

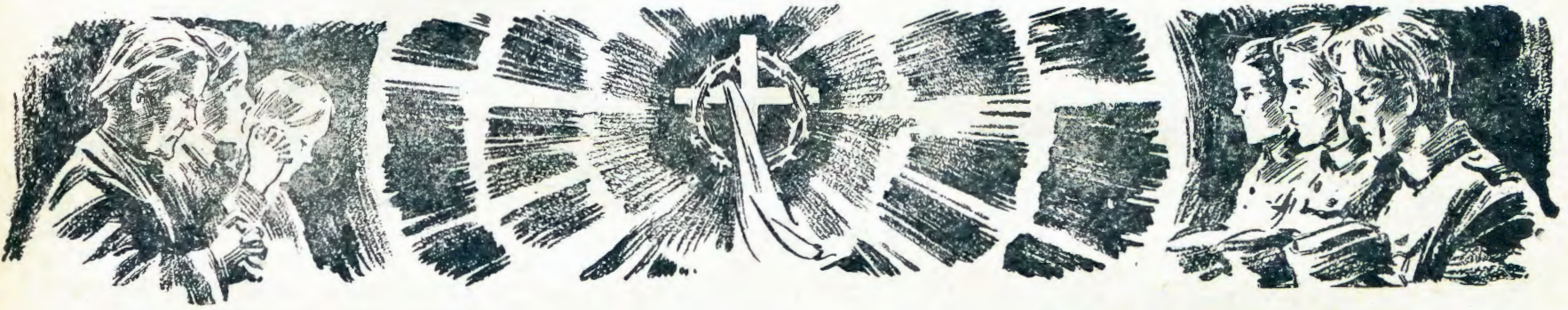


OMUKWETU

No 1

JANUALI

1962



MOSHIKUNGULU PAMWE NA JESUS.

Mat. 8:23-27.

Omuwa Jesus sho ta ti: Ngame otandi kala pamwe nane omasiku agehe. Mat.28:20. Shika itashi ti, ngoka e li pamwe na Jesus ita adhika ando kuudhigu, awe. Omolwa shoka Omuwa Jesus ta ti: Ongoka a hala a landule ndje, ni idhimbike ye mwene, ni itsike omushigakano gwe ye na landule ndje. Mat.16:24. Omushigakano otagu ti uudhigu.

Oteksti ndjika otayi popi wo aalongwa yOmuwa, nando oye li pamwe naye oya adhika kuudhigu uunene. Oondunge noonkambadhala dhawo oya dhimbulula itadhi kwatha we sha, shila eso alike. Oshikumitha oshinene osha li mpoka: Omuhupithi oku li mokati kawo, ihe okwa kotha. Ota vululukwa.

Uudhigu sho wa geya ngeyi aalongwa oya tila, oshoka owato otayi ningine mo. Sho ya li kaye na we kwatho lilwe, oya yi kOmuwa Jesus noye mu pendula (galikana) ya ti: Omuwa tu hupitha, otatu ningine mo! Mat. 8:25. Omuwa Jesus sho a mono ya tila noya limbililwa ote ya ganda, oshoka muumbanda kamu na ehupitho. Ota ti: Ooitaali ne aanenguni, oshike mu na uumbanda? Ihe nando e ya ganda okwe ya kwatha muudhigu wawo.

EUDIFO LEVANGELI.

Joh.3:1-15.

Omunjoli uevangeli eli oje te tu etele oiholekua jouhamba ueulu. No-meudifo lonena ota eta oukuatatu uumuñu uomu Kalunga. Ngenge to leshe evangeli laje oto mono ngaha ejeloko pokati komaevangeli makuao.

Edalululo olo Jesus ta lombuele Nikodemus, kali li momaevangeli makuao. Johannes okua luka Jesus Ondjovo. Johannes oje omujevangeli e shi kulonda moujapuki ua Kalunga, ohatu mu tale a ja omundjondjoñu a fa oñua. Kol.1:26-27.

Edalululo olo eshito lipe, Kalunga ta shiti mu Jesus. Oundjondjo okue u kufa peni? Opu Jesus eshi a puilikina naua osho tashi di mu Jesus. Oñepo jedalululo oje mu ninga omu-

Otseni atuheni ooitaali, otse aalanduli yOmuwa. Oye nando ta kala pamwe natse omasiku agehe, otu nokwadhikeni komaudhigu gili na gili. Ihe oye te tu kumike omukumo, ta ti: Ikoleleleni, oshoka ongame nda sinda uuyuni. Noonkwawo: Ithana ndje esiku lyuudhigu woye, ongame tandi ku hupitha, ngoye eto simaneke ndje. Ano otu nokwadhikeni komaudhigu gili na gili mondjila ndjika yeitaalo. Ihe nando ngeyi otse otu na Omuwa gwomwenyo e li mokati ketu. Ngele tatu adhika kuudhigu, tu yeni ano kuye twaa na omalimbililo, oye te tu kwatha mbala.

Josef Amakali.

ñu mupe oñge oujadi ua Kalunga ue mu ninga omundjondjoñu, oñge ta etele eongalo la Kristus oiholekua jouhamba ua Kalunga. Kol.2:3; Jes.45:3.

Ndelene satana umunandubo okuheka mo ovañu votete meendunge edi, va ti a fe Kalunga. Ndelene Eva a njengua okupukulula satana, osheshi Kalunga okua shita omuñu kefano laje e mu fe. Omuñu eshi a lja komuti okua ninga omufi, ina fa vali Kalunga. Kalunga muene ote li tongo ta ti, kee fi Kalunga kovafi, ndelene okovanamuenjo.

Ou a hala a je mouhamba ua Kalunga, e nokuja meshito lipe. Kol. 3:10. Eshito lotete la njonauka, Jesus a eta eshito lipe. Meshito lipe kamu na vali efjo nomaluhepo nomaupjakadi ounjuni ou. Ndelene, tete u nokudalulua. Ohatu itavele, edalululo olo oñangela ja Kalunga jokuhupifa omulunde. Omuhupifua e nokudalululua, opo a kale mu Jesus, a kale eshi okulonda, opo a likole ouino noiholekua ja Kalunga. Ou a dalululua iha longo oulunde. 1Joh.3:6,9, ndelene omuñu uopanshitue ita i mo mouhamba ua Kalunga. 1Kor.2:14. Omunjoli uevangeli eli oku li mu Jesus, e li meshito lipe.

Omukuetu mu Jesus Kristus, ou li peni paife? Ngenge ku li mu Jesus, efjo otali ku tilifa, osheshi olo oñgoshi, nola hala li ku ninaule po, osheshi ou li momatimba oje. "Ou nokudalulua." Wilho Kaulinge.

HOLENI AATONDI YENI.

Rom.12:16b-21.

Omuwa gwetu Jesus Kristus mevangelu pa Mateus ota longo ngeyi aalongwa ye. "One omu uvu kwa tiwa: Hola omukweni, tonda omutondi gwoye. Ihe ongame otandi mu lombwele: holeni aatondi yeni, galikaneneni aahepeki yeni."

Mpaka wo moohapu ndhika otatu longwa oshinima osho tuu shika: "Holeni aatondi yeni, galikaneneni aahepeki yeni." Ohole yokuhola omutondi gwetu osho oshinima shi nondilo, oshoka mokukalamwenyo kwomuntu aluhe omu na egamo ndika: ngame ndi hole ngoka e hole ndje. Nolwindji tashi monika nkene omuntu ta kambadhala okugalulila omukwawo uuwanawa ngoka he u mu ningile wo. Nangoka e mu ningile uuwinayi ota kambadhala wo oku u mu galulila. Osho ngeyi pwa holoka epingathano ewinayi nelongo lya Jesus ndyoka tali ti: "Holeni aatondi yeni." Tala u tale nkene ho ende, ngele to iyeleke nelongo ndika ewanawa motekeste ndjika nomu 1Tes.5:15 tamu tiwa: "Talen kwaa kale ngoka ta galulile omukwawo uuwinayi, awe, mu hale aluhe okulongelathana uuwanawa nokulongela ayehe."

Ihe yayee nkene tse olwindji twe ende nondjila yi ili. Mpaka twa gwana okutala ohole ya Kalunga okuhola omuntu onakwaavulika kuye notwa yono kuye, ano twa ningi ihe aatondi ya Kalunga mokwaavulika kwetu. Ihe Kalunga ine tu yalulila shoka twa yono. Oye e tu silohenda mOmuwana Jesus Kristus sho e mu tumu muuyuni omolwohole ye oku tu hola. Joh.

nganombibeli ku London ola tambula oshisho eshi, ohatu li halele nde hatu li indilile ku Kalunga eeñgono okushakenifa oshilonga eshi, eendjovo da Kalunga di tandavele, di longifue, di ningi omuenjo ku vahapu.

Omusamane Björklund novakuafi vaje aveshe ohatu va pandula nde hatu va halele epuniko la Kalunga. Ohatu hafele jo ekuafafano la tja ngaha leengerki ñatu odo tadi longo movaKuanjama, di tuikile jo komesho okulonga kumue, ouhamba ua Kalunga u uje.

3:16. "Oye ihe tu ningile pandjo dhetu, ye ihe tu geelele pamayonagulo getu." Ps. 103:10-11. Otse atuhe twa li twi ilongele ondjahi ya Kalunga sho twa ningi aatondi ye omolwokwaavulika kwetu, ihe awe, Omuwa okwe tu sile ngaa ohenda nando twa ningi ngeyi.

Shika sha li sha gwana oku tu longa tu kale nokuhola aatondi yetu wo. Jayee tse nkene tu nohole ya hwa, nolwindji twa yi miilonga mbyoka ya Kalunga, oshoka oye mwene ta ti: "Ondjahi yokugeela oyandje mwene." 5Mos.32:35 na: "Omuwa mwene ta ka pangula oshigwana she: Hebr. 10:30; 2Tes. 1:6. Mu 3Mos. 19:18 Omuwa ta ti: "Ino kala u nondjahi yomukweni gwoshilonga, awe, u nokuhola omukweni ngashi wi ihole mwene."

Mpaka opu na oshinima oshine twa gwana oku shi tala, osho ohole ya Kalunga mu Jesus Kristus, Omuwa gwetu. Muudhigu auhe e u monithwa niuhuna yaa shi okutumbulwa manga e li mo, nosho tuu aakwiita ye nomagonga noondungo taye mu ulula noye mu endjeleleke pokati kegulu nevi. Otatu uvu ta ti miitya ye ya hugunina ta tumbula ngeyi: "Tate, ya dhimina po oondjo dhawo oshoka kaa shiwo shoka taa longo." Luk,23:34. Otatu pulwa tse na ngoye tu holole ohole yetu kwaayehe, kookume nokaatondi yetu wo. Lesho Omayel. 25:21-22. Hasha ngele to shekwa omumbanda shaa u shi shi onondjila tuu ndjika Omukulili gwoye okwe ende nayo, na ngoye u nokwenda muyo.

Onkee taku igidhwa: holeni aatondi yeni, galikaneneni aahepeki yeni, opo mu ninge aana yaho yeni yomegulu.

N. Stefanus Mvula.



Januali 1962

OMBIBELI MOSHIKUANJAMA.

Mohani ei ohatu laleke omusamane Walter Björklund eshi ta fikama nde ta i koSoomi, osheshi okua mana oshilonga shaje shinene, okua tula Ombibeli aishe moshikuanjama.

Oshilonga eshi omusamane Björklund okue shi longa eedula ñe. Koshilonga shinene shi fike apa efimbo olo lihupi nokuli. Ndelene omunashisho eshi ine litula nande moilonga ikua, nde okua diinina eshi okue shi peua, osho okua findana.

Moshilonga sha tja ngaha omu na shili oudjuu uasho. Oku nokutalua oitja ihapu joshiHeberi no joshi-Greka nokufatulula oinima jounjuni uinja uOmbibeli ojo ihe po nande apa. Nde elaka loshiKuanjama nokuli likulu no lipe itaa fafana, olo tali popiua koushilo itau fafana na olo tali popiua kouninginino n. sh. t. Vamue ovo va tekulua meefikola, otava popi elaka la ehenifua komesho naua, tali dulu okulongifua mokupopja oinima ihapu ipe jounjuni ou mupe, vakua fimbo kave udite ko, nde vamue inava hala nokuli, eshi va dama okulala moshihua.

Ombibeli eshi tai etele ovañu aveshe ondaka jehupifo, oñge ovalundululi ova longifa elaka olo tali dulu okutambulua kuvahapu. Inamu ja unene elaka lovatekuki. Opo tuu opo Ombibeli otai talululua alushe shama pa pita eedula omilongo itano ile efele nde ovañu aveshe va ehena komesho mokulongifa elaka lavo mokupopja no mokushanga.

Otu nelinekelo, Kalunga okua endifa nOmepo jaje oshilonga eshi shaje muene. Aveshe ova mona nokuli oñito okulesha Oilonga jovajapostoli nokuholola omadiladilo avo kombinga jelaka. Inaku udika nande omanjemato, ahoue, vahapu ova hafele embo olo. Etestamenti lipe alishe ola ja nokuli kuLondon li njanjangidue. Kashimba neudo ile omudo tau uja otali holoka la pua okunjanjangidua. Ndelene otashi pula eedula dimue, Etestamenti likulu tu li peue jo. Eha-



UYELELE WOMUKRISTE OTAU ZI PENI?

Ngiika wa konakona nawa uunongo weshito lya Kalunga eto tseyamaminikilo gokegulu. Otatu dhiladhila omwedhi aguke. Pamwe moku gu tala gwa fa naanaa gu na uyelele mugo gwene, ihe nani ohagu taamba uyelele ketango. Nena tagu vulu ihe okugandja uyelele wago kevi.

Mu Mat. 5: 14 Omuwa Jesus ota ti: "One uyelele wuuyuni. Oshilando sha tungilwa kondundu, kashi vulu okuholama." Ihe omukriste ta vulu tuu okukala uyelele muuyuni mbuka? Ngele tatu tala ethimbo ndika twa fa katu na uyelele. Otashi monika mpoka aantu sho ya tameka okwetha okugongala poohapu dha Kalunga. Oyendji yi ipyakidhile niilonga yawo nenge niimuna yawo, nando esiku lyombimbelingundu limwe alike moshiwike. Oluthithiya luyelele oto li adha peni, omukwetu, nge ha moohapu dha Kalunga. "Mwaa na ndje, kamu vulu sha," osho Jesus a ti. Omukriste omukwetu, inatu inekeleni eshasho nenge uulalelo uuyapuki nenge okugandja kwetu oshitimulongo, oshoka itayi tu hupitha; Ehu-pitho li li mu Jesus Kristus awike, ngele tu li muye eta kala mutse... Katu vulu okulonga sha nenge okwenda, ngele katu na uyelele wokolutu. Osho wo ngele twaa na uyelele woohapu dha Kalunga, katu vulu okumona ondjila yehupitho. Eps. 119: 115.

Titus A. Ilonga.

Efiku eti 29 Oktober 1961 ovavambo novahelero mu Wenduka ova ongala kumue mongerki okudimbulukua efiku linene fiombi omujelifi uevangeli dr. Martin Luther a joolola Ombibeli momaongalo enja.

Hano, efiku olo ongerki jetu oja li i jadi unene. Omua li jo ovaenda vahapu va dile koilongo noilongo. Tete opa imbua eimbilo 251. Omukuluñutumua omushamane H. Diehl a ninga elongelokalunga, konima opo omukuluñutumua omushamane A. Hukka okue tu popifa neendjovo edi 1 Kor. 3:23. Oje okue tu hololela ngaha kutja, ongerki ei oja Kristus neongalo eli olaje muene. Kristus oje muene na diinine eongalo laje fiyo opehulilo.

Eshi a hulifa eengudu dovaimbi ovanjasha ova imba meshikulafano, ova imba omaimbilo mahapu ehambelelo. Opo omufitaongalo omushamane Johannes Ekandjo e tu kundu neendjovo edi Rom. 11:13. Oje okua holola ngaha: Paulus omujapostoli uOmuene oje okua udifila ovapaani evangeli, oje ina fja ohoni eudifo eli, oñge hano a hemuna omitima dovapaani. Nafje jo ovavambo, osho tua li ngaha momilaulu fokofoko doupaa ni, ndele paife otua minikilua kevangeli la Kristus. Ndele tu li po ngahelipi noujelele ua Jesus?

Omuti muua ohau monika koimati jauo oiua, nomuti muui koimati jauo ii. Nafje jo hatu talua koimati jetu ngenge iua ile ii. Mat. 12:33.

Efiku olo opua li ovapopifi vahapu ve tu popifa neendjovo diua. Pehulilo ovañu ova umba ongalo, noimaliua ei ja tumua ko Union keumbo olo hali njanjangidua eembibeli, i ninge ebandulo letu omolu Ombibeli jetu neendjovo dehupifo tue di peua.

Abraham Jakob.

NKENE OMBIBELI YE YA MWAFFRIKA.

Etestamenti Epe lyotango lyAfrika olya nyanyangidhwa melaka ekulu lya Etiopië momumvo 1549.

Konima yoomvula dhomathele gaali, Etestamenti Epe etiyali olya nyanyangidhwa momalaka getu gaa-Afrika no lyi ithanwa "COPTIC", momumvo 1716.

Momumvo 1835 Ombibeli yotango ayihe oya nyanyangidhwa moshiMalagasi ontuntu ya Madagaskar nohayi ithanwa Amalric noya pwa momumvo 1840.

Otatu pandula Doktora (Dr) David Livingstone na Robert Moffat mboka ya simana moku fatulula Ombibeli moshi-Tswana, noyo ontitatu melaka lyaAfrika.



OSHIPANGELO SHAAWAMBO KORANJEMUND.

MuOranjemund mwa ningwa oshithuthi shaapangi aape, aamati aawambo 16. Omuhona gwOranje (C. D. M.) a laleke aapangi nomatumbulo omanawawa eta ti: "Otandi mu pandula, aamati ne aawambo, sho mwa hala mu kwathe aawambo aakweni haa longo mevi lyetu. Dhimbulukweni wo omu na evi lyeni noshigwana sheni tashi pumbwa wo eyakulo lyeni. Inamu ka kuutumba owala, ka kwatheni ne mu ka yakule oondohotola hadhi longo mevi lyeni."

Otatu pandula sho twa pewa oonkondo noondunge dhokukwatha nokugamena uuponga uushushuka tau holoka koongenge dhoWambo hoka twa kala ko. Otatu pandula wo ookuku oondohotola dhokOnandjokwe mboka ye hole oshilonga shawo no ya hala wo aayakuli oyendji.

Sho twe mu tumine oshinyolwa shika twa hala mu tu dhimbulukwe, one oomeme nootate, mu galikanene oshilonga shika tu shi na, shaa hulile owala muka, ihe tu shi tsikile wo pune ngele twe ya.

Otu hole ondjimbo ndjika 372, tatu yi mu tumine ekundo lyetu, tu yi imbeni atuheni mokudhimbulukwa oshilonga shOmukulili no nkene twa pewa esilohenda oku mu imikila iiyimati iiwanawa.

Tu lesheni natango Luk. 13:9.

T. K. Namandje.

Ombibeli yotango m'Union oya nyanyangidhwa m'oShisutu momumvo 1878. Mu Afrika Etestamenti olya lundululwa momalaka 114 n'Ombibeli omomalaka 219.

Embo ndika olya fa naanaa efuta. Omilonga otadhi vulu okupwina, ihe efuta itali pwine nande.

Ombibeli oyi li aluhe, opo yi tu kwathe muudhigu nomuuyina.

Simon Dapeua Hiskia,
Okahandja.

SHOKA TASHI TU KWATHA MOOMPU-MBWE DHOMEYA.

Ethimbo lyongashingeyi olyo ethimbo lyomalunduluko ogendji. Ngele tatu tala ethimbo lyokukalamwenyo kwookuku, olya li ethimbo li ililela mokuyelekanitha nethimbo ndyoka tu li na ngashingeyi. Aawambo yongashingeyi, otatu pumbwa okwenda pamwe nethimbo opo tu humithe oshigwana shetu komeho. Ookuku oya li nga ya kondjo mpoka pwa li pu thike oonkondo dhawo. Ngele tatu landula ehistori lyetu nena otaku hololwa kutya, ookuku ya zi komatle muumbangalantu wa Afrika osigo ya thiki kOwambo. Oya tsakanekwa komaudhigu ogendjilela, ihe oya kambadhala okukokola nokufala Owambo sigo lya ningi evi lyawo nolyoluvalo lwawo ngaashi tu li mo ngashingeyi. Oya gwana okupandulwa sho ye tu monene evi ewanawa nehohike.

Opo twaa kale aanangunga yeve lyetu nena otatu tegelelwa tu ninge shaa shoka tashi vulu okuhumitha oshigwana nevi lyetu komeho. Ookuku oya li ya kwathwa kuunshitue koombinga adhihe ngaashi u li po tau kwatha natango. Aakwankala niinamwenyo yomokuti. Omolwa shike unshitwe itau tu kwatha we mbela ngaashi u li po tau kwatha aakwankala yomokuti? Mehumo komeho lyoye osho wo nawo otatu zi po kashona na kashona, opo omuntu a longithe oondunge ndhoka e dhi pewa omagano. Kuku Adam na Eva manga ya li po inaa yona ku Kalunga oya li taa paluthwa kuunshitwe nopwaa hena shoka kwa li haa longo. Konima yokuyona kwawo oye ethwa yi kwathe yoyene nopo mpoka sha tameke sigo okonena ndjika wo.

Opu na iinima oyindji twe yi pumbwa noonkondo okuhumitha evi lyetu komeho. Otatu ke yi mona owala ngele tatu kambadhala nomagano ngoka tu na, shaa tuu twa hala oku ga longitha. Natu tale shoka shi shiwiki nawa kaantu ayehe, ngaashi oompumbwe dkomeya mOwambo. Owambo ayihe molumbumbu osigo oomongenge dhayo oyi na oluhepo lwomeya unene. Iilonga yomeya otu yi shi aluhe, shaa gumwe ohe ga longitha ngaashi a hala shaa tuu ge li po.

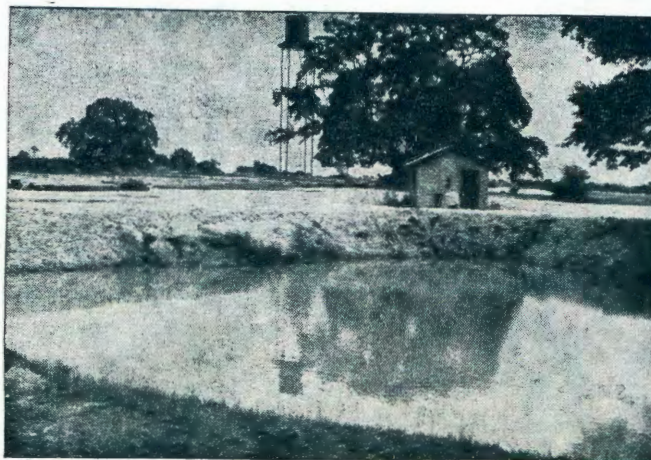
Tango natu tale kutya, omeya ohaga zi peni. Omvula ngele inayi loka, nena opu na oluhepo olunene, ondjala nenta tali holoka.

Oshitiyali natu tale mpokahaga yi shoka haga kala ga pumba omathimbo gamwe. Opu na omikalo ndatu moka evi tali kanitha omeya galyo:

(a) Omeya ohaga pwine,

(b) Ohaga kunguluka taga yi komadhiya ngaashi tu ga na kuumbugantu wOwambo goUpeke no'Mulunga.

(c) Ombepo sho tayi pepe aluhe, netango sho tali pupyaleke evi noonte dhalyo, nena omeya otaga yi mombepo palupe lwomuku. Konima otatu mono owala omilonga nomadhiya ga kukuta tse tatu ti: Oga pwine.



Ondama yokOnandjokwe

Opu na oshindji shoka tashi vulu okuningwa mOwambo, opo omeya ga tya ngaka gi ilikolelwe gaa hepe owala. Opo wo oopumbwe dhomeya dhi kandulwe po koombinga noombinga dhOwambo. Ngika to ti: Omeya ngano haga pwine ogo hatu teke momatope nomomithima ngele twe dhi hupu. Eeno, ou li nga mondjila, ihe ha agehe, na ishewe omukalo ngoka gwomatope nomithima otagu tu mana owala oonkondo nokukala tatu hupu omithima mmo mvo kehe mokukalamwenyo kwetu. Nando twa ti: "Ombinzi yomuthigona ihayioto," hapamukalo nguka, awe.

Aanandunge yongashingeyi oye na omithima omiwanawelega shili ndhoka ihadhi pumbwa okulafululwa ombepo yomahikanyandi ngele ya pepe. Omithima dha tya ngeyi odho twa hala tu kundathaneni ngashingeyi shoka odho adhihe tadhilulu oku tu kwatha momathimbo ngaka goomvula ihadhi hala okuloka nawa.

Otagu ke mu hokololela wo evi limwe lyontumba una Afrika ihaali lokwa nando, ihe oonakukalamo ohaa teya lune (4) momumvo gumwe nokuli. Omolwasho haa longitha omeya gawo pamukalo ngoka tagu longithwe pethimbo ndika.

Frans Iihuhwa,
Okahandja.

OMAKUNDITHO

Aamwatate aawambo naakavango naasoomi jomu S.W.A. Otatu indile OMUKWETU e mu tumine omakunditho getu sho tue mu halele omumvo omupe gwelago 1962 omesilohenda no moonkondo dhOmukulili gwetu Jesus.

.... "natse wo tu ihuleni shaa shoka tashi tu thindi pohi... tse tu matuke nokudhiginina methigathanopo.... omeho ga taalela omutameki nomugwanithi gweitaalo, o Jeesus... Dhiladhileni nguka kwi idhidhimikile ondumbo yi thike mpaka yaalunde, mwaa loloke, noomwenyo dheni dhaa suunye." (Hebr.12:1-3).

Aamwanyoko mu Kristus

Lempi na Viktor Alho.

Owi ikongele tuu oshifo shOmukwetu nEhangano? Endelega, u shi ninge, oshoka to shi vulu natango.

O K A A N D J E T U



Oto kotha po tuu ngashi okamati haka, nando ngashingeyi ethimbo lyo opala u ikongele oshifo shoye Omukwetu.

OMUKUETU

Omukumo nda hala oku mu tua, ovakuetu vaholike mu Kristus, tu lihaleleni okulilandela Omukuetu. Omo mu na eefgundafana dihapu no tadi jandje jo omukumo nelao. Ondi shi shi vahapu otave lipopile, oimaliva oja ninga ihapu. Tala, ei inai uanena natango ouua u fike apa; ame jo, ame umue uomuavo, ndele onda mona kutja, injamenena ihai kuta. Likongela hano shoje muene neudo, opo u kale ho puilikine eefgundana adishe tadi popiua mo.

M.S.Hitombo,
Tsumeb.

EFJO LOMBADILILA.

Mefiku 18 September -61 omulumeñu umue, edina laje Mathias Jairus, Oshitumba, Angola, okua fja ombadilila omanga a li ta longo momina ja Tsumeb. Okambaba ka tokoka kongodi oko haka ende, nomamannya noitenda aishe ja uila po. Ovamati va hangika va mana oilonga javo, ndelene omumati ou je aeke a hangika ta longekida oilongifo no ta kosho oinima aishe, shashi okua li omuuliki uovakuauo. Oje okua pakua mefiku la shikula, ndele nande efiku la li loilonga nomaimbo mahapu e lili noku lili, okua findikilua kongudu jakula, ja hanga pomafele avala. Otua kala jo nehafo pombila nande tu li moluhodi, ndele oluhodi la shituka ehafo efiku olo. Kombila jaje kua popiua omakumaido mahapu omeendjovo da Kalunga, unene fje vene tu dimbulukue ofje ovaenda kombada jedu... Lesha Eps. 90: 12; Luk. 12: 35-39.

M. S. Hitombo,
Tsumeb.

FEBULUALI

1. Do. Iil.28:1-6. Joh.8:12-20.
2. V. Rom.7:14-25. Joh.8:21-30.
3. Sa. Hos.2:20-25. Joh.8:31-36.
4. S. **Os. 5 ya landula Esiku Iyaapagani.**
Kol.3:12-17. Mat.13:24-20.
Jes.40:12-25.
5. M. Mat.13:36-43. Joh.8:46-59.
6. D. Mat.13:47-52. Dan.1:1-21.
7. W. Mat.13:31-35. Dan.2:1-26.
8. Do. Luk.12:54-59. Dan.2:27-49.
9. V. 1Kor.1:18-25. Dan.3:1-30.
10. Sa. Luk.13:22-30. Dan.5:1-12.
11. S. **Os. 6 ya landula Esiku Iyaapagani**
2Petr.1:16-21. Mat.17:1-9.
2Mos.24:1,2,12-18.
12. M. 2Mos.34:29-35. Dan.6:1-29.
13. D. 2Kor.4:3-6. Dan.7:1-14.
14. W. 2Kor.4:13-18. Dan.7:15-28.
15. Do. Gal.1:11-24. Dan.8:1-14.
16. V. Mat.16:24-28. Dan.8:15-27.
17. Sa. Fil.3:20-4:1. Dan.12:1-13.
18. S. **SEPTUAGESIMA.**
1Kor.9:24-27. Mat.20:1-16.
Jer.9:22,23.
19. M. 1Kor.1:26-31. Joh.9:13-23.
20. D. Fil.1:27-30. Joh.9:24-41.
21. W. Rom.3:21-28. Joh.10:1-10.
22. Do. 1Kor.3:5-9. Joh.10:11-21.
23. V. Mat.10:40-42. Eps.23.
24. Sa. Luk.17:5-10. Joh.10:22-30.
25. S. **SEKSAGESIMA.**
2Kor.12:1-10 Luk.8:4-15.
Amos 8:11,12.
26. M. Mat.13:10-17. Joh.11:1-10.
27. D. Mark.11:15-19,27-33. Joh.11:11-19.
28. W. Mark.6:1-6. Joh.11:20-27.

OKUHUPILA.

Ope na eyele ndika omukulu gwonale okwa tile: "Waa lombwelwa no yi noongaku momeya". Onda hala ndi popye oshinima shika kaavali, nando sha popiwa olwindjilwindji, osho okuhupila.

Oomeme aaholike, inamu hupila we. Kuume koye nenge omushiinda gwoye te ku lombwele shontumba no shongandi, ohashi longithwa aniwa, ngashi: ninga owala okagwanga, nenge omeya gothewa. Ihe twa kala nale miinima mbyono, hamo twa pita mo nale? Otamu ti, sho inatu sa. Ihe meme, otandi ku lombwele shika kutya, mOnandjokwe mwa si aanona oyendjiyendji omolwehupilo ndika. Kotoka, waa ikuthe okanona koye nehupilo. Ngele wa hala u kale naantu, ino hupila we!

OMAMBO OMAPE GA HOLOKA.

Inashi gwana ngele ou shi owala okupopya elaka lyoye ngoye waa shi oompango dhalyo. Ngashingeyi oshinyanyangidho sha Niipa sha njanyangidha po omambo omawanawa shili. Otaga longo oompango dhelaka.

Omambo ngoka oga nyolwa palandulathano lyoongundu; ostanda III, IV na V.

Omulongi kehe oto pumbwa u lande omambo ngoka opo waa kale nuudhigu mokulonga kwoye. Oga nyolwa pamusindalongo gwoosikola dhaaludhe mu S. W. A.

Mboka wo mwaa shi aalongi, otamu pumbwa wo shili omambo ga tya ngaaka, oshoka otage ku longo oshidji shili. Oto longwa mo nkene oombrive hadhi nyolwa. Oto longwa mo oshindji.

Ilandela ano omambo ngoka agehe. Otaga landwa ngeyi:—

Ostanda III otali landwa 12c

Ostanda IV otali landwa 12c

Ostanda V otali landwa 12c

Ilandela omambo ngoka mbala. Kayi shi ondilo ndjo. Omambo oge na oshilonga.

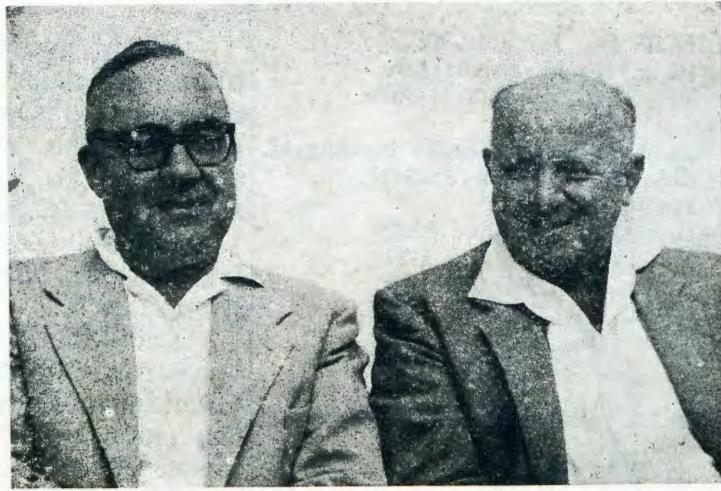
Mbo mu li kUushimba, gwedhii ko iimaliwa yopoosa. Mbesteleni ngeyi:— Tumina ndje elaka lyoshi Ndonga ostanda III lya nyolwa ku T. Tirronen. Nenge shaa tuu ostanda wa hala u tuminwe. Onawa ngele to mbestele oostanda adhihe.

H. D. Namuhuya.



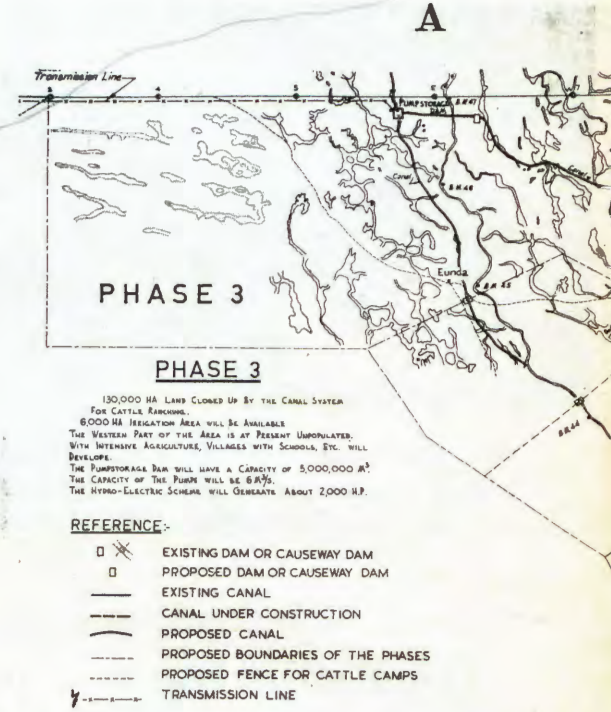
Dhimbulukwa ekumagidho lyomuyapostoli Paulus, nkene ta ti mlil. 17: 30. Ano ino landula omikalo dhaakulu yonale, oshoka oye shi ningi muugoya wokwaatseya sha. Mokuninga ngeyi tamu mana po eliko lyoshilongo niitayi yegongalo lya Kristus. Oye ta ti: "Etheni uunona nau ye kungame, inamu u kelela ko."

Johanna Gabriel.



AATUNGITHI, OMUSAMANE WIPPLINGER
NOMUSAMANE STENGEL

OMEYA

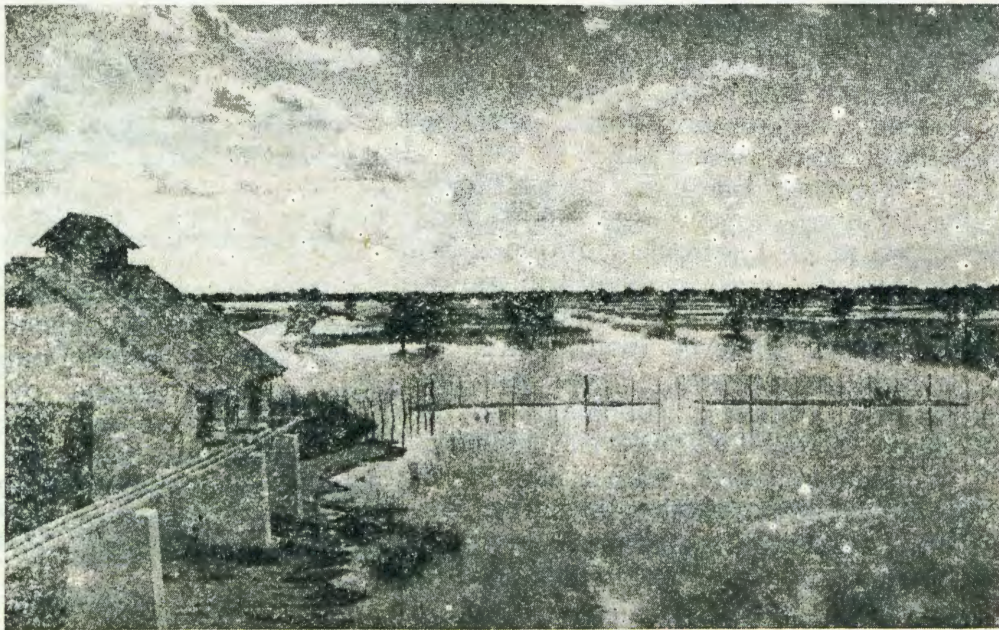


NOTES:-

THIS MAP SHOWS THE OMBALOLA CANAL SCHEME SUBDIVIDED INTO 3 PHASES. PHASES 1 AND 2 CAN BE USED AS A FLOOD-STORAGE SCHEME. UNTIL PHASE 3 IS COMPLETED WHEN WATER IS PUMPED FROM THE KUMENE RIVER.

AN INFLUENCE ZONE, WHICH EXTENDS FOR 5 MILES ON BOTH SIDES OF THE PERENNIAL CANAL, IS FENCED IN. THE AREA IS SUBDIVIDED INTO CAMPS FOR CONTROLLING THE PASTURE AND IMPROVEMENT OF THE CONDITION OF THE CATTLE.

PHASES 1 AND 2 ARE A VERY EFFECTIVE METHOD OF ELIMINATING WATER SHORTAGE DURING DROUGHT PERIODS BY STORING WATER DURING THE RAINY SEASON. ONLY BY COMPLETING THE 3RD PHASE A PERMANENT ANNUAL WATER SUPPLY WILL BE OBTAINED WHICH WILL PRODUCE A SOUND AND ECONOMICAL DEVELOPMENT FOR THIS COUNTRY, CAUSING REDEMPTION OF THE PERIODICAL SEVERAL DROUGHTS.



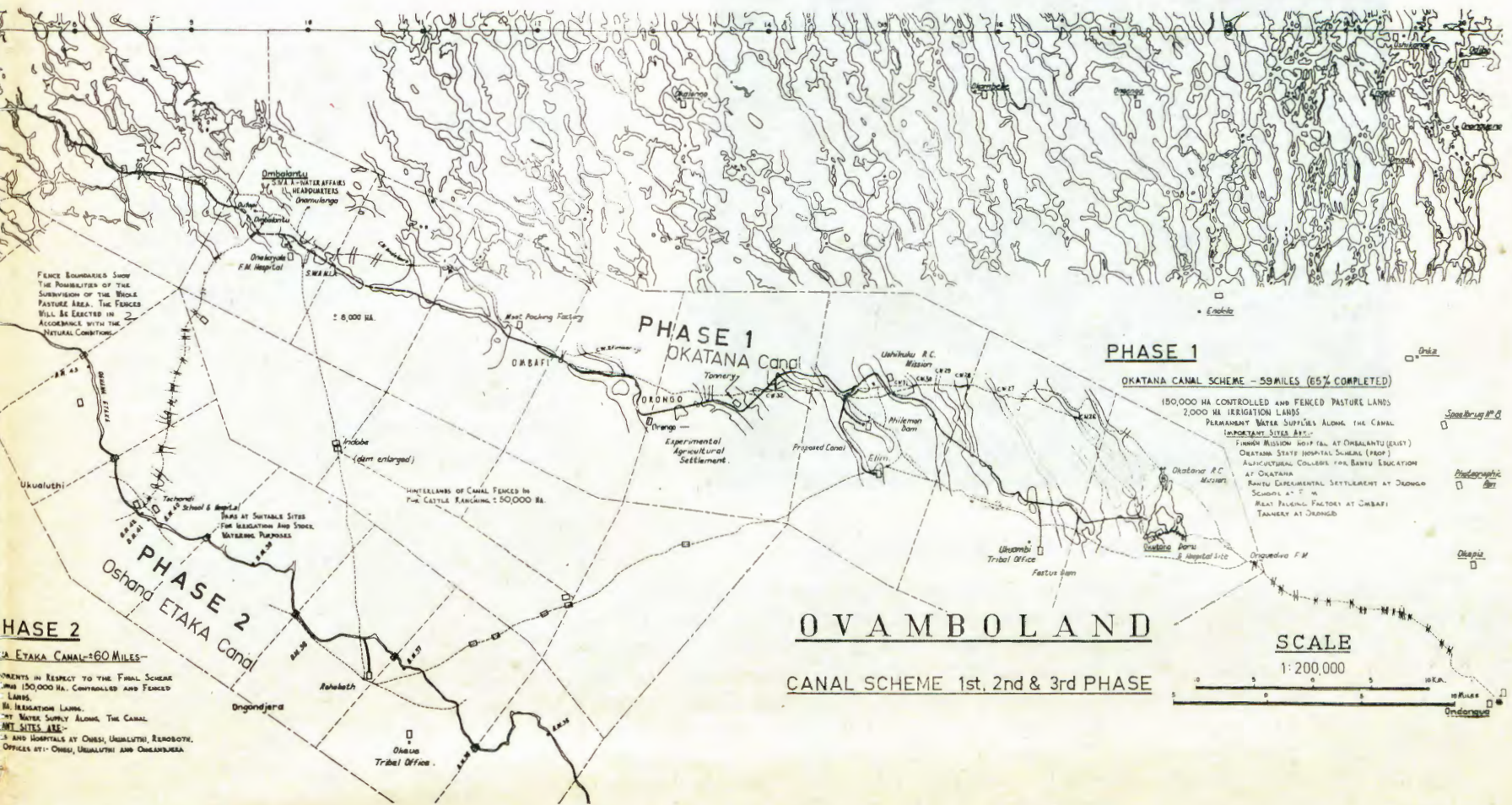
ETALE LYA HOLOKA KELUNDU



OONDAMA OONENE

OKARTA YOWAMBO TAYI HOLO

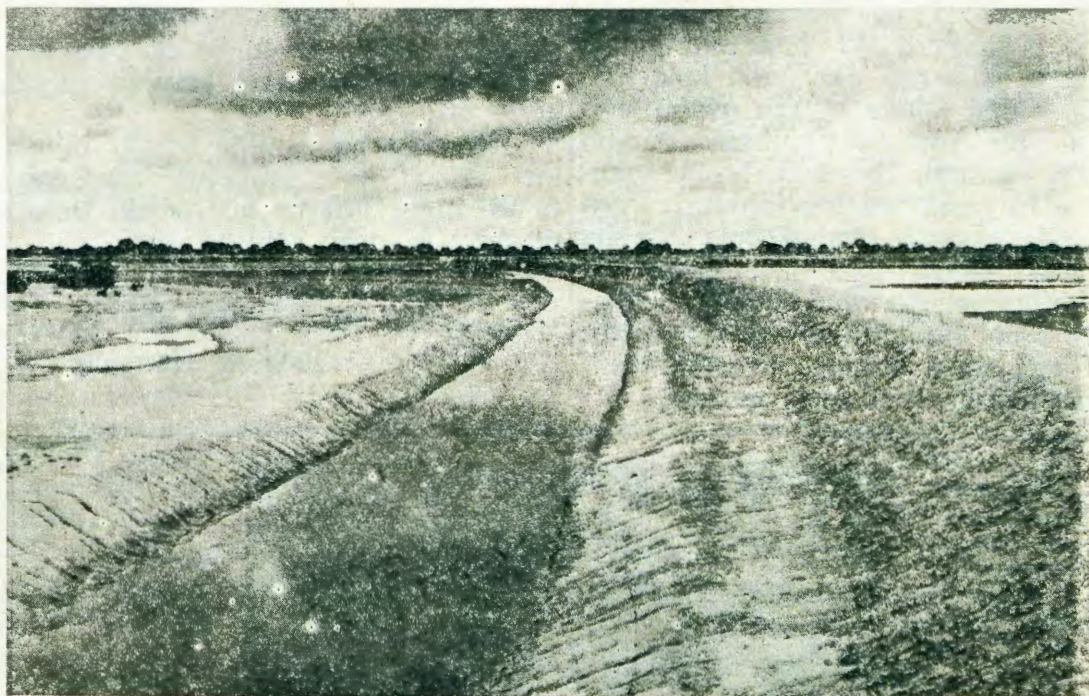
N O G L A



LA OMUNKANKA OMUNENE NKENE TAGU KALA. OGWA PU OKUTUNGWA POKATI KOMBALANTU NOKOKATANA

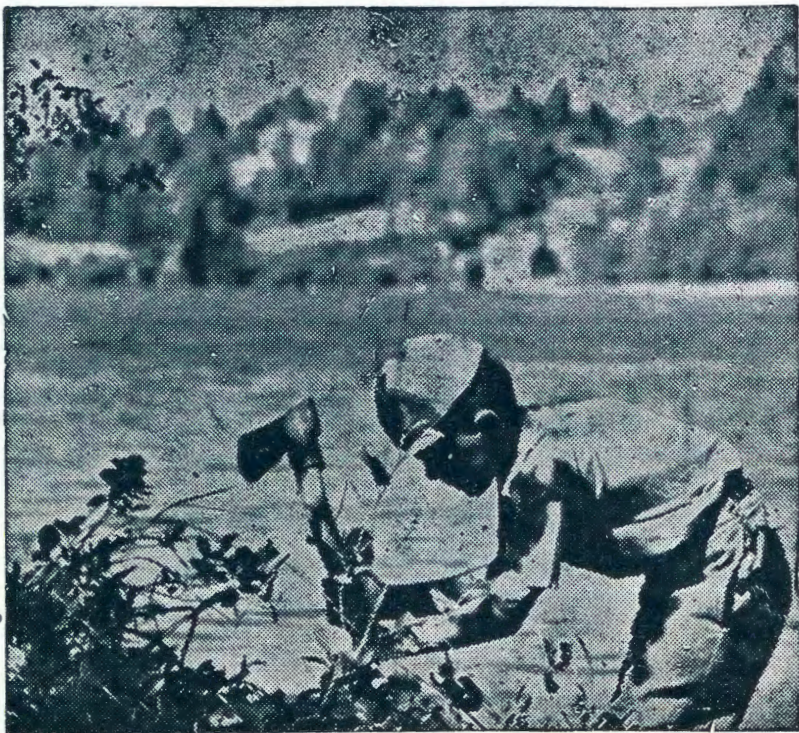


KELUNDU (KOKATANA)



OMUNKANKA KOSHAANA SHONTUMBA KUUKWAMBI

OSHIKOLOLO SHAAGUNDJUKA



OLUENDO LOKUKUNENE.

Pefudo limue ovakongindjila ovamati voku Elim, Oniipa, Onguediva osho jo vokEngela ova ja moluendo lile la njika oshilumeñu okuja komulonga ua Kunene, pamue novamati ava, opa li jo ovaseminari vamue po oku ka tala omulonga oo.

Ondjila oile shili, shaashi oto li hulu nana ovakriste, no to mono ashike ovañu ve na shili ondjala jokomuenjo. Ovo: ovadimba nosho jo ovashimba. Fiku tua dja mOnguediva, otua kalele kEtunda moshilongo shovadimba. Otua ninga mo ohungi onguloshi ojo, shaashi oluendo eli ola li la longekidua naua kovanandungelela. Onda li shili nda fja ohoni eshi ohungi ja fa ja kala mo okafimbo kale no nda li nda loloka manga ovañu ovo ve li po tuu va pulikina efimbo alishe ve litula mo shili. Ngeno omuñu e tu pulile konima johungi ei, nge no nda njengua okuhokolola eshi sha ningua manga ovadimba ngeno va hokolola ashishe sha ningua. Divadiva onda fatulukilua keendjovo edi: "Votete otava ka ninga va huuninua", shaashi osha li sha jela naanaa.

Ovañu venja ova hokua shili eendjovo da Kalunga ve tu dule. Okudja opo otua ja kuKunene, otua enda noudjuu okudja keendudu. Ndele nande ongaha, Kalunga okua li pamue na fje. Otua kala pamue novaherero, navo jo va hokua Kalunga.

Oljelje ne ta i kovañu venja? Onda lipula, osheshi va pumbua omupukululi mondjila javo.

Eshi tua aluka, oshili ovañu ove na oipala ja hafa moku tu mona. Va fa va hala okutja tu udifileni manga.

Ovakuetu ovaholike, ovañu venja ohatu va ningeni ngahelipi? Ohatu ke va tala ko tu va ete oku, ile aame, fje na ove, hatu teelua tu je ko?

Omuene na pendule ehalo muame osho jo mufjeni atusheni, tu shi ninge nehafo no nehala letu, tu shi tale, osho oshisho shetu.

Ame onda kumua shili!

Olavi A. Hangula.

KALA PUTSE.

*Omuwa, kala putse mpa,
Tse aamwoye gamena.
Iiponga ayihe kandula
Omokukala kwetu mpa.*

*Kala po omwendithi
Omegumbo lyetu ndi.
Tu enditha, tu wilika,
Oshoka katu vulu sha.*

*Kala aluhe putse mpa.
Gamena aluhe ngaa,
Moomposi nometonato,
Nomuupu nomuudhigu wo!*

(Sionin Vt. 35)

Lya totwa ku M. Hihanguapo.



EGALIKANO LYOMUGUNDJUKA.

Kalunga Tate omuholike gwomegulu, otandi ku hambelele, oshoka ongoye u hole ndje. Otandi yelutha omwenyo gwandje kungoye. Kwatha ndje, ongame manga ndi li omugundjuka, uugundjuka wandje u yapulwe kungoye. Shundula uuntu wandje? Gwanithila ndje omauvaneko goye ndaa ninge omufundja. Longitha omuntu gwoye muugundjuka nokuli. Otandi kumwa shili, esilohenda lyoye enene ngini.

Pendutha oomwenyo dhaagundjuka yoye. Koleka omagongalo goye kombanda yevi. Pa aakuluntu ayehe oomwenyo oombwanawa nohole oku tu longa ondjila yoye.

Omuwa, Omuwa, pulakena omahambelelo gaantu yoye! Ino tu holeka oshipala shoye. Ongame nda hala okukala omuntu gwoye. Amen.

E. Shombe Salomo.



OSHIKOLOLO SHEGUMBO

EPUTUDHO LYAALELWA.

Muka mOwambo aantu oye hole okukutha nokutaamba aanona yaa-kwawo noyooyakwawo ye ya lele. Iigwana yilwe kayi li unene ngeyi. Otse twa simaneka oombushetu naathikamenwa yetu naamwetugona naamwameme n. sh. t. Aakulukadhi naasamane haa kutha wo aatekulu yawo.

Ope na yamwe ya pilike oondunge no yu uvite taa pumbwa owala okuputudha nawa oyana, ihe ye nuuhethi mokukala naalelwa yalwe. Kashi noshilonga ngele tandi zaleke nawa mbushandje nenge lye no tandi mu pe iikulya iiwanawa, ihe tandi etha oku mu putudhila iilonga noonkalelo oombwanawa nebuliko. Moonkundathana dhetu na yina tandi tseya nkene ndi nokuhuma ko neputudho, opo pwaa kale "ombululu pokati komigoyo dhe no dhandje."

Ngashika mooskola pe naanongeki aahethi naankundi mootundi dhawo nomeputudho moka aanongekwa haa shuna monima, osho wo melelo lyomegumbo. Aavali oya yemata olwindji, sho oyana ya galuka ya shuna monima; ongele momikalo nenge miilonga nosho muukriste.

Shoka tu noku shi tseya osho shika: omasiku ngoka omunona e li pungame ite ke ga kala we palwe. Ogo taga pitilile po no taga yi. Omunona ta koko wo esiku kehe no ta humu komeho. Omasiku ngoka agehe oye ta pulwa miikaha yandje. Ngele a kwatwa kuuvu ongame tandi mu fala koshipangelo, nosho wo oompumbwe dhilwe. Shika tashi ti, oku li miikaha yandje. Ano ogwandje.

Oshinima oshinene osho okuhololela omulelwa gwandje kehe ohole yomomwenyo. Ohole tayi egulula omwenyo gwomulelwa gu taambe eputudho. Ohole yomuntu tayi konakonwa. Yamwe taa nyengwa okumangela kumwe oongundu ndhika mbali nepaya lyohole. Iilonga iidhigu noompitodha nik'iiponga noluhopo osho oshitopolwa shaalelwa. Ihe uuwanawa auhe nehepuluko osho oshitendelwa shaawalwa. Omuputudhi a tya ngeyi ohole tayi mu pangula. Uuhethi nonyanya tayi mu pangulitha.

Nokueta omulelwa megumbo e nokutonata shili nokudhiginina omu-



lelwa gwe. Aakiintu oyendji ya dhiginine tuu aalelwa yawo, ihe oyendji yomaalumentu ya hethipala moshilonga shika. Oyo ya undulile aanona kelugo no ya mwena koshinyanga. Ongele omunona a ningi "okasino" nakukawilwa komukulukadhi noyana, nenge a pewa ompito okwipangela nokwa ningi omutenge omudhigu nohoni yegumbo ndyo. Omusamane nenge omumati e nokudhiginina omutekulu nenge omwana gwomoondjokana dhotango, pwaa holoke uudhigu niiponga.

Uudhiginini meputudho itau hulile pethimbo lyuunyasha apeke, aawe, "sigo ehulilo".

L. Mp.

ELONGO LI NOSHILONGA.

Omuwa Kalunga okwa shitile aantu muuyuni ye li mo yi ili noyi ili nokwe ya pa omagano giilonga. Onke ano oye te tu tegelele tu longe shili nuudhiginini. Oshiponga oshinene sha kala maavali yaanona. Okanona otaka kala puhe na yina, ko ihaka yi koskola. Aakuluntu yako kaye na ko na sha. Ohaa panda aniwa sho taa yakulwa megumbo komwana, oye ta tsu nenge ta litha. Ihe shaa taa lombwelwa koskola, kaa uvite ko sha. Naanona taa vulu okuninga ngashika ya hala. Ihe aakuluntu mboka inaa sila aanona yawo oshimpwiyu ya longwe okutseya Kalunga na Jesus Kristus, otaa ka pewa oondjo kaanona koshipala sha Kalunga. Aakwetu ne, oshigwana shetu oshi li konima ngaka, oshoka inatu longwa kaakuluntu yetu yonale, oshoka inaa tseya omalongo. Ihe twa kumwa, oshoka yamwe nenge oyendji ya fa taa dhini omalongo gongashingeyi. Oyendji haa lalakanene oondunge, ihe itaye dhi kongo momalongo nenge mooskola. Kape nomuntu ta ka ninga omunandunge manga ina mona elongo lya sha. Oludhi kehe lwomuntu lu thike pamwe, ngele ta longwa. Onke ano natse natu ilongeni tu thikeni paantu mboka ya longwa nawa.

Tala mOmbimbeli omulumentu nguya Nebukadnesar. Oye okwa li a pewa uuyamba ku Kalunga, ihe ine u dhiginina okupangela nawa nokulela noondunge oshigwana she, onke ano Kalunga okwe mu thigi sigo a kanitha po ashithe nokwa ningi oshinima showala ngashi omwidhi pelundu. Tu dhiladhileni omukwaniilwa ngoka twaa ningwe ngaka. Onke ano natu dhiginineni aanona ayehe ye li momagumbo getu, ya longwe okutsakanitha iilonga yawo nokuya wo kelongo. Kalunga ne tu yambekele oshilonga shika!

J. I. Josef,
Windhoek.

Nabot Shadipeni, Windhoek. ota ti: Ohandi hambelele nohandi pandula shinene, omoluomakundo etu a dja kovafitaongalo vetu vomOuambo. Omakundo etu a fiki-filua kufje nehafo komushamane J. Marttunen. Ohandi mu halele eeñgono noukolele moi-longa jeni aische. Inamu fja ounje mokukondja kueni amushe!



EHANAUNO LA JERUSALEM

Ovakuaita vovene ova li va hala, va homone diva oshilando osho, sha utamekua koikolokosha ihapu. Ndele Wespasianus okua ti, shi dule ovañu ovo ovahandukilua va Kalunga ve linjone vo vene, osheshi Kalunga ote va jandje momake ovaroma. Efjo lomukesari Nero nomalunduluko epangelo lohilongo, okua kaleka omakondeko oshilando. Wespasianus eshi a ninga omukesari, okua ja ku-Roma, netuikilo loita okue li pa omona Titus.

Opo ovajerusalem va manguluke momafiminiko a Johannes novaseloti vakuao, ova jeululila oivelo joshilando omukolokoshi Simon nongudu jaje. Ndele ovajuda moupofi uavo ova hapupalifa ashike oluhepo luavo. Osheshi Simon oo okua hangika opo a halakanifa shili Idumea, ou a li a vilashi ohonde e dule Johannes. Okua aataa nokufiminika Johannes a hotndame motembeli, omo ongudu jaje ja tukuka, vamue va shikula Eleasar. Ongudu ei ile oja nangala otembeli

meni lajo. Eengudu edi ñatu oda kondjifafana nai, nomehandu linene ova dipaa ovañu voshilando vahapu, va njeka nova huika oikulja jovene neeñe omo hai tuvikilua, ngaha ova endeletifa ondjala i handuke shili. Oshiuana shipofi she linjona shovene.

Hano eshi sha li ngaha, Titus okua li te uja, ta ehene kuJerusalem omudo 70, e na ongudu jovakuaita, ja homata naua na Josefus pamue navo. Oshilando osha li sha dingililua keehote dinene ñatu da li di na omapopiloshungo a kola. Moshilando omua li mu na otempeli i na omapopilongulu a kola nepopilongulu la Antonio neehote dihapu da kola. Omoluoshivilo shopassa ovajuda ova li va ongala mo vahapu, oñge ondjala ja hove-la diva okudipaa ovañu. Titus eshi a hove-la okukondeka oshilando ashisheshi, eengundu adishe ñatu da hove-la okupopila oshilando nokutondokela ovaroma. Ove va monifa oihuna, konjala va kuate Titus muene. Ndele eudafano lavo ola hula po diva. Nelungi Johannes okue lishilila Eleasar a ame

kuje, nokonima joluoodi lunene okua nangala eengulu dotembeli. Epopilo okupopila oshilando ola kala kuSimon. Oje okua popila oshilando eshi shokombada, na Johannes okua popila ohote ja Antonio notembeli. Ndele natango ova kondjifafana vo vene, shiña tuu va mono okafudo kanini kovaroma.

Titus a li a hala okupa ovajuda ombili. Vo eshi inave i hala, okua tui-kila okukondeka oshilando noudiinini shi dule shito, fijo eehote dopondje joshilando oda ja momake ovaroma. Eshi pa pita omafiku atano na edi domeni oda ninga davo. Nande ovajuda va kondjela eehote edi domeni vali, ova li ve na oku di jandja kovaroma, eshi pa pita omafiku atatu, novañu vahapu eshi va fja. Opa pita vali omafiku amue, ovaroma ova tondokela ohote ja Antonio. Titus, omunaluke-no shili okua tuma Josefus, e va kumaide shili, ovajuda ve lijandje momake avo. Ndele nande Josefus okue va lombuele eendjovo da kola nodi shi okulinekelua, a fja oluhodi nokuli.

Taku tuikilua.

OUNJUNI OTAU TONGO SHIKE

OVAINDIA OTAVA I OITA.

OvaIndia ova lala oshilongo sha Goa, sha li shovaPutu. Ova londue-lua nga koilongo ihapu, kutja inashi uapala, oilongo ikua oje va tua o-mukumo oku shi ninga.

OINIMA JA SUIDWES-AFRIKA KOSHOONGALELE.

Oinima ja Suidwes-Afrika oja kundafanua vali moshongalele shoi-uana ja hangana, ngashi ja popiua omudo keshe okudja 1946. Eeñgundafana otadi di opo, Suidwes-Afrika eshi sha tulua omudo 1919 metekulopangelo la Suid-Afrika, nde pe na ovo va njemata okukala kuoshilongo. Epangelo la Suid-Afrika ola ifana o-vauilikhapu vatatu voshongalele va talele po oshilongo, va mone osho shi li mo.

Oinima ei otai ka kundafanua vali omudo tau uja kovatokolihapu voilongo ja hangana.

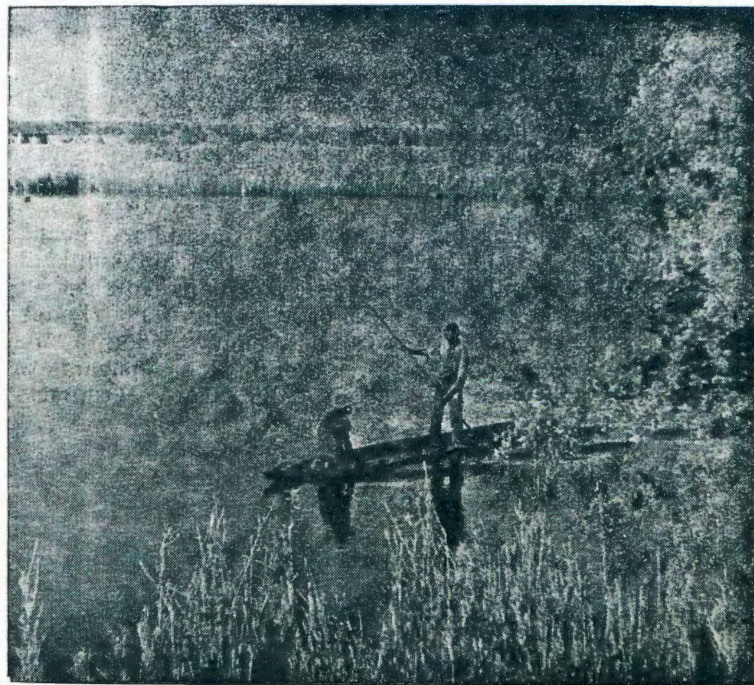
OVARUSIA TAVA DIMBUA STALIN.

Moshongalele sha kula shovakomuni koRusia inaku udafanua naua, Stalin ñumbi ku diladilua. Oje ndi shi okua li omupangeli mutilifi, kua longelua ku vamue ngokalunga. Ova-pangeli va Kiina otave mu fimaneke, ndelene ovapangeli va Rusia ova hala okukufa po ashishe osho tashi mu dimbulukifa. Omadina aeshe oilando nomadina eestrata oo tae mu dimbulukifa, otaa lundululua paife. Oijelekela ihapu jaje otai kufua peeñele dajo. Nde omudimba uaje nokuli ou ua kala mongulu ja fimana, omo ova-ñu vahapu ve mu tala, oua kufua mo nde ua fudikua poñele imue i he nefimano li fike opo.

ODU UEENGOBE KOKAVANGO.

Moshiunda shimue shokuAndara koKavango eengobe 24 oda hangika koshidu. Otaku hepaululua kutja omuñu uoñumba ou a enda kuAngola, okua etele moshilongo oshidu eshi.

KOushimba oshidu otashi tandavele nga natango. Osho shi liili kanini, kashi fi naa naa osho sha monika koKavango.



EKUNDO LOMUDO MUPE LA DJA KONGOLONEJA.

Mekundo laje Ngoloneja Viljoen okua dimbulukua omaudju jomudo 1960, ngashi oidu ja li po i liili no ku liili. Ndelene opa tungua nga, ngashi ondama ja kula, oitauua, eefikola, eenasaresa n.s.t.

“Efiku keshe ohatu mono ookuume vape mounjuni ovo tava kuminua eehenokomesho lovatiliane no lovalaula voshilongo sha Suidwes-Afrika.”

Ngoloneja okua hulifa neendjovo edi: “Net moedhou en alles sal regkom.” (Kalen ashike mu nomukumo, ashishe tashi uapala.)

OMUTALELIPO MUPE UEEFI-KOLA DOMOVAMBO.

Omusamane A.F.Gous ou a li omupoñeleuiliki uofikola ja kula koVenduka okua hoololua a kale omutalelipo ueefikola mOvambo. Ota tula mOndangua pehovelu lomudo 1962.

Mofikola omo ta di, otamu di jo ovalongi vakua 15.

EEMBAHU MU SUID-AFRIKA.

Ku Oranje Vrystaat okua holoka eembahu doludi lipe inali monika ko nale. Edi dipe da kula ditiliana oda dja komulonga ua Niger.

ODULA.

Mu Novemba odula iua oja loka mu Suidwes-Afrika alishe.

KOndangua okua jelekua 68.2 mm (nale luhapu 46.2 ashike), koShaanda 76.3(60.1), koNamutoni 56.0 (39.4), koRuntu 94.4(59.0), koShomeva 121.4(36.8), koMaruru 82.5(22.0), koVenduka 46.6(23.4).

EMONA LOSHILONGO.

Hardapdam, ondama ja kula jo koMalinda, otai pu okutungua paife. Oja pula eeR. 3 400 000. Mounjuni aushe omu neendama mbali adike di dule ei.

Omina joTjisondu otai longo vali. Otaku tungua jo eemina dipe.

Ofabrika jokuhemukifa otai tungua koShomeva, otai pula eeR. 15 000 000.

Omalutenda mape otaa longo jo paife nauanaua.

Omoluoshidu sheengobe epangelo ola longifa fijo pehulilo la Novemba 1961 eeR. 1 421 352.

Oitambulua joshilongo oja nini-pala, kai fike pu ojo tai uja omido diua, ndelene ihue tuu, kape na nga oudju okushakenifa osho tashi pumbiua unene.

AALESHI TAA NYOLA

Martin Gumbo Maltahohe, ote tu nyolele nokuhambelela Kalunga, sho oye ta kwatha aantu ye ye li mehalakano. Oye ta ti: Ote hambelele Kalunga kandje, nande onda valelwa muulunde, ihe Omuwa okwa kongo ndje no nda ningi omukwanegongalo no tandi vulu nokuli okuyakula moshilonga sha Kalunga nokukwatha mboka inaa shashwa nenge inaa kolekwa manga. Pehulilo lyomumvo 1960 otwa mono oshinima oshinene shenyanyu, sho aamati 5 ya shashwa na 8 ya kolekwa. Kalunga na hambelelwe shili! Eps. 146 nEimbilo 257.

Amon Paulus, Windhoek, ta ti: Ondi na o-luhodi linene omoluovamati ovavambo, ava ve li mehalakano medu eli lovashimba. Osheshi vahapu paife inava hala vali oilonga, oñge ve lipuidula nai. Oshilonga shovañu va tja ngaha, osho okuendaula oufiku aushu nokukala momilamba nokutala ovakua-uo peendjila ve va ninge nai... Oñge onda hala kutja omuleshi omukuetu, tu tale naua ondjila jetu. Pamue nafje omo tu li mongudu ei ja tja ngaha, nenge hano nafje osho tu li katu nelao. Tu leseni Gal. 5: 19-21, tu dimbulukue alushe kutja fje katu shi vomounjuni omu. Otua longelua eumbo letu meulu pu Tate, 2 Kor. 5: 1. Omuleshi omukuetu, ila! Aluka! Ila ku Jesus, ote ku kongo nondjabi joje oku i na meke laje.

Ohandi mu kundile po ovamuatate nje amushe ava hamu leshe oshifo eshi medu lovashimba nomOuambo nokOkavango fi-jo kuUnion.

Hilarius E. Malakia Hamunjela, Swakopmund, ota nyola: 1 Kor. 9: 24-27. O-tse atuhe otwa uvanekelwa omwenyo gwa aluhe, gu li pu Tate Kalunga ngoka twe gu hololelwa kOmukulili mwene. Ihe oshike tashi tu thiminike, ohole ya Kristus nenge oshike, 2 Kor. 5: 14-15. Otwe shi tseyaa tuu? Kristus sigo ongashigeyi oku li me-kondjo oku tu galikanena tu ze meti lyuupika mbuka tau tu manga notau tu fala meso. Omukwetu, esilohenda li thike peni twa pewa omagano nge twi igandja ku nguka e tu sile nokwe tu yumukile. Tu kondje-ni ekondjo ewanawa lyeitaalo opo tu ka thigulule omwenyo gwa aluhe.

EIFANO LA KALUNGA.

Eifano la Kalunga ta ifana omuñu uo-tete: Adam, ou li peni? Adam okua ti: Onda uda eifano loje, ndele onda tameke okuholama, osheshi onda tila. Kalunga a pula: Oljelje e ku pe eendunge kutja, u noku-tila? Oshike ua ninga? Adam okua njamukula: Onda njona.

Heno, Kalunga okua mona Adam a njona.

Nenge hatu lipula fje vene, ohatu dimbulukua kutja, Kalunga ita handukile omulunde e mu njone po, ndele te tu ifana fje ava tua kana, tua dja mo mondjila jaje. Omuene ina hala omuñu ta file moulunde. Ovakuetu, fje tu li mehalakano eli, tu lipuleni naua, otu li peni. Kalunga ine tu dimbua natango. Tu juke kuje, e tu hupife, osheshi tu nefimbo liua. 1Mos. 3: 9-10.

Simon Hamutenja,
Mariental.

INAMU ENDA UE NGAAPAGANI, ZALENI OMUNTU OMUPE.

Aakriste oyendji oya kwatele mumwe uukriste nuupagani noyu udha megongalo iinima oyindji yuupagani. Ihe shimwe shomuyo nda hala oku shi popya, osho oompalo.

Aakriste oyendji oye na eitaalo ndika lyuupagani sigo onena, unene aakulukadhi. Nando owa tala omukulukadhi a fa e hole uukriste, okanona ke shaa tuu ka adhika koshimela, nena ota yi konganga yoompalo, a ka pangwe, aniwa, nando kaku na uuvu woompalo. Upagani ashike wa landula niifundja yawo. Oshimela otashi etwa koombaktera ngashi omavu omakwawo. Ano okanona koye ngele ka adhika koshimela, inda kiipangelo mbyoka twa pewa ku Kalunga, ha kaapagani.

Okanona taka ningi omasipa gowala mokufundjalekwa kaakulukadhi aakweni mbo.

Onda mono nokuli oshinima sha yemateka ndje: Omukulukadhi a mono aakwa-

OHO LESHA TUU?

Epulo ndika kaakriste aakwetu no tali ti: Ohamu leshe tuu oohapu dha Kalunga etamu pulakene tuu Tate Kalunga shoka te tu kumagidha? Epulo ndika tandi mu pula, oshoka ondi shi shi kutya, omu na aantu oyendji momagongalo getu ihaa leshe, ihe oya kukutike oomwenyo dhawo.

Akwetu, natu kale aaleshi aadhi-ginini, oshoka omathimbo ngaka omawinayi. Otashi ti: uuyuni kau nombili, aantu ya kolokosha, oondumbo tadhi holoka miilongo niilongo. Onke ano tu kambadhaleni okulesha oohapu dha Kalunga opo tu mone oonkondo okusinda omamakelo gomutondi. Ombimbeli tayi ti natango: Ayehe mboka ye mu taamba, okwe ya pe oonkondo ya ninge aana ya Kalunga, Joh. 1: 12.

Sh. J. Iilonga.

Josef Jacob gwokuPretoria ota nyola iinima yi ili no yi ili iiwanawa. Ota ti wo ngeyi: "Megongalo Iya Kalunga Ongerki ya Kristus sho ya tholomwa inayi tungwa omolwomuntu gumwe nenge muunongo nomadhiladhilo omawanawa, awe, oya tungwa keindjipalo nenge kuuwindji". Ayehe sho ye noshitopolwa shawo momauutho gegongalo, otashi pumbiwa naa naa, ya kale iilyo yi nomwenyo. Joh. 4:41. No tashi pumbiwa aantu ya kale momauthongerki, melalakaneno okutaamba Jesus, ha ngashi aantu mboka ya landula Jesus omolwiikulya ayike. Eimbilo 83.

G. A. Mungungu, Tsumeb ota ti: Tu pendukeni meemofi doulunde, fje tu kaleni oupafi, osheshi katu shi shi, onaini Omue-ne te uja. Mat. 24: 42 - 44.

nambwiyu, okwa li kee na omahini, okwa longitha omahini goongombe nenge gostora nekende. Sho nda tala ekende ihali yogwa olya tiligana ashike koonkulundja. Omahini ohaga pungulwa mokayo, oondhi dha gwila ko ashike. Uunona sho wa adhika koshimela, aakulukadhi ooyakwawo taa ti: owa pangwa tuu oompalo, uunona nangoye ngu mwene. Mokwipangitha koonganga, okanona kamwe oka mana oondjenda nokuli. Koshipangelo okwa yi ko, na kamwe ka nanga nayi. Ou shi oonganga aapagani? Aakriste ngaa. Ooyakwetu, inatu enda we ngaapagani. Efes. 4: 17-24.

Tala, iikulu ya hulu po. Tala, iipe ya holoka.

Hilja Nampala

OLYE A KANITHA.

Esiku eti 12 lya Novemba, sho twa li moshituthi shaaevangeliste kEngela, mokulonda kwetu omukwetu gumwe okwa pe ndje okapakete komakende, ihe oshihauto sha thikama sigo nda thiki ku Elim nomakende ngoka. Ongoye nguka we ga kanitha, tseyithila, ngu pewe omakende goye.

Teopolina Amukushu,
Omagalanga,
Uukwambi.

ONDA KANITHA.

Onda kanitha mu Januari 1961 oongombe mbali: yimwe onduumentu inayi thonwa, onkwawo ondema onimegombe.

Shikuambi Uushona,
Onashitendo,
Uukwaluudhi.

Onda kanitha ondongi onduudhe olutu aluhe nomela, yi na okamba-mba moshipala. Oyi na okanimwena okaluudhe okakiintu okatokele mela. Oya kana petameko lya September 1961.

Petrus Shivute,
Oshigambo.

Ongombe ondjelipa jela limwe uumba-he uyali kekandelo, okutsi kwa tetwa ondu-ngu. Ya kanene kuuzilo wOndonga moku-ti. Noshu wo ondongi onkiintu ya vala, natango ondongi ondhile omakutsi agehe oga tetwa kondungu.

Otandi vulu okupa ngoka shi thike R4.- nenge R 5.

A. J. Nikodemus,
Oshigambo.

FINSE SENDINGDRUKKERY
OVAMBOLAND
ONIIPA