

# OMUKWETU

No 11.

NOVEMBA

1961

## NGOKA TE YA KU NGAME ITANDI MU EKELEHI. Joh. 6:37-40.

Atuhe nangoye otwa longelwa e-hupitho muKristus, ngele otwe mu itaala. "Opo shaa ngoka e mu itaale kaa kane, awe, a mone omwenyo gwa aluhe." Joh.3:16. Jesus sho a yumuka, oonakumuitaala otaa yumuka wo. "Nge nda yeluthwa mevi ayehe otandi ya hili ku ngame" Joh.12:32.

Olwindji ohatu zi pu Kalunga; otashi monika sho tatu yono kiipango ye iiyapuki. Niilonga nomadhiladhilo getu inaga uka koshipala sha Tate Kalunga. Shoka Tate e tu pa otwe shi halakanitha po muunkolwi, muholume, momakotokelo, nomadhino-kalunga n. sh. t. Ihe omuyoni nomuhanagudhi a tya ngaka, ngele ta holoka ku Jesus meitedhululo nomeitaalo tya shili Jesus ite mu ekelehi.

Ihe opu na wo oongundu tadhi holoka nuuyuki wadho ku Jesus, manga omayonagulo ye ga holeka. Jesus ota taamba aalunde yi itedhulula, ita tidha po nando ogumwe.

Elaka ndika etoye nolyesilohenda: "Ngoka te ya ku ngame itandi mu ekelehi." Opu na mboka inaa hala okuya kuJesus. "One no inamu hala okuya kungame mu mone omwenyo." Joh.5:40. Ehalo lya Jesus olyo ndika okupa naaleshi ayehe yOmu kwetu omwenyo. Ngye wo ou li mongundu ndjoka tayi popiwa "otandi yi pe omwenyo." Notamu lombwelwa ishewe: "kadhi na mpoka tadhi kana." Aakani oyo ongundu ndjoka inayi hala okuya kuJesus. Jesus ota ti, ite ku ekelehi.

Ooitaali ya Jesus otaa pitile meso sho taa yumukile meligolo enene-lya aluhe. Ihe mboka inaye ya kuJesus ya dhiminwe po oondjo, otaa yumukile omupja gwa aluhe. Elombwelo lya Jesus ote li lombwele aadhipagi, oonkolwi, aakangiyuuzigo, aahondeli, aashunimonima, aapagani, noonakwiteka ayehe, nomupika guulunde woludhi kehe ta ti: "Ngoka te ya ku ngame itandi mu ekelehi." Nena esiku lyahugunina ote ku pe pamwe nooitaali ayehe yomu Jesus Kristus omwenyo gwa aluhe. Shino oshilieleda.

Kleopas Dumeni.



## OMADIDILIKO EHULILO LOUNJUNI.

Mat. 24: 1-14.

Otua lesa eendjovo tadi popi omadidiliko. Pamue momadiladilo ovahongua va Jesus mua li mu neemata, eshi Omuene Jesus e va lombwela kutja اونجوني otau hulu po. Vo ve uete ne oukolele uomatungilo otembeli, onge ve mu pula noku mu ulikila oomatungilo oo a kola. Enjamukulo tali ti: kaku na sha sha pama. 2 Petr. 3: 12.

Nande otua lesa omadidiliko mahapu, apa tua hala okupopja edidiliko limue alike, olo tali tu jelifile naua ehulilo lounjuni pomafiku etu. Olo eudifo levangeli. Paife evangeli ola udifilua ne oiwana konjala aishe.

Oiuana ja udifilua evangeli opo i kale meteelelo, ja teeleda okuja kua Jesus, i he noumbada, osheshi ja udifilua edimepo lomatimba medina la Jesus. Luk. 24: 47.

Ndelene natango tuu oku na vahapu itava tale edidiliko eli, pamue ve neemata meemuenjo davo nokutja: اونجوني itau hulu manga. Onge tave lipuililike nokukala momatimba, no itava pumbua nokuli edimepo lomatimba. 2 Petr. 3: 5.

Omuleshi, tala naua edidiliko eli. Mat. 24: 14. Osheshi evangeli ola pua nokuli okuudifua.

Tu ende hano metilokalunga. 2 Petr. 3: 11, 14.

Josua Hanjango.



# OMUKUETU

Novemba 1961

## ORADIO.

Aantu yiilongo yetu oya tameke okwikongela ooradio dhokupulakena omalaka haga zi kombinga nombinga yuuyuni. Osho oshinima oshivanawa, tashi kwatha eputuko lyoshigwana li tane. Oonkundana dhuuyuni, omapopitho gokulonga aantu, omaimbilo, omahokololo n. sh. t. omuntu otu uvu shaa a patulula okashina okashona ka fa okaketha, taka ithanwa oradio.

Otashi pumbiwa, omuntu a hogolole, shoka te shi pulakene. Haiinima ayihe yi nekwatho komuntu. Omawi gamwe ngoka taga uvika mombepo no taga kwatwa keshina, otaga hepitha ashike ethimbo, nenge oshiponga nokuli. Egoya ngoka ta patulula eshina li uvike ethimbo alihe. Onawa okutseya okupatulula eshina ethimbo ndyoka taku tumwa omalaka ge nekwatho, no ponomola mpoka taga monika.

Elago, oohapu dha Kalunga sho tadhi vulu wo okutumwa nokupulakenwa nondjila ndjika yoradio. Aantu mboka itaa thiki komambo, ngashi aavu, otaa vulu okupulakena elongelokalunga momagumbo gawo nenge moonasaresa.

Oongerki oonkwaLuther odha dhimbulula wo oshimpwiyu shadho okulongekidhila aantu ompito okupulakena oohapu dha Kalunga. Ngashingeyi taku tungwa ku Addis Abeba ku Etiopia ooshungo dhokutuma omalaka ga uvike mu Afrika alihe no ku Asia wo. Oongerki dha Suid-Afrika otadhi longo kumwe mokulongekidha omalaka ngoka, odha dhiki nokuli ostudio yadho ku Roodepoort ku Transvaal.

Omuwa ngele e shi hala, otatu ka pulakena pehulilo lyomumvo tagu ya nokuli oohapu dha Kalunga nomaimbilo moshiNdonga no moshiKwanyama no moshiKwangali. Oshilonga shi thike mpaka osha pula nokuli no tashi pula natango iimaliwa oyindji. Ihe oyindji oye ya nokuli kekwathathano lyaakwaLuther yokoombinga

O, Omunandunge adhihe nomunankondo adhihe Omuyapuki, omoondunge nomoonkondo nomesilohenda enene wa shiti ndje oshifetha shoye. Ongoye wa pe ndje omwenyo nguka opo ndi kale ndi nomwenyo. Ongoye wa utha oshilonga shandje neha lyandje kombanda yevi. Ongoye wa kundukitha ndje nesilohenda nuwanawa woye. Ongoye wa nyolele ompango yoye momwenyo gwandje.

Nomiiholekwa ayihe yomutima gwandje owa tegelele ndje, u tsakaneke ndje u popye nangame. Ongoye to pitikile ndje pamukalo gwa manguluka ndi kale mehangano nangoye, nando ngame ohandi yono aluhe kungoye. Pe ndje esilohenda opo li longithe ndje mondjila ndjika tayi fala ndje kekululuko. Kwatha ndje ndi hedhe kungoye meishonopeko nondi ku simaneke. Kwatha ndje ndi kale pambepo yoye, Omuwa gwandje Jesus Kristus. Kwatha ndje ndi kale nda manguluka kwaayihe mbyoka tayi kutha ndje ombili, omahalo agehe omawinayi, guutondwe okudhiladhilila oyakwetu uuwinayi. Omuwa, otandi gandja oonkambadhala dhandje adhihe kungoye.

Nomehalo lyoye, oKalunga, omu nombili yandje. Ongoye awike omuyuu-lukiwa gwomomutima gwandje. Olye ando ndi na megulu ngele hangoye? Kondje yehalo lyoye ongame kandi shi sha kombanda yevi.

Nomokukala po kwoye, oKalunga, itandi dhiladhila ashike ngame mwe-ne, awe, nooyakwetu ayehe naamboka ya li pungame; ookuume kandje ayehe; unene yaandjetu naashinda yetu ayehe; naamboka ya longo pamwe nangame notwa dhana nayo nena; kwayehe mboka taa humbata omitenge dhooyakwawo; kwayehe mboka ye li muudhigu nomaha gi ikalela, moshilongo shoye taa adha ethikilo.

Ongoye Kalunga awike Tate yetu atuhe, kala putse nena, kaleka oomwenyo dhetu mesilohenda lyoye. Uva egalikanono lyandje omolwa Jesus. Amen. (Elundululo lya G. Amupolo.)

## OMWONGWA NUUYELELE.

Mat. 5: 13-16.

Omwongwa nuuyelele oyi noshilonga oshinene muuyuni auhe. Onke Jesus okwe yi eta mevitho ndika. Oshilonga shomwongwa okutoyaleka iikulya nokukelela eolelo monyama nomiikulya. Ihe omwongwa ngele gwa hahuka, ohagu kungitha aantu, oshoka ogwa yonuka, Mark. 9: 50; Luk. 14: 34. Otatu mono nkene omwongwa gwa hahuka, tagu yeleke aantu yopethimbo lya Jesus noyopethimbo lyetu. Omuntu shokwa ningi omukriste, okwa ningi omwongwa omutoye tagu longithwa kehalo lya Kalunga, ihe ngele a etha okulandula ehala lya Kalunga, nena ota ningi omwongwa gwa hahuka no kee na we uutoye muye mwene. Oshoka omulongwa gwa Jesus oku nokukala, e na omwongwa

adhihe dhuuyuni. Oshilonga otashi pula omalongekidho gomalaka ngoka taga tumwa. Ihe unene oshilonga otashi pumbwa omagalikaneno, oradio ndjika yetu yi nedhina Ewi lyEvangeli yi tsakanithe oshilonga shayo meya-mbeko lya Kalunga.

kokutya, omutoye gwooyakwawo miilonga iiwanawa yohole. Omukriste a hahuka oye ota etha iilonga iiwanawa noku hole oombudhi nuululu nuugeyi momwenyo gwe, Jak. 3: 14. Omukriste kee nokulonga uuwinayi, oshoka oye omwongwa tagu kelele uuwinayi mpoka e li po, 2 Kor. 13: 11. Ano ngashi uutoye womwongwa tau monika miikulya, osho okukala kwomukriste taku monika miilonga nomohole okuhola Jesus nooyakwawo ayehe.

Jesus okwa yeleke omwongwa nuuyelele, oshoka oyo otayi pumbiwa muuyuni auhe, onke omukriste omwongwa nuuyelele wokuminikila mpoka ta longo nenge te ende, 2 Kor. 4: 6; Fil. 2: 15. Kristus okwa minikile omwenyo gwa Paulus. Otatu tala Paulus manga ina minikilwa, okwa kala momilema. Ihe sho a minikilwa, okwa ningi uuyelele wuuyuni. Paulus okwa pewa uuyelele okuminikila apagani nokuli. Ngoka ta yelekele okuholeka uuyelele we, oye a fa omuntu ta tema olampa e te yi siikile nontungwa.

## OMUSAMANE VILHO KAULINGE OKUA ALUKA KOSOOMI.

Omutumua uongerki jetu omufitaongalo Vilho Kaulinge ou a ja kosoomi muMai, okua aluka pehovelo la Okotoba. Eshi a fika kOnaipa, okua kundu eongalo melongelokalunga, a ti: "Ovasoomi otave mu kundu unene, omakundilo mahapu mu Kristus Jesus. Onda mona oiongalele inene unene jovanjasha, onda kala jo moiongalele jovakuluñu, onda mona eengulu odo douteku neengulu dovakulupe tava ningua oshisho meongalo keshe, oku na jo eengulu dovañu itava dulu okupopja na ovo itava dulu okulinjenga, omo tuu nde va talela po. Onda hala unene okueta omakundo ovanjasha, ove li ko vahapu vahapu tava ongala moiongalele javo jeendjovo da Kalunga.

Otava kala meeñanda pamue omafiku ve a longekida va kale pamue, va manguluka mokati kovañu. Otava lesa eendjovo da Kalunga, tava ilikana, tava tuafana omukumo nokulikonakona eemuenjo davo. Oiongalele ja tja ngaha oi na jo omakundilopo okukunda ovanjasha ovavambo, kutja ovavambo nava kundilue po. Ovanjasha vahapu va hala va kale ve nekuatafano novanjasha ovavambo okulikuafa meitavelo lavo va njolelafane ngeno, va ilikanenafane n. sh. t.

Novakuluñu mongulu jetumo tave mu ilikanene efimbo alishe ngashi omona ta dimbulukiua kuhe na jina. Nounona jo otave mu dimbulukua, eshi tava ningi oiongalele javo. Etumo olo tuu olo oli li meemuenjo dovanjasha vasoomi nounona jo va-

Omukwetu, ngele wa minikilwa kuuyeleele wa Kristus, ito wapa okusiikila uuyeleele woye ninima mbyoka yi tondike ku Jesus. Onyeka ya holekwa oyo ukriste wa holekwa, Mark. 4: 21. Omukriste kee nokuholeka ukriste we, sho a minikilwa ku Kalunga, a ze momilema. Ita wapa okukala te ende momilema, oshoka oye uuyeleele nomwongwa mokati kuuwinayi auhe. Natu ningeni omwongwa nuuyeleele. Eitedhululo lyetu nali kale miilonga nomoohapu nomokwenda kwetu. Ongoka e li mu Kristus, oye iha vulu okuholama. 1 Petr. 2: 12. ....

Eimbilo 135.

Naftali Amadhila.

## EPYA LYA KOKOLWA KWALFRED MUIFI

Omulumentu omukwiita a li miita okwe ya a galuka kiita, Omuwa Jesus Kristus okwe mu fala ko. Aakwiita mboka mwa li ko, otamu mu dhimbulukwa nawa. Alfred Muifi sho a pula iilonga, omuhona Nakale okwe mu lombwele ta ti: Otandi ku pe iilonga u ka longe kombelewa kuuwa kOkaloko, ihe iilonga oyo iidhigu. Oto yi u ka ninge amushanga gwo-shilongo. Alfred okwa yamukula ta ti: Otandi shi vulu medhina lyOmuwa Jesus Kristus, nguka a pe ndje ondjila manga nda li mela lya meme. Otandi yi ndi ka longele Omuwa gwandje nguka ngashi wa lombwele ndje.

Alfred okwa yi muuwa momvula 1948 nomukwaniilwa okwe mu taamba nenyanyu ete mu lombwele: Onda lombwelwa komuhona Nakale ndi ku taambe nombili u ninge amushanga gwandje. Omukwaniilwa E. J. K. Namene okwa ti kwAlfred: Omuwa Jesus e tu pe ondjila tu kokole epya lye. Ihe tu kambadhale tu kondje opo tuu tu dhike ko ondjila ombwanawa. Alfred ta ti: Oshili, tate, shaa tuu tatu longo meuvathano, nena ondjila yetu otayi ukilile nawa. Oshoka ekokolo edhigu katu shi mpoka hapa kunwa oontanga, omahangu, iilyalyaka, omakunde, shaa tuu twa kunu, tatu mono mpoka tapu mene

nini. Ovanjasha otava jandje jo eengalo detumo, etumo otali kondjelua, hano eemuenjo da ovo ve li momulaulu. Ounona otava eta oiimati, ojo tai landua, noimaliua tai i moshilonga shetumo. Olo tuu oshilonga shinene. Novakulupe tava filua oshisho kovakuao otava ningi jo oiongalele javo noshilonga shetumo osha huama meemuenjo davo, nande tava palulua, tava djalekua, otava jandje ketumo. Otava ti: Ihatu dimbua okuilikanena etumo, ovavambo ove li meemuenjo detu efimbo alishe.

Omoluomailikaneno eni no ovasoomi Kalunga a kuafa nge mondjila. Efimbo alishe nda enda momaongalo. Mefimbo olo alishe nda kala omafiku 14 aeke poñele imue. Osoomi olo edu liua. Ohandi diladila ovatumua tave li efa ve tu etele Jesus, ohole ja Kristus otai fininike ngaha. "Tu longeni manga pe nefimbo."

Omusamane Kaulinge okua enda nokuli momaongalo amue mOvambo nokuhepaulula ondjenda jaje.

omau. Omukwaniilwa okwa ti kwAlfred: Tala, omumati gwandje, ngashingeyi itatu tila omau. Otwa hala epya lyetu li mene, oshoka omau omashona oku nokuvudhwa mo.

Ombelewa ya tungwa komukwaniilwa Eino Johannes Namene na Alfred Muifi. Mboka hamu ende mOkaloko, otamu mono etungilo lya-yo. Oshilongo tashi humu komeho ngele tamu zi aakwaniilwa aashona taa tumwa koskola etaa longwa nawa. Aawambo atuheni, tu galikaneni Omuwa Jesus e tu pe omayege gu uka, ombepo yi longe maakwaniilwa ya hite oskola etaa mono uutoye welongo kutya, owo eliko enene. Mboka mwa hala aakwaniilwa aawambo ya longwe, shangeni omadhina geni etamu ga tumu kuuwa kOntananga. Ihe itaa longwa moWambo, awe, otaa tumwa ku Ministry of Africa Education, P. O. Box 144, MAZABUKA.

Kundilweni po medhina lyOmuwa.

Omuyakuli gwomukwaniilwa  
Thomas H. S. Nepaya.



OSKOLA YAAPANGI otayi ka tameka, Omuwa ngele e shi hala, eti 16. 1. 1962 no tayi taamba aalongwa aape. Oombapila dhaamboka ye nehalo neithano lyokukala moshilonga shuupangi no ya piti ongundu ontitatu moskola yaakadhona, odhi nokutumwa kOnandjokwe komukuluntu gwoskola yaapangi omumvo omupe manga inaagu tameka.

Oombapila odho tuu ndhika:

Ombapila yegongalo

Onzapo ya hugunina yoskola yaakadhona

Eihokololo

Ombapila yondohotola

Epopilo lyomusitagongalo

Epopilo lyomukuluntu gwoskola mpoka a zi ko.

OSKOLA YAAYAKULI yomoonasaresa tayi ka tameka esiku 1 lya Mai 1962. Naaidheuli taa taambwa mOnandjokwe eti 2 lya Januari 1962, moka taa kala miilonga sigo oskola yoyene tayi ka tameka kEngela. Oyo naa ye noombapila dhawo, odho ndhika:

Ombapila yegongalo

Onzapo ya hugunina moskola yaakadhona

Epopilo lyomusitagongalo nenge lyomukuluntu gwoskola.

## OMUMVO GWONGERKI

Pomathimbo gotango, egongalo lya Kristus sho lya dhikwa, olya kala nokudhimbulukwa iinenenima yomehistori lyehupitho, ye li ningilwa omasiku ga ya.

Aakriste oya li ya tokola, omumvo gwelandulathano lyiituthi yopangerki gu yooloke momumvo gwelandulathano lyopashilongo, mboka tagu tameke nesiku lyotango lya Januari, e tagu hulu mesiku lya hugunina lya Desemba. Omumvo gwelandulathano lyopangerki ogwa uthwa gu tameke noSondaha yotango ya Adventi, tagu dhingoloka sigo tagu ka hula noSondaha yEpangulo, onke gwa lukwa **OMUMVO GWONGERKI**. Omumvo gwoNgerki ogwo elandulathano lyomasiku omanene, mugo egongalo lya Kristus tali dhimbulukwa oshilonga oshinene shehupitho mu Kristus.

Omumvo gwoNgerki ogwa topolwa moombinga mbali: a) etata lyomasiku giituthi, b) etata lyaa nomasiku giituthi. Nogwa topolwa ishewe momathimbo omanene gatatu: oKrisimesa, oPasa na Pentekoste. Omanenethimbo ngaka oge na wo, kehe limwe, oombinga dhalyo ndatu:

- Ethimbo lyeilongekidho, egongalo sho tali ilongekidhile okutamba eyambeko nokudhana nawa oshituthi shoka.
- Ethimbo lyoshituthi shoshene, moka tamu konakonwa nawa oshilonga shehupitho.
- Ethimbo tali landula ko, lya hala okwetela egongalo lya Kristus eyambeko lyoshituthi shoka.

### ETHIMBO LYA KRISMESA.

Ombinga yalyo yeilongekidho, oyo ethimbo lya Adventi, tashi ti: Eyo lyOmuwa oli li popepi. Ethimbo ndika aakriste otaa ilongekidha okutegelela oshituthi sha Krisimesa. Otaye shi ningi okwikonakona meimweneneno nomeitedhululo lya shili nomegalikano. Ehuku lyooteksti adhihe dhope-thimbo lya Adventi: Eyo lyOmuwa; Okuya kwe kwotango, sho a ningi o-muntu, okuya kwe kwopambepo, sho te ya kegongalo lye nokugaluka kwe meadhimo lye.

Ombinga ontiyali oyo oshituthi shoshene sha Krisimesa, oshituthi shenyanyu enene, aakriste taa hambelele omagano omanene gohole ya Kalunga sho ya pewa Jesus Omukulili. Molwomagano ngaka gehupitho aakriste otaa hambelele nokupathana wo omagano nokunyanyudhathana.

Ethimbo tali landula oyo Epifania, tashi ti ehologo, Omukulili sho i ihololela aanongo yokuuzilo aapagani. Esiku lyosondaha ndjika ohayi ithanwa wo oSondaha yaapagani, ohali dhimbulukwa aluhe eti 6 lya Januari.

**ETHIMBO LYA PASA.** Ombinga yotango moshituthi shoka esiku lyoSondaha yliyale. Osondaha ndjoka aakriste otaa dhimbulukwa okuya kwa Jesus kwa hugunina mu Jerusalem oku ka tsakanitha oshilonga she shekulilo. Joh. 12: 12-13. Osondaha ndjika ohayi tetekelwa kethimbo lyeidhiliko. Aakriste yopomathimbo gotango oya li haa idhilike ikulya pethimbo ndika. Eidhiliko ndika otali ti: Omukriste e nokuya meitedhululo lya shili nomoluhodhi oluyapuki omolwoondjo dhe sho dha humbatitha Jesus uuyechamwe owindji.

Ombinga ontiyali oyo oshituthi shoshene sha Pasa. Nomuuyuni wEtestamenti Ekulu oPasa oya dhanwa kaaIsrael sho haa dhimbulukwa emanguluko lyawo muupika wa Egipti. Muuyuni wEtestamenti Epe aakriste otaa dhimbulukwa oNzigona yekulilo muupika wa satana. 1 Kor. 5: 7. Oshituthi shika oshi na omatango omanene gaali:

- OPasa yomushigakano, ndjoka hayi dhanwa esiku etitano lyoshivike oshiyapuki sheimweneneno.
- OPasa yeyumuko, hayi dhanwa esiku lyotango lyoshivike. Ndika oyo esiku lyenyanyu enene, oshoka mulyo oshilonga oshinene shekulilo sha gwanithwa. Aakriste yotango oya li haa pendulathana nenyanyu notaa minikathana nokutumbula: "Omuwa okwa yumuka shili." Omasiku ngoka taga landula eyumuko otaga talika ogo ombinga ontitatu

moshituthi sha Pasa notaga hulitha oshituthi shika oshiyapuki. **ETHIMBO LYA PENTEKOSTE.**

Ombinga yotango moshituthi sha Pentekoste oyo eyeluko lyOmukulili. Ethimbo ndika oyo wo lyokwilongekidhila okutegelela omagano goMbepo oNdjapuki, ngashika oMukulili mwene wo a lombwele aalongwa ye esiku a yeluthwa megulu. Iil. 1: 4-9. Esiku ndika ohali dhanwa aluhe, ngele pwa piti omasiku omilongone, okuza keyumuko.

Ombinga ontiyali oyo oshituthi shoshene sha Pentekoste. Edhina ndika oyo ekwiilongo, ihe otali ti nga omilongontano, ano omasiku omilongontano okuza keyumuko. AaJuda oya li haa dhana oshituthi shika pethimbo lyehulitho lyiilonga yawo yomapyo, ku yo osha li oshituthi shoshipe. Okuza muuyuni waayapostoli, Pentekoste oya dhanwa nokudhimbulukwa okudhika kwegongalo lyaakriste nosho wo etililo lyoMbepo oNdjapuki, sho Egongalo lya Kristus lya zalekwa oonkondo dhomegulu. Esiku etiyali lya Pentekoste lya dhanwa lyoshipe. Pethimbo lyoshipe aakriste otaa dhimbulukwa nkene egongalo lyotango lya mono uupe weshitululo lyoMbepo oNdjapuki, sho ya hanganithwa, ya kala kumwe, medhiladhilo limwe, neliko lya li mumwe. Iil. 2: 42-47. Nopomathimbo gongashingeyi, oNgerki onkwaLuther yomoWambokavango oya li hayi dhana esiku ndi li ili sigo omumvo 1956, ihe ngashingeyi ohali dhanwa mumwe na Pentekoste.

Mosondaha tayi landula ko, kokutya mesiku lyUukwatatu, tamu tameke etata lyomumvongerki etiyali, ndyoka kali niituthi. Oyo alihe ombinga ya hugunina yethimbo lya Pentekoste etayi kala sigo pehulilo lyomumvongerki.

OSondaha yepangulo otayi hulitha omumvo gwongerki. Ehuku lyooteksti dhosondaha ndjika oyo eyapulo lya gwanithwa mokugaluka kwa Kristus nomepangulo lye lya hugunina.

Noa Ndeutapo.



## OKAANDJETU

## DESEMBA.

## EPANDULO



## OUA UDA TUU?

Opa holoka embo lipe "Epopilongulu la Kunene la kana" la hokololua komutumua E. Hatakka, omukulufu uoseminari Onguediva, noua lundululua komulongi A. Nghifikua.

Moku li lileshela kuange, onda kumua eshi nda li ndi nokuefa oilonga jange imue, opo ndi ude diva aishe ja popiua mo. Otali mange omadiladilo omufu notali jandje omuuhalo muua, osheshi moku li lesa oto ka uda:-

- (a) ñge Kapija e lienda nakashekaitufu
- (b) oñgalelo jookahenge noshihauto
- (c) ñge ovañu va dile po vatatu ndele tava aluka va uedua "komusamane Haindongo"
- (d) ñge ekanipopilongulu la Kunene la monika.

Embo eli ola njolua moshikuanjama. Li lilandela diva, opo u ka kundane nodolongo jomvelo uoñgomb. Otali pula ashike 20c ile 2/-.

Erastus Shamena.

**Okambo Sha Kalunga, shi peni Kalunga** ka nyanyangidhwa ishewe moshiNdonga nomoshiKwanyama no taka landwa ngashi nale 5c (-/6). Endelega ngu ki ilandele!

## SINDA UWINAYI MOMUWA

Aakwetu, mokukala mOmuwa otu na esindano. Ngele tu na uudhigu, otu na omatati ga kola mu Jesus sho ta ti: "Ino sindwa kuuwinayi, sinda uwinayi okuuwanawa." Rom.

1. V. Heb.10:32-39. Ehol.22:6-15.
2. Sa. Heb.12:22-29. Ehol.22:16-21.
3. S. **Os. 1 yomwAdventi.**  
Heb.8:8-12. Luk.4:16-22. Eps.100.
4. M. 2Kor.1:15-22. Sak.1:7-17.
5. D. Mika 2:1,2,9,12,13. Sak.2:1-4.
6. W. 2Sam.7:4-9,11-14,16. Sak.2:5-17.
7. Do. Jes.64:1-3. Sak.3:1-10.
8. V. Heb.10:19-25. Sak.4:1-7.
9. Sa. Ehol.22:12-14,16,17,20,21. Sak.4:8-14.
10. S. **Os. 2 yomwAdventi.**  
Jak.5:7-10. Luk.17:20:25. Mal.4.
11. M. Jes.26:1-12. Sak.6:1-8.
12. D. 2Tes.3:1-5. Sak.6:9-15.
13. W. Ehol.2:1-5,7. Sak.7:1-14.
14. Do. Mark.13:5-13. Sak.8:1-17.
15. V. Luk.17:20-25. Sak.9:9-12.
16. Sa. Jes.35:1-7. Sak.11:4-17.
17. S. **Os. 3. yomwAdventi.**  
Gal.3:23-29. Jer.33:14-17. Jes.12.
18. M. Mat.11:11-15. Sak.14:1-11.
19. D. Mat.3:1-11. Mal.1:6-14.
20. W. Luk.3:10-20. Mal.2:17-3:5.
21. Do. Hos.14:6-10. Mal.3:6-12.
22. V. 2Tim.4:5-8. Mal.3:13-18.
23. Sa. Jes.62:1-3,10-12. Mal.3:19-24.
24. S. **Os. 4 yomwAdventi.**  
1Petr.1:8-16. Joh.5:31-39. 5Mos.18:15-19.
25. M. **ESIKU LYA KRISMESA.**  
Titus 2:11-14. Mat.1:18-25. Jes.11:1-5.
26. D. **ESIKU 2 LYA KRISMESA.**  
2Kor.4:10-18. Mat.2:13-18. Jes.45:17-19.
27. W. 1Joh.1:1-10. Joh.1:19-28.
28. Do. Ehol.12:1-6. Joh.1:29-34.
29. V. Jes.49:7-13. Joh.1:35-42.
30. Sa. 2Kor.5:1-8. Joh.1:43-51.
31. S. **Os. ya landula Krismesa.**  
1Petr.2:1-9. Mat.2:19-23. Jes.8:9-15.

12: 21 osho Paulus wo ta ti. Aakriste oyendji ya taamba esindano meshasho nosho wo tatu kolekwa muukriste, ihe olwindji twi iteka, nosho wo aamati oyendji ya yi kUushimba. Olwindji twa fa twa dhimbwa oshiholelwa shaakriste ye tu tetekelele ngashi shomuyapostoli Paulus sho a sindi uuwinayi okuuwanawa. Elalakano lyetu li kale tu thike paandjetu pu Kalunga. Lesha natango Fil. 3: 12-21. Oohapu ndhika tadhi tu lombwele elalakano lyetu: otseni mbaka twa shashelwa mu Kristus Jesus, otwa shashelwa meso lye, tashi ti: oku mu landula noku mu kalela. Elago nesindano nehupitho otatu li mono mOmwa amuke.

Johannes J. Nangolo,  
Tsumeb.

Omukulu gwonale okwa tile: WAA PANDULA NO YAKA. Natse wo aape yongashingeyi katu hole ngoka iha pandula. Nokuli uuwanawa wowene mboka omuntu e u ningilwa, ohau tumbu omadhiladhililo nehalo lyokupandula.

Otse aakagumbo yomOshigambo otwa ningilwa uuwanawa owindji nuumvo. Uuwanawa mbuka auhe owokuvululukitha nokunyanyudha oomwenyo. Onke twa hala oku mu pandula one aaNandjokwe, meme Sirkka, Adelheid, aalongwapangi 10 nomuhingi gwoshihauto. Itatu ka dhimbwa esiku ndyoka 1 September, one sho mwe tu ningile ohungi yoopalelela. Otwe shi tseyi nawelela kutya omu niilonga oyindji. Ihe ohole, ohole ya Kalunga, oye mu thiminike mu ilandele ethimbo opo mu tu ilongekidhile. Omwe tu dhimbulutha okwilandela ethimbo okwilongekidha miinima yopamwenyo wo nando ope nuupyakadhi wa gwana aluhe. Ombuto ombwanawa mwe yi kunu mpaka moshikunino shetu. Ondi wete otayi ka mena naanaa, notamu ke yi mona wo, oshoka Tate Kalunga mwene ote yi tekele. One osheendo shesiku eti 1 September 1961 Kalunga ne mu yambeke. Otu shi shi kutya omwa mono wo ngaa uupyakadhi, ihe Omuwa mwene ote mu pe natango shoka mwe shi longitha po, oshoka osheendo shika oshe mu opalele. Jes. 52:7.

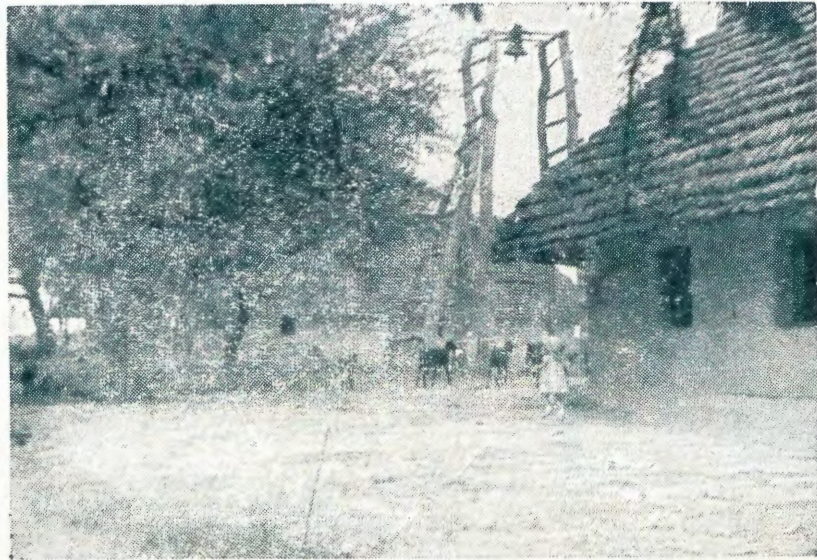
September ogwa kala gwituthi kutse. Osho twa ithanwa ishewe ketuthi lyoopalelela lya longekidhikika ku Juffrou Lahja naalongwa yawo 19. Olya ningwa eti 15 Sept. mohungi kombanda yomulonga megumbo lyoskola ndjoka yoyene. Mokupulakena omawi nomangelengendjo ngo taga zi meni lyolugumbo manga inaatu taambwa mo, omuntu owa fa owala u li kooha dhiilando iinene. Otwa taambwa mo nesimaneko enene, etatu ningilwa ihe ohungi. Ohungi ya li po etuthi ngashi nda ti tango. Otwa pulakenene. Oyi ilongekidha omahokololo niitewo iileleka, ihe inaa puka nande lumwelumwe. Otwa talele Jefta, omupangeli ngoka a popiwa mOmbimbeli Ondjapuki nkene a kalele noshigwana sha Israel. Shoka she mu adha nonkene a longekidha oku ka kondjitha aatondi yawo naashoka a uvanekete Kalunga kutya okwe shi tsakanitha naanaa. Nomuna gwa Jefta naakadhona ooyakwawo oko ya li noondjimbo dhawo. Ehokololo alihe ngashi li li moramata yaAatokolihapu 11 sigo 12. Iiningwanima ayihe oya ningwa pamoniko, ngashi omizalo dhaakwaniilwa noma lenda naakadhona no sho tuu. Ayihe oya li yo opala shili. Omwe tu thigi yalwe. Nani omuntu oto vulu tuu sha, shaa to kondjo mehalo ewanawa. Iyalo, tangi aaSekondere, inamu vulwa okuhila aamwanyoko aashona ye li konima yeni, ya wape wo oku mu holela ngashi Kalunga e shi hala. Omuwa ne mu yambeke, one amuhe. Otatu mu indile mwaa vulwe oku tu ningila ko natango kuuwanawa mboka mwe u taamba. Kalunga mwene ote mu galulile uuwanawa miinima ayihe, Gal. 6.9.

Inatu loloka miilonga mbi yOmuwa. Iishani ya adhima otu yi na.

Frieda Leonard.

## OMOLUA SHIKE NDI NOKUJA KOMAMBO?

1. Omoluaashi eendjovo da Kalunga tadi shi findile nge. Natu tale eeñele dimue mOmbibeli tadi tufindile okuja komambo. "Tuhe liteke po eongalo letu vene, ngashi vamue hava ningi, ahoue, tu kumaidafaneni, na unene eshi tamu mono efiku olo tali ehene." (Hebr. 10: 25.)
2. Osheshi Kalunga ota shakene novañu mongerki. "Osheshi opo pe na vavali ile vatatu va ongala medina lange, ame odi li mokati kavo." (Mat. 18: 20.)
3. Osheshi Jesus muene okua pa nge oshihopaelelua. "Jesus okua ja moshinagoga efiku leshapati, ngashi a ikilila." (Luk. 4: 16.)
4. Osheshi eongalo lotete lopakriste ole shi ninga jo. "Aveshe ova li ve nediladilo limue, nova kala nokuindila pamue." (Oil. 1: 14.)
5. Osheshi ohandishi hepaulula meitavelo lovakriste. "Neendafano lovajapuki."
6. Osheshi onde shi pulua pokukolekua kuange: "Oua hala tuu shili okuenda pamikalo adishe doukriste?" Onda njamukula: "Heno, onda hala."
7. Osheshi omuenjo uange o ue shi pumbua. "Omuenjo uange ova hala noua djuulukua komikala dOmuene." (Ps. 84: 3.)
8. Opo eudifo lovaudifi li kuafe nge. "Otava udu ko ngahelipi ngenge kaku na omuudifi?" (Rom. 10: 14.)
9. Opo ndi ninge oshihopaelelua kovanjasha, kovapaani nokovahenakalunga aveshe. "Osho ngaha oujelele ueni nau jele moipafi jovañu aveshe, va mone oilonga jeni iava vo va hambelele Ho jeni jomeulu" (Mat. 5. 16.)



10. Okuonga'la pamue peendjovo da Kalunga ohaku pendula ondjuulufi joshili nenota loujuki. "Omaudaneko ange onda hala oku a uanifila Omuene omoipafi jovañu aveshe." (Ps. 116: 14.)
11. Olo elombuelo la jandjua kOmbibeli. "Longafaneni, pukululafaneni needunge adishe, nomapsalmi nomahambelelondjimbobo nomaimbilo opañepo." (Kol. 3: 16.)
12. Ojo oñgedi iua okujapula oshondaha. "Osheshi efiku limue lomomikala doje oli dule ejovi pamue pe lili." (Ps. 84: 11.)
13. Ojo oñgedi imue aike iua okulilongekidila oshilongo sheulu. "Hano shiuana sha Kalunga oshi na natango etulumuko lesapati komesho." (Hebr. 4: 9.)

Ohatu ifanua neeñgono okuja komambo. "Tu jeni kongulu jOmuene!" (Ps. 122: 1.)

Ovamuatate mOuambokavango, onaua ngenge hatu tokola ngah: "Omafiku ange aeshe, ohandi a kala mo alushe mongulu jOmue-ne." (Ps. 23: 6.)

Leonard Michael.

## Uuyuni uushike?

Tu taleni nkene tau tumbulwa kOmbibeli; mu Joh. 1:10 tamu tiwa: "Oye kwa li muuyuni, nuuyuni owa shitwa kuye." Meshito mwe etwa po eyaalelo nevi nefuta nomaminikilo niimeno niinamwenyo nomuntu, (1Mos. 1). "Nuuyuni owa shitwa kuye." Ihe overse ndjika tayi tu etele oshinima oshikwawo: "— nuuyuni inau mu dhimbulula." Kalunga okwa shiti omuntu oshifetha she. MElongo lyuukriste tamu tiwa:

"Oshifetha sha Kalunga shi li momuntu osho tuu shoka, Kalunga sho e mu shiti e mu fe, sho e mu pe oondunge nehalo newi lyokomwenyo, na sho e mu shiti omuwanawa nomuyuuki, a kale e nehalo noonkondo okutseya Kalunga noku mu hola nokulonga chalo lye." — Iishitwa iikwawo inayi pewa omagano ngaka.

"Nuuyuni inau mu dhimbulula." Ishewe Jesus ta ti: "Uuyuni nge tau mu tondo, dhimbulukweni owo wa tondo ndje tango." Joh. 15:18 tsikila sigo 19. Tatu ti wo mpaka: Uuyuni owo aantu aawinayi taa longithwa koombepo oombwinayi meyaalelo nomupangeli gwawo satana. "Omupopili nge te ya, uuyuni ote u tompele uulunde wawo, nuuyuuki, nepangulo..., oshoka omupangeli guuyuni mbuka a pangulwa," Joh. 16:8-11.

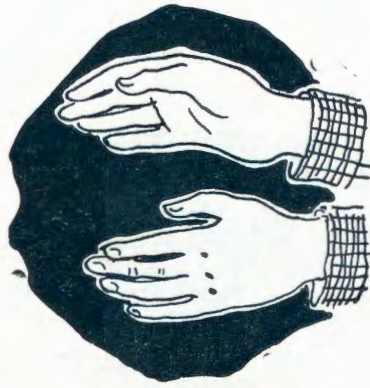
"Muuyuni omu li mo mu nuudhigu, ihe ikoleleleni, ongame nda sindi uuyuni," Joh. 26:33. Aantu ya Kalunga omo taa kala mokati kuuyuni, ihe Oye mwene te ya litha: "Itandi galikana u ya kuthe muuyuni, awe. ihe u ya gamene kuuwinayi," Joh. 17:15, Shoka shu udhilila muuyuni osho shika, Joh. 2:16-17, ihe aana ya Kalunga ye na wawo wi li, Luk. 20:35; 1il. 3:20.

Omauyuni ngaka gaali otaga kondjithatana, Ef. 6:12. Omupangeli kehe e naakwiita ye noonkondo dhe hadhi longo muyo. Aakwiita ya Kristus ye na oonkondo dhe, nOmbepo Ondjapuki te ya tsu omayele, taga nyenge aana yuuyuni oku ga yamukula.

**“OMUENJO UANGE,  
HAMBELELA OMUENE.”**

Omukulu uonale a popja ejele ta ti: “Kape na shikukutu shi ha hulu.”

Ame jo nda hala okutumbula ngaha. Onda li nda mona oshiponga shinene shili. Otua li tua uja kefudo kOushimba, otua li tua fuda naua, tua fuda pamue novalongikadona. Ongula nonguloshi tua li tua hafa naua. Osho jo ovaneumbo va li ve tu hafela. Efudo la pua, ove tu lekela nehafo pamue nokaana ka dalua komukulu uange, ka hafela jo oluendo luetu. Omuene e tu endifa naua momasina, fijo tua fika mOndjondjo. Omupja ue tu hanga ne. Otua londa moshihauto shimue oku tu tuala keumbo. Ofje ne 3 nokanona ketu pamue novaunguli jo vamue. Nani omushingi ine lineekelua unene tashi ti: ongholue. Mokushinga kuaje a ende-



Ongamba yomaunyuni ngaka gaali itayi uthwa komadhina tu ga na muuyuni: Omukwanegongalo “gwowala”, omulongi nenge omusita nomuuvithi, ihe otayi uthwa komwenyo gwa “valwa mOmbepo nomOshili” na ngoka inagu valululwa. Nikodemus okwa li omulongi omunene, ihe kee uviteko evalululo shoka tali ti, Joh. 3:10.

Omadhina ngaka twe ga lukwa molwii-longa yetu megongalo hago ehupitho lyetu, oshoka edhina “omuyapostoli” inali hupitha Judas Iskariot. Tashi vulika, ongame omulongi, ihe nda hokwa “uuyuni no shaa shoka sha kala mo”, manga omukriste gwontumba i igandja ku Kristus nokwa hupithwa. Tatu ndhindhilike wo edhina “omukolokoshi”, inali kanitha omuntu kolulyo lwa Jesus komushigakano.

Aayuda ya li ya dhiladhila ongamba oyi li pokati kawo naapagani, omolwa shoka omuyapostoli te ya pukulula, Rom. 2:26-29. Sigo nena otatu zimine shili, otse iigwana yaapagani, ihe edhina ndika inali tu kanitha, sho twa taamba edhina etoye, Kristus. Otse hatu yelekele okutula ongamba, ihe shika inatu shi pewa, Mat. 13:29, ihe aayoni ye nokugeelwa, opo yi itedhulule ando.

Kalunga mwene ta utha nota ka tenda ongamba ndjika. Oye ta longo ongomufaneki omunkulungu, ita tsitha manga, sigo a mono olupe nduka e lu hala; pamwe tapu ya omalunduluko. Etumbulo ndika lya Jesus: “..... opo shaa ngoka e mu itaale kaa kane,” tali tu holole e ongamba ndjika inayi tsithwa. Ihe tayi ka tsithwa pehulilo, uuna olupe lwa holoka, Mat. 25:31-46. Eso alike tali tu yoolola.

Ndi shi, u uviteko ngashingeyi kutya, ngele taku tumbulwa aantu yuuyuni, itaku popiwa mboka yaa na Kristus muuyuni notaa dhanitha esilohenda lya Kalunga. Okukala kwetu naku tu holole ano otse katu shi yuuyuni. Kalunga ne tu kwathe.

Liina Mpanda.

lela nai neenghono. Inandi mona eshi sha ningua, ombaadilila ashike ngoluvadi vamue tua uilua nai. Oshihauto sha kandoma ne. Keshe umue ota ingida poluaje muene ekuafu. Vamue va dja mo ngashi ve li. Ame onda li shili koshi joitenda. Ovañu ova li tava njengua okukuafa nge. Okua li ndi na ediladilo eli kutja nena Omuene uange a ila nge moshiponga eshi. Onda feua ko koshi joitenda noujehame munene ndi u na efimbo olo. Okaana ka hulifa inaka dja po vali opo. Vakuetu ava va li huepo, tava ilikanene omuenjo uokaana ketu Omuene e ka tambule, nokuhambeleva Kalunga eshi inatu fja atushe pamue nokaana ketu. Oihuna shili ja li po. Divadiva Kalunga e tu tumina ekuafu. Omuhongi E.H. mEngela e uja pamue novapangi noihauto. Vakuetu ava va li huepo, va uja kEngela, ava tua li tua mona oshiponga unene, omuhongi e tu endifa naua fijo mOnandjokue. Tala ko ne, onda kala ne handi ehama shili, nani onda mona oshiponga shili nai. Efiku olo alishe inandi shiiva apa ndi li. Natango nda kala tuu mediladilo lange kutja Omuene uange a ila nge ne moshiponga sha tja ngaha. Nani hasho nga. Ngashi a popja ngaha momuprofiti Jesaja 55:8. Onda nangekua moshihakulilo mOnandjokue. Osho onda li nda nangala ashike ongali ihandi linjenge nande. Omundohotola novapangi tava hakula nge, nokukendabala ngaha noshilonga shavo ngashi Omuene e shi va ifanena. Onda nangala oule uemuedi 7. Osho ngaha nda kala mombete joujehame omafiku aeshe. Onda kala nga nokulesha Ombibeli jange, onde litua peeñele dihapu Omuene Jesus a velula ovanauda. Ame hai ti, ngeno naame a velule nge jo ne, ngashi vakuetu. Efiku limue onde litua eendjovo dili mu Job. 5:17-18. Ovahakuli vange ova hakula olutu nosho jo omuenjo uange. Ookaume kange vahapu nosho jo ovadali va talela nge po mombete

jange joujehame. Ova kala ve na omilongelo dokolutu nodokomuenjo. Vahapu va kala jo ve na oshisho okuilikanena nge. Eshi nda kala efimbo lile ngaha mombete ihandi ende, nge nge handi pumbiua koshihakulilo, ovapangi vange va humbata nge nohole ngashi okaana kanini ke kuetiue ku ina. Ovañu vamue va diladila kutja inandi ka enda vali.

Ahoue nga, eenghono da Kalunga dinene osho ne da holoka. Eshi tuu kua tiua, paife jelekela ne okuenda. Onda jelekela nokuli nokukakama shili. Ohaluka, ohandi endeleva naua. Tete nda jelekela pombete jange fijo nda enda mongulu, onda papala handi ende nokuli neumbo alishe Ionandjokue.

Onda veluka tuu osho. Ovapangi vange eshi va mona nge handi ende, ohandi ende naua nokuli, ehambelelo linene shili okuhambeleva Kalunga oilonganghono noikumufi shili a longanga mokati kovañu. Ame ne muene kandi na nokuli oitja okutanga ekuafu la Kalunga a kuafa nge nalo. Eshi nda lekelua okuja keumbo, ovahakuli vange ova lekela nge nomahambeleva lumbilo mahapu nomaua unene. Limue handi li dimbulukua: “Hambelelwa Omuwa gwandje.” Nosho jo amatumbulo maua unene. Eshi nda fika meumbo, ovakuluñu nounona otava hambelele shili Kalunga nehafo omoluange.

Omuene a tekula ngaha noudjuu omafiku amue mounjasha nokuli. Ovakuetu nje, tamu lesa ehokololo eli inamu dimbua okuhambeleva Kalunga, eshi e tu pa ovanandunge mokati ketu. Uunene oilonga ikumuifa tai longua mOnandjokue. Ngeno hanandjokue ngeno vahapu tua fja nale. Kalunga ta longo shili moñele ja tja ngaha. Paife ondi li naua fijo opapa. Ino dimbua okuilikanena ovajakuli moñele inja, Omuene e va uedele eenghono. Oui ua shituka ouua paife, kaume.

Ookaume vange, namushe mua jakula nge, ijaloo, inandi hala okudimbua po omajakulo eni. Paife ondi li keumbo nokuli. Omuene nge e shi hala handi ka tuikila oshilonga shange. Omuene a tala nge ondi na oshimungu inashi hula manga. Onghe nda uana okutumbula ngaha kutja: “Kape na shikukutu shi ha hulu.” Eps. 103.

Ndeshetelua Kaulinge.

# OSHIKOLOLO SHAAGUNDJUKA



## LILONGA OKUDULIKA PEFIMBO LOU- NJASHA UOJE.

Ovanjasha ovakuetu, efimbo eli tu li na, olo efimbo lidjuu shili, osheshi oli jadi onima ihapu ii, ngashi oikoluifa. Ovanjasha vahapu inava hala okulonga oilonga jomeumbo. Otava endaenda ashike noukamba, okukonga oikaliva javo. Pefimbo lolilonga ofje ovanjasha ohatu piti ashike tua juka oku ku na oikoluifa, manga hatu fije ovakuluñu vetu komaumbo, tava mono oihuna koilonga aishe. Unene moshondaha otu uete nee, tua peua efimbo lokuenda, itatu holoka nande kongerki okuuda eendjovo da Kalunga. Ngenge tatu kala ngaha, itatu dulu okupeua eeñgono, ofje ovanjasha. Ngenge hatu tale Eps. 119:9;112, ohatu mono mo omatoñelo etu, nota tu mono mo jo eeñgono mounjasha uetu.

Tu lilongeni hano okudulika, manga tu li pefimbo liua, osheshi efimbo eli ohatu ke li pulua. Ohatu ka jandja shike poñele jefimbo eli? Tete lilonga okudulika ku Kalunga, opo ajishe hatu ji uedelua ko omaano. Konga hano Omuene uoje, manga u li mefimbo lounjasha.

H. Nd. Haihambo.

## EMBO LA MONIKA MOMUTI.

Efiku limue omulumeñu uonumba uomu Brasilia okua enda nondjila. Oje okua li omudinikalunga unene. Mokuenda kuaje oje okua mona embo la tuvikilua koitaji jomuti uoñumba. Kashimba umue uomovanjasha okua li a londa komuti oota ka leshe mo embo laje, ndele ne moku-dja ko kuaje okue li dimbua ko koitaji jomuti. Omulumeñu oo omudinikalunga okua toola emanja ndele okue li kupula kembo. Embo ola ua ko. Omulumeñu okue li toola pedu nde a leshe edina lalo: "Etestamenti Lipe lOmuene uetu Jesus Kristus." Mokuhada membo omo omulumeñu okua hanga mo eendjovo dihapu odo de mu pa ehala lokulesha embo alishe okudja kehovelu fijo okehulilo. Ombuto jeendjovo da Kalunga oja kunua momueño uaje noja mena mo naua. Omulumenu oo okua ninga omuitaveli uashili nomuudifi uondaka jehupifo. S.G.M.

*Ooskola odhindji tadhi gongele aano-  
na naagundjuka okutaamba elongo  
tali ya humitha komeho.*

## OSHIPEWA KEHE SHA ZI KOMUWA.

*Jak. 1: 17-18.*

- 1. Shipewa kehe shoye,  
Kalunga e kü pa,  
Oshoye mwenemwene,  
Inoo shi idhimbika.  
Ehalelo ndyo lyoye,  
Uudhigu nge u na,  
Lya shi elago lyoye  
Mondjila ndji yoMuwa.*

*Oshipewa shoye wa pewa koMuwa ngo,  
Menongelo lye u li mo,  
Ote ku longo ko.*

- 2. Uudhigu mbuka woye  
Wa pewa koMuwa gwoye,  
KuHe yehupitho.  
Omutenya na uusiku  
Kuu pingathana ko.  
Nokaku na uudhigu,  
Ku na ondigolo.  
Oshipewa shoye...*

- 3. Muuyelee mbu woMuwa  
Na ngoy' wa yelele,  
Muvalwa wa Kalunga.  
Moohapu ndhika dhe  
Dhoshili, dhaa niifundja.  
Ehalo ndi olye.  
Elago twe li pewa,  
Lya pwa megulu lye.  
Oshipewa shoye...*

Die Halleluja 405.

Leonard N. Shongolo.

## NKENE AAGUNDJUKA AAWAMBO OTAA HUMU KOMEHO.

Nale manga oonte dhuuyelee dha li inadhi adha mOwambo, aagundjuka oya li oohepele. Kaya li ya tseyathana ngashi aandonge naakwambi nenge aamandja naakwanyama. Oya li ya kala shitunda opaan-djawa. Aagundjuka oya kala ngaa kehe oshitunda. Oya li ye nomathimbo gi ili nogi ili moka haa gongala peha limwe opo ya dhane ngenge ya leshe. Esiku limwe oya dhana uudhano wa sha, nethimbo ekwawo oya kala miyugo nokulya iikulya. Shika otashi holola kutya omuntu oku negamo wo lyokugongala kumwe.

Ihe nando sha kala ngeyi, onkene tuu Kalunga ota longekidha uuyelee u adhe no maagundjuka aawambo. Oye okwa tumu elaka etoye Iyevangeli mekwatho lyaantu mboka e ya longekidha. Osho ngeyi uuyelee wa thiki. Oonte odha minikile, kashona na kashona dha taandele mOwambo ayihe nomaagundjuka. Opwa holoka ihe oongundumatanga.

Aagundjuka oye na ompito okugongala kumwe. Oshitunda kehe oshi na ompito okuhedha koshitunda oshikwawo. Tango ope na oskola yepatudho, ngele omuntu a piti mo ota yi ihe kooskola dhokomeho, ngashi koskola yaamati nokoskola yaakadhona. Omooskola ndhoka aagundjuka otaa tseyathana, otaa longwa okutseyä Kalunga, nokuhumitha wo oshigwana shawo komeho. Elago oli thike peni!

Mboka inaa mona ompito okutsikila oye na wo esiku ewanawa. Otaa gongala moskola yetitatu moka taa longwa uuyamba owindji woohapu dhomwenyo, otaa longwa omaimbilo okusimaneka nokuhambelela Kalunga.

Omugundjuka omukwetu, oto ti ngiini ano? Ou uvite shike momwenyo gwoye? Omolwa shike ho gongala metitatuskola? Eno, osho tuu shika Jesus oye ondjila noshili nomwenyo. Pwaa nondjila itatu yulu okwenda. Onkene ino dhina okuya ketitatuskola, oshoka oko nkoka to kongo ko ondjila omuJesus Kristus. Oshoka otse aagundjuka otu na ethimbo lyokomeho, onke tu matukeni mondjila yeitaalo opo tu kale oshigwana tashi longithwa kOmuwa.

Elina Enkono.





# OSHIKOLOLO SHEGUMBO



## IILONGA TAYI OPALELE AAKULUKA-DHI NAAKADHONA.

Tango onda hala okupopya sha kombi-nga yiilonga yiikaha mbyoka tayi vulu oku-kwatha oshigwana shetu oshiholike. Otse aanelago shili sho tatu vulu okwikwatha no-make getu yene omolwevi lyetu ndyoka twe li pewa omagano ku Kalunga.

Otse aakadhona aaWambo yonena, otwa pewa uunkulungu owindji, tatu vulu oku u longitha mokukwatha oshigwana she-tu. Ondu uvite omukadhona kehe ota vulu oku shi ninga, shaa tuu e na ehalo nokwi-tula mo nomwenyo mu shoka ta ningi. Oku-tunga otu ku shi atuhe nawa. Ngaashi tu na uunkulungu u thike mpoka wokutunga oon-tungwa osho wo tatu vulu okutunga uu-mbindja niikausino wo.

Ookuku oya longitha omagano gawo ngoka ye ga pelwe noya kambadhala mpo-ka pu thike oonkondo dhawo ngaashi ya toto oontungwa, omashungu, iiyuma n. sh. t. Ayihe mbika oye ya pula oondunge, noo-inkambadhala odhindjilela, moku yi tota. Oonkulungu nomapenda gongashingeyi otwa toto shike shono tashi ka nyanyudha wo oluvalo talu ke tu landula, ngaashi tse ta-tu nyanyukilwa mbyono ookuku ye yi tu thigile? Opo twaa ka kale aanangunga ye-lyetu eholike, otu na okuninga sha shoka tashi pumbiwa muuyuni mbuka womalunduluko ogendji gehumo komeho. Inatu lalakanena owala okukonga shoka tashi tu opalele ne-na nangula, awe! Natu lalakanene shoka tashi opalele no tashi ka nyanyudha oluval-lo talu ke tu landula. Opo oluvalo talu ka landula lu wape okutungila ku shoka talu shi adha.

Okuti ngele taku pi epeya, ohaku fi-kwa owala kohandje tayi gu kombiga yo-mukongi gwongombe. Ohandje ndjoka ngele ya gwile momwidhi, nena otayi vulu okuta-ndelitha epeya tali fike omakuti omanene. Osho wo mutse ngele tamu holoka okaha-ndje kehalo lyokulonga, nena otatu ka ni-nga oshindjilela. Ngele tatu tala O'Repu-blik ya Suid-Afrika, sigo opo mpaka ina yi adha natango onkatu ndjoka okutota ii-hauto kuyo yene. Ihe nando ongeyi, ohaa gandja iimaliwa oyindjiyindji opo ya wape okupewa omahauto kiilongo yilwe mbyoka ya huma komeho mokulonga iyenditho ya tya ngaaka. Otse aakadhona otatu tegele-lwa tu tameke okutunga iitungomwa mbyo-ka tayi tu kwatha notayi opala okulongithwa muuyuni mbuka wehumokomeho. Okutunga okwo shimwe shomiilonga mbyoka yi na ombilialela komukadhona kehe. Oshoka oonane dhokutungitha noongodhi oto dhi landa kombiliha. Ihe ngele wa tungu uu-mbindja u li uyaali nenge utatu oto ka mo-na mo iimaliwa oyindjilela yi vule mbyoka wa landele nayo oongodhi noonane kokule-kule. Natu kambadhale ano noshishonalo-nga shika itashi pula oondunge odhindji ngaashi iilonga yilwe mbyoka tayi longwa mooskola n. sh. t. Shika otashi tu pula o-wala ehala nuudhiginini.

Selma Mutjotjo.  
Okahandja

## AAKWATHI YAWO OOLYE? (Etsikilo)

Ombilive ndjika oya papudhula aanona oyendji noya hambelele Ka-lunga nokupandula omusamane ngu-ka P. K.M paka tandi nyola ishewe oshipilili shomatumbulo gawo sho ye mu nyolele:

“Epandulo, tatekulu, omolwekwa-tho nealudho nde li pewa mombilive yoye. Yaloo, yaloo! Kandi na iitya yoku ku pandula, tatekulu. Ondi uvite ko nawa ngashingeyi notandi ime-meha na mpoka handi gee shito. Kaku na nando gumwe a kwatha ndje nale nokuulukila ndje elunduluko ndika edhigu. Na Jesus okwa pandula, sho wa kwatha ndje pamukalo gu uka, tatekulu. Nando ndi uvite natango omanyeshulo meni lyandje, onda ye-lelwa nawa kutya ndi nokuopaleka wo mwene ha okutegelela owala moo-yakwetu. Otandi hambelele wo Omu-wa. Ombilive ndjika ya ningi oshiholameno shandje aluhe, uuna tandi tsakanekwa kolugodhi nduka moku-kalamwenyo kwandje.”

Olye ita nyanyukilwa omawi ngaka gaagundjuka! Aagundjuka ya senota lyohole nolyuukuume. Ano ngele itaa kumithwa nomeya omana-mwenyo pethimbo lyo opala, ohole yawo tayi shituka uumbwanda nuu-holume. Olye ita tila epangulo ndi: “Kaku na nando gumwe a kwatha ndje nokuulukila ndje elunduluko ndika edhigu.”

## EITAALO OLYO OKUTAAMBA JESUS.

Shaa ngoka a taamba Jesus, oye a valululwa mu Kalunga. Ino itala ngoye mwene aluhe; tala Kristus a-wike! Kristus mu taamba ngomudhi-mipo gwoondjo dhoye! Ino ninga e-hempululo paupika, ihe omwenyo gwoye gu matulila Omuwa ngashi u li noku mu inekela. Omuntu ngele ti igandjele Omuwa sigo muule womeni lye noti ikwatelele neinekelo lyeitaalo komauvaneko ga Kalunga tage ku u-vanekele edhimopo lyoondjo, nena a thiki peha lyokuvalululwa mu Kalu-nga, oshoka oohapu tadhi ti: omboka taa ya ku Kalunga omolwa Jesus Kristus, oyo taa taambwa kuye. Ondjila ano ondji! Ila owala! Ila nga-shi u li! Ila, u mu etele oondjo dho-ye noluhopo lwoye nuudhigu woye! Onke ano tu zaleni iikondjitho ayihe ya Kalunga, opo tu monike muye, no twaa yugwe eitaalo ndika okutaalela Kristus.

Matias Paulus Amashisha,  
Oranjemund.

Ookuume kaagundjuka, ongele aavali nenge aanongeki naasita, n. sh. t., ando tu tompwe kedhudhuko lyaagundjuka yetu lya lundu. Pamwe twe ya tidha nenge twe ya ethele!

L. Mp.



### EHANAUNO LA JERUSALEM

Oshiuana shovajuda eshi inashi dimbuluka efimbo lekongo lasho nainashi lidilulula, ndele mokuhaitavela kuasho osha ekelashi nosha valela komushijakano Omukulili uounjuni, osha hangika ketokolohandu, olo la udifua kovahunganeki nohauhuunina kOmuene Jesus muene.

Jerusalem noshilongo ashihe sha Juda sha njonua po sheke.

Omuhokololi omunandunge omujuda Josefus (okua kala peedula 37-97) ota hokolola nokutja, manga Kalunga ina uanifa omatokolo aa, ovañu ova mona omadidiliko omalonduelo e lili na e lili, nomatengeneko oshiponga sha li popepi. Ndele edidiliko la kolelela lehanauno ola li po odino jomikalo, etandavelo loukolokoshi la tandavela moshilongo ashishe. Oñango ijapuki ja Kalunga ja ekeluashi, netilokalunga la ninga ediinino oku i diinina pashipala. Nomovanamadina nomovañu vongaho oui nomapijaano neendubo da holoka akushe. Na Jerusalem nedu alishe la jada oukolokoshi nomadipao. Okunjona kuoshi-

uana osho sha endelelifua koikolokosha jovañu vovene, oku dule omafiminiko ovaroma.

Okudja komafiku enja a Kristus, edu lovajuda ola pangelua kovapangeli va nangekua kovaroma. Vahapu eshi va li ovanaluisho novakukutu, ovajuda ova li ve udite ondjoko jovaroma oidju, je va njenga oku i humbata. Gessius Florus omuhuunini uomuvo okua li muilela, e va dule. Je okua hokua nokuli, eendumbo nomapijaano nomanjekafano omoipafi ja aveshe, opo a shiive okufudifan gaha oluisho laje luhe na ndjele. Ndele ngolongo eshi e linjekela je muene oimaliua jotembeli, elididimiko lovajuda ola pua po. Opu holoka ondubo ja tiljana ohonde muJerusalem nopamue jo medu lavo, nomupangeli ou okua shekua nokunjekelua. Ndele osho naanaa omupangeli omukotokeli e shi hala nale. Okua handukila ovajuda omahandu madjuulela omoluondubo ja vo. Okua dipaifa ovajuda 3,000 nokua dengifa nai nokuvalelifa komushijakano ovakuluñuelela vavo. Ovajuda

ova li va teelega va kuafue kuSyria komupangeli Cestius Gallus. Ndele Florus okua kotoka shili, oñge ekuafo olo la teelegua inali uja. Omadundakano a hapupala ashike, fijo omupangeli uokuSyria okua li e na okuuja novakuaita vahapu, oku va mueneka. Eshi a hanauna po ombinga inene jedu, okue uja muJerusalem. Divadiva nde ta nangala ombinga jokoumbangalañu uoshilando nde ta idilile ovajuda meni joshilando, omo mua li jo otembeli. Okua li hanga a mane po oluoodi, ndele Kalunga okua tokola nale, ovajuda va mone omahandu madjuu. Nomakoto mahapu Florus okua kelela Cestius Gallus aha endelele, ovajuda va mone ngaha oñito okulilongekidila omaluoodi. Ovo nova finda Gallus nove mu shunifa ko a teua luhapu. Oluoodi eli la fa lefindano, ola ninga oshiponga shavo, osheshi mulo ova mona ouladi mupe. Pefimbo eli ovajuda vahapu ova li va teelega omuhupifi uopaunjuni, omupangeli omunaefigono. (Taku tuikilua.)

# OUNJUNI OTAU TONGO SHIKE

## OILONGO JA HANGANA.

Osha pula oivike i 6 oshiongalele fimbo inashi tokola sha kombinga jomulanduli uomusamane Hammarsköld. Nde opo sha tokola pa kale omupoñele manga. Moinima ikua o inene, ngashi okuninipika oikondjifa nokuanja oikondjifa idjuu (ngashi omaboma a atomi) inapa monika ehovelo nokuli manga. Mauretania na Mongolia oja itavelua i kale oiljo joshiongalele. Berlin oshi li ngashi sha kala, omadiladilo a tukauka. Oinima ja Suidwes-Afrika otai popiua luti 15 (oja hovelua omudo 1946.)

Omahoololo ovakuluñu mu Suid-Afrika.

Omahoololo ovakuluñu voshilongo (parlament) eti 18 la Okotoba inaa ninga elunduluko linene la sha, vahapu ova hoololululua.

Omuafrika ota tambula ondjabi ja fimana.

Ondjabi jombili ja Nobel ja fimana ohai tukulilua ovañu ovo va shivika kutja va longa shili mounjuni mu kale ombili. Omutumuhongi Albert Schweizer oje umue ua ava va mona ondjabi ojo.

Ondjabi jomudo 1960 oja itavelua omusamane Albert Luthuli uokuSuid-Afrika eshi a longa omatukauko komaludi ovañu a ha tuale momalipuño. Luthuli ota i kuOslo kuNoorwee a tambule ofutopandulo jaje. Omudo 1938 Luthuli a li pamue nomusamane Alho koshiongalele sha Madras kuIndia.

Ondjabi jomudo 1961 oja diladililua Dag Hammarsköld je muene nande a mana ondjenda.

Tanganjika otali ipangele.

Efiku eti 9 la Desemba Tanganjika otali dana oshivilo shelipangele. KoNdouishilanda kua mbestelua oupandela 500 000 omoluoshivilo.

## ODU UEENGOBE.

Odu ueengobe (bek-en-kloseer) paife oue lihanena kefaalama 500. Eeñele edi oda kondekua, de lijoololelua, di li mekondeka. Kape nolufuo mokukondjifa oudu ou.

## OMUKIFI MUDJUU UA HOLOKA.

Okudja kefiku 11 Okotoba omangelo ounona kOngandjera okua muenekua omoluomukifi (builepes) ua holoka. Oudu ou ou nehovelo la fa oluidi notaku holoka oshitumbuka. Ovañu vamue ova fja, ndele vahapu ova mona ekuafu nge va etua koshihakulilo divadiva.

Eengulu domanongelo ounona odo da ninga manga onasaresa jovanau du ovo, opo vaha dongakane novanau du ava vomikifi doshito. Eendohotora novahakuli ove noilonga ihapu shili, konjala ihava ombo nokuli. Otava ende momikunda tava tulile ovanau du koshihakulilo, vo tava shashamine omaumbo nomiti. Pa kongua nokuli ovajakuli vamue tava kondjifa eeñuku momapja nomomahenene nokutala omuti pomakuena ado.

Ovañu vamue va vendua tuu, ndele omuti oua teelua natango opo u uane okukuafa aveshe, epangelo ngashi la udaneka.

Hano Ongandjera oi li mefimbo louuike nolouvela. Kape noskola, kape nelongelokalunga mongerki. Oseminari aike tai longo. Tu ilikaneni shili, oudu ua tja ngaha uha tandavele mOuambo aische.

## OMEVA MAUA KU SWAKOPMUND.

Omunino uokuendifa omeva tau longekidua pokati ka Walvisbaai na Swakopmund. Omunino ou otau ka endifa omeva taa di meepompa di li komituni domulonga Kuiseb notaa pombelua mondama inene i li oukukule ueemaila hejaali okudja ku Walvisbaai. Ominino dikuauo tadi a tuala fijo mu Walvisbaai, Osho ngaha Swakopmund ta peua omeva maua okunua kovashiinda vaje.

## OVAENDA MONAIPA.

Oshinjanjangido shOmukuetu osha talelua po kovañu vahapu omafimbo aa.

Omusamane von Bach umue uvapangeli kuVenduka okua enda pamue nondokotola mukuluñu Oosthuizen novanailonga vakua o vombeleua jaje. Ovatalela po Onaipa nOnandjokue nEngela neengulu domatumo makua o jo, unene va mone ovanau du ñumbi tava hakulua nde va mone jo eshi shi nokulongua natango. Ova konakona jo omuhakuli omudaleluamo kEndola nokutala oshihakulilo shaje. Ova hafa shili omoluasho ve shi mona.

Ovatumua va fimana (ambassadeurs) vomapangelo oilongo ja Australia na Kanada ova hafa unene eshi va didilika, ovadaleluamo ñumbi va peua oisho moshinjanjangido.

Omusamane Cloete uomepangelo ku Venduka pamue nomusamane Loopuit, omukulufu uoitauua mu Suidwes-Afrika ova tala unene eengulu, etumo la Soomi ñumbi la tunga.

Omuhongi Ofstad uokuRoodepoort, Transvaal okua enda kOnaipa, kOshigambo, kOnguediva, kuElim, kEngela nokOnandjokue, okua kundafanua oshilonga shokutula eendaka mongalo ojo tai ka longifua koradio "Ondaka jEvangeli" kuEtiopia, tu ude moradio eendjovo da Kalunga momalaka etu.

Omuhongi Dotson uokuRodesia okua popifa jo eongalo lokEefiana melongelokalunga.

Ava ovo vamue vomovaenda vahapu vahapu ovo va talela po Onaipa omafimbo aa.

## OMUKWETU

Ilandela oshifo shOmukwetu omumvo 1962. Otashi pula ngashi nale moWambo 30c. (3/-) nokUushimba 40c. (4/-). Omukwetu oye oshifo oshiwana wa shaawambo yeneene. Onke omuntu kehe e noku shi ihakanena.

## EHANGANO

olyo oshifo shomuyakuli kehe. Otashi popi iinima to yi pumbwa no tashi ku kwatha moshilonga shoye. Otashi pula omumvo aguhe:

moWambo 10c.(1/-)

kUushimba 15c.(1/6)

## AALESHI TAA NYOLA

*J. J. Shipanga*, Omaruru, ota nyola nepandulo enene sho ta popi ekwatho aantu ye li mono okukondjitha uuvu wapolio, eta ti: Otatu hambelele Kalunga, sho e tu pa ekwatho moshinima shika oshidhigu noondohotola taye tu sile oshimpwiyu.

*Silas Iipinge na Andreas Shapaka*, Seeis, otaye tu kundu ngeyi: Tu kondjeni tu yeni komeho medhina lyOmushiti gwetu. Inatu kondjeleni iinima yilwe, ehupitho lyomwenyo dhetu ashike. Kundweni neimbilo 2.

*Lukas Kambala*, Gochas, ota kundile po aawambo noohapu dhi li mu Job. 12: 7-12.

*Jason Titus*, Okahandja, ota nyola ngeyi: Ondu uvite uudhigu aluhe shaa tu nda lesa oohapu ndhika: Ekuya olya tulwa pekota lyomuti ngoka itagu imi notagu kewa po. Ano natu kondje nokulalakanena tu sinde omamakelo nekuya lyegeelo lyaa tu tegelele, oshoka ondjambi yuulunde oyo eso, ihe ondjambi yeitaalo oyo omwenyo gwa aluhe.

*J. P. Hautoni*, Swakopmund, otati ngaha: Onje ovanjasha vakuetu, ohandi mu dimbulukifa kutja keshe efiku tali shi, olo oŋgatu jetu jokuja kombila. Oŋge ano omunjasha omuholike, efa eendjila doukeenaKalunga.

*Malakia P. Amunkete*, Oranjemund ota kunditha aaleshi ayehe yOmukwetu noohapu dhi li mu Mat. 7: 27.

*S. M. Hamunjela Waalvisbaai*, ota ti: Oku na oshisho okuilikanena ovakuatelikomesho voshiuana, Kalunga e va pe eedunge nounongo okulonga oshilonga shavo noudinini netilokalunga.

*Natangwe Shigwedha*, Waalvisbaai, ota kumagidha aakriste ayehe okudhiginina eitaalo, lyaa huhwe nolyaa yugwe komutondi. Onke ano tu nokukala twa tonata.

*Joel Huidivali*, Tsumeb, ota kundifa ovaleshi aveshe vOmukuetu neendjovo di li mu Mat. 25:1-13, noku tu kumaida tu kale atusheni koupafi.

*Ambunda Amutenya*, Onayena, ota ti: Otatu hambelele Kalunga, shoka e tu ithana mu Jesus Kristus, tu kale aantu ye e tu ninge uuyelee wokuminikila momilema dhuulunde. Lesha Mat. 24:4-14.

*Fredrik Hiŋgalua*, Ongenga, ota shanga ngaha: Kalunga a jandje omepo kovakriste ovo va tambula eemepo domutondi. Omukuetu, ove ua ja kokule, ila ku Jesus u ngundjile! Eimbilo 267.

*Absalom Angula*, Grootfontein, ota hambelele Kalunga shokwa mono omagano gealudho kuye. Okwa li a kala omimvo mbali muukithi uoshipangelo, ihe okwa kola ngashingeyi. Kristus onguka a humbata uuvu wetu nokuli, ota kwatha oomboka ye li muudhigu.

## IJALOO, OVAMATI VANGE.

Onda ninga omafiku ndi li momutala uange nda nangala hai vele. Eti 10.9.61 omuimbifi uetu Wilhelm Shipena e uja a talele nge po nongudu jaje joluimbo nokulekela nge, osheshi eehani daje oda pua ko.

Ove uja poshipondoka shetu, nde tava imbi nondaka ja filuka, ngaashi odula jomudimbi, nde tava ongele omadiladilo ange aeshe, nde taa jukilile moitja aishe tai tumbulua meimbilo keshe. Nande nda li po nda humbata oungone, onda mona eulu la jeuluka ngaashi Stefanus, Oil.7:56.

Ofje ovakulukadi ava tua tumua novashamane vetu ovaevangeliste mokati keni mehalakano, otu li moluhepo linene. Manga tua li mOuambo, okua li hatu mono oiongalele mEnongelo lovajakuliongalo mEngela. Nde okua li hatu mono mo shihapu shokomuenjo, nokukundafana jo novakuetu ovo va dja komaongalo amue mOuambo.

Naapa otua hafa ngaho,, eshi tamu udifilua evangeli moluhepo eli linene. Taleni vamati vange, onje ovana vetu mOmepo. Nde omua ninga naua eshi mua talela po njoko. Nde onda mona omuenjo momaimbilo eni, vana vange. Ihai dimbua etalelopo leni. Ondi shi shi, apeshe opo pe na omukulukadi uomuevangeliste, osho tamu ningi. Ombibeli jetu tai tumbula naa-naa okutalela po omunaudu oko okujakula Kristus. Inamu dimbua jo okutuala omaimbilo mOshipangelo. Ovaimbifi ovaholike amushe medu eli nokOuambo, omua peua omiito iua mefimbo eli okuudifa evangeli nomano oo mua peua okuimba, a longifeni, vamuange.

Ekundo kunje, vamati vange, ole li, itai dimbua eshi mua fija poshipondoka shetu. Omuene na kale nanje. Martta Hauuanga. Windhoek.

*Jeremia Maanda*, Windhoek, ote tu nyolele nawa okukala kwawo mehalakano e ta yematele aagundjuka yamwe nkene yi ikukutike owala, ihe ta pandula Kalunga sho ta mono aamati mehalakano haa dhiginine oohapu dhOmuwa. Oye ta ti: Apa jo mehalakano omu na ovamati va Kalunga, ava tava kondjo shili okulongela Kalunga nokukonga eemuenjo dovakuauo ve li mehalakano moilongo ei. 1 Mos. 3:18.

*J. A. Nakale*, Walvisbaai, ota nyola ngeyi: Otandi hambelele Kalunga, sho a talaleke omwenyo gwandje nosho omwenyo gwomuntu kehe. Oye omunankondo shili nota vulu oku tu gamena twaa pugume mondjila ye. Oye Omusita omuwanawa shili, oye ngoka te tu fala komeya gesilohenda lye. Tu mu imbile chambelelondjimbo nena na aluhe.

*Lasarus Shilumbu* ta ti: Oohapu dha Kalunga dhi noonkondo, otadhi eta mo sha aluhe. Omilema dhetu otadhi sindika e tadhini minikilwa kooohapu dhOmuwa, Eps. 119:105.- Tu ethe iituthi yuusiku, 1Petr. :41-6.

## OIHAUTO OI NA OIPONGA.

Onda landa oshihauto mOtjiwarongo. Hano mondjila jokuja kOuambo, onda hangua koshiponga, osha hanga nge pokati kOtavi na Tsumeb.

Popepi na Tsumeb ope na ondudu ile noko kua enda ondjila. Hano okudja kOtavi, eshi tua hanga ondudu ojo, onda tamaka okulondeka oshihauto notua huma tuu komesho. Mepakumo leisho, oshihauto osha aluka ko fijo oposhi. Onda hetekela natango ndele osha aluka ko.

Onda fija po oshihauto nde handi i ku Tsumeb kongalasho. Omuhona uongalasho okua pa nge oshihauto, shi ka shile shikua, Oihauto otue i mangela mumue nde hatu londo kondudu. Mepafimo, onda mona oshihauto shomuhona, osho tashi shili shange, sha taalela monima. Eshi shange osha shitamba memanja nomaulu a taalela pombada. Ame ondi li koshi komashingilo. Onda ninga ko etata lovili. Ovaŋu kave na apa tava piti va dule oku-kuafa nge.

Ohandi hambelele Kalunga shili ou a kuafa nge, inandi mona nande oshiponga.

Natanael Haileka,  
Ombalantu.

## ONDA KANITHA.

Ongombe onzinzi oneluwa onduudhe yi noombinga. Inayi gumwa nando okomakutsi.

Festus Shaanika,  
Omuthitu (Olutayi)  
Ongandjera.

Onda kanifa ongobe odidi ji laula i na evala landja moshuua litoka. Ja kana nokatana kajo.

Oja kanena kofuka jokOndonga.  
Sacheus Markus  
Ondobejeno  
Oukuanjama.

FINSE SENDINGDRUKKERY  
OVAMBOLAND  
ONIIPA