

# OMUKWETU

No 2.

FEBULWALI

1961

## EFIMBO LOŊGENDA

Joh. 12: 35—43.

Aveshe ava ova kala na Jesus oku mu puilikina, eshi ta tukula oupuna uevangeli. Efimbo olo, olo efimbo liua loŋgenda tali hafelua kuaava ve na odjuulufi jehupifo, olo Kalunga e li udanekela ovaitaveli vaje ve li tambule. Simeon eshi a ukata Jesus momake aje nehafo okua ti: "Osheshi omesho ange a mona ehupifo loje ue li longa moipafi jovaŋu aveshe, oujelele okuminikila ovapaani, nefimano loshiuana shoje Israel." Jesus oje oujelele tau minikile momilaulu.

Jesus a tala noŋgenda ovaŋu ovo inaa-ve mu tambula tava ende natango momilaulu, nande oujelele ou li mokati kavu. Jesus te va popifa nelaka lohole: „Okafimbo kafupi oujelele u li mokati keni." Jesus a hala ovaŋu va longife okafimbo oko metilo lijapuki, va tambule oujelele, va ende moujelele, va ha hangike komilaulu.

Jesus ngenge tave mu kufua, omilaulu otadi ningi dinene. Nande vahapu oujelele ou li mokati kavu, ova tuikifua komilaulu, nande Jesus a longa omadidiliko moipafi javo. Omilaulu da tuikifa omesho avo vaha mone Jesus kutja oje shili omuhupifi uounjuni, ou e uja mounjuni oujelele. "Maŋga ame ndi li mounjuni, ame oujelele uounjuni. Joh. 9: 5."

Apa ope noshiponga, omuŋu ngenge e li mefimbo olo liua, ndele ole mu holekua, nomilaulu da tuvikila okukalamuenjo kuaje, nande Kalunga e mu tumina oujelele ite u tambula. Nena efimbo loŋgenda oli li pokupua po. Osho vahapu ve li danaukifa nole va puila po, kokutja omuŋu ta file momilaulu da alushe.

Vahapu va pitililua po kefimbongenda, omilaulu da ninga dihapu muvo. Otava ende tava tualuatualua keemepo domilaulu, ndelene kave shi apa tava ji nande a pulue "Oto ji peni?" Ina shiiva po, shashi omilaulu da ninga dihapu unene. Elaka liua loŋgenda Jesus e li popja: "Ame oujelele uounjuni, ou ta shikula nge ita ende vali momilaulu, ndele ota kala moujelele uoumuenjo."

Omukriste efimbo liua e li peua ku Kalunga eshi a peua Jesus. Lungama uhe li longife nai, opo uha kuatue komilaulu da alushe, omo ita dudu okuaaluka mo vali, omo ove ino hala vali Jesus noshilonga shaje. Omo u udite, Jesus keshi omuhupifi omunjonipo uomuŋu nouoshiuana ashishe. Oihuna ngenge omuŋu to kanifa efimbo loŋgenda.

Puilikina elaka lohole la Jesus, ove u li tambule. "Kaleni tamu ende maŋga mu na oujelele, muha hangike komilaulu."

I. Ninda.



Petrus ti idhimbike Jesus

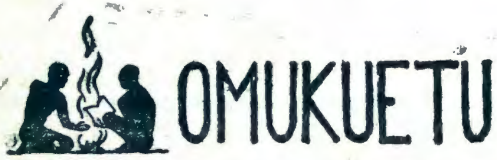
## OUHAMBAMBA UEDIMEPO LOMATIMBA.

"Oshiuana osho tashi kala mo osha diminua po omatimbaikolo asho", Jes. 33:24.

LUTHER ta fatulula: Ouhambamba Kristus hao oheli. "Itandi kala mo", osho oMuene ta ti, "ndi va tokole, ahoue, ndelene ndi dime po omatimba avo. Shashi mouhambamba uange itamu kala nando umue ou ina diminua po omatimba aje. Ouhambamba uange inau kala hamungaho. Ovo aveshe tava kala mo ile vo tava i mo, ve nokukala ve udite omatimba avo. Ngenge ve li po ovanamatimba, nena itava dudu okukala itava diminua po omatimba".

Oŋge ne mouhambamba ou tamu i ovo aveke ve udite omatimba avo. Ouhambamba oo ouaKristus. Ita pitifile

mo nande ovajuki, kutja ovo ve udite vehe noipue. Ovo tava teua mo nokuli. Ovo va hala okukala ovajuki, nande vehe fi ovo, vo te va umbile pondje. Ndelene ovanamatimba ngenge tava pitikilua mo, vo itava talua vali ngovalunde, shashi te va uvike noikutu jefiloŋgenda nde ta ti: "Eshi ua njona, aame hai dimi po omatimba oje nde handi a uvike". Osho oshili kutja mouhambamba ou uedimepo omu na natango omatimba, ndelene omuene uoshilongo ina hala oku a tala vali. Ina hala oku a vala vali. Okua hala oku a holeka nokudima po. Osho ngaho omunamatimba okua ninga omujapuki omunamuenjo noshiŋimbu sha Kristus mouhambamba uaje.



Febulwali 1961

## EPUTUDHO LYOSHIGWANA.

Omukwetu a gwana okutumbula nenyanyu onkatu yimwe onene ya endwa miilonga yooskola, omumvogu sho kwa ningwa ekonakono lystanda onti 6 noyendji sho ya piti mo. Otapu monika ngeyi, ooskola dhetu nkene dha humithwa komeho kashona na kashona, sigo dhi shi kuyelekwa nooskola oonkwawo, no tadhhi thigi nokuli ooskola oonkwawo miinima yimwe, ngashi melongitho lyelaka lyoshilongo nomehumitho komeho lyalyo. Ngashingeyi pe nompito okutsikila sigo mooskola dhokombanda ku mboka ya hala okwidhidhimikila okulongwa. Naku tumbulwe nenyanyu kOshigambo wo nkene ku nongundu ya piti momakonakono gomumvo gwtango noya tameke omutiyaali (Vorm II) nokOnguediva nokOkahao nkene ku noongundu dha tameke ngashingeyi omumvo gwtango (Vorm I) gwoskola yokombanda (sekondêre skool)

Ihe onkatu onene yi vule ndjika oyo ndjoka tayi ningwa kepangelo lyoshilongo, sho tali itaambe oshimpwiyu shika, notali kala nasho pamukalo gwaaputuki. Omukalo nguka *demokraties* otagu ti: Oshimpwiyu shika noonkondo okuutha miinima mbika epangelo oye shi topolele omukwashilongo kehe. ligongi yaakwashilongo otayi ihogololele oongundu okutonatela ooskola notayi tokola nkoka taku pumbiwa ooskola naakwashilongo nkene ye nokukwatha momatungo nomiilonga iikwawo yoshimpwiyu shika. Omukalo gwa tya ngaaka okupangela ogwo oshiyimati shimwe shuukriste, oshoka uuukriste we tu longo omuntu kehe nkene ku nondilo, a gwana okutya sha nokwa gwana okuhumbata oshimpwiyu. Otwa kambadhala nga okwiilonga omukalo nguka miigongingerki, miigongi yitayingerki nomiigongigongalo. Otatu pandula aapangeli yetu sho ye tu inekela miilonga yoshilongo tu topolelathane nayo ngeyi epangelo noshimpwiyu.

Otu nokudhimbulukwa nawa shoka tashi tu pula. Ngashi omupangeli gwoshilongo a pewa oshimpwiyu kaa

Oñumuafo II kovakuaneongalo

## OKUPEUA NAKU NINGE OKUJANDJA!

Mokulesha okukalamuenjo kueongalo lotete hatu ku hokololelua mOilonga jovajapostoli (unene 2:42-47) ohatu koneke omikalo dimue diua tadi holola naanaa ohole inene jokuholo Kristus komesho joinima aisho. Ngashi tamu tiua: "Ovaitaveli aveshe va kala pamue, noinima javo ja fa jomuñu umue auke." Meongalo lotete mua diinua okujandja eeshali. Ngashi mOuambo jo omuenda ta mono omulongelo pamikalo diua dikulu, nosho jo ovakuluñu tava shiivika keeshali. Mounjuni uonale eeshali da jandjua node lipue, ndelene paife oshiuana eshi sha mona evangeli, omukalo ou muua itau diinua vali. Ovajapostoli votete ovo va diinina moshinima eshi. Nokuli mokukala kuomukriste keshe efiku etumbulo eli "One omwa pewa omagano, gandjeni wo omagano" oli nomuenjo. Heeno, omoluoshali osho shinene, Kristus, tue mu mona, nafje jo otu na okujandja eeshali.

Oto dulu okujandja eeshali ngahelipi? Taku tiua, ohole alushe tai dimbulukifa omuñu eeñito dokuninga ouua. Tashi ti, shaña tuu ohole je ku kuata, nena tapu holoka ee-

idhiladhile nuwanawa we mwene, ihe a lalakanene uuwanawa waalelwa ye, osho moshimpwiyu shika tatu tegelelwa, tu tule aluhe uuwanawa woshigwana ashithe komeho guuwanawa wetu yene. Otashi pula eigandjo omolwaakwawo, ihe meigandjo lya tya ngaka omuntu ta mono, uuwanawa woshigwana owo uuwanawa womukwashigwana kehe. Otashi pula etonatelathano nehalo okupukululwa ihe unene tuu otashi pula einkelathano. No ngashi iilonga ayihe yepangelo osho unene shika otashi pula uuyuuuki nuudhiginiini nomukumo.

Oshigongingerki osha tokola medhina lyaakwanegongalo ayehe iilalakanenwa yimwe yepatudho, oyo nga mbyoka ya lalakanenwa shito: aanona ya putudhilwe mombepo yuukriste, omalaka goshilongo ga dhigininwe, aalongi ya kale aaholelwa momikalo omiwanawa naaniimpwiyu yooskola ya kale ye shi kuinkelwa kuyo. Otapu monika ngeyi, nkene tashi pumbiwa naanaa, ongerki yaa ikuthe moshimpwiyu, ihe yi tsikile nokukwathathana nepangelo meputudho lyoshigwana.

ñito dihapu dokukuafa: meumbo leni nomoushiinda. Ovanaudu nava tuminue okahafo, nava ka imbilue nokuleshelua nokuli, ovanaluhodi nava hekelekue nEendjovo da Kalunga, eehepele nadi longekidilue sha tadi shi pumbua. Eumbo lomufita ile lomuevangeliste inali dimbiua!

Nale tua popja unene eefikola dongerki aisho, enongelo lomEngela nofikola joufita muElim tadi teeled di monenue eeshali. Tala, ekuafa olo linene, ovakuaneongalo ngenge tava hovele okutumina eefikola edi eeshali ngashi oilja. Nena Kalunga Tate oue mu hafifa unene, shaashi ou ta jandje nehafo oku holike kuKalunga. Tumeni eeshali moku ha pula sha! Ou ta kanifa omuenjo uaje noinima aisho muuo omoluedina la Jesus Kristus, oje te u mono nokuli, osho Omukulili muene ta ti.

Meedula tadi ke uja ovauambo aveshe tava ka pulua epashukilo nou diinini uhapu mokudiinifia oinima jopaefikola. Otu nokulitula moshinima osho, ha okanima kamuekamue ngeno, ahoue, ndelene fikulimue eeñigono detu adishe mokuhumbatela mo oinima aisho tai pumbiua mo. Ndelene ongerki ojo je tu dala tu ninge ovanamuenjo vashili ojo tuu ojo tai pumbua oudiinini uetu nomakuafele etu. Shaashi ekuafa olo liua tali uja kombinga jetumo itali ka kala omu alushe fijo alushe, ahoue. Efiku limue tapu talua kutja fijo opopo, opuu. Ovatumua tava di mo opo ovauambo vovene va kale moshilonga osho sha diinua kovatumua fijo opapa, ndelene osho shi nokuningua okudja kefimbo lopaife kovauambo vovene nde, okupopja oshili, osha li sha uana shi diininue kuvo nale.

Omoluoinkuuanifua ei inene tai teeled epashuko lovauambo, onaua ngenge hatu li longo nokuikilila nokuli okujandja eeshali nokujandja oijandjiua jetu aisho nehafo nokuhumbata ongerki jetu aisho neefikola detu tu kuafe manga pu na efimbo.

Aisho ei ojetu, ndelene fje otu li va Kalunga, oñge natu jukeni noupenda tu lituikeni omitengi odo diholike odo tu na oku di humbata. Keshe umue na humbate omutengi uaje.

Seppo Löytty

## OKAANDJETU



## MALITSA.

1. W. 1Sam.3:1-10. Luk.16:14-18.
2. Do. Jer.20:7-13. Luk.16:19-31.
3. V. Heb.5:4-10. Luk.17:1-10.
4. Sa. Mat.21:33-46. Luk.17:11-19.

5. S. Os. 3 yomEidhiliko.  
Rom.16:17-20. Joh.7:19-31.  
Sak.3:1-5.

6. M. 1Petr.1:13-31. Luk.18:1-8.
7. D. Mark.6:7-13. Luk.18:9-17.
8. W. Joh.10:17-25. Luk.18:28-30.
9. Do. Iil.18:1-11. Luk.18:31-43.
10. V. 1Kor.4:9-16. Luk.19:1-10.
11. Sa. Jes.49:1-6. Luk.19:11-28.

12. S. Os. yi li pokati mEidhiliko.  
Eps.78:18-25. Joh.6:24-36.  
2Mos.16:11-21.

13. M. Joh.6:22-29. Luk.19:41-58.
14. D. 1Aak.19:1-8. Luk.20:1-8.
15. W. Mark.12:18-34. Luk.20:9-19.
16. Do. Joh.6:46-59. Luk.20:20-26.
17. V. Joh.12:20-26. Luk.20:17-44.
18. Sa. Joh.8:51-40. Luk.20:45-21:4.

19. S. Os. 5 yomEidhiliko.  
Ehol.3:7-13. Joh.11:47-57.  
Joh.50:4-11.

20. M. Heb.7:23-27. Luk.21:20-38.
21. D. Joh.7:1-13. Luk.22:1-6.
22. W. Joh.13:31-35. Luk.22:7-23.
23. Do. Heb.10:1-10. Luk.22:24-38.
24. V. Joh.11:47-55. Luk.22:39-46.
25. Sa. 2Mos.32:30-44. Luk.22:47-53.

26. S. OSONDAHA YIIYALE.  
Ehol.3:14-22. Joh.12:1-16.  
Eps.111.

27. M. Jes.50:5-10. Luk.22:63-71.
28. D. Heb.9:16-28. Luk.23:1-12.
29. W. Heb.4:15-5:9. Luk.23:13-25.
30. Do. Eps.111. Luk.23:26-31.

31. V. ESO LYOMUKULILI.  
Eps.22:7-22. Joh.19:25-30.  
3Mos.16:29-34.

## OSHIKOLoha KOKAVANGO.

Uuvu woshikoloha owa holoka kOkavango, onkee aantu ihaa ziminwa okuza ko nokuya ko manga. Oyendji oya vendwa. Oombuku otadhi taandelitha uuvu mboka, onkee taku kambadhalwa oombuku dhi dhipagwe, dhi fikwe nokuli.

Abner	Filemon	..	..	22,	5,	60
Aktofel	Mikael	..	..	28,	7,	60
Lovisa	Kweyo	..	..	1,	7,	60
Maria	Shiindi	..	..	23,	7,	60
Aksel	Filemon	..	..	2,	8,	60
Elieser	Petrus	..	..	4,	8,	60
Feni	Tobias	..	..	23,	8,	60
Simon	Petrus	..	..	14,	8,	60
Rosalia	Elifas	..	..	1,	8,	60

## OSHIPONGA SHOMBADHILILA.

Esiku eti 5 lya Oktober 1960, otwa longekidha opoosa yo kUuninginino tu yi fale ngashi hashi ningwa shito. Otwa ende ondjila yetu ngeyi: Otwa tameke, Ongwediva, Okatana, Uukwangula, Elim, Oshikuku, no tuuka kOmbalantu, moka twa penduka mo eti 6.10.60, notwa tsikile ishewe Eunda, Uukolonkadhi, Uukwaluudhi, notwa ka lala mOngandjera.

Mokuza mo kwetu, otwa pewa kOmukwaniilwa omukulukadhi—kwaniilwa, nomutekulu Ester Utoni, naayakuli aakadhona yaali, nokamati, ngiika koomvula 8 nenge 9. Oya li ye nokuya kOshipangelo kOshikuku.

Manga tu li mondjila yokuza kOngandjera, sigo omOkalindi mUukwambi, ohaluka yowala oshihauto sha kandoma, nosha lala ongali. Aakadhona mboka yaali ya gu mo, omukulukadhi na Ester nokamati, ya lamininwa kehauto. Otwa endelele neulumo okukwatha mboka ye li koshi yehauto. Otwa adha okamati na Ester ye na omwenyo, ihe omukulupe a sile mo pethimbo tuu ndyoka. Iihuna shili ya longwa po.

Omukwetu omuholike, kotoka, ngele to londo moshihauto, tango soshimpwiyu shomwenyo gwoye. Kala megalikano wi ifupipika koshipala sha Kalunga.

Kristiana P. Kadhikwa.

## EKONAKONO LYOTANGO LYOSTANDA ONTIHAMANO MOWAMBMO.

Pehulilo lyomumvo 1960 pwa ningwa ekonakono lystanda onti 6 kOngwediva, kOkahao nokEngela. Aalongwa 110 oya pita mekonakono ndyoka. Aawambo oya nyola nokuli nawa ye vule mboka yokUushimba. Elaka lyoshiinglisa olya longwa mooskola odhindji omumvo gumwe aguke, ihe konyala ayehe ya pita nga mo-shiingilisa wo.

Mongundu ontitatu kOngwediva nokOkahao ayehe ya piti mboka ya nyola ekonakono. Osho twa mono aanongeki aape 38.

Aasi					
mOshitayi.					
Hilma Iilonga	a si	31	12	1960	
Festus Mpadhi	a si	11	1		
Saara Amutenja	a si	31	1		
Elisabet Nalushija	a si	24	2		
Nikanor Kuua	a si	26	2		
Mateus Kalumbu	a si	26	2		
Hileni Uukelo	a si	22	3		
Mateus Iitembu	a si	25	5		
Filemoni Nuukala	a si	12	5		
Emilia Johannes	a si	2	6		
Jekonia Nelago	a si	19	5		
Petrus Nandago	a si	23	6		
Martta Mateus	a si	12	6		
Sofia Namulandu	a si	23	6		
Delila Abed	a si	2	7		
Absalomo Samuel	a si	4	7		
Filemon Tobias	a si	3	8		
Gottohard Malima	a si	17	8		
Rakel Mbango	a si	20	7		
Maria Shehama	a si	14	9		
Selma Nangolo	a si	12	9		
Martta Nangombe	a si	16	9		
Abraham Uudhila	a si	1	10		
Kleopas Johannes	a si	28	10		
Toini ja Kondunda	a si	30	10		
Fenni Uuguanga	a si	8	11		
Maria Festus	a si	12	10		
Sofia Amukwaja	a si	12	11		
Boas Paulus	a si	6	12		
Abniel Shihueka	a si	4	12		
Petrus Amutenja	a si	8	12		
Jeremia Amutenja	a si	20	12		
Eimbilo 309. 4.					
	M. Iitope.				
mOkatope.					
Lylie Timoteus	afja et.	4.	1.	60	
Medusalem Lasarus	..	21.	4.	60	
Lea Benjamin	..	25.	2.	60	
Lasarus Haileka	..	6.	3.	60	
Toini Andreas	..	11.	6.	60	
Klaudia Johannes	..	30.	4.	60	
Augustus Shaapopi	..	2.	5.	60	
Amon Simon	..	22.	5.	60	
Joel Kamanda	..	24.	5.	60	
Viktoria Jeremia	..	2.	7.	60	
Gabriel Kalimbo	..	18.	9.	60	
Sara Hangula	..	25.	9.	60	
Frida Kaliteka	..	30.	9.	60	
Johannes Filippus	..	24.	6.	60	
Josuaa Hamukoto	..	6.	10.	60	
Salomo Dumeni	..	11.	10.	60	
Lasarus Haihambo	..	13.	10.	60	
Wilhelm Katindi	..	27.	11.	60	
Frida Hamutenja	..	24.	12.	60	
Daniel Muñgete	..	25.	12.	60	
Henrki Haininga	..	28.	12.	60	
mOntananga					
Aili Niikela	a si	21,	1.	60	
Justiina Nangombe	..	5,	2,	60	
Bernhard Nepembe	..	7,	3,	60	
Maria Mushendje	..	10,	5,	60	
David Simon	..	23,	5,	60	

## AAVALI AYEHE YOMONDONGA

taa tegelelwa ya holoke miigongi yawo okupopila eputudho lyoshigwana. Miigongi mbika tamu hogololwa omawilikongundu gooskola.

Esiku eti 15 lya Febulwali tamu ningwa oshigongi mOlukonda, moka aavali ayehe yaanona mboka ye li moskola yOlukonda, yEheke, yOkashandja, yOnamulunga, yOntananga, yOnkumbwimbi taa gongala.

Esiku eti 16 Febulwali oshigongi tashi ningwa mOniipa, aavali yOniipa, yOshitayi, yEtambo taa tegelelwa mo.

Eti 17 lya Febulwali mOnayena naaShilulu naaNathinga.

Eti 18 lya Feb. mOnyaanya naavali ylihongo.

Eti 20 lya Feb. mElombe naavali yomlikokola, yomOniihwa.

Eti 21 lya Feb. mOkankolo.

Eti 22 lya Feb. mOshigambo, naaNeputa naaNathinga.

Eti 23 lya Feb. mOnanona.

Eti 24 lya Feb. mOmbwalambwenge.

Eti 25 lya Feb. mOkaku pamwe naavali yokwlingungu.

Aahona yokoVenduka nomuhona gwokOndangua nomupeha gwomuwilikingerki nomutonatelishitayingerki naasitagongalo yokoombinga nkoka taku gongalwa, otaye ya mo. ligongi tayi tameke potundi 10 naanaa. Aavali, unene oohe nooyina naantu yalwe ayeheyehe ye noshimpwiyu omolwooskola, naye ye miigongi mbika. Ongoka e naanona moskola yo ntumba inayi tumbulwa mpaka, na holoke moshigongi shoka shi li popepi nomukunda gwawo. Kombinga yUuninginino nojOukuanjama tapu ka tseyi. thwa komeho.

## OMUHONGI WILHELM DIEHL A MANA OONDJENDA.

Omuhongi gwetumo lya Reini Wilhelm Diehl gwokoKariveva a mana oondjenda poomvula dhe 85 eti 20 lya Januari. Oshilonga she e shi tameke koKomitombe, omumvo 1907 a dhiki oongulu dhetumo kUsakos. Okuza omumvo 1928 a longo momagongalo Otjimbingwe noKariveva. Kalunga e mu pe omwenyo omule gu neyambeko. Omukulukadhi gwe a thigwa nooyana yatano (gumwe gwomuyo omuwilikingerki H.-K. Diehl) naatekulu 18, oyendji yomuyo ye li mu Suidwes, yamwe koDowishilanda.



## OONDJENDA DHOMUWILIKINGERKI.

Omuwilikingerki Leonard Auala okwa talele po egongalo lyoNyaanya nolyoKankolo nolyoHalushu nolyoOgongo mu Januari. Eti 31 lya Januari okwa londo ekambamba ya yi pamwe nomukulukadhi gwe meme Aina Auala koMonda ya talele po aawambo mboka ye li komunkulo gwefuta, no ya fudhe wo kashona. Eti 19 lya Febulwali ongerki ompe yokoMbaye otayi yapulwa. Omwamemengerki Ongerki OnkwaLuther yomuAfrika yuuningini-nomutenya (Die Evangeliese Lutherse Kerk in Suidwes-Afrika) oya tungitha ongerki yoopala onene popepi nolukanda olupe moMbaye. Oko nkoka omusitagongalo gwetu Jason Haufiku ha yakula aawambo.

Omapangelongerki goongerki ndatu oonkwaLuther otaga gongala koKariveva eti 11 lya Malitsa, ga kunda-thane ehanganano lyoongerki ndhoka.

## JESUS NOVALONGUA VAJE.

Mat. 16:21-24.

Jesus okua li e hole ovalongua vaje unene. Ina hala okuninga sha maŋga ine shi lombuela ovalongua vaje.

Konima jeŋguncafana edi di li mu Mat. 16:13-20, okua lombuela ovalongua eshi tashi ke va ningilua mu Jerusalem. Mat. 16:21-23. Petrus eshi e shi uda okua ti: "Kalunga ne ku file oŋgenda u ha haŋgike kuaashi." Jesus okua njamukula Petrus ondaka inene idjuu. Petrus oje tuu ou a lombuelue ku Jesus elaka limue, okuje taku ka tungilua eongalo lOmuene Jesus Kristus. Mat. 16:18-19. Nena otatu udu ta lombuelua ku Jesus ta ti: "Djapo satana."

Petrus nande a haulua ngaha, ina ninga omuenjo muii, osheshi oje okua li e hole shili Omuene. Na Jesus jo okua li e hole Petrus, no ina tala Petrus kutja oje satana shili. Jesus okua li e uete satana mu Petrus. Ngashi naanaa omundohotora ta mono oudu u li momuŋu. Omuŋu haje oudu, ndelene oudu ouo u li momuŋu. Oŋge omundohotora ta dulu oku u ta mo nomi-ti momuŋu. Osho Jesus a mono satana mu Petrus e na oŋgenda inene ina hala Jesus a ningilue ouui ua sha. Jesus eshi a mona oshiponga eshi okue shi hanjena shi je luanima.

Oŋgenda ojo haŋgenda shili, ndelene satana okua hala ashike okungumuna oshilonga shiua, kutja Jesus a kale uo maŋga ekulilo lihaningue, opo ku hahupifue nando omuŋu. Osho ngaha satana ta longo movaŋu va Kalunga fio onena. Ota holoka naanaa movaŋu pamika'o di lili noku lili, ongomuŋu omunaŋgenda, ndelene haje, okua hala ashike okunjona oshilonga shiua momuŋu uOmuene, opo omuŋu a ha hupifue.

Ngenge hatu tale shili otekisti ei, ohatu dimbulukua shili kutja satana ota nongofuele ovaŋu va Kalunga nominongofuelo di lili noku lili ongomunaŋgenda, opo ku ha hupifue nande omuŋu umue.

Eshi otashi monika nomomafimbo etu. Ondi shi shi omuŋu keshe okua koneka e-nongofuelo eli a nongofelua nalo komuli uovamuameme. Omuene okue tu pa oshihopaelelua okuta po satana. Osheshi ngenge to tale ominongofuelo daje da fa domunaŋgenda, dimbulukua shili kutja okua hala okunjona oshilonga shiua shOmuene muove. Mat. 4:2-4. Jesus okue mu ta po.

Oŋgee hai ku lombuele, penduka kala oupafi. Eimbilo 266.

P. Munalje.

## UUHAPANDULA UVAKA.

Omukuanilua uandonga Eino Johannes Namene. Oje omushiinda uoshilongo shetu. Omushiinda Omujuuki nomunambili shili. Ovakuailongo ova tokolelua naua, inava ja tava kuena nande, ova ja nehafo linene. Oje a li shili omushiinda omujuuki ngashi omusamane Martin Luther a shanga meindilo etine. Oje okua li ohamba i nepangelolo la juka. Okelaka laje tali ti: "Ongobe

jomoukuanjama nai lje, fijo omoŋu jomundonga," oŋge ohai ti: "Uuhapandula uvaka." Ohatu pandula epangelo laje ofje ovakuanjama. Omuene ne mu fundife metulumuko laje, je e mu pendulile momuenjo ualushu.

Omuene na hekeleke eemuenjo dovadaluva nodovatekulua fje, nodovatumua jo ovashuomi. "Uuhapandula uvaka." Tangi! Paulus Naholo.

## OULUNDE.

Atushe tua shiiva naua eshi tashi kanifa omuenjo uomuñu, noku-tja osho oulunde.

Tete otua hala okutala eshi tashi holola nokutja ope na oulunde na ohau tondifa Kalunga. Omuñu keshe nande na kale ina hongua sha shopaKalunga ile shopaputuko la sha, muje omu na ehala lokukala a uapalela sha, nande okomukalo oo fje tua tala inau uapala pufje, shaña tuu ta mono mo ombili melijapulo olo, omolu oñepo joñumba ile omolu oshikalunga shoñumba opo shi mu mone, opo tuu opo ta mono ombili ja uana. Hano osho tu uete nokutja nani nomomuñu omu na sha osho Kalunga ta dulu oku shi hanga je muene noku shi jelifa, osho ELIUDO. Eliudo lomuñu itali mu pe ombili manga inali mona apa tali fundikua opo li ha tale vali osho shi li popepi ile kokule shashi ola fudikua. Atushe otu shi shii kutja osho sha fudikua ngenge oshi na omuenjo, otashi file opo sha fudikua, osheshi hapo sha shitulua shi kale.

Hano eshi tashi tondifa Kalunga, ndelene tashi kanifa omuñu, osho oulunde omo omuñu oo a shiiva Kalunga ta dulu okufudika mo shili omuenjo uaje ndelene itau hanga vali ekuatafano na Kalunga. Ha ovapaani aveke hava kala moulunde, ndelene ovakriste jo.

### Oulunde oshike hano?

Eliteeko lomuñu okuliteeka Kalunga omunamuenjo, olo oulunde.

- 1) Omeliteeko laje omuñu ha pangelua kokahalu kaje.
- 2) Omo ta kala e hole ashike ounjuni na ashisheshi shi li mo komesho ja Kalanga.
- 3) Ha kongo ouua uaje muene ndelene te lilongele je muene.
- 4) Ota kala melinenepoko nomouñua uaje.

Hano keshe tu ou ta fudike omuenjo uaje moinima ei, nokutja ta

Omukwetu ota pandula aakwathi ayehe. Kambadhaheni aluhe okunyola oondanda dha yela. Inamu dhimbwa edhina noadres yomunyoli.

kala mo, oje ota kala shili moulunde, ndelene eshi ha sho ehala la Kalunga, osheshi eshi osho efjo loovene.

Oulunde otau etele omuñu shike?

1) Moinima ei, omuñu ota kanifa ekuatafano na Kalunga novañu vakuauo.

2) Omuñu ota njonauka kolutu nomomadiladilo aje, hano ita kala vali pahalo la Kalunga.

3) Moinima ei tua tonga apa omuñu ta ninginifa mo omuenjo uaje ndelene te u kanifa, shashi tau kala moupika uoulunde.

4) Moulunde nokuli ombili jomuenjo otai kana.

Oñge Kalunga okua hala shili tu kale ovajuki, nokutja tu tile shili okufudika eemuenjo detu moinima ei, ndelene tu di fudike shili pamue na Kristus, opo di njumuke jo pamue na Je.

Oilonga ja juka.

Omuñu oha diladila ashike kutja, oinima ojo tua tumbula ojo aike oulunde, ndelene nani ha sho. Osheshi keshe ou ta longo sha osho sha fa sha juka, nande shi kale sha feua ngahelipi, osho oulunde. Nokuli elijapulo lomuñu, neliuapeko laje neli-dilululo laje noilonga jaje aishe iua, ojo otai ningi shili oulunde shaña tuu omuñu ta diladila kutja ota ningi eshi ashisheshi opo a hupifue. Osheshi moku shi ninga, okua fa ta dimbua Jesus ou tua peua e tu longife. Hano keshe oshilonga osho tashi longua pehe na Jesus, nande oshishi kale sha fa shiua ngahelipi, osho oulunde. Osheshi ovakriste inatu peua okulonga sha kondje ja Jesus.

Ookau me kange nje ovaholike, omua diladila tuu naua apa hatu hangeni ouua fijo tamu dimbulukua naua, ile otamu i ashike nomadiladilo oo inaa ulula ekuma lounjengui opo a mbaduke meshiivo olo la uana li li mu Jesus. Oñge hano, omuenjo neliudo letu nali fudikue shili mu Jesus omo ashike tali kala la jela naua, ndelene ha moulunde oo tau tondifa Kalunga. Fil. 1:11.

Efimbo ola fika Omuene pamue ta ka jelifa nokuli ongerki jaje momaudjuu, ndelene fje tu lungameni opo tuha ninge ovaeti vomaudjuu mongerki ja Kristus.

Tu djeni mo hano moulunde fje tu je ku Jesus.

Natanael H. Shinana

## JESUS KRISTUS OJE OMUTUE UONGERKI

PashiOuambo oshilongo tashi pangelua komuene uoshilongo, oje omupangeli uasho. Ta pulapula oinima jokupangela komalenga nosho tuu, ndelene etokolo lovene nejukifo alisheshi li li kuje muene. Heeno, osho omukalo uokupangela oshilongo shi li kombanda jedu.

Ongerki kai shii kupangelua pamukalo tuu ou, ahoue. Kai fi oshilongo shopadu. Kai na omuñu omupangelingeki. Epangelongerki opo li li nga, ndelene olo lovene tali pangelua moshilonga shalo nomomatokolo alo komujukifi nomukuatelikomesho uashilishili uongerki, oje Kristus. Kristus Jesus oje OMUTUE nomufita omukuluñu uongerki jaje. Kristus oje aeke ti.

Inatu dundakanifeni hano epangelo lohilongo nelelo longerki ja Kristus. Omupangeli uoshilongo oje omuñu. Vamue vomuvo ovatiliKalunga novanaMepo, ndelene ovañu nga. Ongerki ojo elumbakano lovañu va tulua kuKalunga mouhamba inau dja mounjuni ou. Tava kala meufo nomeendifo loMepo iJapuki ja Kalunga, ou pamue na Kristus oMuleli noMuene uetu.

Ovakuangerki aveshe, mokuhatala efimano ile oshilonga shavo, nge ovanashilonga ngashi ovafita ile ovanepangelongerki ile omuulikingerki nokuli nge ovakuaneongalo vamue, avesheveshe tava kala ashike mepangelo la Kristus muene pashikulafano olo je e li tu ufila mongerki.

Mongerki jetu jopaevangeli ka mu nomupangelingeki omuñu, Kristus Jesus oje aeke omutue nomupangeli uongerki jaje ndele fje ovapangelua novalelua novaendifua kuJe. Shashi Je okua kulila nge, ame ndi ninge omuñu uaje, ndi mu kalele mouhamba uaje ndi pangelu kuJe, ame no ndi mu longele mujukui nomoujapuki nomelao la alushe.

Moshilongo shokombada jedu tashi hulu po omuñu keshe, omukriste nomupaani, oha kala mo fijo ta fi ndelene omukriste ta shiiva ñge mu nokukalua musho shashi je muene ta kala pefimbo tuu olo limue jo moshilongo osho itashi hulu po nde ta endifua nokuminikilua komupangeli uovapangeli.

Seppo Löytty

# OSHIKOLOLO SHAAGUNDJUKA

## OMUKEESHIKUGALIKANA A NINGI OMUGALIKANILELA.

Moshilongo sho tumba omwa li mu na omusamane nomukulukadhi gwe. Oyo ayehe oya li aayuki noya li ya dhiginine okugalikana Kalunga. Oyo oya li ye noyana omulongo na yaali. Yatano yomu yo ya kuthwa po manga inaa tumbula sha kombanda yeve. Yaheyali ya kala ye nomwenyo.

Omunona omutiheyali manga a li ta yamu, yina a adhika kuuvu uu-dhigu. Omunona nokwa toyithwa omushushuka. Uuvu mbuka owa li waa shi wokusa. Omumwayina gwomusamane okwa ile po omutiheyali nguka.

Omunona nokwa yi na Henkadhi nkoka kwa li ihaku uvika nando ewi lyomagalikano. Omunona a putudhilwa okwaagalikana. Sho pwa piti po omimvo ntano, aakuluntu ya yuulukwa omumwana gwawo. Omusamane nokwa tumu omumati a ka tale nankelo.

Omumati a galuka e nonkelo yawo. Ano sho ya thiki oya pakelwa po. Ikulya sho ya etwa po, omumati manga ta galikana omutiheyali a yolo. Yina nokwe mu pukulula ihe omunona a tameke okuyola yina, oshoka okwa li a ethelwa omikalo dhilwe wo omiwinayi. Uulalelo nowa pakwa po wo, gumwe gwomaanegumbo a galikana. Omutiheyali nokwa tameke okulya manga aantu taa galikana. Osho a tsikile ngeyi okukala kwe.

Ano ongula sho kwa shi nankelo

## ETHIGATHANO LYOTANGO 1961.

Natango tuu tatu ka tsikila omathigathano getu. Ano ethigathano tali ka kala moshifo shika no mushoka sha Maart. Ano omapulo ngaka taku ka gwedhelwa ishewe omapulo 10, opo u wape oku ga yamukula agehe nawa. Tuma omayamukulo goye oshita. Oomboka ya yamukula nawa mondjila oyo taa ka pewa ondjambi. Ano ino dhimbwa okunyola nawa oadresi yoye.

### Ontopolwa Embo

1. Okuvulika ku vule oondjambelondjambo ..	1-15	I Samujel
2. .. noshili otayi mu mangelula:	1-10	Joh.
3. .. okunyanyukilwa Omuwa okwo omukumo gweni.	1-10	Nehemija
4. Ongoka kee nohole, oye ina tseye Kalunga	1-5	1 Joh.
5. Ohole ihayi sefupa ..	1-16	1 Kor.
6. Holeni aatondi yeni, galikaneneni aahepeki yeni	1-10	Mat.
7. Ileni mu tale iilonga yOmuwa.	42-50	Epsalmi
8. ..nuukuume wetu nangoye itau teka po,	50-60	Jes.
9. Tala, ontilo Kalunga-oyo uunongo	20-30	Job.
10. Ombepo yashili, ote mu longo oshili ayihe.	12-18	Joh.

nkuka a ithanwa komwiha, yina nokwa galikana. Omunona nokwa tala yina nkee a thithikile nokwa si iingungumina nokuuvika ewi eshona lyoondjola. Sho a li, omukulukadhi a hahambele a tonata nokwa li kwa mwena thilu.

Omulukadhi a sindi uuwinayi koonkondo e dhi pewa ku Jesus. Omunona nokwa ningi omudhiginini gwegalikano sigo okusa "Ombila kayi noonkondo oku mu kwatelela mo."

Maria Shilumbu.

## EFIMBO LOUNJASHA.

Ngenge handi diladila efimbo lomunjasha oku li po a mangeluka, na okuna jo eeñgono dihapu. Ndelene luhapu ovanjasha ve li po tava danaukifa efimbo.

Oshike hano hatu danaukifeni efimbo? Nande tua peua oshitalenti kOmuene tu shilongife? Oshitalenti eshi ngenge inatu shi longifa, tu uedele ko nande ombongo imue, ndi shi ohatu ka kala ngashi omumati uinja a peua ombongo imue nde te i fudike? Mat. 25: 24-30. Nge to lesa eeverse edi oto ka uda taku tiua, okue i kufua, noja peua ou e na.

Omunjasha mukuetu, shiimba to li pula, ame onda peua ombongo ja shike? Ove ino diladila ava va peua ombongo ve i uedele mbela havafita novalongi nst. ngashi vamue hava ti. Heeno shili ovo va peua. Ndele keshe omukriste okua peua ombongo. Omunjasha omumati ua peua ombongo, eshi to tale omukulupe e li puove a hepa e na okanduda kaje ha nangala mo koufini ke lipo ka kulupa. Omukulupe e li mo alushe ta tema je ke na eshi te li tuvikile. Omunjasha okakadona u na oshilonga eshi to tale omukulupe a hepa iha dulu okujelula omushi. U na eeñgono okukufa ouheke vaje u mu fululile okafila, je te ka tale nokuhafa. Omunjasha keshe a peua shihapu e shi longife. Ngeno ovanjasha kave



Oukadona vokEngela omudo 1926

# OSHIKOLOLO SHEGUMBO

## ENOTA LYUUNONGO.

Omunona ina tseya manga iinima oyindji, ihe e nehalo enene okutseya. Shika otatu shi ziminitwa komapulo ge ogendji. Oshindji shomoo-hapu dhe osho omapulo: "Shika oshike." "Shoka oshalye?" "Shiyaka osha zi peni?" nosho tuu. Shoka te shi yamukulwa te shi pungula wo momadhimbulukwo ge, onke e nokuyamukulwa wo aluhe moshili.

Esiku limwe onda konakonwa komunona omushona (gwoomvula ndatu). Okwa pula ndje: "Shino oshike?" Onda mu yamukula ando: "Embo." Konima yokathimbo okwa pula ndje ishewe oshinima tuu shoka. Onda ti ando: "Efano." Oye a ti: "Nenge embo?" — Onda li nda sohoni nonda ndhindhlike kutya omunona ota konakona oshili yandje.

Ngele omunona ta pula oshinima nowa tala kutya ina adha oku shi tseya, nena u mu yelithile ngeyi: "Omumwandje, tega u koke, opo ndi yamukule epulo ndika lyoye." Oye ngele te ku pula shoka kuu shi shi, nena u mu pe dhu ukilila: "Inandi tseya omumwandje, shila tandi ka konga ekwatho ndi ku yamukule." Omunona ite ku dhini, ihe te ku inekele. Enota lyuunongo li nokukumithwa noshili!

Eifupipiko. Omunona oye omwiifupipiki nomwiigandji. Oye iti idhiladhila ye mwene. Inii inekela ye mwene, awe, ota tegelele ayihe kaakuluntu ye. Eifupipiko lye mu tul' onka, opo shaa shoka tashi iyege muye otashi kakatele mo. Ando muye mu kunwe oombuto oombwanawa adhike!

Oshikumitha uuna ta dhengwa ku yina, ihe ta nukile mekolo lye.

po, ngeno ounjuni ua hula po nale.

Taleni vakuetu nge hatu ka pulua kuau e tu pa, ndishi itatu dulu okulipopila, osheshi okue tu pa, ndele inatu longifa. Vanjasha, hatu kufue ni oitalenti jetu tue i peua, i peue vakuetu ava ve na, vo va kale va hepuluka. Fje tu ke li pe oushima konima jeembila eshi itatu ka mona ombili. Fje tu tje, ngenue..... Ongeno oja popiua komukulu uonale kutja "Ongeno ihai jada okaanda". Tu kendambaleni hano okulongifa ombongo kanini na kanini. ngashi taku tiua. "Diinina osho ue shi peua, opo u ha kufue omutumbo uoje".

Hilkka Kantalelo.

## EPUTUDHO NELONGO LYOMUNONA.

Iinima mbika oya vundakanena aantu oyendji. Oye shi aniwa eputudho olyo elongo. Onke aanona yongashingeyi ya hepa shili kombinga yeputudho. Aakuluntu oyendji otaa tumu owala aanona koskola e taa

Omwenyo gwe inagu nyanyagulwa konkone nenge kuutondwe, awe. Oye ta zimine shili: "Komeya kaku itekwa." Onke Jesus ta ti: "Ngele itamu fe aanona, kamu na mpoka namu ka ya moshilongo shegulu."

Einekelo neitaalo nohole. Omaukwatya ngaka gatatu onde ga tumbula oshita, oshoka ndi wete ge li mumwe unene. Omunona oti inekele shili ngoka e mu hole noti itaale shoka ta ti. Omunona ngele ke ku hole, nande tya: "Ila," ite ya. Ihe ku yina ota yi, nando ina ithanwa. Nando yina te mu dhenge, onkene tuu oti iumbile mekolo lye.

Omunona omushona oti itaale nuupu shoka ta lombwelwa, onkee olyo ethimbo ewanawa oku mu hokololela ohole ya Jesus ngoka oshili yoyene kuye. Pakukoka kwe opo pakwindjipala kwomalimbililo muye. Taku tiwa, omunona ngele ta tumbula: "Jesus omuholike," oku li momauvito nga ngoka e ga na, uuna ta tumbula "tate" nenge "meme omuholike." Omukadhonagona gumwe okwa galikana konima yeso lya hekulu ta ti: "Jesus omuholike, thipila ndje tatekulu komilungu." — Olyo eitaalo lyomunona ndyo.

Aakriste oyendji muuyuni oya hempulula ya taamba Jesus omuhupithi manga ya li aanona taa longwa moskola yOsondaha. Gumwe gwoomohe yOngerki edhina lye Polycarpus, ngoka a si omuhokololambinzi, okwa hempulula nkene a taamba Jesus Omuhupithi shili, manga e noomvula omugoyi. Omufatululi gumwe omunene gwooramata okwa taamba Jesus, sho e noomvula 11. Osho nonena ku noonzapo oyendji moshili ndjika.

"Ndika olyo ethimbo lyokukuna. Kuna ombuto ombwanawa noshikaha shaa nuuluya. Tukulutha aanona yi itaale noya hole Kuumeakaanona. Nando komeho aanona taa tyololoka, onkene tuu ye nuupu okutengunukila mohole yotango."

pe ko ombunda. Ye wete ye shi mana sho ya lalekele omunona koskola. Ihe dhimbulukwa kutya, oskola itayi vulu okutsakanitha eputudho lyomunona oyo ayike, opo a kale a putudhikika shili. Unene nokuli sho aalongi oyendji yongashingeyi taa nyanyudhwa owala komunona ngoka e shi iilongwa ye, nota dhiginine iilonga yoskola. Yo kaa na ko nasha unene okutala eputuko lyomunona pondje yoskola, ano kegumbo. Mokutala aanona moskola otwa dhimbulula naa naa kutya aakuluntu oyendji kaa uvite ko, yo inaa yoololo iinima mbika iyali EPUTUDHO NELONGO kutya oya yooloka. Ihe ayihe iyali otayi tungu omunona a ninge omuntu omwanawa.

Ano EPUTUDHO eshike NELONGO olini? Eputudho olyo oshinima shi nekwatathano noohedhi, ano onkalelo. Ihe elongo olyo oshinima shi nekwatathano noondunge dhomuntu, ano uunongo wokutseya sha. Eputudho otali dheula omutima gwomunona, mu monike mu ye oshiyimati shopakalunga sheitaalo nenge shohole okuhola Kalunga negulu. Elongo otali longo momutse gwomunona. Li gu udhithe uunkulungu wi li nowi ili nuunkulungu wiilonga.

Elongo oli li koskola, ihe eputudho oli li tango tango megumbo. Itashi ti ando kutya elongo neputudho oyo iinima yi lyaathane kokule, awe. Omulongi moskola e nokutseya shili omunona kehe mpoka a hulithilwa meputudho, opo a tsikile eputudho lyomunona moskola ngashi ta vulu. Nosho wo omuvali e nokukonakona elongo lyomunona andola, opo a tale ngele te mu kwatha mokutseya kwe nando omoshinima shimwe. Tala ano kutya ope na uudhigu okuputudha omunona kee noondunge, nosho oshidhigu okulonga omunona kee nomikalo.

Otandi mu kumagidha one aakuluntu, kondjeni shili meputudho lyaanona. Inatu vulikeni kaapagani aakulu, ya li ye nomukumo meputudho. Galikaneneni wo aalongi ya mone oonkondo okutsikila eputudho lyaanona moskola pamwe nelongo, opo oshigwana shetu shi mone oonkondo noondunge mevi lyetu.

(Otatu ka popya wo eputudho lyopakriste).

L. Mp.

Joel Nakumbuata.



*Opwa piti oomvula 800, oohapu dha Kalunga sho dha thiki koSoomi. AaSoomi otaa hambelele Kalunga omolwomagano ngaka, unene sho haa gongala miigongi iinene yetumo.*

### OMAKAŃGAMENO EHUPIFO.

Ouaa uopalutu itau dulu omuenjo. Eveluko neuapaleko lovene lomũu, ngashi oudiinini uaje uomoihongua nosho tuu oo oudjuulela uoje, nge ua dja ashike mouua uopaushitue, ha muKristus. Ouaa uopaushitue itau dulu okutungila omũu oshikutu tashi uana okutuvikila ohoni jaje, kaku na oshinima shimue tashi dulu oku shi ninga, ahoue, o-tashi dulika koujuki ua Kristus auke.

Keshe eshi sha tungua kouua nokoujuki ile kouladi uopaushitue, oo oinjanju i na okudulua mo, Kristus a dule oku tu djaleka oujuki uaje. Omidjalo adishe dopaushitue satana ote di njeke po ndelene ta fije po omuenjo u kale hamungaho, kau ña omidjalo no kau na oshiuvikilo shi u amene kehandu la Kalunga. Oushitue itau dulu okueta sha, shi kale shi fike pokata kamue kefiloñgenda, shi finde oulunde no shi tu kuafe oku ka tala Kristus oshipala efiku laje. Ove to hepaulula oukriste no ua kala meliudo leedjovo da Kalunga ndelene to ilikana, ndelene to tambula ouValelo uJapuki, ndelene moudiinini ou to dulu okuhepa ombili. Lilungamena shili! Pamue ino mona ejoloko olo li li pokati kouua no koujuki ulili uomoujuni ou no kuKristus, no ñge

poño jevadimo lohole nolefiloñgenda laje oujuki uinja aushe tau ka ninga omute uongaho (Jes. 2:17).

Ngenge ua mona shili Kristus, ua mona muJe efiloñgenda noujuki uhe neengaba, ou ua mbualangadja u dule oulunde noluhepo alishe. Ngenge ua mona shili Kristus oto dulu okuljataula oujuki aushe no uovaengeli, osheshi oo oimbodi jongaho, kau dulu oku ku uapaleka, u ka uapalele Kalunga. Ngenge ua mona Kristus nena nande ou peue ounjuni aushe, ino hala vali okukala uhe na Jesus, 1Kor. 2:2.

Ngenge oho taalele Kristus ove ou uete: oJe emanja lile-lile, e dule noujuki uoje, e dule satana noulunde, Ps. 61: 3. nemanja eli la kala muove, 1 Kor. 10: 4, no ta mu di alushe omata omaadi eenjiki, nefiloñgenda tali ku palula, Ps. 81: 71. Likonakona u tale: oua taalela tuu shito Kristus ongoMona omudalua aeke uaHe e jadi efiloñgenda noshili, Joh. 1: 14-17.

Kondja shili okuehena kuKristus, u fikame kemanja la alushe, ove u tale shili: ove ua shikula eshivo laje e li tumina omuenjo uoje, ove u dimbulukue jo shili, ove ue mu dama, u ka ninge omujuki uashili.

(elundululo pa Th. Wilcox)

### "OSIGWANA HASHI ENDAGULA MILEMA, TASHI TONATELE UUYELELE OWINDJI"

Jes. 9:1.

Omuprofeti Jesaja sho kwa igidhile oshigwana sha Kalunga oohapu ndhika, aantu ayehe ya kala nokupakaleka omakutsi, opo ya pulakene nawa elaka ndika. Oyo ya kala nondjuulukwe onene okuyuulukwa omutegelelwa gwawo Mesias, ngoka te ya mangulula miikaha yaatondi yawo. Luk. 1:68-75; Joh. 8:31-32,36.

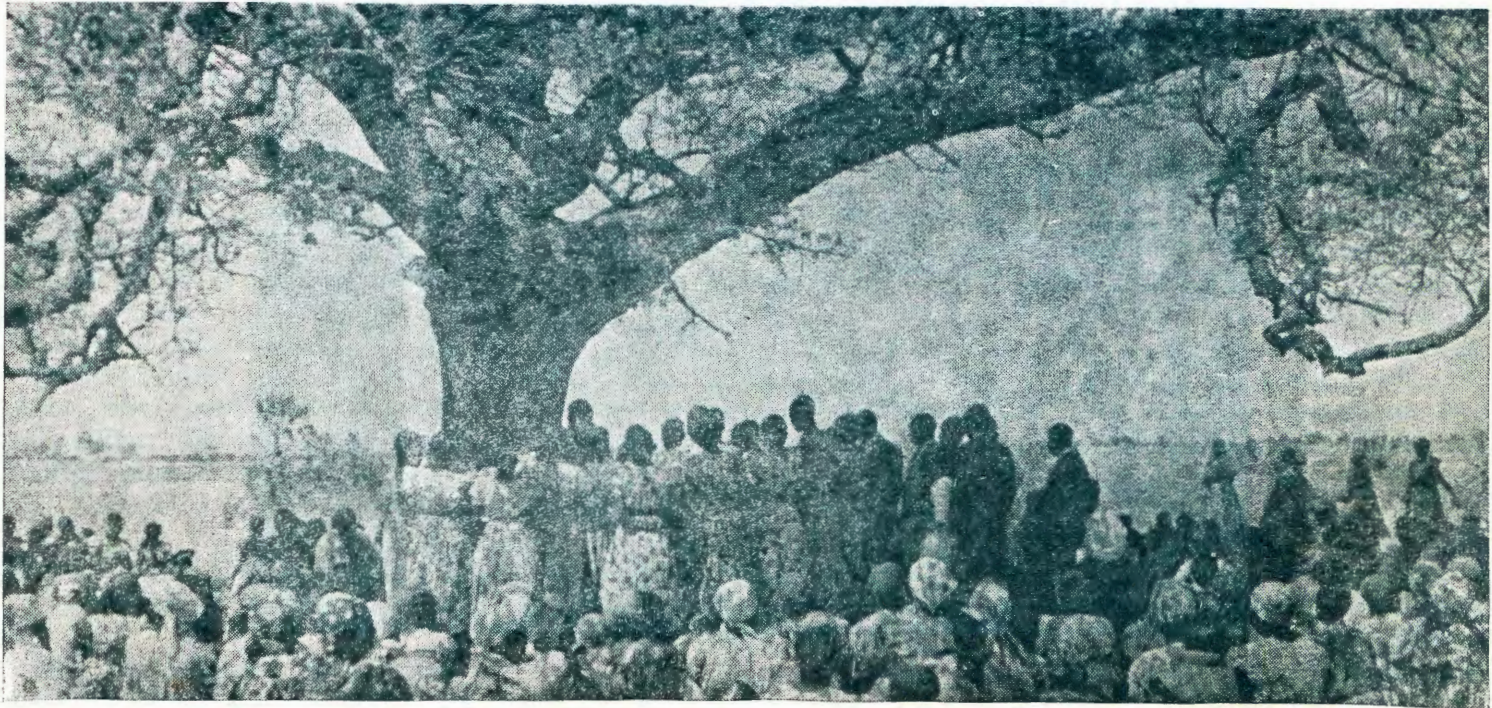
Omunona nguka Kalunga okwe mu gwaaka uuwindjinkondo adhihe. Omuprofeti ote shi popi mpoka, ta landulithathana omadhinapangelo ge. „Omukumithi,” moothapu miilonga ye, meidhidhimiko lye, nomesindano lye. „Mupukululi,” ta pukulula onakuenda noondjila dhomilema, ndhoka tadhi ya fala mekano lya aluhe. „Kalung’ ofule,” oonakukala megameno lye, ihaa adhika nando okokante komutondi, awe. „Hegwaluhe,” iha lunduluka ngaashi aantu, Ye iha lundula shoka e shi uvanekele omuntu, awe, oshoka oye „Hegwaluhe.”

Esilohenda lye olyaaluhe. Iha tidha po ngoka te ya kuye, awe, oshoka oye Omuwa omunambili.

Omukwetu mu Jesus Kristus nonuumvo wo ila kuye. Etha iilonga yoye ayihe iwinayi, ila kOmuwa omunambili. Ngele to nuka ombili ndjika, nena oto lambelwa kondjahi ye. Ila ano ngashi u li, oye ote ku taamba.

Simon Iikuju.





*Aawambo aakriste otatu hambelele Kalunga, sho e tu tumine evangeli. Miigongi yooHapu dha Kaulnga twa hala okugalikanena mboka inaye li mona natango.*

### ITATU DULU OKUMUENA, TU HA LUE MOITA EI JA KRISTUS.

Ovakritse ovakuetu, fijo opapa otua fika pefimbo lidjuu leemepo domulaulu nodomakoto a satana, okuhongolola oiwana mounjuni. Omepo ja tja ngaha otashi dulika i hange jo noshuana eshi shetueni shOvauambo. Nokuli hatu dulu okutja: oshititatu shimue shovauambo, sha pukifua komepo ei nosha hongololua nai filu, shaava inava pama moukriste, nomokushiva. Ohamba ei jaalushe okristus. Onge inava dula okupashukifua opo va joolole eemepo domutondi momafiku aa opehulilo, ngashi omujapostoli Paulus ta lombuele Timoteus. Tim. 4:1-

Tu kondjeni shili moita ei jomuene uetu, tu njeke ko ookaume novamuameme komutondi satana, maŋga pe nefimbo lauapala. Omuene ngenge ta aluka okuiila ovo vaje, eongalo laje moiwana aische, nota fiji po

ngaha eengudu doshiuana eshi shetu moluenjonauko lasho, oto ka uda ngahelipi molu oovakuetu ava?

Ondi uete nga movakriste omu na emueno la uana. Nande tua dimbulukua ŋge omepo jomuhongololi ja puidukila oiwana noshetu jo, ndelene nando ongaho, otua muena ongo pehe na oudjuu ua sha. Onda kuminua emueno eli lovakriste voshuana eshi shetu. Ŋgishi shi otua muena hatu ti: "Ualje ou ta i noikungulu naje ko, omudilo uongula opoŋele joje." Ile pamue otua muena kokutja kape na unene oshiponga? Omolua-shike tua muena mefimbo eli? Heeno pamue tua muena eshi tu nomukumo muKristus. "Eongalo lange itali findua nokomivelo doheli." Heeno, onaua shili ngenge tu na omukumo ou ndelene nande ongaha, itatu muena, otu nokukondjifa eemepo domevalelo,

opo Kristus a pashukife omesho ava va hongololua komepo ei ii, va aluke va hupifue. Heb. 12:12-14.

Tu kodjeni tu na oiti ja Kalunga omunaefngono adishe. Noiti ei ja Kalunga ohatu findi najo neemepo domevalelo, nohatu ka findana meemepo adishe domulaulu.

Otu na okukondja tu na elinekelo letimaumbuile omolua Jesus, osheshi oje omufindani shili. Lesha Jes. 14:12, Heb. 10:27; Hes, 38:1-4, 17-23; 39:1-5; Ehol. 20:1. Mekoondjo Omukulili a lombuela Petrus: "Fikama, ndelene koleka jo vakueni." Ove jo omukriste moshuana eshi, li koleka, nokukoleka jo vakueni mefimbo eli lepukifo, ino muena noku-kofa ahoue, ndelene koleka vakueni omolua Kristus.

Hofni Nakaŋela.

### Kaaleshi yoMukwetu.

Moshifo shetu mwa gwedhelwa omapandja gane, tashi ti momumvo aguhe omapandja 48 nokuli. Ihe natango tatu lalakanene oshifo shi ninge oshinene sha gwana. Aaleshi yamwe otaa nyola, onawa oshifo shi nenepale, nando ondando yi ninge iithilinga 10 momumvo. Ihe manga pe noyendji

mboka ya nyengwa kondando ndjika - notashi monika, omwalu gwaainyolithi sho gwa shonopala omolwegwedhopo - tu nokugwana ngaa noshifo shi thike mpaka. Omumvogu aainyolithi ya li po 7500 sigo 8000, ihe tashi pumbiwa ya ninge 10 000, oshifo shi gwedhelwe omapandja natango. Tu

kongeleni oshifo shetu aaleshi ya gwana, nena tashi ka vulika ngiika omumvo tagu ya shi holoke aluhe shaa pwa piti iiwike iyaali nenge oshiwike kehe nokuli, oonkundana oompe dhi thikithwe olwindji kaaleshi.

OMUKUETU

# OUNJUNI TAU TONGO SHIKE

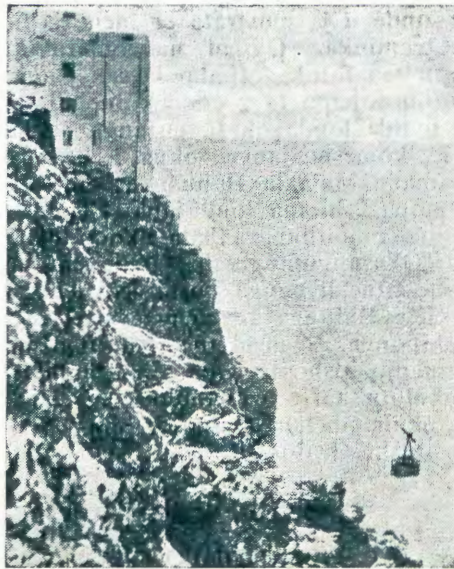
## Omuvalu uovañu mounjuni.

Omavalulo taa holola ovañu ñumbi va hapupala mounjuni. Omudo keshe omuvalu otau hapupalifua novañu eemiljoni 50 (50 000 000). Aveshe kumue paife ve li po eemiljoni omajovi atatu ( 3 000 000 000 ) nokuli. Ovañu eemiljoni eshi itava mono oipalufa naua, taku konakona eemito okutandavelifa eendunge okufila omapja oshisho nokukonga eeshi moule uomafuta.

## EEÑGUNDANA DOIUANA JA HANGANA.

Oiuana ja hangana oja tokola moshiongalele shajo mu Desemba ji tumine koUnioni omukuluñu uajo, omuSvede Dr. Dag Hammarsköld, oje a popje nepangelo ekuatafano lovañu vomaludi e liili noku liili, ñumbi li nokutungua. Omusamane Hammarsköld okua fika ku Pretoria mu Januari nokua endaenda keembinga neembinga. Okua shuna ku New York, ndelene va udafana na Dr. Verwoerd, oje a aluke efiku limue va tuikile eeñgundafana davo.

Oiuana ja hangana oja kundafana jo oinima ja Suidwes-Afrika. Opa tokolua, pa tumue okangudu taka konakona oinima joshilongo eshi. Oshilonga shokangudu ka tja ngaha oshashike mbela? Heeno, osho pa longifua no nale oungudu va hoololua okukonakona oinima joilongo nokuhepaululila oshiongalele shoiuana osho ve shi mona, ngashi omudo 1947, eshi pa li eembudi pokati kovaisrael nokovaarabi kuPalestina. Ovaarabi va li va hala okutaataa ovaisrael moshilongo, nokutja, ovo ovadaleluamo, novaisrael ve uja konima, noilongo ihapu ja ama kombinga jovaarabi, kutja ovaisrael vaha itavelue okuuja mo, na ovo ve li mo va teue mo. Ndelene okangudu eshi ke uja, ka mona, ovaarabi ñumbi va kala mokukala kua vo kukulu, inava ehena nande komesho, ovaisrael mañga va longa shili nokufula omifima nokukuna oikunino nokutungua eefabrika nokulonga eefikola n.sh.t. Okangundu ka hepaululile oshiongalele osho ke shi mona, oñge oshiongalele sha lundulula omadiladilo asho, no sha tokola, ovaisrael nava pangele moshilongo osho, osheshi ova ehena komesho, nova itavelua koiuana ja hangana, va tambulile mo ovai-



*Aantu haa yi kondundu onene ya Tafelberg nokatamba haka endjelele, taka endithwa kongodhi.*

srael vakua ve li kuEuropa nokuAmerika. Ndelene osho ouprofeti ua uanifua, oungudu noshiongalele noi-uana nokuli ja li i nokulonga, Kalunga osho e shi ufa nale. Ehala laje kali shi okukondjifua nande ku umue. Ovo tave shi hetekele, tave limonene ashike oupjakadi noshiponga.

Osho oshiongalele shoiuana ja hangana tashi kendabala okutunga ombili. Oudjuu ou li opo, moiljo jasho eshi pe na ovo inava hala ombili, eembudi ashike. Ngashi ku Kongo, osho moshilongo sha Laos mu Asia lokoushilo oshiuana sha tukuka pokati, neembinga adishe tadi peua oikondjifo kovakuailongo. Oiuana ja hangana oja tuma omusamane Tuomioja, uokuSoomi, a kendabale okuhanganifa ovañu ovo.

Oshilonga shovañu tava tungu ombili, osho shinene, oñge fje ovakriste tu va ilikaneneni, va longe nelao, oujuuki nombili i pangele.

## OVALUMENU OVANJASHA:

Kenongelolovajakuliongalo MENGELA oku noshiongalele shovalumeñu ovanjasha shokukonakona Ombibeli. Kalunga ngenge e shi hala, oshiongalele tashi hovele eti 28 la Februari 1961 notashi hulile eti 28 la Mart 1961.

Omumati ile omusamane omunjasha, ila hano nokuindila Kalunga muene e tu pe oñito okulimuenena keemadi daje.

## OVAKRISTE OVA HEPAULULA EITAVELO.

Ovañu omajovi avaali ova dipaua kuKenia omolu eitavelo lopakriste kovañu va Mau-Mau.

Omuhona umue uokuKenia okua ti: Ondi noku mu indila ombili, osheshi nda pa ovatumua oushima pehovelolondubo, onda li nda diladila va njengua moshilonga shavo. Paife ondi uete, nda puka. Apa poshitafula ondi nehepaululo lovapolofi, tali hepaululo omufitaongalo umue a aluka nomona kongeleka oñgela. Ovanandubo ve mu hanga nove mu pula, oshike ino ana eano la Mau-Mau. Omufitaongalo a tja: "Ohandi shikula ngahelipi Mau-Mau, eshi nda udaneka okushikula Jesus Kristus?"

Ovatilifi ova tja: "Ngenge ito ana eano la Mau-Mau, ohatu tukula omuoje moitukulua komesho joje". Omufitaongalo a tja: "Kalunga a jandja Omona a fje omoluange, naame nde lilongekinda ndi jandjele Kalunga omuuange".

Ova manga omumati nove mu hepeke nai fijo a fja. He okua imba ehambelondjibo. Nena ova tala omufitaongalo, va tonga ngaha: "Ngenge ito ana, naave osho to ningua." Oje a njamukula: "Jesus Kristus a jandjele nge omuenjo uaje. "Eshi va hovela oku mu manga, oje a tja: "Ihandi pumbua okumangua. Ihandi tila okufja", nokua fja ta imbi.

Ovahapu tava ti: Ehepaululo lovakriste ola hulifa etandavelifo vomatilifo, haeñgono doñumba dii liili.

Ehepaululo lovakriste vadaleluamo ola ninga jo elidilululo lovatiliane vahapu va li va kolokosha.

## OITA NODJALA JA HANDUKA KU KONGO.

Ovañu vahapu tava file modjala efiku keshe mu Kasai mu Kongo omo ovabaluba vahapu ve li, eshi va fia po omaumbo avo, osho ondohotola umue uavo ta ti. Mu Europa mua ningua eengalo oku va kuafa. Oita natango oi li ko pokati kovañu va ama ku Lumumba (je muene nande e li mondolongo) nokovañu vepangelolo. Ovañu voshilongo shimue tava dengafana noikondjifo tave i landa movakuailongo. Kape na ovo tava hafa, ahoue, ovo tava landifa po eendjebo, ovo aveke. Noshilongo tashi hanaunua ngaha kovañu vasho shoshene.

# AALESHI TAA NYOLA

*D. N. Naujala*, Oranjemund, ota ti: Aakwetu aaholike mu Jesus Kristus, uuyuni wongashingeyi ou udha omapiyagano, nomakolokoto ogendji gi ili nogi ili. Onkee ano tu kaleni megalikano omutenya nuusiku twaa nezimbuko, opo twaa falafalwe kugo. Eimbilo 470.

*H. Ananias*, Oranjemund, ote tu hololele nyanyu enene ndjoka lja holoka mu Oranjemund esiku ya Krismes. Unene ota hambelele Kalunga sho kwa egululile aantu ye oshiyelo shehupitho, opo ye mwene a wape okuya moomwenyo dhawo. Jes.30:18-21.

*Festus Kambuali*, Ongenga, ota kumaida ovakriste aveshe mounjuni aushe, vaha dimbwe ovashitua vakuaou ve li natango mofuka jounjuni ou, ovakuañgala, navo yo va mone ou te va ulikile ehupifo lomuenjo.

*Jafet A. Shilunga*, Ombalantu, ota ti: Aakwetu aaholike, muuyuni mbu woondjala nowomapiyagano, omukriste kehe ota pumbua a kale a tonata ethimbo kehe megalikano, opo twaa pwile momamakelo. Tu kondjeni shili sigo Omuwa te ya.

*Tarah Augustus Johannes*, Oranjemund, ote tu kunditha ngaaka: Omuwa ota ti: „Omumvo omutoye ogwo omumvo gwenyanyu nogweligolo. Jesus okwe ya okuuvithila aantu ayehe omumvo gweligolo lya aluhe, uuna ndwiya oongunga adhihe dha dhimwa po.

Evi tali gandja iiyimati yalyo, naantu yalyo taa li no taa nu, e taa kuta notaa kala ye na ombili. Oshongeyi Kalunga Tate a hala wo oku tu yambekela omumvo nguka twe gu tameke. Oye a hala oku tu yambekela omumvo omutoye gwenyanyu, nogweligolo, nogwombili, nomumvo gwokuyululuka esilohenda lye mpoka li thike. *Nikanor Shilumbu*, Onyaanya, ote tu kurdu ta ti: Aamuameme aaholike, tu kaleni mombepo yimwe nomehangano limwe, ngashika Kristus e tu hanganitha, tu ninge aana yehupitho ngele tatu itedhulula shili. Tu lalakaneneni changano lyetu li koke muukriste nohole okuhola ayehe. Omuwa Kalunga ota ti: "Ino tila ongame ndi li pungoye. Ongame Kalunga koye tandi ku kwatha." Jes. 41: 10.

*Imanuel Jouel*, Oranjemund ota ti: Ngingeyi ondi nomwenyo okukalela Kalunga, omolwa Jesus Kristus, emanya lyehupitho, ngoka a dhengelwa ndje, opo ndi mone muye ehupitho.

*Matias Andreas Kalenga*, Tsumeb, ota ti: Omukwetu omuholike, owi ilandela tuu oshifo shOmukwetu? Ando u shi ilandele, oshoka omo tuu moka to adha oonkundana adhike ndhoka dha ningwa koombinga noombinga. Nomu na ishewe omauvitho ogendji, ngoka taga tungu notaga kongo omwenyo gwomuntu. Ilandela ano Omukwetu.

*Asser P. Namandje*, Walvisbaai, ota kundu ayehe: Aamuameme aaholike, ethimbo ndika tu li mulyo ngaashingeyi olyo ethimbo lyeyemato. Aantu taa limbililwa, notaa kukuma eyo lyOmuwa. Eyo lyOmuwa otali nyanyudha mboka ya zimina okuhepekela Kristus, oshoka ngashika oshilongo sha Kalunga itashi ya sha talika, osho wo nekano li li. Manga tatu ti: Katu noondjo, nena ekano tali tu akele.

*Festus Lasarus*, Windhoek, ota hokolola ngeyi. Efiku limue eshi nda dimbuka moilonga onde u ja mostrata ei inene ja fimana mOvenduka. Ojo oi na omatukutuku mahapu taa lotoka efimbo keshe. Omu na jo ovañu vahapu tava ende kolupadi. Ame onda li nda londa okafangufangu ha nde ndelele, komesho jange okua li ku na jo omusamane Malakia Hauuanga. Ombadilila otua mona eshi tua londafana. Opa li mome umue omutiliane a hala okutauluka ondjila. Okafangufangu oke li denga muje. Aatushe otue li denga poshi. Ndelene ohai hambelele Kalunga keameno eshi itatu mono oshiponga. Ngashi tua hupifua mefjo lokomuenjo, osho jo Tate te tu hupifa mefjo lokolutu. Ofje ovauambo otua uana atushe okuhambelela Kalunga sho te tu amene alushe. Kalunga Oje eameno.

## EPANDULO.

Omimvo dha piti aataambi yOmukwetu noyEhangano omu uvite ngiini? Omwa dhimbulula shike mokulesha kweni? Ngame onda adhika kenyanu nokonkumwe sho Owambo yetu yi na aakwatelikomeho, mboka ye na oshimpwiyu oshinene. Sho taa tula mOmukwetu nomEhangano omakumagidho nomapukululo gi ili nogi ili. Oomwenyo dhaakriste tadhiti tulwa pokati komeya, omanamwenyo Eps. 1:3, nando tse aantu tatu kotha. Omuwa ita dhimbwa Eps. 11:4, ngele itatu dhiginine oohapu dhOmuwa, itatu mono ko. Eps. 119: 105.

Ngashi Omuwa gwetu Jesus Kristus a thigile aalongwa ye oshilonga, sigo onena Jesus ta sile oshimpwiyu egongalo lye. Onkee ano one ootate noomeme naamwame nookuume ketu; aasita naalangi Omuwa ne mu pe natango oonkondo momumvo nguka, mu tsikile oshilonga mwa udhithwa kOmbepo Ondjapuki. Omuwa nayambeke evi lyetu.

Otandi mu halele eyambeko momukumo nguka Jesus ta ti: "Ongame, ohela nomena no sigo aluhe."

N. Shiimi.

## OSHIWILO SHA KRISMES MU ORANJEMUND.

Efiku eti 24 la Desember 1960, otua ongala vahapu mongerki ja Oranjemund, oku dimbulukua oshivilo shedalo lOmukulili uetu Jesus Kristus. Titus Ananias a tameka neilikano, nokue tu popifa neendjovo edi Rom. 5: 21. Okue tu hololela ñge fje tua li tua fila moulunde, ndelene paife keshe umue okua dja mo. Osho Titus Ananias a lesa vali Luk. 2: 1—7, omo e tu hololela kutja: Paife otua ninga ovamuenjo mu Kristus Jesus, eshi e tu dalaelua mounjuni ou. Osho ovaudifi vakuaou va shikula ko, nove tu hokololela ehafo eli linene, tali ningi lovañu aveshe.

Efiku olo emuenjo detu da mona shili shihapu, eshi tashi di palula. Ofje katu li vali mepangelo lomutondi, ndelene otua dja mo, notua ja momuenjo, omolua Jesus.

Jason Namila, Oranjemund

*Elias Shitalangaho*, Usakos, ota kumaida ta ti: Ofje eembuiti ohatu nu unene oikoluifa neñgono, notua dimbua Kalunga. Ndelene ovakuetu omambo otue a efa nale, otua landula ounjuni. Tu lungameni osheshi efiku Omuene te u ja katu li shi nando. Ote u ja ngashi omufufi, omufufi iha shivika una te uja. Tu lijandjeni kOmuene Eps. 5:3, 6.

*Joel Sh. Amuele*, Oranjemund, ota ti: Otandi hambelele Kalunga sho a gandja Ombepo gwashili kaagundjuka yoku Tsandi. Momumvo 1959 oya lunduluka mokukala kwawo, noya mono okukala okupe. Oya gongala miigongi yawo nomolwiimbo wo pethimbo limwe. Kalunga na hambelelwe shili sho a gandja ngeyi maagundjuka mbaka uupenda wa tya ngeyi. Otandi ya halele wo eyambeko lya Kalunga, yaa se uunye, ihe ya hume komeho mondjila yuuyuki nohole.

*Festus Paavo*, Onyaanya, ota halele aaleshi ayehe eyambeko momumvo omupe nuwanawa mbuka tau monika mepsalmi 66. Ehambelelo omolwehupitho.

Omavi agehe ligoleleni Kalunga tange ni esimano lyedhina lye, mu simanekeni nokutanga kweni. Iilonga yoye iinene ya tilika ngiini! Ileni mu tale iilonga iinene ya Kalunga omukumithi mokupangela aana yaantu.

Omuwa okwe tu ningile iinima iinene atuheni.

## AVA TU LI PONDJE JONDONGA.

Efiku Omukuaniiilua uOndonga a hulifa ouenda uaje, ombeleua ja jakula etumualaaka leefja dohamba. Omukuluñu uOlukanda a shivifila oiuaana ei ja kala mo, nava ve li meehofa. Ovañu eshi va uda okatenda ova pulafana oshike sha ningua po? Aveshe va kala oungudu va jelulila emuenjo davo kOndonga, na vamue va hovela okulila va ti: "Akutu, tua ninga eefije!" Ovaherero vamue va kuatua shili koluhodi pamue novajenda va dile kOndonga. Omusamane L. Auala okua ifanua e va hekeleke neendjovo da Kalunga.

Ava tu li pondje jOndonga, Ovakuanjama noشو tuu. Otua li tua hokua unene ohamba ei. Pehulilo lomudo keshe hatu lesa oshishangua shaje. Ohai tu dimbulukifa Kalunga eshi e tu endifa oule uomudo pamue nejambeko laje, okua uana shili okuhambelelwa. Oje tu longa okuhambelela Kalunga. Okuali e shi okuhambelela ou e mu pa epangelo. Fje otua fiilua oshihopaelelua shiua, vali ngenge e u ja mOushimba ohahungile noiuaana aishe tei tu omukumo okudulika ku Kalunga. Otua hala Kalunga e tu pe omupangeli omukriste, e na etilokalunga, omuduliki. Eshi okuhambelela, ha jandje oshihopaelelua shiua moshilongo, ha lesa ombimbeli alushe. Kalunga na hekeleke ovandonga, novauambo aveshe. Inatu fjeni oluhodi ngaava tuhe na etelelo.

Ev. Malakia Hauuanga.