

OKUDALUA KUOMUKULILI

Efimbo eshi la ehena popepi Omukulili a dalue. Kalunga okua pendula ediladilo momuenjo uomupangeli Augustus okuongela ovañu aveshe, opo va jandje oifuta johamba. Oñge ovakuabetelehem ova ongala mo jo. Moshiongalele oshi oshinene omo Omukulili a dalelua. Kalunga okue shi endifa ngaha, opo aveshe va mone oñito oku mona shashi okua dalelua mepandavanda (strate) omo mu na oshiunda shoimuna.

Opa li jo ovakuabetelehem ovo inava mona oñito okufika ku Betlehem. Omoluoimuna javo ojo kua li va nangela moihua. Navenja Omuene okue va tumina omuengeli, ou e va udifila ehafo eli linenenene lovañu aveshe. Opu ava opa imbilua jo omaimbilo omahambeleso nomafimaneko kongundu jovakuaita vomeulu. Ja li ja kumuina ohokue ei ja Kalunga eshi je a hokua shili ovakuambadajedu aveshe.

Oñge hano novafita jo eshi va shi uda, inava dula vali okumuena, navo jo ova fikama tu osho okuja ku Betlehem va ka tale, eshi sha ningua ko. Eshi va ja ko, ova mona okana na ina na he. Ve ka nangeka metemba loimuna. Tava hepaulula jo ñumba va shivilua komuengeli. Ovafita ova shuna jo nomahambeleso nomafimaneko, omolua aische ve i mona. Oñge va hafa!

Nena otu li mefiku la Krismesa ile ndi tje: efiku eli lonena olo efiku lovakuabetelehem. Oñge taku tiua: Tu jeni hano ku Betlehem tu ka tale eshi sha ningua ko. Betlehem jetu ojo ongulu ja Kalunga.

Mounjuni ua Augustus omua li jo vahapu vehafi ovakuabetelehem, hano mokuongala kuavo inava ja ku Betlehem ova juka koilongo javo. Ndele kuinja inaku dalelua Omukulili, osho jo inava juka ku Betlehem jetu. Va juka keñele dilili, oko itava ka mona ko ehafo eli linene. Otava ka mona ko ashike omahafo taa hulupo ile taa ka shituka omahodi. Mos. 27: 34. Luk. 16:23-24.

Tu jeni ku Betlehem. Heno, omukuetu omuholike, ngenge to i ko ku Betlehem, oto ka mona Omukulili uoje osheshi mu Betlehem jetu (mongulu ja Kalunga) Omukulili ta dalelua mo no ta monika. Omo ehafo linenenene tali monika. Omo to ka dja mo nomahambeleso, nomaimbilo, nomafimaneko.

Josua Hanjango.



OOKRISMESA

MBALI.

Lesha: Titus 2:11-14.

Krismesa otayi ti ngini?

Otayi ti: Oshituthi shenyanyu, omolwa shoka Jesus, Omuna gwa Kalunga. e ya muuyuni.

Ngele ngaaka, nena oteksti yetu otayi popi ooKrismesa mbali, oshoka otayi tu lombwele okuya kwOmuwa Jesus Kristus kwopaali. Peta-meko lyoteksti otapu popiwa, nkene esilohenda lya Kalunga lya holoka mokuvalwa kwa Jesus, opo li etele aantu ayehe ehupitho. Pehulilo otapu popiwa nkene esimano lya Kalunga tali holoka mokugaluka kwOmukulili gwetu Jesus Kristus, opo omauvvaneko agehe ga gwani-thwe.

1. Eholoko lyesilohenda.

Okuya kwa Jesus kwotango, sho kwa valelwa moshigunda shoku Betlehem, okwe etele aana yaantu esilohenda lya Kalunga enene. Aayengeli yOmuwa oyu uuvitha ombili kombanda yevi alihe. Okukala kwa Jesus akuhe okwa holola esilohenda lya He. Oye okwi ipopi ta ti, e noo-

nkondo dhokudhima po oondjo kombanda yevi. Ilongankondo ye oye shi holola wo nawa. Iilema oye ende, aaposi ya tonata, aasi ya yumudhwa. Omboka ye mu inekela, oya mangu-lulwa muupika weso, nowuulunde nowomutondi satana.

Esilohenda ndika enene olye tu holokele wo, li tu hupithe. Olyo otali tu putudha, tu ethe okudhina Kalunga nuuhalu wopayuni, tse tu kaletu nuuyuuki nokuhola Kalunga muuyuni mbuka wongashingeyi.

Ihe nando otu li ngeyi muuyuni wesilohenda, otatu yuulukwa natango Krismesa ontiyali, okuya kwa Jesus, sho te ya olutiyali muuyuni, a holole esimano lya He alihe.

2. Eholoko lyesimano.

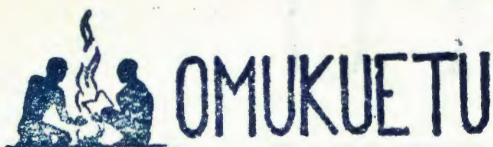
Omu-dhinikalunga kehe oha tila eyo lyOmuwa etiyali, oshoka oku shi shi, Omuwa Jesus ote ya omupanguli. Ongoka a dhini esilohenda ndyoka e li tu hololele mokuya kwe kwotango, oye ite li mono we megaluko lye.

Ihe oomwenyo dhooitaali odhu uudha ondjuulukwe okutegelela Omuwa gwawo nOmukulili gwawo. Aasilwahenda ayehe oya yuulukwa, ya mone ngoka e ya sile ngeyi ohenda, yo ye mu pandule. Oohepele yokomwenyo ohaa tegelele nenyanyu eholoko lyuuyamba auhe wa Kalunga. Omboka taa hepekelwa eitaalo lyawo muuyuni wongashingeyi, ohaa tegelele egulu epe nevi epe, moka hamu ka kala uuyuuki. Aakriste aye yashili ohaa tegelele egwanitho lyetagemano lyelago mokuholoka kwOmukulili gwetu Jesus Kristus.

Okuya kokuvalwa kwOmukulili opwa piti ngashingeyi oomvula 1958. Eyo lye etiyali lya fa li li popepi unene. Ano sho tatu longekidha wo oshituthi shokudhimbulukwa okuya kwe kwotango, inatu dhimbweni wo okuya kwe okutiyali. Tu taambeni shili esilohenda ndyoka e li tu etele ku Betlehem noku Golgata. Ihe esilohenda ndyoka nali tu putudhe wo lyo nali tu yapule, tu wape okutala esimano lye enene, nge ta galuka. Oye i igandja peha lyetu, e tu kulile mo muulunde auhe. Tu igandjeni wo kuye, tu kale oshigwana she hashi mu tegelele.

Ila, Omuwa Jesus! Ila momagumbo getu. Ila moomwenyo dhetu. Ila muuyuni auhe, u holole esilohenda nesimano lyoye lyaaluhe. Amen.

Elias J. Pentti.



Desember 1959.

KRISMESA YOMUMVO 1959.

Oshituthi sha Krismesa ohashi tegelelwa aluhe nenyanyu enene. Ihe numvo metegelelo moka omwa li mu na wo ezimba lyuumbanda nolyoshimpwiyu. Ando wa li wa pula omwambo omukweni pethimbo lyokufu kombinga yetegelelo lye lya Krismesa, ando e ku yamukula owala: "Eeno, ando tu thike ko tuu...", oshoka katwa li twa tseya, ngele tatu ka thikeni ko shili.

Otwa li twa tila oluhepo lwo-meya, oshoka inatu mona omvula onene. Otwa li twa tila, iimuna oyindjiyindji tayi ka sa pethimbo lyokwenye, omolwa shoka itayi mono omeya. Pamwe naantu wo taa kala nuudhigu.

Otwa li twa tila wo oluhepo lwiikulya, oshoka oyendji konyala inaa teya sha. Otwa li twa tila, ondjala yo yene yi ye, ngashi tayi hokololwa kwaamboka ye yi mono poma-thimbo gonale.

Ihe Kalunga na hambelelelwe, sho e tu sile tuu ohenda sigo ompaka. Oye ine tu ningila pandjo dhetu, ye ine tu geela pamayonagulo getu. Omolwoontalanteni dhOmuwa inaatu yonwa po natango, oshoka esilohenda lye inali hula po: olyo epe kehe ongula, uudhiginini we owindji.

Otu nokukumwa shili, ngele tatu tala iimuna yetu. Nando omeya ga pumba, niikulya yayo konyala kayi po, oyendji oyi na natango omalutu ga kola, nomokunyola ndhika - mu Oktober - otu wete ngaa kutya, otayi ka thika ngiika ketameko lyomvula. Ohenda ya Kalunga osho ya longo.

Kombinga yaantu otu wete wo omakwatho, nkene ge ende. Omuwa Kalunga okwa pe oshigwana shika aatonateli aawanawa, mboka ye ende-lele oku shi kongela ekwatho, manga lya li tali monika. Hakutya ayehe ya mono tuu iikulya ye ya gwanena. Ope naakulupe noohepele naakokule, mboka inaa adhika natango nawa komakwatho ngoka. Ihe oyendji oya mono ngaa ehapuluko. Ando epangelo inali enditha epungu li thike mpaka, ando otwa kaleni peni? Ngashingeyi mboka ya li ye niimalilwa, oya mono oompito dhimwe dhokulanda iikulya. Mboka ye normalutu ga kola, oya longekidhilwa iilonga, moka taa vulu okuilongela iipalutha yawo. Aanaskola oya topolelwa ekwatho lyawo, naavu osho tuu. Ekwatho lyoohepele nolyaakulu-

INAMU TI-LA!

Lukas 2: 8-20.

Aaholike! Elaka ndika olya popi-wa nalenale nkwi-yaka kelundu lya Betlehem okomuyengeli omuyapuki, sho a holokele aana-hambo mbeyaka mokuti kowala, e neadhimo enene nuuye-lele kau wapa sha. Eadhimo ndika olya tilitha aasita mbeyaka.

Opo tuu mpoka elaka ndyoka "Inamutila!" olya zi mokana komuyengeli omuyapuki, sho a kumike aasita omukumo. - "Ondi nenyanyu enene okune nokaantu ayehe. Olyo nde mu etele. Inamu tila!"

Eeno, nonena ndjika wo elaka ndika olye tu adha wo ombadhilila, sho twa li tu li momahajakaneno gomalundu guuyuni nomomilema thokothoko. Uuye-lele we tu ye-lele, neadhimo lyohole ya Tate Kalunga gwa shili olye tu adhimine wo, sho e tu tumine oohapu dhe oondjapuki. Omo twa tseyithilwa, otse twa vaelwa Omukulili, o-Jesus Kristus Omuwa, mu Betlehem.

Aamwameme aaholike! Thikamekeni oomwenyo dheni! Tu yeni ku Betlehem, tu tale shoka sha ningwa ko! Tu zii ko kohambo yuuyuni, tu ka konge ehupitho kongulu yOmuwa, nkoka tatu ka uva enyanu enene lyevalo lyOmuwa gwa Kalunga! Ino tila, omuholike. Inda u ka taambe ehupitho.

Otatu yi tuu?

E. J. Nankudhu.

pe olya dhiladhilwa wo komikunda nomikunda.

Apehe mpaka otu nokueta epandulo enene. Tangotango otu noku-hambelela Kalunga, oshoka oshipe-wa kehe oshiwana nomagano ga gwana ohaga zi kombanda, okuHe yuuye-lele. Ihe otu nokupandula wo aapangeli yetu, mbaka yi itula shili miilonga iidhigu omolwoshigwana shika, shi hupithwe. Otatu pandula ayehe, mboka ya yakula moshinima shika, ngashi aaendithi yoompunda naatopoli yuusila naawiliki yiilonga nosho tuu,

Natango inatu thika keteyo. Natango otu nokukaleni, tu nehangano limwe noshilalakanekwa shimwe shokutopolelathana uuwanawa wetu, opo u tu gwanene atuheni. Unene pethimbo ndika lya Krismesa, moshituthi shohole noshombili, otwa hala, tu popitha omwenyo gwomu-wambo kehe, a dhiladhile ooyakwawo, mboka ye li moluhepo, ye a tale, nkene ta vulu oku ya longekidhila enyanyu lya Krismesa. Ite shi vulu, ngele ita kutha mwaambyoka ye mwene. Oshoka osho naanaa Kalunga ketu e shi ningi wo, sho kwa gandja Epona lye omolwetu.

Ano ngashi twa pewa omagano, osho tu nokupathana wo omagano.

Kalunga e hole ngoka ta gandja nenyanyu.



OMUNENE GWOMU BETLEHEM.

1 Mu Betlehem mwa vaelwa Omuhupithi gwaanandjo mba. Tu matuke wo nena ndji, Tse tu ka mon' omuhupithi.

2 Omuyengeli a popitha Aasita sho ya langela, Kwa ti mwa tile nando sha, Omuhupithi e mu vaelwa.

3 Aasita yi ilongekidha, Ya ka thike ku Betlehem! Ya ka tale Omuhupithi, OKristus ye Omukulili.

4 OKristus e tu vaelwa, Ngashika sha hunganekwa, Kaahunaneki ya li ko Ya hunganek' ehupitho.

5 Amuhe omwa vaelwa OKristus omwiinikelwa. Kwa vaelwa muuyuni wo, Opo mu mon' ehupitho.

6 Na ngoye wo wa kulilwa Na ngoye wo wa vaelwa Omuhupithi Omuyapuki, oKristus ngu Omupopili.

Mel. Die Halleluja 348a
Lya totwa ku Sakaria Luanda.

OKAKOMBO NOLUDI.

Movañu namo omua fa mu na "Okakombo noludi". Shaashi haku tiua: "Opo iha-pe lihovua", otashi ti: ope na odikua imue. Na tava tumbula vali: "Lokuoko oliali shikula lokuulu". Nani, nomovañu omu na jo naa naa okakombo noludi.

Efiku eii 25.12.1958 ongerki jovadaleluamo ja li ja ongale'a oshivilo sha Krismesa momukunda ou Welwitschia: ovadilotua novakuena neembastela. Ovaherero kave mo.

Eembastela olupe lado onvatiljane hanga, manga ovadilotua va lau'a edilu, ovakuena ova tiliana omeke joshimbju. Kapa li okakombo noludi ka uana?

Konima jelongelokalunga ova udafana konjala eongalo alishe okutuala omaudifo peumbo lomuevangeliste omuuambo ou ta longo mokati kovauambo vokondalate.

Meumbo lomuevangeliste omu na omukulukadi uaje, ou opo a di kOuambo, nounona vaje. Omukulukadi ou okua li e na ehalo okutalela po ovakulukadi vakua pou-shiinda, nde a njengua omolu elaka. Osho jo ovadaleluamo ve uja kuje luhapu, nde ou-njengui uelaka tuu.

Hano efiku olo ova li ve na ehalo eli, omukulukadi ou e he likalele nomusamane uaje nounona. Ova imba omaimbio a Krismesa pamue nomakundilo eongalo alishe. Ova imba omaimbilo maua nouladi noipala tai vema. Omupolifi Oskar ombastela ou a shiiva oshiuambo tuu, a.jandja omakundilo poñe jeongalo noupenda nohoole.

Omukulukadi nounona va li va fa va tonja eengolo. Eengo'o davo da tonjononua koiuana ei itatu. Otua kumua jo ovakriste ava ve he fi velaka limue, nde ova kondjifa omukalo ou "okakombo noludi", nande ovo naa naa okakombo noludi.

Ovakriste ovakuetu. Jesus Kristus a lumbakana novañu. Ngaashi tua li kokule na Kalunga, osho jo tua li kokule omuñu omukuetu. Kape na omalimbililo, opo Kristus a lumbakana nomulunde, opo ome-po ja kakombo noludi tai fi.

Ev. Malakia Hauanga.

OKAANDJETU

EILIKANO METEELELO LA KRISMESA.

Kalunga, Tate omunamapangelo-
ngono aeshe, Omushiti ueulu nedu!
Tatu ku pandula, Kalunga ketu, eshi ua
tala nolukeno ounjuni, u u tumine O-
mona uoje omuholike. Heno, tate, oi-
longa joje ojaalushelushe. Ohatu ha-
mbelele oule ueendunge doje, edi
uedi hololela omuñu, osheshi oua ha-
la, omuñu uoje a kale mekolo lo-
mona uoje omuholike.

Nopefimbo jo olo tua juka, olo
tu olo, Kalunga ketu, ohole joje je li-
hololela ounjuni aushe. Tate omuholi-
ke, tu hololela hano oukalunga uoje
uaalushe, opo tu ku mone mOmona
ujoje omuholike, no tu ku talele moi-
longa joje inene. Tu pa hano eteelelo
liua momafiku aa tua juka, osheshi
oo omafiku oñgenda joje inene. Di-
mbulukifa omuñu keshe eshi ua hala
oku shi ninga pefimbo eli, opo tu a-
tushe tu tuue omukumo kedalo lOmo-
na uoje, fje tu mu teelee nemuenjo
de lihupipika shili.

Uda eilikano eli kefiloñgenda lo-
je omolua Jesus Kristus. Amen.
(La tumua ku Mateus Shikongo)

OLWEENDO OLUWANAWA.

Esiku eti 11 lya Augustus twa thikama
mOutjo iihauto iheyali, twa uuka lwokuuni-
nginino: Otyikondo, Okamanyab, Otyovaso-
nda. Twa lala mokuti, nesiku lya landula twa
yi mela lyondjila. Omwiha otwe ke gu li me-
vi lyaaherero. Otwa kumwa shili, sho twe ya
mono, nkene ye li po natango moshikulu
shonaale. Natango oye li omalutu gowala, o-
ye li mokati kiiyamakuti noinaa tseyo Om-
wa Jesus.

Esiku tuu ndyoka twa thika kegongalo
epe lyongerki ya N.G. Kerk. Edhina lyoshi-
longo shoka olyo Orumana. Kalunga na kwa-
the omuevangaliste ngoka Stefanus Hamukua-
ja, moshilonga she shekokolo hwiya kOru-
mana.

Efiku 13.8. twa thiki pomulonga gwa
Kunene. Mpoka twa kala omasiku gaali oku-
tala iilonga iikumithi yOmuwa Kalunga Eps.
147: 4-5.

Esiku 15.8. twa thiki kEngela moka a-
atiligane ya kumwa tango kohungi notiyali o-
ngula sho kwa shi 16.8.59 shoka sha ningwa
mo moshituthi. Oyendji yomune mwa li ko,
nomwa mono one yene shika sha ningwa ko.
Shila ndi tye: Oluzo nduka lwevangeli nalu ye
shili sigo omuuzilo Uukwanyama maashitwa
mbe.

Omandaha otwe ya sigo Ondangua, O-
ndjondjo, Oniipa. Otwa talelepo mwene gwo-
shilongo mOkaloko. Oye okwe tu kundu na-
wa naahona mboka twe ende na yo. Sho twa
yi poshinyanga she pamwe namushanga omu-
kuluntu ngoka e ke tu popya ko, otwa adha
ko kombanda yoshitafula Ombimbeli Ondja-
puki. Omukwaniilwa sho e ya po e tu popi-
tha, omukuluntu gwegongalo lyoku Windheok.
okwa ti: Otwa nyanyukwa sho twa adha
mpaka Ombimbeli. Onde ku halela oonkondo
aluhe u kale to kongo oondunge muyo.

Osho olweendo lwetu lwa li oluwanawa,
notwa shuna nokuhambelela Kalunga.

Ev. St. Iteua.

Omukwaniilwa E. J. K. Namene

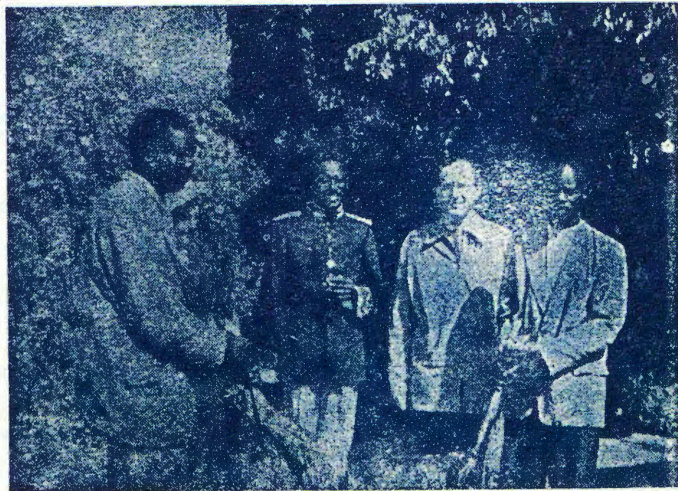
la nefolo Kaisa Vuorela, sho

ya talele po Owambo, oya

ka popithele po omukwaniilwa

E. J. K. Namene kOkalo-

ko mu Junie 1959.



EKUNDO LYA KRISMESA 1959:

Omukwaniilwa E. J. K. Namene.

„Krismesa yetu, eeno ya thiki...“
Atuhe otu nenyanyu enene shili. Otu
nenyanyu okudhana oshituthi shokuva-
lwa kwOmukwaniilwa gwaakwaniilwa.
Otu nenyanyu okutaamba omagano
gi ili nogi ili kookuume yetu. Ya-
mwepo oye nenyanyu nokuli okuga-
ndja omagano nando oyo yene inaa
pewa omagano kooyakwawo. Enyanyu
lyomokugandja olya pumba. Tate Ka-
lunga okwa nyanyukilwa okugandja o-
magano koyana, noku mboka wo haye
mu geyitha. Nenyanyu enene Kalunga
ketu okwe tu pe omagano omanene, ge
mu pula ashihe. Okwe tu gandjele Epo-
na lye, omuvalwa awike. Okwa nyanyu-
kilwa oku tu gadjela omagano gi ili
nogi ili omakwawo, pamwe na Jesus.
Aandonge yandje noshigwana shetu,
ekundo lyandje kune olyo ndika tu
hambeleleni Kalunga ketu sho e tu
peni ayihe nenyanyu. Ihe natse wo tu
taambeni oshiholelwa okuyakulathana
nenyanyu. Tu gandjeni epandulo ku
Kalunga ketu nenyanyu, oshoka otwa
pewa nenka yu. Ethikilo lyokugandja
kwetu nali kale enyanyu lyetu otse
sho tatu gandja.

Pethimbo ndika lyuulumbu, Tate
te tu putudha nawo, one mboka tamu
vulu okukwatha aakweni nomaliko ge-
ni, omwa tegelelwa okuninga ngaaka
nenyanyu. Epangelo lyetu Kalunga
e li tetekelitha nale nokuli okugandja
iipalutha yomalutu kaanaluhepo yetu,
kaanona yetu mooskola na mboka
wo aashuushuu yokomagumbo, na no-
kuli kaavu ayehe taa lala miipangelo,
omagano! Onali pandulwe unene.

Tu taambeni omakundo ogendji
nomagano ogendji: Jesus, nothinge o-
mbwanawa nomvula yeloolo, nomumvo
omupe gu netalaleko, noonkondo o-
mpe okulongela Kalunga nokuyakula
ooyakwetu nenyanyu.

Tangi!

OVANEUMBO OVANELAO.

Paife ou na embo liua la teelee-
lua neefigono. Ola shangua komu-
shamane Kornelius Ndjoba ou eli
shanga pamadiladilo embo leemburu
„Die gelukkige Huisgesin“. Eli ola
hupipikua nomua tulua oinima imue
ipe tai uapalele unene ovauambo. O-
vashangi venja (die Vroue-Sending-
bond van die Kaapprovinsie) ove tu
pitikila li holoke ngaha moshuambo.

Embo eli otali lalakanene oku-
pukulula ovanjasha ovo tava dila-
dila okuja mohombo ñge tava kala
meumbo. Osho jo ovadali otava pu-
kululua mouteku uounona nosho tuu.
Otu uete ovañu aveshe otava ka
mona elao linene membo eli.

OVANEUMBO OVANELAO

tali landua 1/3.

OMAHODHI GAAVALI

olyo ehokololo lya totwa ku Hans
D. Namuhuya. Ano itali hokolola
aantu, mboka ye li po, nenge iini-
ngwanima, mbyoka ya ningwa shili
pokuma pontumba, aawe, ayihe oya
totwa owala komunyoli. Onkene tuu
kayi shi iifundja, aawe, otayi holola
naanaa iinima mbyoka tu yi wete
mokati ketu ethimbo kehe.

Omambo goludhi nduka oga si-
mana noonkondo mokati kaantu,
mboka ya putuka. Ndika olyo lyo-
tango moshiwambo. Omunyoli nguka
okwa kokola oshitauwa oshipe. O-
twa hala, tu mone oyendji taa ende
na sho.

Omahodhi gaavali olya gwa-
na okuleshwa kaagundjuka ayehe. O-
taa mono membo ndika elondodho
nepukululo ewanawa. Ihe aakuluntu
wo mokulesha embo ndika otaa tsu-
wa omayeke kombinga yoshilonga
shawo sheputudho.

Ando aamati ayehe yokUushi-
mba ye endelele shili okulesha OMA-
HODHI GAAVALI!

OMAHODHI GAAVALI

tali landwa 2/6



AUGUST HÄNNINEN.

Omuhongi August Hänninen okua dalua 7.11.1876. Ina okua li omukristelela ilikanena ovana, eemuenjo davo di hupifue. August okua longa tete oilonga jomake. ndele ne omudo 1897 oje okua tambulua menongelo lovatumua. Omudo 1903 oje okua ninga omuhongi. Kuku Nakambale, ou a li moSoomi pefimbo linja, okua findikila ovahongi vape Hänninen na Koivu na Nenye mondjila javo jokuja ku Afrika. Oita jovaherero oje va kañgeka kanini, ndele ova fika kOuambo mu November 1904.

Tete omuhongi Hänninen a kala mOnaipa nokulihonga elaka lo-shindonga nokukuafa ovahongi vakulu moilonga i lili noi lili.

Omudo 1908, eshi August Hänninen a hambola Julia Lindgren, ovanjasha ovo ova mona oñele javo vene kOshigambo. Ova hanga oshilonga shokOshigambo opo sha hovelua. Eongalo ola li po linini, ndele ne ola hovela okukula. Tete momalongelokalunga mua ongala ashike ovañu ve dulike kefele, ndele ne pehulilo lomudo 1909 ova koja 300. Opo ne opo omuhongi Hänninen okue va lombuela, va hovele okulitungila ongeleka, ndele ovañu aveshe ove shi itavela nehafo.

Fimbo ongeleka jokOshigambo inai pua natango, ovakuluñu vetumo ova tuma omuhongi Hänninen, a je kOukualudi. Ova kala ko eedula ñatu netata. Eeñgono doupaa ni oda li po dinene natango, ndele pa li jo ondjala idjuu omudo 1911. Ovakualudi ove linekela naua Hänninen, hanga ve mu ninge nokuli ohamba joshilongo shavo omudo 1909, eshi opo e uye ko.

Omudo 1913 Hänninen okua ka fuda koSoomi, ndele okua kala ko molu oita inene fijo omudo 1920.

Mokualuka kuaje August Hänninen okua nangekua vali kOshigambo, ndele okua lombuelua jo, a file ovakriste vomOukuanjama oshisho, eshi ova fiua po kovahongi ovandouishi. Hänninen okua dimbulula diva nokutja, ondjila jokudja kOshigambo ojo ile noidjuu unene. Oñge hano oje a hovela okuindila, etumo li itavelelue, li tunge eengulu mOukuanjama. Ovapangeli eshi ve shi itavela, Hänninen okua hovela okutungila kEngela mu Junie 1921. Ovakuanjama vahapu ove mu kuafa moshilonga osho. Ongulu inene oja pua 12.11.1921, ndele ne keshe omudo omuhongi Hänninen okua tungifa vali omatungo mape, ngashi oshihakulilo (1922) nongeleka (1923) neefikola nosho tuu. Etumo ola kuafa oitungifo imue, ndele ne eongalo lo vene ola futa oilonga, ngashi oilonga jongeleka oja futua oiponda 350.

Eongalo ola kula neeñgono. Omudo 1922 opa shashua ovañu 338 mu Januarie na vali pehuillo lomudo ovañu 581, hano kumue ovañu 919. Eshi omuhongi Hänninen e uja mOukuanjama omudo 1920, okua hanga mo ovakriste 358 (momambo omua li ngaa omadina 1,121), ndele eshi a ja koSoomi omudo 1928, okua fija kOukuanjama ovakriste 7,000. Menongelo lepameko omua kala pefimbo limue ovañu 600. Omuhongi Hänninen okua hoolola ovanongeki novakriste ve shi kulinekelua, ovo ve mu kuafa keembinga neembinga. Ovanongeki ovo ova ningilua oiongalele jepukululafano alushe, ngenge pa pita oivike ivali.

Omudo 1928 ooHänninen ova ka fuda koSoomi, ndele va aluka vali

ONDJIMBO YA KRISMESA.

*Aasita aanelago mbo,
sho yu uuvu tango elaka ndyo
komuyengeli omuyapuki:
Mwa valelwa Omukulili.*

*Eadhimo enene ndyo
lyomuyengeli, sho e ya po,
nuyelele kau wapa sha
noonkondo we ya halutha.*

*Ihe ewi ndi lyomuyengeli
li na ombili, shota ti:
Inamu tila, aaholike!
Enyanyu nde mu etele.*

*Enyanyu ndi olyeni mbo
no lyaakuuyuni ayehe wo.
Mwa valelwa Omukulili
mu Beetlehem onena ndji.*

+ + +

**OMUKWETU ta halele
ookuume ke ayehe**

KRISMESA

OMBWANAWA

noMUMVO OMUPE

GU NEYAMBEKO

omudo 1930, va tuikila oshilonga shavo mOukuanjama. Omuvalu uovakriste oua koja pomajuvi omilongo (10,000), ndele ongundu jovajakuli oja hapupala jo. Ekuafu linene ola holoka omudo 1937, eshi ovafitaongalo vape va pita menongelo lavo neongalo linene la Engela ola shiiva okutukulua. Ndele ne omuhongi Hänninen okua kala natango omupashukili uomaongalo aeshe nomuuliki uoilonga jao. Okua hovele alushe oinima ipe, opo evangeli li mone oñito okushitulula oshiuana ashishe.

Omudo 1938 omuhongi Hänninen okua shuna koSoomi, je ina dja ko vali. Ndele ne kuinja oje a tuikila oshilonga shaje, e he neloloko, fijo oukulupe uo vene ue mu fiminka, a tulumukue. Omudo 1950, efiku olo a li e nokuuanifa eedula 74, Omuene Kalunga a ifana omumati uaje mounjuni ou.

MOukuanjama – no moilongo ikuafo jo – omu na vahapu, ovo tava pandula Kalunga omolu omuhongi August Hänninen, ou a longifua oilongañgono, ojo tai kumuifa aveshe, ovo ve i mona ile tave i kundana.

(Pa Iija Kilpeläinen no pa Aug. Hänninen muene.)



Na ngame omunelago wo, sho ndu uvu wo elaka ndyo nondu uvithilw' evangeli nevalo ndi lyOmukulili.

Kwatha ndj', Omuwa omuholike, ndi thike wo muyelele, na ngame ndi ka mone wo eadhimo enene ndyo.

Taamba ndje wo, omuholike, megumbo lyou' lyuuyelele, Mongundu ndjo ya adhima nda hala ku ku imbila

*Omutoti: Eino Nankudhu.
Ewi: Ehangano 25; S.V.K. 21.*

KOMUKRISTE KEHE.

Omumwameme omuholike mu Kristus! Ongoye wa taambelwa mongerki onkwaevangeli nowa hempulula eitaalo lyoye koshipala sha Kalunga nomontaneho yegongalo lye. Osho ngeyi wa pewa epitikilo momaganohenda agehe. Peha lya Kalunga otandi ku kumagidha okudhiginina shili euvaneko lyoye nokuhambelela Kalunga, ngoka kwe ku ithanene okutseya kwe kwa shili. Ikolekitha aluhe esilohenda ndyoka we li pewa mu Jesus Kristus. Enda aluhe koshipala sha Kalunga omuyapuki nonakutseya iinima ayihe. Kala nokutila ngu yande omahongololo agehe nuulunde kehe, ngele wongumitila nenge mboka wi igalala. Konakona oohapu dha Kalunga ngu ikonakone ngoye mwene, u koke mokutseya Kalunga nOmuwa gwetu Jesus Kristus. Miinima ayihe yaala uuthigona woye Kalunga mo-maindilo nomomagalikano, u vulike wo shili komagando nokomakumagidho nokomatalaleko gohapu dha Kalunga, to ga uvu ko omeiuvo lyoye. Ino nikitha Ombepo ya Kalunga uuthigwa kokwaavulika kwoye. Konga ehangano lyOmukulili gwoye mUulalelo Uuyapuki.

Endelela u inyolithile OMUKWETU 1960

kOwambo 2/-
kUushimba 3/-

Mostora yomambo, Oniipa,
Pk. Ondangua
to vulu okuilandela
ishewe nosipenitha
ONDJALULAMASIKU 1960.



OŊGEMBADALA I DULE.....

Tu hetekeleni tu ningeni sha, opo tu likeleleni kokuvela medimo. Ile tu tje: Koudu uendjandja. Tu fulukifeni omeva okunua, opo tu liameneni koupuka vomaludi elili nokulili. Unene omeva omomadiva nomeendombe, inatu a nua ina a fulukifua. Oo oshiponga, taa eta omikifi dilili na dilili, omoluekunguluko lao.

Mu aishe tu nueni omashinishini a fulukifua, oo unene taa dulu okutaataa mufje omaudu mahapu.

Tu indileni Kalunga e tu kuafe. Fje tu dimbulukueni eshi taku ti: "Iha kuafa elai". Ko taku ti vali; "Uha umbaumba ku jashe". Kambadala hano, opo Kalunga e ku kuafe.

Taku tuikilua.

HOLA OMUMWOYE.

Ohole yiifundja nohole yashili.

Ohole ya yina ya simana muuyuni auhe. Aatoti yiitewo yeyi pandula miitewo yawo. Nohole ya Kalunga tayi yelekwa nokuli nohole ya yina. Ihe nohole ndjoka wo tayi vulu okufala omuputudhi pombambo notayi etele omunona oshiponga. Omukulukadhi esiku limwe a dhiladhila ngeyi: Omumwandje e nokukala e vule aanona ooyakwawo. Nomoskola e nokuninga omukomehoelela. Okahalu kesimano taka monika mpaka. Aakulukadhi yamwe taa kambadhala okuiyololela ooyana inaa hala ya putudhwe kuhe nenge ya hokwe he. Omukulukadhi esiku limwe a hala okupangela ooyana, ta dhiladhila ehala lye mwene li nokugwanithwa aluhe, ehala lyokanona li lyatwe pevi. Omunona a putudhwa ngeyi ta ningi omuntu kee na nando ehala lye mwene nenge oonkondo dhokutokola ye mwene. Ota falafalwa kehalo lyooyakwawo shaa mpoka, no moondjo wo. - Aakulukadhi yamwe, mehalo lyawo lyokugamena ooyana kiiponga ayihe, otaye ya indike okukalathana naanona ooyakwawo. Yina a hala omumwana a kale aluhe puye. Ihe aanona ya gamenwa, mboka ya kundukidhwa aluhe kegameno lya yina, otaa ka mona oshiponga nge ye nokuya nko-ka kaku naakeleli yiiponga.

Oyina omunandunge ta lalakane-ne eipangelo lyomunona. Ota ningi ashihe shoka te shi vulu opo omunona i ilonge okudhiladhila ye mwene, a tokole wo omatokolo noondunge. Osho ngeyi omunona ta koko ta ningi omukuluntu e shi kuinekelwa. Noye tuu ngoka e shi kusimaneka aakuluntu ye.

Kehe yina a gwana okuipula: Ongame omutaambi nenge omugandji? Oyendji taa yamukula nuupu: Ongame handi gandja, aanona taa taamba. Ihe kombinga onkwawo aanona wo taa gandja. Otaa gandja ohole yawo onene. Aanona taa dhimine po omapuko gaakuluntu yawo nuupu, yo taa dhimbulukwa uwinayi wawo.

OMAGANO GENI GA THIKI.

Liina Mpanda	£1. - -
D.J.Kijjala	10. -
Okagumbo,	
Ongundu III	2. - -
Oshakati, ongalo	19 3
Aanandjokue	2. 4. -

Nomapandulo,
Onandjokwe.

SHITLANGU.

(Ekoardo Mondlane)

Shitlangu oye omumbatu gwomevi lya Mosambiek gwomoshigwana shaatsonga. Oye ogwomezimo lyaawa aatsonga.

Okwa valwa 1920. He okwa si manga ye omushushuka, onkene Shitlangu okwa putukile mokagumbo ka yinakulu omukulu-kadhi moka na yina omo wo a kala.

Imuna yaandjawa oya li tango hayi lithwa ku Mayeriman. Hugunina Shitlangu okwi ilongo oku yi litha pooha dhegumbo, sigo te ke yi litha kuulithilo wokokule oyo na kuume ke Mayeriman. Oko tuu nkoka komalundu goketale lya Nyaurongole i ilongo nokwa ndhindhlike omikalo dhaasita-ngombe. A mono omahindathano nomatukathano nomahepekathano mokupangelathana kwawo.

Shitlangu okwa longwa oostanda dho-vevi moshilongo shaandjawa. Mostanda moka okwa tameke okukuminwa unene aatiligane mokutala omikalo niilonga yawo nokuwilikathana nenge okupangelathana kwawo. Omooskola moka okwi itula me-tanga, omaudhano nookamba dhaamatyona (padvinder). Omatanga ngoka oga li unene haga longo aanona uukriste. Shitlangu sho a mono uyelele mooskola, okwa li a nginga omwenyo omuwinyayi omolu oshigwana she. Oshigwana she oku shi shi konyala koombinga adhihe. Oku shi uumati nkene hau putuka nuukadhona wo. Oku shi aakuluntu nkene haa longo iilonga yawo. Ohaa tungu oondunda haa longo omapya nohaa litha iimuna. Iilonga ayihe mbika Shitlangu okwa ndhindhlike ihayi longwa noondunge. Oondunda ohadhi tungwa nuuti uushona notadhi kulupa mbala. Omapya ohaga longwa kaakiintu ayeke naanona, osho ngeyi ondjala tayi adha oshilongo. Iimuna ohayi lithwa kuumati tau hepekathana. Mokutala iinima mbika ayihe momutse gwa Shitlangu omwa holoka iikungulu yomapulo.

Aalumentu aatsonga oohaa ka longa koomina nokiilando yiilumbu. Nkoka ohaa kanene ko; yamwe taa si, yamwe taa ningi oombwiti. Oomboka haa zi ko ohaa ningi ngeyi: Omulumentu ote ya nooshako dho-suuka nodhotombo niikulya yimwe yaatiligane. Ote ya wo e na okahumba koongalo (ongalamafona) noolaakana oontokele. Omulumentu ota lala ihe mondunda ya dhikwa niiti iwinayi kombanda nomeni omwa kambakana oolakanana oontokele. Omulumentu oha kala ihe moka nota li e ta nu e ta hiki ongalamafona. Aanegumbo nookuumete otaa nyanyukwa na ye ethimbo ndyoka. Omulumentu ita longo ano sha megumbo niinima mbika ngele ya pu po, ota shuna. Osho ngeyi omulumentu omutsonga e li.

Shoka sha li she ehameke Shitlangu noonkondo osho omaitaalo giinima yowala moshigwana shaandjawa. Aatsonga oya li ya hepekwa nayi kokuitaala oombepo dhaathithi, dhoompulile, dhaaanekele no-dhaalodhi yehwiyu (yaKatutu). Omilema dhuupagani odha pangele mo tuu shili.

Shitlangu sho a piti ooskola okwa yi kiilando yaatiligane omumvo 1936 (kUshimba). Ina ya nelalakano lyukukonga iimaliwa owala. Unene okwa yi a ka tale nawa iiholekwa yaatiligane, ano oondunge dhawo, opo e dhi ilonge ye e ye wo e dhi longo oshigwana shaandjawa shoka shi li momilema nomomuzile guukulu.

Elago enene okwa ka kala moshilando shepangelo lya Mosambiek, Lourenco Margues nokwa kala ha longo pomuhongi, o-

OMAYELETUMBULO GAAWAMBO.

Omayeletumbulo gaawambo ogo embo enene li vule agehe, ngoka ga nyanyangidhwa nale moshinyanyangidho shetu mOniipa. Oli nomapandja 228 nokuli. Olyo wo embo lyotango lya tulwa omapeko ga kola muka mOniipa. Ihe esimano lyembo ndika kali li momapeko nenge momwalu gwomapandja, aawe, oli li miinyolwa, mbyoka yi li mo.

Omolwaaleshi yOMUKWETU, mboka inaa tseya natango nawa Omayeletumbulo gaawambo, o-twa ka pula omugongeli gwago, Helmi Haapanen, omapulo gamwe. Ngashi mu shi shi, meme Haapanen oye omukuluntu gwoskola yaakadhona kOshigambo nokwa putudha nokuli omapipi ogendji gaakadhona aandonga. Otwe mu pula ngeyi:

- Oshilonga shika shokugongela omayeletumbulo gaawambo owe shi longo ethimbo li thike peni?

- Onde shi tamekele kOlukonda

mutumwa. Mpaka okwa mono ihe ompito okuya mooskola oombwanawa nokwa shashwa eta ningi omuwiliki gwoongundu dhuumati noku u longa uukriste.

Hugunina 1938 okwa yi moskola yaa-evangeliste nosho wo moskola yelongo lyiilonga yomapya 1940. Moskola moka omo Shitlangu i ilongo oshindji. Okwa ndhindhlike oomposi dhoshigwana shaandjawa nondjila yokupendula aantu. Okwa mono aantu nkene ya pa ondhila yi li moondjehwa inaayi mona uutoye nenyanyu lyomombanda. Tashi ti aatsonga ngele taa monithwa uyelele weputuko otaa ka tuka ngondhila, etaa kala aaludhe kiipa yo momikalo iilumbu, ngashi Shitlangu e shi popi olwindji.

Shitlangu sho a piti moskola yuuevangeliste okwa longwa ishewe mooskoia dhilwe nokomaha galwe. Okwa longwa eta ningi omunandunge. Shitlangu oye gumwe gwomaatsonga aaputuki naahumi ngashingei. Oku li omukuluntu (prinsipaal) gwoskola yimwe onene mu Mosambiek.

Embo ndika olya nyolwa moshifransa ku Andre D. Clere nolya lundululwa moshingilisa, moshisoomi nomoshiwambo nee. Pamwe lya lundululwa ishewe momalaka galwe. Ohali leshwa ano kaantu oyendji muuyuni.

Lyo lyene embo ndika otali hwameke aatiligane miilonga yawo okuputudha aaludhe. Otali kwathele wo aaludhe moomposi dhawo.

(Onda lengalenga nonda mono mu Afrika oontopa noondjila dhosamende, iipangelo nooskola oonene; aantu ye li moku-kala kwi ili. Ayihe mbika otayi zi ku Kristus).

Embo ndika andola li opalekwe noli holoke mbala moshiwambo, opo li leshwe moongundu dhopombanda, ndhoka tadhi holoka wo mbala, noli leshwe wo ku yalwe mboka ye hole elaka iyoomeme oshiwambo nokukonakona oondunge dha holekwa.

omumvo 1938, sho opo nde ya ko-wambo. Pethimbo ndyoka onda nyola omayeletumbulo 180 ageke. Omumvo 1953 onda kwatwa kehalo lyokutsikila oshilonga shoka. Aawambo ayehe, mboka twa tsakanene na yo, onde ya pula omayeletumbulo, ngoka ye ga tseya. Onda tumu aaloga yandje oku ke ga pula kaakuluntu nokooyinakulu. Aalongwa mboka sho ya zi komafudho, oye e-telele omayeletumbulo ogendji, sigo oga tameke okuninga omayuvi. Sho ga kondo 2,000, onde ga tumu koshinyanyangidho omumvo 1958.

- Oolye ye ku kwatha mokulogekidha embo li thike mpo?

- Onda kwathwa kaalongi aawambo nokaasitagongalo Leonard Auala na David Shihepo. Omayeletumbulo ogendji sho haga popiwa kaantu momalupe gi ili nogi ili, oyo ya kwatha ndje okuhogolola mo olupe ndoka lu shi kuinekelwa.

- Owa hala embo ndika li longithwe ngini?

- Onda dhiladhila, li kale embo lyokulesha momanongelo getu. Ihe inali nyolelwa aanaskola ayeke, aawe, aawambo ayehe ngaa. Onda hala, li leshwe megumbo kehe, opo aagundjuka wo ya tsuwe omukumo yo yi igilile okulongitha omayeletumbulo mokupopya kwawo.

- Omayeletumbulo oge na ano oshilonga sha shike kaawambo yongashingeyi?

- Kage shi kukanithwa nando, oshoka ogo uuyamba welaka. Oongoka e shi okulongitha omayeletumbulo, ota vulu okuholola niitya iishona oondunge dhomuule. Aagundjuka, mboka taa longwa omayeletumbulo, otaa iilongo wo okusimaneke aakuluntu yawo nelaka lyaaandjawa. Oshigwana, shoka shi neliko li thike mpaka lyomayeletumbulo, oshi noonkondo dhopambepo; onke shi na wo etegelelo ewanawa, shaa tuu tashi simaneke oshilonga shomapipi, ngoka ga ya. - Owambo oya topoka iilongo niilongo, nomalaka oge li po wo ogendji. Ihe omayeletumbulo ga fa ga tseyika kiilongo ayihe yaawambo. Ano ogo otaga holola wo uukumwe woshigwana shika notage u koleke.

- Oshilonga shika owe shi mana nenge oto shi tsikile natango?

- Otandi shi tsikile nenyanyu pankondo ndhoka tandi dhi pewa. Ondi na po nokuli iinima yimwe, mbyoka inayi gwana membo ndika.

Aawambo ayehe oya gwana okupandula meme Haapanen omolwo-shilonga, shoka e shi longele oshigwana shika. Osha kuminwa wo kaakwiilongo, mboka ye shi mono.

E.J.P.

OUNJUNI TAU TONGO SHIKE

Omufitaongo omudaleluamo otai ku Amerika.

Omufita M. M. Sephula ou a longa eedula ñano mOvenduka otai i ku Amerika oku ke lilonga oinima jopakalunga tashi ti opo a hume komesho moufita, unene mokuimbifa mongerki (kerkmusiek). Omush. Sephula okua kuafua kombinga joimaliua ku Bantoe Welfare Trust Fund, Unie.

Oshiongalele shoalutheri mu Afrika.

Momudo tau uja, 8 - 18 la Sept., mu Madagascar, oñunu ja Afrika, tamu ka ningua oshiongalele shoalutheri omo ovatumua vongerki jetu jo taka teelua mo. Oshiongalele eshi sha fa naanaa osho sha ningua nale mu Tanganyika omo o-vash. Auala nAngula nAmakutuua na Hukka va li mo.

Ovatumua ovo tava i ku Madagascar inava hoololua natango ndele tapu diladilua ku iue vali kovaaambo vatatu nokomusoomi umue medina longerki jetu.

Oshiponga shomondjila.

Mokushinga ehauto omushingi keshe ta teelua a kale a pashuka shashi mondjila tamu holoka oiponga. Unene mUushimba ndele mOuaambo jo muenjo uomuñu u li moshiponga omoluomahauto.

Hatu shiivifilua kutja mu Suidwes neudo okudja pehovele lomudo fijo kehulilo la Junie (hano etata lomudo) ovañu ve fike 28 ova fja nokuli eshi va hangikua koshiponga mondjila. Ovañu ava 28 ova mana olueendo luavo moiponga eshi omahauto e lidenga ile a mona oshiponga shimue shi lili. Oiponga jatjangaha oja li metata lomudo ou i li 21. Ouduali ovañu, ovatiliane novalaule aveshe kumue, ve fike 17 moiponga i lili noi lili i fike 17. Otu uete kutja oiponga ja hapupala neñgono.

Natu lungameni mokuenda kuetu! Melongelokalunga tamu ilikanenena nokuli: "Omuene, amena ovakuaneongalo ava ve li koilongo noilongo novaendanandjila vokedu no vokefuta u va endife naua!"

Oshitaua oshipe.

Pokati kOmbaai nOmonda opua tungua oshitaua shipe oule uasho eemaila 21. Tashi ende naanaa pomuñgulo uufuta. Ovanailonga vamue va li ve nokukala mefuta, momeva ma-

talala nokuli, manga tapu tungua. Oshilonga eshi sha pula oimaliua neendunge neñgono nouladi omoluoudjuu uasho. Luhapu omepo tai fufile neheke. Oimaliua jo longifua metungo eli oi fike poiponda 289.000.

Oshinima shimue sha uana nantango shi tumbulue osho kutja oshitaua eshi osha longua sha pua manga eehani ñatu inadi pita efimbo olo la lila diladililua oshilonga osho. Okutungua oku okua endeleda naua omoluomashina maua. Omuhona uedu, omuadministrateur D.T.Viljoen je muene okua "patulula" oshitaua eshi.

Okufila oitaua mu Suidwes oshisho.

Edu eli la Suidwes olinene. Oñge omu na oitaua ile noihapu. Moku diladila oshisho osho tashi pumbua efimbo nefimbo tu udite kutja opo shi unifue otapu pumbiua oimaliua ihapu.

Epangelo ledu otali filoshisho oitaua aishe kumue i fike peemaila 17.000. Paife tapu diinua opo oitaua imue inene (hoofpaaie) i kolongue noteja. Momido 15-20 dokomesho pua tengenekua eemaila 1.400 doitaua inene tadi ka kala da kolongua noteja. Oshilonga eshi tashi pula vati oiponda eemiljoni 23.

Oiendifo jovene oja hapupala jo neñgono. Momudo 1950 omua li oiendifo ngashi omahauto luapo 1000, neudo i fike 30.000.

Tala, ounjuni tau lunduluka nokuhuma komesho ne!

Ohoromenda novakuañgala.

Omuhona uotetetete ou oshilonga shaje ashike shokuhumifa ovakuañgala komesho okua nangekua moshilonga eshi kohoromenda. Oje mnr. MacIntyre, Boesmansake - beampte mepangelo loinima jovalaule mOvenduka. Enangeko laje tali lalakanene opo ovakuañgala va mone oipaluifa i dule javo vene nopo okukala kuavo ku jele ku dule okuo kuavo kuoshito. Omush. ou ota hovele oshilonga shaje mu Grootfontein-distrik kombinga ja Betshoanaland. Okua hala okuendaenda mokati kovakuañgala vati.

Oshinima sha fa eshi sha ningua kohoromenda tashi tu hafifa.

Otu udite kutja oshilonga shopokati kovakuañgala oshidjuu neñgono. Ou a hala okukala navo ta pumbua a kale e na eif no la kola loku va kuafa. Tava pumbua neñgono ekuafu letu shili, unene oujelele uE-ndjovo da Kalunga.

KU PRETORIA.

Aanongekwa yenongelo lyaasitagongalo mu Stofberg Gedenkskool, oya ka talela po aanongekwasita ya yinangerki ku Pretoria eti 27 Augustus.

Ku Pretoria otwa thiki ko ongula pehito lyomambo.

Omuwilikihapu okwa pandula sho twa thiki ko nokwa pe omuprofessori (omulongi gwaasita aatiligane) a tamekithe oshigongi shetu.

Okwa lesa 1 Kor. 3:9-4:5. "O tse aalongi pamwe na Kalunga", "aayakuli ya Kristus nomalenga giuholekwa ya Kalunga," eta kwatele komeho megalikano

Ehuku lyoonkundathana olya li: "Oshilonga shetumo konakuyiwa pokati ka yinangerki nomumwanangerki." Ekwathathano pokati ka yinangerki nomumwanangerki.

Aapopi oya li 10 aatamekithi yoonkundathana. Aapeha ya yinangerki noyomumwanangerki.

Moonkundatha omwa holoka kutya Omua okwa gandja oshipango evangeli li uvithwe apehe. Ihe oshilonga shika itashi longwa nande.

Aasitagongalo ya yinangerki otaa tala etumo olyaahongi, yo, oshaa taa koleke omagongalo gawo.

Opwa dhimbululwa wo, kutya aakwanegongalo ihaa longo oshilonga shetumo nando ya lombwelwa esiku ya kolekwa kutya "indeni mu ku uvithe eso lyOmuwa ndongo ote ya."

Pwa konekwa wo kutya eimbo enene lyokumba evangeli olyo uukwashigwana w' uunanena. Aakoosa siku limwe oya hala omukooosa te ya uvithile Omuzulu otu uvithile ashike aazulu nosho tuu. Ompumbwe yokwaatseya oshiindia otayi eta enyengano okuuvithila aaindia evangeli.

Ihe aasitagongalo yomagongalo gaatiligane oye nokulonga pamwe naahongi naasitagongalo aaludhe, opo evangeli li falwe apehe. Uukwashigwana itau manga omuntu, oshoka Jesus okwa ti, evangeli nali faalelwe ayehe.

Aanegongalo ya yinangerki noyomumwanangerki oye nokukala aataandelithi yevangeli.

Omuwilikihapu e tu lombwele manga "tu ka kwate ontsezi kolwiinga". "Ndee sho twa mana okumang'omubandja" otwa yi kondjugo yomambo moka aantu haa leshele. Oko twa talithwa omanyolo omakulukulu gaangipiti naambaabeli nomambo tatu ende momikala dhoosikopa dhi nomambo "kage shi kathindi noga nyolwa komakologo ga tek' omeya kokule." Ongulu onene yi noongulu dha londathana "munaangwe taal" Sho twa zi mo otwa ka tala "Aula" engulu lya kolele hali ningilwa iigongi.

Otwa ka tsikila natango oonkundathana dhetu.

Aalongwa oya pandula sho ya mono ompito okukundana wo shoka shili li momagongalo gaaludhe noshinenenima osha li owala kutya: "Kape nongerki tayi kala kayi na oshilonga shetumo, oshoka omwenyo gwongerki ongele tayi longo oshilonga shetumo." Ongerki ongundjuka otayi pumbwa ekwatho lya yina ihe yina oku nokupulakena omumwana sho ta ti wo, opo e mu kwathe.

Oshilyo kehe shongerki oshi nokulonga oshilonga shetumo.

Sho tali ka ts'ongolo otwa hulitha negalitano, e tatu yi kenongelo lyokuwiki kongerki ya Wesley - Methodist - notwa galuka ko tali yi mo tatu shuna kegumbo, noku Stofberg Gedenkskool.

Otwa nyanyukilwa oonkundathana ndhika molwoshilonga shetumo lyevangeli.

Eeno, otse aalongi pamwe na Kalunga, shili.

Jason Amakutuwa

AALESHI TAA NYOLA

OLAMBA JETU JA FIKA NAUA.

Ovamati vomu Walvisbaai, veongalo lokOkatope ohandi mu shivifile olupandu leongalo letu efiku olo olamba jetu ja fika. Onde i tula koshiudifilo nonda lesa omadina eni, ava mua ninga ongalo mu landele eongalo leni olamba iua (shihuaalala). Otu shi shi oivilo jetu ja Krismesa otai ka uanenua koujelele ou u li mola-mba ei.

Osho jo ovamati vomaongalo amue va kuafela jo, ngashi tave shi dulu, ohandi ti ndangi ku vo unene Kalunga ne mu jambeke. Ovamati vamue ovo ku Angola, vamue ovakatolika nokuli, akuetu, oshisho eshi sheni ohatu shi pandula, ngashi nje vene mue shi tumbula omua kala noshisho. Omukulu uonale osho a ti: "Kahuhena hadela njoko, njoko onale e ku hadela."

Ovamati vongerki, hadeleni ongerki jeni.

Jaloo, longeni medina la Jesus Omukulili. (Heb. 6: 10.)

Paulus Andreas.

POÑELE JOMUPAANI.

Mokudana oshivilo shEtummo sheedula efele mua holoka shili oinima ikumuifi, noi-popiuanima jamo ihapu ja punika unene omepo jange.

Mokutala ouhapu uongundu ei kua li ja ongala po, pamaludi ovañu aveshe; opo ndi kale ngeno hai shi lipula nondi lilonge okushi uda ko nauanaua; Onde litula poñele jomupaani.

Onde lipula ngaha: Ovatiiane ava, vehe fi eedaleledamu. Va tauluka omafuta malemale, va fija ko oilongo javo i nomepo nokukala kuua. Va fija po ookaume vavo vaua, omaumbo avo maua, omapata avo nooina noohe nokuli; ndee tave litula ngaha mokati ketu, tava longo notava popi ngaha. Ovañu ava eshi tava popi oshi li po, oshi nekuafo, oshi shii ku lineekelua noshoshili.

Mokukala moshivilo, nda kendambala naanaa okukala pehovelu fijo opehulilo no inai kanifa po nande okafimbo kokupulikina ou kua li e nolufu lokupopja. Ndelenee ope na omatumbulo amue a popiua komuhongi umue nda kala noku e lipula shili efimbo lile.

Omuhongi okua ti kutja moshongalele shofumba va popja ngaha: "Komafiku a huuninua, katu shi shii eshi tashi ka ningua ko, ndelenee shimue tu shi shii, Omuene Jesus oku nokuja."

Omatumbulo aa, a anjena shili momadiladilo angé. Shiimba to pula: "Oto lipula nee shike apa?" "Eeua, hai ja ndi ku lombuele: Luhapu mokulongifa efimbo lange, ombinga imue jamo nde i longifa mokulesha omahunganeko.

Oshinima shimue ashike eshi hashi holoka mo naua naua; Osho tuu eshi kutja Omuene Jesus oku nokuja. Kombinga jange omatumbulo aa a popiua komuhongi ou, a kuafa nge unene kutja kashi fi mboli oshinima shange okushiiva kutja pomafiku a huuninua tapa ka kala shike. Tapa ka ningua shike. Tapa ka holoka shike, notapa ka monika shike, ndelenee shimue ashike nda uana okushiiva osho tuu eshi kutja Omuene Jesus oku nokuja. Hashiivo olo ngashi lili meemepo dajata ile li li movashunimonima, movadinikalunga nomovanaihelele aveshe ndelenee, eshiivo tali mu longele. Eshiivo tali duljika kuje. Eshiivo tali mu teelee neshiivo tali mu lilongekidile.

Omukuetu eshiivo loje oli li kombinga i lipi po?

S.Shikongo

M. S. Hitombo Tsumeb, ota kundu ovafita vape neenjovo edi; Oñgenda nai kale na nje nombili ja Kalunga Tate jetu nojOmuene uctu Jesus Kristus mokudiinina oshilonga mue shi ifanenua kOmuene.

1 Kor. 1:4-10 nomaimbilo 493 na 517.

S. Shaningua Jona ota ti: Onda li nda nyanukwa meti 20. 6. 59 sho twa popithwa komusamane goku Luderitz. Okwe tu popitha noohapu ndhi Joh. 10:11-18 ano, omukwetu, sho nda li nda nyanukwa. Ote ti wo, tse atuhe oya Jesus. Oye a hala tu ninge oonzi dhomuusita we. Ote tu pe omwe-nyo omagano. Mat. 11:20-30

Johanes Ndokosho, Windhoek, ota ti ngeyi: Tonateni ne mu galikane, oshoka inamu tseye ethimbo Omuwa te ya Mat. 24: 42. Otandi mono aantu taa si, ihe ekota iikolitha. Tu galikaneni shili, opo tu kale twa kola mu Kristus.

J. H. Shifotoka, Walvisbay, oku nenyanyu enene molwokambo haka Ongundumbimbeli, nota pandula omunyoji gwako omusitagon-galo T. Andreas. Aantu mboka haa gongala miigongi, Kalunga ne ya kwathe. Ota hehela wo kaa dhimbiwe. Fil. 1; 3-11.

F. H. Itamalo, Windhoek, ota thiminikwa koshinima shika omolwegongalo lyaandjawa tali tembukile kehala li ili, ihe kape na iihenguti okutungu ongerki. Ota indile aamati yegongalo lyaandjawa Oshakati ya umbe ongalo, opo ya kwathe pu monike iitungitha nando iipeleki ano.

A. Namene, Usakos, ota ti: Elaka ndyoka lyOmuwa Jesus te tu lombwele ta ti: „Loungekidha egumbo lyoje, omwenyo gwoye, oshoka ongoye omusi oli shi okudhigininwa. Omulumentu gwembongolo nomuwambo oya kondjo nomuwambo okwa tsu omukwawo noshimbele, nonguka okwa hulitha pethimbo tuu ndyoka. Omudhipagi kee nomwenyo gwaaluhe.

J. A. Mungungu, Tsumeb, ota ti OKrismesa ojo oshivilo shinene shili. Ohatu teelulua tu je mo neemuenjo da longekidua kOmepo ja Kalunga. Tala Luk. 2: 1-20. Tu li pule jo kutja omoluashike omona uokombada euja okudalelua mounjuni. Ota pula shike mu ame nomu ove?

Alfeus Namwiha, Oranjemund, ota kumagidha aamati mboka ye li mUushimba yadhiginine ongundumbimbeli nokudhimbuluthathana Okatekisa. Inamu dhina ompito ndjika. Omuwa okua hala e tu pe omagano. Tu hedheni kuye.

OLYE A KANITHA?

Olye mwene gwokandoongi hano?

Ka kana esiku 14 Oktober nuumvo esiku etitatu koshiwike. Oka kanene kOndangua mokukonga epungu. Oka landula uundongi ulwe wa li wu niwe kaakulukadhi ayeke sigo okOnyaanya kOnakandi (Uuhehe). Okandoongi hoka okaludhe okatokele mela okathona okafupi ka tetwa kokutsi kwokolumoho. Oke na omunya mothingo. Omiya ndhiya dhii nguma ndhii!

Ngoka we ka kanitha ki ila ko mbala manga twe ka dhiginina. Aakwetu, mboka mwaa hole okuilandela Omukwetu taleni ihe sho ta kwatha nomoku mu kongela iinima yeni ya kana. "Kalunga pamwe natse".

Aadhiginini yako oyo
J. Panduleni Katangolo na
Selma Iitembu.

Abisai S. Ijuhwa, Evangelisteskool, Engela, ta ti: Ou li peni? Joh. 13: 21-26. Oonkondo dhoye odhini po ngashingeyi? Omuyuni mbuno nenge ombono tau ya? Owa tegelela lye? Ou li ngiini niikolitha nOmuwa Jesus, owa kutha po lye? Endelega u ethe iihuna, opo waa yonuke.

Jesaja Humbilemo, Okahandja, ota kumaida ovamati ta ti: Ondi na enjeme ku ava tu li kodalate shashi mu na eengudu mbali. Jotete ovava ve li naua moilonga javo nombili, fijo va uanifa eehani 18. Ongudu oñivali ovava ve li ninga eesondolo dongaho di he na omutumba apa ta tokelua hapo ta nangala okua fa ashike oshifitukuti. Omufu a tja ngaha ota funda po ngenge a mona omufu mukuauo.

Vahapu va ekelashi omadina avo. Oihuna omufu atjangaha ngenge ta vele ota fi ashike ongoshifitukuti.

OÑUMUAFO KOVAKUANJAMA

Ame omuhongi Björklund, ohandi mu kundu nombili noku mu halela ouua aushe ou tau pameke eudafano liua nombili mokati ketueni atusheni.

Moñumuafo ei onda hala oku mu shangela kombinga jokandada "x" na "h". - Hai ti: nokutja nale ame nda li nda kondjele "x" meeñele adishe apa "h" tai pumbua okupamekua, ndelene paife eshi ame ihai kondjele vali "x" noku i popila.

Omolua shike hano ame nda lundululu eidiladilo lange moshinima eshi?

1) Tete: eshi "x" tai longifua momalaka mahapuhapu, ndelene kai fi "h" ja pama, ndelene "x" ojo "eks". Ava va shiiva oshienlisa, va shiiva jo nokutja moitja ja fa "excuse" ile "example" ile "except", "x" kai fi "h" ja pamekua, ndele ojo eks.

Oñge hai ti: edidiliko "x" inali uapala okuholola "h" ja pama moshikuanjama. Ovanailongo mokulesha kuavo oshikuanjama hava kumuinua eshi pa longifua x.

2) Na vali, ovanduishi venja va hovela okulongifa nale "x" moshikuanjama, inava shiiva naua oshinima osho. Vo ova kendambala tuu shili, ndele pa njengana opo. Pama ovanduishi ava va shiiva omalaka ovabantu (ovakuanjama jo ovo oludi lovanbantu), ohava ti: Heeno, ngeno "x", itai longifua vali."H" otai uana naua, osheshi omukuanjama keshe ou a shiiva okupopja, a shiiva jo okupameka "h" moitja ngashi ngeno "ohuhua" ile "He" ile "huuninua" ile "oihuna" nosho tuu . . . Ame eshi nda pulikina ovandonga, fimumbi hava popi, onda koneka nokutja "h" javo idule "x" jovakuanjama meeño.

3) Molu oshilonga shange shelundululo nda kala mekuatafano novakuluñu va Bibeli-hanganu la England. Fje tua shangelafane jo moshima eshi. Ndele vo va hala tu longife ngeno "h" aike. Tu ha longife vali "x".

4) Nale fimbo nda li mEngela nda shanga omambo ngashi Ondaka JOkaume, Okukula moukriste, Indileni tamu peua, nosho tuu, ndelene inandi longifa "x". Nomambo aeshe a landua po, a pua po sheke.

Ondi shi shii, eiko olo oshinima sha pama. Omufu ina hala naua okuefa eshi e shi ika. Ndelene ovakuetu ne, ame ohandi mu indile komuenjo aushe, nje mu itavele oshinima eshi, nde shi mu shangela. Kashi fi shidjuu, ngenge ehala liua li li momuenjo uomufu. Unene ame hai londola ava hava ende moshilongo nokuhuameka omienjo dovañu molu "x", vo ihava longo eshi sha juka.