

OMUKWETU

No 10

Oktober

1959

UYELELE NOKUUVA.

Mark. 4:21-25.

Inima mbika iyali oyi na oshilonga oshinene. Ongoka a kanitha shimwe shomuyo oye a kanitha ombinga onene yokukalamwenyo kwe kwomuuyuni. Omuwa Jesus a hala okudhimbulukitha aapulakeni ye ya nongele iinima mbika nkene yi noshilonga oshinene komuntu.

Aapulakeni mboka oya li ya tseya nawa oshilonga shonyeka ngashi tashi popiwa mu Luk. 15:8. Payele ndika Omuwa Jesus a hala aapulakeni ye mboka taa uvuko momayeleye ye mu tseye. Oshoka oye onyeka ya Kalunga ye ya temwa kohi yomilema dhevi ndika. Oye uyelele mboka washili tau minikile omuntu kehe wa adhika tau ya muuyuni. Joh. 1:9, 9:5. Ihe ha ayehe taa nongele onyeka ndjika, awe, omboka ayeke yu uviteko. Onkee taa ti: „Ongoka e nomakutsi gokuuva nu uuveko.” Onawa natse wo ngele tatu ipula kutya, Jesus Kristus sho e ya nokwa ningi nuyelele uuyuni, ohatu ende tuu muwo? Ndi shi mboka ye li popepi nuyelele oyo ayeke ye nuyelele, ihe mboka ye li kokule nawo omilema odhi thike peni? Oshilongo sha Kalunga shoka sha kala sha holekwa, Jesus okwe shi eta muuyuni.

Esiku tali ya uuna tashi monika ku ayehe kaayuuki nokaanuuyuki. Uuna taku ningi ngashika olwaadhi talu shela kuuzilo sigo okuuninginino, oshilongo sha Kalunga she ya. „Oshoka kaku na shoka sha holekwa, itashi ka hololwa, nashoka sha holama, itashi ka holoka.” Oto adhika ngiini meholoko ndika? Oho pulakene ngiini evangeli lyombili? Oye ku etele tuu ehupitho nenge otali li ku kutha? „Oshoka ngoka e na, oye ta pewa, ihe ngoka kee na, oye ta kuthwa na shoka e shi na.”

Tiitus Heita.



EILIKANO OMOLUOSHILONGA SHEVANGELI.

Kalunga Tate jomeulu omuholike nomunaeñgono adishe, oHe jOmukulili uetu Jesus Kristus. Ove ue tu hololela eeñgono doje mu Jesus Kristus, Omukulili uetu, no ue tu hololela oukalunga uoje uaalushe okeudifo levangeli lOmona uoje omuholike, ou ue mu hokua, omanga omafimbo a li e he po. Oje tuu ou a kala oshiholekua shoje shomeumbo loje no shomoule uoukalunga uoje uaalushe. Oje tuu ou ue mu tuma mounjuni, a uanife oshilonga osho ue shi mu ufila, okuudifa evangeli levadimo laalushe, opo fje tu ninge ovanamuenjo kulo no tu mone omuenjo uaalushe.

Oñge hano, Kalunga ketu, tu kuafa shili, fje tu li tambule neemuenjo di na ohokue momakanja ovaudifi. Va pa jo eeñgono neendunge nohoole nouladi, opo va kale ovamati voje tava hokolola evangeli loje omounjuni ou ua fingua no tau hulu po, na vo jo va hupifue momambungu nomeeñgoshi dounjuni ou no movakaenakonasha nefjo lidjuu lOmona uoje Euifa.

Kalunga ketu, amena jo oshilonga sheudifo levangeli mounjuni aushe, omomadu e lili noku lili. Novakuluñu ava ve li mu Suomi va pa oujadi uefimano leendunge doje. Na ava jo tava longua mokati kavu omoluetumo levangeli va pa oujadi ueendunge doje, opo va je moilongo noilongo okuudifa oshilonga shefjo lOmona uoje, opo aveshe va kuatue koutile no va shive nokutja ounjuni ou otau hulu po.

Omushiti omunamuenjo, kuafa ovafita vomaongalo, va file oshuunda shoje. Na vo jo va pa eeñgono doje, novalongi aveshe novaevangeliste novakuluñu vomaongalo novataleli nava jo tava diladila okuudifa oshilonga shehupifo mokati kovapaani.

Kuafa jo ovadikamaumbo, va kale ovajuuki, novanjasha jo ovamati

oukadona, va kale ovalidiliki moimima ii no ve liameke kuove, Omushiti omuholike. Omueene Kalunga, holola oukalunga uoje uaalushe movañu voje, vo ve ku shiive ove auke Kalunga ka shili, Omushiti uavo na ou ue mu tuma mounjuni, Jesus Kristus, omuvale lua komushiakano pokati keulu nedu.

Omushiti omuholike nomunamapangeloñgono aeshe, tala nolukeno ove u file oñgenda ovashunimonima. Va alula ove u va minikile noujadi ueeñgono doje, opo va kafjuulule jo omuenjo uaalushe.

Kalunga ketu, kuafa ove u jambidide ovapapuduki novaitaveli aveshe mounjuni. Va amena koikungulu jounjuni ou, ove u jeululile oivelo eudifo levangeli loje moilongo aishe, opo aveshe va ude engelengedjo levangeli lehupifo loje.

Ohamba Tate Kalunga, amena jo oshilonga sheudifo loje mOuambo, novatumua ava ve li va pa eeñgono doukualushe uoje. Tate omuholike, tu kuafa, tu lidilike ouii aushe, fje tu ku kalele mokuhamonika omoluoshilonga shOñepo joje Ijapuki no medina lOmona uoje Jesus Kristus. Omueene Kalunga, ino tu pilamena, ahaue, talelifa oshipala shoje kuffe. Kuafa jo ava tava japulilua oshilonga sheudifo leendjovo doje domuenjo.

(Naame jo, Omushiti omuholike, kala na ame mounjasha uange. Ino efa, ndi liendele mounjuni, osheshi omu na oikungulu tai tuala vahapu. Penge Oñepo joje Ijapuki, opo ndi kale omunjasha uoje e ku uapalela, opo jo ndi fjuulule omuenjo uaalushe opehulilo lomafimbo.)

Oñge hano, Kalunga ketu, ohatu ti: Hambelelua alushe fijo alushe koiuana aisheishe! Amen.

(Eilikano eli ola tumua ku Mateus Shikongo Tsumeb.)





OMUKUETU

Oktober 1959

OMULILO.

Aatiligane oye neyeletumbulo tali ti: "Omulilo ogwo omumati omuwanawa, ihe omuhona omudhigu". Otali ti: Manga omuntu ta pangele omulilo, otagu mu yakula nawa miinima oyindji, ihe shaa tuu gwa gwaya melelo lye notagu tameke oku mu pangela, nena iihuna ayike. Omagumbo taga pi po, iinima ayihe tayi yonuuka, eeno, aantu yene wo otaa vulu okumona iiponga nenge okudhipagwa nokuli.

Pethimbo ndika lyokwenye omulilo ogu nokutonatelwa unene, opo gwaa ete iiponga, oshoka akuhe okwa kukuta nayi notaku hwama nuupu.

Iiponga yomulilo tayi kelelwa ano ngiini?

Onawa, ngele tatu konakona iiponga mbyoka, tu tale, nkene hayi holoka.

Iiponga oyindji oya zi mpoka, uunona sho wa dhana nomulilo. Ohaluka oya fala omulilo popepi nihenguti yegumbo nenge popepi nondunda, noya hwama ihe. Tu tonateleni ano uunona, waa mone ompito okudhanitha omulilo nenge okudhana pomulilo, manga aakuluntu kaye po. Tu ya fatululileni nawa oonkondo dhomulilo noku ya kumagidha, yaa yelekele nando okudhana noshinima shi thike mpoka.

Oondunda dhoshiwambo na unene iihenguti yegumbo otayi nenepeke mbala oshiponga notayi fala omulilo koombinga adhihe. Onawa ano, sho tapu tungwa ngashingeyi oondunda dhoombasikena. Ando nge tashi vulika, iihenguti yaa longithwe unene momagumbo, nenge tu tye, omikala dhaa ninge odhindji unene.

Etameko lyiiponga oyindji olya li mpoka, omuntu sho kwa ka kongasha pethimbo lyomilema nota minikile nonyeka nenge noshiti sha kuthwa meziko. Ohaluka yowala ota yelutha onyeka ye etayi gumu kondunda, oyo notayi hwama. Ando a li e notamba, ando oshiponga inashi holoka, oshoka omulilo ngoka gu li molamba, ogu li meni lyekende, onkee itagu vulu okukwatathana niinima hayi hwama, ngashi ihagu gandja wo oohandje.

Omukalo omupu gwokukelela iiponga yomulilo ogwo okuyagaya nawa megumbo, oshoka iiyagaya oyo tuu hayi hwama nuupu notayi taandelitha omulilo.

Otu nokukumagidha wo ayehe mboka haa nu omakaya, opo ya

MONDJILA JOKU JERUSALEM.

Mondjila joku Jerusalem Jesus okua lombuela ovahongua vaje ashi she shoka she mu teelee mu Jerusalem. Mark. 10:33. Ndelene Omukulili okua li e shi naua He oku li naje. Joh.16:32.

Omuhongua ua Jesus oku na okupulua jo omapulo madju mondjila joku Jerusalem shomeulu. Epulo lili pomuendi uondjila ei olo oikoluifa. Ojo ja ninga vahapu ovapofi okuenda ondjila ei tai i ku Jerusalem. Vahapu va tuika koikunuuu. Mbela ove ova didilika sha tuu nande oshopalutu.

Omu mOukuanjama omu na etuiko linene ovañu ava va kala peendula 1911 oumatjona noufukuena paife vahapu ova tuika oshitananaa inava fika moshitananaa natingo.

Oshike nee she va tuikifa nga-

dhimbulule kutya, ohaa humbata aluhe iinima mbyoka tayi vulu okueta oshiponga. Unene omuntu oku nokuitonatela, kaa kwatwe koomposi, manga ta nu omakaya. Yamwa oyi ifike po ngaaka noya sa.

Oomboka haa longitha ombenzina nenge haye yi pungula momagumbo gawo, naa kale ya kotoka unene. Ombenzina otayi hwama, shaa tuu omulilo gwe ya popepi kashona. Okunwa omakaya popepi nombenzina oku nokuindikwa noonkondo.

Oongoka ta teme omulilo kombuga nenge mokuti note gu etha inee gu dhima po nawa, oku shi shi nokuli, oye omukolokoshi nota vulu okugeelwa kaapangeli yoshilongo.

Ngele oshiponga shomulilo sha holoka, oshi nokukondjithwa mbalambala. Kehe ngoka te shi mono, ne endeleele oku ka dhima po omulilo. Na kuge onkugo, opo aantu ya gongalembala. Iilonga yokudhima po omulilo oyi li po yopaali: okudhima po iinima mbyoka ya hamwa, nokukelela omulilo, gwaa tandele. Omeya ngele ga pumba, aantu naa kambadhale okusiikila omulilo nevi. Ehahi lya tutikwa olyo oshikondjitho oshiwawana. Iihenguti, mbyoka yi li popepi nomulilo, nayi dhikululwe mbala. Ondunda yoshiwambo ngele ya hwama, nayi kuthwe ko, yi ye pevi, opo oohandje dhaa mone ompito okuadha kokule.

Aawambo yamwe oya tila okukondjitha omulilo ngoka gwa hwamekwa kolwadhi. Uumbanda mboka nau ethiwe owala. Ngashi ohatu kondjitha omikithi ndhoka Kalunga te dhi pitikile oku tu hepeka, osho otu na wo ompito okukondjitha uuwinayi kehe nokuipopila kuwo. Kalunga mwene e tu pe oondunge noonkondo, tu shi ninge.

ha? Ove oto ti ngahelipi? Ame ohai ku lombuele oinima ivali. Shotete osho okandongo.

Ndelene oimati ei jokandongo ohai ima peni hano? Ndi shi omoluhaelo ngaha. Hano lungama oluhaelo. Tala omesho okomutue nge ta tuika kokandongo mbela a okomuenjo otaa kala ngahelipi nee?

Oshitivali osho oikoluifa. Oikoluifa otai eta oshitanananaa. Lungama hano oikoluifa u ha ninge omupofi uokolutu nouokomuenjo.

Ngenge ua ningi omupofi uokomuenjo ondjila ei ta i ku Jerusalem shomeulu oto shiva tuu okuenda najo?

Omu mOukuanjama omu na ehutuko linene.

Otali etua mbela koshike? Otali etua kefiululo loikunua. Ovañu vahapu tava shikula oñgedi ei joupofi nojoulai. Tai ti oikunuuu ojo oukengeli. Ngeno hai tumbula eendunge do moujelele edi tadi ti: Oikunuuu ojo oulai munenenene u li konima jomaulai aeshe. Oshili kape na oulai u li konima joikoluifa. Ngeno to shiva okunjamukula epulo olo ngeno, to tula po mbela oulai ulipi konima joikoluifa? Mbela to ti: Oluhaelo. Ondi shii oluhaelo oshimati shoikoluifa. Ngeno oikoluifa kai po, ngeno oluhaelo olinini mounjuni. Oikoluifa ja indjipaleka unene oluhaelo.

Oto hale okuaanja, eua, hano. Ngeno u efe oikoluifa eedula nge ñano nge mbali opo u ka koneke naua oulai uoikoluifa.

Ouditeko tuu 1Kor.6:9-10, Gal. 35:19-20. Oto shi itavele tuu shili. Ovañu tava ende meendjila da tja ngaho itava dulu okuenda nondjila ta i ku Jerusalem shomeulu.

Enjonauko linene otua mona apa la ndja nokutja, efiululofimano, omukengeli ita kala ita nu oikoluifa. Ndelene mOukuanjama ueehamba dinja donale di heshi Kalunga nande kashili, oda koneka oulai uoikoluifa. Osheshi oñgolue inai tokolifua eendjovo doshilongo nande ile eendjovo dopaukuluñu uoshilongo.

Ndelene momatokolo opaife omujadi eeñgolue adike. Efiku loihokolola ovatokoli tave li longekidile oikoluifa ja lukua eendunge opo nee va ti omutokoli ueendjovo a tokole ehe na etilo lasha. Ndelene ou uete nee shike? Omuñu etokolo okue li peua komuene uaje e mu lenge e mu tula kombanda. Ndelene oikoluifa tai kufa mo eendunge netilo liua.

Omutokoli, ou na tuu elalakano nondjila ei tai i ku Jerusalem? Ohamba imue jovaisrael ja kala pahalo la Kalunga. Eps 119:33.

Omutaveli oilonga jaje aishe otai holola oje te ende nondjila joku Jerusalem shomeulu.

Wilho Kaulinge.

OKAANDJETU

OMAKUNDO EENGERKI MOSHIVILO SHETUMO KENGELA.

Ekundo lOngerki jomOuambo-kavango eshi la etua komushamane *Efr. Angula*, ovahakuli va imba: "Ku Jesus nda pewa elago lya pwa". Konima jeimbilo eli moshivilo mua etelua omakundo a dja keengerki dikuauo nomatumo makua. Apa otapa shikula omakundo oo a etua mo.

Omukulufutumu *G. Krause* uetumo la *Berlyn* okua eta ekundo laje neendjovo edi: Jes. 11:9 na Oil. 18:10 Hatu mono eudaneko lotete la uanifua medu eli. Ovañu vahapu tava hepaulula Kristus oje Omuene. Naava ve li meembila tava teelee enjumuko lovana va Kalunga. Ndele edu eli inali jada okushiiva Omuene. Oje ta ti: Ondi na vali ovamangua medu eli. Okushiiva Omuene nomedu eli jo inaku fe omeva a tuvike oshitako shefuta.

Omakundo etumo lovandouishi a etua komuhongi *J. Baumann* neendjovo Eps. 126:3 a ti: Omoluashi tu kuete efiku eli la kula? Omoluashike tu na oñito okutumbaleka Omuene. Okue tu ningila oinima inene, oñge tua uana okunjakukua. Okuhafela Omuene taku eta omukumo oku mu longela.

Omuhongu *Baumann* okua lesa jo ekundo la dja komudoktora *Vedder* kOkahandja. "Momapja omOuambo namu holoke oiimati joñepo. Gal. 5:22."

Omuuilikingerki *H-K. Diehl* okua eta omakundo Ongerki oñgualuther mu Suidwes-Afrika. Atushe ovamua-inafana tu udite ekuatafano itali di apa eshi omuhongi *Hahn* a findikila ovatumua ovasoomi kOuambo, ndelene tali di apa eshi ootatekulu va li ve nekuatafano. Tua hala okujandja omaano oo taa holola ekuatafano. Omaano oa shike mbela? Omaano oo eudaneko eli: Onje ovatumua ovaholike, ovam ti ngengetave uja kOushimba, otua ha'a oku va tambula naua. Omuuilikingerki *Diehl* okua fikifa jo omaano makua. Omaano aa okua dja komaongalo ongerki ojo. Momaongalo omu na ovaherero, novanama mumue novadilotua neembastera. Ovo va tumama omaano eshi va uda oshiponga shokOnandjokue. Oshiñimbu shimue ngenge tashi vele, olutu alishe otalu vele. Ekundo longerki ei lokukunda etumo olo: Eps. 118:4-6.

Ekundo lOngerki jovandouishi la lesua jo nomushamane *Diehl* okua eta omaano ajo jo.

Omubishofi *H. Fosseus* mOngerki okua tja: Ohandi mu etele ehalelo yaazulu a eta omahalelo aje nedi-



ladilo eli a hala okuninga ngaashi omupastori uoñumba a ilikana koshililo: Tate jetu, oikulja ei tue i peua nena, tu pa jo efiku keshe. Moilonga jetumo hatu loloka, ndele efiku limue hatu shivua koshivilo sha kula shiua. Shiimba Kalunga te shi itavele Afrika.

Omukulufutumu *N. M. Follesoe* a eta jo ekundo letumo lovanorvee nokua popja ñumbi mondjila a mona posasiona joñumba eendjovo edi: Ino tila, ondi li pamue nave. Ofje itatu shiiva oshike tashi uja komesho, ndele otu shii ou te uja. Ngenge hatu mu itavele, itatu dulu vali okutila, shaashi otua shiiva ou te uja.

Omufitaongalo *J. J. Sheepers* a eta omahalelo Ongerki oñguareformi jeemburu nokua tja jo: Tu na ehafo oku mu pa omaano okutungululifa Onandjokue. Oshilalakanenua shetu shimue ashike osho efimano la Kalunga nokutandavelifa evangeli.

Omufitaongalo *J. T. Potgieter* uokOkahandja a popja medina lovakulukadi nounona ongerki jeemburu tava popifa ovakaiñu. Ounene uoshiuana tau jelekua peputuko lovakulukadi. Omoluasho ovakaiñu vetu tava ilikanene ovakulukadi vomedu eli. Otua eta omakundo onunona novakulukadi omaano okukuafifa Onandjokue nokutandavelifa eembibeli. Oje a lesa jo Eps. 118:42-24.

Omuhongu *L. Kroll* uokOdibo okua tja: Ohandi mu etele ehalelo eli medina longerki jetu. Kalunga

na punike oshilonga sheni momido 100 odo tadi shikula.

Omupateri *Heimtrichs* okua eta omahalelo aje nokua tumbula: Eengerki tadi longo da shaama, itadi kondjifafana. Ohole i nokupangela pokati keengerki neengerki. Otu na eteelelo ohatu ka kaleni meulu limue. Ouua uongerki jeni itatu u dini shaashi muuo otamu di ouua uongerki jetu.

Omupateri *P. Kress* kOshiku-ku a eta jo ependulo laje nokua ti jo: Inamu dimbua ovakuluñu veni ve mu longa inamu dimbua okupandula. Okua pandula jo eshi tava dulu okujakulafana moihakulilo.

Omudohotora *Opitz* okua ti: Otu shi shii oshilonga eshi hashi longua moihakulilo jeni inashi dja koilonga ipu, osha dja koilonga idjuu jomido dihapu. Ohatu pandula eshi hatu itavelelua okulonga pamue. Ohatu dulu okuenda neendjila edi tue di peua dopakriste.

Omufitaongalo *A. Kukuri* kOkahandja okua tumbula eendjovo Mat. 13:11 nde ta ti: Oshilongo sha Kristus eshi tashi uja, itashi monika. Osho oshinini pehovelu. Pandjovo edi omuti ua kula shili. Paife otu li koshi jomuti ou. Eshi handi tale oiimati ja holoka momuti, oiuaana aishe je uja meongalo ja tungu oihadila jajo momuti omu. Inamu loloka okukala momudile uomuti ou. Mu hambelele Kalunga eshi a diinina oshilonga shetumo.

Omuuilikishitaingerki *L. Auala* a li e nokueta omakundo okoSoomi jo, ndele omolu efimbo la pua po, okua udaneke a ka ete omakundo aje komaongalo. Ohatu mu teelee nohokue.

Omushamane *L. Auala* okua hulifa oshivilo eshi shiua neilikano. Omolu ovaenda vetu omuhongi *A. W. Björklund* a ilikana jo moshienglisha.



Ofje atushe ovauambo otua longua koshiongalele eshi ñge ongerki jetu ja kula. Otashi holoka mekuatafano lajo neengerki dikuauo. Ovañu nge tava ifanua komadu okokule ve uje koshivilo kOuambo itava ti vali: Openi? Ove shi shi okOngerki jomOuambokavango. Mokutala ovaenda ovaanglikani novaroma tave tu udifile, ohatu toñua apa kutja Kalunga umue auke. Nakufijapo ongerki jaje nokuja ku imue, oje ina shiiva Kalunga.

Erastus Shamena.



REINHOLD RAUTANEN.

Kuku Nakambale Kanene nomukulukadhi gwe Frieda Rautanen oya mona uunona uheta. Utano womuyo owa mana oondjenda dhawo, manga inau adha koskola. Aa- nona yatatu mboka ya hupu, mboka oya ningi ayehe aatumwa yevangeli. Kuku Johanna opo e li natango mokati ketu kOlukonda. Omumwayina Anna Rautanen okwa longo wo mOwambo okuza komumvo 1899, sigo okwa hokanwa komuhongi Tönjes gwomu Rynse Sending nokwa longo pamwe na ye mOukuanjama nopalwe wo. Omukuluntu gwaakadhona mbaka Reinhold, oongoka a landula osheeli Henrik, okwa kala omuuvithi gwohapu dha Kalunga uule woomvula 25.

Karl Christian Reinhold Rautanen okwa valwa esiku eti 23 lya Augustus omumvo 1876 kOmandongo. Ano okwa putuka mOwambo nokwi ilongo okupopya oshindonga nuumatyona wopuushiinda. Ihe oye ina pitikwa okukala mOwambo ethimbo ele. Omumvo 1885, manga Reinhold a adhika a gwani- tha oomvula hetatu, aakuluntu ye oye mu tumu koSoomi, a ka putudhwe mooskola.

Uule woomvula 17 Reinhold okwa kala kokule nOwambo, moka a valelwa mo. Lumwe aluke moomvula ndhoka adhihe aakuluntu ye ye ke mu talela po koSoomi. Reinhold okwa kala moskola yepatudho nomoskola yaahalithi nomoskola yaatumwa, sigo okwa yapulilwa uuhongi omumvo 1902 nokwa tumwa ihe kOwambo, kevi lyaandjawa. Okwa lan- gekwa kOlukonda, a kwathe omu- samane he miilonga ye. Omumvo 1904 kuku Nakambale okwa yile ishewe koSoomi. Mokugaluka kwe pamwe na ye opwe ya wo omuyalekwa gwa Reinhold, edhina lye Rosa Karsten. Aagundjuka mboka oya hokanithwa

mu Desember omumvo tuu ngoka 1904.

Kuku Nakambale nomumwana Reinhold oya yakulathana nawa me- gongalo lyokOlukonda. Omwalu gwaa- kriste ogwa koko noonkondo oomvu- la ndhoka. Omumvo 1909 pethimbo lyondjala ondhigu aatumwa ya ka- mbadhala shili okukwatha aanaluhe- po. Oluhepo lwokomwenyo olwa li wo olunene, oshoka iidhila yuupagani ya manga natango nayi oomwenyo dhaawambo, Reinhold Rautanen o- kwa li a dhimbwa oshindonga, manga a kala koSoomi, ihe okwe shi ilongo ishewe mbala nokwa dhiginine okuu- vitha nokulonga aantu.

Omumvo 1913 Reinhold Rautanen negumbo lye oya ka fudha ko- Soomi. Iita iinene yuuyuni auhe oye ya imbi okugaluka mbala. Omumvo 1917 Reinhold Rautanen okwa mono ompito okuya kOwambo a piti kiilo- ngo ya Siberia noya Kiina, ano ko- kulekule kuuzilo. Ihe omukulukadhi gwe noyana oya kala koSoomi, yo inaa ya we kOwambo.

Reinhold Rautanen okwa kwa- tha nawa he nokwe mu mangulula miimpwiyu oyindji, opo a wape oku- kalela elundululo lyOmbimbeli. Ano egongalo olya silwa oshimpwiyu ku Reinhold, oye nokwe shi ningi wo nawa, oshoka okwa li a tseyana nawa omadhiladhilo gaawambo nokwa li e ya hole nomwenyo gwe aguhe.

Oyendji oya li ya dhiladhila, Reinhold Rautanen a kale omutsikili gwoshilonga sha he, ihe Kalunga ine shi utha ngaaka. Kuku Nakambale Kanene sho kwa hulitha oondjenda dhe mu Oktober 1926, omumwana Reinhold okwe mu landula mu Maart 1927. Aasoomi naawambo oya yuu- lukwa noonkondo omuhongi ngoka omunambili nomudhiginini.

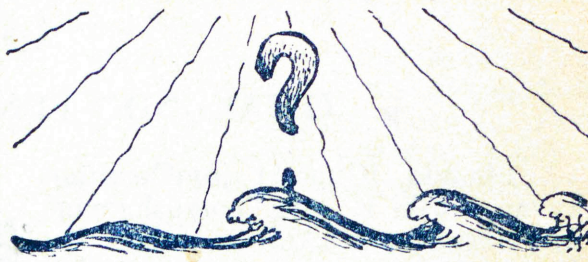
Pa Irja Kilpeläinen.



EPULO TALI YAMUKULWA.

Aaleshi yetu oya tameke oku tu pula: Irja Kilpeläinen nguka te tu hokololele aatumwa aakulu, oye olye noku li peni? Irja Kilpeläinen oye ofeilaini gumwe gwokoSoomi, ngoka e li wo miilonga yEhangano- tumo, nando ine ya huka kOwambo. Oku nomagano gokunyola omambo. Okwa konakona oombapila oonku- lu nokwa nyola embo li nedhina „He lähtivät kauas” (Oya yi koku- le). Olyo otali holola aatumwa aa- kulu yomOwambo. Iinyolwa mbi- ka, mwe yi lesa nuumvo mO- mukwetu, oya lundululwa membo ndyoka nokufupipika.

E. J. P.



ETHIGATHANO LYOOVELISE DHOMO- MBIMBELI.

Mpaka owa tulilwa po ethigathano. Oto pumbwa owala Ombimbeli oyo tayi ku kwatha okumona omayamukulo guka.

Kohi mpaka owa tulilwa po omikweyo mbali. Omukweyo gumwe., oohapu dha fupipikwa dha kuthwa mOmbimbeli okuza konomeli yotango sigo onti 15.

Omukweyo omukwawo oontopolwa, noovelise dhomOmbimbeli dha vundaka- nithwa moka mwa kuthwa omatumbulo ngeyaka.

Ano oontopolwa ndhoka noovelise dhadho dhi vongokonona mo mevundakano eto dhi tula pomaha gadho melandulathano. Ngashi eyamukulo lyaandyoka yotango olyo ndi Joh 3:16.

Ngele wa mono nyola okatopolwa ka- mwe nenge uuyali moka wa hokolola ovelise yimwe yomudho ndjoka u yi hoole unene.

Tuma eyamukulo lyoye kOmukwetu, Oniipa.

- | | |
|----------------------------------|--------------|
| 1. Oshoka osho Kalunga | Joh. 14:21. |
| 2. Ano ngele ku na ngoka | Rom. 5:8. |
| 3. Nondi inikela shili | Gal. 5:33. |
| 4. Sigo onena one ina mu | Joh. 14:2. |
| 5. Ongoka e nii-pango yandje | Joh. 3:16. |
| 6. Dhiginina u monike ku Kalunga | Ef. 2:8. |
| 7. Oshoka ayehe ya yono | Rom. 3:23. |
| 8. Oshoka ondjambi yuulunde | Ehol 3:20. |
| 9. Ihe Kalunga okwe tu hololele | Joh. 1:12. |
| 10. Oshoka mwa hupithwa | 2 Kor. 5:17. |
| 11. Ihe ayehe mboka | 2 Tim. 2:15. |
| 12. Megumbo lya tate | Rom. 6:23. |
| 13. Oshoka ongame inaandi sohoni | Fil. 1:6. |
| 14. Ihe iiyimati yombepo | Rom 1:16 |
| 15. Tala onda thikama | Joh. 16:24. |

“OITA OVAMATI, ONGULUNGU OVASAMANE.”

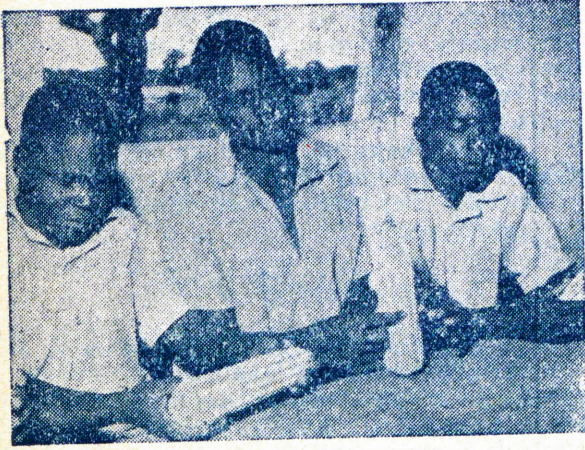
Ounjuni uonale ohamba ngenge ta tumu ovañu vaje koita alushe a tumbula ngaha: “Oita ovamati, ongulungu ovasamane.” O- vamati va fimanekua unene omolu eefigono noupenda uovanjasha.

Oujelele uevangeli lOmuene eshi ua mi- nikile ounjuni Omuene uoita e tu dikila o- maongalo. momaongalo a tula mo ovakuaita vaje ovanjasha ngashi tu li mo. Nedina tue li lukua kuje: Ovanjasha voujelele. Oluhodi ndi li na unene moluetu fie ovanjasha eshi tua dina shivo lOmuene e tu shiva moita ja- je, ndele oujelele uetu tau anje okujelele mo- maongalo etu. Ove omunjasha omukuetu o- mumati nokakadona otua shivua moita jou- juki nohatu pumbua oujelele uetu u mini- kile tete meumbo letu momaongalo etu.

Katu shi shi efimbo letu onaini Omuene uoita nge te tu ile hatu pulua oilonga je- tu jounjasha. Oujelele uetu nau minikile ha- no fimbo pe na efimbo. Omujapostoli Paulus ta ti: Penduka ove ou to kofa, ndele nju- muka koufi. Kristus note ku minikile.

Natu penduke hano meemofi dounjuni. Eps.119:9 neimbilo 135.

J.H.Mungungu.



ANDO TU KUNENI PAMUKALO NGU

Otwa li twa popi mOmukwetu gwa Junie, nkene omapya taga longwa. Ngashingeyi otatu ka tala kashona nkene tatu kunu oombuto dhetu.

Manga inaatu ya moshinima, tu dhimbulukweni oshinima shiya twa popileni mOmukwetu gwa Junie; kutya, omapya naga vundwe, go naga longwe omampungu omanene.

Tango manga inoo tameka okukuna, ou na okutala ombuto yoye nkene ya tya. Aawambo otu na omukalo gwokuhogolola ombuto; manga iilya inaayi pungulwa, okukuthwa polupale. Omukalo ngoka omuwana-wa shili. Onawa ngele to ipungulile ombuto ombwanawa.

Atuhe otu shi shi kutya iilya ohai kunwa moompa. Ohashi ningwa opo yaa like po kuudhila ngele yi li kombanda.

Pamwe wa hala okupula kutya, ethimbo ewanawa lyokukuna olini. Tala, opu na aantu yamwe ye hole okuhenda omapya gawo mbala, nokuwowola mbala opo ya kune. Ya-



mUsakos:

Pinehas Haufiku a si 21. 11. 57
Jonas Ashipala a si 28. 12. 57
Selwanus Niingo a si 15. 2. 58
Frida Nabota a si 10. 3. 58
Johannes Hamukoto a si 5. 1. 59
Jehannes Nepunda a si 14. 1. 59
Reinhard Hamunjela a si 2. 2. 59
Pinehas Ijambo a si 5. 3. 59
Barnabas Ushona a si 22. 3. 59

Tupuilikineni eendjovo da Kalunga e-shi tetu kumaida okulilongekida efjo!
Tu longa okuvala sili omafiku etu fje tu mone omuenjo u na eendunge. Eps. 90:19.

Aamati mbaka aaposi o-ye li moskola yaaposi ku Kenya. Oyo taa yoolola omitse dhomapungu ndhoka dhoopalela ombuto na ndhoka oombwinayi. Taye shi ningi nokuyalula momukweyo kehe omu noondanda ngapi dhomapungu. Ombuto tayi kuthwa momitse dhoopala adhike.

British Official Photograph, Kenya.

mwe oya tameka nokuli okukuna mu Augustus. Ondi uvite kutya omukalo nguka inagu opala nando. Oombuto tadhi kala unene ethimbo ele mevi, dho tadhi pile mo omutenya. Imuna sho tayi lyata natango omapya ethimbo ele, odhindji dhomoombuto otadhi ya kombanda. Ano shaa tuu u wete kehe esiku ongula nokomatango, epya lyoye lyu udha omakola nuudhila ulwe, ino ipula sho tau kongo. Ongoye wa kunu mbala. Oombuto dha kunwa pamukalo nguno, itadhi ka mena adhike, elago nokuli ngee dha mene. Aamapale (aantu ya kala m'Ondonga lwok'Ontananga) ohaa uhala taa kunununa aniwa oombuto dha kokotwa. Ou shi odha kokotwa, aantu oyo haa kunu mbala.

Ndi shi mwa kunu nale nokuli ne aamapale? Ai!

Tala, tu kaleni momukalo gumwe. Onawa ano ngele tatu kala hatu kuneni pehulilo lya Oktober sigo mu November. Pamukalo gwa tya ngeyi, oombuto dhetu itadhi kala we mevi ethimbo ele dhi pile mo. Yakwetu omutenya gwa Oktober omwa fa hamu gu dhimbwa ano!

Yamwe oye hole ishewe okupatela, shaa tuu e wete a shelelwa. Epatelo nalyo wo inali opala, oshoka omvula ngele inayi ifolako esiku ndyoka, nena wa hepeke ombuto yoye.

Tu kaleni ano metokolo ndi kutya: Tu kuneni mu November; tu kuneni ngele twa vundu po; tu kuneni oombuto dha hogololwa.

Ngele ou wete wa lokelwa, nena yelekela owala u longe epya lyoye, opo u kune koshilwa.

Nuumvo tu yelekeleni itale omukalo nguno tu taleni ngaa. Omvula oya nika ko nuumvo. Shaa wa mwena tu lyeni iilya shaa omapya ga longwa, go taga kunwa pomukalo.

Ne yakwetu ohamu landula omukalo guni ano hono? Tu lombweleni. Omukwetu opo e li, ote tu etele oohapu dheni.

H.D.N.



Väinö Bertil Nieminen

KoSoomi okwa zi elaka tali tu hokololele kutya, omusamane Väinö Bertil Nieminen a mana oondjenda dhe esiku eti 10 lya September 1959, a gwanitha oomvula 71.

Omusamane Nieminen okwa li a valwa omumvo 1888 nokwe ya kOwambo omumvo 1925. Shimwe sho miilonga ye yotangotango, mbyoka e yi pewa nkuka, osha li okutula kumwe eshina epe lyoshinyanyangidho. Omumvo 1929 oye okwa hokana. Egumbo lyawo na meme Anni olya kala kOntananga. Omumvo 1945 oya ka fudha koSoomi.

Oomvula dhawo dhokoSoomi odha ningi odhindji. Ihe Kalunga okwe ya pumbwa natango mOwambo, oyo noinaa tinda, ihe oye ya omumvo 1947 noya tula kOnandjokwe. Omusamane okwa tungu kOnandjokwe nokwa wilike wo oshinyanyangidho mOniipa. Ifo oyindjiyindji yOmukwetu oya longekidhwa wo kuye. Omoluunkulungu we oye okwa longithwa wo palwe miilonga yi ili noyi ili, ngashi oye tuu a wilike wo etungululo lyongerki yokOniipa. Omumvo 1953 oyo negumbo lye oya shuna koSoomi.

Omusamane Nieminen okwa kala e hole oshili nokwa dhiginine aluhe nawa iilonga ye. Okwa longo wo aawambo oyendji iilonga yiikaha. Ngashingeyi oye okwa pewa pategamenno lyetu evululuko lyaaluhe. Omuwa Kalunga na hekeleke meme Anni noyana. Tu ya dhimbulukweni momagalikano getu.

E. J. P.

OMUKWANIILWA

Iipumbu ya Shilongo

Omuwa Kalunga komegulu okwa ithana po omukwaniilwa Iipumbu ya Shilongo ngoka a kala moomvula 1908-1932 mwene gwoshilongo shaakwambi. Okwa mana oondjenda dhe esiku eti 9 lya September 1959 moshipangelo shokOshikuku. Okwe ya mo eti 7 lya September nokwa kala mo omasiku gaali ageke. Ongula yesiku lye lya hugunina aapateli ya Shikuku oye mu shasha.

SHITLANGU.

omuna gwokombanda

Etsikilo

Onda tumu ontumwafo ku Lourenco Margues:

Omuhongi Omusimanekwa,

Otwa li tu na mpaka oshituthi oshine noshikumitha, ha kaanaskola ayeke, ihe nongerki wo ayihe, uwanawa owe etwa unene komaulukilo.

Opwa li oongulu heyali dhu udha iilongomwa yomomapyia. Kombinga yandje onda li tandi wilike okagunda koondjuhwa. Onda kumithwa komukalo ngoka aantu yongerki ya likola omolu elongo lyiilonga yomapyia lya longwa aamtyona yoskola. Aantu omilongo ntano na yane oya talitha oondjuhwa oonkiintu; yamwe ye eta ombali, yamwe odhi vule po. Andola omumwamemekadhona okwa li ootuu te shi mono!

Omukuluntu gumwe gwoku Marumben okwe tu talele po. Okwa li a nyanyukilwa okutala iinima ayihe nokwa halele mboka haa yi koskola eyambeko. Okwe tu kumagidha otse aaluudhe twi inekela „aakwiilongo” mbaka, aahongi.

Ongundu yaaimbi ndjoka nda li handi longo oyi imbi omaimbilo omulongo moshiputu nomoshitsonga.

Otwa talelwa po wo kaakadhona yokagumbo. Nayo wo oye eta omaimbilo, onkee ano esiku etiyali lyoshituthi otwa kala nohungi ombwanawa otse nooyo. Otwa nu otee nooyo. Oya li emoniko enene kutse. Olyo wo lya li ethimbo lyethigathano lyolwimbo. Yamwe yomaanaskola oya talitha omahokololo gOmbimbeli gatano na gamwe ginima yuuyuni: okukalamwenyo kwa Samuel, omusamaria omunamutimahe-nda, okukala kwomuyapostoli Petrus, uukalinawa niipopiwa ayihe mbika iiwanawa, oya nyanyudha oonakugongala.

Omuhongi gwandje omuholike nomusimanekwa, ondi li omupehamulongi motundi yOmbimbeli. Ondi na okufatululula aaeangelistelongwa etanga Ohandi ya longo ombepo yetanga, okukala kwongerki, nosho okudheula aalongwa. Ihe onda fa nda mana po ashihe! Kwatha ndje u tumine ndje oondunge oompe dhiilonga.

Ongame okamwoye mu Kalunga, Shitlangu.

Ino dhimbwa ndje momagalikano goye.

Osho ngeyi oskola ya Kambine ya yelithile ndje ndi idhiladhile mwene. Uuevangeliste owa fala ndje pOmuhupithi gwandje. Etanga olya fala mombili, mohole nomiiilonga iiwanawa. Ondu uvite ngashingeyi ondi nokukala mevi ndyoka Kalunga a tula ndje. Ondi wete uumbwalangandja unene we egulukila Afrika lyetu.

Ontopolwa 25.

Ongashi oontsa

(Aagundjuka haa vulwa nohaa loloka, aalumentu aagundjuka haa pundukile nohaa gundile po;

Om aka haa inekela Omuwa, oyo ha mono aluhe oonkondo oompe, oyo taa fala omawawa pombanda ya fontsa.

Jes. 40:30.31.

Onda tula iikaha komeho gandje, onda mono mu Afrika, okuza kuumbanga-

lantu sigo okuumbugantu, okuza kuuzilo sigo okuuningininino, oontopa noondjila, iipangelo nooskola, naantu yomayuvi aalumentu naakiintu ye li monkalele ompe, ayihe mbika otayi zi ku Kristus. Shika otashi gwane Afrika.

Aggrey omundohotola omuluudhe)

Osho nda taamba otumwafo ya zi komulongo Paulino, mestela gwandje gwoku Mahus, oyo ndji:

Shitlangu Omuholike,

Oontumwafo dhoye oombwanawa wa nyolele ndje odha thika ngaa.

Tseyia kutya okukala kwetu okwo uudhigu nuupyakadhi? Otse nangoye otwa kala maaludhe aakwetu meni lyoshilongo. Unene ayehe yomuyo olya yugwa ohole noshimpwiyu. Okuza moondjugo dhooyina oya yonwa po komahokololo taga tanga iifundja nuungangala. (Ngele ngoye hasho wa li, shila aakuluntu yoye oyi ili inaa fa aaluudhe aakwawo.) Ethimbo lyetu lyotango olyo okukala kuusita, nkoka twi ilongo okusiikila uukolokoshi noondjahi dhetu moshiholekitho ihaashi pitwa ando, ihe oko wo nkoka twi ilongo uumbudhi nomahalalahalo gaakadhona. Onkalelo yetu yopambepo oya li ya thindwa pevi kokutula oombepo niimenka. Hugunina onkalelo yetu oya ningi ngiini? Okumatukila kiilando, komalukanda omiinayi, nkoka oongundu dhoombudhi nodhaakongi yaakiintu tadhi thindile aape monkalelo ya tya ngaaka. Hugunina iilonga noomiina odha nina po omathele nomayuvi gaalumentu mboka twaa shi kutya ehulilo lyawo otali kala lya tya ngiini.

Omolwa shika ohandi pandula aalongi naahongi mboka haa wilike omatanga goshili (ooskola dhomashasho nodhomakoleko). Otwa gwana okutseya kutya otse iilongo yongundu ndjo, otu uvite tu nokukala aapenda naanamitsemipuu, unene ngele omuwiliki gwetu uuyeleele, uuyeleele wEvangelii.

Shitlangu, komeho goye oku na omavaneke goondjila oompe. Sho wa li omushona owa li u nomauvito ngogandje, ho uvu evi tali fike kofi yoompadhi dhoye ethimbo lyuupyu. Oho li lyata, ho tutula nokuigidha. Onkandaloya yalyo oya li hayi kakatele mominwe dhoye ngele to kongo iikombo yoye momanenge Ihe otse aalumentu otwa ethele evi miikaha yaakiintu. Twa kala meinenepeko lyuulayi nohatu gumu iilongitho nomake getu.

Ngashingeyi etango lyoye otali longo aamatyona okulonga omapyia, taa longwa okukaleka omeya mevi, oyo iimeno yi ga longithe molutuni sigo omvula ya loko. Pandula mboka ye ku tuma ku Kambine na mboka wo haa ku longo nkoka. Otu na okukondjitha ondeveli noohapu, ihe nomiiilonga yiikaha yetu wo. Ombimbeli otayi tu lombwele tu ihomatekeni iikondjitho ayihe ya Kalunga tu wape okuthikamena omakotokelo ga satana.

Naa simanekwe omboka ye ya kutse nohaye tu etele ohenda, mboka haa tu pendutha mokutseya evi notaye tu kwatakaniha noolyo noonkondo.

Iilumbu yimwe ohayi ti Kalunga okwe tu pa evi lyo opala, iimeno iiwanawa, iimuna iiwanawa, oondunge nonitse omipuu. Otse katu shi aagoya nenge aapika. Ontumwafo yoye yahugunina oya pe ndje einkelo moshigwana shetu komeho. Otatu ka manguluka, notwa manguluka nokuli.

Ou na etanga lyaalongwa yiilonga yepya! Sho sha thiki ku ngame osha li sha fa etendo eshona lyeluwa oshoka opwa fa

pe na ethimbo ele opo omukriste kehe omumbantu omulongi gwepya ta ningi omuwiliki gwetanga lyaalongwa yiilonga yepya. Eeno olyo eluwa eshona, ihe euvaneko ewanawa.

Mokuhungila otandi ku tumine mpaka etotwahokololo lya Aggrey (omudohotola omuluudhe) oshoka otali fatulula nawa einkelo lyetu:

Ehokololo lyOntsaa.

Omulumentu gwontumba okwa yi moshikehe okukonga okadhila okawanawa e ke ka tekule okukala paantu. Okwa kwata okantsagona, e ka eta kegumbo nokwe ka tula moondjuhwa dhe nokwe ka pe iikulya pamwe muuyuhwena, nonando oko ontsa, omukwaniilwa gwoondhila. Sho pwa piti oomvula ntano, omukoneki gwiinamwenyo okwe ya a talele po omulumentu oye ngu, na sho e ende poshikuku okwa ti.- Ondhila ndjoka ontsa. Kayi shi ondjuhwa.-

Mwene okwa ti:- Eeno, ihe onde yi dheula yi ninge ondjuhwa. Kayi shi we ontsa oyo ondjuhwa, nando yi na omizalo heyali netata okuza kondungu yelwenya lyewawa ndino sigo okewawa ekwawo.-

Omukoneki okwa ti:- Aawe, natango ontsa, oyi na omutima gwontsa, ote vulu nokuli oku yi tukitha po yi ye mombanda.-

Mwene okwa ti:- Aawe, ngashingeyi oyo ondjuhwa. Itayi tuka nando.-

Oya tokola ye yi tale. Omukoneki okwe yi kutha, e yi umbile mombanda nokwa popi mokule:- Ontsaa, ongoye ontsa yomombanda. Ku shi gwopevi. Inyengitha omawawa goye u tuke!-

Ontsaa oya tuka mpaka na mpeyaka oya tala pevi, ya mono oondjuhwa tadhi shomora iikulya yadho noya nukile pevi.

Mwene gwayo okwa ti.- Osho nde ku lombwele nale kutya oshima ondjuhwa.-

Omukoneki okwa ti:- Aawe, oyo ontsa. Tu yi pe ishewe olweedhe ongula.

Esiku lya landula, omukoneki okwe yi fala kombanda yongulu nokwa ti:- Ontsaa, ongoye ontsa, inyengitha omawawa goye u tuke.-

Na mpaka ontsa oya tala oondjuhwa nkene tadhi li iikulya yadho noya nukile pevi noya shomona nadho.

Nena mwene gwayo okwa ti:- Osho nde ku lombwele nale kutya oyo ondjuhwa.-

Omukoneki okwa ti:- Aawe, oyo ontsa natango noyi na omutima gwontsa. Tu yi pe owala ishewe olweedhe olukwawo notandi yi tukitha ongula.-

Ongula ya landula okwa meneka rokwa fala ontsa ndjika pondje yoshilando, pekota lyondundu nkoka kwaa na omagumbo. Etango olya li tali piti noonte dhalyo tadhi adhimitha omamanya gondundu notadhi yi opaleke.

A umbu ontsa nokwa ti:- Ontsaa, ongoye ontsa. Ongoye gwomombanda ku shi gwopevi. Inyengitha omawawa goye, u tuke!-

Ontsaa oya tala koombinga noombinga noya mono uuyuni uupe wa fa tau na ku yo onkee inayi tuka. Omukoneki okwe yi talitha ketango. Nanziva oyi inyengitha omawawa gayo noneinano lyontsa oya yeluka po noya tengele pombanda nopombanda no inayi galuka we. Oyo oya li ontsa nonando ya kalekwa moondjuhwa noya paluthwa ngondjuhwa!

Aamwameme ne aaluudhe aakwetu, otse otwa kala iwaa na uuyeleele wa Kalunga notwa li tu shi otse uuyuhwena. Natango tuu ohatu dhiladhila otse oondjuhwa. Ihe aawe, otse oontsa. Tu inyengitheni oma-

OUNJUNI TAU TONGO SHIKE

Oshiponga nefjo nokuli o-
la hanga omuuambo mu
Mbaai.

Eti 18 la Julie okafitola komu-
shamane Abraham Hangula
mu Mbaai oka hangika koshiponga
shomodilo noka pja diva. Va ti o-
kua li a teleka eeshi momahooli ee-
shi ndele ombaadilila efija la topa
nongulu aishe ja kuatua komudilo.

Omush. Abraham okua ja tete
pondje a konge ekuafu ndele eshi a
dimbuluka oinima jaje ja tuvikilua
mo, okua shuna mo vali. Fiku limue
ina mona vali omiito jokudja mo o-
molu omudilo nomuifi nokua pila
mo.

Ngeno okua li ina ja mo vali
omulu oimaliua, ngeno pamue ina
mona oshiponga shasha.

Omush. Abraham Hangula uo-
kOkalongo nokua fija po omukulu-
kadi uaje Viktoria Taunjenge nol-
dalo luavo. Okua li ha jakula nee-
ngono vapashioni, unene ovalongi.

Etumo mokati kovafita-
matui.

Ofelani omusoomi Elsie Roos ou
a shuna paife koshilongo shavo a
ka fude manga okua longa efimbo
mu Afrika mokati kovafitamati.
Okua kala omukuluñu uomoskola i-
mue omo mu na ovanaskola ovafita-
matui aveke. Ounona novakuluñu o-
vo va hala okulungua itava uana
mo nokuli. Ovanaskola ove lilonga
fijo nena okupopja nomilungu noku-
lesha nokushanga. Osho jo va longua
okuushiiva Omukulili Jesus Kristus.

Oskola ei tai futua kovafitama-
tui ovasoomi novasweede aveke, ha-
no ngashi oshilonga shetumo. Ndele
oi li, ha mu Suidwes omo tai pu-
mbiwa jo, ndelene mu Eritrea, po-
pepilela nedu la Etiopia, edu olo ta-
li popiua mEtestamendi lipe nokuli.
Etiopia nEritrea oku li koumbuuañu
ua Engipiti.

Ovafitamati ovakriste ovo va
huma komesho kanini ove udite na-
ua kutya unene omufitamati ou ita
shiiiva okulesha no ku he na ko na
sha noukriste, oku li momilaulu foko-
foko shili. Kalunga ne va filoñgenda!

wawa getweni tu tukeni. Tu feni iilumbu
meni, nando otse aaluudhe koshipa.

Ndhika odho oohapu dho opalela omu-
luudhe, Shitlangu!

Tu taleni ketango. Ha kiikalunga ihe
oku Kalunga He yOmuwa gwetu Jesus
Kristus!

Kalunga na yambeke Afrika!

Ongame mestela gwoye mOmuwa.
Paulino.

Unie otali ka mona ombapila
jalo vene.

Fijo nena ombapila aishe ja lo-
ngifua mu Unie moifo nomomambo
ja dja koilongo. Ndele otu shi shii
nokutja eemburu da diinina efimbo
lile okutuika omiito opo di mone o-
mifitu dipe di noshilonga. Unene mo
Zululand nomu Transkei omua tui-
kua nomua ningua omifitu
da kula.

Paife ne omiito oda kula naua.
Okua diladilua ku dikue ofabrika
ojo tai ningi ombapila nomiti edi
(unene Suid-Afrikaanse denneboom
ou a kula neendelelo). Mokuninga
ngaha vati otapa hupifua oimaliua oi-
ponda i fike omiljoni imue nokuli.
Taputengenekua kutja mofabrika ota-
mu ka holoka momudo keshe omba-
pila i fike peetona 25.000 (hano nge-
nge ehauto limue otali kufa ofraha
jeetona ñatu, eembapila domudo u-
mue tadi ningi eefraha 8333!).

Otu uete kutja omiito diua odi
noshilonga! MOuambo omiito damo
itadi uapalele oshinima shi fike apa,
ndelene omiito edi odi na jo oshilo-
nga. Omifitu tadi lokifa odula nota-
di jandje oshimuke.

--Ombapila ei hai longifua moku-
shanga oshifo eshi "Omukwetu" oja-
dja kuSoomi.

Omubulu hanga a dipaua ko-
vakuañgala.

Mu Julie omukeleli umue mEto-
fa, moñeje joifitukuti, edina lajo Mnr.
Peter Stark, eshi a li a ja a ka tale
oluumbo luofarama imue lua ljatua
vati keendjaba okua hanga ovakua-
ñgala vamue poshitaua. Okua londo-
loka mehauto e va popife. Ombaadi-
lila okua umbua oikuti i noudijo.
Omoluoudijo omushamane ou okua
li moshiponga shili oñge a shuna di-
va keumbo nokua shiivifila ovapoli-
fi oshinima eshi.

Oilonga ei otai tu diladilifa shike?
Otalitai tu jalifa tuu ovakuañgala? Aho-
ue. Natu kaleni tushishii kutja omu-
ñu e he na Kalunga Tate, oje omu-
kolokoshi nomudipai ashike. Oñge na-
tu diinineni opo ovashiinda shovaua-
mbo, ovakuañgala, va kuatue nova
lundululue kEendjovo da Kalunga!

Oshivilo shongerki jovarefo-
rmi.

Ongerki jovareformi (gereformee-
rde kerk) ngashi jeemburu oi na neu-
do oshivilo sheedula omafele ane
omolu ediko lajo. Opua pita eedula

edi 400 eshi ongerki ei ja dikua ko-
mushamane Johan Galvin. Okudja
kefiku ledalo laje pua pita neudo eedu-
la 450.

Ngashi tu shi shii eedula donge-
rki oñgualutheri odi dule kanini. Omu-
sh. Calvin, omujelifi ueitavelo lee-
mburu nolovareformi aveshe, okua
mona eendunge noujelele muhapu ku
Luther.

Oskola joufita jovandouishi.

Douishland, edu olo la taulua
pokati (Wes-Duitsland oli nemangulu-
ko na Oos-Duitsland tali pangelua
kovakommunisme) ola njika oluhodi
omolu ongaha ojo i li pokati kalo.
Ndele ongerki ja Kristus itai shiiva
eengamba datjangaha, ahoue.

Eshi otashi holoka naua eshi
ovauilikerki va tokola va dike osko-
la joufita ojo tai tambula ovafitalo-
ngua kombinga nombinga jongamba.
Oskola ei oi li moshilando Muenchen.
Pokuhovela kuetungo opa li ovabi-
shofi omulongo ovandouishi aveshe
ovakualutheri.

Ongerki jovazulu nomuiliki
uajo.

Mu Julie mUmpumulo, Unie,
omufitaongalo omuzulu K. J. Msomi
(ino leshe: omusoomi!) okua nange-
kua moshilonga shoupashukilingerki
komukuluñutumua N. M. Follesoe,
ou a kala moshivilo shetu shinene
mEngela. Omush. Msomi oje o-
mukuatelikomesho uotete omudale-
luamo ou ta longo moshitaingerki
shopatumo lovanorve nokutja mo-
ngerki oñguaevangeli jovazulu. Mo-
shivilo eshi shenangeko omua li mu
novaenda vahapu, aveshe inava ua-
na va kale mongerki meni ojo na-
nde tai uanene ovañu ejuvi limue.

Moñeje tuu ei ovanorve ova
hovela oshilonga shetumo manga
inapa pita eedula efele limue. Paife
ongerki javo, ojo tai endafana nee-
ngerki dimne dopa Luther dovazulu,
oja mona omuiliki omuzulu. Kalu-
nga na nangeke nouputa omumua-
memengerki ou uetu uokokule!

EINDILO

Omukulukadhi gwomuhona gwo-
kOndjondjo, mev. Oosthuizen oti i-
ndile: Shaa ngoka to mono ompo ye
ndjoka hayi ende koombinga noo-
mbinga kokule nOndjondjo ino yi
dhipaga. Yi falakOndjondjo ote ke
ku pandula. (tashi ti te ke ku pa
omagano)

OMPUNDA.

MONiipa moskola yaanona mwa ningwa ethigathano ewanawa. Aamati yamwe ya tungu oompunda dhomambo, oya longitha oombale adhike na yamwe ya koleke oonkogo nondadhate. Oye dhi tungu momagumbo, ano kadhi shi iilonga yiikaha yoskola.

Eti 26 Iya Auguste iilonga ya talwa. Oomboka ye eta oompunda dhawo, oyo: Sub.-a, A, B. Martin Frans, Petrus Martin, Immanuel Nangombe, Sakeus Abisai, Sefanja Sem, Otto Sakaria, Nikanor Jona, Rehabeam Sostenes, Petrus Vilho, Johannes Samuel, Temus Tomas, Naftali Elia na Petrus Johannes.

Std. I, II. Silvanus David, Sakaria Johannes, Jesaja Petrus na Erastus Malakia.

- 1, Ebandulo lyotango:
Martin Frans na Silvanus David
- 2, Ebandulo etiyali:
Sakeus Abisai na Erastus Malakia
- 3, Ebandulo etitatu:
Temus Tomas, Sakaria Johannes na Jesaja Petrus.
- 4, Ayehe yalwe oya pandulwa wo.

Oompunda dha tya ngaaka oombwanawelega dhokuhumbatela mo omambo nosho tuu. Ethigathano lya tya ngaaka tatu ke shi ninga nokomeho wo.

Oshiholelwa oshiwanaawa shokulandulwa mooskola dhilwe wo.

S. K.

OSHIPONGA SHOONDHI.

Unene ku mboka inaatu ya moskola, tu longwe uunongo wuuyuni mbuka nuukalinawa kolutu, otu li mokati koshiponga shika shoondhi.

Mpaka twa hala okutseyitha, nkene oondhi tadhi eta oshiponga. Ngika omwa tseyana nawa amuhe pethimbo lyothinge, nkene oondhi hadhi kala odhindji. Ondhi otayi eta iiponga oyindji mbyoka ino yi tseyana. Otayi li oonyata apehe mpoka ye ende, nongele ye ya kiikulya yoye, otayi ku ningile ko oonyata etayi li ko ihe iikulya yoye.

Omukwetu, tala oondhi otadhi indji-paleke omukithi gwepunga nosho wo omikithi omikwawo odhindji. Omolwoombuto tuu ndhoka dhuuvu, aantu oyendji oya si, ye vule nokuli mboka ya sila miita. Opo tu ikeelele koombuto dha tya ngaaka, natu opaleke omagumbo getu, unene iiyagaya ayihe mbyoka hayi kala pomagumbo getu noonyata adhihe.

Tu shi ningeni, opo oondhi dhaa valele mo miyagaya mbyoka, oshoka odhi yimwe ohayi vala esiku limwe omayi 600, nokonima yoshiwike pwa holoka nokuli oondhigona.

Eeno yakwetu, mboka ye tu tekele moondunge, ohaye dhi kondjitha nomuti nguka D. D. T. nokuopaleka omahala gawo nawa.

Ooyakwetu, otatu mu halele eiganemo ndika.

Aatseyithi,
Simeon E. Akwaake
Emirha S. Shiindi.

OMAGANO GA KRISMESA

naga longekidhwe manga ku ye!

Oshipakete shika shi nomambo gahamano otovulu oku shi pa gumwe nenge oku shi topolela oyendji. Musho omu na:

Efatululo Iyevangeli pa Lukas 1/6
Omahokololo gamue gongerki
ja Kristus..... 1/3
Mua peua omagano..... 1/-
Eta ljomagadi goonjushi..... -/9
Omalongo giili na giili..... -/5
Euuco lja Kalunga pahogololo -/4

Iiferenda: Ukalata wa Krimesa!

Oshipakete ashike kumwe iithilinga itano 5/- ayike!

Nokuli oposa otayi futwa kostora yomambo.

Oshipakete eshi shi nomambo atano, otu dulu oku shi pa umue ile oku shi tukulila vahapu. Musho omu na.

Epukululohomho 1/9
Okambo komaudano 1/6
Tu lotokeleni tua taalela Kristus 1/-
Moshilongo shetu -/9
Okambo komukuaneongalo keshe -/4
Oiferenda: Oukalata ua Krimesa!

Oshipakete ashike kumue oifilinga itano 5/-ajike!

Ostora jomambo tai futu jo oposa.

AALESHI TAA NYOLA

S.W. Joel, Windhoek ota kuminwa uudhiginini negameno lya Kalunga sho mu Windhoek aat ligane yaali ya gu kombanda yongulu onde ya tsikilathana lutatu, Kalunga okwe ya gamene nawa inaa mona unene oshiponga.

Josafat E. Namupala na Ananias D. Nangolo, Windhoek, oya dhimbulula oshiponga shiikolitha. Aakwankala naawambo taa dhimbwa okuthika kongerki, ihe taa matukile koshikalija. Oyo aaholike yoye wo mOmuwa ya dhimbulukwa megalikano Rom. 1:24,25. Rom.12:11,14.

David Aron, Windhoek, ota hambelele Kalunga shoka okwa gwile pokati koshihauto noshikoto sha mbakumbaku. Kalunga a tumu omuyengeli gwegameno a kwatelethe omaako ge kiitenda ina mona oshiponga uulalo umwe auke.

F.Ashinkono, Windhoek, ota ti: Tu yandeni shili oluhondelo, oshoka otalu yono po omalutu getu manga tu li po nokuli agundjuka. Omuyapostoli Paulus ta ti: „Olutu olwo ontempeli ya Mbepo Omuyapuki.”

Jeremia M. Hamuoma Windhoek, oku noluhodi omolu ovanjasha ovamati tave litula mokuhajavala nance endjovo da Kalunga tadi va shikula Kalunga a hala ovamati jo va ndungipalekue oku mu shiva.



Nepandulo ku The Departement of Native Affairs, Pretoria.

Onda kanitha

Onda kanitha uusino utatu okandongi kamwe okathona, okatsimine kekondo lyokoshoko lya teka kondungu. Onkwa-wo onzinzi osimba otsimine uutsimine wayo oya fa wosinoe (Koedoe) Oyina okutsi kwa tetwa kondungu. Nondema onduudhe omelakombomela osimba. Inaavi tetwa komakutsi aawe. Auhe kau na iihako. Nomulutiyaya yi na okamulutiyagona okakiintu okaluudhe. Wa kana 14. 11. 1958

Silas Ulenga, Okahawo, Ongandjera.

IPONGA YOMULILO.

Paulus Martin, Grootfontein, ote tu hokololele eso lyombadhilila mesiku 25. 7. 59. Sakaria Filippus, Onathing, Onayena nomudamara edhina lye David oya pile mondjugo. Oya tema mo omulilo noya kotha. Iikumbatha nani ya hwama oshipondoka ashike sha pi inapa uvika sha.

Ongula ayehe yaali ya adhika ya sa niinima ayihe ya li mo. Kakele kEtestamenti Epe neimbilo Ehangano ogo ageke ga hupu. Shika tashi tu longo: „Longekidha egumbo lyoye - - - -”

Paulus Naholo, Ondobe, ota hokolola oshiponga sha holoka momukunda ueongalo la Ndobe onunona ueedula 5 ile lo kakuwo kondula l veli monififa oshiponga ova li meumbo aveke he a ja kohambo ina a katjava. Ounona va ja monduda jokinangala aka ka kula oka kufa okapalua nde taka tomeke onduda. Ina eshi aluka koikuni okua hanga onduda tai pi nounona omo ve li.

Ounona ou ovo aveke va li vavali va pua po aveshe. Tu indilileni vakuetu ava

EPANDULO

Ongame otandi hambelele Kalunga, oshoka e tu tumine iipalutha. Na hambelele, oshoka aantu mboka ye tu tumine ooskola hayo ya dhiladhila yoyene, aawe. Otate megulu e ya lombwele, onke tu nokhumbelela.

Otwa li tu shi otatu si po ihe nani Omuwa opo e li ote tu sile oshimpwiyu unene omolwondjala.

Onda nyanvukilwa etumo ndyoka. Kalunga na hambelele.

A. A. Komeya, 14 jaar oud.