

# OMUKWETU

No. 6

Junie

1959

## OTSE AANTU YA KALUNGA

(Osondaha 5 ya landula Uukwatatu.)  
2 Mos. 19:3-6

Egulu nevi nayihe mbika tayi kala mulyo oya Kalunga. Ngashingeyi oohapu dha Kalunga dha hala okutya: aantu oyo uunene eliko lya Kalunga.

Aantu ayehe oya Kalunga, oshoka oye omushiti gwawo. Omunyoli gwepsalmi ta ti: "Oye okwe tu shiti; otse oye, otse aantu ye noonzi dhuusita we" (Eps. 100:3). Kalunga oye Kalunga kIsrael. Ihe oye Kalunga kiigwana ayihe. Omuyapostoli Paulus ta ti: "Kalunga oye Kalunga kaajuda ayeke? Kee shi okaapagani wo? Eeno, nokaapagani" (Rom. 3:29). Onke Omuwa ta ti: "Evi alihe olyandje."

Aantu ayehe oya Kalunga, oshoka oye okwe ya kulile mu Jesus Kristus. Jesus okwa gandja omwenyo gwe omolwaantu ayehe. Johannes Omushashi okwa ti: "Tala, Onzigona ya Kalunga, tayi kutha po oondjo dhuuyuni" (Joh. 1:29).

Omuwa oye omushiti nOmukuli. Onke aantu ayehe oye. Nonke oye ita dhimbwa aashitwa naakulilwa ye. Oye a hala elaka lye etoye li faalwe kiigwana ayihe.

Kalunga okwa hogolola tango oshigwana shIsrael shi kale oshigwana she. Omuwa okwe shi enditha oondjila oonkumithi. Oye ta ti: "One mwa mono ko shoka nda longele mEgipiti, ongame nkene nde mu eta nkuka ku ngame". Ihe Aayisrael ya nyengwa okuitaala nokinekela Omuwa. Oyo ya nyengwa okuuva ewi lya Kalunga. Oyo inaa hala okutsakanitha oompango dhe.

Omukwetu!

Otse atuheni otwa pewa elaka lyevangeli. Otwa hogololwa wo tu kale aantu ya Kalunga. Meshasho nokuli Omuwa gwetu okwe tu taamba tu kale aana ya Kalunga. Na sigo esiku lyonena Omuwa okwe tu sile oshimpwiyu. Oye okwe tu humbatele nomwawa gesilohenda lye. To vulu okuhempulula: "Oye te ku lombwele aayengeli ye oku ku game na momapola goye agehe. Otaye ku papatele momaako gawo waa ipume ko ompadhi yoye kemanya" (Eps. 91:11-12). Ihe nando tu uvite oshimpwiyu sha tya ngaaka tatu nyengwa okuinekela Omuwa miinima ayihe.



Omuwa ta tegeiele tu mu uve notu hale okutsakanitha oompango dhe. Inima mbika Omuwa okwa tegeiele oshigwana shIsrael shi yi gwanithe. Ihe Aayisrael ya yono ehanganano lyOmuwa. Mesilohenda lye Kalunga okwa uvaneke ehanganano epe: "Tala, omasiku tage ya, Omuwa osho ta ti, ongame no nda hala okupanga uukuume uupe otse negumbo lya Juda, waa fuukuume, nde u pangele otse noonnyokokulu, ongame sho nda li nde ya kwata koshikaha, ndi ya tembudhe mu Egipiti, oyo no ngashi ya yono uukuume mbuyaka, nando nda li omulumentu gwawo, Omuwa osho ta ti. Aawe, uukume owo tuu mbuka nda hala oku u panga otse negumbo lyIsrael opomasiku ngeyaka gokomeho, Omuwa osho ta ti: lipango yandje otandi yi paka mo moontulo dhawo notandi yi nyolele moomwenyo dhawo, ongame notandi kala Kalunga kawo, oyo notaa kala aantu yandje. Oyo ngashi itaa kala we nokulongathana okuume nokuume ke, omukwawo nomukwawo, ya tye: Tseye Omuwa, oshoka oyo ayehe, ngashi ye li, aagundjuka naakuluntu otaa tseye ndje, Omuwa osho ta ti. Oshoka ongame tandi dhimi po omayonagulo gawo no itandi dhimbulukwa we oondjo dhawo" (Jer.31:31-34).

Otse aana yehanganano ndika epe. Omankankameno gehanganano ekulu ogo ompango. Ompango tayi ti: "Longa! Longa! Tsakanitha! Tsakanitha! u mone omwenyo!" Ehanganano ekulu ihe inali pa oonkondo okutsakanitha ompango. Omankankameno gehanganano epe ogo edhimopo lyoondjo omolwa Jesus Kristus. Oye okwa ti: "Sha longwa sha pwa!" Oto pitikwa okutaamba oshilonga sha Jesus u

mone omwenyo. Oto pitikwa okutaamba oshilonga she u pewe ehala noonkondo okuvulika kompango ya Kalunga. Kalunga mwene okwa ningi ehanganano epe pamwe nEpona lye. Oye mwene okwe ku taamba meshasho eyapuki mehanganano ndika. Noye mwene te ku sile oshimpwiyu u kale omuntu gwe. Tu nokukala ashike popepi noohapu dhe nomasakramenti ge tu taambe mugo aluhe omwenyo omupe nehala epe noonkondo oompe nesilohenda epe.

Oshigwana shIsrael sha pewa oshilonga. Omuwa ta ti: "One no tamu kalele ndje onkwaniilwa yuusaseri, oshilongo oshiyeelele," Omusaseri, omusita oye okwa pewa oshilonga she kOmuwa mwene. Omuwa okwe mu yoolola nokwe mu yapula a thikame pokati ka Kalunga naantu e ya uvithile oohapu dha Kalunga. Oshilonga sha tya ngaaka oshigwana shIsrael she shi pewa kuKalunga. Kalunga sho kwa hogolola Israel oye okwa dhiladhila iigwana iikwawo. Oshilonga shIsrael osho tango okupungula eihololo lya Kalunga na nana oku li faalela kiigwana iikwawo.

Otse ooitaali atuhe otwa pewa wo oshilonga shika. Omuyapostoli Petrus ta nyola: "Ihe one ezimo lya hogololwa, nongundu yaasaseri pakwaniilwa, noshigwana oshiyapuki, naantu ye mwene, mu hokolole uyamba wa nguka e mu ithana momomilema, mu ye muuyeelele we kauwapa sha" (1 Petrus.2:9). Ooitaali ayehe ye noshilonga sha simana: okukala mokati kaantu ayehe aantu ya Kalunga mwene. Tashi ti: tatu thikama pokati ka Kalunga naantu mboka inaa tseye Omuwa Jesus Kristus tu ya ithane kuye.

Oshigwana shIsrael inashi taamba ehanganano epe. Aayisraeli inaa ninga onkwaniilwa yuusaseri noshilongo oshiyeelele ngashi Kalunga okwa dhiladhila. Aayisrael inaa faalela elaka lyevangeli kaapagani. Onke Omuwa okwe shi ekelehi nokwa pe oshilonga shIsrael kiigwana iikwawo. Oshilonga shika osho oshilonga shetu ngashingeyi. Ihe onawa okudhimbulukwa oohapu dha Kalunga: "Tala ano uwanawa wa Kalunga, nuugeyi; uugeyi we pwaamboka yi iteka, ihe uwanawa wa Kalunga opu ngoye, ngele to kala muuwanawa we; ngele hasho na ngoye oto kewa mo" (Rom. 11:22).

Arvo Eirola.





# OMUKUETU

Junie 1959.

## LANDENI NOONDUNGE.

Omupangeli omunene ngoka e noshimpwiyu sheputudho lyomu Suid-Afrika okwa tumbula aniwa moshipopiwa she shimwe kutya, aaluudhe yomu Union ohaa landa kehe omumvo iinima ya yeleka andola £365,000,000 (iiponda oomilyoni omathele gatatu nomilongo hamano na ntano), kokutya iiponda yomilyoni yimwe esiku kehe. Okwe eta edhiladhilo ndyoka kutya, miiponda mbyoka oyindjiyindji omu na wo oyindji mbyoka ya hepele owala miinima yaa noshilonga nenge mwaambyoka inaayi pumbiwa shili. Onkee omupangeli ngoka okwa kumagidha aanastora ayehe, ya kale haa tsu aalandi oma-yele, ya tseye nkene ye nokulongitha iimaliwa yawo pandunge noku yi hupithila wo oompumbwe dhokomeho.

Eeno, aanastora oya gwana shili okukumagidhwa, oshoka muyo omu noyendji mboka kaye na ko na sha naalandi. Oye nedhiladhilo limwe alike: okulanditha iinima oyindji noku-mona muyo iimaliwa oyindji. Ashihe shimwe ngele oshinima sha pumbiwa komuntu nenge inee shi pumbwa, otaye shi halitha ashike, shi landwe po. Osho ndu uuvu omuwambo gumwe i ilandele eshina li nondilo lyokutungitha uumbindja, nando ina tseye nando, nkene tali longithwa. Nomulandithi inee shi pula; okwa nyanyukwa owala, sho a mono £90.

Mokulanditha iihauto iikulu mwa fa tamu holoka omakoto go genegene. Omutiligane ota longitha oshihauto she, sigo osha kulupa nayi; opo ne ota tameke oku shi landitha po. Ote shi gwayeke kashona kombanda nota kambadhala okuholeka omapuko gasho nuunkundi washo. Ngele ta mono omuwambo ngoka a hala okulanda oshihauto, ota tameke oku mu lombwela iifundja oyindji, e mu hokithe oshihauto shoka, sigo ote shi landa niimaliwa oyindji. Esiku limwe oshihauto sha tya ngaaka otashi thiki tuu kOwambo, ihe yimwe oya tekele nokuli pokati kOshomeya nOwambo. Iimaliwa yi thike peni aawambo ye yi kanithile miihauto ya tya ngaaka kayi noshilonga? Oyindji noonkondo.

Ando aalandithi yiinima yi ili noyi ili ya dhimbulule shili nawa kutya, oyo aayakuli yaantu, opo aantu ya mone puyo shoka ye shi pumbwa, ando omakotokelo ga tya

## ELALEKO.

Mokuthikama kwetu okushuna koSoomi tatu mu kundu one amuhe aawambo naasoomi mu li miilonga mevi ndika lyaawambo. Osho aakavango wo tatu mu dhimbulukwa nohoole. One amuhe otatu mu kundu nekundo lyombili ya Kalunga, notatu mu halele wo eyambeko lye. Katu shi we, nge tatu monathana kevi ndika lyuundjendi, ihe otu shi shi otu nemonathano lyaa netopoko, nge tse atuhe twa thiki mevululuko lyaanamwenyo.

1Kor. 15: 58.

Kalii po nawa.

Kaino Kovanen

Miina Anttila

ngaaka itaga holoka we. Omulandithi omuwanawa ota vulu okukwatha nawa aalandi mehogololo lyiinima, oshoka oye tuu a gwana okutseye mbyoka ya kola naambyoka inaayi kola. Omulandithi a tya ngaaka aantu otaye mu dhimbulula wo mbala, oye omukwathi gwawo, notaa ya okulanda kuye, manga taa yanda omukotokeli.

Otwa ti, aalandithi naa kumagidhwe, ya sile wo aalandi oshimpwiyu. Ihe aalandi oye na wo okukumagidhwa, ya lande noondunge, yaa hepithe owala iimaliwa yawo ye yi mono nuudhigu. Ongoka a hala okuilandela oshinima shontumba, ni ipule tango omapulo gatatu:

1. Onde shi pumbwa tuu shili?
  2. Ondi na tuu iimaliwa yoku shi landa?
  3. Ope na tuu shoka nde shi pumbwa komeho gasho?
- Ngele a limbililwa mu limwe lyomwaangoka, ne ethe owala oshinima shoka. Ngele ishewe a tokola oku shi landa, na tale mpoka ta mono oshinima oshivanawa kaashi nondilo unene.

Olwindji otandi uuvu aantu taa yematele oostora dhi nondilo. Oshike tamu landa ano moostora dha tya ngaaka? Kokuma ngele ku nostora yi nondilo, aantu yako naa pangele owala ompangela kutya, itaa ka landa mo. Nena omunastora e nokulundulula mbala oofuto dhe, ngele ina hala okuetha oshilonga she mpoka.

Iimaliwa yaawambo oya likolwa nuudhigu shili. Onkee oyi nokulongithwa wo nuudhiginini nopandunge, opo yi ete ekwatho ndyoka lya tegelelwa nolya pumbiwa.

Ngoka ta hepitha nota halakanitha iinima ye, manga ooyakwawo taa soluhepo, oye omukolokoshi nokwa yono nayi koshigwana ashihe.

## ELEKELO.

Ovauambo ovahoolike.

Olufu luangelokushuna koshilongo shetu le uja. Oñge ne nda hala oku mu lekela. Okukala mokati keni omuenjo uange ua li u udite etulumuko, osheshi onde mu ika unene noshilonga shange shokuhakula nda li ndi shi hoole. Handi mu pandulile ohoole jeni, osheshi luhapu mua tua nge omukumo. Paife handi i koSuomi, ndele ondi udite kutja omutima uange tau ka fiala omu.-

Ovaeñana nje handi mu pandula unene osheshi luhapu mua hafifa nge nohoole jeni, ngashika omafiku aa mahuuninua manga nda kala apa. Nje vene nande mua li mu noluhepo mue tu kuafa moluhepo luetu. Ohoo-le jatjangaha ihandi i dimbua nande.

Ovauambo ovahoolike. Handi mu halele enangeko nouputa linene la Kalunga. Oje muene ne mu endife naua fijo tamu ka fika kefikilo liua. „Meumbo la tate mu neñeñe dihapu.”

Nomakundifo ombili

Lyyli Mantere.

## OMAGANO GOOHAPU DHA KALUNGA.

Pokati komapandja goshifo shika omutaambi kehe ota aadha po okafo okashona ka nyolwa oohapu dha Kalunga. Aataambi yomOndonga noyomuuninginino noyokOkavango noyokUushimba otaa mono okafo edhina lyako

IINIMA INE MBYOKA KALUNGA A HALA U YI TSEYE manga aataambi yomOukwanjama nayokUushimba wo otaa mono okafo tuu nkoka moshikwanyama, ano edhina lyako

OINIMA INE OJO KALUNGA A HALA U JI SHIIVE. Okafo nkaka omwe ka pewa omaganano kehanganotumo lyontumba edhina lyalyo SCRIPTURE GIFT MISSION (=Etumo lyomagano goohapu dha Kalunga), ndyoka lya nyanyangidhitha ufo mbuka. Otatu pandulile etumo ndyoka unene omolwomaganano ngaka.

Ongoka a pumbwa natango ufo mbuka, ne u indile komusitagongalo gwaandjawa nenge kaatumwa aasoomi nenge aandowishi (ya Rynse Sending). Otau monika puyo ayehe.

Dhiladhila nawa shoka Kalunga te shi ku lombwele mokafo nkaka nomoohapu dhe adhihe, ngu vulike kudho. Omuwa na yambeke etopolo lyuufu mbuka!

OMUKWETU.



# OKA ANDJETU

## OSHIGONGI OSHIPE.

Mesiku lyotango sigo etitatu lya April 1959 otwa ningi oshigongi mUukwaludhi. Aakalimo oyo aakulukadhi yaasitagongalo ayehe momagongalo omugoyi gomOshitayingerki shokuuninginino, naakulukadhi yaaevangeliste noyaalongi yamwe nosho wo aainekelwa yalwe ya hogololwa momagongalo. Aakulukadhi ayehe kumwe oya li 52 naasamane 10. Mwa li aatumwa 8. Kumwe 70.

Aawiliki yoshigongi oyo omuwilikishitayingerki Arvo Eirola nefolo lye na meme Kyllikki Hatakka nomusitagongalo Sakeus Iihuhwa, naayakuli yalwe.

Omuwilikishitayingerki okwe tu popitha ngeyi: "Twa gongala opo tu kolekelwe citaalo lyetu koohapu dha Kalunga. Na ishe-we tu dheulilwe okulongitha iikaha yetu. Twa hala okuyakula Omuwa, oshoka twa pewa oshindji kiikaha ye. Otwa hala wo okuyakula megongalo lyetu. Iimaliwa tatu yi mono mokulonga iilonga yiikaha tayi tungu egongalo, notayi yakula mpoka pe noshiponga-ongele oongulu dha pya po, nenge egumbo lyomukwanegongalo nosho tuu iiponga yilwe."

"Ombimbeli tayi popi wo kombinga yokuyakula aapopepi natse. Jesus omulumentu gwomahepeko Jes.53:3, oye Omukwahi gwaahpekwa. Momaevangeli tu na iilonga oyindji ya Jesus yeyakulo: Okwa aludha aavu yopendji nokwa yumudha aasi. Okwa kutitha aasindjala. Pethimbo lyomahepeko ge okwa aludha okutsi kwa Malkus mu Getsemene. Komushigakano okwa kwatha yina nomukolokoshi. Oye shili Omukwathi gwaahpekwa Luk.4:17-19."

"Jesus e nekwatathano naahpekwa nota monika muyo: Mat.25:34-40. Muusiku wahugunina Jesus a longo aalongwa ye okuyakula Joh.13:3-5,14,15. Osho e tu thigile oshiholelwa shika."

"Egongalo li nokuutha iilonga yeyakulo. Tu na aahpekwa oyendji: oothigwa naaselekadhi noohepele naavu naakulupe n.sh.t. Oyo ayehe ya pumbwa eyakulo. Jesus okwe tu longo neyele ndika: Luk.10:25-37 „Nangoye wo inda u ka ninge ngaaka!"

Meme K. Hatakka okwe tu hololele omadhiladhilo gamwe gaakuluntu yetu mu Soomi molwoomvula 100 dhEhangano tumo. Oya tokola pu tamekwe iinima iipe mOwambo wo. Unene ya dhiladhila pu tamekwe etumo maakwankala. Okwa fatulula nkene oshilonga shetumo tashi dhigininwa mu Soomi kaakiintu naalumentu miigongi yawo. Oyo taa dhiginine iilonga yiikaha. Taa hondjo notaa tungu iinima yi ili noyi ili. Mbika tayi landithwa po e tapu monika iimaliwa oyindji. Niimaliwa mbika taa tumu aatmwa yawo na huka wo. Aakriste oyendji ya hokwa unene iilonga mbika yetumo.

Kuku Miina Anttila okwa hokolola shoka e shi mono mokuendaenda nooskola dhomiihwa mOngandjera nomUukwaludhi nomUukolonkadhi; „Oku naantu taa longo oshilonga shetumo inashi tseyika kaantu ooyakwawo-Kalunga awike e shi shi." Okwa tumbula omadhina gaalongi ayehe taa longo momakuti muuwike mokati kaapagani nomwalu gwaalongwa yawo. Yamwe ye li mokati kaakwankala naahimba. Oonkondo taye dhi pewa ku Kalunga meholamo. „Tu nokugalikanena ooyakwetu 2 Mos.32:31; 2 Ondjal. 6:32; Joh.17:9,15-19; Luk.23:34. Unake tatu galikanene nomwenyo gwa yela naatondi yetu wo, ha okutaandelitha uuwinayi wawo?"

Mootundi dhOmbimbeli twa popithwa aluhe komusamane S.Iihuhwa: 2 Petr.1:16-19. „Tu nokutala aluhe nawa oohapu dha Kalunga miilonga nomokukala kwetu. Oondjokana dhaakriste wo dhi nokupanegilwa koohapu dha Kalunga, 1 Mos.2:22-24; 15:1-4. Pahapu ndhika uupagani tau longo natango maakriste. Uukwazimo tau pongeke oluvalo notau topola aanandjokana. Owo tau kokeke uuhalu, aantu sho taa halukilathana iilokolwa yawo. Taa vulu ngiini okulongela Kalunga sho yaa nombili? Jesus ta ti Mat.5:23,24. Moohapu dha Kalunga ngele tatu dhindi mo dhimwe, otse twa ningi aaniita naye Mat.5:19;24:35. Pokati kuupagani nuukriste pu nokukala ongamba ontiligane. Tu nokutala nawa oohapu dha Kalunga. Mokuhalakana shaa ngoka na taambe oonkondo ongomukiintu omusamaria, oshoka otu na aakriste ya mangwa."

Iil.8:1; Joh.15:16. „Mboka ya hogololwa ku Jesus okwe ya pa oshilonga shokufala Evangeli. Inatu ithanwa tu kothe owala noshilonga sha Kalunga shi oolele miikaha yetu, aawe. Kape na ngoka ta yanda elaka ndika lyEtumo. Itatu tegelele tu ninge ongundu onene, oshoka Jesus okwe ya awike nokwa toola yaali na gumwe, sigo ongundu ya ningi onene."

Ef.4:7-13. „Iilyo yongerki yi nokukoka nokulonga iilonga yayo. Iilonga mbika yiikaha tatu yi tameke momagongalo oyo oshilonga shetumo. Tu nokutunga olutu lwa Kristus. „Longa uusiku tuu ya ....!"

Aanongeki Lahja Angolo na Liina Mpanda ya sile oshimpwiyu ootundi dheputudho nodhokutseya omwenyo, osho wo ootundi dholwiimbo. Aapangi, meme Aino Ellonen naayakuli ye, oye eta mo wo omakupululo ogendji omolwuuvu nolualo. Aa-

pagani yalongitha iigwanga niimenka oyindji noyi iyono po. Aakriste taa kongo ekwatho moshipangelo amuke.

Aapopithi oyendji yiili oye tu kumike noohapu dha Kalunga. Oondjimbo dhetumo odhi imbwa nEvangeli lya ningi shili „onkundana ombwanawa". Aakulukadhi naasamane ye nokuninga aawiliki yooyakwawo momagongalo, onke esiku kehe komatango ya dheulwa miilonga yokuhondja noya yelithilwa nawa sho taa ka ninga. Oyo ya holola wo enyanyu lyawo molwoshigongi nuunyengwi wawo mokutameka iilonga mbika, ihe yi igandja ku nguka a ti: „Mwaa na ndje kamu vulu okulonga sha."

Meme Maija Kantele okwe tu popitha pehulitho: „Miigongi otu uvite uutoye nuupu wuukriste ngashi aalongwa kondundu yeyelitho. Ihe mehalakano otatu tsakanekwe uudhigu. Otatu ka adha uuvu nonyalo nokwaaitaala n.sh.t. Miigongi tatu kolekelwa uukriste wetu wesiku kehe, opo miitsakanekwa ayihe u iholole ongoye omukriste. Meputudho tatu pumbwa uudhiginini neifupipiko noshili. Mpoka nda puka ndi noku-hempulula komuputudhwa gwandje, opo a dhimbulule oshili neifupipiko mungame. Okukala kwomukriste taku pangelwa kegalkanano."

Oshigongi sha hulithwa nUulalelo Uuyapuki mongerki. Omusita gwegongalo ndika Henok Haufiku okwe tu yakula. Otwa paluthwa aluhe komalutu notwa yambekwa moomwenyo. Ongulohi iihauto ya ndunduma notwa yi nenyanyu.

Kalunga na kokithe omadhiladhilo getumo maawambo no maakavango!

Peha lyoshigongi,  
Liina Mpanda.



### ONDOBE:

Marta Ndatumbala a si 23.1. 58  
Sofia Andreas a si 26. 1. 58  
Daniel Jeremia a si 15. 2. 58  
Rehabeam Isimael a si 3. 3. 58  
Josia Amon a si 30. 3. 58  
Maria Hangula a si 22. 3. 58  
Hileni Hamakali a si 26. 3. 58  
Sadorh Silas a si 10. 4. 58  
Ndeshetelua Nanapo a si 23. 3. 58  
Aina Muatumbu a si 11. 5. 58  
Ruus Sijelekeni a si 16. 5. 58  
Simisoni Kamati a si. 28. 6. 58  
Paulus Haufiku a si 58  
Nafit Hamukende a si 30. 6. 58  
Tusnede Kandume a si 5. 7. 58  
Matens Silongo a si 29. 6. 58  
Jushirina Feshitus a si 8. 7.

### UUKOLONKADHI:

Helena Nuurjango a si 21. 7. 1958.  
Matrida Angala a si 24. 8. 1958.  
Lot Aluto a si 29. 10. 1958.  
Filippus Aludilu a si 24. 11. 1958.  
Wilhelm Ipinge a si 3. 4. 1959.

## EINDILO LOMULUNDE.

Omuene Kalunga oha udu naa-ovalunde. Okua li ku na omulume nu uoñumba omulunde, ndelene okua li a pama kolutu, e na eeñgono je ina tonjala nande. Mokukala kuaje oje okua li omulunde, no kua li a dimbua Omushiti uaje.

Efimbo lehani dokukala koilonga eshi li li pokumanuka, okua hangika komukifi muji etelelo, le muhepeka shili. Okua tua eengolo koshipala shOmuene. Omolu oujehame okua indila eehani mbali no kui idilike ouii aushe ou kua li ha ningi, osheshi okua li omukolokoshi mu aische, Omaluodi nomaui aese noinima aische okue i efa nde ta indile.

Kalunga okua uda omailikano aje nde ta veluka. omoluefiloñgenda lOmuene uetu Jesus Kristus a veluka. Na vali mukuetu, Kalunga nge e ku pa olutu la kola li na eeñgono, ino tja ame onda uana, ahoue, lininipika alushe nde to kala ua kol aalushe.

Johannes Mateus.





OIMUNA POMEVA.

### OSHIONGALELE SHOVALONGI MONGENGA. 21. 2. 1959

Ovalongi vomOngenga, mOkambebe, mOikokola, mElakalapua nomOshimuaku va ongala mOngenga potundi oñimulongo.

Eimbilo 254 eshi la imbua, omusamane P. Nailenge a hovelifa oshiongalele eshi neendjovo edi Ef. 4:11-16.

Okua fatulula jo ñige Kalunga a longekida naua aishe na ashishe mu Kristus Jesus.

Oje okua hoolola vamue va kale ovatumua ovo tava tuala EVANGELI keembinga adishe dounjuni. Ovatumua ava otava monika fijo onena mokati ketu.

Oje okua longekidila jo ovañu ovaprofeti ovo tava holola ehala la Kalunga naashi tashi ke uja komesho, opo va kale ve li longekida. Ovaprofeti vamue va monika moiwana jovapaani. MOukuanjama jo mua holokele vamue ava va hunganeka ngaha: „Okandjila kalekale ka taulu' oshilongo ndele katu shi shii apa ka hovela na apa ka hulila, ovañu ava ve li momadimo tave ke shi mona. Koumbangalañu kua djo-vañu hinga nava nangal' oshilongo. Koumbuañu kua dja vamue ve uja mOndonga nomOukuanjama va ja kOukuambi nOngadjela fijo va ja kOmbalantu, ndele nje vambadja novavale mu nomupja.”

Oje okua ufa jo vamue va ninge ovalongindjovo. Ovo jo ongudu ja hoololua ku Kristus muene.

Ava aveshi kumue ovo ovatungi volutu la Kristus ava va hoololua meengudu dounjuni. Luk. 6:13.

Ava nande ve li ovatungi novahoololua ovo jo oiljo molutu la Kristus pamue noovakuao. Rom. 12:4-5.

Otua ninga olutu limue ngahelipi? Mu Kristus okeitavelo otua ninga olutu limue omo fje atushe tua shakana. Ef.4:13.

Onje ovaifanua vOmuene mu nokutala eshi mue shi ifanenua. Omujapostoli ta ti: „Haku mu itavela akuke, ndelene noku mu hepekela jo. Fil. 1:29. Vali metungo tuu eli otu nokuka'a mo ovakuluñu meitavelo ha unona, opo tu ha tualuatualue keemepo di lili nodi lili dounjuni ou. Oñge hano hafa njakukua, osheshi nande ku dje oudjuu, otau shituka ehafo nouua shaa tuu u hoolo Kalunga. Rom. 8:28.

Omutaleli uoskola E. Rydman a hokolola oshilonga shetumo. Etumo loovene la fa la tameka nokuli nalenale mu Jerusalem okeendjovo edi dOmuene Jesus: „Hano indeni ka ningeni ovañu aveshi ovahongua vange moku va shashela medina la He nolOmona nola Mepo Mujapuki.” Mat. 28:19.

Ovajapostoli ovo ovatumua votete va tameka oshilonga eshi konima jomafiku manini eshi Jesus a londa keulu.

Elenga lomu Etiopia la ninga omutumua mu Afrika. Omujapostoli Paulus a ninga omutumua koilongo i lili noi lili jovapaani.

Osho ngaha EVANGELI la enda fijo la fika jo nokedu lovasuomi omudo tuu ou 1155.

Oukriste oua enda kanini na kanini medu olo, fijo momudo 1548 va mona Testamenti lipe melaka lavo.

Ovasuomi va ninga oshivilo va kundafane oshilonga shetumo omudo 1857, oñge efiku 19. 1. 1859 la ninga efiku tetumo mu Suomi.

Omulongi J. Ngitapulua a hokolola jo pahupi oshilonga shetumo lomOukuanjama. Omuhongi uotete a enda mOukuanjama pefimbo la Mueshipandeka ua Shaningika omudo 1866, oje Hugo Hahn. Ovahongi ovasuomi ve uja jo mOukuanjama pefimbo la Mueshipandeka va fika komuene uoshilongo efiku 10. 7. 1871, ovo omuhongi Tolonen na Skoglund.

Omudo 1890 ovahongi va Rynse Sending ve uja kOuambo, no va fika kOndjiva 4. 9. 1891 pefimbo ia Uejulu ja Hedimbi.

Ovahongi ava va longa shili noudjuu, osheshi ova hangele omuulu nomilaulu dao, ndele va kondja keñgono domutumi uavo Kalunga. Eshi oita jounjuni je uja, ova li ve nokufija po oshilonga nokudja mo mOukuanjama. Ndelene va fija mo nokuli ovakriste ve fike 1200 na ava va li meeskola tava longua va ninge ovakriste va li ve fike lopo 900 omudo tuu ou 1915.

Pokati keetundi da „modellesse” pua imbua jo eimbilo lipe tue li longua komutaleli uetu E. Rydman nosho jo kehulilo la imbua, nomapukululo nomatumukumo e lili noku lili a ningua.

Oshiongalele eshi sha hulifua neilikano potundi oññano komatango.

Omunjoli J. Ngitapulua.  
Ongenga.

### OMUHONA OMUWANAWA A PANDU- LWA KAAWAMBO.

Petameko lyomumvo 1949 mu Tsumeb omwa holoka omuhona omunandunge, omukwatheli gwaawambo mboka haa longo mii-longa yomina. Nale opwa li evundakano enene, ihe omuhona ngu okwa kondjo, sigo ayihe ya yele. Aantu ya mono omutonateli omuwanawa nomukwatheli gwaamboka ye nuudhigu noye noluhepo. Ayehe e ya tala ookuume ke naamwayina nokwe ya longo moayele omawanawa.

Aantu ya zi koombinga noombinga ya ti: Inatu mona omupangeli a fa Mr.B.Lane. Edhina ndyoka a lukwa kaaluudhe oyo Kakulu. Okwa li ha yakula wo nawa aayenda mboka ya zi kOwambo nokwe ya kundu nawa mombeleva ye.

Momumvo 1958 oye a kala ke na uukolele nawa nomukithi gwe mu kwata ombadhilila nogwe mu fala koshipangelo. Oko a ningi omasiku. Aantu ya tameke okulilila omuhona gwawo noye mu galikanene Kalunga, e mu pe oonkondo oompe dholutu, ihe eutho lya Kalunga inali shi ninga.

Nena aantu ya tameke oku mu pa ongalo, i ikongele oshinima shoka ta kala noku shi tala, edhumbuluko kokutya okwa li e nohoole naawambo.

Meti 22 Iya Junie 1958 omuhona Kakulu e ya ongula onene mokomboni okulaleka aantu. Opwi imbwa kaamati nomusamane gwontumba a laleke omuhona noohapu dha Kalunga dhomu Job nokwe mu tseyithile kutya Kalunga okwa dhenge Job, ihe Job a dhiginine oompango dha Kalunga. Opwa leshwa wo epsalmi 121 nopwi imbwa ishewe. Aantu oye eta oluhepo lwawo noya lili nokulililila.

Ohugunina omuhona Mr. Lane a lombwele aawambo kutya oshigwana shaawambo sha humu komeho molwiilonga yawo. Nokwa pandula aawambo nokwe ya lombwele kutya, naa dhiginine iilonga nombili naa ilonge oompango nokuvulika kaapangeli nokomagongalo nokaakwanilwa nokwaayehe mboka ye li komeho, oshoka oyo ya tulwa po ku Kalunga. Nohugunina okwa gandjwa elaka, aantu ya kale momikweyo noya laleke omuhona, manga te ende momikweyo dhawo.

Ngashingeyi ngoka wa li nale wa longo mu Tsumeb, kala u negalikano okugalikana Kakulu. Okwa yi ku Durban eti 25 Iya Junie 1958.

Lazarus Matheus Uguanga.  
(Dha fupipikwa.)

### ORADIO YAAWAMBO.

Aamati aawambo oya tseyana nawa oradio. Aatiligane oye hoole oradio. Omutiligane ngele e na oradio, otu uuvu iinima yokokule.

Aaawambo nayo wo oye na oradio.

Oradio ndjoka ohayi pe oshindji oomboka ye hoole oku yi landa noku yi pulakena. Otayi ya hokololele shoka sha ningwa ku Kaap nenge ku Engeland. Oku na wo oonku ndana odhindji noombwanawa dhomOmbimbeli. Omukriste ngele a zi komambo, oku hoole okukutha oradio ye pamwe nOmbibeli, opo a pulakene nawa, shoka Radio na Mbimbeli taa popi.

Oradio yaakriste aawambo oyo Omukwetu.

Mateus Gabriel, Otjisondu.  
(Dha fupipikwa kashona.)



# OSHIKOLOLO SHOMEGUMBO



Omahangu taga falwa kolupale.

## EPYA NALI LONGWE NGIINI?

Otwa popileni nkene tatu vulu okukonga uuho, opo tu tuleni moyana getu. Nando ongawo, inashi gwana owala ngele tu shi okukonga uuho, ihe otu na wo okutseya nkene tu na okulonga omapya gogene, nonkene tu na okukuna oombuto.

Manga inaatu za mo moshinima shuuhoho, otatu gwedha po edhiladhilo lye etwa komuleshi gumwe Abraham Jakob, Windhoek, ota ti: „Pethimbo lyokwenye, kala ho lundulula iigunda yoye, yi kale tayi lyateke epya.”

Osho shili, atuhe otatu koleke edhiladhilo lyoye, omusamane Abraham.

Ewa, natu yeni ano mombinga yokulonga kokwene. Ngashi mu shi shi, aantu ihaa longo ya faathana, ngu nomukalo gwe. Opo tu kale atuhe tatu moneni ngaa sha, tu landuleni omukalo ngu: -

Onawa shili ngele to vundu epya lyoye okwenye, oshoka oombuto ohadhi mene nawa mpoka pwa vundwa. Mboka mu niipululo, onawa ngele to etha manga omwidhi gu mene, shaa gwa mene, nena gu pululila mo, omwidhi ngono otagu ku etele wo uuho, kofi yeve itagu kala ko omwidhi, otagu olele ko. Ihe ino inekela owala oshipululo, „omumvo no sha gwo.” Otashi vulika omvula yi kale inaayi loka mbala. Onke ano, nangoye ando u vunde ko wo ombinga yimwe manga omvula inaayi

loka, ombinga onkwawo yi tegelele epululo.

Mokulonga kokwene, onawa ngele to ningi omampungu omanene. Uumpungu wonkwanyama (itandi shek' aakwanyama) kau shi uuwanawa. Uumpungu wa tya ngaaka, otashi vulika mu kale owala ethinde limwe lyehangu. Otashi kwatha shike. Ngele ou na mepya lyoye uumpungu u thike mpono uushona u li ando 900. mokampungu kehe ethinde, ndi shi otashi ti, nomahangu oge li mo omathinde 900; Itau eta po sha. Oshinima oshikwawo osho shi, kuty; uumpungu wa tya ngawo ohau mana po eha, oshoka epya alihe ohali udha owala oondjila. Yamwe ohaa ti, uumpungu wa tya ngaaka, ihau sitha omuntu uunye. Ta, uunye hash, shaa to li iilya. Tu yelekeleni owala tu longeni omapya omampungu omanene. Uumpungu tula kumwe. Nda ti; ngwey' iilya yopongandankulu iho yi mono. Noyomomampungu omanene osho tayi ka kala.

Omumvo ku nomuloka, aasamane ningeni ngashi hamu ningi shito, kondjitheni omalusameya. Omukalo ngoka ogwoopala shili.

Ngashingeyi otwe eta owala ombinga ontshona yoshinima, ihe ngoka wa hala u gwedhele po sha, ito monika nokuli.

Moshifo tashi landula, otatu ka popyeni nkene tatu kuneni oombuto dhetu.

H. D. N.



## ELALAKANO LYEGWANENENO.

Aakuluntu yamwe taa ndhindhlike oyaana yamwe ya thigulula omapuko gawo yene. Mpoka omukuluntu ta tameke okugeela omumwana unene oye a manguluke mepuko ndyoka. Oye a hala omumwana a kale kee na nando omapuko. Ihe oye e nokudhimbulukwa nkene kape na nando omuntu gumwe a gwana a pwa. Oye mwene ta puka natango; ota vulu ngiini okuthimini-ka omunona a kale kee nomapuko. Omunona e nokumona ombili. Ngele ita mono ombili, ita vulu okuhuma komeho. Aakuluntu ya gwana okuikonakona nge taa putudha oluvalo lwawo, ya mone eifupipiko lya shili.

Ha aluhe tatu vulu okulombwela omunona: „Kala wa fa ndje.” Ihe natu tye: „Lalakanena shoka na ngame wo tandi shi lalakanene. Shi lalakanena shili u vule ndje.” -Aakadhona aanelago mboka taa lombwelwa ku he: „Kala wa fa nyoko! Muye to mono oshiholelwa.” Noshu wo aamati mboka taa lombwelwa ku yina: „Ngele to ende miinkotii yaho, ongoye ito puka.” Ando mOwambo mu kale aakuluntu oyendji mboka taa vulu okulombwela oluvalo lwao ngeyi!

(Tadhi tsikilwa.)

R.V.

## Ohatu pumbua Mepo Mujapuki.

Nande omuñu na kale a jadifua omalongo aeshe, ndele ina dalululua shili, kashi na eshi tashi kuafa nande. Oje okua fa ashike etemba la longelua ofraha nde kali na oishilifo. Oñgene ohatu pumbua shili Mepo Mujapuki.

Elina Shikeva.

## OIKUTU IKULU NAI DIININUE.

Omunjasha omukuetu, ope na oshinima shimue she tu holekua, osho oikutu ja kulupa. Kashiimba to ti: Oinjanju oi na oshilonga sha shike? Nge hatu tale moiulo ojo hatu lande meestora ile kOushimba ohatu ka hanga mo oikutu ikulu ile oinjanju. Nge to uapaleke naua oikutu jetu ja kulupa, itatu fi oluhepo luoshiuilo vali

Na nge hatu ka tunga eumbo letu, oinima ei ohatu ke yi pumbua neeñgono mokujakula najo onjata jounona, opo tuha longife oinima ipe noku i njona po nai. Osha monika ne luhapu ñge omaluhepo hae uja.

Oñge ne vakuetu, tu djeni moupofi ou, tuha ekeleshi vali oikutu jetu ikulu tu i uapaleke naua, fje tu i pungule naua nokulingila oiulo jetu vene.

Rakel Hamukoto



## SHITLANGU.

omunagwokombanda

Lya nyo wa  
ku  
Andre de Clerc  
na  
Eduardo Mondlane

lya lundululwa  
ku  
Hosea Nampala.

Etsikilo

Otandi popi shika nepandulo: Tangi, omuwiliki!

Omuwiliki Fransisco okwa yamukula:- Eeno, ndhoka oohapu oontoye. Onda li he dhiladhila oshilongo shika sha Male ngan osha kalwa kaantu aanamitimamiku kutu. Nani olya li epangulo lyopombambo. Onda li nde mu dhiladhila one aanima yowala- ngashingeyi otandi mu ithana ookuume kandje.

Oohapu ndhika oontsona nokuimba okwa kwata omitima dhetu omulilo nogwa dhimi gwa ningi omakala nomutoko.

Ngame wo onda kwatwa kushoka sha tiwa. Ngame onde ya nkuka kokamba ndjika omulongwa i ili nda zi koongundu dhombanda moshilando, ihe onda mono mpaka oshilongwa sha tsa. Aakwetu yomiihwa oyo ondhalate yoshingoli (ya penduka) Ondjundo yawo oya holama. Oyu uvte omadhiladhilo gukumwe mu Kristus.

Ndika olyo endhindhiliko lyokukalamwe-nyo kwoye Shitlangu.

Ekapiteli 24.

Omiti dhiyimati mombuga.

(Omolu okukwatwa kehalo lyokutseya, Shitlangu okwa yi moskola yuuevangeliste mu Rakatla. Okwe etha okuwilika etanga lye-gongalo momikunda dha Lourenco Margues. iNando ongeyi, okwa tsikile okukala moskola (yuusiku ya tungilwa iilumbu. Oskola ndjoka (Portuguese Normal School) ando okwa li ynaayi edhilila aevangeli omiyelo dhayo shoka oyaakatolika) ando Shitlangu okwe yi piti.)

Inandi gwanenwa kiilonga yandje yomayati kuumati, ndi li omuwiliki gwetanga kaamati. Nando ongeyi onda ndhindhilike utya ondi li po ethimbo efupi. Omuhongi gwandje wo okwa fa a ndhindhilike kutya ewiliko ndika olyokathimbo. Na ishewe oskola yaakatolika inayi hala we aalongwa ya za kooskola dhomatomo gaevangeli. Ondjila yandje oya thitikwa nduno? Oshike tashi landula omatoko gandje ehala lya-ndje okuningina iiholekwa, elalakano lyandje okuilonga nokutseya?

Onda pula endhindhiliko ku Kalunga.

Ohela aahongi oyi ithana ndje. Omukuluntu okwa ti:

-Shitlangu, ope na ehologo ndi: Itatu yi kEtumo lyaaAmerika ku Kambine hono haku putudhwa aevangeliste yolandbou (yo aevangeliste yo aalongi yomapya)? Okuilonga naa-amerika oomvula mbali, otaku ku pe ompito yokuilonga shoka itaatu vulu oku ku longa mpaka.

Omuhongi gwandje okwa gwedha po:

-Shitlangu, epulo ndyoka enene. Otandi ke ku mona u li omuevangeliste wa longwa wa ninga omukuluntu gwongeleka onene yontumba. Oto ka longa, to uvitha noto kwatha aanuuyina eto kondjitha olu-hepo. Oto ka fala elaka lya Kalunga kaa-



TOBIAS REIJONEN.

Omuhongi Tobias Reijonen okwa valelwa koSoomi 4. 12.1844.

Omumvo 1864 oye a taambelwa moseminari yaalongi, ihe okwa zi mo omumvo tuu ngoka nokwa tembukile moskola yaatumwa. Oyo na Gustaf Mauritz Skoglund oya longwa mongundu yimwe noya kala ye nuukuume wa kola pokati kawo. Oya lalkwa moskola oshita noye ya ku Afrika omumvo 1870. Omusamane Hugo Hahn okwe ya yapulile uuhongi kOti- mbingwe 5.3.1871.

Tango omuhongi Reijonen a kala kUukwambi, ihe mbala oye okwa tuminwa kOngandjera, a ka kwathe Nakambale petungo lyoongulu. Omumvo 1872, Nakambale sho kwa ka hokana kUushimba, Reijonen na Weikkolin oya kala peha lye kOngandjera. Ihe oyo oya nyengwa okuuvathana nomukwaniilwa Sheya shUushona; onkee oya tembukile kOndonga.

KOndonga omuhongi Reijonen okwa kala tango kOniipa. Oye okwi ilongo oshindonga nokwa tameke okulundulula omaimbilo melaka lyaandonga. Esiku eti 15 lya Julie 1874 oye a dhana oshituthi she shohango pamwe na Emilia Charlotta Björholm.

Aagundjuka mbaka oye ki itungila oongulu kOmulonga omumvo tuu ngoka 1874. Tango oya li haa lala metemba lyawo, manga taa tungu omakuma gotango. Oya longo ko wo oshikunino, ihe iimeno oyindji oya si omolwoluteni. Mu Desember 1875 oya mono sheeli shawo noye mu luku Armas Tobias.

Omuhongi Reijonen okwa li ha kwatha wo aavu oyendji. Aandonga oye mu simaneke omolwoshilonga

nene naashona. Aakweni otaa si oluhepo oshoka kape na omuntu e shi ootu oku ya pendutha nashono ishewe aakiintu ohaa pangelwa kiikalunga iimbolo, ya gandja oomwenyo dhawo kiilonga yomepya opamikalo dhooyinakulu.-

Onda dhiladhila aakulukadhi mbeyaka ayehe, aakiintu aamwameme, ohaa idhipaga niilonga, haa pula omvula koompulile. Upya owa lyweka. Onda dhimbulukwa okwaa-kuna mbala oshoka omukwaniilwa ina kuna. sho epogolo okukuna tango kondjayi. Omuhongi oku li mondjila Eitaalo ndika lyopombambo oli na okuekelwahi kekuya netemo. Aakwetu ye na okuululilwa nkene omuigandji ku Kalunga ta longo.

shoka noya ti:

- Nguka oye onganga onene; ooyakwetu kaye thike puye nando.

Oye oha tala momukanda moka mwa popiwa omikithi adhihe nomiti dhadhho. Nena ota galikana Kalunga, notaa aaludha ihe omuvu pamwe na ye. Otatu nyengwa kuye, oshoka oye a hangana na Kalunga.

Yamwe oya ti nokuli:

- Oye tuu onganga yetu; inatu pumbwa dhilwe. Oye ta aaludha omagano, manga oonganga dhetu tadhi tu futitha noonkondo. Oye tuu twe mu hala.

Opwa li pu na wo uudhigu owindji. Efolo Reijonen okwa li ta aalukililwa omumvo 1878. Omuhongi Skoglund okwa man' oondjenda. Pethimbo limwe kOwambo kwa kala aahongi yaali ayeke: Weikkolin na Reijonen. Moshilongo kamwa li nando epangelo lya kola. Aantu ya hepekwa kiita nokomayugathano nokondjala.

Ihe moomvula tuu ndhoka iiyimati yoshilonga shetumo oya tameke wo okuholoka. Esiku lyaapagani, ano eti 6 lya Januarie, omumvo 1883 omuhongi Tobias Reijonen okwa shasha moshinyanga shokOmulonga ongundu yotango yaandonga, aalumentu yahamano. Egongalo lyotango olya dhikwa nolya tameke wo okukoka. Aantu oyendji oya tameke okugongala komambo nokulongwa ukriste.

Oshilonga oshidhigu shekokolo lyuukriste osha mana po oonkondo dhomuhongi Reijonen. Omumvo 1884 oyo nomukulukadhi gwe nomumwana oya shuna koSomi, yo inaa mona we ompito yokugalukila kOwambo. Omuhongi Reijonen okwe ende nomagongalo ogendji nokwa hokololele aatumi ye oshilonga shoka e shi longo kOwambo. Okwa longekidha wo oamambo gomoshindonga ngoka ga nyanyangidhwa koSoomi pethimbo ndiyaka.

Esiku eti 5 lya September 1905 Omuwa Kalunga okwa zimbula omutumwa gwe omudhiginini.

Pa Irja Kilpeläinen.

-Shitlangu,- osho a tsikile, -Oto zimine tuu okuthiga po iimaliwa mbyoka tayi ku pe epangelo eto taamba ishewe okukala omulongwa?-

Onda zimine. Onda li nda tega endhindhiliko: olye ya. Omweelo gwe egululwa.

Otwa yi molweendo. Okonima yomeila dhomathele, okupitilila iihwa ya sombambi, nomano taga piyaganeke, oongulu dhetumo otwe dhi adha. Evi lya Kaanan! Okalando ka ziza ka nikuuyamba. Eeno, ope te kala mpaka ethimbo lya gwana ope ndi ngononone iiholekwa yiilonga mbi iwanawa. Iiwike ya piti.

Tadhi tsikilwa



# OUNJUNI TAU TONGO SHIKE

## Epungu lomuSuidwes.

Otua lesa moshifo Suidwester, kutja neudo itaku ka monika epungu lihapu omolu oluteni. Vati epungu itali fiki pamue na eli louduali nande nande.

Okatana ke nomitue mbali.

Ongobe imue jombulu C.W.Schoeman popepi nOkahandja oja dala okatana ke na omitue mbali, omadimo avalu, omesho ane, omalaka avalu nomatui atatu. Okutui kumue oku li mombaba joshipala. Olutu lako ola li li li naua. Ongobe ojo oja li i nokudipaua pefimbo lokudala, osheshi oja fa ja li ihe neefigono dokudala.

Ombulu ja kondjifa ongadulu.

Ombulu imue jomu Zoeloe meneer Nel oja ka kuafa okatana kajo ka kua-tua kongadu noka tualua momulonga. Ndele eshi ja ehena popepi nomeva opo i luife ongadulu nodibo, divadiva ongadulu oja efa okatana nde tai fiukile ombulu. Odibo oja uila poshi nombulu oja li i nokulidengifa ongadulu nomake ongaho. Nena ongadulu oja faduka po nde tai i momulonga.

## ELONDODHO

Aakwetu, tu dhiginine eitaalo lyetu. Opu na oshiponga oshinene nenge ndi tye epukitho enene. Mu Suidwes-Afrika omwe ya ongerki yimwe edhi lyayo A.E.M. Onda tilitwa kaalumentu yamwe aawambo, sho na yo wo yayi mongerki ndjoka.

Kotokeni! Onime osimba notayi vala ngashingeyi, nomokuvala kwayo otapa kala uudhigu opune aagundju. Tonateni ne mu kotoke!

Onda tilitwa kaamati aawambo. Omuwa ota ti: Omukuni ota kunu ihe yayee kepya ndyoka lyaa noshitosi (Luk. 8:6). Dhimbulukwa ano Omushiti gwoye pomasiku guugundjuka woye (Omuuvithi 12:1). Kotoka, waa pukithwe kiikolitha nokuuhalu wuuyuni. Inoetha ethimbo lyOmuwa, li ka pitilile po owala.

Omuevangeliste M. Johannes, Maltahöhe.

A.E.M. oyo ongerki ya zi mu Amerka noyi nondumbo noongerki dhoka dha aadhika nale komavi ngaka. Oye eta ehalakano nevundakano enene momagongalo gamue gomu Suidwes-Afrika.(Omukwetu)

## Oskepa ja ningina mefuta.

Mu Januarie oskepa imue ipelela ja tungua naua ja kola, opo i dule okuenda mokati komeva oikangua, oja dja mu Denemark noja juka kumbangalañu. Mondjila jajo oja hangika koshiponga popepi na Groenland. Oja undula ondudu jomeva oikangua. Omakufikufi okua li e neefigono nomeva a hovela okupita moskepa. Ovanaskepa ova tumina eeskepa dikua omalaka nekuafo la radio, opo di uje nokuendelela di va kuafe. Ndele omolu omakufikufi manenenene ova kuafi inava mona omuto okuehena popepi navo. Osho oskepa ojo ipe oja ningina mefuta novaenda ovo aveshe va li mujo ve fike po 95, ova fja.

## LEONARD AUALA A THIKI KU SUOMI.

Pori, Suomi, 17. 5. '59.

Kaawambo aakwetu amuhe,

Ngashi mwa tumu ndje, ndi ye medhina lyeni amuhe ku Suomi, Omuwa Kalunga okwe enditha ndje nawa nokwa thikitha ndje nawa.

Ookuume ayehe, nge mboka ya li ko nale kOwambo nenge mboka inaa enda ko ihe ye hoole oshilonga shetumo, ayehe oya taamba nenyanyu omakundo geni noya hokwa shili oku mu tala amuhe moshipala shika sheni shimwe. Unene ya hokwa uukriste mboka yu uvite tau koko nawa mevi lyaawambo.

Esiku kehe ndi nokuuvitha noku-hokolola komagongalo gi ili nogi ili. Komagongalo ogendji inandi thika ko natango, oshoka opo tu li petameko lyelandulathano lyomalwendo ngaka. Onkee ookuume oyendji opo tatu ka tsakanena na yo.

Nda mono owala aawambo aakulu mbaka: efolo lya Liljeblad nefolo lya Amutse, kuku Karin Hirn Ngulungulu na kuku Levänen, omusamane Perheentupa nefolo, kuku Koivu (efolo lya kuku Koivu ta alukwa unene), kuku Alho nefolo, Mutanen na Kekki nefolo na mekulu Linda Helenius, Katri Saarisalo, Eila Muukkonen, Eevi Halminen, Sirkka Halme, Aune Hirvonen, oo-Eriksson nooAirikkala nooSaارين nomusamane Vapaavuori nomumbisofi Simojoki nomuwilikitumi Vuorela. Ayehe oye mu pulile po nondjuulukwe onene.

Kundweni nekundo lyokomwenyo.

Omutumwa gweni

Leonard Auala.

## MANGA TU LI MONDJILA.

Efiku eti 22 la September 1958. tua dja mu Grootfontein tua juka ku Otjiwarongo pamue nounona vetu vatano- navavali.

Olivia ueedula 14 uomuaavo nani a li a hala a ka huhue. A fiuka mo meshina, manga li li moñapo joshidudu. Eshi tue mu jongola, eshina oli li kokule. Omukuluñu ueshina eshi a shivifilua, okua njengua okuuda ko diva. Eshi a ka uda ko mui-nja, opo ne a kañgeka eshina, la hangika la koja osasiona ja Otjihaene-ne.

Onda dja mo, ndi shune kolupadi okulandula omumuange, manga eshina tali tuikile okuja nondjila jalo pamue na meme Marta nounona ve noluhodi linene netilo. Manga ame hai shuna, nda hupula Olivia uetu.

Nani, Olivia eshi a fiuka mo omoipafi jomuhona umue ou ha fufile olutenda pamue novakalele vaje. Oje okua endelela diva pamue nomu-uambo umue Abraham, nde te mu pe omeva nomuti. Nani mokuñuka mo omepo jeshina oje mu umbila mondu-ba jedu olo la feua olo la kuñgula nolutenda alushe. Vali penja opa li jo pa tumba. Okua alangatela momalambo, omo hamu di omadu oo. Ashishe osho osha li eameno kuje.

Omuhona ou na Abraham uaje va kufa okanima oko haka kulikua mongodi, ngaashi ongodi tai kuñgula nolutenda alushe, nde tava lombuele ovo va lekela omashina ku Grootfontein kutja, momashina mua ua omuñu.

Eshi nda fika ko neloloko nenota, onda hanga ovapolifi vavali va tulika Olivia metukutuku lavo. Otua tuikila okushuna ku Grootfontein. Tua ja kepangelo no komundokotola no tua peua ombapila, tu ke i jandje komundokotola ua Otjiwarongo.

Pehulilo lehokololo eli otua hala okupandula ovaevangeliste va Grootfontein novakriste vamo aveshe, novañu ovo va enda meshina pamue na meme Marta nounona ngaashi omumati ueongalo lokOshigambo a li ta ka pasiona ku Windhoek, nomuevangeliste Werner Hamualua nomukulukadi uaje nomuhona uosasiona ja Otjiwarongo, ou a jandja omupolifi a jakule ovañu vange.

Efiku 12 la Oktober Olivia a pitifua mo moshihakulilo sha Otjiwarongo. Otua tuikila ondjila jetu joku Welwitschia nokuhambelela Kalunga.

Ev. Malakia Hauuanga  
(Da hupipikua)



## KAHUHUENA HADELA NJOKO.

Otua lesa mOmukuetu ua September, eumbo li kale la jela.

Ovamati luhapu eshi ve li kOushimba, ohava tumine oohe nooina oinima joku va jakula momaumbo. Eshi oshiwa unene. Ndele eumbo eshi hali uja oipakete ihapu, otali hovel jo okunjata. Apeshe oimbapila ojo ja pambauka meumbo alishe. Handi mu indile ovamati: inamu dimbua okuete-la maumbo ooho oshajakulifo shi na oshilonga - olukoolo lokukomba oipambu jeembapila ojo tai njengana okukomba nokukateko.

Na vali mumati, tala eshi ua kula no ua tekulua naua noikulja ku ho na njoko, u kule u je kOushimba. Eshi ua aluka, ua hanga ho na njoko tava ende va fe-ngombe, va petama koilonga jokutua oimungu, u mone oipaluifa fimbo ua li okaana. Paife konga oshipululo u tumine njoko opo a lime noupu poima pa nengenekua keengobe.

Kahuhuena hadela njoko! Oshipango oshitime.

A. Kañalelo.

## OPASSA MU DAGGAFONTEIN.

Efiku eti 26.3. onda talela po ovamati ovakuanjama keemina da Daggafontein. Oko tua dana Opassa navo.

Otua li po tuu okangudu ka kula shaashi opa li ovatanganyika vahapu vongerki jetu.

Otua hafela ngaha emonafano eli. Ovamati va hafa jo eshi nda ja ko.

Umue okua ti: Oku ovañu ohava dila dila otua dja mohua jongaho.

Vati ovatiliane otava tula ekutu lofjuuka pondjila opo nee eshi tue uja okukufa ofjuuka otave tu kuata ve tu ete keemina. Ngaanga tave ku mono otava shiiva kutja fje katu li mofuka ongaho, otua dja momaumbo.

Ohatu mu kundile po mOmue ne poñele jovamati

Jason Amakutuwa.

OKAMBO  
KOMUKUANEONGALO KESHE  
KA HOLOKA

Otaka landua kOuambo 4d.

## EKUNDO.

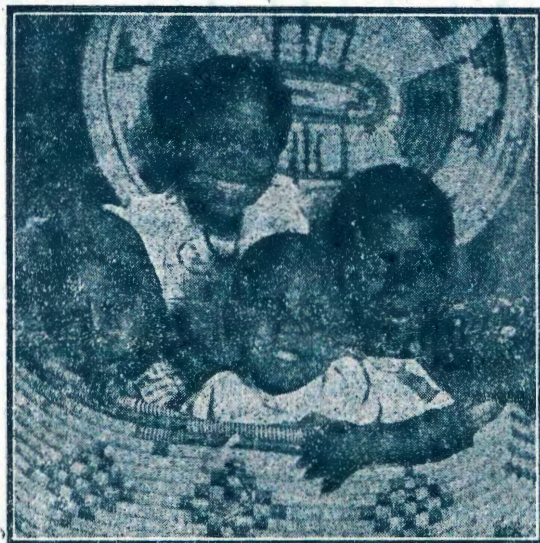
Shika ekundo enene kaagundjuka ayehe.

Nuumvo ongundu Bantu Koor Klub ya gandja uukadhona 2 kooskola oonene.

Omugundjuka omukwetu ino kanitha po okathimbo koye kuugundjuka, oko okafupi shili, pendapala mOmua, opo u wape okusinda omutondi. Konga mEhangano 503. Ethimbo ndika nkene tatu li fatululilwa.

Omugundjuka a dheuka meimbilo ndika, oye iha kotha po nando. Nuupenda we halulakano oshoka a tonatele okathimbo okafupi kuugundjuka.

Nekundo enene kaagundjuka ayehe  
Bernhard J. Kustaa  
Bantu Koor Klub.  
Bus 101,  
Luderitz.



## TUA KANIFA.

Moshifo sha April omua tumakana Eshi nde mu shangela onda kanifa Uukambe haengobe. Onkambe kamue edija jokapolo moshipala i na ouposhe komakondo okonima imue omemba i na okambaba kanini moshipala.

Ame

Josua David.

Ohalushu - Oukuanjama

Onda kanifa ondongi jange ja kanene ouduali poihati 1958, jondema ituima itoka medimo jomaulu male, alikana ou e itola kuafe nge u jandje. enjamukulo koshinjanjangido opo tu ndude apa ili.

Erastus Muesudu.

Edundja.

Onda kanifa ongombe oñuedi jofidi jee- mbinga doimbalambinga.

Mateus Silas Ondema, eongalo Omundaungilo, Oukuanjama.

Onda kanifa ongobe jodidi ilaula jeembinga doimbalambinga. Komatui oja ningua eendele. Kolumosho komakandelo oja tetua jo ja vovolua. Ja kana pokuenje mofuka. Ou e i mona ojange.

Filemon Ngijonanje.

Engela.

Onda kanitha uusiao uuyali. Wa kana mu Oktober 1958. Wa kanene kOyovu ku Uukuma. Egongalo Ontananga. Okandoongi kamwe okandema okaluudhe ka tetwa okutsi kondungu. Okatsezi okandhile ka tetwa kondungu yokutsi.

Silvanus Engombe

Oyovu, Ontananga

## OLJE A KANIFA?

Efiku eti 18 Augustus 1958 okua toolua okakofa katilijana ke na omaluvala ke jadi oinima.

Ou ua kanifa okakofa katja ngaho ila kufje kOshali Haikela Endola. Nde kala u shii omuvalu noinima i li mo.

Erasmus Lasarus.

## EMBO ENENE LYA HOLOKA.

Aakriste yokOwambo oya pewa ishewe omagano omanene. Omusamane T.E. Tirronen okwa lundulula efatululo lyEvangeli pa Markus lya nyolwa komukoneki gwOmbimbeli Esko Haapa, ngoka ha longo aasitalongwa yomu Helsinki. Embo ndika oli nomapandja 274 nomapeko omanawa ga kola. Ookuume ketu kOsoomi oya gandja iimaliwa yawo, o-po ondando yembo ndika enene yi shonopekwe. Onke otali pula 5/- ayike.

Embo ndika olya pumbiwa uunene kaasitagongala nokaalongi noku kehe ngoka e hoole oondunge neputuko noohapu dha Kalunga.

Oomboka ya hala, ye li tuminwe kUushimba, naa gwedhele ko omani 6 omolwoposa.

Ostora yomambo.

## EKWATHO LYENI LYA THIKI.

Twa taamba ngeyi:

Egongalo:	Iimaliwa:
Onayena	4.19.-
Okaku	2.12.-
Onyaanya	1.2.9
Okankolo	18.9
Etilyasa	6.4.-
Onyaanya	4.-
Engela	4.6.1
Edundja	2.18.-
Eenana	14.10.3
Ondobe	7.14.9
Omundaungilo	6.2.1
Ongenga	3.16.10
Endola	1.7.-
Okalongo	2.7.10
Endola	1.4.6
Elim,Nima	10.-

Orangemund:	
Josef Shuuya	10.-
Aawambo, omutumi	
Mateus Nangombe	2.6.7
Aawambo, omutumi	
F. Auala	3.-

Walvis Bay:  
Aawambo, Canning CO. 2.-

Omaruru na Kalkfeld:  
omutumi S. Itwea na  
Paulus Muvale 4.-

Tsumeb:  
Aawambo, omutumi  
F. David 3.-

Welwitschia:  
Aawambo, omutumi  
M. Hauaanga 2.7

Tatu mu pandula unene notatu mu halele omayambeko ga Kalunga.

Onandjokwe.