

OMUKUETU

No 10

OKTOBER.

1956.

KALUNGA KEIDIDIMIKO. Rom. 15:5-6.

Nguka e ka mono, oye he ka popi. Omuyapostoli Paulus okwa tseya nokwa mono eidhidhimiko lya Kalunga olyo enene shili.

Ngaashi megumbo lya Adam tamu uuvika omayamukulo omadhigu, ngoka taga ti: „Omukiintu nguka wa pe ndje.“ Na: „Ongame omusita gwomumwameme nani?“ 1 Mos. 3:12; 4:9.

Mpaka tapu monika eidhidhimiko lya Kalunga opendji, ngaashi kwi dhidhimikile oshigwana shIsraël mombuga, nando sha popi omakamba. Okwi idhidhimikile iihuna ya li ya longwa ku Golgata, nkoka kwa hepekela Epona lya Kalunga okiikaha yaalunde nota aalelwa komushigakano noti iigidha: „Kalunga kandje, oshike we ekelehi ndje?“ Mat. 27:46. Ndele Omuwa ta mwena nokuidhidhimika.

Eeno, omujapostoli Paulus ina popya oshinima shi li kokule naye, aawe. Oye nguka Saul, omutidhagani guegongalo lya Kalunga nolyOmuwa Yesus Kristus, ihe ina yonua po, nando a gwana okuyonwa po. Omuwa okwa li a tegelele ethimbo lyoku mu gundjilika, opo a dhimbulule eidhidhimiko lya Kalunga.

Muuyuni wongaashingeyi otamu uuvika omalaka ga fa ngeyaka gomegumbo lya Adam, ngoka taga ti: „Kalunga oye a shiti omigongo niilyalyaka nosho tuu.“ Na yamwe taa ti: „Oshike Kalunga a shiti aakiintu oyendji? Ndi shi, okwe ja shitile aalumentu.“ Iihuna oyi thike peni tayi zi mokani komuntu! Omuwa Kalunga ta pulakene ayihe mbika, ihe oti idhidhimike manga, oshoka Kalunga ina shita omagongo nomalovu nolambika nosho tuu, aawe, Kalunga okwa shiti iimeno, nomuntu a kale ondjelo ye. Omuntu sho a pangelwa kuuhalu we, onkee kee shi we okuyoolola uuwanawa nuwinayi, nando Kalunga okwa halela omuntu, a mone omwenjo gwaaluhe. Joh. 3:16. Ihe omusilwahenda nguka oye inee li hala, onkee ti iigidha: „Za po na nguno; tu mangululila Barabbas!“ Luk. 23:18. Shika tashi holola nokutya, omuntu ina nongela ethimbo lye-kongo lye. Luk. 19:41-44.

Omuleshi omukwetu! Eidhidhi-

OHATU HOPAENENE TUU OVANINIVE?

Konga mEtestamenti Likulu omukanda uomuhunganeki Jona ndele lesa naua etukulua eti 3 alishe.

Nale nale Kalunga a tuma omupija uaje, nedina Jona ku Ninive a udifile oshilongu shinja ehanaunopo lasho molu oulunde uasho.

Osho Kalunga a tuma ovaudifi vaje koilongo noilongo. Ovo va fika moilongo jomOuambo jo. Nena natango Kalunga ta tumu ovaudifi ve neendjovo daje kufje. Ohave tu udifile shike hano?

Eendjovo edi Kalunga e di tu tumina tadi tu lombuele shike hano? Ohatu udifilua tuu: ombili, ombili, nande katu nombili, ile ohatu udu eendjovo da fa eendjovo da Jona: Oshilongo shewi, eongalo leni nomaumbo eni, neeskola deni tadi njonua po! - Natu puilikineni naua!

Eendjovo edi da talifa nge keembinga neembinga. Eshi nda lengalenga ngaha nda fa nda uda ondaka ja Kalunga. Oshilongo eshi tashi hanaunua po! Eongalo eli tali njonua po! Oskola ei tai njonua po! Eumbo eli tali hanaunua po! Ame nda mona jo oinima ihapu moluajo Kalunga e noku u udifila ehanaunopo letu.

Meongalo loñumba omu noikoluifa, mu likuauo omu nohoole joipala. Moskola imue omu nokuhadulika, mu dimue omikalo dii dilili nodilili. Meumbo limue omu neenamanana netondafano. Mokati kovanjasha hamu taandavele ehalo lokulitalifa noihelele. Ofje atushe ohatu kondjele oimaliva neliko alishe nokunjeka ovakuetu noku va futifa eendado dinene. Ohandi njengua okutumbula oinima aishe Kalunga moluajo e noku tu udifila ehanaunopo letu. Ndelene ngenge oye muene to puilikine naua koshipala sha Kalunga to udu ondaka jaje, tai ku ulukile oshinima eshi sha hala oku ku hanauna po.

Dimbulukua paife eshi ovaninive va ninga eshi va uda eudifo la Jona, kutja oshilongo shavo tashi hanaunua po. (Lesha naua vali okudja koverse 5.) - Ovaninive va itavela Kalunga nova ingida elidiliko loikulja, nde va djala omakutu. - Ngaha va

miko lya Kalunga ngele itali tu pe eitedhululo, nena oye ta ti: Yayee, epipi ndi lyaa na eitaalo nolya pilaala, osigo unake ndi kale pune noku mu idhidhimikila? Luk. 9:41.

OMUTIMAMANYA TATUKA,
UULUNDE WOYE LILILA.
OMUKULILI TA HEPEKWA,
OKOONDJO DHOYE TA
DHIPAGWA.

David Shihepo.

EPISTOLI LYOSONDAHA YEPANGULO.

Mondjalulamasiku epistoli lyosondaha yepangulo (25.11.) olya nyolwa.. „Ilm. 20:11-15.“ Efu-pipiko ndika lyopashisoomi oli nokuleshwa .. EHOLOLO 20:11-15.

holola ehalo okulidilula nokuefa okukala kuavo kuomoulunde. - Ohamba jovaninive ja ninga shike? Ohamba novalenga aje va udifila ovañu vavo shike hano? Diladila: Ohamba novalenga aje tai kumaida ovañu vaje va ilikane no va lidilulule shili. - Novañu va dulika kuvo. Eshi ve lidilulula Kalunga e va hupifa; ine va hanauna po vali.

Ofje eshi hatu udu ondaka ja Kalunga tai tu lombuele ehanaunopo letu ohatu ningi shike? Ohatu tuikile mbela okukala kuetu moulunde ile ohatu ningi ngashi ovaninive?

Momaumbo etu omu na tuu ovakuluñu hava kumaida oludalo lavo va ilikane Kalunga nokulidilulula eshi hava mono oshilongwa tashi ja popepi molu oulunde?

Momaongalo etu omu na tuu ovakuluñu ovafita novaevangeliste tava ladipike moshilonga shavo eshi hava mono ehanda la Kalunga kombada jeongalo lavo li li mokuhanauka po?

Meeskola detu omu na tuu ovalongi hava ingida ku Kalunga oshilonga shavo shi ha hanauka po.

Ile moilongo ei jovauambo omu na tuu eehamba nomalenga tava ningi ngashi ohamba nomalenga ovaninive eshi va uda eendjovo da Kalunga?

Mokati ketu kamu na nande umue ta dula okulipopila kutja ina kumaidua ile ina londolua. Eendjovo da Kalunga tadi tu lombuele nana eshi tu nokuninga nokoinima aishe tai ningua mokati ketu hatu dimbulukua kutja tu h mondjila jehanauko.

Ovanelao ovakuluñu ovo hava udu eendjovo da Kalunga nokulidilula nde tava kumaida oludalo luavo.

Ovanelao ovakuanashisho vomeongalo tava udu ondaka ja Kalunga nokulidilula hava longo oshilonga shavo mulo ehupifo lovañu.

Ovanelao ovalongi hava longo nokuefa oulunde aushe nokujandja oshiholelua shiua kovalongua vavo.

Ovanelao eehamba nomalenga ovo vo vene ve nehalo okulidilulula shili nde tava pukulula ovañu vavo.

Oshiuana ashishe shi nelao ngenge tashi udu ondaka ja Kalunga nokulidilula, osheshi natango tu nomito okuhupifua ngenge hatu aluka ku Kalunga nokulidilulula.

U. P.



OMUKUETU

Oktober 1956.

ONKUGO YOKU MAKEDONIA.

Omwa dhimbulukwa tuu oshipalanyolo shika? Osha li peha tuu ndika moshifo sha Julie 1955. Pethimbo ndyoka otwa popi omuyapostoli Paulus, nkene oye a aadhika kewi lyonkugo e li uuvu memoniko lya ti: „Taagulukila, u ye ku Makedonia, ngu ke tu kwathe!” Otwa tile oonkugo dha tya ngaka odhu uuvika wo momakutsi gaakriste yokOwambo.

Onkugo yimwe oya zi kombanda yongamba, ku Angola. Otwa kala hatu yi uuvu, tse twa li twa nyengwa oku yi matuka. Kalunga iha nyengwa ku sha. Otwa kundana, nkene oye e egululile etumo lyontumba ekwaevangeli ompito yokulonga oshilonga shetumo mUukwanyama wa handiyaka. Tu hambeleni Omuwa gwetu omudhiginini, tse tu galikeneneni aamwameme mboka ya tameke oshilonga shoka. Pamwe otatu ka uuva komeho oonkundana oombwanawa hadhi zi kombanda yongamba.

Onkugo onkwawo ohayi uuvika omolwaakwankala yokuuzilo. Oshilonga shoka inashi mona natango etameko ewanawa. Natango Omuwa Yesu Kristus ta tala kutse note tu pula ta ti: „Omukriste omuwambo, ou hoole ndje tuu?” - „Omukriste omukavango, ou hoole ndje tuu?”

Ihe ope na natango onkugo ontitatu, inaatu yi tumbula moshifo shiyaka sha Julie 1955. Oyo itayi zi kaapagani, aawe, aakriste aakwetu, aamwameme meitaalo otaye tu kugile ekwatho. Onkugo ndjoka otayi zi kokule kuumbugantu, kaamati mbeyaka ye li kokawe. Nkwiyaka, pokati kefuta enene nokombuga yehekevi, oku nomayovi ogendji gaawambo, mboka ye niwe koluhepo olunene lwoohapu dha Kalunga. Momwalu oyo ye vule egongalo kehe lyomOwambo, ihe kaye nomusita. Oyo ya pumbwa elongo lyuukriste noye li hala wo yene, ihe kaku nomulongi. Oye na ondjuulukwe okuuva oohapu dha Kalunga, ihe aauvithi oya pumba.

Palwe moshifo shika otamu uuvika oshilonga shoka sha longwa notashi longwa ku Oranjemund. Otatu hambelele Kalunga omolwawo. Otu uuvite nawa, sho tu shi shi, aamwameme yomu Rynse Sending ohaa kambadhala okwaadha na mboka yoku Oranjemund. Unene otwa hala ngashingeyi, tu pandule aantu mboka ya tameke okukondjela oomwenyo dhaawambo, nando sho shene oyo aalongi yiilonga yilwe. Otatu ya kundu mpaka noku ya halela eyambeko lya Kalunga.

Osha zi ano peni, ku Oranjemund sho kaku na mando omusita nenge omuyevangeliste? Osho euutho lyooyene yiilonga yokawe. Oyo ya tila okupitikila mo aantu yopalwe, ya kale keha ndyoka lyiilonga, manga kaye shi yomiilonga mbyoka. Aniwa oya dhimbulula naale, aantu ya tya ngaaka otaa hongololwa kuufuthi nokuuwinayi ulwe.

Eeno, pamwe osho. Ihe mokutala oluhepo lwokomwenyo lwaamboka ye li ko omayovi nomayovi, itatu vulu we okumwana. Otu nokuyelutha ewi lyetu, tu indile ooyene yeha ndyoka, oyo ya ziminine tuu aalongeli yawo eyakulo ndyoka ye li pumbwa, ya mone oonkondo oompe dhomeni

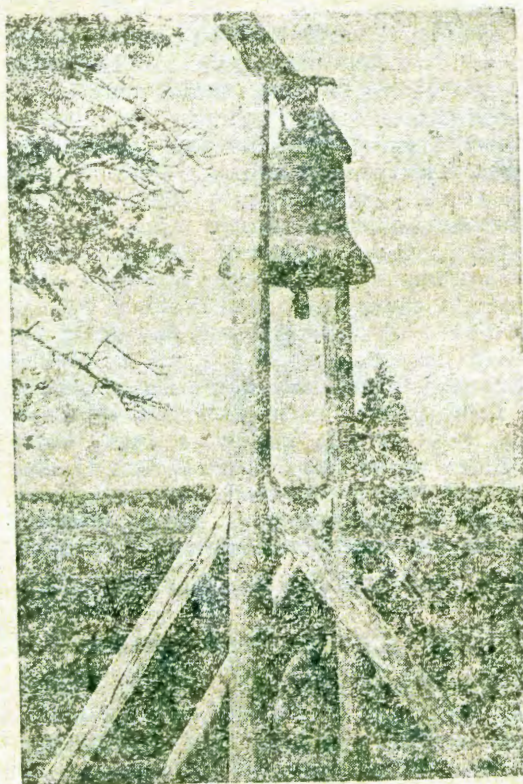
nombili ya yela koshipala sha Kalunga nomokati kaantu ooyakwawo. Otu nokuknkola komwelo ngoka gu li po natango gwapatwa. Otu netegameno lya kola: ngashi omiyelo dhopalwe odhe egulukile oshilonga shevangeli, osho na nguka wo tagu vulu oku tu egululilwa.

Otse katu shi mboka taa etele aamati omalongo omape tage ya piyaganeeke. Aawe, ongerki yaandjawolela otayi kongo ompito yokuyakula iilyo yayo. Otwi inekela, oshinira shika osha gwana oku tu yoolola maakonkoli ayehe yalwe mboka taa kongo ompito ku Oranjemund.

Otu shi shi, eindilo lyo lyene oli nokuza kaakuluntu yongerki yetu. Oshinyolwa shika nashi talwe owala eyamukulo lyokuyamukula iinyclwa mbyoka hayi zi ku Oranjemund oyindji shili yoku tu hokololela oluhepo lwako.

Aamati aakriste kokawe nopalwe wol One inamu dhimbiwa kongerki yaandjeni. Oyo oyi na oshimpwiyu sheni. Shaa tuu oyo tayi shi pitikilwa, oyo ya hala okukonga mboka ya gwana oku mu tuminwa. Manga oyo inaa ya, dhiginineni shono mwe shi pewa. Longathaneni oohapu dha Kalunga, ne mu kumagidhathane. Dhiginineni natango okuilandela omambo niifo mbika. Inamu sohoni okuhokololela ooyakweni Omuwa gweni Yesu Kristus, Omukulili gwaantu ayehe. Nonge tamu galukile koshilongo shaandjeni, kongeni ekwatathano negongalo, opo mu yakulwe nawa neyakulo ndyoka mwa li mwe li yuulukwa nkwiya.

Omukriste kehe, shaa nkoka u li! Omagalikano goye okugalikanena aamati yetu yomehalakano naga ninge ekonkolo li noonkondo momakutsi ga ngoka hu uuvu omairidilo gaafupi. Oye e noshipatululo shomwelo kehe. Oye nge te egulula, nena kaku na ngoka te edhile po.



ECIMBO LJAUO LJA CIKANA.

mEeñana	
Lamek Hafeni ja Erastus	a fi 14. 4. 56
Jona ja Paulus	„ „ 7. 4. 56
Festus ja Ngijalua	„ „ 8. 6. 56
Rauna Gebhord	„ „ 17. 6. 56
Sesilia Ngilundua	„ „ 3. 8. 56
Ndamonoñgenda Hamukoto	„ „ 20. 8. 56

OSHIONGALELE SHOAMATI 'MENGELA 17-19 AUGUSTUS.

Mefiku eti 17-19 Augustus 1956 mEngela omua ningua oshiongalele shovamati aveshe vomOukuanjama. Elalakaneno loshiongalele eshi olo okupendula neputukilo lovamati va kale va putuka palutu nopamuenjo.

Oshiongalele osha hovela nohungi, omo ovapopi va dimbulukifa ovamati okukala kuOmukulili uavo kutja, Oje okua kula meendunge, moukuluñu nomoñgenda, ha pu Kalunga apeke, ndeene nopovañu. Ediladilo eli ola etua po opo mulo ovamati va dimbulukua kutja ovo opuna uoshilongoneñgono doshilongo, ngenge tava ja mbuka notava penduka mouua, nena oshilongo otashi kala sha kola shili. „Oshiua-na shi na Kalunga kasho oshi nelao.”

Mohungi ei omua li shili ouua muhapu, neemuenjo dovañu da mona opuna munene uOmuene mujo. Ongudu jovaevangeliste nojovamati ovanaskola ja imba mohungi ei. Omo jo ovamati va ulikilua omafano okekuma ha umbua ko keshina lolusheno. Oinima aishe ja holola eeñgono domushiti ñge dinene di he shii kujelekua.

Ongula jefiku eti 18 omuningi uoandaha okua lesa Ps.127: 3-5 nokua holola kutja ovamati ovo oikuti monjua ja Kalunga. Kashiimba Salomo eshi a tonga ngaha, a mona ovamati vahe David, ou a li e novakuita ngashi Josabeam ou a denga etanga lovañu 800 oje aeke. Osho jo Eleasar na Samma ova li eefule nosho vakuaovamue. Opu li shili eefule dihapu ngashi Abisai ou a denga ovatondi va David novatongolome nokuli.

Okua eta jo ngee mOukuambi mua li omatanga e li ngaha:- 1. Ovanjakua, 2. eembulu, 3. ovapolifi, 4. ovandobe, 5. ovakolokoshi novalunde. Etanga keshe oli nohilonga shalo.

Konima joandaha ovamati ova ja ne komafijafano e lili noku lili. Ovamati voskola vetanga "A" va kondja novaevangeliste "A" nosho "B" jovamati na "B" jovaevangeliste mokudenga etanga. Ovamati jo vomomaongalo va kondjifafana nomatanga avo

Konima ovamati ova ka lotoka momafafano. Ovamati ava va kula ve needula 15 fiu 30 ova lotoka oshinano sheemeteri 100. Ava vanini oshinano sheemeteri 60.

Konima ja eshi opua ningua ekondjo mokushila ongodi. Otashi ningua ngaha, ovamati vamue oye kuete ongodi kohulo imue, na vakuaoko kohulo ikua, ovo ne tava shili vakuaoko fijo okufika poñele ja ufua; ovo va ninga ovafindani. Otua tala shili notua dimbulukua kutja apa ovamati tave li longo oinima ivali, eeñgono nouino opo omuñu a ninge omufindani.

Ovamati va fijafana vali mokunuka ve li moshako. Efijafano otali joololua kefimbo. Ava va lotoka eemine dinini ovo va ninga ovafindani.

Ovamati va fijafana vali mokutoola eendunga tadi pindua nokañguto notadi tualua peeñele da ufua, nomukuauo te di alulile apa da kufilue. Osho tuu tashi ningua fijo ovafafani aveshe va mona omalufu avo. Ava va mana tete ovo tuu tava talua ovafindani.

Opa li pe na jo omafafano ovamati va fijafana mokulesha nomokushanga. Naapa jo ovamati ova tukuka eengudu dovamati va kula naava va nini aveshe ova mona omalufu okulesha nokushanga jo. Na ou a lesa naua ile a shanga naua okua ninga nee omufindani.

Onguloshi ja shikula tua popifua jo

OSHIKOLOLO SHOMEGUMBO

KAAKULUNTU JAAGUNDJUKA.

Miilongo mbika jaaumbo mu nomukalo gumue guo opala gua monika naale nomu Europa uo, nando nkujaka gua kanica oonkondo daguo. Omukalo ngoka ogo okupula ezimino ljaakuluntu, omumati nge a hala okujaaleka omukadonga gue. Noshu uo omukadonga ta pula ezimino ljaakuluntu je. Ngele aakuluntu jomumati nenge jomukadonga itaje shi zimine, aagundjuka itaa ka hokanacana nando esiku limue.

Omukalo ngoka guo opala, Otagu pe aakuluntu eha ljokugamena aagundjuka jauo. Esiku limue omuuje omumati a hokua omukadonga guontumba ke nomikalo dopakriste, ngoka u mu shi oje omumpuidi nomuendaguli: Onaua, sho u nompito jokukeelela omuuje kaa itule moshiponga oshinene shokuhokana omukadonga omuinaji. Noshu uo esiku limue omuuje omukadonga a zimine epulo ljomumati e hoole iikolica. Na mpoka uo onaua, sho to vulu oku mu gamena keshiponga shokuninga omukulukadi guomusamane onkolui. Aakuluntu aauambo ojo aanelago moshinima shika Miilongo jaatiligane aakuluntu taa kumagida nga aagundjuka jauo, ihe kaje noonkondo doku ja indika, ngele ja hala okuhokana nenge okuhokana.

Ihe oonkondo dika daakuluntu aauambo di noshiponga, ngele aakuluntu itaa endicua kOmbepo jOmua. Oshoka pe naakuluntu mboka itaa pula omikalo omiuanaua adike, aue, otaa pula uujamba nezimo lja simana. No moku shi ninga ojo taa tula aagundjuka jauo moshiponga. Esiku limue omuuje omumati a hokua omukadonga ngoka e nomikalo omiuanaua,

nando kee nuujamba ua sha nenge ezimo lja simana. Ngele to mu indike okuhokana omukadonga ngoka, ongoje to iholola, uujamba uomuujuni mbuka u ku vulile omikalo dopakriste. Noshu uo ngele omuuje omukadonga a hala oku zimina epulo ljomumati omiuanaua kee nuujamba nenge ezimo ndjoka ue li hokua. Okuciminika omugundjuka i ihogololele omumati nenge omukadonga mezimo limue omukuluntu e li uuca, oshoka e nuukuume naantu jaljo, okuo uugoja uunene. Olje e shi shi, omuuje omugundjuka ngele ta vulu okuhokua shili omuntu ngoka ongoje to mu ucile? Inatu dina ohoole ndjoka jopokati kaagundjuka! Kalunga muene okua tula momuenjo guomumati egamo ljokuhokua omukadonga gumue e mu hokane. Noshu uo euvito ljomomukadonga ljokuuvita omumati guntumba e mu vulile aamati ajehe jalue, oljo lja zi meuco lja Kalunga. No ngele aagundjuka jaali aauanaua je hoolacane shili no taa tegelelacana muujogoki sigo kohango jauo, egumbo ljaauo tali ka mona elago li vule elago ljaantu mboka ja ji moondjokana nando kape nohokue ja sha pokati kauo. Ihe ngele aakuluntu taa ciminika aagundjuka jauo moshinima shika, ojo taje ja tula momamakelo nomomahindo ogendji taga vulu oku ja fala momikalo omiinaji no moluhondelo nekuli.

Onke ano: ngele omuuje omugundjuka ta pula ezimino ljoje, konakona oshinima shoka koshipala sha Kalunga nokutokola etokolo ljo opalacana nehala lje, ha etokolo ndjoka tali kongo esimano nuujamba u'uujuni mbuka.

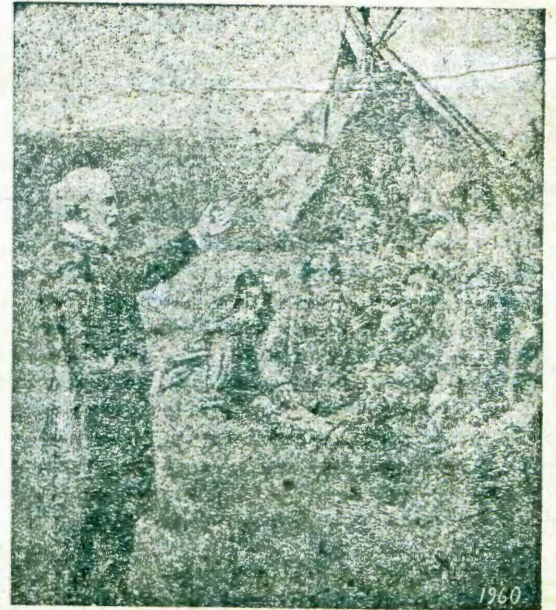
Ngoka a hala okupula sha kombinga yenongelo ndjoka nenge kombinga yokupitilwa mulyo ne shi pule:

kOmuwiliki gwenongelo lyaapangi,

Onandjokwe,

P. K. Ondangwa.

Sirkka Halme.



OMADHINA GA KALUNGA.

Nando Kalunga oye gumwe awike, iigwana yi ili noyi ili ohayi mu ithana nomadhina gi ili nogi ili. Oye ohi ithanwa moshieberi Elohim, moshigreka Theos, moshiarabia Allah, momalaka ogendji gaayeuropa God nenge lwaampoka, moshikiina Shang-ti, moshirussia Bog nomoshisoomi Jumala. Koontuntu dhokuuzilo oye oti ithanwa Atua, ku India Deva nenge Ischwar noku Pakistan Khuda. Miigwana yimwe yaabantu Kalunga ohi ithanwa nomadhina ngaka :uNkulunkulu, Mukuru, Mulungu, Mungu, Molimo na Nzambi.

Omadhina gamwe ogo omadhigu noonkondo kutse, ihe otu shi shi, Kalunga kaantu ayehe ohe endebele okuyamukula, sho tu uuvu, oyana taye mu ithana nago. Osho ngeyi ooitaali ye yokontuntu ya Madagascar haa galikana Andriamanitra, manga aavalelwa yamwe yomu Amerika taa ithana Kalunga kashili Vittekwichancho naatibeti taa tumbula edhina lye Dkon-mchhog.

Agehe kumwe omadhina ga Kalunga momalaka gi ili nogi ili ge vule 300. "Omuwa gwetu, edhina lwoye olya simana ngiini kombanda yeve alihe!"



otaa kenakonua kOnandjokwe eti 4 neti 5 lya Desember 1956.

Ongoka a hala a taambelue moskola yaapangi yokOnandjokwe, e nokutuma eindilo e li nyola ye mwene nopamwe neindilo e nokutuma.

- 1 ombapila yegongalo
- 2 onzapo yoskola yaakadhona
- 3 ehokololo moka ta hokolola okukala kwe.

Andola oombapila adhihe dhi thike kOnandjokwe manga eti 30 lya November 1956 inaali thika.

OTEE.

Omafo otee
Omeva a fuluka
Oshuuka

Omafo otee hatu a tula mokakopi nde hatu tula omeva a fuluka kombada. Eshi omafo a ningina mo, hatu dindi omeva otee momakopi. Ohatu tula natango omeva a fuluka kombada jomafo opo tu mone omeva otee natango. Omakopi hatu a jadifa nomeva a fuluka nde hatu pilulile mo oshuuka.



Oshikololo shaagundjuka.

OSHINAKUGUANICUA OSHINENE SHOMUKRISTE KEHE.

Oohapu dimue nda hala ui itule mo mudo noku di diladila, nodo dimue domombimbeli doka tadi tu etele uumbanda. Ngame muene kandi na nando esiku limue nde li lesa ndi kale inandi adika kekakamo nokuumbanda. Odo hadi ningine shili momuenjo guandje mui. Nondi luete efano, nke nda cikama koshipangelapundi sha Kristus, nombin i joongundu noongundu taji ndonda miikaha jandje. Shika sba fala ndje mpoka, ondu uvite ongame omunandjo guokuaatsakanica oshinakuguanicua shandje, no kandi na ompito oku shi holama. Tu konakoni ano enjolo ndika. Omuaa ne tu kuace okukoneka oshitja kelhe moku di lesa.

"Omuna guomuntu, ongame nde ku nenge omutonateli guegumbo IjIsrael, nonge to uvu ohapu mokana kandje, ou na oku ja kumagididila edina Ijandje. Ngele tandi lombuele omukeenakalunga: ongoje u nokusa ngoje no ito mu kumagida no ito ti sha kuje a ece okujona kue, ngoj' u hupice omuenjo gue. Nena omukeenakalunga ota si moluokujona kue, ihe ombinzi je otandi ji pula moshikaha shoje. Ihe ngele ua kumagida omukeenakalunga nota tindi okueca okujona kue, je iti itedulula, oje ta sile okujona kue, ihe ngoje ua hupica omuenjo guoje." Odo oondjo dokuaaguanica, oondjo dokukaleka evangeli.

Oshinakuguanicua shika ongame tandi shi pulua ndi uvicile no ndi kumagide jalue. Mokuuaa shi guanica otandi tula omuenjo guandje moshiponga.

Eeno oshili Kalunga te ke shi pula miikaha jetu.

Tu taleni momikunda detu, muushiinda

uetu nomaandjetu moka tu li mo. Otatu inekelua tuu? Tatu vulu tuu okuholola po sha shi uetike, shoka tashi kuaca miilonga javangeli? Tatu uapa tuu okucikama koshipala sha Kalunga nokutumbula: "Tua ningi shi cike poonkondo detu mokukumagida aantu? Ngele inatu shi ninga, tu noongunga dombinzi jauo.

Kalunga ine tu popica shili? Pulakena oje ta ti: "Eui Ijombinzi jomumuanjoko, otali kugile ndje mevi." Nenge tatu jamula pamue na Kain: "Ongame omusita gomumuameme?"

Oto ti ngiini, omuntu ngoka e luete oshiponga tashi ja je ita londoda nando gumuegumue?

Noa okua mono epangulo tali ja nokua londoda aantu nando ojo ja li kaa na ko na sha. Aajengeli oja jono po Sodom, ihe oja londoda tango Lot. Moses okua tseja omujengeli gueso te ja nokua londoda aaisrael. Kalunga okua jelica, epangulo edigu tali ka aada evi, uudigu mboka inau monika nando nale. Ihe oje okue tu pe oshilonga tse aamati je oku ja ko, okulondoda aantu je, manga pe necimbo oku ja ontuku.

Jajee tse ngele itatu shi ningi. Longa, uusiku tuu ja. O, endelela, tsejicila aantu oshiponga sha heda popepi. Hupica mboka taa hiilua meso. Ja galula. "Tala, inatu shi lombuelua." Omukonakoni gomitima ite shi didilike ando? Ongoka e uete ko omuenjo guoje oku shi shi. Omajelet. 24:12.

"Ombinzi je otandi ji pula moshikaha shoje."

Elundululo. L. Angolo.



OVANJASHA

Konaipa okua holoka paife embole mu shangelua, li mu kuafe meengeda deni doukriste. Oli nomatukulua mahapu nomafano maua. Efano eli la tulua apa kombada jeendjovo edi, nalo jo ola dja membo olo.

Ovakuluñu jo ohava mono ouua uhapu membo olo.

OMUUILIKI UOSHOONGALE-LE SHOVANJASHA ile UONGUDUMBIBELI! Keshe etukulua lome-mbo olo otali ku pe otundi jOmbi-

beli ojo to dulu oku i longa ovo vomongundu joje. Lilandela hano ekuafo li fike opo!

Ofuto jembo olo oi li pedu naua, shaashi ohali pula ofilinga imue aike. (Onje vokOushimba, uedeleni po Id. omolu oposa). Edina lembo olo oliua unene, osheshi otali ti:

TU LOTOKENI
TUA TAALELA KRISTUS!

OSHI LONGA SHIKA PAMWE OSHOJE?

Omugundjuka kehe ohi ipula momwenjo gwe kombinga joshilonga te ke shi longa muuyuni. Ngiika nangoye omukadhona oho ipula wo. Nenge pamwe ino mona natango oshilonga she ku opalela?

Ondi shi shi owa hala okudhiladhila oshinima shika. Ino hala u kale oshinima showala waa na oshilonga muuyuni. Oho kongo ehala lyoye mokati kaaatu, u wape okulongitha oonkondo dhoye nomagano goye we ga pewa pehala ndyoka wa pewa.

Na ishewe, konga oshilonga shoka tashi ku etele enyanu negwano u vule okuigandja shili noonkondo dhoye adhihe momwenyo gwoye aguhe moshilonga shoka shoyelela.

Aagundjuka aakriste oya hala okukala okuume ka Kalunga moshilonga kehe. Uene mokuhogolola oshilonga shawo oyo inaa hala oku shi hogolola pandunge dhawo yene, aawe, ohaye shi ningi pahalo Iya Kalunga. Ohaa indile Kalunga e ya wilkile oshinima shoka ye na oku shi longa. Oyi inekela ewiliko IyOmuwa, oshoka oya mona nonale uuwanawa wOmuwa noya dhimbulula nke oye e shi okupangela okukala kwawo, ku simanekithe edina lye kokukwatha aantu ayehe.

Ano na ngoye sho ho indile ngeyi noho ipula koshipala sha Kalunga, u mone oshilonga shoye oto ka mona, oshoka Kalunga okwe ku longekidhila nale oshilonga moshilongo she. Okwe ku pumbwa naanaa note ku lombwele: - Ila u landule ndje! - Ngiika okwa hala e ku ithane u ninge omupangi gwaavu.

Mokupanga aavu ohamu pumbwa naanaa omagano ngoka Kalunga e ga pa aakintu. Omupangi oha panga aavu, oha kwatha oohepele, oha kalele aakulupe noha kwatha unona naagundjuka mboka ye na uudhigu nuuwehame. Oshilonga shi thike mpoka otashi pula omulongi gwasho oshindji, ihe otashi mu pe wo uuyamba wokomwenyo.

Aapangi ohaa putudhwa menongelo lyawo kOnandjokwe. Aalongwa ohaa kala tango omumvo gumwe moseminari yokOngandjera. Okuza nkoka otaa putudhwa nduno omimvo ndatu mOnandjokwe. Kombinga jimwe ohaa longwa oondunge dhokupanga aavu, kombinga onkwawo ohaa dheulwa miilonga yo yene yokupanga.

Menongelo lyaapangi ohamu longwa wo okutseya Ombimbeli, elongo lyuukriste, elaka lyoshiwambo, elaka lyoshimbulu, omwaalu niilonga yiikaha.

Mokupita menongelo omupangi omupe ota lalekwa moshituthi oshinene. Aakuluntu otaye mu tenteke iikaha yawo noku mu lalekela nuuyamba, koshigalikaneno shOmuwa. Otaye mu galikanene etaye mu laleke a ka tameke oshilonga she oshiya-puki.

Enongelo lyaahungi kOnandjokwe otali tsejithile aakadhona ayehe mboka ya pita mokagumbo:

Mboka ya hala okutaambelwa menongelo lyaapangi mu Januari 1957

OKA ANDJETU

AATAAMBI YOMUKUETU

MOMAGONGALO GETU.

neendjovo da Kalunga mohungi notua lombuelua nge ounjuni tau ende noñge fje tu nokuenda nao. Otua kumaidua shili tu kale tu nelalakaneño lokukatukila luokomesho opo tuha fjaale notu ha ninge omushila mounjuni. Ndele komesho jaaishe natu dimbulukue kutja "Etilo Kalunga olo ekota lounongo aushe."

Mohungi ei tua talifua jo omafano oku Soomi tua ulikilua "Oparadisa" jovamati mu Soomi. Ojo oñele iua shili omo hamu kala ovamati ovasoomi vahapuhapu. Otua tala jo oilonga javo nomafijafano avo. Tue likuata komilungu noñgumue- Ngeno nafje jo tu mone oñele i li ngaha ee!

Ongula eti 19 manga omambo inaa ja mo, omukulunutumua uetu a ningila ovamati otundi jOmbibeli Mark. 14: 13. "Markus ina longua unene, ndele ejakulo laje ola li li noshilonga oshinene. Meumbo la ina okua jakula shili noudinini ngashi Jesus a tuma ovahongua oku ke mu longekidila odi ja paasa, oje tuu omulumeñu a hambata oshitoo shomeva. Okua kala apeshe ngaashi mu Getsemane nopekuato la Jesus fijo a njekua noshikutu shaje nokuli. Apa otua peua shili ondjila iua okujakula Jesus nande vahapu vomunje inava longua unene. Omudiinini moinima inini ota peua okudiinina shihapu.

Melongelo Kalunga ovañu vamue ina va uana mongerki. Elongelo Kalunga ola li lovamati nokoaltari kua leshua 1Sam. 3: 1-10. Omuidifi a lesua Joh. 2: 12-25. Jesus ta ti: "Tumbeni mo ei" osheshi Omalutu eni oo otempeli ja Mepo Mujapuki." Jesus a hala omumati omukuanjama a tumba mo osho tashi mu tandifa, opo a kale mo Je aeke. Jesus onakushiiva aisho, oje ita tale ondjelo okua hala okuuapeka oludi lomukuanjama.

Konima jomambo okua kala elekelafano. Pua hololua nge efiku eli lotete mependuko lokuehena komesho ongovanandunge. 1Tim. 6: 11 - "Dja onapo noinima i, inda oñapo mokukonga oinima iua." Ope noinima itatu tai kuafa omuñu mekondjo. a, Okudiinina ojoongalele omo omuñu ta ono ekuafu linene. b, Okulesha eendjovo da Kalunga "Kuata omuenjo u'alushe." e, Eilikano neinekelo.

Ovafindani va peua eendjabi dao. Ava va findana mokulesha nomokushanga va peua. "Ombibeli Ondjapuki" nosho tuu ovamati va peua omambo ngashi" Vululukueni manga, Omutima uomuñu, oka "Woordboek," nosho tuu omambo amue e lili.

Ovafindani va hafa neengono eshi va tambula oshali shavo.

Pehulilo omutonatelishitaingerki mOukuanjama a popja ñumbi omumati umue a shangela kaume kaje osho she mu tualifa mefjo. Okua faneka eendondo edi:-

a, okuhadulika ku Kalunga nokovakuluñu, b, okudina efiku letulumuko, ine linekela eedjovo da Kalunga

c' oikunua noivilo jajo

d, edipao, ojo tuu eendodo odo de mu tuala meshunduko fijo omokudipaua nokuli shashi oje omukolokoshi, Ofje atushe otua tomua keemuenjo detu osheshi kape nomuñu a hala efikilo la fa lomumati uinja.

Omukulunutumua a hulifa na okua ti oku ku netilo Kalunga oko akuke ku noshilonga shinene noku nekuafu shili tali kuafa kolutu nokomuenjo. Ofje ohatu hambelele Kalunga eshi e tupa ovakuluñu tave tu file oshisho tu kale tua putuka kolutu nokomuenjo.

Moshifo sha September omwa holokele omiyalu dhaataambi yOMUKUETU yomomagongalo agehe. Omiyalu dhomumvo 1955 na ndhoka dhonuumvo odha tegamekwa kumwe, opo pu talike, ngele omiyalu dha humu komeho nenge dha kuluka.

Mokutala omiyalu ndhoka omuntu ota dhimbulula, pe na omagongalo ngoka ga kondjele shili oshifo shika shOMUKUETU, shi taambwe koyendji. Egongalo eshona lyokOmundaungilo, ndyoka lya li komeho gomagongalo agehe omumvogu, osho li li nongashingeyi. Egongalo lyokOndobe na ngoka gokOngandjera oga humitha wo noonkondo omiyalu dhago komitse. KOkankolo kwa holoka wo elunduluko enene. Omiyalu dhokOlukonda nodhokOnayena odhi indjipala wo, ihe omagongalo ngoka inaga aadha natango iitegelelwa yago. Oge vulike natango komagongalo ogendji. Omagongalo omakwawo omulongo oga mono wo aataambi aape.

Ihe osha zi peni, sho pe na omagongalo 11 (omulongo na limwe !), moka omiyalu dhaataambi yOMUKUETU dha fupipala? Momagongalo gamwe nokuli etata lyaataambi lya kana. Oshike she ya sitha uunye? Ongoka ta vulu okueta eyamukulo, ne li tume kOMUKUETU kOniipa, opo natse wo tu li uuve.

* * *

Omumvogu otwa li tu noshilalakanenwa shetu, omwalu gwaataambi yOMUKUETU gu aadhe komayovi gahetatu (8,000), ihe nani, twa mono aataambi 5,160 ayeke. Ano komwalu ngoka gwomumvo 1955 okwa gwedhelwa 400 ageke, nando twa li twa tegelele eindjipalo enene. Omagongalo gata tu ageke ga aadha iitegelele yago. Ogo Omundaungilo nOndobe nOnguediva. Mugo omwalu gwaataambi yOMUKUETU gu vule oshitimulongo (tashi ti 10%) shomwalu gwaakwanegongalo ayehe.

Ihe natango tuu inatu hala, tu ethe oshilalakanenwa shetu. Ando tu kambadhaleni ishewe ngashingeyi, tu kongele OMUKUETU aataambi ya gwana.

* * *

AASITAGONGALO! Inamu vulwa okupopila OMUKUETU momagongalo geni!

AAYAKULI YOMUKUETU! Otatu mu pandulile uudhiginini weni wonaale.

Onkee ano mokulonga uuwanawa inamu vulwa nokomeho.

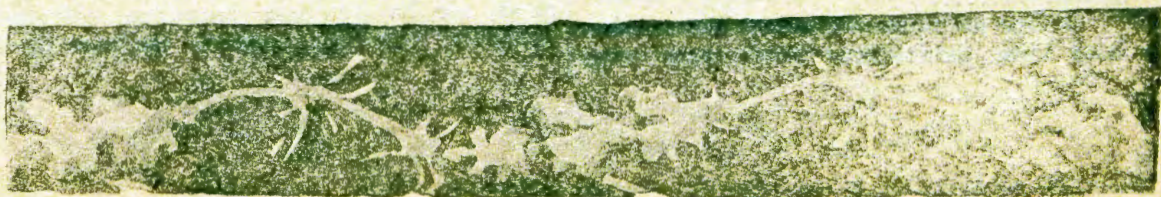
Kambadhaleni tuu natango okuenda noku-hokololela aantu ayehe uuwanawa wOMUKUETU. Osho ngeyi tamu mono aluhe aataambi aape.

AATAAMBI YOSHITO! Inamu dhimbwa okulombwela omuyakuli gweni, e mu nyolithe ishewe. Ofuto inayi lunguluka; oyo tuu ndjoka 2/- mOwambo, 3/- palwe.

AAKRISTE OYAKWETU! Tu ningeni ethigathano enene okuikongela OMUKUETU, oshoka oye ote tu pukulula miinima oyindji!

Nongele ino shi dhimbulula, yekekela u mu ikongele u mu leshe; opo to ka dhimbulula ihe uuwanawa we.

* * *



SHITLANGU.

omuna guokombanda

Lja njolua
ku
Andre de Clerc
na
Edoardo Mondlane

Lja lundulua
ku
Hosea Namupala,

Etsikilo.

Kape na ejoololo.

Mokukalamuenjo kuomuntu ope na shoka hashi mu papudula. Esiku ndjoka Shitlangu a li a lica ketale lja Njarongole momuenjo gue omua holoka epapuduko enene.

Kokutala uudigu uaakulukadi mbono haje mu sile oshimpuiju aluhe kokutala oonkondo daatiligane niiholekua jauo noku-taamba oondunge kookuume ke mboka a li ha kala najo, Shitlangu okua guedelua oondunge dopaantu nokukala ngashi omulumentu e na okukala.

Onkalelo de oombuanaua oda li hadi jonua kiinima jaakulu jonale joshilongo shauo, guupenda noguukatalume. Omavundakano ngano nomapingacano oge na okuopalekua ngiini? Oku na okugama kombinga jini?

Osho ngeji omaipulo ga holokamo-muenjo gue.

x x x

Ongulohi ojo tuu ndjoka, Majeriman okue ja ku ngame. Sho nde edilile iikombo moshigunda shajo, otua ji kaandjauo. Otua li tu na odindji okuhapula.

- Esiku olja li edigu ngiini, osho Majeriman a tameke.

- Jo aamentu oje li ku pupjalekele. Ihe ngoje oue ja pe oshilongua oshiuanaua. -

- Oje li po shili ongundu ombuinaji. Ongundu jomakatalume gouala taga vulu okusindika komuntu gumue. Oje shi shike? Okujola ouala nokuekameka oondjego dauo. Aakatalume shili! -

- Majeriman, ongula ndi shi ito ke ecela ndje? -

Aje, ino ipula nesiku ljongula. Kondja ouala ngashi to vulu. Ngaje ndi ka kondje isheue ongula? Ohela nda guanica. -

- Eeno, otu ninge shike isheue. Osho pe nokukala ngaaka. -

- Osho tuu shili. Ope na okukala aluhe omalunduluko. Nena oNjarongole. Ngula okuja komavi galue. No komeho tatu tegelelua isheue kiilonga iidigu. Sigo komeho tatu ka ja, kiilando kaatiligane: ouo isheue uusita uiili. Na isheue moomina. Oua tseja tuu uusita mbono uokohi jevi? -

- Mbjoka ajihe iuanaua, oskoka koomina omuntu ota zi ko noshikeca shu uda iinima. Gumue isheue ota zi ko niimaliua. Opo mpoka omuntu to vulu okukonga omukiintu.....

- Ope na okuhepekua kaatiligane, okufalua kiita, okulongicua koofaarama nenge

palue puua shiuike. Osho shoka tashi tu tegelele. -

- Tala Majeriman. ngame inandi tila nando oku ka longela aatiligane. Onda hala okutseja naua oondumba diinima. -

- Okutseja iinima? Iinima jini? -

- Iinima ngashi mbija ua mono kostora. Onda tala, ihe kandi uvite ko kutja, aatiligane ohaje ji ada peni. Ohandi li osuuka, nojo ontoje, ihe kandi shi kutja aatiligane ohaaji ningi ngiini. Omumuameme omukadona oku na okanastuke ihe kandi uvite ko. Onda hala okutseja. -

- Shitlangu, ngele ua hala okutseja, ninga omutiligane popja elaka ljaatiligane. Ogo omadiladilo goje ngono? Onaua, lundulula ano edina ljoje ljuukuanilua. Ciga po njoko negumbo ljaandjeni. Ekelahi nduno okamuja kuunganga mihua ho ke li mcingo joje. Laleka ajihe Shitlangu. -

- Onda hala okutseja nokukala natango omuafrika guashili. -

- Aatsonga mbo haa zala oohema noombulukueja ngashi mbeja ua muene postora, kaje shi ue aanashiguana shetu. Eeno, ondi shi shi ngaa kutja otaa popi ngashi tse noje na omadina goshiguana shetu; ojo aakuiilongo. -

- Majeriman, aluhe otandi ka dimbulukua shoka sha ningua nena. Omutima guandje otagu ningi ouala mpa gua talala mpa gua pupjala mpa gua talala, gua fa ombiga ji li peziko. Meni ljangde omu na sha. -

- Oua hala okutja ngiini. -

- Shoka sha li po sha ponda osha manguluka. No shito nale inandi ipula omapulo. Ngashingeji onda ti: Shoka shi li po oshi li po. Omagandambadi gaamati ku Njarongole oge ehameke ndje, op mpoka pe na uatalala. Na uupju ouo mbu: Ngoje Majeriman oua li ua pe ndje mo monkundenona joje. Na Hosana okua hupica ndje meso. Onaua, ngame ondi ipula nee kutja, itapa lunduluka nando osha? -

- Oshike ua hala shi lunduluke? Otse aaluude notu na okukala ngashi aaluude, pamikalo doshiluude..... -

- Ha ngoje nani ua ti oua pondelue po ngashingeji? -

- Eeno, onda pondelue ihe ndi shi ogame omuluude. Doka odo omikalo doshiluude. -

- Ashihe shimue Majeriman, ongundu jetu jaasita otaji vulu okukala aatsonga aauanaua noji na omukuaniilua omuaanava ngashi Mutetu ngoka omunankondo nependa. Omukuaniilua nguka ota vulu okuninga oompango oompe. Kape na ngoka te di taaguluka. Otua pumbua oompango oompe. Ngashi hatu si ondjala moluashoka aakiintu ojo ajeka haa longo omapja ou uete nee sho opala? - (Aatsonga aalumentu ihaa longo iilonga jetemo.)

- Oh, oua hala ihe okulongica etemo ua fonganga? Shitlangu! oua pijagana? -

- Ashihe shimue, omoluashike aakiintu je na okuhepekua niilonga ajihe? -

- Moluashikee, oshoka osho shi li po meshito ljiinima kutja omukiintu e na okuhumbata aanona nokulongekida iipalua, ota humbata aanona nota humbata omahini gauo, oje ha humbata ontungua netemo noshijala. Ngashika naanona tse hatu hu-

mbata iikondjico. -

- Hapo ua ti ino hala ue okukondja! -

- Onava Shitlangu. Inda koskola. Zala egala, ohema, oongaku noombulukueja u opale ngu iluke Muhamed nenge Delfino ua fa oshilumbo. -

Moonkundacana dika omu na sha nde hi tila. Kuume kandje ku uvite ombili koohapu doka nde mu cindile. Oluindji sho hatu lica naje, oonkundacana detu ohadi hulile muuinaji. Oha uvu naji nota ningica ndje ompindi opo a hololele ndje kutja nando handi mu sindi moohapu moonkondo oku vule ndje.

Omadiladilo ngoka gepapuduko oga kala haga injenge mu ngame ga fa omulilo guokalimaale ngoka hagu tema notagu dimi isheue mbala.

Nonando ongeji, esiku ndjoka onda fa ngaa ndi ilongo oshindji. Inandi iteka aamati aakuetu joku Njarongole. Ojo oshiguana shandje. Ondi na okupukulula aantu jandje.

Osho nda lombuele Majariman ete ti: - Majeriman, ngoje okuume kandje, ngame uo okuume koje. Itatu ka topoka nando. Ongula otandi etelele sha oshindji shokombinga jikulja. Na ngoje osho ninga. Otatu ka mona nkene tua hokiuu. -

Onda popi oshinima shomondjila Majeriman a tempua. Ongula otatu ji ku Njarongole.

Uusiku ue ja. Jina ja Majeriman a ti nale natu ka lale po naua nokua ji mombete. Onda ji kegumbo.

Onde ende nenjanju mokulandula ondjila nokumatuka, nondjila onda li ndi ji uete ouala kashona shoka okua luuda. Omokufa okanona onda jelekele omundundumo guehauto ndjoka nda li nda mono postora. Ondi iningi ongo nda kuata koshingico nonda matuka ete matuka. Mbala mbala onda ciki kegumbo.

- Goja ngoje muena! - Osho kuku i igida. - Ku shi shi nani kutja aalodi muujelele uomuedi omo haa kuca oonjeka dauo notaa taandelica omazimba gauo okudipaga oonakukoca. -

Onda muena, nda tilicua ku shoka. Pecimbo oljo tuu ndjoka ehuiju olja lili ko eui limue ndjoka ljekemo, ndjoka tali kukutike ombinzi moonkandja domuntu.

- Eui ndjono oue li uvu tuu? Omahuiju otaga icana omakiintu gago ge je ga lje oonjama daantu mboka ga dipaga. -

Elilo ljuhuiju ohali kala unene lja fa li li popepi ngele uusiku. Onda kuatua kuumbanda. Onda tilicua unene kodila ndjoka taji hunguna uuvu. Otaji li ndje po tuu nena. Ongame taji kongo.

Kuku okua fupipike oshimpuiju shandje, sho a kuata ndje kekoci nokua undulile ndje mondjugo. Mokukala mondjugo onda dimbulukua shoka nda tokola. Ondi na okupula iikulja jongula.

- Kuku, kuulicilo uokokule iimuna jetu ohaji mono omuiidi gua guana. Ongula oko tatu shuna. Ndele ndi shi oua muene ndje sho nda galuka nda sondjala? Omoluashono ooforomana jetu ohaje tu hepeke opo tu fute sho inaatu etelele iikulja taji ja njanjuda. Oje tu ningi ngashi aakuiilongo. -

- Oua hala shike? -

- Shaa shoka tamu vulu okupa ndje. -

- Musamusa, Musamusa! -

Tadi tsikilua.

OUNJUNI TAU TONGO SHIKE

Ovauambo vomu Windhoek va dimbuluka oshilonga shetumo shok'Ouambo.

Ku Windhoek kua dja ongalo jetumo ja ningwa keongalo lovauambo moshivilo shometi 8/7,56. Ongalo ei otai tulua moshikefa shetumo shorgerki aishe.

Ovasoomi va longa naua mO-uambo.

Omukuluŋu uehangano la „Bibelihanga-no Ija Britania rolj' lilongo" uoku Kapa okua popja ta ti: „Etumo la Suomi ola longa naua mOuambo, eshi tua talela po omaongalo amue." Omukuluŋu ou okua ile kOkaoko nok'Ouambo.

Ovaenda ava ova tala jo Ombibeli eshi taji longifua nova tala ngenge pe nomumbue jokuuapaleka Cmbibeli ile oitukulua imue jomujo.

Eshi va talela po Ouambo ehauto lavo la mona oshipenga nova nangala moshana, ndelene Kalunga e va monena ekuafu, fiyo va uapaka ehauto lavo.

Ovakuluŋu ava oyo omuhongi Bruwer nomuhongi J. T. M. de J. van Arkel.

Elundululo lipelOmbibeli melaka lovajapani la tambulua naua.

Dr. Matsumoto oje omulundululi uOmbibeli a fimana omujapani. Eshi a ile mu Norwegia okua hokololela ovaŋu venja ku-

tja elundululo lipe lOmbibeli melaka lovajapani, ola la holoka mamafiku aa, ola tambulua naua naua. Eembibeli odo da landifua modula jimue odi fike 2,500,000.

Moshilongo shovajapani paife mu no-vakriste 500,000, hano ovapzani vahapuhapu ve likongela Eembibeli ve fike 2,000,000.

Okahumba kedu lovauambo.

Eongalo limue lomu Soomi la Heinavesi ola jandjela okahumba oshilonga shetumo tashi longua medu lovauambo. Oimaliua jokahumba oko oja ongelua moiongalele ja ningua keembinga neembinga deongalo. Oimaliua ojo ja monika ifike £100. Osho ngaha ookaume ketumo ve li po tava kondjo.

Ovahongi vape ve uja vali.

Omusamane Juho Syrja nefolo laje ove uja vali oku kufje nova tula kOkavango, nohatu va halele epuniko la Kalunga.

Ova hokolola jo ŋumbi oshiongalele shetumo sha kula shoshilongo ashishe mu Soomi sha ongala 2-5.6.56 moshilando Lahti. Ounona novanjasha ova li mo vahapu. Ovakuluŋu ova li ve lili nounona novanjasha ve lili.

Omumbisofi M. Simojoki okua udifa moshiongalele eshi, nosho jo omulongi omulaule uomu Tanganyika edina laje Eliufo, ou a kala eedula mbali mu Amerika te lilongo. oko a li no kua udifa moshiongalele eshi.



OLUTU LWOMUNTU.

Olutu lwomuntu olwo oshikumithalonga sha Kalunga. Olu umbwa shili noonduge nuunkulungu. Kehe okanima ke li mulwo oke noshilonga shako, nuutopolwa mboka auhe otai longa pamwe meopalathano ekumithi.

Uudhigu wolutu lwomumentu nge tau yelekwa, olwindji ou thike pooponda 160 (160 lb.). Ando tu wape okukutha olutu kumwe, tu yekeke iitopolwa ayihe yi ikalela, ando tu mone uudhigu u thike mpaka: oontumba 70 lb., omapunga noma-ndjandja 30 lb., oshipa nomagadhi 28 lb., omasipa 28 lb. nuuluyi 4 lb.

Molutu lwomuntu omu nomeya ogendji. Nokuli ombinga onene yomulwo oyo ome-ya. Molutu ndoka lu nuudhigu u thike pooponda 160, omu nooponda 105 dhomeya. Inima iikwawo oyi li mo ngeyi: omagadhi 16 lb., omaludhi gi ili nogi ili gomwongwa 7 lb. nosuuka 2 lb. Oshinima shoka sha fa ombinga ontokete yeyi, oshi li molutu lwomuntu ooponda 30.

Molutu lwomumentu omu nombinzi tayi vulu okuudhitha omakende gaheyaali. Oyo ohayi endithwa komutima, ngoka hagu tuna lwomilongo heyaali nenge lwomilongo hetatu mominute kehe. Uupyu wmutenya niikulya iipyu niilonga ayihe otayi endelelitha omutima. Omutima gwokahanona ugu neendelelo gu vule ngoka gwomukuluntu. Otagu vulu okutuna nando lu 130 mominute yimwe.

Omuntu oha fudha lwomulongo-na-hama-no mominute kehe. Omapunga ohaga pumbwa mominute kehe ombepo yi thike poogelling mbali. Ombepo ndjoka yi li mohwayikitha onene ndjoka hayi taamba omeya gomvula, otayi gwanene omuntu ootundi ntano adhike.

Molutu lwomuntu omu nomasipa 211. Mugo 124 oge li momaako nomomagulu. Omutse gwomuntu ugu nomasipa 23. Omasipa inaga fa oshiti sha kukuta; oge nomwenyo. Otaga koko ethimbo alihe. Nokuli meni lyago ohamu holoka aluhe ombinzi ompe.

li po yu uvite uehame, sho Kalunga inee ya tumina omuhongi nenge omuyevangeliste gwawo yene, ta kala aluhe puyo, ngashika iilongo iikwawo yi na aayakuli yoshilonga shika. Onkee aluhe omagalikano goonakuehama mbaka hagi inyenge meholano, Tate megulu e tu pe omulongi ta wilike oshilonga she mu Oranjemund.

Omukuetu pamwe naaleshi ye otaa ti ngiini mbela?

Galikaneni, Omuwa a tume aalongi meteyo lye!

A. A. Julius.

OONKUNDANA DOKUORANJEMUND

Ope li ngiini mu Oranjemund?

Epangelo lya C. D. M. sho lya dhimbulula uupenda waamati aawambo nohoole? yokuhoola ongerki, olya uutha, mu kehe okomboni mu tungwe ongulu yelongelo. Osho omukuluntu gwokomboni Mnr. H. H. Howkens a ningi shoka te shi vulu, nokwa tungitha oongulu dho opalelela. Omo aawambo haa ningile mo iigongindjimbo noongundumbimbela dhawo nomalongelo ye ga hokwa.

Ohaa wilikwa kulye? Mu Oranjemund kamu na nande omuhongi nenge omuyevangeliste ngashi miilongo iikwawo yokUushimba. Ohaa wilikwa owala kooyakwawo mboka yu uvite oyo aakriste, onkee ye nokwitula moshilonga. Epangelo olya pitika, tu talelwe po komuhongi ta zi mu Luderits, oshaa tuu ta mono olwedhe lumwe nenge lwaali momumvo. Osho omuhongi Eerw. Rust (gwaandowishi) e tu talele po olwindji nokwe tu yakula nawa elela nokwa tsumukumo mboka taa wilike oshilonga.

Oshikwawo shi shi okuhokololwa kombinga yoshilonga mu Oranjemund osho Oshipangelo. Iilonga ya Hospital ndjika ompe oya tameke pamwe noshilonga sha tamekwa komuhona Mnr. X. nguka e li po omwafrikaner elela nomulongi pamwe natse miilonga yiikaha. Ano oye ke shi omuhongi ye ina lalekelwa ando oshilonga shokuuvithila aawambo mu Hospital, aawe, Mnr. X oku uvitile muye mwene, oye omutumwa gwa Kristus, onke ita limbililwa. Okwa tameke ekutalela po aavu mu Hospital kehe oshiwike note ya lombwele omundohtora omunene nomwaludhi oJesus.

Mnr. X inu uuvithila uuvu ayeke, aawe, okwa hiya aawambo oondjolowele naahona ooyakwawo, ya gongale kehe osondaha komatango mumwe naavu aawambo noku ya uuvithila shoka ohapu ya Kalunga tayi lombwele omuntu kehe: „Tu yeni, tu ka tamananeni, kwa ti Omuwa; oondjo dheni nando nadhi kale dha tiligana - - (Jes. 1:18-20) Ngashingeyi okugongala nkuka kwa koko, oku shi nee okudhiladhilwa, noshilonga kashi shi kudhinwa, oshoka osho oshi li po oshikuluntu shomwedhi hamano nokuli.

Oonakukala mu Oranjemund otaa ti ngiini omolwoshilonga shika?

Otaa ti, osho oshiwana elela. Ihe --- ohaku uuvithwa ngiini? Eerw. Rust na Mnr. X naahongi yalwe mboka haa ya oku tu talela po, ohayu uuvitha moshiafrikaans nohaku kongwa wala ngoka e shi kutoloka, opo a fatulule moshiwambo. Omauvitho ngoka itaga tsu muule woomwenyo dhaantu. Yamwe ya fa haa gongala ashike, ya pulakene elaka lyolyene, ha euuvitho. Onkee ano itapa dhimbululwa naanaa, shoka haye shi lalakanene. Ando euuvitho li kale tuu melaka lyoshiwambo, ando kwa dhimbululwa naale, shoka aantu haa shi lalakanene omokugongala nkuka. Ihe oshilonga kashi shi kudhinwa, oshoka kashi shi shomuntu, ihe osha Kristus.

Oshike sha gwana kudhiladhilwa omolwoshilonga shika?

Oyendji mboka ya dhimbulula sha, oye

A ALESHI TAA NJOLA.

EPUKULULO.

Onda ningi oomuadi 8 mejakulo ndika ljaakuetu je u mu C. D. M. nejakulo ndika oljokupupalekica euvacano ljaakuetu nomupangeli guetu ano ngoka euco alihe ljaauambo je li mu C. D. M. tali ningua ku je. Pamue ojendji je mu tseja nokuli sho a li omujakuli guomuhona Shongola, oje J. B. Wessel; okua kala uo mepangelo ljaalude ku Kaakoveld, nokua li ecimbo ele meucilo ljaalude mu Windhoek, unene tuu mboka jomehalakano.

Kommissaris Wessels nguka okua tseja oshindji shokukalamuenjo kuoshiuambo. Mejakulo ndika nda dimbulula uo nkene e na ehalo euanaua okukuaca maaashihe shi shi okukuaca. Ihe opu na mpoka a nje- ngua uo okukuaca nuupu, nongashi tashi pumbiua. Oluindji onda mono shili nkene pu na uudigu molua okua shi sha, sho pue ja mboka je na oonderkram doka da tumua molu oshiponga shontumba; ngashi mbika tandi ji holola mpaka:

„Hokulu ta alukililua, nokua hala oku ku mona aniuu.“

„Omukulukadi guoje okua tsika, ende- lela u je.“

„Omukulukadi guoje a hulica oondjenda de.“

Muudigu mbuka Komm. Wessels okua holola shili olukeno lue, unene sho ta tseja evundakano ndjoka hali etua keso ljoshiuambo. Ihe nando ngeji, ita vulu okukuaca omuntu nguka pecimbo ndjoka ngashi tashi pumbiua, oshoka ina peua epitikilo okula-

leka nando gumue manga ina mona ezimini- no lja Kommissaris kOndangua nenge kO- shikango. Onke omupumbiua nguka nenge ocigua nguka ita mono ejakulo mbala, sho e na manga okunjolela aakuauo noku ja fatulila nkene je na okuenda opo a pitikue okuja. Pamue ta tegelele nokuli oomuadi 2 nomajemato. Iimpuju je taji mu ningi onga ngoka a kanica oondunge, nehooloko lje ku tse tali eta ouala iinima ojendji ja vunda- kana, ihe natango tuu tatu njengua oku mu kuaca.

Ngele taku holoka ompumbue ja tja ngeji, inda ngoje muene komupangeli guO- ndangua nenge guOshikango, holola uudigu mbuka nompumbue ndjoka omuntu ta pu- mbiua. Nena etsejiciloicano ndika otali ka ningua ku je shampa tuu ta dimbulula otashi pumbiua shili, nejakulo ndika otali ka ningua uo kutse mu C. D. M. nuupu nombala uo.

Opu na mbjoka ja talua aniuu inaji guana kuicanica omuntu; eeno mpoka itatu vulu kulundulula po sha, ihe ondjila ojo tuu ajike ndjoka taji tu kuaca unene mboka jomu C. D. M. no taji mu kuaca uo. Ajehe mboka ja kuacua moshinima nga shika, omukalo ogo aguke nguka, ihe osha pula omasiku omolu edingoloko nde li popi ta- ngo.

Taambeni ano epukululo ndika, tu kua- cueni nuupu.

Kundueni nombili ku

F. V. Auala

African Labour Supt. Office

Oranjemund, S. W. A.

OONDJO DHOYE ODHA DHIMWA PO TUU?

Opu na ombepo ondhigu ya holoka maakriste notayi indjipala noonkondo muka, mevi lyetu lyaawambo.

Oluindji omuntu ota kambadhala okuholeka iilonga ye iwinayi nonando pu na mbjoka yi igalala, itaayi we okuhola- ma, ihe otayi monika kaantu oyendji. Omuntu a tya ngaaka ngele ta pukululwa komukuluntu guegongalo nenge guontumba, nena ota tameke okupopja kutya: „Omo- lua shike tandi lundilwa?“ Nonge ta pe- wa egeelo lyasha kegongalo nenge koskola nena ota popi ishewe: „Owala nda pangu- lwa kaantu noya tokola ndje, ongame o- munandjo nando inandi yona sha nando; ihe Kalunga ote ke ya pangulila ashihe ye shi ningile ndje..“

Omukriste ngoye omukuetu, iilonga yoye iwinayi owa kambadhala shili oku yi holeka; yimwe oyi igalala noyindji owe ho- leke sigo ompaka. Dhimbulukwa opu na ngoka ihaa holekwa sha. Opu na esiku ndyoka iilonga yandje noyoye noyomuntu kehe tayi ka holoka puuyelele - Luk. 8: 17.

Omukwetu omuhoolike ehalo lyandje olyo ndika: Ngele u uyite shili momuenyo guoye uwindji woondjo tau ku kama, e- ndelela oku dhi hempulula komuhempulu- lithitate manga inaadhi tseyika nando ko- muntu Luk. 15: 21. Ino tegelela u kwatwe ngoye u mone ompito okutya: „Aantu ya pangula ndje.“ Oshoka okudhimbulukwa omayonagulo getu otaku tu pe ehalo oku ga hempulula koshipala sha Kalunga nomo- ntaneho yaantu. Osho ngeyi tatu mono ompito okugalukila ku Kalunga nokuzimi- na tu geelelwe oondjo detu. Nena shoka tashi landula osho okukala okupe.

Onke ano ehalo lyandje olyo ndi- ka: Tu endebele nomeemato getu agehe, tu ye koshipala sha Tate Kalunga. Tu mu hokololele owindji woondjo detu nkene itau tu etele nando elago, ihe eyonuko. Nena otse aanelago. Omolua Jesus Kristus Omukulili noguetu wo.

Israel N. Kadhingula,
Opleidingskool,
Onguediva.

ONDE SHI NINGILE PENI?

Ope noshiponga oshinene aantu ojendji inaa je shi didilika ihe otaje ke shi mona no tashi ke ja kumica esiku ljepangulo. Oshinima shika osho okuhongolola kamue ko muushona mboka Omuaa guetu Jesus e u popi mu Luk. 17:1,2; Mark. 9:42.

Otashi ningua ngiini? Omukuluntu guo- ntumba sho e li po e shi naua omulongi Nima, a tseja uufupi ue nomikalo daandjauo omiunaji; je a tseja naua ezimo ljauo nuu- fupi ualjo nonkalo jaljo ajihe; osho ra tame- ke okuhokololela omuana e li menongelo ljomulongi ngoka. Omunona sho ta ji ken- ongelo, ota tala omulongi nodino. Ina hala ue okupulakena nokutaamba shoka te shi nongekua. Omuenjo guomunona nguka kagu na ue ehalo okupulakena oohapu domulongi nguka, sigo ke na ue nehalo ljorskola. Eui ljokomuenjo lja li tali longo muje naua kali na ue oonkondo. Navulua ke na ue ehalo ljokuitedulula. Ta tameke okuhokololela aanona oojakuauo omahokololo ngoka. Naa- nona ajehe taa shundula omulongi guauo meombepo dauo nando ine ja ninga sha. Osho nosho sigo ehokololo ndika nuutondu mbuka ua taandele maanona ajehe. Ecimbo alihe ljaanona mbaka sho ja kala menongelo lja hepa ouala. Pamue ojo ajehe sho inaa uva ko oohepu nomapukululo gomulongi nguka, pamue itaa uvu ko ue kujalue, ji itedulule, jo ja hupicue. Olje e noondjo doshinima shoka?

Osko uo aakriste jamue haa hokola aasita jamagongalo paakriste aakuauo no paapagani nokuli. Aakriste aankundi taa nkundipalekua shili meitaalo ljauo. Naapa- gani inaa hala ua okuja meitedululo. Osho- ka ju uvu aalongi naasita ojo aanima jouala

TU KONDJENI!

*Tu kondjeni, tu kondjeni,
muujuni sho tu li mo.
Mu nuupjakadi ouindji,
u tu kuce po pOmuaa.
Tu tje shike, tu tje shike,
shoka tuua na ko na sha.*

*Tu kondjeni, tu kondjeni
'cimbo manga tu li po.
Shoka tse otu nomukuaci,
nguka he tu popile.
Jesus Kristus, Muene guetu,
oje he tu kondjele.*

*Tu kondjeni tu nehafo,
shoka tse tua kulilua.
Uujelele tue u mono,
ngashingeji tua jelelua.
Hambelela, simaneka
nguka e ku kulila:*

*Pendukeni, ligoleni,
imbilen' Omukulili,
kuume ketu nguka e ja.
Ngashingeji tua hupicua.
Jaloo, Omuaa, jaloo, Omuaa,
pandulua ua simana!*

Selma Shikongo.

Eui: „Kevi ndika oljuupika...“

nenge oja tja ja tja. Ehokololo tali ji tali taandele sigo okiilongo; omungoje lja zi. Na nkoka uo aantu puamue itaa ji meite- dululo. Olje e noondjo mpaka? Tala esiku ljepangulu nkene u na ongundu onene ndjo- ka taji ka kana omoluoje. Ngiika ua hala u pule Kalunga u tje: „Onde shi ningile

peni?“ Oshoka ku shi shi shili. Oua li u shi oto lombuele ouala mukueni oje auike nenge omumuoje oje auike; a tseje uukuatja uo- musita nenge omulongi gue. Ihe nani ua tsejicile uo naantu jokiilongo noue ja kuca mo mondjila jeitaalo no ue tula mondjila jekano. Otashi kumica shili, okumona ongu- ndu noto lombuelua taku tiua ongoje ue ja hongolola. Oua li u shi ongoje ho diginine uukriste; ihe nani ua ningi oshilagula sha li omuti.

Ando kehe gumue na indile ngeji omolu elaka ljetu: „Omuaa tul' omulangeli,
Komilungu dika dandje.
Lela ndje, Omukulili,
Pangela nelaka ljangj.,
Ngaj' ndaa hapule douala,
Aue. doka tuu do opala.

S. Shikongo.