

OMUKWE TU



50c

No. 5

ISBN 0-620-06828-0

EDHIMBULUKWO LYOOSA NEHAMBELELO LYOONAKUHUPA MOSHIPONGA SHOBOMA MOMBAANGA YASHAKATI

Eholokepo lyoshigwana, eimweneneno mombili nelongelokumwe, okuthikama momutenya uule wootundi dhi vule (4) nokulandula iiningwanima neidhidhimiko sigo opehulilo lyelongelokalunga, mbika oya li tayi holola ohole yuumwayinathana nuudhigu wo-shigwana okukanitha oomwenyo odhindji mekondjo lyoshilongo shasho Namibia.

Oshituthi shedhimbulukwo lyoosa dhaakwashi-gwana mboka ya sile mombaanga yaShakati eti 19.2.1988, osha ningilwe eti 19.2.1989. Osha ningilwa pehala mpoka pwa topele oboma nopwa kanene oomwenyo odhindji. Oshituthi shono sha tamekwa nelongelokalunga osha li mewiliko lyomusamane Daniel Namuhuya. Omumbisofi Kleopas Dumeni gwa ELCIN, okwa popitha oshituthi petamekolela nomatumbulo ngaka manga inaa ninga elongelokalunga pamwe naakwathi ye.

“Aamwatate muJesus Kristus, ehala mpaka twa gongala nena opo mpaka pwa kanene oomwenyo, pwa lemanekelwa oyendji, ihe opwa hupithwa wo oyendji moshiponga eti 19.2.1988.”

Okwa tsikile ta ti; otatu dhimbulukwa wo iiningwanima iikwawo ya fa shika oKassinga aasi yomathele nomathele, Okatope aasi 8, Eenhana aasi 9, Kongo aasi 17, ongele gumwe nenge ye vule gumwe miiponga yiihautho nenge ya dhipagwa monkalo yiita. Nuluhodhi nondjuulukwe onene omolwoomwenyo dhaayehe ye dhi

kanitha omolwemanguluko nombili muNamibia. Mboka oya thigi po uudhigu auhe noye li koshilongo shaanamwenyo. Sefanja 3:14-20.

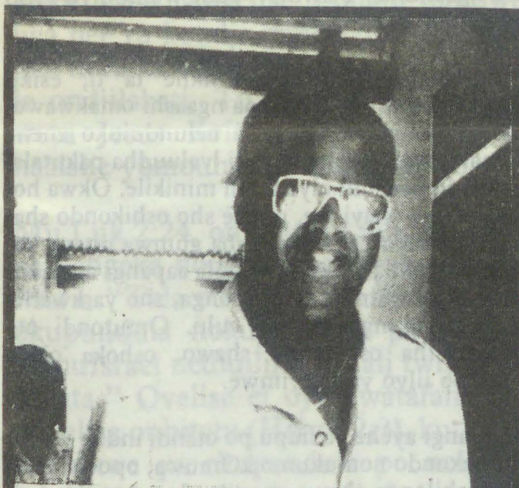


Pooha dhoshilambo shoboma yomOshakati opo pwa tentekwa oshuuvithilo nomushigakano, ooitaali ya hempulule ishewe puyelele oomwenyo ngoka gu na okuza meso. Omiti otadhi monika dha mena moshilambo shoka.

Natango tuu oonkundana dhomadhhipago muNamibia

Pethimbo ndika aantu yi ipyakidhila netungo lyombili, etaambathano nuukumwe woshigwana, otaku kundanwa natango oompangela dhomonanguwi tadhi halutha. Omuntu owa fa to nyengwa oku shi itaala. Ihe aantu mboka taa popi oya mona shike? Iiningwanima yimwe yomehokololo tali landula oya fa tayi thiminike omuntu a zimine, kutya pamwe oku na omalongekidho gehanagulo lyetungo lyombili.

Omolvashike ombili yi na okuhanagulwa po? Tala kep. 10



Ontumwa yombelewa yoontauki Bwakira kuNamibia. Ehokololo kep. 6

MAALITSA 15, 1989

SHUNA EGONGAMWELE LYOYE MOLUPANGWA

Sho twa thiki methimbo lyokutunga ombili, onawa moshigwana shika konyala omulumentu kehe a homata, osho wo aakiintu yamwe, tu dhiladhile etulopo lyomatati getu. Otu na oyendji mokati ketu mboka ya homatekwa komutondi noya pewa owina oshinakugwanithwa ya ka longithe iikondjitho mbyoka mokati koshigwana, shawo.

Aantu yoludhi ndoka oye na oshiponga, nando hayo ayeke taa hindi ethimbo lyetungo lyombili ndyoka li ipyakidhilwa nalyo ngashingeyi. Mboka wo ye li moshigwana yi ikongela iikondjitho yawo notaa nyanukilwa ashike ombiliha moku yi mona, nayo oye na oshiponga shi thike poshikwawo.

Oyendji yomaahumbati yiikondjitho mbyoka, ngele mbyoka ye yi hwalekwa nenge ye yi ilandela, oya pewa euvoko lyopombambo, kutya okukutha omuntu omwenyo nondjembo yo AK-47, nenge yo Tokarev osho ashike epogolo kuuntu womuntu, ihe ngoka a si omolwepakolwa, osalupende nenge eefena (FN) kape na mbudhi. Oondjembo dholudhi ndoka odha mana aantu moshigwana muka nopwaa na epangulo (condemned) lyonyanya.

Etopolelwo lyiilwitho komuniita noshigwana shaNamibia pamukalo kehe ngele gwomeulikilo nenge gwa dthingilila ko, oli na okwaangalwa komukwashigwana kehe. Etopolo ndyoka inali kwatelela mo onakuyiwa yelago lyoshigwana. Ngoka ta kwata kegongamwele, oku na wo okusa kulyo, osho Ombimbeli tayi londodha.

OSHITUTHI SHOOSA MOSHAKATI

Dha za kep. 1

po lyawo yamwe otaa endele komampango nayamwe oye na owala iyadhi nando ayehe oya li aantu yanakandjege. Ehalo lyomutondi olya li okuyonagula, ihe opwa li oonkondo dhaKalunga okuhupitha mboka ya ze mo notaa vulu natango okutsikila momwenyo.

Gumwe gwawo omusamane Titus lipumbu okwa popile peha lyayakwawo ngeyi: "Opwa li

Aakwanezimo yoonakusila moshiponga mwi-yaka nayo oya thikamene komeho goshigwana, moka omumbisofi Dumeni a li wo gumwe gomuyo. Peha lyooyakwawo omumbisofi okwa tumbulile ngeyi: Opo mpaka twa gongala nena, opwa kanena oshindji nopwa hupithwa wo oshindji. Otwa tula po omushigakano tashi ti; Kristus a sindi eso.



Methano ndika yamwe yomwaamboka ya li ya hupu momulilo esiku ndyoka

ompito tu se atuhe, ihe hasho sha ningwa. Hamolwiilonga iwanawa twe yi longo ando aawe, nenge otse tu holike kOmuwa tu vule mbaka ya sile mpaka. Kalunga okwa hala tu ninge iyakulitho ye

Omusamane Iipumbu okwa holola nkene a mono egameno lyoonkondo dhaKalunga moku ya kutha mokati komulilo, okwa li a tegelele ya sile mo. Okwa li e wete e na okusa nopwaa na ekwatho limwe, ohaluka owala ye li puuyelee. "Omwenyo gwandje hambelala Omuwa, ngoye ino dhimbwa uuwanawa washa e u ku ningile," osho a hiya yakwawo ya tumbule pamwe naye. Ps. 103:2.

Patokolo lyElelongeleki Osoondaha ndjoka oya li yegalikano. Omuningi gwelongelokalunga omumbisofi Dumeni pamwe naakwathi ye; omukalelipo gwongeleki yaAnglikana omusamane Heradius Mwaetako, omukalelipo gwongeleki yaKatoolika omusamane John Shivolo, omusita Mateus Ampweya, omusita Petrus Shipena nomusita Johannes Mufeti oya longekidha egalikano ngaashi shi li meutho. Pakuninga egalikano omumbisofi okwi indile ku galikanenwe;

- Aatondi yi itedhulule, opo ya hupithwe.
- Emanguluko lyaNamibia li kale pauyuuki.
- Okupandula Kalunga molwomvula nomolwonakuhupithwa moshiponga shoboma.

Pompito yomapopitho Matron omukuluntu gwiipangelo mOwambo, omupangi Aletta Ngaikukwete okwa popitha oshituthi peha lyaapangi ayehe. Okwa ti oshinyanyudhi ngele taku dhimbulukiwa esiku lyevalo (lyenyanyu), ihe oshidhigu okudhimbulukwa esiku lyoluhodhi ngaandika. Uuwinayi auhe womumvo 1988 owa lulile moshigwana.

Omupangi Aletta okwa tsikile ta ti; esiku ndiyaka esiku lya li naanaa ngaashi omakwawo, ihe lwopomutenya olya li nelunduluko enene komakwawo. Etango olya li lyaluudha pakutala nonando paushili olya li tali minikile. Okwa holola wo euvonayi lye, unene sho oshikondo shawo shuuhaku osho sha li sha gumwa unene koshiponga shika. Okwa pandula aapangi meyakulo lyawo pethimbo lyoshiponga, sho ya kwatha meendelelo ngaashi taa vulu. Omutondi ota shongolitha oshikondo shawo, oshoka okwa yona po iilyo yasho yimwe.

Kaapangi ayehe ya hupu po otandi indile ya pule oonkondo nomukumo kOmuwa, opo ya tsikile moshilonga shawo yaa tile. Jesus ngoka a sindi eso, oye wo omuhekeleki koshigwana. "Omwenyo gwandie, hambelala Omuwa ngoye ino



Konima yelongelokalunga iilyo yaSWAPO ya Namibia, oya tsikile ko noprograma yayo ofupi opo ya holole euvitopamwe lyawo

Tala kep. 5

HANO TU LOTOKENI NOKUTAA- LELA KRISTUS OMUHOVELI WEITAVELO

Jesus Kristus oye omuhoveli weitavelo ngaashi hatu lombwelwa moshipalanyole shekapiteli eli 12. Oshili Jesus oye omuhoveli weitavelo. Jesus oye Omona ou a tumwa kuXe e uye e tu kufe moulunde noku tu mangulule komatimba noku tu kulile, eshi ootatekulu noomeekulu va nyona noinava dulika kondjovo yaKalunga.

Ndele Jesus okwa wanifa oshilonga shaye shekulilo, noina puka nande opamwe ngaashi hatu dimbuluka nghene a yelekwa kusatana mombuwa. Jesus ina wanifa nande ehalo limwe laSatana. Onghe-taku tiwa natu itavele Omwene Jesus tu xupifwe.

Movelise yotete otamu popiwa kutya ofye ovaitaveli tu li mekondjo natango notwa pumbwa okulidula oulunde keshe. Rom 13:11-14 Otu li yo mefiyafano ngaashi ovahongwa mofikola ile ovalctoki tava fiyafana po, keshe umwe ota kondjele a ninge wotete padjapo.

Nomulotoki ota kondjele a fike tete. Hano fyee ovakriste otu li mefiyafano meitavelo. 1Kor 9:24 "Kamu shi shii ava hava lotoka, umwe oha hakana po ondjabi yefindano? Lotokeni ngaashi winya mu i hakane."

Movelise 2 ohatu lombwelwa tu taalele kuye, tu kuwe kuye omaudjuu etu aeshe notu mu indile e tu dimine po. Eps 50:15. Osheshi oye okwa vaelwa komushiyakano molwomatimba etu, nokwa wanifa oilonga yaye. Oku li kolukalwapangelo, kolulyo laTate Kalunga. "Nando oye Omwene okwe lihongo eduliko okouyehame ou e u humbata.

Ndele eshi a ningwa a wana a pwa, okwa ninga omuwanifi wexupifo laaveshe kwaaveshe ava tava dulika kuye. Hebr 5:8-9 Movelise 3 ohatu lombwelwa nee tu kondje meitavelo tu ha sholole notu ka mone efindano. Tu ha xulile ondjlakati. Tu ye melila lOmwene wetu Jesus Kristus ou a finda efyo naaishe yomounyuni noulunde yo.

Mu Luk 2:24, omuxungu Simeon okwe va nangeka noupuna nokwa tya ku ina Maria "Tala ou (Jesus) okwa tulwa po okupundula nokuyambula po vahapu vomuIsrael nedidiliko eli tali twilwa eemhata." Ovelise ei oya kwatafana yoo novelise onhitatu (Hebr 12:3), kutya Jesus okwe ya okupendula po nokupundula vahapu ovo itave liufa keitavelo muye.

Mu Mat 26:67 otamu tiwa, "Ove mu fiila omate moshipala ndele ove mu denga neengonyo, navamwe ove mu denga nomanghava." Hano Luk 2:24 otai tu lombwele kutya ou okwa tulwa po okupundula nokuyambula. Apa ngaashi ava tave mu denge ovamwe vaavo taku tiwa okwa tulwa po okupundula.

Sha yela kutya ava inave mu itavela, ove mu tala ote li luku omona waKalunga nohamba yovaJuda. Voo ouhamba ou ove u tala ko epuko, shaashi Kristus ke shi ohamba yopambeleda, ita pangele ngaashi tava diladila. Ye shaashi okwa tiwa omumangululi pefimbo opo ovahongwa va li moupika nOvaroma, okwa li ve shii ote ya oku va mangulula moupika omo ve li mo wOvaroma.

Epopitho lyopethimbo ndika otali gandja ompito komuuvithi, opo a tumbulile aapulekeni evaangeli lyehekeleko noku ya dhimbulukitha ompumbwe yokukala mekwatathano lyu uka nOmukulili. Pethimbo ndyoka oomwenyo dhaapulakeni, nando haadhihe, ohadhi kala dhe egulukila evaangeli lyesilohenda.

Mpaka itapu tulwa oompango dheuvitho, aawe. Omuuvithi kehe ni inekele omauvaneko omanawa gOmuwa: 'Otamu ka pewa shoka mu na okupopya pethimbo tuu ndyoka' (Mat. 10:19). Omuyakuli gwOmuwa ngele ta hedha kuKalunga, nena Kalunga ota yambeke oonkambadhala dhe oku ulukila yalwe kemanya li na omwenyo.

Onawa shili omuuvithi ngele ta dhimbulukwa kutya pethimbo ndika otashi vulika ta sindile oomwenyo kuKristus, unene ndhoka dha nyengana pomathimbo galwe.

Oshinakugwanithwa sheuvitho kepako lyaamboka ya si pwaa na endhindhiliko lyeitaalo, oshinima sha kitakana noshidhigu. Unene tuu ngele omuntu okwi idhipaga, a kandomwa nenge a dhipagwa kugulwe nokapwa li ompito yehungomwenyo, ndjoka ya hilile momandhindhiliko gontumba.

Osha yele kutya nomoompito ndhika wo, omuuvithi ke na okuhenuka oshinakugwanithwa she. Onawa shili ngele omuuvithi ita tumbula sha kushoka tashi tengenekwa she era eidhipago (tse ihatu uvitha omafekela), osho

Heb 12:1-3



Ashike eshi inave shi mona molwaashi, Jesus okwe uya oku va mangulula moupika woulunde nova ninga ovaitaveli pamwe naye. Natu efeni aishe tu lotokeni kOmumangululi wetu (nomoupika wa South Africa) nokuli yo omuhoveli weitavelo letu. Nafye tu ninge ovaitaveli opo tu ka ye muKaanana shomeulu.

Inatu shololifweni kwaai oikwadu oshe-shi ou e tu shiteni okwa udaneka e tu diinine oye note tu mangululeni opefimbo le mu wapalela. Hano ngeenge hatu liufa keenghedimhango da Tate Kalunga nokudulika koutekuduliko waye, Mhepo Muyapuki, Omuyapuli nOmunikili ote tu hololele aishe nemanguluko laNamibia yo.

**Eliazar Tuhafeni Hamukwaya
Engela**

EFUMVIKO / EPAKO

wo onawa ngele ita tumbula sha kombinga yelago lyanakutembuka. Kakele kaashoka, kutya Kalunga oye omukumithi. Oshimpwiyu shomuuvithi osho okupopitha mboka ya gongala nokuukitha oomwenyo dhawo kungoka ta ti:

Oomwenyo dheni inadhi nika oluhodhi, itaalen Kalunga ne mu itaale ndje wo'. Omuuvithi ina palutha okuulika kuKristus ngoka e li 'ondjila, oshili nomwenyo' naangoka ta gandja etalaleko tali kalelele.

Meekulu Rakkell Ndiweni yaNakale womEtomba, meongalo laNamunhama, okwa xulifa oweenda waye 19-12-1988. Okwa fiya ko ovamwaina vavali ovana vahamano ovatekulu 36 novatekululwa 10.

Ohatu pandula ookaume ovashivikile ava mwa li mwe tu yakula noku tu wiyauka nomoshivilo shameekulu wetu. Eefiye naapambeke amushe hekelekwani neimbilo 147.

Loide Nangula Haimbodi
Ongha Sec School

OMUNHU OMUSHIKE?

Omunhu oshike? Eli epulo tali kongelwa enyamukulo kuvahapu. Omolwaasho omunhu, momafelemudo aa etu, okwa kala ashike te linyekwa kovanongononi ve lili noku lili. Shaashi ovanongononi ovo, navo ovanhu. Otashi ti, omunhu ye mwene oku na omhito okulikonakona nokulishiiva ngaho, nande ombinga. Elishiivombinga la tya ngaha ola kwafa unene ovateloxi okukonga eudeko kutya omunhu olyelye ile oshike.

ELIUDEKO LOMUKOLONYEKI

Mongudu oyo twa popya pombada, omuyadi unene Ovalaule. Mongudu ei, unene omu na Oilumbu. Vahapu ove liudite ko kutya voo ovanhu ovanamupya ve li mounyuni tau va tilifa. Onghee, ove na okulikondjela vo vene, omunhu keshe polwaye, ndele "ongudu noludi letu" nalo oli na okupopilwa. Onghee eudeko eli ola eta opo, opo ovanhu voludi eli ve litule mokuhakana eenghono di kale momake avo, opo vati ve lipopile kounyuni.

Hano eudeko eli ola ninga omunhu a tale kutya omutondi wotete womunhu oye omunhu mukwao. Onghee omunhu oku na okulikalela. Eudeko eli olo la etifa omadumbo, omalukanda a tukuka, eefikola da tukuka, oundjuwo va tukuka. ndele nomaendo okwa tukuka. Tashi ti, ovanhu vavali va fya, omulaule noshilumbu ope na umwe ta tila omudimba wamukwao. Onghee

nee, omaendo oku na okukala a yooloka.

Nena omunhu ou udite ko nee kutya ina yokatongotongo, halaka, ngeno Ovaputu neembulu inava kala pamwe, ndelenee oumbada. Oilumbu ohai tila Ovalaule, ngeenge ohatu popi ovanakatongotongo. Onghee, opo va kale nombili nava pangulwe nande ova fya, mbela inga va shakena meulu ile moheli. Monghalo omo tu li, oshipa osho tashi ufa. Eliudeko la tya ngaha, ola puka nopefimo lonena, naunene mouyelele wekufi eli tu wete, otwa pumbwa "elidilululo", hakeenghono ndele okOmhepo yOmwene.

Eliudekomwene lomunhu monghalo youkoloni, ngee nee omukolonyekwa ile omukolonyeki ola pilamena eudeko lomunhu paMbibeli. Pauteoloxi omunhu oye **omudidi** oo ta kala ashike omunhu shili, ngeenge e li mekwatathano naKalunga kaye, naye mwene, navakwao, noneshito alishe. Hano, pauteoloxi, **omunhu oye omunhu mekwatafano**.

Keshe nee twa hala okumona enyamukulo kutya omunhu oshike, nena otu na oku mu nokona nakwatafano na.... opo ashike tatu mu udu ko mondjila kutya: **OMUNHU OMUSHITWA WAKALUNGA**.

Nande omunhu oku na omakambelo mahapu, oye omushitwa waKalunga. Okwa shitwa kuKalunga nomolwaKalunga. Omunhu oye omushitwa oo ta pulwa alushe kuKalunga. Kalunga oku na **onghwa** noukwamhepo nomunhu aushie. Oye eliko laKalunga, "osheshi ou te mu

kumu ota kumu ondada yeisho laye." (Sakaria 2:8). PaMbibeli omunhu, nande oye omulunde, Kalunga ine mu yemba ile e mu lidimbike. Onghee ke na okulidoladola ile okulidoladola. Tashi ti ounhu waye washili ite u pewa komunhu mukwao, ndelenee okuKalunga.

Oufemba waye, nao itau ufwa ngee koluvala ile koukwaludi waye, ndelenee okuKalunga. Kalunga okwe shi ufa nale, omunhu a kale omushitwa womakwatafano. Omunhu ngeenge "omunhu" yeisho laKalunga, nena otashi ti; ou oku na oku mu popila, hakoitilifi ashike ndele nokomunhu mukwao. Omolwaasho mouteoloxi wemanguluko hamu popiwa, kutya Kalunga okwa ama kovahepekwa.

Ota hepa pamwe navo nota kala navo alushe noku va popila, ile ndi shi tyuulule, nokuhepa pamwe navo. Nande omunhu ta ufwa kuKalunga kutya oye oye, ke fi omupika ile opapeta yaKalunga. Ota dulu okutokola a hepeke mukwao, e mu kale kofingo noku mu ninga oshilongifo. Kombinga ikwao omunhu ota dulu okudiminina nokutambula onghalo oyo ta ufilwa komunhu mukwao nande oyo oii.

Kombinga vali ikwao, omunhu ota dulu okutokola a kondjele omufika waye ou a pewa kuKalunga. Ekondjo eli otashi dulika li mu lidengife mumwe nomunhu mukwao unene omuhepeki waye. Onda hala okutya, omunhu oku na mo oshitukulwa mokutunga ondjokonona yaye nokuufa onghalo yaye nena paife apa.

Molwomhito oyo e na okutunga onghalamwenyo nondjokonona yaye, luhapu omunhu okwe litula ponhele yaKalunga. Ovanhu vamwe ove litala ovo ookalunga vavo vene ile vavakwao. Ashishe osho tava pumbwa otava diladila kutya otava dulu oku shi li pa vovene. Eudeko eli olo la efifa ovanhu vahapu Kalunga, osheshi eemhumbwe davo adishe otave di mono, vati kuvo vene, nope he na Kalunga.

Eudeko eli olo yo le liudifa ko ovanhu mepuko, kutya vo ove li pombada ve dule vakwao ovo "ookalunga", onghee Ovalaule ove na okukala moinama yavo ya yooloka; eefikola, omalukanda, oundjuwo ndele nomaendo.

Ashike pauteoloxi, eudeko eli otali wapalekwa ashike keshakeno lomunhu naKalunga. Ngee hatu uya mouyelele womuKalunga, opo ashike hatu mono kutya, fye ovashitwa ashike vaKalunga "inaku wedwa sha, ko inaku dja sha." Onghee nee, omunhu ou te litala e li pombada e dulife opo a tulwa kuKalunga, ile te litala e li pedu shi dulife opo a ufilwa kuNamhongo, ota nyono komuumi waye.

Ngeenge hatu shakene naKalunga ohatu shiiva oushiti waye noushitwa wetu. Kalunga ohatu shakene naye meendjovo daye. Eshakeno letu naKalunga otali tu kwafa tu litambule, tu mone twa shitwa twa wana twa pwa, inaku pumbwa okuwedwa sha. Hano, omunhu oye omaano a dja kuKalunga e ya komunhu mwene, komunhu mukwao, nosho keshito alishe.

Ashishe osho omunhu e na, ile e li, osho omaano oo e na okukwatwa nawa. Onghee omunhu keshe oku na okulitambula ye mwene nokutambula yo vakwao. Oshili ei oya fimana moilongo oyo i na ovanhu vomaluvala nomaludi a yooloka. Kalunga ngee okwa shita ovanhu va yooloka, oye e na oufemba woku mu pa oushima? Eshi Kalunga ta shiti ye okwa li peni?

Omumbisofi Dumeni megongalo Omulondo



Egongalo oli na aayakuli ye thike mpoka mboka ya kala moonkundathana nomumbisofi moshigongi shawo

Egongalo Omulondo muuzilo wOndonga, olya mono lwotango etalelopo lyopaumbisofi okuza sho lya dhikwa 1985. Etalelopo olya li ko

24-26.2.1989. Metalelopo ndyoka egongalo olya tsuwa omukumo miilonga yalyo li longe lya mana mo, opo li adhe omuthika guukulu-ntu.

Tala kep. 10

EKUNDO LYOSHIKONDO SHUUNAMITI KOSHIGWANA

Aakwashituthi amuhe mwa gongalele nena pehala ndika etilithi notali etitha omahwilili mokudhlahhila shoka sha ningilwe mo, kape nee mbudhi kutya yamwe oye ya nelalakano lini po, otandi mu kundu petamekolela noohapu dhoshipalanyolo shomvula ndjika 1989 ngaashi tadhi ti: "Hakoondoko dhoye, aawe, okOmbepo yandje ayike."

Omumvo kehe tagu tsakanithwa unene tuu mokudhimbulukwa evalo nenge oshinaku-gwanithwa oshivanawa, ohagu nyanyudha. Ihe metsakanomumvo ndino lyeti 19.02.1989, oomwenyo dhoyendji odhi na oluhodhi natango nomaipulo, unene tuu sho oshinima inaashi yela kutya oye a longo uudhigu nuukolokoshi u thike mpo.

Ihashi pe omuntu kehe ombili uuna wa lika kosha ihe ino tseya oshike she ku li nosha ningine peni. Nohashi uvitha omuntu nayi unene ngele to ka lombwelwa kutya owa lika kokambwa kaandjeni oshoka oke na oonkwengu aniwa, omanga u shi shi nawa kutya hasho mokutseya kutya okambwa kopuushiinda oko ka fa ka piyagana kashona. Naampano nashi kale kutya, 'amuhe gu umbw'egoya, onkotoki tayi gu uvu.'

Ashike shoka she ku yeleda nawa mushika shetopo lyomboma mombaanga yaShakati, osho

shika kutya Kalunga oye awike ta tseya oshili yoyene. Momumvo gwa yi (1988) esiku ngandino eti 19.02. ngashi nena, koshiwike olya li Etitano nomumvo gwogwene ogwa li omumvo gweihaluko.

Koyendji ondi inekela kutya esiku olya li lya piti ko ngaa ngashi omasiku omakwawo, etango olya pitile kuuzilo ngaashi naanaa shito, noonte dhalyo odha minikile dha yela ngaashi sha kala shi igililwa. Ohaluka lwopotundi yotango yomutenya noominate dhimwe, omuntu oto hala okutya onkalo yetango ayihe oya lunduluka noonte odha luudha nonando paushili okwa li kwa yela ngaa.

Lwopotata lyombali yomutenya, esiku olya tuu ndyono, pelesho lyoonkundana mOradio Owambo, hakutiwa, oshilongo ashike konyala osha haluthwa mokulindimanekwa oomwenyo konkundana yetopo lyoboma mOmbaanga yomOshakati.

Onkalamwenyo yokevi otayi dhigupala esiku



Matrona Aletta Ngaikukwete ta popitha oshituthi

nuuyamba, omumbisofi Dumeni okwe shi kumagidha nomatumbulo taga landula:

— Nashi itedhulule noku etha iilonga ayihe iwinayi yomutondi. Iita omahepeko, omadhigapago, uutondwe ayihe nayi fumvikwe. Okutaa-mbathana, okudhimitathana po notu indile edhiminepo lyoondjo odhindji, opo tu kale nohole peha lyuutondwe. Ohole nombili yaKristus ngoka a sindi eso naayihe iwanawa nayi yumuke, oyo yi kale muNamibia, opo tu ka dhane oshituthi shemanguluko tu holathane.

Oshituthi osha halakanene nombili mohole yuumwayinathana nomelongelokumwe ngaashi sha tamekele mombepo yimwe.

kehe nokathimbo kehe. Aapangi noonohotola miipangelo nomuupangelo oye shi ku shi hokolola sho esiku kehe konyala taa tsakanene aantu ya mona iiponga ngele komalutu nenge koomwenyo wo. Oshiponga shoboma yeti 19.2.1988 osho shimwe shomwaambika.

Nonando moshiponga shino mwa kanene aayakuli oyendji yopaundjolowe, otse mbaka tu li po manga natango, natu indile tu gwedhelwe oonkondo nomukumo kOmuwa miilonga, osho wo eitaalo opo twaa vulwe, twaa teke omukumo notwaa tyololoke andola.

Kalunga mwene na hekeleke oonakuthigwa po

H.Taati Kanana

Tala kep. 6



Taati H. Kanana

Dha za kep. 2

dhimbwa uwanawa washa e u ku ningile," meme Aletta osho a ti. Shigwana, omvula ndjika otwa kalela efuta enene komeho, nokonima otondi okwe tu kalela wo. Ihe Omuwa mwene ota ti; "Mweneni thilu, ngame otandi mu kondjele," osho a li a tsu omukumo oshigwana.

Okangundu kombili nuuyuku (RCC) mOngeliki yaKatoolika kaRoma oka gandja ekundo lyako.

Omusamane Engelbrecht Atshipala okwa ti; Pakutala oshinima shika inashi ningwa ombaadhilila, ihe osha longekidhwa nosha ningilwa owina. Naku shi ninga okwa li nelalakano oku kateka emanguluko lyaNamibia nokwa hala a tilithe oshigwana shaa itule mo melalakano lyombili yoshilongo.

Okwa tsikile ko kutya, mokuyonagula po oshigwana shetu ngeyi, inaye tu etela owala omaudhigu, ihe oya hwameke wo mutse omukumo mokuyululuka ombili nemanguluko lyoshilongo shetu. "Mbaka ya sile mpaka kaye shi aakolokoshi, ihe oya ningi 'aahokololambinzi', osho a yelitha nomukumo.

Okwi ipula noongundu dhomakwatho sho inadhi ninga nando osha komazimo goonakusa mbaka. Okwa londodha oshigwana kutya omutondi opo e li natango oku na elalakano a ponyithe okatokolitho kligwanahangano 435, kaa ka ye miilonga, ngaashi a ningile nale. Ina hala tu mone emanguluko, okwa hala a tsikile niilonga ye yomuyonena mutse. Tu indileni ekwatho kOmuwa, opo ayihe iwanawa yi tu ningilwe.

Omuwilikishituthi omusamane Namuhuya okwa tseyitha wo oongalo ndhoka dha umbilwe miituthi yomafurvikiko goonakusila moshiponga shoka. Efumviko lya ningilwe mOngwediva eti 27.2.1988, lyaamboka 17, ya yile moshilambo shimwe, opwa umbilwe ongalo ooR5081-03. Efumviko etiyali lya Anna-Ndahambeleda Dumeni 12.3.1988 mOngwediva, ongalo ooR2226,99. Nomoshituthi wo shika okwa ningilwe ongalo, ndjoka inayi tseyika manga omwaalu gwayo. Ongalo ndjika oya thigilwa okangundu hoka taka ka utha kutya otayi ka longithwa ngiini.

Manga oshituthi inaashi igidhilwa elaleko

OMOLWASHIKE AANTU YA DHIPAGWA MOMBAANGA YASHAKATI 19.2.1988

Oshituthi shokudhimbulukwa oosa oonene pombaanga yaShakati shono sha li ko 19.2.1989 osha li sha popithwa kaantu oyendji. Omupopi gumwe okwa li omukalelipo gwokakomisi kuuyuuki nombili mOngeleki yaKatolika kaRoma, omutalelisikola Engelbrecht Atshipala. Mepopitho ndika okwa tumbula ngeyi:



Aantu taa tengenekwa 10,000 oya li moshituthi shoka, moka oyendji ya kala omuthika omutenya aguhe sigo opezimbuko.

OMAHALA GOKUTHIKILA AANAMIBIA GA TALELWA POKOMBELEWA YOKIIGWANA- HANGANO



Aatumwa yombeleva yoontauki ko UN yaali, kolulyo methano ndika naAmushanga omukuluntu gwa ELCIN a thikama te ya popitha

Aatumwa yaali yombeleva onene yoontauki yokligwanahangano (UN) oya ningi etalelopo efupi koshitopolwa shokoongamba mekwatathano nomalongekidho getulomiilonga lyoshitokolitho 435 shemanguluko lyaNamibia. Etalelopo olya ningwa petamekolela lyomwedhi nguka.

Osheendo shaatumwa yaali yakomufala omuku-

luntu gwoontauki muuyuni ko UN, osha thikama wo pOniipa 3.3.1989 manga inaashi ka konakona omahala gamwe ngaashi Engela, Oshikango nOdibo mpoka Aanamibia yomathele gomayovi ye na okuthikila mokugalukila kwawo kegumbo.

Omuwiliki mosheendo shika omusamane Nico-

Tala kep. 9

Otu na okutseya nokutya edhipago lya tya ngeyi inali ya ohaluka, omupya andola, ihe olya zi moonkundathana mpoka pwa li tapu ikundwa opo shi ningwe. Opwa li tapu ikundwa nkene shi na okweendwa, opo elalakano lyehatopevi lyoshigwana li gwanithwe.

Oshinima oshi na sha nemanguluko ndyoka lya halika notali kondjelwa koshigwana uule womimvo mu-Namibia. Ekondjo ndyoka lyoshigwana, inali halika nande li uvike tali popiwa moshilongo muka. Omolwemanguluko ndika Aanamibia oyendji oya kuthwa nale oomwenyo dhawo mwa kwatelwa mbaka ya dhipagelwa pehala mpaka, ihe pwa hupithilwa wo yamwe.

yamwe elongo lyanathangwa eliko nenge iiyemo yopaufupilela, oku ya kutha omauthemba ogendji, oku ya tula moonholongo, okuyona po omaliko gawo, oku ya lemaneka noku ya dhipaga ngaashi shoka tatu dhimbulukwa nena. Atuheni tu dhimbulukweni uwinayi womaidhengo gomitse mumwe, etondathano, okwaainekelathana ku hule po, omahundjuninathano nuwinayi ulwe u hulithwe po.

Uukumwe okuholathana, uuyuuki nombili oyo yi dhane onkandangala. Okatokolitho 435, otaka yi miilonga 1.4.1989. Mbaka ya sile mpaka oya li ye na okuya memanguluko lyaNamibia, ando omutondi okwa li inee ya yona po. Otu shi shi eso lyawo olya ningi evitho enene muuyuni auhe, kutya Aanamibia naa pewe emanguluko.

Aanamibia otaa dhipagwa molwehalo lyawo ewanawa. Mbaka ya si ngeyi itaa ka talwa ko kutya aagwaaleki mehistolli lyaNamibia a manguluka, ihe otaa ka tulwa momusholondondo gwAanamibia aahokolola-mbinzi yemanguluko lyoshilongo shika, oshiholike.

Epulo olya ndi: Aathigwapo yoonakusa nosho wo mbono ya lamanene moshiningwanima shika oya ni-

Tala kepanja tali landula

Dha za kep. 5

kumboka ye tu tetekele: "Mboka ye tu tetekele shili tu ya adhe ko. Omuwa tse tu mu hambelele, tse tu tseyathane wo. Tu na tuu..."

Esiku ndyoka mokutala omulilo nomakuma taga gu, osho wo iipeleki tayi wilauka mombanda, kapwa li naanaa etegameno lya kola kutya otamu ka za omuntu ta tumwa.

Ihe esilohenda lyOmuwa enene nokwa hupitha mo yamwe ye na omwenyo sigo onena noye li wo mokati ketu mu nonando haayehe ngiika. Mokupanga aavu mbaka ya hupu moshiponga shino, pethimbo ya li moombete, opwa konekwa kutya yamwe yomuyo oya li taa nyengwa okuuva ko nawa nomakutsi, nondi na uunzapo mushika, ihe omakutsi gawo gokoowwenyo inaga gumwa komutopelo nando! Pamwe nayo ayehe, oshigwana oshiwanaawa okutumbula kutya; "Omwenyo gwandje hambelele Omuwa, ngoye ino dhibwa uwanawa washa e u ku ningila."

Pehulilo mpano onda hala okutya: momvula ndjika yonuumvo osha fa ishewe shi li ngeyi kutya otwa kalela efuta enene komeho getu nokonima yetu otwa kalelwa komutondi. Ihe natu inekele neitaalo lyashili, kutya nomomaudhigu ongotaga tindi okuhula, otatu lombwelwa ngeyi kOmuwa; "Mweneni thilu, ngame otandi mu kondjele mEhangano 381:1-2.

Aletta Ngaikukwete
Matron omukuluntu gwiipangelo
mOwambo.

EPANDULO

Tse aakwalimene nongaashi wo aakwanezimo ayehe yameme Leena otatu nyengwa okuthitikila olupandu momitima dhetu, okupandula amuhe mboka mwa tondoka onkugo yomuholike gwetu. Omwa pupaleke oluhodhi olululu lwetu, sho mwe ya oku tu hekeleka nongaashi tamu tsikile oku shi ninga natango.

Ashihe mwe shi ningile noondjimbo, noohapu nomaliko noombilive osho wo nomagalikaneno, Kalunga ketu ne shi mu yambekele. Omuuthi gwaayihe oye mwene ne mu gwedhele oonkondo, uupenda, ontalanteni nolukeno mokutsikila nokuyakula ngaashi mwe shi tu ningile.

Elifas Sheetheni Iimene
Nangolo Secondary School

Festus Shigwedha Jesaja Lumbala (28) megongalo Oshitowa okwa huli-thile oondjenda 7 - 12-1988. Okwa thigi ko aakuluntu ye naamwayina.

Selma Amuyagele Lumbala
Oshitowa

Tate Daniel Shifotoka okwa manene oondjenda dhe 6-9-1988, muukulupe womimvo 97, mEgongalo Omulondo. Okwa thigi ko oyana yahamano, aamwayina yatatu, omuselekadhi naatekulu oyendji. 2Kor 5:1-11, eimbilo 40

A. Shifotoka
Oniwe

Da dja kep. 6

ngilwa ano shike koshiketha hashi popiwa muNamibia shi na sha naamboka ya yonagulilwa miita? Nongele inashi ningwa otashi eta ihe omapulo momuntu e na omadhiladhilo ge li pihala.

Etumwalaka lyandje kutseni atuheni olyo ndika: Tutamanekeni twaa na uumbanda omukalo kehe gwokutilahi ombinzi, okulemaneka, okudhipaga nenge okushundula omuntu naashihe shono sha hala okukwata moshipala emanguluko lyetu twe li yuulukwa nale.

Nonando ope na ethimbo ele natango iigongi yomayelithilo gomahogololo inayai tameka pakatokolitho 435, ongandu oya kwata nale komaako gaa na oonkondo, tayi hilile koho yomeya. Tse tu kwatani komagulu opo tu hupitheni natango iihakanwa mbyoka yaa na oonkondo. Tu yambidhidheni kehe tuu shono tashi tungu uukumwe nomakankameno agehe taga thikitha memanguluko lyoshili nolyuyuyuki.

EYAMBIDHIDHO LYOONGELEKI

Okuza mehogololo noshilongo shaNamibia sha mona lwotango epangelo epe lyopashigwana, kokutya epangelo lya za mehalo lyaakwa-shigwana yoyene, shoka tashi landula ko mbala etunguluo lyoshilongo. Etungululo ndyoka otali ka pumbwa iikaha yaantu osho wo iimaliwa.

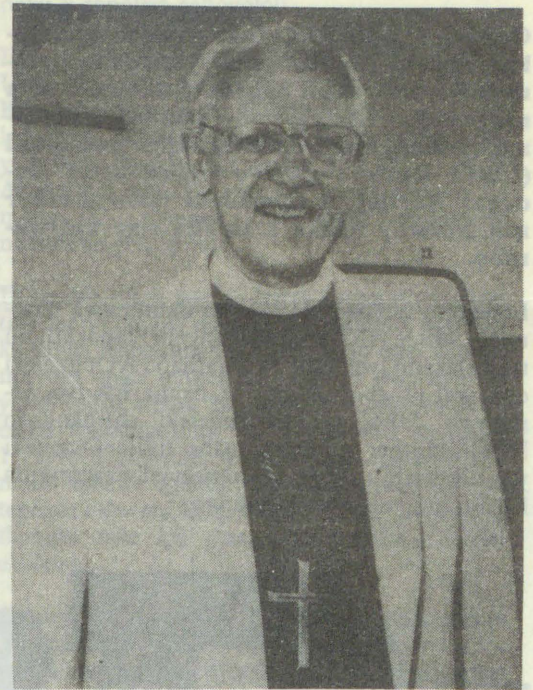
Ongeleki onkwaEvaangeli paLuther muAmerika oyi iuvanene, kutya muule woovmula ndhoka twa taalela, otayi ka pula iilyo yomagongalo gayo yi kwathe iimaliwa moshilonga shokutungulula Namibia. "Tse ngaashi tu li Aayamerika, otu na ompito ya sheywa okukwathela Namibia," osho Ongeleki ndjoka ya holola.

Oya gwedha ko kutya osha pula Namibia ekondjo edhigu okwaadha emanguluko lye, onkene Namibia opo li thike nawa pehulilo lyekondjo lyalyo, otashi zi mpoka sho tatu gandja mbala ekwatho ndyoka lya pumbiwa. "Melongelokumwe lyetu naamwameme Aanamibia osho wo aanambelewa ya UN, otwa li tu na okulongodha omukalo kehe twa tala otagu nkundipaleke ethaneko 435," osho Ongeleki ya ti.

Ehokololo olya tsikile tali ti, ngele uuyuni owi itula mo okulongekidha emanguluko lyaNamibia pamwe nAanamibia yoyene, unene tuu Ongeleki onkwaEvaangeli muAmerikandjoka ya kala mekwatathano noomwayinangleleki muNamibia, otayi ki itula mo ya mana mo.

Oshilonga shimwe shi li po Ongeleki tayi vulu okuninga sha, okukwatha Oongeleki muNamibia, okutaamba Aanamibia taa tengenekwa ye vule 80,000 ngele taa galuka muupongekwa, okugalukila kegumbo.

Omolwegaluko lyaantu mboka, ombelelwa yaKomufala omukuluntu gwoontaui muuyuni (UNHCR) oya gandja oshimpwiyu kOongeleki muNamibia dhi taambe oshimpwiyu shokutaamba oonakugalukila kegumbo. Oongeleki dhAatiligane (oombulu nAandowishi) inadhi kwatelelwa mo melongelokumwe ndyoka.



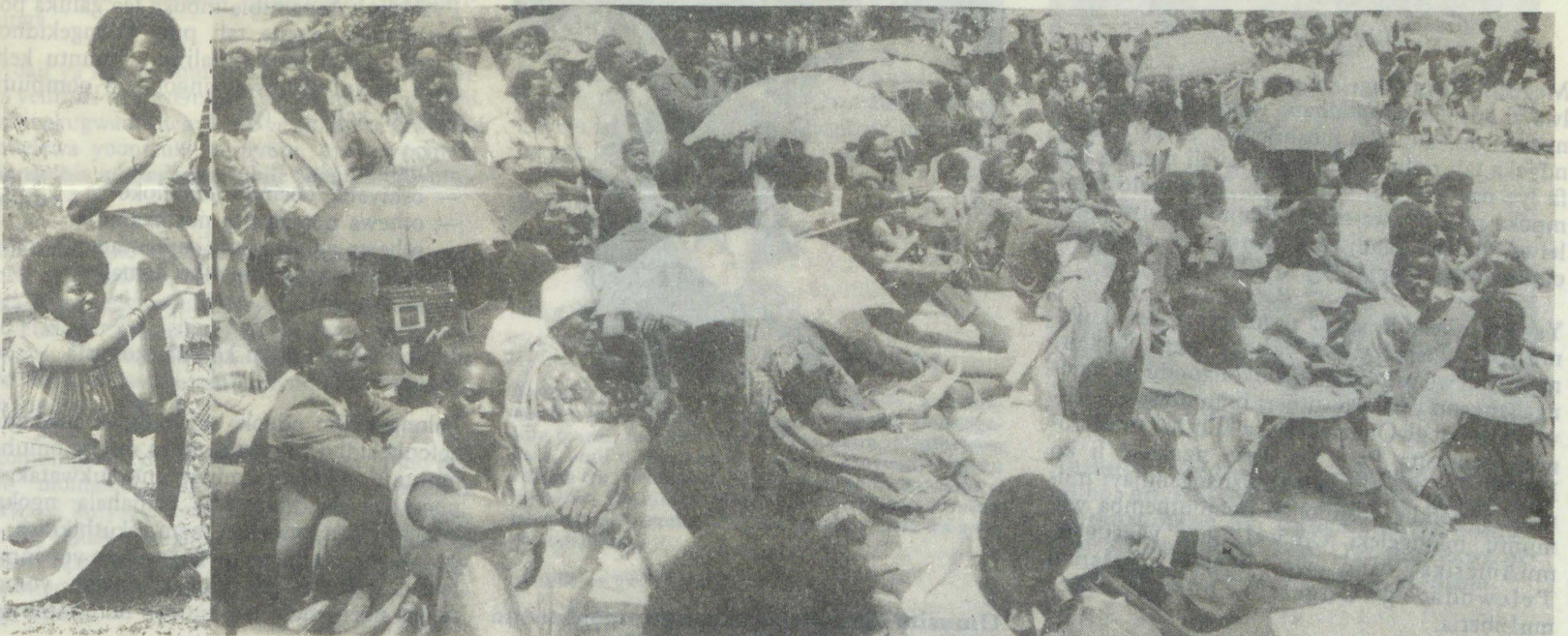
Omumbisofi omukuluntu gwaambisofi mOngeleki onkwaLuther ya hangana muAmerika Herbert Chilstrom

Pamathaneko gombelewa ndjoka yoontaui yokligwanahangano (UNHCR) ando omahala guuthikilo woonakugaluka, inaga kalathana kokule niyelo mpoka taa pitile sho taye ya moshilongo. Osho wo iilonga yoosikola mokati koonakugaluka, ando yaa tetwe pokati.

Oongeleki moshilongo, pambelewa yOraata yOongeleki, oya hogolola okakomisi kelongekidho lyetaambo lya tya ngeyi. Okuza Febuluali 1989, aantu momikunda oya kala taa kumagidhwa komakakunya, opo kehe gumwe aniwa a ka tale omuntu gwe kOshikango nenge

Tala kep. 8

Mbaka ye li methano ndika, oya li melongelokalunga lyoosa pombaanga yaShakati



ETALELOPO LYOPAUSITA KOONGELEKI OONKWALUTHER MUNAMIBIA

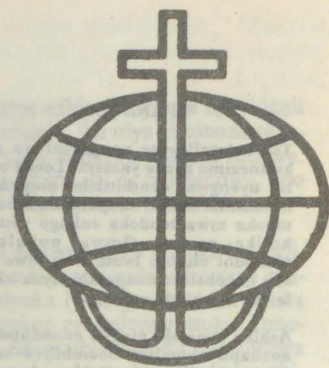
Oongeleki oonkwaLuther moshilongo shika odha mono etalelopo lyopausita petameko lyomwedhi nguka. Etalelopo olya ningwa kaatumwa yane yombelewa yOngongahangano yAakwaLuther muuyuni (LWF) Gumwe gwawo omumbisofi Andreas Aarflot, gwOongeleki onkwaLuther mu Norway ngoka a thikile sigo okOwambo.

Etalelopo ndyoka lya li na okuningwa omumvo 1988, e tali imbwa kepangelo lyopokati, oli na elalakano lyokutala ekwatathano lyOongeleki oonkwaLuther muNamibia nkene lya tya. Omumvo 1984, oshigongingeleki shEhangano lyAakwaluther muuyuni osha tulile Oongeleki yAandowishi megeelo omolwokwaapangula kwayo puuyelee okangotongo.

Ombelewa yOngongahangano yAakwaluther oyo ya kala omusilishimpwiyu omunene gwaafadhukipo muuyuni. Pethimbo ndika lyAanamibia taa galukile kegumbo, Ongongahangano oya hala wo okuuva omadhiladhilo gOongeleki meni lyoshilongo, nkene tadhi ilongekidhile egaluko ndyoka naashono tadhi shi pumbwa melongekidho lyadho.

Oshilonga shokuhanganitha oshigwana shono sha kuthathanapo omimvo odhindji dhiita, osho shimwe sha talelwa Oongeleki mpaka yi shi ninge pethimbo lyomalunduluko ngoka gopolotika. Nombelewa yOngongahangano oya hala okuuva nkene Oongeleki tadhi shi ningi.

S. Ekandjo



Endhindhiliko lyehangano lyAakwaluther



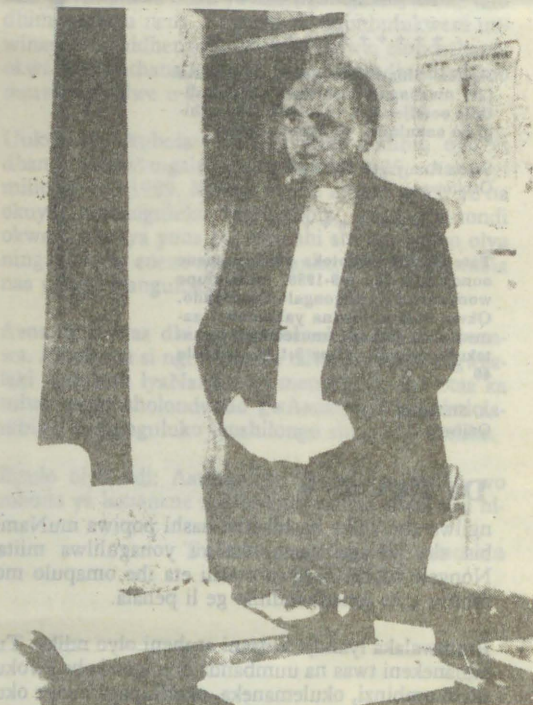
Iilyo yEpangelongeleki lyOongeleki yAandowishi moshigongi shoonkundathana nElelongeleki lyOongeleki yaELCIN 1988, okukonga euvathano

Megeelo ndika Oongeleki yAandowishi oya indilya yi opaleke ekwatathano lyayo noomwayinangeleki dhAaluudhe moshilongo. Ekwatathano ndyoka tali pulwa ngashingeyi otali monika lya fa lya nayipala shi vule shito. Ehokololo lyampoka pwa thikwa neopaleko ndika, olya tegelelwa li ka gandjwe moshigongi shaayehe omumvo tagu ya (1990).

Ya li mosheendo shoka omumbisofi omukuntu gwOongeleki yaNorway, Andreas Aarflot, ngoka e li wo oshilyo shEwilikongundu lyOngongahangano yAakwaLuther; omumbisofi Soritva Nababan gwOongeleki onkwaLuther muIndonesia; omusita Paul A. Wee, ngoka e li ko L.W.F. omukwathi gwaAmushangandjayi mii-nima yopondje yoshilongo nomuuthemba womuntu mOongeleki OnkwaLuther yahangana muAmerika osho wo Feelani Susanah Telewoda, gwOongeleki onkwaLuther muLiberia.



Omusita Paul Wee gumwe gwomosheendo shaatalelipo ya LWF



Omumbisofi omukuluntu A. Aarflot pethimbo lyetalelopo lye mOniipa

Dha za kep. 7

mpoka tapu helukwa. Omakakunya mpoka inaga pewa nando oshimpwiyu shoka.

Eyakulo lyAanamibia mboka taa galuka pondje yoshilongo, enene tali pula eilongekidho lya gwana. Otali pula iimaliwa. Omuntu kehe ta thiki okwa pumbwa tangotango oompumbwe dhesiku kehe, tu tye;

- iikulya
- oshiyaha, oosindo noofoloko
- othewa nomagadhi noshikamule
- othewa yokuyogitha niihanduke
- etalashe omakumbatha nomalapi gokombete.

Shoka ashihe otashi ka pula konyala R16 720 000.

Palongekidho ndyoka tali ningwa kokangundu kelongekidho kayatatu, moka mu na omuhingi, omutali gwoompumbwe nomukwatakanithi noombelewa dhopondje, omahala ngoka ga hogololwa kOongeleki meni, okuthikilwa, osha pumbiwa ga talelwe po kaanawino yopauamiti taa zi pondje yoshilongo, onkalo yomahala ngoka ngele otayi tsu kumwe nompumbwe.

Untag ta tonatele iilonga yehogololo lyaNamibia, manga South Africa te enditha

Omatumbulo ge li pombanda itaga hokiwa kAanamibia oyendji, ashike onkalo yethimbo ndyoka twa taalela osho yi li ngaashi shu ulikwa. Etanga lya UNTAG ngele tali thiki muNamibia, itali ya li zimbule SA melelo lyoshilongo shika. Omolwashoka SA okwa hanagula po epangelo lyopokati, opo ashihe shoka tashi ningwa pethimbo lyehogololo, shi pulwe miikaha ye.

Pashitokolitho 385 muJanuali 30, 1976 shOraata yEgameni lyLigwanahangano, Iigwanahangano oya li yi na okudhika epangelo lyayo lyopakathimbo muNamibia, manga SA e li mpeyaka a tala ko owala. Ihe shono SA ine shi taamba. Moonkundathana oonde, Oraata yegameni oya ningulula ethaneko, pashitokolitho 435 muSeptemba 29, 1978, shono sha taambwa ku SA.

Pashitokolitho shoka SA ota kala nepangelo ngaashi a kala nalyo shito, ihe iilonga ye otayi tonatelwa kumboka ye mu li popepi, Omukalelipo gwowina gwLigwanahangano pamwe naayakuli ye. Oshitokolitho 435 otashi pula SA a fupipike omwaalu gwaakwiita ye okuza 30,000 sigo 12,000 muMai. Aapolosi mboka taa kala miilonga (oKoevoet?) ya humbate owala oondjembo oonshona.

Kakele kaashono iilonga iikwawo osho ando yi na okutsikila ngaashi iipangelo oosikola, niilonga iikwawo yopambeleva naambyoka yonkalonawa yaantu, pahokololo lyomolunza lu



Methano ndika kolulyo, omukuluntu gwo-matanga ga UNTAG, Ndjayi Dewan Prem Chand gwaIndia, pethimbo lyetalelo lye muNamibia pehulilo lyaFebuluali.

Omahala gomahelukilo muNamibia

Dha za kep. 6

Iay Bwakira gwaBurundi, okwa gandja omakundo gowina komumbisofi K. Dumeni ngoka ga zi kuKomufala gwoontauki kombelewa yligwanahangano.

Okwa ulike kondjokonona yekwatathano lyOngeliki muNamibia nombelewa yawo ko UN. Omusamane Bakwira oye omukuluntu omupeha mombelewa yoontauki ko UN, miinima yi na sha naAfrika. Pamwe naye okwe ende nomukalelipo gwepangelo lyaCongo moBotswana mombelewa yoontauki, omusamane Ngandu I-lunga.

Moku ya kunda omumbisofi K. Dumeni okwe ya yelithile nkene Ongeliki ya taamba neinekele oshinakugwanithwa shono ye shi inekelelwa kombelewa yoontauki muuyuni, opo yi taambe Aanambia mboka taa galukile kegumbo pashitokolitho 435.

Endhindhiliko lyeitulomo lyOngeliki okutaamba oshimpwiyu, omumbisofi oku ulike kiilonga yimwe mongeleki mbyoka ya mwenekele o po etaambo lyoonakugaluka li pewe ompito ya gwana. Ihe omumbisofi okwe ya dhimbulutha wo kutya omwaalu ogundji moshigwana kagu na einkelelo mu SA.

Kombinga yaayenda okuulika wo eitulomo lya-wo momalongekidho, omusamane Bwakira okwa ti kutya, osheendo oshikwawo shaakonakoni yonkalo yAanamibia muAngola naZambia otashi tumwa moshiwike oshitiyali shaMaalitsa, kiilongo mbyoka, opo ku talike iinima koombinga adhihe.

Bwakira okwa koleke kutya Mai 10, 1989, omo aafadhukipo Aanambia taaa ka galukile kegumbo, opo ye ye yi ilongekidhile ehogololo lyaayehe muNovomba 1, 1989 metonatelo lyo UN.

Oongeleki muukumwe wadho meni lyoshilongo koho yonduda yOraata yOongeleki muNamibia (CCN) odha longekidha iiyelo iheyali yokupitila nomahala 13 moshilongo ashihe gokuthikila mo ngoka konyala agehe aakonakoni mboka yu uvite ombili kugo.

Iiyelo oyi li pomahala taga landula:

Oshikango, Ruacana, Ondangwa, Rundu, Katima Mulilo, Grootfontein nOvenduka. Popepi niyelo opwa longekidhwa omahala guuthikilo manga inaa kwatathana nomazimo gawo.

Sebulon Ekandjo

YA KUNDANWA YA MANGULULWA

Tomas Iipito, a kwatelwe muKotoba 1987, naJohannes Kavila, Eengolo. Inatu tseya omasiku gemangululo lyawo. Etsyitho ekwawo twa pewa mOmbelewa yetu, otali ti Shipandeni Mupolo, Onyaanya ngoka edhina lye lya holokele momusholondondo gwaamangululwa yomumvo 1988, otaku tiwa okwa kwatwa ishewe muDesemba 1988. Katu na uuyeleele wa gwana mushika.

Amushanga gwOmukwetu

shi kwiinekelwa. Okweenditna iilonga yehogololo kwa SA otaku ti ngini? Shoka otashi ti SA okwa tegelelwa kligwanahangano a kale ta nyolitha aahogololi (registered), a longekidhe omanyanyangidho guumbapila wehogololo noku u topolele aahogololi.

Iilonga mbyoka ote yi ningi metonatelo lya-UNTAG, ihe oye te yi ningi. Fanuel Kozonguizi ngoka a li oministeli mepangelo lyopokati, okwa popya pehulilo lyomumvo gwa yi (1988) moshigongi shawo sho DTA, ta ti: Aanambia oyendji otaa ka haluka sho taa ka mona SA natango ota tsikile nepangelo nokonima yehogololo.

Ethaneko oli li ngeyi, kutya ongundu ndjono tayi mono omawi ogendji mehogololo, oyo tayi ka tunga Ekotampango lyepangelo epe. Iilonga mbyoka opwa tengenekwa tayi ka pwa konima yoomwedhi ntano lwaampoka. Omolwashono esiku lyemanguluko lya thanekelwa kuApilili 1, 1990. Kombinga ya SWAPO ngele oye a mono omawi ogendji, ngaashi oyendji ye shi tegelela osho shi kale, Ekotampango lye okwe li thaneka nale lya pwa, olya pumbwa ashike ekoleko.

Aatseyinawa yomataambathano gomapangelo oye na eipulo enene kutya oshitokolitho 435, aniwa itashi gandja uuyeleele, kutya pokati kasho nepangelo epe ndyoka tali kala koshipundi oye ta tonatele egameni lyoshilongo nolye ta kala omuleli okathimbo hoka kopokati. Ngiika Aanambia aaholimbili otaa ka kala ya tonata opo yaa ethele omeya pokampito hoka.

EPPUKULULO

Moshifo shOmukwetu No 3/1989 epandja 11, omwa holokele omadhina goonakusa yaali gaa li mondjila. Nakusa Frieda Shikomba, ihe oli na okukala Shikongo. Osho wo Anna Ndahafa Dumeni, oli na okukala Anna-Ndahambeleva. Otatu gandja ombili kaakwa-nezimo yoonakusa mboka.

Amushanga gwOmukwetu



Aatumwa yombelewa yoontauki methano ndika, omusamane N. Bwakira kolumoho nomusamane Ng. Ilunga kolulyo nomumbisofi Dumeni pokati. Oya thanekwa pethimbo lyetalelo lya wo pOniipa.

Ompangela yomadhipago ya halutha oshigwana nOngeleki

Ombelewa yOngeleki oya kundana nehaluko enene, oonkambadhala dhomadhipago ga longekidhilwa oshigwana pethimbo lyomalongekidho getaambathano nogokutunga ombili moshilongo. Mokati kaakwashigwana, unene moshitopolwa shOwanabo, oompangela dhomadhipago otadhi ipulwa nadho muungundu wooyaali nooyatatu, kutya odhi na etungo lyashike koshigwana.

Aanashilonga yamwe oye li ngashingeyi mehaluko enene momahala gawo moka ya li ya hogolola ya kale mo nombili manga yamwe ya thigi po nokuli iilonga yawo sho ya kundana, kutya omadhina gawo oge li momusholondondo gwaantu konyala 100, mboka ye na okudhipagwa, manga okatokolitho 435 inaaka tulwa miilonga.

Momalunza ge shi okwiinekelwa, omwa kundana nkene pe na ombapila yomadhina goonakudhipagwa, sha kwatelela mo aalongisikola, aanangeshefa naasita yomagongalo. Opu na wo okangundu ka pewa iihauto ka ende noshitopolwa shika okutsakanitha elalakano ndyoka. Ondjembo niitopitha yi na okulongithwa mompangela ndjoka, otaku tiwa oyo mbyoka ya kwatwa mekondjo lya SWAPO, osho ehokololo lya ti.

Gamwe gomomadhina gaadhipagi oga tseyika moka mwa holoka nomadhina gaakiintu. Mulimwe lyomomanyengo ga limbilika uusiku pegumbo lyomusita Nashidengo, olya li sho aane-gumbo mboka ya pendulwa moomposi kewi lyomukiintu a niwa a pumbwa ekwatho lyokupukululwa ondjila.

Konima yethimbo ele lyokugandja uumbangi, kutya omolwashike Nashidengo, itaa egulula omweelo a ka pukulule aayendi yuusiku, Nashidengo okwa halutha omukongi gwekwatho ngoka. Omuyenda ngoka sho a fadhukile momilema, muyelele womwedhi okwa dhimbululwa, kutya omukiintu ngoka okwa li naalumentu ye li yaali noya thindi momilema, ya yi. Pethimbo ndyoka oveta yuusiku inayi kuthwa po manga.

MuFebuluali esiku lya tseyika nawa, aakwiita oyi ile pegumbo lyomumbisofi Dumeni lyopau-mwene, taa pula ngele okwe ya po pegumbo. Shono oye shi ningi iikando yi vule shimwe nomanyengo gawo oga hokololwa, kutya kaga li omawanawa.

Mepya lyaKuku Mukwamhalanga gwaDumeni, mOmbalantu, yina yomumbisofi omwi itsuwa omwedhi nguka ondjembo nomangandjiina giikuti ga holekwa miilya. Elakano lyanaku shi ninga, inali tseyika natango. Aakwiita ya SA mokamba yaUtapi ndjoka yi li konyala ookilometra ndatu nehala ndyoka, otaku tiwa oye shi zimine, kutya iilwitho mbyoka oyawo, ihe walyewo ngoka e yi tula po.

Epulo enene olya li lya holoka moshigongi shaalogi yoosikola 4.3.1989 sha li mOshakati kombinga yelalakano lyEhangano lya dhikwa mOshakati, lyedhina Namibia Research, kutya olyashike. Omapulo ga tumwa moshigwana kEhangano ndyoka, otaga pula kombinga yaangoka e na okuhogololwa moshigwana, uukwatya wepangelo ndyoka omuntu a hala, omalenga ngoka ge na enwethemo enene moshigwana nOngeleki ndjoka hayi popi unene opolotika nosho tuu.

Onakulonga yamwe yomehangano oya tseyika koshigwana, kutya aapolosi mboka ya mana po oshigwana shawo. Ekwatathano ndyoka olya limbilika wo uukwatya womapulo ngoka taga pulwa aakwashigwana yaa shi elalakano lyago ne-

nge inaye li pumbwa. Oshigwana otashi kumagidhwa natango, okutseya omutondi gwasho kutya olye, sho shi ende sha tonata shaampoka shi li po, oshoka ethimbo ewinayi.

Moshiningwanima shi ili, omakakunya gomo-Bataliona 202, oge ya mOseko yaRundu moKavango nokuumba nondjembo yomashina "Kaposikayaalela" momakende gondjugo yoshililo nomatungo omakwawo gomuhandjo. Oga thigi aanasikola yaheyali ya ehamekwa. Shoka osha ningwa 4.3.1989 petata lyomugoyi. Pauyelele mboka wa thiki mombelewa yOmukwetu, ekakunya limwe ndyoka sigo oompaka inaaali tseyika kutya olini, olye ya pomuhandjo gwsosikola yopombanda yaRundu tali hingwa komutiligane.

Olye ya momuhandjo nokutameka tali umbu shaampoka lyu ukitha. Pethimbo ndyoka aalongwa oyendji oya adhika moshililo, e tapu ehamekwa yaheyali. Gumwe gwawo otaku tiwa okwa ehamekwa unene montulo.

Natango moshiningwanima oshikwawo elandwambongo limwe Lukas Rooi, okwa kwatelewa pegumbo lyomusita Hendrik Witbooi, noboma. Lukas okwa zimine ye mwene kutya okwa li a tumwa kOmutiligane, opo a tege oboma koshi yoshihauto shomusita Witbooi. Osha ningwa 25.2.1989 moGibeon.

Koombinga adhihe dhoshilongo pethimbo ndika, osho taku kundana amatilitho nomambandameko mokati kaamboka unene ya humbata uuwanawa woshilongo nowoshigwana shawo. Omuwiliki gwoshifonkundana The Namibian, sha simana moNamibia, Efolo Gwen Lister, okwi indile a mana mo, opo aapolosi mboka haa ambele oohapu dhe moongodhi, ya ambele wo naamboka haye mu tumine moongodhi omatumwalaka gomatilitho gaa na mutse nandungu.

Oshigwana oshi li pokati kolumpangwa nomwele, ashike esindano lyasho olya yeleda nomutondi.

Sebulon Ekandjo

SWEDEN INA TAAMBWA KU SA METANGA LYA UNTAG

Epangelo lya Sweden muumbangalantu wa Europa ndyoka lya longo oshindji me-yambidhidho lyekondjo lyaNamibia inali ziminwa kuSouth Afrika opo aakwiita yalyo ya yakulithwe metanga lyombili lya UNO, UNTAG. Metamaneko lyaashika, SWAPO moLuanda okwa gandja ondjo ndjika kuAmushangandjayi gwa UN sho ta zimine omakamba kehe ga SA te ga ningile muuyuni.

"Sweden oku na ehokololo ewanawa, niilonga ye yokutonatela ombili pokati koontamanana dhuuyuni," osho ehangano lyaSWAPO lya nyenya. Omumvo 1988, Sweden okwa gandjele oomiliyona R23 kAanamibia mboka ye li muu-pongekwa.

Omimvo adhihe dha zi ko, Ehangano lya SWAPO olya kala lya humbata moom-pumbe dhesiku kehe mwa kwatelelwa oosikola niilonga yuunamiti. Iilongo iikwawo yuumbangalantu waEuropa ngaashi Soomi naNorwee, nayo ohayi yakula neitulomo enene ekondjo lyoshilongo shika.

Iilongo 21 oya ziminwa kombelewa ya UN oku-yakula metanga lyombili muNamibia ndyoka tali ka thikama maantu 4,650, pashonopeko ndyoka lya tokolwa kiilyo yimwe yOraata yegameno ngaashi Amerika, Britania, Soviet Union, Fulanisa naKiina.

Oshihupe shaakwiita 2,850 otashi kala sha pungulwa, kehe yamwe moshilongo shawo sigo uuna ompumbwe ya dhimbululwa muNamibia, kutya etanga ndyoka li li ko otali nyengwa nali gwedhelwe. Okuyanda elongitho lyiimaliwa oyindji osho sha gandjwa etompelo lyokuteta pokati etanga lya UNTAG 7,500 ngaashi lya li lyu uthwa 1978.

Etanga lyaakwiita yokolupadhi olya gandjwa kuBangladesh, Finland, Kenya, Malaysia, Togo, Venezuela naYugoslavia. Iilongo iikwawo tayi gandja aakwiita oyo Czechoslovakia, India, Ireland, Pakistan, Panama, Peru Poland naSudan. Ndowishilanda lyuuninginino naSwitzerland nayo otaku tiwa otaa ka gandja aanambeleva.

Aanambelewa metanga ndyoka otaa ka kala aapolosi 500, oohamushanga konyala 760 niilyo yetonatelo lyehogololo 620. Aanambeleva ooyakwawo 829 otaa ka kuthwa meni lyoshilongo.

Omwaalu gwaatonateli 1,700 yoombelewa dhaakwiita otagu ka za kuAustralia, Britania, Canada, Denmark, Italia Poland naSpania. Etanga lyaUNTAG, oyendji yomuyo oya tegelelwa mesiku lyotango lyaApilili 1989.

Omuntu omushike?

Dha za kep. 4

Ovanhu ove na okulihonga okulitambula vovene, osheshi Kalunga okuwete sha wapala eshi ve li ngaho. Ovanhu ove na okupitika va kale nombili navo vene noshoyo nakwao. Kashiimba okukala oushiinda nOmulaule itaku laulike ngaho Oshilumbu, ile ku tilyaneke Omulaule. Okudimina kutya omunhu okwa shitwa kuKalunga noye te mu ufa, oko yo okudimina kutya omunhu ita dulu okukala po, okuninga Kalunga te mu kaleke po.

Eshi tu he na ekwatafano naye, nena omunhu omukwetu, ngeenge inatu mu tila twe mu ninga oshihakanwa shetu. Shaashi otwe mu tila na kale kokule nafye momaduumbo, meefikola doluhepo, momalukanda eendwi nomilaulu; na pewe ehongo lomatyatya, opo a ha fike pufye. Ngeenge a fi na tulwe momaendo a yooloka.

Momafimbo omu tu li paife otwa pumbwa elishiivo lashili nelitambulo netambulafano. Komesho yaaishe, otwa pumbwa elilongekido tu shakene naKalunga ketu. Ngee twa shakene naye, ohatu litambula nokulifimaneka, ndele hatu tambula yo vakwetu noku va fimaneka.

V. Munyika

ONGHUWO YOLUHODI

Otwa holokelwa koluhodi linene oule weedula nhano (5) da ka pita, meumbo latate Petrus Nghilongwa eshi a kufwa ovana novatekulu meshikulafano. Mokutala oto ti ngeno omufufyo, ndele osha ningwa lela. Oonakufya ovo nee ngaha melandulafano.

Gabriel Nghilongwa ya Nghilongwa a fya	26.8.1984
Sesilie Ndafapawa Nghilongwa a fya	22.12.1985
Martha Mwashaka Alugodhi a fya	26.1.1986
Albertina Ndelituondya Hailalula a fya	16.9.1987
Erastus Veendwanawa Hailalula a fya	10.8.1988

Tate Petrus okwa popya noluhodi etumbulo limwe ta ti: "Omwene, onde ku ninga shike eshi wa ponyonena nge moshana ngaha? Ngeno ame wa kufilepo ngeno xwepo vali, shaashi pamwe ame nda longa oulunde koshipala shoye Tate dimine nge po."

OMAHEKELEKO

Ohandi yandje omahekeleko ku tate Adolf Hamukoshi nameme Hendrina Shikwaya omolwefyo lokanona kavo Hamukoshi Anna (Karolina). Ohandi yandje vali omahekeleko keongalo letu laHalushu, omolwefyo lomunyasha wetweni. Hamukoshi Anna okwa li omuwiliki wovanyasha meongalo laHalushu, osho yo omulongifikola wofikola yOsoondaha pomukunda Omehenge.

OVadali, ovakwaneongalo ovakwanedimo osho yo ookahewa, hekelekweni. Eimbilo 251 (268) John.14:1-3

Hashilundo Iyaloo Claudia
Mweshipandeka High School

"KUNDANEKA"

Ondi shi shi kutya kehe gumwe ongula kehe ta penduka oha fenya ezimba lyemanguluko lyoshilongo shetu. Oshi li modjila ngele osho shi li shili mwaayeha.

Ondi shi shi kutya oku na mboka natango kaaya uvite ko oshinima shika shemanguluko lyoshilongo nehogololo tali ya. Aantu oyuvite owala taku popiwa iinima, ihe kaye na owino yasha. Otse yene tu na oku ya uvitha ko. Otu neni okulonga manga kwa talala. Otu na okuninga sha manga uusiku inau tya koongulasha.

Otandi indile aanona, aagundjuka aamati naakadhona, ootate noomeme naakulupe mboka mu uvite ko iinima, mu yelithile mboka ya kotha natango miinima ya tumbulwa metetekelo, oshoka katu shi kutya otatu ka tsakaneka ehogololo lyoludhi luni po. Miinima ya tya ngeyi omwa pumbiwa oshigwana shi uvite ko, oshoka natango tuu embungu inali teka omayego, onkee tuu tali kambadhala okunukila moshigunda shoonzi.

Ando kehe gumwe u na owino miinima mbika, imonena okangundu kaantu yoye mboka wa pukulula nowe ya nongopaleke moshinima shika. Mpaka inandi dhiladhila mboka ya (kothekwa) tsikithwa omakutsi gawo kaa mone nokaya uve omaudhigu nomakemo goshigwana.

Mpaka onda dhiladhila aantu mboka ye li mokati ketu ya kotha yo ya tonata. Aaposi miinima yemanguluko lyoshilongo naa tonatithwe wo. Tangi sho to ki ilikolela okangundu koye momudhingoloko gwoye.

Te shi ningi pamwe nane.
OKETU KOKUUSHIMBA



OMUNAMIBIA MUAMERIKA TA SHANGELE OMUKWETU

Omufimanekwa....

Apa ohandi ku tumine omatokolo amwe a ningwa, ove u mone ouyelele, kutya oshinima shedu letu osha yuka peni. Ope na ngo omananafano, osheshi "oonalunhanga" inadi hala okulundulula onghalamwenyo yado.

Fiyo opaapa omalongekido otaa ningwa apa mo UN, osho penya muAngola mepangelo longudu. Otwa kundafana naBen Gurirab oministeli yopondje yongudu.....Eshi otashi ningwa, osheshi etanga la UN konima eshi la shuna ohape ke uya oupyakadi woshilongo. Oiholelwa Israel, Zaire, Nicarangua Vietnam nosho tuu.

Oku ohatu kendabala momaongalo okufatulula, kutya ondjila yombili ongeenge epangelo laAmerika tali fininike epangelo la SA li yandje epangelo koovene voshilongo ovadalelwa mo (SWAPO). Naava otava dulu nee okuudafana nakeshe ehanganano olo la hala okuuya moshilongo.

Ondjila oiwa ndele oya finana omolweedjo odo dinene nhatu domaliko di li moshilongo shetu, okawe, ongopolo, urana nouwa woshilongo. Vali

MOMBELEWA YOAUDIO = VISUAL MONIIPA

Otu na mo uungalo (uukaseta) wi ili nowi ili womaimbilo goongundu, ngaashi: **TEKAMO** (Tshandi); **OSHI-TAYINGELEKI** shaUkwanyama; **TE-IMBIITEZIMBUKA**; **OSHI-TAYI** nosho tuu.

Ondando yuungalo (uuteipa) kominute 60 ohaka gu **R10-00** omanga hoka kominute 90 haka kotha **R12-00**.

Ohatu thaneke wo uufano wopasporta, okafano kamwe **R7-50**.

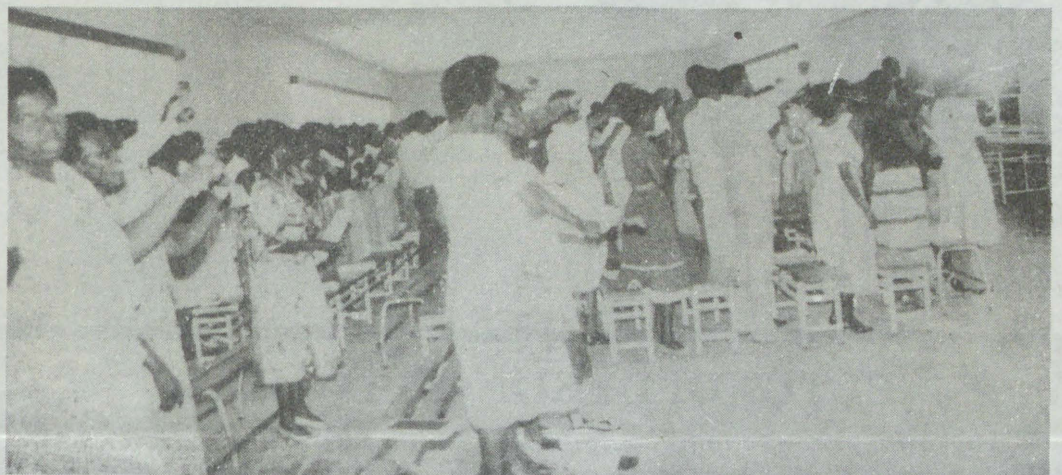
Ileni mu lande ne mu thanekwe.

ovafita momaongalo novakwaneongalo omukato umwe tau dulu okukeelela etiko lohonde owo ou ngeenge Ovalaule aveshe tete va ye momukalo umwe weudeko, kutya oshilongo shootate, oshetu manga Omutilyane ine uya medu eli.

Ovanhu nava tale ehistoli. Ito dulu okutungo oshilongo, ngeenge ito tomhele ovatondi nehistoli. Kalunga ote mu amene. Ovanhu vetu oku ova djuulukwa okushuna koshilongo. Otava ti onale trwa kala moungeendi.

Omumamibia mukweni

Ohole yiimaliwa naye pingwenwe koho- hole yoshigwana: Ekumagidho kaa- longi



Aalongi yomoshikondo oshiti 3-4 moshigongi shawo shokomumvo, oya londodhathana ya nongele oompangela dhomutondi gwoshigwana okuponyitha emanguluko lyoshili nolyuuyuuki ndyoka lya tegelelwa mpaka. Okwi ipulwa moshigongi shoka nomagwedhelo goondjambi pethimbo ndika maalongi ngoka ga talwa okulanda po aalongi yoshigwana, nosho wo mboka ya pewa oondjembo okudhipaga po oshigwana shawo.

"Pethimbo tu li mulyo, omuholi gwoshi-

gwana oti imonikila, nomuholi gwiimaliwa oti imonikila," osho elondodho lya ningwa mokati kaalongi ye vule 800. Oshigongi osha li ko 3.4.1989 mOshakati. Aapopi ya simana oya li ya hiyilwa mo, ngaashi omusamane Frans Indongo nosho wo omusamane Paul Kalenga, omupresidende gwEhangano lyoNanso. Omusamane Aupa Indongo okwa yelitha etulo miilonga lyokatokolitho 435.

Sebulon Ekandjo

Onghuwo yOvanamibia moupongekwa

Otwa lila nalenale
Mondjoko youkoloni tu li mo
Twa talika ko ngomalai
Hatu file damungheya
Namhongo mangulula Ovanamibia

Ohonde tai tika efimbo keshe
Ovanhu voye tava fi va fa eemhuku
Ongula nonguloshi omaloli ku pula
Tava teyaula eengubu, noilya yovamoye
Kalunga uda onghuwo yOvanamibia

Ovanhu otava dengwa oipundjamenye
Tava pulwa osho ve he shi, naasho inava mona
Otava hepekelwa oshili oyo tava tongo
Omanghava neengonyo oda tindika omalutu avo
Namhongo mangulula Ovanamibia

Ovanhu otava dipawa pe he na epangulo
Meedolongo doshiwana shoye ku tala mo
Ovanamibia va yadekamo
Tava pi komalutu nokeemwenyo
Kalunga uda onghuwo yOvanamibia

Ku na oku to nipukile moNamibia
Koumbuwanhu woshilongo oixuna
Koumbangalanhu ku tale ko, oto lili
Koushilo kwinya ito nyanye ko nande
Kouninginino oixuna noupyakadi

U tale ovapangeli vati voshilongo
Eshi tava pangele ku taleko
Otava ningile ashike omalutu avo
Opo va kale tava dana onghandangala
Kalunga uda onghuwo yOvanamibia

Kalunga uda onghuwo yovanhu voye
Tava lili ongumitila nokuhe na ehekeleko
Tava lili tava pula ekwafo lOmuxupifi
Tava pula emanguluko moukoloni ve li
Kalunga amena ovamoye moupongekwa

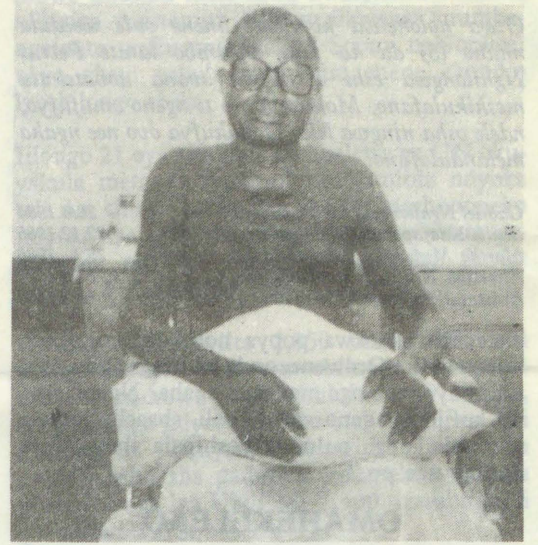
Oshiwana shoye oshe lipilukila,
Tashi lidipaifa ohokwe yoimaliwa
Vamwe ova fiyapo omaumbo avo
Tava hakana eliko lounyuni ou
Namhongo mangulula Ovanamibia

Ovakulunhu, ovanyasha nounona
Otava tale ekwafo loye
Oove auke eameno letu
Ekwafo moudjuu li shi kulineekelwa
Onghuwo yepongo oKalunga he i tondoka

Otwa tula onghuti pomeva
Okwoove akuke twa hala Tate yetu
Ngeenge katu ku na Omwene wetu
Otwa fa oipipili yongaho
Kalunga uda onghuwo yOvanamibia
Omolwomahepeko a kenyaneka medu letu

Seven Shimendah
Valombola Technicon Institute

ESO



Omulongi omutalelisikola omusamane Severus Ekandjo
IyaKamati okwa zimbulwa muuyuni mbuka 2.12.88 moshipangelo shepangelo mOshakati, muule womumvo gumwe noomwedhi heyali, mboka a zile nawo moshiponga shoshihauto.

Omapandulo otatu ga gandja kaayakuli yopaunamiti, yopambepo, nonkambadhala adhihe ya li ya ningi okupanga olutu lwa loloka. Otwe mu halela omayambeko gaKalunga.

Okwa thigi ko omukulukadhi gwe noyana 11. "She ku pe muthithi taamba, she ku pe Kalunga kaNangombe, shambelela nomaako gaali."

Ndapewa Omagano Kamati

Oluteyi

YA DHIGININWA NATANGO NENGE YA KANA

Mai 1979 — Festus Nakawa

31. 5.1979 — John Nakawa

5. 5.1980 — Toivo Shilongo

4.10.1980 — Marcelinus Shilongo

Juni 1979 — Matias Ashipembe

4.10.1980 — Modestus Ipinge

18. 9.1978 — Ndeifeka Erastus

18. 9.1978 — Rufus Amukuhu

18. 9.1978 — Mutumbulwa Amukuhu

10. 9.1981 — Kristof I.Shikongo

19. 1.1981 — Filemon Iikela

25. 7.1980 — Vilho Mateus Nyambali

19.06.1979 — Simeon Nehoya

?? 9.1980 — Simeon N. Angula

?? 7.1988 — Hosea Heita

9. 4.9.1985 — Markus Paulus

17.3.1987 — Natanael Shikongo

27.11.1980 — Andreas Kashikola

27.11.1980 — Teofilus Mateus

27.11.1980 — Mateus Jesaja

29.6.1985 — Amutenja J. Ashipala

3.7.1987 — Abner Shikesho

22.7.1987 — Stefanus Nghifikwa

19.1.1988 — Daniel Israel

20.4.1988 — Erasmus Hendjala

28.11.1986 — Ruben Edmund

9.4.1988 — Johannes Kawelekana (Komeya)

2.1987 — Silas (Kamule) Kandenge

Januali 88 — Linus Matongo

21.1.1977 - Kaleb Paulus Shikale

Ndhindhilika: Ngoka wa tseyya gumwe gwaantu mbaka, kutya okwa manguluka, onawa u tseyithile ombelewa yOmukwetu mbala. Tangi kekwaitho.



EETUNDI DEKONGO LOMEVA

Oprograma yekongo lomeva koumbangalanhu waNamibia, (Northern Water Supply Programme) yomo CCN, otai shivi ovo va pumbwa okumona omauyelele nhumbi omunhu e na okulimonena omeva aye mwene.

EFIKU:

ONHELE: ENGELA

Unene ovanhu vomomudingonoko womEngela otamu teelelwa keetundi edi. Etelela yo oshifo shoye shokushanga nopena.

*Joseph Jatileni
Engela*

+++++
Omugundjukamati Armas Jakob Shikongo (21) gwomegongalo Oshitowa, okwa mana oondjenda dhe mu 2/2/89 moshipangelo shaVenduka. Okwa thigi ko he nayina naamwayina yataatu. Eimbilo 570

Rauha Augustinus Shiinda
Oshitowa

+++++

Meme Leena-Angula ya Leonard Nenge (61) Elombe okwa mana oondjenda dhe eti 26-1-1989. Okwa thigi ko omuholike gwe tate Malakia-Namhindo yilimene, oyana yahamano nuutekulu utano.

Jehova okwe tu mu pele, Jehova okwe tu mu kutha edhina lya nali hambelelwe. Job 1:2

OMUKWETU

Oye oshifo shOngeleki Onkwaevangeli paLuther yomu SWA/NAMIBIA.

Ohashi nyanyangidhwa mOshinyanyangidho shOngeleki mOniipa.

Omukuluntu gwoshifo omumbisofi Kleopas Dumeni.

Amushanga gwoshifo omusita Sebulon Ekandjo.

Ondando yOmukwetu muNamibia naSouth Africa R8,00 komumvo.

Palwe muAfrica nokombanda yomafuta R20,00 komumvo. Ndjika oyo wo ondando yoshifo shomondhila.

Oondando nomambesitelo agehe naga tumwe kOmukwetu, Oniipa, P/Bag 2013, Ondangwa 9000, N A M I B I A.

ELOC PRINTING PRESS
PRIVATE BAG 2013, TEL. (06762) 11, TELEX 56-3257 WK
SWA/NAMIBIA