

# UMUKWETU



50c

No. 4

ISBN 0-620-06828-0

## DUMENI VATI MELIHOOLOLIFO LANAMI-BIA

Omubishofi wa ELCIN, dr K. Dumeni, edina laye ola shakenekwa kovakwashiwana nokoilyo yomaongalo Ongeleki yaye momusholondodo womadina aavo tava ulikwa ve na okuhoololwa, shimha tuu vati ehoololo tali fiki muNovomba 1989. Edina lomubishofi Dumeni, ola shakenekwa kovanyu ova va ninga omafiku taa ongelwa komakakunya a SA, unene moshitukulwa sha Ukwanyama. Omadina makwao ovanapolotika, ngaashi Peter Kalangula, Moses Katjiuongua, Andreas Shipanga na Dirk Mudge.

Moyoongalele yoludi eli omo oshiwana tashi fatululilwa komakakunya vati ngeenge ehoololo tali fiki, nava ka kufe omuhoololwa wavo momadina oo. Moyoongalele yoludi eli, Ehangano la SWAPO otaku kumaidwa li ha hoololwe nande, osheshi vati ekomunisi, kali na oimaliwa

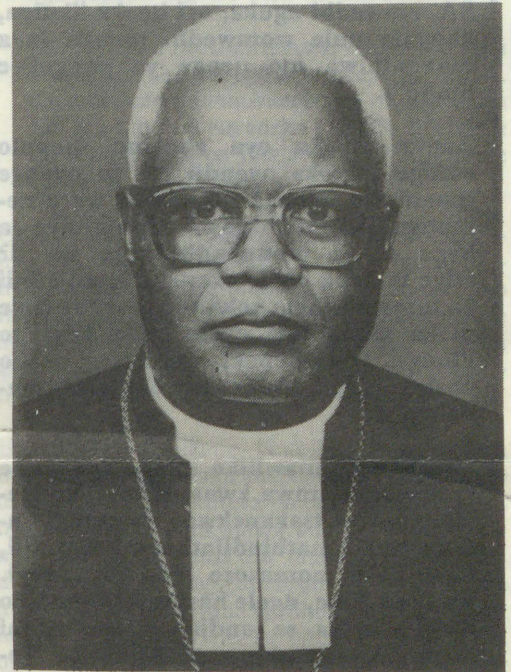
yokufuta eepedjela loo kali na ohole noshiwana.

Omubishofi kepulo lOmukwetu ngeenge okwa yandja edina laye li tulwe mofandifa yomadina aavo va hala va ka hoololwe, okwa nyamukula kutya oshinima oshe mu halukifa neenghono. Okwa ti omikalo adishe hadi longifwa, opo omunhu edina laye li ye meehoololo, ina longifa po nande umwe.

- a) "Inandi yandja edina lange mehoololo.
- b) Inandi pulwa yo tuu nande ku umwe womoshiwana ndi yandje edina lange mehoololo. Hano kandi shii kutya okomukalo ulipipo edina tali kala mehoololo, ngeenge hakomukalo ou hau longifwa," osho eli pula nonghumwe inene.

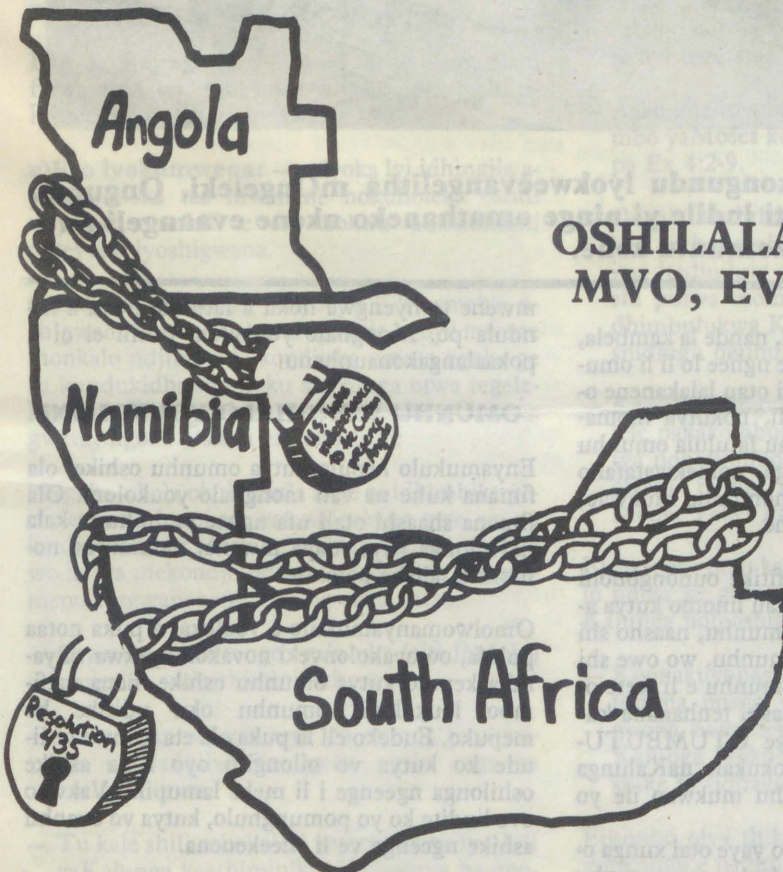
Noshipala sha lunduluka okwa ti kutya ina hala nande vali okuuda edina laye tali yandjwa mehoololo ile tali tambulwa kovahoololi. Nongee-

Tala kep. 5



"Otandi ka konakona oshinima ndi tale mpoka sha za," osho omumbisofi a tumbula noshipala sha kani-tha ombili.

## OSHIKALAKANENWA SHONGELEKI NUUMVO, EVAANGELI LI THIKE KOMUNTU KEHE



Eti 16.1.1989, ligwanahangano (UNO) oya tokola lwahugunina omakumba ga hakuluke, Namibia li ze muukwatawa wa SA noli mangu-luke mekokeko lyAcuba muAngola, oshitokolitho 435 sha UNO shi tulwe miilonga muApilili 1, 1989.

ONIIPA: Omuwiliki gwOngeleki yaELCIN omumbisofi Kleopas Dumeni, okwa dhimbulukitha oshinakugwanithwa shOngeleki momumvo gwonuumvo kutya nashi kale Evaangeli li thike komuntu kehe. Omumbisofi okwa li a hiya aanashilonga yomiikondolonga yOngeleki, sha kwatelela mo iipangelo nomatungo opo ya taambe etumwalaka ndyoka.

Manga aanashilonga mboka ya gongala pamwe niilyo yElelongeleki momutumba gwalyo omutiyali gwomumvo nguka, omumbisofi okwa tumbula ngeyi:

"Otandi dhimbulukitha iinakugwanithwa  
Tala kep. 2

FEBULUALI 28, 1989

## Kuyamwe emanguluko nuuthemba otaye yi gandjeleashihe ye shi na

Ohenda onene oku shi ulika mpaka, kutya emanguluko nuuthemba waamboka aankundi sigo onena otau lyate-lwa pevi kumboka ye na oonkondo. Lagonene aathiminikwa yamwe kohi yethiminiko ndyoka, oye na natango omukumo okutindila uuthemba wawo notaa gandja po ashihe shawo, opo ya tale nkene taye u hupitha. Pamatompelo ngoka, aanandholongo konyala 300 mu SA, omwedhi nguka, oyi iteeka ikulya, konyala uule womwedhi manga inaa mangululwa mo nenge ya pangulwe mohofa.

Aantu mboka oya sindana mepulo edhigu ndyoka oyendji lye tu nyenge moompito ndhoka uuthemba wetu nemanguluko tali hindwa. Epuolo oye ta hepa ngele omunandholongo ita li? Oye ta hepa ngele okanona kandje inii ka tuma kosikola yokatongotongo? Oye ta ka sa ondjala ngele onda thigi po iilonga yomuhepeki gwandje, nosho nosho omapulo taga vulu okutsikilathana ngeyi.

Konyala momawiliko agehe omanene nomashona, mwa kwatelelwa Oongeleki, otamu tsakanekwa omaningililathanomo, omathindilathano kongudhi, omatilitho nomasoso ga tya ngeyi. Vulika ashike, ngele hasho, kanitha ano iilonga u ka se ondjala, osho hashi dhengithwa nasho aathiminikwa. Komukalo ngoka omuthiminikwa oku na ompito onshonalela okuhupa miikaha yomuthiminikwa gwe. Okwiigandja ashike kuye, omuthiminiki e mu ninge ngaashi a hala nenge oku mu tinda sigo oponkatu yahugunina, mpoka omuthiminikwa he ki iyadha ihe a fa ti ihepeke ye mwene. Ihe ngoka ogwo aguke omukalo gwa hupitha uuthemba waathiminikwa.

Otatu tegelele nondjuulukwe, oministe-li yuuyuuiki mepangelo lya SA yi pulakene nolukeno ewi lyaanandholongo mbeyaka taa kugile uuthemba wawo nowoshigwana shawo nokomukalo kehe tagu vulika.

## OMUNHU

Omunhu oshike? Eli epulo tali kongelwa enyamukulo kuvahapu. Omolwaasho omunhu, momafelemudo aa etu, okwa kala ashike te linyekwa kovanongononi ve lili noku lili. Shaashi ovanongononi ovo, navo ovanhu. Otashi ti, omunhu ye mwene oku na omhito okulikonakona nokulishiiva ngaho, nande ombinga. Elishiivombinga la tya ngaha ola kwafa unene ovateoloxi okukonga eudeko kutya omunhu olyelye ile oshike.

## OSHILALAKANENWA SHONGELEKI

Dha za kep. 1

iinene yOngeleki yetu pamautho; kutya oshilonga shEtumo noshilonga shevaangelitho, miilando momalukanda naapehe pwa kungulukila aantu yetu, mbika oya pumbwa okuhanyekwa shi vule shito."

Omumbisofi okwa gwedha ko ta ti, kutya kape na mpoka to ka adha omunashilonga omwaanawa mOkefe miikulya nenge omOngalashhe, ngele ina mona tango evaangeli lya yela.

Iitsa ihetatu pombapila yoshipopipiwa shomumbisofi, oya li ya pendutha oonkundathana dhomuule pokati kaanashilonga niilyo yElelongeleki nokukonga omayamukulo muukumwe. Omathaneko gamwe oga thigilwa Elelongeleki li tale nkene ge na okutulwa miilonga. Iitsa ya kundathanwa oya li ngaashi tashi landula:

1. Oshilonga shEtumo mokati kaapagani ayehe; muAngola, Kaoko, Caprivi, Senegal nenge palwe nkene shi na okulongwa.
2. Okuuvitha miilando, momalukanda naapehe pwa kungulukila aantu yetu.
3. Okulonga ukriste miilyo yOngeleki, nkene tashi nenepekwa.
4. Pu monike omukalo okukwatha aaposi, ombolo, iilema naayehe mboka ye ethiwa

moshigwana.

5. Oshilonga shuuhaku, elongo nomape-ndulopo gokutungo oshigwana pambepe, pankalathano palongo nopamahupilo gasho.
6. Oshilonga shehanganitho, meitaalo okudheminathana po oondjo, opo Kalunga a tilile mutse ohole oyindji.
7. Okutaamba iilyo yomagongalo getu sho tayi zi muupongekwa Ehungomwenyo momagongalo li dhigininwe, oshoka onkalo oyu uka methimbo lyomaluhodhi nolyenyanyu oshita.
8. Noshitsa shahugunina omumbisofi okwa dhimbulutha omalunduluko gopapangelo ngoka taga tegelelwa moshigwana, onke Ongeleki wo otayi ilongekidha okupopya nepangelo ndyoka tali ya po, opo oshilonga shOngeleki shi tsikile memanguluko.

Ethimbo kali shi we epu, okangendjo kuusiku kake na we egameno lyoshigana, nando taki igidhwa ka kuthwa po. Tu endeni ngaashi aanandunge. Ihe ekwatho lyetu omOmuwa ngaa," osho omumbisofi a ngogosheke aanashilonga yOngeleki ye, manga inaaya shuna kiimpwiyu yawo. Elelongeleki olya tsikile nomutumba gwalyo.

Sebulon Ekandjo



Iilyo yimwe yEwilikongundu lyokweevangelitha mOngeleki. Ongundu ndjoka omumbisofi ti indile yi ninge omathaneko nkene evaangeli nuumvo li na okuthika komuntu kehe.

Elishiivomwene la tya ngaha, nande la kambela, ola kwafa ovateoloxi va mone nghee lo li li omukili notali shakula. Outeoloxi otau lalakanene okufatulula omunhu omudidi, nokutya momakwatafano aye. Outeoloxi otau fatulula omunhu mekwatafano laye naKalunga, nomekwatafano naye mwene, mekwatafano nomunhu mukwao, nomekwatafano neshito alishe.

Oshili ei yopauteoloxi otai fitike onunongononi oikafa komulungu, ngeenge tau linomo kutya ashishe osho shi li noshi na omunhu, naasho shi na okupopiwa kombinga yomunhu, wo owe shi popya nale. Heeno, nande omunhu e li wete omavilovilo, haxuuninwa otashi tenhanana kutya, komunhu, omunhu oye OTUMBUTUMBU. Ke shi nghee e na okukala naKalunga kaye, naye mwene, nomunhu mukwao ile yo tuu nee neshito.

Onghee nee, onghalamwenyo yaye otai xunga omakondjifafano, nomaupyakadi oo omunhu

mwene ta nyengwa noku a fatulula noku a kandula po. Monghalo youkoloni oshili ei oi li pokaalangakonaunhenu.

OMUNHU MONGHALO YOUKOLONI

Enyamukulo kepulo kutya omunhu oshike, ola fimana kuhe na vali monghalo youkoloni. Ola fimana shaashi otali ufa nghee omunhu ta kala naKalunga kaye, naye mwene, namukwao neshito, alishe kolonde.

Omolwomanyamukulo a yooloka, a puka notaa pukifa, oo ovakolonyeki novakolonyekwa va yandja kepulo kutya omunhu oshike, nena mefimbo loukoloni, omunhu oku uditike ko mepuko. Eudeko eli la puka ola eta vamwe ve liude ko kutya vo oilongifo oyo i na ashike oshilonga ngeenge i li meke lamupiki. Vakwao ove liudite ko yo pomunghulo, kutya vo ovanhu ashike ngeenge ve li shekenena.

Tala kep. 4

# Namibia nyanyukwa metegameno

**Monkalo yuudhigu noyuupongo, monkalo yetilo netyololoko lyoshigwana oshithiminikwa omo wo moka Kalunga e li ti iholola noku shi tsa omukumo shi tegamene efudhitho sho te shi igidhile omatumbulo gombili ta ti: "Oshoka omadhiladhilo gandje onde ge mu dhiladhilile, ondi ga shi, Omuwa osho ta ti, omadhiladhilo gombili go gaa shi gomupya, ndi mu thikithile kokudhiladhila kweni kwelago" Jer 29:11.**

Itatu vulu okupopya etegameno ngele twaa na eitaalo nohole, oshoka mbika itatu oyo wo mbyoka omuyapostoli Paulus e yi holola yi li ontumba nomuthipa mevutho lye kAakorinto yotango ontopolwa 13: ovelise 13. Eitaalo oyo omukanka nkoka twa thikamena, ohole ndjoka epaya nenge ekwamo lyokwiikwatelela netegameno oyo oonkondo ndhoka tadhii tu undula, tadhii mangulula notadhii fala monkalo yombili, yenyanyu netalaleko.

Omukumo gwetegameno ogu na olunza lwago moshipundi shelelo lyaKalunga notagu fala omuntu meidhimbululo lyokutseya nokunongela nkene tu li mewiliko nomelelo lyaKalunga. Ngele tatu popi etegameno nena otwiipyakidhila nonkalo ndjoka yaa na omaudhigu nomathiminiko.

Onkalo ndjika oyo ndjoka yi na etegameno etameko meyumuko lyOmuwa gwetu Jesus Kristus. Etegamno oyo onkalo ya hugunina, onkalo yesindano moka uukwatya wuuyuuki, woshili, womwenyo nuuthemba auhe womuntu tau pangele. Monkalo ndjika itaamu adhika nando omaso gomaludhi taga landula:

**a) Eso lyopaliko:** — ndyoka lya kundukidha ethimbo kehe aasindjala naanaluhupo.

**b) Eso lyopapolotika:** — moka aluhe oshigwana oshithiminikwa tashi adhika tashi si oshimpwininika mokukwatwa komulungu shaa holole oshili nuuyuuki.

**c) Eso lyopankalathano:** — moka iilema, aayambidhidhwa naayehe mboka ya dhinika kaa na esiloshimpwiyu lya gwana.

**Eso lyekugagano:** — moka oshigwana tashi fikwa nomalusheno, tashi yugwa eliko, tashi tilithwa nokumbandamekwa.

**e) Eso lyokumwena:** — ndyoka lyi idhingila ayehe mboka taa mwenene nokuholeka oshili uuyuuki nombili e taa hokwa uukolokoshi neteyopo lyoshigwana.

Omolwonkalo ndjika yenyanyu li li komeho, oshigwana owa tegelelwa u igandje ngoye mwene monkalo ndjika nokukondjitha omaso ngaka ge tu kundukidha, nomoku shi ninga otwa tegelelwa tu dhimbulukwe omatumbulo gOmuwa gwetu, ngoka a sindi eso sho ta ti:

"Ngoka a hala okulandula ndje ni idhimbike yemwene, na humbate omushigakano gwe, ye na landule ndje." Mark 8:34. Natu dhimbulukwe wo kutya mekondjo ndika oyo tali fala metegameno lyegwaneneno lyoshigwana shetu.

— Otwa pumbwa tango egaluluko (eitedhululo) muupika wokuthiminikathana.

— Otwa pumbwa okuteya po ontopa yuukwatya womadhiladhilo agehe ngoka tage tu kutha kumwe.

— Tu kale shili aahokololi yetumwalaka lyoshili yaKalunga kaathiminiki yoshigwana hamoo-

hapu adhike ihe nomiilonga wo.

— Tu longekidhileni wo oohepele naathiminikwa ayehe eha mekondjo ndika nayo ya wape okukondja pamwe.

— Twa kondje kutse yene, ihe ekondjo lyetu okukondjitha uupika, oli na etameko muKalunga Ex 3:7-8 Omuwa ota ti: "Okuhepekwa kwaantu yandje ondi ku lwete ko.... Onkee nda kuluka oku ya kwatha noku ya hupitha miikaha yAayegipiti."

Ekondjelomanguluko olya tameka muKalunga mokukondjela oshigwana oshithiminikwa, sho a lombwele Moses a ti: "Ila, otandi ku tumu ku Farao, u ka tembudhe aantu yandje muEgipiti." Ex 3:10. Uuna oshigwana tashi kanitha etegameno ndika lyomuKalunga e li pamwe nasho moothina nomomathiminiko nokwa hala oku shi mangulula mo, nena itashi adha nando ethikilo mekondjo lyasho.

Shigwana shaNamibia, ethimbo lyeimbembeko olya pwa po. Ethimbo lyongashingeyi oyo ompito yokulonga twa mana mo mokweendelelitha onkambadhala adhihe ndhoka tadhii fala memanguluko lyoshilongo oshiholike shaNamibia. Ompito yi li po oyo ndjoka yokuteya po uupika thilu noshowo iita mbyoka yi li pokati kaamwayinathana. Ethimbo lyongashingeyi nali longithwe mokuholola oshili ndjika kutya:

— Ekondjelomanguluko lyoshilongo shetu oli na etameko muKalunga.

— Aakondjelimanguluko yoshigwana shetu, Ombepo ndjoka ye ya thiminike ye shi kondjele oyi na etameko muKalunga.

— Aakondjelimanguluko otaa longitha ondhimbo yaMoses koshipala shomupangeli Farao pa Ex 4:2-9.

— Oonakulanditha po oshigwana naahepeki yasho ayehe, ombinzi yoshigwana shika, ngele itaa itedhulula eitedhululo lyashili, otaye ke shi pulwa momake gawo Gen 4:10-11. Ihe dhimbulukwa Kain okwa li e shi mono ko oshidhigu okuhumbata egeelo ndyoka.

— Kaaleli yoshigwana (aanepangelo) mboka taa lele pakakombonoludhi, dhimbulukweni kutya nopethimbo ndika oshikaha shaKalunga otashi nyola koshipundi shelelo: Mene-Mene, Tekel Parsin Dan 5:25.

Elelo lyoye otali ka hulithwa po nokugandja elelo ndika ku gulwe ngoka ta ka lela pahalo lyaKalunga nolyoshigwana wo.

— Koonakuyonagula po omaha omayapuki niitopitha nosho wo oonakuhepeka aakwashigwana nomahahepeko gonyanya ethimbo lyaKalunga lyokuholola oshili oyo ndika "Oshike to tidhagula ndje?" Iil 9:4.

Ethimbo olya thikana, hulitha po iilonga yoye yuukoloni e to zimine u ninge oshilongitho sho-

(Rom 12:12)



mbili meke lyaKalunga.

— Koonkolwi, aahondeli, aadhipagi, oombotso tso naayehe mboka ye na oondunge dha pilaala moNamibia, Kalunga oKalunga kelandulathano kee shi Kalunga kevundakano. Oshike tamu hilile natango ondjahi yaKalunga popepi? Egeelo otali ku thikamene.

— Kaahepekwa naathiminikwa, omahodhi geni nomazigudhe geni oge li momeho gOmuwa, noye mwene momauvaneko ge omakwagulu oku mu nine wo euvaneko lya kola, ngaashi e shi ningile nale pa Jesaja 43:19 "Tala ayihe otandi yi shitukitha iipe."

Omuwa omunankondo okwa hala okuholola onkondo dhe, mokumwenyeka Namibia omwenyo nokutondokitha omulonga gwemanguluko moNamibia. Shigwana ino lila, Omuwa gwoye oye ekwatho lyoye. Shigwana, mwena, Omuwa gwoye e ku na, ikolelela ngoye noto mono ko Omuwa nkene te ku kwatha ekwatho. Ex 14:14

Ethimbo olya thikana, Namibia, tega Omuwa nomukumo. Oshikaha shaKalunga shoonkondo oshi ilongekidha okuteya po omatati gomutondi nokukongolola oonkwatwa adhihe moondholongo, e ta galula oonzi dhe dhaNamibia ndhoka dhi ihanene niilongo muuyuni auhe, e dhi ete moshigunda nomeyana lyadho Namibia. Esiku ndyoka oshigwana shi ka tye: "Eeno Omuwa okwe tu ningile iinima iinene otse twe yi nyanukilwa." Ps 126:3 Namibia etegameno nali ku nyanyudhe.

**Eliakim N. K. Shaanika  
mEengolo**

## EPUKULULO

**Megongalo Nakayale omwa ningilwe oshigongingango nuumvo, 1988.** Miikundathanwa omwa li yimwe ya talika otayi eta uupyakadhi moshigwana shetu.

**Owindji womasiku gokulila oosa dhishinanena.** Osha konekwa, kutya osha etwa komidhimba hadhi kala ethimbo ele mokila. Mokukala moshituthi shika, aahekeleki otaa pumbwa eyakulo lyiipalitha esiku kehe. Molweyakulo ndika osha etele aathigwapo yamwe oogunga dhi kenyeneka.

**Methimbo lyoosa aantu yamwe ohaa yi owala oku ka ipalutha koshituthi shoosa nokwaa na ohenda nondjaalela yoonakukonga iipalutha.** Ando ku shunwe ngaa komukala gwoshigwana, okukala omasiku gane goosa dhomukuluntu nenge gaali goosa dhomugundjuka. Oshitunda nohedhi nenge okukalwa ngaa omasiku ngoka ga yeleka. Ngele omasiku ga pu ko, aantu naa shune andola yo ya ka galuke esiku lyefumviko.

**2. Okulongekidha iikolitha moosa, otashi yemateke noonkondo.** Moshituthi shoka kamu na we egundjilo nuukwashituthi woosa owa kana. Moosa dhimwe okamu nika iiyimbo yoshigwana. Iikulya ya yogoka oyo nayi longekidhilwe aalilisa miituthi yoluhodhi.

S. Ndatipo

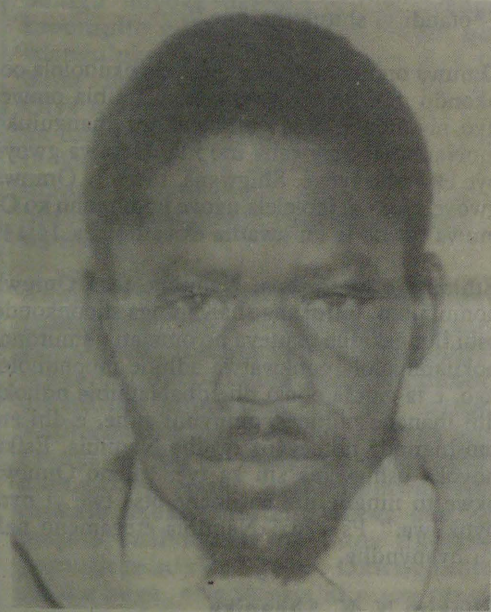
# EHANGANO LYAALONGI MOSHIGWANA OMUMAALITSA 11

**Aalongi yoosikola muNamibia, oya tokola okuthiga po omutungilo gwomahangano gaalongi gwopamavigumbo, opo ya dhike ndyoka tali kwatelele mo aalongisikola yomihoko adhihe muNamibia. Oshigongi shaaye shehangano ndyoka epe, lyedhina Namibia Teacher's Union (NTU) oshi li ko 11-3-1989 mOvenduka.**

Pauelele mboka wa gandjwa kuAmushanga gwokomitiye yedhiko lyehangano ndika moshilongo, omusamane Herbert Jauch, konyala aalongi yomomavigumbo ayehe, kakele komoshitopolwa shaCaprivi, oya popiwa nayo noya fatululiwa elalakano lyEhangano.

Esiku 11-2-1989, osha li olufo lwokomitiye ndjoka okukundathana naalongi yomoshitopolwa shOwambo. Aalongi konyala 300 moshigongi shoka mOngwediva oya li ya pulakene mokana kokakomitiye kedhiko nkene Ehangano lyaalongi li na elalakano:

- Okuyambula po omuthika gwelongo mokati kaanona.
- Okugamena nokupopila uuthemba wuunona nowaalongi yawo.



**Omulongi Tomas Nambambi, omunashipundi gwokangundulo-ngekidhi kEhangano lyaalongi.**

- Shono shi na okulungwa shi ze metokolo lyaavali yomunona nomeuvathano naalongi yomunona.
- Okuyambidhida omadhiladhilo agehe gomahangano galwe gaaniilonga ngoka ge na elalakano lyuwanawa woshilongo, osho wo goongundu dhilwe moshilongo. "Oshikaha shimwe ngele tashi ehama, olutu aluhe otalu ehama pamwe nasho," osho sha gandjwa etompelo okutopolelathana euvitopamwe kusho-notashi vulu okuholoka po momahangano galwe nehanganu tali dhikwa.

Aalongisikola mOwambo mboka ya holola eyambidhido lyawo montaneho kedhiko lyEhangano lyaayehe moshilongo, oya hiywa nesimaneko koshigongi shaayehe 11.2.1989 kOvenduka.

Omalongekidho galwe ge na sha neinyolitho

lyuukwashilyo mEhangano ndyoka, oga thigilwa okakomitiye komoshitopolwa, hoka sigo oompaka ka thikama ashike miilyo ine. Okakomitiye oke li mewiliko lyomulongi

Thomas Nambambi notaka shangelwa komulongi Julia Iilonga, Ongwediva Tr. Centre.

Pahokololo lyomunashipundi gwokakomisi kedhiko lyEhangano lyaalongi ayehe, omusamane Aron Ivan Kasingo, okwa ti ita vulu okugandja manga omwaalu gwomondjila gwaalongi ngiika taa ka holoka moshigongi shotango shedhiko lyEhangano muMaalitsa, ashike ota tengeneke po 3000.

## OMUNHU OMUSHIKE?

### Da dja kep. 2

Onghalo ei oyo ya shingila, ovanhu vamwe ve litala kutya vo ova shitwa va hepe nova fye ondjala nena paife apa, shaashi "otava ka hekeleka," "otava ka fyuulula edu" "otava ka kutifwa." Vakwao ove litala ve na okulikalela moumbada womutondi waye, oo e na oku mu ya kokule opo e he mu etele oshiponga.

Eliudekomwene eli, ola puka otali pumbwa okuminikilwa nefatululo kutya omunhu oshike paMbibeli. Ashike, eshi hasho hatu ningi tete. Tete natu ndjadjukunune nawa ngehe Ovalaule nOvatilyane, ile ovahepekwa novahepeki ve liudite ko.

### ELIUDEKOMWENE LOMUHEPEKWA

Onghalo omo omunhu te li hanga, oyo hai ufa enyamukulo olo ta yandja kepulo kutya ye oshike. Ovanhu ovo va kala alushe ya kolonyekwa kuvakwao, ve he na oufemba washa, va vavamenwa nova ningwa ve he na po sha muvovene, luhapu ova tambula efano lavovene olo la puka kutya, voo oilongifo i na ashike oshilonga ngeenge tai longele omuhepeki.

Monghalo youkoloni, ovahepekwa ohava ufwa koluvula loshipa shavo, okudja tuu komufudo wavo wotete. Vahapu ova itavelifwa kutya voo ova shitwa va kale monhele yonhumba oyo ya ufilwa oludi lwavo, ova shitwa va ye kofikola yavo yonhumba, va kale oilyo yOngeleki yongadi nova ha lumbakane nominghoko dimwe di lili.

Hano ngee wa pula Omulaule ha longo puShilumbu kutya Omulaule oshike, umwe ote ku lombwele kutya, ye okwa dalwa omupiya, oo e na okuhafela oilonga yaye yokulela okalumbwena, nokukosha ohauto ya shindele.

Ota dudu yo okutya, osho sha ufwa ngaho kuKalunga nondjabi oyo ta pewa ya fa ngaho "omuti womomesho" oye mu yeleka. Hano oluhepo ole mu itavelifa kutya oluhepo oshipewa shaye, nokulongela ondjabi yoluhepo eifano laye. Ngee a

Omusamane Kasingo ota kuminwa unene keyambidhido lyomadhiladhilo, ndyoka okangundu kawo ka tsakaneke maalongi yomOwambo, kutya inaye shi mona unene palwe. "Osha yela kutya uudhigu nomahepeko ngoka oshitopolwa shika sha mona, osho sha gandja euveko ewanawa maanashilonga mbaka," osho ye mwene ta tala oshinima.

Omusamane Kasingo ota ti kutya miilonga yawo yokudhingoloka noshilongo sho taa fatulula elalakano lyEhangano, inaa ipyakidhila natango nokupopya naawiliki yelongo nenge aataleli, oshoka ota ti, mboka oye li manga muuyuni wawo tau pangelwa komithika dhiipundi yawo nkoka ya kuutumba.

Okwa gwedha ko wo a ti, kutya konyala uudhigu wa fa mboka ye u tsakaneke nomaaawiliki yomahangano gaalongi gopamavigumbo, ihe shono osha mono ehulilo miitopolwa oyindji.

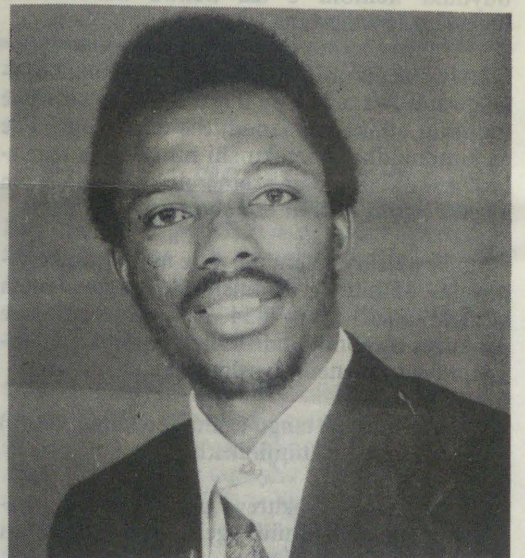
### Sebulon Ekandjo

katulwa koshilumbu, ota menye mo ashike. Onhu a tya ngaha nande a kale a hongwa, okulite ashike omavilovilo.

Ovanhu voludi eli ova itavela kutya Oilumbu oi dule Ovalaule. Nokuli vahapu ova hala ve i fe, nande omoshipala ngaho ile keexwiki. Ndele, ngeenge omulaule ile omuhepekwa tuu keshe okwa itavela kutya onghalamwenyo oyo ta pewa komuhepeki waye oyo aike i na okulala ko, nena eliudeko la tya ngaho ola puka noli na okuminikilwa keudeko lomunhu pauteoloxi.

Unene pethimbo eli lemanguluko la eta exunga, omunhu keshe a itavela kutya fye otwa shitwa ihatu dudu okulilela, okwa pumbwa a talulule eudeko laye nomokuninga nawa, e liufe kOmbibeli.

### TAKU TWIKILWA



**Omufita Veikko Muniyika, omudo 1988 okwa hanga onghatu mouteoloxi (B.Th)**

# DUMENI VATI MELIHOOLOLIFO

## Dha za kep. 1

nge ope na ou ta ka twikila ngaha, ota ka landula oshinima osho.

"Nokuli onda tameka nale okutala nokukonakona oshinima osho apa sha dja," osho omubishofi a lombwela Omukwetu. Pamauyelele amwe oo a toolwa kombelewa yOmukwetu, oshoondaxa 22.1.1989, komatango, ovanhu ve fike lunga 30, ova kwatelwe keembulu di li mume nOvakwanghala. Ovanhu vahapu pokati kOndobe nokamba yovakwaita yaKatope ova kala tava londekwa momaloli omakakunya.

Ehepu otali ti ovanhu ovo inava ninga sha, ndele vamwe ova hangwa ashike tava lifa oimuna yavo, navamwe ova hangwa poundingodho, vakwao vali otava ende kolupadi nomeelefa. Konima yokulondeka ovanhu ngaha, Eembulu ode va manga komesho, ndele tadi va twala kokamba yado kOkakwa, oko va lele, fiyo ongula eshi va efwa.

Umwe womonakukwatwa okwa hepaulula osho a mona, kutya okwa li va tulwa mofaila omo va lele, inava lya sha, voo inava pitikwa va popye ile ve limangulule komesho. Pakupopya kwaye mofaila omo omo nee va kala tava kufwa koomwe noomwe, opo va ka pulapulwe mokakololo kamwe, mu na ashike Ombulu imwe nOmulaule ou ta toloka. Okwa twikila ko ta ti:

"Otwa lombwelwa tu ha hoolole SWAPO osheshi vati SWAPO okwa hepa, ote ya ashike vati e tu nyeke oinima yetu, vati onawa tu hoolole ovakwaita va SA."

— Otwa shangwa omadina etu neenomola doumutwe vetu naapa hatu di.

— Otwa pulwa yo kutya okatokolifo 435 utu ka udite ko ngahelipi nolye ta ka wina ehoololo ngeenge ka i moilonga?

— Otwa pulwa yo vali ngeenge ootate noome me oko ve li ve na omwenyo ile ova fya.

— Otwa pulwa ngeenge otu na ovashivikile vetu va ya pondje.

Ehokololo ola twikila kutya ongula eshi kwa sha, va mangululwa, umwe woonakukwatwa, okwa hepaulula kutya okwa dengwa kOmbulu omutwe kekuma, osheshi vati okwa nyamukula Ombulu, kutya fiku a mwene SWAPO osho a li a djala oikutu ya fa yOmbulu.

Omafiku 24.1.1989 momudingonoko wOndobe omwa monika okadona vavali nomumati umwe. Ovanyasha ava, ova heluka mokahauto okaToyota kobaki taka shingwa kOshilumbu. Eshi va helulwa ova ya mokaumbo komukuluka di Teopolina Kaulinge omo vati inava hanga mo omukulunhu.

Ova kala tava pula ounona ovo va hanga mo, vati ngeenge pomudingonoko ope na "oikulo". Ofikola younona eshi ya pita mo, omulongi umwe wokakadona womeumbo olo okwe ya meumbo. Konima yomapopifafano, okakadona kamwe oke mu hololela nokutya, koo okambushe kameme Teopolina netalelopo lavo oli na sha ashike noilonga.

Eshi ve ke likalela ava vavali, okakadona aka oka twikila natango taka hokolola kutya otava monifwa oixuna kEembulu mokushangithwa omadina ovanhu e na sha nomahoololo vati aa tae uya.

Okakadona oko take li ti oko Teopo, ile olako ngoo shili, pamwe navakwao, ove na eefooloma, omo vati tava yadeke omadina ovanhu. Otava shange ashike keshe edina eli le uya momutwe, nande kali fi tshili. Vati eshi otave shi ningi osheshi ngeenge inava shanga mo sha, itava pewa yo oimaliwa.

Okakadona aka vati oko Teopolina yaNghuushi nohava longo navakwao kopolifi ya Shakati. Inaku shiivika ashishe shi li meefooloma mwinya, ashike omo yo mwe lituwa kutya ovakwashiwana nava hoolole ovakalelipo va SWA/Namibia." Oonakuhoooliwa ovo:

1. Kalangula
2. Shipanga
3. Katjuongwa
4. Mudge

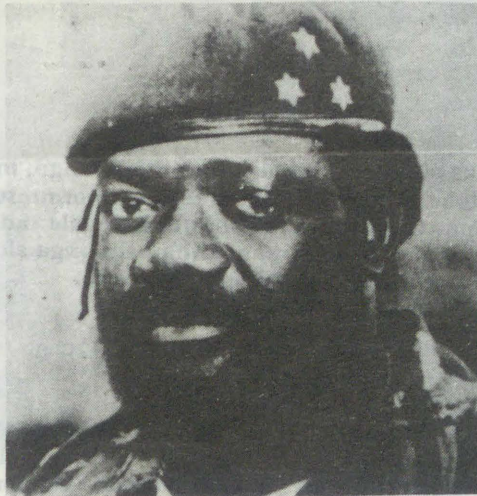
Sebulon Ekandjo

## Oshiwana osha loloka oilonga yomunyonena noubotsotso

Efimbo lokomatango omafiku 28.1.1989 omulumenhu wedina Petrus Amunyela okwe ya pOkamwoongo kaShakati opo hapalandifile ovakwashiwana vamwe momudingonoko waShakati. Eshi e ya pOkamwoongo okwa li a homata ohamala noshange moshikamufino oyo hai djalwa komakakunya.

Petrus okwe ya popepi nomumati umwe wedina Felesianu Nghishikushitya, oo a hangika ta landifa eeshi, noimaliwa ta tula mokakutu kombaanga. Petrus okwa longifa ohamala oyo a homata, nokufekula nayo Felesianu Nghishikushitya, ndee ta wile po.

Felesianu eshi e lidenga po, Petrus okwa vakula po okakutu koimaliwa nokufaduka po nako, a yuka kombaanga yoWholesale ya ENOK. Felesianu eshi e litoola po, okwa lambalala naku mudenga, nove shi ninga pamwe novakwashiwana



Ope na eipulo enene naantu yaUnita mboka taa zi ontuku iita muAngola, notaa longo omiyonena muNamibia.



Efelo Margareth Thatcher, oministeli yotango mepangelo lyaBritania, epangelo lye otali ti, lya itali ka ningila manga SA oondjindikila nonando ta tsikile nomulandu gwokakombo noludhi. Ohenda yopauvali ihayi adhika mo muumbanda wokutala Aaluudhe.

vamwe. Keshe opo va pita ova enda tava pitula ovakwashiwana opo obotsotso (Petrus) a kwatwe.

Petrus okwa li ta tewatwa pamukalo womulove woovene. Konima yokafimbo obotsotso ei Petrus, oya tauluka oshana ya lambalalwa ngaho kovakwashiwana ovo va hangika va hapupala. Eshi ta kondekwa nokomahauto okwa shuna vali momeva. Eshi tuu a ka anduka kombaanga inya yolukanda hali ifanwa Ompumbu, oko a hanga ohauto imwe yomukwashiwana ye mu telamena.

Ovakwashiwana vahapu ova li ve na oifufuta yavo nova hovela oku mu umba pomunghulo. Eshi a mona kutya mboli "enongo itaa fe vali ongobe" okwe liyandja. Oimaliwa ei a nyeka Felesianu okwa hangika ngaho e i kwete natango. Eshi a pulwa nawa okanaku, okwa holola kutya okwa tumwa kumukwao wekakunya Tyapaka shaMupolosi vati Omukwambi ha di kOtsandumbala noha longo mokamba yomakakunya yedina Oniimwandi, oyo i li momudingonoko waShakati.

Pahokololo laPetrus, Tyapaka shaMupolosi okwa landela tete Petrus omalodu, ye (Tyapaka) ta tumu nee mukwao (Petrus) opo a ka kufe Felesianu oimaliwa, shaashi vati ova shiiva kutya Felesianu oha kala noimaliwa ihapu. Shamha nee Petrus a nyeka ko oimaliwa, voo ve uye va twikile okunwa natango.

Obotsotso ei eshi ya pulwa kutya ohai longo peni, oya yandja okamutwe kayo koshilongo noka li pamwe nokamutwe kookakunya konomola RANG No. 87816468, oyo eshi nawa momutwe. Omulumenhu ou Petrus ota ulike kutya ye ekakunyalela, ha longo shili koBatalion 101.

Tala kemandja tali landula

## Omaupyakadi mohombo a etwa koipupulu yonganga

Opwa li ovakriste vavali va hombolafana mungeleka nova tunga eumbo lavo, Kalunga nokwe va pa omaano ounona. Edina lomushamane Timoteus Ndatinda, nedina lomukulukadi oJuliana Nashendjeleke. Efiku limwe okaana kavo kamwe oka ombokelwa.

Xe okwe ka twala koshipangelo opo ka mone ouhaku, ye ina okwe shi anya ta ti: "Hakamwange, shapo oto twala ko okakweni." Xe eshi a aluka koshipangelo, ina okwa pula: "Okanona oka vendwa ngaho?"

Omushamane okwa ti: "Ahowe, nena ina vendwa, okwa pewa ashike omti. Ohatu shuna mongula a ka vendwe."

Manga inava shuna koshipangelo ye omukulukadi ota i kokandingosho oko a hanga vakwao, ye te va lombwele kombinga youdu wokamona. Mukwao umwe okwe mu pula ta ti:

"Okaana omwe ka ninga nee ngahelipi eshi inaka nangala po? Ye Nashendjeleke ta ti:

"Kaanave, xe okwe mu twalele koshipangelo" Mukwao ta i mo. Hano omti dovatiyane ohadi velula ngaho?

"Omushamane ino mu lombwela, livakamo ashike, ndi uye ndi ku twale konganga ihai danaukifa omukifi wa tya ngaho, ndishi ku shi shi!"

Ye waNashendjeleke ta nyamukula ta ti: "Nghe tu nda dile oinyenye ndi i ude.

Ye winya ota ti: "Edina layo Nakanyala kaxuxwa nake ku nyae u veluke. Hakambiya komalodu nake ku pembele u ende, olo edina layo olo."

Voo tava i nokuli konganga osho, xe ve mu ivaka. Yo onganga otai pula nokuli xe yokanona apa e li. Voo tava ti oku li keumbo.

"Oshike ine uya okutala eshi hai hakula okanona?" Ye waNashendjeleke ta i mo: "Ame inandi mu lombwela shaashi oha ti vati eenganga ohamu ningi oinima youpaani."

"Haiya utale." Onganga ota kufa omute nde te u tula peke layo nokutala po nawa ye ta ti.

"Tala, u wete ko eshi shi na okamwoye ohai shi holola ngoo nena." Ta, tala peke laye pomute opo eshi a loloka ye ota ti: "Handiya, omukonda inau hala kupopya shaashi inapa tulwa oimaliwa. Shuneni nye mu aluke mongula, mu na oiponda itano nokaxuxwa kokakadi nokatoo koulodu ndi uye ndi ku lombwela eshi shi na omumwoye."

Omukulukadi okwa shuna keumbo ye ta lombwele omushamane waye Timo ta ti: "Timo

okanona ka ka kungifwe, osheshi vati oke na sha medimo."

Omushamane nghene a udu oulayi ou, ye ota ti: "Okaana itaka i ko vali nande konganga oko."

"Aka okakwetu, oko ashike taka i, okange mweene." Eenhamanana da holoka meumbo ye omushamane ta ti, okanona oketu atushe twe ka pewa omaano kuKalunga. Omukulukadi ina hala okwiitavela eendjovo domushamane waye, ye ota i nokuli konganga vali osho.

Onganga nghe ngo ye mu mono yo tai pula apa a fiya xe yokaana, ye omukulukadi ta i mo: "Okwa anya ko."

"Haa, ite ya ko, osheshi oku shi shi eshi shi na okaana." Yo onganga otai kufa nokuli eenyala doxuxwa tai nyae medimo lokaana, yo tai nhu momalodu, yo tai ti okanona koye oka tulwa enyengele kuxe, ku wete eshi a anyako oku.

Okanona oka li ne taka kungu omolwoimbodi oyo ka pewa konganga. Yo otai kufa nokuli enyengele la fya li li mokaima ka tonywa nde tai i oku taku kungile okaana yo ota i fudike ponhele oyo monghungo yokaana, yo tai lombwele ina tai ti: "Hadapo utale eshi sha li shi na omumwoye medimo."

Eshi a hada po ye oya mono enyengele li li po, yo onganga otai ti u wete ko ovalumenhu veni? Nokudja opo Nashendjeleke okwa fikila ta tutu, nokomukalo ou ohombo ota teka omolwaashi nokanona oka fya omolwoudiyo woiimbodi yonganga. Hano ove ongomukriste, kotoka, 1Tim 6:11-12.

**Kamati Nghidipohamba Walvisbay**

## Oilonga yominyonena moshiwana

**Dha za kep. 5**

Okwa dimina yo kutya oha longo oilonga ihapu yomunyonena te i longele ovakwashiwana.

**ETUMWALAKA KEEBOTSOTSO NAAVESHE OVO HAVA LONGO OMINYONENENA**

Oshiwana osha loloka nosha tokola okulimanga kumwe mokuliamena kwaavo tava longo ominyonena. Eshi oshe liholola eshi ekakunya eli Petrus Amunyela la tewatewa pamukalo womulove kovakwashiwana fiyo ve mu kwata. Ovakwashiwana ova li va hala ve u mane mo (omweenyo). Unene tuu nghee va kundana kutya Petrus ekakunya, okonyala paholoke oupyakadi.

Paife efimbo lokulidilulula, opo ovo hamu longele oshiwana omunyonena, mu efe oilonga ei ii noinyanyalifa, nyee mu limange kumwe noshiwana sheni opo ombili i pangele muNamibia. Ominyonena osha yela otadi mu imbi okuya mOUHAMBWA WAKALUNGA, osheshi ominyonena adishe odaSatana.

Ngeenge nee itamu lidilulula, oshiwana nasho otashi kufa ko eenghaku. Lidilululeni shili, manga taku tiwa onena, oshe shi mongula otaku toko

**Kamangili kaJoseph Oshakati**



**Epango lyopaunongononi otali kambadhala okutseya eshito lyomuntu meni tango, manga inaali tameka okupanga omuntu. Oondohotola yoshingolo otaa ilongo omuntu meni, ombinzi, omithipa, oonkandja nomasipa. Oonganga dhOshiluudhe ngele tadhiihumitha komeho dhi konakone omuntu ngeyi, otadhi ka simanekitha oshilonga shadhho. Okutseya ashike omuti guni tagu aludha, shoka itashi gwanene.**

"Hadi velula peni kaanave, waNashendjeleke ta nyamukula. Ye mukwao ta ti:

"Tala shilayi oove, oukelefiti owe mu ya komapunga hano? Okanona ndishi owa ti oke udite medimo? Omukifi ou kau shivike kovatiyane. Onawa nge to uya ndi ku twale kondudu ei i dule ongolo."

"Omushamane wambuletetu ite ke shi itavela tu ye konganga."

ame onda ile keenganga opo ndi konge eshi tashi li omumwange."

"Kakwa li ngeni tu na okushuna koshipangelo, konganga owa i ko ngahelipi? Tala muholike wange eenganga oinima yongaho. Oipupulu lela oulayi wongaho. Omwa pewa ko nee eepela ile ovenda yasha?"

"Okwa tiwa natu ye naave u twaalele oiponda itano nokaxuxwa, ame hai dungu omalodu opo

# Omasiku gandje muHarare

Omukulugwonale okwa tile, "Omutumba ethete," naishe, "Ngupa u za wo pongombe pamwe noshituka elolo." Onda thigile po Namibia, nelalakano oku ka kala efudho lyandje lyaDesemba moshilongopangelo dhaZimbabwe, Harare.

Pokapale koodhila kopaigwana kaHarare onda thika 20 h 15. Okuza pokapale ndu uka koshilando onda kwatwa konkumwe yomatungo. Oondjila dhiihauto odhi na uunene wa gwana. Odha tulwa oteya. Mooha dhoondjila omwa tsikwa omiiti. Ngele ou li moHarare, omutenya dhimbwa. Oshilongo oshi na ombepo ya talala konyala ethimbo alihe. Oshilongo ohashi lokwa konyala esiku kehe. Elundu olya ziza nawa.

Oshilando oshiyamba shiimeno, evi eyamba. Zimbabwe oshilongo shimwe hashi longo uunamapya oshikumitha. Omapungu omambanana, omamangos, oofukwa, omakunde, iilya konyala oshikunwa kehe otashi monika moZimbabwe. Zimbabwe olyo evi limwe hali likola iipalutha

## Nacayul ta hiya ukumwe waagundjuka muNamibia

Ehangano lyaagundjuka yOngeleki yaKatoolika kaRooma moNamibia (Namibian Catholic Youth League (NACAYUL) olya hiya aagundjuka ayehe moshilongo, ya yande omatopoko ngoka taga ziilile meyoologo lyomalaka nolyuukwamuhoko. Ehiyo olya zi moshigongi shokomumvo shEhangano ndyoka petameko lyaJanuali 1989 moDöbora popepi nOvenduka. Aagundjuka oya zile momagongalo gOngeleki ndjoka moshilongo ashihe. Omatokolo gamwe ga zi miikundathanwa otaga landula mpaka:

a) Eindilo kaagundjuka ayehe moshilongo yaa pitike etopoko tali zi momalaka nomuukwahoko. Ihe aagundjuka ya tsakanene noya tseyathane, opo ya vule okutunga Namibia.

b) Aagundjuka yi ipyakidhile nokukonakona okatokolitho kemanguluko lyaNamibia 435 kligwanahangano pamwe noongundu oonkwawo moshilongo.

c) Aagundjuka yi ilongekidhe mombepo ombwanawa, yuukwashigwana, egaluko lyamwayina mboka taa zi pondje.

d) Aagundjuka yi ilongekidhe okuyakula neitulomo miinima ayihe tayi gumu onkalamwenyo ngaashi; pambepe, pankalathano, paliko nopapolotika.

e) Ongeleki monakuyiwa sho tayi ka kala mompumbwe onene yilmaliwa notayi ka nyengwa okusila oshimpwiyo oosikola, omihandjo dhadho osho wo iipangelo, aagundjuka otaa indilwa nokukumagidhwa mpaka, yi ilonge okwiikwatha yoyene, yo ya kwathe wo Ongeleki mesiloshimpwiyo lyiilonga yawo.

f) Kombinga yehogololo lyEkotampango epe lyoshilongo, oshigongi osha koleke kutya shono shi na okuningwa tango, ehogololo, opo ihe omusindani mehogololo ta ka tunga Ekotampango. Ekotampango ohali ningwa kaantu ya hogololwa koshigwana, osho sha ti.

Mokuhulitha omushangwahokololo gwomatokolo, oshigongi shoka osha endulula ompumbwe yuukumwe waagundjuka moshigwana, uuna taa tsakanekwa komadhigu ngaashi iipotha yoosikola 1988 nosha ti:

Okuuva uudhigu pamwe naakwashigwana ooyakweni molwoshinima kehe oshiwini taye shi ningilwa, osho nashi kale oshinakugwanithwa shetu shesiku kehe, opo tu vule okukala muNamibia limwe noshigwana shimwe.

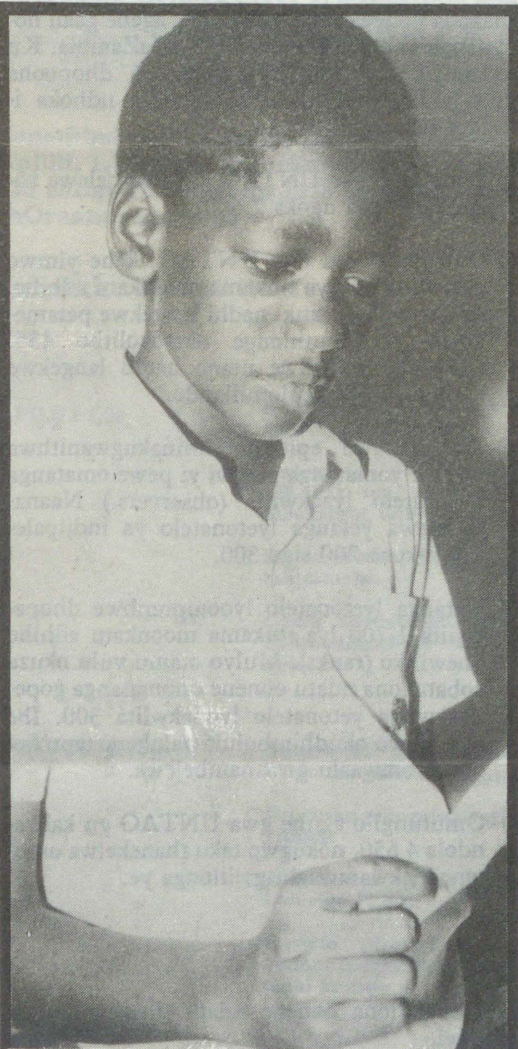
oyindji sha pitilila nohali tumu ikulya pondje.

Zimbabwe oku na uunamapya nuuniimuna wa dhenga pombanda. Iilongo oyindji muAfrica csho wo muEuropa otayi ligamene omeho kuyina yawo Zimbabwe omolwiipalutha.

Oshilando shono nda kala konyala omwedhi noshiwike, Harare aantu yamo aanambili. Oye na uukwatya wa fa wAanamibia thiluthilu, pamutungilo gwolutu osho wo onkalo. Omuntu oto ndhindhlike lela kutya Aanamibia nAazimbabwe oya zile pehala limwe konale. MoHarare elaka oyendji otaa popi Oshishona.

Aashona otaa popi lela ye tu fa, oondanda dhimwedhimwe dha yooloka ngaashi: "Ngame otandi yi koshipangelo." Moshishona: Ndi nokweenda kotshipatara. Aashona ngele ye li nAanamibia, ongaashi owala aantu namumwayina. Esiku kehe pombelewa yopasporta opu udha aantu ya hala oopasporta. Oyendji oya hala koNamibia ngele lya manguluka.

Zimbabwe oshilongo shi na aantu ya longwa. Poshipangelo shimwe oto adha po oondohotola dhi vule 20. Kehe momusholondondo gwomagumbo omu na oondohotola dhopaumwene oshindji dha pitilila. Moshilando ito adha aantu ya ngundumana ngaashi iipangelo yomoNamibia



Omwiilongi Samuel Mushelenga (13) mOseko yaLuno, nuumvo okwa li a gandja etumwalaka kaanonaa ooyakwawo ayehe moshigwana, opo yi ilongekidhile okutunga onakuyiwa yoshigwana shawo meitaa-lo lya -ola lyomuJesus.

bia. Ngele ino lombwelwa kutya shono oshipangelo, ngoye ino lesa edhina lyoshipangelo, ito shi dhimbulukwa kutya oshipangelo.

Oshigwana ohashi lesa omambo sho tashi ga nyola. Oositola dhomambo odhindji. Manga muNamibia taku pulwa mpono pe na lya pya, koZimbabwe hasho shi li. Pohetatu shaa oositola dha patuluka, kehe gumwe oku na oshifo a kundana shoka uuyuni tau ti. Aazimbabwe ohashi lesa. Elongo oli li pombanda.

Kehe pehala to ende nomupolosi. Aapolosi ya Zimbabwe aanambili, ngele wa puka nenge wa hala uyelele wontumba, oyo taye ku kwatha ngele we ya pula. Ihe ino ninga sha sha puka, oto imono epumpo. Etungo kehe olya tonatelwa meni nokombanda. Omuyonena gwa SA ogwa kenyeneka iilongo mbyoka yopuushiinda. Aatseyi yawo otaa ti Zimbabwe oku na etanga lya dheulwa dhangi. Omunakatongo SA naye oku shi shi kutya Zimbabwe okwa pama pevi nomombepo.

Harare oku na omeseum ya dhenga pombanda. Etungo enene, kehe shimwe hashi monika moZimbabwe okuza muuyuni wonale 1505 omo shi li momeseum ndjo. Okutameka ngaa kiilikama, oondhila, omayoka, uupuka, oondjima, oosizi, omafuma, naakwashilongo manga ya li inaa putuka osho wo iilongitho momagumbo gawo.

Inatu dhimbweni okusiikilila iinima yetu yonale otatu ke yi pumbwa mbala.

Konyala onda talela po omahala ogendji meni nopondje yaHarare. Onda ndhindhlike kutya ngele ou li owala megumbo aniwa owa tegelela emanguluko, ngoye inoo tala nando iiholelwa palwe, ondi wete omuntu to kala kokule nando evi oli ka manguluke.

Sho sha tsa ndje omukumo osho shono kutya aluhe Cde Sam Nujoma ngele ta pulwa kaaniifo shi na sha nuukwatya waNamibia lyamanguluka, olwindji iiholelwa ohe yi gandja ta yelekaniitha naZimbabwe. Osha yela kutya ngele oSWAPO ya gwini ehogololo, otatu ka landula omulandu tagu pe oshilongo shetu ombili neithikameno li na egameno lya gwana osho wo uthike pamwe.

Onda pandula ketaambo ewanawa kAanamibia, ookuume mbono ya taaguluka ongamba. Aailongi Aanamibia ku mana oya hokwa eilongo nohaa ka kotha ethimbo lya pwa po. Aanamibia oshilongo shetu otashi manguluka mbala. Aamaati naakadhona Zimbabwe okwe mu tegelela mu ka likole eliko lyuunongo woshilongo shetu Namibia lyamanguluka. Aanamibia oyi ilongekidha okugalukila kegumbo noya yuulukwa okuthika.

Sho ndi li pokugalukila kegumbo oya lalele ndje nawa kutya: Oshigwana nashi kale nombili. Aantu ayehe kutya omakakunya naga talwe ko ongaantu, oshoka nayo Aanamibia nando oya li ya pukithwa komutondi gwombili Botha. "Olugodhi ihalu shunine." osho aamwameme naaholi yombili yoshigwana shaNamibia ya ti. Natu kaleni tu na omukumo okutegelela emanguluko lyoshilongo shetu Namibia. SWAPO oye oshigwana, naakwashigwana oyo o SWAPO.

**Negumbo E. Uushona  
Ombalantu**

# KU NINGWE EHOLOLO LYA MANGULUKA NOLYUUYUUKI, OSHINAKUGWANITHWA SHO- MUNAMIBIA KEHE

Manga omitima dhAanamibia tadhi tuna neulumo, dhi mone UNTAG a thika muNamibia noshitokolitho 435 shi tulwe mii-longa, muNew York, Amushangandjayi gwa Un, Dr Perez de Cuellar, ota yaga muuluwi we mu mu zile ethaneko tali vulu okukaleka natango Apilili 1, 1989 elalakanenwasiku metameko lyemanguluko lya-Namibia.

Oshimpwiyu oshinene mAanamibia oyendji oshi li po sigo onena, kutya ehogololo lya manguluka lyoshili noli na uuyuuki otali adhika nomukalo guni. Pauyelele mboka wa zi mehokololo lyaAmushangandjayi gwa UN, nolya kolekwa oshiwike sha yi kOraata yEgameni nokli-gwanahangano, etegameno lyAanamibia okuligamena kepopilo lyiligwanahangano, olya lyatelewa koho yoompadhi.

Sho shoka itashi thigi Aanamibia yashili yi ikwata ombandamutse, ihe otaa yi miilonga, ya gamene noya popile ombili yoshilongo shawo nemanguluko lyasho. Omunamibia kehe mpoka ta kala po oku na okukala omotonateli gwombili yoshilongo. Gamwe gomomadhiladhilo gehokololo lyaAmushangandjayi ndyoka lya kwata omapandja 20, otaga landula mpaka:

## Aatalelipo yaAmushangandjayi gwa UNO

Omasiku 20.12.1988, aakalelipo yonapangelo lyaAmerika, lyaRuslanda, lyaBritania, lyaFulanisa nolyaKiina oya talelepo Amushangandjayi gwa UNO. Mbaka oya holola eyambidhidho lyawo kushono tashi ningwa po kombinga yemanguluko lyaNamibia.

Aakalelipo mboka oya holola nkene euvathano ndyoka tali ka shainwa 22.12.1988, tali ka gandja ompito, Namibia li vule okumanguluka muApilili 1, 1990. (Koneka ndika emanguluko hahogololo). Oyi indile wo Amushangandjayi a talulule omwaalu gwa UNTAG, gu vule okushonopekwa.

Iilongo mbyoka oya tala kutya Namibia olyo lyotango tali pula iimaliwa oyindji moshilonga shetanga lyombili lyiligwanahangano, onkee omolwiilonga ya tya ngawo tayi ka longwa nokomeho miilonga yilwe wo, Amushanga na tale nkene ta shonopeke iimaliwa.

Aakalelipo mboka sho ya pilamene ko, po otapu ya (puAmushangandjayi) aakalelipo yEhangano lyiilongo inaayi gama ombinga (Non-Aligned Countries) mewiliko lyomupresidende Robert Mugabe, gwaZimbabwe. Mbaka oya holoka pamwe niilyo yimwe yomOraata yegameno ya UN, osho wo omukalelipo gwaNigeria nehanganano lya SWAPO.

Eindilo lyongundu ndhika, olya li omwaalu gwa UNTAG gwaa shonopekwe, ihe shila gu gwedhelwe omolwonkalo muNamibia ya piyagana ngashingeyi, shi vulihe 1978, sho UNTAG (7 500) ya totwa po. Natango eti 6 lyaJanuali 1989, ooministeli dhiilongo; Botswana, Mozambique naZambia odha tsakanene naAmushangandjayi nodhi indile omwaalu gwa UNTAG gwaa shonopekwe.

Painingwanima ya tumbulwa metetekelo, Amushangandjayi ota ti kasha li we oshipu kuye okutsitha kumwe omadhiladhilo agehe ngoka ga pingathana, nonando ayehe otaa koleke kutya ngele esiku lyotango lyaApilili olya tokelwa ishewe, otashi ka eta uupyakadhi owindji.

“Moonkondo ndhoka nda li ndi na onda tokola ndi tunge po ethaneko, ndyoka itaali ka mbilipaleka we unene kehe gumwe, nangame nda kwatelelwa mo,” osho Amushangandjayi a tumbula mehokololo lye. Ethaneko ndika olyo lya kala tali kundathanwa kOraata yEgameni iiwike konyala iyali ya zi ko. Methaneko omwa kwatelelwa iinima tayi landula:

a) Etangawiliki lya UNTAG, li tongolole unene mokuhalakanitha po omatanga ga SA ngoka ga zi maakwashigwana (kaaye shi aakwiita paithano) omatanga gaakwiita gogene nomatanga gomakakunya mwa kwatelelwa ngoka tagi ithanwa oga SWA.

Nali tonatele ano aakwiita ya SA mboka taa thigala muNamibia (1 500) pOshivelo nenge mOshaanda nenge momahala ngoka agehe gaali nomatanga ga SWAPO muAngola naZambia. Ku tonatelwe nokugamenwe ookamba dhopooa noongamba dhaAngola naNamibia ndhoka inaadhi halakanithwa po.

b) Omwaalu gwa UNTAG gwopambelewa nangu kale ngaa ngoka 7,500.

c) Ootrupa ndatu dha UNTAG, kehe yimwe yaakwiita 850 ya thikama moonkatu adhihe, dhomawiliko (rank) nadhi langekwe petamekolela lyetulomiilonga okatokolitho 435. Oobataliona dhilwe ntano nadhi langekwe momahalá gokokule niilando.

d) Pu gandjwe epitikilo miinakugwanithwa yimwe yomatanga gopevi yi pewe omatanga getonatelo lyaakwiita (observers.) Naanambelewa yetanga lyetonatelo ya indjipalekwe okuza 200 sigo 300.

e) Netanga lyetonatelo lyoompumbwe dhopakwiita 1,700 lya thikama moonkatu adhihe dhewiliko (ranks). Mulyo otamu vulu okuza oobataliona ndatu oonene dhomatanga gopenaakwiita yetonatelo lyopakwiita 300. Ihe ope na wo okudhimbulukiwa nkene tapu kolekwa omwaalu gwaanambelewa.

f) Omutungilo aguhe gwa UNTAG gu kale andola 4 650, nokugwo taku thanekelwa omutengenekwamwaalu gwiilonga ye.

— Oobataliona oonene ndatu dhaakwiita yopevi.

— 300 aatonateli (observers) yopakwiita.

— 1 700 lwaampoka yetonatelo lyoompumbwe dhopakwiita.

— 100 aanambelewa ya thikama moonkatu adhihe.

— Oku na wo andola aatonateli yuuketha wehogololo 800.

g) Ngele opwa dhimbululwa mokati kiilonga, kutya itashi ende nawa ketanga lyaakwiita, nOmukalelipo gwowina ota nyengwa okweenditha ehogololo li kale lyoshili nolya manguluka, nena Amushangandjayi otaka tseyithila mbala Oraata yEgameni, neindilo lya na omatindilo, opo ku monike aakwiita niilongitho yawo ya gwana, osho ehokololo lya yelitha.

Omwaalu aguhe gwetanga lya UNTAG ngoka tagu pumbiwa oodola oomiliyona \$ 416, R840 mil), mwa kwatelelwa niilonga yaKomufala gwoontauki ngoka taka longekidha egaluko lyAanamibia ayehe ya hala kegumbo.

Pahokololo ndika eshaino molwetulopo lyomatati pokati ka SA naSWAPO otali ka ningwa muApilili 1, 1989.

Sebulon Ekandjo



Omupresidende Robert Mugabe gwaZimbabwe

**Aagongeli yomadhina gaaleshi nane wo aahalithi yoshifo ooshimwe nashimwe, ndhindhilikeni**

**Omuntu kehe ota vulu okulanditha nenge okugongela omadhina gaantu yopomudhingoloko gwe.**

**Amushanga gwOmukwetu**

**Etanga lyombili lya UN, (UNTAG) ngele tali ya li tonatele ehogololo muNamibia petameko lya Apilili numvo, opwa tengekwa tali ka longitha omwaalu gwiimaliwa oodola dhOshiamerika oomiliyona \$ 450 (R1 000 mil.)**

Iilongo iinene mOraata yegameno ya UNO, Amerika, Britania, Rusland, Kiina naFulanisa natango oya tindi okulundulula ethaneko lyayo lyeshonopeko lyomwaalu gwetanga lya UNTAG, nonando ya indilwa yi shi ninge kiilongo yaAfrika, kaawilikingeleki muNamibia nokEhangano lya SWAPO.

Iilongo ya tumbulwa metetekelo, uukwashilyo wayo ihau kushu momutumba gwOraata yegameno, oya tokola Etanga lyaUNTAG li shonopekwe okuza 7, 500 sigo 4 650, omolwiimaliwa yokufuta etanga ndyoka yaa po.

Etanga alihe lya UNTAG, ngaashi lya thanekwa 1978, pashitokolitho 435, li ye koNamibia, li tonatele ehogololo, olya tengenekwa tali pula ando oodola oomiliyona \$ 700 (R1 500 mil).

Ongundu ndjoka ya tokolwa oyo yi ye kiilonga 4,650, oya tengenekelwa omwaalu aguhe oodola oomiliyona \$ 416 (konyala R840 mil). Kakele kiimaliwa yoomiliyona oodola 700, mbyoka iiloyo yOraata yegameno tayi ti kutya otayi monika nuudhigu, etempelo ekwawo tayi gandja moshinima shoka, otali ti kutya omwaalu omunene gwaakwiita ya UNTAG inagu pumbiwa we oshikando shika, oshoka, aniwa ongamba pokati kaNamibia naAngola otayi kala metonatelo lyokakomisi kopongamba.

Mokakomisi kopongamba omu na iilyo yepangelo lyaAngola lya SA nolya Cuba, naAmerika naRusland taa kala mo aatali yowala shono tashi ningwa. Namibia mokakomisi hoka ota ka ninga oshilyo uuna evi lya manguluka. Okakomisi hoka oka kolekelwa mumwe nethaneko lyaNew York 22.12.1988.

Omumvo 1978, etanga lya UNTAG sho lya dhikwa, pethimbo ndyoka otaku tiwa SA okwa li e na owala aapolosi 3,000. Ihe ngaashingeyi o-



**Omupresidende Jose Eduardo dos Santos waAngola ou a dana onghandangala moupolotika woumbuwantu waAfrica. Koniima yeshaino lavo letulepo lomatati na SA, 22.12.1988 muNew York, eti 15.2.1989, ota hokolola SA a ninga natango oshiponokela moshilongo shaye. Ehokololo otali ti Eembulu oda fiya mo omudimba umwe neengangala da UNITA 100 da fya nadikwao da kwatwa nomwenyo.**

## OOMILIYONA \$ 450 MELONGITHO LYA UNTAG

taa tengenekwa 8,300 inaamu kwatelwa etanga lyoshiponga lyokufuta ndyoka tali tengenekwa 3,000. Ndjayi gwaapolosi Dolf Gouws okwa ti kutya olyo tali ka longithwa ku SA li ninge omotonateli gwombili yoshilongo pethimbo lyetaagulukoko. Epulo ketanga lyaKufuta otali ya wo pamwe nomwaalu omunene gwomakakunya omaluudhe nomatiligane ngoka ga dheulwa ku SA, ngashingeyi ge thike 30,000, okuza oshitokolitho sho sha totwa.

Kaku na natango uyelele wa gwana kutya omakakunya ngoka SA ota ningi ngiini nago. Pethimbo limwe SA ota ti kutya ote ga laleke mo miilonga, ihe ondjambi yawo nenge openzela otanga taamba sigo ehogololo lya ningwa muNovomba 1989.

Oyendji muNamibia oyi itaala kutya mokufuta omakakunya nonando kage li miilonga, omukalo ashike gwoku ga landa, opo ga hogolole epangelo lya SA, ngele ehogololo tali ya.

Omahokololo gamwe ga thiki mombelewa yOmukwetu otanga ti kutya, omakakunya omaluudhe oga pewa ga tonatele iikondjitho, nomookamba dhimwe oondjembo ndhoka otaku

### Tala kepannja tali landula

## OKALIINDELI KETHIMBO LYE-TAAGULUKILO KEMANGULUKO

**Omathambo niiningwanima yago mbyoka tayi hingile kemanguluko lyaNamibia, okuza Apilili, 1,1989 oga thanekwa ngaashi tashi landula. Ethaneko ndika oli li pashitokolitho 435 shligwanahangano 1978 shoka sha kolekululwa ishewe numvo pakatokolitho 629 shOraata yegameno.**

### MUFEBULUALI POKATI

#### APILILI 1,89

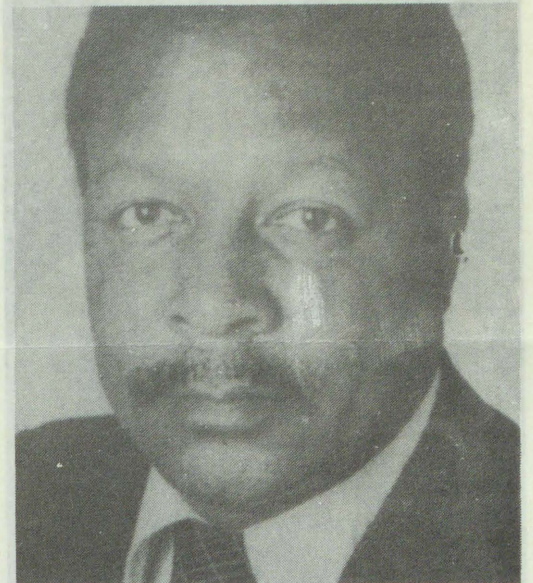
- Ehulithopo lyomautondwe ngoka ga adhkika po.
- Aakwiita ya SA noya SWAPO taa ngambekelwa mookamba dhawo.
- Emangululo lyoonkwatwa tali tameke.
- Oveta dhokatongotongo nodhomangambeko tadhithwa po.

#### POKATI KAMAI

- Aanamibia yopondje yoshilongo taa galukile kegumbo.
- Omautho gehogololo taga tseyithwa.
- Aakwiita ya SA taa shonopekwa sigo 12,000.
- Ooveta dhokatongotongo nodhomangambeko adhihe tadhithwa po.

#### PETAMEKO LYAJUNI

- Aakwiita ya SA taa shonopekwa sigo 8,000.
- Emangululo lyoonkwatwa dhopapolotika tali tsikile sigo lya pu.



**Omusamane Moses Katjuongua, gwo SWANU noministeli yaaniilonga nonkalonawa mepangelo lyopokati, ndyoka okuza Maalitsa 1, 1989, itaali ka pewa we mokaana ku SA shoka li na okuninga, sigo oshizemo shehogololo sha gandjwa.**

— Iilyo yimwe yaUNTAG tayi thiki muNamibia opo yi longekidhile yakwawo etameko lyetulo miilonga oshitokolitho 435.

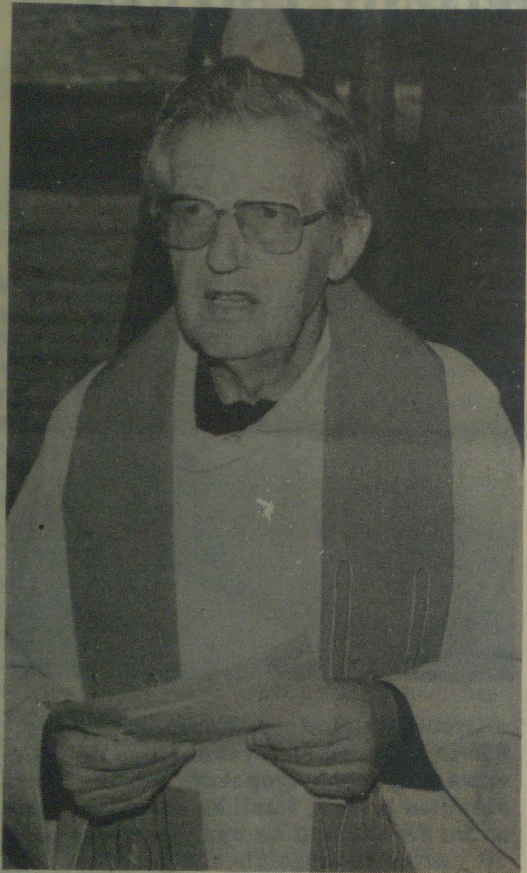
Omukalelipo gwowina gwa UNO, ta thiki pokati kaApilili na Mai pamwe naanambelewa, aapolisi, niilyo yimwe yetanga lyombili. Otaa ihanene noshilongo, omahala 50 ngaashi ye ga longekidhilwa.

— Komufala gwoontauki kli-gwanahangano ta kwatha kugulula Aanamibia.

— UNTAG ta tsikile nokutonatela nokutula iinima melandulathano.

— Iilonga ya UNTAG tayi tsikile natango.

**Tala kepannja tali landula**



**Omusita gwAanamibia muupongekwa Gerhard Heimerikx (Kaishala) moNyango, Zambia, egumbo lyAanamibia**

**Dha za kep. 9**

tiwa otadi landithwa po kaakwashigwana nenge otadhi holekwa. Omukwetu ina mona we uuyelele umwe moshinima shoka.

MuNew York edhiladhilo lyokushonopeka etanga lyombili koNamibia olya pendutha omaludhi omanene neuvo lyonayi miilyo yimwe yaanambeleva. Oshikando shimwe Ndjayi gwetanga lyombili; Pram Chad gwaIndia, okwa hokolola kutya ye ita taamba we oshilonga shokuwilika omatanga ngoka tage ya kuNamibia, ngele omwaalu itagu kala ngaashi gwa thanekelwe (7,500).

Konima Amushangandjayi gwa UNO, okwa ti, otashi vulika komwaalu gwaakwiita 4 650 ku gwedhelwe natango nando inashi ziminwa kiilongo iinankondo. Mokushilipaleka ombili methimbo lyetaaguluko, aakwiita ya UNO otaa pitikwa ya humbate oondjembo, omukalo ngoka inaagu longithwa shito, osho ehokololo lya kundanwa tali ti.

Sigo opelongekidho lyoshinyolwa shika, okwa li inaaku ningwa ekoleko lyahugunina momatokolo gOraata yegameno ya UNO, kutya aakwiita ye thike peni ye na okuya kuNamibia niimaliwa mbyoka ye na okulongitha mpoka yi thike. Eto-kolo lyaambika olya li lya tagelelwa oshiwike sha yi.

Omupopihapu gumwe kligwanahangano (UNO) okwa tumbula nonkumwe onene kutya ngele omathaneko getanga lyaUNTAG osho taga tsikile ngaashi ga lundululwa ngeyi, nena Namibia olya thigwa ashike miikaha ya SA.

**Sebulon Ekandjo**

**EHEKELEKO KOSHIWANA**

Fyee Ovanamibia kombada yoshilongo shoome, otwa li twa yehamekwa shi lifa omolwoKassinga okatiyali oko ka ningwa mOmbaanga yaShakati 19.2.1988. Hekelekweni nye oshiwana shOmwene.

Shomutondi paife oshi li ko shinini, shi li ko oshetu. Efiku leshiko lomanghuma neenghuwilili kali li vali kokule. Palutu otwa topoka, pamwenyo otu li pamwe.

**Twikileni nokulwifa omutondi, efindano oshili.**

Leepha - Ndapewa Ndoboh  
Free Town  
Sierra Leone

**Oshipotha shondjala maanandholongo**

Aanandholongo konyala 300 mu SA otaa kondjo natango ya tsikile moshipotha sheiteko lyiikulya mondholongo shoka ya tameke konima yomasiku 25. Yane yomaa-nashipotha otaku tiwa onkalo yuukolele wawo oya tameka okunayipala noonkondo.

Oshipotha osha tameka maanandholongo 20 yomondholongo yaDiepkloof, muJohannesburg, moka ye edhililwa pwaa na epangulo aniwa omolwetaaguluko lyoveta yokangendjo moshilongo. Yamwe yomuyo oya kala mo omwedhi dhi vule 24.

Otaku tiwa eiteeko lyiikulya ndika maanandholongo yoludhi ndoka olyo eti-37 okuza oveta yokangendjo sho ya tulwa miilonga mu SA mu-Juni 1986.

**OKALIINDELI KETHIMBO LYETAAGULUKILO KEMANGULUKO**

**Dha za kep. 9**

**PETAMEKO LYAJULI**

- Aakwiita ya SA taa shonopekwa ishewe sigo 1 500.
- UNTAG ta tsikile niilonga ye.
- Omahala gaakwiita koon-gamba taga tulwa koho yetonatele lya UN nenge taga patwa.

**NATANGO PETAMEKO LYAJULI**

- ligongi yopapolotika tayi tameke pambelewa.
- Osheendo oshitiyali shaanambeleva ya UNTAG tashi thiki, shi ye shi tonatele ehogololo.
- Nomainyolitho gaahogololi taga tameke.

**PETAMEKO LYAKOTIBA**

- Osheendo oshinene shaatonateli yehogololo tashi thiki notashi langekwa pomahala guuketha wehogololo.
- Osheendo shoka oshaantu konyala 800 aanawino miinima yomahogololo.

**1—8 GANOVOMBA**

- Ehogololo tali ningwa moka tamu zi ongundu ndjoka tayi ka tunga ekotampango lyoshilongo.
- UNTAG ta tonatele ehogololo nuuketha womahogololo no-shizemo shehogololo tashi tseyithwa shono shi na okupewa eziminino kOmukaleli-po gwowina gwa UNO.

**POKATI KANOVOMBA**

- Aakwiita ya SA yahugunina 1 500 taa thigi po Namibia.
- Ookamba adhihe dhaakwiita tadhi patwa.
- Oshigongi shekotampango tashi gongala.
- UNTAG ta tsikile niilonga ye.
- Oyendji taa tameke okushuna ethimbo ndyoka.

**ESIKU LYAA SHIWIKE**

- Oshigongi shekotampango tashi hulu.
- Tapu longekidhwa okudhika epangelo epe.
- UNTAG ta tsikile niilyo oyi-ndji tayi thigi po oshilongo.

**ESIKU INAALI TSEYITHWA MANGA: EHOLOLO**

- Oyendji otaa zi miilongo yi li iilyo yo UNO.

# Ova shangela nge tava ti .....

## Otwa gwana okutulwa megalikano lyaa na ezimbuko

Oyendji pethimbo ndika otwa kanitha omukumo molwokwahe na iilonga. Twa ekelahi einekelo lyomuKalunga notu wete a fa a kanduka po putse. Katu na we ombepo yokugongala momalongo ngelokalunga pamwe naakriste aakwetu, ihatu gongala we miigongi yaagudnjuka.

Oshigwana oshiholike muJesus Kristus, aailongi yopaumwene nosho wo mboka mwa mona iilonga, otwa pumbwa okutulwa megalikaneno lyaaha na ezimbuko, opo omadhiladhilo getu ga hwepopale tse tu vule okugongala poohapu dhaKalunga opo mboka inaaya mona iilonga, a dhipage mo omadhiladhilo omawinayi muyo. Otwa pumbwa okutulwa megalikano opo tu ninge aakriste yashili.

Aamwameme aailongi yopaumwene nosho wo mboka mwa mona oonzapo ihe inamu mona iilonga, nane otamu pumbwa egalikano lyaaha na ezimbuko. Okugongala momalongo ngelokalunga nomiiigongi yaagudnjuka, otaku ngambeke omaipulo getu omawinayi omolwongalamwenyo ya tya ngaaka. Oohapu dhaKalunga otadhi tu tsu omukumo moku dhi pulakena, nomukumo nomoku dhi itaala.

Okukala megumbo to hepekwa komaipulo, otaku nkundipaleke onkalamwenyo yomuntu ayihe. Inda poohapu dhaKalunga, kala wo nokulesha Ombimbeli ye Ondjapuki.

Katu na we uuna natu ki iyalulila kongundu nokonkalo yuuntu, ngele ihatu pulakene omakumagidho nomalongo gaasita nogaapukululi yetu momalongo ngelokalunga opahapu dhOmuwa. Uuna einekelo lyomuKalunga lya nkundipala mutse, nena oonkondo dhomutondi otadhi indjipala, notadhi tu sindi nuupu.

Tse tu dhimbulukweni wo kutya omuntu kehe okwa uvanekelwa euvaneke lye note li gwanithilwa ethimbo ngele lya thikana. Aluhe megalikano lyoye ino dhimbwa okulesha kAaheb.10:35. Nosho wo muJeremia 29:11

**Ottilie Nuusiku Angala Onemanya**

## Omauvitho nenge oshimenka?

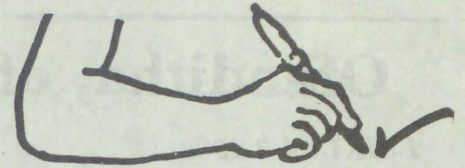
Omauvitho poohango naga talekwe muuyeleele wago. Ohashi holoka olwindji poohango mu na euvoko lyopombambo. Tango maafuko yoyene, patiyali maayenda yohango naanegumbo.

1. Omufuko oha ka dhimbulukwa esiku lyoohungu lyelalo komatango, kutya opwa pumbiwa euvitho. Ota ponokele gumwe gwomaayenda yohango opo e ya ningile euvitho.

Pethimbo lyeuvitho, mwiya megumbo oondigolo odha pwakela owala, ko hwiya omapakolwa noosalupenda otadhi kolola. Euvitho lya pwa.

2. Esiku lya landula oshituthi otashi tsikile kongeleka Omusita ta ningi wo euvitho pafupi. Ndika omusita okwe li longekidha ngika, oshoka okwa tseye kutya oye te ya a hokanithe ohango.

3. Ohango ya piti mo mongeleka yu uka kegumbo. Manga aafuko naayenda yu uka momuti gwomauvitho ye omufuko ota lombwele oshinkumbi she shimwe: "Ka lombwele omusamane Tobias, e tu ningile egalikano mbala. Ngaashi omuuvithi gwohela komatango, osho wo omusamane Tobias ta ningi.



Sho omusamane ta longekidha, yo aayenda yoshituthi otaa fadhukapo omauvitho ya ka gondje momuti gulwe omanga taga pu, yo ya galuke ya etele aafuko omagano. Po pethimbo ndika okangalo kaBrenda mongelema yometala ndjoka ya patululwa ya pwako, otaka kinitha aayenda naafuko komitise ya landula "oritme" yokangalo taka inyenge nawa.

Ano oshinima omauvitho nenge oshimenka? Aafuko longekidheni iituthi yeni nawa miinima ayihe. Ngaashi tamu longekidha iikulya osho wo longekidheni omauvitho kuyele. Lombweleni wo aahiywa yeni ya simaneke omauvitho. Ande longekidheni pamwe kuyele ngeyi:

1. Esiku lyohango 14 Desemba 1988 omuhokanithi Rev. Max Asino.

2. Omuuvithi mongeleka Tk. Lukas Iita  
3. Omuuvithi megumbo Tk. Daniel Sheya.

Oto vulu wo okuulika oohapu ndhoka wa hala odho dhi leshwe oshowo omaimbilo ngoka wa hala ga imbwe. Nenge shika to shi ethele aauvithi yoyene.

Aahiywa wo konekeni kutya inamu ithanenwa owala okulya oosilaye nokunwa omikonyo nokakambe okatokele. Mokakalata kehiyo okwa tiwa: "Ileni nomagalikano". Inaku tiwa: Ileni noosalupenda nomishasho. Onkene tu taleni iituthi yooyakwetu, kutya oya pumbwa omagalikaneno getu. Gumwe sho ta galikana atuhe otatu zimine "Ameni".

**Namatshi Ampweya**

## Uukriste nevundakano lyomithigululwakalo dhOshiwambo

Aaleshi aasimaneke, atuhe twa tseye kutya eitaalo lyetu li ikwatelela muKalunga omunamwenyo, omushiti gwegulu nevi, no-gwiinima ayihe yi lwetike naambika yaa wetike.

Moshipopipiwa shika onda hala okupopya kombinga yonkalo yetu tse aakriste nokudhila dhila ondjembo yomoosa okuyeleanitha noluhodhi ndoka talu kala tu lu na, omolwamukwetu e tu thigapo? Ihe oto adha omukrite ta umbu ondjembo moosa. Mpano onda hala tu tameke nokuninga ehogololo kutya oshinipo shi shi okulandulwa na oshinipo shi shi okukandulwapo?

Kalunga mwene okwa tula momuntu okaana kome ni hono taka popi muye. Ongomuhololipo gwoshipopipiwa shika ondi itaala wo kutya okaana kokomwenyo ke li ngeyi ohaka si oluhodhi uuna tse tatu ulike uukwatya wa za melandulathano ekwakriste.

Patiyali mwene gweshito ta popi wo kutse kutya ngame, ongame, tashi ti Kalunga ngoka ta kalekepo elandulathano noita etha ina geela omuumbi gwondjembo moosa dhomukriste.

**Lamek Israel Omudiakonilongwa**



Omasiku 8 gaApilili, omumbisofi gwaambisofi yOngeleki yaAnglikana muumbugantu waAfrika, Desmond Tutu, okwa talela po Ongeleki yaELCIN. Okwa li metalelopo ndika pamwe naambisofi yOngeleki ye konyala 10. Omumbisofi Tutu okwe endele wo pamwe neefolo lye, kuku Leah ngoka ta monika omutiyali okuza kolumoho. Oya kuutumba mongeleka yaNiipa pamwe neefolo lyomumbisofi Dumeni, kolumoho omutango methano ndika.

# Ofanditha, ofanditha, ofanditha

**ESIKU: 4.3.1989**

**EHALA: Ofaalama yaKashana**

**ETHIMBO: Okutameka 10h00 ongula**

**IILANDITHOMWA: Oongombe, iikombo noonzi**

**Omaulikilo omakwawo otaga vulu wo okuningwa**

**Ino pitililwa kompito ndjika.**



## ESO

Omasiku 27.1.1989 Kalunga okwa ithana po kuku Sheepo Ihuhwa, meso lyombaadhilila. Nakusa okwa thigi ko omukulukadhi gwe noyana oyendji.

“Okulila kwandje otandi ku pupulile koshipala she, noluhepo lwandje otandi lu fala kuye. Omwenyo gwandje nando gwa lolokela mungame, oondjila dhandje u dhi shi, nepola ndyoka handi ende mo ya tegele ndje mo omwigo ongumitila.” Eps 142 Eimbilo 398

Kalombo Samuel Kaboy  
Walvisbay

\*\*\*\*\*

Omumati Salom Tangeni Egumbo (19), okwa si eso lyombaadhilila sho a gwile momeya 2.12.88. Okwa thigi ko aakuluntu ye naamwayina omugoyi. Eimbilo 246: John 8:1-3

Fredrika Hambelela Egumbo

\*\*\*\*\*

Tate Amoni Haufiku Nghifikwa, okwa mana ceengeda daye, 31.11.1988 mouyehame wefimbo lile. Okwa fiya ko omukulukadi waye novana 9, eimbilo 455.

Panduleni George Nghifikwa  
Onakaolo - Ongenga

## Ondjodi yaMukwana- mbwa waNghifikwa

Ohandi hokolola a pa ondjodi nda twa. Onda li nda nangala oombe mombete meumbo lovamwange pOnihandi mOndonga. Efimbo lokeengula, shaashi e-shi nda ka penduka okwa yela filufilu. Efiku 2.9.1987. Ondjodi oyo ngaha:

Okamati ke na okatenda meke lako, ka yukilila Ongeleka yaNiipa. Moku ka tala nawa, nomumati vavali va djala eembulukweva ditoka, ova djala ombidja vatoka ve na omavala matilyana. Ove kwete outenda momake ova yukilila oshivelo shokEvale longeleka, shashi naame ponhele oyo yoshivelo opo nda hangika.

Ova hala okukuma noutenda kongeleka. Inandi popya navo onda dja po, nda yuka keumbo. Onda pita ofitola yomambo koutokelo nda yuka kondjila ya yuka kOshigambo ya enda pomukwiyu waNama-tende.

Mokuya nondjila onda ya moingodowati momano matalala okadilanghono. Onde litwa momusholondodo wongudu. Oomeme nounona ve li mondjila omo va twa omhola oyo oku tai di okEvale ya enda ya yukilila, ndele otai nyengwa okupwa ko.

Moku va tala onda mona ounamwenyo vatatu oukambe. Okakambe kamwe okatoka, vavali ova fa edu. Ova humbata oikefa noikelive itoka yeendjedja, nounona va londekwa ko. Inandi popya navo,

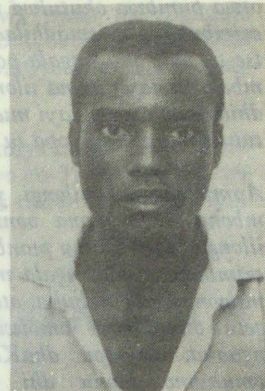
omhola oile tai nyenge okuvalulwa. Meme umwe onda pumhakana naye ndi li koushilo wondjila.

Onda ingida pombada hai ti: “Halleluya, Halleluya, Kalunga na hambelelwe we u ya u tale ovanhu voye, ngaashi wa longele oshiwana shoye shOvaisrael. Halleluya. Ohandi hele nee hai ti; iyaloo Kalunga, Halleluya! Eshi nda penduka meemhofi ohandi imbi iyaloo Halleluya we tu ningila oinima inene.

Dortea Fumalekuu  
Kongo

## A KUNDANWA A MANGULULWA

Ombelewa yOmukwetu oya tseyithilwa emanguluko lyajohannes Kaweelekana Komeya eti 28.10.1988.



## MOMBELEWA YOAUDIO = VISUAL MONIIPA

Otu na mo uungalo (uukasetu) wi ili nowi ili womaimbilo goongundu, ngaashi: TEKAMO (Tshandi); OSHITAYINGELEKI shaUkwanyama; TEIMBIITEZIMBUKA; OSHITAYI noshu tuu.

Ondando yuungalo (uuteipa) kominute 60 ohaka gu R10-00 omanga hoka kominute 90 haka kotha R12-00.

Ohatu thaneke wo uufano wopasporta, okafano kamwe R7-50.

Ileni mu lande ne mu thanekwe.

## OMUKWETU

Oye oshifo shOngeleki Onkwaevangeli paLuther yomu SWA/NAMIBIA.

Ohashi nyanyangidhwa mOshinyanyangidhwa shOngeleki mOniipa.

Omukuluntu gwoshifo omumbisofi Kleopas Dumeni.

Amushanga gwoshifo omusita Sebulon Ekanjo.

Ondando yOmukwetu muNamibia naSouth Africa R8,00 komumvo.

Palwe muAfrica nokombanda yomafuta R20,00 komumvo. Ndjika oyo wo ondando yoshifo shomondhila .

Ondando nomambesitelo agehe naga tumwe kOmukwetu, Oniipa, P/Bag 2013, Ondangwa 9000, N A M I B I A.

ELOC PRINTING PRESS  
PRIVATE BAG 2013, TEL. (06762) 11, TELEX 56-3257 WK  
SWA/NAMIBIA