

UMUKWAZI



40c

ISBN 0-620-06828-0

No. 21



Methano ndika kolumoho, omupresidende omupe gwa CCN nokolulyo omulongi Shivute U. Shivute

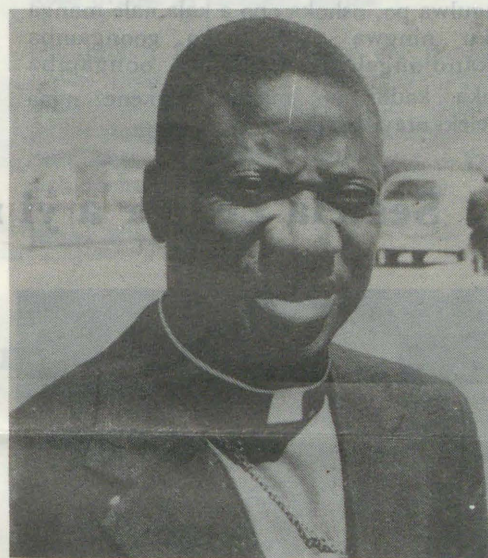
CCN MOMIMVO 10 DHIILONGA

ONGWEDIVA: Owambo: Oraata yOongeleki muNamibia (CCN), oya li ya hulitha omutumba gwayo gwaayehe omutihamano 23.10.1988 mOngwediva nedhimbulukwo lyeholokepo lyoraata ndjoka muule womimvo 10 dha zi ko. Oshituthi shi dhimbulukwo osha ningilwa melongelokalunga lyuukumwe moka iilyo ayihe yomagongalo gOongeleki ndhoha dhi li iilyo mehangano ndyoka, unene mOwambo ya hiylwa mo.

Omutumba ogwa tamekele 19.10 nelongelokalunga. Omasita nomuyevangeliste mOngeleki ya ELCIN, Natanael Shinana oye kwa li a uvithile etameko lyoshigongi shoka shophahistoli, melongelokalunga.

“She tu eta tu gongalele koshitopolwa shika sholugodhi otwa hala oku ulika uukumwe wetu nane mboka mwa humbata chepeko ethimbo ele.” osho omupresidende gwOraata ndjoka

Tala kep. 6



Omumbisofi James Kauluma oye a kala omupresidende gwehangano ndika sigo onuumvo sho pwa hogololwa omupe, omumbisofi H. Frederik

IILONGA YOSHIHONDJELO SHONGELEKI YA MONENWA EHALA EPE

Omatungo omape giilonga yokuhondja mOngeleki ya ELCIN, oga yapulilwa oshilonga shago 22.10.1988, komumbisofi Kleopas Dumeni mOniipa. Etungo ewanawa nenene li vule konyala omatungo agehe mOngeleki ndjika, pahokololo lyomuwiliki gwiilonga mbyoka, olya pula R 525 296,67.

Ongeleki yaSoomi pamwe nepangelo lyawo, oya kwatha okutungitha etungo lyongushu yi thike mpoka. Iimaliwa oya kwatelela mo iilongitho yomeni lyetungo. Ompumbwe ku monike ehala lya tya ngaaka lyiilonga yoludhi ndoka, oya za nale, sigo Elelongeleki lyeti 21 - 22.11.1981 lya ningi etokolo lyahugunina okudhikitha ii nga mbyoka.

“Otwa tamake niimaliwa iishonalela I. 00 adhike 1.1.1981. Nopomathimbo gamwe otwa nyengwa okufuta oondjambi dhaanashilonga mboka ya li po yatatu ayeke,” osho meme Irja Soikkeli ngoka e li omuwiliki gwiilonga a tumbula moshituthi sheegululo. Feelani Soikkeli oku na natango omadhimbulukwo ga yela

Tala kep. 5



Mpaka iilonga yoshihondjelo ya monenwa ehala epe. Esiku kehe omiyelo dhiilonga odhe egulukila eyakulo, kakele Olyomakaya nOsoondaha

ELCIN OKU LI PENI?

MOmukwetu No. 19/88 omwa holoka epulo ndika: "Sho hapu popiwa Ongeleki ya ELCIN, oyi li peni?" Sho nda konakona oontentekelihapu dhomunyoli, onda koneke omu na iinima iyali inaayi yela momadhiladhilo ge. Shotango oshitya ELCIN noshityali omutungilo gwOngeleki. Omuleshi omukwetu, kwatha ndje ndi ku pe euvoko lyandje.

1. ELCIN: Ndika edhina lyOngeleki ngaashi naanaa we li toloka moshinyolwa shoye. Edhina lyehala nenge lyehangano ohali vulu okulunduluka, opo li opalele ehala nenge aantu mboka taye li longitha.

Otu na iiholelwa yomadhina ga lunduluka. OPO ndyoka lya ningi SWAPO; Tanganyika, lya ningi Tanzania; ELOC lya ningi ELCIN. ELCIN edhina lyOngeleki, yo Ongeleki ongundu yaantu mboka ye li iilyo mOngeleki ndjoka.

Ehanagulopo lyomathaneko goongamba dhiikandjongeleki itashi ti, kutya ELCIN a hanagulwa po, oshoka opo a kala nale manga inaaku ningwa omathaneko goongamba dhiikandjongeleki. Nonando oongamba ndhoka kadhi po manga, onkene ngaa Ongeleki otayi tsikile.

Aantu otaa shashwa na ELCIN ota nenepala. Omagongalo taga totwa naanashilonga otaa langekwa. Otashi vulika wo omutungilo gwepangelo gu lunduluka, ihe edhina itali lunduluka. Tala iiholelwa yomadhina giilongo mbika:

Angola naMozambikwe. Omadhina inaga lunduluka, ihe omitungilo dhomapangelo odha lunduluka okuza muukapitali nokuya muusosiale. Shika osha hala nee okutya edhina ELCIN oshinima shi ili.

2. Omutungilo

Omutungilo gwolutu kehe oshinima wo hashi vulu okulunduluka, uuna pwa holoka ompumbwe. ELCIN naye wo ompumbwe ndjika okwe yi dhimbulula nokwa tokola a ninge omalunduluko momutungilo gwe, kaa kale we e na omumbisofi gumwe, oshoka

Sestela Lehrer a yi manga kuuvu wayina



Okuza petameko lyomwedhi gwa yi, Kotoba, omupangi Sestela Christa Lehrer, okwa thigi po Namibia ombadhilila a ka tale yina ngoka a kundanwa te ehame-nene muNdowishilanda. Meme Christa omukulukadhi gwomundohotola Stefan Lehrer, ngoka a thigala natango mOnandjokwe meyakulo lyaavu yomathele oge-ndji esiku kehe moshipangelo shoka.

Aanegumbo lya dr Lehrer oya thikile mOwambo omumvo gwa yi 1987. Omusamane okwa thikile 15.6.1987, manga efolo okwa landula ko e ta thiki 13.9.1987. "Esiku lyokuthika kwandje mpaka kape na siku nandi li dhimbwe, oshoka otii li tala lya fa esiku lyevalo lyandje," osho omundohotola Lehrer a shendjula pOmukwetu. Omukulukadhi gwe omulongi kosikola yaapan-gi nopoompito dhimwe oha vulu okuyakula

moshipangelo.

Ndohotola okwa hokolola kutya manga ye li muNdowishilanda, mevi lyooyina, oya kundana oluhepo lwoondohotola moshipangelo shaNandjokwe. "Oshe tu penduthile ondjuulukwe tu ye tu kwathe mpoka tatu vulu," osho a fatulula omolwashike ye ya kuAfrika. Ompito ndjoka okwe yi tala kutya kuyo osikola onene okwiilonga aantu, omudhingoloko nosho wo oohedhi dhawo.

Ota yemata ngaa kashona sho inaa mona ompito ya gwana okwiilonga elaka lyaavalelwamo, ihe oya tseyi iitya yokupendulathana nokuuva ko iitya yimwe-yimwe. Moshinima shika sheilongo lyelaka, Ndohotola oku uvite shi shi okulongekidhwa, manga omutumwa inaa za ko kegumbo, sho ta ti ope na Aawambo oyendji muNdowishilanda mboka taa vulu oku shi ninga.

Aanashilonga mbaka oyo aatumwa yEhangano lyiilonga yomapendulopo gOngeleki, lyOongeleki dha hangana onkwaEvaangeli muNdowishilanda. Ehangano ndyoka oli na iikondo itano shimwe shomuyo shoka 'Eyakulo lyopondje yiilongo' shoka she ya tumu.

Omunashilonga kehe mEhangano ndyoka oku na ompito yokuyakula oomvula ndatu adhike pondje yoshilongo nenge hamano ethimbo ngele ele, nena oti ithanwa ko ku tumwe gulwe. Ehangano oli na aanashilonga oyendji unene muAfrika, ngaashi Tanzania nenge muZimbabwe.

Aanegumbo lyaLehrer, oya taamba ko nomaako agehe eyakulo lyawo mokati ketu nonando oye na natango oshindji okwiilonga. Oye na oshimpwiyu oshinene shevi ndika inaa li mona natango emanguluko, noye na etegameno, kutya shono otashi ningwa mbala

Sebulon Ekanjo

Ongeleki oya koka, nomumbisofi gumwe ita tsakanitha we iilonga ye pamautho, (oshito. 168,) unene etumbulo ndyoka tali ti:

"Omatalelopo e na okuningwa momaongalo, moshikondo nomoshilongelwanhele keshe lumwe ile luhapu meedula nharu."

ELCIN okwa tameke ihe okwiinyenga ta zi miitayingeleki u uka miikandjongeleki yopaumbisofi. Molweendo nduka, ELCIN okwa tempelwa, kutya shika otashi pula omasiku ogendji. Tala omatokolo ngoka ga ningwa muule wethimbo ndyoka lya pitipo.

Oshigongingeleki oshiti 12/84 montokolwa yasho 110, osha tokola ELCIN a topolwe miikandjongeleki itatu nomawi 173. Elelongeleki otali indilwa li longekidhe edhiko lyiikandjongeleki. Montokolwa onti 156, etumbulo lyahugunina otali leshwa ngeyi:

"Elelongeleki, omumbisofi nomukwathi gwe ya longekidhile Oshigongingeleki oshiti 13 edhiko lyiikandjongeleki itatu, yi holoke po oshita."

Ontokolwa onti 13 yOshigongingeleki oshiti 13/86: "Oshigongi osha kutha ontokolwa yasho onti 110/84 oonkondo, ongeleki yaa topolwe miikandjongeleki itatu. Osha tokola nomawi 257, Ongeleki yi topolwe miikandjongeleki iyali.

Elundululo lyontokolwa 110/84 yi pingene po kontokolwa 13 yOshigongingeleki 13/86, oshinima sha ningwa nomatompelo ga yela. Iilyo yOshigongingeleki shoka oya li shili ya tempelwa kutya Ongeleki otayi vulu ashike okutopolwa miikandjongeleki iyali.

Elundululo lyontokolwa ndjika nando lya talika lya fa epu, oye eta wo amatamaneko nomikundu omipe. Oshe eta elelepeko lyethimbo lyiilonga yElelongeleki. Oshi imbi iitopolwa yilwe mEkotampango epe yaa tulwe miilonga mbala.

Iilyo yOshigongingeleki oshiti 14 yi hogololwe paitayingeleki nando osha li shi na okulala paikandjongeleki, osha pendutha omukundu gwongamba ndjoka ya tendwa pantokolwa onti 31 yOshigongingeleki oshti 13/86.

Shika osha fala sigo omomatokolo goshongalele shoukumwe woongalele yOikandjongeleki mOngwediva 9 - 13 . 12 . 1986 ngaashi taga landula:

Epandja 4. ETOKOLO: Omolwainima inai yela natango, efimbo letameko lOyoongaleleikandjongeleki la undulilwa komesho efimbo inali shivika.

Epandja 5 — Oshigongi shuukumwe wopaitayingeleki sho kaashi na oonkondo pakotampango nopamauthompango ga ELCIN, okulundulula etokolo lyOshigongingeleki, osha popile efaneko lyoongamba dhiikandjongeleki lya Z lya zi kOshitayingeleki shUukwanyama, li ye kOshigongingeleki tashi ya oshiti 14.

Oshigongi shika oshiti 14, osho ihe sha gongala eti 11 - 16.7.1988, nosha ningi omatokolo taga landula. Ontokolwa 34:

ETOKOLO: Oshoongaleleleki oshiti 14, osha tokola nomawi 19/38 kutya opo tu adhe etsokumwe moshinima shetendo lyongamba yiikandjongeleki, ndjoka ya ziminwa

Tala kep. 8

Oshinakugwanithwa shaatumwa ya- Jesus Kristus

Mat 10:16 - 22



Aluhe mpoka pu na aatumwa oya tegelela iinima tayi landula:

1. Okutidhaganwa
2. Okutaambwa nena
3. Okuhulila ondjilakati
4. Okugwanitha iilonga yawo nokumona ondjambi.

Oteksti otayi popi Jesus ta tumu aalongwa ye omulongo nayaali. Jesus ote ya lombwele shoka ye na okuninga noshaashoka tashi ke ya adha komeho moshilonga oshipu nenge oshidhigu. Uuwanawa nenge uuwinayi. Ohapu tayi popi Jesus Omugalilea naJesus omuyumuki kuusi. Ano Jesus manga e li kevi nosho wo Jesus a yumuka meso nokwe li sinda.

Jesus oye omulumentu a li ihaa holeke aalanduli ye shono tashi ke ya tegelele. Ote ya lombwele ashihe tashi ke ya adha miilonga yawo. Shikwa-wo otatu ndhindhilike, moteksti otamu popiwa ethimbo lyongashingeyi nethimbo tali ya.

Ethimbo lyongashingeyi lyopethimbo lyaJesus olya pita nale. Osho wo ethimbo tali ya ndyoka lya li ya tegelelwa kaalongwa yaJesus olya pita, ihe olya faathana naandoyoka tali inyenge mokati ketu nena moshilongo shetu nomongeleki ya-Kristus.

Jesus sho a li ta komanda aalongwa naashoka tashi ke ya adha otatu shi yelege wo naashoka hashi ningwa miita yuuyuni wetu nena. Iita yilwe muRoma omumvo 1849, ondjayi yiita yedhina Garibaldi okwa lombwele aalanduli ye kutya:

“Ngame kandi na sha okumu pa okukondjitha aakwiita naatondi yetu ya longekidhe nawa. Shoka tandi mu pe osho ondjala, enota, uudhigu neso. Otandi ithana ayehe ye hole oshilongo shawo ya landule ndje.” Ashike nando ongawo, aakwiita oye mu landula. Omukwaniilwa Mandume Ndemufayo mokulwa nAaputu nosho wo nAandowishi, okwa tile kaakwiita ye:

“Oluhepo neso kashi lidule.” Pamwe nomapenda ge olugodhi olwa faalele Mandume naalanduli ye. Andimba Toivo yaToivo ota ti: “Ekondjo olile lo olilula.” Nonando ekondjo nena mevi lyetu olyo ele nelulu, Toivo yaToivo okwa mona aalanduli oyendji inaa tila uululu, oya hala esindano kutya nee otashi ya pula shike nosigo uunake.

Aalongwa yaJesus nayo inaa tila okutidhaganwa, yo inaya tila oondholongo nomapangulo ga popiwa kuJesus. Jesus wo okwa li te ya tsu omukumo ta ti; inamu tila ngele tamu yi moompangululo, Kalunga ote ke mu pa shoka mu na okupopya. Moses naye osho a lombwelwa ku-Kalunga (Exodus 4:12).

Aatumwa naakriste yolela aamati yaKalunga mongeleki yaKristus oye na okutidhaganwa. Oye na okushekwa omolwevaangeli (Iil 7:6). Omazimo gawo mboka ya tokola okulongela Kalunga mokulandula Jesus Omunazaret, otage ya tondo noku ya tidhagana. Aashiinda shawo, aaholike nookuume kawo oye ya tonda. Otaya dhiladhila pamwe oya piyagana momitse. Otaya edhile po omiyelo ngele ye ya mono taye ya notaye ya fadhuka po.

Jesus ota londodha aamati ye kutya, yamati yandje; Ethimbo otali keya sho tamu ka mona epangelo, Aajuda nosho wo aatondi yandje yalwe taye mu tidhagana. Aluhe aakriste ngele taa hepekwa ohaa kongelwa omalundilo. Aaroma momapangelo gawo oya li haa lundile aakriste kutya: Sho taa nu omaviinu mUulalelo Uuyapuki otaa nu ombinzi yaanona aashona mboka ye ya dhipaga.

Uukriste mokati kaapagani owo oshinima shoka sha topola aakuluntu kumwe naanona yawo, aakulukadhi kumwe naasamane yawo. Ano aakriste mboka ya makela uutoye waKristus otaa kondjo sigo ometopoko. Sigo onena uuyuni wetu uukriste kau shi elalangali. Aakriste otaa lundilwa. Otaa pangulwa omapangulo giifundja. Otaa dhipagwa. Uukriste owo iilonga yevaangeli li taandele naantu yaKalunga ya hupithwe kutya nee otashi pula shike.

Tseni nena otwa tya ngiini nuukriste wetu? Otwa tegelelwa tu gwanithe etumwalaka lyaJesus omolwevaangeli momagumbo, momikunda, moshilongo nomongeleki yetu. Otse aatumwa yaJesus. Aatumwa yaJesus mokati komadhengo muNamibia, momasheko nomomalundilo, mo-

Eongalo Ondobe la dana oshivilohambebelelo sheedula 50

Eongalo Ondobe ola totwa 1939 nomodula 1987 omafiku 31 aKotoba fiyo Novomba 1, omo nee la li la dana oshivilohambebelelo shalo. Omototipo weongalo eli oye tatekulu Mwadikange Vilho Kaulinge. Modula 1921 omo a tambulilwa mokuwiki youhongifikola waye.

Konima yepito laye okwa kala omulongifikola nomutaleli. Modula 1934 tatekulu Kaulinge okwa tuminwa vali kofikola youfita kOniipa, nomodula 1937 omo a yapulilwa oshilonga shoufitaongalo opamwe navakwao vamwe.

Pamaufu ombelewa yoshitaingeleki shaUkwanayama, oyo yo yimwe ya yi ya longekida oshivilo okuhambebele Tate Kalunga, eshi a humbata nokwa amena moule weedula detatafele. Oshivilo osha li sha hovela nelongelokalunga.

Ovafitaongalo ava, Simon Namunyekwa, Johannes Hamulungu naLapindja Nghole, va ninga elongelokalunga loshivilo. Omufitaongalo tate Filippus Shikomba oo yo a longa oule weedula dihapu meongalo eli okwa ninga eudifo loshivilo. Okwa lesa Eps 150. Oshipalanyolo sheudifo laye osha li “Oilonga yoye ondi i shii.” Nomokupandula Tate Kalunga eshi a endifa eongalo nokwe li amena fiyo paife la nene-pala momukokomoko weedula 50, okwa imbwa eimbilohambebelelo 426.

Konima yelongelokalunga tatekulu Kaulinge a kunda ovakwashivilo eshi a lesa John 15:1 - 9. Tatekulu Kaulinge a tula yo omufindo apa kutya: “Ouhamba waKalunga owa fa onhemo yoshinapi.” Eengudu domalwiimbo di lili nodi lili oda li da mwenyeka oshivilo.

Ponhele yovatumwa Irja Soikkeli a yandja omakundo a dja kOsuomi Eps 34. Paye mwene

ndjala nomoluhepo moNamibia, meso lyesiku kehe koombinga adhihe. Aatumwa yaJesus miilongo yopuushiinda nuuyuni auhe.

Poompito dhimwe uudhigu wokevi owe tu yonene omukumo muukriste wetu. Onke aatumwa tse yaJesus tu kondjeni sigo opehulilo opo tu kondjitheni oombepo dhaSatana. Tweetheni iikolotha tse tu kale aaidhiliki yolela. Shoka sha popiwa kuJesus otashi gwanithwa nena, lesa ovelise 21 moteksti ndjika.

Omuprofeti Mika 7:6, okwe shi hunganeke nosha gwanithwa. Tu etheni oontamanana mokati ketu, omadhhipagathano, okulongela satana nongundu ye. Jesus ota lombwele aatumwa kutya, omunelago oye ngoka ta kondjo sigo opehulilo oshoka oye ta hupithwa.

Jonas Mweutota

mokutala engafifi lovakwashivilo okwe li faafanifa nongudu inene oyo tai ka kala ya ongala koshipala shaKalunga mefiku letokolo Ehol 7:9.

Omupashukilishitaingeleki shaNdonga, omufita Petrus Shipena oumwe waavo va li va mona omhito yokupopifa ovakwashivilo. Amwe oomatumbulo aye: Eendjovo daKalunga odi na eemhemo di dule eongamukonda leembinga mbali Heb 4:12. Longafaneni, pukululafaneni neendunge adishe Kol.3:16 - 17.

PONDobe opa kala yo ofikola yokaumbo koukadona nomutotipo wayo meekulu Emilia Nhinda, pahokololo laye nghee va longa noudjuu mokutunga eengulu dokaumbo pamwe novalongwa vaye votete 27, fiyo va findana va mana, okwa xulifa oshipopiwa shaye netumbulo eli. “Omwenyo wange hambelela Omwene, ove ino dimbwa ouwa e ku ningila” Eps 103:2. Oshivilo osha li shi na ovapopifi vahapu ovo itai pu kutumbula vopaikandjo i lili noi lili payakulolonga meongalo.

Omalongekido

Oshivilo osha li sha longekidilwa eengode 9, oikombo 19 noikulya yomaludi amwe e lili noku lili. Naashi sha tya pefimbo lomalyo kapa li xuxwa itai tondoka nehandja. Ou ina lya oyou a ha liko.

Omapandulo

Ovakwaneongalo mOndobe ohatu yandje olupandu linene kwaaveshe ovo ve tu liyambela moku tu pa oiyakulifo yoshivilo. Otu shii oku yandja olupandu la shewa kootatekulu ovo ve he

Tala kep. 8

Omukwaniilwa gwOndonga moshituthi sheyambeko lyaapangi mOniipa



Ovahakuli tava nangekwa nooupuna kOngeleki va ka twikile oilonga yavo. Moshivilo eshi, oshihakulilo shaNgela osha li shi na mo, ovayakulihakuli 10

Mwene gwoshilongo shOndonga, omukwaniilwa Immanuel Elifas, okwa li gumwe gwomaayenda ya simana ya hiyilwa moshituthi sheyambeko lyaapangi mOnandjokwe. Omunyekadhi Sesilia ngoka e li wo oshilyo shokomitiye yosikola yaapangi naye wo omo a li nokwa popitha oshituthi shika.

"Oshituthi osha li shi fuula ngiini," osho gumwe i igidha konkumwe. Musho omwa li mwa hiyilwa aailongi ayehe yomOwambo yoonkatu dhopombanda sigo opevi. Mboka ya thikile oya li konyala 45. Mokati kawo omwa li oondohotola dhuunamiti, aailongi meputudho lyoosikola, aateolohi, aailongi monkalathano nayalwe yomiikondolonga iikwawo.



Omukwaniilwa mwene gwoshilongo shaNdonga, I. Elifas, momuzalo gwe gwoshilongo pamwe nomunyekadhi, oya li ya pewa oshipundi shesimaneko moshituthi shika mokati kaaailongi yopombanda. Methano ndika otaa monika ya kuutumba komeholela nakuku Sesilia

Eyapulo lyaapangi olya ningilwe mongeleka yaNiipa 15.10.1988, komukwathi gwomumbisofi Matti Amadhila. Mokati kaapangi mboka omwa li omugoyi mboka ya piti ekonakono lyuuyalithi. Yakwawo 15 oya piti ekonakono lyuupangi nomulongo ekonakono lyuuyakulipangi Ongeleka yaNiipa ndjoka hayi gwana aantu 900, siku ndyoka inayi vula okupapatela momawawa gayo aakali ayehe yomoshituthi.

Oshipopiwa showina; Uutoye welongo, osha li sha tulwa melandulathano lyoshituthi shoka, nelalakano lyokusikumudhila aagundjuka mohokwe yelongo noyailongo. Omwiilongi gwotangotango okwaadha onkatu yopombanda mOwambo, omusamane Hans D. Namuhuja, oye kwa li e shi pewa a tanuthe mo oondunge dhasho.

Namuhuja mefatululo lye okwa ti, kutya uutoye welongo ohau lolwa komwiilongi ye mwene no-kumboka ta longo mokati kayo. Ohau vulu okulolwa nomeho, nomakutsi osho wo nonkalathano. "Elongo oto li iyimati yalyo notali ku fala mpoka inoo enda po nkene wa valelwe," osho a ti.

Mokufatulula moshituthi moka kehe gumwe edhina lye, shoka i ilongela nomouniveesiti ndjoka i ilongele, osha gandja ethano mbala maapulakeni kutya oshigwana oshi ilonga pombanda, shi vulithe mpoka omuntu ho shi dhiladhilile. Omusamane Namuhuja nomusita Julius Mtuleni, oyo ya li taa wilike euliko lyaanoonkatu mba-ka.

"Twa tenenekwa ngeyi ano puuyelee moshigwana shetu, tu tseyike kukehe gumwe. Tu tonateleni ano eilongo lyetu niilonga iiwanawa, oshoka uuhethi owo tuu hau shekitha iigwana," omusita M. Amadhila ngoka a pelwe ompito yokupopitha aailongi ooyakwawo, osho kwa li e ya tumbulile.

Sebulon Ekandjo

Iinima ohii popiwa!

Shilombolwa, iinima ohii popiwa ngaa, kwa li kwa tegelelwa etanga lyombili tali zi ku UN opo li tameke ando niilonga yalyo muka okuza Novomba 1, 1988. Okwaathika kwalyo okwa kolekele owala oyendji momalimbililo gawo, mboka yaa na etegameno muudhano wuupeko wopolotika yoshilongo shika.

Ongundu ndjoka sho inaayi thika, oya tindwa ku SA? SA okwa ti haye e yi imba. Omolweuvathano lyAaCuba okuza muAngola ndyoka inaa li adhika sigo oompoka? Meuvathano lyokuNew York, ndyoka olyo lya landulwa, moshitsa shalyo oshitihetatu omwa tiwa ashike:

Ngele ku uvathanwa esiku lyetulumiiilonga lyoshitokolitho 435, yo AACUBA taa langekwa kumbangalantu (waAngola) neikuthomo lyawo tali ningwa pauvathano lyepangelo lyaAngola nolyaCuba. Lyo euvathano lyiilongo mbyoka iyali, tali tseyithilwa Oraata yegameno ya UN.

Oshike ano shi imba etanga li thike? Ombelewa yaAmushangandjayi gwa UN, oyo inaayi ilongekidha nawa? Omolwashike inaayi shi popya? Omolwashike inaaku tseyithwa paveta elundululyesiku, nethanekwasiku uuna taku ka tamekwa, sho ayihe tayi ende ya fa yi li momalimbililo? Etokelwo lyesiku oye ehameka oshigwana, ihe Omukwetu ina tseyi sha yela ngoka e shi okuhumbata uusama mbuka.

Shoka oshigwana sha thigilwa po, eilongekidho natango methimbo lya gwana. Opu na omagumbo gamwe nondunda yimwe ayike yokulala omuntu ta zi palwe, muupongekwa, oyo yaa mo nomvula ya thikana. Iikulya oshinima itaatu shi popi manga.

Omagongalo wo ngiika kape na nando limwe lya tseyi omwaalu gwaantu ya zile moongamba dhalyo noyangapi tashi vulika ya galukile mo nosho tuu. Otu na oshindji noshinene okwiilongekidha, Omalimbililo ngele 1.1.1989 nenge 1.3.1989 taga tsakanithwa tuu, kashi shi oshinene shi vule elongekidho.

Sebulon Ekandjo

Da dja kep.1

kekwatho lyaKalunga ndyoka ya tsakaneki metameko lyawo enkundi lyoshilonga shoka sha koka ngashingeyi mOngeleki.

Pethimbo ndika, kaSoikkeli, ngaashi a tseyika kaAwambo nedhina ndika, ota ti oshihondjelo oshi li po okuhondja omizalo dhaasita naanashilonga yOngeleki. Otashi hondjo omizalo dhowalitali moongeleka momagongalo. Ihe oshi li po wo okuhondja omizalo dhilwe dhaakwashigwana. Kakele kokuhondja, oshihondjelo otashi kala wo hashi teleke uukwiila wuulalelo uuyapuki. Aanashilonga 25 otaa longo ngashingeyi metungo ndyoka, aalumentu naakiintu.

Omumvo tagu ya 1989, otapu ka tamekwa noprograma yookersesa dhokuhondja maakwashigwana. Otashi ka hiya wo pomathimbo nomathimbo aaopaleki momagongalo ye ye komapukululo gawo. "Oshihondjelo oshOngeleki, ihe osho wo eyakulo lyoshigwana ashihe," osho Soikkeli a yelitha iilonga yawo.

Omumbisofi Dumeni okwa kumagidha ashihe tashi longwa notashi popiwa metungo ndyoka, shi kale shokuhamelelitha Kalunga. Epopitho iye okwe li kutha mu Kol. 3:12-17. Amushanga omukuluntu mOngeleki, omusita Absalom Ha-

Ehokololo lyoseminali koZimbabwe

Elelongeiki lyaELCIN olya li lye tu tumu ko shigongiilonga ("Workshop") ko Harare sha li ko okuza 1-11.06.1988 nosha li tashi popi kombinga yeledo nelongitho lyaantu muAfrica. (Human Resources Development Workshop in Africa).

Osha li oshiwana noshinyanyudha okutsakana naawiliki yikandjolonga yi ili noyi ili nonaantu yomaitaalo gi ili nogi ili. Oshigongi shika osha li tashi tungu noonkondo. Oshe tu kwatha sho ethimbo olindji twa kundathana muungundu, osha gandja ompito opo omadhiladhilo gakehe gumwe ga longe. Ano kasha li okupulakena ashike kaalongi.

Aalongi yetu oyo aalumentu yaali ya zile ko Tanzania ya pyokoka nawa moshilonga shawo noya li shili ye shi sho taa ningi, ya za kehangano haku tiwa ESAMI (Eastern and Southern African Management Institute). Nonando ya holola kutya olwo lwotango okugandja ootundi kaawiliki yomiilonga yopangeleki, kasha li nande tashi dhimbululwa ngaaka.

Oshinima shokwiinekelela iilonga (development)

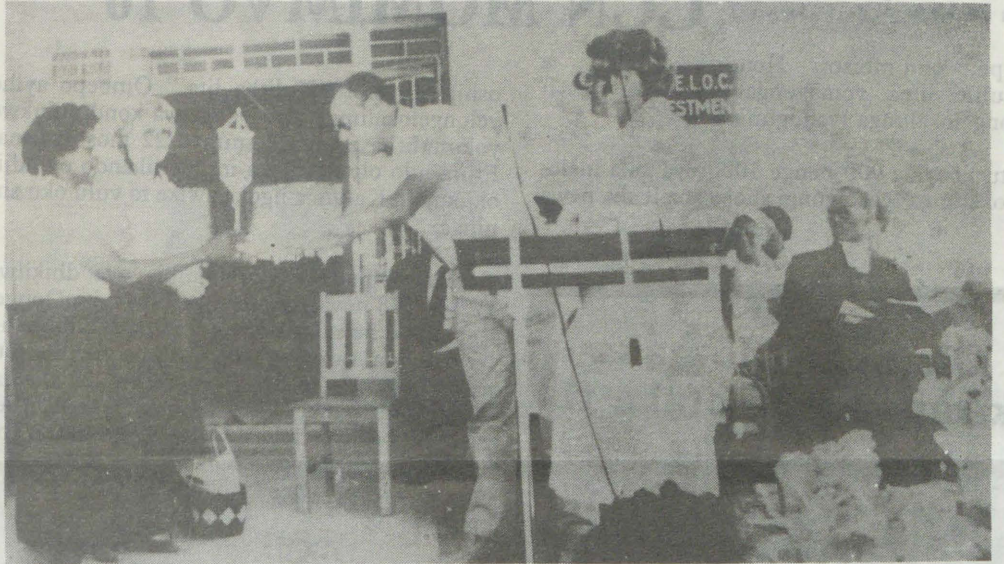
— Mokutopolela aaniilonga koho yoye iilonga, dhimbulukwa kutya:

— Omuwiliki omwanawa oye ngoka hi inekelele yalwe iilonga ye uuna sha pumbiwa. Shika itashi ti u gandje po oshimpwiyu shoye kugulwe (accountability).

— Ngoka ti inekelelwa oshilonga, nashi kale she mu yeleda nawa.

— Kala wa tegelela omapuko komuyakuli gwoye

— Omuyakuli na longe kuye mwene nopwaa na ekalepo lyoye lya pitilila.



Ehanganotumo lyaSuomi, moshituthi sheegululo lyoshihondjelo, olya gandja okapandela, endhindhiliko lyombili pokati kEhangano nOngeleki ndjika. Methano ndika, omusamane S. Kalliokoski ota gandja okapandela koshillyo shEwilikongundu lyoshihondjelo, meme Katrina Auala

sheela, okwa gwedha ko, kutya ngoka a taamba omagano ga simana, okwa thigilwa wo oshinakugwanithwa shoku ga kaleka po monkalo yi li nawa.

Okwa hiya oshigwana shi longithe etungo ndika opo li tsikile nawa niilonga yalyo. "Eshi osho ashike ondjila yoku tu fikifa keputuko," osho a ti.

Sebulo Ekandjo



Meme Irja Soikkeli peshina lyokuhondja moshihondjelo oshikulu

— Egandjo po lyiilonga nali kale li na elalakano

— Mokutopola iilonga nashi endele pamwe nuuthemba (rights)

— Tonatela iilonga yi longwe mondjila!

Ongonga yokupulana (Planing Cycle)

— okukoneka omikundu
— okukonga omukalo gwoku shi longa (strategies)

— okuholola shoka to ningi po

— okuninga opulana

— okukonga iimaliwa

— okutula opulana miilonga

— okutalulula opulana yoye (evaluation)

Oontamanana (conflicts)

Oontamanana miilonga ohadhi etwa kiinima oyindji, yimwe oyo:

— okwaavathanako medhiladhilo

— omalalakano inaaga yela

— oondjambi oontshona unene

— uupangalume

— omayooloko gomaukwatya

— okwaanolukeno n.sh.t

Ehokololo ndika olya longekidhwa kaatumwa yOngeleki yokoshigongi shoka, omupangi Aletta Ngakukwete nomusita Absalom Hasheela. Mpaka olya etwa molupe lwefupipiko

omupe, omumbisofi Hendrik Fredrik, a fatululile iilyo yomagongalo mbyoka ya li melongelokalunga lyahugunina.

Aantu konyala 900 nenge 1000 oya kala melongelokalunga lyoshigongi shoka sha li sha pewa

Okahokololo haka kAanamibia otaka ti shike?



Omusita Lamoela tu uvithile elongelokalunga kekwatho lyetoloko lyomusita J. Mtuleni

Omusita gwOngeliki yaCongregational muumbagantu waAfrika, Peter Lamoela, oye a ningi euviho melongelokalunga lyuukumwe mOngwediva 23.10.1988. Okwa uvitha koshi yoshipalanyolo 'Hulitha iita'. Meuvitho lye okwa etele iholelwa oyindji kombinga yonkalo yiita mbyoka ya konekwa miilongo oyindji. Shimwe shomiholelwa okwe shi hokolola ngeyi:

Opwa li ethimbo limwe iita tayi kondjwa muVietnam, ya kondjwa ethimbo ele. Esiku limwe omumati gumwe omukwiita okwa dhengele kegumbo, nokutya iita ya hulu, ongula ote ya kegumbo. Enyanu lya li megumbo moka kalya li li shi okutumbulwa, omumati gwetu ota galukile kegumbo.

Mongodhi omumati okwa tsikile netseyitho lye, kutya sho te ya kegumbo ote etelele kuume kelela, ngoka itaashi vulika nando ya topoke naye. Ihe kuume ke nguka ke na oshipala (omeho), oshikaha shokolulyo nokugulu kwokolulyo nayo kayi ko. Onkundana ndjoka oya li ombwinayi momakutsi gaavali, onkee ya tokola, omwana oye awike e ye kegumbo.

Konima yokathimbo okafupi, aavali mbaka oya kundana nokutya omumati ngoka kwa li e na okuya ongula kegumbo, a mana oondjenda. Oya hiywa wo ya ka tale oshipala shomumati gwawo. Sho ya yi ko, oya dhimbulula omumati gwawo oye naanaa e li moshiketha shomudhimba, ihe ke na oshipala, oshikaha shokolulyo nokugulu nayo kayi ko. Osho enyanu lyaavali mbeyaka lya hulile molugodhi.

A kana

Orwa ndhindhilike Hailwa gwetu Titus Taapopi a kana okuza 30.4.1988 sho a kwatwa po kokufuta, sigo onena katu shi mpoka e li. Taapopi omuhingi gwihauto mOfabulika yonyama (Swavleis) mOkahandja. Na tulwe momusholondondo gwooyakwawo mboka ya kana.

Mateus M. Elago
Okahandja

oshipalanyolo: "Hulitha iita." Ombepo ayihe yelongelokalunga, oya pangelwa kondjuulukwe yokuhulitha po iita yomimvo 22 moshigwana. Etumbulo oyi igidhwa muule iikando oyindji, okukugila Kalunga ngoka awike ta vulu oku shi ninga.

Oraata yOongeleki muNamibia oya dhikilwe 17.10.1978 noya thikama ngashingeyi mOongeleki shilyo heyalu. Oongeleki ndhoka odhi na iilyo ayihe kumwe 932 000, konyala yi vule etata naanaa lyomwaaalu aguhe gwoshigwana shaNamibia. Oongeleki onkwaevangeli paLuther yaapopi yOshindowishi, oya hulithile po uukwashilyo wayo mOraata ndjoka 1987, onkene inayi wapa okukala momutumba gwonuumvo.

Oraata ohayi gongala omumvo omutitatu kehe. Amushangandjaji ngoka a longo ngaashingeyi mEhangano ndika uule womimvo hamano dha zi ko omusita Abisai Sheyavali, moku ulika ehumokomeho lyiilonga yOraata okuza sho ya dhikwa, okwa ti:

"Nonando iilonga yOraata ndjika inayi thika ngiika mokakololo kehe koshilongo, kape na wo oshitopolwa shontumba, moka omuntu to ti inayi tseyika mo." Ehangano olya thikama miikondolonga ine, mbyoka ya thikama wo miimpungulonga. Oshikondo shuunambelewa woohamushanga; oshikondo shiilonga yomapedulopo moka mu na iimpungukinga; a)shomapedulopo goshigwana b) noshuusosiale (onkalathano).

Omu na wo oshikondo sheputudho moka mu na elongo lyaakuluntu, omapukululolongo goshigwana, elongo lyaagundjuka mboka inaa mona omahala palwe mosikola noshimpungu shokugandja iimaliwa yuunasikola kaailongi yopondje.

Shahugunina oshitine oshikondo shuuteolohi, moka mu na iimpungulonga ngaashi ehanganano lyaakiintu nolyaagundjuka. Muka omo wo mu na ombelewa yokukongela aahepekwa ekwatho lyopaveta omolwonkalo yoshilongo.

Oraata yOongeleki moshilongo shika otayi longo oshilonga shOmusamaria omunamutihe-



Aapresidende yaali yopevi ya CCN mboka ya hogololwa nuumvo moshigongi, oyo ya ningile elongelokalunga; Methano ndika kolulyo Sesta Irmgard Poroto nomusita Matti Amadhila. Olwotango mehistolli lya CCN mewiliko li thike mpoka mwa hogololelwa omukiintu

nda. Ehokololo lyiilonga yehanganano ndyoka olya ti: Omahala, Otjimbingwe; Kaoko; Ovitoto; Groot Aub nOwambo, ohaga taamba ekwatho lyiikulya omolwoshikukuta moshilongo shomimvo odhindji.

MOwambo omahala gokutaambela oga ulikwa pOngwediva yaELCIN nopOaputeka yaShakati, mewiliko lyomusamane Sebulon Amutenya. Mekwatho ndika, Oraata ohayi landa iilya kOkavango, hoka kwa mwene omuloka hwepo, nokweeta koshitopolwa shOwambo.

Ehokololo olya tsikile, kutya aakulupe ye vule 30 moKaribib ohaa taamba wo ekwatho lyehanganano ndyoka. Osho wo hashi ningilwa aakulu-

Tala kopardja tali landula



Omusita Abisai Sheyavali okwa hogolululwa ishewe oshikando oshititatu a ningi Amushangandjaji gwOraata yOongeleki (CCN) nuumvo mOngwediva.

pe megumbo lyawo mOliindili (Luderitz). Ohaku gandjwa wo iipalutha koosikola dhimwe ngaashi yaJacob Marengo nosho wo iikunino ehokololo lya ti.

Oprograma yokukwatha mokugandja omeya nayo opo yi li mehanganano ndika mOwambo, Caprivi, Kavango noKaoko. Oku na wo ooprograma dhokukwatha paundjowe mpoka ehanganano lya dhikitha uukilnika ngaashi moGibeon nomOtjimbingwe. Momwedhi hetatu adhike, aaavu 3,481 oya talelepo uupangelo mboka.

Ehokololo otali ti, aalongwa 102 oya pewa uunasikola pethimbo ndika ko CCN mboka taa ilongele uulongi; uunaveta; uupangi; uunangeshefa nuunongononi. Aalongwa mboka yi inyolitha meilongo lyapaumwene kekwatho lyehanganano oye li 2 751, naamboka haa mono ekwatho koshikondo shuusosiale 221 omumvo gwa yi 1987.

Sebulon Ekandjo

KONEKA NAWA!

ONDJALULAMASIKU 1989 OYA HOLOKA NGASHINGEYI NOTAYI GU R1-55. OMULESHI NOMUKRISTE KEHE OTO DHIMBULUKITHWA U ILANDELE MBALA OKAMBO NKAKA MANGA OMADHILA INAAGA TUTHA.

Okuza pomimvo 1972 - 1974 aatumwa Kristi Pakkala, Maija Mattila, Kauko Hakkinen, naAnna - Liisa Hirvela pamwe nomutonateli-shitayingeleki pethimbo ndyoka F. Ashipala nosho wo Loide Shipanga, Helena Nahenda, okwa li haa talele po omahala taga landula: Ohinda, Ohamutundu, Neshiyi, nomikunda dhopuushinda dhomegongalo Epembe.

Ndele okuza 1975 - 1976 okwa ningi oondjindikila omolwiita, omatalelopo nomakwatho inaga tsikila we. Shika inashi mweneka aanandjokwe, oya tsikile okulongela omutumba sho ya tameke okugongela iimaliwa mewiliko lyAnna - Liisa Harvela.

Iimaliwa oye yi landa ombasikela ompelela petameko lyomumvo 1979, noye yi tumine omusitagongalo gwEpembe nelaka tali ti : Nayi kale hayi thiki pomahala ga tumbulwa pombanda. Osho sha ningwa pa Eps. 33. 9, sigo ya gwedha ko omahala galwe.

Mesiku 14. 12. 1980 okwa li ya thiki puushinda waNkumbula pOmaya, nomesiku 5. 9. 1982 Onkumbula oya taambwa muukatekumeni. Egongalo Oshitayi olya kala tali futu iimaliwa yomunashilongatumo, Mateus Nghipunya oomvula odhindji manga taku longekidhwa egongalo. Tangi sho tamu tu humbata.

Mesiku 1. 1. 1988 Onkumbula oya mono edhina epe **Omukumo** ndyoka tali ka longithwa konakuyiwa. Oshitayingeleki sha simana, ngaashingeyi otu na egongalo lya zi melongekidho lyAanandjokwe, oshoka omolwawo lya holoka po noli li po.

Otu na ompumbwe onene, omeho getu otaga lokomene kune, omolwekwatho lyeni twe li



Methano ndika, iilyo yimwe yoshigongi sha CCN pethimbo lyelongelokalunga lyuukumwe mOngwediva

Aanandjokwe ya sindana okulonga oshilongatumo

pumbwa. Egongalo epe Omukumo oli na oosigoga tadhi landula ndhoka dhi lyaathane kokule.-

1. Oshifitu oshi na aanona 168 ye li mosikola okutameka Sub A - Std 11, aalongi yane (4) nogwoshikunino. Uule wokuthika okuza kegongalo kolupadhi ootundi 6.

2. **Omutwewomhed**i aanona 212. Ope na oshikunino shaanona 35 mbo ya tameka. Ope na ootundi ne (4) netata okuthika kegongalo.

3. **Elambo**, moshikunino 39 mosikola 114

4. **Oshilimeya**, moshikunino oye li mo 61, mosikola 121. Uule wootundi 5 netata.

5. **Ehangano**, moshikunino 26 mosikola 115

6. **Epamha**, moshikunino kamu na, mosikola 205

7. **Onanguwo**, kamu na oshikunino mosikola 244

8. **Omutonda**, oshikunino 68 mosikola 120

9. **Pegongalo, Omukumo**, aanona 152 aalongi yatatu okuza Sub A - Std 11. Natango oku na omahala gamwe inaaga ya melandulathano. Epya olya tiligana, ihe aalongi aashona.

Mpano pegongalo epe otwa pumbwa omuhandjo omolwuukule womahala. Aakwakala otaa monika omwaalu gwa gwana mpaka naampeyaka. Okwa li omikunda dhimwe dha ningi maputu omolwiita ngaashi: Oongodhidhanatuwa, Ombandango, nOshauku, ihe ngashingeyi omu na aantu taa longekidha omagumbo gawo ya kale mo.

Natango Aanandjokwe osho wo oshitayingeleki shOndonga, itatu ka dhimbwa ashihe mwe shi tu ningile, nonatango tsikileni neyakulo lyeni. Eyakulo lyeni otali pumbiwa nolya tegelelwa. Aayakuli yoshigwana yopambepo longitheni o-

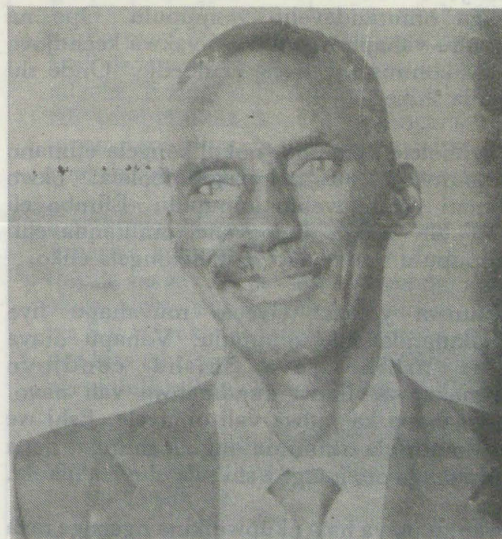
pethimbo lyiita ya geya

magano mwe ga pewa. Omuwambo oha ti: Omulongelo ogwa kutha omukwawo kondunda.

Tu eteleni omukumo ne mu gu taambulule ishewe. Egongalo ndino oli li muuzilo lela wOndonga, okilometa 109 okuza pombelewa yongeleki, kwa gwedhwa uudhigu wefululu. Pehulilo mpano otandi mu pandula amuhe sho mwa li mwa kwatha ndje nomwa yakula ndje pethimbo nda li muunkundi wokolutu okuza 1986 sigo 1987.

Ngaashingeyi ondi li nawa, Omuwa okwa galulile ndje ishewe oonkondo. Otandi longo nawa nokweenda nombili, tangi unene komagalikano geni.

V. Nepembe



Omusitagongalo Vaino Nepembe

Okulundilafana nokutandavelifa oipupulu

a. Okulundila okwo okupopya eendjovo ile ediladilo lonhumba kungadi nope he na eshiivo loshili moshinima.

b. Okumbebelekela omunhu oshinima shonhumba.

c. Outondwe tau eta fiyo omokuhalela omunhu wonhumba owii noku mu tenheka eendjovo di he fi doshili.

d. Elinenepeko tali dala elundilafano.

f. Onyalo tai dala okulundilafana.

g. Oumbada tau twala fiyo omelundilafano.

h. Okuhelineekelafana taku eta omalundilafano.

i. Pefimbo eli eshi twa kanifa ohole yotete yopakriste nouteku wopashiwana, osha twala

Omolwaashi pwilida!! Kaleni mu shi shi, ovamwatate ovaholike, omunhu keshe na kale ha endebele okupwilikina, ne liteelele mokupopya, Jak 1:19.

Eshi u li oshilyo shOngeleki yaKristus, osho ngaha ehandu laKalunga tali pitile muove nokuuya moshiwana. Onghee oto pumbwa okuliyoolola kounyuni. "Mokukalafana naava vopondje, kaleni mu na eendunge nokudimbulukwa efimbo olii," osho Paulus Omuyapostoli ta kumaida. Omolwaasho ou a hala okukala kaume kounyuni, ota ningi omutondi waKalunga." Jak 4:4(a).

Natu taleni omaufomhango ongeleki ya ELCIN otaa ti ngahelipi kediladilo eli 67:1-4. Lesha. Pativali Ombibeli otai ti ngahelipi komukalo wokulundilafana nokutandavelifa oipupulu. Dr. Martin Luther moshipango oshiti 8 ota ti ngaha: INO LUNDILA MUKWENI. Tala eendjovo nefatululo lasho.

Ou ta endaenda nomalundilo ota holola oshiholekwa, hano ino litula pwaau e na omilungu da makuka. Omayelet. 20:19. Kalunga ota lombwele oshiwana shaye ta ti: "Ondombwedi yoipupulu itai kala inai handukilwa, naau ta kunu oipupulu ota nyonwapo, Omayelet. 19:9.

Owa fa ino koneka nokutya okupopya oinima ino i tumwa ile u he i shii nawa, nokufekaela oinima, fiyo we i tandavelifa movanhu, osho oudiyo. Oipupulu oyo oya dja kuSatana, noye xe yayo. Ina kala moshili nande nghee a dja. Omolwaasho lidiliken hano owii aushe, noipupulu aishe noihelele nefupa nomalwaambo aeshe, nye mu hale shili ongaashi ouhanana omashini aa omeendjovo inamu ya sha, opo mu kule keenghono dao, mu xupifwe, ngeenge mwa makele kutya Omwene oye omunyenye, 1Pet. 2:1-3.

Onghee hano efeni oipupulu, popyeni oshili keshe tuu omunhu nomukwao, osheshi ofye oinhimbu mokukalafana, Ef. 4:25. Pexulilo apa nandi ku indile omuleshi omukwetu, opo tu kwafafane okududa mo ombuto yeu oyo ya mena paife notai kulile mumwe noilya, omanga efiku leteyo inali fika.

Nahas Mukwaita Ndevahoma

Ewanifo lomido 50

Da dja kep. 3

shii oilyo yeongalo letu, eshi va li ve tu pa eehove odo itadi kulu vali, ovo nee Tk. Kalangula, Tk. Esra Naikaku, Tk.V.Weyulu, Tk. U.Nghaamwa. Tate Kalunga ne tu mu pandulile ye ne mu wedele ko natango kwaasho mu kwete.

Oshivilo osha li sha enda momhepo iwa nokonima yaaishe ovaenda va shuna keshe umwe nondjila yaye.

Ovakwaneongalo
Ondobe



Otandi pandula koonkondo dha-Kalunga sho dha hupitha ndje moshiponga sheshina lyokuteta omboloto 5.8.1988. Omuwa onda hala oku mu simaneka aluhe.

Dha za kep. 2

kOshigongingeleki shopaulumompumbwe oshiti 13 naandjoka ya Z ya thanekwa koshitayingeleki shUukwanyama, dhi ethiwe, ko ku tendwe ongamba ompe yi li pokati ka L na Z.

Ontokolwa onti 69 yOshigongingeleki oshiti 14/88, okatendwa okatiyali, otaka ti ngeyi:

"Oshoongalele osha etelwa efaneko etivali leengaba doikandjongeleki kuhamushanga wokangudu noku li tala ngaashi la fanekwa koshipelende. Konima yeenghundafana dokukonga ouyelele, oshoongalele osha popila efaneko eli olo li tumwe koitaingeleki nokoyoongalele yovafita, li ka kundafanwe nokuholola ewi layo."

Omukokomoko gwomatokolo ga tumbulwa me tetekelo, ogwo gwe etitha sigo opo mpoka ELCIN, a kale monkalo ya nikila yamwe oshitsime. Ano sigo opo mpaka, ELCIN oku li ngaa momulandu gwiikandjongeleki nota longo ko mukanka gwoshikandjongeleki shimwe, manga oshikwawo tashi tendwa.

Mpaka kapu na eshunomonima, ihe opu na ngaa chumokomeho. Oshinima osho owala sha pumbwa euvoko, onkene otashi ende kashona.

Omuleshi omukweni.

A kanitha aanona yaali oshita



Omusamane Salomo Shigwedha, Onaanda okwa kanitha aamati Timoteus naSalomo ombadhilila sho ya sile momeya numwo. Okwe ya tangumunine ta ti:

"Jesus Kasindani meso ngo
A vekula oonkoondo dhomutondi ngo
Oye te ke mu yumudha mo
Kuusi e ke mu pe omalutu geadhimo
Ga kweshuka kage na we edhilo"



Omuhongifikola Nahas Ndevahoma

fiyo omelyeefo opo ovakulunhu navo va tulwe komaludalo mokupopya oipupulu nokulundilafana.

Okutandavelifa oipupulu

Luhapu omulundili haye omutandavelifi woipupulu, ndele otashi dulika yo oinima ei ivali i kale momunhu umwe aeke. Okupopya eendjovo we di uda ove ino di tumwa, owe linanga omutandavelifi woipupulu. Ope na ovanhu vahapu ovo have li vakwa keendjovo nopo konima ote livele eembedi: "Onde shi popila shike?"

Okuliholele komesho, nokulikongela efimano lomounyuni ou nolopakafimbolela, okwo oiimati yetandavelifo loipupulu. Efimbo eli loita ola ninga kuloovene omutandavelifi woipupulu muvahapu mokulikongela eliko.

Oikunwa ya eta elyeefo muvahapu fiyo omokutandavelifa oipupulu. Vahapu otava ende ashike tava shisha eendjovo momakanya. Ihava kundafanwa vali navo. Puvo ihapa ka pulwa vali omayele. Eshi we mu lombwela oshinima ongula shitoka, nena komatango oto hange e shi tula oluvala lilaula.

Ovanhu inava hala okupwilikina ngeenge tava lombwelwa, opo va ude ko oshili, voo va ha popye oipupulu noku i tandavelifa. "Okupula haulai, kwo okuminikila haupofi."

Shoka sha leshwa momapandja omape gembo lyedhina Operation Timber oshu ulike kutya omuwiliki gwongundu yaUnita, Dr. Jonas Savimbi, ekondjo lye okuza petameko lela, olye endela pamwe noompangela nelongelokumwe naamboka ha ti, kutya ota kondjitha. Embo olya nyolwa ku Mervyn Dymally muAmerica

Mpaka otapu holoka iithowwamo yimwe mbyoka ya hololwa membo ndyoka. Dr. Savimbi okwa valwa 1934 moMunhango kuuzilombugantu waAngola. Okwa mono onkatu yuundohotola womiti muSwitzerland, pethimbo ndyoka oshigwana shaAngola sha tameke ovlwa ondjoko yuupika womukolonyeki.

Angola osha tseyika nawa osho shimwe sha kala onzo onene yokuhalitha aapika momathelemumvo ga piti. Konyala aapika 20,000 ohaa landithwa omumvo kehe mokoloni ndjoka yaAputu.

Omumvo 1956 ongundukondjekimanguluko Popular for Liberation of Angola (MPLA) oya dhikwa moLuanda mewilikolya Dr Agostinho Neto. Omumvo gwa landula Holden Roberto okwa dhike onkwawo Union of the people of Angola (UPA) muCongo lyaBelgia, ndyoka tali ithanwa ngashingeyi Zaire.

Omumvo 1961 muFebuluali 4, aantu yomathele oya ponokele oondholongo dhaKaputu moka mwa li mwa patelwa aantu mboka ya adhikile moshigongi shopolitika. Esiku lyoshigongi shoka aantu 30 oya dhipagwa kaapolisi na 200 ye ehamekwa.

Eponokelo lyondholongo inali pondola sha, nando lya thigi aapolisi yaheyali ya sa. Oshiwike sha ka landula moLuanda omwa ka dhipagwa aantu yomathele, sha zi miikonene yadhipago lyaapolisi mboka.

MuMaalitsa 1961, ongundu ya UPA oya pono kele aatiligane nomathele oya thigwa ya sa

Tatekulu Andreas Markus 66 mOmaadi mOukwanyama, a xulifa oweenda 25.3.1988. Okwa fiya ko omufiyekadi, omonamati umwe omuwaina umwe osho yo xe

Michael Shipandekeni
Windhoek

Timoteus Itana, mUjtaye mOnankali a si 6.8.1988. Okwa thigi ko omukulukadhi gwe, aanona 16. nuutekulu 9. Eimbilo 196, 400 2 Kor 5:1 - 10

Hilma Paulina Timoteus
Ondjamba

Tate Sakaria Jakob Nkambakani mOmugulugwoonime mOmuntele, mOndonga (71) okwa mana oondjenda dhe 20.7.1988. Okwa thigi ko omuselekadhi naanona yahamano. Eimbilo 400 2 Kor 5:1 - 10

Ruusa Bertha Angola
Omuntele

Kuku Ester Nampala Shipanga (90) megongalo Oshitayi mOndonga, okwa mana oondjenda dhe 1.8.1988. Okwa thigi ko oyana yatano, aatekulu 12 naatekulululwa yatano. "Omwenyo gwandje oKristus nokusa okwo elikolo." Eimbilo 400

Ester Junias

EHISTOLI LYA DR. SAVIMBI, OLYA UDHA OOMPANGELA DHUUMBUDHI

Shoka sha futwa natango nombinzi yaaluudhe, sho ekondjo lya ka thika mokati komumvo ngoka, otaku tiwa epangelo lyaKaputu olyadhipagana nale aaluudhe 20,000.

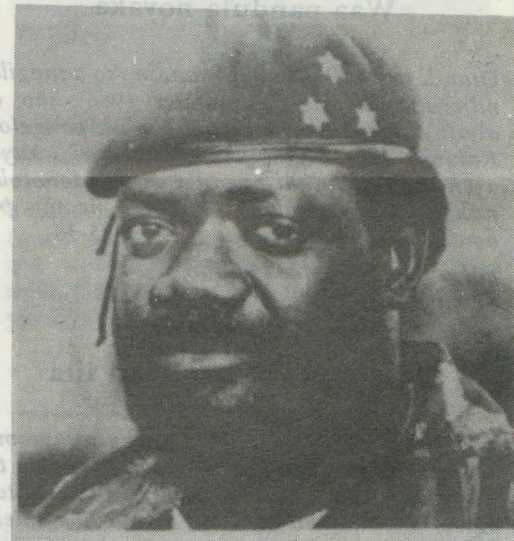
Aantu omathele nomathele oya tauka mo moshilongo ya ye kuZaire noku Congo Brazzaville iishiindalongo. Omathele guunona naakuluka-dhi oya gundile momuthitu noya sile mo omoluule wondjila. Kapwa li ekwatho lilwe. Shoka osho sha li etameko lyekondjo lyoshigwana shaAngola.

Jonas Savimbi sho a galuka keilongo lye kuSwitzerland, okwa thikile mongundu yaUPA muZaire ndjoka ya li tayi wilikwa kuHolden Roberto. Okwa thikile ta ningi amushanga omukuluntu gwongundu noministeli yiikwapondje.

Konima yethimbo efupi okwa zi mo mongundu, aniwa Roberto oku na unene uukwamuhoko. Okwa yi kuMPLA kuBrazzaville, hoka i indile ye mwene a pewe ehala lya simana mongundu. Sho nee inee li pewa, okwa zi po a ka dhike ongundu ye "The National Union for the Total Independence of Angola" (UNITA).

Omumvo 1966 okwa taaguluka oongamba nokuwe ya muAngola. Inapu pita ethimbo ele, sho ekwatathano lye naZambia lya teka, omolwa-

shoka aniwa okwa hanagulapo olutenda lwaBenguela ndoka halu enditha ongopolo yaZambia okupita muAngola. Sho a tidhwa mo muZambia, okwa yi kuEgipiti nokuKiina hoka a ka galuka ko 1968 muJuli.



Omupresidende gwa UNITA, dr Jonas Savimbi, ngoka a kana muupolotika we omolwelongelokumwe lye nAatiligane

Megaluko lye ndika, otaku tiwa Unita okwa kala ta konditha unene MPLA, shi vulithe sho ta kondjitha Aaputu.

Savimbi ina tsila ashike MPLA ondumbo, ihe noongundu onkwawo wo ngaashi UPA na FNLA. Nokuli moshikando shimwe muBern, shomuSwitzerland, okwa yi komukwanepangelo gwaAmerika i ilopote, kutya Angola ngele tali manguluka, oye na kale omupresidende.

Moodokumende dhiilonga yaakwiita yaKaputu, omwa monika euvathano lyaSavimbi naawiliki yomatanga ngoka opo yaa homonatathane nenge opo pwa ningwe shono tashi fala sigo omokukwatwa kwe. Oondokumende ndhoka odhi na enyolwasiku lyomumvo 1971. Oku na wo omauvathano omakwawo ngaashi lyomuSeptemba 1972, kutya Savimbi omulongithwa gwepangelo lyaKaputu.

Epangelo lyaKaputu sho lya gu koshipundi muPortugal 25.4.1974, otaku tiwa Savimbi opo a adhikwa a shaina ethaneko ekwawo nepangelo ndyoka. Epangelo lyaAmerika ndyoka lya kala tali yambidhidha Aaputu muAngola, sho lya mono Aaputu ya sindika, olya gandja iimaliwa konyala oomiliyona R30 okutsikila nekondjo.

Kombinga yongundu FNLA okwa pewa kuAmerika konyala R600 000. MPLA awike a thigala po kee na ekwatho lyopondje. Savimbi okwa ningi oshilongitho sha simana metanga lya SA, ndyoka lya ponokele Angola 1975, manga kwa tegelelwa oopaati adhihe ndatu dhi ilongekidhile ehogololo muNovomba 11, 1975.

Osho sha thiminike MPLA a konge ekwatho muCuba, li mu popile momahindo ga SA, naUnita osho wo.

Ondjila yekondjo lyaSavimbi, oyo ya pendutha eipulo maadhiladhili ngele Savimbi omumangululi tuu gwaAfrika nenge oshilongitho.

Sebulon Ekandjo

Eso lyombadhilila



Omasiku 30.7.1988 otwa kanitha omumwamemekadhona Petrina-Nangula Ntinda, gwomomukunda Ombalayamumbwenge mOshigambo. Manga a li i ipyakidhila niilonga mositola yaQueen Namundjemo, ombadhilila opwa holo-kele ekakunya. Olye ya nomakotokelo kutya olya tula 20c mokatanga kokudhanitha hoka ka li ka kala mositola moka, mwa li hamu longo Petrina, nolye mu dhipaga.

Nongele opè na ngoka e mu tumu, na kale e shi shi kutya ombinzi yomumwayina otayi mu kugile okoshipundi shepangulo lye. Eps.

Leonard B. Ntinda



Ova shangela nge tava ti

Holeka omikithi dhaavu, kau shi uupangi mboka, tse aakwazimo omwe tu tilitha ngele otamu ningi hamu popi omatando gaantu. Ngele otwa ka pula ondohotola ndjoka, ngoye ongoye mwene we shi popi? Lundululeni omikalo dheni.

**Maria Nepolo
Lindangungu**

Waa pandula noyaka

Otandi pandula Kalunga kandje sho a ningile ndje iinima iinene omumvo 1986, sho a aludha aamwandje yaali moshipangelo. Kalunga okwa gandja wundjolowe kuyo ayehe yaali. Otandi pandula wo ondohotola ndhoka dhe tu yakula, Kalunga ne mu pe oonkondo miilonga yeni. Heb.10:35-36.

**Sofia Nashikalepo Iyambo
Olupumbu**

Dha londoka ihadhi yi iita

Onda yile nda ka talela po omumwameme koshipangelo nda adha ta zi koshitandelo ta lili noonkondo, anuwa omupangi gwokoshitandelo e na iihako okwe ya te mu hokololele shoka ndohotola e mu lombwele. Anuwa okwa longwa oshege, ndohotola ke shi shi.

Hene u li oto lombwele omuvu kutya okwa tandwa nayi kundohotola? Oshinima shika osha tilitha ndje. Aakuluntu yeni ihaye mu pukulula po?

Nandi pukululwe pamapulo ange ku ELCIN

Kutya ngeenge taku diladilwa eyapulilemo lovakainhu moufitaongalo, ongeleki oya tala tuu tete omufika woshiwana omo yo tai longo mo? Ile omesho ayo okwa tala tete koiwana 'opondje, noko nee ya mona eyelakanifo?

Ile pamwe oya tala kutya ngeenge kai na eyapulilemo lovakainhu, oya fa inai va talela mouyadinhu, ile i he na ohole novakainhu vayo?

Ile oya talela oshinima shoufitaongalo koulongifikola, oupangi, nounambelewa?

**P. H. H.
Engela**

Efyuululo mounyuni wopaife

Onda li nda enda fiku limwe meefya donhumba ndele onda hanga efyuululo tali

kondjelwa. Hano efyuululo paife kali tilifa vali? Nale ovanhu ova li hava' tila oshinima shomufi.

Omushamane oye ngaho ha fyuululwa unene kovanhu va manguluka, ndee ovakulukadi vaye ova mangwa, yee umwe omulongi, hano e na oinima ndee ovakwao ove na efyuululo lixupi.

Ounona otava longele xe meumbo, ndele ngee a ti ke na vakwao vovadalwa hano onunona ihava fyuulula xe? Paife kaku na vali omushamane ha pe onunona vaye efyuululo. Oha ti ngaho ina kulupa fiyo ota fi ine va pa sha, voo onunona tava fyaala moluhepo va li naxe omukengeli.

Oinima nai ninge yovatekulu ava ve mu kalela ile hava ende puye, novana vomukulukadi, shaashi omukulukadi ove i longa aveshe. Efyuululo nali kale po ndee naku longifwe eenghono daKalunga ou a ila ko omunhu waye.

Ovashamane shangeni ava 'tave mu fyuulula momaumbo eni omanga inamu fya, shaashi alushe ovanhu otava tanguna ashike nokulihandukila nopo nee outondwe owe ya pokati kovakwapata vomukulukadi novakwapata vomushamane.

Kalunga ne tu kwafe hano oyo tu longife eenghono daye fye tu diladile oshinima osho

Aakwiita mOwambo oya tameka nale niigongi yomahogololo



Ongundu yo DTA, nayo oya kala tayi hiya aantu kiigongi yayo. Oshigogni shimwe osha li mOshakati, 15.10.1988, moka omusamane Dirk Mudge nomusamane Fanuel Kozonguizi, ya li aapopi aanene. Methano ndika aagundjuka yamwe mboka ya li moshigongi

Okuza Kotoba 1988, aakwiita ya SA oya tameka nokugongela aakwashigwana momikunda moka taa indile oshigwana shi ya dhimine po kiilonga yawo yomuyonena. Pamwe neindilo ndika lyombili, aakwiita pomahala gamwe otaa topola wo iikulya, omeya nomiti, nelalakano lyokutaambwa koshigwana.

Iigongi yoludhi ndoka tayi ningwa kongundu yEtango, oya ningilwa mUukwanyama nomOndonga. Miigongi mbyoka oshigwana otashi londodhwa aniwa shaa hogolole SWAPO, uuna

okatokolitho 435 taka tulwa miilonga.

Moshigongi sha ningilwe mEpale, 24.10.1988, popepi nOniipa komakakunya gomokamba 101, mOndangwa, aantu oya kala taa lombwelwa kutya SWAPO omukomonisi kee shi okuhogololwa noha dhipaga oshigwana. Oshigongi osha li sha geye kushoka omakakunya ga li tage shi popi, oshoka ashike iifundja yowala.

Ishewe pethimbo iigongi tayi ningwa moshigwana, aakwiita taa kongo aniwa ombili, opwa kala uukongo wokonga aagundjuka mboka ya vaa uumbindja wa shangwa omahangano gaa-

niilonga nenge SWAPO. MUukwanyama oosikola mbali dhopevi, Ondeihaluka nOkapombo, odha patele sha zi momatilitho goombapila.

Oombapila dhomatilitho ndhoka dha umbwa momudhingoloko gwoosikola ndhoka 17.10.88, otadhi londodha aakuluntusikola yomadhina taga landula ya huliithe po iilonga yawo yosikola ngele inaa hala oshilanduli: oyo Elifas Namhindo, Ondeihaluka; Jason Komada, Ondeikela; Jona Kakuna, Eopalo; Gottlieb Mokahwa, Onamahoka; Paulina Heita, Kapombo nomulongi Ndongo pOndeihaluka.

Pauelele mboka wa thiki mombelewa yOmukwetu, oosikola tadhi landula natango kadhi li miipundi: Omaha, Ombalantu nOseko ya Mwaala mUukwaluudhi pamwe noyaShikongo.

Nandi pukululwe

Omumati wedina Peingondjabi Haukongo, Omafo, a kwatelwe muAuguste 1987, ndele okwa popilwe moshifo shOmukwetu 30.1.1988, kutya okwa mangululwa ko, ndele fiyo opaapa ine uya keumbo, onghelipi mbela? Ohandi indile nefimaneko linene mu yelifile nge.

N. Nd. Foibe
Omakango

Omuleshi omufimanekwa, pamwe onawa ngeenge to ulike epandja loshifo osho mwa popiwa emangululo laHaukongo, osheshi otwa nyengwa okumona oyo sha shangwa

Hamushanga wOmukwetu



sha yuka nosha wapala okulongifwa.

Tuyeni-Keumbo Mwalundilange
Eengedjo Secondary School

Etumwalaka kOvanamibia

Vanamibia vaholike, otu lyeni mouposi twa ninga okakombo noludi hatu lidipaa fye ovalaule twa londafana. Ombili katu i na momaumbo hatu ngwadjulafana twa ninga ou nokaye.

Ndele tu taleni kefimbo tali tondoka omido tadi pokako ndele natango otu lyeni mouposi.

ESO

Otandi gandja ehekeleko kegumbo lyatate Albert Otto, mOniwe mOnayena mOndonga, sho ya thigwa po kumeme Ester Nentele Johannes Shipindo 8.8.1988. Eimbilo 329; Rom 6:8

Vaino Penda N.
Windhoek

+++++

Otandi gandja omahekeleko kaakwezimo amuhe yezimo lyandje mboka mwa topolelathana oluhodhi lwameme Hilma Gabriel. Nandi pandule wo amuhe mboka mwa li mwa yakula pethimbo lyuuwehame womasiku omashona moshipangelo moshiponga shoshihauto.

Fanus M. Nestor
W.Baai

+++++

Tatekulu Erastus Shomeya Kankono lyEendombe (66) a mana oondjenda dhe 27 Auguste 1988, Elondo. Okwa thigi ko oyana 8, aatekulu 22, aatekulululwa 38. "Omwenyo gwandje oKristus nokusa okwo elikolo." Eimbilo 617

Rebekah N. Kashinyenga
Elondo

+++++

Momasiku 3.9.1988 okanona Tresia Penomwenyo Nelawo yaNelomba okwa thigi ko aakuluntu ye ombaadhihila moshipangelo shaNakayale, mOmbalantu.

Koonakuvala nokaakwanezimo amuhe Omuwa Tate Nampongo ne mu hekeleke moluhodhi nduka. Eimbilo 335

Joseph Ph.L.S.Amunyela
Ombalantu

+++++

Otandi hekeleke aanegumbo lyakuku Elifas K. Nuunyangho sho ya thigwa po komutekulu gwawo Toivo 9.10.1988. Hekelekweni nohapu dha Job 1:21; Job 7:7

Elifas K. Amunyela
Ohuno Sec School

+++++

Okaholikemati kameme Lineekela Paulus na Tate Matias Petrus oka mana oondjenda dhako muAguste 1988, muuwehame wethimbo efupi moshipangelo shaNandjokwe.

"Omwenyo gwandje oKristus nokusa okwo elikolo." Eimbilo 516

Frieda Kakuga Paulus
Oshigambo

+++++

Ester Mukombambi 65 mOnambalili mOshitayi okwa mana oondjenda 5.9.1987. Oyana 5, aatekulu oyendji.

Tatekulu David Mutjotjo Shapwa (101) naye wo okwa landula omukulukadhi gwe 28.3.88. Oyana 10, aatekulu 40, aatekulu 34 oye a li mwene gwOnambalili.

Omunona gwomegumbo lyatatekulu Mutjotjo edhina lye Immanuel Shigwedha mOnambalili (15) a mana oondjenda dhe moshiponga shoshihauto, okwa thigi ko yina nokamwayina kamwe.

Joh 14:1-4; Eimbilo 110

Anna Nd. Dhikwa

+++++

Tu taleni exupifo tali tondoka, ohatu hangwa tuu tu li oupafi? Ohatu hangwa tuu twa teelega Omwene?

Kalimbo Nalimanguluke
naDolly Dolter Haipinge
Hamutenya Senior Primary School

Efiloshisho kovanaudu kali shi kutalululwa?

Nandi endulule omadiladilo a popiwa luhapu kovanyoli vatetekela. Omolwohole ya kana medu letu, ndee naava tave uya mo va dja koilongo otava kwatwa kolutapo lu he na ohole.

Oipangelo

Ovalongi vomoipangelo, otamu kendabala ngoo hewa, ndee ope na sha natango. Ovanhu otava mono oixuna eshi tava aluka lune ile lutano pe he na ouhaku. Ye ita lombwelwa nawa, opo a kale e na ouyelele kutya omolwashike ina pelwa omiti.

Otu na eendjila dile, notadi pula oimaliwa efimbo keshe, nde omunhu oto i koshipangelo koo taku tiwa: "Aluka vali mEtime," ove ino pewa nande oyo opela imwe. Oluhapu ovanhu itava wanifa omalombwelo eendokotola omolwoluhepo neengeda dihapu unene.

Omutali womunaudu litula ponhele ngeno oove to ende alushe ngaho. Nonande eengeda odi na sha nouwa woye mwene, kendabala okutala oinima aishe, ino tala ashike eshi omunaudu te ku hange mokamudile taka pepelwa noutalaleki ove to ti shiimba owopopepi.

Otu na eendokotola da dja komadu, ndee otadi lipyakidile unene. Fiku limwe onde ya nee nekalata lange nda dja nalo koipangelo imwe, eshi nda ifanwa mo, ngeno ndi kale omutumba, ondi wete ndokotola ta pe nge ekalata lange, noina popya sha. Pamwe omukifi wange inau takumwa nawa? Ihandi pulwa ngoo manga, ye ndokotola ta faafanifa nee eshi sha shangwa nale, naashi tashi tolokwa komutoloki waye?

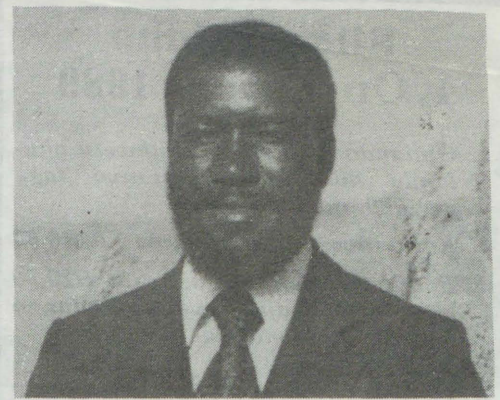
Itashi dulika puningwe ngaha:

1. Nдохотолa na ifane ovanaudu ava e shi kutya ote va mane po fiku olo.
2. Nдохотолa na kale a shiiva omuvalu wovanaudu ovo ha hakula mefiku. Oshi dule okwiifana ovanhu eengudu ye ite va mane po fiku olo, ndee vahapu tava shuna ine va ninga sha. Vali oshikondo shouhaku nashi kwatwe konghenda okuudila ovanhu ve li mefimbo londjala ndee otava elaela epwanga. Ouhapu voshiwana owa kufa eendokotola efiloshisho lovanhu nonando oo va longwa.

Hameembete ashike omunaudu ta filwa oshisho, na filwe yo oshisho kutya ota ende ngahelipi. Nandi indile vali ovatolokeli veendokotola mu kwafe eendokotola novanaudu kutya omunhu oku li kokule, a pewe yo efiku li li kanini kokule, ngeenge oku lixwepo nande lumwe mohani a mone ndokotola oshi dule Eritatu keshe.

Natu longeni nelitulomo moshiwana, shaashi handjabi aike ei to pewa kedu, ndele otwa taalela yo ondjabi yaalushe meulu, notai ka pewa ava va kondja meenghendabala adishe kedu.

V. K. Hamwaalwa
Eengeva



Timoteus Eliakim (35), Onaanda, okwa mana oondjenda 10.3.1988, muuwehame wethimbo efupi, kiilonga kuArandis. Okwa thigi ko he nayina naamwayina yatano.

Twa vulwa iifundja yawo

Omatanga gAacuba ano oga thinaneke oolye? Kehe ethimbo to pulakene oto uru taku tiwa Aacuba naa zemo muAngola, ano SA ota zimo unake muno, sho Aacuba oyo ayeke taku tiwa naa zemo muAngola nonando Aacuba muAngola oye li mo paziminino lyaAngola mwene? SA ano ngo inatu hala ye ke li mo paziminino lyaAnamibia ota yi unake?

Tse otwa loloka kufundja nokukulundila SWAPO, kutya oye ta tege oomboma. Aakwashigwana itatu itaale nando kutya Swapo oye ta tege shili oomboma, ngaashi taye mu lundile. Ngoni SA ta longo ilonga ye yuukolokoshi e ta lundile SWAPO. Swapo ote ya piti peni mo omo ye li mOshakati ya zima ya fa omafuma. Etheni omalundilo gokulundila SWAPO.

K. L. Tweuthigilwa

Eedula 10 mohombo daponya

Ohandi yandje ombili kootate noomeme, eendenge dange, oshoyo ovakulu. Nye ookaume ovalineekelwa osho ovo nda li nda lombwela oshivilo sheedula 10 mohombo.

Oshike nee sha eta eponyo olo? Osha li shi na okukala ko 24.6.88, etanga loKoevoeta le uya mo 8.6.88 potundi 10 yongula nokuponekela nokuhanauna omaliko ange. Vamwe vomunye mwa lotoka nghuwo. Vamwe inamu shi uda. Otulyeni pamwe mOmwene.

Osha li nee shi nyanyalifa neenghono osho sha ningwa mOmutsegwombahe fiku olo. Ovanhu ova dengwa, va lemana. Ounona ova nangekwa pondje efimbo loufiku. Mwene weumbo okwa teywa oluhamama, ye oye mwene womukunda. Ovanhu vomukunda ove li moupongekwa, venya vomumbo ihava tongwa ne vali, epya noikwamepya aishe oya halakanifwapo.

Hano oshivilo osho osha li sha ningwa mo 24.6.1988 mEngela nOshigambo. Tangi vakwetu eshi mwa tambula elombwelo lange eli.

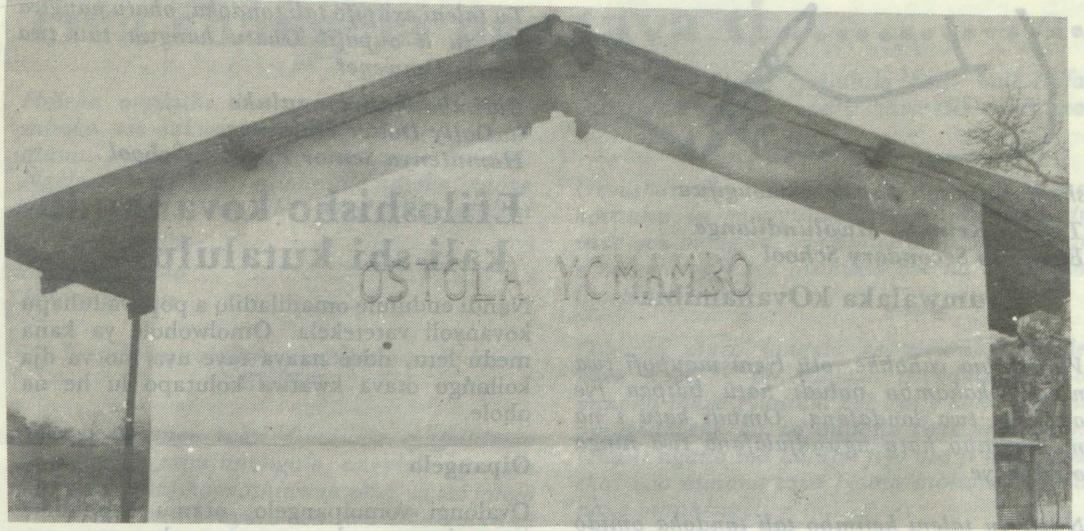
J. Ndongwi

Eilongekidho lyOmukwetu 1989

1. Ondando yoshifo shOmukwetu okulanda kooshimwe omumvo tagu ya 1989, oosenda 50c.
2. Komumvo muNamibia na SA R8,00
3. Pondje yaNamibia na SA R20,00 komumvo. Ndjika oyo wo ondando yoshifo shomondhila.

Aagongeli yomadhina gaaleshi nane wo aahalithi yoshifo ooshimwe nashimwe, ndhindhilikeni ano elunduluko ndika. Omuntu kehe ota vulu okulanditha nenge okugongela omadhina gaantu yopomudhingoloko gwe.

Amushanga gwOmukwetu



Pa pita paife ehani dihapu, eshi eyakulo lokulandifa omambo moshitaingeleki shaUkwanyama la kanghama. Paife ekuma ola mwena moupungo walo li he na omuyakuli, ngaashi tali monika mefano eli. Kape na mbela ou a hala okuya meyakulo eli? Ombelewa yoshitaingeleki osho inai yandja manga enyamukulo. Vakwetu omambo naa landifwe, vo nava leshwe!

UUKALINAWA

Omukifi wofyuuka otau dulu

Omukifi ou wofyuuka omo ondodo yofyuuka mohonde hai kala pombada, omo oshikunguluki shopaushitwe 'insulin', hashi kala shi he mo mohonde. Paemhito dimwe, oha yandje ofyuuka ihapu meedjo dolutu okwaamena eteyepo olo tali holoka mondodo omo.

Omukifi ou alushe oha kala movakwanedimo, ngeenge osheeti shao nawovene inau hakulwa nawa. Elondwelo kuo ohali monika ngehe u na okupashukila omukifi ou.

Ope na omaludi avalu ofyuuka (diabetic). Umwe oyoo hau ya pefimbo lounona, naao hau dulu okwata omunhu oshikando shotete moukulunhu waye. Momukulunhu ongeenge pe na eshonopalo loinsulin nohau hakulwa luhapu novenda yoinsulin yakeshe fiku.

okutonatelwa nawa

Mounona luhapu oha hakulwa neepela odo hadi shonopaleke ofyuuka yomohonde. Ohaku yandja yo eendya da pashukilwa di he na ofyuuka. Ope na oludi limwe lomukifi wofyuuka oo u na sha nomikifi doilyo ngaashi exuli, needjo domeva okukokifa omunhu, (thyroid), hau takumwa 'Secondary diabetic Mellitus', ndele inali fa omaludi a tumbulwa metetekelo.

Eli ihali pumbwa ouhaku wonghalamwenyo yomunhu, ndele ohaku longifwa ashike eepela doludi lonhumba.

Komesho hatu ka popya oshiponga shomukifi wofyuuka.

Phillipus C. Nghaamwa
Omuhongwa moScience in Physiotherapy
Oshakati

Moitaingeleki ikwao oilonga yelandifo lomambo otau ende ngoo ngaashi moKavango nomOuninginino. Mouninginino omu na eenhele mbali hadi landifa, Oshakati nOkahao. Ofitola inene yomambo mOniipa ohai konakona konyala efimbo keshe nhumbi eendjakulwambinga odo tadi longo. Apa inashi endifwa nawa, oilonga ohai mwenekwa. Oudiinini otau pulwa moilonga ya tya ngaho.

Epukululo



M O m u k w e t u
No.19/88 pepandja 8,
otapu holoka ethano
lyaLeevi Nehoya, ihe
oku na okukala
Simeon Nehoya
ngoka a kana okuza
19.6.1979. Tangi
epuko ndika sho tali
opalekwa

A. Antindi
Omuntele

OMUKWETU

Oye oshifo shOngeleki Onkwaevangeli paLuther yomu SWA/NAMIBIA.

Ohashi nyanyangidhwa mOshinyanyangidho shOngeleki mOniipa.

Omukuluntu gwoshifo omumbisofi Kleopas Dumeni.

Amushanga gwoshifo omusita Sebulon Ekandjo.

Ondando yOmukwetu muNamibia naSouth Africa R6,00 komumvo.

Palwe muAfrica R10,00 nokombanda yomafuta R14,00 komumvo. Mondhila R17,00.

Oondando nomambesitelo agehe naga tumwe kOmukwetu, Oniipa, P/Bag 2013, Ondangwa 9000, N A M I B I A.

ELOC PRINTING PRESS
PRIVATE BAG 2013, TEL. (06762) 11, TELEX 56-3257 WK
SWA/NAMIBIA

YA DHIGININWA NATANGO NENGE YA KANA

Mai 1979 — Festus Nakawa

31. 5.1979 — John Nakawa

5. 5.1980 — Toivo Shilongo

4.10.1980 — Marcelinus Shilongo

Juni 1979 — Matias Ashipembe

4.10.1980 — Modestus Ipinge

18. 9.1978 — Ndeifeka Erastus

18. 9.1978 — Rufus Amukuhu

18. 9.1978 — Mutumbulwa Amukuhu

10. 9.1981 — Kristof I.Shikongo

19. 1.1981 — Filemon Ikelia

21.1.1977 — Kaleb Paulus Shikale

25. 7.1980 — Vilho Mateus Nyambali

?? 9.1980 — Simeon N. Angula

?? 7.1988 — Hosea Heita

9. 4.9.1985 — Markus Paulus

28.11.1986 — Ruben Edmund

Kotoba 1987 — Tomas Iipito

8.10.1987 — Mateus Handjaba

3.12.1987 — Shipandeni Mupolo

22.7.1987 — Mateus Mudjanima

7.10.1987 — Jason Angula

17.3.1987 — Natanael Shikongo

27.11.1980 — Andreas Kashikola

27.11.1980 — Teofilus Mateus

27.11.1980 — Mateus Jesaja

29.6.1985 — Amutenja J. Ashipala

3.7.1987 — Abner Shikesho

22.7.1987 — Stefanus Nghifikwa

19.1.1988 — Daniel Israel

20.1.1988 — Natanael Ndatyapo

20.4.1988 — Erasmus Hendjala

20.4.1988 — Frans Hango

14.1.1988 — Gideon Kampulu

19.1.1988 — N.S.Ndatipo

19.1.1988 — Daniel I. Namwandi

20.1.1988 — Delfine Abraham

21.1.1988 — Natanael Stefanus

17.12.1987 — Hafeni Philippus (Hamunyela)

19.1.1988 — Johannes Nekongo

20.1.1988 — Salom Uusiku

9.4.1988 — Johannes Kawelekana (Komeya)

2.1987 — Silas (Kamule) Kandenge

Januali 88 — Linus Matongo

17.12.1987 — Josef Dumeni

19.06.1979 — Simeon Nehoya

Nhindhilika: Ngoka wa tseyia gumwe gwaantu mbaka, kutya okwa mangeluka, onawa u tseyithile ombelewa yOmukwetu mbala. Tangi kekwatho.

