

# OMUKWETU



40c

No. 18

ISBN 0-620-06828-0

## Egandjo lyombinzi tali zi kiinamwenyo

Oshikondo shuunogononi muAmerika osha holola po omukalo omupe gwombinzi hayi gandjwa kongombe. Shoka otashi ningwa omoluuvu waa shi okwaaludhwa woAIDS mboka tau taandele neendelelo enene mokati kiigwana. Otaku tiwa ombinzi ndjoka oya yogoka komukithi ngoka notayi vulu okupungulwa ethimbo ele molupe luusila.

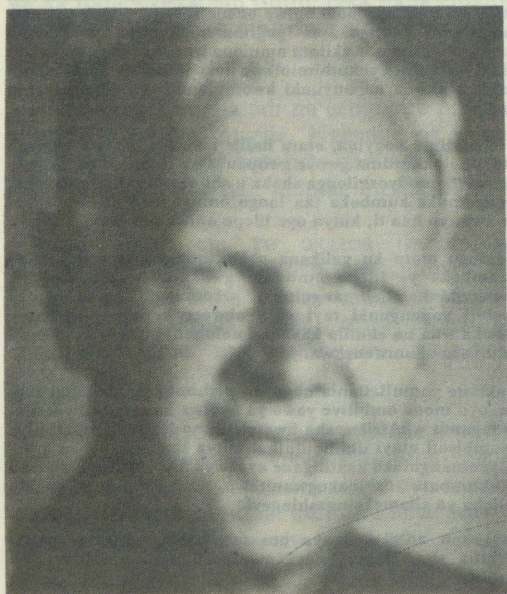
Ombinzi ndjoka taku tiwa otayi vulu okukuthwa miinamwenyo ayihe hayi yamutha, oya monika yi na uwanawa ngaashi tau landula:

- Ombinzi ndjoka kayi na ongondu (pamaludhi goombinzi dhaantu.)
- Otayi vulu okwiipungula muyo yene oomwedhi omugoyi. Ombinzi yomuntu ohayi kala ashike iiwike ihamano.
- Otayi vulu okupungulwa nokutumwa kondje yiilongo.
- Ombwanawa okulongithwa miita.

(Adv. 11.7.1988)

## Ongeleki ya ELCA muAmerika

Omumbisofi Herbert W. Chilstrom gwongeleki ya ELCA muAmerika ota talelepo Namibia nuumvo (1988 muSeptemba). Nguka omubisofi omukuluntu mOngeleki ompe mondjokonona yaAmerika. Efupipiko ndika ELCA epelela. ELCA otashi ti Ongeleki onkwaEvangelii paLuther yomuAmerika ngaashi tayi shi toloka melaka lyawo, "Evangelical Lutheran Church in America" (ELCA).



Omumbisofi Albert W. Chilstorm

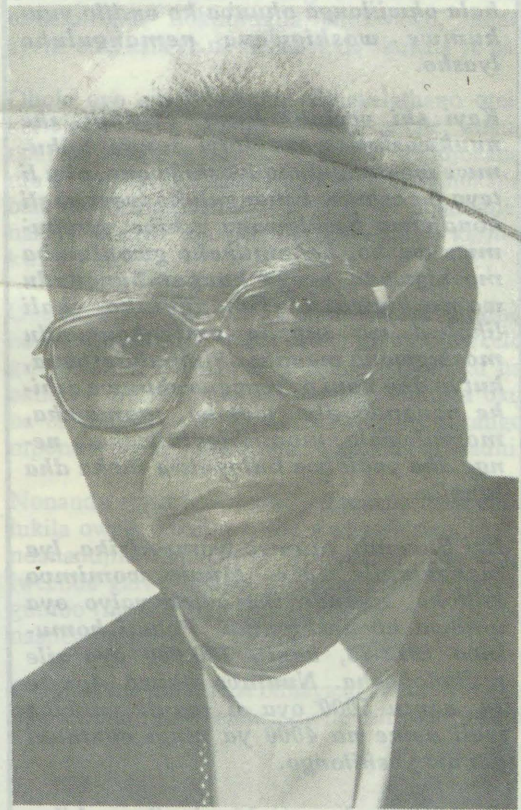
## ETUMWALAKA KAANASIKOLA INALI ZA KUDUMENI

Omumbisofi Kleopas Dumeni, okwa ti, ye ina tseyi sha ketumwalaka ndyoka lya leshwa mOkatutura mOvenduka, omasiku ngaka tali hiya aanasikola ya shune kootundi. Omumbisofi gwa ELC, Hendrik Frederik naye okwa yamukula aatoolinkundana nokutya Ongeleki ye kayi na moshamoobapila ndhoka dha halakanithwa molukanda lwaVenduka.

Omukwetu sho a pula omumbisofi kombinga yombapila ndjoka, okwa yamukula ngaashi tashi landula: "Ombapila hangame nde yi nyola nohangame nde yi shaina. Kayi shi yOngeleki yaELCIN. Ngele ope na ngoka e na ombapila nde yi shaina, ne yi gandje puuyeleele.

"Edhina 'Bishop Dumeni', otali vulu okutulwa po kushaangoka e li shi, noku shi okunyola. Oombapila dhandje ohandi dhi shaina noihadhi

umbwa koodhila. Ohadhi tumwa mopoosa. Ngoka a shanga ombapila ndjoka oye omulundili nomufundja. Ye mwene ota dhiladhila kutya ina tseyika, ihe ye mwene okwi ishi, nokwa tseyika wo kumboka e li nayo moshinima.



Omumbisofi K. Dumeni

"Nomukalo nguka ita nyateke 'Bishop Dumeni', ihe oye mwene ta yono. Omulundili nguka nomufundja shoka ta pumbwa osho okwiitedhulula nokuhempulula iifundja ye opo ta hupithwa. Na galikanenwe i itedhulula, ye a hupithwe."

Aakali yomOvenduka otaa ti, etumwalaka olya tuminwa aanasikola opo ya shune kootundi, nolya kolekwa koho nedhina lyomumbisofi Dumeni. Olya nyolwa moshiingilisa nomOshiwambo. Oshikalimo oshi li ngaashi tashi landula:

Tala kep. 6

Tala kep. 7

## "Inima ohii popiwa ngaa"

*Shilombwolwa, iinima ohii popiwa ngaa, sho pu na elongekidho li thike mpano lyokutaamba emanguluko moshilongo shino, oshivanawa wo okudhimbukithathana nokutya okwa kala iitya iwinayi noyi li omutondi omunene guukumwe mboka owo auke hau kaleke po emanguluko.*

*litya mbyoka kayi shi etukano muyo yene, aawe. Ihe ohayi vulu okutsana nokunywitha omakutsi ngele tayi popiwa nuuhasha, nuuntsa nenge nokwaashi sha. Ou shi shi tuu kutya omolwashike pethimbo lyekondjelomanguluko oyendji ya vuka okulongitha oshitya "Namibia"? Epulo ndyoka ngele owe li yamukula wa ti, mokutumbula Namibia, omuntu oho kala wa fa u wete emanguluko u li na nale nokuli, oshi li mondjila. Ano edhina Namibia, oshitya showala, ihe musho omu na sha tashi ti oshindji, pamanguluko.*

*litya mbyoka hayi tu hutuka, kutya tse "Aanama," tse "Aawambo" nenge nokuli tse "Aangandjera, Aakolonkadhi," iitya iwinayi, unene tuu ngele wa hala okwiilonga okuwa ko ondilo yuukumwe woshigwana nemanguluko lyasho.*

*Kayi shi yoshili? Eeno, oyoshili, ihe nuukwashili wayo itayi tungu uukumwe wemanguluko lyoshigwana, oku li teya po ashike. Emanguluko lyevi ohali kondjelwa koshigwana ashike muukumwe washo, hakomuhoko gwontumba moshigwana nenge kuupambungundu womoshigwana. Emanguluko ihali likolwa wo mpoka omihokongundu moshigwana inaadhi dhimbubulathana, kutya dho nani oshigwana shimwe ashike nonando dha yooloka, momalaka, momalwaala, momithigululwakalo nenge dha yoololwa kiitopolwa moka dha tungila.*

*Evi Burundi, olimwe lyomuAfrika, lya mangulukile 1961. Muule womimvo ndhoka, iikando ine aaleli yalyo oya umbwa ko koshipundi. Pokati komumvo 1972-73, aantu 100,000 oya sile miikolokosha. Nuumvo okuza Aguste 14, aantu 5000 oya si muule wiiwike iyali ayike na 4000 ya ningi oontauki pondje yoshilongo.*

*Ngele to pula, otashi ningilwa shike, eyamukulo to pewa olyo alike ndyoka; Kehe gumwe ota ti, tse "Aakwambi," nenge tse "Aandonge, Aacaprivi." Kape na gumwe gwomutse a yuulukwa emanguluko lyoludhi nduka, hasho? Okwaahala ngeyi, hasho unene sha simana. Okuninga po sha tashi kebele osho shi na oshilonga. Tse uukwamuhoko otwe u putudhilwa koveta yuukoloni noshi li mombinzi yetu. Eidheulo enene otwe li pumbwa moshinima shika. Yanda etumbulo kehe tali teya uukumwe woshigwana.*

## Ongeleki otayi pula natango aakwiita ya S.A. ya thigepo oshilongo

Momushangwahokololo gwalyo gwa piti omasiku ngaka, ewilikongundu lyOraataa yOngeleki muNamibia (CCN), otali pula natango aakwiita yepangelo "lyaa shi lyopaveta" ya thigepo oshilongo shika, onkalo yoosikola yi wape okushuna pehala lyayo.

Omutumba gwEwilikongundu ndyoka ogwa li gwa gongala 8.9.1988 mOvenduka, okukundathana uupyakadhi woosikola moshilongo. Ehololo alihe lya zi momutumba ngoka otali leshwa ngeyi:

Otwa dhimbubula iiyeti oyindji yuupyakadhi mboka u li po, inaayi faathana omolwookamba ndhoka dhi li popepi noosikola kuumbangalantu woshilongo, nodhe eta omaso nomaehameko kaanasikola.

Uupyakadhi moosikola owa tsikilathana ngaaka omolwepangelo ndyoka lya tindi okukutha po ookamba ndhoka, nonando lye shi indilwa koonkundundu ndhoka dhi lile po oshinima nodhi inekeliwa. Shika osha fala owala monkalo yaa shi we okwiidhidhimikilwa, sho konyala omatanga gaakwiita nogaapoloji ga tameke okukalelela poosikola moshilongo shika.

Otwe shi dhimbubula wo noluhodhi, kutya omawi agehe gopambili nomatamaneko oga yamukulwa netindo, noonkatu dhokukondjitha odha katukwa, ngaashi ndjoka ya tiwa "Egame-no lyoveta yekotampango lyuuthemba." (AG 16 of 1980), ya totwa kEpangelo lyopokati.

Tse otatu pangula eedhililo lyaalongwa, omaehameko gomuntu goshiningilawina, nefikopolyomaliko goosikola, ngoka taga ningwa kumboka taa pitile meuvitonayi lyoshili lyaalongwa nolyoshigwana.

Otatu holola olupandu lwetu kumboka ya kwatele komeho mokuholola uwinayi womulandu gwethiminiko lyopaukoloni noku gu kondjitha, notatu endlulula natango eindilo lyetu ketanga lyepangelo ndyoka lya shi lyopaveta, opo li thige po Namibia mbala opo tu shune konkalo yetu yoshito yombili.

Natango otatu holola euvitopamwe lyetu noosikola noniiputudhilo mbyoka yu ulike olukeno lwayo kaanasikola yokuumbangalantu, ngaashi enyolo tali shi pula: "Oshilyo shimwe ngele tashi ehama, iilyo ayihe otayi ehama nasho." 1Kor 12:25-26.

Ashike otu uvite oshimpwiyu shomuule omolwonkalo ndjoka yi li po ngashingeyi yuumbanda, yelimbililo noyomatilitho, ndjoka ye eta efadhukopo lyomayuvi ogendji ga ze moshilongo, naandjoka ya ningitha oosikola pomahala ogendji dhaa wape okutsikila mbala pomahala ogendji.

Otatu kaleke kehe gumwe a kale muuthemba wopaudemokoli okushuna posikola megundjilo mpoka ta mono ehala, nenge a hogolole okuza mo. Osho wo tatu koleke uuthemba woonkatu dhokutinda pambili okwoopaleka omapuko ngoka ge li po.

Pauelele mboka kutya otwa pewa ewiliko kuKalunga noshimpwiyu omolwaantu yaNamibia, otatu indile ishewe pu kotokelwe omukalo kehe tagu eta etopauko ngoka tagu homekwa pokati kongundu kehe yaathiminikwa, ihe pu kongwe omukalo gwokusinda esi-

mano lyuukwamuhoko, omayooloko guukwaaitaalo wOngeleki; omafekela guukwangundu wopapolotika; okwiihola mwene; uumbanda pokati kaantu nokwaainekelathana.

Otu na edhiladhilo pu ningwe oprograma yopalalakano yokutsitha omukumo gwoonkundathana mokati kuupyakadhi mbuka. Tatu tsu omukomo nokunkondopaleka oshihampi sheuvito pamwe pokati kaalongi naavali, kaanasikola naaniilonga, sha kwatela mo omagalikano, etungu lyondhimbubulo, iigongi yokugandja omauelele mOseminali negandjo lyiilongitho yongeleki okulongithwa moombumbwe ndhoka tadhi holoka po.

Otatu hiya aalongi ayehe Aanamibia ya huli-the po omahangano ngoka ga kankamekelwa kuukwamuhoko, opo ya dhike ehanganano limwe alike lyopashigwana lyaalongi. Mokuninga ngaaka, otatu hiya wo aanashilonga yalwe moshigwana, ya tameke okwiunganeka yoyene, yo ya kale aanashilonga ya kola methimbo ndika lyuudhigu, Namibia tali valwa.

Lwahugunina otatu hiya oshigwana shi galikane shaa na ezimbuko. "Kalunga yambeka Namibia, tu pa ombili nemanguluko ngashingeyi. Hanagula po omathiminiko opo uuyuuiki u pangele. Amen!

## OMBILIVE YEEGULUKA KUTHATCHER

Aakulukadhi ye vule 200 oya shaina ombilive ya tuminwa koministeli yotango yaBritania, efelo Margaret Thatcher, omolwonkalo yomu SA ya nayipala. Ombilive oya nyolwa pethimbo lyoshigongi shaambisofi yOngeleki yaAnglikana muLambeth, Britania, shoka sha li ko muAguste nuumvo. Aakiintu oyi indile omukiintu omukwawo ngeyi:

Omusimanekwa efelo Thatcher,

Tse aakulukadhi yaambisofi ye li moshigongi muLambeth, otwe shi kundana nonkumwe onene iilonga yiuhuna yomulandu gwa SA ngoka ta longitha maaludhe moshilongo moka ya valelwa. Aakiintu nuunona waa shi okuyalulwa oya ningi iihakanwa yokuthiminikwa noku undulwa, tashi holola naanaa okwaa na uuyuuiki kwomulandu gwopolotika yaa-moka.

Tse aakiintu nooyina, otatu indile kungoye, sha za komutima, opo pamutima gwoye gwopauvali u ninge shoka to vulu panwethomo lyoshilonga shoka u shi na. Otatu ku galikana, wi igamuke kumboka taa longo omuyonená kaantu ooyakwawo, yo haa ti, kutya oye lilepo aniwa ukriste.

Natango otatu ku galikana u kuutumbe nou kundathane naamboka ye lilepo omwaaalu gwaantu oyendji mu SA (oongundukondjelimanguluko). Okomukalo nguka aguke ombili yopauyuuiki tayi vulu okweetwa po, nuuwehame mboka waa na ehulilo kaanona noluhodhi lwaavali oyendji talu vulu okumwenekwa.

Aakriste yomuBritania nayo wo pethimbo lyoshigongi shoka, oya mona ombilive yawo ya nyolwa kaambisofi yomumbugantu waAfrika, sha kwatelela mo Namibia. Ombilive yaambisofi otayi dhimbubula, kutya Britania ngoka a gandja emanguluko kaatiligané ayeke ya SA, 1910, oye wo e na okuhumbata oshinakugwanithwa shokwaaludha onkalo ndjoka ya ehameke ngashingeyi.

"Oohapu adhike, kutya otu mu uvitile ohenda, itadhi kwatha sha, iilonga nayi monike," osho ombilive tayi leshwa.

# OVAKULUNHU OTAVA PULWA ASHISHE SHOUNONA, NEITAVELO YO

**Ndele (ovadali) ova eta ounona kuJesus e va kume, ndele ovahongwa vayeve hanyena ava ve va eta. Jesus eshi e shi mona okwa umana ndee ta ti kuvo : Efeni ounona ve uye kuaame, nye inamu va keelela ko, osheshi ouhamba waKalunga owaava ve li ngaashi ava.**

Eengeleki oda yooloka moshinima "shonghee" ku na okushashwa nande da diminafana moshinima osho "omolwashike." Eshasho lounona oko la li pefimbo loyapostoli, itashi tuwa mhata. Ashike mEtestamendi Lipe, omwa tenhenekwa unene eshasho lovakulunhu, itashi pelwa omunhu ombedi.

Eshasho otali udika ko mouyelele wetanda mEtestamendi Likulu, olo la ya ponhele yalo. Etanda olo etambulilo mo lokaana mongudu yovanhu vaKalunga Gen.17:12-13. Moukriste omunhu ota ningi omukriste' mokupitila meshasho laye Mat.28:19-20

Eshasho lounona inali yooloka kwaalo lovakulunhu. Meshasho keshe, lounona ile lovakulunhu, otamu ningwa etauluko, okudja koukulu nokuya koupe, komwenyo. Ehovelo eli otali mu etele yo oukwashilyo meongalo laKalunga nomOengeleki yaKristus.

Kutya omolwashike ounona navo tava shashwa, epulo eli olukulu. Ola tukula nokuli nEengeleki. Pamadiladilo aELCIN, ounona ove na okushashwa, osheshi Kalunga okwe va pumbwa ngaashi a pumbwa ovakulunhu.

Pahongo louleliumbo, aische ohai di kuKalunga; oilya, oimaliwa, oimuna nounona yo. Eshi twa pewa omaano ngaha, ohatu pulwa yo tu yandje sha kuKalunga nokuholola olupandu letu. Meshasho lounona, ohatu yandje okaana kuKalunga ou e ke tu pele. Ohatu ka yandja Kalunga e ka longife ngaashi a hala. Kalunga ota yambeke omaano etu aa nafye vene.

Eshasho lounona kali na sha unene neitavelo lounona voo vene, ile okushiiwa osho tashi ningwa po. Oshi na sha ashike neitavelo lovakulunhu nolupandu lavo. Meshasho kaKalunga ota tambula okaana note ka shange membo lovana. Eshi otashi ningwa ngee okaana koo vene ke shi shii, ile kake shi shii.

Kalunga ote ka tula oshilimbo monhulo yako nomoshipala, eshi tashi holola kutya okaana aka oke na Omukulili. Oshixwepo okaana ka ekeleshi omungome, ka ka toole emanya ile oshi ka ka toole eyoka, shi dulife taka toola emanya ile eyoka shaashi omungome ile oshi inake i ulikilwa.

Endjovo daKalunga odi na eenghono naanaa ngaashi Kalunga mwene. Ngeenge da i itadi aluka oshimha. Oda humbata ohole nefilonghenda laKalunga olo hali monika meshasho.

Eshasho otali eta yo okaana moukumwe wovaitaveli, omo ondjovo, yaKalung. tai hokololwa novanhu tava ufwu keendjovo daKalunga. Okaana otaka tulwa mengungo lovaitaveli omo mu na oupyu weendjovo daKalunga.

Endjovo edi otadi lundulula eenghalo dovanhu notadi va ningi vape. Okaana shimha tuu ka tulwa mongudu oyo, omhito i li po oyo ei kutya naka ka ninge oshiyuma. Omufita haye aeke ha shasha. Eongalo alishe olo tali shashe. Okaana

otaka tambulwa meongalo alishe notali tambula yo oshisho shoku ka pashukila paukriste, ngaashi tashi lombwelwa ovafikameni.

Otwa wana ndishi okukangheka okanona manga inatu shasha ngeenge inashi yela nawa kutya itaka ka tekulilwa moukriste norr kutila Omwene? Natango apa eitavelo lokaana inali pulwa manga. Kalunga iha pula osho ine tu pa.

Eshasho olo omaano aKalunga komunhu. Meshasho ohatu pewa omaano efilonghenda nomo yo hatu tambula. Konyala eengeleki adishe otadi dimine kutya osha pumbiwa omushashwi a kale e na eitavelo. Elitulemo ola pumbiwa, opo ovo va shashwa va kale oilyo i na

## Oondjokana nuukriste

**Omaitaalo ga yooloka muuyuni oge na omakankameno gago gontumba kombinga yondjokana naashoka tayi ti. Ihe nando ongawo ope na omakankamenoitaalo ngoka konyala taga holoka moongeleki adhihe, noga simana unene.**

Oondjokana yoondunge noya simana oyo ndjoka muyo aahokanathani, nomaukwatya gawo ga yooloka, omategameno, oondjodhi nomapuko nomakanitho gawo notaa humbata omitenge adhihe pamwe.

Osho oshinima tashi kwelengendja nawa momakutsi uuna oonakwiihokana ye na ekwatathano limwe, taa li omwiha pamwe, taa nyanyukwa notaa uvu nayi pamwe, taa taamba ko omapuko nomakanitho gawo notaa humbata omitenge adhihe pamwe.

Ope na owala oshinima shimwe, oonkondo dhimwe muuyuni, ndhoka tadhii kwatha okutunga uukumwe wa tya ngaaka, odho oonkondo dhohole. Ohole oyo omukanka gwashili moondjokana. Ohole ngele oyoshili oyo etaamboko lyomuntu ngaashi e li, nkene e li, noya kwatelamo wo euvoko, edhiladhilo nehala lyokulongela nokwiitula aluhe mushono mukweni ha panda, nonando shino otashi ti eiyambo.

Ohole kayi shi owala yopomasiku omawanawa, uuna mukweni we mu pumbwa, ihe oyi na okuholoka nopomasiku wo omawinayi guuvu, guudhigu nogekaniho. Ohole oyi na okukalapo nopomasiku ngoka gumwe gwomuyaali e li mothina yasha, uuna iinima inaayi enda nawa kombelewa, uuna omwiha gwa lunguna, nuuna gumwe a ningi ehiyo lyokwiithana aantu oye ndji mokatuthi okashona, pwaa na epitikilo lyamukwawo.

Momasiku ngoka wa ningilwa sha itoo shi uvu ko nuupu, pwaa na etsokumwe neuvathano, ohole oyo yi na okupangela. Ohole oyo okugandja nopwaa na okutaamba sha, okulongela nopwaa na ofuto.

Dhimbulukwa wo kutya, omuntu ota vulu okudhimbwa sha a li e na ando oku shi ku ningila



**Mark.10:13-16**

omwenyo molutu laKristus, eongalo.

Eshasho kali shi oshinima shopakafimbo, ndelenee olo olweendo laalushe omo omukriste ta teelwa a kale muKristus. Ekulo laye otali holoka eshi ta tunhukwa kefimano laKristus mokweenda kwaye kwefiku keshe. Ota teelwa alushe a indile "Nda hala ndi fe Jesus," nokOmhepo Iyapuki ote shi ningilwa 2 Kor.3:18

**Veikko Munyika**

omolwomaipulo niimpwiyu ye yopaumwene. Uuna yaali kehe gumwe ha gwanitha shono e na okwiiningila nokuningila mukwawo, nena ayehe otaa kala ye na shoka ye na okukala ye na.

Ohole oyo einekelathano. Einekelathano otali keelele omuntu okukala nomeho omale, noku-talatala pondje yondjokana. Ngele mondjokana mu na uuyuki, neinekelathano, oonakwiihokana otaa iyambelathana notaa kala ye holathane, nakehe gumwe ota kala nokugwanenwa kumukwawo.

Oondjokana odho oondjapuki. Okuya mudho okuya muuyapuki, moka mwaa na we omweelo gwokuzamo. Naangoka ta zi mo, shila oku na okuteya. Mokushuna mo natango omuntu oku na okwoopaleka owala epuko lye, ihe natango mpono a teyele, onkee ngaa tapu kala oshaadhi.

Nonando egumbo lyoonakwiihokana inali egulukila owala ookuume, ihe naakwiilongo, aayendanandjila nomapongo, ope na wo ngaa omalweendo galwe mpoka pwaa na gwopondje yegumbo (na kale oye lye) a pitikwa okuhangana naanegumbo.

Oondjokana dhodhene odhayaali ayeke, noka pe na omutitatu ta tegelele a mone oshitopolwa shi

**Tala kep. 7**



# Aakiintu otaa ti ngiini pethimbo ndika naandyoka tali ya?

Ewi lyaakiintu a) megumbo b) moshigwana c) nomOngeleki. Oshipopiwa tashi landula osha pulakenwa tango moshigongi shaakiintu shokomumvo shOngeleki mOngwediva nuumvo. Omulongekidhi gwasho efolo Nangula Kathimdi, Amushanga gwehangano lyaakiintu mOraata yOngeleki, mOvenduka.

## A. Aakiintu methimbo lyongashingeyi

Oshitya aakiintu moshipopiwa shika, okwa dhiladhilwa aakiintu muNamibia alihe nuuna sha pumbiwa otaku gandjwa wo iiholelwa yaakiintu muuyuni. Ngele tatu popi ethimbo lyongashingeyi, otu na wo ethimbo tali ya momadhiladhilo.

1. **Egumbo:** Otatu tameke noshitopolwa shegumbo moka aantu ayehe haa mono eputudho. Monkalo yegumbo omu na enyanyu, uuna aanegumbo yu uvite elago okukala pamwe, oshowo omaudhigu uuna ohole, ombili nelandulathano ya kana megumbo nosho tuu.

Moshilongo shetu aakiintu oye na oshinaku-gwanithwa oshinene megumbo, okusila aanegumbo oshimpwiyu, osho wo okulalakena ombili nelandulathano. Aakiintu yamwe mokati ketu oyo ooyene yomagumbo nokuli omolwomatompelo gi ili nogi ili.

Egumbo kehe moshigwana olya fa oshitopolwa sholutu nenge tu tye ondhopi metungo, 1Kor 12:27 Egumbo ndyoka li na omaudhigu olya fa etungo li na oondhopi inaadhi gwana po. Omaudhigu otaga vulu okuholoka uuna aanegumbo unene aakuluntu, ya ningi aapika yiikolitha, uukwazimo, uunganga, oluhoko, uumbanda, ondumbo, omalundilo niikwawo ya fa mbyoka.

## 2. Moshigwana:

Moshilongo shetu omu na iita, ondjala nombinzi yaa na ondjo tayi tika uusiku nomutenya. Iita oye tu yuga ootate, oomeme, aana yetu, aamwameme nookuume ketu nosho tuu. Iita



Omuwiliki gwaakiintu mOngeleki, W. Shikomba

oya pona po uuyuki nombili moshilongo shetu. Uupapeta owa ningi omukalondjigilile.

Aantu otaa lopotathana omolwiimaliwa mbyoka tayi futwa ombinzi yaa na ondjo. Iilonga yomuyonena tayi longwa komutondi ihayi mu sitha we ohoni. Oomboma odha mana okutopa nokangendjo kuusiku ka faalele oyendji. Kape na egumbo inaali lila omolwiita.

Ethimbo lyokwiihukata olya pita, aakiintu Aanamibia oya tegelelwa ya kuthe ombinga mepotokonono lyomukundu gwoshilongo shetu. Shimwe shomiinakugwanithwa yetu nashi kale okuninga omatokolo, kutya otatu ningi po shike. Otashi gandja omukumo sho yamwe yomutse ya tameka nale nokuli.

Ongoshiholelwa onda hala ndi tumbule sha kiigongi ya li ya ningwa pokati kaakiintu noma-

lenga gomUukwanyama. Aakiintu oya li ya holola omaudhigu gawo ngaashi taga landula:

- Okatokolitho kIgwanahangano 435, ka ye miilonga mbala ngaashi tashi vulika.
- Okamba pOhangwena ndjoka ya faalele oomwenyo dhaanasikola, osho wo ookamba dhilwe dhi ze po popepi noosikola.
- Aanona yetu yaa landulwe we ngele taa taagulukuka oongamba yu uka muAngola pamwe hoka taa yi oko ku li hwepo.
- Iita yi hule po, noshilongo shi manguluke.

Omalenga oga li ga tindi okupulakena omaudhigu gaakiintu, ihe aakiintu inaa sa uunye, oya tsikile noonkundathana dhawo pomuthika gulwe gwi ili, sho ya ka mona omusamane Kalangula, ngoka kombinga ye e ya yamukula nawa.

## 3. MOngeleki

Nonando aakiintu oyo aadiginini miilonga yOngeleki moshigwana shetu, ekuthombinga lyawo noompito dhokuninga omatokolo mOngeleki, odha ngambekwa. Methimbo lyongashingeyi aakiintu mboka yu uvite, kutya oyi ithanwa okulonga mOngeleki ngaashi aasitagongalo, naa pewe utemba wawo ngaashi naanaa hashi ningilwa aalumentu.

Ogendji gomomatompelo gaamboka inaa hala aakiintu ya ninge aasitagongalo ina gi ikwatelela koohapu dhaKalunga, Ongeleki ngele otayi tsikile nokwiindika aakiintu ya longele Kalunga ngaashi yuu uvite, nena otayi talika ko ya hala okwiitula peha lyaKalunga mwene. Omahalelo omawanawa otaga gandjwa koongeleki ndhoka dha yapula aakiintu moNamibia nomuuyuni auhe.

Onkalo yaakiintu muuyuni auhe sho tayi shongola, Ongongahangano yOngeleki muuyuni (LWF), oya tokola oomvula omulongo tadhi landula okuza 1988 yi yambidhidhe aakiintu momaudhigu gawo. Omvula ndhoka odha nuniwa okwoopaleka onkalo yaakiintu muuyuni, oshoka moomvula omulongo dha pita, 1975-1985 inamu longwa shomupondo okupotokonona omikundu dhaakiintu.

Elalakano lyoomvula omulongo dhuukumwe 1988-1998, oongeleki tadhi yambidhidha aakiintu olyo:

- Okuladhipika aakiintu mokuhomona oongudhi ndhoka dha tulwa po okuthiminika aakiintu muuyuni, miilonga nomoongeleki.
- Okutaamba ko iiyetwa po yaakiintu mOngeleki nomoshigwana, muuteolohi nomii-kwambepo, uuna aakiintu taa kutha ombinga mokuwilika nomokuninga omatokolo.
- Okusimaneka omadhiladhilo niilonga yaakiintu nokukondjela uuyuuiki, ombili nokuudha kweshito.
- Okukwatha Oongeleki opo dhi kale dhamauguluka komilandu dhokatongotongo (racism, sexism and classism) momalongo taga tongola aakiintu.

## B. Aakiintu methimbo tali ya

Okuhanganitha aakiintu muNamibia osho shimwe shomiinakugwanithwa yoshipundi shaakiintu mOngongahangano lyOongeleki muNamibia. Oomvula omulongo dhuukumwe tadhi landula, otwa tala kutya etameko ewanawa lyiilonga yoshipundi shaakiintu.

MuApilili 8-9 nuumvo aakiintu oya gongalele mOkahandja. Omahaio oga tuminwe komaha-

Tala kep. 9



Methano ndika kolulyo, efolo Nangula Kathindi taa kundu thana nomusamane Chief Ankama

**ENGELA, Oukwanyama:** Omusika yopa-Ngeleki moshitaingeleki shaUkwanyama, oya dana ewanifo lomido 10, eshi ya ya koshi yEwilikongudu, pamaufoyukifo oshilonga shomusika. Oshivilo osha ningila mEngela 2-4.9.1988, mewiliko laHamushanga womusika moshitai osho, omushamane Toivo Ndevaetela.

Oshoondaxa omo oshivilo sha xula, oshe li twa yo kumwe nedimbulukwo leuyo levaengeli moshitai osho. Konyala omaongalo aeshe e dule 20 oshitai okwa tumine ovakalelipo vao moivilo oyo ya ningilwa mEngela. Engela omisioni yotete oufikilo eshi eongalo laUkwanyama la tembuka mOukwanyama waAngola.

Oitaingeleki ikwao itatu muELCIN, osha-Ndonga ashike sha monene omhito yokufika nokuyandja ekundo lasho. Ekundo ola yandjelwe komushamane Eliakim Shiimi (Prins), omuponhelewiliki woshilonga shomusika mOndonga.

Mondjokonona yaye ei a longekidila oshivilo, omushamane Ndevaetela okwa ti oshitukulwa



**Omuwiliki gwoshituthilwiimbo, omushamane Toivo Ndevaetela ta gandja elandulathano kaakwashituthi nkene shi na o-  
kweenda**

shaUkwanyama, hangaashi ikwao mOwambo, ndele sho osha kala efimbo lile sha tya "nyee", kombinga yokwiimbula omaimbulo opamhepo, fiyo 3.9.1891, eshi ovahongi votete Ovandowishi va fika. Okwa ti, peuyo lavo opo yo pa konekwa kOvakwanyama, eyooloko lokwiimba nokwiimbula. Omaimbulo opamhepo ohaa imbulwa fimbo oiimbo tai imbwa," osho chokololo la ti.

Omadina ovatumwa Ovandowishi a holoka mondjokonona omu oo F. Mesenholl naAugust Wulphorst, ou Ovakwanyama ve mu luka Hashipala. Eongalo lotete ola hovela mOmupanda, opo la shikulwa kOndjiva, Onamakunde nOmatemba.

Konima yomido nhee oilonga yovatumwa, Ovakwanyama 14 ova shashwa pandjokonona ei, efiku 21.7.1895 mOmupanda. Ovashashwa ava okwa tiwa ova kala ve shi shii okwiimbula nofimbo inava shashwa. Eshasho lotete mO-

## Ehovelo lomusika moukwanyama la dimbulukiwa



### Ongundulwiimbo lwoshitayi shUkwanyama pethimbo lyoshituthi shegwanitho lyomimvo 10

ndjiva ola ka ningwa 1897.

Ondjokonona ei oya ulika omaimbulo omakulukulu aa a lundululilwa mOshikwanyama kOvatumwa, a kufwa mOshindowishi. Omaimbulo oKrisimesa, ouvalelo uyapuki, ongula, onguloshi, oukwatatu nosho nosho.

"Elalakano lovahongi ola li okuhonga Ovakwanyama va itavele shili Kalunga komeulu, onghee ova hovela okuhokwifa ova paani mofikola yeshasho nomaimbulo," osho Ndevaetela a ulika enwefomo lomusika mOvakwanyama pefimbo linya.

Konima yeedula 25, doilonga yovatumwa mOukwanyama, okwa tiwa opo nee pa ka ningwa etau linene, eshi omaongalo aeshe enya ane a tembukila pOmafo, opo e uya a ninge eongalo limwe alike, eli tali ifanwa paife Engela.

Eshi Engela la nangala novatumwa Ovandowishi va shuna, ovatumwa Ovashoomi ova twikila koshilonga shOvandowishi sholwiimbo.

Okwa tumbula yo omadina makwao omapenda ngaashi; Paulus yaXuxwa, Martin Shanyenge, Josef Kainge, ooKanyalilo nooSimon Jona navakwao vahapu va ka tulumukwa nale. Omunyoli wondjokonona okwa ninga eindilo lowina kovanyasha, nokutya eshi va dalwa ngaha koshiwana shi hole okwiimbula, voo mbela elalakano lavo nomusika mOngeliki olilipipo?

Omuholololi okwa ti, ope ke uya Omundowishi Paul Schulte, mEngela tuu omo, ta popi Oshikwanyama shi yela sheke, ou a fikila ta udifa mOshikwanyama. Ou okwa tiwa oshilonga shomusika okwe shi ehenifa pondodo yopombadalela.

Movakwanyama yo mwa penduka omanyakwa okwiimbula aa omadina a holokele mondjokonona ei. Tete omwa tumbulwa Abraham Shiweda (Takalungwinike) nomukulukadi waye Emilie Haipinge. Ehepu otali ti; ava ovonee va dala Maria Abraham, ina yomufita Ismael Nhinda.

**Tala kep. 8**



**Aasitagongalo oyendji yoshitayingeleki shUkwanyama, oya holokele moshituthilwiimbo mEngela. Otaa monika methano ndika, pamwe nomumbisofi K.Dumeni pokatilela kethano**

# OSHITOKOLITHO 435 OSHIKUNDATHANWA



**Ovanhu 10,000 otaku tiwa okwa li va kala moshongalele shopapolotika 11. 9. 1988 mOvenduka.**

## Ombelewa yomayelifilo

Pefimbo eli okatokolifo 435 oke li komilungu davahapu. Hapondje ashike yoshilongo taka popiwa ngaashi nale, ndele otaka popiwa yo nomeni loshilongo.

Omafiku a dja ko, mOvenduka omwa li eenghundafana domafiku avali tadi kwandjangele moinima ya pamba okatokolifo 435 noinima nghee tai ka ende shimha ka tulwa moilonga.

Eenghundafana edi oda li mewiliko longudu "Namibia Peace Plan 435" (NPP 435).

Pakupopya kwovawiliki vongudu ei, NPP itai lalakanene oku ke lishangifa mehoololo olo tali ka ningwa pefimbo okatokolifo 435 taka ka tulwa moilonga, ndele otai lalakanene okuxumifa komesho etulomoilonga lokatokolifo oko.

Omukulunhu wongudu ya tumbulwa, omunaveta Bryan O'Linn, mokuyelifa omalalakanano ongudu yaye okwa twikila ta ti: "Ongudu ei otai lalakanene yo okupataneka pouyelele ovo tava fatululile ovanhu oshikalimo shokatokolifo 435 pamukalo wa puka.

Okwa weda ko ta ti ongudu NPP oi lile po yo okuyandja omauyeleele nomayelee pamaindilo ee-

ngudu adishe odo tadi lalakanene etulomoilonga lokatokolifo 435.

Eenghundafana dinya oda hovelele eti 9-10/9/1988 modoolopa yaVenduka, ndele tadi ka xula noshongalele shaaveshe mOkatutura eti 11/9/1988. Meenghundafana nomoshongalele mOkatutura, omwa li mwa kalwa kOvanamibia vomaluvala aeshe: Ovalaule nOvatilyane noshonsho.

Mokutaalelifa omesho ovapwilikini, muNamibia la manguluka, omushamane O'Linn okwa ti: "Emanguluko itali ke tu tula mOparadisa; loo itali ke tu ninga oipuna, ndele otali ke tu pa omhito yokutunga oshilongo eshi nomhito yokulonga pamwe nokuninga oshiholelwa shiwa muAfrika laumbuwanhu."

## ONGELEKI ONKVALUTHER MUAMERIKA

### Dha za kep. 1

ELCA yi vule okudhikwapo nokutameka iilonga muJanuali 1, 1988.

Ongeleki yoyene ya ELCA okutala kombanda oya zi moongeleki ndatu. Ihe konima yayo oku na omusholondondo gwoongeleki odhindji dha hangana moomvula dha ziko. Oshe ende ngeyi: Tu tumbule ko owala yimwe.

Omumvo 1960 oongeleki dhi li ne (4) odha tholoma ongeleki ndjoka "The Amerika Lutheran Church" (ALC). Oongeleki ndhika odho: "American Lutheran Church" (ALC) yotango ndjoka ya totelwe omumvo 1930 koongeleki dhika: Ohio Synod (1818), Buffalo Synod (1845), Iowa Synod (1854), noshitopolwa shimwe shoTexas Synod (1851). 2. "United Evangelical Lutheran Church" Danish (UEL) ndjoka wo ya totelwe omumvo 1896 ya zi mehanganano lyoongeleki ndhika: Blair Church (1884) naNorth Church (1894).

3. "Evangelical Lutheran Church" (ELC) ndjoka ya zile mehengumukilomumwe lyomumvo 1917 koongeleki ndhika: Norwegian Synod (1853), Hauge Synod (1846), naUnited Church (1890). 4. "Lutheran Free Church" (LFC) oshipambu shoUnited Church ndjoka ya hanganene na ELC mo 1917. Oshipambu shika oshitolakolo momumvo 1897 mehanganano ndyoka haku tiwa "The Friends of Augustburg ndyoka yo" Lutheran Church in America" (LCA) ya totwa, koongeleki ndhika: 1. United Lutheran Church (ULC), 1918, 2. Agustana Lutheran

lya totelwe moUnited Church omumvo 1893.

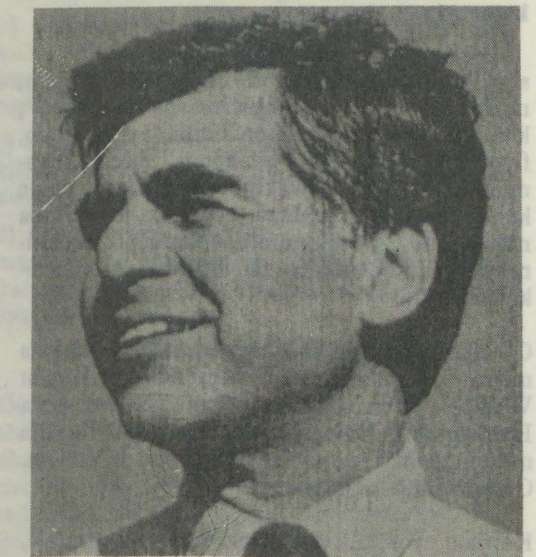
Omumvo 1962 ogwa mono ishewe ehanganano lyoongeleki onkwaLuther sho ongeleki Church (ALC, 1860), 3. American Evangelical Lutheran Church (AELC-Danish, 1870), na 4. Suomi Synod nenge Finish Evangelical Lutheran Church (1890). Ndhika ne kumwe odho dha ningi LCA mo 1962.

Omumvo 1976 muDesemba ongeleki ndjoka haku tiwa "Association of Evangelical Lutheran Church" (AELC) oya totwa sho ya pambuka koLutheran Church-Missouri Synod (1847).

Ano omumbisofi Chilstrom ota wilike ehanganano epe lyoongeleki ndhoka dho ALC, LCA na AELC sho kumwe dha ningi ELCA okuza Januali numvo. Omumbisofi nguka ota wilike ongeleki ndjoka pamwe naambisofi yalwe oyendji, noye e li omutsekaalelipo gwongeleki ayihe paukumwe wayo. Shaampoka ta popi pambelewa ota popi peha lyiilyo yongeleki ye yi vule oomiliyona ntano. Onkee etalelepo lye koNamibia olya humbata aantu ayeche mboka kondungu yalyo.

Osha yela wo kutya ongeleki tayi wilikwa komumbisofi Chilstrom oya tameka okuyelutha po oshinima shomukundu gwaNamibia moombinga adhihe. Momumvo nguka oku na aanasikola Aanamibia 50 kuAmerika muunasikola wowina wa dhikwa po kongekeki ndjika omolwaNamibia. Moku shi ninga otaa tu kumike tse Aanamibia mekondjo omolwombili nuuyuuki moshilongo shetu.

S.V.V. Nambala



**Omwiilogololithi mepangelo lyaAmerika Michael Dukakis**

# OSHINENE NGASHINGEYI MUNAMIBIA

- MuNamibia otamu ka kala ashike ovapolifi 300 va hoololwa kuNgoloneyandjai notava ka longa pamwe novanambelewa voiwanahangano mokutula po oveta nelandulafano pefimbo lehoololo.
- Munamibia otamu ka kala ashike ovakwaita vaSouth Africa 1500, ashike otava kala ve li meekamba.
- Ovakwaita va SWAPO navo otava ka kala meekamba odo inadi tumbulwa kutya otadi ka kala peni.
- Manga ehoololo inali ningwa, eenghwa-twa adishe dopapolitika odi na okumangululwa.
- Ovanamibia ava ve li pondje ove na okwaalukila moNamibia.
- Eeveta adishe domafininiko nodokatongotongo odi na okukufwapo.
- Ehoololo otali ka ningwa pamukalo "womunhu umwe newi limwe" -tashi ti omunhu keshe a wanifa eedula dokuhoolola ota hoolola ashike lumwe.
- Oradio yoFM/SWABC noTV, otai indilwa i ka longe nouyuuki pefimbo lehoololo.
- Namibia otali ka manguluka pexulilo lomudo 1989 ngeenge okatokolifo oka tulwa moilonga mulotete laNovomba (Nov.1-(1988). Omhepo yeenghundafana moshilando oya li ya nyika okulongafana, osheshi haluhapu Ovatilityane muNamibia ve lilongekida okukundafana nOvalaule kombinga yemanguluko loshilongo eshi. Pefimbo leenghundafana opwa li Ovatilityane vamwe, unene ovo ve na oupuna muhapu, va holola oubada kombinga yomaliko avo muNamibia la manguluka.

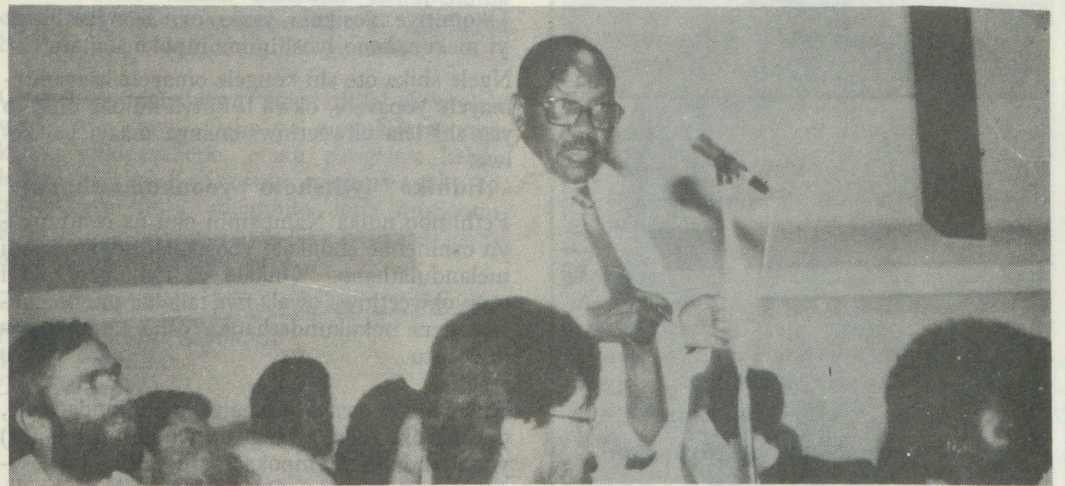
## OMBILIVE MEDHINA LYOONGELEKI

### Dha za kep. 1

Tse aawilikingeleki muNamibia mboka twe mu kwatele komeho ngaashi Moses mombuga yiita, paMbimbeli. omwi idhidhimikile uuwehame nomahepeko, otwa kundathana naComrade Nujoma, tu mu fatululile kutya ethimbo lya thiki, uunona waNamibia u ilonge nou tunge Namibia epe.

Otwe mu gunu, kutya uunona owa kondjo ekondjo enene, ihe ngashingeyi onawa u ki ilonge. Uunona owe tu sindile ekondjo okukondjitha epangelo lyoopapeta. Oongeleki dhaNamibia otadhi pangulilwa shono dhe shi ningi. Etumwalaka ndyoka, tatu ku etele ngashingeyi, olyo ndyoka, kutya esindano olyetu.

Ihe ne indeni ngashingeyi mu ki ilonge, mu tunge onakuyiwa yetu onene nompe, muNamibia lya manguluka. Taleni oohapu dheni ne mu dhiladhile nawa. Dhimbulukweni, NANSO ina za koSWAPO yaComrade Nujoma. SWAPO oku na ehanganano lyaagundjuka ye mwene, mboka ye lile po aagundjuka yomadhiladhilo ga yela.



### Omusamane N. Maxwilili ta popifa oshoongalele shaaveshe

Omhepo yoshoongalele shaaveshe muKatutura oya li ya nyika odjuulufi yemanguluko, kondjoko youkoloni waSouth Africa nodjuulufi yetulo moilonga lokatokolifo 435. Omaimbilo ekondjelomanguluko aSWAPO okwa li a yaka notaa mwenyewe oshoongalele shinya. Omupresidende wa SWAPO, Sam Nujoma naye okwa li a tuma etumwalaka lowina olo la li la leshelwa oshiwana eshi sha li sha ongala moVenduka.

Omushamane Nathanael Maxwilili, oye umwe womovapopi vanene moshoongalele shaaveshe moKatutura.

Okwa lombwela oshiwana shaNamibia ta ti: "Kalunga ihe ku efa nganyoko," ye ta weda ko ta ti: "NPP oye ya oku mu lombwela kutya sha weda ombwena oshe ya."

Okwa kumaida yo oilyo yo NPP ta ti: "Inamu tila, popyeni oshili. Dimbulukweni kutya omutondi woshili oye omutondi woshiwana."

Ile ove shi lundulula ndele tave shi ningi hola okambishi, okambwa, okandjima koye ngaashi handi mono mwe va shila mwa yuka meehotela?

Okudja nena 11/9/88 okatongotongo naka fye — natu kaleni nondaka imwe tai ti: "Namibia limwe noshiwana shimwe."

## Ondjokana muukriste

### Dha za kep. 3

thike pugumwe gwomudho. Nakwiidhopa mudho aluhe ohe eta okwaainekelathana, okafe-kela, eiuvo lyokwaa na egameno neyonuko ndyoka hali kala edhigu (nokupangela) nokwoopaleka.

Uuna taku dhimbulukiwa aluhe "ekaloko lya-Gwopombanda", nota pewa ompito opo a longe moondjokana, kwa ndhindhiliikiwa wo kutya oonkondopangelo dhe odho oonene, dhi vule dhaahokanathani, nena otaku endiwa wo ondjila onde pwa na omaudhigu.

Kakele kaashino, oshiwana wa wo okweendjelela kaashiinda, ookuume nookahewa, mokugandja omayele nomokwaambidhidha oonakwiihokana. Oku ya humbata megalikano nokukoleka eitaalo lyawo momaudhigu ngoka konyala haga holoka momagumbo (agehe) ogendji.

Pehulilo nando halwahugunina, osha simana unene oonakwiihokana ya kale ando yongeleki noyetaalo limwe. (Itashi ti Omukatoolika nomuvaangeli inaa hokana). Shika ohashi tungu eitulomo, euvathano netopolelathano lyiilonga. Shika otashi mangele kumwe onkalamwenyo ayihe yomondjokana, aana naalelwa otaa koko notaa putukile meukombinga limwe naakuluntu yawo.

Kutya nee Ongeleki yoye oyini, oondjokana oombwanawa odho adhike ndhoka tadhii wili-kwa KOHOLE, einekelathano, eiyambelathano, elongelathano, uuyuuki neyambidhidhathano.

Lukas Shawana  
Ondangwa

NDHINDHILIKA: Oombapila odha halakanithwa 15.9.1988.

# ELALEKO ETIYALI LYOMULONGISIKOLA MIILONGA

Dha za kep. 5



**Omusamane T. Nambambi**

**Omulongisikola Tomas Nambambi, okwa taamba ishewe omwedhi gwa yi ombilive yokulalekwa kwe miilonga. Shoka oshikando oshitiyali omulongi nguka iilonga ye tayi hulithwa po pamukalo ngaashi e gu tumbula mwene, kutya "gwaa na uuye-lele."**

Omumvogu, omusamane Nambambi okwa li a gwini oshipotha mohofa, moka a li ta tama-neke okulalekwa kwe miilonga pwaa shi pautho. Aatamanekwa oya li omukuluntusikola gwonale ngoka a kanitha ewiliko mOseko yaShakati, omolwoshinima shika, omusamane V.Tshitayi nombelewa yelongo, mOndonga.

Nambambi ngoka e li ngashingeyi omulongi posikola Uukwioongwe, S.P. mUukwambi, okwa kuminwa unene omukalo nkene she endithwa opo a hulithilwe po ngeyi iilonga. Ombilive oye mu zilile mombelewa yaAmushanga gwepangelo lyOwambo.

Okopi yombilive yelaleko lye ndjoka u ulike kOmukwetu, oya nyolwa eti-29.8.1988 noye mu lombwele iilonga ye otayi hulithwa po muAguste 31, ihe ondjambi ota taamba sigo Septemba 30,1988, shoka okwa tiwa oshaningwa pakArtikel 29(1) koveta AG 8/1980.

Omukwetu ina mona omutalelishikandjo oshitine omolwoshinima shika, moka omulongi Nambambi ha longo, ashike pakuuva kombelewa yomutaleleishikandjo inaku za elopoto lyeihumbatonayi ando lyomulongi nguka, lya tumwa koshikondo shelongo.

Nambambi oku li oshilyo shEhangano lyaailongi muNamibia (NANSO) oku li wo oshilyo shoshigongi shaavali yopashigwana (NPA) ongundu ya holoka po poomwedhi dha zi ko, omolwokukonga omayamukulo komaupyakadhi goosikola moshigwana.

"Ashike shono handi shi ringi, ohii shi ningi methimbo lyandje mwene. Nuuna ndoka oshimpwiyu nani ndi lwete tashi pula ndje ethimbo olindji li vule mpoka, ohatu shi kundathana tango nomukuluntusikola gwetu," osho a kala ti ipula a fa ta kongo shono sha falitha mokulale-

kwa kwe miilonga.

Okomitiye yosikola yawo oyi li ngaashingeyi mekonakono lyoshinima mpoka sha zi

Ngele shika ote shi kongele omayele kaagandji-mayele yopaveta, okwa ti kutya ndjoka ompito yaa shi lela okweethiwa manga inaayi yekelelwa.

## **Ethiko "lyiitshoto" yoonkundathana**

Pethimbo ndika Nambambi oku na oshimpwiyu oshinene shonkalo yoosikola, ndjoka yaa li melandulathano. "Onkalo ya tya ngeyi, itayi vulu okweethiwa owala twa tala ko, otu na okutsakanena nokukundathana, "osho a popya pOmukwetu.

Okwa ti manga aantu inaa ya moonkundathana, ope na okudhikwa tango "iitshoto" (iinyanga) yoonkundathana, mpoka aantu ye na okutsakanena nokuhungila. Oprograma yokudhika iinyanga mbika, ota ti, ngele oshe ende nawa, ote ke yi tameka pethimbo lyefudho lyaSeptemba nguka, mpoka te ke enda pomahala nomahala okukundathana oshinima naavali mOwambo.

"Ethimbo ndika oshigwana otashi hepekwa unene kiinima itatu; euvito lyegameno kaali po (uumbanda), ookamba dhaakwiita poosikola nomalovu. Mbika oyi na okupopiwa nokukundathanwa, manga inaayi tu mana po," osho omulongi Nambambi a hokolola noshimpwiyu oshinene.

## **Sebulon Ekandjo**



**Mondjila onene yoteya pokati kOshakati nOshivelo, ohamu adhika uunona umwe tau hehela iihauto yomakakunya sho tayi matika kopate, ngaashi mbuka womethano ndika**

## **A kana okuza 1980**

### **Omusimanekwa,**

**Kwatha ndje nesimaneko u tule edhina ndika lyamumwameme melandulathano lyaambo ya dhigininwa natango nenge ya kana. Edhina oyo: Vilho Mateus Nyambali. Okwa yakwa po ku"Walye" 25.7.1980 muArandis, sigo onena kape na ngo e shi Vilho mpo e li.**

**Oshiningwanima shika otashi konakonwa ngaashingeyi kehangano ndi: LORENTZ & BONE, mOvenduka.**

Philip Matheus Nyambali

Osho yo a dimbulukifa ovakulunhu novafita vOngeleki ei va ha efe onghoko yaHashipala ei a ninga noudjuu, i ha xulile ondijlakati. "Ongeleki okwiimbula, okwiimbula okwo omwenyo wOngeleki," osho omunyoli a kunghilila.

Nande kwa kala taku imbulwa momaongalo nexwamo nomomaumbo meexungi, ehokololo otali ti, oivilo yomalwiimbo omudo keshe, oya ka hovela kokule nelongekido loshivilo sheedula 100 shetumo, eshi la longa mOwambo. Ndevaetela oye umwe waava va pelwe oshisho shelongekido kombinga yomusika moshivilo osho.

Omudo 1977, oshilonga shomusika moshitai osho, osha tulwa lwotete koshi yepashukilo lewilikongudu, omo mwa yakulwa tete komupashukili woshitai woepimbo linya, omufita Filippus Shikomba, M. Nhinda, A. Nghikembwa, Anna Hasheela, Dan Hamunyela, T.Ndevaetela naLeefa Shikongo.

"Meedula eedi omulongo, otwa koneka nokutya efilonghenda laKalunga, oli li pamwe novanhu vaye. Oivilo oya kala i na ombili mefimbo loita. Heeno, okefilonghenda alike tu li po notatu linyenge," osho ondjokonona yoshilonga shomusika ya xulifwa ngaha nomatumbulo taa ulike kumwene wOshilonga.

## **Sebulon Ekandjo**

### **Loans! Loans! Loans!**

**We grant loans from R1000,00 up to 100 000,00 The term is (5) five years Interest rate 2% For more information contact:**

Mr. Amadhila Set  
P.O. Box 302  
Ondangwa, Tel. 272  
9000

and

Petrus (Kues) Shaanika  
Okahao, Ongandjera  
9000

**For prompt services send R200,00.**

## Ekundo la dja ku- Soomi, komaongalo muNamibia

Ovamwameme ovaholike muNamibia, ondi na ehafo linene nefimaneko eshi ndi na omhito oku mu kunda ponhele yeongalo laSimpele. Onda hala oku shi ninga neendjovo daKalunga: "Hano ngeenge twa tula eteelelo muKristus mokukalamwenyo oku akuke, ofye omapongo unene tu dulike kovantu aveshe. Ndelenee paife Kristus okwa nyumuka movafi, oye wotete waava va kofa mo, osheeshi efyo ngaashi le uya omolwomunhu umwe, osho yo nenyumuko lovafi omolwomunhu umwe. Osheeshi ngashi aveshe tava file mu-Adam, osho yo aveshe tava ningwa ovanamwenyo muKristus." 1Kor 15:19-22

Elaka lenyumuko laKristus olo omukangha wetelelo alishe. Omukangha oo otau kwatikanifa ovakwaneongalo muSimpele nOvanamibia nosho yo mounyuni aushe. Omukangha oo otau yandje omukumo nehafo mokukala mokati koudjuu.

Ovakwaneongalo letu otava ilikana pamwe nanye opo mu mone emanguluko diva. Mokukalamwenyo kwaKristus ondjila yaye yokuya kemanguluko oya endela momahepeko, nosho yo omaongalo moilongo ihapu okwa enda momahepeko nokukala nohole, osheshi eenghono dao ola dilila meshivo lenyumuko laKristus. Okupewa oikwaulu otaku yandje eenghono mokukondja mokukalamwenyo kwomukriste.

Kristus oku na omwenyo, noye oha longo mokati keongalo laye. Oye te tu tumu yo nena okutwala elaka lehafo ngaashi moPaasa yotete mombila nokukakala "Kee mo mombila, okwa nyumuka."

Ofye Ovasimpele, otu na ehafo linene eshi tu na omunashilonga wetu Irja Soikeli ha longo mokati keni notu na ekwatafano nanye momailikano. MOshoondaxa keshe ohatu mu ilikanene

## EWI LYAAKIINTU METHIMBO NDIKA

### Dha za kep. 4

ngano gaakiintu yomOongeleki dhi li iilyo mOraata yOongeleki koIndependent Church osho wo komahangano galwe gaakiintu gopangeleki nenge gopapolotika. Elalakano lyoshigongi olya li:

1. Okukundathana nkene aakiintu taa longitha oshipundi shawo mOraata yOongeleki muNamibia (CCN).

2. Okukonakona nokukundathana kombinga yoomvula omulongo dhuukumwe 1988-1998 nkene Oongeleki tadhi yambidhidha aakiintu.

3. Okuninga omathaneko giilonga yaakiintu muule woomvula omulongo dhuukumwe tadhi landula.

4. Okutokola esiku nehala mpoka oshituthi shokutaamba oomvula omulongo dhuukumwe tashi dhanenwa.

5. Okulongekidha onakuyiwa. Elongekidho lyoomvula omulongo olya li lya kundathanwa molupe lwomapulo taga landula:

a) Aakiintu oye na okuninga po shike opo ya teyepo oongudhi dhoku ya kolonyeka mOongeleki nomoshigwana?

me -  
longelokalunga.

MuApilili, muSoomi opu na okwenye. Etango tali minikile kanini nakanini nokupendula oushitwe konima yefimbo lokufu. Ohatu ka hafela efimbo lokulombo li li komesho.

Omwenyo moushitwe otau dilile mouyelele wetango noupyu. Osho yo mokukalamwenyo kwetu kwopamhepo, otaku pangelwa kelaka lehafo loPaasa. Kristus oye etango lenyumuko, osho hatu imbi meimbilo letu muSoomi. Kristus oku na omwenyo, ofye hatu kala yo tu na omwenyo pamwe naye.

Ohandi mu halele epuniko linene laKalunga.

Ponhele yeongalo laSimpele  
Mikko Rinkinen  
Omufitawiliki

## Eilongekidho lyOmukwetu 1989

1. Ondando yoshifo shOmukwetu okulanda kooshimwe omumvo tagu ya 1989, oosenda 50c.
2. Komumvo muNamibia na SA R8,00
3. Pondje yaNamibia na SA R20,00 komumvo. Ndjika oyo wo ondando yoshifo shomondhila.

Aagongeli yomadhina gaaleshi nane wo aahalithi yoshifo ooshimwe nashimwe, ndhindhilikeni ano elunduluko ndika. Omuntu kehe ota vulu okulanditha nenge okugongela omadhina gaantu yopomudhingoloko gwe.

Amushanga gwOmukwetu



Omuwiliki wovanyasha meongalo Omundaungilo, Evelina Nd.Haikali nomuviyaukikwatakanifi wovanyasha momaongalo opoushiinda Stefanus M.Nd.Ndayomuku mEenhana, otava ulikile ovanyasha vakwao komutwe wondjaba mokutunga eumbo lavo. "Ohatu hambelele Kalunga eshi e tu fikifa moshivilohombolo 26.6.88. Otwe shi dana nawa. Otwa hala okweenda pahalo laKalunga," Osho va tumbola moshivilo shavo.

## Ondjokonona yaNakufya Paulus Mwalyondiba Shipalekeni

Shipalekeni okwa dalwa eti 1.3.1902 momukunda onghangalikola moAngola. Omhepo youkriste oya pepa moAngola noponee a djako e ya kOnekwaya, oko a shashelwa momudo 1920 pamwe nomuvalekwa waye Rosalia Hashilungu.

Okwa shita ofikola yeengudu dishona pOnekwaya. Modula 1925 omo a hombola. Nomodula 1926 ova pewa oshiveli Josef Nghinashisho. Modula 1929 a ya kofikola kEngela, ta piti ko, ta i kOniipa oko a dja ta ka longa ofikola kOngenga.

Ta shuna kOseminali, noponee e ke uya a longwe pOshimwaku. Okwa tota po ongudu yenongopalo. A longa fiyo 1976 omo a pewa oshipundi shetulumuko. Ta kala nokuudifa poshinagoga pOshimwaku. Okwa kondjela oshikefa sheongalo, ngaashi tashi monika mu Mat.3:10

Omukulukadi waye e mu fiyapo 4.7.1979 nokwa hombolulula 10.7.1980 naJosefina Kavinga. Eti 6.6.88 okwa xulifa oweenda waye, nokwa fiyako omufiyekadi, ovana vatatu, vavali ovatetekela nale, vatekulu 20 novatekulululwa 14.

b) Ongeleki otayi kwatha ngiini opo yi kale ya manguluka komikalo dhokatongotongo?

c) Iinima oyini po Ongeleki yi na okuninga po opo yi yambidhidhe aakiintu?

Okangundu kelongekidho lyoomvula omulongo oka li ka totwa noka gongala iikando oyindji moka ka thaneke oshigongi shokutaamba oomvula 10 shi ningwe muSeptemba 26 sigo Kotoba 2, 1989.

Iilyo yokangundu oyo:

Bernardine Mbai, (Amushanga)  
Rebecca Meyer  
Gisella !Haoses  
Selma Shejvali  
Nashilongo Elago  
Judith Tibinjane  
Kavari Kaveri  
Batsaba Katjiuongua  
Nangula Kathindi (omuhiyi)  
Julia Nepembe  
Emma Muyoro

Olwindji nopendji mokati kaakiintu omwa kala omahilathano nomakondjithathano. Ngele itatu vulu okulongela kumwe, omolwashike ta tu tegelele Ongeleki yi tu yambidhidhe? Uutondwe nau ekelwehi. Uuna twa sindana mushika, Oongeleki nuunene aawiliki opo taa tu uvuko noku taamba ko omahangano getu.



## OUDJUU MOSHIWANA

Tete nandi yandje ombili kovakwashiwana ovo tava ka endulula okulesha oshinyolwa eshi ngeenge osha nyolwa nale nokwaavo ve lipya-kidila noshikumungu eshi.

Fye twokomaumbo omiti nge hatu i kOndangwa nokOshakati ohatu ti ohatu i kodoolopa nongee-enge ne wa tokola okuyako, ou na nee okumeneka ongula inene. Ashike meumbo ou na okudja mo

# Ova shangela nge tava ti.....

potundi onhihetatu shaashi nge owa dimo oheyali wa tauluka oveta yokangedjo koufiku, oto yashwa okufya ketanga ledipao. Onghee kopate oto ka fika po pomulongo naimwe.

Omukwashiwana ou kefiku limwe omulongi ne wofikola. Efiku limwe alike a efelwa a faule oku na oku li longifa nawa, opo mongula a kale e li meetundi, shaashi edjepo laye kali shi lopambelewa.

Eshi tuu a londa mokambesha oko ke na omukwashiwana umwe vati ta findikilwa divadiva komufitu waNakashole pe na 20km kashiimba eshi taka ka shuna kopate ke uye ke liteteke odoolopa, onhatu yokomatango yo oya denga.

Kodoolopa eshi wa ya ko ou na eemhumbwe dihapu onghee owa kufa ko naana omulongo wa wana, ashike owa pitilila omwalu woimaliwa ei i na okweenda kolutu, onghee oho lipameke ngaha: "Modoolopa ou na okukala wa nhuka po ngokambishi, nge hasho, wa lyatwa, ile okandjato ka iwa nako."

Omunhu ou na ashike okweenda noimaliwa i fike opo kolutu shaashi ku na ngehe. Ponhele yokweenda ashike noumbo vamwe vokulanda navo, ove u kale ho ende navo, ngeno koutile wa tya ngaha, kwa xwepopala.

Ovo va talela po Oushimba ile ovakalimo vamo, oto mono nghene voo tava longifa 'eerekenenga' osho yo oukalata vamwe vanini ovo va shangwa ashike omadina eefitola odo ha ka landa. Noshinima nee eshi ohashi longifwa ashike mOushimba, mOwambo nghi na eshiivo lasho voovalaule ovo have shi longifa otava valwa.

Shilumbu ou nande ou mu ulike okandjebo koi-pupulu, to ti pokati komwenyo noimaliwa yandja po shimwe, kashimba ota ka tya ashike ninga eshi to ningi, nghi na sha. Nobotsoto ya tya ngaha, otai fi ashike ohoni, shaashi mokandjato neshende olo itai mono mo, ye mwiishishi te i kenya ashike i wete kafala mulai. Mbela ngeno oove nee mukwashiwana mukwetu, ou ho ende noimaliwa kolutu, hakombuda ngaho we i mwene?

Kovanangeshefa ovaholike, unene tuu ovo mu li omitwe da kula mehanganu leni, ngeno okwa lindi mu shii, ngeno ohai mu shangele kondadalu-nde opo mu fatululile oshiwana eshi sha pumbwa eudeko lelendo la tya ngaha.

Efimbo ola pya omo Ovanambia va teelewa ve li - kufe moukoloni woludi keshe, osheshi komunwe woye omukwashiwana keshe womuulikwa ou na oku u teta moipambu ine ngeenge owa teelela u ningilwe ile u kufwe moupika koonima. Omalando a tya ngaha naa kwandjangelwe koo ku talike kutya otashi shiva, nafye ovalaule tu longife oinima yoludi olo, ile oyo oinima ashike yovatilwane?

## Dalondoka Heita Oshikango

Tala kepanja tali landula

## Omapandulo kune mboka mwa kwatha Etumo moshitayingeleki shetu mUuninginino

Peha lyewilikongundu moshikundathanwa shalyo oshiti-12 shesiku 30.8.1988 onda thigilwa oshimpwiyu ndi mu nyolele ombilive yepandulo kushoka mwe tu ningila. Tse otwa pandula Oshinyanyangidho, komambo ngoka mwe tu pa omolwetumo. Otwe ga topolela nale aatumwa meni lyoshitayi nopondje yoshitayi kuAngola.

Kombinga yOshihondjelo sha ELCIN otwa taamba nepandulo R 700,00 omolwegumbo lyaatumwa kOpuwo. Kalunga na yambeke mpoka mwa kutha, opo a udhitho po natango. Otu na omaluhepo mEtumo miinjima oyindji, kwatheni aluhe. Omwuwa ota ti "Indeni nuuyuni auhe, mu ka uvithile aantu Evaangeli."

Omahaleloyambeko  
J. Kaapanda

## Omakundo ga zi kuJason naTaimi Amakutuwa kOsoomi

Tatekulu nakuku Amakutuwa oya laleke egongalo lyawo muElim noyu umbilwa ongalo yomondjila sho yu uka metalelopo lyawo kuSoomi. Otaa pandula ayehe ye ya kwathele mondjenda yuukulupe yowina. Uunene oyana mboka ya futu ondjila naayambidhidhi oyendji yawo, nosho wo aagalikaneni. Otaa halele ayehe egameno nombili notaye mu kundu nombili taa ti:

1. Ooranda omilongo  
Heyali nantano  
Oosenda omilongo  
Ndatu yimwe nduno  
Taleni petsali  
Onda ya nomwali  
Keukeni onganda  
Nda ya nomunanganda

2. Kanzuna koluketi  
Kake na olwegeti  
Oka kwata ndje keti  
Ka kuthe ndje meti  
Omukandje ngu "tsha yela"  
Ina thokelwa  
Mu ligamena u tale  
Mu keukeni u tale

3. Twa londa muNelomba  
Mushindi gwombululu  
Twa mbwata muNelomba  
Mondjila onkulu  
Tali tuka pombanda  
Lyu uka mookathele  
Lya yeluka pombanda  
Lya ya mookapyole

4. Otwa tula pontuntu  
Tapu popi Oputu  
Twa yambuka pOntuntu  
Ndjo yi na Aaputu  
Twa ya muNdowishilanda  
Metulilo enene  
Twa vunda Ndowishilanda  
Muupale uunene

5. Otwe ya muFinlanda  
Tamu tiwa "Kule"  
Itaa ti oFinlanda  
Shila "okulekule"  
oSoomi ye yi luka  
Ye shi tala shu uka  
Aana yawo aagundjuka  
Otaa nyashuka

6. Shilongo shomilonga  
Shi na omatale  
Shitunda shi na iilonga  
Shi mona u tale  
Kamu na iihagadhi  
Omu na omagadhi  
Shitunda oshiyedhi  
Kamu na oongodhi

7. Etango kali toka  
Ohaku wiwile  
Nge lya fa ngaa lya toka  
Kwa fa taku wiwile  
Opomulongo nambali  
Sho tali ningine  
Lya fa tali lala ongali  
Shimpa tali ningine

8. Shilongo shomatale  
Kashi na ontale  
Shitunda "shomeendjele"  
Kashi na uwayele

Omuthitu ngaashi ongoya  
Etunda lya ngoya  
Makuti ompandakani  
Mugulu omwiindakani

9. Omiti o"koivu"  
Dhimwe o"peteya"  
Kadhi kwatwa koshivu  
Dhi fe ando dha"aya"  
Odho omalshuleshu  
Notadhi lelema  
Kadhi li omupulungushu  
Dha kakata dhi ima

### EFATULULO LYIITYA YIMWE

olwegeti = egamena  
omukandje = kuume  
mookathele = mookapyole = muulembanda  
ontale = ombuga  
omwiindakani = thikama  
iihagadhi = omayoka  
aya = za omulyo  
Omuleshuleshu = omwiidhi  
Omupulungushu = kape na sha  
Kule = iipopya yAasoomi  
omeendjele = omahini gomunya



## TALA, TALA,

Omolwashike to teya nohamala okila yoye molwaashoka otayi fuluka nenge ya thita?

ilonga yokupangela ookila dhiihauto oyi li konima yongeshefa Pick & Pay pokalukanda kaShikopi, pOngwediva.

- Ohatu dhi opaleke
- Ohatu tula mo omandjandja
- Ohatu dhi thitulula
- Ohatu landitha okila kehe

Ila meendelelo tu monathane

A. Paulus



## Natu dhiladhileni nawa!

Onda li nda kumwa konkudana ya pitile mOradio mesiku 14.3.1988 ya zi kepangelo lyopokati kOvenduka. Moka otaya popile opo oshigwana shi ngambekelwe oluvalo. Elalakano lyawo anywa opo aantu ya kale ye na onkalamwenyo yi li nawa, ya mone iipalutha ya gwana, yo ya mone iilonga. Mbela oolye mbono taya longekidhilwa ngawo? Oombo tu li po nenge oomba taya ngambekwa momala?

Manga inoo ninga etokolo lyokungambeka, onawa u dhiladhile nokwiipula omapulo ngaashi:

Mbela sho ndi li po ngeyi ondu uwite ngiini? Ando meme okwa li i ingambeka, ando ondi li po tuu? Ando ookuku oyi ingambekele ando oolye ye li ko ngashingeyi? Ngele onda kulupa, nda si, olye ta ka kala pehala lyandje? Ngele wa mono omayamukulo komapulo ngaka, opo ihe to ningi omatokolo. Inatu hulitha po oshigwana shetu tse yene.

## Omupulakeni gwOradio Olulongo

### Ombilive yeeguluka komupresidende Botha

Ongame Akulilagana yaAmatendo, nda valwa 21.5.1967. Tate Amatendo oye gumwe gwaambo-ka ya dhipagelwa mokamba yaCassinga ku SA. Onda kala nokulila oosa dhatate. Peha lyokuhekelekwa, SA okwa gwedha ko owala omaupyakadhi ogendji gokuhepeka nokudhipaga oshigwana shetu. Oosa odhi ihanene Namibia alihe.

Ngashingeyi otandi lilagana kuwewehame womipini niitako yoondjembo nda mbothagulwa ku-“Botha” naalanduli ye. Iilalo oya tinda okwaaluka, oshoka otayi tolokanwa ethimbo kehe komakunya mewiliko lya “Botha.”

Onkalo ndjika ondhigu oya thiminike ndje noonkondo ndi popye sha koshipala “shaBotha”. Otandi inekele ombilive ndjika otayi thiki nawa miikaha yoye nenge yaalanduli yoye.

Omusimanekwa Botha, nesimaneko noneinekelo otandi ku popitha. Itandi ku popitha pahalo lyandje mwene, ihe onde ku popitha omoluwehame nomoluudhigu wa ningile ndje nowe u ningila Aanamibia. Oombole ndhoka we tu dhenge otadhi tokota unene.

Oosa owe dhi andjaganeka moNamibia ayihe, ngiika opo pondondo mpoka wa hala nondi inekele ito gwedha ko we. SA otwa hala u ze emanguluko lyaNamibia moshipala. Za po posheelo opo okatokolitho 435 ka pite, ka ye miilonga mbala, tse tu thuwepo omahepeko nomalilagano.

Anamibia otwa hala ombili ndjoka hatu yi uvu owala ngokatana komiilya. Inda ano, ino thiga po oopapeta dhoye, ngoye ino dhimbwa po omakakunya goye.

## Aanona

Aanona mboka ye li momudhingoloko gwomatoto goombulu oya yonuka unene. Oshoka ihaya yi we kosikola, ohaya yi ashike komalambo giyyagaya nokulya iipolopolo. Ihe shika otashi ke eta ondjala, oluhepo, okwaaha longa nosho wo omikithi ngele te konakona oshinima shika nawa.

Aakuluntu itaa pukulula nande aanona opo ya yekosikola. Oshigwana inaashi longwa osha fa omukulukadhi a kwiinina okanona, nokonima ota kutha omwele e ta tete omiya dhondhikwa okanona e ta ka gwile pevi.

Aagundjuka oyo nanaa taa longo iihuna medhina lyoshimaliwa. Omunasikola ngele a ndopa ota matukile ashike kuukakunya, ye omukadhona tayi kuumbenge a ka ninge omukadhi gwomukwiita gwaBotha. Taa ningi iikandekitho yoholo naa thipi yombinzi yaamwayina yaa na oodjo. Ano dhimbulukweni kutya Pamba opo e li nota ka yamukula mbala omahodhi goshigwana ngoka tashi lili.

Asino

## Ekonakono lyongundu ontihetatu

Akwetu onda kumwa nonda limbililwa kekonakono lyOhetatu unene lyokehulilo lyomumvo. Omolwashike hali kala lya tulwa ootundi oonshona, omuntu ngoye oto nyola to dhiladhila. Otandi indile opo ando kootundi ku gwedhwe, opo ngaa tu kale hatu mana. Nenge otamu shi tile ngiini aakwashigwana? Ngame onde shi tala ko kutya, shika osha ngambekwa oshigwana shi hume komeho.

## Ndeshiyematela Nehale Secondary School

### Nandi yelithilwe mwaashika

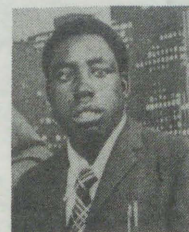
Onda hala okupukululwa molwaavali ye na aanona yawo aaniilonga ndele gumwe ota pe he iimaliwa R 100 nayina R 500, ihe ngele yina okwa si, itapa pulwa sha nande. Ihe ngele he a si, omwana oti igidha iinima mbyoka moosa. omolwashike?

Ishewe onda nyengwa koshinima shomusamane nomukulukadhi gwe ya konga eyana lyawo, ihe omukulukadhi ngele a si omusamane ita futu. Ihe ngele omusamane a si omukulukadhi ota futu, koo inaku tseyika nawa kutya olye a gandjele iifuta mbika yotango.

## Hilma Gideon Onamulele

Kuku Eino Johannes Shivute (82) mOtananga okwa manene oondjenda dhe 19.6.1988. Okwa thigiko omuselekadhi gwe, noyana 6 naatekulu 13. Eimbilo 617.

I. Johannes Shivute



Nakusa J. Nashinge

Tate Jason Nghidishange yaNashinge gwomegongalo Elombe (38), okwa manene oondjenda 8.7.1988. Okwa thigi ko omukulukadhi gwe noyana 2.

Omwenyu gwandje oKristus nokusa okwo elikolo. Eps. 103, Eimbilo 644



Nakusa J. Shivute

## ONGHUWO KOVAITAVELI

Koshiwana shaNamibia, fye Ovanengali mOukwanyama ohatu kuu onghuwo yetungululo (ewapalekululo) lohinagoga. Oshinagoga eshi shopOnengali osha tungilwe kuNikodemus Hamukoto waKaluvi lwopo 1919 pamwe novapiya ovalitulumo meitavelo levaengeli.

Osinagoga eshi osha tungilwe needopi dedu da fewa mepya laye (Hamukoto). Omeva okwa kufilwe mondongu oyo va xupile pamwe novaitaveli (nonena otai longo).

Osinagoga osha longelwe noikonde yomuhongo ngaashi ngoo eenduda diikwao domedu letu.

Omiwelo oye mwene (Kaluvi) e di longele shaashi ye omuhambwidi nomuhongi woipilangi kwa li, sha kwatelelamo okulonga omatamba. Paife ohatu kuu onghuwo kovaitaveli Ovanamibia, meni ile pondje yoshilongo oku tu pa sha, ndele tava tumu kondjukifi pedu, opo fye tu wapaleke osinagoga. Paife otwe shi uvilika noipeleki kekuma olo ngo olo likulu.

Omushamane Hamukoto waKaluvi okwa xulifile oweenda waye muNovomba 1950 mOnengali. Iyaloo keudeko letweni.

Weni ponhele yomufita F. Haulofu

Malakia Ndakoneke waKaluvi (Omudiakoni)  
P.O. Box 36, Oshikango 9000, Owambo

## Ekondjo lyuunona ewanawa

Omakakunya ogu umbile uumbapila wopropaganda okugoyapaleka aanona naakuluntu yoshigwana oshihepekwa, anywa ya fa ya gama kaanona nokutya otaa kanitha oshindji ngele kaye li mosikola. Anywa aanona otaa tsuwa omamini-mini.

Nashi uwike ko, unene kuMatjila nokutya oshigwana osha vulwa iilonga ya nyata moshilongo shetu. Aanona mokuninga omakanka osho onkatu onene ya ningwa mondjokonona yaNamibia. Tsikileni natango, omutondi a ze popepi noosikola sigo a thigi po Namibia alihe. Tse otu li nane notatu mu yambidhidha.

Okukala kwaSouth Africa muNamibia kwaa shi kwopaveta, okwo taku kondjithwa nokaanona yetu ku hulithwe po. Aanona oya kale ngiini mootundi yo taa dhipagelwa mo naakuluntu yawo taa dhipagwa, otashi kwatha shike? Oosikola adhihe, yambidhidheni yakweni, inamu itaala etopagulo nando.

## Finny Petrus Ombalantu

## NDHINDHILIKA

Ohatu futu 20% koshifo kehe to landithapo nenge oopelesenda 10% komadhina gaaleshi we ga gongela. Ngoka wa hala okuya meyakulo ndika, tuma owala edhina lyoye kOMUKWETU, P/Bag 2013, Ondangwa, 9000, nomwaalu gwiiwo mbyoka wa hala u kale ho landitha.

(mOmaimbilo).

Oyana  
AAKWAKANANA  
mElombe

Tatekulu Paulus Negongo gwomomukunda Onangombe mElombe okwa hulitha oondjenda dhe 19.5.1988, muwewehame wethimbo ele.

Okwa thigiko aatekulu 14 naatekululwa 13. Joh 14:6.

Hilma Shilumbu  
Elombe

# RUDOLF BAHM

## Omupangeli gwootundi MOSHAKATI

**Mpaka otandi tseyithile aayakulwa yetu ayehe, kutya iilonga yokupangela ootundi, okulanditha po oompe nokwoopaleka ndhoka dha teka, okutula ko omakende numanya, itatu yi longele we metungo JAMAICA INN.**

**Ngashingeyi otu li mpaka mOshakati metungo lya ENOK (BBK), mpeya hapa kala pwa thikama aluhe omaloli goeiskilima (Roomys). Shika otashi ti elalakano mpaka, oku ku etela eyakulo ndika popepilela, waaha pumbwe we okufala nenge okutuma ootundi dhoeye kUushimba.**

**Ohatu landitha wo ootundi onkulu kondando yi li hwepo, onkene tu talela po ngele to piti pOshakati.**

\*\*\*\*\*

\*\*\*\*\*  
 Omumati Lisisa Iyambo yaTaapopi 18.8.87 megongalo Elondo moshiponga shedhipago nondjembo moVenduka. Eimbilo 617 IKor 2: 1-3

Johanna Iyambo (100) gomUukete megongalo Elombe mOndonga 1.7.88 okwa thigi ko oyana yahamano, aatekulu 31, aatekulululwa 12.

Elago lyaNambinga Omigwena

\*\*\*\*\*

Taapopi Rehabeam Elondo

\*\*\*\*\*

Omukulupe Evelina Mpingana Iileka (108) 5.6.1988 mElondo. Aatekulu 30, aatekulululwa oyendji.

Taapopi Rehabeam

### A KANA

Otandi indile nesimaneko enene mu tule Simon Namwandi Angula momusholondondo gwomadhina goonkwatwa. Okwa kwatela muSeptemba 1980, ihe sigo onena katu shi mpoka e li.

Ruusa B. Angula Omuntele

### YA DHIGININWA NATANGO NENGE YA KANA

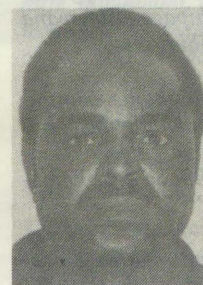
Mai 1979 — Festus Nakawa

- 31. 5.1979 — John Nakawa
- 5. 5.1980 — Toivo Shilongo
- 4.10.1980 — Marcellinus Shilongo
- Juni 1979 — Matias Ashipembe
- 4.10.1980 — Modestus Ipinge
- 18. 9.1978 — Ndeifeka Erastus
- 18. 9.1978 — Rufus Amukuhu
- 18. 9.1978 — Mutumbulwa Amukuhu
- 10. 9.1981 — Kristof I.Shikongo
- 19. 1.1981 — Filemon Iikela

- 25.7.1980 — Vilho Mateus Nyambali
- ? 9.1980 — Simeon N. Angula
- ? 7.1988 — Hosea Heita

- 4.9.1985 — Markus Paulus
- 28.11.1986 — Ruben Edmund
- Kotoba 1987 — Tomas Iipito
- 8.10.1987 — Mateus Handjaba
- 3.12.1987 — Shipandeni Mupolo
- 22.7.1987 — Mateus Mudjanima
- 7.10.1987 — Jason Angula
- 17.3.1987 — Natanael Shikongo
- 27.11.1980 — Andreas Kashikola
- 27.11.1980 — Teofilus Mateus
- 27.11.1980 — Mateus Jesaja
- 29.6.1985 — Amutenja J. Ashipala
- 3.7.1987 — Abner Shikesho
- 22.7.1987 — Stefanus Nghifikwa
- 19.11.1988 — Daniel Israel
- 20.1.1988 — Natanael Ndatyapo
- 19.1.1988 — N.S.Ndatipo
- 21.1.1988 — Natanael Stefanus
- 17.12.1987 — Hafeni Philippus (Hamunyela)
- 19.1.1988 — Johannes Nekongo
- 20.1.1988 — Salom Uusiku
- 9.4.1988 — Johannes Kawelekana (Komeya)
- 2.1987 — Silas (Kamule) Kandenge
- Januali 88 — Linus Matongo
- 17.12.1987 — Josef Dumeni
- 19.06.1979 — Simeon Nehoya

Ndhindhilika: Ngoka wa tseya gumwe gwaantu mbaka, kutya okwa manguluka, onawa u tseyithile ombelewa yOmukwetu mbala. Tangi kekatho.



Nakusa J. Munenguni

### OMUKWETU

Oye oshifo shOngeleki Onkwaevangeli paLuther yomu SWA/NAMIBIA.

Ohashi nyanyangidhwa mOshinyanyangidho shOngeleki mOniipa.

Omukuluntu gwoshifo omumbisofi Kleopas Dumeni.

Amushanga gwoshifo omusita Sebulon Ekandjo.

Ondando yOmukwetu muNamibia naSouth Africa R6,00 komumvo.

Palwe muAfrica R10,00 nokombanda yomafuta R14,00 komumvo. Mondhila R17,00.

Oondando nomambesitelo agehe naga tumwe kOmukwetu, Oniipa, P/Bag 2013, Ondangwa 9000, N A M I B I A.

ELOC PRINTING PRESS  
 PRIVATE BAG 2013, TEL. (06762) 11, TELEX 56-3257 WK SWA/NAMIBIA

