

OMUKWETU



40c

No. 17

ISBN 0-620-06828-0

ETUMO MOSHITAYINGELEKI SHONDONGA

Aantu ye thike 800-900, oya li ya kala moshituthitumo mOshitayingeleki shOndonga megongalo Onguta. Omuuvithi omusita Salomo Elago okwa li a etele aakwashituthi amatumbulo gamwe ngoka ga li ga tumbulilwa aatumwa omumvo ya lalelwa okuza koSoomi okuya kuNamibia.

“Kalunga oye egameno matati wo negonga olyo eimbilo ya li ya imbilwa petulilo lyosikepa mpoka ya londele okuya huka;” osho omusita Elago a ti.

Kalunga okwe tu dhimbulukwa manga twa li twaaha mu shi. Kalunga okwe tu sile ohenda manga twa li momilema. Osho kwe tu ningi iyuma yokuhumbatela mo edhina lye, oku li fala kwaamboka inaaye mu itaala. Onkee osho oshinakugwanithwa shetu okufala elaka lyehupitho kumboka inaaya itaala.

Amushanga gwEtumo mOshitayingeleki shOndonga, omusita Sebulon Ashipala Nambambi mokupopitha aakwashituthi okwa ti ngeyi: “Etumo olyo omwenyo. Aakriste ye na omwenyo, omwenyo gwawo etagu monika sho ye na ohokwe mokulonga etumo. Egongalo li na omwenyo otali imonikila omwenyo gwalyo sho tali longo etumo. Oshitayingeleki shi na omwenyo otashi imonikila sho tashi longo etumo. Ongeleki oyi na omwenyo uuna tayi longo oshilonga shetumo. Aakriste, egongalo,

Tala kep. 5

OKAPAKETE MOMAALAKA, KA HALUTHA AANTU



Kristofina Namupala okwa humbata okapakete moka taku ti omwa zi uushina wokutulitha oondando kiinima



Josiah Kibira, omupresidende omukulu gwa LWF, a mana oondjenda dhe eti 18.7.1988 mepipi lyomimvo 62. Oye omumbisofi gwOngeleki okwaLuther muTanzania.

Ehokololo lyoboma ya tegululwa kaapolosi pOmaalaka galleni pOnethindi, inali kolekwa komusamane Jairus Shikale. Aaniilonga ye mpoka, kape na wo ngoka e na uumbangi moshinima. Shikale oye mwene gwongeshefa onene ya tseyika nedhina Punyu, ndjoka yi na iitayi pomahala oge ndji mOwambo.

Ehokololo olya zi pokapakete ka thigwa koshilumbu mOmaalaka gopOnethindi, sho inaashi popya aniwa naanashilonga mboka ye li mo. Osha li eti 6.9.1988. Gumwe gwomaadhengi yomashina gokutaamba iimaliwa, Kristofina Namupala, ngoka peshina lye pwa thigwa okapakete, okwa ka lombwela omutonateli gwiilonga, Klaudia Max. Omutonateli okwe ke shi lombwela omusamane Shikale, ngoka i ithana mbala aapolosi ya konakone oshinima.

Omusamane Shikale, okwa ulukile Omukwetu okapakete hoka a ti, aniwa omwa zi ashike uushina wokutulitha ko oondando kiinima mo-

Tala kep. 5

Omagongalo oge na ngashingeyi ethimbo lya gwana meputudho lyaanona

Omutumba gwaanaskola momagumbo nuumwo ogwoku ka kala omule inaashi monika nale mehistoli lyaNamibia. Shika omuntu ito shi popi ando sho oshiwana okukala ngaaka nenge osho omuntu wa hala shi kale. Omandhindhiliko gethimbo tage shi ulike gogene.

Aavali oyendji oya haluthwa nale konkalo ndjika nokaye wete shono ye na oku shi ninga. Yamwe oye li pokudhimbwa nokuli omukalo nomatompelo nkene she endeke aanona ya thige po oosikola. Odhoshili wo kutya ethigopo lyoosikola omolwookamba dhomakakunya pooha dhoosikola dhimwe, omwe ki iyakela omautsini nomaukolokoshi ogendji ngoka aavali itaa vulu oku ga mangela mumwe neyambidhidho lyawo kuunona sho wa li tau pula ashike ookamba dhi hedhe kokule.

Omuntu oto kwatwa kongunga yokupandula oshigwana sho tashi kambadhala okuhilila kumwe nonando eko ndjo otali lulumike. Etulomilonga lyomatokolo goshigongi shaayehe moshigwana (National People's Assembly/NPA) omasiku ngaka mekanka ndika lya hugunina, oyo uunzapo wa kola moshinima shika. Ombepo ndjika yuukumwe oyo ya yuulukiwa ethimbo ele moshigwana shika nonawa sho tayi adhika.

Okukuutumba kwaanasikola momagumbo omweedhi noomwedhi, kashi, shi shi onkundana ombwanawa momakutsi gaavali, shoka osha yela. Shoka shi na okuningwa po, ando oshi na okuningwa mbala, opo uunona u shune miipundi yawo. Ihe atuhe oshe tu yelela, nokutya ngoka e na okutula shika miilonga, hashigwana, epangelo lya SA, ndyoka lya kaleka omakakunya galyo muka. Ethimbo ndika kali shi we lyokuthikama nokwiihukata nokutala ko konkalo omuntu wa mwena. Manga kwa tegelelwa ookamba dhi inyenge, ndhoka kaape na ngoka e shi shi otadhi tameke unake, naku tameke ooprograma dheputudho lyuunona momikunda nenge momagongalo. Olye te shi ningi, epulo limwe.

Katu na omahangano moshigwana ge lile po owina neputudho lyaagundjuka. Osho wo sha kala tashi yematelwa kaavali nokOngeleki nokutya nokomihandjo dhodhene, aanona ohaa monene ko iihuna, sho pwaa na etonatelo lya gwana nenge lyaa po nokuli.

Ngashingeyi uunona ou li miikaha yoshigwana. Omagongalo ngiika otaga talwa mpaka omeho shoka taga ningile aanasikola mboka ye li omutumba momagumbo. Eipopilo kutya aanona katu ya na, ndika olya hulithwa po konkalo. Eputudho lyopakriste osho wo omalelogongalo momagongalo naa tameke mbala ooprograma dheputudho manga kuyeke. Aasita mboka ya tameka nomapopitho kaagundjuka mbaka, oya gandja oshiholelwa sha simana, ihe eitulomo enene olya tegelelwa natango omoluuwanawa woshigwana shoka shokomongula.

Ehistoli lyoukaromwe-nyo wamusita Elia Mukongo Neromba

- 1914 — Yimo va mu hampuruka. Age kwa mu hampurukira moAngola momukunda gwaNcuwa pesinya lyaMbunza, morwa siruwo sina vantu kwa tungire unene mesinya. Oguhwe yiwo Neromba zaHausiku nozina Nepembe Linia zaHaindaka.
- 1933 — Vatumwa vEvangeli vana mu rongo kutjanga, kuresa noma-sanseko gomoBibeli. Mezuva 15 Okotobeli 1933 vana mu kuhu nedina Elia.
- 1934 - 36 — Ana ka kara pombongi zaNkurenkuru pomuhongi Aatu Jarvinen. Momalima gogo ngoso vana mu rongikidire etwikiro lyosikora kOniipa kOwambo, kumwe novakwawo 9. Ekoreko 30.3.34.
- 1937 - 38 — Ana kara mosikora zourongi.
- 1939 - 46 — Eyi ana ka mana urongi, ana ya kwara mukadona gwendi ogu va lidivire nendi nokulivandekera siruwo esi va kere kumwe pombongi. Mo 13 Desembeli 1939 vana va kwareke. Etumo lina va tumu koKatwitwi va ka ronge. Mo 1940 vana tengwire koNkurenkuru, eyi murongi ogu ga kere po ga zire kousita (Matias Sikondomboro.)
- 1947 - 48 — Kwa mu tumine a ka lihedese komeho koAugustinium kOkahandja. Kwina kwa ka tundire ko nerongo lyopaStandard Six.
- 1949 - 50 — Kwa kere murongi mosikora zovamati poRupara ezi ngava tumbura morumburu asi "Jongenskool." Age kwa kere ta rongo yirongwa yoyinzi. Nye varongwa vendi tava mu sanse-

ke asi nga rongo tundimbimbeli moRumburu.

1951 - 54 — Vana mu tumu kosikora zousita kOniipa.

1954 — Vana mu pongwere mousita no-ku mu tura musitapongero mombungakriste Mupini.

1959 - 70 — Vana mu tumbu a kare mupahukili gonombungakriste dongereka zaELCIN moKavango. Siruwo esi kwa kere nye noyirugana yoyinzi Moupahukili yimo ga varekere kutoroka notekiste domoBibeli a di ture moRukwangali.

1970 - 78 — Kwa kara merero lyosirongo ngoministeli gwerongo nomugaviveta mosigaununo saKavango.

1984 - 86 — Yimohena ga kere ngomusitapongero mombungakriste zaRupara.

1987 — Yipo ana zi mopensiona.

16 Auguste 1988 ana hagesa ugenda.

Yilye Elia Neromba?

Elia Neromba mukriste, murongi, musita, nomupitisili gorudi.

— Elia mukriste gomurutheli gousili. Age kwa divire erongo lyongereka zendi ga zi huguvarere dogoro pehagero. Age muhuguvali gwaKristusa dogoro konomfa dendi.

— Mourongi wendi varongwa vendi kwa mu here unene. Kapi nga faura kuronga, age mupampi, mafwatururo gendi mawa. Varongwa vendi morwa ku mu hokwa ngava mu zigida tupu lyolyo KAKOVE.

— Ngomusita nomupahukili, age kwa here sili vakriste. Murugani gumwe ta mu tumbura asi: "Nga kara nosiruwo novantu, ngali yongo, nga zogere novarugani, nokuzakura usimbu momaudigu."

Murugani mukwawo gumwe ta tumbura asi: "Vasita, novarongi novagolikadi vawo kwa mu here, kwa kere nawo ngwendi va mumbayavendi ano ose ngatu mu tara guhyetu namukwetu." Gumwe ta tumbura asi mupahukili wendi ngatu gwana nose nokersese dokupindwisa, nokuliyonga nawe to limono asi nove ku ku varura.

Ngomusitapongero nomupahukili, musita Elia kwa kere nosinka sheharaveso lyoukriste noyitjangwa, nonokersese noyigongi momutayingereka.

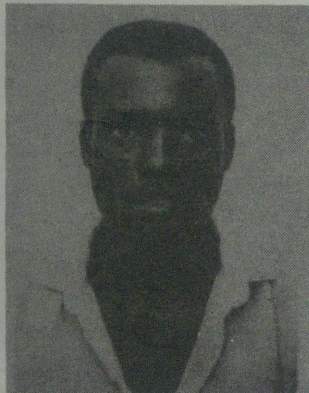
Yilye ogu nazumbanesa Elia?

Mouzuni ou womahepeko, kahepere nage norudi rwendi kulikendjaukisa novanankondo, moMarsi kava mu hepekere wonkore zendi nourudi.

Elia kuna sigi nonsigwe dononzi mosirongo, mongereka, mekoru, momukwarero, mupongai ki gwanavenye. Age kuna zi ga hana makongo geharo lyorudi rwendi nongereka zendi.

Epuro: Yilye nye na pinganesera po Karunga?

A kana



Johannes Komeya (32) mOngo, okwa kwatelwe po 9.4.1988 komakakunya sigo onena ina tseyika mpoka e li.

Kalunga oye Kalunga kaahepekwa

Shigwana shaNamibia, inatu mweneni omahepeko ngele tage tu adha, tu tsaathani omukumo, otseni otwa kulilwa. Inatu tileni oshoka esindano lyetu oli li meitaalo lya kola: Onkee ano tu tidhii po uumbanda, Omuwa ote tu popile molwaJesus Kristus ngoka omumangululi gwetu.

Mokukula kwetu mokati kefundja lyuulunde womunandumbo, nomuhepeki gwoshigwana sha mwena, tu taambeni etumwalaka lyomukumo Jesus Kristus. Oshili ndjoka ya popiwa kaahunganeki (aprofeti). Metumwalaka lya tya ngeyi kapu na nando osha shimwe sha pumbiwa ngele haKristus awike.

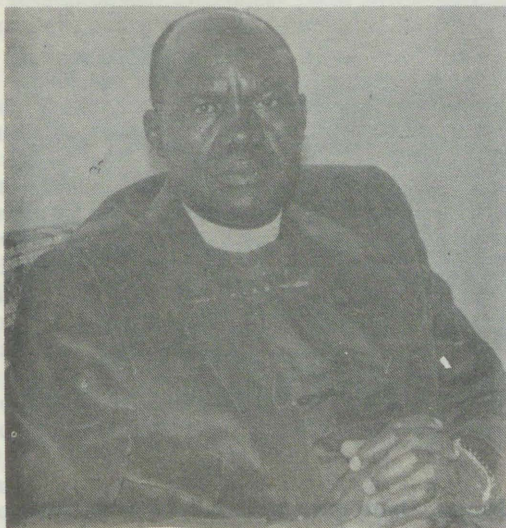
Oonkondo dhuuyuni nando nadhi kondjithe, aantu nando naa shekwe, oshili ya yela oyo ndjika kutya, Evaangeli lyehupitho oli na omwenyo. Sho tu li methimbo lya tya ngeyi li na omatilitho Jesus Kristus okwa hala oku tu longa, note tu longo nena opo tu popye nomuthindo eyo lyoshilongo shaKalunga.

Aamwameme aaholike, tu ndhindhilikeni kutya Kalunga ngoka iha lala, ngo ihaa kumuka none na ndjika ota longo mokati koshigwana shetu Namibia osho wo muuyuni muka e tu galulile omukumo.

Aanamibia aaholike onda hala ndi mu tumbulile kutya: Inatu dhimbweni, Kalunga ketu ngoka ta gongele uuyuni auhe noshikaha she. Sho tu li monkalo ya tya ngeyi yi nyanyalitha, Kalunga ketu ngoka e li Omumangululi gwetu, oku li pamwe natse. Nota kwatha shili mboka taa lilile emanguluko. Oondjodhi dhetu otadhi ningi dhoshili molwaImmanuel ngoka e li Omumangululi gwetu.

Mwaayihe mbyoka oye ta teya po oshipundi shuupika nokatongotongo, oshoka oonkondo dhetu odhi li meuvaneko lye okukoleka aankundi. Ngame ondi na eitaalo ndika kutya Kalunga ketu ota shundula po aanandumbo natse nokatongotongo. Ihe koho yegameno lyaKalunga, uudhigu mbuka otaw kana mo mutse nokatongotongo moshilongo shetu Namibia.

Miilonga ya tya ngeyi tu kaleni meinkelo. Natu indileni Kalunga ketu ngoka e li omusita gwetu. Tu galikaneneni Kalunga ketu e tu longekidhile ondjila yokomeho. Omuwa Kalunga ne tu pe natango oonkondo okuhokolola evaa-



Omusita Jason Amakutuwa

ngeli lyemanguluko nolyedhimopo. Aaholike yandje, inatu etheni tse inatu vulweni nando okwiithana edhina lyOmuwa Kalunga, Oye Kalunga ketu.

Sho tu li methimbo lyomahepeko, shika itashi ti kutya Kalunga okwa hokwa omahepeko. Ihe Kalunga okwa gama kumboka taa hepekelwa uuyuki, unene tuu edhina lye, oshoka Kalunga ngoka e tu gama oye Kalunga kepulo, "Kalunga kandje oshike we ekelehi ndje?" (Mark. 15:34).

Oshili ya yela oyo ndjika kutya: Kalunga ngoka e tu tula muuyuni oye tuu ngoka ina hala tu longele iikalunga, oye Kalunga ta kalelele. Oye ohela, nonena, nomasiku agehe. Onkene tse itatu vulu okukala nomwenyo pwaawe na Kalunga. Omuwa ota holola uuyuki notu uthile oohepele (Ps. 103:6).

Inatu tileni okupopya oshili pethimbo ndika. Oshoka ndika oyo ethimbo lyokupopya oshili Kairos.

Onkene uuwinayi ngele tau popiwa tau holoka maantu ya shashwa nau popiwe. Noonkondo dhuuwinayi dhi li mepangelo papangelo, nadhi popiwe. Oshoka ehanganu nuukumwe melonge-



lokalunga olyaayehe. Inatu tileni okuuvitha evaangeli lyemanguluko, nolyedhiminathano po.

Oondundu nando dhi dhikuke po, esilohenda lyaKalunga itali kanduka po putse. Aanandumbo nando naa kale taa kondjitha: omalutu getu nande naga topagulwe, omalutu getu naga dhe ngwe, natu dhimbulukweni kutya esilohenda lyaKalunga itali kanduka po putse. Omalutu getu naga fikwe po, esilohenda lye olyaaluhe.

Kalunga kesilohenda, ninga wo Kalunga koshigwana shetu. Muudhigu nomoothina tu li mo, meyemato tatu lili, otaw taalele Omuhupithi nOmugwanithi gweitaalo lyetu Immanuel.

Eino Nd. Ekandjo

OSHOMEYA

shilanda 1925 aakwanegongalo oya li 2,500.

Muhongi Welsch okwe ya pehala lye nokoKavango okwa zi aantu 700 nokwe ya uvithile evaangeli. Okwa mana oondjenda dhe eti 8.3.1927.

Muhongi Albert Hochstrate okwe ya kOshomeya nokwa kala sigo a yi kuNdowishilanda moluunkundi wokolutu 1929, nokwa landulwa kuAlfred. Unterkotter pelala ndika Aawambo ya li pomina mpoka oya li 2,000. Omumvo 1930 okwe ya feelani Lina Stahlhut. Omumvo 1932 opwe ya embuluko, nenge tu tye embangoloto omina ye edhilwa naantu ya shuna kaandjawa. Feelani Liina Stahlhut a kwatwa kuuvu nokwa yi kuNdowishilanda a ka kana ko eti 2 Novomba 1933. Okwa landulwa kufelani Luise Schulte. Omulongi Isak Tshitilitha okwe ya ko wo.

Omina oye eguluka ishewe 1937. Aantu ya tana. Omuhongi Paul Schulte e ya kuTsumeb. Pethimbo lyiita muhongi Schulte okwa li a ka pongekwa po manga. Muhongi August Rethemier nalsak Tshitilitha oya langekwa ya yakule egongalo 1947.

Omina oye eguluka ishewe mehangano TCL nAawambo oyendji oye ya kiilonga. Muhongi omupe Gunther Reeh okwe ya muTsumeb 1954. Omumvo 1956 muhongi Eberhard Heuer okwe ya kuTsumeb. Pokati mpono okwa tuminwe omulongwasita Johannes Nantinda (1953-1954.)

Ongeleki yetu oya tumine ko aasita ando ngaashi Johannes Kashiakumwa, Malakia Hauwanga, Lasarus Ngipandulua, Metusalem Shilongo naJason Amakutuwa. Okwa li aayevangeliste Johannes Nghishoono, Andreas Amalovu, Gottlieb Manya naDavid Aludhilu.

Nena aakwanegongalo yetu otaa yakulwa kuMika Kaijamo nomusita Hendrik Dengeinge.

Jason Amakutuwa.

"Edhiya lyaNuugwanga, lyomavo kaga fukulwa, Oshomeya shaMutumba naShikoto." Ehala ndika Aaherero oye li luka "Otimuse," oshoka ohaa tala ondundu ya tayima kolupe lwayela nawa molwoshikushu. Omutiligane gwotango a mona ehala ndika oFrans Galton mondjila ye yokuya kOwambo 1815. Okwa tsakanekke aahwi ya zi kOndonga eti 30 Apilili 1851 pOttjikoto. Oshendo osha li mewiliko lyaShikongo.

Aatiligane oya vugu po tango 1892 nehala olya lalwa kehangano lyolutenda 1900, niilonga yi indjipala. Omulongi gwotango a li mokati kawo oye Samuel Kutako nokwa yakula nomolutenda wo oye ngaa a toto egongalo. Omuhongi Fernand Lang okwe ya kuTsumeb 1906 nokwa kwatha mokuyakula aantu. Ye mwene okwa tembukile ko eti 27 Mai 1907.

Lang okwa li e na oshinyanyangidho. Okwa yakulwa kuBenjamin Kido naDavid Hailonda. Moskola yeshasho omwa li Aawambo 300. Momumvo 1912 egongalo olya tokola iiloyalyo yi gandje iigandjwa komwedhi 50c. Aantu oya ale ya yonuke po kokunwa, ihe muhongi okwa longo sigo e shi fululako hewa.

Iita yuuyuni sho ya tameke, nondjala yekomba yi iteyela Owambo, Aawambo oyendji oye ya kuTsumeb. Megongalo omwa kala epapudhuko enene 1916-1918. Omuhongi Ashipala okwa yakula Lang naantu 450 oya shashwa.

Omumvo 1918 omukithi gwaKapitahanga (gwapitilila nopoholo), ogwi iteyele Oshomeya. Ogwa langula aantu oyendji. Eti 2 Novomba 1918, muhongi Lang neefolo, naSamuel Kutako oya li ya kangawala pamwe naakwanegongalo oyendji. Aakwanegongalo oye ya fumvike. Iilonga oya tamekululwa komuhongi Herman Gehlman 1919.

Okwa tidhwa mo kepangelo 12.6.1919, nokwa ka galuka ishewe 16.6.1919. Oshinyanyangidho osha yakula nawa. Muhongi sho a yi kuNdowishilanda

EBOIKOTO LYOOSIKOLA LYA FUPIPIKWA NOSHIWIKE SHIMWE



Aalongi yamwe pethimbo lyoshigongi shawo mOluno 2.9.1988

Oosikola adhihe mOwambo, odha hiywa kOshikondo shelongo, dhi shune miipundi okutameka 5.9.1988, manga ku na ashike oshiwike shimwe oshipotha shadho moka dha adhika shi hulepo. Aalongi yamwe mUukwanyama, mUuninginino nomOndonga, oya popya pOmukwetu noku-yemata, kutya chiyo ya tsikile nootundi, olya ningwa ngaashi omuntu ta lombwele uunona uushona.

Ehiyo olya ningwa tango muukumwe waalongi miikandjo moka ya leshelwa ombilive ya za koshikondo shelongo mOwambo, ndjoka ya thikama miitsa iheyali. Miitsa mbyoka omwa kwatelelwa efatululo nkene oshikondo tashi tala ookamba dhaakwiita poosikola, kutya itashi popile.

Osha ti wo itashi popile etokolo lya ningwa (pakutala ko NPA), ndyoka tali fala evundakano poosikola dhalyo. Mombilive oshitsa oshititatu otashi lombwele aalongi ayehe ya tameke poosikola dhawo okuza 5.9.1988 pwaa na congaongo. Opwa londodhwa kungoka te ke eta oluhindo nenge ehongololo kaalongi nenge kaalongwa, kutya ota ka humbata oshilanduli.

Aalongi yamwe oya ti, yo poshikandjo shawo, omapulo kaga li taga yamukulwa. Yakwawo ishewe oya ti moshigongi oya leshelwa ashike ombilive, ihe omapulo okwa tiwa itaga taambwa. Yamwe mUuninginino, oshikandjo shimwe, okwa leshwa ashike oshitsa oshititatu, shelombwelo aalongi ya kale poosikola Omaandaha ngoka.

Aalongi yamwe moshigongi shawo otaku t wa oya yemata ashike sho peha lyokufatulula omikundu ndhoka dhi li po, okwa kala owala taku shekwa SWAPO, kutya ina tungitha mo oosikola moshilongo. Onkene aalongi naa taambe ko ashike shoka epangelo tali ya lombwele.

“Tse otwa halele owala okuuva shoka sha halakanithile oosikola ngele osha za po, nenge oshe ethiwa nenge otashi tsikilwa nasho ngiini.

Omafatululo otwa li wo twe ga pumbwa okuuva kombinga yomakonakono nkene taga longekidhwa, osho wo komakakunya ngoka hage ya okuhindila aanona moosikola sho ye li miipundi, manga yakwawo aniwa ye dhi thiga po,” osho aalongi ya li taa tula omaipulo gawo puuyelele.

Oshiwike sheti - 5.9.88, aalongwa yamweyamwe ayeke ya kala taa inyenge popepi nomiandjo dhawo. Uunona owindji owa holola pOmukwetu uumbanda wawo koshilanduli, uuna tau shuna momihandjo dhosikola, manga etsokumwe moshinima shookamba inaali adhikwa.

Ongula yokupendukila etameko lyoosikola ombelewa yosikola yopevi yaanona mOngwedita oya penduka ya pya. Inaku tseyika manga ngoka e shi ningi. Oshidhigu okuhunganeka



Oshikandjo oshiti-8 noshiti 9 shaalongi mOndonga. Osha gongalele 2.9.1988 mOluno, shi tseyithilwe etameko lyoosikola

pethimbo lyoshinyolwa shika, ngele etsikilo lyoosikola otali ka kala mombepo yegundjilo.

Aawiliki yOongeleki moshilongo, oya ningi omutumba gwowina 30.8.1988 mOvenduka, okukundathana omakuyunguto goosikola moshilongo. Oya dhimbulula omayooloko miitopolwa niitopolwa kutya kape na unene efaathano momaupyakadhi ngoka. Oya tsu wo kumwe mokutala nkene eboikoto lyootundi lyaanona tali ehameke aanona naavali, shi vilithe kepangelo lya SA.

Oongeleki oya kwatwa koshimpwiyu shuunona owindji wa taaguluka oongamba nokape na ngoka e shi shi shoka she u ningilwa mpoka pokati.

Uunona umwe otawu hokololwa wa tulwa miilonga yokugandja omauyelele komakakunya nomuukakunya nokuli. Aavali wo momagumbo nayo oya keme kuudhigu wokukala naanona ethimbo limwe ele.

“Ihatu kotha mo we momagumbo moka, ihe otatu dhiladhila owala onakuyiwa yuunona,” osho omuvali a kundathana nOmukwetu onkalo ndjoka oshigwana shi li mo.

Pokati mpoka, Omukwetu okwa kundana molunza lu shi okwiinekelwa, kutya SWAPO ota simaneke unene ekondjo ndyoka aanona ye li mulyo. Manga meni lyoshilongo, uupyakadhi waanona kaaye li moosikola owa topola omadhiladhilo gaavali nogaalongi pokati.

Yamwe otaa gandja uusama kemweneko lyootundi, unene ketokolo ndyoka lya zi kOtmjimbngwe 13 - 14.8.1988. Kombinga onkwawo oku na mboka ya tala kutya shoka osho shi na okuningwa ngele tapu lalakanenwa okuthiminika SA a ze posikola.

Moshitopolwa shOwambo moka mwa penduka uupyakadhi auhe, oshe ende ethimbo ele pwaa na nando okomitiye yokukundathana oshinima, ya hogololwa owina kaavali. Ewiliko alihe olye ethelwa muunona shoka tau dhiladhila.

Ngiika shoka itashi ka tsikila we olule sha tya ngaaka.

Sebulon Ekandjo

Olupandu letu molwohole yeni ye liholola

Filemon 1:4-7

Onamayaka otai ti IYALOO! molwohoni ma inene noi hafifa twe i ningilwa mo 1986-1987. Otu shii shili okupandula Kalunga ketu, eshi a udififa ovamwaye nye onghuwo yetu, eshi e mu ndjadjukununina moku mu tolokela pamhepo oudjuu neefina detu, odo de tu kama tu we pedu koipala yeni ovamwatate novamwameme meitavelo. Omwe tu hekeleka shili.

Vaitaveli nyee vOmwene, shiveni kutya mokutondoka kweni onghuwo omwa udifa eudifo la twa, la pendula eemwenyo dovanyongili paitavelo, naavo kwa li ihave linyenge mokuyakula eehepele meongalo laNamayaka, nena ovo tava yandje oilya ihapu.

Ouyelee weelamba deni inau monika ashike kovandedenhu meitavelo, ndelenee unene tuu movapaani. Ngaashi vamwe ve shi tumbula kutya; voo itava shashwa ngenö opo va dimbulukiwe efimbo keshe tapa monika sha, ndele ova hala okushashwa mOngeleki onghwa-Evaengeli paLuther, osheshi yoo otai lalakanene ohole oyo ya nyolwa mOmbibeli, tai popifa oonakufiwapo ovapaani, notai ilikanene ovo ve na omaudjuu noinaku amwa ombinga.

Umwe ota ti eshi ondalü ya nelyanga oyo ya ekelwa meumbo laye kounyuni wonena ya lafapo ounduda vaye nounyakwi vaye aveshe, okwa li a hala nokwa tokola e litule mongodi. Umwe womuudifihekeleki weongalo laVaengeli eshi e tu popifa nondjovo oyo tai ti inatu lipula naasho hatu li ile osho hatu djale, onda li nda

Dha za kep. 1

sitola. "Uusama washilumbu, owa li ashike mpoka sho inaa popitha aantu mboka a adha po," osho omunangeshefa Shikale a fatulula oshinima.

Okwa holola wo ondjuulukwe yawo aanangeshefa ya kale ye na omambo moka tamu nyolwa omadhina kaayenda mboka taye ya po, ngaashi a ti, kutya ohashi ningwa moongeshefa dhimwe oonene.

Aanashilonga mOmaalaka, Kristofina, naKlaudia omutonateli gwiilonga, ayehe oya ti yo inaa mona okapakete sho ka patululwa kaapulosi. "Aanashilonga atuhe otwa li twa lombwelwa tu ye manga kOluno pethimbo lyekonakono lyokapakete, tate oye awike a li a thigala po naapulosi," osho yi ipopile.

Onkundana yokapakete ka thigwa mOmaalaka, oya li ya halutha mboka yi ile okulanda. Gumwe okwa hokolola, kutya okonyala a thige po oshihauto she, e lwete itaashi endeleele. Ehala alihe olya li lya vundakana, aantu taa fadhuka po. Okuza mpoka ehokololo olya taandele, kutya mOmaalaka omwa thigwa oboma.

Kombanda yokapakete okwa li ashike edhina lyongeshefa ndjoka nedhina Swarite koshiketha 21342 kOvenduka, ando hoka sha za. Shikale naapulosi oya ti, oya adha mo ashike uushina wokutulitha ko oondanda kiilandithomwa.

Sebulon Ekandjo

hala ndi mu kwate pofingo, shaashi ondi wete ta yolo nge.

Fye ovaitaveli ohatu ti, Kalunga okwe shi pitika, opo ovo hava itavele mokumona va wanifilwe elineekelo lavo kOmwene, va shiive nova koneke Kalunga ou ha kwafa pomafimbo mawa, oye ngo ha kwafa yo noha hekeleke pomafimbo madjuu.

Oye tuu oo ta dimbulukifa oshitai shaKunene ounenenghono waye tashi pitile momaudjuu nomomahepeko, tu mu dimbuluke notu mu kalele fiyo alushe.

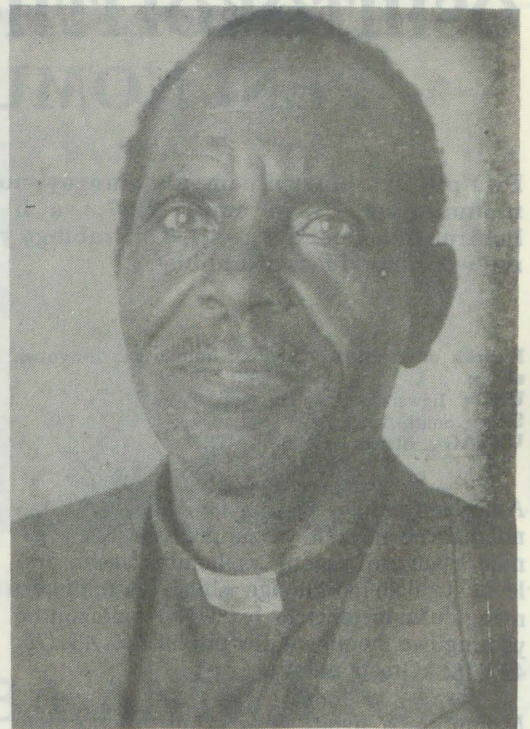
Koneka kutya inashi hujila ashike meedula odo da tumbulwa, ndele nee paife omufimba ta fetwa okaana, kakele ashike kutya nge ta fetwa, opa teelelwa sha.

Okudja omafiku 4aJuni fiyo 19 aJuli odula ei okwa li tu na ominghenyewa tadi tewa, oo omaoko twaa tula pokati komaulu. Omaumbo 30 ovaitaveli a fiwa pomutenya, no 80 ve he fi veongalo letu va tya eenyala pomalupanda va kanghwa mbela ile ova handukila ounyuni walye.

Kalunga mwene ota ka hekeleka keshe nota ka manapo aisho oyo. Hano inatu lidimbweni momailikano. Otu shi okupandula umwe womovafita oo a pitifa eemhumbwe detu, mokuhapupalifa eindilo letu pamishangwa, nande inatu tumbula edina. Kalunga ne mu yambekele oshilonga shaye sheyakulo.

Ope na ovo va twa ondubo nekwafo la tya ngaha, ashike Omwene ne va kufilepo, yee e va dimbulukife oshilonga shavo.

Ponhele yeengudu dopakriste mOnamayaka L.P. Haunini



Omufita Petrus Haunini, Onamayaka

Edhimbulukitho

Otaku dhimbulukithwa nokutya ontanda yaakiintu ya ELCIN mUushimba otayi ka kala ko 30.9. - 2.10.1988 mOtjiwarongo.

Ondjakulwambinga ayihe yomUushimba, ilongekidheni.

Aino Kapewangolo

ETUMO MOSHITAYINGELEKI SHONDONGA

Dha za kep. 1

oshitayingeleki, ongeleki ngele itayi longo oshilonga shetumo, oya sa.

Aakriste oye na okulonga oshilonga shetumo mokati kawo, miilyo yomagongalo gawo, maapagani mboka ye li meni lyoongamba dhomagongalo, maashunimonima, momagongalo, maadhinikalunga, nomokati kaashekikalunga megongalo. Egongalo oli na okugalikanena moongundu kehe oshilonga shetumo, aatumwa naamboka oshilonga tashi longwa mokati kawo.

Oshitayingeleki otashi longo oshilonga shetumo meni lyomagongalo gasho, unene mpoka omagongalo, aakriste itaaya vulu okwaadha po yoyene. Oshitayingeleki otashi sile oshimpwiyu omapyatumo ngoka ge li meni lyoongamba dhoshitayingeleki shoka. Aatumwa taa longo mo nokutala ngele oshilonga otashi humu tuu komeho.

Ongeleki otayi vulu notayi piti ashike mokulonga oshilonga shika, uuna aakriste, omagongalo, iitayingeleki yu uvite ko oshilonga shika.

Omolvashoka tse otatu popi Ongeleki sho pu na aakriste, omagongalo niitayingeleki. Ngele etumo olyo omwenyo, nena otashi ti: Oli na okukala tali inyenge."

Ashipala okwa hiya wo opo aakriste, omagongalo, iitayingeleki nongeleki yi longwe nuupenda nonomukumo oshilongatumo, opo ya mone omayambeko tage tu ziilile mokulonga oshilonga shetumo.

"Talen ne aakriste, omagongalo, iitayingeleki nangoye ongeleki, onde mu pe osheelo she eguluka shokuuvitha evaangeli, nokaku na ngoka te shi edhile po," osho amushanga gwetumo moshitayingeleki shOndonga Ashipala a hulitha ekundo lye.

OSHITOKOLITHO 435 OSHA ZILE PENI NOMU NA SHIKE?

Pwa piti ngashingeyi oomvula omugoyi noomwedhi 11, sho Oraata yegameno ya UNO momutumba gwayo omuti 2087, ya li ya pulakene noya taamba ko ehokololo lya Amushangandjayi gwa UNO kombinga yoonkundathana pokati ke ne pangelo lya SA molwomukundu gwa Namibia.

Koneka omafupipiko taga ka holoka moshinyolwa shika:

UNO = Iigwanahangano yuuyuni
SA = South Africa
UNTAG = Etanga lyombili lya UNO

Amushangandjayi nepangelo lya SA oya kundathanene noya li ya ziminathana SA a gandje epangelo kaantu ya Namibia tashi pitile mehogololo lyoshilongo ashike, lyoshili nolya manguluka metonatelo lya UNO paitokolitho ya ningilwe momimvo dha piti 385/76; 431/78; 432/78; kOraata ndjoka.

Momotumba ngoka mwa taambwa ehokololo lya Amushangandjayi, omo wo mwa tokolwa pu tungwe ongundu ya UNO, United Nation Transition Assistance Group/UNTAG yokukwatha. Omukalelipo gwowina gwa UNO ngoka e na okutonatela ehogololo mu Namibia. Esiku mbika ya tokolwa osha li 29.9.1978, noshitokolitho shu utha iinima mbyoka oshiti 435 shomumvo 1978.

Ethimbo UNTAG ta longo mu Namibia, olya thanekwa li kale oomwedhi 12 nota longo pankondo dhoshitokolitho 431/78 shOraata ya UNO. Pethimbo ndyoka SA okwa pulwa a longele kumwe na Amushangandjayi gwa UNO, oshitokolitho 431/78 shi tulwe miilonga, nehogololo kehe tali ka ningwa mu Namibia pondje yiitokolitho mbyoka 385/78 na 431/78, otali talwa lyaa shi lyopaveta.

Osha zi ano peni UNO yi kale noonkondo dhi thike mpoka kombanda ya Namibia? Oshi na o-

ndjokonona onde. Okuza piita yotango yuuyuni 1914-1919 okwa li kwa ningwa euvathano lyombili yiigwana ndyoka lya shainwa 28.6.1919 muVersailles, shaFulanisa.

Pauvathano ndyoka, iilonga ayihe ya li ookoloni dhaAndowishi, oya tulwa koho yomalelo giilongo yilwe. Ndowishi oye a sindikile kiigwana yuuyuni. SWA osho ihe shomiilelwalongo yaAndowishi nosha pewa ngaaka SA kOngonga yiigwana yuuyuni, pethimbo ndikayaka hayi ithanwa League of Nations, ndjoka 1945 ya pinginwa ku UNO miilonga yayo. Osho sha li etameko lyelelo lya UNO mo Namibia shoka.

Aatungi yethaneko lyehogololo mu Namibia pashitokolitho 435, oya li iinankondolongo itano yuuninginino, Fulanisa, Britania, Canada, Ndowishilanda lyuuninginino na Amerika. Iilongo mbyoka oyo wo oongudhi dhEhangano lya UNO. Oshitokolitho 435 shoka sha zimnawa omumvo 1978 ku SA nokuSWAPO, osha talwa ano etsokumwe lyoonkalankongo pokati ka SA na UNO ndhoka dha pangele omimvo 33 dha piti, SA sho kwa li inaa hala okulongela kumwe nEhangano ndyoka.

Kombinga onkwawo osha talwa wo egwanitho lyoshimpwiyu shoka SA e shi pelwe ko UNO (1920) okuputudha oshigwana sha Namibia noku shi thikitha meipangelo lyasho shene, ihe ka li e shi ningi. Omukalelipo gwowina gwa UNO oku na ompito yokuninga omathaneko ngoka taga gumu onkatu kehe yopapolitika mewiliko, pethimbo lyehogololo, opo u uve ombili iinima nkene tayi ende. Mewiliko lye ota kala e na aanashilonga ya gwana aakwashigwana wo yomondungu ya UNTAG.

Mpoka sha pumbiwa, Omukalelipo gwa UNO, ota kala ha gandja ehokololo lyiilonga ye ku Amushangandjayi gwa UNO, nguka kombinga ye ota yelithile wo Oraata yegameno, iinima nkene tayi ende.

Ehogololo otali ningwa puuketha wehogololo. Naamboka yaa shi okulesha nokunyola, otaa ningilwa uuketha wawo womeholamo. Esiku lyetameko lyokuninga iigongi yomayelithilo gomahogololo, esiku lyehogololo lyolyene, elongekidho lyuumbapila wehogololo niikwawo yi na sha nehogololo, otayi ka kundathanwa kuyele, opo oongundu adhihe dhopolitika naantu ayehe yomoshigwana ya mone ompito yokwiilongekidhila nawa okuya mo.

Omumamibia kehe e na uukwashigwana wa Namibia okuza pomimvo 18 sigo opombanda, oku na uuthemba mokuhogolola. Emanguluko lyu udha okupopya, lyokugongala, lyokweenda, lyokunyola, mbika ayihe otayi ka gandjwa pwa na omalimbililathano.

Iinima yimwe yi na okuningwa po tango, mangwa iigongi yehogololo inayai tameka, sigo Omukalelipo gwa UNO a tala sha gwana, oyo ngaashi:

1. Ngoloneyandjayi gwa SWA e na tango okukutha po omathegela agehe gooveta nogomautho ngoka ga kala ge na sha nokatongotongo.
2. Oye wo ta ningi elongekidho lyokumangululitha oonkwatwa dhopolitika ndhoka dha dhigininwa ku SA, opo nadho wo dhi itule

Tala kepanja tali landula

OMAHANGANO OVANAILONGA MUNAMIBIA

Ehangano laSWAPO mOvenduka ola dikifa ongonga yomahangano ovanailonga (National Union of Namibian Workers /NUNW). Ehangano eli otali talwa ina ile onduda yomahangano e lili noku lili ovanailonga moshilongo.

Fiyo opaapa omahangano atano oikondolonga i lili noku lili, okwe lishangifa monduda oyo NUNW. Omadina omahangano e li mo oo;

Namibia Transport and Allied Workers Union (NATAU); Mine Workers Union of Namibia (MUN); Namibia Food and Allied Union (NAFAU); Namibia Public Workers Union (NAPWU); naMetal and Allied Namibia Workers Union (MANWU).

Omahangano aeshe aa, oku na paife oilyo i fike lunga 70,000, osho tashi talwa kutya etanga linene li lile po ouhapu wovakwashiwana. Otapu kondjwa natango eengudu dikwao dovanailonga di dike omahangano ado do di lishangifa membwida eli.

EEMBAPILA DEERADIO DA KUFWA PO, DEETELEVISIO DA WEDWA

Ewiliko lokutuma omawi momhepo la SWA, otali xulifa po eyandjo leembapila deeradio okudja Septemba 30, 1988 nopefimbo tuu olo, otali ka wedela oifendela yoradio yomudidimbe (Televio) neepresenda 60% komudo.

Oradio yomudidimbe otai ka futwa R96,00 komudo. Oradio ei oya tameke okulungifwa moshilongo eshi okudja 1980, nopahokololo, otaku tiwa eepresenda 10% adike dovakwashigwana hadi longifa oradio oyo.

Ofanditha Ofanditha Ofanditha Ofanditha



HEKA MARKET oku na ofanditha onene yomasiku 30 ageke. Okuza eti 15.9. — 15.10.1988.

— Oohema dhoomeme
— Oohema dhaakadhona

— Oohema dhuukadhona uushona
— Oondjato dhaakiintu
— Oongaku dhoshikiintu

HEKA MARKET oye e na shoka wa pumbwa. Endelela, ino pitililwapo.

miinima yehogololo, pwaa na elandulwo, etilitho nenge ekwatwo.

3. Aanamibia ayehe ye li muupongekwa nenge ye li muukwatwa, nenge palwe pondje yoshilongo, otaa pitikwa ihe okugalukila kegumbo nombili pwaa na ngoka ta landulwa, ta kwatwa, te edhililwa nenge ta hindwa. Iiyelo yokupitila aantu mboka tayi opalele, otayi ka totwa po owina.

4. Omukalelipo gwowina gwa UNO kekwalho lyaKomufala gwoontauki ko UNO, nomahangano galwe taga opalele gopaigwana, oyo taa ka tala kutya Aanamibia ayehe ye li pondje yoshilongo ya pewe emanguluko lyokutokola yoyene ngele otaa galukile kegumbo nenge aawe. Ngoka inaa hala, ita thiminikwa.

Oshinima shombepo yiikonene pokati koongundu dha kala tadhi kondjithathana ngele tashi manwa po tango, manga inaku yiwa kokule melongekidho lyehogololo, osho onkatu yi na okwaadhika. Omolwasho iinima itano tayi landula oyi na tango okugwanithwa.

(a) Aakwiita ya SA noya SWAPO ye na okungambekelwa mookamba pethimbo lyehogololo nolyiigongi yomahogololo.

(b) Muule wiiwike 12, oshitokolitho 435, sho sha tulwa miilonga, aakwiita ya SA ye na okukala ya thiga po Namibia, e tamu thigala owala 1500. (Ndishi ngashingeyi ohaa tengenekwa 50,000 sigo 100,000). Ezemo ndyoka otali tetekelele iigongi yehogololo.

Aakwiita 1500 mboka ya thigala po, otaa ka ngambekelwa kOshaanda, nenge kOshivelo nenge akuhe hoka, sigo uuna oshizemo shehogololo sha tseyithwa, moka taa kala ayehe ya manga, ya shune hoka ya zile.

(c) Omakakunya agehe Omanamibia pamwe newiliko lyago alihe tayi halakanithwa po. (Inaku tumbulwa mpoka taa ukithwa, ngele okushuna momagumbo nenge okugandjwa po kepangelo ndyoka tali yi koshipundi.)

(d) Aanambelewa yaSWAPO ya kala pondje, taa longekidhilwa egaluko, opo nayo wo ya kale mehogololo ndyoka lya mangulukila omuntu kehe Omunamibia.

(e) Omatokolo gasha taga ningwa po, otaga tonatelwa ketanga lyombili lyaUNTAG pamwe naapolosi ya SA mboka taa longo pamwe nalyo. Oveta nelandulathano alihe moshilongo pethimbo ndyoka lyokugandja epangelo kaavalelwamo, otayi kala natango momake gaapolosi ya SA pamwe noyaUNTAG.

Ngoloneyandjaji pamwe nOmukalelipo gwowina UNO, otaa tala nkene aapolosi mboka taa longo iilonga yawo, nonkatu otayi vulu okukatukwa mbala mpoka pwa dhimbululwa eihumbato nayi maapolosi. Aapolosi mboka itaa pitikwa ya humbate oondjembo oonene, ihe otaa kala ashike naandhoka dhokwiigamena.

Ehogololo sho lya pu, ongundu ndjoka ya gwini, otayi gongala ihe mbala, yi tunge Ekotampango lyoshilongo. Iilongo yuushinda nayo oya pulwa yi yambidhidhe omalongekidho ngoka agehe, emanguluko lyaNamibia li ende nombili.

Ano ngele to igidha wa hala emanguluko pashitokolitho 435, osho to pula shi ende ngaaka.

Sebulon Ekandjo

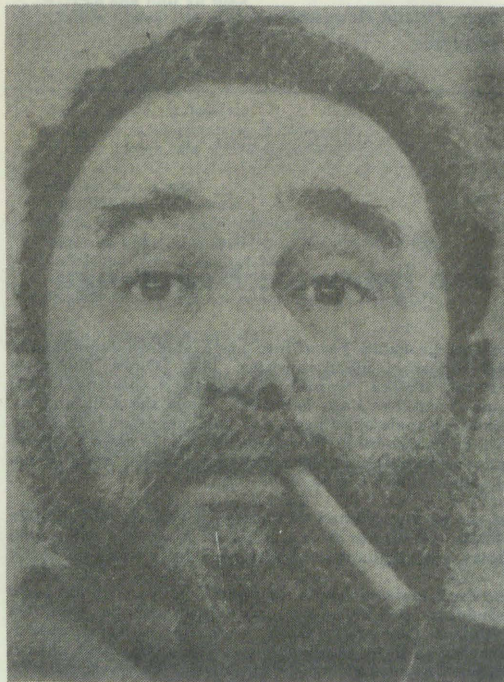


Oluvalo lwaNamibia lwomuupongekwa

ANGOLA NACUBA ANIWA NAA GANDJE EYAMUKULO

Manga oshifo shika shi li melongekidho, omutumba omutiheyali gwoonkundathana dhokukonga ombili muAngola nemanguluko lyaNamibia, odha tameka moshilandopangelo Brazzaville, shaCongo. Oonkundathana odhi li pokati kaAngola, Cuba na S. Africa mewiliko lya dr Chester Crocker, Amushanga gwiinima yaAfrika mepangelo lyaAmerika.

Oonkundathana otadhi kongo etsokumwe lyethimbo uuna aakwiita yaCuba taa kala ya pwa mo muAngola. Nale SA okwa li i indila Aacuba mboka ya pwe mo mulyotango lyaJuni 1989, esiku ndyoka lya thanekwa Namibia ta ka kala mehogololo. Cuba naAngola oye li tindi noyi indile ya pewe omimvo ne.



Dr Fidel Castro, omuleli gwaCuba



Dr Jose Eduardo dos Santos, omuleli gwaAngola

Uudhigu woonkundathana dhethimbo Aacuba taa zi mo, owa gwedhelwa kepulo lyaSavimbi nkene taa paathana ombili nepangelo lyaAngola. Amerika na SA oyo ya hala oshinima shika. SWAPO kombinga ye, ota kongo wo uuyelele kepopyo lya SA sho ta ti, Ombaye oya ningi oshitopolwa sha SA.

Oonkundathana ndhoka dha tamekele 7.9.188, otaku tiwa otadhi ende nuudhigu shi vule ndhoka dha tetekele. Ihe muLuanda, omusamane Maria Tonha, okwa popile kaatoolinkundana, kutya kape na unene oshinima oshidhigu shokwiimba etsokumwe li adhikwe. Eindjipalo lyaakwiita yaCuba muAngola, ndyoka lya hokololwa muAmerika, nalyo olya ningi endangalati moonkundathana. Cuba naAngola inaa zimina omipopyo ndhika.

IITA YOKUKONDJITHA OMALOVU

Ongeleki yaKatoolika mOvenduka muNamibia, oya adha petokolo yi itule moshilonga shokuyakula oshigwana shaNamibia mboka taa hepekwa kuuvu wuunkolwe. Otwa dhimbulula nkene ongundu onene yaakwashigwana shetu oya shundulwa kiikolitha. Omolwiikolitha oyendji oya gwile momaluhepo taga landula:

Uukwaa na iilonga
Uukwaa na egumbo mpoka
omuntu e li.
Oluhepo
Ehalakano lyoondjokana
Etopoko lyekwatathano
nongeleki:

Ongeleki yaKatoolika oya langeke omunashilongayakulo gwokuyakula aantu ya tya ngaaka ethimbo alihe. Nguka okulilepo ashike okuyakula ayehe mboka ya hala okumanguluka kuupika wiikolitha, nokoluhepo ndoka talu etwa kiikolitha. Ngele owa pumbwa uuyeleele wa gwana kombinga yomuyakulishigwana nguka, dhenga ongodhi ku:

Mej. Selma Martin
Ongodhi (061) 61505 kOvenduka.
Okutameka otundi 09h00 — 13h00,
nosh wo po 15h00 — 17h00.

KONDJITHA UUNKOLWE OTO KA MANGULUKA.

Tega u pule ehala komunona ye mwene

- Ndishishi:** Olye ano e ku ulula?
Ndanyengwa: O! mukwetu omeme
Ndishishi: Owu ululwa uunake?
Ndanyengwa: Onale manga nda li omunona omushona. Ndishi ngame osheli, aniwa meme okuulula ndje opo ndi kale tandi monika nawa ngele te ende nangame.
Ndishishi: Nani ou ululilwa uufuuli?
Ndanyengwa: Tate yemwene ka li a hala ndi ululwe, oshoka owala meme ta ti kutya ita kala aniwa nokanona inaaka ululwa a fa omukulupe. Ota ningi a yolwe kaafuko ooyakwawo mboka ye na uunona wu ululwa.
Ndishishi: Ngashingeyi ou na okuninga nee ngiini opo dhi thite po?
Ndanyengwa: Kandi shiwo kahewa kandje.
Ndishishi: Ngele owa kala ino tula mo uutenda momakutsi, otashi vulika wu pite omalolo, nenge oombululu dhi thite po owala.
Ndanyengwa: O! Akutu meme gwandje a

ningilila ndje mo. O, oshili okwe shi ningile ootuu shike? Ndishi ngame ngashingeyi ondi na ondjo kuKalunga nenge ongiini Ndishishi?

Ndishishi: Ngiika ngoye ku na ngaa ondjo, shaashi kwa li u shiwo.

Ndanyengwa: Andola aakuluntu yaa ululewe aanona yawo hwepo. Shaashi ohashi ka kala she etela aanona uupyakadhi komasiku gokomeho ngaashi ngame.

Ndishishi: Ngashingeyi otu na okuninga ngiini opo aakuluntu ya tseye kutya tse aanona ohatu kala tu uvite nayi molwuufuuli woomeme mboka taye tu longo. Yo itaa tege tu ke wi ilonge tse yene. Aakuluyonale okwa li wo haya tenwa, ndele ihaa tena uunona wawo. Ohaa tege u ka tenwe ngele owa hala wowene, ngele wa koko.

Mbulu Frieda Magano
Ondangwa

"Iinima ohii popiwa ngaa"

"Ando Kalunga a kwathe ngaa oonkundathana ndhoka dhi li muBrazzaville shaCongo, dhi adhe esindano, tu mone emanguluko lyoshilongo shetu," yamwe osho ya kala taa galikana ngaaka manga oonkundathana dhi li metifa. Yamwe taa gwedha ko ishewe sho dha piti, kutya: "Kashi na mbudhi, ngele inapu adhika etsokumwe moshikando shika, otu na omukumo neinekelo lya kola, kutya moshikando tashi landula, otadhi ka adha esindano." Onawa sho oshigwana shi na omukumo netegameno lya kola ngeyi.

Uuna oonkundathana nomikundu adhihe ndhoka dha kandulwa po, nopwa adhika etsokumwe, sha kambela ko emanguluko lyoshilongo, lya olyo ihe nda hala tu hungileni molufo nduka. Oohungi momagumbo nomoongundu odha pumba. Mpaka otatu vulu lela okutenda ondhi kwa nando okanona inaka valwa, oshoka meme Namibia oku li metegelelo enene nokanona otaka valwa mbala, hasho? Otwa pumbwa ashike okwiilongekidha nawa twa mana mo.

Ndishishi owa yeelwa ngaa kemanguluko, kutya oshike nuukoloni oshike naasho hashi yi eta po nenge tashi yi tidha po? Onawa sho u shi shi, ihe natu kwathe mboka kaaye shi shi. Mbaka haa ti, emanguluko okulya ya lala. Mbaka otaa tsu oongano dhomutenya mba. Tashi vulika ngaa ye li oyendji mongundu ndjika.

Kuyamwe ishewe emanguluko okwaha pangelwa, ondiikwatela. Kuyamwe emanguluko okulikola pu na omuposi, nenge okumona aniwa shaa shoka a hala. Iinima ngashingeyi ohaye yi imbwa ashike kAatiligane, osho taa dhiladhila. Memanguluko ou na okutaamba iinima yimwe wa li u yi hole muukoloni ihe ito yi mono we. Ngaashi wo to vulu okukaniha yimwe iwinayi yomuukoloni tayi pingenwa kiwanawa.

Pamwe iinima yimwe muukoloni owa li ho yi mono nuupu sho omukolonyeki gwoye e yi ku longekidhila owina opo u kothele mo, manga ta tsikile okulya omagadhi ge, nenge omukolonyeki kwa li he yi mono nuupu. Mokakololo haka otwa popi nale kutya otu na iiholelwa yomamanguluko gaamwameme mu-Afrika.

MuZimbabwe oya ningi ashike oomwedhi ngapi-ngapi memanguluko, yo otaa ningi omakanka taa pula egwedhelo lyoondjambi. U lwete ko? Ngiika ka pwa li ngoka e shi shi, kutya oondjambi dhopombanda oyo yene ye na oku dhi longela po niikaha yawo. Eputudho lyawo osho lya li, kutya ohaa pewa ashike ohi ya kangwa nale, yo inaa lombwelwa kutya ohi ndjoka ohayi uhalelwa komulonga to ndjolola. Memanguluko otu na

Tala kepanja tali landula



Nakusa Leokadia Neputungu

Eso lyameme Neputungu

Popyeni Leokadia Tweufilwa, okwa valelwa momukunda Embulunganga mUukwanyama 1888. Okwa putudhwa kukuku Ruusa Kapale kaTavayuu omunyekadhi gwomukwaniilwa Kapa kaShikede. Kapa sho a hulitha 'oondjenda, Kapale okwa pewa a ka kale megumbo lyaNdemufayo, he yaMandume. Mandume sho a koko okwa li a pewa egumbo. Kapale nomwana Popyeni oye mu lele, oshoka Mandume kakwa li e na omukiintu.

Iita sho ya li ya hwama sigo omegumbo lyawo lyahugunina mlihole, Mandume okwa li a kondjo nuupenda noina hala uupika, okwi iyaha mwene oholo ye yahugunina 6 Juni 1917.

Opo ihe Kapale naNeputungu nomalenga ya yi metau ye ya mOndonga pethimbo lyomukwaniilwa Martin Nambala Kadhihwa. Okwa li ya taambwa nenyanyu. Kapale nomumwayina ya li ya pewa egumbo mOtaikena, moka mwa li omuyamba gwaLukonda Viktoria Namene yaKadhihwa. Neputungu a shashwa 12.12.1938 Leokadia, a kolekwa 3.12.1939, a hulitha 6.8.1988, aanona ye yatano, aatekulu 94.

Thomas Nepaya

okwiilongekidhila okuhumbata iimpwiyu.

MuNamibia lya manguluka, otu na shili okulonga noonkondo dhetu, okutungulula mpoka pwa mbyonyagulwa komutondi. Otashi kwatelele mo oondunge, omikalo, eliko nonkalathano ayihe. Tatu longo pwaa na ngoka e tu li konima ngaashi yamwe ye shi igilila ngashingeyi, ihaa longo inaa kalelwa komuhona. Ohaa longele omeho gaantu.

Gumwe ngele ta lombwelwa a dhiginine nando okuthika pethimbo lyiilonga, oha ti, "mbuka uukoloni." Ngele ta lombwelwa a longe sha, aniwa ota kolonyekwa. Kuye mboka owo uukoloni. Osho tuu? Ngele mbuka owo uukoloni, nena onyalo oshike nee? Omuntu gwoludhi nduka, ona ka mona iihuna muNamibia lya manguluka. Omikalo dholudhi nduka onde dhi ikwata ngele onadhi ka longithwe muNamibia lya manguluka. Oku ulika ashike kiiholelwa yimwepo.

Aaniilonga yamwe otaa ningi nomasiku inaaya ya kiilonga. Oya faula. Kapu na etompelo lyasha. Aanambelewa naanashilonga yamwe otaa thigipo ilonga ethimbo inaali adha. Nkene a yile komulongo na galuka ongula. Mbuka owo uuvu uunene nuukoloni uupe woshigwana. Nau pangwe manga kuye.

Omukithi omukwawo tagu vulu okufaa-lala emanguluko lyoshigwana shetu, ogwo iikolitha. Ope na ngoka te shi patana? Omalovu otwe ga hokithwa nowina komuhepeki gwoshigwana shika, tu kale moomposi. Ku wete haa popi taa ti: "Aaluudhe naa kolwe tse tu ya pangele ngaashi twa hala." Oshoshili,



Oveta yokangendjo mOwambo, oyo yimwe ya kala ya dhigupaleka oshitopolwa shiita. Okamati David (14), Oshigambo, eti 9.7.1987 oka gwile moshilangela shaakwiita ya SA e taka yahwa moompadhi. Aawilikingeleki oya shuna oshipotha shoveta ndjoka mohofa yopombanda kuBloemfontein omasiku ngaka.

onkolwe oyi na eipangelo lyashike, oto yi ningi ngaashi wa hala.

Etumbulo ndika nali hulile muukoloni, inali ka thika nando muNamibia lya manguluka. Ondi na eindilo lyowina kaantu yoshigwana shetu. Ngoka ho nu oolitela 10 mesiku, dhombiila nenge dhotombo, kambadhala u tameke okushuna pevi, u kale ho nu 5 mesiku. Namibia sho tali manguluka ngoye u kale ho nu ashike olitela yimwe nenge ihoo nu sha nokuli.

Ngoka ho patulula ongeshefa nenge okandingosho komakende ongula sigo ongulohi, u kale ho patulula nando opoyimwe yomutenya. Ndishi uunzapo otwe u mona ngashingeyi aantu sho taa

patulula iikunwa okuza ongula sigo ongulohi, oshigwana otu wete mpoka shi li ngashingeyi nohashi yemateke oyendji, hasho?

Opu na mboka ye li moshigwana ngashingeyi ihaa longitha iikolitha. Oyendji otaa kongo oompangela oompe dhokukondjitha omuhepeki gwoshigwana a thige po Namibia, nokaye na ethimbo lyokunwa. Aantu mbaka oye shi okupandulwa. Ihe otashi vulika memanguluko taa tameke okunwa sho yu uvite ya adha oshilalakanenwa. Emanguluko lyokutidha po omutondi halyo emanguluko, shoka etameko ashike lyondjila onde yokutungwa oshigwana.

J. Akudhenga

"Efa oshiwana shange shi ye!!"

Omunamibia komudidi
Omuholimbili Omuafrika
Omunamibia omuhepekwa
Ohandi ingida ewi lange mokule
Handi lombwele South Africa
"Efa oshiwana shange shi ye!"

Omunamibia omuhepekwa
Omudinwa mokati koiwana
Ndi li Omuafrika kuyadi
Ohandi lalekida ondaka yange mokule
Handi lombwele South Africa
"Efa oshiwana shange shi ye!"

Omunamibia kuyadi
Odalele yaAfrika
Omukolonyekwa medu loomeme
Ohandi popi handi lombwele
Handi ula omukolonyeki wetu
"Efa oshiwana shange shi ye!"

Namibia edu la pumbwa ombili
Oshilongo sha hala emanguluko
Shi dje moupika nokatongo ka lulila
Momake aava ve hole okakombo noludi
Namibia tali kuu moule walo
"South Africa, efa oshiwana shange shi ye!"

Omhepo oya pepele
Oikungulu ndele tai duka
Ohonde tai tika mOnamibia
Ndele "Ocassinga" take uya
Oixuna "mOmbaanga yaShakati" tai holoka
Ndele Ovanamibia tava tale
"South Africa, efa oshiwana shange shi ye!"

Okudja keembinga nhee dedu
Oudjuu waNamibia tau tongwa
Ovakwaunyuni tava lombwele
Ovaholimbili tava tongo
Ovanamibia tava udifa

Hali ka sha hali ka toka
"South Africa, efa oshiwana shange shi ye!"

Omido omafele nadi piti
Namibia li li moukoloni
OoTjamwaha va popile
OoMaharero va ingidile
Oohpumbu ve shaanya, li kolonyekwe
"South Africa, efa oshiwana shange shi ye!"

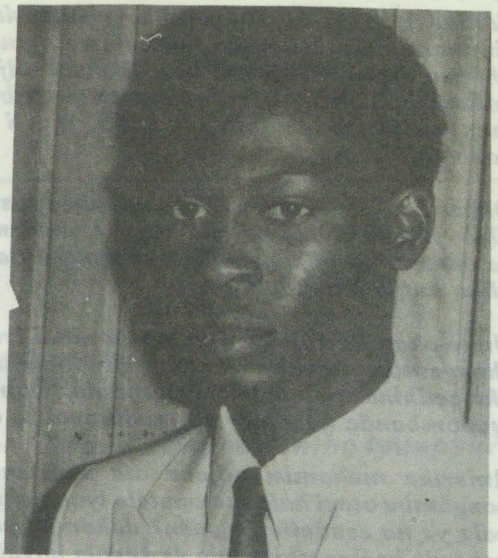
Efimbo noule walo
Namibia moupika walo
OoMandume va kufile oifufuta
Ohamba yokayalambadwa tai kanifa oshilongo
OoWitbooi fiyo tava punduka
Ndele oupika tau ya, oukoloni tau holoka
"South Africa, efa oshiwana shange shi ye!"

Eedula omulongo da pita
"Ocassinga" ka holokele
Oshitokolifo shoiwana yahangana sha yandjelwe
O "SWAPO" ya popile
Eengeleki da udifile
Eedalele da li kupopya
Okatokolifo ka ye moilonga
"South Africa, efa oshiwana shange shi ye!"

OmolwoCassinga modula 1978
Molwoboma mOshakati 1988
Omolwoukakunya tau dengele
Okangedjo koufiku mOwambo
Omolwomaidililo pe he fi paveta
Omahepeko e lili naku lili
Ohonde yOvanamibia ya kanenamo
Ohatu ingida ngomunhu umwe hatu ti,
"Otwa hala emanguluko nouyuki"
"Ombili i pangele moNamibia"
"Alikana, South Africa, efa oshiwana shange shi ye!"

Moses Sh. Shingo
Ondobeyeno

Eso



Omupangi Isak Shithigona yaMbadhi (25) Onemanya mOngandjera, okwa mana oondjenda muuwehame wethimbo efupi 2.6.1988. Okwa piti uupangi mOvenduka 1987 nokwa longo moshipangelo mOshaanda (Grootfontein). Okwa thigi ko he nayina naamwayina yaheyali. Ehol. 19.9.

Tarah N.Shaanika
Ongandjera



Ova shangela nge tava ti.....

Ovadali inamu efa outeku weni

Onda mono kutya oshiwana ounona vasho veedula nhatu fiyo 20, ova ongaleta omalukanda pOkamwoongo, pOmwandi waKamanya, pOkano, poivelo yeekamba domakakunya nopomatenda omeva apa pe na eembulu.

Kunye ovadali vooememe onda hala kutya, outeku wokaana nau tameke fimbo ke na ominute 30. Omu li po hamu ti: "mona wange, oo iha udu ko. Oo wange osho e li, ile ito mu dulu." Tate ngeenge te ka denge, ove to ti; ka dipaa u ka pulwe."

Okaana ngeenge ito ka dengele epuko lako, oto tula omwenyo wako moshiponga. Dimbulukweni nokutya ounona ovo ve mu nyenga okukelela keekamba domakakunya noku ka shashala eembelela pomashingifilo, ovo naanaa hava ningi omakakunya, osheshi ova hokwa oonyenye weendoxa, voo tava dimbwa kutya edu larvo oli li momake omutondi.

Ovashamane, ongushu yeni youmwene weumbo inamu i kanifa. Meme ngeenge ina hala okaana ka dengwa, ne ka ningile okaumbo kako, ndele hamekove loye nande. Omo nee naka dje taka i keekamba.

**L.Kanyiki
Oshikango**

Valuleni omilongelo deni nawa

Ovamwameme ava hamu londo oihauto mondjila, kwafei nge mu shange okambapila oinima yoye, kutya oi fike peni. Eshi tuu to londoloka, ove to tala nee ngeenge aische opo i li, ile wa dimbwa mo imwe. Eshi shi ninga nee fimbo ino londa moshihauto.

Ondi udite unene onghenda omolwainima yovamwameme tai kana noupu. Eedikwa noikelive otai kana. Ame inai mona nee nale omudali a kanifa odikwa, shapo okwe i nyekwa ashike. Ovanyasha, kwafeni ovakulupe mondjila.

**S.H.Mupumba
Oranjemund**

Tu ningei po sha

Vakwateli komesho voshirwana nye, oikwatakwata oya nyika edilo, yo oinyanekwa ihai shakene nomutenya. Ashike onghendabala oi dule okumwena. Omutumba efete, eengeda okeyelu ku liwa. Ningeni onghendabala opo okatokolifo 435 ka tulwe diva moilonga, pamwe enongo taa fe ongobe. U ha umbaumba ku yashe. Kape na wa imine ihau kuka, doo nomido onghee ngoo tadi ya doo tadi i.

**Tulonga Tomas
Oshakati**

Epulo

Aaholike, onda hala okupula kombinga yegongalo Etambo, kutya olya kanene peni, sho sha li sha piti li nyolelwe medhiko lyomagongalo? Aakwane-gongalo ya li ku tegelela, ihe sigo onena. Osha kanene peni ano?

**Sem Nalimanguluke
Tshandi**

Elongo la ninga efipahonde movadali muNamibia

Ovadali ohatu xupu paife shokadila, molwaa-shi oilonga oye tu wilililapo. Ove to limi mepya, ove to ka lifa oimuna. Mepya omo hamu di oilya ei hai liwa, mo omo hamu di omidjalo domudali nofuto yofikola ngaashi yo moimuna.

Aishe oi li komapepe omudali, fimbo okaana taka alangata monyalo yelongo. Ovawiliki velongo mOwambo, ovatalelifikola ohatu mu indile amushe kumwe. novakulunhufikola novapangeli voilongo, mu talulule oshinima shomafudo eefikola, oo ihaa yandjwa pethimbo loilonga.

Tu tuleni oukuni kumwe, tu tungeni onakwiirwa yoshilongo shetu nomomaludalo etu, opo ngaho elongo li ha ninge omulonginyalo moshirwana, unene tuu ovo ve li meesheko. Yaveleleni hano ovakwashiwana vakweni ovo hava xupu ashike mounamapya nomounaimuna.

J.P.Nghatanga

Otwa hala tu mone ekondjo lyeni aakwaniilwa

Onda koneke oku na oongundu naawiliki yomahangano gi ili nogi ili taa kondjo neitulomo okweeta popepi emanguluko lyoshigwana oshithiminikwa shaNamibia. Ihe sigo oompaka ine mona einyengo lyaakwaniilwa nomalenga goshilongo shika moshinima shemanguluko.

Ngame omunyoli onda hala okuuva, omwa thika-

'ma ano kombinga yinipo? Aanyoli yiitewo otaa tongomona aakwaniilwa nomalenga oofule yoo-Nehale nooNamupala gwaAmoomo, kwa gwadhwa ooMandume noohIpumbu, aantu ya li taa kondjele uuthemba womihoko dhawo. Momitumba dhomalelo giilongo yeni ohamu ikundu mo shike?

**Filemon Kaashona
Ondangwa**

**N.B.Ya fupipikwa
Amushanga gwOmukwetu**

Oshiponga sheenailona

Ohai tu kumwe nomushangi woshifo shonomola 1, 15.1.88, tashi popi odula ihai loko molwomiti da prwa mo okukeza po moshilongo. Oshili, ngeenge da pu mo itatu mono vali odula. Mee-mbuwa ihamu lokwa, noilongo ei i li meembuwa ihai lokwa.

Ohai weda ko oishoshela. Ondi wete moule weedula omulongo tadi ya ohatu ka kala tu he na eengobe. Adishe otadi ka kala di na omukifi "Wokanker", omukifi ihau veluka nande.

Oshiponga eenailona edi di yadi mOwambo aishe. Ngeenge to dipaa ongobe oto hange mo onduba yeenailona nande ongobe nai kale ya ondoka.

Ngeenge ongobe ya lya onailona ihai di mo vali medimo. Vamwe vati ohadi nwefa eembiila ndele, nailona okwa mwena ashike. Ondi shi shi moule weedula 10 itatu xupu nongobe.

Ondi shi shi eenailona ohadi tonyenwa oinima iwa, ndele odi na oshiponga. Ovanandunge ohave di diinine di ha halakanene keshe pamwe.

Eshi tu li koshitukulwa shi he na omhango, osho ashike tu na okukala ngaho, ndele ngeenge ohatu dilonga, ohatu i ashike nawa, nande kape na mhango shamha hatu longeleni kumwe. Xwika eenailona opo u xupife oinamwenyo koshiponga novanhu yoo nounona.

**Toivo Ndakomani Kambode
Edudja**

ETSEYITHO LYOWINA

OMIZALO DHOWINA DHOMUUPYU

Owa tseya tuu mpoka pu na oonguwo dhowina dhopethimbo lyuupyuu?

ILA U TALE MOHEKA MARKET

MOHEKA MARKET omu na oonguwo oomppe dhoomeme, omuzalo gwowina muupyuu.

Kondando ombwanawa noto yakulwa nawa nombili, endelela.

Etseyitho lyowina kaaleshi nokaahalithi yOmukwetu

Omasiku sho taga hilile pehulilo lyomumvo, otaga dhimbulutha wo neilongekidhilo lyomumvo tagu ya 1989. Aaleshi ayehe yoshifo shOmukwetu naayehe haa landitha nohaa nyolitha omadhina gaataambi yOmukwetu, onawa mu ndhindhilike egwedhelo lyondando yoshifo omumvo 1989.

Egwedhelo lyondando yoshifo olya zi mewilikongundu lyoshifo nuumvo. Otwa thiminikwa kelondo lyoondando dhiinyanyandidhomwa nodhomopoosa, tu shi ninge nando twa tseya wo uupyakadhi waaleshi okumona iimaliwa monkalo tu li muyo. Egwedhelo oli li ngaashi tali landula mpaka:

1. Ondando yoshifo okulanda kooshimwe oya gwedhelwa noosenda 10c, opo dhi kale 50c.
2. Ondando yoshifo muNamibia nomu S.A. oya gwedhelwa R2,00, opo yi kale R8,00 komumvo.
3. Ondando pondje yaNamibia na S.A. oya gwedhelwa R3,00 opo yi kale R20,00 komumvo. Ndjika oyolweendo lwomondhila.

Aagongeli yomadhina gaaleshi nane wo aahalithi yoshifo ooshimwe nashimwe, fatululileni nawa aalandi yeni egwedhelo ndyoka manga kuyele, opo ya wape okwiilongekidha nawa. Oshifo shika oshe egulukila omuntu kehe oku shi landitha momudhingoloko gwe nenge okugongela omadhina gayakwawo, niimaliwa opo e yi tume kOniipa.

NDHINDHILIKA: Ohatu futu 20% koshifo kehe wa landitha po nenge oopelesenda 10% komadhina gaaleshi we ga gongele. Ngoka wa hala okuya meyakulo ndika, tuma owala edhina lyoye; kOmukwetu P/Bag 2013 Ondangwa 9000, nomwaaalu gwiifo mbyoka wa hala u kale ho landitha.

Otatu indile aaleshi aaholike, mu yambidhidhe oshifo shetweni ngaashi shito nondando ndjoka, opo shi wape okutsikila niilonga yasho. Inapa kala ano okakololo megongalo lyeni, momukunda, mokomboni nenge molukanda moka Omukwetu ihaa thiki mo. Tu kwathathaneni mushoka.

(Amushanga gwOmukwetu)



Elieser Hashiyana Hamupolo methano ndika, okwa manene oweenda waye 30.1.1988 mepupi leedula 42 metando mOvenduka. Okwa fiya ko omukulukadi waye noumatyona vaye vatatu. 2Kor.3:5-8

Robert Sem
Oup'amako

LOANS LOANS LOANS

We grant loans from R1000,00 up to R10 000,00. For further information contact:

Mr Amadhila Set
P.O. BOX 302
Tel 272
ONDANGWA 9000

For prompt Services send R100,00.

YA DHIGININWA NATANGO NENGE YA KANA

Mai 1979 — Festus Nakawa
31. 5.1979 — John Nakawa
5. 5.1980 — Toivo Shilongo
4.10.1980 — Marcelinus Shilongo
Juni 1979 — Matias Ashipembe
4.10.1980 — Modestus Ipinge
18. 9.1978 — Ndeifeka Erastus
18. 9.1978 — Rufus Amukuhu
18. 9.1978 — Mutumbulwa Amukuhu
10. 9.1981 — Kristof I.Shikongo
19. 1.1981 — Filemon Ikelala
4.9.1985 — Markus Paulus
28.11.1986 — Ruben Edmund
Kotoba 1987 — Tomas Iipito
8.10.1987 — Mateus Handjaba
3.12.1987 — Shipandeni Mupolo
22.7.1987 — Mateus Mudjanima
7.10.1987 — Jason Angula
17.3.1987 — Natanael Shikongo
27.11.1980 — Andreas Kashikola
27.11.1980 — Teofilus Mateus
27.11.1980 — Mateus Jesaja
29.6.1985 — Amutenja J. Ashipala
3.7.1987 — Abner Shikesho
22.7.1987 — Stefanus Nghifikwa
19.11.1988 — Daniel Israel
20.1.1988 — Natanael Ndatyapo
19.1.1988 — N.S.Ndatipo
21.1.1988 — Natanael Stefanus
17.12.1987 — Hateni Philippus (Hamunyela)
19.1.1988 — Johannes Nekongo
20.1.1988 — Salom Usiku
9.4.1988 — Johannes Kawelekana (Komeya)

2.1987 — Silas (Kamule) Kandenge
Januali 88 — Linus Matongo
17.12.1987 — Josef Dumeni
19.6.1988 — Simeon Nehoya

Ndhindhilika: Ngoka wa tseya gumwe gwaantu mbaka, kutya okwa mangeluka, onawa u tseyithile ombelewa yOmukwetu mbala. Tangi kekawatho.



OMUKWETU

Oye oshifo shOngeleki Onkwaevangeli paLuther yomu SWA/NAMIBIA.

Ohashi nyanyangidhwa mOshinyanyangidho shOngeleki mOniipa.

Omukuluntu gwoshifo omumbisofi Kleopas Dumeni.

Amushanga gwoshifo omusita Sebulon Ekandjo.

Ondando yOmukwetu muNamibia naSouth Africa R6,00 komumvo.

Palwe muAfrica R10,00 nokombanda yomafuta R14,00 komumvo. Mondhila R17,00.

Oondando nomambesitelo agehe naga tumwe kOmukwetu, Oniipa, P/Bag 2013, Ondangwa 9000, N A M I B I A.

ELOC PRINTING PRESS
PRIVATE BAG 2013, TEL. (06762) 11, TELEX 56-3257 WK
SWA/NAMIBIA