

OMUKUKWE TU

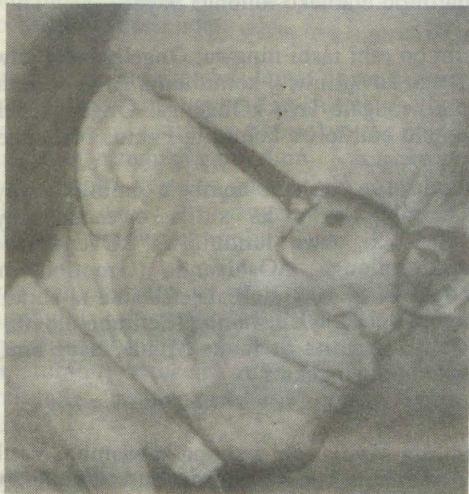


40c

No. 15

ISBN 0-620-06828-0

SHIVUTE A GALUKILE MEGUMBO LYE



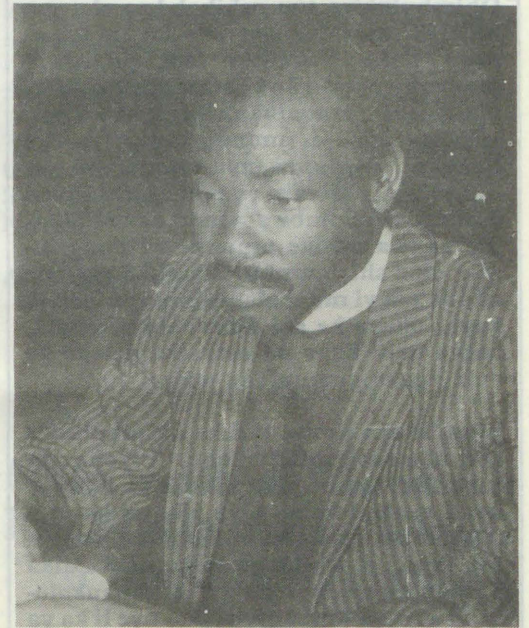
“Sho twe ya moshitopolwa shiita, otwa dhimbulula miipala yeni kutya nani oshigwana shono tashi dhipagwa, osho shi na ombili shi vule aahepeki yasho. Hasho twa li twa tegelela shoka: Kameeta

Omusita Set Son Shivute, okwa galukile ishewe megumbo lye sho a kala moshipangelo uule wiiwike 10, omolwoshiponga shoka a mono meipumomumwe lyiihauto 12.5.1988. Omukulukadhi gwe Justina-Nani omo a hulithile moshiponga shoka, konima yomasiku gahetatu.

Tate Shivute okwa kala ta pangwa mOshakati nokonima omOnandjokwe sho a teka ongongoti (okasipa kothingo) netundji. “Konyala ndi nyengwe koo-mposi sho nde ya megumbo,” osho a hokolola oomposi dhe dhotango megumbo lye ndyoka ye li thigile po nomukulukadhi gwe sho ya yile ashike koshituthi shefumviko kUukwambi.

Oku li nawa ngashingeyi. Ote shi pandulile Kalunga omolwomagalikano gookuume naashiwikile moshigwana nokombanda yomafuta.

Sebulon Ekandjo

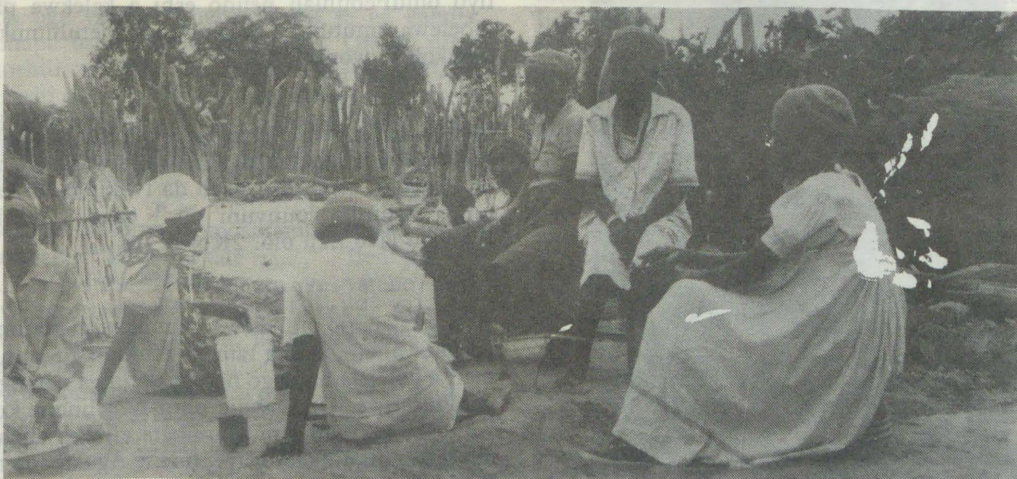


Omusita Set Son Shivute

Ye vule 6000 ya hulitha momimvo ne dha zi ko

Ehokololo lyomumbisofi moshigongingeleki

Ehokololo tala kep. 4



Mbaka oye ya okupopitha aashiinda yaandjaKanyolo kaShikongo mEloolo egumbo lyawo sho lya lyatwa po komakakunya numvo muApilili, yo yaa shi kutya omolwashike

Aacuba muAngola natango epulo ekukutu

Oonkundathana dhemanguluko lyaNamibia nombili muAngola, otadhi humu ko nuudhigu, omolwepulo lya SA sho ti indile Aacuba ya thige po mbala Angola, konima ashike yehogololo sho lya ningwa muNamibia. SA okwa ti wo, shono ngele ote shi ningilwa, ye ota vulu okwiithana ko aakwiita ye 9,000 muAngola mulyotango lyaSeptemba numvo, opo oshitokolitho 435 shi tulwe miilonga 1.11.1988. Tala kepanja 9.

“Iinima ohii popiwa ngaa!”

Shilombolwa, iinima ohii popiwa ngaa. Aatiligane yamwe aawiliki yiikandjolonga ya simana moshilongo, ye thike lwopo-40, oya zile mo muka e taa ka kundathana naawiliki yaSWAPO ku-Sweden. Mbaka oye shi ningi nelalakanono lyokwiilongekidhila emanguluko lyoshilongo, ndyoka tashi vulika li ye pethimbo ndyoka omuntu inoo shi tegelela.

Aatiligane iinima oye yi shi, yo oyendji iinima oye yi mona. Oye shi shi emanguluko lyevi shimpa tuu tali ningwa, ohapu ningwa omalunduluko, ngoka tashi vulika ga gume onkalamwenyo yoye miinima oyindji, haambyoka ayike to pandula, ihe naambyoka wo u uvite kutya andola ku na oku yi kanitha.

Dhambulukwa tuu oshiholelwa sha gandjelwe moshifo sha zile ko mokapopiwa haka “Iinima ohii popiwa.” Mwiya okwa tilwe, etameko lyoshilongo tashi manguluka, ongaashi aagundjuka taa yi mondjokana, ya ka tameke onkalamwenyo ompe, yo ya dhimbwe ndiyaka yokonima. Shoka omuntu ito pumbwa nando oku shi tila, ihe onawa ashike omuntu wi ilongekidhe oku shi taamba. Naafuko yoyene nando taa yi monkalamwenyo ompelela kuyo, ohaye ke shi dhimbulula mbala, kutya nani kape na omasiku gelago ge vule ngoka gomuufuko wawo.

Elunduluko limwe tali ka dhimbululwa komukwashigwana kehe, olyokutamba aakwazimo yetu mboka ya halakana uuyuni auhe. Oya zile muka momagumbo getu, momikunda dhetu e taa thigi po oshilongo shika nevi ndika omoluudhigu womahepeko gopaukoloni. Hwiya inaa kanena ko, oye li ko ya tegelela omweelo gu ya egulukile, tashi pitile memanguluko lyevi.

Onawa yamwe yomune sho haye mu nyolele noinamu kanitha ekwatathano nayo. Oyendji otaa ka galuka ya papata nomela, omaluvalo gawo ngoka ga valelwa muundjendi. Otatu ya tu se iilonga yokuhemp: “Mukunde gwi imi, mvula ya loko, muzimo gwa tana, okantu ke ya ko,” hasho?

Ihe tu dhimbulukweni tuu, aantu mbaka otaa galuka iikaha yowala ngaashi ya yile ko. Oomwenyo dhawo adhike taye etelele. Aayengeli yaKalunga mboka haye ya sile oshimpwiyu, otaa hulile mpoka, ya tsakanitha oshinakugwani-thwa shawo. Otse tatu ka tsikila ko.

Ndishi itatu vulu okutila eindjipalo ndyoka, shila okuya ashike miilonga tu li ilongekidhile? Nayo wo itaa galuka aantu aanamakamba, otaa gwanenwa kushono shaandjawa, shono shi li po. Okakololo haka: “Iinima ohii popiwa,” oke na elalakano lyokwiindungika moshinima shika sheilongekidho lyemanguluko. Ngoka u na edhiladhilo lyontumba, nyolela kokakololo haka; “Iinima ohii popiwa.”

Omatokolo amwe Elelongeleki 7-9.7.1988

287/88

Elelongeleki ola koleka onhengenekofaneko yondohotola moipangelo yOngeleki (Lutheran Medical Mission/LMM) ovo tava indilwa kOsoomi nokoNdo-wishilanda.

- Eendohotola mbali hadi kofeke
- Mbali moshilonga shoukalinawa wovanhu
- Umwe womesho mekwatafano noshilonga shovapofi
- Ovapiluli vomiti vavali
- Eendohotola mbali kuNdo-wishilanda ponhele yooElstermann ovo ta shuna.

Omaindilo otaa ningilwa omido 1988 - 1989.

288/88

Ava vomadina taa shikula apa, va ufilwa mokangudu kokukonakona ediko lofikola yokomanda koKavango pashitokolifo 187/88.

- Jakko Kangayi nomuponhele Heikki Ausiku
- Johannes Sindano (omushiivi) omuponhele Sebastian Kantema
- Seppo Kalliokoski
- Timoteus Ndakunda nomuponhele Filippus Henok
- Lahja Lehtonen nomuponhele Hans D. Namuhuja
- Hamushanga weeprojekta

294/88

Elelongeleki ola tambula osho sha ningwa kokangudupitifi kElelongeleki kombinga yonhengenekofaneko ya ELCIN yomudo 1989. Omuvulu aushe womudo owa diminwa u kale ngaha:

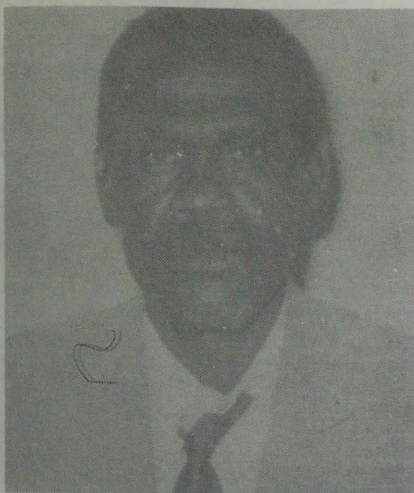
- MOngeleki R 2 012 811
- Moshikefangeleki R 1 699 944

330/88

Omufita Paulus Musheko eshi ta i koprograma yomatalelopo kuAmerika, Elelongeleki ola nangeka omufita Teofilus Nelumbu, omufita omuwiliki meongalo Olupandu, okutameka 1 Juli 1988.

A tulapo ondjoko yoshilonga yomido dihapu

Omunashilonga wa ELCIN, omweevangeliste Justus Vatilifa, okwa kutulilwe ko-



Omweevangeliste Justus Vatilifa,
omunashilongatumo muAngola

ndjoko yoshilonga shevaengeli 7.2.1988, osho a kala musho oule weedula 40. Omweevangeliste ou okwa longa efimbo lile mOUshimba nopomido edi okwa kala omunashilonga mOshaangalala, muAngola.

Tate Vatilifa evaengeli laye olo ihali kunghula omunhu, fiyo onena otali dimbulukiwa kovana-ilonga vahapu mOUshimba omo a manena eenghono daye adishe doilonga. Oshilonga okwe shi deulilwa mofikola yaDortea, mu SA eedula nhatu. Omudo 1947, omo a mana ofikola yaye. Ehalo laye a ninge ngeno omuhongifikola mu-Augustinineum mOkahandja, inali shakenifwa.

Eshi a mana koDortea, okwa hovela diva oilonga yokuudifa, tete moKariveva (Karibibi) nomOvenduka. “Ongeleki yetu oya indila nge ko ndi dje moilonga yOngeleki yomOUshimba (ELC) opo ndi ninge omunashilonga wOngeleki yetu,” osho a kala ta dimbulukwa natango omafimbo etameko loilonga yaye.

Pefimbo eshi tashi ningwa, Ongeleki otai lelwa natango kovatumwa, komuhongi Alho ou e mu tuma keongalo lavo kOngenga. Ongenga pefimbo olo otai lelwa komufita Paulus Nailenge.

Omudo 1967 eshi a hombola omufuko waye mOwambo ou a ka xulifa oweenda waye 31.10.1972, okwa lundululwa kOvenduka a tameke oilonga mOshivanda (Grootfontein). Okwa kala ta dingonoka neefaalama ta shikula ovapopi velaka lOshiwambo. Pefimbo olo ota ti yo kutya omufita Stefanus Mvula, naye mOshivanda a nangekwa.

Omufita Mvula eshi a shuna kOwambo, Vatilifa okwa nangekwa movalumenhu vokomboni ya SWANELA, fiyo osheshi ehanganano eli la pata mo 1972.

“Ovakulunhu vokomboni okwa li tava fininike nge vati ndi ninge omunashilonga wavo, ndele ame osho onde shi anya. Onda ti ame ondi li nale omunashilonga wOngeleki,” osho a hepau-nuna ye mwene.

Okwa ti oilonga mo SWANLA eshi ya xula po ngaho, Ongeleki oye mu tuma koUsakos. Fimbo e li kwinya, opo okwa hangika komhepo yokuya mEtumo. Ongeleki oye shi mu diminina nokwa ka hovela 1.7.1975 moshitai shaKunene mOshangalala.

Eumbo etivali okwe li dike 1973 nomudiakoni Aguste yaJohannes nova shuna mo muAngola fiyo omuFebuluali neudo eshi a kalekwa pambelewa omutumba moshipundi shetulumuko moukokele womido 72

“Ndele evaengeli letu ngeenge ola tuvikwa, ola tuvikwa mwaava tava ka kanifwa, mwaava ve he na eitavelo, eendunge davu da twikifwa kuKalunga kefimbo lounyuni ou,” osho a lekela Eongalo lavo fiku olo. 2Kor 4:3-4.

Eshi a talela po ombelewa yOmukwetu konima yeehani nhatu, eshi a tameka etulumuko, omumati a kolelela natango noha yakulifwa natango pamhumbwe. Ota yandje olupandu linene ku-Kalunga kaye oo e mu humbata efimbo alishe olo nokomukulukadi waye, unene Aguste, oo ta ti kutya okwa tekula shili nawa eefiye daye nomwenyo muwa.

Sebulon Ekandjo

OMULUNDE A LIKOLWA KU- JESUS OHA LIKOLA WO YALWE

Petameko lyontopolwa ndjika otwa uva oonkundathana dhajesus nomukiintu Omusamaria pomuthima, moshilando shaSikar. Ekwatathano lyAajuda nAasamaria olya kala ewinayi. Oyo aantu ye tondathane noonkondo. Aajuda ohaa tala Aasamaria aantu inaa yevelwa kelongo. Kaye na elongelokalunga lya yela, olya vongakana nuupagani.

Kaa uviteko oshinima shepito lyetanda. Aajuda ohaa nyanyala aantu, ngele itaa gwanitha ngaashi ompango yaMoses tayi shi pula Aasamaria kaye uviteko omolwashike otempeli yaJehova ya tungwa muJerusalem. Ondjila yokuza muGalilea nokuya kuJerusalem oya pitila muSamaria, ihe Aajuda ihaa ende nayo, ohaya ka dhangoloka, oshoka inaa hala nando okweenda moshilando shaalunde.

Omuntu oto koneke shili kutya opwa li ekuma lyetondathano. Ihe nando pwa kala ekuma lyuutondwe, Jesus ina imbwa okutsakanitha nokulonga ehalo lyaanguka e mu tumu. Jesus okwa longitha ompito ye nawa nokwa vulu okupopitha omukiintu nelaka lyevaangeli lyehupitho, komuntu a pumbwa ehupitho.

Okwe mu popitha nombili sigo omukiintu a dhimbulula ota popi naKristus Omuhupithi guuyuni. Osho ngeyi Jesus okwa popi oohapu nomatumbulo ngoka ga gumu eitaalo momuntu omulunde, nodha pendutha eitaalo lyashili muye.

Oohapu odha hiti mbala momwenyo gwomukiintu e tadhilongo iikumitha muye. Odha longo iinyengandunge mungoka a li nale omukiintu gwaalumentu yatano. Oohapu odha holola eitaalo lyashili muye sho e dhi taamba nomwenyo aguhe. Odha ninga dhoshili ndhoka tadhilongi: "Onkee ano eitaalo ohali zi mokuuva, neuvitho otali zi moohapu dhaKristus." (Rom. 10:17).

Odhe mu pe eitaalo sho inee dhi gwaya ashike kombanda, ihe odha hiti meni lyomwenyo gwe. Oohapu odha mono ompito okupangela momwenyo gwe nomahalo ge. Odhe mu kutha monkatu yuulunde womilema e tadhilongi mu tula monkalo yoku ka longa oshilonga shetumo lyoohapu.

Okwa popiwa okwa thigipo oshiyuma she pethiya. Pamwe osha pumbiwa a faalele omeya kegumbo, ihe okwa dhimbulula kage na oshilonga, oge vulike kungoka Jesus te ga gandja. Oohapu osho dha longo ngaaka. Otadhilongi dhoshili ndhoka dha popiwa kuJesaja: "Ano ngaashi oohapu tadhilongi mokana kandje, itadhilongi galukile kungame dhowala, aawe otadhilongi shono sho opalela ndje, notadhilongi gwanitha shoka nde shi dhi tumine." Jes. 55:11.

Okwa yi metumo lyomoshilando nelaka limwe kwaayehe: "Ileni mu tale" "Ileni mu tale" 4:29. Naalumentu ye yatano nayo okwe ya ithanene kokutseya kwashili. Omukiintu a ningi omutumwa, nomuhokololi gwaJesus. Omukiintu a silwa ohenda a hokolole Omu na gwaKalunga kaapagani ooyakwawo. Omukiintu okwa tokola a ethe iimpwiyu ye, kakele ko kuhokolola Jesus Kristus Omuhupithi guuyuni.

Omukiintu nale okwa li ta lalakanene esimano lyuuyuni, ngashingeyi okwa hogolola limwe

epe, olyokutaandelitha elaka etoye mokati kaantutu yomoshilando she. "Ileni mu tale omulumentu ngoka a lombwele ndje ayihe nde yini ninga, pamwe oye Kristus?"

Okwa penduthilwa eitaalo kuJesus nokwa ningi omutumwa gwtango moshigwana she. Oshigwana tuu shoka sha tindile esiku limwe okutamba Jesus a lale puyo, Luk. 9:53.

Onda pendulilwa omapulo kotekisti ndjika, kombinga yetu nena, pethimbo lyongashingeyi. Oohapu dhajesus odha thikithwa komwaaalu ogwindji gwaantu. Ngoye owa vulika tuu kelaka lyevaangeli lyehupitho? Ope na aantu taa nyengwa okumanguluka muulunde.

Aantu yetu nena otaa nyengwa okulundulula nando evaangeli lyehupitho olye ya etele oshili popepi. Aantu oya hokwa okugalangata moonyata nando oya uva evaangeli. Aalumentu otaa nyengwa okweetha uugumbo wawo nonando ya popithwa kuJesus opendji. Kuume ino dhanitha esilohenda we li etelwa kOmuhupithi guuyuni, oJesus. Tala Jesus ta kongo eitedhululo mungoye. Walyewo shoka wa tegelela nando owa popithwa kuye. Walyewo sho to nyengwa oku mu hokololela yakweni nando oho ti ou mu shi.

Omukiintu ngwiya sho a dhimbulula Jesus inashi mu gwanena, okwa yi a ka hiye yalwe ya kale ya dhimbulula Omuhupithi ngaashi ye. Walyewo sho ho ti, Omuhupithi gwoye ou mu shi mehempululo lyeitaalo nando to nyengwa okweetha uulunde. Walyewo sho oondjo dho ye dhi mangela momwenyo ethimbo li thike mpoka shomuntu a mangela iilya yondjala kondambo yokashako.

Oomeme yongashingeyi ohaa ti oyi itaala Jesus, noye mu shi. Walyewo sho pehala lyoku mu hokololela yalwe, ohaa matuka oku ka taandelitha oohapu dhiifundja, omaluhoko, oontamanana, noombudhi.

Omolwashike ano sho ku na aantu oyendji pethimbo ndika taa taandelitha Uusamaria nuuJuda mokati ketu. Ando Kalunga a gandje natango ombepo yeuveko ngaashi ya li momukiintu ngwiya, opo aantu ya zimine oshili. Omuntu ngoka a vulika kevaangeli iha holeke nando uulunde we.

Tala omukiintu okwa popi oshili sho a pulwa omulumentu gwe. "Kandi na omlumentu" 4:16-18. Omuyapostoli Paulus naye ina holeka uulunde we sho a adhika kuJesus. "Nando ngame onda li nale handi mu popi nayi, nde mu tidhagana nonde mu sheke. Kalunga okwa sile ndje ohenda, oshoka onda li inaandi itaala noka nda li ndi shi wo shoka te ningi," 1Tim.1:13.

Oku na oyendji mboka ya dhimbulula Jesus no ita holeke we uulunde wawo, oshoka eitedhululo lyashili kali na ohoni. Kalunga na pendutha eitaalo lyetu natse tu itedhulule noshili yomukiintu omulunde. Natse wo tu matuke tu

JOH. 4:27-30; 39-42



ka hokololele yalwe Jesus. Opo ku monike ongundu yooitaali ya zi meuvitho lyevaangeli lyetu. Opo shi kale ngomuSamaria yi itaalithwa kelaka lya thikithwa mokati kawo komukiintu a li omulunde.

ANDO AYEHE YI ITAALE YA KA TYE: "OTSE OTWI ITAALA HAMOLWOOHAPU DHENI, IHE OMOLWASHOKA OTWE MU UVU TSE YENE NOTU SHI SHI OYE LELA OMUHUPITHI GUUYUNI.

Alpo Enkono

Natu indileni Omuwa a lundulule okukala kwetu momalongelokalunga

Ondi shi shi kutya kehe gumwe ngoka ha yi kongelesa kelongelokalunga ope na sha shoka tashi mu tukulutha opo a ye ko. Elalakano lyokuya kelongelokalunga oyo ngaa oku ka pulakana nkene oohapu dhaKalunga tadhilongi lombwele nohaku pulakana nomakutsi ashike, ihe oku dhi uva ko nawa nosho wo oku dhi itaala nosho wo okuvulika kudho, tse tu ende wo pahalo lyaKalunga.

Ihe ondi wete kutya ope na oyendji mbono ya tsiminwa natango kelalakano lyoku ya kongelesa, naashika ohashi holoka momaihubmato gawo mongeleka ngaashi tashi landula:

Ethimbo lyeuvitho

Oto adha omusita nenge omuuvithi koshiuvithilo tu uvitha oohapu yaKalunga ndjono oyo ye tu kutha komagumbo, ihe ooyamweyamwe mbono ye mu pulakana. Oye ndji oye li moonkundathana dhopaumwene noyaa na ko nasha naashoka taa uvithilwa, ihe oohapu tayi lika tuu shili naantu otaa kwekwela ngaashi ya hala noya manguluka.

Omaimbilo pethimbo lyokuumba ongalo.

Omaimbilo ihaga imbwa we taku tumbulwa iitya, ihe otaa izizima ashike ongowela opuwo,

ehokololo la ti.

Ovayakulingeleki yo vamwe ve lili

Ongeleki ei oya yakulwa efimbo lile kovayakulingeleki vomOngeleki yaSoomi nande Ongeleki ei ya kala nokuli eedula 34 meifikameno. Paife ovanashilonga ava ova ninipala unene. Ehepu ola ti, kutya ava va fyaala po natango, ove li ashike 10 ile 20 lwaapo.

Okwa twikila ta ti, ovanashilonga ava ove lipyakidila unene noilonga youhaku moihakulilo ile nouhongifikola. Ekwatafano la ELCIN nOngeleki yaSoomi, omubishofi okwe li kolekulula moshongaleengeleki osho nokutya ola pama, lopahistoli noli li moule weemwenyo.

Okwa kumaida yo Ongeleki ei i diinine oinima ivali inene; a) tete okupandula Kalunga, omolwetumo laSoomi olo la longa apa, b) nopativali ku diladilwe nhumbi Ongeleki i na okuwanifa komesho eemhumbwe dayo vene, mwa kwatelwa ovayakuli noiniwe.

Omolwomhumbwe yovanashilonga tai kulu efiku keshe mu ELCIN, Ongeleki oya ifana yo ovanashilonga vamwe va dja keemwainangeleki. Ovanashilonga 10 otava longo paife mOnandjokwe. Ava ova dja kuNdowishilanda, kuHollanda, kuEngilanda, ile kuAmerika. Vaheyali vomuvo eendohotola doumamiti.

Oilonga yomubishofi inai kala ashike meni lOngeleki, ndele oye mu twala yo nopondje yoshilongo. Oikando i dule 20, okwa ya pondje omolwoinima i na sha nOngeleki ile nonghalo yoshilongo eshi. Okudja 1984, omubishofi oku li oshilyo mEwilikongudu lOngongahangano yOvakwaluther mounyuni.

Eegululo lyElelongeleki epe mOniipa

Omumbisofi K. Dumeni

Otandi mu kundu amuhe one iilyo yElelongeleki epe nane mboka mwa li Elelongeleki pokati kiigongingeleki 1984 - 1988. Otandi mu taamba amuhe mElelongeleki ndika lyetaambathana:

A — Elelo lyiinima yaantu:

Okulongela Omuwa, eyakulo moshilonga shelelo otali pula uudhiginini, eitulomo moshilonga, neiyambo enene. Oshilonga ito shi vulu u shi longe pamwe noshilonga **shilwe**. MElelongeleki otu na okukala miinima yElelongeleki, moonkundathana, mepulakeno nomomadhiladhilo giinima yElelongeleki. Otatu pulwa uudhiginini mElelongeleki, Luk.16:12,13.

B — Omuwa tu uvaneke:

“Otandi kala ndi ku na.” Gen. 28:15.
— Otandi ku gamene akuhe nkoka to ka yako.”
— Otandi ku galulile kegumbo koshilongo.”
— “Itandi ku etha sigo nda tsakanitha adhihe nde dhi ku lombwele.

Opu na **etalaleko**: Omukwathi Jesus pamwe natse. **Pamwe naye moshilongatumo, oshilongayakulo she.** Opu na

Onhengenekofaneko yoilonga yOngeleki

Okukula kwOngeleki okwa twala yo Ongeleki ei i kale ina oinakuwanifwa ihapu noinene, oyo tai pula oimaliwa ihapu. Oilonga yOmbelewangeleki aishe oya pula nokuli R 160 740 pavalulo lomudo ou. Ofikola yovafita kOtjimbingwe R110 350; yokOshigambo R 230 131; yOmbibeli koKavango R 37 897; yOmbibeli mOngwediva R 16 560 nomEnongelo loyayakuliongalo mEngela R 254 633.

Oku na yo oimhungulonga imwe inai tumbulwa apa, ya fanekelwa yo oimaliwa ihapu. Noimaliwa aishe oyo oya li ina okudja meendjato doilyo yomaongalo. Ekwafo lopondje olo la kaleka po Ongeleki ei, i fikame komaulu ayo, nomunhu oto shi pandulile Kalunga.

Ashike nando ongaha, omuwilikingeleki meholololo laye ina dimbwa okudimbulukifa Oshongaleengeleki, omuleli wOngeleki, opo shi tale nhumbi taku monika eedjo doiniwe, ovanashilonga va monenwe omungome wa wana moilonga yavo. Onhengenekofaneko aishe yomudo 1989, otai pula R 3 712 755. Ekondjo liwa moshinima eshi, opo li li ngaho momaongalo Ongeleki ei.

Ehokololo omubishofi okwe li xulifa nomatumbulo aa: “Onda kala ndi na ehalo linene ndi shakenife osho nda li nda hala. Onda diladila ouwa, ndele nda ninga omapuko mahapu.” Okwa pandula ovo ve mu pukulula, ve mu xunga ile ve mu twa omukumo. Umwe wavo oHefolo laye, meme Aino.

Sebulon Ekandjo

mpaka einkelo ‘Hope’ lyomwiitaali, otatu longo **kumwe noshilongatumo** shagulwe; **Jesus.**



Elelongeleki epe ndyoka lya hogololwa moshigongingeleki nuumvo, olya tamekele omutumba gwalyo gwtango 2 - 5.8.1988 mOniipa.

Omuwa mwene oye omuwiliki. Euvaneko ndika olyo assurance kutya Jesus ote li gwanitha. Euvaneko ndika olyo **shili**. Pamadhiladhilo ngaka **mu A na B**, otandi egululile Elelongeleki iilonga yalyo sigo okOshigongingeleki tashi ya medhina lya-Kalunga katatugumwe.

17 va punikilwa moshilonga shouyevangeliste

Oshitaingeleki shaKunene, muAngola, osha punikila ovahongwa 17 moilonga ovo va kala mofikola youyevangeliste. Oshivilo osha ningilwe 12.6.1988 mOshaangalala, ponhele opo pe na ombelewa yoshitaingeleki osho. Va ninga ovaevangeliste ovo ava vomadina taa landula apa:

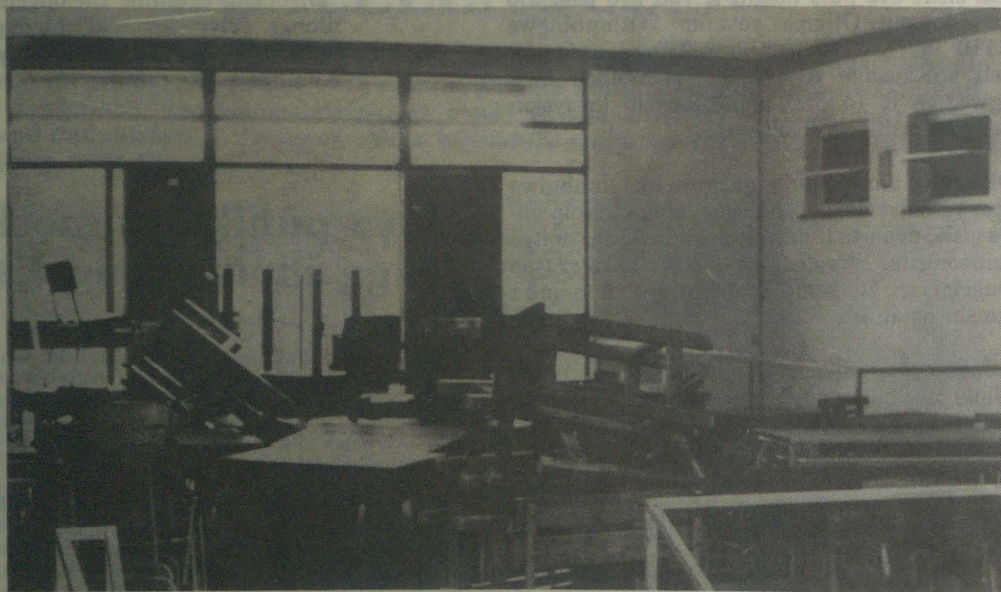
Abel J. Nghidileko; Absalom M. Haikali; Wilhelm Ndjimbji; Erastus Nande; Erasmus A. Itumba; Profilio Hamunyela; Dionisio Popawa; Jonas Shamu-kweni; Immanuel Haishila; Leonardo P. Haunini; Jason Haikali; Johannes Kambangula; Johannes Kashiakumwa; Lukas Hipandwa; Mateus Kahoko; Titus N. Sheehama naAlfredo Zunguma.

Oshitai eshi, mewiliko lomufita Noa Ndeutapo, oshi na paife omaongalo 8. Nande sha hovela noudjuu munene mefimbo laKaputu, paife otashi longo oilonga yasho nemanguluko koshi yepangelo la MPLA.

Sebulon Ekandjo

Ino holeka Amushanga gwo-shifo edhina lyoye nondjukithi nando wa hala okulongi-tha edhina lyefutamo.

IPROTHA YAANASIKOLA NGASHINGEYI OTAYI YAMBIDHIDHWA KOMILILO



Oondjugo odhindji dhoosikola otadhi tsikile natango okuhwama, notashi limbilike oyendji.

Oshikako oshittatu shoosikola muNamibia alihe nasho osha tsikile nomakuyunguto omanene nonando pwa li pwi indilwa efudhopo lyiipotha mbyoka lyiiwike ine. Moshitopolwa shOwambo, omililo momatungo goosikola namo wo ogwa tameke.

Aalongwa 769 yomongundu yomumvo gwotango guulongi, mOngwediva, oya thigile po omuhandjo, sho omala gaali goongulu dhosikola ndjoka ga pendukile ga pya po 29.7.1988. Iitaafula oyindji niipundi oya yonukile momulilo moka. Inamu ehamekelwa omuntu noinaku tseyika ngoka e gu hwameke.

Aalongwa ooyakwawo yomumvo omutiyaali mOseminali ndjoka, oya adhik... tegelelwa ya tsikile andola nootundi 2.8.1988, okuza meidheulo lyawo lyiiwike iyali momagongalo, pahokololo lyomukuluntusikola ndjoka, omusamane Patrick Simataa.

Omulilo moondjugo dhosikola mbali ndhoka dha pya po thilu nontintatu ndjoka ya tindi okuhwama, omusamane Simataa ote gu hokolola ta ti, osha li pontine yokoongulasha, sho aanasikola yamwe ya dhimbulula olwithi talu tsina metungo ndyoka lyopombanda.

Mbaka oye endebele ya ka lombwele omukuluntu gwegumbo (Huisvader), ngoka wo palufo lwe a ka pendula omukuluntusikola. Esiku lya tetekele momuhandjo ngoka nuumvo gwe edhilila aalongwa 1072, omwa li mwa leshwa ombapila tadhi londodha aalongwa ya thige po omuhandjo manga inaa pila mo. Inaku tseyika olye omulongekidhi gwadho.

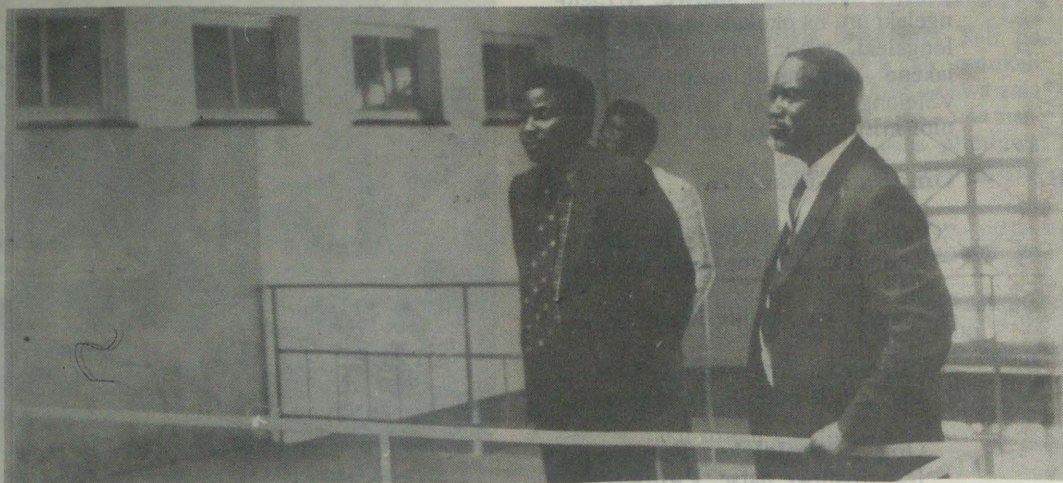
Konyala oosikola 16 muNamibia odha kundana dha yonagulwa po komulilo noonkwawo dhi vule 14 dha patwa nenge aanona naalongi ihaa yi we mootundi nando momuhandjo inaa za mo. Oseko yaShigambo noyaShakati odha hokololwa dha mana moshikako shika omakonakono gadho goshikako shaJuni ngoka ga hupile ko.

Oosikola dha kundanwa dha pya, Oseko yaDebasen, mOkombahe; Osikola mOliindili; Osikola yuunona Aurora mOkahandja; Oseko yaKakarara; Oseko yaKolin moArandis; Oseko yaWelwitschia moKhorixas; yaPetrus Ganeb

Omushangwahokololo woshongaleleshitaingleki shOukwanyama

Oshongaleleshitaingleki shOukwanyama, sha ongala muJuni 28 fiyo 30, 1988, mEngela, koshi yoshipalanyolo:

“Hano elineekelo leni inamu li ekelashi, osheshi oli na ondjabi inene” (Hebr. 10:35). Pahepaululo lomupashukilishitaingleki loilonga yoshitaingleki, osha kundafana efimbo lile nonopolimano omakufikufi omo omaongalo asho taa yoo, nosha tokola okuholola omadiladilo newi lasho muamwe omakufikufi taa shikula:



Omukwathi gwomumbisofi M. Amadhila, methano ndika kolulyo, otaa tala nonkumwe onene omulilo mOseminali yaNgwediva, yo nomukuluntusikola P. Simataa.

muUis; Oseko yaTjikoto; Oseko yEengedjo; Oseminali yaNgwediva; Oseko yaMwaala; Oseko yaNujoma; osikola yuunona Okarundu mOtjiwarongo nOnekwaya.

Oosikola tadhi landula odha patwa omolwiikolokosha nenge ootundi dhe ethiwapo kaalongwa nokaalongi. Oseko yEtalaleko; yaNehale; yaNangolo; yaNgandjera; yaShikongo-Ipinge; yaGongo; yaJohn Jonker Afrikaner; mbali moRundu; yaMarx Makushe; yaLinus Shashipapu; yaLevy Hakusembe; yaKandjimi Murangi nOluno.

Oosikola dhimwe dhopevi dhaanona mUukwanyama nomUuninginino osho wo moKavango, nadho odha hokololwa dha thiga po iipundi, inatu mona omadhina gadho.

Ombelewa ya SWAPO moLuanda, oya adhikile ya popi nokutya oya ninga omalongekidho omanene gokutuma omakumbatha niikulya okutsakaneka uunona womathele kOluwango (Lubango) muumbugantu waAngola, mboka tau zi muNamibia pethimbo ndika. Uunona mboka otau ka tsikila eilongo lyawo muAfrika nenge muEuropa, papopyo lyombelewa ndjoka.

Aavali oomeme metsakaneno lyawo momalenga gUukwanyama muJuli nuumvo, oya li ya popitha omalenga nokutya uunona wawo momagumbo otau pu mo, tau taaguluka ongamba, oshoka moosikola moshilongo kau uvite egame no molwookamba ndhoka dhi li pooha noosikola. Aavali oyi indila omalenga ngoka ga ninge po sha, ookamba dhi hedhe kokule noosikola.

Sebulon Ekandjo

Oikolwifa

Oshongaleleshitaingleki otashi pangula nai poluhaela oilonga yeemhangela domonguwi domunaita noshiwana shaNamibia paupolitika, doku shi xutula noku shi xulika po neandjane ko loshiningilewina loikolwifa i he na engabeko mokati kOvalaule.

Onghee oshongaleleshitaingleki otashi lo-

Tala kep. 9

NATANGO ONGELEKI TAYI INDILWA YI HEDHE POPEPI NAATHIMINIKWA

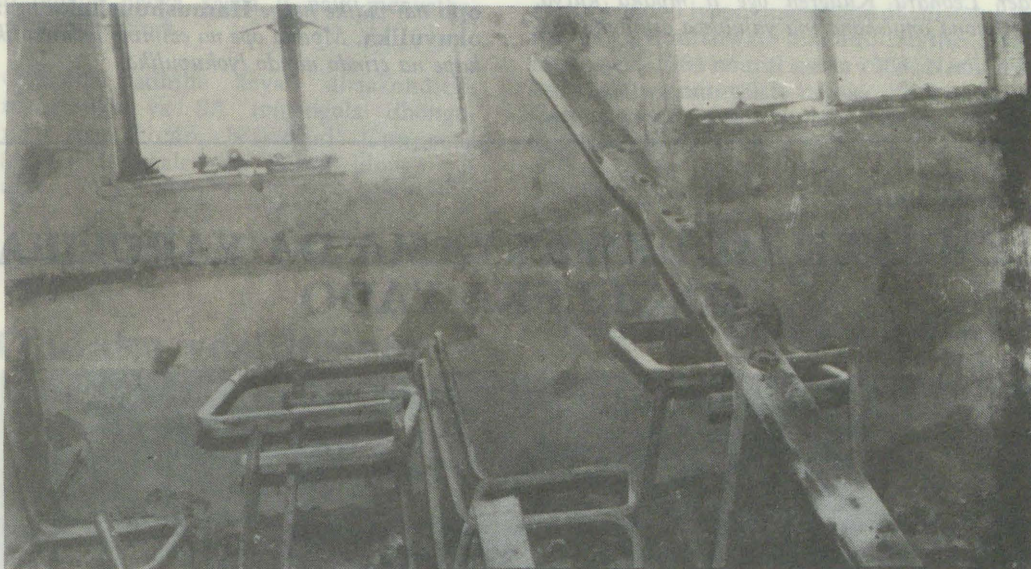
Moshigongi shayo, Ongeleki muNamibia oya kumagidhwa yi ninge po sha natango, opo eyakulo li kale popepi noohepele naantu mboka ye li kohi yomathiminiko. Oshigongi melongekidho lyOraata yOongeleki muNamibia (CCN), osha gongalele moDobra, popepi nOvenduka 4-8.7.1988.

Oshigongi osha li shotango koludhi lwasho. Musho omwa li iilyo yOongeleki dhomuNamibia. Omwa li wo aakalelipo yOraata yOongeleki, aayenda ya za ku SA; kuNorwee; kuDenemark; kuNdowishilanda nokuEngelanda.

Oshigongi osha ningwa koshi yoshipalanyolo: **Oshinakugwanithwa shOngeleki moshilongo shi li meipendulopo ngaashi Namibia.** Muuyebele woshipalanyolo shoka, onkalo yaNamibia yonale, yongashingeyi naandjoka tayi ya, oya konakonwa. Pehulilo lyoshigongi, opwa thikwa metsokumwe miinima yimwe ngaashi tayi landula:

1. Ongeleki ngaashi yi li po omuyakuli gwoshigwana, noyi ithanenwa iilonga, nayi monike natango meyakulo lyayo sho tayi hedha poohepele nopumboka ya lyatelwa pevi.
2. Ontseyo yaantu okutseya Kalunga sho hayi zi moowino dhawo, muumbugantu waAfrika omwa fa mwa holoka ookalunga yaali; a) Kalunga koohepele (b) naKalunga kiifundja gwaahepeki.
3. Oshigongi osha koleke kutya tse otatu ningi ashike aakriste ngele otatu longo ngaashi aakriste ye na okulonga.
4. Ongeleki kayi na okuyambidhidha omatopauko moshigwana shetu, ihe Ongeleki nayi izaleke iikondjitho yokweeta po uukumwe nemanguluko lyaNamibia.
5. Ompangela yaKalunga omoluuyuni tau ya, nuuyuni kaa na omahepeko, moka Ongeleki tayi ka kala oshigwana tashi yakula uuntu

womuntu, onkee okatongotongo, ethipombinzi kumukweni, nomahepeko oyo uulunde womonkalathano tau kondjitha uuntu womuntu.



Omala gondjugo yosikola yaalongi mOngwediva, osho ga li taga monika ngeyi konima sho ga dhimwa omulilo ngoka gwa li tagu tsina natango konima yootundi hetatu

Miitokolitho yasho 14, oshigongi osha dhimbulukitha kiinima yimwe ya simana monkalo yaNamibia ngaashi:

Kalunga oye awike ngoka ta mangulula, neitaalo lyomwiitaali oli na ashike oshilonga ngele ngoka e li na okwa mangululwa. Ongeleki wo Ongeleki ashike ngele oyi igandja kuJehova.

Okwa pangulwa iilonga yoprojeka tadhi ningwa komahangano moshigwana ngoka ge na sha nomulandu guukoloni, kutya shika okuthipa oshigwana ombinzi. Ependulopo lyoshili olyo alike ndyoka tali ningwa nelalakano okuhupitha onkalo yaNamibia. Iilongo yomuuyuni oya dhimbulukithwa mpaka yi tule oveta yligwanahangano miilonga, ndjoka tayi keelele uyamba waNamibia waa tutwe mo moshilongo.

Okwa indilwa wo ku gandjwe eyambidhidho lya gwana kaalongwa, nokomahangano gaaniilonga

moshilongo, Oraata yOongeleki yi ningile aana-shilonga yoongelekishilyo oshigongi, opo ku kundathanwe enaipalo lyonkalo nOngeleki yu ulike mpoka ya thikama moshinima shoka.

Oshigongi osha holola ewi lyasho aakwiita ya SA yi ikuthe mo muNamibia, mbala ngaashi tashi vulika, noshitokolitho shIlgwanahangano 435, shi tulwe miilonga. Kombinga yOomuni mboka ye na oondunda dhomalovu momalukanda, oshigongi oshi indila ya hulithe po omukalo ngoka tagu eta ehanagulo mAaluudhe. Muni gwaMalinda (Mariental) oye gumwe a tumbulwa kedhina moshinima shika.

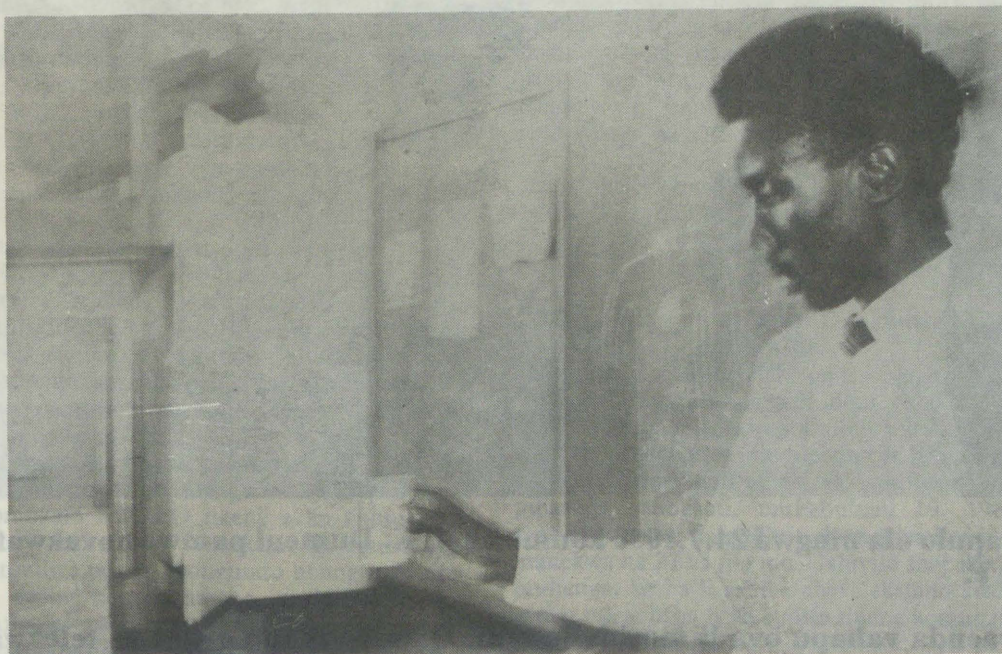
Sebulon Ekandjo

Ondaka ya dja moshoo-ngalele shovabishofi

Omupresidende wa SA, P.W. Botha, okwa tuminwa etumwalaka la dja moshoo-ngalele shovabishofi va-Angilikana mounyuni aushe, sha li muLambeth, Britania. Momushangwahokololo ovabishofi ova indila omupresidende Botha ngaha:

1. a) a kufe mo ovakwaita vaye muAngola, b) a tulife oshitokolifo 435 moilonga.
2. Eengeleki daAngilikana muCanada, Britania na-Amerika, di fininike omapangelo ado, opo oilongo itano i ye moilonga okumangululifa Namibia.
3. Oshoo-ngalele sha koleka nosha yambidida ekandjo loshiwana shaNamibia okuhanga emanguluko lasho.

Oshoo-ngalele osha holola yo olukeno lasho komahapeko taa ningwa muNamibia nosha yandja omukumo kEengeleki tadi kondjele oufemba womunhu keshe.



Omulongi Kandombo ta tala okandooha ka adhiakwa mondjugo moka omulilo gwa tindi okuhwama. Omandhindhiliko gomahooli oga li taga dhimbululwa kutya oga longithwa.

EYAMUKULO LYOMBELEWA YOMUSIKI

Omusimanekwa Lyyli Lugambo Ewvula

Oshinyanyangidho sha ELOC osha tumine Ombelewamusiki epulo lyoye kombinga yiitya yeimbilo 533:2 (577:2), opo yi li yamukule. Olwindji oshinyolwa sha kuthwa melaka ekwiilongo ohashi pendutha ngaa omapulo nondi inekela mokafatululo taka landula oto mono mo okauyelele.

Omadhiladhilo gomutoti gwiitya mbino Alksander Leonard Kullgren oge li mpaka kutya: Omunona omushona ina yalulitwa oshinakugwa-

nithwa shevuliko, oshoka ke shi okuyoolola uuwanawa nuuwinayi. Iitya yeimbilo ndino oyomunona a zi mepipi lyokwaahayoolola noku li methimbo ndyoka u uvite okwa koka nota vulu okukala monkalathano.

Movelese ndjika onti 2 ongo ta ti: "Akwetu ngame onda koka kandi shi we omushuushuka ngoka itaa vulu ando okuyalulitwa oshinakugwanithwa shevuliko! "Movelese ndjika kamu na **opo ndi vulike** ngaashi wa shanga, ihe omu na okuvulika. Ope na eyooloko: **Hamushuushuka** ngame **opo ndi vulike** nenge **Hamushuushuka** ngame **okuvulika**. Mpaka ope na ezimino lyokuvulika, kape na etindo nando lyokuvulika.

Ngele to lesa oovelise adhihe, dhi uva ko ngeyi:

Ov. 1. Inandi talwa omushona unene ngoka itaandi vulu ando okukala ndi uvite kutya ngame okanzi kaKalunga.

Ov. 2. Inandi talwa omushona unene ngoka itaandi vulu ando okukala mevuliko, aawe, onda gwana mo mevuliko okuvulika kaakuluntu yandje.

Ov. 3. Onda gwana ngame okukala ngoshitayi momuti Jesus, tandi imi.

Ov. 4. Ngame inandi talwa ando ite vulu okukala mongundu yaalongelikalunga mbo taa yelithwa.

Ov. 5. Ngame kandi shi omushona unene ngoka itaandi vulu ando okukala ndo opalela Jesus omuholike.

Ishewe uushona mbuno tau popiwa oto vulu oku u talela mokudhinwa nomokushonopekwa. Omuntu oti ikutha okudhininwa egulu ngeyi kutya:

Ov. 1. Inandi dhinikilwa okukala okanzi kaKalunga.

Ov. 2. Inandi dhinikilwa okukala mevuliko, aawe nandi talwe nda gwana okuvulika.

Ov. 3. Inandi dhinikilwa okukala mongundu yaana uyelele yaKalunga.

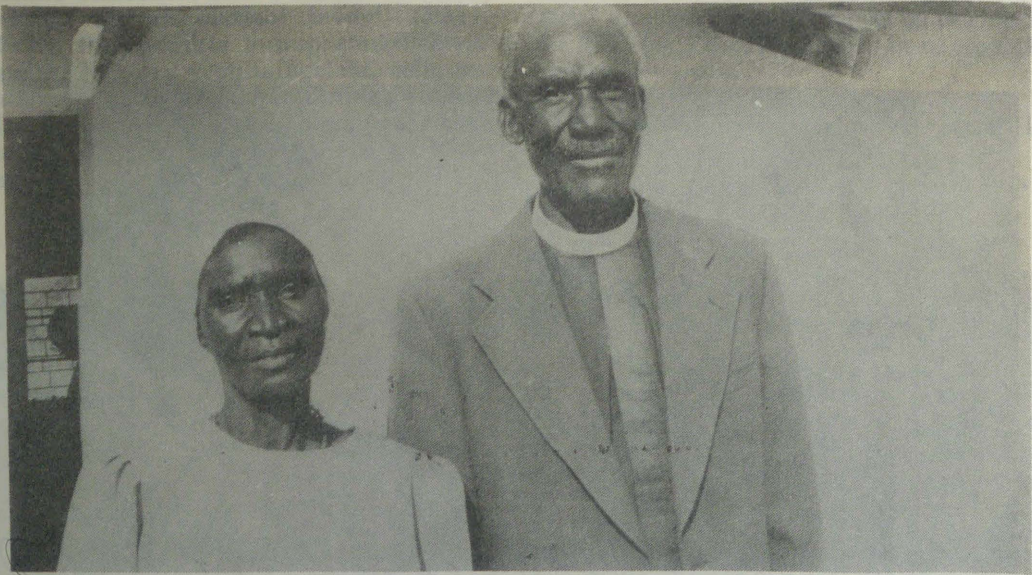
Ov. 4. Inandi dhinikilwa okukala oshitayi momuti Jesus.

Ov. 5. Inandi dhinikilwa nande okukala nda opalela Jesus omuholike.

Pamwe oto mono mo ngaa muka uyelele tau ku kwatha. Nongele ope na sha natango, oto vulu okupula.

M. Kambudu
Amushanga gwomusiki mu ELCIN

EEMBAXU MOUKWANYAMA DA YAPULIFA ONGELEKA YADO



Eyapulo ola ningwa 24.7.1988 komubishofi K. Dumeni pamwe novakwafi vaye.

Ovaenda vahapu ova li moshivilo eshi. Oikulya ihapu oya li ya telekwa fiku olo pamwe "nomukonyo wa ELCIN," ngaashi tashi monika mefano eli kumeme e litwika oshitoo. Omufita weongalo naHefolo laye meme Lusina Hamulungu ova fanekwa fiku olo.

EUVATHANO LYANEW YORK INALI TULWA NATANGO MIILONGA

Oonkundathana dhaGeneva 2 - 5.8.1988, kombinga yemanguluko lyaNamibia nehulithopo lyiita muAngola, inadhi huma ko unene kokule ngaashi sha li sha tegame-nwa kuyamwe muNamibia. Etsikilo lyadho oli li ko 22.8.1988, mehala inaali uthwa manga.

Aakalelipo yepangelo lyaAngola, lyaCuba nolyaSouth Africa oya ningile omutumba omu-titano gwomasiku gane muGeneva ya tale nkene taa tula miilonga euvathano ndyoka ya ningile muNew York 13-15.7.1988, nolya ziminwa kom-pangelo gawo 20.7.1988.

Euvathano ndyoka lya kwatelela mo iinaku-gwanithwa 13, otali indile:

- SA, Angola naCuba ya gandje mbala esiku kuAmushangandjayi gwIigwanahangano, uuna oshitokolitho 435 sha UN tashi tulwa miilonga.
- Epangelo lyaAngola nolya SA mekwatathano noshitokolitho shIigwanahangano 435, ga longele kumwe naAmushangandjayi gwa UNO, emanguluko lyaNamibia li shilipale-kwe pamukalo gwehogololo lyaayehe, lyo-shili nolyopauyuuki nopwi iyagekwe onka-tu kehe tayi imbi etulomiilonga lyoshitoko-litho sho ka.
- Omatanga gaCuba muAngola ga tembukile kuumbangantu waAngola nolu ningwe euvathano kuAngola naCuba nkene aakwiita yaCuba ye na okushuna koshilongo sigo ya pu mo, nuuyeleele waashika u tseyithilwe Oraata yegameno ya UNO.
- Ku simanekwe uukumwe woshilongo kehe, uuthemba nemanguluko lyasho, opo pwaa hindwe ongamba yoshilongo kehe.
- Po pu yalulwe oshinakugwanithwa shOraata yegameno lya UNO kutya oyi li ombangi yokutulitha miilonga euvathano ndyoka tali tulwa po.

Mbika iitsa yimwepo ayike yomiitsa 13 ya uvathanenwe kuNew York yi ninge omufango gwoonkundathana. Oshikalimo shalyo ashihe, tala Omukwetu No. 14/88.

Oonkundathana dhaGeneva, sigo opethimbo lyelongekidho lyoshinyolwa shika, Omukwetu ina mona uuyeleele, kutya iini-ma yinipo ya ziminathanwa. Ayehe Angola na SA otaa ti kutya oonkundathana odha huma ko nawa komeho.

Eyamukulo lyomapangelo, Angola, Cuba na SA kushono sha zi kuGeneva, olya tseyithilwe 8.8.1988. Manga inaali tseyithwa, omupresidende gwa SA, P.W.Botha, okwa hiyile aawiliki yoongundu adhihe dhomeni lyoshilongo sha SWA, e dhi kuthile ko kushono sha zi kuGeneva.

Aatalinawa yopopepi noshinima, otaa ti ethimbo lyomatanga gaCuba ge na okuza muAngola; omukalo SWAPO nkene e na okutula po omatati osho wo omukalo gwehulithopo lyuutondwe pokati koongundu noongundu dha kala tadhhi kondjithathana muNamibia nomuAngola, osho unene sha kala oshikukutu moonkundathana ndhoka.

Angola naCuba oya thaneka Aacuba mu-Angola taa vulu okupwa mo konima yoo-

mvula ne, ngele pwa dhimbululwa ombili moshitopolwa oya shuna pehala. Ethaneko ndika Cuba ota ti otali vulu okukundathana, ngele osha pumbiwa.

SA kuGeneva okwa li a faalele ko wo omapululo omape ngoka kaaga li nale mevathano lyokuNew York.

1. Ookamba adhihe heyali dhaakondjeli-manguluko ya SA muAngola dhongundu yaAfrican National Congress (ANC) dhi kale dha patwa iilonga yadho.

Ondaka yoshitainge-leki shaUkwanyama

Da dja kep. 6

ndwele oshiwana shi nongele kutya: Oikolwifa, oyo ya talika kuvamwe voshiwana eshi odjo yoi-maliwa neputuko, oyo naanaa oboma dingi.

Ngaashi omunaita ou e na oboma okuxwika nokunyanyaula omaliko noilyo yoshiwana eshi, nondjebo okutilashi ohonde nokudipaa, osho a hanyeka nelalakano ediko loikolwifa mokati koshiwana eshi, opo eitavelo lashili, oonhu neendunge dasho di pye onhukufula ngonyitoko fiyo sha ninga oshikamena shongaho, nge panghalafano ile pamaxupilo nopaupolitika.

Ekukumo loludalo meefikola

Oshoongaleshitangeleki otashi nyematele nai omupangeli wa SA, omushamane PW Botha omolwokwaanya kwaye okutembula po eekamba peefikola, notashi ekeleshi filufilu omadiladilo okutungila oludalo letu eendjibololo dokuhondama omaumbafano, osheshi ofikola ya tya ngaho, osha yela, kai fi ofikola, ndele okamba yoita muyo vene, omo onghalo aishe younafikola noyelihongo ya nyonauka filu.

Oshoongaleshitangeleki otashi teeleele omaludalo a kumbulule koshidjemo sheenghendabala dovadali okukundafana noshikondo shehono okudulikifa etwikilo lelihongo lalo.

Etopo loboma mOshakati

Oshoongaleshitangeleki otashi pangula pouyeleele oshiningwanima sholuhodi, osho sha pongifa Ovanamibia novaholimbili aveshe mounyuni shoboma yoshiningilewina ya haalalekwa mengafifi lovayakuli vOngeleki noshiwana mombaanga yaShakati, muFebuluali 19, 1988, omo ovanhu ve dule 80 va ehamekwa ile va lemanekwa na 27 va fila mo. Oshivilo shepako lomuhanga, kasha li ashike ehekelekafano koshiwana, ndele osha li yo eudifo linene komunaita nasho.

Wa shainwa ku: Adolf Hangula, omuwilikindjovo Apollos Kaulinge, omupashukilishitangeleki

2. Nomatanga gAacuba muAngola ga kale ga thiga po oshilongo shoka mulyotango lyaJuni 1989. Esiku ndika olyo wo SA kwa li a thaneka mu ningwe ando ehogololo lyaayehe muNamibia.

Osha kala sha limbilika oyendji, naamboka ye li moonkundathana muGeneva, kutya omolwashike SA e na okutseyitha muuyuni omathaneko ngoka inaaga kundathanwa noinaaga ziminathanwa natango muukumwe.

Aakalimo oyendji muNamibia, oye na iilalo inaayi pola mbyoka ya zile momategameno gepotokonono lyoonkundathana dhemanguluko inaaga gwanithwa, iikando ayihe iyali muGeneva 1981 nomuLusaka 1984. Naandhika odha talelwa muuyeleele mboka. "SA ke shi okwiinekelwa," osho oyendji natango taa hempulula.

Sebulon Ekandjo

MAFIKU EFIKU LA FIKA

Efiku mafiku la fika
Otundi oi lipo metata
Efimbo otu li poku li hanga
Tu ye tu fike pexulilo
Moudjuu wokombada yedu tu dje

Vanamibia tu ilikaneni
Tu tweni eengolo tu kuweni mokule
Onghuwo yetu Namhongo e i nyamukule
Kalunga loteka efyo moNamibia
Tu pa ombili nemanguluko moshiwana

Ovakengeli moshiwana ve tu pilukila
Noyeetwamo yavo ve tu shitukila fimbi
Naku tu kengelela tave mu manepo
Hatu fi twa yofwa twa fa (oimuna) oifitukuti
Ofiyo onaini tu li moupika wavo?

We va ifanene va shuna ko
Shiwana shaNamibia otwa loloka
Oufudime wavo ova longa sha wana
Ve ya nombili mboli ovakengeleledi
Namibia oletu fye otwa hala ombili
Mafiku efiku lavo la fika nava shune

Shimbwede Helvi
Omuloka

Aaniilonga moshigongi

Dha za kep. 11

Ya li ya thiki moshigongi shoka shotango, aalngisikola, aalongi yomoongalasho, yomoongeshefa, aanashilonga miipangelo nOshinyanyangidho. Miikandjo ya tumbulwa mpaka, oya li ya kalelwa po kaantu yaali nenge ye vule po.

Omapulo moshigongi shoka oga kala taga zi maaniilonga, gu ukithwa kaawiliki mbaka, nkenetashi ende uuna omuniilonga a hala okuninga oshilyo shEhangano lyaaniilonga. Okwi ipulwa neihumbato lyomugandji gwiilonga uuna inaa hala aaniilonga ye yi inyolithe mehanganano, osho wo egameno lyomuniilonga mpoka li li uuna a tidhwa miilonga omolweendathano lye nEhangano lyaaniilonga.

Sebulon Ekandjo



Ova shangela nge tava ti.....

ya tila, yo ye li moshilongo shawo.

Euveko pombambo maanasikola

Euveko lyaanasikola yamwe okuuvako iipotha olya sa kali na mwenyo. Unene onda hala okupukulula oosikola ndhika tadhi landula mpaka: Oluno Secondary School, Oshakati, noskola yokombuga kutya iipotha kayi shi okutuka aalongi nenge oku ya ula omalaka omawinayi nenge okutuka aalongwa ooyakweni, aawe.

Oshinima oshikwawo ohamu ningi iinima mwaa shi shoka tamu ningi, unene osikola yokombuga ngele ya ningi oshipotha, aamati ohaa yi ishewe mohostela yaakadhona noku ya kwata koonkondo. Mwe tu sitha ohoni. Oshipotha ohamu shi ningi owala ngele mwa yuulukwa okuponokela oohostela dhaakadhona?

Oosikola ndatu dha tumbukwa odho oombanda noonkondo. Ngele kwa tiwa: Indeni kosikola, nena otaya ende ashike taa hunyama, ku shi sho

KAANIILONGA YOMEHALAKANO MUUSHIMBA

“Aakwetu yaNankali yuupongo.” Pitikilii ndje ndi mu popithe noku mu pandula amuhe. “Onke ano aamwameme aaholike naayulukiwa, one enyanyu lyandje no-shishani shandje, kaleni mwa thikama mOmuwa, aaholike!” Fil. 4:1.



Omusita Jason Amakutuwa omasiku ngaka oku li muSoomi pamwe neefolo lye metalelopo lyookuume kawo hwiya.
“Tse aakalele yaahongi”, osho e hole okwiitanga nasho neipando enene.

Otandi gandja eluku kuKalunga sho a longithile Elelelongeleki li langeke ndje pune oshikandjo Tsumeb 1983-1987 noshikandjo Uushimba 1984-1987.

Nando onda li ndi shi shi ondi li meyakulo lya-hugunina, onda li nda nika uuhedhenge, uutshatshandjeke nuukwatamakoko. Ombili akwetu sho nda li nuunyolowe, inamu mona eyakulo lya tya shoo! Yamwe inamu mona ndje moshipala, oshoka omahala ogendji inandi ga enda we nani. Ombili-mbili akwetu, kuthilii ndje po ngaa akwetu.

Aashitambi taleni mokati keni omu na oondaadhi ngaashi hamu shi ti dho odho hadhi mu wilike e tadhi mu lombwele omitoto. Oshoka odhi na elalakanano kutya ngele mwa kala momagumbo, oyendji yomune otamu ka yonuka komalovu, oondunge e tadhi kana e tamu yi moArmy nenge moKoevoet. Okuninga hamu ka kala peha limwe ngaashi yamwe ya ya mo nale nokuli. Ano kutha embo u leshe manga kuye.

Nomokati kaalongwa omu na mboka shampa a mono kutya iilongwa ke yi shi, oha kwatele ihe iinima komeho, omanga inaayi konakonwa. Aanasikola yamwe ohaa ka longa ngele ya ningi iipotha, omolwashike? Ano ke shi shoka ta ningi. Andola a li owala kosikola ta leshe, oshoka ngashingeyi oku li owala pomahala gaaniilonga ya tidhwa piilonga yawo omolwiipotha.

Velipeni yaVanyamukula

Ote pandula aayakuli mUushimba? Aasitagongalo, aayevangeliste, aalongi naawiliki yongundu dhi ili nodhi ili ongele ooskola dhomakuthilo, eshasho, ekoleko naagundjuka, oongundumbimbeli nodhaalumentu, oongundu dhaakiintu nodhoondjimbo nosho tu

Omwe shi holola wo pokutopoka kwetu. Omwa pendje “opatekosa”, mwe shi ningi ngaashi tamu vulu! Ote pandula Aakaukweyo, Aahalali naNamutoni sho mwa umbile ndje ongalo mewiliko lyomuyevangeliste Andreas Amalovu.

Ote pandula ne Aashomeya ongalo yeni mewiliko lyelelogongalo mekwatelokomeho lyomuyevangeliste Mika Kaijamo. Onda pandula aakwetu mu shi kukala naantu ngangaye. Ongalo yeni oya gandjwa kuKaijamo nonde yi taamba nyanyu.

Ote pandula ekwatho lyaagundjuka mewiliko lyewilikongundu mokati kaagundjuka mUushimba komunashipundi Stefanus Shou naAmushanga Elisa Ndume. Nde yi pewa mewilikongundu lyaagundjuka mUushimba kOtiwarongo. Ote pandula Aayarandisa mewiliko lyame Kapewangolo naDavid Amukushu.

Otandi pandula amuhe mwa yakula ndje maandjeni. Sho itee vulu okutumbula amuhe mwa yakula ndje, ne popye ko yamwe, aangandja Tuutaleni Uuwanga, aangandjaAbner Akweenda, aangandjaTrofimush Shikongo naamuhe kUusakosa, Keetmanshoop, keemina, keefalama, kiilando nokomahala agehe.

Aamwandje yomUushimba
Otamu shishimba
Aatekulu miilonga
Tamu yungayunga
Pamba ne mu ndjangeke
Mbangu e mu koleke
Nampongo e mu nyasheke
Kalunga a yambeke

Jason Amakutuwa

Ekundo kAanamibia ye li pondje yoshilongo

One ootate, oomeme, aamwameme, aagundjuka naamuhe mu li pondje yoshilongo shaNamibia, otandi mu kundu medhina lyaanguka a li ko, noku li ko, nota ka kala ko, oye Jesus Kristus.

Tse mbaka tu li meni lyoshilongo otu li pamwe nane mekondjo notwe mu humbata momagalikano getu ethimbo kehe one amuhe. Onkee ano tu kondjeni twa mana mo nonando tatu hepekwa kepangelo ethindili kongudhi nolyokakombo noludhi lya gama ombinga yimwe.

Tse meni lyoshilongo ihatu tula naanaa omposi meho, omolwomahepeko ga vuka omutenya nuusiku. Esiku kehe otatu hepekwa ketanga edhipagi, ihe itatu teka omukumo, otatu tsikile ekondjo lyetu neitulomo. Nonande itatu kondjo nomatati, otatu shi ningi negalikano.

Aamwameme otandi mu kumagidha mwaa teke omukumo mekondjo, ihe mu itule mo ngaa. Oshigwana osha sa enota lyemanguluko lyaNamibia noshe li yuulukwalela. Tse otu na einekelo kutya otu na okukala muNamibia limwe, twi ikwata miikaha twa panda tatu yolo hahahaha. Botha oku na okuthiga po Namibia mbala.

Esilohenda lyOmuwa Kalunga nali kale pamwe nane. Jesus oye na ninge osheelo sheni shokuza mo nokuya mo, noye ne mu lithe noku mu galula mepuko kehe.

Pamwe nane mekondjo
Katharina Mookolandje Shilongo
Northern Namibia

Vamati horoworeni yirugana yamu wapera

Tani mu tantere one vadinkantumati muna kara mosirugana soukatakoko. Magova one. Oyo kاپisi yirugana mwa horowora, awe. Tanko muntu to horwo tanko ku gazara asi ngapi omu nopapara sirugana.

Morwa one kwa kara mepuku unenenene sili eyi mwa horowora yirugana youkatakoko. Mwa ha tukumbagera asi ruhepo runa ku mu twara moukatakoko yipempa yeni. One kwa ziramo tupu asi. Mu dipage vakurona veni novamubya veni novakuru veni vaava. One hena kwa zira mo ruhonda noyipara yozanyi.

Gazara nawa-nawa asi: Yihuna nayinye oyo ono ku ruganesa. Ehandu lyaKarunga ngali ku SARA: Ngoso eyi ono likutu moyipara yi ronnye ruhepo wa ziramo ndi? Ani hawe munona yige ava kumbagere. Kاپisi nyose nomukumbagera ntudi nyamweni nomu likumbagera.

Ngoso to kwafangana nemukaranganya lyoge asi, omuzeruki nye, ndi? E, nani muzeruki nage kudwara mamukaku gomuhanene nekaranyanya ndi? One kwa ziramo nani kulidipaga nyemweni. Diworoka asi munanyoko ogo ono kutjida-tjida ngwedi ndimba, Karunga ana ku mono nare asi: Mepuko ono kara.

Anove mubyage, mukurwange, tundamo paapa yina dili kupya unene. Yangoso onokurwa ngoso. Etamu lyoge ono ku lu nwina. Ndi ni ntante asi

Tala kependja tali landula

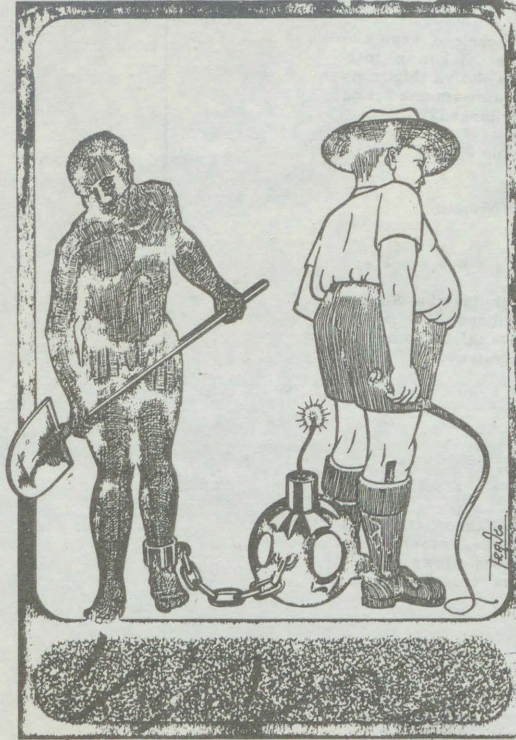
Etsakaneno lyotango lyaanilonga yomOwambo naawiliki yehangano lyaaniilonga

OLUNO: Aaniilonga ye vule 20 haa longo momaithano gi ili nogi ili mOluno nomomudhingoloko gwalwo, oya li ya ningi oshigongi pamwe naawiliki yEhangano lyaaniilonga eti 2 lyaAguste 1988 mOluno. Osho oshikando shotango mOwambo aaniilonga yomomudhingoloko gumwe taa tsakanene nelalakano lyokukundathana onkalonawa yiilonga yawo.

“Ondjoko yopaukoloni ndjoka ya lelitha oshigwana shaNamibia, oye tu tula moluhepo oludhigu nomondjala, nope na omukalo gumwe aguke oku yi ekelahi ko komapepe; ongele taku popiwa newi limwe alike kaaniilonga ayehe,” osho omusamane Lamek Iithete a popi kaanashilonga mboka ya li po. Omusamane Iithete okwa zile kombelewa onene ndjoka yi lilepo omahangano agehe gaaniilonga mOvenduka.

Pamwe naye, Iithete okwa li nomusamane John Nankudhu, oshilyo shokomitiye mehangano lyiikulya (Namibia Food and Allied Union/NAFAU), osho wo omusamane Amos Niikuwa gwehangano lya MUN. Elalakno olya li okukwatha aaniilonga yoshitopolwa shika nkene taa vulu okuhangana kumwe noya thikamene po okukondjela uuthemba wawo wopailonga nuudemokoli.

Tala kep. 9



etamu lyoge ono ku li huna.

Oro ruhonda onokuruganesa asi Karunga kapi ana kuhanduka ndi? Nove ono kulya nkenye ezuvha nyama name nina kulya ehidi natuvenye kuna lifana tupu. Nyama ozo wa ropokera nomakende gonobira yina kuhweda nye opo ono kara. Tundamo hasa paapa yina bili kupya. Siruwo sokutunda mo kuna kusigava paapa ntantani ngesi.

Tani ku pe ko nakauke o rese nonkango ado ga tyanga muyeVangeliste Rukasa 13:25-30, tuna yidiva asi one nyone vazeruki kwetu. One hena nyone wopomuhowo kwetu.

Nkenye ogu o zuvhu, zuvha nsene nomatwi gendi.

Mukavango gumwe.

Oukulupe hano eshito ile oudu?

Tete mangha inatu ya kokule natu tale oukulupe pamwe neshito. Ngeengee hatu tale eshito pashikulafano eli: Eshito ola fikama paitopolwa 7 lwaapo omunhu keshe.

1. Efimbo louhanana okudja eedula 0-1. Pefimbo eli omunhu ke na naana eshiivo lasha, shapo ngeenge oku na oudjuu washa ongeenge ina lya.
2. Efimbo lounhovele okudja peedula 2-5. Pethimbo eli omunhu ota dimbulukwa sha ngaa kashona.
3. Efimbo lounona okudja peedula 6-12. Pefimbo eli okaana taka kwata omikalo keshe omukalo urwa ile mwii. Otaka tameke ofikola.

4. Efimbo lakamukonda-pweyu okudja peedula 13-21. Pefimbo eli omunhu oku li naanaa medundakano li he shii okuyelekwa, ita tongola noupu ouwa nowii. Eli olo efimbo lidjuu komushitwa keshe.
5. Efimbo lounyasha okudja peedula 21-25. Pefimbo la tya ngaha, omuntu ota dulu naanaa okuyoolola osho shiwa naashi shii.
6. Efimbo loukulunhu okudja peedula 26-60. Peedula edi ohapa holoka yo omaupyakadi meshito, unene kovakainhu lwoopedula 60.....
7. Efimbo loukulupe okudja peedula 60.....

Ngeenge hatu tale eshito pashikulafano la tya ngaha, nena ohatu mono naanaa enyamukulo kutya nani oukulupe oo eshito, kashi fi omukifi. Pefimbo nee eli oinima aishe otai ende nee ya finda shanimanima. Omungo momakipa kau mo, omeva molutu kae mo vali naanaa ngaashi nale. Nomolwaasho hatu hange nee ovakulupe va tumhakana, kutya aaye, ame ohandi ehama nani ukulupe.

Oukulupe pamwe nouvela (oudu)

Ngaashi naanaa ovakulunhu, ounona novanyasha hava ehama omikifi di lili, nomukulupe meshito, ita pitililwa po komauyehame oludi olo. Ope na omikifi dihapu odo tadi etwa keembakiteli donhumba nodongadi ngaashi tu tye Malaria ta etwa koupuka ngaashi eemwe, hano ino teelega u tye ngeenge wa lika komwe oyo, u tye ito kwatwa komukifi shaashi ove omukulupe aaye. Omukifi wa tya ngaha otatu dulu okuhakulwa ngaashi omikifi dikwao ndee to veluka kuwo.

Ndele nee kombinga yomikifi dimwe ngaashi omaulu, ombuda nsht. imwe ya fa oyo, otai hakulwa to pewa omuti wokumweneka ouyehame ndee ino teelega u velukilile. Shaashi omungo oo kwa li tau kwafele mounyasha, paife kau mo vali.

Hano natu yeletweni kwaasho kutya kape na nande ombakiteli imwe i li momhepo tai dulu oku ku etela oukulupe. Eshi nee to ehama omaulu nale ngaho ino kendabala nee u twalwe keenganga vati ou na omukifi itau veluka, aye. Osho okumana po ashike eliko loye, nokulimonifa oixuna.

Ope na nee oinakuwanifwa imwe oyo ovakulupe vetu ve na okukala vei shii, noku i wanifa imwe tave i wanifilwa kufye ovo tu li novakulupe momaumbo opo va tyapule yo eshito ngaashi:

2. Oikulya: Naanaa ngaashi to file okaana koye oshisho opo ka mone oikulya ya wana opo ka ha kwatwe komikifi di lili naku lili, osho naanaa nomukulupe woye a teelega u mu file oshisho kombinga yoikulya.

Natu kongeleni ovakulupe oikulya oyo tai va wapalele notai tungu omalutu avo ngaashi: omai, ombelela. Ngeenge omukulupe ke na omayoo ombelela yaye nai tuwe koshini, opo i pupale moku-lyu. Omai aeshe ino ke a landifa po, fiila po omukulupe woye nande limwe ngaa moshivike.

Eeshe, eembu, eenyandi, omauni, oikwambidi, omashini, oshikundu, oifima nsht. Oikulya oyo ikukutu nai tutikwe opo i dule okuliwa komukulupe oo e he na omayoo. Osho to li shi pa yo omukulupe woye. Oimaliwa yomukulupe oyo ha pendjelwa kendabala oku i landa oinima oyo tai dulu oku mu kwafa. Unene tuu kombinga yoikulya.

2. Oilonga: Ovakulupe navo yo nava deulilwe oilonga naanaa ngaashi ta dulu oku i longo oilonga oyo ipu i fike peenghono daye. Hakutya nee eshi to uhalele mepya, onye nomukulupe, aye. Naku tye ngoonee shapo eshi to limi, yee oku li ngoo meumbo te ku tungile nande oukuninino voye.

3. Okudeula olutu: Omukulupe woye naye na kendabale opo a kale ta deula olutu laye opo pe fike eenghono daye. Ta ende ngoo nande okanano keemeta donhumba keshe efiku.

4. Oidjalomwa: Landela omukulupe woye oidjalomwa tai wapalele omafimbo ngaashi pautalala oikutu youtalala nopoupyu, oikutu yomhepo. Nava kongelwe yo eenghaku dipu nawa, ngaashi ngeno oikapute ponhele yeetyokola odo tashi dulika di mu teye.

Atusheni novanyasha natu lideule okuhanwa omakaya omangha tu li ovanyasha, opo shi tu pe oupu moukulupe wetu tu ha ka nwe nande omakaya. Omukulupe ho nu omakaya, lifaafanifa namushiinda shoye oo iha nu nande omakaya u tale eshi u mu dule moukulupe nyee omwa dalwa odula imwe.

Natu lideulile yo okuhanwa oikolwifa omangha tu li ovanyasha opo shi tu pupalele moukulupe okuhahala oikolwifa. INO NWA OIKOLWIFA NANDENANDE.

5. Etulumuko: Omukulupe na pewe omhito opo a tumukwe yo eetundi ngaa nande mbali omutenya, noufiku.

**F.V.Ndadi
Omundaungilo**

Omumati Sostenes Shikongo Niilenge (24), Ondongwadhiya mUukwaluudhi 2.5.1988. Okwa thigi ko he nayina naamwayina yaheyali. Eimbilo 630; Fil.1 - 21

*Aina N.Nangolo (Iiyambo)
Mwaala Sec. School*

+++++

+++++

Jacobina Nangula Kaandje (40) 15.6.1988. Okwa thigi ko aakuluntu ye, aamwayina yaali, omusamane gwe, noyana 8. Eps. 90:12; Eimbilo 630

Frieda Mutalemi Kaandje

Gideon Mbangula Hafeni (47) Oshipundu, Oupumako 14.12.1987 okwa fiya ko omukulukadi waye, ovana 12, okatekulu kamwe.

*Lovisa Ndalekwa Amutenya
Oupumako*

+++++

Maria Alkelaus mOupumako, ina yovamati vavali novakainhu vavali, inakulu younona omulongo 8.5.1988. Okwa fiya ko omushamane waye.

*Linea Abel Haipinge
Windhoek*

+++++

Omukalimo mOnankali mOndonga Teopolina Benjamin (27) 6.5.88. Okwa thigi ko omusamane gwe naanona yatatu.

Hileni Benjamin

+++++

Kuku Johannes Mvula 21.6.1988, Onyaanya omolwoshiponga shoshihauto. Okwa thigi ko omuselekadhi gwe, oyana yahamano naamwayina yane.

*Frederich Nangolo
Windhoek*

+++++

Otandi gandja ekekeleko kegumbo lyakuku Johanna Nickanor mOmbata, mOndonga sho ya thigwa po ombaadhilila komumwameme Selma yaTalen Mwashindange (22).

Eimbilo 329 Aaroma 6:8

*Gweni
Hileni Nelago Abner Neshuku
Windhoek*

+++++

Tate Mikael Shekutaamba Shuuya 5.5.1988 (66) ombaadhilila popepi negumbo lye, okwa thigi ko omuseledhi gwe naanona yatano.

Eimbilo 400

*Peha Iyaakwazimo
D.N.Kweenda*

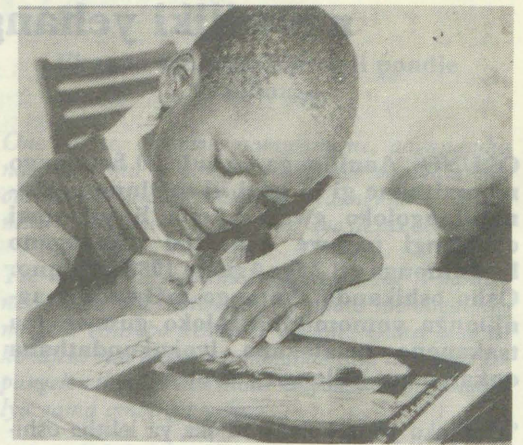
+++++

Israel Tangeni Nikanor (12) Onambango mOnguta, moshiponga shoshihauto 6.7.1988. Okwa thigi ko yina naamwayina yatano. Eimbilo 269 2Kor 5:1 - 10

*Elizabeth Nangula Amadhila
Oshigambo*

+++++

OTWE LI NYIKA KOMILUNGU



Omwedi wa dja ko ounona vaUpumako okwa liva ya momutumba opo ve li nyika komilungu. Ova li tava tu kumwe meenghundafana davo node va twala fiyo oshingwanima shetopo loboma 19.2.88 mombaanga yaShakati eshi ve uya pondodo ei.

Okanona aka ke li omunashipundi, oka fikama ndee taka tale nehiluko linene kombinga oku kwa amena Oshakati notashi tu kumwe nawa nefiku loboma ya topele. Efimbo olo tuu olo oka talatala koipala younona vakwao aveshe nomesho noshipala sha nyika oluhodi nde take lipukapuka komutwe wako noka popya ngaha:

Satana shito okwa kala noku tu fininika oku tu fenyifa momayulu edimba linyika nainai. Nena ote tu kondjifa tu li lye momakanya etu. Okwa twikila vali nomapulo ngaashi, aa:

Nena omutondi eshi a longa oupyakadi u fike opo okwa dibuka ile natango ota twikile nollonga yaye youpwidi? Nongenge mboli ota twikile, mongula ota ka longa peni? Nena eshi e shi ningila ootate, oomeme, ookaume ketu, mongula ote ke shi ningila oolyeyle?

Shiwana, hano natu kaleni tu shi sheni kutya ookaume ketweni va fiwapo kovakulunhu vavo omolwehalo lomutondi, paife ove li moluhepo lilula nomembwalangadjo lokukwenauka efimbo nefimbo. Apa ohandi yelula omesho nda taalela oshiwana ashishe ndi shi lombwele:

Shiwana, efimbo ola pwapo paife nomaupyakadi okwe tu tilyaanena, hano tu dimbulukweni kutya omundilo wa tema koshikuni shimwe, ihau pifa mbiya nande oi kale ya ninga efimbo lile pediko.

Otai pi ngeenge oshipandi ashishe shoikuni sha ya pediko noikuni aise ya xwama. Oshili ohandi mu lombwele fieni atusheni twa pumbwa ombili nemanguluko lashili, natu ilikaneni, natu indileni atusheni natu kaleni twa xwama, opo Tate e tu pe emanguluko nombili yashili omepakumo leisho, tangi shiwana!

Ngh. Fikameni

YA DHIGININWA NATANGO NENGE YA KANA

Mai 1979 — Festus Nakawa

31. 5.1979 — John Nakawa

5. 5.1980 — Toivo Shilongo

4.10.1980 — Marcelinus Shilongo

Juni 1979 — Matias Ashipembe

4.10.1980 — Modestus Ipinge

18. 9.1978 — Ndeifeka Erastus

18. 9.1978 — Rufus Amukuhu

18. 9.1978 — Mutumbulwa Amukuhu

10. 9.1981 — Kristof I.Shikongo

19. 1.1981 — Filemon Iikela

4.9.1985 — Markus Paulus

28.11.1986 — Ruben Edmund

Kotoba 1987 — Tomas Iipito

8.10.1987 — Mateus Handjaba

3.12.1987 — Shipandeni Mupolo

22.7.1987 — Mateus Mudjanima

7.10.1987 — Jason Angula

17.3.1987 — Natanael Shikongo

27.11.1980 — Andreas Kashikola

27.11.1980 — Teofilus Mateus

27.11.1980 — Mateus Jesaja

29.6.1985 — Amutenja J. Ashipala

3.7.1987 — Abner Shikesho

22.7.1987 — Stefanus Nghifikwa

19.1.1988 — Johannes Nekongo

20.1.1988 — Salom Uusiku

19.11.1988 — Daniel Israel

20.1.1988 — Natanael Ndatyapo

19.1.1988 — Julius Kapula

20.4.1988 — Erasmus Hendjala

20.4.1988 — Frans Hango

14.1.1988 — Gideon Kampulu

19.1.1988 — N.S.Ndatipo

19.1.1988 — Daniel I. Namwandi

20.1.1988 — Delfine Abraham

21.1.1988 — Natanael Stefanus

17.12.1987 - Hafeni Philippus (Hamunyela)

9.4.1988 Johannes Kawelekana Komeya

18.1.1988 — Johannes Nande

18.1.1988 — Ndeshaanya shaKanana

18.1.1988 — Jeremia Nandjebo

18.1.1988 — Shaamena Shikungunya

18.1.1988 — Shuudifonya Haufiku

26.12.1987 — Silas (Kamule) Kandenge

Januali 88 — Linus Matongo

17.12.1987 — Josef Dumeni

Ndhindhilika: Ngoka wa tseyia gumwe gwaantu mbaka, kutya okwa manguluka, onawa u tseyithile ombelewa yOmukwetu mbala. Tangi kekwaatho.



O M U K W E T U

Oye oshifo shOngeleki Onkwaevangeli paLuther yomuSWA/NAMIBIA.

Ohashi nyanyangidhwa mOshinyanyangidho shOngeleki mOniipa.

Omukuluntu gwoshifo omumbisofi Kleopas Dumeni.

Amushanga gwoshifo omusita Sebulon Ekandjo.

Ondando yOmukwetu muNamibia naSouth Africa R6,00 komumvo.

Palwe muAfrica R10,00 nokombanda yomafuta R14,00 komumvo. Mondhila R17,00.

Oondando nomambesitelo agehe naga tumwe kOmukwetu, Oniipa, P/Bag 2013, Ondangwa, 9000.

ELOC PRINTING PRESS
PRIVATE BAG 2013, TEL. (06762) 11, TELEX 56-3257 WK
SWA/NAMIBIA