

OMUKWE TU



40c

No. 12

ISBN 0-620-06828-0

Epangelo olya tila nomizalo?



Omunasikola Hilja okwa li ta hokolola omatilitho ngoka kwa li ge mu thikamena. Ka li e shi wo shoka ta ningilwa. Ehokololo tala kepanja etine.



“Nani nda yi mefudho ele,” Nenonen

Tangi unene kune amuhe mwa humbata ndje momagalikaneno nomwa talele ndje po sho nda li moshipangelo muuwehame uudhigu. Ohole yeni oya li ya pendje omukumo. Kalunga okwa uvu omagalikano geni nonda pewa esilohenda ndi tsikile natango muuyuni mbuka.

Ihe nando ongeyi, onda pewa efudho ele nonda shuna manga kuSoomi. Ombili sho inaandi mona oonkondo oku mu laleka gumwe nagumwe ngaashi nde shi halele. Kalunga ngele e shi hala, oonkondo ngele dha galukile ndje, otandi ka galuka ngaa pehulilo iyomumvo.

“Hambeleleni Omuwa, oshoka oye omwaanawa, nesilohenda lye hali kala aluhe.” Eps. 118:1. Itandi mu dhimbwa nando nda ya kokule. Megalikano otulyeni kumwe.

Kaliipo nawa.

Ulla Nenonen



1,200 MOSHITUTHI SHEYAPULO LYAASITA MONIIPA

Iilyo yomagongalo ga ELCIN, tayi tengenekwa 1,200 oya li ya tegelele konyala ootundi ne netata, okupewa aasita aape pethimbo lyoshituthi shawo sheyapulo 12.6.1988 mOniipa. Eyapulo olya ningwa pethimbo lyelongelokalunga lyaayehe komumbisofi Kleopas Dumeni.

Aayapulwa oya thikama ayehe omugoyi komeho gegongalo ya taalela oshigalikaneno, moka mu na omumbisofi naakwathi ye yaheyali. Aayapulwa oye li momizalo dhuusita omiludhe, ihe inaa zalekwa manga uukunde moothingo.

Sho ya hempulula eitaalo lyawo lyopakriste, omumbisofi okwe ya pula omapulo gokanaku gane ga landulathana, ngoka kehe gumwe e ga yamukula polwe mwene neuvaneko kutya ota ka tsakanitha oshilonga she shopausita. Naasho ya gana egano lyopausita, omumbisofi okwe ya pe ihe oshilonga shuusita medhina lyuukwatatu waKalunga noya zalekwa ihe uukunde moothingo, endhindhiliko lyuusitagongalo.

Ayihe mbika sho ya pwa, konima yootundi dhi vule ne kumwe nelongelokalunga nomapopitho, aakwanegongalo oya tameke okutanta nolupanda lwongeleka koshipala shaasita aape. Aakulukadhi otaa ligola noondjimbohambelelo otadhi uvika mookolonela adhihe dhetungo lyongeleka.

Moshituthi omwa li aakwanegongalo oyendji mboka nkene ya valelwe ya mone omusita ta yapulilwa uusita, noya li ya kukutika omilungu konkume. Gumwe gwawo okwa li meme Justina Haihambo, omutumwa gwopambepo ngoka naye wo a pelwe ompito moshituthi shoka okweeta etumwalaka lye ndyoka kwa li a pewa kaayapulwa nokOngeleki ayihe.

“Mboli poima ohapa anwa nokwaana,” osho a hepaulula nonghumwe inene. Okwe ya kumika omukumo ya ye mo moshilonga methimbo ndika edhigu nomauvaneko getumo lyaJesus paMateus 10:1. Omadhina gaayapulwa noma-

Tala kep. 6

Oshigwana osha zimina tuu Ooseko dhomomihandjo?

Moshigwana sha taandela, omagumbo ge lyaathane kokule, okutunga oosikola shaampoka pu na aantu, osha kala shi na ondilo. Onkee nopethimbo lyaatumwa opwa li pwa adhika oosikola dhuugumbo nodhaamati dhi li momihandjo. Ihe oya li wo ya dhiginine ya dhike oosikola shaampoka ya li taa adha. Omahala ngoka ge na oosikola ngashingeyi ogendji gomugo ogo ngoka ga totelwe pethimbo ndiyaka.

Ehumokomeho olindji ndyoka lya ningwa po kali shi unene ndyoka lyokudhika omahala omape goosikola, ihe shila olyokunenepeka ashike oosikola pomahala gontumba ga ninge oosikola dhomihandjo. Aatumwa sho ya li ya andjaganeke oosikola komahala agehe, oya li ye na elalakano kutya okanona kehe ke na ehalo lyokuya kosikola, ka ye ko taka zi maandjawa. Nonge ka koko noke na ehalo lyokutsikila, ka ye ihe nawa komuhandjo.

Omihandjo dhonale odha li dhaantu ya koka yopomimvo 18 sigo 25. Aakadhona naamati oya li yomimvo 30 nenge dhi vule po. Omuhandjo gwonale ogwa li gwa tulwa nawa melandulathano. Omukuluntusikola okwa li ngaashi he naHuismoeder okwa li ngaashi yina yegumbo. Omautho noompango momihandjo odha li oonkunkutu, ihe odha kaleke aantu, unene aagundjuka ya kale ngaashi megumbo. Aalongi yalwe momihandjo, oya li melalakano oyo tuu ndyoka lyokuptudha. Omuhandjo kagwa li omunene gwe ya tuwakana mepangelo nomesiloshimpwiyu.

Omihandjo dha tya ngeyi, odho dha tsikilwa nodha humithwa komeho dha ningi Ooseko dhomomihandjo. Omihandjo odha tungika dho opala nominene. Dhimwe nokuli otadhi vulu okukala

naalongwa ye thike peyuvi. Shika otashi ti, onkalo oya pitilila mokupangelwa. Oshikwawo osho shika ishewe, kutya aanona ngashingeyi otaa yi mOoseko aashona unene, pethimbo naanaa ndyoka ya pumbwa natango yina nahe nomudhingoloko omushona gwe ya yeleka.

Shoka ya li ye na oku shi mona kaakuluntu yawo, itaye shi mono we, ihe pehala lyasho otaa longwa shoka shomengundu enene. Egongelo lyoongundu oone ne dhi li ngeyi dhi li kudho dhene, okukanitha po omithigululwakalo dhoshigwana nokutula onakuyiwa yasho moshihulila. Ongundu otayi ningi shoka shopangundu nolwindji osha nika uugoya nelongitho lyekuni.

Omukalo gwokutunga nenge okutungilwa Ooseko dhomomihandjo ominene dhi thike mpoka, ogwo tagu tungile Aawambo yokondhalate ookomboni koomina nokiilando. Oshigwana mookomboni inashi hala mo, oshi li mo ashike kaashi na nkene shi ninga. Aalumentu yetu mookomboni oya monena mo iihuna noluhepo lwoondunge. Omulandu ngoka ogwo ashike gwa etwa muunona wetu womimvo 13 sigo 20. Aavali oyendji oya makela nokuli uudhigu wuukwangundu, omaluhondelo gaagundjuka, okunwa iikolitha, okwaapita nenge okwaahuma komeho nosho tuu.

Omihandjo ndhoka ominene nomiwanawa, andola uuanawa nuunene mboka owa andjaganekwa miitopolwa ayihe yOwambo, tapa tungwa ashike oongulu dhosikola (classrooms), andola ngashingeyi poosikola odhindji pu na sigo Ostanda 8 naanona taa zi komagumbo. Dhiladhila andola osikola yimwe onene otamu zi oongulu dhosikola ngapi?

Ngashingeyi otwa tungilwa ashike ookomboni, dho tadhi tulilwa po etanga lye gameno ndyoka lye eta nee uudhigu unene. Omadhiladhilo gaavali oyendji otaga ehamekwa koshinima shika, nando petameko twa li twe shi nyanyukilwa, oshoka otwa li tu shi aniwa uunona wetu otau ka longwa. Ngashingeyi osha eta ashike omikundu odhindji dhi vule uuanawa.

Epandulo

Otandi pandula Tate Kalunga, sho a li a aludha ndje momukithi omudhigu konyala gu faalele ndje. Otandi pandula wo aailongi ooyakwetu, yomoNehale mboka ya kala yi ipyakidhila nokugalikanena ndje, nosho wo aapangi aasimanekwa mboka mwa kala nokupanga ndje mOnayena. Otandi mu halele oonkondo nuupenda tau zi kuTate Kalunga oye na kale omukomeho miilonga yeni nomuwiliki.

T.W.Nekwaya
Nehale Secondary School

Kuku Aina N. Nakaluudhe (135) Uukuvu mOngandjera, 1.1.1988. Okwa thigi ko oyana 8 naatekulu oyendji. Eimbilo 53.

Kornelia M. Amutenya
Walvisbaai

Tatekulu Nambudunga Nakathingo (99) mUukuvu mOngandjera 10.2.1988. Okwa thigi ko omuselekadhi noyana 9 naatekulu oyendji. Eimbilo 653, Fil. 3:20-21.

Wilika Nd. Iita
naMaria N. Shilongo
Onemanya

Omatokolo amwe a dja mElelongeleki

234/88

Elelongeleki mokukundana eefikola da pata molwowaanya kwepangelo la SA okukufa po eekamba dovakwaita popepi neefikola, eshi pa konekiwa kovanafikola nokovadali omhumbwe yekufepo leekamba, Elelongeleki ola pangula nonyanya elihumbato nayi lepangelo eshi li he na okutwi kokupwilikina ondaka yOvanamibia nola koleka otelekisa ei ya tumimwa omupresidende wa SA, paidilo lo-shoongalele shovafita moshitaingeleki shaUkwanyama.

237/88

Elelongeleki ola tambula nepandulo \$250.00 ei ya dja kuNational Namibia Concern Colorado, USA, omolwoboma yomOshakati yeti 19.2.1988 noya ufwa i tulwe moshikefa shomafudiko oshiponga osho.

238/88

Elelongeleki la tambula nepandulo \$2,000 ya dja kuEmmanuel Lutheran Church muAmerica. Elelongeleki ola tokola paidilo loyayandji pu totwe oshikefa "Anna Ndahambelela Fund." Elelongeleki ola tokola yo oimaliwa yoshikefa osho i longifwe mounafikola wefimbo lixupi.

260/88

Elelongeleki ola ufa Matrone mOnandjokwe, meme Penina Akudhenga, oye a kale yo Matrone omukulunhu woipangelo yOngeleki okudja 1.4.1988 ngaashi sha kala omulandu wOngeleki.

278/88

Elelongeleki otali ifana omubishofi omukulunhu wOngeleki onghwaLuther ya hangana muAmerika (ELCA), Herbert Chilstrom, e uye a talele po Ongeleki yetu muSeptemba neudo, ngeenge Kalunga okwe shi hala.



Uunona mondjila yawo yokushuna kosikola, sho wa kala iiwike iyali moshipotha shookamba dhomakakunya. Mbaka oyomOoseko yaLuno mboka ngashingeyi ya shuna ishewe komagumbo

KALUNGA KOYE OYE OMUKWANIILWA

Oompadhi odho opala ngiini dhaangoka te ya ta zi koondundu te eta onkundana ombwanawa, tu uvitha ombili. Ota tseyitha elaka etoye lyehupitho e ta ti kuSioni: Kalunga koye oye omukwaniilwa.

Oompadhi dho opala otadhi kala dhaangoka ta kundaneke uuyuni mbuka, kutya Kalunga oye omukwaniilwa, oshoka Kalunga oye ha kala aluhe. Oshoka omukwaniilwa nenge omupangeli oye ta kalele aalelwa ye, ngele haKalunga tuu awike?

Aakwaniilwa naapangeli yuuyuni mbuka sho haya kanitha oonkondo dhawo nohaya si wo, nena Kalunga ngoka e tu shiti, ngele twe mu ningi omukwaniilwa gwetu nomupangeli gwoomwenyo dhetu, nena uthigona wetu sheke.

Kalunga okwa hala aantu ayehe ya tseye ngele ye mu na, nena itaa pumbwa ye okukala ongaamboka yaa na omukwaniilwa. Megongalo ekulu mokati kAaisraeli, Kalunga okwi iholola oye omukwaniilwa sho a mangelula Israel miikaha yomukwaniilwa Farao nAayegipiti inaye mu imba, sigo tuu Aaisrael yi igidha: "Israel Omuwa Kalunga koye oye omukwaniilwa."

Komeho Israel okwa puka mo mondjila nokwi ihogololele omukwaniilwa gwoshigwana, Saul yaKis. Aakwaniilwa mboka egumbo lyaisraeli yi ihalele olwindji oye li pukitha, onkene Kalunga okwa tumu aatumwa ye moshigwana, aaprofeti, opo ya galulile oshigwana meuveko lyakalunga oye omukwaniilwa.

Omuprofeti Jesaja mpaka ota penduthile nenge ota papudhula Aaisrael ya kala muSion, moshilando shetegameno lyuukwaniilwa waIsrael, te ya papudhulile meuveko lyashili lyuukwaniilwa.

Ewi ndika lyajesaja Aaisrael oyendji inaye li pulakena, nopamwe naakwaniilwa yawo inaye li zimina opo yu uvithile muSion, kutya Kalunga koye oye omukwaniilwa. Onkene Israel mokiinekela uukwaniilwa womuyuni mbuka, oompadhi dhe ine dhi fala ko koondundu i igidhile aantu ekulilo.

Aaisrael yamwe okwiigidha motempeli, Kalunga oye omukwaniilwa, osha ningi oluhindo nomolwaashoka Omuprofeti Amos okwa li a mwenekwa komusaseli Amasija gwomuBetel, Amos. 7:10, ta ti: Omegumbo lyaisrael Amos ta tsitha aantu ondumbo nangoye nokwe mu tidha mo ta ti:

Ino hunganeka we muBetel, oshoka osho ondjelele yomukwaniilwa notempeli yoshilongo. Moothina nomoonkondo dhaakwaniilwa no-dhaasaaseli, egumbo lyaisrael olya li lya mwena noinali longa we oshilongatumo nokwiigidhila aantu ekulilo, naSion Kalunga koye oye omukwaniilwa.

Egumbo lyaisrael sho lya tila okuninga omutumwa mokati kaakwaniilwa yalyo, naakuluntu ya kalele muJerusalem, Kalunga okwa tumbu mo Israel moshilongo nokwe mu halakanithile muuyuni mboka mwaa na etegameno lyomukwaniilwa ta kalelele, opo uuyuni u kundaneke etegameno tali zi mu-

Sion.

Ehalakanitho lyaisrael mokati kiigwana, kashi shi owala uupika, ihe olyo etumo enene lyoonakutseya Kalunga kashili mokati kaamboka inaaya tseye Kalunga omushiti, omukwaniilwa nOmuwa.

Mehalakano ndyoka Aaisrael yamwe inaya hokolola onkundana yaSion yomukwaniilwa ta kalelele, ihe oya ti: Otatu imbi ngiini ondjimbo yOmuwa mevi ndika lyuundjendi." Eps. 137:4

Ihe kumboka ya kundaneke mevi lyuundjendi oya ti: "Onyothi tayi piti muJakob nonkwaniilwandhimbo tayi itumbu muIsrael" (4Mos. 24:17), oya tsakanitha oshilonga shetumo ye shi pewa. Naanongo yokuuzilo oya ningi iiyimati mbyoka ye ya okutala omukwaniilwa gwaJuda a valwa ngashingeyi mpoka e li, oshoka onyothi ye otwe yi mono kuuzilo notwe ya okwiinyongamena kuye.

Sigo onena aakuuyuni oya sa enota lyaangoka te ya kalele, omukwaniilwa, note ya kwatele komeho. Enota lyomukwaniilwa nolyomuleli gwothaatha maantu, otali zi mo ashike ngele ngoye ngoka wa tumwa kuJesus, omukriste, oto yi ko kaantu noku ya lombwela nkene Jesus awike a pewa oonkondo dhuukwaniilwa megulu nokombanda yevi.

Ngele to yi ko, uuyuni otatu ka nyanyukwa pamwe naIsrael yaKalunga tatu ti. Twa pewa omumati, nelele te li pewa ku li na komapepe ge. Shaampoka to fala ko onkundana, Kalunga koye oye omukwaniilwa, oompadhi dhoye otadhi kala dho opala shaampoka to ka lyata po. Mboka taya hokolola muuyuni mbuka, kutya tse otwa mono Messias nokutya Kristus, oya ningi aana yaKalunga ya gwana okutumwa kuHe, shaampoka, opo ya kundaneke onkundana yenyanyu noyombili maantu e ya hokwa.

Ngaashika tu li wo aalongwa yaJesus, elombwelo lyajesus: Mu ka uvithile aashitwa ayehe evangeli, otu na oku shi tsakanitha. Okuya nokulonga kwetu etumo, otashi tu imikile iiyimati mbyoka tayi tu kalitha muJesus. Nongele itatu tsakanitha elombwelo ndyoka, nena muJesus otatu kewa mo kuTate Kalunga. Joh. 15:2

Oku na aantu oyendji inaaya kundaneke natango, kutya Kalunga koye oye omukwaniilwa. Hamolwaashoka andola kaaku na aalongwa yaJesus, aawe. Ihe aana yaKalunga opo ye li ya gwana, nokaye na nokuli iilonga niyimati yasha momagongalo nomoongeleki ye li mo iilyo. Oongatumwa mbaka oya fa ya dhimbwa ihe hayo yokudhimbwa, oshoka Ombepo Ondjapuki yaKalunga ohe ya dhimbulukitha aluhe etumo, ye li tumwa.

Oonakutumwa inaya dhimbwa, ihe aniwa oya tila Kalunga, nonando oye mwene e ya tuma. Luk. 19:2. Oonakutumwa yamwe aniwa inaya longwa etumo, oya tega aniwa ya longwe. Oonakutumwa yamwe oya mwena, aniwa kaye na shoka taya gandjele etumo, oya hala Kalunga e ya pe oshindjishindji, opo ihe ya gandje-



Jes. 52:7

ketumo. Oonakutumwa yamwe oye na ombata, ya nyenga nooyene yomikunda ye li mo, onkee inaya halelela ya tumwe we.

Oonakutumwa yamwe oya mwenena okutumwa kwawo kuKalunga notaa ti: Tse otu na iilonga oyindji, nokatu na ethimbo lyokutumwa kuKalunga. Oonakutumwa yakwawo otaya ti: Kalunga ita pumbwa oku ya tuma, oshoka oye nakuvula ashihe, onkene ngele iti itumu mwene, nena etumo nali se. Oonakutumwa yamwe otaa ti: Tse inatu hala tu ka lombwele aantu yalwe ekulilo, otatu yi kuundingosho wetu nokoohambo.

Oonakutumwa yamwe oya hala okugandja po okutumwa kuyakwawo kaantu ooyakwawo no-kaayengeli, oshoka aniwa oyo aalunde noya tila okuhumbata onkundana yombili yaKalunga maantu e ya hokwa. Ihe nonando oyo aalunde, onkene tuu Jesus okwa tuma aalunde ya hokololele nawa aalunde ooyakwawo esilohenda lyakalunga mpoka li thike lyokuhupitha kehe ngoka ti itaale Jesus.

Omuprofeti Jesaja oye omulunde nokwa kala mokati kaantu yomilungu dha nika uulunde, Jes. 6:5, okwiigandja a tumwe kuKalunga. Omuwiliki gwOngeleki Petrus, ota ti wo mwene: "Ongame omulumentu omulunde." Luk.4:8. Osho wo omuyapostoli Paulus ina mwenena okutumwa kwe nonando kwi iyuvite e li omulunde e vule aalunde ayehe. 1Tim. 1:15-16, okwa yi a ka kundaneke onkundana yenyanyu; Jesus e ya muuyuni a hupithe aana-djo.

Aantu atuheni koshipala shaKalunga otu li aalunde, ihe onkene tuu otseni Kalunga ta tumu tu faleni ko onkundana yenyanyu, tayi hupithitha wo aalunde aakwetu. Nongele tseni aalunde twa lombwelwa kuKalunga te tu hupitha molwesilohenda lye alike, twaa halele ngiini okutumwa tu igidhile aalunde ooyakwetu ekulilo notu ya lombwele kutya omushiti gwawo oye omukwaniilwa? Olye ta tumwa ihe ita yi ko, a ka hokolole, a kale andola itaashi mu nyenyetele?

Jesus Kristus ngoka e tu tumeni, oye omukwaniilwa. Oye omupangeli gwegulu nevi. Onkene otseni mboka tu na oohapu dhuuprofeti dhi vule ndhoka dhonale inatu mwenena okutumwa kwetweni ngaashi oyendji yomegumbo lyaisrael ya ningile. Okuyona otwa yona, ihe inatu iyekelela, tse inatu iteeka po Omuwa, aawe.

Natu longeleni shili Omuwa koomwenyo dhetu, 1Sam. 12:20. Kalunga okwe tu tegeni kehe gumwe polwoye, oompadhi dhoye dhi kale dho opala shaampoka u li po, u hokolole esilohenda lye enene sho e tu tumine omoluhupo nduka lwetu, Omwana omuholike, opo e tu kalele noku tu kwatele komeho ngaashi Omukwaniilwa nOmuwa gwetu.

Petrus Uugulu

EPATO LYOOSIKOLA OTALI ENDELE PAMWE NOMAHALU-THO MAANASIKOLA

Pomahala ogendji mOwambo nomUushimba, opwa kundanwa aapolosi nenge aakwiita ya ponokele uunona mboka tau thigi po ootundi dhawo, omolwokuholola kwawo euvitopamwe nuukwawo mboka wa thigi po oosikola dhawo sho tau indile ookamba dhaakwiita dhi hedhe kokule noosikola dhawo.

Eti 12.6.1988, omunasikola Hilja Namupala (21) manga e li mondjila ye u uka kegumbo, pOnethindi okwa adhika po komabofola gatatu. Omakakunya 10 lwaampoka oga nuka mo mebofola e tage ya ge mu pulagule kombinga yokambindja e ka zala, osho wo ondjato yiinima.

Okwa thiminikwa a popye ngele ye omunasikola, naampoka a landa okambindja hoka ka nyolwa SWAPO. "Inaa ninga ndje ngaa sha hewa, ihe andola onda ziminine ngiika, kutya ondi li kosikola, andola oya dhenge ndje," osho a hokolola pOmukwetu uudhigu mboka kwa li a taalela esiku ndyoka. Inaa oha sikola mOseko yaNehale, omunashipundi gwaailongi aakriste, nomuwiliki gwomuhandjo gwaakadhona ye li 300.

Esiku oyo tuu ndyoka komatango, ehokololo oya ti, omabofola ngoka oge ya posikola yaNehale, mOnayena, e taga dhenge aanasikola noku ya pulagula shono tashi ya thigitha po oosikola. Omulongwa Ferdinand Shilongo, okwa tiwa okwa dhengwa iikando iyali, e ta yugwa uumbindja we uyali, e tau yiwa nawo.

Uunona uukwawo, Lovisa Amukwata naElizabeth Namupala nayo otaku tiwa owa dhengwa. Ongula sho kwa ka sha (13.6.1988), uunona auhe owa tokola okuthiga po osikola, ndjoka wa adhika ashike opo wa shuna mo sho wa ningile oshipotha shookamba dhomakakunya.

Omukwetu okwa kundana ishewe natango, kutya oosikola ndhoka dha li dha tamekulula ootundi sho dha ningile iipotha uule wiiwike itatu yaMai, odha shuna natango komagumbo. Dhimwe dhomudho Oseko yaShakati; yaNuuyoma; yaTalaleko; yaNgandjera; yaNehale; yaNangolo noyaShigambo.

MUushimba omahangano gaaniilonga oga ningile olwindji eindilo kuNgoloneyandjayi gwa SWA, nepangelo lye ya tale nesimaneko oshinima shepatu lyoosikola muNamibia alihe, yo ya kuthe po ookamba pooha dhoosikola. Omaindilo gomahangano ngaashi wo ndyoka lya ningilwe kaavali pOhangwena, kaawilikingeleki mOwambo nokoshigongi shaasita moshitayingeleki shUukwanyama, inaga pulakenwa kepangelo.

Okuza petameko lyaJuni nuumvo, oosikola odhindji mUushimba noKavango nadho odha tameke okuthiga po ootundi, opo dhi ulike euvitopamwe naandhoka dhokOwambo. Osikola yaalongwasita mboka ye li kOtjimbingwe, nayo oya hokololwa ya thiga po ootundi dhawo omolwoshinima tuu shoka.

Pahokololo ndyoka lya gandjwa kEhangano lyaaniilonga muNamibia, okuza Ovenduka, Ombaye, Oshiwakopo, Arandis sigo Gibeon, aanona sho ya thigi po ootundi, oya ponokelwa kaapolosi nokudhengwa. Oya tilithwa nomatilithe ogendji, ya yahwa nenge yamwe ya kwatwa nokuli e taa patelwa moonholongo. Omainyengo goludhi ndoka osho wo ga kundanwa nokoshitopolwa shaKavango, unene moRundu.

Elelongeleki lya ELCIN momutumba gwalyo gwomwedhi nguka, oya li natango lya kundathana oshinima shoosikola noshuunona wa thigi

po ootundi. Elelongeleki olya gandja uusama mbuka kepangelo lya SA, ndyoka lya ti, kutya kali na nando "okutsi kwokupulakena" omaudhigu gAaluudhe. Aavali oyendji oyu uvite euvitopamwe nuunona mboka tau indile ookamba dhi hedhe kokule noosikola.

Momushangwahokololo gweti 13.6.1988, Ehangano lyaaniilonga olya li lya indila epangelo opo mboka ya mangwa mekwatathano niipotha yoosikola moshilongo, ya mangululwe mo, osho wo ookamba ndhoka tadhi indilwa dhi hedhe kokule, dhi shi ninge. Ayihe mbyoka oya li ya pulwa yi ningwe manga 17.6. nuumvo inaaga pita. Ngele hasho, aaniilonga otaa etha iilonga omasiku gaali (20.6 na 21.6.1988).

"Omolwashike tatu kondjo owala niilonga, tse tu na uunona wetu tau yahwa ashike, sho tau indile uukwawo wokOwambo u pewe egame-no?" osho omushangwahokololo gwaaniilonga gwa leshwa ngoka gwa halakanithwa noshilongo ashike. Ogwa li gwa nyolwa mOshimbulu nomOshiharerero.

Oshilyo shimwe ngele tashi ehama, iikwawo otayi ehama pamwe. nasho, osho gwa hulitha ngeyi.

Sebulon Ekandjo

Olyelye iha yahamenwa okaana kaye ?

Ovafita vomeongalo pamwe nomubishofi wetu novambishofi veengeleki dimwe, ove udite oudjuu omolwoshiwana shavo tashi hepekwa nova tokola va hepe pamwe nasho. Oto shi tile ngahelipi Omunamibia ou to tumbula: Ongeleki oye li tula mopolotika?

Ngeenge ou na okaana koye taka hepekwa, oto shi nyakukilwa ngaho? Okaana koye ngeenge oka kwatwa koudo oto shi tile ngahelipi? Olukeno eli wu kwetele okaana koye fiku ka hangika koupyakadi olo naanaa li niwe kovafita nokovabishofi vetu okutala oilyo yomaongalo avo tai mono oixuna. Tashi li omufita otashi li yo ovakwaneongalo, tashi li omubishofi otashi li ongeleki nomaongalo aesh.

Ovanhu mopolotika ova ya mo komahepeko nokeshundulo lopaunhu. Ovawilikingeleki otava lwile eedi davo, di ha vakulwe po komambungu. Okambo kamwe oke na edina tali ti: Ou na tuu onghenda noshiwana shoye? Ediladilo eli oli shi yo okupulwa naapa.

Mest.Djikolo Kwaki.

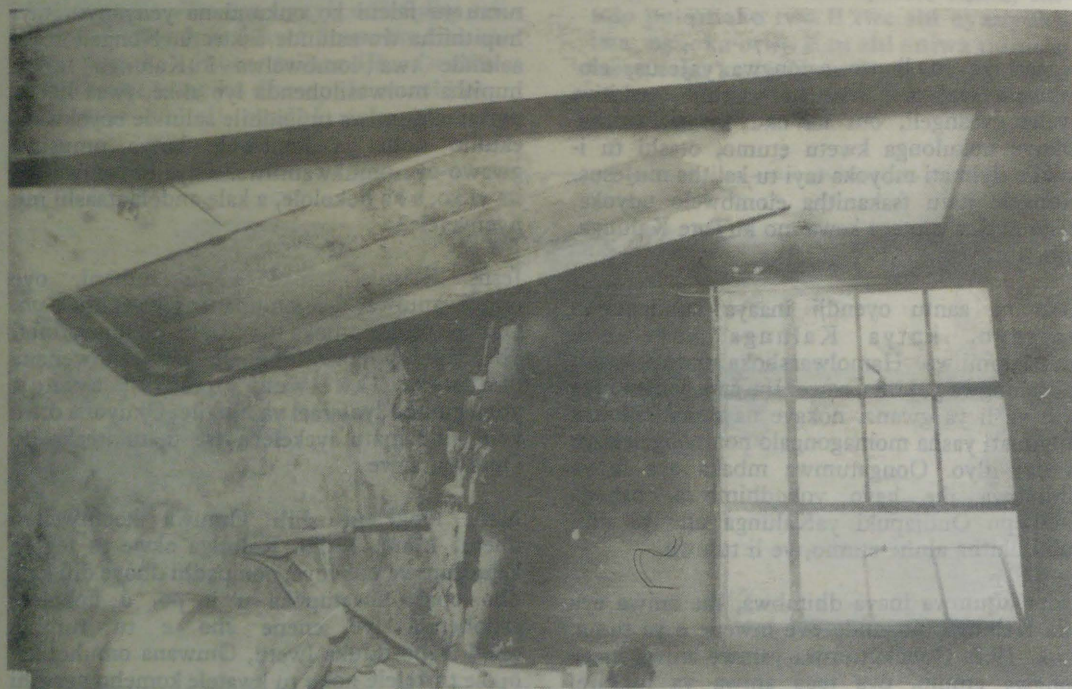
Omulilo mokambelewa kOseko yaLuno

Okambelewa komalongekidho gomakona-kono mOseko yaLuno, oka pendukile 11.6. ka pya po komulilo. Oombapila odhindji, eshina lyokwiindjipaleka oombapila noshitaafula, oya pila mo. Inamu chamekelwa omuntu moshinima shoka. Pethimbo Omukwetu a thiki poshiningwanima shoka, kapwa li manga uyelele weyonuko lyoombapila dhomakonakono ngoka ga adhikile mo.

Omulilo ogwa dhimbululwa potundi 10.00 yongulohi yeti 10.6 gwa hwama mokambelewa. Aalongwa naalongi ayehe mboka haa lala molugumbo, oya tondoka onkugo. "Aanona yetu oya longo shili nuupenda auhe omulilo gu dhime," omukuluntusikola Paulus Tjilondelo, osho a hokolola oshiponga shoka. Okwa ti, aapolosi nayo oye ke ya ngaa, ihe oya adha omulilo gwa dhimwa nale.

Manga omulilo inaagu hwama, inapu uvika etopo lyasha, inapu monika omuntu ta tokola nenge sha shilwe, pahokololo lyomukuluntusi-

Tala kepandja tali landula



Okambelewa kelongekidho lyomakonakono hoka ka pi po mOluno

Okudja eedula edi 1986-1988 elinyengo lovanyasha momaongalo omOshitayingeleki shOukwanyama oliwa paife. Ovanyasha ova tameka oyoongalele yavo momaongalo. Oto hange meongalo limwe mu na oyoongalele ihapu, i li kOinagoga nopefikola, opo ounona ovo ve li meefikola, shaashi ovo yo ve li moyoongalele, va ongala ashike ponhele yavo. Ngaashi meongalo Eenhana omu na oyoongalele 12 ile i dule po.

Ovanyasha ohava ningi nee eenhanda davo momaongalo, omo omunyasha keshe womeongalo e na oufemba okukala mo. Monhanda oyo ihaku tiwa ovanyasha nava kale vangapi, ndele aveshe ove na omhito okuuya, naaveshe ovo vokesekundo ohave uya.

- Ohava lande omadidiliko
- Ohava umbu eengalo
- Ohava kondjele ebandela lavo lomeongalo.
- Ohava ningi eetumbutumbu nosho tuu.
- Ove na omwaalu wa ufwa oo ve na okweetelela.

Ino holeka Amushanga edhina lyoye nondjukithi yoye, nonando owa hala okulongitha edhina lyefutamo

EAMENO LAKALUNGA LINENE

Ohai pandula Kalunga eshi nda li mwinya moAngola neengobe dange okukonga omwili nomeva. Nonda kala ndi udite nawa molwanghalamwenyo yomuna yange. Ndele nande onghaha osha li oudjuu pokati kovalaula novalaula ovo tave tu nyeke eengobe detu.

Omafiku 16.11.1987 onda hangelwe kovakwaita vaUnita vahayali, vamwe vomuvo oya homata omanga twa li nokaana kange keedula 12 lwaapo. Eengobe oda li tadi li nawa, ohaluka ondi udite okaana taka ti: Eembudi odoodo tadi di oko.

Ova li ve na eengobe 8 ve di nyeka ovafita oku va dja. Vatano ove ya kwaame tava popifa nge hai ti: Oto di shilikile" fye eshi tu li ngaha otu li molunyango tu kwafa yo ongobe imwe," osho va ti ngaha.

Enyamukulo lange onda ti: ame itai shi ningi noitai shi dule. Ova ti pokati keengobe nomwenyo kufapo shimwe, noinai dimina nando. Vamwe va hala okuumbange. Ndele molwa Kalunga ina pitika ve shi ninge. Mokudula nge eengono ova kufamo nhee (4) nde tava i nado.

Onda nangala inandi kofa, ondi na omalipulo ngehe ndi na okuninga. Jesus okwa pange enyamukulo ta ti; inda, ka shikule oinima yoye. Odula oya loka eengobe oda enda moututo. Onda ya kuvakwetu opo tu ka shikule eengobe odo. Otwa fikama notwa ya vatatu. Otwa ninga omafiku avali tu li momakondo, mefiku etitatu otwe di hanga ve di tukulilafana.

Otwa mona tete mbali inga hatu monopo vali nhee. Omanga hatu pula oovene vomikunda ohaluka eengobe oda fadukiwapo nado. Omukunda oo Okamwandi popepi nOnanhe, popepi nombelewa yaUnita.

Fye otwa tameka oku va ta fiyo okOhongo watelela popepi nOmbada. Nghe twa uhala hatu te fiyo va loloka ve di holeka vali momukunda Ohameke. Nonando ongho otwe va shikula fiyo adishe tve di mona. Osho yo fye inatu mona oshiponga omolwaJesus omwaameni wetu.

Ohai yandje omapandulo ange neimbilo 518. Natu ilikani vakwetu oita i xule, opo tu kale tu na ombili. Vavali moku va lombwela, ngaha onde va pa oshipango oshithayali nondjovo yange yaxuuninwa onda ti: Tate va diminapo osheshi kave shii osho tava ningi.

Markus Frans
Ohaingu

ELINYENGO LOVANYASHA MOSHITAINGE-LEKI SHOUKWANYAMA OTALI ENDE NAWA

Natu tye nee oshoongalele keshe otashi eta R40.00 ye ou a koya po oye nee ta i nepandela. Oto ka hanga eshi tava ka dimbuka monhanda yavo, oyo hai tameke Etitano fiyo Oshoondaxa, va ongela nande R1000,00 sha dja meedyo odo twa tonga. Ohava ongala vahapu momaongalo amwe.

Oshihopaenenwa neudo. 1988 muMaalitsa mOupumako ova li va ongala 643 vomeongalo limwe. Fye ovawiliki mOshitayingeleki ohatu ka yandja nee omapandulo moshooongalele shavo shokomundo mOshitayingeleki, ngaashi tu shi na kOhalushu 1-3.7.1988.

Ava nee va ongala nawa ve dule vakwao otava pewa ebandulo, novativali novatitatu. Ava va ongela shihapu ve dule vakwao, osho tava pandulwa okudja kuwotete fiyo omutitatu. Nomolwomapandulo oo, vahapu ova hovela nee okuninga oyoongalele oyo momaongalo aeshe. Nokonyala moshitai shOukwanyama ashishe ohamu ningwa oyoongalele oyo. Otwa li yo tve shi popya novawiliki vakwetu koitai ikwao, nonde lineekela navo otave shi tula diva moilonga. Onghee ame ondi wete elinyengo eli ola hokwifa yo ovanyasha vetu oyoongalele yavo, nokwoongala pondjovo yaKalunga otaku xumu komesho.

Nanye kombinga oko mwa ama didilikeni, opo ovanyasha aveshe Ovanamibia apeshe tuu opo

ve li, va ongale moyoongalele yavo. Va tungafane pamhepo, panghalafano, nopamaxupilo, ve lilonge okweeta po sha, kwa longifwa omadiladilo.

Ovanyasha amushe vaNamibia novaELCIN, ohandi mu kundu. Onda hala kutya ehanganoni leni olo la tameke 1961 mEngela nola pewa omaufoyukifo 1964 muElim, olo la wilikwa komufita walo wotete Dr.K.Dumeni, opo li li fiyo onena mOngeleki aishe. Nomoshitayingeleki otali ende ngaashi nde ku lombwela koshitai oku nda ama, navakwetu osho ngoo tava kondjo ngaho. Ame onda kala mo paife eedula 13. Ove li nawa otave mu popifa amushe.

Otava ti: Ava mu li keefikola nomoupongekwa mangeni sha pama mweete keumbo. Ounongo keshe oo tamu teke otava ya okuninga olupuna waNamibia. Mangeni sha pama, kutya nee oto li longele shike, pamwe oungoba, ile ouhaku, ile outekenika ile oikwapolitika ile omauxupilo ile oulongi, ile oufita, ile outekuliumbo, ile oudiakoni, ile ouweevangeliste ile ounaafalama. Eta keumbo tu tungeni Namibia letu, otali manguluka ashike, ngeenge hatu li yambula po fye ovanyasha valo. Oita ovamati, ongulungu ovanyeeumbo.

Filippus Nakanwe Engela

Dha za kep. 4

kola omupeha, meme Tusnelde Iita. Mokukonakona mompile, opo pwa dhimbululwa sha sha za omeya ga fa omagadhi gelehita ga tukila kekuma lyokambelewa.

Natango eti 2.6. nuumvo, omakakunya ge thike 10, oga li ge ya molugumbo pomihandjo dhaakadhona, e taga kookolola mo uunona umwe noku u fala momilema. Onkugo sho ya ka kuga, uunona umwe owa yiwa nale nawo. Omusamane Tjilondelo, ita pandula nando onkalo yolugumbo, uukwatya yi li ngashingeyi.

"Tala tate, otwa li tu na okumona iinima iinene yi vule pumbika, oshoka ashike tu na aanasikola aawanawa. Ayihe mbyoka iyelo molugumbo tayi pitilwa kushaangoka a hala," osho a fatululile Omukwetu omolwashike osikola ye hayi mono iiponga olwindji.

Okwa ti wo kutya eyonuko lyolugumbo okwe li lopota iikando oyindji, koshikondo shelongo noshaaniilonga, ihe ina pewa sigo oompoka eyamukulo. "Pamwe molufu nduka taa inyenge tuu, opo iihuna yoludhi nduka yi hulithwe po," osho a popi newi kaali na nkondo nawa, ongaangoka a tseyi amatokelwo goshikondo shoka.

Sebulon Ekandjo

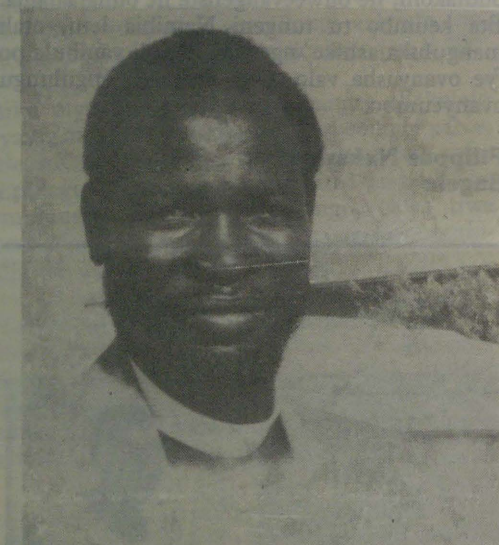


Meme Tusnelde Iita, ota tala nokumwe iinima yimwe mbyoka ya hupithwa mompile

YA YAPULILWA OSHILONGA



Omuyapulwa Tylväs Haitula, konima yeyapulo, ota halelwa eyambeko moshilonga she oshipe



Omuyapulwa Julius Ndevahoma, ou naye a pelwe sha okutya ponhele yovayapulwa

Elundululo lovanashilonga va ELCIN

Elelongeleki momutumba walo 1-3.6.1988, ola ninga omalundululo a kwata moiti mokati kovanashilonga vOngeleki. Omalundululo oku li ngaashi tashi landula apa:

Omufita **Elia Nanhapo**, Onandjaba, okwa nangekwa **moshihakulilo shaNgela 1.10.1988**; omufita **Johannes Nghilundilwa**, moshihakulilo mEngela, okwa pewa a kale mopenzela molwoundundi wopalutu, pashitokolifo shomaufomhango 76/87 nopamayele ovapangi; omufita **Filemón Alugongo**, Onemanya, okwa nangekwa **moRuacana**, okuhovela 1.10.1988; omufita **Jason Mbadhi**, lipandayamiti, a nangekwa **mOnemanya**, okuhovela 1.10.1988. Fimbo omulongwafita **Lukas Haindongo**, ou e li natango melideulo ta ka yakula eongalo **lipandayamiti** mewiliko

lomufitawiliki muElim.

Omweevangeliste **Melkisedek Nghatanga**, Onhelewa, okwa lundululilwa meongalo **Okambebe**, okuhovela 1.3.1988; omweevangeliste **Paulus Hamukwaya**, Engela, a lundululilwa **mOhaingu**, okutameka 1.4.1988; omweevangeliste **Sakaria Nantanga**, Onayena, okwa mangululwa paindilo laye omolwoundundi wopalutu. Okwa hangika a fika moshipundi shetulumuko. Omufita **Elia Niinkoti**, Nakayale, a nangekwa moinyolwa yopangeleki okuhovela 1.7.1988.



Aayapulwa oye li momukweyo yu uka kongeleka, oshituthi shi ka hite

Dha za kep. 1

hala mpoka ya langekwa, tala palwe moshifo shika.

Aalumentu aagundjukalela 10 nomukiintu gumwe, oya kala mOseminali yuusita kOtimbingwe uule womimvo ne dha zi ko. Omulongwasita Lukas Haindongo, omoluunkundi wopalutu, ina vula okunyola omakonakono ge gahugunina, onkene ina yapulwa we pamwe nayakwawo. Elelongeleki olya uvaneke okutala nkene ta kala, naye a yapulilwe wo oshilonga.

Sylvia Heita, ngoka awike a kala omukiintu okuza ku ELCIN mongundu ndjoka, naye ina kala moshituthi sheyapulo noina konakonwa manga kElelongeleki, sho e li natango ketsikilosikola lye kuAmerika. Ngele omukiintu na yapulilwe tuu uusita mOngeleki ndjika, oshinima tashi ka kongelwa eyamukulo moshigongingeleki omwedhi tagu ya nuumvo.

Oshituthi sheyapulo lyaasita osha dhanenwe lwotango mOngeleki ndjika 27.9.1925, uuna aasita yotangotango yaheyali aavaalelwamo ya yapulilwa oshilonga shuusita. Ayehe kape na we ngoka e li momwenyo, oya ka vululukwa. Okuza kesiku ndyoka sigo onena, eyakulo lyopausita mOngeleki ya ELCIN, olya talwa kaakwanegongalo ngaashi naanaa oshikwiila shesiku kehe notashi pandulilwa aasita mboka ye shi dhimbulula, ompumbwe ndjoka nohaa kambadhala oku yi yamukula.

Oshituthi osha kalwa wo kaalongi yamwe yosikola yuusita ngaashi; omukuluntusikola, dr Zedekia Muyoro naalongi pamwe naye, osho wo aalongwa yomongundu yotango 12 ya tameke ko nuumvo.

Sebulon Ekandjo

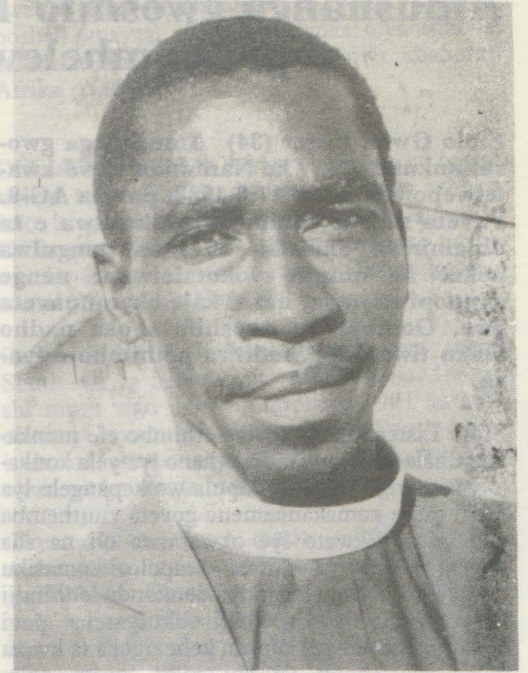


Aasita aape oya lange- kwa ngaashi tashi landula

Arvid Nghatanga, omusitamuwiliki mOkaku.
Aaron Kanana, omusitamuwiliki mOnandjaba.
Tylväs Haitula, omusitamuyakuli mo-Nkurenkuru.
Ignatius Haipinge, omusitamuwiliki mOthithiya.
Junias Iiyambo, omusitamuwiliki mEenghango.
Veikko Shiimi, omusitamuwiliki mOnaanda.
Julius Ndevahoma, omusitamuwiliki mOnangolo.
Eino Ekandjo, omusitamuwiliki mOmulonga.
naLukas Iimalwa, omusitamuwiliki mEengoma.

NDHINDHILIKA:

Onandjaba, nale olya tiwa Okalongo
Othithiya, egongalo epe lya za mOkahao nOnangalo
Eenghango, egongalo epe lya za mOhalushu nOkatope
Onangolo, egongalo epe lya za mEenhana
Eengoma, egongalo epe lya za moNakayale



* Ethano pombanda kolumoho, omusita omupe Eino Ekandjo, ta tantwa naye a yeluthwa kiilyo yegongalo Omulonga, moka a langekwa mo. Enyanyu olya li lya shi okutumbulwa.

* Methano pombanda kolulyo, omuyapulwa Aaron Kanana

* Methano pokati, omuyapulwa Ignatius Haipinge neefolo lye Namwenyo, ngoka omukuluntu gwoshipangelo shaKahao. Ayehe Haipinge naEkandjo meyapulo ndika aana yaasita.

* Methano pevi, omuyapulwa Arvid Nghatanga ngoka a li omuvithili gwo-shituthi sheyapulo.



Oshiwana shiwa



Oshiwana shi shii ouwa nowii
Shi shii, ovatondi nookaume kasho
Oshiwana hashi diminipo
Oshiwana shi na onheni nelididimiko
Shi shii okulinyangela pauyuki
Oshiwana shi na ovashiinda
Oshiwana hashi yolo
Oshiwana shi holafane
Oshiwana she lineekelafana

Oshiwana tashi pula omayele
Oshiwana tashi pulululafana
Tashi longo nomake asho
Tashi fimaneke Kalunga kasho
Tashi ongala pamwe nokutokola
Tashi longele kumwe.

Oshiwana sha hala oufike pamwe
Oshiwana sha hala cedjo domaunongo
Oshiwana sha hala emanguluko
Oshiwana sha hala oshili.

Shi tonde oipupulu
Shi tonde oukolwe
Shi tonde ondubo
Shi tonde omalwaambo
Shi tonde ondede
Shi yele ouvaya
Shi tonde okatongotongo

Sha diinina omifyuululwakalo dasho
Shi na omahopaeneno aayo iwa
Oshiwana shi na ondubo iyapuki
Oshiwana shi shii okulyaamena
Oshiwana hashi lididimikile omasheko
Oshiwana oshillininipiki

Unene tuu: Oshiwana shi na Ombiimbeli peke
Unene tuu: Oshiwana tashi lesha nokudiinina ondjovo yaKalunga.
Unene tuu: Oshiwana sha itavela Kalunga Xe, Omona nOmhepo iyapuki.

L.P.Kaiye
Omungwelume

Amushanga gwoshifo The Namibian, a kwatwa po, oombelewa dha hadhwa

Efelo Gwen Lister (34) Amushanga gwoshifonkundana, The Namibian okwa kwatwepo kaapolosi 17.6.1988, paveta AG-9. Paveta ndjoka, omuntu ota kwatwa e ta dhigininwa omasiku 30 inaa pangulwa nokee na ompito yokutalelwapo nenge okupopiwa naye, nashi kale okomunaveta gwe. Oombelewa dhoshifo shoka nadho otaku tiwa odha hadhwa pethimbo ndyoka.

Efelo Lister, okwa tseyika ethimbo ele monkamadhala ye yokugandja ethano lya yela konkalo yoshilongo shika nokupula wo kepangelo lya SA li iuthe komakankameno goveta yuuthemba womuntu. Ekwato lye okwa tiwa oli na sha noveta ompe ya vutwa kaapolosi omasiku ngaka, ndjoka tayi gandja oonkondo odhindji kuKomufala gwaapolosi, okulyatela pevi onkatu kehe nenge omuntu kehe ngoka ta kwata moshipala shono ye shi luku 'oveta nelandulathano'.



Efelo Gwen Lister, nuumvo okwa pewa epapa muunyakwa wokunyola iifo kehangano Inter Press Third World News Agency (IPS.) Epapa otali ka gandjwa 14.9.88 mombelewa yilgwanahangano muNew York, moka Amushangandjayi gwa UNO, Javier Perez de Cuellar a tegelelwa a kale po

mufala gwaapolosi, okulyatela pevi onkatu kehe nenge omuntu kehe ngoka ta kwata moshipala shono ye shi luku 'oveta nelandulathano'.

Epangelo lyopokati pethimbo ndika olya pyakidhilwa koshipotha shaanona yosikola moshilongo ashihe, shoka shi na eyambidhidho enene mEhangano lyaaniilonga.

Ethaneko lyoveta tayi popiwa, ngiika ndjoka ya hutuka moombelewa dhaapolosi e tayi gwile miikaha yaLister, otaku ti oya kwatelela mo onkalo yoveta yokangendjo muNamibia.

Ethaneko lyoveta ndjoka otali indike omainyengo gaantu memanguluko, omahala gamwe mwaa ningwe omainyengo gaantu, otali gandja wo oonkondo okupata ongeshefa kehe nenge iilonga nokutongolola kaantu yontumba mboka taa talwa "ooyene yoshinima".

Methanekoveta ndyoka omu na natango oonkondo dhokwiindika iigongi nomagongalelo gaantu. Oshilyo kehe shomukwanepangelo nenge shomukwiita osha talwa omukondjithi gwonkatu kehe tayi ningwa kaantu nenge komahangano. Oveta otayi thaneke egeelo kiinima mbyoka R 20 000 nenge oomvula 10 mondholongo.

Aanaveta mboka ye lile po oshifo sha The Namibian sho ya pula epangelo lyopokati ya mone ando Lister, inaa yamukulwa. Omunashipundi gwokabinete, omusamane Andrew Matjila, okwa ti ashike, ye ita popi sha manga koshinima shono sigo okabinete akehe ka gongala 20.6.1988.

Aanaveta yo The Namibian oya ti, kutyā ethaneko lyoveta ndjoka, olya pingathana unene nomakankameno goveta yuuthemba womuntu, ndjoka yi li mekotampango lyepangelo ndyoka.

(NCC/LONDON)

EHIIYO

Keegululo lyombelewa yuuthemba womuntu

ESIKU: 9.7.1988

ETHIMBO: 12H00 omutenya

EHALA: Ongwediva yaELCIN

Uyeyele wiilonga yombelewa otau ka gandjwa pethimbo lyoshituthi. Amuhe ileni.

NAMIBIA MEKANKA OMASIKU GAALI

Aaniilonga ye vule 60 000 muNamibia alihe, oye shi pondola okweetha po iilonga nomukalo gwopambili uule womasiku gaali (20-21.6.1988). Oshipotha mewiliko lyombelewa onene yaaniilonga mOvenduka, osha yambidhidha ekanka lyoosikola moshilongo ashihe ndhoka dha thigi po ootundi okuza Maalitsa nuumvo, sigo uuna taku monika ookamba dhomakakunya mOwambo dha hedha kokule noosikola.

Manga ku na esiku limwe ekanka li tameke, pomahala ogendji mUushimba nomOwambo, opwa halakanithilwa oombapila moka tamu leshwa, kutya mboka itaa yi miilonga esiku tali landula, naa ka hawale iimaliwa yawo kombelewa yaaniilonga nenge koombelewa dhOraata yOongeleki (CCN).

Omukwetu sho a pula omukalelipo gwo CCN mOvenduka, okwa ti ombelewa yawo kayi na elongekidho lyegandjo lyimaliwa pamukalo ngoka. Oombapila odha nyolwa medhina lyomahangano gaaniilonga: NUNW; MUN; NAFU; MANWU na NAPWU, notadhi monika naanaa dha fa ndhoka hadhi zi mombelewa ndjoka. Iimaliwa tayi gandjwa aniwa R15,00 nenge R20,00 mesiku. Elalakano otashi vulika okuvundakanitha ashike oshigwana.

Olwotango mehistolli lyaNamibia oosikola moshilongo ashihe dha kutha onkatu yi thike mpoka. Oomina oonene moshilongo; yokawe ya CDM noyaUran moArandis odha kala dha mwena. Pethimbo lyelongekidho lyoshinyolwa shika, Omukwetu ina kundana iiponga yasha, nonando omainyengo gaakwiita naapolsi oga kala omanene, unene mOvenduka nomOwambo.

Omupondo wovanyasha mOngeleki we liku ndwa muZimbabwe

Oshoongalele shotete shovawiliki vovanyasha mEengeleki eenghwaLuther muAfrika, osha ongalele 10 - 21.5.1988 muBulawayo, Zimbabwe. Ovanyasha 15 va dja moilongo 12 yaAfrika okwa li ve uya koshoongalele shavo. Omwi ile yo ovaenda va dja kuLatin America, kuEuropa launinginino lolau-shilo nokuAsia.

Oshoongalele osho sha longekidwa kombelewa yOngongahangano yOvakwaluther mounyuni (LWF) muGeneva, osha li sha tambulwa nawa kovanyasha vOngeleki onghwaLuther muZimbabwe. Omumake-ninga mOnandjokwe, Josefina Nathingwe mu ELCIN naHamushanga wovanyasha mOngeleki ya ELC, mOushimba, ovo kwa li va kalela po ovanyasha muNamibia moshoongalele shinya.

Oshipalanyole shooshoongalele osha li "Oilonga yovanyasha muAfrika, oilongifo yomEtumo laKalinga." Ovapopi vovina okwa li yo va shiivwa okupopifa oshoongalele koikundafanwa ya fimana.

Oshoongalele musho shene oshe litukula yo meengudu nhatu okukonga omanyamukulo kediladilo loshipalanyole nokekondjo lokukondjifa okatongotongo, okukondjela emanguluko nokutala nomesho mape omikundu domuAfrika la manguluka.

Oilyo yoshoongalele okwa li tai paafana omauyelele kombinga yoilonga yovanyasha moilongo omo va dja. Okwa kundafanwa Eengeleki nhumbi di na okuyambidida ekondjo lemanguluko muNamibia nomu SA. Moshoongalele eshi ovanyasha ova indila Ongongahangano yOvakwaluther i longekide oshoongalele shovanyasha vomuAfrika alishe, shi tetekele oshoongalele shaaveshe shOngongahangano yOvakwaluther osho tashi ka kala ko 1990 muBrazil.

Okomitiye yelongekido lochinima eshi, oya hoololwa pefimbo opo okuya nediladilo komesho. Oshoongalele osha xulifa nomadiladilo aa, kutya;

"Fimbo omishangwa diyapuki da yandja nale omufinda wa yela mokukala kumwe novafinikwa, ngaashi sha holoka movaprofeti nomuJesus Kristus, novahongwa vaye, fye (ovanyasha) otwa dimbulukwa nokutya Ongeleki muAfrika inai longa natango sha sha wana oshilonga osho shopauprofeti.

Onghe hatu kungihilile Ongeleki, unene ovanyasha vomuyo, va katuke onghatu i lwetike okukwafa mng halo yaAfrika, sha kwatelela mo ekwatafano Iongeleki nepangelo.

Ovanyasha va ninge eenghundafana nepangelo mochinima ya kwatelela mo oulinawa woshiwana ngaashi okupendula po ewi laavo ve he na ewi lokuholola omauyehame avo.

Pu ningwe omakonakono mOngeleki nomepangelo okutala omulandu oo tau nenepeke natango omwaka yopokati koipuna novafi vondjala, kutya otau di naanaa peni, nou xulifwe po.



Nakusa Anna Kuliwoye (29) ou a dipawa nomushamane waye Isai. Ehepu tala kepadja 11.

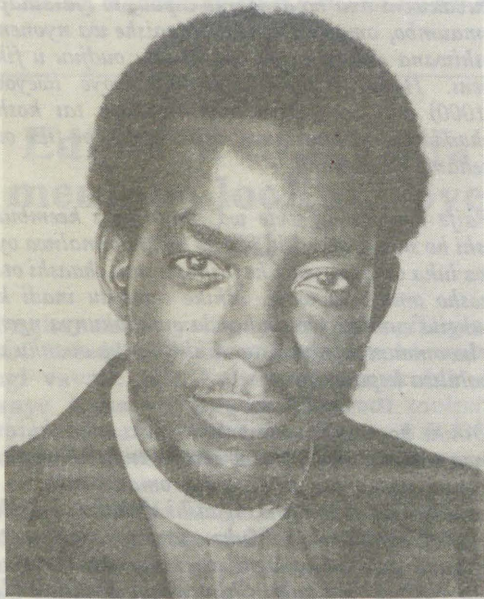
OSHILONGO SHETU: NAMIBIA

Shekutaamba V.V.Nambala

Oshitopolwa 3

Aantu yaNamibia

Okuza nalenale Aanamibia oyo aaludhe (ngaashi Aayafrika yalwe) mboka mokati kawo mu na Aaherero, Aadamara (Aadhilotsa), Aanama, Aawambo, Aakavango, Aatswana, Aayecele, Oombatili (ndhoka dha valwa pokati kaaludhe naatiligane), nAakapriivi. Ihe nena Aanamibia omu na wo Aatiligane nenge Iilimbu (mboka ya lukwa ngaaka omolwokulumba kwawo, sho inaa shuna we hu ya zile kuEuropa).



Omwiilongi Shekutaamba
V.V. Nambala

Ihe Aatiligane mboka ya hala oku kala nombili naantu ayehe yaNamibia otatu ya tala oyo Aanamibia noye na uuthemba wu thike po- wAanamibia ooyakwawo mboka ya kalamo nale oomvula kaatu dhi shi. Ihe Aatiligane mboka inaa hala okukala nombili nAanamibia naa kale ye shi shi kutya oyo ya hindi Aanamibia, ihe ha Aanamibia ye ya oku ya hinda. Nenge? Aatiligane mboka ye ya koNamibia nando oyo azaazayi, oyi iningi aapangeli naauthi yiinima yaNamibia. Oya dhini aapangeli Aanamibia noyi itala oyo ye na oondunge dhelelo nepangelo neutho lyiinima ayihe naambyoka kaa ye yi shi. Omolwondhino ndjika yaatiligane nuukoloni wawo, Hendrik Witbooi okwa kondjitha uupika wiilumbu pomimvo ndhika 1891-1896. Mupya munene (kombinga yetu), ina sindana. Nando Witbooi ina sindana pethimbo ndiyaka, inashi mweneka ekondjo lyAanamibia okukondjela ombili nokukondjitha uukoloni.

Omumvo 1902 iita yekondjelomanguluko ya tameke ishewe moNamibia. Nehale lyaMpingana okwa tumu aakwiita ye ya ka dhenge Aandowishi kOnamutoni, opo a kwathe Aaherero nAanama mboka ya li taa tyakaleke kolukadhi nopokati koshilongo shaNamibia.

Witbooi oye ishewe a li natango ta wilike olugodhi kolukadhi lwaNamibia.

Ihe esiku eti 28 lyaKotoba 1905 puVaalgrass oholo yomutondi oya kwata omusamane Witbooi gwomimvo 80 nokonima yootundi dhontumba okwa si. Ihe Witbooi okwa sile oshigwana she shoka a li e hole. Nando Aandowishi ye mu tala oye a li " oshidhukudhuku" nomutondi omunene gwawo. Witbooi kAanamibia oye epandafule ngoka inaa silolwiho omwenyo gwe omolwoshigwana nomolwemanguluko lyaNamibia.

Hendrik Witbooi sho a si, iita oya tsikilwa natango. Kombinga yokolukadhi okwa tukuluka ependa epe peha lyaWitbooi. Olyo nee Jacob Morenga ngoka a li omulongi moomina dhoshingoli koSouth Africa. Morenga okwa valwa 1855. Nando olwindji a longo moomina dhaSouth Africa, omumvo 1903 okwa tokola a wilike ongundu yokukondjela emanguluko lyaNamibia.

Okwa li ondjumbeta nomukayili gwokakambe omwaanawa. Morenga oye gwotango mondjokonona yaNamibia a longekidha lwotango etanga lyaakwiita lya kwatelela mo Aanamibia ayehe ngaashi a li ta vulu okuya mona---unene tuu mboka a hepa pamwe nayo moomina. Osha kala nee Samuel Maharero sho ta komanda pokati kaNamibia, ye Jacob Morenga ota komanda kolukadhi. Omanga Nehale lyaMpingana e li kolundume pamwe naMandume ta dhenge Aaputu.

Aanamibia inaa sindana. Omumvo 1907 Jacob Morenga okwa dhipagwa kaapolisi yaKapa mboka ya li nani taa tongele kumwe nAandowishi. Nehale lyaMpingana a si ishewe 1908. Samuel Maharero a tidhilwa muupongekwa kAandowishi, sho a tidhilwa kOshawana (Botswana) mo-1907.

Mandume gaNdemufayo naye wo a ka dhipagwa kAaputu nOombulu omumvo 1917. Aanamibia omayovi ya tidhilwa muupongekwa, ya dhipagwa omayovi ogendji, noya tulwa miilonga yuupika yaAandowishi. Iita yekondjelomanguluko ya mwena po manga.

Okuza 1914-1918 iita yuuyuni yotango oya kala tayi kondjwa. Sho Aaingilisa taa kondjitha Ndowishi kuEuropa, Englanda okwa lombwele ootulupa (omatanga gaakwiita) dhiita dhaSouth Africa (ndyoka lya li natango pethimbo mpoka oshihakanwalongo shaEnglanda, nonando epangelo lya adhika lya pewa okangundu kaatiligane ayeke yaSouth Africa), opo dhi ponokele Namibia dho dhi dhenge Aandowishi nokulala oshilongo. Osho sha ningwa omumvo 1915.

Aandowishi ya dhengwa. Okuza 1915-1920 Namibia olya kala mepangelo lyuukwiita waAfrika-lukadhi (South Africa). Konima yiita yuuyuni, Namibia olya tulwa metonatele lyEhangano lyIlgwana (1920-1945) nosho wo lyIlgwanahangano konima yiita iitiyali yuuyuni (1945 sigo onena).

Ehangano lyIlgwana olyo lya li lya pe South Africa oshimpiyu shokulongekidhila Namibia kemanguluko li ze mepangelo lyaakwiilongo. Shika osho shoka South Africa inaa gwanitha sigo onena ndji. Omumvo 1946 South Africa okwa indile ongundu yEgamenyo yIlgwana-

hangano opo a mangele Namibia kuSouth Africa ongoshitolwa oshititano she sha gwedha ando shoka shaKapa, Natal, Orange, noshaTransvaal. Eindilo ndyoka olya tindwa, oshoka Namibia ke li oshitopolwa shaSouth Afrika pandjokonona.

Okuza mpoka South Africa okwa tula ko othige nokwa tokola kaa gandje we omushangwahokololo kligwanahangano kombinga yaNamibia. Omumvo 1948, South Africa okwa toto paveta omulandu gwokatongotongo. Okatongotongo oka etwa sigo okoNamibia.

Omumvo 1966 Ilgwanahangano oya tokola South Africa i ikuthe mo moNamibia. Ihe ine shi ninga sigo onena. Omumvo 1971 natango ohofa yUuyuni oya lombwelulula South Africa i ihomononemo muNamibia, ihe omumentu okwa pa ko owala ekothi.

Okuza 1946 okwa mono edhikwopo lyomahangano gopashigwana gaali: SWANU naSWAPO. Omahangano ngaka oga kala taga pula emanguluko kombili oomvula odhindji. Ihe peha lyokuyamukulwa nombili, oga tidhaganwa niilyo yago oya dhipagwa, ya dhegwa noya tulwa moondholongo.

Oompito adhike dhokupula emanguluko pambili adha thitikwa koombulu dhuukoloni nodhokatongotongo. Aantu oyendji oya kwatwa nokundholongopalekwa nenge ya tidhilwa pondje yaNamibia ya landula ooyinakulu mboka ya tidhililwe koBotswana kAandowishi. Omatidhatidho goludhi ndoka ogo naanaa ga geyitha ishewe Aanamibia ya kuthe omatati (elaka lyaatiligane ndyoka haa uvu ko), mewiliko lyoSWAPO. Mboka ye hole oompata ohaa pula ngele South Africa nAandowishi oya ninga nawa sho ye ya ya kolonyeke Namibia.

Olye e na ondjo moshinima shino: Omufuthi nenge oye ngo tu undula omufuthi a ze megumbo lye ? Ngele owa lyatwa kompadhi, ongoye wa ningi nayi nenge oye ngono e ku lyata? Sho u li omukriste, ndishi inashi pumbiwa ngiika u lombwele ngono e ku lyata kompadhi a yeluthe po ompadhi ye?

(Taku tsikilwa)

Ontakumogalikano omolwaNamibia

Kalunga ketu, dhimbulukwa oshifetha shoye we tu shiti. Tala utale okudhinwa kwetu. Uuthiga wiitendelwa yetu wa yi naakwillongo. Okudhenga oongoma kwetu kwa mwena, enyanu koomwenyo dhetu lya kana ko. Oomwenyo dhetu odha loloka, enyanu lyetu lya shituka oluhodhi. Orneho getu ga nengena komahodhi. Oshike wa hala oku tu dhimbwapo aluheluhe?

Ngashingeyi evi lyyo olya kukuta, oshoka omvula yoye ino yi lokitha. Inamwenyo yoye ngashingeyi kayi na we iipalutha ya gwana. Othinge neteyo ewanawa katu na we. Esilohenda lyyo we li kalitha kokule natse ongashika uuzilo kokule nuuninginino. Dhimapo oondjo dhetu Tate, tu galulila kungoye otse notatu galukileko.

Pulakena ewi lyegalikano lyetu Tate, oshoka ongoye tatu ku galikana. Dhimbulukwa esilohenda lyyo we li uvanekele ookuku yetu David, Abraham naapropeti Jesaja naJeremia.

Tsakanitha omauvaneko goye omawanawa gombili nogohole kutse, otwe ku tegelela, Tate Ehala lyyo nali gwanithwe kombanda yevi ngaashika megulu.

Amen

Titus Halweendo
Walvisbay



Ova shangela nge tava ti

Edipao leni ohali di moushima weni

Onda uda ouyehame munene okulesha ehokololo lovamwameme ava; Jonas Atti, Angula, Paavo naShikongo Iyambo, olo la li mOmukwetu wa-Januali 30, 1988, eshi ve lipopila kwaasho she va imbi okudja moukakunya, kutya omolwetu ava hatu va dipaifa.

Ame mwene ondi wete kutya inamu puka pahokololo leni, kutya ohamu dipawa ngeenge mwe ya komaumbo ile kOushimba. Ndele ondi wete kutya edipao leni ohali di yoo paushima weni vene, osheshi ngeenge to ya kOushimba iho liyandje koshiwana opo u shiivike, kutya ove oilonga youkakunya owe i efapo, sho oshiwana shi ku diminepo.

Paife oho ya ashike wa mwena, to lituwa ashike to ende nolukanda ile to kondovala nodoolopa. Fyee nee ava tu ku shii, kutya ekakunya, katu ku toka nomeisho, owa ponokelwa ngoo osho, poo pefimbo opo nee to ka tya oilonga youkakunya owe i efapo. Kape na nee po ta ka itavela vali efimbo olo. Otaku ti ashike oto lipopile.

Ohandi indile kunye ovamwameme ava mwa tokola okufiya po oilonga youkakunya mu liyandje momake oshiwana tete, opo u shiivike koshiwana koshiwana ashise, kutya owe lidilulula shili, noshiwana otashi ku tambula ko nombili. Vahapu omu na eefamili deni mOushimba nondi

wete kutya keshe umwe ngeenge to ya mOushimba, oto ya ngaho apa pe na omunhu u mu shii, mumwanyoko ile kaume koye, ile komunhu wopomukunda weni.

Ngeenge to uya nee kuye ngaha, ou na okukala we mu pa ouyelele woye aushe, opo e ku popile koshiwana. Oshihopaenenwa ou shi kwete nale mwene, ngaashi naanaa hamu ti: Oikulo yaSWAPO nai liyandje. Omukwaita waSWAPO ngeenge te liyandje, ndishi ohave liulike kunye, opo mu va itavele shili, kutya ove liyandja?

Ondi wete kutya ove ou na owino muhapu wokuliyandja u dule nge nokuli, osheshi ove oho kala po alushe ngeenge ovanhu ve liyandja, naapa nda puka oto dulu okupukulula po. Onghe omukalo ou hau longifwa kuSWAPO mokuliyandja, owa pumbiwa yo okulongifwa kukeshe umwe, unene tuu ove ile nye.

Apa nandi ku shiivifile yoo kutya inamu likolekela momapuko, nye mu kukutike omitima deni, mu haitavele, kutya fye oshiwana itatu mu tambula ko. Eshi ndi li apa, handi shange ngaha, ondi na vakweni ava va li yoo omakakunya, ndele eshi ve litala kutya ova puka notava landifa po oshiwana shavo nedu lavo komutondi, ova efa oilonga youpwide nove liyandja koshiwana, noshiwana oshe va tambula nombili.

Paife ove li ovanailonga pamwe nafye momina ei yaRossinga. Ava ndishiilela ove li vanhe (4) navamwe vomuvo ookaume kange nokuli unene paife. Ngeenge tava hokolola oilonga yavo ile yeni youkakunya, ohava lili shili kwaai ve i longela oshiwana, nove udite ko paife lela, kutya oshiwana shavo oshi li moupika notashi pumbwa okumanguluka mo.

Ohava ongala yo paife moyoongalele yaSWAPO oyo hai ningwa alushe moitopolwa ei yaUshimba, noiha hane nande i va pitilile po, keshe apa tai ka ningwa. Onghe kufeni oshihopaenenwa kuwakweni ava, ileni koshiwana, fye ovamwanyoko otwe mu pumbwa notwa hala amushe ngeno omwe lidilulula.

Efeni okulongela kumwe novatondi veni, ovatwindubo nedu leni nonoshiwana sheni. Fyee ohatu mu tambula ko nombili. Ashike ihatu mu dipaa ngeenge mwe uya okutonga omaudjuu eni ngeenge itamu futwa? Oudjuu oo oho u lopota koshiwana haku SA. Omolwashike ho shi ningile, ndishi oho uya koshiwana shaashi ou shii, kutya oshiwana oshe tashi ku kwafa?

Oho shiiva kutya oukoloni oshike ngeenge wa ningi eehani ino futwa, ndele iho diladila yoo kuvakweni ava ho denge, to dipaa, to lyataulapo omaumbo, omapya, eengubu naaishe wa nyonena oshiwana shoye, kutya ohashi udu oudjuu u fike peni. Hano yelekanifa oudjuu woye lweyovi (1000) eshi ino futwa oimaliwa oyo tai kosho ohonde yoshiwana shoye, opo naanaa pe fike ouyehame woshiwana.

Paife ngeenge ou wete wa fimanekwa keembulu eshi ho shingi ekaspeli, ove ho kwata oimaliwa oyo wa luka oihapu, yoo i he fi ihapu shili shaashi otai kosho omwenyo woye, oshike eembulu inadi ku tungila eumbo? Omalukanda omakakunya ngeno e na omaumbo mawa, taa ulike, kutya ovanhu va valulwa kepangelo?

Oshike ho nangala moipeleki wa fa onhauki, ove owa valulwa ngoo? Ngeno otwa li tu he na omakakunya ngeno oto ti katu na omalukanda oo a kakeka Owambo aish; ngaashi olukanda laTulun, laShimhanda, laMukwanambwa, laShikopi, laNandjengo, laKandjengedi, Oneshila, Omashaka, Etenda, Kalaula, Shimbungu, Shikayi, Hamunghambya namakwao aeshe a xupa ko, omo paife mu na omikifi di lili nodi lili odo tadi nyanyalifa notadi ka eta oupyakadi wa kula moshilongo shetu. Osheshi fiyo opaapa katu na ouhaku wa wana omolwoukoloni ou u li medu letu.

Apa opo tapa ulike kutya omadiladilo eni omaxupilela, osheshi kamu shii ouwa nowii. Shoo osho nee oilumbu ye mu shivila oulai. Ombwa ngeenge oya kwata okafitukuti, mwene eshi te uya keumbo, konguloshi eshi tava li ombelela, ombwa ohai umbilwa okanghako, yoo tai telwa mepya, inai valulwa vali osheshi ekuta opo li li, nande oyo ye li etapo.

Omunambia e hole oshiwana shaye nokuhole ombili nelandulafano nokuyelele okatongotongo noukoloni, ite liefele mondova omo a halelwa kovafininiki novakolonyeki vaye, ndele oku na oku va kondjifa opo ve mu valulile kounhu nove mu longela onhele i shii kukalwa kovannu.

Nande ngaho likukutika, kala yo u shii kutya Namibia otali mangululwa koSWAPO. Oindele ingapi ya kala koshipundi opo ngeno vati i twale Namibia memanguluko? Inai likonda oSWAPO nokushuna oku ya dja? OoSteyn ve etele po oungedjo voufiku opo tu ha ende, okwa li eshi ota mangulula Namibia pamukalo mupu, SWAPO ine i likonda, ina shuna?

RUDOLF BAHM

Omupangeli gwootundi

MOSHAKATI

Mpaka otandi tseyithile aayakulwa yetu ayehe, kutya iilonga yokupangela ootundi, okulanditha po oompe nokwoopaleka ndhoka dha teka, okutula ko omakende nuumanya, itatu yi longele we metungo JAMAICA INN.

Ngashingeyi otu li mpaka mOshakati metungo lya ENOK (BBK), mpeya hapa kala pwa thikama aluhe omaloli goeiskilima (Roomys). Shika otashi ti elalakano mpaka, oku ku etela eyakulo ndika popepilela, waaha pumbwe we okufala nenge okutuma ootundi dhoeye kUushimba.

Ohatu landitha wo ootundi onkulu kondando yi li hwepo, onkene tu talela po ngele to piti pOshakati.

Tala kepaanja tali landula



OKAMBO KEWILIKO LONGELEKI

Okambo nkaka EKOTAMPANGO NOMAUFOMHANGO, gOngeleki Onkwaevangeli paLuther yomu SWA/Namibia, oka holoka nale nokuli noke li mostolamambo taka gu R3-50. Lesha shoka tashi tiwa kaalongekidhi yako:

Omukwanegongalo kehe, unene omunashilonga nenge meyakulo lyOngeleki, ota indilwa a kale nokambo nkaka noku ka longitha. Miikundathanwa, unene miinyolwa, napa longithwe iityadhina yopangeleki mbyoka tayi adhika pehulilo lyokambo, pwaa kale evongakano miinima. Shika okutya: "u kale u shi shi nkene tamu longwa notamu kalwa megumbo lyaKalunga, oondyoka egongalo lyaKalunga Omunamwenyo, ongudhi nomukanka gwOshili" 1Tim.3.13 (Tala epandja 104-108).

**Peha lyokangundu
Timoteus Shipanga
Matti I. Amadhila
Oniipa**

ONDJALULAMASIKU 1988 otayi monika natango, ihe okondando ya kululwa, nale R1-50, ngaashingeyi R1-00, mona po yoye.

Edipao li nyanyalifa meumbo looKuliwoye mEndola

Onghundana yedipao loshiningilawina noli halwifa, oya dja mEndola, eshi ovalongi vavali; Isai Kuliwoye nomukulukadi waye Anna va dipawa kombudi moipafi younona vavo. Eshi osha ningwa 8.6.1988 meumbo lavo oufiku.

Pahepu laHilja Haifene (15), omudipai ou konima a shiivika nedina Teofilus Ngholondjo womomukunda Omahenge, popepi nOhalushu, okwe uya oufiku fimbo ovanhu va nangala ndele ta konghola a yeululwe. Konima yefimbo lile, okwa mona mwene weumbo te linyenge mouyelele

Tala kep. 12

Dha za kep. 10

Ou e etele etanga lokufuta nokweendjeleleka omidimba dovanhu komalola oihauto yeni, ndishi okwa li a hala a tilife oshiwana? Oku li peni, ina ya oku a dile? Omwa li kudenga ovanhu nokuxwika omaumbo nokudipaa, opo mu mbadapalife oshiwana, ope na eyooloko lashike? SWAPO yaNamibia haya finda ashike komesho?

Ame ou to file Namibia li dje moukoloni, ohandi ku pe oshishani noitandi ku dimbwa alushe. Ngaashi oohailwa Shifidi navakwao aveshe ovo itava pu okutumbulwa. Nomafiku avo omafyo oku na okudimbulukiwa alushe kOmunamibia keshe. Inatu hala ava tava fi ngaashi eedi da fila komashini, nande vati okwa li va valulwa ngaashi eeministeli odo kwa li da yelwa koilumbu, ndele eshi da fya, oilumbu ye va dimbwa nale omafiku avo.

Olye e va shii vali, nande ou pule oilumbu, kutya ova fya naini, otai shi ku lombwele naini? Osho oshihopaenenwa kufyeni atusheni Ovanamibia.

Nanghendanoshiwana I. Ngh.

DHIGINENI MOOTHINA

Aamwameme aaholike aamati naakadhona, ookuku nootatekulu, oomeme nootate naayehe mu li meni lyoshilongo, otandi mu kundu notandi mu halele ekondjo li na uuyuuiki noli na uukumwe, mokati keni amuhe mu li muNamibia, notandi mu dhimbulukwa aluhe momagalikano, nande palutu otwa topokeni, ihe pambepe otu li pamwe.

Otandi mu pe omukumo mwaayihe mbyoka tamu longo, shi na sha nonakuyiwa yemanguluko lyoshilongo shetu, noshi na sha nuuthemba womu-Namibia kehe. Shika otandi pandula ashike mboka taa longo ombili kaakwashigwana, ndele hakumboka ya landithapo oshigwana koohekulu yoombulu. Otandi ti kune aamwameme aaholike, dhigineni moothina nomomaudhigu kehe ge li mokati keni.

Kondjeni shili mwa mana mo, sigo ombili yoshilongo shetu ya holoka. Nande napa kale pe na omandangalati nomathindi mondjila, ngoye shigwana kondja, ino tila, ngoye ino shuna monima, oshoka ondjila yemanguluko owe yi palelwa nale.

Tse mboka tu li kondje yoshilongo ongaakondjelimanguluko shili, otatu kondjo tu na omukumo, twa homata ethimbo kehe, notatu kondjitha epangelo lyomunakatongotongo opo li kale lya tekapo muNamibia.

**Lovisa Shitenga Ndazapo
Nigeria, West Africa**

Aanamibia omwa mwena owala

Aaholike otu na okulonga twa mana mo tu mone emanguluko. Onda kumwa ngele otatu ende owala twa tuwalaleka omaako twa zala nawwa tse itatu dhimbulukwa kutya otu li muokoloni wa SA.

Otu li ompadhi ya lyata ku SA, omanga ominwe thi li koSWAPO. Ngele otwa pulwa kutya owa

lyata peni, oto nyengwa okuyamukula, oshoka ou li pokati kanamumpaka namumpaka. Emanguluko wa hala, shimaliwa she ku tula mo. Aamwameme mboka taa si kuutalala, taa hepa koondje nomayoka taa nuka uusiku auhe omolwoye. Aanamibia tulii po iikolitha.

SA ku na oonkondo, oonkondo dhoye openi? Aluhe ote ende mombanda, nomoshihauto. Aluhe otamu kuta ombaambaa. Oh, shilumbu nani ke na po sha. Tala komulumentu Omunamibia te ende, omakwega kuye omeya. Mombanda nkene a valwa e ende mo tashi holola uulumentu.

Tse Aanamibia itatu sholola, Kalunga ketu ote tu kwatha. Omahodhi getu oku ga wete tu galikane-ni, Namibia onali manguluka. Aamwameme otu na okuya mona, ngoka wa ninga ekakunya otwe ku dhimbwa.

**Deatrise Twamanguluka
Oshigambo**

"OSHIKUNDATHANWA INASHI HOLOKA WEE!"

Otandi indile nesimaneko enene opo omusamane "Hailwa" Samson Ndeikwiila e tu pe ko sha kombinga yoshipopipiwa shoka a hulithile ondjakati mOmukwetu 15.12.1987. Osha li tashi gandja uyelele koshigwana oshithiminikwa shaNamibia, kombinga yomahangano omape taga totwa muNamibia, nelalakano okupukitha Aanamibia, unene tuu ehanganano lyo ICHTUS, lya holokele mOtjomuise (Windhoek) lwotango mo 1986.

Pamwe oshe enda ndje pomunkulo, ombili hailwa, nongele ino shi tsikila we; otwa hala oku shi uva.

**Twapandula N. Kamati
Oshakati**

Ehiyo kOkersesa yomusiki

Ombelewa yomusiki mu ELCIN, otayi hiya okersesa yomumvo gumwe 1989.

ELALAKANO: Okudheula aawiliki yomomagogongalo momusiki yopangeleki.

SHOKA TASHI PUMBIWA: Omwii-ndili na kale e na onzapo yuulongi nenge onzapo ombwanawa momusiki. Na kale wo e na epopilo lyomusita gwaandjawa.

EHALA: Ongwediva yiigongi ya ELCIN.

ETHIMBO: Omumvo gumwe, esiku kehe miipundi.

Omaindilo agehe naga thike mombelewa yomusiki manga 15 gaJuli 1988 inaaga pita. Omapulo agehe naga ukithwe kombelewa yOmusiki.

**P/Bag X5505, Oshakati 9000
nenge kuTuovi-Kaarina Pennanen
P/Bag 2015, Ondangwa 9000.**

wolamba nokwe mu yashelé mekende londjuwo.

Okwa twikila okwiingida a yeululwe, nongeenge itave shi ningi, ovaneumbo ave-she ote va dipaa. Nakufya Isai oponce okwa lombwela omukulukadi waye a yeulule po. Ngholondjo eshi a yeululwa, okwa fikila ashike ta fyuula omushamane nokwa pilukila omukulukadi vati e mu pe oimaliwa.

Eshi a pewa R 200,00 okwa ti inai wana nokwa dipaa natango omukulukadi oo a hangika e na okaana keehani ashike heyali. Ongula eshi kwa sha, ovanhu vomomukunda ova shiliia omhadi fiyo omeumbo laye mOmahenge, omo ve mu kwata nove mu manga. Konima yomafiku amwe, Omukwetu okwa kundana kutya, omudipai naye a fya, eshi limangeleka.

ESO

Kuku Selma-Niye Amashila (71) 19.5.1988, mOshigambo. Okwa thigi ko oyana yatatu naatekulu oyendji.

* Selma M. Nuusiku Angolo (25) 21.5.1988, ombaadhillila mElombe. Okwa thigi ko he nayina naamwayina.

* Marta N. Amugongo (45) 20.5.1988 mElombe. Okwa thigi ko oyana yaheyali.

YA DHIGININWA NATANGO NENGE YA KANA

Kotoba 1979 — Festus Nakawa
 31. 5.1979 — John Nakawa
 5. 5.1980 — Toivo Shilongo
 4.10.1980 — Marcelinus Shilongo
 Juni 1979 — Matias Ashipembe
 4.10.1980 — Modestus Ipinge
 18. 9.1978 — Ndeifeka Erastus
 18. 9.1978 — Rufus Amukuhu
 18. 9.1978 — Mutumbulwa Amukuhu
 10. 9.1981 — Kristof I. Shikongo
 19. 1.1981 — Filemon Iikela
 4.9.1985 — Markus Paulus
 28.11.1986 — Ruben Edmund
 Kotoba 1987 — Tomas Iipito
 8.10.1987 — Mateus Handjaba
 3.12.1987 — Shipandeni Mupolo
 22.7.1987 — Mateus Mudjanima
 7.10.1987 — Jason Angula
 20.1.1988 — Heikki Shillila
 17.3.1987 — Natanael Shikongo
 27.11.1980 — Andreas Kashikola
 27.11.1980 — Teofilus Mateus
 27.11.1980 — Mateus Jesaja
 29.6.1985 — Amutenja J. Ashipala
 26.3.1987 — Protasius Leevi
 3.7.1987 — Abner Shikesho
 22.7.1987 — Stefanus Nghifikwa
 Juni 1981 — Simeon Nehoya
 19.1.1988 — Daniel Israel
 20.1.1988 — Natanael Ndatyapo
 19.1.1988 — Julius Kapula
 20.4.1988 — Paulus Shilule
 20.4.1988 — Erasmus Hendjala
 20.4.1988 — Salomon Kankono
 20.4.1988 — Haidiwa-Filemon
 20.4.1988 — Aaron Haufiku
 20.4.1988 — Frans Hango
 14.1.1988 — Gideon Kampulu
 19.1.1988 — N.S.Ndatipo
 19.1.1988 — Daniel I. Namwandi
 19.1.1988 — Albine Mulyau
 20.1.1988 — Delfine Abraham
 21.1.1988 — Natanael Stefanus
 19.1.1988 — Moses Erkki
 20.1.1988 — Shipingana Shivute

20.1.1988 — David Haikonda
 19.1.1988 — Johannes Nekongo
 20.1.1988 — Immanuel Shivololo
 20.1.1988 — Salom Uusiku
 20.1.1988 — Kandenga Herman
 18.1.1988 — Johannes Nande
 18.1.1988 — Ndeshaanya shaKanana
 18.1.1988 — Jeremia Nandjebo
 18.1.1988 — Shaamena Shikungunya
 18.1.1988 — Shuudifonya Haufiku
 26.12.1987 — Silas (Kamule) Kandenge
 Januari 88 — Linus Matongo
 20.1.1988 — Lukas Nghipandulwa
 14.1.1988 — Ananias Uutoni
 26.9.1987 — Edward H. Haipito
 17.12.1987 — Josef Dumeni

Ndhindhilika: Ngoka wa tseyá gumwe gwaantu mbaka, kutya okwa manguluka, onawa u tseyithile ombelewa yOmukwetu mbala. Tangi kekawatho.



VACANCY VACANCY VACANCY VACANCY

The Council of Churches in Namibia has a vacancy in the Finance Office for the position of Deputy-Treasurer.

The successful candidate should:

- * have a post matric bookkeeping qualification or matriculation plus at least two years practical experience in bookkeeping;
- * be able to do books up to the trial balance
- * be reliable and responsible with leadership qualities.

For enquiries contact:

Mr. Vezera Kandetu
 Tel 37510 during working hours or
 P.O. Box 41,
 WINDHOEK 9000

DEADLINE: 17 June 1988

* Samuel P. Kamati (oomwedhi 5) mElombe 28.5.1988. Okwa thigi ko he nayina nokamwayina kamwe.

Magano Shekupe Uusiku
 naHelena Uugwanga.

Ehekeleko kaakwanezimo yoonakusa taa landula:

Shilongo Abed Efraim
 Mikka Amupolo
 Immanuel Haikali
 Leonard Nangolo Dumeni
 Hailapa Mukwiilongo
 Iyambo Armas
 Urbanus Pangela Heita ngoka a hulitha oondjenda dhe meti 4.1.1988 mekandomo lyoshihauto pokati kaShakati naNgwediva.

Ootate noomeme, aamwameme nookuume, iiponga mbika ye mu adha onde yi uvu, ihe omoluuwike, oluhepo lwethimbo, omolwonkalo yomuupongekwa, inandi vula okuthika. Tu hupuleni pamwe palutu, nopambepo megalikano.

Gerson Haikali Mondholongo mOvenduka

O M U K W E T U

Oye oshifo shOngeleki Onkwaevangeli paLuther yomuSWA/NAMIBIA.

Ohashi nyanyangidhwa mOshinyanyangidho shOngeleki mOniipa.

Omukuluntu gwoshifo omumbisofi Kleopas Dumeni.

Amushanga gwoshifo omusita Sebulon Ekandjo.

Ondando yOmukwetu muNamibia naSouth Africa R6,00 komumvo.

Palwe muAfrica R10,00 nokombanda yomafuta R14,00 komumvo. Mondhila R17,00.

Oondando nomambesitelo agehe naga tumwe kOmukwetu, Oniipa, P/Bag 2013, Ondangwa, 9000.

ELOC PRINTING PRESS
 PRIVATE BAG 2013, TEL. (06762) 11, TELEX 56-3257 WK
 SWA/NAMIBIA