

OMUKWE TU



40c

No. 10

ISBN 0-620-06828-0



OSHIPONGA OSHINENE KEGU- MBO LYAANASHILONGA YAE LCIN

Omupangi Justina Nani Shivute okwa mana oondjenda dhe uusiku wokupendukila 21.5.1988 moshipangelo shaShakati sho oshihauto moka a li nomusamane gwe Set Son shi ipumu mumwe noshikwawo.

Oshiponga shoka osha ningilwe 12.5.1988 pokati kOshakati nOngwediva manga taa galuka kefumviko lyakuume kawo kOngongo.

Omusamane Set Son Shivute ota lala natango moshipangelo shoka. Onkalo ye pahokololo lyoshipangelo shoka otayi ende tayi hwepopala.

Omusita Shivute oye amushanga mombelewa yOoprojeke mOngeleki, nameme

Justina okwa kala omupangi mOnandjokwe, nomuwiliki gwoshilonga shosikola yOsoondaha megongalo lyaNiipa.

Nakusa okwa thigi ko omusamane gwe naanona 5, nefumviko oli li ko 28.5.1988 mOniipa.

Amushangakwatakanithi gwehanganotumo lyaSoomi muElcin, meme Ulla Nenonen naye okwa kala konyala iiwike 3 moshipangelo omoluuwehame wolwiidhi. Naye ote ende ta tipo hwepo ngashingeyi.



Nakusa meme Justina Nani Shivute

Imonena omakende gokomeho

Okuza 21.6.sigo 2.7.1988, mehala lya tseyika nawa nedhina; Central Dispensary, Oshakati popepi nongalashe F.M.Garage, puKapapaleni, otapa ka kala omukonakoni gwomeho nota vulu okugandja omakende gokomeho.

Ehala ndyoka oli li pokati kaNambili naAupa. Ngoka u uvite ompumbwe ndjoka ino etha ompito ndjoka yi ku pitilile po.



Kwanza Sul, okamba onene yaafadhukipo yaAnamibia taa tengenekwa ye thike 45,000. Aanona mbaka oyo yamwe yomokamba ndjoka ya talelwa po kombelewa yOngongahangano yAakwaluther. Eholololo alihe tala kep. 6

Momimvo omilongo mbali dha zi ko, Ongeleki oya kala omuhungi gwiilyo yayo mbyoka ilalo yuuehame tayi zi miita. Monkalo ndjoka Ongeleki inayi kala omuhungi, ihe oya mono wo ilalo yomachameko. Onkene inayi kala omulili pamwe naalili, ihe oya kala wo omulilithwa.

Oku shi okupandulwa iilyo oyindji yomagongalo mbyoka ya hogolola okugama kushono shoshili, noyi iyageke omambembeleko niifundja ngaashi ya kala hayi taandelithwa mokati kawo. Aantu mbaka oyo unene ya humbata omushigakano gwomahepeko pamwe noshigwana shawo. Omuntu oto zimine pamwe nomumbisofi K.Dumeni sho a tumbulile; "Otatu lilithwa, nomahodhi getu oga shituka efuta."

Oonkundathana dha tamekwa omwedhi nguka, pokati komapangelo gane; Angola, Cuba, SA na Rusland na Amerika ngoka omupokati gwawo, kape na ngoka e shi shi natango shoka tashi zi mo, nonando omandhindhiliko getameko lyadho omawanawa.

Angola ina zimina emanguluko lya Namibia li kogeke kaAcuba muAngola, mboka ya kwatithitha emanguluko lya Namibia ombambyona kuAmerika na SA. Omolwombili ya pumbiwa noonkondo moshitopolwa, Angola okwa zimine nokwa yuulukwa nokuli Namibia li kundathanwe moshigongi shoka. Aanelago aantu mboka aanamutimahenda, oshoka oyo taa ka silwa ohenda.....

Ongeleki oya tegelelwa nondjuulukwe ethimbo li thike, opo mboka haa dhana noomwenyo dhaantu peke omolwuwanawa wawo yene, ya dhimbulule shono shi na ondilo notashi kwatha ayehe. Oonkundathana odhi li petamekolela natango, nomuntu oto tegelele SA a tule poshitaafula omapulo; Angola shoka te shi ningile Savimbi, te shi ningile ookamba dha ANC nenge shono SWAPO te shi ningile ookamba ANC Namibia ngele oya mangeluka.

Ngele sha dhimbululwa kutya sigo ompaka ondjila ye endiwa nayo inayi eta nando ombili, ihe oku yi hulitha po ashike nokuli, onawa ano sho tapu ikundwa ondjila yokushuna kushono hashi indilwa ethimbo alihe koshigwana — okugandja ompito kwaayehe ya hogolole pauyuuki nomemanguluko ngoka ya hala yoyene e ya kwatele komeho melelo, tashi ningwa metonatelo lyiigwanahangano.

Ayehe ye hole ombili, otaa indilwa ano ya tule omalongekidho ngono megalikano lyaa na ezimbuko. "Kalunga iha kwatelwa ngele taa tenge."

Etumwalaka lyopausita kOngeleki nokoshigwana sha Namibia, molwonkalo yiita

Lya za moshigongi shopamautho shaasitagongalo yoshitayingeleki shuuninginino shokomumvo, mOkahao eti 7-9.4.1988

Tse, aasita yOshitayingeleki sha tumbulwa pombanda tulilepo omagongalo 31, otwa ndhindhilike nokukundathana onkalo yiita ndjoka ya dhigupala momagongalo nomoshilongo shetu. Onkee, otwa thimnikwa oku mu thikithila etumwalaka ndika lyopausita medhina lyaKalunga Omupopili gwaayehe nolyaJesus Omumangululi gwaayehe nOmbepe Ondjapuki Omutalaleki gwaayehe.

Aakwetu, oshiningwanima sheti 19.2.1988 mOmbaanga mOshakati osho shimwe shominingwanima iwinayi mbyoka ya halukitha noyi inyengitha omagongalo getu, oshigwana shetu ashije noshu wo uuyuni auhe. Nonando twa ulika koshiningwanima shimwe ashike, onkee ngaa natango iiningwanima yoludhi nduka yi kenyaneka tayi tsikile okuhepeka, okudhipaga aakriste naakwashigwana shetu ngaashi:

- Ehanagulo lyomaliko getu omutenya nuusiku
- Ekwato lyaakiintu koonkondo
- Elyatagulo po lyomagumbo, oondhalate dhomapy komakasipeli
- Ekwato nokweedhilila mondholongo ongu-mitila (pwa na ompangu)
- Omadhengo gaakwashigwana
- Ekuto lyaamati naakadhona muukwiita wa SA pwa na ezimino lyaakuluntu opo ya ko ndjithe oohe, ooyina naamwayina. Shika ihashi ningwa mAatiligane.
- Omalopoto nomalopotathano ngoka taga eta omaso inaaga tegelelwa giipundjamenye.
- Omatilitho nomahalukitho taga ningilwa aakwashigwana komakakunya.

Iinima ayihe mbika iwinayi otayi ningwa koshi yepangelo ekriste lyaSouth Africa tali yambidhidhwa komapangelo gokUuninginino. Otu shi shi nawa noshe tu yelela kutya, S.Africa pamwe niilongo yuuninginino oyo ye li endangalati mondjila yokutulitha okatokolitho kiigwana yahangana 435 miilonga, opo ombili nuuyuuki yi ye moNamibia.

Iiningwanima mbika otayi etele aakriste naakwashigwana omalimbililo meitaalo nometegameno lyonakuyiwa yawo. Molwonkalo ya tya ngeyi aakriste oyendji oya pendulilwa omapulo gaa na omayamukulo. Monkalo ya tya ngeyi yuudhigu, Kalunga ota ti "Ithana ndje esiku lyuudhigu woye." Ps. 50:15.

Otatu indile aakwanegongalo ya dhiginine egalikano opo Kalunga e tu kwathe tu mone emanguluko lyoshilongo shetu. Otatu indile aakriste ya vulike koohapu dhaKalunga, shi vulithe okuvulika kaantu, Jer. 7:23 b); Iil.5:29. Aakriste otaa indilwa ya pangelwe kohole yu-mwayinathana, ihe hakufala oomwenyo dhawwayina momaso molwohole yiimaliwa.

Otatu indile aakriste yaa haluke yo yaa ekelehi eitaalo neinekelo lyawo molwiiningwanima yethimbo ndika, Hebr. 10:35. Oshoka Omuwa okwa popi: "Okuhepekwa kwaantu yandje ya kala muEgipiti onde ku tala nale,

nokukuga kwawo taa kugile ehupitho, ya popilwe aalongithi yawo, onde ku uvu, eeno, ondi ya wete ko ya hepa nokuhepelela," Ex. 3:7.

Hugunina, otatu hambelele Kalunga sho tu na ompito yokuuvitha evaangeli lyombili twa manguluka, notwa tokola tu hepe pamwe naakriste aakwetu noshu wo pamwe noshigwana shetu ashije. Inatu ithanwa tu kale omuzizimba mokati kaantu, ihe tu kale aayakuli kohi yendhindhiliko lyomushigakano gwaKristus.

Otse pamwe naakriste ayehe momagongalo gOshitayingeleki shetu shUuninginino, otu na ompolo yokukala aana yetegameno. Otatu hempulula kutya Omuwa gwetu Jesus Kristus ota galuka meadhimo notatu ti pamwe naakriste ayehe "Amen". "Ila Omuwa Jesus," Ehol.22:20. Ombili yaKalunga ndjoka yi vule uunongo auhe otayi gamene oomwenyo dheni nomadhiladhilo geni muKristus Jesus." Fil.4:7.

Aasitagongalo Oshitayingeleki shUuninginino

Ependulo kookuume

Otwa hala oku mu pandula one ookuume amuhe mwa li mwe tu yakula moshituthi sholuhodhi lwomukadhona gwetu Lahja Omagano Shilonga, ngoka a li a hulithile moshiponga shomboma, mombaanga mOshakati eti 19.2.1988, moka mwa kanene wo oomwenyo dhaaholike yetu oyendjiyendji.

Pandulweni unene Aanandjokwe sapangi, naalongwapangi pamwe naatumwa yeni noshu wo omusita gweni, sho mwa li mwa tondoka onkugo ndjila. Otwa hala oku mu pandula one aasita yomagongalo mwa za koombinga noombinga mwi ile oku tu hekeleka nohapu yaKalunga. One sapangi, aalongi naanangahefa mOngandjela sho mwi ile oku tu yakula neyakulo lyopambepo noshu wo lyopalutu. Pandulweni kutse one ookuume mwa thikile megumbo lyaavali aakweni, nomwa eta omakwatho ngoka mwa kutha moondjato dheni.

Otwa pandula unene one yomilando ngaashi mOshaanda mOvenduka nokOlange sho mwa li mwa thigi po llonga yeni nomwa ile oku tu yakula. Otwe mu pandula wo amuhe inaa mu mona ompito omolwillonga, ihe otu shi shi omwa li mwe tu humbata momagalikano.

Shoka sha hupu moondjato dheni Kalunga ne shi yambeke, ne mu tsikile negalikano lyaa na ezimbuko omolwuudhigu wevi lyetu. Tse tu dhimbulukweni, Kalunga ketu oko e li e nomwenyo nota pangele, nonkugo yetu ote ke yi yamukula.

Peha lyonakuyiwa
J.Namashana

+ + + + +

Otandi gandja omahekeleko ku kuku Paulina Mateus Ntanga, ngoka a thigwapo komwanamati ombaadhillia, osho wo kaakwanezimo nokookuume atuheni Nampongo ne tu hekelekeni Eps 142; Eimbilo 500

+ + + + +

Otandi hekeleke meme Selma Immanuel opamwe noothigwa dhe adhihe, sho ya thigwapo komunegumbo gwawo tate Samuel Kano muuehame wethimbo ele. Aakwanezimo atuheni tu uvite oluhodhi Kalunga ne tu hekelekeni moluhodhi nduka.

Julia Nangula Henok
Oniipa

Omahekeleko kumeme Ester lyaShiyagaya momasiku 19.2.1988 sho Tate Kalunga a kuthapo okaholikenkelo ke Frieda Nepunda.

Paulus ota tumbula: Oshoka otse mbaka tu li metsali ndika, otatu fudha olule tu na uudhigu, oshoka inatu hala okuhulwa, aawe okuzala tuu, opo shoka shonakusa shi ninwe komwenyo. Naangoka e tu longekidha okutakaneka oshinima tuu shika oKalunga, ngoka e tu pa ombambyona yOmbepo. 2 Kor. 5:4 - 5 osho tatu lesha. Tate Kalunga ne tu hekeleke unene. Eimbilo 538
Hilja Mpingana Kuitondokwa
Onashitendo - Uukwaluudhi

Esiloshimpwiyu lyoomwenyo nali talwe li vule lyokolutu

Gumwe gwomongundu nokwa ti kuye; Omuhongi, lombwela omumwameme tu topolelathane uuthiga. Jesus okwa ti kuye; mentu ngoye, olye a tula ndje po ndi ninge omuuthi nomutopoli guuthiga weni.....?

Omuntu nguka okwa fa a nukile mo moohapu, manga Jesus ta popi. Ngele osho, iinima ya fatululwa kuJesus ya simana nkene Kalunga ta sile omuntu oshimpwiyu, metetekelo, osha yela kutya ine yi kwata, oye mu pitilile po owala. Ishewe otashi vulika efatululo lyaJesus, olyo lye mu tsu omukumo a pule shono sha kala she mu kambaakana monkalo ye, etopolo lyuuthiga namumwayina.

Omumati nguka inu uthilwa kuJesus shoka ti indile, omolwashike mbela? Jesus oye ngaa omuuthili gwaamboka ya nyengwa konkalathano andola. Mpaka Jesus inu ulika wo ando kutya omumati ota pula iinima kaayi ko, nenge inaayi pumbiwa. Osha li nokuli omukalo pethimbo lyaJesus, omapulo gaakwashigwana gomonalathano okukongelwa omayamukulo paalongihapu ya simana moshigwana.

Ugoya womumati ngwiya, kakwa li ta pulakene nawa ethimbo Jesus te li popi, kutya olya li lya tya ngiini. Ethimbo olya li lyokulongwa esiloshimpwiyu lyopambepo. Paitiyali omumati okwa ningi omugoya, oshoka ina hala okulandula shoka shu uthwa momulandu gwawo gwomathigululathano. Eutho lyawo olya li tali ti ngeyi;

“Ngele ku na omulumentu tu ushike po aakiintu yaali, e ta kala e hole po gumwe ye e ta tondo omukwawo, e taye mu valele ayehe aamati, uuna ta topolele oyana uuthiga weliko lye, oye (omusamane) kee na okushundula po omutango omuna gwomutondwa, a tule ando komeho omuna gwomuholike gwe, oye a pe uuthiga womutango, aawe.....5 Mos.12;15-17. Yeleka wo ndhika Hes.46;16;4 Mos. 27;8;36;7

Eutho ndyoka, kutya aluhe omukuluntu gwamukwawo oye omuthigululi, olya li lye mu yeleda. Onkene Jesus e mu ula “omumentu,” palundululo lyOshindonga. Omuyonaguli nenge ngoka kee na elongelokumwe nayalwe, ohi ithanwa omumentu. Ngoka we mu kwatha sha opo e shi galule pethimbo mwe li uvathana, ngele ina dhiginina euvathano ndyoka, oto mu ula; “omumentu onkene a yile.”

MOngeleki yaELCIN, oshitopolwa shomauvitho moosa osha kutha ombinga onenelela, nelalakano okuhunga oomwenyo dhaathigwapo. Ihe olwindji omahepu ngoka haga anduka mo, nomamga oosa inaadhi halakana nokuli, uuthiga ashike to pulakene, nkene aathiga kaa uvitathane.

Oku na ano oyendji mOngeleki ndjika ye na eindilo lya fa lyomumati nguka, Jesus e ya uthile naamwayina moshinima shuuthiga. Olwindji owa topolwa moshigwana shetu pwaa na uuyuki, nenge pwaa na etopolo nokuli. Ngoka e na uuthemba kokuvalwa, iha pulakenwa we. Mboka yaa na uuthemba wetopolo, ohaa ithiminikepo yu uthile mboka ye na uuthemba.

Onkambadhala yOngeleki okupopila ombili yaakwanegongalo moshinima shono, sho ya ka konga oonkondo dhopapangelo dhi potokonone ando oonkalankongo dhopauthiga, nasho osha talwa shaa na oshilonga noinashi eta ombili pokati komazimo. Aantu oya fa ya vulwa noya loloka oontamanana dhuuthiga, ngele to pulakene moohapu dhooyaali nooyatatu nenge miigongi. Ihe mboka ya loloka oyo tuu mboka natango taa tsikile nadho. Jesus ota tala nota tumbula; Aamentwee.....“

Uuthiga nomOshiwambo owa yonena ando oyendji elongelokalunga lyawo, ngaashi omumati ngwiya a yonenwa okulandula euvitho lyaJesus. Uuthiga hawo uuwinayi muwo wene. Shono sha kambela po oshi li mutse aathigululi.

Ooveta dhomathigululathano itadhi simanekwa, itaku simanekwa wo elongo lyOmbimbeli. Itaku dhigininwa we omulandu gwoshito gwomazimo pauthiga, ngele ando ogwo nani gu na okulandulwa. Itaku dhigininwa omulandu omupe ngoka gwa dhikwa po gwopashingolo. Okahalu keliko oka ningi omupangeli naanaa ngaashi sha li momumati ngwiya.

Komukalo nguka omauvitho gomoosa, aathigwapo yamwe ohage ya ende kombanda yomitse, inaa uva po sha, shila okudhiladhila owala ngoka e na oku ka

Luk. 12:13-24

ya neliko lyanakusa nomunamupya ngoka ta zi po oonyala dhowala. Aauvithi yomoosa oye na elaka lya yela kutse, oku tu hupitha nomokahalu kokuyugathana nokukuthathana po naamwameme omolweliko. Ngele itatu pulakene, otatu ningi aamentu yowala twa fa omumati ngwiya koshipala shaJesus.

Palongo lyohapu ndjika, eliko lyetu, olyo onguta yowala yokuliwa sho twa tegelela etembu lyetu, tu ze muuyuni muka notu ye kaandjetu puJesus megulu. Kumboka tatu ikongele omuntumba tagu kalelele mpaka neliko, otwa pewa ekundo edhigu kuKalunga; Omugoya ngoye, nena oto si, mbika wa likola otayi ningi yalye? Ov.20

Olwindji otatu iyadha twa ninga omwenyo omwiinayi, twa kanitha ombili nonando otu na ekulilo miikaha yetu. Ugoya momoho gaKalunga, uuna omuntu ta yeleda kumbika yokevi, e ta dhini omwenyo gwomuKalunga. Ohole yuuyuni oyo okutonda Kalunga. Jak.4.4

Okukala nasha, nonando osho olwindji twa hala notwa yuulukwa, hasho wo eyamukulo lyombili yomwenyo gwetu. Osha yela nakulombwelwa onkundana ndjiyaka, oto si, ina tsikila we nomwenyo gu na ombili, nonando eliko okwa li e li na shili. Ano kombanda yegwano lyeliko, oku na natango shono twe shi pumbwa opo tu kale tu na ombili ya gwana.

Okukala negwano lyeliko, nasho wo oshi na oshinakugwanithwa oshidhigu shono tashi vulu okukanitha ombili yomuntu. Omuntu megwano lye, okwa thiminikwa a dhiladhile nkene eliko lye te li gamenene po, oolye ya ningi aatondi ye omolweliko, eliko ndika otali tanekwa ngiini, opo li kale po. Oshimpwiyu shika ote shi humbata uusiku nomutenya, notashi vulu oku mu imba oomposi.

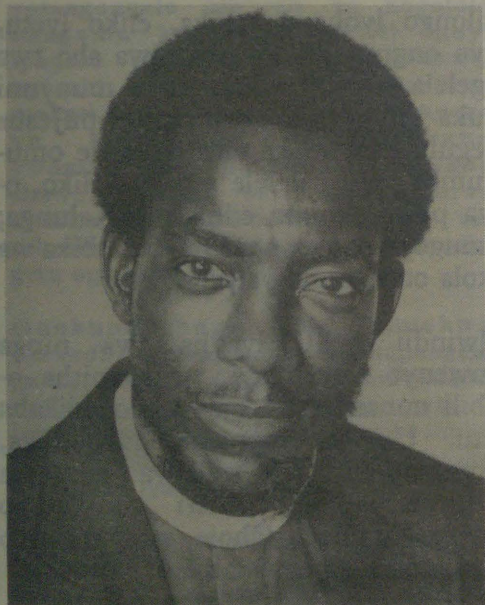
Elongo lyaJesus mpaka olyo ndika, kutya evululuko lyomwenyo lya yela, olyo alike ndyoka lya za melikolo lyokulikola Kristus. Oye ombili yetu, ngaashi Omuyapostoli Paulus ta nyola. Euvitho lyaJesus olya li ndika; Inamu vulitha oomwenyo dheni noshimpwiyu shiipalutha.

Sebulon Ekandjo

AFRIKA NOSHILONGO SHETU

S.V.V.Nambala
Oshitopolwa I

Ngele owa hala okutseya ondjokonona ya Afrika, tameka mOmbimbeli. Pambimbeli Abraham okwi ile kuEgipiti sha Afrika a konge ikulya (Genesis 12:10 - 13. Ehokololo lya Josef na-mwayina olya tseyika wo nawa nonkene aanezimo lyaJosef konima ye ke ya kuEgipiti ishewe okukonga ikulya. (Tala Genesis okuza ekapiteli 37 nokuuka komeho).



Omwiilongi Shekutaamba
V.V. Nambala

Ano ooFaraao taa popiwa mOmbimbeli oyo ngaa aaleli yaEgipiti momathimbo ngeyaka gonale. Jesus wo sho a valwa okwi ile ongomufadhukipo pamwe naakuluntu ye kuEgipiti sha Afrika, tala Mateus 2:13 - 19. Ombimbeli otayi popi wo iilongo mbika ya Afrika: Libya, Ethiopia, (nenge nedhina lilwe Chus nenge Kush), tala nando 2Aakwaniilwa 19:9; Jeremia 13:23 nosho tuu.

Paunongononi wo Afrika ota talwa oye yina yetameko lyaantu sho omasipa gomutse gwomuntu gi itsuwa muAfrika taga tengekwa guuko ke womimvo oomoliona mbali netata (2,5 mil.). Pafupi, Afrika ke shi okatana, ihe osha!

Uunene wa Afrika

Muuyuni otu na mo omanenevi ge li gahamano. Afrika oye limwe lyomanenevi ngoka noye e li omutiyali muunene. Omanenevi ngoka ogo nee ngaka: Asia (e na uunene 17,032,000 oombinamayila); Afrika (oombinamayila 11,706 166); Amerika lyokolundume (oombinamayila 9,363,000); Amerika lyokolukadhi oombinamayila 6,875,000); Europa (oombinamayila 4,063 000), opo ihe taku ya lwahugunina Australia na New Zealand (oombinamayila 3, 071,477).

Enenevi kehe oli na iilongo yalyo. MuAfrika omu na iilongo yi thi ke po 56 lwaampo. Ishewe muunene wa Afrika oto vulu okuhwela mo iilongo mbika: Enenevi Europa alihe, China, iilongo yahangana ya Amerika (USA), India,

Argentina, New Zealand na Jordan mbyoka kumwe tayi ningi owala uunene woombinamayila 11,705,332, omanga Afrika e na oombinamayila 11,706.166.

Afrika kali shi owala enenevi, ihe oli na wo uukwatya walyo wowina mboka itaa adhika palwe muuyuni. Ombuga onene muuyuni ya Sahara otayi adhika mu Afrika. Omulonga omule gwa Niili ugu li mu Afrika. Omulonga gwa Kongo gumwe gwomomilonga omine muuyuni ugu li mu Afrika. Omauyamba gopauntshitwe ogendjigendji otaga adhika mu Afrika. Uutoye neopalo lya Afrika olya lilwa koyendji.

Aantu ya Afrika

Afrika ke shi owala enenevi lya na aantu. Afrika oli na aantu ye vule oomiliyona omathele gatano (500,000,000). Aantu mbaka kontsapo oyo aaluudhe, nonando nena otatu adha omwaaalu omushona gwawo ogwomaantu ya zile ku Europa, mboka aatiligane (iilumbu --- mboka nkene yi ile okulumba inaa shuna we hoka ya zile ko).

Afrika oya thikama momihoko odhindji nomomalaka omayovi. Shika osho sha ningitha

Afrika a kale a yambapala meopalo nomuuthigulwakalo we.

Nando Aayafrika ye li po oyendji pahomuko nopamalaka, oyo aantu yamwe. Oyo aantu ye na oshindji sha faathana. Aayafrika oye na oohedhi dhimwe nomikalo dhokumwe. Oyo aantu taa simaneke uukumwe, ekwathathano, etopolelathano nomiishonanima. KOMuyafrika evi ihali landithwa komukalo gwoshi Europa. Evi olyaayehe. Aayafrika oyo aantu ye hole ombili nokonale kakwali Omuyafrika inaa itaala mOmushiti guuyuni.

Ombili ya Afrika mboka ya gama ombuga ya Sahara kolukadhi, oya kala (ngaashi Aawambo haa ti), inayyi sitamenwa, ano inayyi vondagulwa nokupiyaganekwa) koohedhi nokomikalo dhoshi Europa---dhaazaazayi naakwiilongo yalwe sigo opomimvo 1400. Nonando pwa li ngaa omakwatathano gontumba miilongo yopondje ya Afrika oomvula odhindji dha tetekele.

Omahala omanene goosikola dhopombanda nogompendulopo oga li mu Afrika ngaashi poombala dhoo Timbuktu mpoka wo Aayeuropa yi ile okulungwa kayafrika. Omauhamba wo ngaashi goo Koumbi, Ghana, Mali, Songhay, Loango, Kongo, Lunda, Luba, Lozi, Malawi, Mwene Mutapa noo Rozwi (ngaka gaali ga hugunina oga li mpoka pu na Zimbabwe nena) oga li omahala gaa shi okudhimbiwa mondjokonona ya Afrika.

Konima yethelimumvo etimulongo nantano, ombili ya Afrika mbaka oya yonwa. Onkalo yawo oya yongolwa kAayeuropa mboka ye ya okukonga omaliko, aapika, okuthiminika nokupanga iilongo yaa shi yawo. Aayeuropa oya teya po koonkondo iiputudhilo noosikola dhomu Afrika. Peha lyeputuko lya Afrika oya eta uukoloni. Uukoloni wa ponokele Afrika neipangelo lya Afrika lya yiwa oonyala.

Sigo opomumvo 1870 ombinga ya Afrika yi vule 90% oya kala tayi pangelwa kAayafrika yoyene. Ihe pomumvo 1900 konyala Afrika alihe oya gwila mepangelo nomiikaha yaathipimbi-

nzi (aakolonyeki), kakele kokambinga owala okashona. Ethininiko lyehakano lyAayeuropa okuhakana Afrika olya gumu Aayafrika ayehe.

Aayeuropa mbaka yaathiminiki oyi ile ya faamentu ye na ombili, ihe nani oye endela okukolonyeka nokuthiminika. Ethininiko lya tya ngaaka oyo lya fala mpoka Aayafrika ya kondjele ombili ndjoka ye yi kuthwa kAayeuropa miineya.

Unene tu konima yiita iitiyali yuuyuni (iita mbyoka ye etelwa uyuni kAayeuropa sho ombepo yawo yokupangela tayi ya hingi---walyewo ngele hayo ngaa naa eta ishewe lita iititatu yUuyuni), Aayafrika oya tameke ekondjo lya mana mo, opo Aayeuropa ya shunithe Afrika kooyene.

Onkee ongundu dhomakondjelomanguluko dha tameke ngaashi dhoo Mau-Mau mo Kenya, noo Mayi Mayi mo Tanganyika noo SWAPO mo Namibia, nosho tuu. Ekondjo ndyoka sigo onena otali tsikile, oshoka aakolonyeki mbaka inaa hala okushunitha Afrika kooyene kombili.

Aluhe otaa longitha ekuni ya kaleke a Afrika koho yoompadhi dhawo. Ihe a Afrika oya tokola okuza koho yondjoko yuupika wopapolitika, wapakulikola nowopankalathano nopamuthigulwakalo. Onke itashi kumitha sho to adha a Namibia taa imbi ngeyi:

1. "Aantu tse ya Afrika
Aantu tu na ombili
Nuuyuni wonalenale
Aantu ya Europa
Ye ya mu Afrika
Taa ti oye li nawa
Ihe nani hasho
Aantu ya piyagana

2. Aantu kaa na oondunge
Aantu ya piyagana
Mbili oya yonwa po
Mbili ya Afrika
Nale oya kondjelwa
Kepipi lya li ko nale
Natse epipi lyonena
Tatu yi kondjele

3. Tala Namibia
Nale mwa li ompenda
Witbooi na Maharero
Uukoloni taa ti
Inatu wu hala
Tyamwaha na Mandume
Uukoloni taa ti
Inatu wu hala

4. Ipumbu ya Tshilongo
Uukoloni taa ti
Inatu wu hala
Natse epipi lyonena
Uukoloni, aawe inatu wu hala
Aawe, aawe, aawe, aawe
Aawe inatu wu hala
Aawe, aawe, aawe, aawe
Awee, inatu wu hala"

(Eimbilo ndika hangame nde li tota)

Odhoshili, Aayafrika inaa hala uukoloni noitaye ke u hala nokomeho. Nando aakolonyeki naaitali yoonkondo kaye hole okugandja emanguluko kombili, itaa ka sinda chalo lya Afrika. Nomolwaasho Namibia na Sahara (kali shi lyombuga) ogo owala gaali gomomavi ga Afrika ga kala ko inaa ga manguluka natango. Nomamanguluko gago ongula -hela. Afrika oli na ooyene noli na okushuna kooyene.

Taku tsikilwa

Ina ovakriste ova ELCIN aveshe

Olyelye a wana okwiifanwa ina yOvaelcin aveshe? Epulo eli olopahistoli lela. MuGenesis 3:20 ohatu leshe "Ndele omulumenhu okwa luka omukulukadi waye Eva, osheshi oye ina yaaveshe ava ve na omwenyo." Eva omukulukadi waAdam oye ina younyuni aushe.

Mehistoli lonakudiwa yaElcin omwa tongwa omukriste ou a tetekela Ovaelcin aveshe meitavelo nokwa ninga inakulu yOvaelcin aveshe, oye EVA MARIA NANGULOSHI. Ondjokonona inai tu pa edina laxe, ashike nando onghaha edina laxe ola shiivika ngaho.

Eva Maria Nanguloshi oye omukriste wotetete Omuwambo a shashwa mOngeleki onghwae-VANGELI PALUTHER MOWAMBO NOKAVANGO. Okwa shashwa eti 9.7.1876 kOsoomi muHelsinki, komuwilikitumi K.J.G. Sirelius eshi va ya ko nomuhongi waye Kurvinen 1875.

Eva Maria ou, oye yo a tetekela Ovaelcin aveshe mekoleko, oye Omuwambo wotete a lya olutu nohonde yaJesus Kristus, shaashi okwa kolekelwa mOsoomi. Eva Maria oye a yapulifa tetetete ohombo yopakriste mOvawambo, eshi va hombola muApilili 1882 vo nomumati waye Martin lipinge, ou a shashwa 6.11.1881 komuhongi Omundowishi wetumo lyaRyns mOmaruru.

Eva Maria ou, oye yo omukainhu wotete a hongha ovanhu oukriste, hano umwe womOva-

wambo ovaudifi novahongi voukriste votete. Oye a fya momudo 1926 a file moshihakulifo mEngela, nombila yaye oi li momawendo otete mEngela.

Dimbuluka: Eva ina yaaveshe ve na omwenyo, a shitwa tete nokwa ninga omudali wovanhu votete mounyuni. EVA MARIA NANGULOSHI ohatu mu tale oshiveli shetu moinama aishe ngaashi twa popya. Ndele atushetushe, ofye ovatekulu vaye vopamhepo nopaitavelo.

Ondi na epulo linene kOvaelcin amushe: Ombila ei yameekulu omutetekeli wetu osho tai kala eshi ya nyika oluhepo ngaha? Eva Maria e na paife ovatekulu omayovi nomayovi, vamwe ove na efitola da kula, vamwe ove na omatuwa...Onda hala eengudu doomeme mOngeleki aishe di kundafane epulo eli, do di tu pe osho tu na okuninga, opo omukriste wotete meekulu Eva Maria Nanguloshi a monenwe EMANYA liwa lohinanena tali holola kutya ye oshiveli shaELCIN.

Ehamba nomalenga novanamadina aveshe va fya nale, ovakwapata vavo nookaume kavo ohave va dimbulukwa pomafimbo aa, nokuwapeka eembila davo, okuulikila omapipi tae uya. Hano unene fye epata linene lOvaelcin, tu dimbulukweni ELENGA laKalunga eli, fye tu ningile ovatekulululwa monakwiiwa, nokuwapa- leka ngaha ondjokonona ya ELCIN.

N.H.Shinana
Engela

Ngame onda shundulu- lwa, ine tokolwa: Nantinda

Ofuto R34,000 pamwe nekanitho lyomukunda nuukwashilyo wOngonga yelilo lyoshilongo shOndonga, mbyoka ya pewa omusita Johannes Nantinda, okwe yi tala eshundulo kuye, inashi kankamekelwa keyono.

Ofuto ndjoka omusamane Nantinda, mOluno, mOndonga, okwa ti egeelo e li pewa momutumba gwashilongo shOndonga 15.4.1988, melopotelo, kutya okwa yaka oongombe 21 dhomusamane Peter Kalangula manga dhi li kohambo muuzilo wOndonga.

Ombelewa yoshilongo shOndonga, oya ti ongombe ya yakwa mOndonga e tayi monika kumwene, omufuthi, oha futithwa R400 mwa kwatelwa "edhimo lyoompadhi mompangu." Nuumvo ondando yongombe paveta mOndonga oya londo okuza R200 sigo R300.

Omusamane Nantinda okwa pewa egeelo a fute R1,500 mongombe yimwe, mondjo ndjoka a popi pOmuwetu kutya oongombe ndhoka a li ha landithwa kaanahambo, nani odha yakwa.

"Egeelo lyandje inali kankamekelwa keyono." osho a tum-
bula oiwindji nokuyemata pOmuwetu.

Sebulon Ekandjo

Mujuni 12, 1988 Ongeleki ya ELCIN oyi na oshituthi oshinene shopangeleki, okuyapulila aalongwasita miilonga. Inashi yela manga, oshoka ekonakono lyahugunina oli na natango okuningwa kElelongeleki. Ehala lyeypulo, Oniipa nenge Ongwediva.

Ila kuMakedonia u tu kwafe

Ovamwameme meitavelo nookaume mu-Kristus Jesus, oilyo yomaongalo etu mOwambo nOkavango nomuNamibia alishe, taulukeni mu uye oko, mu tu kwafe, Oil. 16:9.

Omubishofi wetu ovapashukili voitaingeleki, ovafita vomaongalo, ovatumwa vetu mOwambo nokuSoomi, ovapangi vetu, ovanangeshefa novalongi, oshinima etungo longeleka moSwakopmund yokwoongalela ovanashilonga. Ovanhu ava ohava ongalele mongulu imwe ya li oshililo shovanailonga. Onhele ei ove i pewa okukala mo efimbo lixupi.

Oshinima osheetifa onghenda unene, okutala ovanhu tava ongalele melongelokalunga omafele onhumba, pefimbo limwe ova fika peyovi nokuli. Onhele yokutungilwa ongeleka oya pwa okutungwa nale, kakele kongeleka yoovene inai tamekwa natango.

Onhele ei oya li ya talelwa po komubishofi wetu tate K. Dumeni 8.4.1988 pamwe novakwafi vaye, metalelopo lopamaufomhangongo Ongeleki; omupashukili P. Shipena, A.Kaulinge, omufitaongalo Oiva Sikwaya nomupashukili J.Kape- wangofu mwene woshitai.

Eongalo olo la li la talelwa po lomoSwakopmund ko oko ne to tumu ekwafu loye. Omupuli wekwafu oye omweevangeliste Gideon Shaka-

lela ou e lineekelelwa oshilonga eshi kungeleki yaye.

Moshifo shOmuwetu shonomola 5, ondi shi shii owa leshe nale eshi mwa tumbulwa edina laShakaalela shi na sha netungo longeleka osho yo eumbo leongalo. Onde lineekela omukwafi wetu ou na epulo kutya eshi u li kokule nafye, mokutuma ota sheende nee ngahelipi?

Ngeenge owa hala okuuda ouyelele onomola yongodi yetu 63006 ile P.O.Box 3568 Vineta, Swakopmund.

Oto dulu okyandja oinima yetu kwaava tava landula apa; Omubishofi K.Dumeni, A.Hasheela, J.Mtulen, S.S.Shivute nomupashukili P.Shipena, P/Bag 2018 Ondangwa 9000.

Ile kOukwanyama komupashukili A.Kaulinge, nouningininino yandjeni komupashukili J.Shanghala, kOkavango komupashukili A.Lihongo. Ava mu li mOushimba, taleni nghee tamu fikifa kufye. Omwene ne mu wedele ko mokuyandja kweni.

Gideon Shakaalela
Swakopmund



"Omuwa mu simanekela eliko lyoye noshipe shoye shoshaashoka we shi ilikolele, iigandhi yoye notii ka udhilila pombanda noondjupa dhoye otadhi ki ihanga omaviinu." Omaj.3.9,10

ELOLOKO MOUKOLONI

Ame okaana keedula 16, ndele onda loloka nee okukolonyekwa paife, mbela ngeenge ovaava ve na eedula 60 ile di dulepo ove li ngahelipi?

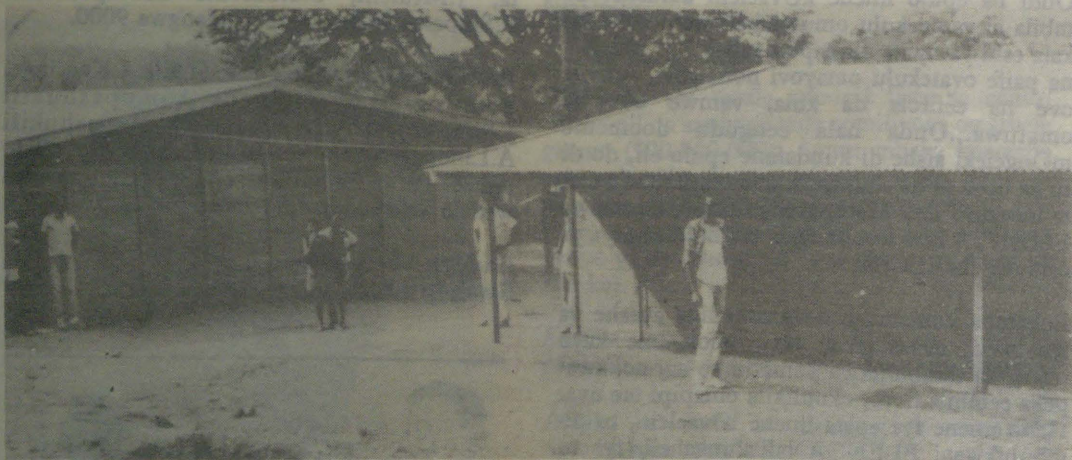
Ame itai shi holeke shoshili ame oSWAPO yovene, nande nghi na oilwifo. Oomeme nootate, eendenge detu novakulunhu vetu ava hamu ula Swapo eetoli, nye omayoka onghaho. Swapo ke fi otoli, oye omukondjelimanguluko eli twa haleni.

Ava nee hamu ula omakakunya etanga leameno kamu shii eshi tamu ti. Kamu shii kutya omakakunya etanga lekolonyeko hamba?

Ndapewashali V. Nd.
Ongha

Omupopyo gwelongithonayi lyuu- themba womuntu mookamba dha SWAPO kagu shi gwoshili — eko- nakono lya ti

GENEVA: Oshizemo shekonakono lyosheendo shOngongahangano yAakwaluther (LWF) mookamba dhaafadhukipo yehangano lya SWAPO, muAngola nomuZambia, osha tseyithwa. Etalelopo olya hiylwe komupresidende gwa SWAPO omusamane Sam Nujoma pethimbo lyetalelopo lye muGeneva 1987 petameko.



Omatungo gosikola yimwe yAanamibia moKwanza Sul, muAngola ndjoka yi na uunona tau tenzenekwa 3000 naalongi 150 Ethano olya kuthwa mOmukuni

Osheendo shoka osha li mewiliko lyomusita dr Ishmael Noko, omuwiliki gwoshikondo shomakwatathano gOongeleki mOngongahangano yAakwaluther nosha endeke ikandø iyali muDesemba 1987 nomuMaalitsa 1988.

Ya li mosheendo shotango shoka sha gandja ehokololo ndika lya kolekwa kosheendo oshitiyali oyo:

Omusita Rut Blaazer, gwOongeleki onkwaevangeli paLuther muCanada; omusamane Olle Eriksson, gwOongeleki onkwaEvangelii paLuther muSoomi; Hanne Sophie Greve, gwOongeleki onkwaLuther muNorwee; omusita Helmut Jehle, gwOongeleki onkwaEvangelii paLuther muDenmark. Omusita Matti Amadhila gwOongeleki onkwaEvangelii paLuther muNamibia naye okwa li wo i ithanenwa mo mosheendo shoka peha lyomumbisofi Dumeni.

Elalakano lyetalelopo ndyoka olya li miinima iyali:

1. Ku konakonwe ompumbwe yopalutu yAanamibia 70,000 muupongekwa muAngola, opo Ongongahangano yAakwaluther yi tale nkene tayi kwatha nawa.

2. Okumona uuyeleele tau gandjwa kumboka ye li mookamba moka ngele nayo otaa vulu okukoleka omapopyo ngoka taga ti SWAPO ota tekula nayi aantu ye mookamba ngaashi taga popiwa kokakomitiye kaavali mOvenduka.

Iigongi yomasiku gahamano ya ningwa kosheendo shotango, oya li ya kwatelela mo etsakaneno lyaakwanepangelo lyaAngola, iilyo yOraata yOongeleki muAngola, aawiliki ya SWAPO moLuanda nomoKwanza Sul mokamba yaafadhukipo.

Okamba ndjoka yomuKwanza Sul oyi na Aanamibia 45,000 nosheendo shaatalelipo osha li shi

kwatwa muundaadhi, ihaa pangulwa kaakwa-shigwana, ihe pahokololo lya SWAPO mwene ohaa pangulwa kaakwiita yoyene. Nomahala gomapangulilo kage li moKwanza Sul ngaashi hashi popiwa.

Osheendo osha koneka wo kutya ekonakono lyasho halyo unene lya ya muule, li yamukule ando omahokololo agehe haga popiwa. Ashike osheendo osha ningile omapulo miinima yontumba yowina meukililo nopaveta nosha gwanenwa komayamukulo ngoka ga gandjwa.

Ehokololo olya ti kutya osheendo osha koneke omayakulo ngoka haga ningwa mookamba ndhoka ku SWAPO, ngaashi ando; eputudho, (elongo), uunamiti nuusosiale, ohayi ningwa lela nawa. Omuntu oto dhimbulula nkene ewiliko lyokupalutha aantu lya tungwa nawa, osho wo uundjolowele nuuyogoki mookamba, oshinima sha silwa oshimpwiyu.

Oshilonga shehungomwenyo lyaasita yomookamba ndhoka mokati kaagundjuka ye li muupongekwa, eyakulo lela tali imonikila. Ehokololo olya tsikile lya ti, ekwatho lyOngongahangano yAakwaluther, oshinima sha pumbiwa natango okugwedhela shono hayi ningi shito moompumbwe ngaashi dha pulwa kombinga yeyakulo lyopausita, iikulya, omiti, iilongitho yuunafalama noyomoosikola.

Amushangandjayi gwOngongahangano yAakwaluther dr. Gunnar Staalsett, kombinga yehokololo ndika okwa ti ye okwa nyanyukilwa unene iilonga yosheendo shoka, mbyoka tayi ulike uunongo mboka ya likola noowino.

Ehokololo olye shi yelitha nokutya omapopyo, guuthemba waantu aniwa itaa simanekwa mEhangano ndyoka, kage na mpo gi ikwatelela, osho Staalsett a tumbula.

Amushangandjayi Staalsett naye mwene oko a kuAngola nuumvo, nokwa ti kutya okwa li a kuminwa onkalamwenyo ya mangeluka yomookamba noya tungwa nuukeka.

Okwa koneke wo kutya oontauki dhaNamibia dho naakwashigwana yaAngola, osho wo aana-

Tala kep. 7



Mbaka oyamwe mboka ya valelwa muupongekwa ihe oye na ondjuulukwe onene okugalukila kuNamibia hoka ya hokololelwa kaakuluntu yawo kutya oko kegumbo

Ethano olya kuthwa mOmukuni

IIPATULULO 35,000 YA TUMINWA EPANGELO LYA SA OKUMANGULULA OONKWATWA

Ehekeleko koshiwana ashishe shaNamibia nokongeleki

Ovaholike novaitaveli vaKristus, onda fininikwa okutumbula omatumbulo aa omolwoshiningwanima shometi 19.2.1988 mOshakati. Omubishofi, ovafita ovahakuli, ovalongi, ovanangeshafa, ngihiti ovanashilonga nookaume amusha mwa kumwa koshinima eshi nokukwao ya fa eshi, talen) Jesus oku li ofika poshivelo eshi, nota tumbula:

"Munayuni omu li mo mu na oudjuu nde kaleni nomwenyo muwa nomwe likolelela, Ame onda dula ounyuni." Omwene Jesus omesho aye otaa tale nopefimbo eli tu li. Joh.16:33b

J.Mwapangasha Haikali
R.P.

Koonakufiwa po aveshe nokookaume aveshe Ovanamibia molwoshiningwanima shomoombaanga yaShakati 19.2.1988, Omwene ne mu hekeleke. Eps.34:2 - 10; Eimbilo 360

Filippus Hanghome
Windhoek

Otandi gandja omahekeleko kaakwashigwana ayehe mboka ya thigwa po koonakusa yawo mboka ya sile moshiponga shomboma meti 19.2.1988, mOshakati.

F.N.Hamutenya
Grootfontein

Otandi gandja omahekeleko kaakwashigwana ayehe mboka ya thigwa po kaaholike yawo mboka ya sile moshiponga shetopo lyoboma mOshakati. Omuwa mwene ota theta po omahodhi, taikileni nokugalikana.

Mboka mu li moombete dhuuwehame omolwoshiponga shika, galikaneni mwaa na ezimbuko. Kalunga komahekeleko agabe ne tu hekelekeni. Hebr. 13:20 - 21; Eimbilo 500 mOmaimbilo.

Tate Shanghala, Kalunga oye ne ku hupuluthe moluhodhi lwoye. Oye e ku pele noye e ku kutha, Omuwa oye ha kunu, ye oye ha teya.

S.K.Shongolo
Ongwediva S.P.School

Dha za kep.6

shilonga aakwiilongo mookamba ndhoka, ayehe oya taambathana ko nawa.

Okwa ti ye ita tegelele ando mboka ya ningile omalundilo kehangano ndyoka ya nyanyudhwe ando kekokololo ndika, oshoka oshinima ombinga yimwe yiita yopropaganda ya SA okushundula ehangano lya SWAPO.

Oku ulike komakankameno gOngongahangano yAakwaluther kombinga ya SWAPO, kutya ehangano lye otali tala natango SWAPO kutya oye tuu ngaashi a ziminwa kuuyuni ta talwa ehangano lyoshili noli lilepo oshigwana sha-Namibia.

Ehiyo olya ningwa wo kuAmushangandjaji kOongeleki adhihe dhomOngongahangano ndjoka, opo dhi gongele iimaliwa yokutungitha ongeleka muKwanza Sul,mbala ngaashi tashi vulika. Epulo lyetungo lyongeleka olya zi komupresidende gwa SWAPO, Sam Nujoma.

"Tse kombinga yoompumbwe dhopalutu, otatu tsikile okukwatha Aanamibia mboka ye li muupongekwa, osho wo mboka ye li meni lyoshilongo," osho dr Staalsett a holola.

(Lwi)

Epangelo lya SA olya popithwa nomikalo odhindji dhopambili nelalakano li lundulule omulandu gwalyo moshilongo ngoka gwa kankamekelwa kuukwamuhoko nogwa tulitha oyendji momahepeko. Mongeleki oonkwaLuther muAmerika, muKotoba gwa zile ko, odha tokola okutumina epangelo lyaBotha oshihampi shiipatululo yi vule 35,000 mbyoka ya thindikilwa komatumbulo gamwe taga landula mpaka:

Omusimanekwa Botha,

Ngame kandi na uunona, nonakuyiwa yuuyuni ondi yi lwetele ashike muunona wooyakwetu. Sho ndu uwo we edhilila uunona mboka tau kambadhala okwoopaleka onkalo, osha halutha ndje. Alikana egulula mo uunona mboka u ka tunge onakuyiwa yawo. Kutha po okatongotongo.

+++++

Omusimanekwa Botha,

Egongalo lyetu otali ku tumine iipatululo 570, ka patulule oondholongo dhokatongotongo.

+++++

Omusimanekwa Botha,

Iipatululo oyo mbyoka, otatu ku indile u ze mbala muNamibia ehogololo lyaayehe li ningwe, emanguluko li holoke.

+++++



Kepangelo lya SA,

Iipatululo mbika nayi dhimbuluthe okweegulula mo aantu mboka ye edhililewa pwaa na uuyuki. Nayi kale wo endhindhiliko lyokupatulula omitima, opo SA shi kale oshilongo moka ayehe taa kala ye na uuthikepamwe.

+++++

Numvo pethimbo lya Paasa aambisofi yOngeleki yaAngilikana mu SA pamwe nongundu yaaakwane-gongalo, oya ningi ondendamushigakano nomapandaanda goshilando shaDurban, ya humbata omishigakano, endhindhiliko lyomahepeko goshigwana mu SA nomuNamibia.

Pamwe tashi ka landula ko edhengo lyoongendjo omutenya aguhe, oshoka ewi lyomokana ihali pula-kenwa we kepangelo ndyoka.



NGOKA A LI NALE OMUMBISOFI OMUKULUNTU MONGELEKI YAANGLIKANA MUUMBUGANTU AUHE WAAFRIKA, PHILIP RUSSELL, OYE E LI KOMEHO NGEYI A HUMBATA OMUSHUGAKANO NOTA YAMBIDHIDHWA KOMUSITA NORMAN HUDSON GWONGELEKI YA METHODIST. OYA LANDULWA KAN-TU 19 YE LILE PO OMAHANGANO 19 GA MWENEKWA MU SA.

SOUTH AFRICA OTA HINGILWA MPOKA KEE NA WE EHOLOLO?

Amerika na Ruslanda oya dhimbulula ompumbwe onene yokukwatakanitha omahupilo ga Angola na Mozambikwe nombanga onene yuuyuni (International Monetary Fund/IMF). Shoka opo shi ningwe, otapu hulithwa po tango iita yopaukwashigwana miilongo mbyoka iyali, moka oongundu tadhi kondjitha omapangelo ge li kiipundi, tadhi mono omayambidhidho kuAmerika na SA.

Pashifonkundana Weekly shomu SA, kombinga yelongekidho ndyoka osha nyola sha ti, ngele nani SA oye ta kala moshipala elongekidho ndyoka, nena (SA) otaa ki ipuma mumwe nakuume ke, Amerika.

Meipumomumwe ndyoka, Amerika ota ka thiminikwa a hulithe po ekwatathano lye enene lyopaliko na SA, omukalo ngoka pashifonku-

ndana shoka, tagu ka mboniyagula po uukolele auhe womahupilo ga SA.

Omuniyoli gwoshifo omadhiladhilo ngoka okwe ga pendulilwa unene koonkundathana ndhoka dha ningi esiku tadhi kwandjangelwa nadho pokati kaAmerika, Ruslanda, Cuba, SA naAngola omolwonkambadhala yokumona omukalo nkene omatanga gaAcuba muAngola,

ge na okushuna kegumbo naNamibia li mone emanguluko, pashitokolitho 435 shligwanahanganano.

Oonkundathana dhopakati kiilongo ya tumbulwa metetekelo, ngaashi dha tamekele muLondon petameko lyaMai nguka nodha ka tsikila kuCongo Brazaville, nodha tegelelwa dhi shune ko mbala esiku inaali uthwa, sigo oompo-ka otaku tiwa odha adha etsokumwe li etitha oonkondo.

Iita mbyoka ya kondjwa kepangelo lyaAngola okutaalela SA pamwe naUnita muule woomwedhi omugoyi dha zi ko puCuito Cuanavale, oya talwa oyo yotango iidhigu ya kondjwa muAfrika okuza piita iitiyali yuuyuni.

Nongele oonkundathana dhi li po ngashingeyi odha ponyo, osha pendutha uumbanda maatalinawa yoshinima shoka, kutya omatati omadhigu ge vule gotango, otaga ka etwa mo natango momalugodhi ngoka.

Ehokololo otali ti; Ndjayi Arnold Oscho Sanechez gwaCuba, okwa helukile muAngola muNovomba gwa zi ko, pamwe netanga lyaalumentu 6000. Nguka oye a li ta wilike omatanga gaCuba muEtiopia nomuNicaragua.

Ekanona lyOshirusia B-72, ndyoka lya kala tali longithwa muAfghanistan, nalyo olya hokololwa lye etwa mo muAngola. Aatalinawa yolugodhi ndoka lwomuAngola, otaa ti, ekanona ndyoka okuyamukula ompumbwe yaAngola omolwa SA ngoka a dhana onkandangala nekanona lye G-5 na G-6, sho a kana molugodhi lwoondhila mombepe.

Yamwe oyu uvite kutya, andola SA a kambadhale noonkondo adhihe a kuthe ko Cuito, andola okwa kanithile mo Aatiligane 300 naAaluudhe 2,000. SA ina hala okukanitha omwaalu gwAatiligane gu thike mpoka.

Ihe uuyuni wopondje owi itaala, kutya iita mbyoka ngele oyi ka tsikile natango, SA onkene tuu ta ka kanitha Aatiligane pamwe ye vule po nokuli nando ine shi hala.

Okuza Juli 1987 sigo Maalitsa nuumvo, Unita okwa tengenekwa a kanithila aakwiita 1,000 nenge 4,000 momalugodhi ngoka. Ekanitho ndyoka niikulumuna iikwawo yomongundu, otaku ti oya eta oonkalankongo pokati kaSavimbi naagundjuka yomomatanga ge, omolwa SA ngoka e ya li konima.

Shoka ehokololo olya ti, osho shimwe shomiinima mbyoka tayi kanithitha SA omukumo okutsikila niita mbyoka. Iinima yilwe ya gwedhwa po ongaashi; uupenda waakwiita yaFAPLA pamwe naAcuba, ondilo yiita ndjoka tayi yi oonyala moshiketha sha SA, niita tayi tula oomwenyo dhAatiligane oyendji moshiponga.

Juyuni wopondje, osho wo SA ye mwene naAngola, owa dhimbulula, kutya iita mbyoka itayi ka kala yi na omusindani, nando nayi pule oomwenyo odhindji dhi thike peni. Ashike Angola iita ote yi kondjo nuuyuuki nonuunta, oshoka ota popile oshilongo she komutondi, SA naAmerika noye (Angola) ta hugunine noshishani sho inaa yugwa oshilongo she.

Moorkundathana dhongashingeyi, aatalinawa yoodjumbu dhomalugodhi ga SA muAngola, oye na uumbanda, kutya pamwe SA ite ki iutha unene koonkundathana ndhoka, oshoka oku na

ala kepannja tali landula

TA LONGELE ONDHOLONGO YOKUTINDA KIITA



“Andola aakwiita ya SA oya li shili etanga lyegameno, tali gamene uthemba nomaliko gaakalimo ayehe mu SA, andola onda yi nombili,” osho dr Ivan Toms a hokolola kutya omolwashike inaa hala we okulonga metanga lyaakwiita.

Omundohotola muunamiti, Ivan Toms, ngashingeyi ota longele ondholongongo yomasiku 630, sho inaa hala we metanga lyaakwiita ya SA nomiita mbyoka a ti, kutya kayi li pauyuuki. Epangulo lye olya hulile muMaalitsa nuumvo.

Paveta ndjoka yi li po ngashingeyi, Aatiligane ayehe oya thiminikwa okuya muukwiita, naangoka a tindi,

shila okuya mondholongongo nenge a fadhuke po m o s h i - longo. Aatiligane yamwe oya dhimbulula, kutya okulonga miita ya SA, hakupopila shili oshilongo nuwanawa washo, ihe okugamenena po omulandu gwa puka gwokatongotongo ngoka gwa kwatelela mo ashike uwanawa wAatiligane.

natango okahalu kokulola iikondjitho ye na Ruslanda.

The kombinga onkwawo, okwa talika ishewe kutya ethiminiko lyaAmerika kuye kali shi we eshona ngaashi shito, oshoka epangelo lyaReagan olya dhimbululwa inaali hala okuthiga uumbugantu waAfrika wa nyata, sho tali zi koshipundi pehulilo lyomumvo nguka, ehogololo ngele lya ningwa.

Otaku tiwa wo nonando SA okuhutuke mo mekondeka lyaAmerika naauninginino ooyakwawo, oFapla, omatanga gepangelo lyaAngola, pamwe nekwatho lyOmucuba, ngashingeyi oga nyatipala ge vule shito. Aatseyinawa yiite mbyoka otaa tala kutya molufo talu ka landula otashi vulika SA ta ka tsakanekwa lwotango kOmucuba ye mwene. Sigo oompaka SA oya kondjo ashike no FAPLA, nAacuba oya kwatha ashike mpoka sha li sha pumbiwa.

Etopolo pokati lyoshilongo shaAngola, natango otali fofotwa

Omahunza omakwawo goonkundana otaga fofota ompangela ya SA naSavimbi okutenda oshilongo shaAngola pokati. Shika itashi pumbwa omuntu u kale tango u na ando owino muupolitika, opo u shi luke oondjodhi dhomutenya tadhi yagumwa.

Ehokololo lya fa ekwawo lya holokele 1983, olya anduka ishewe omasiku ngaka moshifonkundana shomuLisabon, moka tamu popiwa oonkundathana dha li pokati kaChester Crocker gwaAmerika naPik Botha, oministeli yikwapondje mu SA.

Moonkundathana ndhoka, ooministeli mbali odha ziminathana aniwa oshilongo shaAngola shi tendwe pokati, okuza uumbangalantu sigo uumbugantu. Aniwa dr Crocker okwa zimina wo okukoleka ongundu yaSavimbi opo yi vule okulala oshipambu shimwe shoshilongo shoka.

Pashifonkundana shomuSouth Africa. Die Afrikaner, onduge yokutenda Angola pokati oya kala aniwa shito momadhiladhilo goondjayi dhiita dha SA. Elalakano olya fatululwa wo mpoka, kutya oshitopolwa shaSavimbi oshi ninge eyambi lyokugamena oongamba dhaNamibia kaadhi egamathane nepangelo lya MPLA, ndyoka li na uukuume naSWAPO na ANC.

Elalakano ekwawo lya tumbulwa mpoka, oshipambu shaSavimbi okwa tiwa onawa ngele tashi kwatelele mo olutenda ndoka lwa za kuZaire, ngoka a talwa kuume kaakolonyeki nokuya kuBenguela, muuninginino waAngola. Ngele ando ayihe mbyoka oyi gwanithwe, nena iita muAngola SA ote ke yi sinda mbala, ehokololo lya ti.

Ondungedhiladhilo ndyoka olya pendutha oluhodhi moyendji yomuSouth Africa, sho kwa talwa, kutya oku yi tula miilonga, otashi ka pula oomwenyo odhindji dhAatiligane, neliko wo, manga egameno lyolyene ku SA inaali etwa po nando, osho ehokololo lya hulithwa.

Omumvo 1983 okwa li kwa leshwa natango miifonkundana ompangela yokutenda oshilongo shOvimbundu, muumbugantu waAngola, shoka Savimbi nomusamane Kalangula taa kala aapresidende yasho. Omusamane Crocker naye

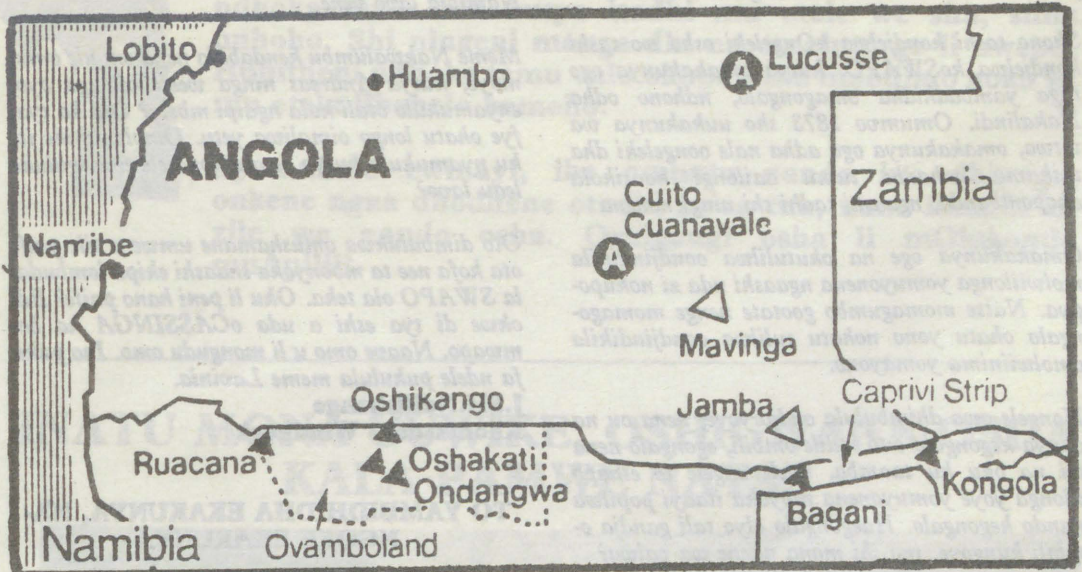
okwa li a holoka mehokololo, ndyoka kutya onduge ndjoka okwe yi panda.

Okuza 1960 oshigwana shaAngola osha gandja ombinzi yasho ondjambo onenenene keholikevi lyasho, tango miikaha yOmuputu, nokonima sho sha manguluka miikaha yomalandwambugo naahona yawo.

Oyendji pethimbo ndika otaa zimine, kutya MPLA esindano kombinga ye ngashingeyi oku

li lwete lya yela, shi vule shito. Oompangela ngaashi ndhoka tadhi zi moLisabon, otadhi tungwa momitse dha pwa ko, dhaamboka ya kanitha ekondjo, onkene itadhi halutha we oshigwana shaAngola naaholimbili yomuumbugantu auhe waAfrika.

Sebulon Ekandjo



Okaalita kolugodhi lwaAngola oomwedhi dha zi ko. Tala amatulilo gookamba dhaakwiita

Shapo ounona nava tungilwe omakwena olo enyamukulo la pwa ovadali

Owambo oya pwilikina nehaluko linene eshi Ngononeyandjai wa SWA a yandja elombwelo kovadali nokounona hava fikola meeshoko; Ponghofi nOngha nokutya eekamba dovakwaita peefikola opo itadi di po. Omolweameno lounona ovo hava mono oiponga moiponhokela ya SWAPO, shapo otava tungilwa ashike omakwena meefikola okuhondamamo.

Etokolo olo, pafatululo lomunashipundi wokomitiye yepangelo lOwambo, Ngoloneyandjai okwe li pewa vati komupresidende P.W.Botha kovawiliki vomatanga ovakwaita, kovapolifi, kOkabinete kepangelo letauluko nokomalenga omushamane Kautwima nomushamane Dan.

Eenghundafana moshinima osho pokati komushamane Kalangula naNgoloneyandjai, Louis Pienaar, oda li mOshakati 10.5.1988. Eefikola dimwe tadi tengenekwa pomulongo, mwa kwatelelwa dounona yo mOukwanyama, oda hangika da flya po nale etundi omolweuditopamwe neefikola dikwao odo ounona va ya omolwoumbada weekamba dovakwaita momudingonoko wavo.

Ovadali vahapu ove na paife oumbada, kutya pamwe eefikola dimwe otadi ka fiwa po natango omolweuditopamwe navakwao ovo va kumwa koshinima. Ofikola Eengedjo, oyo ounona vamwe oumati va shingilwe po, pahokolo letanga leameno koSWAPO, otaku tiwa ovo va fyaalele po, paife ova faduka po va ya komaumbo, omolweuditopamwe naPonghofi.Omukwetu okwa tambula cembapila da dja kounona vamwe kofikola oko, omo tava ti kutya voo kakwa li shili va shingwa po kuSWAPO, shapo oku SA ile kuUnita.

Omuwiliki woshikondo shehongo mOwambo, omusamane Denis Nandi, okwa nyamakula Omukwetu pangodi, kutya opo tava tale kumwe

novadali nepangelo lOwambo, kutya otava twikile ngahelipi noshinima sheekamba, konima yetokolo laNgoloneyandjai. Kakwa li a hala manga okufatulula shihapu unene mwaasho.

Pokati opo Omukwetu okwa kundana nokutya ounona ve fike 40 pofikola Okanimekwa, mOmbalantu, ova taulukifwa ongaba 11.5.1988, kovakwaita va SWAPO. Ovalongi vane navo otaku tiwa ova liwe navo, ndele eshi vamwe va ka aluka ko, inaku shiivika vali omuvalu aushe wovalongi nowounona va ya, kutya ou fike peni.

Nale 4.6.1987, ofikola oyo natango oya shingilwe ounona ve fike 60. Ofikola oi li ashike eekilometa dimwedimwe popepi nongaba yaAngola.





Ova shangela nge tava ti

EMANGULUKO OHALI VALWA NGAASHI OMUNTU

Nandi kwathwe ndi yamukule ombilive yaNakwalumbu mOmukwetu gwoNo.6/88

Shono tashi kondjelwa kOngeleki osho wo tashi kondjelwa koSWAPO, kutya omakakunya ogo taga yambadhidha omagongalo, ndhono odha Nakalindi. Omumvo 1873 sho uukakunya wa totwa, omakakunya oga adha nale oongeleki dha thikama nohadhi tumu aailongi koosikola dhopombanda, ngaashi tadhi shi ningi nonena

Omakakunya oge na okutulilwa oondjindikila molwiilonga yomuyonena ngaashi nda zi nokupopya. Natse momagumbo gootate nenge momagongalo ohatu yono nohatu tulilwa oondjindikila omolwiinima yomayono.

Nongele owa dhimbulula ondjo yoye, nena ou na okuya kegongalo e to indile ombili, egongalo nena oli na oku ku taamba, ndele ongele to ethapo iilonga yoye yomuyonena mbyoka itaayi popilwa nando kegongalo. Haegongalo olyo tali gandja ombili kungoye, ino shi mona nkene wa valwa?

Kombinga yemanguluko ndyono to pula kutya oli li neq peni, ongaashi naana wa li metegelelo lyokamati koye hono wa tumu kuukakunya nelalakano oku ka yambidha omagongalo naanaskola. Nenge esiku ndyono we ka mono olyo esiku ka ya kuukakunya?

Sho to ti koPLANA iita ashike ya ka shongwa, ngeno okwa li iita inayi shongwa, ngeno iimaliwa yomakakunya mbyono to ti otayi yambidhidha omagongalo, otayi zi peni? Ito pandula ngaa nee iita sho ya etapo shomupondo?

Shoopala Naitumanepo Amunyela Kuisebmond

LAVINIA NAKWALUMBU NA S.S ITEWA AAPOPILI YOMAKAKUNYA NAYO OMAKAKUNYA

Tala meme Lavinia, kotoka okuteyela omu-mwoye omakwega moonjala, peha lyoku ga tongona. Eli okwa sa a teka othingo sho ina hala oyana ya popiwe. No ine ya ganda nando ya longo uulunde.

Oongundu ngaashi DTA, SWAPO D odho naana tadhi tikitha ombinzi yaaNamibia kaaye na ondjo, shono dha tula po okangendjo kuusiku mOwambo.

Odho tadhi yambidhidha puuyelele SA nomakakunya ge. Kwa gwedhwa ngweye Lavinia, Kautwima, Dan, Shipanga naKatjiuungua.

SWAPO ITA LWILE ONDJABI

Ngeno owa li we tu dala atushe, nani ngeno oto ti ashike, vana vange indeni, ka kongeni oilonga ketanga leameno, opo mu tu xupufe koikulo nyee mu tu xupufe yo kondjala. Ondi na epulo; Oikulo

oolye hano meme Nakwalumbu?

Onde lineekela edimo leni opu na ngaa umwe a ya kombada yoshilongo nokonima eshi ta ka aluka e na ondjebo, oto mu luku nokuli oshikulo?

Ame onde mu luka omukondjelimanguluko. Ovanhu nee va rya ngaha, omwedi nande nau fye, ihava futwa, shaashi otava lwile edu lavo, Namibia lavo vene.

Meme Nakwalumbu kendabala nena wu ule omu-moye, kutya Andreas ninga weefe oilonga oyo, enyamukulo otali kala ngaipei mbela? Ota ka rya, fye ohatu longo oimaliwa yetu. Omolwashike ite ku nyamukula kutya ye ota kondjele emanguluko ledu lavo?

Oto dimbulukwa omushamane umwe a tile paife ota kofa nee ta mboniyoka shaashi ekipa lombuda, la SWAPO ola teka. Oku li peni hano paife? Edi okwe di tya eshi a uda oCASSINGA ka bomwapo. Naave omo u li mongudu omo. Ino puki-fa ndele pukulula meme Lavinia.

**J.SH.Ndillishange
Khomasdal - Windhoek**

TO YAMBIDHIDHA EKAKUNYA, N'ANGOYE EKAKUNYA

Yesus ine endela aayuuki shili ngaashi to ti, ihe aalunde mbo ye endelwa kuJesus kaye li ngaashi aamwoye yomakakunya mbo inaya hala okwiitedhulula. Lombwela aamwoye yi itedhulule. Sho to ti: "Ovana veni ohava mono oixuna moixwa," ndishi omolwoye ngono wa panda iipakete yombifa mbyono ye ku nyolitha ombapila ndjino sho wa kuta? Ku shi ashike nakwala ekakunya, ndele nangoye ekakunya lyolyene lela.

Sho to ti aakwiita yaSWAPO ohaa dhipaga, osho. Ohaa dhipaga oopapeta nomakakunya ngono taga keelele emanguluko lyoshilongo shetu. Kapu na nando esiku limwe tu ka longele kumwe nomakakunya.

**Shikesho shaBenny
naAngula Filippus
Tsumeb**

OMBAPILA YALAVINIA NAKWALUMBU

Mokulesha ombapila yameme Lavinia Nakwalumbu ya holokele moshifo shOmukwetu sheti 30.3.88 osha holoka nawa kutya, oya gumwe gwaamboka kaaye shi nokaaye uviteko ondjokonona yevi lyetu nenge mbo taa iningitha molwaasho ya pewa iimaliwa pamwe oya shaina nokuli okondraka okulonga nokupopila omapiyagano.

Owa pula ngele uukakunya uulunde, onda hala ashike oku ku tseyithila kutya, omakakunya ohaga longo iilonga yuulunde. Sho osha yela wo kutya ongeleki kayi shi egumbo lyomusita ngaashi wa ti, ihe kali shi wo ehala lyokulongela iihuna.

Evi otali manguluka ngiini ngoye to kwata emanguluko? Nandi ku shilipaleke kutya ngele ngoye nooyakweni ye ku fa omwa zi emanguluko moshipala, nando ongula otatu manguluka. Oombulu ohadhi ku yolo noku ku nyenkela sho to dhi popile

noto dhipagitha aamwaanyoko, manga dho tadhi ku thipi nokambinzi kahugunina.

**Kristofina Shigwedha
Ongandjera**

ENYAMUKULO KULAVINIA NAKWALUMBU

Ngeno omakakunya oye kaa li po, ngeno katu na eengeleka, ile oto ti katu na ovalihongi vetu? Owa mona ofikola yaapeni hai yambididwa komakakunya ile osheeshi tae tu dipaele mo?

**Heita Tsambo
Eeskepa H.P.School**

TSE INATU SHI ITAALA

Kutya iimaliwa yomakakunya oyo eyambidhidho komagongalo nokaanaskola ngaashi Lavinia Nakwalumbu ta ti, kadhi shi dhoshili.

Nando ekakunya lyoye inali gandja iigandjwa, ongeleki otayi tsikile komeho yi li ngaashi yi li, naantu otaa mono "ooBursary" oku ki ilongitha ngaashi shito.

Shigwana ino fundjalekwa, kala mumbika yoshili.

**T.M.
Ondangwa**

OHOLE YIIMALIWA OTAYI VALA UUKAKUNYA

Lavinia, nashi ku yele nawa kutya ngoka ta yi muukakunya oye owala ngoka e hole iimaliwa. Nenge ku uvite ko opolotika? Ishewe omakakunya oge hole okatongotongo notage ka landula, nomolwaasho oga lamba aanakatongotongo, noito uvu nando lumwe ga dhenga omutiligane, aaludhe tuu ooyakwawo.

Sho to ti oyana yeni (omakakunya) oyo haa futile (uundenge) aamwayina moosikola, natse oohepele e.u na aamwameme ye li muukakunya, ihe ihatu taamba iimaliwa tayi kugile onkugo yaAnamibia mevi. Natu kale momaluhepo getu, naa lye iimaliwa yawo sigo taye yi kuta, pamwe oya sa ondjala.

Oongundu ndhono to popi dhooDTA nooSWANU wa ti tadhi kondjo dhaa na etiko lyombinzi, tse katu dhi wete. Okulya to kuta, okukala megumbo nohauto ombwanawa nokukala wu uvitathane nawa nomukolonyeki gwoye, oyo ekondjelomanguluko ndyono?

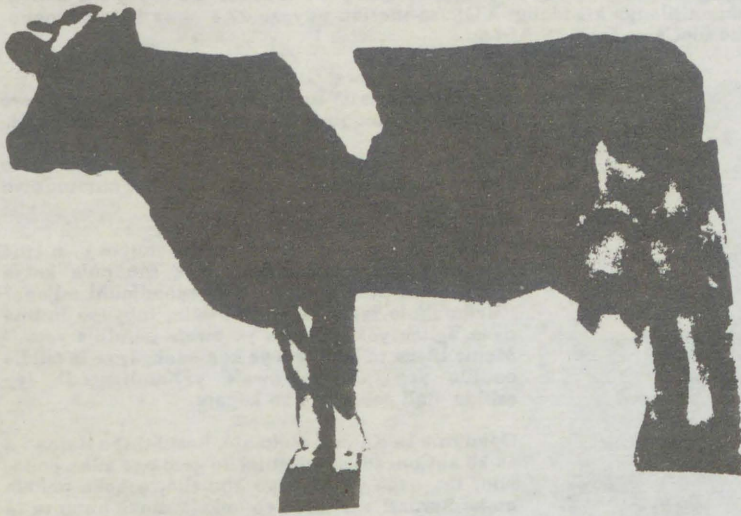
**Shafouxuna
Nothorn Namibia**

ENYAMUKULO KUMEME LAVINIA

Meme Lavinia, oshili eshi wa nyolela oshiwankOmukwetu, owe lidiladila ngaho? Ou hole ngo

Tala kepanja tali lanqula

OONGOMBE OTATU DHI HUPITHA ANO NGIINI NUUMVO?



Epulo ndyoka olya li moshigongi shaalumentu, tali pulwa mboka ye na oowino mesiloshipwiyu lyiimuna pamukalo gwopaunongononi. Ya pulwa epulo ndika oyo omunafaalama Seppo Kalliokoski nomunafaalama W.Lechner ngoka ta wilike ofaalama yopOkashana mOndonga.

Eyamukulo lyaasamane mbaka olya li efupilela nolya gandjwa komuntu kee na omambembeleko: Dhipageni adhihe ndhoka mwa tala kutya itadhi mu etele we sha, shila uuho. Shi ningeni manga dhi na omalutu ge li hwepo. Hupitheni ndhoka tamu vulu okupalutha mondjato noku ke mu etela iihohela komeho.

Eyamukulo ewinayi, ihe omuntu nando ino dhipaga, onkene ngaa dhodhene otadhi ka sa tuu, uuna itaadhi ku zile we nando osha. Oshigongi osha li mOlukonda muApilili.

Dha za kep.10

shili oshiwana shoye?

Mokutya ngaho oshili Lavinia, iho fi nande ohoni? Mboli ku na nemanguluko loshiwana shetu tashi mono oixuna? Ohandi kwiindile nefimaneko u ha nyolele vali oshiwana oinima ya tya ngaho. Diladila nawa kutya oita oye ya ngahelipi naau e i eta olyelye?

John Mwatale
Windhoek

NONGELEKI OTAI PANGULA OILONGA YOMAKAKUNYA

Ino pangula Shekutaamba aeke, shapo pangula oshiwana ashishe, osheshi osha ama ku Shekutaamba. Fyee otu shi shi kutya omakakunya omamwaameme ndele oo etu tonda tete, eshi haa longo omunyonena koshiwana shetu.

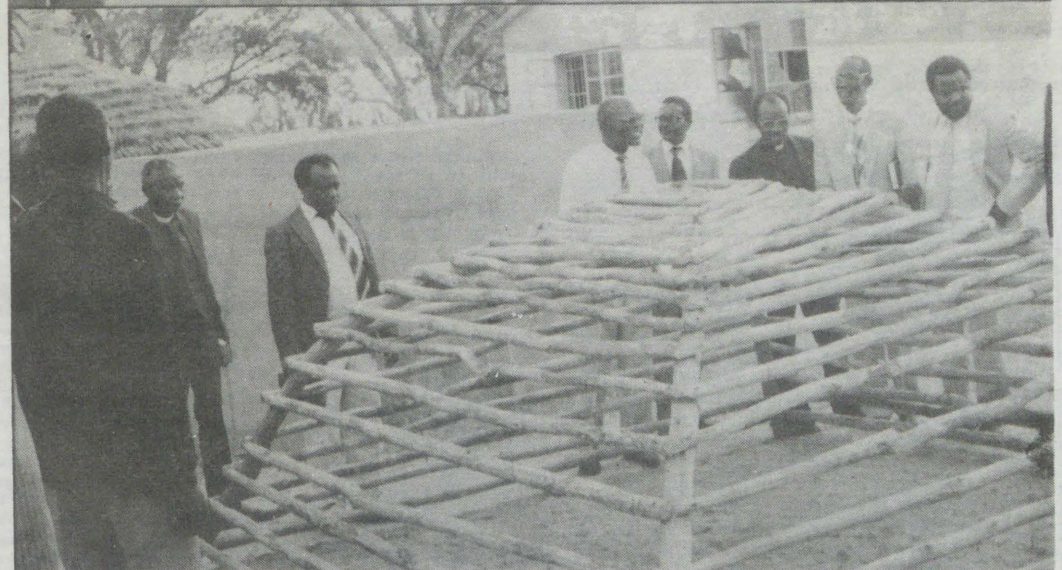
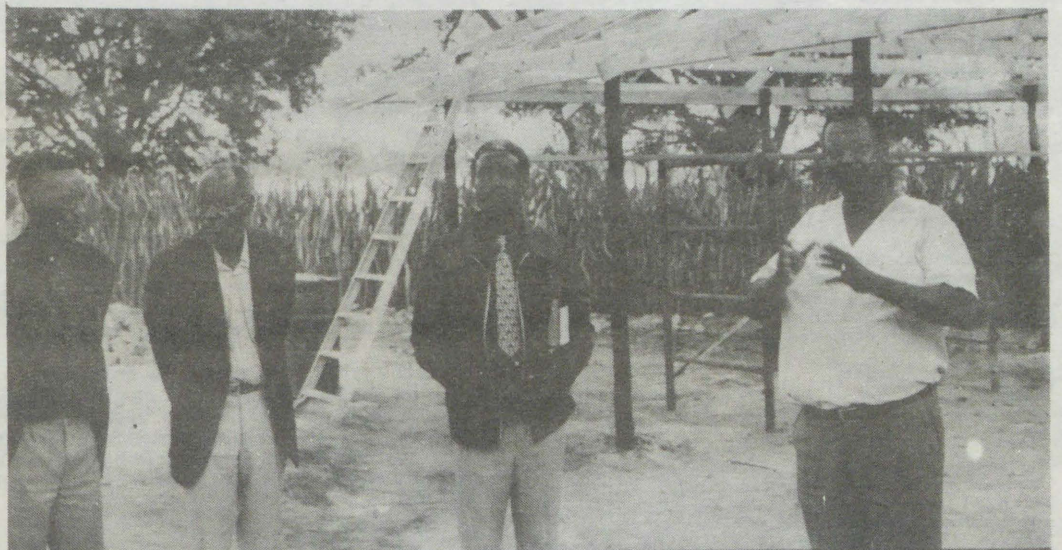
Oimaliwa ei to tongo hai pewa omaongalo, owe i mona peni novanafikola ovo tava kwafwa otave i tambula, osheshi oimaliwa oyo oyetu yoshiwana, ya vakwapo kekakunya loye, eshi la landifapo uumwameme ou la dipaa ile la dipaiifa. Omukolonyeki Mbulu wa handukila Shekutaamba, kutya oshike ina ya kombada? Oto ti hamba ovanhu ava inava ya aveshe, ova hala omakakunya noilonga yao?

To popi nodjapo ei ya ka kongwa kuShekutaamba? Ye ou a ya moukakunya oshike ina ila mofikola yoo onhele yaye omo i li? Ndishi oove we nu heka kutya na efe ofikola a ninge elandwambongo, ta pewa oimaliwa oyo ta landifa nayo eemwenyo dovanhu vaNamibia?

Ashike lya oimaliwa yomumoye wekakunya oyo tai landwa oshiwana shetu. Walye nee oku to ka kala nongeleka omo to ti oto mu twala, oku a shashwa. Ku udite ovabishofi vetu pamwe nafye kutya ohatu ti SA na shune? Omalenga aa to tongo ooKalangula ku wete kutya oye a ti omakakunya oye inaa kwata ovanhu keenghono? Ndishi osheshi ina hala oilonga yao, mangha ove wa hafa koilonga yao yomunyonena?

A.Neumbo
Okahandja

INATU MONA UUWIKE, OSHIGWANA OSHA KALA PAMWE NATSE



Pethimbo lyoshigongi shaasita yomOndonga nuumvo muApilili, mOlukonda, osha li sha ka ninga owandaha pompile yuuwa. Metahno ndika omukwaniilwa Immanuel ota monika pombanda kolulyo, ta hokolola nkene oshigwana she shi ipyakithila netungululo. Pevi aasita oya kuminwa uunkulungu womutungilo gwondunda ndjoka ya thikamena. "Inatu sa uuwike nando, oshigwana osha kala putse, osho omukwaniilwa a hempulula nepandulo enene.

KAMATI A GWANITHA OMUMVO GUMWE MOKATEMBA

Omusamane Ishiposha Ashipala okwa mana oondjenda 22.4.1988 moshipangelo shaAntonius moSwakopmund ombaadhillila.

Omuselekadhi, aanona naakwazimop hekelekwel, Eimbilo 20

Naftali Zimina Nakuumba Swakopmund

+++++

Omunashilonga omukulu moshipangelo shaShakati, Rehabeam Andreas Kalukambe (88) 4.3.1988 . Okwa li a tungila momukunda Omaalala megongalo Okaku mOndonga. Okwa thigi ko samwayina yatatu, omukulukadhi gwe noyana yahayali. Eimbilo 647, 649; 2Timoteus 1:7 - 13

M. Tangeni Mbahe Okaku

+++++

Omasiku 14.4.1988 Kalunga okwa zimbula meme Selma Namankono David 54 megumbo lye, megongalo Onaanda, omukunda Omapopo mUukwambi. Okwa thigi ko oyana 6. Omwenyo gwandje oKristus nokus okwo elikolo. Eimbilo 490

Wilka H. Angula Onaanda

Kuku Elizabeth N. Naalye Amukwa muvu wombadhilla 11.3.1988, okwa thigi ko oyana 8, aatekulu 45 naatekulululwa 25.

Aina Niitembu Egumbo Etalaleko Secondary School

+++++

Kuku Selma Nantinda Namadhungwe (120) 15.12.1987, Okaku mOndonga okwa thigi ko oyana yatano naatekulu oyendji.

Joël Thikameni T.N. Ashipala Olushika - Okaku

+++++

Meme Anna Lusya Mungungu, okwa mana oondjenda 14.4.1988 mepipi lyoomvula 45. Okwa li momukunda Engela mOukwanyama. Okwa thigi ko omusamane gwe noyana yatatu.

Andreas Panduleni Haifete Oupumako

+++++

Momukunda Ondeshela, megongalo Uukwiyuuushona, kuku Rehabeam Frans 28.1.1988 muwehame wethimbo efupi moshipangelo shepangelo Oshakati. Okwa kala omwilimbi a simana megongalo lyaandjawa nomongeleki wo ayihe.

Okwa thigi ko oyana yahamano nomusamane gwe "Hebr.10:35 Eimbilo 600

Nikodemus Amunyela Shangula Uukwiyuuushona

Omuteleshikandjo gwashikandjo XI koshitopolwa shUukwaluudhi, omusamane Severus Ekandjo yaJohannes Kamati, okwa monene oshiponga 27.4.1987 pontopa yaKandjengedi, sho oshenditho moka a li sha gu kopate. Kamati okwa li te ki ihakana ilonga kOndangwa. Okuza mesiku ndyoka 27.4 okwa kala ta mono epango moshipangelo shaConradie moCape Town, S.Africa.



Omusamane Severus Kamati: "Kalunga okwa hata ndje po, ihe ina nyanyagula ndjepo", osho a tumbula olwindji kaataelipo ye.

Megumbo oye okwa galukile mo 31.12.1987 e li mokatamba, ihe ende, iha kuutumba kuye mwene, iha kwata sha niikaha ye mwene, ongaashi naana okahanona. Sigo onena pethimbo lyoshinyolwa shika tashi longekidhwa oku li megumbo lye.

Pahokololo lye mwene oshiponga shika inashi mu adhikilila nando, okwe shi pewa mondjodhi uusiku wokupendukila 27.4.1987. Okwa yaguma ta pewa ombapila yolwaala lwegulu (hemelbiou), ihe okwa tindu oku yi pandjula opo ngeno a leshe mo. Oshikando oshitiyali oye ya lela ya pandjwa ta vulu okulelesha mo.

Mombapila omu na omusholondondo gwomadhina, ihe ompito ya li po okulesha mo ashike edhina lye

OWE YA KUMAGIDHA TUU

Oshinima shoka ohashi kala tashi nyenyetwa kaayapuli yoombila dhetu mboka ihaatu kala momalongelokalunga

kutya ihatu monika moongundumbimbelli, miigongi yaagundjuka nosho tuu.

Otu li momukunda mokomboni, molukanda lumwe noho mono ayihe mbyoka hatu ningi, ndele owa mwena.

Owa li po tuu pomagumbo getu, opo u tupukulule nenge owa tegelela owala esiku lyefumviko? Tala momukunda gweni otu li mo oyendji twa gunda, ndele iho ya u tu yambule. Lesha Joh. 10:16. Uunake to tu eta mo moshigunda? Tu popitha manga tu na omwenyo, tameka okulonga opo u wape okupopya negele ito shi ningi ou na ondjo.

Obadja Uushona Swakopmund

"Severus Kamati" no ina leshe mo we edhina limwe li ili, nokonima ombapila oya hilwa po komeho ge.

Kutya nee omusholondondo ogwaamboka taa mono liponga muule womwedhi ngoka, nenge omomumvo ngoka ina tsey.

Omweendi pamwe naye esiku ndyoka meme Ndinelago (Emvula) lileka sho e mu pula kutya mbela osha hala okutya ngiini mondjodhi ndjono? "Eyamukulo lye olya li: "Suwala, mbyono iinima ngaa ngilka yokegulu, tu ye owala nondjila yetu." Meme lileka ta heluka a ye kombaanga, ye ta tsikile ondjila ye. Pontopa owala yaKandjengedi, lye eshina otali galangata ko kopate.

Ookuume ka Kamati meitaalo, itashi ti sho Kamati a za ko koConradie omagalikano geni oga adha ondoondo, ihe naga ye natango komeho, oshoka onkalo moka Kamati e li mo, oyo onkalo moka omuntu ta vulu okukanithila mo omukumo neitaalo.

Omagalikano geni nomatsomukumo geni otaga pumbiwa ethimbo kehe.

Omwana Lahja Nd. Severus Oluteyi



Lahja Nd. Severus, omutseyithi

O M U K W E T U

Oye oshifo shOngeleki Onkwaevangeli paLuther yomuSWA/NAMIBIA

Ohashi nyanyangidhwa mOshinyanyangidho shOngeleki mOniipa.

Omukuluntu gwosano omumbisofi Kleopas Dumeni.

Amushanga gwashifo omusita Sebulon Ekandjo.

Ondando yOmukwetu muNamibia naSouth Africa R6,00 komumvo.

Palwe muAfrica R10,00 nokombanda yomafuta R14,00 komumvo. Mondhila R17,00.

Ondando nomambesitelo agehe naga tumwe kOmukwetu, Oniipa, P/Bag 2013, Ondangwa, 9000.

ELOC PRINTING PRESS PRIVATE BAG 2013, TEL. (06762) 11, TELEX 56-3257 WK SWA/NAMIBIA

OHANDI KONGO

Ohandi kongo ovalumenhu vomadina taa landula apa: Simon Grisson Shinedima osho yo Benhard Mupenda Shinedima, Immanuel Natangwe Shinedima. Ova fiya po eumbo laxe nale. Ohandi indile va alukile keumbo.

Voovene oko ve li ve na omwenyo, shaashi ohava nyola, nde ihava tula ko eendjukifi davo. Alikana ngeenge tamu nyola, tuleiko eendjukifi deni, ndi tye ashike nyoleleni:

Rosalia Chapa P/Bag 47 Gibeon 9000 ile P/Sak 13241 Windhoek 9000.

Weni Chappa

