

OMUKKWE TU



40c

No. 8

ISBN 0-620-06828-0

Aanashilonga aawanawa muuyuni weyonuko



Omusita Matti Amadhila

Peha lyomumbisofi Kleopas Dumeni nolyOngeleki ayihe ya ELCIN, omusita Amadhila okwa ulike kiilonga iinene yaKalunga, ngoka awike ta vulu okushitulula omitima dhaantu ye etele yakwawo ohenda, nokwa ti:

“Otatu adha ano muuyuni mbuka woonakulonga uukolokoshi, tau hulitha po onkalonawa yayalwe, tamu monika wo natango aantu mboka omitima dhawo dha sindika kohole yaKalunga notaa longele yakwawo uwanawa, ngaashi edhiko lyegumbo ndika.”

Mokati kaayenda aasimanekwa ya li moshituthi shoka, omwa li omusamane Lord Leonard

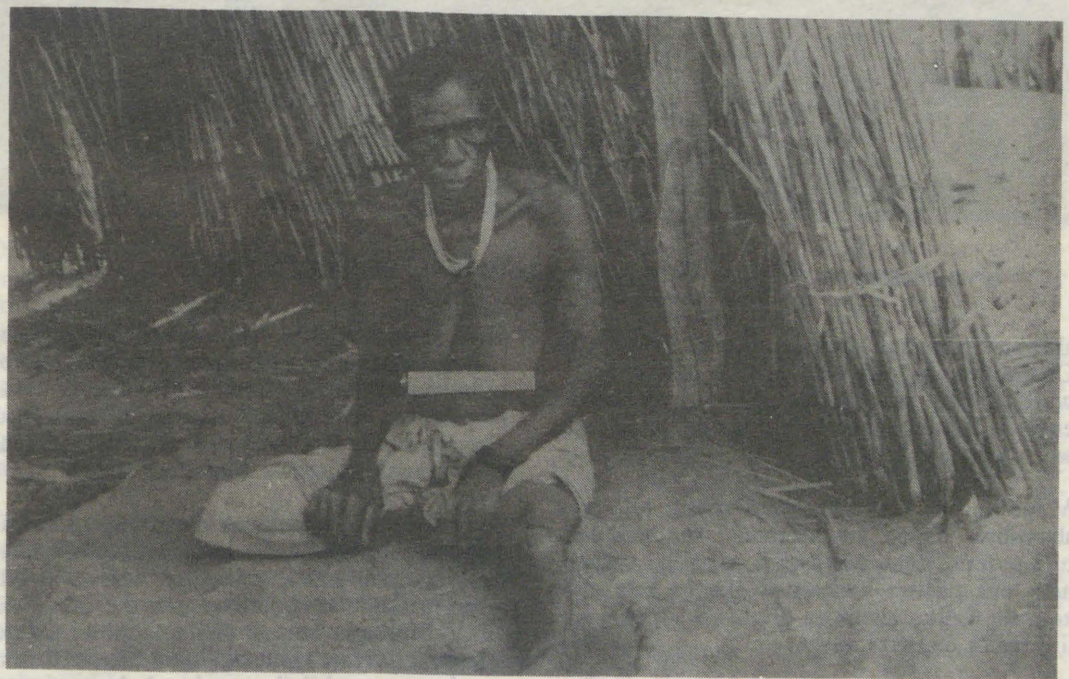
Cheshire, omvatelele yaBritania, ngoka omudhiki gwehangano lyesiloshimpwiyu lyiilema niitini ngili muuyuni, ndyoka lya dhikwa ngashingeyi konima yomimvo 40. Kunguka edhina lychangano ndyoka muuyuni auhe lya lukilwa ‘Cheshire Homes.’

Omumbisofi Haushiku okwa holola epandulo lye nolyOngeleki komuyenda ngoka, kutya edhiladhilondunge lye okudhikitha changano lyesiloshimpwiyu kumboka itaa vulu okwiikwatha yoyene, oshigwana shaNamibia pamwe nOngeleki yaKatoolika kaRooma, otayi mu pandula ya mana mo.

Epandulo enene komuyenda ngoka oyendji ya li taye mu tala nokatalekonawa, olya gandjwa wo moshituthi shoka komusita Adolf Volk. “Omu-

Tala kep. 4

Omagumbo ga lyatwa po komakaspeli, inamu ehamekelwa omuntu



Omukulupe Rauna Hanyengo yaShifidi (80) paife okwa kumwa ko eshi a fiwa pomutenya, okaumbo kaye ka lyatwa po. Lao linene meumbo inamu hangika omunhu.

Ehokololo alihe tala kep. 5

ANAMULENGE, OMBALANTU: Muuyuni wa piyagana ngeyi, naantu yamwe taa longo omuyonena ngoka tagu hulitha po onkalamwenyo ya yalwe yi ihwa po, omu na wo natango aantu mboka ya sindwa kohole yaKalunga notaa tungulula shono tashi hanagulwa po kaakolokoshi.

Omatumbulo oga kuthwa mepopitho lyomukwathi gwomumbisofi, omusita Matti Amadhila moshituthi shelalo lyegumbo lyiilema muAnamulenge, mOmbalantu. Eti 13.4.1988, Ongeleki yaKatoolika kaRooma muNamibia, oya egulula lwotango pambelewa egumbo lyesiloshimpwiyu lyaantu mboka itaa vulu okwiikwatha yoyene, nosha tula mondjokonona yiilonga yOngeleki ndjoka, endhindhiliko lyonkatu onde ya katukwa.

Egululo olya ningwa komumbisofi gwoshikandjo shokuumbangalantu, Bonifatius Haushiku pamwe naakwathi ye, Pata Peter Borsutzky Trustee naPata Adolf Volk, omusita gwegongalo ndyoka lyaAnamulenge. Iilyo oyindji yegongalo lyaAnamulenge niilyo yegongalo eshiinda lya ELCIN, mOnakayale, oya li moshituthi shoka.

Oipute yoita mOngeleki yaAnglikana inai kanifa omwenyo wOngeleki

ni, Oshiingilisha, omikanda odo da kuwa omahepeko oshiwana eshi nokwiindila epopilo kounyuni. Ombilive ya shiivika 'onghuwo yepongo' yomushamane Theophilus Mutumbangela, oyo imwe yomomikanda odo pomido

ODIBO, OWAMBO: Oshilonga shetumo laMaria Omuyapuki (St. Mary's Mission) mOdibo, osha li vali tashi ulike omwenyo washo ou wa kala tau fufilwa omadu koita omido 22 da dja ko. Ovanyasha okwa li tava imbi oukorasa voo tava hakele, ovakulukadi tava nhuka voo tava kuwilile.

Eendjafa ditoka dovabishofi 10 nomambale omaluvala komitwe davo, okwa li tai vilola koshi yeemwiidi noyomakulukuma onhele oyo, eshi ve li omukweyo va yuka kongulu yOmwe-ne okuhambelela Kalunga.

Mokati kavo omwa li onghwatwe yepangelo la SA meevili 24, omubishofi omukulunhu mOngeleki yaAnglikana moubuwanhu waAfrika, Desmond Mpilo Tutu, ou a kwatelwe po nde ta diininwa konima yohani imwe.

Ekwato laye ola li eti 29.2.1988, pamwe novawilikingeleki vakwao vatatu, mu SA fimbo ve li mosheendo shinene shovabishofi novafita va djala omdjalo doshilonga novakwaneongalo vahapu, tava ka holola omadiladilo avo kongulu yepangelo loshilongo.

Epangelo ola hangika la ingida okumweneka omahangano 18 mu SA haa popile oufemba wo-



Oikulukuma yoludi eli otai monika konyala apeshe meumbo laDibo.

"Otwa teelega natango nomukumo tu mone ovakwaita aveshe va SA va yela mo moshilongo eshi, ndele ombili tai alukile moshilongo, onhele ei i kale ngaashi shito tai longo oilonga

1950 noixupe.

Onhele oyo ya kala ponhofi yoshilonga shetumo shevaengeli mOngeleki yaAnglikana moshitukulwa ashishe shaumbanganhu woshilongo. Mahapu omomayakulilo a kala shito haa ningilwa monhele ei, okwa mwena paife, a mwene-kwa koita.

"Olweendo letu okufika kunye, oku mu lombwela oshili nokutya, omu na ovailikaneni vahapu, inamu dimbiwa po nande okanini," osho omubishofi George Swartz, umwe wovatalelipo a kumika ngaha eongalo omukumo.

Eshakeno eli novaenda, okwa li la ongela ovakwaneongalo vOngeleki oyo vahapu tava tengekwa 900, va dja eefuka adishe daushilo waUkwanyama navamwe va dja fiyo Oshakati. Oshivilo shouvalelo uyapuki osha ningwa pamwe no aenda, neongalo ola tuwa shili omukumo okufikama meitavelo nometelelo liwa lemaguluko loshilongo eshi.

Konima osheendo shovaenda, osho sha pitula mOvenduka omubishofi woshikandjo shaDamaraland (shaNamibia), James Hamupanda Kauluma, osha talela po yo Ongeleki ya ELCIN efiku tuu olo komatango, opo sha shakenekwa kongudu inene yovanashilongangeleki novakwaneongalo mOniipa.

Fimbo ovaenda inava shuna kOvenduka, osheendo shavo osha ninga elongelokalunga mOshakati 9.4.1988 omo ovaenda va pameka natango oilyo yOngeleki meitavelo.

Va li pamwe nomubishofi Tutu metalelopo olo, omubishofi woshikandjo shaAfrika laumbuwanhu, George Swartz, waKimberley naKuru-mann. Ou oye yo e li omuponhele womubishofi Tutu mewiliko lOngeleki aishe yaAnglikana.

Omwa li yo omubishofi woshikandjo sha St. Markus, koumbanganhu waTransvaal, Philip le Feuvre. Oshikandjo eshi oshipe, sha dikwa pexulilo lomudo 1987; omubishofi woshikandjo shaNamibia, James Kauluma; woshikandjo sha-

Tala kep. 7



Ovakwaneongalo laDibo tava tanhele omubishofi Desmond Tutu.

shiwana nemanguluko lasho, a ha longe vali. Oshinima eshi osha handukifa oshiwana novawilikingeleki ova tokola ngaha va ka holole enyeme loshiwana koshipala shomupresidende woshilongo, P.W.Botha.

Mondjila ova shakenekwa kovapolifi nde tava shaminwa omeva nomakanona, eendjafa tadi tuta omeva. Vane ovo kwa li ovawiliki vosheendo, ova twalwa kodolongo oko va kala oule konyala wefiku alishe va diininwa. Osha li she linyengifa ounyuni aushe.

Etalolopo laye mOdibo, omubishofi Tutu okwe li ninga 8.4.1988 la tetekela oshoongalele shovabishofi vOngeleki yaye aishe yaAnglikana moubuwanhu aushe waAfrika, osho sha li mOvenduka 11 - 15.4.1988.

yayo. Oseminali apa i yeuluke natango ngaashi nale, oshihakulilo tashi longo ngaashi shito, osheshi Namibia ola hoolola ovaleli valo ngaashi voovene ve shi hala," osho omubishofi Tutu a yandja ngaha eteelelo lavo keongalo linya, eshi va teelega shi ningilwe Namibia.

Odibo onhele ya yaamena olupati kongaba yaAngola, oshilongo osho tashi lwile paife emanguluko lasho shi li kaleke po ngaashi le shi mona netiko lohonde linene momake Omuputu 1974. Momesho avahapu muNamibia, Odibo oya kala onyika yemanguluko momadiladilo nopalutu noya shiivika yo olupale loxungi yee-ndunge dokuteya po oukoloni moshilongo eshi.

Omonhele ei vahapu va dile ve shii okushanga omikanda momalaka e shii okuleshwa mounyu-

EUVITHO LYOMUMBISOFI OMUKULUNTU MOSHIGONGI SHAA-SITA YA ELCIN MONGWEDIVA

Esilohenda nombili nayi tu indjipalele, lya za kuKalunga Tate, nokOmuwa Jesus Kristus. Aamwameme muJesus Kristus nandi mu etele tango omakundo gohole, ga za kOngeleki onkwaevangeli paLuther yomuSoomi nokaakriste hwiya, ookuume keni. Konima yoshiwike shimwe otwa li tu na oshigongi shaambisofi, naambisofi ayehe mOngeleki yetu oya tumu ndje ndi mu etele omakundo gohole oyindji.



Ngashingeyi natu pulakeneni oohapu dhOmuwa mokana kOmuprofeti Jesaja 48:17-18.

Kalunga kAaisrael omuyapuki Omuwa Omukulili gwoye ota ti: "Ongame Omuwa Kalunga koye, ngoka tandi ku lombwele shoka she ku opalela, noku ku ulukila ondjila u na okweenda nayo."

Shika osho Omuwa ta ti: "Ongame Omuwa Kalunga koye. Ongame Omuwa gwegulu no-gwevi. Uuyuni mbuka wu udha omahepeko nomachamo ogendji; uuyuni mbuka wa topa-uka owo uuyuni wandje." osho Omuwa ta ti.

Ongame nda shita uuyuni mbuka. Ngame ondi hole uuyuni mbuka. Onda hepele, nonda hepekelwa uuyuni mbuka. Onda hala okusila oshimpwiyu uuyuni mbuka, osho Omuwa ta ti. Onda hala ehala lyandje li gwanithwa kombanda yevi ngaashi hali gwanithwa megulu, opo ohole nuuyuki, yi kale tayi pangele.

Osho Omuwa ta popi, Kalunga ngoka tatu mu adha moohapu dhe. Osho Omuwa ta popi, ngoka okukalapo kwe tatu ku koneke moonoyi ndhoka dhi li kegulu, tatu ku koneke moongala oonshona notatu ku koneke wo momaiuvo getu, meiuvo lyokomwenyo muuyuni auhe.

Ngele Omuwa te tu tumu muuyuni pethimbo ndika, nena ite tu tumu ongaakalelipo yelongo nenge yoIdeology onkwiilongo. Ye ngoka i ilikolele uuyuni mbuka muJesus Kristus, ote tu tumu muuyuni mbuka we, hangaashi aafuthi, aakwiilongo, aayugi ndele ongaatumwa, aakalelipo ye naakalelipo yohole ye.

Oye ote tu tumu, oshoka oku tu hole. Oye ote tu tumu, oshoka okwa hepekwa molwetu. Ngele tatu vulu oku shi tumbula niitya mbika:

Ngele osho shi li ngeyi kutya ohole otayi hepa pamwe naamboka taa hepa, nena Kalunga ota hepa pamwe nuuyuni wetu nena. Ngele ohole oyo ndjoka kutya otayi topolelwathana naangoka wu mu hole, nena Kalunga ota topolelwathana natse uumbanda wetu okutula kwetu, okuteka omukumo kwetu, etegameno lyetu noondjodhi dhetu.

Ohole yaKalunga oyo ohole ndjoka tayi hepekwa, tayi ehamekwa, ohole ndjoka tayi kondjo. Shino otashi tu hololelwa ketumwalaka lyesiku lyealelo, ketumwalaka lyeyumuko. Ihe ohole yaKalunga itayi tu kutha oshinakugwanithwa shetu, oshimpwiyu shetu.

Oye te tu lombwele ta ti: "Ngele to dhiginine oohapu dhandje, ngele tamu dhiginine oohapu dhandje, nena ombili otayi kala tayi mu kungulukile ongomulonga." Moohapu ndhika dhOmuprofeti Kalunga ote tu lombwele kutya ombili oshike, nombili otayi holoka po ngiini.

Okwa dhiladhila naanaa shike noshitya ombili.

Olwindji ohatu dhiladhila kutya ombili oyo elandulathano ewanawa lyokombanda, ombili ndjoka tayi monika kombanda, negundjilo ndyoka tali monika lyokombanda. Ndele osho tuu shili kutya ombili nelandulathano ewanawa, emoniko ewanawa lyokombanda, oyo oshinima shimwe?

Konima yekondjo ele omusindani a kale e na etegameno, kutya ombili otayi ka pangela, mpoka pwa li pwa kala iita. Ihe shika osho tuu shili?

Miilonga omulongi nenge omuwiliki, folomana, omudhiginini ota vulu okukaleka po elandulathano miilonga molwepangelo. Ihe shika osho tuu ombili?

Megumbo otashi vulika omusamane ngoka e na oshipango uuna ta holoka te eta po emweno enene negundjilo lya talala momudhingoloko gwe, megumbo. Ndele otatu vulu tuu okwiithana egundjilo ndyono nemweno ndyono kutya blyo ombili?

Moshilongo shontumba otashi vulika eke lyoonkondo tali thiminike noonkondo ngoka ta lalakanene ombili, nenge ta yaguma ombili nonakuyiwa yuuyuki nemanguluko nelunduluko, elandulathano lyokombanda nemoniko lyokombanda. Ihe shika osho tuu ombili? Ombili oshinima tuu shimwe ngele pokuma itapu ningwa sha, ngele aantu oya mwena.

Kalunga ngoka ta popi maaprofeti ote tu lombwele kutya, "ombili yenyi otayi ka kala ya fa omulonga. Ombili yashili inayi fa nande omeya genono ga thikama mondombe, itaaga ende. Ombili kayi shi etale lyiikangwa lya kukutikwa kuutalala. Ombili oyo omulonga. Ombili oyo omulonga ngoka tagu fuluka notagu gandja omwenyo mevi ekukutu. Ombili oyo omwenyo. Ombili oyo uuyuki, emanguluko, ependulopo, nehumokomeho."

Otatu vulu ngiini okwaadha ombili ndjoka ya fa omulonga? Okuhololithapo ombili ndjoka tayi etithapo elandulathano ewanawa lyokombanda; ashihe shoka tashi pumbiwa okulongithwa mpano, osho ashike oonkondo. Ngele ombili oyo ndjika kutya oompoka pwa mwena thilu itaapu ningwa sha, itaapu inyengwa, nena shoka twa pumbwa osho ashike oonkondo. Inatu pumbwa we sha shilwe.

Ombili ya tya ngaaka otayi vulu okuhololwa po nekwatho lyiilwitho, ekwatho lyokuhepeka nokufika nomalusheno, ekwatho lyokuninga omalugumbo omaleleka goondhalate dhomakwega. Ombili ya tya ngaaka otayi vulu okuhololithwa po kuumbanda nenge kethiminiko lyokugalulila uuwinayi.

Ndele elongitho lyoonkondo noonkondo dhodhene, ano uukolokoshi, kau na esiku nau ka etitha po ombili ndjoka ya fa omulonga....

itapu vulu okuholoka omulonga tagu tondoka, oshoka omeya agehe oga kukuta ga ninga iikangwa. Otatu vulu ngiini okuholola po ombili ndjoka tayi fuluka notayi kunguluka ya fa omulonga?

Omuwa ote tu yamukula mokana kOmuprofeti kutya, 'ngele to dhiginine oohapu dhandje niipango yandje, nena ombili yoye otayi kala tayi kunguluka ya fa omulonga. Ngele to dhiginine iipango yandje! Inaku kala nale ethimbo muuyuni mbuka uuna aantu tatu vulu okumona onakuyiwa ya yela shi vulithe ngele tatu dhiginine iipango yOmuwa.

Muuyuni wetu wongashingeyi otatu koneke kutya omukalo gwokuhololithapo ombili pamukalo, oshiyimati nenge oshizemo moshilongo kehe mpoka iipango yOmuwa itaayi dhigininwa we. Iipango yOmuwa, oshipango shohole, oshipango shuuyuki, oshipango shoshili, oshipango shokukala omuntu u shi okwiinekelwa, oshipango shokwiimanga kumwe noshipango shemainguluko.

Muuyuni wetu wongashingeyi, tse inatu pumbwa ashike elandulathano epe lyopamahupilo lyopokati kiigwana. Ihe otwa pumbwa wo elunduluko lyomonkalathano, elanduluko lyomombepo, elunduluko lyopamwenyo; ngele otwa hala okuyanda eyonuko, ehanagulo nokupopila omwenyo kevi ndika.

Tse "kOplanete" ndjoka tu li, otwa pumbwa sha shi vule elunduluko lyopamikalo nomonkalathano. Ihe oshipango shOmuwa oshi na sha wo niinima iinene yi vule oohedhi nomikalo dhomonkalathano.

Ndele oshipango shOmuwa, oshi na sha nonkalo yoohedhi nomikalo, nonkalo ndjika oyo einkelathano meitaalo einkelo neitaalo. "Ongame Omuwa Kalunga koye" osho oshipango oshine noshotango shoka sha kwatelela mo iipango iikwawo ayihe, tashi ti:

Shika kashi shi ashike elombwelo nenge eindilo (epulo.) Ongame Omuwa Kalunga koye. Shika otashi ti osho shoka Kalunga te tu pe shoka a hala oku tu pa. Kalunga nguka omunene osho shoka ta gandja kaantu nokongundu yaantu. Shika osho evangeli. Ongame Omuwa Kalunga koye! Oto vulu okwiinekelala ndje.

Openi mpoka tatu tula einkelo lyetu muuyuni mbuka wongashingeyi? Openi mpoka tatu kongo ehupitho lyetu? Egameno lyetu nombili yetu netegameno lyetu? Kalunga ote tu lombwele, ongame Omuwa Kalunga koye, oto vulu okwiinekelala ndje. Oto vulu okukala u na eitaalo, kutya iipango yandje, nomauvaneko gandje ogoshili. Onkee inamu ekelahi einkelo lyeni, oshoka oli na ondjambi onene.



Ombinga yetungo lyosikola noshililo megumbo lya Canasius Cheshire Home, muAnamulenge.

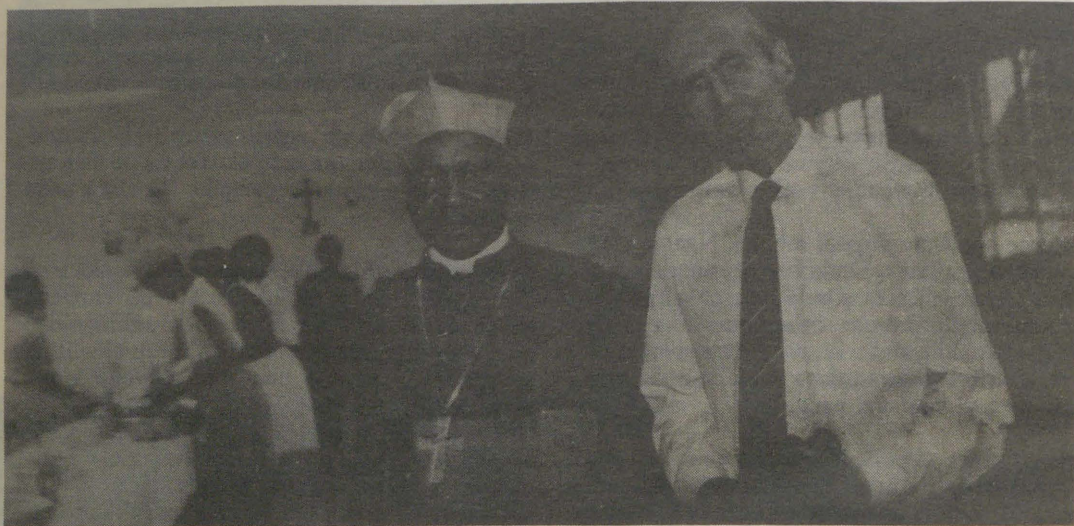
Aanashilonga aawanawa

samane Cheshire okwa li i inekelelwa kepangelo lyawo lyaBritania okuhinga oondhila dhokubomba iigwana pethimbo lyiita iitiyali yuuyuni. Ngashingeyi olukeno lwe otalu bombo iigwana yuuyuni opo yi kwathe wo mboka ya pumbwa ekwatho lyayakwawo," osho Pata Volk a fatulula omuyenda.

Palufo lwe, Lord Cheshire okwa tumbula, kutya oshilema kee shi ando omuntu inaa fa aantu ooyakwawo. Eyooloko oli li ashike mpoka sho itaa vulu okwiikwatha ye mwene. Kristus okwe ya e tu mangelule mukehe shono itaatu vulu tseyene okwiikwatha musho, osho omusamane a ti.

Omundohotola Lord Cheshire okwa ulika wo nonkumwe komukalo gwetaambo ngoka a ti, ogwa ningwa lela pashiAfrika noine gu ningilwa nande palwe pwi ili.

Okwa ninga omatalelopo miilongo oyindji yaAfrika, sigo omuumbugantu waAfrika, moka a ti omu na ngashingeyi omagumbo goludhi ndoka 56.



Omumbisofi B. Haushiku pamwe nomuyenda dr. Lord Leonard Cheshire pethimbo lyoshituthi shelalo lyegumbo lyillema muAnamulenge.

Iilonga yegumbo lyillema muAnamulenge, 'Canasius Cheshire Home', pahokololo lyomupehawiliki gwegumbo ndyoka, Sestela Laurensia Olaf, oya tamekele nokuli 1987,

moka mwa kala iilema 15. Nuumvo okwa ti omwaalu ogwa londa sigo 24.

Okwa tsikile ta ti, petameko lyomumvo, oye na ompito okutaamba iilema, itaapu talwa kuukuluntu womuntu nenge keitaalo lye. Naamboka ya taambwa, otaa tulwa moosikola opo yi ihumithe komeho mukehe shono taa vulu, oshoka oyendji oondunge odhi li nawa, iilyo ayike ya lemana.

Eguluso olya tamekelwe nelongelokalunga (emisa eyapuki), oshituthi e tashi hulithwa niitelekela iinene.

Sebulon Ekandjo

Namibia lya kundathanwa ishewe muZambia kaakalelipo yomapangelo giilongo

Ehangano lyokukondjitha okatongotongo miilyo yomalelo giilongo yuuninginino Association of Western European Parliamentarians for Action Against Apartheid (AWEPA) olya ningile oshigongi shalyo muZambia nomuZimbabwe moka lya tokola okuthiminika SA e ethe okatongotongo noli gandje emanguluko lyaNamibia nokuSouth Africa.

Ehangano olya tokola wo okupopya nomapangelo galyo ngoka mwa kwatelelwa Britania, opo ondji-ndikila ya kola yomipindi yi ningilwe SA, sigo Namibia na SA ga manguluka.

Oshigongi osha li ko muMaalitsa numvo, nosha kalwa wo kaakalelipo yomapangelo gomuumbugantu waAfrika, aakalelipo yoongundu oonkondjeli-manguluko, aakalelipo yoongeleki nokoongundu dhopapolotika muNamibia nomuSouth Africa.

EPUKULULO

Nakusila moshiponga shoboma mOshakati, meme lyaloo Nd. Shikongo, pashifonkundana shOmukwetu No. 5/88 ep. 9, okwa ulikwa gwokOmundaungilo, ihe oku na okukala Omutundungu, Okalongo. Ombili kwaashika.

Amushanga gwOmukwetu



Mbaka oyo yamwe taa tekulwa ngashingeyi megumbo lyaCheshire

Megongalo Eloo, 18.4.1988, egumbo lyomusaamane Kanyolo kaShikongo, olya lyatwa po komakaspeli sho pahokolo lyaanegumbo, omukwiita gwa SWAPO e ya a tidhwa nokwa dhipagelwa pooha dhegumbo ndyoka. Omukwetu ina mona uyelele natango kombinga yetanga lyegameno moshinima shoka.

Pahokololo lyaakali momukunda ngoka, ndyoka lya kolekwa komusita gwegongalo lyaLoolo, aakwashigwana megongalo ndyoka oya thigilwa ketanga lyegameno omidhimba mbali dhaakwiita ya SWAPO, ye dhi fumvike. Nokonima omakaspeli sho ga shuna, oga thigi oondunda adhihe dha lala niigandhi iyali yiilya.

Omufuko Elizabeth Johannes Shikongo, omuvalwa gwomegumbo ngoka a adhikile mo pethimbo ndyoka pamwe nuunona une uushona, oya pitithwa mo megumbo manga egumbo inaali lyatagulwa po. Aakuluntu ayehe inaa adhika mo megumbo.

Ekaspeli limwe olya monika tali matuka mokati kokagumbo komukulupe Rauna Shifidi (80), moka pethimbo ndyoka kaamwa li omuntu. Omukulupe mokugaluka, okwa adha ashike uuhenguti auhe wa lala.

Ehokololo olya tsikile lya ti omudhimba gwoshikulo shono sha sile pooha dhegumbo

Omagumbo ga lyatwa po komakaspeli, inamu ehamekelwa omuntu



Ehanagulo lyegumbo osho tali monika ngeyi. Iigandhi iyali oya yonukila mo.

UUNONA NIITA

Onkalo yaakiintu nuunona ndjoka ya nkundipala, oyo ye etitha ya kale oyo unene oshihakanwa shomapumathano pokati kaakwiita, osha leshwa mehokololo lyehangano lyomakwatho kuunona lyopaigwana (UNISEF) lyomumvo gwa yi.

Oshigongi shehangano ndyoka osha ningilwe muNairobi moka mwa gongalele iilongo yimwe yomuAfrika nomahangano omagameni gonkalo yuunona gaa shi gopapangelo. Ehokolololo lya zi moshigongi shoka olya ti.

Uunona ohau hepa pamikalo odhindji. Miitopolwa yiita, omwaalu gwaakiintu mboka taa gwitha omala ogwa londa osho wo eso lyuunona muushona wawo. Momahala ngoka omo twaadha kaamu na uundjugo wuuholameno woopalekwa, omeya ga yogoka, egameno kiiponga yiita nompumbwe yiikulya tayi tungu.

Aakiintu oyendji oya monene iihuna mefadhuko po lyiita, nuunona wawo kombunda. Oya pandakana mokati kiilikama, komatopola nokoongwe, ye ende omasiku ogendji yaa na omeya niikulya nolwindji mpoka taa ka thikila, kape na eha lyokuholama mo, ehokololo lya ti.

Iita ohaku ti ohayi eta ehanagulo, oshinima oshivule po mpoka. Iita otayi inbi uuntu u gwanepo, uutekenika, nuunongononi, iilongitho nomalunza guanamiti, nohayi kombo po ayihe mbyoka.

Sigo oompoka, omakankameno gegameno, ngaashi ga gandjwa ando koveta yegameno lyuuntu yopashigwana (International Humanitarian Law IHL) okugamena uunona, inaga longa sha, omolwiinima itaayi hololwa.

Oshitokolitho 8 shomautho guuthemba womunona muuyuni otashi ti: "Mompito kehe,

Tala kep. 9



Omusita gwegongalo lyaLoolo, Sakaria Nashongo, okwi ile okupopitha aakwanegongalo lye mboka egumbo lyawo lya lyatwa po. Pokati lela omeme Maria Jakob ngoka naye megumbo ina adhika mo. Kolulyo omeme Elizabeth Johannes ngoka a adhika megumbo nuunona.

lyaShikongo, pethimbo lyefumviko, kagwa li gu shi nando okutalwa sho gwa nyanyagulwa nooholo nokomatayela manga omuntu a sa nale.

Omakaspeli oga kala tagi inyenge pegumbo lyomusamane Shikongo natango momasiku gaali ga ka landula nokupula aanegumbo oshinyama shoosa dhoshikulo, shono shaa shiwiike nando omegumbo ndyoka.

Tomas Nghitukwa
naSebulon Ekandjo

Otashi ti ngiini?

Nandi kwathwe ndi yelithilwe elombwelo hali kala mOmukwetu li li ngeyi, "Landela hano eshiivifo loye onhele mOmukwetu". Kandi uvite ko kutya tashi ti ngiini?

EYAMUKULO

Ngele ou na shoka wa hala okutseyithila omuntu kehe moshigwana shopaumwene ngaashi okungeshefa nenge okutaamba aalongwa posikola yoye nosho tuu, osho shoka twa dhiladhila.

Amushanga gwOmukwetu

Omagumbo gaali ga dhengwa niikuti yomolotila mOwambo, omukwashigwana gumwe e ehamekelwa mo



Omusamane Wilhelm Amukuhu, pethimbo ta pangwa iilalo yooholo moshipangelo shaShakati.

O mukulupe Wilhelm Amukuhu (72) momukunda Oshinenge, mOmbalantu, okwa ningi omasiku ta pangwa moshipangelo shaShakati iilalo yooholo, mbyoka a hokolola pOmukwetu nokutya okwe yi mona sho ekuti limwe lya zi mokamba yaakwiita mUutapi e tali gwile kombanda yombete hoka kwa li a lala.

MOshaandjela, mooha dhokapale kaNdangwa, kuumbangalantu, omukulupe Marta Haixwema (80), naye okwa popya nOmukwetu nehaluko edhigu nkene Kalunga e ya hupitha nuutekulu we uyali, miitopitha iidhigu ongulohi yokupendukila eti 11.4.1988.

O mukwetu okwa falwa piilambo 12 momudhingoloko gwokagumbo ke, mpoka omukulupe Marta a ti, opo pwa fundu iitopitha (oomolotila) mbyoka ya zi komulungu gwondjembo onene ndjoka ya tsilikwa mOkapale.

Iilya yaampoka pwa gwila iikuti mbyoka, ayihe oya li tayi monika pethimbo ndyoka omutoko gwowala. Pahokololo lye natango, iilya yimwe oya li ya teywa noya gongelwa ondumba. Aantu kapwa li ngoka ya ti okwa mona oshiponga.

Okatekulu komukulupe Ndilimeke Mikael (14), nokakwawo Marta Nangula (9) ka lukilwa omukulupe, pahokololo lyawo esiku ndyoka uunona ou uhala tau litha iimuna yawo manga yinakulu a ya komambo kOshitayi.

Manga tau litha aniwa owa igidhwa kaakwiita mboka ye li koshungo mOkapale, kutya "ons skiet jou dood" (otatu ku dhipaga.) Uunona owe ya tau shi hokololele yinakulu sho a galuka komambo.

"Kanda li unene ndi na nadho, ote ti ngaa pamwe omahokololo guunona," osho omukulupe a li ta hokolola oshinima shegumbo lye.

Ongulohi tuu ndjoka manga opo ya ka lala, oyu uvite iikuti tayi mbwata mooha dhokagumbo ke. Lagonene kapwa li nando shimwe sha gwile meni lyokagumbo ke. Ongula ku she omukulupe okwa tokola okutembuka.

Ombelewa yaAmushanga gwaKalangula, omusamane Oswald Shivute, oya yamukula Omukwetu nokutya, oya kugwa komukulupe Marta egumbo lye lyu umbwa, ye kee shiwo kutya omolwashike e shi ningilwa.



Meme Selma Andowa, tu ulike kombululu ndjoka ya dhengwa moshigandhi manga e li mondjila a ka tale omusamane ngoka mondunda ye mwa-mbwata ekuti limwe. Elago enene iikuti mbika inayi hwameka egumbo.

Omusamane Shivute okwa ti natango kutya onkambadhala yawo (epangelo lyOwambo) opo andola aapolosi ya ka konakone oshinima shoka manga oshitalala, oya hulile muunyengwi. "Katu na iihauto okuya ko," aniwa osho ya yamukulwa.

Omusamane Wilhelm Amukuhu, ngoka naye egumbo lye li li ashike okilometa yimwe nokamba yaakwiita pUutapi, okwa ti ye okwa li gumwe gwaantu 9 mboka ya li megumbo pethimbo lyiikuti ayihe ine ya gwile meni lyegumbo. Osha li eti 12.4.1988.

Oshikuti oshitine osha ulula ondunda yomwii-dhi moka mu na ontala ye nosha dhenge kongenge yombete hoka kwa li a lala. Pethimbo ta popi nOmukwetu pombete moshipangelo, ota ti ooholo mbali odha hilwa mo molutu, nontintantu ndjoka u uvite inaayi kuthwa mo natango.

O mukadhi meme Selma Andowa okwa ti esiku ndyoka manga nayo ya andalala iikuti nuunona kondunda yawo, okwa uva omusamane kondunda ye i igidha, kutya nda yahwa. Ye nokwiiumba mo a ka tale nkene omusamane e li po.

Mondjila manga ta ende, oshikuti shimwe konyala shi tsakanene naye. Osha dhenge owala moshigandhi shiilya shono sha li pooha naye. Elago lye ina topelwa nando koholo yimweyi-mwe.

Pamahokololo gaakali yomomudhingoloko ngoka, esiku ndyoka okamba yomUutapi oya li ya ponokelwa niikuti kaakwiita yaSWAPO. Omakende goongulu dhOseko yaUutapi, nago oga pendukile ga tatulwa mo koshikuti shimwe shono sha ka dhenga momuhandjo gwsosikola. Pokati kosikola ndjoka nokamba ope na oonkatu oonshona lela.

Pethimbo lyoshinyolwa shika, aanona yosekundo ndjoka 926, oya thigile po omuhandjo gwawo ya shuna komagumbo nelaleko kaalongi yawo, kutya ngele okamba ya zi po mpoka, naa

Tala kepanja tali landula



Okanona Ndilimeke Mikael pokati methano ndika, otaka ulike iimbangu yiikuti mbyoka ya gwile mooha dhokagumbo kawo. Kuku Marta okwa tokola okuthiga po okagumbo ke niilya ye mepya, a tale mpoka taka hupila nuutekulu we.

Dha za kep. 6

tseyithilwe, opo ye ye ya tsikile ootundi dhawo nombili.

Mwene gwoshilongo shaMbalantu, omusamane Oswil Mukulu, pOmukwetu okwa holola euvo-nayi lye omolwaantu ye mboka a ti, ohaa mono olwindji iiponga tayi zilile mokamba ndjoka.

“Omuntu ngoka (Amukuhu) omutiyali okumona iiponga pamukalo ngoka muule ashike woowwedhi ndatu,” osho elenga Mukulu lya hokolola noluhodhi olunene. Omusamane Mukulu, pethimbo ta popi okwa adhika opo a zi mondjila a ka talele omwahe Amukuhu nkene e li po moshipangelo mOshakati.

“Omusamane Amukuhu okwa li oshikaha shandje shokolulyo, oye gumwe gwomaakuluntu yoshilongo shika mboka omuntu to inekele,” osho Mukulu a tumbula nomaipulo ogendji.

Omuleli Mukulu okwa yamukula Omukwetu, kutya oku na edhiladhilo a ithane mbala omalenga goshilongo she, ya kundathane uudhigu mboka hau zilile mokamba ndjoka yi li mooha dhosikola, dhoshipangelo nodhaakwa-shigwana oyendji.

Sebulon Ekandjo

Dha za kep. 2

Natal, Alfred Mkhize; woshikandjo shaKaapa, Charles Albertyn; woshikandjo shaJohannesburg, Siyisbert Ndwandwe; woshikandjo shaPretoria, John Restond nomubishofi woshikandjo sha St. John shomuTranskei, Geoff Davies.

Ava ova enda yo pamwe nahefolo Leah Tutu; Hamushanga woponho waTutu, omushamane Matt Essau naHamushanga womayelifilo mombelewa yomubishofi Tutu, omushamane John Allen.

Sebulon Ekandjo

MOmbalantu ya kundathana ondjala molwoshikukuta

Omumvo gwonuumvo ngoka onkalo yagwo tayi dhimbululwa moshitopolwa oshinene shoshilongo, kutya oya nayipala kombinga yilpalutha momapya, osha pendulila aaleli yoshilongo shaMbalantu omaipulo nkene tapu tsakanekwa onakuyiwa ya tya ngeyi yompwina.

Omukwetu metsakaneno lye nomuleli gwoshilongo shono, omusamane Oswil Mukulu, omwedhi nguka okwe shi koleke, kutya oonkundathana nkene mboka kaaye na sha shokupita nasho monkalo yondjala, taa monenwa ngiini ekwatho, odha ningilwe.

Oshigongi shomalenga naakuluntu aagandjima-yele yoshilongo shoka, elenga ekuluntu Mukulu, olya ti, osha li ko eti 9.4.1988, moka kehe elenga nooyene yomikunda, ya thigilwa oshimpwiyu ya ninge omakonakono ga yela miika-

Tala kep. 10



Omubishofi Tutu, kolumosho, ota pwilikine ehapu longhalo yomisioni oyo yaDibo, nghene ya kala moita mokanya komubishofi James Kauluma, pokati.



Etungo loshihakulilo mOdibo osho kashi li vali moilonga. Osha li shi na cembete 50.

OMUDHINGOLOKO GWANIIMWANDI TAGU TILITHA

(Sha zi mombelewa yomayelithilo)

Eso lyokanona Sheehama Efraima (3) eti 30/3/1988 komomukunda Olupumbu megongalo Oniimwandi mUukwambi, olya eta iinima oyindji puuyeleele, ya ningwa omathambo ga piti momukunda moka nomomudhingoloko aguhe gwaNiimwandi.

Eso ndika lyombaadhilila lya etwa koshitopitha, olya gandja wo ompito opo ehala lyaantu yomomukunda moka, ndyoka lya penduthwa kuumbanda wokutila iitopitha nooholo dhaakwiita ya SA, li uvike kuyalwe moshilongo nomuuyuni wopondje.

Okanona Sheehama oka dhipagwa koshitopitha melundu, uule wetatakilometa lwaampoka, okuza pegumbo lyaandjawa, sho ye pamwe namukwawo gumwe, Daniel Wilhelm (4) ya li ya tumwa po kaakuluntu yawo.

Ano mokukundana oshinima shika, aaniifo yOngeleki ya ELCIN oya yi ko komukunda hoka kwa ningilwa oshinima shika. Kakele kasho, aantu hwiya oya hokololele aaniifo nokugandja iiholelwa mbyoka tayi ulike kutya omudhingoloko gwegongalo Oniimwandi ogwa nyata notagu pumbwa ekwatho lyombala.

Aalupumbu oya fatulula kutya mesiku tuu moka Sheehama a dhipagwa koshitopitha, popepi naampoka a sile opwa adhikwa iitopitha ihamano. Aakwiita ya SA mboka ya hokololwa ihaa pu mo momukunda moka, oye ya mbala poshiningwanima sheso noya topitha wo iitopitha mbyoka ihamano ya li inaayi topa natango.

Mokuulika kutya omudhingoloko gwegongalo Oniimwandi, ogu na iiponga, omusita gwomoniimwandi, Alpo Enkono, okwa tumbula omadhina gaanona yoskola yahamano ya dhipagelwe koshitopitha eti 23.7.1986.

Oyo: Hinanane Fidels
Salavia Kanisius
Filemon Kanisius
Tomas Fidels
Modesta Paulus
Salatiel Raphael

Tate Enkono okwa tumbula wo aakwanegongalo yalwe ya dhipagwa kiitopitha nayalwe ye ehamekwa kuyo poompito dhi ili nodhi ili, oyo ngaashi Gervasius Elvin ngoka a dhipagelwe koshitopitha momumvo 1986, Reinhold Martin, Tomas Kasheeta, a dhipagelwe koshitopitha momumvo 1983, Nicodemus Jason, a tokolwa oshikaha shokolomoho koshitopitha.

Omusita Enkono okwa tumbula nomuthindo kutya oku na aantu yalwe oyendji mboka ya tseyika naamboka inaa tseyika ya kanitha iikaha pamukalo gwokuguma nokudhana iitopitha mokaatseya sha.

Moonkundathana naantu yalwe momukunda Olupumbu, omuntu otu uvu natango oshindji tashi ulike kutya oomwenyo dhawo inadhigamenwa; odhi li moshiponga.

"Tse momukunda muka otu li mo twa mbandapala. Inatu tila ashike iitopitha mbyoka yi ihanena omikunda dhetu, ihe otwa tila wo unene ooholo dhaakwiita ya SA ndhoka dha yaha yakwetu yalwe momukunda muka nodha yonagula po omaliko goyendji.

Ooholo ndhoka te popi ohadhi zi kekuma ndyoka wa tala, mpoka aakwiita ya SA haa kala taa idheula okuumba, konyala kehe esiku," osho gumwe a fatulula ta ulike komukuma omuleleka gwa fa oshikulundundu.

Meme gumwe Wilika Nehale okwa hokolola noku ulika oombululu nkene oshihauto shawo sha yahwa kooholo dha zi tuu kevi hoka haku

Omukwetu ta pukululwa



Ovaleshi vOmukwetu meongalo laKongo, ova pukulula etumbulo la shangwa moshifo eshi No.5/88 ep. 1, eshi kwa tiwa "osho oshikando shotete". kombinga yoonakufudikwa vahapu mombila imwe mOngwediva. Eshi osha dimbulukifa eongalo lomoKongo, oliyo yeongalo lavo 17 oyo ya fila metopo loboma moshihauto, 15.10.1978 nova fudikwa mombila imwe aike momawendo eongalo tuu olo.

"ShokOngwediva hasho shotete," osho ovaleshe vena va holoka mombelewa vOmukwetu nova pukulula etumbulo lohifo. Otw va pandula unene.

Hamushanga vOmukwetu

ningilwa omadhewo kaakwiita ya SA. Meme Wilika okwa ulukile wo aaniifo oonguwo dhe odhindji nodhomusamane gwe nkene nadho dha ningwa oombululu kooholo, ndhoka a ti dha zi kekuma ndyoka a ti okwa hala lya za po mbala, oshoka okwa ti egumbo lyawo ndyoka li li okilometa yimwe okuza pekuma lyokuumbila, oko haku kala aluhe kwa taalela aakwiita noondjembo dhawo uuna taa umbu.

Meme Wilika okwa ti shika osha ningilwe eti 26.1.1988 ethimbo lyongula, sho oonguwo dhaandjawa dha yahwa kooholo dha piti mondunda yOshiwambo e tadhi yaha oonguwo meni lyondunda.

Kepulo ngele meme Wilika nomusamane gwe oye na edhiladhilo ya tembuke po pOlupumbu, okwa ti: "Ekuma ndyoka oyo nali ze po, oshoka tse otwa longo nuudhigu okwoopaleka epya lyetu opo li tu pe iipalutha ya gwana, onkene oshidhigu kutse okutembuka po mpaka."

Amushanga mombelewa yoshilongo shUukwambi pEmbandu, omusamane Herman Ipumbu, sho a pulwa kaaniifo kutya omalenga oga ninga po shike okwa ti: "Elelo lyUukwambi olya kala nokukondjitha opo ekuma ndyoka li kumunwe po. Otwa nyola nokuli oombilive mbali yimwe omomumvo 1984 nayimwe 1987 tadhi pula ekuma ndyoka li kuthwepo mpoka, oshoka oli li unene pokati kaantu noinapu opalela okuningila omadhewo kaakwiita."

Okwa gwedha ko kutya sigo oompaka inaa mona eyamukulo, lya zi kaakuluntu yaakwiita mboka haa umbile mpoka nenge kombelewa yEpangelo lyOwambo.

Omusamane Ipumbu mokugandja iiholelwa yaantu yamwe mboka ya yahwa kooholo dha zi pekuma lyomadhewo, okwa tumbula aakadhona yaali Selma Haimbodi naKarolina Nangolo. Mbaka 2 oyomomagumbo ga yooloka noya yahwa momasiku ga yooloka.

"Ngashingeyi oondjembo ndhoka shaa tuu dha tameke okuumba, ohatu kala twa mbeta nokutula oomwenyo dhetu momake gaKalunga," osho aantu yomomagumbo moka mwa yahwa aakadhona mbeyaka ya hokolola.

Omusamane Ipumbu naye okwe shi koleke nokugandja iiholelwa kutya ooholo ndhoka hadhi zi pekuma lyomadhewo gaakwiita otadhi tilitha aantu mboka yomomagumbo ngoka ge li kuumbugantu hoka haku kala kwa taalela oondjembo uuna aakwiita taa umbu.

"Ohatu pulakene omanyenyeto ogendji taga zi maakwashigwana yomomukunda muka mboka ye na aantu yawo ya yahwa kooholo ndhika nenge iimuna yawo ya yahwa pamukalo nguka."

Lwahuginina omusamane Ipumbu okwa holola okwaa na oonkondo kwe opo ando a kuthithe po ekuma mpoka hapu umbilwa kaakwiita ya SA, oshoka ngaashi ye mwene a ti, omukunda Olupumbu kagu li moshikandjo she, ihe ogu li moshitopolwa shelenga Abner Nuule ngoka inaa monika kaaniifo opo a gandje omadhiladhilo ge moshinima shika tashi vulu okulemaneka aantu oyendji nenge nokuli okufaalela oomwenyo dhaantu.

Eefikola da fiwa po konona omolweekamba dovakwaita nelondo lofuto yofikola

Eeseke mbali mOwambo, Outapi nOngha, oda fiile po ominghandjo dado 14.4.1988 mokunyematela oupopepi w e e k a - mba dovakwaita nominghandjo davo. Ofikola yOngha oyo i na ounona ve dule 600, oya lekela nokutya otai fiye po oipundi okuyambidida ashike vamwaina Pohnofi, ofikola onhinhatu oyo ya fiile po omunghandjo wayo pexulilo loshikako shotete.

Oseko yaUtapi younona 926, oya lekela ovalongi, kutya nava ifanwe ashike, ngeenge okamba ya tembuka. Ofikola ei oi li mOmbalantu. Paife ounona 2,000 noixupe ove li omutumba momaumbo ooxe nooina.

M'Oushimba nOkaoko eefikola heyali lwaapnado oda pata oshikako eshi oshitivali omolwengongoto lovadali kofuto yofikola ya londa pombada. Ova ti shixwepo ouona va kale inava longwa, osheshi otava pulwa oimaliwa ihapu, loo ehongo kave li lwete nawa.

Eefikola odo Rietfontein, younona 390; C.Heuva younona 489; Good Hope mEpukiro; younona 872 odo di li moshinima. Eefikola dikwao yo mOkakarara; Okamapati; Omatjete; Otjinene nOkaoko nado otadi longele kumwe nadikwao.

Uunona niita

Dha za kep. 5

nomonkalo kehe, omunona oye na kale oshinima shotango okupewa egameno: ihashi ningwa. (The Hagm Convention of 1899).

Nokuli moomvula ndhika dha zi ko, osha vuka okwaadha uunona womimvo 14 u li miita. Olwindji ohashi zi mpoka ngele uunona mboka owa kanitha aakuluntu yawo, nenge oosikola dhawo niipangelo yawo ya hanagulwa po kiita.

Meputuko alihe omunona ngoka kee shi we sha shilwe, shila iita ayike, elongitho lyoonkondo nedhipago lyomulape.

Konima yiita yotango yuuyuni, ehanganu lyomushigakano omutiligane, omumvo 1919 olya ningile onkambadhala yokuvuta omautho guuthemba womunona. Omumvo 1924, natango Ongonga yiigwana (League of Nations) oya tula po oshipango omunona kehe a ningilwe egameno lyowina, pwaa na okutalwa uukwamuhoko we nenge oludhi lwe.

Oshipango shoka osha humithwa komeho kligwanahangno 1959, sho ya tula wo momaautho gayo kutya omunona nayina, oye na okuningilwa esiloshimpwiyu lyowina metonatelwo nomekwatho (Art.25:2/1948).

Ishewe omumvo 1974, iigwanahanganu oya kolekulula oshipango shayo noya pangula iponokela hayi ningilwa aakwashigwana, nelongitho lyooboma. Ehangano olya indike wo aanona naakulukadhi yaa tulwe moondholongo,

yaa dhengwe, nenge okuningilwa omukalo kehe gwelongitho lyoonkondo kaantu mbaka.

Moshitokolitho 16, shoveta yuuthemba womuntu yopaigwana mokapragrafu okatitatu, otamu leshwa ngeyi: "Aanegumbo omutungilo gwopanshitwe nogwo gwa tungu po uukumwe wopashigwana, onkene oye na okugamenenwa koshigwana nokepangelo."

Oshitokolitho 77 moveta yuuthemba waanona opragrafu ontintatu, omwa tiwa: Omunona e li koho yoomvula 15 ngele a kwatwa miita, oku na okuningilwa egameno lyowina. Omwa tiwa wo omunona e li koho yoomvula 18, ita vulu okutokolelwa egeelo lyeso.

Ooveta ndhika odhi na oonkondo nodha simana, ashike oku dhi tula miilonga otaku keelelwa kokwaalongelakumwe kwomapangelo ngoka ge li miita. Uunona miilongo oyindji kau na ompito yokuhupa muupyakadhi wiita, mbyoka wo tayi kanitha uundjolowele wawo, oosikola nonakuyiwa yoshilongo ashihe.

Oshigongi shaavali mosikola Ondjamba Comb. 13.3.1988

Omautho gamwe goskola yetu kaalongi naalongwa:-

Motto: Omayel. 1:7-9

Iilonga yoskola oyo tango.

1. Ethimbo.
2. Onawa ngele omulongi nomulongwa kehe ta kala powandaha yongula.
3. Omulongwa kehe, mostanda kehe ta thiki moperiode ontiyali na shunithwe kegumbo. Tondoka mondjila.
4. Hamulongwa puundingosho pethimbo lyootundi.
5. Okatenda ngele ka dhenge ino ka etha ka pole.



Ovanafikola vaUtapi va tumba eendjato davo tava i komaumbo fimbo va teelela okamba yovakwaita i dje po.

Osheendo oshitiyali shekonakono lyookamba dha SWAPO sha galuka

Omahepeko haga popiwa kokakomitiye kaavali mOvenduka taga ningilwa Aanamibia kaawiliki yehanganu lya SWAPO muumbugantu waAfrika, oga konakonwa ngashinegyi iikando iyali kombelewa yOngongahanganu yaAakwaluther muuyuni (LWF).

Ehangano lyAakwaluther ayehe muuyuni olya unene li na oshikaha oshile okugandja omakwatho goompumbwe dhesiku kehe kAanamibia yomayovi mboka ya kanitha ashihe shopalutu nopambepo omolwonkalo yopapolotika muNamibia.

Osheendo shotango shekonakono lyomahepeko taga popiwa kaavali yamwe muNamibia, osha li ko pehulilo lyomumvogu (1987), noshitiyali osha hulithile ekonakono lyasho 29.3.1988 muAngola naZambia.

Pauelele mboka wa thiki mombelewa yOmu kwetu, osheendo shahugunina osha li mewiliko lyomusita dr. Ismael Noko ngoka e li omuwiliki gwoshikondo shelongelokumwe lyOongeleki mOngongahanganu yaAakwaluther. Amushangandjai gwehangano ndyoka dr Gunnar Staalsett, naye otaku tiwa omo a li mosheendo.

Omweelo gwetalelopo lyookamba dhaafadhukipo yoshigwana shika ogwa li gwe egululwa komupresidente gwa SWAPO, omusamane Sam Nuujoma pethimbo lyetalelopo lye muGeneva 1987.

Aatalelipo oya li ye shi tumbula nepandulo, nonesimaneko kushono ya mono SWAPO te shi ningile Aanamibia pondje yoshilongo.

Tala kep. 10

Eso lya zi muuleke nenge oshiponga kapwa li ngoka e shi shi

Okanona Sarlotte Beatus (6) oka mana oondjenda 7.4.1988 lwopetata lyohamano (17H30) manga ko nuunona uukwawo tau ihakana uuleke mboka wu umbilwa kaa-kwiita ya SA.

Oshiponga osha ningilwa pomukunda Iikuku mOmeege, mUukwambi konyala ookilometa 18 kuumbugantu wOshakati.

Pahokololo lyayina yanakusa, meme Tabita Beatus, Sarlotte nayakwawo yalwe ye vule 10, oya li taa dhana uudhano wawo wedhina "Fufila", pondje yolugumbo lwepeya. Opo nakuvala okwa mono omaloli gaakwiita (omabofola) tage ya noga thikama momuti gumwe omunene meni lyondhalate yepya.

Okwa gwedha ko a ti ishewe kutya konima yokathimbo okulwete aakwiita, unene Aatiligane taa londoloka momahauto gawo nayamwe oyu umbile uunona uuleke. Pethimbo ndyoka uuleke tau umbwa uunona owa li wa mwena okudhana sho wa mona omahauto gaakwiita.

Omunona gumwe gwaamboka ya li muudhano, okwa hokolola ta ti manga ye li meihakano kuuleke, oya haluka ashike Sarlotte a lala pevi nokusa ashike pokathimbo hoka.

Onzonkundana onkwawo momukunda mono, oya hokolola kutya, aakwiita nkene tuu ya mono aantu ya ngundumanene nakusa yamwe oye ya e taa pula yina yanakusa ngele okwa li okaleke. Efolo Beatus okwa yamukula kutya ina tseysha, oshoka naye okwa li kokule, onkene ina mona shona sha ningwa po.

Ehokololo olya tsikile tali ti, aakwiita oya kala taa ningi ekwatho lyotango, okulongitha omeya, ihe inashi kwatha sha. Aakwiita oya kutha po omudhimba e taa yi nagwo.



Omuleli gwoshilongo shaMbalantu, Oswil Mukulu

Nayina yanakusa okwa londo pamwe nayo sigo opondjugo yomidhimba yoshipangelo mOshakati. Oshipangelo shaShakati osha tindi okutamba omudhimba, onkene aakwiita ye gu fala kokila yaapolosi mOshakati hoka gwa taambwa.

Efolo Beatus ngoka kwa li u uvanekelwa kaa-kwiita kutya aakwanezimo lyanakusa Sarlotte otaa ki ilwa opo ya falwe kokila yaapolosi ya ka tale okanona kawo 8.4.1988, ehokololo lya ti, aakwiita opo yi ihulwa mpoka inaa monika we. Onomola ya li tayi leshwa komaloli gawo gaali oya li "22."

Omakakunya 18 ga sila muAngola

Onkundana ya gandjwa kepangelo lyaAngola, otayi ti omalugodhi ngoka ga ningwa pokati kaakwiita yepangelo ndyoka naakwiita ya SA 18-23.3.1988 puCuito Cuanavale, omwa sile omakakunya omaliudhe 18.

Ootenga (Tank) dhiita ne dhaSouth Africa nadho otaku tiwa odha hanagulwa po molugodhi ndoka manga yimwe ya kwatwa po. Pethimbo oyo tuu ndyoka omalugodhi taga ningwa onzo yepangelo ndyoka otayi ti oondhila dhiita dha SA odha kala tadhi hindi oshitopolwa shomombepo shaAngola dhe shi ningi likando ayihe ihamano.

Oshitopolwa sha kala tashi hindwa ngeyi oshoprofensi yaKunene mOmongwa, Naulila Otchindjau nomoMulondo.

Ekwatho lyaasindjala tali kundathanwa

Dha za kep. 7

ndjo yago nomomikunda, okutseya oolye noolye kaaye na we ekwatho lilwe kombinga yiipalutha, monkalo ndjika yondjala.

"Ekonakono ndika opo tali tulwa miilonga, inatu tseysha manga otatu ka mona omwaaalu gu thike peni, osho wo inatu ninga manga etokolo kutya otatu ka tsikila ngiini noshinima shoka komeho. Shoka ashike twa dhimbulula, otwa pumbwa okutseya aantu yetu mboka taa tegelele ekwatho kutse manga kuyele," osho omusamane Mukulu a popya pOmukwetu.

Omathaneko omakwawo ogendji, omuleli Mukulu, okwa ti oye ga ningile wo momutumba ngoka, ihe nago otaga pumbwa okutalululwa manga, manga inaaga gandjwa puuyelee.

Oshitopolwa shOmbalantu osha monene omvula ombwanawa muJanuali nuumvo, shi vule iitopolwa oyindji yomOwambo. Omapya ogendji moshitopolwa shoka otaga monika natango ga talala hwepo. Ihe shono inashi imba aaleli yoshilongo shono ya konge ekwatho noya ninge omalongekidho ga pumbiwa.

"Ngele otatu mwena, aantu taa ka mona oshiponga, tse tse ya pewa tu ya sile oshimpwiyu, Kalunga ote tu tile ngiini?" osho u ukitha epulo enene komutoolinkundana, inaa tegelela eya-mukulo.

Sebulon Ekanjo

Aafadhukipo ya-Namibia

Dha za kep. 9

Pahokololo lyomusita Ipinge Kristof Shuuja, ngoka a kalele po Ongeleki ya ELCIN metalelopo ndyoka, oshigwana shomuupongekwa okwe shi konekele miinima tayi landula:

- Otashi longo ilonga yasho neitulomo
- Esiloshimpwiyu oli li pombanda. Oye na iikulya ya gwana nomizalo, oosikola oombwanawa, iipangelo iiwanawa, oofaalama dhomapyo nodhimuma nodhoondhila.
- Oku na aalongwantu oyendji miikandjo yi ili noyi ili.
- Oyi ilongekidha okupulakena omauvitho noma popitho gopambepo.
- Uukumwe woshigwana otaw kondjelwa.
- Omweelo gwokulonga uukriste ogwe eguluka pwaa na ondjindikila.

Aasita ngele aashona yatatu, otaa pumbiwa natango mokati kaafadhukipo okugwedha mboka taa longo mo konyala yane. Iifo yOngeleki niinyolwa iikwawo yopangeleki ehokololo olya ti nayo otayi pumbiwa noonkondo.

Etalelopo lyahugunina olya mona omukumo oku ka koleka oshizemo shekonakono lyotango ndyoka inali gandjwa natango puuyelee. Amushangandjaji dr Staalsett naye oku uvanekela aawiliki ya SWAPO changano lye okugandja natango oompumbwe dhopalutu kaafadhukipo mboka.

Sebulon Ekanjo

Omutumwa gwomepyatumo kUutsathima, tate Lisias Angula okwa mana oondjenda dhe eti 5.3.88 moshipangelo shaShikuku. Tate Lisias okwa langekelewe kepyatumo lya tumbulwa pombada 1985.

Okwa kala ta tonatele omuhandjo gwaanona mboka ya za kokule, ye ya ya kalele osikola pUutsathima nokutonatela oshilonga shopambepo nopomudhingoloko aguhe.

Oya longo pamwe naalongi yosikola yoshigwana naakwathi ye aakuluntugongalo mboka haa tumu iinima iinene kElelogongalo kOnemanya nokEwilikongundu lyetumo lyoshitayingeleki shUuninginino, yi mone etokolo.

Okwa kala a hwama moshilongatumo. Okwa li ha talele po omahala ngoka goromudhingoloko a kayila kokandongili (okasino). Ngashingeyi tate Naftali Shimhanda naayakuli yalwe, oyo taa kwatha mpeyaka manga ya tegelela Ewilikongundu lyetumo lyoshitayingeleki shUuninginino sho ta li ningi; molweso lya tate Lisias, sho chala lye li li owala.

Otatu pandula mboka ya kala taa galikanene epyatumo ndika nenge haa kwatha niikwatha: Tsikileni aaholiike.

Okwa thigi ko omuselekadhi naanona 10.

Epya olya tiligana, ihe aalongi kaye po. Galikaneni mwene gwepya a tume aalongi mepya lye."

Rauha Shimhanda na Filemon Shetunyenga Alugongo

Ondjodi ya wanifwa

Modula 1975 onda koneka mo eendjodi 4 da fimana odo mudo mu na imwe yado nde i wanifilwa. Onda li yo nda mona outa wodula meendjodi odo nhe. Outa wodula oo owa li ashike u li koixwa hano u he li keulu.

Onda mona ovalumenhu vavali ve uya puame va dilila nge kolumosho, ndele tava ame nge kolulyo. Voo vene ove fike pamwe mofika, molutu, oikutu oye lifa nomouyelele yo. Opo nee onda uda ondaka tai ti:

“Ovalumenhu ovo u wete, ou oye Kalunga Xe naau oKalunga Omona.” Ame onda pula kutya Kalunga Omhepo oku li peni? Ondaka oya ti oku li ngaho muvo omo. Pokafimbo opo ondi wete ndi li moshikungulu, sha dilila nge kolumosho.

Olutu lange ola hovela okweendekela kolumosho oule wefimbo nokolulyo oule wefimbo, ola lyaalalekwa yo efimbo lile nola fidimikwa oule wefimbo. Efimbo alishe ohai ti ashike “Kalunga kange, Kalunga kange, Kalunga kange.

Ame handi tale kovalumenhu venya vavali, ndele vo otava tale nge ashike va mwena. Onda li nda loloka unene. Lwaxuuninwa onda tya: “Kristus ondi mu kwete nomaoko aeshe eshi! Okudja opo oshikungulu osha mwena, naashi nda ka tala ovalumenhu venya nghi va wete vali.

Ewanifo layo

Momafiku 30 Maalitsa 87 onda ya pomaumbo opopepi nafye. Onda pewa oshinwa, ashike mboli oshinwa osho osha li shi na oudiyo. Onda nwa mo enghwiya limwe nokudja opo ondi udite nai. Onda ya koshipangelo handi tulwa komafano. Okwooko kwange kwokolumosho okwa hovela okudjuupala kwa fa ku na emanya taku yahama.

Ombuda yange oya hovela okudinda kombinga yokolulyo yo otai vele. Ihandi dulu vali omutumba nge inandi kwatelela pedu nda lyaalala. Onhulo oya fa i na emanya nge ndi li omutumba ohandi fe nda nyongama opo xwepo kanini.

Ashike moule wefimbo alishe olo oilyo yolutu lange tai li pe omalufu ouvela, ohandi ilikana. Hano handi ilikanene mukwetu ou a pa nge oshinwa molwaashi ndi shi kutya naye yo omukriste ngaashi ame.

Hano okutameka Apilili fiyo Juni ohandi ilikanene mukwetu, ashike ondi li yo mouyahame munene. Onda mona kutya mboli nge to ilikanene omunhu e ku ninga nai (omutondi) oshinima shipu lela.

Okutameka muJuli fiyo Aguste outa wodula oo nda mwene owe uya hano u li ashike momesho ange efimbo alishe, unene efimbo loufiku. Efimbo limwe ou li ongonga efimbo limwe owa kambakana. muSeptemba otaw ende tau dimi. MuKotoba inandi u mona vali.

Eshivifo

Vakwetu amushe ava nda hokololele eendjodi dange odo nhe, imwe yomudo oya wanifwa pamwe nouta wodula oo yo nda mwene nonde u hokololele yo meongalo tete mongudu yeilikano omo twa li twa ongala mo va 8.

“Inatu dimbweni okwillikanena ovanita nafye.” Inandi hala okudimbwa vakwetu ovo va ilikanena nge unene ovaneumbo lange.

Omukweni meitavelo
Namutenya Kornelius

INO DHIMBWA Cassinga:4 MAI

OKUKALAMWENYO KWOMUNHU

*Katu na po onhele apa
Otwe ya po twa pita po
Twa etwa po hatu ilwa
Kalunga ta eta ye ta twala.*

*Otali tungwa loo tali xwaxununwa
Tali tuka po loo tali wile
Hatu kufwa, fyee hatu pewa
Kalunga ta kunhu ye ta teya.*

*Otau mene woo tau kewa po
Tau dudwa po woo tau twikwa po
Otau hape woo tau yaumuka
Tau imi woo tau kuka
Kalunga ta tenge ita kwatelwa.*

*Ota peya poo tapa di
Tapa dalwa poo tapa fiwa
Otapa kufwa poo tapa tulwa
Tapa ilwa poo tapa etwa
Kalunga ta yandje ta pandula.*

*Hatu hapupala fyee hatu ninipala
Hatu holoka fyee hatu oholoka
Ohatu ongala fyee hatu lihane
Hatu lishiwa fyee hatu lidimbwa
Kalunga ta denge ta fudile.*

*Ohatu tane fyee hatu puka po
Hatu dipo fyee hatu ya po
Ohatu wedwa fyee hatu holwa
Hatu fewa fyee hatu sheshwa
Kalunga ta dike ye ta dula.*

*Ohatu kandwa fyee hatu lekelwa
Twaenda fye tvaumbo
Otwa fika fyee inatu fika
Twa tula fye tva manga
Kalunga iha yandje ina sheya.*

*Ohatu yolo fyee hatu lili.
Tu na oluhodi fyee tu na ehafo
Otu na oupu fyee tu na oudjuu
Tu na enyeme fyee tu na enyakuko
Kalunga ta ile ye ta eta.*

*Ohatu piti fyee hatu ka nangala
Hatu longo fyee hatu dimbuka
Otali tu shile loo tali tu tokele
Tali tu yukifa kexulilo
Kalunga oye mwene ta tokola.*

Laimi Nd.Hakaala
Onangama

NDHINDHILIKA:

Aanyoli aasimanekwa, ngele oto tumu oshinyolwa we shi tola mpoka we shi tola, onawa u ulike wo nomunyoli gwasho gwoango. Otwa tsakaneka linyolwa oyindji ya tumwa noya kolekwa kumboka yaa shi ooyene, ngaashi oshite-shika.

Amushanga gwOmukwetu

EOPALEKO:-

Oombapila momudhingoloko gwoskola itadhi popilwa. Omambo naga kwatwe nawa ongomuntu e li na kuume ke kopothingo.

OMIZALO

Omizalo adhihe nadhi kale dha yela dho dha zalekwa komalutu ga yela.

HAMULONGWA TA ZALA:

- a) Oshikayiwa/egala.
- b) Uutenda momakutsi.
- c) Okalyenge/iimona/onyoka mothingo.
- d) Uugondo poompando nenge pomaako.
- e) Efufu lya pandwa.
- f) Hamulungu nenge uunyala wa tiligane-kwa nenge wa paindwa.

IKONDJITHO:-

- 1. Omakuya, omakatana, uutati, oondhimbo, oomwele, iimbele noondjembo nayi kale kegumbo.

OMALUGODHI:-

- 1. Omumati nomukadhona inaa hindathana.
- 2. Omukuluntu nokanona inaa hindathana.
- 3. Aanona moondjila dheni okuya kosikola nenge komagumbo, kongeni omahala gokugalikanena. Otashi mu kwatha mu kale mu na ombepo yuumwayinathana nosho ngeyi omalugodhi gomoondjila ngono ga vuka pethimbo lyetu taga mono chulilo. Aalongi naavali wilikeni moshinima shika.
- 4. Ino kondja poskola mpaka, alikana ino, kondja, ngele owa kondjo onde ku yaalela shili.

IILONGA YOYENE YOSKOLA:-

- 1. Holoka esiku kehe koskola.
- 2. Ino faula pwaa na omaimbo gothaathaa.
- 3. Tseye eyamukulo kehe koshilongwa shohela.
- 4. Ngele nani owa faula inyolela iilongwa yoye yesiku ndyoka to kutha momambo gaya-kweni.
- 5. Tala ko omulongi kehe poskola mpaka omulongi gwoye, onkene mu pula oshilongwa kehe she ku nyenga nonando iha lyata mo mongundu yoye.
- 6. Pula wo omapukululo komulongwa omukweni ngono u lwete u uvite ko e ku vule.
- 7. Ngele nani owa mono egeelopotudho (punishment), nali gwanithwe.
- 8. Ostudi yi na okukalwa kukehe i ile koskola ositanda 2 - 5.
- 9. Kehe omulongwa na simaneke ongulu ndjoka ha longelwa. Hakweendagula kudhilwe nokuhinda.

OMANDHINDHIKO GALWE:-

Omumati ngoka a mitike ota kala negeelo lyomvula yimwe. Nongele okwa hala koskola yilwe ngame itandi mu pe ombapila. Konima yomvula ndjono yimwe na galukile koskola a kutha okanona kaantu kondunda pashipango shOmukwaniilwa gwaNdonga, ye a kuthilwa palandulathano lyOngeleki yetu ya ELCIN.

(Osikola ndjika oyi li mewiliko lyomukukuntusikola Akithophel Antindih)

A SILA MOMAUMBA-THANO



Omufuko Rebekka Immanuel Nangolo (25), Okandongwena megongalo Okaku, okwa sile pokati komaumbathano gaakwiita 17.5.1987. Okwa thigi ko sakuluntu ye nuunona utatu.

Okamwayina Sakeus Nangolo (22) oka dhana noshtopitha, ke shi toola pehala mpoka pwa li omaumbathano e tashi ka topele okusa 9.2.1988. Sakeus okwa thigi ko sakuluntu ye naamwayina 6. Eimbilo 50.

Ester Taati Immanuel Okaku

ESO

Loide N. Linus, Uukwaluudhi okwa hulitha ombaadhilila 1987. Okwa thigi ko sakuluntu ye naamwayina.

Kosenane Iitya Elondo

Junias K. Amukwaya (56) Omatuni, egongalo Onemanya mOngandjera 25.2.1988. Okwa thigi ko omuseleka-dhi noyana 14.

David Amukwaya Onemanya

Jafet Nuuyoma Ipinge (72) Olupumbu, mUukwambi 3.3.1988. Okwa thigi ko omuseleka-dhi noyana 5, aatekulu 6.

Natali Jafet Oshuungu

Marta Tautunyenge Neshuku (42), momukunda Oneputa, egongalo Onilpa 18.12.1987. Okwa thigi ko omusamane gwe noyana 5.

Helvi N. Mbango Oseko yaNehale

Julia Filemon (20) momukunda Oikango popepi nOngwediva. Okwa thigi ko samwayina naakuluntu ye. Eimbilo 192.

Teopolina Hashipala Oseko yaShakati

Jafet Shikongo (17) omukunda Othika mUukwambi, 1987.

Rauna Ipinge Oseko yaNuuyoma

Mukwaudimbe waNgulu (110) Epubu, Omungwelume, 27.2.1988. Okwa fiya ko ovana 2, ovatekulu 11 novatekulululwa 21.

F.Haikuti Bethanie

ONDJOKONONA YA-NAKUSA MATILDA SHAPAKA

Nakusa meme Matilda Netumbo okwa valwa 9.4.1938 e ta shashwa 1940 nokwa kolekwa 1956. Okwa putukile mOneumba pamwe naakuluntu ye kuku Lusino lindongo nakuku Selma Shilongo. Meputudho iye okwa tameke oskola yeputudho, sho a mana oskola ye, okwa hogololwa ku kuku Nahum Iihuhwa, a ye koskola kEngela, hoka a mono ko onzapo ye.

Sho a galuka kEngela okwa li a pewa a longe oskola yoshikunino pOnathing North. Kalunga okwa li e mu pe omukwathi gwe tate Paulus Amoomo ngoka a hokans naye mongeleka yaShigambo 12.12.1960.

Meme Netumbo okwa kala mondjokana ye nokutsikila oshilongayakulo she. Momumvo 1982 okwa hogololwa a ninge omukuluntugongalo mOshitutuma. Oomvula dhe sho dha pu ko natango okwa li a pewa ompito okushuna mo moka a kala sigo Omuwa e mu zimbula mo muuyuni muka.

Omasiku 20.8.1987 okwa tsambeilwa moombete mOnandjokwe. Natango mo 20.10.87 okwa shuna mo moka a kala sigo a mono etando 21.10.87. Okwa lalekwa 30.10.87 a ka kale kegumbo.

Momasiku 4.12.87 okwa lala ondjodhi a pewa cimbito 396 nokwe li imbilwa komumwayina Paulus Shapaka sho e mu talelepo. Inapu pita omasiku ogendji, Omuwa okwa li a ningi elongekidho opo a zimbule mo omuntu gwe muuyuni mbuka woothina, okwa manga oondjenda dhe 7.1.1988. Okwa thigiko omusamane gwe noyana 9 mepipi lyomimvo 50.

Omwana kashona Selma Ndinelago Amoomo

ILA U ILANDELE

Ohatu landitha uukasete wi ili nowi ili womaimbilo gaakuluntu nogaanona. Ohatu thaneke wo uuthano wopaspoorta, noto u mono pethimbo ndyoka. Auhe 4 ohau kotha R7,00.

Endelela ano u ilandele mbika mombelewa ya AUDIO & VISUAL mOniipa

ESIKU LYA MAI

ESIKU LYA MAI



Ya dhigininwa natango

1985 Amutenya Ashipala, Okatana
3.4.1987 Martina Mulondo, Katima Mulilo
3.7.1987 Abner Shikesho, Okamule
7.10.1987 Jason Angula, Windhoek
26.9.1987 Edward H. Haipito, Okatana
14.1.1988 Ananias Uutoni, Othika
17.12.1987 Josef Dumeni, Engela
20.1.1988 Lukas Nghipandulwa, Ponghofi Sec. School
19.1.1988 Daniel Ismael Namwandi, Odibo
19.1.1988 Julius Kapuka Okatale, Odibo
20.1.1988 Delfina Abraham Okatale, Odibo
19.1.1988 Shipandeni Mupolo, Onyaanya
1988 Shipanga Shivute Ampole, Uukwaluudhi
19.1.1988 Johannes Nekongo,
20.1.1988 Immanuel Shivolo, Okando
20.1.1988 Salom Uusiku, Okando
21.1.1988 Ndipala Nghiyahamba (60) Odibo

26.12.1987 Silas (Kamule) Kandenge, Okahao
14.1.1988 Gideon Kampulu, Ogongo
20.1.1988 Heikki Shillilifa, Nakayale
19.1.1988 Jason Shikomba, Oshimwaku



O M U K W E T U

Oye oshifo shOngeleki Onkwaevangeli paLuther yomuSWA/NAMIBIA.

Ohashi nyanyangidhwa mOshinyanyangidho shOngeleki mOniipa.

Omukuluntu gwoshifo omumbisofi Kleopas Dumeni.

Amushanga gwoshifo omusita Sebulon Ekandjo.

Ondando yOmukwetu muNamibia naSouth Africa R6,00 komumvo.

Palwe muAfrica R10,00 nokombanda yomafuta R14,00 komumvo. Mondhila R17,00.

Oondando nomambesitelo agehe naga tumwe kOmukwetu, Oniipa, P/Bag 2013, Ondangwa, 9000.

ELOC PRINTING PRESS
PRIVATE BAG 2013, TEL. (06762) 11, TELEX 56-3257 WK
SWA/NAMIBIA