

# OMUKWETU



40c

Nr. 13

ISBN 0-620-06828-0

## AMBULANSA YOSHIPANGELO SHOKEENHANA YA YASHWA KOVAKWAITA

Omushamane Viktor Nghihalwa, ota hokolola ambulansa oyo ha shingi yokahakulilo komEenhana, ya umbwa noya yashawa kovakwaita va SA, fimbo ya li mondjila yayo tai eta ovanaudu kOnandjokwe. Inamu monifwa omunhu oshiponga.

Eshi osha ningwa 30.6.1987, okilometa imwe okufika mOnandjokwe. Oshihauto osho hashi endifa ovanaudu Etivali nEtitano loshivike keshe, fiku olo osha li shi na ovanaudu 20, nasestela umwe ou te va file oshisho nomushingi.

Pahepu lomushingi, fimbo ku na okilometa imwe aike a fike moshihakulilo shaNandjokwe, ongula yEtivali 30.6.87 okwa ti okwa hanga ovakwaita vo Army moshitauwa tava minikile ondjila. Vamwe ova li tava ende kolupadi navamwe ve li moihauto.

Okwa pita pomunghulo, osheshi okwa li a hala okweendelela omolwovanaudu vamwe ve he li nawa. Okwa ti yo kapwa li omadidiliko, kutya ova hala okufikameka oshihauto. Ohaluka fimbo ta shingi, oshihauto oku udite tashi funga nokwa dimbulukwa kutya ope na oshiponga sha sha.

Eshi a kanghama, okwa mona kuta etayela loshihauto oli na eembululu deeholo. Omushamane Nghihalwa okwa ti yo eshi a



Omushamane Nghihalwa okwa longa oilonga yeendifo lovanaudu eedula nhano. Mefano eli, ota ulukile Omukwetu etayela olo la yashwa.

Tala kep. 10

## OLUSHINDO KONGELEKI

**ONIIPA-OWAMBO:** Elelongeleki la ELCIN, momutumba walo ohani ya ya, ola kundana noluhodi omunyonena oo wa ningilwa vali natango omaliko ongeleki. Oshinagoga yokOhamuti, meongalo Omutundungu, oya xwikwa po 11.4.1987, osho yo eengulu detumo moKongo, 26.4.1987.

Ombelewa yomatungo mu ELCIN, oya pewa oshisho i konakone omakanifo komatungo omoKongo kutya okufike peni. Omutumba wElelongeleki owa li ko 22-24.6.1987, mOniipa.

## Oraata yOongeleki muuyuni (WCC) ya pangula SA muNamibia

Okomitiye onene ya WCC, pethimbo lyomutumba gwayo nuumvo petameko, oya koleke ekondjo lyoongeleki muNamibia, kohl yondunda yadho CCN, noya pangula nyanya elongitho lyoonkondo tali ningwa ketanga lyegameno, nelangeko lyepangelo lyopokati, shoka okomitiye ye shi luku, omukalo gwokutokelitha emanguluko lyaNamibia.

Okomitiye oya kolekulula natango oshitokolitho 435, shligwanahangano, shi kale natango omukanka gwokumangululitha Namibia. VVO okwa hiywa kokomitiye ndjoka, e ekelehi natango ekogeko lyAacuba muAngola kemanguluko lyaNamibia.

Okomitiye oya yambidhidha eindilo lyOoraata dhoongeleki muNamibia (CCN) nomu SA (SACC) ope ku tullwe SA ondjindikila ya kwata milti, sigo SA a mangulula Namibia, ngashi te shi pulwa kuuyuni.

JULI 15, 1987

## ONGELEKA YOKANKALO YA YAPU- LILWA OILONGA

Ongeleki ei ya tungwa mefimbo lidjuu noloita mOkankolo oya li ya yapulilwa oilonga yayo eti 21.6.1987 komuponhele womubishofi Matti Amadhila, fimbo omubishofi e li metalelopo kombada yomafuta.

Okankolo oke li moushilo wOndonga, eekilometa 60 okudja pombelewa yongeleki pOniipa, noka dalwa keongalo Onayena. Eongalo la totwa po 1952 noli na ovakwaneongalo 5475 paife. Ovanhu ve fike 1200 ova li va ongala moshivilo sheyapulo longeleki ipe younene u fike peemeta 9 neemeta 22,5 moule.

"Lidilululeni" osho omuponhele womubishofi a tumbula, manga omushamane Filippus Amwele, omumbeshiteli woitungifo, nomulongekidi womambako oo a li taa longifwa efiku tuu olo, ta tu oshipatululo momuvelo wongeleka i yeuluke. Eshi omivelo da yeululuwa, omuponhele womubishofi okwa ya meni novakwafi vaye nongeleka oya yada mepakumo leisho.

"Ongulu ei otai kala apa ya fikama, opo i ninge ondombwedi yeni, kutya efimbo ola fika, u ninge omukulilwa waJesus," osho omuyapuli a ti.

Konima yoitya ei omuyapuli okwa ya koshii-likaneno pamwe novayakuli vaye ngaashi omufita Absalom Hasheela, omunyoleli

wongeleki; omufita Petrus Shipena omutonatelishitai shOndonga; omufita Titus Ngula, Oshitayi; omufita Matias Nghipandulwa hamushanga woueliumbo; omufita Matias Nepela, Okankolo nomufita Nikanor Shuukwanyama, Epembe.

Konima yeyapulo okwa twikilwa neudifo komufita Titus Ngula. "Kristus oye e li ongulu ei, omuhongi washili, ta hongo omunhu onghalo oyo ye e na okukala mo," osho Titus Ngula a ti meudifo laye. Okwa twikila ko ta ti: Ovankolo ovo ooLasarus, eshi va ongela ousenda vavo vanini, opo va tungile. Omwene ongulu ipe.

Patekisti yefiku Luk. 16:19-31 omufita Ngula okwa yekekanifa Ovaafrika naLasarus, nomuyamba ongaashi oilongo itano yokouningininino oyo i he nakonasha nOvalaule. Ova-yamba inava dula okutula ko nande epeni limwe, ndele oshiwana tuu shomOkankolo osha ninga ngaha.

Okwa twikila ko vali nehupu lomukulu wonale; Iita Nuumbala, ou a tile: Ngeenge keulu okuwa, ota ka kalelela, nge kaku na ouwa washa, ota aluka ko. "Nuumbala ina aluka fiyo

onena, onghe keulu oku na ouwa uhapu," osho Kasi-ndani a kumike ovaitaveli. Okwa kunghilila yo ongalo li ha tule ouyamba komesho, shaashi osho oshiponga shinene.

"Ngeenge oshilongo sheulu onashi ka kondjelwe naanaa ngaashi ovanhu tava hakana oipundi mongeleka, ngeno Ovanamibia ohatu ka xupifwa," osho omufita Titus Ngula a xulifa eudifo laye noitya ei.

Ongeleki ipe mOkankolo oya tamekwa okutungwa 6.6.1985, komushamane Eino Vilho. Nonande etungo la kala li na omaupyakadi mahapu inae va kwata moshipala.

Pahepu la yandjwa komufitaongalo Matias Nepela, efiku limwe manga oipeleki yavo ya longelwa onduba pedu, oya li ya shekunwa noboma momaumbafano ovakwaita. Ongeleki ei oi li ashike oshikako shixupi okudja pokamba yetanga leameno. Etungo alishe kumwe ola pula R36 806,12.

Okankolo oka tunga yo okandjuwo koku-liyakulila, koshinanena nonando inava tumbula kondadalunde, kutya oka pula shi fike peni. Ehepu ola ti oka tungwa okudja medu fiyo okombada. Okandjuwo aka oka topolwa moitolwa ivali, shimwe oshokulongifwa kovalumenhu noshikwao okovakainhu.

Omufita Nepela, okwa indila ediminepo kovakwaneongalo laye, shaashi pefimbo longeleki tai tungwa, okwa longifa omikalo dihapu, dimwe odo e likwata, kutya pamwe kada li dopaxungomwenyo nokuli. Eongalo ola dimina eindilo lomufita nekomono lokomitwe.

Ovakwaneongalo ova li tava kuwilile opo va holole olupandu lavo kuKalunga eshi e va

## OMUMBISOFI DUMENI KUEUROPA

Tala kep. 9

Omumbisofi Kleopas Dumeni mokugaluka koshigongi shAalwaluther ayehe muAfrika, shono sha gongalele muMadagaskar (Malagasy Republic), pehulilo lyaJuni, okwa tsikile ishewe olweendo lwe kuEuropa a ka kale moshituthi she-gwanitho lyoomvula 40, Ongongahangano yAakwaluther (LWF,) sho ya dhikwa.

Oshituthi sha LWF, osha ningilwa muLund, Swedeni, moka mwa li mwa ningwa oshigongi shotangotango shehangano ndyoka 1947.

Okuza 6-15.7.1987, omumbisofi ota ka kala ishewe moshigongi shongundumpitithi yOngongahangano yAakwaluther, shoka tashi ka kala muViborg, shaDenemark.

Shimwe shomiikundathanwa yongundu ndjoka, otashi ka kala ehala lyuupresidende wehangano ndyoka, ndyoka li li owala ngashingeyi omolweso lyomupresidende, omumbisofi Zoltan Kaldy, muMai numvo.

Manga inaa galukila kegumbo, omumbisofi ota ka pitila kEhangano tumo lyaSoomi, omolwiinima yi na sha nelongelokumwe pokati kOngeleki ndhoka mbali. Okwa kundile po iilyo yOngeleki ye.

Sebulon Ekandjo



Omumbisofi K. Dumeni

Endhindhiliko lyoshigongi shahugunina shaayehe sha LWF



### Edhimbulukitho

Oonakutseyitha omaso moshifo, yaluleni nuuyuki oonakuthigwa po. Ngele wa gandja omwaalu gwoyana, konakona tango ngele moyana mboka omu na shili mboka ya vala opo u gandje nawa omwaalu guutekulu wanakusa. Shoka osho wo tashi ningwa nokombinga yaatekulululwa. Ngele aatekulu yanakusa ayehe kamu na ngoka e na omunona, ino ka kongolola we haana yamumwayina gwanakusa. Shoka Kalunga inee shi ku pa, ine shi ku pa.

Amushanga gwOmukwetu

### Oondohotola oyendji yopaunamiti

Oshilongo shi na oondohotola oyendji yopaunamiti osho Rusia, moka mu na oondohotola 831,300 nenge ndohotola gumwe e na ashike aantu 307.

Oshilongo shi na oondohotola aashona, osho Burkina Faso, shi na oondohotola 58 (omundohotola gumwe oku na aavu 92,759 payalulo lyomumvo 1970.

# TAAMBATHANENI ANO NGAASHIKA NA-KRISTUS E MU TAAMBA, OKUSI-MANEKITHA KALUNGA

- (a) **Kristus oye a tameka lwotango okutaamba egongalo lye, li li muunyuni.**
- (b) **Aantu mboka ya taambwa kuKristus, oye na wo okutaamba Kristus.**
- (c) **Aataambwa mbano, oyo wo aataambathani, taambathaneni ano.**

Mokanomola (a) otatu ulukilwa etaambo ndyoka lya ningwa kuKristus, sho Jesus a ti "Ashihe shoka Tate te shi pe ndje, otashi ya kungame naangoka te ya ku ngame, itandi mu ekelehi." Otandi mu taamba Joh.6:37

Etokolo enene lyaKalunga, olya ningwa megulu esiku Jesus a pewa epangelo alihe megulu nokombanda yeve. Olyo esiku Jesus a ninga lwotango etaambo lyaalunde. Taambathaneni ano, ngaashi one wo mwa taambwa kuJesus. Otu li megongalo lya taambwa. Oli li miikaha yomutaambi gwalyo, Omuna gwaKalunga, Jesus Kristus omuyuuki.

Aantu ayehe yomapipi agehe, yomathimbo agehe, yiigwana ayihe, yomalaka agehe ye li mongeleki, oya taambwa kuJesus pwaa na kayo. Paulus ta ti: Ino pangula omuntu gwaantu, oshoka Kalunga okwe mu taamba Rom.14:3. Ano otwa taambwa kuJesus.

Jesus okwa lombwele aatumwa yaJohannes ta ti: Ka lombweleni Johannes ndhoka tamu dhi uvu naamyoka tamu yi mono. Aaposi otaa tonata, iilema otayi ende, aanuulepela otaa yeve, ombolo otaa uvu ko, aasi otaa yumudhwa, nohepele otaa uvithilwa evaangeli. Mat.11:4-5.

Ongame nde ya, opo ya kale ye nomwenyo noya kale ye na egwaneneno. Onde ya taamba. Joh.10:10. Taambathaneni ngaashi naKristus e mu taamba. Ihe mokanomola (b) otatu adha aataambwa sho ya taamba Jesus, tangotango meshasho eyapuki. Oshoka omushashwa ngele ta ndhindhilika, omushashi ota ti: Taamba endhindhiliko eyapuki lyomushigakano, moshipala shoye nopontulo yoye. Ano taamba Jesus momahepeko nekulilo lye.

Endhindhiliko ndika, otali negelwa momwenyo gwomushashwa, ota taamba Jesus, meshasho eyapuki. Johannes okwa ti ayehe mboka ye mu taamba, okwe ya pe onkondo ya ninga aana yaKalunga. Joh.1-12.

Aataambwa oye na okutaamba wo Jesus omutaambi gwawo. Taambathaneni ngaashika one-mwa taambwa kuKristus. Jesus okwe shi popi wo sho a lombwele aalongwa ye ta ti: "Ngoka te mu taamba, oye ota taamba ndje, naangoka ta taamba ndje, oye ota taamba ngoka a tumu ndje." Mat.10:40.

Aayenda yokuulalelo uuyapuki, otaa taamba Jesus moshikwiila nomomaviinu notaa lalekwa: "Ngaashi mwa taamba Jesus Kristus moshikwiila nomomaviinu, osho kaleni mokweenda muye." Ano ngaashi mwa taamba Jesus. Jesus ota ti: Tala onda thikama posheelo notandi konkola, tandi indile okutaambwa. Ngele ku na ngoka ta egulula ndje, okuye tandi ya notatu li

uulalelo pamwe naye, noye pamwe nangame. Ehol.3:20

Jesus ta ningi eindilo komuntu, a hala a taambwe. Ano ita ponokele momuntu. Omwiindilwa oye ta ningi etokolo, ote mu taamba nenge ote mu tindi. Taambathaneni ano. Paulus ota kumagidha ooitaali nomatumbulo ngaka; Taambathaneni. Egongalo lyaKristus oli na iilyo inaayi faathana.

Oli na ooitaali aankundi ngaashi kwa nyolwa kwa tiwa: Omwiitaali omunkundi, mu taambeni mwaa tameke okuludhika Rom.14:1. Taambathaneni ano. One aantu naamwayinathana, yakulathaneni omitenge, osho ngeyi otamu gwanitha ompango yaKristus. Gal.6:2.

Ihe oohapu odha ti, taambathaneni pashiholelwa shaKristus. Ano ngaashi one mwa taambwa ku Kristus, ngaashi kwa nyolwa: Oye okwi itsike uunkundi wetu, nuuvu wetu okwe u humbata. Jes.53:4 nota ti: Oshoka manga twa li aankundi, Kristus okwa si peha lyaakanakonashanakalunga pethimbo lyoopala Rom.5:6, a kwathe aankundi mboka ya nyengwa kuunkundi wawo. Ngaashi kwa nyolwa: Esilohenda lyandje olye ku gwana, noonkondo dhandje otadhi gwanene pombanda omuunkundi, Omuwa osho ta ti. 2Kor.12:9. Taambathaneni ano. Sileni ohenda yamwe mboka ya limbililwa, yamwe ya hupitheni noku ya akula monulilo Judas Ovr.22.

Ihe etaambathano otali, ningwa molupe olukwawo wo, ngaashi ando nduka; hokololelathaneni ano omayonagulo geni, ne mu galikanenathane, opo mu aludhwe Jak.5:16. Taambathaneni ano, ningilathaneni eimatulo lyomwenyo, ne igidhilathaneni edhimopo lyoondjo.

Dhiminithanenipo oondjo, ngele mwa ningathana, inamu etha etango li ye mo mu na ondjahi. Ongaashi Kristus e mu dhiminipo, osho nane wo ningeni. Kol.3:13.

Longathaneni, pukululathaneni noondunge adhihe Kol.3:16. Taambathaneni ano, hungathaneni oomwenyo. Kolekeni omaako ga gu noongolo dha loloka. Oshitiningili shaa dhamuke, ihe shi aluke nookuli. Heb.12:12,13. Taambathaneni ano.

Ihe oohapu odha ti, etaambathano nali ningwe pashiholelwa shaKristus, ngaashi Kristus e mu

## Eeshali da pewa Ongeleki kOvalange

S.Gabriel	R20.00
P.A.Ipinge	30.00
N.V.Auala	30.00
H.Leonard	30.00
J.Jason	30.00
R.Soro	10.00
L.Moombola	30.00
S.Aukus	10.00
M.Shongolo	30.00
L.Dumeni	30.00
E.Erasmus	30.00
S.Amupadhi	30.00
H.Clemens	10.00
E.Nantanga	30.00
F.Angula	30.00

Rom.15:1



taamba. Inamu konga ondjila yilwe yetaa-mbathano, otamu li kutha pehala lyalyo, kokutya inamu henuka uudhigu, naampoka wo oto lombwelwa, taambathaneni. Elalakano lyetaambathano itali ningwa ngaashi aantu ya hala, ihe ongaashi sho opalela Omuwa, ongaashi twa taambwa ku Kristus.

Aantu ohaa ningi oongamba metaambathano. Ohaa ti; "Nima kee shi gwandje, omuntu nogwe." Nenge, "nima ihatu tsu tu thithe tse naye, itandi mu adha. Nenge, "oshithi ohashi landula ompadhi." Nenge, "mu pa e ku pe wo." Jesus okwa ti ngele mu hole mboka ye mu hole, omu na okupewa ondjambi yashike? Naateloni ihaye shi ningi wo? Matt 5:46-47.

Taambathaneni ano, ngaashi one mwa taambwa kuKristus, omukeenandjo ta hepekwa, nelalakano a taambe aalunde, e ya pe uuyuki omagano. Ihe oohapu odha ti: Kristus okwe mu taamba okusimanekitha Kalunga, haku isimanekitha mwene.

Jesus okwa ti: Itandi kongo esimano lyandje, olyaanguka a tuma ndje. Metaambathano otamu adhiika esimanekeithokalunga, ngaashi kwa nyolwa: Esimano lyaa ninge lyetu, ihe li ninge lyedhina lyoye. Ps.29:1,2. Holeleni Jesus.

MuGetsemani, Jesus ota galikana ta ti: Tate ngele tashi wapa, oshitenga shika nashi pitililendje po, ihe hangaashi nda hala, aawe, ongashi ngoye wa hala. Otandi taamba oshitenga shika pahalo lyoye Tate. Paulus okwe mu popi sho a ti okwa vulika sigo okusa, eeno sigo okusa kwokomushigakano. Fil.2:8. Taambathaneni okusimanekitha Kalunga, haantu.

Jesus okwa lombwele Aajuda: One otamu vulu ngiini okwiitaala, one mbono hamu kongo esimano lyaantu, ano tamu taambathana esimano, nesimano lyaKalunga awike ihamu li kongo? Joh.5:44. Taambathaneni ndjino otayi lombwelwa aantu ye vule gumwe, kutya inamu ethathana, ngaashi kwa nyolwa:

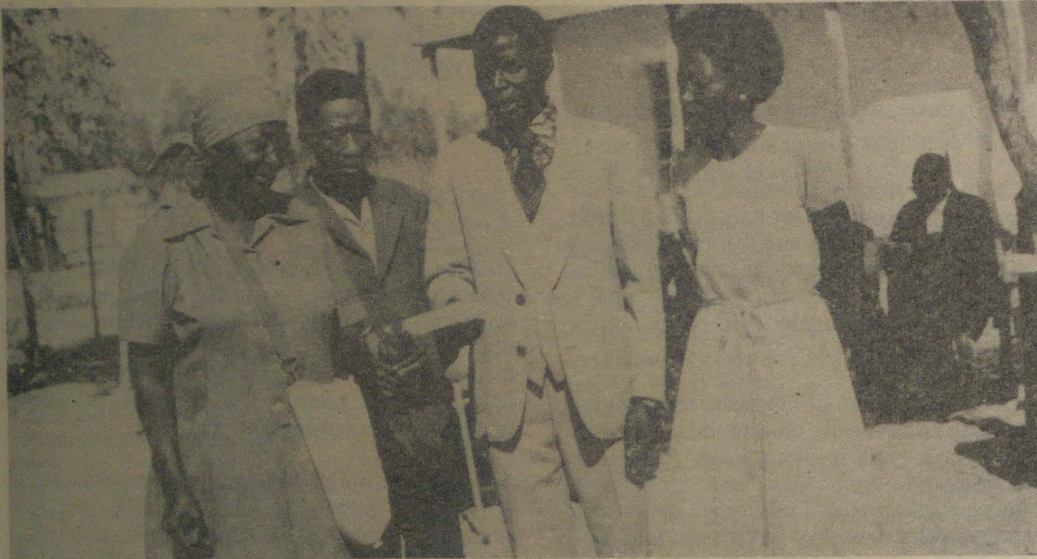
Nyanyukweni naanyanyukwi, lileni naalili. Rom.12:15. Taambathaneni ano. Ngele gumwe okwa adhiika kuudhigu wontumba, rau ninge waayeche. Kalathaneni mwa tsompango yimwe. Rom.12:16. Taambathaneni ano.

Inamu ninga; "Shipolo iha komene kothi, kothi oye na se iilandula;" nenge, "Na kuule nomumvi gwako;" nenge, "ihayi tininine onkwawo ya teka;" nenge, "ondjala opuukweni inaapu tsuwa;" nenge, "ihaka lilwa peke lyamukweni," nenge, "omulilo gwongula opeha lyoye."

Ihe ningeni; "Mukweni mu uvila ta li; Kamukweni ke etith'ohenda; Dhamukweni, dhi lilwa; Ta kugu ota lika;" Tondokelathaneni onkugo, ningeni, "Ngu a vulwa tamu mu kwiinine po."

Filippus Iimene

## OSHIVILO SHETUMO MOSHITAINGELEKI SHONDONGA MONTANANGA



Mboka taa longo oshilongatumo kOmangeti, otaa gandja mpaka ekundo lyawo. Kolumoho okuku Gwiingula.

Oshivilo shomisioni shokomudo okudimbulukwa etumo eshi la fika mOwambo, osha li sha ningilwa mOntonanga eti 28.6.1987, omo omaongalo oshitaingeleki shOndonga a li a kalelwa po kovakalelipo avo, ve fike lwopo 600-700.

Oshivilo osha li sha tameka nelongelokalunga, neudifo ola li la ningwa komufita Johannes Mvula wokOlukonda. Lukas 14:16-24 odo eendjovo da li da ufilwa efiku tuu olo. Patekisti yeudifo laye okwa ti, omutumwa oku na okukala e na oinima itatu ngaashi:

- Okukala e na omukumo okutwala evaengeli kovanhu vaKalunga.
- Okulonga ovanhu opo va diinine aishe ve i lombwelwa.



Moshituthi opwa li pwa dhanwa oshinyandwa aatumwa yotango nkene ya thikile mOndonga.

— Evelulo nomambo, opo va shiive okulesha nokunyola.

Omufita Herman Shongolo, Ontananga naye yo okwa li a mona omhito opo a fikife etumwalaka loshivilo neendjovo da dja 2Mos,3:7-10. Okwa holola nghene oshiwana shaIsraeli sha li tashi hepekwa kuFarao, ndele Kalunga okwa uda onghuwo yasho.

Pefimbo ovatumwa ve uya mOwambo, oikutu neefewa oda li da nyika nayi, shaashi ovanhu inava ikilila omadimba a tya ngaha. Ovanhu otava li pamwe neembwa nombishi, kave shii oukoshoki. Etumo eshi le va hongwa, ova tameka okushiiva olulyo nolumusho.

“Onda li handi kala ndi udite ounhwa, ngeenge handi pwilikine ovatumwa tava tolakelwa pefimbo linya. Ngeno oye nee a li ta tolakelwa pefimbo eli, a fa e li nokuli mokati kovanhu ina shiiva elaka lavo. “Onda hala, okupita moshivelo shoshingoli,” osho omufita Herman Shongolo a mana ekundo laye nokaimbilo nokudimbulukwa efimbo loumatyona waye.

Omufita Titus Ngula nameme Hileni Iingula, ou ta longo oshilongatumo mOmangeti ova li yo va mona omhito okupopifa omisioni ei. Meme Iingula okwa holola odula eshi inai loka neudo, opo tu fikame tu longe oshilongatumo nou-diinini. Okwa tumbula, kutya ovanhu vaKalunga ohava dulu okulya ouvalelo womanghete, tava kunya, opo konima otave a tende va dule okulya omaxuku ao,” osho meme Hileni a tumbula ye ta kupula eenghete limwe mokanya noku li mwakushula nomayoo.

Pefimbo lopaipe mOmangeti ove na Ovakwanghala ve fike 787, onghe ohava longifa ofooya

***Ngele to longitha edhina lye-futamo, hololela omulongeki-dhi gwoshifo edhina lyoye nondjukithi.***

imwe okuhavaleka ovakwanghala oilya. “Ngeenge twa mono omaxuku, otwa mona omboloto ya xuwa ombuta,” osho a tumbula nokuyola. Okwa kunghilila yo ovanhu va longe nou-diinini oshilongatumo mokati kOvakwanghala.

Meme gwlingula okwa xulifa oshipopiwa shaye nokaimbilo koshipalanyolo shomudo wonuudo, melaka loshikwanghala. “Taambathaneni, ngaashi Kristus e mu taamba.”

Meme Else Witting okwa yandja etumwalaka lehanganotumo laSuomi, ponhele yovatumwa aveshe. Okwa tumbula yo kutya efimbo letumo ohali fimanekwa muSuomi omudo keshe, koshi yoshipalanyolo “Tema onyika yoye.” Ota pandula unene meme Rebekka Amupanda, ou a li omulongwa wotete Omuwambo nokwa tema onyika yaye i yelee ovanhu. Meme Rebekka (80) paife oku li mefudo koSuomi nolweendo e li okwe li futilwa kovana yaye.

“Ombepo yaKalunga oye mu tompele opo mu ye koshituthi shetumo. Omuwa kala mwa ngungumana, tashi holola kutya omu li miinima yaTate.” osho Witting a ti: Omutonateli woshitayi shOndonga okwa tumbula olupandu laye. Okwa tumbula yo omapyatomo aa e li metonatelo loshitai shOndonga, ngaashi; Omangeti, Onhinda, Onyuulaye, Onkumbula naAntoni omo mu na omumati omunyasha lela ta longo oshilongatumo meefalama.

Okwa twa ovaitaveli omukumo, opo va longe oshilongatumo ve he na engungutulo. “Kalunga na yambeke eshi mwe uyile,” osho omufita Shipena a xulifa oshipopiwa shaye noshipala shi na ehafo.

**Thomas Nghitukwa**



Meme E.Witting ta gandja ekundo peha lyEhanganotumo lyaSoomi

## ETUMO nomulanduli gwaJesus

Uuna aapagani taa sile muupagani tse inaatu ninga ko sha, otatu ka mona oshiponga. Otatu kwatwa "KUUTONI WETUMO LYOMUWA". Ihe otaa kugu ngiini kungoka inaye mu itaala? Otaa itaale ngiini ngoka inaye mu uva? Otaa uvu ngiini ngele kaku na omuuvithi? Otaku uvithwa ngiini ngele itaku tumwa omuuvithi? (Rom.10:14-15) Etumo olyo omwenyo gwOngeleki.

"Ongeleki otayi kala ongeleki ashike uuna tayi itula metumo lyaKalunga notayi gwanitha elalakano noshinakugwanithwa shayo. Ongeleki itayi vulu nando okwiikutha yo yene metumo". (A Dictionary of Liturgy and worship, by J.G. Davies, p. 273). Opo ku tseyike shili kutya Ongeleki oyi na omwenyo, ongele tayi longo oshilonga shetumo, opo wo ukriste wetu wu dhimbululwe kutya ou n omwenyo, nou shi okwiinekelwa, otatu konekiwa sho ha tu longo oshilonga shetumo.

Ope na oyendji ye na umbanda taa tila okulonga etumo. Omutumwa gumwe Omukii-na sho a li ta longo oshilongatumo mokati kaapagani, okwa hokolola nkene omukulukadhi gumwe i itedhulula. Okwa li wo i inekele embo lye lyOmbimbeli, nokwe yi lesa nuudhiginini. Omutumwa okwa li a tegelele omukulukadhi e ye a pule eshasho, nokwa kala he mu tsu omukumo opo e shi ninge. Omukulukadhi okwa tindi okushashwa, oshoka okwa li e li tila.

Omutumwa sho e mu pula nawa, omukulukadhi okwa ti "Onda tila iinakugwanithwa mbyoka Jesus ta pula ndje, ngame itandi yi vulu. Sho a pulwa kutya oyini, okwa ti: "Oyo mbyoka nde yi lesa mOmbimbeli yandje mevaangeli limwe, "Indeni nuuyuni auhe, ne mu ka uvithile aashitwa ayehe evaangeli, Oh! aawe, oshinima shoka oshidhigu kungame, oshoka onda kulupa nokuli, ite vulu okuya muuyuni auhe". (Tala embo Wie sal gaan, ku J.Du Plessis, ep. 8).

Uunkundi nuumbanda ou li maantu oyendji, sha zi mpoka sho nani kaya uvite ko oshilongatumo nkene hashi longwa. Oyendji otaa ipopile aniwa oya kulupa. Ondu uvite nomukulupe, omuntu ngoka ta vulu okulonga etumo negalikano alike, sigo Omuwa ote ya. Oyendji otaa ipopile niiniwe kaayi po. Ngame ondi uvite oshoopala okulonga etumo, nando tu na uudhigu, nomaunkundi koombinga adhihe.

Oshilonga shetumo tatu shi longo muunyengwi wiiniwe kaayi po, osho onzapo yokuholola nkene aantu aankundi taa vulu oshindji, Kalunga ngele te ya longitha. Otseni aakriste niilyo yOngeleki yetu nando katu na oshindji okuwatha metumo, shoka tu na po, osha gwana Kalunga ngele te shi yambeke.

Okashona hoka u na oka gwana, unene sho tu lyeni oyendji, okuninga shila itatu itula mo atuhe. Okulonga etumo haatuhe tatu yi ketumo palutu, ashike otatu vulu okuya atuhe pambepe.

Oshilongatumo osha tegelela ngoka ta yi palutu, ano ta yi yemwene a ka longe. Ashike yalwe otaye mu landula nomagalikano gaa na ezimbuko. "Yambeka oohapu dhoye tadhi uvithilwako. Noshu wo aamati yoye mboka we ya tula po, Okulitha oonzi

## Sirugana sendi muhakuli, nye age murongi hena, musita nomudiakoni

Vakriste vamwe kwa kara noyihorekwa. Awo kutetukisa moyirugana yawo. Gumwe kwauyungire asi: "Vamwe Karunga kwa va pa mauhwi, nye ogo mauhwi to ga mono nomeho goge. Nye ose vamwe mpili oyininke kapi to yi vhuru." Gumwe gomepongero lyetu ga kara ngoso yige muhakuli gwetu Kleopas Shikongo Naingwendje.

Mukriste ogu Kleopas Naingwendje, silyo sepongero lyaNkurenkuru. MuRutheli nawanawa moikara yendi, ga kora mepuro. Age pasirugana sendi muhakuli. Uhakuli wendi kwa ka u pitire kOnandjokwe ntaantani malima 35 gana piti po. Ngesi ngano mopenziun ana kara.

Muswamane ogu ava tumbura hena asi "Matava" vaUkwangali vamu diva nawa mouhaku wendi. PoNkurenkuru kwa hakura po nomvhura dononzi. Vaveli vanzi ga verura, novakeke ga hampurwisa, ntani vanzi va fira momawoko gendi. Awe sirugana sendi souhakuli kuvhura asi gavere raporta zaso kwaKarunga nokovantu. Mutupumo makongo mwaso. Ame musitapongeror nasimpumba sendi kuna mu harere ngano a pwizumuke ko.

Mukodi ogu apa nina mu kangangera papa. Age mwa ka dikisa kapangerogona koMbambi mekwaso lyetumo. Ngesi ana ka kara ko nomvhura kupitakana ponomurongo mbali. Age hena kumwe mosirugana souhakuli, yige muudisi, murongi, nomusita gononkango daKarunga movakriste wokusika pomaferre gatatu.

Age kuhakura parutu nopamwenyo. Ntaantani nsene o genda koMbambi to gwana ko etungo lyongereka neli lyosipangero. Nayinye ei kwa yi gendesa nonondunge nokononkondo dendi. Mwene novakriste vendi va foroma nodopi. Esanseko lyendi to tetuka. Awe Mbambi ntaantani misiona tupu nye, nye mugara gogu mupampi.

**dhoye, noku dhi pa iipalutha. Kalunga ya koleka" mEhangano 187.** Etumo otali pumbwa oshilonga shi yambekwe kOmuwa, noshu lalekwe nuuyamba.

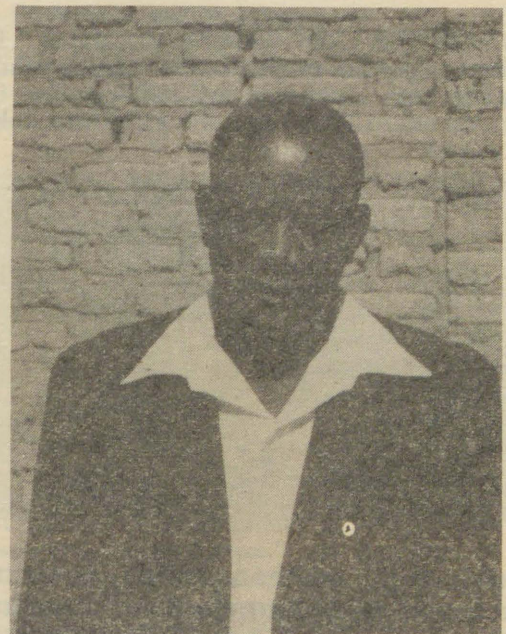
Otatu vulu wo tu longe etumo noku gandja iikwatha yokolutu: oohema, oombulukweya, oongaku, ilya, iikombo, oonani, iipululo, omatemo, uumbasikela, iimaliwa, noshu tuu. Otatu gandja kehe shoka tu uvite otashi vulu okuwatha shili. Olwindji aakriste momagongalo otwa gandja iinyakwi, iyagaya yo yene. Omuntu ngoka ta longo oshilonga shetumo, oye ngoka a kwatwa shili kohoole yaKristus. Mokugandja iinyakwi, otashi holola katu na ohole yaKristus. Ohole yaKristus otayi tu thiminike tu gandje iiholikenima yetu molwa-Jesus.

Oshilonga otashi pumbwa ohole oyindji ndjoka tayi thiminike tu iyambe, notayi tu kutha uundalapata wetu. Koyendji, oshipu okuhepekela eliko lye miinima kaayi na ekwatho kuyalwe, ashike otaa nyengwa okutula nando olyo epenipeni limwe molwoshilonga shetumo. UUNA-KE OSHIGWANA SHANDJE TASHI KONEKE ONDILO YOSHILONGA SHETU-MWEEEE?!

Alpo S. Enkono

Mbambi ngwendi Insu, yizo za kwata epongero lyaNkurenkuru kepitisiro lyendi. Mbambi nazo kuzigadzara zi ka kare epongero komeho. Mukweni ntene ta wiza koNkurenkuru noForda zendi ku zi zwiida vaveli woparutu nopampepo. Vamwe ta twara kosipangero, ava vakwao ta reta kosinyanga, ano wononkango.

Kapi a gendere simwe, nye yivali. Nsene ta tundilire koshipangero to zi mono tazi wiza, kugenda ngwendi tazi dana ndanisa zosungura mokuwoko kandjato nosifo. Mondjato yimaliwa mo yegawopongeror nomauhwi, nononzambo. Mosifo makarata govakriste. Metuwa nonsako dosipe. Ntani momutjima nonkango dovakriste ana simbire mo.



**Muhakuli Kleopas Naingwendje,  
mugara ogu yinzi ya kasa mwendi.  
Mutetukeni.**

Narunye to zi zuvhu tazi uyunga asi: "yita yina kara ko oko, tatu ru yita, vasita omu gende ko." Tazi uyunga tazi rugurura. Vamwe kuuyunga asi "Sikongo mudona", nye wovanzi asi "Ndokotora gwetu ogo ku tu hakura napenye kouvera nokononzo." Elima eli yana mu horuwurura a kare mukuronapongeror gomukunda tupu ogo gwendi. Mukurukadi gwendi Bilha-nkuru, yige mupitili gorudimbo nosikora zoasondaha koMbambi. Awo kwa reta vana yawo vatanonavatatu.

Sinyangapongeror setu tasi harere nonkondo mukurona ogu. A twikire kulisa nonzwi daKarunga, dogoro ngadi ka gwane musita komeho. Wa ha fa unye, wa ha funduka, wa ha roroka kovekeda ngoka gwane nkata ezi ga ku pungwira guho gomeguru.

Musita gwawo.



Ompile yegumbo lyomukulupe Alina Shilongo, moka a zi ashike nohema ndjoka yu uhala kolutu

## Ngele iita, nenge omuyonena gwa mona ompito yokulonga, kape na ngoka e shi shi

OKAMULE UUKWAMBI: Etitano (3.7.1987 7), omukulukadhi Alina Shilongo (80) okwa za ontuku megumbo lye nohema ashike ndjoka ya adhika kolutu, manga omaliko agehe taga lungunine momulilo gwiita. Omwanamati Abner Shikesho (43) pamwe nomukadhi Linea, nayo sho ya galuka kokuuhala, oya adha egumbo alihe omutoko.



Kuku Alina, methano ndika, omutitatu okuza kolumoho, a tulwa pokati kiitenya ye. Kolumoho lela, amushanga gwOmukwetu, taa zi pompile

Onkundana ndjika oya zi momukunda Okamule, mUukwambi, ookilometa 15 muumbugantu wOshakati. Momulilo inamu kanena oomwenyo dhaanegumbo, ihe aatali yoshinima, oya mono omidhamba mbali dha tumbwa mo, dha londe kwa medhagadhaga.

Omukulupe Laina pahokololo lye, ota dhimbulukwa, siku ndyoka shokomatango iihauto, pakutala oyaakwa shigwana iyali, ye ya pegumbo lye. Omwa heluka aalumentu mbono inee ya tsey, noinaa hala okuholola mpoka taa zi na mpoka taa yi.

"Kuku ito tu tsey otwa zi kokule, kala ashike nombili," osho ashike sha li eya mukulo lyawo okugundjilika omukulupe.

Ehokololo olya tsikile lya ti, aalumentu mboka oya shuna pondje yegumbo, Uunona mboka wa adhikile nomukulupe megumbo; Laina (17), Jafet (12) Erastus (10), Saara (4) na Namalwa (2<sup>1/2</sup>) sho wa kambadhala okulandula aalumentu

mboka owa gandwa u shune megumbo.

Konima yokathimbo iihauto sho ya dhuma ya yi, omukulupe okwa haluka owala iitopitha tayi topa megumbo. Mehaluko lye okwa kookolola mo uutekulu we, ya ye ontuku kegumbo lyomwana omukwawo, puushiinda.

Omukulukadhi Teopolina Oskar, oshitenya shakuku Laina, okwa hokolola pOmukwetu, kutya manga ye li megumbo lyawo siku ndyoka, lwopetata lyotundi 4 komatango, oya mono iihauto iyali ya thikama paandjayinakulu, oFoota yiitenda oshunga noka Toyota kombaki, kondjila ontiligane molupati.

Iihauto mbyoka ya pilamene ko ya yi, ko otaku zi ishewe omahauto gomakakunya, e taga thikama kokule kashona negumbo ndyoka. Opwa uvika etopo, nokonima ya yeluthe omeho, oye lwete omukulupe ta ziwa ko naye kuunona ya tota. Oondjembo odhindji odhu umbwa mpoka, egumbo nolya hwama omulilo.

Konima yomasiku gatatu, shika sho sha ningwa, Omukwetu okwa adha aapolisi yi

Tala kepanja tali landula



Egumbo alihe otali monikwa ngeyi li li mevundakano nomomotoko

ipyakidhila natango nokukonga uyelele woshinima momukulupe nomuunona umwe, nomapulapulo. Omukwetu okwa hokololelwa kutya siku ndyoka aantu oya pitile mo momagumbo ye ya kuuyanda, ya tale shono tashi ningwa pegumbo lyomukulupe Alina.

Aatali otaa hokolola, ya mono omidhimba mbali tadhi tumbwa, tadhi zi megumbo lyomukulupe dhaantu yaashiwike, omanga egumbo inaali pya po. Oyendji oyi itaala kutya omidhimba ndhoka odnayanwe yomaalumentu mbeya yoshihauto. Otaa hokolola ya mona wo oombe-dhegumbo nomaliko galwe, taga tsilikwa momakasipeli, manga egumbo alihe inaali hwama.

Pethimbo lyelongekidho lyoshinyolwa shika, omulongisikola Abner Shikesho, gwoposikola Uukwiyuwongwe, ngoka ina adhika po koshiningwanima shoka pegumbo, okwa li natango momake gaapolosi okugandja uyelele.

Osho wo okamwana Lukas (18) nokakadhona okanasikola mOseko yaShakati, Laina Nambambi (17) Feni Shikesho (27) naHilma Shikesho (17), nayo oya dhigininwa kaapolosi pethimbo ndyoka.

Konima Omukwetu okwa kundane kwa, kutya ayehe ya li ya dhigininwa, oye ethiwa, kakele komulongi Abner ngoka inaa tseyika natango mpoka e li



**Uutekulu wakuku Alina, tau ipula niipalutha nuumvo, iigandhi ayihe sho ya lungunine momulilo**

Ayehe aanegumbo naashiinda oya haluka koshiningwanima noshe ya etela omalimbililo omanene, shono sha fala sigo omeyonuko lyomaliko gaanegumbo. Otaku ipulwa niihauto mpoka ya zi, naampoka ya ka ningina. Oolye ya li mo, nomolwashike yi ile pegumbo yaashiwike po nomolwashike yi ithigi po nosht.

Nguka ogwo omukalo iita tayi kondjo moshitopolwa shika, nomuntu itoo tseye we ngele iita, nenge omuyonena gwa mono ompito yokulonga.

*Sebulon Ekanjo*



- Okweeta po etulepo lomauta.
- Ovapongekwa otava ka alukila moshilongo shavo nombili.
- Ehooolo loshili nola manguluka tali ningwa metonateloo loiwanahanganó.
- Okatongotongo otaka teywa po.
- SA ota kufa mo ovakwaita vaye aveshe. Omushamane Kalangula okwa pula yo ovakwashiwana nge ova hala eameno nepangelo la SA, aveshe mouhapu wavo ova ti: "Ahowe, SA na ye!"

## VE DULE 10,000 OVA KA PWILIKINA CDA MOSHAKATI

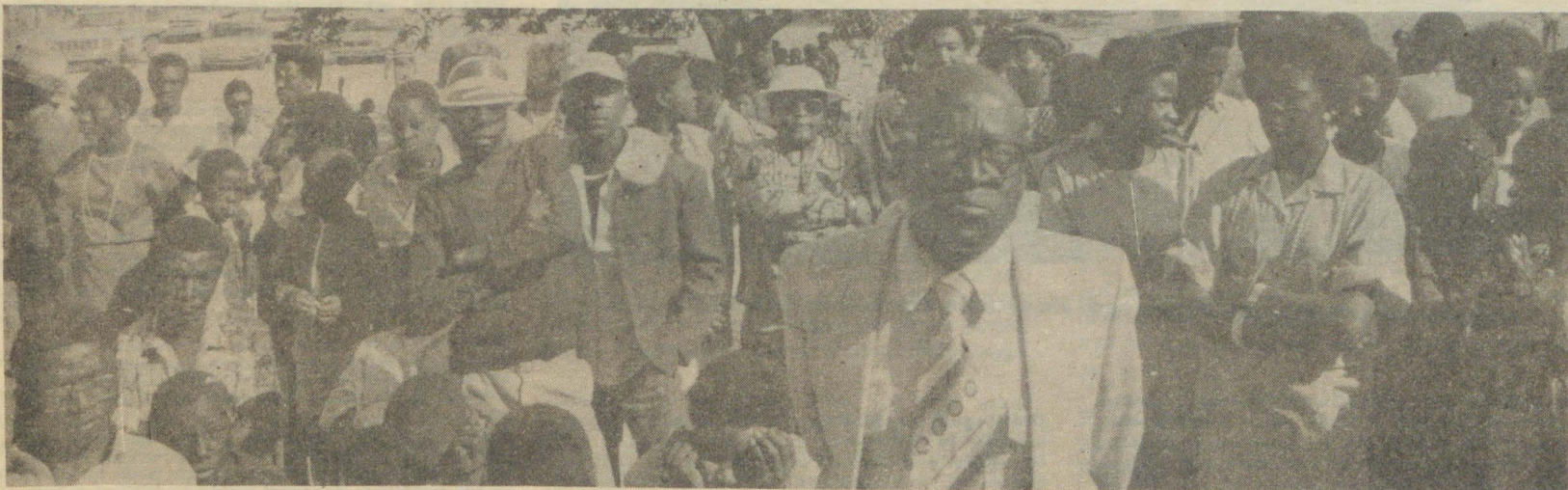
Ovanhu ve dule 10,000 ova li va ongala mOshakati eti 2.7.1987 okupwilikina oinima oyo ya pamba onghalo yoshilongo shavo mokanya kongudu yo CDA yomushamane Peter Kalangula. Osho oshoongalele shotete shi fike opo sha ngalwa kuvahapu nghe ongudu oyo yeduumbo lOwambo ya tamekele 1982 noilonga yayo. Owambo oshitopolwa osho tashi hepekwa unene koita notashi pangelwa keeveta dopakwaita, odo itadi

pitika eengudu dimwe dopapolotika di holole omadiladilo ado moipafi yoshiwana.

Moshoongalele eshi omuunganeki washo, omushamane Peter Kalangula eshi a pangula oilonga yetanga leomeno nokwa ingida li shune ku SA, okwa ingida yo okatokolifo 435 ka tulwe moilonga. Okwe shi fatulula ngaha pauxupi, kutya oke lilepo:

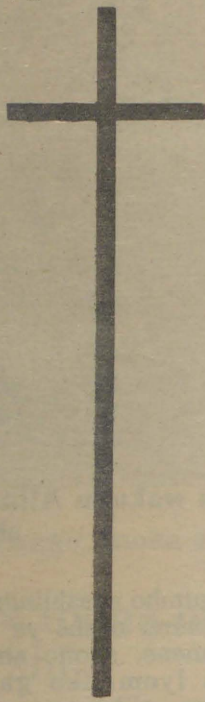
Omunangeshefa Frans Indongo nomufita Vilho Kaulinge, ova li yo va mona omhito okupopifa oshivilo eshi. "Mepangelo lopokati omu na ovahumbati vokakutu koimaliwa, ngaashi Judas Iscariot a kengelela Jesus," osho omushamane Frans Indongo, oshilyo sho CDA, a ti. Natango omurita Kaulinge okwa ti Ombibeli oyo omukanghamhango wa shili. Okwa kumaida yo okatokolifo 435 ka diininwe, osheshi ota ti, omo mu na Kalunga.

**Thomas Nghitukwa**



**Otapu tengenekwa aantu 15,000 ya li taa pulakene omuwiliki gwongundu CDA, omusamane Kalangula.**

## Meme Elvi - Helena a thigi po omusamane gwe



“Omuwa oye omusita gwandje Ps. 23” 1943 - 1987

Omupangi moshipangelo shaNandjokwe, meme Elvi - Helena - Ndahafa Asino (44), okwa mana oondjenda dhe ombaadhillila moshipangelo shaNandjokwe eti 19.6.1987. Okwa thigi ko omusamane gwe, tate Asino, omukuluntusikola gwOsekundo yaNehale, kOnayena, naanona yaali.

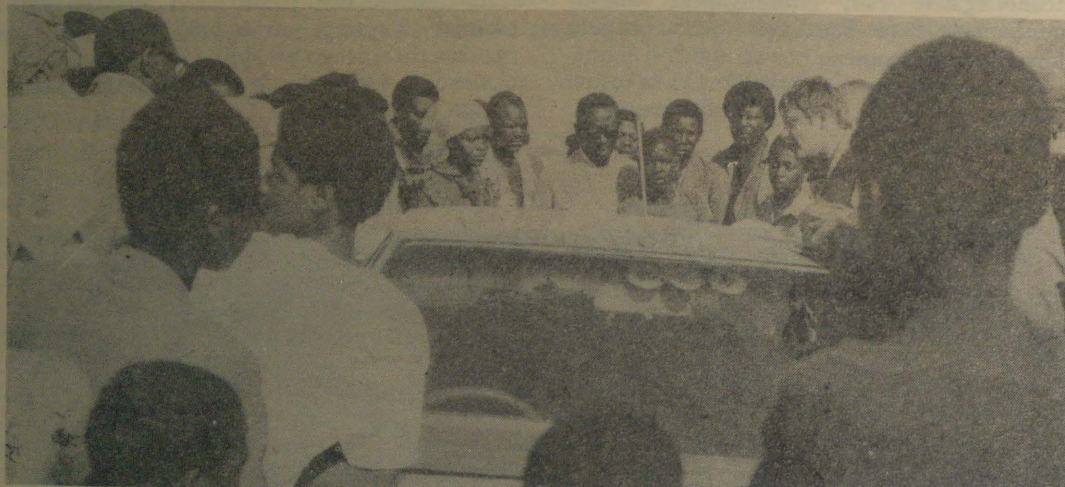
Oondohotola, aapangi, ookuune, aashiinda naakwanezimo amuhe, otatu nyengwa oku mu pandula niitya, molwoonkambadhala kehe mwe tu ningile, nomwa ningile meme manga a li moshipangelo.

Tsikileni natango oku tu galikanena. Otatu mono omukumo esiku kehe molwomagalikaneno geni.

Tangi aamwameme.

(Pehala lyaanegumbo naakwanezimo ayehe)  
J.Asino

## VATI ELOMBWELO LA DJA MOKADILA, LA DIPAIFA OMUNHU



Ongula sho kwa shi, omukunda ogwi ile okutala mpoka pwa yahelwa nakusa

Omunafikola waVenduka Laina Taapopi (17), okwa yashelwe oufiku weti 8/7/1987, ndele ta xulifa oweenda waye pefimbo tuu olo. Oshiponga osha ningilwa molukanda laValombola mOngwediva, eshi okahauto omu mwa li Laina ka umbwa kovakwaita va-South-Africa. Omushingi wako, omumati Israel Mwandingi (21), ota hokololwa kutya okwa chamekwa unene nokwa tuminwa koshipangelo shokOvenduka.

Ongula yefiku la landula, ovakalimo vahapu vomolukanda lwaValombola novomomudingonoko wa-Ongwediva, ova tondoka onghuwo, va tale eshi sha ningwa po. Hamushangandjai wOraata yEengeleki muNamibia, omufita Abisai Shejavali naye okwa li umwe womovatondoki vonghuwo. Shejavali okwa hangwa metalelepo loivike ivali lwaapo koshitukulwa eshi shokoumbanganlanhu woshilongo.

Ongula oyo onghumwe inene oya li tai leshwa mopala yongadu ei unene mokutala ouluvi wanakufya wa napakana nokahauto noشو mokutala ekungu lohonde. Pahokololo lovanhu vopomudingonoko apa pwa ningilwa oshiningwanima eshi, olonga ei yomunyomona, oya longa lwopotundi onhivali yongula inene. “Onda uda omitopo deeholo mbali adike nokonima elinyengo lokahauto eshi taka wu,” osho umwe a fatululila ovatoolinghundana vongeleki ya ELCIN nokwa holola, kutya ye aishe ei eshi tai ningwa, okwa hangwa e li oupafi.

Nakufya Laina okwa hangwa ha fikola mofikola yedina Dawid Bezuidenhout High School, muKhomasdal mOvenduka, nokwa hangwa ashike e ya kefudo kOwambo. Israel ota hokololwa kutya owomolukanda laValombola noha kala yo kOshakati.

Ovakalimo vomOvalombola ova hokolola yo kutya ongula eshi kwa sha, pokahauto ova hanga po ovakwaija Ovatiyane, ve li 6 nova itavela kutya ovo va yasha okahauto, vati palombwelo lokadila komafano. Omudimba wanakufya nanakwehamekwa, inai hangika mokatuwa eshi kwa sha. Laina naIsrael vati ova hangwa tava di keumbo lomuValombola mwa li okavilo, va yuka kulimwe lomolukanda tuu eli. Ovo aveke 2 va li mo.

Moshito, omudingonoko waShakati nOngwediva inadi kumwa koveta yokangedjo oyo tai kelele ovanhu va ende oufiku. Ovanhu vopomidingonoko edi, ohave linyenge keshe efimbo ngaashi va hala. “Hano paife opwa totwa oveta ipe?” osho ovatondokinghuwo va li tava pula neendaka da handuka, va pewe omanyamukulo koilyo yopolifi, oyo nayo va li poshiningwanima eshi ongula yefiku olo.

(Omayelifilo)

## Onda hupithwa meso: Endjala



Omusamane Max Endjala

Omasiku 7.4.1987, Kalunga okwa hipitha ndje meso lyekandomo lyoshihauto, mondjila yokOmbalantu popepi nOgongo. Membolokoto enene lyokambesa shi ki idhenge momasilulambo, omugameni okwa kala popepi natse. Inamu kanena omwenyo gwomuntu.

Ooyakwetu ayehe ye chamekwa pamwe nangame, oya falwa mbalambala koshipangelo, manga ngame ada thigwa mpoka, oshoka kanda li ndi shiwike kumwene gwoshihauto, nokwa tla ndi sile miikaha ye. Onda thigwa mpoka ndi tegelele aapolosi.

Manga twa tegelele aapolosi, okwa zi oshihauto shimwe shono mwene gwasho a toola ndje po nokwe eta ndje moshipangelo mOshikuku, mono nda tsakanekwa keyakulo ewanawa nolyeulumo. Meme Nambahu nameme Nekulilo mboka ya dhimbulula ndje, oya tsyitha mbala onkundana ndjika mOradio.

Mehokololo ndika otandi gandja ano olupandu kaapangi noondohotola mOshikuku, kumwene gwoshihauto sha fala ndje moshipangelo inaa pula ofuto. Kalunga mwene ondi shi shi ote ke ku futa, ofuto yi vule ndjoka nda li ndi na oku mu pa.

Otandi pandula wo kookuume ya kala nokuyakula ndje niipalutha, Saima Nambahu, Nekulilo naNangula. Egumbo lyaAmakutuwa ndyoka lya talele ndje po, noشو wo mboka ya zile kOndonga. Kundweni amuhe ne tsikileni natango neyakulo lyeni, mu na etegameno lyethigululo lyoshilongo shegulu pauvaneko lyOmuwa: Mat.25:40

Max Endjala  
Uutsathima

# Omukundaneki Halweendo

**Omafiku a dja ko, omukundaneki wetu Halweendo, fimbo a li molweendo, okwe litwa oshiningwanima shimwe, okwe litwa oshiningwanima shimwe mokalukanda ke li popepi neengeshefa dimwe da fimana moshishwana. Oshiningwanima shinya ote shi hokolola ngaha:**

“Efiku limwe eshi nda li handi linyenge mokalukanda kamwe, onda shakeneka mo oshiningwanima sha li tashi shili ovaondoli vomesho vahapu. Osha li pokati komutenya, pefimbo lanhu ova li eemusha. Ponhele imwe hapu landifwa oupana noikulya yomaludi amwe, opwa holoka elinyengo lovanhu tave liongele nokungudumana. Ame onda hangwa kokule kanini nonhele ei.

“Mokumona eilinyengo la tya ngaha, fye navakwetu sha nda li hangwa, otwa endeleda diva tva yuka oku kwa ngudumana ovanhu, opo tu ka tale eshi shi li ko. Eshi tve ya popepilela, otwa mona kutya ovanhu ova ongalela okakadona keedula 19 lwaapo, taka dengwa noshokoto, ongola, komushamane wedimo linene, muxupi a djilapusha yombifinda, nohema itoka nofilipusha yombifinda. Okakadona oka li taka kuwaana mokule, novanhu ava li kokule navo ova uda ekuwaano eli, ndele tava tondoka onghuwo.

“Kombinga yange onda li nda hala okuuda diva kutya eshi tashi dengifa ngaha omukainhu mokati kovanhu oshike. Ashike pefimbo, olo kapa li ou ta dula okukumbulula nge, osheshi opa li epiyaano linene. Ovakwashiwana vamwe inava dula okukala ashike va tala omunhu ta dengelwa puvo, ova ponhokela nakudenga okakadona, ndele tava ka nyeka ko.

Moikeleketa mwinya, omulumenhu woshuta okwa mona po yo “okapana” keengonyo nomanghava, tashi dulika neenghaku. Oshokoto nayo okwe i nyekwa, ndele te i dengifwa lwokofingo nokomatwi. Ponhele opo okwa dja po ta li onghaku, ndele ta ka ningina neendelelo metungo limwe linene, li li lwopopepi. Ovanhu ava kwa li tave mu tataa, eshi va mona a ka hondama, ova aluka ko.

Okakadona opo ka fyaala ponhele youpana, taka pulwapulwa. Mokunyamukulo omapulo oka hokolola kutya kokunyamukulo mopongeshefa yomulumenhu winya a li te ka denge. Oka twikila taka ti:

“Omulumenhu winya ke fi omunhu. Omuhepeki ashike nomufiphonde woshiwana. Atushe ava hatu longo mopongeshefa woshiwana, pefimbo lomusha, ihe tu pe efudo opo tu ka konge eshi hatu li. Okwa hala ashike tu twikile okulunga nondjala. Walye kutya eenghono dokulonga ohatu di hange nee peni. Ndishi edimo olo eenghono damaulu?

“Paife ngaha onda li nde ya okulikongela okulya vange nova vakwetu vamwe va tuma nge, ndele ta landula nge. Ngaashi mwe mu tala e li ngahenya, ihe tu pe eendjabi da yeleda oilonga ei hatu longo. Nokuli otwa li tu na okukala hatu mono omusha tau longekidwa mopongeshefa yaye, shaashi eshi a ninga

oshipuna, omolwetu ava hatu yakula nawa ovalandi.”

Konima eshi okakadona ka mana okufatulula eshi sha eta oupyakadi, oka londa mokahauto komushivikile umwe, ndele tava fiye po onhele inya youpana.

(Etwikilo, tala moifo tai landula).



**Omushamane V. Namwoonde ou a xupa momundilo woboma**

## Epulo kOvanamibia

Hano moNamibia omu na ngo ehangano tali vatele, opo u mone oilonga? Oto kongo oilonga eedula 4 ile 5, to ningi omaindilo, nde fiku limwe itaa nyamukulwa? U konge ne kolupadi, oihuna ne, ohaku ti ashike, opeyadi.

MoNamibia kape na nande ehangano tali dula okuvatela, opo u mone oilonga? Li ku popile kovanailonga, opo u vatelwe oilonga? Omunhu umwe okwa hokanwa omushamane oku na okandjabi kashona itaka wanene ounona meumbo. Hano ngeenge omushamane oha longo, nde omukulukadi ita longo, nena meumbo neudafano kali mo vali. Ove oho kongo ngoo oilonga, iho mono ashike.

Rauna Nd. Sh.  
Tsumbe

## Da dja kep. 2

kwafa moilonga yetungo longeleka ipe noya yapulilwa oilonga.

Okankolo nonande oke li moixwa novakwaneongalo vahapu ve he na oilonga, oke litungila yo okapangelo kavomo tava pangwa kumeme Frieda Nakanyala nameme Petrina Shipalanga.

“Efimano li ha ninge letu, ndele li ninge laKalunga mwene,” osho omufita Matias Nepela a xulifa ondjokonona yetungo longeleka ipe. Oshivilo osha xulifwa netyapulo loikulya.

Thomas Nghitukwa

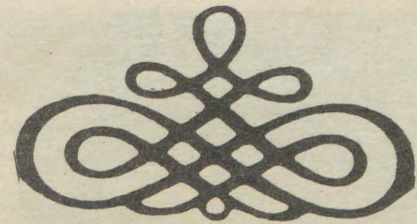
## OBOMA MOUNAMAPYA NOU-NAIMUNA MOGONGO

Ovanhu vavali moGongo ova fila moshiponga shoboma omafiku a dja ko. Oshiponga eshi osha ningilwa meni ovaalanga imwe yomefaalwa doimuna mofikola younamapya nounaimuna, oyo i li moGongo. Oonakufya aveshe vavali ovanailonga mofikola ei. Oshiponga osha ningilwe meti-22/6/1987 lwopotundi omulongo naimwe yongula.

Omadina oonakufila moshiponga eshi oo: Samuel Abraham naSakeus Ambinga. Aveshe vavali ova hangwa ve na omaumbo momudingonoko waGongo. Pahokololo lomushamane Veikko Namwoonde, ou a li ta shinga oshihauto osho sha lyata oboma, oshiponga osha ningilwa meni lofaalwa imwe lwopotundi omulongo nayimwe yongula.

“Otwa hangwa hatu twaalele eengobe eemongwa dokulafa, tu li noshihauto shoilonga. Mokandjila omu tva lyatela oboma, omo hatu ende noshito, noshihauto shetu osho ashike hashi ende mo,” osho omushamane Namwoonde a fatulula.

Omushamane Namwoonde ye mwene okwa ehamekwa keke limwe. Pefimbo a li ta kundafana ovatoolinghundana vOMUKWETU, eke laye olata ningungu tali monika la hondjwa nola nyika odindo natango. Ashike ye mwene ota hokolola, kutya inali teka nokwe li neekela kutya otali ka kala nawa.



+++++

Ovanashilonga amushe, ovanangeshefa naamushe tuu ovo mwe lihanga, omwe shi shiiva tuu kutya:

Omanga nee ho tale ngadi oye ekakala, oye embakuvava longaho noita dula nokuli okuyola naave shaashi ove “ouli moule”, shapu ngeno oto yolo nanhumba ile nangadi shaashi ovo mwa faafana navo.

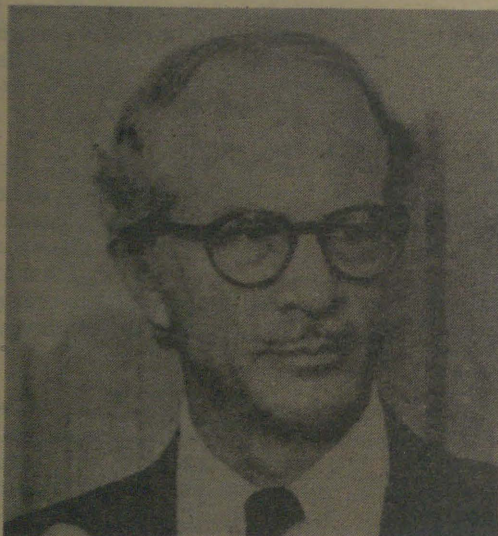
Shi shiiva nee hano kaume kutya:

Ove, ooive nee naanaa ekakala, oye oove nee naanaa embakuvava loovenevene, ove oove nee naanaa ohepele yoovenevene ei ya ka xula ko, osheshi oto longo kondje yehalo laKalunga ngaashi ye mwene a hala u kale novashitwa vaye. Didilika yo kombada yedu oweve osho hamakasha, nou na yo okudja ko ngaashi we ile ko.

F.J. Nakale  
Nkarapamwe  
Rundu

+++++

## Crocker okwi ile kuAngola, koshinima shaNamibia



Amushanga gwiinima yaAfrika mepangelo lyaReagan, dr Chester Crocker ngoka a kala omupokati moonkundathana dha SA naAngola okuza 1981.

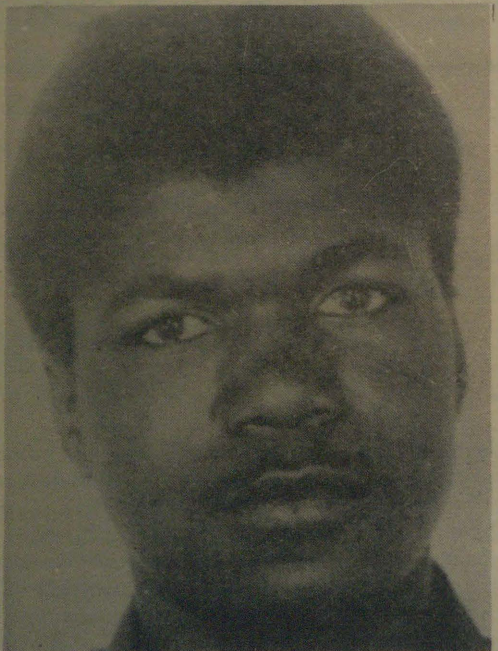
Omusamane Chester Crocker, amushanga gwiinima yaAfrika mepangelo lyaAmerika okwa tamekele oonkundathana ohela nepangelo lyaAngola, kombinga yemanguluko lyaNamibia. Oshizemo shoondathana inashi tseyika manga.

Otaku popiwa epangelo lyaAngola lya ninga po omathaneko kombinga yuupolotika womuumbantu waAfrika, ngoka dr Crocker a hala okupulakena. Epangelo lyaAmerika olya tegelela osima yowala Angola a laleke omatanga gAcuba moshilongo, Namibia li wape okumanguluka noku kundathana aniwa nongundu yaSavimbi etopolelathano lyepangelo.

Konima yoomwedhi 15 dha piti, epangelo lyaAngola olya hulithile po oonkundathana dhalyo naAmerika, sha zile mpoka epangelo lyaReagan sho lya gandjele iikondjitho iidhigu kongundu yaUnita omumvo gwa yi.

Sebulon Ekandjo

## Oshinima shedhipago lya-Josef Dumeni otashi landulwa paveta



Omumbisofi Kleopas Dumeni okwa zimina aaniifo kutya otapu kundathanwa nehangano lyaanaveta, omolweso lyamumwayina Josef Dumeni (41) ndyoka lya ningilwe ketanga lyegameno 14.6.1987 muAngola.

Etanga lyegameno olya adhika lya zimine nale, kutya olya dhipaga Josef paveta yuusiku. Omumbisofi Dumeni, okwa ti edhipago olya zalekwa ifundja, oshoka pakutseya kwe (omumbisofi), oveta yuusiku ihayi longo mevi lyaAngola. Omumbisofi okwa holola wo oluhodhi lwe komaso ogendji gaakwashigwana pamukalo nguka, nokwa ti osho ethiwa ngaaka, oshoka Aaluudhe taa si.

Ehangano lyaanaveta lyaLorentz + Bone olya lya pewa oshinima shika meyakulo lyomunaveta David Smuts.

## Eshi sha ningwa mehistolli

- 1795 - Britania a kufa ko epangelo lOvahoolanda muKaapstad. Namibia inali nangalwa natango kovanailonngo.
- 1866 - Eenhuahu domefuta laNamibia koumbuwanhu, da tulwa kumwe noshitukulwa shaKaapa kOvaingilisha.
- 1878 - Britania a kufa ko etulilo lambaye.
- 1884 - 85 Omapangelo manene aEuropa e litukulila Afrika alishe. Ndowishilanda la nangala Namibia.
- 1915 - Eembulu da nyeka ko epangelo lOvandowishi moNamibia, palombwelo lOvaingilisha.
- 1920 - Namibia la tulwa mepashukilo loiwana younyuni (League of Nations) Eembulu da pewa oshisho shokutekula edu eli ponhele younyuni.

## Ambulansa yoshipangelo .....

Da dja kep. 1

Tate Nghihalwa okwa ti oshinima okwe shi lopota kovapolifi mOndangwa nove mu pa eudaneke ve ke shi landule. Konima yoshivike shimwe oshihauto eshi sha yashwa nosha lopotwa, Omukwetu okwa pula ombelewa yoshihakulilo shaNandjokwe ngeenge oya pewa ouyelele washa noya nyamukula kutya fiyo opoopo inai pewa sha.

Ombelewa yomumbisofi yo nayo kaya li ya hala okupopya shihapu koshinima osho, momalimbililo ayo, kutya itashi ka mona ekonakono liwa ngaashi ikwao ihapu ya pita. Ombelewa yovapolifi inai monika kOmukwetu moshinima eshi.

Sebulon Ekandjo

## Okatokolitho 435 kli-gwanahangano otaka ti shike ano?

Ngashingeyi omimvo 9 dha pita, oyendji muNamibia nopondje muuyuni taa imbi okaimbilo haka 'okatokolitho 435 naka tulwe miilonga, Namibia li manguluke.' Okatokolitho hoka otaka ti ano shike?

Muko omu na efatululo ele, ndyoka lya gandjwa kOraata yIigwanahangano nolya popilwa koshigongi shaayehe sha VVO. Mpaka otatu gandja iitsa 8 ayike pafupilela.

\* Namibia li pewe ehogololo lyaayehe moshilongo lyoshili nolya manguluka tali tonatelwa kiigwanahangano (UN).

\* Kehe ngoka e na oomvula dha gwana mehogololo oku na uuthemba wokuhogolola.

\* Ehogololo lyiilyo yoshigongi shooveta tali ningwa, opo ya tunge ekotampango lyoshilongo ashihe muukumwe.

\* Manga omalweendo niigongi yelongekidho lyehogololo lyaayehe moshilongo inaayi tameka, Ngoloneyandjayi gwa SWA, ota dhimipo omathegela agehe gooveta dhokatongotongo, oveta dhoondjindikila nodhomangambeko agehe moshilongo.

\* Iigongi yomauvitho gehogololo lyaayehe, oyi na okutetekelelwa kemangululo lyoonkwatwa adhihe dhopolotika, ndhoka dha dhigininwa ku SA, opo nadho wo dhi kale nemanguluko miigongi yelongekidho.

(Oshitokolitho 435, inashi popya sha koonkwatwa hadhi popiwa kepangelo lya SA dha dhigininwa ku SWAPO, kaadhi shi ndhoka 100 dha kwatwa miilonga yuundaadhi 1986).

\* Aanamibia ayehe ye li oontauki muuyuni ya zimininwe okugalukila nombili kegumbo, opo nayo wo ya kale momalongekidho ngoka ehogololo. Ehangano lyiigwana (UN), mpaka olya pewa oshimpwiyu opo li tale Aanamibia oontauki ya tokole memanguluko, ngele ya hala kegumbo nenge inaa hala.

\* SWAPO na SA ya shaine euvathano lyetulopo lyomatati, naakwiita yawo ayehe ye edhiliwe mookamba. Pethimbo ndika oyendji yomaakwiita ya SA otaa shuna ku SA, e tashi ende ngaaka okandanampadhi sigo ayehe ya pu mo moshilongo.

\* Ehogololo alihe tali ningwa muNamibia, kutya otali ningwa kulye, ashike opondje yelongekidho lyokatokolitho 435, otali talika ko osima yowala notali ekelwahi moshimbamba.

Ethaneko ndika olya taambwa ku SA nokuSWAPO, nando pethimbo ndika SA okwe li tila nokwa hala pu kongwe omukalo gulwe gwokumangululitha Namibia, oshinima shoka itee shi mono we nuupu.

Sebulon Ekandjo

## Olupandu kovakwafi vange

Ohandi eta olupandu lange eshi nda li nda mona oudjuu, nda filwa omutekulu wange, ndele onda nyengwa okulanda oshikefa nokulonda okudja mOmbaye nokuya kOtiimbangi. Onda kwafwa kwaava vomadina aa:

Pete Shikudule  
Hanna Mupetami  
Elise Nghipandjua  
Aina Shipiki  
Ileni Haikela  
Nghidimbwa Andreas

Tangi unene, Omwene na kale nafyeni

Inge Sevises  
Walvis Bay

## Oonkundana pafupi

Oprograma yuundjolowele  
1987 - 2000

Iilongo 36 muuyuni opo tau putuka (Africa, Asia naLatin America) otayi hepekwa kondjala nokomikithi, tashi zi muunkundi womahupilo gillongo mbyoka. Osha zi mehokololo lyomuwlili omukuluntu gwehangano lyuundjolowele muuyuni (WHO) dr Halfdan Mahler na dr Emilio Castro, amushangandjayi gwOraata yOongelesi muuyuni (WCC) muNovomba gwa zi ko. Inaku popiwa omadhina gillongo ya dhiladhilwa mpaka.

Aawiliki momahangano ngoka omanene gaali muuyuni, oya hiya aawilikingeleki mllongo nilongo, unene mbyoka opo tti putuka, ku tamedkululwe noonkundathana omukalo gu shi oku kutiwa okupendula po uundjolowele komuntu kehe.

Okwa indilwa omauyelele ga gandjwe, kumboku unene inaa mona eputuko, okwligamena komikithi. Ehanganu lyuundjolowele (WHO), oiyu utha omumvo 2000 ando sho tagu ka dhanwa, omuntu kehe muuyuni ota adhikwa a manguluka muuyapakadhi womavu nowuunkolwe.

## Oraata yoongelesi muNamibia nelongo moshigwana

Aanasikola 50 oya pewa nuumvo ilimaliwa yeilongo kOraata yoongelesi muNamibia (CCN) nosha eta omwaaalu gwaailongi taa futiwa kehanganu ndyoka sigo 100. Osha leshwa mehokololo lyaamushanga omukuluntu gwehangano moshigongi shompitithi mujuni nuumvo. Inaku popiwa aailongi mboka otaa sikola peni.

Oraata yoongelesi otayi sile wo aailongi yopamwe oshimpwiyu momapukululo ga publiwa, okulandula ililongwa yawo. MOvenduka omu na aailongi 500, kOwambo oye vule 800 nokoCaprivi 300, chokololo lya ti:

## Evi lyoye Namibia

Uunene: Oli na oombinekilometa 824,629

Oshilandopangelo: /Ai //Gams /Otljomwis = Oothithiya oopyu.

**Epangelo:** Oli li muukoloni. Paveta yiigwanahanganu, SWAPO oye a ziminwa a ninge omukalelipo gwilgwana yaNamibia nOraata yaNamibia kiigwanahanganu, oyo ya pewa oshimpwiyu yi lele evi sigo lya pewa emanguluko.

**AAKALIMO:** Oomililyona 1.46 payalulo lyomumvo 1983. Aaluudhe 94% nAatiligane 6% adhike. Oopelesenda 70% dhAaluudhe odhi li momikunda.

**ELAKA:** Aantu ye vule etata lyaakalimo, otaa popi Oshiwambo. Oshimbulu elaka lyeepangelo. Omalaka omakwawo; Oshitakumi, Oshierero, Oshilozi, noshi.

**EPUTUKO:** Oopelesenda 60% dhAaluudhe kadhi shi okulesha. Aatiligane ayeke ye na osikola tayi dhengele.

**UUKOLELE WOSHIGWANA:** Meyovi limwe (1,000) kehe lyuunona tau valwa, otamu si 155 wAaluudhe na 21 wAatiligane.

**OKULALA EVI:** Oopelesenda 77% dhevi oofaalama dhAatiligane (5,000) manga Aaluudhe 190,000 taa hupu muupya wanathangwa.

(Oxfam)

**Ino holeka Amushanga gwo-shifo edhina lyoye nondjuki-thi nando wa hala okulongi-tha edhina lyefutam.**

## Ova shangela nge tava ti.....

### U nyika iho liudu, ye e he ku lombwele ke fi woye

Ovahongi veefikola vamwe onghee natango hava tumbula oitya ngaashi odjapo, otjeke komesho younona. Omuhongi to hange ta ula okaana ta ti: "Pamwe omu shii ame ondi na ko nokaana ito leshe, ame ondi na odjapo yange, vali otjeke yange ohai uya ohani keshe."

Oitya oyo naikwao inatu i tumbula apa, vamwe onde lineekela ohai va xutuka, nge va handuka. Ile ohave i popi, opo va lulumike nokuudifa nai ovahongwa vavo. Vamwe kaimba ove i tala ko, ongongola noshimwati osho tashi dudu okweeta okaana kondjila.

Embonyano lomalaka omaonga a fa oo nda tumbula, okwa twalifa ounona vahapu momatokolo okupa ofikola ombuda. Vamwe va ya kouxwi, vamwe va ya nomukifi wokapundja (moukaku-nya).

Ongudu inene ya mbubukila moubotsotsi. Omahelende mahapu otaa monika momalukanda ngaashi laMukwanambwa, Lashikopi laHamunghabja, nOshakati shaNangobe, shi ha iwa nashikete, nosho tuu.

Omaldalo a tya ngaha, haeshe a fiya po ofikola inave i hala ngeno, nde vahapu ove liteeka moipundi, ngongobe ya dja oinyeko petemba inai nwa, omolwomalaka omundilo noomuhau, oo haa di mokanya komulongi ongula keshe, nande oye xe naina yovahongwa vaye ovo.

Ovahongi ovafimanekwa, osho mu na okukoneka nokushiiva osho eshi: Onye omako nomakwila. Onye omuvelo nondjila omo mu na okupitwa kovanyashilonga aveshe. Didiliken, ovo tamu ngwadjaula moipundi nena, mongula ovo tava ka ninga ovafita vomaongalo, ovapangi, eendokotola, ovapangeli, neeprofesoli doshilongo eshi, nosho tuu. Osho mwa kuna, osho tashi ka kala eteyo mOnamibia.

Epulo la yukilila omuhongifikola keshe. Mbela owa hala nowa teelela onghalo ya fa peni kovanyasha vetu ovalihongi, ovo ve li moipundi nena, eedula nava ka mane ehongo nokutameka oilonga mokati koshiwana eshi shaNamibia?

Ofikola omuhongwa, omuhongwa oilonga yomuhongi. Heeno, otjeke yoye oho i mono ohani keshe. Ino dimbwa, osheshi oonaku i tuma alushe

ove na oshisho naave. Vali venya otava wanifa oilonga yavo efiku keshe. Ove nee?

OmuHongi omufimanekwa, odjapo kai fi okayaaya, okashandje, ongoma ile enghuma, okushikwa komesho younona. Ponhele yokutanga odjapo, oto dudu u fimaneke ovalongi ovo ve ku lihepekela, opo u mone odjapo nonghatu youhongu. Ile u pandule Kalunga ou e ku kwafa fiyo wa mana ofikola.

Odjapo owe i pewa ondombwedi nekoleko, kutya owa wana noto dudu oku ka longa omunhu. Nowa teelelwa u ka wanife oilonga noku ka tandavelifa ehongo moshiwana shoye. Otjeke oho i pewa ongekaya, (olupandu komuhongi).

OmuHongi okulonga okaana tete, owa pumbwa okutala ko omuhongwa ngaashi omunhu, noku ka tumbula ko pamufika wa dindwa. Okuhonga okaana ongaashi omunhu ta tungu ekuma, ile ta upike ekuva nelima, e na elalakano. Omuhongwa keshe na upikwe shili, opo a ka kokole nokutunga Namibia. Ovahongi she mu tumbulilwa inashi mu fiya nafunda.

Ovahongi ava mwa tumbaleka omatumbulo noitya oyo hai ningi ongwena neeshosholo kovahongwa, ohandi mu indile mu ha longife vali eendilimani doludi eli. Omulongi ho tumbula noho longifa oikuti neeholo da fa edi, owa fa to hololele ounona ombinga yomutima woye. Nomuhongi a tya ngaha, ina yeleka okukala komesho yongudu, noye umwe e li konima noposhi mokutalwa noku udika ko koshiwana.

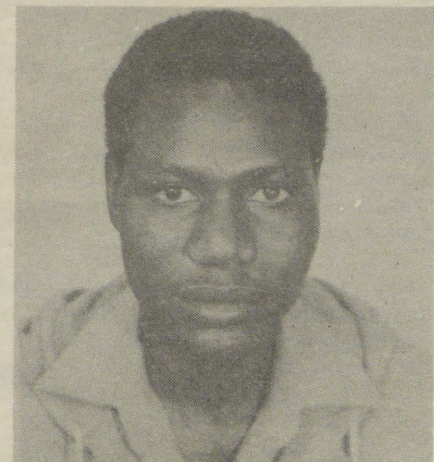
### Ovanafikola

Havalongi aveke ve na ombedi noushima mokuyandja elongo, ndee ovahongwa ove na yo epuko la kula. Ohava ningi eemhangela dokufiya po ofikola. Pangongoma yavo yopauunona, ohava tu mukwe nokutokola va denge ovahongi vavo. Tava fininike yo ovahongwa vakwao moimima i he na oshili. Tava nyonauna oilongifomwa peefikola nokutuka aveshe ovo tave va mweneke, opo va mwene nokuxulifa po oilonga youshada.

Omikalo dii da tya ngaha, oda nyona po omalalakano ovanafikola vahapu. Oimati ilula yomaludi mahapu hai hetekelwa kovahongwa vefimbo eli, oya kwata moshipala eyokomesho lounona vahapu ovanamaano.

Ovanafikola, elao leni ohamu li ende

### Tala kepanja tali landula



Omushamane K. Tawii

### Iilongo ya Afrika nemanguluko lyayo

Sierra Leone	24.4.1961
Tanzania	9.12.1961
Ruanda naBurundi	1.7.1962
Algeria	3.7.1962
Uganda	9.10.1962
Kenya	12.12.1963
Malawi	6.7.1964
Zambia	24.10.1964
Gambia	18.2.1965
Botswana	30.9.1966
Lesotho	4.10.1966
Mauritius	12.3.1968
Swaziland	6.9.1968
Equatorial Guinea	12.10.1968
Guinea Bissau	10.9.1974
Mozambikwe	25.6.1975
Sao Tome & Principe	12.7.1975
Cape Verde	5.7.1975
Comoro	6.7.1975
Angola	11.10.1975
Seychelles	29.6.1976
Zimbabwe	18.4.1980

## Dha za kep. 11

pomunghulo, molwaashi tete ohamu dimbwa elalakano eli le mu etifa kofikola nohamu lyatele poshi omalombwelo nomapukululo aeshe ovahongi noovadali veni. Ohamu fimaneke nokulandula omukalo nomaukwatya ookahewa nookaume veni ovo mwa shakena nava moipundi. Hauxuuninwa ohema youteku wovadali, ounona ihave i djuulukwa novali.

Komukalo wa tya ngaha ouluwa wa panuka. Nomulongwa a tya ngaha, ota monika ngaashi oxupa i he na ekumbo, eshi ponhele yodjapo keumbo ha twaalele ko edopo. Ile ta i ko a homata okanghangwena modikwa nedina lounyeumbo mekwamo lekanda. Omunyasha a tya ngaha, onghalo yaye okwe i fonghola nota ende ta shongola nande ka ile koukongo. Oye umwe womongudu yovanhu ovo hava ka hondama odula moixwa.

Hauxuuninwa omuhongi nomuhongwa otava yelekwa, ngaashi omesho nomatwi kolutu lomunhu. Ovahongi onye omesho ofikola novahongwa omatwi ayo. Hano omuhongi nomulongwa omwa pumbwa eudafano nelongelokumwe, opo mu findane mokutwika po oimati iwa, nefano tali ulike efimano noshinge shouwa monakwiwa yoshilongo shetu.

## Kaningina Tawii Swakopmund

### E he ku lombwele ke fi woye

Oshiwana oshiholike, ohai nyamukula elaka la tongwa mOmukwetu wa Febuluali 1987 tali ti ovakulunhu kave na sha nemanguluko, eshi oshinima shovanyasha.

Heeno shili, omunyasha oye omutwe woshiwana, ndele ope na yo elaka eli hali ti; omukulunhu iha ningi elai, shapu omwii ashike. Naali hali ti: Shawana metiti omukulunhu e shi yandja. Hano fye oshinima otu uditeko ngaho, ndele oluhodi letu osheshi ashike ovanhu vana imwe tave lidenge, oshinima shikumwifa.

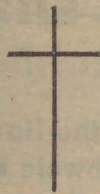
Hano eilikano letu otali ti, ovanhu eshi va ninga eengudu mbali, oshi shi okuyandjwa meke laTate Kalunga omushiti waaishe nokupopya eshi sha halika moshiwana. Kalunga oha udu omailikano shi dulife omadipao.

Hano ovaholike, lituleni mo ngaho momakumaido, e he ku lombwele ke fi woye, navali ekondjo nali kale li na Kalunga. Inali mu dimbwa po nande, ye iha kwatafana nomadipao noinima ihapu tai ningwa mefimo eli. Inamu dina omalaka ovadali, vanyasha. Ombili nelandulafano nohole oyo twa hala ashike moshiwana.

Navali ombili eshi i he po, ovanhu otava ningi okatongotongo, osheshi ova tilafana, kape na oukumwe, okakombonoludi. Ovakulunhu ove udite ngaho shili oudjuu ngeenge nani emanguluko otali etwa ashike ketiko lohonde.

Fye oludalo letu otu li hole, otwa loloka eenghundana defyo keshe efiku. Ovaholike kufeni oshiholekwa kuTate Kalunga eshi e tu pa oipango. Ava ina ve i wanifa, inatya nande nava fye, ae. Okwa teelega ngaho ve lidilulule. Ongenda oyo tai tungu oshiwana nombili.

Ngeenge ovanyasha vetu otava kala ngoo ne moinima i fike apa, olyelye hano ta tungu oshiwana? Kalunga oha udu onghuwo yepongo,



## ESO

Daniel Ndapewa Muteka (26) megongalo Ontananga, 19.5.1987 moshiponga shedhipago. Okwa thigi ko aakuluntu ye naamwayina yahe-yali.

Eimbilo 308

Vicktoria Nameme Fotolela  
Katutura, Windhoek

Tomas Eliaser (Aamakali) gaNdjago yaNehoya lyAmutenya (60) 2.6.1987, moshipangelo shaShakati muwehame wethimbo ele. Okwa thigi ko omuselekadhi, oyana 8 naatekulu 15.

"Omwenyo gwandje ogwo Kristus nEso oyo elikolo."

Ndjago Andreas Kapys  
Ongwediva Training College

Tatekulu Gabriel Ananias, gwomegongalo Ompundja, mUukwambi, okwa mana oondjenda dhe moshipangelo sha C.D.M. mOlange. Okwa thigi ko omuselekadhi noyana 7 naatekulu 50.

Kaulishimwe A.Andreas Shiinda  
Omusimboti

Barnabas Jakob (78) mOshakati okwa xulifa oweenda 14.5.1987 moyehame wefimo lile, okwa fiya ko ovana 5, ovatekulu 18 novatekulululwa 3. Omwene na hekeleke omitimadeni.

Helena T. Vateimo  
Engela

Omushamane Mateus Haulofu (99) momukunda Omanyoshe meongalo Endola, 30.5.1987 moyehame wefimo lizupi. Okwa fiya ko ovana vavali, ovatekulu 13 ovatekulululwa 6.

Eimbilo 332

Erasmus Abed Shilambo  
Omanyesho - Endola

ngeenge aise hatu i tula meke laye. Ovanyasha ovaholike, Ombibeli nai leshwe mwa manamo, oponee mu pwilikine yo Tate Kalunga eshi ta ti: Oshiwana shi na Kalunga oshi na elao. Epangulo ola Kalunga mwene.

Ohandje vati ohai xwike ofuka, ovanhu vahapu otava ningi ngo ne eshi va hala ko taku tiwa omukondjelimanguluko, oye a longa ngaho. Edina otali ipikwa vali.

Hano nye longeni ouwa, hamadipao. Omunhu oha nyengwa okulonga ouwa, dimineipo vakweni, navali ope na elaka eli tali lili tali ti: "oixuna vakwetu, ngeno ngi dalekwe, ngeno xwepo vali." Shone ohaku tiwa omahodi omukulunhu kema-wa.

Hano shiwana shetu oshiholike, longeni ouwa, nye mu he li mange nye vene, osheshi ovanhu otava konakona eshi shiwa notashi dulu okutekula ounyuni.

## Omuleshi wOmukwetu

Filemon Hamutenya (124) womomukunda Etaneno, meongalo Okaku, mOndonga 7.4.1987. Okwa fiya ko ovana 7 ovatekulu 32, novatekulululwa 24.

Eimbilo mEhangano 461

Gideon Kalola  
Okaku

Abed Tomas Shapaka (24) womomukunda Omufutu, moUkwanyama 5.4.1987 ombaadhillila. Okwa fiya ko ovakulunhu vaye novamwaina vavali.

Ester Nangula Shaduka  
POnhofi Sec. School

Kuku Elizabeth Nandjembo Namupala (65) momukunda Onanona, mOshaango 17.3.1987. Okwa thigi ko aamwayina 5 nayina.

Eimbilo 190. Eps.6

Anna Kapulongwe R.Amakali  
Oshaango

Sofia Lamek, megongalo Eengolo mOmbalantu, 17.4.1987 moshiponga shombaadhillila mokulika koshihono. Okwa thigi ko omusamane gwe, oyana yane. Jes.57:1-2

Kweendakutala Shikesho  
Eengolo

Selma M.Nghuujolele (87) momukunda, Okatookajakobo, 29.4.1987. Okwa fiya ko ovana vatano, ovatekulu 45 novatekulululwa vahapu.

Moses Nd. Jakob  
Otjiwarongo

Marta Amuyegele (60) okwa thigi ko oyana 9 naatekulu 30. Mat.11:29-30. Eimbilo 294

Aili Kaunapawa Shuuya  
Onaanda-Uukwambi

Festus Nekondo Mucetako, (61). Etomba moUkwanyama 28.3.1987 ombaadhillila okwa fiya ko omufiyekadi nounona 11, ovatekulu 3.

Moses Nd. Jakob  
Posbus 510  
Otjiwarongo

Simon Ntanga Sheya (66) megongalo Ontananga, mOndonga, 25.4.1987, muuwehame wesiku limwe alike. Okwa thigi ko omukadhi gwe, oyana yatano naatekulu oyendji-yendji. Eimbilo 500.

Sheya Kamilie Tautuyenge

Kuku Elgina Amutenya, mOshigambo mOndonga 5.2.1987. Okwa thigi ko oyana naatekulu, nuutekulululwa.

Emilie Nambwa  
Box 399  
Okahandja

Kuku Helana Agustinus (Gwakanyama) 4.2.1987 momukunda Olungalunga, Olulongo, popepi nEheke. Okwa thigi ko omusamane gwe Johannes Sambi. Oyana 7, aatekulu 39 nokatekulululwa 1. Fil.1:21

Marta Nd. Nangombe  
Kepembe Sec School

Jafet Shilongo, Silvanus (39) 7.8.1986, okwa thigi ko he nayina nomuselekadhi.

Peha Iyaamwayina  
Josty Nendondo

Omukulupe Rakkal Nafuka, (Kangweshole) 108, okwa xulifa oweenda waye 25.5.1987 kOndjibu kuAngola. Okwa fiya ko ovana 10, ovatekulu 100 novatekulululwa 10, Ovafilipi 1:21

Selma Nangula Haimbodi  
Ondobe  
Oilyateko

Meme Mirjam Hafina, e tu fiya po a landula tate Daniel Nghifika 29.3.1987, okwa fiya moonyuni eefye 10, Okwa xulifa e na cedula 83. Okwa fiya ko vamwaina va 3.

Ovaitaveli ovaholike, tangi keyakulo leni eshi mwe uyile natango kolufo eli. Tangi unene komayakulo eni, nande omifitu odiledile, otwe mu pandula noshe tu kumwifa. Tangi unene komapopifo eendjovo da-Kalunga. Twikileni natango okupendulila po eefye ngaashi mwa shangwa mujak.1:22

Ponhele yovakwao  
Tabita Daniel  
Kongo

## OMUKWETU

Oye oshifo shOngeleki Onkwaevangeli paLuther yomuSWA/NAMIBIA.

Ohashi nyanyangidhwa mOshinyanyangidho shOngeleki mOniipa.

Omukuluntu gwoshifo omumbisofi Kleopas Dumeni.

Amushanga gwoshifo omusita Sebulon Ekandjo.

Ondando yOmukwetu muNamibia naSouth Africa R6,00 komumvo.

Palwe muAfrica R10,00 nokombanda yomafuta R14,00 komumvo. Mondhila R17,00.

Oondando nomambesitelo agehe naga tumwe kOmukwetu, Oniipa, P/Bag 2013, Ondangwa, 9000.

ELOC PRINTING PRESS  
PRIVATE BAG 2013, TEL. 11, ONDANGWA 9000  
SWA/NAMIBIA.