



Nujoma ta yamukula epulo lyuukomunisi nelongitho lyoonkondo mehanganano lye

Okuza petameko lela SWAPO sho a ka konga iilwitho kiilongo yaasosiale (yuuzilo) sho e yi tindilwa tango kiilongo yaakapitali (aauninginino) okwa kala ta pewa uusama nokulukwa omukomunisi.

Uungundu wontumba owa totwa miilongo yimwe yaauninginino, unene muAmerika okuyateka ekondjo nelalakano lyaSWAPO n-ndomo yuukomunisi. Meni lyaNamibia wo aakwashigwana oya pulakene aluhe nkene taye

Efiku looshoongalele shoikandjongeleki la ufwa natango

ONIPA: Oshoongalele shokulongekida oikandjongeleki mu ELCIN, efiku lasho ola shiivifwa vali, shi hovele 13-15 muAguste neudo. Eshiiwifo eli lipe ola dja mElelongeleki laMai 5.5.1987 omolwedjepo lombishofi. Oshoongalele osha li shi na okuningwa muJuni 24-25, 1987.

Elelongeleki momutumba walo wa ulikwa pom-bada, ola koleka vali okangudu komadina taa shikula apa ka kale okangudu ketalululo lefaneko longaba yoikandjongeleki, efanelo olo li li molupe londada Z.

Moshitaingeleki **shOndonga:** Omufita Salomo Elago nomulongi Hans D.Namuhuja; **mOukwanyama:** omufita Veikko Munyika nomuteolohi Aune Shilongo; **kOuninginino:** omufita Ananias Iita nomulongi Erkki Tauya **nokOkavango:** omufita Hekki Ausiku nomulongi Amos Sirongo.

Meshiivo laye komaongalo aeshe mu ELCIN, omubishofi okwa dimbulukifa ovaleti vo-maongalo ngaha:

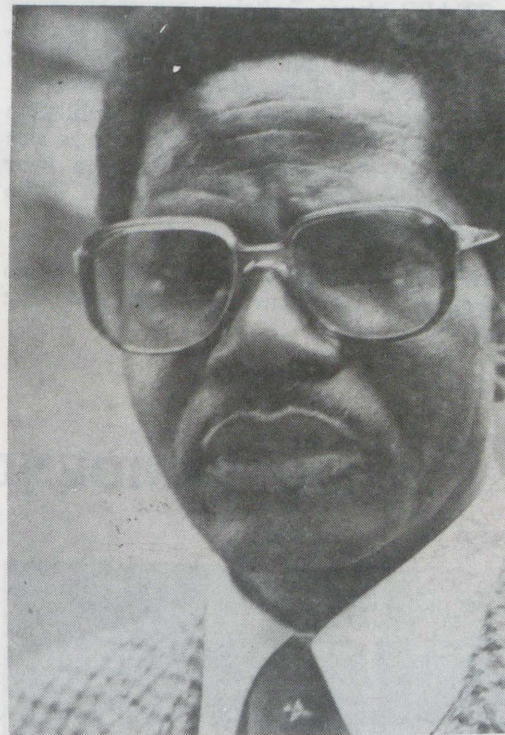
Tala kep. 2

ya ya yugwe omaliko gawo, SWAPO ngele te ya taa kanitha aakulukadhi yawo noongombe dhawo, oshoka aniwa uukomunisi osho u li.

Aanangeshefa aanene, unene Aatiligane osho wo oongeleki dhimwe muEuropa odha kala dha thikamenwa kepulo lyuukomunisi moSWAPO, kutya otadhi piti ngiini nawo. Iikando iyali ya landulathana nuumvo omuwiliki gwehangano ndyoka Nujona, okwa yamukula epulo ndyoka nomuthindo. Moshigongi shOraata yOongeleki muuyuni (WCC) petameko lyaMai nuumvo, omupresidende Nujoma okwa tile ngaashi tashi landula:

“Koongeleki ndhoka tadhi ipula nelongitho lyoonkondo nuukomunisi moSWAPO, nandi yelithe mpaka natango omakankameno gongundu yandje. Monkatu yotango noyo ya simana yi vule adhihe, tse oSWAPO, ohatu itala kutya tse Aanamibia aakondjelimanguluko naaeti po yelunduluko paudemokooli.

Tala kep. 2



Omufita A.Kaulinge (53)

“KAULINGE NA TWIKILE VALI:” — ELELONGELEKI

Omupashukilishitaingeleki shaUkwanyama, omufita Apollos Kaulinge, efimbo laye loupashukili eshi la pwa ko, Elelongeleki lohani yaMai, ola tokola a twikile natango noshilonga osho. Oshilonga shoupashukili woshitaingeleki ohashi kalwa eedula nhano, opo taku hoololwa umwe, ile nakukala mo ta hoololulwa vali.

UUKOMUNISI NELONGITHO LYOONKONDO MO SWAPO

Dha za kep. 1

- "Omuntu okuninga oshilyo shoSWAPO, ota pulwa oshinima shimwe ashike, kutya a kale omukondjithi gwomukalo kehe omukwii-
longo gwopakupangela.

- Na kale i ilongekidha aluhe nongele sha pumbiwa, okusila mokupopila uuthemba wOmunamibia kehe, eithikameno nema-
nguluko.

- Na kale i igandja aguhe kuukumwe woshigwana ashike shaNamibia.

"Pamufangolongo (ideologically) gwa SWAPO, SWAPO ota kondjitha uulunde womonkalathano okuthipa omuntu omukweni ombinzi. Aanamibia oyendji oye li nale iihan-
kanwa moshinima shoka. Onke tse oSWAPO otu li oitaali komakankameno guuyyuki womonkalathano."

Omuwiliki gwaSWAPO, Tshafiishuna okwa tsikile ehokololo lye okuyelitha ekankameno lyongundu nokugwedha ko kutya: "Tse yoSWAPO elongo lyohokwe muuthikepamwe nokupopila uuthemba wakehe gumwe pankalathano nepamahupilo, otwe shi tula shili shi kale omutima meputudho lyetu lyopapolotika. Nomolwasho otwi itaala onakuyiwa yoshilongo shaNamibia sha mangeluka oyi na oku ka kala noonkondo dhokudhinda einyowelomo kehe lyefupa lyopaukapitali. Sho ihe shika hasho nande uukomunisi.

"SWAPO ehanganano ekondjelimanguluko ndyoka itaali vulu okuvundakanithwa mumwe

nopaati yopapolotika, nashi kale opaati yuudemokooli yopakriste nenge yopakomunisi. Opaati ohayi kala ya tula omufangolongo gwayo melandulathano.

"Shika hasho kombinga yehanganano ekondjelimanguluko, oshoka mulyo omu na oongundu odhindji (classes). Ongundukondjelimanguluko ohayi pangelwa kelalakano limwe alike kutya, iilyo otayi dheuilwa notayi unganekwa okukondjitha omahepeko nokupangelwa kaakwii-
longo."

Okwa ti natango kutya SWAPO oku na eitaalo kutya aasosiale mboka ye hole elunduluko naateologi yelongo lyemanguluko lyomuntu aguhe oyi itula mekondjo li thike pamwe mokweeta po onkalathano nuuyyuki nuuthikepamwe.

"Pakutala kwa SWAPO eyooloko lyawo (aasosiale naateologi) oli li ashike moshinima shomwenyo konima yombila, sho yamwe ye shi itaala nayamwe taye shi patana. Tse ehanganano lyopolotika, oshinima shono otwe shi ethele omuntu mwene, a tale sho ta landula."

Okwa gwedha ko ta ti, yo otaa taamba aantu ayehe, oitaali nakaaneitaalo mehanganano lyawo moshilonga kehe shongundu, naayehe otaa putudhwa yi iyambe komakankameno guuyyuki nuuthikepamwe womonkalathano. "Osho-wo she tu ziminita oitaali miilonga yetu ya ninge omalongelokalunga gawo nemanguluko nohatu ya tsu omukumo ye shi dhiginine. Ookamba dhetu dhoontauki mOswapo odhi na eyakulo lyopausita."

OMUPRESIDENDE GWA VELKSWA



Omuwilikingeleki W. Blank

Omuwilikingeleki gwOngeleki yAandowishi muNamibia, Wilfried Blank, okwa hogololwa pehulilo lyomumvo gwa yi koshigongingeleki sha VELKSWA, a ninge omupresidende gwehanganano lyoongeleki ndhoka omimvo ndatu tadhilandula.

Shoka oshikando shotango sha ningwa pokati koongeleki oonkwaLuther dhAaluudhe naandjoka yAatiligane muule wethimbo ele dha kala tadhikongo ondjila yelongelokumwe noyehengumukilo mumwe.

Oshigongi shoka osha tokola, omumvo 1992 gu kale oshijalakanenwa shadho okuthika mehengumukilo mumwe ndyoka.

Ethiminiko kOngeleki yAandowishi okulongela kumwe noomwayinangeleki dhAaluudhe, kali li ashike meni lyoshilongo, ihe oli li wo nokombelewa yOngongahanganano yAakwaluther kuGeneva.

Sho e ke ya poshita shelongitho lyekuni (elongitho lyondjembo) Tshafiishuna okwa lombwele aawiliki meukililo a ti: "Mushika itatu ka gandja nando ombili, nokwiipa ando uusama molwaasho ehanganano lyetu olya tokola okukutha omatati okwigamena kethiminiko lyopaukwiita lyopaukoloni ndyoka lya kala uule womathele moshilongo nokethipo mo lyuuyamba moshilongo kaali na nando ongamba."

"Oshi li nale momadhiladhilo gehanganano lyetu mooprograma dhopapolotika, kutya SWAPO kee na enota lyokulwa iita. Otwa hala ando pwaa kale nando gumwe te tu thiminike tu kuthe omatati okumangulula oshilongo. Ihe oshili oyo ndjoka, kutya elelepalo lyomahepeko gopaukoloni muNamibia olya inaatu monena we omukalo gulwe okwiimangulula muwo."

"Mboka ya hala ye tu kumagidhe twaa kondjithe uukoloni nomatati, eyamukulo lyetu ohali ti ashike: tu ulukila omukalo kaagu na elongitho lyoonkondo, tagu vulu okumangululitha Namibia.

"Molwaasho iita kayi shi oshinima shono twe shi hogolola owina, ihe otwe shi thiniilwa, osho hashi tu popitha ishewe niishewe, kutya tse otwi ilongekidha okushaina emweneko lyiita esiku kehe na SA. Ombili nedhiminathanopo li holoke mokati kaantu yetu, oitaali naamboka yaashi oitaali, Aaluudhe nAatiligane.

"Naashono inaashi ningwa natango oomvula 9 ngashingeyi sho pwa ningwa ontokolwa 435 kiigwanahanganano, uusama mboka otau tentekwa ashike kombanda ya SA."

Omuleli gwa SWAPO okwa hulitha eyelithilo lye nomatumbulo taga landula:

"SWAPO kombinga ye, okwi itula unene mehogololo lyayehe lyoshili, lya mangeluka nolyopaudemokooli mokutula miilonga opulana yiigwanahanganano kombinga yemanguluko lya-Namibia.

"Tse otatu ka konakona shoka shu uka nosha yela methimbo lyoshitokolitho 435 notatu ki iutha komatokolo gopaveta goshigwana sha-Namibia."

Sebulon Ekandjo

Dha za kep. 1

"Onawa wo mu dhiladhile ngoka ta ka kala omupehawiliki gwoshigongishikandjongeleki sheni naamboka taa ka kala iilyo yoshigongingeleki tashi ya, patokolo lyoshigongi shomOngwediva sheti: 10.12.1986," okanomola okatine oko taka leshwa ngaha:

"Opo tu mone iilyo yoshigongingeleki oshiti 14, Elelongeleki otali hiya iigongi yiika ndjongeleki pangamba ngaashi yu uthwa montokolwa 31 yoshigongingeleki oshiti-13/86 nelalakano limwe alike, okuhogolola aatumwi yoshigongingeleki oshiti 14. Omalongekidho galwe otaga tegelele koshigongingeleki sho shene 1988."

Okangudu aka oka indilwa kElelongeleki ka ongale diva ko ka ninge omafaneko oo ta tumwa koyoongalele yoikandjongeleki muJuli 1987.

Sebulon Ekandjo

OMILAUU NOUYELELE

Omulaulu ihau kala pamwe nouyelele. Omulaulu owo oshinima shii, osheshi omunhu ou e li momulaulu iha kala e wete ko nawa, nande oshiponga oshi li popepi naye oshifidi ile ekiya, ihe shi mono omolwomulaulu.

Ou e li momulaulu luhapu ohe li tu moiponga, molwaashi ke i wete. Omulaulu owo we uya tete, nokoñima pa holoka ouyelele 1Mos.1:2-5. Omilaulu odi li pavali.

- Omulaulu wokolutu.
- Omulaulu wokomwenyo.

Omulaulu wokolutu owo ou wetango la ningina, ile wolamba ya dima. Omulaulu wokomwenyo owo ou omwenyo u na omatimba, womunhu a nyona koshipala shaKalunga, a dipaa, avaka, a fimaneka oikalunga, noinima ikwao oyo hai di komutondi satana.

Omulaulu ou holike keembudi opo di longe owii di he wetike, osheshi ngeenge da monika tadi longo owii otadi hanyenwa, nokukelelwa di he u longe Joh.3:19-21.

Ovalongi vowii ava va hala kwa laula diva nandi tumbule po oshihopaenewa.

- Umwe okwa hala a vake ofitola ota teelee li ningine ye a endelee kumwe nomilaulu.
- Umwe ota i komukainhu wovanhu a nyone naye, oha endelee kumwe nomulaulu.
- Umwe ondudu hai kufa oikupa movanhu ohai teelee ku toke, opo i longe momulaulu.

Ashike omulongi woshili oha longo mouyelele, ngeenge omulandifi womofitola oha patulula po moipafi, ile oshitenya sha hambola omuvalekwa washo, nokwa djapo a ya kooxe nomulumenhu waye a hala e ke mu talelepo ota i ko moipafi mouyelele.

Ouyeleele owo omuwa

Ouwa wouyelele oyou, ouyelele ohau monifa ko omunhu keshe tuu oshinima shaye te shi kongo ku na ouyelele oha dudu oku shi mona. Omauyeleele oku li pavali.

- Ouyeleele wopalutu wetango nowohani nowolamba.

b. Ope na ouyelele wokomwenyo hau minikilwa kuJesus ngeenge e li mo, osheshi Jesus Kristus oye ouyelele wovanhu (wounyuni) Joh.1:1-10. Nakeshe ou e na ouyelele nomulaulu muye ihau uya mo. Joh.8:12;12:46; 1Petr.2:9.

Efimbo louyelele ohali piti po onghee nau li hakanwe diva manga u li po. Joh.12:35-36; Rom.13:11-14. Ouyeleele ohau pitilile po omunhu, paenghedi tadi shikula apa: Omunhu oha fi, omunhu oha tembuka po popepi neongalo omu mu na ouyelele weendjovo daKalunga nota i kokule meefuka kokule nado. Omunhu oha kulupa noha nyengwa okufika kongeleka molwoukulupe a ka minikilwe kevaengeli osheshi eendjovo daKalunga odo ouyelele meendjila detu noshela yokeemhadi detu. Eps.119:105;3-4.

Omunhu waKalunga ove naame, fikama u ye manga pe na efimbo. Lesha Jes.60:1-3. Fikama u li hokolole omatimba opo u yele, fikama u ye mofikola opo u yeleele koilongwa aische nou dule okuninga olamba yokuminikila oshiwana pamikalo edi;

Omumati Boetie Simon yaKaukungwa (38) momukunda Ohalushu, okwa xulifa 7.3.1987. Okwa fiya koxe naina neendenge daye nhatu.

Omumati Boetie Simon okwa shiivika nawa mokushika eengongi nokudenga oiketala. Ondaka yaye oya shiivika nawa Moradio. Omuudifi. 3:1-8.

Cornelius Sh. Mengela
Ohalushu

Omumati Daniel Nghidiphamba Shanghala, Ofaitumbo meongalo laHaingu, okwa xulifa moshiponga shekandomo lohauto 19.4.1987. Okwa fiya ko ovakulunhu vaye novamwaina Eimbilo 490.

Ester Ndeshihafela Shanghala
Walvisbaai

Tate Petrus Kapuka (38) okwa mana oondjenda dhe mesiku 18.10.1987 megongalo Ontananga, moshiponga shoshihauto.

Omutekulu
Erenstina Eva-Liisa Nafuka

Kuku Aili Namwandi Nehoya (83) mOlukonda, okwa mana oondjenda dhe 26.11.1986. Gwanchoya okwa kala omudiakoni megongalo Olukonda.

Omutekulu
Erenstina Eva-Liisa Nafuka

JES.5:20



pamukalo woulongi, ile woufita, ile wouhakuli, nowoudiakoni, ile ouye-vangeliste. Omunashilonga keshe oye olamba. Mat.5:14-16; Luk.8:16-17.

Lesha eendjovo tadi shikula apa tadi popi omilaulu nouyelele Jes.5:20;9:1, 49:9;50:10;59:9. Ofye ava twa li momilaulu, paife otwa mona ouyelele. Nau kale mufye u monike melaka letu la yela. Ef.4:29;31,5:4 nomoilonga yetu yokomake i kale ya yela, Iil.2:12-15 nonomadiladilo etu a kale a yela Fil.3:5.

Inatu lumbakanifa oupaani noukriste. Lesha Joh.3:19-21. 2Kor.4:4-6 6:14. 1Joh.2:8-11, 1:5-7, Efes 5:8-14. Kalunga oye Xe youyelele neulu alishe ola minikilwa kouyelele waye. Ehol.21: 23-27.

Tu tambulafaneni ngaashi Kristus e tu tambula, fye tu ka ye mevadimo olo. Eimbilo 146.

Ev.A.Muleka

ESO

Simon Samuel, mOniihandhila, megongalo Omuntele, mOndonga okwa mana oondjenda dhe ombaadhillila moshipanga shepangalo mOshakati 10 Kotoba 1987. Okwa li e na omimvo ne (4). Okwa thigi ko he nayina naamwayina. Na otandi pandula unene kumboka mwa li mwe tu kwatha, muudhigu wetu. Kalunga ne mu yambeke ye ne mu gwedhele ko komayakulo geni aamwameme. Eimbilo 410.

Matlida Kwedhi
Oniihandhila, Omuntele

Titus Ndakola Amalwa (55) a si 13.12.1986 ombaadhillila. Okwa thigi ko omuselekadhi noyana 8.

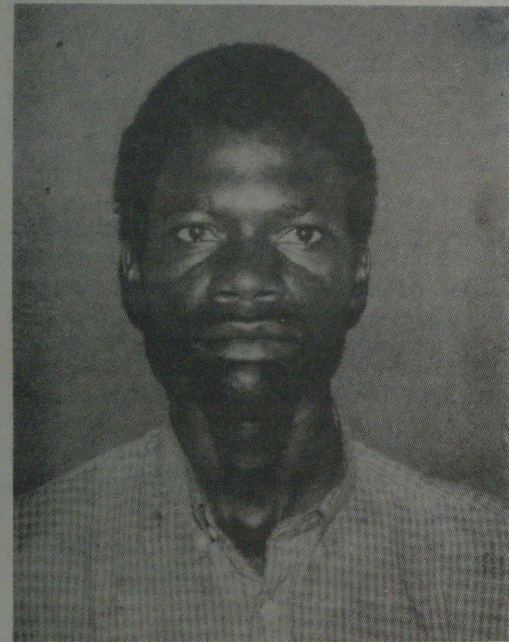
Andreas Namupala (13) megongalo Uukwiyu okwa sile moshiponga shoboma 30.3.1987. Okwa thigi ko he nayina naamwayina 7. Osho wo Sakeus naKapa (10) naye okwa sile moshiponga shoboma esiku tuu ndyoka. Okwa thigi ko he nayina naamwayina 5.

Jakobina Namupala
naMariana Kapa
Uukwiyu

Ko ve li tava ligava nzambo kwaHompa

Nsene ono hara kuza o ka lironge yuma kovarugani vamwe ve ligava nzambo mosirugana saKarunga, zende komukunda gwaInsu. Insu mukunda gumwe gomonomukunda depogero lyaNkurenkuru momutayingereka gwaKavango moukwangali. Ago kwa kara kourundu waNkurenkuru, nokirometa 44 ngoso. Ago kwa kara novakriste ava ava pongere po wokusika pomasere 250-300 ngoso. Yige gumwe gokugazarera ngaku ka kare spongero komeho.

Walye wa kwata mukunda ogu, noku gu pindura? Vagara ava mefano vapyu unene. Awo



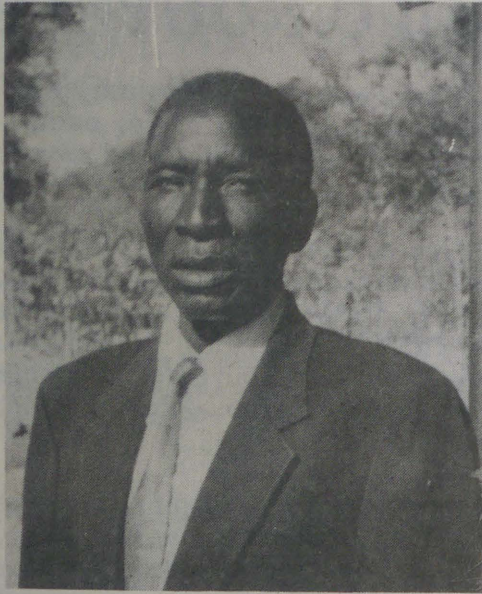
Mitili Markus Naftali yige nye ogu wa zuva

varongi wosikora zorudi, nye yiwo hena vavangeliste, vakuronapongerono vasita womukunda ogu. Madina gawo Jeremia Kangayi naMarkus Naftali nomurongikadi Kylikki Sirongo (Muranda). Mugolikadi ogu Kylikki kapi ku na gwana efano lyendi popepi ngano nage ta moneka.

Varugani ava narunye to va gwana tava uyunga asi: "Tu peni mpito tu rugane sirugana saHompa." Muswamane Kangayi gonomvhura dokusika 56 ngoso kwa tameka sirugana sourongi pomukunda ogu melima 1964, mezakuro lyetumo. Ntaantani popepi nokuza mopensiuna zendi zourongi.

Narunye tate Kangaji to mu zuvhu mauyungo gendi asi: "Kutupu kurugura monyima tatu rugana makura", "Ndi asi:" Nare kapi ngani zuvhu ko, nye ntantani yina zerere nge nawanawa". "Ndi asi" vasita tu mangurureni tu rugane mwa ha tura ko mukindiko".

Kapi a hara ku faura mosigongi sina mu tamba, Mpili ta lizuvhu rutu ta wiza. Konyima ta uyunga asi. "Awe nina ya veruka, nye mosigongi komwenyo." Nsene ehauto lyendi tali ya sikama pevero lyosinyanga, yuma ana gendere.



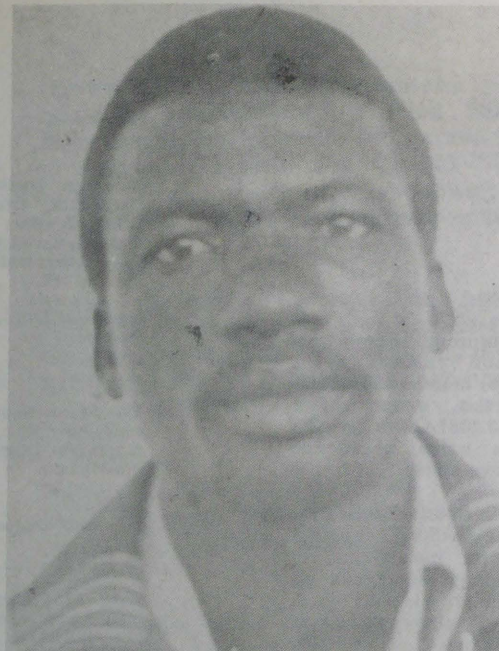
Mitili Jeremia Kangaji, mumbja musika nakufa Alfeus Kangaji odjaJaakko, ta moneka apa

Nkene sivike moutano gogu. Ta reta maudigu voyakriste vendi, ndi ta reta nonzambo, egawo pongero mahangu. Sinene ana wiza sinyanga kugawopa. Ngesi yige a tambura nayinye, ta ya yi sikisa. Ntaantani ngesi kuna kupongaika emona nomaunongo a dikise ngereka poInsu. Age hena ga randa yikesa yoimaliwa gapa va pitisili vendi womusiki, vagara-novakadi vapongaikire mo.

Nsene kapi wa diva sihorekwa seyi ava fundu naNkurenkuru monombunga dimwe, nonkondo dawo dimwe mukunda gwaInsu. Varugani ava yi tetukisa unene moku litura mosirugana saHompa. Ngawo varongi vetu navenye va guse

Oukongo woshendja wa xulila momakende

Efiku limwe onda li ndi li poundingosho nde lipyakidila nokulandifa ombelela yoshingulu. Ope uya omukulukadi e na oimaliwa ihapu yomafo vali ota kongo oshendja. Ame onde mu lombwela, nghi na oshendja meme, ondi na ashike ombelela yoshingulu tai landwa. Ye okwa ti oi na ondilo, okwa ya monduda, ina pula vali oshendja.



Ngh. Fikameni

mpepo ezi, awe ukriste gano tau moneka momapongerono. Komeho ngo ka resa Kleopas Naingwendje.

Jeremia, Markus, naKylikki Karunga a mu gwedere ko nonkondo a mu tungike.

Musita H. Ausiku

Ekumaido kaahokanathani

Aamwameme aaholike muJesus Kristus, ohenda unene sho handi uvu olwindji aantu taa ti anirwa ondjokana, ondjo yokana. Otamu ka mona sha tya ngaaka shili shoka megumbo lyeni nkene tuu mwa hokanene okatongo kobala ke limo.

Omadhiladhilo itaga tsu kumwe, kehe gumwe oti itangele owala kaandjawa nande otaku tiwa otaa ningi omuntu gumwe. Oto ti ngele oto pingathana neutho lyaKalunga ou shi iinima otayi kala nawa?

Tala kuume, Kalunga iha utha oshinayi, onke ngele to ti ondjokana ondjo yokana oto popi ondjo koshipala shaKalunga oshoka oye mwene okwa ti ondjokana oyo ondjapuki, manga ngoye to ti ondjo yokana.

Ombimbeli yo yene otayi ti, omulumentu kee shi omwiitaali ota ka hupithwa omolwomukulukadhi gwe nomukulukadhi kee shi omwiitaali ota ka hupithwa omolwomulumentu gwe. Oshinima shono ihashi ku halutha nande? Ngele oto tsu ompata, tala 1 Kor. 7:14.

Mpaka ota ganda omadhiladhilo gokutya ondjokana, ondjo yokana, nenge otiibii ngaashi yamwe haa ti.

A. Martin

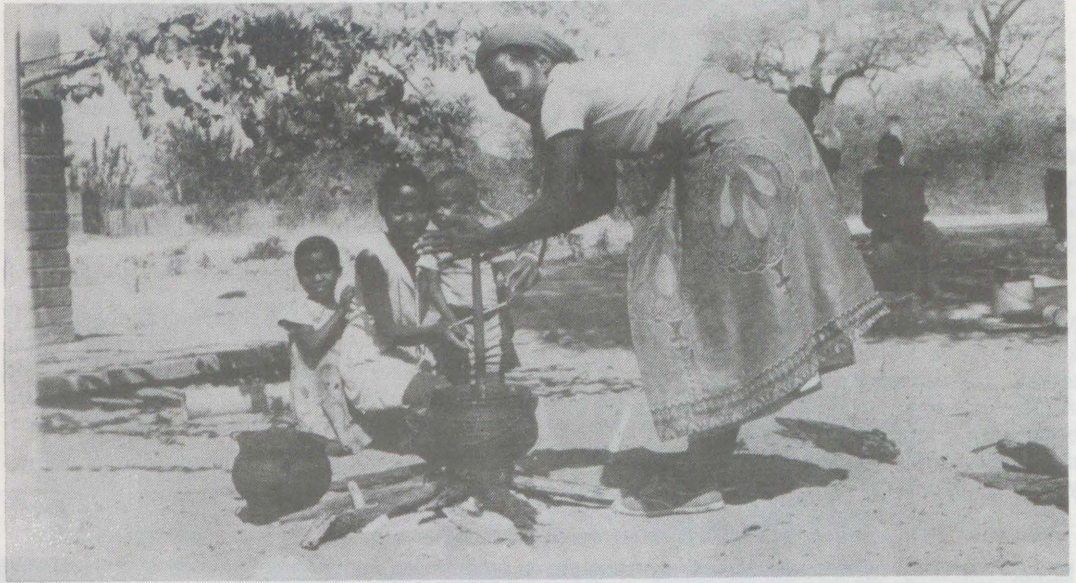
Okwa pula a pewe ekende. Osho ngaho a kala ta pula ekende nekende fiyo oimaliwa ya pwa po. Mokushuna kwaye okwa indila ko ekende a ka nwe keumbo ye oshimaliwa e shi ete mongula. Mondjila ekende ole mu xutuka nde tali tatuka. Okwa endeleda divadiva nde te li polola moshipala nomalodu aa kwa li taa kunguluka pedu.

Konguloshi omangha e li pepata laye okwa mona omhuku yonembudu tai nyongola ya yuka melimba. Ye okwa endeleda ta xwameke onyika yomundilo opo a ka konge mo omhuku e uye e mu vatele okupona eenghako, molwomukaa.

Mokuminikila kwaye okwa yelula ashike omundilo pom-bada, ye ta tale komhuku omundilo nowa kwatafana nonduda ndele onduda tai lungwina po neumbo alishe, ndele nembudu ina pila mo, okwa nyongola nde ta i.

Ongula eshi kwa sha omukulukadi ou okwa ya kongodi ku "hallow", hallow ta lombwele omushamane waye kOshimba ta ti, okwa mona oshiponga shomundilo. Eumbo alishe noimaliwa oya pila mo aisho. Oshiponga vati osha etwa kounona ava kwa li tava danauka nomundilo. Omushamane okwa efa manga oilonga e uye a tale eshi sha enda keumbo. Ngh. Fikameni

Caprivi ta hiya ELCIN kepyatumo, eyamukulo olini??



Omotonatelishitayingeleki shaKavango, omusita A.Lihongo, okwa talela po Caprivi pamwe naAmushanga gwEtumo mOngeleki, omulongi J.David osho wo aasita yamwe; O.Sikwaya, H.Ausiku, N.Sirongo nameme Eva Kakukuru. Elalakano okupula eziminino kaakwaniilwa yaCaprivi ELCIN a tameke epyatumo hwiya. Eziminino olya gandjwa nokatoma oke li kombinga ya ELCIN. Omukwetu, okweendele wo pamwe nosheendo shoka.

Omathano agehe mepandja ndika otaga ulike onkalamwenyo yesiku kehe muCaprivi

ESIKU LYACASSINGA KALI SHI OKUDHI-MBIWA MONDJOKONONA YEMANGU-LUKO LYANAMIBIA

Oondhila dhojete dhOshifulanisa 12, noonkwawo dhokuhumbata dha longwa muBritania, nomadhagadhaga gatano, oyo ya li ya longithwa ku SA miita yaCassinga 4.5.1978 moka Aanamibia konyala 1,000 aakulukadhi,uunona, naakulupe ya silemo," osho sha li sha pulakenwa mokana komupresidende gwa SWAPO mesiku lyedhimbulukwo lyaCassinga nuumvo muLusaka shaZambia.

Mehokololo lye okuulika shono sha ningilwe komatanga ga SA mokamba yoontauki dhaNamibia ngashingeyi omimvo 9 dha piti, omusamane Sam Nujoma, okwa ti siku ndyoka oomboma oondhigu dhepangelo lyokatongotongo, odha tameke okuloka kombanda yokamba okuza po 7.15 ongulangula nodha

muuyuni nomu SA naNamibia, oya li moshigongi. Meegululo lyoshigongi shoka, omupresidende gwoshilongo shaZambia, dr Kenneth Kaunda, okwa dhimbulukitha Ongeleki oshinakugwanithwa shayo shokukondjela uuyuuki, ombili nemanguluko lyomuntu kehe.



Methano ndika oonakusa yomoCassinga Aanamibia molwoshiponokela shetanga lya SA

thigi konyala 1,000 ya sa, nayalwe 250 oonkwatwa mumboka oyendji yomuyo inaa monika we sigo onena, manga ooyakwawo ya kala oomvula heyali momahepeko kokamba yaMalinda (Mariental).

Cassinga osha li okamba yuuthikilo yAanamibia muumbugantu waAngola mboka ya fadhukile po omahepeko goshilongo shika. Pethimbo lyoshiponokela, oya adhikwa yi na Aanamibia 4,098. Ookamba oonkwawo ndatu dhAanamibia moChetequela, Guamato nomoNdobordola nandho esiku ndyoka odha hanagulilwe po.

Esiku lyaCassinga nuumvo olya li lya dhimbulukiwa koyendji muNamibia. MuLusaka olya li lya dhimbulukiwa pamwe netamekitho lyoshigongi shoshikondo shokukondjitha uukwamuhoko shomOraata yoongeleki muuyuni auhe (WCC). Aawilikingeleki yamwe

"Opamukanka ngoka Oraata yoongeleki muuyuni (WCC) yi na okutsikila oshinakugwanithwa shayo oshinene okutsa omukumo, nokuyambidhidha mboka taa kondjitha uulunde womulandu gwokatongotongo," omuleli gwaZambia a ti.

Okwa ninga chiyo koongeleki adhihe muEuropa, Amerika sigo Afrika, opo dhi longithe ompito yadho pethimbo ndyoka muZambia okudhiladhila nawa omukalo ngoka tagu kwatha iilyongeleki nomapangelo okukondjitha okatongotongo.

Omusamane Kaunda ekundo lye okwa li e li ningi ashike konima yomasiku 10 sho a zi moosa dhayamwe yomaakwashigwana she,

mboka ya sile moshiponokela sha SA momukunda gwaLivingstone. Oshigongi osha li sha hulu eti 8.5.1987.

Nujoma okwa ti, mondjokonona ayihe yekondjelomanguluko edhigu lyoshigwana shaNamibia mpoka tuu nayi ka hulila, esiku lyaCassinga (4.5.1978) oyo aluhe tali ka kala mo oshiningwanima itaashi ka dhimbiwa.

Oondjembo dhuuzigo odha li dha longithwa mwa kwatelelwa ndhoka dhomeya ga fosfate (phosphate), ondjembo yokuzitha omahodhi, noyokulemaneka oonelive. Uunona owindji owa sile komiku ndhika, mamga yalwe ya sile mihwa kiilalo," osho Nujoma u ulike kuuyuni shono sha ningilwe po.

Omuwiliki gwa SWAPO, okwa hulitha oshipopiwa she noku gandja epandulo komupresidende gwoshilongo shaZambia, kiishiindalongo naZambia ya manguluka, kOraata yoongeleki muuyuni nokomahangano ge hole ombili omolwaayihe mbyoka ye yi ningila oSWAPO yaNamibia sigo oompaka.

Sebulon Ekandjo

AANAMIBIA NONGHALO MOSHILONGO NENA

Aveshe ovo ve hole ombili ohava lalakanene ombili i kale po. Ohava amene ombili noku i popila. Vo ova fimaneka omunhu mukwao nove shi shi kutya omunhu oshike. Nge omunhu omwaameni, owa teelega a amene.

Ashike patanga leameno eshi osha pingafana filu-filu, shaashi etanga leameno otali longo po oilonga yetanga lomahepeko. Nge eameno; nali longe oilonga yeameno. Ovanamibia nge tava shakene otava lili ashike eecassiperi: Umwe ota ti:

Tate nameme ova dengwa nena; odalate oya lyatwa po, oradio yetu nayo oya iwa nayo kokufuta. Ndele naame onda dengwa nomupini. Hatuhepekwa naye okwa dengwa, ye oku na ashike eedula nhatu, walye kutya Swapo oku mu shi nee peni ye omushona natango.

Omutivele ota nyamakula: Fye oilya yetu ofilu. Eecassiperi omo hadi ya omutenya. Mbela oilya yetu tai lyatwa po ngo nee owina shaashi tu he na omauta. Hano omakakunya otaa ti fye ohatu havala eendoosha ngaashi vo? Ile otaa ti eendoosha domakunde otadi wanene oshilongo hano, eshi hava kala tava lyata po oilya yetu? Fye

Tala kepanja tali landula

Ofikola nokapangelo mOkalongo ya xwikwa po

Oilonga yomunyonena oya ningilwa natango ofikola Shihetekela mOnambome mOkalongo. Oshiningwanima eshi osha ningwa 12.5.1987 eshi ofikola imwe nokapangelo mOkalongo ya tomekwa omundilo kuwalye. Eefikola 16 oda xwikwa po mOwambo, pauyelele oo wa dja mElelongeleki laMai, nouhakulilo vavali. Ehepu oia ti ofikola ei oya tungwa po konima yeedula 9, noi na cengudu okutameka onghatu yetete, Sub A fiyo Std 6.

Nonande ku na okangendjo koufiku mOwambo inaku shiivika natango kutya olyelye ta longo oilonga yomunyonena wa tya ngaha moufiku. Petameko lohani ei, omuwiliki waSWAPO Nujoma, okwa popya moLusaka ta ti, kutya eefikola mOwambo otadi xwikwa po kepengelo la SA. Ye SA ota ti exwiko leefikola, oilonga ya SWAPO.

Ovanambia otwa loloka omahepeko akeshe efiku. Omunhu nge ina dengwa, okwa tukwa meekulu woye okwa dengwa, nge hasho ndongi weni oye ta lyatwa po ponhele yoilya nongubu yeni.

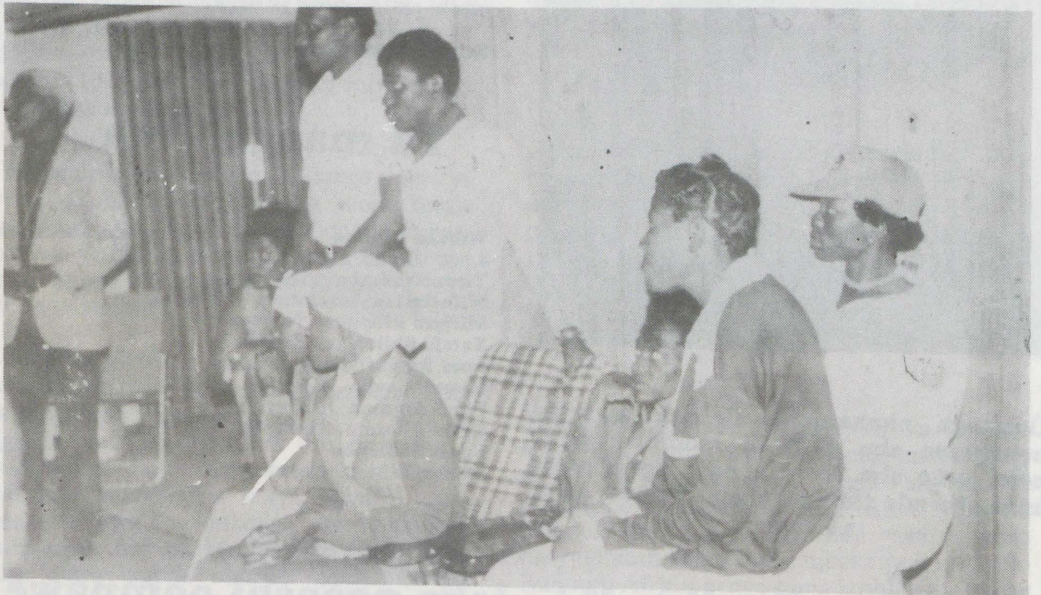
Woo omahepeko mokati ketu!! Ndalalamo okwa ya mo diva: Tu maneni oyoo taa дума oko, tu yeni komaumbo, walye nge omacassiperi otwe a henuka, kutya oikengelela youfiku ohatu i ende peni nena ei tai tongwa i li mumwe novadipai voineya?

Otashi ku kwafa shike okudenga omukulupe e na omutwe mutoka? Elao leni oli li peni nge oshiwana otashi mu keme keshe efiku. Nge inamu denga vakwashiwana itamu pewa nawa oimaliwa yeni? Nge inamu nyona po ombili yoshiwana hano koimaliwa yeni ohaku di? Omwa dimbulukwa ngaa kutya oilonga ei hamu longele Ovanambia momilaulu oya dimbulukiwa naKalunga mwene okwe i tala?

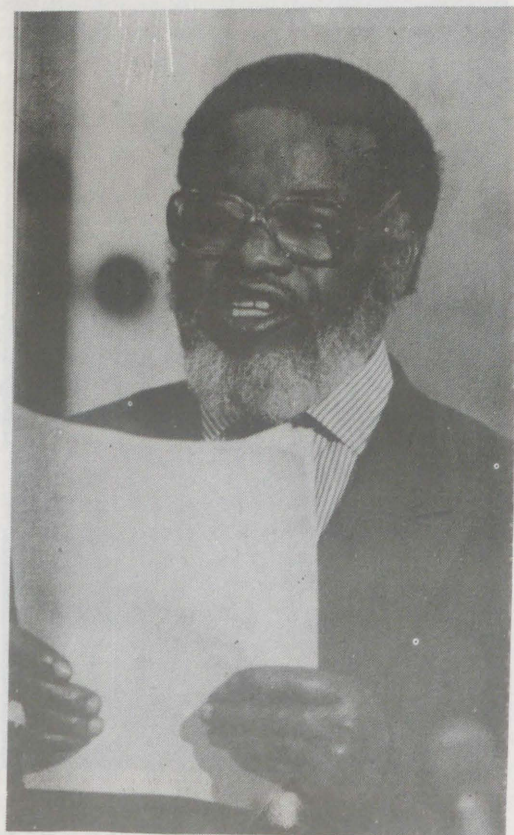
Ngele oshiwana otamu shi dipaa po noku shi hepeka, moshilongo omwa hala mu kale mo noi-xwa hano? Ofiyo onaini tamu kala tamu kuwitwa ngaha? Omwa dimbulukwa nga kutya haalushe hatu kala ngaha Kalunga ketu ote ke tu kufa mo diva moupika weni? Kaleni ngaashi ovanhu lela.

Oshiwana!! owa ninga po nee shike omahepeko a xule. Natango oto lopota nga mushiinda shoye a hepekwe? Owa ninga po nee shike emanguluko li uye popepi? Nge ove owa mwena olye wa teeleda e ku mangulule? Vakwetu tu tuleni oukuni kumwe hatu indile Kalunga, hatu lyaameke kwaashi tashi endeledifa emanguluko po li uye diva pamwe hatu fuda opo omadipao nomahepeko.

**N.Natangwe
Oshigambo High School**



Omathano ngaka oga thanekwa pethimbo oonkwatwa dhokokamba yaMalinda dha mangululwa, moka dha kala omimvo heyali. Methano lyopombanda lela, omumbisofi Dumeni, ota monika pokati lela ta popitha aamangululwa, omumvo 1984.



Omupresidende Sam Nujoma ta popifa oshoongalele

Aniwa oya dhengwa, oshoka itaa holola iini-ngwanima yomuusiku manga ya kotha

"Oshitago shono sha dhengwa nonkama, osha li sha dhiladhilwa momutse gwandje, sho osho sha ka teya oshikaha ngeyi moku shi kandeka;" osho omusamane Samuel Simon (38) a yamukula Omukwetu omasiku ngaka.



Oshitago shoka sha li sha kwatwa nonghama shu ukithwa momutse gwandje, osho sha ka teya ndje ngeyi oshikaha sho nde shi kandekela: Samuel osho a hokolola.

Tate Samuel okwa adhikwa a penduka megumbo lyawo lwotango ngaaka, sho a zi kiilonga kOlange nokwa tsakanene noshipupudha shetanga lyegameno momukunda gwawo Iiyale, popepi nOniipa.

Omukulupe yinakulu omusamane Josef Andreas (Ntoko) (88) okwa ngwandulwa niitenda yombete mombunda. Ngashingeyi ota lili uuwehame mombunda. Omukulupe mukwawo natango a adhika mo, omushiinda gwe Salomo Auala, naye okwa ngwandjagulwa nayi.

Oshipupudha osha ningilwe Osoondaha yeti 17.5.1987 momikunda odhindji dhaNiipa, Oshitayi, Oshigambo sigo Oshitutuma. Oyendji oya zi mo ya dhengwa, omankolo ga lyatwa osho wo omapya.

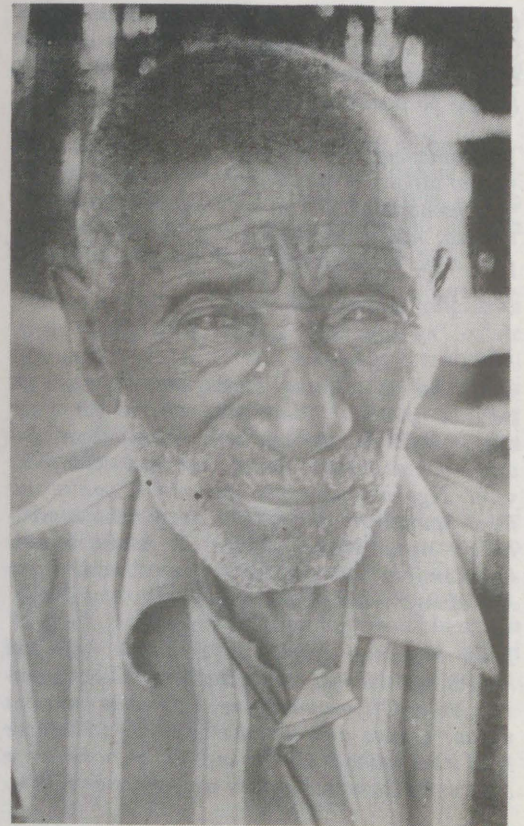
Samuel okwa hokana meme Suoma Diogenes (29) ngoka naye a tuntwa. Oye na uunona utano. "Otwa falele tuu oshinima shomadhengo getu kombelewa yomusamane Kalangula, noko twe shi thigi taye shi konakona," osho Samuel a tumbula a fa kee na etegelelo enene mekonakono.

Etompelo lyomadhengo omolwashoka aniwa itaa popi mpoka pwa lili ondjembo muusiku. Inaa tseyi ngele ondjembo oyu umbu mokapale kaNdangwa nenge palwe, oshoka osha li uusiku ya kotha.

Sebulon Ekandjo

Ya mangululwa

Wilikka Ainima Nakayale nokamwana koomwedhi 4.
Titus Shalimba Nakayale
Wilhelmina Amukwaya Nakayale
Mirjam Filippus Nakayale
Katofa Shilongo Eengolo
Josef Katofa Eengolo
Lamek Kavila Eengolo
Fiina Aluuma Nakayale
Erkki Aluuma Nakayale
Konis Shoombe
Nestor Tobias Nakayale



"Ombunda yandje kayi uvite nando ombili, koshipangelo oshimaliwa otashi nde ya," osho mwene gwomukunda gwliyale, Josef Andreas (88) a ningi omasiku ta yemata kuuwehamwe womangwandjulo

Ooholo odha li tadhi loko ngaashi oompawe

Okamati Josafat Viktor (23) manga ke li moshipangelo mOnandjokwe oka li taka dhimbulukwa nawa natango ikuti tayi zi medhagadhaga tayi loko ya fa oompawe. Konima yoosekundo dhimwe oya dhimbulula kutya nani oyo taa umbwa. Yaali yomuyo oya thigwa niilalo iinene.

Ethimbo lyu uka po 12 guusiku okupendukila osoondaha yeti 17.5.1987, okamati Josafat pamwe nayakwawo yatatu oya li mokahauto kawo taa zi positola ya ABC, popepi nOluno yu uka kOnethindi.

"Onkalo kaya li nando ya nika oshiponga niihauto yilwe otwa li tatu pingathana nayo ngaashi shito," osho Josafat ngoka a li omuhingi nomwene gwokahauto a hokololela Omukwetu, ehokololo lyoshiponga shawo siku ndyoka.

Manga taa thikama pegumbo mpoka ye na okuya, omadhagadhaga gaali oge ya, nooholo odha tameke okuloka dha fa oompawe dhomvula. Sho ga ka shuna, oga thigi Josafat, namukwawo Joel Johannes ye na iilalo iinene nayakwawo yaali ye na "uupulu welume."

Aashiinda shawo oye ya thindikile moshipangelo shaNandjokwe uusiku tuu mboka,

moka Josafat naJoel ya kala taa pangwa uule woshiwike iilalo yawo.

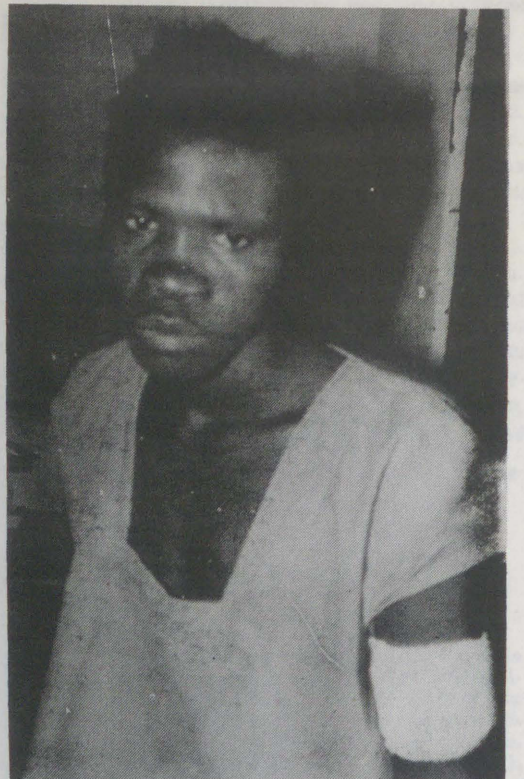
Ongula sho kwa ka sha mOsoondaha, etanga lyegameno olya ningi oshipupudha sha kwata miiti momikunda dhOniipa, Oshitayi sigo Oshigambo nOshitutuma. Omusamane Samuel Simon momukunda Iiyale oshe mu thigi noshikaha sha teka nomulongi Festus Iiyambo (Nangolo) okwa zi mo nomulongu gwa tatuka.

"Tse omakasipeli (Cassipar) oga adha tatu piti momambo nongele onda tala nawa, onda yalula omakasipeli 30," osho omukwanegongalo lyaShitutuma a hokolola pOmukwetu. Inaga pula sha kaantu, ihe omankolo niilya momapya oya lyatwa.

Momikunda moka aantu ya dhengwa, oya kala taa pulwa ngele oya mono oompadhi dha SWAPO nenge oyu uvu ondjembo ya lili uusiku. Aakulupe nuuhanona, kape na ngoka kwa li a hupu ko.

Omukwetu ina tseyi etanga lyegameno ndyoka mpoka lya zile, ngele omOndangwa nenge palwe.

Sebulon Ekandjo



"Yakwetu oya yalula ooholo 24 ndhoka dha dhenge poshihauto shetu moka nda gumwa kuyimwe yadho," osho Josafat methano ndika a hokolola nkene ya hupu meso

Inatu dina omakumaido ovakulunhu, nande twa tunga omaumbo

Pefimbo eli ovanhu ova ninga ovakulunhu, ove li kuwo vene. Ashike fiyo opapa, epangelo lovakulunhu otali landula eshi tava ka ninga keumbo lavo, kashi na sha nee kutya omolukanda ile omomukunda, ove na okukumaidwa nokulombwelwa, kutya eshi ohashi ningwa, shinya ihashi ningwa. Shi li metiti omukulunhu e shi yandja. Ove na okukumaidwa noku-ndungikwa.

Nande u kale wa longwa shi fike peni, ku dule ovakulunhu voye eendunge osho yo omayele. Manga inandi ya pexulilo, onda hala ndi mu dimbulukife kutya, otwa peweni oshipango oshitine: "Fimaneka xo nanyoko opo u kale u na elao nomwonyo mule kombada yedu."

Oshipango shotete shi na eudaneke, okuudanekelewa elao ndee nomwenyo mule kombada yedu. Hano ovo inava talako ekumaidolombwelo lovakulunhu vavo ongepangelo, itava mono omaudaneke aa.

Tala osho sha udanekelewa ovaduliki. Omayel 2:1-4,10 "Omumwange, ove ngeenge ho tambula eendjovo dange noipango yange ho i tuvikile mwoove, ngeenge to kongo eendunge ngoshisilveri ndee to di shitiile ngaashi omamona a holekwa, onunongo tau ke uya momutima woye neshiivo tali ka kala ounyenye komwenyo woye."

Onye onunona dulikeni kovakulunhu veni moinima aische, osheshi osho shwa wapalela Omwene." Kol.3:20.

Eshi sha yela osho kutya, epangelo lovakulunhu kali na efiku nali xulu po.

**Daniel Sem Taukuheke
Grootfontein**

EYELITHO KOMBINGA YOMAKAKUNYA MONGELEKI

MOmukuni gwaMaalitsa nuumvo omwa holokele ihe ombilive ndjoka ya nyolwa komuleshi gumwe gwedhina Ndobolilula K.K.Namukwayu, tayi nyenyeta kombinga yomakakunya ngoka haga kala mokati kaakwashigwana mOngeleka nokuhokanena mo.

Ombilive ndjika oya tsakanekwa kaaleshi yOmukuni oyendji mboka ya eta nokuli omaynyengo ogendji ga yooloka okuza koombinga noombinga, ngoka ga etwa unene kaantu mboka ya fa yaa na ontseyo nawa kombinga yonkalo yopolotika moNamibia osho wo muuyuni auhe, noya fa natango yaa na owino miinima yopaukalunga sho taya longitha iitya yimwe yomOmbimbeli pehala lya puka.

Nongele iinima mbyoka ya tumbulwa metetekelo oye yi shi nawa, ngiika pamwe oye li taya dhana noomwenyo dhAanamibia ndhoka tadhi kana esiku kehe. Iita sho yi li moshilongo muka inayi etwa mo nando okAanamibia yo yene, oshoka Aanamibia inaya taaguluka nande omafuta ya ka kondjithe epangelo lyaNdowishi moBerlyn, ethimbo ndiyaka (1884-1915), osho wo inaya taaguluka Omulonga Oranje ya ka kondjithe epangelo lyaSouth Africa muPretoria okuza mo 1915, opo iita yi tsimike ontsi ngaashi tayi monika moNamibia.

Ihe Aanamibia oya adhika moshilongo shawo ya mwena, ye li mombili, sho ya mono owala aakwiilongo yi iteyela moshilongo shawo, nokonima yethimbo oya tindile mo, nando oye na nga iilongo yawo, unene tuu SA ngoka ta tindile moNamibia.

Iita mbyoka yi li moNamibia ngashingeyi tse Aanamibia otatu yi yeleke nomweendanandjila e ya megumbo lyoye ndele ta tameke oku ku pangelela mo. Oto shi pitika tuu e shi ninge shika? Nenge otatu vulu okuyeleka olugodhi ndoka lu li moNamibia kutya, olwa fa omukiintu ta kwatwa onkonga komulumentu (oshimpulu) omunankondo, ihe omukiintu ngoka okwa kutha ombele ndele ta tsu omulumentu ngoka a hala a lale naye koonkondo, omukiintu ngoka okwa puka ngaa ando?

Ekondjo tali monika moNamibia ngashingeyi oli li pokati komweendanandjila ngoka e ya okupangelela mwene gwegumbo, megumbo lye konima sho a tameke ta manene mo uwanawa megumbo lyaantu moka. Ano oshigwana shaNamibia mpaka hasho sha kongo olugodhi, ihe otashi ipopile owala komuyugi gwoshilongo shawo, South Africa.

Kombinga yaamboka haya popi kutya yo kaye na ombinga hoka ya gama, noye hole aluhe okunyola iinyolwa ya hala okupukitha nayo oshigwana, OMUKUNI otagu ya lombewe

na kutya, monkalamwenyo kamu na ondjila yopokati nando. Nongele ou li elimalima nena ku na onakuyiwa ya hwepopala. Oshoka ngele owa yi koombuku, otadhi ku tidha nongele wa yi kuudhila ongashikwawo.

Onkee shoka shi na oshilonga okukutha ombinga ndjoka wu li. Ngele owa tokola u longele aawa yaali, nena ito ya longele uwanawa ngaashi yo ya hala, oshoka oto ka kala u hole po gumwe, ngoye omukwawo to mu tondo. Pamukalo gu li ngawo natango owa fa ashike elimalima.

Monkalo yopolotika ngaashi ndjoka omuntu kehe itaa vulu oku yi yanda moNamibia methimbo lyongashingeyi, omuntu oto vulu ihe okuhogolola pokati kiinima yi li ike iyali: oto hogolola ombinga yaathiminiki yaamwanyoko naayugi yoshilongo shoye mboka ye li epangelo lyaSouth Africa; nenge gama koshigwana shoye

Tala kep. 10

Elunduluko kovanashilonga va ELCIN

**Elelongeleki la ELCIN momutumba walo waMai neudo ola ninga omalundululo amwe kovanashilonga vonge-
leki ngaashi tashi shikula apa:**

+ Elelongeleki ola alulila omufita Alfeus Sikwaya, Kavango, moshilonga shoufita nole mu nangeka meyakulo kOvenduka okuhovela Juni 1.1987

+ Omufita Sebulon Ashipala, mOkaku, a lundululilwa omufita omuyakuli kOmuntele, okuhovela Juni 1.1987.

+ Omufita Jairus Uugwanga, Onguta, a nangekwa meyakulo loilyo yOngeleki kOliindili (Luderitz) okuhovela Juni 1.1987.

Omufita Gerson Max, Luderitz a ya kuAmerika kelixumifo komesho.

+ Omweevangeliste Nabot Iimene, Epembe, a nangekwa mOmulondo okutameka Juni 1.1987.



Elelongeleki lya ELCIN miipundi

Ondjokonona yomulongi

meme Eva Shaningi



Nakusa Eva Shaningi

Eva-Nampoka Shaningi okwa valwa 19.11.1927 pOhamayuutsi, mOmbalantu. He oSakeus Haihwa Hitukwa nayina Albetina-Kaalombelwa Sheendelwako. Oya vaelwe 11, ye omuthetatu mokuvalwa. Okwa tameka osikola yaanona poNakayale, 1944, Osiminaili kOngandjera 1947. Nomumvo 1948 okwa piti uulogi nokwa longo tango kOnakazimba kOnawa.

Okwa ka tsikila kOshigambo momumvo 1951. Momumvo 1952 okwa longa mokagumbo mUukwaluudhi. Konima okwa ka longa ishewe kOmbalantu hoka a kuthwa komuholike gwe, Johannes Amanjanga esiku 1.5.1955. Kalunga okwe mu pa omagano gaakadhona 4 naamati yaali.

Okwa tameke ishewe okulunga pOtshandi moka a tameke okukala molwiimbo lwegongalo mOtshandi, moka onda kala omuwiliki gwolwiimbo megongalo. Moka a kala ha pukulula ndje miinima oyindji. Okwa li omunamagano mokutota omahokololo. Olwindji onde mwiindile e tu ningile iinyandwa ngee molwiimbo lwegongalo nenge mokangundu "Tekamo." Ina tinda nando kwa li e na lilonga oyindji yuulongi. Okwa kala ihe miilonga ye yuulongi sigo esiku ndyoka a hulithile mo eti 5 lyomwedhi ngo a hokanwa omutitano (5.5.1987).

Eti 16.1.1987 okwa kwatelwe po e ta kala mondhologo pamwe nooyakawo yahamano uule woomwedhi mbali netata. Oya mangukula ko esiku eti 24.3.1987. Okwa li omudiakoni, kuume kaakongindjila, omuwiliki gwaakiintu nomwiimbi pamwe natse. Miilonga ayihe megongalo okwe yi longo nenyanyu. Okwa hulitha a mana lilonga ye yuulongi e na omimvo 60 a li e na okuya mopenzela momumvo tagu ya.

Saara N. Shoomo
Tshandi

Oye shi owala shoka ye shi, ihe haayihe ye shi yi ihwapo. Omithigululwakalo otadhi tseyika unene komuntu ngoka wa putukila mudho, ndele haangoka to dhi tameke owala pokati; molwashoka u na omalalakano gopolotika sho wa hala ashike eyambidhidho lyoshigwana nomukalo gwiineya.

Kombinga yomakakunya ngoka haga hokanene moongeleka, shika oshinima shi na okutalika ko nawa noondunge dhomuule, nongele ino ninga ekonakono lyomuule lyopambimbeli nopapolotika moshilongo shetu ethimbo tu li mo, nena otashi vulika lela u ze mo neuveko nonetokolo lyopambambo nolya tsima.

Ihe tango omuntu ou na okutala kutya omakakunya Omanamibia miilonga moka oge lile mo shike, nalye naanaa e li konima yago, naashoka haga longo oshike, naamboka taya kondjithwa komakakunya ngoka oyo oolye noya zi peni?

Tala wo nawa natango kutya oshilongo shika Namibia kutya oshi li monkalo ya tya ngiini; ngele osha mangukula nenge inashi mangukula, nongele osha mangukula olye ando e shi mangukula nosha mangukula uunake? Niiyimati yemangukulo mbyoka oyi li peni, ngele ngoye oto ti osha mangukula?

Ngele inashi mangukula, ando olye e shi manga nenge olye ta kwatha opo kaashi mangukule? Ngoye to tala wo kutya, ngele natango inashi mangukula, oolye ye na oku shi mangukula? Tala wo kutya oshike shi na okuningwa po opo oshilongo shika Namibia shi mangukule, ihe kala wo wu na ontseyo yondjokonona yaNamibia, omanga inoo yamukula omapulo ngoka!

Ngele natango oku na omuntu ngoka ha nyengwa okupopya kutya, ye oku li kombinga yini monkalo yopapolotika yaNamibia ndjoka itaayi vulu nande okuhenukwa nokuyandwa komukalimo, nena omuntu ngoka ota nonika a fa kee shi okuyoolola uwanawa nuuwinayi, nenge ota tindi okuyoolola uwanawa nuuwinayi nomukalo gwowino noti idhimbike oshili yoyene, molwashoka ngiika e na uunkundi wontumba nowongandi mokukalamwenyo kwe.

Kakele komatompelo ngoka, oshigwana shaNamibia oshi na okukala sha kotoka ngele tashi ningi omatokolo nomishangwa dhontumba, oshoka ponkatu mpoka oshigwana shi li, aatondi yasho oye ende po nale oomvula omathele dha pita po, noye na owino olwindji miinima mbyoka ya nika iineya nomakoto gokukengelela nokupukitha oshigwana ye shi kwate ko, oshoka hasho oshikando shotango iinima mbyoka taye yi longo, ihe oye shi kambadhala wo nopomahala galwe muuyuni, ngaashi moViëtnam, Angola, Mosambike, Guinea Bissau, Algeria, Western Sahara, Ethiopia nomoZimbabwe momwene.

Mpaka opwa tumbulwa owala iiholelwa iishona mbyoka tayi vulu okudhimbukilwa natango. Oshoka aakolonyeki ayehe hoka ya ka tsa, ngele ya mono kutya ekondjo lyoshilongo shoka ya hala okukwata ko otali ya pula oshindji noomwenyo (ngaashi moNamibia methimbo ndika), nena ohaya kambadhala olugodhi ye lu ethele aavalelwa mo (aakwashigwana), opo ya kale taya putagulathana yo yene oshoka oya

Tala kep. tali landua

Dha za kep. 9

shoka tashi mono iihuna notashi kambadhala okwiipolila kaathiminiki aakwiilongo, mboka ya tindila moshilongo shoye.

Opo ihe u ninge etokolo lyoshili noli na omwago, ou na nduno okukala wa dhimbwa olwiho lwiimaliwa, nou na okukala wi ilongekidha okumona iihuna omoluuwanawa woye mwene nowomalualo goye gepipi tali ke ya.

MOmbimbeli otamu hokololwa ihe kutya, omuntu ou na okuhogolola ombinga ndjoka wa hala okulungela: ngele oKalunga nenge osatana. Pokati kaKalunga na Satana kape na we nando oshinima shilwe shaa shi uukwatya wuulimalima.

Kakele kaashoka otaku indilwa ano aanyoli yiipopiwa yontumba ya ninge haya konakona tango ontseyo yawo manga inaya tameka okunyola. Nongele taya longitha oohapu/iitya yomOmbimbeli naya kotoke yaa longithe nando oohapu oondjapuki pamukalo gwa puka sho ya hala okupukitha oshigwana nomukalo gwokutseya nenge gwokwaatseya sha.

Ngele omuntu to longitha oohapu dhomOmbimbeli ou na okutala nokukonakona nawa tango kutya, nakupopya/longitha oohapu ndhoka okwe shi ningi nelalakano lini, nokwa li ta lombwele aantu yeni noya li monkalo/methimbo lya tya ngiini.

Oshi li wo ngeyi kutya, omuntu ota vulu okulungitha Ombimbeli opo a adhe o-

malalakano ge gopapolotika ngaashi hashi monika kaakwateli komeho yomahangano ngaashi Etango, Ezuva nosho wo galwe ogendji.

Aantu yomahanago ngaka sho ya mono kutya, Aanamibia, unene tuu mboka ye li kuumbangalantu woshilongo, oye hole uukalunga, oya tameke ihe taya uvithile aantu Ombimbeli yiifundja opo ya kwate ko Aanamibia mboka ngaashi ngaa haku tiwa: "ohaka kwatwa naashoka haka li."

Aantu yomahangano ngoka ga tumbulwa gokuuvithila aantu Ombimbeli yiifundja, aniwa oye lile po okutaandelitha omithigululwakalo dhoshigwana shaNamibia, ihe ngele wa tala mboka ye ga lile po komeho, kaye shi Aanamibia nande.

Ndele omuntu olwindji oto limbililwa kutya, omuntu oto vulu ngaa okukala wa kwatela komeho omithigululwakalo dhoshigwana shAashawana moBotswana nenge dhAabemba moZambia nenge dhIimbundu muAngola, wa zi owala moNamibia, waa na shili elalakano lyontumba nolyongandi lyokunwa po iigwana mbyono?

Owa tseya uunake omithigululwakalo dhaantu mboka? Moshilongo muka Namibia, omu na ihe aakwiilongo oyendji mboka haya inomo kutya aniwa oye shi omithigululwakalo dhAanamibia, ihe paushili wowene kaye dhi shi nando.

Omayelithilo kombinga yomakakunya mOngeleka

Dha za kep. 10

posipalekwa nomukalo gwiineya tagu ende pamwe niimaliwa, omanga OMUHONA OMUNENE (omukolonyeki) a mwena owala ye ta gandja owala omalombwelo, ta komanda kutya oye na okuninga shike nashike.

Onkee ngele tatu ya pomakakunya, otu na nduno okuyoolola kutya, olye ta longithwa mpoka opo a keelele emanguluko lyoshigwana she moka wo ye a kwatelwa mo.

Natango ngele taku popiwa oshili yo yene, hamakakunya ogendji ga mona osikola nenge ga longwa; tashi ti inaga mona epukululo lyopolotika (political motivation) ndyoka aluhe iya pumbiwa momukwiita kehe (unene tuu monkalo yaNamibia), opo a kale e shi shili, kutya ye ota lwile shike nota gamene shike. Ndele moNamibia omakakunya aluhe ohaga pewa epukitho lyopolotika, ihe hapukululo lyopolotika haa pewa!

Oku na shili aakwiita mboka haya zi kiilongo niilongo ya hehelwa nohaya kala owala taya kongo mpoka pe na iita, oshoka yo oye lile po owala okumona iimaliwa tayi zi miita yetiko lyombinzi mbyoka kayi na elalakano lyasha.

Aakwiita mbono ya hehelwa (mercenaries) aluhe kaye hole iita yi hule, kutya nee otaa lwile shike, oshampa owala taya mono iimaliwa yawo oyindji mokudhipaga aantu, aakuluntu naona, aakiintu ye li momategelelo naavu ye li moombete (miipangelo) naakulupe wo aantu mboka yaa na ondjo. Kuyo oshi li ike nawa!

Ihe ngeno okwa li omakakunya (aakwiita aadhipagi yaantu yaa na ondjo, omatanga ga zile kiilongo yilwe, ando tatu ga yekeke naakwiilongo mboka haya lwile owala iimaliwa (mercenaries) shi vulithe elalakano lyo lyene lyolugodhi.

Kakele kaashoka nomakakunya go gene oge shi shi nawa kutya, aakwashigwana kaye na ohole nohaye ya tila; nayo yene ohayi ithana yo yene OMAKAKUNYA, noye shi shi kutya, ngele omuntu a yi miilonga yuukakunya aluhe aantu ohaya tameke taye mu kukuma, oshoka ye mwene oku shi shoka ha longele oshigwana.

Oshigwana oshi ilongekidha owala okutaamba omakakunya moongeleka dhasho ngele ga etha po iilonga mbyoka haga longo; tagi ipe ombedhi yiilonga yago, ndele taga galukile koshigwana nombili, opo nduno oshigwana tashi vulu oku ya taamba ko kutya oya gwana shili okukala mokati kasho. Nomolwangaaka mOngeleki yetu omu na omukalo nguka, kutya ngele owa yono nowa dhimbulula kutya owa ningi nayi shili, ou na okwiihokolola koshipala shOmuwa noto vulu okudhiminwa po natango ngele owi ipa ombedhi nomutima gwoye aguhe.

Ohatu uvu, nenge otu shi omapangelo ngoka goshili haga dhimine po mboka ya li aakondjithi yago, ngele ye etha po iilonga yawo yekuni, ndele taya galukile koshigwana. Kaku na nando ompito yimwe Kalunga a ka lile pamwe nasatana, ihe satana kumwe naalanduli ye oyo ye na okwiitedhulula.

Onkee osha nika paunona ngele pu na omuntu gumwe ngoka ta popile okukala pamwe nomakakunya mongeleka, omanga inaga itedhulula. Ano a kale nago mongeleka nokuya

kOshililo oshiyapuki pamwe omanga ngele ga thigi po ongeleka (elongelokalunga), otaga ka dhenga nokudhipaga aakwanegongalo (aakwashigwana) mboka ya li nayo pamwe mongeleka

taya imbi nokugalikana pamwe. Ngashingeyi osha kwatha nee shike sho ga li mongeleki?

Aakwashigwana mokunyeneta ngawo, oya hala okutunga, haku teya. Ndyoka olyo egandjo lyuusama tali tungu (constructive criticism) ndyoka hali popilwa muuyuni. Egandjo lyuusama ndika olya pumbiwa noonkondo molwashoka omuntu ho mono nkene muuyuni mu na oongundu dhompilameno niifonkundana yi lile po okupukulula aantu nomapangelo, ihe haku teya.

Nando momapangelo giilongo yimwe hamu totwa owina ongundu yompilameno yokupukitha aantu, paushili wo wene hasho elalakano lyoongundu dhompilameno nodhiifonkundana.

Oshigwana ianshi hala oombili ndhoka dhiineya hadhi lukwa "iimbilikulyandje" nani omuntu ota tsikile owala niilonga ye tayi nyanyalitha, mbyoka ya tondwa koshigwana ashihe. Naangoka u na onumwoye nenge kuume e li ekakunya, ndele oho mu yambidhiicha noho mu tsu omukumo miilonga ye, nena oshigwana shoka tashi mono iihuna ngaashi shaNamibia, otashi mu tala ko AMUHE neho lya nika umbanda, oshoka "ngele owe ende nombudhi nangoye wo ombudhi".

Shika nashi yelele ihe aantu ayehe mboka yaa na omakankameno mokukalamwenyo kwawo moNamibia, kutya eitedhululo olyo li na oshilonga, manga oshigwana inaashi taamba ko aantu mboka yi ikutha moshigwana opo ya longele kumwe naathiminiki yoshigwana.

Oku na wo euveko lyopambambo ndyoka unene hali popiwa kaantu mboka inaya hala Ongeleki yi popile uuthemba waantu kutya aniwa Ongeleki inayi itula (idhopa) mopolotika. Ihe aantu mboka inaya tseya tango kutya Ongeleki oshike, noyi lile po shike, onkee ohaya ti "Aakwangeleki naya kale kokule nopolotika."

Shika itaku tiwa nando kutya aakwangeleki naya ninge aawiliki yopolotika, aawe. Ngoka te

ya indike ya popile uuthemba waantu oku li a puka noonkondo, oshoka shono sha simana ooshika, kutya omukwangeleki tango omukwashigwana gwowala ngaashi aantu ayehe moshilongo nokwa gumwa woo kuudhigu wopolotika woshilongo ngaashi aantu ayehe.

Nongele opu na ooveta dhethiminiko, nena naye okwa gumwa kooveta ndhoka. Ihe otaku tiwa aniwa "ina popya sha kombinga yopolotika", molwaashoka aniwa kayi shi iilonga ye yokupopya nenge okukema ngele u uvite uudhigu.

Natango ngele omusita/pata oku li mongeleka a tegelela aantu ye ye kongeleka, ihe nani sho inaye ya oye na mpoka ya edhililwa, inashi puka ngele omusita/pata ngoka ta ka pula, kutya aakwanegongalo ye oye li peni ano nenge oya edhililwa molwashike?

Natango ngele pata/omusita (na kehe tuu omushashwa) okwa mono ihe omuntu gwo ntumba a dhengwa ombole nenge a dhipagwa, osha puka ngaa ngele ta pula kutya oshike sha ninga omukwashigwana gwe? Ope na ihe eyooloko pokati kokwiidhopa mopolotika nokupopila uuthemba nuwanawa woshigwana.

Naashoka osho ihe shi li elalakano lyOngeleki yaKatoolika noshifo shayo Omukuni, noshu wo ihe shi li ngaaka sha faathana koongeleki ndhoka dhi li iilyo yOraata yOngeleki muNamibia (CCN), unene tuu okuuvithila aathiminikwa naakolonyekwa yaNamibia ohapu ondjapuki yOmuwa yombili, yuuyuuki, yehanganitho noyemanguluko lyomuntu pambeppo nopalutu moshilongo shawo.

E.H.Handuba & W.J.Mbangula

(Sha zi mOmukuni gwaMai 1987)

Ou shi shii tuu?

nokutya

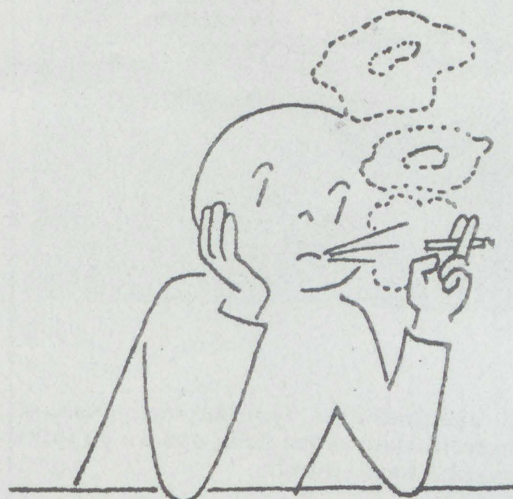
Omakaya otaa eta yo omalunduluko oo ihaa monika kombada, ndele oku li naanaa oshiponga sha kula kuove?

- Ohonde otai ende kanini molutu notashi hepeke omutima.

- Eembululu domapunga otadi fiti, notashi eta emweno lomutima noupu.

- Mohonde yomushili womakaya otamu holoka ekako olo tali holoka moumanya vanininini notau eta diva oshiponga.

Omunelao nomukondjifi muwa womakaya ongeenge ino a danena nandenande opo e he ku ninge omupiya wao.





ETHANO NDIKA ENDHINDHILIKO LYUUKUMWE WAANIILONGA MUUYUNI AUHE MBOKA HAA DHANA ESIKU LYOTANGO LYAMAI OMUMVO KEHE



Mukriste omama Abisayi kamina ogu ka monekere mesanseko lyosipito sendi sehamberero lyendi mOmukwetu gwa-Apilili nomora za 8/87 ka pilile momazuva 11 Apilili mvhura ezi. "Yosili, naina to ka kara kumwe name moParadisa".

(Luk.23:43)

EPANDULO

Otatu mu pandula one amuhe aayakuli yetu moshituthi shetembu lyameme Laina K.litula, sho a li a hulithile muuwehame wethimbo efupi moshipangelo mOkahao mOngandjera eti 18.1.1987 mepipi lyoomvula 78 megongalo Okahao. Okwa li a kala momukunda Etunda.

Okwa thiga ko oyana 5. Otatu mu pandula unene aaholike sho mwa li mwe tu yakula palutu nopambepo. Tate Kalunga ne mu talaleke ye ne mu yambekele olukeno lweni, nuukumwe weni ne u koleke. Jak.3:13-18.

*E.K.David H.Shiimi
Windhoek*

OMUKWETU

Oye oshifo shOngeleki Onkwaevangeli paLuther yomuSWA/NAMIBIA.

Ohashi nyanyangidhwa mOshinyanyangidho shOngeleki mOnilpa.

Omukuluntu gwoshifo omumbisofi Kleopas Dumeni.

Amushanga gwoshifo omusita Sebulon Ekandjo.

Ondando yOmukwetu muNamibia naSouth Africa R6,00 komumvo.

Palwe muAfrica R10,00 nokombanda yomafuta R14,00 komumvo. Mondhila R17,00.

Oondando nomambesitelo agehe naga tumwe kOmukwetu, Onilpa, P/Bag 2013, Ondangwa, 9000.

ELOC PRINTING PRESS
PRIVATE BAG 2013, TEL. 11, ONDANGWA 9000
SWA/NAMIBIA



Eulumo lyoshihauto olya kwatelela mo ehedhathano lyomauyuni gopaali; muukwaaluhe. Mpoka pu thike tatu ya pehulilo lyonkalamwenyo yetu, opo wo pu thike tatu ipe uusama sho twa longitha nayi ethimbo.