

Nakusa Leonard Auala

OSHITUTHI SHEDHIKO LYEMANYA

Kombila yanakusa omu-ndohotola Leonard Nangolo Awala, omumbisofi gwotango gwongeleki Onkwaevangeli paLuther yomOwambokavango, otashi ka kala ko eti 22 Desemba 1985 mOngeleka yomOniipa potundi onti 10 H 00 okutameka nelongelokalunga notashi ka tsikila momawendo gomOniipa mpoka ta vululukilwa nokutegelela eyumuko lyaana yaKalunga.

*Ombelwangeleki
Oniipa*

a) Iigwana ayihe noshaNamibia, oya hiywa yi tange Omuwa, okuza meyumuko lyaKristus.

b) Esilohenda lyOmuwa oli li kombanda yoshigwana shika, onkene oshi na nena ompito yokudheminwa po oondjo nokuhupithwa kesilohenda.

c) Oonkondo dhevangeli opo dhi li tadhi longo.

“Odho dha gandjitha okahumba hoka, odhe tu tulitha mongundu yaana yaKalunga, otadhi tu hilile puJesus notadhi tu kalekele meitaalo,” omumbisofi osho a dhimbulukitha aapulakeni.

Lwahugunina Dumeni oku ulike kuudhiginini waKalunga kombanda yaantu ye, kutya itau pu po. Nomeitaalo ndyoka aana yaKalunga oye na etompelo okuhambelela.

Okahumba ka langekwa mOngeleka yopaumbisofi

ONIIPA — Okahumba okapeepe, oka tulwa miilonga omasiku ngaka mOngeleka yopaumbisofi mOniipa. Oshituthi shokuyambekela oshilongitho shoka shomusiki miilonga osha ningwa komumbisofi Kleopas Dummeni eti 3.11.1985, pamwe naayakuli ye.

Omuwiliki gwoshilonga shomusiki mOngeleki ayihe efolo Magdalena Kambudu okwa hiyilwe wo moshituthi shoka a lilithe lwotango okahumba hoka. Ongundulwiimbo Teimbiitezi-

mbuka nayo oya holokele pamwe nameme Kambudu.

Oshituthi osha li naanaa shopagongalo lyo lyene lyaNiipa noinamu hiyilwa aayenda yalwe, kakele kaamboka ya tumbulwa metetekelo. Aantu 1381 oya li ya yalulwa ya kala melongelokalundyoka.

Pahapu dhEpsalmi 117, omumbisofi okwa hiya egongalo mekundo lye, li ye mombepo yehambeledo omolwomadhiladhilo taga landula:

Okuza 1977 ongeleka yopaumbisofi sho ya tameke okutungwa mOniipa, mbalambala opwa penduka wo edhiladhilo mOngeleki yaSoomi okukongela ongeleki ndjika okahumba okanene ngaashi shi li moongeleka odhindji dhomuEuropa.

Ongeleki yaSoomi pamwe noshikana shayo Ehanganotumo lyaSoomi oya kongo omikalo nkene iimaliwa tayi monika okulanda okahumba. Omukalo gumwe ogu uluka nomOngeleki yetu ya ELCIN, sho mwa tuminwa oopena tadhi landithwa kombiliha. Omo dhi li sigo onena mOsitola yOmambo.

Taia kep. 4

EYAPULO LYAASITA LYA GWANITHA OMIMVO 60

Ngashingeyi pwa piti omimvo 60 okuza sho aasita yotangotango aavalelwa mo ya yapulilwa moshilonga eti 27.9.1925. Aalumentu aagundjuka 7 yomimvo okuza po 35-55 oya li ya kundukidha owalitali mOngeleka yaNiipa ya taalela owalitali.

Omuwilikitumi gEhanganotumo lyaSoomi, pethimbo ndyoka Martti Tarkanen, okwa gandja oshilonga kaavalelwa mo mboka konima yomasiku gaali sho e ya konakona uusiku nomutenya okutala nkene ya pya muukriste wawo.

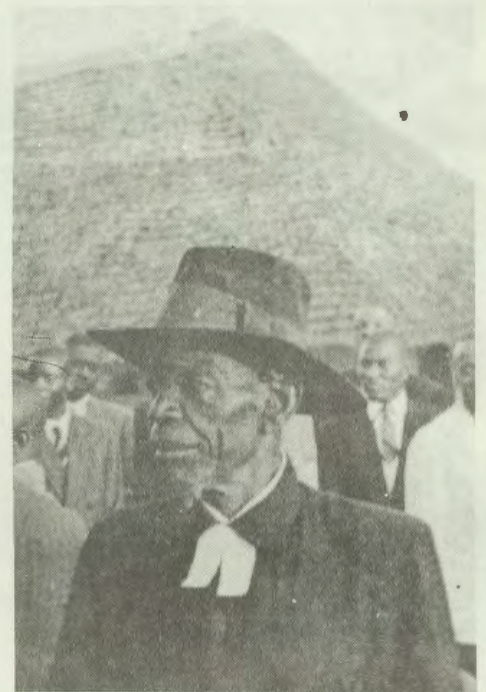
Aahongi aatumwa Martin Rautanen (Nakambale), Reinhold Rautanen Viktor Alho, Nestor Wäänänen na August Hänninen oyo ya li ya yakula moshiyambelo pamwe nomuwilikitumi Tarkanen.

Eyapulo olya ningwa konima yoomvula 42 aakriste yotangotango sho ya shashwa moshilonga shetumo ndyoka lya longo ngashingeyi muNamibia oomvula 115. Sigo opethimbo lyeyapulo, epulo olya kala enene momadhiladhilo goshilongatumo shoka ngele ethimbo olya li lya pi tuu shili, okugandja oshilonga oshinene ngeyi miikaha yaakriste aagundjuka.

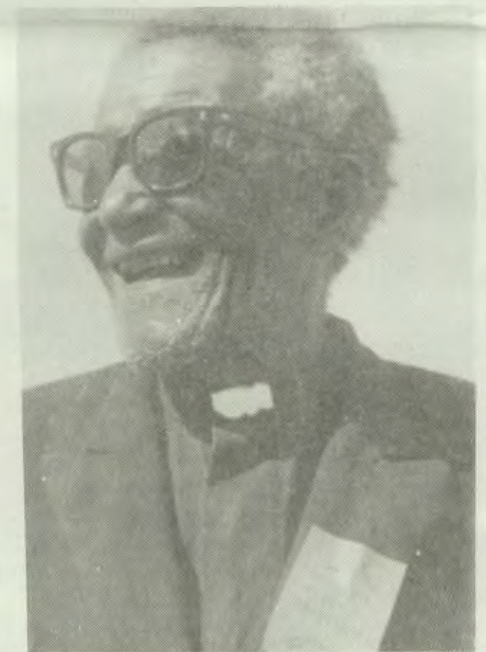
Ashike ondjokonona yoshilongayapulo shoka otayi shi yelitha, kutya aayapulwa ayehe oya li mboka ya kala ethimbo ele naanaa muukriste. Yakwawo 10 ya kala pamwe nayo melongo lyuusita, oya pewa ashike oonkondo okuuvitha nokulonga oosikola dhomashasho.

Aayapulwa: Paulus Hamutenja, Gideon Iitula, Sekeus Iihuhwa, Obadja Simeon, Nabot Manasse, Juuso Ngai-kukuete na S. Shituuua oya topolelwa oonzapo dhawo dha nyolwa mOshindonga. Manga egongalo tali imbi: **Mbepo omugandji gwomagano:** aayapulwa oya zalekwa omizalo dhawo dhoshilonga kaahongi: Heikki Saari, A. Perheentupa, E. Närhi, A. Jarvinen na O. Tylväs.

Konima sho ya zalekwa, oya tentekwa iikaha manga omukulupe Nakambale ta lesa egalikano lyOmuwa. Mbeyaka 10 nayo wo oyi ithanwa poshigalikaneno ya yambekwe.



Simson Shituuwa



Sakeus Iihuhwa a si 22.6.1976 a hugunine momwenyo.



Mboka ya yapulilwa uusitagongalo 27.9.1925. Omadhina okuza kolumoho: P. Hamutenja, G. Iitula, S. Iihuhwa, O. Simeon, N. Manasse, J. Ngaikukuete na Simson Shituuua.

Omukulupe Nakambale okwa popi newi enene mokule nomeho taga ndonda omahodhi sho a pewa omagano okumona esiku enene ngeyi moshilonga shOmuwa nokwa lombwele aasita aayapulwa:

“Kalunga oku uvaneke okukala pamwe nane sigo ehulilo lyuuyuni.”

EHOKOLOLO LI NOMWENYO GWAALUHE

Muuyuni wonale aantu inaa longitha iinyolwa nenge omambo gasha, aawe, omahokololo ngaa gomokana. Omahokololo ge li ngaaka oga kana thilu miigwana oyindji nomiilongo nomomalaka ogendji. Moohapu dhotekisti yetu Jesus ta ti: Ogame ndi na ehokololo enene.

Uunene wehokololo ndika ou li mpaka sho ta lombwele iilongo iigwana nomalaka nomazimo agehe. Ehokololo lye kali na mpoka tali ka hula po, otali uvika notali leshwa momapipi agehe. Oli na onyeka yaKalunga ya minikila omuntu kehe.

Ayehe mboka ya taamba ehokololo ndika lyomegulu oyo itaa pegeyithwa kiinima yuuyuni mbuka, oshoka oya tala onyeka yaKalunga ya hwama noya minikila oondjila dhawo. Ehokololo lyaJesus itali yi, no itali ka ya pombambo nando esiku limwe. Omuwa Jesus ita gandja owala ehokololo lye kaantu, ihe ota hokolola wo iilonga ye oyo yoshili.

Okwa aludha aavu, okwa tonatitha omeho gaaposi nokwa yumudha aasi, ano tashi ti ehokololo lyaJesus oli na ealudho mulyo lyene. Ehokololo lyaJesus oyo omulundululi ta lundulula oonkalo adhihe dhomuntu kehe nando nadhi kale oombwinayi ngiini nenge dha nyengathana. Momuntu omu na oonyango oondulu dheso, ihe Jesus awike ti, ta vulu sha omolwehokololo tuu ndika lye:

“NaTate nguka a tuma ndje oye ta hokolola ndje,” tashi ti: oonyata adhihe hadhi zi momuntu odha mono eopaleko enene lya pula ondilo yombinzi yOmukulili gwetu. Oonakutaamba ehokololo lyomegulu ndino oye na elago enene ngiini sho ye na oshiholekwa omuntu kehe.

Ehokololo lyaJesus nando lya taandele ngeyi muuyuni auhe noli li po sigo ongashingeyi, onkee ngaa haku monika oonakuludhika ehokololo ndika noku li tinda nokuli.

Ihe nonando ongeyi, ehokololo lyaJesus itali wegulwa kuutoyekana womahokololo gaantu nonando nau kale wa tungwa nawá ngiini. Omutumwa gwehokololo ndika okwa mona nale iiyimati yoshilonga she naasho tatu lesha: Gal. 5:22-24.

Ehokololo lyaJesus olyu udha uwanawa owindji: Elago nomwenyo. Aantu yamwe ohaa ti: MuJesus omu na uwanawa ano washike? Kuume, ila u tale muJesus iikulu ayihe otayi hulu po sheke niipe otayi tameke, sha hala kutya uupe nomwenyo omuJesus awike tau monika, hamamahokololo gontumba nenge gongandi ga tungwa andola nuunkulungu, ihe omehokololo tuu ndika li na uyelele washili tau minikile omuntu kehe. Epulo enene oondika?

Ou na tuu ehokololo mu ngoye? Pamwe to ti; ondi li na, ngele ou li na oshikalimo mwene gwasho olye? otatu indile Omuwa Jesus Kristus e tu pe meni moomwenyo dhetu uupe womwenyo wesiku kehe, opo twaa kanithe moomwenyo dhetu ehokololo lyomegulu.

Omuntu ngele ta dhana nethimbohenda lyaKalunga, ethimbo lye ndyoka e li pelwe omagano e tali mu pitilile po, o, iihuna shili tayi ka kala po. Omuyamba naLasarus ota ti: Ando ku ze yamwe yomaasi ya ka hokololele aamwayina.

Eyamukulo kwa li e li pewa ekukutu nedhigu sho tali ti: Naa uve Moses naapofeti. Omulongi gwoye omuyevangeliste nomukuluntugongalo nomusita gwoye, oyo ooMoses naapofeti yopethi-

AYI KEVULULUKO LYAANA YA KALUNGA

Lumbu Vilho yaKashika, okwa mana oondjenda dhe eti 7.10.1985 mOshipangelo shepangelo mOshakati, konima sho a li a ponokelwa ketanga lyegameno pegumbo lye eti 26.8.1985. Konima yootundi dhimwe okwa taambelwa mOshipangelo shOngeleki mOnandjokwe moka a kala uule konyala wiiwike iyali, nokwa lundulukile kOshakati.

Omulumentu gwomimvo 41, okwa longo oshindji megongalo lyOkankolo. Tse egongalo Okankolo otwa thigilwa oluhodhi lu thike mpoka. Okwa thigi ko omuselekadhi, noyana 5.

Otatu mu pandula amuhe mboka mwi ile oku tu yakula, noku tu kwatha opo tu topolelathaneni oluhodhi nduka. Kalunga ne mu yambeke. Rom.8:35-39.

*Peha lyaanezimo
I. S. Ambunda*

EPANDULO

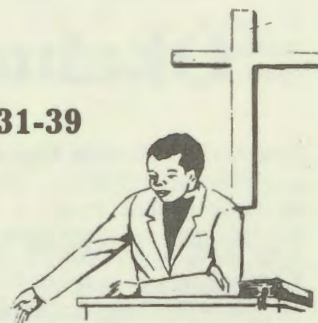
Ondi na epandulo lya na ongamba kaamwameme, aasamane naakulukadhi, aamati naakandhona mwa li mwa yakula ndje sho nda li nda mono oshiponga okukala moshipangelo ngele mOshomeya nenge mOvenduka.

Nampongo ne mu laleke nuuyamba komakwatho mwe ga pe ndje, nenge omahaleloyambeko geni. Mokulongela Omuwa inamu vulwa. Kalunga ne mu gwedhele ko Ye e mu pe ayihe tamu yi pumbwa.

Shoka mwe shi ningile ndje inamu loloka oku shi longela yalwe pampumbwe taye dhi pumbwa, nena Ho yeni megulu ote ke mu futa. Esilohenda lyaanguka gwopombanda nali kale nane aluhe, inamu dhimbwa ndje natango momagalikano geni aaholike muKristus.

*Omukweni meitaalo
Hambeleni Ashipala*

Joh.5:31-39



mbo lyoye, momahokololo gawo. Itaa eta kungoye oohapu nomahokololo gawo yene, aawe, otaye mu uvithile elaka lyaKalunga lyopasilohenda tali ti:

Itedhululeni oshoka oshilongo shaKalunga osha hedha popepi.

Ano mokukala kwoye akuhe, kotokela omahokololo galwe opo waa falafalwe kugo. Omuntu gwotango andola kwa li inaa taamba ehokololo lyeyoka, andola eso kali ko. Nena otu na owala ehambelelo enene sho tu na oshilikolomwahokololo shetu Jesus Kristus ngoka a li ko noku li nota kala aluhe sigo aluhe nehokololo lye oli na EHUPITHO lyaayehe.

J. Gweendama



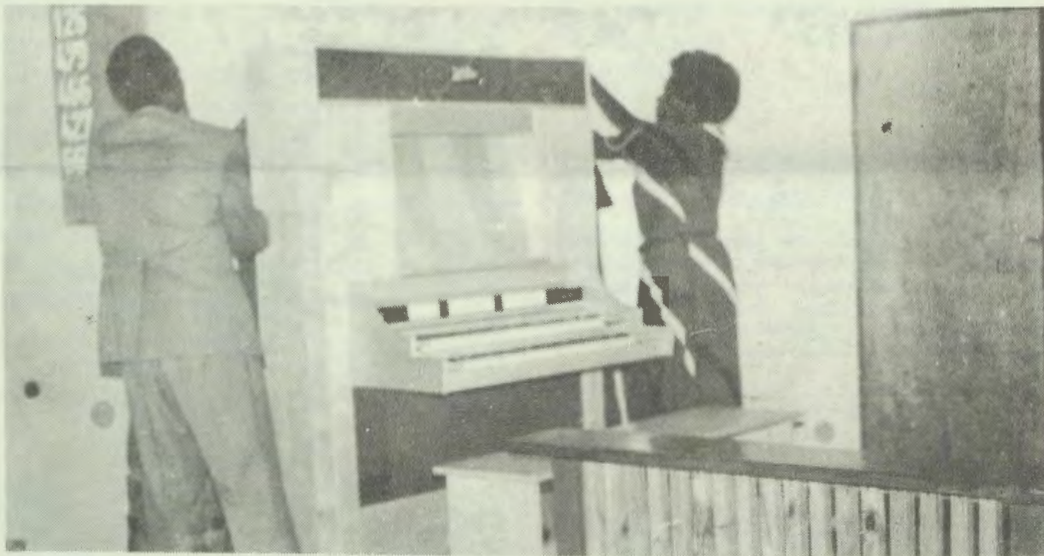
Nakusa Lumbu Kshika

Okahumba

Da dja kep. 1

Okahumba kake na manga omuhiki. Ombelewa yomusiki nElelongeleki osha yela, otaa tala nkene taka mone-nwa omuhiki. Osoondaha ya landula ko (10.11) oka kala ka mwena thilu, oshoka kape na ngoka e ka dheulilwa manga. Oke vule uuhumba auheuhe mboka wa longithwa shito momagongalo go-ngeleki ndjika.

Omuwiliki gwomusiki, Kambudu sho a pulwa **kOmukwetu**, kombinga yokahumba hoka ke ya mu ELCIN, okwa mwena manga ominute dhimwe. Sho a ka gandja eyamukulo lye **Omukwetu** okwa thigilwa euvito kutya okahumba melongelokalunga oshinima shokupendula po egongalo momusiki ngele sha longithwa nawa, nenge oku li nkundipaleka ngele itali kotoka.



Efelo M. Kambudu ta siikulula okahumba siku lyoshituthi

Nokahumba mongeleka, meme Kambudu okwa ti kutya nomawi gi ili nogi ili mokahumba hoka ou na ompito okwiimba omusiki shaandjoka, noyopashigwana wo.

Okwa gwedha ko ngeyi kutya, sho pe na aluhe egamo eimbilo ngele lya tamekwa melongelokalunga, kehe gumwe ota tula mo ewi lye ndyoka a hala, nena melongelokalunga tali wilikwa kokahumba, amuhe omwa thiminikwa mu imbe ngaashi okahumba taka imbi okuninga shila egongalo tali tokola okwiimba mevundakano.

Uzuni wantantani kapi ru

Mokutara ntantani uzuni oku una kulinanena, hawe, kuna kulinanena kosikero sa hura. Mokutara vantu omu va na kunwa nomu vana kulikwara-kwara, hawe, yosili to reta nkenda. Ano ogu a kwata egano nare ka yi kwatere egano asi: Nhi esi sa hura pepi lina kara.

Tuzeni pomuhowo tu tareni nokwara, edi dina kureta sitetu. Mumati nomukadona tava gwanekere postanda ndi positora zomakende. Makura vantu owo vavali tava lihehe. Pamwe mukadi yige na vareka asi:

Ee; mwene Jona yisi omu likitire mwa hana kurandera mo vakweni nampili nkinda zimwe? Ano Jona age asi: Kutunde maharasa gavali oko! Ano Johana age nare pe na asi, ta ti, ogu ono puka tuharase tuvali yilye nye? Kwato nomuga ove mumati. Ano Jona eyi na patana asi: Kwato notarako Johana nare ku na kuwiza aya kwate melimba lya Jona. Nampili R20.00 zina karamo. Age nare ana zi ko Toonbank. Asi peni nge ko noBira ntano noCasitiro zimwe.

Ano Jona age hena egova kuna kugwevauka nomurundu ngwendi madamate. Ano yina apa nayipya, he, he, tarera nye onane Johana va pire

nondunge. One Jona! zogereseninge ko na ina. Ame rwaJona nsene, nava ka pura nge vakondi asi, yinke eyi ono ya hara? Ame rwaJona nane, nane otate nonane, kapi va yi pakera mbili oyo. Age Jona nage opo, yiponye ga lira. Johanna nare asi:

Jona siga tupu tu rande ko sipakete sonobira tu ka nwine kembo lyetu. Jona nokuvatuka nare ana vatuka, a dane tanko odo dene nomusika di na wiza, vene onane Johana tara-tara omu vana kuzunduka nobira zawo mokuwoko.

Pamwe nye bira ntanko tazi va somponoka (PWFA) zina tauke, awo mokadoro kawo nare moveli. Peninge ko hena ntano. Ano murandisi eyi na yi mona asi, vantu vana korwa, age ta pata mbaha zendi, ano Jona naJohana kupi nye kwina, kembo lyoJohana nye, kumwe nonobira dawo.

Tarera nye moro-moro odjaJohana nawo hena kuna ka tokwera kombaha zapeke, tava ligwana monzila. Tava pura asi: Ee, one Johana oku mu na di gwana odo nobira kupi? Johana nare asi: 'Kuna di randere nge Jona. Ee, nani googu mutekuroge. Yimo olyaJohana vana kutenta ngoso: 'Hawe, munage ame nayimwesi no tjilila nge, kazogeleni tupu namutekuroge.' Ano olya-Johana eyi vana tugumuka ko, onyaJohana tava tanta asi:

Ah, ove! awo vanona nsene vasogera yinke? Mbadu munange sende nanyokokuru mu ka zogere. Awo nare vana pwezamo nobira ntano nazimwe poopu ngosho nawo nare ku na kunwa. Ta ti, mukriste mukwetu omunehundi, pve! Ove kapi ono diva asi: Owo vanona kuna kuturunganesa nyata nove djaJohana nove nare ono gusa nobira kuna kunwa asi nove yina kuwapere nye, oliguke. Ta ti, oku kunwa eyi nakureta hawe kapi twa yi mona rumwe.

Moomu tupu ya kere momazuva 'gaNowa nayeyi yimo yi na fana tupu. Ngava likwara, nayeeyi yimo ngayi kara. Oku aku kara erambo yiko aga pongo makuvi kooko. Gumwe nampo to lipura ukaro wa Johana naJona moukaro wawo, ame kuna tamba ukaro wovakriste navenye mouzuni mudima. Ukaro ou tau moneka mononkwara dovakriste.

Nononkwara dovakriste wovanzi kuna kara moudigu wounene moomu ono kuyimona. Vanavamali tu takameseni, va ha tu pukisa ava va hana epuro. Vanzi ngava likisaukira asi yiwo, Kristusa nye, nani yimpempa yomawokowoko. Mukriste mukwetu, takamesa. Mukurukwangali kwa tente asi: 'Hova ruyiga ruhepo komeho. Ano hova ruhepo ruyiga ta ru wiza. Ano hena gumwe yiyo ga tente asi! 'ehafo kureta ruhoti.'

Takamesa nye neyisi ngaru kugwana ruhoti. Ove apa ono kara amesi kunwa kwelike ono kumwa. Nayeyi yimonye, Ndi ove ku na kugazara asi eyi nina kutanta tani likumbagere? Ame kuna kumurwira esupa asi ngano ya ha mu gwana eyi. Takamesa, gokuwiza ta wiza, kapi ana kulikatakata hena.

Vakwetu, siruwo si supiko kutunda. Vakwetu, purakeneni esi asi kositji soukuzu lirongereni ko asi: Nsene nomutayi daso dina pumine nare nye komu yi divire asi: 'Kurombo pepi kuna kara nsene tamu yi mono eyi diveni asi: Nayeeyi yimo yina fana. Mat.24:32-35.

**Silas Lebbeus Katembo
Rupara, Mayenzere**

Sebulon Ekandjo

DR SHIVUTE TA FATULULA ETUMO PAUTEOLOGI

Uuteologi wetumo

ETSIKILO

Uuna twa tala Etumo moombinga ndhika, nena otashi ti evaangeli lyashili ndyoka tatu uvitha kali na sha ashike noomwenyo, ihe olyo evaangeli alihe komuntu aguhe. Omuhumbati gwetumwalaka oye oku li 'omongwa gwevi' 'nuuyeleele wuuyuni', 'omongwa nuuyeleele' iinima mbyoka hayi kwata oshinima ashike onkama.

Ashihe she ya mekwatathano nomongwa otashi 'fingala', ashihe she ya mekwatathano nuuyeleele otashi 'minikilwa' Ondjala uulunde nonkayi, uukolonyeki nethengenyeno kongudhi, ayihe oyo oshishonekwa shEtumo lyaKalunga.

Oshike ano tashi uvithwa? Momapipi agehe epulo ndika olya kala nokudhimbulukiwa, onkene onawa wo tu li pule. Omayamukulo gomuyapostoli Paulus kutya, 'Itatu iuvitha tse yene, aawe oKristus Jesus, oye Omuwa 'nenge' ihe otse otatu uvitha Kristus omwaalelwa komushigakano' 2Kor 5:4; 1Kor 1:23) oga gwanene omapipi agehe ga kala nepulo ndika.

Tashi ti itatu uvitha etumwalaka epe, otu li momulandu gwongeleki yopayapostoli, otu na ehologo ekulu netumwalaka wo ekulu (evaangeli lyoshilongo shaKalunga, olyo etumwalaka ekulu). Eeno omikalo dhoku li thikithila aantu otadhi vulu okulunduluka nokushendja, ihe oshikalimo shevaangeli oye ngoka 'e li ohela, nena nomasiku agehe'.

Omolwetumwalaka ndika ekulu omuyapostoli Johannes ta kumagidha, twaa hakane omalongo omape niikalimo iipe, 'Noshaa ombepo itaayi hempulula Jesus Kristus e ya monyama, kayi shi yomuKalunga', onkene ano kotokeleni ombepo. Omutumwa kehe oku na okutseya **omutumi**, etumwalaka **nelalakano!**

Okuza petameko lela metumo lyOngeleki omwa kala aluhe mboka taa limbilike, onkene taku tiwa, 'kaye shi yomutse, andola kwa li yomutse ando ya longo pamwe natse. Ongeleki kehe oyi na oshimpwiyu naatumwa yayo kutya oyo oolye noyu uka peni. Oolye, tashi ti oyo aanandjo ya silwa ohenda ngaashi tse atuhe, oyo aaheheli, ihe oya mona oshikwiila nonkene taa ka ulukila yalwe nkene oshikwiila tashi monika.

Aatumwa hayo ye na omayamukulo miinima, 'oshoka okutseya kwetu okombinga! Oyu uka peni? Epyatumo olyo 'uuyuni (Mat.13:38) naatumwa otaa pu-

mbwa ewi lyOngeleki ye ya tuma.

Ngele ye na okutopola sha, nena osho oonkondo dhaKalunga dha gwanene opombanda muunkundi.

Aatumwa mboka oyu uka muuyuni mu na omaitaalo galwe omanene noonkondo dhomilema tadhi longo 'oshoka ethimbo efupi'. Uuna ongeleki inaa yi koneka shika, otashi vulika omaupyakadhi ga holoke.

Methimbo ndika otatu ithanwa tu koneke omandhindhiliko gethimbo. Omandhindhiliko gamwe ogo ngaka: Uuyuni sho inaaala okwiitaala Kalunga naangoka a tumwa kuye Jesus Kristus. Iita nomakamogevi oga kutha ehala moonkundana, efupa nondumbo iinima tayi umpile oongundu dhaakriste. Osho wo egaluko lyOmuwa neadhimo enene olya engena ko. Ngele nani ope na sha shi shi okulongwa, nena etumo lyuuyuni olyo eyamukulo lya kola.

Tashi ti yimwe yomiiningwanima ya tumbulwa otayi hingilwa kehulilo lyomathimbo hoka wo etumo li na ekwatathano, oshoka 'Nevaangeli ndika lyoshilongo otali ka uvithilwa nuuyuni auhe, li ningile iigwana ehokololo, notaku ya ihe ehulilo' (Mat. 24:14).

Mongeleki yetu otwa pumbwa wo aalumentu naakiintu mboka taa koneke omandhindhiliko gomathimbo, opo tu 'mone omwenyo gu na oondunge'. Uuna pwa konekiwa shika, nena otatu ndhindhilike wo kutya Etumo itali kala sigo aluhe.

'Longa uusiku tuu ya, Longa memeneko, Longa omutenya gwa tsu, Nogwa hulu po. Longa nge ku nepupyu, Longa kwa talala, Longa uusiku tuu ya ito vulu sha.

Pauli Vaalis oku li mombepo yuuteologi wetumo sho ta nyola: "...Omido omafele do, Da dja ko, oda pita po, Nde vahapu ne tava hepele Momilaulu, naini omutenya to va pe?... Oufiku ou li pokuuya Tu na okweendelela, Moudjuu fye tu ye, tu ha tokelwe, Divadiva tango tali ningine."

Epulo ekwawo lya kala tali kundathanwa muuteologi wetumo olyo: 'Omolwashike omahanganotumo ogo taga kutha oshimpwiyu shetumo nohaongeleki? Mongeleki ombinga yimwe yepulo ndika oya kundathanwa miigongi nenge koogumwe noogumwe. Etumo pakulonga kali shi unene oshinima shengathithi, edhiladhilo ndika tashi vulika li kale eyenda kaapulakeni nolya nika uukwashimpaga (nando uukwashimpaga tau vulu wo okukala mungoka itee li zimine.

Otwa popi nale kutya mOngeleki 'nenge megongalo otashi vulika mu kale oongundu mbali, A na B. Mu a omu na aapapudhuki yetumo nomu b omu na mboka ye li natango epyatumo.

Oshilongatumo kashi na sha nuunene wOngeleki, kutya oyi na omayovi noomiliyona ngapi, ando kasha li ngeyi andona inatu ya muupyakadhi mehistolli lyetumo. Omuntu kee shi engathithi, okwa pumbwa ashike engathithi, oshoka kee shi wo ontuntu. Ihe ngashingeyi ehupitho li li oshinima shomutumba gumwe nagumwe oyo taa koneke oluhepo lwe mwene, lwomushiinda nolweshito alihe lyOmuwa.

Mbaka ya papudhukila etumo moomwenyo, oyo ihe taa tholoma okangundu niilyo yehanganotumo pamagongalo, omwenyo gwomuntu gu na okupapudhukila etumo ngele oli na okulonga nomatha.

Ehangatumo kehe olyo wo li na oshimpwiyu shokulonga nokuuvitina ko mboka ye li natango 'epyatumo' mOngeleki nenge nomomagongalo. Ehangantumo olyo ngaa eliko lyOngeleki, okwaako taku adha kokule notali longo paKotampango nopamauthompango gOngeleki. Sho edhiladhilo lyokudhika 'ehanganotumo' mOngeleki yetu li li nale mOmbelewatumo yetu, onawa ndaa ye kokule noshinima shika.

Ondjila yOngeleki oyi na omaudhigu taga gumu wo oshilongatumo, ihe nando ndi nokwenda mesilu lyomilema, ihe tila oshiponga, oshoka ongoye wa kala pungame, ondhimbo yoye nolwoondje lwoye talu nyanyudha ndje" Eps.23:4).

Okweenda oshinima shoshili, 'esilu' oshinima shoshili nosho wo 'omilema' oshinima shoshili. Mbika hayo ayike yoshili, ihe 'ondhimbo' 'nyanyu' wo iinima yoshili, naunene tuu sho pu na 'yoye', 'lwoye'. Tashi ti' ondhimbo yoye' 'nolwoondje lwoye' iinima yi na mwene ngoka ndi itaala kutya oko e li.

Tomas Shivute
Paulinum



Dr. Tomas Sivute

EONGALO OKALONGO LA TALELWA PO KOMUBISHOFI

KuSebulon Ekandjo

Molwokupashukila omwenyo wo-maongalo ongeleki ei pamaufomhango, omubishofi Kleopas Dumeni okwa fikile yo meongalo Okalongo. Etalelopo okwa li lomedingonoko laye etivali lomatalelopo makwao e a ninga neudo momaongalo a ELCIN. Osha ningwa pexulilo laKotoba.

Oule womafiku avali netata, omubishofi pamwe novakwafi vaye, okwa kala pamwe neongalo; tete naavo ve na oinakuwanifwa ihapu meongalo, Eleloongalo novanashilonga aveshe, opo konima okwa kala pamwe neongalo alishe, konima yelongokalunga, ta pula ta lombwele, ta kumaida ye ta nyamukula omapulo eongalo.

Omupashukili woshitai sheongalo olo tali talelwa po, oku na alushe okukala po, pamaufomhango. Oshikando eshi omufita Apollos Kaulinge, oye a li po pamwe nomubishofi. Kaulinge okwa li yo a kalela po Elelongeleki metalelopo olo, osheshi ou kwa li e na oku shi ninga, omulongi Silvanus Vatuva, ina holoka.

Omufita Set Son Shivute nomuhokololi ova li ovayakuli metalelopo eli etitatu komaongalo a talelwa po xuuninwa omudo ou. Omaongalo aeshe 13 mOngeleki okwa talelwa po komubishofi ile komukwafi waye neudo.

Eongalo Oshigambo, mOndonga olo tali kala laxuuninwa okutalelwa po, fimbo Okrismesa inai dana noilonga yomudo inai pata. Fimbo eongalo Oniipa eongalo lomubishofi la tetekela Oshigambo.



Ongudu imwe yovanashilonga meongalo

Okalongo eongalo li li mouninginino woshitaingeleki shaUkwanyama noli li yo konyala eekilometa mbali adike nongaba yaAngola. Omwenyo meongalo olo otau monika unene kwaasho ovakriste ve shi ningila eongalo lavo oku li fikifa melifikameno liwa.

Eengulu dihapu da longifwa pefimbo lovatumwa, otadi kondjelwa meongalo olo di wapekwe nodi kale natango melongifo. Momaongalo mahapu eengulu oda teka po ashike ile otadi monika da nyateka omudingonoko weongalo.

Eongalo ole li tungila ongeleka yoshinanena, oshuudifilo osha landelwa embako lokupopila omuudifi nohali longifwa keshe Oshoondaxa. Ongeleka ikulu yekuma ledu opo i ili natango, i li mewapekululo i longifwe natango komesho ile i kale edidiliko lehovelo.

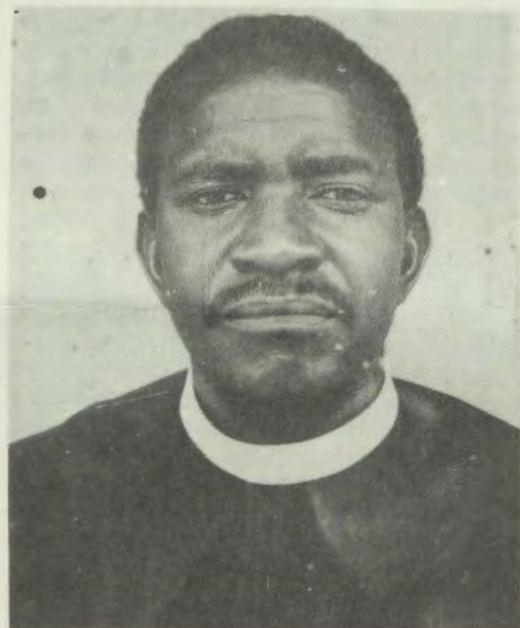
Omudingonoko aushe otau monika nawa natango noushitwe konyala u li ngaashi wa kala nande omanyonauko amwe a hovela nale okuholola omadidiliko ao omolwexumokomesho eli la nyonauna oushitwe

peenhele dihapu mOwambo.

Elitungo lopamhepo nalo yo otali konekiwa meongalo olo. Oilyo ihapu yeongalo oi li mongudu yeilikano, oshinima osho shi fla ondilo mefimbo eli nokashi na onhele momaongalo amwe mOngeleki. Omudo 1984 ovapaani 200 ove lishashifa nova ninga oilyo yeongalo, 24 ova hambolifwa paukriste.

Pamivalu domaongalo domudo 1984, eongalo Okalongo etitatu mOngeleki aishe komaongalo e na omuvalu wovahomboli wa ya ngaha pombada. Lotete Ondobe ya hambolifa ovanhu 33, taku shikula Onheleiwa ya hambolifa 29, aeshe moshitai shaUkwanyama.

Tala kep. 7



Omufitaongalo Jonas Mweutota

Omaongalo aa e na ovalihomboli pangeleki vanini, shiimba itashi ti kutya inaku lihombolwa omudo oo, ndele shapo opa longifwa ashike onghedi imwe i lili, oshipwe shinene pashiwana nopangeleki.

Etalelopo ole shi koneka yo kutya omuyelani nokOkalongo mboli oko e li. Eongalo ola fikama po ashike eshi ku na ovq tava kondjo noina va hala okuliyandja kuye. Ovo ve na oshisho sheitavelo li kule meongalo, otava nyematele elongifo lonai lokunwa mokati kovakriste vamwe. Otava nyemata yo komhepo yolufuko lopashiwana tai liyombe meongalo.

Nande eongalo la dja nokuli paife omaongalo avari; Ewaneno nOmutundungu, natango oli li mongudu yomaongalo oo a pendula euditoshisho shinene mewiliko lOngeleki, nhumbi e na okuyakulwa omolwounene wao.

Pavalulo lomudo wa dja ko (1984) oli na ovakrite 7,683. Oilyo ei otai filwa oshisho



Omufitaongalo Lukas Dama

kokangudu kanini kovanhu hava tambula ondjabi meongalo 12, omo mu na omufita omunyasha lela, Jonas Mweutota.

Pamwe nokangudu aka, oku na yo vakwao ve dule 50 tava yambidida etungalo leongalo pamhepo nopalutu memanguluko lavo vene Oku na eenhele 7 domauidifilo keembinga neembinga deongalo.

Outeku aushe weongalo nokukula kwalo, ngaashi tali shi ulike, shiimba oshi shi yo okutalikila meviyauko lomupiya wOmwene, omuxungu Lukas Dama, ou paife ta li ashike omungome wetulumuko.

Oye a nhuka nalo okudja 1942 eshi a yapulilwa oshilonga mOniipa nokwa nangekwa okutota eongalo olo fiyo 1981, eshi Ongeleki ye mu tulumukifa po. Oku na eenghono natango nota yandje omauyebele mawa natango kwaavo va fyaala kondjoko yoshilonga.

Etalelopo lomumbishofi mOkalongo ola xulifwa nomapandulo kwaayo eongalo le i ninga noudiinini nomakumaido yo kwaayo eongalo li na oku ke i pendula po.



Hamushanga moshinyangagongalo Rut Hamufungu ta longele nawa omambo. Okwa longa eedula nhano moshilonga osho noilonga yaye oya pandulwa ketalelopo.

TATEKULU DAMA

Tatekulu Dama, Okalongo
we ka twa po wa nyashuka
kaHaudila we ya mo u nomeva,
Ndee Okalongo to ka deng'omakuva
We ka tengifa omukonda u'neememo kuvali
Kokutya, elaka levaengeli wa xwika nal'ofuka

Oupenda woye otwe u koneka nawa,
Ondjoko wa xumbatele kaya li ipu
KaHaushina oke noupwidi u li mondwi yedu,
Kahaudano ke nokatongo ke li mehekedu.
Ndee mokulonga kwoye, omapipi mahapu a
nyashuka.

Epulo wa pulilwe owe li wanifa
Ekonakono wa shangele owe li pita nawa
Omutengi woufita woye owe u fikifa
Ileni tu ka puleni eendunge da fewa
Tatekulu Dama owa liile oipyu noitalala

Ovashashwa voye hatu pula?
Fiku limwe hatu ka tek'ombuda
Ile pamwe ovaava wa koleka?
Olyelye te tu valele oimbale wa teya?
Oivalo yovanhu vaKalunga hatu ke i kanifa.

Ngeenge hatu ka tomatandangole tu alula
Damaino ino tu efel'eendunge doshiwana
Nande wa longele nomwiya wa twa kekupa
Shoye Tate Kalunga okwe shi ku pakela

Vanheleiwa kuwilileni, Ewaneno va yakuleni
Ovmutundungu inamu dimbwa tatekulu Dama
Ovakando dimbulukwe efimbo lekongo leni
Pamba ne ku pe omwenyo wa nyashuka
Kalunga ne ku poupenda woinima yaalushe.

E. Haukongo

Otatu uvitha shike?

Aauvithi oyendji otaa dhimbwa shoka ye na okuuvitha. Omuuvithi ini iuvithila mwene, oshoka tse itatu iuvithile tse yene, ihe oJesus omwaaalelwa komushikano. Haoowino dhe momatamba e dhi tange ando, aawe, haupolotika.

Otatu uvitha oohapu dhaKalunga. Euvitho oli na okuza mOmbimbeli. Oyo omukanka gweuvitho lyetu, kape na omukanka gulwe. Omuuvithi ote etele aantu elaka lyehupitho, li taambwe kuyo.

Ombimbeli oyi na oonkondo yi vule omambo agehe. Ombimbeli oya nyolithwa kenwethomo lyOmbepo Ondjapuki. Euvitho oli na okuuvithilwa metompelo lyOmbepo yaKalunga.

*Omudiakoni
Otto M. Egumbo*



Eongalo melongelokalunga



Omutaleli A.L. Nghifikua

Nghene to dulu okukala nawa novanhu

ETWIKILO

Ngeenge owa hala okukala nawa novanhu meyakulo loye, ove ino hala okukala omupangalume, shikula omapukululo aa taa shikula apa:

1. Ninga oshinima shimwe pefimbo limwe.

Ovawambo oha va ti: "Eenghandanga mbali ihadi dipawa." Eshi otashi ti omunhu ito dulu okulonga oilonga ivali oshita. Ovanhu otu na eamo lokupapata oilonga, shaashi ohai kala ihapu unene. Ashike epapato la tya ngaha ohali imbi oilonga i longeke.

Oshixwepo okulonga po manga oshilonga shimwe, sho shikwao shi ka shikule ko. Tala nawa oilonga yoyeye yefiku, yoshivike, yomwedi ile yomudo meshikulafano. Tokola eshi to longo po tete. Okuyandja ominute, eetundi, omafiku oivike ile eehani koshilonga shonhumba ndele tashi pu, otashi ku pe omhito yokulonga nawa oilonga yoye.

2. Lihonga okupwilikina

Okupwilikina nawa omunhu, otashi ku pe eudeko la wana notashi pupaleke onghendabala yoye yokuyukifa oshinima. Ovawiliki vamwe ove na eamo lokutalela ashike omunhu moukwatya wavo ou ve va shiivile shito, onghee ihave va pwilikine nelitulemo, ngeenge tava eta omaudjuu avo kuvu. Onawa unene ngeno omunhu keshe a pwifikinwe nawa panghalo yopefimbo opo, nande na kale e na olaikota yokuhelimekelwa.

3. Lihonga okupula omapulo

Epulo keshe tali pulwa ohali hololele

omupulwa oukwatya ou tau pangele momupuli pefimbo opo. Okulitula mo ile okuhelitula mo kwomuwiliki, otaku monikila momapulo aye. Omapulo amwe ohaa yandje emanguluko komupulwa, opo a popye nemanguluko eshi she mu endifa, manga amwe taa shololifa omupulwa notae mu tilifa okupopya nemanguluko eshi she mu endifa.

Omunhu e li mombelewa oku na okulungama a ha pule ovayakulwa vaye omapulo ngaashi:

"Owa hala shike?" "Oshike wa ila oku? Oto kongo shike?" "Eshi u li apa koilonga olye wa fiya ko?"

Onawa ngeno omunambelewa a kale ha pula omapulo oludi eli: "Oto kwafelwa sha mbela?" "Owa hala ndi ku ningile shike?" "Owa pumbwa ekwafo lashike?"

Omuwiliki keshe okwa teelwa a pule omapulo taa holola eputuko nefimaneko, kukeshe omuyakulwa te ya kuye, opo a hokife ovayakulwa vaye okuuya kuye nemanguluko, nande nava kale ve lilongela ehandu.

Yoolola oinima yolela momapopyo ongaho

Omuwiliki oku na okulungama a ha wilikwe ye a ha mbebelekwe. Ovanhu luhapu ohava kendabala okuhenuka oshili nokuholeka omapuko avo nomahokololo oipupulu, ashike mokupwilikina nomokukonakona nawa, ohashi dulika ku yoololwe oinima yolela momapopyo ongaho.

Omuwiliki omunamakeko, ota kala aulushe a lungama, opo a ha kotokelwe noupu, fiyo novawilikwa vaye tave shi mono mo kutya, mboli okavandje aka va lya oye e ka dipaa!

5. Shiiva apa pe na epuko

Okukonakona nawa oshinima nokumona apa pe na epuko, nande nashi kale tashi pula efimbo lile, oshi li nawa. Okweendelela okuya metokolo, ove ino konakona nawa, otashi ku kwikifa kakulu, ye ou ta vele omutwe otena!

Oipyadiva ya tya ngaha oya yembifa noya tondififa ovawiliki vahapu, shaashi ohai etifa oshilanduli sha kwata moiti.

Ohashi nyemateke unene omunhu ngeenge a pewa oushima ine u lilongela, ndele okuyandja ounongo komunhu e na oushima, molwaashi ino konakona nawa oshinima, ile molwaashi ino mu halela oushima, oshi na oshiponga shi dulife pwaashi shotete, shaashi nye amushhe vavali omu na etimba loshiningilawina.

6. Dimina omalunduluko

Moitukulwa aishe yopanghalafano, onghalo otai ende nokulunduluka. Omunhu keshe oku na okuliufa komalunduluko aa, ngeenge ina hala okukala konima panghalafano.

Omalunduluko omilandu ohaa etifa yo omalunduluko opanghalafano. Eshiiivo lomunhu lopamalihongelo, nalo ohashi dulika li fyaale moukulu wonale, ngeenge ite lixumifa komesho ye mwene.

Omuwiliki ke na ashike okudimina omalunduluko a tya ngaha, oku na yo okweendela pamwe nao. Okutalela ovayakulwa vaye aveshe pondodo yoye yoshito yopashiivo, nokulitula u shii sha u va dule, otashi dulika u mone vamwe ve ku dina, ile ve he na omikalo, ndele mboli ove li pamulandu woepfimbo opo.

Omuwiliki oku na okukendabala e li likolele eshiivo lopashinanena. Okulesha omambo noifonghundana, okupwilikina oradio nokukundana kovanhu vakweni, nande itashi pefa omunhu ondombwedi meshiivo, otaku ningifa ngaho omunhu a kale pashiivo lopashinanena, panghalo yefiku keshe.

Omuwiliki iha lesa ye iha pwilikine eenghundana dounyuni wanakanena, ota djuupaleke eyakulo laye, shaashi onghalafano yaye novayakulwa vaye, ovo mokati kavo mu na ovanhu ve li pashinanena otai kala ya yooloka neenghono.

Olungwenye lovawiliki vamwe, noutondwe wavo okutonda ovawilikwa vavo, luhapu ohau etifwa ashike koshinghwanenge sha dja momaliudo outwakalanale wovawiliki, ava inava hala okudimina omalunduluko, nova diladila ashike panghuluyonale.

Omuwiliki nomuyakuli omunandunge oha pwilikine noha tambula omayelevawilikwa ile ovayakulwa vaye, unene ovo e lineekela nokwe va ninga ovayandjimayelevaye.

7. Lihonga okutambula omunhu ngaashi e li

Oshidjuu shili okukala komesho yovanhu itamu tu kumwe navo monghalafano yefiku keshe, ashike osha puka okuteelela omunhu keshe e li mewiliko loye a kale ngaashi wa hala.

Ope na ovayakuli vamwe hava kendabala tete okushiiva kutya, omunhu okwa tya ngahelipi panghalafano, pamaxupilo, paupolotika ile paukriste, fimbo inave mu yakula. Luhapu ongushu yeyakulo eli tava yandje otali ufwa keyooloko ile ke-

Tala kep 12

Ova shangela nge tava ti

Omhangho nai kale omhangho

Ovadali longifeni onghedi ikulu, mu dule oukadona oikutu ngaashi mwe shi ninga nale, opo va ha hombolwe nomadimo. Ounona havo va panga ko shaashi vati ojefolou ile oMatrona. Omhangho nai kale omhangho.

Okuhombola okakadona ke na edimo ihamu ka futa vali omaliko ovana vavakweni a wana po, ko okutotolola okudjuu.

F. M. Nghidinihamba
Arandis

Ekoleko lyongashingeyi inali fa lyonale?

Otwa kala nale nomakoleko momagongalo moka twa longekidhwa opo tu ikwate nawa esiku ndyoka, nokudhimbulula esilohenda lyaTate Kalunga twe li ningilwa monkalamwenyo yetu.

Onda tala omakoleko taga ningwa omathimbo ngaka. Okuza morigeleka aantu ohaa yi ya ka lye, yo ya ka nwe pamwe nokonima yaashoka otaa ningi ondanisa.

Ngame pakutala ekoleko tali longitha oondanisa, kali shi ekoleko. Amwameme, taleni ano nawa ethimbo lyeni, mwaa hanganithwe nuuyuni. Efes.5:15-21.

David Nangombe
Mweshipandeka

Nava kumaidwe

Onda hala mu kumaide onunona woukadona ava hava di mofikola, vati ova hala kOushimba eshi tava hekwa kovamati. Vahapu ova mono ashike oixuna, inava mona ngaashi va udanekelwa. Hano va kumaideni.

Omukundaneki
muKeetmanshoop

Ovanhu nava pulwe eshi va hongwa

Ohandi indile nelinipiko koshipala shovakalelipo vetu ovalongi, ovataleli, omuwiliki woshikondo shelongo nokepangelo yo, mu diminine ovalongi vetu ve tu ningile omakonakono okodula, keshe umwe ngaashi a longwa. Unene tuu Eestanda 4,5,na 6.

Osheshi otwa koneka kutya moule womudo, ohaku ningwa omalunduluko mahapu omambo okulihonga nomambo inaa faafana peefikola adishe nohashi hepeke ovahongwa ava hava pulwa osho inava longwa.

Otilie Hendjala
Landbou College

Masiku omumvo gwa yi, ngoye omugundjuka owa longo mo shike momumvo nguno we gu pelwe? Owa opaleke tuu oondjila dhoye koohapu dhOmuwa. Tu indileni aluhe onkondo kOmuwa, tse tu konge oshipala she. Eps.100

Omukundaneki
muMariental

Shapo onunona nava futile ovadali

MOmukwetu waAguste 30, 1985 ep.10. Onda leshe oshipopiwa shaumwe vati omukalo wonale nau efiwe, kutya ngeenge omunhu a fi, oinima nai ninge yovana nomukulukadi waye, osheshi ovo ve i longwa voo vene. Paiife ngeenge hano okaana eshi ka dalwa, keshe eshi taka li meumbo lavo sho otashi shwangwa opo eshi taka ka tunga eumbo lako, ko taka futu.

Itashi dulika nande omunhu a hepeka ovakwao nde oinima tai ka ninga yomukulukadi waye.

Nikanor Natangwe
Klein Aub

Otwa hala ondjugo yomakoshelo oikutu mu ELCIN

Ongeleki yetu ya ELCIN, oya katuka onghatu moinama ihapu, ongha onawa yo ngeenge tai kongo ondjuo yomakoshelo oikutu, Omufitaongalo komesho yeongalo, e na omidjalo da wapalekwa nwa, otashi monika nawa unene.

Osho yo omidjalo dikwao dongeleka ngeenge da koshwa nawa otadi yandje oshinge shefimano komuyakuli waKalunga. Otu shi shii cenhele da tya ngaho doilonga ohadi pula oimaliwa ihapu, ashike oda pumbiwa.

Gideon Shakaalela

Oho longele Kalunga keni po?

Oshipango shotango otashi tu longo tu simaneki Omuwa Kalunga komesho ga shaashoka noye awike tu mu inekele. Ngele ano osho ngeyi, omolwashike tatu mono aakriste yamwe taa longele satana peha lyaKalunga omunamwenyo?

ONDJOKONONA YANAKUFYA OMWEEVANGELISTE W. AMWAALWA

Amwaalwa otwa shakena naye efiku eti 12.2.1946 eshi twa tambulwa mofikola youyevangeliste mEngela. Otwa kala mo 1946 fyo 1947. Mofikola otwa tambulilwe mo 16. Fye ava hatu ka longwa kOushimba otwa twikilifwa ko odula onhivali tu li 13, omanga vakwetu va ninga mo odula imwe.

Otwa li Jason Haufiku, Filemon Nashihanga +, Toivo Amutenya +, Malakia Hauwanga +, Nikolae Gustav Haukongo +, Werner Amwaalwa +, David Haufiku +, Medusalem Nghidinwa +, Leo Nuugulu, Benjamin Kambala, Stefanus Itewa, Stefanus Hamukwaya nomuhokololi. Vakwetu vahapu va tetekela, paife twa fyaala po 6.

Otwa pewa odjapo notwa yapulilwa ouyevangeliste eti 15.11.1947. Otwa lombwelwa taku tiwa: "Vamati vange, indeni ka udifeni efyo lomwene fyo ote ya". Otwa tameka oshilonga shetu omu mOwambo meongalo Ohalushu atushe na W. Hamwaalwa okudja 1948-1950.

Moilonga otwa kala hatu tukwa fye hatu tewatewa, "Kape na mbudi kaume, osho twa pewa kOmwene", mukwetu osho a kumaida nge, eshi handi hala okunyamukula ou ta tukana. Fye hatu tula Ombibeli yetu mondjato fye hatu imbi. Unene otwa imba omaimbilo aa: 494 unene ov.3, "Eenghono doku mu longela, omuye ndi di na", opo nee hatu findi opo. 522 unene ov. 2. "Medu linya li pe, Ouwa u li mo. Kamu na oulunde, noudjuu yo kau mo."

Mwaali 173 ohatu findi eev. 4-5. Ohatu imbi fye hatu kunduluka oixwa. Ohatu ende eumbo keshe, nakeshe apa hatu hange omunhu otu na oku mu popifa neendjovo daKalunga. Eimbilo

653 ov. 4 ohatu lishuna mo. Omaimbilo aa okwa li tu a shi momutwe.

Eumbo laye ola li pOmaputu aNepando mOukwanyama. Opo a li pewa okapya kongwena eshi a li a tembuka kOnampadhi. Ye ongwena ote i fe mo nomidi. Omulumenhu okwa li e na eenghono dokolutu nodokomutima. Nokwa li e na eitavelo loshili.

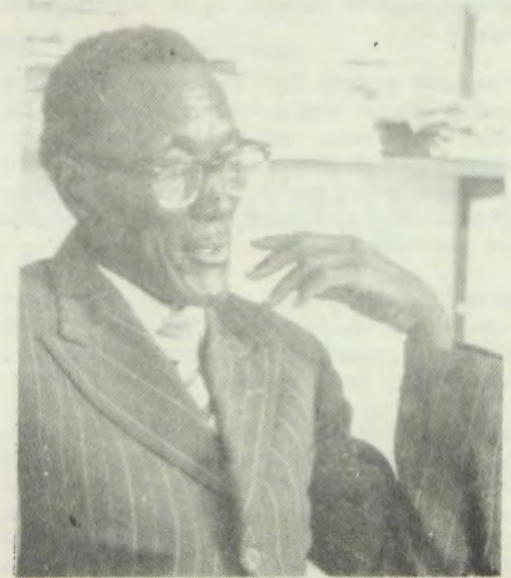
ONDJILA YOKUYA METUMO MOUSHIMBA 1950.

MuNovomba 1950 omo twa ifanwa komukulunhu omutonateli tatekulu Alho, kOnayena, tu ka tambule eembapila noimaliwa yondjila. Otwa li vatatu W. Amwaalwa, F. Nashihanga nomuhokololi.

Eti 7.11.1950 otwa ya medimo londjila. Vakwetu tava i mOtiwarongo, ame handi i moUsakos. Otwa hovela oilonga eti 10.11.50. Oko twa kala 31. Otwa kala hatu longo meefaalama. Amwaalwa a pewa oundongi 2, kamwe okoinima kamwe e ka londa.

Efiku limwe oshoa ka wa ko nosha fa ngaho she mu etela ouyehame womeni. Konima a ka pewa okambasikela. Malakia Hauwanga, naye metumo muTsumeb a ka pewa okapakapaka opo ngeno vati a endebele a hange eekomboni, osho a ka wa ko nosha fa osho she mu twaalela.

Osho twa longwa ngaho noudjuu noneitavelo. Ame nda hala ndi tye vakwetu vahapu ve tu tetekela, omo mu na yo omufuko wange Rosalia Naulondo ou a xulifila mOmaruru. Omo e li pamwe nongudu yaye yovakainhu mOmaruru. Okwa teelega va ka penduke meluwa lovana vaKalunga pamwe navakwao Ovaherero, Ovawambo nOvadamaru.



Nakusa W. Amwaalwa

WA FUTU TUU OSHIFO SHOYE SHOMUMVO 1985? INYOLITHA ANO NATANGO MBALA MOLWOMUMVO 1986.

Aakriste Aasoomi oya mangelwa kumwe naakriste Aanamibia kEhanganotumo — Ongeleki yaSoomi ya ti

“Oshilonga sha longwa oomvula dhi vule 100 muNamibia kEhanganotumo lyaSoomi, osho sha kwatakanitha kumwe aakriste yomuSoomi naakriste yomuNamibia, nonando pe na omukakena omule pokati kiilongo mbyoka iyali.”

Omatumbulo ngoka oga zi montokolwa yEwilikongundu lyiinima yopondje mOngeleki onkwaevangeli paLuther yaSoomi, omasiku ga zi ko. Ontokolwa oya tuminwa epangelo lya SA osho wo Oraata yOngeleki yomu SA noyomuNamibia pamukalo gwetseyitho lyowala.

Oshikondo shiikwapondje mOngeleki yaSoomi osha ningi eindilo komahangano gomusoomi haga pindike na SA ga hulithe po iipindi yago. Opwa ningwa wo eindilo lyu ukilila kepangelo lyoshilongo shoka opo li dhike po omukalo gwondjindikila yiipindi ku SA ngaashi yu uthwa ku VVO.

Ongeleki yaSoomi oya ulika wo nkene tayi popile ekondjo lyoyendji mu SA. Aakwashiigwana niilyo yomagongalo, unene oshikondo shiimaliwa mOngeleki ndjoka, oya kumagidhwa wo pankondo dhawo ya nwethemo omahangano gomoshilongo, opo ekwatathano na SA miipindi li hulithwe po.

Ehokololo otali ti kutya oshikondo shiimaliwa mOngeleki yaSoomi osha pungulitha iimaliwa yasho momahangano gatatu omayovi goodola 35,000, konyala R100,000. Ontokolwa yewilikongundu ndyoka ayihe otayi leshwa ngeyi:

“Aakriste yomuSoomi oya kala nekwatathano naantu yomuNamibia muule womimvo dhi vule 100, onke omukundu gwaantu yoshitopolwa shoka pamutungilo gwevi shi lyaathane kokule noshilongo shetu, ihe paitaalo lyopakriste ye tu li popepi, ogwe tu pendulile wo euvitoshimpwiyu.

Momagalikano pamwe niilonga otatu hangana kumwe okuyambidhidha shono tashi hololwa kuukriste wombinga yiigwana iihepekwa mbyoka yi li mu SA nomuNamibia.

Shoka otatu shi ningi metso kumwe nomatokolo giigwanahangano osho wo nomaindilo goyendji miigwana nomoongeleki mboka ya kala taa indile emanguluko lyaNamibia li tulwe mbala miilonga na SA a hulithe po okukala kwe moshilongo shoka, oshoka okwo taku pendutha omahepeko gaantu.

“Omulandu gwomahepeko gopaukwamuhoko tagu longithwa ku SA, ogwo gwe etitha po eidhimbiko lyuuthemba womuntu nuuthikepamwe mokati komuhoko ngoka gu li omunene (Aaluudhe), osho wo she etitha po omahepeko omadhigu niilonga yaa na uuyuuki, tayi ningilwa mboka ye li oyendji moshilongo.

Pakutala kwetu shono itashi tsu kumwe nomakankameno gopakriste nonaashoka tashi pulwa kuuntu. Palongo lyOmbimbeli, omapangelo oge lile po okugwanitha uuyuuki, ihe mu SA epangelo olya ninga oshiimbi shuuyuuki nomuyugi gwaakwashigwana

emanguluko lyawo nenge omuyugi gwoomwenyo dhasho nokuli.

“Metsokumwe nuukriste woyendji, otatu ningi eindilo koshigwana shAatiligane ya S Afrika ye ete po uuyuuki moshilongo shawo yo ya lundululile omulandu ngoka gu li po momukalo gulwe pambili pwaa na etiko lyombinzi niita manga pe na natango ompito yoku shi ninga.

“Otatu indile aakwanegongalo yetu ayehe yi itule miilonga yokweetitha po emanguluko nuuyuuki muumbugantu waAfrika moku-galikanena nomokuyambidhidha pamahupilo iilonga mbyoka ya longwa kEhanganotumo lyaSoomi nokoshikondo shiimaliwa mOngeleki yaSoomi okukwatha aantu ya SA noyaNamibia.

“Natango otatu indile mboka ye na uuthemba wokuninga omatokolo momahangano agehe ngoka ge na ekwatathano na SA miipindi ya teye po ekwatathano ndyoka. Oshoka otashi yambidhidha omahepeko gukwamuhoko mu SA.

“Ehalelo ndyoka olyo wo lya kala tali hololwa kaawiliki yAaluudhe nokoongeleki momishangwahokololo dhawo. Otatu indile wo kepanaglo lyetu li katuke onkatu yi na oshilonga shi vule ngashingeyi mokudhika po omukalo gwondjindikilayomahupilo na SA opo ku yambidhidhwe neulumo Namibia ongoshilongo sha manguluka pu tulwe omukalo gwelunduluko lyopambili mu SA.”

Ontokolwa oya gandjwa 3.10.1985 kEwilikongundu lyiikwapondje mOngeleki onkwaevangeli paLuther mu Soomi.

Emanguluko lyaNamibia otali kotokelwa

Amushanga omukuluntu mehanganano lyaSwapo omusamane Andimba Toivo yaToivo, okwa ti kutya opwa fa pe na oompangela dhomuumbudhi okuninga Namibia li kale oshitopolwa shimwe shomahilathano pokati kAuzilo nAauninginino, nonando ope na omautho ga yela gokupangula omulandu gwaAmerika sho ta yambidhidha SA.

Amushanga yaToivo oshinima shoka okwe shi popile ko VVO pethimbo lyiiwike iyali okuza 27 Kotoba sigo 1 Novomba, mbyoka VVO e yi yoololele okuulika euvitopamwe lye niigwana yomuNamibia.

Pethimbo lyiiwike mbyoka ya lukwa “molwaNamibia”, okambo komapandja 98 oka topolwa moka iilongo yuuyuni ya sikumudhwa yi kondjithe natango okatongotongo shi vule shito.

Pamwe nokambo haka opwa gandjwa oshinakugwanithwa miinima ngaashi: — Epungulitho moombaanga dha SA li hulithwe po niimaliwa yomakwatho yaa gandjwe we, osho epindiko na SA li mweneke.

Ya Toivo, okwi indila Oraata yegameno ya VVO yi tsikile noshinakugwanithwa shayo shokutulitha oshitokolitho 435 miilonga, shoka a ti kutya osha pungulwa ngashingeyi ethimbo ele noshi li pokuninga omawiiwili.

Tala kep. tali landula



Methano kolumoho popepi, meme Sofia Kadhingula

Efelo Kadhingula ta popitha aagundjuka

Aagundjuka oyendji kaye li we paaputudhi yawo, onkalo yongashingeyi oye ya halakanitha nuuyuni. Omulongi Sofia Kadhingula ota gandja etumwalaka ngeyi kuyo:

“Oohapu dhaKalunga kungoye omugundjuka odho adhike tadhi yeleke ondjila yoye. Eps.119:9. Odho ondhikwa ihaayi tokoka oku ku humbata shaampoka to yi naku kale okokule ngiini naakuluntu yoye.”

Oshitokolitho shOraata yegameno 435, osha gandjelwe omumvo 1978 shi kale omukanka gwemanguluko lyaNamibia. Omolwashi okangundu kiilongo itanò yuuninginino ka li ka dhikwa okuyambidhidha omukaleli po gwowina gwa VVO muNamibia moshinakugwanithwa she shokutonatela emanguluko li ende nombili.

Oshitokolitho osha kwatelela mo oonkatu ndatu ndhoka tadhhi hingile memanguluko. Nopethimbo lyoonkatu ndhoka ando:

- Oopaati adhihe dhopolotika odha thiminikwa dhi hulithe po iilonga ayihe yetondathano pokati kadho.
- Oonkwatwa adhihe dhopolotika e tadhhi mangululwa mo.
- Ooveta adhihe dhi na sha nokatongotongo dhi hulithwe po.
- Aanambia ayehe ya pongekelwa miilongo yopondje osho wo oonkwatwa dhopolotika taa galukile koshilongo.

Manga oVVO tayi longekidha ngeyi, epangelo lyaReagan muAmerika, olya nukile mo, kutya Aacuba mboka ye li mu Angola naa ze mo tango, manga inaapu tsikilwa momalongekidho.

Omusamane Toivo yaToivo okwa ti kutya ondjila yokumangulula Namibia pambili oya "bolokwa" kepulo lyaAacuba ya ze mu Angola, manga oshigwana tashi hepa.

SA a pewa oomwedhi hamano.

Omumbisofi Desmond Tutu gwaJohannesburg ngoka naye wo pethimbo ndyoka a li muWashington, okwa lombwela oshigongi sha VVO, a ti, ngele SA ita tameke a hanagule po omulandu gwe gwokatongotongo muule woomwedhi hamano, oti ihilile egeelo lyondjindikila yiipindi.

Ehangano lyiilongo ya kala shito hayi lelwa kOmwiingilisa (Commonwealth countries) moshigongi shalyo nuumvo muKotoba olya gandja oomwedhi hamano ku SA i ilongekidhe okwoopaleka egumbo lye manga inaali ninga etokolo lyasha. Englanda naye wo okwa taamba ko elondodho ndyoka.

Ehangano ndyoka lya thikama ngashingeyi miilongo 49, olya ti kutya elunduluko ngele inali holoka po momulandu gwa SA, oonkatu dhopombanda tadhhi landula otadhi ka dhiladhilwa:

- + Oondhila dha SA kaadhi taambwe we miilongo yehangano ndyoka.
- + Ondjindikila ompe yepungulo lyiimaliwa yi talululwe.
- + Oondjindikila miikulya yi ningwe po.
- + Omauvathano gomafutilo gootakisa ga hulithwe po.
- + Omakwatho gopaimaliwa agehe kepangelo lya SA ga hulithwe po, osho wo iipindi.
- + Ekwatathano nomahangano ga SA li hulithwe po.
- + Osho wo ekwatathano lyaatalelipo ku SA (tourists) li hulithwe po.

Sebulon Ekandjo

OONKUNDATHANA PAFUPI

Oveta yokutidha omuntu moshilongo nokukelela uuthemba waantu yamwe muka, oya tameke okukundathanwa momutumba gwepangelo lyopokati.

Aantu ya valelwa muNamibia, nenge ye ya okukalelela moshilongo shika, manga oveta ndjoka inaayi totwa, nenge mboka taa longele epangelo osho wo ilyo yetanga lyegameno inaa kwatelelelwa mo meutho lyoveta ndjoka.

Omuntu ngoka a hala okukala muNamibia omasiku ge vule 30, oku na okupula ombapila yeziminino.

Epangulo omolwa Shaanyenange lya hulu

Epangulo lyohofa yopombanda mOvenduka omolwedhipago lyomulushi gwoonkundana mOradio Owambo, omusamane Martin Shaanyenange, olya thiki ngashingeyi pehulilo. Iilyo iyali yongundu yaSWAPO, Veikko Nghitewa (25) na Sam Mundjindji (29) oya pewa egeelo ngaashi tashi landula:

— Kehe gumwe okwa pewa oomvula 15 mondholongi omolwedhipago

— Kehe gumwe oku na oomvula 9 mondholongi omolweyakopo lyanakusa Shaanyenange.

— Oomvula mbali mondholongi kukehe gumwe omolweyakopo lyohauto yanakusa.

Epangelo ndyoka lya kawata konyala uule wovula yimwe olya kala lyi ipyakidhila nedhipago lyomutoolinkunda Shaanyenange eti 12.6.1983 mOwambo.

Ope na natango onkambadhala kombinga yoohahende dhaatamanekwa yokutamaneka etokolo ndyoka kohofa yopombanda ku Bloemfontein.

OTATU MU GALIKANENE: LUTHERAN CHURCH OF SAVIOR

Ombilive ya zi megongalo ekwaLuther muAmerika, oya tuminwa ombelwa yoraata yoongeleki muNamibia (CCN). Ya nyolwa noya shainwa kiilyo 20 yehangano lyaakiintu megongalo, **The Lutheran Church of our Savior**, ombilive oya ti oya hala ashike oku ulika euvitoshimpwiyu lyawo, ohole neyambidhidho kaakriste yomuNamibia. Otayi leshwa ngeyi:

"Tse otwa koneke omaudhigu geni nomahapeko ngoka Aamanibia mu li mugo. Elalakano lyombilive ndjika oku mu tseyithila euvitoshimpwiyu lyetu lyomuule, ohole neyambidhidho lyetu kune.

"Oshilongo sheni ohashi tumbulwa esiku kehe momagalikaneno kiilyo yegongalo lyetu. Osoondaha kehe ohatu mu dhimbulukwa momagalikano.

ESO

Mateus E. Shivute Kambata okwa manene oondjenda dhe 30.9.1985 ombaadhilila mOvenduka. Ye mwene okwa zile mOndonga. Okwa thigi ko omuselekadhi, oyana yaali naatekulu 10. Okwa li e na oomvula 26.

Andreas Kambala
Grootfontein

Josef Johannes Nankulungu (25) okwa mana oondjenda dhe ombaadhilila 12.9.1985 moshiponga shoshihauto pOluno.

Petrus Nankulungu
Okahandja

Omulongifikola Andreas Nghitaunapo okwe tu fiya po 7.10.1985. Oshilonga shoulongi okwe shi hovela 1937. Okwa fiya ko ovana 11, novatekulu 41 novatekulululwa 33.

J. Nghitaunapo

Nikanor Sageus okwa xulifile oweenda waye 26.9.1985 moshiponga shoshihauto. Oye okanona ka Sageus Aron na Emilia Kafita. Okwa li e na eedula 18.

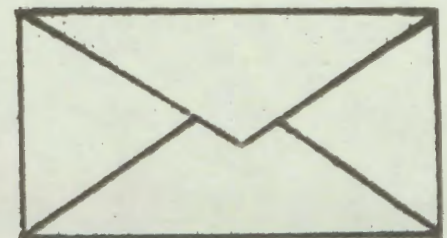
Moses Jacob
Klein Aub

EPYATUMO 1985

Ounyuni aushe ou na ovanhu 4,781,124,000
Ovanhu 1,184,935,900 aveke ve li ovakriste. Ovatumwa 250,000 otava longo moilonga yopondje, mangha 3,500,000 otava longo meengaba deengeleki davo omudo ou.

Ovanhu 1,335,212,000 inava uda nande lumwe evaengeli.

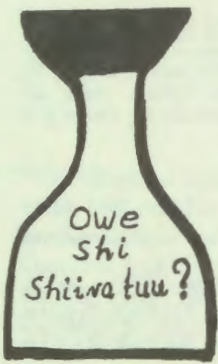
(PMAS — Newsletter No.17/1985)



"Okutseya kweni aamwatate aakriste Aanambia, kutya otu na oshimpwiyu nane, otu mu hole nohatu mu galikanene, naku mu tse omukumo, ko naku mu pe etegameno noonkondo meitaalo lyeni mu wape okutaalela uudhigu wesiku kehe.

Phillis Freeman
Omupresidende gwaakiintu

Bernice Manns
Amushanga



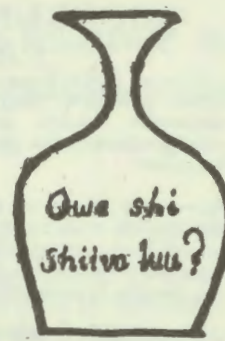
Owe shi shiiva tuu

kutya

Mokulikonakona mouyelele womapulo a tya ngaho, umwe ota mono ekwafo ile elikwafomwene la wana umwe inali wana, ota pumbwa natango okutwikila nomukwafi waye.

Nge owa mono kutya omapulo mahapu oto nyamukula "heeno" ou li nakunwa kwa pitilila, kongwa ekwafo.

Nge owa nyengwa okunyamukula omapulo aa, ou li momukundu wokunwa natango, kongwa ekwafo.



OMUWILIKI OYE OMUYAKULI

Dha za kep. 8

twokumwe lavo nomuyakulwa. Omuwiliki ile omuyakuli welai, oye ashike ha kenda bala okukaleka ovanhu aveshe ngaashi a hala, panghalafano ile paupolotika.

Paushili ovanhu ove na oufemba wokuholola kuvo vene oukwatya wopanghalafano, oupolotika nelongelokalunga eli va hala okushikula, nande oshoshili yo kutya, luhapu oufemba wa tya ngaha ohau longifwa papuko.

Epukululo lomuwiliki neyandjomaye le laye ola pumbiwa shoshili, ashike oli na ashike okukala tali lalakanene okukwafa omunhu a longife nawa oufemba waye moshinima keshe. Ovanhu ngaashi va yooloka komifika nokomalupe, osho ve na okukala va yooloka nomeemhito adishe dopanghalamwenyo, nosho ve na okutambulwa nokuyakulwa ngaho.

Omuwiliki ile omuyakuli, ku lile po okushiiva omunhu nghee a tya, oyo u mu

kwafe nawa. Ou lile po okushiiva omunhu eshi a pumbwa, oyo u mu kwafe Itashi dulika omunhu a kale momaukwatya aeshe aa tae ku wapalele, oyo ngeno mu longele kumwe naye moshinima keshe.

Oukwatya umwe po ou u li momunhu we u hokwa, oo u shikula mo. Ou ta mu tu kumwe naye panghalafano, kala nawa naye panghalafano, nande itamu tu kumwe paupolotika. Ou hamu kundafana naye oupolotika ndele paukriste itamu tu kumwe wanenwa kekwatafano leni lopaupolotika.

Ou mwa kwatafana pashilonga ndele panghalafano omwa yooloka, nashi tye ngaho. Ou hamu kwafafana ashike pama-xupilo ndele moimima imwe inamu fikafana, kashina mbudi osho. Ou hamu kundafana naye oiholekwa yopamwenyo, ndele nge e ku indile sha a ka longife ko ite shi alula, angala oku mu pa oinima yoye, ndele ino angala okukundafana naye.

Taku twikilwa

Mateus E. Shivute Kambata okwa manene oondjenda dhe 30.9.1985 ombaadhilila mOvenduka. Ye mwene okwa zile mOndonga. Okwa thigi ko omuselekadhi, oyana yaali naatekulu 10. Okwa li e na oomvula 26.

*Andreas Kambala
Grootfontein*

Josef Johannes Nankulungu (25) okwa mana oondjenda dhe ombaadhilila 12.9.1985 moshiponga shoshihauto pOluno.

*Petrus Nankulungu
Okahandja*

ESHIVIFO!

La enda ongula olo la toola oshima!

Otu na ofandifa kofeema kEngela eti 13-30 Desemba. Efimbo: 8 H 00 ongula efiku keshe.

Otamu monika eembete, omatalashe kombilixa, oikutu yoomeme, yootate, younona oumati noukadona noinima yomaludi mahapu.

Martha M. Namundjebo

The CCN has a vacancy in dhe position of the Director of the Education Department.

The Director of Education is required to:

- (a) Have a degree, preferably in education
- (b) Have excellent command of English and at least one indigenous language.
- (c) Be a good administrator
- (d) Be a man/woman who has the disposition to work with people
- (e) Have teaching experience
- (f) He/she must be committed to dhe course of the Namibian people
- (g) He/she should at least understand the political economic and social situation in the country
- (h) He/she should be a Christian and also involved in the life of the Church.

All the applications and enquiries should be sent to the General Secretary of the Council of Churches in Namibia before the end of November 85.

P.O. Box 41
WINDHOEK
9000

OMUKWETU

Oye oshifo shOngeleki Onkwaevangeli paLuther yomOwambokavango. Ohashi nyanyangidhwa mOshinyanyangidho shOngeleki mOniipa. Omukuluntu gwoshifo omumbisofi Dr. Kleopas Dumeni,

Amushanga gwoshifo omusita Sebulon Ekandjo

Ondando yOmukwetu muNamibia naSuid-Afrika R 5,00 komumvo. Palwe muAfrika R 8,00 nokombanda yomafuta R11,00, komumvo. Mondhila R13,00.

Ondando nomambestelo agehe naga tumwe kOmukwetu, Oniipa, P/Bag 2013, Ondangwa, 9000

EV. LUTH. OWAMBOKAVANGO CHURCH PRESS
PRIVATE BAG 2013, ONDANGWA 9000
SWA/NAMIBIA