

# OMUKWANE TU



30c

No. 14

ISBN 0-620-06828-0

## OSHITUTHI SHOMISIONI NUUMVO MUELOC OSHA NINGILWA POMPAMPA YASHIKONGO SHAKALULU.

KuSebulon Ekandjo

### Omandongo, Ondonga

Aantu 1500 nenge 2000, mokati kawo ongundu onene yezimo lyaakwaniilwa yomOndonga nomalenga gawo 9, oya li moshituthi shaMisioni nuumvo pOmandongo petameko lyomwedhi nguka. Omukwaniilwa gwOndonga Immanuel Elifas naye omo a kala moshituthi shoka.

Muule woshituthi shootundi ne netata antu oya pulakene edhina lyaShikongo shaKalulu momauvitho, moondjimbo nomiipopiwa yaapopi.

Omandongo, (Okangili) ehala lyuuthikilo waatumwa yotangotango Aasoomi, mOndonga, sho ye ya okutameka oshilonga sheuvitho lyevaangeli mOwambo nOkavango. Omukwaniilwa Shikongo oye a li ta lele Ondonga omumvo ngoka 1870, nokwe ya taamba muuwa we nomoshilongo she.

Ngashingeyi ehala ndyoka lyompampa (ombila) yaShikongo elundu lyowala lya mena iihwa nomwiidhi. Omagumbo gamwegamwe ageke ta ga monika natango koombinga noombinga, ngoka aatseyi yehala ndyoka taa ti kutya nago oge li moshitopolwa shimwe nepya lyuuwa waShikongo.

Aakwaniilwa yopethimbo ndiyaka mOndonga ngele okwa si, omudhimba ohagu gonyenwa mekunka lyongombe ya dhipagwa owina, nokombanda yekunka otaku gongelwa ondumba yomiti dhegu-

mbo. Ombila pamukalo nguka otayi ithanwa ompampa.

Aantu omathele ogendji siku ndyoka oya li taa thikamene omi dha tya ngaaka kombila yaShikongo nonkumwe onene dha thikama oomvula 111. Omukwaniilwa sho a si, sigo onena.

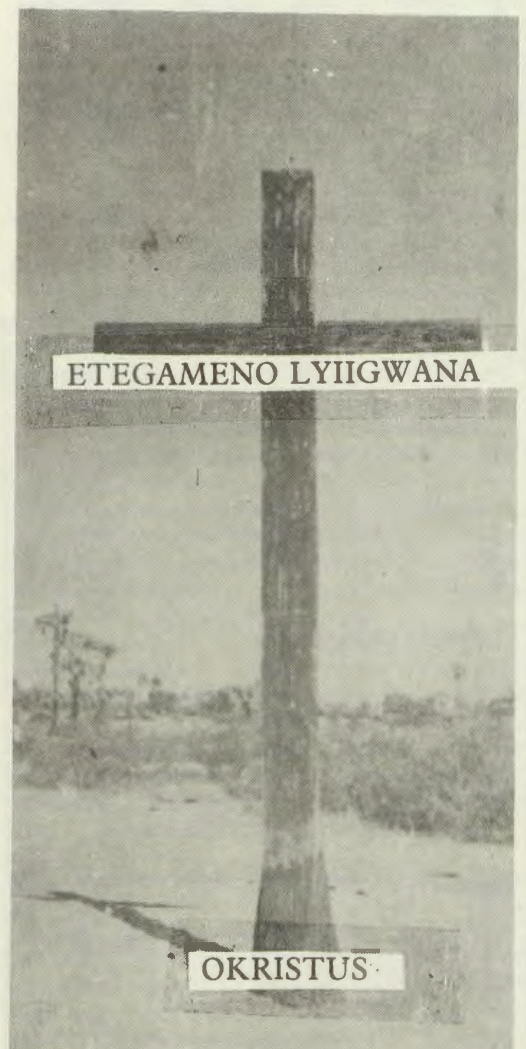
“Aantu amuhe imblileni Omuwa ---Tseyeni Oye omweendithi gwetu, --- Oye he tu gamene noye he tu langele ---Muuyuni mbuka twa kala mo,” osho ezimo lyaakwaniilwa lya li tali imbile ko oshituthi.

Oshituthi shomisioni mOngeleki ndjika ohashi dhanwa eti 9.7. omumvo kehe. Esiku ohali undulilwa mOsoondaha yomesiku ndyoka li li popepi opo shaa yone esiku lyiilonga yoshiwike. Onkene nuumvo oshituthi osha dhanwa eti 7.7.1985.

Manga esiikululo lyemanya kombila yaShikongo inaali ningwa, ndyoka lya li wo ombinga onene yoshituthi shika, elongelokalunga olya ningwa tango kaasita Natanael Sirono, naJohannes Mufeti moshigalikaneno na Paulus Heita moshuuvithilo.

Konima yelongelokalunga omukwaniilwa gwOndonga Immanuel K. Elifas okwa kundu oshituthi noku shi taamba pambelewa shi kale nombili. “Ngaashi mwa taamba Kristus, osho kaleni nokweenda muye”, osho e shi kumagidha.

Emanya otali monika lyi iyelutha pomba-



Tala kep. 5

Omushigakano gwopahistoli pOkangili

JULI 30, 1985

## EPOPITHO LYOMUMBI-SOFI DUMENI MOSHI-TUTHI SHETUMO MOMANDONGO

ELOC, ondi na omapulo momwenyo gwandje:

1. Omagongalo getu oga thikama peni moshinima shehwamo nohole yoshilongatumo?
2. Omagongalo otaga koko, otaga humu komeho, oga thikama, nenge otaga shuna monima, nohole ya talala nokuli?

Aakalelipo yomagongalo aaholike, onda li nda haluka shili koshigongingeleki sha zi ko. Moonkundathana omolwoshilongatumo kuSenegal naAngola, omwa li mwa holoka omadhiladhilo nga: Oshilyo shimwe osha holola nkene oshilonga shEtummo sha dhima momagongalo getu 74.

### Oshilonga shopaEster:

Shika osha dhimbulutha ndje oshilonga shopaEster, nohole ye onene okuhola oshigwana she shAajuda. Ester 4:14-17.

“Ngele to mwena, ngoye nezimo lyaandjeni otamu ka yomuka po. “Ester, ohole yoshigwana she, citaalo, omukumo, einkelo lye muKalunga otali holoka:

“Onda hala oku ya komukwaniilwa nonando nashi kale oshidhila-noshiponga, nongele ondi na okuyonwapo nandi yonwepo.” Ov.16.

OohEster yethimbo lyetu omo tuu ye li mu ELOC? ooAbraham, he yeitaalo, noonakuvulika kuKalunga oye li mo tuu oyendji mu ELOC?

OoPaulus nooBarnabas otaa vulika tuu nonena opo ya ye ya ka longe oshilonga shoka ya yoololelwa, noye shi ithanenwa? Okumwena oshiponga, aantu otaa yonukapo. Otaa sile muupagani. Etumbulo lyomutumwa gumwe moshigongingeleki olya tile: “Ando omagongalo ngoka inaaga gandja oshinakugwanithwa shago naga gandje. “Omagongalo 14 ageke ga gandja ga mana.”

### Osheelo sheeguluka:

Omalthimbo gontumba Kalunga oha pe aantu ye aayakuli osheelo sheeguluka, noompito nomalthimbo gokuyakula komahala ga fa omawinayi, inaaga halika, nenge ge li kokule. Aasoomi ye ya sigo Owambo. Aawambo sigo Angola nenge Senegal.

Iil.8:26-40.

“Thikama, u ye.” ov.26 Inda ko, u ka kale popepi naye ov.29.

Omuyengeli gwOmuwa ota popi

ngashingeyi: “Thikama u ye” kuSenegal, Angola, oku na omuntu ta pumbwa ekwatho lyoye, notseyo yoye. Ngele oto mwena, aantu otaa sile muupagani.

Ombepe okwa ti kuFilippus: “Inda ko, ka kale popepi naye”, ov.29 Aasoomi oye ya ya kale popepi natse. Oshilonga shetumo osho okuuva elaka lyomutumwa gwOmuwa. Okuuva elombwelo lyOmbepe Ondjapuki, otashi pula evuliko. --- “Okwa matukile ko”, ov.30 oshi na eulumo enene. “Okwe mu uvithile Evaangeli lya Jesus”, overs 35.

### Ompumbwe yetu nena:

— Okuhwamitha omulilo gwoholole yoshilongatumo, momagongalo getu 74.

— Natu indjipalekeni onkundathana tadhi popi etumo.

— Omapya getu natu ga taleleni po opo tu mone aantu taa pumbwa shili ekwatho.

— Natu nyoleni iinyolwa yetumo.

Oongeleki muuyuni otadhi kundathana, otadhi hokolola, otadhi gongala, notadhi longo omolwetumo lyEvaangeli, ihe hapeha lyetu. Opu na mboka taa dhiladhila tu longe ashike meni, yamwe tu ethe Senegal, tse tu kale naAngola.

Otwa tameke oshilonga muAngola naSenegal, ayehe oyetu. Otandi pandula Aasoomi mboka ya hwama, oomvula 126 okuza mpoka sho changano lyawo lya totwa, noomvula 115 ye li mokati katu.

Omutumwa Paulus Heita mOshigongingeleki okwa pulile epulo: “Ngele ou na aanona yoye yaali (Angola nSenegal) oto dhipaga po osheeli nenge onkelo?”

Etokolo oli li miikaha yoye, ihe aantu oye ku tegelela. Justus okwa tile wo, ando omagongalo ngoka inaaga gandja oshinakugwanithwa shago ga gandje”.

## EPULO

Amushanga gwOmukwetu,

Nandi pewe wo uuyecele.

Onda limbililwa, mOngoleki yetu ya ELOC, ohamu ningwa ongalo yeshasho, aavali ohaa gandja omagano, geshasho naakolekwa wo ohaa gandja omagano. Iimaliwa yongalo ohayi kala komuthikameni; ohayi uka peni? Oshoka ihandi uvu nando taku ti ongalo yeshasho ya yi moshiketha shontumba.

Tangi kuuyecele tandi ke u pewa.

E.Martin  
Ongwediva

### EYAMUKULO:

Omagano geshasho nogekoleko, oga yalulilwa mongundu yomagano kehe taga pewa egangalo, onkene ohaga longithwa megongalo lyo lyene, koshiketha shegongalo.

Qondjalulilo dhiiketha yomagongalo odhe dhi shi yelitha omumvo kehe, kutya egongalo ndyoka lya hwama okugandja omagano kegongalo, oyo tuu hali adhikwa aluhe mongundu yomagongalo ngoka ihaaga pumbwa we ekwatho lyayalwe.

Amushanga gwOmukwetu

## Okambo kelongelokalunga mu ELOC ka lundululwa

Opa ningwa paife omalundululo mahapu mokambongeleki ka ELOC okukufa po sha nokuwedela po sha shipe nomalundululo aa okwa tambulwa koshongaleleleki sha dja ko oshiti 12.

Mokambo aka paife omwa wedelwa ehPaululo lokuNikea-Konstantinopoli, osho yo mwa wedelwa ofoloma yelongelokalunga li li mumwe nouvalelo uyapuki.

Pamutungilo wokambo aka nenge eongalo la hepaulula omatimba alo omwa tulwa yo oitya yeingido ledimepo lomatimba.

Eefoloma doilongayakulo itadi ka monika mo vali mokambongeleki kape, ongashi:

- Eyapulo lohombo yaavo va punduka.
- Eyapulo lohombo yaavo va punduka noya pamekwa nale paveta.
- ofoloma yetaambululo/omukondwa.
- noyetaambululo lovapaani moukatekumeni.

Eano lomubishofi menangeko laye, ola tamununwa ashike. Elongelokalunga li he fi lomoalitali, paife mokambongeleki kape ola pewa oshipalanyole shipe: ELONGE-LOKALUNGA KOVAYAKULI VAMWE PONDJE YOWALITALI. Ounima vamwe ova wedelwa mo yo.

Okambo oka eta mo eefooloma dipe odo tadi yandje oupu komuyakuli a shiive osho e na oku shi ninga meyakulo laye ngaashi mokushasha omunhu ombaadilila, ile okuyambekela ovahakuli moilonga.

Ashike okambo inaka yandja omufango washa, tu tye kelongelokalunga lopefimbo lepako lomudimba ngaashi hashi longifwa paife mo-maongalo mahapu, ile kelongelokalunga lediko lemanga. Ei inai wedelwa mo mokambo aka.

Omalundululo makwao oku li unene meenda-nda nomoitya okuyelifa ashike omadiladilo oshikalimo.

Okambo oke li natango movalongekidi vako, notashi ka pula efimbo lile kanini manga inaka tumwa menyanyangido.

Sebulon Ekanjo

Omumwa na kale nane nomomumvo nguka gwetu gwaagundjuka. Ano igandjeni ne yene eyambo li na omwenyo, mu kale mwaa opalela eyakulo kehe momumvo nguka.

Abraham A. Nekwaya

# “SOLA GRATIA, SOLA FIDE NA SOLA KRISTUM.”

## ETSIKILO:

Moshi popiwa eshi ohatu ka tala osho sha dalwa mefimbo olo Sola gratia (efilonghenda alike), Sola Fide (keitavelo alike) na Sola Kristum (muKristus aeke). Naasho ei itatu tai ti kufye moshilongayakulo tu shi na nena.

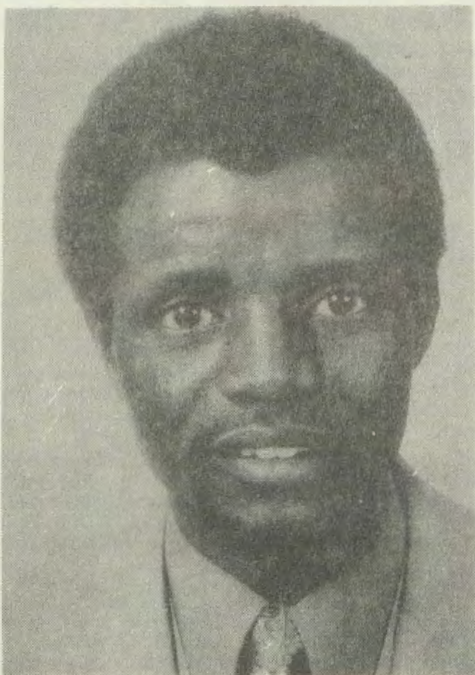
Ashike nashi yele yo kutya ngee hatu popi eitavelo (Sola fide) apa itatu popi oonongo neshiivo olo li niwe nokondeveli, osheshi nayo oi na eshiivo lomahepeko aKristus nenyumuko koufi. Fye ohatu popi eitave **loshili** omo twa itavela efilonghenda nedimine po lomatimba muKristus Jesus.

Keshe ou e shii kutya muKristus ye omu na Kalunga omunanghenda kape na mhata ye okwa shiiva Kalunga, te mu ifana Kalunga kaye, noina fa ovo ve he na Kalunga ou. Osheshi ondeveli novalongeli voikalunga inava itavela oshili ei - Sola fide, eitavelo alike omunhu ta xupifwa eitavelo eli olo hatu lesa mu Heb.11:1

Osho twa dja mokupopya itashi tu nande ondubo noilonga iwa, onghee oilonga iwa oi na okudiinwa nokundjabulwa, ndele haku i lineekela kutya molwayo ohatu filwa onghenda yaKalunga.

Meitavelo hatu filwonghenda nohatu diminwa po omatimba etu. Osheshi meitavelo ohatu pewa Omhepo Omuyapuki nomufye otamu fuluka oilonga iwa - ndele manga itatu pewa omhepo Omuyapuki, ounhu wetu owa nghundipala neenghono, molwaashi otatu wilikwa kOmuyelani noye te tu shingile mokunyona nomokuwila moulunde.

Ihatu longo ouwa opo tu ninge ovakelefiti,



**Omusita omupe Tomas  
Ndiwakalunga**

ndele ohatu longo ouwa, shaashi fye ovakelefiti.

Omolwaashi pu he na eitavelo, pu he na Jesus, oushitwe womunhu neenghono daye itadi dulu sha shiwa - Onghee okwiifana edina lOmwe ne okulidiinika moudjuu, okuhola omushiinda, nomutondi, okudulika nokulikelela kouhalu, kondubo nokefupa, oilonga ei ya fimana noi na ondilo, itai dulu okuwanifwa komunhu e he na Kristus ngaashi ye mwene ta ti: “Mu he na nge kamu dulu okulonga sha.” (Joh.15:5) muJesus Kristus (Sola Christum) ohatu findi nokufindilila.

### **Sola Christum (MuKristus aeke)**

Kristus, ou hatu ti oye aeke muye tu na okuxupifilwa mo, oye hano lye? Netivali okwe tu ningila naana shike? Omapulo a nyika oukumba, ndee oku shii okukonenenwa.

#### **1. Kristus oye olye?**

Meitavelo lovakriste ohatu hepaulula nokutya Jesus oyaKalunga shili a dja muKalunga, ounyuni nanga wa li u he ko. **Jesus Kristus oye Kalunga shili** Omona waKalunga **nomunhu shili** a dalwa komukainhu.

##### **1.1. Oye Omona waKalunga.**

Kuvahapu okanhokotumbulo aka itaka ti naana sha shipu, shaashi ohava hepaulula noupu kutya - “Oye Omona waKalunga. Shoshili osho yo ove naame ovana vaKalunga” ohatu yelifwa paMbibili kutya fye nande ovana vaKalunga oshoshili hamefaafano naana naKristus.

Fye ovashitwa vomake aye novana mokwiitavela Jesus Kristus”; Ndele Kristus okwa dja muKalunga ounyuni manga u ha li ko” Noku na oukwatya umwe naXe. Onghee oye Kalunga ngaashi naana Xe e li Kalunga. Onghee ta ti “Ame naTate umwe”. Nge hatu hepaulula eitavelo letu muKristus Jesus Omona waKalunga, ohatu popi ouyapuki wekwatafano nOmona naXe.

Ombibili otai popi ouyapuki waye okuhovela ngaho komadina aye. Pedalo ohatu lesa omatumbulo omweengeli. Onena tuu e li mwa dalelwa **Omukulili Omukumwifili, Omupukululi, Kalunga Omunaenghono, Xe waalushe nOhamba yombili.**

##### **1.2. Oye Omona womunhu.**

Omuxupifi wetu ke shi ashike Omona waKalunga, ndele oye yo omunhu shili, a dalwa kokakadona Maria. Naye mwene ohe li popi ta ti: Omona womunhu: Omaukwatya aye mahapu otae mu holola oye a li omunhu.

##### **1.3. Oye Kalunga - Omunhu.**

Opo a kale omuxupifi wetu osha li sha pumbiwa Kristus a ninge Kalunga - Omunhu. - E shi a dalwa omona waKalunga okwa ninga Omona womunhu. - Oukwatya waye uyapuki nowopanhuh owa hangana. Oku na okukala Kalunga shili, opo a dule oku tu mangulula mo momapando aSatana.

Ashike opa dimbulukwa elongo lArius

nenyamukulo lomukondjifi waye Athanasius). Kakwa li ku na nande oumwe a wapala nokwa wana okufuta oulunde e he shi Kalunga Omona. Fye otwa itavela na osho hatu hepaulula kutya Jesus Kristus ou e li Kalunga -Omunhu, Oye Omuxupifi nomumangululi wetu.

#### **3.1. Okwe tu wanifila omhango.**

Keshe ou ta hepaulula kutya Jesus Kristus oye Omwene - ote shi pameke yo kutya ye ka li e na etimba nande. Ombibili otai shi popi sha yela. Oye okwa shindwa moinima aische, ndee e he na etimba (Heb.4:15).

#### **3.2. Okwa hepekwa nokwa fya omolwetu.**

Ohatu hepaulula Jesus okwa hepekwa mounyuni wa Pilatus, a vaelwa komushiyakano, Okwa fya, ndele okwa pakwa. Ashishe osho Kristus a ningilwa oshali chandukilo lapumbiwa omolwomatimba Ounyuni - Okwe tu hepekwa nokwe tu fila. Jes.53:5.

3.3. Meitavelo lovakriste ohatu hepaulula kutya Jesus okwa ya moshovafi ka shi shi ashike omupopyafano wokutya okwa hepekwa shi lengifa ile pamwe twa dilaadila okunangala kwaye mombila, ndele apa otapa dilaadilwa kutya mefimbo lonhumba Omwenyo (Soul) eshi wa alukila molutu laye la nyumuka. Kalunga Omunhu okwa ya monghalo omo mwa idililwa eemhepo ihadi dulika -.

Petrus ota ti, Jesus okwa ya, ndee ta udifile eemhepo di li modolongo. Eli ola li ehovelo leyeluko lOmona waKalunga. Paulus ota ti yo komushiyakano Kristus okwe limangulula momapangelo eenghono dovapangeli a veshe vopamhepo nokwe va kaleka poluhaela noku va endifa olweendo laye lefindano (Kor.2:15) Oye aeke a finda eemhepo nokwa dulikifa nodomoshovafi.

#### **3.4. Okwa nyumuka koufi.**

Enyumuko laJesus otali ulike kutya Kalunga Xe okwa dimina nokwa hokwa aische oyo Jesus a ninga omolwomunhu. Osho oshilimbo shaKalunga mokutambula oshilongaxupifilo shOmona.

#### **3.5. A londa a ya meulu.**

Eshi a dja mombila ina fikila ta londo tai meulu, ndele okwa kala natango nokushilipalekela ovalongwa vaye enyumuko laye nokuyandja oshilonga shetandavelifo louhamba waKalunga mounyuni aushe kovalongwa vaye.

Konima eshi a punika ovalongwa vaye muBethania Okwa yelulilwa meulu. Otwa lesa, manga a yelula omaoko aye te va punike, okwa yelulwa kanini nakanini nokwa tambulwa koshilemo osho hatu hepaulula. A kala omutumba ponhele yaye “kolulyo laKalunga Xe.”

**3.6. Ota aluka ko - Jesus, ote** uya okutokola Ovanamwenyo novafi - Oshili otai popiwa konyala membo keshe lomEtestandi Lipe. Atushe ohatu ka holoka koshipala shaye -Atusheni ohatu ka holoka kolukalwatokolo laKristus, opo keshe tuu ou a pewe osho eshi longa molutu, ngenge ouwa ile owii (2Kor.5:10)

**Ku T. M.Ndiwakalunga**

# ELONGO MOWAMBO

Tango nandi pandule oshinyolwa sha holokele moshifo shika, sha nyolelwe kutate I. Iithete, shoka a li a holola omadhiladhilo omawanawa, sho a tile kutya aalongwa andola tu kale ngaa tatu hogolola oshilongwa shono shuunongononi; Natuur en Skeikunde.

Natse wo otwa li twe shi mono oshiwana, ihe oshilongwa shono osha pumbwa omaholelo (Experimente) ngono taga ningwa miilongitho yontumba mbyoka hayi adhiwika moorabora. Mowambo, oongulu otu dhi na, ihe kadhi na iilongitho. Naashika otashi imbi omulongwa a mone, ye u uve ko shoka ti ilongo.

Onke otandi indile oshikondo shelongo shi tale nawa, oshinima shika shehogololo lyiilongwa yaanasikola neitulomo enene, opo shi kandule po shono tashi imbi ehogololo li kale ewanawa.

Aantu oyendji ngashingeyi oya longwa, ihe oyendji yomuyo mboka ye na onzapo yonti-10, iilongwa yawo ongashi ashike; Biologie, Bybelkunde, Geskiedenis, Afrikaans, Engels nosho wo Elaka lyoomeme.

Ope na ehwata lyiilongwa oyindji mbyoka itandi vulu okuholola mpaka, ihe kandi shiwo kutya omolwashike ihaayi hogololwa. Yamwe ohaa ti aniwa aalongi yiilongwa mbyoka oyo yaa po. Ngele ongaaka, sigo uunake ihe taa kala yaa po? Openi naa ka za ngele aalongwa yongashingeyi kaye na iilongwa mbyoka?

Moshinima shika otandi indile natango eitulomo lyaayeche mboka ye na ko nasha noshinima shelongo moshigwana shetu.

**Iimaliwa yeilongo:** Aanona Aawambo mboka taa piti ongundu onti-10, oye na uudhigu oku mona iimaliwa yoku ki ilongitha koosikola dhopombanda. Kandi shiwo nande ngele iimaliwa tuu shili yaa po nenge oshike.

Ooseko inadhi gwana mOwambo: Omumvo kehe otatu adha aanona taa lilile oosikola, yamwe yomuyo otaa hupu ko, itaa mono omahala okutsikila mooseko, nando oya pita nawa. Uunake mbela amatungo taga ka gwanena aanasikola, opo omukundu nguno gu kandulwe po?

Omatungo gamwe onkene ga tungilwe po, ihaga mono we nando esilohenda lyokwoopalekululwa. Omakuma oga tenda omisa, uuholameno oopomba dhomeya ihadhi longo we sha. Iinima mbika oya talwa ashike sigo uunake?

Iikulya iishona moosikola: Otandi kumwa ngele tandi adha aantu 36 nenge 40 nokuli taa li iikulya inaayi gwana ookilograma hamano (6Kg.) Kandi shiwo tuu shili ngoka a tula po omukalo gwa tya ngeyi, ngele oku shi lela kutya iikulya mbyoka oya gwana aanona ye thike mpoka.

Ndhika omikundu dhimwe nda tumbula dhi li moosikola nomeilongo, ihe shono nda hala oku ulika unene nonkene iilongwa ya simana itaayi vulu okwiilongwa pwaa na iilongitho ya gwana moorabora.

F.S.Amweelo

# Aambalantu taa li taa pi, aantu yaKalunga taa hepa

KuShikambe E. A. Sparks

Omolwashike oKring 1, kehe omvula yi na okutidha aalongi miilonga (aalongisikola)?

Okuza 1980-yatatu, 1981 yaali, 1982 yatatu, 1983 yatano, 1984 yatatu.

Omolwashike aalongi ye na okutidhwa, aniwa otaa lundululwa ka pe na omatompelo, taa lundululwa pomagumbo? Omolwashike aalongi ye na okulundululwa pamukalo gwombapila tayi ka landulula omuntu mefudho, kutya ina galuka omvula tayi landula nando hamu lile poshitafula shimwe?

## EYAMUKULO

*Elelosikola olya hala okugandja mpaka olupandu nomayamukulo ga pumbiwa kombelewa yOmukwetu.*

*Otwa hala mpaka tu gandje uyelele mboka tu lwete owa pumbiwa kombelewa yOmukwetu mekwatathano nombapila ndjoka ya nyolwa komumwameme opo omadhiladhilo ga holoke ando mOmukwetu.*

a) Inatu tseya nando omulongi ngoka a tidhwa miilonga yuulongi moshikandjo sha tumbulwa komunyoli gwoshinyolwa.

b) Inatu tseya nando omulongi ngoka a tidhwa pOseko ya hololwa moshinyolwa, ihe shoka twa tseya moshinima shika sigo oompaka, okulundululwa posikola ya tumbulwa noku ukithwa kosikola yongandi nohashi ningwa nomatompelo taga landula:

*Ngele opwa taambwa aalongi posikola ndjika kaaye na oonzapo dhuulongi, ndele omumvo gwa landula tapu monika mboka ye na oonzapo dhuulongi, mboka kaaye na otaa gandja omahala ngaka kumboka taye ya po. Aalundululwa ohaa mono ngaa omahala poosikola mpoka tapa vulika okulongwa nomuthika gwonzapo yi niwe komulongi ngoka.*

*Shika ihashi ningwa komutalelishikandjo nenge komukuluntusikola muugumwe, ihe ohashi ningwa keElelosikola, ndyoka olyo li na uuthemba oku shi ninga. Ihali shi ningi wo momutse gwalyo, ihe ohali ikwatelele komauthosikola ngoka ogo ge li omuuthi niinima yi na sha nelongo.*

A. Metendo (d) lyomoshitokolithogona (1) shomoshitokolitho oshiti 156 shomoveta yelongo yomumvo 1926, oveta onti 16 yomumvo ngoka ngaashi ya lundululwa koshitokolitho oshi 20 shoveta yelundululo melongo yomumvo 1960 (no 19 yomomumvo 1960) Pa ngoloneya D.T.Dup. Viljoen, Etendo lyotango pamauthompango metemdo eti 13:1-15.

B. Nopa Artikel 18(1) van die Owambo Wet op Onderwys (no 11 van 1973).

## EPULO -

Omolwashike aanona yomOkring 1 yamwe mbono ya li ya yeleka okukala mosikola ye li mehalakano?

Omolwaasho okanona ngele ka tidhwa posikola, ohaku dhengwa ongodhi poosikola dhopepepi, opo aniwa ke shi lombole (ka hepe), ko otake shi lombole tuu shili, oshoka

kake na we mpo naka ka ya omolwoongoom dha dhengwa. Ongodhi nani hashiponga?

Ngele wa tidha okamwoye megumbo oto lombwele omukunda kutya inaka edhililwa? Oku na omuntu iha yono huno? Aanona naa talike ngaantu taa ka ninga wo aakuluntu. Naa simanekwe, omolwawo wa yelwa.

Omolwashike ooranda ntano (R5.00) komunasikola kehe omvula kehe, okuza 1981-1984? Omolwashike ihaapu gandjwa omandhindhiliko kutya okanona oka fendela (R5.00) ngaashi hashi ningwa poompito dhimwe (school funds)

Omolwashike kashi ningwa we poosikola (Sekundo) dhimwe dhi thike pundjino? Omolwashike ooranda ntano dhi na okupulwa pehulilo lyomumvo lwopekonakono opo ngoka ta hala okutidha, a tilithwe kutya ita shanga ekonakono? Osekundo ndjino oyi ithikamena ano kuyo yene, inayi fa oonkwawo?

Shikambe E. A. Sparks

## EYAMUKULO

3. Etidho lyaanona moosikola osho wo oshinakugwanithwa sheElelosikola. Omunona ngoka iti ihumbata nawa miinima ya kwatathana nokuvulika, okwi ilongela okugeelwa, negeelo otashi vulika li mu fale sigo okutidhwa moskola.

Ngele ina taambwa moosikola dhilwe, kashi shi kutya okwa tiwa ina taambwa, ndele omikalo dhe odho owala itaadhi mu taambiha.

3. Egongelo lyooranda R5-00

Osho shimwe shomiinakugwanithwa yElelosikola amatungo ga silwe oshimpwiyu kombinga yokwoopalekwa. Nokwaa na iimaliwa ito vulu okulonga ilonga mbika. Elelosikola ihali longo wo momutse gwalyo oshilonga shokugongelitha iimaliwa yokwoopalekitha.

Osha gandjwa wo kOshikondo shi ningwe koosikola, haposikola ndjika apeke. Mboka inaaye shi longitha pamwe amatungo gawo inaga mona uupyakadhi, nenge pamwe kaye lwete ompumbwe yasho.

Omunyoli okwa holola kutya iimaliwa ya hololwa moshinyolwa she oya gongelwa 1981-1984, ihe shono shi li mondjila oya gongelwa 1982, na 1984 naampoka ya ndhindhilikwa omomambo gomadhina ngaashi sha gandjwa pepandja lyayo.

J.MBANDEKA  
AMUSHANGA GWELELOSKOLA

## MuZambia mwa momika omahooli

Onkundana ya zi muZambia omasiku ngaka oya ti moshilongo shoka omwiitsuwa omahoofi moshitopolwa shokuuninginino woshilongo. Epangelo lyaZambia otali hiya ngashingeyi omahangano gomahooli ge ye ga fule go ga tsikile okukonakona natango omahooli galwe.

Zambia oshilongo sha pumbwa iikwamina, kakele kongopolo ndjoka ya talika oyo oshigandhi shoshilongo. Zambia omahooli ohe eta mo ashike taga zi kiilongo yopondje nohage mu pula ooranda oomilyona R 260 komumvo.

## ESO

Ester Kamutoole Mututonde Emvula, okwa mana oondjenda dhe 26.4.1985 mepipi lyomimvo 75 konima yethimbo ele muwehame. Okwa kala mOnashiku Uukwambi. Okwa thigi ko omusamane, oyana 12 naatekulu 44.

Demugwedha Nantanga

# OSHITUTHI SHOMISIONI NUUMVO

## Dha za kep. 1

nda ngiika oompadhi konyala 15 nenge 20 nokuli. Mulyo otamu leshwa edhina lyaangoka ta lala mpoka kutya oye wo a zimine aatumwa yotango yu uvithe evaangeli mOndonga, evalo lye (a 1814), eso lye (7.11.1874).

Memanya otamu leshwa wo ngoka e li dhika po, omutekulu Kauluma Elifas neshiku lya dhikwa (9.7.1985). Inashi nyolwa memanya, ihe otaku ti emanya olya pula R 5000 (Euvitho lyaHeita)

Otwa ongala nena apa tu dimbulwe oilonga inene yaKalunga e i longa mokati ketu. Otwe uya okuhambelelela fye oiwana yOwambo nOkavango.

Nandi tumbule manga oinenenima imwe yomondjokonona. Mefimbo laShikongo shaKalulu, ohamba yaNdonga, eindilo lovatumwa ola ningwa pambapila yaye ya nyolelwa Ehanganotumo laSoomi. Oshili ei oya

### Ovaleshi ovafimanekwa,

*Opa ningilwe omawedelo mahapu keendado deestombe nokoilongifo ikwa yOshinyanyangido okudja 1984 fiyo opaapa.*

*Fimbo oilyo yEwilikongudu loshifo shOmukwetu tai diladila nhumbi pe na okumonika ombapila yombiliha kanini, ombapila oyo twa kala hatu longifa shito oya pwa ko yo oku hai di.*

*Tambuleni hano ombapila ei, nomwenyo muwa, fimbo Ewilikongudu tali tale oyo tu na oku ka longifa komesho.*

*Oshikalimo oshi li ngaashi shito, olupe lombapila olo alike la lunduluka. Oita oyo ngoo ndjala, nondjala ito piti ngenge ito li eenhanga. OUMUKWETU ote mu halele omukumo mu leshe ngaashi shito.*

*Amushanga wOmukwetu*

Mosikola omu na uudhigu kombinga yaakuluntu mboka haa tonatele mo ngaashi aasita nenge aatonateli yalwe. Uuna omuntu a tya ngaaka ta popi sha, ohapu uvika aluhe omangungutulo nomategu guugoya.

Unake tatu ningeni oondunge? Omuntu ngele iho kumagidhwa, ngye egoya. Katu shi aanene tu vuile aakuluntu. Nokusimaneke aalukuluntu itashi ti oyo mboka ayeke ye ku vala, aawe. Aakuluntu ayeche, tu ya shi nenge kaatu ya shi.

Elago nomwenyo oshinima oshiwana, ihe ohashi zi mpoka ngele tu hole aantu ooyakwetu. Ngoka u hole omuntu mukweni, ongye wo u hole Kalunga.

**Omugundjuka mukweni**

wanifwa.

Ovatumwa mokufika kwavo apa, 9 laJuli 1870, ova dimbulukwa onunene waKalunga eshi va imba: "Kalunga oye egameno." Oshili ya popilwe kohamba Shikongo oya twa, eshi a tile:

"Ne omwa ninga nawa sho mwe ya" Omolwokuuya kwavo, nafye oiwana ei: Otwa tumwa yo nounyuni, omolweudifo lavo.

Otu li ponhele youtamanekelondjokonona, onghe keshe umwe dula ko eenghaku keemhadi, doye, osheshi ponhele apa u li ofika, "edu liyapuki".

Omukulupe Vilho Kaulinge okwe tu lombwela: Shikongo shaKalulu okwa etela Owambo exupifo laKalunga --- Kalunga a longifa Shikongo oshilonga shinene. Tu hambeleleni hano, osheshi Kalunga okwe tu longela oilonga inene, otu na exupifo.

Ovaitaveli vOngeleki ei nonye amushe mwa ongala; otwa tumwa nounyuni. Kalunga okwa hala aveshe va xupifwe, onghe ta tumu ovatumwa: "Ame ohandi tumu omutumwa wange", osho ta ti. Olyelye ta lombwelwa? Ovakalimo vomeulu tava lombwelwa oilonga oyo Kalunga ta ka longa. Koshipangelapundi shaye Kalunga ota ka longa. Koshipangelapundi shaye Kalunga ota lombwele omuprofeti Malakia osho ta ka longa; kutya ye ota ka tuma omutumwa waye. Oilonga yomutumwa oyo :

Okukokolela Kalunga ondjila. Okulongekida euyo lOmwene. Embo lomuprofeti Malakia ola nyolwa pefimbo olo otombeli ya li ya pwa okutungululwa konima youpika waBabeli. Ola nyolwa pefimbo olo wapristeli va li hava wanifa nawa oilonga yavo yomaxwikilo.

Ashike oukwamhepo owa li wa kuluka muIsrael, ovapristeli hava lalakanene ashike omatyapulo, onghe oinamwenyo inai yela oya longifwa yo mokuxwikila. Ovanhu kakwa li hava yandje oitumulongo yavo. Opwa li eteyo leehombo la manamo, oipango ya Kalunga oya ekelwashi.

Omuprofeti okwa ponokela owii woulunde woshiwana shinya. Mal. 1:7. Elaka laMalakia olo olikukutu nola hongala, la fa oluvinga lomhanda. Okwe va shilipaleka, kutya Omwene ote ke uya, ndele olyelye ta dula okulididimikila euyo laye?

Omutumwa ote mu hokolola, oye e li ngaashi omundilo womeleva lomuhambwidi. Apa opa monika omhito yekufe po lomatimba oo oshinima shinene. Kalunga okwa hala a lungwinife po omatimba a pye po.

Nakuuya okwa fa ofewa yomukoshi. Omundilo nomeva mumwe nofewa oyo tai ulikwa oyo oiyeleki, oikoshi. Osho sha pita momundilo osha kola noshi na ondilo. Osho ihashi hengumukile momeva, osha kola notashi yelekwa kuo.

Omundilo otaw yoolola oitenda kumwe nedu notau tula oitenda momaludi ayo. Osho yo omeva nofewa otai tukula oikutu kumwe nekako. Apa opa xungane kwa Kristus oo e na okuuya a kufe po omatimba oonyuni.

Opa popiwa eyoololo ile epangulo. Manga efiku olo inali fika okwa pumbiwa elongekido. Fye o-

twa longekidilwa nale efiku lepangulo, nefiku 9 laJuli 1870, olo ombangi koshipala shaKalunga.

Ovatumwa ove shi yelifile nawa eshi va tile: "Aawe, otse aatumwa yelaka lyombili." Nafye otwa ya mongudu yovatumwa. Katu na omalipopilo nande asha. Otwa tumwa nounyuni.

Oku na oiwana oyo Kalunga te i lombwele ta ti: Taleni, onye Ovakhwaghala, ame ohandi tumu ovatumwa vange kunye: Taleni, onye Ovahimba, Ovandongona, ohandi tumu omutumwa wa nge kunye.

Taleni, onye Ovasenegal, ohandi tumu omutumwa wange kunye. Ofye otwa tumwa nounyuni aushe, otu na oshinakuwanifwa shokulundulula oonyuni. Taleni nghe oonyuni u na omhumbwe yovatumwa.

Fulanisha oku na eepeleshenda 10% dovanhu va pumbwa evaangeli domeepeleshenda 21% dovakwashiwana ovo ve li ovakristelela. Engilanda 2,3% da pumbwa evaangeli, Afrika alishe 40%, Angola 22%, Botswana 60%, Central African Republic 27% Mozambikwe, 66%, Senegal 93%, da teelega evaangeli.

Vakwetu, ofye omutumwa oo ta popiwa a ka udife evaangeli. ELOC ove omutumwa oo e na okukokolela Omwene ondjila, osheshi ote uya divadiva. Ealuko lOmwene mbela otali hange tuu twa longa oshinenga shetu?

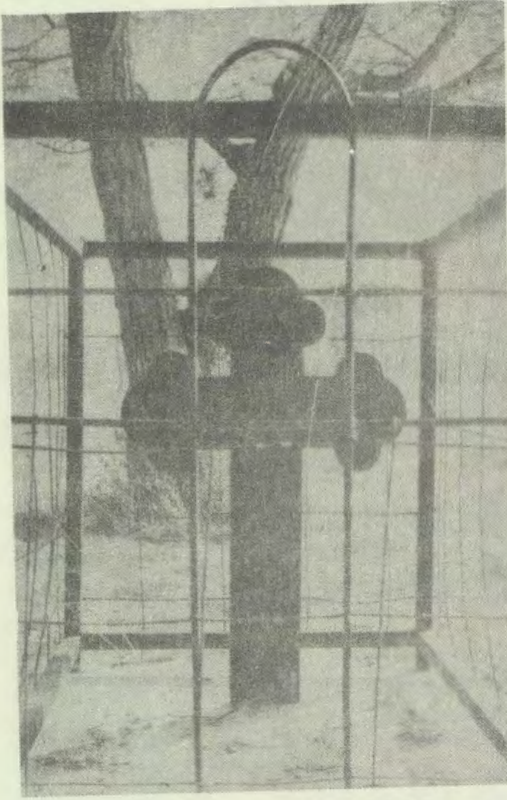
Moshilongo sheyu otu na eepeleshenda 6% da pumbwa evaangeli. Tu tongololeni mOngeleki yetu, otu na epuniko linene. Omaangalo otae li tungile cengeleka noinyanga yoshinanena. Oyoondaxa oiyadi ndoo novafita otava ningi omalongelokalunga. Ovaudifi vetu otava ende mOngeleki aisho tava udifa, ndele onghe tuu onghalo yomefimbo laMalakia otai monika.

Eehombo ofadi teka, cameno louyuki waKalunga, ou li oshipulifo, omapyo etu etumo meni nokombada otaa teka po. Kalunga okwa hala tu kale ovatumwa vaye. Otwa tumwa nounyuni aushe tu longekide caluko laKristus.

Tu yambukeni moshinima eshi.

### Tala kep. tali landula

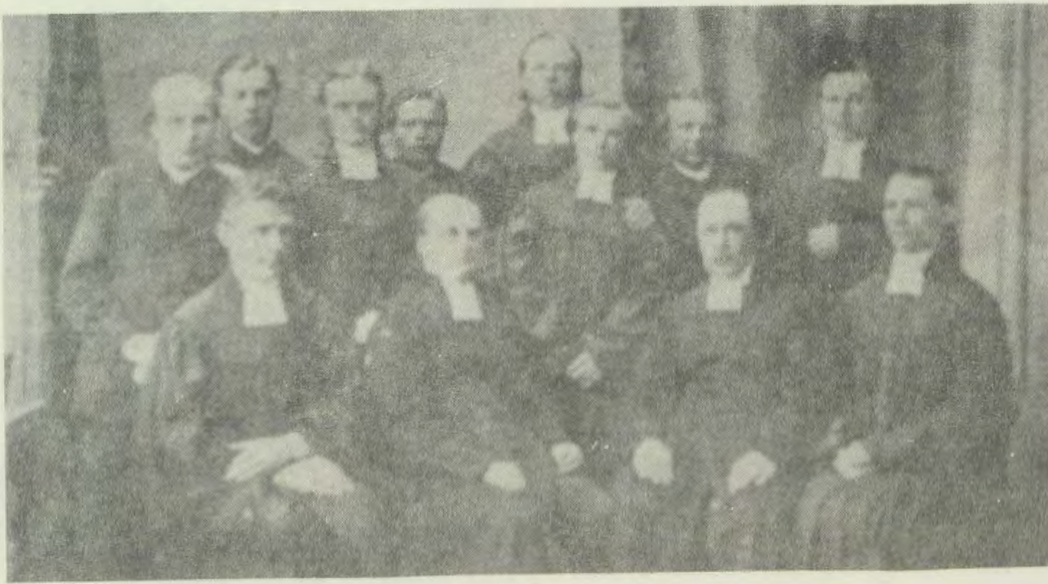




**Ombila ndjika oyo efumviko lyotangotango lyopakriste lya ningwa mOwambo. Oyokamwana kaNakambalekanene, hoka ka si manga ke na oomvula hamano adhike.**

#### Dha za kep. 5

Heita omutumwa gwo tangotango gwOngeleki ndjika kuSenegal. Kuye Senegal kashi shi okuningila mo nenge eihwameko lyowala lyomombepo, ihe muye otamu monika wo ekanyatelo lyuukumwe mboka wa li wa tamekwa pailonga nopankalathano naantu yaa hoka.



**Mefano ndika ongundu yaatumwa Aasoomi mboka ya thikile eti 9.7.1870 noya taambwa komukwaniilwa Shikongo. Mpaka otatu tumbula ashike omadhina, ihe itatu ulike kutya ogunipo, oshoka twa nyengwa okukoneka iipala yawo. Karl-Emmanuel Jurvelin; Botolf-Benhard Björklund; Pietari Kurvinen; Martin Rauthanen konima pokatilela; Karl Leonard Tolonen; Karl August Weikkolin; Juho Nissinen; Anti Piirainen na J. Heinonen.**

Ehiyo lyaHeita ELOC a ye metumo olye endululwa mepopitho lyomumbisofi K. Dumeni moshituthi shoka sho a pula ngele okwa kala tuu ongela yokonima (olivesa) mokulonga kwooitaa oshilonga shetumo?

Omusita Titus Ngula, okwa li omupopi omunene moshitithi shoka. Ye okwa hiya aapulakeni ngeyi:

“Omwa ninga nawa sho mwe ya. Oompadhi dhetu nadhi fale ehokololo lyekulilo kaanahambo, kAakwankala, kaashunimonima nokaapagani. Oompadhi dhetu otadhi opala ngele tatu gongelele oshilongatumo meni lyOngeleki nopondje muAngola naSenegal. Ongeleki kayi na oshilongatumo kayi na omwenyo”, osho a ti.

Mepopitho lye omukalelipo gwEhanganotumo lyaSoomi, meme Ulla Nenonen naye okwa sikumudha aapulakeni ya hwame mombepo yoshilongatumo, musho Kalunga ha longitha aankundi ngaashi aatumwa yotango naShikongo shaKalulu.

“Ando natse wo tu dhimbulukweni katu shi yetu yene, oya Kristus, ando natse wo tu kale twaa shi iinima yilwe, oKristus awike, --1Kor.2:2-5, ando itapu kala uudhigu okuthikitha elaka lyehupitho apehe moshilongo shika, sigo muAngola naSenegal.” osho Nenonen a kumagidha.

Oshituthi osha li naanaa osinima shomegumbo mu ELOC, nosh oshituthi shokomumvo ngaashi shito. Musho inamu hiyilwa nando aayenda yopondje kakele komusita gwa-Anglikan, pOndangwa, Silas Nepaya ngoka a holoka mo nokwa gandja ekundo peha lyOngeleki yawo.

Oshituthi osha kala mewiliko lyomutaleli Hans D. Namuhuya ngoka wo a li omweeti gwondjokonona yaShikongo nomulongi Sakeus Kaulu.

Aapopi yalwe moshituthi shoka oya li; Omusita N. Sirongo peha lyoshitayingeleki shaKavango nomusita omukuluntu Vilho Kaulinge.

Tatekulu Kaulinge okwa hokololela aapulakeni oonkondo dheitaalo ihadhi kwatwa moshipala nando okusha.

Konima yootundi ndatu dhoshituthi oyendji oya kala taa tala ombaluwali kootundi dhawo kiikesho noketango. Ashike kaya li ye na ompito yilwe, oshoka oya lombwelwa komusamane Namuhuya, konima yoshituthi te ke ya ulukila emanya ekulu lyomuuwa waShikongo hali ende. Kape na ngoka a li a hala okushuna kaandjawa inaa mona emanya tali ende.

Namuhuya mwene kee na shili eitaalo memanya hali ende, ihe okwe shi popi ngaashi yamwe haye li hokolola.

**OMUKWETU** ota gandja olupandu lwowina kaatungi yelandulathano lyoshituthi shoka. Konyala ye li tu ningile nawa lya yeleka oonkondo nethimbo laantu okukalela oshituthi. Onawa sho taa ka holelwa koyendji mu ELOC.

#### **Omushigakano pOkangili ogwa thikama natango.**

Konyala muule wetata lyokilometa okuza pompampa yaShikongo mpoka pwa ningilwa oshituthi u ukwa kuuzilo, oto adha ehala mpoka pwa tungilwe tangotango ongulu kaahongi yotango.

Nomoshikako shedhaadhigo lyemanya okuza nomakulukuma oto adha natango omawendo gopahistoli.

Momawendo ngoka otamu lala omuna gwaNakambale, ngiika osheeli H.W.B. Rautanen a sile 4.5.1880 manga e na ashike omimvo hamano. Osho wo tamu lala omupangi gwotango ngoka a sile metumo Efolo Liisa Roiha.

Pomakulukuma otapu thikama oshiti oshinene shOmushigakano, endhindhiliko lyesindano lyaKristus mOwambo. Omushigakano ngoka ogwa kala ngashingeyi oomvula 15. Oyendji oye gu thikamene siku lyoshituthi nokuninga omathaneko gi ili nogi ili omolwago nokombinga yehala ndyoka alihe omolwehistoli natango lyokomeho.

Konima yoshituthi sho sha pu, poshitaafula shoka sha yakulithwa ongowalitali, opwa thigwa iimaliwa R1083,80 oongombe 6 oolata dhiilya 13, omatanga nayilwe.

Shoka osha li etokolo lyoshituthi lyopailonga kutya evaangeli ndyoka lya taambwa kuShikongo moshigwana, otwa hala wo oku li fala kuyalwe nayo wo ya mone omwenyo.

#### **Tala ke pandja tali landula**

#### **ESO**

Ndayelekwa - Nangula yaAmon Nghifikwa okwa xulifa oweenda waye 30.4.1985 moshipangelo mEenhana moyehame wefimbo lixupi.

Ndayelekwa owomeongalo Omundaungilo, mOukwanyama. Okwa dalwa 6.2.1962 momukunda Omupanda mOukwanyama.

Ohatu pandula unene kovamwameme amushamusha ava niwe tu yakula moshivilo eshi.

**Ponhele yovaneumbo letu Kristofina Nghihamba.**

Elelo lyoshilongo shaNdonga olya li lya ningi oshindji okupalutha mboka yi ile koshituthi, sho kehe elenga enene olya gandja ongombe. Ehala alihe mpoka oshituthi sha gongalele opwa yagaywa omwiidhi niuhwa ayihe kelelo lyOndonga.

Omusamane Seppo Kalliokoski pamwe naakwathi ye, oya li ya ningitha ehala li opalele onkalo yelongelokalunga naapopi yoshituthi ya kale yu uvitikwe komuntu kehe.

## “Omeya omalulu, ohaga dhimi omulilo”

Oshipopiwa tashi landula oshomusita T. Ngula, ngoka a tulwa melandulathano lyoshituthi; ‘Omupopi gwoshituthi’. Oye wo omupehatonatele gwoshitayingeleki shOndonga

“Ne omwa ningi nawa sho mweya”, osho omukwaniilwa Shikongo shaKalulu a lombwele aatumwa Aasoomi meti 9-7-1870 sho ya thiki moshilongo she.

Omukulugwonale okwa tile: Omeya gomuthima omululu oga dhima egumbo tali pi. Omulumentu omukwanekamba, omuntu gwolumoho a li a tondwa kezimo lye, okwa tidhwa moshilongo nokwa ka holama kOmbandja.

Naahwiya eso lya li popepi naye. Esiku limwe okwa li mongundu yaadhipagwa. Manga ompito ye yokudhipagwa ya thiki, omukwaniilwa okwa ti opuwo, mboka naa hupe, ko nda vulwa okutala ombinzi.

Oye “Amushila gwa tsima ta zi kOkashana, Amupembe gwa tsima ta zi kOnandoya. Ta zi miihenguti yAashimba Omutsa gwomakay’omatoye, Gaa hilwa kOmukwankala: Oshilongo oti ke shi lala”, osho i itanga.

Oye ngoka ta lala mpoka. Ota ka yumuka pamwe nAandonga ye, pamwe naatumwa nopamwe nepipi ndika note ke li pa uusama, oshoka inali itaala evaangeli. Nando ina shashwa okwa longithwa kuKalunga. Pulakena omatumbulo taga zi mokana komupaganilela:

Ne omwa ningi nawa sho mwe ya, ashihe tamu shi tu lombwele otwa hala oku shi ninga”. Onda tile, omeya omalulu oga dhima egumbo tali pi.

Shikongo okwa li ngomuthima omululu mezimo nomoshilongo shOndonga, ihe oye tuu ngoka Kalunga e mu longitha ongokudhima omulilo guupagani mOwambo.

Oye tuu a zimine aatumwa romwenyo aguhe ya kale moshilongo she. Onda leshe petameko elaka lyomuprofeti Jesaja mehunganeko ta popi oompadhi dhomukundaneki gwombili 52:7

Okwa li a tseya oompadhi dhilwe ngaashi ombimbili tayi shi holola,

— hadhi endelee uuwunayi  
— hadhi endelee etiko lyombinzi  
— hadhi endelee chanagulo

Omukwaniilwa Salomo ota ti: Omumwandje oompadhi dhoye dhi keelela momapola ngoka guuwunayi Omayel.4.27.

— Oompadhi dhakuku Abraham kondundu yaMoria, - okwa zi ko ta hokolola omauvaneko gaKalunga.

— Kondundu yaSinai okwa zi ompango yaKalunga.

— Kondundu yeyelitho okwa zi ehokololo tali hokolola etegameno lyeadhimo lyaKalunga.

— Kondundu yaGolgota okwa zi eigidho; “Sha longwa sha pwa”. Omey’omalulu oga dhima egumbo tali pi.

Kristus okwa li ngomeya omalulu mokati koshigwana she, ihe Kalunga okwe mu ningi omudhimi guulunde nogetondathano. Omukwiita omunethele okwe shi hokolola nawa, “Beno shili nguka okwa li omuna gwaKalunga”.

— Kondundu yoomono Omukulili ota thikama omupangeli: “Ongame nda pewa epangelo alihe nomegulu nokombanda yevi. Indeni ka ningeni aantu ayehe aalongwa yandje, ya longeni, ya shasheni medhina lyaKalunga He nolyOmwana nolyOmbepo Ondjapuki.”

— Koondundu dhaSoomi kwa kuluka oompadhi dhaagundjuka yuuka kuAfrika. ye ya mOmoonda, ya yi kOtjimbingwe. Oya ii aayenda yokOwambo.

— Koondundu dhaTjimbingwe taa kuluka ya londo koondundu dhaTsumeb, ya kondo okashana: Oya thikama meelo lyuuwa waShikongo.

Oshike she ya eta? Oya li ye na elaka lyaKalunga. Oya li taa hokolola enyanyu, ombili, ekulilo. Oye ya okudhima omulilo guupagani noguukolokoshi.

Ne aakwashituthi omwa ningi nawa sho mwe ya: Oompadhi dhetu otadhi ka kala dhoopala

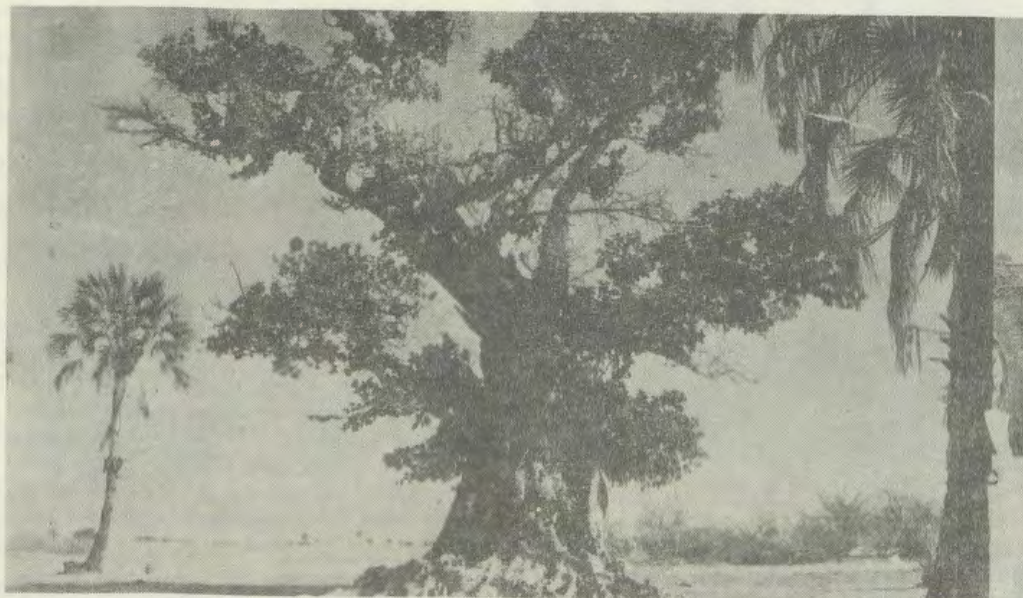


Eso lyomupangi efelo Liisa Greta, olya li li inyengitha aatumwa moshilonga shawo. Otashi dhimbuluwa moohapu ndhoka dha tulwa memanya kombila ye: “Olye ta vulu okuwa ko oondjila dhaKalunga?”

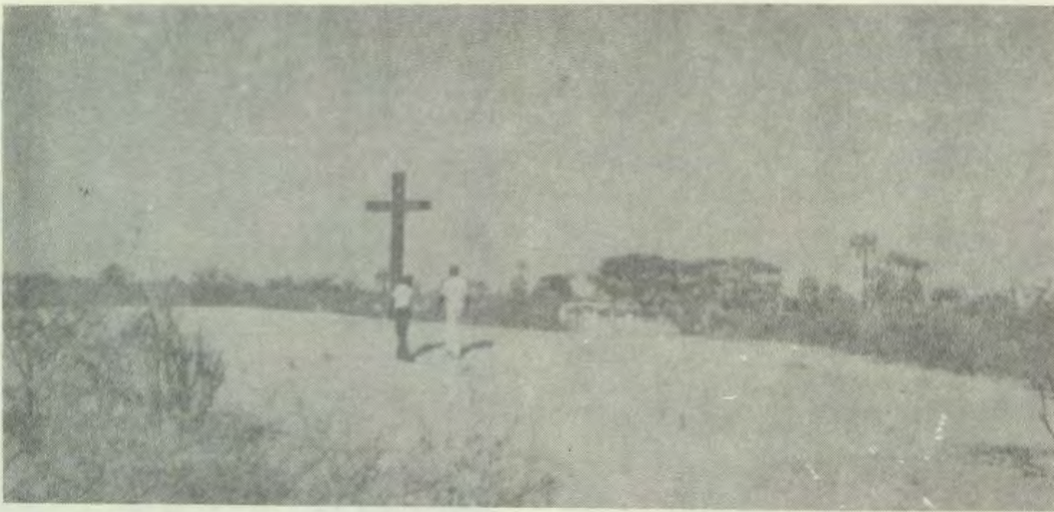
ngele tatu hokololele Aakwankala, aanahambo, aapagani, aashunimonima kutya ehupitho oli li muJesus Kristus.

— Oompadhi dhetu ota dhi kala dhoopala uuna tatu gongelele oshilonga shetumo meni lyongeleki nopondje muAngola muSenegal.

Ongeleki itayi longo oshilongatumo, kayi na omwenyo. Omwenyo gwomukriste kehe ongele ta longo etumo nomaliko ge nohole ye nehale lye nonolutu lwe:



Omukwiyu moka ehistolali tali ti kutya omo mwa li mwa thikile omatamba gaatumwa pOkangili, sho ye ya lwotango kOwambo omumvo 1870.



Ethano ndika otali ulike nkene ehala lyOmandongo tali monika. Omushigakano ogwongoka gu li mepandja lyotango nokokule kashona omawendo moka mwa lala aatumwa yaali nomalenga gamwe omanene gomOndonga, ngaashi; ooNamupala gwaAmoomo noohaAmakali glindongo.

### Ongalo

*Mongaloyetumo kOmandongo omwa zile wo oolata mbali dhomakunde, omatanga gaali, okashungu 1, omakaka gane, omuhi 1 noonguwo. Mehiyo lyoshituthi omwa li mwi indilwa ooitaali ye etelele iinima mbyoka.*

### ESO

Omuyevangeliste Petrus Eelu, Elim mUukwambi, okwa mana oondjenda dhe 26.5.1985 mepipi lyomimvo 79.

Omusamane Eelu okwa kala mosikola yaamati 1949-1950 nomosikola yUuyevangeliste 1962-1964. Okwa yakula unene momikunda ndhika; Ekamba, Oshuulo, Okauwa kaMasheshe nlipandayamiti. Ekundo lyehcheleko Kol.3:23-24

## EKUNDO LYEHANGANOTUMO LYASOOMI (ETS)

Peha lya ETS, onda hala oku mu kunda, one amuhe mboka mwa gongala moshituthi shika oshinene mOndonga. Nda hala oku mu kunda noku mu dhimbulutha: **ONE AAKULILWA**, one oyaKristus.

ETS otali nyanyukwa nena pamwe nane notali hambelele Kalunga omolwongeleki ndjika, omolwegongalo lyaKristus huka muNamibia. Otali hambelele omolwiilongankondo yaKalunga moshigwana shika nomevi ndika.

Omadhiladhilo getu oga falwa kokule nena, kokule petameko, konima yomimvo 115 okutala nkene Kalunga ketu iha nyengwa ku sha. Oshoka pethimbo ndyoka nokuli omukwaniilwa omupagani, Shikongo shaKalulu okwa li melongitho lya Kalunga oye sho kwa zimine aatumwa ya kale moshilongo she.

Ezimino lye olya li li na oshilonga oshinene

oshoka olya lundulula oshindji mevi ndika. Otu na oshindji okuhambelela.

Osoondaha ndjika onti-5 ya landula Uukwatatu. Aakwalutheri oyendji mboka ihaa dhana nena esiku lyetumo, oyo oya lesa otekisti mEpistoli 1Kor.2:2-5 nomOsoondaha ndjika omu na oshipalanyolo **OSHIKONGA SHOMULONGWA**, nomolwashoka otayi tu opalele wo mesiku ndika lyetumo.

Kalunga okwa uva egalikano lyaatumwa yotango. Ombuto ya kunwa muunkundi ihe omolwoonkondo dhaKalunga oya mene. Kalunga okwa longitha aantu, ihe oye mwene okwa kokitha, nomolwashoka ongeleki ndjoka omidhi dha ya muule moohapu dhaKalunga noitayi tenguka nuupu.

Nando otwa dhimbulukwa nena aantu, nokuli twa tumbula omadhina gawo, otatu tseye, Kalunga okwa menitha ombuto, okwa kokitha egongalo lye, nando moku shi ninga okwa longitha aantu, nomolwashoka Kalunga awike na pewe esimano.

Natango Kalunga a hala elaka lyehupitho li thike apehe. Tse otatu dhimbuluthwa nena, One **AAKULILWA**, kamu shi we yeni yene, one oyaKristus.

Ando egalikano lyetu nena li kale wo eindilo: Omuwa tu kwatha, **TU KALE TWAA SHI IINIMA YILWE, oJESUS KRISTUS AWIKE, OONGUKA OMWAALELWA KOMUSHIGAKANO**. Ando tu dhimbulukwe aluhe, **OTSE AAKULILWA**, otse oyaKristus, katu shi we yetu yene.

Ando shika tu shi dhimbulukwe, ando itapu ka kala uudhigu mokuthikitha elaka lyehupitho apehe moshilongo shika, nomuAngola nomeSenegal.

**U. Nenonen**  
**Amushangakwatakanithi**  
**gwEhanganotumo**  
**lyaSoomi**

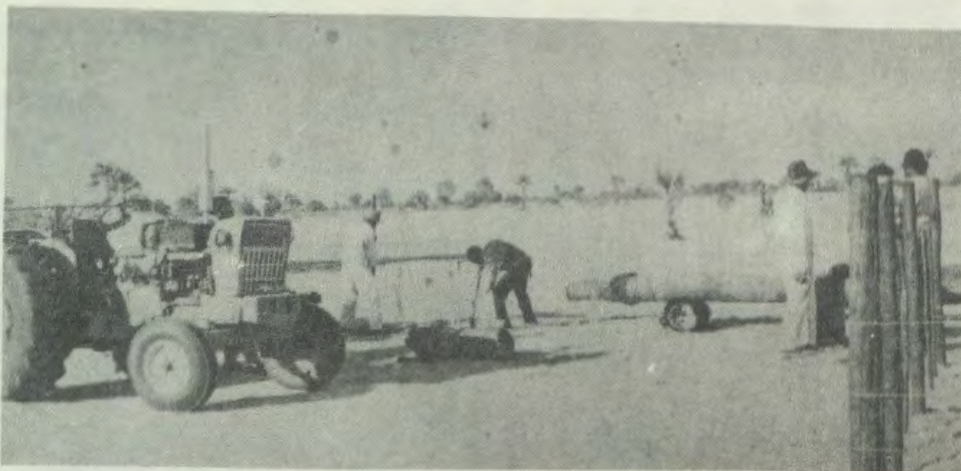
## SHIKONGO

Dha za kep. 9

Momumvo 1871 meti 19 lyaMai, kOmandongo okwa thiki aatumwa aape. Moshigongi shoka sha li sha hiywa kaatumwa, omwa dhanwa ohango yotango onkwakriste mOwambo, oshoka Juho Heinonen naJohanna Eskelinen, oya hokanathana Aali yohango ndjoka ooShikongo shaKalulu nomalenga ge. Esiku ndyoka Shikongo omo a pa Rautanen epitikilo a ye kOngandjera.

Shikongo okwa li a lombwele aahongi mboka taa yi kiilongo yilwe yaAwambo, ta ti: "Ngele tamu tidhwa ko, galukileni kungame." Eti 7.11.1874 Shikongo okwa nama ihe oondjenda dhe. Okwa ningilwa ihe ompampa.

Atulwa moshipa shongombe, ina fumvikwa, niiti yegumbo oye mu kundukidhithwa. Oshilongo osha lalwa ihe kuKambonde kaNankwaya, ondjokonona yaShikongo noya hulu mpoka.



Esiku lya tetekelele oshituthi, omusamane S, Kalliokoski pamwe nomusamane A. Shando naalongipamwe nayo mOnandjokwe, oya li yi ipyakidhile konyala esiku alihe okulongekidha ehala mpoka tapu ningilwa elongelokalunga. Omilunga dha gwa odha kokololwa koombinga noombinga dhi longithwe.



# ONDJOKONONA YASHIKONGO SHAKALULU

KuHans D. Namuhuja

Ondjokonona yomukwaniilwa Shikongo Shakalulu, oya li ya hokololwa komusamane H. D. Namuhuja moshituthi shokOmandongo nuumvo, esiku ndyoka kompampa yomukwaniilwa Shikongo kwa dhikwa wo emanya. Otayi holokele mpaka ayihe ngaashi ya li ya pulakenwa.

*Osimu yolumoho yaKalulu  
Omumbindja gwolumoho gwaNambahu  
Amushila gwa tsima ta zi kOkashana  
Amupembe gwa tsima ta zi kOnandoya  
Ta zi miihenguti yaAshimba  
Amutsa makaya omatoye lela  
Gaa hilwa kuMukwankala  
Koopalele moshilongo  
Omokuti he koopala mo.*

Omukwaniilwa Shikongo shaKalulu okwa valwa pomimvo 1814. Okwa li omutekulu gwaNangolo dhaAmutenya naShipanga shaMukwiita. Yina okwa li Nashikote shaAmutenya ngu a landula Nangolo dhaAmutenya mombunda.

Yinakulu, yina yayina okwa li omukwaniilwa omukulukadhi nambahu yaMutundu, omumwayina gwaNembungu lyaMutundu. Nambahu oye a vala Nangolo dhaAmutenya, Nashikoto shaAmutenya, Nangombe dhaAmutenya, Namupala gwaAmutenya, Shipanga shaMukwiita, Kwedhi kwaMukwiita naNuutundu waMukwiita.

Shikongo shaKalulu okwa valwa omumohontu. Pamithigululwakalo shOshindonga, omukwaniilwa ngele oku na olumoho, ita vulu okulala oshilongo. Okwa li ihe e na omumwayina Nakanyala kaKalulu. Manga Nangolo e na omwenyo, oya tula ukuni kumwe yo nomumwayina Shipanga shaMukwiita.

Oya tidha mo Shikongo, nokwa yi kOmbandja. KOmbandja okwa kala ko onkwatwa. Esiku limwe manga e li kOmbandja, oonkwatwa odha li dhi na okudhipagwa, OoShikongo ihe mboka. Oya li ya tulwa momukweyo, taa dhipagwa.

Manga tuu ku na omuntu gumwe nenge yangapi Shikongo a adhike, ye omukwaniilwa gwaMbandja ota ti: "Opuwo, nda vulwa okutala ombinzi." Shikongo a hupu. Sho a hupu ngeyi kedhipago, okwa galukile kOndonga. MOndonga ina tsa mo nenyonti, oshoka ooyinakulu oya li ye mu endja mo, ya hala wo oku mu dhipaga.

Shikongo okwa kutha omalenga ge oohaAmoomo gwaKatondoka, he yaNamupala gwaAmoomo, naanyekadhi ye, ngaashi Kanime, omunyekadhi a li po gwomukuusinda omufupi. Okwa kutha wo Namene yaKandaangu, a lukilwa Namene yaKadhikwa, aantu yaPale mboka taa vala omukwaniilwa Immanuel Elifas.

Shikongo a yi kUushimba. Oshiningwanima shino osha ningwa momumvo 1875 pehulilo. Oyana yaShikongo shaKalulu yamwe oyo; Kapuka, Iifo, a lukilwa Iifo yaNankwaya, Nandoya, Iikukutu, Nakanyala nUushona waShikongo. Uushona oye a gandjelwe kuShikongo kuHahn yinakulu yaShongola, e mu putudhe.

Nangolo dhaAmutenya sho a si, meti 30.7.1875, Shikongo okwa li e na uthemba

okulala oshilongo, ihe pokati kawo nayinakulu opwe ya ekondjo ndyoka lya fala Shikongo kUushimba. Shikongo sho a yi kUushimba, okwa thigi aantu ye piishalakati, ye mwene okwa yi sigo okoondundu dhaMatako.

Hwiyyaka okwa popi naJonker Afrikaner, Omukwena, e mu kwathe mokulala oshilongo. Omuna gwaJonker okwe ya shili e ti idhopo miinima yOndonga. Olugodhi ndoka olwa tseyika sigo onena, netumbulo 'ongolo yaJonker'.

Ekumbu ndyoka olya ningwa muKotoba 1875 nolya faalele oohambo 18 noyana aamati yaali yaNangolo, ngiika ooShapopi shaNangolo mbaka ya ka tunga po Ombaye. Aanyekadhi yaShipanga shaMukwiita yatatu nayo oya yiwa nayo.

Momumvo 1858, omukwaniilwa Shipanga shaMukwiita okwa mana oondjenda, nena Shikongo shaKalulu okwa lala ihe oshilongo nolumoho lwe. Shikongo okwa li ha dhenge nawa Oshihero, nokOshinama okwa li e shi ko shokulya nasho, oshoka mUushimba okwa ninga mo omvula.

Shikongo okwa li a kongo ekwatathano nAayeuropa, unene sho a li a hala i imonene iinima yopashingolo. Okwa li a zimine aahalithi ya tule mOndonga momumvo 1861. Momumvo 1864, okwa zimine wo aakongo ngaashi Frederick Green nooyakwawo ya pindike mOndonga.

Muuyuni waShikongo, Omutiligane gwtotango a valelwa mOndonga, mOwambo, oshoka momumvo 1865 meti 4 lyaNovomba, efolo lyaGreen, okwa mono omukadhona Maria. Omukulukadhi gwaGreen okwa lumbu muuwa waShikongo, manga omulume a ya kuKunene.

MuJuli 1866 Shikongo okwa tumu elaka komuhongi Omundowishi Hahn, kutya okwa hala aahongi. Momumvo tuu ngoka, Hahn okwi ile kOndonga. Hahn okwa nyolele ihe Ehanganotumo lyaSoomi opa li ye li longe oshilongatumo mOwambo.

Shikongo manga ta pangele okwa li ha dhipagitha ayehe mboka taa vulu oku mu kutha oshilongo, kakele kaKambonde kaNankwaya. Omukwaniilwa Shikongo oha dhimbulukiwa nawa mondjokonona yaAandonga.

Manga Nangolo ta lele Ondonga, Aangandjera oya li ye na omithima muuzilo wOndonga. Nangolo okwa li ha tila Aangandjera, oshoka oye na iikuti yuuzigo. Shikongo sho a lala oshilongo, ye e na iifufuta, okwa tumu elenga lye Amoomo kOngandjera nokwa dhipagitha omukwaniilwa gwaNgandjera miineya. Aangandjera noya tembuka ko ihe kuuzilo wOndonga.

Mboka ya li ya kwatwa kOngandjera, ongaashi ooFeni yaNdengu yaShikongo. Omalenga gaNgandjera ga sila moshidhengo shoka

oohitula yaShaanika.

Ompampa ohayi ningilwa ashike aakwaniilwa mboka ya fukala pamukalo gwOshindonga ngaashi ya ningilwa; Namupala gwaNangombe mOntananga, Nangolo dhaAmutenya, mOndonga, Nembungu lyaMutundu, plinenge, Shikongo shaKalulu pOmandongo.

Omukwaniilwa Shikongo nando ina shashwa, okwa longithwa kuKalunga. mOmumvo 1869 muMai, okwa tumu kOtjimbingwe aatumwa ye ya ka konge aahongi. Okwa li a hala okutseya omadhina gaatumwa, nuuna taa ya. Okwa tuminwa ashike ondjembo noshilage, kutya ina vulwa okutegelela.

Olweendo olwa tameke ihe eti 27 lyaMai 1870 okuza kOtjimbingwe. Meti 9 lyaJuli 1870, amatemba gahamano oga thikama mOmaruru gu uka kOmwambo. Etemba etihamano olyaGreen ngoka e ende pamwe naahongi.

Takele koonani 80 ndhoka dha li dha hila amatemba moosipana 4 sigo 18, omwa li wo oontsetwi. Mondjila aatumwa mbaka oya

Tala kep. 8



pingathana nAandonga taa ka tala osheela niwengendje kOtavi.

Meti 8 lyaJuli, oya thiki komalyowalyowa gaNdonga. Ongulohi yesiku eti 9 lyaJui 1870, osheendo shaatumwa osha thiki mOmandongo popepi nuuwa waShikongo shaKalulu nokuhika omankutha: 'Kalunga oye egameno'.

Ongula yOsoondaha omukwaniilwa okwa kundu aatumwa e ta ti: "One omwa ningi nawa sho mwe ya, ashije tamu shi tu lombwele, otwa hala oku shi ninga." Moshinyanga shamutyakemo, muuwa, okwe ya taamba ihe nawa.

## Omaongalo muEtiopia ga zimininwa ga tsikile niilonga yago

Opwa kundanwa moshifonkundana shOngeleki onkwaevangeli paLuther muSweden (Kyrkans), kutya omagongalo gatatu muEtiopia ga zimininwa kepangelo ga tsikile iilonga yago.

Omagongalo ngoka oga li gomomagongalo 350 moshilongo shoka tashi hepa kiita nokondjala ga patwa sigo onena.

Shoka osha tseyithwa kuAmushanga gwoshilonga shehanganotumo lyaSweden, omusamane Rune Backlund, muuzilo waAfrika.

Omupresidende omupe gwOngeleki onkwaevangeli paLuther, Mekane Yesu muEtiopia, Francis Estafanos, eegululo lyomagongalo gomuBodju, Nendjo naMandi okwa ti kutya ndyoka etameko ashike lyomakwawo ogendji taga ka egululwa natango.

Monkundana opwa tiwa kutya epangelo olya ziminine wo ngashingeyi Ongeleki yi tameke okupalutha aasindjala moshilongo shoka. Aantu 15,000 okwa tiwa ohaa hawalekwa nale nokuli iikulya kOngeleki, lwaali mesiku, manga omagumbo 23,000 haga hawalekwa lumwe momwedhi.

Aantu oomiliyona 8 muEtiopia otaku tiwa kaye na sha shokulya, noya pumbwa ando iilya ootona oomiliyone 1,5. Oshilongo ashike oshi na aantu konyala omiliyona 42.

## Etalelopo lyomusita Nepela mOmuniyakwe

*Oomposi dhomutakushi inadhi monika meti 19.5.1985 maandja Tatekulu omusita Vaino Nepela, mOkankolo. Okwa meneka ongulangula u uka muuzilo wegongalo lye kosinagoga Omuniyakwe. Ehala li li ookilometa konyala 9-10 lwaampoka.*

Pethimbo lyotundi 9.30 aakulupe, aagundjuka naanona oya li taa monika konima yihwa nomiti omile taa mbombolokele pehala lyomagongalelo.

Uutalala? "Aawe, omambo gomusita otwe ga hula nale, uutalala kau na mbudhi," osho omuselekadhi gwanakusa Nabot Manase Shiyoma kuku Julia Nambuli a yamukula."

Omusita Shiyoma oye a totele po egongalo ndyoka lyaKankolo.

Meuvitho lyomusita Nepela ndyoka lya li patekisti yesiku ndyoka, okwa holola ongunga yetu tse Aawambo, unene Aandongga. Okwa ti Aasoomi oye tu pe evangeli, tse uunake wo tatu li gandja?

Ehala Omuniyakwe, olimwe lyomomahala ngoka ga hepekwa nayi kiita. Omudhumo kehe gwoshihauto ohagu pulakenwa shili nawa opo gu yoololwe ngele ogwehauto lyiita nenge olyowala.

"Otu na uumbanda, oshoka otatu ("gamenwa") shimpa tuu ye tu adha po mpaka", osho omusamane gumwe 'a holola omauvito gawo. Okwa tsikile ko natango a ti kutya natu galikanepeni ongeleki yaKristus yaa sindwe kuuyuni.

Mehala ndika omu na ongundulwiimbo yedhina "Natse oyOmuwa," Aagundjuka yomunangonzi, oyo ya li taa towaleke elongelokalunga.

Aakulupe oya li ya yakulwa mUulalelo Uuyapuki, nongalo yetumo oyu umbwa melongelokalunga ndyoka.

*A.J.J. Nakanyala.*

## EPULO

### NANDI PUKULULWE KOMAPULO ANGE

1. Hano ongeleki ya ELOC oya tulilwa po SWAPO, ile oyovanhu aveshe ovaxupifwa vaKalunga?

### EYAMUKULO

Omolwashike omuleshi omusimanekwa????  
*Amushanga gwOmukwetu*

### EPULO

2. Onda lesa OMUKWETU 30 Juni 1985 nokwa tiwa ovanhu ova dengwa tava shuna komaumbo. Hano ova dengelwa meepate ile ovahangika va ongala nale?

3. Ovanhu ovo va li tava denge ovanhu ngaashi winya oo a li a dengwa omuhongi Nel (wokOmbaye) ina pula kutya ovanhu otava dengelwa shike?

J.F. Nafenda  
Oshakati

## Otatu popi shono sha monika nomeho:

**Shoka tashi landula mpaka omushangwahokololo gwokomisi yuuyuuki nedhiminathanopo yomOngeleki yaKatoolika kaRooma.**

"Okomisi yuuyuuki noyedhiminathanopo yOngeleki yaKatoolika kaRooma oya thiminikwa mpaka okuholola puuyeleele shoka shoshili, omolwegoyokitho lyehokololo ndyoka lya gandjwa kiifo yimwe yomoshilongo hayi wilikwa kepangelo kombinga yesiku lyelalo lyepangelo lyuukumwe lyopashigwana.

"Ehokololo lyetu olya kankamekelwa kuuyeleele woontaliho, komahokololo goonakweehamekwa nokomakonakono gaamboka ye shi ningi mOkatutura.

"Oshinima osha zi ashike sho ongundu, Namibia Independent Party paziminino lya Magestrata gwomoshilongo, ya ningi oshigongi pOkapale komaudhano kaKatutura, opo yi holole omadhiladhilo gayo gokwaahala edhiko lyepangelo lyopakathimbo (ndyoka lya tulwa po kepangelo lya SA.)

Konyala 2000 nenge 3000 oya li moshigongi shoka. Oshigongi osha li muukumwe washo auhe shopambili nsha ningwa esiku alihe.

"Pethimbo lyetango tali yi mo, aantu ya shune komagumbo, etanga lyaapolisi li li miikutu yuupolosi oye ya lya londa mecaspela. Ehokololo olya ti oyi uvundu maantu noye ya tiliitha uule wesiku alihe.

"Aantu oya li ya dhengwa noondhimbo hoshipolosi noboma yolwithi oya li wo ya longithwa. Oya dhenge aantu mboka kaaye na nando eigameno lyasha pwa na ondjoolola.

"Nokuli naamboka ye ehamekwa nale ya lala, inaa hupa ko nando. Maayehamekwa 67, aantu 31 oya kala taa pangwa moshipangelo, oyendji yomuyo aakiintu. Yaali yomoonakupangwa oya li ye ehamekwa noonkondo.

"Oshinima osha ningwa muJuli 17, 1985, esiku iipopwiwa ayihe yooministeli ya li tayi igidha pu lalakanenwe ombili nuuyuuki. Ishewe oshu ulike nkene aapolosi inaa nwethwa mo unene koohapu dhooministeli.

"Otashi vulika osho taa ka thiminika kehe gumwe ngoka inaa gama kombinga yawo nomonakuyiwa ngaashi ye shi ningi mpoka."

## Eeministeli mepangelo lipe noikandjo yado

David Bezuidenhout (50) woLabour Party, oye o-munashipundi woshongalele sheeministeli. Inaku popiwa manga oministeli yotete mepangelo eli. Oshikondo shaye oshoyeendifo.

Andrew Matjila (53) woDTA, oministeli yeputado.

Andreas Shipanga (54) woSWAPO-D, oministeli yoikwamina, youshitwe noyoutalelipo (Tourism)

Eben van Zijl (54) woNational Party-oministeli younamapya, yomeva neeshi.

Dirk Mudge (57) woRepublican Party-oministeli yoimaliwa noinima yopapangelo.

Fanuel Kozonguizi (53) woDTA-oministeli yoyuyuuki, yomayelifilo, yoikwapoosha neengodi.

Moses Katjiuongwa (43) woSWANU-oministeli youndjolewele, youlinawa noyovanailonga.

Johannes Diergaardt (58) woRehoboth Liberated Democratic Party, oministeli yoikwameni.

# 1/5 OSHO ASHIKE TASHI LIKOLWA KUNAMIBIA MEEMINA DAYE

Namibia oshilongo shi na oupuna muhapu tau di moikwamina. Okawe, Ourana oyo hai longifwa moilwifo yolute, ongopolo, omahooli omuku (Gas), Zinc noifulwa ikwao.

Mokati koupuna u fike apa, Ovalaule moshilongo eshi otava hupu noudjuu. Oimaliwa oha i peni oyo taj longwa meemina?

Okudja nale osho shi li fiyo onena, oimaliwa oyo oi na ondjila imwe aike. Omashina oilongifo nomahooli oyo oha i pulu konyala 1/3 shoidjemo aische, opo oilonga i twikile. Etata loimaliwa aische tali i koovene vomahangano oo taa longo eemina, noku SA ou ha pula oifendela komahangano (Otakisha) noshixupe tu tye konyala 1/5 osho nee tashi i meendjabi dovanashilonga veemina, ashike natango vahapu ovanailongo.

Eemina daNamibia odi li meenyala domahangano manene, oo e li ounyuni aushe. Omina yaRossinga mOshiwakopo, otai longwa komahangano mahapu, naRosinga olo linene li dule aeshe, ehango laBritania olo tali longo natango momadu; Australia, Canada, Amerika, S.Afrika, Zimbabwe nomoilongo ikwao.

Ehangano eli oli li yo mumwe nomahangano a Ndowishi launinginino naFulanisha.

Eemina dokawe otadi longwa unene komahangano a SA, ngaashi ehango la De Beers. Ehangano eli olo tali longo mOrange, nombinga imwe mongopolo yaTsumeb.

Omina yaTsumeb otai longwa yo komahangano a Amerika nokumakwao amwe. Hano oishoshela inene tai di meemina edi otai i meendjato domahangano oo.

Ekuta eli olo tali va tu omukumo va hepekele mo imaliwa ihapu mokufulifa eemina odo, neteelelo kutya otava ka alulilwa shi dulife osho va kanifila mo.

Ohaku tiwa yo SA ou te va futifa eetakisha, ohe shi ningi nondjele iwa opo e va twe omukumo va twikile nomwenyo muwa muNamibia.

Namibia ke na epangelo, osho yo ke na ondaka ya sha momina tai fulwa, ile ina okuyelulwa, ile ina oku patwa, omatokolo aeshe otaa ningwa pondje yoshilongo, pamahalo omahangano.

Ehangano lounyuni lotete (League of Nations) olo la yandjele Namibia melelo la SA nolo he li tangele shi dulife VVO, ole mu kunghilile (SA) a ha kufe nande oimaliwa moshilongo eshi, ndelene noimaliwa oyo oshilongo e shi pendule po fiyo e shi fikifa melipangelo. Omudo 1966 ehango la VVO olo la pingena oLeague of Nations ola xulifa po eenghono da SA okulela Namibia, osheshi ina shakenifa oshinakuwanifwa shaye medu eli.

Etokolo la VVO ola kolekwa natango komhangu younyuni omudo 1971, mu Den Haag. VVO a kufa po yo oufemba wa SA wokuyandja epitikilo komahangano opo a fule eemina muNamibia.

Epulo otali fikama kutya, hano otashi di peni omahangano a tya ngaha a twikile ashike

nokufula Namibia?

Opwa tumbulwa omatomhelo a vali:

a) Shotete omapangelo omahangano, oo naanaa haa yandje tete omapitikilo komahangano ao, nande omapangelo oo oku li oilyo ya VVO oyo ya ninga omatokolo.

b) Pativali nosho unene sha fimana, omahangano oo otaa moro oishoshela iwa muNamibia.

Eengeleki moilongo yauninginino, oda popile ko tuu hewa, eshi da hololele euditonghenda lado momushangwahokololo oo wa tuminwa omapangelo omolwokuxutula eemina daNamibia. Osho inashi longa sha, osheshi omapangelo pefimbo eli inaa hala vali okupwilikina eengeleki dao.

Omulandu wovanailonga vokodalate nao omukulu u fike naanaa pamwe nefulo leemina. Ovanailonga ova kongololwa keembinga neembinga (Ovalaule) va kalele eemina va longe, nomahangano okwe va tukulila oundjabi vongaho.

Pefimbo eli otashi monika eshi eemina dimwe tadi futu xwepo ngashi yaLange noya Rosinga shi dule momina yaTsumeb. Natango otashi pendula epulo kutya omolwashike?

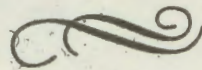
Ekangha lovanailonga 1971, ola li la etifa po elunduluko meendjabi. Newedelo leendjabi luhapu ohali ningwa ashike momhepo oyo kutya paha ningwe oibofa.

Omahangano eemina muNamibia pefimbo eli ohaa ti kutya oo otaa ningi shihapu okupendula po oshilongo.

Ashike osha shiivika yo nawa nokutya omahangano amwe ihaa futu nande otakisha. Ngaashi omahangano oo haa yandje ounafikola kovahongwa, ohae shi ningi ashike nelalakano opo a talwe omesho mawa koshiwana nokounyuni.

Ehokololo ola twikile tali ti, onghedi oyo yokulimonikifa omunhu muwa, oyo yo ya undula omahangano amwe a deule Ovalaule opo va ninge owawiliki moilonga. Omahangano amwe okwa hovela okulikongela edina liwa uuna Namibia la mangeluka, opo a popilwe osheshi e wete kutya olukuuya mboli.

(CCN-Information)



Ongeleki yomuNorwei, oya hambelele ketokolo ndyoka lya ningwa po kepangelo lyawo sho lya hala okuningila SA ondjindikila yiipindi. Norwei omugandji omunene gwomahooli ku SA.

Oshigongi shiilongo yaEuropa lyuumbangalantu shono sha ningwa nuumvo petamcko, osha uvathana shi ninge ondjindikila yiipindi ku SA noshi nenepekitho omakwatho gopalutu kumboka taa hepele mooveta dhokatongotongo moshilongo shika.

(CNN)

## Omido deenguduleli daNamibia mefimbo loukoloni

1884 - Ovandowishi ova nangala oshilongo eshi.

1915 - Oshilongo osha wila momake ovakwaita va SA nova kala ovaleli vasho.

1920 - Oshilongo osha tulwa melelo l'ongudu yoiwana younyuni (League of Nations) nosha tulwa mongudu ya C, pamulandu welelo lehango olo.

1946 - Ehangano la VVO ola dikwa nola twikila nelelo la SWA.

1974 - Epangelo laKaputu la teka muAfrika. Ovanamibia vahapu, ovalumenhu novakainhu va tauka mo moshilongo.

1975 - Oshoongalele shekotamhango shaTurnhalle sha dikwa mOvenduka.

1977 - Epangelo lopokati la dikwa, la fikama meendodo nhatu; oshoongalele sheeministeli, ongudunhotiveta (oilyo 60) nomapangelo opamaduumbo.

1983 - Epangelo lopakafimbo la xulifwa po kuNgolonea Ndjai wa SWA nelelo lohilongo e li twikila ye mwene.

17.6.1985 - Epangelo loukumwe lopashiwana, ile letafuluko ola dikwa.

## Shigwana shandje, oho ipula ngaa?

Momukwetu gwaJuni 15,1985 omwa holokele iinyolwa iiyali tayi popi kumbinga yuuthiga tau yemateke oyendji moshigwana shetu.

Ngame onda fa yakwetu moshinima shoka. Itandi ti andola inaku thigululwa omazimo, aawe. Onda hala ashike okuulika epuko enene lyoonakuthigulula, unene tuu mboka hamu thigulula iinima yomeni lyomegumbo.

Onda koneke kutya moshigwana kehe sha putuka omukulukadhi nenge omusamane gwoye noluvalo lweni oyo EZIMO. Nakuthigulula gulwe ota talika ko omuyugi, oshoka ota thigulula iinima mbyoka:

- a) kaa yi shi ye mwene.
- b) kee shi kutya oyalye.
- c) inee yi longela sha.

Oyendji ohaa kondjele iinima ya tya ngaaka nohaa dhipagathana nokuli.

**IINIMA TAYI LANDULA OTAYI VULU WO  
OKWEETA AATHIGULULI YOYE POPEPI NGELE  
WA SI:**

- i) Ngele oho ka popya palwe iinima yegumbo lyeni.
- ii) Ngele nangoye owa li wu hole sha thigululwa.
- iii) Ngele eliko lyeni megumbo olya topoka, nosho tuu iikwawo yilwe. Aathigululi (haayehe) haa thigi nakuthigwapo komuholike gwe noluvalo lwe pomutenya.

— Mbela ino dhipaga natango ngawo?

— Aayugi mboka haa ivundu miinima mbika ya longwa koonkondo dhayaali ayeke, mbela otatu ya tile ngiini?

**S. Shivute**

Koshiwana oshiholike, ohandi kumaida ovanyasha vakwetu mu tale omudo ou ngomudo weni. Ekundo leni oli li Gal.5:12-22.

**L.Kalus  
Tsumeb**

Onda hala oshiwana shaKalungama tale ko oikolwifa ongomusatana nomutondi munene woshiwana. Kristus oye a kale ombili yetweni.

**L.K.Hadibo**

