

# OMUKWE TU



30c

No. 3

ISBN 0-620-06828-0

## “Amuhe gu umbwa egoya”

Omunyasha ote ku mane omalakusha opo u mu ete kondjila. Ote ku pwataula omutwe, ngee wa hala oku mu uda ko. Ote ku imbi u kumuke, u lye eendya tadi kuluka, eshi to lipula noto mu shipaashipa. Otashi ku pula ashishe u na naashishe u li, nge wa hala oku mu uda ko. Hauxuuninwa otashi ke ku yeleda diva kutya: “omunima nani naye mwene ke liudite ko.”

### OMUMVO 1985, OMUMVO GWAAGUNDJUKA MUUYUNI



Nge we mu pe emanguluko, ote li longifa nai ngaashi tashi dulika, ye ta ti: “**owa weya.**” Nge we mu tulile po omhango ota mono a kolonyekwa, **ndele to ningi omutondi waye.**” Na lukwe “Vaamwapeni,” pamwe nghixwe.

Nge we mu pukulula mouwike, ota ti oto fekele, “teelela u kwate nge.” Nge we mu pukulula mongudu, vati oho popi ovanhu. Nge wa hoolola okumwena, oho efele ovanhu momapuko: “Oshike ino ifanena nge?”

Omunyasha ina hala ashike okweendwa nawa. Okwa hala yo okuyandja efimbo nomukalo ngehe e na okupukululwa. Luhapu okwa mona a endwa nai, ye ina pukululwa nawa. “**Hasho wa li u na okweenda nge osho!**”

Nge we mu londwele eshi u wete omudidimbe woshiponga, ota ti: “ondi wete wa pota unene.” Nge we mu lombwele epuko e li ninga la pita nale, ota ti: “Owa tokelwa, owa li peni? Nge a piti nawa okwe lihonga. Nge a dopa, okwa dopifwa komulongi e mu xuwa. Nge a pukululwa “okwa kula.” Ngenge a nyono, ota ti “okaana.”

Omunyasha mbela “ovakwanghala vavali.” Nge we mu pe sha ota ti: “**eta, oshinakuwanifwa shoye.**” Nge we mu pe kanini otashi dulika e litteeke nokuya kofikola, nande oye naana ta ka mona odjapo. Eshi ta nyengwa



“Yo yene ondjala ongele ashike shila omvula yaKalunga ketu inaayi loka,” osho omumati gumwe a popya manga a lala ongali pokangwena moshikunino sha-Venduka.

Ye mwene okwa lala keloloko sho a shilwa ta ndjiligana noondoolopa ayihe ta kongo iilonga, ta thikamene omiyelo dhomagumbo nodhoongeshefa ye ta yamukulwa kenyo: “Kape na iilonga,” ndyoka li li moombapila komiyelo.

Aalumentu aagundjuka naakiintu otaa monika ya andjakana noondoolopa adhihe nomalukanda moshilongo shika, unene tuu mboka ya za koshitopolwa shuumbangalantu.

Pethimbo ndika lyiilonga momapya ya tameka, mboka taa monika yi ipyakidhila nayo; omukulukadhi ashike ngoka a koka. Oye ta ningi ketemo a kwata, kuusita wiikombo oye e li ko, manga omusamane ta kongo oongombe nenge uusino kohambo, aanona aashona kosikola.

Osho tashi ende ngeyi sigo okoomwedhi dhetyo, iilya yi pungulilwe miigandhi, ngele ya monika. Opo ihe aafuko taa ya okutalela po ooyina yo e taa shuna ishewe ya longelelwa iilya ya ka lile muuthondolo, aniwa epungu ohali vulitha.

Huka okwo okukalamwenyo kwesiku kehe muNamibia pethimbo ndika, moka omuhapu gwa kola, konyala mOmuwambo kehe, kutya ondjala ongele ashike Kalunga inaa lokitha omvula.

Otu li moshilongo shika oshiholike sha pumbwa ehupitho enene mondjala yiikulya noyoondunge, ihe hamoohapu nomomadhiladhilo gopandjigilile nando.

Osha pumbiwa tu shi taambe ko moshilongo shetu, kutya oshigwana otashi indjipala neuluma enene momwaalu, manga tashi nkundipala wo mombepo yohokwe yiilonga maagundjuka.

Omwaalu gwoonakuhupa moshimaliwa mevi lyetu, otagu koko esiku kehe. Onkene iimaliwa sho ihaayi kokotwa, opwa pumbiwa meulumo, omukalo omupe gu vule ngoka tu na nena gwokulonga omapya.

Otu na wo oshindji okutumbulando kombinga yomikundu ndhoka tu dhi na melongekidho lyiikulya, tadhi tu ziilile monkalo yopapolotika, ihe shono nashi tye manga ngaaka.

Ngele oshigwana osha thithikila shaa mone ompumbwe yokulongekidhila Namibia iikulya, onatu ki iyadha esiku limwe tu li moshigumbo shomusi gwondjala momumvo gweloolo.

*Sebulon Ekandjo*

## Dha za kep. 1

okuliningila, ota ka dula tuu okuningila vakwao?

Omuhongi ou te mu lihepekele, oye mwii. Oo ta longo nelitule mo, vati: “ota longo oimaliwa yaye.” Hamba komunyasha ovahongi ovalongeli vondjabi? Opo twe shi udu nena, ava tamu ka longela ondjabi.

Omunyasha wonena oto mu kumwa: Kuye pombada opedu, kolumosho okolulyo: oinima yopashiwana ondova, yoshingolo exumokomesho. Ina yoolola edundakano nexumokomesho, naai kuye “oinonime”: oitya ya faafana.

Oinima oyo i na oshilonga kuye, oyo oudano. Yotete, kuye oya xuuninwa. Omusha ou mu dulile ouvalelo. Oyuunda yedu, oi mu dulile yeengobe. Vokoikombo ove mu dulile vokeengobe. Okalinga oke mu dulile eumbo. Okaana kondunga oke mu dulile komwenyo. Oshivilo shedalo oshi mu dulile shehombolo. Okuholwa oku mu dulifile okweendelwa. “Onena” oi mu dulife “omongula.” Kuye sha pya, ihashi nangala, she ya keyulu oshe ya okupembwa, sha eta ouyulu kokwena, omhuku.

Omunyasha oye: “Oto kwafwa ngahelipi? Nge we mu ningile olune, ote ku tu koshini, ye ta ti: “ope na omupofi.” Nge we mu tale onheni ota i kokule, ndele ota i tuu shili. Nge we mu ekelele, ke na ko nasha, ota nyonauka

ndele ta nyonauka tuu shili. Ota dulu oku popila osho ine shi itavela, ile a pule ovakulunhu va popile omapuko aye: **oulunde kuye etomhelo.** Mbela naye ota ka popila omapuko.

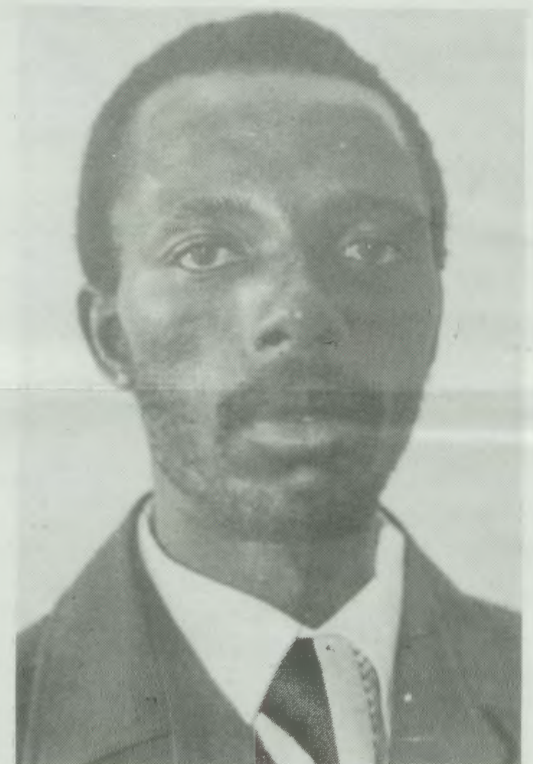
Omunyasha, edina lombwa okumukweni ho li udu, we ka mwene oove ho ka tongo. Didilika: Onakwiiwa ihai tungilwa konakwiiwa, okonakudiwa. “**Kufa osho shi na oshilonga monakudiwa u tungile ko onakwiiwa yoye ya kola.**” “Omuhalombwelwa ou mushii?” “Amuhe gu umbwa egoya .....

Omunyasha, ito kala alushe omunyasha: “Heeno shili, okanya kamukulu ohaka di omuku u nyika .....

Hano vamwange, indeni ngaashi mwa hala nale. Onale twe mu weelele. Sha mana omudo omafiku. Itatu mu valulile osho mwa ninga ile inamu ninga. Otu na etomhelo. **Otu shi shii omu na nantango ondjala ile okuya, oshihongwa shihapu noshile noshidjuu okulihonga noshimhungu shinene okulonga.**

Omwa yuka mounyuni. Ounyuni kau tondokwa, oto u koya, wo ihau lindilwa, kau lindilwa. Taleni apa tamu lya-ta, manga inamu katuka enha etivali. Puleni nawa manga inamu makela (lola). Pamwe otamu ka lya omagege, nye mu ka makele oukola. Ningeni

Tala kep. 10



Omusita Veikko Muniyika



# EDHIMINATHANOPO OLYO YINA YOMBILI

Mark 11:25



## OSOONDAHA YESIKU LYOTANGO LYEGALIKANO - 24.2.

*Nongele mu li po mwa thikama tamu galikana, dhimeni po omayonagulo, ngele mwa ningathana nomuntu, Ho yeni yomegulu e mu dhimine. po wo.*

Otwe ya methimbo lyomaipumo mumwe ga vuka. Pokati kayaali nenge yatatu, kongundu yontumba nenge yongandi, olwindji otapu inyenge ombepo inaayi opala. Omihoko otadhi thikame-nathana nosho wo iigwana niigwana. Mpo pu thike omaipumomumwe taga indjipala pokati kaantu, opo wo pu thike ombili yashili tayi pumbu.

Omolwashoka komuntu kehe ombili pethimbo ndika oya yuulukiwa. Moka-ti kooitaali otamu ningwa omagalikano omanene moongundu nomuuwike ombili yi monike, ihe opwa fa itapu ya sha.

Mboka ye li muudhigu oyendji otaa igalikanene, nayalwe otaye ya tsu omukumo: "Otat u mu galikanene." Eeno, onawa sho pu na wo einyengo lya tya ngaaka. Ihe elongo lyaJesus mpaka o-lya hala li tu dhiladhilithe natango oshitolwa oshikwawo sha simana shomegalikano, osho edhiminathanopo naamboka twa ningathana nayo.

Tango Jesus manga inaa tya sha kedhiminathanopo, okwa fatululile aapulukeni ye oonkondo dheitaalo ndyoka tali vulu okulongitha omuntu iikumithalanga.

Ngele oli li mune ando otamu vulu "okulombwela nondundu ndjika: Itumba po ngoye u iundululile miefuta, notashi mu ningilwa." ov. 23.

Eitaalo lya tya ngaaka olyo ndyoka Jesus a hala okuholola movelise 25 yomontopolwa tuu ndjoka, kutya halyo alike tali pulwa, ihe ombepo wo yedhiminathanopo.

Oshikalimo shOsoondaha yeti 24.2., osho wo elaka lyevaangeli patekisti yi li pombanda, otamu holoka ezimba, kutya egalikano tali popiwa mpaka kuJesus, olyo ndyoka uuna omuntu ta pumbwa okugalikana Kalunga omolwoondjo dhe e dhi dhimbulula nodhe mu tilitha. Okwa pumbwa ihe edhiminopo koshipala shaKalunga.

Odhoshili, kutya haaluhe tatu galikana Kalunga omolwoondjo dhetu twe dhi dhimbulula, twa hala dhi dhimwe po. Oothina nomaudhigu hage tu adha, osho wo oompumbwe dhetu dhesiku kehe, ohadhi tu undula tu shi ninge wo.

Natu tale ano Jesus melongo'lye nomekumagidho sho ta tsu aantu omukumo yi ikongele oompumbwe dhawo taa pitile momweelo gwegalikano. Mat 6:9 noonkwawo tadhi landula. Ihe kona-kona unene oovelise 14-15. Ngele itamu pe aantu ombili, naHo yeni megulu ita dhimi po omayonagulo geni, osho ta ti.

Ombimbeli otayi shi yelitha kutya omagalikano getu nomahambeleso ogo ondjambo, tayi etelwa Kalunga Heb. 13:15. Nokape na ihe omagano

hage etelwa Kalunga, manga omuntu inoo tala konima, ngele pe na ngoka mwa ningathana naye opo mu wape okupaathana tango ombili, osho Jesus a longo aantu. Mat. 5:23-24.

Elondodho tu na mpaka olyo ndyoka, kutya kape na egalikano neitedhululo tali tsakana koshipala shaKalunga, tu pewe kuye ombili, manga tse inaatu punguluka tango tu taalele kumboka twe ya tula momalyenge, tu ya dhitule mo. Mat. 18: 23-35.

Elongo ndyoka olyo lya kala ethimbo alihe komilungu dhaJesus ngaashi tashi kolekwa koonzapo tadhi landula. Mat.7:12; 18:21-22; Luk.6:35-36; 17:3-4.

Eitaalo, ohole nombili oyo iimwayinathana, tayi valwa medhiminathanopo pokati komuntu nomuntu, nopokati komuntu naKalunga.

(Omuuvithi)

## Owe shi shiiva tuu?

Kutya:

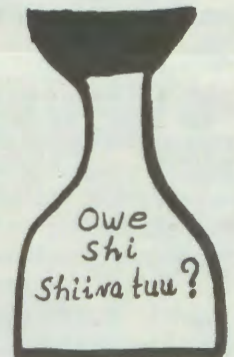
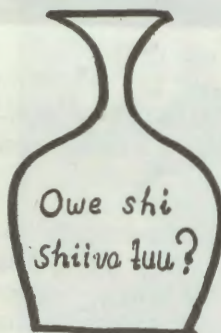
Alkoholi, uuvu, kashi shi nando kutya pamwe uunkundi ashike weihumbato lyomuntu.

- Uuvu mboka otau kwata ombepo yomuntu, omauvito ge, oondunge dhe dhomomutse nonkalonawa ye ayihe.

- Alkoholi otayi hanagula omuntu paugumwe we, e tayi hepeke wo aaholike ye.

Alkoholi uuzigo mboka itaa vulu okupangwa nuukatalume, naanaa ngaashi omauzigo galwe.

- Mboka haa ti, kutya oya tuntilwa, noalkoholi, molwashoka ohaa nu ashike ombiila, otaa ifundju yoyene.





# OUKRISTE MEEFIKOLA

Ongeleki otai lalakanene oukriste u na omwenyo u pangele moshwana. Omolwaasho ongeleki i na oikandjolo nga: oomeme, ootate, ovanyasha, nonona. Keshe shimwe oshi na omuunganekeki washo oo e li "eisho neke" lelelongeleki musho. "U he na mutanda ku na ngobe, u he na mhaona ku noilya; osho ovakuluvonale va tya. Osho shili.

Ovanyasha ovo oshiwana nongeleki yokomesho, onghe ove na okukwatwa nawa. Momaongalo otava filwa nawa oshisho osheshi ove li povakulunhu vavo, povafita vavo nopovawiliki vavo. Meefikola oshinima kashi li ngaho.

Omolwehongo, ovanyasha ova mboboloke la kominghandjo, oko tava nongekwa nota va pewa okulya opo va kule. Momatalelopo eefikola otaku konekiwa ounona vomido omulongo nanhatu, ovo va li ve na okukala koshi youteku wovadali ove li mominghandjo.

Outeku wavo ou na omhito oku ya pomunghulo, osheshi omapulo avo otaa nyamu-

shoongalele sha tya ngaha olo **Ehangano lovalihongi ovakriste (SCM)**. Ohatu ningi eetundimbibeli, omailikano, eexungi, olwiimbo nosho tuu.

Kape na elalakano limwe li he fi ashike okufitika ombululu oyo oshikondo shehongo, ongeleki novadali itava dulu oku i fitika. Ohatu shivi ovapopi vowina, eendokotola dopaunamiti, ovatalelifikola, ovo va shiiva omifyuululwakalo doshiwana, ovafita, ovahongifikola nosho tuu. Aveshe ava ohave tu kwafa ve tu fatululile nova nyamukule omapulo ovanyasha mouyelele wOmbibeli.

Opa kala epulo muvawu nge ehango eli ola, pumbiwa tuu? Enyamukulo HEENO. Omunyasha keshe e he li oshilyo, okwa kanifa omhito ite ke i mona vali. Omolwaasho tu na ovanyasha nghee a putukile fiyo ota tungu eumbo ina enda moshongalele shovanyasha.

SCM oyo oshoongalele shovanyasha meefikola. Oi na elalakano limwe alike no-shoongalele shovanyasha momaongalo. Ovanyasha nava tuwe omukumo va ye mo SCM, oshoongalele shovanyasha meefikola.

Aishe oyo tave i pumbwa yopamhepo nyopamifyuululwakalo otai monika apa. E-

hongo, ovo va tala oSCM ngaashi oshitulwa shomalinyengo ofikola.

Ohatu pandula yo omayambidido avo kovawiliki peefikola davo. Ombili opo twa ninga sha inashi wapala. Ohatu pandula yo ovahongi ovo tava wilike peefikola, oshoyo ovapopi ve lili ovo have tu popifa. Inamu loloka.

Ope na vamwe va tala kutya oSCM oyo ehango longeleki imwe. Otashi dulika eliendo eli tali etwa ashike kouhapu woilyo yongeleki oyo, ashike oSCM kai na nande elalakano okuudifa eitavelo ile ehongo longeleki yonhumba, ile okuhongolola omunyasha mongeleki yaye a ye mwei ile inya. Ekotamhango letu otali tumbula kutya:

Otaku lalakanenwa ovanyasha "ve lineekele eengeleki davo." Ouwa oo u li mehanganoli kau wetike nande. Ovanhu ota va konakona ashike va mone eembongo. SCM

## OLUHODI NEPANDULO

Otu na oluhodi linene  
Mofikola yaNgwediva  
Hatu lilile komwenyo  
Hatu lili omumwahodi  
Shaashi twa dengwa odibo  
Ye tu denga keemwenyo

Fye otwa li tu na elao  
Shaashi otwa pelw'ependa  
Ndee mboli twe li kufwa  
Li ka ninge omushitai  
Shovanhu vaKayala  
Vamushindi waKanhene

Tate wetu omunambili  
A li ta lele oshiwana  
Te shi lelifa nondjovo  
Inyenye yevaengeli  
Shi shiive shi mone omwenyo  
Shi ye meulu melao

Oha tekula nombili  
Yee ta lele nolukeno  
Oha denga ta fudile  
E shi ku pang'eemwenyo  
Nopela yevaengeli

Kalunga ketu omuyamba  
Iha dipaelwa vana  
Navali oshitwa shinene  
Iha kwatelwa nge ta tenge  
Ote tu pe omuponhele  
Ndee ta feta po omahodi

Kombinga imwe ohatu lili  
Nde imwe otwa pandula  
Tate wetu Kaulinge  
Molwelididimiko loye  
Olo we tu yakulifa nalo omido da ya  
Kalunga na yambeke okukala po  
Kwoye alushelushe tate

Ehalelo letu oleli (3 Joh.1:2,5,6)  
U twikile nomukumo moilonga yoye  
Fiyo oto ka findana  
Ondjabi opombada to i hange  
Shikukutu momunghulo, Shipu momupolo

(KuNdeshihafela Abraham)



Omufitaongalo A.Kaulinge, pefimbo e li omupresidende wehangano olo mOngwediva, pamwe novanyasha vaye

kulwa kovanhu va puka ile pamwe okomambo, oo mahapu a shangelwa oiwana i lili. Omhito yokuxungila kave i na, yokukala moyoongalele yaHamunona noyovanyasha ove i kanifa. Ove na ondjala yoikulya yopamhepo noyopamifyuululwakalo.

Ongeleki oya koneka oshinima eshi noya yandja ovafita owina, va kale meefikola odo dinene va kwafe moshinima shopamhepo. Meefikola omu na hanu oshoongalele shovanyasha pamufika wovalihongi. Edina lo-

lalakano lo SCM OKUHONGA NOKUKUTEKULA ovanyasha va kule ngaashi Jesus. Luk. 2:52.

Ehangano eli olo okwooko kwongeleki nokovadali. Otali longo ponhele yavo. Ola kwafa yo ovakulunhufikola vahapu mouteku. Otali pyakidike ounona naasho shi na oshilonga, opo omhito yoku ka endaenda pondje yofikola i ninipale. Ohatu pandula ovakulunhufikola novawiliki moimima ye-



# O U K R I S T E M E E F I K O L A

Da dja kep.4

oyo imwe yomomahangano manini oo taa tungu oukumwe weengeleki moshilongo eshi.

Ovanyasha otave lihongafana notava mono shili kutya nani Jesus Kristus oye aeke Omuxupifi wetu. Ovawiliki veengeleki moshilongo, unene ovo tava lalakanene oukumwe weengeleki otava teelwa va twe oiyoyavo omukumo i uye mo SCM.

Vamwe ova tala oSCM otai piyaaneke ehongo. Naashi hasho. Omalandulafano etu okwa tungwa noukeka shili, opo e he lipume mumwe naao eefikola. Omalinyengo etu aeshe ohatu a ningi neshiivo lomukulu-nhufikola oyo.

Ohatu tu ovahongi omukumo meemhito dihapu opo va diinine elihongo. Otwa pwi-likina yo luhapu ovapopi tava popi ehongo nghee li na okweendelelwa po nosha kwafa ovalihongi vetu shili.

Nandi pule epulo lange: Omolwashike hano ovalihongi itamu piti vali nawa? Ombedi oyeni ile oyovahongi? Ile oya umwe e lili? Omudo ou, onawa tu kongeni omanyamukulo komapulo oo. Ngee twe a mono, keshe umwe na longe nawa oshimhungu shaye. Ohatu lineekele oinima otai wapala.

Onda hala yo oku mu londwela. Otamu fiyepo eefikola opo mwa li oudwaali, mu ye keefikola dimwe ketwikilo. Inamu ende- lala okuhoolola ookaume. Kape na omuto- ndi woye e dule kaume koye. Dulikeni ko- maufu eefikola, nande inaa fa aaku tamu di. "Shitunda nonghedi." Taleni shili nawa mu yoolole eehole, neenghenda.

Kotokeleni ohole nonghenda yokaningiki- lamo. Inamu lya oukola, ningeni hamhu- ndja ya kulu naxe hambabi ya putuka naina ..... Inamu tala konima, eshi inaku mu e- ndela nawa momakonakono a piti. Omu na omhito oku shi fulula ko. Okweendulula oko ina yeendunge. Taleni eshi tamu li, apa tamu lyata na yoololeni eenhele.

Ohandi mu halele omudo muwa welihongo la kwata moiti neitavelo, okutya ohatu shi ningi. Tu kongeni OMBILI muJesus, o- sheshi oye OMBILI yetu.

Rev. V.Munyika

Ombili kune amuhe mboka oombapila dhomambesitelo geni opo tadhi thiki, sho itaamu ka mona we iifo ya- Januali. Omwedhi ngoka to tameke nagwo, ogwo wo to ka hulitha nagwo omumvo tagu ya.



Omumbisofi ta langeke omusita  
Eliakim Shaanika

## Ehogololo lyaKalunga kuEliakim

"Eliakim, Kalunga okwe ku hogolola manga inoo valwa nomanga aakuluntu yoye kaaye shi shi. Owa hogololwa u kale o-

muyuuki koshipala shaKalunga noshaantu," osho omusita omugundjuka Eliakim Shaanika, a dhimbulukithwa komumbisofi Kleopas Dumeni.

Moshituthi shelangeko lye megongalo, Eengolo, mOmbalantu, omumbisofi Dumeni okwa kumagidha omulangekwa nomatumbulo ga kola:

"Kala omukeenashipo koshipala shaKalunga, moongundu adhike megongalo nomomudhingoloko. Dhi- ginina ukriste, naashika ashihe oshi na elalakan- lyokuhambelelitha Kalunga."

Omadhiladhilo ngaka omumbisofi okwe ga kutha mEpistoli kAafilipi 1:3-6. Oshituthi shelangeko osha ningilwe pehulilo lyomumvo gwa yi, nosha li sha kalwa kaantu konyala, 700, oyendji ya zile moma- gongalo gopuushiinda.



Omulangekwa E. Shaanika



Oshitai shehangano lovalihongi ovakriste, shomOnandjokwe. Efanola fanekwa 1984



# AANTU 85,000 OKWA TIWA KAYE NA SHO TAA LI MUNAMIBIA

**Omumvo kehe uuyelegele otau holoka notau ziminwa paveta, kutya omahupilo goshilongo shika otaga koko okuuka muwinayi. Omumvo nguka wo iifonkundana yomoshilongo; Windhoek Observer 19.1.1985 na The Advertiser 16.1.1985 oye tu etela onkalo yoshilongo shetu nkene yi li.**

Aantu 45,000 nenge nokuli 85,000 oya ziminwa paveta kutya kaye na iilonga nokaye na sha peke shokulya esiku kehe. Eyalulo ndika olya ningwa 1980, omimvo ntano dha piti.

Ihe muule womimvo mbali, ndatu dha zi ko, pahokololo lyiifonkundana mbyoka, Aaluudhe oya tameke okukunguluka taa zi moofaalama moka ya kala taa longele aahona yawo noye ya mooolopa, yaa na shono taa longo.



## UUNAMAPYA

**Oshike shi na okuningwa po, opo uunamapya muNamibia, unene tuu miitopolwa yaavalelwamo, u humithwe komeho? Aakuluyonale oya tile: 'Ohayi hokelwa pondjila.' Manga tu li petameko lyomumvo, onawa tu yi hokeleni pondjila.**

Ngame otandi yi hoko nda gama kuunamapya. Sigo oompaka inatu ngambekwa okulonga omapya muunene wa uthwa. Shaa ngoka oha longo shi thike mpo ta adha.

Uunamapya opo u yambuke po shili, otashi ningwa tangotango kaanamake moshigwana. Sigo oompaka aanamake oya longeki dha oombakumbaku, opo ya fupipike ehtagano lyetu mokulonga omapya.

Kombinga yoombakumbaku otaku pumbwa ehumokomeho. Shaa tuu taku ka holoka oombakumbaku hadhi pulula dho tadhi kunu, otadhi ka'hakanwa shili. Osho-

Ehokololo otali ti, kutya aahona yawo moofaalama, otaa nyengwa ngashingeyi oku ya dhiginina, omolwomalutteni ngoka ga dhenge nayi oofaalama omimvo ndhoka dha zi ko.

Oofaalama odhindji, omolwolutteni, nadho odhi li pokuhalakanapo, nonando pu na ekwatho ndyoka hali gandjwa konyala omumvo kehe kepangelo, opo dhi tsikile niilonga.

ka oshilwa shambakumbaku ohashi vulitha okukuna.

Oshike hashi tu imbi okulonga omapya omanenenene? O, ku shi shi? Oshiiimbi hashilwe, shila okuhelela epya akuke. Oshoka nando u longe nenge u longithe epya enenenene, iimeno otayi mene ngaa nawa; ihe otayi ka sila momwiidhi.

Shaa tuu kwa holoka ihelelitho yomapya, nena ombululu yehumokomeho lyuunamapya oye eguluka nee thiluthilu. Oshoka epya tuu ndyoka wa li u na oku li helela oomwedhi mbali nenge ndatu, otali helelwa omasiku ngele ogendji gaali nenge gatatu ageke.

Komukalo nguka, aalongi yepya ndyoka oya hupithilwa oonkondo odhindjidhindji, ya li ye na oku dhi manena mehethagano lyehelero. Yo niikwamepya otayi uluma okukoka, noshita, oshoka inayyi hepekwa komwiidhi, kembungu.

Aanamake aasimanekwa moshigwana; ota-

Oshinima shAaluudhe taa tidhwa piilonga moofaalama osha yematelwa unene kungoka a li nale Komufala Ndjayi gwa SWA, omusamane Jannie de Wet.

"Aahona oya pelwe iimaliwa okukwatha nayo aantu mboka, nena aantu mboka oya ka hupile we peni, komavigumbo gaandjawa kwaa na sha?" osho omusamane de Wet a popi paatoolinkundana.

Otaku tengenekwa aantu 150,000, aasamane nomagumbo gawo, ohaa kwathwa oompumbwe dhesiku kehe manga ye li poofaalama mpoka. Oshilongo ashike otashi tengenekwa shi na oofaalama dhi vule 4 000.

Enayipalo lyonkalo yomahupilo goshilongo shika, kape na nando gumwe gwomaaleli yoshilongo hu ulike omunwe guusama kii-ta mbyoka ya kala moshilongo ngashingeyi oomvula hetatu.

Kakele ashike komatembu gaakalimo yamwe mOkaoko, ngoka kwa tiwa ogo ga ningwa, sha kwatela mo onkalo ombwinayi yomapya niita.

Oshifo, Windhoek Observer sheti 19.1.1985 inashi etha inashi dhimbulukitha aaleli mboka shoka uupolotika woshilongo shika tau shi etele wo.

Mokomenda yasho, oshifo shoka osha londodha unene aaleli yevi ndika, ngaashi sha ti kutya oya thikama muupangelogona 11, ye ete po uupe washwa muupolotika woshilongo shika, manga ondjala inaaayi mana po ashike.

### Uuprofeti womuloka muNamibia

Okuya muJanuali gwomumvo nguka, aanamapya oyendji okuza uuzilo sigo uuninginino woshilongo, inaa kala we netegameno lya kola kutya omapya otaga ke eta sha gwana nonando omvula yi loke.

"Onda kunununa iikando ayihe itatu, inashi kwatha sha," osho Ombulu yimwe ya hokolola.

MOwambo aanamapya hayendji ya kunununa, sigo oompaka, oshoka oshitopolwa oshinene osha mwene omvula polumwe aluke.

Aanafaalama otaku tiwa oya kanitha oopelesenda konyala 50% dhiimuna manga iinamwenyo ya kana mevi, ya sa nenge ya landithwapo oopelesenda 80%.

Ihe omashina guuprofeti wombepo oge na sha okuhokolola. Pompito yimwe eshina ndyoka olya hunganeke omvula tayi tegelelwa okuza 21.1. sigo 24.1.

Oshinyolwa shika onde shi nyola 25.1 ndi li momuzimbi gwa tamekele 24.1.



# Egwedhelo k- ndando yoma- hooli

Amushanga gwekonomi (omahupilo) muNamibia, omusamane P.Kruger, okwa ti kutya egwedhelo lyondando yopetololi otali etithwa po unene komahupilo goshilongo shika ngoka ga

he. Shoka ashihe oshe ya pe eyamukulo kutya oshigwana inashi taalela omumvo omupu, ihe ogwomuntu wi imanga epaya.

Ehangano lyiyenditho yoobesa moshigongi shalyo omwedhi gwa yi nalyo olya thiminikwa

nkundipala, oshoka konyala kehe shimwe ohashi tu zile ku S.A., osho a ti. (Adv. 24.1.1985).

konkalo okuyelutha oondando dhomalweendo goonakweendithwa:

Egwedhelo lyondando olya ningwa wo kiikwamahooli iikwawo, ngaashi odisela nomahooli gomoolamba.

Nonando egwedhelo ndyoka pakutala olya ningwalela nondjele, shoka tashi dhimbululwa sha fa oshihe osho shoka kutya oondjato dhopeke nadho odha tameke okuyalulilwa ofuto yadhho pamwe nomitsalo omikwawo, osho wo uunona.

Oonakulanda wo moositola egwedhelo lyondando oye li dhimbulula nale nokuli miikulya, momizalo osho wo moompumbwe dhesiku ke-

**Sebulon Ekandjo**

**Omaweendo gomiiyenditho omumvo nguka oga dhigupalekwa kegwedhelo lyondando yopetololi ndyoka lya tuliwe miilonga okuza omasiku 25 gomwedhi gwa yi.**

Egwedhelo olya ningwa noosenda 25 molitela, nokwa tiwa kutya otashi vulika li ka ningwe ishewe pokati komumvo nguka ngele opwa dhimbululwa kutya egwedhelo lyotango inali eta po sha.

**“ONDA LI NDA SA ONDJALA, INAMU PA NDJE IIKULYA”**



## **ETOKOLO:**

**Elelongeleki olya tokola momagongalo gOngeleki yetu mu gongelwe ongalo yowina yokukwatha aamwameme mondjala kuEtiopia. Ongalo ndjoka yowina, oya uthwa yi ka ningwe ponto yongalo yomelongelokalunga lyOsoondaha yeti 3/3/1985.**



# Oshituthi sheshasho mOmangeti

## 6.1.1985

Oshilonga sheuvitho lyevaangeli osna pumbiwa mokati kAakwankala nokuyalwe momudhingoloko gwoshilongo shika. Pehulilo lyomumvo gwa yi omutonatelishitayingeleki shOndonga, tate Festus Ashipala, okwa li a fala kuku Hileni Ingula kOmangeti opo a sile Aakwankala oshimpwiyu, noku ya topolela iikulya mbyoka ya gongelwa komagongalo gamwe gomOndonga.

## Eshasho lyaapagani muAngola

“Omuwa lundulula okukala kwetu,” osho sha kala egalikano miilonga ayihe yOngeleki ya ELOC omumvo gwa yi. Egalikano ndyoka olya longo oshindji moomwenyo dhaantu.

MuAngola omwa zi aapagani yi ile okukonga eshasho mEtunda iikando ayihe iyali. Oshikando shotango osha holokele muMaalitsa shi na aantu 25, noshitiyali osha shashwa esiku lyotango lyaJuli, aapagani 45 ya shashwa.



Ongundu yaashashwa tayi monika methano pamwe naasita. Pokatilela oKristofina Mu lamba omulongi gweshasho, nokolulyo, omusita Johannes Tolu

Opwa li wo pwa ningwa olweendo olukwawo komutonatelishitayingeleki shaKunene pamwe naakwathi ye, ndoka lwa thikile sigo okombanda yomulonga. Eshasho lyaantu 97 olya li wo lya ningwa hoka.

Esiku olyo tuu ndyoka okwa kolekwa aakriste 23, yamwe ya pewa ombili yegongalo. Opwa topolwa Uulalelo Uuyapuki esiku ndyoka.

Aantu mboka ya yakulwa ngeyi komutonateli oyomuhoko gwAandongona.

Johannes Kambungu

Ombili kune amuhe mboka oombapila dhomambesitelo geni opo tadhi thiki, sho itamu ka mona we iifo yaJanuali. Omwedhi ngoka to tameke nagwo, ogwo wo to ka hulitha nagwo omumvo tagu ya.

Hasho ashike. Elalakano enene okulonga Aakwankala oohapu dhaKalunga. Iiyimati yiilonga yagwilingula oya holoka melalathi-mbo ndyoka a kala hono ta hawaleke iikulya, nokulonga osikola yeshasho nekoleko. Okwa kwathwa wo kutatekulu Mika Amutana, a za kOntonanga, omulongeli gwa BBK.

Pehulilo lyaDesemba 1984 omuyevangeliste gwAakwankala kuKongo tate Frans David okwi ile kOmangeti a ningile Aamangeti oshituthi shaKrisimesa. Osho sha li shotango okuningwa ko pamukalo ngoka.

Frans nagwilingula oya uvathana yi ithane omutonateli nomusita gwetumo, tatekulu

Markus Amushila, opo ku ningwe eshasho meti 6.1.1985. Aatonateli sho inaa mona ethimbo ngele omukulu nenge ngoka omupe, tate Petrus Shipena, omupeha gwawo Titus Ngula okwa yile pamwe nomusita gwetumo, nomusita Filippus Iimene mOnyaanya.

Osheendo osha yi mondjila eti 4.1.1985. Nesiku eti 5.1.85, olya li esiku lyomakonakono nomayoololo gaamboka taa shashwa, nenge taa kolekwa nenge taa kuthilwa.

Ondjuulukwe onene yehupitho moomwenyo dhaakwakuti otayi inyenge tayi zi muule. Mboka ya piti nawa omakonakono, aana okuza poomvula 9. Aakuluntu nayo oya piti nawa shono ya li ye shi pulwa.

Opo ihe esiku eti 6 lyaJanuali 1985, opwa shashwa aantu aalumentu naakiintu 120. Opwa li eshasho lyuunona 31. Owindji owAakwankala. Opwa kolekwa wo Aawa-

mbo nAakwankala kumwe 30.

Konima yaashika opwa ningwa wo oshituthi shUulalelo Uuyapuki. Okwa li aayenda 47 natse wo otwa mwene ompito yokukala koshitaafula shOmuwa pamwe naayenda aape ongomegongalo epe lyOmangeti.

Konima yelongelokalunga otwa talele po omatsali gAakwankala metolokelo lya gumwe gwawo, Tomas Adam. Momatsali omu na aakulupelela, naankundilela.

Oluhepo talu dhimbululwa olwo nduka:

- Oluhepo lwiikulya
- Oluhepo lwelongo lyosikola mokati kaanona.
- Okapangelo kokukwatha muunamiti
- Omuuvithi gwoohapu dhaKalunga mokati kawo.

Otandi ningi eindilo komagongalo gomOndonga mu dhimbulukwe aakwakuti mboka ya halakana muuzilo wOndonga noshowo omagongalo agehe mu ELOC tu tumeni kaanaluhepo momidhingoloko dhetu, iipalutha iizalomwa niyakulitho yi ili noyi ili.

Titus Kasindani Ngula

## Uunamapya

Dha za kep. 6

tu mu indile nesimaneko enene shili, mu lande iihelolitho yomapya; mu yambue po uunamapya komukalo ngoka. Otwe mu inekela otamu shi ningi, nombala.

Shaa tuu aanamake ye shi tameke shoka, nena iipalutha hayi zi momapya otayi ka indjipala. Go nomahupilo oga yambuka po shili.

Omumvo gwa hulu 1984, sho kOwambo nOkavango twa pelwe iilya oyindji, opwa ningilwe shili ehumokomeho koombinga noombinga, ndyoka inaali kala ko nale. Iilya sho ya gongelwa moompale, oombakumbaku odha pookele oompale odhindji okuyungula.

Aahethagani ano, mokuyungula, pamukalo tuu nguka, oya hupithilwa shili oonkondo odhindji. Komukalo tuu nguka aanamake oya yambula po oshigwana, noku gamena wo aayunguli koomvulwe dha pitilila; pamwe odha li dhi na okweeta nomikithi wo.

Oombakumbaku nadhi indjipalekwe mo-shigwana. Yo niihelolitho payi holoke po ando mbalambala. Aasimanekwa aana-make, ulumeni okuyambula po oshigwana sheni komukalo ngu gwa pumbiwa, kombi-nga yuunamapya.

Juuso Sh. Mundjungulu



# Omukundaneki Halweendo

## Onghuwo tai kuu mo- matwi aHalweendo

Omafiku a dja ko, omukundaneki Halweendo manga e li meemhofi, okwa uda ondaka yomufininikwa tai mu popifa. Ovanaifo okwe va hokololela oshiningwanima shinya ta ti:

“Efiku limwe manga nda li meemhofi, onda uda ewi tali popifa nge tali ti: “Tatekulu Halweendo ohandi ku kundu nonda hala ndi ku hololele kutya nokoshilongo shetu otwa kundana oilonga yoye youfule ho i longo yokunyatulula apa pwa nyata:

Onghe onda pewa eindilo lowina kuvakwetu opo ndi li fikife kwoove. Tatekulu koshilongo shetu oku na oita tai tu hepeke; otwa hala nokuhalelela opo ngeno u taulukile kufye, osheshi otwe lineekela kutya oto ke tu kwafa moudjuu wetu, manga inatu pwa po okufya.

“Omatwi etu paife otaa ti ndjee komidumo doidumi yopakwaita oyo yelihanena oshilongo shetu ashishe. Omesho etu konyala efiku keshe otaa lili omumwahodi. omolwomafyo oovakwetu va dipaelwa oipundjame nye; omayulu etu nao oku li pokufita komhepo ya nyika oudiyo weeholo noitopifa.

“Onghalo ya tya ngaha inai etela ashike oshilongo shetu ondjala nomhepo yokutondafana, ndele oya etela yoovakwetu vaha pu oudu wefindakano neenghwengu ....”

“Opo hanga ndi pule kutya ou ta popifa nge oye lyelye noshilongo shavo osho ta popi oshaama peni nondi na okufika ko ngahelipi, onda penduka mo meemhofi.

Okudja opo eemhofi oda londoka nge ndele handi twikile ashike nokudiladila osho nda lombwelwa meemhofi, fiyo otaku shi. Ongula eshi kwa sha nawa, onda ninga etokolo ndi ye kovayandjimaye vange moimime yopapolotika, opo tu ka xungile oshima shinya,” osho Halweendo a fatulula paxupi.

## Va halelwa etwikilo liwa

Ohandi pandula omahokololo nokomakumaido mawa, haa kala moshiufo shOmukwetu.

Omukundaneki Halweendo nomufita V.Munyika, osho yo amushe hamu yandje omaye nomakumaido, peweni cenghono nomukumo modula ei yoneudo yo.

M.M.Kweendakutala

# Omatalelopo mOshitaingeleki shaUkwanyama

Omaongalo a talelwapo 1984 otaa shikula apa: Ongwediva, Oupumako, nEndola. Onda hala oku mu pandula unene. Fye osho twa fiki koKongo, tangi unene. Oiyandjwa yeni kombinga yoikutu, ngaashi nda ti, oikutu ohandi i nayo, kakele keengalo odo ha, pitike kombelewa yoshitai; osho nda ninga.

Oikutu oya longa nee ngaashi tashi landula. Oya djalwa kOvakwanghala vahapulela. Otave mu pandula. Opo ve li, ve li nawa. Eine ya landifwa po, omwa dja R860. Ndishii onda ti elalakano okumona eenhani opo ve limonene oipalwifa!

Onda landa nee eengobe 2 keshe imwe R310, adishe kumwe R620, oshipululo R100, hano kumwe R760. Opa xupa R100. Oinima nee ei, oya diladililwa epya Eendobe. Omudo 1983, otwa pelwe Onamatadiva eengobe noshipululo shado.

Oku na nee epya eli li dule aeshe, Ekoka. Eshi hai shange ngaha eti 15.1.1985, Ekoka inali tuwa nande oshipululo mepya, omolwefimbo. Omambakumbaku aeshe oku li kuKongo omolwefimbo eli. Hano neudo ohatu ka kala noluhopo li dule loshito, omolwomaxupilo.

Tu yeni moilonga. Momuvalu nee ou, R860 inamu kwatelelwa ei oyo pamwe Omukwanghala a ombokelwa ta i koshihakulilo ile ovakulupe va pewe omakaya. Onda i longifa panghedi oyo, shaashi nghi na nghee ndi ninga. Ashike Omwene na wedele chalo liwa munye, nye mu dule okutwikila natango. Fye Ovakwanghala veni itatu ke mu dimbwa nande.

Olweendo modula ei 1985, Omwene ngenge e shi hala otali ka ningwa momaongalo taa shikula apa: Olupandu, Onhelelwa, Okalongo, Oupumako, Ongenga nOhaingu. Efimbo ngenge tali shi pitike hatu tale vali eshi hatu ningi.

Omalupaleongalo novafita ovafimanekwa, ombili, oshinima oshi li ngaashi shito. Kapena eshikulafano, osheshi nghi na osheendifo. Ohai mbadukako ashike. Neshikulafano otali tungwa molupaleongalo, eenhele adishe tadi pumbwa okutalelwapo oinagoga, eefikola nopongeleka.

Fye katu na eulumo, shamha tu twa fiki meongalo omo, nena otuvakwaneongalo ashike. Ohatu liufa ashike komalombwelo eongalo letu omo tu li. Osheshi aische ohatu i mono meongalo omo. Olo tali tu endifa tali tu yakula fiyo le tu tambeka kulikwao.

Ovahongifikola, ovanangeshefa mwa kwatelelwa ovafitaongalo, ame nghi na oitya kunye omolweiyambo leni. Omatukutuku eni omahooli e na ondilo, ndele otamu tondoka ashike nomwenyo muwa.

Shiiveni oshili ei kutya osho mwe shi ninga notamu ke shi ninga, oshi na ondjabi inene kOmwene.

Ashike nee, ngenge inapa holoka elunduluko, onda yuka nee moukulupe. Ohandi indile ombili tu longeleni kumwe, inamu tala oukatalume wange. Ame onde mu pandula nohandi mu halele omayambeko Omwene.

**Omutumwa woshitai  
Lot Kaishungu**



**Omweevangeliste Lot Kaishungu, omutumwa wokupapudula oshitaingeleki shaUkwanyama. Ota longo oshilongatumo muKongo**

## Uuprofeti womuloka

**Dha za kep. 6**

Pafatululo lyomusamane A.Port, gumwe gwaakuluntu yomashina ngoka guuprofeti, omumvo nguka ogwo ngaa gwahugunina andola medhingoloko lyomimvo dhiikukuta moshilongo.

Ashike okwa ti kutya otashi vulika shi kwate sigo omumvo 1986 nenge edhingoloko lyomimvo dhiikukuta, li tamekulule ishewe mbala.

Omuloka omwaanawalela pauprofeti mbo-ka, ogwa tegelelwa owala komumvo 1990.

**Sebulon Ekandjo**



Da dja kep.2

"Hamhundja ya kulu naxe, Hambabi ya putuka naina ...." Eisho limwe okeulu vamwange, limwe opaapa to lyata. Oranda imwe omondjato, ikwao omokambo, yashewa "okuNekwalitoka .... Shimha itamu dimbwa "okambale" kee!

Omu lya tamu keuka, shaashi hanye amushe. Inamu kofa tamu mbonyoka, oshilongo oshi na eembwa tadi weda. Ka kaleni ovakulunhu. Omukulunhu "etungwa lya siikila ombepo," ye "okw? lya ombinzi nuutsika." Indeni mu ka "siikile ombepo," nye mu ka lye "uutsika."

(Tala 1. 1Tim.4:16; 2. Iil. 2:40b; 3. Omaj. 3.)

Oshipopiwa eshi osha ningilwa ovalihongi ovo tava piti moxungi yelekelafano 1984. Onda hoolola ndi popye omunyasha ngaashi nde mu lihonga, opo ndi mu londwele manga kuyela, kutya otamu ka longa nepupi tali pumbwa elididimiko.

Onda hala yo mu koneke apa, kutya ope na oinima omunyasha he i teelele kovakulunhu, shaashi ashike "e li omunyasha," novakulunhu itava dulu oku i mu ningila shaashi ashike ve li ovakulunhu.

Ope na hano eemhito opo omukulunhu nomunyasha itava tu kumwe, fiyo efimbo olo omunyasha ta ningi yo omukulunhu. Oshipopiwa eshi osho "okatengelelo" nefano lokutala kokule ("verkyker.")

V.Munyika

## Omahupilo gaNamibia otaga ka kundathanwa omasiku ngaka

Oshigongi shokukundathana oluhepo lwoshilongo shika, otashi ka kala ko eti 16-17.2.1985 mOvenduka. Osha tseyithwa kuAmushanga gwokomitiye yekwatathano lyuukwashigwana muNamibia, efolo Ottilie Abrahams.

Pauelele mboka e u gandja, oshigongi otashi kundathana iinima tayi landula:

Okukonga omukalo omwaanawa nkene aantu momikunda nomiilando taa pendulwa po.

Okukonakona iinima mbyoka tayi pumbwa unene ependulopo kutya oyinipo.

Okutala ekwatho lya pumbiwa mpoka li thike mependulopo lyoshigwana nokukonakona omikalo dhelongelokumwe mooprojeke ndhoka dhi li po nale moshilongo nonkene hadhi longo.

Oshigongingeleki oshiti 12 mOngwediva, eti 10-15.12.1984, oshitokolitho 41 osha tokola:

1. Omukalo gwokugandja iiniwe yOmuwa mu ELOC okutameka 1985 gu kale pakulikola, miilya, miinamwenyo nomiimaliwa.

2. Miimaliwa omuntu kee na iilonga:

a) Omulumentu a gandje R10,00 komumvo miigandjwa ngaashi shito.

b) Omukiintu a gandje R5,00 komumvo ngaashi shito.

3. Omuntu ha likola ondjambi okuza R100, noku uka pombanda, a gandje 1% yomondjambi ye miigandjwa.

Okugandja paimaliwa ku kale ngeyi:

19.	$\frac{R950 \times 1\%}{100}$	=	R9,50	komwedhi	x 12 = R114,00	komumvo
20.	$\frac{R1000 \times 1\%}{100}$	=	R10,00	komwedhi	x 12 = R120,00	komumvo
21.	$\frac{R1050 \times 1\%}{100}$	=	R10,50	komwedhi	x 12 = R126,00	komumvo
22.	$\frac{R1100 \times 1\%}{100}$	=	R11,00	komwedhi	x 12 = R132,00	komumvo
23.	$\frac{R1150 \times 1\%}{100}$	=	R11,50	komwedhi	x 12 = R138,00	komumvo
24.	$\frac{R1200 \times 1\%}{100}$	=	R12,00	komwedhi	x 12 = R144,00	komumvo
25.	$\frac{R1250 \times 1\%}{100}$	=	R12,50	komwedhi	x 12 = R148,00	komumvo
26.	$\frac{R1300 \times 1\%}{100}$	=	R13,00	komwedhi	x 12 = R156,00	komumvo

Oshigongi shono kwa tiwa otashi ke egululwa ku Dr. Kenneth Abrahams, osha tegelelwa shi ka kalelwe po wo kaakalelipo yokombanda yomafuta yomomahangano haga gandja omakwatho, osho wo aakalelipo yomapangelo; Britania, Canada naNdowishilanda lyuuninginino.

Oraata yOongeleki muNamibia (CCN), aailongi, nomahangano gamwe moshilongo gaa na sha nepangelo, osho wo ayehe ye na okatalekonawa, oya tegelelwa mo.

## ESO

Omukulupe Johanna Mhandeni Haihambo, okwa xulifile oweenda waye 31.12.1984. Okwa dalwa mounyuni wohamba Uejulu waHedimbi, mOkanghudi, muAngola.

Twa pandula unene ovo mwe tu yakula moshivilo shaxuuninwa.

Ponhele yovakwapata  
Ndinela K. Ndeutapo

## OMUKWETU

Ihadhi gwanene omutse gumwe, nandi pukululwe yakwetu. Nandi pule ano ngeyi: Ano osikola ngaashi ngeyi oyi na oombinga mbali petaambo, unene tuu ositanda ontihamano?

Onda kumwa unene aana yookiikombo kwaali, ohaku tiwa owala kapu na omahala, ihe mba ya za momagumbo goohashike shalye, kapu na uudhigu otaa taambwa nuupu.

Andola ku talwe aantu ayehe koombinga adhihe ye thike pamwe, andola opo owala tatu yambula po oshigwana shetu. MuMateus 22:37-40, otatu lombwelwa tu hole aantu ayehe ngaashi tse yene. Hakutala koondjelo, hakutala kutya omuntu okwa za maandjalye, ihe aantu ayehe ya talwe ye thike pamwe. Aantu ayehe ontsi yevi, "yo" ayehe otaa ka shuna mevi.

Ndaombanongwe Ndjimba



# KENNEDY KUAFRIKA OKWI ILE OKUTSEYITHA ONDJINDIKILA YIIPINDI ?

**Oshilyo shOsenate mepangelo lyaAmerika, Edward Kennedy, etalelopo lye ku SA petameko lyaJanuali, olye mu etele sigo omuNamibia moka a tsakanene wo naawilikengeleki.**

Omusamane Kennedy, oshilyo shongundu yohandimwe mepangelo lya-wo, ongundu ndjoka ya kanithile oshipundi mehogololo lyaayehe 1981.

Yamwe otaa ti, nuka okwi ile ko opo i ikongele esimano ndyoka tali vulu oku mu hogololitha a ninge omupresidende gwaAmerika, uuna ehogololo tali ka ningwa konima yomimvo ndatu tadhi landula.

Yakwawo ishewe otaa ti, elalakano lye okuya huka, oye li lwetele mokukonga ondjila ye yokuthiminika SA, a hulithe po omulandu gwe gwokatongotongo, mbala ngaashi tashi vulika.

Eyamukulo lya yela oku li na ye mwene, nayalwe ote li ya ulukile naashono te ke shi ninga mepangelo lyawo, ngele oshi na tuu sha nomikundu dhevi lyetu, nenge aawe.

Metsakanano lye naawilikengeleki yOongeleki ndhoka dhi li unene iilyo mOraata yOongeleki muNamibia, omusamane ngoka okwa tseyithilwa sha yela, kutya Ongeleki muka kayi lwete natango omukalo gulwe gwi ili okumangululitha oshilongo shika pamukalo gwombili, kaagu shi andola ngoka aguke tagu pitile mehogololo lyaayehe, lyoshili nolya manguluka pashitokolitho 435/1978 shligwanahangano.

Omusamane Kennedy mokuthika kwe mu SA, okwa holola mbala omadhiladhilo ge, kutya ye okwa hala epangelo lyaAmerika li hulithe po omakwatathano galyo, unene gopaimaliwa, nepangelo lya SA.

Mongundu yOsenate muAmerika, omu na iilyo ya yuulukwa oshinima shoka, ngaashi wo tashi adhikwa nomoongundu dhaawilikengeleki yomoshilongo shoka, noshe etela epangelo lyaReagan uupyakadhi.

Ekwatathano ekwawo ndyoka Kennedy a yuulukwa li hulithwe po, pokati kiilongo mbyoka iyali, oli li miinima tayi landula:

- Pu ningwe ondjindikila yiipindi pokati ka SA naAmerika.
- Omakwatho gopaimaliwa moombaanga dho mu SA ga hulithwe po.
- Nopu hulithwe po omalongelokumwe gopangangeshefa pokati kiilongo mbyoka iyali.

Opwa dhimbululwa kutya Amerika oku na omahangano goongeshefa mu SA, konyala 350, ga kuta Aaluudhe 120,000.

Epangele lya SA inali kala nando lyu uvite ombili komadhiladhilo gomuyenda ngoka gwokuAmerika. Osho wo gahamano gomomahangano taga longo mu SA, oge mu nyolele omushangwahokololo ngoka tagu tamaneke edhiladhilo lye lyokweeta ondjindikila yiipindi mu SA.

Omahangano ngoka oga ti, kutya go oga mona ondjila ombwanawa yokweeta po elunduluko

mu SA paupolotika nopauekonomi.

"Tu etha tu kale nombili, tu tsikile noshilonga shetu, sigo twa adha ethikilo," osho ge mu lombwele.

Oshigongi shligwanahangano uuna sha gongala pethimbo ndika, ohashi popile noonkondo edhiladhilo lyokutulila po SA ondjindikila yiipindi, ongepopitho kuye li na oonkondo, a vule okupulakena shoka uuyuni tau shi mu indile e shi ninge.

Aatiligane oyendji oye na uumbanda, kutya SA ngele okwa ningilwa ondjindikila kuuyuni, ngoka ta ka hepa unene haye (SA), ihe Aaluudhe moshilongo she nomiishiindalongo ye.

Epangelo lyaAmerika nolya SA nago oga zimina edhiladhilo ndyoka nohaga londodha edhiladhilo ndyoka lya tsakanithwe nando.

Ihe oku na Aaluudhe yamwe nomu SA mboka inaa itaala shoka. Mbaka ohaa ti, kutya yo moluhepo omo ya kala nomo ye li sigo onena, kape na oshipe tashi ya po.

Ombili pokati kaantu. nokiigwana otayi ende tayi pumbu, unene tuu ngele kapu na eiyadhililo nedhiminathanopo.

## Omolwohole yaKalunga Ongeleki tayi itula memanguluko lyomuntu: Naudé ta ti

**"Oshinakugwanithwa oshinene shOngeleki osho okupendutha nokukokeka cuvoko lya yela mokati kiilyo yayo, yi koneke omaukwatya guuwinayi osho wo omulandu gwaa na uuyuki," osho omusita Christian F. Beyers Naudé, a popya omasiku ga zi ko mOvenduka."**

Momutumba gwaayehe gwOraata yOongeleki muNamibia (CCN) dr Naudé okwa ti, iilyo yomagongalo oyi na oku uva ko sha yela, opo yi vule okukutha ombinga ndjoka ya yela yokupopila uuyuki, ombili nedhiminathanopo.

Oraata yOongeleki muNamibia oya li noshigongi petameko lyomwedhi nguka. Oshigongi sholudhi ndoka ohashi ningwa aluhe konima yomumvo gumwe. Omukwathi gwomumbisofi, omusita Matti I. Amadhila, oye kwa li a kalele po Ongeleki ya ELC (ELOC) peha lyomumbisofi Dumeni, ngoka a adhika e li kombanda yomafuta omolwoshigongi shompitithi ya LWF.

Aatumwa yElelongeleki yatano nayo oya li pamwe nomusamane Amadhila moshigongi shoka, mosheendo moka mwa li wo Amushanga omukuluntu gwOngeleki, omusita Absalom Hasheela.

Aapopi ya simana ngaashi omusita Naudé, Amushanga Ndjayi omupe gwOraata yOongeleki mu SA (SACC) nomusita Ismael Noko, gwokuZimbabwe, oya li ya hiyilwa mo wo.

Dr Noko, oku li ngashingeyi Amushanga kwatakanithi kOngongahangano yAakwaluther, kuGeneva. Moshipopipiwa shedhina: **Ongeleki mokati kekondjelo lyemanguluko**, Naudé okwa ti ngeyi:

"Olwindji omuntu ohu uvu nga omagandjo guusama taga zi mOngeleki dhimwe, kutya Oongeleki aniwa otadhi itula muupolotika, aasita oya lukwa iilongitho yopapolitika.

"Epulo oli li ihe mpoka, kutya omolwashike Ongeleki yi na okukala neuvitoshimpwiyu omolwekondjo lyemanguluko lyomuntu, sha kwatelela mo emanguluko lyopapolitika?"

Omupopi okwa gandja iitsa itatu, eyamukulo kepulo ndyoka, ngaashi tayi landula:

**(1). Shotango, Ongeleki otayi shi ningi, omolwohole yaKalunga, okuhola uuyuni auhe. Ohole ndjoka oyo ondingandinga meihololo lyaKalunga kaantu ye.**

"Ohole ndjika ngaashi inaayi yoolola omuntu komuhoko gwe, koludhi lwe nokoshigwana she, osho yi thike pamwe kaayamba nokaatigona, kaailongi nokumboka inaa longwa sha, kaalinawa nokumboka taa hepa.

"Uuna ohole ndjoka tayi kondjithwa notayi imbwa okuhololwa kaana yaKalunga komukalo gwontumba nenge kuukwatya wongandi, koveta nenge okomulandu gwasha, nena oyi na okudhigininwa noonkondo adhihe ndhoka aakriste taye dhi pewa.

**(2). "Oshitiyali, Ongeleki otayi shi ningi omolweuvitoshimpwiyu lyaKalunga moluuyuki.**

"Okuza kEtestamendi Ekulu sigo okundyoka Epe, otatu mono Kalunga nkene e na oshimpwiyu oshinene nuuyuni waantu ayehe. Mpoka Kalunga otatu dhimbulula nkene aluhe okwa gama kaadhigona nokoonahepa.

"Mpoka uuyuni mboka Kalunga te u kongo, tau thindilwa pevi nenge tau idhimbikwa, opo mpoka ta yelutha ewi lye okugamena mboka taa hepekwa noya yugwa ompito yokuningwa nawa.

**(3). "Lwahugunina Ongeleka otayi yi mo memanguluko lyomuntu omolwoshimpwiyu shombili yomuntu.**

"Oshilongo shaKalunga osho ombili, ngaashi Kristus a ti, kutya okuya mo okutaagulukila moshigwana oshipe, moka aantu taa ka tala iiholekwa yonkalamwenyo yi li kumwe mevathanoko lyoshili nomokukala kwa yela."

Omusamane Naudé, okwa tsikile natango a ti, kutya ye mokutala oowino ndhoka ya likola mu SA okukondjela emanguluko nuuyuki, otashi kwatha wo Ongeleki yomuNamibia, moshinakugwanithwa shayo.

Ekondjo ndyoka omupopi okwa tala, kutya pethimbo ndika olya thikalela ponkatu odhigu, unene miinima tayi landula:

Tala kep.12





## ESO

Omutumwa omukulu mu ELOC Juho (Johannes) Syrja okwa hulithile oondjenda dhe eti 18.1.1985 muSoomi, mepipi lyoomvula 88.

Omutumwa Syrja, okwi ile lwotango ku-Namibia moshilongatamo omumvo 1928. Okwa longo mEngela, kOngwediva nokO-kavango.

Okwa longo omimvo adhihe kumwe konyala 18, nando a kala ha mono omafudho pokati. Mpaka okwi ihulu po 1966.

Okwa thiga ko omukadhi noyana yatano, yatatu nayo oya kala aatumwa mpaka mu ELOC; Maija, Sirkka naKalle. Maija oku li natango kOkavango.

\*\*\*\*\*

Tate Johannes Muijale Pesha, okwa mana oondjenda dhe mOmaruru eti 14.12.1984. Oku na oomvula 78. Okwa thigi ko omukulukadhi gwe naanona 5 naatekulu 6.

Otatu pandula amuhe mboka mwa li mwa tondoka onkugo ndjika, opo mu ye mu tu tse omukumo noohapu dhomahekeleko.

Ngaashi mboka mwa zile kOwambo, Oshomeya, Ombaye nOvenduka. Otatu pandula omuyevangeliste gwetu A. Naulondo ngoka e tu galukile opo a kale pepako lyakuume ke ngoka ya kala naye ethimbo ele mOmaruru. Otatu pandula tate J.M.Nashandi ngoka a li e tu kwatha osheenditho opo tu ka tale omudhimba gwetu kOvenduka. Kalunga ne mu yambeke komayakulo geni agehe.

**Peha Iyaavalwa  
Magnaemi Angula**

### EDHIMBULUKITHO

*Ngoka wa adhika wa tumu embesitelo lyoye niimaliwa mopoosa, mekutu lya tendwa, unene momwedhi Desemba 1984, nowa dhimbulula kutya ino yamukulwa natango, fala okambapila komaumbilo kopoosa hoka u umbila iimaliwa mbyoka, opo opoosa yi ninge. onkambadhala yokulandula oshinima.*

*Tangi sho tamu shi ningi. Ombili ngaa, shoka ndishi osha etithwapo ashike koshiponga shomulilo shoka sha holokele mopoosa yaNdangwa, omwedhi ngoka.*

## A mana oondjenda

Hilma Kepale Kaunapawa F. Mwashindange okwa mana oondjenda dhe eti 31.12.1984, metopo lyoboma, mOpoosa pOndangwa.

Okwa hulithile mepipi lyoomvula 30. Meme Kepale okwa li omulongisikola pOsikola, Omukandu Comb. Skool, megongalo Uukwiyu mOndonga.

Kepale oye wo e li amushanga gwEtumo megon-galo lyaandjawa, Uukwiyu.

Okwa thigi ko omusamane gwe noothigwa 7. Okankelo oke na oomwedhi 9, adhike.

Otandi indile oshigwana shetu shaNamibia tu tsikileni nokugalikanena evi li mone ombili. Oshigwana oshi li muudhigu unene.

Otatu pandula unene amuhe mboka mwa li mwe tu hekeleke pambepo, nosho tuu wo omayakulo agehe mwa li mwe tu yakula nago.

**Omumwayina  
Teofilus Hakko**

## Ongeleki nemanguluko

Dha za kep.11

(a)"Uudhigu owa holoka miinima **yopakotampango**,kutya shoka Aatiligane oyendji taye shi popile mekotampango lyoshilongo, omwaalu ogwindji gwAaluudhe ogwe shi ekelahi.

(b)"Uudhigu **mepatudho lyoosikola**, kutya omukalo gwelongo lyOshibantu, Aaluudhe otaa pula gu se mo thilu. Ekondjo enene moshinima shika, olya li ko omumvo gwa yi (1984).

(c)"Uudhigu otu li nawo ngashingeyi **mekonomi** lyoshilongo. Haashoka ashike sho pwa thikwa mengushuluko lyiimaliwa, melondo lyoondando nenge omelondo lyomwaalu gwaakeeniilonga, ihe nomokutegelela wo iipotha oyindji yi ka holoke mokati koomiliyona dhindji dhaaniilonga pauthemba wawo.

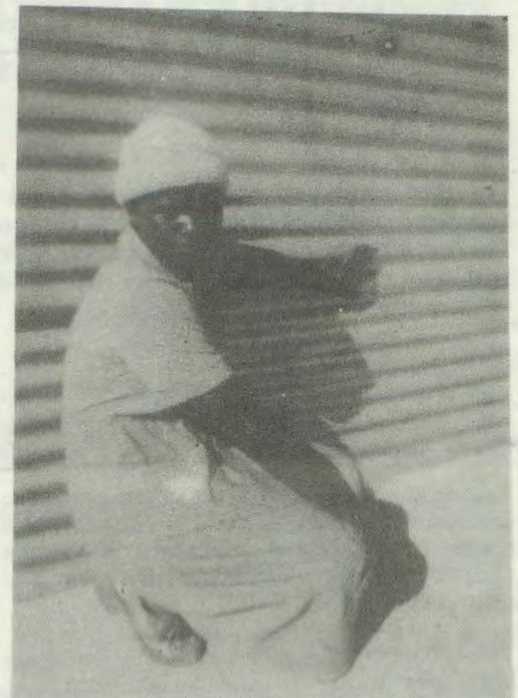
(d)"Aluhe mpoka to adha omulandu gwoshilongo kaagu li paukriste nogwaa na uuyyuki, notagu thiminikilwa aantu, onkalamwenyo yongeleki nayo itayi kala inayi mona oshiponga.

"Shika mu SA otashi yele ngashingeyi shi vule shito, moka konyala itoo adha mo we Ongeleki yontumba kaayi na omatopoko muyo yene omolwokatongotongo hoka ka thindilwa maantu omimvo ndhoka dha zi ko."

Mokuhulitha oshipopiwa she, omusita gwOmbulu Naudé okwi indile Oraata yOongeleki muNamibia yi kale melongelokumwe naandjoka yomoshilongo shawo mu SA.

"Otu na iinima oyindji iidhigu mbyoka tatu tsakaneneni muyo," osho e yi kumagidha. Mokati kayo okwa tumbula yimwe tayi landula mpaka:

Omatopagulwo gomokati komihoko, okunkundipaleka uupolotika nuuthemba wawo,



**Nakusa omulongi Kepale**

omulandu omwiinayi gwaaniilonga, ngoka tagu koleke ekonomo lyokangundu kaazeko Aatiligane, eindjipalo lyuukwiita moshigwana ashike, osho wo uunyengwi wokumona ondu-nge ombwanawa yokukondjitha iilongo yaauninginino mbyoka tayi yambidhidha omulandu gwa SA ngoka gu li po."

"Kandi na omalimbililo, emanguluko otali ke ya muNamibia nomu SA. Kandi na omalimbililo omulandu gwokatongotongo otagu ka ekelwahi nokuhanagulwa po, kandi na omalimbililo oshigwana onashi ka thikama kumwe shi tye: Sigo oompaka, opuwu.

"The oshi na oshilonga oshinene uuna ekondjo lyopaukriste li li po wo tali monika, tali hololwa notali taambwa ko koomiliyona dhaamboka taa kondjo ya ze moomango dhuukeenuuyyuki moka taa hepele mo pethimbo ndika, osho a ti.

### OMUKWETU

**Oye oshifo shOngeleki Onkwaevangeli paLuther yomOwambokavango.**

**Ohashi nyanyangidhwa mOshinyanyangidho shOngeleki mOnilpa.**

**Omukuluntu gwoshifo omumbisofi. Dr. Kleopas Dumeni,  
Amushanga gwoshifo omusita Sebulon Ekandjo**

**Ondando yOmukwetu muNamibia naSuid-Afrika R 5,00 komumvo.**

**Palwe muAfrika R 8,00 nokombanda yomafuta 11,00, komumvo. Mondhila R 13,00.**

**Oondando nomambestelo agehe naga tumwe kOmukwetu, Onilpa, P.Bag 2013, Ondangwa, 9000**

**EV. LUTH. OWAMBOKAVANGO CHURCH PRESS  
PRIVATE BAG 2013, ONDANGWA 9000  
SWA/NAMIBIA**