

# OMUKWETU



30c

No. 2

ISBN 0-620-06828-0

## 47 ayeke ya piti Omatilika mOwambo

KuSebulon Ekandjo

Mekonakono lyongundu onti 10 omumvo gwa yi (1984), aalongwa 47 ayeke ya piti mo yomaalongwa 335 mboka ya nyolele. Mbaka oyomoshitopolwa ashike shOwambo no-  
yo mboka ya nyolele miipundi.



“Aanasikola inaa itula mo nando miilongwa,” osho omupopyo gwa tana pethimbo ndika maavali nomaalongi. Ihe oku na tuu yamwe ye shi oshinakugwanithwa shawo ngaa-  
shi mbaka methano ndika.

Pauyelele mboka wa thiki mombelwa yOMUKWETU, Oshigambo osho aniwa shomoosikola 4, sha pititha aalongwa yasho hwepo. Aalongwa 14 ya piti (oopelesenda

66%) yomaalongwa 21 ya nyola ekonakono ndyoka.

Yatatu yomoonakupita ekonakono, oye na ompito okutsikila koosikola dhokombanda.

Oosikola oonkwawo, odha pititha nuunkundi ngaashi tashi landula:

**Mweshipandeka**, aalongwa 18 ya piti yomaalongwa 228 ya nyola, **Ongwediva** aalongwa 15 ya piti, yomaalongwa 86 ya nyola. **Okahao**, inamu za nando gumwe. Mumboka ayehe ya piti moosikola ndhoka, kaku na nando gumwe a mono onzapo yoku mu tsikilitha koosikola dhokombanda.

Epito lyosikola yaShigambo, osikola ndjoka yi li metonatelo lyOngeleki, nonando lya fa li etitha oonkondo ngeyi, kali shi ewanawa unene okuyeleka nomimvo dha piti.

Omumvo 1983, osikola ndjika oya li ya pititha aalongwa 25 yomaalongwa 26 mboka ya li ya nyola ekonakono mOmatilika. Aalongwa 10 oya li ya mono onzapo dhokutsikila koosikola dhokombanda.

### Ekonakono lyOsitanda VIII

Ekonakono lyOsitanda onti-8 moshitopolwa shika omumvo 1984, nalyo kali shi okupandulwa unene. Aalongwa 4814 mboka ya nyolele miipundi, omwa piti owala 889, oopelesenda 18% adhike.

Tala kep. 2

## Ngele otatu shi ningwa otatu shi iningi, nenge OMUKWETU ke shi wo.

- Omapito kage shi we omawanawa pomimvo ndhika, unene tuu moongundu dhopombanda.
- Omatsikilo goongundu dhopombanda (univeesiti) oga nkundipala.
- Omwaalu gwepito lyaalongi moshigwana, itagu yamukula we ompumbwe yelongo. (Pamwe shika otashi talwa kutya nonale osho sha kala, aanashilonga ihaa gwana.)
- Omumvo 1980 pahokololo lyokomumvo lyomutaleli gwoshikandjo oshiti-8, kakwa li nando okanona kamwe hoka ka piti omwaalu, moshikandjo shoka. Omuntu kehe konyala ito tegelele nando shi kale ngaaka, nonando ku kale omuhapo, kutya Aaluudhe kaye shi omwaalu.
- Omayeme otaga koko maalongi, kutya aalongwa mosikola oye na egamo lyokuhogolola iilongwa yanathangwa, unene aalongwa yomoosikola oonene. Iilongwa ngaashi omwaalu, Uunongononi (Science) nObiologi, omulongwa ita vulu nando okutsikila komeho okwiilongela eithano lya simana, manga kee yi na.

Shoka otashi ti, kutya iilongwa yanathangwa nonando oye yi pite itayi vulu oku ya taambitha moosikola dhokombanda. Nengele otaa taambwa, itaa vulu okukutha niilongwa mbyoka eithano kehe ye li pumbwa, okuyakula oshigwana shawo.

- Aalongi taa piti methimbo ndika, oya nkundipala montseyo yawo, osho omupopyo gu li po pethimbo ndika. OMUKWETU ina zimina omadhiladhilo ngoka, oshoka kape na ngoka ha putudha omulongi nuuhethi oshoka oku shi shi kutya omulongi ngoka oye ta ka kala omushiti gwoshigwana.

Shila uunkundi owa dhimbululwa ngaa mungoka a dhimbululwa, oshoka aantu kaye thike pamwe momagano. Ihe ngele omupopyo otagu uvika mpaka naampeyaka, nena otashi ulike wo kutya ngiika uunkundi otatu dhimbululwa moyendji. Epulo otali penduka: Omolwashike ngiika sha tya ngaaka?

Shoka tashi monika nomeho kumboka ye shi okutongolola, osho shoka, kutya eyambukopo lyoshigwana olya fa lya thikama owala lya mwena, itali inyenge we mokukoka.

Eyambukopo nekoko lyehumokomeho alihe, ohali zilile ashike oshigwana moosikola, melongo, hapalwe we. Moosikola omo hamu zile oshigwana aahambudhi ye shi iilonga yawo, aapangeli ya pyokoka, aalongi ye shi shono taa ningi naalongwa yawo mootundi nopondje, osho wo omaungomba galwe ga kwata onkalamwenyo yoshigwana.

Iinima mbyoka itayi dhimbululwa unene, kutya opo yi li tayi koko, oshoka kape lwetike moshigwana aanashilonga aape taa taamba iimpwiyu niinakugwanithwa yi ili noyi ili miikaha yawo, nonando pwa piti ngashingeyi omimvo odhindji elongo mpaka tali hokololwa, kutya oli vule lyomiilongo oyindji yomuAfrika.

Omaipulo opo ge li moshigwana omanene okwiipula naanashilonga mboka taa hehelwa muuyuni okutaamba iinakugwanithwa mpaka. Otashi vulika oshigwana sho shene inaashi holola ehala lyasho okwiilongekidhila okutaamba iinakugwanithwa yasho.

Otashi vulika oshigwana inaashi dhimbulula ompumbwe yokuhumbata iinakugwanithwa yasho shene. Otashi vulika mbika ayihe opo yi li, ihe ope na shoka tashi imbi oshigwana shi tsakanithe ompumbwe yasho.

Ihe epulo lya thikamena OMUKWETU mpaka olyo tuu ndika, kutya shika ope na ngoka te shi tu ningi nenge otatu shi iningi tse yene?

Sebulon Ekanjio

## 47 AYEKE YA PITI

Dha za kep. 1

Oosikola 14 dha nyolitha ekonakono ndika, osikola yaShakati ayike ya pitha hwepo, aalongwa 181 (oopelesenda 50%) dhaalongwa 361 mboka ya nyola.

Uutapi ngiika otatu ya monomola ontiyali, sho wa pitha aalongwa 49 (oopelesenda 43%) yomaalongwa 327 ya nyola. Ongha otayi ya monomola ontintatu, ya pitha aalongwa 34 (oopelesenda 33%) yomaalongwa 103 ya nyolele.

Inatu mona natango oshizemo shekonakono lyaalongwa yOsitanda V, sigo ompaka. Pethimbo tatu longekidha oshinyolwa shika, ombelewa yoshikondo shelongo, oya li inaayi pyakudhukwa manga okugongela omiyalu ndhoka.

## KOVAHONGWANHU EKUMAIDO

Omunhu keshe e li mofikola elalakano laye okuya komesho opo a yakule oshiwana. Ovanhu vahapu otava lalakanene eliko. Otava longifa oimaliwa yawo ngaashi va hala. Omunhu umwe ngeenge nee pamwe okwa ningi omulongifikola, elalakano laye okuyaya ashike kongulu yofikola ye ta "kala omutumba nokutokifa etango.

Omunhu a tya ngaha ohatu mu luku ashike "Shikofela" ile "omupwaalali" wongaho. Ke na ohole noshiwana, osheshi ota lalakanene ashike omwedi u fye. Oyo ngaho ohole yoshiwana oyo?

Ovanashilonga vahapu ova ninga ashike ovalongeli voingamifi noikunwa. Vamwe ova ninga "eebotjotjo" noilonga oyo va li ve na okukala tava longo kave i shii vali.

Ovanhu va tya ngaha otava hovele okufufya oshiwana kutya ove na ohole. "Lungama, satana naye oha longifa oshitya ohole, vali oku shii efatululo lasho nohe shi longifa ongomhani ile tu tye oshilondelo shaye.

Ohandi mu kumaida ovamwameme "Elalakano leni nali kale, liwa. Konima yokudja mofikola, otamu teelwa mu ka yakule oshiwana. Oshiwana shetu oshi li unene monima komba yexumokomesho. Olyelye te shi kufamo?

"Longifeni oitalenti yeni. Yepeni oikolwifa noingamifi. Shiiveni kutya ohole yeliko oyo oshiponga noimaliwa oyo omudi wowii aushe. Etilokalunga olo efina leshiivo; omalai otaa dini ounongo nouteku waye.

"Inamu li likolela omamona kombada yedu. Lalakaneneni omwenyo waalushe. Kuleni pamhepo palutu, paunongo nopanghenda, opo muha ninge ovapwaalali vongaho. Keleleni elaka leni kowii keshe. Filafaneni olukeno. Liteleleni mokuhanduka.

Hauwanga Christian

# “OROBOTA” YAKALUNGA

Orobota omulilo hagu adhikwa nohagu longithwa momapandaanda giilando iinene okulombwela aayendi yomomapandaanda okuthikama nenge okutsikila komeho. Moshikunino shaEden, Adam naEva oya li ya manguluka okulya komiti dhomeyana.

Eendathano lyawo nomushiti gwawo olya li ewanawa. Ihe Kalunga okwa tula ngaa ongamba mpoka ye na okuhulila. Omuti gwokutseya uuwanawa nuuwinayi ogwo ogwa li ositopa ndjoka (orobota) oku ya lombwela yaa lye iyimati yomuti nguka.

Konima aantu sho yi indjipala, Kalunga okwa indjipalitha omandhindhiliko goku ya londodha mpoka ye na okuthikama nenge okuhulila. Oompango ndhika, Kalunga ine dhi pa ashike oludhi lumwe lwaantu, ihe okwe dhi ningile wo uuntshitwe auhe.

Kalunga osho a lombwele omeya gefuta e ta ti: “Sigo oompoka ku kondo po we Omaj. 8:29 Oku na omalombwelo kaanona nokaakuluntu, kumboka yahokana naamboka inaaya hokana. 1Kor.7:8-11

Muuyuni wongashingeyi oondjila odhu udha omalombwelo kaahingi yihhaauto nokaayendjindjila. Oto ya mono nkene taa thikama pomandhidhiliko ngoka poondjila nomomapandaanda giilando. Okwaa iutha kugo, okwo okuya moshiponga. Ihe oku iutha kugo, okwo okuhupitha omwenyo.

Endhindhiliko lyehupitho lyomuntu olya tulwa komuti gwethingo, omathelemumvo omilongombali sho ga piti. Kristus Omuna gwaKalunga sho a sile oondjo dhetu. Ndjika oyo orobota onankondo ndjoka ya dhikwa kombanda yevi okusitopa aana yaantu yaa ye mehanagulo.

Tse atuhe otwa yono twa pe Kalunga ombunda. Okuza ngaa uuna Adam naEva ya hongololwa kuSatana, sho inaa vulika kelombwelo lyaKalunga, aantu ayehe oya yi meyono. Ihe Kalunga okwa tula po oositopa ndhoka tadhi keelele omuntu meyonuko.

Kalunga sho a dhipaga aatango yaAyegipiti, okwa lombwele oshigwana she oshihogololwa okuninga endhindhindhiliko piipamba yomagumbo gawo. Ndika olya li endhindhiliko lyokusitopa omuyengeli gweso ke etele megumbo ndyoka eso.

Kakwa li nando egumbo limwe moka eso lya ende mo, kakele kaandyoka

pwaaha li endhindhiliko lyombinzi yonzigona. Ombinzi yonzigona oye eta ehupitho kutse.

Aana yaIsrael sho ya kunduka oshilando shaJeriko, ohonda Rahab okwa li a lombwelwa a tule endhindhiliko pegumbo lye. Okutula ongodhi ye endjelela mekende, kondje yekuma. Ye okwe shi itaale nokwa ningi ngaashi a lombwelwa.

Paitaalo ndyoka a li e li na okwiitaala Kalunga kaIsrael, omakuma goshilando sho ga mbolokotele po, Rahab negumbo lye oya hupithwa. Endhindhiliko lyomuti gwethingo, otali tu lombwele tu ethe okwaaitaala, eikukutiko, uunkolwe nokugana iifundja. Ondhino okudhina Kalunga noohapu dhe. Uuntsa, oluhondelo nokuyonitha omalutu getu. 1 Kor. 6:19-20.

Tu ethe uukunyuni auhe wopambepo noku undulila esiku lyeitedhululo komeho. Okulongitha iingangamithi noopela dhomaludhi gontumba ndhoka tadhi etele olutu oshiponga.

“Onena tuu ndjika ngele tamu uvu ewi lye, inamu kukutika oomwenyo dheni.” Tu ethe omangungutulo, ihe tu hambelele Kalunga. Ugeyi nuutondwe u ze mo momitima dhetu, noku indila Kalunga e tu pe omutima gu na ombepo yombili.

Tu ethe po ohokwe yiimaliwa ndjoka ya yono po naamboka ya li ye shi okwiinekelwa. “Demas mokuhokwa uuyuni mbuka, okwa thigi ndje po.” 2Tim. 4:10-11, Mark. 14:10-11.

Omandhindhiliko gomomapandaanda itaga lombwele owala omuntu a thikame, ihe otaga ti wo komuntu: “Inda.” Omushigakano gwaJesus kagu shi ashike endhindhiliko lyokutya thikama, ihe ogwo wo elombwelo, kutya inda muJesus.

Otu na ompito yokuya kuKalunga. “Kaku na ngoka ta yi kuTate, okuninga ta pitile mungame.” Etopolitho olya tuulwa po, kehe ngoka a hala ota vulu okuya kuKalunga. “Ongame oondjila noshili nomwenyo. Ongame oshelo shoonzi.”



Ondjila okuya megulu, otayi pitile meitedhululo nomehempululo lyoondjo nomokuyelithwa nokuyogwa kombinzi yaJesus. Oye ote tu pe oonkondo tu ninge aana yaKalunga. Joh.1:12.

Ngele tse otatu tsikile meyogo ndino, mokukala okuyapuki, esiku limwe otatu ke mu mona oshipala noshipala.

**Salomo Elago**

## Omutumwa omukulu ota galikanene natango oshilongatumo

Kuku Elina yaMwashindange, okwa valelwa mOmbandja. He nayina oya sila miita yaFrank. Ye okwa tondoka ta ka holama. Okwa yile sigo okuSweden nokonima yethimbo okwa galuka ko e te ya kOwambo.

Aatumwa Aasoomi, oye mu tumu a fale evaangeli koKavango. Hwiya okwa monene ko aanona 12. Osheeli she aakwanambwiyu, gumwe okwa koko e ta yapulilwa uusitagongalo e ta tumwa ishewe metumo muAngola. Oye Samuel Mateus Shininge.

Alina yaMwashindange oku na omwenyo natango nota dhimbulukwa omwana miilonga ye yeyumo.

Otandi halele aahongi yetu muNamibia, onkondo dhaKalunga nuupenda ya yelithile oshigwana shetu.

**Milka Leena Petrus**

## E TU TETEKELE A YI MEGULU

Jerobeam (Ashipala Paulus) Amashisha, okwa manene oondjenda dhe 26.9.1984 ombadhilila moshiponga shoboma. Okwa li gwoomvula 36 nokwa thigi ko omuselekadhi noyana yaali.

Okwa li gwomOkando, mUukwambi. Ekund kaaleshi amuhe Ehol.14:12-13

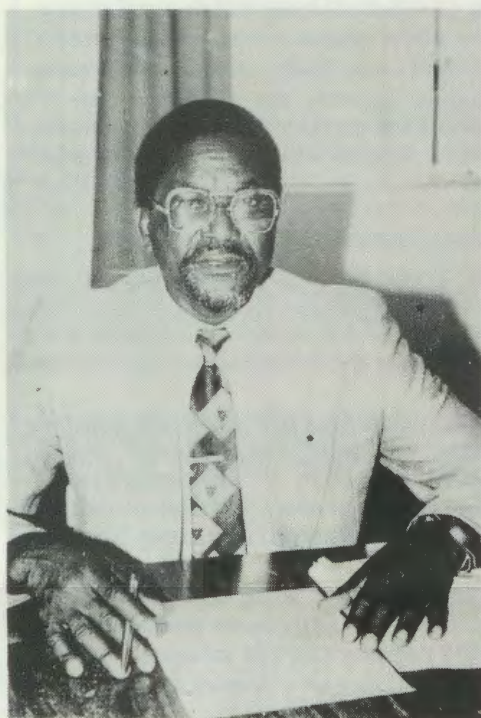
**L. Uushona Amashisha  
Oranjemund**

# Etumwalaka lyoshigongingeleki sha ELC (ELOC) oshiti 12 komagongalo

Oshigongingeleki shOngeleki onkwaEvangeli paLuther yomu SWA Namibia (ELOC) sha gongalele mOngwediva eti 9-14.7.84, nosha tsikile omutumba gwasho eti 10-15.12.1984 mOngwediva, moku-kundana omaudhigu moka iilyo yomagongalo yi li mo, osha thimnikwa okutumina omagongalo etumwalaka lyetsomukumo nolyetalaleko kutya "Jesus Kristus oye ombili yetu." Efes 2:4.

1. Opwa kundathanwa koombinga noombinga, kutya iilyo oyindji yomagongalo oya adhika komaudhigu gi ili nogi ili, ngoka ge etwa kaakwiita. Aantu yamwe oya yahwa okusa, yamwe ya kwatwa koonkondo, yamwe ya kuthwa momagumbo gawo uusiku, noinaaku tseyika oye li peni, yamwe moonholongo ethimbo ele noinaa pulakenwa naakwanezimo yawo oye li moluhepo.

Oshigongingeleki osha koneke natango, nkene oveta yuusiku ya etele aantu uudhigu neso, mokuyahwa, sho taa ka konga ekwatho nenge mokwiiyekelela sho taa nyengwa okweenda uusiku ya adhe hoka taa vulu okumona ekwatho.



Omusita Asser Lihongo, omu-pehawiliki gwOshigongingeleki

Oshigongingeleki otashi halele omagongalo naakriste ayehe omukumo okugalikane-na onkalo ya tya ngeyi, opo Kalunga e yi hulithe po koonkondo dhe.

Kombinga yoveta tayi thiminikile aantu muukwiita, Oshigongingeleki otashi pangula pamwe noongeleki dhomuNamibia muukumwe wa CCN, kutya oveta ndjika itayi lalakanene ombili yoshilongo, ihe otayi eta elelepeko, eindjipalo lyomaudhigu netiko lyombinzi moshilongo.

Onkee Oshigongingeleki otashi tsu omagongalo omukumo ga tsikile, ngaashi haga ningi shito okugalikane ombili yoshilongo ndjoka tayi yonwa kiita, nokuukolokoshi auhe tau monika maakwashigwana pethimbo ndika, wa etwa kokwaa na oveta nelandulathano.

Oshigongingeleki kashi lwete ondjila nopito yilwe tayi tu fala notayi thikitha oshilongo getu mombili shaa shi etsakanitho lyoshitokolitho oshiti 435 shIigwana yahan-gana.

Oonkambadhala dhilwe dha ningwa nale naandhoka tadhini ningwa kongundu ndjoka hayi ithanwa yetango lyaakwiita ya SA. Koombinga noombinga dhoshilongo shetu, itadhi ka tompola sha.

2. Oshigongingeleki osha kundana noluhodhi, kutya aakriste yamwe momagongalo itaa simaneke we oshipango oshititatu, otaa longo iilonga yawo mOsoondaha noitaa holoka komalongelokalunga. Oshigongi otashi londodha aakriste mbaka yaa ihilile yo yaa hilile ondjahi yaKalunga koshigwana mokwaadhiginina iipango yaKalunga.

3. Oshigongingeleki osha koneke wo noluhodhi, nkene omikalo dhopakriste nodhopashigwana nokuli tadhini shundulwa mukulongitha iikolitha nayi. Iikolitha otayi eta ehulopo neshundulo lyoshigwana, ngaashi tayi eta eteko lyoondjokana, ehalakanitho lyomaliko, omavu noluhupo lwopambepo nolwopalutu.

"Inamu kolwa komaviinu, moka tamu zi uuwinayi kehe, aawe, udheni Ombepo Ondjapuki." Efes 5:18.

4. Oshigongingeleki sho sha pulakene ehokololo tali hokolola oshilongatamo, osha koneke opu na omagongalo inaga gwanitha oshinakugwanithwa shago, onkee otashi kumagidha omagongalo okulonga oshilongatamo moongamba dhago, miitayingeleki nopondje yoshilongo shika. (Oshilongatamo osho oshinakugwanithwa shomukriste).

Ongeleki ndjika oyo oshiyimati shoshilongatamo, onkee monkalo kehe namu falwe ombili yomevaangeli. "Ano Petrus sho e mu mono, okwa ti kuJesus: Omuwa, nguno ota ningwa ngiini?" Joh 20:21.

"The Kalunga ketegameno ne mu udhithe nenyanyu alihe nombili omeitaalo, opo mu kale mwa gwana pombanda einkelo okoonkondo dhOmbepo Ondjapuki." Rom.15:13.

## Iimaliwa yetu nomagongalo

Omolvashike ongeleki itaayi pendula po omagongalo, ga kale ge na oongeleki omagumbo, oongulu niihauto? Ndika epulo hali pulwa kaakwanegongalo oyendji nando haayehe.

Mpaka onda hala owala ndi holole pafupi, kutya Ongeleki kayi shi sha shilwe shaashi aakwanegongalo. Ongeleki ongoye nangame. Ngele oto ti: Ongeleki nayi pendule po omagongalo, nena owa fa owala to ti: Nandi ipendule po u tale ngame mwene. Oshi li mondjila.

Iimaliwa mbyoka tayi vulu okweeta ependulopo lyopainiwe nongeleki, ohayi ende ngeyi. Ohayi zi kaakwanegongalo, tayi ya momagongalo, tayi ziilile miigandjwa, moongalo nomomagano okushashitha okanona nenge pwaa na eshasho.

Iimaliwa mbika ngele tse iilyo yongeleki tu yi dhiginine momagongalo getu, tu li muukumwe pwaa na omangungutulo onawa. Opo ihe iimaliwa mbyoka ngele twe yi thikitha megongalo, ohayi topolwa. Yimwe tayi kala megongalo, manga yimwe tayi tumwa kombelewa yoshitayingeleki, unene iimaliwa yiigandjwa noongalo. Iimaliwa yomagano ihayi piti mo megongalo.

Oshitayingeleki nasho hasho ehulilo lyiimaliwa mbyoka yetu. Ohayi topolwa mo ishewe hoka, yimwe tayi kala moshitayingeleki nayimwe tayi tsikile olweendo yu uka moshiketha shOngeleki ayihe, ngiika hoka hatu tala kutya oko ihe "kongeleki".

Okuza mpoka nayo ya pu po ngaa ne. Ya shuna ishewe kaakwanegongalo nedhingoloko ndyoka osho tali endlulwa ishewe niishewe. Ano olweendo olu li ngeyi:

Omukwanegongalo egongalo oshitayingeleki oshikethangeleki osho tashi shuna ishewe ketameko.

Sho wa landula sigo opompano, olye ta vulu ihe okupendula po omukwawo pokati kaambono yane? Ngele mbano yane kumwe oyo tatu tala Ongeleki, olye ihe ta pulwa a yambule po mukwawo?

Onde egulula owala oonkundathana miinima ya guma iimaliwa yetu momagongalo nomongeleki yetu.

S.V.V. Nambala

# Uunkundi weliko lyoshilongo, ompumbwe yiilonga niikukuta, oyo iinima yimwe tayi dhigupaleke onkalo yoshilongo

**Igwana yomuumbugantu waAfrika pethimbo ndika, oyi li momaudhigu ogendji. Oongeleki wo ndhoka dha humbata oshinakugwanithwa oshinene moshitopolwa shika, odhi ipyakidhila wo ethimbo alihe okupopitha nokutsa omukumo aantu yadho.**

Shoka tashi landula mpaka, etumwalaka lyaambisofi yOngeleki yaKatoolika kaRooma 59 yomiilongo 9 yomuumbugantu waAfrika. Etumwalaka olya tuminwa kiilyo yomagongalo gOngeleki ndjoka pehulilo lyomumvo gwa yi (1984), manga aambisofi ya li moshigongi shawo muHarare, Zimbabwe

Olya holokele tango moshifo shOngeleki yawo; OMUKUNI, naampaka otatu tula ashike amatumbulo gamwe pafupi ngaashi ga holokele.

## Omaupyakadhi

Tse otu li moshitopolwa shi na onkalo yiita kombinga yimwe; nombili kombinga onkwawo. Omaudhigu gopapolitika meni lyiilongo, otaga tsikile. Onkalo ya tya ngaka otayi kunu etopoko enene mokati kaa-kwashigwana yoshilongo shimwe.

Iilongo yilwe oyi igandja kenwethomo lyopapolitika tali zi pondje notali dhigupaleke aantu. Shika otashi ningwa meholamo nenge montaneho. Uunkundi weliko muuyuni owo oshinima sha guma nayi oshitopolwa shika shuuyuni, naashika otashi holoka meindjipalo lyompumbwe yiilonga.

Iikukuta wo oya nkundipaleke nayi onkalo. Omaudhigu ngoka taga hepeke aantu yetu yamwe, ogo eyugo nehindo lyomakankameno guuthemba womuntu, tashi ningwa omolwomadhiladhilo giinima yopauyuni.

Oshindji otashi vulu ihe okuhokololwa kombinga yondjala, yomatembudho gaantu, yokakombo noludhi, kuukwamuhoko, yoontauiki noyaamboka taa hepa sho itaa futwa pamuthika gwiilonga yawo noyopamahupilo gawo.

Tse otwa tseya omaudhigu agehe ngaka notu uvite uudhigu mbuka pamwe nane. Ihe omaudhigu ngaka inaga holoka ashike owala, omidhi dhetameko lyago, odho ondjo (omayonagulo) – pankalo yopaumwene noyopaukumwe.

Sigo oompaka, kehe tuu ngoka ta yono (ta ningi oondjo), otatu mu kumagidha i itedhulule, ye e ethe po omayonagulo ngoka taga halakanitha po ashihe. Olutu lwaKristus otalu nkundipalekwa kokukala po kwoondjo nokomayonagulo agehe.

Osho wo omaudhigu oge na ongushu ndjoka tayi nayipaleke iilongayakulo yaKristus. Omathimbo gamwe nando omaudhigu getu ga fa ga mena omidhi noitaga mono ehulilo, inatu kanena monkalo yuupongo noyomalimbililo, oshoka Kristus mwene oku li mokati komaudhigu note tu ningi aantu ye mwene, sho te ga kandula po ngele tatu inekele muye.

## Omandhindhiliko getegameno

Miitopolwa yetu, tse otwa gumwa komandhindhiliko getegameno. Uumbugantu waAfrika kau shi oshitopolwa shoka sha kanena momilema dhomaudhigu gaa na ehulilo. Tse otwa kuminwa citaalo ndyoka tali taandele monkalo ndjika ya piyagana unene komaudhigu.

Miilyongeleki yetu omu na uukokele mboka tau iulike wowene pamikalo ndhoka onkalamwenyo yopakriste tayi monika niilonga wo yesiloshimpwiyu; onkalo yopausosiale ndjoka tayi ulike iilonga yopambe-po, eindjipalo lyeithano lyiilonga yopambe-po, onkalo yesiloshimpwiyu lyoonakuvala noyaamboka inaa hokana, aamati naakadhona, etaandelo nekoko lyeitaalo maagundjuka, eyakulo kwaamboka ye li muudhigu.

## Ohapu yahuginina

Kristus sho a sile aantu ayehe, notatu hangana pamwe naye, otatu ningi ihe eindilo

Tala kep. 10



**Natango eso enene momikunda dhondjala muEtiopia olya tegelelwa pethimbo ndika ngele inaku monika ekwatho lya sha. Ehokololo olya ti aantu ye thike 200,000 oye li pokusa.**

## OSHIVILO SHEFANE-KO LOUKADONA OMULONGO MONANKALI

Otwa li tu na oshivilo shefaneko loukadona omulongo muNovomba 1984, mOnankali. Omwa li mwa ongala ovanhu ve fike lwopo 2985 ovo va dile motukulwa yOwambo nokondje yOwambo.

Ovakwashivilo aveshe ova fika kuyela nakeshe umwe okwa mona onhele yaye. Okwa li kwa ongalwa metala linene olo la tungwa nounghulungu nomomidile domifyati odo da dingilila ongeleka. Opwa li elimweneneno likumwifa mokati keembunga dovanhu ovo va li po.

Elongelokalunga ola ningwa komufita Titus Ngula neudifo okomufita Natanael Shinana. "Kalen i mwe lilongekida, mu li oupafi, osheshi inamu shiiva efiku notundi," osho omuudifi e tu lombwela. Mat.25:13.

Oukadona omulongo meongalo laNankali neongalo konyala alishe ola li la djala oikutu itoka,

osho yo ovakwashivilo vamwe. Omutumwa wmomhepo meme Justina Haihambo eshi a pewa oshinyandwa eshi momhepo, okwa shiva omaongalo e uye a tale oshinyandwa osho.

Oshinyandwa otashi faneke nghe eongalo laKristus tali i, li ka dane oshivilo shohango yOdjona moilemo. Osha'etwa nee efano apa pedu, opo ovanhu ve litalele ko, kutya otashi ka tya ngaheleli penya moilemo. Osha tungilwa keendjovo edi:

"Ouhamba weulu otawu kala wa fa oukadona omulongo va kufa elamba davo va ye va ka shakeneke omuhomboli. Ndele vatano vomuvo ova li omalai navakwao vatano ova li ovanandunge. Omalai ova kufa eelamba davo, vo inava kufa ko omahooli ..... " Mat.25:1-13.

Meme Justina okwa li a pewa yo omatumwalaka makwao opo e a lombwele ovakwashivilo aveshe ovo va li va ongala. Amwe okwa li taa ti ngaha:

Ovanhu nava kale ve na ombili.

Ou ta shindi mukwao, ota tulwa omutima.

Ou ta longo ouwa, ota alulilwa ouwa waye.

Oshilongo otashi ka shuna mombili, ngaashi sha li nale.

Ovanyasha ova pewa oshipango oshitine neendjovo dasho. Eshi konyala tava mono oiponga, omolwaasho ihava dulika kovakulunhu vavo, osho a ti.

Ovalumenhu aveshe ova pewa eendjovo edi. Eps. 103, Omaepistoli atatu aJohannes neimbilo 102.

Ovakainhu ova pewa Eps. 100 nEpistoli etivali laPetrus neimbilo 103. Tu konakoneni hano eendjovo detu odo.

Ovanhu okwa li yo va palulwa komalutu, opo va shune neendjila davo va pama. Ohatu yandje ombili kuovo inava mona eyakulo eli.

### Omakundifo:

Ohatu yandje ebandulo amushe mwa holokele koshivilo eshi. Otwa lekelweni netumbulo: "Onye ovanelao." Hano Kristus oye ombili yetu. Osheshi aishe ei twa pumbwa, tu kale nomwenyo netilokalunga mokushiiva ou e tu ifana noshinge shaye nouwa waye, omo tuu omo e tu pa oshali omaudaneko e na ondilo nomanene. 2 Petr. 1:3-4.

### L.Londeinge

## KONYALA AANTU 6,000 OTAA SI KEHE ESIKU MUETIOPIA

Oontanga muNamibia otadhi likila momapya koongombe nuusino, iilya nomakunde otayi nengenekelwa po iingulu, omalwishi nomakaroni otayi hawalekwa oondjuhwa, ihe muEtiopia, aantu konyala 1 000 nenge 6 000 nokuli otaa si kehe esiku.



Oshilongo shaTigray, muEtiopia, konyala ookilometa 400 okuza moshilandopangelo Addis Ababa osho unene sha hepekwa kondjala.

Ondjala moshilongo shoka shaakalimo taa tengenekwa poomiliyona 30, oya za komumvo 1973 omvula sho ya kala ihaayi loko we sha gwana miilongo oyindji yaAfrika.

Ihe enayipalo lyonkalo yoshilongo shoka oya tameke muule woomvula ne dha piti. Iita yuukwashigwana mbyoka ya kala ngashingeyi omimvo 10, uuhethi woshigwana inaashi putudhilwa iilonga, nevi ewinayi lyomapya gawo mbyoka oyo tayi nayipaleke onkalo yondjala.

Omahangano omanene gOongeleki muunyuni, Oongeleki paugumwe wadho ngaa-shi yomuSoomi noyomuAmerika nomahangano omakwawo gokukwatha gomligwanahangano otaga kondjo ethimbo alihe, ihe onkalo itayi lunduluka nando.

"Ondu uvite Ongeleki yetu wo ando yi ninge po wo sha, shoka tayi vulu monkalo ndjoka," osho omumbisofi Kleopas Dumeni, a holola nolukeno olunene sho a lesa ehokololo lyonkundana yondjala moshilongo shoka.

"Oondjila oombwinayi nooboloka dhaakwiita moondjila odhindji, nolwindji osha pula iiwike itatu lwaampoka, opo ololi yii-kulya yi thike kaantu," osho ehokololo lya ti.

Ehupitho lyaakalimo yomoshitopolwa sha dhengwa kondjala taa tengenekwa poomiliyona heyali, otali monika ashike ngele ando omumvo nguka taa topelelwa iikulya yootona 60,000 omwedhi kehe.

Omikithi ngaashi oTii-bii, omalaria neligalala moshitopolwa shoka nayo otayi ti 'nde ya'.

"Andola natse wo tu ninge po ngaa sha mOongeleki yetu, okumatuka onkugo yaamwameme mboka," osho omuwilikingleki Dumeni a hokolola pOmukwetu no-shipala sha kanitha ombili.

Etiopia oli na Aakwaluther ye thike 562,750 payalulo lyomumvo 1983.

Sebulon Ekandjo

# “Ninga ashike osho Kalunga te ku lombwele”: Ueyulu ta ti

**Elenga tatekulu Vilho Ueyulu, Ohaingu okwa talelwa po kOvangela nomaudifo Okrismesa (1984) momwoongo wopoluvanda laye pamwe neumbo laye novakwaneonga - lo Ovahaingu. Pexulilio lomaudifo okwa pandula unene etalelopo eli. Meedjovo daye okwa ti:**

“Ediladilo eli opo mu uye ngaha, ola djalela kuKalunga, osho ndi udite momutima wange, nda fa Betuel ta lombwele Elieser olweendo laye okuuya a endeke Rebeka.

“Onawa eshi mwa dulika kelombwelo laKalunga, ndele mwe uya, ina mu ninga ngaashi Jona a anya kuNinive naMoses a tila koshipala shaFarao.” Okwa weda ko a ti:

“Momunhu omu na alushe omalaka avari, limwe tali ti, longa eshi shiwa, nelombwelo eli ohali di kuKalunga ta popi meni lomunhu. Elaka likwao otali kondjifa tali ti; aye osho itashi dulika nande osho. Nelombwelo eli ohali di kuSatana.

“Hano onawa alushe omunhu u kale ho dulika kelaka laKalunga, osheshi alushe oliwa nola yuka.”

Omaturumbulo aa ohe a popi kalupu momapopifo aye nomeenghundafana. Omumati waye woshiveli, Viktor okwe shi pameka, eshi konima yepopyo laHe, a tya:

Tate oku hole alushe okutya, omunhu na longe osho ta lombwelwa kuKalunga meliudo laye, osheshi oha ti, oshi na alushe elao okuninga osho Kalunga ta popi, shi dule okuhadulika.

Omushamane ou omupangeli Ueyulu, oye umwe womomalenga manene aUkwanyama, ndele oye omukriste a shiivika nawa nonale. Eshi e uya moulenga woshilongo, okwa dja moseminali youlongi kOniipa, nosha yelalela kutya oko a mona omakanghameno mawa okulongela Kalunga.

Okukala kwaye moukriste, okwa kala omupukululi, nosho e li fiyo onena mefimbo loukulupe. Oye omupukululi munene mokulongela Kalunga nemona Oshilonga eshi ine shi ninga ashike mokanya, ndele okwe shi ulika moilonga yaye yokuyandjela Kalunga emona laye.

Vahapu nge tava tale eshi ta yandje, ohava diladila, kutya ota yandje osheshi oinima opo i li. Ndele luhapu ye mwene oha ti, iha yandjele Kalunga unene molwaasho e na sha, ndele oku li alushe molwoodi lokuwanifa elombwelo laKalunga meni laye, olo tali mu pula a longe osho shiwa.

Muye oha kondjifa elaka olo hali ti, itashi dulika. Luhapu nokuli okwa kwafela aveshe ava ve mu lilila nove mu yava oufyoona. Ye mwene okwa tya, kutya osho a yandja, luhapu okwa dimbulukwa she mu alukila molupe lomapuniko aKalunga mahapu e he shii okuyelekwa.

Omushamane ou oha hafele unene eendaka tadi popi okuyandjela Kalunga ngaashi omwenyo womunhu tau mu lombwele, osheshi osho a kala ha ningi nghee a kala. Ngenge owa hala oku shi shiiva nawa, pula kOvangela eshi a longa metungo longeleka ipe mEngela.

Etumbulo likwao he li popi nokwa kala he li endlulula moule womido detungo longeleka, oha ti:

“Omunhu ye mwene ita dule okuyandjela Kalunga shomupondo, fimbo ine limona ouluva koshipala shaKalunga, shi dule okumonika ouluva kovanhu vakwawo.”

## Etumwalaka la fimana

Omukulupe ou meenghundafana meumbo laye konima yomaudifo, okwe tu kumaida nokukunghilila, tu diinine shili okuxumifa

komesho omaongalo etu nokuyandjela Kalunga. Omaongalo a ha kale nande a hepa mefimbo eli lounyuni tau xumu komesho nowa hepuluka.

Okwa tuma etumwalaka komaongalo aeshe mOngeleki aishe, ta ti: “Peongalo keshe pongeleka, napa tungwe eengulu dokuyakulila ovaenda novakambakani omulele neendya.” Okwa weda ko ta ti; “Omukalo u li ngaha, otawo lundulula yo vali omikalo domaleloongalo etu (osheeshi okwa kala efimbo lile meleloongalo), opo a kale haa ongala fiyo oufiku novakulunhu veongalo tava kala hava nangala nombili opo.

“Ovakundwa tava kundwa omutenya noufiku, taku kundafanwa oinima oyo luhapu hai kundafanwa nokweendelela omolwetango la toka.”

Oshinima eshi okwa kala he shi popi shito nokwa li a faneka ngeno shi hovelifwe mEngela

Tala kep. 9



Elenga ekulunhu V. Ueyulu

# OKUGANDJA IINIWE YOMUWA KEGONGA- LO PAKULIKOLA

Oshigongingeleki oshiti 12 mOngwediva, eti 10-15.12.1984, oshitokolitho 41 osha tokola:

1. Omukalo gwokugandja iiniwe yOmuwa mu ELOC okutameka 1985 gu kale pakulikola; miilya, miinamwenyo nomiimaliwa.
2. Miimaliwa omuntu kee na iilonga:
  - a) Omulumentu a gandje R10,00 komumvo miigandjwa ngaashi shito.
  - b) Omukiintu a gandje R5,00 komumvo ngaashi shito.
3. Omuntu ha likola ondjambi okuza R100, noku uka pombanda, a gandje 1% yomondjambi ye miigandjwa.

Okugandja paimaliwa ku kale ngeyi:

1.	a) Omulumentu kee na iilonga .....	R10,00	komumvo	
	b) Omukiintu kee na iilonga .....	R 5,00	komumvo	
2.	$\frac{R100 \times 1\%}{100} =$	R1,00	komwedhi	$\times 12 = R12,00$ komumvo
3.	$\frac{R150 \times 1\%}{100} =$	R1,50	komwedhi	$\times 12 = R18,00$ komumvo
4.	$\frac{R200 \times 1\%}{100} =$	R2,00	komwedhi	$\times 12 = R24,00$ komumvo
5.	$\frac{250 \times 1\%}{100} =$	R2,50	komwedhi	$\times 12 = R30,00$ komumvo
6.	$\frac{R300 \times 1\%}{100} =$	R3,00	komwedhi	$\times 12 = R36,00$ komumvo
7.	$\frac{R350 \times 1\%}{100} =$	R3,50	komwedhi	$\times 12 = R42,00$ komumvo
8.	$\frac{R400 \times 1\%}{100} =$	R4,00	komwedhi	$\times 12 = R48,00$ komumvo
9.	$\frac{R450 \times 1\%}{100} =$	R4,50	komwedhi	$\times 12 = R54,00$ komumvo
10.	$\frac{R500 \times 1\%}{100} =$	R5,00	komwedhi	$\times 12 = R60,00$ komumvo
11.	$\frac{R550 \times 1\%}{100} =$	R 5,50	komwedhi	$\times 12 = R66,00$ komumvo
12.	$\frac{R600 \times 1\%}{100} =$	R6,00	komwedhi	$\times 12 = R72,00$ komumvo
13.	$\frac{R650 \times 1\%}{100} =$	R6,50	komwedhi	$\times 12 = R78,00$ komumvo
14.	$\frac{R700 \times 1\%}{100} =$	R7,00	komwedhi	$\times 12 = R84,00$ komumvo
15.	$\frac{R750 \times 1\%}{100} =$	R7,50	komwedhi	$\times 12 = R90,00$ komumvo
16.	$\frac{R800 \times 1\%}{100} =$	R8,00	komwedhi	$\times 12 = R96,00$ komumvo
17.	$\frac{R850 \times 1\%}{100} =$	R8,50	komwedhi	$\times 12 = R102,00$ komumvo
18.	$\frac{R900 \times 1\%}{100} =$	R9,00	komwedhi	$\times 12 = R108,00$ komumvo

# OONKUNDANA DHO- NGELEKI PAFUPI

## ENGAMBEKO LYOLUVALO ITALI POPILWA MU ELC (ELOC)

Okomitiye yaantu yane, oya hogololwa kOshigongingeleki shOngeleki onkwaEvangeli paLuther yomu SWA/Namibia (ELC) (ELOC), shoka sha zi ko, opo yi longekidhe efatululo ndyoka tali yelitha nawa omakankameno gOngeleki ndjoka moshinima shelongitho lyomiti okungambeka oluvala nekuthomo lyomala miipangelo.

Efatululo ndyoka otali ka tuminwa ihe omagongalo nolya dhiladhilwa unene mboka yaa li moondjokana.

## OMPUMBWE YAANASHI- LONGA MONGELEKI OTA- YI KONDJITHWA

Ompumbwe yaasita naayevangeliste ndjoka tayi dhengele mOngeleki ya ELC (ELOC), oya kundathana moshigongingeleki neitulomo enene. Oshimpwiyu osha thigilwa ihe Elelongeleki li tale nkene taku monika omukalo gwokutaamba aalongwa oyendji mosikola yuusita noshiputudhilo shaayevangeliste mEngela, nkene shi shi okupendulwa po ishewe.

Iimaliwa nkene tayi monika okuputudhitha aana-shilonga ya gwana mOngeleki osho shi li omukundu omunene sigo ompaka noshu shi na okudhimbulukiwa komagongalo, kutya ogo taga tegelelwa tangotango ga kandule po omukundu ngoka, osho omumbisofi Dumeni a dhimbulukitha wo oshigongi.

## AASITA 16 KUPAULINUM

Elelongeleki lya ELC (ELOC) olya koleke omadhina gaasita yOngeleki ndjoka 16, ya ka kale mOkersesa yomasiku 35 muPaulinum, Otjimbingwe.

Osha ningwa mElelongeleki ndyoka epe nomadhina ngoka oga hogololwa kaatonateli miitayingeleki ayihe ine. Etameko lyokersesa oli li ko eti 3 lyaFebuluali nuumvo.

Elalakano oli li mehumithokomeho lyOngeleki maanashilonga yayo.

## EHANGANOTUMO LYA YUULUKIWA LI HOLOKE NOMU ELOC

Osha dhimbululwa moonkundathana dhiigongi oyindji mOngeleki ndjika, nkene pe na ompumbwe onene yokudhika Ehanganotumo mpaka wo.

Oshigongingeleki sha zi ko, moonkundathana dhaso dhiilonga yetumo mOngeleki, osha koleke wo dhiladhilo ndyoka. Onke osha thigile Elelongeleki oshimpwiyu, opo li ninge omalongekidho agehe taga pumbiwa, pu totwe oshikondo shetumo mOngeleki.

Nongele shika osha ningwa, otashi ka longa meithikameno notashi kala okwooko kwOngeleki moshini ma shetumo.

## NDINDHILIKA

Omumvo ogu na omasiku 366, uuna Febuluali gu na omasiku 29, nomasiku 365 uuna Febuluali gu na ashike omasiku 28.



## “Inandi longwa omwaalu,” otashi tumbulwa ngashingeyi koyendji

Oshilonga shika shuulongi, otwe shi pewa kesilohenda, oshoka osho oshilonga shaKalunga mwene. Tse inatu shi inekelelwa moluuunkulungu wetu, nando uunkulungu nawo oshinima sha pumbiwa tuu shili.

Pethimbo ndika lyomulongi kehe a pumbwa okwiihumitha komeho ethimbo kehe, opo a kale e na owino moshilonga she shoka e shi inekelelwa kuKalunga, otatu adha mo aalongi oyendji ye etha eilongekidho.

Eilongekidho lyomulongi ihali tameke ashike uuna ndoka to ka thikama koshipala shaanona, ihe otali tameke kolule manga omuntu u li miipundi to longwa.

Pethimbo ndika aalongi oyendji pethimbo ye li mosikola ihaa dhimbulukwa nando oshinima shoka, onke otaa kutha ashike iilongwa yawo yene yi li 5 nenge 6 opo ya vule ya ka pite nuupu ya mone onzapu, nokweekelahi ngaaka iilongwa iikwawo.

Moshilongo shetu otamu simanekwa pethimbo ndika Oshiingilisa. Omwaalu ihagu pitwa we oshigwana otashi kwathwa ngiini? “Inandi nyola omwaalu muulongi wandje,” osho oyendji taa ipopile ngashingeyi.

Mokati koyendji mbaka taa tumbula ngeyi, kaye shi aasama pakuvalwa, ihe nayo wo inaa putudhilwa okudhiladhila iinima yomiyalu okuza petamekolela. Naashika oshi na ekota lyasho kaalongi mboka yoonundu dhopevilela, haa longo uunona mboka tau ka ninga aalongi komeho.

Dhimbulukwa oshigwana shoye mwene noluhupo lwasho. Omulongi oye ngaa omeho goshigwana. Kaku na gulwe ngoka te ke tu longela nokuputudha oshigwana shetu, ngele tse yene itatu itula mo moshinima shika.

Oshilonga otwe shi thigilwa kootate ye shi longele nondjala nenota. Oya longo nuudhiginini, oya gandja eyambo lyawo kuKalunga mwene gwoshilonga noshigwana osha li sha yambekwa.

Tu idhidhimikeni ano miilonga mbika iine noya simana, tse tu holeleni mboka ye tu tetekelele.

**Soini N. Kandume**

## Uukumwe waFELCSA wa tenda omusa

KuSebulon Ekandjo

Omusa omwiinayi ogwa holoka mOfederasi yOongeleki oonkwa-Luther dhomuumbugantu waAfrika, ehanganano ndyoka hali ithanwa FELCSA, sho ongelekishilyo yimwe ya tokola okuthiga po ehanganano.

Etokolo olya zi moshigongingeleki shOongeleki ndjoka onkwaEvangeli paLuther yomuumbugantu waAfrika (ELCSA), muDesemba gwa zi ko, Ongeleki yAaluudhe ayeye.

Felcsa ndjoka ya thikama moongelekishilyo 12, moka mwa kwatelelwa wo na ELC (ELOC), oya dhikilwe 1966, nando elongelokumwe olya za nokuli komumvo 1953.

Pethimbo ndika ombelewa yaFelcsa oya adhikwa yi ipyakidhila niilonga yooprojeke ya simana mokati koongelekishilyo; elongo lyuuleligumbo osho wo okutunga omusindalongo gweputudho lyopakiste moosikola dhOsoondaha, dheshasho nekoleko.

Konima yomimvo ne, ntano dha zi ko, Oongeleki ne dhAaluudhe Aakwaluther mu SA, odha hangana kumwe e tadhini ningi Ongeleki yimwe ayike. Odha zile momatumo ga yooloka.

Oongeleki dhAatiligane Aakwaluther nado odha kala tadhini hiywa dhi itule muukumwe mbuka, ihe inadhi shi pondola omolwomulandu gwokatongotongo koshilongo shoka, ngoka tadhini gu yambidhidha pamukalo gwontumba nogwongandi, nosho shoka sha geyitha Aaluudhe mboka.

Oongeleki oonkwaLuther dhAatiligane mu SA nomuNamibia, omumvo gwa zi ko, odha tidhwa mo nenge odha kuthwa uutheмба wuukwashilyo mOngongahanganano yAakwaluther muuyuni auhe, omolunyengwi wadho okupangula okatongotongo puuyelele.

Omumbisofi omukuluntu gwOongeleki ya ELCSA, Daniel P. Rapoo, oye wo e li omupresidende gwaFelcsa. Elongelokumwe lyoomwayinangeleki dhomuNamibia nomuZimbabwe, ELCSA okwa ti, kutya otali tsikile, ihe kutya okomukalo guni inashi yela manga.

Omaudhigu gethimbo ndika, osho ga tameke okuninga ngeyi omisa mokati kezimo lyAakwaluther ayeye muuyuni.



Omumbisofi omukuluntu gwOongeleki ya ELCSA, Daniel Rapoo pethimbo lyetalelopo lye muNamibia, pOniipa, 1975

## Ninga ashike osho Kalunga ....

Da dja kep. 7

lo li yandje oshihopaenenwa komaongalo makwao. Onghe oha ti nee:

“Efimbo ola fika nee, moukriste wetu opo tu longe keshe umwe meliudo laye, to shi lombwelwa kuKalunga nokuyambulapo ngaha oshilonga shaKalunga medu letu.

Ekundoehelo eli okwe li yukifa momaongalo aeshe ongeleki yetu aisho, ta ti:

“Natu efeni ouluva ou tau kondjifa alushe elombwelo laKalunga mufye, ndele Kalunga na pewe osho shaye.”

Luhapu meenghundafana omushamane Ueyulu oha ti, kutya okuhole ongeleki, osheshi xe Ueyulu waHedimbi, oye a tumbula ovahongi Ovandowishi mOndjiva va udifile oshilongo shaye, nande ye mwene a fila mopupaani.

“Ame eshi nda ninga omukriste ite file mupaani ngaashi tate, ondi udite alushe oshikolo meni lange shokupandula Kalunga. Naashi handi yandje, ohashi kala ongepandulo lange nehamebelelo eshi nda itavela Kalunga omunamwenyo,” osho ha ti.

Tu tambuleni omapukululo nomalombwelo omukulupe ou, unene ovanyasha.

N.H. Shinana

# NAMIBIA OTALI ENDE NONDJILA YA DI-LIKWA

**Ombelewa yOmukwetu oya tambula omahepu mahapu a dja keembinga neembinga doshilongo eshi, oo taa holola nhumbi elihumbato loshiwana la naipala. Unene ovo va mwene omhito okukala modolongo, tava pwaalala, tave lipupu voo tava dilonga moule, voo tava tale nomesho eshi va piti mo, ove shi koleka neenghono, kutya oshiwana shaNamibia efimbo eli otashi ende mondjila ihai endwa koiwana, ya dilikwa.**

"Fiku nda dja modolongo, nde handi tale elihumbato loukadona novamati, ovashamane novakulukadi, onda li nda nyanyala," osho omunadolongo umwe a hokololela O-MUKWETU.

"Ame fiku nda pita mo modolongo, nde handi tale oshiwana shange nhumbi tashi nu, olo fiku nda tokola kutya nghi na vali fiku nai longife oikunwa moshilongo eshi," mukwawo vali umwe osho a ti.

Omunhu oto hovele okulipula, kutya ovanhu ava ove wete shike naanaa sho shi he wetike kuvahapu moshiwana? Ombilive imwe otwe i tambula ya dja modolongo. O-madiladilo ayo okwa fa ngo a dongakana kanini, e he li meshikulafano, ashike omunhu oto mono mo sha, kutya omunhu ou ye mwene okuwete sha, ashike oshe mu nyene okuhokolola. Ota shange ngaha:

Ondi na sha shihapu okuyelifila oshiwana, osheshi moule wefimbo ndi li mondjedililo, onda likola mo shihapu mokukonakona onghalamwenyo yoshiwana nomushitwa kombada yedu.

Omushangi ou a ti, oye N.V.Mwatilefu Nangonya, ota twikile ngaha: Apa onda hala ashike nde ete pouyelele ehalakano nelipwidulo letu, fye oludalo laNamibia. Natu taleni hano osho shi li moitanaishe yetu tashi ulike omunyasha, okaana nomudali wako.

Hembadangelo oha nu, ta haele, ta eta eendjovo domatukano kovakulunhu nokonima ta fiye po oonakudala vaye ta i nomaushiinda paengeda dokakombo lilifa.

Moukakombo lilifa omo ta ningile omuxungulume ile ngenge okakadona, ota ningile mo oshikumbu, ovanhu ava nova ninga oipele yokovanhu. Mekonakono loshili, shiwana shaNamibia, ondjelo yetu ohatu i yandje po koingulu noku i lyatela koshi yomakondo ayo.

Ounyuni onde u lifa nde handi u alula, noponhele apa ndi li po, inandi hala ove naave u fike po vali, osheshi otapa ulike euliko nemakelo loheli pamwe novaengeli vayo kombada yedu.

Ashishe oshe tu yeulukila opo tu yoolole ouwa nowii. Omolwashike twa ningwa ovapika komalodu, koluhaelo osho yo koinima ikwao yopautondwe oyo i li pamaludi e lilili noku lilili?

Ounyuni wopaife hawomunhu to dimbwa okandjodi we ka twile onghela, aye. Eshi tashi monika moshilongo shetu, efifahoni.

Ashike Namibia otali tu pula oukoshoki, ohole, omikalo diwa nomayekele puKalunga nopovanhu.

Omunyasha, aluka, tala diva konima. Xungila naxo ile nanyoko, kendabala u longife oshikundu ponhele yoKing Corn noWhisky. Tu dimbulukweni oonakudala vetu opo tu va pupalekele oumbangi wayo ngenge tave ke tu pulwa kuKalunga.

## Omunhu na kale ngahelipi noshiwana shaye?

Omunhu keshe e li mofikola, elalakano laye okuya komesho opo a yakule oshiwana. Omuhongwa nge okwa piti, ota teelelwa a ka yakule oshiwana. Ndele pefimbo eli, otaku monika ovanhu vahapu tava lalakanene eliko. Ove ongahelipi?

Umwe ngenge ne pamwe okwa ningi nande omuhongifikola, elalakano laye okuuya ashike kongulu yofikola, ye ta kala omutumba nokotikifa etango. Omunhu a tya ngaha, ohatu mu luku ashike 'Shikofela' ile "omupwaalali" wongaho.

Oto hanga ne vati omunhu okwa hala a ka longe moshiwana, ye ke na ohole moshiwana, ota kendabala ngaashi ta dulu, opo a kale monyalo, shaashi oyo ashike oilonga ipu kuye. Ota pwaalala ashike, ye ta hovele okusheka ovanhu. Ota pula omapulo madifa omaxwilili. Oyo ngaho ohole yoshiwana oyo?

Ovakulupe vahapu otava nyenyeta omolwovana va longwa, vati omikalo di he po, ile di nyanyalifa. Ovanashilonga vahapu ova ninga ashike

ovalongeli voingangamifi noikunwa. Vamwe ova ninga eebotyotyoto, oilonga kave i shii vali.

Ovanhu va tya ngaha, otava hovele okufufya oshiwana, kutya ove na ohole. Lungama, Satana naye oha longifa oshitya, ohole, ashike efatululo laye oli lilili.

Ohandi mu kumaida ovamwatate, elalakano leni nali kale liwa. Konima yokudja mofikola, otamu teelelwa mu ka yakule oshiwana. Oshiwana shetu oshi li unene monima, kombinga yexumokomesho. Olyelye te shi kufa mo?

Longifeni oitalenti yeni, yepeni oikolwifa noingangamifi. Ohole yeliko oyo oshiponga. Oimaliwa oyo omudi wowii aushe. Etilokalunga olo efina leshiiwo, omalai otaa dini ounongo.

Inamu lilikolela omamona kombada yedu, lalakaneni omwenyo waalushe. Kuleni pamhepo, palutu, paunongo nopanghenda, opo mu ha ninge ovapwaalali vongaho. Keleleni elaka leni kowii keshe. Filafaneni olukeno. Liteleleni mukuhanduka.

**Omumwaxo,  
Hauwanga C. Shivanifeni**

## Etumwalaka lyaambisofi

**Dha za kep. 5**

molwonkalo ndjoka tayi pitike okugwanitha po ondilo nongushu ya gwana po yuuntu, opo aantu ya vule okwaadha elalakano lyawo memanguluko nomombili.

Tse otwa tseya uuwanawa mboka wa longwa komapangelo monkalo ya dhigupala, ihe otatu indile natango opo omuntu muAfrika (Aaluudhe) a ziminwe ye e ethiwe a koke pamukalo guukwatya womithigululwa nowongushu yaAfrika, opo kaa ningwe oshege komadhiladhilo gopaputuko ngoka gaa shi okutaambwa ko nokulongithwa muAfrika.

Aluhe Ongeleki oya egulukila oonkundathana nokupulakenathana opo omadhiladhilo ga yooloka taga kondjithathana ga vule okukundathanwa nokukandulwa po nelalakano lyokumona embilipalo.

## Owe shi shiiva tuu?

**Kutya:**

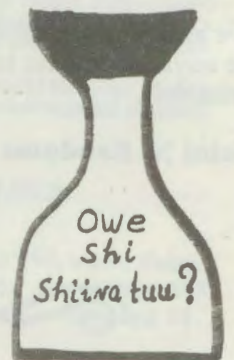
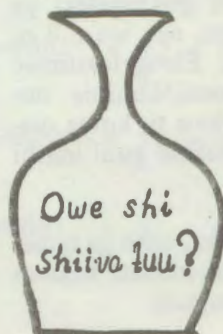
Oinuwa ei; White Horse Whisky, Rum naKonjak, o-mu na alkoholi ihapu eepeleshenda 36-40.

Ngenge omunhu to i nu etata lekende, otashi pula eetundi 11 okukololokwa.

- Ngenge omunhu a nu ekende alishe ile avari, ita dulu vali okulipangela, ota kofa ashike. Ita koneke vali omunhu nomudingonoko waye.

- Ngenge to nu ekende limwe netata fiyo atatu, oto kanifa eudito loye. Ito dulu okufuda netuno lomutima otali denge kanini notashi dulika to fi.

- Omunhu munini molutu ngenge ta nu pamwe e na olutu linene, ou munini ota kolwa dja.



# EPANGELO LYAREAGAN, MU-AMERIKA, INALI PANDULWA KAAWILIKINGELEKI

Oomvula ne dha zi ko, omupresidende gwaAmerika, Ronald Reagan, a kala koshipundi, okwa toto po omulandu ngoka ye mwene e gu luku 'ekwatathano tali tungu' (Construction engagement) okulundulula aniwa okatongotongo mu SA.

Omukalo gwekwatathano lya tya ngeyi, kape na ngoka te gu pandula, aapolitika nenge aawiliki yoongeleki oye gu yematele ashike. Aawilikingeleki yaali mu SA; Dr Allan A. Boesak, omupresidende gwehangano lyoongeleki oonkwa-Reformi muuyuni, nomumbisofi Desmond Tutu, oya gandja etumwalaka lyawo kaakriste yomuAmerika mboka taa yambidhidha omulandu gwaReagan mekwatathano na SA.

Koshifonkundana shOngeleki onkwaevangeliki paLuther muAmerika; News Bureau, omusita Boesak okwa ti:

"Otandi lombwele aakriste Aayamerika ya lungamene epangelo ndyoka tali kondjitha uukomunisi nomikalo dhopaukomunisi."

Boesak okwa ti yo mu SA oye na epangelo kali li paveta, oshoka kali lile po wo tuu nando oopelesenda 80% dhaakalimo. Omumbisofi Tutu ngoka a likola oshishani shombili 1984, naye okwa yematele omulandu gwokatongotongo mu SA. Koshifo tuu shono sha tumbulwa metetekelo, ye okwe shi tumbula ngeyi:

Omuluudhe kehe na kale omukiintu nenge omulumentu, shimpa tuu a gwanitha omimvo 16, okwa li e na okuhumbata aluhe opaasa ndjoka tayi holola ngele oku na uuthemba wokukala miilando ngaashi muJohannesburg.

Okwa tsikile a ti: "Omumbisofi a taambwa kaantu oyendji moshigwana ngaashi ngame, ite pitikwa nando ndi gandje ewi lyandje mehogololo lyoshigwana, manga okanona kOmutiligane koomvula 18 otaka hogolola nando inaka tseye manga kutya okuhumbata oshinakugwanithwa otashi ti shike."

Omumbisofi Tutu moomvula dha zi ko, okwa kala Amushanga Ndjayi gwOraata yOongeleki mu SA ndjoka yi na aakriste ye thike poomilyona 12.

Omumvo 1982, okatongotongo mOngeleki yOombulu mu SA, oka li ka pangulwa noonkondo koongelekishilyo dhomehangano lyOongeleki oonkwaReformi muuyuni noka li ka lukwa "uulunde".

Moshigongi shehangano ndyoka 1982 mu-Ottawa, Canada, Oongelekishilyo odha to-

kola dhu umbe mo Ongeleki yAatiligane mu SA (NGK) mehanganano omolwokuyambidhidha kwayo okatongotongo. Moshigongi shika omo moka omusita Boesak a hogololwa a ninge omupresidende gwehangano ndyoka.

Pandjokonona yOngeleki yOombulu sho ya holoka lwotango moshilongo 1652, Aaluudhe mboka ya tedhululithwa kuyo, oya shashelwa mOngeleki tuu ndjoka noya gongala pamwe mUulalelo Uuyapuki.

Konima engunyagulathano olya tameke mOngeleki, noshigongingeleki shomumvo 1857, osha gandja oonkondo komagongalo ga tale nkene tagi ikutha kothingo omute-nge gwAaluudhe momalongelokalunga.

Okuza mpoka eshasho lyAaluudhe olya kala hali iningilwa nUulalelo Uuyapuki tau itopolelwa sigo pwa ningwa etopoko lyo-

## TOIVO YATOIVO

1. Andimba Toivo yaToivo  
Fiku wa kokola onghokola  
Eumbo we li luka Namibia  
Kakwa li tu udite eshi to ningi  
Mboli owa popya neefimu dovalumenhu  
Andimba wa xungila naNehale laMpingana  
Nomunhu waKayalambadwa, wokapekwa waMelulo  
WaNdiiokelwashima Mandume yaNdemufayo

2. Fiku we ya muNahambo momwedi  
omutivali kodula  
Omafiku eshi a li omilongo mbali naatano naane  
odula oyo tuu oyo  
Owa shangela pokalili, mondjuwo yokoilongo  
Popepi noshidipaelo  
Pa fya ovaenda otututu  
Ovanhu noohembadi otwe va mwene ve uya  
Va popilwe kuShishaama shaNdunge  
Ta lombwele Haimbili yaHaufiku  
Ohamba yaUkwanyama manga u he li okamunduda  
U he fy'okatumwamundilo  
Eexuxwa ve di kwata komilungu  
Ookahadashala va lele  
moupika wokoshikuku  
Ashike ependafule lokOmandongo  
Vahapu owe va pombuda shiveli.

3. Oshiwana shaNamibia kashi na mukwayu naave  
Ovakalimo nande ve ku ye le omenyo,  
osho kashi na oshilonga  
Vati oiyuma i li elimba limwe, ihai pu  
okupulungusha  
Namuweda, ove shamha to lesha okambo keendunge  
Okatikisa kovashashwa vaKalunga

4. Ounongo owe u nyama kevele  
Oupendafule we ya wa dja nao medimo  
Onyati we i pewa kuPamba  
Omaye le we a ndungikwa kuNamhongo  
Fiku wa popifwa kuShihepo mOkaloko  
Andimba wa kundwa kuAukule wokombuwa  
yaNamupolo waNgwali  
Tava ti diinina, ehete oloye  
Andimba Toivo yaToivo diinina outa woye

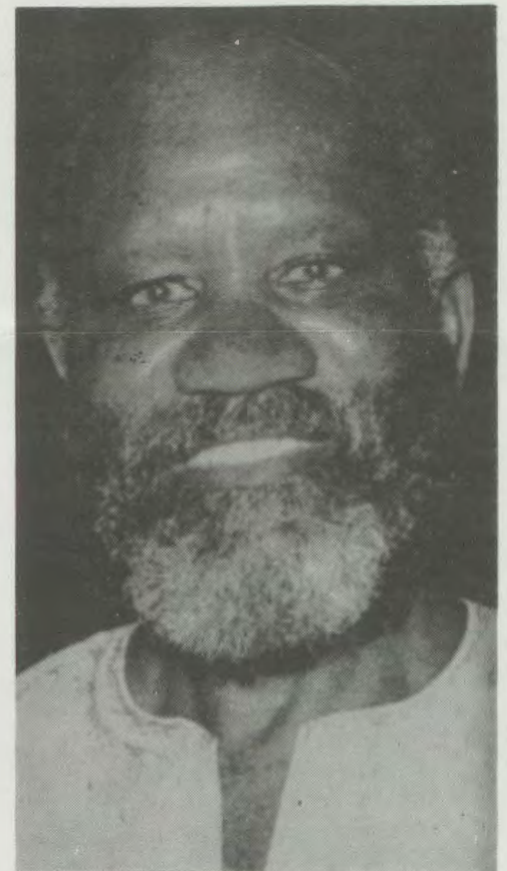
lyene mokugongala akuhe. Ngashingeyi Aaluudhe oye na oongeleka dhawo dhi ikalela.

"Oshilongatumo mOngeleki ndjika yOombulu sigo onena otashi longwa komukanka gwomulandu gwetopoko ndyoka," osho omuwilikingeleki Boesak a hokolola.

Paulyelele mboka wa zi mokana ke, kape na natango euvathano ewanawa pokati kayinangeleki nomwanangeleki (Ongeleki yAaluudhe), okuza 1982 ongeleki yAatiligane sho yu umbwa mo mehanganano lyoonkwa-wo.

"Yo oya hala aniwa tu kundathane nayo oshinima shika komukanka gwokutala okatongotongo kutya oshinima ashike she etelwe po nomu na ngaa sha shi shi okutaambwa, ihe tse otwa ti okatongotongo oko iihuna yi thike pamwe nuukomunisi, ka pumbwa ashike okuvudhwa mo nomidhi," osho omusamane Boesak a yelitha ekwatathano lyawo lyongashingeyi mu SA.

Sebulon Ekandjo.



Andimba Toivo yaToivo, mefano ndika

5. Fye katu na eepena nomambo  
Ofikola otwe i yandja po keengobe  
Hailwa ngeno ohatu ku shangele  
Andimba ngeno pamwe to tu ndungike  
Ashike osho kashi na oshilonga  
Fye otwa taalela kuKilimandjaro  
Kwinya haku diile etango  
Koima ku na Shafoixuna momufitu  
Pamwe novalamanani veendenge daye  
Eefimu daNamibia

6. Shiwana shetu, ove u li edu letu  
Ounongo nande ku u na, kondjela omutumbo woye  
She ku pe Pamba, pandula, u nomushila kokolola  
Hakapandi we litwika oudjuu kauyavala  
Namibia oletu

Vataleni Mwatilefu Nangonya  
(Namukaledi)

## Omulongi ependa e tu thigi po



Nakusa G. Nembiya

Gabriel Johannes Nembia, Onamukulo, oye osheeli shajohannes Nembia naSelma Edrward, okwa mana oondjenda dhe 21.8.1984, sho a yaha kaakwiita popepi negumbo lye.

Omulongi nguka Nembia okwa valwa 15.8.1950, nokwa hiti osikola yaanona 1956. Okwa tsikile osikola yaamati kOniipa 1970

### OMULONGI TA PUMBIWA MENONGELO MENGELA

- \* Na kale a pita oulongi
- \* Na kale omulineeketwa moinima yopakriste
- \* Na kale Omukwaluther
- \* Na kale e na Odjapo youteologi
- \* Na kale e na owino welaka lOshiingilisha
- \* Na kale e na owino weedula mbali moshilonga shoulongi ile di dule po
- \* Na kale a pita ositanda 8 ile 10
- \* Na kale yo e na owino walimwe lomomalaka atatu haa longifwa mu ELOC
- \* Eumbo otali monika

Ondjabi otai ya i kundafanwe nOmbelewa yEnongelo, nenge omulongi ou ta pumbiwa a fiki

Omaindilo otaa teeletwa fiyo opexulilo laFebuluali

**Omukulunhu wEnongelo**  
P.O.Box 116  
OSHIKANGO

nomomumvo 1977 okwa mana oseminali ye yuulongi mOngwediva.

Okwa hokana 24.12.1978. Omumvo ngoka ogwo a ningi omukuluntusikola mOnamukulo.

Okwa lele aalongi 14 naalongwa 800. Osikola oyi na 'eopalo enene omolwe.

Megongalo okwa yakula ongomudiakoni, omuuvithi, nomwiiyambi muuleligumbo waKalunga. Mondholongo okwa kala mo iikando iyali omoluudhigu wopapolitika moshilongo shika.

Okwe tu thigile oshiholelwa oshivanawa okuyakula oshigwana nokulongela Kalunga.

Simon Shiwagala

## Oita noulunde muNamibia

Oshinima nda hala okupopya osheshi, kutya natu lituleni meilikano omolwonghalo tuu ei yoshilongo shetu, Tate Kalunga opo a ehenife popepi efimbo lexulepo loita nomawii makwao aeshe.

Ndele natu kaleni twa shiiva, kutya fye otwe limanga fye vene noulunde wetu. Otwa fa ne twa dimbwa kutya fye ovashitwa vOmwene. Ohatu popi eshi twa hala, hatu longo eshi twa diladila nohatu li keshe shimwe twa hala.

I.Nghipangelwa

## Omadhina goomwedhi

Owa tseya tuu omadhina goomwedhi mOshindonga? Lesha ano ngaashi Onesimus Philips e ku kwatha.

Januali =	Kalokanene
Febuluali =	Epembegona
Maalitsa =	Epembenene
Apilili =	Eshengegona
Mai =	Eshengenene
Juni =	Uumbumegona
Juli =	Uumbumenene
Aguste =	Okwenyegona
Septemba =	Okwenyekunene
Kotoba =	Okuzimogona
Novomba =	Okuzimokunene
Desemba =	Okalogona

## AMUSHANGA PE NDJE E-YAMUKULO

MOmukwetu No.23/84 mepandja 12, onda li nda tsakanene mo omayeletumbulo, ihe eyeletumbulo ndika tali ti: Okwooko kumwe ihaku itumbola ona, ondi na epulo. Okwooko kumwe, nenge omunwe gumwe?

EYAMUKULO:

*Ombili kungoye nokaaleshi ayehe. Ohaku tiwa omunwe, ombili.*

## EILIKANO MOLWEDU LETU

Omwene wetu, Kalunga Omunaenghono adishe, omuyandji wouwa aushe, ohatu ku indile u nangeke noupuna ovapangeli voshilongo shetu, eehamba nomalenga etu, naaveshe ve na elelo va pangele mounongo woye Tate.

Ohatu indile u tu yadife ohole yoye nombili mokulongafana kwetu. Oulipamwe wetu aushe ou li muove, Tate, Xe yomaludi aeshe. Ohatu ku ilkana u yadife ovanhu voshilongo eshi nOmhepo yoye youyuki noshili nohole.

Tu kwafa moilonga yetu tu ulikilafane omwainafana, Tate Kalunga, ou wa hala ovanhu va kale hava longele kumwe. Pa oshiwana shetu ombili, tu paka kumwe paMhepo yoye, osheshi otwe lihanifwa. Ino loloka ovapiya yoye, Omwene, kala pamwe naye nomodula ei, otwe ku lineekela.

Amen.

L.Kashaua

## OMUKWETU

Oye oshifo shOngeliki Onkwaevangeli paLuther yomOwambokavango.

Ohashi nyanyangidhwa mOshinyanyangidho shOngeliki mOniipa.

Omukuluntu gwoshifo omumbisofi. Dr. Kleopas Dumeni, Amushanga gwoshifo omusita Sebulon Ekandjo

Ondando yOmukwetu muNamibia naSuid-Afrika R 5,00 komumvo.

Palwe muAfrika R 8,00 nokombanda yomafuta 11,00, komumvo. Mondhila R 13,00.

Oondando nomambestelo agehe naga tumwe kOmukwetu, Oniipa, P.Bag 2013, Ondangwa, 9000

EV. LUTH. OWAMBOKAVANGO CHURCH PRESS  
PRIVATE, BAG 2013, ONDANGWA 9000  
SWA/NAMIBIA