



## Yi vule R 1 000 000 ya pumbiwa mu ELOK

linakugwanithwa yOngeleki onkwaevangeli paLuther yomOwambokavango (ELOK) oya ningi iinene notayi pumbwa ngashingeyi iimaliwa ya konda nokuli omiliyona. Shoka osha dhimbululwa momutengenekwamwaalu ngoka gwa thanekelwa elongitho ndyoka lya tamekele mu Maalitsa 1984 notali ka hula muMaalitsa 1985.



Meme Selma Shejavalali okwa li a mono omhito mohani ya dja ko okukala moshongalele shovakainhu muAmerika. Oilongo 15 mounyuni oya li ya tumu ko ovakalelipo moshongalele osho. Meme Shejavalali okwa wina odjapo yefimaneko moshongalele osho. Mefano eli ota tambula odjapo momake omupresidende wOseminali omo mwa ningilwa oshongalele, Roger Fjeld nomuyakuli waye meme Rask. Ehokololo alishe tala kep. 8

Ethaneko ndyoka olya ningwa komudhiginini gwiiniwe Sakeus Hekandjo nolya pita kokangundulongekidhi kopombelewa manga inaali kolekwa kElongeleki.

Iimaliwa R 1 043 170 oya thanekwa yi gongelwe elongitho mOngeleki okuza numvo sigo 1985. Omwaalu ngoka ogwa londo R 384 450 shi vule ontengeneko ndjoka ya hulile 1984.

Osho oshikando shotango mOngeleki ndjika okutunga ontengeneko ya dhenga sigo okomiliyona. Pauyelele mboka wa zi mombelewa yiiniwe mOniipa, methaneko ndyoka inamu yalulilwa nando ethaneko lyomukalo omupe gwokugandja ligandjwa, ndyoka li li ngashingeyi poshitaafula shOshigongeleki.

Omagongalo gOngeleki ogo gene taga kongo omikalo nkene taga mono R 238 083, manga oomwayinangeleki dhopondje dha humbata esiloshimpwiyu enene okuudhitha shoka omagongalo itaage shi vulu.

Lesha natango mepandja 2

# Naku landulwe omukalo guni mu ELOK, okugandja iigandjwa?

KuSebulon Ekandjo

**Ethaneko olya ningwa nale kokangundu kiiniwe mOngeleki noke li tentekele poshitaafula shOshigongingeleki numvo, li kolekwe. Ethaneko otali landula mpaka:**

1. Omukiintu kee na iilonga a gandje R 5,00 komumvo
2. Omulumentu kee na iilonga a gandje R 10,00 komumvo
3. Omunashilonga kehe omukiintu nenge omulumentu ha taamba ondjambi okutameka R 100,00 sigo opombanda, a gandje R 1,00 komwedhi, = R 12,00 komumvo.

Ndhindhilika: ethaneko ndika inali kolekwa natango kOshigongingeleki, otatu ligamene kuDesemba.

Ngoka ha taamba ondjambi okuza R 90,00 sigo opevi ethaneko ndika olye mu yalulila mongundu yaakeeniilonga. Ethaneko olyi indile oshigongi omukalo nguka gu tamekwe 1985.

“Otatu tseya ngiini oondjambi dhaakwanaegongalo yetu?” osho sha li epulo lyotango methaneko ndika lyi inyengitha oshigongi ashihe. **Eyamukulo olya gandjwa:**

“Kundathaneni nayo meinelathano noku ya fatululila elalakano.”

‘Otaku ningwa ngini naangoka a kala ashike niilonga oomwedhi mbali, e tayi kana ishewe, ngaashi olwindji hashi holoka?’ osha li epulo ekwawo natango moshigongi.

**Eyamukulo:** “Uuna a kanitha iilonga a yalulilwa mongundu yaakeeniilonga.”

Elalakano lyokweeta po omukalo nguka, oli li miinima iyali; a) okukwatha Ongeleki yi adhe eithikameno miiniwe, ngaashi yi li na meipangelo, b) nokukutha yamwe uudhigu womutenge gwomukalo ngoka gu li po, unene aakeeniilonga,” osho sha fatululwa koshilyo shimwe shokangundu ke eta ethaneko poshitaafula.

Omaipulo gamwe moshigongi ogi ile po wo, kutya evulathano pokati

komukeeniilonga nomuniilonga lyo R 2,00 adhike, pamwe eshona unene, manga yamwe ya li ya hala ethaneko li kwatelele mo kehe gumwe ha taamba ondjambi, nayi kale R 10,00 adhike.

Pwa piti ngashingeyi ethimbo ele sho kehe mOshigongingeleki sha ELOK, tashi ningwa, otamu holoka wo epulo lyokumona omukalo gwokugandja iigwandjwa kOngeleki, itaagu li yamwe po omulemo.

Manga kombinga yiilyo yomagongalo, oshi igililwa wo, kutya ngele oshigongi shoka tashi ka gongala, omolwegwedhelo ashike lyiigandjwa li ningwe, hashi shilwe we. Ihe ndika euvoko lyopombambolela.

Oshigongi shika osho omuleli omunene gwOngeleki ayihe nohashi ningi omatokolo omanene, miinima oyindji. Uyelele wa gwana lesa okambo: **Ekotampango nomaufomhango**, u yeelwe.

Omuntu ha taamba ondjambi ihe ota pulwa oshinakugwanithwa shiigandjwa shi thike pamwe noshomukulupe nenge omukeeniilonga kehe, shoka osha dhi-mbululwa ngashingeyi koyendji mOngeleki ndjika, kutya kashi li mondjila.

“Omukalo ngoka kagu na uuyuuki nando nokagu li paMbimbeli nokuli,” osho amushanga gUuleligumbo mOngeleki, omusita Matias Ngipandulua, a popile moshigongingeleki shomumvo 1981.

Omahupilo gomagongalo mOngeleki ndjika, ohaga pitile unene molunza lwiigandjwa, yu uthilwa kehe omukwanegongalo a kolekwa, omumvo kehe. Olunza ndoka ohalu yambidhidhwa komagano haga gandjwa moshituthi shoshipe omumvo kehe nokomagano omakwawo haga gandjwa kaakriste sho euvoko nohokwe yeyambulopo lyomagongalo gawo lya koko.

Nonando omagongalo ogendji ga tameke tuu shili okwiithikamena painiwe muule womimvo ne, ntano dha zi ko, onkene tuu ope na oshindji okuningwa natango Ongeleki ndjika muugumwe wayo yi adhe eithikameno lyuudha.

Iinakugwanithwa oyindji niinene oye etelelwa wo ngiika kehumokomeho nomOngeleki yoyene notayi pula Ongeleki iimaliwa oyindji, opo iilonga mbyoka yi tsikile.

Iimaliwa R 516 700, oya pumbiwa numvo iilonga yepatudho lyopakriste palutu nopambepo, yi wape okutsikila, pahokololo lyomumbisofi gwOngeleki moshigongingeleki shoka.

Ndjoka ombinga yimwe po ashike yomiinakugwanithwa yOngeleki tayi pula iimaliwa, nOngeleki ohayi yi pititha ashike omolwomakwatho gopondje.

**Omapulo gaagandji oto ga yamukula tuu?**

Omukalo gwokukwathathana kwoongeleki noongeleki muuyuni nomoshinima wo shiiniwe, otagu popilwa komuntu kehe muuyuni auhe. Ngoka osho gu na okutsikila notashi koleke uumwayinathana wopambepo.

Ihe Oongeleki dhopondje nomahangano, ohadhi tameke okwiipula ngele ekwatho lya halika oli vule kokule shono tashi gongelwa meni lyOngeleki ndjoka. Omudhiginini gwoshiketha mu ELOK pethimbo ndiyaka, omutumwa Kaija Pentti, okwa li e tu kwatha okutseya omapulo gaamboka haye tu kwatha miimaliwa:

Omumvo 1982, okwa li a nyola kOmukwetu ngeyi: Shika okwa li e shi ningi nelalakano lyokuyamukula komanyenyeto gamwe ga thikile kOmukwetu, omolwegwedhelo lyiigandjwa.

“Tu tye muSoomi, ngoshiholelwa, aantu otaa tseya nokuli kutya ELOK oku na aasita naanashilongagongalo yalwe ye mwene; Elelongeleki lye mwene nOshigongingeleki she mwene, (iinima mbyoka hayi ulike eipangelo lyOngeleki) omolwashike natango ti indile iimaliwa oyindji? osho taa pula.”

Otaa tseya kutya inatu lokwa momimvo ndatu notu na ondjala, ihe oya tseya wo nkene oyendji taa mono oondjambi oonene notaa ilandele iihauto yi na o-

Tala kep. 9

# Etopoko lyolutu nomwenyo oshinima sha patathanwa olwindji - Dr. Shivute

**Omasiku hamale sho moshifo shOmukwetu mwa holokele omafatululo gaateologi yaali, mboka ya kambadhala okuyamukula komapulo ngaka:**

1. Omuntu ano omushike?
2. Peyumuko otapu ka ningwa shike?
3. Omwenyo nolutu otayi kalathana ngiini manga omuntu inaa yumuka?

OMUKWETU okwa kundana kutya aaleshi yamwe yOmukwetu oya piyagana kashona, oshoka shoka sha fatululwa hasho ya kala yi itaala shito nonando pwa longithwa oovelise dhombimbeli. "Pamwe oye yi uvite ko kashona pombambo," osho yi ipopile.

Oshinyolwa tashi landula mpaka oshitiyali, nasho otashi popi kombinga tuu yeso nomwenyo konima yeso. Shika nasho osha zi komuteologi Tomas Shivute.

"Itandi kondjitha omuntu noshinyolwa shika, aawe. Okutalaleka ashike mboka yu uvite ya tulwa pomutenya metegameno lyawo," osho Shivute a londodha.

Omolwehala kaatu li na lya gwana, otatu tula amatumbulo gamwegamwe ashike mpaka:

"Eso oshike nolye ya ngiini muuyuni? Otandi eta omadhiladhilo gamwe taga zi momahempululo gopaLuther, hoka ngame wo mwene nde egamena mokudhiladhila eso. Omahempululo gatumbulwa, otaga ulike aluhe kushoka Ombimbeli tayi popi eso, onkene shika osha kola shi vule oondunge dhaantu nuunongo waafflosofi.

"Oshiyeti sheso osho okuyona kwomuntu meyana lyaEden. Eso kali shi oshinima shopantsitwe komuntu, olye etwa kuulunde. Rom. 5:12. Ngashingeyi kehe gumwe oku na okusa eso lye mwene, lumwe aluke.

PaTestamendi Ekulu, eso ekondjithathano nomwenyo. 5Mos.30:9, Elulu 1Sam.15:32 nehaluthi. Eps.35:5. Ndjika onkalo yi na oku tu landula apehe. Etestamendi Ekulu otali popi wo etopoko lyolutu nomwenyo. "Omwenyo sho gwe mu thigi po." 1Mos. 35:18. Shika otashi ti, 'okunukwa komwenyo'.

Moka otamu popiwa wo; "Ontsi tayi shunine mevi ngaashika ya li ko nombepo tayi shunine kuKalunga kwe yi mu pele." Omuuv. 12:7 Mpaka oshinima osha yela. Job. wo ota popi:

"Kalunga ngele 'ta galula' omufudho gwe nombepo ngele tayi itambululile, omuntu andola ta hulu po sheke nota shituka ontsi yevi ngaashika shu uvane kwa." Etopoko lyolutu nomwenyo oshinima sha patatha-

nwa olwindji nayamwe yi igameke kokusa kwomuntu omudhidhi, opo ya yande omadhiladhilo gaanongo Aagereka, mboka taa ti; olutu ondholongo yomwenyo.

"Onawa omuntu a pulakene Ombimbeli shoka tayi ti moshinima shika, unene tuu Aakwaluther mboka taa dhiginine 'Ohapu ayihe.'

Luther ota tala kutya eso olyo omutondi omunene, gwetu. Omutondi nguka okwe tu itopolela, onkene otu na okukala twa tegelela otundi ndjoka. Satana oku na egonga etu dhipage, oshoka osho twiilongela. Ihe lwahugunina uuzigo we itau tu kwata, oshoka Kristus ote tu yumudhile momwenyo gwaaluhe.

Luther naye wo ota popi etopoko lyolutu nomwenyo peso. Kombinga onkwawo ota ti: 'Inandi hokwa aantu mboka ya nyanyukilwa okusa. Aayapuki inaa hokwa eso, uumbanda oshinima twe shi ilongela, oshoka inatu hala okuhulwa, ihe okuzala tuu.

Natango Luther ota ti: Osho oshili, kutya konima yeso, oomwenyo otadhi uvu, tadhi dhiladhila notadhi mono. Ihe kutya ongiini, itatu vulu oku shi uva ko. Ihe ngele tatu dhiladhila iinima mbika pankalo yomwenyo nguka tu na, nena otse otatu ningi omagoya.

"Kristus okwa yelithile aalongwa ye, kutya Ngoka i itaala ndje, oye ta kala e na

omwenyo nando na kale a sa. Joh. 11:25 Paulus ota ti wo: ....Ngele tu na omwenyo nenge tatu si, otse oyOmuwa. Rom. 14:8

"Mpoka oomwenyo tadhi vululukilwa dha tegelela eyumuko, osha holekwa aana yaantu. Shoka ashike twa hololelwa, osho shoka kutya odhi li miikaha yOmuwa. "Tate, omwenyo gwandje otandi gu gandja miikaha yoye." osho Jesus a tumbula. Manga oonakutula mOmuwa olwindji oya tumbula: Omuwa, taamba omwenyo gwandje.

"Ashike kapu na wo omaludhi kutya Ombimbeli otayi gandja wo uyelele ulwe kombinga yiinima mbika. MuTimoteus gwotango, Paulus ota nyola, kutya Kalunga oye awike **omunamwenyo**, kokutya, ashike shilwe oshi na okusa.

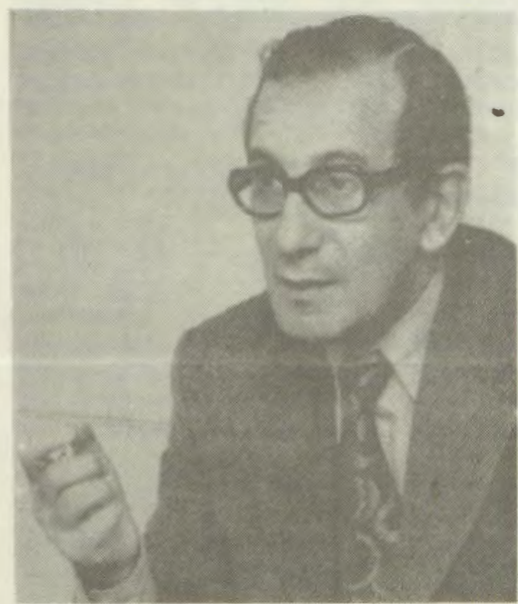
"Tse aakriste otwa tseya kutya otu na okusa, ihe inatu tseya uunake nongiini. Oshimpwiyu twe shi pewa osho: Longekidha egumbo lyoye, oshoka oto si. Egalikano; Tu gamena keso lyombaadhilila, kali li mondjila. Elongo lyOmbimbeli; Tu gamena keso lyomwiiteekikalunga.

"Manga tatu ende kevi, ndika natu kale twa londoka twa tonata."

**"Penduka moomposi ndhi, Tonata u kale, Ongomuntu omulangeli, Molushiya nale. Eso wo, olyo ndyo, Li ku kwate mbala, Ngoye nge wa lala.**

**Penduka galikana, Kwata komatati, Dhenga shili Satana, Oye omutondadhi. Kee nonge, Te ku pe, Shoka inoo hala, Kotoka owala.**

Ehangano 286:2,5



Emilio Castro

Oraata yOongeleki muuyuni (WCC) okuza poshigongi shayo shaayeh omumvo gwa zi ko, oya li ya hogolola Amushanga omukuluntu gwehangano ndyoka omupe, omusita Emilio Castro, ngoka a pingene omusita Philip Potter.

# Niinkoti ta ti sha komayamukulo gomagongalo

## ETSIKILO:

Uunganga nolufuko sho tayi tamanekwa kOngeleki yetu nguupagani onda kwatwa kedhiladhilo ndi konakone mombimbeli kutya uupagani oshike. MEstamendi Ekulu, otashi holoka sha yela, kutya opwa kala oshigwana shaKalunga, Israel pamwe niigwana yilwe. Iigwana mbika yilwe oya yalulwa iigwana yaapagani.

Israel okwa kala oshigwana oshiyelele, nuupagani muye owe ya mo owala uuna a tameke okulandula omalongelokalunga giigwana yaapagani. Etestamendi Epe otali ulike kutya uupagani owo onkalelo yi na ekwatathano noondjo.

Omupagani ota hondele, ota pangelwa kuuhalu, ota kolwa, ota dhana iituthi yuusiku, okwa fukila iikunwa nota simaneke iimenka. 1 Petr.4:3 Omupagani ota pangelwa nuupu kuuhalu nokomakamba gonyama ye. Efes.2:2-3 Iilonga yonyama otayi hololwa nawa mu Gal.5:19-21.

Omupagani oha galikana iikalunga pehala lyokugalikana Kalunga kashili. Rom.1:23 Omupagani omolwokwaalongela kwe Kalunga kashili, ote ende monilema. Efes.4:17-19 Rom.1:21-22.

Omupagani omuntu ngoka ta galangata momaulunde gi ili nogi ili. Rom.1:24-31; Ootekisti adhihe ndhika, otadhi koleke kutya uupagani owo oondjo nuulunde mboka omuntu ta longo koshipala shaKalunga. Omuthigululwakalo kehe ngoka tagu fala omukriste moondjo nomuulunde, otagu pangulwa nguupagani wowene kOngeleki.

## H. Okwaavulika komautho gOngeleki nokiipango yaKalunga

Omolwomaudhigu gontumba, otashi vulika egongalo li itotele oautho galyo lyene taga wilike eenditho lyoshinima shontumba mulyo. Oautho ngoka omagongalo gi iningila gogene, ogo haga kala unene ge li miilonga noga guma okukalamwenyo kwaakwanegongalo.

Oautho ga tya ngaaka, oge eta wo oshiponga sheyooloko lyokulelwa kwaakwanegongalo, pagongalo negongalo. Egongalo limwe ohali kuthile po omukintu e li metegelelo, manga egongalo ekwawo ihaali shi ningi.

Egongalo limwe otali pula omukwanegongalo a monathane tango nomukuluntu gwegongalo, opo a vule

okukundwa melelogongalo, manga ekwawo itaali shi ningi.

Omauthompango ogo ageke ge na uuthe-mba wokuholola ewi lyOngeleki ayihe kombinga yoshinima shontumba, onke ogo ge na okumona ehala lyotango miilonga yegongalo, opo ombili nuukumwe wiilonga yOngeleki momagongalo yi popilwe.

Onawa oautho gopaumwene ngoka omagongalo gi iningile ga kale haga konakonwa kOngeleki, opo ku talike ngele otaga tsu tuu kumwe nomauthompango notaga yambidhidha epititho lyago.

Ongeleki ya ELOK oya pumbwa okutalulula omukalo gwayo gwokupangula aayoni yiiipango yaKalunga. Sigo opethimbo ndika, osikola yekuthilo ohayi ningilwa owala mboka ya miti nenge ya mitike.

Omundohotola Lucy okwa holola edhiladhilo ndika, kutya oshinima shoka hashi geelwa unene muAfrika, kashi shi okukanitha uuyogoki, ihe okuvala okanona pamukalo ngoka inaagu ziminwa konkalathano. Ongeleki yetu oya fa tayi koleke omadhiladhilo ngaka.

Ethimbo inali thika ano, osikola yekuthilo yi ethiwe po, opo pu tamekwe nondjila yehungomwenyo lyopausitagongalo, moka iipango ayihe tayi talwa yi thike pamwe?

Ethimbo ndyoka onkalathano tayi putuka notayi uvanekele oshigwana omauwanawa ogendji, ombepo yopayuni ohayi holoka naantu ohaa kala yaa na konasha nelongo lyOngeleki, nondhino yiinima yopaKalunga ohayi tana.

Aantu mbaka ya pukithwa kombepo ndjoka ohaa tameke okwiuhumbata mokwaavulika kiipango yaKalunga. Ongeleki ya ELOK oyi na okwiilongekidhila okwaadha aantu mboka noku ya itedhululitha nehungo lyoomwenyo, opo ya hupithwe.

Omuyakuli gumwe okwa tile: "Nale aakwanegongalo oyo kwa li haa ikumbu Ongeleki, ihe ngashingeyi Ongeleki oyo tayi ikumbu aakwanegongalo." Pethimbo ndika olyOngeleki tayi landula nokukonga aantu yaKalunga moonkalo moka ye li.

## Ongeleki tayi pewa uusama

Omagongalo momayamukulo gago otaga pangula Ongeleki, aniwa itayi longitha egeelo lyekondo motekula aakwanegongalo. Iinima; omateyo goondjokana, uunganga omalufuko nayilwe, otayi talwa ya gwana okugeelwa nekondo.

Pahapu dhaJesus muMateus ontotolwa omulongo nahetat<sup>u</sup> ovelise 15 sigo 17,

ekondo oyo egeelo ndyoka tali pewa ngoka a holola eikukutiko enene megongalo lyaKalunga.

Pashitokolitho 74 shOmomauthompango gOngeleki ndjika, omuntu ota tokolelwa ekondo uuna kwa monika, kutya okwa tinda okwiitedhulula nando a kala nokuli a kuthwa omapitikilo agehe, kakele kokukala melongelokalunga.

Otashi iholola sha yela, kutya ekondo oyo egeelo enene noonkondo. Pahapu dhOmuyapostoli Paulus, oyo okugandja omuntu mepangelo lyaSatana. 1Kor.5:5 1Tim.1:20 Oshidhigu noshinene okumanga aakwanegongalo nekondo, onke shi na okweendwa nawa.

Omauthompango gOngeleki ndjika, oga gandja eziminino lyokukonda. Oshi li ashike miikaha yomagongalo gogene okuuthila aakwanegongalo ekondo.

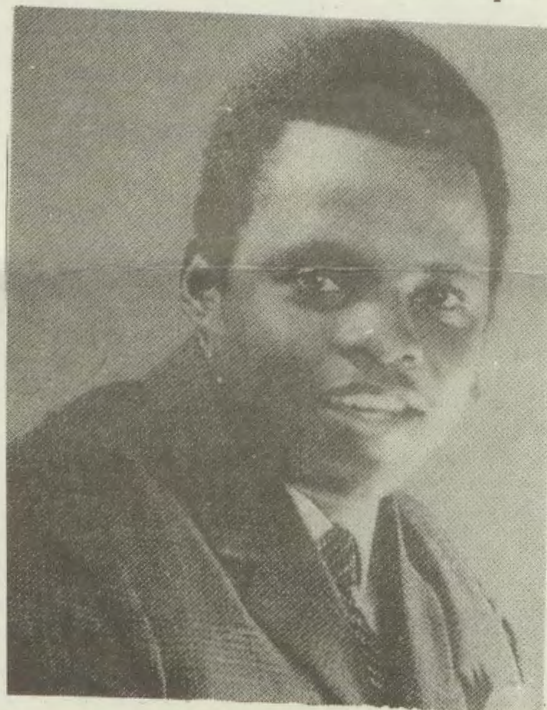
## Omukalo gwokwiikonda megongalo

Aakwanegongalo ohaa longitha wo omauthompango pombambo sho haa itula yoyene megeelopotudho yo inaaye shi uthilwa pambelewa. Pashitokolitho oshiti-71 shOmomauthompango, okwa uthwa egeelopotudho li ye miilonga uuna omuntu a pulakenwa noshinima she sha konakonwa kegongalo.

Omuntu oku na okuya megeelopotudho pambelewa. Aakwanegongalo mboka haa ipe egeelopotudho, yo nani kaye na uusama otashi vulika ya pethe omusitagongalo uusama kutya oye itaa longo nawa.

Oshitokolitho 73 osho tashi longo unene mokugeela aakwanegongalo. oshitokolitho shika, osha tumbula iinima yontumba mbyoka tayi kuthitha omukwanegongalo amaziminino megongalo, ihe oshi na iinima yimwe inaashi yi tomona, ihe oshe yi luku ashike "etimba lidjuu".

Tala kep. 8



Omusitagongalo Elia Niinkoti,

# Iipangelo yetumo moTshandi, Okahao Nakayale ngashingeyi otayi tuka omakola.

**KuPetrus Shipena**

**Opwa tseyithwa omasiku ga zi ko kelelo lyiipangelo, kutya iipangelo; shaTshandi, shaKahao noshaNakayale, itayi ka tsikila we niilonga yokupanga aavu, oshoka epangelo olya tungu iipe popepi nomahala ngoka ga tumbulwa.**

Iipangelo mbika yomuuninginino wOwambo, oya yakula omimvo odhindji oshigwana shika, sha pitile moonkambadhala nomeitulomo lyaatumwa Aasoomi mokuuvitha kwawo evaangeli moohapu nomiilonga.

Konyala konima yomimvo 60 iipangelo mbyoka ya kala meyakulo lyaavu, omahala ngoka ngashingeyi otaga tuka omakola.

Elelongeleki sho lya tseyithilwa shono, olyu utha okangundu opo ka konakone iinima nomahala ngoka ga thigwa po, ko ka tume ehokololo lyako kElelongeleki ndyoka tali ka utha omahala ngoka nkene ge na okulongithwa kOngeleki.

Patseyitho lyaakuluntu yiipangelo mbika, etembu lyaavu naayakuli yawo olya ningwa ngaashi tashi landula:

Oshipangelo shaTshandi osha thigilwe po 23.5.1984, shaKahao 13.6.1984 noshaNakayale otashi tengenekelwa muSeptemba muka, uuna oshipe shepangelo she egululwa ihe omandhindhiliko otagu ulike, kutya ope na okathi-mbo okale natango shi egululwe.

Okuza omumvo 1974 Epangelo olya tameke okugandja ekwatho lyuudha lyopaimaliwa kiipangelo ayihe yOngeleki sigo onena.

## **Tshandi (Uukwaluudhi)**

Ongulu yotango ya tungwa mUukwaluudhi, osha li 1909 komuhongi August Hänninen. Eshasho lyotango moshilongo shoka olya ningwa eti 16.12.1912, moka mwa shashwa aantu 16.

Evaangeli olye ende aluhe pamwe noshilonga shokupanga omalutu. Onke omuhongi Aatu Jarvinen, okwi indile iimaliwa kEhanganotumo lyaSoomi nokwa tungu okapangelo kotango moTshandi omumvo 1922.

Etameko nando lya li po eshona ngeyi, Kalunga okwe li yambeke, sigo omapipi nomapipi ogendji ga mono ekwatho moshipangelo shoka she ende tashi koko.

**Nakayale (Ombalantu)** Evaangeli lya thiki mo nomOmbalantu. Eshasho lyotango olya ningwa 1919 naamati yotango Aamandja oyo ya shashwa. Omuhongi Heikki Saari, okwa tungu

ongulu yotango moNakayale omumvo 1925.

Naamoka wo ompumbwe yoshipangelo ya dhimbululwa nosha dhikwa 1928. Omukulukadhi gwomuhongi Tuure Vapavuori oye a li omupangi gwtango mokapangelo hoka.

Osha kala nokutamununwa, sigo feelani Ebba von Pfaler a tungitha mo omukunda gwaavu niimaliwa ye mwene. Omukunda ngoka ogwa lukwa Oshali. Poompito dhimwe osha kala wo hashi langekwa oodohotola.

Pomimvo 1935-36 oshipangelo osha tungwa shi na omala gatatu. Aakwanegongalo oya li ya longo nuudhiginini okukwatha metungo ndika. Pashipango shomupangeli omupagani Kalipi, naapagani wo oya li ye eta iihenguti yokukumba oshipangelo shi holoke. Omupangeli nguka ita dhimbiwa nando mondjokonona yuukalinawa woshigwana.

## **Okahao (Ongandjera)**

Moshilongo shika omuhongi Hopeasalmi, oye tango a tameke okupanga aantu mOngandjera 1929 pamukalo gwopashingolo. Sho pwa monika aapangi oyendji aavalelwamo, nena komagongalo gamwe osho kwa dhikwa uupangelo, nomakwatho oga monika popepi, ngaashi mehala ndika.

Momahala ga tumbulwa, Kalunga okwa longo mo iikumitha iinene keyakulo lyiikaha yaatumwa pamwe naavalelwamo. Omalutu oga aludhwa osho wo oomwenyo. Ngashingeyi itaga longo we oshilonga shoka sha longelwa mo omimvo odhindji, ihe ogo ngaa omahala omayapuki. Ongeleki otayi ka tala nkene tayi ga longitha.

Mehistoli lyOngeleki apehe muuyuni, osha yela kutya Ongeleki oyo aluhe omukokoli gwomakuti gopambepo nogopalutu nomapangelo ohaga ka landula mo. Naandika olyo esimano lyOngeleki yaKristus muuyuni. Oyo tayi kala aluhe omulangeli gwoshigwana okuulika mpoka tapa gwayelwa koshiponga.

Ongeleki ya ELOK otayi pandula sho ya li ya pewa ompolo ndjoka yokuyakula aantu yaKalunga momathimbo omadhigu momahala ngoka.



**Oshipangelo shaNakayale osha yakula uunene omihoko dhopepepi nomulonga gwaKunene, ngaashi gumwe ngoka ta monika mefano ndika.**

## **“KAUHWENA, NYOKO ONALE E KU HADHELE**

Okupopya okayuhwena, otwa dhiladhila oluvalo lwetu ndoka Kalunga e lu tu pa omagano. Twa hala ye tu hadhele ngaashi twe ya hadhele nale. Ope na aanona mboka haa dhimbwa uuwanawa waakuluntu yawo ye u ningilwa manga ya li po aashona taa putuka.

Oya tulwa moosikola oonshona noonene yamwe e taa ningi aalongi, aapangi, aasita nenge yomaithano galwe gi ili nogi ili moshigwana. Aanona yamwe ashihe shika oya fa ihaaye shi yalula nando.

Ihe Kalunga na pandulwe sho ku na aanona mboka taa gwanitha etumbulo lyOshiwambo: “Kauhwena hadhela nyoko, nyoko onale e ku hadhele.”

Uunene otii shi tumbula nepandulo enene mpaka omolwaanona yomegumbo lyetu mboka ya dhiginine shili okugwanitha etumbulo ndyoka. Kalunga ne ya gwedhele ko ishewe.

Osho wo yalwe mboka haa ningi ngeyi, Kalunga ne ya yambeke. Ngoka e hole aakuluntu ye, ohe ya yakula nawa. Mboka ihaamu shi ningi, tamekeni ngashingeyi. Moku shi ninga omu na euvaneko ewanawa lyelago pashipango oshitine.

*H. Amadhila*

# Oshivilo shetumo mEngela 1984

KuJohn Shitundeni

Oshivilo shinene shedimbuluko loshilingatumo moshitaingeleki shokOukwanyama, osho hashi kala ko omudo keshe mEngela, noneudo osha li sha ningilwa meongalo tuu olo pehovelo laSeptemba. Osha li sha kala omafiku avari ngaashi shito.



Oshivilo osha li sha ningilwa momidile domiti, ngaashi tashi monika mefano eli. Pehovelo lengudumano ovafitaongalo va dja momaongalo e dule omulongo moshitaingeleki, ova li tava leshele ovaenda voshivilo Ondjovo yaKalunga, pamalufo, ngaashi efano eli tali shi ulike.

Mefiku lotete ovaenda voshivilo ova li va ningilwa oxungi kovakali mEnongelo longeleki mEngela. Moxungi oyo omwa li mwa danaukwa oshinyandwa tashi hokolola omuhokololahonde wotete Omuwambo, omuudifi wEvaengeli Filipus Kamati nosho yo ondjokonona yovatumwa Ovasoomi, eshi va fika tete mOukwanyama pefimbo lohamba Mweshipandeka ya li tai pangele oshilongo osho.

Ovatali voshinyandwa osho ova li va tala novapwilikina nghee ependafule letandavelifo levaengeli, Kamati, ta lekele ovaneumbo laye peedula dinya mEngela, opo a ye kuAngola oko a hangelwe opo a dile ko onhapo omolwoita pamwe novaudifi vakwao vetumo lOvadowishi.

Omushamane Kamati eshi a ya ngaha olutivali muAngola, okwa ya fiyo omOndjiva, omo a hanga mu na nale etumo laKatooolika kaRooma. Pauyelele woshinyandwa shinya, pata wopetumo linya ka li nandenande a hala Kamati a udife mOndjiva nomomudingonoko, shaashi vati ye omuprotestande; tashi ti owongeleki oyo tai kondjifa elongo laKatooolika.

Oshilanduli, osho osho kutya pata winya okwa lombwela epangelo laAngola li kwate Kamati noku mu denga noku mu patela modolongo; osho sha ningwa.

Pokati penya, kEngela okwa dja okangudu kovakwaneongalo, opo ka ka talelepo

Kamati kodolongo; lao linene pefimbo opo ove mu hanga e na omwenyo. Opo nee Kamati okwa shanga ombapila ndele te i va pe, opo ve i twale i ka leshele eongalo. Ombapila oya li ya shangwa ngaashi tashi landula:

*Ovaholike vakwetu muJesus Kristus, va kala meongalo lEvaengeli laJesus Kristus mEngela.*



Manga oshivilo inashi halakana, mongudu omwe uya oomeme vomoshitaingeleki osho, tava di koshoongalele shoomele mongeleki aische kOngwediva. Kwinya ova dja ko nepandela olo hali kondjelwa komaongalo odula keshe, eshi va ongela oimaliwa ihapu nova yandja yo ongobe yondema. Kakele kemandela olo tali monika mefano eli, ova pewa yo oshiyasha nokakefa kokupungula oimaliwa.

Ohandi mu kundile po mOmweni. Hafeleni shili okukwatwa kwange muJesus, ngaashi ame mwene nde shi hafela. Onda nyengwa okukundafana nomupangeli wokOndjiva; kwinya onda hanga ko eembapila 4 domalundilo da shangelwa omupangeli, vati onda udifa nda ti:

*"Ileni amushe kofikola yange. Ofikola yaKatooolika kai fi sha, yokEngela oyo aike i na oshilonga."*

Vati osho nda udifa mOnamakunde nomOongo. Vati olo etimba lunge eshi nda udifa inandi tembuka. Vati onda sheka pata wOvakatooolika nonda fimaneka ushike ovahongi vange. Ndele nye hafeni. Indilileni vakweni va mangululwe, opo va mone exupifo leemwenyo davo. Lesheni Fil.2:12-24."

Konima yeehane donhumba, enota nondjala nomadengo, oya ka dula Kamati eenghono, ndele ta file modolongo... Eshi okahokololo aka ka hula ngaha, mokati kovatali voshinyandwa omwa li vamwe va lindimaneka eemwenyo navamwe tava xukula ehodi, omanga pa li vamwe ve udite omukumo mupe wokuhokolola evaengeli laKristus nande nave li hepelwe.

\* Dididilika, ehokololo laKamati nefyo laye nombilive oyo a shanga, inai holoka ashike moshinyandwa, oku shi mwenyeka, ndele oyo oinima ya ningwa shili.

Ongula yefiku etivali, oshivilo osha twikila nelongelelomalunga neudifo loshivilo nosho yo oipopiwa i lili noku lili tai kumu onghalo omo mwa li ovakalimo voshitaingeleki osho naamo mu liwe paife.

Tala kemandja tali landula

Omupashukilishitaingeleki osho, omufita Apollos Kaulinge mepopifo olo a li a popifa nalo ovaenda voshivilo okwe va dimbulukifa kutya oshivilo shetumo osho oshivilo shovana vaKalunga; noka shi shi okudanwa kovapaani, osheshi inava makela oudalwa ou womuKalunga. "Ndele fye ohatu shi dana tu shi shi otwa dalwa kuKalunga muJesus Kristus," osho a ti.

Inatu uya apa okudimbulukwa ashike efiku ledalo letu, ndele tu dimbulukwe yo kutya oudalwa ou na oshinakuwanifwa osho tashi tu fininike nosho tashi tu endifa nosho tashi tu longifa.

Omupashukili mokuyandja oihoelwa yoinakuwanifwa yovana vaKalunga okwa ti: "Otu na oinakuwanifwa ihapu noinene noidjuu momaongalo; ovana vaKalunga otava kaleke po omaongalo; Otu shi shi otava pulwa moimhungu i lili noku lili oyo tai tanifa notai koleke eumbo laKalunga li kale la tungala.

"Penya otapa pulwa osikola yOsoondaha; penya otapa pulwa oshilonga shovanyasha; penya otapa pulwa ootate; tapa pulwa oomeme... noitatu mane oilonga tai longwa momaongalo, moshitaingeleki nomongeleki aische, ndele okovana vaKalunga ngaa. Omolwaasho wa dalwa, nomolwaasho handi ti: Oudalwa nokukala omudalwa oku na oshinakuwanifwa. Noufemba wokukala omudalwa otashi ti okukala u na oshinakuwanifwa ngaashi naanaa tu li, ile twa li momaumbo ootate," osho Kaulinge a li ta yelifile ovaenda voshivilotumo oudalwa womuKalunga naasho tau ti.



**Efano eli otali ulike ovaenda tava tale nohokwe eendjato noimbaba oyo ya li tai landifwa, omolwoshilongatumo. Konima yavo, otaku monika ongulu omo mwa li 'Omusenegal'.**

Eudifo loshivilo shetumo ola li la ningwa komufitaongalo laHalushu, Fridrik Nghihalwa; nola li la kufwa muMat.28:18-20.

Mokuhovela eudifo, omufita Nghihalwa okwa hololela ovapwilikini vaye kutya 'otwa dja moupaani.' Okwa dimbulukifa yo aveshe ovo hava ti ova dalelwa momambo kutya vo oiimati yetumo; osheshi ngeno kakwa li etumo ngeno kaku na ovafita," osho vali a lombwela ovo hava ti ova dalwa kovafita.

Okwa twikila nokupapudula ovapwilikini vaye ta ti kutya etumo olo eudifo levaengeli. "Ndele ope na omaudifo mahapu nande ito popi; Eudifo limwe okuyandja oimaliwa metumo; ile okuyandja tuu keshe shimwe shominima tai landula: oihauto,

oukambe noundoongi, opo ovaudifi va ende nawa vo va ka udife; 'Wa fa u nomatuwa avali? Ngeenge owa hala okulonga oshilongatumo, yandja po limwe wani!', osho a indila ovapwilikini vaye.

Oinima ikwao Nghihalwa e i tumbula tai dulu okuyandjwa metumo ongaashi: oikutu eengobe, oikombo, neexuxwa. Ovo ve na eehambo okwe va lombwela meyukililo kutya ngenge oku na umwe a hala okulonga oshilongatumo, na ye ko kohambo ye a kufe ko ohove, ndele te i yandje metumo. 'Wa fa ngo u na ohambo', osho a pula mongudu.

**Tala kep. 8**



**Omufita Fridrik Nghihalwa ou a ninga eudifo loshivilotumo, ota monika mefano eli, kolumosho. ola fanekwa konima yengudumano lovaenda vetumo.**



**Moshivilo shetumo kamwa li ashike ovakulunhu, ndele omwa li yo oshiwana shokomesho, ngaashi tashi monika mefano eli, tashi tale notashi pwilikine nawa ovapopi.**

# Gwanandjokwe a pandulwa nonzapo muAmerika

Oseminali yuuteologi yaDubuque, Iowa, muAmerika, oya gandja omasiku ga zi ko onzapo yesimaneko kumeme Selma (Gwanandjokwe) Shejavali, omoluupenda we wewiliko mokati kaakiintu mOngeleki ya ELOK nomolwehwamo lye moshilonga shetumo.

Onzapo yoludhi ndoka, ohayi gandjwa kOseminali ndjoka omumvo kehe pashihogololitho okudhimbulukwa nesimaneko ependa moshilongatumo. Wilhelm Loche, Omuyamerika ngoka a dhike po Oseminali ndjoka nelalakano lyokuhwameka etumo muAmerika konima yoomvula 130 dha piti.

"Onzapo ndjika ohatu yi gandja kaantu mboka ye na ehwamo li lwetike moshilonga shetumo lyOngeleki, nuukwatya mboka otu u lwetele muSelma.

"Meme Selma ota ningi oshindji okuya-mbidhidha oshilonga shomusamane gwe ngoka e li Amushanga Ndjayi gwOraata yOngeleki muNamibia, nomukumo gwawo omunene sho ya thikama ya kola okuhokolola evaangeli monkalo yoshilongo shawo yaa na etenguko.

"Omimvo hamano ya kala mOseminali yetu, omadhiladhilo gaSelma hage endebele momashendjo, oondunge dhe dhomuule nomikalo dhe omiwanawa okukalathana, osha li she etele Oseminali yetu uuntsa tu kale tu uvite kutya oku li naanaa gumwe gwetu," osho sha tiwa komupresidende gwOseminali manga ta gandja onzapo ndjoka kumeme Selma.



Efano eli olo ne la li la mana vahapu oimaliwa, oyo va tale Omusenegal, ndele paushili oshinima osha li ashike omunhu Omuwambo a djalekwa omdjalo doku-Senegal nelalakano ola li okumonena etumo oimaliwa, oyo evaangeli li tandavele.

Oshituthi shegandjo lyonzapo osha ningilwe pethimbo lyoshigongi shaakiintu mehala ndyoka, mboka ya li ya zi koo-mbinga adhihe dhuuyuni.

*Sebulo Ekandjo*



Mefano ndika, meme Shejavali oku li mondambo yuudhano wopashigwana pamwe nOmwiindia (tala kolulyo lwoye) pethimbo lyohungi.

## OSHILO SHETUMO MOUKWANYAMA

Da dja kep. 7

Omuudifi winya okwa xulifa eudifo laye olo la li le linyengifa engafifi lovapwilikini noitya ei ta ti: "Tu longeleni Kalunga ovamwameme, ndele omanga ashike pe na efimbo."

Pexulilo lengudumano, ovadani voshishilo shetumo ovashiivifilwa kutya peembelewa doshitai ope na oilandifonwa ya ongelelwa etumo. Ova shiivifilwa yo vali kutya ope na ongulu mu na 'omweenda a dja kOsenegal' naau a hala oku mu tala ota yandje 30c (kovakulunhu) na 10c (kounona). (Efano 'IOMusegal' tala pamwe pe lili moshifo eshi, ove omunelao shaashi oto mu tale oshali!

## OMAYAMUKULO GOMAGONGALO

Dha za kep. 4

Eiuvo lyomusitagongalo nelelogongalo oyo alike li na okulongithwa moshinima shokupangula oondjo dhaakwanegongalo yi ili noyi ili notashi vulika elelogongalo li ninge omapuko nomatompakano gasha moshinima shoka, omusita e ta talika ko kee na uuyuki.

Ano oshitokolitho shoka 72 mOmauthormpango, osha pumbwa okutalululwa, onkatu dhasho dhi kale dha yela nawa.

*(Ehulitho)*

**OMUKWETU** nau tyikile:  
Omakundo mahapu a dja  
kwaame neumbo letu.

*Hafeni Hangula  
West Germany*

## ESO

Omusamane Thomas Nembungu Namugongo, momukunda Onathing, Onayena, okwa hulitha oondjenda dhe 27.7.1984. Okwa thigi ko omuselekadhi, oyana yatano naatekulu yahetatu.

*Kauna Namugongo*



## Omukalo gwiigandjwa mu ELOK

Dha za kep. 2

Otaa tseya kutya inatu lokwa momimvo ndatu notu na ondjala, ihe oya tseya wo nkene oyendji taa mono oondjambi oonene notaa ilandele iihauto yi na ondilo, oonguwo odhindji, oombiila niikolitha oyindji, omagadhi gokwiininga omalutu omayebele, ooradio nootelevisi nokuli.

“Ongeleki oya hepa ano shike, iilyo sho yi na iimaliwa yi thike mpaka? Osho taa pula, oto yamukula ngiini, mukwetu epulo? Nomahangano ngoka hage tu tumine iimaliwa, aanambelewangeleki yamwe ohaye ga nyolele omahokololo iimaliwa nkene ya longithwa, oshoka oga hala okutseya.”

Momahokololo ngoka otamu monika iilyo yOngeleki mpoka yi thike, nosho wo iigandjwa nkene ya futwa omumvo ngoka, onkene ohaga kumwa sho omumvo kehe omiyalu dhaakwa-negongalo otadhi koko, ihe iigandjwa itayi koko nando,” osho omunashilongangeleki Pentti kwa li e tu tseyithile nkene aakwathi yetu haye tu dhiladhila.

Lagwenene iilyo yOngeleki ndjika wo oyindji yomuyo nayo oya tameke okuuya ko iinima mbyoka notashi gandja etegameno. Nonando oshigongi sha Juli inashi ninga etokolo lyasha kekwatho lye etelwepo, ngaashi sha ningwa momimvo omikwawo dha piti, ngele tashi ka tsikila kuDesemba ngiika itashi kala inaashi ninga po sha shi lwetikile, oshoka ogwo aguke omukalo gwokuyamukula aakwathi yetu, sho taa dhimbulula oonkambadhala dhetu.

## EFYO

Elelongeleki ola shiivifilwa efyo lomunashilonga wOngeleki omweevangeliste Tomas Nghilalulwa, Ondobe, ou a xulifa eti 4.7.1984. Elelongeleki pashitokolifo shalo oshiti 299/84 otali hekeleke omufiyekadi novakwapata neongalo Ondobe, ehekeleko laKalunga.

\*\*\*\*\*

Omulongi omukulu gwosikola yeshasho nekoleko, mOthika, Uukwambi, Gottlieb (Kangumu) Mumbala, okwa mana oondjenda dhe 29.7.1984 konima yuuwehame wethimbo ele, mepipi lyomimvo 84.

Evindina Mumbala

## OUNGOBA

Omafiku a dile ko, Elelongeleki la ELOK ola nangekele omupangeli woihauto Festus Ndjibu mongalashe yongeleka pOniipa. Ndjibu okwa mana elihongo laye leedula nhatu neudo kuSoomi oko a tuminwe kOngeleki vo na Matti Shipena. Matti okwa nangekwa koshitukulwa shaKavango.

Panhokolwa yElelongeleki (335), Ndjibu okwa mona odjapo youmakeninga nokwe shi pandulila Kalunga. Onhokolwa oya twikila tai ti kutya omunashipundi wElelongeleki okwa indila omupangeli ou omunyashalela a diinine oilonga nokutukule oonongo oo a pewa kofikola oko a li.

\* Omupangeli Ndjibu ota monika mefano eli (kolumosho), ta tale oindjina ‘moman-djadja’. Efano ola fanekelwa mongalashe yongeleki pOniipa eshi opo a hovele oilonga muAuguste neudo.

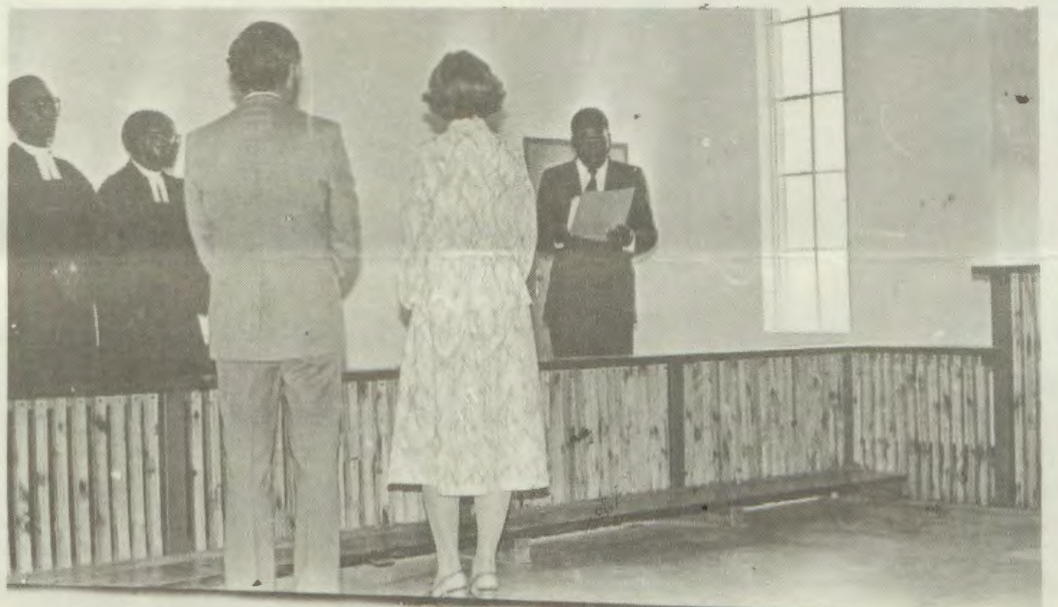


## TSEYITHA MBALA E-LUNDULUKO LYO-NDJUKITHI YOYE

## Ovanashilonga vOngeleki va imbwa okuuya koilonga

Elelongeleki ola shiivifilwa nenyeme komubisofi, kutya ovanashilonga vOngeleki ya ELOK, tate Raimo nameme Eeva-Liisa Holopainen, inava diminwa kepangelo la SA okwaalukila muNamibia.

Ovanashilonga ava ova ka fudile po omudo umwe kuSoomi vo va alukile vali keyakulo lavo. Ovo ova longa eedula di dule 20 moshilongo eshi.



Eumbo laHolopainen fiku tali lekelwa kOngeleki li ka fude po, konima yomudo umwe.

# YATANO YA KA TSIKILA EILONGO LYAWO KOMBANDA YOMAFUTA

Aagundjuka yatano, aateologi yane nomulongi gumwe mu ELOK, oya ka tsikila eilongo lyawo komavi gokokule. Kakele komulongi, ayehe



**Onesimus Shanyengange**

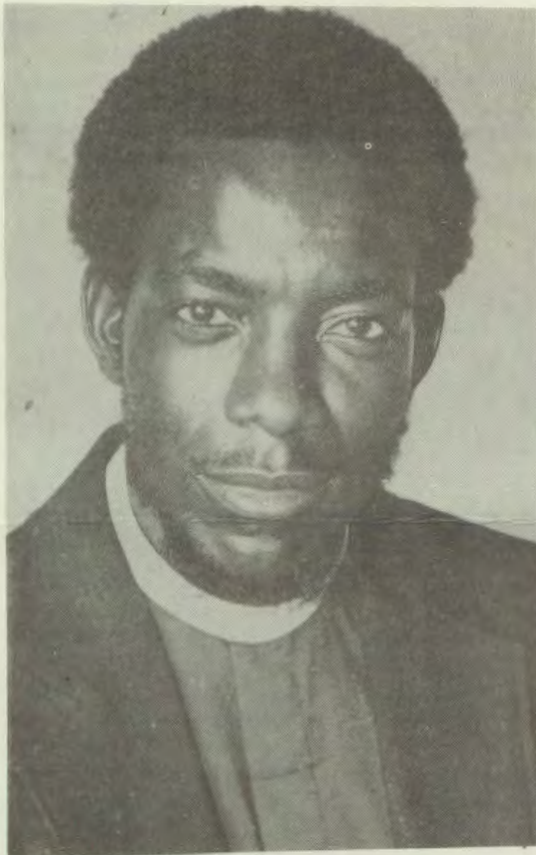


**Anna Mweshida**

yane oya pewa uunasikola kooseminali hoka taa ilongele.

Omusita Julius Mtuleni, okwa ka tsikila kuAmerika mOseminali yuuteologi yaWartburg, Dubuque, Iowa, osho wo aasita Martin Nelumbu naShekutaamba V.V. Nambala oya yi kOseminali yuuteologi muMinnesota muAmerika.

Omusita Onesimus Shanyengange oye a yi kOseminali yuuteologi muBethel, Bielefeld muNdowishilanda lyokuuninginino. Omulongi Anna Mweshida okwa pewa uunasikola kEhangano lyOongeleki oonkwaLuther muNdowishilanda lyuuninginino (VELKD) hoka ta konakona iinima yi na sha nuunamiti (Apoteka).



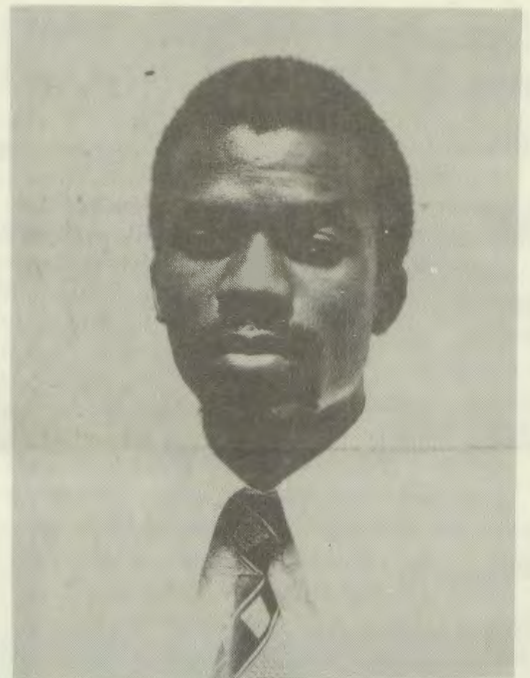
**Shekutaamba V.V. Nambala**

## EITHANO LYETU

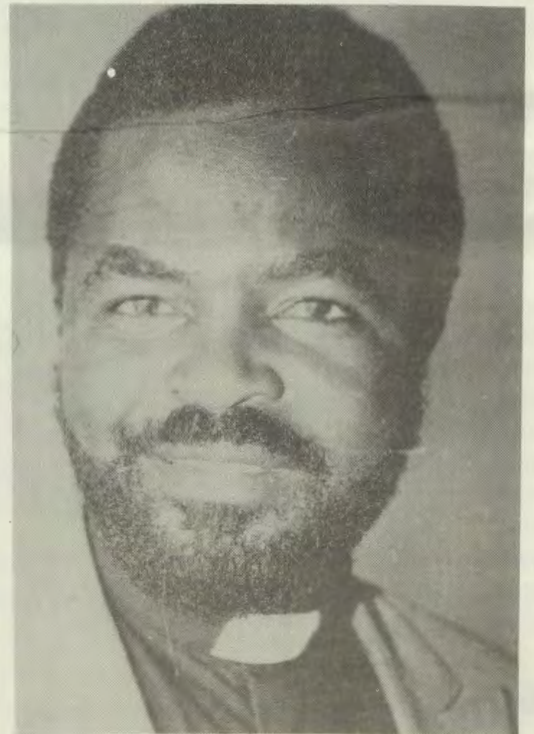
Oyendji moshigwana shetu oye li po taa limbiliwa, kutya yo otaa ka ninga aashike pamaithano gawo, oshoka ngashingeyi osha talika ko omaithano gamwe ogo ga fa ga simana ge vule omakwawo.

Ihe oshinima kashi li ngaaka nando. Omaithano agehe oga simana, nokehe gumwe okuuthilwa eithano lye. Ohaku tiwa nokuli, yamwe omaithano ohaga dhimbululwa muudhano wawo manga ye li po aashona.

Ihe sho tatu dhiladhila omaithano gamwe oge na oshilonga nenge oga simana ge vule



**Martin Nelumbu**



**Julius Mtuleni**

omakwawo, olwindji oyendji oyi igameke kugo nando muye mwene kee li uvite. Kashi li mondjila.

Aagundjuka naanona naa yelithilwe manga kuyeke opo yaa kuthe omaithano gopombambo. Ishewe okwaadha onkatu yopombanda, hasho okuhenuka eithano lyoye. Eithano kehe ohali longwa komuntu u na onkatu shaandjoka wa adha, notashi kwatha okulonga eithano lyoye nawa.

*Angula D. A.  
Oseko yaShigambo*

# OSHIINGILISA NASHI TSIKILE TUU MOSIKOLA ONGELAKA ETIYALI?

**Okuza 1980 elaka lyOshiingilisa sho lyu uthwa paveta li kale oshilongwa shelaka etiyali mOosikola dhOmowambo, okuza Sub A nokuuka pombanda, uumbanda nomalimbililo oge ende taga koko, kutya pamwe okuhepeka ashike aanona nelaka ndyoka, ihaali uvika olwindji tali popiwa momudhingoloko, unene papangelo tali lele natango oshilongo shika.**

Omandopo gamwe gaalongwa omanene mositanda yontumba nenge yongandi, yamwe ohaa endebele okugandja uusama kelaka lyOshiingilisa ndyoka lye ya po. Osha yela, elaka lyOshiingilisa oli na aakondjithi unene aapopi yOshimbulu nomuntu ou uvite ko uudhigu wawo.

Ihe elaka lyOshiingilisa, olya yuulukiwa ethimbo ele moshigwana shika. Omutaleli gwoshikondo oshiti - 8 mElongo lyomOwambo, omusita Hosea Nampala okwa pulwa koshigongi shaaye shaalongi sha OTA, onkatu yOshiingilisa mpoka ya thiki ngashingeyi. Eyamukulo lye otali landula mpaka:

## Ehistoli lyomalaka glilumbu mOwambo

### 1. Oshindowishi

Elaka lyoshitakumo ndyoka lya yi tango momakana gAawambo Oshindowishi. Okuza ngaa twopomvula 1880, Aawambo aalumentu oyendji oya kutwa miilonga kUushimba noya longo pamwe nAandowishi.

Okuyalula mOshindowishi, omadhina giilongitho nogomaludhi giikulya, amatukano, na yimwe yomokupopya, oya tseyika kaaniilonga mboka oyendji. Yamwe ya tseyika nokuli okupopya Oshindowishi shoshene.

Siso onena otu na aakulupe yamwe inaa enda osikola, ihe ohaa popi Oshindowishi. Kutya oye shi tseyi shi thike peni, ngiika oopelesenda 5% sigo 10%.

### 2. Oshiingilisa shotango

Oseminali yaNiipa oya totwa po 1913, muuyuni wAandowishi. Momvula 1916 Aa-ingilisa oya kutha ko epangelo, nOshiingilisa osha tameke okulongwa mOseminali. Oshiingilisa shika shotango osha kala sha nika uunkundi. Mboka ya piti mOseminali oya li ye na owino onshonalela melaka ndyoka.

Sigo nokuli 1936, aalongi kaya li ye na omukanka gwa yela gwOshiingilisa. Moosikola odhindji oshiingilisa she ethiwa thilu. Natu tye Oshiingilisa pethimbo ndiyaka, osha li sha tseyika ashike ngiika oopelesenda 0, 5%.

### 3. Oshimbulu

Inandi mona uyelele wa gwana, kutya Oshimbulu osha tameke uunake. Pamwe uuna elaka lya zi kapingelo kutya aanona ayehe moosikola dhEtumo lyAasoomi nolyaKatoolika kaRooma, naa longwe Oshimbulu.

Oshimbulu osha ponoka ko kashona nakashona moosikola dhEtumo. Osha hokiwa kaagundjuka ye li moosikola, aalongi oye shi ningine muule. Okuthika pomimvo 1975, Oshimbulu otatu tengeneke, kutya osha tseyika noopelesenda 50%. Pethimbo ndyoka olyo wo aantu ya tameke oku shi nikanika.

Pethimbo ndyoka Omatumo gaSoomi nolyaKatoolika kaRooma taga pendutha po Oshimbulu, lyo Etumo lyaAnglikana otali hwameke Oshiingilisa shaLondon momihandjo dhalyo mUukwanyama. Nasho moosikola dhawo osha li sha tseyika noopelesenda 50% naanaa ngaashi elaka etiyali li na okutseyika.

### 4. Oshiingilisa oshitiyali

Tse nayakwetu sho twa zi keilongo lyetu, ngame onda tameke okulonga mOseminali yaNiipa. Aalongi oya tokola Oshiingilisa shi longwe maanona mboka yomvula yotango. Aanona oya li ye shi nyanyukilwa.

Omutaleli okwe ya. Nomokutseya elandulathano lyiilongwa yosikola, okwi itu momailongekidho gandje gOshiingilisa. Inaka pula omukuluntusikola, ongame a pula kutya omolwashike tii shi longo. Okwa kumagidha ndje ndaa shi longwe.

Omvula ndjoka onde shi longo ngaa sigo opehulilo, ihe oomvula dha landula ko, onde shi longo pondje yiilongwa yandje. Omathimbo hamale we ga piti, "etemba olya yi momunoko." Oshiingilisa sha mwena.

### 5. Oshiingilisa oshititatu

Pehulilo lyomvula 1959 epangelo olya tokola pwaa na we uudhano, kutya moosikola adhihe dhomOwambo namu longwe Oshimbulu nOshiingilisa. Koosikola dhetumo lyaSoomi nolyaKatoolika kaRooma, Oshiingilisa nashi kale elaka etitatu.

Koosikola dhaAnglikana, Oshimbulu nashi kale elaka etitatu. Pethimbo ndika okwa li ku na iinima mbyoka ye endeleditha aantu yetu oyo ya hokwe Oshiingilisa.

1. Oshiingilisa shoshene ohashi ithele mukupopya.

2. Oonakweenda kombanda yomafuta oya holola, kutya ngele wa zi mOvenduka Oshimbulu we shi ihulu, Oshiingilisa osho tuu.

3. Mboka ya ka longwa koosikola dhokombanda ku SA oya ti iilongwa ayihe ohayi longwa owala mOshiingilisa.

Okuthika pomimvo 1979, Oshiingilisa oshe ya po shi shiweke ngaashi naanaa elaka etitatu li na okutseyika. Ontseyo tayi tengenekelwa poopelesenda 22%. Yamwe ye shi tseyi shi thike pamwe nOshimbulu.

### 6. Oshiingilisa oshitine

Moshigongi shaakuluntusikola sha li mOngwediva 1980, omwa tokolwa Oshiingilisa osho shi ninge elaka etiyali moosikola adhihe mOwambo. Etokolo ndika olya kolekwa miigongi yaalongi ya OTA, yaatalelisikola nosho tuu.

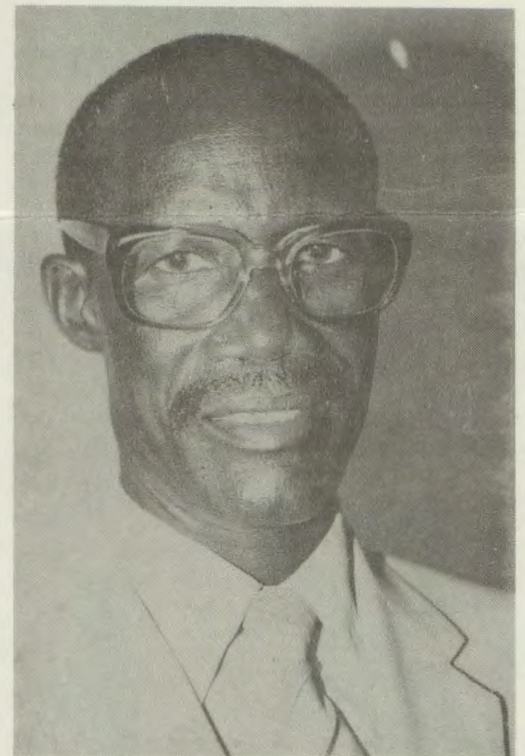
Osho omumvo gwa landula osha tameke kOstanda ontiyali nokuuka pombanda. Unene momvula ndjoka osha li ngaa tashi nyengana. Ihe uyelele ndi u na okuholola omuthika gwOshiingilisa moosikola dhetu ngaashingeyi, owa zile ndje miizemo yomakonakono ngaashi mOstanda 5, 6, sigo 10.

Omwaalu omunene gwaanona nogwaalongi ogwa hwama okukutha Oshiingilisa. Ehwamo ndika olyo tali kwathele ontseyo yi ye mbala komeho. Omuhangenwa iha sindi.

Omupokatiyalu gwontseyo yOshiingilisa moosikola dhetu, onde gu tengeneke poopelesenda 30%. Ondi shi shi etengeneke ndika kali li kokule noshili.

Etengeneke ndyoka otali holola Oshiingilisa kutya inatu shi pita. Ihe oopelesenda 30% odhi li popepi nokupita. Okudhiladhila elaka lya galangata komalaka getu oomvula mbali, adhike, ihe oshi li ngawo, alikana osha gwana okupandulwa.

Nashi tu pe omukumo tu ye komeho nasho tu na einkelo. Oshigwana ashike osha panda sho tatu longwa Oshiingilisa.



Omutaleli Hosea Nampala

## Omukwetu

**EMBESITELO LYOMUKWETU INALI PATA NATANGO, OTO VULU OKU SHI NINGA NOTO TSIKILE SIGO 1984.**

## ESO

Rosalia Ilapa Amwenye, okwa hulitha oondjenda dhe 27.7.1984 ombadhilila megumbo lye, mOndonga. Okwa thigi ko omusamane gwe naanona yahetatu.

\*\*\*\*\*

Aina Nīta Tshiimi mUukwaluudhi, okwa mana oondjenda dhe 15.8.1984 muukokele tau tengenekwa pomimvo 68 sho a kala ethimbo ele muuwehame. Okwa thigi ko omusamane gwe noyana yaheyali naatekulu yaheyali.

Jafet Kashinamwene (Masamanegiindongo) okwa hulitha oondjenda dhe 29.8.1984 moshipangelo shaShakati, mepipi lyomimvo 65. Okwa kala mOmaalala, mOndonga. Okwa thigi ko oyana yahetatu, omuselekadhi gwe naatekulu yatatu.

Robinson Nehale

Aantu yamwe oya vulwa okukala nomwenyo noyi ikutha omwenyo. Otu na okugalikana Kalunga e tu gamene kuuwinayi mbuka, oshoka otaw taandele noonkondo moshigwana shika. Aantu naa kumagidhwe wo<sup>a</sup> yaa yekelele okufupipika oomwenyo dhawo nenge oku dhi iyuga yo yene.

Oku na wo eidhipago ndyoka tali ningwa aantu sho taa fupipike okukalamwenyo kwawo muunkolwi nomuufukedhi. Tu pukulu-lathaneni, tu hungathaneni oomwenyo, pamwe iihuna mbika tayi fupipala.

Otto M. Egumbo

## “OMUPOPYO OMWIINAYI”

Muule woomwedhi omulongo nagumwe dha zi ko, omwa kala hamu holoka omupopyo ngono omwiinayi nogwesheko kombinga yoogwamululu (uundoongi). Omuntu ngono ha toto omahokololo ngono, okwa tala ngaa nawa nokwa dhiladhila tuu mondjila?

Okwa tseyana ngaa iilonga mbyoka hayi longwa koonoongi? Ndele oha ti oondoongi otadhi mana po omwiidhi? Kape na ngoka te mu itaale. Oondoongi odha zi nale manga inaatu valwa sigo onena.

Omuntu ngoka ota sheke, kee na oshili, ye ishewe kee na egumbo, shila oku li moondunda oontokele. Ngele okwa hala a mone aayambidhidhi na tye shila; oo-

mvula odha ningi omimvo odhindji inaadhi loka, ondjala oya geya. Handoongi ha mana omwiidhi.

Simon Shivute  
Windhoek



## Onamagongwa Motors

### OYE

OMULANDITHI GWOYE GWIIHAUTO G M NOO ISUZU  
OTE KU PE OMAUWANAWA TAGA LANDULA.

1. Ongunga yoye yotango kutse, otse tatu yi ku futile
2. Ondando yetu ongaashi yokOvenduka
3. Oombaki dhetu adhihe odhi na oshilondelo konima noshikandekitho (ogrella) komeho
4. Otse dhangi muSuid-Afrika nomuSuidwes okulanditha oobaki ndhono hadhi nana akuhe, tu vule lwoopelesenda 52 (52%) aatetekeli yetu.
5. Eyakulwo lyoye nesiloshipwiyu lyoye putse, oto li ningilwa kumboka ye shi putudhilwa owina.
6. Otatu ku kwathele paimaliwa nopaihohela pakulanda kwoongunga.

ILA NEHALO EWANAWA U MONE:

Douw Nell nenge  
Victor Gabriel

Oto vulu wo okudhenga konomola - Ondangwa 95, u yakulwe nawa.

## Ofanditha yiihauto yoobaki

Ofanditha onene yiihauto yoobaki niitenda yi ili noyi ili, otayi kala ko eti 29/09/84, mOlyomakaya mongalasho ya ELOC pOniipa.

ILENI KUYELE.

### OMUKWETU

Oye oshifo shOngeleki Onkwaevangeli paLuther yomOwambokango. Ohashi nyanyangidhwa mOshinyanyangidho shOngeleki mOniipa. Omukuluntu gwoshifo omumbisofi Dr. Kleopas Dumeni. Amushanga gwoshifo omusita Sebulon Ekandjo.

Ondando yOmukwetu muNamibia naSuid-Afrika R5,00 komumvo. Palwe muAfrika R8,00 nokombanda yomafuta R11,00, komumvo. Mondhila R13,00.

Ondando nomambesitelo agehe naga tumwe ko-mukwetu, Oniipa, P/Bag 2013, Ondangwa, 9000.

EV.LUTH.OWAMBOKAVANGO CHURCH PRESS  
PRIVATE BAG 2013, ONDANGWA 9000  
SWA/NAMIBIA