



## “Inamu etela ndje nando ethindakano lyombinzi,” - Hilja a ti

KuSebulon Ekandjo

“Ethii ndje ndi kale nombili, ompito yokoshigongi nde yi kanitha nale, inamu etela ndje we nando ethindakano lyombinzi,” osho meme Hilja Shivute a yamukula Amushanga omukuluntu gwOngeleki ya ELOK, manga Hilja taa thiki pOniipa, okugaluka kOvenduka pamwe nomuthindikili gwe Makambuli.

Manga kwa li ku na ashike omasiku gatatu oshigongi shi tameke, omumbisofi Dumeni nameme Hilja, oya tseyithilwa kombelewa yomaweendo mOvenduka, kutya Opaspoorta yaHilja inayi yela notashi pula natango iiwike ihamano okwoopalekwa.

Eimbo olya li ashike, edhina lyoshilongo hoka ku na oshigongi inaali tulwa mo. Pethimbo ndyoka, omumbisofi naHilja oya adhikwa nokuli taa ilongekidhile okulonda ondhila esiku lya landula yu uka koshigongi oshinene shAakwaluther ayeche muuyuni, shoka sha tamekele 22 Juli muBudapest shHungary.

Omumbisofi okwa kambadhala osima okwoopalekitha oshinima shoka, sigo e shi thigile ombelewa yOraata yOongeleki muNamibia (CCN), ndjoka palufo lwayo ya longo konyala uusiku auhe nasho.

Manga Amushanga gwOsikola yOsoondaha mOngeleki, Hilja, ta thiki pOniipa kee na we etegameno lyokuya,



Hilja Shivute Amushanga gwOsikola yOsoondaha mOngeleki

### MOSHIFO SHIKA:

+ Oshituthitumo numvo - Ep.3

+ Oshigongingeleki kuDesemba - Ep.6

+ Eyamukulo lyaKaulinge kOshigongingeleki - Ep.7

Dr Shejavali a teelelifwa - Ep. 10

## EHISTOLI PAFUPI:

Okuza kEipangelo lyOngeleki 1954, Ongeleki ya ELOC oya kala mewiliko lyOshigongingeleki, Epangelongeleki, nOmuwilikingeleki Birger Eriksson 1952-1958, Alpo Hukka, 1958-1960 na Dr Auala 1960-1963.

Omumvo 1963 Oshigongi sha tokola Ongeleki yi lelwe paumbisofi. Moshigongi shoka Omuwilikingeleki Leonard Auala oye a hogololwa a kale omumbisofi gwtango gwa ELOC, omuvalelwa-mo.

Miigongingeleki ya landula omumbisofi Auala okwa holola ompumbwe yomukwathi gwomumbisofi. Okuza kOshigongingeleki mOkahao 1969, opwa li inapu taambwa omadhiladhilo ngoka gokuhogolola omumbisofi. Shila mEkotampango omo amuke mu egululilwe ompito yOmumbisofi omutiyali.

Ihe osha fa sha nengenekithwa koshiponga shoshihauto, moka a hupithwa, kesilohenda lyaKalunga nosho wo Kalunga u uvu omagalikano ogendji gooitaa-li.

Oshigongi sha tokola omumbisofi a hogololelwe omukwathi ngoka ta longo koshi yomumbisofi sigo okoshigongingeleki mOngwediva 1973.

Methimbo ndyoka 1973-1978 opwa holo-ka omadhiladhilo kutya, kashi li mondjila, nokashi shi oshihanawa wo noitashi monika palwe moongeleki muuyuni, aawiliki yaali ye li mOmbelewa yimwe. Omuwilikingeleki, nenge omumbisofi oku na okukala moshikandjongeleki.

Opo mpoka ekotampango nomauthompango nando oga egulula ehogololo lyaambisofi ye vule gumwe, osha talika itashi piti manga, oshoka aambisofi ihaa kala moshikandjongeleki shimwe ye li yaali.

Oshigongingeleki oshiti -11 mOngwediva 1981, pamalongekidho ga ningwa metetekelo, osha koleke lwotango Ongeleki ya ELOC yi topolwe miikandjongeleki. Opo ihe ngele ethimbo olya pya nekotampango lya kolekwa olutiya-li, nena uupyakadhi kau po we. Ngele pwa dhimbululwa ompumbwe, nena omapulo ngoka ga kala po otaga yamukulwa nuupu.

Iikandjongeleki: Onawa shi yele kutya, uuna tatu popi iikandjongeleki, itatu popi etopolo lyOngeleki. Ekotampango, nomauthompango, otaga shi yelitha kutya Omutungilo gwelelo lyiikandjongeleki otagu longo koshi yoshigongingeleki shimwe shOngeleki ndjika yimwe, nopa na okukala omumbisofi gumwe ngoka ta pewa oonkondo, opo Ongeleki yi kale mewiliko limwe alike.

Kleopas Dumeni

## ....Inamu etela ndje

Dha za kep. 1

n o m u -

sita Matti Amadhila e li mondjila u uka kOvenduka a pingene ehala lyaHilja koshigongi, Hilja ota lombwelwa: Opaspoorta yoye yoopala, shuna natango mondjila u ye kOvenduka.

Oongodhi odha kala tadhi imbagana pokati kombelewa yOngongahangano yAakwaluther naBudapest nopokati kombelewa yOraata yOngeleki muNamibia nombelewa yOngeleki ya ELOK okwoopaleka omadhina gaMatti naHilja ngoka ga adhikwa ga tumwa oshita pwaa na ompumbwe.

Muule wootundi 48, ayihe oya tulwa melandulathano nameme Hilja okwa

shuna mondjila ye nombili manga Amadhila a galukile wo mbala kiilonga ye yoshitayingeleki.

Oshigongi otashi ka hula 5 Aguste.

Sha piti hewa, Ongeleki otayi shi pandula unene omatompakano goombapila sho go opalekwa methimbo efupi, na unene tuu sho kasha li epuko lyombelewa yomalweendo mOvenduka.

Elelongeleki olya adhikwa lya hogolola omumbisofi, Dumeni, omusita Heikki Ausiku, omulongi Hilja Shivute nomugundjuka Anna Mweshida omumvo 1983 oyo ya kalele po Ongeleki ya ELOK moshigongi shoka shAakwaluther ayehe muuyuni.

Meme Hilja konima yoshigongi okwa li e na oku ka pitila kuSoomi, omolwoshilonga she mpaka shewiliko lyOsikola yOsoondaha.



Aalumentu aagundjuka ya thikama methano ndika, oyo mboka ya yapulilwa oshilonga shuusitagongalo muJuni nuumvo. Okuza kolumoho; Tomas Ndiwakalunga, Eliakim Shaanika, Jesaja Iipito, Sebulon Ashipala, ta landula ogwongeleki ya ELK, Jonas Mweutota, Mateus Kapolo, Halolye Nashihanga, Jason Mbadhi naElpo Enkono. Omalangeko gawo tala Omukwetu No.12/1984.

## EHEMPULULO LYONGANGA YOSHILUUDHE KOSHIPALA SHEGONGALO

“Kalunga okwiithana ndje iikando omulongo ndi mu taambe, ngame ndi dhine uunganga. Nena onda tokola ihe ndi ninge omukriste nondi holole uuwinayi auhe mboka nda longo,” osho Kanyoni Njogu (77), muKenya esiku limwe a thikama megongalo konima yeuvitho e ta hempulula.

Kanyoni iilonga yuunganga okwe yi longo omimvo 50. Okwa simanekwa moshilongo shawo popepi nokokule. Okwa holola nkene a yuuluka aantu mboka ya pangwa kuye ya kale peshasho lye, osho wo mboka ye na natango eitalo muunganga woshiludhe.

Esiku lyeshasho lye, manga olwithi talu itumbu meziko enene lyiiketi mbyoka Kanyoni mwene e yi gongele nokwe yi eta koshipala shegongalo nokwe yi fike po, egongalo alihe olya thikama li imbe chambelelondjimbo molwoonkondo dha-Kalunga dha vulu okumangulula nonkwatwa Kanyoni sho a kala momalyenge gomutondi.

Aantu 300 oyi ile okutala ondumba yiipeta yoonkosa, oombago dhomiti, omakende gomeya omaluudhe, walyewo kutya ogashike niikoloko lo iikwawo yi li momulilo tayi pi.

Kanyoni okwi ishashitha edhina epe, Samuel.

“Kalunga ngoka a mangulula ndje, oye wo ta ka ulukila ndje mpoka ndi na okumona iikulya,” osho Samuel a yamukula kepulo nkene ta ka hupa sho a ningi ngeyi omukriste.

Epango lye olya li lya pula konyala R2,00 sigo R10,00 komupangwa.

(Lwi)

# **Epopitho lyOmu- mbisofi Dumeni moshituthitumo nuumvo**

**“Otwa gongala mpaka opo tu hambelele Kalunga noku mu pandula pamwe nOngeleki onkwaLuther muSoomi, ndjoka Ehanganotumo lyayo lya gwanitha omimvo 125 nuumvo, okuza 1859 sho lya to-twa.**

“Ehanganotumo ndika, olyo lya longithwa kuKalunga iinima iinene nolya holola po Ongeleki ya ELOK meuvitho lyevaangeli, onkee otwe shi nyanyuki-lwa.”

## **Iiningwanima yimwe yomehistoli**

“Muule woomvula 85, okuza 1870 sigo 1954 opwa holoka osheeli, omagongalo gEhanganotumo ndyoka mOwambo nOkavango ngoka ga ningi Ongeleki tayi ipangele 1954 noya ziminwa kepangelo lyoshilongo, muNamibia alihe.

“Omuwa okwa gamene aatumwa oomvula 13 konyala sigo aantu yahamano ya shashwa eti 6.1.1883. Methimbo ndyoka aatumwa oya kala nomaudhigu ogendji nomanene. Yamwe ombinzi yawo oya tikile muka. Gwotango oye G.M.Skoglund, Henrik Rautanen, Veikkolin, Elias Pentti naToivo Tirronen nooyakwawo oyendji.

“Muule wethimbo ndyoka, omwaalu gwootaali gwa thiki sigo 100,000. Ombimbeli melaka lyOshindonga noma-mbo omakwawo otwe ga pewa. Elongo, epango, iipangelo aayakuli aatumwa naavalelwamo.”

## **Ethimbo lyopokati**

“Konima yoomvula 30 dha piti, okuza 1954 sigo 1984, mOshigongingeleki shoka sha tokola eipangelo lyOngeleki, omwa li omakumagidho meuvitho lyo-mumbisofi Martti Simojoki. Okwa tile: “Kwateni koohapu dhaKalunga.”

Kaleni aakriste yashili, aakriste yashili ohaa yambekitha oshilongo, osho omupangeli gumwe a ti.

“Ombimbeli melaka lyOshikwanyama ya holoka. Elaka Etoye mOrukwangali lya holoka. Elongo lyuukriste, Omai-

mbilo, iifo, iinyolwa yopaukriste, Oshinyanyangidho, omwaalu gwaauvithi, gwaalongi ya holoka.

“Methimbo ndika, osheelo oshe tu egulukila okufala ko evaangeli muuzilo wOndonga sigo Caprivi, muuninginino sigo Okaoko, Angola naSenegal. MOshigongingeleki shiyaka konima yoomvula 30, omusita Vilho Kaulinge okwa pulile, epulo ndyoka nda hala oku li ku pula wo nena:

“Otu na okuninga ngahelipi, osheshi otwa pewa oshilonga?”

## **Ethimbo lyahugunina**

“Ethimbo ndika otali tameke 1984 sigo 2000. Aapulakeni, inandi tseya uuyuni otau hulu uunake, onda lesha ashike, kutya Omuwa ote ya mbala. Aapagani opo ye li ngaashi ya li po pethimbo ndiyaka konima yomimvo 114 dha piti.

“Aapagani oya yuulukwa ya ningilwe wo shoka twe shi ningilwa. Okulye? Methimbo ndyoka lyomimvo 16, manganu inaatu thika momumvo 2000, otatu ningi po shike, nena?”

“Evaangeli otwe li pewa, onkondo otwe dhi pewa, ethimbo otwe li pewa, eliko otu li na. Osho twa ningilwa ngeyi iinima iinene, Omuwa otatu mu pandula nashike.”

“Ngoka a dhiminwa po oondjo odhindji, oye oku na ohole oyindji.”  
Luk.7:47. “Otatu shi futu ngiini nuunake?”

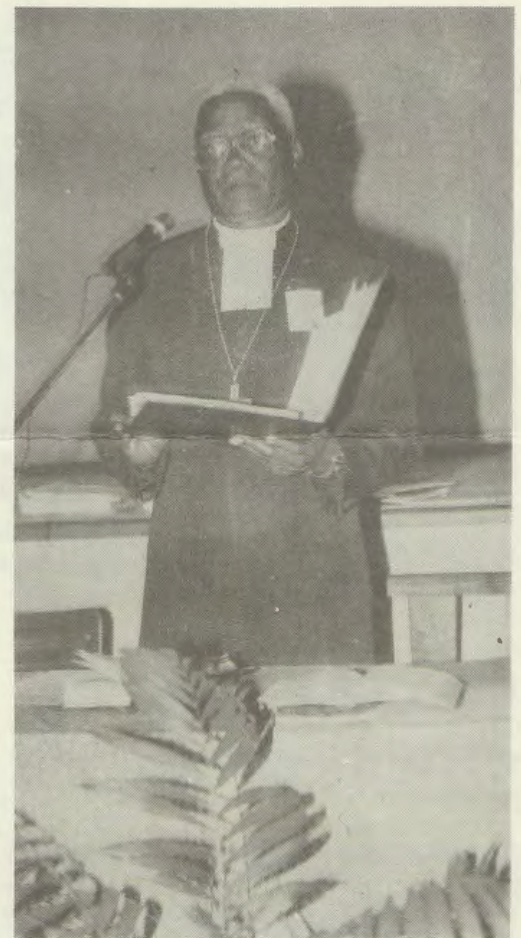
# **OSHITUTHITUMO NUUMVO MU ELOK**

## **KuSebulon Ekandjo**

**Ongeleki ya ELOK nonuumvo oya li ya dhimbulukwa ethiko lyaatumwa yotango Aasoomi mOwambo, konima yoomvula 114 dha piti. Oshituthi shoka osha dhanenwe mOngwediva.**

Esiku eti 9.7.1870 olyo aatumwa yotango Aasoomi ya thiki lwotango mOmandongo, mOndonga, okutameka oshilonga sheuvitho lyevaangeli. Molwaashoka esiku ndyoka nuumvo olya li Omaandaha, esiku lyiilonga, onke aalongekidhi yOndjalulamasiku yomumvo gwOngeleki mu ELOK, oye li tula li kale mesiku lya tetekele eti 8.7.

Pamwe noshituthi shoka, Ongeleki oya dhimbulukwa wo pamwe nOngeleki Onkwaevaangeli paLuther yaSoomi, o-



“Okuza 1870 sigo 1954 Omuwa okwa tungu Ongeleki ye ndjoka ya li omagongalo sigo ya ningi Ongeleki. Pethimbo ndyoka Kristus okwi ilikolele ootaali ye vule 100,000 notwa pewa oohapu dhaKalunga melaka lyetu,” osho omumbisofi a tumbulile oshituthi mepopitho lye.

molwEhanganotumo lyayo sho lya tsakanitha nuumvo oomvula 125 miilonga yalyo.

Ongeleki ya ELOK oyo osheeli shEhanganotumo ndyoka, onke ELOK okwa hambelele pamwe nayinangeleki.

Nonando omagongalo agehe oga li ga indilwa kElelongeleki nokombelewa yoshilonga shetumo mpaka, ga holoke koshituthi, omagongalo omashona gwala

Tala kepanja tali landula



Konyala aantu 400 nenge 500 ayeke ya kala nuumvo moshituthitumo mOngwediva. Oshituthi osha ningilwa pondje ngaashi iikwawo hayi ningwa olwindji.

### DHA ZA KEP. 3

ngoka ga tumu ko aatumwakalelipo yago.

Sigo oompaka OMUKWETU ina tseya omatompelo, kutya ogashike mokwaa-holoka moshituthi oshinene shi thike mpeyaka shOngeleki, ihe opu na omandhindhiliko gasha taga ulike, kutya uudhigu woondjila pethimbo ndika, ookwaa na owino wa gwana kwomawilikon-gundu getumo momagongalo nkene iituthi yi na okulongekidhwa, osho wo etsokumwe lyoshituthi shoka nOshigongingeleki, otashi vulika oyo ya ningi eimbo lyomagongalo.

Amushanga omukuluntu gwOngeleki, omusita Absalom Hasheela sho a kundathana nOMUKWETU oshinima shika, naye ota koleke oshitsa shahugunina kutya osha li eimbo limwe.

Oshituthihambelesho shoka osha tamekit-hwa nelongelokalunga ndyoka lyu uvithilwa komusita Asser Lihongo, omutonatelishitayingeleki shaKavango. Ongele mevitho lye nenge miipopiwa ii-



Elongelokalunga moshituthi shoka olya li lya ningwa kaasitagongalo okuza kolumoho; Paulus Heita, Alfeus Sikwaya naTitus Niitshinda.

kwawo ya landula ko moshituthi shoshene eigandjo lyomukriste koshilonga sheuvitho lyevaangeli, olutu lwe, omwenyo gwe neliko lye, olyo lya kala tali tulwa omuthindo kaapopi ayehe.

Konyala Aasoomi ayehe ye li meyakulo lyOngeleki ndjika, oya li ya kala moshituthi shika, mokati kawo omwa li aayenda yamwe ya zile kOsoomi taa talele po Namibia.

Moshituthi omwa li wo omumbisofi gwOngeleki, K.Dumeni, aasita yamweyamwe yOngeleki nosho wo omuwilikingeleki Wilfried Blank gwOngeleki Onkwaevaangeli yAandowishi mUushimba. Epopitho lyomumbisofi tala palwe moshifo shika.

“Epulo edhigu muuyuni wongashingeyi, kali li mpoka, kutya eitaalo kali po, aawe. Uuyuni ou na omaitaalo gawo, notau ga longele. Epulo lyetu oli li mpoka negele uuyuni owiitaala tuu edhi-



Konima yekundo lyaAmushangakwatakanithi meme Ulla, peha lyEhanganotumo lyaSoomi, ongundu yaatumwa ayehe taa longo mOngeleki ndjika, oya thikama noyi imbi okuwolo yawo.

na Jesus, oshoka omo moka amuke tatu hupithilwa,” Iil.4:12, osho omusita Tomas Shivute T.T. a popi mevitho enene lyoshituthi esiku ndyoka.

Moshituthi omwa li wo ongundu onene yaamboka haa longo momapya getumo meni nopondje yOngeleki. Mokati kawo omwa li omusita Noa Ndeutapo, omutonatelishitayingeleki shaKunene pamwe naasita naanashilonga ooyakwawo pamwe naye hwiyaaka.

Mepoptiho lye amushangakwatakanithi gwEhanganotumo lyaSoomi, meme Ulla Nenonen, okwa ti ngeyi:

“Mokuthikitha ko evaangeli huka, Kalunga okwa longitha Ehanganotumo

Tala kep. 5

## Onhuko tai mane po oshiwana shetu nai kondjifwe ngahelipi?

Tu taleni koupyakadi u li mOwambo, tau teya notau piyaaneke, tau limbilike notau eta oshiponga mokati koshiwana. Ovakulunhu, o-vapangeli, ovanandunge amushe, tu taleni po nawa moshiwana shetu kombinga yoluhaelo.

Ounona vaninilela otava ningi omadimo ovamati ove na onunona ookane nookatano. Ova hombola eembada. Ounona va tya ngaha, ou li moshiponga nomoluhepo li he shii okutongwa. Outeku owa kana po, osheshi onunona itau tekulwa vali kooxe nokooina.

Momaumbo ihamu nangalwa vali, ovanhu ova nyengwa okupangela omalutu avo. Ounona vanini inava hala okunangala momaumbo. Mbela opo tu kufe po omukundu wa tya ngaho woshilongo tashi ningwa Sodom naGomora, sho shi tu etele oupyakadi wehandu laKalunga, ope shii okuningwa ngahelipi?

Kalunga ota dula ngahelipi okulundulula okukala kwetu, pe li ngaho? Ovakomesho lungameni, otamu ka pulwa eemwenyo edi.

Tu likundeni vakwetu, tu ningeni po shomupondo. Ou ta mitike nande ovanhu vavali ile vata-tu, na hombole po umwe. Omaongalo nanye, dulei ko eenghaku. Ovanhu va tya ngaha, shapo nava kondwe.

Otava lapeke, va lapekele lyelye? Ovo tava eta

oukumbu neendaendo moshiwana shetu. Omumati nge to tale omunhu we mu nyona, a kalela odalate yaShomeva, ove to mu efa u ka konge okakadona, ino tila mbela okupulwa omwenyo waye?

Epangelo nalo nali kendabale apa tali dulu. Ngenge ongaho shapo, oifuta nai wedwe, shaashi ovamati ovo ngo tave shi idjipike keshe pamwe opo e li. Pamwe oimaliwa tai ke mu vela.

Omumati a tya ngaho, shimha a mane okulapeka, ye ota ka konge okakadona ka yela. Aveshe venya e va ekelashi, va ninga oikumbu novandaendi.

Efimbo paife ola lunduluka, oinima otai ningilwa owina, shaashi ovanhu kave na vali ombada washwa. Nale eshi kwa li hava xwikwa, kava li hava miti unene ngaashi ngaha. Paife emito omoode kuvo. Nava kondwe, nava handukilwe pamwe tave lidilulula.

Ile pu ningwe yo ngaha: Hamumati nande a pe-wa epitikilo a hombole okakadona ka yela, ye e na po vane ava a nyona. Pa dja umwe, ope dule inapa kufwa nandenande.

Ovakomesho ovaholike, nyatululeni Owambo. Etei po eemhango di tu twale mondjila ya yuka, oyo tai tu endifa moipango yaKalunga, nde tai ke tu twala fiyo okexupifo nokomwenyo waalusha, opo Kalunga a lundulule okukala kwetu.

Moiwana aishe nge to tale, kape na oshiwana shi li ngoshetu. Moiwana ikwao nge wa nyono po omunhu, oho mu kufa po, onghe kai li mehalakano ngOvawambo, ovo tava dalele paife meekomboni.

S.S.Aron

## Elalakano lyomugundjuka moshigongi

Kashi shi oshinima showala omugundjuka ngele ta hiyilwa mongundu yaagundjuka ooyakwawo moshigongi. Ope na elalakano. Shotango:

1. A tungwe uukwambepo we noohapu dhaKalunga Ps. 119:9.
2. Patiyali a tunge yakwawo mboka taa gongala pamwe naye, naashoka te eta po pamagano ngoka e ga na.
3. Patitatu, omugundjuka ngele ta kala omugongali moshigongi okutunge oshilongo she noshigwana she mokwiilonga omikalo omiwanawa dhonkalathano palutu nopambepo.

Omukulugwonale okwa tile: Waa na mutanda ku na ngombe, waa na aanona ku na aantu. Omugundjuka oku na wo oshilalakanenwa oshinene shokulonga oshilonga shetumo meni lyOngeleki nopondje yayo. Oshilonga shika otashi pula oonkondo dhaagundjuka.

Omugundjuka omuhumbati gwelaka etoye kaantu, omupopili nomuhanganithi. Omudhiginini guuyogoki, omuyakuli gwaakulupe nogwaayambidhidhwa. Iilonga ayihe mbika ote yi longo mohole.

L. Nd. Haukongo  
Windhoek

## OSHITUTHITUMO NUUMVO MUELOK

Dha za kep. 4

IyaSoomi, onke twa hala okuhambelela Kalunga, oshoka muule womimvo ndhoka 125, Kalunga okwe li dhiginine.

“Olwindji aantu mboka ya tumwa noya longithwa oyo aankundi noya li ye na o-mapuko, naanaa ngaashi nonena ndjika wo. Ihe Kalunga iha nyengwa okulongitha aantu aankundi, oonkondo dhe otadhi gwanene pombanda muunkundi.”

Mokuulika koshipalanyolo shonuumvo shEhanganotumo IyaSoomi: KRISTUS TA TUMU, meme Nenonen okwa ti, kutya kalya li Ehanganotumo IyaSoomi ndyoka Iya tumine aatumwa mbeyaka, ihe oKristus mwene, omutumi omunene.

Nomokuhokolola pafupi ondjokonona yedhiko lyEhanganotumo Iyawo nkene Iya tamekelwe nomaudhigu ogendji, nokokangundu okashona kowala, omutumwa Nenonen okwa hulitha nomatumbulo ngaka:

“Ngaashi Kristus a yambeke oshilonga shoka sha tamekwa kAasoomi huka ku-Afrika, osho ta ka kala naatumwa yongashingeyi, nane mboka mwa longo wo mUuninginino, mUuzilo wOndonga, momudhingoloko gwaKongo nomuAngola, Kristus ngoka, iha lunduluka.”

Oshizemo shegongelo Iyiimaliwa yetumo moshituthihambeleda shoka, OMUKWETU ina mona manga uuyelele, komeho otatu tseyitha ngele twa pewa sha kombelewa yetumo.



Meme Terttu Heikkinen, methano ndika, omulundululi gwOmbimbeli melaka lyOshikwankala, kee na unene uukolele wa gwana, ihe okwa holokele wo moshituthi shika.

# Oshoongaleleleki sha wedelwa o-mafiku atano

KuSebulon Ekandjo

**Omutumba omuti 12 wOshoongaleleleki shOngeleki Ongwaevaangeli paLuther yomOwambokavango, owa dimbulilwe manga komubishofi Kleopas Dumeni DD, eti 14.7.1984 mOngwediva fiyo okuDesemba neudo.**



**Oilyo yoshoongaleleleki pefimbo lokafudo**

**Omutumba ou owa hovelele 9 la-Juli nomoule womafiku ahamano pashikulafano loshoongalele, oikundafanwa oya nyengana okupwa ko ngaashi kwa li sha fanekwa.**

Oshoongalele eshi osho hashi toto eeve ta nomaufu oo taa lelifa Ongeleki aishe nohashi ongala alushe konima yeedula mbali ngenge odinini ile nhe ngenge odihapu. Omubishofi wOngeleki oye he shi wilike.

Pamaufomhango Ongeleki, oshi na yo omhito okuhoolola omuponhelewiliki washo, nomomutumba woneudo, omuponhele ou okwa li omufita Asser Lihongo.

Paufu lasho ohamu ongalwa ashike kovafita aveshe ovo va yapulilwa oufitoangalo kOngeleki ya ELOK ile kuinangeleki yomuSoomi ile keemwainangeleki palongoitavelo nodi na eh paululo limwe ngenge ova pita ekonakono lelala kOngeleki ya ELOK.

Oilyo ikwao yoshoongaleleleki sha ELOK noi na ewi mokutokola oyo ovakalelipo vomaongalo, umwe fiyo vane mukesho eongalo paunene weongalo. Ava ohava di movakulunhu veongalo ile ovo va kala shito ovakulunhu veo-

ngalo nomunhu keshe ota kalele po ovakriste 500 meongalo lavo hava i kuvalelo Uyapuki. Ovaevangeliste yo ohava dulu okuhoololwa.

Osho yo ovakalelipo vovayakumungeleki Ovasoomi tava yakula mOngeleki, keshe umwe ta kalele po ovayakulingeleki 20 moshooongalele eshi. Ovayakulingeleki vakwao yo otava dulu okukala mo, ashike kave na ewi okutokola sha.

Oshikundafanwa shinene momutumba woneudo, osha li okukoleka Efinamhango lipe lOngeleki. Oinima ihapu ipe, i na sha nelelo lOngeleki, oya fanekelwa mo mEfinamhango nomOmaufomhango noya li ya pendula oku ha twa kumwe momatokolo oilyo yoshoongalele.

Etendo lOngeleki ei moikandjo yopaubisofi nehoololo lovawiliki moikandjo oyo, oyo unene ya li ya eta oku ha twa kumwe moshooongalele osho.

Aveshe okwa li va twa kumwe kutya mEfinamhango namu yeululilwe omhito yetukulo lOngeleki moikandjo yopaubisofi. Ashike inava twa kumwe kombinga yefimbo oikandjo ei i na okunangekwa nomomuvalu wayo kutya oi na okukala ingapi.

“Iilonga yuumbisofi ya ningi oyindji nolutu lwe italu monika we lu ukilila omolweloloko. Ano ompito oyo ndjika, omumbisofi a pewe omukwathi mbala,” osho oshilyo shimwe moshooongalele sha kumaida.

“Elelongeleki ola ninga po omalongekido ashike, opo tu ye mo moshinima?” umwe vali osho a pula.

“Pamwe tatu tende ondhikwa, manga okanona inaaka valwa. Ekotampango ndyoka tali tu egululile ompito ndjika, inatu tala manga nkene tali longo,” osho natango mukwao a londwele oshooongalele.

Pafatululo lomubishofi Dumeni, eshi a yelifila oshooongalele, okwa ti kutya Elelongeleki ola ninga omalongekido aeshe kwa li a pumbiwa. Oshooongalele shovafita yo, (omudo inau tumbulwa, ashike osha yela kutya 1983) nasho osha li sha longekida oshinima eshi.

“Momagongalo aasita otwa hala tu pewe aayakuli. Nena omumbisofi sho te shi indile, katu mu uvite ko. Ano otwa hala shike naanaa?” natango osha li etwomukumo lomufita umwe Oshooongalele opo shi ye mo metokolo.

Kakele koku ha twa kumwe kwomadiladilo moshinima osho, omhepo youmwainafana noyoukaume moshooongalele oya li tai monika sha yela.

Oshooongalele kasha li yo sha hanga etwokumwe, kutya onaini omaufomhango mape taa ka longifwa pambelewa. Vamwe ova kala noumbada oku a longifa diva konima yomutumba ou, osheshi pafatululo lavo, otava ti, vati okambo kEfinamhango inaka pwa ko manga okukundafanwa koshoongalele ko ka kolekwe akesho oshita.

Manga vamwe otava tale, kutya kashi fi epuko ngenge oitokolifo oyo i li mo, ya kolekwa nokuli paife koyoongaleleleki ivali, tai hovele ashike okulongi-fwa.

Vali vamwe otava ti, kutya onawa okambo kEfinamhango nge taka kolekwa, elongifo lako pambelewa, li undulilwe natango komesho kanini. Omatomhelo mwaashi inave a yandja, ashike osha yela, kutya ove a kwete.

Eenghundafana mwaashi inadi ya unene kokule, omutumba womuDesemba owo tau ka kufa omakipa pokati keembwa.

**Kepandja tali landula**

# OSHOONGALELE-NGELEKI KUDE-SEMBA

Dha za kep. 6

Kakele koikundafanwa imwe inene noidjuu oyo ya li melandulafano loshoongalele, opwa li yo natango shihapu shokukundafanwa mehokololo lomuwilikingeleki, olo la kwatelela mo onghalo yOngeleki oule weedula mbali da pita.

Oshoongalele osha kundafana yo nhu-mbi pu shi okumonika omukalo muwa wokuyandja oiyandjiwa yOngeleki, shi ningwe palikolo lomunhu. Elongifo yo loshitimulongo ovakriste va tuwe omukumo oku shi longifa, nasho osha etelwe po yo meenghundafana.

Oshoongaleleengeleki osha kala vali tashi indile edina lomufita Apollos Kaulinge, li shune mongudu yomadina ova-hoololelwa mouwilikingeleki. Eshi oshikando oshitivali, Kaulinge ta indilwa ngaha a ninge umwe waavo pokati kavo tapu ka hoololwa omukwafi womubishofi.

Omhito yotete oya li, eshi omadina a longekidwa moitaingeleki aische, fimbo oshoongalele inashi ya moipundi nokwa li a hoololwa nouhapu womawi. Konima yaashi, omushamane Kaulinge okwa yandja omatomhelo aye, kutya ita dulu. Omatomhelo aa okwe a endlulula vali natango pefimbo lomutumba woshoongalele.

(Tala natango enyamukulo laye konima yoshoongalele moshifo eshi.)



Epulo nkene Oshitayingeleki shaKunene tashi uthilwa kOshigongingeleki shi tsikile iilonga yasho, olya holokele wo moshigongi shika. Ethimbo lyoku shi kundathana inali monika. Methano ndika, omutonatelishitayingeleki shoka, omusita Noa Ndeutapo ota monika ta popitha aakwanegongalo

# ENYAMUKULO KEINDILO LOILYO YOSHOONGALELENGELEKI EDINA LANGE LI SHUNE MOVAHOOLOLELWA VOMOUWILIKINGELEKI



Omupashukilishitayingeleki Apollos Kaulinge

**Enyamukulo lange moshinima eshi, oli li moitwa itatu ngaashi tai shikula apa:**

1. Onda hololela oilyo yOshoongaleleengeleki, oyo i li ovakalelipo vomaongalo etu, kutya onda fimaneka omake omaongalo oo a fanekela nge mehoololelwo louwiliki wOngeleki.

Elineekelo eli ola xupipika nge nola pendulila nge omapulo handi nyengwa oku a monena omanyamukulo.

2. Onda yelifila yo Oshoongaleleengeleki, kutya eshi inandi tambula eindilo lomaongalo, ndi ye mehoololo eli, ounghundi, oungone wopalutu, tau imbi nge ndi yakule nondjingu.

Onda hala okukala omupiya wOngeleki. Nde eshi Kalunga oye ha pitike oungone noye ha yandje oshilonga, eanyo lange kali fi elipopilo, ndele epopilo ashike leyakulo liwa lOngeleki, olo Efinamhango nOmaufomhango Ongeleki ei, tae li ufa notali lalakanenwa kOshoongaleleengeleki eshi.

3. Molwomatomhelo moshitwa oshitivali, oshinima onde shi tula monhanaisho yOshoongaleleengeleki, neindilo lepopilo leyakulo liwa lOngeleki noloukolele womunhu, kutya ame itandi tambula eindilo lOshoongaleleengeleki nongaashi itandi shi anye.

Ashike omuntu oto nyengwa. Nge omunhu ota dulu okweefa po oshilonga pamaufomhango molwoungone wolutu, omuyakuli olyelye ta pe-wa oufemba kougone waye wokolutu, a tambule eyakulo li dule olo ta yakula nalo mefimbo olo?

Ondi udite kutya nge taku kondjelwa ouwa wOngeleki, otaku popilwa yo oukolele womunhu wopalutu.

Apollos Kaulinge

## KAULINGE OLYE?

Omufita Apollos Kaulinge, omona womufitaongalo Vilho Kaulinge, wotete mu ELOK mokati kovafita vaninilela ve li ovana vovafita. Okwa dalwa 1935. Ofikola younona okwe i fikola pOndobe, meongalo lavo fiyo a ya kofikola yovamati kEngela.

Omudo 1953 okwa hovela Oseminali youlongi mOniipa fiyo 1955. Okwa longa ofikola younona eedula mbali fimbo ina ya kelongekido loufitaongalo kOshigambo 1958.

Omudo 1962 okwa yapulilwa oshilonga shoufitaongalo muElim. Okwa nangekwa omufita omuyakuli mOndobe, ndele konima okwa tumwa ketwikilo kofikola youfita kuMapumulo, Natal.

Mokwaaluka kelihongo laye okwa ka yakula manga efimbo lixupi kofikola youfita kOtiimb-ingwe fimbo ina ninga hamushanga woponho womubishofi moshilonga omo a kala fiyo 1967.

Konima yaashi Elelongeleki ole mu nangeka mofikola yokombada yaNgwediva okupashukila eenghedi dopakriste mokati kovahongwa. Pefimbo olo, okwa kala yo omupresidende wEhangano lovalihongi ovakriste moshitukulwa shOwambo.

Omudo 1981, ovafitaongalo moshitaingeleki shaUkwanyama, ove mu indila a ka ninge omupashukili woshitai neindilo eli ola tambulwa kElelongeleki. Moshilonga osho omo e li fiyo onena.

Omushamane Kaulinge okwa kalela po yo pe-mhito dimwe Ongeleki yava moyoongalele ya kula yEengeleki. Omudo 1973 okwa ile koLusaka shaZambia oko a kala moshoongalele shEengeleki adishe muAfrika (AACC) nomudo 1970 okwa ile natango koshoongalele shOngongahangano yOvakwaluther mounyuni aushe, sha li muEvian, Fulanisa.

# OMIMVO 37 DHEPUTUDHO LYOSHI-GWANA MOKAHAO

KuNdinelago Emvula

**Okuza komumvo 1868 aahongi Aasoomi sho ya taagulukithile evaangeli kOwambo, oya thikile wo npehala ndika hali ithanwa Okahao, mOngandjera. Mpaka oya thikile po omumvo 1871.**

Edhina OKAHAO, olya za koshyta chao, shoka tashi ti, ombiga, embundju. Ano Okahao otashi ti okambundju. Muuyuni wonale pehala ndika opwa li oombiga oonene ndhoka dha li dha siikilila oonkondo dhopakwaniilwa nodhoshilongo nodha li paitaalo lyoshilongo shoka, dha gamene oshilongo kaatondi.

Omumvo 1947 muJanuali, ehala olya ningi lyokuputudhilwa aalongikadhona moshilonga shuulongi. Pethimbo ndyoka feelani Sylvi Kyllonen, oye a kala omukuluntusikola nosikola ndjoka oya li hayi ithanwa Ongandjera Opleidingskool.

lia Nhinda, Maire Tuhkanen naLiisa Markkanen.

Omumvo 1952 okuza petameko sigo Maalitsa, feelani Rauha Voipio okwa yakulile moshilonga shuukuluntusikola nopo feelani Sylvi Kyllonen naalongi pamwe naye Anna-Liisa Sorsa, Liisa Markkanen nameme Liina Mpanda ngoka sigo onena ta ndungike nuunongo we itaau guguka pehala tuu mpoka.

Omumvo gwa landula, 1953 omulongi omuvalelwamo ishewe meme Justina (Mwapopi) ngashingeyi Kelimwe, okwa taamba oshilonga menongelo moka.

Osikola ya koko noya tameke nokersesa yomimvo ndatu omumvo 1954. Aalongi aavalelwamo nayo wo yi indjipala ngaashi Viktoria Mwahafa na Martha Iileka, oya taamba oshilonga pamwe nafeelani Aune Hirvonen mewilikio lyomukuluntusikola Anna-Liisa Sorsa.

Omumvo 1955, aakadhona yahamano yomongundu yotango oya tuminwa kosikola yuupangi kOndanjokwe. Nomumvo gwa landula ko meme Lahja Angolo ngoka a tseyika nawa omolwelandulathano lye lya kola mokuputudha osikola yokagumbo yaTsandi, mUukwaluudhi, naye wo okwa ningi omulongi mOkahao. Pethimbo ndyoka omwaalu gwaalongikadhona mOwambo gwa londo sigo 190.

Osho ngaaka ehala lya kala lyokuputudhi



**Omukuluntusikola A-Liisa Sorsa**

na ayeke tango sigo 1975 sho aamati yaali ya taambelwa mo wo. Omumvo gwa landula omwaalu gwaamati gwi indjipala, ihe oya kala haa zi momaguribo gopopepi, oshoka kapwa li manga omuhandjo gwawo.

Edhina lyosikola lya lunduluka wo nolya ningi: Ongandjera Sekondere Gebiedskool Omukuluntusikola pethimbo ndika, okwa kala meme Ulla Nenonen ngoka e li ngashingeyi Amushangakwatakanithi gwEhanganotumo lyaSoomi. Okwe shi pondola momimvo dhe dhiilonga 1975 sigo 1979 mosikola ndjika.

Pwa dhimbululwa ngiika ekoko lyoshigwana nosha talwa kutya aavalelwamo yoyene oya gwana okwiiwilika. Omumvo 1980, e-lelo lyosikola olya yi miikaha yomuvalelwamo tate Epafra Uushona noye e li na sigo onena.

Ishewe edhina lyosikola olya lunduluka nolya ningi: Ongandjera Sekondere Skool. Nomukanka gwoongundu dhopaVorma gwa lundulukile moositanda.

Omumvo 1982 okwa totwa Ositanda IX nomumvo 1983, Omatilika oga nyolwa lwotango mosikola ndjoka kaalongwa 20, aakadhona omugoyi naamati 11. Mumbaka 11 oya piti ekonakono lyawo.

Omumvo nguka osikola oyi na aalongwa 935 taa nongekwa kaanongeki 31, okuza Std. 6 sigo Std. 10. Nuumvo osikola ndjika oya vala mo wo oSeko ndjoka yi ithikamena mpeyaka tayi ithanwa Etalaleko Secondary School. Moka omu na aalongwa 430 mositanda ontihamano nomukuluntu gwayo otate Paulus Amadhila.

Ongandjera Secondary School otayi dhimbulukwa nesimaneko enene oshilonga shoka sha longwa muyo kaalongi yomadhina taga landula mpaka:

**Kepandja tali landula**



**Ethano ndika, Oseko yaOngandjera esiku ya lala momuhandjo omupe ngoka gwa tungithwa koshikondo shelongo. Aansikola otaa hambelele noondjimbo.**

Oya kala nomulongi omuvalelwamo ngoka ta talwa netumbaleko molwoshilonga she pethimbo ndiyaka, oye meme Emilia Nhinda ngoka a longo pamwe naatumwa ngaashi oofeelani Maire Tuhkanen. Oya tameke tango naalongwa 25.

Omumvo 1950, osikola oya koko noya. kala noongundu ndatu; ongundu yotango ya li naalongwa 23, ontiyali ya li naalongwa 14 nontintatu oya li yetsikilo lyaalongi mbo-ka ya pita nale.

Omumvo tuu ngoka (1950), feelani Anna-Kaisa Ripatti, oye a li omukuluntusikola sigo 9 Septemba, sho feelani Kylliki Hataka a tsikile oshilonga shoka shuukulu-ntu wosikola.

Nguka okwa longo pamwe naalongi; Emi-

la oshigwana aalongikadhona sigo 1960 uuna pwa gwedhelwa Ositanda ontihamano ndjoka ya tamekele naalongwa 20.

Elaka lyOshiingilisa lya tameke wo okulongwa mo ongoshilongwa oshipe. Omumvo 1961 o Vorma 1, ya tameke mpoka nosikola ndjika oya kala ihe noongundu ne; mbali dhuulongi, ositanda VI noVorma 1, sigo omumvo 1963 sho ositanda ontihamano ya hulithwa po noya tembudhilwa, koosikola dhokagumbo nodhaamati.

Epangelo olya tala kutya osha fa kashi li nawa aalongikadhona yi iputudhilwe oyo ayeke, onke lya hulitha po eputudho lyaalongikadhona mOkahao omumvo 1970. Eputudho ndika, olya tembudhilwa kOngwediva.

Ihe Okahao oka tsikile neputudho lyoshigwana nonkatu yoVorma 1-111 naakadh-



# OMIMVO 37 DHOSI-KOLA

Dha za kep. 8

S.Kyllonen, K.Ripatti, A.L.Sorsa na U.Nenonen aakuluntusikola. Osho wo aamongeki Kaisa Lehtonen, Aune Hirvonen, Kajija Niinimäki, Emilia Nhinda ngoka molwe aakadhona Aawambo ya fuuka okulandula eithano lyuulongi, osho wo meme Liina Mpanda ngoka omukumo gwe nuunongo tau koko esiku kehe.

Kalunga na yambeke natango aalongi mbaka ayehe naamboka omadhina gawo inaaga holokela moshinyolwa shika, omo-lwehala sigo a thikitha oshilonga she.



**Omukuluntusikola gwongashingeyi Epafra Uushona**



**Omulongi Liina Mpanda**



**Omukuluntusikola U.Nenonen**

## OMAMBO OMAPE ISHEWE MOSITOLA YOMAMBO

*Mositola yomambo, mOniipa, mwa holoka ishewe omambo omapeepee, inage ku pitilila po.*

*EMBO: 'Elilongekido komuwiliki', otali ku kwatha mokutseya shoka tashi tegelelwa komuwiliki kehe kaawilikwa ye. Embo olya gandja omayele gomuule gokuwilika. Otali gu ashike R1,40.*

*EMBO: 'Lidilika', epeepee lya nyolwa komugundjuka. Ngele we li tameke u li leshe, ito hala u li siikile we manga inoo li mana ko. Iipindi omomeho: Oto li mono ashike R1,70.*

*EMBO: 'Iilonga yOmoshinyangagongalo', otali ku yelithile nawa ashihe hashi longwa mOshinyangagongalo shaandjeni. Iilonga oyashike nohayi longwa ngiini?*

*Li ilandala, nena ito ka pula we.*

*Otali landwa R2,90.*

**Petrus Shipena**

## Tuuliki a galuka kOsoomi

**Omukadhona Tuuliki Nekundi (34), okwa galuka keilongo lye ku-Soomi hoka a kala oomwedhi 18 ta konakona elongo lyaaposi.**

Pahokololo lye mwene, okwa ti ye okwa li une-ne ti ilongo nkene omuposi e na okwiiyakula nondhimbo ye (Mobility), okulesha oondanda dhaaposi (Breilla), okuyalula omiyalu dhawo

(Albācus) nokwiidheula miilonga yilwe yawo yiikaha.

Okwa ti wo natango kutya opwa li ishewe omadheulo gamwe kombinga yokuteleka, okulesha oondanda dhaanameho osho wo ootundi dhO-shiingilisa nomudhingolokolongo.

Ya li 170 mongundu yawo, oyendji yomuyo Aasoomi nayatatu oya zile kuAfrika, meme Tuuliki ota pandula unene kompito ndjoka e yi pelwe kElelongeleki.

"Oshilongwa shomwaalu osho tuu sha li po oshidhigu kashona, ihe Kalunga okwa kwatha ndje mekonakono nonda piti," osho a hokolola a fa i ikuminwa ye mwene.

Tuuliki ngoka naye wo kee na we oshipala, okwa pitile osikola yuulongi 1969 mOkahao manga inaa kwatwa kuunkundi womemo.

"Okukanitha omemo osha li oshidhigu kungame petameko, ihe konima onda taamba onkalo ndjoka nokandi na we omaipulo muyo," osho a hokololele OMUKWETU pafupi okahistoli kuuwehame we womemo.

Omulongi Tuuliki ota longo mosikola yaaposi mEngela ngaashi e shi utilwa kElelongeleki.

## Sebulon Ekandjo



Omulongi Tuuliki Nekundi methano ndika. Okwa thanekwa esika a thika mOvenduka okugaluka kOsoomi. Ongala ndjoka e yi na peke okwe yi pewa komukuluntu gwsikola yawo yaNākovamimaisten Ammattikoulu muLettāvaara.

# NATANGO OWE SHI ITAALA

**KuEster Hango**

Pwa piti oomvula 18 konyala sho ndaa le ndi mone omadhengo nando hagiiti, omolwoshinyolwa nde shi nyolele mOmukwetu. Ngame omupangi gwoomvula dhopokati miilonga nomonkalamwenyo.

Esiku nesiku onda koneke sha miilonga yandje, ongele elunduluko nenge eshunomonima lyoshigwana, unene oshigwana shetu shOwambo. Kandi na ontseyo yomihoko dhilwe.

Nonando oonkambadhala odhindji tadhi ningwa, ongele paigongi nenge painyolwa miifo, onkene tuu oshigwana shetu sha tindile monkalo yasho. Ngame ongOmuwambo, inandi dhina andola iinima yetu yopashigwana mepango, aawe.

Ondi shi, kutya ope na iigwana oyindji yomevi lyetu tayi vulu okupanga omuntu, ihe omupya nuudhigu ou li owala mpono sho kape na aamongononi manga.

Andola pamwe taa vulu okukonakona iigwanga yetu tse tu vule oku yi longitha ngomiti dhokupanga.

Oku na ihe ongundu onene, unene aakiintu mboka taa mana po ethimbo mokukonga omakwatho gawo ongepango ewanawa. Omavu ga tya ngawo olwindji oga fala sigo omeso, sho ga pangwa niigwanga nenge niifundja.

Nandi tumbule omavu gamwe ngaashi taga landula mpaka:

**Ompalo, oshipa, oshaatu, oshithitikila nepaha.** Ondu uvu olwindji oohapu dhaa shi okwiinikelwa, kutya koshipangelo nako aniwa ohaku pangwa omavu ga tumbulwa mpaka.

Kandi shiwo naanaa, efatululo ndyoka olya zi peni, ihe ondi inekela pamwe omupangi owala sho a nyengwa okuuvithitha ko omuvu, opo kaa ka pangwe niigwanga nenge niifundja, ye te ke ya koshipangelo ethimbo lya pwa po, okwe mu lombwele ihe nkene oshipangelo nasho hashi ga panga.

Ngame inandi hala elombwelo tali mbembeleke omuntu, oshoka onda hala oomeme, unene aagundjuka ya koneke oshili ndjika, kutya koshipangelo ihaku pangwa iinima mbyoka, ihe ohatu konakona tu mone shoka tashi vulu okweeta oshiponga, tse tu shi pange, ngele tashi vulika.

## Oshimela nonkungo

Koneka u tale oshinima shika. Nando u tetwe ompalo, okanona kokene ihaka gwayekwa sha. Ongoye awike to ningwa oshilalo shoka tashi kala tashi tika ombinzi.

Kombinga yimwe ethimbo oto li mana po lyokupangitha okanona kuye, sigo olutu lwako lwa kanitha omeya agehe noomongwa, nepango tali dhigupala siku to ke eta koshipangelo.

**OSHAATU:** Pethimbo lyuusimba, omusimba kehe okwa langekwa kuuzigo wuusimba. Uzigo mbuka ohau dhimbululwa pethimbo lyekonakono momasita sho taga konsiderwa nokuye-

leka ethindakano lyombinzi.

Ngele mbika oya dhimbululwa kuye, ompito yokupanga opo yi li nomutegeleli ota lombwela a valele moshipangelo. Ngele inayi dhimbululwa, pamwe omusimba ine ya kekonakono nenge a hula ko nale, nenge omupangi ina konakona nawa omuvu gwe, pethimbo lyoshitheta uuzigo mboka ohau geye molutu, ethindakano tali londo unene nomuvali ota kambuka.

Ngele kape na ekwatho lyopaunamiti, omuntu ota si. Shoka osho Omuwambo a luka oshaatu. Omuntu a tya ngawo ngele ta pangwa pAshiwambo, oku na okupewa natango iigwanga a nwe, nosha yela otayi gwedhele natango uuzigo molutu nomuntu ota si mbala.

**EPAHA:** Omusimba gwepaha oha kwatwa konzindo onene e vule yalwe, oshoka okwa humbata shi vule yalwe.

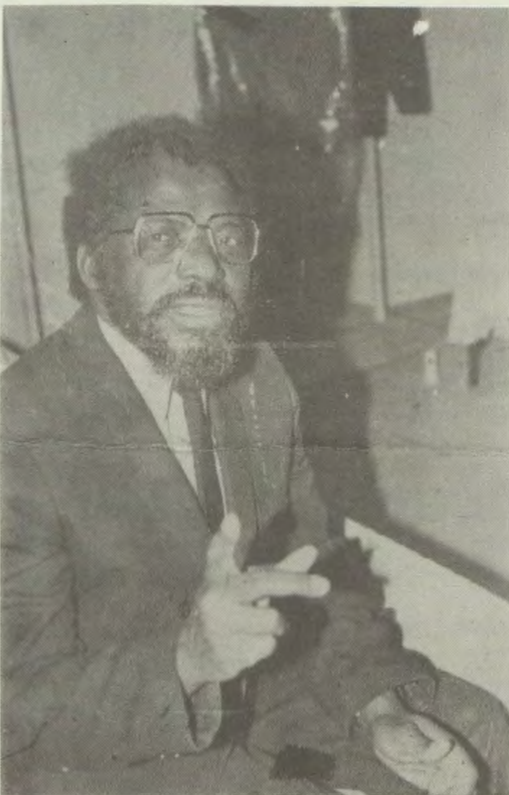
## Oshithitikila

Ohashi vulika kutya poompito dhimwe evalo itali vulika pamatompelo taga landula:

- oonto dhomuvali oontshona
- okanona okanene unene, nenge
- okanona oka lala nayi

Ashihe shimwe kutya omukulukadhi oha vala shito nawa, ngele ta valele megumbo, kape na ngoka ta tseya, kutya ohkalo otayi ya ya tya ngiini. Omualithi megumbo sho kee na ontseyo ya gwana, oha ti owala: "Idhidhimika" sigo omuvali a vulwa pamwe nokanona sigo ayehe yaali ya si.

Ohashi vulika wo omuvali a tike unene sigo ta kambuka. Okukonga ekwatho kuye moshipangelo, oshi vule oku li kongela sho oshiponga sha holoka nale.



**Omusita Abisai Shejavalu**

# DR SHEJAVALI A TEELELIFWA EETU- NDI HEYALI MOSHI- HAKULILO

**Abisai Shejavalu, Ndjai Hamushanga wOraata yeengeleki muNamiibia (CCN), okwa holola koifo enyeme laye, eshi vati ina mona eyakulo olo a kala a teelelifwa konyala oule weevif heyali moshihakulilo shaKatutura mOvenduka.**

Konima yefimbo olo, ekwafo Shejavalu okwe ke li kongela pamwe pE-dili.

Oshiningwanimwa osha li sheti 11 laJuni neudo, eshi omushamane Shejavalu e etele omunaudu waye moshihakulilo osho, a mone ekwafo landohotola lopaulumomhumbwe.

Fimbo e li keumbo, omufita Shejavalu okwa denge ongodi, a shiive nenge koshihakulilo ndohotola oko e li. Naashi a udanekelwa, kutya pefimbo olo ka li mo, ashike ota ka holoka diva, Shejavalu okwa tumba omunaudu waye fiyo omoshihakulilo.

Osho a kala ta udanekelwa ngaha, fiyo konyala eevili heyali da pita inava mona ekwafo. Shejavalu nokutumba omunaudu waye natango a ka konge eendohotola dopaumwene.

Eshi sha kala tashi hepeke omushamane Shejavalu moshinima eshi, ongenge oshihakulilo osho, kutya osha kala tuu shi na eshikulafano ile ahowe.

"Oshihakulilo osho oshi lile po tuu hano eyakulo lovanhu, ile oshilongifo shongaho shopropaganda?" osho e lipula noluhodi.

Pahepu laye, fimbo a teelela ngaho ndohotola e u ye e va kwafe, Shejavalu okwa mona omuhakuli umwe ta yandje omaushima mahapu komukulukadi umwe oo kwa li ina enda mo nale moshihakulilo naina shiiva elandulafano lamo nhubi hali endwa.

"Onda ya mo meendjovo davo nonda lombwela ovahakuli va pendukile eyakulo liwa leemhumbwe dovanhu. Omuhakuli umwe okwa li e he udite ko nokwa twikila natango okupopya pomkada," osho a hokolola osho a shakenekele fikulo olo.

"Eshi handi udu kutya ovanhu ohava hepele meyakulo loshihakulilo eshi, onde shi limonena ko amwe mwene", osho a twikila natango ehepu laye nonghumwe inene.

Omushamane ou, ngaashi osho oshitwe yaye i li, kutya ke shii okumwenena etumhakano ine li kongela ekwafo, okwa ti kutya okwa indila koshikondo shounamiti opo shi ete po eshikulafano la pumbiwa meyakulo loshihakulilo osho unene kovanaudu vopaulumomhumbwe, ngaashi shi li mounyuni aushe.



# OKUZA KULUSAKA, OPENI ISHEWE?

**Okuza moonkundathana dhemanduluko lyaNamibia ndhoka dha ningilwe muLusaka shaZambia, petameko lyaMai numvo, sigo opethimbo ndika, opo lwotango kwa popiwa sha kudho ongetsikilo lyadho.**

Kushono sha kundanza mooradio dhomeni lyoshilongo nodhopondje, omasiku ngaka, osheendo shaNgoloneya Ndjayi gwa SWA, dr Willie van Niekerk, osha ningile oonkundathana na-wiliki ya SWAPO muCape Verde eti 25 gaJuli.

Oshikalimo shomoonkundathana ndhoka, kwa tiwa kutya odha ningilwa konima yomiyelo dha patwa, inashi tseyika ashike manga, kutya osha li tashi tengele kombinga yini. Shimpa tuu eindilo oSWAPO a mweneke omainyengo ge poongamba dhaAngola naNamibia nokutaambe etulopo lyomatati, osha uvikwa kutya nasho omo sha li moonkundathana.

Aakalelipo yepangelo lyaAngola nolyaAmerika, nayo ohaku tiwa opo ya li poonkundathana ndhoka ngaapulakeni yowala.

OMUKWETU ina tseyi sha manga ngele o-musamane van Niekerk mosheendo she okwa li wo a gwedhele mo aakalelipo yoshigongi shoongundu odhindji dhomeni. Nongele eyamukulo, aawe, ngiika omolwashike?

Pamahokololo ngoka ga zile kuLusaka kumboka ya landula popepi oonkundathana ndhiyaka, otashi yele kutya eyooloko lyomadhiladhilo goongundu dhi ili nodhi ili ndhoka dha li moshinima, oshinima wo shimwe sha li sha vulikitha etsokumwe lyaa adhikwe nando.

Moonkundathana ndhiyaka omwa li; SWAPO, Ngoloneya Ndjayi gwa SWA nosheendo she osho wo oongundu dhomeni lyoshilongo. Otashi kolekwa komalunza ogendji, kutya oshigongi shoongundu dhomeni, nasho osha topoka moongundu mbali, Aatiligane oyi iningi okangundu kawo, unene omolwoshinima shAacuba muAngola.

Omuntu kehe oto shi uvu ko ano nuupu, kutya oongundu adhihe ndhoka kadhi na uupu dhi thike medhiladhilo limwe, unene tuu sho oma-yooloko gadho ga kala ethimbo ele.

Nongele shoka osho ihe sha yandwa koonkundathana dhokuCape, Verde, OMUKWETU ina tseyi sha. Ashike nadho wo pahokololo lya dr van Niekerk inadhi eta iyimati yasha.

Allister Sparks, omutoolinkundana ngoka a ti kutya okwa li a thigala owina muLusaka konima yoonkundathana, opo a konakone nawa omukundu gwoshinima mpoka gu li, okwa pewa euvo-ko ndika.

Momadhiladhilo ge koshifonkundana shomu SA "The Star 23.5.1984, okwa dhimbulula nke-ne SA na SWAPO ya pumbwa ashike aniwa ya pewe natango okalweedhe okafupi kokwiilongekidhilathana nokeinekelathano, nena shino shi imba etsokumwe li adhikwe, otashi kandulwa po.

Omutoolinkundana nguka okwa dhimbulula etokolo lya SA lya kola lyokugandja emanguluko kuNamibia, ihe omukalo kagu lwetike. Oshikwawo okwa dhimbulula wo SA itaa tsu we ku-mwe unene naAmerika moshinima shAacuba muAngola.

Peha lyokwiindila Aacuba ya ze mo tango mu-Angola, opo Namibia li manguluke, pakutala kwaSparks, SA okwa hala ashike okomisi yetonatelolo lyombili ndjoka a toto nepangelo lyaAngola, muAngola, oyo yi pingene aakwiita yetanga lyombili lya VVO (Untag), shimpa ashike tayi nenepekwa nomatanga gomuumbugantu waAfrika.

Pamalunza ge shi okwiinekelwa, edhiladhilo lyelongitho lyokomisi ndjika yaAngola metonatelolo lyehogololo lyaayehe muNamibia, ohaku ti, SWAPO ine li zimina, ihe ine ekelahi wo.

Okweeta omalunduluko gasha moshitokolitho 435 sha VVO, shoka sha gandja omukalo nkene ehogololo lyaNamibia li shi okweendithwa, osha yuulukiwa unene ku SA noshigongi shoongundu dhomeni.

Moshipopipiwa she pethimbo lyoonkundathana dhomuLusaka, omusamane Moses Katjiuungua, gumwe gwomaadhiki yoshigongi shoongundu odhindji, okwa popile wo oshindji kombinga yoshitokolitho shoka.

"Otatu shi popi noku shi endulula ishewe nii-shewe, kutya oshigongi shoongundu dhomeni osha taamba oshitokolitho 435, sha VVO, kutya osho ashike shi li opulanda ya kola yaNamibia yi li po sigo onena," osho a tumbulile.

Mokweeta tango ondjokonona yeholokepo lyoshigongi shawo shoongundu, omusamane Katjiuungua, okwa tsikile a ti: "Oshigongi shoongundu dhomeni kashi li mpaka tu lile okwaa-tulwa miilonga kwoshitokolitho shoka, ihe otu kale pamadhiladhilo goshili nomiinima mbyoka tayi vulika pailonga, tu konge omukalo gwokupita po mpoka pwa tyuulilwa, twa dhiginina ekotadhiladhilo lyoshitokolitho, noinaatu shi yonagula.

Oonkundatha neendathano pokati kaAnamibia omolwokutunga onakuyiwa yaNamibia nekwa-tathano lye naashiinda, oyo omukalo tagu kwatha ekandulopo lyaashono shi li mondjila yemanguluko, pakupopya kwaKatjiuungua.

Omupresidende Kaunda gwaZambia moonkundathana dhe nomutoolinkundana Sparks, okwa ti kutya ngele einekelathano ando oli etwe po tali zi moopaati adhihe ndhoka dhi na sha noshinima, dhi koleke ekotadhiladhilo lyoshitokolitho 435, nena otadhi vulu ihe okukonga euvathano lyokweeta mo omalunduluko gasha moshitokolitho.

Omalunduluko ngoka tadhi eta mo, odhi na oku ga gandja kuAmushanga Ndjayi gwa VVO, ngoka kombinga ye te ke ga faalela kOraata yegameno ya VVO ga ka kolekwe.

Omusamane Kaunda, nonando ta pandulwa kekondjo lye moshinima shoka sho a tula oongundu dhaNamibia kumwe dhi kundathane, aatalinawa yopapolitika inaye mu kutha nando ondjo yokweetha oonkundathana dhaLusaka dhi yonukile mewiliko lye.

"Mpoka okwa li lela e na ompito yokulongitha uuthemba woonkondo ndhoka kwa li e dhi na, opo oongundu dhi thike meuvathano," osho omupolitika Gwen Lister a popile pompito yimwe.

Shoka tashi dhimbululwa pethimbo ndika mopolitika yoshilongo shika, osho shoka, SA naalanduli ye sho taa kambadhala okukandula po VVO mokulongekidhila Namibia emanguluko, naSWAPO i igandje komalongekidho ngoka ge li meni pamwe noshigongi shoongundu odhindji.

Naashika ashike, pahapu dhaSparks, SA ote shi ningithwa kuumbanda, kutya aantu ya VVO ngele taa monika taa inyenge moshilongo shika ya kwatela ewiliko komeho, shoka osho eshundu-ko lya SA momeho guuyuni.

Nonando oyendji otaa tsu kumwe mokutala kutya SWAPO oku na iinima yimwe yokoshitokolitho sha VVO, ta vulu oku yi zimina yi lundululwe, SWAPO kombinga ye okwe shi popya lwindji kutya ye ita ka zimina emanguluko lya-Namibia li kundathanwe pwaa na etonatelolo lya VVO.

## MOZAMBIKWE INI INEKELA SA

Epangelo lya SA olya kala natango tali pewa u-usama kuSamora Machel, omupresidende gwa-Mozambikwe, aniwa ihali mangwa nalyo omba-go komutenge, sho a ti, kutya natango otali kwatha ongunu yoshipotha nepangelo lye.

Shika okwe shi popile muGaberone, oshilando-pangelo shaBotswana petameko lyomwedhi nguka. (Adv.5.7.1984). Eti 16.3.1984, epangelo lyaMozambikwe nolya SA oga shainine euvathano opo pwaa kale we omahindathano gopau-kwiita pokati kago.

Pahokololo lyomusamane Machel, SA okwa kwatha iilyo 20,000 yongundu ndjoka ya MNR, yi taagulukile moongamba dhaMozambikwe, ashike omanga euvathano inaali shainwa. (Star 7.7.1984.)

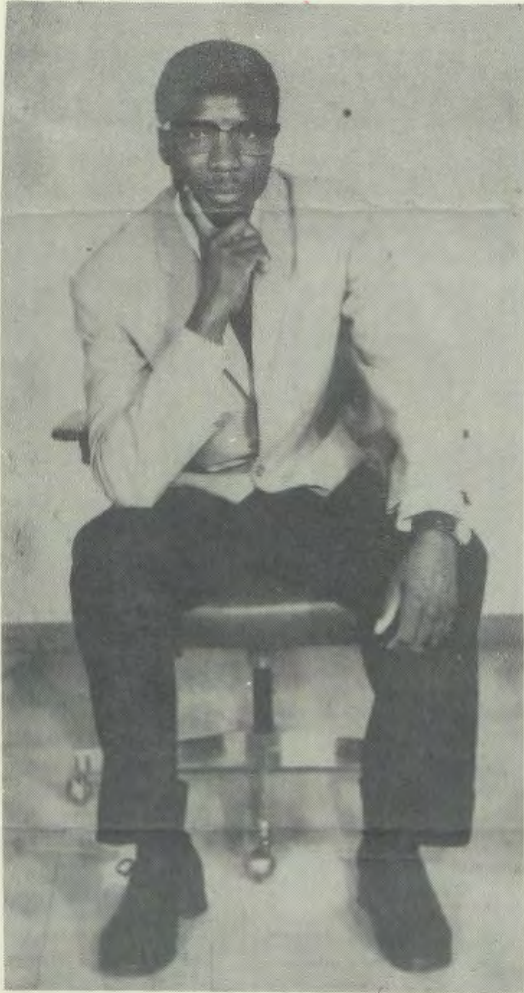
Omupresidende Machel, uusama ku SA okwa kala te u gandja ko pethimbo lyoshigongi oshitanano shehangano lyelongelokumwe nolyependulepo muumbugantu waAfrika (Southern African Development Co-Operation Confernce SADCC).

Ehangano ndyoka oli na ngashingeyi iilongo omugoyi nolya tamekele pehulilo lyomumvo 1981. Iilongo; Angola, Botswana, Lesotho, Malawi, Mozambikwe, Swaziland, Zimbabwe, Tanzania naZambia oyo yi li mehanganu ndyoka.

"Ashike nonando eopato lyonkalo yomalweendo muumbugantu waAfrika nomakwatathano gomombepo yi li aluhe oshilalakanenwa shotango mehanganu lya SADCC, onkene tuu SADCC omumvo gwa zi ko, okwa li i itula manga unene mokulonga omapyo omolwondjala ndjoka ya kala ya geya," osho sha popiwa komunashipundi gwehangano ndyoka, omusamane Peter Msi.

Paueyelele mboka wa monika omasiku ngaka mehanganu ndyoka, opwa pumbiwa iimaliwa konyala oomiliyona R 3 000 opo yi ka pendule po mooprojeke 138. Ooprojeke 10 otaku tiwa, odha pwa nale okulungwa.

Sebulon Ekandjo



Nakusa Elieser Nambahu

Elieser Kitnel Nambahu (41), okwa manene oondjenda dhe ombaadhilila moshiponga sheipumo mumwe noololi dhetanga lyegameno 31.5.1984 popepi nOndangwa.

Okwa li e li pokutsakanitha omimvo omugoyi mondjokana nokwa thigi ko omusele-kadhi naanona yatatu, aamati yaali nomukadhona gumwe. Aalelwa oya li yane.

Tangi kune amuhe mwe tu tsu omukumo, mwe tu yakula ongele niilonga nenge noohapu dhomahekeleko mwe ge tu tumine. Jesus ota ti: "Shoka mwe shi ningile gumwe gwaambaka aashuushuka, ongame mwene mwe shi ningile."

Kalunga ne mu pe ishewe oonkondo dhoku tu humbata momagalikaneno. Eps.62:2-3, Eimbilo 481.

**Peha lyoonakuthigwa po S.Dhiginina Nambahu**

XXXXXXXXXXXXXXXXXXXXX

Kuku Johanna yaMbulu, okwa mana po oondjenda dhe muukulupe womutoko 21.5.1984, mOnantsi megongalo lyaNguta, mOndonga. Okwa li a kala muuwehame konyala oomvula 3 mOnandjokwe.

Otatu pandula aapangi sho ya yakula omuvu gwetu. Kalunga ne ya yambeke.

**Gumwe gwomaatekulu Tias N.Uukule**

**TSEYITHA MBALA E-LUNDULUKO LYONDJUKITHI YOYE**

**ONAMAGONGWA MOTORS OYE:**

*Omulandithi gwoye gwopopepi gwiihauto yoo GM, ISUZU noombaki.*

*Ila nehalo ewanawa kiipindi iwanawa yiihauto iipe niikulu.*

*Onomola yongodhi, Ondangwa 95.*

*Victory Gabriel naDouw Nell*

1. Nakaheke we tu heka Mungoye tu kalemo Sho wa lapa gwAmitayi Ngu na Tate Shilongo Nowiithana Malikishi E na uunongo womatungo Ye ha pangel'omitenge Tu kale mongulungulu Ongiilumbu yokOmbaye Yokehala lya ty'ondau

2. Nakaheke yokangulu Ka ningwa po kuShingenge Ngu ha ngongola kOlange Ye ta galukil'Etine Olyongundumbimbeli Yootate noomeme Omuwilik'ogwAmitayi Nomupeha gwe oShingenge NaRauna yaAngolo Ha hokololith'iipango

3. Meme Aune waShingenge Nay'ohu tu pukulula Tu panduleni Niishinda Ngu e tu etela gwaNganga E tu totel'enongelo Tatu mu ithan 'huofa' Noshu wo Tate Kashele Yo nameme gwaShilumbu Yi ishuna ko koshilongo Nde nen'oya tulilila.

4. Meme ha ly'Oshiingilisa Ku lwete oku shi "going?" Pu na oongulu dhoshigwana Dhi li po ntano nambali Hamu longelwa kuAmunyela NokuMili gUushona Nombwiti yaLiindili Dorrel yaKambonde E ya long'uukalinawa Nomutemo gwaBartolo

5. Ope na edhiya lyokapomba Twe li ningilwa kujona Komusamane gwOmbaatili Naasamane yokEtaka Nashikwel'ina thigwa ko Otatu mu kwelengendja Shiwandjili a ning'etale Ngel'okapombw'edhiya Nakaheke "yimbundu" Ya ning'ekunda lyehumo

Ku E.Kashele

**OMUKWETU**

Oye oshifo shOngeleki Onkwaevangeli paLuther yomOwambokango. Ohashi nyanyangidhwa mOshinyanyangidho shOngeleki mOniipa. Omukuluntu gwoshifo omumbisofi Dr. Kleopas Dumeni. Amushanga gwoshifo omusita Sebulon Ekanjjo.

Ondando yOmukwetu muNamibia naSuid-Afrika R5,00 komumvo. Palwe muAfrika R8,00 nokombanda yomafuta R11,00, komumvo. Mondhila R13,00.

Ondando nomambesitelo ageche naga tumwe komukwetu, Oniipa, P/Bag 2013, Ondangwa, 9000.

EV.LUTH.OWAMBOKAVANGO CHURCH PRESS PRIVATE BAG 2013, ONDANGWA 9000 SWA/NAMIBIA