

OMUKWETU



Registered at the GPO as a Newspaper

30c

No. 22

ISBN 0-620-06828-0



Martin Luther

IN SILENCIO ET SPE ERIT
FORTITUDO VESTRA

Ehanganotumo lyaSoomi tali ka gwanitha omimvo 125

Ongeleki onkwaevangeli paLuther muSoomi, otayi dhana oshituthi shehambelelo omumvo 1984, omolwEhanganotumo lyOngeleki ndjoka tali ka tsakanitha omimvo 125 dhiilonga.

Eti 19 Januari 1859 ongundu ya za koombinga noombinga dhevi lyaSoomi, aasita naakwanegongalo, oya gongalele muHelsinki, moshilandopangelo, ya dhike Ehanganotumo.

Ehanganotumo olya tameke niilyo 150, noya kala negalikano opo Kalunga e yi ulukile epyatumo moka tayi ka longa. Omusamane Hugo Hahn sho a tsakanene nomuwiliki gwsikola yetumo muSoomi, oya kundathana Etumo, nokuhokolola wo iilonga ye kuAfrika.

Omumvo 1866, Hahn okwa talele po Owambo nokwa li a taambwa nawa kaakwaniilwa. Mokushuna okwa ka hokololela omukuluntu gwsikola yEtumo muSoomi kombinga yolweendo lwe muumbugantu wa SWA nomaindilo gaakwaniilwa nkene ya hala aahongi.

Meti 18 Septemba 1867, Ehanganotumo lyaSoomi, olya tokola li longithe ompito ndjoka okufala elaka etoye kiigwana yaAfrika, muSuidwes-Afrika. Oya adhika ye na nale aatumwa, oshoka osikola yEtumo oya dhikilwe nokuli 17.11.1862.

Osha li ihe eti 10 Juni 1868 sho aalumentu aagundjuka yatano ya thikama powalitali mongeleka yomumbisofi muHelsinki ya zala oonguwo oonde oonduudhe dhoshilonga.

Eti 24 Juni 1868 okangundu hoka okashona kaasita yatano naalumentu yaali yuungomba oka thikamene etulilo lyoosikepa muHelsinki. Pamwe nako ookuume naakwanezimo ya gongala ye ya okulaleka aatumwa yotango kuAfrika.

Okasikepa okashona komakalamanya, ka tulwa iihwa, oka thikama ki ilongekidha ki idhenge okuti kwomeya omanene nomadhigu. Pethimbo ndyoka petulilo opwa uvika ehiko lyomankuma nokonima yomankuma okwa landula ondjimbo: "Kalunga oye egameno, matati wo negonga ..."

Ondjimbo ndjika oya hondjele kumwe oomwenyo dhaayehe mboka ya li petulilo naalumentu aagundjuka yaheyali yi igandja kuKalunga e ya longithe mekuno lyoohapu.

Okuza muSoomi, oya yi kuNdowishilanda yi ilonge elaka lyOshindowishi. Elaka lyOshindowishi olyo wo lya li elaka lyopapangelo mu SWA. MuNdowishilanda mongundu yawo mwa gwedhwa yakwawo. Ashike mongundu yayatano ya yapulilwa uusitagongalo, gumwe ina vula we okutsikila olweendo lwe kuAfrika, okwa shuna kuSoomi.

Sho ya zi kuBarmen, Ndowishilanda, oya yi natango kuLondon, oko ya zi ihe nokasikepa kedhina "Cape City," ya taalela kuSuid-Afrika. Konima yolweendo lwoomwedhi hamano olule noludhigu, oya thiki koKapa, eti 30 Desemba 1868. KoKapa ya tameke okulongwa omatameko gelaka lyOshiherero pawiliko lyaJohannes Rath, Omundowishi ngoka a kala puStellenbosch.

KoKapa ya zi ko nokasikepa kedhina Fliberty hoka ya thiki nako konima yomasiku omulongo muWalvisbaai eti 14 Febuluali 1869. Omusamane Hahn okwe ya tsakanene moka mOmbaye, e te ya fala kOotjimbingwe hoka ya thiki ko eti 23 Apilili 1869.

Molweendo nduka, okuza mOmbaye omo yi ilongo lwotango okweenda netemba lyoongombe. Omatemba aatumwa mpaka oye ga longitha sigo 1956. Osho aatumwa mbaka oya kala ihe mOotjimbingwe uule womvula taa ilongo elaka lyOshiherero. Omusamane Hahn okwa li a tala kutya otaa pumbwa omatemba gatano mondjila yawo kOwambo, onkee oya pangele wo omatemba

omanenenomadhigu. Pethimbo ndyoka petulilo opwa uvika ehiko lyomankuma, nokonima yomankuma okwa landula ondjimbo: "Kalunga oye egameno, matati wo negonga..."

moka mOotjimbingwe.

Oyi ilongo wo Oshihoolanda nOshilingilisa. Erkki Juntunen okwa kwatwa kuuvu onke okwa li e na okushuna kuSoomi. Eti 27 Mai 1870 yakwawo; Botolf Bernhard Björklund, Pietari Kurvinen, Martti Rautanen, Karl Leonard Tolonen, Karl August Weikkoljn, Juho Heinonen naAntti Piirainen oya zi kOotjimbingwe taa hokele uumbangalantu woshilongo nelalakano ya thike kOwambo.

Kalunga okwa kwatha molweendo nduka olule noludhigu, mwa kwatelelwa omanota, oondjala, omikithi, omitenya noomvula. Pamwe uatalala ye u igilile ngaa, ihe omudhingoloko omupe ogwe ya pula oshindji.

Ohaluka eti 9 Juli 1870, oonani otadhi fudha meelo lyomukwaniilwa Shikongo shaKalulu mOmandongo, mOndonga. Evaangeli lya thiki, omulilo gwa tema gwi indjagana nuumbangalantu auhe woshitopolwa. Osho ngeyi ehala ndika lya ningi epyatumo lyotango lyEhanganotumo lyaSoomi sigo pwa holoka Ongeleki ndjoka ya tameke okwiithikamena 1954.

Tse wo Ongeleki ya ELOK, osheeli shEhanganotumo ndyoka, otatu hiywa tu ka kale moshituthi shoka pamwe naakuluntu yetu meitaalo. Opo ELOK a kale wo pamwe nOngeleki yomuSoomi palutu, Elelongeleki olyu utha omusita Titus Ngula (Kasindani) a kalele po Ongeleki yetu moshituthi shoka.

Omupeha gwe omusita Josia Mufeti. Tu yelutheni ano ehambelelo lyetu pombanda pamwe nOngeleki yomuSoomi omolwoshilonga shetumo, tse tu ilongele ko wo.

Petrus Shipena

OMIKALO DHETU DHOKUTSEYA KRISTUS

Jesus otu mu shi ngüini? Kehe gumwe epulo ndika ote li yamukula ngaashi e li uvite ko. Mpaka inapu pulwa ondjelo yaJesus nenge omuthika gwe.

Jesus mwene okwa pula wo aalongwa ye nkene aantu ye mu shi. Okwe ya pula wo yoyene shoka taa ti nkene ye mu shi noya yamukula:

OJesus yaKalunga omunanwenyo. Shika osha tsa kumwe nelongo lye sho ta ti: "Ngele tamu kala moohapu dhandje, otamu ningi aalongwa yandje shili, otamu ka tseya oshili noshili otayi mu mangulula.

Jesus omwenyo gwandje, osho ndi mu shi.

Naftali Nd. Nambinga

Shoka tashi dhigupaleke uuteku waanasikola pethimbo ndika

Aavali otu na uumbanda twa tila uunona wetu, oshoka shimpa tuu twa popi ko sha kuwo ongepukululo aniwa, okanona ka yi. Aniwa otu na onyanya. Okanona otaka ka konga aniwa ombili nonando itake ke yi mona ko shili.

Mokupopya ngeyi aavali, onda kwatelela mo wo naalongi mboka ye li wo aaputudhi yaanona, palutu nopambepo. Shoka shi li mondjila osho shoka kutya inatu tileni uunona wetu, kashi na mbudhi kutya otatu tondo.

Shoka tatu shi ningi, otatu shi ningi moluuwanawa wawo yene noshigwana ashihe moka Kalunga e tu tula mo.

Omukundu gumwe tagu tsakaneke aanona, iimaliwa mbyoka ye eta omaupyakadhi ogendji. Omaupyakadhi giimaliwa oge li wo nomaakuluntu. Aanona moosikola otata ende nomadhiladhilo giimaliwa. Nongele omunona ta pewa oshimaliwa megumbo, otashi vulika te shi dhini, aniwa oshishona. Nongele a pewa oyindji ye te yi longitha mepuko.

Omunona e na iimaliwa oyindji, ota yi mookefe e ta landa onyama kehe ya tsilikwa mo nokunwa shaashoka sigo oWisky nomakende omakwawo gondilo, nokwiitanga kutya yo aana yomakenge.

Aanona yoludhi nduka, oyo ngaa onakudopa. Yamwe kaye na omagano tuu shili, manga yamwe oye ga na ihe itaye ga longitha nawa. Shika itashi ti ando kutya aanona inaa pewa we iimaliwa, aawe. Naku yelekwe oompumbwe dhomonona.

Otatu pandula mooseko dhimwe sho mu na uusitola moka aanasikola taa vulu okwiimonena oompumbwe dhesiku kehe. Andola uusitola mboka nau kale ihe wa pakela, okuza kwaanona molugumbo ku ninge okufupi.

Tu silathaneni oshimpwiyu, unene tuu shoowwenyo.

S. Nendongo Kadhingula

Oshigambo

Okuza momukunda gwa simana, Oniipa, moka mu na oshipangelo nombelewa yomithima dhuunongo, oku na omukunda gumwe gwa gama haku ziilile "oludhi lu hole oongombe," (Aakwanyama), uule wookilometa ngiika omilongombali lwaampoka okuza pOniipa.

Omukunda ngoka ogwo Oshigambo, mwa kala aakonkoli yuunona momitse, Aatiligane. Ohaa gandja elongo ya fa inaa hala. Omudhingoloko gwogwene ogusitha uunye, nomatungo gamo ihaga etitha oonkondo.

Ngele owa hala okutseya oshikalimo

mOshigambo, inda momuhandjo gwaanasiikola. Tameka nuunona wongundu ontihamano, ihe longitha elaka lyaalihi ndyoka lya ningi oshidhanitho shawo.

Onkatu nonkatu to hedha koongundu dhopombanda, oto adha yamwe ya ningi aalihi ooyinakulu, oshoka ethimbo kehe otaa dhana nelaka lyawo. Pula ishewe kombinga yootundi, u lombwelewe shoka sha fadhukitha po oyendji.

Aakonkoli yuunona ohaa longo itaa yolo, ngele omuntu wa tala, oto ti pamwe otaye ku ningi onyanya, ihe nani uunongo to pewa.

Ngele we ya mOshiganbo, tala tango komuzalo gwawo, olwaala oluzizi nohema yaale yi ninge ontokele. Mbyoka oto yi mono kaatondi yiilya (aakadhona).

Omakuya oge na ondjiwamagulu yolwaala olumbulau, ohema ombulau yomaako omafupi. I, tu tale manga komatungo ngoka taga etitha oonkondo meni lyago.

Aanongononi mboka taa putudhilwa oku ka longa omalusheno nuunamiti, oye na ongulu ombwanawa yi na oshinima hashi idhingoloka komutse gwongulu ndjoka.

Omu na iikwakutema oyindji, iikwavi mbyoka ya za momavi, iikwakupanga ngaashi omiti, ihe odhokuninga omalolelo. Aailongi yo "Biology", nayo oye na ongulu ya thola.

Etungo moka hamu ningile ohungi, kali shi okuhokololelwa omuntu waahe po. Omudhingoloko gwogwene ogwa gamenwa nondhalate ya kunduka ehala alihe.

Omiti mOshigambo omo mooyina yadho. Ehala li shi okuhokololelwa nokuunona waa shi okwiikwata pomayulu. Aaleshi yomambo oye shi oshindji kOshigambo, mOndonga, nOshindonga, embo lyasho omo lya tetelwa.

*Gumwe gwomaalongwa
Neshila Paulinus*

Shono ndi ilongo ko m b i n g a yokulandelathana mo

Omukalo gwokulandelathana mo ngoka gwa talika pethimbo ndika, kutya ogwo "ka mana kandongo" mokutunga ombili nekwatathano, itagu eta ashike shoka, ndele otagu taandelitha wo uunkolwe neshunduko moshigwana.

Ondi itaala kutya omuntu haunene ha kolwa komalovu gomiimaliwa ye mwene, shila oomboka haku tiwa oonakunwa kwashili. Omupopyo ngoka hagu ti kutya, ngele oho thigi po omalovu we ga pewa oshali, nenge ho tindi omalovu we ga landelwa owina, oto yono ombili nenge ekwatathano, ogwo gwa fala oyendji mokunwa sha pitilila.

Aantu mbaka haa kala moositola dhomakende nenge muundingosho, ohaa longitha omukalo gwokulandelathana mo, oshoka oya tala kutya ogwo tagu tungu onkalathano ombwanawa moshilongo.

Omukalo nguka olwindji ohagu longithwa mepuko. Oshoka oku na aantu yamwe haa vulu okulanda iikunwa sha pitilila. Ngaashi pomatsakaneno gaantu moondunda dhomanwino omo unene omukalo nguka gwa vuka.

Aaleshi yOmukwetu, unene mboka hatu longitheni iikolitha iidhigu, uuna tatu yi tuleni melongitho, otu na okudhiladhila tango muule, ehalo lyomushiti gwetu.

"Ino yonagula po niikulya yoye mukweni, oshoka Kristus e mu sile. Inamu etha ano uuwanawa weni u shekwe, oshoka oshilongo shaKalunga kashi shi okulya nokunwa, aawe, uuyuuki nombili nenyanyu omOmbepo Ondjapuki."

Omushitwa kehe gwaKalunga he tu landele mo nenge ihee tu landele mo, ha longitha iikunwa nenge ihee yi longitha, natu mu taleni ongomumwameme omuholike muKristus, mungoka tu na edhimopo lyomayonagulo.

"Kaleni mu na ohenda, ngaashi oho yeni yomegulu e na ohenda." Luk. 6:36.

N.F.Ambata

A GALUKILE ISHEWE MIILONGA

Omukuluntu gwOshinyanyangidho, omusamane Moses Amkongo, okwa galukile ishewe miilonga petameko lyaNovomba nguka sho a kala uule wethimbo ele



mefudho lyombete yomegumbo.

Sha endele mongaya, osha fa ngaa eloloko lyiilonga. Tate Amkongo okwa wilike oshikandjolonga shika mOngeleki uule womimvo dhi vule omulongo nomaudhigu ogendji oge mu tsakaneke miilonga ye.

MARTIN LUTHER



LUTHER OSIKOLA YAANONA OKWE YI ENDELA NUUDHIGU OWINDJI. OYE INA SIKOLA PE-GUMBO NGAASHI AANONA YETU OYENDJI YE LI. IIPALU-THA YE MOSIKOLA OKWA LI E NA OKU YI IHEHELELA NOMA-GUMBO. TANGO TE YA IMBILE KO, OPO AANEGUMBO NDYOKA NGELE YE NA OHENDA, TAYE MU UMBILE UUSENDA WASHA. POOMPITO ODHINDJI, OKWA TIDHWA PO OWALA, INA PEWA SHA. METHANO NDIKA, OKU LI NOKA-NGUNDU KAAASIKOLA OYAKWAWO TAA IMBILE KO EGUMBO NDYOKA.

Iilonga yomusamane Luther kombi-nga yeyelitho lyeitaalo, oya kala numvo oshidhimbulukiwa sha simana momavi agehe guuyuni, omavi gaakriste nomomavi gaakaan-itaalo.

Iituthihambeleso ayihe oya adha ehulilo lyayo muNovomba okuza sho ya tamekele muMai numvo. Oongundu noongundu dhaailongi nodhaamboka ya hokwa okukonakona iinyolwa yaLuther,

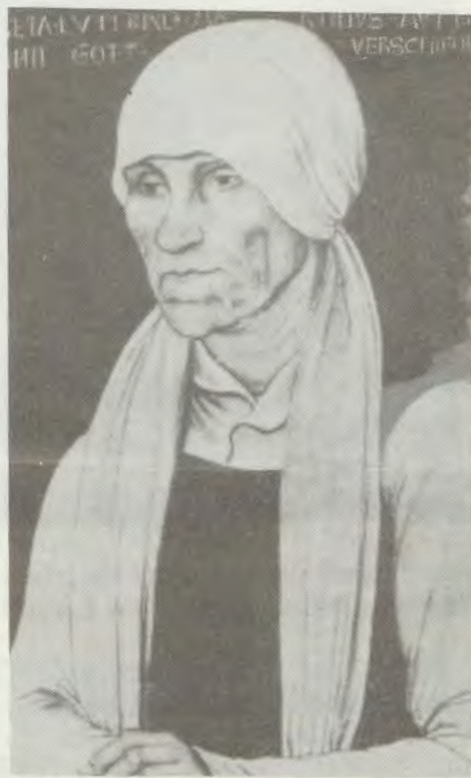
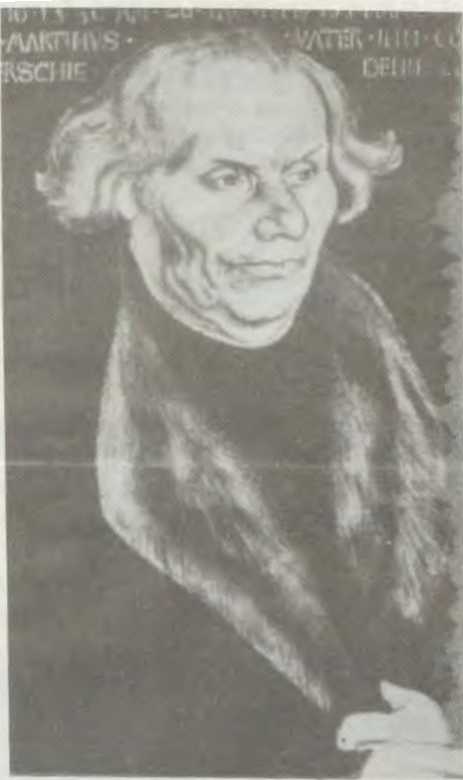
Tala kep. 5

Omumvo 1512, Luther okwi ithanwa muErfurt a ka longe osikola yokombanda yaWittenberg hoka a kala omulongi gwOmbimbeli. Omapistoli kAarooma, kAagalati nOraamata yOmapisalmi oyo ya kala iilongwa.

MOmapistoli ngaka Luther omo i ilongo elongo lyOmuyapostoli Paulus sho ta tula omuthindo mehupitho tali zile omuntu mokwiitaala, pwaa na oonkambadhala dhomuntu dhiilonga pa Rom. 1:17. "Omuyuuki oha kala e na omwenyo gwomeitaalo."

Methano ndika, Luther ota monika ta longo aalongwa ye uyelele mboka a tsakaneke movelise ndjoka.





kweenda nokuya shaampoka omuntu a hala a ka dhane oshituthi shika. MuJerusalem wo omwa dhanwa oshituthi shika.

Oyendji oye shi hempulula kutya shono sha ningwa numvo mokudhimbulukwa evalo lyomusamane nguka, osha hanganitha omaitaalo, gi ili nogi ili kumwe, omalelo giilongo, nomithigululwakalo dhiigwana.

Lwi

AAVALI YAMARTIN; OMUSAMANE HANS (JOHANNES) NAMARGARET LUTHER. ONDJAMBI YE YOMILONGA YOMINA YAMANSFELD, OYO YA KWATHA OKANONA MARTIN KA TSIKILE OSIKOLA SIGO OKOUNIVEESITI. MARTIN OKWA LI OMUNAMAGANO.

oya gongala noya kundathana oshindji.

MuMadras, India, aakriste nAahindu, Aabuda nayalwe oya gongalele nokukundathana Luther. Opwa kala wo ethimbo ele oonkundathana pokati kAakwaluther nAakatoolika kaRooma okukonakona iinima mbyoka ye etele omatopoko.

Oonkundathana ndhika odha hanyekwa numvo momumvo gwa Luther naashoka tashi hambelelitha Kalunga mudho, osho shoka kutya omaitaalo ngaka gaali ga topoka konima yoomvula 460, ngashingeyi otaga ziminathana miitsa oyindji mbyoka ya li ya talika oyo ya topolitha Ongeleki. Oonkundathana otadhi tsikile natango.

MuRusia, oshituthi osha dhanwa omasiku gaali, nopwa talika kutya ehwamo musho olya li li vule miilongo oyindji. MuNdowishilanda lyokuuzilo nolyokuuninginino numvo, aantu oya li ya pewa oopelemeta dhemanguluko lyo-

MARTIN SHO A TOKOLA OKUNINGA OMWIIKALELI 1505, OKWA YI KONDJUGO YAAIKALELI YAAUGUSTINUS MUERFURT. METHANO NDIKA ETUNGO NDYOKA OTALI MONIKALI LI MOKUTUNGULULWA OMOLWOMUMVO GWALUTHER NUMVO.

Tala kep. 6



Ezimo lyAakwaluther muuyuni auhe

Ombelwa yOngongahangano muuyuni (LWF), oya gandja eyalulo lyomwaalu gwAakwaluther muuyuni auhe omumvo gwa yi 1982 ngaashi tagu landula mpaka:

Omanenevi:

Asia oli na Aakwaluther 3,404,100
Australia noontuntu 726,800
Amerika 9,984,600
Europa 51, 108,00

Ayehe kumwe mbaka oye thike poomiliyona 54.4 ya ya mOongelesi 97.

Oku na wo Aakwaluther ya lwe mboka yaa li mehangano ndika, otaa adhikwa unene ngaashi muAmerika nosho tuu muNdowishilanda lyuunininginino. Mbaka ayehe kumwe oye thike poomiliyona 14,5.

Ezimo alihe lyAakwaluther oli thike poomiliyona 68.9.

Pehulilo lyOkatekisa Okanene, Luther ota kumagidha ooyene yomagumbo ya longe oyana nokutala ya putudhilwe "ashihe shoka ye na oku shi tseya, oshoka oyo ya shashwa noya taambelwa muukriste.

"Oye na okumona wo ompito yokumona ehanganano lyEsakaramendi, opo ya wape oku tu yakula kekwatho lyetu, nokutya; oyo ayehe ye na oku tu kwatha okwiitaala, okuhola, okugalikana nokukondjitha ondiyapoli."



Methano ndika, Luther omutitatu okuza kolumoho, e li miilonga yelundululo lyEtestamendi Epe melaka lyOshindowishi, omumvo 1521. Kolumoho lwe otaku monika kuume ke Philipp Melankton.



Okahistoli kaLuther:

- 1519 muJuni omo ya tamanana na dr. Eck 8.5.1521 omo a mangelulilwa okudhipagwa kukehe ngoka a hala
- 1522 muSeptemba omo elundululo lye lyEtestamendi Epe mOshindowishi lya holoka.
- 1523 okwa gandja elandulathano epe lyegongalo kaalanduli ye
- 13.6.1525 ya hokana naKatharina von Bora ya mono naye aanona yahamano

EPUKULULO

MOmukwetu gwaKotoba No.20/1983, mepandja 12, owa lesa etseyitho tali hiya Osikola yOmbimbeli, ndjoka inaayi tumbulwa kutya otayi kala peni.

Owadelesi yayo:
Osikola yOmbimbeli
ELOC Youth Centre.
Ongwediva

Otatu gandja ombili kOmukuluntu gwOsikola ndjoka sho inaatu gwanitha po ehiyo lye.

Amushanga gwOmukwetu



Omupapa John Paul II, ngoka e li ngashingeyi melelo lyOngeleki yaKatolika, omumvo nguka opwa kala omadhiladhilo ga kola mAakwaluther kutya ota ka uvitha mOngeleki yimwe onkwaLuther muRooma. Sigo oompaka inatu mona uyelele mbuka kutya osha ningwa nenge aawe.

Ihe shoka sha yela oye okwa taamba numvo aayenda aawilikingeleki yOngeleki onkwaLuther muAmerika mombelewa ye muRooma nenyanyu.

Otwa pumbwa okwaalukila kuAfrika

Afrika enenedu lomanenedu atano ounyuni. Edu eli ola shiiva nalenale oukalunga. Ofikola yokulihonga oukalunga mounyuni aushe, oya kala hai longwa muAfrika amuke.

Ovayeuropa ova mbwalangadjeka oukalunga oo va kufa muAfrika. Konima ova ka mona vali omhumbwe ya kula yokunenepeka oukalunga, oyo, i li keembinga dimwe daAfrika. Ova tokola otoko, opo va kwafe Ovayafrika paukalunga nande havo ve tu hongwa okushiiva Kalunga.

Ovatumwa ove u ya kuAfrika netumo. Mupya munene pamwe novatumwa oukoloni nawo inau fyaala ko. Ovatumwa ove uya yo nodino okudina Ovayafrika. Ova mona kutya keshe omukalo u li muAfrika, owoshipaani nomikalo adishe dOvayafrika kadi na onhele vali moukriste.

Kuvo omikalo davo odo adike dopakriste nande navo ova li pondodo oyo ve i luka oupaani. Itashi ti, inatu pandula osho ve shi tu pa, ahowe. Kombinga imwe Ovayafrika vamwe ova tala kutya keshe Omutiliyane omukriste nakeshe osho ta ningi oshikriste.

Oukalunga pashiAfrika

Oukalunga woshiAfrika, ova hala ovakriste tava endele pamwe nomikalo davo dikulu odo diwa. Elongelokalunga nexumokomesho pashiAfrika. Oukalunga woludi eli, otau yandje oufemba kovakriste Ovayafrika, opo va diladilulule oukriste pamukalo woshiAfrika.

Otashi dulu okuningwa yo nomikalo tadi shikula: Okukufa omifyuululwakalo diwa koiwana imwe ngaashi kOvayeuropa ile kOvayamerika opo tu di longife.

Ngaashi okukufa oukriste palupe loshiEuropa ile loshiAmerika nde hatu u ningi oshiAfrika. Ovayafrika ova hala okudenga ongoma ile omarimba momalongelokalunga avo ponhele yokaxumba koshiEuropa ile oshiketala. Sho eshi itashi ti ngeno oxumba ile oshiketala inai halika, ahowe.

Ovalihongi voukalunga woshiAfrika,

ove lipyakidila nokulafulula meendjokonona daAfrika opo va mone mo omikalo dikulu delongelokalunga. Omikalo edi otadi wapekwa, opo sha pumbiwa, nde tadi longifwa ko - vakriste Ovayafrika vonena, naavo ve he fi Ovayafrika ngenge va hala.

Osha fimana noshi na elalo okushiiva omikalo dikulu doshiAfrika shi dule oku di lidimbika. Konena otu na ovo tava lu, opo va wapeke oukriste wetu u kale wa udiwa ko nawa nou longepashiAfrika. Ohai tumbula po vamwe vomuvo. John S.Mbiti, Kenya; Bishop T.Thimbangu, Zaire; James H.Cone, USA; Jose B.Chipenda, Angola; Bishop Desmond Tutu, S.A. navakwao vahapu.

Ovalumenhu ava ova hala oukalunga wetu u kale tau ti sha, u na ondilo nou kale tau tyapulwa kOvayafrika. Paukalunga wOshiAfrika, inaku



Omuprofesoli John Mbiti omunyoli gwomambo ogendji kombinga yuufilosofi wOmuluudhe, ngashingeyi oku li amushanga gwiinima yi ili noyi ili kombelewa yOraata yOongeleki muuyuni kuSwitzerland.

dilwa eitavelo limwe lipe, ndele okwa diladilwa oukalunga owo we likwatelela keitavelo lomOmbibeli, notau popifa eemwenyo dOvayafrika.

Itashi ti otapa totwa Ombibeli ngeno yOshiAfrika, ahowe.

J.H.Mweutota
Omuhongwafita



Omumbisofi Desmond Tutu, omupanguli omunene gwokatongotongo, oku li ngashingeyi Amushanga Ndjayi gwOraata yOongeleki dhomuSuid-Afrika.

Otu udite ko ngahelipi ounashilonga wetu

MuNamibia omu yadi ovanashilonga vomaludi mahapu, ngaashi ovahongifikola, ovaevangeliste, ovanambelelwa vomaludi mahapu, ovapangi neendohotola nosho yo vahapu itava pu okutumbulwa.

Otwa fa tu udite ko ounashilonga wetu mepuko. Otwe shi tala ko ngaha twa fa ofye vene twe li pa oilonga ei. Onde shi linekela kutya muNamibia kamu na ovanashilonga vahapu ovapaani, shapo ovanini lela.

Eshi Kristus a li omunashilonga waaishe, okwa li omulixupipiki, omunambili, ndele fye ovanashilonga vopaife, otu udite kutya ame omunashilonga ndi li pombada ndi dule vakwetu. Omunashilonga keshe oku na okaifano kamwe akeke oko a pewa kuKalunga omushiti waye.

Otwa shiiva yo kutya olutu olu na oinhimbu ihapu, opo li ninge omunhu. Keshe oshinhibu otashi pumbwa shikwawo, ndele fye ohatu litangele ashike ounashilonga wetu ile eifano letu eli tu kwete.

Omuyapostoli Paulus ote tu kumaida: Kaleni mu na ediladilo limwe, inamu lovelela ei oinonenima, kaleni mwa wana naai ixupi. Inamu litala onye ovanandunge. Ngeenge tashi dulika, kombinga yeni kaleni nombili novanhu aveshe. Rom.12:16-18.

Kombinga yeputuko omunhu ou ha ti; ame, aame, he linenepeke, nande na kale e lihonga shi fike peni, oha talika a fa wongaho nelihongo laye ihali ti vali sha mokati kovanhu.

Tu shikueni oshihopaenenwa shaau e tu pa oshilonga nomaifano tu a yakulife nao oshiwana shetu.

Jona Sh. Nghilundilua

Omuniyasha ota shake- neke shike mefimbo lo- maudjuu

Omweendindjila keshe novashingi voihauto, ova koneka nawa oshinima eshi kutya, haye aeke mondjila, onghe e na okuninga etokolo pefimbo leshakeno kutya ota ama kolumoshu, ota yukilile moshipala ile ota ame kolulyo.

Eendjila mbali dopetameko odi na oshiponga. Mondjila yoihauto, ovanhu ihava paafana omalumoŝho, osheshi kolumoshu kaku na ondjila, kakele koiponga.

Natango omushakenwa naye iha yukililwa moshipala, otapa holoka elidengomumwe noshiponga. Ngeenge wa tokola okuhoolola ondjila ei, kai kala inai ku twaalela.

Ovanyasha, otulyeni mondjila omo mu na ookaume ketu, ookahewa, ovavalekwa novavaleki vetu, ovakulunhu novapukululi vetu. Ovanyasha vahapu otava shakeneke oiponga youlema noyefyo nokuli.

Momaumbo kave mo vo inava ya koyoon-galele yopakriste. Ova ya kOvenduka, kOshakati, kOluno nokoRuacana. Moyeendifo omo te ende, vahapu va lemanena mo notashi pendula epulo ngeenge omuvaleki waye, ile omuvalekwa ne mu efe po ile nava twikile natango.

Nande efiku loye itali ku shekuna, Kalunga iha kwafa yo elai. Onawa tu yepeni oiponga mokukala meumbo, hatu petwa momutwe nohatu udu ovakulunhu vetu eshi tave tu imbulula, shi dulife okufila nokulemanenamoipwaendo.

Oiponga imwe oya twaalela ounyasha wetu. Momalweendo ounyasha wavahapu wa fyaala mo, va li ve shi hala ile inave shi hala, osheshi ova fitikininwa poukololo. Tu xulifeni omukalo wokweendaenda.

Oku na vamwe va fya kwa li ve li mondjila yoku ka nangelela. Vamwe ova tokelelwa poikunwa peekamba. Otu na oihopaenenwa ihapu okuulika nghe shi na oshiponga okukondjela edimo nokukanifa omwenyo.

Oiponga ihapu ya popiwa metetekelo, itai hangika ashike movanyasha, ndele nomovakulunhu yo ovo ve lininga twaalele nge, ile iha di pokamba fiyo oufiku.

Ovanyasha vahapu ova fyaala poluhaela, pomutenya, eshi oshiponga osha twaalela ovadali aveshe ile aveshe va ninga oilema. Apa ngeenge sha ningwa, hasho yo edidiliko kufye ovanyasha, kutya Kalunga ke tu hole. "Ihe ku efa nganyoko"

Ohatu shakeneke komapulo mandjuu tae tu dile meni mufye nomuvakwetu. Eshi tu na okukoneka osheshi, kutya efimbo eli Kalunga ine li tu pitikila shaashi lipu, ndele osheshi e tu lineekela.

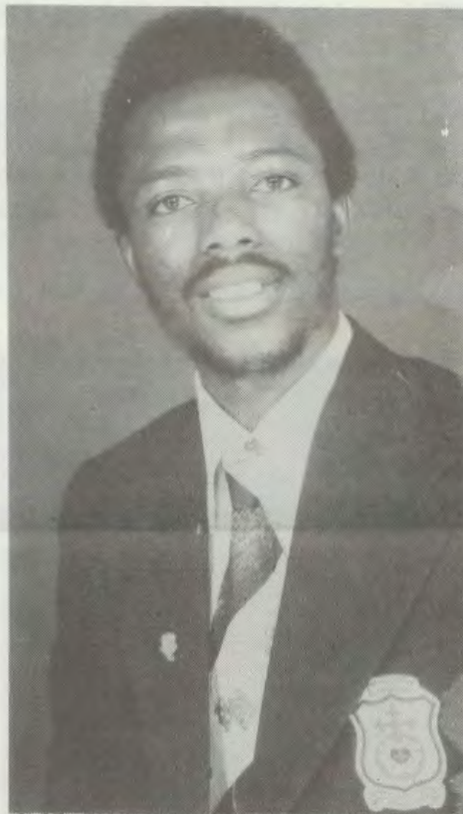
Kalunga ou e shii komesho nokonima, okwa koneka nale kutya ovanyasha vopefimbo eli, ovo aveke tava dula okuhumbata ondjoko ei. Kalunga oye Kalunga shaashi katu udite ko nokatu shii eendjila daye.

Ngeno tu shiive kutya omolwashike Kalunga ha pitika oilonga yonhumba, Ye ta kebele yongadi, ngeno oukalunga waye otau tutuka. Jesus oye oku tu lile po komapulo aeshe taa tukuka mufye.

Onghalo yomaumbo

Ovanyasha nye omwa shiiva ovanhu vahapu mu dule ovakulunhu veni. Omwa uda yo nghe eehombo tadi teka; nge omedina loikunwa ile omolwouteku woludalo.

Oupyakadi womaumbo owa twala yo ovadali vahapu monghatu yokunwa oikunwa idjuu. Naapo omolwaasho wa dalwa meumbo la tya ngaho, u holole eitavelo loye. Ino va hauluka, konga ashike eenghono meendjovo daKalunga moyoongalele. "Ouyelee weni nau monike apeshe".



Omufitaongalo V. Muniyika

Ovanyasha kombinga yomavalekafano eshi va shiivafana paife novakwao vokomakule, oshinima shotete naku pulwe ehala laKalunga otali ti ngahelipi. Nopativali ovakulunhu nava pwilikinwe yo ko ku ningwe omaudafano mawa.

Ovanyasha ovo va hangika koumbada kutya otava kulupa novalumenhu vati ova ninipala paife, nava koneke kutya oludalo halo oshinima shotete, ndelene exupifo. Hakuliyandja hano komutondi omolwoubada.

Onda itavela kutya omwa shakeneke nale ovanhu tava udifa omaitavelo ehe fi aa twa ika ngaashi lopavaangeli paLuther, laKatoolika kaRooma ile laKatoolika kaDibo.

Ohatu yelifa apa kutya, omaitavelo aa taa

holoka, haaeshe e li mondjila nohamunhu keshe a humbata Ombibeli e li omukriste. Hano inamu livonda okulanda embo keshe tali shingifwa, kakele komambo Eengeleki da tumbulwa metetekelo nomwa shiiva nawa apa taa monika.

"Kape na shikukutu shiha xulu."

V. Muniyika

NAMHILA LA TEYA PO OSHI- longo

1. Ohatu koko ondjadjo tu lietele omafundju, Enghululula Namhila, tali tiki oshilongo La kwatelela momunhu, li li ofika mehala-sha

2. Luhapu ohatu vele kalupu, hatu yehama Ndele eenghono katu na, Namhila le di kanifa Tombo le di lya mo eenhanga

3. Eima nali hanyenwe, tomo natu mweefeni, La utameka vahapu, Namhila la ninga ovanhu oyoongo Ounona meumbo olumhanda ola yaka, shopedimo kave shi na

4. Namhila la eta ondjala meumbo, oilya i yadi omaanda Efimbo lokutwa ke li kwete, waNangula, olufu lokuteleka ke li mwene waNamhila

5. Keshe fiku ola konda, omadilongo la kanifa Nali nuwe ngaa nawa, nali longifwe pandjele Opo lihe tu etele oisho yokomongula, noinima ya lupuka nale

kuAtty L.P. Haininga

Ovaleshi tava pukululafana

Hamushanga wOmukwetu, Kwafeni nge moshinyolwa shOmukwetu waMai naJuni, opo tu kwafeni omunyoli woshipopipiwa shedina "Eyonuko olya tembudha aasamane momagumbo." Omukwetu No.12/1983 ep.11.

Omuleshi omukwetu, ino leshe nawa. Moshifo inamu popiwa OVAKAINHU, omwa popiwa OVANYASHA, oukadona novamati. Leshe mo vali nawa ndele to nyola vali opo ovaleshi va ude ko nawa.

Osheshi paife ova kukutika omitwe dovaleshi, ovanyasha novakulunhu, osheshi moshinyolwa shoye, ino kumaida, ile u twe omukumo, ova tukana ashike, noku shinda ovaleshi vOmukwetu.

Oshifo shOngeleki oshokukumaidafana nokupukululafana nawa. Momukwetu waMai No. 10/1983, epandja 2 mokapopiwa kedina "Tashi li ekunde oshi li mekunde," osha pukulula oukadona, opo va shiive

Tala kep 12

OKWIIMBA

Atuheni otu shi shi kutya okwiimba okwa za nale. Nongele tse mbaka twi itaala muKalunga tatu tala Ombimbeli, otatu adha okwiimba taku popiwa okuza muGenesis sigo okEhololo lyaJohannes ekandanga sho tali imbwa megulu.

Ano okwiimba okwopaMbimbeli wo. Unene embo lyOmapisalmi, oyo embo lyoondjimbo mOmbimbeli nedhina otali shi holola "psalttari".

Okwiimba oshike niilonga yakwo oyinipo? Okwo okutanga, okuhambelela, okugalikana okwiinekela, okukalamwenyo. Okwiimba kwopakriste kwegongalo okwo ehempululo lyegongalo egalikano nomutoloki gwomahambelelo gomwenyo.

Okwiimba kwoondjimbo dhopambepo, otaku egululile omuntu okutamba Ohapu nohapu ndjika, oye Jesus Kristus. Ondjimbo oshike? Oyo oshilongitho shOmbepo Ondjapuki okwiithanena aantu kuKristus nokuthindila oshili yoyene meni moomwenyo.

Ondjimbo omukwathi omwanawa okuthikitha omuntu meitaalo. Oyo wo oshikondjitho shokwaaitaala. Okwiimba kwopambepo okwo oshilongitho shi na oshilonga meuvitho lyevaangeli, okwo omuvithi omunene.

Ondjimbo otayi hungu omwenyo, tayi tidha omadhiladhilo omawinayi guumbanda wokudhiladhila onakuyiwa yaahe shiwiki. Mookondjimbo dhopambepo, otamu hololwa elago lyokukala omukriste.

Okwiimba okwo ombinga yimwe yomusiki. Oku na oomusiki dhomalalakano gi ili nogi ili. Tse melongelokalunga nomonkalo yetu ayihe, omusiki yopambepo, otwe yi pumbwa.

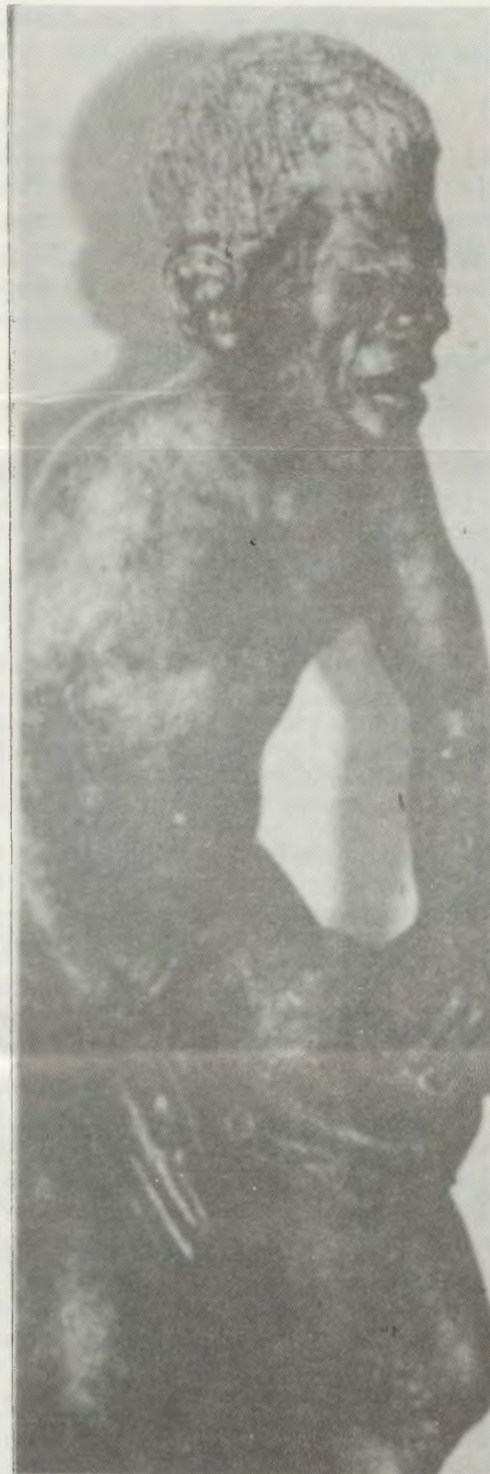
Oshilonga oshi li unene mpoka, omusiki ngele tayi tu dhimbulutha omagano nomugandji gwago. Omusiki ya longithwa nawa, oyo omagano gaKalunga. Omusiki oyi na ishewe oshilonga ngele tayi tu dhimbulutha kutya otu na oshinaku-gwanithwa oshinene momusiki.

Nongele wo tayi tu ukitha mpoka tu dhimbulule kutya otu na omwenyo

gwa zi mOhapu. Ishewe ngele tatu dhimbulukwa kutya omusiki oyo omulongeli gwOhapu omwiifupipiki.

Aaimbi aahololike, natu tseyeni uunene noshikalimo shoshilonga shetweni Okwiimba okwa kwatelela mo muko ombinga onene yetegame-no lyokwaahula po kwomuntu, omwenyo gwaaluhe.

Ngele iinima ayihe yi na okuhula po,



nena olwiimbo shimwe shaambyoka tayi kalelele. "Nenyanyu te tedha megulu, megumbo lyaJesus. Aakulilwa taa imbi ko, taa tanga Omuwangu. Aluhe taa imbi, aluhe taa imbi, aluhe taa imbi, yo ita zi mo we."

Elalakano ewanawa li vule omakwawo galwe oondyoka ngele tatu imbi mpaka notatu kala meilongekidho oku ka imba molwiimbo lwaaluhe.

Epapudhuko mokati kaakondjelimanguluko yaZimbabwe

Oshiwikembimbeli shoka sha ningwa mokati kaamati mboka ya lumbu omimvo odhindji, momuthitu omolwekondjelomanguluko lyoshilongo shawo, Zimbabwe, osha thigi oyendji ya tokola okuninga oonzapo dhehokololo lyehupitho.

Oshiningwanima osha ningwa muJuli gwa zi ko, 1982, nosha popiwa kokafonkundana kiilonga yevaangelitho muuyuni auhe, World Evangelization Service, haka zi muSwitzerland.

Momukunda gumwe Mutare, Zimbabwe, aantu ye vule 5,000 oya hempulula montaneho eitaalo lyawo lyomuKristus pethimbo lyoshiwikembimbeli shoka.

Moshigongi oshikwawo moka kwa tiwa omwa li aapulakeni 3,000, omukwiita gumwe evaangeli oye mu tompele uusama we nokwe u hempulula puuelele sho a ti kutya okwa kala omuhepeki gwaantu pethimbo lyiita nokwiindile ngeyi edhimopo lyoondjo koshipala shaKalunga.

Pokamba onkwawo yaakwiita "domomufitu", 500, oya tokola okulandula eitaalo lyopakriste. Oombimbeli dhi vule 1000, odha topolelwa wo mokamba ndjoka.

EKWATHO LYENI LYA THIKI

Omwaalu R130,00 twe gu taamba nepandulo enene mombelewangeleki ngaashi gwa zi kOlange kaantu yomadhina taga landula:

1. M.Elago
2. P.Ipinge
3. E.J.Ntinda
4. E.Heita na
5. N.Kalili

Ombelewangeleki

Oshilonga shewilikongundu lyuudiakoni niilyo yuudiakoni momagongalo

Oshilonga shuudiakoni osho oshilonga shohole yopakriste, pa Joh.3:16 moka tatu adha ekankameno lyawo paMbimbeli.

Iilonga yuudiakoni oya longwa nale nokaapagani. Oya li ya kwathathana miilonga yi ili noyi ili.

Unene mOwambo omwa li mwa longwa iilonga yuudiakoni.

— Okutungilwa oondunda niigandhi.
— Okuyungula iilya piipale nokutsilwa uusila, nosho tuu.

— Aakwanaluhepo oya li ya kongo ehanga lya pya, noya kwathwa.
— Iilonga yomepya oyo oshinima sha li sha si-manekwa, nokukwathela ngoka iha vulu okulima.

— Oondjambi pwaa na ofuto yasha, shila iikulya ya telekwa nawa, odha longwa.

— Aashiinda oya kwathathana mokulitha iimuna yawo, nokuhupa omithima opo iimuna yi mone omeya.

Oshigongi shoshitayingeleki shUuninginino shagongalele mOgomgo 23-25.4.82. Omwa li mwa yelithilwa oshilonga shuudiakoni niilyo yuudiakoni momagongalo nkene yi na okulonga iilonga yawo.

IILONGA MOMIKUNDA

Okutonatela aakwanaluhepo kehe ye li momikunda dhawo, ya mone ekwatho.

IILONGA YEWILIKONGUNDU MEGONGALO

Ewilikongundu megongalo oli na okugongala opo li kundathane ashihe shoka shi na sha noshilonga sheyakulo nokutonatela momukunda kehe mu kale mu na aadiakoni.

Egumbo kehe nali lalakanene uuyogoki okuza pelugo, moondunda dhokulala unene dhaanona nathi silwe oshimpwiyu, nosho wo dhaakulupe.

Okusila aakulupe oshimpwiyu momikunda, okwoopaleka oondunda dhawo dhokulala, noku ya yoga komalutu, nokutala iikulya yawo ngele oya yogoka.

Egumbo kehe li lalakanene uuyogoki li kale li na okandjugo kokuholamena mo, opo oombuto dhuu-
vu dhi kondjithwe nomikithi dhi pupalekwe.

— Iizalomwa nayi opalekwe nawa.
— Iikulya yi silwe oshimpwiyu, yi telekwe nawa.
— Iikulya yOshiwambo yi simanekwe.

— Iikulya yOshiwambo unene tuu mbyoka tayi zi momapya inayi landithwa po ngoye u ka lande yopashingolo.

OKUGONGELELA IINIWE MOSHIKETHA

Naku ningwe epya lyuudiakoni megongalo mpoka tashi vulika.

— Iituthi yuudiakoni momagongalo nayi ningwe.
— Naku ningwe edhiginino lyiilonga yomake muungundu.
— Ongalo momasiku gokugongala.

Egumbo lyuudiakoni moshitayingeleki olya pu-

mbiwa. Egumbo lyaaakulupe ehala mpoka aayaku-
lwa taa vululukwa nokuyakulwa pampumbwe dha-
wo adhihe.

ENENEDHILADHILO OLYO NDIKA:
Ando egumbo ndika li vululukithe aakulupe
omvula nenge oomwedhi dhontumba.

Ando egongalo kehe li tale nkene tali longo egu-
mbo lyaakulupe.

Oshigongi shi sha li sha gongala mOgongo,
osha li sha thaneke wo egumbo lyuudiakoni mo-
shitayingeleki ando li tameke nokuli omuvo 1983.

IILONGA YIINKAHA MOMAGONGALO

Iilonga yiinkaha oye etele omuningi gwayo enya-
nyu. Mokulonga omuntu kehe ota etelwa iinima
mbika;

— uunongo
— esimano
— eyambeko
— enyanyu

Iilonga yiinkaha otayi etithapo iimaliwa moshike-
tha, onkee iilonga yiinkaha nayi dhigininwe mo-
magongalo.

Egongalo kehe mOwambo nali tale nkene tali lo-
ngo meyakulo lyuudiakoni.

Kauko Shikongo

OKAMATI KA KANA

Ohai kongo okamati kedina Sa-
omo Nakafingo. Okamati aka
odalele yaAngola momukunda
Oshihedi. Oka kufwa ketanga
lovakwaita va SA momukunda
wako muAguste 8, 1982, ndele
fiyo onena eli.

Ou we ka mona, onawa u kwafe
nge, ouyelele ile u denge ongodi,
Tel, 2544, Tsumeb; ile u nyolele
koshikefa 172, Tsumeb.

Omapupatwi okwa fa taku tiwa
oko ngo ke li, ndele katu shii
nawa. Kwafei nge.

Festus S. Ngeeshalulu

ENYAMUKULO:

Onawa u ka pule keekamba
dovakwaita pamwe to mono
ouyelele.

Amushanga wOmu kwetu.

Osha kumitha ndje

Ope na oshinima shoka sha ku-
mitha ndje nondi inekela aavali
oyendji otaa kumwa wo kusho
ngele ye shi dhimbulula.

Ngele to ende momapandaanda
giilando noodoolopa nuu-
ndingosho, oto adha uunona tau
landitha iifo. Muundingosho
uunona owo tau landitha
nokudhinda omafau. Uunona
mbuka ohau sikola etango peni?

Ngele osho tashi tsikile ngeyi, o-
ndi uvite kutya kaku na we
oshigwana komeho, twe shi
kanitha. Napu katukwe shila
onkatu nziya.

Judo Cangwandyu

OMADINA MAHAPU OKWA SHANGWA ME- PUKO

Ombelewa yomayelifilo otai i-
ndilwa natango i nyole ela-
ndulafano lomadina olo la kala
po nale, lo li tuminwe omalupale-
ongalo. Omhumbwe ei oinene, o-
sheshi momambo omaongalo, o-
tamu monika omadina ovakwa-
neongalo a nyolwa nepuko.

Elelongeleki, Oshitok. 463/1983

Uukwiyu masiku we shi fulula ko

Egongalo Uukwiyu, moshitayingeleki shOndo-
nga, olya dhikilwe 1979. Olya zi momagongalo
Olukonda nEheke noli li muumbugantu wEheke.

Egongalo ndika olya tameke nondjundu noneitu-
lomo okwiitunga pambepo nopalutu.

Okuza ethimbo lya totwa, olya kala hali go-
ngalele muukwiyu momutenya nomomvula. Ta-
ngo olya tungu oshinyanga shegongalo shomala
gatatu. Inapu pita ethimbo ele, olyi itakeke o-
ngeleka yoshinanena tayi gwanene aantu 400 si-
go 500.

Oshinyangagongalo osha tungwa wo shi li ku-
mwe nongeleka, noshi na omala gaali, omanene.

Oshinyanga shika ngele tashi ka longithwa, nena
otashi ka mangelula oshinyanga shotango shi ka-
le egumbo lyomusita, ndyoka taye ke li gwedhela
ashike mbala konima yiilonga yetungo lyO-
ngeleka.

Kombinga yiilonga yOngeleka, ekolongo meni no-
kombanda olya pwa, omiyelo odha tulwa mo, ii-
kulo yomakende omo yi li.

Opwa pumbiwa ashike omaopaleko omashona nii-
pundi noshungo yongendjo nokutula mo omake-
nde opo yi pwe.

Uukwiyu, egongalo egundjuka lela, olya longo
neitulomo, notali kala oshiholelwa shaagundjuka
ooyakwawo mu ELOK. Kalunga ne ya yambeke.

Aaukwiyu, inamu ninga "ndjamba a vulwa, mu-
tse a loloka." Ookuume, popileni Aaukwiyu, oye li
pokumana.

Petrus Shipena

EHENGUMUKILO MUMWE LOVAKWALUTHER TALI KUNDAFANWA

Okuholola po Ongeleki imwe aike onghwaevangeli paLuther moumbuwanhu waAfrika, otashi linyenge paife unene mombelewa ya FELKSA. Eshi osha halika nande pu na ounyengwi kombinga yOvakwaluther Ovatilityane tava nyengwa okulongela kumwe novawainangeleki Ovalaule.

Amushanga wOngeleki ya ELOK, omukulunhu, okwa koleka yo elinyengo eli Ovakwaluther, kutya ova hala va ninge po Ongeleki imwe.aike.

Okwa holola yo omalimbililo aye nhumbi eshi tashi ka tulwa moilonga, nonande elalakano lohinima oliwa.

Shiimba omushamane Absalom Hasheela, ina etelwa ashike elimbililo koumbwalangadja woumbuwanhu waAfrika, ndelene nomayooloko omilandu domalelo oilongo omo Eengeleki eenghwaLuther di li.

Pauyelele oo we uya lwotete mokakomisi kelongekido loukumwe woshinima eshi oka ti kutya elalakano lokuhengumunina mumwe Eengeleki eenghwaLuther, osha dja nale.

Oku ulikwa koshihopaenenwa shooshoongalele shaFELKSA, inashi tumbulwa kutya osha ongalele peni, ashike okudja 27-28.10.1976 omo mwa dile etumwalaka kEengeleki tali ufanwa "Status of the Appeal."

Etumwalaka eli oli na okatendo taka leshwa ngaha:

"Ohatu shi kumaida nomufindo, kutya eenghundafana pokati komaongalo Eengeleki dEhangano eli, di ningwe, nelalakano okweehenifa komesho etambulafano liwa noukumwe wopakriste pokati koiimbi youkwamuhoko."

Okwa li yo oyoongalele ikwao oyo ya yandjwa ongoumbangi wehalotokolo laFELKSA, kutya okwa hala shili moukumwe ou, ngaashi osho shovafita sha li ko 1971 muHammanskraal, SA, nashikwao muSwakopmund 1975, shomutumba waaveshe.

Inapu pita unene efimbo lile, eshi Eengeleki eenghwaLuther adishe dOvalaule mu SA de shi pondola nde tadi hengumukile mumwe. Ongeleki yOvandowishi Ovakwaluther ovo aveke va nyengwa okuya mo moukumwe ou, fiyo onena.

MuNamibia yo ongashikwao. Eengeleki adishe dovalaule oda ya nalenale monghatu yelongelokumwe (Federation). Osha pula efimbo lile Ongeleki yOvandowishi muNamibia (DELK) i ninge etokolo i litule mumwe nadikwao melongelokumwe.

Eshi tuu ye ke shi ninga, oya kala ihai i momatokolo amwe pamwe nadikwao, unene tuu moinina oyo ya kuma onghalo yoshilongo eshi.

Nasho osha enda yo efimbo lile, eshi Eengeleki Eenghwaluther muNamibia da kala tadi kundafana nhumbi tadi hengumukile mumwe, ndele inashi pita, fiyo onena. Omalongekido otaa twikile.

Etomhelo limwe lokuha wanifa ehala lOngeleki imwe muNamibia, okulindila

Ongeleki ya DELK, oyo tai nyengwa okukwatukunuka noupu komilandu delelo lohilongo eshi. Sho nee eshi, osho yo tashi hepeke Ongeleki yOvandowishi mu SA.

Ashike nando shi li ngaha, oku na osho tashi pandulwa; onge omelalakano lEengeleki eenghwaLuther moumbuwanhu waAfrika (FELKSA), ile mEengeleki eenghwaevangeli paLuther muNamibia (VELKSWA) kutya, Ongeleki keshe oya twa kumwe nadikwao ku ningwe Ongeleki imwe aike. Naapo inashi ningwa natango, osho oungundi wOngeleki moshinakuwanifwa shavo.

Sebulon Ekanjjo

YE TU GALUKILE ISHEWE YE LI NAWA

Egumbo lyaKalliokoski; Seppo nandohotola Ritva Kalliokoski naanona yawo oye tu galukile ishewe ye li nawa, konima yefudho lyawo konyala oomwedhi hamano muSoomi.



Omundohotola Kalliokoski okwa tameka nokuli iilonga ye mOnandjokwe, nomusamane ota tsikile nedhiginino lyegumbo ndyoka alihe lyaNandjokwe.

Aanashilonga mbaka oya lalekelwe kOngeleki muApilili nuumvo ya ka fudhe po kashona kiilonga yuusiku nomutenya moshigwana shetu. Eiyambo lyawo oye tu zile omayambeko omanene kolutu nokomwenyo.

Mokugaluka kwawo ngeyi, methimbo lya tya ngeyi, otatu ya halele ashike oonkondo oompe ya tsikile nomukumo ngaashi shito.

Nendongo lyaShali metyofa

Osha li omulongo gwongula yeti 25.10.1983 sho aantu konyala ye vule 1400 ya kala moshituthi shegandjo lyoshipundi komulongi Petrus Nendongo lyaGabriel Shali mEheke.

Oshituthi osha tamekwa nelongelokalunga komusita Johannes Ekanjjo noye a ningi euvitho lyoshituthi paKor.16:14-16.

Nendongo lyaShali, ngaashi a tseyika nedhina Petrus yaShali, okwa valwa 1905 mOnamenye megongalo lyaShitayi, ndyoka nale lya li Ondangwa. He Shali shaKweyo, ine mu pitika nande a ye mosikola. Osikola ye oya li ohambo yimuna.

Omumvo 1920, Nendongo okwa zi ko kohambo a tameke osikola moomwandi dhopOnamenye mOshitayi. Omumvo 1928 Nendongo a tumwa kosikola kOshigambo. Pehulilo lyomumvo 1930, okwa pitikwa a longe osikola pOshuungu.

Omumvo 1934 okwa ka longa pOneshoko nokEtambo 1935. Pehulilo lyomumvo ngoka Nendongo okwa yi kuuhwi ku CDM hoka a kala sigo 1938. Hwiya oya longo pamwe nomuyevangeliste Andreas Kalumbu ngoka ya tsikile okulonga naye ngaauvithi mEheke okuza 1957-1983.

Omuyevangeliste Kalumbu ngashingeyi ota longo megongalo Uukwiya okuza 1982. Omumvo 1936 Nendongo ya hokana nomuyalekwa gwe Karolina Justus noya pewa aanona 11 mumboka 9 ye na natango omwenyo.

Omumvo 1939-1941, Nendongo a tameke okulonga pOshitayi. Omumvo 1942 sigo 1944 okwa longo pEhangano. Omumvo 1945 sigo 1947 okwa kala miita yaAdolf Hitler.

Konima yiita okwa tsikile osikola ye pEhangano sigo 1963. Omumvo 1964 okwa ka longa pEheke mpoka a kala sigo 31.12.1983 sho te ke egeka etemo lye pambelewa.

Esiku ndyoka lyoshituthi shaNendongo. Okwa pewa wo omagano galwe, gamwe gomugo etyofa lyondando R 130,00 ndyoka kuku Nendongo ta ka vululukwa mo uuna a loloka.

Megongalo lyEheke, Nendongo ina kala ashike omulongi gwaanona, ihe okwa kala wo omulongi gwoosikola yeshasho noyekoleko nomukuluntu gwegongalo.

Kompito ndjoka e yi pewa a tumbule sha, okwa ti kutya ye okwa ningi omulongi omolwesilohenda lyaKalunga alike. "Olyo lya hambata ndje," osho a hokolola.

Okwa tsikile ko a ti ngeyi kutya, nonando a pewa a vululukwe kiilonga yosikola, mbika yeuvitho lyelaka etoye, ota nuka nayo manga e na omwenyo.

Pehala lyaakwashituthi Nuuyoma Ntinda

