



Dr Hamata ta vele oshiwana shaye eembedi

Omundohotola omukulunhu, Naftali Hamata, moshihakuluo sha ELOK mOnandjokwe, okwa popya noluhodi linene kouhasha nokenyonauko leenghedi diwa mOshiwambo, ngaashi omhepo ye livakela moshiwana eshi.

Okwe shi popila moshivilo shepito lovapangi 21, mOngeleki yaNiipa pexulilo laKotoba neudo.

Ovahakuli 18, ovadalifi vavali nosestela imwe ova nangekwa noupuna komufita woshipangelo Festus Ashipala pamwe novakwafi vaye powalitali. Ovanangekwa noupuna ova hepaulula yo eitavelo lavo nokuninga eano kutya ova hala shili okuya moshilonga pawiliko lOmwenene.

Konima eshi a popifa ovapangi nokwe va tumbulila osho kwa li a hala okutumbula (Tala pamwe pe lili moshifo eshi), omundohotola Hamata okwa taalela kovaenda voshivilo nde ta tumbula nondaka ya kola:

“Ehombo otadi xulu, omikifi otadi tandavele mokunyateka keshe okanhele, ohoni yopanhu ei ya kwafa oshiwana eshi oya kana mo paife. Hano oshiwana otashi twikile ngahelipi,” osho a pendulila ovapwilikini omadiladilo.

Eli olo la li epito etivali momudo ou, kofikola youhaku moshipangelo eshi shaNandjokwe. Lotete ola ningilwe petameko lela lomudo muFebuluali.

Oomatrone voshipangelo, ovalongi vovahakuli noondohotola vavali, ova li yo va kala mo moshivilo.

Omundohotola ou a likola omhepo yavahapu moshitukulwa eshi molweenghenga daye di nyakula okutambula omunaudu keshe meyakulo laye, okwakunghilila ovadali nookaume kovapangi moshivilo va lungamene omukifi, ndele va pule yo omauyelee kovahakuli moinima yomikifi odo da pamba ovaneumbo vavo.

Kombinga yexulepo loukadona mepupi linini nokuli moshiwana, nouhasha wokuha lalakanena vali ehombo dopashikulafano, omushamane Hamata okwa pula kovapwilikini nomesho a kanifa ombili:

“Eshi osho nee eputuko hatu lalakeneneni, sho shihe li moilongo ikwao ei ya putuka vali inashi kala nale ngaha moshilongo shetu. Apa itatu kwafele tuu eshunomonima?”

Exulife po lee lombo moshiwana, tatekulu Hamata, okwe li meta nomivalu dovakulukadi ava hava i kefulo, nove li meehombo, kutya ove duliike kokule koukadona ou tau holoka lwotete, inava hombolwa.

“Otashi fifa ohoni, osheshi vahapu vomoukadona ava ove li peedula 16-20 ovo kwa li ve na okukala meefikola,” osho a popya noshipala tashi shili euditonghenda movapwilikini.

Kombinga yaye, omushamane Hamata ina tala enyonauko li fike apa, kutya omukundu ashike woshiwana pauhaku, ndelene osho yo omukundu paNgeleki, panghalafano nopamaxupilo.



Omundohotola Hamata ta popi

IIFENDELA MOKULANDA OOMPUMBWE NAYI HULITHWE PO - CCN

Oraata yOongeleki muNamibia (CCN), oya tamaneka omukalo gwokufuta lwaali mokulanda oompumbwe moositola. Etamaneko olya ningwa pambilive ndjoka ya zi mombelewa yEhangano ndyoka noya tumina kuNgoloneya Ndjayi dr Willie van Niekerk, mOvenduka pehulilo lyaKotoba nuumvo.

“Nopwaa na omalimbililo, oohepele; aakeeniilonga, aakulupe naantu ayehe yowala moshigwana, oyo unene taa ka hepekwa kegwedhelo ndyoka.

“Onkene sho twa nongele shono tashi ka ehameka aantu yetu, otwa thinimikwa ngeyi tu nyole ombilive ndjika,” osho ombilive ya holola.

Okuza konyala 1980, Ngoloneya Ndayi omutetekeli, M. T. Steyn, okwa toto oveta omuntu kehe a gandje iifendela kukehe shimwe te shi landa mositola nenge moholosaila.

Shika inashi pulwa ashike aanangeshefa mboka taa ka ninga oovenisa kiilandithomwa koositola dhawo, ihe osha kwatele mo wo kehe ngoka to landa; ngele uusila u kalye uulalelo nenge to landa omboloto.

Ngoloneya gwongashingeyi sho a tseyitha omasiku ngaka, kutya iifendela otayi ka gwedhelwa ishewe okuza poopesenda hamano sigo heyali (6%, -7%), Ongeleki oya nyengwa okumwenena oshinima shoka.

“Otwe shi dhimbulula kutya omahepeko gaa na ehulilo moshilongo shaNamibia otaga zi mokwaa na uuyuuki nomomathiminiko. M o k u - gwedhela ngeyi iifendela (General Sales Tax), okutsika ashike natango aantu omutenge omukwawo yo itaaye gu vulu ,” osho Ongeleki ya ti.

Etokolo lyegwedhelo ngele oli tsakanithwe ngaashi kapu na nokuli etegameno enene li kale ando inaaali tsakanithwa, nena omuntu ota futu ngaashi tashi landula:

Uuna wa yi mositola e to landa mo iinima ye ku pula R20,00, nena oto gwedhele kondando ndjoka oopesenda heyali R1,40. Ngele owa landa iinima R 30,00 nena oto gwedhele ko R2,10. osho nosho.

Moositola dhimwe iimaliwa mbyoka oto adha ya yalulilwa nale mumwe nondando yoshinima shoka to landa,

manga moonkwawo iigwedhela mbyoka oto ke yi kuthwa komulandithi pethimbo ndyoka to futu iinima yoye.

Okopi yombilive yOngeleki, oya tumina wo oministeli yotango ya SA, omusamane Pieter Willem Botha noya hulithwa niitsa tayi landula kutya:

“1. SA a dhimepo oveta ndjoka yegwedhelo lyiifendela kiilandithomwa.

“2. SA a dhimbulule omupopyo gwe sho ha ti Namibia itali pumbwa okweendjelela aluhe ku SA, kutya shoka otashi taambwa ashike uuna twa mono kutya otwa mangeluka notatu utha iinima yetu yene.

“3. SA a zimine mbala oshitokolitho 435 sha VVO shomumvo 1978 shi tulwe miilonga osho shi wilike emangeluko lyaNamibia.”

OLUHODHI LWOSHI- GWANA

Omuwa pulakena okulila kwoshigwana shoye, omwenyo gwoshigwana shoye gwa loloka, gwa vulwa nokagu na we oonkondo, O, Omuwa sigo uunake?

Oshigwana sha dhimbulukwa omasiku gonale. Ohashi dhiladhila iilonga yoye ayihe we shi ningile. Osha hala okusimaneka edhina lyoye. Otashi yelutha omaako gasho kungoye, omwenyo gwasho gwe ku yuulukwa ngaashi evi lya sa enota. Omuwa sigo uunake?

Omuwa uva oshigwana shoye. Esiku kehe Aanamibia oya hala okwiinyenga ya mangeluka. Longa oshigwana shoye ondjila shi na okweenda nayo. Kungoye awike taku tu zile ekwatho. Omuwa sigo uunake?

Oshigwana shoye osha hala oku ku longela muNamibia lya mangeluka. Omolwomahepeko, oshigwana otashi monika sha ganya ngongala mevi ekukutu. Omuwa sigo uunake?

O, Omuwa, omidhimba otadhi ihanene oshilongo ashiihe. Ombinzi otayi kunguluka. Oshigwana osha ninga euvaneko shi ku longele. Namibia otali ka imba ekandanga lyaa na ezimbuko. Omuwa sigo uunake?

S.A.Nambambi

Otu li ngiini nayakwetu?

Omumati gumwe okwa li nomwele omule, gwa tsa ngoka a hepeke nago aantu poshilongo shawo. Omwele ngoka aluhe okwa li hagu kala gwatiligana oombinzi dhaantu.

Omumati ngoka okwa kala wo ha popi ta ti: Omwele nguka ogu na okumona iikulya, onde gu pewa komukwaniilwa gwandje, onke itagu kala nondjala.

Konima yoomvula mbali lwaampoka, omumati nguka omwele okwe gu kuthwa komukwaniilwa. Omumati okwa tsu oongolo koshipala shomuwawa gwe nokwa galikana:

Omumwa gwandje, pe ndje iilonga, oshoka ngele onda zi po mpaka, kegumbo aantu otaa ka dhipaga ndje.

Omukwaniilwa okwe mu yamukula: Okusa ndishi ihaku ehama? Ka se ngaashi wa li wa dhipaga wo yakweni. Owa tila okusa, oshoka owa dhipaga nale aantu. Ano oshiyelekithe shoka to yeleke nasho mukweni, osho wo to yelekithe.

Oshivanawa ano ngele tu uvu ko uudhigu wamukweni. Okuuva ko nomakutsi, oshinima oshivanawa nosha pumbiwa. Ihe okuuva ko okunene nokwa simana omuntu ngele u uvite ko yakwawo mombinzi.

“Hola mukweni ngaashi wi ibole mwene.” Kaku na oshipango oshinene shi vule shika. Mark. 12:31.

Manasse H. T. Hibanguapo

EITAALO OLYO OKAMUTSE HOKA TO KA PULWA ESIKU LYA HUGUNINA

Amwameme muJesus Kristus, otu li methimbo ndika edhigu, tatu yelutha omeho koondundu twa tegelela ekwatho ndyoka tali tu zile kOmuwa.

Otu li methimbo ndika tatu pulwa okamutse mpaka naampeyaka, aniwa u talike ngele ogwoshigwana dimbulukwa, ngele mokupulwa nenge mokupula mukweni okamutse, esiku lya hugunina oto hiywa mpoka to ka pulwa shoka wa longo.

Ondjambi yoye oto ke yi adha shi thike piilonga yoye dimbulukwa shoka to longo mokwaayalula uuntu womuntu.

Eitaalo olyo oshinakugwanithwa shoka to kaluka koshipala shaKalunga. Tu kondjeleni eitaalo, opo tu ka mone omwenyo gwaaluhe.

Ngele owa adhika wa kanitha okamutse koye, ka kongamanga pu na ethimbo, opo waa ki itse koo-pena esiku lya hugunina.

Elieser Natangwe Kathindi

Luther ta popi kombinga yUulalelo Uuyapuki

Luther okwa kondjitha unene omalongo-pukitho gatatu mokukalamwenyo kwe.

1. Elongo kutya iilonga iwanawa, otayi yukipalitha omuntu.
2. Elongo ekwawo ndyoka tali ti: Ombepo ondjapuki itayi longo miyayakulithohenda, kokutya mevaa-ngeli nomOmasakramendi omayapuki.
3. Elongo etitatu ndyoka tali ti; Uulalelo Uuyapuki owo ashike "Endhindhiliko" lyowala haku kala po kwokwene kwolutu lwaKristus.

Shoka osha fatululwa kuJohannes Calvin, omuyelithi gweitaalo lya NG, kutya mUulalelo Uuyapuki, Ombepo Ondjapuki ndjoka yaKristus, ndjoka yi li apehe kombanda yeve noyi li momalutu getu, otayi hanganitha omalutu getu nolutu lwaKristus ndoka lu li megulu.

Luther ina zimina omafatululo ngaka, ihe okwa kanyatele komatumbulo gomusita omwanawa: "Kwateni, lyeni, shino olutu lwandje talu mu gandjelwa....."

"Taambeni ne mu nwe mo amuhe, oshitenga shika osho ehanganano epe lyomombinzi yandje....."

PaLuther omatumbulo ngaka gOmukulili, oga yela nokape na ompito yoku ga tompakanitha, kakele kaamboka ye hole evundakano. Aayevaangeli ayehe yatatu; Mat. 26:26-29 Mark.14:22-24; Luk.22:19-20 naPaulus mu 1Kor.1:23-26.

Paulu ota tula nokuli aantu mehogololo: "Ohandi mu lombwele ngaashi ovanandunge, tokoleni nye vene eshi handi shi popi; Eholo lepuniko eli hatu li nangeke noupuna, kali fi hamba ekwatafano nohonde yaKristus? Omungome ou hatu u pambula, kau fi ekwatafano nolutu laKristus? 1Kor.10:15-16.

Luther ota fatulula kutya Kristus mEsakramendi lyowalitali, oku li mo nolutu nombinzi ye, e li mo nesilohenda, edhimo lyoondjo, omwenyo gwaaluhe nomaganop galwe ngoka

a hala oku tu tilila.

Luther okwa tsakaneke ekondjo edhigu, onkene popepi neso lye ota tumbula: "Ngoka inaa hala okwiitala shoka, kutya oshikwiila osho olutu lwOmuwa ndoka Judas a gwaaleke, naPetrus e mu idhimbike, ne ethe ndje ndi ikalele noina tegelela we ndi kale ndi na ekwatathano naye."

Konima yokathimbo Luther ota ti: "Edhiladhilo ndika olya hugunina." Luther ina pitika nando okukonga ondjila yopokati pamwe naapatani, oshoka okwiitaala oonkondo dhOhapu yOmukulili ngoka a pewa oonkondo megulu nokombanda yeve."

Kalunga peshito sho a ti: "Uyelele nau ye," okwa ningi uyelele. Kristus mwene sho a dhike "Esaka ramendi lyolutu nOmbinzi ye", ngaashi Luther e li ithana poompito dhimwe, opwa ningwa shoka Ohapu hayi shi vulu opo ooitaali ya lye noya nwe.

Kumboka taa limbiliwa Esakaramendi lyolutu nombinzi, Luther ote ya tsu omukumo nomayeke kutya: "Inekeleni omanyolo omayapuki. Itage mu fundju, oga tseya onyama yeni nawa shi vultithe okwiitseya kweni yene."

Luther mOkatekisa Okanene ota ti: "Otatu yi kEsakaramendi opo tu pe-we oshaalwata sha tya ngaaka tashi tu pe edhimo lyoondjo." Oshaalwata shika osha "dhikilwa ndje, okusinda uulunde wandje, eso lyandje niiponga yandje ayihe."

Esakaramendi lyolutu nombinzi yOmuwa, Luther okwe li tala olya "iikulya yomwenyo tayi palutha notayi koleke omuntu omupe." Eeno, mEsakaramendi ndika Kristus ote tu uva-nekele oshaalwata tashi zi megulu, kushoka te tu hiyile nehiyo ndika lye-silohenda:

"Ileni kungame amuhe hamu longo nomwa lolokithwa, ongame notandi mu pe evululuko." Mat.11:28.

Natango Luther ota ti: "Mpaka mUulalelo Uuyapuki, oto mono edhimo lyoondjo tali zi mokana ka-Kristus, tali ku etele ohenda nOmbepo yaKalunga noshwo wo eshigo

negameno.

Pehulilo lyOkatekisa Okanene, Luther ota kumagidha ooyene yomagumbo ya longe oyana nokutala ya putudhilwe "ashihe shoka ye na oku shi tseya, oshoka oyo ya shashwa noya taambelwa mukriste.

"Oye na okumona wo ompito yokumona ehanganano lyEsakaramendi, opo ya wape oku tu yakula kekwatho lyetu, nokutya; oyo ayehe ye na oku tu kwatha okwiitaala, okuhola, okugalikana nokukondjitha ondiyapoli."



Omusita Filippus Henok

Oshituthi shevalo lyaMartin Luther, sho pwa piti omimvo 500, osha dhanwa muuyuni auhe mokati kOongeleki oonkwaluther okutameka Mai numvo. Ondinga yiituthi mbika oya kala muNdowishilanda lyokuuzilo, moka Luther a valelwa.

Omusitagongalo Filippus Henok, mu ELOK, oku li ngashingeyi moshituthi sha hugunina shomiituthi mbyoka koshilongo shoka. Shoka oshikando oshititatu Oongeleki ya ELOK, sho ya kalelwa po ngaaka

Lwotango omumbisofi Dumeni oye a kala moshituthi shoka muMai, e taku landula omusita Jason Amakutuwa ngoka a kala miituthi yomuJuli. Momagongalo ga ELOK wo, oshituthi osha dhanwa eti 13.11.1983 moka mwa fatululwa shoka Luther kwa li te shi lalakanene, eitaalo lyi ikwatelela kombimbeli..

Oshilonga shounongo mokati koiwana

Oshipango shetumo osho "Indeni nounyuni aushe," Opwa wedwa ka ningeni, va longeni okudiinina: Jesus okwa popya noitya ya yela osho sha kala elalakano laye lovatumwa vaKalunga mEtestamenti Likulu.

Okuninga oko okuudifa. Okuudifa osho oshityadina sha dja koshityalonga *okuuda*.

Opo omunhu a ude, opu na okukala umwe ta popi ta ingida, na umwe ta weelele ile ta kwena. Eudifo eli lounongo olo, otali udika neingido li li pondje, mondaka ya yeuluka i li momapandavanda, omo mu na ombu-yaano yeudifo lounongo tau udifwa.

Eenhele edi tadi popiwa apa odo otadi holola kutya, opo ounongo u shiivike opwa li pu na okutwalwa apeshe, okulongwa kesho pamwe nopeenhele adishe tashi dulika.

Jesus ote shi koleke sha yela kutya, opo exulilo li uye Evaangeli lOuhamba, oli na okuudifilwa tete ovanhu aveshe, nopo nee exulilo tali uya. Ndele oli na okweenda momaupyu nomomaupyakadi.

Osha wapalela Kalunga a xupife koulai weudifo ovo tava itavele. lKor.1:19-20.

Etumo nekunguluko lalo otali udifa ounongo wonghulungu oo weendjelela keti lashiyakana. Ngeenge taku popiwa omushiyakano nena, ounongo wounyuni otau nyamukulwa diva.

Kalunga kemwii a hepeke umwe omolwoma-nyono a vakwao, shaashi keshe umwe oku na okuhepela okunyona kwaye mwene.

Ounongo ou tau ningilwa ovashima, ovasheki, nomalai. Ovanhu voludi eli ovo ovatondwa vongudu keshe yomokukala-mwenyo okutameka meumbo fiyo omoshiwana.

Vamwe ovanhu ova kanifa nokuli eteelelo lealuko lOmwe. Ova talwa vehe na onakwiwa nokuli.

Ovo ova kanifa omhepo yomaliudo, yohole, yombili, yelandulafano, yelongelokumwe, youkwatatu, yelininipiko noyeduliko yo.

Otava kumaidwa va alukile komakumaido ovanhu ava ve va tetekelela. Nani elidilululo eli tali popiwa apa, olo oshinima tashi lombwelwa ove omunhu to hale kutya, itashi dulu okuwanifwa.

Ngeenge eendjovo tadi ka kala momunhu, nena oye ombuto iwa noku na ounongo woshili muye. Ovo vehe u na otava pulwa va alukile, ve uye okulilonga eendunge va dje moushima.

Elidilululo olo ealuko lomhepo yaKalunga momunhu a laipala, ashimapala nokwa ninga omushiki nomutondi waKalunga.

Omuprofeti Jesaja okwe shi yelifa nawa kutya, ovanhu voludi eli ove na omatwi, ndele ihava uduko, ove na omesho ndele ihava monoko, ove na omadiladilo ndele ihava diladila.

Eudifo, eingido leendjovo daKalunga olo efina lepangulo lomunhu. Kalunga oye ta ifana noshilanduli osho, osho ehandu laKalunga.

Ngeenge hatu popi exulilo lounyuni. Jesus okwa ti: "Ame ondi li pamwe nanye fiyo exulilo lounyuni."

Omhepo yaKalunga oyo tai tondoka, oyo ekalepo lOmunaenghono adishe. Ndele enyamukulo la xuuninwa keshiivifilo leendjovo daKalunga olo exulilo loshiponga.

Etumo levaangeli olo etetekelo lehandu laKalunga. Onkee okukala omutumwa, ou na omalaka avali "Ondaka inyenye" nosho ondaka yehanauno nexulepo lokuhaitavela.

Opu na ovanhu vahapu unene tuu ovanongononi vomwenyo ovo va tala kutya okuudifa ehandu laKalunga oko okutilifa ovanhu nokashi shi oshinima shiwa.

Ndele oshili yeendjovo daKalunga oyo iheshi okulundululwa oyo ei:

Oku na ehanauno netilifo kwaavo va anya noinava pwilikina eendjovo daKalunga omunamwenyo. Kalunga ota ka fikifa omhito yokushiiva noku mu mona omolwoukukutu wovanhu.

Etumo nena oli na oshilonga oshinene, shokupandulila ovashitwa vaKalunga eshiivo nounongo, omo tamu va dile exupiffo lavo.

Etumo olo oshilongifo meke laKalunga, opo ovalidilululi vaye onhapo yehandulaKalunga. Opo va mone omhito va tulumukwe nombili.

Jesus okwa tameka oilonga yaye neshiivo kutya ouhamba waKalunga owe uya popepi. Eli olo etameko leshito lipe leudaneko lipe laKalunga.

Netulumuko nombili ei otali monika moshilongo shaKalunga. Hano Ongeleki ya-Jesus oyo i li etameko lOuhamba waKalunga kombada yedu, oi na oshisho shokuya apeshe, okwii ngidila ovashitwa neshito ondaka yehafo.

Ondaka yemanguluko koukwatya aushe tau ngambeke eshiivo lokushiiva Kalunga omushiti.

OIIMATI YOUNONGO NOYEENDUNGE

Enota limwe la kula lomokweenda kwefimbo eli, olo eshiivo. Elongo neputudo oyo ya kufa po eshiivo, elongo, edimbuluko, ounongo, omayele omunhu te a pumbwa omafiku aye kombada yedu.

Enongelo tali pitile menongeko inali ninga mbela ondjila younona okuya moukulunhu momayele nomeendunge?

Ovakulunhu ovo ovanongo novanongeki, "omumwange". Eli olo etumbulo tali pendula notali yukifa ovo ve li mondjila yeshiivo.

Eendjovo noipango ndishi oyo ya kala elombwelo laKalunga? Kalunga oo twa itavela oye Kalunga e na ewi nelandulafano la yela.

Peshito lela Kalunga okwa landulifafanifa nawa eshito, laye. Shaashi mokushita Kalunga okwa shita a tamekifa eulu fiyo okomunhu. Kalunga natango okwa longifa ewi laye mokushita noku eta po aishe ya li ihe ko.

Mokutula omunhu moilonga yaKalunga, Kalunga okwe mu pa oipango. Oipango oyo omalombwelo aKalunga oo a hala a wanifwe komunhu.

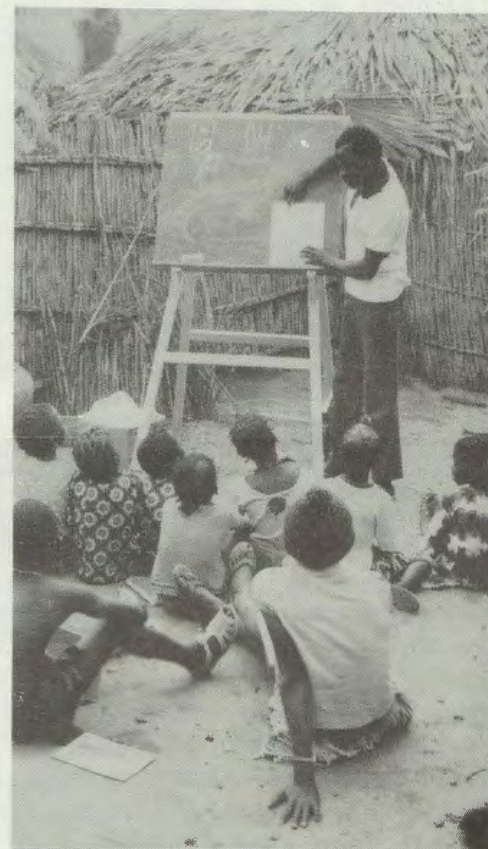
Ounongo oo wa fimana momambo aKalunga tau monika meendjovo nomoipango yaKalunga. Onghee oludja tu na nena lounongo, olo eendjovo da Kalunga noipango yaye. "Omuyapostoli Paulus ota pula:

"Inamu shiiva kutya omalutu eni oo otempeli yOmhepo Iyapuki? Natango ota twikile ko "Eendjovo daKristus nadi kale da yadelela munye; pukululafaneni neendunge adishe;

Peshito Kalunga ota lombwele Adam: "Iya komiti adishe domoshikunino ngaash! wa hala, ndele komuti wokushiiva owii nouwa ino lya ko, osheshi efiku olo to li ko, ou na oku ka fya shili."

Omunandunge oye tuu ou ta udu ndele ta pwilikine eendjovo daKalunga, nopo tuu nee ne di diinine mokulandula oipango.

Paulus Heita



Oshilonga shounongo mokati koiwana

Oshipango shetumo osho "Indeni nounyuni aushe," Opwa wedwa ka ningeni, va longeni okudiinina: Jesus okwa popya noitya ya yela osho sha kala elalakano laye lovatumwa vaKalunga mEtestamenti Likulu.

Okuninga oko okuudifa. Okuudifa osho oshityadina sha dja koshityalonga *okuuda*.

Opo omunhu a ude, opu na okukala umwe ta popi ta ingida, na umwe ta weelele ile ta kwena. Eudifo eli lounongo olo, otali udika neingido li li pondje, mondaka ya yeuluka i li momapandavanda, omo mu na ombu-yaano yeudifo lounongo tau udifwa.

Eenhele edi tadi popiwa apa odo otadi holola kutya, opo ounongo u shiivike opwa li pu na okutwalwa apeshe, okulongwa kesho pamwe nopeenhele adishe tashi dulika.

Jesus ote shi koleke sha yela kutya, opo exulilo li uye Evaangeli lOuhamba, oli na okuudifilwa tete ovanhu aveshe, nopo nee exulilo tali uya. Ndele oli na okweenda momaupyu nomomaupyakadi.

Osha wapalela Kalunga a xupife koulai weudifo ovo tava itavele. 1Kor.1:19-20.

Etumo nekunguluko lalo otali udifa ounongo wonghulungu oo weendjelela keti lashiyakana. Ngeenge taku popiwa omushiyakano nena, ounongo wounyuni otau nyamukulwa diva.

Kalunga kemwii a hepeke umwe omolwoma-nyono a vakwao, shaashi keshe umwe oku na okuhepela okunyona kwaye mwene.

Ounongo ou tau ningilwa ovashima, ovasheki, nomalai. Ovanhu voludi eli ovo ovatondwa vongudu keshe yomokukala-mwenyo okutameka meumbo fiyo omoshiwana.

Vamwe ovanhu ova kanifa nokuli eteelelo lealuko lOmwe. Ova talwa vehe na onakwiwa nokuli.

Ovo ova kanifa omhepo yomaliudo, yohole, yombili, yelandulafano, yelongelokumwe, youkwatatu, yelininipiko noyeduliko yo.

Otava kumaidwa va alukile komakumaido ovanhu ava ve va tetekelela. Nani elidilululo eli tali popiwa apa, olo oshinima tashi lombwelwa ove omunhu to hale kutya, itashi dulu okuwanifwa.

Ngeenge eendjovo tadi ka kala momunhu, nena oye ombuto iwa noku na ounongo woshili muye. Ovo vehe u na otava pulwa va alukile, ve uye okulilonga eendunge va dje moushima.

Elidilululo olo ealuko lomhepo yaKalunga momunhu a laipala, ashimapala nokwa ninga omusheki nomutondi waKalunga.

Omuprofeti Jesaja okwe shi yelifa nawa kutya, ovanhu voludi eli ove na omatwi, ndele ihava uduko, ove na omesho ndele ihava monoko, ove na omadiladilo ndele ihava diladila.

Eudifo, eingido leendjovo daKalunga olo efina lepangulo lomunhu. Kalunga oye ta ifana noshilanduli osho, osho ehandu laKalunga.

Ngeenge hatu popi exulilo lounyuni. Jesus okwa ti: "Ame ondi li pamwe nanye fiyo exulilo lounyuni."

Omhepo yaKalunga oyo tai tondoka, oyo ekalepo lOmunaenghono adishe. Ndele enyamukulo la xuuninwa keshiivifilo leendjovo daKalunga olo exulilo loshiponga.

Etumo levaangeli olo etetekelo lehandu laKalunga. Onkee okukala omutumwa, ou na omalaka avala "Ondaka inyenye" nosho ondaka yehanauno nexulepo lokuhaitavela.

Opu na ovanhu vahapu unene tuu ovanongononi vomwenyo ovo va tala kutya okuudifa ehandu laKalunga oko okutilifa ovanhu nokashi shi oshinima shiwa.

Ndele oshili yeendjovo daKalunga oyo iheshi okulundululwa oyo ei:

Oku na ehanauno netilifo kwaavo va anya noinava pwilikina eendjovo daKalunga omunamwenyo. Kalunga ota ka fikifa omhito yokushiiva noku mu mona omolwoukukutu wovanhu.

Etumo nena oli na oshilonga oshinene, shokupandulila ovashitwa vaKalunga eshiivo nounongo, omo tamu va dile exupiffo lavo.

Etumo olo oshilongifo meke laKalunga, opo ovalidilululi vaye onhapo yehandulwa laKalunga. Opo va mone omhito va tulumukwe nombili.

Jesus okwa tameka oilonga yaye neshiivo kutya ouhamba waKalunga owe uya popepi. Eli olo etameko leshito lipe leudaneko lipe laKalunga.

Netulumuko nombili ei otali monika moshilongo shaKalunga. Hano Ongeleki ya-J e s u s oyo i li etameko lOuhamba waKalunga kombada yedu, oi na oshisho shokuya apeshe, okwii ngidila ovashitwa neshito ondaka yehafo.

Ondaka yemanguluko koukwatya aushe tau ngambeke eshiivo lokushiiva Kalunga omushiti.

OIIMATI YOUNONGO NOYEENDUNGE

Enota limwe la kula lomokweenda kwetimbo eli, olo eshiivo. Elongo neputudo oyo ya kufa po eshiivo, elongo, edimbuluko, ounongo, omayele omunhu te a pumbwa omafiku aye kombada yedu.

Enongelo tali pitile menongeko inali ninga mbela ondjila younona okuya moukulunhu momayele nomeendunge?

Ovakulunhu ovo ovanongo novanongeki, "omumwange". Eli olo etumbulo tali pendula notali yukifa ovo ve li mondjila yeshiivo.

Eendjovo noipango ndishi oyo ya kala elombwelo laKalunga? Kalunga oo twa itavela oye Kalunga e na ewi nelandulafano la yela.

Peshito lela Kalunga okwa landulifafanifa nawa eshito, laye. Shaashi mokushita Kalunga okwa shita a tamekifa eulu fiyo okomunhu. Kalunga natango okwa longifa ewi laye mokushita noku eta po aishe ya li ihe ko.

Mokutula omunhu moilonga yaKalunga, Kalunga okwe mu pa oipango. Oipango oyo omalombwelo aKalunga oo a hala a wanifwe komunhu.

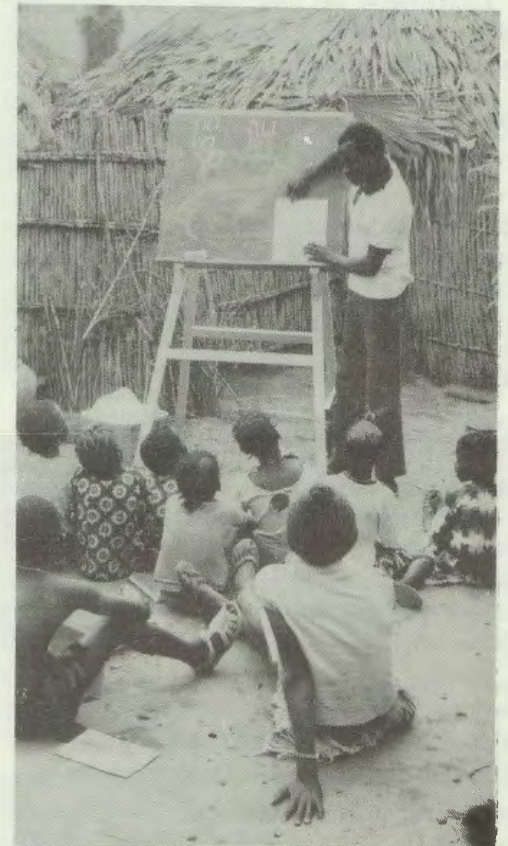
Ounongo oo wa fimana momambo aKalunga tau monika meendjovo nomoipango yaKalunga. Onghee oludja tu na nena lounongo, olo eendjovo da Kalunga noipango yaye. "Omuyapostoli Paulus ota pula:

"Inamu shiiva kutya omalutu eni oo otempeli yOmhepo Iyapuki? Natango ota twikile ko "Eendjovo daKristus nadi kale da yadelela munye; pukululafaneni neendunge adishe;

Peshito Kalunga ota lombwele Adam: "Iya komiti adishe domoshikunino ngaash! wa hala, ndele komuti wokushiiva owii nouwa ino lya ko, osheshi efiku olo to li ko, ou na oku ka fya shili."

Omunandunge oye tuu ou ta udu ndele ta pwilikine eendjovo daKalunga, nopo tuu nee ne di diinine mokulandula oipango.

Paulus Heita



Ovalumenhu ovo aveke kave po

Etumbulo eli ohali udika luhapu momahokololo omaongalo a ELOK nomoiongi yopakriste. Ohaku hokololwa ngaha:

Eongalo opo li li, ovakainhu otava ongala nawa nounona, Ofikola yOsoondaxa otai ongala nawa, eengudumbimbeli otadi ongala nawa, ndele ovalumenhu ovo tuu kave po. Omalongelokalunga otaa ongala nawa ovakainhu nounona ndele ovalumenhu kave po.

Ovalumenhu openi hano va yuka. Ohava kala peni? Valumenhu vakwetu, ofyeni hatu ifanwa apa pakukutu. Eyoka le uya meumbo, ohaku tiwa: valumenhu ileni! Ovalumenhu ngeenge kave po, eyoka otali i.

Omulumenhu oye wotete peshito, oye tete peshasho kOmulonga mu ELOK. Elaka eli paife kave po, ola dja hano peni? Ngeenge meumbo laTate Kalunga katu mo, eli letu ne twa tunga novakulukadi vetu otu li peni?

Eshi omukainhu ta i komambo, ame onda yuka ne peni? Vakwetu, onghe ngo omafiku a xuuninwa a fika, ofye ngaho hatu hangika ne tuhe po? Luk.18:7-8 Eitavelo oletu Omwene ta hange la fya?

Otu li mefundja linene paife nohandi tumbula kop omakufikufi alo atatu:

- Olwisho lwoimaliwa
- Olwisho lwokunwa, okahalu kedimo
- Olwisho lwoipala

Mwaai itatu, kashiimba ou na mo onomola yoye, ile adishe nokuli ei tai ku imbi meengudu dovakriste. Vakwetu, tu efeni tu dimbulukweni, tu fikameni, tu taleni nawa efimbo tu li mulo paife. Omayel.8:4-5.

Okwa tiwa, omafiku axuuninwa, otaku uya omafimbo madjuu, ovanhu tava ka kala nokwiihola ve na ouhalu weliko. 2Tim.3:1-9 Inatu liteeka po eongalo letu Hebr. 10:24-25.

Natu lidule keshe shimwe tashi tu findi pedu Hebr.12:1-3.

Mwa kundwa komukweni meko-ndjo.

Absalom N. Naulondo.



Omuyevangeliste A.Naulondo

Eteko lyondjokana olya totwa po kaantu

Ondjokana oya dhikwa kuKalunga, sho a pe omuntu omukwathi e mu opalela oshilyo shomuye. 1Mos.2:18,21-23. Oondjokana dhaakriste odhaamboka yu uvanene ya hokanathane, neuvaneno ndika otali ningwa nokukolekwa medhina lyaKalunga ngoka omuleli nomutungikumwe gwaamboka taa hokanathana. Mat.19:6a.

Omuwa Jesus ota popi kutya shoka sha tulwa kumwe kuKalunga, inashi kuthwa kumwe komuntu. Kokutya okomukalo gwa tya ngiini, itashi vulika. Mat.19:6b.

Aaihokani oyi ithanenwa molutu lumwe, onke omulumentu e na okuthiga po aakuluntu ye nokwiimangeleka komukiintu gwe, ya ninge yamwe, onyama yimwe Mat.19:5.

Omulumentu oku na okuhola omukiintu gwe ngaashi ye mwene i ihole. Ef.5:28. Oshiholelwa oshikwawo, Omuyapostoli te shi eta, osho Kristus e hole egongalo lye, e li hole sigo ehulilo nohole yaaluhe sigo okusa.

Shoka shu uvathanwa koshipala shaKalunga nomontaneho yegongalo lye nokugalikane-nwa, kashi shi okwiitakekwa komuntu e shi yone, onke ehalo lyokuhengathana olya zi muuwinayi woomwenyo dhaantu.

Jesus ota yamukula aapuli ye naashono shopontsapo. 1Mos.1:27;5:2. Osha kola,

oshoka osha kala ko shito manga uyuni wuulunde inaa ya. Jesus okwe etelwa shoka sha shangwa mu 5Mos.24:1-2, ihe etameko ndyoka lyehengathano kali shi lya za muKalunga. Mat.19:8.

Ondjokana ohayi topolwa kuulunde nokoontamanana. Eso alike li na okutopola ondjokana. Ngoka ta thigala po, mukwawo ngele a si, nena okwa manguluka ihe okukonga ondjokana ompe nenge okwiikalela nokulongela Omuwa ngaashi Hanna. Luk.2:36-37.

Sho shoka itashi ti ando mondjokana kamu na uudhigu aawe. Uudhigu nomamakelo ayihe omo yi li nomunelago oye ngoka ta dhiginine egano lye Ps.15:46; Ps.50:15; Jak.5:13-18. Tala wo iitya yomaimbilo gondjokana mEhangano.

Ohole nayi pangele ondjokana. Oyo hayi siikile ayihe ngele mwa ningathana. Mat.18:21-22. Gumwe uuna a gwile mepundo, mukwawo oku na oku mu dhimini po.

Oku na oondjokana odhindji pethimbo ndika tadhi tina. Tu indileni Kalunga e tu kwathe. Ye a kwathe wo oluvalo lwetu ndoka talu tsikile onakuyiwa yoshigwana shetu noyOngeleki.

Mwaayihe epaya lya kola ohole Rom.8:35; 1Kor.13:1-8.

Maria Ndinoshiso

EPUKULULO MOMUKWETU NO.20

Amushanga gwOmukwetu, ninga epukululo omolwOmukwetu No. 20/1983 mep. 8. Omukunda nguka Okawe Namupala Alukonkolo kOnewawa, ihe **Onekwaya**.

Osho wo pepandja 11 okwa dhiginine okwiilonga mosikola. Hamosikola, ihe okuye mwene ta kwathwa kuAnna (Nususiku) megumbo. Osho wo aalangi ye mu mono; ihe **aahongi** ye mu mono e shi okulongithwa.

Nomakundo gombili
Salomo Elago
Tate Elago twa pandula kepukululo lyoye, Tangi.
Amushanga gwOmukwetu

OMBELEWA YETUMO OYA LI MONDJILA

Kepulo lyomuleshi mOmukwetu No. 15/1983 kutya osha zi peni, Oniipa yi kale konima yOmuntele nonando oya gongele oshindji, otatu yamukula kutya omuleshi owa pukithwa ashike kepingakanitho lyoonomeli.

Omwaalu gwomondjila, Oniipa oya gongele R 258,74, manga Omuntele gwa gongele R 265,00.
Ombelewa yEtumo
Ongwediva

OMUNDOHOTOLA HAMATA

Da dja kep. 1

“Tu konakoneni enyonauko eli, kutya ohali di mushike, lo li wapekwe fimbo kuyela,” osho a indila.

Sebulon Ekandjo

Mepandja ndika ombinga yoshituthi momathano

“U HA PANDULA NOVAKA”

Ohandi pandula unene nye ovamwatate mOlange eshi mwe shi tu ningila fye ovanaudu vaAngola moshihakulilo mEngela. Hafye atuke mwe shi ningila ndelene oTate meulu.

Oimaliwa R 220,39, noshipakete sha kula shoidjalomwa oya fikifwa nawa lela kutate V.Shangheta. Tangi unene.

Ovanaudu ove li oititatu ine yomovanaudu aveshe vomeni novopondje, unene mo TB. Kundweni amushe nondjovo yOmwene, 1 Tes. 5:23.

Ponhele yoshihakulilo
Omukulunhu woshihakulilo,Engela



Hilma liuhwa, oye omupangi ngoka a pewa epandulo lyotango kekonakono lyoondunge ndyoka ye li ningilwa. Methano ndika ota taamba oshipakete shomagano miikaha yaMatrona Shilongo. Osho oshikando oshitiyali Osikola yaapangi mOnandjokwe okugandja esimaneke kungoka a piti nawa ekonakono lyoludhi ndoka. Lwotango osha ningilwe muFebuluali numvo.

...The olutu kalu shi lwokuhondela, aawe,

MEtestamendi Ekulu, Kalunga oti iholola omunyanyali gwoluhondelo, Oshipango sholuhondelo osha li tashi dhengele mokati kAajuda. Kalunga okwa gandja omautho koshigwana she ga yande oshiponga shoka.

“Nokehe ngoka ta hunu po ihuna yomiihuna mbino, oye e na okudhimwa mo moshilongo,” osho taku leshwa 3Mos.18:29.

MEtestamendi Epe wo, eutho ndika olya katuka natango onkatu komeho. Jesus ote li popi ngeyi: “The ngame otandi mu lombwele, kehe tuu ngoka ta tala omukiintu neho lye mu hula, oye okwe mu hondele komwenyo gwe.” Mat.5:27.

Mu ELOK moveta ye yegeeloputu-dho, omwa tiwa ngeyi:

Tala kep. 9



Sestela Saima Mwafufya, kombinga yongundu yaavaliithi oye kwa li omutango moshituthi shika okutaamba omagano gesindano mekonakono



Ongundu ompe yaalongwapangi ye thike lwopo-20 oya li ya taaambwa numvo miipundi muSeptemba. Moshituthi muka oya holoka wo yi kunde aayambekelwa moshilonga. “Oyu ulukilwa komutse gwondjamba.”

“Onda dopa, inandi pita ekonakono laJuni, “Helena osho a nyamukula ina eshi a aluka kexulifo loshikako shaJuni.

“Okaana kange oka dopifwa komulongi wako. Oitwa younona vetu ohai liwa po kovahongi, nde tai pewa po ounona voohashike shalye,” osho ina a nyamukula nenyeme linene. Osho yo sha udika luhapu momakanya ovadali.

Ovadali vaholike, inandi shi itavela kutya oku na omulongi ta hale ovahongwa vaye va dope, ndele shapu aveshi va kale va pita nawa, ngeno, osha li tashi dulika.

Olo ehala lovahongi veefikola olo, aveshi ngo ovo ve li moshilonga. Ope na oshiponga shinene movadali vahapu, tashi etifa po yo edopo. Oshiponga eshi okufaulifa ounona.

Ounona vahapu ohava faulifwa omfimbo ehe na oshilonga, vali tashi dulika nokuli okaana ka faulifwe oshivike shiyadi, manga omudali mwene ta manguluka oku ka konga oikunwa keekamba nokuya apa a hala.

Ovadali vahapu kave na konasha nonakwiiwa yokaana, onghe ino kumwa ngenge ounona tava dopa ngaho.

Meme na tate, lungamena efimbo lokaana li kale la wana okulongela onakwiiwa yako noyoshiwana ashishe. Ponhele yokungongota, onawa ovadali va kale melongelokumwe novahongi veefikola, opo eputudo tali ende nawa. Eshi osho elao lounona vetu ngenge tava tulwa pokati ngaha.

Omwene Jesus okwa pumbwa yo ounona va kale puye alushe momahongelo mayapuki.

Efela okaana momake omuhongi, opo ounona vetu tava ka mona eputuko la yela noutyotye otatu ka xupipala.

Efimbo oshimaliwa, oli na ondilo. Ounona nava yakule shili uuna sha pumbiwa, ndele efimbo lavo lihapu nali kale pomuhongifikola, oye e na onghalamwenyo yavo.

S. Haimbili

Omukundaneki Halweendo

“Moshilongo shika otu na nale omaudhigu ogendji. Otwa hala emanguluko, tu manguluke kuumbanda nokomapulo gaa na omuyamukuli. Otashi vulika ngiini tu tsikwe ishewe omutenge gu thike mpano?”

“Osho nda li tandi ipopile ngeyi, shondu uvu kutya ‘otaxa’ otayi ka gwedhelwa momwedhi nguka Novomba,” osho omukundaneki Halweendo a tameke ta hokololele aatoolinkundana, ngashi ha ningi shito ngele a kundana sha.

“Omasiku ga zi ko onda li ihe nda kundathana naanangeshefa yamwe unene mboka ye na oongeshefa oonene. Oonkundathana dhetu odha li tadhi popi oshinima shika shotaxa tayi gwedhelwa.



“Yamwe oya ti kutya oya gwedhele nale nokuli noopelesenda heyali ngaashi tadhi pulwa, okuza mulyotango lyaNovomba, omanga yamwe ya ti kutya ngiika yo otaa ka gwedhela momumvo tagu ya.”

Halweendo okwa tsikile ta ti: “Shonda pula omadhiladhilo gomunangeshefa gumwe moshinima shegwedhelo lyotaxa, okwa yamukula ndje ta ti:

“Omwenyo nando omuntu ou kale wa yemata, ku na nkene u nokuninga.

“Onkundana ndjika yaanangeshefa yamwe ya gwedhela nokuli nale ngiika oyo owala eyamukulo lyaNgoloneya Ndjayi kaAavenduka omayovi gaali nomathele gatano (2, 500) mboka ya shaina omukanda kutya yo oya tinda etseyitho lye lyokwiindjipalitha ‘otaxa’ noye mu indile ngaaka keeche shi ninge.

“Molwashoka aantu mboka ya gumwa kegwedhelo lyotaxa, aalandi, inaa ningilwa iigongi, opo ya fatululilwe omatompelo, oyendji oya kwatwa ngashingeyi komalimbililo ogendji ge vule goshito.

“Otaa hadhahadha omatompelo ngoka ga gwedhelitha ‘otaxa’, mpaka naampeyaka,” osho Halweendo u ulike ehala lyOmunamibia nena ngoka ta li nota zala ashike moshimaliwa.

“Omutengeneki gumwe okwa tile,” Halweendo ta tsikile,” pamwe egwedhelo lyotaxa lyongashingeyi, ngaashi wo omaudhigu omakwawo goshilongo shika, olya ningwa omolwonkalo yiita mbyoka ya ningi ngashingeyi oomvula 17.

“Ngame ondi uvite kutya nguka otashi vulika e li popepi naampoka pwa fumvikwa oshili,” osho Halweendo a holola omadhiladhilo ge pompito ndjoka.”

Omukundaneki okwa hulitha ehokololo lye ta ti: “Tse mboka twa gwilililwa po komaudhigu goludhi kehe mevi ndika, otatu tsikile nomukumo okudhimbulutha Ngoloneya Ndjayi, dr Willie Van Niekerk nepangelo lye kutya, oshigwana shika osha hala ehogololo lya manguluka metonatele lye VVO, opo shi hogolole ngoka sha tala kutya ota ka pulakena omaudhigu gasho.”

OLUHONDELO MOOSIKOLA

Dha za kep. 7

“Ovakwaneongalo inava itavelelwa okukala pamwe pahombo, fimbo inava hambolifwa.” Na ishewe:

“Ngenge umwe wovalihomboli ta haele, na tulwe koshi yehandungeleki naau va haelafana naye,” Oshitokolifo 49 shomOmaufomhango.

Okutala natango omadhiladhilo gaKalunga okutala oluhondelo, oto vulu okwiileshela momahala taga landula: 1Mos.38:24; 5Mos.22:13-29; Mark.10:10; 1Kor.5:11;6:13-20;7:39. Oku na wo odhindji tadhi popi oshinima shoka.

OSHIPANGO SHOLUHONDELO MOOSIKOLA

Oshipango sholuhondelo moosikola, otashi monika sha vuka nayi ngashingeyi maanasikola nomaalongi yoyene. Omunyoli mOmukwetu No.14/1983 epandja 9 okwa popile oshindji kombinga yaalongi nepukululo lyawo.

Ewi lyOngeleki otali uvika nomoosikola. “Iipango yaKalunga nayi simanekwe”. Ongeleki otayi popitha ngaaka aalongi naalongwa moosikola. Omolwoshimpwiyu shOngeleki nepangelo, ukriste u dhigininwe nomoosikola, Okwa langekwa aasita moosikola dhopombanda.

M Ongwediva omu na aasita taa yakula. Mooseko dhilwe wo, ohamu ningwa omalongelokalunga. Ongeleki oya langeka wo omusita omunashimpwiyu mokati kaagundjuka ayehe. Moshitayingeleki kehe namo wo omwa langekwa aasilishimpwiyu ya tya ngaaka. Ano Ongeleki otayi lwitha omutondi mokati kaagundjuka.

Omushangi moshifo shomukwetu kombinga yelongelokumwe lyoshikondo shelongo nOngeleki moshinima sheputudho lyopakriste, otandi mu pandula. Oshinyolwa osha pendje uyelele owindji.

Nandi holole wo omadhiladhilo gamwe pafupi gombilive yoshikondo shelongo yonomola 22/1980. Kohi

yoshipalanyolo ELONGITHO NAYI LYIIKUNWA NIIPALA, omu na omadhiladhilo taga landula:

“Omulongi oye omuwiliki mongulu yosikola nosho wo moshigwana. Shoka te shi popi note shi ningi, oshivanawa noshi na okulandulwa.”

Ondi inekela oku na oyendji mboka taa ipula ngele shoka sha popiwa kombinga yaalongi, ohashi tulwa tu miilonga. Mokatopolwa okakwawo omwa tiwa ishewe:

“Onke omulongi na kotoke kaa fale okanona momapuko noonkatu dhe nosho wo nonkalamwenyo ye.”

Shika osha tsa naanaa kumwe naashono tatu longwa kOmbimbeli kutya, “Ngoka ta pukitha kamwe kaambuka uushuushuuka, we mu itaala, oshoopala a mangelwe emanya lyoshini mothingo ye e tu umbilwa muule wefuta.” Mat.9:42.

Mombilive ndjoka omu na wo elondodho tali leshwa ngeyi: “Oshikondo otashi londodha aalongi mboka onkalamwenyo yawo itaayi gandja oshiholelwa oshivanawa wo kaagundjuka naamboka wo onkalamwenyo yawo tayi pukitha aano na.”

Omukwetu sho ta kundathana nagumwe gwomaakuluntusikola yOoseko, okwa ti kutya, osikola yawo numvo oya kanitha aalongwa 30 okuza petameko lyomumvo omolwemito. “Ohoni onene yoshigwana,” osho a komenda noluhodhi

Inandi hala mpaka okukoleka oveta yi kale ando yi vule euvoko lyomuntu mwene netompelwo lyomeiuvo kutya oshinima kashi opalele, ihe ondu uvite oshivanawa wo okudhimbulukitha mboka itaa ya pangelwa we keiuvo miinima ya tya ngeyi.



Omusita David Angula

Oku na euvito nayi koyendji pethimbo ndika omolwomaihumbato gonayi tagi indjipala mokati kaagundjuka. Ngele taku talwa komiyalu dhaanona mboka ya thigi po osikola, otadhi koko noonkondo. Yamwe yomuyo oye na ashike oomvula 14, omolwoluhondelo .

Ongeleki otayi kumagidha nomuthindo, aakriste mboka ya ningi aapukithi yooyakwawo, yi itedhulule moshinima shoka. Aanashilonga ya pukululathane. Hes.3:17, nopashitokolitho 71,72, shomOmaufomhango Ongeleki.

*Omukweni mekondjo
David Angula*

Natango embo epe mOsitola yomambo

Embo, Ewi momulilo, epeepe lyopauteologi lya holoka omasiku ngaka mOshinyanyandidho shaNiipa notali adhikwa mOsitola yOmambo, pOniipa.

Embo olya valwa moondunge dhomuteologi, omusita Eino Amaambo A.D., moka a holola nawa ondilo, uunene nekitakano li li moshinakugwanithwa shomuuvithi kehe.

Montopolwa yotango omu na omapukululo nomayelithilo komuuvithi. Ontopolwa tayi landula omu na iiholelwa yomauvitho nolwa hugunina oto adha membo ndika iihohela yilwe yootekesti nkene dha tungwa.

Omunyoli ota ti kutya embo ndika lyomapandja 56 okwa hala okukwatha aauvithi meilongekidho lyawo. Ihe omuleshi kehe gwembo ndika ote shi dhimbulula wo kutya nani naye mokupulakena omauvitho oku na oshitopolwa sha simana, shokugandja euveko lye ndyoka lye mu zile meuvitho.

Endelela ano wi imonene embo ndika, otali gu ashike R 1.20.

Iilyo ya ELOK mUushimba tayi landulwa

KuSebulon Ekandjo

Aasita yahetatu, yaali ya za mukehe oshita-yingeleki sha ELOK, oye li ngashingeyi metalelopo mokati kiilyo yomagongalo gOngeleki ndjoka mbyoka ya halakana nUushimba auhe.

Etalelopo olya longekidhwa kElelongeleki notali kwata iiwike iyali sigo itatu lwaampoka. Omahala Windhoek, Tsumeb naSwakopmund nomidhingoloko dhago, ogo unene ga dhiladhilwa manga mpaka.

Ekungulukilo lyiilyo yomagongalo ga ELOK, okuya kUushimba, oye endwa nalyo noshimpwiyu oshinene kOngeleki, unene omolweyakulo lyopambepo.

Okuza Oputu sho ya teka muAngola 1974, onkalo yaNamibia kuumbangalantu inayi kala we ombwanawa omolwiita nondjala. Nengambeko lyoombapila dhomalweendo pokati komihoko moshilongo shika sho lya kuthwa po, ndyoka wo lya li lye ehameke aantu ethimbo ele, aantu oya mono uupu wokwiinyenga okuza moshitopolwa shiita noku ka konga uufudhilo muumbangalantu woshilongo.

Shoka osha ningitha wo neyakulo edhigu lyaasita naayevangeliste mboka ya langekwa mUushimba owina kOngeleki.

Onkene efaneko olya zile numvo moshigongi shaasita ayehe yOngeleki mOngwediva, Elelongeleki li longekidhe omalweendo gaasita opo ya ka kwathe aasita naayakuli yalwe meyakulo mUushimba pomathimbo nomathimbo. Ethaneko ndika olya taambwa.

Nonando etalelopo ndika oli li manga pamukalo gwa "e ende po e ku kundu", itashi fudhitha ashike hwepo Ongeleki ndjoka ya kala noshimpwiyu, ihe otali ka talelapo wo oomwenyo dhoyendji taa yiwa kuyo nokukodheka onkugo yawo yethimbo ele.

Shoka sha ka tidhwa hwiayaka inashi adhikwa ko

Oshigongi shaakiintu ayehe mOngeleki shonuumvo mOngwediva, kundathana wo neitulomo etembu lyaantu mUushimba. Moshipopwiwa shimwe, omweetipo gwasho meme J. Ndinomukwathi Iita, inu ulika ashike kiinima mbyoka tayi fala unene aakiintu.

Metamekitho lyoonkundathana koshipopwiwa shoka, meme Iita, okwa tumbula nolukeno olunene nkene aatembuki mOwambo hwiayaka inaa adha ko nando shoka ya li ye shi tegamene ye shi mone andola.

Uudhigu waakiintu mokuthigilwa omagumbo kaasamane ya taaguluka, ye li moondholongo dhethimbo ele, ya dhipagwa nenge omagumbo gawo ga fikwa po nokuli,

Ohatu mu dini ngele tamu nu iikolitha

Dha za kep 10

Okunwa meholamo otashi tu dhiladhilitha kutya uulunde noondjo ongele ashike omuntu ta longo sha e lwetike komusita nenge komukuluntu gwegongalo. Onke hatu kambadhala okuholeka oondjo dhetu mwaa dhi uve opo dhaa ninge uulunde.

Osho hashi tu ipatanitha sho twa ithanwa miinyangagongalo noitatu zimine manga inaatu uva kutya oye e eta ko oohapu ndhoka koshinyanga nenge komusita. Ohatu pula ngoka e shi mona. Osho tu uvite ngaaka kutya eyono ongele wa monika.

Shika otwe shi ilongo kune aanashilonga, sho hamu tala kutya uulunde wokunwa ongele ashike tamu nu montaneho.

9. Omolwashike ano mwa vuka mokunwa aanashilonga?

Tse oyendji yomaakwanegongalo mokunwa

iikolitha, ohatu falwa mo kooyakwetu mboka hatu uhala nayo. Ohatu nu sho twa tila okwiithanwa aakatalume nenge aakelesiti.

Yamwe otatu nu iikolitha molwondjala nenota momagumbo, onke sho hatu uhala puundingosho, opo tatu makelwa kiikunwa. Yamwe otu uvite aniwa olyo ehumokomeho neputuko.

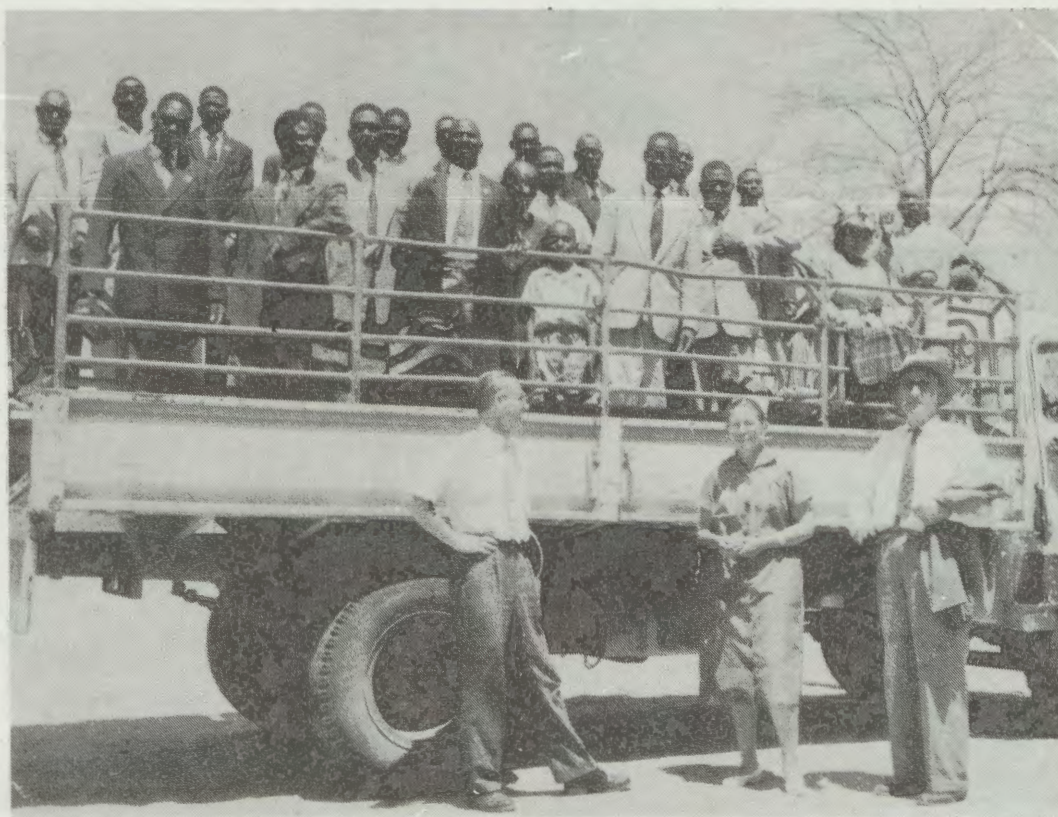
Ihe ne aanashilonga, oshiponga shiikolitha omu shi shi. Ne omwa simana, yamwe omwiilonga mu na iilonga nomaithano omawanawa noga simana. Oshike ano tashi mu fala mokunwa iikolitha ne aanashilonga?

E TU FIYA PO OMBADILILA

Omushamane Jonas Hiwedwa Haufiku, Luderitz, okwa xulifa oweenda waye 29.9.1983, ombadilila mepupi leedula 56. Osha ningwa ku na omafiku avali aeke a dane oshivilohombolo shaye.

Ohatu pandula amushe ava mwa li mwa yakula pamhepo nopalutu moshivilo shetembu laJonas.

Josefine Naholo



Ongundu yaayevangeliste ya ELOK mboka ya tuwma nUushimba okuyakula iilyo yomagongalo gOngeleki ndjoka. Ethano olya thanekwa omumvo 1963 sho yu uka koshituthi shetameko lyoseminali yaPaulinum. Oyendji yomuyo otaa tsikile natango oshilonga mUushimba, manga yamwe ya ka yakula palwe, nayamwe ya thiki nale kevlululuko lyaaluhe.

oyo yimwe yomumbyoka ya zi mehokololo ya falitha aakiintu muundjendi.

Meme Iita naye ina tala kutya iita oyo ayike omunandjo moshinima shomatau gaakiintu moshigwana shika.

Ohole yeliko ya pitilila, omaholela omawinayi, okwaapya moohapu dhaKalunga, eputudho lya puka momagu-

mbo nonyalo oyo a tumbula ya hingila aakiintu yamwe aanene naashona muupyakadhi moka ye li mo sigo onena.

Ndinomukwathi Iita, Okahao, oye omunashilonga miinima yopankalathano nokwa konakona kashona omaupyakadhi haga adha aantu, manga e li omugundjuka nokuli.

TSE AAKWANEGONGALO INATU HALA AANASHILONGA TAMU NU

Okunwa iikolitha, otashi kundathanwa notashi kondjithwa miigwana nomiilongo oyindji ngashingeyi. Omusamane Immanuel Iithete, okwa pelwe oshipopiwa sha tya ngeyi e shi popye moshigongi shOshitayingeleki shOndonga 1982.

Pashipalanyolo shi li pombanda, okwa tumbula iinima yimwepo ngaashi tayi landula mpaka:

Otwe mu hogolola nayamwe omwa yapulwa, mwa yoolololelwa iilongayakulo mu tu kwathe moonkalo nomomaudhigu tu li mo. Tse olwindji otatu nyengwa notatu makelwa konyama yetu nokooyakwetu ethimbo kehe.

Onkene omwa tulwa po mu tu kwathe. Otwa pumbwa mu kale nomadhiladhilo ga yela inaaga piyagana kiikunwa. Otamu tu kwatha tu longithe nawa omaliko getu nokuyakulitha nago aanegumbo lyetu naayehe mboka taa pumbwa ekwatho lyetu.

Omwa tulwa po wo mu tu pe iiholelwa iiwanawa noku tu kumagidha tu ende muuyelee. Uuna tatu mu adha ihe pokunwa, otatu mu dhini notu uvite kutya itamu vulu we okuuva ko omaudhigu getu.

2. Ohatu mu si ohoni ngele mwa nu iikolitha

Ookuume ketu ohatu ya dhikile ndele tatu nu pamwe nayo, osho sha kala omukalo gwoshigwana shetu. Pashieuropa ishewe hoka kwa zi iikunwa iilulu mbyoka tayi nuwa ngashingeyi, aantu ohaa nu pamwe.

Ne aanashilonga ngele tatu mu pe iikolitha, ohatu mu ipele, oshoka otwa sa ohoni okutala tamu nu iikolitha. Ohatu mu sile ohoni, onke ngele mwa mana, tatu ya ihe tu gongele omakende ngoka mwa nu nokwiipopila nomusheko:

“Akwetu omusita nenge kakayiwa gwetu nguka, oha nu unene iikolitha. Omakende agehe ngoka oye nga a mana, nenge okwa tilehi?”

Sho hatu mu si ohoni ngele tamu nu, onke nomadhina geni yene nenge gomaithanoilonga yeni, hago we hatu mu ithana puundingosho. Otwe mu luka gamwe, oshoka ngeyaka otwe ge mu dhinina.

Uuna tatu tsakanene nane mwa nwa, ohatu mu tsu poluha, nenge hatu iningi twa fa inaatu mu dhimbulula aniwa.

3. Ohatu mu tila ngele mwa nu iikolitha

Ikolitha ohayi lundulula omalupe gaantu. Unene tuu oshipala, otashi lunduluka kiikunwa, oshoka alkoholi ohayi matukile kuuluwi. Mokunwa iikolitha, ondjelo nolupe lwomuntu, otalu shituka.

Oshipala nomeho ohayi tiligana, omilungu otadhi endeke noitadhi wapa we okwiigonya. Elaka ohali golwa kuuzigo woalkoholi, ihali vulu we okutumbula iitya nawa.

Omagulu ohaga kuthwa oonkondo dhoku ga kalitha mondjele gu ukilila, onke omuntu ha

pegeya. Iilyo yokupiitha mo iiyekelwahi, ohashi vulika yi nyengwe keipangelo, notayi tilehi manga inaayi lombwela omauvito ngoka haga lombwelwa tango kutya andiya ndi ke ekelehi iiyekelwahi.

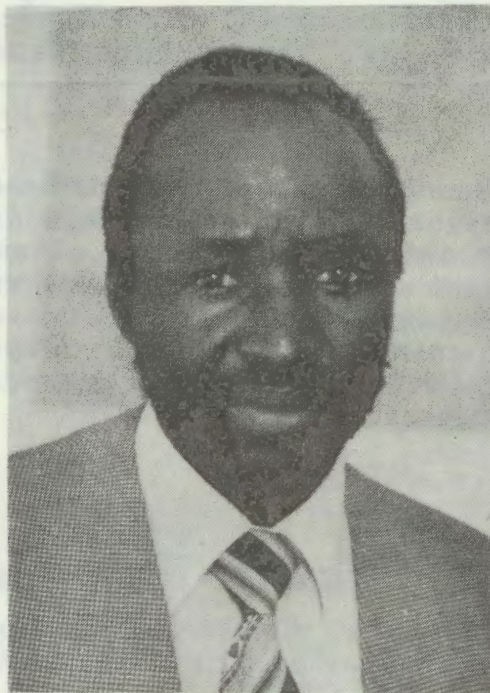
likutu yomunwi ohayi piyagana nomafufu komutse ohaga shindalala, onkene shimpa tuu mwa nu, ohatu mu tila uumbanda wowene. Uuna nda dhimbulula kutya owa nwa, ohandi ti ashike:

“Tatekulu onde ende po owala ndi ku popithe,” nonando onda li nda hala ekwatho lyoye.

Uuna wa nwa nenge mu na opapalasa, ihamu dhimbulula we iipala yetu aakwanegongalo naayakulwa yeni kutya otu na uudhigu nenge aawe.

4. Mokunwa omayakulo getu kune ga ningi ondilo nomukundu.

Tse yene otwe mu simaneka sho hamu tu yakula. Unene sho tamu tu yakula pambepo, nonando shoka hasho oku mu futa



Omusamane Immanuel Iithete

omayakulo geni. Ohashi tu nyanyudha wo notu hole oku mu yakula palutu, shaa tamu ya mu tu talele po nenge tamu ya moohango, momashasho nomomakoleko nenge miituthi yoosa nosho tuu.

Ishewe, tse aakwanegongalo iinima ohatu yi mono nuudhigu, onke hatu yi ngungunine. Oluhepo olwa ninga olunene, ihe ne kombinga yeni sho aanashilonga oyendji

ihaamu li we iithima ne ihaamu nu we oontaku noonamunate, aniwa iikulya yaanona, oshe tu etele olwindji uudhigu.

Ngele mwe ya momagumbo getu, ohatu ka kongka ihe omalwishi, omakoloni niihakautu, mwa tulwa omayonaisa. Yo mbika momagumbo getu ohayi liwa mo ashike uuna mo na ohango. Nokukonga natango omikonyo nookansacity opo tu mu yakule ngaashi mu hole. Otamu dhipaga po uunzi wohepele owo auke ye na.

5. Mokunwa, ihamu longo we ngaashi hamu popi.

Okunwa otaku mu longitha iilonga ya tsa ondumbo noohapu nonomauvitho geni. Nonando mu uve tatu ti:

“Tse otu hole Nima ngu ta li shaashoka noini idhilika iikulya ya shitwa kuKalunga,” ohatu shi ningi ashike nokambweenga sho mu li po, twa tila oku mu ganda, oshoka kamu thike pamwe natse.

6. Ihatu mu inekele we ngele mwa nu iikolitha.

Ohamu shi mono uuna taku hogololwa aantu ya ye miilonga yontumba, nando ndi kale onkolwe nenge iinima yilwe iwinayi, ihe tumbula nande ngoka nda tseya onkolwe nenge omunkundi a fa ndje, nenge e vule ndje.

Shika osho tashi ulike nkene twa simaneka iilonga mu li mo nomu yi na. Nopo hapu zi omapopyo ngaashi ngaka:

“Nima otwi ivulathane nga, itandi mu hogololele muukuluntu wegongalo. Aaposi otaa kwatathana ngiini keti...”

Sho hamu nu ngeyi, niimaliwa yegongalo otashi tu dhiladhilitha otamu ke yi nwa po, onke iigandjwa yandje itandi yi eta ko we. Mokunwa kamu li we aapethimbo. Otatu uhala twe mu tegelela, ihe itamu ya oku tu kwatha.

Itatu mu inekele we sho tamu nu nomiituthi yoosa moka twa pumbwa okuuvithilwa nokutalalekwa. Okulesha ashike okavelise okafupifupi, aniwa omolwethimbo lya ngambekwa, shika itashi tu kwatha nando.

7. Omaiuvo ohaga simpikwa mokunwa kweni.

Sho nde ku monene ohela mOlyomakaya wa nwa, shaa tuu wa thikama koshiuvithilo, otandi kwatwa komadhiladhilo gokupangula notandi ipula:

“Akwetu osho ngaa a zi po ohela mpeyaka?”

Mokunwa kamu na ethimbo lyokwiilongekidhila euvitho. Olwindji omauvitho ogu udha ashike omangongoto ngaashi omukuluntu e li poshinyanga naanona ta nyenyeta. Omauvitho itaga kutitha we sho pwaa na eilongekidho.

8. Okunwina kuukololo otashi yono eitaalo lyetu.

Iilyo ya ELOK mUushimba tayi landulwa

KuSebulon Ekandjo

Aasita yahetatu, yaali ya za mukehe oshitayingeleki sha ELOK, oye li ngashingeyi metalelopo mokati kiilyo yomagongalo gOngeleki ndjoka mbyoka ya halakana nUushimba auhe.

Etaalelopo olya longekidhwa kElelongeleki notali kwata iwiike iyali sigo itatu lwaampoka. Omahala Windhoek, Tsumeb naSwakopmund nomidhingoloko dhago, ogo unene ga dhiladhilwa manga mpaka.

Ekungulukilo lyiilyo yomagongalo ga ELOK, okuya kUushimba, oye endwa nalyo noshimpwiyu oshinene kOngeleki, unene omolweyakulo lyopambepo.

Okuza Oputu sho ya teka muAngola 1974, onkalo yaNamibia kuumbangalantu inayi kala we ombwanawa omolwiita nondjala. Nengambeko lyoombapila dhomalweendo pokati komihoko moshilongo shika sho lya kuthwa po, ndyoka wo lya li lye ehameke aantu ethimbo ele, aantu oya mono uupu wokwiinyenga okuza moshitopolwa shiita noku ka konga uufudhilo muumbangalantu woshilongo.

Shoka osha ningitha wo neyakulo edhigu lyaasita naayevangeliste mboka ya langekwa mUushimba owina kOngeleki.

Onkene efaneko olya zile numvo moshigongi shaasita ayehe yOngeleki mOngwediva, Elelongeleki li longekidhe omalweendo gaasita opo ya ka kwathe aasita naayakuli yalwe meyakulo mUushimba pomathimbo nomathimbo. Ethaneko ndika olya taambwa.

Nonando etalelopo ndika oli li manga pamukalo gwa "e ende po e ku kundu", itashi fudhitha ashike hwepo Ongeleki ndjoka ya kala noshimpwiyu, ihe otali ka talelapo wo oomwenyo dhoyendji taa yiwa kuyo nokukodheka onkugo yawo yethimbo ele.

Shoka sha ka tidhwa hwiya inashi adhikwa ko

Oshigongi shaakiintu ayehe mOngeleki shonuumvo mOngwediva, kundathana wo neitulomo etembu lyaantu mUushimba. Moshipopwa shimwe, omweetipo gwasho meme J. Ndinomukwathi Iita, inu ulika ashike kiinima mbyoka tayi fala unene aakiintu.

Metamekitho lyoonkundathana koshipopwa shoka, meme Iita, okwa tumbula nolukeno olunene nkene aatembuki mOwambo hwiya inaa adha ko nando shoka ya li ye shi tegamene ye shi mone andola.

Uudhigu waakiintu mokuthigilwa omagumbo kaasamane ya taaguluka, ye li moondholongo dhethimbo ele, ya dhipagwa nenge omagumbo gawo ga fikwa po nokuli,

Ohatu mu dini ngele tamu nu iikolitha

Dha za kep 10

Okunwa meholamo otashi tu dhiladhilitha kutya uulunde noondjo ongele ashike omuntu ta longo sha e lwetike komusita nenge komukuluntu gwegongalo. Onke hatu kambadhala okuholeka oondjo dhetu mwaa dhi uve opo dhaa ninge uulunde.

Osho hashi tu ipatanitha sho twa ithanwa miinyangagongalo noitatu zimine manga inaatu uva kutya oye e eta ko oohapu ndhoka koshinyanga nenge komusita. Ohatu pula ngoka e shi mona. Osho tu uvite ngaaka kutya eyono ongele wa monika.

Shika otwe shi ilongo kune aanashilonga, sho hamu tala kutya uulunde wokunwa ongele ashike tamu nu montaneho.

9. Omolwashike ano mwa vuka mokunwa aanashilonga?

Tse oyendji yomaakwanegongalo mokunwa

iikolitha, ohatu falwa mo kooyakwetu mboka hatu uhala nayo. Ohatu nu sho twa tila okwiithanwa aakatalume nenge aakelesiti.

Yamwe otatu nu iikolitha molwondjala nenota momagumbo, onke sho hatu uhala puundingosho, opo tatu makelwa kiikunwa. Yamwe otu uvite aniwa olyo ehumokomeho neputuko.

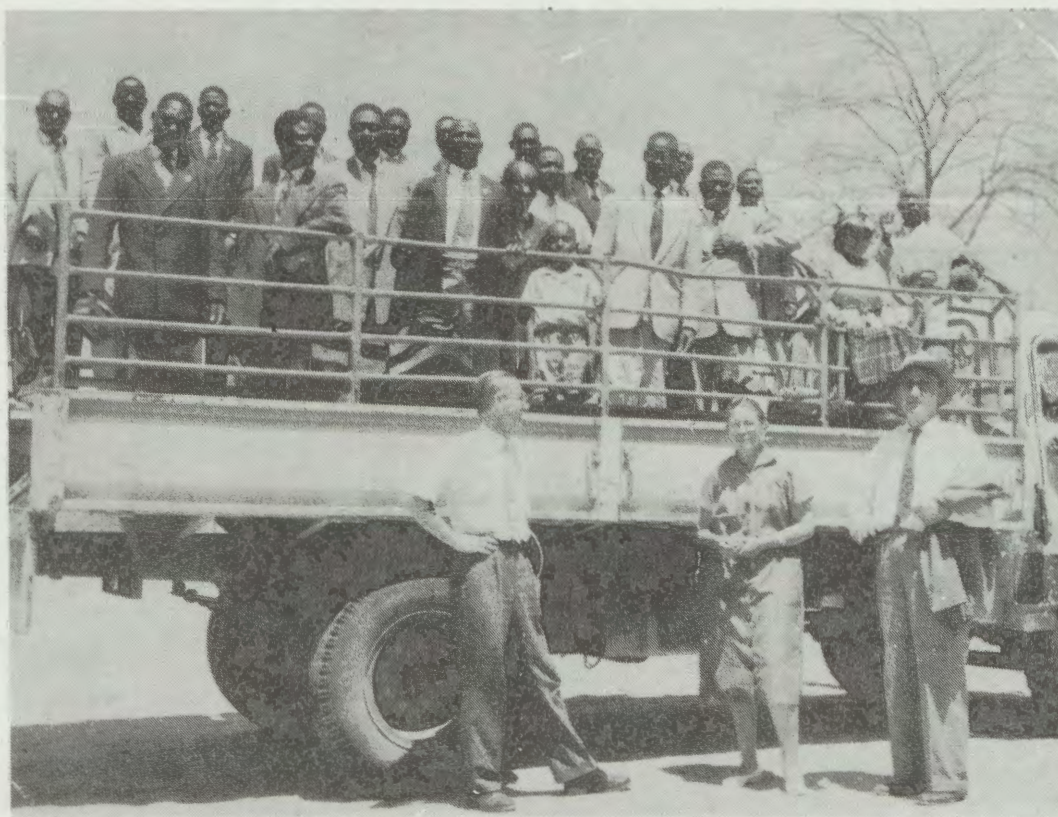
Ihe ne aanashilonga, oshiponga shiikolitha omu shi shi. Ne omwa simana, yamwe omwiilonga mu na iilonga nomaithano omawanawa noga simana. Oshike ano tashi mu fala mokunwa iikolitha ne aanashilonga?

E TU FIYA PO OMBADILILA

Omushamane Jonas Hiwedwa Haufiku, Luderitz, okwa xulifa oweenda waye 29.9.1983, ombadilila mepupi leedula 56. Osha ningwa ku na omafiku avali aeke a dane oshivilohombolo shaye.

Ohatu pandula amushe ava mwa li mwa yakula pamhepo nopalutu moshivilo shetembu laJonas.

Josefine Naholo



Ongundu yaayevangeliste ya ELOK mboka ya tuwma mUushimba okuyakula iilyo yomagongalo gOngeleki ndjoka. Ethano olya thanekwa omumvo 1963 sho yu uka koshituthi shetameko lyoseminali yaPaulinum. Oyendji yomuyo otaa tsikile natango oshilonga mUushimba, manga yamwe ya ka yakula palwe, nayamwe ya thiki nale kevlululuko lyaaluhe.

oyo yimwe yomumbyoka ya zi mehokololo ya falitha aakiintu muundjendi.

Meme Iita naye ina tala kutya iita oyo ayike omunandjo moshinima shomatau gaakiintu moshigwana shika.

Ohole yeliko ya pitilila, omaholela omawinayi, okwaapya moohapu dhaKalunga, eputudho lya puka momagu-

mbo nonyalo oyo a tumbula ya hingila aakiintu yamwe aanene naashona muupyakadhi moka ye li mo sigo onena.

Ndinomukwathi Iita, Okahao, oye omunashilonga miinima yopankalathano nokwa konakona kashona omaupyakadhi haga adha aantu, manga e li omugundjuka nokuli.

Tatekulu Nevonga IyaAuene a hulitha po oondjenda dhe

Omukulupe a tseyika nawa Filippus yaAuene, mOniipa okwa mana po oondjenda dhe 17.10.1983 mepipi lyoomimvo 91 patengeneko. Omusamane Auene okwa hulithile moshipangelo shaNandjokwe sho a kala ethimbo efupi nuunkundi. Okwa thigi ko oyana yane.

Omusamane Nevonga (Filippus) okwa valemwa momikunda dhOniipa muupagani. Okwa li a mono aamati ooyakwao ye li puukalele waatumwa mOnandjokwe nOniipa nokwa tokola naye a ninge ngaaka.

Okwe ya kOnandjokwe pu kuku Selma Rainio, omundohotola gwotangotango mOwambo. Omumvo 1911 muJanuali, 15 Nevonga okwi ishashitha nokwa ningi Filippus.

Mondjala onene, 1915-16, oyo ya kala taa yakula aantu mboka ya mbomboloka ya zile koombinga noombinga noye ya kOnandjokwe. Oya kala wo aatuti yoofulaha nomatamba gomagulu gane oku ka tala uusila waatumwa kOkaukweyo, kilitota nokOutjo nopalwe wo.

Mokweenda mondjila ndjoka, inaa kotha oya kala ya tema omililo dha kunduka omatamba gawo omolwiilani. Ondjala nenota nuutalala nomutenya, oya li kuyo oshinima shesiku kehe.

Manga e li mpoka puukalele, oya hokana nomuyalekwa gwe Sarlotte yaMoses eti 18.9. 18. Konima yehokano okwa lundululilwa kaatumwa yokOniipa nokwa ningi omuhingi omukuluntu gwomatamba okututa omi dhokutungitha oongulu ndhoka dhi li po sigo onena dhi na oontala dha kola.

Mokukalamwenyo kwe okwa tsakanekwa komaudhigu gopendji. Tango oongombe dhe odha luwa po ekumbu adhihedhihe manga dhi li kOhambo. Lutiyali egumbo lye olya pipo thilu komulilo. Aanona, yahetatu mboka ya pelwe, yane yomuyo Omuwa okwe yi ile po nokonima omuholike gwe Sarlotte eti 4.2.1981.

Osho ngeyi a thigilwa metonatelo lyoyana mboka ye li po naatekulu sigo eti 17.10.1983

“LA ENDA ONGULA OLO LI TOOLA OSHIMA”

Ofeema Market, oi na ofandifa eti 19.12.1983 fiyo 30.12.1983 mEngela. Eembete, omatalashe, oikutu younona noyovakulunhu aishe otai monika.

Kendabala u fike diva u li monene aishe we i pumbwa pamukalo wombiliha. Nougenge ope na eshi to shi pumbwa, lombwele nge diva, ohandi shi ningi, shimha ashike muDesemba.

Martha Eliakim

Kalunga sho e mu zimbula.

“Etalaleko lyandje oyo tuu ndyoka oohapu dhoye sho hadhi tululula ndje omwenyo.”

Stefanus Mvula

Omapulo nomayamukulo

Omuntu a fa a nika uumbudhi nenge iineya, ota tilitha okuyamukula. Omuntu ngaanguka L.M. gwokOngandjera, ina holola edhina lye kutya olye, ihe ote kambadhala ngaa okuyamukula komapulo ge.

Omuyamukuli oye Jason Amakutuwa, Elim.

Onda hala okupula oshinima shi li momagongalo, Otamanzi nEtilyasa ngele oshi li tuu momagongalo agehe.

Epulo: 1. *Omolwashike omukiintu nomulumentu ye li megumbo inaa hokanithwa, ihe itaa pitikwa kUulalelo Uuyapuki yo oyana itaa shashwa?*

EYAMUKULO: Aakwanegongalo oye na okuhokanithwa tango, opo taa kala ihe megumbo lyawo. Mboka yi itula kumwe, oyo oohonda. Oluhondelo ohalu etitha egeelo lyaKalunga.

Egongalo olya hala yi itedhulule yo ya yapulilwe oondjokana dhawo.

EPULO: 2. *Omolwashike aakuluntu ye li maandjawa, omufuko e li mo e ta ningi epunda, ihe aakuluntu itaa yi we kUulalelo Uuyapuki?*

EYAMUKULO: Wa umba ka tuka po. Aafuko nkene ye li oyo haa ningi omapunda oshoka oya fukala, ya hokanwa. Naantu ya tya ngaaka oyo ya halika.

EPULO: 3. *Omolwashike aantu ngele taa ningi etulokumwe, otaa indikwa okuligola?*

EYAMUKULO: Aakadhona mboka taa fukala, oyo taa ligolelwa. Aadhimbwe ihaa ligolelwa nkene sha za nale. Ngele wa hala u ligolelwe, ino mita.

EPULO: 4. *Aantu mboka ye li mUushimba inaa halika, oshoka aniwa aanona yawo ohaa shashwa nonando kaye li paalumentu.*

EYAMUKULO: Inaa halika kulye? Ino lundila aana yaPamba.

Ou shi tuu edhina lyoye shoka tali ti?

Omadhina ogo olunza lwokupungula uukwashigwana womuntu. Shika epukululo, opo twaa ekelehi notwaa landithe po uukwashigwana wetu mokuluka omadhina gaa-kwiilongo, tse tatu ekelehi getu.

Shika itashi ulike nando ehumokomeho ngaashi yamwe haa dhiladhila, kutya ngele ta luku okamwana Remember-Remid (dhimbulukwa) nenge Forget-me-not (ino dhimbwa ndje) osho ehumokomeho, aawe.

Alfered — ofule

Alma, Amalia — oye ta gamene iilonga
Aloisia, Aloysius — ngu a tseyaya iye
Alto — okasamane okashona

Maria, Mia — omwanawa,
ngo e holike kuKalunga
(efatululo inali yela)

Markus — ngo a gandjelwa
oshikalunga

Marta — omulongi

Martin — omukwiita

gwoshikalunga

Matias — omagano gaJehova

Mikael — olye a fe Kalunga

TANDI LILI OMAHODHI

Ongoye Omushiti gwetu, Ongoye Kalunga ketu
Ongoye Tate yetu, Ongoye Omuwa gwetu

2.

U li megumbo lyoye, U li megulu lyoye
U li muuyapuki woye, U li moshilongo shoye

3.

Wa tala aantu yoye, Wa konga aantu yoye
Wa kulila aantu yoye, Wa sila ohenda aantu yoye

4.

Otwe ku longele shike? Uuwinayi
Otwe ku pe shike? Oluhodhi
Otwe ku dhiladhilile shike? (?????)
Otwa longele yakwetu shike? Omeehamo

5.

Omuntu gwomushiti, Omuntu gwaNampongo
Omuntu gwaPamba, Omuntu gwaShime
shomuukwaaluhe

Frans Natanael

OMUKWETU

Oye oshifo shOngeleki Onkwaevangeli paLuther
yomOwambokavango.

Ohashi nyanyangidhwa mOshinyanyangidho shOngeleki mOniipa.

Omukuluntu gwoshifo omumbisofi. Dr. Kleopas Dumeni,

Amushanga gwoshifo omusita Sebulon Ekandjo

Ondando yOmukwetu muNamibia naSuid-Afrika
R 5,00 komumvo.

Palwe muAfrika R 8,00 nokombanda yomafuta 11,00,
komumvo. Mondhila R 13,00.

Oondando nomambestelo agehe naga tumwe kOmukwetu, Oniipa, P.Bag 2013, Ondangwa, 9000

EV. LUTH. OWAMBOKAVANGO CHURCH PRESS
PRIVATE BAG 2013, ONDANGWA 9000
SWA/NAMIBIA

OLUHONDELO MOOSIKOLA

Dha za kep. 7

“Ovakwaneongalo inava itavelelwa okukala pamwe pahombo, fimbo inava hambolifwa.” Na ishewe:

“Ngenge umwe wovalihomboli ta haele, na tulwe koshi yehandungeleki naau va haelafana naye,” Oshitokolifo 49 shomOmaufomhango.

Okutala natango omadhiladhilo gaKalunga okutala oluhondelo, oto vulu okwiileshela momahala taga landula: 1Mos.38:24; 5Mos.22:13-29; Mark.10:10; 1Kor.5:11;6:13-20;7:39. Oku na wo odhindji tadhi popi oshinima shoka.

OSHIPANGO SHOLUHONDELO MOOSIKOLA

Oshipango sholuhondelo moosikola, otashi monika sha vuka nayi ngashingeyi maanasikola nomaalongi yoyene. Omunyoli mOmukwetu No.14/1983 epandja 9 okwa popile oshindji kombinga yaalongi nepukululo lyawo.

Ewi lyOngeleki otali uvika nomoosikola. “Iipango yaKalunga nayi simanekwe”. Ongeleki otayi popitha ngaaka aalongi naalongwa moosikola. Omolwoshimpwiyu shOngeleki nepangelo, uukriste u dhigininwe nomoosikola, Okwa langekwa aasita moosikola dhopombanda.

MOngwediva omu na aasita taa yakula. Mooseko dhilwe wo, ohamu ningwa omalongelokalunga. Ongeleki oya langeka wo omusita omunashimpwiyu mokati kaagundjuka ayehe. Moshitayingeleki kehe namo wo omwa langekwa aasilishimpwiyu ya tya ngaaka. Ano Ongeleki otayi lwitha omutondi mokati kaagundjuka.

Omushangi moshifo shomukwetu kombinga yelongelokumwe lyoshikondo shelongo nOngeleki moshinima sheputudho lyopakriste, otandi mu pandula. Oshinyolwa osha pendje uyelele owindji.

Nandi holole wo omadhiladhilo gamwe pafupi gombilive yoshikondo shelongo yonomola 22/1980. Kohi

yoshipalanyolo ELONGITHO NAYI LYIIKUNWA NIIPALA, omu na omadhiladhilo taga landula:

“Omulongi oye omuwiliki mongulu yosikola nosho wo moshigwana. Shoka te shi popi note shi ningi, oshiwana noshi na okulandulwa.”

Ondi inekela oku na oyendji mboka taa ipula ngele shoka sha popiwa kombinga yaalongi, ohashi tulwa tuu miilonga. Mokatopolwa okakwawo omwa tiwa ishewe:

“Onke omulongi na kotoke kaa fale okanona momapuko noonkatu dhe nosho wo nonkalamwenyo ye.”

Shika osha tsa naanaa kumwe naashono tatu longwa kOmbimbeli kutya, “Ngoka ta pukitha kamwe kaambuka uushuushuuka, we mu itaala, oshoopala a mangelwe emanya lyoshini mothingo ye e tu umbilwa muule wefuta.” Mat.9:42.

Mobilive ndjoka omu na wo elondodho tali leshwa ngeyi: “Oshikondo otashi londodha aalongi mboka onkalamwenyo yawo itaayi gandja oshiholelwa oshiwana wo kaagundjuka naamboka wo onkalamwenyo yawo tayi pukitha aana.”

Omukwetu sho ta kundathana nagumwe gwomaakuluntusikola yOoseko, okwa ti kutya, osikola yawo numvo oya kanitha aalongwa 30 okuza petameko lyomumvo omolwemito. “Ohoni onene yoshigwana,” osho a komenda noluhodhi

Inandi hala mpaka okukoleka oveta yi kale ando yi vule euvoko lyomuntu mwene netompelwo lyomeiuvo kutya oshinima kashi opalele, ihe ondu uvite oshiwana wo okudhimbulukitha mboka itaa ya pangelwa we keiuvo miinima ya tya ngeyi.



Omusita David Angula

Oku na euvito nayi koyendji pethimbo ndika omolwomaihumbato gonayi tagi indjipala mokati kaagundjuka. Ngele taku talwa komiyalu dhaanona mboka ya thigi po osikola, otadhi koko noonkondo. Yamwe yomuyo oye na ashike oomvula 14, omolwoluhondelo .

Ongeleki otayi kumagidha nomuthindo, aakriste mboka ya ningi aapukithi yooyakwawo, yi itedhulule moshinima shoka. Aanashilonga ya pukululathane. Hes.3:17, nopashitokolitho 71,72, shomOmaufomhango Ongeleki.

*Omukweni mekondjo
David Angula*

Natango embo epe mOsitola yomambo

Embo, Ewi momulilo, epeepe lyopauteologi lya holoka omasiku ngaka mOshinyanyandidho shaNiipa notali adhikwa mOsitola yOmambo, pOniipa.

Embo olya valwa moondunge dhomuteologi, omusita Eino Amaambo A.D., moka a holola nawa ondilo, uunene nekitakano li li moshinakugwanithwa shomuuvithi kehe.

Montopolwa yotango omu na omapukululo nomayelithilo komuuvithi. Ontopolwa tayi landula omu na iiholelwa yomauvitho nolwa hugunina oto adha membo ndika iihohela yilwe yootekesti nkene dha tungwa.

Omunyoli ota ti kutya embo ndika lyomapandja 56 okwa hala okukwatha aauvithi meilongekidho lyawo. Ihe omuleshi kehe gwembo ndika ote shi dhimbulula wo kutya nani naye mokupulakena omauvitho oku na oshitopolwa sha simana, shokugandja euveko lye ndyoka lye mu zile meuvitho.

Endelela ano wi imonene embo ndika, otali gu ashike R 1.20.