



Etumwalaka lyaVELKSWA komagongalo

Oshigongingeleki oshitine shOngeleki onkwa-evaangeli paLuther yahangana muSuidwes Afrika/Namibia (VELKSWA) osha gongala mehala lyiigongi ya ELOK mOngwediva, okuza 14-17.7.1983 kohi yoshipalanyolo:



Omizalo dhaambisofi yAakwaluther, otadhi yooloka kashona kundhoka dhaambisofi yOongeleki dhilwe. Mpaka otapu monika omuzalo gwomuwilikingeleki yaKatooolika kokuuzilo (Orthodox).

OTU NA OKUTILA OKUHOLA NO-KWIINEKELA KALUNGA KOMEHO GASHAASHOKA," shimwe shomiikundathanwa naashoka tashi landula mpaka, oshigongi osha hala shi shi tumine omagongalo.

a) UUKUMWE

Nonando pwe etelwe omathaneko nkene ehengumukilomumwe tali hololwa po mokati kOongelekishilyo dhetu, nopwa humithwa ngaa hewa komeho kashona muukumwe mbuka, ohenda sho tapu dhimbululwa wo kutya shoka sha thikwa musho sigo oompaka oshishonalela.

Ihe nando ongeyi otatu indile omagongalo getu ga tsikile niilonga negalikano omoluukumwe mbuka sigo wa adhikiwa.

b) OMAHEPEKO

Oshigongingeleki osha holola euvito-shimpwiyu lyasho lyomuule omolwomahepeko gAanmibia ngoka taga tsikile omolwiita, enayipalo lyomahupilo nonkalo yopapolotika mokə oomwenyo odhindji tadhi kana ashike, omaipulo omadhigu nomangambeko gomaliko, okwaana iilonga moshilongo shika, oluteni nelondo lyoondando, eyonagulo lyuuthemba womuntu kohi yooveta dhepangelo: AG 26, AG 9, AG 8 noveta yi na sha naandhoka, oveta yokangendjo kuu-siku.

Oshigongingeleki otashi koleke edhiladhilo kutya chalo lyoyendji mu-Namibia, olyo ndyoka ya pewe ompito yehogololo lya mangeluka noli li pauyuuki, opo ya hogolole aawiliki yawo yene, ngaashi tashi tsu kumwe noshitokolitho 435 sha VVO, omukalo ngoka aguke tagu ka mweneka iita netiko lyombinzi mevi lyetu.

Tala kep. 2

Uukumwe wOngeleki niikitakani yawo

Uukumwe wOngeleki oshinima shoshili noshi li po, ngaaashi sha ulikwa komanyolo Omayapuki, kutya, Ongeleki oyo olutu lwaKristus noitayi vulu okukala nomalutu ga topoka.

Uukumwe wOngeleki owa kankamekelwa kombepo yimwe, ketegameno limwe lyokwiithanwa kOmuwa gumwe, keitaalo limwe, keshasho limwe kuTate Kalunga gumwe He yaayehe. Ef. 4:4-6.

Omithigululwakalo dha yooloka, omaungakaneko giinima inaaga faathana nomutungilo gu na omayooloko, mbika itayi vulu okuyona nokukelela uukumwe wOngeleki yaKristus.

Omayooloko naashihe shoka shi li po inaashi faathana, otashi vulu okukundathana nokutala tango mpoka pwa faathana.

Uukumwe wopaLuther ngele ou uviteko itau kala ashike mokwaamonika amuke, ihe otau pula wo onkalo ayihe yopailonga yokombanda.

Nongele uukumwe mboka owa kwatelela mo owala elongo limwe nenge owa kwatelelamo wo okukala kwiilonga yesiku kehe.

Shoka shi shi okukolekwa nokuuvika ko, osho shika, kutya uukumwe mokukalamwenyo ngaashi tashi fatululwa nawa metumbulo ndika, "ehangano nenge egongalo lyaayapuki" shoka itashi popi ashike egongalo lyaandjetu, ihe otashi popi Ongeleki ayihe yaKristus.

Nando ongeyi, uukumwe u li pamukanka gwomautho, ou na ngaa oshilonga nowa pumbiwa.

Etopoko pokati kOngeleki yi na ehempululo limwe nenge yopashigwana, otali holola oshilalo shi li molutu lumwe.

Oshilalo shino otashi pangwa ashike, ngele taku dhigininwa oshili ndjoka ayike tayi mangulula notayi thiminike e tayi thikitha aantu nengongalo muukumwe woshili.

Oshinakugwanithwa shetu pethimbo lyetu, osho okulonga kumwe nelalakano lyokukala olutu lumwe.

Uukumwe otau vulu okuhokololwa niitya iifupi: Okwaadha euvathano kombinga yomakotalongo gOngeleki nOmasakrame-ndi.

Otau pula wo efaathano nomukanka gwehempululoitaalo, oshoka ehempululo lyOngeleki, otali ulike evuliko okuvulika kOhapu yaKalunga nokwiikolelela kuyo.

Uukumwe owa kwatelela mo elongelokumwe lyopahungomwenyo noshilongatumo nosho wo elongo lyopauteologi.

Efaathano lyiinima yopaliturgi noyopakotampango. Ekwatathano nuukumwe wa tya ngeyi, owa pumbiwa meendelelo notau kwatha unene moshilongo shetu.

Moshilongo shika mu na omilandu dhopakakombonoludhi nomu na aanilonga yomomihoko dha yooloka ya halakana koombinga noombinga nolwindji oyu uvite ya fa ya kana, uuna taa kala momalongelokalunga moongeleki omwayina tayi longo moshitoplwa shoka a mono iilonga naamoka elaka lyayina itaali longithwa.

Okwaauvako elaka nosho wo elandulathano otaku ningi omuntu omuyenda. Okwaauvako elaka moka elaka etoye tali uvithwa, otashi vulika ku lye omuntu olunagela.

Shoka shi na okuuvika ko, osho shika kutya okudhenga nokuhamala oshitya "uukumwe, uukumwe" wo waa wetike, inashi gwana.

Uukumwe wooitaali nau monike miilonga nonau tulwe mo.

Tse aantu naamwayinathana tu na tate nameme gumwe ngoka e tu valitha esilohe-nda lyomuJesus Kristus.

Ihe katu na olupe lwokombanda lwa faathana nomikalo dhetu dhokombanda inadhi faathana, ihe otse ngaa aana yomuntu gumwe.

Okwaafaathana kwomikalo noondjigilile, itaku imbi Ongeleki yaKristus yi kale yimwe. Oyo yimwe nale.

Uukumwe wOngeleki Onkwaevaangeli paLuther muNamibia, ndjoka yi na ehempululo limwe nomakotalongo gamwe, itau keelelwa kokwaafaathana kwomikalo no- kwoondjigilile.

Otu na nale omukanka gwa kola ogwo ehempululoitaalo limwe nOhapu yaKalunga yimwe hoka tu na okutungila onkalamwenyo yetu yesiku kehe meitaalo nomeinekelokalunga.

Omandangalati taga tulwa komutondi mondjila yuukumwe, sho ta longitha aantu, otaga zi muunyengwi nomuunkundi womuntu, naga kuthwe mo nombepo yeinekelathano noyohole.

Petrus Shipena

Gunda a hogololwa ishewe

Omusita Zephania Gunda, 55 okwa hogololululwa oshikando oshititatu a kale omuwiliki moshitopolwa shopokati shOngeleki onkwaEvangeli paLuther muTanzania [ELCT] oomuula ntano.

Oshitopolwa shika usho shimwe shomiitotayi 14 yOngeleki ndjika. Oshi na omagongalo 56 niilyo 70;000. Oshitopolwa shika otashi longo oshilongatumo mokati kaAwasukumo muTanzania.

Amushanga gwomayelithilo

Yalwe ndishi itaa vulu okuninga iilyo ya ELOK?

Ohandi kala nokwiipula edhina lyOngeleki yetu; ELOK. Oondanda mbali onde dhi uvu ko kutya otadhi ti Owambokavango. Ngele ondi li mondjila nena otashi ti Ongeleki oya dhikwa mokati komihoko ndhoka.

Omolwashike edhina lya pewa po ashike aantu yomihoko mbali, nando aantu oyendji kaye shi yomihoko ndhoka? Ngele pu na ngoka a hala okuninga oshilyo shOngeleki ndjika, ndishi ita wapa, oshoka okwa patelwa pondje kedhina "Owambokavango?"

H. A. Kamatih
Rossing Mine

EYAMUKULO

*Kuume Kamatih,
Omadhiladhilo goye oge li mondjila, notaga tsu kumwe noyendji mOngeleki ndjika. Onke mOshigongingeleki 1981 mOngwediva omwa ningwa efaneko edhina li kale ando:*

1. Ongeleki onkwaevangeli paLuther yomuNamibia nenge:
2. Ongeleki onkwaevangeli paLuther yomuumbangalantu waNamibia.

MOshigongingeleki shomumvo tagu ya 1984, pomadhina ngaka gaali otapu ka kolekwa limwe oyo li kale edhina lyOngeleki yuilyo tayi kwatelele mo omihoko adhihe.

Amushanga gwOmukwetu

Dha za kep. 1

c) OMUTUNGILO GWONGELEKI

Konima sho pwa kundathanwa olule, oshigongingeleki osha ziminathana pu kaliwe natango pamukanka gwekotampango ndyoka li li po nale lye-longelokumwe ashike lyOongeleki pamuthika gwopaFederale (Federation), ihe opamwe neuveko ndyoka kutya otapu lalakanenwa kuugumwe wOngeleki.

Natu galikaneneni ano emoniko neuveko ndyoka epe mokupegula ko omeho getu kushono shetu yene, tse tu tongolole kuKristus awike. Mpo pu thike tatu hedha popepi naKristus, opo wo pu thike tatu hedhathana popepi. (Otundimbimbeli).

UWANAWA WAKALUNGA MONDUNDA YOKALUGONA

Uwanawa wandje kehe otandi u pititha koshipala shoye, nesimano lyOmuwa otandi li igidhile koshipala shoye. Notandi sile ohenda ngoka tandi mu sile ohenda naangoka tandi mu tala onteni, otandi mu tala onteni.

Momagumbo gAawambo, unene me-gumbo lyOmukwambi lela, omu na ondunda ya simana, ondunda yokalugona. Ihayi kala yaa mo. linima ayihe yomegumbo ya simana, ohayi pungulwa mondunda ndjoka.

“Ongame otandi pititha uwanawa wandje kehe pungoye..” Ov.19, olyo limwe lyomomatumbulo gaKalunga ngoka ga pungulwa kuye mondunda yokalugona — Ombimbeli.

Tate E. Liljeblad meimbilo ekulu 238 ovelise yotango, okwa dhimbulula uwanawa mbuka nokwe u imbi: “Kalunga omwanawa, othithiya yuuyamba..”

Kalunga osho tu ulike nota monithile aantu ye uwanawa we. Ta kokitha nota kolekele aantu ye meitaalo nomeinekelo. Aana ye mboka te ya egululile osheelo shondunda ndjoka ya tale mo, otaa mono mo uuyamba kehe.

Nena aantu mbaka otaa udha omukumo, omwenyo nelago. Kalunga omwanawa, othithiya yuuyamba.

Uwanawa mbuka owo ohole, ou li muule. Aana yaKalunga mboka inaa-tu egululilwa nawa ondunda ndjika yokalugwena, uuyamba waKalunga otatu u tala ashike okambinga kamwe.

Kalunga ote egulula ondunda ye. Oshapi ndjoka te egulula nayo ondunda ndjika oyo Ombepo Ondilika (Ondjapuki). Ombepo yomuule-meya waKalunga, “Othithiya, ontalala oJesus ngoye ngu.”

Ombepo ota longo mekwatathano nombinzi yOmukulili, ndjoka ngele ya taambwa komuntu a nika oondjo, ota yele nota ningi ezimba lya hokiwa kuKalunga.

Mondunda yaKalunga otamu zile ndje omuzalo gwOmbepo Ondjapuki, e tandi yele.

Aalongelikalunga aakwetu, otandi mu kundu. Onda li omugundjuka, ihe uugundjuka mbuka inandi mona mpoka we ende ndje. Ondu uvite ngashingeyi uutoye miilonga mbika yOmuwa, ihe kapu na we onkondo dhokwaadha kaantu yaKalunga. Shika otashi pititha omahodhi gandje ogendji.

Tu endeeleni ano mokulonga, manga tu li muupyu wombepo yuugundjuka. Manga tatu ende twa nika elago kiipala yetu.

“Omunelago oye ngoka omayonagulo ge ga dhimwa po noondjo dhe dha siikilwa.” Ps. 32:1.

Andreas Kanhalelo

Ayehe mboka otaa monenwa ngiini aauvithi?

Kuuninginino nokuuzilo waNamibia hoka kwa halakanena iilyo yOngeleki ya ELOK, okwe tu zile epulo edhigu, otaa monenwa ngiini ayehe mboka, mboka taye ya hokolele Omuhupithi gwoomwenyo dhawo?

Omusita Titus Ngula, Oshitayi, okwa hokolele oshindji kombinga yoluhupo lwiilyo yomagongalo ga ELOK, ngaashi e lu dhimbulula pethimbo lyetalelopo lye kuSwakopmund petameko lyomumvo nguka. Pafupi ota ti ngeyi:

Efudho lyetu nomukuluntu gwegongalo lyaandjetu Martin Mweshida, inali ninga we efudho. Otwa ka ninga aauvithi momudhngoloko aguhe gwaMoonda.

Twa talele po egongalo lyomOmoonda ndyoka tali wilikwa komusita Mativa. Tatu talele po Oshikokota pamwe nomuyevangeliste gwa ELOK, Filippus Mbangula ngoka ta longo mokati kAawambo hwiayaka.

2Mos. 33:19



Oshikokota ehala li li muuzilo wondundu yaRössing, aakriste yaampoka oyi itungile okangeleka okawanawa moka tamu gwanene aantu 30 sigo 40. Ohaa iyakula yoyene.

Ondundu ndjoka tatu yi gama ishewe kuuninginino wayo, ookilometa ngiika dhi vule 20 pomina yaDeblin. Naampoka opu na aakriste oyendji noyi itungile okangeleka wo moka tamu gongalwa kiilyo ya ELOK, yaAnglikan noyaKatoolika kaRooma. Naampoka ohaa iyakula yoyene.

Otwa yi natango kuHentisbaai, ookilometa 71 kuumbangalantu waSwakopmund hoka twa adha oyendji. Omusamane Levitikus Shaanika okwa gandja po ombinga yegumbo lye yi kale ongeleka yokugongalela iilyo yOngeleki adhike.

MuSwakopmund, pahokololo lyomuyevangeliste Mbangula, omuhona gwokomboni van Zyl okwa gandja etungo enene lela li ninge ongeleka yaapopi yOshiwambo ngele taye yi opaleke. Ongulu ndjika oya li yoshililo.

Apehe to yi aantu oya yuulukwa oohapu dhaKalunga. Ihe oko ye li wo mboka ya tsikithwa kuuyuni mbuka nokaye na konasha nevaangeli.

Omahokolo ga fa ekwawo ndika osho taga uvika kiitopolwa yi ili noyi ili mUushimba auhe. KOkaoko muuninginino, omunashilongatumo Johannes Kambungu oti igidha ngeyi:

“ELOK, yelutha omeho goye u tale muuninginino wetango.”

Oondjila oonde okuza moRuacana, nodha nika iiponga, aana yaKalunga otaa kugu moluhupo lwawo ya pumbwa omuyakuli. POpuwo aakriste oyi itungile po okasinagoga ka ningwa nomapulasitika niiti. Kapu na omuyakuli gwopambelewa.

Okwa tsikile ko ta ti kutya, shoka tashi kumitha osho shoka sho aapagani yi itaala kutya ngele oyu uvithilwa evaangeli, otaa aluka komavu gawo.

Tala kep. 8

“Indeni nuuyuni auhe”, oshi li momakana goyendji nuumvo mu ELOK

Oshigongi shaanashilongatumo noshituthi shEtumo (OSHIPONOKELA).

Omasiku 8.7.1983, ombelewa yEtumo mOngwediva oya li ya longekidha oshigongi shaanashilongatumo mongeleki ayihe ya ELOK. Oshigongi osha li mewiliko lyaamushanga mombelewa yEtumo omulongi Justus N.David.

Shika oshikando she shotango okugongala pamwe naanashilongatumo moshigongi sholudhi nduka.

Moshigongi omwa li aatumwa naanashilongatumo omilongo ntano (50), ya zi momapyatumo ngaashi taga landula:

OSHITAYINGELEKI SHUUNINGININO:
EUNDA, Etoto, Otjovanatye, Ruacana, Etunda, Uutsathima, Amalika, Onanyanga nOnkani.

OSHITAYINGELEKI SHONDONGA:

Omuthiyagwiipundi, Onyuulaye, Onankali, Omutsegwonime nOnkumbula.

OSHITAYINGELEKI SHUUKWANYAMA:

Ekoka naKongo.

OSHITAYINGELEKI SHAKAVANGO:

Nepara, Rupara, Nkutu, Tugura, Nkurenkuru, Mpungu naGava.

OSHITAYI SHAKUNENE:

Shangalala nEdudamo

PONDJE:

Senegal

Oshigongi osha li sha hulu noshituthi oshinene shEtumo mOngeleki ayihe lya gwanithwa oomvula 113 mOwambo. Oshituthi osha li megongalo lyaNgwediva eti 10.7.83, nosha li sha pewa edhina “OSHIPONOKELA”.

Moshituthi muka omwa li wo mu umbwa ongalo “yoshiponokela”. Naampaka otapu landula aasindani “meponokelo”. Egongalo lyaShitayi olya ponokele noo R830,44, nolya kutha onomola yotango mOngeleki ayihe. Ongwediva oya ningi ontiyali sho ya gandja R440.81, Omuntele ogwa ningi omutitatu sho gwa gandja R265.00, nOniipa oya ningi ontine sho ya gandja R285.74.

Egongalo lyaMuntele inali mona ompito yokukala moshituthi, oshoka osheenditho shawo osha tekele mondjila. Ihe nando ongawo, olye monomola ontintatu paimaliwa.

Pakugongela iimaliwa Oshitayingeleki shaNdonga osha sindana.

Omagongalo ngoka ga sindana mokugongela iilandithomwa oge li ngaashi taga landula mapaka:

1.Ongwediva, 2. Oshitayi, 3. Onankali, 4. Onyaanya.

Ongalo ayihe ya li ya umbwa esiku eti 10.7.83, oya gwile R3360,77.

Ombelewa yEtumo oya hala okupandula ookuume kEtumo mbaka: Tatekulu Isak Shanghala, Nakayale; Ongundu yaalumentu mokomboni yaVenduka; meme Lydia Urho, Oluteyi; Ehangano lyaalongi OTA; mOshitayi shuuninginino nameme Rakel Hasheela. Omuwa Kalunga ne mu yambeke mwaashihe mwe shi ningile Etumo.

Omagongalo taga landula oge shi wo okupandulwa:Eunda, Nakayale, Nkurenkuru, Ohaingu, Ohalushu, Onayena, nOnawa. Oshitayingeleki shuukwanyama nasho wo osha mana oshinakugwanithwa shasho.

Mushindi gwaKanhene, ombelewa yEtumo otayi mu kwatelelo. Ngashingeyi omagongalo 12 ageke ge eta sha koshinakugwanithwa shago.

YAELOC, inatu kaleni tu hole nohapu nelaka, aawe, omiilonga nomoshili.

Omakundilo ga zi kuAmushanga mombelewa yEtumo. Justus David.

*Omuwa tum' oohapu dhoye
Shaa mpo aantu ye li po
Ya ka uve ewi lyoye
Ya ka mone ekulilo
Li nelago, kaa li po
Omegulu tali tsu
Eimbilo 178:1*



Omulongi Sakeus Amunyela, omuwiliki gWEwilikongundu yEtumo mOniipa



Omissioni mOshitayingeleki shaNdonga, oya dhanene eti 24.7.1983 mOniipa, moka omagongalo 12 gomomagongalo 20 gOshitayingeleki, ga gongele iimaliwa R2,348,30. Methano ndika, iilyo yegongalo lyaNiipa tayi yalula shoka ya gongelele etumo.

Oshilonga shuusita noshuumbisofi sha hokololwa moshigongi shaasita yOngeleki ya ELOK eti 27.6.-1.7.1983, mOngwediva, komumbisofi K.Dumeni

Osha hololwa mokukalamwenyo kwe, meso lye, nomeyumuko lye sigo oshilonga ashihe shehanganitho pokati kaantu ayehe naKalunga.

Ombepo Ondjapuki oyo tayi wilike aantu mokwiitaala mehanganitho ndyoka tali gandjwa omagano.

Eyakulo alihe mOngeleki oyo Etumo lyaJesus, okuuvitha, nokunyanyukiwa elaka Etoye ndyoka lya halelwa omushitwa kehe.

Oshilonga shuumbisofi oshi na okuuvivako neuvoko lyonawa lyoshilongayakulo ashihe [Ministry]. Oshilonga shika sheyakulo otashi monika meni lyegongalo [ecclesia], aantu yaKalunga kombanda yeve pehala limwe, nomuuyuni auhe.

Oku na eziminathano kutya, oshilongayakulo shOngeleki pamukanka gwasho ashihe shimwe. Osha kankamekelwa keuvitho lyOhapu yaKalunga, noketopolo lyOmasakramendi Omayapuki.

Moshilongayakulo shika tuu shimwe, otatu mono wo omayooloko pokati koshilonga shopausita megongalo nosho wo moshilongayakulo shuumbisofi mongundu yooitaali pehala limwe, muuyuni auhe [communion of believers].

A. Ekwatelokumwe lyeuvoko lyoshilonga shuusita pamulandu-gwakwaLuther:

1. Eyamukulo lyOhapu nolyOmasakramendi. Okuwilika miilonga ayihe yomelongelokalunga.

2. Okusila omuntu aguhe oshimpwiyu nonkalomwenyo ye ayihe, ngaashi elongo niinakugwanithwa yalyo, neyakulo lyopaudiakoni komuntu kehe, nokomuntu aguhe.

3. Omusita oye e li ngomulangeli gwegumbo pamukalo gwontumba [“Wachman”] ta yelekwa naaprofeti moshinakugwanithwa shawo okuuvitha ompango yaKalunga mokati kaantu nomonkalamwenyo yoshigwana shoka.

B. oshilonga shuumbisofi moongeleki oonkwaLuther.

Oshilonga shika osha hogololelwa aantu ye na iinakugwanithwa ya yooloka mOngeleki. Omutungilo gwii-longa, noondjila dhokulonga inadhi faathana mOngeleki adhihe.

Omayooloko ga tya ngaaka itaga talwa kutya ogo etopoko lyAakwaLuther. Itaga talwa kutya oge li oshii-mbi shuukumwe wOngeleki, aawe.

Oge li po omolwOmakotampango gOngeleki ge li pamitungilo dha yooloka. Opu na eziminathano mAakwaLuther kutya, eithano moshilonga shuumbisofi kali li ngaashi omusita ta lundululwa megongalo limwe nota langekwa mekwawo, e ta yambekelwa mo ishewe, aawe.

Ihe osho eithano lela, okulangekwa, nokuyambekelwa moshipelonga nomoshinakugwanithwa sha mbwalangandja.

Iinakugwanithwa yomoshilonga shuumbisofi.

Aasita mboka ya yapulilwa uusita oya hogololelwa okugwanitha iilonga ye yi uthilwa kOngeleki ndjoka: ngaashi ewiliko lyopausita, netonate-lo lyopambepo, miinakugwanithwa mokukalamwenyo kwOngeleki, nomoluwawana wopambepo wegongalo alihe.

Iinakugwanithwa mbika oyo yomumbisofi wo.

1. Ihe iinenelonga ye oyo: Okuuvitha Evaangeli, okutopola Omasakramendi, okugalikana, nokukondjela uukumwe wOngeleki nosho wo ehupitho lyaantu ayehe muuyuni.

Pamatokolo ngaka omumbisofi ota longitha uuthemba, noonkondo [authority] pamwe naambisofi ooyakawo, nenge naamboka yi ithanwa, opo ye mu yakule moshilonga shoka pamautho.

2. — Okugandja omayeke nokukwathela omagongalo moshilongayakulo shago ashihe, moku ga talelapo noku ga kongela aayakuli. Okupulakena oompumbwe dhago, nokuyamukula omapulo omadhigu momagongalo [problems].

3. — Okutonatela eitaalo lyopakriste li koke, mOngeleki nomokukalamwenyo akuhe kwiiyo yayo.

4. — Okuninga omathaneko taga humitha komeho nokuhwamitha ohole yEtumo mongeleki nomuuyuni auhe.

5. — Okutonatela elongo mOngeleki li tse kumwe nEvaangeli ngaashi sha fatululwa mOmahempululo gOngeleki, nokulondodha mboka taa eta nenge taa taamba omalongo gopombambo.

6. — Okuyapula aasita naayakuli yalwe, te shi ningi pamwe naayakuli ye.

7. — Okutokola pamwe naayakuli ye pu uthwe mboka ya gwana okuyapulilwa oshilonga, noku ya langeka.

8. — Okwiiyaki dhila nokutopola Elongo lyuukriste ngele oli li tuu mondjila mOngeleki ndjoka.

9. — Ota longo iilonga yopahungomwenyo maayakuli, aasita nayalwe, ihe ngele opu na sha shi shi okupopiwa, ota gandja wo uyelele kaambisofi ooyakawo nenge kaalongi pamwe naye moshilonga shoka.

10. — Okugeela ngele sha pumbiwa omapuko ngoka ga ningwa kaasita nenge kaayakuli yalwe mokukalamwenyo kwegongalo nenge kwomusita.

11. — Okutonatela etsakanitho lyEkotampango, nOmauthompango nomatokolo agehe gOngeleki.

12. — Okugandja omayeke, nokukwathela iiputudhilo nomahala ngoka taga gandja eyakulo medhina lyOngeleki koshigwana.

13. — Okupopila, nokuholola uukumwe wOngeleki mekwatathano nOngeleki oonkawo, nosho wo “pauekumene”, nenge pamahempululo galwe, nomahangano galwe ngoka hatu longele kumwe, nenge tatu vulu okukundathana nago.

VELKSWA A GONGALA MONGWEDIVA

Oshigongingeleki oshitine shOongelesi oonkwaLuther ndatu muNamibia, osha gongalele okuza 14.7.1983 mOngwediva onkulu.

Oshigongi osha kala omasiku gane koshi yoshipalanyolo "OTU NA OKUTILA NOKU-HOLA KALUNGA," tashi kongo ondjila yokumangulula momikundu dha dhangakana mehanganano ndyoka muule womimvo 10 dha piti.

Oongelesi ndhika odha thikama mOongelesi onkwaevangeli paLuther yomUushimba yaAaluudhe [ELK], Oongelesi onkwaevangeli paLuther yaAandowishi [DELK] nOongelesi onkwaevangeli paLuther yomOwambokavango [ELOK].

Shimwe shomiikundathanwa osha li nkene taku dhikwa Oongelesi yimwe ayike onkwaLuther muNamibia.

Osha li wo sha dhimbululwa moshigongi shiyaka kutya yamwe oya li ye shi aniwa elongelokumwe pokati kOongelesi ndhika ndatu, ndyoka lya dhikilwe po 1972, oyo nale uugumwe wOongelesi ndjoka.

"Shoka hasho nando, sigo onena Oongelesi kehe otayi landula ekotampango lyayo," osho sha li sha yelithwa koyendji yomiilyo yoshigongi shoka.

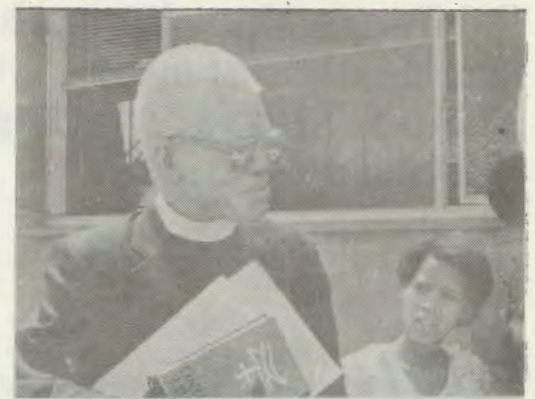
Omikundu omikwawo ndhoka dha kala po ongaashi Oongelesi ya DELK sho ihaayi vulu okutaamba oomwayinangelesi moshuuvithilo shayo nomUulalelo Uuyapuki.

Ehangano ndyoka lya kala melelo lyaomupresidende omumbisofi K. Dumeni, gwa Elok omimvo ntano dha zi ko, olya hogolola Omupresidende omupe Hendrik Fredrik gwa ELK, nomupeha gwe Willfried Blank

Blank opo ta ka langekwa moshilonga shuuwilikingeli muSeptemba nuumvo sho a hogololelwe koshigongingeleki sha DELK nuumvo petameko. Sigo onena oku li muNdowishiland.

Oshigongi osha gandja efatululo efupi komagongalo ndyoka she li luku kutya: "Ohapu yoshigongingeleki oshitine sha VELKSWA komagongalo.

Tala palwe efatululo ndika.



Omupehawilikingeleki S.Kameeta ngoka a taamba omasiku ngaka onkatu yuundokotola wesimaneko muAmerika kOseminali yaWartburg, Dubque, Iowa.

Moseminali ndjika omo wo omusita Abisai Shejavali, gwa ELK i ilongele uundokotola we muufilosofi.

Oshituthi shegandjo lyonkatu yesimaneko kuKameeta, otaku hololwa kutya osha li sha kalwa kaantu ye vule 3000.

Moshigongi oshikwawo moka mwa li aantu 150, Kameeta okwa li a pangula noonkondo omulandu gwokatongotongo hoka ta ka longithwa muNamibia sigo onena.

"Nando mu uve otamu ningwa ngashingeyi omalundululo, okatongo ashike taka pewa omadhina omape," osho a lombwele aapulakeni ye.

Omapulo gamwe a li e ga pulwa moshigongi shoka nomayamukulo e ga gandja kugo, oga li po ngeyi:

Omusita Kameeta okwa pulwa shoka ta dhiladhila ngele ando omakwatathano gaAmerika ngoka ge li po na SA otage ethiwa. Okwe shi yamukula:

"Omolwashike mu shi pule ndje ngame Omunamibia? Amerika sho a tulile oondjindikila yipindi muPoland, okwa pulile uunake aantu yomoshilongo shono?"

"Sho e shi ningile muArgentina, mu-Afghanistan nomuIran okwe ya pulile uunake? Oveta yokangendjo sho ya totelwe muPolanda, oya li ya lulumike Aayamerika. Yo oveta yi vule ngaandjoka oyo ihe tayi longo sigo onena muNamibia,"

Mokuyelitha nawa oshiponga shi li moveta yuusiku muNamibia, Kameeta okwa ti:

"Omukulukadhi ngele a tameke oshitheta shokumona okanona otundi ohamano komatango ya dhenga, kape na we ekwatho lilwe. Omusamane gwe oye awike kwa li e na okukikimba naye, sigo kwa shi."

Tala kep 12



Oshigongingeleki shaVELKSWA shi li miipundi mOngwediva moka mwa zi etumwalaka lya yi komagongalo.



Methano ndika otamu monika aawiliki yoshigongingeleki shaVELKSWA mOngwediva. Okuza kolumoho, omuwilikingeleki gwa DELK, W.Blank, omuwilikingeleki gwa ELK, H.Fredrik, omuwilikingeleki gwa ELOK, omumbisofi K.Dumeni, omulongi Hoabeb nomusita omuwiliki gwegongalo lyOombasitela muKhomasdal, mOvenduka Nakamhela.

MUELM, AAGU-NDJUKA YA TSUWA OMUKUMO YI I-LONGE.

Oshituthi osha dhanwa megongalo lyaElim 17.7.1983, konima yelongelokalunga, moka Kalunga a hambelelwa sho a kwatha omwiilongi Hilma Mpingana yaTshilongo, a mone onkatu yopombanda.

MuMai numvo, Mpingana okwa taamba onkatu B. Th. mosikola yokombanda ya SA. Tala wo Omukwetu No.10.1983 ehokololo alihe nkene lye ende.

Moshituthihamblelo shika sha dhanenwa mO-ngeleka yaElim, nomegumbo lyaavali ye omusita Erastus Tshilongo, omwa li aanasikola yoosikola dhopevi nodhopombanda taa tengenekelwa po-50.

Mokukumagidha aavali ya tonatele eilongo lyaanona, li ka adhe ethikilo, meme Maria Hamata, okwa ti:

Puleni aanona shoka yi ilongo siku ndyoka kosi-kola. Konakoneni uumbapila wawo womakona-kono, nando ku uvite mo sha, opo aanona ya dhi-mbulule kutya omwa landula iilonga yawo.

Meme Hamata ngoka naye e na onkatu moshikandjo shelongo, okwa kumagidha moshituthi shika aalongi, aapangi naanangeshefa yi ihumithe komeho miilongaithano yawo wo.

"Hilma oto vulu wo okutsikila okwiilonga miikandjo yilwe, hauteologi auke," osho e mu kumagidha nomuthindo gwa kola.

Omutaleli gwelongo mOwambo, omusamane Namuhuja ngoka a wilike oshituthi, okwa fatulula oshitya "ograte" shoka tashi ti, osho wo omaludhi gomizalo dhoograte dhi ili nodhi ili.

Manga oshituthi inaashi ka tsikila kegumbo, tatekulu Tshilongo, omukulupe nguka okwa popitha aayenda yoshituthi.

"Shono Kalunga a ningile Mpingana, inashi za mutse. Tse Mpingana otwa li tatu mu dhiladhilile oshishona, shi vule aamwayina, ihe nani Kalunga okwe mu dhiladhilila oshinene," osho omusamane a tumbula noku ulika komaenditho gaKalunga.



Omulongi Maria Hamata ta popitha aakwashituthi



Eti 17.7.1983, megongalo lyaElim mUukwambi, omwa li mwa ningwa oshituthihamblelo shepito lyaHilma Mp. Tshilongo, sho a pewa onkatu muuteologi. Okwa li e shi ningilwa kaakuluntu ye, tatekulu Erastus Tshilongo. Ye vule yatano yomailongi ya mona oonkatu miikandjo yi ili noyi ili, oya li ya gongala moshituthi shoka. Mokati kawo omwa li omundohotola N.Hamata omutiya okuza kolulyo. Osha li eulikilo ewanawa kaailongi ya li mo.

Ombelewa yoshitayingeleki shUuninginino, oya gandja ethaneko lyayo kOmukwetu ndyoka tali ulike kutya, iikandjolonga moshitayingeleki shoka, oya thanekelwa yi gongele R4,200,00 omolwaSenegal na R1000,00 omolwetumo lyaAngola.

Ethaneko ndika olya ningwa nolya gandjwa komutonateli ngoka a piti mo omasiku ngaka, omusamane Jason Amakutuwa. Inaku tseyika mpoka ya adha methaneko ndika sigo oompaka.

Omusamane Amakutuwa oku li omasiku ngaka muEuropa, okudhana iituthi pamwe noongeleki muuyuni, omolwevalo lyaLuther konima yomimo 500.

Omusita Jason Amakutuwa

Uudhigu wevi wa nyolitha ndje

Nolukeno olunene onda nyola ndjika omoludhigu woshigwana shetu sho tatu hepa. Kaakuluntu yetu, aamwameme, ookuume, noshwo uunona, natu ituleni mo megalikano lyaache na ezimbuko, opo Tate Kalunga a dhime po oondjo dhetu ndhoka twa yono, ye e tu kuthe muudhigu tu u na, evi li manguluke pamukalo gwombili.

Ekundo lyeni Episalmi 70:16.

Jesaja P. Nghitombo



Omulongi gwaMpingana mosikola ya rona, Anna Shuuja ngoka a koneke eitulomo lyaMpingana okuza pevi lela. "Shoka we mu longo, ihe shi dhimbwa, ngele shi kale shomepuko," osho meme Anna a fatulula Mpingana.

Efimbo lokaana nelongelokumwe lovatekuli

Moshoongalele shovahongi shokomudo sha OTA, 1982 mOshakati, osha kundafana nhumbi ombuto yoshiwana eshi i shi okuxupifwa menyonauko omolwonakwiiwa yasho. Efina lexupifo eli ola monika ashike kutya oli li mokutula ounona aveshe mofikola. Umwe womovahongi omushamane R.Kamali okwa hovelifa omadiladilo aa.

Oshilongo keshe sha putuka, ohashi tale tete komhumbwe yovanyasha vasho. Ngashi oikulya i li omhumbwe inene mekulo lokaana, osho yo ehongo omhumbwe ya kula unene tuu peedula nhe fiyo opombada, opo eendunge di pendulwe po.

Ovanyasha vetu otava monika tava helaana ashike noundingosho, nokudja opo va ye ashike koitoto yeekamba dovakwaita okuhada oikulya.

Vamwe ova ninga eebotsotso, ovalunga ile ovalongi vomeefaalama mepupi linini lela. Opa li pe na okukufwa onghatu ya diinina okukeelela aishe ei.

Kutya ehongo tali dengele oshike, eshi otashi ti ashike kutya ohatu tambula oshinakuwanifwa shinene okulifininika fye vene koveta oyo hatu eta po i kaleke okaana keshe taka dalwa mokati ketu, ka mone ehongo mofikola okudja peedula nhe fiyo omulongo nahetatu. Osho osho ehongo tali dengele.

Hasho ngoo shiimba oku mu dina ngenge handi ka tumbula kutya kevahapu vomokati ketu va koneka omaupyakadi noiimbi i li mehongo tali dengele. Omaupyakadi hatu ka shakaneka mehongo tali dengele ongaashi:

1. Omhumbwe yeendjuo dofikola moshi-kandjo keshe, oyo i li po nale. Okaana keshe ngenge taka fininikwa ke uye mofikola, otwa li yo tu na okumona oimaliwa yomatumape, yokulanda omambo a wana.

Eshi otashi ka twala yo opo kutya ovana-mbelewa aveshe va kula, ove na okufuta oifendela ya londa pombada.

2. Ounona ava va fiya po ofikola, otava ka alukila po va etelela osho ve shi toola pondje (oubotsotso, oulunga nosho tuu). Eshi otashi ka nwefa mo yo ovanafikola vetu vava pofikola.

Okukeelela nee enwefomo eli lii, ounona ou wopondje yofikola, owa li u na okutumwa manga tete kofikola yowina okumona kwinya omakanghameno mawa nehongo. Eshi otashi kala nee oshilonga shopondje yoilonga ye fiku kombinga yovalongi vayo.

3. Omhumbwe yovalongi oyo i li po nale, otai ka kula moshiwana ashishe shovanyasha ngenge ve na okukala mofikola.

4. Molwaashi ehongo tali dengele oli na okweetwa po koveta, epangelo okwa li li na okufikamenwa koupyakadi welipulo, nhu-mbi oveta oyo tai etwa po, i na oku ka hanga oshilalakanenwa shayo.

Eshi otashi ti kutya ovapolifi nepangelo, aveshe ova fininikilwa moveta oyo. Omukauli wonyanga koveta oyo, ota kala ovadali ile okaana koovene.

Oku na omikundu dihapu hatu dulu oku i tumbula ngenge hatu popi ehongo tali dengele. Dimwe ihatu dulu nokuli oku di monena omanyamukulo.

Ashike otu na okuninga po sha, omolwovanyasha vetu. Ngaashi naanaa ihatu dulu oku shi lididimikila ounona ovaholike va lemanekwe palutu, osho yo ihatu shi dulu oku shi humbata va lemanekwe paendunge.

Etokolo letu nali kale lidjuu li fike peni omolwomikundu dihapu di li po, otu na ashike okutokola. Edu oletu, ofye hatu li futile. Ovanhu ovo tava hepele mo ovetu vene.

Ondi udite kutya ofye hano tu na oufemba uyadi nomapuniko tu tale ekuliko lounona voshilongo shetu. Eshi osho tashi ka xulifa po ediladilohongo lomupopyo "omuhona nomupiya" notashi kelele yo ounona vetu komhepo yelidino.

Kalunga na punike ediladilo lehongo tali dengele moshiwana shetu.

Dha za kep. 3

Omushamane Kambungu ota pandula eyakulo ndyoka lya kambadhalwa nalyo kaatetekeli ye; omudiakoni Frans Amunjela, omusita Johannes Mvula nonkambadhala ndjoka tayi ningwa ngashingeyi komusita gwomoRuacana, Johannes Tolu.

Oshigongi shaasita nuumvo mOngwediva, osha li sha ningi ethaneko ando ombelewanengeleki yi longekidhe iiyendo yaasita okutalela po omahala gi ili nogi ili mUushimba nokuyakula iilyo yomagongalo hwiya.

Opwa li wo pwa ningwa ethaneko kaatonateli yiitayingeleki opo omusita Johannes Tolu a tembukile koRuacana okuyakula aantu mbeyaka. Omathaneko agehe ngaka inaga kolekwa manga kElelongeleki.

Kalunga oha yamukula esiku limwe oonkugo ndhika.

Hangame omutoti gwegongalo - Epukululo

KOmuKwetu,

MOmuKwetu gwaJuni 15, 1983, ep. 6 namu ningwe eopaleko ngaashi tashi landula: Omumvo 1976, Katoma okwa langekwa kElelongeleki a ka yakule egongalo Elondo ndyoka lya li tali yakulwa komusita Samuel Ndinoshiho ngoka a mama oondjenda.

Egongalo ndika olya zile megongalo lyaTshandi mUukwaluudhi. Ano okatopolwa hoka "Omumvo 1979" oka puka, osho wo egongalo Elondo inali totwa kuKatoma.

Lasari Katoma

Eyamukulo

Tangi unene tate Katoma kepukululo lyoye ewanawa. Ombili kwaayihe mbyoka.

Amushanga gwOmukwetu.

OLYE ANO E NA ONDILO PU MBIKA?

Kalunga okwa shiti egulu nevi pa 1Mos.1:1 ff. Okwa shiti wo iinamwenyo ayihe nokwe yi tala yoopala. Omuntu okwa pewa epangelo okulela iinamwenyo iikwawo.

Oshike shi li po nena? Omuntu okwa ningi omuyamba e na omaliko goludhi kehe. Okwa landa iinima oyindji ngaashi eliko lye tali shi utha. Ina hala a kale ta yi kokule kolupadhi, okwi ilandele oshihauto she.

Oshihauto shika omuntu ohe shi longitha ihe ngiini? Ote shi hingile kethele, ohaluka mondjila omwa nukile ondoongi, ye e ta lyata oombiliki ngaashi tashi vulika opo ki idhenge muyo, oshoka aniwa etuwa lye otali mono oshiponga.

Nakuhinga mukwawo okwa li a hingile komathele gaali. Sho a mono endhindhiliko lyoholongo mondjila okwe etha omahooli e ta hingile pomilongo ne, oshoka aniwa ooholongo ohadhi nukile kiihauto yaantu e tayi yonuuka po.

Olye ano e na ondilo pumbika? Sho ho ende mokati kaantu to hingi wa tula kethele, ngoye ho ende oendhindhiliko lyoholongo u li ashike komilongo?

Oshike ho pumine aantu, ngoye to ti omuntu oye a nukile mondjila, ngoye ho lyata oombiliki uuna ndoongi a nukile mondjila. Tu hingeni nawa uuna tu li pokati kaantu. Omwenyo gwandje nogwoye nogwamukweni ihagu monika pokakangwa.

Frans Natnael

AALESHI TAA YAMUKULA

Onda leshele mOmukwetu gwaJuni 30, 1983 ep.8 mokapopiwa "Nda tool'omba". Omwa li epulo kutya "Okukulila osheeli otashi ti shike?"

Paxupi nopaudeko lange linini, onda hala ndi tye, okukulila osheeli paTestamendi Likulu, okudipaa odi, opo oiveli yavo iha fye, ndele va hambelele Kalunga eshi e va pitifa medu loupika muEgipiti.

Tangi vali eshi to ka pa nge ouyelele kombinga yepulo tuu olo.

Elisie T. Joseph

Omukundane ki Halweendo

Moshikololo shaHalweendo nena, omu na ashike elaka loluhodi

Halweendo fimbo inaa ka toola eenghundana fiku olo, okwa shakene kwa kelaka lii loluhodi. Ye mwene ote shi hokolola ngaha:

“Ongula yOmaandaha eshi kwa sha, onda ya pongudu yovanambeleva vOngeleki, apa hava ongala okuninga owandaha fimbo inava ya moilonga yavo yefiku. Osha li naanaa ohetatu komutwe yongula, yeti 25.7.1983.

“Onda lengalenga mongudu, ndi mone vati ngeno oshipala shomutoolinghundana mukwetu, John Shitundeni, ndele inai shi mona. Luhapu ohe limonikila shito mongudu oyo, eshi e likambakaneka ombuluwaka yopautoolinghundana.

“Omayoo matoka koshi yeendjedi dile dilauka foko, ohaa monika diva eshi te limemesha nokakepisha komutwe, ei oyo hai eta noupu poluhaela choloko laye.

“Onde lipula kutya shiimba oku na apa a ka fika okwoongela manga ouyelele waasho a hala okwoongela, ye e uye nawa poshitaafula shaye mombelewa okutula oinima meshikulafano.

“Konima yowandaha eshi ya pwa, otweli popifa navakwetu vomoilonga ngaashi shito.”

“John wetu oye aha lele po nena. Okwa hangwa po kelaka loluhodi mexuliloshivike eli, kutya xe, omushamane Shitundeni, okwa xulifa oweenda waye omafiku aa,” osho omushiinda shaJohn Anna a hokololela nge.”

Konima yotundi lwaapo, Halweendo okwa fikama a ye keumbo, ye e mu pendulile po yo moluhodi laye, ye a pwilikine yo nehokololo alishe longhundana nhumbi la fika kuye.

“Eshi nda fika peumbo olo li li ashike shiimba oshinano shomanha 150, okudja pombelewa yaye,” osho Halweendo a twikila nehupu laye.

“Omaulu ange okwa hovela okuninga madjuu, omutima nao owa tameka okudenga neenghono nomesho okwa fa taa kengele omahodi. Onde lipameka oshilumenhu ndi shive yo okuyombameka mukwetu oo nde muhanga e lityaulila pokalupanda koshivalanda sheumbo laye.

“Omumbishofi naye onda hanga a fika po nale. Omukulukadi womushiinda shaJohn nomupangi Lovisa ove li yo omutumba penya va lindi-maneka eemwenyo.

“Kasha li shipu kuame okumonena mukwetu ehe wete ina ile ovamwaina, omatumbulo tae mu kwafa mefimbo li li ngahenya.”

Pakuuda omushamane Shitundeni, okwa kala moule weefuka daushilo waUkwanyama naNdonga. Mokuhetekela ngeno a etwe koshilei (oshi-ti sha pangelwa pamukalo wonhala nohashi shilwa keenani), popepi ngeno noshitauwa, a fikifwe nawa koshihakulilo, omukifi owe mu dula eenghono osho.

“Okonima ashike yokafimbo kanini eshi twa pwaalala, fye twa tumbulila ngo mukwetu osho twe shi diladila,” osho Halweendo a twikila,” ye omushamane Abenego Nghifikwa, okwa fika nokuli yo okudja kOngwediva. Navo mboli ve shi kundana ko.

MooNghifikwa omo mwa tekulwa yo okamati aka John. Eshi va lila, omushamane Nghifikwa okwe likanghameka, okwa wapeka omunino waye.

“Omafiku aeshe aa, ohandi kundana ashike eefya da pamba nge, ndele onghundana ei oyo imwe ya yehameka nge neenghono,” osho a tumbula nondaka ixupi tai xwema koluhodi.

“Konima yomalipulo mahapu kombinga yokufika kwaJohn kwinya noudjuu wondjila nowonghalo aishe yomoushilo pefimbo eli, Nghifikwa okwa ninga etokolo okufindikila okaana ka ka lile eefya daxepomutumba.

“John okwe lidenga ekopi lomeva pamwe noupele e u pewa komupangi shiimba okukoleka omutima.

“Omepakumo ashike leisho, oshihauto shaNghifikwa ohatu shileshe nale konomola sha taalela oushilo. Otwe va yandja ashike meke lOmwene e va kwatele komesho fiyo opaapa tava fiki.”

(Molufu tali shikula, hatu tale nantango Halweendo eshi te tu toolele).

Eitaalo lyAakwaluther nayalwe

ku Salomo Elago

AAKWASAPATI

Ekutho lyoomwenyo

Aasapati otaa longo kutya oomwenyo mombila, odhi li monkalo yokumwena, kaye na eiuvo. Membo lyawo “Fundamental Principles,” epandja 12, otamu tiwa ngaaka.

Ihe Ombimbeli otayi, tu longo kutya oomwenyo mombila odhi li monkalo yokwiiyuva. Ombimbeli otayi popi eso noku li yeleka nokukotha. Mat.9: 24. Itaku popiwa nando ekanopo nenge ehalakanitho po, lyaakaanakalunga.

“Okwi igidha, sa ndje ohenda.” Luk.16:24. Otaa lilagana nokwiikokota omayego. Mat.24:51. Otaa kala ye na omwenyo.

Eyeye lyomuyamba naLasarus muLukas 16: ohaye li fatulula ngeyi kutya inali etwa po okulonga aantu kutya aasi muusi oye li mo ya tonata, nenge ye na eiuvo, ihe otali longo ashike kutya mepangulo uyuyamba kau na shoka tau ti, okuninga wa kala nokulongithwa pauyuuki, pamukalo gwokukwatha mohole.

Ishewe otaa ti kutya uuhepele otawu ulikwa mpaka kutya itau imbi omuntu a ye megulu.

Ihe Ombimbeli otayi ti kutya Paulus okwa hala a kale puKristus. Fil. 1:23 Stefanus ota si noshili ndjika. Iil.7:59.

Tala kep. 12



Omusita Salomo Elago

KuSebulon Ekandjo

Iikukuta mbyoka ya holoka miilongo oyindji yaAfrika, muule womimvo omulongo dha zi ko, oyi li ngashingeyi pokushituka ondjala yekomba. Euvito ndika, otali zi olwindji mombelewa yehangano lyiikulya nolyuunamapya (FAO) lyomiigwanahangano.

Oli na ombelewa yalyo muRooma shaItalia, konyala aantu ye vule oomiliyona 10, muAfrika oya dhi-mbululwa kulyo kutya oya thikame-nwa kondjala ondhigu, ngele itaa mono ekwatho kuye.

MuEtiopia omahangano omakwatheli miikulya, otaga hokolola kutya iitopolwa yimwe kayi na we nando ombuto yasha nonando omvula oyi loke.

Oshitopolwa shoka sha kambakana Uuninginino waAfrika sigo Uuzilo waAfrika (Sahel), osha kala miikukuta ethimbo ele sigo onena. Omagongalo ga ELOK 1974 oga li ga umbu ongalo yaKrisimesa yomumvo ngoka noya tuminwa aanaluhepo yokoshitopolwa shoka.

Iilongo yi li moshitopolwa shoka oyo: oontuntu dhaCape Verde, Senegal, Mali, Upper Volta, Mauritania, Sudan, Chad naEtiopia. Aantu 50,000 nenge 100,000 otaku tiwa oya sile momaluhepo ngoka ga etwa kiikukuta.

Momimvo ndatu, ne dha zi ko, oshikukuta shika osha taandele sigo Uumbugantu waAfrika, shoka taku tiwa kutya oshi inyengitha wo niigandhi ya SA, ngoka a tseyika wo ongundja onene yiilya muAfrika alihe.

Oshikukuta shoka sha dhimbululwa mu SA unene 1982, otaku ti kutya oshi ihulilwe mondjala yekomba 1915.

Kashi shi naanaa oshipu okutseya onkalo yondjala mu SA nenge Namibia, ngiika pamwe omoluropolitika ngaa, ihe Ehangano lyokukwatha mompumbwe yiikulya mu SA, olya holola kutya momikunda dhAaluudhe ngaashi gumwe Onverwacht, popepi naBloemfontein, konyala esiku kehe otaku si okanona. (The Star 17.5.1983.)

Oshikukuta shi thike mpoka osha thiminika SA e ete mo ootona dhiilya dhi thike pomiliyona yimwe netata, okugwedhela shono sha zi momapya. (The Star 19.5.83.)

Oshihomo shondjala otashi pupyaleke uuninginombugantu woshitopolwa shuumbangalantu waNamibia, moka omvula inayyi monika nawa uule womimvo konyala ndatu dha zi ko.

"Iilya miigandhi ya pu mo, kopenzela ihatu zi ko we nasha," osho omukulukadhi gwomimvo ngiika 70, kombinga ndjoka a hokololele ndje omasiku ngaka mombelewa yandje.

Ondjala oya ya wo oonyala miishii-ndalongo; Zimbabwe, Angola, Botswana, Zambia, Tanzania, Lesotho, Swaziland naMozambikwe.

Zimbabwe, moshitopolwa shaMatabele, okwa kanitha iimuna 400,000 nenge 600,000 omumvo 1982. MuNamibia itatu tseya omwa si iimuna yi thike peni, shimpa tuu kaayi shi iishona.

Etengeneko otali tsikile kutya aanafaalama oomiliyona 3 muZimbabwe, otaa yambidhidhwa ngashingeyi kepangelo. Oshilongo shika oshi na aakalimo oomiliyona heyalu netata.

MuNamibia osho wo aanafaalama ya ningilwa kepangelo, mupya munene Aatiligane ashike manga. Hewa omahangano omakwatheli muuyuni oga tondoka onkugo yepongo.

Epangelo lyaMozambikwe, olya indile kiilongo ayihe yi na ekwatathano nalyo, opo yi hupithe oshitopolwa shaantu oomiliyona ne(4) dhi li mondjala.

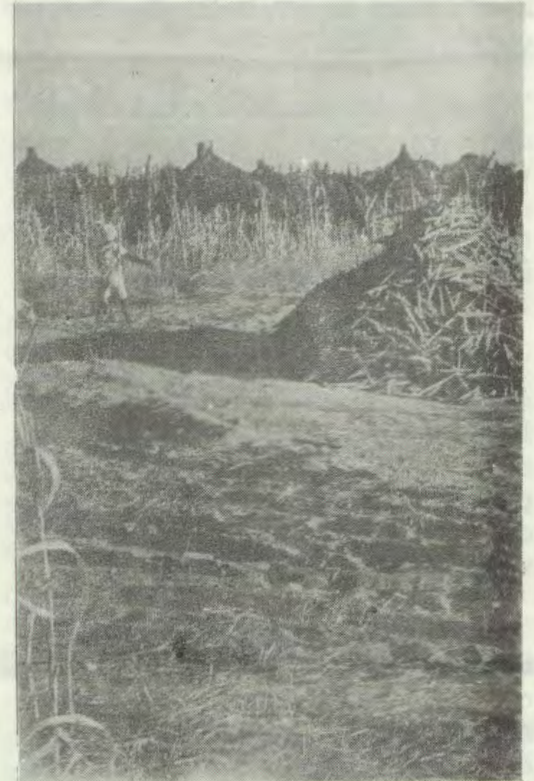
MuBotswana etata lyaakalimo mboka taa tengenekwa ngashingeyi ye thike pomiliyona yimwe (ya fa Aanamibia), otali mono nale ekwatho lyopaulumompumbwe, nonando oongombe dhomayovi ogendji moshilongo shoka otaku tiwa otadhi sigulwa esiku kehe moluukumba.

Lesotho osho wo ta mono omakwatho ngaka, unene tage mu ziilile kuTaiwan.

Epepo lyombepo yopanshitwe, sigo onena otali limbilike natango aanongononi yoombepo. Nopwa tegamenwa kutya omalutteni goludhi nduka, ogo ku tsikila natango oomvula dhimwe komeho, ngele nani Kalunga ita pepitha ando ombepo yehupitho meshito lye.

Tute gwomegulu, ongoye omushiti gwetu nou li einkelelo lyetu. tu sila ohenda mevi ndika lyu-ndjendi tu li mo. Tu sila ohenda momasiku omadhigu moka tu li mo.

Omuwa gamena ngoye u taandelithe ewi lye-vaangeli lyoye miigwana ayihe. Tu yelithila oshipala shoye, ngoye u tu sile ohenda molwo—mumwoye Jesus Kristus. Amen.



Moshitopolwa shOwambo, aashonalela taa monika ya li ye na sha shondumba yuulya poompale ngaashi nguka mOndonga.



Moshitopolwa shaWollo, muEtiopia, ongundu yaantu 45,000 ngaashi taa monika methano ndika, ohaa gongala esiku kehe okuhawalekwa iikulya nokupangwa.

14. — Okukalelapo Ongeleki mepangelo, nenge miinima yimwe yomontaneho.

15. — Okupopya, nokuholola omadhiladhilo gOngeleki miinima tayi gumu onkalamwenyo yaantu, ngashi: uuyyuki.

Iilonga ayihe mbika otayi longwa muukumwe naayakuli yomumbisofi. Yimwe tayi tsakanithwa kaasita pamwe naayakuli yawo momagongalagawo. Yimwe pamautho otayi longwa komumbisofi mwene.

C. Omusholondondo gwekwatathano melandulathano moshilonga shuuyapostoli.

Epulo enene nedhigu muuteologi woshilonga shuumbisofi nosho wo mokutaambathana miilongayakulo pokati kOngeleki, olyo epulo lye-lyengekwatathano lyuuyapostoli [Apostolic Succession].

Omadhiladhilo oge li mpaka kutya: Okwaatopoka kwoshilongayakulo shuuyapostoli, nenge shuumbisofi mOngeleki, okuza kethimbo lyaJesus.

Otapu talika kutya, aalongwa, aayapostoli, mboka ya tumwa kuJesus oya pewa oonkondo ndhoka kuye. Oyo oya langeke nenge ya yapula aasita ya landula ko.

MOongeleki otamu dhigininwa, opo aayapulwa naalangekwa ya langekwe kumboka ya yapulwa ye na elandulathano ndyoka.

MOongeleki odhindji muuyuni ngashi Ongeleki yaKatoolika, noyAnglikana naOrthodox noonkwawo otadhi dhiginine noonkondo uthiga mbuka wopayapostoli.

Euvoko lyAakwaluther kombinga yekwatathano nomusholondondo gwoshilongayakulo shuuyapostoli.

Ongeleki onkwaLuther moshinima shokwaatokola kwoshilongayakulo shuuyapostoli mEvaangeli lyaJesus Kristus, moohapu nOmasakramendi, otashi talwa ngaashi tashi landula:

Osho etsikilo lyoshilonga shuuyapostoli mOngeleki okuza ketameko.

Ayehe otaa zimine kutya, etsikilo muudhiginini meitaalo lyopayapostoli, olya simana shi vule okudhiginina omukalo gwowala gwelyenge lyopauyapostoli, momayapulo gopaumbisofi.

1. Evaangeli ndyoka lya uvithwa kuJesus nokaalongwa ye sigo ayehe ya kala meyakulo, olyo ndyoka tatu li uvitha sigo onena.

2. Ehempululo lyeitaalo nomagalikano gamwe ngaashi: Egalikano lyOmuwa, otatu li hempulula notatu li galikana sigo onena.

3. Ombepo Ondjapuki ngoka ta gandjwa kuJesus ota gandjwa natango.

4. Omasakramendi otaga topolwa palongo lyaJesus sigo onena. Ano ekwatathano lyopayapostoli nopauyapostoli omo li li mOngeleki, nando omuntu ina yapulwa kungoka e na elyenge lyopauyapostoli.

Shika itashi ti Aakwaluthee oya ekelahi edhiladhilo ndika, aawe. Otaa simaneke, noya taamba omukalo nguka, unere omoluukumwe wOngeleki.

WITBOOI MUBOTSWANA

Omupresidende gwopevi gwaSWAPO, Hendrik Witbooi, okwa hokololwa a yile metalelopo kuBotswana, oshilongo shopuushiinda.

Molweendo nduka okwa tiwa kutya okwa yile pamwe nomusamane Daniel Tjongarero.

Pafatululo lyoshifonkundana The Windoek Advertieser 14.7.1983, elalakano lyetalelopo lyawo aniwa okutsakanena nilyo ya SWAPO pondje yoshilongo. Inaku fatululwa we oshindji kushoka.

Ehokololo lyomulongi Witbooi gwaGibeon, olya zile moshigongi shEwilikongundu lya SWAPO muApilili nuumvo ndyoka lya li lya gongala muAngola.

Kasindani mu peni eyamukulo, okwa nyengwa

Kaatseyi yomavi nokaanongononi naafatululi yomadhina gomanenevi giilongo, onda ningi ethimbo ele tandi ipula nedhina lyenenevi lyetu, Afrika, hali ithanwa Afrika eluudhe. Sha fa sha hala kutya, oku na Afrika etokele nenge etiligane.

Opo li ithanwe ngawo, omolwashono li na aaluudhe koshipa, nenge pamwe omolwashono lya kala momilema dhuupagani, yo niilongo iikwawo omo ya kala?

Evi olyo tuu ndika, olya lukwa natango uuyuni uutitatu. Uuyuni wotango nuutiyaioni? Omolwashike wotango, uutiyaioni uutitatu?

AFRIKA NOMBIMBELI

Konima yomimvo omayovi manga Kristus inaa valwa, osha yela kutya Afrika olya li eha la lyomahupilo giilongo yomuuyuni wa tseyika ethimbo ndiyaka kOmbimbeli, mwa kwa-telelwa nevi lyaIsrael.

Okutameka naJosef yaJakob, Omuheberi, oku li megumbo lyelenga lyomuAfrika Potifal, muEgipiti. 1Mos.39:-45: Komina okwa lengwa nokwa lukwa edhina lyoshiAfrika Safnat-paca nokutya omuhololi gwii holekwa.

Josef okwa hokana Omuyegipiti noya vala aanona; Manasse naEfraim nomazimo ngaka oko ge li sigo onena mokati kAajuda. Omuwiliki a simana gwoshigwana shaIsrael, Moses, ndyoka tali ti, onde mu tola momeya, oye omualele yaAfrika.

Omulanduli gwe Josua yaNun, omualele yaAfrika, ngoka a wilike oshigwana sigo omevi lyeuvaneko. Omuprofeti Jeremia sho kwa li a hugwa koshigwana she, okwa li u umbilwa momuthima gwaa na omeya, moka a hupithwa mo komulumentu Omuyafrika, a zile muEtiopia. Jer.38:6-13.

Pomathimbo gamwe omuprofeti Jesaja, naye okwa li a holama muEgipiti omaudhigu goshigwana she.

Etestamendi Epe nalyo inali shi holeka, kutya Afrika olyo lya li oshihandhila shokholama Josef naMaria, yina yaJesus, Omupangeli Herodes sho kwa li e na omadhiladhilo gokudhipagitha okanona. Mat.2:13-15.

Omweevangeliste Filippus Nakanwe, oo a ufwa kElelongeleki a ninge omuponhelewiliki mokati kovanyasha vOngeleki ei, okwa ningile konyala omafiku 30 ta talele po eekomboni mOushimba, petameko lomudo ou.

Molweendo eli okwa li pamwe novakwafi vaye; omufita Paulus Musheko, omufita Johannes Hambyuka, omweevangeliste Cottlieb Many, Omudiakoni Tylves Taanyanda, omufita Onesimus Shanyengange nomweevangeliste Elisa Ndume.

Ova dingonoka neekomboni da CDM adishe omo va shakana novalumenhu vahapu. Ove uya mOliindili [Luderitz], muKeetmanshoop, Swakopmund, Walvisbaai, Omaruru naGrootfontein.

Apeshe ovanyasha ova wilikwa mondjila yokuninga oyoongalele mokati kava. Ova popifwa nondjovo yaKalunga nova tukulilwa eshikulafano loileshwa oyo tai longifwa neudo meengudu dovanyasha.

Mehepu laye omushamane Nakanwe, ota hepaulula eenhele ngaashi, Luderitz, Keetmanshoop omo muhe na omunashilonga a tumwa ku ELOK, kutya otamu hepetwa koluhepo leyakulo lopa-mhepo.

Ashike ota pandula yo Kalunga eshi ovanailonga tava kondjo kuvo vene okulikwafa meenhele odo.

Omushamane Nakanwe, okwa ufilwa oshilonga eshi kElelongeleki, eshi omufita wovanyasha Josaphat Shanghala a ya kelihongo kuAmerika nomanga omushikuli waye omufita Josef Avia, ina mangulukila eyakulo olo petameko lomudo 1984.

Sebulon Ekandjo

Dha za kep 11

Jesus sho a tokolelwa eso, mondjila ye yokwaalelwa, ngoka e mu kwatha okuhumbata omushigakano, Omuyafrika, Simon Omukireni nonando he Omuisrael. Afrika okwa humbata omushigakano pamwe na-Jesus Luk.23:26.

Siku lyetililo lyOmbepo Ondjapuki, mboka ya li taa pulakene euwitho lyaPetrus yamwe yomuyo, Aayafrika. Iil.2:6-12 Nokuli omuntu oto hala u tye, Afrika evi lyOmbimbeli.

Aleksandrie, moka mwa nyolelwa Etesta-memdi Ekulu, omuAfrika. Elenga lyomu-Etiopia lya ka galikanene kuJerusalem, li shi okulesha omanyolo omayapuki. Iil.8:26-39 Omuyafrika nguka okwa shashwa komulongwa gwaJesus.

Ohaku hokololwa kutya Omuyapostoli Tomas, okwa uvitha evaangeli sigo omu-Egipiti.

Openi ano tu ze tatu ithanwa Afrika eluudhe nenge uyuni uutitatu? Aanongononi yomadhina, peni ndje eyamukulo.

T. Kasindani

EGALUKO ETIYALI LYAKRISTUS

Aasapati osho wo Oonzapo dhaJehova, oya kambadhala okusiikulula iiholekwa yaKalunga. "Kashi shi oshinima sheni okutseye omathimbo nenge ootundi ndhoka Tate te dhi pangulitha uuyuni. Iil.1:7.

Pahunganeko lyomuDaniel osho wo Ehololo lyaJohannes, William Miller okwa hunganeke okugaluka kwaKristus lwopomimvo 1843 nenge 1844. Ombimbeli otayi ti:

— Kape na ngoka e li shi, oTate awike Mat. 24:36 Mark. 13:32.

— Ayehe otaye ke mu mona sho ta galuka. Ehol.1:7.

Omahunganeko giifundja inaga za kuKalunga. 5Mos.18:22 Okuyanda aapukithi osha kumagidhwa mOmbimbeli Mat.24:4-5.

Taku tsikilwa

OMAHUNGANEKO GAKRISTUS OGA GWANITHWA TUU?

Ombimbeli otayi tu hokololele iinima ya ningwa nale nosho wo mbyoka tayi ka holoka pehulilo. Jesus sho a pulwa kaalongwa ye nkene tashi ka kala pehulilo, okwa ti ngeyi:

Tonateni, oshoka kamu shi shi esiku no-tundi Omuwa te ya. Jesus okwa ti wo kutya otamu ka kundana omalugodhi nomakakamo gevi nondjala. Ngele tamu mono mbika, shi tseyeni Omuwa oku li popepi.

Ngashingeyi otatu uvu iikolokosha yi li apehe koombinga adhihe dhuuyuni. Omato-po gooboma niikwawo tayi halutha oyi li mokati ketu. Aakondjithi yaKristus (anti-Kristus), oye li mokati ketu. Kape na we sha shilwe tu na okutegelela shi vulithe mpaka.

Omunelago oye ngoka ta adhikwa i ilongekidha.

Frans A. Uusiku

OWE LI MANGELA MO TUU?

Eli olo epulo tali udika luhapu moradio. Lo otali dulu oku nyamulwa pavali, heeno ile ahowe. Ashike epulo eli oli shi yo okuyelifwa tete nawa, kutya okulimangela mo peni.

Ovashingi voihautu ohave limangele mo opo ngenge oshihauto tashi u, vaha mone oshiponga. Omukriste okwa teeelwa e limangele muKristus aha we mo.

Owe li mangela mo tuu. Vamwe ova londekwa kondudu notava talifwa oupuna wounyuni nde tava dimbwa okulimangela mo. Tu limangelei mo. Ef.6:13-18.

Dorkas Fumalekku

Omusita gumwe moshigongi okwa pula Kameeta ngele ota vulu oku ya pa (aasita muAmerika) ondunge yasha, shoka aniwa oya kumagidhwa yaa uvithe uupolotika, Kameeta okwa yamukula:

“Mu SA ngele to uvitha omadhiladhilo taga pangula uukomunisi, shoka osha talwa kutya evaangeli lya yela. Ngele ando ou pangule omahepeko taga ningilwa aantu, shoka osho sha talwa uupolotika.

“Ngele to ti okatongo oke na uuyuuki, shoka osho aniwa evaangeli lyolyene. Ngele ano otwiitaala Kalunga oye He yaKristus, mwe-ne gwOngeleki, ye Kalunga oye a shiti uuyuni mbuka, otatu wapa ngiini tu indike Ongeleki yaa pangule uuwinayi tau ningwa muuyuni waKalunga?”

Omushamane Kameeta okwa kala ethimbo limwe omukuluntu gwosikola yuusita Kotjimbingwe nethimbo ekwawo okwa kala omuwiliki gwegongalo. Oha popi omalaka agehe gomunamibia nokwa tseyika muuyuni auhe kutya iha kunkula epuko lya holoka.

A KA FUDHA PO MANGA

Omukokele SAKARIA NASHONGO (69), Okankolo, mOndonga, okwa hulitha oondjenda dhe eti 17.6.1983, moshipangelo shaNandjokwe.

Okwa thigi ko omuselekadhi gwe naanona yahetatu, aatekulu 18, naatekulululwa 24.

Amuhe mboka mwa tondokele onkugo, otatu mu pandula noonkondo, ongele onomagalikano, omatu mwalaka noshowo nomauvitohekeleko.

Kalunga ne mu gwedhele ko Thomas T. Nashongo (Osheeli shanakusa).

OMUKWETU

Oye oshifo shOngeleki Onkwaevangeli paLuther yomOwambokavango.

Ohashi nyanyangidhwa mOshinyanyangidho shOngeleki mOnilpa.

Omukuluntu gwoshifo omumbisofi. Dr. Kleopas Dumeni,

Amushanga gwoshifo omusita Sebulon Ekandjo

Ondando yOmukwetu muNamibia naSuid-Afrika R 5,00 komumvo.

Palwe muAfrika R 8,00 nokombanda yomafuta 11,00, komumvo. Mondhila R 13,00.

Oondando nomambestelo agehe naga tumwe kOmukwetu, Onilpa, P.Bag 2013, Ondangwa, 9000

EV. LUTH. OWAMBOKAVANGO CHURCH PRESS
PRIVATE BAG 2013, ONDANGWA 9000
SWA/NAMIBIA