

OMUKWETU

Registered at the General Post Office as a Newspaper

18c

Kaulinge ta kunghilile Elelongeleki

Oshipala eshi shipu, oshomulumenhu omupika. Onghwate yombili, yeifano laye, kaume nakeshe umwe, omulumenhu mupu nomuwa okukalwa naye.

Ndele oye yo omulumenhu womatokolo a pama, e lifikamena momadiladilo, omuyandjimayele nokuyadi eeshali dewiliko.

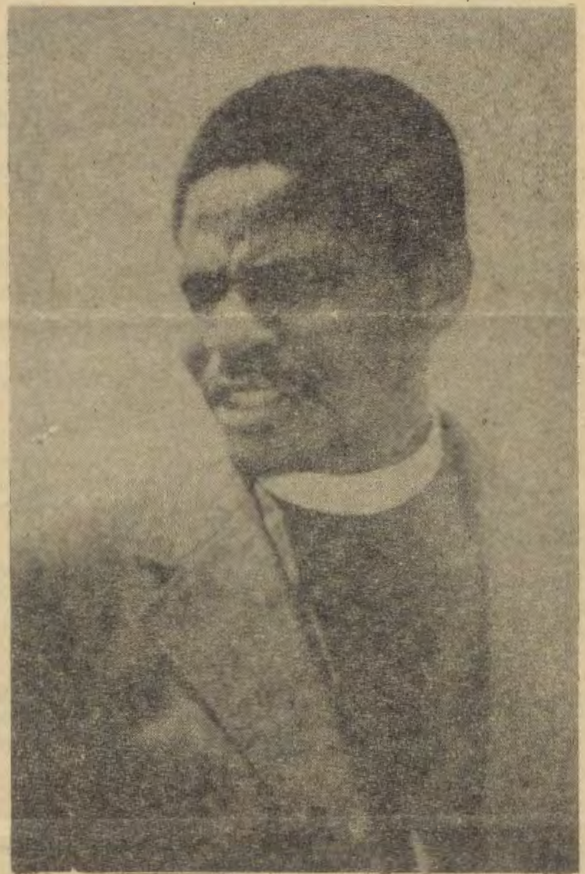
Ovanyasha meefikola ove mu shii omupresidende, ovalongi pamwe naye tava ti; kaume ketu, mOukwanyama oha ufanwa omupashukili womu ELOK oku shiivike omuponhelewilikingeleki.

Ava vehe mu shii, shiimba ohava ti ashike tate Apollos.

Ongeleki moshiwana eshi, okwe i mona i na onakuiwa. Ashike oiponga oku i lwe-te yo ya fikama moshipala shayo. Ngeenge Ongeleki otai fi omeva ile otai yauka mo, okwe shi talela mondjungu ye-lelo lOngeleki.

Osho she mu ingidifa kElelongeleki nonghuwo ya kwata monghama.

(Ehokololo alishe tala kep. 3)



Omupashukillishitayingeleki

Apollos Kaulinge

Nkene ompumbwe yaakulupe ya dhimbululwa muAmerika

Eti 9,12,1.1961, osha li lwotango epang' lo lya Amerika sho lya ningi oshigongi omolwokukonakona ompumbwe yaakulupe.

Aantu 2,500, ya za miilyo yepangelo nomomahangano gomoshilongo, oya li moshigongi shika.

Omushangwahokololo ngoka gwa pelwe oshipalanyolo "Oshigwana naakulupe yasho", ogwo gwa ka hwameka oshigwana, e tapu tungwa ooprograma showina dhaakulupe.

Uuthemba waakulupe owa pewa wo egameno lyopaveta. Omukulupe kehe a kale e na uuthemba;

1. wokulalwa e na oshilonga mokali kaantu.
2. wokukutwa miifonga, shi ikwatelela kokukala kwe
3. wokupumbwa sha muukulupe we
4. wokupewa wo eihumithokomeho nenge omalunza guukalinawa ngoka ga ningilwa oshigwana.
5. wokukala negumbo tali opalele notali yamukula oombumwe dhokomeho.
6. wokukwathwa pambepo ye nenge paimaliwa kaanegumbo kehe, shaa tuu tashi zi kehalo lyaanegumbo mboka.
7. wokwiikwatha mwene shimpa tuu ye mwene osho a hogofola
8. wokukala nesimano manga e li momwenyo nenge a sa
9. wokweegulululwa oowino adhihe ngaashi tadhi etwa po, a longekidhe nawa onakuyiwa ye.

Dhindilika: Komemo tatu tala iinakugwanithwa yimwe yokwiilongekidhila muukulupe.

OKWIILONGELE EVULIKO KAAWA YOMUUYUNI

Ehistoli lyaShomongula Hakuya

Tatekulu Shomongula Hakuya, okwa valemwa muupagani, pOshoovele mOmbandja. Manga e li omumati, okwa putukile poohekulu Mumbala gwaShuuveni, he sho a mana oondjenda.

Pethimbo tuu ndyoka, okwa kala omupiya gwohamba Nauyala waNdjebela. PuNauyala oya kala po nanakusa Josef Haikela, omulongi omukulu mOnawa, mOmbalantu. Haikela ngoka okwa li omutekulu gwaNauyala.

Nauyala pombala ye pOhwelo, inaa kala mo ethimbo, oya tidhwa mo kiilumbu. Okuza mpoka oya taaguluka e taa yi kUukolonkadhi, manga yina yaNauyala ta yi kUukwaluudhi.

Ethimbo ndyoka okwa li ondjala onene ya manene po aantu oyendji.

Ohamba yawo Nauyala oyi idhipaga, sho ya li mondjila yu uka kUukwaluudhi, sho a kundana kutya yina okwa luwa. Okuza mpoka, aapiya ye oya topoka.

Tatekulu Shomongula nomumwayina Nekanda Shililifa, oya yi kUukwambi pohamba Ipumbu yaShilongo. Opo ya hupile ondjala. Pulpumbu oya ningi po oomvula ndatu.

Ondjala sho ya piti, oya shuna ihe kOmban Ija, hoka ya zile. Tatekulu Shomongula pethimbo ndyoka omu-

mati natango, ina hokana. Sho e ya mOmbandja, okwa thikile ta hokana omukadhona gwe Ndihiwa yaMwetwiiyela.

Okwa hokanene moohekulu Mumbala gwaShuuveni.

MooMumbala moka omwe ya aana aamati yaMumbala, ya zi kUushimba, ye etelela oohapu dhaKalunga. Odha hiti tango momukulukadhi gwe, e ta shashwa taango.

Opo ihe tatekulu Shomongula a ka shashwa wo konima nedhina Abraham. Abraham oya tembukile ishewe kOndombodhola, oshoka mpoka oya tidhwa po kiilumbu. Nokuli kOndombodhola oko a ka shashelwa.

Inaa kala ko hoka natango ethimbo ele, oya tidhwa ko mbala ishewe noya tembukile kOmbalantu. Moka oya ningi aakwanegongalo lyaNakayale manga tali lelwa komusita tatekulu Sakeus Ihuhwa.

MOmbalantu okwa ningi egumbo lye pOshipya. Oyendji mboka taa zi kUushimba, aakriste, oya kala taa thikile megumbo lye.

Tatekulu Hakuya a ningi omukuluntu gwegongalo mO-nakayale. Okwa kala omudhiginini gwomambo nanda ge mu li kokule, ina faula, shila ote ehama.

Kuupenda we nokewiliko lye, egongalo epe lya totwa lya zi mOnakayale ndyoka tali ithanwa Onawa. Naa-hoka okwa tsikile noshilonga shuukuluntugongalo, komitiye yosikola, omuuvithi nomulongisikola yOndanda.

OSHILALAKANENWA SHA HANGWA, ASHIKE KASHI FI EXULILO LOILONGA

O ngeleki ya ELOK oya teelelwa i yandje enyamukulo londjulume, oyo pa kale pu na eteelelo loukriste tau kulu nou na omwenyo mokati kovalihongi.

Osho omufitaongalo Apollos Kaulinge, a dimbulukifa elelongeleki omafiku aa.

Mehokololo laye lokomudo olo la konakonwa mElelongeleki nola tambulwa nepandulo linene, omufita Kaulinge, okwa ulika koshiponga osho sha fikamena ovalihongi.

Okwa holola yo osho sha kala oshilalakanenwa shomoilonga yaye omido 15, a kala omufita mokati kovalihongi, mOngwediva.

ELOK okwa pumbwa okukonena nokuyandje enyamukulo londjulume:

a) komufindalongo wopaMbibeli mEesekundo ngenge otau wapalele ekuliko leitavelo.

b) a mone omukalo wokupopila ovalihongi kehongo lEendombwedi daJehova

c) Omaudano mokati kovahongwa mOyoondaxa nhumbi tashi ningwa.

d) nelongelokalunga Oshoondaxa keshi li ningwe ngeno meefikola odo.

Osho omushamane Kaulinge a tula mehokololo laye.

Elelongeleki ola kala alushe noshisho novanyasha ovo va fiya po omaumbo nomangalo avo omolwehongo. Osho sha nangekifa omufita ou mOngwediva, nande kEesekundo dimwe kwa kala oluhepo lwomuxungimwenyo a tya ngabo.

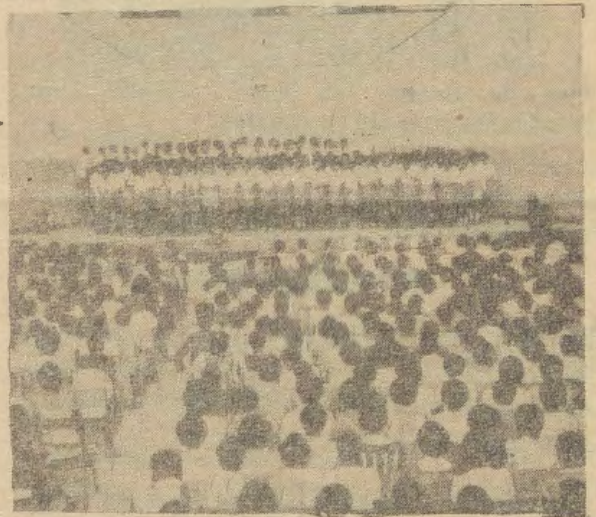
Omunhu oto dulu oku shi hepaulula noku tya tate Kaulinge okwa kala a shiiva oilonga yaye. Ina efela yo eenhelefikola dikwao moluhepo, nde oshilonga okwe shi unganekana nawa. Aveshe ova kwafwa kuye.

Modula ei [1981], elalakano letu ola kala okukonga enyamukulo komapulo ngashi; eitavelo oshike, olyelye e na okwiitavelwa nomolwashike, otali kulikwa ngahelipi?

Osho a yelifila Elelongeleki oshilonga shaye.

Elalakano ola hangika nande eshi hasho tashi talwa exulilo lekondjo. Ye mwene eitavelo lovahongwa okwe li popya ngaha:

“Otava ongala nawa momalongelokalunga avo, ohava unganekaneke eetundimbeli nomailikanofimbo nohokwe inene, kuvo vene.



“Otava pamekwa ovo inave shi ninga, Omayovi 3630 ova yakulwa mOuvalelo Uyapuki. Noshinima shinene, mokati kovahongwa omu na vahapu ovalimatuli.”

Kwaaishe ei, omufita okwa weda ko ohokwe yovahongwa moshilonga shetumo neliyandjo lavo okuyakula omaongalo. Omolwoshilonga shetumo, ova ongela R 1,0600 omudo wa dja ko.

Oimaliwa ei ovahongwa have i indile ooxe noqina nooinakulu, mboli haaveshe have ke i lya po. Vahapu ohava ka yandja yo koshilonga shaKalunga.

Tala kep. 4



Owe shi koneke tuu kutya omamvo gwo-
numvo ogweyakulo lyaakulupe?

Linima yokukwathwa moshigwana

Mokati kOmawitkongundu gi ili nogi
ili mu ELOK, omwa hogololwa wo oka-
ngundu konkalathano. Oke na oshilonga
sha kwatathana noshoudiakoni.

Okangundu haka oka gongalele mu-
Kwenyona [Febuluah] 1982 noka dhi-
mbulula onkalathano yongashingeyi
kutya oya pumbwa ekwathathano. Ota-
ndi pumbwa ekwatho lyoye, ngoye o-
to pumbwa lyandje.

Mboka taa pumbwa ekwatho oyo mbuka
taa landula mpaka:

Aakulupe, iilema, aanona, aaniintomo-
ngo, aanandjokana, aaposi, oombolo,
aavu, oonkolwe, oombotsotso, oombwii
dhomakaya niingangamithi yilwe.

Aakulupe otaa pumbwa ya talelwe po
yo ya popithwe komuntu u na ethimbo lya
gwana. Megundjilo omukulupe ote ku
bokololele ompumbwe ye. noto dhimbu-

lula shoka to vulu oku mu kwatha.

*Ondunda ye to yi opaleke, omizalo dhe,
iikulya ye nosho tuu. Ando ku kale egu-
mbo lyaakulupe mpoka taa vulu okutsa-
kanena ya fa ye li mefudho andola.*

Tala kep. 5

Efikilo inali hangwa

Da dja kep. 3

*Mokuholola eteelelo lavo liwa kombinga
yOngeleki yokomongula, omufita Kau-
linge, okwa ti kutya ELOK ke na nande o-
mhumbwe yaavo va hala okutekulilwa ou-
fitaongalo fityo opaapa.*

*Omushangwahokololo ou, oo tau talwa
owaxuuninwa kombinga yoshilonga sha-
ye mokati kovalihongi. Oshoongalele-
leki sha dja ko [Des.1981], omushama-
ne Kaulinge oshe mu hoolola a ninge o-
shilyo shElelongeleki kOshitaingeleki
shaUkwanyama.*

*Elelongeleki papopilo lovafita mOukwa-
nyama, ole mu hoolola yo a ninge omupa-
shukili woshitaingeleki osho.*

*Elundululo eli, ye mwene e li luka "edu-
do netwiko loshimeno", okwe lifatulula
ngaha:*

*"Omaliudo etu opaumwene noopashilo-
nga, otwe a hololela ewiliko lOngeleki.
Ashike etokolo ola ningwa ngaashi la ni-
ngwa lindjuu kufye. Omolweitavelo no-
molweduliko, kutya fye ovapiya vOngele-
ki, ohatu tambula, tu na eitavelo kutya:*

*"Okududa oshimeno, omino odi na okuto-
kokela mo, osheshi oda ya mokule. Ndele,
onda itavela yo kutya oshimeno nande
sha twikwa pomudingonoko u lili, Omwe-
ne woshilonga ote shi tekele nde te shi
kulike shiha lembe.*

*"Otashi twama nokutwamenena, shi wa-
palele onbele ipe yeyakulo."*

Iilema otayi vulu okukwathwa ngele tayi yakulwa noku uvitithwa uugumbo noyi dhimbulule kutya nayo aantu lela, nando ye li muuyuni ya tya ngaaka. Nayo otaa yakulwa ngaashi aakulupe.

Aanona oyendji kaye na oohe nenge oo-yina. Nonando oye na , inaa valwa mondjokana. Oye li owala pooyinakulu oohepele, taa thindilwa owala ethima lyongula nenge ontaku. Ngoka a za ko, otee.

Aanona yoludhi nduka oyendji oye li miipangelo taa alukwa kondjala, ye ya konna.

Ekumagidho koonakuvala

— Kala u na oshimpwiyu nomumwoye, ino mu ethela yinakulu. Konga ikulya tayi pumbiwa komunona, ngoye u mu tekule, opo u uve uugumbo wahe nowa yina.

— Ino monithwa okanona kungoka itee ka sile oshimpwiyu. Ino monitha omuntu okanona, ye kee shi gwoye.

Aaniintomongo yethimbo lyetu oyendji notaa pumbwa ekwatho lyopalutu no-lyopamwenyo.



Mbaka oyo yamwe ya tungu onakuziwa e tapu kala onena. Ya simanekela iilongatungo yawo



Aagundjuka oyendji otaa monithwa ii-huna kuyakwawo.

Elondodho kaagundjuka

Hokana omukiintu molwashoka u mu hole nou mu hoiolele ohole oyindji. Ino zimina ashike omulumentu, molwashoka ashike aniwa "ontsezi ihayi tumbilwa uwanawa," aawe.

Zimina omulumentu ngoka a pendutha mungoye ohole. Mu sinda nohole ndele to mu gwililile po nohole.

Aakwanaluhepo naasindjala otaa pumbwa epukululo lyoye, sho to ya pe iilonga opo ya mone oshikwiila. Oto ya pe wo oshikwiila omagano, omizalo negumbo ya kale mo.

Aaposi noombolo, otaa pumbiwa ya ye kosikola yawo kEngela nokOngwediva, opo ya ka tseye kutya nani nayo aantu lela ngaashi yakwawo. Oto vulu oku ya kwatha ngaashi tashi pumbiwa.

Aavu omo ye li momagumbo taa pumbwa ya falwe koshipangelo. Ino zimina ehauto lyoye li longithwe okufala omuntu koonganga a ka hwelwe iiganga. Mbika otayi yono po omuvu.

Tala kep. 6

OMUKWETU JULI 15, 1982 5

Oluhepo lwomagongalo nomakana gu udha omahambelego

Otatu vulu tuu okunyanyukwa nokuba mbelela noohapu, ngele momagongalo getu nomuuyuni oohepele otadhi, o dndjala? Ehambelelo lyiitya yowala, otali kwatha tuu oshiketha shetumo lyaKalunga mu ELOK; shi li owala?

Omapulo ngaka onde ga penduthilwa shonda mono nonda uvu aagalikani naahambelego momagongalo getu ya hala oshishi ninga ashike nomakana, ndele hanilonga.

Omuyapostoli Jakob ota ti: Eitaalo lyaa na iilonga olya sa.

Ngame ondi uvite ko ngeyi kutya okuhambelego Kalunga, nena okuholola po wo iilonga yehambelego. Omukulu gwonale oha ti:

Omulongelo ogwa kutha omukwawo kondunda.

Okweetela Kalunga oombalagelo dhohambelego kashi shi ashike oshinima shomokana, ibe oshilonga wo yi wetike. Kalunga okwa pumbwa noohapu dhetu ninima mbyoka yi lwetike wo.

Momumvo nguka ngele oyendji oyu uvite shili epandulo omolwomvula ya loko noya gandja ipalutha, nena osha li shi na okwiimonikila mokukalamwenyo kwOngeleki akuhe.

Iilyo yegongalo otashi vulika yi kale ya pandula notaa hambelele Kalunga nokana lyo egongalo lyawo li na oluhepo lwiiniwe noinali pita. Ehambelelo lyomokana otali kwatha tuu sha?

Mehambelego otatu tsakanek Kalunga, ibe otatu shi ningi niikaha yowala?
Festus Ashipala

IINIMA YOKUKWATHWA

Dha za kep. 5

Oonkolwe otadhi kwathwa ngele aantu taa pukululwa yaa nwe. Naa ye mehanngano lyaaidhiliki nolyaapapudhuki mu ELOK. Naa taambe Kristus omuti gu sinde omahongololo agehe guulunde.

Naa konge ekwatho ya ye komusitagongalo nokundohotola. Naa iyageke okunwa, yi idhilike nokugalikana. Kwatha mukweni mpoka to vulu.

Oombotsotso, otaa kwathwa moku ya ulukila onkalathano ombwanawa yawo yi li komeho. Naa ye kosikola yi ilonge yo ya mone iilonga iwanawa tayi ya kwatha ethimbo ele.

Uumbotsotso owokathimbo nowa udha iiponga oyindji.

Oombwii dhomakaya nodhiinganganithi otatu dhi kwatha ngele tatu dhi ulukile uuyogoki wokwaahila omakaya. Otatu ya ulukile uuzigo womakaya akene tau yono nayi olutu aluhe.

Omuntu opo a kale omuntu, ota pumbwa a kale a yogoka pwaa na iinganganithi yasha. Oto kwatha mpaka wo ngaashi to vulu.

Muayihe, Kristus oye eliko lyetu li vule agehe.

Jason Amakutuwa



Mbyoka we yi tula miigandhi, pamwe omu na wo hoyaKalunga? Owe yi kutha mo nale?

Ngoye omumwoye owe mu yamukula wa ti

Penda omutimulongo gwa tate na meme Nego-nga na Mwaalwa gwaAbisai. Okanona kawo kotango oye ka mwene 1950. Oko Simaneka. Onkelo Penda, oya monikile 1973.

Simaneka naamwayinamati 5, oya thigi po egumbo lyahe noshilongo shaandjawa, noya taaguluka.

Mokuputuka kwaPenda, okwa tsey a owala aamwayina 4, aamati yaali naakadhona yaali. A fa ngaa hu uvu kutya oya valwa oyendji, ihe ka kwa li naanaa e nakonasha.

Penda sho a koko nokwa tameke osikola, esiku limwe okwa pulwa komulongi gwawo:

“Penda, aamwanyoko oye li yangapi?”

Penda okwa yamukula nomalimbililo ogendji:

“Omulongi okwa tumu Penda a ka pule nawa aakuluntu kegumbo kutya oye li yangapi noyo oolye.”

Pohungi, Penda okwa pula he a . . .

“Tate, Jefolou gwetu okwa pula ndje nena kutya otu li yangapi. Ngame onda ti owala otu li 5.”

“Aawe, kamu li yatano mumwandje,” osho he a yamukula mbala. Okwa tsikile.

“Ne onde mu pelwe kuKalunga omagano mu li 10.”

“Yamwe oye li peni noyo oolye?” osho okanona ka hala oku uva nawa.

“Osheeli sheni osho Simaneka, taku landula Ngendeya, Nehale, Mpingana, Nelago, Tangeni, Ashipala, Ndunge, Tukondjela nangoye ihe onkelo yawo.

“Ayehe mboka oya ya meni lyaAfrika, yamwe ku-Europa okulungwa uukwiita okukondjitha uupika wAatiligane.”

Penda: “Oh, tate, oto dhengwa ngele wu uvika to popi uupika. Ino mona Alveta sho a dhengelwe nitako yoondjembo?”

He: “Eeno, shono onde shi tsey a, Nomumwanyoko Simaneka okwa li a ningi omvula netata mondhologo, manga inaa taaguluka.”

Penda: “Tate, onda hala nangame ndi ye hoka ku na aamwameme, ndi ke ya tale ko.”

He: “Aawe, mumati gwandje, ngele wa yi ko, ito galuka manga evi inaali manguluka. Ou na okukala hoka nokulongwa uukwiita nopa ihe to ka kala momuthitu.”

Penda: “Tate, ya nyolela ano, opo ya galuke. Inandi hala nando okukala inaandi ya mona.”

He: “Naashoka itashi vulika. Shila otu na owala okugalikana, oonkondo dhaKalunga dhi ya galule.”

Penda: “Tate, onda hala natango oku uva naanaa kutya aamwameme mboka oye li koshilongo shini?”

He: Ndunge okwa li muZambia.”

Penda: “Ano mEtitano otandi yi kuZambia ndi ka konge Ndunge, ngame ndi pule yakwawo mpoka ye li. Ihe otandi galuka mbala ndi ye ndi mukwathe mpaka megumbo.”

Penda: “Ashike natango ishewe tate, Magano sho e li muno ogwaandja lye ano nani?”

He: “Magano okwa valwa komumwameme, oku li pungame yinakulu.”

Penda: “Meme kee na wo aamwayina ndi ye wo kookuku?”

He: “Oku ya na. OoPita Nanjemba hayo mbono? Ashike nayo oya kala ihe kombanda yomafuta oya taaguluka nalenale. Okwa fa hakutiwa oye aniwa nokuli omukuluntu gwomatanga?”

Penda: “Oh, ehee, nani iinima osho ya tya ngeyi? Ashike nangame ondi na owala okuya ko hoka kombanda nokugaluka ko ishewe mbala, shimpa tuu nda mono aamwameme nakuku Pita.”

Uusiku mboka Penda ina kotha, onkene a lala ta dhiladhila oonkundathana dhophungi nokonima yoshiwike shimwe Penda noinaa monika we moshilongo.

Sebby Abisai

Okukalamwenyo kwomunhu

1.

Katu na po onhele apa
Otwe ya po, twa pita po
Twa etwa po, hatu ilwa
Kalunga ta eta, ye ta twala

2

Otali tungwa, lo tali xwaxunuka
Tali tuka po, lo tali wile
Hatu kufwa, fye hatu pewa
Kalunga ta kunu, ye ta teya

3

Otau mene, wo tau kewa po
Tau dundwa po, wo tau twikwa
Otau hape, wo tau yaumuka
Tau ima, wo tau kuka
Kalunga ta tenge, ita kwatelwa.

4

Otape ya, po tapa di
Tapa dalwa, po tapa fiwa
Otapa kufwa, po tapa tulwa
Tapa ilwa, po tapa etwa
Kalunga ota yandje, ta tambula

5

Ohatu hapupala, fye hatu ninipala
Hatu holoka, fye hatu oholoka
Ohatu ongala, fye hatu lihane
Hatu lishiiva, fye hatu lidimbwa
Kalunga ota denge, ta fudile

6

Ohatu tane, fye hatu puka po
Hatu di po, fye hatu ya po
Ohatu wedwa, fye hatu holwa
Hatu fewa, fye hatu sheshwa
Kalunga ta dike, ye ta dula

7

Ohatu kundwa, fye hatu lekelwa
Tuvaenda, fye tuvaumbo
Otwa fika, inatu fika
Twa tula, fye twa manga
Kalunga iha yandje, ina sheya

8

Ohatu yolo, fye hatu lili
Tu noluhodi, fye tu nehafo
Otu noupu, fye tu noudjuu
Tu nenyeme, nyenyakuko
Kalunga ta ile, ye ta eta

9

Ohatu piti, fye hatu ka nangala
Hatu longo, fye hatu dimbuka
Otali tu shile, lo tali tu tokele
Tali tu yukifa kexulilo
Kalunga oye mwene ta tokola

A. L. Nghifikua

OKWILONGO EVULIKO

Dha za kep. 2

Meuvitho lyOhapu yaKalunga, oya kwathathana nomulongi J. Haikela. Miihlonga ayihe mbyoka okwa ka zimbulwa mo ashike kuukulupe.

Oye okwa mono omaudhigu olwindji megumbo lye omolwomaso goyana. Nonando Kalunga okwe mu pele oluvalo, aanona 7, ngashingeyi ope na gumwe awike, onkelo yawo. Okwa tekula oyendji megumbo lye. Okwa hokanitha aamati naakadhona 26, ayehe kumwe.

Patengeneko tatekulu Hakuya, sho a hulitha oondjenda dhe 5.2.1982 nokwa yi kohamba ye yaa hulu po we, okwa yalulwa e na omimvo 115.

Athigi ko omukadhi, nokankelo kawo nuutekulu 12.

Aakwaneczimo lye.

OMUKWETU

Oye oshifo shOngeleki Okwaevangeli paLuther yomowa-mbokavango.

Ohashi nyanyangidhwa mOnilpa.

Omukuluntu gwoshifo omumbisofi dr. Kleopas Dumeni,

Amushanga gwoshifo omusita Sebulon Ekandjo

Ondando yoshifo komumvo muAfrika alihe R2,60. Kombanda yomafuta R5, 00, nondhila R6, 24.

Oondando nomambestelo agehe naga tumwe kOmukwetu, Ontipa, P.Bag 2013, Ondangwa, 9000

EV. LUTH. OWAMBOKAVANGO CHURCH PRESS
PRIVATE BAG 2013, ONDANGWA 9000 SWA/NAMIBIA