

OMUKWETU

Registered at the General Post Office as a Newspaper

Etumo n'Evangelii tayi ikundwa



Methano ndika omu na yaali yomaalongi yoshikondo shoka shelongelokumwe lyOongeleki, taa kundathana oshilonga shokweevaangelitha. Kolumoho Amon Mwakisunga ngoka a talele po lumwe Oongeleki yetu.

Oshigongi kombinga y'Etumo noshilonga shokweevangelitha, otashi ka kala muNorwee okuza 18-26.5.1982.

Oongeleki adhihe ookwaLuther nomatumo gadho muuyuni, odha tegelelwa okutuma aakalelipo yawo.

Sha longekeidhwa koshikondo shelongelokumwe lyOongeleki shomOngongahangano y'Aakwaluther muuyuni (LWF/DCC), oshigongi shika mu ELOK otashi ka kalelwa po ku Dr. Tomas Shivute, amushanga gweputudho lyo-

pakriste m'Oongeleki

Sha pewa edhina "ETHIMBO LYO—KWEEVANGELITHA", oshigongi otashi ka kong'a uyelele woshikalimo shokweevangelitha.

Otapu ka kundathanwa wo omayooloko nenge omafaathano ngoka taga adhika pokati koshilongatumo noshilonga shokweevangelitha. Mbika ayihe otayi ka yelekanithwa nelongo ekwaLuther paureologi.

Ondhila ya fike po etungo muElim

Etungo lyomala 4 popepi nOshipangelo shaElim, olya ongotele momulilo pamwe nomaliko galyo ngoka ga li mo. Aantu ayeke ya hupithwa.

Omulilo ogwa zi mondhila yaakwiita ya SA ndjoka ya li tayi tuka uusiku. Oshiponga shika, etanga lyaakwiita ya SA olye shi zimine wo.

Mpaka otapu landula ehokololo ndyoka lya pewa Elelongeleki lya ELOK, oshinima shika nkene sha dhimbululwa kumboka yomegumbo lyaElim.

Eti 23.4.2982 po-12.00 guusiku, ondhila yaakwiita ya SA oya li tayi tengele kombanda yaElim. Oyu umbu uyelele uunene wa minikila Elim alihe nomudhingoloko gwe aguhe.

Pethimbo ndyoka aantu ya penduka. Okwa monika uyelele uunene u li muule mombanda, hoka taku ndunduma ondhila. Kuuyelele mboka okwa zi iinima oyindji iutiligane ya fa omakala gomulilo ga geta, yi li mihampi, okuza pombanda sigo opevi. Oya lambele ketungo limwe.

Konima yokathimbo etungo olya hwama omulilo okuza koshihokohoko shondunda. Pethimbo ndyoka ondhila oya kana po.

Omutonateli gwoshipangelo okwa endebele a ka pendula aapangi mboka ya li ya lala, ya kotha metungo ndyoka tali pi. Aanasikola naantu yopuElim oye endebele wo okuya koshiponga noku ka tala shoka taa vulu okukwatha.

Metungo omwa li omala gane. Gaali gokulala moka mwa adhika aakuluntu yatatu nokanona. Ela etitatu olya li ombelewa yoshipangelo. Nela etine olyokupungula iikulya, iilongitho yoshipangelo niipumbiwa ayihe yasho.

Momala gokulala nosho wo mombelewa, iinima oyindji oya hupithwa. Ihe mela hyokupungula, inamu hupithwa nando oshinima shimwe.

Etungo enene lyegumbo lyaElim ndyoka lya adhika pooha dhoshiponga shika, nalye olya kwatwa komulilo, gwa zi kundjika tayi pi. Nguka ogwa dhimwa mbala manga inaagu taandela.

Potundi yotango [1.00] uusiku tuu mboka, ondhila ndjoka ya fike oya galuka ishewe noya tengelele natango kombanda yaElim ominute 5 nenge 10. Oshikando shika inayi tema we, noya shuna.

Konima yethimbo ongulu sho ya hwama, aapolosi kOshakati oya tsevithilwa oshiponga shika. Pondatu [3.00] yuusiku opo kwa ka za aakwiita yokEmbandu, pUukwangula, Aaluudhe nAatiligane nomahauto omnene gatatu.

Mbaka oye ya taa lombwele aantu ya ka lale, oshoka aniwa otaa si uutalala. Sho ya pulwa kutya oshinima oye shi uvu ngiini, yamwe yomuyo oya ti, oye shi lombwelwa kondhila, ya ti oya fika osikola.

Aakwiita mbaka oya kala po ominute 15 nenge 20 noya shuna.

Ongula sho kwa shi potundi onti 9 ya pita, Komandant T. A. Nell naKpitiya D. Atkinson oya thiki puElim pamwe naakwiita yawo. Mbaka oya zimine kutya shika osha ningwa kondhila yaakwiita ya S. Afrika.

Enenedhiladhilo lyawo oondyoka kutya oyi ilongekidha okufuta shoka sha yonuka. Oya fatulula wo olwindji nkene aniwa shika inaashi ningilwa owina.

Konima yootundi 12, etungo sho lya hwama, amushanga gwOmukwetu okwa talele po ehala ndyoka. Okwa dhimbulula nkene pwa li natango omahalutho mokati kaatali, sho oondooha, walyewo kutya odhahike, tadhi topa natango momulilo.

Omalenga naantu yowala oya monika nkene ya thikama ya tala omutoko nonkumwe onene. Oyendji otaa holola euvito lyawo puuyeleele nokupangula oshiningwanima.

Yamwe otaa nongona owala, ngiika muumbanda wokulimbililwathana kutya olye a tulwa po omupulakeneni, ngaashi tashi holoka opendji methimbo ndika.

Omudhingoloko ogwa fa gwa za melandulathano noka-pe na ngoka e shi shi shoka tashi ka landula uusiku tau landula. Uunona, aakulukadhi naasamane aakulupe, amushanga okwa popi nayo ye li mehaluko enene.

"Shika osho twa ningilwa kungoka ta ti, ote tu game-ne," osho gumwe a tumbula a fa i iyetela ohenda.

Moshinima shika, osha li sha yela ngaashi oyendji ye shi holola pwaa na we uumbanda ngaashi shito, kutya oondjembo dhuusiku nendundumo lyoondhila itayi pulakenwa we negundjilo kaakalimo.

Elelongeleki sho lya taamba onkundana ndjika noluhodhi, olya hambelele Kalunga omolwegameno lyoomwenyo 4 dha li moshiponga shika, nonando pwa dhimbululwa ekanitho li vule nokuli R 28,000.

"Kalunga oye oshiholameno shetu, ekwatho muudhigu li shi okwiinekelwa." Eps.46:2



OMBILI KAALESHI AMUHE

OMUKWETU oti indile ombili kaaleshi ayehe omolwetokelwo lyoshifo shika. Osha zi owala muupyakadhi womashina, inaga enda nawa osho wo iimpwiyu yilwe ya holokele po ombaadhilila.

Komeho otatu ka kambadhala okutsikila pamukalo omwaanawa.

OVAVILIKI KUEUROPA

Omumbishopi wa ELOK, dr. Kleopas Dumeni pamwe nahamushanga waye, omufita Absalom Hasheela, okwa li vamwe vovavilikingeleki 6 va kundafana no-vakwanepangelo laAmerika muWashington.

Eshi osha ningilwe pokati kaApilili neudo.

Va dile meengeleki domoumbuwanhu waAfrika, osheendo osha li sha talela po Europa nosha fikile yo kuAmerika.

MuAmerika ova shakana nomushamane Chester Crocker, hamushanga woshilongo wopedu moinima yaAfrika. Dr. Crocker oku li yo omuwiliki wokangudu koilongo itano yaUninginino, ye lipyakidila nemauguluko laNamibia.

MuFranisha, Britania, Sweden naCanada, ova kundafana nOvavilikingeleki osho yo ovanamapangelo. Apeshe ova yelifa ekanghameno lavo kwaasho ve shi tala otashi eta ekandule po loita moumbuwanhu waAfrika.

Eshi ova ti otashi ningwa ngeenge SA ta tambula a shaine eudafano lexulife po loita, ye a kundafane na-SWAPO kokanya nokanya.

Ova indila yo Eengeleki kwinya di kwafe omapangelo ado, a kundafane na SA opo a tambule omafaneko aa.

Osheendo osha longekidwa kOshoongalele shoukumwe wEengeleki daAfrika, [AACC]shi na ombelewa muNairopi shaKenya.

Eengeleki muNamibia inadi ninga natango oilyo mOngonga ei i na oilyongeleki i dule 100.



Oshilonga shuupangi mOnandjokwe



Dr. Kleopas Dumeni

EKUNO ----

Dha za kop. 3

"Shika otashi etwa unene kompumbwe yaanashilonga, walyewo ngele ondi uvitike shono nda hala okuya," osho a yi ngeyi komeho nadho.

Eilongekidho moshinima shoka, omusamane Amaambo ote li tala lya tokelwa' ihe ota ti:

"Ombuto ndjoka yeithikameno otatu yi kunu mendelelo, nando opu na othina, sigo ya mene."

Tatekulu Amaambo ku SA okwa kala ta lesa nota konakona iinima yopaunamiti. Kutya okwa hala okuninga omundohotola gwowina moshinima shinipo mekonakono lye ndika, okwa menye mo ye ta puku komutse.

"Shoka shi na oshilonga monkalo ndjika tu li mo, okwiithomateka nawa, okukwatha omuvu kehe te ku adha nuuvu we kehe," osho a thindile mo.

Mokufatulula ehologo lyomikithi odhindji ndhoka tadhil hepeke oshigwana shika, omusamane gwomimvo 32, Amaambo, oku na lela eitaalo lya kola miipangelo mbyoka yi li po nena.

"Shoka ashike sha pumbiwa, aanashilonga ya longeye shi shoka taye shi longo," osho a ti. Omukondjelimanguluko guukalinawa, Amaambo, ite shi tala nepandulo omukalo ngoka oshigwana tashi kondjitha omikithi dhasho.

"Otu na omikithi odhindji natango maanona nomakuluntu tadhil zi ashike mokutoola oombakiteli nenge mondjala. Ndhika otwa li tatu vulu oku dhi kandula po tse yene momagumbo."

Okwa ti kutya uuyogoki otau tameke tango momutima gwomuntu. Opo ihe omuntu ngoka ta tsikile nawo pelugo, poshini, koshigunda, mombete yokulaia, mepya sigo okenkolo lyepya.



Omwilongi Johannes Shitundeni

Omutoolinkundana gwOmukwetu, Johannes Shitundeni, okwa kundila po aaleshi ayehe yOmukwetu Omugundjuka Shitundeni oku li ngashingeyi muK1-twe shaZambia ti ilongo iinima yiinyolwa.

Mombilive ndjoka e tu nyolele omasiku ngaka, ota ti kutya otashi yi nawa nokulesha kwe hwiyaaka.

Ashike ota kumagidha aaleshi aaholike ya tume iinyolwa koshifo shawo Omukwetu.

Kapofi a tembudhwa

Konima yethimbo efupi sho omusita H. Ushona a mana oondjenda, Kalunga okwi imonene omupiya gwe, Nathan Eliab Kapofi, a yakule egongalo lyaShakati.

Oluhodhi lwaakwanegongalo osho ngeyi lwa mwene-kwa. Tate Kapofi ohi ithanwa "omuhekeleki gwoothigwa nomapongo". Megongalo ndika omu na aantu yoongundu dhi ili nodhi ili noontauki dhiita. Kapofi okwa kwatha aantu ayehe mbaka pwaa na ondjooola, unene miinima yopambepo.

Oondjokana dhoyendji ya li yi ihokanitha, odha yapulwa. Konyala egumbo kehe etokele, omu na ngashingeyi aanandjokana. Egongalo olya kala li na omwe-nyo.

Ilonga yaKapofi ando yi kale oshiholelwa shaasita

IILONGA YA AGU

NDJUKA

MU UKWIYU

Omuwiliki; Ndinelago L. Nantinda

Ilonga yoshigongi megongalo lyetu oya tameke 28.1.1981. Metameko otwa kala pamwe nomusita gwegongalo Filippus Uusizi, ngoka e egulula oshigongi nohapu yaKalunga Mark. 11;22-

Koshipalanyolo shOngeleki shomumvo, Heb.11: okwo kwa kankamekelwa iileshwa yetu wo. Eti 29.4.1981 palandulathano lyiilonga yetu otwa li niilonga yopaudiakoni, momikunda.

Aakulupe ya popithwa, ya yogwa komalutu niikutu yawo ya yogwa. Oya tsilwa iilya yawo, omagumbo twa dhike niilya twa teyele momalupale. Opwa holola maagundjuka eitaalo li na iilonga.

Esiku 12.6.1981 otwe li longitha mokutaandelitha evaangeli momahala gomalandithilo. OToyota yomuhi-angi, omwiigandji megongalo lyetu tatekulu Simon Nafuka, okwe tu enditha okuza uuningininino wegongalo sigo omuuzilo walyo.

Otwa talele po omahala gomalandithilo 9. Menyanyu lyawo, aagundjuka yi imbi; Elaka lyOmuwa fala ko.....Tit.2;15.

Otwa li wo tu na esiku lyetalelopo lyowina komukulupe gumwe ngoka egumbo lye lya halakanithwa po komulilo. Otwe mu gongelele iimaliwa nomizalo.

Oshigongi shetu osha gongalwa kaagundjuka 196 omumvo aguhe. Otwa hambelele Kalunga sho oshigwilo sha satana inaashi tu imba okuzongala.

Kaagundjuka aakwetu mu ELOK, otu neni omayemato nuudhigu methimbo ndika. Ihe inau mu thinda pevi. Ongula nongulohi, tu simanekeni edhina lye.

ooyakwawo mu ELOK. Kotjimbingwe hoka a ka longa aalongwasita, ondi shi shi otaka ninga ko sha shomungunda.

Ondi shi shi wo, natango Kalunga ote ke tu pa omusita a fa Kapofi. Kapofi, Omuwa na kale nangoye negumbo lyyoye.

H. Kamati

Elalo lyOshinyanyangidho 6.6

Elelongeleki lyeti 28-30.4.1982, olya koleke efaneko lyEwilikongundu lyOshinyanyangidho, opo Oshinyanyangidho oshipe shi egululilwe iilonga yasho eti 6 Juni 1982, Kalunga ngele te shi piika.

Iilyo yomagongalo otayi hiywa keegululo lyoshinyanyangidho shawo, potundi onti-mulongo netata (10 h 30).

Ekuno Iyemanguluko mothina — Dr.

Mokapepo koshikufuthinge komatango taka pepe komafu gomingalipi dha kunduka eelo iyegumbo. Omundohotola muunamiti, Filemon Amaambo okwa fa ta tidha okazimba okawanawa taka zi muungala nomuumeno wa ziza wa kunduka oshiwalande. Egumbo ndika olimwe lyomomagumbo gaNandjokwe ngoka ga silwa nawa oshimpwiyu.

Sindano, okasheelimati ke otaka dhana mpoka pamwe nokandenge ke Meke, koomwedhi 7. Omuleli gwawo naye kee li kokule nayo, omuntu te ku dhiladhilitha Mirjam pethimbo a tonatela okamwayinagona Moses, momanenge gomulonga gwaNiili.

Meme Hilma, efelo lyaNdohotola, ina zimbuka manga, okwi ipyakidhila natango netonatelo "lyokanyothi" omukunda gwa simana mOshipangelo shika shE-tumo.

Siku ndyoka Omukwetu, okwa li gumwe gwaanela-go aashona. mboka haa mono ompito yokukundathana naNdohotola pondje yiilonga.

Konima yomuuhalekathano nokuhapula koshontumba noshongandi, oonkundathana odha thenunukile memenekelo lyaNdohotola ku S. Afrika uule womvula yimwe noomwedhi dhontumba.

"Tala," okwa hili ndje ngaaka momadhiladhilo ndi landule nawa.

"Kandishiwo ngele aantu oye shi lwete, nenge ngele otaa uvu ndje ko tuu mondjila, nokutya shoka twe shi pumbwa moshilongo shika osho eithikameno."

Onda pata omufudho okathimbo, ndi wape okulandula nawa shono Ndohotola a hala okutya.

Ye mwene haye gwaapopi haa dhuga iikaha mombepo sho ta popi, nenge mboka haku tiwa aapopi itaa

EUVITONGUNGA LYA

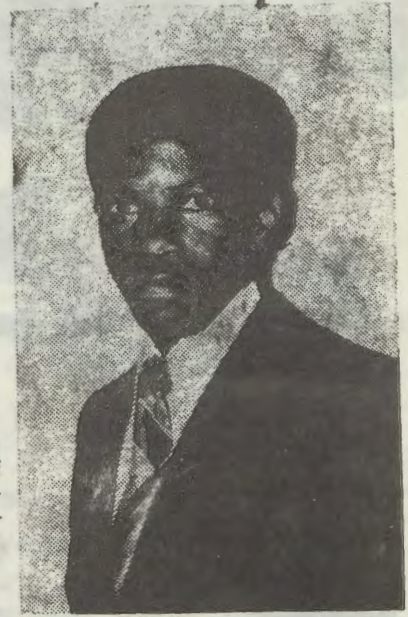
Omagongalo ga ELOK, oga gandjele ehambelelo lyago kuKalunga omolwoku uvilwa eindilo lyago kompumbwe yomvula moshilongo shika.

Ehambelelo olya li ko eti 16.5.1982 pautho lyEleloungeleki lyeti 28-30.4.1982. Pandjalulamasiku yomumo, esiku ndika olya adhika lya sheyeta nale ehambelelo.

Aakriste oyendji molupandu lwawo lwomvula ya loko noya gandja nokuli iipalutha, konima yomimvo odhindi dhuulumbu dha zi ko, oya hololelathana euvitongunga lyokuhambeleda Kalunga moshinima shika.

Omagongalo gamwe ge shi ningi nale nokuli kugo gene, manga oombilive dhoyendji odha holokele wo momebelewangeleki tadhi dhimbulukitha oshinima shokuhambeleda.

Elelongeleki ndyoka lya kala lya humbatu wo noshimpwiyu shika, oyu utha ihe omagongalo agehe muukumwe wago ge shi ninge eti 16.5. Ongunga ya fa



Dr. F. Amaambo
Efano ndika inali
thanekwa mekwata-
tathano noshipo-
piwa shika.

"Iambelwa kondhi komulungu", aawe. Okwa gundjila moshipundi she.

Ombindja ye "Wolle", ya siikila sigo omunino, otayi hokolola Ndohotola a fa kee na unene uukolele, nenge okwiigamena ko "griep" (omukoloshikisha) ndjoka pethimbo ndyoka ya langeta oyendji nokuli.

Ha dhiladhila oshindji noshomuule, shi vule shoka ta popi kokana, okwa tsikile nokuyelitha edhiladhilo lye:

"Osho tu yelele miilonga yesiku kehe mpaka, kutya monkalo yoshilongo sha tya ngeyi, nkene nani sha pumbiwa omunashilonga noguunamiti a kale ando i ihomateka nawa, opo a vule okuyakula aavu yomaludhi ogendji mboka taye mu adha."

Tala kep. 5

FUTWA

ya futwa, Eps. 56:13.

Ihe komukriste, ongunga ndjika kapu na siku nayi pu po. ElongeloKalunga lyesiku kehe okuhambeleda iilonga iinene ya Kalunga.

UUDHIGU

Ombilive ndjoka ya zi momebeleda yomumbisofi ya tumwa komagongalo okutseyitha esiku lyehambeleda, oya tumbula ngeyi kutya;

"Osho wo oshitopolwa oshitiyali [shoka tashi gwedha kehambeleda] shi kale egalikano omolwonkalo yoshilongo shetu ndjoka inaayi lunduluka natango."

Mpaka osha yela kutya otapu dhiladhilwa omukithi niita mbyoka tayi mana oomwenyo dhoshigwana.

Nomushika otatu kala koshipala she, twa tega eutho lye.



Engambeko lyoluvalo

Eimbilo lyesiku keha mooradio dhaAluudhe, engambeko lyoluvalo. Miipango yaKalunga omu na tuu nando oshimwe tashi popi engambeko lyoluvalo? Shoka ashike tashi ti:

"Valathaneni nevi mu li udhithe aantu, ne mu li pangele." 1 Mos.1:28. Noowa okwa lombwelwa kuKalunga: Valathaneni, indjipaleni." 1 Mos.9:7 1,7.

Ombibeli oya tseyo wo oshipango shomuntu kombinga yoluvulo. Omukwaniilwa gwaEgipiti, okwa li a gandja oshipango kaavalithi moshilongo she, kutya ngele tamu valitha aakiintu Aaheberi, taleni nawa okanona ngele okamati ka pondwe po. 2 Mos.1:15-20.

Aavalithi mbeyaka oya li inaa zimina oshipango shomukwaniilwa, oshoka osha tsa ondumbo nehaloutho lyOmushiti.

Omushiti okwa tseyo ashike omolwashoka ku na nale aantu ihaa mono uunona. Yamwe otaa mono kamwe, yamwe uyali sigo utatu.

Yamwe otaa mwenekwa komundohotola omoluwehamwe womalutu, ya hupithilwe okukalamwenyo kwonena.

Eeno, eigidho mooradio olyu uvika nolya taambwa koyendji moshigwana shika. Iigwana mbika oya kala ya hanagulwa po kiita, komavu nokondjala methimbo lya piti.

Owa tseyo tuu omiyalu dhaantu miilongo niilongo muuyuni?

— Mexico oku na aantu oomiliyona	67.3
— Nigeria	84.5
— Japan	117.0
— Küna	953.5
— Egipiti	41.5

Moshifo "Die Afrikaner 21.4.1982", hashi nyanyangi-dhwa kAatiligane muSuid-Afrika, omwa holoka oshipalanyolo tashi ti:

"Ekuluko lyokuvala kwAatiligane mu SA, oshipanga oshinene." Yo yene oye nale oomiliyona 23.7.

Tseyo wo nawa kutya Aanamibia ayehe otaa tengekwa ye thike pomiliyona yimwe ayike. Omolwashike ngoye okagwana okashona, wa hala okushonopala manga iigwana iinene niinankondo tayi indjipala pashipango shaKalunga?

Ngoye olye u kondjithe oshipango shaKalunga? Eimbilo lyengambeko, otali ti; Naku valwe okanona kamwe sigo uyali. Aniwa owindji ito vulu oku u longitha nawa.

Ou shi shi ngiini kutya uyali mboka otau ka kala muuyuni? Oto tseyo ngiini ngele otau ka kala iilema, iidhukudhuku, womitse omikukutu nenge tau ka ninga omapongo?

Owa dhiladhila miilongo mono mu na eindjipalo lyaantu, kamu na aantu ya longwa? Kiilongo hoka, hako taku tu zile nani ehumokomeho? Uunongo nuumakenika hako tuu zi kiilongo mbyoka yi na eindjipalo?

Omukulugwonale okwa tile: Ombiga onene omakonyo. Moluvalo olwindji oto likola mo wo oshindji, oluhodhi nenyanyu.

Adam naEva oya pewa aanona yaali; Kain naAbel. Ohaluka Abel a dhipagagwa po kuKain. Lagonene oya li ya dhiginine oshipango shaKalunga, onkene ya tsikile okumona Set naakadhona.

Oshipango shaKalunga; Valathaneni, udhitheni evi, osha sile peni nuunake? Oosa dhasho odha lilwa kulye nodha halakana uunake nomwa li oofye?

Jakob yalsak mokuvala aalumentu 12 naakadhona, osha li elongekidho lyaKalunga okulongekidha omazimo 12 galsraeli.

Ngiiika omafatululo gamwe gokungambeka otaga zi muunongononi. Ihe haashihe tashi longwa paunongononi shi li mondjila nopahalo lyaKalunga. Uunongononi otau lalakanene elongo niimaliwa nuuyamba.

Ondishi aniwa ando kwa li tashi vulika, andola aanongononi otaa gwedhele po nokuli aantu kumboka taa valwa. Pautho lyaKalunga, aantu yu udhe sigo egulu.

Kashi shi esimano nani sho pu na aantu ya tsakana miilonga ayihe? Moofalama, moombelewa, muulongi muunamapya, muupangi, muupolosi muukwiita nosho tuu?

NA ANAMBELEWA

AAPE

Ombelewa yOngonga yAakwaluuther, muumbugantu waAfrika, oya pewa aayakuli aape, peha lyaakulu mboka ya zi miilonga.

Omusamane S. Abrahams, gwokuKaapa, okwa hogololwa kEwilikongundu lya Felksa, omasiku ngaka a ninge amushanga omukuluntu gwOngonga ndjoka omimvo tadhi landula.

Okwa pingene omusita Fredrieck Bell, ngoka a laleke miilonga.

Omusamane Johannes Muayatikazi, gwokuNatal, naye okwa hogololwa koshigongi tuu shoka, a ninge amushanga gweputudho lyopakriste.

Oshigongi shompitithi yOngonga ndjoka, osha gongalele petameko lyaApilili. lilyo yoshigongi shoka mu ELOK, aasitagongalo Heikki Ausiku, Julius Mutuleni naPetrus Shipena.

Oshigongi osha kundathana wo omutengenekwamwaa-lu gwiimaliwa yomumvo 1982. Iimaliwa R88,500,00 oya ziminwa yi kale ontengenekofaneko yiilonga yOngonga ndjoka, yaFelksa.



Omusitagongalo Fredrieck C. Bell

EPULO LYOMUPAPA PAUL II

Omupapa John Paul II, okwa lombwela omuwilikingeleki gwOngeleki onkwaevaangeli paLuther muRoma, Rev. Christoph Meyer, kutya ye (omupapa) oti ipula noonkondo nkene a taambe ehiyo lyoku uvitha mOngeleki Kristus, onkwaprotelandi yaRoma.

Omumbisofi Mayer, shika okwe shi lombwelwa pethimbo lyetalelopo lye komupapa mOngeleki ya St. Theresia.

(Lwi)

AFRIKA TA KWATHWA OKUMANGULUKA

Oshikondo shouteku woiwana, onunongononi nomifyuulwakalo shOmoiwanahangano (UNESCO), otashi longekidile Afrika ehangano lokwoongela eenghundana.

Elalakano okumangulula Afrika ka endjelele alushe komakwafo aEuropa moshinima osho.

Ehangano eli la teelwa li ka hovele oilonga yalo muSeptemba neudo, otali ka dikwa muDakar, sha Senegal notali yakulwa keeshashiyona domuNigeria, Zaire, sudan naSomalia.

Oimaliwa yOshiamerika eemiliona 5.3, oya ongelelwa /osho oule weedula 3.

REAGAN OTA KANIFA VAHAPU

Omalmibililo mOvajamerika otaa kulu efiku keshe okuhelineekela elelo laReagan, omupresidende woshilingo osho. Mokulola omadiladilo aa, eepelesenda 52 doshiwana oda tya kutya inadi hafela omulandu waye wepangelo.

Eshunduko lekonomi moshilongo, osho shimwe sha eta olungongo movanhu. Inapu teelwa omushamane ou Ronald Reagan a ka shune vali koshipundi osho e shi tambulile 1981.

(Star 30/3/1982)



Omusitagongalo Elia Nghikembwa

A MANGULULWA MOSHILONGA SHOFIKOLA

Omufitaongalo Elia Nghikembwa, omulongi kofikola youfita yOngeleki kOtjimbingwe, okwa mangululwa kEpangelongeleki meyakulo olo.

Eshi osha etifwa po eshi omufita ou e na ehalo liwa okwehenifa komesho elihongo laye. Osha fa inapu monika manga ouyelele kutya ote ke lihonga peni no-naini.

OSHOONGALELE
OSHOVAVILIKINGELEKI

engambeko ..

Dha za kep. 4

Mboka ya makele engambeko lyuunona muEGIPITI, osha li uuwehame uunene koshigwana. Epangelo nO-ngeleki otayi kala ya kola nawa meindjipalo lyaantu.

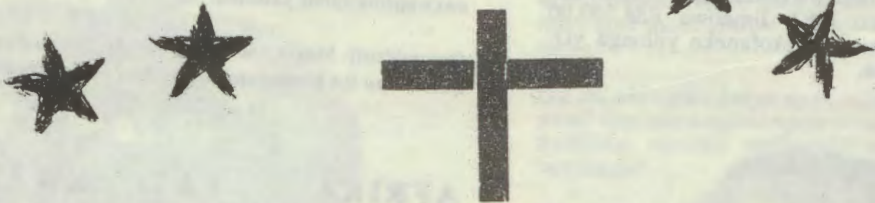
Omukulili okwa gandja omukumo kutya: Megumbo lya-Tate omu na omahala ogendji. Joh.14:1. MEhololo lyaJohannes otamu nyolwa:

Konima yaambika, ondu mono, tala ihe, ongundu onene ya nyenge okuyalulwa. Yomaapagani aye-he, mugwana ayihe noyomomalaka agehe. 7:9.

Shigwana shandje oshiholike, mpo pu thike okungambeka oluvalo, opo pu thike nani okungambeka egulu lya ka udhe.

Tate, ehalo lyoye nali gwanithwe.....

T. Kasindani Ngula



YA KA VULUKWA KUUDHIGU WAWO

Tatekulu Paulus Nandi yaShilongo, okwa hulitha oondjenda dhe kevi 23.12.1981, sho a yugwa omwenyo gwe koombotsotsotso mondjila ye okuza kOlange.

Inatu tileni omudhipagi gwolutu, ihe tu tileni Kalunga ngoka ta vulu okudhipaga omwenyo nolutu e tu undulile mekano lyaaluhe.

Laina O. Uulenga.

Meme Lahja Nd. Nd. Shikalepo, mOkapanda mO-mbalantu, okwa zimbuka muuyuni 29.11.1981 moshipangelo shaNakayale. Okwa zimbulwa konima yu-wehame wethimbo ele.

Ayihe oyomuye, notayi shuna kuye. Omuuv. 6:12; 7:1-14,14.

Ekundo kaaleshi lya zi kaakwanezimo lyanakusa; Selma A. Shondili, A. O. Shigwedha otaga landula:

Inandi zimbuka okuhambelela omolweni noku mu dhi-mbulukwa momagalikano gandje nokwiindila Kalunga kOmuwa gwetu Jesus, e mu pe ombepe yuunongo, ye a minikile omeho geni. Eimbilo 446

Titus S. Heita na
I. Taapopi

Hamushanga mukulunhu wa FLOK, omufita Petrus Shipena okwa kala omafiku avali moshooongalele shovawiliki vEengeleki eenghwal. uther moubuwantu wa Afrika.

Oshooongalele osha li muBophuthatswana, SA. petameko la Apilili. Ovawiliki konyala 10, ova li moshooongalele eshi.

Pahokoloto la yandjwa komukalelipo wa FLOK moshooongalele osho, oikundafanwa oya li kombinga youkumwe wEengeleki nokupaafana omauyelele moimima yonghala mwenyo yEengeleki edj.

Shikwao vali shoikundafanwa osha li oinakuwanifwa yEengeleki kombinga yoshilongatumo noshilonga shoudiakoni. Ombinga youteologi nayo oya kumwa yo mooshooongalele eshi.

Stefanus Shipulomalenga Mukete (Kulyata). omunangeshefa a shiivika nawa mOukwanyama, okwa fila meponokelo 6.2.1982 pofitola yaye, pOndobe.

Omusamane Mukete, weedula 56, okwa kala a shiivika unene meyakulo laye. Okwa tekela ovakulupe omeva mefimbo lolulumbu osho yo omakwafo mahapu moshiwana e a ninga nomOengeleki.

Oshikulo sha konekwa kutya osha shuuka kuAngola, nde tashi shondolele poixwa yavo, osha xulifa po ngaha eyakulo laye. Nasho otaku tiwa osha fya.

Omuunguli mukulu kOlange, Mukete, okwa fiya ko omwalikadi waye nounona 46.

OMUKWETU

Oye oshifo shOengeleki Onkwaevangeli pal uther vomOwa-mbokavango.

Ohashi nyanyangidhwa mOniipa.

Omukuluntu gwoshifo omumbisofi dr. Kleopas Dumem.

Amushanga gwoshifo omusita Sebulon Ekandjo

Ondando yoshifo komunyo muAfrika alihe R2,60. Kombanda yomafuta R5, 00, nondhila R6, 24.

Ondando nomambestelo agehe naga tumwe kOmukwetu. Oniipa, P.Bag 2013, Ondangwa, 9000

EV. LUTHER OWAMBOKAVANGO CHURCH PRESS
PRIVATE BAG 2013, ONDANGWA 9000 SWA NAMIBIA