

# OMUKWETU

No. 23-24

Registered at the GPO as a Newspaper

24c



Oshiwana hashi endaenda momulaulu osha mona ouyelele, naava hava kala medu lomudile wefyo, ouyelele, otau va minikfle. Osheshi ondjoko ei ye va djuupalela noshimwati shombuda yavo nodibo yomuhepeki wavo, oto i teyaula po ngaashi sha ningwa mefiku laMidian.

Osheshi okaana ke tu dalelwa, Omona omumati e tu yandjelwa nepangelo oli li komapepe aye, ndee ta jfana: Omukwafi - Mupukululi, Kalunga Omunaenghono, Tate yaalushe, Ohamba yombili.

Epangelo laye tali ningi linene nombili itai xulu po, okolukalwapangelo laDavid nomouhamba waye, opo Ye e u kanghameke noku u pameka netokolo nouyuuki okefiku eli nofiyo alushe.

Jes.9:1-6

## Osho twe shi mono shono sha li sha tonyenwa mo

Etumwalaka lyOmukwetu lyaKris-mesa yomumvo 1979 kaaleshi ye, okwa li mwa tumbulwa iinima 3 tayi landula:

a) Kaku na ngoka a tseya shoka she edhililwa momumvo 1979.

b) Ongeleka otayi ka tsikila oku-thindikila evaangeli koombinga noombinga.

c) Ongeleka otayi ka kala yi na hoka ya gama; tayi pangula uukwaa-nuuyuku nokulonga oshilonga sho-pauprofeti.

Moshitsa shotango, mboka twa pe-wa ohenda yokulyata mo 1979, o-sho shili twe ki itsa mummyoka ya li ya edhililwa momumvo. Otwa kundu iipyu niitalala.

Osho twa lili oondila dhaRakkel gwomuRama, ndhoka dhaa shi ku-mwenekwa omolwoomwenyo nomaliko getu. Etilo nehaluko moomwe-nyo dhoyendji, olya koko esiku ke-he. Onkalo yoshilongo oya tsikile okunayipala shi vule shito. Omate-gameno agehe gomalunduluko go-pambili, oga pwine mepathimo lye-ho ngaashi omume moonte dheta-ngo.

Twe shi mono shili shono sha li sha gonyenwa mo mompunda yomumvo 1979.

Ihe shono sha li sha tegamenwa okuningwa kOngeleka, patumwala-ka lyomumvo ngoka, omuntu oto zimine kutya osha ningwa. Evaange-li olya thindikilwa koongundu ndhoka dha lilithwa konkalo. Ehekeleko olya ningwa netegameno olya tu-ngwa mokuulika KRISTUS, ngoka e li etegameno lyiigwana ayihe, ngaa-shi shika shetu wo.

Otatu zimine wo kutya nomushika kasha li oshinima oshipu. Mpaka naampeyaka omalongelokalunga o-ga yonagulwa. Nenge aavithi oyi imbwa okutsakanitha oshinakugwa-nithwa shawo.

Ihe mokati koothina, elaka lyevaa-ngeli olya uvithwa nedhimopo lyoo-ndjo oyi igidhilwa aaimatuli, onge-le kumboka ya kala muupongekwa nenge moondholongo nokuli.

Ongeleka oya pewa uusama wayo, ihe ya kala ngaa ewi lyaamboka ya mutikwa. Oya kala tayi toola omi-dhimba yo tayi ulike mpoka tapu zi oshiponga tashi eta eso, Egalikano olya kala tali ningwa nonatango ta-li tsikile opo ayehe ye na oonko-ndo miinima yevi lyetu ye dhi lo-ngithe pahalo nopauyuuki waKalunga.

Mehulithomumvo lya tya ngeyi, no-mokweengena popepi noshituthi shehupitho kuuyuni, Okrismesa, Omukwetu ke na we elaka lilwe kaa-leshi ye, kaali shi ashike ndyoka lya tumbulwa olwindji kutya:

Omutse ngele otagu kala natango kumwe nothingo omumvo 1980, o-shilonga shOngeleka otashi kala ngaa okufala evaangeli kaantu yayo monkalo kehe ye li mo. Naantu ya-yo omwa dhiladhililwa omuntu ke-he momuthika gwe; aanene nenge aashona, aayamba nenge aathigo-na, aaleli nenge aalelwa, aapika ne-nge aamangululwa, Aaluudhe ne-nge Aatiligane.

Noshilonga shopauprofeti otashi ka-la osho shoka okulondodha kutya mpoka pwaa na eitedhululo, eso, ehaluko, nomalimbililo otayi kala oshinima shesiku kehe.

Aaleshi naa yambekelwe ano Okris-mesa nomumvo ngoka hagu kala gwa siikilwa gu ye etele elago no-mbili.

Mpoka kaapu na euvito lyoondjo, opu na omayagumo gomatandangole guuyuni ngoka gaa na omukanka gwashili. Edhina Jesus olyo etegameno lyuuyuni, olyo elu-wa lyongula kaandunduwiila taa ugadhala momilema dhuulunde.

Edhina Jesus olyo ekulilo nesindano ko-munandjo. Olyo emangululo.

Heikkie Tashiya Ngipandulua

## OWE SHI UDA TUU

Ewilikongudu loomeme meongalo Engela, mewiliko lameme Wilhelmina Amweelo, ova kundafana nova ninga epulo kombe-lewa yOshitaingeleka nhumbi pe shi oku-ningwa sha kombinga yombila yomusha-shwa wotete muELOK, Eva-Maria Na-nguloshi oyo i li momawendo aNgela.

Oshiti shomushiyakano kombila osha wa ko netutumbo lombila otali halakana po.

Ewilikongudu linya ola ninga efaneko kutya pa kongwe emanyadimbulukifo lomushashwa wotete. Oshinima eshi onde shi twalele moshooongalele shovanyasha vaELOK osho sha li mEngela 1978; ndele diva ova nyamukula R61,65.

Ehepu eli onde li twalele vali monhanda yoomeme vOshitaingeleka shaUkwanya-ma omo mwa dja R23,20. Osha li natango 1978. Neudo mbela sha ya okawi nokawi. Ovatshandi kOuninginino ova uluka ko R24,00 mewiliko lameme Lilja Itenge.

Nokonima yokafimbo, Ovanawa va tuma vali R10,00 mewiliko lameme Elizabet Shikongo. Ohatu mu pandula vakwee. Paife ohatu pula nee okudja opo kutya ove owe shi uda tuu shopulanda ei yoo-meme?

Eongelo lavo paife R118,85. Oomeme, oo-tate, ovanyasha, ounona, ovakulupe nosho tuu, oto ningi po shike? Ehokololo lomushashwa ou, hau li shi ngoo?

Maria haye winya okakadona kotete ka ile novahongi votete kuSoomi, ndele ta ka shashelwa ko. Hau shii nga kutya osho ka ka hambolwa komukalele mukwao nde tava kala mEngela omo ka fila nombila yaye fiyo onena hai li ngaa mEngela.

Ndishi mafiku otu na omudo wovasha-shwa votete muELOK, 1883, ohatu ningeni po nee shike? Okasende, ousende 10, okaranda nosho tuu aishe ohatu tambula.

Ou nee wa mona po sha, tuma nee ko-ndjukifi ei.

Omupashukilishitaingeleka,  
Engela,

Posbus 49, Oshikango,

9276

Rev. F. Shikomba



## Okrismesa oyo evalo lyOmukulili

Omunona ta ka valwa. edhina lye li na okukala Jesus. Uukwatya we niilonga ye ayihe oya kwatathana nedhina ndika lye. Oye Omukulili, e ya okuhupitha aantu moondjo dhawo.

Muuyuni ando inamu kala oondjo, ando inamu ya uusiku waKrismesa. Andola kamwa li mu na oondjo, ando inaku pumbi-wa Omukulili. Onkene evaangeli lyaKris-mesa olyo evaangeli kaanandjo naayehe mboka ya hala okuhempulula kutya oyo aanandjo, taa mono uuwanawa neadhimo lyaKrismesa.

# “Ombete yokuvalelwa etemba lyiimuna, ombete yuuwehamwe omushigakano”

“Ngoka e na oohema mbali, na pe ngoka e li owala naangoka e na iikulya osho tuu na ninge.” Aateloni (aafendelithi) mboka ye ya keshasho oya ti kuye: “Omuhongi, tse otu na okuninga shike?” Johannes okwe ya yamukula: “Inamu futitha mbyoka inaamu yi lombwelwa.” —

Aakwiita oye mu pula wo ya ti: “Tse otu na okuninga shike?” Johannes okwe ya lombwele: “Inamu thiminika aantu, ne inamu ya yuga, gwaneni nondjambi yeni.” Luk.3:12-14

Oohapu dheuvitho lyaJohannes odho oondhigu dho otadhi vulu okuyitha aantu ondapo pelongelokalunga, ngele omuntu te dhi uvitha mOngeleka methimbo lyonena. Ihe aantu yomethimbo ndiyaka, ina ya ya nando ontuku, oya kala puJohannes noku mu pula ashike: “Natu ninge shike?”

Pamadhiladhilo ngaka, Aajuda oya dhiladhila kutya yo aantu aayuuki mwaashihe. Oya kala nomatompelo ngoka kutya oyo aantu aawanawa momoho gaKalunga. Ihe Johannes sho e ya, okwe ya kutha moomposi nokuhanagula po oondjodhi dhawo ndhoka dha puka.

Oshilalakanenwa shotango kuJohannes osha li onkalathano. Aayamba ye na okukwatha oohepele. Tse otwa li ngiika twa tegelela Johannes a tumbule iinima mbyoka tatu dhiladhila kutya oyo yi na oshilongalashinene ngaashi:

Elongelokalunga, omagalikano, onkalathano yomoondjokana nenge oongundumbimbeli dhi dhigininwe. Ihe kuJohannes iilongayakulo oya li ya simana unene.

Kalunga itu uvu nawa ngele aantu mboka ye na ashike, aayamba, itaa kwatha mboka yaa na sha, aathigona.

Shika hasho ando oshilalakanenwa shi na okusimana nomethimbo lyonena? Tse mboka tu li methimbo omuyamba ta ningi omuyambelela nomuthigona ta thigonapala.

Dhiladhila muAmerika lyuumbugantu miilando yaantu oomiliyona noomiliyona dhi li momahala ga nigila. MuIndia aantu oomiliyona taa endagula nondjala momapandaanda yo taa lala shaampoka, oshoka omagumbo inaga gwana.

Onkalo ya tya ngeyi ya nkundipala, oto yi mono wo muSoweto, S. Afrika, nomuKatutura muNamibia nomomahala wo ogendji muuyuni moka aantu ye li taa mono shili omaudhigu.

Oshilalakanenwa sheuvitho lyaJohannes itashi opalele ando pethimbo lyaKrisimesa moka aantu omayovi nomayovi taa mbo-mbolokele koositola okulanda iipumbiwa yawo yoshituthi shaKrisimesa? Tse tatu dhimbwa kutya mpaka naampeyaka opu

na aantu ya tegelela netegameno iilongahole yetu tu ya ningile.

Omuntu oto limbililwa, oshoka ku shi shi shili ngele Jesus ota nyanyukilwa tuu iilonga nonkalathano yetu. Jesus mwene okwa li omuthigona, omatompelo ogo ngoka kutya ombete mpoka a lala oshikando shotango, oya li etemba lyokulila iimuna nombete mpoka a sile omushigakano.

Jesus okwa li e na iimaliwa, ihe mbika oya li kuJudas. Mokukalamwenyo kwe akuhe, okwi igameke aluhe kombinga yaathigona, yaathiminikwa, yaalunde, yiilema noyaatidhaganwi.

Mokukalamwenyo kwetu aantu, katu hole

## Uulunde neitaalo

Ongeleka yaKristus muuyuni oyi li mekondjo enene sho pe na oonkondo mbali dha taalelathana. Omuntu opo a ninge omwii-taali nomunangeleka, oku na okuhogolola pokati kuulunde neitaalo.

Ihe olwindji osha fa tashi holola kutya, iitya mbika iyali oya fa yaa shiwiki naa-maa shoka tayi ti. Onke pomathimbo gamwe to adha omuntu ta luku oshinima shontumba kutya uulunde, sho hasho.

Uulunde otatu vulu wu fatululwe kutya owo okwaana ekwatathano pokati komuntu naKalunga. Ashihe shoka tashi yono onkalo yomuntu ombwanawa koshipala shaKalunga, osho uulunde.

1. Uulunde owo onkalo yaa na elandulathano. Onkalo ndjoka omuntu a hala a kale pamahalo ge mwene, ihe hangaashi Kalunga a hala a kale. Uulunde owo onkambadhala yomuntu okwiikaleka po pamautho gopantu.

Uulunde owo okweethela oonkondo dhi-lwe mungame, dhi pangele ndje, peha lyoonkondo dhaKalunga. Uulunde owo eso.

Kalunga oku na tango oku ku kutha omutenge gwoondjo, opo ihe to ningi oshilongitho miikaha ye. Oto ningi ihe oshilongitho shoka ta vulu okwaaludhitha noku-hupithitha nasho yalwe.

Eitaalo olyo oonkondo tadhi hupitha. Olyo okutseya nokutaamba iilonga yaKalunga yehupitho mOmwana.

S.V.V.Nambala



nando oohapu dha fa ndhika. Ohatu mono shili uudhigu muuyuni mbuka nokukala nomukumo okukondjitha uukwanuuyuki, okutheta po omahodhi agehe pomoho gaantu mboka taa hepekwa, taa thiminkwa, taa tidhagulwa.

Nenge ngele tatu mono oimiliyona dhaantu taa si ondjala, ohatu pendulilwa wo ngaa omapulo ngoka kutya Kalunga ota hokwa tuu shili iilonga mbika tatu longo? Omaudhigu ngaka hago ando Kalunga ta popi kutya egeelo otali ka holoka shili esiku lyontumba?

(Omukuni/Desemba 1979)



## Okwa dalwa ngaashi a xunganekwa

Ndele ame ohandi ka tula outondanhu pokati koye nomwalikadi, koludalo loye nokoludalo laye. Ye ota ka nya-nyaula omutwe woye, ndele ove to ke mu twa moshifinwa — Gen.3:15.

Omwene ote mu pe edidiliko, okakadona otaka ningi kafimba, ndee taka dala omona okamati, ndee te ka luku Immanuel — Jes.7:14.

Ndele ove Betlehem Euftrat, ove munini mokati komapata aJuda, Muove tamu ka dja ou ta ka ninga omupangeli mulraeli. Ehovelo laye olomou-shitonale, heeno olomoukwaalushe — Mik.5:1.

EWANIFO: Omwengeli okwa tya ku-Maria; Ino tila, osheshi ove wa mona onghenda kuKalunga. Tala, oto ningi omufimba nde to dala okamati. Ka luka edina lake Jesus — Luk.1:30-31.

# Oongunga dhetu otatu dhi futu ngiini?

(Osho Aina naLeonard ya kundathana.)

**Nani moshipundi shevululuko shaa tuu wa kuutumba mo e to tala konima komimvo adhihe dha pita, shoka tashi penduka tangotango momwenyo gwoye osho euvito lyoongunga.**

Petameko lyomumvo nguka 1979, otwa pewa iipundi yevululuko, moshituthi oshiwana, twe shi ningilwa kongeleka nokookuume mboka ya li ya gongala pamwe natse eti 31 lyaMaalitsa, mOngwediva. Otwa li twa nyanyukilwa iipopilwa ayihe ya li moshituthi shiyaka.

Otwa li twa nyanyukilwa wo omagano nomakundo ngoka ga gandjwa kookuume yi ili noyi ili nokumboka mwa li mwa nyengwa okuthika kOngwediva ihe mwe tu tumine omakundo otatu mu pandula. Nane yegongalo lyokuRupara otatu pandula ekundo lyeni ewanawa nomagano geni.

Otwa li twa nyanyukilwa iipundi mbyoka yevululuko, uunene twa nyanyukilwa oshikalimo shetumbulo ndyoka: —..**moshipundi shevululuko.**— Oshu uka shili okunyanyukilwa oshikalimo shetumbulo ndyoka, oshoka otashi ti:

Kuutumbeni ihe mu vululukwe nombili. Etheni iimpwiyu ayihe mbyoka mwa kala hamu ipyakidhile nayo miilongayakulo yOngeleka noshigwana. Etheni omainyengo geulumo okuuka hwiya naa-hwiya.

Etheni okulonga meendelelo shika naashiyaka, opo u ye ishewe koshikwawo. Etheni ayihe mbyoka. Kuutumbeni nombili. Nongele tamu inyenge, inyengeni ashike nombili mwaa na eulumo lyasha. Vululukweni ihe.

O! Oohapu oombwanawalela notwe dhi pumbwa shili. lyaloo! Tangi kumbyoka ayihe.

Ihe oomwedhi adhihe ndhika twa kala moshipundi shevululuko otwa mono ompito yokutaalela konima hoka twa zeni nane, notwa dhiladhila nokudhimbukwa omauwanawa agehegehe ngeyaka mwa li hamu tu ningile. Shoka ihe sha penduka moomwenyo dhetu, osho euvito lyoongunga dhoku mu pandula amuhemuhe, noshu she tu nyolilwa omatumbulo ngaka mOmukwetu.

Ando pwa li pu na ethimbo nehala lya gwana okutumbula ando omadhina geni amuhemuhe. Ihe sho mu li po omayovi nomayovi otwa tokola okutumbula pafupi ashike kutya:

**Otatu pandula one okuume amuhemuhe mu ELOK nomoongeleka dhilwe, muNamibia nopondje yaNamibia. Tatu mu pa-**

**ndula amuhemuhe molwomauwanawa agehe mwa kala hamu ge tu ningile. Uunene omagalikaneno geni mwa kala hamu tu galikanene, otatu ga pandula shili.** Okukala kwetu miilongayakulo sigo opehulilo osha zile ngaa shili meithano lyaKalunga nomesilohenda lyaKalunga nomegameno lyaKalunga; ihe osha vulika wo molwomayambidhidho geni nomagalikaneno geni. Onkee tu uvite shili ongunga yoku mu pandula.

— Taambeni ano omapandulo getu. Tangi wo sho mwe tu dhimina po mpoka tse twa li twa nyengwa okuninga ngashi sha li sha tegelelwa. Notatu pandula sho tu shi shi otamu tsikile natango oku tu galikanena.

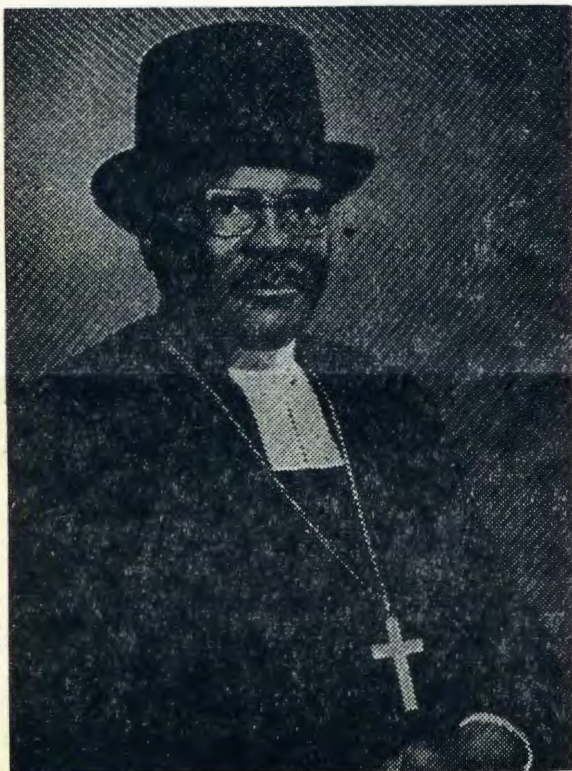
**Otatu mu halele amuhe Okrimesa ya yambekwa nOmumvo Omupe gwombili.** Ookuume keni,

Aina naLeonard Auala



Mefano ndika kolulyo omumbisofi a thikama nakuku Aina, pooha dhiipundi mbyoka ya pewa. Mefano ndyoka kolumoho omusita Ismael Nhinda nomusamane Olle Eriksson. Ayehe otaa imbi eimbilo lyehambelelo pamwe naashituthi.

1. Mpaka ope nomusitagongalo Leonard Auala Kuku Vilho Loide naaholikehongu ye mwi ihepekela, Shilonga e shi uvanekelwa omOniipa he shi tsakanithile, Uulongi-sitagongalo nuatonateli-wilikingeleka ngashi wo uumbisofi, Kuku Aina oku li Aluhe gwe, ponto nomoshipundivululuko.
2. Onde mu tseya omauvavula muumatyona wandje, Nda yuulukwa nondi impwiyike ndi mu tse keho, Momumvo gwomilongo-ne-nahamano mosikola yaamati, Olwotango mohango yaNelago naSaara Kamonde, MOlukonda lwaNakambalekanene nde mu ti meho, Nde mu dhakamen' omeho nde mu hokwa.
3. Inandi pul' omuntu nguka olye, Muthika-shipapalutu nuundjangele ongoshitenya mOndonga, Mupopyo nomainyengo kaga fele goshitenya, Puye oondjembo noongunduthindikili kadhi po, Ondi itompo nguka ke shi omuntu gwanathangwa, Miinima yopakalunga e na mo sha, osho ndi ipopile.
4. Nangolo e li holelele, inandi uva tali tumbulwa, Mboloto olyo twe mu luka tse aakuwiki yaNiipa, E yi fatulula ongo ta longo Okatekisa, Tse aakuwiki twi inyanyudhile ko noku mu hokwa, Miilongwa yopakalunga twa kala mo hatwi imemeha, Ando twa vulu sha ando twe mu Ndohotoleke nale muukalunga.



Omumbisofi Dr. L. Auala

5. Muusita wandje onde mu tseya omulondi gwokambasikela,  
Nokokapakapaka okwa nyontomanene ko' masiku gamwe,  
E tu hingile' oshihauto inaa konakonwa,  
Magano e ga shitwa nongongi onde mu mwene te yi ts' oonyala,  
Komushiwa oha nyanda ko ta komona komutse,  
Ando e shi ninge oto ti shila na nyandulule ko,
6. Muutonateli ohii helagula mo owala,  
Muuwilikingeleka ohii nyopitamo okathimbo,  
Muumbisofi omo ha lolokele nota kulupile mo,  
Moka omuntu oto mu etel' ohenda nolukeno,  
Shipundi shevululuko ohe shi pulagula olwindji,  
Pamba gwetu sho e tu gama ihe shi mu pitikile ohaluka.
7. Omumbisofi gwetu ogwoomvul' omilongoheyali,  
Oomwedhi hamano nomasiku gahamano konena,  
PaMbimbeli masiku ke shi we gwoputse,  
Pauvaneko otashi vulika dhi lelepekwe kuPamba,  
Otwa indila notwa halelela dhi vul' omilongohetatu,  
Etameko lyegwedhelepo otu li na moshituthi shika.
8. POniipa opwiil' omuzaleki gwomaguyo nomugandjindhimbo,  
Nangame wo a pele ndj' uulenga nde u sheshwa,  
A ningi ndje ndi kale onga Namunganga gwomamenkulo,  
Shigegeti mothingo ongiiyolitha a kwilike ndje,  
Osheendo shokuya kiimenkulilo nde shi kwatele komeho,  
Mpadhi dha nyengw' okukatuka tu thike poshimenkulilo.
9. Musholondondo gu uka pongeleka yaNiipa,  
Mafano ga li po ongomvula tayi kenya,  
Muzaleki gwomaguyo nomugandjindhimbo okonima yosheendo e li,  
Ngathithi lyAa ELOK lye tu ningil' omukala,  
Gwandjimbo-gwameho ta tal' iikumitha,  
Ya longekidhwa kuNampongo gwetu e tu hole.
10. Okalyenge taka taima mothingo kake shi uulenga,  
Mushigakano gwako kagu shi eopalo lyomutalelo,  
Inandi tseya ondjundo yako mpoka yi thike,  
Onkene tuu nda yeelwa ndjundo yako hayo yondhimbo,  
Itashi kumitha omumbisofi ngele a loloka,  
Nando kolutu na kale a gundjupala.
11. Onde mu mwene sho a pushagana moshipala,  
Zigudhe olya zile komutse sigo okoompadhi,  
Mondhimbo yuumbisofi sho ndi ipampaleke mo,  
Nde shi koneke mo kaya li ompu,  
Uudhigu wayo nani ondjundo yokulolola,  
Opwa pumbiwa omukwathi e mu yakule mo,
12. Shipewa she e shi longo nuudhiginini,  
Ndunge dhe nehalo lye olya kala iimwati kuye,  
Shilonga naakwathi ye ye mu kopagula,  
Peha lyokugeya a tula po iiyolitha nomashendjo,  
Yamwe yomaanona ye mu thengathenga mepunda,  
Uukali e u na kau shi womeilongo-shila okwe u shitwa.
13. Omumbisofi Auala itandi ku ehameke nokatewo ke ku shewa,  
Ndohotola Nangolo wa pewa ku ELOK oshipundivululuko,  
Kuku Aina onkene e li ponto yoye moshipundi she mu shewa  
Vululuko mwe li pumbwa omwe li pewa nena pambelewa,  
Li kale ompito yokugalikana nokugalikanena,  
Yambeko nelago li mbolokotele mAa ELOK.
14. Kangundulongekidho ka pula ndje' fatululo,  
Pensione ya tsimina aapenzulwa,  
Yalwe ohaa penzulwa yo yaa nompito moshipundi,  
Fatululo lyoshitya omembo lyiitya li li,  
Okufuta omuntu a tsakanitha iilonga ye,  
A lye ihe oshikwiila she nevululuko.
15. Omumbisofi naKuku Aina shi koneka,  
Iilonga yokukuna noondima dhepya,  
Itadhi kala aluhe, otadhi hulupo,  
Otaku ya eteyo, lyokunyanyukwa,  
Uuyamba womegulu tatu ke u taambithwa.  
Nampongo ite mu dhimbwa nomuukulupe.

(ku Rev. M. Ngipandulua



## Namibia naEtiopia ga galikanenwe

Eindilo lyowina olya tumwa kuAmushangandjayi gwOngongahangano yAakwaluther (LWF), dr. Carl Mau, Jr, e li tumina kOongeleka adhihe 99 dhi li iilyo mehanganu ndyoka.

Meindilo amushanga okwa kumagidha omasiku 20-25 gaJanuali 1980 ga yapuliwe egalikano omolwoongeleka dhomuEtiopia naNamibia.

Mobilive yehiyo, dr. Mau, okwa tumbula omahepeko kiilyongeleka muEtiopia moka omagongalo gamwe ga patwa kepangelo naAmushangandjayi gwOngoleka yaMekane Yesu, Rev. Gudina Tumsa, onkene a yakelwe po ina mangululwa natango.

Kombinga yaNamibia, ombilive oya kumagidha Oongeleka miilongo niilongo dhi hedhe komapangelo gadho noku ga guna, oyo pu tsakanithwe omathaneko ga VVO omolwemanguluko lyoshilongo shika.

# MuEuropa otaa pula unene konkalo yoshilongo

"Omapulo ogendji muEuropa kombinga yaNamibia, oga pamba unene konkalo yoshilongo nkene yi li po," osho omumbisofi gwOngeleka ya ELOK, Dr. Kleopas Dumeni a tumbula mokugaluka molweendo lwe lwomasiku ogendji.

Okuza petameko lyaKotoba, omumbisofi okwa talele po iilongo oyindji yaEuropa. Okwa kala miigongi nomoonkundathana pamwe naawiliki yongeleka dhilwe.

"Shaa mpoka to yi, aantu itaye ku pula kiilonga yOngeleka ashike, ihe unene oya

hala okuuva nkene onkalo yaNamibia yi li po, nomuntu ito shi pe uusama, oshoka ashike osha guma omuntu ngoka kee shi okutopolwa," osho a ti ngo te ya pandulile euvoko lyawo okusimaneka omuntu aguhe.

Omuwilikingeleka okwa talele po iilongo ngaashi Sweden, Denmark, Ndowishiland lyuuninginino naSoomi okutumbula ko yimwe ayike. MuSoomi okwa popitha miigongi yi ili noyi ili momagongalo. Okwa tsakanene naanashilonga oyendji ya yakula mpaka.

"Okoko ye li ngele mboka ya longo nale mpaka, ye li mefudho nenge mboka ya tindilwa oovisa," osho a hokolola.

Okwa ti kutya omakundo oga za wo kwaamboka kaaye shi iipala yetu, ihe omwenyo dhawo odhi li pamwe natse.

"Aantu pondje, otaa pulakene nohokwe shono twe shi pumbwa noya hala okukwatha", osho omuwilikingeleka a yelitha.

Omukuluntutumi Alpo Hukka, omumbisofi omukuluntu Mikko Juva peha lyEwikongundu lyEhanganotumo nOngeleka ayihe onkwaevangeli paLuther muSoomi oya kunda Ongeleka.

Omakundo omakwawo oga zi komumbisofi Erkki Kansanaho ngoka a yapulile

omumbisofi Dumeni moshilonga, omusita Matti Kopponen nayalwe oyendji. Osha yela kutya uukumwe wetu nayo otau koko ashike.

Tate Dumeni okwa popi wo sha kepapudhuko ndyoka tali inyenge ngashingeyi muSoomi.

"Ando natse wo tu pewe omagano ga tya ngaaka mOngeleka yetu," osho a tumbula molupe lwa nika egalikano. Okwa gwedha ko ishewe nkene muSoomi ombepo yetumo ya hwama. Aagundjuka oye li mosikola yetumo noye na oshimpwiyu oshinene naatumwa yawo mboka ye li kiilongo niilongo nohaye ya galikanene.

Omuwilikingeleka gwa ELOK, okwa kala wo moshituthi sheyapulo lyaasita mboka mokati kawo mwa li aateologi aakiintu nayo wo ya yambekelwa moshilonga. Oshituthi osha ningilwa mongeleka yomumbisofi gwoshitayingeleka shaHelsinki, Aimo Nikolainen.

Naye wo okwa kundile po unene Ongeleka ndjika nomutima aguhe. ELOK, na taambe ano omakundo ge ge mu zile kookuume muuyuni

## A tindilwa e ye mo moshilongo

**Omukuluntu gwoshikondo sheyakulo lyaantu muuyuni shOngeleka onkwaevangeli paLuther muAmerika, Dr. Edward May, okwa tindilwa oviiisa, ombapila yepitikilo lyokuya muNamibia.**

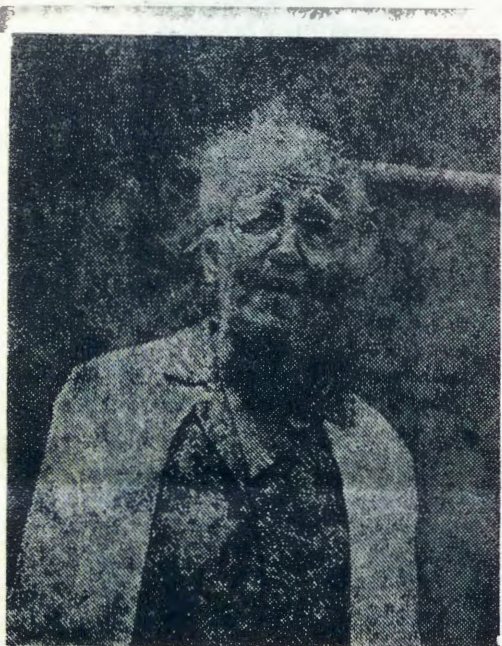
Dr. May, okwa li a hiywa kOngeleka onkwaevangeli paLuther yomUushimba (ELK), opo a kale moshigongingeleka mOtjimbingwe omasiku ga piti.

Sho a li a pewa onkundana ndjoka, omusamane May, okwa tumbula nokukomenda a ti:

"Shika osho okapambu kamwe okakwawo okashona kuumbangi kutya Epangelo lya S. Afrika, inali lunduluka nando. S. Afrika ota tila iinima yomuNamibia yi talwe nawa nokutongololwa kwaangoka ta pulakene nawa neitulomo e ta gandja ehokololo lya yela lyiinima yi li ngaashi yi li."

Omuwilikingeleka May, okwa ti wo kutya otashi vulika okutindilwa kwe eziminino lyomoshilongo shaNamibia shi na sha nokomenda yometalelopo lya Dr. Paul Wee, moshilongo shoka.

Oshikando shika oshititatu, Dr. May sho inaa pitikilwa okutalela po Namibia



Kuku Laina Kivelâ

## Okakalata kaKrisimesa molupe lwombilive

**Ekundo lyaKrisimesa**

Ombimbek otayi tu lombwele momahala ogendji: "Kaloni mu na omukumo." Helundo ndika onda hala oku mu halela Okrisimesa ombwanawa nOmumvo Omupe gu na eyambeko lyaKalunga.

Ne oolwume, onda nyengwa oku mu tumina uhalata noombilive koombinga noombinga mu li muNamibia, onke ondi na omukumo oku mu tumina ehundo ndika moshifo shOmukwetu.

Mombepo otandi dhana Okrisimesa pamwe nane. Mokati komaudhigu omanene wogendji, oshapi dhaKalunga nadhi mu kolebe dho dhi mu pe enyanyu lyashili lyaKrisimesa.

"Omwa valelwa Omukulik."

Laina Kivela



# Ayehe otandi ya halele Omumvo gwesilohenda lyOmuwa - Dumeni

Jes.61:2

## ETUMWALAKA LYOMUMBISOFI KONGELEKA

Otatu thigi po omumvo 1979 tu taambe omumvo 1980. Omimvo dha piti otwe dhi pelwe kesi-lohenda lyOmuwa. Otwi itaala wo kutya otatu ka pewa nomomumvo tagu ya omumvo gwesilohenda lyOmuwa. Otwa kala noombinga adhihe mbali:

1. Otwa kala aana yaKalunga tu li momaudhigu ogendji. Omadhipago, omasoge etwa kiiponga, nokuuvu. Osho ngaaka yamwe ya thiki momumvo gweligolo megulu.

Aantu ya halakana nuuyuni, yamwe ye li moonholongo, mondjala, momahepeko gopendji. Opu na mboka ya etha ukriste, yamwe aapagani natango. Opu na mboka inaa mona iilonga. Omaudhigu gopankalathano, oondjahi, nomautondwe oga kala mokati kaantu yaKalunga 1979.

2. Patiyali otwa kala wo aana yaKalunga momumvo gwesilohenda lyOmuwa. Otwa kala naayakuli yetu yi ili noyi ili, taa dhiginine iilongayakulo methimbo edhigu. Otwa kala momalongelokalunga getu nomiigongi yopakriste ya manguluka, nando tu shi shi opu na mpoka twa etelwa omaudhigu kethimbo ndika.

Esilohenda olye shi ningi, otwa kala noongundu oonene dhomagalikano, aantu muudhigu ya kala ya hwama muukriste. Opwa kala aana yaKalunga taa kwathathana noonkondo monkalo adhihe.

lituthi ayihe ya holoka miigwana yetu, ongele yomaudhigu nenge yomanyanyu. Otwa li shili tu na omumvo gwesilohenda lyOmuwa, oshoka aana yaKalunga oya kala pamwe nokuyakulathana nokukwathathana pambepo nopalutu.

Shika otandi shi pandulile Kalunga ketu, nando omumvo gwa kala ngaashi twa ende mo, otandi shi hempulula ogwo "Omumvo gwesilohenda lyOmuwa."

Ayehe otandi ya halele omumvo 1980 gu kale gwesilohenda lyOmuwa. Ondu uvite ewi lyetumo, ewi lyOmuwa tali ti:

"Indeni .... 1980, mu ka longe aantu okudhiginina ayihe." Mat.28:18,19 Oku ka yakula aantu nuudhiginini pamaithano getu, okufala evaangeli kaantu ayehe nokomuntu aguhe.

Okudhiginina okulonga oshigwana ukriste nokudhiginina iilonga ayihe moshigwana. Okutuga ombili noku yi popila, opo yi kale moomwenyo nomonkalomwenyo yesiku kehe.

Unene ukriste mboka auke tau vulu okukaleka po ombili, ohole, oshili, uuyuki nuukumwe nokukeelela omadhipago netiko lyombinzi, u longwe shili, nuudhiginini maantu ayehe aanona sigo aakulupe. Nau dhigininwe kuayehe.

Mokudhiginina oohapu dhaKalunga noku dhi longa nuudhiginini, nena otatu kala tu na omumvo gweligolo, ongele muuyuni mbuka nenge mboka taa ka hulila 1980, otaa ka ya momumvo omupe gwesilohenda lyOmuwa megulu.

Otandi mu halele amuhe omumvo gwesilohenda lyOmuwa, tashi ti: Oshigwana tashi talalekwa momaudhigu:

- Oohepele ayehe palutu nopalutuu taa kwathwa.
- Aavu ayehe pambepo nopalutu taa aluka.
- Oonakweedhililwa moonholongo adhihe taa ethiwa, taa ethiwa.
- Oonakukala muupika woludhi kehe taa mangululwa.
- Aaposi ayehe wo yopambepo taa monoko.

■ Evaangeli nuukriste tau longwa nuudhiginini. Omumvo moka yamwe taa ka tya:

"Mwenyo gwandje otagu nyanyukilwa pombanda Kalunga kandje, oshoka oye a zaleke ndje onguwo yehupitho." Jes.61:10

Omumvo moka oshilongo tashi manguluka komukalo gwombili, nopauyuuki. Oshilonga sheuvitho lyevaangeli tashi longwa memanguluko. Omahepeko nomadhipagathano taga hulu. Aanamibia ayehe ya galukile kegumbo nombili.

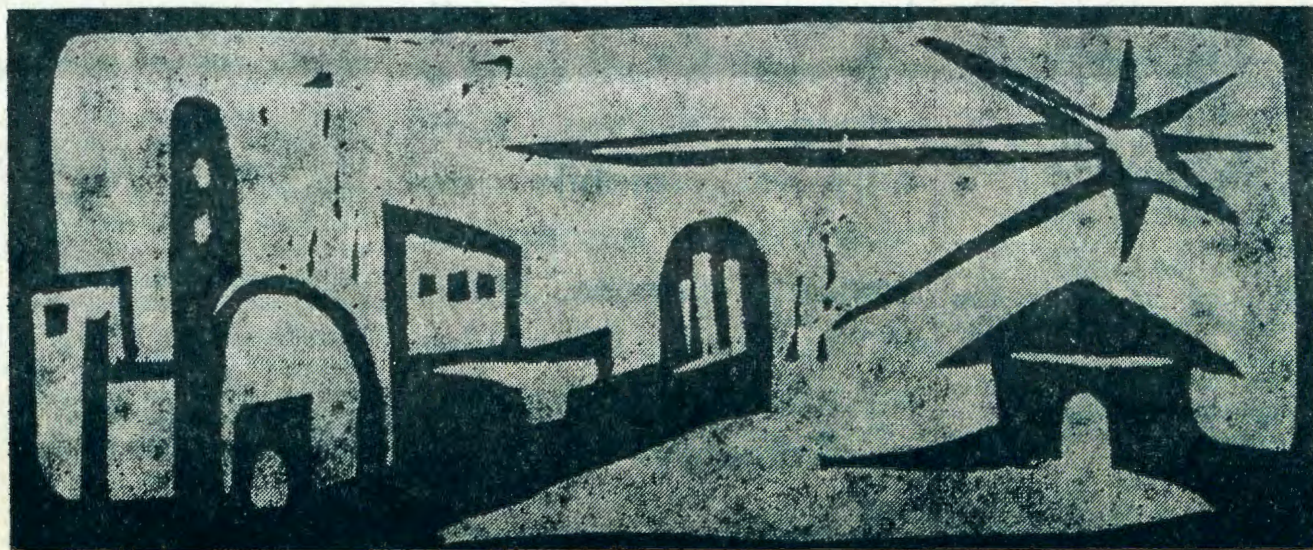
Opo tatu tsikile nokutunga evi muukumwe noku li longekidhila omumvo gwesilohenda lyOmuwa, omumvo gweligolo lyaaluhe. Otandi halele ayehe Omumvo gwesilohenda lyOmuwa. Omumvo uuna Omuwa te ya, a hupithe aantu ye. Okumangulula omamango gomahepeko nokudhitula oositropa dhoondjoko nokweetha oonakuhepekwa nokuteya po KEHE ondjoko." Jes.58:6

Indeni momumvo 1980 neitaalo kutya: Jesus ota kala pamwe natse omasiku agehe, ngele momeya momulilo, mekololo lyoonime, mondjala, muuvu, nenge muudhigu kehe, nomenyanyu. Ota ka kala natse sigo opehulilo lyuuyuni, sigo omomumvo gweligolo lyaaluhe megulu.

"Oye ota theta po omahodhi agehe momeho gawo, oko itaku kala we eso, oluhodhi, elilo nenge uuwehamwe, oshoka iikulu oya hulu po." Ehol.21:4

Okrisimesa nOmumvo Omupe gwesilohenda kune amuhe.

Omumbisofi Dr. K. Dumeni



# Omaimbilo gOkrisimesa yotango

KuRev. Matti I. Amadhila

Okrisimesa yotango oya li ya pendutha muuyuni mbuka omaimbilo getegameno nogenyanyu ngoka inaaga uvika mo nale nekwelengendjo lyago inaali mwena we sigo okelewa ndika.

Omaimbilo gaKrisimesa oga imbwa komapipi nomappi momalaka agehe nomomavi agehe. Omapsalmi, omaimbilo, omahambeledondjimbo nuuimbilo uufupi ngoka ga imbwa nomawi omatoyetoye, oga kala noge li sigo onena ndjika taga uvitha etumwalaka lyenyanyu nolyetegameno ndyoka li li ehuku lyOkrisimesa.

Otwa tseya tuu omaimbilo gOkrisimesa yotango ngoka ga fuluka moomwenyo dhaamboka ya hololelwa noyu uvithwa ko lwotangotango shoka Okrisimesa tayi ti? Natu taleni ano ngashingeyi etumwalaka lyomaimbilo ngaka:

Omaimbilo ga tya ngaaka oge li gane komwaalu. Agehe otaga adhika mEvangelii



paLukas; gatatu oge li montopolwa yotango netine oli li montopolwa ontiyali. Gatatu gomwaangaka oge na omadhina gOshilatina ga tseyika nawa mokati kaakriste muuyuni auhe noga imbwa kOngeleka onkwakriste oomvula omathele nomathele.

Omaimbilo ngaka ogo "Magnificat" nenge Ehambeledondjimbo lyaMaria Luk. 1:46-56. Ekwawo Benedictus nenge Ehambeledondjimbo lyaSakaria Luk.1:68-79, Nunc Dimittis nenge Ehambeledondjimbo lyaSimeon Luk.2:28-32.

Eimbilo ekwawo inaali tseyika unene nawa ngaashi ngaka, oondyoka lyaElisabet Luk.1:42-45. Ope na wo ekwawo lyaayengeli ndyoka lya uvika kaasita Luk.2:14, ihe ndino oli na okwiikalekelwa nokuyoololwa mo mwaangaka omakwawo, oshoka ngano oga fuluka moomwenyo dhaantu yokevi.

Gaali gomomaimbilo ngaka oge imbwa kaakiintu nomakwawo gaali oge imbwa kaalumentu. Nokuli limwe oyi imbwa ko-

mukulukadhi omukulupe nekwawo okomukiintu omugundjuka. Osho wo limwe li imbwa komusita omukulupe nekwawo okomuyuuki omunene a simana.

Omaimbilo ngaka oge imbwa koonakutikalalunga. Eimbilo lyaElisabet, mulyo otamu holoka ombepo yesimanekokalunga noyonkumwe omolwiilongankondo yaKalunga. Ehambeledondjimbo lyaMaria, olya anduka muule womwenyo gwi ifupipika, gwa yela nogwi igandjela Kalunga.

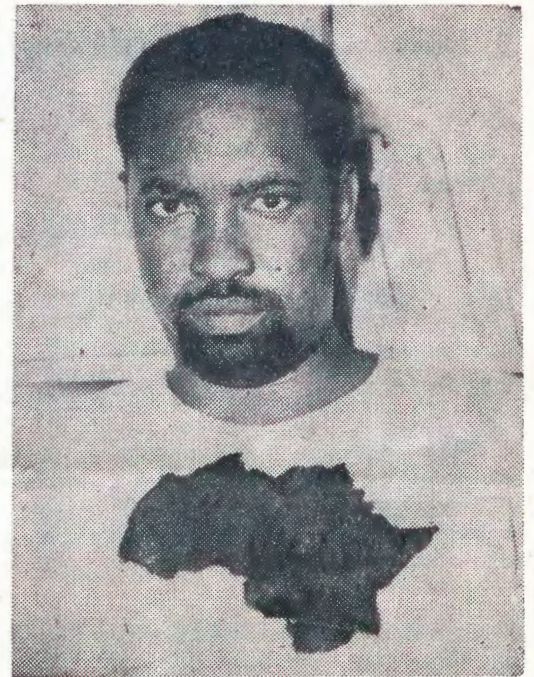
Ehambeledondjimbo lyaSakaria otali holola uuyuuki neitaalo lyaSakaria naandyoka lyaSimeon, otali ulike puuyelete ombepo yeidhidhimiko noyetegameno, ndjoka ya kala tayi pangele mokati kAasrael oyendji uule womimvo odhindji.

Pafupi, eimbilo lyaElisabet, oyo lyokuyambeka, lyokusimaneka Kalunga nolyeitaalo. Eimbilo lyaMaria ewanawa notali tangumuna egwanitho lyomategameno nolyoondjuulukwe ndhoka Aaisrael yashili ya kala nadhoo uule woomvula noomvula. Manga ndyoka lyaSakaria li li eimbilo lyeitaalo, lyetegameno nolyolupandu.

Eimbilo otali tangumuna ehupitho ndyoka lya zi mohole yaKalunga yomuJesus Kristus Omuwa gwetu.

PaSimeon, Omugwayekwa gwOmuwa, Kristus, ota kala uuyelete mboka tau ulukile aapagani ondjila yehupitho nokuholola puuyelete esimano lyolela lyoshigwana shalsrael.

**Ombepo yOmuwa oyi li kombanda yandje, oshoka oye a gwayeke ndje ndi uvithile oohepele evaangeli nokwa tumu ndje ndi igidhile ookwatwa emangululo naaposi etonato. Noku-tembudha mo oonakuhepekwa noku uvitha omumvo omutoye gwOmuwa.**



Omusitagongalo Matti I. Amadhila

Otwa konekë mpaka momaimbilo goKrisimesa yotango kutya oshituthi shevalo lyOmukulili gwetu, osha dhiladhililwa okupendutha omahambeledondjimbo moomwenyo dhaantu. Osho sha li sha ningwa pOkrisimesa yotango nosho tashi ningwa sigo onena wo.

Elisabet, Maria naSakaria, oyi imbi Omahambeledondjimbo gawo geitaalo nogenyanyu nomanga nokuli Omuwa Jesus inaa valwa. Pethimbo lyokuvalwa kwe, ongundu yolwiimbo yaayengeli yomegulu, oyi imbi eimbilo lyawo tali tanga esimano, eadhimo nombili yaKalunga.

Aasita mboka yu uvu onkundana ombwanawa yenyanyu, enene tali ningi lyaantu ayehe, neimbilo lyongundulwiimbo yaakwiita yomegulu, oya galukile koohambo dhawo taa hambelele nokusimaneka Kalunga.

Aanongo yokuuzilo sho ya mono onyothi ndjoka ye ya kwatele komeho sigo opOmukulili guuyuni, otaku tiwa, oya nyanyukwa nepyanyu enenenene.

Okuza kOkrisimesa yotango sigo onena, opwa piti ngashingeyi oomvula dhi thike lwopo 2000. Ooitaali ayehe apehepehe muuyuni mboka yu uvite ko nawa nawa Okrisimesa shoka tayi ti, naamboka wo ya taamba neitaalo omaganano ngaka gohole yaKalunga ndjoka Kalunga mwene e yi hololele uuyuni nokuvalwa kwOmwana Omukulili, oya kala, noye na sigo onena omaimbilo taga kwelengendja taga holola etegameno, ombili nenyanu ndyoka ye li na moomwenyo dhawo.

Nokuli omaimbilo ga tya ngaaka oge li ogendji nopomasiku wo ngaka nonando, onakuyiwa yaantu noyiigwana oya luudha. Eeno, nopomathimbo wo ngoka gu udha omaupyakadhi nuutondwe.

Ehambeledondjimbo lyongundulwiimbo yaayengeli oya li lya uvika lwotango mo-



milema-dhopokati kuusiku, ihe omukwele-ngendjele gwalyo otagu uvika sigo omomilema dhuusiku wokukalamwenyo kwetu, kwaamboka ye na omakutsi gokuuva ko.

Oshinima oshitiyali tya koneke mekwata-thano nomaimbilo ngaka gOkrisimesa yotango, osho shika kutya omaimbilo ngoka ohaga anduka ashike moomwenyo dhoo-nakutilakalunga. Elisabet, Maria, Sakaria naSimeon, ayehe oya li oonakutilakalunga. Omaimbilo gawo otaga holola kutya oga za moomwenyo dha yela, dhi ifupipika nodhi inekela Kalunga.

Oyo ya li Aaisrael yashili nolualo lwo-shili lwaAbraham. Uule woomvula odhindji, eitaalo lyomuKalunga olya kala lya hwama kowalitali yomoomwenyo dhawo, neinekelo lyawo okwiinekela Kalunga inali tenguka, nando.

Kalunga okwa longitha okukalamwenyo kwawo kweitaalo, opo a pe uuyuni mbuka omaimbilo omawanawa lela gaKrisimesa ngoka etumwalaka lyagwo itaali kushu nando.

Oshinima oshititatu tatu koneke momaimbilo ngaka gaKrisimesa yotango, osho shoka kutya okwaaitaala, kaku na nando omaimbilo gasha getegameno nogenyanyu okugandja kuuyuni mbuka.

Owa koneka tuu shoka sha ningilwa Sakaria sho omuyengeli gwOmuwa e mu tseyithile kutya omukadhi Elizabet ota ka mona okanona okamati? Sakaria okwa li a nyengwa okwiitaala oshinima shika, onke omolwokwaaitaala kwe, okwa thiti ewi noina popya we naindo oshitya shimweshimwe, okuza mpoka.

Huginina okanona sho ka valwa, noka pewa edhina lyako Johannes, ngaashi omuyengeli a tile; opo ihe ewi lye lya thituluka nokwa popi ta hambelele Kalunga. Okwaaitaala kwe, okwe, mu ningi omuthitawi, ihe eitaalo lye olya pendutha muye ondigolo nehambelelo. Okwaaitaala okwa mwena thilu, okana ka pata, kaku na ondjimbohambelelo.

Eitaalo alike hali pendutha omaimbilo golupandu nogetegameno. Egalikano lyetu nali kale ndika: "Omuwa, taneka eitaalo lyetu."

Ngele tatu entamene mokati kAaisrael yopethimbo lyaJesus, mboka ya li yaashi oitaali, omaimbilo gashike ando ye tu thigila? Nda dhini kutumbula Herodes, ongangala ndjoka ya li tayi kambadhala okudhipaga okanona Jesus, nokuhulitha po po ngeyi Ongeleka onkwakriste muuyuni, oye tu thigile eimbilo lyashike? Nando olimwe.

Ayehe oya mwena, ya mutika kaye na iitya yasha. Kaye na sha shoku tu pa noku tu talaleka nenge oku tu kumika omukumo, momaudhigu getu tu ga na ethimbo ndika.

Kaye na omaimbilo okuudhitha oomwenyo enyanyu, etegameno nehambelelo mOkrisimesa ndjika. Shila shoka aakaaneitaalo ya kala aluhe ye shi na noye shi na sigo onena, osho onkambadhala yokuhana-gula po nokukelela omaimbilo gaKrisimesa kaga uvike.

Okuza kOkrisimesa yotango nigo onena, aanandunge oyendji oya kala ye tonde notaa kondjitha oondjimbo nehokololo

lyOkrisimesa. Sigo onena muuyuni mbuka pamwe nomoshilongo shetu wo omu na mboka taa patana notaa tindi okwiitaala kutya ehokololo lyokuvalwa kwOmululili, olyoshili. Otaa ti olyo oongano ashike dhowala.

Oye shi apiwa otaa vulu okumweneka omaimbilo gaKrisimesa nokupatana kwawo nonokwaaitaala kwawo? Oshikumitha osho shika kutya Ongeleka yaKristus oyi imbi notayi ka imba omaimbilo gaKrisimesa, nando opwa kala nopya na notapu ka kala aakondjithi ya tya ngaaka.

Ekwelengendjo lyomaimbilo gaKrisimesa itali kodha nando, oshoka Okrisimesa oya za kuKalunga. Noomwenyo dhaakuuyuni otadhi tsikile okushambulwa kwashono sha za komushiti gwawo.

Opo omaimbilo gaKrisimesa ga kale taga anduka moomwenyo dhetu aluhe, otwa pumbwa eitaalo okwiitaala Kalunga no-

kwiitaala ngoka Okrisimesa ye mu lukiwa, Kristus.

Oye awike tu na oku mu hola, oku mu inekela nokutegamena ekwatho nehupitho lye nomomaudhigu tu ga na. Oondjuulu-kwe dhetu niimpwiyu nayo yi mu tsikeni. Tu longeleni Omuwa nenyanyu nonomwenyo aguhe mOkrisimesa ndjika naaluhe. Nena otatu ka uva ko nawa lela etumwalaka lyomaimbilo ngoka omawanawa, tagi itumbu aluhe kevi ndika gu uka kegulu naangoka wo taga zi megulu tage ya kevi.

Oitaali yOmuwa mu ELOK nomuNamibia alihe, muudhigu nomehepeko menyanu nomesimano, natu kaleni moohapu dhOmuwa twe mu dhama. Oshoka oye awike te tu pe eimbilo epe:

Imbileni Omuwa ondjimbo ompe, oshoka oye a longo iilongankondo. Olulyo lwe nokwooko kwe okuyapuki kwe mu kwatha, Ps.98:1

Maria, Ove omunangekwa  
noupuna mokati kovakainhu,  
ndeke nakudalwa ou wo-  
mwoove omunangekwa nou-  
puna. Osha dila nge peni,  
ina yOmwene wange te uya  
kuame? Osheshi ondaka ye-  
kundo loye eshi ya fika mo-  
matwi ange, okaana oka mu-  
ka kehafo medjimo lange.  
Omunelao oyoyu ya itavele,  
osheshi osho she mu lombwe-  
lwa kOmwene, otashi ka  
wanifwa—oshu Elisabet a po-  
pifa omweenda waye Maria.



# Tsika ngeyi okamwoye mohole yomuKristus



Omidhi dhomiti ohadhi koko tadhi yi muule. Mpo pu thike omuti gwa kola nawa, opo wo pu thike omidhi dhago tadhi yi muule dhi adhe oshitosi. Ohashi vulika omidhi dhi koke omile dhi vule omuti gwo gwene.

David ote tu lombwele kutya aantu oya fa omiti. Eyelekanitho ndika otatu vulu oku li dhiladhila komidhi ndhoka dha fa omadhiladhilo getu.

Ngele otatu zimine omadhiladhilo getu ga kale noga kokele mohole yaKalunga, nonge otatu dhiladhila oshili yOmbimbeli muule, nena otatu kala aantu twa kola. Omidhi dhetu otadhi ningine muule wohole yaKalunga.

Ngele ohatu dhiladhila tse aakuluntu uwanawa waKalunga nohole ye, osho wo tatu vulu okutula aanona yetu miinima yopaKalunga. Ompito onkumithi ngiini tu yi na okutaalelitha omadhiladhilo gaana yetu lwokegulu?

## OKWIIMBA

Yina ngele ta langeke okamwana mombete yako, peha lyokutya: Lala po nawa, oti imbi okaimbilo: Jesus ondi mu hole, shika ondi shi shi ngaashi Ombimbeli ye shi tya.

Nonando okanona okashona natango okuuva ko omadhiladhilo goohapu ndhoka,

ihe mokukoka kwako, otaki ilongo okupopya shoka ku uvite yina ta tumbula.

Ondi ku hole okamwandje, osho wo okanona taka holele yina; ondi ku hole me-me.

Ano yina ite ka lombwele ashike ohole ye kuko, ihe ote ka hokololele wo ohole yaJesus kuko.

## Egalikano pamwe nuunona

Mpo pu dhike aanona taa koko, opo wo pu thike sho taa dhimbulula ohole yoye noyaJesus, momitima dhawo, Sho omunona ta tseyo okutumbula: Tate, nenge me-me, ota tseyo wo okutumbula: "Jesus".

Ongulohi kehe manga okanona inaaka kotha, oto tsu oongolo pokambete kako noto ka kwatha okutumbula egalikano. Egalikano lyotango otali vulu owala okukala ngeyi:

"Ondi ku hole Jesus, Amen".

Ngaashi omimvo tadhi yi komeho, osho to longo okamwoye ka uve ko elalakano lyegalikano. Oku ka uvitha ko egameno lyakalunga, oto vulu okutumbula ongulohi yimwe:

"Aayengeli otaa kala popepi nangoye ngele wa kotha. Tu pandule Jesus omolewagameno ndyoka, lyaayengeli."

Aanona oto vulu wo oku ya indila ya pandule Kalunga sho a lokitha omvula noya talaleke iilya mepya mbyoka ya li tayi si po komutenya. Osho wo to vulu oku ya longa ya galikanene yalwe.

Oshitopolwa sha simana megalikano osho okwiindilila edhimopo lyoondjo. U tye kokanona:



Mefano ndika, omumbisofi dr. Leonard Auala pamwe nomuhongi H.K. Diehl meyakulo lyeyapulo lyomuwilikingeleka omupe Hendrik Fredrik



## Tu diinineni eilikano

"Tala, owa dhenge mukweni nena, nondi shi shi owa li wu uvite nayi. Pula edhimopo lyoondjo kuJesus, omutima gwoye gu mone ombili.

Aanona yetu otu na wo ompito oku ya longa omahokololo gomOmbimbeli taga popi ngashi ooMoses, Daniel, Jesus omusita omwaanawa nenge aanongo yokuu-zilo.

Iilonga mbika yeitaalo lyomuKalunga kombinga yohole ye, egameno, ohenda ye osho ngeyi tayi ningine muule momitima dhaamwetu, tayi yelitha euvoko lyawo lyuwanawa muKalunga.

Osho ngeyi omidhi dhomadhiladhilo gawo tadhi koko aluhe, tadhi yi muule.

Sakaria N. Elago

# Omakuma ga ELK, oga kumuka po, - Omupresesa a ti

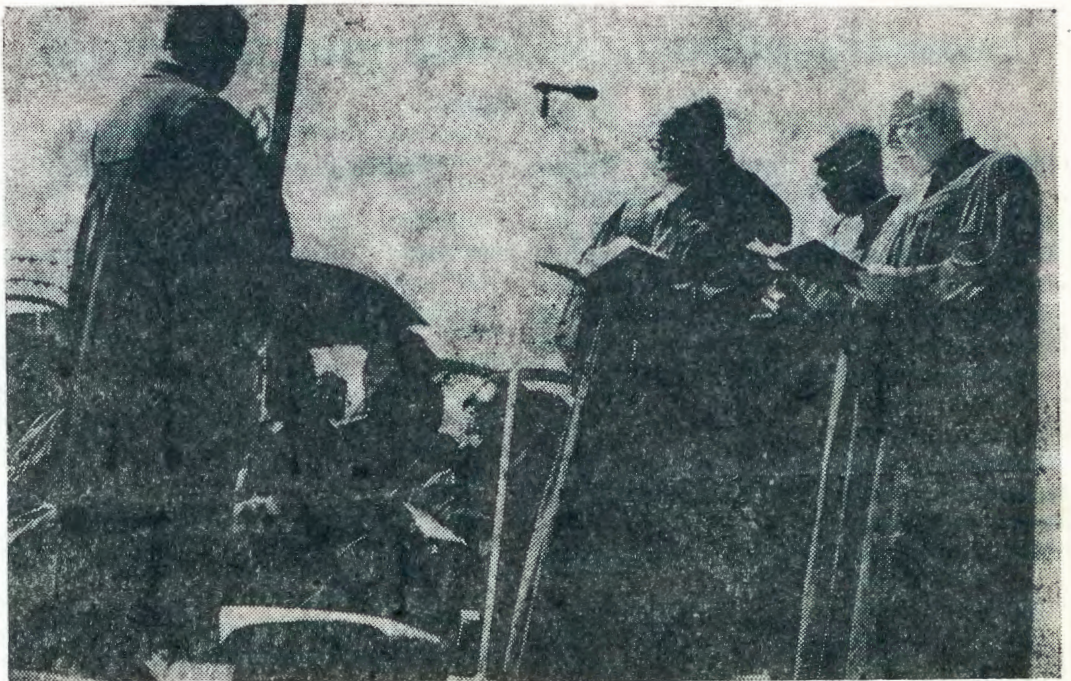
"Ileni amuhe aanene naashona tu tungululeni omakuma gaJerusalem ngoka ga mboniyagulwa po. Ileni tu tungeni pamwe ELK yetu," osho omupresesa omupe gwa ELK, Hendrik Fredrik a hiya iilyo yOngeleka ye.

Newi lya yela nawa noli uvitike ko kwaayehe, omusita Fredrik okwa kumike iilyo yongeleka ndjika omukumo noku yi inekelitha oonkondo dhaKalunga.

"Inamu tilithwa kumboka taa kondjitha Ongeleka, Kalunga kesindano o po e li nonena ote tu pe esindano. Ileni tu tungululeni pamwe egumbo lyaKalunga mokati ketu," osho e ya lombwela.

Omuwilikingeleka okwa popitha iilyo yOngeleka manga, ya li moshituthi oshinene shopangeleka oku mu langeka (omupresesa) moshilonga konima yomwedhi gumwe sho a hogololwa.

Aayenda ya simana wo omo ya li moshituthi shika ya za moongeleka dhilwe meni lyoshilongo. Ongeleka ya ELOK, ndjoka yi li muukumwe nOngeleka ya ELK, oya li ya kalelwa po moshituthi shoka komumbisofi omukulu Dr. L. Auala, Amushanga gwomayelithilo nOmanyanya-ngidho mOngeleka omusita Matti I. Ama-



Mefano ndika omuyapulwa ota monika a thikama koshipala shaayakuli ye.

dhila, omusita Abisalom Hasheela, Amushanga gwomumbisofi, Efolo Anna-K. Kapenda omuwiliki gwsitola yomambo nomulundululi gwOmbimbeli yOshindonga, omusita Jason Amakutuwa.

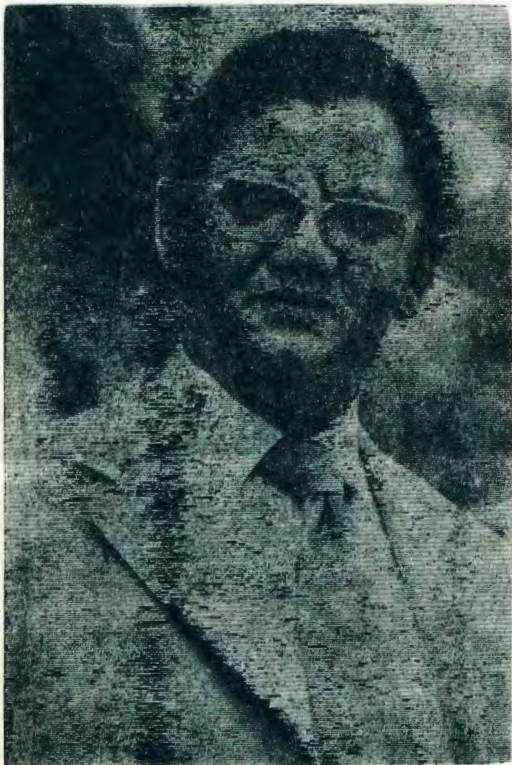
Omuwilikingeleka Dr. Johannes De Vries, ngoka e na okugandja oshimpwiyu komuwilingeleka omupe, ina monika mo moshituthi shoka. Omahokololo gamwe oga ti kutya ina monika we nomombelewa ye okuza uuna omuwiliki omupe sho a hogololwa. Pakuuva okwa taamba iilonga iipe mombelewa yaNgoloneyandjayi.

A kutha otekisti ye muNehemia 2:17-20 moka omutungululi Nehemia ta tamankwa kaanandumbo naye; Sanbaltat, Tobias naGesem, meuvitho lye omuwiliki Fredrik okwa ti:

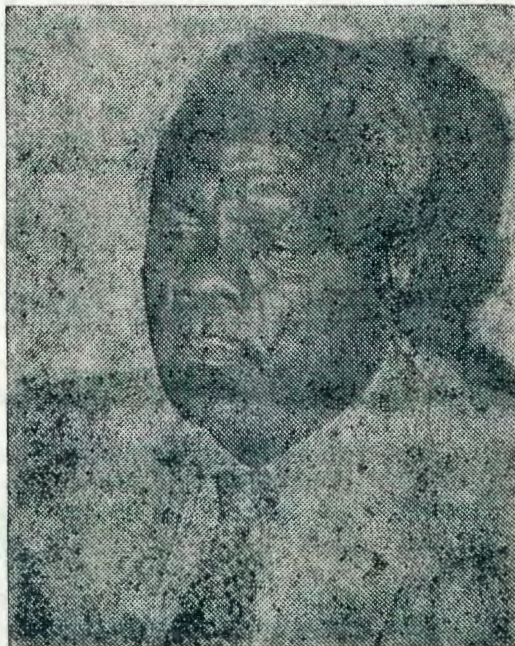
"Inamu tilithwa kwaamboka taa kondjitha Ongeleka methimbo lyetu. Kalunga komegulu o po e li ote tu pe esindano. Ileni ashike tu tungululeni egumbo lyaKalunga mokati ketu."

Fredrik okwa popitha oshituthi nokwa holola shono sha tegamenwa kiilyo yOngeleka ye ngaashi ya holokele kuye. Okwe ya kumagidha ngeyi:

Ondu uvaneka koshipala shaKalunga no-sheni ndi kale omupresesa gwaayehe no-sho nda dhiladhila okuninga. Keitulomo lyetweni atuheni, Ongeleka ndjika itayi ka kala komapepe gomuntu gumwe. Natu tungeni pamwe ELK yetu.



Dr. J. L. De Vries ngoka a hulitha ewiliko lyOngeleka muSeptemba sho pwa hogololwa ngoka omupe.



Omusitagongalo Paulus Gowaseb, omuphawiliki pamwe na De Vries. Nguka oye a langeke omuwilingeleka omupe moshilonga, ngoka kwa li e na oku shi ninga sho inaa monika.



Omuwilikingeleka omupe Fredrik

# Eyoololo pokati kOmhangano nEvangelini

Ku M. Veikko

Ngeenge pe na umwe ta ti kutya omhangano kai fi Ondjovo ya Kalunga, ile Evangelini, oye ta dini Ondjovo ya Kalunga naKalunga mwene. Omhangano nEvangelini aische kumwe otai ningi Ondjovo yaKalunga. Ashike ei ivali oya yooloka moilonga, nande inai yooloka momalalakano.

Omhangano okeshe tuu osho tashi tu tamaneke noku tu pangela, ile oku tu yandja momake omupanguli. Evangelini itali pula sha tu shi ninge, ndelene otali popi sha twe shi ningilwa.

Evangelini otali tu lombwele kutya aische tai pulwa koveta, otwe i wanifilwa nale muKristus. Otali udifa edimepo lomatimba medina Jesus, notali eta omwenyo 2 Kor.3:6

Omhangano otai pula eduliko momutima manga evangelini tali undulile momwenyo waalushe. Eshi omhangano tai tula omunhu koshi yehandua, evangelini otali mu tula koshi yefilonghenda.

Omhangano otai pula eduliko nomutima wa yela, manga evangelini otali ti: **Omulunde** noulunde woye, owa tambulwa kuKalunga molwaJesus. Evangelini otali teyaula eenghono domhangano neyukipalifo otashi dulika li ningwe nande omhangano kai po Rom.3:21-22

Omhangano otai tameke oshilonga, nEvangelini otali shi tifa kefikilo. Omhangano otai holola oulunde, womulunde, nevangelini otali mu pe edimepo lomatimba. Omhangano otai tu fifa enota lokutambula exupifo notai tu fininike tu lidilulule fye tu tambule evangelini.



## Vahapu ova shiiva ashike oheli

Omaongalo etu mahapu okwa dipawa keemhangano. Tashi dulika nokuli a ninga eedula dihapu inaa pewa omuti wokuvulula oipute oyo a ningwa komhangano. Vahapu va fiya po Ongeleka, osheshi vati kamu na sha shimwe shihe fi: **INO**. Omaongalo mahapu okwa shiiva nawa oheli, ndele inaa koneka sha kombinga yexupifo noilonga va longelwa kuKristus.

Omunhu ngeenge owe mu ulikila oudu waye, ndele ino mu ulikila oshipangelo, ota fi omwenyo. Osho yo omunhu ngeenge we mu ulikila oulunde waye noheli, ndele ino mu ulikila yo omushiyakano, naye ota fi mokuwila moheli.

Omhangano omwa kwatelelwa; "efeni oukolwe, oiपाला, eteni oinakuwanifwa yeni, ileni komambo, lidilululeni". Oyo otai lemaneke ovanhu. Ovakriste ova pumbwa hano evangelini li velule oipute oyo ya dja meshiivo lomhangano opo va mone exupifo.

Onawa eshi hatu udifa omhangano otava ulikilwa oulunde wavo, ndele onghenda inene ngeenge ihatu yandje yo Evangelini li velule oipute yomhangano. Kalunga okwe tu pa aische ei ivali, omhangano nEvangelini nokwa teelelwa tu i udife aische. Nai longifwe shi fike pamwe. Ngeenge eshi otashi ningwa, elidilululo tali twala momwenyo, otali ningwa po.

Koneka oinima ei: Ou li omona waKalunga ndele wa nyengwa okukala omona waKalunga omolwoulunde, ongho ou li koshi yepangulo. Eshi osho to shiivifilwa koveta.

Mohole yaKalunga, okwa tuma Omona waye omaano, **ou e ku ninga omona waKalunga meitavelo nomeshasho liyapuki**. Eshi osho Evangelini, ile onghundana iwa kuove.

Eshi u li ngaha omona waKalunga, ito ende vali moubada womhangano, ndelene omohole tai di meitavelo, kutya eshi shoku handukififa kuKalunga, owe shi yandja po kuKristus.

Eshi osho okutambula efilonghenda laKalunga lomuJesus Kristus. Naapa opo nee Omuyapostoli Paulus ta pula:

Natu kale nee moulunde, osheshi otu li koshi yefilonghenda? Enyamukulo otali ya: Nandenande, osheshi ohole otai tu fininike tuha ningife vali Kalunga Tate omwenyo mwii.

Eshi osho hakutiwa kutya ohatu ende **mOhole**, ndele hamoubada vali **wOmhangano**.

## Fredrik mewiliko Iya ELK

Eti 25.11.1979 olya li esiku enene nolyopahistoli komwamemengeleka yomUushimba (ELK). Omuwilikingeleka (omupresesa) omupe ngoka kwa li a hogololwa kOshigongingeleka shOngeleka ndjoka pehulilo IyaSeptemba 1979, omusita Hendrik Fredrik, okwa li a langekwa muwilikingeleka.

Okwa landula Dr. Johannes Lukas de Vries, ngoka ethimboyakulo Iye Iya pu ko, ye inaa hogolululwa. Oshituthilangeko osha ningilwa pondje yOngeleka yaKatutura, mOvenduka.

Engathithi enene Iyaantu olya li Iyu udhitha ehala ndiyaka manga otundi 8.00 inaayi dhenga. Aantu oya li ya zi koombinga adhihe dhaNamibia momagongalo ga ELK, ga ELOK nogoongeleka dhilwe dhomoshilongo shika.

Omutalelo gwomudhingoloko ogwa li po omwaanawa lela, oondundu dhaKhomas Hoogland, odha li tadhi itumbu kuuninginino, kuumbangalantu nokuuzilo netango IyaAfrika olya li tali minikile nawa. Engathithi Iyaantu opo Iya li mpoka, ye ya, ya hambelele Kalunga nokutaaamba mo-shikaha she omuwilikingeleka omupe.

Oshituthi oshe egululwa medhina IyaKa-  
Tala ke pandja 13

## EHIO KOSHIGAMBO

lilyo yEpangelongeleka, Elelonongelo Iyosikola ndjika, aalongi aakulu yomosikola ndjika naalongwa aakulu yomosikola ndjika amuhe, otamu hiywa nesimaneko

### kOshituthihamblelo

shekalepo Iyosikola ndjika tashi ka kala ko **METIHAMANO 16 FEBULUALI 1980**,

Kalunga ngele e shi hala, huka kOshigambo.

Oshituthi otashi tameke nelongelokalunga potundi onti 9 mungeleka yaShigambo.

# ELANGEKO LYAFREDRIK

Dha za kep. 12

lunga katatugumwe komuwilikishituthi (Master of ceremony), omulongwasita Petrus Kim, gwaTavi, Elongelokalunga tali ningwa komusita Th. Vries gwego-ngalo lyaNama/Damara mOvenduka.

Meyakulo lyelangeko omwa li omusita Paulus Gowaseb, ngoka a kala omupeha gwa Dr. de Vries mewiliko lyOngeleka ndjoka naakwathi ye omumbisofi omukulu gwa ELOK, Dr. Leonard Auala, nokomuhongfi Hans Karl Diehl omuwilikingeleka gwotangotango mOngeleka ndjoka.

Konima yelongelokalunga noyokutaamba oshilonga shuwilikingeleka oshipe, omuphawilikingeleka omupe ngoka a hogololwa po, omusita Engelhard Noabeb, pamwe naatonateli yiitayingeleka naakwanepangelongelegeka aape, ayehe oyi ithanenwa kowalitali nkoka ya yambekelwa oshilonga shawo pamwe nomuwilikingeleka omupe noya kumagidhithwa ohapu yaKalunga.

Pamauthompango gOngeleka ndjoka, omupresesa nomupeha gwe, osho wo aatonateli yiitayingeleka niilyo ayihe yepangelongelegeka, otaa kala miilonga uule woomvula hamano notaa vulu okuhogolululwa.

Oshituthi osha li tashi nyenyepalekwa koongundu dhi ili nodhi ili dhomalwiimbo.

## Ino dhimbwa okunyo- litha Omukwetu 1980. Ikongela wo Ondjalu- lamasiku manga inaayi pwa po. Ondando 50c



Mefano ndika omupresesa omupe ta tentekwa iikaha

## Owa kundana tuu nale kuBotswana?

**Moushiinda waNamibia, moshilonga sha manguluka, Botswana, omwe tu dila omafiku aa onghundana tai hokolola oshilonga shetumo mwinya. Oshilonga otashi longwa komwamengeleka ELK, mOushimba, te shi ningi mekwafafano nEhangano-tumo laRyns muNdowishiland.**

Mokanya komunashilongatumo winya, meme Helmi Makkonen, ou a talele po Ongeleka ya ELOK, ota ti kutya eehenokomesho moshilonga osho shi li petamekolela, opo li li. Ashike ovanashilonga ova pumbiwa unene. Etalelopo okwe li ninga neudo muNovomba.

Omutumwa Makkonen okwa longa shito mOngeleka ya ELOK, ndele konima eshi a ka fuda po kuSoomi, Epangelo inali mu pa vali epitikilo okwaalukila kuNamibia.

A longa paife nokuli eedula 7 penya, manginga ta hokolola omhumbwe yovanashilonga moilonga yavo, okwa mona hamushanginga wOmukwetu eshi ta kokolola opena a didilike sha.

Okwa londwela diva moshinima eshi, nokuyandja omatomhelo aa a tambulwa ko nawa kOmukwetu. Ehokololo eli kali shi yo okutalika ko kutya inali pewa edimini-no ahowe, ndele ola itavelwa nola tambulwa komuhokololi.

"Ombelewa ya ELK, oyo ngaa i na oshisho shokushivila ovanashilonga mepyatumo, ame onda hokolola ashike osho nda koneka moilonga yetu," osho omutumwa Helmi a yelifila Omukwetu.

Sehitwa, onhele imwe yomomikunda nhatu dokokule opo tapu longo omupangi Helmi nopo na ovakalimo 1600. Opu na okapangelo nelongelokalunga ohali ningwa Oshoondaha keshe, osho a hokolola.

Oita yopokati kOvaherero nOvandowishi muNamibia 1904, oya undula Ovaherero va taükile muBotswana nova nangala omikunda odo dooSehitwa. Vahapu okwa li ovakriste vometumo laRyns muNamibia.

Konima yefimbo eendjovo daKalunga eshi da pumbu mokati kavo, eenhauki odo oda indila kOngeleka yavo ku ELK pefimbo i li natango mewiliko lovatumwa ku dje ovafita va ka kwafe.

Mo 1971, Ovatumwa vavali ova tumwa va dja kuNdowishiland nde tava tula puSehitwa. Pefimbo olo, Ongeleka ya-ELK eshi ya mona yo elipangelo 1972, oya tuma ko ovafita vayo noshilonga osha hovela osho.

Omutumwa Helmi ou ta longo yo mokati kovanyasha nounona konima yeetundi doshipangelo, ota ti kutya etumo paife oli na ovakriste 200. Nexwamo mokati kounona enene shili nande pe na nga eendjindikila dovakulunhu.

Botswana okalongo kovakalimo 710,000 (pavalulo 1977). Osha pelwe emanguluko kuBritania 1966 nohashi xupu moilya, momakunde nomoimuna. Eemina yo omo di li nande hado di shii kutangwa.

Tala kep. 14



Omutumwa meme Helmi Makkonen, ngoka a talele po Ongeleka ndjoka moka a longo shito ongomutumwa. Ngashingeyi oku li mepyatumo lya-Botswana. Omafano omakwawo go-kuBotswana, tala mepandja 14, moka meme Helmi i ipyakidhila nokukundathana naakulupe yamwe miilonga ye.



## Omaduumbo olo etokolo lepangelo

Epangelo la S. Afrika ola lombwela Ongeleki onghwaMetodi yomoumbuwanhu waAfrika kutya lo kali na nande ediladilo lokulundulula omakanghameno alo oko kwa tungilwa omulandu wokakombo no-dilu.

Eshi osha tongwa koministeri yelongelo-kumwe nehenifokomesho, Dr. Piet Koornhof, Omukanda wenyamukulo loministeli, eshi ya nyamukula Ongeleka owa shang-elwe eti 6/8/1979.

Ongeleka yaMetodi oya li ye mu shangela ombilive ile okushiivifa oministeli ko-mpinga yetokolo la ningilwe moshongale-le shomu Oos-London omudo wa dja ko, Etokolo okwa li la ekelashi okakombono-ludi nomulandu womaduumbo.

Dr. Koornhof okwa nyamukula ngaha: "Epangelo la S. Afrika, mouyelele ween-ghono odo de li pewa kovahoololi, kali na nande ediladilo okudja mo momaka-nghameno omulandu wokuyandja emangu-luko lopakatongotongo nokupopila ovanhu vomihoko dinini."

Ovatilyaane ove uya moshilongo eshi nale 1652, nepangelo lange oli na etokolo Ovatilyaane va kale noukwatya wavo u li ngaashi u li. Oshinima sheehenifokome-sho lomaduumbo, osha hanga ponghatu opo epangelo itali ka dula okushuna moni-ma musho, osho omushamane Koornhof a nyamukula Ongeleka.

## Owa kundana tuu Botswana

Dha za kep. 13

Moshilongo osho, ovakriste aveshe ku-mwe eepelesenda ashike 15 nande omwa kala yo omatumo amwe a longa eedula di dule 100.

Pahokololo lomutumwa Helmi, omaitavelo oshinamumwe oku na omidi unene mova-kulunhu.

"Ino kufa opena, osheshi inandi hala ndi kale ongaau ta shivile ovanashilonga ke-tumo laBotswana. Osho oshilonga shO-ngeleka yoovene, ashike ovanashilonga otwe va pumbwa shili," osho meme Helmi a ngongoshekela hamushanga wOmukwe-tu pedu, ongaau ina hala shi ye moma-twi avahapu.

ELOK, ngaashi okwa shiivika nawa ku-tya oku na omhepo yetumo, ongundana yaHelmi otai tu dimbulukifa ashie etumbu-lo lOshiwambo:

Ino komba kondje, meumbo mwa kaka.

## Aktur nkene ta tala oshigongi shopashigwana

Oshigongi shopashigwana shoka sha ho-gololelwe muDesemba 1978, kashi shi na-ndo omukalelipo gwaantu yomoshilongo shika. Omadhiladhilo ngaka oga hololwa koshilyo shongundu yaAktur, omusamane Eben van Zijl moshifonkundana The Windhoek Advertiser 11/10/1979.

Ongundu yaAktur, oya yile kuNgoloneya-ndjaji, Dr.G.Viljoen okuholola omadhila-dhilo gawo moshinima shika, Oya popi nomuthindo kutya:

Oshigongi shopashigwana pamutungilo ngoka shi li ngashingeyi, kashi shi nando omukalelipo gwaantu yomoshilongo. No-kuli oshigongi shika otashi kala omudhi guululu gwokutsitha aantu ondumbo noku ya geyitha sigo sha opalekwa shi kale paushili.

Omusamane Van Zijl okwa tinda thilu okuzimina kutya oshigongi shoka otashi vulu okulonga nokupopya medhina lyaa-ntu ayehe yomoshilongo.

Shoka ongundu ndjika tayi kondjitha ko-shipala shaNgoloneyandjaji osho oonko-ndo oonene ndhoka dha gandjwa koDTA.

**YAMBEKELWA O-KRISMESA NOMU-MVO OMUPE.**

## Ova shangela nge tava ti . . . .

Ngeenge ondi li okakadona handi ho-bbolwa ndele inandi hala okwoondwa, voo ovakulunhu va hala, nandi ninge nee ngahelipi?

Ashike ovamati inamu litula mo nee mu tye kutya oyoonda ya fya, aaye. Vahapu kave shi udite ko natango. Oonakudala kave shi udite ko natango. Oonakudala, ohandi mu indile yo nefimaneko muha lombwele ovanyasha oinima ya puka. Natu pukulufaneni ngaho neendunge moinima oyo tu wete tai tungu notai kwafa monakuyiwa. Kol. 3:16-17.

N. Simon

XXXXXXXXXX

Oku keengaba kwa holoka oshiponga shenyeko tali pitile mekondjelomangu-luko. Omunhu ota hongo ondjebo yoshi-ti nde ta xwekele eendoosha deenamu-nate kongodi te di djala ne moshiya, o-po ku tiwe mbela eeboma ile omahomato.

Eshi te ya meumbo ota ti, ame omuko-ndjelimanguluko pei nge R200,00 Eshi to ti, ngi ikwete, ota ti Shishaande wetu okwa ti ngeenge ku i kwete, nai ku dipae ile ndi kufe ko oimuna koshu-nda.



## Oupuna wedu ihau liwa medu letu

Onda koneka kutya eepelesenda 30 doilikolo-mwa yaNamibia ihadi liwa nande nande mo-shilongo shetu. Ohadi ka palula oiwana yopo-ndje. Ovanailonga vetu ove lile po ashike oku-kwafa oilumbu i lye.

Olyelye e li mokati ketu e na okalinga koka-we ile kongopolo? Ongopolo nokawe ketu oya ya peni? Ei aishe otai longwa ashike i ka djaleke ovakulukadi voiwana imwe i lili.

Eefabulika ohadi eta mo eepelesenda 9.4, oma-pya eepelesenda 16, eemina eepelesenda 30.3 doilikolomwa.

Okupopya eshi, ino tya kutya ondi hole eliko. Omu omu na eehepele dihapu nde itadi li sha. Eshi hasho shi na okukala. Hamo elunduluko momaxupilo otali etwa po ngahelipi?

F.P.Hamunyela

# Ova shangela nge tava ti . . . .

Onde mu londwela ashike ovaitaveli amushe mu dimbulukwe oshiponga eshi koshipala shaTate Kalunga. Oshiwana shetu oshi hole eliko notashi ningi oinima inene molwalo. Ashike Kalunga okwe tu teelega ketokolo.

**Omukundaneki**

XXXXXXXXXX

Eshi tuu Radio Owambo a yeulukila Owambo, osha popiwa nomufindo kutya Oradio oyo otai ka kala kaume kOvawambo aveshi, ngaashi yo Radio Herero, Damara-Nama nokonima Radio Kavango.

Hano ngeenge Radio Owambo oye kaume ketu, omolwashike ha kundaneke eefya doikulo noupu a fa ta kundaneke edipao lomambungu? Omolwashike iha kundaneke omadina oonakudipawa, opo ovadali va ude shili eefya dovana voo va xupule?

Ovana vetu ovo va tauluka eengaba ovaholike vetu shili ngaashi naanaa ovo tu va kwete momaumbo. Kape na eyooloko, okutauluka hako taku kufa po nande ohole yetu, shapo oku i wedela tu va djuulukwe nomahodi.

Onghe hatu va ilikanene nde ihatu va dimbwa po. Nande va lukwe oikulo, ovakomunisi, onghee ngo otu va hole, o-

## EPUTUTHO LYAANONA OLYA KANKAMEKELWA KOOVETA DHUUTHEMBA WAWO NGAASHI TAU LANDULA

### EUTHO 4

Omunona oku na okutyapula omakwatho gegameno lyopasosiale. Oku na okupewa uuthemba wokukokela nokuputukila muukolele nelalakano ndika esiloshimpwiyu negameno lya sheywa oku na oku li pewa lyo nali pewe wo yina, mwa kwatelelwa esiloshimpwiyu lya gwana lyokomeho nokonima yokuvalwa kwe.

### EUTHO 7

Omunona oku na uuthemba okutaamba elongo ndyoka li na okukala itaali futwa, ihe otali dhengele, unene moongundu dhopevi. Oku na okupewa elongo ndyoka tali yambula po omithigulwawapututho notali mu ningi a vule pauthemba u thike pamwe, okukokitha omagano ge, omatokolo ge gopaumwene neuvoko lye lyoshinakugwanithwa shopahedhi nopoulosiale noku ninge oshilyo shi na oshilonga moshigwana.

### EUTHO 9

Omunona oku na okugamenwa komukalo kehe gwokudhimbiwa, gokuningwa onyanya nokokuyugwa. Omunona ina kala nando omupika gwondalasiyopota komukalo gwontumba nenge gwongandi. Omunona kee na nando okukutwa miilonga manga ethimbo lyuukuluntu wokukutwa inaali adha. Kee na okuningwa nenge okupitukwa mpoka tapu mu zile uunkundi wuukolele nowelongo lye nenge epiyaganeko lyokukoka kwolutu, kwoondunge nenge kwoohendhi dhe.

sheshi emona letu, ve dule okawe, ongopolo neeshi dokOmbaye.

Ovo ohonde yetu, onhumba nekipa letu lela. Eshi ngeenge ope na ou te shi patana na talwe nawa ngeenge Omunambi-  
bia ile pamwe ota ombokelwa.

Radio Owambo ngeenge okaume ketu, shili, ne tu kundaneke oyo tai tu hekeleke, nde hayooyo tai tu handukifa. Eenghundana edi oto limbiliwa kutya otadi lalakanene shike movapwilikini ava ve li onhumba nohonde yoonakudipawa.

**H. Ngh. Shinana**

Tala oilonga ya longwa moNmibia ngehe ya tyaa; ovamwameme vahapu katu va na, omaumbo okwa pya po, eendjila dihapu ihatu ende mo vali.

Omolwashike hatu lile oikulya inai pola, hatu lile ofika, keshe apa tu li, omutima owa mbdapala?

Koneka oinima ei ove u ilikane. Yelula ewi loyepombada li udike. Lixupipika koshipala shOmwene woye, oye aeke omwaameni nomungululi wetu moupika.

**P. Panduleni**

XXXXXXXXXX

Eyamukulo kepulo mOmukwetu gwaKotoba, 30. 1979 tali ti: Okatongotongo nani omo ke li nomaasita yetu.

Ngame otandi shi koleke lela ongaangoka nda sikola ekuthilo oomwedhi hetatu, aniwa omasiku ihaaga gwana, kutya maasita namo omu na wo okatongotongo shili.

Opwa li gumwe a pulile epulo lya fa konyala ndyoka. ihe okwa yamukulwa taku ti, opu na aniwa eimatulo lyomwenyo hali ningwa. ihe



shono hasho nando, otaye tu mbembeleke owala. Okuyona akuhe kumwe.

**Omuleshi mukweni**

XXXXXXXXXX

Kwafe nge u nyolele omadiladilo ange aa mOmukwetu. Qnda lesa oifo yeenomola da pita tai popi kombinga yoyoonda i fye po. Oyoonda yoovene hano oya dile peni noya tamera hano naini?

Mokulesha oipopiwa aishe onda koneka kutya oyoonda hayo tai nyono eehombo dopaife. Naava ihava ondwa, ohava dengwa doo eehombo tadi teka ngoo.

Tu tyeni shapo, okutokelelwa meekamba nakufye po, tu xungileni momaumbo tu hokolelelwe omahokololo onale koomeekulu nootatekulu. Oyoonda hayo ya nyona eehombo, eexungi edi da fya momaumbo odo shapo da nyona eehombo.

**Liina Haufiku**

XXXXXXXXXX

Esimano nali ninge lyayeni po? Ngashingeyi esimano lyoondigolo nomishila noontembu, dha ningi po dhaapunduki. Aamati naakadhona mbo-  
ka ya sindana naa ningilwe shike? Yamukula ndje.

**S. A. Niitembu**

## OUNYUNI

1.

*Otu li mounyuni wa nyonauka  
U he na mbili nohole  
Wa kanifa eduliko  
U he na efimaneko  
Ovakulunhu otava tukwa  
Ovadali tava undulwa  
Ovaxungu otava ende tava nyanye  
Omaushiinda otaa yolo shepumhumu  
Ovanhu inave lineekelafana.*

2.

*Ounyuni womalundilo  
Woshimaliwa komwenyo  
Weenghone momadimo  
Womalihalelowii  
Ombili kai mo vali  
Kau na we limwenena  
Kau na ino nyona sha  
Kau na uhe na timba  
Omunhu keshe okwe likeva ashike.*

3.

*Ounyuni wa nyonauka  
Ouhahu tau pangele  
Eliteeko ola tana  
Eshunomonima ola sha  
Ohole oya talala  
Omaliyalo omahapu  
Ovanhu ove tondafane  
Kalunga inga nge tu handukile  
Oixuna yomunhu oi dule yombwa!*

4.

*Ounyuni womadipao  
Wondjebo tai pangele  
Ombili ya kana filu  
Ohonde otai tika  
Ashike inashi lya mbwa  
Omukongo okwa londa  
Pamba opombada e li  
Ovanhu ovaKalunga  
Munymbala okwe va pawa.*

**Tala kep. 16**

## TEACHERS WANTED

Council of Churches in Namibia,  
P.O. Box 41, Windhoek 9100,  
invites applications for  
ENGLISH TEACHERS FOR ADULTS

Applicants must be fluent English speakers but need not have previous experience.

Applicants prepared to teach outside of Windhoek will be preferred.

Duties will include:

- Teaching classes every evening during the week (preparation will be needed every afternoon).
- Attending quarterly seminars on teaching methods.

Applicants should make themselves available for an interview in Windhoek during November to December, 1979.

All successful applicants will have to attend a four week training course during January 1980 and will thereafter be employed. All trainees will be paid R150 for attending the course. Trainees who do not complete the course satisfactorily will not be employed after its completion.

**Salary: R175** basic with sliding scale depending on qualifications and experience. **Three months trial period February-April, 1980.**

Apply by letter or telephone:

The Educational Co-ordinator, Churches English Language Project, P.O. Box 41, Windhoek 9100.

Tel: Windhoek 37510

# Lishangifa diva Omukwetu

## Ounyuni wonena

Da dja kep. 15

5.

*Ounyuni wenyonauko  
Woikohwifa tai longo  
Omukulukadi ota nu  
Omushamane ota kohwa  
Eenghundafana oda fya  
Eezungi oda xula  
Outeku wounona owa kana  
Eendjovo daKalunga ihadi leshwa momau-  
mbo.*

6.

*Ounyuni kau na woye  
Kau na kaume koye  
Kau na waxo nanyoko  
Waxo ote ku tikile  
Wanyoko te ku lundile  
Te ku lopota u kwatwe  
Te ku yandje u dipawe  
Tashi li ekunde omekunde ngoo shi li!*

7.

*Ombibeli oye shi popya  
Omulyapuli liyapula  
Omulinyateki linyateka  
Ondjabi oya longekidwa  
Ounyuni owa tya kondongolondongo  
Wa tya kombala yefuma  
Tashi hevaele inga ngashi ningi shili  
Pa hevel' ombabi inga ngai pitile po  
Wa lya shakakodi tala pombada.*

8.

*Ounyuni kau fi wetu  
Kau shii ku litangehwa  
Okalanda kamukweni  
Kehe liteyehwa fingo  
Mwene ote ka ile ko  
U ka' ofingo yongaho  
Ounyuni otaw xulu po,  
Omunhu okwa teeel' etokolo  
Efa ounyuni u ninge shao.*

9.

*Ounyuni kau fi umbo  
Omuti womutulilwa  
Twa tula mo tu ombe po  
Ngee kwa pepe tu twikile  
Tu ka fikeni keumbo  
Twe li longelwa kuPamba  
Mafiku kongolo kwa sha  
Efimbo kali po vali  
Konga Omwene manga ta monika.*

(A.L.NGHIFIKWA)

### OMUKWETU

Oye oshifo shOngeleka Onkwaevangeli  
paLuther yomOwambokavango.  
Oha nyanyangidhwa mOshinyanyangidho  
shOngeleka mOniipa.  
Omukuluntu gwoshifo omumbisofi  
dr. Leonard Auala.  
Ondando yOmukwetu komumvo muAfrika  
R 2-60, kombanda yomafuta R 5-00.  
Omambesitelo pamwe noondando naga tu-  
mwe kOmukwetu Oniipa, P/B. 2013  
Ondangwa 9270

OWAMBOKAVANGO CHURCH PRESS  
ONIIPA P/BAG 2013 ONDANGWA 9270