

# OMUKWETU

No. 13

Registered at the GPO as a Newspaper

12c

## Shoka to vulu kuningila



Omathaneko gamwe omolwoshilongatumo mepya lya Senegal,  
tala ke pandja etihamano



## Egalikano moongeleka nali tsikile — Dumeni

“Onda talela po omagongalo ogendji niigongi oyindji muAmerika. Onda holola onkalo yOngeleka nomaudhigugayo, osho omayambeko ngoka twa pewa”, osho sha tseyithwa kombelewa yomumbisofi Dr. Kleopas Dumeni, konima yethimbo ele sho a galukile ko kuAmerika.

Omumbisofi Dumeni, okwa taamba onkatu yesimaneko yuundohotola melongo lyuukalunga mOsikola yokombanda yaWartberg muAmerika, manga inaa yapulilwa muumbisofi eti 17.6.1979.

Manga inaa galukila kegumbo, omumbisofi okwa ningi omatalelopo pomahala gi ili nogi ili muAmerika nomuEuropa.

“Osha yela kutya otu na aantu oyendji mboka ya pewa oonkondo miinima yevi lyetu, mOngeleka nomomapangelo muuyuni. Otaa uvanekele oku kwatha nondu uvite kutya ELOK, nOngeleka adhihe moshilongo odha pumbwa owala okutsikila nokudhiginina megalikano pavelise 2 mukAakolosa 4”, osho tate Dumeni a hokolola.

Moshifo shimwe shOngeleka muAmerika “Lutheran Standard”, omumbisofi Dumeni okwa hokololwa ngeyi:

“MuMinneapolis omuwilikingeleka a tya ngeyi a simana, miigongi okwa yelitha nawa nkene omatokolo gaAmerika ge na oshilonga noga kola kominga yokweeta po emanguluko lyoshili lya yela muNamibia naZimbabwe.

“Omuwilikingeleka okwa kumagidha wo akriste yomiilongo yUuninginino ya popithe omapangelo gawo opo emanguluko ndika li monike mbala.”

KuEuropa omusamane Dumeni okwa talela po oombelewa dhOngongahangano yAakwaluther. Naahwiyaka okwa kundathana noyendji miinima yi na sha nehumokomeho lyOngeleka yaElok.

OIweendo lwoludhi nduka omumbisofi okwe lu hokolola nepandulo enene kutya olwa li lu na iiyimati iiwanawa nomolwomaenditho gaKalunga, ga za momagalikaneno gooitaali mOngeleka.

~~~~~

**Osha pula uuyuni ethimbo ele u dhimbulule nokutya uuyamba woshili moshigwana kehe ou li mokuputudha oondunge dhasho — Kenneth Kaunda**

~~~~~

## Omatumwalaka gomahaleloyambeko komumbisofi omupe

Oshituthi shelangeko lyomumbisofi mOngeleka yaElok, osha li sha yamukulwa nomatumwalaka gomilongo nomilongo, ga za kOngeleka, komahangano, komapangelo nokomuntu oogumwe noogumwe. Ayehe oya li ye na edhiladhilo limwe—omumbisofi omupe a mone omayambeko. Gamwe gomugo oga li taga leshwa ngeyi:

“Otat u dhimbulukitha u inekele omwiithani gwoye moshilonga. Ote ku ulukile emoniko, ote ku egululile omagulu, u tseye kutya ondjila oyinipo aantu yoye ye na okweendithwa” — Ongeleka onkwaevangeli muumbugantu wa Suid-Afrika.

~~~~~

“Aakriste oyendji Aasoomi otaye ku galikanene nOngeleka yoye. Silweni ohenda ne mu yambekwe.” — Omumbisofi gwoshitayingeleka shaKuo-pio.

~~~~~

“Omusita gwetu omwaanawa na kale pamwe nane nonomagongalo geni. Ne mu gamene ye e mu willike nOmbepo ye Ondjapuki.” — Medhina lyEhanganotumo lyAandowishi, S. Groth.

~~~~~

“Ongeleka yEvangeli paLuther muAmerika, oya kala nohokwe okulandula Ongeleka yaELOK mokuhempulula kwayo Kristus noku mu longela. Ohatu shi tala nonkumwe keyakulo lyayo lyeitulomo.

“Onkee otatu mu galikanene, Kalunga a koleke omumbisofi omupe, a gandje ewiliko lya pumbiwa kaana yaKalunga.” —

~~~~~

Omukalelipo gwowina gwaAmushanga Ndjayi, muNamibia omusamane Martti Ahtisaari, naye wo okwa tumine omahaleloyambeko ge pamwe negumbo lye. Okwa ti ngeyi;

“Otat tumu omakundilo getu kungoye noku ku halela uuwanawa auhe sho to ka tameka iimpwiyu yoye iipe. Otwiinekela oto ka tsikila okuwilika Ongeleka yoye komukalo naanaa ngoka nopalalakano ndyoka lya longithwa komutetekeli gwoye, omusimanekwa omumbisofi Auala.” —

M. Ahtisaari



Omusitagongalo Matti I. Amadhila okwa galuka omasiku ngaka pamwe negumbo lye keilongo lyawo kuAmerika, hoka a kala konyala uule womimvo ndatu. Hwiyaka tate Amadhila okwa taamba onkatu yuumasteri melongo lyuukalunga nodipoloma montseyo yooveta. Mefano ota taamba odipoloma ndjoka komuwiliki gwsikola ndjoka yokombanda yaColombus, Ohio.



# Ekundo Iya kuku Ranttila

ETAMEKO TALA OMUKWETU No. 12

Ondi na iifo iipe koshitaafula shandje. Muyo otamu hokololwa aantu nomafano gawo ge li mo nokuli. Oyo yamwe taa hokolola nkene ya mangululwa kiikolitha polumwe.

Sho ya li kowalitali noya hempulula montaneho yaantu omayono gawo. Ya hatwa pevi koonkondo dhaKalunga, noya manguluka kiikolitha, ngwi-yaka komakaya, nenge kuulema, nuwehame wi ili nowi ili. Nena oye li po taa tanga Tate gwomegulu. Omwana gwaKalunga nedhina lye Eyapuki ta longo iilongankondo yi thike mpoka.

Omwenyo gwandje hambelela Kalunga noshaashoka shi li mungame edhina lye eyapuki. Hambelela Kalunga noino dhimbwa uuwanawa e u ku ningila.

"Omadhiladhilo geni naga fe gaJesus Kristus, Oye okwi ifupipike. Onkee ano Kalunga okwe mu yele pombandambanda nokwe mu luku edhina enene li vule omadhina agehe, opo kehe shimwe megulu nokombanda yevi nomohi, shi tse oongolo medhina lyaJesus. Nokusimanekitha Kalunga He. Ayihe yi hokolole montaneho kutya Jesus Kristus Oye Omuwa".

Ngaashi Kristus ta longo mevi lyetu, osho ta ningi muuyuni auhe. MuKorea kehe omwedhi aantu otaa shashwa omathele nomathele. NokuPeru moomvula dhimwe omagongalo omathele ga li ga dhikwa.

NAakiina ya tidha aakriste ayehe naKalunga aniwa, nena taa tungu oongeleka. Aantu taa tameke okugongala. Jesus ta longo, nedhina lye otali simanekwa. Jesus ta ti: "Ongame nda pewa oonkondo adhihe megulu nokombanda yevi.

Mu uvu Aazulu nkene taa gongala medhina lyaJesus. Aaposi taa tonata, iilema tayi ende. Ehambelelo lyawo tali uvika apehe.

Nandi tsikile ko natango. Kandi na ethimbo Iya gwana. Otatu ti ngiini ano? Kalunga ngele oku li kombinga yetu, oye ta tsu ondumbo natse? Oye ngoka ini ihupithila Omwana, ihe okwe mu gandja molwetu atuhe.

Olye ano te tu topola ko kohole ya-Kristus? Uudhigu ando, nenge oothina, nenge etidhagano, ondjala nenge oluhepo oshiponga nenge eso? Otse twa ningwa ngaashi oonzi tadhi ka dhipagwa. Ihe mwaayihe otatu sindi nokusindilila omolwangoka e tu hole. Oshoka ndi shi shi kutya, kaku na na oshinima nando oshimwe tashi vulu oku tu topola ko kohole yaKalunga.

Haeso nenge omwenyo, haayengeli nenge aapangeli naanankondo yomegulu, haambyoka yongashingeyi nenge mbyoka tayi ke ya, hauuyuni wokombanda nenge wokohi. Kamu na sha tashi vulu oku tu topola ko kohole yaKalunga yi li muJesus Kristus, Omuwa gwetu."

Otandi hambelele Kalunga kandje omolweni amuhe, kehe ethimbo tandi mu dhiladhila. Momagalikano gandje agehe otandi mu galikanene nenyanyu. Inamu vulwa momahepeko geni.

Otandi tsu oongolo koshipala shaTate, kungoka kwa za edhina Tate mezimo kehe lyomegulu nolyokombanda yevi. Nangame tandi galikana Kalunga omoluunene wesimano lye, e mu pe oonkondo tadhi zi mOmbepo ye, opo mu wape okukala mwa kola kombinga yomuntu gweni gwomeni. Kristus na tunge egumbo lye momitima dheni keitaalo.

Kalunga, ngoka omunandunge awike, na simanekwe omolwaJesus Kristus aluheluhe. Esilohenda lyOmuwa Jesus Kristus nali kale pamwe nane."

Hilma Ranttila



**Omusitagongalo Absalomo Hasheela, methano pombanda, Epangelongeka olye mu uthile a ninge amushanga gwomumbisofi gwoponto. Omusita Hasheela opo a galuka keilongo lye kuAmerika hoka i ilongele onkatu yuumasteri melongo lyuukalunga.**



## A yakwa po neliko lye

**Epangelongeleka olya lesa ombilive yoluhodhi tayi tseyitha kutya omunashilonga nomuwiliki gwiilonga mOngalasho yOngeleka, omusamane Leonard Ndilimeke Asser okwa kwatwa po uusiku 21.6.1979, pakuuva kaamati yomomuthitu. Eliko lye mwa kwatelelwa oshihauto she, olya yiwa nalyo.**

**Monkalo ndjino oshigwana shi li mo, nomomaudhigu taga zi koongundu tadhi kondjithathana, Ongeleka yi na oshinakugwanithwa okugalikana Kalunga, iiningwanima yoludhi nduno nongaashi wo iikwawo tayi ningilwa oshigwana niilyo yOngeleka dhetu koongundu dhuupolotika, yi hulithwe po.**

Tate omunamutimanghenda, ohatu ku hambelele eshi we tu pele omafimbo ombili moshiwana shetu oo a dja mokuuda nomokutambula eendjovo doye. Ohatu ku ilikana yo nopefimbo eli lidjuu, u-tu amenene mombili ei. fye tu kale tuhee na efupa nondubo nomahalo mai outondwe.

Tu kwafa molwedina loye tu finde oupika aushe woulunde, fye tu longe osho she. ku wapalela. Tu kwafa fye atushe tu ende nondjila yeyakulo omolwedina loye linene, opo oshiwana shetu shiha kale nokulilongela shoovene, ndelene shi lalakanene ouwa wovanhu aveshe.





**Aanasikola yOsekundo yaKahao taa hambelele moshituthi sheegululo lyomatungo gawo gosikola yawo 1977.**

## Vahongi, onakuiwa yoshiwana oi li momake eni

ku A. Nghifikwa

Ovanhu ngeenge tava tumbu oshinima shidjuu, ove na okutumbila oshita. Ngeenge opa kala vamwe tava efele vakwao, oshinima otashi yeluka ashike kombinga oku ku na ovanhu ve kwete oshimati, manga tashi filuka oku kwaama vounyala. Ovanhu ava ngeenge ove na oku va hala okutwala oshinima eshi, itava dulu oku shi fikifa ko. Eshi osho hashi ningwa mekonakono lomeefikola detu.

Ngeenge hatu popi epito lounona mekonakono, unene mongudu V moshitukulwa eshi shokOwambo, otu na yo okutala oinima oyo tai djuupaleke oilonga youhongwi. Eefikola domOwambo luhapu kadi na oilongifo ya wana. Omambo ohaa fiki efimbo la pwa po, manga oinima ihapu oyo hai longwa mofikola ounona vokeenhele dimwe ve i wete efimbo keshe, mOwambo itai monika mo.

Eshi luhapu ohashi nghundipaleke epito lounona. Okuhalongwa nawa kwounona meengudu dokonima, luhapu nako ohaku nghundipaleke epito lounona. Unene okudja ongudu St. 111, ounona ove na okulongwa nawa ngeenge ova halikila okupita nawa ekonakono longudu St. V.

Nande pe na oimbide moilonga yetu, itatu dulu okuyepa oshinakuwanifwa shetu. Ngaashi tu li ovahongi keshe apa tu li, osho yo hatu kala ovanangunga vepito

lovahongwa vetu okukalamwenyo kwetu akushe. Kashi na nee mbudi kutya ope na omikundu dashike moilonga yetu, ovahongwa vetu otava teelee ashike oshinima shimwe kufye; osho okupita nawa ekonakono.

Luhapu ngeenge kwe uiwa kepito nawa lekonakono, oinima aische ei ya kwafela opo okanona ka pite nawa, ile ya imba ka pite nawa, ihai talika. Ohaku talika ashike omuhongi. Oye ha pewa epandulo, ngeenge va pita nawa, ile a pewe oshinima ngeenge inava pita nawa.

Omalipopilo ovahongi vamwe kutya ounona vopofikola yavo avesho omalai, itaa itavelwa. Osho itashi dulika avesho va kale omalai, manga pofikola ikwao pe na ashike ovanandunge. Kalunga ina shita oshinima sha tya ngaho.

Oshili oyooyo kutya, ounona haalushe ve na eendunge di fike pamwe. Ashike omuhongi muwa oku shii nawa ovahongwa vaye nonhumbi e na oku va kwafa. Ka kwete okupitifa mo etata ile ongudu aische.

Vahongi, otu li mefimbo lidjuu, omo ounona inava hala nawa okutambula ehongo, omolwoukwatya wefimbo eli. Ashike otu na okwiitavela kutya ounona haalushe hava dopa molwavo vene, ngaashi yo itashi dulika va pite kuvo vene. Eshi kashiimba itashi itavelwa unene noupu, ndele haalushe shihee fi shoshili. Omuhongi washili oye oo haku ti ongudu yaye ngeenge ya dopa unene epuko ohe li konggo tete muye mwene, opo e li kongge vali kounonna. Eli edidiliko lomuhongi washili.

lyevi lyetu.

Onda hala ihe ndi pule kutya, kape na nando omambo omakwawo taga ndjokonona evi lyetu, ihe oge li melaka lyetu? Omambo ngoka onda li nde ga pumbwa unene, ihe itii ga vulu we, osikola nde yi ende ponto.

**Omuleshi gwOmukwetu**

Kandi shii ngeenge ope na oshilonga sha pumbwa oudiinini sha fa ouhongwi. Omunute keshe tau kana nau longifwa sha, oo ekanifo linene, notashi dulika naanaa u naipaleke epito lounona. Omuhongi muwa ohe lipula kutya omunute keshe oo a diladila okulongifa pondje yongudu yaye pefimbo leetundi, otatu etele ounona vaye ouwa washike, ndele haye ou ha diladila kutya otatu mu etele ouwa washike ye mwene. Ovahongwa vetu ova pumbwa unene ekwafu letu shi dulife eshi twe li pumbwa fye vene.

Oshinima shimwe oshi na oshilonga nohashi nweywa mo diva ovahongwa, osho okukalamwenyo kwomuhongi pondje yofikola. Opa fa pe na ovahongi vamwe inava koneka oshinima eshi, ile pamwe inava hala oku shi itavela.

OmuHongwi inashi pumbiwa ashike a kale ha wanifa oshilonga shaye pofikola. Oku na yo okukala oshihopaenenwa shiwa momudingonoko. Oku na kukala neenghenga, da wapalela eifano laye. Molwetotomhelo eli, liwa noloshili, okukalamwenyo kwomuhongi pondje yofikola, ngeno inaku kala ngashi ku li, ndele naku kale ngashi kwa wana kukala, osheshi otaku tende omufinda koshi ile mokati keendjovo edi ha popi mongulu yofikola.

Efiku keshe omuhongi ota shange ehistolilolonga yaye moshiwana, komesho yongudu yaye, olo tali ka kala mehistolilongho moshiwana shetu. Ovahongwa vaye otave ke ku dimbulukwa alushe moyelele woilonga yoye komesho yavo. Kashi na nee mbudi oya tya ngahelipi.

Onghee osha fimana unene ngeenge omuhongi keshe ta diinine oilonga yaye manga e li koshi yetango, osheshi osho oshinakuwanifwa shaye. Ovahongwa vaye vaha ka mbabale fiku limwe kombinga yaye tava ti: We tu ninga oshiyeye."

**Oshipopiwa eshi sha xupipikwa, nosha lundululwa kanini, osha popilwa moshoo-ngalele shovahongi (OTA) muJuni 1975.**



**Omusitagongalo Junias Vaino Kaapanda ngoka a menekele iiwike oyindji mondholongo, okwa mangululwa mo negongalo lyaTshandi otali mono omayakulo ngaashi shito.**

## YEPA OMBEDHI YOKOMEHO U LONGITHE NAWA ETHIMBO

Onda lesa ehokololo limwe moshifo shoye, amushanga gwOmukwetu, tali popi omambo gatatu, ihe omambo oga shangwa melaka lyoshidhumo.

Omambo ngaka oga shangwa ehistolil



## Oukwapata dingi komesho younwainafana muKristus

Ohandi pandula unene kOmukwetu wa holo-kele muApilili nomuMai 1979 omoloshi-popiwa shovanyasha osho tashi popi komba-ninga yoyoonda nelongifo loimaliwa momahombolo.

Oshinima eshi oshi li oshixungilwa shine-ne kovanyasha vahapu Ovanamibia. Luhapu peexungi edi ohapa kala eengudu mbali tadi kondjifafana. Vamwe tava ti: Oyoon-nda nai fye, vakwao tava ti; Nai kale po.

Luhapu kombinga yonaikale po oyo ombinga yoonakupewa manga oonakuyandja ovo hava ti; nai dje po. Eshi osha dalwa ashike keyeletumbulo lomukuluwonale ou ta ti: "Omundilo wongula opokanhele koye ho yokele."

Ashike otashi holola sha yela yo kutya ovanyasha vahapu ova mona epuko moshinima shoyoonda. Ohandi pandula eshi eemhata edi da fika fiyo mOmukwetu, ndele naame nda ninga omutitatu wado moku di koleka. Oita nai twikile meemhata da tya ngaha, efindano oshili.

Ame oshilyo shongudu yotete oyo tai kondjifa oyoonda i dje po. Sha yela kutya omunyoli wotete mOmukwetu waApilili pashipalanyolo "Ehepeko loimaliwa momahombolo opashinanena," ohandi mu pe ongobe. Nondi na omatomhelo ange kutya omolwashike handi popile i dje po.

Ngeenge hatu tale oshipalanyolo shoshipi-piwa tu shi na paife, oshi na eembinga mbali. "Oukwapata noumwainafana muKristus". Onda tala kutya oinima ei ivali otai kondjifafana. Ope na lela oudjuu oinima ei ivali i ka kale pamwe nombili. Natu taleni nee kutya oyoonda oi na ekwatafano nashilipipo pwaai ivali.

Nale ootatekulu noomeekulu okwa li hava ti: Ame omumwange, ita kongwa ile ita kongo kooNima, nde ota kongwa ile ta kongo kooNgadi, osheshi epata lavo oliyamba, ohali longo.

Oukwapata wa hovela nale nokuli nowa hovela okulikongela omifenu. Ova hala kepata liyamba shaashi ve shii kutya otaku dulu okudja ongobe oyo tai ningi eliko lokepata lavo.

Paife ka konge kooNima, kashi po vali. Paife omumati ile okakadona otaka i ashike apa ka hala. Paife okakadona oka hala oyoonda, ashike inaka shiiva ngeenge omumati winya ka itavela keumbo lavo oku na oshiunda ile ahowe. Ngeenge oha di pokamba? Epulo.

Ohatu ti omukriste okwa mangeluka okukonga keshe, shimha ashike omukriste. Eshi oshoshili, ashike molwoyoonda, inatu wanifa omhango youkriste. Shiwana, hano Isak winya Rebekka okwe mwoonda eengobe ngapi? Epulo.

Pa Iil.2:44 otaku tiwa, aveshe ava va itavela ova kala kumwe nemona lavo ove li

paka mumwe. Ngeenge nee fye ohatu ti ovamwainafana muJesus mokwiitavela, emona letu otwe li tula ngoo mumwe?

Paife ngeenge emona letu oli li mumwe, oyoonda inya otai i kulyelye womukriste notai di kulyelye? Hamba otashi dulika ngoo eengobe u tye owe di tongola, nonande odi li moshiunda shimwe? Epulo.

Pakutala kwange, oyoonda oya puka shashi omunhu ito dulu okulanda mumwan-yoko. Ou ha landwa omupika.

Kombinga yohango yomosaala ile yomefiku limwe, itandi shi popile. Otashi ka eta ounghundi uhapu movadali okuhafela oivilo yovana ile yovatekulu. Ngeenge owa ningile oshivilo mosaala, osha yela kutya otaku uya ashike ava ve na oukalata veshiivo. Meekulu nounona vanini vounde-nge vange otava mono nee ngahelipi kutya onda ninga oshivilo? Vali fye Ovawambo katu na unene omhumbwe yoikulya opo ngeno aishe i kale yapita koshimaliwa.

Lungameni eumbo leni li kale alushe onhele yelineekelo noyouidiinini noyeliidiiniko noyokutila Kalunga, opo epuniko olo Kalunga e li udanekela ehombolo, li ninge yo noleni.



## Eshi tu na kuningila ounona neudo, Munyika e shi tu lombwela

Keshe munhu mefiku laye ledalo, oha kala a hala a ningilwe ngaashi naanaa e li mefiku laye la fimana. Ita pumbwa nande kuhandukifwa nokunyematekwa. Omufuko e li mefundula laye, ohe lihumbatifa vahapu nawa, opo vaha nyone po ehafu laye. Nande omunhu na kale omutondi womufuko oo, alushe ota kendabala e li humbate nawa aha nyone po ombili nehafu lomufuko.

Ounona mounyuni aushe ovo ovafuko momudo ou 1979. Ou omudo wavo. Oshike nee tave tu pula? Otu lihumbate nawa, tuhe va nyemateke. Ove li moshivilo sha-

Kombinga yodede yondilo, eshi nashi mone exulilo, osheshi ewapalo olefiku limwe ashike. Konima yomafiku avali nefano loye ola kana mo momesho ovanhu kutya okwa li wa fewa. Landa popepi naave, ino hepifa oimaliwa noku ka konga kokule.

Ehalo lange oleli ngeno ovafitaongalo voshitaingeleka shaUkwanyama nOndonga aveshe va leshele ovanyasha vomaongalo avo oipopiwa yoludi eli. Ovanyasha nava tokole voovene kutya mefimbo lavo oyoonda oyapumbiwa ile ahowe.

Ashike vanyasha vakwetu, Ovakwanyama nOvandonga, onda hala ku mu shiivifila kutya onye amuke moiwana 7 yOwambo mwe limangeleka moyoonda oyo tai pangelwa koukwapata. Lungameni nee shiha ninge endangalati moukumwe weni wopa-Kriste.

Ohandi xulifa kutya oukwapata nau fye pamwe noyoonda yao. Oumwainafana muKristus nau pangele.

T. P. Nakwafila

vo. Oshinyolwa eshi, okukwafa ovo tava longo nounona, nande hamoinima aishe. Onda tala shiwa tu ndungikafaneni oku uda ko ounona.

Nale mounyuni wOvagreka, omunhu okwa li a topolwa moitolwa ihapu. Ova li hava lalakanene okukonakona oitukulwa ei ooshimwe nooshimwe ngashi olutu, omwenyo, omutima, eendunge nosho nosho.

Ounyuni eshi wa ehene komesho, eitavelo eli ola i momeva. Ovanongononi ova ka

Tala kep. 8



# OMAPANGELO OGENDJI PETHIMBO NDIKA OTAGA EGULULA OMIYELO DHETUMO

Ongeleka yaELOK, yi dhimbulule ekwatho ndyoka tayi pulwa muuyuni wopondje osho sha kala oshinenenima momapopitho gomuwiliki gwEhanganotumo lyaSoomi, omusamane Alpo Hukka.

Tatekulu Hukka okwa talele po Ongeleka yaElok, muJuni nuumvo. Okwa li wo a kala moshituthi oshitiyali sheyapulo lyomumbisofi mOngeleka ndjika mOngwediva. Konima okwa talele po omagongalo gamwe osho wo omapyatumo gamwe meni lyOngeleka.



Omuwilitumi A. Hukka

Mokuyelitha oluhepo lwevangeli talu pangele muAsia nomuAfrika pethimbo ndika, omuwilitumi okwa ti:

Ngame mwene inandi mona natango ompito okutalela po kehe shimwe shomiilongo 15 moka Etumo lyaSoomi tali longo oshilonga shetumo. Ihe onda dhimbulula opu na etegameno ewanawa ngashingeyi miilongo mbyoka ya kala ye edhila po omiyelo mwaa uvithilwe evangeli.

Peking naNepal oyo iilongo iyali mbyoka e yi tumbula komadhina tayi egulula ngashingeyi omiyelo dhayo.

Omuwilitumi okwa zimine wo o-maudhigu ge li po natango miilongo mbyoka.

MuNepal, oshilonga osha tamekwa nokuli moka aatumwa Aasoomi ye vule 20 taa longo. Oku na wo omatumo galwe taga longo oshilonga shevangeli. Ihe oshilongo shoka otashi pumbwa natango aatumwa taa zi kuAfrika, osho omusamane Hukka a hokolola molupe lwehiyo.

Ehiyo ekwawo ndyoka omutumwa omukulu gwaElok, Hukka, a holola, olya za

kuCentral African Empire, hoka Ongeleka yaElok, yi indilwa owina meukililo yi tume ko aatumwa yayo.

Okwa uvika wo ondjala yevangeli tayi hepeke muUpper Volta, popepi naMali. Nayo wo omeho gawo oga ligamena kuumbugantu waAfrika ku ya zile ekwatho.

Omuwiliki gwaatumwa Aasoomi ye thike lwopo 200, taa longo muAsia nomuAfrika, omusamane Hukka ota pandula eu-

voko epe lyoshilonga shika lya penduka ngashingeyi mAasoomi shi vule shito. Ihe okwa londodha wo nkene pwaana uuwanawa itaa u pitile ando muudhigu washa.

Manga inaa thiga po Afrika a shune ku-Europa, omusamane Hukka okwa kongo ompito opo a vule okupitila hwiyaaka a ka talele po aatumwa mbeyaka taa longo mu-Angola oshilonga shetumo pamwe naasita yaElok.

## EKWATHO LYAELOK KUSENEGAL OLINI?

Ohaku popiwa unene oshilongatumo pethimbo ndika kuSenegal, naElok, ta pulwa ekwatho moshinima shoka. Omiinima yinipo ano ekwatho lyOngeleka ndjika tali pulwa. Aatalelipo yetu kepyatumo ndyoka, oye tu tomonene iinima yimwe po.

Olweendo olwa ningilwe pehulilo lyomumvo 1978 komumbisofi Kleopas Dumeni, aatalelisikola tate Hans Daniel Namuhuja natate Abednego Nghifika.

### Aantu

Oshilonga osha pumbwa aantu, iika-ha yawo omeho noompadhi nosho tuu, ya longo shono sha pumbiwa po ngashi elongo lyomoosikola momikunda, okupanga aavu yomomikunda, noshilonga shopausita oshi na ompumbwe onene.

Okwa pumbiwa wo mboka taa vulu okulundulula iinyolwa ye yi tule melaka lyaavalelwamo nosho tuu. Aantu yomaithano ngaka agehe oya pumbiwa omalutu gawo hwiyaaka, shimpa tuu ye li momuthika tagu vulu okwiilonga omalaka omakwiilongo ngoka tage ya kwatakanitha naambo-ka taa longo muyo.

### limaliwa

Ongeleka yaElok, oyi na wo ekwatho metumo ndyoka okugongela iimaliwa ya pumbiwa noonkondo moshilonga shoka omolwiinima tayi landula:

Oondjambi dhaanashilonga dhi monike, omatungo goosikola nomagumbo komikunda nomikunda ga tungwe, iipumbiwa moosikola dhaanona ngashi iipelende, oompya niinyolitho niifo nosho tuu yi monike.

Omahangano gaanona, gaagundjuka, goomeme, gootate nosho nosho, oge na mpaka ompito okuninga sha, iilonga yetumo yi pondoke. Opu na nantango oompumbwe dhokulanda uupakapaka nuutemba okweenditha aavithi komikunda nomikunda.

### Osikola yetumo

ELOK, ota vulu okudhika osikola yetumo, moka aagundjuka taa putudhila oshilonga nomalaka ngashi Oshiserere nOshifulanisa tashi dheulwa manga kuye.

Epya olya tiliganena ano eteyo.

### MEME OKU LI PO HWEPO NGASHINGEYI

Meme Selma Nampala (55) ngoka pamwe nooyakwawo ya monene oshiponga shekandomo mondjila pokati kOnandjokwe nOshigambo nuumvo muJanuali, oku li hwepo ngashingeyi.

Omasipa ga teka, Kalunga okwe ga tsikinike kumwe nolutu lwa li lu udha iilalo yambegenyeka, okwe lu andeke. Ngashingeyi oku li hwepo hewa.

Otatu pandula kookuume ayehe ya kala nokugalikana omolwoshiponga shika. Omagalikano oga thiki, ngashingeyi omukulupe oku li hwepo.

King M. Angolo



# Ekondjo lyaNamibia tali popilwa muAmerika

Oshipopiwa tashi landula osho efupipiko lyaashono sha holoka moshifo shOngeleka "The Lutheran Standard" muAmerika. Omunyoli omuwilikingeleka Dr. Edward May, Oshipopiwa okwe shi nyola nelalakano oku uvitha ko iilyo yoongeleka moshilongo shawo, onkalo yuumbugantu waAfrika. Oyendji yomaakriste yoongeleka ndhoka oyo wo aawiliki yomepangelo lyaAmerika ndyoka limwe li na oonkondo miinima yevi lyetu.

"Ekondjo lyaAaluudhe molwemanguluko muAfrika, oshinima sha za nale. Opwa li ethimbo ndyoka oshitopolwa oshinene tashi pangelwa kuEngilanda nokuFulanisa ongiitembukilwalongo yawo. Pethimbo ndika ookoloni ndhika otadhi monika maapopi yOshifulanisa kuuninginino nopokati kaAfrika, naapopi yOshiingilisa oya gama unene kuuzilo waAfrika.

"Etindo lyuukoloni mbuka lya nika etiko lyombinzi niinima yilwe, osho sha thimnika Aafulanisa nAaingilisa ya langeke omapangelo gaavalelwa mo kiipundi yawo. Osha ningwa unene pomimvo 1950-1960."

"Shono sha ka za mekondjo lyaakondjeli-manguluko yomomimvo 1960-70, oya lukwa aniwa ooteroleza dhaakomunisi ndhoka tadhi taandelitha elongitho lyekuni netiko lyombinzi."

"MuZimbabwe inapa pita omimvo odhindji sho omumbisofi Abel Muzorewa nomusita Ndabaningi Sithole ya li ya lukwa omadhina ogendjigendji, sho ya talika oya

hala okukutha ko epangelo kiilongo yUuninginno mbyoka ya talwa ye na oku li gandja. Ngashingeyi oya talika oyo aawiliki aanene aakriste.

Kombinga onkwawo Josua Nkomo naRobert Mugabe, yo konyala inaa yalulilwa moongundu yaakriste, nonando Nkomo omuvvithi mOngeleka yaMetodisi naMugabe omuyakuli omwiinekelwa mOngeleka yaKatolika. Ayehe iyimati yomoosikola dhetumo. Tango oya kala ihaa popile elongitho lyekuni, ihe konima oya tala kutya Rhodesia otali mangululwa ashike kondjembo.

"Engilanda ye okwa li i ilongekidha okugandja emanguluko palandulathano ewanawa 1965. Smith pamwe naalanduli ye oyi ikuthile ihe epangelo ndyoka nokuza mpoka okangundu okashona kAatiligane oka tameke okupangela nonyanya.

Epangelo lyaSmith olya vulu okukala koshipundi keyambidhidho lyilongo yUuninginino. Ihe oshili oyo ndjoka kutya, ko-

nyala aawiliki ayehe yekondjelomanguluko muZimbabwe, aakriste. Omatati oye ga kutha, sha za muuwehame nomeidhi-ngoloko lyomitima.

"Etiko lyombinzi ndyoka li li mo pethimbo ndika, andola olya kandulwa po nokudhiginina ondjindikila yiiipindi yiilongo yUuninginino. Lyo ando emanguluko lya monika nale nokuli."

## Namibia wo osho li li

"Namibia mekondjo lye naye osho e li. Mboka taa kondjele emanguluko lyoshilongo shoka mooradio oya tiwa ooteroleza dhaakomunisi. Manga omumbisofi Omunamibia gwOngeleka onkwaLuther te ya ithana; "aamwetu".

Aakondjelimanguluko oyendji moshilongo shoka oya pututhwa moosikola dhopakriste noya kolekwa mOngeleka dhopakriste ngashi; yEvangelii paLuther yaAnglikani nenge yaKatolika.

"Tulinane Emvula, omukalelipo gwoponto gwaSwapo kligwanahangano okwa ti kutya: "Tse inatu hala okudhipaga, tse inatu hala wo okudhipaga."

"Oshinakugwanithwa sha simana shono Aanamibia ya tula komapepe gawo osho okweeta po emanguluko nuuyuuki mevi lyawo. Naanaa ngaashi tse muAmerika hatu dhana oshituthi shoka shetu eti 4 Juli omumvo kehe.

"Oomvula dhomathele gaali qa piti po odha hambata natango omadhimbulo getiko lyombinzi nomahodhi twa li tu ga na omolwemanguluko lyetu. Aayamerika yamwe ohaa tala aasita muNamibia nayi mboka ye na eitaalo memanguluko. Ihe Aayamerika tuu mboka, oyu uvite uuntsa komusita gwawo Peter Muhlenberg ngoka a thigile po oshuuvithilo a ka kondjele emanguluko."

## Elongitho lyekuni

"Aawilikingeleka omapenda muumbugantu waAfrika oya kondjitha etopoko lyomaqumbo, etulo moondholongo pwaa na ompangu, omafiko nomalusheno nosho tuu.

"Kombinga yepangelo omaliko gonzeleka oye ga vonaqa po, oombelewa dhaawilikingeleka odha hadhwa, oopaasa dhawo odha tokelithwa noya tulwa moondholongo, ya tidhwa po moshilonga shevangelii noya ningwa nayi komikalo odhindji.

"Aakriste oyendji otaa kondjitha elongitho lyekuni lyaa shunithilwe omuntu. Yamwe ya nyengwa okuhambata omahepeko noya kutha omatati. Ayehe otaa lalakanene uuyuuki, ombili nuuthemba wemanguluko.

"Aamwameme mbaka muNamibia oya pumbwa tu ya uvii ko notu ya galikanene. Ngele twe ya uvu ko kutya oye li moshili, otaa tegelele wo ihe eyambidhidho lyetu nepopilo, opo elalakano lyawo li adhike pwaa na we etiko lyombinzi nevundakano."

## Aakwaluther muAmerika meyambidido lemanguluko laNamibia

Okudja petopo leboma yotetetete muNamibia mOshinyanyangido shOngeleka yaElok, Ongeleka onghwaevangelii paLuther muAmerika, oya kala ya udanekela ovakriste muNamibia kutya yo otai ka ninga ashishe tai dulu emanguluko loshilongo eshi li monike pehe na etiko lohonde ihapu.

Onghundana ya dja muAmerika omafiku aa, otai hokolola nhumbi Ovakwaluther muAmerika va kema eshi omafanekelo emanguluko muNamibia naZimbabwe a xulila ondjalakati nonghalo moilongo ei ivali tai naipala efiku nefiku.

Mombilive ya nyolelwa keengeleka adishe eenghwaLuther muAmerika, Okomitiye yOngongahangano yeengeleka odo muAmerika (Lutheran World Ministries;) oya kungihilila ongeleka keshe i yelifile oilyo yado oyo i li mepangelo laAmerika onghalo yaNamibia.

OmolwOvanamibia tava ehamekwa, oshoongalele shepangelo laAmerika osha pumbwa okuuda sha kwaavo tava popile mOngeleka emanguluko laNamibia, osho omukanda wokomitiye wa popya.

Ovo ve li koshi yomahepeko, Okomitiye oya pula yo eengeleka moshilongo shavodi va tule momailikaneno pavelishe 3 mukAaheberi 13.

Moshooongalele shayo shomuMai, Okomitiye oya li ya tokola ngomunhu unwe ondjidikila yoipindi muZimbabwe i twikile natango nonando moshilongo omwa ningwa osho sha lukwa ehoololo la manguluka.

Opo nee moyoongalele ikwao ya tetekela osho, Okomitiye oya ninga eindilo kepangelo lavo li koleke omatokolo Oraata yeameno yaVVO. Omatokolo otaa lombwele epangelo la S. Afrika li longele kumwe naAmushanga Ndjai wa VVO pu ningwe ehoololo muNamibia.

Ngeenge S. Afrika ita itavele oshinima eshi, Okomitiye oya indila epangelo loshilongo shavo li ninge ashishe osho tali dulu mondjidikila yakeshe shimwe moipindi, omukalo ou ngeenge oo tau etifa po elunduluko mombili.

David Preus, omupresidende gwOkomitiye okwa ti kutya, Ongeleka yomiilongo yUuninginino oya longo oshindji momimvo 50 dha piti muAfrika okweeta po Ongeleka moka mu na ngashingeyi Aaluudhe oomiliyona.

Otashi kala ihe oshiyolitha ngele Aaluudhe mboka uuna taa kongo emanguluko nuuyuuki, iilongo yUuninginino tayi dopa oku ya uva ko. Tseyithileni aakalelipo yeni moshigongi shooveta ya tseye omadhiladhilo geni kombinga yuumbugantu waAfrika. Onkalo oyi li moshiponga noya pumbwa okuhupithwa, osho omupresidende Preus a londodha. Oongeleka dhawo.



# Omudo wounona

Dha za kep. 5

yelelwa diva kutya omunhu oye oshinima shimwe ashike. Omunhu ita dula okukonakona ouluvi womunhu ye ina konakona yo neendunge. A konakone ngeno eendunge ye ina konakona yo nolutu.

Lwaxuuninwa omundohotola Eric Beren okwa mona omukalo mupe wokutopola omunhu. Okwe shi ninga moitopolwa itatu aike.

- a) omudali womeni (internal parent)
- b) omukulunhu womeni (internal adult)
- c) nokaana komeni (internal child)

Omudali womeni okulile po omadiladilo nomalipulo, omakeko eenghenga neenghono. Enwefemo lomukulunhu otali di mouluvi. Otashi konekwa mokaana taka popi oinima ya dindwa noi na komongula. Fimbo taka popi ngaho, omukulunhu wako oye ne ta pangele muko pefimbo lo.

Okaana komeni ohaka konekwa meliudo, mehafo, nomehandu. Enwefemo lokaana komeni ohali di komudali womeni. Okaana komeni ihaka fii po ondjokonona ke i lihonga monghahamwenyo yako. Otashi dimbulukiwa movakulunhu ve hole oinima yokounona noyopefimbo lavo. Omukulupe ta popi elaka lidjuu, eli kwa li hava popi pefimbo lavo.

Komesho otashi dulika tu ka popye koitopolwa kwao yomunhu (parent and adult) nde molufo eli momudo wounona, natu tale manga kombinga oyo yokaana komeni oko ke li momunhu keshe, nghee ka kwatafana naaka kokombada oko ka nuninwa omudo mounyuni aushe.

Ediladilo lange okutya ngeenge mokudimbulukwa oukwatya wopakanona oo u li nomovakulunhu, itatu dula nande oku u longifa, opo tu udife ounona vetu ouumbo momudo wavo.

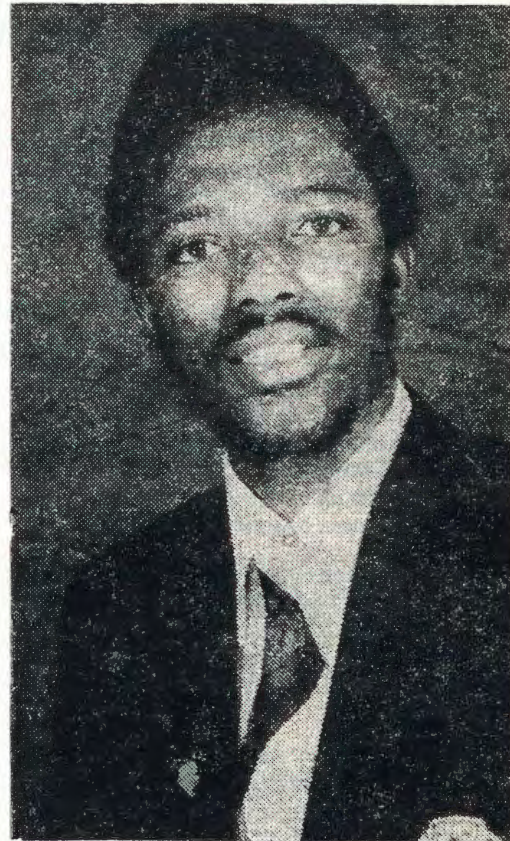
Omunhu ta pangelwa komudali womeni, oto hange taku tiwa, okaana konhumba oke na eendunge ile oke na omhepo ya fa yomukulunhu. Ngeenge ke li nava-kwao, oto hange tava kongelelwa shili.

Osho yo to hange omukulunhu e yelike kuvakwao, vati oku na oindunge yopakanona. Ngeenge oukwatya womudali otatu pangele mokaana, otaka kala haka tilika kuvakwao, osheshi muye ove wete ashike omudali ha denge ounona iha hafe, iha yolo, noiha shendjula nounona shaashi okaana kaye komeni aka ke hole ounona vokombada, oka fya. Omunhu a tya ngaho, ita kala e hole ounona nounona itave mu hokwa.

Omunhu e na okaana komeni taka longo nawa, okuhole alushe ounona, nounona ove mu hole yo. Alushe okwa hafa, ta yolo (nande pamwe ha handuka yo diva), ota nhuka moudano wounona nande na kale e fike peni moukukulunhu.

Oha ongalelwa kounona noitave mu tila. Muye ounona ove wete okaana kakwao. Omunhu ou oku na oshilonga nekwafo linene momudo woneudo 1979 opo ounona va hafifwe neudo moshivilo shavo.

Elao linene oli li opo eshi nande twa topolwa moitopolwa oyo itatu notashi dulika shimwe shomuyo shi kale tashi pangele omunhu nokulyaminina po ikwao,



Muniyika Veikko

oitukulwa ei aishe ohai dula kupangelwa kuKristus. Omhepo yaJesus oyo tai lundulula onghalo yetu.

Eshi sha pumbiwa osho eshi tu longe nounona tu va udite ko nove tu udite ko noku tu hola. Inandi diladila fye tu ninge ounona ile tu ninge oinima yopakanona, ndele tu ehene kuvo mokulininipika, vehe tu tale ngashi ovapangeli, ndele ongaashi ookaume kavo novaholike vavo. Tu kale tu shii okuya po nokudja po.

Ngeenge to nyengwa okushiiva oukwatya oulipipo tau pangele unene muove, pula mushiinda shoye. Ame nandi ku vakele ko nee kanini. Shimha tuu uhe hole ounona nohave ku tila, dimbulukwa kutya ou na omhepo youdali tai ku pangele. Hano i pangela.

Ovakriste neudo ohatu pulweni shihapu omolwounona vetu, oshiwana shokomesho. Tu hafifeni ounona vetu neudo, osheshi ovafuko fye oinghumbi novatanhi. Natu kotoke hano tuha nyone oshivilo shovanhu shounona.

## OMUKWETU

Oye oshifo shOngeleka Onkwaevangeli paLuther yomOwambokavango. Oha nyanyangidhwa mOshinyanyangidho shOngeleka mOniipa. Omukuluntu gwoshifo omumbisofi dr. Leonard Auala. Ondando yOmukwetu komumvo muAfrika R 2-60, kombanda yomafuta R 5-00. Omambesitelo pamwe noondando naga tumwe kOmukwetu Oniipa, P/B. 2013 Ondangwa 9270



Momudo woneudo tu liningeni ookaume kounona ngaashi meekulu ou e tu ulikila, komutwe wondjaba.