

# OMUKWETU

No. 5

Registered at the GPO as a Newspaper

12c

## TWA MONO AAYAKULI YETU

Mongeleka ya Niipa Olyomakaya geti 24 IyaFebuluali nuumvo, kowalitali okwa li kwa thikama aavalithi ye li 15 nomupangi 1, opo ya yambekelwe moshilonga shawo.

Eyambekelo moshilonga olya li Iya ningwa komusita Festus Ashipala pamwe naakwathi ye, Sebulon Ekandjo, Stefanus Mvula nosho wo Reijo Kaarto omusita gwoshilongatumo mu Elok.

Omusita Festus Ashipala okwa imbi-  
tha eimbilo 191. Okwa lesa muLu-  
kas 16:13, nomuKaaroma 6:18, nokwa  
tsikile ta ti:

■ Oshituthi oshiwana koshigwana  
ashihe sho tatu yakulwa. Omutondi  
gwetu uuvu okwa sindika.

■ Ne aayakuli omwa ningi nawa sho  
mwa kala aadhiginini moskola, no-  
mwa tseye nawa iilongwa. Okuthi-  
kama kweni mpaka otashi mu ningi  
aayakuli.

■ Aalongi yeni oyo oonzapo dhoku-  
tseye kutya ne aayakuli. Okuya  
kweni mpaka nena okwa thikama  
kepulo kutya one aayakuli yalye?

■ Omuntu otashi vulika a kale omu-  
yakuli gwaMammoni nenge gwasata-  
tana, ihe kombinga yimwe ota kala  
wo omuyakuli gwaKalunga. Ano ne  
omwe ya mpaka ketokolo lyeni ku-  
tya omwa hala mu ninge aayakuli.

■ Elalakano lyokuya powalitali yo-  
muwa oyo ndika kutya ne omwa  
hala okuninga aayakuli yaJesus.  
Josua ta ti: "Hogololeni ngoka  
mwa hala oku mu-longela, ihe  
ngame negumbo lyandje onda hala  
okulongela Omuwa".

■ Ombepo yaKalunga otayi mu ningi  
aalanduli yaJesus. Okukala kweni  
mpaka powalitali oshi na eyambe-  
ko IyaKalunga. Kaleni aalongeli  
yaantu, ngaashi Jesus a kala omu-  
yakuli gwaantu ye.

■ Mboka ya pumbwa eyakulo oyo  
aavu. Omuyakuli gwaMammoni ke  
na sha naantu, ihe omulanduli gwa-  
Jesus oku na sha naantu.

■ Tokoleni ne yene olye ngo mwa  
hala oku mu longela. Omwa yoo-  
lolelwa okukala aayakuli yaJesus,  
okutonda uulunde nokulandula uu-  
yuki. Amen.



Yamwe yomaavalithi mboka ya yambekelwa moshilonga shawo. Mokati kawo otamu monika omupangi gumwe Olivia Kandume ngoka oye awike a piti mongundu yooyakwawo omilongo mbali.

Okuza mongeleka oshituthi osha ka  
tsikila kOnandjokwe mongulu moka  
haa longelwa. Naamwiwaka omulongi  
gwawo gumwe meme Else Witting  
okwe ya tsu omukumo sho a ti ngeyi:

Oshilonga shuupangi kashi shi oshi-  
pu, oshoka olwindji omupangi okwa  
kundukidhwa komayemato. Kol. 3:  
23-24. Aapangi ne, longeleni Omuwa  
nenyanyu. Omuwa oto mu longele  
mokuyakula yakweni, osho meme  
Witting a hulitha ngaaka.

Omusita Stefanus Mvula mokupopi-  
tha oshituthi okwa ti: Jes.21:14. Aa-  
pangi yetu, Kalunga na hambelwe  
sho mwa hogolola uupangi, nokwe  
mu ithanene meyakulo Eyapuki. Ka-  
lunga na hambelwe sho oye mwene  
e ya a longe pamwe nane.

Ethimbo ndika elulu, oli na iiponga,  
omayemato nuuvu. Eso otali yanga  
ongoombuku tadhi yanga mepya. O-  
mwa mono nale sho oshigwana she  
ya kune sha sa enota, mu shi pe o-  
meya, noshikwiila shi lye.

Tala kep. 2



## South Africa oti ikwatelele kuuyidhi

Ehokololo lyaAmushangandjayi gwa VVO, omundohotola Kurt Waldheim kOraata yEgameni, ndyoka a gandja eti 26 Febuluali 1979, olyo limwe lyomiikundathanwa ya simana pomasiku ngaka.

Mehokololo (li lesa palwe moshifo shika) otamu popiwa nkene VVO pakulongitha dr. Waldheim nomukalelipo gwe, pwa longekidhwa oshindji pashitokolitho 435/78 shOraata yEgameni tashi tulitha omathaneko glilongo Itano yokUuninginino miilonga, opo ku adhike ekandulopo lyomukundu gwaNamibia tashi pitile mehokololo tali wilikwa kligwanahangano; shoka S.A. itee shi adha kuye mwene.

Ehokololo olya kwatelela mo wo iitsa ya simana ngaashi tayi landula:

- Egalukilo moshilongo lyoontauki Aanamibia mboka ye li pondje.
- Engambekelwo lyaakwiita yaSouth Africa noya SWAPO mookamba.
- Omalongekidho gehulithepo lyuutondwe netulepo lyomatati.
- Omutungilo gwetanga lyombili lya VVO, Untag.
- Euvathano lyomuthika gwa Untag
- Ethaneko lyesiku lyetulepo lyomatati, eti 15 Maalitsa 1979; etameko lyokuya kwomatanga gombili muNamibia.

Epangelo lyaSouth Africa inali panda ehokololo ndika, oshoka aniwa olya ya pondje yomavathano gawo nllilongo Itano yUuninginino, ngaashi e li ziminine meti 26 Apilili 1978 (lesha omathaneko mOmukwetu No. 14/78).

S.A. mokwiikwatelele kuuyidhi ota konenene aniwa iitsa 11,12 yomehokololo nota ti, ililongo Itano yokUuninginino oyo ya teya euvathano sho tayi pulakene owala SWAPO.

Kombinga onkwawo sho pwa indilwa omayamukulo gaSouth Africa na SWAPO kethaneko lyetulepo lyomautu, SWAPO okwa gandja nale eyamukulo lye, ye nomuSeptemba 1978 okwa hololele ehalo lye mombilive kOraata yEgameni moka a pula ya shaine euvathano.lyetulepo lyiiti yo na S.A.

Mbela ngele S.A. oye omuholimbili shili okwe shi ulike nomukalo guni? Ishewe momanyenyeto nomagandjo ge guusama ko VVO, omuntu oto nyengwa okuuva ko ngele moonkundathana ndhika, nando e dhi zimina aniwa, oku li mo tuu nehalo lye mwene nenge pamwe oku na ethiminiko lyagulwe, sho a tila okwiikalekelwa nokutongolwa kuuyuni. Okwa fa wo keehe na naanaa ehalo lyoshili Namibia li manguluke pambili.

“Kandi na sha oshindji oku mu etela, ihe otandi ka popya owala pafupilela kombinga yethimbo twa kala mosikola,” osho meme Frida Shivute gumwe gwomaavalithi mboka ya yambekelwa moshilonga shawo 24 Febuluali 1979 a tumbula mukupopitha aayenda peha lyooyakwawo.

Okwa tsikile ko ishewe ta ti kutya ethimbo olindji sho twa kala mosikola, otwa kala tu na uudhigu, nomathimbo omashona gowala twa kala tu na uupu. Ngaashi atuhe tu shi shi kutya ethimbo lyongashingeyi edhigu, uudhigu tuu mboka owa li wo wa piyaganeke eilongo lyetu.

Ngaashi tandi dhimbulukwa omasiku 4 Mai 1978, sho aamwameme ya dhipagwa koKassinga, otwa adhikile mootundi sho oshihomo nekudhilo lyoondhila lyu uvikile mombanda, nomwenyo gwa kehe gumwe ogwa li gwa timpililwa.

Omulongi okwa koneke nkene atuhe twa li twa sholola noka pwa li nando ogumwe a vulu okulandula oshilongwa. Okwe tu tsu omukumo kutya Kalunga oku li pamwe natse omathimbo agehe, osho meme Shivute a hulitha.

Kwaayehe mboka ye ya kwatha pethimbo lyoskola, osho wo aalongi yawo mbo ye ya nongeke noye ya tsu omayele, meme Shivute okwe ya totele oshitewo sha ngongwa nuukeka tashi ti:

### Dha za kep. 1

Sho mwa tentekululwa iikaha omwa zalekwa ngaaka oonkondo. Ne aapangi otamu yakula oombinga adhihe, oshoka moshipangelo otamu ya ayehe, ya shashwa nenge inaa shashwa. One aanelago shili.

Oshigwana osha loloka, sha yemata, sha fikwa nomalusheno notashi ya kune mu shi yakule. Oomwenyo tadhii ya kune mu dhi kwathe apehe, palutu nosho wo pambepo. Ethimbo ndika ethimbo lyOmusamaria Omunamutimahenda, onkee kulukileni kaantu (aavu) mu ya yakule. Ohole yoyendji pethimbo ndika oya dhima.

Omwi inekelelwa oshilonga sheni pethimbo edhigu, ihe inamu idhimbwa ne yene. Koonkondo dha mwene gwo-shilonga otamu ka sinda kudho, osho tate Mvula a kumike aapangi, ya kale ye na omukumo moshilonga shawo ye shi yambekelwa.

1. Otwa li tu na meme Helga ontana yaTollander  
Oye omutamekithi gwetu, ye oye e tu topolele omambo.  
Meme Salmi yaShivute oye e tu tonatitha  
Ye oye ngaa e tu longo nkene tu na okutala pomambo.  
Nangolo ndhi dhaAmakali a topatopa iifo yimwe  
Natate Moses Amkongo pamwe naanyanyangidhi ooyakwawo  
Oye tu indjipalekele omambo.
2. Nonando twa kala mosikola yuuvavalithi noyuupangi wo wene, Shigwedha shika shetu, shOmukolo shaKashilumbu,  
(ano tate Festus Ashipala) naAune waShilongo  
Inaye shi pitika nande tu kale inaa tu siikulula Ombiimbili yOohapu dhaKalunga.  
Ndiyaka omvula Nashenga, epoola lyomumvogu  
Olya teyele po omakuma, nekuma ndyoka hatu longelwa  
Olya li lya kumunwa po,  
Ihe tate Kalliokoski pamwe nomwana Ambambi  
Inaye shi pitika nande yi tu tule pontundulu.
3. Tate Samuel Amuthenu nooyakwawo kekulo  
Oya li haa meneka, taye tu telekele iikulya  
Tu wape tu ga matule.  
Mbaka aanamagumbo getu, nookuume ketu ayehe,  
Otandi hala ndi tye,  
Oongolo dhawo odha pushuka molwo ku tu galikanena.  
Tate Olle Eriksson e tu ulukile nkene tu na okukalathana naantu ayehe, unene, naavu yetu.
4. Omundohotola gwetu Hamata okwe shi koneke kutya, osha pumbiwa noonkondo, oku tu humitha komeho  
Ihe omumbyoka ya li ya kitakana.  
Elizabeth Kashile okwe endele ko esiku limwe ti!  
E tu ulukile nkene omikithi tadhii keelelwa pamukalo gwetuntulo.  
Meme Aletta Ngaikukuete okwa li he tu kumagidha twaa ethe po pomambo,  
Oshoka ethimbo ohali endelele.



# JESUS KRISTUS OMUFINDANI

Dr. Shejavali

Exodus 14:10,13,14

**ETWALEMO:** *Ovaisraeli ova li molweendo lwemanguluko. Va dja muEgipiti omo Kalunga eva mangulula moupika wopalutunomoupika wopamwenyo, nosho yo moupika wopamhepo. Osheshi ngenge omunhu e liomupika nomuhepekwa wamukwao, shihapu shefi-mbo laye ite shi longifa okufimanekanokutwila eengolo Omushiti waye.*

Emanguluko laIsraeli moupika wOvaegipiti, otali ulike Kalunga omushiti weulu nedu eli, nghe e li meshito laye te li nyenge, note li tula moinima yopanhu, yopanghalafano, yopapangelo yopapolotika, yopaekonomi nosho nosho. Note shi ningi, osheshi ngaashi e li omushiti womunhu, osho yo e li omupopili, nOmukondjeli womunhu waye. Te mu popile komahpeko nokokupikwande ta kondjifa ovahepeki novapiki vomunhu. Ote shi ningi, opo ounyuni waye u wanifwe nomokati keenghalafano dovanhu nodoupolotika.

Kalunga a findana mokulongifa omupiya waye, Moses a mangulula mo Israeli koshi youhauyuuki oo a li ta longelwa kOvaegipiti. Oku li molweendo mombuwa pefuta etilyane, olweendo lwa hololwa po koilonga ikumwifa yemangululo laKalunga. Ovaisraeli ova li va yada ehafo. Oupika otawu kala konima nemanguluko ove li moku li makela. Emanguluko olo oshali komunhu e shi pewa kuKalunga ndele omupika oku na oudjuu oku u dimbwa kutya oye okwa manguluka nee. Omupiki nomuhepeki iha efa noupu omuhepekwa waye. Okwa ikilila okukala omuhona. Osho sha li nokOvaegipiti. Inava ikilila vali okukala itava longifa omunhu, itava piki nokuhepeka, nosha li oudjuu kuvo va kale vehe na vali Israeli ngomupika wavo.

Ovaisraeli otava dimbulukwa kutya nani inava manguluka momake oovene vavo. Ovahona vavo otave uya nee va handuka tave uya komupika a lunduka a fiya po, tu tye "Oshinakuwanifwa" shaye. Efuta otali ame kombinga imwe naIsraeli ota kala a fa a fitikininwa pokakololo. Osho ne osho sha eta ehefaano loubada momitima davo. Movelishe 10 yekapiteli tuu eli 14 otamu tiwa: Ndele va kwatwa koumbada munene." Notava hovele okutangunina Moses noku mu tala nomesho mai matilyana.

Moumbada wavo, ove wete kutya osha li sha wapala ngenge vo va kalele ashike moupika nokulongela ovahona vavo nokufila poovene vavo, naau nee a fa a fimanekwa komupiki waye, ye ta fudikwa ngaa nefudiko la fimana. Ndele tuu moumbada oo, omwa li yo hewa onghuwo okukuwila kuKalunga. NaMoses ina tala noipala yavo ya lunduluka koumbada nokehando-ahowe. Ye ke nako nasha oshoka ovo ovanhu ngaashi ye:

Omunhu ota ningine ashike. Moses ina tala yo okuyuka mefuta, osheshi okwa itavela, Kalunga ote mu monene ondjila naapa, pakutala kwopanhu, ihapu endwa evelishe 13-14.

**OUMBADA:** Oku na omaumbada mahapu. Oumbada wokutayululila oshili. Oumbada wokuhalonga nokupopila ouyuki. Oumbada wokuhakondjela emanguluko lomuhepekwa nolomupika. Oumbada okutula emanguluko loye mwene nokweekelashi omutenge woupika. Oumbada wefyo nosho nosho. Omaumbada aeshe aa a fa taa monika mou-

mbada waIsraeli pomituni defuta litilyana. Oumbada wokutula eflyo pakutala kwange owa fa oo u li ina yomaumbada ayeshe.

Oumbada otawu dulu okuningifa omunhu oinima ii. Abraham omolwoumbada okwa li e na okulombwela omwalikadi waye Sarai, opo muEgipiti a dje mo oye omumwaina waAbraham, nopo ngaha ta xupu mokukala nomwenyo. Genesis 12: 11,13,20. Ndele moumbada tuu omo, Omwene Kalunga okwa popila Sarai koiponga, naAbraham okwa alulilwa omuholike waye, nondjila oyo a li ine i teelega. Omunhu ota tala, ndele ne Kalunga ota xupifa nomoumbada.

Oumbada otawu vayula elineekelo lokulineekela oshipala shefilonghenda shaKalunga nohole yaye noukaume wopafilonghenda. Adam ota nyamukula Kalunga Ame onda uda ondaka yoye moshikunino, ndele onda tala ... Genesis 3:10. Omunhu ota faduka po Kalunga, a tala ndele Kalunga kombinga yaye, ota shikula, omunhu nota ifanene kuye omunhu eli mokati koumbada. Omolwoumbada ovakuluvonale ava vomoumbanganhu waNamibia, ova fimaneka nokutula ovakwamhungu, netilo la pitilila nova kongela elao nomapuniko kuvo. Omunhu oto hale u tye, omalongeloitavelo mahapu okwa holoka po omolwoumbada.

Oumbada otawu piki omunhu. Mokukala moumbada waye, omunhu otashi dulika ta ningi oinima ihapu ii. Ota dulu okudipaa, okuvaka, okupopya oipupulu note shi ningifwa koumbada wovene. Oumbada otawu dulu u pangele eengudu doupolitika nonghalo yopanghalafano.

Epangelo lonhumba nge oli na eendevelo doumbada, nena otali yuka kouwii. Omolwoumbada Egipiti okwa ya molwoodi okudipaa ounona ovamati vaIsraeli Ouyuki otawu kukumwa, nouhayuki tau kala oshinakuwanifwa shalo. Oshili otai fudikwa novanhu alushe otava lombwelwa oipupulu. Oipupulu, omadengo, omakwato, omaxwiki-fo omalusheno, nomadipao, okwa yada mo medu eli.

Eedolongo domuNamibia kadi li hamwasha. Nehoololo otali ningwa moumbada, haalushe hali kala la djala ouyuki, oshili, ombili, nefimaneko lovanhu. Oineya nomakengelelo mahapu otaa ningwa noupu, omolwoumbada. Oumbada oo omalyenge okupandeka omunhu. Omunhu eli moumbada oye a pumbwa okumangululwa mo. Nomumangululi oye Kalunga. Omunhu ota pumbwa okukalapo noupopepi waKalunga, opo omunhu oha tala. Ou a mangululwa mo moumbada, ota dulu okufimana monghalo yemanguluko omo omunhu ta kala ehe fi omumangwi ndele omumanguluki. Ke fi omupiki ndele oye ta ningi vakwao ovanhu.

Ke fi omuhona ndele ne omuyakuli, omumangululwa washili, oye ota talele note lineekele Kalunga. Oye oku udite kutya oo e mungululwa oku mu shi Jes.3:1. Ndele nova-

tili hano ovo ve li moumbada ova pumbwa okulombwelwa: "Inamu tala nande". Omwene ote mu kondjele.

Osho tashi tilifa ovanhu, oshiwana shOmwene osho ounyuni. Ounyuni ohau eta oshipala shi lili. Fiku limwe, ounyuni owa fa wa pola nofiku limwe oshipala shavo oshitilifa.

Ounyuni ohau holoka noshipala shi tilifa keongalo laKristus. Eongalo laKristus tali kondjo mounyuni ou, otali shakeneke oipala i nolupe li lili: Oipala imwe nde i tumbula mekwatafano nepangelo li li moumbada ngaashi:

ohipala shokulonga ouhayuki.  
ohipala shomahepeko.  
ohipala shOngeleka tai shekwa  
ohipala shoipupulu  
ohipala shomadipao  
ohipala shovana vongeleka ELOK ile  
oshiwana tashi tauluka eengamba da  
Namibia omolwomahepeko.  
ohipala shoikolwifa tai hanauna po  
oshiwana nongeleka yaKristus.  
ohipala shokulidina kutya fye ovaluale  
nopolomukalo watya ngaha ohatu li  
efele okuhepekwa nosho tuu. Otwa pumbwa  
okuxupifwa mo mefuta loubada wokulidina.

Oipala aishe ei otai tilifa eongalo laKristus mefimbo eli oshipala shaNamibia sha lunduluka, eongalo lOmwene otali pumbwa ovalumenhu novakainhu ve noupenda wa fa waMoses, okulineekela eenghono daKalunga. Nokutwa omukumo eongalo laKristus liha tile. ELOK ota pumbwa okulipamekela mu Ou a finda ounyuni. Oye tuu ou a findana ota pameke ovo vaye, eshi ye ta ti mu Joh. 16:33. Mounyuni omu li mo mu noudjuu ndele kaleni nomwenyo muwa, ame onda finda ounyuni.

"Kaleni nomwenyo muwa inamu tala" Inamu tala, inamu li yandja koumbada nokomutondi. "Kaleni mu neyombamo" Kaleni mwa pama muhe na omalimbililo nomuhalimbililwe. Ou a finda ounyuni oye yo a finda eflyo, olo li li ina youmbada. Ehol.1:17-18. Eongalo laKristus mokuhatila, oli na okukondjifa owii. Ouhayuki nomahepeko oulunde e lili noku lili. Oil. 18.9. Ino tala popya ino mwena Jes.1:8. Ino va tala osheshi ame ondi li pamwe naave, ndele handi ku xupifa, Omwene osho ta ti.

Jesus Kristus, omufindani wounyuni ou, oye ta dulu yo okuhakula nokukola omuti u neenghono, tau lundulula oshipala shaNamibia. Evaengeli la udifwa mounyuni ou, ola kala eenghono dokulundulula ounyuni ou. Rom. 1:16. Fye otu na oshilonga shokutwala ounyuni wetu woshipala sha handuka she tu fikamena, ngOvaegipiti va fikamena Ovaisraeli, kuJesus. Ohatu indilile ounyuni. Otwa dulwa mounyuni ou, tu u lundulule kekwafo lOmhepo Iyapuki.

Ihatu pumbwa unene okuteelela oshipala shounyuni shi kale sha lunduluka. Oshinenima apa osho okwiindila kuTate Kalunga, tu kufwe oumbada wokutula Ovaegipiti, ooFarao ve tu fikamena. Mokumangwa nomokufya tu kale tu na elineekelo kutya ou ta ti: "Ino tala" oye a finda ounyuni note tu kondjele. Oye a kala omufindani mefimbo la ya, noku li omufindani nomonakuiwa yongeleka yetu. ELOK, "Ino tala," Omwene ote ku kondjele. Edina lOmwene nali fimanekwe alushe'fiyo alushe. AMEN.



## Oshinakugwanithwa shaakuluntu kaanona

Aakuluntu oyendji oya yematele noonkondo eihumbato nenge omikalo dhaanona yawo inaadhi opala, ongele nee pethimbo lyuugundjuka nenge pethimbo lyuukuluntu.

Shimwe ohashi kala ngaa shili okwaauva-ko kwaanona, ihe olwindji epuko olyaakuluntu momukalo gwawo gwepatudho. Otashi vulika epuko lyaakuluntu li tameke pethimbo lyokutegelela okanona sigo evalo-nosigo eputuko megumbo poomvula 2-6. Nokuza mpoka okanona otaka tameke enongelo nkoka take ki ilonga onkalo ompe ya yooloka naandjoka yomegumbo lyaakuluntu yako, onkee tse aanona nonuumvo otatu indile nesimaneko aakuluntu yetu ya uve ko oompumbwe dhetu, noye tu putudhe neitulomo, opo twaa ye ke ya geyithe nomaihumbato getu ngele twa "lundu esi-ga".

### Shoka aakuluntu ye na okundhindhilika

Omunona ota pumbwa a kale u uvite uugumbo: palutu, pambepo nopankalathano, onkee aakuluntu naa se oshimpwiyu petamekolela lyepatudho, opo oompumbwe dhaanona dhi kale dha mbilipalekwa, ihe naku kotokiwe aanona yaa ethelwe omakamba gawo.

Onkalo yaakuluntu nayi kale oshiholelwa "Deeds speak louder than words" Omunona okwa pumbwa ohole yaakuluntu ayehe yaali (tate nameme). Omunona okwa pumbwa wo epandulo ngele a longo nawa, opo shi mu tse omukumo okulonga uwanawa nokomeho. Omunona okwa pumbwa iikulya yi na iitungithi yolutu, opo uuluyi we u ka longe nawanawa uuna ta kala momalongo. Iikulya mbyoka yi na ashihe oyo omahini gayina pethimbo lyokuyama kontulo yayina, pethimbo tuu ndyoka ekwatathano ewanawa pokati kayina nomunona tali tungwa.

Omunona ota pumbwa okugamenwa komikithi adhihe ndhoka tadhi vulu okukelelwa netuntilo. Onawa ngele etuntilo tali tameke petamekolela sigo aatuntili ya ti sha gwana.

Omunona okwa pumbwa iizalomwa opo ku keelwe onkayi, ihe ezaleko lya pitilila otashi vulika li yone eilongo lyomunona uuna e li momalongo. Omunona okwa

pumbwa okulonga oohapu dhaKalunga manga omushona, opo a uve ko ondilo yeso lyOmukulili gwe noguuyuni auhe. Mpaka wo onkalo yaakuluntu nayi kale oshiholelwa kaanona, oshoka nandi tye nee tate nenge meme oha ti ine fundja, opo ndaa ye moheli, ihe omukuluntu a tya ngaaka iha popi oshili, nena ote limbili-liwa ngele moheli omuwinayi, oshoka ye ota longo iilonga mbyoka tayi fala moheli nonando ye oti indike ndje mo.

Omunona na longwe petamekolela okuyalula uthemba kwomuntu kehe kashi na nee kutya olye: omuyamba nenge ohepele, okwa longwa nenge ina longwa. Okuula aantu iitya ngaashi, oontauki nayimwe ya fa mbyoka aanona yu uvite ko ihashi opala nande.

Ngele omunona okwa mona ohole yaakuluntu ye, nena naye wo ota vulu oku shi ulukila aamwayina nenge aanona ooyakwawo kosikola nenge komuntu kehe ta tsakaneka monkalamwenyo ye.

Omapulo gaanona naga yamukulwe. Mpoka itaashi vulika naga undulilwe komeho, shi vule okulombwela omunona iifundja nenge okutidha po omunona noku mu haula.

Okuninga ngaaka otashi fala owala omunona momapuko ga li taga vulu okuyandwa, nomapuko ogo tuu ngoka otaga yemateke aakuluntu notaa limbililwa eihumbato lyaanona yawo.

Tse aanona elalakano lyokukalamwenyo kwetu okunyanyudha Omushiti gwetu naakuluntu yetu aaholike nookuume ketu, noshigwana shetu shaa owala tatu mono eputudho ndyoka tali tu fala moondjila ndhoka dhu uka.

Ondi inekela aakuluntu oyendji oya gwanitha iinakugwanithwa yawo meputudho noya mona nokuli iiyimati yiilonga yawo, ihe otatu indile natango nesimaneko nonuumvo omumvo gwaanona; aakuluntu yetu ye tu humbate momagalikano, opo tu ya nyanyudhe na unene tu nyanyudhe omusita omukuluntu oye Jesus Kristus Omuputudhi omunene, tse tu ka thigulule omwenyo gwaaluhe pamwe nooitaali ayehe moshituthi shomegulu.

Otse aana yaKalunga kokwiitaala Jesus Kristus.

Elizabeth Kashile

### Dha za kep. eti 2

5. I, te hala ndi dhimbwe ondhikwa koshilwa,

Meme Mustaniemi okwe tu dheula, nkene tu na okuteleka iipilili nuutete waavu yetu.

Oku na ihe oonashidhiga yaali Mbaka oyo oodosente yetu

Else Witting naLeilah Hamunyela Andola mbaka kaya li po, andola ehulilo lyoskola yetu

Kandi shi kutya ongiini

Oshoka oyo ye tu tompokononene omikundu dhetu

Yo ye tu kwatha muudhigu nomoothina

Sigo twa thiki pehulilo lyoshilalakanenwa shetu.

Ihe kamana Kandongo ngo e vule ayehe mbaka

OKalunga ketu ngo e li megulu.



Omapulo gaanona naga yamukulwe

### OKERSESA YAAWILIKI YO SCM koMadadeni Training College, Newcastle Natal

Esiku 14-18 Desemba 1978 okwa li Okersesa yaawiliki yo SCM koseminali yaMadadeni. Aawiliki yaheyali yomuNamibia oya li ya mono ompito okuya ko.

**ELALAKANO LYOKERSESA:** Okutala iilonga yo SCM nkene tayi ende kii-kandjo niikandjo.—Okutala o SCM ngele otayi lalakanene tuu uukriste u na omwenyo maailongi.—Okutsa aawiliki omukumo noku ya pa uunongo uupe mokukwatha aailongi ya ninge Jesus omukwaniilwa (ohamba) gwoomwenyo dhawo.

**OMAPANDULO:** Otatu pandula Kalunga sho okersesa ya adha oshilalakanenwa shayo nehulilo lyayo.—Otatu pandula wo oongeleka moku tu galikanena molweendo nduka. Unene ELOK otatu mu pandulile eitulemo lye okukwatha o SCM pambepo nopaimaliwa.—Otatu pandula wo iilyo yo SCM naamuhe mu yi hole nomwa hala aailongi ya tseye ehupitho lya-wo yene—sho mwa galikanene olweendo nduka.

—Otwapa pandula aamwameme ayehe ya li ko (80) omolwuukuume nuumwayinathana wawo. Omolwemanguluko lyawo muukriste pethimbo ndika.

—Omolwomayakulo gawo agehe palutu nopambepo momagumbo gawo, mOmbelewa yo SCM nomolweendo aluheluhe.

Oye mu kundu unene noya uvaneke oku mu galikanena unene pethimbo ndika edhigu.

Kristus okwe tu mangulula tu kale twa manguluka, ikwateleleni mwaa tulwe meti lyuupika womutondi Gal.5:1.

Peha lyaawiliki yo SCM

Selma A. Iileka



# OMUYAKULI KESHE OYE OMUPIYA WOSHIWANA — HAMUHONA

Omundohotola Naftali Tuyoleni Hamata, moshipopwiwa shaye e shi tongela moshivilo sheyambekelo moilonga lovadalifi nomupangi, mOnandjokwe, o-kwa nongeka ovapwilikini vaye novaleshi aveshe vOmukwetu ngaha:

Opa pita paife konyala eedula 50 eshi oshilonga shokulonga ovahakuli mOnandjokwe sha tameka mo 1930. Moule weedula edi omwa pita ovahakuli 383. Oshilonga shokulonga ovalalifi osha longwa omu konyala eedula 15 eshi sha tameka mo 1965.

Mefimbo olo otwa monenwa ovadalifi 94, mwa kwatelwa ava, osho yo omulongi wavo Leilah Hamunyela oo konima yetwikilo a ninga OmuaAfrika, Omunamibia wotete okuhanga odiploma youlongi wovahakuli novadalifi.

Nande eemwaalu da fa dihapu, onde linekela ovaenda voshivilo otava pula nge kutya ovanashilonga ovo ove li peni eshi vehe li poihakulilo yetu, ile eshi tuhe na oupangelo peenhele detu? Ohandi dimine pamwe nanye. Ove li hanena Namibia alishe, navamwe ove li pondje yeengaba daNamibia.

## NANDI MU DIMBULUKIFE OINIMA IMWE

1. Namibia ongoshilongo tashi putuka, oshi na ovatondi vatatu momesho ouhaku ovo va fimana: -

- a) Okuhashiivasha
- b) Ondjala
- c) Omikifi

Omunaudu Omuafrika te ya koshihakulilo oku na okutalwa ko mouyelele woinima ei itatu taku wedwa oumbada omolwonghalo yomunhu aische ya kolonyekwa. Omolwoutile ou, luhapu omunaudu ota dimbwa ko omakemo aye amwe, unene tuu nge okwa pelwe po nelaka limwe li hahafifa, oo okwa sha okupewa ovanauudu moihakulilo. Nali kale elalakano letu oku a ninipika noku a xulifa po.

## 2. Onye ovahongi moshilonga shouhaku

Eshi muvahakuli omu na oshisho shokukwafela oshiwana mokuyandja omapukululo koinima ngaashi:-

- a) Okuudako omikifi noyeeti yado.
- b) Omhumbwe youkalinawa wokolutu nowaapa omunhu eli.
- c) Omhumbwe yokukelela omikifi nokulikalekela noundjolowele ngaashi mokuninga oinima tai landula:
  - i) Efimano lomatumhilo ounona oo nokuli haa ningwa oshali.
  - ii) Efimano lokulya oikulya oyo tai kulike naayo tai tungu olutu, ngaashi oiimati, omai, omashini nosho tuu ikwao. Onghenda inene nge to mono okaana take ya koshihakulilo ke li moidjalomwa nande aische oya kosha R15.00,

nde otaka vele ondjala. Omudali ou ina tukula nawa oimaliwa yaye.

## 3. Oshilonga sheni osha fimana no-shidjuu

a) Osha fimana shaashi peemhito dimwe, unene odo da endelega omwenyo womunaudu ou li momake oye. Osho ope na oiholekwa oyo omunaudu te i ku linekelele, oyo pamwe i te i lombwele nakaurne kaye kopofingo ile omuholike waye.

b) Oshidjuu shashi omuhakuli oto pumbwa u kale Nightngale to pumbwa elididimiko nge wa kala eetundi 24 moilonga ino dimbuka.

## 4. Elihongo efimbo keshe

Eamo lefimbo lopaife okunenepeka oilonga yovahakuli. Omolwasho omifindalongo (Syllabuses) tadi lunduluka notadi wedwa oinima idju, oyo nale ya li hai ningwa ashike koondokotola. Eshi otashi ti kwaavo tamu ka twikila komesho, lo olo ehala lange, mu ka longe nouidini nokulesha yo omambo amwe oo ta yandje ouyelele, wa wana woshinima shonhumba.

Kwaava itamu ka twikila vali manga, epito leni itashi ti elalangali lokwekelashi omambo, nde otashi ti okukala to lesa oifo noto li kongele omambo amwe tae ku wedele ko keshivo loye. Ouhaku inau mwena otatu twikile - ongho ou na okukala omulihongi fiyo to ka lya omungome womoukulupe.

## 5. Oudinini nelongelokumwe novayakuli vakweni

Konima yeedula omulongo eshi nda kala nekwaterafano noshihakulilo eshi nokonima yodula imwe iyadi eshi nda kala omu, onda didilike oinima imwe:-

- a) Elitulemo lomoilonga ola shuna pedu.
- b) Eendelelo moilonga ola xupipala.
- c) Efimaneko laavo ve li momapashukilo nge momikunda ile oilonga yonhumba ola xula.
- d) Elalangali ola hapupala neenghono.

Oshike sha eta oinima ei? Kandi shi shi shapo ohandi mbelaake:-

- a) Omhepo yemanguluko oya udiwa ko pomunghulo ile,
- b) Omolwashi omikunda tadi wilikwa "koolestela" Ovaafrika, ile;



Omundokotola Naftali Tuyoleni Hamata

c) Omolwashi oshihakulilo tashi wilikwa kondokotola Omuafrika ile; d) Omolwainima oyo nda popya.

HamOnandjokwe ile mouhaku ashike eyakulo lomunaudu la shuna pedu, moitukulwa yo imwe ngashi moulongi ope na vahapu tava lili kutya ovana vavo otava dopa, mangha ovahongi tava xumifa eefitola davo komesho.

Ngenge imwe yomoinima nda popya oyo ya shunifa ouhaku pedu mOnandjokwe, nena natu dimineni kutya momauluvi etu nomokukala kwetu akushe natango ofye ovapika oukoloni. Ovapika ovo va itavela kutya itava dulu okuliwilika vo vene, ova pumbwa ovakwailongo, oyo oilonga i twikile. Ngenge edina liwa Onandjokwe oli na okutwikila nonge otu na okuyakula ovanauudu vetu opapa hatu dulu, elalangali le li vakela mOnandjokwe oli na okumona exulilo diva.

## 6. Nye ovapiya voshiwana — havahona

Ongovayakuli voshiwana otu na okudimbulukwa oshinima eshi sha fimana. Okukala komesho yovanhu osho okukala omupiya wovayakulwa vaye hamuhona. Oto pumbwa alushe elididimiko, oyo u yakule keshe umwe a pumbwa eyakulo paenghono doye. Ongomuhakuli, ou li mekwatafano novanhu aveshe va yooloka meedula, meputuko, meendunge nomouyamba. Aveshe ava nava yakulwe u wete kutya ounhu wavo itau shundulwa. Nge ohatu kendabala okuwanifa ei, ohatu ka kwafela meputuko laNamibia nohatu ka kala oihopelelwa iwa moshiwana.

Dr. N.T. Hamata



# EHOKOLOLO LYA DR K. WALDHEIM KORAATA YEGAMENO

Ehokololo ndyoka amushangandjayi gwa VVO omundohotola Kurt Waldheim kwa li a gandja kOraata yegameno meti 26 Febuluali 1979 pakatokolitho 435, hoka taka longithwa mokwaadha euvathano lyokukandula po omukundu gwaNamibia, okwa li a tumbula ngaashi tashi landula (elundululo ndika olya fupipika ehokololo).

1. Pakatendo 7 koshitokolitho 439/78 shOraata yEgameno kombinga yomukundu gwaNamibia, onda ningi iigongi muNew York pamwe naAmushanga nosho wo noministeli yiinima yopondje ya S.A., okuza eti 23-24 Novomba 1978. Miigongi mbika otwa popi oshitokolitho 435 moka Oraata yEgameno ya pula S.A. elongelokumwe; noshitokolitho 439 moka S.A. a pulwa natango kaaha tsikile nehogololo ndyoka a hala okuninga muNamibia kuye mwene, muDesemba 1978. Oshitokolitho osha pula wo S.A. a longele kumwe nOraata yEgameno nonaAmushanga gwo VVO dr. K. Waldheim, mokutsakanitha oshitokolitho 435.

2. Mombilive yeti 22 Desemba 1978 oministeli ya S.A. oya tseyithile ndje kutya epangelo lya S.A olya tokola okulongela kumwe na VVO mokwaadha epotokonono lyomukundu gwaNamibia pashitokolitho 435. Okwa pula ndje ishewe ndi tume mbala ngaashi tashi vulika omukalelipo gwandje gwowina kuSouth Africa nokuNamibia, opo a ka tsikile oonkundathana kombinga yiinima mbyoka ya thigalele ko sho a yile ko lwotango 1978.

Meti 1 Januari 1979 pahiyi lyepangelo lya S.A., onda tseyithile S.A. ehalo lyandje okutuma omusamane Martti Ahtisaari kuSouth Africa nokuNamibia okutsakanitha oonkundathana dhi na sha netanga lyombili Untag, lya VVO.

3. Omukalelipo gwandje omusamane Martti Ahtisaari pamwe nomuwiliki gwetanga lyaakwiita, Untag, naanambelewa yligwanahangano oya ningi etalelopo muSouth Africa nomuNamibia pomasiku 13-22/1/1979 nelalakano lyokumanitha oonkundathana dhombinga yetanga lyombili yligwanahangano, miinima mbyoka kwa li ya thigala ko.

4. Konima ishewe sho omukalelipo gwandje a hokololele ndje oonkundathana nkene dhe ende metalelopo kuSouth Africa nokuNamibia, okwa shuna kuAfrica nokwa talele po omavi gomushiiinda waNamibia: Tanzania Zambia, Mosambique, Botswana naAngola, momasiku 28/1-10/2/79. Metalelopo ndika okwa ningi oonkundathana kombinga yomukundu gwaNamibia nomapangelo gomavi ngoka. Kehiyi lyaNigeria, omusamane Ahtisaari okwa li a kundathana wo nepangelo ndyoka meti 11-12/2/79.

5. Meti 9-10/2/79 omukalelipo gwandje okwa li moonkundathana nomupresidende gwa SWAPO, omusamane Sam Nujoma, muLuanda. Oonkundathana pamwe nomusamane Nujoma odha li kombinga yonkene omathaneko taga tulwa miilonga nonkene ga tsakanithwe.

6. Konima omukalelipo gwandje sho a hokololele ndje ayihe a kundathana nepangelo lyaS.A., SWAPO nonomapangelo giilongo yaAfrica, naasho nda dhimbulula kutya ope na natango omaifatululilo gopombambo ga yooloka naashoka sha kwatelelwa metsakanitho lyomathaneko, onda tala osha pumbiwa, opo ndi ye mekwatathano miilongo itano yuuninginino, lilongo iikomeho yaAfrica, mbyoka kwa li yi ipyakidhile nokutunga omathaneko pamwe na SWAPO nosho tuu S. Africa.

7. Konima nee yomauelele agehe ngano nda mono nonda adha, onda tala ihe sha pumbiwa iinima tayi landula yi endithwe andola pamukalo ngu.

## A. EGALUKO LYOONTAUKI DHANAMIBIA

8. Pamathaneko, aafadhukipo ayehe Aanamibia, ye li oonkwatwa nenge mboka ye li pondje yoongamba pamukalo gwontumba, oye na okugalukila kuNamibia pwaahye na uumbanda nenge ugelele wokukwatwa, okutolithwa, nenge okweedhililwa. Iiyelo moka aagaluki Aanamibia ye na okupitila otayi longekidhwa. Epangelo lya S. Africa olya shilipaleke omukalelipo gwandje mokutaamba nomokuuva ko edhiladhilo ndika nawa. Kombinga wo yandje otandi ka kutha oonkatu adhihe dha pumbiwa okushilipaleka shika ashije shi endithwe pauyuki.

9. Opo egalukilomo lyaAnamibia li endithwe nawa, omalongekidho agehe galyo otaga kala miikaha yakomufala gwoontau-

ki gwoklilongohangano, noye nduno ta longekidha nokuutha iiyelo yokupitilwa kaagaluki mboka.

Mekwatathano niilonga yakomufala gwoontauki, momahala gokupitila otamu ka kala wo ompito yokupitilila mo kwAanamibia aagaluki, mboka ye shi hala. Etonatelo alihe lyomahala ngoka otali kala meutho lyakomufala gwoontauki. Komufala ota ka sa oshimpwiyu, opo oonakugaluka mboka ya kale ye na emanguluko lyokutungila mpoka ya hala. Emanguluko lyokwiinyenga olya uthwa wo nale mokatendo okati 6 komomathaneko.

10. Omathaneko gokugalukila moshilongo gaaniilonga ya SWAPO mboka ye li pondje, ngaashi ga hololwa momathaneko okatendo 8D, oye na oku shi ninga pambili noya hula mo iikondjitho, yo taa pitile po-

mahala gu uthwa, opo nayo wo ya kale mehogololo. Iilongitho niikondjitho yawo otaye yi gandja metonatelo lya VVO.

## B. ENGAMBEKELWO LYOMOOKAMBA

11. Pamathaneko gokukandula po uuto-ndwe auhe, omatanga ga homata ga S.A. noga SWAPO oge na okukeelelelwa mookamba dhago, ga ngambekwa nokutonatelo ketanga lyombili, Untag, lya VVO. Shika otashi kwatelele mo ishewe okuzamo kwaakwiita ya S.A. kashonanakashona muNamibia, pamathaneko.

Opo nee omukwiita kehe gwa SWAPO, ngoka a homata nota adhika e li meni lyaNamibia pethimbo lyetulepo lyomatati, naambaka wo oye na okutulwa mookamba dhi li meni lyoshilongo muNamibia notadhi ka kala pomahala gu uthwa komukalelipo gwowina gwaAmushangandjayi. Oshinima shokukelelela nokutonatela ookamba dhaakwiita ya SWAPO meni lyoshilongo, itashi vulu okutalwa kutya osho omukalo gwokweeta po sha oshipe metulepo lyomatati.

12. Omatanga gaakwiita ya SWAPO agehe ge li miilongo yopuushiinda, pethimbo lyetulepo lyomatati nehulitho lyuuto-ndwe, nago wo otaga ka ngambekelwa mookamba dhago momavi ngoka ge li. Nonando momathaneko kamu na sha tashi uthile ookamba ndhino dhi tonatelwe nokukondololwa ketanga lya Untag, onkene tuu mokatendo 12 komomathaneko otamu tumbulwa kutya: lilongo yomuushinda waNamibia otayi ka indilwa, opo yi gandje elongelokumwe lyayo nokugandja uushili kutya omalongekidho agehe gepotokonono lyomukundu, ehogololo naashoka tashi anduka mo, shi simanekwe kuyo.

Otayi ka pulwa wo opo yi gandje omahala kaakalelipo yligwanahangano nokaaniilonga, opo ya vule okutsakanitha iilonga yawo nawa.

13. Otandi gwedha po natango nokweendulula oshitsa sha simana nosheshilipaleko lyomavi gopuushiinda, sho ga zimine nokukolekulula omauvaneke gago kutya, yo otaya ka longa neitulemo alihe, opo omalombwelo gopamauthothaneko ga tsakanithwe nawa. Mekwatathano naashino, onda adha natango eziminathano naAngola, Botswana naZambia, opo momavi gawo mu dhikwe oombelewa dhetanga lyombili, Untag, opo omapangelo ga vule okukala melongelokumwe nadho metsakanitho lyomathaneko gepotokonono lyomukundu gwaNamibia.

## C. OMALONGEKIDHO GETULEPO LYOMATATI

14. Omathaneko otaga popile wo ekuthopo nehulithopo lyiilonga yuutondwe wolu-dhi kehe. Ngashingeyi osho ano edhiladhilo lyandje okuthaneka omukalo gwetulepo lyomatati. Konima yaasho oonkatu odhindji dhi ili nodhi ili, ngaashi pwa tulwa momathaneko notashi hololwa moshitokolitho 435/78, oonkatu ndhoka otadhi longithwa nduno.



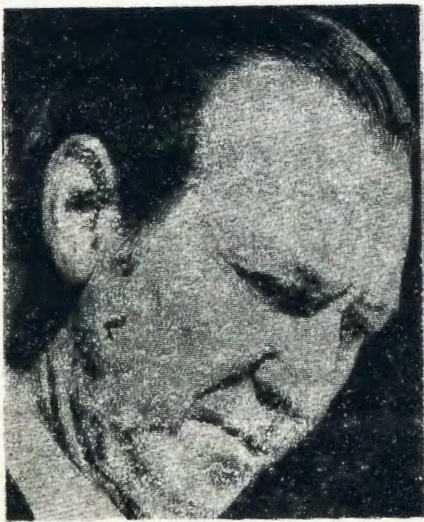
Onda hala okutuma omushangwa gwi ikalekelwa ku S.A. noku SWAPO, ngoka tagu thaneke otundi nesiku moka etulopo lyomatati li na okutamekwa. Otandi ka pula wo S.A. na SWAPO mombilive ndjoka opo ya pe ndje ezimino lyawo kehe gumwe polwe molupe lwenyolo nome-siku lya uthwa noyo yene yi iuthe wo ke-lombwelo ndika nokomautho galyo.

Otandi ka indila S.A. nosho SWAPO ya tseyithile ndje manga ku na ethimbo lyomasiku omulongo taga tetekele eigidho lyetulepo lyomatati; ethimbo li thike mpoka olya pumbiwa opo kehe ombinga yi vule okutseyithila omatanga gayo kombinga yethimbo lya uthwa lela nethimbo lyetameko nolyetaandelitho lyetanga lyombili mu-Namibia.

#### D. OMUTUNGILO GWETANGA LYOMBILI, UNTAG

15. Epulo kombinga yomutungilo gwetanga lyombili oli na okumanithwa natango. Moonkundathana dhetu na S.A. nosho tuu na SWAPO onde ya pa wo elandulathano lyomadhina giilongo mbyoka nda tala ya hala notayi vulu okugandja aakwiita ya yakule metanga ndika Untag. Noma nga etanga inaali tameka niilonga yalyo, otandi ka gandja ethaneko lyomutungilo gwalyo kOraata yEgamenno.

Mokuthaneka elandulathano lyiilongo tayi ka gandja aakwiita, otandi kala ndi na omadhiladhilo nomaiuvo goombinga adhihe mbali, S.A. na SWAPO, momadhiladhilo gandje; nokukaleka omutungilo aguhe montengelelwa, ngaashi te tala sha pumbiwa, ehalo lyomavi taga gandja aakwiita osho tuu moshinima shaanongo noshuwindji tau pumbiwa, opo iilonga yi tsakanithwe nawa.



Dr Kurt Waldheim amushanga gwa VVO

#### OIPONOKELA YA S.A.

Ovatalinawa ova hepaulula kutya S.A. okwa ponokela okamba ya SWAPO mu-Zambia oyo i li lwokouningininombuwannu, popepi naSiangi, onhele oyo i li eekilometa dimwe okudja kongaba yaAangola neekilometa vati 45 okudja kongaba ya-Namibia.

#### 3. Euvathano lyomuthika gwa Untag

16. Ethaneko lyotango kombinga yomuthika gwetanga lyombili okwa li lya ulukilwa lwotango epangelo lyaSouth Africa muAguste 1978. Etsokumwe olya adhika nomalelo (giilongo) ngoka taga vulu okugandja aakwiita. Ngaashi sha tseyithwa nale muAguste, 29-1978 kutya mongundu ndjoka mu na okukala mboka ya talika otaa vulu shili paukwatya wawo ngashika aayakuli yligwanahangano notaa vulu okulonga metsakanitho lyomathaneko ngoka.

17. Pakuzimina etulomiilonga lyoshitolitho 435/78, otapa tegelelwa oombinga adhihe (S.A., SWAPO) dhi imange komauvathano gasho. Shika otashi ti wo kutya omukalelipo gwowina a mbilipalekwe noku dhi tula miilonga. Itapa kala nando komauvathano agehe gi ili nogi ili ge na sha nomikalo dhokulongekidha ehogololo eikuthilo lyompito yontumba kongundu ndjika nenge ndjiyaka. Yo ayihe mbika otayi ka vulika owala uuna S.A. na SWAPO taa gandja elongelokumwe; nongele omafaneko ngaka taga tulwa moshiponga omolwokwaaihumbata nawa kwongundu yimwe yaandhino, nena oshinima otandi ke shi tya ko kOraata yEgamenno.

18. Mekwatathano nepangelo lya S. A. nosho tuu SWAPO, oongundu ndhoka dhi li etindi momathaneko, ngele tadhi dhiginine elongelokumwe lyetu nadho, nena onda dhiladhila okuulika eti 15 Maalitsa 1979 li kale olyo etameko lyokuya kwetanga lyombili nolyo esiku lyetulepo lyiiti. Euvathano otali ka tuminwa South Africa nosho SWAPO notaa indilwa ya gandje elongelokumwe mokuhulitha po omaumbathano, ngoka tashi vulika ga fale ethaneko alihe moshiponga shomupya li paluthe, ngele itapu longelwa kumwe.

19. Omatanga gombili otaga ka kala mu-Namibia ethimbo lyoomwedhi ando, 12, ihe oshi ikwatelela kushoka kutya esiku lyemanguluko ndyoka tali ka uthwa kOshigongi shEkotampango, konima yehogololo, oli li ko uunake.

Vati inapa shivika ngeenge okamba oyo oyovafadukipo ashike ile oyovakwaita tuu va SWAPO.

Oshiponokela sha fa osho osha ningwa yo vati meekamba da SWAPO muAngola, ndele moiningwanima aishe ei inaku yandwa nande ouyelele muhapu, kakele kasho kutya omatanga a S.A. vati inaa ningwa nande okapefili.

Ovatalinawa otava ti oiponokela i li ngaha S.A. okwe i ningila owina, opo etulepo loiti olo la shonekelwa meti 15 Maalitsa 1979 li shekune.

Pokati opo epangelo laAmerica ola ifana eengudu dopapolitika muNamibia, S.A., SWAPO, opo va ka kale moshongalele shokuyelifa oinima yomehokololo la dr. Waldheim notashi ka kala ko vati 19-20 Maalitsa 1979.

#### ETSEYITHO LYOMAMBO

Okambo inoo ka lesa nale, "OONKUNDATHANA TADHI MANGULULA OMWENYO" ka holokele mOstolamambo. Okambo nkaka oka adhikile opo ka piti momashina, sho omukolokoshi e ya kufika po Oshinyanyangidho 1973. Mokambo nkaka, omunyoli Festus Ashipala, ote tu longo shoka ehungomwenyo tashi ti. Otaka gu R1-55.

Ondjalulamasiku 1979

Aalandithimambo amuhe mboka mu na natango Ondjalulamasiku 1979 inayyi pwa po, tu kwatheni mu yi galulile kOstolamambo kOniipa, mangu 15 Apilili inaali pita.

#### NGWALI & MBOLONGONDJO — ONGONDJODHI

Omupopihapu gwOngeshefa yedhina Ngwali naMbolongondjo pOnankali, okwa hokolola nkene ongeshefa ndjoka ya fikwa po moontundumene dheti 25 Desemba 1978 komukolokoshi, ngoka inaa tseyika sigo onena.

Pahapu dhomuhokololi ota ti manga etopo inaali uvika, pongeshefa opwa li pwa monika ehauto lye ya po nopakutala okwa li aniwa lya ziilile kondjila onene yoteya e tali thikama mpoka, uulethimbo wominute 30-40 lya dhima. Pokathimbo tuu nkoka ehauto olya zipo konima omboma noya topa nomulilo ogwa yaka nee. Etopo lyomboma olya li enene nolya uvika aniwa uule woshinano shi thike lunga pookilometa 20 lwaampo. Aantu oyendji oya penduka nokutala omulilo tagu lokotitha po etungo.

Nonando aantu ya ngundumana noya halele ando ya ninge oonkambadhala dhokuhupitha sha, aa, e. Inamu za nando ondhi. Ashihe sha li mo shondjundo R613,417-00, pahapu dhomupopi nguno ondaluliyanga ya nwine ko omeya.

Omupopi okwa tsikile nokuhokolola nkenne ongeshefa ndjika oyo kwa li onene kombinga yahandyoka; mUuzilo wOndonga, nokwa li hayi yakula aantu ye thike lwoopo 400-600 mesiku.

Ongeshefa yo yene oya tamekele nuunkatu uufupi okuza 1968. Etungo ndyoka lya fikwa po komukolokoshi okwa li aniwa lya thikamithwa po kiimaliwa R360,000-00 nokwa li li na omala omulongo mulyo.

Mokupulwa ngele aapoloji oya tseyithilwa tuu oshiningwanima shika, omupopihapu okwa ti osha ningwa, ihe kape na mupolosi a lyatele ko nando ompadhi.

Mehala ndyoka okwa li mwa yakulwa kaantu 13, ngashingeyi ngele to li tala o to ti kalya li po, shila ondjodhi yowala.



## NOMBUNGA DOPOLITIKA DIMWE DANKUNDIPAREKE NGELEKA

Nombunga dopolitika edi vana toto po ntantani tadi nkundipareke ngereka, odo hena kuna kureta evhundakano mokatyi kovakriste. Nompepo zoumunwazina zina zumbana mokatyi ketu. Ntantani kutupu ogu ana diva asi kupiko ana hama, ndi asi inke vana kumuninkira mosirongo esi.

Vantu wovanzi ntantani kuna kuhara kuntanta asi vanakutaguruka vawo kapi ngava vama hena. Morwa mahundakano gonombunga edi vana toto po ntantani. Imo hena mpepo zokulityira, kudirakulifumadeka, nokudirakulihuguvara zina mene mokatyi kovakriste, noukaro wovantu una nkundipara. Imo hena yilyo yonzi yongereka yina zumbanesa sirugana sayo sopakriste, kapi yima diva hena asi inke yina kurugana. Wovanzi wovakriste tava gazadara vana kutaguruka, vawo, awo vene kapi tavalirongikida kuruganenakumwe, ndi kugenda kumwe navenye. Vakriste vangesi kuvahetakanesa nonomfi odo dina fu momema ntene tadipupu kuyuka nkenye oku gana yuka mema, morwa dina fu. Nomukriste imo vana kumuhetakanesa ngesi.

Mukaro ogu gokumwne nokugazadara pwanamoge twagulironga nare, morwa muntu kukara nokuyikilira epangero oyo tali mupangere, omo noporopahanda doyimpempa tadi nkundipareke dororo mwene kapi tavhuru kugazadara, ndi kumahura kana kendi kweyi yahana asi youyuki.

## NGELEKA KAPI ZINALITURA MWEYI YOUPOPOLITIKA

Rorunzi atu zuvhu monoradio domo Namibia asi ngereka zahalitura moyininke yopapolitika. Eno esi sosili ngereka kapi tadi kara zina lipyakidire yopolitika. Vakriste vakwetu tukareni tunadiworoka asi evangeli lya Kristus kapi tatu vhuru tuli zuvhisire opo pwahana kukara vantu. Nye nonkango daKarunga dakona kudizuvhisira vantu navenye, owo vana nkundipara komarutu nokonomwenyo rambangako nonopapeta deedi, morwa pano nkango daKARUNGA udona kuukandura po pambili.

Mosirongo setu kuna kara mo vantu owo vana kara nomagazaro gosiu SA gokudira kumulimbura, ngamomu tuna kuyi mona mosirongo setu. Ngereka ozo tadi vhulika kepangero kwesi tasi tungu kukara vantu namunwa-

## OMAONGALO A PANDULWA MOLWOUDIAKONI

Omaongalo aa otaa pandulwa omolwokuwanifa oshinakuwanifwa shao shomudo kOshikefangerki omolwoudiakoni. Iyaloo twikileni ngaha.

Odobe okudja	1976-1978	R 30.00
Okahao	1976-1978	30.00
Etilyasa	1976-1978	30.00
Olukonda	1977-1978	20.00
Elim	1977-1978	20.00
Onaanda	1977-1978	20.00
Othika	1977-1978	20.00
Okankolo	1978	20.00
Okankolo	1978	10.00
Epembe	1978	10.00
Olupandu	1978	10.00
Okalongo	1978	10.00

Kumwe: R230.00

Nandi kunde omaongalo oo inaa ninga sha natango. Vakwetu omwa teelwa mu hovele. Okukala nongunga efimbo lile oko oku likokela oinima ihapu. Hoveleni neudo.

Omuwilikidiakoni  
Kristofina Ndatjomawe

zina nombili mosirongo esi. Epangero kuna hara Mbibeli vaziresere nokuzizuvhisira mekuma lyongereka mweli ke, morwa ngereka ntene tadi divhisira uwa wazo wongandi naina tozuvhu nye asi O! Ngereka tazilitupike moyininke yopolitika.

Vakwetu womapuko gangesi tudiworo- rokeni asi ngereka kapi zakara mpepo, nye kwakara movantu owo vandindira ekwaso mwazo ku tupu mbudi asi ove gombungake, nye sinene muntu ogu gasita Karunga Mat. 25:40 kuna kutanta ngesi, Hompa makura ngavalimbura asi, Yosili nina kumuntera asi, nkenye eyi mwa rugannena gomununu po povamumbya vange, nyame mwa yi ruganena.

P. Ausiku

## AALESHI OLYE TA KWATHA TATE NEKUNDI?

Kaaleshi yOmukwetu nookuume aaholike, osho wo aaningi ye pamwe naanongononi yondjokonona yaNamibia, onda hala mu kwathele ndje mu yamukule omapulo ngaka:

lifo yoonkundana osho wo ooradio okuza omumvo 1977 sigo onuumvo otayi holola oontamanana dhOmbaye, aniwa oya South Africa.

## EPANDULO

Egongalo Omuntele otali pandula yakwetu mboka mwe tu kwatha okuumba ongalo yongeleka yetu.

Otatu mu pandula medhina lyaKalunga, ne mu gwedhele kuupenda weni.

Aalange oya gandja	R76-42
Aavenduka - " -	R37-00
Aashomeya - " -	R 9-66
Aambaye - " -	R 7-50
<b>Ayihe kumwe</b>	<b>R130-58</b>

Aamwameme mboka mu na ehalo lyokugandja Kalunga ne mu gwedhele ko natango. Dhimbulukweni oohapu dhJesus mwene sho ta ti: lil.20:35b.

Peha lyegongalo

L. Magano Nahambo

1. Osha ziilile peni opo Ombaye yi kale nenge yi ninge ya S.A.?
2. Okuza omumvo guni na oshe ende ngiini opo yi kale oshitopolwa sha S.A.?
3. Iilongo yini ya ningile euvathano lya tya ngaaka?

Onda fa inaandi tseyana nawa ehistoli alihe lyaNamibia okuza Aandowishi sho ya li ya kolonyeka Namibia sigo Aayingilisa ye ya ishewe ya kolonyeke Namibia nokoni- ma oombulu ndho dhi li mo sigo onena.

Aamwameme aaholike muJesus Kristus o- tandi tegelele nenyanyu eyamukulo komapulo gandje.

Gweni

H. V. Nekundi

## OMUKWETU

Oye oshifo shOngeleka Onkwaevangeli pa- Luther yomOwambokavango. Oha nyanyangidhwa mOshinyanyangidho shOngeleka mOniipa. Omukuluntu gwoshifo omumbisofi dr. Leonard Auala. Ondando yOmukwetu komumvo muAfrika R 2-60, kombanda yomafuta R 5-00. Omambesitelo pamwe noondando naga tu- mwe kOmukwetu Oniipa, P/B. 2013 Ondangwa 9270

OWAMBOKAVANGO CHURCH PRESS  
ONIIPA P/BAG 2013 ONDANGWA 9270