

# OMUKWETU

Registered at the General Post Office as a Newspaper

10c



Kondjitha omikithi nokuyamutha okanona. Lesha wo mEpanджа 2 mosh'fo shika.

## ETUMWALAKA LYOLUPENDU

**Aawiliki yoshigongi shOngeleka onkwaLuther yomuSoomi oya tumine omakundilo omapyu guumwayinathana kOngeleka ya hangana yomu SWA (VEL-KSWA) nokiiyo yayo. Ekundo otali leshwa ngeyi:**

Moomwedhi ndhika dhahugunina, otwa taamba noshimpwiyu nontseyo nkene uuthemba womuntu wa dhinwa, nkene aasita naayakuli yalwe yOngeleka ya kwatwa nonkene oshilonga shOngeleka tashi tsakanekwa komaudhigu.

Otwa tseya oshili yohapu yOmbimbeli. "Oshilyo shimwe ngele tashi ehama, iilyo ayihe otayi ehama pamwe nasho. 1Kor.12:26.

Mekundo lyetu nosho wo maanashilonga aatumwa yOngeleka yaSoomi taa longo mOngeleka yeni, otwa hala okugandja etompelo lyetu, kutya otatu mu dhimbulukwa aamwame-me muKristus momagalikano nomokulonga kumwe.

Nehwamo otatu dhimbulukwa oohapu mOmbimbeli Ondjapuki. Omuyengeli gwOmuwa otakundukidha, mboka haye mu tila note ya hupitha.

Ya shainwa mu Turku 6.11.1975 ku:

**Martti Simojoki, Lars Erik Taxell naViljami Kalliokoski.**

### EKUMAIDONDJOVO KOVALESHI

Ohaikundu ovaleshi voshifo Omukwetu, nonda hala kutya atusheni natu kale momhadi imwe. Tu lituleimo mokulanda oshifo shOmukwetu, opo tu shiiveni tu koleke ongeleka yetu, i kale i na sha. Okwiindila nokulya eengunga, kaku shi kuwa. Alushe, "kwa fe nge," iha eta po sha.

Ou hole ngo ngenge to indile sha, ou na po ngo kaningholi koye, akuliweda. Tu kondjeleni ongeleka yetu, ovafita vetu va mone yo ondjabi ya wana tai di moshiwana.

Ovafitaongalo ovo oshiwana hashi longele Kalunga, nohava ifanwa nokuli ovalongelikalunga, omolwaashi kape na shimwe osho have shi longo, ngenge hailonga yongeleka.

### Ombili yoshigwana

Ovafita tava ifanwa ovalongelikalunga shili, nove li po okukondjela ombili younyuni. Osheshi eemwenyo dovakwaunyuni odi fike pamwe, kape na omwenyo umwe u na ondilo kuKalunga mangha mukwao u na ombilixa, shidalelwe. Kalunga ota ti:

Omwenyo u na ondilo kumukwao oyoyu uhee na etimba. Omwenyo u na omatimba oo omwenyo wombilixa, molwashi tau ka ya miheli.

Ope na okutalwa nawa kombinga yombili younyuni kutya, otai ya ashike ngenge to yandje oshinima shamukweni, opo tamu mono ombili. Ngenge to shi anyene, nena ombili itai kala po nande. Hano shamukweni shi yandja, opo mu kale nombili.

Meshita Djikolo Kwaki

## OLUGODHI NOMIKITHI PANGELEKA

Uunona 306 womasiku gamwe sigo owomimvo 12, owa mana oondjenda 1975, miipangelo yetumo mu ELOK. Eindjipalo ndika olyaa-nona 148 okuyeleka neso lyomumvo 1974.

Uuyelee moshinima shika owa monika mehokololo lyomundohotola omukuluntu miipangelo yOngeleka Hannu Kyrönseppä.

Kutya omumvo gwa yi, ogwa kala gwa nika uunkundi kombinga yaantu, otashi ndhindhikwa nawa mehokololo ndika kaavu mboka ya lala moombete 25,397 nenge mboka ya zile komagumbo noya pangwa 540,001.

Omatando omanene 539 oga ningwa momumvo ngoka nomatando omashona 3014.

Uuvu womayego nawo wo owa katukila oshigwana shika onkatu. Mehokololo ndika osha holoka kutya, aavu 1606 oya pangwa 1341 omayego ga kuthwa mo, 950 ga andekwa.

Omiyalu adhihe dha tumbulwa pombanda, itadhi holola ashike uunkundi waantu, ihe otadhi tu yelithile wo nawa mpoka pwa li pu thiike iilonga yaayakuli yetu miipangelo.

Kombinga yeso lya vuka lyuunona, omundohotola Hannu mehokololo lye ndika okwa fatulula kutya, osha za ngaa shili momikithi ngashi okakwenyene nosho tuu.

Ihe okwaapaluka kwaanona hoka taku koko moshigwana, okwa indjipaleka eso lyaanona. Okwaapaluka okwa etwa wo konkalomwenyo yoompumbwe tadhi londo pombanda esiku kehe nomokwaa na owino kwaavali mokupalutha oyana, osho omundohotola a ti.

Oshiwana okulesha ehokololo ndika lyoshilonga shuundjolowe pangeleka, sho omuntu to dhimbulula omikithi ndhoka dha kwata oshigwana pothingo pethimbo ndika.

Omukithi gwepunga (TB) maantu nongashi wo omukolo gwoshikayikayi maanona noshiligalala, odho dha talika dha dhenga pombanda. Osho wo oshimela nokakwenyene odha geya.

Kakele kekondjitho lyadho ndyoka tali ningwa miipangelo, momikunda ohamu tumwa wo aapangi ye ke dhi gande nomiti dha longekidhwa nawa, ngashi sha tseyika nawa nokuli koombinga noombinga dhOwambo.

Aantu 55,806 oya mono ekwatho ndika, osho ehokololo lyomundohotola lya ulika.

## "ONGAME ONDJILA NOSHILI NOMWENYO"

"Ongame ondjila noshili nomwenyo". Osho Jesus mwene a lombwele aakuuyuni ya kanitha ondjila yehupitho pethimbo ndika; uuyuni wa kanitha oshili, na unene uuyuni wa kanitha omwenyo gwaa-luhe. Pahapu ndhika otatu ndhindhilike nkene uuyuni wa kanitha iinima itatu, nenge tu tye uuyuni wa kanitha uukwata-tu waKalunga omunamwenyo.

Elongo lyetu lyuukriste otali pula nepulo lyoonkondo notali yamukula wo neyamukulo lyoonkondo. Epulo otali ti ngiini? Otali ti: "Oshike aantu ye shi pumbwa noye shi sila uuthigona? Shimwe ashike shono aantu ye shi pumbwa noye shi sila uuthigona, osho elago lyokomwenyo.

Tse atuhe otatu shi ndhindhilike nawa nkene tse yene tatu ugadhala omutenya nuusiku tu li po aathigona, twa hepa twa hepelela elago lyokomwenyo. Ano methimbo ndika omuntu kehe na kale oye lye, ota pumbwa okukala mondjila. Ota pumbwa okukala moshili na unene ota pumbwa omwenyo.

Jesus Kristus omuna gwaKalunga ngoka a kala mokombandambanda, oku li kolulyo lwaKalunga He omunamapangelo agehe megulu nokombanda yevi, e li ko ta galikanene iigwana, omapipi, omaludhi gaantu. Ota galikanene aayamba naathigona. Oye wo omukwathi gwaaselekadhi noothigwa nomugameni gwaamboka ya pongekwa.

"Ongame ondjila noshili nomwenyo". Osho Jesus ta lombwele aakuuyuni yopethimbo ndika: Eigidho ndika olya zi mpoka sho uuyuni wa kanitha uukwata-tu waKalunga omunamwenyo. Eeno shili. Otwa gwana okwiitaala kutya; Jesus Kristus oye ondjila noshili nomwenyo. Ohapu ndjika yaJesus ti ipopi ye mwene, oya taambwa tuu moshilongo shetu, momikunda dhetu, mevi lyetu, momagumbo getu osho wo moomwenyo dhetu? Elago oli li mpoka sho ku na aana yaKalunga mboka ya taamba ohapu sho ku na yamwe ya tala ohapu ndjika kutya oya nika uugoya.

Opo dhi gwanithwe; "Ohapu yomushigakano oya nikila uugoya mboka taya ka kana, ihe mboka ya zimina okukala nokweenda nondjila ndjika muuyuni mbuka, nokukala moshili ndjika muuyuni mbuka, osho wo okukala momwenyo Jesus mwene e gu gandja kuuyuni wa li wa sila moondjo; oonakupewa omwenyo nguka esiku kehe otaa shitukithwa kepangelo lyomadhiladhilo okudhiladhila iikwanegulu muJesus Kristus.

"Ondjila oyi na oondunge yi vule omuntu ngoka te ende muyo". Oshoka otashi vulika omuntu ta yi kokuma kee shi ko. Mokweenda nondjila ndjoka otashi vulika te ende ta dhiladhila uukwata-ta waankoka ta yi ko, owa tya ngiini? Aantu mboka ye li ko oye li ngiini? Aawanawa nenge aawinayi? Ihe nando omuntu na kale mondjila nomadhiladhila

lo ga tya ngeyi, ondjila oyi li ashike ngaashi yi li. Momaipulo a kala nago nokwiipula manga e li mondjila, agehe otaga ka yamukulwa uuna ndoka ondjila ye mu thikitha, niinima ayihe yokokuma nkoka ote ke yi mona yi li naana ngashi yi li.

Osho ngaaka Jesus oti ipopi ye mwene. "Ongame ondjila noshili nomwenyo". Ohapu ndhika odha kola nodhoshili, odhi shi okwiinekelwa wo kungoka u li mondjila ndjika yokevi yu uka kuKanaan shomegulu.

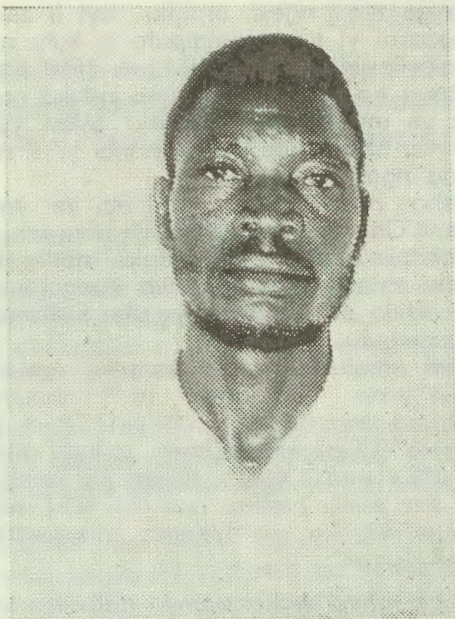
Otse omaludhi, otse omapipi, iigwana, otse aana yaKalunga tu li muuyuni mbuka wa kanitha ondjila. Otwa pumbwa esilohenda lyaJesus, a kale mutse a koke mutse tse tu shonopale koshipala she esiku nesiku, opo ihe tatu mona elago ndyoka lya thikama muukwatatu waKalunga.

Elago ndika lyokomwenyo itatu li mono palwe pwi ili nenge tu li adhe mondjila yilwe andola, aawe. Ngele twa hala megulu, ngele twa hala omalutu getu ga ka fe olutu lwaJesus luuyelele, natu kale mondjila ndjika Jesus noohapu dhe. Ngaashi naana ondjendi yomuuyuni tayi yi kokuma kaayi shi ko, osho naana noondjenda ndhika tu na kevi dhu uka kuKanaan shomegulu. Onke ngaa taku adhika mboka ye na omapulo ogendji. Natu kale twa tya ngiini, shaa tu li mondjila, onatu ka thika uuna lumwe maandjaTate Kalunga. Ondjila noshili nomwenyo oyo tayi ke tu thikitha ko yo yene. Sho tu li kevi ndika ngele tatu dhiladhila iikwagulu natango inatu yelelwa kutya oya tya ngiini naKalunga Tate okwa tya ngiini, oshilumbu nenge Omuluudhe? Omapulo ogendjigendji tagi ipulwa nago koyondjendi dhokevi kage na natango omayamukulo ga yela kutya iikwanegulu yi kale ye tu yelela manga tu li kevi. Ngoka a hala oku ka mona nkene omapulo ge ga yamukulwa nokwa hala oku ka mona oondunge dhondjila, na kale muJesus ngoka "ondjila noshili nomwenyo".

Ondjila ndjika oyi na oondunge shili yi vule omuntu. Oyi na oondunge yi vule oondjila dhokombanda yevi ndhoka dha goyoka nodha samapala. Oondjila ndhoka dha totwa kaantu mboka ya kanitha ondjila onene Jesus. Aantu ya puka. Ombimbeli otayi shi popi yo yene: "Ayehe ya puguma mo mondjila. Eho lyaKalunga sho lya entamene kombanda yevi inali mona ko tuu nando gumwe ta kongo Kalunga ihe ayehe ya puguma mo mondjila, ya lamba oondjila dhomuuyuni odho tuu ndhoka dhi limbilika. Ondjila ndjika Jesus kayi na omatopokeo nando okashona.

Omuntu gwehimbo ndika ngoka ho tala nokutongolwa, oto mono nkene aana yaKalunga oyendji ya thikama poompagiila dhoondjila. Omolwashike? Aantu aya kanitha ondjila. Oya kanitha oshili, oya kanitha wo omwenyo nguka gu li muJesus Kristus.

Tala kep. 4



### Omusamane Jeremia Aksel

Omunashinyanyangidho Jeremia Aksel, okwa kala konyala etata lyomumvo a lala moombete mOnandjokwe. Ngashingeyi tate Aksel ota ti kutya oku uvite hwepo, onkene okwa tsikile natango oshilonga she mpaka okuza Januari nuumvo. Oshilonga she shokunyanyangidha omambo niifo, okwe shi longo uule womimvo dhi vule omulongo.

Okwa ti, Kalunga na pandulwe sho a gandja nokuye ompito yokuyakula aantu yaKalunga niilonga ye.

### OSHITUTHIHAMBELELO OMOLWOMUMVO GWAAKIINTU MEGONGALO OSHIGAMBO

Kuuzilo sigo okuuninginino, edhina lyOmuwa nali hambelelwe. Osho sha ningwa mongeleka yetu onkwa-ELOK mOsoondaha yotango yomuAdventi. Aakiintu ayeheyehe momagongalo getu oya li ya tumbula pamwe nOmupsalmi ngo ta ti:

Omuwa okwe tu ningile iinima iinene; otse notwe shi nyanyukilwa. Eps.126:2-3.

Osoondaha ndjoka aakiintu ayehe oya li momizalo dhawo omitokele dha yelekwa nawa. Noya li yo opala shili. Oshituthi sha nyandwa naanaa palandulathano ndyoka lya tuminwa omagongalo agehe kEpagelungeleka. Omahokololo agehe oga tekwa momuthima ngo omule, nokutya mOmbimbeli Ondjapuki.

Aahokololi oya li ya sa uulaadhi okutumbula edhina lyaKalunga montaneho yegongalo lye. Omuwiliki okwe shi hempulula ngeyi:

"Otatu pandula Kalunga sho kwe tu pe ewi oku mu hambelela noku mu tanga montaneho yegongalo lye. Esiku ndika olyetu. Onkee otatu li longitha nena." Otwa pandula shili sho Omuwa e tu inekelele oshimpwiyu oshiyapuki omumvo aguhe. E tu pe ewi lyokupopya nokupukululathana mOhapu yaKalunga miigongi yetu. E tu dhimbulutha tu paluthe aalumentu yetu nuunona wetu naayenda yetu nOhapu yomwenyo, haniikulya ayike yolutu, ngashi kwa nyolwa:

"Ha koshikwiila ashike omuntu ta hupitha omwenyo gwe, aawe. Okukehe tuu ohapu tayi zi mokana kaKalunga." Mat.14:4.

Tse aakiintu, tu taleni nawa okwiithanwa nkuka

kwetu. Shono omalenga gaKalunga taga pulwa ta-ngotango, oya monike aadhiginini. Aakiintu aakwetu, tu tonateni. Tu pendukeni. Tate Kalunga okwe tu ningeni iinkumbi. Oshinkumbi sha thata otashi dhedhelitha ohango. Naahiywa yohango otaa shuna nondjala nando iikulya mwene gwohango okwe yi konga ya gwana po nuudhigu owindji.

Tu siikululeni Oombimbeli tu dhi lesheni. Tu galukileni momagumbo getweni, tu galikaneni mugo. Ngashi kwa nyolwa:

"Ihe ongoye nge to galikana, inda mondunda yoye, edhila po osheelo ngu galikane. Oho nguka a kala meholamo, naHo nguka e lwete ko meholamo, ote ku futu." Omukiintu na kale aluhe megumbo lye.

Tu taleni omumvo gwetu twe gu inekelelwa kuTate. Ogu udhilila epopitho lyaTate Kalunga. Omumvo omudhigu. Oonkondo noondunge dhetu oonshona. Tu galikane nokugalikanena aantu yaKalunga. Ongele aana, aagundjuka, aasamane yetu, ookahewa ketu aalongi yetu, aasita yetu nenge aapangi yetu.

Aamwameme amuhe mbo mu shi okulesha, ekundo lyandje kutseni oondi: Kutha Ombimbeli yoye petameko muJanuali 1976. Yi lesha okuza petameko lela sigo opehulilo lela.

Kehe esiku wa lesa, ndhindhilika mpoka wa hulila. Shaa wa mana ko embo limwe lyOmbimbeli, ihogololela mo ovelise yimwe ndjoka to yi ilongo momutse, opo pehulilo u kale wa tseya momutse oohapu 66.

Tu tseyithilathaneni ihe moshifo shOmukwetu, kutya mukwetu owa mana uunake okulesha Ombimbeli yoye. Pehulilo lyomumvo otatu ka nyanyukwa sho tatu ki imoneni atuheni Omuwa e tu kutha uunye. Oohapu dhaKristus nadhi kale dhu udhilila mutse.

Frieda Elago

### limaliwa ya kana

**Omusamane Lamek Ithete, Okahao, okwa dhimbulula iimaliwa ye R280 ya kana mo megumbo, okuza sho a kwatwa po kaapolosi megumbo lye muAguste 1975. Okwa ti oshinima shika osho mu limbilika note shi konakona nawa natango.**

### Ongame ondjila noshili .....

Dha za kep.3

Kungoka wa adhika wa hwateka noondjila dhoye galukila mondjila, ondjila kayi na uudhigu oku ku hambata noku ku thikitha nkoka wa hala nando. Kungoka u li mondjila ndjika, Jesus a hala e ku pe oonkondo oompe esiku nesiku sigo ondjila yo yene tayi ke ku thikitha maandjaKalunga.

Aamwatate amuhe mu hole ompango yOmuwa; nomwa hala okwiitula mondjila nomoompadhi dhOmukulili gweni, inamu sa ohoni okweenda nondjila ndjika ya thinana. Ngele tamu ende nondjila ya thinana ngeyi, nena otamu i idhimbulula one aakwiita yiita iyapuki yaKalunga, ihe dhimbulukweni iita yaKalunga kevi ndika kayi shi ando iita yokukondjela oshilongo shaKalunga shaambomwe po nenge shaa katukilwe onkatu, aawe. Ihe iita yaKalunga muuyuni mbuka oyo okutaandelitha, okulombwela, okwiigidhila, nokugalikana twaa na ezimbuko. Onkee ano nonena uuyuni wa gwana okwiigidhilwa elaka ndika: Jesus oye ondjila noshili nomwenyo.

V. ND. Tshilongo

## OWA HALA OKUHOKANA NALYE?

Owa hala okuhokana nomuyamba? Onomulongi? Onomuvalekele? Onotyomi? Onohepele nenge oguni po pumbaka ya tumbulwa?

Epulo oli li epu kungoka kee na sha nokwiipula kutya oondjokana otadhi lalakanene shike, nokungoka kee na ko nasha kutya handiyaka yuugundjuka we oku na oku ka kala ngiini.

Ihe epulo olyo tuu ndyoka edhiguelela kungoka a hala okwiipula shoka oondjokana tadhi ti, nangoka e na sha nuwanawa we nongele a pilamene uugundjuka.

Oondjokana odhindji odha teka, dhimwe odhi li pokuteka, dhimwe otadhi ka teka mbala. Oshike mbela? Odhindji odha teka, oshoka omuntu okwa hokanene uyamba. Sho wa hulu po nenge ihee u mono we nando eu hedha popepi, osha ti wo ehulilo lyoondjokana ngaaka. Dhimwe odha teka, oshoka sho ta pulapulwa dhomanyonyolo nenge ta popithwa miidhumo, ihadhi nyanda we nawa.

Dhimwe dha teka, oshoka puuvalekele opo tuu mpoka. Ngele ye omuvalekele wo, "omasipa omunene ihaga pi mbiga yimwe." Ngele ohepele, nena mbeya inaa panda we tuu nawa omuna gwiikombo kwaali.

Dhimwe dha teka, oshoka uutyomi auhe nda li he mono wa thigala kuumati nenge uutyaka auhe wa thigala kuukadhona. Nani nokwiyyoga kape shi! Okuteleka malwamanene. Ohepele itandi yi ningi oshiyele kape na ngo te yi hala nuupu.

Otandi ti ashike: Tu kotokeni, twaa lalakanene okuhokana uyamba, uvalekele, elongo, uutyomi-tyaka, oshoka shampa ya hulu po nondjokana othilu.

Lalakanena okuhokana omuntu mwene ngoka u hole nopwaa na etompelo omolwashike u mu hole, oshoka shoka u mu holele ngele sha ka kana po, nohole yoye opo tayi ka hulila mpo.

Shika otashi shundula wo oonkondo dhokukongela aantu aamati nenge aakadhona, oshoka ku shi ngoka e holike komuntu a mana mo.

Laina Shikongo

**Joël Akudhenga, oha longo mOshinyanyangidho iilonga oyindji. Omugundjuka lela kaanashilonga ayehe mpaka gwomimvo 21 adhike, sho a mono onzapo yoJuniolo mOngwediva 1974, okwa tameke mpaka.**

**Petameko okwa tameke noshilonga shokutopatopa, oshilonga shono e shi ilonga nawa mosikola ongoshilongwa she. Opo ihe okwi idheula wo mbala miilonga yilwe ngashi okulongitha omashina gokunyanyangidha omambo.**

## ONDJOKANA, ONKALATHANO POKATI KAANTU YANGAPI

Ondjokana yopakriste oyi na omukanka gwayo muKristus. Kayi shi yimwe naandjoka yopaveta, ya ningwa kaantu.

Miitopolwa oyindji yomuAfrika, "Opoligami", ondjokana yomulumentu gumwe naakiintu oyendji, oya ziminwa paveta. Miilongo oyindji yaatiligane ngashi muBritania, muAmerika nomuSuid-Afrika, eteko lyoondjokana, oya ziminwa paveta. MuRusia, ohamu ya ethimbo limwe, aalumentu taa shendjelathana aakiintu nokutaambathana ngaaka aakiintu.

Miitopolwa yimwe yaAsia, "Opoliandri" omukiintu gumwe ta hokanwa kaalumentu oyendji, sha ziminwa paveta. Omikalo adhihe ndhika itadhi tsu kumwe nomukanka ngoka gwa tulwa po kuKalunga okuza peshito.

Omukanka gwondjokana otagu popiwa kuJesus muMarkus 10:6-9. Ehangano ndyoka omulumentu ta mangelwa kumwe nomukiintu gwe, mondjokana ayehe, otali vulu ashike okushainwa pokati komulumentu gumwe nokomukiintu gumwe. Oshoka gumwe e na okwiigandja ye mwene aguhe, omwenyo nolutu kumukwawo.

Pautho nopahalo lyaKalunga, ondjokana oyo omuntu gumwe, ezimo limwe alike. Moshinima shika tse Aawambo oohedhi dhetu odha tsa ondumbo thiluthilu noshipango shaKalunga. Oshoka otu na moondjokana dhetu omazimo gaali megumbo limwe. Kalunga ta ti:

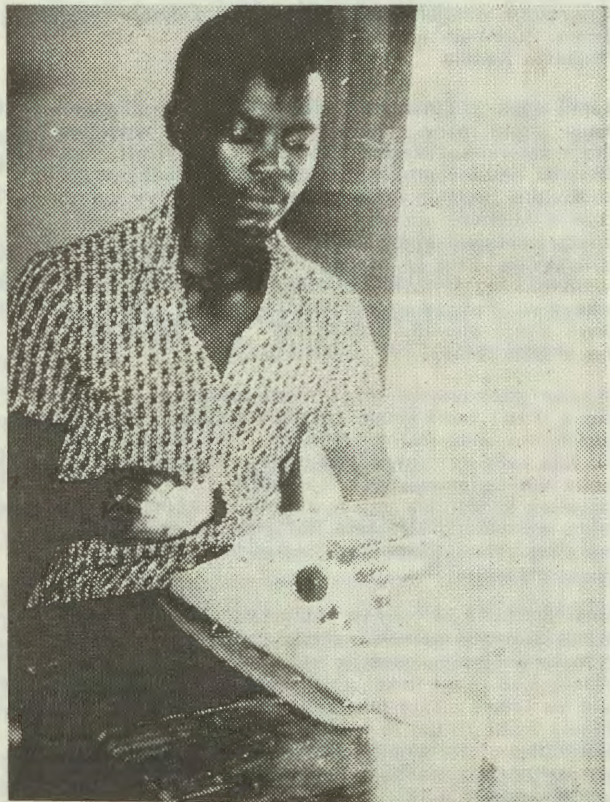
**Oyo taa ningi omuntu gumwe, ezimo limwe.**

Ondjokana yopakriste oyo ethano nomuzizimba gwehangano noguugumwe waKristus nepangelo lye. Kape na noitaku ka kala ethimbo, uuna Kristus to ke mu adha ando kee shi we Omuwa gwegongalo lye. Oye oku li, nota ka kala Kristus, omuyaleki gwegongalo sigo muukwaaaluhe.

Muuyelele mbuka, ondjokana otayi topolwa ashike keso. Ondjokana "yopamonogami," yomulumentu gumwe nomukiintu gumwe, otayi kolekwa kuJesus sho ta londodha Aafarisai ta ti:

Ano shoka Kalunga e shi tula kumwe inashi kuthwa we kumwe komuntu.

Rev. Matti Amadhila



omumati Joël Akudhenga

## ONDJILA OYA LI ONDE NONDHIGU, IHE EGAMENO OPO WO LYA LI

Otse aakwaShituula, otatu pandula nokuhambelega Tate Kalunga, sho twa mono ompito ndjika okuya komapya getumo agehe goshitayingeleka shUuningini-no. Ondjenda ndjika otwa li twe yi uvanekelwa nale muJuni 1975 kaakwaSeppälä ogo tu ende pamwe nayo mokuuvitha evangeli nokudhana oshituthivalo shOmukulili gwetu Jesus Kristus.

Eti 11.12.75 oshihauto shaagundjuka sha thiki poTshandi natate Jacob Abraham. Otwe shi londo sigo opo-Nakayale mpoka twa adha ongundu onene yEwilikongundushilongatamo mUuninginino ya za komagangalo: Elim, Oniimwandi, Ogongo, Onawa noNakayale.

Twa ningi atuhe kumwe aantu 40, naapangi yatatu, meme Toini Hihnala, Aini Kadhila naAlbertina Heita. Tate Seppälä a kwata komeho natate Abraham e li konima.

Otundi onti 4.00 yokomatango twa thiki pOmindamba. Tate Shituula a ningi owandaha. Konima aapangi ya panga Aamindamba.

Inatu lala po pEtunda, otwa tsikile tu uka kOtojovantje. Ondjila oya li ombwinayi molwomvula otwa kundana kutya ehauto ndyoka enene itali piti nuupu. Tate Seppälä natate Jacob ya kutha oshihauto oshishona ya tale kutya ongiini. Manga twa tega ya galuke, meme Seppälä a ningitha aakulukadhi naagundjuka ondhelela, manga yamwe taa li oosigele miihwa.

Mokugaluka kwawo otwa tsikile ngaa notwa kondo ehala limwe ewinayi noonkondo. Twa ende ngaa nawa, sigo twa thiki pOtojovantje. Tate Kakongo okwe tu taamba nokamwanamati oke tu pe oshikombo. Twa ningi ohungi yomaimbilo pamwe nehokololo lyOkrismesa.

Ongula yeti 13.12.75, meme Shituula a ningi owandaha. Konima twa yi melongelokalunga lyeshasho lyokanona komukriste. Konima yeshasho otwa laleke tu uka kEtoto. Otwa adha esilu ndyoka ewinayi. Pesilu moka ehauto lyetu inali hala okupita olya shuna lwaali konima, na yaali yomutse oya nuka mo nokuli.

Olutitatu, mondjila olya nuka mo, omagulu gaali kolumoho oga yi moshilambo lyo lya yeluka nokuli tali ilongekidha okuganyuka. Kalunga e li kwatele moshilambo. Etumbulo lyomuhingi olya li: "Kalunga kandje .....

Aantu oya zi mo ngaa nawa nonkejo yaShituula, Paula, okwa mono oshiponga polupanda lwokolulyo, sho a tetwa kokakende kolupati lwoshihauto. Ester Shituula okwa matuka noonkondo okugalula oshihauto shatate Seppälä moka mwa li aapangi, ya kwathe. Toini a kodheke ombinzi. Opwa tokolwa mbala aantu ya ka konge ekwatho kOnakayale. Tate M. Seppälä a kwata koluuli pamwe nomunona ngoka a mono oshiponga ya ye ando kOnakayale. Pokamba yaasolotati ya S.A. poRuacana, okwa mono ekwatho, omahauto gaali ge ya ga hile mo ehauto lyetu.

Gumwe gwaasolotati okwa mono oshiponga koonyala sho a li ta kambadhala okutula emanya komagulu goshihauto shaa shune monima. Tate Seppälä okwe mu fala kehauto limwe lyaasolotati. Ehauto lyetu inali mona we oshiponga sigo opoTjekwa. Okuwolo yaShituula ya nyongota ko koodhalate kashona nakashona na tate M. Shambo e ya pe mo mevitho. Meme Seppälä okwe ya popitha wo, notwa tsikile sigo omEtoto.

Esiku eti 14.12.75, otwa ningilwa elongelokalunga kutate Seppälä pamwe nehokololo lyOkrismesa, PO-shifo pwa ningwa ekuthilo nUulalelo Uuyapuki. Otundi 8.10 otwa thiki poNakayale Shituula nooSeppälä ya tsikile sigo oko Tshandi mpoka twa lala. Ongula yeti 15.12.75, otwa penduka nokudhana oshituthivalo shaHanna Leona Seppälä. Konima otwa topoka natate Seppälä ta yi kOniipa manga meme Seppälä naanona tatu tsikile sigo okomapya getumo kOngandjera.

Twa thiki muAmarika. Epango lya tameke, oshoka

aapangi otwa yile nayo. Twa ningi oshituthi shaKris-mesa. Konima twa tsikile sigo opoToongo. Tate T. Amupala a ningi owandaha. Okuwolo ya imbi omaimbilo gaali niiketala.

Siku ndyoka otwa ka lala kUutsathima. Ongula yeti 16.12.75, opwa ningwa owandaha, epango nOshituthi shaKris-mesa. Otwa tsikile sigo okOnamatanga. Omulongi Eino Amukeshe otwa adha e tu tegelela. Aapangi oya longo oshilonga shawo. Oondjimbo dha imbwa kOkuwolo yaShituula. Aapopi meme R. Seppälä natate Amupala. Twa laleke notwa hulitha ngaaka ondjendatamo yetu.

Viktoria Shituula



## Omutonatelishitayingeleka shOndonga, Festus Ashipala.

limaliwa yEtumo mOndonga

Omagongalo omulongo mOshitayingeleka shOndonga, oga tsakanitha nawa efaneko lye-longitho lyiimaliwa (obegrotting) yomumvo 1975.

Omagongalo gaali ageke ga nyengwa, noma-kwawo gatatu inaga holola manga shoka ga ningi po.

Omolwoshilonga shEtumo tashi longwa une-ne muuzilo woshitayingeleka shino, etokolo olya zile moshigongi shOshitayingeleka, egongalo kehe li gongele omwaalu gwiimaliwa R50,00. Omagongalo gatatu; **Onayena, Oshitayi, nOnandjokwe** oga gongele shi thike peutho ndyoka lwaali.

Egongalo, **Omuntele** olya gandja R60, manga **Ontananga, Onyaanya, Okankolo, Olukonda, Oniipa nEheke** oga gandja omwaalu ngoka gu uthwa. **Okaku, Oshigambo nElombe** inaga gandja natango eyamukulo.

Pankundana ndjoka ya gandjwa komutonatelishitayingeleka F. Ashipala, egongelo ndika olye eta R709,00 moshiketha shetumo moshitayingeleka shika.

## Aaluudhe ya shunithwa kuAngola

Konyala aafadhukipo 7,000 oya kala muSuidwes o-masiku ga zi ko, kaku shiwiki ngele otaa tegelele moka iita yaAngola yi hule po, yo ya ka shune ko, nenge otaa tsikile kuPortugal.

Pashifonkundana, **The Windhoek Advertiser** 26. 1.1976, muAngola omu na ookamba ndatu moka aafadhukipo yaAngola taa silwa oshimpwiyu kaakwiita ya S.Afrika. Okamba yomuKalai, oyi na aantu, unene ya FNLA, 1,453. Guangar, omu na 672 nokamba yaChitado 2,050.

Miifonkundana yilwe, okwa tumbulwa aafadhukipo ya za kuAngola ye ya muNamibia, ye vule omayuvi omulongo. Oontauki kaadhi na uukwashigwana wa-Portugal, odha shunithwa nale kookamba dhomuAngola hoka dha zile ontuku. Aantu mbaka unene aaluudhe. Inaku tseyika manga shoka tashi ke ya tsakaneka.

Epangelo lya S.A. olya indila ko VVO ku ze esiloshimpwiyu lyoontauki tadhii ya muNamibia okuza kuAngola. Muule woomwedhi ntano dha za ko, okwa tiwa nokuli S.Afrika okwa longiitha ooranda oomiliyona 4.3 mesiloshimpwiyu lyaantu mboka.

Omatau gAaputu okuza kuAngola, endhindhiliko kutya, onkalo hwiwaka oya pupyala ngashingeyi, unene kumboka aakondjithi yehangano ndyoka MPLA.

### **EDHIMBULUKITHO**

**Kaalandithi amuhe yomambo otamu dhimbuluthwa manga kuyeleleye nokutya kehe ngoka u na natango uumbo wOndjalulamasiku yomumvo nguka, u shunitha mbalambala kOstola yOmambo, Oniipa, manga Febuluali inaagu sa ko. Omuwiliki gwOstolamambo**  
**A-K.Kapenda**

## **ENDELELA U MBESITELE OSHIFO SHOYE FIMBO KUYELA.**

### **MBESITELA MBALA OSHIFO SHOYE**

## **MONDHOLONGO MWA ZI YAMWE**

Ruben (Kakolonya) Hauuanga, okwa manguluka pehulilo lyaJanuali, sho a kala mondholongo mOndangwa okuza Aguste 1975. Omumati gumwe Teofilus, kEenhana, naye okwa hokololwa a mangululwa.

Emanguluko lyaRuben, olya ningwa ngashi lyoonkwatwa odhindji dha mangululwa nale, sho a lombwelwa owala:

**"Inda kaandjeni!"**

Omusitagongalo lyaTshandi, Junias Valno Kaapanda, omusamane Lamek Ithete nokano na komimvo 15, Marta Mateus, nayo oya mangulukile muDesemba gwa zi ko.

Lamek, okwa holokele mohofa yaNdangwa, okutamanelwa ondjo yoshikuti shondjembo kaashi na ombapila sha adhika megumbo lye.

## **Oyendji ya si ishewe muAngola**

Aakwiita yaCuba taa tengenekwa ye thike po 10,000 muAngola, aniwa 500 ageke ga sile molugodhi, ihe Aayangola oye thike 200, 000 nenge 250,000. Etengeneke ndika olya gandjwa ku dr. Jonas Savimbi muLusaka, ihe kagu shi omwaalu gwaasi ayehe okuza petameko lyiita mbyoka.

Pehulilo lyaJanuali, MPLA, limwe lyomomahangano gatatu taga kondjele oshipundi muAngola, olya hokololwa tali humu nawa komeho mekondjo lyalyo. FNLA, ota hokololwa a kanitha nale nokuli ehala lyiita sho a dhengwa nayi ku MPLA sigo omeni lyoongamba dhaZaire. Ehangano etitatu UNITA, oli li ngashingeyi monkalo ya "ndi sila peni."

MPLA ngoka ta pewa omakwatho kuRusland na Cuba, okwa kondekelwa moLuanda koongundu ndhiyaka mbali, FNLA na Unita, tadhii pewa omakwatho giikondjitho naagandjindunge kuAmerika na S.Afrika, mehola-mo, okuza Septemba 1975. Ngashingeyi okwe gi ikandula.

Ehangano lyuukumwe waAfrika, (OAU), li-gwana ya hangana yuuyuni (VVO) na Swapo, oga gandja usama ku S.A. sho ta longitha aniwa Namibia ongoshilondelo she mokulalela okuhomona Angola.

Rusland, Amerika naCumba nayo wo iitaa popilwa komahangano omaleli guuyuni, sho yi idhopo miita yaakwashigwana shaAngola. Omasiku ngaka, S.A. okwi igidha muuyuni kutya ye aakwiita ye e ya kutha mo muAngola, kakele shila sho taa gamene aniwa iilonga yomukanka gwaKunene.

**Ou ino mbesitela natango oshifo shoye, ile wa mbesitela ndele ihashi fiki, ohatu ku indile u yandje diva edina loye nondjukifi ya wana po, opo oshinima eshi shi wapekwe meendelelo. Onda-do yishifo R2,00 komudo, eeshenda 10 mokulanda kooshimwe.**

### **NKURENKURU, KAVANGO**

Onkundana ndjoka ya thiki mombelewa yomukwetu, otayi hokolola Epangelo lya S.A. lya ninga elondodho kAavango, yaaha kwata-thane we nAawambo. Oshoka pakufatulula kwEpangelo ndika, Aawambo aniwa oye na elalakano okukutha ko oshilongo shaKavango noku shi ninga oshipika.

Pahokololo lyomukundaneki e shi kwiinekelwa, elondodho olya ningwa montaneho yoshigongi shaavali poNkurenkuru pehulilo lyomumvo 1975.

## KA KA VULULUKWA

Okamati Israel Mweedelesi ka valwa eti 9-11-69 mEgumbo lyatate Festus nameme Loide Mweedelesi, kOnayena, oka li ka kwatwa kuvu uudhigu wa dhimbululwa kaakuluntu yako eti 2-2-75.

Oka pangwa mOnandjokwe, mOshakati nokOvenduka. Oka kondjelwa noonkambadhala dhi ili nodhi ili.

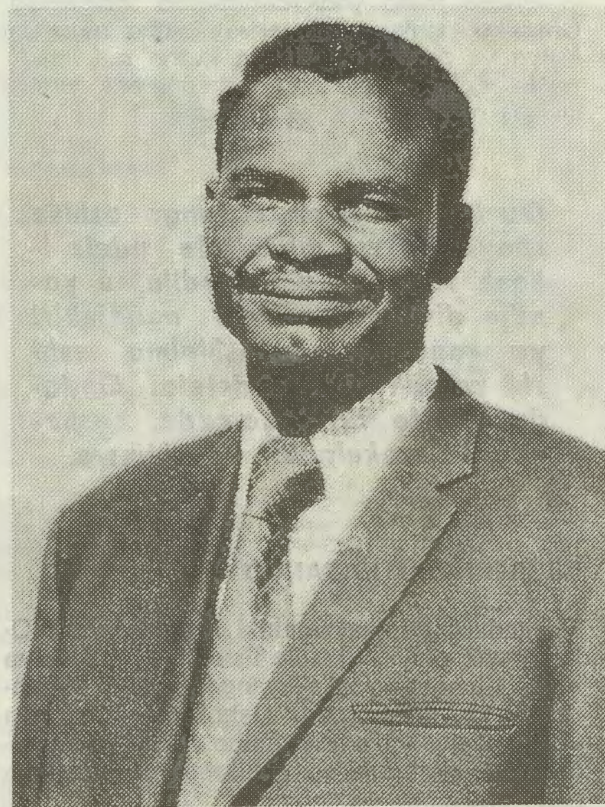
Oondohotola naakuluntu yako, oye ka ethele miikaha yaJesus kuume kuunona, ngoka e li ondohotola onene. Jesus ina nyengwa nande. Okwa aludha Israel, sho e mu ithana muuyuni mbuka eti 26-10-75.

Ngashingeyi Israel itaka alukwa we, okwa aludhwa kuJesus sigo aluhe. Oku li megulu timbi, ta nuka kenyanu. Oye omunelago e vule aanona ayehe kombanda yeve.

Tse aakuluntu ye otatu pandula oondohotola naapangi sho ya li taa kambadhala nokupanga okanona ketu. Otatu pandula omakwatho nOmagalikaneno nomahekeleko gookuume ayehe. Omuwa ne mu yambeke mboka mwa li mwe tu kwatha muudhigu nomoluhodhi lwetu.

Inamu vulwa oku tu humbata natango momagalikano geni.

**Loide Mweedelesi**



Omuniyangidhi gwethimbo ele mpaka, omusamane Jeremia Kangonga. Okwa pewa eputudho lyowinawina moshilonga shoka, nohe shi longo neitulo mo.

Mu S. Afrika opwa tengenekwa nokutya aaluudhe oya pungula R300,000 moombaanga dhoshilongo, ndhoka tadhililikwa kaatiligane. Ihe miimaliwa mbyoka kapu na nando omuluudhe e na uthemba wokuhehela ko e yi longithe pampumbwe dhe.

Shika osha fala aaluudhe yaamoka ya ninge po sha. Etokolo olya ningwa po nale nokuli pu dhikwe ombaanga yaaluudhe yo yene. Ewilikongundu lyayo nehala mpoka yi na okudhikwa, mbika ayihe oya pwa nale.

Ohashi pula owala ooranda omiliyona yimwe (R1,000,000) u kale u shi oku ya moohapu dhokutota po ombaanga. Yo mbika pahapu dhomuhunganeki e shi okwiinekelwa, oya monika nale, kwa hupa nokuli.

lilyo tayi inyolitha mehanganano ndino, oyo yene tayi gongele iimaliwa yokuziminitha ombaanga ndjoka paveta.

Okwa li sha pulandwa, ando kutya oshilyo kehe shi gandje R100,00. Omwaalu gwaainyolithi sho gwa indjipala methimbo efupifupi, eutho ndyoka olya lundululwa, opo kehe gumwe a gandje ashike R2,00.

Omathaneko otaga ti kutya shimpa tuu oshilonga shombaanga ndjoka sha tameke, oopelesenda 49 otadhi pewa kehe oshilyo shi inyolitha moka. Oopelesenda 21 otadhi tulwa mepangelo lyoshilongo moka tayi dhikwa, manga oopelesenda 30 tadhililikwa kaatiligane aagandjindunge moshilonga shoka.

Aaluudhe oyendji oyi itaala kutya, shimpa tuu omathaneko agehe ga tsakanithwa, onkatu onde oya katukwa okuza mokweendjelela komutiligane mombinga yomahupilo.

Oongeleka, aanangeshefa, omahanganano omakwawo gaaluudhe nosho tuu aantu oogumwe noogumwe, oyo yi inyolitha mehanganano ndika.

**(Africa Acts)**

## OMUKWETU

Oye oshifo shOongeleka onkwaevangeli paLuther yomOwambokavango. Ohashi nyanyangidhwa mOniipa. Omukuluntu gwoshifo omumbisofu dr. Leonard Auala.

Amushanga Rev. Sebulon Ekandjo

Ondando yoshifo komumvo muSuidwes nomuAfrika alhe R 2.00 kombanda yomafuta R 4.00.

Ondando nomambesitelo naga tumwe kOmu kwetu Oniipa: P/B. 2013, Ondangwa.

Omatseyitho agehe gomuntu mwene ohaga futiwa kumwene.

QWAMBOKAVANGO CHURCH PRESS  
PRIVATE BAG 2013, ONDANGWA S. W. A.  
9270