

# OMUKWETU

Registered at the General Post Office as a Newspaper Newspaper 10c



**Aatumwa yatatu otaa monika mefano ndika kolulyo, omusitagongalo Paulus Heita, omukulukadhi gwe, omupangi, Fiina nokasheeli kawo Kalonge, oye li powalitali mOngeleka yaNiipa.**

## **“HATU UYA MANGA, FYE TWA YA”**

**Omufitaongalo Paulus Heita pamwe neumbo laye, ova lekela Ongeleka omafiku aa, va ka longe oshilonga shEtumo muAfrika.**

**Elekelo ola ningwa noshivilo mOngeleka yaNiipa. Omubishopi dr. Leonard Auala nomukwafi waye mewiliko longeleka, Kleopas Dumeni, ovo kwa li ovayakuli.**

Tate Heita (27) nomukulukadi waye nokashi-veli kavo keehani 5, Rakkel Ndahambelega Shawanifwa Kalonge, ova ninga ngashi omubishopi Auala e shi tumbula kuvo fimbo ve li ofika powalitali, kutya ova yandja ehalo lavo exwikilo kuKalunga e li longife pahalo laye.

Konima eshi va nangekwa noupuna, nofimbo tate Heita ina holola osho she va fininika okuya metumo, ngashi e shi kwatakanifa nel-fano lomuxunganeki Amos, tete okwa tya kovakali moshivilo:

“Hatu uya manga, kaleipo, fye twa ya.”

"Onghoshi ngenge oya kumba, olyelye ngeno ita tila. Omwene ngenge okwa popya olyelye ita xunganeke?"

Osho ovelise yomuAmos 3:8 tai leshwa, oyo ya ninga efina leduliko lovanyasha ava.

### Afrika otave li ama peni?

Ngenge to tale mokaalita koye edu laAfrika, onghome yedu oyo ye ku ama kouninginino lela, koxulo yalo oko to mono oshilongo oko kwa iwa tashi ifanwa Senegal.

Okalongo koovene okanini lela nde oke na ovakalimo eemiliona nhe. Oko oshilongo shimwe shomoilongo ihapu yaAfrika ya mangu-luka. Paife eedula 16 eshi ke li melipange-lo, ka dja meenyala dOvafulanisha.

Opo Ongeleka yetu i shiive oluhepo levange-li li li moshilongo osho, onghuwo oya kuwa tete komukulunhutumi wEhanganotumo la-Soomi 1974. Ehanganano eli ola hovela oshilong-a sheudifo moshilongo osho konyala moule weedula mbali da pita mokati kOvaserere.

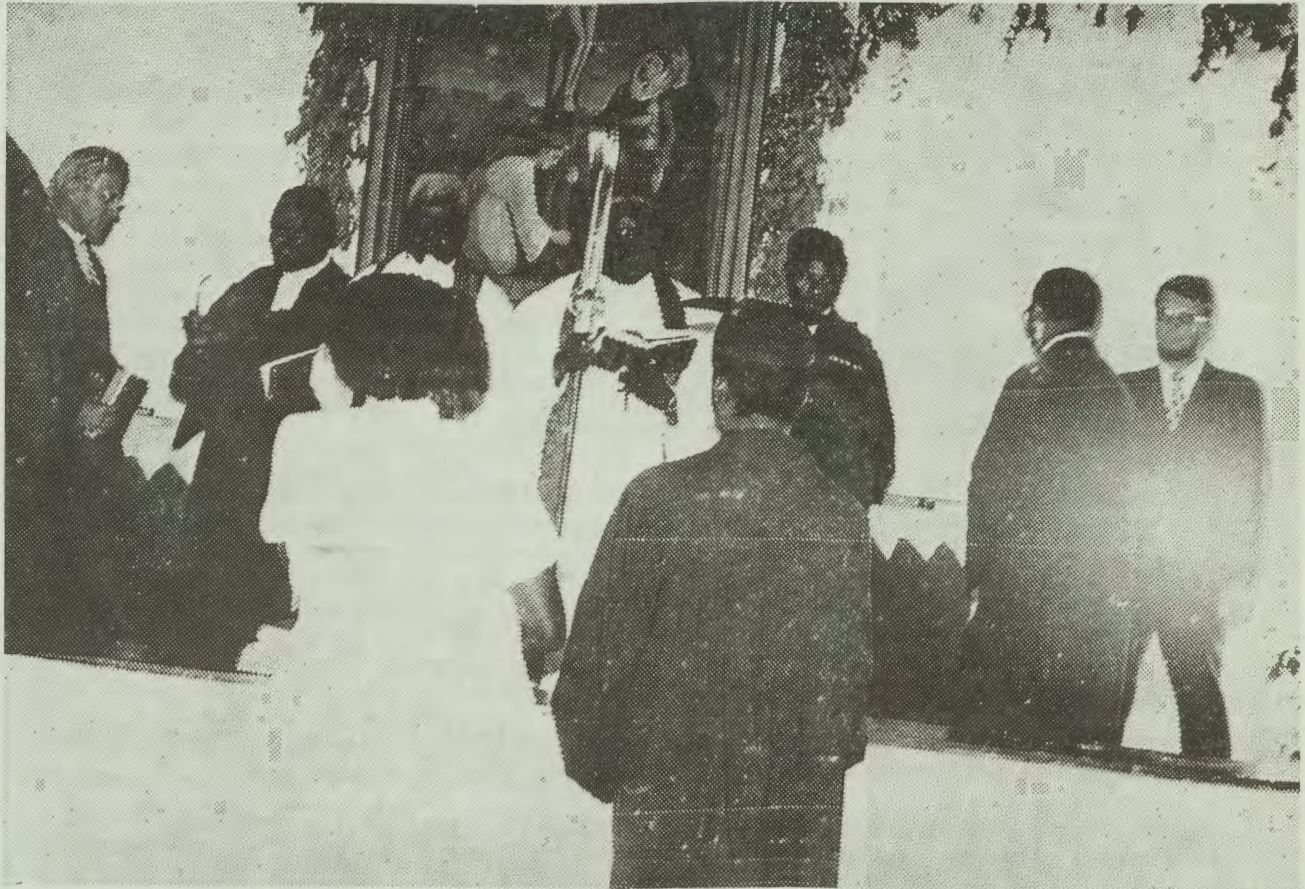
Heita neumbo laye, inava ninga ashike ovate-tete mehistolli lOngeleka ya ELOK nomoshi-wana ashishe shaNamibia, oku ka longa evan-geli koshilongo shokokule, ndele ova ninga yo votete ovaxumbati vomaushima mahapu taa pewa ovatumwa pefimbo eli. Eshi otave ke shi xumbata medina letu.

Powalitali, hamushanga woshilongatumo sha-Soomi mOwambo, Olle Eriksson, okwe va lom-bwela a ti:

Fye ovatumwa hatu longo apa paife mOwa-mbo, oshilonga shetu oshipu, osheshi ohatu longo mokati kovakriste. Nye otamu ka longa mokati kovapaani notamu ka mona shiimba omaudjuu mahapu.

Tate Olle okwe va twa yo omukumo vaha tile, osheshi Omwene oku li pamwe navo ngashi sha udanekwa mOmbibeli.

Okudja mOwambo, ooHeita ova ka pita ma-nga kuSenegal okukala ko okafimbo kaxupi, opo tava twikile nee kuSoomi nokuFulani-sha okulideula momalaka Oshifulanisha nO-



Aayakuli yomowalitali melaleko lyaatumwa yotangotango yokokule, dr. Auala ta monika e na ondhimbo yopaumbisofi, pamwe nomukwathi gwe tate Kleopas Dumeni kolulyo lwe. Aasita yalwe oya kwatha wo aawilikingeleka moshilonga shika, ngashi tate Filippus Shikomba omutonatelishitayingeleka shUukwanyama hoka kwa za aatumwa, omutonatelishitayingeleka shaNdonga tate Festus Ashipala kolumoho lwomumbisofi. Amushanga gwehanganotumo lyaSoomi mOwambo tate Olle Eriksson kolulyo lela lwefano nomuyakuli gwaanashilonga, tate T. Pentikainen, kolumoho lela lwefano. Aatumwa oye li komeho ya tsa oongolo powalitali.

shiserere osho tashi popiwa komuhoko umwe omo tava longo.

"Keshipu okufiya po oshilongo shetu, ndele keshipu yo okulundulula etokolo," osho va lombwela Omukwetu, fimbo ve li mepiyaano lokulongela ounguma wavo.

Vati, venya va ya manga, inava kala ko.

## EPUKULULO

**Moshifo shika mepandja etihayali omwa tumbulwa oonkwatwa ndatu dha yakulithwa evangeli. Epukululo olye tu adha manga oshifo shika inaashi pita mo, kutya mboka ya yakulwa oye li yane. Ngoka a li a thigala po inaa tumbulwa oFestus Shaanika (Kapapaleni).**

**Nguka nando ogwOngeleka yaAnglikani, okwa kundathaniwa naye pamwenyo nokuyakulwa pambepo ngashi e shi yuulukwa.**

## OMATHANEKO GAMWE MONGELEKA YAKATOLIKA

Omathaneko kombinga yomuleli gwOngeleka yaKatolika kaRoma, omupapa, oga nigwa omumvo gwa za ko. Nongele osha ningwa, elunduluko monkalo yomupapa otali ka ningwa po.

Omadhiladhilo gamwe gopauteologi kombinga yokweeta uupe monkalo yomupapa otaga ti: Opo oshilonga shi tse kumwe nethimbo lyongashingeyi, omupapa ando a tembuke moshilando she, Vatikan, a ye koombelewa dha- Lateran.

Na longithe oolefa dhoshigwana peha lyokulongitha oshihauto sha gamenwa kaakwiita.

Ye a longithe oshipangelo shaayehe shaRoma, siku a hala epango.

Ethaneko ekwawo lya holoka miinyolwa yilwe, ngiika ndyoka tali ka talika kashona edhigu, otali indile omupapa a longe natango oshilonga she shopaumbisofi, muRoma.

Ethaneko limwe olya etwa kuamushanga gwii- fo Raneiro La Valle, kutya omupapa a hogololwe kaapristeli nokaakwanegongalo yomu Roma.

Omupapa oha hogololwa koshigongi shaakuluntu yaambisofi (Cardinals).

## ETUMO OLIKULU

Etumo lotete Kalunga okwa tuma tate yetu Abraham, eshi e mu lombwela; dja mo meumbo laxo nomovakweni, Gen. 12:1.

Ndele nani omushamane Abraham nande a itavela ngaha, okwa li e u dite oudjuu. Nde shilimonena kovanyasha awa; omufita Paulus Heita naFiina waye, eshi twe va lekela 11-1-1976 mOnandjokwe.

Ova li tava kwena. Ame xekulu yavo, onda li yo nda hala oku a pitifa, nde onda tila va lile unene. Onda endelele ashike oku va kumaida kutya:

Vamwange, inamu nyemata, etumo olikulu. Kalunga eshi a tumine Abraham, Abraham okwa li e na oudjuu e mu dule.

Handi uda nande Kalunga ta lombwela kuti ham ta ti: Manga etemba loye, ile londa moshihauto omo, ohowe. Okwa tiwa ashike, na ye. Okwa enda kolupadi.

Nye vakwetu omuvanelao, osheshi nena otamu ende metuwa, mongula omu li momhepo. Lineekeleni ashike Kalunga, vana vange. Aishe ote i mu ningile ongovatumwa vaye.

Ovatumwa tu na apa mboli ohava kala ve udite oudjuu. Omunhu okufiya po ina naxe nepata noshilongo, keshipu. Ngashi ovaava kape na nande ofiwa. Aveshe ove na ooxe nooina.

Kalunga na hambelwe eshi ta tumu ovatumwa va tya ngaha, va ka ionge mepya u- kuSenegal, muAfrika.

Ngashi Abraham a ile kuKaanana ehe shii ko, osho yo ava tava i koshilongo kave shii ko. Vanyasha, otamu ifanwa moshilonga shetumo. Osheshi otaku tiwa:

Indileni Omwene weteyo a tume ovalongi meteyo laye. Osheshi eteyo olinene, ndele ovalongi ovanini.

Teofilus Mbwalu



**Elaleko lyaatumwa yotango mbaka, inali ningilwa ashike oshituthi shiipo- piwa, ihe oya tsu wo oongolo powali- tali yOmuwa nokutentekwa iikaha. kegongalo. (Tala efano kep.6)**

Sho ya hempulula eitaalo lyawo nokuzi- mina montaneho yegongalo lyaNiipa, ndyoka lya li omukaleli po gwomago- ngalo agehe ga ELOK, kutya oya tokola shili okufala elaka lyaKalunga kuyalwe, tate Heita okwa pewa ompito a tye sha kegongalo.



**Omusamane Tomas Filippus Auene**

Omuwiliki gwiilonga yOshinyanyangidho pethimbo ndiyaka Hartikainen, okwa taambe ndje miilonga yOshinyanyangidho. Onda tulwa moshitopolwa shehogololo. Onda kala handi hogolola oondanda niikaha, yimwe nayimwe noku dhi shunitha wo uuna dha mana okulongithwa mokunyanyangidha omambo nOmukwetu. Aahogololi otwa li otundji ngaa, ihe iilonga yehogololo kakwa li hayi endebele ngashi ngashingeyi," Tomas sho a tsikile ngaaka nokufatulula oshilonga she.

Mokupita kwomaathimbo oshikondo shehogololo osha humithwa komeho. Opwa landwa eshina lyokuhogolola, ndyoka lya li na oshitopolwa shilwe "Keyboard". Ngame onda li nda tulwa nduno ndi longithe Keyboard mokuhogolola. Eshina ndika onda li nde li hokwa, ihe konyala onde li longitha owala oomvula mbali nopo mpoka omutondi okwe li yonagula po pamwe niilongitho ayihe nOshinyanyangidho ashihe meti 11/5/1973.

Manga Oshinyanyangidho kwa li tashi longekidhilwa etungululo, onda li nda pewa ompito yokuyakula mongalashe ya Elok. Ohaluka ondi ithanwa mo nonda tseyithilwa ondi na okuya kuJohannesburg, opo ndi ki idheule okulongitha omashina goludhi olupe gokuhogolola, 'Intertype'. Otwa yi kuJohannesburg pamwe naShikongeni Shayuka, ngoka wo e li gumwe gwaahogololi mokulongitha omashina goludhi nduka.

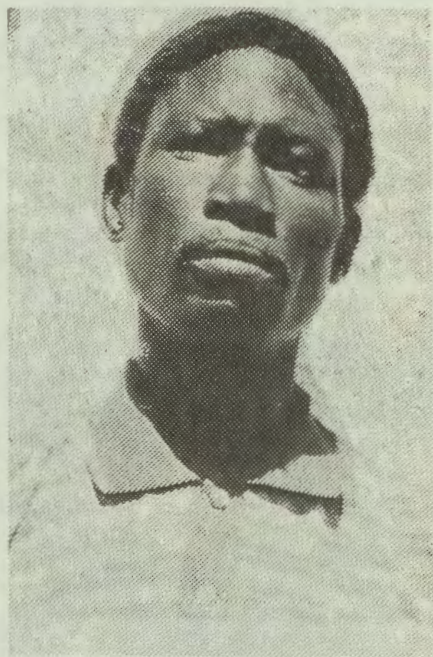
Ohatu hogolola omambo gopangeleka ngashi uutikisa, elongo lyuukriste, omaimbilo omambo gooskola, uukalata wi ili, nowi ili, Omukwetu nosho tuu iinyolwa yilwe.

Mokukala kwandje miilonga mbika, ota ndi pandulile Kalunga ompito ya tya ngeyi. Ondu uvite onda ithanwa mpaka okuyakula oshigwana shaKalunga niikaha nonomadhiladhilo gandje moshilonga shiinyanyangidhwa.

Aaleshi aasimanekwa yomambo niifo, Kalunga ne mu yambekele Omumvo Omupe, na unene shoka tamu toola miinyolwa yuukriste.

Omusamane Petrus Ugwanga, (35) okwa tameke iilonga mpaka 1960 nokwa kala noshilonga shokuhogolola oondanda noku dhi shuna miiketha yadho. Omashina gokuhogolola sho ga holoka, ogo ge mu zigula mo mehogo'olo lyokiikaha, nogo ta longitha sigo onena.

Tate Ugwanga ota ti: Otandi pandulile Kalunga ompito ndjika ndi yi na okuuv'itha evangeli niikaha nonomadhiladhilo ngashi Kalunga e yi pa ndje. Ota halele wo aaleshi ayehe yomambo taga hololwa po kiilonga ye niifo, eyambeko lyaKalunga.



**Omusamane Petrus Ambunda**

Omusamane Petrus Johannes Ambunda, gwomimvo tadhi tengenekwa 32, miilonga yOshinyanyangidho okwa taambelwe mo 1969. Iilonga ye yuunkulungu (yuungomba) mbyoka he yi longo pondje yOshinyanyangidho nomeni, otayi kumitha oyendji. Opo ihe sha yele ngashingeyi, sho a hokolola okukalamwe-nyo kwe.

Tate Ambunda ota ti kutya konyala kape na oshilonga inaa kwata ko oonyala manga inaa taambwa moShinyanyangidho. Okwa longo mokombitha, okwa longo mongalashe nomiilonga yoopate omo wo a li lwokOshawana. Kutse aanash nyanyangidho, otatu m tala "Shikwetepo."

Omusamane Ambunda ota ti kutya, shono a nyanyukilwa piilonga yOshinyanyangidho, handjambi, aawe. Okwa ti shika osh'nima e shi humbata neidhidhimiko. Shoka hashi mu nyanyudha, okwa ti kutya owandaha ndjoka hayi ningwa aluhe petameko lyiilonga.

Anna-Katri oye oshivelikadona shooNdevaetela nokwa dalelwa kOngenga momudo 1932. Eshi a wanifa omido nhe, okwa tembukila kEngela pamwe novakulunhu vaye, osheshi omushamane Ndevaetela okwa li e na okukala omuyakuli wakuku Selma Rainio moshihakulilo mEngela. Anna-Katri eshi a wanifa eedula hembali okwa shita ofikola younona pEngela fiyo a ya mongudu yokaumbo koukadona kaapo, omo a pita 1950. Okuhovela omudo 1951 okwa ya kOseminali kOkahao, oko e likola odjapo youhongifikola 1953.



**Omusamane Petrus Ugwanga**

Epangelongeleka la Elok, ola ifana omulongi Anna-Katri Ndevaetela momudo 1964, opo e uye a longe kOshinyanyangido kOniipa. Okwa hovela tete okulonga mOmbelewa yOmukwetu, ongomutoolinghundana, fiyo opefimbo olo eshi L. M. Shemuvalula e uya a tambule oshilonga osho. Okudja opo Anna-Katri okwa kala nee ta longo unene moilonga yOfitola yomambo pamwe nalnkeri Hartikaine novayakuli vamwe.

Okudja momudo 1968, Anna-Katri a lunduluka. Okwa mona edina lipe, hano Anna-Katri Kapenda nomo nee e shivikile paife medina eli. Oshinyanyangido eshi sha ninga eliko la Elok 1972. Anna-Katri Kapenda okwa tambulifwa oshisho shokukala omukulunhu mOfitola yomambo nomudiinini wemona IOshinyanyangido, omo ye ta longo fiyo opaife.

**Shayuka**

MEndola laShituaa omo omushamane Shikongeni Shayuka, 37, a dalelwa nomo a endela ofikola yopedu. Konima Shayuka okwa tembukila kOngwediva pamwe novakulunhu vaye.



**Meme Anna—K. Kapenda**

Pehovelo lomudo 1959 Shikongeni a tambulilwa moilonga yOshinyanyangido komufi A. Hartikainen, ou a kala omulongi waye a a fimana pamwe novanashilonga vakwao mOshinyanyangido. Okwa kala ta longifa unene "Monotype", eshina lokuteleka eendada kooimwe naimwe fiyo pa landwa vali likwao olo kwa li hali teleke lo tali hoolola pefimbo opo. Shayuka ota pandula unene omhito ei yokulonga monhele omo e li fiyo opaife.

Pefimbo letungululo IOshinyanyangido, Shayuka vo pamwe na Tomas Filippus, ova pelwe omhito yokuya kuJohannesburg, oko va panga ohani iyadi. Kwinya ove likola owino nounongo ve u pumbwa moilonga yavo yehoololo leendada, unene mokulongifa tuu omayambulaxungi. Unene ta hambelele Kalunga e shi e mu ufila okuyakula moshinhenga osho shokulongekidila oshiwana shaye oinyolwa youkriste molupe lomambo noloifo nosho tuu oinyolwa imwe i lili noku lili. "Ohandi indile Tate, Kalunga a penge oukolele wokolutu, eitavelo la pama nou-diinini moilonga efiku keshe," osho a tumbula.



**Omusamane Shikongeni Shayuka**



### OSHILONGA SHOKWEEVANGELIFA MOWAMBO MOMUDO 1975

Pehovelo lomudo 1975, otwa hovela oshilonga yeudifo levaengeli lOuhamba waKalunga, mokati kovakelefiti vomomaongalo a Elok.

Omundaungilo, Eenhanha nOkankolo, omaongalo aa ovanhu konyala inava ongala nawa ngaashi sha li sha teelelwa, ndele ava va ongala ova li nohokwe okuuda ondaka yOmwene wavo.

Onayena, Oshakati nOndobe navo yo inava ongala nawa, kakele kEem axu eongalo olo lipe, ola li la ongala pomufika walo, osho yo Elombe nalo yo ola ongala she li yeleka.

Ontananga, Ohalushu, Onaanda, Edundja nOshitayi navo ova ongala tuu. Okahao oka ongala haxwe. Oluteyi, eongalo lipe, ola ongala "nohamu".

Engela inali lixwa po ngaashi sha teelelwa. Kongo nOgongo ova ninga ngoo. Eengolo eongalo lipe, ohatu li fimanekele elongekido lalo olo la longekidila oivikembileli momkunda adshe dalo ovanhu ova ongala nawa nopef.mbo naanaa olo la ufwa. Ovaengolo, pandulweni.

Nakayale inatu kala nombili, osheshi satana okwa li a nyona po eshikulafano leongalo eli, eshi omufitaongalo a li a kwatwa ndele nande ongaha eongalo ola mona ngaho omapuniko aKalunga.

Tshandi: Eongalo eli ola hangwa li li moufiye, omufita walo okwa hangika mojolongo, ndele nande ongaha ovakwaneongalo ova ongala nawa mongeleka yavo peemhadi dOmwene wavo. Omaongalo mape Oshilemba nOukwandongo okwa ongala she a yeleka. Etilyasa eongalo eli olo la li dingi mokwoongala, osheshi efiku keshe omuvalu wovakwaneongalo owa kala tau londo pombada mokwoongala, eongalo eli oli shi okupandulwa okwoongala kwalo. Pamba ne mu punike alushe.

### OMHEPO YOMWENE OTAI LONGO SHILI APESHE OPO EVAANGELI TALI UDIFWA

Eshi oshe liholola shoovene momaongalo omo twa enda. Ovanhu vahapu, unene ovanyasha, ove na ehalo okunyamukulilwa omapulo avo

omeni, moukriste wavo. Vahapu ova hala onima yavo i wapekwe pokati kavu naKalunga, onghee eenghundafana nomailikaneno ohaa kala mahapu konima yeudifo keshe, mongeleka ile momikunda, peefikola ile poundingosho. Elinyengo eli linene ola fikifa ovaitaveli vahapu melimatulo. Opa kala epulo linene olo tali ti.

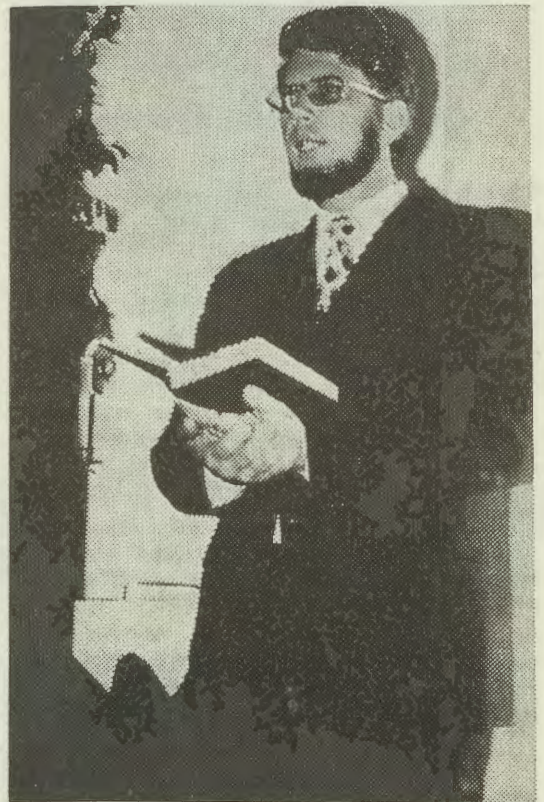
"ONAKUIWA YA LAULA OTO I SHAKENEKE U LI NGAHELIPU NAKALUNGA KOYE?"

Vahapu ova yandja omanyamukulo kepulo eli, siinene pef.mbo lomaudjuu. Momaongalo oo twa hanga ovanhu va makela omaudjuu efimbo eli lopaafa, omo twa mona epuniko linene. Omaudjuu nomatilifo efimbo lopaafa otaa shundula ngeni Ongeleka, ndele nee otaa pendula ashike ouladi meitavelo nokulipameka. Omaudjuu aa atya ngaha otaa yandja ashike elinekelo movaitaveli okulinekelwa Kalunga kavu, shi dulife nale. Kalunga oye aeke eshi kulinekelwa momaudjuu shi dule okulinekelwa ovanhu. Nande twa hanga ngoo vamwe va limbililwa omolwomaudjuu, ava kevahapu. Osha yela kutya mu Elok evangeli itali udifwa nando oshimha, oukriste mOwambo oo oshinima shi li moule weemwe-nyo, onghee eshi osho omukumo wetu.

### EKUMAIDO KOVAITAVELI

Ohatu mu indile onye amushe ovakriste, tu longeleni kumwe mokweevangelifa, oshinima sha f mana osho okwiilikanena oivikembileli momaumbo etu fimbo i li kokule, okukala momailikaneno mokati koolonga. Ef.mbo eli ohatu pulwa tu kale oupafi nokwiil'kana, osheshi ondeveli oya dula ko eenghaku, mokusonda Ongeleka. Efimbo tuu olo twa taalela, itatu dule nande oku li henuka. Otali tu shakeneke li li ngaashi li li. Natu indileni, opo tu wedelwe eitavelo li dule lonale tu dule okweenda nalo momaudjuu. Oshivikembileli nge tashi uya meongalo, ndele osha ilikanenwa ovanhu aveshe nava kale moilonga okulishivila komaudifo mOngeleka pefimbo olo la udafanwa, nosho yo meenhele da ufwa momikunda. Eingido eshi tali ingida mOngeleka, napu kale elinyengo momikunda da ulikwa. Onhele opo tapu ongalelwa nai shiivike. Ovanhu veembinga odo nava shiivifilwe, oshe-

**Tala kep. 8**



**Tate Olle Eriksson ta laleke aatuma medhina lyaAasoomi ayehe taa longo mu ELOK.**

Ongongahangano yAakwaluther muuyuni auhe, okwa dhimbululwa tayi koko miilyo yayo, nonando oku na wo eshunomonima miilongo ngashi yaEuropa naAmerika lyokuumbangalantu.

Shino osha zi mekonakono lyombelewa yomaseyitho yongongahangano ndjoka.

lilyo mehanganano ndino oyi li ngashingeyi 70,638,520 ya za moongeleka 95. Miilyo mbyoka omu na Aayafrika 2,443,358 payalulo lyomumvo 1976.

(Lwi)

### Oonkwatwa dha yakulwa nevangeli

Oonkwatwa ndatu, Johannes Nakawa, Sem Shivute, naAxel Johannes, oya yakulwa pahungomwenyo lyoonkundathana gumwe nagumwe, komusitagongalo lpinge Kristof Shuuya.

Oonkundathana naanandholongo mbaka, mOshikango, odha li dha hulithwa neyakulo lyUulalelo Uuyapuki.

Meme Ndahambelela Nakawa, naye wo okwa li a mono ohenda yokupopya nomulumentu gwe, lwotango sho tate Nakawa a kala mondholongu uule woomwedhi ntano.

Aapangi yomEngela, Kaino Malwa naEva Mwandingi, otaku tiwa natango oye li mondholongu noinaku tseyika otaa ka pangulwa uunake.

Aapangi Anna Lusua Hasheela, Hendrina Shaketange, Hileni Elias, Olivia Mbangula naEster Shangano, mbaka oye li ngashingeyi miilonga yawo ya mangululwa pamalufu, oogumwe nooyaali.

Eshi-omudo mupe twa hovela, Uukulu twe u xulifa, Atushe natu nyakukwe Neendjovo fye tu imbile Kalunga Xe neWifa ne NOMhepo yo youyelele, Tu-mu pandule neenghono.

Kalunga e tu hambata, Oudwaali-aushe e tu na. Koiponga e tu amena Neendjovo daye e tu pa. Nomomudo ou twa hovela, Kalunga e tu teelega, Tu dje mukulu wetu.

Omwene ne tu pameke Noneudo, e tu hambate Moiponga ne tu kandule, Komesho ne tu kwatele. Epangelo liwa tu pa, Noilonga yetu wapeka, Eongalo li lela.

### LUSAKA, ZAMBIA

Onghundana ya dja muZambia otai ti nokutya oita muAngola oya lya ovanhu ve dule 100,000. Vahapu vomuvo ovanafaalama ashike.

Omatau aavo tava ka holeka eemwenyo, otae linyenge keembinga adishe doshilongo shaAngola. Onghundana osho tai ti.

Epangelo la S.A. otali indilwa natango kehangano la SWAPO oinima ine li i wanife, opo pu hovelwe neenghundafana pokati kavo omolwemanguluko loshilongo eshi.

Omupresindede wa SWAPO, Sam Nuuyoma, okwa holola oitwa ei moshongalele sheenghundafa molwaNamibia, sha li muSenegal omafiku a dja ko.

Omushamane Nuuyoma okwa ti kutya, opo SWAPO a ye meenghundafana na S.A. okwa li e na okuwanifa tete oinima ei:

- A itavele nokutya Suidwes edu limwe alike, novanhu valo ove na oufemba wokupula emanguluko.
- A kufe mo omatanga aye aeshe ovakwaita muSuidwes.
- A itavele nokutya SWAPO oye aeke e lile po ovanhu vaSuidwes.
- Eenghwatwe adishe dopolotika meedolongo di mangululwe mo, naave va faduka po moshilongo, va efiwe va alukile koshilongo shavo memanguluko.

Moshongalele eshi shovanhu 300 va kalela po omapangelo avo, omahanganano oupolotika, nosho tuu, ova fanekelwa eemhumbwe omolwokweeta po emanguluko laNamibia kutya: Ngeno pu dikwe eefikola dowina moilongo ihapu okutekula ovali voshilongo shaNamibia ngashi oyo i li paife muZambia.

Pu hoololwe oukomitiye vahapu okwoongela omakwafo Ovanamibia, melongelokumwe na V.V.O.

Efiku 27 Septemba neudo li ka kale efiku laNamibia okudimbulukwa etokolo la VVO 1966, eshi a kufa S.A. eenghono okulela vali oshilongo eshi.

Omafaneke aeshe aa, okwa etelwa oshongalele komupresindede waSenegal omushamane Leopold Senghor.



### MERORO MU LONDON

Omunashipundi gwaSWAPO, omusamane David Meroro, okwa monika muLondon mu Desemba gwa zi ko, ta kongo uuhaku womiti omolwiiuntila yomadhengo gaapolosi moVenduka.

Omumvo 1974, Meroro okwa kalele mondholongu oomwedhi hamano ta tamanekelwa ondjo yiinyolwa yaakomunisi.

Pashifo "The Star 8-12-75" pethimbo ndyoka e li mondholongu, Meroro okwa ti kutya okwa dhengwa kaapolosi yegameno ya S.A. noshinima shono ote shi thikitha momakutsi gehanganano lyoohahende dhuuyuni auhe.

MuNamibia, omusamane Meroro okwiiyakele mo muSeptemba 1975 sho a yi ngaaka kombanda yomafuta.

ndeke vamwe ova mwena. Elombwelo letu olo: "KALUNGA OKU KU HOLE, NAAVE OKWA HALA U MU HOLE"

"Djamo moulunde. Ila kuye, okwe ku teelega molwaJesus Kristus." Omatumtulo aa okwa nengeneka omitima dovaitaveli vahapu ovo va mona omhito okuya meenghundafana omolu oisho yonhumba, nomaudjuu ngadi, omauvele avo vene ile ovaholike avo. Vamwe va indila nokuli okutenhekwa omake medina lomwene, unene tuu ovo hava fi oshinhona noingolomena, osho tate Efraima Angula a pameka alushe momakumaido. Inapa monika mangha oshingudu sha enda ile omupofi a twikululwa, ndele ovanaudu vamwe ova kala nawa. Aishe ei oya ningwa mEdina lomwene Jesus Kristus. "OSHILONGA SHOKWEEVANGELIFA OSHO OSHILONGA SHOPOMUTIMA WAKALUNGA"

Vamwe vomovanafikola ova pula omailikaneno hamoluomatimba asha, ndelenee omolwoilongwa yavo i pupale. Oshilonga eshi osho oshilonga shi efimbo eli olixupi onghee nali longifwe. Ovadiakoni novawiyauki aveshe meongalo nava kwafele ovafita opo oshivikembibeli shi kale ongoshivilo shiyapuki momikunda odo nOmongelega.

Omaweendo a tya ngaha oku na ondilo, onghee ou ina longekida nawa vakwao ota hepifa omaweendo e na ondilo. Ohashi dulika eongalo li li meshikulafano lomudo, ndele itali ka mona olufo ngaashi neudo omaongalo aa a xupa ko: Onamukulo, Omuntele naRuacana. Aa otaa ka talelwa po 1976.

**OMAPANDULO**

Amushe ava mwa longela kumwe nafye moku tu ilikanena, ngaashi twe shi dimbulukwa luhapu, ohatu mu pandula. Ava mwa ongala nomwe tu shikula apa twa enda, ohatu mu pandula. Ovaudifi vakwetu ovafita, ovaevangeliste, ova-diakoni novawiyauki aveshe momaongalo ovo mwe tu xwameka yo nomaudifo eni, ndele luhapu twa mona oikongo yokukwatelela mokweevangelifa, Omwene ne mu pe eenghono meitavelo.



**Omweevangeliste wOngeleka  
Natanael Shinana**

Omufita Matti Endjala na pandulilwe oudlinini waye mokulongekida oshivikembibeli mEongalo. Oye wotete a longekida: nawa momikunda. Tate Johannes Kalenga eshivo laye, eshi a shiva eongalo Etilyasa la ongala nawa mOngeleka nova ongala pefimbo, oye wotete mokwoongela nawa eongalo. Tatekulu Henok Haufiku na pandulwe osheshi oye omutivali mokwoongela eongalo laye mOngeleka. Kalunga na pandulwe. Meshikulafano lomudo 1976, otamu ka holoka omaongalo mahapu, onghee tu longeleni kumwe okulongela nokukalela Omwene wetu. Oye aeke te tu hekeleke momaudjuu nomeefina detu adishe mounyuni omu. "OUHAMBWA WOYE NAU UYE" Amen!

Rev. N. H. Shinana

## OSHITUTHI SHOMIMVO-10 DHUUKONGINDJILAKA- DHONA MOWAMBO

Otashi ka dhanwa mesiku lye-dhimbulukitho lyaBaden--Powell eti 20-22. 2. 1976 KOSHA-TOTWA kuuzilo wONANDJO-KWE.

Melandulathano:

Etihamano pot. 3.00 komatango, euvaneko lyoontetango, lyaakongindjilakadhona no-lyayayendindjilakadhona.

Pot. 7. otu na ohungi.

MOsoondaha pot. 9.00 ongula oparaadi yomatanga nomapandela, elongelokalunga noshituthihambelesho shene.

Opu na ompito okulanda iikulya noonamunate megumbo lyetu.

Ayehe otaa tegelelwa nenyanyu nokudhimbulukwa oshituthi megalikano.

**ETUMO MU ANGOLA**

Ewilikongundu lyoshilongatumo shOngeleka onkwaevangelista paLuther muAmerika (Missouri Synod) olya hala li taandelithe oshilonga shalyo miitopolwa oyindji yaAngola nomuMozambikwe.

Aakwaluther mbaka yomuAmerika, Ongeleka yetu oya yakula oombilive odhindji dhomahekeleko ga zi kuyo, omolwomaudhigu ogendji mevi lyetu ga guma Ongeleka.

**OMUKWETU**

Oye oshifo shOngeleka onkwaevangelista paLuther yomOwambokavango. Ohashi nyanyangidhwa mOniipa. Omukuluntu gwoshifo omumbisofi dr. Leonard Auala.  
Amushanga Rev. Sebulon Ekandjo

Ondando yoshifo komumvo muSuidwes nomu-Afrika alihe R 2.00 kombanda yomafuta R 4.00.

Oondando nomambesitelo naga tumwe kOmukwetu Oniipa: P/B. 2013, Ondangwa.

Omatseyitho agehe gomuntu mwene ohaga futi-lye kumwene.

OWAMBOKAVANGO CHURCH PRESS  
PRIVATE BAG 2013. ONDANGWA S. W. A.  
9270