

OMUKWETU

Registered at the General Post Office as a Newspaper



OSHIGONGI SHAAPANGI MONANDJOKWE

Ongundu onene yaapangi, haa longo miipangelo nomuupangelona wEtumo, okwa li ya kala moshigongi shawo shokomumvo mOnandjokwe okuza 11-14 Juli 1975. Moshigongi aapangi okwa li ya popithwa kaandohotola nokaapopi yalwe. Gumwe gwomaapopi okwa li omusamane E.Niinkoti, ngoka moshipopwa she a li a hololele aapangi euveko nondilo yoshilonga shawo nekwatathano lyasho nuuhungimwenyo. (Tala oshipopiwa pehala lilwe).

Konima yoshigongi aapangi yamwe oya tsikile nokuningilwa Okersesa yomapukululo miinima yuunamiti. Mokersesa ndjoka omwa li mwa kundathanwa omikalo odhindji tadhikwatha mokukaleka po uundjolowele moshigwana.

Mokati kiipopiwa ya simana ya etelwa aayenda mokersesa ndjoka omwa li iitsa mbi:

- a) Okukeelela omavu okwa talwa okwo ekota nekankameno lyokupopila uundjolowele woshigwana, onkene mokupanga mboka ya kwatwa komavu gi ilinogi ili, onawa yo yene wo aavu ya mone omapukululo, nkene ye na okuyanda omavu.
- b) ootundi kombinga yomiti odha ningwa wo nokwa londodhwa pu kotokiwe kombinga yesiloshimpwiyu lyaategeleli.
- c) Okutuntula uunona manga u li pethimbo lyokukoka, okwa talwa okwo ongudhi yuundjolowele moshigwana, onkene naavali taa kumagidhwa wo moshinima shetuntilo, opo ya ninge haa fala aanona komatuntilo.

Uunake omuluudhe nomutiligane taa kala muukuume?

Mokuuva nokupulakena iinima yethimbo ndika, omwenyo otagu longola. Omutima otagu shi dhiladhila nuugelele, tagu shi dhiladhilithwa kaafadhukipo Aaputu, mboka taa inyenge moondjila adhihe dhevi lyetu. Oshike ano sha eta einyengo li thike mpa? Oshike sha eta omadhipagathano nomahepekathano muAngola nomatembu ngoka gokuthiga po evi?

Inapu pita wo ethimbo ele sho aantu oyendji aagundjuka, aanona naanamagumbo, ya thigi po evi ndika lyawo noya yi kiilongo yokokule kaaye shiko, muupongekwa. Shika kashi shi oshinima oshipu okudhiladhilwa kaakwashigwana, kooyina, koohe nokaamwayina, nokwaayehe mboka ya kanitha ngeyi omaluvalo gawo. Shika osho oshilalo oshinene momitima dhaakwashigwana nomondjokonona yoshilongo shika.

Omukalo gwokuyoololathana muupolitika, mehumokomeho nomeliko, ogwo okutungila komukanka gwapuka, ngoka gwa eta shika kutya aapekwa Aaluudhe, ya konge eholameno pOmuluudhe omukwawo ngoka e na oonkondo nehalo oku mu taamba noku mu kwatha, oshoka oye oku mu uvite ko nawa, osho wo omutiligane ota kongo eholameno mpoka omutiligane omukwawo e na oonkondo noku mu uvite ko.

Ihe akutu; Epingathano ndika sho tali e ta uudhigu, ekanitho lyevi neliko, eso nuuwike. Oku na ngaa iinima yimwe yi shi okwoopalekwa nenge okwaandekwa, ihe omukanka ngele ogwa puka, nena eopaleko lyiinima yimwe itali kwatha sha, shila okutungulula omukanka omupe. Uunake Omuluudhe nomutiligane taa ka kala muumwayinathana nometopolelathano lyeliko, lyuupolitika nokuhumitha komeho evi lyawo itaaya yoololathana nenge itaaya tidhathana nokuhepekathana ngeyi. Oshike tu na okuninga, opo tu hupithe oshilongo shetu naantu yetu?

"Otango ano kongeni oshilongo shaKalonga nuuyuuki washo, nena mbika ayihe otamu yi gwedhelwa ko."

X X X X X X

OMUBISHOFI OMULAULE MUSWAZILANDA

Ongeleka yaAngilikana muSwazilanda oya hoolola omudiakoni omukulunhu (Archdeacon) Bernard Lazarus Mkhabela, a ninge omubishofi wotete omulaule moshilongo osho. Vati ovabishofi vakwao mongeleka ei, otava ka hoololwa yo mollongo ngaashi Zululanda, Lesotho nomuPretoria.

Oshigongi shaapangi

dha za kep. 1

- d) Uuvu wa TB wa li wa kundathana wo nkene u na okukondjithwa shili mokati kaantu. (tala oshipopiwa palwe).
- e) Epalutho lyuunona inali dhimbiwa po miipopiwa nomomaendululo ga ningwa mokersesa ndjiyaka.
- f) Opwa li pwa ningwa ishewe epopitho kombinga yaaipangithi nomokukundathana opwa ndhindhilikwa nkene eipangitho li na oshiponga. Nali yandwe.

Pehulilo lyokersesa opwa li pwa ningwa okakonakono (kritiek). Aakali mokersesa ya pandula kompito ndjoka, ihe ya tumbula kutya ethimbo okwa li efupi unene. Okersesa oya kalwa kaapangi 30, komusita tate J. Haufiku, kaandiakoni nokaayenda yalwe. Manga inaaya hulitha opwa li esikulimwe oonkundathana kombinga yoshilonga shetumo, moka mwa li ehwamo enene nokwa ulikwa omafano gokuSenegal.

HOLOKA KOSHIPANGELO KUYELE

Okuholoka kuyele koshipangelo otaku kwatha omundohotola mokupanga uuvu manga u li petameko lela. Ope na omavu gamwe itaga vulu okupangwa nawa uuna omuvu te ya kwa toka koshipangelo.

Omavu taga landula naga falwe koshipangelo manga kuyele:

a) Okatumbuka kehe itaka shuna muule wethimbo efupi nenge taka tsikile okukoka. Utumbuka wa tya ngaaka otavu vulu okuholoka ngele mothingo, megundji, mela nopalwe wo.

b) Okukunga, okukolola, okusitama nenge okuya kondje ombinzi, kapena mbudhi kutya ombinzi ontshona nenge oshaningwa owala esiku limwe.

c) Okupona nuudhigu unene maakuluntu.
d) Omagulu taga zindi, ela tali fulu, oshipala tashi tulu. Mpaka oonzindo ngandhino ohadhi vulu okwetwa kuuvu u li mehuli, momutima miitiyanathigo noshotuu.

Salomo N. Amadhila
(Omwiilongi muunamltl)

Ayihe okwe yi longo nawa

Mark.7:31-37

Eyele ndika otali tu hokololele Omuwa Jesus ta aludha omulumentu ombolo. Jesus oto opaleke ngeyi eshito lyaKalunga li kale lyo opala ngashi Kalunga a hala li kale, omuntu gwaKalunga a kale nawa, ngashi Kalunga osho wo a hala a kale sho kwe mu shiti.

Jesus okwa tsu ominwe dhe momakutsi gombolo, a gumu elaka lye e ta ligamene pombanda kegulu ta fudha omufudho omule, e ta ti "Efata" "Thituluka". Okupopya nkuka kwaJesus okwa aludha omulumentu nguka. Omakutsi ge ga thituluka, elaka lye lya manguluka nomulumentu oku li ku uvite ko nota popi.

Omuwa Jesus, okwa li ta vulu okwaaludha omulumentu nguka noinaa ninga nando omainyengo ngangoka e ga ningi pahapu ndhika. Mokuninga omainyengo, Jesus okwa li a hala omulumentu ngwi-yaka e mu itaale. Ihe shoka omuntu okwa li ombolo, Jesus ina vula okukwa-tathana naye pamukalo gulwe gwaathe shi ngoka gwa tumbulwa; ano gwokuninga omainyengo. Oye okwa longitha ano ngaaka elaka lyombolo nguka, okwa aludhwa moluundu lumwe, koonkondo dhaJesus. Ndika okwa li endhindhiliko limwe lyomungoka ga ulukile aantu, kuty a Jesus oye shili Messias. -Oombolo otaa uvuko! Jes. 35:5; Mat.11:5

Mpaka Omuwa Jesus okwa li a uvithile omulumentu ngwi-yaka evaangeli nomainyengo nomulumentu okwa uvuko e te li itaale. Pomasiku ngaka getu oombolo otadhi popiwa nadho notadhi uvithilwa wo evaangeli pamukalo gwomandhindhiliko gomainyengo, kumboka yi ilongo okuuva ko nokupopya wo elaka lyoombolo. Oombolo yamwe oyi ilonga wo okulesha komilungu dhaantu sho taa popi nopamukalo nguka, ohaa uvuko ishewe nomeho peha lyoku shi ninga nomakutsi.

Oshilonga shika ngashi kwa li sha longwa kuJesus esiku ndiyaka okwa li oshivanawa noshikumitha, onkene kapwa li nando ogumwe ngoka kwa li ta vulu okukala e shi mwenena, ye kee shi hokololele andola mboka kwa li ta mono nenge ta tsakanene nayo. Ihe Jesus mwene ka li a hala aalongwa ye ye shi hokololele nando olye, oshoka ethimbo lye okwa li inaali thikana manga lyokwaalelwa komushigakano. Onkundana yoshilongankumwe shoka Jesus a aludha ombolo, okwa li tashi vuliya yi tukuluthe Aajuda ya kwate Jesus noku mu alela komushigakano manga ethimbo lyoku shi ningilwa inaali thika. Omolwasho ano Jesus kwa li iindile aalongwa ye kaaye shi hokololele nando olye.

Ihe ngashingeyi, Omuwa sho e tu alelelwa komushigakano nokwa gwanitha ngeyi oshilongakulilo, a londa nokuli megulu kolulyo lwaKalunga Tate note tu galikanene, nena tseni ooitaali nongaalongwa ye, osho oshinakugwani-



Salatiel Angula, ngoka a galulilwa kaandjawa, kOniimwandi, mOndonga, sho kwa li a taagulukwa ongamba 1965. Pahokololo lye mwene okwa kala mondholongo puKatimamulilo (SWA), uule woomumvo. Konima a piithwa mo nokwa kala pondje etatumumvo sigo aapolosi ya S.A. ye mu fala kaandjawa, poomwedhi dha piti numvo.

Oumukwetu e mu tsakanene manga a li monasaresa mOnandjokwe.

thwa shetu okuhokololele ayehe iinene-nima mbyoka. Omuwa Jesus e yi longa kombanda yevi. Eeno, ngashingeyi oshili ndjika:-Kalunga okwa li muKristus nokwa hanganitha aantu ayehe naye, ye ina yalulila aantu omayonagulo gawo. Okwe tu pe ohapu yehanganitho, 2Kor. 5:19.

Aalongwa mbeyaka ya li poshiningwanima, okwa li ya tompelwa oshili ndjika nomolwasho oya igidha nonkumwe onene taa ti -Ayihe okwe yi longo nawa! Tse ekulilo lyokuGolgota olye tu tompela wo oshili ndjika kutya, nonando tu li po aankundi naanye meitaalo, nomokwiinekela Omuwa gwetu, Ye mwene polwe iinima ayihe okwe yi longa nawa. Ndjika ovelise yetweni atuheni aakulilwa, tu na oku yi dhimbulukwa aluhe.

Ethimbo onali keya nokuli pehulilo lyokukalamwenyo kwetu, uuna twa thika mehupitho, muukwaaluheluhe. Nena mboka twa yalulilwa notwa taambelwa mongundu yaayapuki, otatu ka imba nokwiigidha nokuligola pombanda pamwe naayapuki tatu ti: Halleluja, Omuwa gwetu, Ayihe okwe yi longa nawa. Amen.

Matti I. Amadhila

KALUNGA OKU LI PENI

Aantu aashona yowala natango ngiika mOwambo taa tseya nokutya oku na aantu yamwe muuyuni, mboka itaaya zimine nando kutya Kalunga oko eli noye Omushiti gwaayehe. Ihe oshinima shika osha yela.

Eitaalo lya tya ngeyi tali tindi Kalunga kutya oko eli, itatu li adha nando miigwana yaAfrika, ngashingeyi nenge nale muupagani wayo, aawe. Ayehe otaa hempulula kutya oku na Kalunga nando inaa shashwa, nenge nando taa longele iimenka yilwe.

Omakonakono goshinanena okukonakona eshito nuunshitwe, ogo oshinima shoka she etele eitaalo lyoyendji uupyakadhi. Yamwe oya tala ku-

Epuko kalya li lyOmukwetu!

Omapopiwo omawinayi ga popiwa nokunayipaleka ando oshifo Omukwetu shOngeleka, mOradio Owambo, konima yokupitamo kwOmukwetu no 10 gwaJuni, otaga sitha uunye oonakugapopya. Oga holola owala okwaashi kulesha kwawo nomolwasho itaa tseya iinima nkene yi li. Epuko ano kalya li lyOmukwetu. Nakupopya mOradio Owambo na leshulule nawa, ye ni iyageke omapuko omatiyali. Mpaka otapu landula eopaleko lya mwene gwepuko, ngaashi e li holola mEume lyonomola 6 lyaJuni 1975. Set Son Shivute

EPUKULULO

Otatu ukilile koshipopiwa mOmukwetu No. 10 gwaJuni 1975 mono Ongerki yaN.G. ya li ya homonwa molwasho Omukwaniilwa J. Sh. Taapopi, paEume lyaDesemba 1974 ongoshilyo shOngerki yaN.G. a li a shashwa. Otwa hala okutseyitha kutya iitya: 'a shashwa' mEume oya li epuko. Omukwaniilwa Taapopi okwa li a taambwa ongoshilyo shOngerki yaN.G. na ka li nande a shashwa. Iitya 'a shashwa' peha lya "a taambwa" mEume oye ya mo papuko. Kasha li nando edhiladhilo lyEume okushundula Ongerki yaN.G. nenge Omukwaniilwa Taapopi. Eume otali lalakana aluhe mokugandja oonkundana kwalyo, li ete iinima ya ndjanga, yaa na omashundulo nomasheko. KOngerki yaN.G., kOmukwaniilwa Taapopi nomuntu kehe ngu a gumwa kepuko, nenge kee li uvitile ombili, otatu gandja ombili.

tya shono itaashi vulu okulolwa (Proef) komashina guunongononi, kashi shi shoshili. Kalunga okwa tulwa wo mongundu ndjika. Ihe Ombimbeli otayi ti ngiini?

"Omapangulo ge ohaga konakonwa kulye noondjila dhe olye e dhi tseya?" Rom.11:33.

Oshinima shokwiitaala muKalunga, oshi li meihololo lyaKalunga mwene komuntu, hamuntu e na oondunge dhi thike mpoka oku mu tseya. Omundohotola muunongononi A. J. White, ngoka kwa li ha patana kutya Kalunga oko e li, Kalunga sho e mu ihololele okwa hempulula a ti:

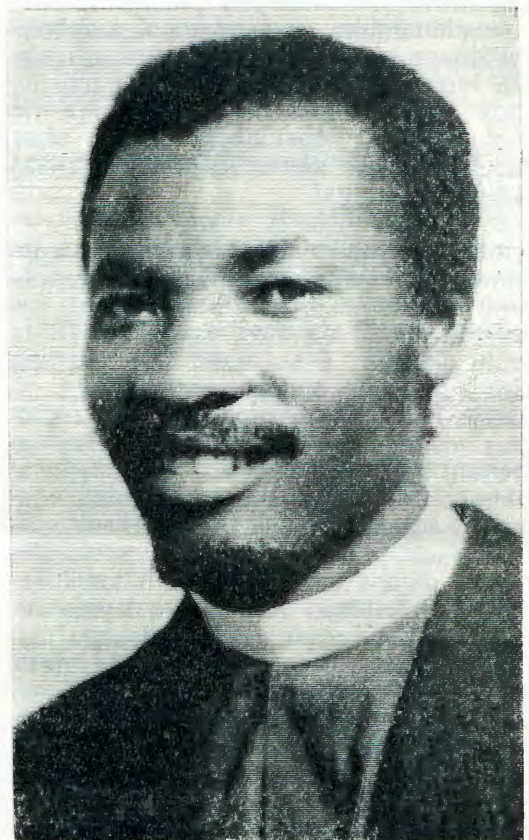
- Onda li he ti Ombimbeli oyo omatenge-neko gowala gaantu.
- Jesus kee shi Omuna gwaKalunga ngashi tashi tiwa.
- Uukriste kau shi sha tashi anduka momwenyo gwaaluhe, ngashi tashi tiwa.
- Naanongononi inaa zimina embo lyaMoses ndyoka tali popi eshito.

Onda tameke okulesha nawa Ombimbeli. Peta-meko lyomumvo 1974, onda zimine kutya Ombimbeli embo lyoohapu dhaKalunga.

Ondi itedhulula nondi itaale Jesus omukulili gwandje. Omumvo 1971, ondi ishashitha. Kalunga okwi ihololele ndje, nonda ningi omuyakuli gwe. Ngashingeyi ondi li omuyapuki omunene, nomulunde nda hupithwa kesilohenda. Kalunga ina pa ndje ashike omwenyo gwaaluhe gwomuuyuni tau ya, ihe okwe gu pe ndje wo gwa gwana nomanga ndi li kevi ngashingeyi".

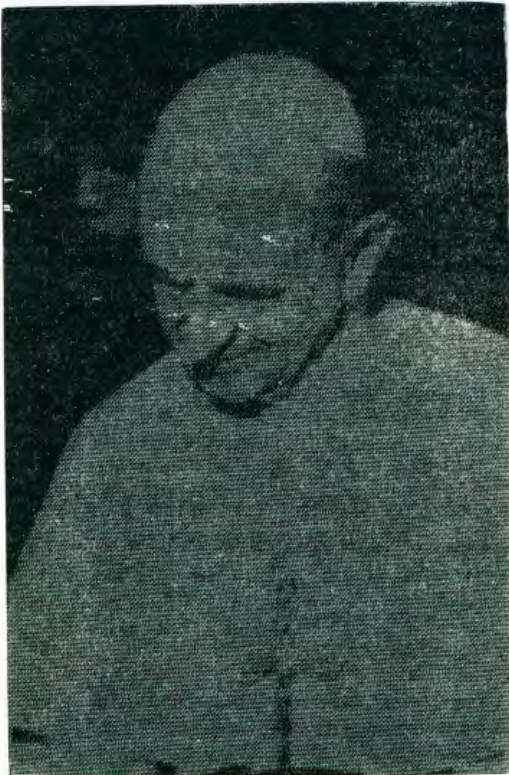
Roger Garandy, Omufulanisa omukomunisi, okwa hempulula wo a ti:

Kalunga nani oko e li e vule omuntu. Oye Omushiti gwaayihe nogwonakuyiwa ye. Oku li mungame, nangame ondi li gwe.



Omusitagongalo Set Son Shivute, ngoka e li amushanga gwOmumbisofi no-gwEpangelongelegeka lya Elok.

**NATANGO EPULO NGEENGE
OVAKAINHU NAVA YAPULILWE
OUFITA OTALI LIPULWA
MOUNYUNI**



**Omupapa Paulus VI
woku Roma**

Ondaka ya dja moshilando shomupapa Vatican, muRome, otai ti kutya Ongeleka yaKatolika noya Gereka (Ortodox) muRusia oda udafana nokudimina pamwe nokutya vo itava itavele nandende ovakainhu va yapulilwe oufitaongalo. Ehongo likulu, olo la kala meengeleka edi mbali olo kutya oshilonga shoufita shi kale sha ngabekelwa movalumenhu, ola kolekululwa vali moshoo-ngalele shoukumwe weengeleka odo.

Oinima ikwao ya fimana kwa li ya kundafanwa moshoo-ngalele omo, oyo ina sha unene nexupifo nemanguluko, ngaashi tali hongwa mOmbibeli, mehongo longeleka ikulu nopauteologi mupe. Ongeleka otai udifa ondaka yexupifo noyemanguluko. Ongeleka otai longo yo oshilonga shayo omolwouyuki, ombili nemanguluko mowii. Moshinima eshi ongeleka otai longo nekwafelo lovalumenhu.

MuQuebec, Kanada, omwa ningwa oshoo-ngalele ongeleka shongeleka yaAnglikana. Epulo eli lokutya ovakainhu ngeenge ve shi okuyapulilwa moufitaongalo, moshoo-ngalele eshi ola monenwa enyamukulo eshi sha itavelwa nomawi 189, sha kondjifwa nomawi 56 aeke.

Pokati penya ovabishofi vongeleka tuu ei, Anglikana, muDublin, lerland, ova dimina ngomunhu umwe nokutya pauteologi kape na etomhelo li shi kutumbulwa olo ngeno tali keelele ovakai-

**FYE OTWA HALA ONGELEKA
YETU IPE**

Fimbo hatu diladila tu ninge oshoo-ngaleleongalo, opo tu tale ngeenge ohatu dulu okwoongela oimaliwa yetungo lOngeleka yetu mEembaxu, mboli omukwaneongalo umwe a hovele nale nokuli, okwoongelele Ongeleka yavo, eshi a eta oimaliwa i fike R77,32 oyo ya umbwa kovamwaa-meme ovo ve li pondje yeongalo letu. Meme Monika Hamutenja naamushe ovo mwa umba ongalo ei, Omwene ne mu pe eenghono. Ndele mokulonga ouwa inatu lolokeni, osheshi efimbo ngeenge la fika, hatu ka teya yo ngeenge itatu loloka Gal.6. 9.

Ponhele yeongalo
Rev. Moses Mundjele

Onni Aho a yi kekululuko

Omutumwa, omusitagongalo Onni Aho, okwa ithanwa kekululuko lyaana yaKalunga eti 13-7-1975. Omutumwa nguka okwa li a valwa eti 17-9-1896. Okwa li a longo wo oshilonga shetumo mpaka mOwambo okuza 1927 sigo 1936. Ethimbo lye lyahugunina mOwambo okwe li kala muElim nopo ihe omo a zile sho a shuna muSoomi.

Nkwiyaka muSoomi okwa li ta yakula momagongalo gamwe moshilonga shusitagongalo. Omathimbo ogendji, okwa longo wo miilonga yEhanganotumo. Unene okwa li ha talele po momagongalo ogendji lela miituthi yago yetumo nomiigongi. Okwa kala omudhiginini miilonga ye ayihe.

Omuwa, nena to laleke ndje omuntu gwoye, ndi ye nombili ngaashi wa tile, "Luk. 2:29.

Oundobwedi meyasho lomukainhu Omuwambo otau konakonwa

Ovenduka: Omupanguli akula, omushamane J. E. Nöthling SC, okwa tongela mOvenduka, kutya ye ota konakona a mone oudjapo moshinima sheyasho nefyo lomukainhu Omuwambo, ou e shi a yashwa okwa li a twalwa nodila yetanga lovakwaita kOvenduka, oko a ka fila nee moshihakulilo.

Nakuyashwa ou okwa hangwa a kailkwa kombashikela kukaume kaye, oo naye yo eshi ondjebo ya umbwa a ningwa oipute. Epulo ngeenge moshinima eshi omu na sha shi sh okushikulwa paveta, olo nee omushamane Nöthling ta konakona.

The Windhoek Advertiser 22-7-75

Epukululo

MOmukwetu No. 8/1975 mepandja 6 moongalo dhomagongalo, mUuningininu opwa tumbulwa mwa taambwa R 49,149, ando ayihe kumwe. Ihe oshi na okukala R 49,148.

nhu vaha yapulilwe oufitaongalo. Etomhelo olo la yandjwa kovabishofi, ola yeulula nee oshivelo noshinima sheyapulo lovateologi ovakainhu, otashi ka ningilwa etokolo moshoo-ngalele ongeleka shomudo tau uya.



**Meme Vistorina Johannes okwa nyanu-
kilwa omagano gaakwanambwiyu.**

EPAHA

Epaha olyo oshinima sha kala hashi tilika shili unene. Lya talwa olyo oshiponga oshinene. Ano omusamane nomukulukadhi gwe ngele ya vala uunona uyali, otaa lombwele omazimo gawo. Kehe gumwe ta lombwele ezimo lye. Aakuluntu yomazimo agehe gaali taa gongala ya konge onganga onkuluntu yi na oonkondo noondunge nuunongo wokukeelela oshiponga sheso lyepaha mokati kaantu. Nomazimo agehe taga kongo iikombo noongombe nomihanga niinima iikwa-wo tayi pulwa konganga. Ihe omuvali noyana taa tilika. Aakwawo inaa hala oku ya guma nenge oku ya talela po manga inaaaya pangwa. Ngele omwedhi gwa si, onganga tayi galuka yi pange omazimo ngaka agehe. Nena naantu kaa-ye shi yomazimo ngoka, taa pangwa wo moshiyayo shepaha nokunkwanunwa, shaa tuu taa etele onganga ofuto onene ya gwana.

Eeno, aapagani naakriste aatenguuki ohaa tila epaha sigo onena. Ndele aakriste yoshili naa-yehe mboka ya dhimbulula oshili ndjika, taa pangelwa koonkondo dhOmulilili, kaye na sha shokutila mpaka. Esiku limwe taku monika oshiponga mokuvalwa kwaakwanambwiyu omolwa shoka yina a nkundipala uunene naavalithi kaye na onduge yoku mu kwatha nawa, nenge uunona wa valwa uunkundi uunene nonke tau yonuka po. Ihe ngele wa valwa nawa nowa kola nena kape na wo oshiponga, naakwanezimo itaa mono oshiponga nando. Oluvalo aluhe lumwe, kape na ekwatathano lyasha nezimo lyomuvali, ngashi aantu haa dhiladhila. Shoka osho iifundja iitotototo.

Ano omukwetu ngoye ho tila epaha! Onda hala ndi ku lombwele: epaha kali na oonkondo shili oku ku dhipagal! Onganga ya hala ashike oku ku yuga iinima yoye, kape na nande oshiponga! Oluvalo aluhe lumwe aluke, inapa lunduluka nando. Etha uugoya nuusama u thike mpa tau ku yugitha iinima yoye koonganga dhaapagani, noto dhini ngeyi oonkondo dhaKalunga omunamwenyo noto inekele oonkondo dhaantu. Ano ngoye omukriste, lungama, oto ihilile ondjahi yaKalunga! Ino limbililwa. Kape na sha tashi nyenge oonkondo dhOmuwa, ayihe otayi vulika koonkondo dhe.

Tse aakalelipo

Aayafrika oyendji oya tseya okukala moshilongo oshipe sha mangeluluka nke-ne ku li. Esiku lyemanguluko sho tali endelego notali hedha popepi, oshigwana otashi kwatwa wo kondjuulukwe yokumona esiku lyevalo lyoshilongo shawo oshipe.

Una tuu ndoka uukwashilongo uupe wa holoka, edhina epe, ebandela neimbilo lyoshigwana tali imbwa.

Iinakugwanithwa yoshilongo nomalandulathano omape otaga holoka nokuli, sho oshilongo shi na okumona esimano nuuthemba wemanguluko.

Shino otashi ka etela yamwe esimano enene sho taa ka kala aakalelipo yasho kiilongo yilwe. Ombimbeli otayi tu lombwele, kutya tse aakalelipo yaKristus.

Mboka ya taamba Kristus ongomuhupithi gwawo, oya zalekwa uulenga woshilongo shaKalunga. Tse ootaali otwa pewa oshimpwiyu miilonga yoshilongo shika, pwaa na ondjoollola yomalwaala yiigwana nenge yomalaka; atuhe aakalelipo Ye kombanda yevi ndika.

Ongaakalelipo yaKristus, otu na okuulika iilonga yetu iivanawa mokati kuu-yuni mbuka, kewiliko lyOmbepo Ondjapuki, opo tu kale oonzapo dhoshilongo shaKalunga.

a) Ihe one otamu pewa oonkondo, Ombepo Ondjapuki ngele te ya mune, lil.1:8.

b) Aakriste otwa tegelelwa tu hempu-lule Kristus ongoshinakugwanithwa shetu shesiku kehe.

c) Ope na ompumbwe onene muuyuni mboka Kristus e u sila, ngele itau uvu elaka lyehupitho.

Tu lalakaneneni okukalelipo Kristus noshilongo she shoka itaashi hulupo.

Ndeyapo Auino

OONKUNDATHANA DHOMUKANKAVE- TA GWARHODESIA MIIPUNDI

**Oonkundathana dhomukankaveta molwo-
nakuyiwa yaRhodesia, opwa tseyithwa
tadhi ka tameka meti 25 Aguste 1975.**

Oonkundathana ndhoka otadhi ka ningwa pokati kepangelo lyopatiligane lyaRhodesia, mewiliko lyoministeli yotango. omusamane Ian Smith, nehangano ekondjelimanguluko ANC lyomuRhodesia, mewiliko lyomupresidende gwalyo, o-mumbisofi Abel Muzorewa.

Ehala lyoonkundathana olya uthwa li ka kale moshikoto sheshina lyolutenda lya Suid-Afrika. Oshikoto otashi ka kala omuthika pontopa yopegwo lyomeya pe-tale lyaVictori, meti 25.8.1975.

Etompelo lyokukala moshikoto, aniwa okutya oonkundathana otadhi ningilwa nee ngaaka pevi lyaSuid-Afrika.

SHOKA AANYOLIMAMBO TAA TI KOMBINGA YOWAMBO

Embo epe olya holoka ngaashingeyi medhina; Die rol van die Owambo-elites in die politieke ontwikkeling van Owambo. Embo otali popi uupolotika wOwambo nomushangi, Gerhard Töttemeyer, okwa li a pewa eziminino kEpangelo a konakone uupolotika mbuka, moka a pewa onkatu yuundohotola mosikola yokombanda yaStellenbosch.

Osha holoka membo kutya dr. Töttemeyer okwa talele po Owambo 1968,1971, 1972 na 1973 okukonga uuyejelele wa pumbiwa. Membo lye omwa holoka iinima mbika ya tulwa kumwe pafupifupi kaaleshi yalyo.

Okwa ti moshilongo kehe omu na okukala ehukumokomeho miinima yopapolotika. Kombinga yOwambo okwa ti, kutya omu na omalunduluko natango omanene, onkalo onkulu yoshigwana sho tayi teka nonkalo ompe tayi holoka. Okuyeleka omalunduluko gomiilongo yilwe, ngaka gomOwambo, okwa dhimbulula kutya oga ningwa methimbo efupi.

Elunduluko lyomOwambo, okwa dhimbulula lya tameke pamwe noshilonga shetumo sho sha holoka, onkalathano yopashingolo ya tameke. Oongundu dha simana dhomoshigwana odha kala dhi na sha nehukumokomeho alihe. Dr. Töttemeyer oongundu okwe dhi yalula ngeyi. 1. Oongundu yaakwaniilwa nomalenga nooyene yomikunda, oye vule eyovi limwe. Oongundu ndjika oya koka moomvula, ihe oyendji inaa tseye okulesha, manga yamwe ayeke ya pita Ostanda 1 nenge Ostanda 11. 2. Oongundu ontiyali oyaavithi, aasita naayevangeliste naanashilonga yalwe yOngeleka. Mbaka dr. Töttemeyer okwa ti kutya oya kala nga moosikola sigo Ostanda VI nosikola yuusita nenge yuuyevangeliste.

3. Oongundu ontitatu oyaalongi ye thike lwo 1400.
4. Oongundu yaanambeleva.
5. Oongundu yaanangeshefa.
6. Aapangi
7. Aanasikola
8. Oongundu yaakwiita ye li kombanda yoshilongo. Oongundu ndhika adhihe, omushangi okwa ti kutya odho aakwatelikomeho yoshigwana.

Embo ndika otali ti, nonando shito kwa kala ashike oongundu yaaleli, evangeli sho lya uvithwa moshigwana naantu ya putuka, oya tameke okudhiladhila wo niinima yoshigwana nonando momaavitho inamu kala uupolotika. Omunyoli nguka okwe shi holola sha yela kutya oshilonga shetumo osha li okweeta po ombili pokati kiilongo. Ihe okwa ti wo:

Ethimbo ele omatungo nOongeleka odha kala hadhi longo kudho dhene, ihe Komufala Shongola sho e ya, okwa dhimbulula kutya hwepo ngele Oongeleka itadhi ningi odhindji, oshoka okwa tila kutya otashi ka etela Epangelo naapangeli yiilongo omaudhigu. Moomvula dha landula ko Ongeleka nEpangelo oya topoka miinima oyindji nopwa kala okwaavathana. Shika omushangi Töttemeyer okwa ti kutya osho hashi titha Ongeleka otayi itula miinima yEpangelo, nEpangelo otali itula miinima yOngeleka. Manga Ongeleka tayi tala kutya oyi na oshimpwiyu nomuntu aguhe, Epangelo otali tala kutya Ongeleka kayi na sha okutya miinima yoshilongo. Osho omushangimbo nguka a ti.

Ongeleka sho ya kwata nawa aantu, naantu sho kaye na we oompito dhilwe, Ongeleka oya talwa kutya otayi vulu okupopila oshigwana nokupopya medhina lyoshigwana. Unene ombilive yeeguluka yomunvo 1971 ndjoka ya nyolwa kOngeleka, dr. Töttemeyer okwa ti oye eta



Omundohotola gwomambo
G. Töttemeyer

etopoko pokati kEpangelo nOngeleka, naantu oyendji oya gama kOngeleka. Etopoko ndika lya kolekwa ishewe uuna Oshinyanyangidho sha fikwa po, osho a ti.

Omushangimbo nguka okwa lombwela Epangelo li dhimbulule oonkondo dhOngeleka noku yi pulakena momafaneko nomomandilo gayo, ngele Epangelo ndyoka lya hala okupititha iinima yalyo.

Omapulo gamwe taga landula mpaka oga li haga pulwa oongundu dha tumbulwa pombanda nkene dhu uvite miinima yoshilongo. Oga li po ngeyi:

1. "Ou uvite ngiini uukwashilongo woye moshilongo moka u li shOwambo?"

2. "Oto simaneke tuu uukwashilongo wOwambo?"

Omapulo ngaka aapangeli oopelesenda 100, tashi ti ayeheyehe oya yamukula kutya otaa simaneke uukwashilongo wOwambo, manga kombinga yaasita etata alike lya zimine omadhiladhilo ngoka.

Aalongi oopelesenda 58, aanambeleva oopelesenda 96, aanangeshefa oopelesenda 80 naapangi oopelesenda 95 dha zimine evigumbo.

Epulo ekwawo olya pula omukalo gwokuhogolola aapangeli yoshilongo ngele otagu zimirwa tuu. Aapangeli ayehe konyala oya zimine noopelesenda 96 kutya, eeno. Aanangeshefa wo oyendji za zimine, manga oongundu dhilwe inadhiladhilima.

Omushangi okwa pula wo kutya Epangelo nenge Oraata ontotimpango, otayi kalelepo tuu oshigwana. Aapangeli ayehe oya ti kutya, eeno, nosho wo oyendji yomaanambeleva naanangeshefa. Aalongi, aasita, naapangi oya tindi. Epulo ekwawo olya li po; "Ou uvite tuu ombili kombinga yehukumokomeho lyOwambo nenge ku na ombili?"

Aapangeli ayehe oyu uvite ombili naanambeleva oyendji, osho wo aanangeshefa oyendji. Epulo limwe tali pula kutya Owambo oyi na okuhumithwa komeho pamwe na S.A. na V.V.O, nenge opamwe niilongo yilwe?

Aaleli ayehe oya tokola nokutya ehumithokomeho li na okuningwa po ku S.A., manga moongundu dhilwe omadhiladhilo oga topoka. Oongundu dha pulwa wo kutya odhu uvite tuu dhi na oonkondo nompito nokuwilika oshigwana?

Aapangeli oopelesenda 96 odha zimimb. Aalongi, aanangeshefa naanambeleva oopelesenda 80, Aapangi oopelesenda 60 manga maasita oopelesenda 44 adhike dha zimine.

Omushangi okwa tsikile nepulo kutya oolye ando ya simana ongaawiliki mOwambo?

Omawi ogendji oga gandjwa komumbisofi Auala, kuJohannes Nangutuuala nosho wo kuFilemon Elifas na John ya Otto.

Embo ndika inali eta po uunene omadhiladhilo omape. Shoka tashi kumitha mpaka osho shoka kutya omutiligane gwa S.A. okwa dhimbulula kutya Epangelo olya puka miinima oyindji noli na okweeta po andola omalunduluko ga halika kaantu oyendji.

Embo ndika inali holoka natango moositola dhomambo, oshoka sho lya dhimbululwa oli na iinima oyindji ya simana, omunyoli okwa indilwa natango a tsikile okukonakona iinima yimwe.

AATONDI YAAFRIKA YA TSEYIKA

"Afrika oli na aatondi yatatu, okwaalongwa, omikithi noluhepo. Oshilonga oshinene muAfrika momapangelo nomOngeleka, osho okukondjitha aatondi mbaka".

Shika osha tiwa komusitagongalo Amon D. Mwakisunga, pethimbo lyetalelo lye kOwambo petameko lyomumvo nguka. Mepopitho lye aapangi noondohotola mOnandjokwe, omusita Mwakisunga okwa ti:

"Oshilonga shOngeleka kashi shi ashike okukondjitha aatondi mbaka ngaashi epangelo tali shi ningi. Ongeleka sho tayi tala omuntu aguhe, olutu lwe nomwenyo, otayi kondjitha wo ondeveli nomilema. NOngongahangano yAakwaluther okukwatha oongeleka moshinima shika".

Omusita Mwakisunga manga inaa thika kOwambo okwa kalele wo moshigongi shOngeleka oonkwaLuther muumbugantu waAfrika mOshiwakopo. Okwa li molweendo lwe pamwe nomuwiliki gwo-shikondo shomakonakono noshomailongo mOngongahangano yAakwaluther dr. Ulrich Duchrow ngoka a ti:

"Oonkondo dhevangeli otadhi pumbiwa unene muAfrika, muAsia nomuAmerika lyuumbugantu, omolwomaudhigu ge li momavi ngoka".

Omusamane Mwakisunga ngoka a simaneke uukumwe woitaali metalelo po lye okwa ti nokutya nonando pe na omayooloko momalaka, momikalo nomomapatuko, aakriste ayehe otaa kwatelwa kumwe kedhina Kristus ndyoka ye li lukilwa.

OMUKWANIILWA ELIFAS A HULITHA

ELAKA LYOLUHODHI OLYA TSEYITHWA MOORADIO ONGULANGULA YETI 17 AGUSTE TALI TI: "OMUMINISTELI OMUKULUNTU MEPANGELO LYOWAMBO, OMUKWANIILWA FILEMON SHUUMBWA ELIFAS, OKWA HULITHILE MOSHIPANGELO SHEPANGELO MOSHAKATI. ELAKA OLYA TI: OKWA YAHWA IILALO MONGULOHI YETI 16 AGUSTE, MANGA A LI PONAMAGONGWA. EFUMVIKO OTALI KA NINGWA KOLUKONDA MOLYOMAKAYA, ETI 23 AGUSTE 1975.

INAKU NINGWA ETSEYITHO OLYE E SHI NINGI. AAPOLOSI OTAA KONAKONA NATANGO OSHINIMA SHOKA.



Tomas Iuhwa amushanga omushona gwOmukwetu

EPUTUKO NUUKRISTE

Uukriste sho we ya miigwana mbika yetu, aantu oya adhikile ye li kokule neputuko, tu tye ye li pankatu yopevi lela (Primitief). Uukriste wa pendula po aantu ya mono uuyeleele wo-koomwenyo nendjango lyomalutu nuuyogoki neinekathano, pokati komuntu nomuntu. Ombili nuumwayinathana ya li ya pangele miigwana mbika.

Ethimbo lyehumokomeho olya holoka wo miigwana oyo tuu mbyoka, ndyoka lye eta okwaayoolola uukriste neputuko. Onkee aantu ya tala iinima mbika oya faathana. Ihe omathambo gomuyuni, noondunge dhaantu nomahumokomeho gopashinanena (pamoode), ohaga ningwa omahistoli, oshoka mbika ayihe oyomaantu muuyuni moka ye li mo.

Uukriste ihau lyuka, wo ihau lunduluka pamoo-de. I hau hokololwa pahistoli. Owakankamekelwa muKristus, ngoka e li omupe omukwaalunduluka ethimbo kehe sigololo osigo. "Tonateni oshoka kamu shi shi esiku lini Omwuwa gweni te ya Mat.24:42.

Tomas Iuhwa

OMUKWETU

Oye oshifo shOngeleka onkwaevangeli paLuther yomOwambokavango. Ohashi nyanyangidhwa mOnIipa. Omukuluntu gwoshifo omumbisofli dr. Leonard Auala.

Ondando yoshifo komumvo muSuldwes nomuAfrika alIhe R 1. 00 kombanda yomafuta R 2. 00.

Oondando nomambesitelo naga tumwe kOmukwetu OnIipa; P/B. 2013, Ondangwa.

Omatseyitho agehe gomuntu mwene ohaga futiIwa kumwene.

OWAMBOKAVANGO CHURCH PRESS
PRIVATE BAG 2013, ONDANGWA S.W.A.
9270