

OMUKWETU

Registered at the General Post Office as a Newspaper

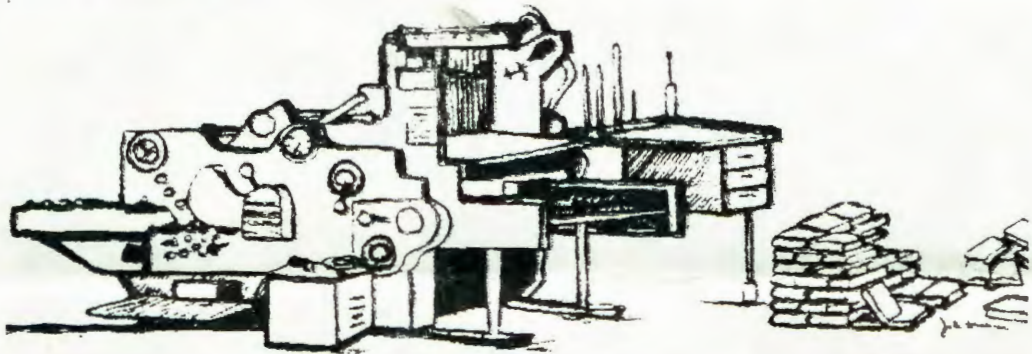


Aantu ya tengenekwa pokati komayovi gaheyali sigo omulongo (7,000-10,000) o-ya li moshituthihambebelelo shOshinyanyangidho shOngeleka yOwambokavango, eti 11/5/1975. Aayenda ya simana meni nopondje yaNamibia oya li wo moshituthi shika. Aantu oya gongala taa tala notaa pulakene elongelokumwe lyiigwana muuyuni nkene tali longo oshindji. Esimano lyaKalunga olyi iholola moshituthi shika.

Oshinyanyangidho osha kala omuyakuli meuvitho lyevangeli

Pokuya kwaatumwa Aasoomi mOwambo, oya uvitha nokupopya, ihe oya tala inashi gwana. Oyu uluma okukala popepi lela nOmuwambo, opo ye mu ilonge. Oyi ilongo elaka lye nomayeletumbulo nomikalo dhe noya tameke okulundululila omambo melaka lyOshiwambo. Pethimbo ndyoka iinyolwa oya nyolwa nopolopolota moombapila dhowala.

Iinyolwa mbika oya tumwa kuEuropa ngaashi kuLondon nokuSoomi ko kowane. Ondjila onde niyenditho yethimbo ndiyaka hayi ngonyotoka, osha pula omumvo gumwe nenge shi vule opo omambo ga thike ishewe kOwambo ga longithwe momanongelo.



Ompumbwe yoshinyolitho oshiwana mOwambo, aatumwa oye yi thikitha kEhanganotumo lyawo nolya mono eyamukulo li na iiyimati. Omumvo 1901, okashina okashona haka pewa oombapila komuntu, haka kweywa nohaka gwayekwa komuntu oka thiki mOwambo. Omuhongi Albin Savola nomukwathi gwe feelani Anna Woutilainen, oya tameke oshilonga shokunya-nyanga oombapila. Ookuku sho ya mono okashina taka nyanyanga oombapila, oye ka luku "oshinyanyangithi", shoka hatu tumbula melaka lyonena OSHINYANYANGIDHO.

Okafo OSOONDAHA ka mono uuyeletele 13.9.1901. Okafo haka komapandja gane haka holoka lwaali momwedhi, oka topolelwa aakriste momagongalo oshali, mboka kwa li inaaya konda po 300. Oke ya kwatha mokuuva ko oondunge dhomoohapu dhaKalunga, oshoka omusamane Nakambale (Martin Rautanen) okwa dhiginine okutula muko omalundululo giitopolwa yOmbimbeli.

Utekisa 300 mOshindonga owa vulu okunya-nyangidhwa kokashina hoka. Osho wo utekisa mOshikwanyama paindilo lyaatumwa Aandowishi 1902. Eshina etiyali lyokunya-nyangidha olya thiki ishewe kOwambo 1907. Omashina ngaka oga yakula nawa okutekulilila oshigwana shika muukriste mboka u li ekota lyeputudho alihe.

Ewiliko lyOshinyanyangidho olya taambathana kaawiliki ngashi; Oskar Tyllvägs na Suoma Terho. Feelani Terho okwa tembukile nOshinyanyangidho kOntananga 1919—1920, pamwe naakwathi ye Aawambo, gumwe e li natango mokati ketu, omumbisofi dr. Leonard Auala, ihe yamwe ngashi tatekulu Moses ya Viktor, Gideon Hosea na Festus Ambinga, oya ithanwa nale mevululuko lyaana yaKalunga.

Oshinyanyangidho sha tembukile kuElim 1920 hoka sha kala sigo 1924 sho sha fikwa po kolwaadhi. Iinyolwa ayihe omo ya pile. Opwa holoka natango oshipe 1925 shoka sha tungwa pehala lyasho ekulu kOniipa. Oshifo shOngeleka Osoondaha, sha holoka sigo 1933, nopenhimbo ndyoka okwa li shi na aaleshi 2,000.

Omolwilongitho mbyoka kwa li hayi zi kuEuropa, opwa kala hapa piti oomwedhi dhomafudho nomimvo nokuli, ngashi okuya sigo 1936. Iita yomumvo 1939 oya teya ekwatathano lya-Afrika naEuropa. Iinyolwa mbyoka kwa li hayi tumwa klinyanyangidho kuEuropa inayi pita we ethimbo ndyoka, onke Oshinyanyangidho shomOwambo okwa li shi na okutaambithwa iimpwiyu yokunya-nyangidha omambo agehe taga pumbiwa miilonga.

Okuza 1941 edhina lyokafo lya lundululwa nolya ningi OMUKWETU. Aaleshi oya indjipala sigo 3,000. Iinyanyangidhwa yilwe kwa li ya piti mo omumvo 1941, oya li 97,000 nomumvo gwa landula Omaimbilo gegongalo lyaKristus

lya holoka. Embo ndino lyomapandja 184 olya li lya humbata omaimbilo 397.

Omambo omakwawo ga holoka ongashi Okambongeleka, Ekotampango lyOngeleka, Omahokololo gomOmbimbeli mOshindonga, mOshikwanyama nomoRukwangali.

MOmumvo 1956 Ehanganotumo lyaSoomi olya langeke omuwiliki ngoka a putudhilwa ilonga yenyanyangidho, omusamane Arne Hartikainen. Pethimbo lyewiliko lye omashina omanene haka kweywa kolusheno gokunya-nyangidha, gokuteta, gokufoloma oondanda nomakwawo galwe ga landwa, noongulu oompe dhOshinyanyangidho dha tungwa. Ayihe mbika kumwe oyo ya yonagulwa po komutondi nomboma eti 11.5.1973.

Etungululo lyOshinyanyangidho lya tamekululwa ishewe kaakriste yo yene siku ya li moshituthi shoosa, ya kootumba mompile 3.6.1973 sho yu umbu ongalo ya gu ooranda dhi vule eyovi limwe, noongombe niikombo.

Otatu hambelele shili Kalunga sho e tu ishewe Oshinyanyangidho nOsitola ompe yomambo. Omuwa okwe tu ningile iinima inene, otse notwe shi nyanyukilwa.

M. Amkongo

Tila Kalunga ngu tsakanithe iipango ye, oshoka aantu ayehe oyo ye na oku yi tsakanitha. Iilonga yaKalunga ayihe ote yi etele koshipala shetokolo, ayihe mbika ya holama, ngele iivanawa nenge iwinayi.

Ekundo lyOngeleka yaAandowishi mUushimba

Gumwe gwomaayenda poshililo okwati kuJesus: Omunelago oye ngoka ta ka lya oshikwiila moshilongo shaKalunga. Jesus okwa ti kuye; Omulumentu gumwe okwa paka po uulalelo uunene nokwa ithanene mo oyendji. Uulalelo sho wa thiki, okwa tumu ko omumati gwe a ka lombwele aaitanwa: Ileni, oshoka ayihe ya pwa okulongekidhwa. Oyo ayehe oya tameke okutinda komukalo gumwe.....Luk. 14:15-24.

Omuntu gwopantshitwe aluhe oku na o-mbedhi koshipala shomuyambantu, shomuvalekele, shomuhumi nosho tuu, onkene nuuna ndoka ta teleke nota hanga oshituthi she, okwa hala okunya nyudha ngaa aantu yongundu ndjika. Iituthi yomuuyuni inayi enda nondjila yi-lwe moshinima shika.

Ihe ngiika olwo lwotango momakutsi gaapulakeni sho ya li yu uvu elongo ndika epe, Jesus sho ta popile wo ongundu yomagoya, yaaposi, yiilema nyaamboka ya nika koongaga kutya nayo wo naya ningilwe iituthi. Okwa lombwele mwene gwegumbo ngoka kwa li a longekidha nokuli oshituthi she nokwa hiya pandjigilile, kutya nge to ningi oshituthi dhimbulukwa mboka. Ov. 13

Elongo ndika Jesus ine li eta ashike sho e li omutungu omunene gwonkalathano yuuthike pamwe. Ihe oshinima shimwe oshinene okwa hala wo oku shi ulika, osho omukalo gwokutaamba

Eti-30 Mai, S.A. ta ti:

Aawe

Epangelo lya S.A. sho lya li lya pewa ethimbo lyokukala muNamibia sigo 30.5.1975 ku V.V.O. omusamane Vorster okwe shi yamukula kutya ita zi mo. Iitsa yimwe yetindo lye otayi landula mpaka:

Itatu zi mo mu SWA, oshoka evi inatu li lala, ihe ongashi sha halika kaavalelwamo yoyene.

Kombinga yomavigumbo oga kala ko noshito manga Epangelo lya S.A. inali ya po mpaka. Ngele itaga tsikile we, aavalelwamo yoyene naye shi tokole.

S.A. ite ke shi talela nonteni V.V.O. a pangele SWA, ye ite shi zimine SWAPO e shi ninge.

Epangelo lya S.A. oli ilongekidha okukundatha nEhangano lyuukumwe waAfrika na V.V.O.

Aawiliki yaAfrika otaa vulu okutalelapo SWA, naawiliki ya SWA otaa vulu okutalela po iilongo ya Afrika kekwa lya S.A.

Oministeli omukuluntu, omukwaniilwa Filemon Elifas, okwa koleke omadhiladhilo ngaka, moshipopipiwa she moradio Owambo.

BEIRA

Aakwiita ya Portugal mboka ya thigalele mu Mozambikwe Epangalo sho tali longekidhilwa miikaha yaavalelwamo, nayo oye li pokushuna kaandjawa pehulilo lyApilili.

ehiyo pokati koongundu ndhika mbali; ongundu yaasimanekwa noyaamboka yaa na esimano.

Omusimanekwa ehiyo ote li yeleanitha nesimano lye noniimpwiyu ye yesiku kehe. Oku shi shi ngele ina taamba ndika, omuhiyi gulwe ngula ote ke ya ishewe ti indile ohenda yoshituthi she shi ka kaliwe kuye.

Edhina lyokuhiywa oku li na nompito ayihe oye mu egulukila, onke ote yi dhanitha pwaa na okudhiladhila ondilo yayo. Shika osho sha li sha vulikitha omuhiyi a ze ko iikaha yowala kaanama dhina mbeyaka pwaa na nando gumwe a taamba ehiyo.

Omuhiyi nando kwa li a tokola okulongitha eliko lye okuteleka iikulya ya simana, a tokola ye mwene oolye noolye ye na okukala moshituthi she e ya nyanyudhe, a longitha po ethimbo lye nomalongekidho omanene omolwaasimanekwa taye ya ko. Pehulilo lyomalongekidho agehe ota lombwelwa ashike papupi:

"Itatu ya ko."

Ooshilema-shi-vulombila ite ku yamukula ngeyi. Ota kala a tila, a kumwa e ku hole note ku yambeke. Ite etha ompito ndjika yi mu pitilile po inee yi longitha ngashi e yi pewa. Aantu mbaka omo tuu ye li miituthi yetu, aahiywa nenge aahungilili yowala?

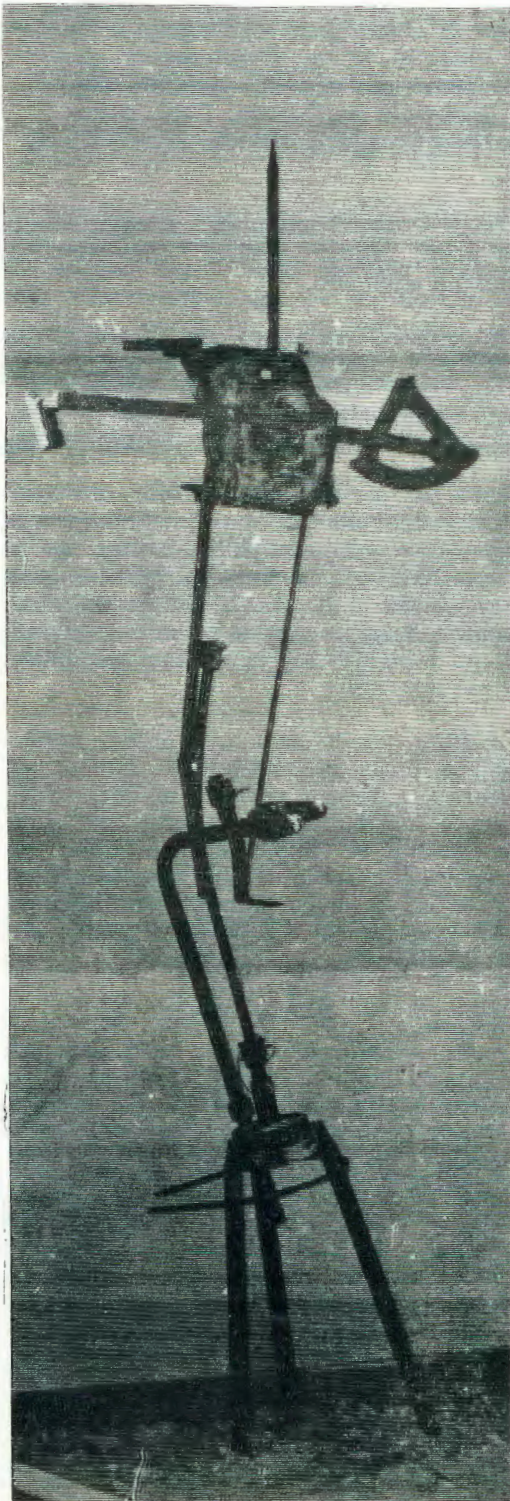
Jesus okwe shi yelitha nohapu ndhika kutya miiningwanima mbika yesiku kehe omu na olupe lwoshilongo shegulu. Aasimanekwa oya nyengwa olwindji okuthika kUulalelo Uuyapuki momagongalo mboka Jesus e u hiyila omuntu kehe. Kaye na ethimbo nenge oyu uvite oomwenyo dhawo kadhi li meilongekidho lyashili.

Otatu nyengwa oku ka lya uulalelo megulu ngele inatu taamba omahiyo gUulalelo mbuka u li putse kevi. Ihe omagoya otaga taamba ompito ndjika sigo onena nepandulo.

Sebulon Ekandjo

ETIOPIA.

Oshilonga shOngeleka osho okulininipika nokuya keehepele oku di yambula po noimaliwa ile nevangelii. Kristus ngeenge ehe po, nena kape na yo onghalafano yoshili. Onghalafano oshinima tashi yandjwa komunhu nomunhu tashi endeke kumwe neitavelo.



Efano kali na ewapalo lasha mulo, ndele otali pendula muvahu o madiladilo okushiiva nhumbi efindano muKristus inali holoka mounyuni molupe lewapalo. Oshivilo ashishe okwa li shi li omutumba koshi yoshitenda eshi shomushiya-kano, nokuhambelela oilonga inene ya Kalunga.

ONGALO YOSHITUTHI

KOlange okwa zi R 55,63
 Kombaye okwa zi 147,00
 Moshituthi shoshene mwa umbwa R 1447,46
 Natango oyendji ota gandja

OMAKULUKUMA OSHINYANYANGIDO NATANGO OPO E LI

Natango onhele yOshinyanyangido shiku-lu otai monika ya nyika oufiye, ndele kuvahapu otai hokolola natango shihapu. Oponhele ei fimbo Ongeleka aishe i li omutumba ya teelega elongelokalunga eti 11. 5. 75, vo ovafitaongalo aveshe vOngeleka otava dingonoka oikulukuma nomhile ve li momidjalo davo. Okwa li tava katuka momukweyo mule va mwe-na filu.

Penya okwa li tava ende natango tava taunhuka omangumaukilo omakuma, oitenda yomashina a pya neemboxa da napela keembinga adishe. Omute womambo neembapila owa ninga ngashi ekoko lomeva efuta lefyo. Omakungulukilo omeva odula kombada yekuma olo li li natango ofika kali na onduda, fiyo onena otava monika ngashi omahodi taa koloka kombada yeemhanda domulili weenghali.

Momute wa tya ngaho omwa iwa kovalongekidi voshivilo shehambelole nde tava toola mo oitenda imwe i shii kuningwa omushiyakano noshiudifilo. Omashina aa a kala eedula mbali koshi yomute, a fa a fya, okwa udifila natango vahapu moshivilo shehambelole. Naapa yo Ondjovo yOmukulili oya ninga yoshili eshi ta ti:

"Keshe tuu ou a itavela nge, oye ta kala nomwenyo nande okwa fya."

Oposhiudifilo shoitenda ei nokoshi yomushiakano waitenda ei efindano laKristus le lihola moipopiwa nomomakanya ovakali mehambelole eli. Omutumwa wEhanganotumo nomukalelipo wOngeleka onghwaevangeli paLuther muSoomi, Leino Hassinen poshiudifilo apa okwa kunda Ongeleka ya ELOK a ti:

"Emanguluko loshiwana oshinima shidjuu sha fa olweendo londjila ile mokati komutenya. Ndele oluhepo lwomoupika oshinima shi duli-fe po opo. Meitavelo lomuKalunga omo amuke hatu shiiva okukala kwetu nohatu udu ko vakwetu. Omulo hatu shiiva eshi Kalunga a hala naashi ina hala. Osho tashi hepeke ovakriste mukukalamwenyo kwavo, oshi na okupopiwa."

Omufitaongalo Carl Mau, Hamushanga Ndjai wOngongahangano yOvakwaLuther, ye poshiudifilo apa okwa ti:

"Aveshe mounyuni okwa li tava lili pamwe nanye eshi mwa kanifa Oshinyanyangido. Ndele nena aveshe otava hafe yo pamwe nanye. Kalunga oye mwene e tu hole eshi e tu pa Omona waye ou muye fyeni atusheni hatu kaleni vamwe."

Eongalo alishe nande okwa li li omutumba efimbo lile momutenya, okwa li tali shikula ovapopi aveshe nelitulomo. Meloloko lavo okwa li tava hakelele omuwilikingeleka omuponhele, Paulus Gowaseb, wongeleka ya E.L.K. fimbo e li ofika poshiudifilo eshi shoitenda ya pya ta ti:

"Ehanaunepo IOshinyanyangido ola li ehetekele leenghono domulaulu okumweneka Ongeleka yaKristus, ndele Kristus ota kala omufindani."

Ye ombishofi wOngeleka yOvatswana Rapoo. okwe shi findila movapwilikini ve dule omayovi ahamano ta ti:

"Eongalo letu kumwe ngaha oshinima shopa-Kalunga. Ngenge ku na ou ta tukula ovanhu kumwe, nashi kale sha yela kutya ota longo oulunde."

Ohamba yoshilongo shaNdonga noministeli Omukulunhu mEpangelo IOwambo, ou a ti kutya ota popifa oshivilo medina IEpangelo laye, o-

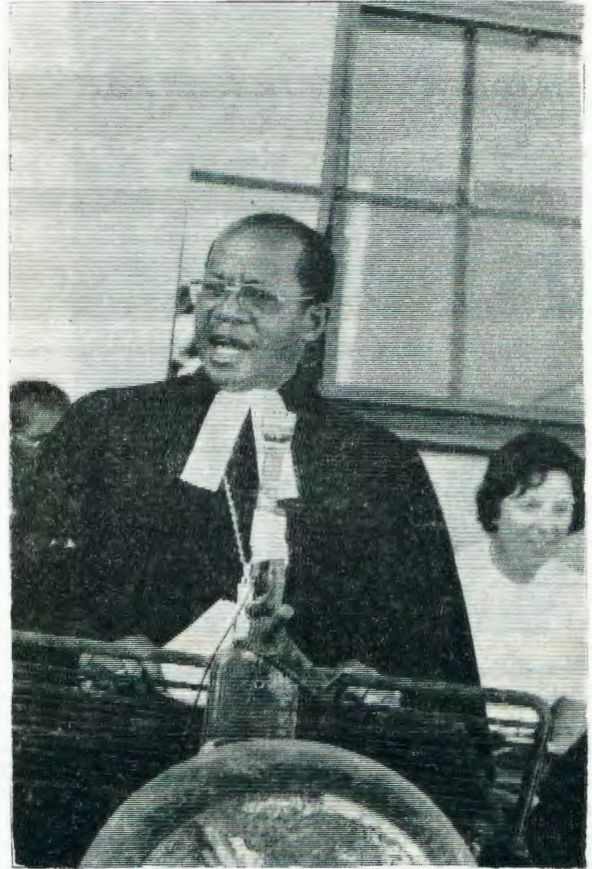
Tala kep. 5

OSHINYANYANGIDO SHA ELOK.

1. Meedula donale, kasha li ko.
Vatumwa konale kava li ko.
Efimbo la fika, va pita ko.
'Shina lokushanga ve ya nalo.
2. Tate Nakambale a hovela
Vavambo tu leshe nokushanga.
Mokukendabala, sha dulika,
Omambombapila a monika.
3. Katekishimusha ka pita mo,
POkilishimusha, ehovelo.
Oshoondaxashifo sha holoka,
Nomambo makwao a holoka.
4. Vamwe va twikila sha ya nawa.
Osho sha monika, osho shiwa.
Shihapu ku popi, ku na fimbo.
Mefimbo lixupi, pe y'omambo.
5. Owambo ya hafa nokOmbwenge.
Omukulu a leshe nokandenge.
Mafano va mona mombapila
'Nghundana va uda, italala.
6. Menenepaleko newapeko
Shihapu she ya po nefeweko.
"Muwa iha mane", ngeno hanga.
Pa ningwa shinene, twe shi hanga.
7. ONGULU ya tungwa, ya xwikwa po.
MASHINA a landwa, a nyonwa po.
Inashi tewa po, osha BOMWA.
Inashi tinhwa po, osha TEMWA.
8. Nakushixwika po ke shiivike
Eshi a yonhapo, ke wetike.
Oshili ya yela, oku lishii.
Osho e shi ninga, oku shi shii.
9. Kape na fekelo, a monika.
Kape na lundilo, a udika.
Ashishe a ninga, osha yela.
Kombinga nombinga, ova lila.
10. Enyeme li li po, omolwoye.
Luhepo kali po, ngeno haye.
Ovaitaveli ve li ta po,
Ovakwaluteli va longa po.

11. "SHIVANDA va henga" shi taleni,
ONGULU va tunga, PANDULENI.
Eshina li li mo, ke li tale.
Omambo e li mo, ka pandule.

12. Shiwana shaWambo, ino tila.
Ou na Namhongo, ino lila.
Ekwafo e li na, ku li mane
Neenghono e di na, ODINENE.
Pa Josia Mufeti



Omubishopi Rapoo wOngeleka yaTswana mu S. A. ta popifa oshivilo.

Efano pevi eshina ekulu ndyoka lya longithwa ngashi oshiuivithilo

OMAKULUKUMA

Da dja kep. 4

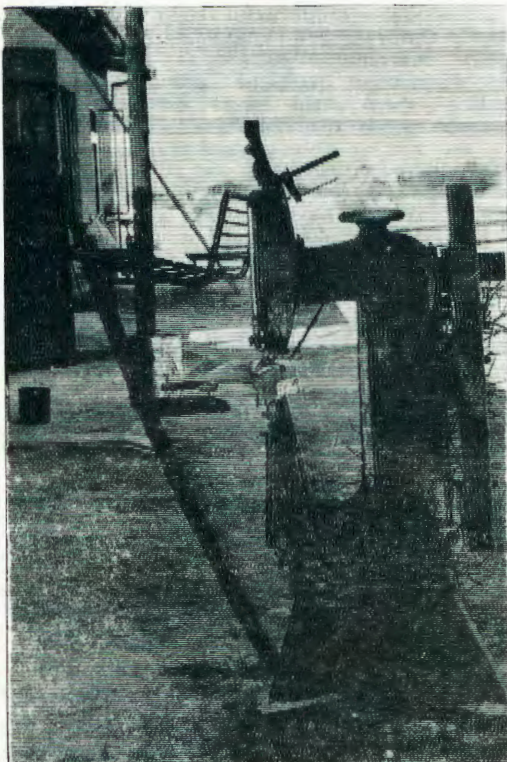
kwe shi hepaulula yo moipafi yOngeleka aische poshiudifilo apa nokutya aische ya popiwa po oiwa momatwi aye nokwe i panda.

Ohamba oya udanekela Ongeleka nokutya ngenge pe na natango ou te ke etela Oshinyanyangido shipe oshiponga, ota ka shikulwa.

Elongelokalunga noshivilo ashihe nande sha ningilwa pomatungo mape Oshinyanyangido, okomakulukuma ngaa sha tamekelwa. Ovafita-ongalo medingonoko lavo lomhile, ove li meemhadi dovakwaneongalo ovo va lele fiku olo ondangala, eshi ponhatu youfiku va ongala kumwe pomhile tava imbi omaimbilo oupongo.

Omundilo woboma owa xwamene ponhatu youfiku eti 11.5.1973.

Twa dana oshivilo shehambelelo, neemwenyo doshiwana sha dile keembinga adishe doshilingo shaNamibia oda shuna da hekelekwa mokutala osho Kalunga e va alulila mekanifo lavo.



Oitenda ei oya longifwa moshivilo nokuyakula ngashi oshiudifilo

**“Oshili, one mwa halele ndje uuwinayi,
Kalunga nokwe mu galulile uuwanawa**



Omusitagongalo Leino Hassinen, amushanga gwoshifo shOngeleka onkwavangeli paLuther muSoomi, Kotimaa, ngoka a kalele po Ongeleka yawo nEhanganotumo IyaSoomi moshituthimbelelo. Ombinga onene yiimaliwa ya tungitha Oshinyanyangidho oya go nge-lwa kOshifo shika. Ilonga yoshifo shika Kotimaa, oya li ya kwatha natango me-gongelo lyiimaliwa yOshinyanyangidho shika sho sha fikilwe po kolwaadhi 1924. Uule wondjila tayi pula iimaliwa oyindji okuza kuSoomi a kale pamwe natse moshituthi shesiku limwe alike, otashi holola oshindji shomuvalwa womuKalunga.



a longe shika, oshigwana oshinene o-po shi kale nomwenyo”

Mboka ye mu monitha iihuna mbika iinene omimvo mbali dha piti, okwa li ye mu halele uuwinayi shili, ye mu tondo. Otashi ehameke omwenyo gwomuntu, okutseya kutya oku na aantu mboka ye ku halele uuwinayi noye ku tondo. Ihe inamu kumwa. Inima ya tya ngaa-ka oya li aluhe omandhindhiliko ga landula aalongwa yaKristus. Kristus ota ti: “Omulongwa ke vule omulongi gwe, nomupiya ke vule omupangeli gwe.” (Mat. 10:24. Joh. 15:20).

Uuyuni nge tau mu tondo, tseyeni ongame wa tondo tango.”

Shika mwa ningelwa otashi ulukile kutya one aakriste, oye mu tondo tango, otaye mu tondo nonena.

Jesus ota ti: “Ngame, otandi kala pamwe nane sigo ehulilo lyuuyuni.” Uuwinayi mboka mwe u ningilwa, Kalunga okwe u galulile uuwanawa, a longe shoka shi li ko, Oshigwana oshinene opo shi kale nomwenyo Gen. 50:20). Oshinyanyangidho sheni kashi shi oshilongitho showala, aawe, oshilongitho shetumo, shaKristus shokuuvithila aantu onkundana ombwanawa yaKristus, opo oshigwana shika shi kale nomwenyo. Omwenyo gwaana yaKalunga.

Inamu dhimbwa nando kutya elakaneno lyOshinyanyangidho sheni oyo ndika ELONGO LYA KRISTUS. Omwa ningilwa ondumbo ihe ne gandjeni ohole.

Kehe ngoka e tonde omukwawo, oye omudhipagi”. Omuyapostoli Johannes ota ti: (1 Joh. 3:15) Ihe omu shi shi kutya omudhipagi ita kala nomwenyo gwaaluhe muye. Oshinyanyangidho sheni inashi ninga oshilongitho shondumbo, aawe, oshohole tuu.

Otse aatumwa yaKristus ngu u uvithile aantu oshipango oshinene shotango: Hola Kalunga, hola omukweni, holeni aatondi yeni.” Osho Oshinyanyangidho shika sho sha li sha nyanyagulwa po kaawinayi Kalunga okwe shi yumudha nekwatho Iyaantu aawanawa. Nashi uvithile uuyuni elaka etoye IyaKristus nohole ye, opo oshigwana shika oshinene shaWambo shi kale nomwenyo gwaana yaKalunga, muuyuni wuumwayinathana kehalo IyaKristus.

Kristus na kale pamwe nane, e mu pe Ombe-po ye mwene, a wilike ye mwene oohapu dheni.

Kombinga yegongalo lyetu, medhina lyOmbisofu gwetu nomehangano Iyaayapuki ayehe mboka ye li mpaka otandi mu halele eyambe-ko negameno nekwatho IyaKalunga mOshishinyanyangidho sheni oshipe.

Pata G. Heimerikx

Tate Heimerikx mOtshikuku, mefano pe-vi okwa li gumwe gwaayenda mboka ya simana moshituthi shehambelelo. Okwe tu kundu nomalaka gu udha evangeli ndyoka tali gumu omuntu kehe gwongashingeyi.

**OOSA NELIGOLO LYOSHINYANYA-
NGIDHO**

Ndiliman' a mwashuka
Tenda lya tanduka
Lya tegwa nekanyeko
Halo tu nenwe ko
Ehayango lya yaka
Mulilo gwa tukuka
Yakwetu ya penduka
Yehe taa matuka.

2, Onkugo oya yaka
Ngendjo tii hikika
Ekuyungut' enene
Pehe pehe enene
Ngu ta kugu ta lili
Ngu ta ti "hilili"
Ya kutha hew' iinima
Ya hupith 'iiyuma.

3, Omwenyo sho gwa tedha
Mutima gwa pongola
Omutondi e shi mana
Sho a longo iihuna
Momwenyo hamu na mbo
Neta lyuunamambo
Muye nge lya holoka
Ota ka monika.

4, Yakwetu yaNankali
Tamu lil' oonkali
Itamu tsu onyanyo
Nkundundu komwenyo
Omuyengeli Mikael
Nanguka Gabriel
Oye li na Rafael
Shanka naFaniel.

5, Omakand' aayengeli
Tu na aapopili
Otu na Aaserafi
Mumwe nAakerubi
Ya kinga taa tsu mevi
Ya taalela pevi
Ya hupith' aakwapevi
Ya kwathe aanevi.

6, Kalunga ketu tate
Tu koleka Tate
Hatenda tatu tege
Kristus tatu tege
Twa nzana mo omeho
Twa nutha mo omeho
Twa taalel' omutameki
Kristus omuwiliki.

7, Esiku uuna ndo to ya
Wa pindjala to ya
Wa nika uukandala
Ngoy' omumwamunyembala
Atuhe twa gongala
Notwa pugalala
"Ileni ne yaTate
Omuuwa waTate."

Jason Amakutuwa

**OMAYOVI MAHAPU OKWIILE OKU-
HAMBELELA**

Ovanhu vomayovi mahapu a tengenekwa puaheyali fiyo omulongo (7,000-10,000) okwa li va ongalela etungo lipe lOshinyanyangido kumwe nofitola yOmambo eti 11/5/1975 pOniipa. Elongekido moshinima eshi ola ningwa kOngeleka ya-ELOK okuhambelela Kalunga eshi kwa monika vali Osninyanyangido shipe.

Shikulu osha hanaunwa po komutondi wOngeleka noboma konima yomido mbali. Epangelo la S. A. eli la ifanenwe kOngeleka okukonakona oshinima eshi, fiyo onena inali yandja enyamukulo kutya la nyengwa ile otali twikile natango.

Ovakriste va dja omaongalo aeshe mu ELOK kumwe naavo va dja Namibia alishe, ova kala melongelokalunga efimbo leetundi konyala 8, tava imbi, tava yolo voo tava kuwilile ehafo omolwaaisho oyo Omwene e va ningila.

Ehafo lavo okwa li tali va lundilifa kutya mboli ova kala nenyeme, nomalipulo, noluhodi noshisho, noluhepo nonghono ndele aishe ei Omwene okwe i va kufila po. Omubishopi dr. L. Auala okwa koleka omalundilo aa, a ninge oshili eshi a tya:

"Omwene ngenge okwe tu ningila oinima i fike apa, Oshinyanyangido shipe nofitola yOmambo tai fikama vali mokati ketu moule weedula mbali adike, ohatu mwena nee ngahelipi tu kale inatu mu hambelela?"

Ye omufitaongalo omukulunhu Vilho Kaulinge oye nee e shi mana moshipopowa shaye kwa li sha shambula ovapwilikini aveshe, eshi a tya:

"Fiku leefya dOshinyanyangido okwa li tu udite nai shili. Nakushixwika po ngeno wa holokele fiku linya, ngeno ota shi dulika twe ku nyanyaula po filu." Okwa weda ko nde ta ti:

"Paife otwe ku kufila po, ohatu hafe ashike."

Eshi tatekulu Kaulinge a xulifa omatumbulo aa, yo onghuwilili otai kaluka mongudu.

WINDHOEK

Paulus Hamukwaya ota pula Ovawambo ta ti:

"Otulyeni ngahelipi naKalunga?" Oshiwana otashi yashwa ngashi eemene mofuka. Otaku ti osho tashi teya eefitola dovanhu moushimba. Oshi li mokanya koshiwana keshe.

Pamwe oshiwana eshi osha dja mo mekwatafano naKalunga, ile omo tuu shi li? Unene ava tu li mehalakano tu lipuleni noshinima eshi.

MBOKA YA TONDOKA ONKUGO YOSHINYANYANGIHDO

Oshifo shOngeleka onkwaevangeli paLuther muSoomi KOTIMAA	R 48,300
Ehanganotumo IyaSoomi	25,500
Epangelongeleka IyOngeleka onkwaevangeli paLuther muSoomi	18,000
Kumwe	R 91,800
Ongeleka onkwaevangeli paLuther muNdowishilanda	61,800
Ongeleka onkwaevangeli paLuther yomuSweden	55,000
Ongeleka onkwaevangeli paLuther yomuAmerika	13,400
Ongeleka onkwaevangeli paLuther yomuFulanisa	1,000
Ongeleka onkwaevangeli paLuther yomuHollanda	2,000
Ongeleka onkwaevangeli paLuther yAatswana mu S.A.	900
Omogongalo ogendji ga ELK mu SWA ga tumu wo iimaliwa nosho wo omogongalo gamwe	
gomuAmerika nomuNdowishilanda naakriste yalwe pondje yOngeleka yetu oya gandja	R 8,000
Mu ELOK omwa gongelwa	11,800

IIFUTWA

Omatungo oga pula	R 56,000
Omashina	80,000
Natango omatungo inaga pwa, oshoka otaku dhiladhilwa ku tungwe uutayisitola womambo koombinga noombinga.	
Omusamane Simon Jakob a gandja ondumetana yimwe.	
Omusamane Abraham Hamukoto a gandja ondumetana yimwe	
Omusamane N.P.Jacob a gandja iikombo itatu	
Omusamane Simon Shiwagala a gandja oshikombo shimwe.	



EGALIKANO LYAPATA (TATE) HEIMERIKX OMOLWOSHINYANYANGIDHO

Omuwa gwetu Jesus Kristus, ngoye ngoka wa lombwele aalongwa yoye wa ti:

Ngele omwa yi megumbo limwe, popithii mo mu tye: Ombili nayi kale megumbo ndika: Otatu ku indile: Ombili yoye nayi kale mondjugo ndji yokunya-nyangidhila iifo nomambo. Nayi kale wo naantu ayehe mboka taa longo mo. Keelela kuyo iihuna ayihe kolutu nokomwenyo. Udha aanyoli naatopati naalongi ayehe nOmbepo yoye yuunongo noyoonkondo. Ya pa Ombepo yesimanekekola-lunga, opo ye ku kalele nuudhiginini, nokulongela uuwanawa waantu ayehe, ngoye ngu u li ondjila, oshili, nomwenyo, ongoye noto kala nokupangela aluhe sigo aluhe.

Amen.

Mefano pombanda otapu monika ombinga one ne yoombelwa kombinga yokolulyo, manga kombinga yokolumoho popepi kashona ondjugo yoyene yOshinyanyangidho tayi monika nokolumaho lela etungo lyOsitola yOmambo. Osha thikamekwa po ishewe kohole yaamwame yomuuyuni. Mpaka opu na ngashingeyi Oshinyanyangidho shaayehe muuyuni.

“OMUWA OKWE TU NINGILE IINIMA IINENE, OTSE NOTWE SHI NYANYUKI-LWA,” shika osho sha li enenedhiladhilo lyoshituthihambelesho shOshinyanyangidho sha ELOK, shoka sha dhanwa omasiku ngaka.

OMUKWETU

Oye oshifo shOngeleka onkwaevangeli paLuther yomOwambokavango. Ohashi nyanyangidhwa mOnilpa. Omukuluntu gwoshifo omumbisofi dr. Leonard Auala. Amushanga Rev. Sebulon Ekandjo.

Ondando yoshifo komumvo muSuidwes nomuAfrika alihe R 1. 00 kombanda yomafuta R 2. 00.

Oondando nomambesitelo naga tumwe kOmulkwetu Onilpa; P/B. 2013, Ondangwa.

Omatseyitho agehe gomuntu mwene ohaga futilwa kumwene.

OWAMBOKAVANGO CHURCH PRESS
PRIVATE BAG 2013, ONDANGWA S. W. A.
9270