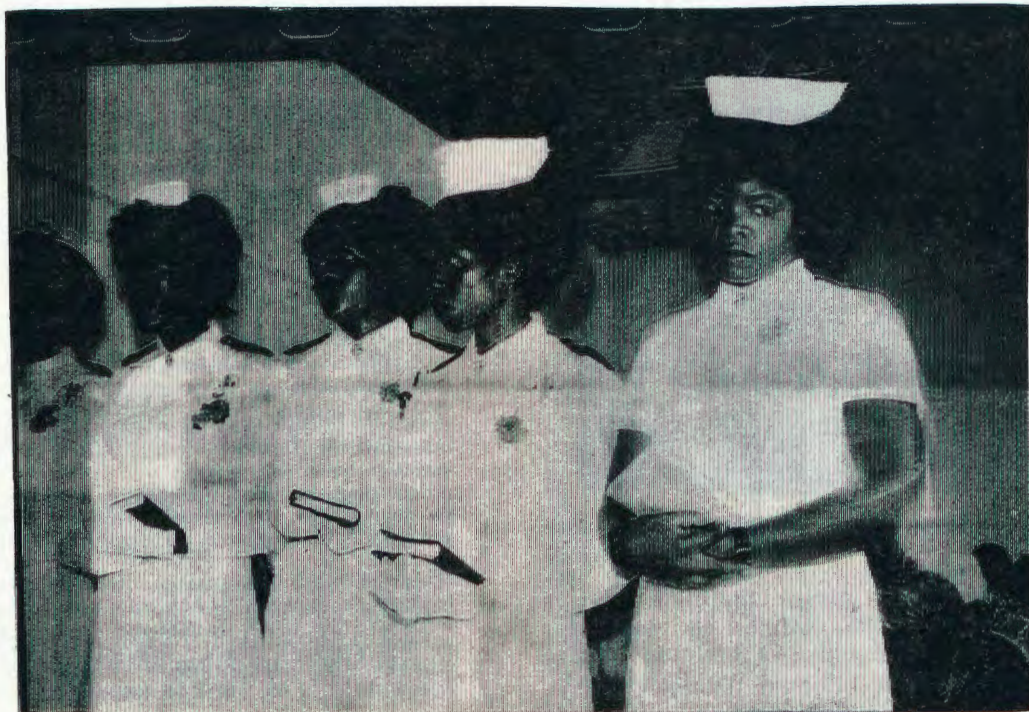


OMUKWETU

Registered at the General Post Office as a Newspaper



Yamwe yomaayakulipangi aakulu yomOnadjokwe

NGIIKA OONDOHOTOLA 30 TADHI PUMBIWA MOWAMBO

Omasiku hamale okuza petameko lyomumvo nguka sho oshituthi shelangeko lyondohotola omuuludhe sha ningwa mOshipangelo shetumo mOnandjokwe. Pamwe naye, okwa ningwa wo oshituthi shaapangi aavalithi naayakulipangi. Ipopiwa oyindji iwanawa nokuli, oya li moshituthi shoka shopahistoli. Mpaka otatu tula shimwe shomundohotola Hannu Kyrôseppa. Okwa tile ngeyi:

Tala kep. 2

OMUNDOHOTOLA OMULUUDHE MOWAMBO

Omuluudhe gwtango, Thomas Ihuhwa, okwa ningi omundohotola muunamiti no-kwa tameke iilonga ye moshipangelo shetumo lyaSoomi mOnandjokwe okuza petameko lyomumvo nguka. Osho shatango mehistolli lyaNamibia alihe, nuune mehistolli lyoshipangelo shika, omundohotola omuluudhe ta longomo.



Dr. Th. Ihuhwa

Dr. Ihuhwa, okwa pitile Omatilika mu-Augustineum 1965. Okwa ka tsikila mosikola yokombanda yaTurffloop, mu S.A. moka a kala mo omimvo 3. Okwa tsikile mosikola yokombanda yaDurban, Natal, 1969 moka a piti nawa onkatu yuundohotola muunamiti 1973.

Omusamane gwaanona yaali, okamati nokakadhona, Ihuhwa, okwa hogolola eha lyOnandjokwe omo a tamekele mo oshilonga she sheyakulo lyaavu. Ina gandja etompelo, kutya omolwashike.

Pahokololo lyomusita gwoshipangelo, tate Ihuhwa okwa indile wo a yambekele oshilonga she powalitali yOmuwa, ngashi hashi ningwa aluhe miipangelo yetumo.

"Iilonga otayi ende nawa, inandi tsakanekwa natango kusha tashi yematitha ndje mpaka." Osho ye mwene a hokolola. Nando ta zimine wo kutya, kee na aluhe ethimbo lya manguluka, shila Osoondaha, hwepo kashona, omolwiilonga.

Oye omuluudhe gwtango e li miilonga ya tya ngeyi muNamibia, (Tala oshipopiwa shomundohotola Kyrõnseppã mo-

shifo shika). Pakutseya kwe, (Ihuhwa), oku na ngaa oondohotola yamwe aaluudhe (Oombasitela) ngele oyendji 3, ye li wo miilonga.

Shono opo ta ka gwanitha nokuli omimvo 29 muMaalitsa, okwa ti, shimpa tuu a tala iilonga ye otayi ende ngiini, ota ka konga natango mbala omukalo gweihumitho komeho.

Efolo lye, meme Jacobine, omulongi gwonkatu yopombanda, opwa thanekwa a tameke mofolomu lndjoka ya dhikwa pOluno nuumvo.

OSHILONGA SHUUNAMITI MEVI NDIKA

Onda dhimbulukwa esiku ndyoka 1967 uuna aavalithi yotango ya ningilwa oshituthi shawo sho ya piti ekonakono lya hugunina noya ningi aavalithi lela mboka ya longwa nawa miilonga yokuvalitha.

Okuza kethimbo ndyoka oyendji oya piti omakonakono agehe muupangi nomuvalithi noshigwana shika osha mono oyendji ngiika ye thike lwo 100, ya longwa nawa mokupanga aavu nokukwatha aasimba naanona nosho tuu.

Oshigwana osha nawa komeho neulumo momimvo ndhika dha hugunina. Shika osha yela nawa unene ngele tatu tala ethimbo ndyoka lya piti okuza ku Kuku Selma Rainio ngoka a tameke muka 1910—11. Ehumokomeho olya endelele momasiku getu.

Ihe ngele tatu tala aantu mbaka ye li muka mOwambo, oye thike 350.000, etata lyomwaa-lu gwaantu ayehe muNamibia. Ano oyendji unene. Aanashilonga naapangi inaaya gwana natango. Oshigwana otashi pumbiwa natango omathele nomathele gaapangi. Nongele tatu tala oondohotola aavalelwamo nando twa tseya kutya yamwe oya mono onkatu yuundohotola palwe notaa longo pondje yoshigwana nokutegelela ya galuke, otu li petameko lyondjila natango yokumona oondohotola yuunamiti ya gwana.

MuNamibia alihe omu na oondohotola dhi thike lwopethele limwe alike. MOwambo ngiika oye thike lwo 20. Ngele oondohotola mbaka ya topolelwa omahala giilonga pauyuuki, nena Owambo oyi na okukala noondohotola ye thike lwopo 30 sigo 40, pakutala kwandje.

Ihe otu na etegameno lya kola kutya, oshigwana otashi ka mona oondohotola dhuunamiti o-dhindji moomvula tashi ya. Mboka ya taambwa ngashingeyi nokuli mosikola yuundohotola, oye thike lwopo 10 nenge ye vule po. Onda nyanyanyukwa unene shondu uvu kutya omukadhona gumwe okwa piti nokuli omvula yotango miilongwa yuunamiti nota ka tsikilela omvula ontiyali nuumvo.

Otashi vulika kutya yamwe oyi ipula moomwe-nyo dhawo kutya: Omolwashike oondohotola muka mOwambo, nando aashona, oya gongala ashike momahala gaali nenge gatatu? Oya tala kutya ihwepo ngele oondohotola oya halakana, gumwe nenge yaali ya longe moshipangelo shimwe.

Mpaka onda hala okweeta omatompelo gamwe ngaashi nde ga mona. Omukalo gumwe gwa simana gwomiilonga yuundohotola ogwo uukume nekwithathano lyaanashilonga. Oveta ya S.A. otayi utha nokuli kutya, miilonga yimwe mu na okukala ngele tashi vulika, oondohotola yaali nenge yatatu mboka taa longo kumwe. Ihe nando itatu tala oveta ndjoka, elongeliku-mwe lyomiilonga yiipangelo oli na ondilo unene omolwaavu. Ngele twa hala okukwatha aavu nawa pamukalo gwoopala, otu na okukala tu li oyendji poshilonga shimwe.

Tala kep. 5

COHAAPU DHAKALUNGA TADHI YOOLOLA

Jesus okwa tidha mo ompwidhuli, egoya, nolya popi. Aantu oya kumwa. Ihe yamwe yomuyo oya ti: Oompwidhuli ote dhi tidhithamo Beelsebul, omukuluntu gwoompwidhuli. Yamwe noya hala oku mu makela noye mu pula endhindhiliko lyomegulu. Luk.11:14-28.

Okuuva oohapu dhaKalunga ohadhi topola aantu moongundu mbali. Ongundu yimwe otayi uvu oohapu dhaKalunga notayi dhi gwanitha. Ongundu onkwawo otayi dhi dhini noku dhi sheka.

Shika osho sha ningilwe wo sho Jesus a li kombanda yevi. Olwindji uuna a longele aantu iilonga iiwanawa palutu nopamwenyo, omayooloko oga holoka. Ongundu yimwe ohayi mono miilonga ye uunenenkondo waKalunga nuuMesiasa muye, ihe ongundu onkwawo oyi wete ashike uusama tau longo muJesus.

Aafarisayi aakwashigwana shaKalunga oya nyengwa okwitaala uuMesiasa mbuka nonkene olwindji oye mu sheke noku noku mu nyana. Oye shi ningi, oshoka elongo lye olyoshili hangaashi lyAanogoramata yawo.

Molwefupa nondumbo yawo otaa tidha po nokweekelahi elongo ndika tali gandja omwenyo. Oye lwete oyo epukitho aniwa. Omeho gawo gokomwenyo oga tsika, inaa dhimbulula nkene Jesus te ya mangelula mepangelonkondo lyasatana.

Mombili Jesus ote ya ulukile epuko lya wo yaa uve ko ngaaka pantu nopauto ndwe. Ihe ya dhimbulule ngaa andola omanenedhiladhilo gaKalunga komuntu nokutya Jesus okwe ya opo ayehe ya kale nawa nokomalutu wo. Nomoku shi ninga, Jesus ota longitha oonkondopangelo dhaKalunga.

Jesus kee na ehanganano lyasha nasatana noita popile nando omadhiladhilo gasatana sigo aluhe. Oshoka omadhiladhilo

X X X X X X

ETALELOPO MOMAONGALO 1975

Efaneko lomuponhelewilikingeleki okutalela po omaongalo mOngeleki yaELOK, ola kolekwa yo nokEpangelongeleki li hovele eti 9.3.1975. Omaongalo amweamwe moitaingeleki imwe otaa ka mona omholo ei.

Ngenge sha ende ngashi sha fanekwa, tate Kleopas Dumeni, ota ka talela po omaongalo aa: Epembe, Onayena, Edundja, Okatope, Onesi, noTshandi. Efaneko eli ola xulila manga mohani Apilili.

Ovapashukili voitaingeleki, hamushanga womumbishopi, novafitaongalo vamwe, otava ka enda pamwe nomuwilikingeleki pamalufu avo metalelopo eli.

gasatana oga nyata nogo oompwidhuli. Jesus oha tidha mo oompwidhuli ndhoka medhina lyaKalunga.

Mpaka mAafarisayi otatu mono muyo elongitho lyombepo ya nyata. Iiyimati yombepo ndjoka otayi holoka moohapu dhawo. Ombepo ya nyata oya hala yi vundakanithe nokupiyaganeka Jesus miilonga. Shika otashi dhimbululwa sho taa sheke. Kaye shi okuhambelela.

Aakaaneitaalo kaye shi ku kumagidhwa nokaa na ohole yoohapu dhaKalunga. Ihe mukupulakena otaa kongo ashike uusama, opo ya vule ye mu makele noye mu kwate.

Aamwameme aaholike, ngiika tse wo twa yemata nokukumwa nayi molwAafarisayi mboka. Pamwe twi ikutha mo nokuli mongundu yawo. Dhimbuiukwa, nangoye wo omo u li mongundu ndjoka.

Olungapi wa tidha po omakumagiho nomapukululo ngoka Kalunga mwene u ge ku tumine? Olungapi wa sheke nokuli aavithi niilongahole yaKalunga sho a hala aantu ayehe ya kale nawa palutu nopamwenyo? Ihe ngoye ou lwete ashike uusama nombepo yuupwidhuli tayi longo aniwa.

Otu li methimbo ndika aana yaKalunga taa uvu oohapu notaye dhi dhiginine. Ihe otu li wo methimbo aana yuuyuni mbuka taa sheke notaa tondo oohapu ndhika. Oshoka ombepo ya nyata otayi longo muyo. Natu kondjeleni okudhiginina oohapu dhaKalunga nokukala padho nopethimbo ndika wo. Ino fundjwa kuuuyuni noshashoka shi li muwo. Uuyuni otatu hulu po, ihe oohapu dhaKalunga itadhi hulu po sigo aluhe.

Omuyevangeli Lukas ota dhimbulutha eyooloko li li moongundu dhaantu, ngashi Jesus mwene kwe shi popi: Ngoka kee li pamwe nangame oye e na ondumbo nangame, naangoka ita gongele pamwe nangame, oye ta halakanitha po Ov. 23.

Mpaka kape na ngoka ta kala pokati kee na mpoka a gama. Ngele kee li kombinga yimwe, kombinga tayi popile oohapu dhaJesus, tayi dhi inekele, tayi longele kumwe naye, nena osha yela kutya oku li kundjono tayi mu kondjitha, tayi mu sheke, tayi kongo oku mu kwata yi mu dhime po.

Tu konakoneni ehala lyetu mpoka lya gama.

Wilhelmina M. Amweelo



OKAANA NOFIKOLA

Luhapu ovanhu ohava diladila okaana otaka tameke ofikola nge ka wanifa eedula 7. Omadiladilo aa okwa puka unene movanhu. Okaana ota hovele ofikola manga ke li medimo laina, na omulongi mongudu ei oye ina, oye ta telelwa a longekide noku tunge omufindahongo oo ta longo okaana (omuhongwa) waye manga e mu hambata. Mongudu ei yotete omo naanaa mu na omukangha wa kola oo tau tungu notau wapalele onakwiiwa yokaana.

Onghe meme keshe e li meteelelo oye omuhongi, mongudu ei yotete. Oku na okutunga eshikulafano liwa nola koshoka manga ta teelele okaana kaye.

Apa otapa landula oilongwa imwe oyo meme keshe ta pumbwa a longe okaana manga ke li medimo. Na kale omunashili, omunambili, omu. lidiliki mwaaishe ii, ependa nomudiinini mokuwanifa oilonga. Meme na dimbulukwe oshilonga keshe shiwa ile shii te shi longo manga a teelela, osho tuu naanaa okaana taka ka kala, eshi taka ka kula. Ina ngenge ota popi oipupulu, ta tukana, ta lundile ile ta vake, na dimbulukwe osho te shi ningi osho okaana oko a teelela taka ka ninga.

Okaana nge ka dalwa, natango oke li mofikola yaina manga taka nyamu ke li komatundji. Apa ina natango onawa nge ta landula omufindalongo oo a longifa manga okaana ke li medimo. Omesho okaana nge taa hovele okupashuka nokumona omalinyengo oinima, apa ovalongi va ninga yo vahapu, osheshi paife monghatu ei ovaneumbo aveshe ova ninga ovahongi vako, xe, ina, novamwaina. Nopefimbo eli okaana oka ya mongudu onhivali.

Monghatu ei, ovaneumbo aveshe nava tunge omufindalongo muwa oo tau tungu onakwiiwa iwa yokaana. Pefimbo lokaana ke na eedula 3—7 opo okaana haka mono yo ovanhu vopondje

ovashiinda. Ofikola otai longo osheshi kovashiinda yo okaana otake ilongo shihapu, ndele nande ongaho, osho okaana ke shi hongwa mongudu yotete itake shi kanifa.

Okaana nge ka wanifa eedula 7 otaka tameke nee ofikola yefiku, oko okaana taka mono omuhongi wopakafimbo, oo ha uhala ashike. Itashilwa nako, ita tokelwa nako, onghe hatu ti owopakafimbo.

Pefimbo eli ehongo lokaana ola djuupala nee shaashi ovahongi ovahapupala. Ehongo lovaneumbo, lovashinda, lomuhongi kofikola nolounona vakwao pofikola. Okaana ngeenge oka monene omukangha muwa manga ka li medimo nokomatundji a ina ehongo lako itali kadjuupala vali. Otaka ka kala okalongwa kawa nokeengudu dokomesho.

Onghe oomeme, natu tonateni moshinima eshi tuha yandje ashike omaushima, alushe onunona nge tava longo osho inashi yuka ohatu popi luhapu.

“Kofikola oho hongwa shike hano?”

Wa fa to pe omuhongi winya oushima. Oomeme, natu dimbulukweni osho onunona vetu tave shi ningi nge shiwa ile shii. efinalongo omeme.
Saara Shikeva

OYONGALELE YAVELKSWA NEUDO

Ovafita vOngeleki Onkwaevangeli pa-Luther ya hangana muSuidwes-Afrika, VELKSWA, ove li paife metifa loshoongalele shavo mOtjimbingwe. Eongalelo eli lofavita vEengeleki mbali, (ELK. na ELOK) etivali okudja 1972, eshi efinalongo lEhangano eli la kolekwa.

Oshoongalele eshi shomafiku atano 3-7. 3.1975, oshe lipyakidila unene noukumwe wEhangano eli nhumbi tau tulwa molonga, osho yo okutala oukumwe wOvakwaluther aveshe vomoumbuwanhu waAfrika oku la ka twa.

Oshilonga shetumo tashi longwa kOngeleki ya hangana nosho yo oilonga ikwao ihapu nayo otai ka kundafanwa nhumbi tai ehene komesho.

Natango oshoongalele otashi ka shikulwa kushikwawo tashi ningilwa mOwambo. Oshoongaleleengeleki oshitivali sha VELKSWA otashi ningwa mEngela okuhovela 7 laApilili.

Omalongekido omolwasho okwa hoololwa nale nokuli okakomitiye mu ELOK okutala osho shi na okuningwa po.

Mewiliko lomufitaongalo Kristof Shuuya, okakomitiye oka ongala nale noka ninga omafaneko mahapu noka teelelwa ka ongale vali muMaalitsa. Ovaenda ve fike lwope 100 okwa tengenekwa otava ka kala moshoongalele eshi.

SSSS

OSHIKONGA SHUUNAMITI

Dha za kep. 2

Kombinga onkwawo milonga mbika yuunamiti itatu ka adha nando onkatu yahuginina. Oku-kalamwenyo kwetu akuhe oondohotola ngaashi wo aapangi, ku na okukala mokwiilonga nomeidheulo u hume komeho. Osha yela nawa kutya ngele to ilongo kashona ashike, inoo dhiginina, oto kala mpoka u li, ito humu komeho nando. Nele ku na ehalo nenge ku na ethimbo lyokwiilonga, oto ka shuna mbala monima. Unene omolwashika wo oondohotola kaye hole okulonga muuwike.

Esiku limwe onda mono ompito okukundathana noondohotola yamwe muReblika nomOvenduka, nonda mono osikola ndjoka yuunamiti muDurban, hoka kwa zi ndohotola lihuhwa. Ishewe onda mono ompito okutalela po pafupi oshipangelo shoka oshinene shoombete 2000 moka aalongwa yuunamiti haa longwa noku-dheulwa.

Onda nyanyukwa shili, oshoka osha yela nawa, kutya onkatu yelongo mosikola ndjoka nomoshipangelo shono oyi li pombanda yi thike pamwe noosikola dhimwe dha simana muEuropa.

Ishewe onda nyanyukwa sho ndu uvu kutya, ehangano lyoondohotola lyomu S.A. olya hala nolya longekidha elongo lyuunamiti lyaalongwa Aayafrika li thike naanaa pamwe nelongo lyawo. Natango onda lesa onkundana moshifo shoondohotola muSoomi, kutya ehangano lyoondohotola lyomu S.A. naalongwa yuunamiti, itaa zimine eyooloko pokati koondjambi dhoondohotola Aayafrika nodhawo (aatiligane.) Pakutala kwandje opu na elongelokumwe ewana pokati koondohotola ayehe.

Otu na enyanyu enene nena sho twa mono omulongwa guunamiti ngoka kwi idhidhimike nokwa dhiginine oomvula odhindji nolwahuginina okwaadha elalakano lye nokwa mono onkatu yuundohotola. Otwa mono nena aapangilongwa naavalithilongwa mboka ya dhiginne mo sikola yawo sigo ya piti omakonakono agehe.



Ohamba Filemon Elifas oya hoololwa natango i kale oministeli omukulunhu mEpangelo lOwambo.

Kune amuhe onda hala okweendalula: Omu li petameko lyondjila ndjoka yokwiilonga uupangi nuunamiti neyakulo alihe lyaavu. Tamekeni okulongitha elongo lyeni noondunge dheni miilonga yesiku kehe. Tamekeni shili okugwanitha iinakugwanithwa yaanashilonga yiiipangelo. Tamekeni elongelokumwe tali kwatha mboka taye ehama.

Otandi mu halele amuhe aanashiilonga aape naamboka aakulu, eyambeko lyaTate Kalunga miilonga yeni ya simana.

Omuwa oye omunankondo adhihe, ngoka ahalala nota vulu oku tu kwatha, ngele twa hala okukala mewiliko lye esiku kehe.



Omubishopi Abel Muzorewa, omupresidende wa A.N.C.

RHODESIA NATANGO MEENHAMANANA

Eshi sha teeelwa nelitulomo linene muZimbabwe shi hangike diva omolwelongekido lokuyandja emanguluko momake ovalaule, osha yela kutya natango ope na oinima ihapu i shi li moshipala.

Ovakondjelimanguluko mwinya fiyo onena otava kondjo va hange eudafano liwa pokati kavo nEpangelo lomministeli lan Smith, okutunga efinamhango lemanguluko loshilongo.

Etameko lokuya meenghundafana pokati kEpangelo nEvakondjelimanguluko, ola ningilwe komupresidende waZambia, dr. Kenneth Kaunda nokoministeli yotete ya S.A. omushamane Johannes Vorster okudja Desemba 1974.

Okalamauka pokati komushamane lan Smith na A.N.C., ongudu yovakondjelimanguluko, paife oke li unene pokutokola onhele apa tapu ningilwa eenghundafana okutunga efinamhango. Eshi omushamane Smith ta ti nadi ningilwe moshilongo, ovakondjelimanguluko ova ana yo kutya otadi ningilwa pondje yoshilongo.

Oinima imwe yo ya talwa tai nyono eudafano, ohai etwa po yo ngashi ovakwaita va S.A. keengaba daZimbabwe ile eponokelo lovakondjelimanguluko eli inali xulifwa po natango.

Elalakano lekuno efikilo lalo eteyo nefimano lekuno omunhu ota kunu nombuto inini, ndele ota teya shihapu. Onghalo yomunhu kondje younyuni ohai yelekwa nekuno. Omukuluwona-le ota ti, ino tonga ngaho, oto popile komutwe waKalunga. Kokutya otashi ku alukile eshi to popi.

Mounyasha omunhu ota kunu osho te shi teya moukulupe woye ngashi tu wete tu udite ovadali tava lili omolwoludalo. Vahapu otava dimbulukwa osho va li tave shi kunu ngee mokuhadulika kwavo.

Paitavelo onghalo yomunhu ohai yelekwa nolweendo. Omunhu koshi yetango oku li ko ta ende a yuka kefikilo, kefyo oko omukulunhu nokaana tava ka teya osho ve shi kuna koshi yetango eli nena. Omupisalmi ta ti:

Inamu lifufya, Kalunga iha shekwa. Osheshi osho omunhu te shi kunu, osho tuu te shi teya yo.

Oilonga yange mounyuni wonena oyo ekuno lomounyuni tau ya. Ou ta kunu mombelega yaye, ota ka teya enyonauko mombelega yaye. Ndele ou ta kunu mOmhepo, oye ta ka teya omwenyo waalushe omOmhepo. Gal. 6:7-8.

Hai ti, to kunu tuu? Omolupe lilipipo? Kuneni ekuno louyuki, opo mu teye eteyo lefilonghenda. Hos. 10: 12. Pamwe ou li noupyakadi nokuli ku wete osho u na oku shi kuna. Fye Ongeleki yaKristus otwa pewa ombuto noshipango shoku i kuna, naapa tu na oku i kuna.

Ombuto ei evangeli. Omwene ta ti: Indeni nounyuni aushe nye mu ka udifile ovashitwa aveshe evangeli. Mark. 16:15.

Epulo tali ti: To kunu tuu? To twala tuu evangeli? Mokumwena kwoye owa mona omhito yokukuna shimwe shi lili, osheshi owa efa oshinakuwanifwa shoye, okutwala edina Jesus, Omuxupifi. (Ev. Lot Kaishungu)

NGOKA U NA NATANGO ONDJALULAMASIKU INAAYI PWA PO, YI GALULILAMBALA KOSITOLA YOMAMBO, ONIIPA. NGOKA WA MANA PO, MBESITELA KOSITOLA YOMAMBO.

EINDILO LYA ZI KONANDJOKWE

Pakundathano lyoshigongi shokangundulongekidho kiinima yipangelo yomuELOK keti 17.2. 1975 otaku tseyithilwa shoka tashi landula kaantu ayehe:

Opwa holoka kutya oshipangelo shOnandjokwe osha kala ethimbo ele shu udha aavu esiku kehe. Oyendji nokuli ohaa zi kokule kUninginino nenge kUukwanyama nopalwe. Kombinga onkwawo aanashilonga yokOnandjokwe ya ningi aashona sho oyendji ya thigi po oshilongo noya yi kombanda yongamba.

Ngashingeyi osha yela kutya oshipangelo shokOnandjokwe itashi vulu we okukwatha nawa ayehe mboka taa thiki ko. Oshipangelo kehe oshi na oshimpwiyu okukwatha unene mboka ye li popepi nasho.

Iipangelo yetu ayihe nomOnandjokwe wo aavu ohaa talwa tango kaapangi mboka ye na okutokola olye ta ka talwa komundohotola natango. Omolwashika otaku indilwa kutya kehe gumwe ngoka ta ehama a ye tango moshipangelo shoka shi li popepi naye. Nongele ekwatho inali gwana mpoka, omukuluntu gwoshipangelo ota vulu oku mu tumina ihe koshipangelo oshinene.

Ngele omuntu okwa ya koshipangelo a zi kokule ye kee na epopilo lyomukuluntu gwoshipalo shopopepi naye, otashi vulika ita ka mona eyakulo omolwowindji waantu.

Omukuluntu gwOshipangelo:
Omundohotola H. Kyrõnseppà

OU LI NGAHELIPi NOVANEUMBO LOYE

Oshinakuwanifwa shomeumbo keshe okutonatela onghalo iwa yomuneumbo laye. Ngenge handi popi ouumbo ou, onda diladila ashike keshe opo omunhu e li po omuwiliki wongudu yovanhu vonhumba ile vongadi, nena onda diladila ashike kutya ovanhu va tya ngaha ovo ovaneumbo laye ile ndi tye ovaumbo laye, ovanhu vaye. Nandi tye hano nande ou na nee ovaneumbo loye, oho va pukulula hano ngahelipi?

Ovatungaumbo vamwe ove na ovanhu vahapu momaumbo avo ndele ohava pukulula vamwe, voo vamwe tave va efa, eshi osho epuko linene. Ngenge ounona voye ndele iho va pukulula aveshe u va longe eendunge otave di hange nee peni mbela?

Ounona ngenge iho va pukulula itava shiiva ouwa nowii. Eshi oshiwa unene okupukulula ovanhu voye aveshe shi fike pamwe. Ngenge ou va hole, kala u va hole shi fike pamwe.

Ngenge ounona voye ova nyona enyono limwe, onawa ashike ngenge to va denge aveshe pefimbo tuu olo, opo pahakale omalungongo muvo kutya ou holepo vamwe, voo aveshe ovaye. Okupukulula ovanhu aveshe shi fike pamwe noku va tala ongomunhu umwe, osho outeku muwa unene.

Ovashamane vamwe nande na mone okaana ke li mepuko lonhumba, oha taleko ashike yee a mutika, vati kake shi okakwao. Okwa hala ina oye e ka pukulule shaashi vati oye mukwao, eshi osho epuko linene. Ame ohandi shi popi shaashi fiyo onena ovanhu vahapu ove li natango momikalo dikulu da efiwa nale. Hano itashi ti kutya omikalo dikulu inadi longifwa vali, aaye!

Outeku muwa oyou tau tekula ovanhu aveshe shi fike pamwe, hakuongaifa ovanhu noku va etela omakamba. Natu taleni ovaneumbo letu aveshe va fike pamwe ngaashi Omushiti wetu e tu tala tu fike pamwe.

N. N. Halweendo

OUNYUNI TAU TONGO SHIKE?

Paife pwa pita nokuli ohani nomafiku amwe eshi medumbo lOwambo mwa ningwa ehoololo etivali tali ifanwa olaaveshe. Eepeleshenda 55 dovanhu 120, 000, va talwa ve na oufemba mehoololo, okwa tiwa oda monika mo.

Omutumba wongudu taku tiwa oya hoololwa, shiimba nao ou li pokuhovela. Oshilonga shao shotete osha xunganekwa nale koministeli omukulunhu, ohamba Filemon Elifas. Oinima imwe oyo ngaashi:

—Okumweneka ovanangeleki vaha tonge nande sha vali koinima youpolotika.

—Omudo fimbo inau pwa ko neudo, Epangelo lOwambo li ka kundafane nEpangelo laAngola omolwongaba pokati koiingo ivali. Oshiwana shi alulilwe ongaba yokuAngola, (*The Argus* 20/1/75).

—Okutuma ovakalelipo voshili keenghunda fana dovawiliki veengudu di lili moshilongo omolwonakwiwa yaSuidwes, (*Advertiser* 21/1/75).

Oilonga inene i fike apa naikwao inai tumbulwa apa, oi li komapepe ongudu taku tiwa oya hoololwa koshiwana shoovene. Nehoololo li li ngaha, otali fatululwa yo komikalo dihapu moifo i lili noi lili nokomupopyo woshiwana.

Oshifo "Pretoria News" osha ti, eepeleshenda 50 odo da dja mehoololo lOwambo, oda nyateka oshikundafanwa shaNamibia, nde oda yelifa yo oshinima, kutya SWAPO ou he linomo vati okulilepo oshiwana ashishe, okwa lengifwa. Ehoololo ngenge ola kandula po SWAPO, nena otali yandja eenghono kEpangelo laPretoria li longekide eenghunda fana daaveshe moshilongo, omo na SWAPO ta ka ifanwa (*Pretoria News* 20/1/75).

Shikwao vali osha ti nokutya okupita nawa kwehoololo, osho omukangha woshili nokutya ongudu imwe inai hala okupangalwa kuikwao, ngaashi hashi tongwa kelenga Clemens Kapuuu, (*Die Vaderland* 21/1/75).

Oministeli ikulunhu mEpangelo lOwambo, ohamba Filemon Elifas, ye okwa ti eepeleshenda diwa da dja mehoololo. "oshikungulu shomhepo shidjuu sha pepa SWAPO". Okwa weda ko ngaha: Epangelo lOwambo itali ke lipula noma weelelo ovanhu kumwe na SWAPO pondje yoshilongo, (*Comment & Opinion* 24/1/75).

Fimbo ehoololo li li mokati, ohamba Elifas oya li tai yandje oushimha kuSWAPO, vati ota tilifa ovanhu noipupulu ya ye, vaha ye kehoololo. Ye SWAPO okwa kala yo ta yandje oushima kepangelo, vati otali fininike ovanhu noku va tulika moihauto va findikilwe koikefa yomahoololo, (*The Daily News* 20/1/75).

Natango pefimbo tuu olo keembinga neembinga dOwambo okwa kala taku di omangongoto kae na sha noupolotika, kutya ehoololo otali dengele. Omupopyo ohau ti:

Ovanhu ova lombwelwa kovapolifi nokutya itava hakulwa moihakulilo ngenge inava hoolola. Itava i koiilonga kOushimba ile otava tewa moilonga yEpangelo ngenge inava hoolola.

Omuunguli Shivanene kOutjo waNepando, okwa shangela koshifo shetu te shi hokolola ngaha:

"Eshi twa ya moilonga fiku olo, otu udi te ashike hatu lombwelwa: Kataleni ombombo veni vomitwe. Otwa tulikwa osho mololi ya kula tu ye kombelewa. Otwa itanenwa opolifi tai tu pula ovanhu vomadina taa leshwa ngenge otu va shii, tu va hoolole.

Eshi twa tya: Ahowe, katu va shii, fye itatu hoolola, ova handuka nove tu kondjita nekuni. Umwe okwa kwata nge poshikesho, navakwetu aveshe osho va ningwa nounona vomeefalama, tave tu shangifa. Okwa weda ko ta ti:

Eshi osha ningwa kekuni nokefininiko. Eshi sha halika kovanhu, itashi di kefininiko nande," osho a nyola.

"Oifo ihapu yEpangelo nomoradio ya S.A. otamu kuwililwa unene pombada omolwefindano mehoololo lOwambo. Eshi okulyatela oshili yoshinima medu." Osho oshifo hashi di muJohannesburg, *The Star* 3/2/75, sha hokolola. Ponhele ikwo osha ti, nokutya onghedi ei yokulemena noupu oinima monima nomomunghulo okuhafifa Epangelo, okulifufya ashike notashi naipike onghendambala onhivali ei i li po tai ningwa, eshi Epangelo laPretoria la hala okulikufa mo muSuidwes, (2/1/75).

Oshifo eshi otashi ti, ehoololo moshitwa shalo shotete otaku tiwa paife oSWAPO a dengwa ou kwa li ta indike ovanhu vaha ye ko kulo. Nde mOkabinete kOwambo omwa tumbulwa ashike oinima ivali i na okulalakanenwa mehoololo.

a) Kumonike ovawiliki voshili oku ka kundafana medina lOwambo neengudu dikwao moshilongo.

b) Eduumbo lOwambo li pewe eenghono dokukufa ko oshitopolwa shongaba yomuAngola osho shi na Ovawambo ve fike konyala 120,000. Oshifo tashi twikile nee tashi ti:

"Ongudupangeli yaamanguluka yOwambo kai kufile omunhu wayo e lihoololife. Ovalihoololifi aveshe kakwa li ve lile po ongudu yonhumba. Ovanhu ova hoolola hano paveta ihe fi kutangwa, osheshi inava kondjela ongudu yonhumba, omupopili wokatongotongo," osho sha ti ngaha, (3/2/75).

CCC

A A L O N G I T A A P U M B I W A K U C.D.M.

Ehangano lyomina yOkawe muSuidwes (C.D.M.) olya pumbwa aalongi ye shi nawa Oshiingilisa, okulonga moosikola dhelaka ndyoka mookomboni. Ombinga onkwawo ya kwatathana naashono moosikola ndhoka, oyo elongitho lyiitya pamuthika gwayo.

Shono omuntu ta pulwa: Ngoka a hala okutaamba iilonga mbika na kale e na iinima tayi landula:

—Onzapo yomatilika

—E shi okupopya nawa Oshiingilisa, Oshaafrikaanisa nOshiwambo.

Ngoka a pita uulongi nenge e na owino moshilonga shelongo, nokuye otaku kengwa tuu.

ONDJAMBI: R 200,00 komwedhi komutameki.

Alikana pula uyelele komuwiliki omukuluntu gwOmina kondjukithi ndji

P.O.Box 35, ORANJEMUND,

9015.

Nyola edhina lyoye lyu udha, esiku lyomwedhi naampoka wa valelwa. Osho wo holola onkatulongo yoye nomimvo dhoye miilonga.

Meindilo lyoye endithila mo wo enyolululo lyonzapo yoye noombapila adhihe dhi na ekwatathano neindilo.

NGONDO

**Omuyelele gwaMbuga,
Omwanawa gwokEpumbu,
A valelwa mOndangwa,
Ngondo Kiimbindjola,**

Omukulukadhi nguka okwa valelwa mUukwambi mOndangwa lwopo 1887. Oye omuna gwakuku Tshanyenge shalimalwa. Yinakulu oKagwedha klitana yaAmbuga yopOmulondo, mUukwambi.

He oTshilongo shaKaambulwa kaKiinge kaMukongo gwaTshiyala shaNamundjanga. Tshilongo okwa tembukile kOngandjera eta tula mUukwamasti. KOngandjera okwa tembukile ko ishewe eta yi kUukwanyama.

Omolwombeyo ye ombwanawa, okwa falwa mombala yaNekoto kliheke, opo a ninge omubada wohamba (omunyekadhi).

Pelala ndyoka okwa adhika kee na yina, oshoka Tshanyenge sho a ka talela po yina kUukwambi, a zi kUukwanyama, sho a thiki kooyina kOmulondo, okwa kwatwa kuuvu eta si. Aakwambashu oya geele Tshilongo ya ti:

"Tshilongo te tu kanithile omuntu." Meme okwa hokolola ta ti:

"Tate okwa yaka ndje mo mombala yaNekoto mlikeke, nde ta nonoma ndje ta gogo ndje omakala, ta gwayeke ndje omudhime, ndi dhimeye nde ta fala ndje kookuku kOmulondo kookagwedha klitana."

Tshilongo sho a fala omona kUukwambi, okwa tembukile ishewe kOngandjera noko a sile kondjala 1915. Niilonga a kala kOmbuga yawo. Omolwaasho ye mu luku:

Omuyelele gwaMbuga, Omwaanawa gwOkepumpu.

Pakutseya kwandje oya li aanona yane, ihe yaali ayeke ya li ye na omwenyo sigo 1974. Omolwooyinagona ya li aanona, ye omukuluntu Niilonga ina fukala manga tango, nopo a fukikwa nduno kuyinakulu Kagwedha lwopomumvo 1913. Ano okwa kala kuukulukadhi omimvo 61.

Sho a li omukadhona lela, ekadhona eleleka, okwa imbi pamwe naakadhona ooyakwawo ta ti:

Mem'andj'ino lala tshaalala.

Ino lala maambandjodhi ngomuntu ndi li klitunda.

Ehangano lyOkawe

Mem'uukadhi omwene Nde u ukila ngaa ko. nyemba.
Ngaang' enkete ndu ulula.

Oye onzini yeemputu hetatu mumboka yatatu ye na omwenyo natango. Oye yinakulu yaana 21 nomutekulululwa gumwe. Okwa shashwa 1944 a ningi "Ilona". Ye mwene okwa halele Hileni, edhina lyambushe Niilonga yaKagadhina kEendjamba, nde nani ina tseya nawa edhina. Okwa ti owala, ongaye Ilona ngoka ta nyanyudha yakwawo.

Uuvu woku mu fala meso owa tameke 1958, ihe okwa kala a kola hwepo sigo 1963, mpoka a zi a zazuka. Eso okwe li tegelele 1970, ihe inali ya. Omumvo nguka 1974 okwa li a kola, ihe ohaluka muJuni 1974 okwa kwatwa kuuvu ombaadhilila. A dhengwa ombanda, ita popi sigo a hulitha eti 5 Juli 1974. Efumviko olya ni ngwa kOkando, mUukwambi, eti 6 Juni 1974 lya yapulwa komumwayina omusitagongalo Erastus Tshilongo.

Moonkali Aakando oya gongala nawa nokotshigumbo okwa li ohango ha tya nde ya. Omukadhona a tsa uusila kupula. Osho twa dhana ohango yameme.

Omumbisofi okwe tu tumine elaka lyetalaleko: Omwenyo gwandje oKristus nokusa okwo eli kolo."

Otatu lukula Aakando naayakuli amuhe moku tu talaleka moonkali dhameme.

**Kalunga ketu tate Owa shita meme,
Ngondo hUukengeli, A ya kaayengeli.
Owe mu fala megulu, Sho a ningi omukulu.
Gwopevi mpa muuyuni, A ze mo muuyuni.**

Jason Amakutuwa

O M U K W E T U

Oye oshifo shOngeleki onkwaevangeli paLuther yomOwambokavango. Ohashi nyanyangidhwa mOniipa. Omukuluntu gwoshifo omumbisofi dr. Leonard Auala. Amushanga Rev. Sebulon Ekandjo.

Ondando yoshifo komumvo muSuidwes nomuAfrika alihe R 1, 00 kombanda yomafuta R 2, 00.

Ondando nomambesitelo naga tumwe kOmukwetu, Oniipa; P/B. 2013, Ondangwa.

Omatseyitho agehe gomuntu mwene ohaga futiwa kumwene.

OWAMBOKAVANGO CHURCH PRESS
PRIVATE BAG 2013, ONDANGWA, 9270.

ovashiinda. Ofikola otai londo osheshi kovashiinda yo okaana otake lilongo shihapu, ndele nande ongaho, osho okaana ke shi hongwa mongudu yotete itake shi kanifa.

Okaana nge ka wanifa eedula 7 otaka tameke nee ofikola yefiku, oko okaana taka mono omuhongi wopakafimbo, oo ha uhala ashike. Itashilwa nako, ita tokelwa nako, onghe hatu ti owopakafimbo.

Pefimbo eli ehongo lokaana ola djuupala nee shaashi ovahongi ovahapupala. Ehongo lovaneumbo, lovashinda, lomuhongi kofikola nolounona vakwao pofikola. Okaana ngeenge oka monene omukangha muwa manga ka li medimo nokonatumundji a ina ehongo lako itali kadjuupala vali. Otaka ka kala okalongwa kawa nokeengudu dokomesho.

Onghe oomeme, natu tonateni moshinima eshi tuha yandje ashike omaushima, alushe onunona nge tava longo osho inashi yuka ohatu popi luhapu.

"Kofikola oho hongwa shike hano?"

Wa fa to pe omuhongi winya oushima. Oomeme, natu dimbulukweni osho onunona vetu tave shi ningi nge shiwa ile shii. efinalongo omeme.

Saara Shikeva

OYOONGALELE YAVELKSWA NEUDO

Uvafita vOngeleki Onkwaevangeli paLuther ya hangana muSuidwes-Afrika, VELKSWA, ove li paife metifa loshoongalele shavo mOtjimbingwe. Eongalele eii lofafita vEengeleki mbali, (ELK. na ELOK) etivali okudja 1972, eshi efina-mhango lEhangano eli la kolekwa.

Oshoongalele eshi shomafiku atano 3-7. 3.1975, oshe lipyakidila unene noukumwe wEhangano eli nhumbi tau tulwa moilonga, osho yo okutala okumwe wOvakwaluther aveshe vomoumbuwahnu waAfrika oku la ka twa.

Oshilonga shetumo tashi longwa kOngeleki ya hangana nosho yo oilonga ikwao ihapu nayo otai ka kundafanwa nhumbi tai ehene komesho.

Natango oshoongalele otashi ka shikulwa kushikwawo tashi ningilwa mOwambo. Oshoongaleleengeleki oshitivali sha VELKSWA otashi ningwa mEngela okuhovela 7 laApilili.

Omalongekido omolwasho okwa hoololwa nale nokuli okakomitiye mu ELOK okutala osho shi na okuningwa po.

Mewiliko lomufitaongalo Kristof Shuuya, okakomitiye oka ongala nale noka ninga omafaneko mahapu noka teelwa ka ongale vali muMaalitsa. Ovaenda ve fike lwope 100 okwa tengerakwa otava ka kala moshooongalele eshi.

SSSS

OSHI LONGA SHUUNAMITI

Dha za kep. 2

Kombinga onkwawo milonga mbika yuunamiti itatu ka adha nando onkatu yahuginina. Okukalamwenyo kwetu akuhe oondohotola ngaashi wo aapangi, ku na okukala mokwiilonga nomeidheulo u hume komeho. Osha yela nawa kutya ngele to ilongo kashona ashike, inoo dhiginina, oto kala mpoka u li, ito humu komeho nando. Nele ku na ehalo nenge ku na ethimbo lyokwiilonga, oto ka shuna mbala monima. Unene omolwashika wo oondohotola kaye hole okulonga muuwike.

Esiku limwe onda mono ompito okukundathana noondohotola yamwe muReblika nomOvenduka, nonda mono osikola ndjoka yuunamiti muDurban, hoka kwa zi ndohotola lihuwa. Ishewe onda mono ompito okutalela po pafupi oshipangelo shoka oshinene shoombete 2000 moka aalongwa yuunamiti haa longwa noku-dheulwa.

Onda nyanyukwa shili, oshoka osha yela nawa, kutya onkatu yelongo mosikola ndjoka nomoshipangelo shono oyi li pombanda yi thike pamwe noosikola dhimwe dha simana muEuropa.

Ishewe onda nyanyukwa sho ndu uvu kutya, ehanganano lyoondohotola lyomu S.A. olya hala nolya longekidha elongo lyuunamiti lyaalongwa Aayafrika li thike naanaa pamwe nelongo lyawo. Natango onda lesa onkundana moshifo shoondohotola muSoomi, kutya ehanganano lyoondohotola lyomu S.A. naalongwa yuunamiti, itaa zimine eyooloko pokati koondjambi dhooondohotola Aayafrika nodhawa (aatiligane.) Pakutala kwandje opu na elongelokumwe ewanawa pokati koondohotola ayehe.

Otu na enyanyu enene nena sho twa mono omulongwa guunamiti ngoka kwi idhidhimike nokwa dhiginine oomvula odhindji nolwahuginina okwaadha elalakano lye nokwa mono onkatu yuundohotola. Otwa mono nena aapangilongwa naavalithilongwa mboka ya dhiginne mosikola yawo sigo ya piti omakonakono agehe.



Ohamba Filemon Elifas oya hoololwa natango i kale oministeli omukulunhu mEpagelo lOwambo.