

# OMUKWETU

No. 14

JULI

1966

## AME ONDE UYA OPO VA KALE VE NOMWENYO

Joh. 10: 10.

Omwene Jesus okwa kala e na oshilonga shinene manga a li kombada yedu. Oshilonga shaye shotete a hupife eemwenyo odo da kana. E di hupife meke lomulunga ou iha ende le shimwe, okuvaka ashike. Omulunga iha ende le shimwe okuvaka nokudipaa.

Ndelenee natu dimbulukwe, otu na Omufita wetu muwa, ou e tu kulila. Ye okuhole eemwenyo detu, onghe ta ti: "Ame onde uya, opo va kale ve na omwenyo. Omulunga ina hala tu kale tu na omwenyo okwa hala oku tu dipaa. Oku na omaonga mahapu. Ndele Jesus okwe mu finda.

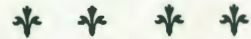
Oye omufindani, ou a finda satana.

Jesus okwe uya opo, fye ovo twa li twa fya tu kale tu na omwenyo notu kale twa wanenena. Jesus okwe uya, opo tu ninge ovaneumbo laKalunga. Omukwetu, dimbulukwa Omufita ou Jesus e ku endela, opo u ye nou ninge omuneumbo laKalunga.

Ngaashi e tu liyandjela, osho a hala tu mu liyandjele yo. Omunelao ou te liyandje kuJesus, osheshi Jesus ta ti:

"Keshe ou te mu itavele aha kane, ndelene a mone omwenyo waalushhe."

H. Dengeinge.



Muuyuni muka inamu kala mu nomwenyo negwaneneno. Ootatekulu oya kongo omwenyo negwaneneno miigegeti yi ili noyi ili, ihe oya nyengwa oku gu mona mo, oshoka onkene tuu eso lya kala nokupangela.

Mboka inaa itaala Omuwa Jesus, oyo aakwanaluhopo, oshoka kaa nonomwenyo gwaaluhe nokaa negwaneneno lyaaluhe. Oya dhipagwa kuu yuni mbuka nokomupangeli guuyuni mbuka satana. Okwe ya yuga a shihe kwa li ye shi na.

Omukriste ngoka e nomwenyo oye omuhokololi gwomwenyo ngoka e gu mona. Ngoye oho hokolola tuu omwenyo ngoka we gu mona muKristus? Nakumona oha nyengwa okumwena inaa hokolola shoka e shi mona. Nakwaamona oha mwena, oshoka oye ina mona sha. Omuwa Jesus ta ti: "Ongame onde ya, opo ya kale ye nomwenyo noya kale ye negwaneneno."

Ev. Ismael Amupolo.



Jesus ta kongo onzi nokwe yi mono konima yemanya.



# OMUKUETU

Juli 1966

## KOTOKELA OSHIPONGA SHOMUNDILO

Aakwanyama ohaa ti: "omundilo ihau kwata shimbodo." Mpoka tagu fike otapu italelwa. Ndika nali kale elondho kutseni Aawambo.

Uupalwa wetu ohatu wu ethele mii-kaha yaanona, onke omagumbo oge-ndji ga fikwa kaanona nuupalwa. Ohagu longithwa wo moondunda dhokulala moluutalala, ihe pamukalo nguka omagumbo ga pilela. Ndishi otwe gu pumbwa mokuteleka? Ihe uunona ungapi wa lunguna nayi nuumvo komulilo? Owindjiwindji taa! Na nguka a dhengela mo itagu mu tila.

Ndishi omagumbo otwe ga dhika niuhwali, oohwelo niiti yi na omahwameno? Ngele lya hwama, onkene lya ti tutututu. Ombepo ino yi dhimbwa. Mesiku eti-10 Juli 66, egumbo lyomusamane Sakaria Kalimbo, gwengalo lyOlukonda, olya pya po thilu. Tu kotokeni shili! Kotokela omulilo! Ndishi otwa pungula momagumbo iikolokoto?

Megumbo ngele omu na iitopimballa: ooholo dhoondjembo, ofunda, openzina nomahooli, omulilo etagu hwama, ooholo odhu ukalela mune. Peha lyokukwatha mokudhima omulilo, na ngoye mwene gwegumbo, oto thiki pona. Pwa kundanwa mOwamba nokUushimba, aantu ya pila moondunda ya sa. Ne mwa gama komakuti gOwambo, kotokeleni wo omulilo gwepeya.

## ONKUNDANA YOLUHODHI

MuSoomi mwa zi onkundana kuya, kuume ketu KAINO HARJANNE, okwa si eti- 18. 6. 1966. Okwa valwa eti- 27. 11. 1901 nokwa kala ano oomvula 65 muuyuni mbuka. Otwa tseya shoka e shi longo moshilongatumo mOwambo. Otatu mu dhimbulukwa nohole. Tadhil tsikilwa moshifo tashilandula.

## YATATU YA SA MOMINA

Omutiligane gumwe naaluudhe yaali, oya si moshiponga, iilongitho momina ya topa noyo ya vunyagulwa. Shika osha ningwa momina ya Brandberg-West Tin Mine.

## AAYENDA YOKUSOOMI TAA TALELE PO OWAMBO NOKAVANGO

Omusamane Alpo Hukka, pamwe nomuprofesoli Kaitera, omunongo gwii-longa yokukonga omeya noku ga opalekitha, nosho omuprofesoli Hellemaa, omunongo gwii-longa yiipa, nomusitagongalo Aaltio, amushanga gwa Nasionale Komitee yongongahangano yaakwaLuther yomuuyuni auhe, oya tegelelwa ya heluke mOvenduka 10. 7. 66. Otaa ya mOkavango 11. 7. 66, moka taa tsakanene naatumwa yongerki yetu nomumbisofi. Otaa taalele po oshilonga shomOkavango notaa uka ihe mOwambo.

Kwa thanekwa eti-23. 7 ya kale mEkoka moshilonga shomaayeleele. Mu-Kongo 24. 7 taa ningi elongelokalunga.

Eti-26. 7. 66 oye li kOniipa nOnandjokwe.

„ 27. 7. 66 kOshigambo Hoërskool

„ 28. 7. 66 kOnguediva na Elim.

„ 29. 7. 66 Ogongo, Nakayale, Etunda na Kunene.

„ 30. 7. 66 Omindamba, Tsandi, Okahao.

„ 1. 8. 66 otaa kala kUutsathima,

„ 2. 8. 66 okEngela,

„ 3. 8. 66 omOniipa,

„ 4. 8. 66 Epangelongerki mOniipa pamwe naayenda.

„ 5, 6. 8. 66 oye li kOtjimbingwe.

„ 7. 8. 66 otaa shuna kuSoomi.

Otaa pumbwa omagalikaneno getweni, opo etalelopo lyawo li ete eyambeko kongerki yetu.

## IINIWE YOMAGONGALO AGEHE MOMUMVO 1965

Miifo ya tetekela onda fatulula nkene omagongalo ga gongela iimaliwa moongalo nomiigandjwa, ihe inandi tumbula sha natango kombinga yiitambwa yilwe. Ngaashingeyi otandi fatulula noku ulika iimaliwa ayihe ya gongelwa momagongalo agehe nonkene ya longithwa momumvo ngoka 1965.

Oshitayingerki	Iitaambwa oya li ngeyi:				lifutwa oya li ngeyi:			
	oshihupe ye ya 1965		Ekwatho Kumwe		Iifutwa		Oshihupe Kumwe	
	R	R	R	R	R	R	R	
Ondonga	1413	15352	1435	18200	16734	1466	18200	
Uukwanyama	1197	11729	4744	17670	15789	1881	17670	
Uuninginino	397	12727	2801	15925	14436	1489	15925	
Okavango	98	2105	356	2559	2472	87	2559	
	Kumwe R 3105 41913		9331	54354	49431	4923	54354	

Ngele tatu dhiladhila aayakuli ayehe momagongalo getu, omiyalu ndhika dha hololwa mpaka odho itadhi ti sha mokufuta oondjambi nomokutsakanitha iinakugwanithwa yomagongalo. Otapu pumbiwa natango ehwamo lya shili maakriste okugandja iipewahenda. Kalunga ne tu pe ehwamo epe lyoku mu longela.

## OMUMBISOFI A YI MUEUROPA

Omumbisofi L. Auala, sho ta zi moshigongi shaatumwa aaSoomi kOkavango, na sho ya minikathana nokukundathana naayenda mboka taa zi kuSoomi, ota yi kuYugoslavia muEuropa.

Ota yi koshigongi shawo shepangelongundu lyaakwaLuther yomuuyuni auhe, ngaashi oye naanaa oshilyo shepangelongundu ndyoka. Moondjenda dhe adhihe ota pumbwa shili omagalikano gongerki, a gamenwe kii-ponga nomalweendo ge ga ninge esi-manekitho lyedhina lya Kalunga. Okwa tegelelwa a thike mOvenduka 25/7/ 66.

## OLWIIMBO LWONGERKI MUKATUTURA

## AATONDIELELA YETU YATATU

Gwotango oye ondeveli satana. Oye omupukithi omunene guuyuni. Oye omufundja nomudhipagi guuyuni okuza nale. Omuye mwa valwa omadhipagathano nomalugodhi ngoka ge li muuyuni. Oye omutondi gwa ashihe shoshili.

Ihe Kalunga na pandulwe, oshoka ope na ngoka a sindi oshiponga shika, oJesus Kristus ngoka a endjelele momushigakano. Ombimbeli otayi ti: "Kondjitheni ondeveli (medhina lya Jesus), oyo notayi mu yi ontuku," Jak.4:7.

Omutondi omutiyali oye uuyuni wowene. Omuyapostoli Johannes ta ti: "Otse otu shi shi, otse oyomuKalunga inatu hokwa uuyuni mbuka: Inamu kala mu hole uuyuni mbuka na shoka shi li mo. Ngoka e hole uuyuni, ohole ya He kayi mo muye," Uuyuni owo wu udha omamakelo. Jesus a sile uuyuni, ngoka te mu itaale ita kana, ota kala nomwenyo. Kape na ompito ya sha okuya uuyuni ondapo. Itaala Jesus eto hupithwa noto gamenwa nonando u li muuyuni mbuka.

Omutondi omutitatu oye onyama yetu yene. Okukala kuulunde momutima gwomuntu ngashi: okahalu konyama nokomeho nokwitangela uyamba, mbika oyo onyama yoshiponga inayi za muKalunga. MuGalati, 5:19-21 tamu popiwa iilonga yonyama melandulathano. Oyo tuu ya kwata uuyuni pompando. Ela wo tu wete nkene lya hala kuudhithwa niikulya yopanyama.

Ihe Jesus a si. Ota popi ye mwe-ne: Ngoka ta li onyama yandje nota nu ombinzi yandje, oku nomwenyo gwaaluhe, ngame notandi mu yumudha esiku lya hugunina, Joh.6:53,56 opuwo. Hashimwe shomonyama tashi mangulula etashi hupitha omuntu.

## OMUWAMBO A WILWA KOMINA

Omumati, Ileni Daniel, weongalo lokuKongo, okwa hulifa oweenda waye ombadilila. Okwa wilwa komina yomuBoksborg moRepublika eti-20.6.66, omutenya.

Omumati mukwao A. L. Shikufa, E. R. P. M. Ltd., No. 3 Compound, Box 46, Boksborg, oye a tumina kOmukwetu onghundana ei.



Ongundu yolwiimbo lwaaVenduka.

Mongerki yaKatutura momumvo Oya zi kOmbaye ayehe muJanuali. Onguka omu na wo olwiimbo lwongerki, ngaashi momagongalo omakwawo. kala lu udha nawa, aamati naakadhona, aasamane naakulukadhi wo. Yamwe ye na nokuli uunona uushona, ihe shaa wa adha ye u kwatela komapepe, otapa ti pwaka taa!

Olwiimbo nduka olwa tameke eti-22.3.66. Aalongi yalwo oyokOmbaye: Pastor J.Haufiku na J.J.Shikongo. I.N.Neumbo.

## "MENTU MUKWETU SHO HO ENDAGULA, OHO KONGO ANO SHIKE?"

Epulo ndika olya pulwa omumbisofi Leonard Auala mohungi eti-16/6/66 mOvenduka. Aamati yetu mOvenduka manga ya li mohungi pamwe nomumbisofi, oya pula ngaaka. Ondi shi shi kutya, aantu oyendji wo oya hala okupula epulo ndi.

Omuniyoli I.Neumbo okwa ti:

"Tate Auala okwe tu fatululile nee nawa-nawa oondjenda dhe sho tuu ha kala ta ende. Otwa kumwa sho twa uvu omalalakaneno goondjenda dhe. Okwa fatula okuza kondjenda ye yotango, sigo okundjika sho ya yile na amushanga moRepublika.

Otwa pandula komayamukulo ge. Nani oha endagula peha lyandje nolyoye. Oondjenda dhe otadhi eta eyambeko mongerki yetu. Otatu tegelelwa tu mu galikanene ethimbo alihe."

## KONIMA YEEDULA 38

Moshifo shOmukwetu shikulu, osho sha li nedina "OSHONDAHA," sheti-12/2/1928 mepandja lotete, omwa li oshipopiwa sheudifo lomushamane Tarkkanen, ta udifile Ovawambo pefimbo olo kOntananga eti-2/8/1925. Etwalemo leudifo laye olo:

"Aanelago omboka omayonagulo gawo ga dhimwa po noondjo dha-wo dha siikilwa. Omunelago ongoka Omuwa ite mu yalulile oondjo," Rom. 4:7-8.

Eudifo laye ola li la pupyala shili, tali ifana ovapaani va tambule edimo lomatimba neshituluko muJesus Kristus. Okwa hulifa eudifo laye ngaha:

"Na ngoye nguka u li kondje natango, ino-ya we Kalunga ontuku! Itedhulula u mone elago li vule kehe lyuuyuni. Zimina ngashingeyi eithano lya Kalunga, sho te ku ithana esiku lya hugunina, u uve eithano lye tali ti: Ileni ne aayambekwa ya Tate! Ngele to tindi okuya, one naatindi ayehe tamu lombwelwa: 'Zii po pungame'."

## EYAMBEKO NDYOKA LI NOKUYA MAANEGUMBO

Timoteus okwa li omuntu omunelago, oshoka ooyina Eunike na Loise oye mu longo oohapu dha Kalunga. Eitaalo lyoshili ndyoka lya li muyo, olya yi wo muye (2 Tim. 1: 5). Onke okuza kuunona we a tseyo manyolo. Okanona ke li megumbo lya tya ngaaka, oke nelela elago.

Omusamane nomukulukadhi naanona naa kale haa gongala pamwe nokulesha oohapu dha Kalunga nokugalikana. Otashi eta omwenyo gwegumbo. Otaa simanekathana niyimati iiwanawa yuukriste otayi holoka. Megumbo kehe namu kale Ombimbeli. Nayi leshwe esiku kehe powandaha. Omusamane na kwate komeho naanona naa leshe wo ovelise, naa imbe pamwe nonaa galikane. Omagalikano ohaga sindi.

## OMUKWETU TONATA

Momafiku 5/6/1966, ovamati ovawambo Matias Hiponua na Silvanus Stefanus, ova shuuka. Ove li denge ondjila tava i moushondolo.

Pwilikina nawa: Mefiku 8/6/1966, monhatu youfiku, Silvanus Stefanus na Matias Hiponua, va hulifa oweenda wavo kombada yedu. Ova lya-twa, koshihauto sha Keetmanshoop. Silvanus Stefanus omundonga a dja kOnyaanya, Matias Hiponua omukwanyama; inai shiiva apa a dja.

Ova fudikwa muMariental. Natu kaleni oupafi, inatu shiiva, efimbo, Omwene te uya. Ehol. 21: 4-6.

Ev. Simon Hamutenya,  
Posbus 235, Mariental.



*Ovalongwafita oudwaali eshi va mana oskola yavo motjimbingwe ova pitila pOkangili noshihauto okutalela po onhele oyo, mokuyuka keyapulo lavo kOkahao.*



*Omusitagongalo E. Amaambo ta laleke sho ta yi ku Amerika.*

## E KI ILONGA MUAMERIKA

Omusitagongalo *Eino Amaambo*, ngoka a yapulwa 1965 nokwa yakula megongalo lyOniipa, ote ki ilonga muAmerika. Okwa thigi po Owambo lyotango lya Juli.

Omusamane Amaambo ota landula omakodholo gomusamane K. Dumeni, sho a yile wo kuAmerika. Amaambo ote ki ilonga moskola yuusita: Luther Theological Seminary, St. Paul Minnesota 55108, U.S.A. Ota ende nondjila yopokalemo. Omumati gwe-tweni ota pumbwa omagalikaneno getu ge mu humbate, ye a ze ko a manga shapama.

Omulukadhi gwe, meme Ester naanona yawo yatatu Hileni na Lahja na Ruben, ya kala po manga. "Omuwa oye egameno matati negonga."

## OVATONDI VOUKAUME NOMBILI

Ovatondadi voukaume nombili valori vakula ovo a) ove mwene na b) osatana. Jakob ota nyola ngaha: "Omalwodi neenamanana mokati keni o hai di peni? Kai shi yomouhalu weni ou hau lu moilyo yeni?" Jak. 4 1. Oshiponga oshi li opo, eshi fyevene inatu shi didilika. Otwa fa tu li nawa mounyuni uhe na oipwe. Hatu mono omapuko ovakwetu, ndelene etu vene katu a wete. Opo ope na oshipongalela. Okulimona ouyuki nokuhelimona epuko, osho tashi tu twiya tuha mone omapuko etu. KovaRooma kwa nyolwa ngaha: "Onghe hano, omunhu ove, uhe na elipopilo, u kale nande olyelye ho pangula omunhu, oho lipangula ove mwene, osheshi ove ou ho pangula, osho yo ho ningi," Rom. 2: 1. "Ngenge twe lipangula fye vene, nena itatu pangulwa," 1 Kor. 11: 31.

Oulunde aushe tau nyonauna oukaume, ohau di mondubo. Ombibeli oya ti kutya, owo oshiponga shoiponga. Ohau tukula ngaha omukainhu nomulumenhu waye, ina nomona, ovakriste nde hau tukaula yo ovakulunhu vopoima meembinga di lili na di lili moilonga yeumbo laKalunga. Ondubo oyo omudi wa fudama medu wowii aushe. Muyu omwa dja oimanga yeengerki nomautondwe omaludi.

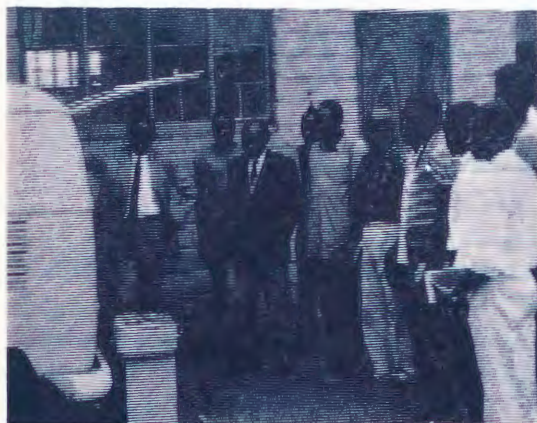
Mufye vene, omutondi wolela ta eta onyango aishe osatana. Oye omuli wetu efiku nefiku nde ta eta etondafano pokati komunhu nomunhu. Ote tu li yo kuKalunga. Okwa ya lwotete kuKalunga, a ka lye ko Job:

"Job ohe ku tila tuu?" Opo a ya kuJob a ka lya ko Kalunga: "Kalunga oye e ku ninga ngaho, Kalunga oye e ku denge, tuka Kalunga u fye." Satana a ya vali kookaume ka Job a ka lya ko Job. Opo a ya kuJob a ka lye ko ookaume kaye. Satana e liholeka nawa na Job ine shi koneka, ndele satana oye tuu ta denge ngaha ovanhu omitwe kumwe. Satana moshikafa shongwe oye a li te lidimbikifa Petrus. Petrus eshi ta ula Jesus: "Shidalelwe u hepekwe," osatana e mu li mombuda, onghe Jesus te mu denge elaka loshipilamo: "Dja po satana!"

Fiku pa holoka eyalafano punye, tete tu likonakone fye vene, tu tale ngenge otu li tuu mondjila. Tu lipule omapulo aa: Mwame ile omu na omhepo yokulihola? Omu na pamwe ouyuki wange mwene? Omu na ehala lange mwene, okukonga shange mwene mbela, omu na oungangala pamwe, omu na okafuma pamwe, ondi li moukaume ou wa halika kuKalunga, ile ahowe?

"Nye muha longe sha kokulihola nokukonga efimano longaho, ahowe, omelihuipiko omukweni mu mu tale e mu dule, muhe lifile nye vene oshisho amuke, ahowe, noovakweni yo," Fil. 2: 2-3. Ndelene okwa nyolwa: "Ofye itatu lwifa ombelela nohonde, ndele ohatu lwifa ovapangeli vomilaulu dounyuni ou." Kufye vene noovakwetu tu didilike: "Osheshi oye ombili yetu, ndele eembinga adishe mbali okwe di lumbakanifa mumwe. Okwa ngumauna po ekuma la li pokati, nokutya etondafano," Ef. 2: 14.

L. M. Sh.



*Uukriste nau uvithilwe mookomboni, nomomaha agehe mpoka aantu taa gongala.*



*Mefano eli hatu mono okudja kolumoshu omuwiliki woshongalele shovanyasha mOkahandja E. Ndevaetela nomutitatu omwevangeliste waKahandja M. Amushila. Ovamati aveshe avava ovomokamina kOtjisondo, metalelepo lavo leti- 7 - 8 Apilili 1966. Elongelokalunga la ningwa komufitaongalo P.Laukkanen neudifo omufita G. Max. Omwevangeliste a popya sha yo.*

## YA NDJEKA

1 Joh. 3: 16.

Aagundjuka yUuninginino mOnakayale oya gongelele etumo ngeyi:

Nakayale oye tsuu	R 101. 50
Okahao	100. 61 1/2
Elim	46. 13
Oniimwandi	36. 56
Otshandi	28. 18
Onakayale (Onawa-Oluwango)	24. 22
Onangalo	22. 70
Etilyasa	16. 55
Onaanda	14. 45 1/2
Ogongo	12. 47
Onesi	2. 82

Kumwe 406. 20

Otayi ka longa ngeyi:

R 101. 55, Ondjambi yomuyaangeli
Edward Ngimueni.
4. 65 Ondunda kOmindamba.
180. 00 Okakola kaagundjuka.
40. 00 Epungu moshilonga maa-
kwakuti.
36. 00 Oondjambi dhaayakuli, O-
mindamba.
34. 00 Okeentama dha Moongela,
pondje yOwambo.
396. 20 kumwe

10. 00 Saldo, kompumbwe yavaangeli.

R 406. 20 kumwe

Tshiteyi.

## EPENDA LYETU

Esiku eti-2.6.1966 otwa kala moshituthi shohango yomugundjuka Frieda Gabriel. Omugundjuka nguka okwa li ependa okudhiginina olwiimbo lwaagundjuka. Ke na nando esiku limwe inaa holoka molwiimbo, okuninga ta alukwa shila. Ina dhiginina owala olwiimbo, okwa holoka wo aluhe melongelokalunga osoondaha kehe. Osho a dhiginine wo nuugundjuka we ine u gwilitha pevi, sigo esiku ndyoka a taaguluka ongamba yuugundjuka. Ngashingeyi mefano ndika otatu mono ongundu yaagundjuka ooyakwawo mboka ya li haa gongala pamwe naye molwiimbo, oya thikama puye taye mu imbile.

Tatu indile Kalunga, a pe ependa nguka oonkondo nuupenda nomokukala megumbo lye. Omusindani ota ka pewa oshishani.

Samuel Namulo.



*Aanashituthi shohango.*



*Ongudu ei tu wete mefano eli, oyovanyasha vomostata muWindhoek mohungi yavo.*

# ETHIGATHANO ENENE 1967

Amuhemuhe otamu ithanwa mETHIGATHANO ENENE lyokulanditha OMUKWETU 1967.  
Otali ningwa ngeyi:

Omuhalithi ngoka ta tumu omadhina gaataambi AAPE OGENDJI, inaaga kala maataambi 1966, ota ka pandulwa ngeyi, gwtango sigo omutitatu:

I	ota	ka	pewa	Oradio	(Transistor)
II	-,,-	-,,-	-,,-	R20.00	
III	-,,-	-,,-	-,,-	R10.00	

Aataambi aape otaa pewa wo omagano giifo yomumvo 1966, oomwedhi ndatu okuza Oktoba, Novemba na Desemba 1966. Iimaliwa yi nokuthika pamwe nomadhina kOMUKWETU, eti-30 Septemba manga inaali ya.

## AANASIKOLA YOKOKAHANDJA YA TALELEPO OWAMBO

Aanasikola yokOkahandja, Augustineum, oya thiki mOwambo eti-24/6/66. MOnghuediva oya thikile mo lwo-ponti-8 komatango noya kala moshigongi shaalongwa pamwe naanasikola yoosikola oonkuluntu dhomOwambo.

Aakahandja oye ya mewiliko lyomusita gwawo Andreas Wierecke noo-

feelani mbali dhomOtjiwarongo. Opwali wo feelani gumwe omumbastela, ngoka ha longo moshinyanga shaagundjuka mOkahandja nosho muKaribib.

Aalongwa oya li ayehe kumwe 28, yaheyali oyomuKaribib nomilongo mbali na gumwe oyomOkahandja.

Aakahandja sho ya zimbuka moshigongi, oya ka talelepo omahala gamwe gOwambo. Tango ya talelepo oshipangelo mOshakati nofabilika yihongomwa. Opo oya shuna natango

kOnghuediva, oshoka omo mwa' li omutumba gwawo.

Meti- 28/6/66 oya talelepo ombelwangerki, oshinyanyangidho, Onandjokwe noyu uhala kOshigambo. Eti-29/6/66 oya talelepo Engela, Oshikango nosho tuu omaha gamwe ga simana mUukwanyama. Esiku lyahugunina Iya Juni, Aakahandja ya thigipo Owambo noya ka menekela omasiku gaali mEtosha, taa talelepo inamwe-nyo.



Mewiliko lyomusamane A. Hartikainen (Katau) Aanayena otaa tungilwa oshipangelo oshipe. Iimaliwa otayi futwa kepangelo.

# OUNYUNI OTAU TONGO SHIKE

## EFUTA LANATAL OLA FULUKA NDE EENDUDU ODA KAKAMA

Mafiku aa, ekakamo ledu ola monika puNatal nomoumbanganhuushilo wa Vrystaat. Omahokololo otaa ti kutya, efuta eli la kunghula koubuwanhu waNatal ola fuluka nde eendudu da Drakens tadi kakama.

Ope na omafatulo e lili na e lili kuosho hashi etifa ekakamo ledu. Ope na yo oiyelekifo yomakakamo edu ngashi "seismograaf." Omakakamo luhapu ohaa eta oiponga inene.

Opa konekwa omakakamo a eta oiponga ngaashi tashi shikula:

MuSan Francisco, 1906 - eemwenyo da kana 700.

Tokio, 1923 - eemwenyo 140,000 oda kana.

Agadir, Marokko, 1960 - eemwenyo 11,000 da kana.

Chile, 1960 - ovanhu 6,000 ova fya.

Osho muMeksiko, Italië, Mant-  
sjoerye, Indië... ekakamo ledu la nyo-  
nauna po ovanhu. Ndele inashi ni-  
ngwa nande lumwe muSuid-Afrika  
na Suidwes. Suid-Afrika na Suidwes  
oku li pondje yongonga yeenhele odo  
hamu holoka unene omakakamo edu.  
Eshi oshi shii okupandulwa kufye.

## EEMINISTELI DA SUID-AFRIKA OTADI KE LIKUNDA

Okwa fanekwa kutya, oshoonga-  
lelenghundafana sheeministeli daSuid-  
Afrika shoParlementa, otashi ka onga-  
la 29/7/66 nde kwa talwa oshi no-  
kukundafana fiyo muAuguste.

## OMUPASHUKILI WOIFITUKUTI OKWA KOFA INE SHI SHEYA

Mokaukuejo, omwa kundandwa nga-  
ha: Omuti wokukofeka (verdowningsmid-  
del) oifitukuti, owa kofeka omutilyane  
umwe ine shi sheya.

Omutilyane ou okwa li nondjebo  
yeeholo domuti oo. Nge oholo ya ya-  
she oshifitukuti, otashi kofa diva nde  
ovanhu otava dulu okwehena pusho  
noku shi ninga eshi va diladila.

Omutilyane Duvenhage, okwa u-  
mba omenye noholo yomuti oo. Ome-  
nye oya yashwa nde ya kofa. Opo ko-  
mbinga yomenye okwa dja omhepo  
ihapu. Mokupepa nani oya etelela yo  
edimba lomuti komushamane ou. Oye  
okwe u lifudila mo yo nde a kofa yo.  
Mukwao ou a hangwa po okwe mu  
fenyifa omuti wokupendula, ou hau  
longifwa yo mokupendula oifitukuti.  
Ekanda ola penduka po nde la ya ta-  
li ndjanguka.

## OILONGA YEPANGELO OTAI EHENE KOMESHO

Noneudo epangelo laSuidwes  
Afrika ola tokola okweehenifa kome-  
sho oilonga yalo. Ola indila ovalongi  
va hovele oilonga diva. Otali longifa  
oimaliwa ihapu moilonga i lili na i lili.  
Imwe oya tokolwa nde oya fanekwa  
ngaha:

Oimaliwa tai tungifa oshipangelo  
shaRuntu R 80,000.

Oimaliwa tai tungifa oskola yo-  
nguediva R 500,000.

Oimaliwa yoshitauwa shoteya sha  
dja kEunda sha ya koRwakana R880.  
000. Oshitauwa shoteya okudja  
kOshomeva-Ondangua fiyo Oshakati  
R 2,981,000. Ope na natango omafane-  
ko e lili na e lili.

## OMUHONGI VEDDER OKWA SIMANEKWA

Omuhongi omukulukulu, Dr. Hein-  
rich Vedder gwomOkahandja, oyo  
yotango ya kokola oshilongatumo  
(baanbreker) nomauthemba ogendji  
muSuidwes, okwa simanekwa kepange-  
lo ndika.

Mesiku 4/7/66, dr. Vedder okwa  
dhana oshituthi shevalo lye, sho a  
gwanitha oomvula 90. Epangelo olya  
tula ethano lye mostombe yopoosa,  
noostombe ndhoka otadhi tandelithwa  
okuza mesiku lyoshituthi she. Ogwo-  
tango muSuidwes a simanekwa  
molupe ndoka lwokutulwa mostom-  
be. Ehistoli lyatatekulu Vedder ele  
shili. Okwa uvitha evangeli miigwana  
yUushimba. Unene ongerki yomUu-  
shimba oya yakulwa kpenda ndika.  
Aatalelipo nge ya hala, ohaa pewa  
ngaa ezimino lyoku mu talela po mo-  
kahandja.

## OSHIHAUTO SHA KANDOMA

Ovalongi vaheyali ova  
li moshihauto shomukulunhufikola  
(hoofonderwyser) Heimo Udjombala,  
womEndola. Ova li mondjila, opo va  
pashiyone mOushimba mefudo lavo  
laJuli. Oshihauto shavo osha kandoma  
mondjila yaNdangua na Namutoni.  
Inapa fya omunhu, ndele ovo va li  
mo ova ningwa oiveta yomaludi no-  
kungwadjaulwa. Udjombala omo a ha-  
ngwa yo nde a ehamekwa.

Aveshe va twalwa moshihakulilo  
mOnandjokwe, omo va yakulwa nawa.  
Okukofa kwavo efiku nefiku otaku  
nuwa ngaho momeva.

## EHALA LYOMAVULULUKILO TALI DHIKWA

Pokati kOvenduka nOkahandja  
otapu ka dhikwa ehala lyomaituwi-  
tho netseyitho otali ti otashi ka ni-  
ngwa mbala nokuli. Eha lya tya ngaa-  
ka ota li ka kala mooha dhomulo-  
nga gwOkahandja aniwa.

Tamu ka tungwa uundama wo-  
ntente, uupale wuutanga womaludhi  
gi ili nogi ili, iinyanga yoondanisa  
nuundunda wongolonga (cottages)  
wazyendindjila. Omaziko gokuyothela  
onyama otaga ka tungwa mo wo no-  
taa kala haa ningi eyotho enene lu-  
mwe momumvo kehe, moka onzi ne-  
nge ongombe ayihe tayi vulu kuyo-  
thwa nzaana. Aniwa otali humithwa  
komeho ethimbo nethimbo ehala  
ndyoka.

## SERETSE KHAMA OKWA GWINA

MuGaberones omwa zi onkunda-  
na. Ombinga yepangelo lya Kha-  
ma, ya lukwa Demokratiesc Party,  
ndjoka tayi pangele ngashingeyi, oya  
gwina ishewe mehogololo lya ni-  
ngwa omasiku ngaka. Osho ngaaka  
oyo ano yi li keho lyepangelo lya  
Betsjoeanaland.

## ELENGA MOUKWANYAMA OLA FYA

KOshikango, Oukwanyama, okwa  
dja onghurdana. Elenka Nandjebo  
Mengela ola fya omafiku aa. Okwa  
hangwa a kula nde iha ende vali ko-  
kule.

Omushiivifi a holola kutya, efyo  
laMengela ola shakena noshidano  
shinene shomafiku atatu mOhanguena  
mOukwanyama. Omalenga makwawo  
okwa hangwa a ongala poshidano  
shomaludi. Komufala womOshikango  
nomalenga, ova kala pepako lelenga  
eli.

Omushamane Mengela okwa shii-  
vika nawa mOwambo, unene mOu-  
kwanyama. Oye umwe womalenga  
ahetatu makula mOukwanyama ndee  
a kala moshikandjo shaye, momuku-  
nda waye Efululula, kombinga ya a-  
ma kOukwambi. Okwa kala mo omi-  
do dihapu. Mefimbo loukulupe waye,  
a kala iha fiki vali koyoongalele. O-  
nghe ponhele yaye okwa tula po o-  
mutekulu Valombola Kalomho ongo-  
muyakuli, ou pe na elineekelo oye a  
ye koshipundi sha hekulu.

## ONDUNGE YOKUKONDJIFA OUKWA - ALUKOHOLI YA DILADILWA

Otapu ka ningwa ekonakono la kwata monghama, oshiponga sho alukoholi shi konakonwe kombinga younhu nomukulongifwa.

Omuprofesoli E. W. Blignaut, womepangelo leshiivo lounamwenyo (sielkunde) moUniversiteit ya Suid-Afrika, okwa hoololwa oye a ninge omuwiliki wekonakono olo. Omushamane Blignaut okwa longa nale nokuli mombinga oyo.

## OMUKULUNTU GWA SWANLA OMUPE

Omusamane H. G. Poolman, okwa hogololwa omasiku ngaka a ninge omukuluntu gwa SWANLA (general manager) muGootfontein.

Omusamane Poolman okwa yi peha lyanakusa N. C. Esplin, ngoka a si nomukadhi nokamwanamati kamwe moshiponga shiihauto pokati kaTsumeb na Grootfontein eti- 12 lya Juni.

## UUNONA WA ESPLIN OU LI IHWEPO

Kwa kundanwa kutya, uunona mboka wa hupile moshiponga sheso, sho yina, he nokamwanamati ya sa mekandomo lyoshihauto mondjila ya Grootfontein na Tsumeb, ou li ihwepo moshipangelo sha Grootfontein. Otau pangwa ngaa nawa manga, ihe pwa talwa otau ka lalekwa ngaa u pite moshipangelo momasiku gokomeho. Omusamane Esplin okwa li omukuluntu gwaSWANLA.

## A DINGILILA OUNYUNI MOMAFIKU 33

MuLondon omwa kundanwa vali ngaha: Omukainhu Sheila Scott, omushingidila, okwa aluka a loloka unene, eshi a tuka pombada nodila metuko lowina (rekordalleenvlug) omafiku 33 nominute 3 okudingilila oonyuni.

## RHODESIA TALI KUNDAFANWA

Ope na eenghundafana dinene pokati kovatumwa vepangelo la Ingilanda na ava va Rhodesia. Eenghundafana otadi popi epangelo laRhodesia kutya, li kale meke lovatilyane ile li ye momake ovalaule. Omhepo inene younyuni otai pepe kutya: Ngeno epangelo li ye momake ovalaule nde omakanda ovatilyane muRodesia inae shi hala. Eenghundafana edi oda ongala paife ompa e dule 12, nde etokolo la huuninwa kali wetike manga.

Eemwenyo tadi halakanifwa po. Ondunge ei otai ningwa, osheshi epangelo louhalukoholi ola indila epangelo loshilongo ashishe li konakone oshinima osho. Osheshi eemwenyo dihapuhapu tadi halakana po molwa alukoholi, omaliko mahapu taa halakana nosho tuu omudo nomudo.

Ekonakono otali ningwa nondunge yopaundokotola. Blignaut ou oku li nongudu yovanongonhu vomeebinga adishe omo omukwashiwana keshe a pamba mo.

## OMBOOLA YOMAHOOI YA SUID-AFRIKA

Opwa kundanwa kutya, omuministeli wotete waSuid-Afrika, dr. H. F. Verwoerd, okwa yeululila omboola yomahooli oilonga yayo pofalama Kareebosch. Omboola ei oyo yotete yakula muSuid-Afrika.

Ovanhu ve dule 2,000 ova kala poshiindingili eshi.

## ISRAEL NA KENYA OYA NINGA EUDAFANO

Nairobi, Kenya. - Oministeli yotete ya Israel, Eshkol, vo nopresidente ya Kenya, Yomo Kenyatta, ova shiiva eudafano lavo lokulongela kumwe.

Eudafano oveli ninga, va longele kumwe momaufemba omadju neemhito dokwehenifa komesho oilongo yavo, oyo tai pumbwa natango eehekomesho.

Ova yandja yo aveshe oushima komushamane Smith waRhodesia, eshi ehe udite ko nawa omaufemba ovanhu aveshe vomoshilongo shaye.

Omukainhu ou Scott, ondjolowelee yeedula 38, okwa hovela okulila, eshi okadila omo a tuka ka wila mokapale keedila kaLondon.

"Onda loloka nde onda nyemata eshi ashishe sha hulapo," osho a lombwela ava va li po.

## AASHAWANA OTAA KONGO OMALANDELO GONYAMA

Gaberones. - Aatumwa yepangelo lyaBechuanaland, oya yi kuLusaka ya ka kundathane oompito, ya kale haa tumu onyama noku yi landitha muZambia.

Onyama yomoondoha (beef-ombifa) oyi li mo oyindji muBechuanaland. Aatumwa mboka oya ende meliliko lyomusamane M. P. K. Nweke, oministeli yuunamapya. Oya yi ko, oshoka Dr. Kenneth Kaunda, opresidente yaZambia, okwe ya tseyithile kutya, ote ya taamba nenyanyu.

## AALESHI YA NYOLA

*Pinehas Mika, Walvis Bay*, ota nyola: Ovamwatate ovaholike, natu kaleni tu shi shi kutya, efimbo letu mounyuni oli li meufo laKalunga. Inatu kaleni ngaashi twa hala. Olo otali lotoka ngaashi efundja. Inatu lidanaukifeni, oonyuni kau fi wetu, otu li mo ngaashi ovaendanandjila.

Jehova shiivife nge efyo lange, ndele shiivife nge nokutya, omafiku ange efike peni. Dimbulukife nge nokutya, oweenda wange ouhupi.

Eps. 39:5.

*Simon Jonah, mOkapa*, ote tu shivifile oipofa ya Simeon Shimhanda, a dja pOshikango ngaha: Ovamwameme tu dimbulukweni omumati mukwetu ou Simeon Simhanda momailikano etu. Oye oku li moudjuu, osheshi oku noipo yopatatu. Okwa dipaa omunhu, okwe livaka modolongo nokwa teya vali shilumbu omaulu.

Natu mu indilileni hano omwenyo waye u hupifwe, nande e noipo ifike opo nolutu laye pamwe talu ka hepekwa kepangulo lokombanda yedu, ndele omwenyo u hupifilwe momwenyo waalushe.

*T. M. Shipandeni, Oranjemund*, otwa pewa omathano ogendji goku tu pukulula. Tu ilongeni kiilonga ya Jesus mbyoka e tu ningila. Otwa nyengwa okwitaala moluupagani wetu.

Tu taleni oshihauto nenge etemba lyoye. Tse tu kuthe po uunongo, tu konakone ondjila yOmushiti gwetu. Oshihauto shoye manga inaashi patululwa, itashi inyenge na itashi matuka. Ongoye u shi mpa hashi gumwa opo shi ende. Etemba lyoye ongoye mwene u shi kutya, oonani ngapi hadhi tulwa ko.

Ngoye ano u na olutu lwoye. Ku shi sho ho ende, ho longo ho matuka kutya, openi halu gumwa. Oho ende, ihe ku shi mpoka ho patululwa u wape u ende. Ipatululo yolutu lwoye ku yi na, oyi li miikaha yOmushiti. Ongoye oto kongwa kuKalunga ngoshihauto. Za mo ano moomposi, u dhibulule kutya, Omushiti gwoye oye te ku enditha.

*Kornelius Kefas Otavi*, ota hambelele Kalunga, eshi va pewa omuevangeliste mupe Friedrik Hinghalua. Ota indile yo ovamwaina meitavelo, va dimbuluke alushe ovamati ava ve li mehalakano momaindilo avo.

FINNISH MISSION PRESS  
ONIIPA OVAMBOLAND