

OMUKWETU

Registered at the General Post Office as a Newspaper



Omulongi mosikola yokombanda yaNgwediva, Maria Amakali okwa li a mono ompito yokukala moshigongi shaakiintu yomuumbugantu waAfrika, (tala ehokololo kepanja 4-5) Mpaka meme Amakali ota hwameke okiinteli yoshilongo shawo Suidwes-Afrika.

Odjuulufi yemanguluko otai kulu movakainhu

"Alushe ova tulwa konima nomoinima oyo va pumbiwa mo neenghono, nde fye tu na okukonga enyamukulo moshinima osho kutya omolwashike."

Osho hefelo Margaret Lessing, omupresidende wehangano lovakainhu mu S.A. a popya moshongalele shovakainhu osho sha li sha ongala muMaseru modula ya dja ko.

Moshongalele eshi okwa yandja efanoliyela keehenokomesho olo la hangika fiyo opopo kombinga yokulineekelela ovakainhu oinakuwanifwa inene. Okwa ti kutya mOiwana ya Hangana oyo i dule paife 130, oilongo itatu ashike i li mo tai pangelwa kovakainhu, India, Ceylon nalsrael. England naHolland oi na eehamba dovakainhu ndele ne hado tadi longo mepangelo.

Paife oku na oilongo ihapu tuu hewa ya katuka onghatu iwa okutambula ovakainhu meengudu doupolitika, opo va kale yo hava hoolola ovawiliki ngaashi Franisa a ya ndjele omhito ei lwotete 1946 Japan 1946 Israel 1969 Turkei 1935 na S.A. 1930.

Eshi sha konekwa osheshi kutya nande ovakainhu va pewa omhito ei, omoilongo inini natango va yeulukulwa kondaka yokutya sha moinima tai kumu oshiwana ashishe. Otava efelwa meengudu dokutota eeveta, nde ovanini tava kala meengudu deeministeli.

Eshi shikumwifa vali osheshi kutya, ovakainhu vahapu ve li komutwe womapangelo paife, luhapu osha pitila moukwapata; tu tye nande oIndira Gandhi walndia ou a fyuulula po oshipundi shaxe ile ohefelo Siramovo Bandaranaike [waCeylon, ou omutete okuninga oministeli yotete yomukainhu 1960, okwa nangala oshipundi shomulumenhu waye eshi a dipawa ko. Ashike nandepa na eenghatu da tya ngaha da katukwa kovakainhu. nove shi ulika kutya otava dulu lela navo yo okulonga oilonga i fike opo, oshinima onghe ngo oshashi ende kanini unene.

Osho efelo Lessing a tonga.

Ondaka ei nadikwao dihapu otadi ulike kutya eifano linene movakainhu okuhanga emanguluko olo tali pula okukalamwenyo kupe, onhele yomukainhu mokati kovanhu i kale ipe, oinakuwanifwa yaye i ninge ipe nonghedi yokukala kwaye i ninge ipe lela.

Elunduluko eli otave li teelee li itavelwe kovalumenhu ngaashi tave va tale kutya ovo ovafininiki vavo novatondi vavo moshinima shokufimaneka ouyadi wounhu wovakainhu.

Nonhele yotete yelunduluko shiimba otai kala ohombo, oyo tai ka nwefa mo omudingonoko aushe, fiyo oshilongo ashishe. Ngeenge hangaha, nena kape na ou ta ka wapaleka omadiladilo aa a penduka movakainhu kutya ohombo oyo oudu wa T.B., hashashimwe shi lili.

Ovalihomboli ve litale ngaashi omukainhu umwe a ti: Ovelise 18 yomuGenesisi, "omukwafi" inai udika ko kutya

Ohole yomeumbo

Kombinga yokukala momaumbo etu ohatu indilwa shili unene ouladi wa minikilwa komhepo yaKalunga. Otwa hala okupopya apa ohole yomeumbo. Omuyapostoli Paulus ta ti:

"Valumenhu, holeni ovalikadi veni ngaashi Kristus e hole eongalo laye..." Ou e hole omwalikadi waye, oku lihole ye mwene, osheshi kaku na ou ha tondo ombelela yaye mwene, nde ote i palula, te i yakula.

Okuhola mukwao ngaashi e lihole mwene osho okuhe mu ninga eshi ina hala okuningwa, oku mu dimina po omatimba aye ngaashi ye a hala a diminwe po omatimba aye:

Osho yo kombinga yomukainhu oku na okuhola omulumenhu waye, ngaashi eongalo li hole Omwene walo. Ngaashi eongalo tali dulika kuKristus, osho yo omukainhu ta dulika komulumenhu waye.

Okuhola mukwetu, ihatu tale ashike olutu, ndele hatu diladila unene omwenyo, osheshi ohole i na okulalakanena oinima ei itai xulu po. Omulumenhu e hole omwalikadi waye, ote mu amenene omhepo yaye kukeshe tuu osho tashi twala omwenyo womwalikadi waye momanyono. Omulumenhu na kale ta yandje omwenyo waye ongexwikilo omolwomwalikadi waye. Kalunga aeke ta yandje eenghono neendunge moshinima eshi, onghee natu kaleni meitavelo omo hatu pewa ohole yashili.

Nikodemus Shinomesho



Shimwe shomayambeko Kalunga te gandja mondjokana osho aanona

ONGERKI OYI NA OMAUDHIGU GAYO

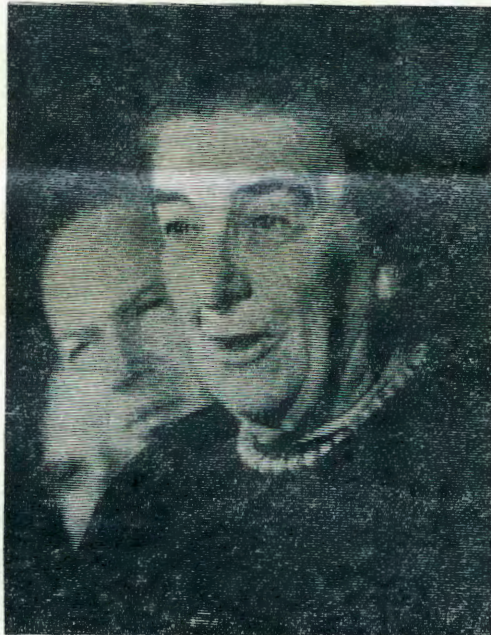
"Oshikalimo shiinakugwanithwa yongerki kashi shi ashike shoka okuninga omagalikano nomalongelokalunga, ihe nomaudhigu wo ngoka ge na sha nokukalamwenyo kwesiku kehe," osho omuwilikingerki muRusland a popya.

Omumbisofi Albrecht Schönherr ngoka ta wilike oongerki muNdowishiland lyokuuzilo, okwa yematela unene omukalo gwepangelo ngoka gwilvunda milnima yongerki. Kombinga yelongo okwa ti kutya epangelo otali pendula uuwehame moomwenyo dhaantu mokati kaakriste.

Omumbisofi Schönherr okwa ti kutya, epangelo lyoshilongo oli na oku shi konakona nawa ngele omukalo gwalyo gwokupangela ngoka tagu kala omaithano gaagundjuka moshipala itagu li etele uunkundi washu. Omumbisofi ota yematela wo aavali aakriste sho itaa zimminwa ya kale lilyo yokomitaye moosikola.

"Oshikalimo shiinakugwanithwa yongerki kashi shi ashike okugalikana, ihe nomilnima wo mbyoka ya guma okukalamwenyo kwomuntu kwesiku kehe," osho a ti.

(LWF)



Efelo Golda Meir, oministeli yotango yalsrael

"omupiya" ndele, "omulongipamwe naKalunga" (partner) Kalunga ou e li omukwafi womunhu omutivali.

Omatilika oge ende nawa mOshigambo

Aalongwa yomatilika yahetatu mosikola yokombanda, yOngerki, mOshigambo otaku tiwa kutya oya pita ayehe. Omwa li aamati yatano naakadhona yatatu.

Omulongwa gumwe okwa adha onkatu yotango noo A mbali (twee onderskeidings), onkatu yimwe muWiskunde nayimwe muBiologie.

Aalongwa yahamano oya adha onkatu ontiyali, gumwe onkatu ontitatu. Ihe ayehe oya adha amatilika go gene.

Patseyitho lyomukuluntusikola ndjoka:

T. E. Tirronen

Omwenyo gwokonima yeso

Osoondaha 6 ya landula esiku lyaapagani

Ihe pamwe oku na ngoka ta ti: Aasi otaa yumudhwa ngiini notaa holoka ye na omalutu ga tya ngiini? Omugoya ngoye, shoka to shi kunu, itashi yumuka ngele inashi sila mo....." 1Kor. 15:35-50

Epulo nkene oonakusa taa kala notaa ka holoka siku lyeholoko lyaKristus, olya kala edhigu mokati komapipl nomapipl gooitaali.

Omuyapostoli Paulus okwa kambadhala okumonena aantu eyamukulo moshinima shika. Tala nawa oovelise ndhika. 1Kor. 6:14-15; 1Tess. 4:13-18

Igwana yimwe otayi tala kutya olutu o-lwo ondholongo yomwenyo, onkene ya nyengwa okudhiladhila omwenyo ngoka gwa li gwa manguluka mondholongo ndjoka omuntu sho a si, kutya otagu ka shuna mo ishewe meyumuko.

Mpaka Paulus ota eta oonzapo okukoleka eitaalo lyezumuko. Ota yelitha oshinima shika neyele lya kuthwa kilmeno. Opo mombuto mu ze oshimeno, ombuto oyi na okusa tango. Omuwa Jesus okwa popi wo oshinima shika, tala Joh 12:24. Osho natse wo aantu tu li pamukalo nguka.

Etaambathano ndika ewanawa, okugandja shono shopayonuko, opo tu taambe shono shaaluhe. Paulus ta ti, omwiitaali ota fudha olule sho a yuulukwa etaambathano ndyoka 2Kor. 5:33 Mat. 6:30.

Eyele alihe oli na okutalwa muuyele wokutseya kwomuuyuni mbwiyaka nokudhimbwa shoka sha tseyika monshitwe yilnamwenyo yomuuyuni wongashingeyi. Paulus ota yelitha natango uukwatya wolutu olupe niinamwenyo;

Ota popi omayooloko gomaludhi goonyama dhokombanda yevi, naandhoka dhomegulu. Osho olutu lwopavi kaalu shi ku yelekwa naandoka lwomegulu. Olutu talu fumvikwa olu na eyooloko naandoka talu yumuka. Uukwatya wolutu lweyumuko owo ombepo.

Paulus ota popi ishewe ooAdam yaali. Elongo ndika pamwe oye mwene e li dhiladhila nokwe li kuthile oonzapo mOmbimbeli 1Mos.2:7, nando inali tseyika mokati kAayarabia. Kalunga okwa shiti omuntu a zi montsi yevi, nokwa fudhile muye ombepo yomwenyo omuntu nokwa ningi omunamwenyo. E na sha shi na omwenyo (siel).

Paulus ota ti, omuntu gwtango oye omwenyo aguke, nomuntu omutiyaali okwa pewa omwenyo gwomomwenyo. Ano mpaka otaku dhiladhila kutya omuntu omutiyaali okwa zi megulu. Manga tu li muuyuni, otse otwa fa kuku yetu Adam, omuntu gwtango, ihe nge twa yumuka otse otwa fa Kristus

Meyo lyaKristus naamboka ye na omwenyo otaa shituluka, ihe kashi li ngashi Aayuuda ye shi dhiladhila kutya olutu tuu nduka olwo talu yumudhwa notalu mono eyadhimo lyomegulu, aawe.

Omuyapostoli ota ti: "Onyama nombinzi kayi vulu okuthigulula oshilongo shaKalunga. Shoka tashi kana naashono itaashi kana kayi shi okutulwa kumwe. Ihe omukala gwo gwene nkene ayihe tayi ka ningwa po meyumuko, Omuyapostoli ota ti shika oshiholekwa manga kutse, oshoka okutseya kwetu okombinga manga.

Sebulon Ekandjo



JESUS OTA TI: "ONGAME EYUMUKO NOMWENYO, NGOKA IITAALA NDJE OYE TA KALA E NA OMWENYO NANDO NA SE."

TU LOPOTENI OUDJUU WETU KUKALUNGA

Elaka eli kutya "Ino tila" ohali lombwelwa omunhu fiku pe na sha osho tashi tilifa. Ondaka ei ohai popiwa alushe konima yehepaululo lomatimba, Omukulili eshi ta tu omunhu waye omukumo aha limbililwe edminepo laye.

Ndele hamolwediladilo ashike eli. Ohai udika yo okutwa omukumo pefimbo loudjuu nomekondjo keshe tali hange omunhu waKalunga. Shiwana shaNamibia owa koneka tuu ondaka yOmukulili woye eshi tai ingida ngaha: "Ino tila omudinwa ove, Ame onde ku kulila."

Osha yela lela kutya, oudjuu ou tu neni owa pumbwa elombwelo eli. Eendunge doonakutumanga otadi tu etele oumbada, nde fye ovanelao, Kalunga e tu ninga ovanelao eshi tu na omukangha wa kola wevangeli. Ou e li muKristus ita tila oudjuu, ota lopota ashike oudjuu waye kOhamba yopombada.

Tu lopoteni hano atusheni omaudjuu etweni kuKristus, opo keshe umwe u pewe kuMhepo lyapuki osho u na okupopya nokunyamukula.

Ame ohai nyamukula ngaha

Onda hala okunyamukula epulo la pulwa moshifo shOmukwetu shaDesemba No23, 1972 mepandja 7 eli tali pula kutya ovalihomboli nava kale ngahelipi omutumba mongerki?

Ame ohai nyamukula ngaha: ove na okukala koshipundi shimwe, osheshi fiku loshivilo shavo kowalitali ova ile ko vavali, nde eshi va dja ko ova ninga umwe. Inatu yavala ava tava yolo omukalo ou. Ou ta fi ohoni onghedi ei, lesa muMateus 19:4-6. Mwa kundwa ku.

E. Mumoye, Ongenga

Vamwameme, Omukulili wetu ina ninga eengaba domakwafo aye, ndelene okwa tee-lela tu kuwe kuye moudjuu keshe tau tu hange; wokomwenyo ile wokolutu ngaashi tu una palfe molwedu letu.

Tu nungumaneni koshipala shOmwenyo o-po tu ude ondaka yaye osheshi haye Kalunga kepulukuto, ndelene Kalunga kengungumano. Shiwana shetu, inamu tila otu neni omupopili Kristus. M. Sjameneh

OMOVE LIMOKATUTURA VENA OMWENYO

Shito inandi kala unene naanaa meekatutura domOwambo, onghe nge hai tale omunhu ta i kOkatutura ta fii po eumbo lavo, omukunda wavo neongalo lavo, ohe diladila ashike kutya nOmukulili waye okwe mu efa po.

Nani hasho. Omo ve li vahapu ve na omwenyo. Fiku limwe omutenya mOshoondaxa onda kala mOkatutura pOluno. Onda tala ovanhu vahapu eshi va li ve lipyakidila noipana yavo yeembelela noyeemboloto osho yo eengeshefa di lili noku lili.

Fimbo ve lipyakidila ngaha, nani langhele kwinya okwe uya omuudifi wevangeli. Kandi shii kutya ove mu uda ngahelipi, ile mbela omo ha kala alushe. Nghee ndi li po, ondi wete ashike ovanhu vahapu tava endebele tava tuvikile oingeshefwa yavo ndele opa li ongundu inene ya fikama tai pwilikine eudifo levangeli. Omuudifi ou okwa xulifile netumbulo eli.

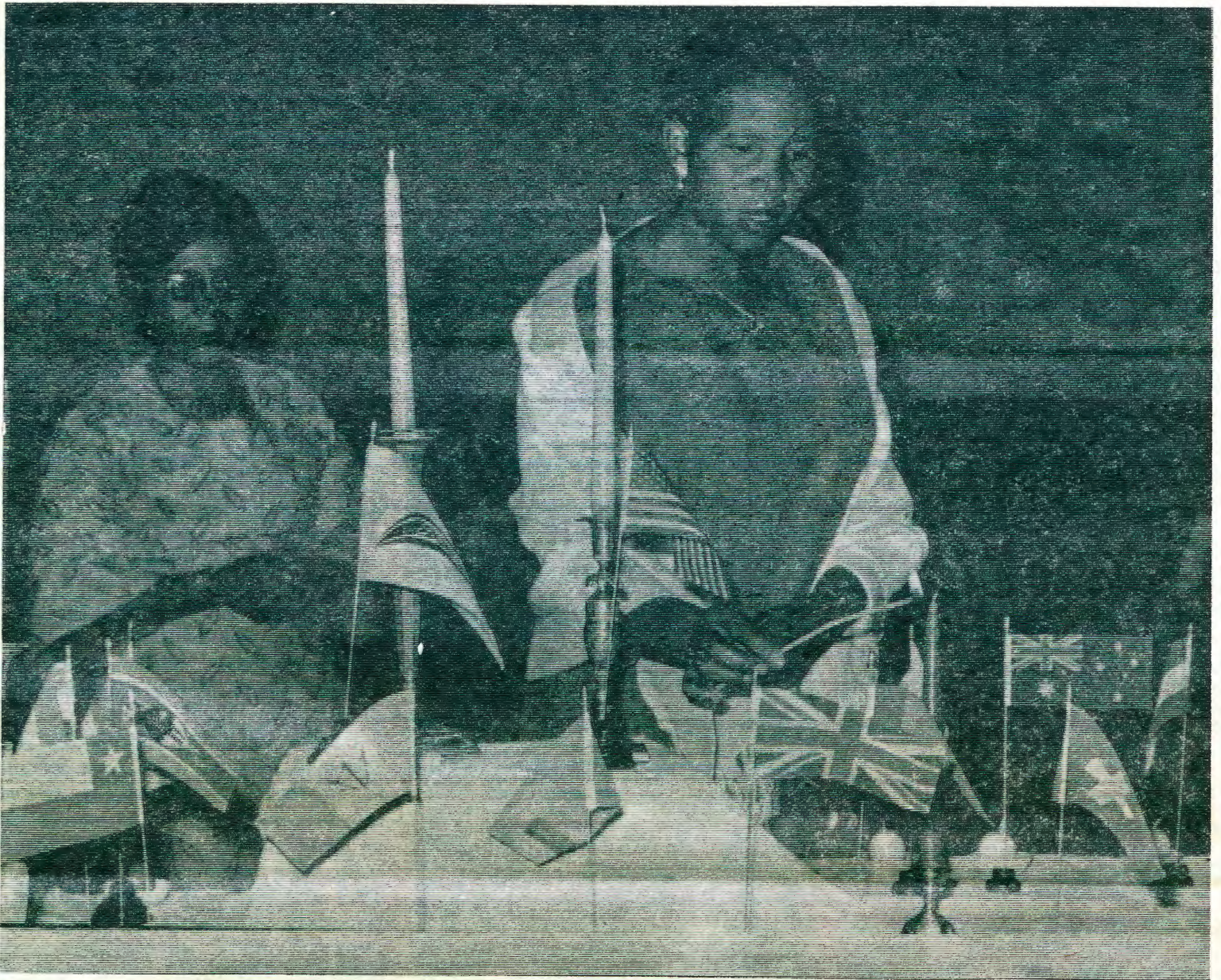
Ohatu hangwa tu li momhepo ilipipo hano?

Ovanhu ova li po va polimana mokupwilikina epulo eli. Omuudifi okwa ehena komesho kanini, nde ovanhu ova kala tava shikula mo. Eshi osho sha dimbulukifa nge eudifo lomuudifi umwe kOshakati la holokele mOmukwetu 1971 eshi a tile:

Ngenge umwe okwa udikila e li kOshakati, ohaku ti ngaa nee ooNima oko vati ve li kEeshakati oko. Omunhu a fa ina valulwa vali. Omuudifi oo womOshifo okwa tile:

"Nomomalukanda omu we tu tala tu li, vahapu otu na omwenyo." Eshi naame onde shi itavela nee, vahapu omo ve li ve na omwenyo.

Abraham Haileka



MOSHOONGALELE OSHILONGO KESHE OSHA LI SHI NA EPANDELA LASHO NELEHITA, ONYIKA YOSHILONGO OSHO. APA MEFANO OHAMBA YALESOTHO OTAI XWAMEKE ELEHITA ELI LA MANGELA OSHOONGALELE A-SHISHE KUMWE NGAASHI E SHI PULWA E SHI NINGE KOMUNASHIPUNDI HEFOLO GODFREY KOLUMOSHO.

Oshoongalele shovakainhu muLesotho

Ovakinhu ve fike po 50 ova dile keembinga adishe doumbuwanhu waAfrika nde tava ongala moshongalele shavo muMaseru, oshilando shEpangelo laLesotho poushiinda wa S.A. Moshongalele eshi omwa li Omuwambo umwe.

Eshi osho oshoongalele sha li sha fimana tashi kundafana nokukonga onhele yomukainhu monghalafano yovanhu ngeenge oi li tuu pouwa. Osha ningwa pokati kaSeptemba naKotoba wodula ya ya. Oufikepamwe wokwilnekelelwa oinakuwanifwa (Towards equalisation of responsibility) osho sha li oshipalanyolo shoikundafanwa.

“Eshi tashi lalakanenwa kEhangano eli lovakainhu osho ependukepo ngaashi li li mounyuni aushe unene kombinga yetu yaAfrika ovo twa djuulukwa kutya keshe umwe a lalakanene ekoko laye mouyadi, naasho osho ashike tashi dulikifa omukainhu keshe a dule okuwanifa oinakuwanifwa yaye ipe monghalafano yopaife.”

Osho sha tiwa kuhefelo Eleanor Godfrey, omunashipundi woshongalele mekundo laye.

Elinyengo eli lovakainhu okudiladila omufika wavo ola hovela nale muAmerika lwo-

peedula 1881, nde ola tandavela paife nounyuni aushe. Otali ifanwa paife oshoongalele shovakainhu aveshe ovalongi novanangeshefa (Federasie van sake en beroepsvrouw).

Konyala moshilongo keshe omo la dikwa omu na omupresidende walo pashital shalo noital aishe ohai ongala komudo okukundafana oilonga yavo. Komutwe waaveshe mounyuni aushe oku na natango omupresidende ou shilimba ta talele po Suidwes, ngeenge omutwe ou li kumwe nofingo, neudo muMaalitsa, hefelo Nazzla Dane Omukanada nokwa dalelwa muEgipiti.

Ehangano ndika mu S.A. olya dhikwa mo 1938 manga mu S.W.A. 1956 ngiika mOwambo onuumvo.

Elalakano lyalyo olyo okuhumitha nawa komeho lilongayakulo mokati kaakiintu.

b) Okumonena uthikepamwe meliko, muropolitika nomokukalamwenyo akuhe moshigwana.

c) Okuninga omalanduthano gliipopwiwa taga kwatha aakulukadhi naakadhona okwilsimanekela wo oludhi lwawo. Aakiintu wo ya mone elongo tali humu komeho tali gumu

eithano lyawo, opo uunongo wopaithano lyawo ye u longithe omoluwana wawo yene nowoshigwana ashihe.

d) Okupendulila aakiintu ombepo yiilonga yuusipesiala noyuunongo wi ili nowi ili noshi ya kumike wo omukumo okwilitula mewiliko lyoshilongo mEpangelo moshilongo momukunda nenge moshitopolwa shontumba.

Ehangano ndika olya tseyika muuyuni ahe kutya kali na sha nuropolitika, lthe mu Amerika olya simanekwa nohali pulwa omyele kEpangelo.

E NA OKUTWIKILA NATANGO OILONGA APA

Oshitaingerki shongerki yaAnglikani shomuDamaraland, S.W.A. osha tokola natango moshongalele shasho muDesemba wa dja ko kutya omubishofi Colin Winter ota talika natango oye ngo omuwilikingerki apa. Omubishofi ou okwa telwe mo mu S.W.A. kEpangelo la S. A. omu pehovelodula ya ya.

NDE DHI YAKA PO

Meme gwaShilongo, oto zi peni ano?

Haiti, mushamane wokOmbaye, iho ti nandi tye we ya po? Ame hamo meumbo omu?

Te ti, ou na omagumbo gangapi ano? Mpaka nda ti okOngwediva, kOjtjimbingwe osho wa zi ko?

Aye, inandi dja ko natango. Ngeenge tate Kalunga e shi hala, opo nee handi ka xullifako pexulilo lodula. ei.

Ai, wa kala ko nduno! Sho u li mpaka mOnandjokwe, maagundjuka yoye olye e li mo?

Omu na ngaho vamwe. Ame ondi li manga omu handi lideula. Navakwetu ava vongradu yetu ove li yo peenhele dimwe tave lideula.

Otamu idheula ethimbo li thike peni?

Eehani hamano. Mujuli hatu fuda po kanini opo nee hatu shuna kOjtjimbingwe. MuNovemba ile muDesemba, fye otwe ya nee.

Kandi shi tuu sho to iloongo. Matsa oho mana tuu? Ngele wa mana oto longo shike? Oto galukile maagundjuka yoye?

Tate, nge nda piti tashi monika shito. Yo oilonga oihapu, nge nda shuna movanyasha nounona, ile ndi longe meongalo ile moshipangelo ngaashi ngaha. Oilonga ito dula. Oshilonga mokati koomeme nasho

osha pumbwa omunhu, ounona meefikola ova pumbwa elongo lela lopakriste la mana mo, ouhamushanga moilonga yonhumba nongadi omo outeologi tau pumbiwa opo u li.

Oi, meme Shilongo, nando owa hulile mpo. lilonga oyindji shili. Te ti, ngashingeyi muka oho longo mo tuu shike?

Ohatu longo pamwe novanashilonga ava tava longo omu. Handi lideula okuningila ovanaudu owandaxa, ongula, pomulongo nokomatango, noku va talela po momikunda, oku va popifa nokukundafana naavo tava pumbwa eenghundafana. Okuyakula eembapila tadi di momaongalo omolwovanau-
vetu, nokuyandja dimwe kwaava va lekelwa ava va pumbwa, opo ve di twale komaaongalo. Okulonga nokushasha nayo oilonga.

Otil ku pula nena iihuna. Te ti, okahautu koye oke li peni?

Omushamane oha pula. Ai, hano okwa li u shii nge oto mono nge?

Omolwaasho ngaa nde ku mona. Ngweye iho monika lwaali.

Pandulo oku li moshilonga movanyasha. Mofikola itandi mu pumbwa, omu moshipangelo ke na mo oilonga. Ota longo, shaashi omunyasha e hole oilonga.

Ngele wa piti nde to tulwa miilonga yilwe, oto ke mu longitha tuu we? Ngeenge otai pumbwa osheendifo, ota ka longa ngo,

molwaashi ava ve shi yandja inava tya oku na ashike okulonga moshilonga shonhumba.

Ova ti ashike hatu uya tu konge omunhu oshikwafi, opo a ka longe, elongo letu liha hepe. -Onawa nokuli opo ovanyasha va lande oshihauto, shaashi ova li va hala nale okulandela omufita wovanyasha oshihauto, manga inaandi ya kofikola. -Eshi onde ku vake-
la ko ngaho.

Oto ya uunake u tu talele po kOmbaye?

Odo natu di twikile nee nge nda piti.

O, paife ohandi i nokuli koilonga. -Ila tu ka longe ko.

Te ti, naambika ilonga kuume. Longa nawa. Tangi sho nde ku mono.

Tangi, tate, Ovambaye nava kundwe unene.

Osho omusamane gumwe ya popi nameme Shilongo okuza pomukunda gwotango sigo koshipangelo mOnandjokwe. Ngame tii dhi yaka po.

TAAMBENI OMAKUNDO GENI

Stefanus Kaulwa, Windhoek, ota kunditha iilyo ayihe mongerki ya Elok nohapu ndji:

"Onke ano tandi tsu oongolo nda taalela ohe yOmuwa gwetu Jesus Kristus ngoka omazimo nomegulu nokombanda yevi ge mu lukilwa e mu pe oonkondo pashindji shesimano lye odhokwiikolelela komuntu gwomeni okOmbepo ye, Kristus opo a kale moomwenyo dheni okokwiitaala.

Ne mu wape nge mwa tsama nomwa dhikika mohole, okunongela pamwe naayapuki ayehe uumbwalangandja nuule nolumbumbu nuule wopombanda nokutseya ohole yaKristus yi vule uunongo auhe opo mu udhe omaudho agehe gaKalunga. Ef. 3: 14-21.

Kaavu ayehe ota ti:

"Ngele ku na ngoka gomune e na uudhigu, oye na galikane, naangoka e na enyanyu na imbe omahambeledondjimbo. Ngele ku na ngoka gomune ta alukwa, oye na ithane aakuluntu yegongalo ye mu galikanene noye mu gwayeke omagadhi medhina lyOmuwa. Egalikano lyeitaalo notali hupitha omuvu, Omuwa note mu kankameke, nongele a adhika a yono, otage mu dhiminwa po. Jak. 5: 14-50.

A lalekwa ko manga kOmbaye

Omuyevangeliste gwetu Benjamin Shuuvani okwa lalekwa ko manga kOmbaye opo a ka tameke elongekidho lyuusitagongalo kOwambo. Okwa lalekwa noohapu ndhika:

Oyo noya lapa ooyakwawo ya li mowato onkwawo ye ye ye ya kwathe. Oyo noye ya noya udhitha oowato adhihe mbali dha suudhigu. Ihe Simon Petrus sho e shi mono, okwa tsu oongolo komatundji gaJesus nokwa ti: Omuwa za po pungame, oshoka ongame omuntu omulunde. Jesus nokwa ti kuye: Ino tila, okongashingeyi to ningi omuyuuli gwaantu. Luk. 5: 7-11.

Tate Shuuvani okwa langekelwe kEpange-longerki a yakule aamati yomehalakano kOmbaye okuza 1966. Ekwatho lye olya li lya dhimbululwa nawa mokati kaayakulwa ye.

"Otamu ke tu tumina tuu omuntu a fa Shuuvani," osho gumwe a lombwele omu-tonateli gwoshitayi shUuninginino. Tate Shuuvani ota tameke pamwe naayevangeliste yamwe po elongekidho lyuusitagongalo mEgela muFebuluali nuumvo.



Omukainhu pashitwe yolutu laye noyeendunge okwa palamekwa okulidiinikila nokufinda engabukilo louyehame munene, omanyematifwo, nonyanya. Onghe oushitwe waye oukumwifa nowa wana okuhanga omufika wopombadambada mokati kovanh nande ovanh ohave mu kandula po, molwaashi ashike e li omukainhu." Eshi osha popiwa kumeme Stella Sigcau, kalulyo oministeli yehango mepangelo laTranskei. Jefolou Sigcau oye omukainhu wotete moumbuwanhu wa-Afrika a hoololelwa oshilonga shauministeli.

Oshoongalele shovalihongi muKongo

Mefiku eti 15 fiyo 17 Desemba 1972 ovalihongi vomoushilo wOukwanyama ova li va ongala muKongo. Oshoongalele osha li sha pangelwa komhepo yaKalunga nelongeloku-mwe.

Oshipalanyolo sha pangela oshoongalele: O-KUKALAMWENYO KWOMUNYASHA osha tameka notundimbibeli ku Rev. Paulus Andreas, (Omuuvithi 11:9-10). Omo ye a dongokununa okukalamwenyo kwomunhu pashivomwenyo. Omunhu ngeenge e na eedula 16-21 okwa tameka okulitokolela ye mwene nokushiiva ouwa nowii.

Omufitaongalo Josua Hanyango okwa hokolola EHISTORI LAKONGO nonghee eongalo la totwa po. "Vakwetu, okukalamwenyo natu ku tale ongokuulu kwetemba taku i komesho, ndele kaku na ou ta dulu oku ku shunifa monima, osho ehistori li li. Omunyasha mOmbibeli oye oo te liufa keendjovo daKalunga."

Moshooongalele omwa dja yo ediladilo eli: Okukalamwenyo kwomunyasha okwo oku na ondilo, onghee omunyasha ota pulwa a konakone efimbo omo e li mo nena. Ovanhu vamwe ohava efa va ye nomulonga manga inava shiliva apa tau di naapa tau i. Ovan-yasha ova pumbwa okuhangana novanyasha vokeembinga di lili, ndele moku shi ninga itatu teelee mongula ile naini, ndele natu tamekeni paife.

Eduliko ola teeelwa komunyasha keshe okudulika kovakulunhu vetu opo tu kale nelao nomwenyo mule kombada yedu, aaye, ohatu shi ningi shaashi nge hatu va fi-manekke ohatu shi ningi eshi sha yuka mOmwene.

Fye otu shi shii nokutya Kalunga ina endela ovayuki novayelele va wana va pwa, ndele okwa endela ovalunde, opo e va xupife moulunde. Ndele tu dimbulukweni. Kalunga oha tondo oulunde.

Omunyasha keshe ota pulwa a kale e na elalakano mokutokola eifano laye, manga i-ne shi ninga ne lipule omapulo aa moku-hoolola eifano laye:

- Ondi na tuu owino nounongo meifano olo?
- Eifano nde li hoolola ohandi ke li wa-



ETSEYITHO

Aavu mboka taa lala monaasaresa mOnandjokwe otaa pewa ikulya yonasa-resa, onke aayakuli itaa pumbwawe oku ya kalela ando omolwiikulya aawe.

Omathambo gokutalelapo aavu

Aavu oye na ompito yokutalelwapo pomathambo ngaashi taga landula mpaka: Okuza potundi yotango (1.00) omutenya sigo potundi ontiyali (2.00) komatango.

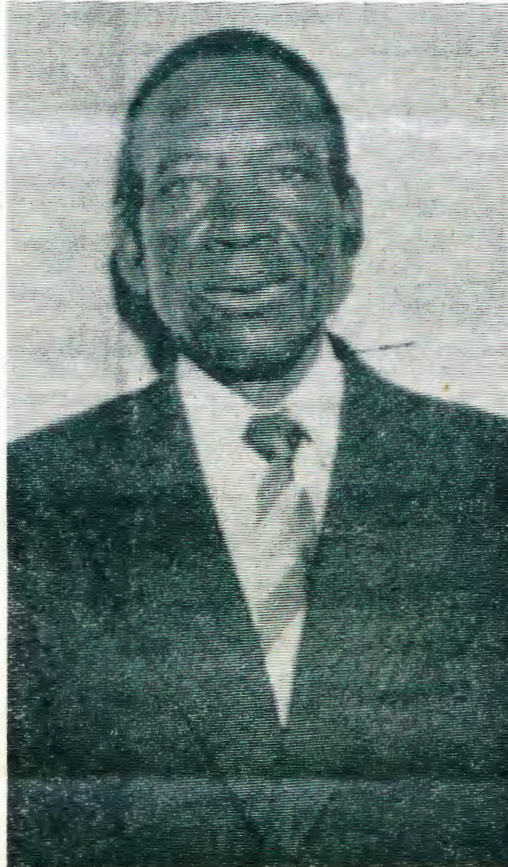
Okuza potundi ontihamano (6.00) komatango sigo otundi ontiheyali (7.00) kongulohi.

Aavu yomomukunda omutine IV, mOvenduka, mbaka itaa talelwapo nando, oshoka uuvu wawo ou na omukwayu, nomutalelipo otashi vulika a kwatwe kuuvu wontumba mboka u na omuvu gwaandjowo nenge u na aavu yalwe mboka ye li wo mOvenduka moka.

Omudhiginini gwegumbo, Onandjokwe

nifa tuu?

- Oilonga ohandi ke i diinina tuu?
- Ohandi kongo oilonga oyo i na oimali-wa ihapu, nde ondi wete tuu shili sha pumbiwa opo oilonga yange tai hafifa nge?
- Oiimati yoilonga yange otai ka monika tuu?
- Ondi na tuu shili okutameka noulonga va dinika, opo komesho ndi ka hange efikilo.



Omusitagongalo IyaKongo Josua Hanyango

Reinhold Indongo Oranjemund ota ti; liyaloo, sho tu na omuhumbati Tate yetu. Nonuumvo ndjika oti ilongekidha oku tu humbata. Kandi shi wo ihe kutya tse nangoye otwe mu pe shike momumvo gwa yi, nenge otwi ilongekidha oku mu ningila shike? Ombibeli tayi ti: "Ayihe mbyoka mwe yi ningile aamwameme aashuushuuka, ongame mwene mwe yi ningile."

OLYE OMUNANDJO?

Omolwoondjo aantu ayehe oya katalumeka nokaku na ngoka a longo shoka shu uka koshipala shaKalunga. Oyendji oye wete ye li nawa, itaa pumbwa edhiminopo lyoondjo, oshoka yo kaa shi aanandjo. Rom 3:23.

Oondjo ohadhi zi peni ano? Kalunga omuntu okwe mu shiti omuyogoki nomuyuuki e mu fa, ihe satana, eyoka ekuluntu, olya fudhile olwithi momeho gaantu, onkee aantu kaa weteko we yo itaa dhimbulula shoka sho opalela Kalunga. Oya tameke okulonga uulunde. Muulunde nomwa zi oondjo. Jer 23:29. Oondjo dhandje otandi dhi mono ngiini?

Uuna wa hala okwiimona moshipala oho yi poshisipili, sho notashi ku hololele uuwanawa woshipala shoye nonkene u li. Ope na ihe espili ndyoka hali minikile meni lyolutu lwomuntu notali ku ulukile ihe oondjo dho, oyo oohapu dhaKalunga. Uuna to dhi lesa mOmbibeli yoye, oto itsu mo ndhoka tadhi popi oshinima ho shi ningi sha nika ekwatathano noondjo nonuulunde wo.

Onkene inda nena wu ki italele mesipili ndyoka eyelele lyohapu yaKalunga. Jes 64:6.

M. Amoomo

Eleloongalo

Eleloongalo olo ina yovakriste notali pashukile eemwenyo dovana vaKalunga noku va pukulula mohole.

Omwiifani omufitaongalo mokwiifana kwaye eleloongalo okwa shiiva ava ve na eendjovo dile ile dixupi. Nelixupipiko onda hala kutya ngeenge ovanaendjovo ve li po omulongo pamwe vatano aveke, eleloongalo tali va pwilikine nawa, nde vatano vaxuuninwa eloloko ohali kala lihapu netango ola toka yo oilyo imwe yeleeleongalo oya dja kokule.

Keshiwa mbela omwiifani weleloongalo a tume oumbapila kwaavo a hala va kundanfanwe navo va yeleka efimbo loilonga youhakumwenyo wefiku olo? Ihe efimbo vakwetu ohamu mono ngaa tali wana nexulilo ohamu li tale liwa?

Ev. Paulus Hamunjela



Omusamane Reinhold Indongo

Nani otu lyeni natango pamwe

Ookuume mu li ku C.D.M. otandi ti kune tangi unene sho mwa tenteke ikaha yeni koshiponga shegumbo lyandje sho lya pi po eti 20.9.1972. Palutu nando otwa topokeni, ihe nani pamwenyo otu lyeni pamwe pamadhiladhi gajesus Kristus.

Thomas M. Katondoka

Omatumo oga longo uuwanawa washike?

Epulo ndika lya kala limwe lyomiikundathanwa yoshigongi shoongerki adhihe muuyuni shoka sha li sha gongala muBangkok petameko lyomumvo nguka no-sha li sha pendutha omadhengo ogendji miilyo moka omatumo gi ili nogi ili ga longo mo.

Moonkundathana okwa dhimbululwa nkene etumo kali shi oshinakugwanithwa sholudhi lwontumba nenge omuhoko gwongandi, aguke, ihe igwana ayihe miitopolwa ayihe ihamano yevi otayi vulu okufaalelathana evangeli.

Shika otashi kandula po euvoko lyopombambo kutya aatiligane oyo ayeke ye na ompito yokufala evangeli kiigwana yaaludhe, ihe epingathano oli na wo okukala po mpoka tali vulika.

Takele komadhengo ga zi muusama wiilonga yomatumo ngaashi ga dhimbululwa, oonkundathana ndhika odha hulithwa noshipopipiwa shomumbisofi S.U. Hastings, gwa Jamaika, West Indies, shoka tashi yambeke iilonga yomatumo ngaashi tashi landula mpaka:

1. Omunashipundi omusimanekwa nookume: Otandi indile eitulumo lyeni moshipopipiwa shika shandje oshifupi shoka ndi inekela otashi ka eta ekwatho moonkundathana nomomadhiladhilo ngoka gu uka pehulilo ngashingeyi. Otandi popi ngame ngoka nda zi mongerki yi ithikamena mokwiikwatha nomeipangelo lyayo noya dhike Ehanganotumo lyayo yene momumvo 1883. Oshipopipiwa shika inandi shi ninga opo ndi pandike ando kaatumwa nenge kEpangelotumo lyontumba, ihe okwoopaleka shoka ndi wete, pamadhiladhilo gandje, shu uka unene kombinga yimwe moonkundathana dhetu kombinga yomatumo.

2. Natango onda hala oku shi yelitha nawa kutya, itandi popi ongomupanguli. Shika osha dhimbululwa kutya, aapopi ya tetekele ndje moshinima shika, oya popi pawino yawo mokugandja omausama komatumo, noye shi ningi noomwenyo dha yela ongaar-kriste. Ondi inekela kutya aapopi mbano otaa pitikile ndje wo opo ndi popye paukwatya wandje nopawino yandje.

3. Sigo oompaka omaludhi kombinga yoshipopipiwa shomatumo oga kala owala taga gandja omausama, ihe ngame onda hala okweeta epandulo kombinga yomatumo ngoka. Shika osho oshililela kutya aatumwa oyendji miilongatumo yawo oya kambadhala okuhula aaitedhululi eputuko lyopamithigululwakalo dhawo noye ya thiminikile muukwatyankalo nomomagano gopauteologi wopashikiwilongo. Okuza mpoka pomahala ogendji gomuyuni otatu adha ngashingeyi aaluudhe miipa yaatiligane. Aatumwa mbono kaya li ye na ontseyo yopaukwatya, yopankalathano noyopankalamwenyo gwomuntu methimbo lyongashingeyi. Oya gandja shoka ya li ye na naashoka kwa li ya tseya, onkene kashi shi oshiwana, pamadhiladhilo gandje, okupangula aatumwa yomethelemumvo 18 oku ya pangulitha onkalo yomuthika gwomethelemimvo eti-20.

4. Moshitopolwa moka nda zi Etumo olya tameke 1732 (shika otashi ti kutya Etumo ndika ekulukulu muuyuni) ihe nonando aatumwa mboka ya longo monkalo ndjoka tayi piki notayi shundula omuntu, na nande aatumwa yamwe noongerki dhimwe dhi igameke nduno shili koonkondo ndhoka dhonkalathano nodhopamahupilo gopandevell, oyendji yomuyo pasilohenda lyaKalunga oyi imangulula ko, nonando kwa li tashi pula oomwenyo dhawo, ya kondjo noya adha emanguluko lyaapikwa aaluudhe.

5. Uupika sho wa hulithwa po aatumwa oya monena oonakwaana evi (aaluudhe) evi,

ya tungu oondjila, oosikola nonena konyala oopelesenda omilongo 60 dhomatungo giiputudhilo muJamaika oge li ngele gongerki yo yene nenge ge yi pamba. Aatumwa oye tu etele emanguluko, eputuko, nuuyelele wehupitho; nomadhengo ogendji ngoka twa dhengitha omatumo omasiku ngano (mungoka ogendji nde ga itaala) oge li paukwatya wontumba ehokololo lyesindano lyomatumo. Kakwa li tashi vulika tu kale mpaka nokukundhathana EHUPITHO MUUYUNI WONGASHINGEYI ando omatumo okwa li inaage tu etela onkundana ombwanawa yehupitho.

6. Moshitopolwa shuuyuni nkoka nda zi

ETSEYITHO

MONandjokwe omwa pumbiwa omulumentu ngoka e shi okulesha **Oshiingilisa** noku na ehalo okwiilonga omashina goshipangelo. Omulumentu ngoka na kale andola a pita **Junior** nenge ongundu yi vule pundjoka. Ngoka u na ehalo mushika holoka komusamane *Henrik von Schantz, Onandjokwe, mu kundathane.*

OKURSUS YOMUSIKI

Kalunga ngele e shi hala k**Ongwediva** otaku ka kala okursus yomusiki tayi ka kala oomwedhi 4-6. Otayi ka tameka petameko lya**Apilili**. Mboka ya hala mokursus ndjoka naa ninge eindilo manga lyotango lya**Maalitsa** inaali thika.

Oompitikilo: omuntu ngoka e shi okulesha, okunyola **NOKWIIMBA NAWA**. Ofuto omolwokursus **R1,00** komwe dhi, **Ombelewa yomusiki Ongwediva**.

Ongomuwilikingerki gwomongerki ndjoka ya valwa wo kEhanganotumo, otandi koleke oshipopipiwa shomumbisofi Hastings gwaJamaika. Osho omumbisofi gwongerki yOwambokavango **Dr. L. Auala** a ti sho a galuka koshigongi.

Agentskap - Jonas Israel

WINDHOEKBIER, WINDHOEK BIER!

Oluno, Ondonga:

Ava mwa hala Windhoekbier nomu na eelisensa deefitola domakende, tate Israel pOluno oku na eyakulo leni moshinima eshi notamu lande kondado yofabulikalela.

Kwaava muhe na eembapila deelisensa, ondado yomakende oi li ngo ngaashi shito. Endelega hano u limonene ekwafo apa popepi. Ofraha yotete okuholola po eyakulo eli popepi naave, oya helulilwe eti 11.1.1973.

oku na natango oshindji sha pumbiwa okuningwa. Oku na onkalathano yokwahe na uuyuki nomayugwo. Hwiya oku na onkalo yongupa pongombe. Aantu yomiilando iinene moka mu na oofabulika otaa thipi aantu yokoha mokati kaamboka ngame wo ndi li. Aatumwa oyo ye tu pe niikondjitho mbyoka tatu kondjitha nayo uuwilnayi, niikondjitho ya tya ngaaka oyo uuyeleele weputuko nowevangeli mboka tau mangulula notau shitulula omuntu gumwe na gumwe nopo tau ya mangle mehanganano limwe.

7. Hugunina, omunashipundi omusimanekwa oshipopipiwayamele shi holike muWest Indies ooshi: "**Oriens Ex Occidente Lux**". Uuyeleele ohau zi kuuninginino. Einekelo lyetu oondika kutya tse mboka tu li muWest Indies otatu vulu okulongithwa kuKalunga okuulukila aantu yomaludhi gi ili nogi ili noyomomalwaala gi ili nogi ili nkene taa vulu okukala pamwe mombilli nomeuvathano.

Tangi omunashipundi omusimanekwa.



**"KA TWEETHA KU MU LILA,
OSHOKA OKWA LI GWEKONGO
LYETU"**

Mpaka ote dhiladhila tate nakusa M. Hauuanga "Hakunokadolo koshikombo konhanga ke na apa te ka hange."

Okwa longwa pamwe nangame mosikola yuusita mOtjimbingwe. Otwa yapulilwa uusitagongalo mOkahao eti 3.10. 1965. Kumwe atuhe otwa li omulongo nayatano.

Omusi Hauuanga okwa langekwa me-gongalo lyaTsumeb nokwa kala kuume kandje kopothingo. Okwa li ha ithana ndje ndi mu kwathe miiututhi yegongalo mbyoka a li a ningi muTsumeb.

Lwahugunina okwa ithana ndje tu ka ninge oshituthi shekoleko nokulongekidha omba-sara omolwokulanda okapakapaka kegonga-lo naayihe mbika oya li ya ende nawa.

Okapakapaka sho ka landwa okwe ka luku "Mikael". Itandi etha ku mu lila nando. Otwa li twa thanekwa pamwe konima yilituthi ya tumbulwa pombanda, nani olwa-huginina muuyuni muka.

One aayapulwa pamwe nangame otandi mu kundu, medhina lyongundu yetweni.

Onda li nda mono ohenda ndi humbatele oshiketha shomudhimba gwatate Hauuanga moshihauto shoka she mu thindikile koma-wendo eti 27/11/72 Aakwangundu yetu ya li

po: Eino Amaambo, naSebulon Ekandjo Tu hekelekeni moluhodhi lwetu noku-hambelela Kalunga sho mongundu wo yetu gumwe gwetu e tu tetekelele mevululuko lyaana yaKalunga.

Osho wo ngaaka ethimbo lyeso lyetu tali ya mbala kutse. Mukwetu okwa li a pewa ohenda yokulongekidhilwa ehulilo lye moshipangelo shaNgela, onkee tu longeni nomukumo neidhidhimiko netegameno neinekelo, oshoka ethimbo lyetu efupi.



Nakusa Malakia kolumoho pamwe nomusitagongalo Titus Ngula ya fanekelwa mOshomeya manga nakusa ta longo megongalo ndiyaka.

Omwa Jesus ote ya mbala. Kalunga na hekeleke meme Marta Hauuanga noothi-gwa naasitagongalo ayehe mongerki ya-Elok noya Elk.

Aayapulwa pamwe naMalakia Hauuanga oyo: Asser Lihongo, Eino Amaambo, Mikael Nengola, Elia Nghikembwa, Hofni Nakamhela, Junias Valno Kaapanda, Johannes Ngilundilwa, Salomo Elago, Sebulon Ekandjo, Petrus Shipena, Titus Ngula, Sakeus Shaduka na Levi Gerson Max.

"Itatu etha ku mu lila, oshoka okwa li gwekongo lyetu."

Omukwiita omukweni muKristus Jesus.

Titus Ngula.

Oshitayi 1.1.73



*Kundweni momumvo
Omupe 1973*

Edhina lyOmuwa olyo epopilongulu lya kola, omuyuuki omo ta ka matukila mo nota popilwa. Omaj. 18:10. Tse omolwontalanteni yOmuwa inaa-tu yonwa po nata-ngo. Esilohenda lye olyo epe kehe ongula nuudhiginini we owindji. Hambeleleni Omuwa one omapipi agehe, hambeleleni.

L. Max

OMUKWETU

Oshifo shOngerki onkwaevangeli paLuther yomOwambokavango
Die Nuusblad van die Evangeliese Lutherse Owambokavangokerk
Ohashi nyanyangidhwa mOnilpa,
Omukuluntu gwoshifo/Hoofredakteur omu-mbisofi Dr. Leonard Auala,
Amushanga/redakteur Rev. Sebulon Ekandjo
Ondando yoshifo komumvo muSuidwes-Afrika R1.00, kombanda yomafuta R2.00
Oondando nomambestelo naga tumwe kOmu-kwetu, Onilpa, P/B 2013, Ondangwa, S.W.A.

Omatsyitho gomuntu mwene pashinyolwa shuule woondeimi	1	otashi futwa	R1.00
oondelmi	2	otashi futwa	R1.90
oondelmi	3	otashi futwa	R2.70
oondelmi	4	otashi futwa	R3.40
oondelmi	5	otashi futwa	R5.00

Oto vulu okutuma wo efano lyaashono wa hah shi tseyithwe.

Owambokavango Church Press
P/B 2013 Ondangwa, S. W. A.