

OMUKWETU

Registered at the General Post Office as a Newspaper

He yongerki yaKatolika kuuzilo a hulitha

He yongerki, Atenagoras, omutse gwongerki yaKatolika kuuzilo waEuropa okwa hulitha oondjenda dhe mulstanbul (Konstantinopel) momwedhi gwa yi.

Omuwilikingerki gwongerki yaKatolika (Ortodoks) Atenagoras 1 okwa valwa 1886 Griekeland, e ta sikola uuteologi moseminali yaIstanbul. Oshipundi shuuwilikingerki woongerki adhihe dhaOrtodoks muuyuni, okwe shi kuutumba 1948.

Shono kashi dhimbitha mehistoli lye etsakaneno lye nomuwilikingerki gwongerki yaKatolika kaRoma, omupapa Paulus VI lwotango oshipala noshipala muJerusalem 1964, konima yoomvula 300 lwaampoka aawiliki yoongerki ndhika mbali sho ya topokele ya na ombili.

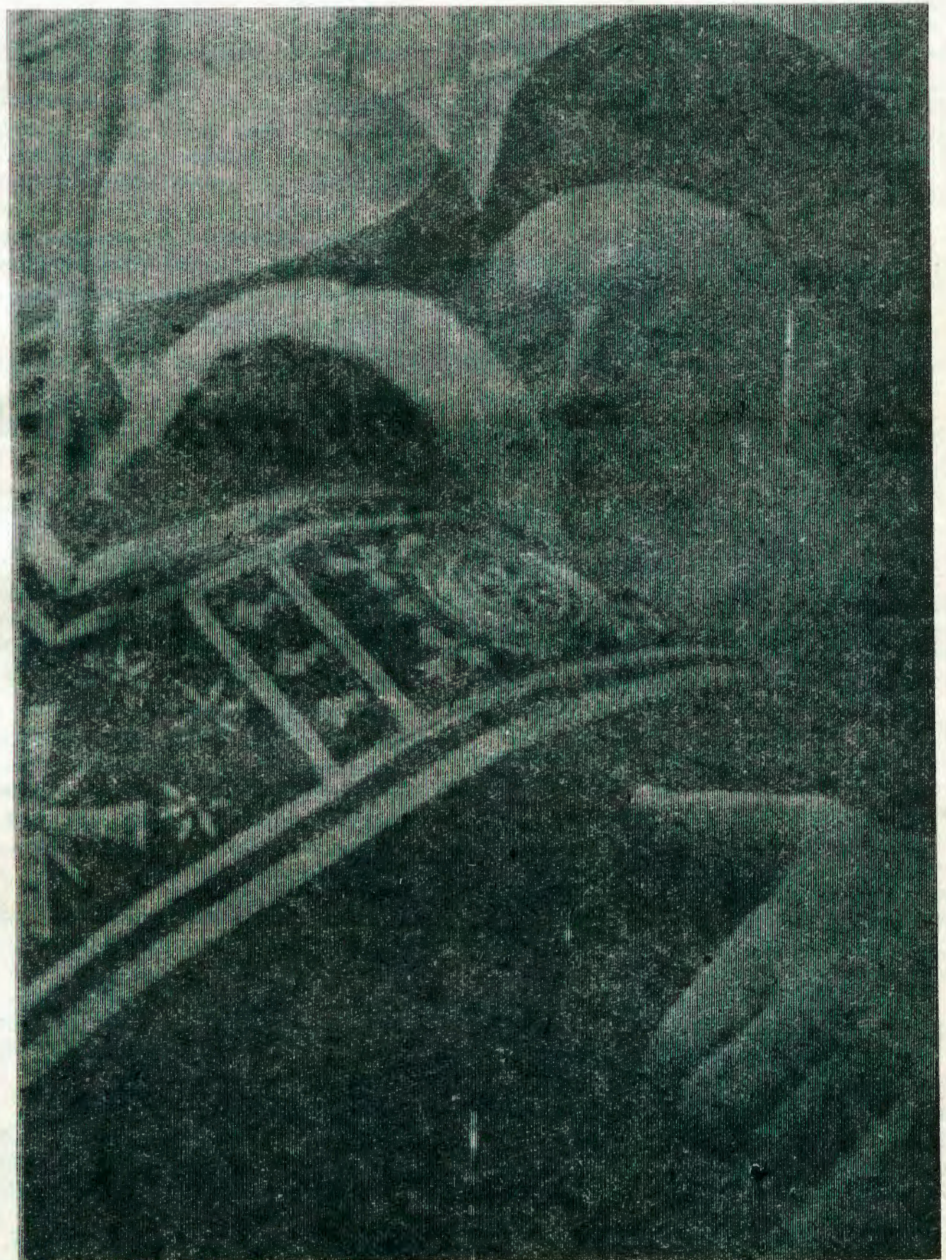
Omupatriagi Atenagoras okwa ningi oshindji mokukondjela uukumwe woongerki muuyuni auhe, okuza 1920.

"Kape na ongerki yopakriste tayi kala yi li mondjila ngele oya tokoka ko koonkwa-wo. Hakutala omayooloko guuteologi, hakutala iinima mbyoka twa yooloka muyo, ihe ongerki kehe nayi lalakanene okuuva ko oshilonga shOmbepo yaKristus," osho nakusa Atenagoras a lombwela ehangano lyoongerki adhihe muuyuni (WCC).

Pefumviko lye opwa kala aawilikingerki yoongerki dhomaaitaalo gi ili nogi ili mokati kawo; omumbisofi omunene gwongerki yaAnglikani Michael Ramsey, Cardinal Willebrands, omupresidende guukumwe wopakriste moshilando shomupapa Vatikan, Roma.

Edhinasimaneko kwa li e li pewa, "Omuyapostoli guukumwe waakriste." Inaku tseyika manga omulanduli gwe melelo lyongerki yaOrtodoks.

Omupapa Paulus VI, gwaRoma (kolumoho) okwa dhingatela omuwilikingerki Atenagoras 1 gwalstanbul sho ya tsakanene lwotango nolwahugunina muJerusalem 1964. Omupapa okwa tuma elaka lyehekeleko kongerki yaOrtodoks sho a kundana eso lyomuwilikingerki omukwawo.



Eyooloko Iyepange- lo IyaKristus ku- ndyoka Iyuuyuni

Nale otwa popya pafupi nkene omapulo ngaka gaali ga fa kage shi okuyoololwa nuupu. Otwa li twa tumbula nokuli oshinima oshinene kutya, ngoka e li kombanda yomapangelo ngoka Iyuuyuni nolyaKalunga, oKristus awike, oye omutse gwaayihe. Ngashingeyi otatu tala omayooloko gamwe moshinima shika.

Sho twa popi kutya uuyuni otau pangelwa koveta manga oshilongo shaKalunga tashi pangelwa kevangeli, nena konyala otwa mona nale eyooloko mpoka li li. Olwindji oshilongo shaKalunga otashi kondjithwa kuuyuni. Kalunga okwa shiti omuntu oshifetha she. Kalunga ngoka omupangeli nomuntu oshifetha she okwa pewa ano oshinakugwanithwa shoka shokupangela uuyuni, ihe omuntu mokulangekwa miilonga mbika okwa kambadhala okukala kee na Kalunga,



manga e li po nokuli omuleli gweshito IyaKalunga. Opo mpoka pwa zi omuntu a kondjitha Kalunga.

Omuntu sho a thiki ponkatu ndjika, Kalunga okwa kala omupangeli guuyuni mboka inaa vulika kehalo Iye. Ihe hasho ashike, uuyuni mboka Kalunga e na oku u pangula omolwetangalalo Iyawo, oku li po wo e u hole nokwa hala oku u hupitha. Shika osho oshilonga shOmuna gwaKalunga muuyuni.

Mpaka osha yela nawa kutya, uuyuni mboka u na oontamanana naKalunga ngele tau zimine epangelo IyaKristus nokuvulika kulyo nena itaku ka popiwa we uutondwe pokati komuntu naKalunga.

Omukriste sho ta dhimbulula nkene uuyuni wi ilongela ondjahi yaKalunga nowa nika okuyonwa po kuye, otashi pendutha omadhiladhilo gokutembuka mo muuyuni. Ihe Ombimbeli naampoka otayi gandja eyamukulo:

"Itandi galikana u ya kuthe mo muuyuni, ihe u ya gamene kuuwinayi." Joh.17:15

Shika osho tashi thiminike aakriste ongaakalimo yomoshilongo shaKalunga ya vule wo okukala moshilongo shuuyuni. Pamwe opo wo mpaka hapu ya omapumathano sho uuyuni tau ya thiminike ye ende pauyuni, ihe yo aakriste otaa dhiladhila oshipango shomukwaniilwa gwomoshilongo kaashi lwetike noya hala okuvulika kuye.

Epulo aluhe otali thiminike mpoka kutya, omiinima yini po ano tu na okuvulika kEpangelo Iyopantu? Tango otu na okutseya shono Kalunga ta pula kutse, opo tu vule ihe okuyamukula uuyuni kwaashono tu shi shi. Omuyapostoli Petrus mondholongo ta ti:

"Tokoleni ne yene ngele oshuuka tuu koshipala shaKalunga okuvulika kune komeho gaKalunga." Iil.4:19

Emanguluko kali ko momavigumbo

Ngele otaku popiwa emanguluko Iyomavigumbo ngashi haga longekidhwa kEpangelo Iya S.A., ihali tumbulwa noshitya shono sha tseyika moondunge dhemanguluko Iyo Iyene. Iitya hayi tumbulwa mpaka oye etele ngiika wo aatoloki uudhigu nosha fala omadhiladhilo gaapulakeni pombambo.

Komufala Ndjayi Jannie de Wet, momutumba gwopaulumompumbwe gwEpangelo IyOwambo numvo, okwa tumbula iitya iyali kutya:

"Omallenga oga mona kutya, ethimbo olya pya oonkondo dhi gwedhelwe mEpangelo nonkatu yokuza moselfbestuur nokuya moselfregering yi etwe po."

Iitya mbika iyali ngele ino hala okwiayetela uuyakadhi wokudhiladhila oto vulu oku yi fatulula mOshiwambo pandunge yimwe ayike eipangelo. Hanuupu to ndhindhilike kutya, eipangelo moshitya "selfbestuur" (self rule) oli vulike keipangelo moshitya "selfregering" (self-government).

Opo ihe konima yoonkantu ndhika oto pewa nduno eipangelo pandunge dhoshitya "selfbesikikking" (self-determination); nenge "onafhanklikheid" (independence).

Iitya iyali selfbesikikking na onafhanklikheid oyo ayike ya tseyika nawa komambo gomafatululo giitya momalaka galwe omakwiilongo mekwatathano neipangelo Iyoshilongo. Iitya iikwawo selfbestuur na selfregering itayi monika nando palwe.

Uudhigu wiitya owa hololwa mpaka pafupi okuulika nkene oshigwana sha falwa momatokolo giinima mbyoka kaayi uvitike nando kashona. Mboka ya nyanyukwa sho yu uvite kutya otaa pewa aniwa eipangelo, konima oya ningi omwenyo omwiinayi noyu uvite ya kotokelwa. Ano omukundu aguhe ogu li meuvoko Iyiitya hayi longithwa.

Eipangelo "onafhanklikeid" (independence) moondunge dhopapolitika ihashi popiwa nando lumwe momavigumbo, osho wo omusimanekwa Johannes Vorster omuleli gwa S.A. okwa nyengwa sigo onena okuyamukula uuyuni kutya, uunake ta ka gandja emanguluko pandunge dhoshitya shoka, unene muTranskei ndyoka Iya pewa nale eipangelo.

"Etokolo Iyahugunina Iyemanguluko IyaSuidwes oli li miikaha yiigwana yaamuka; hamu S.A. nenge shi uthwe ku V.V.O.", osho oministeli Vorster a lombwele uuyuni. Ano okutaamba etata Iyokwiipangela aluhe (selfregering) nenge okutaamba eipangelo (onafhanklikheid, hali humbata oshimpwiyu ashihe shelelo komapepe galyo, oshi li momatokolo gomuvalelwamo kehe gwaNamibia.

Omutse nomutima

ku Rev. F.Ashipala.

"Omulumentu oye omutse gwomukiintu, ongaashika Kristus omutse gwegongalo noye omuhupithi gwolutu." Ef. 5:23

Olwindji etumbulo ndika ngele tali leshwa, aalumentu ohatu iuvu unambano nohatu isimaneke sho tatu dhiladhila kutya otu li ngaaka kombanda tu vule aakiintu naanona.

Kombinga onkwawo aakiintu ngele taa uvu etumbulo ndika, ohaa kwatwa keidhino noyu uvite ya tulwa mongundu yaa na oshilonga. Ihe ngele tatu tala ethimbo Iyo Iyene Iyetumbulo ndika, mokukala kwaantu yethimbo Iyetu olya fa Iya piti nenge li li pokupitapo.

Moshili yo yene mpaka itapu popiwa we kutya esimano Iyomulumentu enene li vule Iyomukiintu nenge, epangelo Iyomulumentu enene okupangela omukiintu gwe. Nenge ando kutya, oku na shoka omulumentu e shi pitikilwa manga omukiintu ineeshi pitikilwa mokukalamwenyo.

Mpaka otapu popiwa ashike eyooloko Iyiilonga, moondjokana ayehe omulumentu nomukiintu oyo uugumwe u na omwenyo. Sho omulumentu ti. ithanwa omutse, ota taamba iilonga mbyoka yaa shi yopakulombwelwa, ihe yokehalo ewanawa.

Omutse kagu vulu okwiikalela, iilyo iikwawo yilwe yi na oshilonga, otayi pumbiwa. Oshilyo shimwe muugumwe wondjokana osho omutima, nomutima ogwo omukiintu. Shika ohatu shi adha mehokololo Iyokushitwa kwomukiintu. Kalunga okwe mu kutha molupati Iwomulumentu. Okwe mu tanda popepi nomutima fpokatiiti ko-lutu.

Oye ogwopomutima nenge oye nokuli omutima muugumwe mbuka. Omutse olwindji otashi vulika gu longe pombambo. Omukiintu oye omupukululi gwomulumentu nomukwathi gwe moombinga odhindji mokukalamwenyo nkuka. Omulumentu omu-



Omusitagongalo Festus Ashipala

tungi nomudhiki gwegumbo, omukiintu omusilishimpwiyu gwalyo nogwaamboka ye li mo notaa ya mo.

Omulumentu ando tu mu yekeke noma-laka gomulilo nena omukiintu oye oshikuni shoka tashi pi.

Tala kep. tali landula

Mukwetu olyelye

Ndele tala, omunongo womhango okwa fikama nde te mu yelege ta ti: Muho-
ngi, ondi na okuninga shike ndi fyuulule omwenyo waalushe? Jesus okwa tja:
"Hala mukweni ngaashi u lihole mwene." Omunongomhango okwa ti: "Olyelye
hano mukwetu?".....Luk. 10:25-37.

Fye ongaava tu li pefimbo lomhepo yelunduluko, ohashi tu yelege efiku keshe kutya, apa pe fike eyeuluko londaka youkwapata, younasionale ile oyoukwaludi, opo yo pe fike ekulo lelipulo eli: Mukwetu olyelye.

Alushe naakushe otaku popiwa oukumwe wovaitaveli ile wovakriste, nde akushe otaku di yo omahepu eenhamanana pokati kovaitaveli nomomaongalo noluhapu osha twala momalihano.

Ombibeli otai ti kutya epulo linya omunongomhango okwe li pula okutalifa ouyuki waye apa u fike moshilonga shoveta, nde sha ninga vali elao kuye okuulikilwa okuhafika moshilalakanenwa shaye. Ov.29.

Osho shipu omutekuliumbo keshe a kale neliudo kutya, okwa ningila ovaneumbo laye ashishe ngaashi omutekuliumbo te shi pulwa, nde natango ota kala ina fika meshiivo lamukwao kutya, olyelye. Ovaleli voi-longo tashi dulika va kukutike omilungu eshi tava pulwa ouyuki, moilonga yavo nande va diladila kutya, ova ninga ashishe tashi eta po eehenokomesho.

Apa ohatu yelege nawa kehongo lOmu-yapostoli Paulus eshi a tala kutya oshilonga shomhango mokufikifa omunhu mexupifo oshi na ongaba. Rom. 8:3-4 Meni leengaba doveta, natu kale twe i wanifa nouidiini u fike peni, mukwetu ohatu kala alushe tuhe mu shii. Nde pondje yayo opo oshipango shohole tashi longo, omesho etu otaa talifwa oinima tai pendula onghenda nolukeno mufye eshi hatu mono ovo va fya ondjala, ve li momahepeko mai, va tulwa meedolongo nopehe na omutalelipo wavo. Ohatu tauluka eengaba dopamuhoko nodoukwapata tu na efininiko lohole aike.

Ohatu mono ovo va liwa oipungo monghalafano ile hatu mono omesho aavo tava tale kufye nova teelega ekwafo letu. Mohole yokushiiva mukwetu kutya olyelye. Ohatu koneke oungone wetu moilonga eshi tva yelege kutya, ope na shihapu natango osho inatu shi va ningila. Ov.35b.

Epulo eli ohali tu shuna ongovaitaveli pe-

Omutse nomutima . . .

dha za kep. 2

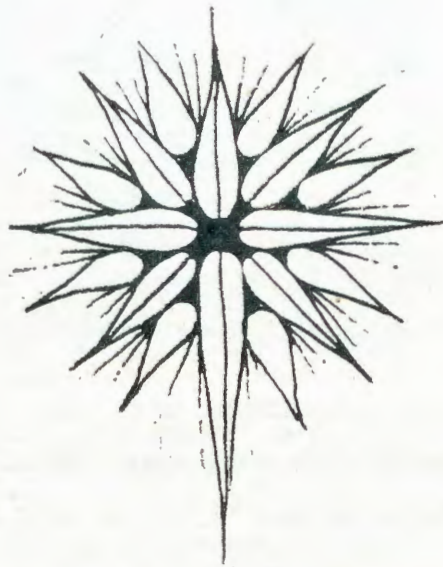
Omutse kagu na omutima nenge omutima kagu na omutse, kape na omuntu.

Olwindji ohashi monika wo moondjokana odhindji nkene omulumentu nomukiintu taa kondjo ya kale omutse, taye shi ningi kethiminiko nokoonkondo. Nolwindji ndishi mutse aalumentu oshi li muule sha holama momoho gaantu ihe osho oshinima shoshili kutya, ngele itandi mono ompito yokukala omutse, nena otandi tala palwe mpoka tandi vulu okukala omutse.

Onke ngoye omuhokanwa, sa oshimpwiyu u kale shili omutima muukumwe mbuka. Igandja omunashili. Shika kashi shi oshinima shopanshitwe. Pa aluhe omulumentu gwoye einkele e ku inekele nokohole nomepandulo u mu popithe.

Ngoye mulumentu mukwetu, uuvu womutima uudhigu. Shaa tuu tagu alukwa,

hovelolela leongalo laKristus, omo ovaitaveli avesho inava tukulilafana ashike ohole yavo, nde nomaliko yo avo eendunge davo noufemba. Iil.2:42 *Sebulon Ekandjo*



MONGWEDIVA otamu ningwa oshiongalele shokulihonga nokuxwameka oshilonga shEtumo momaongalo. Oshiongalele tashi hovele eti-6.9.1972 fiyo eti-12.9.1972.

Ohatu teelega ovo va hala okulihonga nokuxwameka oshilongatumo momaongalo ve uye koshiongalele eshi.

Ngeno eongalo keshe li tume omukriste umwe ile vavali koshoongalele eshi. Omukwashiongalele keshe na etelele 50c omolwoikulya.

Omuyakuli wovanashilonga muElok. *Toivo Pentikainen*

nena omuntu a ningi oshimbembe noshingolomena showala, neso kali li we kokule. Onke gu kwata nawa gwaa mone oshiponga. Oku na aniwa yamwe haa dhi tanda nenge taa tula mo gulwe, ihe naashika kashi na ukolele.

Oshinima oshikwawo okupopila eitaalo me-gumbo lyeni lyokwiitaala Kalunga.

Olwindji aalumentu tse ohatu ti otatu longitha omutse, otu na oondunge naakiintu otatu ya yelege naanona.

Ihe mokulongitha oondunge kwetu eitaalo lyokuKalunga olya yi pombambo nenge olya kana. Oshoka eitaalo kali li moondunge kali li momutse. Okukala neitaalo otwa pumbwa eiuvu, otwa pumbwa ohole netaleko nuukuume.

Oondunge otadhi hanagula po eitaalo, ihe ohole otayi koleke notayi li kokeke. Longitheni ayihe muugumwe weni, omutse nomutima, noyendji otaa ka hala okukala pune okupula oondunge noku dhi longwa. Kristus kee shi ashike omuholelwa nkene ye e li omutse gwegongalo lye, aawe, oye uukumwe nuukwauhe weni, omutima gweni.

INO TOOLA NGE

Eti-4.7. 1972 mondjila yeebesha pokati kaTsumeb nOshikango, onda kanifila mo okakofandjato katilyana kehe na edina mu na oinima tai landula apa:

1. Ombaikifa ilaula embudu yo-shiinda

2. Eembulukweva mbali dimbulau dile

3. Eehema mbali, imwe itoka, di na onomola 258

4. Ombushete imwe itoka ixupi i na onomola 258

5. Oshikutu shoshiinda shile shokunangala nasho

6. Eembilive mbali ya Rev. Eino Amaambo nameme Hilma Auala, avesho pOniipa.

7. Ouxupinima vahapu ve na onomola 258.

Ou we i mona, kwafa nge u shiivife umwe wovashamane ava:-

Henok Hamata, Engela ile Erasmus Sjamanah, P/sak 2013 Ondangwa. Ou we i mona, ohandi ku hafifa lela nawa. *N.T.Hamata*

9 TAVA PANGULWA MOLWE-DIPAO

Ovawambo 9 otava pangulwa paife mOvenduka omolwedipao lovanhu vavali mOndobe mOukwanyama neudo.

Omhangu oyo ya tamekele eti-8 Aguste 1972 otai ka pwilikina; Lisias David, Elia Shoongele, Andreas Haimbodi, Johannes Nakafingo, Jonas Neulumo, Ninahonye Hauliku, Frans Hipunya, Joas Gabriel naSakeus Kakoto ovo kwa tiwa kutya ova monika pedipao lameme Hileni Kaulinge pOndobe.

Omusamane Sem Kaulinge ou a monene omadengo madjuu moikolokosha ei, naye yo okwa ya keemhangu edi pamwe novadali vaye avesho. Edipao etivali la ningwa pakudiladila natango kovalumenhu ava ola-Valomkuleni Hishiko. Oiponga ei oya ningwa eti-29 Januari 1972 mOukwanyama.

Hahende Brian O'Linn, oye shiimba ta ka kalela po ovapangulwa ava, nokombinga yepangelo ohahende Chris Jansen.



“Ohatu lungu onhakwi yomeva”

Onda hala tu tale oinima ei “exumokomesho” eshi tali ti moshiwana. Osheetwamo sheliko nodino okuhashiwa sha kwoilonga yetu, omikalo, oivilo nondjonona yoshiwana, fye tu tale eshi hatu li po naashi hatu yandje keembwa.

Exumokomesho otali ti shike?

1. Kepulo eli oku na omanyamukulo mahapu ngaashi: “Okushiiva okulesha, okulonda okafangufangu, okudjala eemini” nosho tuu. Ngeenge hatu tale omanyamukulo aa lhatu mono kutya, kapu na nande olimwe o li-mondjila, osheshi oinima ei, otwe i hongwa ndele hafye twe i fikifa ponghatu ei.

Okulya nomanyala oivela neembe hasho exumokomesho. Omanyamukulo ometetelo otaa holola exumifokomesho, ndele haexumokomesho. Okuhadako nawa oshinima eshi hatu shi luku ehopeneno, otaku tula oshiwana menyonauko. Oshiponga eshi osha etwa koinima ivali.

Otwa kanifa oukalunga mwaashi

a) Inatu limona kutya ofye ovanhu tu na ondilo ngaashi ovanhu vamwe. Etumbulo eli “omunhu oshifea shaKalunga,” la kwe- lendedja ongo tali popi vamwe ovo va yooloka moluvala.

b) Otwa talifwa oukalunga momesho ehe fi onga halelo yetu, ile otwa uda ko elaka lOmwiingidi pomunghulo mepuko. Katu na ondjila imwe tu na okweenda okudja apa tu li tu wapalele Ombushiki, shapo okunukila monghalelo imwe opo vati tu wapalele oshivilo.

Paife to pula kutya, eli olo efatululo lexumokomesho moshiwana? Enyamukulo lange itali fe ngaashi olo ho lombwelwa ngeenge to mono oministeli yoinima yovalele, ove to diladila omatale, eeshako domapungu, to ti eli olo exumokomesho.

Nandi fatulule oshitya eshi ngaashi shi li kutya, exumokomesho okweehenifa mokuwapekulula nokweeta po eshi shiha li po moshiwana shoo vene.

Itashi ti eshi kwa li ho shingi etemba paife to shingi oshihauto, oto ti owa xuma komesho. Ngeno otwa li twa tala etemba tali tu katasha, fye hatu longo oshihauto ile shimwe twe shi eta po nomadiladilo etu, ngeno otu shii kutya eshi osho exu-



mokomesho moshiwana shetu.

Nandi ku pe oshihopenenwa shipu osho tashi ku fatululile nawa. Vati efiku limwe la file ondjaba, u ye pOlukonda u tale ngeee etungo loimbale tali ulike eshi hatu ifana exumokomesho.

Oundede nouvaya

Engafifi linene la pumbwa kulonga sha mokati ketu ola pukifwa kwaashi tashi lukwa vati exumokomesho notali tula oshiwana pomutenya. Okukala omukalele nomulungeli woshimaliwa osho efimano.

Ndishii hasho ashike omukalo wokulikola? Ope na omikalo dihapu hatu dulu okuxupa mudo.

Otu na oshilonga sha fimana hatu dulu okuninga ngeenge twa hala okuudako nawa. Oilonga yoimbale, okuhonga oitoo ngaashi sha li mOukwambi sha etele eliko lihapu. Okuhambula omatemo nosho tuu ikwao tai dulika okuxumifwa komesho nomeendunge yo hatu putuka.

Eshi tashi lukwa exumokomesho sha wana okulukwa oundede nouvaya. Ombinga ei tai monika movaxungu, movanyanyamaumbo

Oshimela shombinzi

Nale twa popi koshimela shombinzi, nkene tashi etwa koombuto nenge kuupuka.

Omuntu ta nina oombuto niikulya nenge nomeya inaga fulukithwa. Oombuto nuupuka tau taandelithwa wo koonchi niilomwa inaayi yogwa nawa nenge niikaha inaayi yogwa nawa.

Otandi dhimbulula ngiini ano kutya osho oshimela shombinzi shoka?

Hamahala ogendji mOwambo omuntu to vulu okuhongela iiyuma yeloya polweela, ihe kEtu-nda muuninginino otashi vulika. Oonzimbogo dho- shinanena otadhi pumbi- wa ngashi ndjoka ya tungwa mosikola yiilonga yiikaha mOlukonda ya fa ekuma lyokangulu, peha lyokutha oshilambo. Oshipopiwa shika shependulopo lyevi otashi ka holoka natango komeho.

nomomotanda ou hau lukwa oshiwana.

Omumati ina hala okulonga meumbo vati kape na ofuto, ngeno opushilumbu opo ha di noimaliwa itai mu kalifa ohani mOwambo ile ta xupu moulunga vati ota lili ohamba. Ounona voukadona va nhukila mefau vati ota futwa a djale ye a fute oiyandjiwa yaye yomudo keongalo.

Ohandi di omaxwilili okutumbula ou a fiya po epata laye a ningwe kaimbi tambula efuma ile mwene weumbo ita monika vali kushipala, shapu ondoloma yomeva va futwe ehalasha. Eshi ohai shi tila okutumbula.

H.Hatutale

IINDHINDHILIKI:

Omuntu ta yi kondje olwindji nonyata ya yula unene, na ombinzi nenge omakakame- na, sikulimwe mu na ontsika. Omuvu te ehama momandjandja nota thetwa. Ota kungu nolutu talu kukuta oshoka ta kanitha omeya ogendji. Uupyu tashi vulika u londe, omutse tagu ehama wo. Omuntu ta kanitha oonkondo. Unene otwa hala oku- popya aanona. Omunona ngele a kwatwa koshimela ota kukuta unene (dehidrasie).

Oluwewe talu mbanduka, oshipa sha fa shi na oongandji, omeho ga ningina mo.

Ota yi kondje olwindji. Tashi vulika ta kambuka ethimbo alihe naanona oyendji oya si shili omolwoshimela shika, sho inaa- ya etwa mbala nenge inaa etwa nande moshipangelo.

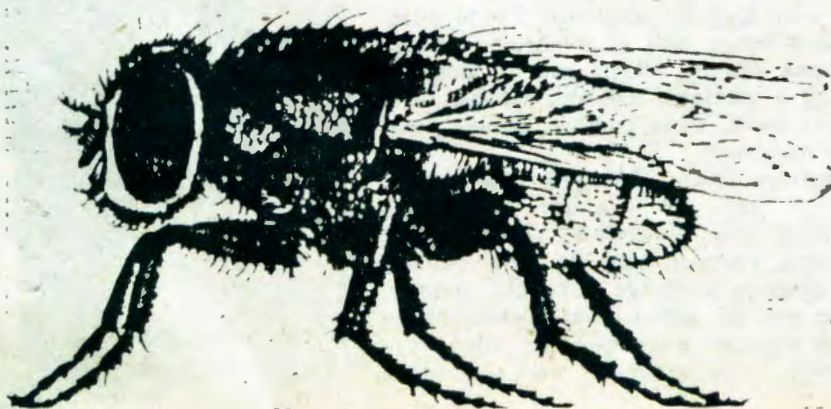
Oshimela otashi pangwa ngiini?

Epango ewanawa okukeelela oshimela ngaashi twa popi.

Omuntu ngele okwa kwatwa koshimela ta pumbwa ekwatho. Tango twa hala oku- tala ekwatho lyotango lyomegumbo lya- meme. OMUNONA NA PEWE OMEYA OGE- NDJIGENDJI notee kaayi na oonkondo ihe mu na osuuka okunwa. Ngele ota kungu nenge moonyata omu na ombinzi ota pumbwa oku- falwa koshipangelo mbalambala esiku lyo- tango sho a kwatwa. Ngele omunona ina kwatwa unene ota pewa omeya ga fuluka ga pola notee yi na osuuka, ina pewa sha shilwe. Esiku etiyali ngele a fa e li hwepo

Tala kep. tali landula

Okwiigamena koonchi hadhi taandelitha oshimela, ongele to fike po iiyagaya ayihe niikulya ayihe yoola. Okusiikila wo iikulya nawa yaa lambelwe kudho.



OMAPULO NOMAYAMUKULO

Oshike ongerki itai fimaneke ovakulunhuongalo, itai va futu? Tala mentu gwameme, aakuluntu yegongalo oyo aayakuli mboka ye li miilonga yawo hayi ya pe ondjambi. Yamwe aanasitola, yamwe ooyene yiilongo, yamwe aapolisi yamwe aalongi, yamwe aavangeli, yamwe aasita, yamwe aanamutete ngashi gweye ngiika gumwe gwawo. Ano uukuluntu hawo ha longo ethimbo alihe.

Omolwashike ovafita novaevangeliste hava futwa? Osheshi ve u longela hano? Inaye u longela, oyi ithanwa kuKalunga ngashi Aaron, Hebr. 5:4; 4Mos. 16:5; 2Mos. 28:1. Ihaa longo we iilongo yilwe, oyo ayike mbyoka. Kaye na ofuto ya tya shoo. Ngiika owa mona yamwe ya ya manga kUushimba, opo ya kwathe omagumbo gawo.

Omolwashike ongerki ihai futu omunhu ehe na ombapila yoshilonga? Ohayi futu mboka taa longo ngashi tashi vulika. Ovafta ovalongelindjabi hano? Eshi vakwao tava longo nde itava futwa? Oyo wo otaa longo oshindji shi vule shoye, ngoye oho lala owala nenge u li miilonga yoye mwene. Ihe mukweni oku li mpeyaka naampeyaka, ta vunguuka tuu shili.

Ngeenge ondjabi otai nyengana okufuta vamwe, omufita iha longo ngo nee ye aeke? Omusita ota shasha ye awike, ta topola Uulalelo Uuyapuki, ta yapula oombila, ta ningi elongelokalunga, ta uvitha, ta pulakene aakwanegongalo ye awike. Ihe omusita ota longo wo oshilonga hashi longwa kuyakwawo aakwanegongalo.

Iilonga yomusita oyindji inandi yi tumbula mpaka ayihe. Yakweni yamwe oya ti: Omusita gwaandjawa oku na iilonga oyindji. Egongalo otali mu dhungu. Ongerki ngeno i kendabale okufuta ovanhu va tya ngaha.

Pamwe ngele to gandja oshitimulongo, egongalo otali mono oonkondo dhoku shi ninga. Ihe dhimbulukwa kutya, Ruben Mbwalala okwa gandjele oolata dho-shipe 4, ihe egongalo lyawo Etilyasa inali sindana kaya. Omolwahsike? Oshoka oye awike e shi ningi.

Fran: Kankondi okwa gandjele oolata 15, nde egongalo lyawo Okahao inali sindana, omolwashike? Oye awike. Ando aakwanegongalo yetu atuheni tu gandjeni oshitimulongo, ando otu na eiuvo ewanawa puKalunga nopaantu.

Jason Amakutuwa

Oshimela . . .

dha za kep. Iya tetekele

nokuya kondje taku shonopala, gwedhela ko kashona omahini ihe ha uunene manga. Omahini niikulya yokanona tayi gwedhelwa kashona nakashona sigo taka pewa ngashi taka paluthwa, opo ka kole noka koke.

Omunona sikulimwe ina hala okunwa nota pwasha, ngoye owa mwena ashike megumbo ngoye ino kongwa ekwatho poshipangelo sho shi li popepi nangoye. Omunona sho a loloka ye ta kambuka opo to mu fala moshipangelo, nena ekwatho opo lili ihe sho omunona a adhika nale a vulwa, kape na etegelele lilwe omunona ta hulitha ashike mbala.

Ndhindhilika nawa: Eta omunona mbala moshipangelo manga inaa kukuta, manga iindhindhiliki iidhigu ya tumbulwa inayai holoka. Omunona ota pumbwa omeya ogendji, ihe naga kale ga fulukithwa noga pola.

Omunona ota gamenwa ngiini, opo kaa kwatwe koshimela nenge ngele a kwatwa kaa kwatwe ishewe?

Omunona kehe na pewe omahini ga yina omvula yimwe.

Omunona na dhigininwe uundjolewele wa gwana, opo kaa kwatwe kuuvu ye a kole nawa. Oshoka omunona ngele a kola itaka kwatwa koshimela nuupu uunene.

Uuyogoki nau dhigininwe apehe. likaha ya meme nayi yogwe olwindji nuunene manga ina tameka okupalutha okanona. Omagundji nomakende ngele taga pumbiwa naga yogwe nawa noga fulukithwe. Omeya naga fulukithwe. likulya nomahini go ota inaga gandjwa.

Uuyogoki nuukalinawa ou na oshilonga u vule epango.

Saara Nekomba

Omugundjuka noshigwana she

Sho nda mono etumbulo ndino "omugundjuka noshigwana she," onda kala ndi na omaipulo kutya olya hala okutya shike.

Atuheni otatu zimine kutya, omugundjuka ke na oshigwana, ihe oshigwana osho shi na aagundjuka. Uunake oshigwana tashi ithanwa oshigwana? Uuna shi na aagundjuka musho, oshoka "Waa na mpagona ku na iilya, waa na mutanda ku na ngombe."

Otatu vulu wo okutya, Waa na aagundjuka ku na oshigwana. Eha lyomugundjuka moshigwana oyo enene nolyopokati. Ngele nani aagundjuka oyo oshigwana, noshokomeho, oye na ano okukala ngiini moshigwana?

lilonga yomugundjuka moshigwana

Otwa adhika twa popi eha lyomugundjuka kehe moshigwana, kutya oyo lyopokati. Ngele ongeyi, otashi tu fala wo meipulo tu ipule iilonga yomugundjuka moshigwana.

Omuluku gwonale okwa tile "Ompinda ya vala kayi lika kumbwa." Ano osho wo oshigwana shi na aagundjuka, itashi ka hepa. Oshigwana otashi tegelele ekwatho lyomugundjuka kehe.

Aakulupe mboka ye li moshigwana ya pumbwa ekwatho, otaa tegelele ekwatho ye li mone tali ya ziilile kaagundjuka. Aavu mboka ye li moshigwana, otaa tegelele ya talelwepo etalelopo tali ya ziilile kaagundjuka. Aakwanaluhepo moshigwana oya pumbwa ekwatho lyaagundjuka, oshoka ompinda ya vala kayi lika kumbwa.

Moshigwana kehe aakulupe naakokele otaa tonyala, ihe Haagundjuka. Ohatu shi dhimbulula nawa kiinamwenyo. Pethimbo lyuunkundi, iinamwenyo mbyoka ya koka, otayi

ONDA KANITHA

Onda kanitha iikombo yomawala ga tya ngeyi:

1. Oshikombo oshitiligane noshitiligane oshimbulu
2. Oshikombo oshimela
3. Oshikombo oshiluudhe
4. Oshikombo oshimbambi-mbahe
5. Oshikombo oshindema oshitiligane shiimbathithi
6. Okathona okatiligane okambulu

Ngoka wa mono iikombo yaty ngeyi nenge u yi na pungoye, kwatha ndje alikana u tseyithile ndje. Shangela kohandele lesi ndjika:

Jeremia M. Kandombo, Onalulago, Oniipa, Pk. Ondangwa.

tonyala mbala, ihe hambyoka, iigundjuka. Sho osho shi li wo naagundjuka yoshigwana otaa piti miikukutu noomiidhigu, oshoka omugundjuka oye esipa lyuulumbu.

Moohapu dhaKalunga wo ndi shi otatu lesa: "Otandi mu nyolele one aagundjuka, oshoka one aanankondo." 1Joh.2:14

Oshigwana kehe otashi tegelele aagundjuka yasho ya kale ya kola ye na oonkondo, oshoka shaa aagundjuka oyo ya kola, nena oshigwana ashihe otashi kala sha kola. Otatu vulu wo okutya, uukolele wo wene woshigwana, otatu uthwa kokukala kwaagundjuka yasho.

Ano ngele ongeyi, aagundjuka otaa tegelele oshigwana shi yi isimaneketele, oshoka ngele hasho, nena aagundjuka otaa mono kutya iilonga mbyoka haa longo moshigwana shawo, oyowala. Omugundjuka oye oonkondo dhoshigwana. H. D. Namuhuja



Omutalelisikola H. D. Namuhuja

Owe li uva nale ehanganano ndika?

Aakulukadhi yomuElim, oya toto ehanganano lyawo omumvo gwa yi pehulilo. Oya tameke ngaa nongundu onshona yi thike shila 30 lwaampoka, ihe ngashingeyi otayi ka tidha pethele limwe.

Oomeme mbaka oya hiylwe lwotango kontanda yoomeme yomomagongalo gomuninginino wuukwanyama, ya ningilwe mOngenga omumvo gwa yi. Molweendo nduka oya li ya kwathwa kutate Josef Shivute noshihauto she.

Esiku tuu ndyoka olyo uuna ya toto oshiketha shawo shehanganotumo lyawo. Ongalo ndjoka ya umbilwa kegongalo lyawo moshituthi shawo okugandja omakundo oyo ya totitha oshiketha.

Ehanganano ndika oli na ewilikongundu lyalyo li na iilyo ihetatu, moka omuwiliki meme Selma Shejavali ta wilike wo. O mudhiginini gwiiniwe omeme Kanime namushanga gwehanganano meme B.Shikomba. Ewilikongundu ohali gongala aluhe konima yoomwedhi ndatu kakele kopaulumompu-mbwe.

Iilyo yehanganano ndika oya hogolola wo yamwe yomuyo ya ninge aaheheleli yoshi-

Nuuyuni auhe, Epukululohombo, Oshilalakanenwa sheputudho nOmbimbeli. Ohaa longitha wo iileshwa yilwe taa kutha muumbo woshimbulu.

Meme Shejavali ina longwa sha ando sha nika owino mewiliko lyiinima yaakulukadhi, ihe oku na ehalo oku ya kwatha. Ehanganano ndika otali pandula nokuhambelela Kalunga molwomaenditho omawanawa nomakumithi omolwomakwatho ge li zile kooitaali ku-Soomi nokuAmerika.

Mokutalelapo wo ohaa mono omayambidhidho ogendji moku umbilwa oongalo kaatalelwapo, ngashi yali ya talelepo kOthika nokOlukonda. Oya li wo ya talelepo epya lyetumo kEtoto mUuninginino wOwambo. Oya popi noya kundathana naantu yaahwiyaka miinima yopamwenyo ngashi Kalunga e ya pe ewiliko lyQmbepo ye.

Hwiyaka oya dhimbulula ondjala yopela nomokugaluka oya gongele iipalutha yoolata 56 dhiilya nomakunde nomongwa. Oya gongele wo oonguwo dhimwe nando sho ya yile ko, oya faalele ko dhi vule ethele limwe, uunene oonguwo dhoshikiintu.

Okomitiye yefinamhangongo IEpangelo IOwambo

Omutumba waxuuninwa wEpangelo IOwambo ou wa ningwa paulumomhumbwe ova hoolola moshiwana oilyo imwe i kale mokomitiye yelongekido lomaufomhangongo Epangelo lipe IOwambo olo tali ka hoololwa koshiwana odula tai uya.

Oilyo iheyali oya hoololwa kongudu yomutumba wEpangelo IOwambo va ka longepamwe nolloyo yomongudu Oyandjiveta okuninga omaufo okuhoolola Epangelo novaleli vOwambo pamukalo wodemokarasi.

Omutalelifikola Hans Daniel Namuhuja okwa hoololwa a kalele po ovahongi, omufitaongalo Kleopas Dumeni, a kalele po ovafita, omupangi Johanna lilonga, a kalele po ovapangi, omushamane Pendapala Auala, a kalele po ovaunguli. nomushamane Toivo Shijagaja, a kalele po ovanambelewa, omunangeshefa Eliakim Namundjebo, a kalele po ovanangeshefa nomushamane Festus Amukwa a kalele po ovanamapya novanaimuna mongudu oyo.

Omapangelo oilongo moshilongo keshe okwa hoolola omunhu umwe a kale yo mongudu ei. Ava ove li oilyo yomongudu oyandjiveta mEpangelo IOwambo, noilyo yokomitiye otai kala aische kumwe;

Ovo Omushamane Johannes Mbokoma, Ondonga, elenga Valombola Kalombo, Oukwanyama, omufitaongalo Gabriel Amupolo, Uukwaluudhi, elenga Titus Mbago, Ongandjera, elenga enene Wilbard Shitatala, Uukwambi, omushamane Israel Nakamwe, mUukolonkadhi, nomufitaongalo Titus Heita, mOmbalantu.

Oshilyo oshitihetatu mongudu ya tumbulwa xuuninwa omufitaongalo Kornelius Ndjoba, ou a hoololwa komutumba wEpangelo nota kala omunashipundi shokomitiye.

Eshi tashi ka dja moilonga yokomitiye ei otashi ka etelwa Epangelo IOwambo eti-26 Febuluali 1973 opo shi ka kale oshikundafanwa shomutumba wodula tai ya.

Ya fika

Ovaitaveli ovo hava longo mu C.D.M. ova longa oshilonga sha denga pombada eshi va ongela ongalo yeehepele R78.54, omudo 1971 mewiliko lomufimanekwa Salomo Paulus.

Tate Salomo ongalo ei okwe i fikifa nawa moshikefa sheehepele. Eongalo otali pandula unene tate Salomo nookaume kaye mOlange. Omwene ou iha mane po ne mu pe omapuniko aye mahapu nye mu kale inamu hepa moku mu shiiva. Joh. 17:3.

Ponhele yeongalo Natanael Muafufja



Egongalo lyokEtunda otali tana omumvo nomumvo aapagani sho taa ishashitha medhina lyaKalunga katatugumwe.

ketha shawo, opo shi kale tashi koko aluhe. Gumwe gwomaaheli okuku Selma Negumbo ngoka ta longo muudhiginini. ligandjwa yoshilyo kehe R 1.00 komumvo

Ehanganano ndika oli na wo aadiakoni yaa shi aakulukadhi, tate Josef Shivute natate Epafra lipinge. Omusamane omutitatu i itula mo wo melongelokumwe nehanganano ndika noha gongala pamwe naakwanegongalo mbaka oye tatekulu Paulus Natshimbulu.

Mehanganano ndika inamu nyolelwa nando omulumentu gumwe, ihe aakadhona oya manguluka okwiinyolithila mo. Ehanganano olya tokola okuninga oshigongi oshinene lumwe momumvo kehe. Aakulukadhi ohaa gongala lwaali moshiwike kehe, opo ya kundathane kombinga yaashika tashi landula mpaka;

Otundimbimbeli, uukalinawa, eputudho lyaanona, edhewo lyolutu, etumo nuudiakoni, noondjokana.

Oliwimbo olwa kwatelwa mumwe nolwiimbo lwegongalo ndoka halu ningwa mOsoondaha kehe konima yelongeloKalunga. Mokuwilika ootundi ndhika, aawiliki ohaa longitha uumbo umwe ngashi; Ondjila oondji,

Egongalo lyomuElim, ohali gongele aluhe iizalomwa, unene ngele meme Shejavali ta ka talela po omapya getumo iha yi owala. Olwindji egongalo lyiizalomwa otali kondo pethele. Kalunga na dhiginine ye a taneke eliko lyakehe gumwe a guma ko omake koshilonga shika shohole.

Ehanganano otali pumbwa omagalikaneno nomakwatho goye. Ne tamu kondjo tuu hono yakwetu?

Imonena iilonga muContanto-Store

Aagundjuka yaali otaa pumbiwa meyakulo lyaContanto Store ngele oya gwanitha iipumbiwa tayi landula mpaka:

**Kehe gumwe na kale e na onzapo yaSt. VI,
Kehe gumwe na kale e na ombapila yegongalo
Kehe gumwe na kale a nyola eindilo lye mwene
Ye kehe gumwe na kale a thikitha eindilo lye manga eti-25 8. 1872 inaa li pita.**

Ngoka ta kongo ekwatathano lyomoombapila na nyole ngeyi:
Contanto Store, Posbus 7, Ondangwa, S.W.A. mewiliko lyaNangalo Jacob.

Omahuku gamwe gomekonakono IyaWaldheim

Shono aakali yomuSuidwes ya kala ya tegelela shi ze kuNew York konima yetalelopo lyAmushanga gwligwana ya Hangana, Dr. Kurt Waldheim, osha uvika petameko lyomwedhi nguka. Mpaka otatu kutha ashike omahuku gamwe gomehokololo lyomapandja 20 ngoka ga gwedhelwa iihohela yomapandja 10.



Amushanga Ndjayi gwligwana ya hangana, Dr. Kurt Waldheim

Metalelopo ndika amushanga Waldheim okwa konakona omadhiladhilo gaakali mevi ndika nkene taa dhiladhila onakuyiwa yevi lyawo Suidwes. Oongundu dhi ili nodhi ili mekwatathano naashika odha kundathana naye nodha holola omadhiladhilo gadho.

Aawambo

Omalenga gOwambo oga holola nkene ga hokwa emaguluko lyomavigumbo. Ehokololo otali ti kutya, omolwomayooloko gelaka, geputuko nolyomihoko, ongundu yomalenga gEpangelo lyOwambo otaga popile pu kale eyooloko miigwana yevi ndika nomokwiipangela, opo oshigwana kehe shi dhiginine uukwatya washo.

Manga omusimanekwa Amushanga ye li moonkundathana noministeli yEpangelo IyaS.A. omusamane John Voster, okwa holola nkene a ninga omwenyo omwiinayi omolwepangelo sho tali longekidha omavigumbo mOwambo nomoKapriivi.

Amushanga Waldheim okwa londodha omusamane Voster, kaa tsikile noshinima shoka, opo kaa yone omalongekidho ga V.V.O. okukonga ondjila yokumangulula iigwana mbika. Omusamane Voster naye wo okwe shi koleke kutya, okuza kesiku lyoonkundathana ina tsikila we nomavigumbo kakele shila mpoka evigumbo lyo lyene lye ya oku mu indila.

Aakavango naAdamara

Omalenga gepangelo IyaKavango nago ota-

ga popile omukalo gwomavigumbo omolwomayooloko giigwana. Omadhiladhilo gawo oga fa gomalenga gOwambo, ihe Adamara itaa popile nando omavigumbo noinaa nyanjukwa kaatiligane sho yi ihogololele ehala lyopokati lela kaSuidwes.

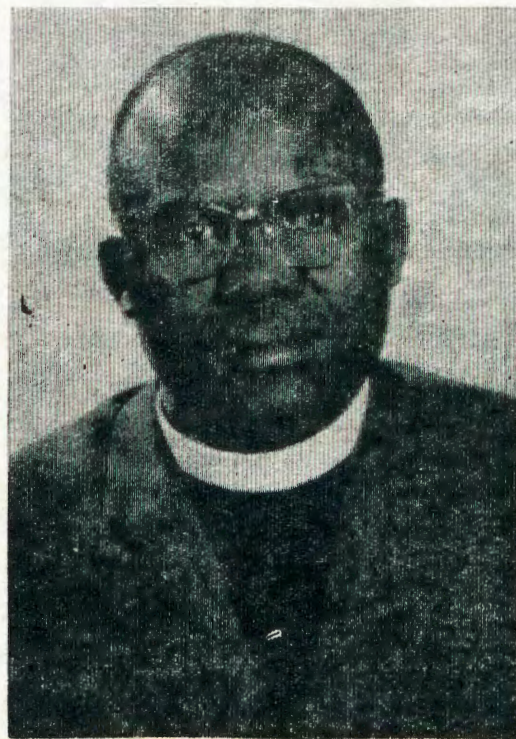
Dr. Waldheim okwa ti mehokololo lye kutya Aawiliki yAdamara mboka e ya etelwa kuGrootfontein opo a kundathane nayo oya indile Suidwes li kale li na epangelo li mwe alike Iyaayehe. Otaa yemata wo molwepangelo Iya S.A. ndyoka tali thiminike iigwana yaaluudhe noku yi tilitha noku yi kutha uuthemba wokupopya. Oya ti wo aatiligane oyi ihogololele ombinga yevi ndjoka yo ondoka muNamibia manga aaluudhe ya yoololelwa uuhala mboka waa na omahupilo gopaliko.

Oongundu dhilwe

Dr. Waldheim ota ti mehokololo lye kutya omolwethimbo Iya li efupi muSuidwes okwa nyengwa okutseya lela aantu oye thike peni taa popile uukumwe wevi. Ihe okwa holola wo kutya, oyendji a popi nayo otaa popile uukumwe waNamibia.

Okwa ti shika osha yelithwa nawa kooongundu dhaakalelipo mboka ye mu tsakanekke pOndangwa nomOvenduka aantu 80 sigo 200. Oongundu ndhika dhaaludhe otdhi popile omatokolo ga V.V.O. omolwevi ndika notadhi popile wo uukumwe wemanguluko Iyevi alihe.

Mewiliko lyomusamane John Otto, amushanga gwaSwapo nomusamane Johannes J. Nangutuuala omunashipundi shokomitiye yondhalate yaamati, ongundu yaalumentu ngii-



Rev. Jason Amakutuwa, omutonatelishitayingerki shUuningininino gumwe gwaatonatelishitayingerki mOwambo mboka ya kundathana na Dr. Waldheim mdhina IyaVELKSWA.

ka 80 oya indile Epangelo Iya S.A. li kuthwe mo muSuidwes pwaa na omaongaongo molwashoka otali Iyata aaluudhe pothingo noku ya yuga uuthemba wokupopya uupolitika.

Ongundu ndjika oya koleke wo nkene epangelo IyaS.A. li li muSuidwes pondje yetokolo Iyuuyuni.

Aakwatelikomeho mbaka yaali; Otto na Nagutuuala, oya indila V.V.O. yi taambe mbala oshimpwiyu shelelo Iyevi ndika ethimbo efupi Iya uuthwa okulongekidhila aavalelwamo yaNamibia okutaamba elelo Iyevi alihe.

Oonkwatwa ando dhi mangululwe

Ongundu yaantu 200 ya tsakanekke Dr. Waldheim mOvenduka ehokololo olya ti kutya omadhiladhilo gayo oga fa ngoka gaandjoka ya kundu amushanga mOshakati mOwambo. Ongundu ndjika yomOvenduka mewiliko IyaClemens Kapuu Omuharero, otayi popile uukumwe wemanguluko Iyevi alihe, otayi indile oonkwatwa dhaNamibia dheedhililwa moonholongo dha S.A. dhi egululwe mo pwaa na ekandaakando Iyasha, ongundu otayi indile wo oontauki dhaNamibia dha holama miilongo yopondje dhi galukile kuNamibia.

Oongerki oya gandja wo ewi Iyayo

Aatumwa yongerki mboka ya zile mOongerki onkwaevangeli paLuther yomOwambokavango, sho ya kundu Dr. Waldheim mOshakati, oya ti kutya ongerki nando kayi shi ongundu yontumba yopapolotika, iilyo yongerki onkene ngaa nayo itayi popile omukalo gwomavigumbo, oshoka ongerki oya tompelwa kutya omukalo gwa tya ngaaka gwokatongotongo otagu taandelitha ashike eidhino nuumbanda pokati kiigwana niigwana.

Oku na wo uungundu wooyaali nooyatatu wa holoka mehokololo ndika. Okwa tumbulwa ongundu yOombastela ndatu aawiliki yongundu Volksparty osho wo okangundu kAaherero yamwe mboka taa kondjitha Clemens Kapuu, mbaka ota koleke naanaa omukalo gwomavigumbo kutya ogwo aguke tagu kwatha mpaka.

Ongundu yaatiligane

Ewilikongundu lyooveta dhaSuidwes, mOvenduka olya kala wo moonkundathana na Dr. Waldheim. Ongundu ndjika oyi na uumbanda wokutula iigwana mumwe kutya otashi ka etela aakali yomevi ndika omaudhigu oogendji, onke tashi pula elongekidho lyethimbo ele.

Okomitiye ndjoka yooveta dhaSuidwes, moka omuwiliki oye Ngoloneya oya indila wo kuAmushanga opo aatiligane mboka ya valelwa muSuidwes ya kale wo ye na uuthemba u thike powaaluudhe. Oya indila wo evi li kale mekwatathano na S.A. unene omolweekonomi Iyaa nkundipale.

Vorster naye okwa yamukula

Omusimanekwa John Vorster, ominister ya S.A. kombinga yehokololo Iya Dr. Waldheim okwa holola omadhiladhilo ge kutya, kombinga yomavigumbo kape na natango shono sha ningwa po kaashi shi ando okulundululwa. Etokolo Iya hugunina oli li miikaha yaavalelwamo. Tse itatu dhini omadhiladhilo gawo, noitatu ke shi ninga nokomeho, opo twaa ninge aagoya.

Eshunomonima lyomonguwi

Moshifo shaMai No.10. ep.5.1972 omwa li oshipopiwa shoshipalanyolo "Ovanyasha" nava fatululilwe," sha nyolwa kutate Abraham Haileka. Musho okwa hokolola oluhepo lwaagundjuka momagongalo sho inaaya fatululilwa nawa kaasitagongalo nawa nkene ye na okulonga oshilongatamo.

Okwa ti wo kutya, oku na aasita yamwe momagongalo iigongi yaagundjuka otayi itamekele sigo otayi ihulithile inaa lyata mo nando ompadhi. Shika osho nda hala okupopya:

Ngele oku na omusita a tya ngawo iha gongala pawe naagundjuka sigo omumvo gwa piti, ndishi kape na omalimbililo okutumbula kutya, okwa kwatwa keshunomonima lyomonguwi. Okukala naagundjuka moshigongi ndishi okupulakena omadhiladhilo gawo noku ya kwatha moonkundathana dhawo. Aagundjuka wo ye mu ilonge noye mu tseye.

Uunyengwi molwiilonga oyindji aniwa osho oshigwilo showala shomutondi ngokate ya umbu eshunomonima lyomonguwi. Omusita oye omutse gwoshilonga shongerki.

Mekotampango lyongerki yetu mokatopulwa okatine omwa tiwa: "Oshilonga shongerki osho okuuvitha evangeli lyaKristus nokulongitha omalongelokalunga nomasakramendi nokuhunga oomwenyo," "nokuputudha aagundjuka nokuholola miilonga ohole yokuholathana, nokulonga oshilongatamo."

Mehokololo lyomusita gwaagundjuka a tekele Rev. Kleopas Dumeni moshitayingerki shaNdonga okwa tile okwa adha omusitagongalo gumwe a nyolwa membo lyomadhina pamwe naagundjuka moshigongi shawo.

Shika osho endhindhiliko lyomusita omukriste, oshoka oku uvite ngele ine shi ninga, ita tsakanitha wo oshilonga she megongalo. Aasita yamwe oya tegelele owala aagundjuka yawo ya galuke kiigongi opo ya tumbule:

"Kamu na aagundjuka megongalo muka, oya sa," molwashoka aniwa oya thigwa po komagongalo omakwawo mokugongela iiniwe.

Shika itashi eta iiyimati, oshoka ihe ya ulukile komutse gwondjamba. Aagundjuka oya pumbwa ekwatho lyaakuluntu.

Vilho Ph. Shikulo

Eindilo oSWAPO yi indikwe

Moshifo "Eume" shonomola onti-6, 1972 omwa holoka kutya Ongundu yepangelo o-gandjiveta yEpangelo lyOwambo, oya indila kepangelo lya S. A. opo Ehangano lyopolitika SWAPO kaali longe we momavigumbo. Ombilive yeindilo ndika oya gandjwa kuKomufala Ndjayi omusamene J. de Wet.

Ongundu yaSwapo oya dhikwa okuza 1959 muSuidwes alihe noyi na iilyo ya halakana muuyuni auhe nomeni, lyoshilongo. Epangelo lyOwambo oya indila ongundu ndjika yi indikwe okulonga mokati kAawambo notayi pula eziminino kEpangelo lya S.A.

Otaku tiwa omavigumbo omakwawo muSuidwes, nago wo oga nyola nale ombilive yeindilo lyokwiindika ongundu ndjika momahala gawo. Okavango nevigumbo lyAadamaro oyo ya tumbulwa mehokololo ndika.

Egano lyaSwapo okuya miinima yekondjelomanguluko lyevi, nokulongitha kwe ekuni noonkondo ngashi sha holokele mOwambo nuumvo muJanuali ndyoka lya etele epiyagano moshigwana, mbika ayihe oyo ehokololo lya ti otayi indikitha etsikilo lyongundu ndjoka.

Maxwilili a tulwa moitomo

Omushamane Nathanael G. Maxwilili okwa imbwa paife okukwatafana neengudu dovanhu nokupopya oupolitika ngaashi a kala he shi ningi. Omushamane Maxwilili oye omukulunhu waSwapo muSuidwes.

Ovapolifi ova mweneka oilonga youpolitika yaMaxwilili ohani ei, nde ta lombwelwa aha ye vali pondje yoshilongo shaMbaye (Walvisbaai) ile aha talele po nande olukanda ile okomboni yovamati ile eefabulika, nde a pitikilwa ashike okuya poilonga yaye nokwaalukila meumbo laye.

Omushamane Maxwilili okwa tulwa ngaha moitomo oule weedula nhano.



Omupangi Monika Hamutenya

OWAMBO

1.

Pokati kOnamutune,
nOmulonga waKunene,
Ope noshilongo shinene,
sha yadifwa koiwana.
Ye shi luka edina liwa,
Ye shi luka Owambo.

2.

Owambo oshilongo,
shi yadi ndo omihoko.
Mu na Ovauninginino,
novanhu vaKayala.
Naavo ve hole kulanda,
Ovandonga vaNangolo.

3.

Ootate ova longa,
va tambul'evangeli.
Ve tu etela popepi,
shi li ko oshetu vene.
Sha taale'ovanyasha,
ve shi ete ko tu shi tale.

J. Nghitapulua



OMUKWETU

Oshifo shongerki onkwaevangeli paLuther yomOwambokavango
Die Nuusblad van die Evangeliese Lutherse Owambokavangokerk
Ohashi nyanyangidhwa mOniipa,
Omukuluntu gwoshifo/Hoofredakteur omubisofi Dr. Leonard Auala,
Amushanga/redakteur Rev. Sebulon Ekandjo
Ondando yoshifo komumvo muSuidwes-Afrika R1.00, kombanda yomafuta R2.00
Oondando nomambesitelo naga tumwe kOmukwetu, Oniipa, P/B 2013, Ondangwa, S.W.A.

Omatseyitho gomuntu mwene pashinyolwa shuule
woondeimi 1 otashi futwa R1.00
oondeimi 2 otashi futwa R1.90
oondeimi 3 otashi futwa R2.70
oondeimi 4 otashi futwa R3.40
oondeimi 5 otashi futwa R5.00
Oto vulu okutuma wo efano lyaashono wa hala shi tseyithwe

Owambokavango Church Press
P/B 2013 Ondangwa, S. W.A.

Oshipangelo shAakwaLutheri Onandjokwe

OSKOLA YUUPANGI:

Ongundu ompe otayi ka tameka esiku 1 lyaDesemba 1972. Euthwathimbo lyokukala moskola olyo omvula 2 omolwekonakono lyaanyolelwamopangi (enrolled nurses).

Aakadhona mboka taa nyola ekonakono omolwonzapo yaJuniolo nuumvo, nenge mboka ye li pita nale, otaa vulu okutameka moskola ndjika.

Tuma eindilo lyouye pamwe nombapila yegongalo, kOnandjokwe Lutheran Hospital, P. B. 2016, P.O. ONDANGWA, manga esiku eti-15 lyaKotoba inaali thika.

Omukuluntu gwoskola