

OMUKWETU

Registered at the General Post Office as a Newspaper

OMUNTU OTA TSEYA KOMBINGA

"Muuyuni omu na oosikopa oonene noonde dhu udha omambo ngoka taga longo omuntu, ihe nando ongaaka okutseya kwomuntu okombinga ashike," osho omundohotola omukuluntu moshipangelo shEtumo mOnandjokwe Veli-P. Jääskeläinen a lombwela aavalithi.

Moshituthi shaavalithi yaheyali Aawambo mboka ya langekwa petameko lyomwedhi nguka miilonga yuualithi, omundohotola Jääskeläinen okwa popya kutya, omuntu mokwiilonga kwe kee na nando esiku limwe na ka kala a gwana, onke nando nde mu ithana aayakuli aape, ine dhiladhila mboka mwa gwana.

Mekwatathano noshilonga shokuvalitha, ndohotola okwa ti kutya okanona ngele ta ka ka valwa, omuntu ota koneke ngaa oonkatu dhimwe, ihe ita tseya ashihe shono tashi ningwa po.

Opo omuntu a nyanyukwe miilonga oku na okwiikumitha aluhe komeho mokolanda omambo gi ili nogi ili. "Nando itashi ke mu pa egwano, otashi ke mu fudhitha miilonga yeni," osho a ti.

Omuthindo gwoshipopiwa sho Dr. Jääskeläinen okwe gu tula mpaka kutya, sha mana ongele omuntu ta longo oshilonga shuualithi meiuvo lye lya yela, osho tatu shi longwa kaavalithi Aaheberi mOmbimbeli. "Shika otashi ka yambekitha iilonga yeni"

Omuntu, omuntu!

Omuprofessori Paul Tillich okwa nyola membo lye "Uuyuki, ohole noonkondo" ta ti:

"Kape na ngoka ta vulu okupopya mpoka pe na ongamba ya shiga ko moonkondo dhomuntu. Omuntu metsakaneno lye



Dr. Veli - P. Jääskeläinen

Aavalithi ya langekwa miilonga okuza kolomoho sigo kolulyo: Elisabet Martin, Tsumeb; Mirjam Handjaba, Engela; Miina Shongolo, Ontananga; Rakel Kaukungwa, Nakayale; Ester Shikomba, Onayena; Loide Amukwaya, Nakayale, naLeena Haihambo kuMpungu. Nguka a tumbulwa lwahugunina ota ka yakula koshipangelo shEtumo shaNkurenkuru.

AAYAKULI AADHIPAGI

Oshituthi shika sha ningilwa moshipangelo shaNandjokwe, omusitagongalo gwaayakuli yomilpangelo mongerki Festus Ashipala, aayambekelwa moshilonga shokuvalitha okwe ya lombwele ngeyi:

Ne ngashi tamu langekwa nena miilonga yeni, pamwe otamu hogolola nokuli ombinga yeni. Omwa hala okukala aasita aawanawa, haamboka aadhipagi naayugi. Ano nge kamu na tango omusita e vule ayehe, Jesus, oye a longe moondunge dheni, a longe momiti tamu ke dhi longitha, one otamu kala aadhipagi yoshigwana naayugi.

Otekisti yelongo lyJesus "Ongame omusita ngo omwaanawa," oya li ya leshwa wo mpaka.

nuuyuni (universe), ota vulu okukonda ongamba kehe yi shi kudhiladhilwa. Ihe omuntu oku na ongamba ndjoka yaa na omalimbililo nohi itsu muyo aluhe, oyo omuntu omukwawo.

Omuntu mukweni okwa fa ekuma ndyoka itaali vulu kukumunwa po nenge okuululwa nenge okulongithwa. Ngoka ta kambadhala okuninga ngaaka, oti ihanagula po mwene."

Aawambo ohaa ti: "Omuntu, omuntu." Mokutya ngeyi otaa holola uule wondilo yomuntu kehe a shitwa kuKalunga na kale omushike. Dr Tillich momatumbulo ge ota tsu kumwe nAawambo mokudhiladhila omuntu.

Epandulo nda hala okweeta oli na sha nelongo epe tatu li pewa "mOmukwetu" lyuuthemba womuntu. Omuntu kee na owino wuuthemba womuntu okwa fa a mangwa elapi komeho noonkatu te dhi katuka odhe mu ipalela ye mwene ndee nayakwawo. Onkalathano yaantu oya pumbwa shili uuyuki, ohole noondunge netseyitho lyuuthemba womuntu oyo ekwatho mushika. "Omukwetu," otwa tegelela owino owindji muuthemba womuntu!

Elia Niinkoti

Omasiku hamale we

Inapa pita unene omasiku omale sho pwa hokololwa nkene Aayeleele kOnankali ya tindi okukala melongelokalunga molwashoka aniwa inaa gamenwa paveta dhomonkalathano ngashi aayamba ya gamenwa. (Tala wo ombilive yomudiakoni gwokOnankali moshifo shika).

Nkene aamwameme Aayeleele taye tu dhiladhila ngashingeyi Aawambo, osha holekwa natango aantu oyendji. Ihe omasiku hamale we kehe gumwe e ke shi iuvile ko ye mwene.

"Aandongo aakriste mboka inaaya thika muukriste wo wene, ohaye tu kwankula owala, sho taye tu ithana Aakwankala. Aasoomi oya nengeneke onkalamwenyo yetu opo tu ze tatu ithanwa Aayeleele notwe shi nyanyuki-lwa."

Osho naanaa sha tumbulwa kAayeleele yamwe nosha li sha dhigininwa komukulupe gumwe ngiika gwomimvo 60, sho ya pulwa kuamushanga gwOshifo shika nkene ye shi uvitile sho taa ithanwa ngashingeyi Aayeleele.

"Edhina Aakwankala katu shi mpo lya zile, notwe li taambebe, oshoka katu na nkene tu ninga," osho ya holola. Ihe oshinima shedhina pamwe oshishona nohasho tatu lalakanene mpaka.

Omuntu kehe oto shi zimine kutya, okwa kala shito omathimbo uuna mokati kiigwana nokomaludhi gaantu mwa kalathana elilathano lyokomasilu, elyaathano lyiipungo nethindilathano lyokongudhi miinima yaa na omutse nondungu.

Evangeli ndyoka tali holola oshili yalyo ngashingeyi mokati kiigwana, naandyoka aataandelithi yalyo ye na eulumo oku li thikitha komuntu kehe, oyo naanaa li na oku tu tompela kutya, omasiku hamale we iigwana naambyoka ya li ya talika oyopeviivii, yi thikame okukondjela uuthemba wayo, ngashi ye shi dhimbulula kutya, otatu tindwa notau pathanwa kuyalwe.

Ndishi oshipu okudhimbwa uudhigu noothina dhaamboka tu ya vule oonkondo notashi kala wo oshidhigu oku ya gwanithila uuwanawa nuuthemba wawo ngashi ye u tegelele nehwo enene kutse.

Ayihe mbika itayi tu mangulula mondjo yokushundula nokudhina eshito lyaKalunga. Mpaka natu pulakenu-nune ashike eindilo lya simana tatu li pulwa kaamwameme Aayeleele kutya, tu ya tale notu ya yalule wo ongaa-ntuuntu ngashi tse hatu idhiladhila.



Emanguluko neipangelo lyetu

Emanguluko oyo oshilikolwa shondilo komuntu kehe. Unene momathimbo ngaka, oshitya emanguluko otashi kelengendja komilungu dhakehe omuntu. Oshoka emanguluko otali pumbiwa tuu shili komushitwa kehe. Onke olwindji ohali monika netiko lyombinzi. Ope nemanguluko lyomuntu nongaashi wo pe na emanguluko lyoshigwana. Mpaka otatu hala okupopya ndyoka lyomuntu, ihe lyomekulilo nolyomwenyo.

Emanguluko lyetu nolyaayehe

"Kristus okwe tu mangulula tu kale twa manguluka. Iyomevangeli Gala. 5:1. Emanguluko ndika lyopavangeli olya monika netiko lyombinzi yaKristus. Onke li na ondi-lo yaa na ondjele. Netiko lyombinzi ndjika itaali endululwa we, noitali kundju. Tse ootali inali tu pula sha, otwe li pewa omagano medhimo lyoondjo. Onke tatu pumbwa oku li dhiginina noku li kwatekeka. Nuuna tatu popi emanguluko otu na okudhimbulukwa wo kutya pamwe nalyo otwa pewa eipangelo. Oshoka emanguluko kali shi kutopolwa kumwe neipangelo.

Pwaa na eipangelo, emanguluko otali fala meyonuuko nomiiponga wo. Oshoka ngoka a pewa emanguluko okwa inekelelwa oshinima oshinene. Onke Kalunga ketu okwe tu inekelele emanguluko ndika molwetu yene nomolwoshilongayakulo. Noshongaka Kalunga ine tu nyonyodhola moshinima shika tse ootali, na unene aayakuli. Shila okombinga yetu yene tu shi okwiipula nkene hatu li longitha. Owe li kwatekeka tuu, notatu li longitha tuu neipangelo? *Natu shi tale manga.

2. litya yetu, emanguluko neipangelo momalundululo mbimbeli 1 Kor.8:9; 1Kor.9:4,5; 10:23,24. Momalundululo gi ili nogi ili ha-ga uuvika putse, iitya mbika iiyaali

eipangelo nemanguluko itayi faathana. Nohaapehe elundululo lyetoloko lyoshitya shekota mootekiste. Nge tatu tala andola paGal.5:1, moka oshitya shekota "eleutheria" = emanguluko, momalundululo gamwe inashi tolokwa ngaaka. Moshindonga oshi



Rev. Timoteus Shipanga

li pashitya, noshongaka wo moshiAfrikaans (vryheid nomOshiingilisa liberty/ freedom). Ihe mOshikwanyama nomOshikwambi omwa fatululwa owala edhiladhilo lyoshinima niitya yilwe. Kombinga yoshitya "eipangelo" patekiste ndhika tadhingi omadhiladhilo getu moshnima shika; itatu shi mono momalaka galwe tu shi ngashi ando: "selfbeheersing/ self-control".

Noshitya shekota "eksousia" osha [lundululwa niitya yi ili noyi ili. Yimwe otayi toloka naana edhiladhilo lyoshitya. MOshikwambi osha tiwa kombinga yimwe "mangururo" na mpeyaka "epitiko." Momalundululo gamwe gomOshiingilisa osha lundululwa ishewe na "liberty/freedom" noshongaka wo mOshiafrikaansa kombinga.

Ihe mugamwe osha tolokwa padhiladhilo lyasho "power/authority" sha fa wo mOshikwanyama pomaha gamwe "eenghono". Ihe nonatango nge tatu lesa momapandja ga tya ngaaka, otatu adha ngaa sho sha lundululwa na "vryheid" nenge Reg/ right"

Mpaka osha yela kutya oshitya shetu "eksousia" osha longithwa okuhokolola oonkondo dhepangelo, ndyoka aana yaKalunga ye dhi pewa okutidha mo oombepo oombwinayi, nokupangela nokusinda oonkondo adhihe melongitho lyomutondi. Noma dhiladhilo ngaka osha yela wo kutya emanguluko ndyoka twe li pewa mevangeli, otwe li pewa pamwe noonkondo dheipangelo nodhokupangela. Osho Omukulili mwene kwe shi fatulula kutya:

"Ayehe mboka ye mu taamba okwe ya pe oonkondo (eksousian) ya ninge aana ya Kalunga". (Joh.1:12). Noonkondo odho tuu ndhika dha pulwa Jesus kaasaseri nokaakuluntu yoshilongo:

"Ooonkondo (eksousia) dhini ho longo mbika? Nolye e ku pa epangelo (eksousian) ndika?"

Natse wo otu nokuholola otwa pewa oonkondo nepangelo neipangelo miipathi yaayahe. Ando shika shi dhimbululwe komeho gemanguluko, ndyoka tu li na notwe li taamba mevangeli. Unene methimbo ndika aantu otaa limbililwa - ongele omuyakuligo-ngalo oku na tuu oonkondo dheipangelo, okupangela okahalu keliko nodhokugandja oshiholelwa shi shi okulandulwa kuyalwe. Eikonakono otatu li pumbwa mushika.

T shipanga



Nevangeli lyoshilongo otali ka uvithilwa uuyuni auhe, li ningile iigwana ehokololo, notaku ya ihe ehulilo

Ileni ayihe ya longekeka

Luk.14:16-24.

Eyeye lya fa ndika otatu li adha muMat. 22:1-14, tali popi ohango yomuna gwokombanda. Omayele ngaka agehe gaali oge na edhiladhilo nelalakano limwe. Kalunga oye okwa paka po uulalelo uunene, opo aantu ayehe ye ye okulya. Kristus oye ta hiya nota ithanene mo aantu ayehe ya ka lye. Omuntu kehe kombanda yeve oye omuhiywa, nando na kale oye. Aakuluntu naanona oyi ithanwa kuulalelo uunene megulu. Aaitanwa yokulya uulalelo tango **O-SHIGWANA SHAAYUDA** patiyali oyo-miigwana **YAAPAGANI**. Eithano ndika nando oye egulukila aantu ayehe ye li kombanda yeve noye li longekidhilwa, inaa li taamba. Oya tindi kehe gumwe nomukalo gwe.

Aatindi yotango aakuluntu naanenentu yomAayuda, ndele mboka aafupi ya dhinika moshigwana oye li taamba, oya tyapula uulalelo nopwali pu na eha natango.

Onke omutumwa ota tumwa noondjila nomapola. Tashi ti, ota yi kaapagani. Ileni oshoka ayihe ya longekeka nokuli.

Oshituthi shiitendele iinene oshilongo shaKalunga. Ongerki oyo oshilongo shaKalunga kombanda yeve, tayi ithana aantu ayehe ya taambe omwenyo gwaaluhe. Aantu oyi ipyakidhila niinima yawo yene; epya, oongombe, aakiintu aape, iipindi niilonga iintimbe yomilema. Ef.5:12.

"Ileni, oshoka ayihe ya longekeka nokuli."

Mpaka omuntu kehe otaa ithanwa a kale gwomoshilongo shaKalunga. A manguluke miinima ye mwene. A manguluke muhalu wonyama. A manguluke meiteko Kalunga, megamo nomeitumbo lyomuntu.

Iitya iyali iikwiilongo Oshilatina nOshigreka otayi holola nawa ukwatya wuulunde. **Concupiscentia**, okahalu konyama neiteko omuntu sho ti iteka Kalunga omunamwenyo, e ta gama muuyuni. Osho aantu otatu iteka megongalo lyaKalunga e nomwenyo e tatu yi muuyuni 2Tim.4:10. Otse otwa ithanwa twaa iteke egongalo lyetu Hebr.10:25.

Oshitya Oshingreka **HYBRIS**, otashi ti eigameno neitumbo lyomuntu ti itala oye ita pumbwa kongerki, kaku na ekwatho lye. Ota longo iilonga ye esiku lyOsoondaha, oshoka omiilonga ota mono ekwatho aniwa. Onke aalunde itaa vulu megongalo lyaayuki Ps.1:5'4:9 oshoka kaa uvite taa kwathwa kegongalo.

Nomolwashoka aantu oyi ithanwa oya tinda oya mangwa kuuhalu wonyama, keiteko, nokeitumbo. Omuwa ota ti:

Kaku na nando ogumwe maakuluntu mbe-yaka yi ithanenwe ta makele oshituthi shandje. Uveni ano eithano ndika.

"Ileni, oshoka ayihe ya longekeka nokuli."

Rev. G. Amupolo (Omukatokodhilo.)

Omulendu 1971

Ovawambo 480 ava va kwatelwe komulendu, notaku tiwa kutya ovanhu 112 ova fya. Osha shiivifwa koshikondo shoinima youhaku mOvenduka.

Ehokololo otali ti natango kutya ovanhu aveshe kumwe muSuidwe ovo va kwatelwe koudo ou womulendu okwa li ve fike 611. Omiti doimaliwa i fike R244,680 oda tuminwe kOwambo 1971 okukelela omaudu e lili noku lili.

ELALAKANO LAVELKSWA OTALI KONAKONWA KEPANGELO

Okangudu keeveta daSuidwes-Afrika, oka ehena kongerki onghwaevangeli paLuther yOvandowishi (DELK) ka mone oshilalakanenwa shehangano leengerki eenghaevangeli paLuther omu (VELKSWA) kutya osha shike.

Medina lEpangelongerki longerki yOvandowishi, omuwilikingerki, Otto Milk, okwa yandja omanyamukulo aa:

Epangelongerki ole shi yelifa nawa kutya, inali teelela nande efiku limwe okangudu kEpangelo ka kondjife ile ka popile elalakano leengerki nhatu mokuhangana. Omolwomalimbililo, Epangelongerki ola ulika kutya lo inali lipyakidila nomalalakano a nyika ombudi.

Epangelongerki kombinga yalo otali ningi ashishe tali dulu omolwouwa wovanhu aveshe, opo omalalakano alo a kale koshi yeeveta doshilongo nokoshi youwa woshilongo.

Okangudu kokuyandja eeveta nako yo oka holola kutya ko inaka hala okulidopa moinima yongerki nde itake ke shi ninga nokomesho, kakele shapo ngeenge ongerki tai ka holola osho shihe na ouwa woshilongo.

Ouyebele ou owa pulwa ashike kokangudu aka keeveta omolwokukonga eshiivo la wana moshinima shehangano leengerki dovalaule novatilyane moshilongo, nde nokomesho onghatu keshe moshinima osho tai ka shikulwa noudiinini ngaha, osho ehokololo lomushamane Milk la ti. Ehokololo eli ola yandjwa yo koifonghundana.



Ev. Johannes Ndimwedi

ESHIIVIFO

Kookaume, koomeme nokovafimane-kwa amusha mwa li hamu nyolele nge naava hamu talele nge po nohamu file oshisho keembinga adishe palutu nopamhepo, mwa taalela kefuta laLuderitz.

Mefiku 14. 5. 1972 olo Ndimwedi a lekela eongalo laLuderitz nokulongekida omitwalo neumbo laye okuya momashina nokutembukila kuWindhoek. Omo nda nangekwa paife. Nge wa hala okutonga naame nyolela koPosbus 7070,

Room 02036, Katutura, Windhoek. Nomakundo mahapu a dja ku

Ev. J. Ndimwedi



G. Amupolo

AakwaLuther nAakatoolika moonkundathana

Pwa piti ngashingeyi oomvula ntano sho oongerki ndhika mbali, ongerki onkwaevangeli paLuther nongerki onkwaKatoolika paRooma dha kala moonkundathana, opo ku talike oshikalimo natango kombinga yuuteologi (elongo lyuukalunga) osho wo elongelokumwe pokati kadho miitopolwa yi ili noyi ili.

Oshigongi sholudhi nduka osha tegelelwa sh ka tsikile natango muKotoba nuuwvo etii-16-20. Ehala nando inali tseyika manga, okwa tengenekwa kutya, sikulimwe otali kala ngaa muEuropa. Ondjokana pokati kaantu yomomaitaalo ngaka gaali osho wo oshinima shimwe shi li mekonakono

Etaalelopo lyAakatoolika

Aayenda ya simana otaa ka za moshilando



shomupapa "Vatikan" opo ya ka talelepo oombelewa dhOngongahangano yaakwaLuther kuGeneva. Mokati kawo omusimane-kwa Cardinal Jan Willebrands, amushanga omukuluntu gwoshikondo shiinima yuukumwe waakriste muuyuni.

Shika otashi ningwa palufo sho aanambelewa yOngongahangano yakwaLuther ya li wo ya talele po oshilando shomupapa 1969. Etaalelopo lyongashingeyi inali tseyika manga otali ka thikama uunake.

(Southern Cross)

A hulitha po oondjenda

Omusamane Andreas Shipanga 79 gwegongalo lyOkaku okwa mana oondjenda dhe eti-21. Kotoba 1971 moshipangelo shaShakati, konima yethimbo ele mombete yu-wehame. Tate Shipanga okwa thi-gipo omuselekadhi gwe noyana ya-hetatu: Aalumentu yahamano naa-kiintu yaali naatekulu.

*Peha Iyaamwameme
Petrus Shipanga*



Ekundo kaalongi ayehe

Aalongi ne, otuneni oshilonga oshinene shi li moshigwana kwatya ngaa sho oshinene molumbumbu, sho oshile momuthika ku vulu okumeta noshimetitho nenge u shi tende oongamba u tye nee osha hulila pontumba nopongandi, oshoka ashilhe sha pumbiwa otashi pitile melongo amuke ti.

Oshilonga shika osha longwa kOmuwa Jesus mwenemwene ndele te shi tsakanitha po nawa. Jesus Kristus ngu a sinda omaudhigu agehe guulongi, ndele te tu longekidhile ondjambi yesindano, okwa ti:

“Ongame ondi li pwamwe nane omasiku agehe sigo ehulilo lyuuyuni.”

Aalongi, tu landuleni ano moshiholelwa shaJesus, muudhiginini we nomuulaadhi we, nonando otu li muudhigu. Ndhindhilika, “Ongame ondi li pwamwe nane.”

Tse otu na tate yetu megulu, ota gandja oonkondo esiku nesiku, ote tu yambula muunkundi wetu woomvulwe oondhigu. Momayipyakidhilo getu, otu na Jesus omu-sindani.

*Omulongi omukweni.
Linda-Naambo Shimbuli*

AAWAMBO KU SHI SHO YA HALA

Aaleshi taa nyola ngeyi

**Omuwiliki gwOshikondo shElongo
mEpangelo lyOwambo**

Omusimanekwa,

Moshipopiwa shoye no'ministeli yotango ya S.A. omusamane Vorster, moKaaapstad ngaashi sha toolwa kaatoolinkundana yiifo tayi landula “Die Suidwester” (3.5.72.) na “Omukwetu,” ‘Aawambo inaa hala Namibia’: Omuwiliki omusimanekwa; Namibia inali dhiladhililwa Owambo.

Omuwiliki omusimanekwa; Epangelo lyOwambo sigo onena inali gongela Aawambo ayehe li pule ngele inaa hala edhina Namibia.

Omuwiliki omusimanekwa; Onawa okupopya medhina lyoshigwana, ihe konakona nata-ngo muule momwenyo gwoshigwana shoye.

Omuwiliki omusimanekwa; oto dhimbulukwa tuu aantu 700-800 taa kongo omukuluntu omunene gwEpangelo lyOwambo, molwetumbulo ngaandika lyoye. “Ngame noshigwana shandje,” ihe inaye mu mona.

Omuwiliki omusimanekwa; Epangelo lyOwambo otali indilwa li pule Aawambo ayehe ngele inaa hala Namibia.

Omuwiliki omusimanekwa; Aawambo ayehe owe ya gongela uunake, nopeni u tseye shili ngele inaa hala iigwana ayihe yomu S.W.A. yi kale kofi yepangelo limwe?

J. Nangombe

Ngame ote tumbula ngashi Omupisalmi

Eti-15.3.72, onda li nda thikama mOshipa-ngelo shetu mOkahao okufala aavu yetu kOshakati ngaashi hatu shi ningi aluhe moshiwike kehe mEtitatu. Mokugaluka ongulohi oshihauto shetu osha kandoma, nomuhingiwetu Lisias Shigwedha a hulitha pethimbo tuu ndyoka.

Tate Kalunga okwa hupitha ndje meso nando nda li nda ehamekwa noonkondo. Kalunga a tumu wo osheenditho shi thikithe aanashiponga kOshakati.

Otandi pandula oondohotola, aapangi naayakuli ayehe yomOshakati sho mwa kwatha ndje kolutu nomwe ya okutalela ndje po mombete yu-wehame. Ngele mboka yomOshakati, nenge mwa zile palwe mwe ya ne ye ne, mwa gandja omakundo, nenge oombi-

live naamboka mwa pe ndje onguta yoohapu dhaKalunga nokutsandje omukumo muuwe-me. Nando inandi tumbula omadhina geni, Omuwa mwene te ga tseya.

Ngoka wo ino mona ompito okuninga ayihe nda tumbula, ondi shi shi owa kala shili nokugalikana. Onkee kune amuhe onda hala kutya, omagalikaneno geni oga uvika kOmuwa. Onkee na yambeke okukalamwenyo kweni akuhe ne mu tsikile natango.

Ngame onda hala aluhe okutumbula ongO-mupsalmi. “Omwenyo gwandje hambelela O-muwa, ngoye ino dhimbwa uwanawa washa e u ku ningila” Ps. 103.

Ngashingeyi otandi tsikile natango noshilonga shandje, moonkondo dhOmuwa. Eeno shili, itandi dhimbwa okuhambelela Kalunga omolwiikumithalanga e yi ningile ndje.

*Lahja Omagano Amunjela
Moshipangelo mOkahao*



Omusita gwoshilonga sheputudho lyopakriste mongerki, Matti Seppala manga inaa shuna kuSoomi, okwa ningile aalongisikola yomuuningino wOwambo oshigongi mOtshandi. Konyala aalongi 100, oya kala moshigongi shoka.

Oshoongalele shovanyasha mu C.D.M.

Ovanyasha vongerki yOwambokavango, Elok mu C.D.M. ova li va ongala moshooongalele shavo muLocal Hostel. Oshoongalele eshi osho shotete okuningwa momina ei. Elalakano olo okudimbulukwa Ehanganano lovanyasha longerki aishe muElok, nova hala okudimbulukwa kutya, nande ove li moilonga ovo oilyo yehanganano eli, novo oinhimbu yolutu laKristus.

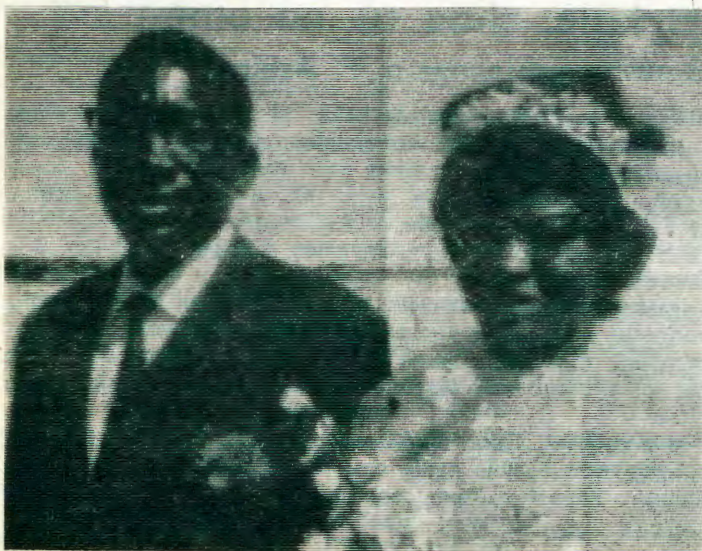
Ovanyasha veekomboni edi nhee, Local, Noord, Uubvley, naAffenrucken ova ongala aveshe muLocal Hostel eti-30.4.72. Ovanyasha ova dja mOngerki nomapandela avo notava ende momikweyo nokupita mokati kokomboni va yuka kokapale ketanga, omo mwa li ovanhu ve dule eyovi. Manga ve li momikweyo, ova enda tava imbi eimbilo 544. Omuwiliki woshooongalele a leshe Ps. 119: 33. Omatumbulo aa okwa li olo edina loshooongalele. Nokwa twikila nomatumbulo aa.

"Fyeni ovo twa ongala apa nena, otu na yo okwiingida. Omwene, ulikila ondjila yomikalo doye ndi di diinine. Kaku na omunelao ou ita diinine omikalo dOmwene. Aveshe ovo ve li mondjila nomomikalo dOmwene, ovo aveke ovelao nove na oku diinine omikalo edi fiyo alushe."

Konima yoshipopiwa shomufita okwa leshe omakundo akamukomboni waLocal D. J. Steyn, a leshe komuyakuli waye F. Kalili. Noshipopiwa oshi li ngaha:

"Omufita Dengeinge okwa konga noudjuu omhito yoshooongalele sha tya ngaha. Ehala laKalunga olo eli keshe umwe a xupifwe, onghee nomokuyandja, Kalunga ota hokwa ou ta yandje nomutima aushe. Nanye yo ondi udite otamu ka hafela ndele tamu ka pandula oshivilo eshi."

Eekomboni adishe da ongala okwa li da eta omaimbilo taa shambula eemwenyo. Otwa li momudimbi weendjovo daKalunga efiku olo noitatu ka dimbwa efiku la tya ngaha. Nomanga inatu fika pexulilo loshooongalele otwa popifwa kOmuudakoni F. Hafunda nosho Ev. Josef Petrus novanyasha ve tu pa momaimbilo. Komufala wovaluale mu C.D.M. Omushamane J.B. Wessels naye oumwe wongudu yovanyasha, noshipopiwa shaye osha li ngaha:



Omuwa okwa pendje ishewe omumati omumatilela Moses Sakaria omolwesilohenda lye. Mesiku ndika 14.4.1972, otwa dhana oshituthi shetu mongerki yaNiimwandi pamwe naye. Aaleshi tu mbuleni ano pamwe nangame kutya, Kalunga katatukamwe na simanekwe.

"Oshivilo eshi osho shotete nda mona mu C.D.M. sha ningwa. Elalakano lasho oliwa unene. Oitukulwa yOwambo oyo ya tumbulwa, omo mu na ovapaani. Oushilo waUkwanyama Ovakwanghala ovo ve li mo, Ouningininombuwanhu waNgandjera nOvahimba nomihoko dikwao di li mouningininino, ondi di shii. Ohandi halele eyambeko ovo va longekida oshivilo eshi, okukwafa ovanhu ovo va popiwa nale. Eshi oshinima shiwa unene. Ohandi lineekele atushe otwa hafela oshivilo eshi."

Ndishi pehovelo otwa ti ovanyasha ova hala okukala mekwatafano novanyasha vakwao mOwambo. Ova li va ninga ngaashi naanaa hashi ningwa kuvakwao. Eshi ve na eekomboni nhee ova ongela yo oimaliwa paekomboni pamaongalo. Ova li va ongela ngaha:

Local Hostel	R29.15
Noord Hostel	R11.67
Uubvley Hostel	R09.16
Ongalo ya umbwa moshooongalele	R26.02
Kumwe	R75.90

Shiimba ou na omapulo avalu; limwe oleli: Owa ti eekomboni odi li 4, okomboni onhine oi li peni? Aayee, oyo onghelo, oi limonghwapu. Oimaliwa oyo oyashike nee? Oyomoshilonga shovanyasha mongerki aishe, teelega u tale Kotoba oto ke i uda ko nawa lela. Nafye oko twa yuka.

Otwa mona omayambeko manene mefiku lovanyasha. Ove oho mono omayambeko peni? Ovanyasha mu C.D.M. otava halele ovakwao mu S.W.A. alishe omayambeko aau, Wokombadambada nekundo lavo Ps. 100.

H. Dengeinge

Kalunga oha hekeleke

Omukadhona nguka Helena Amunyela, omumati gwe gwotango okwa li a mana oondjenda manga ku na esiku limwe a ye mondjokana. (Omukwetu No. 7 ep. 8, 1971). Osha li edhengo edhigu kuHelena, ihe nani shono Kalunga e ku pakela po, ihashi liwa po kombwa.

↓ (Efano Iyehokololo kolumoho)



Ambrosius Agapitus

Hogolola iilongwa tayi ku kwatha

"Omwiilongi ino imangeleka kelandulathano lyiilongwa ngaashi lya langekwa koUniversity. Kutha iilongwa iishona, 3-4 komumvo, mbyoka to ka pita nuupu. Kotokela wo aluhe einkelelo mwene nomukumo gwopetameko, sho u uvite oto ka pita nawa. Ngele to shi vulu, onawa.

"Tala nawa iilongwa oyini ya simana, yi na oshilonga to yi landula mbyoka tayi ku adhitha pondondo. Oonkatu ndhika nge to dhi landula, otadhi fupipike ethimbo niimaliwa."

Shika osha hokololwa kuAmbrosius Agapitus, gumwe gwomaailongi 165 mboka ya pewa oonkatu meilongo lyawo mosikola yokombanda yaFort Hare nuumvo muApilili.

Ambrosius omvalele yaWambo, okwa pewa onkatu muunongononi (B.Sc.) nokwii-pyakidhila natango okwiimonena odiploma melongo (Education Diploma) ndjoka te ke yi mona wo nuumvo.



Aapangi yetu naatumwa] oomeme Marja Mattila nalrmeli Aho, omulongi gwaapangi mOnandjokwe, oya shuna ishewe kuSoomi. Meme Marja ngoka a longo ethimbo ele nokuli mOwambo, nando a longo aluhe mOnandjokwe, okwa dhiginine okutalela po omahala gEtumo mongerki. Ethimbo inali ya pitika ye tu kalele aluhe mpa-ka noku tu yakula. Oya shuna kevi lyooyina o-malutu, manga oomwenyo dhawo tadhi dhiladhila oshilongayakulo shawo muka. Kalunga ne ya gamene naahwiayaka.

Oshilonga shetumo muuzilo wOndonga

Oshilonga shEtumo osha tamekwa ngaa, ngashingeyi pwa piti ethimbo ele nokuli muuzilo wOndonga mokati kAayeleele.

Onankali, oyo eha ekulu lyOshilongatumo muuzilo wOndonga. Ihe oyo ehala ndyoka wo oshilonga shEtumo oshidhigu sigo ompaka. Onankali eha Iya nika uukwashilando nokali shi eha naanaa lyombili. Onkee Aayeleele oya tameke ngashingeyi okufadhuka po taa yi kokule nalyo. Onkee Etumo kOnankali olya fa li na okukundathanwa nokudhiladhilululwa.



Osikola

Okwa li ku na aanasikola aakadhona mboka ya kala muNkongo. Ngashingeyi oya zi ko inaa hala ko we. Ompito yo yene yokwii-longa opo yi li ngashingeyi pOnankali, ihe Aayeleele ihaa dhiginine osikola. Opwa dhiladhilwa andola ngele iilya tayi monika ya kale taa pewa omwiha nenge ontaku posikola, ihe walyewo ngele otashi kwatha tuu sha, pamwe otashi eta ashike uuhigu uu-kwawo mosikola ayihe.

Epya

Numvo epya inali lika po koongombe ngaa-shi omumvo gwa yi. Mboka ya litha iilya omumvo gwa yi, oya futu ayehe kakele kagumwe. Epya olya longwa ngaa, unene Aayeleele aakulukadhi oya longo nuudhigini ye vule aalumentu. Ihe epya natango eshona, otali pumbwa egwedhelo, okukokola nuunene nokufula iithindi.

Ongerki oya tungwa ihe inayi pwa. Oongalo otadhi pumbiwa opo yi pwe molwasha-shoka iimaliwa oya pwa po, noshihupe osha fa itaashi ka za we kaagundjuka. Etumo kOnankali olya fa Iyaa shi naanaa ndyoka we lyomaapagani, ihe Etumo lyomoostarata, moshilando, ndyoka tali pumbwa aapapudhuli. Okwa ningwa numvo eshasho lyAayeleele ndyoka Iya tetekelwa komashasho omakwawo gatatu. Ihe mboka ya shashwa oya fa taa kanitha ashike ashihe shoka ya pewa. Andola ku talike moonkundathana iinima mbi:

1. Andola ku dhiladhilwe kumwe negongalo lyOnyaanya nEpangelongeleki ku totwe egongalo.
2. Uuthemba woshigwana shAayeleele paveta nomonkalathano kumwe nAayamba nkene

tau opalekwa.

3. likolitha.
4. Ondjala.
5. Elandulathano Iyaanashilonga.

Onyuulaye

Oshilonga oshi li petameko nosha fa tashi ende hwepo mehumokomeho. Ehala ewanawa li na ombepo ombwanawa yefudho. Okwa kokolwa epya lyAayeleele nomuthima pooha dhepya otagu pumbiwa. Pamadhiladhilo gandje ehala ndika olya fa li shi kuhumithwa komeho li ninge ehala lyopokati lyOshilongatumo muuzilo wOndonga mokati kAayeleele.

Oshiya

Oku nompumbwe yomulongi gwaakuluntu. Ngoka e li ko omukadhona gwamwene gwomukunda gwaShiya oha longo ashike aana. Oku na Aayeleele oyendji mboka taa pumbwa omulongi. Ngashingeyi evangeli olya pitwa ko kiikolitha.

Omunyankwe

Aanona wo oye na omulongi, ihe aakuluntu kaye na. Omatalelopo wo oga pumbiwa. Oku na wo omahala galwe moka mu na Aayeleele mboka inaa mona eyakulo lyasha. OSHAAMPULA, EENGODHI, OSHAANA-SHATEMBA, NOKALAMBA.

Tu dhimbuluthathaneni oohapu dhameme Anneli Hirvonen moshigongi shimwe sho e tu lombwele a tile:

"Aasita oye na okupapudhuka opo ya papudhule aakwanegongalo. Megongalo kehe omu na okukala elandulathano omolwoshilonga shEtumo. Omu na okukala okangundu kEtumo. Okangundu haka oke na okulongekidha megongalo opo mu kale ituthi yetumo, ngele iishonashona iiyali. Hakangundu akeke ihe noongundu wo ndhoka dhi li megongalo odhi na okuninga sha omolwEtumo."

Ngaashi osikola yOsoondaha, aagundjuka nongundumbimbeli, oshilonga shEtumo otashi humithwa komeho mokutseyithwa nomokuninga elandulathano. Omuwa Jesus ota ti mwene:

"Galikaneni ano mwene gwiilya a tume aalongi keteyo Iye."

Otatu tameke okugalikana opo Omuwa mwene a tume aalongi keteyo Iye. Ngele itatu kala muJesus, noitatu galikanene oshilonga shEtumo muJesus nena oshilonga shetu osima yowala.

Ngame otandi vulu okukala muka mOwambo oomvula odhindji tandi longo tandi talele po aantu apehepehe, ihe ngele itandi kala muJesus, nena kashi na oshilonga, osima yowala sigo tandi si. Ihe ngele tandi kala tandi indile Omuwa Jesus mungame, nena oshilonga shandje oshi na oshilonga. Otse yene tango tatu igandja kuJesus moshili esiku kehe, opo tatu vulu okulonga oshilonga oshidhigu shEtumo.

Rev. Festus Ashipala

Ongerki nayi kale, shaa tu na ombili

Ombilive komusita gwiipangelo, F. Ashipala

Omusimanekwa, ohela onda talelepo Aayeleele komahala hoka ya tembukile ko, nonda kambadhala oku ya pula kutya, oyu uvite ngiini. Oya hokololele ndje omahokololo taga etitha uupongo. Ga tala nawa ngaashi taga landula mpoka:

- a) Oya tila okukala taa dhengwa noitaa gamenwa.
- b) Otaa sile po ondjala pOnankali, ihaa mono we sha.
- c) Jason (Omuyelele) ngoka a li pehawaleko Iyiikulya, haye we e li po.
- d) Ohaya indikwa omeya gokunwa komilungu.

Oya hokolola onkalo ya tya ngaaka ondhigu, onkene etokolo Iyawo oli li ihe mpoka kutya, nando ya kale kokule nongerki yawo, shaa ye na ombili mokati kawo.

Oya ti wo kutya, ngame (omunyoli) nandi kale handi ke ya talelapo. Eewa, otandi ke ya talelapo, ihe otandi ya faalele shike shokolutu? Ngele kandi na oonguwo dhoku ya pa nosho tuu?

Oku ye li ya halakanithilwa ko komikithi. Gumwe okwa zinda omutse. Onawa sho wa pewa oshimpwiyu shika u tale shoka tashi opalele ngele oku na natango ompumbwe yaatumwa, shika osima yowala nehetho Iyiimaliwa tayi longo mpoka.

Omudiakoni Abisai liuhwa,
Onankali

Aatumwa meme Else Witting, meme Anneli Hirvonen, meme Helka Honkanen, meme Eine Valimaa Kuku Rebeka Amupanda, naatumwa ooyakwawo wo oya kala meshasho lyAayeleele mbaka ngashi wo oya kala haye ya talele po olwindjilwindji

SWAPO OKWA GONGA-LEKELE UUYUNI

Egongi enenenene Iya za uuyuni auhe olya hiyilwe kuSwapo muBrussel, Belgia moka mwa li mwa ningwa omafaneko gi ili nogi ili omolwemanguluko Iyevi IyaSuidwes.

Aayenda yoshigongi 500 mokati kaamboka mwa li aakalelipo yomapangelo gi ili nogi ili oya kala moshigongi shika shomasiku gatatu pehulilo IyaMai.

"Suidwes oli li metonatalo Iyuuyuni nonando nale Iya li Iya kala muuteku wa S.A." Ndika etokolo limwe Iya kolekwa koshigongi shoka.

Omafaneke wo omakwawo ngoka ga taambwa ogokukondjitha okukala kwa S. A. muSuidwes nenge okugandja iikwatha ayihe tayi pumbiwa, iikondjitho nenge yopakukalamwenyo kwesiku kehe kiilyo yaSwapo, noshu tuu okukonakona ooveta dhaaniilonga muka.

Omusamane Sam Nujoma, omupresidende gwehangano IyaSwapo, okwa li wo moshigongi shika osho wo okomitiye yeledo IyaSuidwes ndjoka ya hogololelwe ku V.V.O. 1970 evi sho Iya kuthwa miikaha ya S. A.

Ya sila momina

Wankei, Rhodesia. Aalumentu 418 oya sile momina sho ya mbandukilwa kuyo muWankei. Shika osha ningwa petameko Iyomwedhi nguka. Aalumentu 382 oya li aaluudhe.

Ebandukila enene Iya Iya aantu oyendji ye vule ayehe muuyuni auhe oondyoka Iya ningilwe muMantsjoerye sho aantu 1572 ya sile momumvo 1942. Omina ndjika yomakalamanya yaWankei ohayi zi ootona omiliyona yimwe netata dhomakala ngoka haga tumwa kuEuropa.

Ebandukila ndika olya li uule woometeli. 100 okuya mevi.

Burundi

Oonkambadhala dhokukutha epangelo IyaBurundi koshipundi koonkondo sho dha palutha, otaku tiwa kutya, ngashingeyi oshilongo osha nika eso nomadhipagathano. Omusamane Michel Micombero, oye omupresidende gwoshilongo shika. Inashi yela nawa ngele aakambadhali yokukutha ko epangelo oya kwatwa tuu ayehe kepangelo Iyoshilongo. Oshikonga otashi tsikile natango.

Amerika

Eudafano lipe la shainwa nokuli pokati kovawiliki volongo ya kula Amerika naRuslanda, otali yandje paife etimaumbwile kutya, shiimba eemhedi itadi ke li ya vali moipala ngaashi sha li sha tilika kounyuni.

Omupresidende waAmerika Richarda Nixon, okwa talela po Rusland nomaudafano mawa okukeelela oita pokati koilongo ivali okwa ningwa. Eudafano limwe okuninipika oilwifo neekamba dovakwaita. Ova londwelafana yo vaha ningilafane oikupuladenga kombuda youlongo vanini ovo tava kondjele omamanguluko.

Oita yaVietnam, oyo oshihopaenenwa shimwe shokuhevelafana kwovakulunhu ava.

Rhodesia

Okomisi yaPearce oya li ya totwa moshilongo i konakone efaneko lefinamhango olo la tungwa kepangelo laRhodesia naEngiland. kutya, ola hafelwa kOvarhodesia ve fike peni.

Ekonakono eli ola mona kutya, vahapu vomovalaula ova ekelashi efaneko eli nova tala kutya, inali eta natango eameno lasha kovadalelwamo kakele ashike kovatilyane.

Waldheim natango ina tonyala

Oshinakugwanithwa shandje ndi shi na ngashingeyi osho shika ndi. longele pamwe niilyo mbyoka yaa na euvathano niikwawo okukondja pamwe natse mokweeta po ombili muudhigu womiilongo yaAfrika Iyomuumbugantu, osho Ndjayi amushanga Dr. Kurt Waldheim a popya muNew York.

Dr. Waldheim oku na etegameno Iya kola natango moshimpwiyu e shi pewa okukonga ekwatathano moonkundathana dhiigwana ya hangana nEpangelo IyaS.A. Okwa ti ye ota ningi natango ashihe te shi vulu, nokwiitaala kutya, oonkundathana mombepe ya kodha ombwanawa otadhi ka adhika, shimpa tuu iilyo ayihe yiigwana ya hangana tayi tu kwatha.

Omusamane Waldheim okwa li a talele po S.A. naSuidwes, muMaalitsa mokukonga ondjila yokufala iigwana yaSuidwes memanguluko. Konima okwa kundathana ishewe noministeli yiikwapondje yaS.A., Dr. Hilgard Muller muNew York nokwa hokololwa kutya, oonkundathana odha li tadhi humu nawa komeho koombinga adhihe.

Konima yoonkundathana ndhika amushanga Waldheim oya kundathana ishewe nomusamane Sem Nujoma, omupresidende gwongundu yaSwapo. Opwa li wo omafekela kutya, oministeli Muller okuza moonkundathana naamushanga Waldheim, okwa ka

pita kuArgentina, opo hwiya i indile Epangelo IyaArgentina li tume omuntu kuSuidwes, ongomukalelipo gwaV.V.O. muka.

Shika osha patanwa thiluthilu kuVon Hirschberg, omukalelipo gwaS.A. kiigwana ya hangana. Mookundathana dhaamushanga gwiigwana ya hangana noministeli yotango yaS.A. omusamane John Vorster, omwa zile omafaneke ngoka ngele oshi shi okulongi-thwa oV.V.O. yi tume aakalelipo yayo ngele mOvenderuka nenge muPretoria.

"Sigo oompaka kape na nando oshilongo shimweshimwe sha indilwa kuS.A. e shi longithe ando moshinima shika shaakalelipo" osho omusimanekwa Von Hirschberg a ti.

Ndjayi Amushanga Waldheim ota pandula unene omusamane Kenneth Kaunda gwaZambia nomupresidende Moktar Ould Daddah gwaMauritania kutya, oya longele oshilumentu pethimbo Iyoshigongi shaAddis Ababa shoka sha tumine amushanga kuSuidwes.

Oveta yuuthemba womuntu yiigwana ya hangana

27

1. Omuntu kehe oku na uuthemba a kale moshigwana she a manguluka, a nyanyukilwe uunkulungu noku longe iilonga yuunongononi.

2. Omuntu kehe oku na uuthemba wegameno Iyopalutu nenge Iyopaliko ndyoka Iye etwa ngele kuunongononi, kuunamambo, nenge kusha shilwe kushoka oye omweetipo gwasho.

28

3. Omuntu kehe oku uthilwa uuthemba wopashigwana nowopailongo moka uuthemba wemanguluko ndyoka wa landulithathanwa mefatululo muka li gwani-thwe Iyu udha.

29

1. Omuntu kehe oku na oshinakugwanithwa koshigwana moka amuke emanguluko Iye li li Iya gwana nehumoko Iyuuntu we tali monika.

2. Melongitho Iyuuthemba we nemanguluko Iye, shaa ngoka ota kala owala koho yoompango ndhoka dha nyolwa dho dha zimina uuthemba nemanguluko Iyayalwe, nodhi gwani-the pauyuuki uwanawa nelandulathano na unene wo okukalathana kwEpangelo ndyoka Iya ziminwa koshigwana.

3. Uuthemba nemanguluko ndika, inau longithwa mokukondjitha omalalakano gomautho giilongo ya hangana, aawe.

30

4. Mefatululo ndika inamu ifatululilwa kutya, otamu pitikilwa oshilongo shontumba, nenge ongundu yontumba, nenge omuntu gwongandi uuthemba wemanguluko Iyokuninga shaa shoka a hala sigo tashi yonagula po omauwanawa nemanguluko ndyoka Iya tumbulwa mEfatululo ndika.

ILANDELA OSHIHAUTO SHOLELA

POmisioni yaTshikuku oto imonene po oFord yootona ntano. Iikwa-taakwata ohayi nika edhilo, endelega u mone mbala pater G. Haime-rikk. Ondando R2 500,00.

Ngele owa hala pamwe oku mu nyolela ohandelese ye oondji: R. C. Mission, Otshikuku, Posbus 7, Oshakati, Owambo.

Inaku shiivika manga England nepangelo laRhodesia otava ka wapeka ngahelipi oshinima osho, ashike oministeli yotete yaRhodesia oya ti kutya,

Ekonakono nenyamukulo lokomisi oyo edengo linene lepangelo laSmith, nde ina shiiva natango nhumbi tashi ka enda.

OMAIMBILO NGOKA GEPEKO EPU, HAGA PULWA OLWINDJI, OMO GE LI MOSTOLA YOMAMBO NGASHINGEYI. ILA OWALA U NA R1 50. PEKE.



Ovafuko Eriksson naRauna Kristiana

OMUFITA MODOLONGO INA PANGULWA

Omufitaongalo O. Nailenge wongerki yaAnglikani, okwa kala modolongo okudja Januari 1972 ina pwilikinwa nande.

Omufita Nailenge okwa kwatelwa langhele keengaba daAngola lwokOshikango mekwatafano noveta ipe omolwoupyakadi wa holokele mOwambo, unene kombinga yaUkwanyama.

Ina itavelelwa okutalelwa po komufita omukulunhu wongerki yavo Rev. F. Haythornthwaite, ou e li paife ponhele yomumbishofi Colin Winter, ou a tewa po kepangelo. Osho yo omufita ou ina talelwa po kovanhu vameve ve lili.

Okwa hambola noku na oouna vatatu.

(Die Suidwes-Afrikaner).

Meme Elina pokati nomonamati ou a kana, osho yo omona omukainhu tava hafele pamwe fimbo omafimbo omadjuu kwa li inaa holoka.

VA DIKA, EUMBO LAVO

Eriksson Naukosho 30 naRauna Kristian 29, va hambolifwa 25.3.72 mEngela.

Omufitaongalo N. Shinana eshi e va hambolifa, okwe va pa Eembibeli. Eshi ve li ofika, keshe umwe pomesho yaye ope na Ombibeli kombada yoyalitali. Omufita okwe va fatululila ouyelele mondjila yavo. Nokuya, Ombibeli tuu oyo.

Meme Rauna oye omudiakoni meongalo eli. Konyala ovanashilonga vahapu omo va li melongelokalunga lehombolo efiku olo. Novahongi vaye, meme Aili Mwatotele na-Toivo Ndevaetela.

Omudiakoni ou, okwiifanwa kwaye komwene ohe ku tale nomaxwilili. Okudja kwaye moupaani, okwa dja mo ta lotoka, ovakulunhu vaye va hala ve mu fukike meengoma. Hano efimbo keshe, ote li tale a dja mokanya konghoshi. Eshi osha li yo she mu pa ombepo yetilokalunga. Neyakulo laye meongalo letu ola pangelwa kOmhepo iwa.

Hai ti, ohatu mono tuu omudiakoni a fa ou? Ovakulupe vetu, novanyasha, nounonangalo ova nyika oluhodi. Hai ti: Ohatu mono peni omudiakoni ependa ngaau? Omwene okwa shiiva aishe. Oye ta dula oku tu pa omuponhele waau. Ovalihomboli, twikileni oshilonga sheni mOhalushu, Eriksson, yakula eongalo leni nolwiimbo nokuhumbata omwalikadi woye.

"Ou e na okuuya ote ya, ita kala ko."

Malakia Hauuanga

A kana filu

Meme Elina Nahole, omukwaneongalo la-Tsumeb, okwa kanifa omumati waye oshiveli, Wilhelm Nakashona, weedula 28 Eti-8. 8. 1970.

Ehokololo otali ti: ngehe a yukile pokati kaTsumeb nOtavi-Grootfontein, ofilu fiyo onena eli. Ina a li ina loloka okuteelela omuholike waye, paife eshi pa pita eedula nhatu konyala, kape na ou a duma omumati ou, ovapolifi va kongele, odila ya li kupe-nauka, aaye mumwange. Nena meme Elina ota tumine omufita wavo mukulu Malakia Hauuanga ehokololo, e mu xupulife. Na ota holola ondjuulufiluhodi meimbilo eli 355 na 5 Mos 34: Ota fafanifa ekanofyo lomona,

Ontengenekelafaneko yaVELKSWA

Ongerki okwaevangeli paLuther ya hangana muSuidwes (VELKSWA) oya ninga lwotango efaneko lyelongitho lyiimaliwa (ontengenekelafaneko) yooranda 4,000. Shika osha ningwa Epangelongerki lyehangano lyongerki ndjika sho lya dhikwa 21.4. 1972.

Otaku tiwa natango etata lyiimaliwa mbyoka otali indilwa kOngongahangano yaa-kwaLuther kuGeneva. limaliwa mbika oyo etameko lyokulongitha mehanganu lyongerki nuumvo. Ehangano ndika olyongerki mbali adhike dhaavalelwamo, ihe ongerki ontitatu, ongerki onkwaevangeli paLuther yaAandowishi, otayi dhiladhila manga ngele oyi shi wo okwiitula mehanganu ndika.

LWF-Information

Omuleshululi a pumbiwa mOshinyanyangidho

Omuleshululi gwiinyolwa Omukadhona, okwa pumbiwa mpaka, ngoka e na oho-kwe neithano mokunyola iinyolwahokololo niinyolwankundana. Na kale wo a pyokola nawa elaka lyOshiwambo, e na onkatu yaJuniolo nenge yi vule ndjoka.

Mbika ayihe ngele okati komokutsi kungoye, endelela ano u tume nziya eindilo lyoye pamwe nonzapo nenge nenyolululo lyonzapo yonkatu yoye:

Oshinyanyangidho shOngerki, Oniipa, P/sak 2013, Ondangwa.



ina mona ombila yaye, ngaashi Ovaisrael tava lili Moses inava mona ombila yaye.

Meme Elina, eshi ote shi tale, osho edengo lOmwene kuye. Ombinga imwe ote shi tale osho onghenda yOmwene kuye. Shaashi okaana aka okwe ka hongwa Jesus kaume kounona.

"Okwa kana momesho etu, nde momesho a kaume kaye, Jesus, okwa monika. Na ohandi ke mu mona meulu," Meme Elina osho a tumbula.

Omufita wavo, ote mu tumbulile ngaha: Ps. 23: 3-4. Ehol 21: 4. Sak 49: 14-16. Ehol. 1: 17-18.

Malakia Hauuanga

OMUKWETU

Oshifo shOngerki onkwaevangeli paLuther yomOwambokavango
Die Nuusblad van die Evangeliese Lutherse
Owambokavangokerk
Ohashi nyanyangidhwa mOniipa,
Omukuluntu gwoshifo/Hoofredakteur omu-
mbisofi Dr. Leonard Auala,
Amushanga/redakteur Rev. Sebulon Ekandjo
Ondando yoshifo komumvo muSuidwes-Afrika
R1,00, kombanda yomafuta R2,00
Oondando nomambesitelo naga tumwe kOmu-
kwetu, Oniipa, P/B 2013, Ondangwa, S.W.A.

Omatsyitho gomuntu mwene pashinyolwa shuule woondeimi	1	otashi futwa	R1.00
oondeimi	2	otashi futwa	R1.90
oondeimi	3	otashi futwa	R2.70
oondeimi	4	otashi futwa	R3.40
oondeimi	5	otashi futwa	R5.00

Oto vulu okutuma wo efano lyashono wa hala shi tseyithwe

Owambokavango Church Press
P/B 2013 Ondangwa, S. W.A.