

OMUKWETU

Registered at the General Post Office as a Newspaper

Omwenyo gwongerki mokati komainyengo guuyuni

ku Dr. L. Auala



Ongerki ngele oyi li muuyuni nde kayi na omwenyo, uuyuni otatu si, oshoka omwenyo guuyuni ogu li mongerki. Omathimbo guuyuni otaga inyenge notaga lunduluka. Ohaku holoka omathimbo guudhigu osho wo omathimbo gombili.

Nge tatu lesa Ombimbeli nokuli mEtestamendi Ekulu, otatu dhimbulula nkene uuyuni wa kala noshito momainyengo nomomalunduluko. Ihe mehistolli lyomainyengo ngoka guuyuni otatu koneke wo kutya, omwa kala ondhalate ontiligane yosheela sha kola yi li mokati komainyengo tayi ende mokati kehistolli notayi tsikile yu uka komeho. Naamboka ya kala ya kwata kuyo, oya kala nomwenyo.

MEpistolli lyotango lyaJohannes ontopolwa ontine, ovelise ontine otatu lesa:

“Aamwandje, one oyomuKalunga nomwa sindi mbeyaka, oshoka nguka a kala mune oye omunene e vule nguyaka a kala muuyuni.”

Jesus oye a kala ondhalate ontiligane ya kala meshito inayi konekiwa koyendji. Johannes nguka ta ti: “Ohapu nokwa ningi

onyama.”

Ongodhi ndjika otayi tuulunga omathimbo agehe guuyuni notayi tsikile nando uuyuni u hule po. Omwenyo gwongerki momathimbo guuyuni oJesus mooitaali ye. Uuyuni nau lunduluke ngilini naku ye omathimbo ga tya ngilini, oondjala nenge iita nenge omatidhagano omolweitaalo, pamwe natse wo twa tegelela tu shi ningilwe, Jesus ota kala omwenyo mooitaali ye.

Aayapostoli ya hogololwa kuJesus mboka ya ningi ongerki, okwe ya longo ya fale omwenyo muuyuni. Sho ya kwata kongodhi ndjoka, oya kala ye na omwenyo nomomadhigu. Omolwashono Johannes ta hokolola: “Nguka e li mune oye omunene e vule uuyuni.”

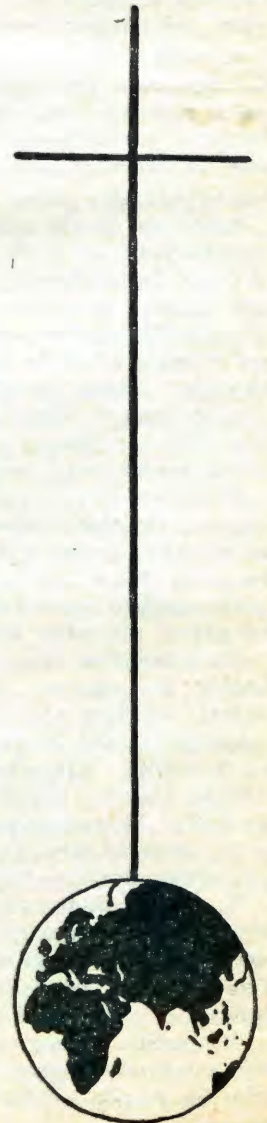
Omuhokololambinzi Polikarpus, omulongwa gwaJohannes, naye wo okwa kwata kongodhi ndjika nokwa kala nomwenyo nando a hepekwa.

Omwenyo gwongerki ohagu monika tango maayakulingerki. Gwo itagu monika ando ngaashi egee lyomulilo gwa tema. Ogwo otagu monika momuntu ngoka sho ta kala

ngaashi a kala shito nando uuyuni nomathimbo tayi lunduluka. Osho wo tagu iholola momwiitaali kehe nando na kale a fa kee na oshilonga nenge esimano.

Ohapu yaKalunga oyo tayi kwatelele omwenyo mooyitaali mongerki. Epandulo nokuli sho yi li nomelaka lyetu lyOshiwambo. Omusitagongalo oye omutopoli gwOhapu ndjika ongerki yaKristus yi mwenyekwe.

Uuyuni ou na oonkondo dhawo noondunge dhawo, ihe ngoye ino tifa, ngoka e li mungoye oku vule mbeyaka.” Omainyengo otaga hulu po, ihe Jesus ta kala aluhe. Ongerki yetu pamwe ohayi konakonwa, pamwe ohayi simanekwa sho ya Indjipala notayi langeke aanashilonga melandulathano ewanawa, ihe oshinene osho shika ngoka a kala mune oye omunene.



Aakriste mboka yi indjipala mongerki onkwaevangeli paLuther yomOwambo-kavango muule womumvo gumwe otaa thiki ngashingeyi ko-203,890. Ngele ya li po ano 194,884 momumvo 1970, nena otashi ti kutya eindjipalo aakriste 9,006.

Oluhepo lovakwaneongalo vopeengaba

Umwe ngeenge te ku lombwele kutya ongerki yaElok oi na oungerki vanini vahapu meni layo, oto hale kutya, shapu ota i eemhepo. Nde umwe ngeenge te ku hokololele o-mayakulo ovakriste vopokati komaongalo nomaongalo makwao eshi taa ende, oto tila.

Opeengaba domaongalo ongerki imwe to hange ounona tava file moipafi yomuyakuliongalo wokeongalo likwao nopehe na eyakulo lasha. Opeengaba luhapu ovaveli ihava hangika komuyakuli nde inava talwa yo kwaau a enda po wokeongalo li lili.

Opeengaba tuu opo ovakulupe luhapu va dimbiwa ile va fiwa po ashike inava mona ekwafo nande tave shi indile. Osho yo ovo va hala eyakulo mouhakumwenyo. Ei aische ohave i ningilwa patomhelo limwe alike;

"Kave fi veongalo letu."

Ito mane okutumbula kwaavo ve na okweenda emaila dihapu fimbo tava fiye po eongalo likwao poushiinda wavo. Apa sha hetekelwa okutauluka eengaba edi sha eta omaliyalo pokati komaongalo.

Pamwe omolwoinima ei eshi epulo la penduka movayakulwa vongerki yetu, ngeenge ovayakulingerki otava longele tuu kumwe. Apa otava teelele va nyamukulwe koilonga yo vene haendjovo dongaho.

Kaku na nande omufita umwe mongerki yetu oo e na eenghono neendunge da tandavela moubwalangadja aushe weongalo a shiive ngeno okuxupififa keshe umwe e li mo nande ye mwene ina fika ko kuye. Omolwaasho ohatu pumbwa ovayakulingerki vahapu momaongalo, opo keshe umwe a longe paenghono odo a pewa komwiifani waye.

Omolwaasho ongerki nande imwe, omaongalo okwa tukaulwa opo eyakulo lomunhu keshe e li fikifilwe. Omolwaasho ihatu hafele ouhapu wovakwaneongalo meongalo limwe, nande tu shiive oupenda wovayakuli vamo.

Omolwaasho hatu hafele eyakulo keshe la ningwa komuwameme nande na kale ehe fi weongalo letu ngeenge ine shi ninga momhepo yoku tu kondjifa. Omolwaasho hatu tambula nohatu fimaneke neenghono eyakulo lovayevangeliste mongerki yetu, osheshi ovo va lotauka alushe peengaba domaongalo mongerki ei.

Ei aische ohatu fininikwa oku i tambula nomwenyo muwa molwaasho otwa fikamenwa alushe nohatu tili-fwa kepulo ngaashi la holoka mehokololo lomuvaluli wongerki kutya:

"Omufita umwe ta dulu tuu okulifa ovakwaneongalo ve dule 7,000 ile oku va kanifa ashike?"

Osha zi momiyalu dhaakwanegongalo mii-tayingengerki ayihe 1970-1971.

"Shika otashi vulika sha puka," osho omutulikumwe gwomiyalu ndhika a popya mehokololo lye lyomumvo nguka, omusamane Olle Eriksson. Oohapu dhe okwe dhi kolekitha nomatumbulo gamwe ngaka;

"Omiyalu ndhika olwindji inadhi yela, oshoka ohadhi zi momagongalo ogendji, gamwe gago omambo inaga yela nomiyalu kadhi li naanaa mondjila.

"Ishewe omiyalu sho tadhi kuthwa momambo notadhi falwa mofooloma, otapu holoka nuupu omapulo omape; 6 tayi ningi 9 nosho tuu. Okuyalula wo otaku eta omapuko gako.

"Ihe omiyalu nando tadhi fundju pamukalo gwa tya ngeyi, ohadhi tu pe ngaa efano ewanawa kutya, "Iwaampoka," notatu pewa ehokololo lya yela kombinga yongerki yetu niilonga yomomagongalo."

Omiyalu ndhika ohadhi tumwa omumvo kehe kOngongahangano yaakwaLuther(LWF) kuGeneva.

Uusita waakwanegongalo

Ngele oshigwana tashi tsikile okwiindjipala ngashi sha ningi sigo ompaka, otatu tengeneke kutya, omwaalu gwaakwanegongalo yaELOK, otagu ka adha 300,000 momumvo 1978.

Ehokololo olya tsikile ngeyi kutya, omugongeli gwomiyalu okwa koneke omagongalo gaali momumvo 1971 moka omusita gumwe a litha oonzi dhi vule 7,000. Momagongalo gatatu omusita gumwe a litha oonzi dhi vule 5,000. Epulo lye oondi:

"Omusita gumwe ota vulu tuu okulitha aantu ye thike mpoka, nenge oku ya kanitha?"

Ongerki momumvo 1978

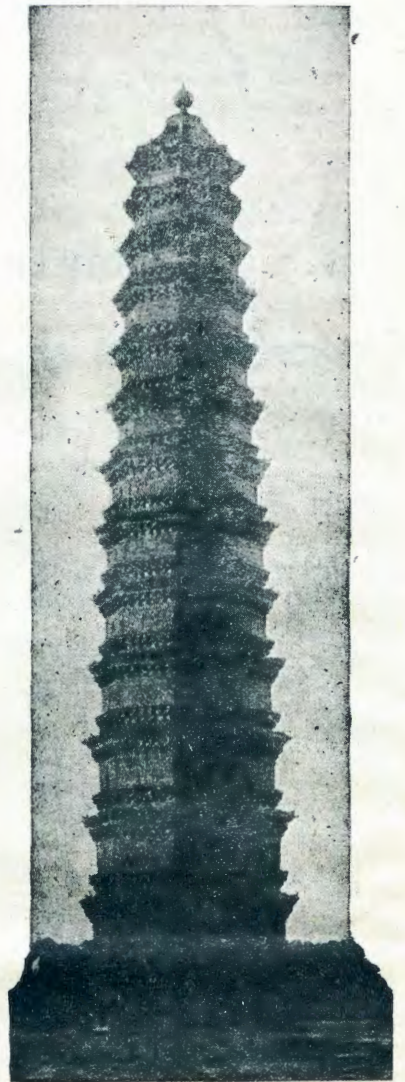
Omugongeli omusimanekwa, okwa tala osha pumbiwa okuninga omahunganeko gonakuyiwa yongerki yaElok. Elangeko lyaanashilonga mongerki, okwe li hunganeke ngeyi. Otandi tumbula ashike kombinga yaasita, Ihe okwa ti kutya, oshi thike wo pamwe naayevangeliste.

"Omusita kehe gwegongalo ota litha ngashingeyi aakwanegongalo ye thike lwopo-3,200. Omwaalu nguka ngele otatu tsikile nagwo sigo 1978, nena otu na okukala tu na aasita 94 momagongalo." (Ngashingeyi 63 ayeke)

"Ngele omwaalu gwaasita ye li meyakulo lyongerki ayihe itagu indjipala we, otu na okukala tu na aasita 116. Natu tye, momimvo ndhika 1972-1978 aasita 10 otaa penzulwa nenge taa mana oondjenda nenge taa zi po miilonga komukalo gulwe mongerki. Opo omahala gawo wo ga udhithwe, okwa pumbiwa ano aasita aape 41 muule womimvo ndhoka 1972-78.

Ewi lyaakwanegongalo lya pumbiwa

Inatu dhimbweni wo omuhunganeki nguka sho a adhika e tu lombwele kutya, nge tva hala okufupipika omwaalu gwaakwanegongalo taa lithwa komusita gumwe, tu tye ando ya kale ashike ye thike lwopo-4,500 megongalo kehe, nando naampaka



Tatu tungu aluhe, ngula sigo ongulohi. Otembeli ndjo kayi lwetike. Nkatu kehe omOmuwa, Tungo tali kolekwa, noku-fala mo muukwaaluhe.

paye omwaalu omunene natango, melala 1972-78 otatu ka kala tu na omagongalo 67 mongerki.

Tu gandjeni omayamukulo komapulo ge ga simana. Aasita oya pumbiwa yi indjipale mongerki pamwe niilyo yaakwanegongalo;"

a) "Omagongalo getu oga holola tuu ehala lyago okutsakanitha oompumbwe tadhi holoka po, aasita aape ngele taa holoka?"

b) "Ope na tuu aagundjuka ya gwana ya hala okuya muusita?"

c) "Osikola yuusita otayi vulu tuu okulonga aalongwa oyendji ye thike pompumbwe yongerki?"

d) "Omagongalo getu oga hala tuu okuyakulwa, nenge sha gwana sho omadhina ga shangwa ashike membo lyegongalo?"

"Aalelingerki itaa vulu sha ngele maakwanegongalo itamu zi ewi lya yela kutya oya hala okuyakulwa noya hala okugwanitha oompumbwe tadhi holoka po," osho amushanga gwomafaneko gongerki, omusamane Olle Eriksson a tumbula mehokololo lye.

2) NKENE EYAPULO OLYO LYA LI ELALAKANO LYUU- WEHAME WAJESUS:-

"Onke ano Jesus okwa hepekwa, opo a yapule aantu Ye." Hebr. 1:12. Meuthohenda IyaKalunga muukwaaluhe, ekwatathano nuuyapuki we, olyo ngaa sha. Olyo Iya li ekota Iyeholoko IyOmuwa Jesus muuyuni, unene ehepeko neso Iye. "Opo a yapulithe oshigwana she." Opo ya kale aayapuki naakaanashipwe koshipala she," Ef.1:4. Megalikano Iyuusaseri otamu holoka nawa kutya elalakano ndika Jesus okwe li adha oshingini? Otandi iyapula omolwawo, opo ya yapulilwe moshili," Joh.17:19. Ehepeko neso Iye olya li Iyapulo Iye nolye tu yapula wo.

Otashi ti ngiini?

Jesus okwa li Omuyapuki gwaKalunga. Omwana ngoka a yapulwa kuHe nokwe mu tumu muuyuni." Joh.10:36. Ndele okwa li e nokwi yapula ye mwene natango? Eeno, o, okwa li e na oku shi ninga, kape na madludhi nokuli.

Uuyapuki we kawa li wa za mo momayekeko. Okwa li e noku wu dhiginina momamakelo; okwa li e na okuholola nkene Ye i igandjele uuyapuki waKalunga. Otu shi lwete kutya uuyapuki ongele tatu igandjele ehala IyaKalunga. Memakelo mombuga Jesus okwi igandja kehalo IyaKalunga nosho wo muGetsemene pelala Iyoonkondo dhomulema. Oonkondo dhoshikanyeko mbunyukile nehola Iyuupyundjahi, a longe ehala Iye mwene. Ihe emakelo okwe li takele omunwe ndee ti iyamba Ye mwene kEhala Eyapuki IyaKalunga. Okwi iyapula Ye mwene mEhala IyaKalunga eyapuki meiyapulo Iye ndika natse otwa yapulilwa moshili.

MAaheberi omwa nyolwa: "Tala otandi ya okugwanitha ehala Iyoye," Hebr.10:9,10, Nokehalo ndika otwa yapulwa kegandjo Iyolutu IwaKristus. Eyambo Iyolutu Iwe olya li eigandjo kehalo IyaKalunga, opo tu yapulwe. Okwe tu yapulile, opo tu yapulilwe moshili. Evuliko Iya gwana po sho i igandja, opo uuyapuki waKalunga wu mu opalele, kasha li ashike elago nehupitho Iyetu, ndele, uulunde wo wu sindike nuuyapuki u kale mutse, Hebr. 2:11, Omuyapuli naayapulwa oya za mugumwe. Jesus naangandjawa oyo nuuyapuki waKalunga. Jesus Oye omuyapuli, aangandjawa oya yapulwa, uuyapuki otawu ya mangle kumwe," onkee ano Jesus a hepekwa opo a yapulithe oshigwana she," Hebr. 13:12.

Ngele twa hala tu uve ko oonkondo ke yapulo mombinzi, nena natu tale," eyapulo olyo elalakano nedhimbululo Iyehepeko IyaJesus moka ombinzi oshimati neyambeko. Eiyapulo Iye mwene, endhindhiliko Iyehepeko, nolye tu etele eyambeko.

Kalunga okwa hala uuyapuki we e wu adhimithe mekandanga Iyokusinda uulunde meyapulo Iyomuntu a shitwa oshifetha she. Pamushingo nguka Jesus okwa yi muuwehame ndee te shi fulula ko. Otwa yapulilwa Kalunga. Mbepo Muuyapuki sho e ya mutse okwe tu hololele ekulilo muJesus, ehanganitho nekuthilopo neyelitho oye tu longele eyapulo. Ombinzi yaKristus oye tu opalekele eyapulo, onke a hepekwa opo a yapulithe aantu Ye ombinzi.



Kulilo Iya longekeka, Maana yaantu Iya gandjelwa Jesus sho a si, ayehe oya kulilwa Nzigona awike a sindana, Omuwa awike a simana Haleluja.

Etalaleko kaakriste ayehe

Otandi pandula sho nda mono okampito oku mu etela ekundo Iyandje mokati komaudhigu tu Iyeni mo mugo. Omathimbo ngashi ngaka Omuwa gwetu Jesus Kristus okwe ga makele wo pamwe naalongwa ye Joh.16:33, Mark,6:50

One aaholike yandje mu li methimbo Iyevundakano Iyomalimbililo muSuidwes alihe, kaleni mwa kolelela meitaalo. Aaluudhe ayehe naatiligane yamwe oya sa unene oluhodhi mevi ndika, omolwonkalo yokuumbangalantu waSuidwes.

Etegmene Iyetu neitaalo Iyetu oli li ashike muKalunga He nOmwana nOmbepo Ondjapuki, ngoka e shi shi ayihe mbyoka ye tu dhingoloka. Oye okwa tseye omauwehame getu nuudhigu wetu. Okwa tseye omadhiladhilo getu, omahalo getu nomalalakano getu agehe. Tu mu galikaneni neinekelo, oye note tu gamene.

Mpaka mevi Iyoomeme uyuuki ou na okugwanithwa, uuthikepamwe, uumwayinathana nemanguluko oyi na okusinda nonando katu na emanguluko Iyokwiinyenga. Eutho Iyomukanka gwemanguluko olya pumbiwa opo tu shilipalelwe kokugamenwa kwe-tu notu longele Omuwa gwetu nombili, tu mu hambelele tse tu mu simaneke.

Ongerki oyi na eithano Iyayo

Ngashingeyi osha fa naanaa kutya, epangelo olya tameke okukondjitha ongerki yaKristus. Epangelo otali ndunduma omolwashoka aayakulingerki momauvitho gawo ohashi vulika ye ete mo oohapu dhasha dhopolitika.

Ongerki oyi na eithano Iyayo okuuvitha evangeli nokupukulula aakwaniilwa nomalinga. Ngele nani epangelo oli na uuthemba wokutidhagana aayakulingerki, katu shi we kutya efano ewinayi Iya tya ngeyi, otali tu kwatha moshike. Tse otatu isimanekela ashike Kristus, oshoka oye tuu a tseye ekota Iyuukumwe wetu mboka tatu u lalakanene noitatu pitika nando omalongo gamwe taga zi pondje.

Tse otatu tungu ashike uukumwe u kale ekuma Iyokukelela omalongo gopombambo

ngoka taga ziilile pondje muuyuni. Nomushigakano gwaKristus ogwo oshikeelitho she-tu.

Kalunga ta shundula

Osho ehala IyaKalunga kutya tu kale muukumwe. Nandi mu indile ashike oshinima shimwe ihe osha simana lela osho shika; elongelokumwe, ekolekathano, osho wo ombepo yimwe. Oonkondo dhuuyuni nadhi kole ngiini, dho nadhi geye ngiini, nadhi shi tseye kutya, eshunduko Iyadho oko li li komeho.

Omuwa ngoka a kandula po nale iipundi yaanankondo, oye wo a gandja epangelo no-kaapangeli yaAfrika opo ye li lele mohole okusimanekitha oshilongo shaKalunga. Aapangeli otaa indilwa ya konge noya lalakanene elago Iyopakriste komuntu kehe manga eiddhidhimiko IyaAaluudhe li li po natango.

Shika oshi na eendelele okukelela onkalo ombwinayi ya nika omahepekathano nomadhipagathano ngashi tayi hunganekwa kiiningwanima yopethimbo ndika.

Uukomunisi

Tse katu tonde nando aatiligane noitatu kambadhala okudhima po kehe shono sha nika shopatiligane, ihe shono twa yuulukwa kuyo, osho shono tu mone uuthikepamwe miinima ayihe, muropolitika, memanguluko nomelikolo.

Oyendji oye na omadhiladhilo kutya, aayakulingerki otaa uvitha elongo Iyuukomunisi notaye li taandelitha. Lyo elongo ndyoka tali yoolola omaludhi gaantu notali ningitha moshilongo shino mwaa kale ohole yuumwayinathana pokati kaantu naantu, otali talwa ngiini?

Tse ongaakwashilongo shika otatu tondo nokudhina elongo Iyokayoya nuukwatya walyo auhe. Tse otwa putukila mokati kevangeli muule womimvo 100, uukomunisme ou tu kwate ngiini methimbo Iyomilema dhi thike mpaka ndhoka tadhii tu thiminike tu kuge kuKalunga okumangululwa mudho? Kату u shi nokuli.

Aamwameme, ngele twa hala okudhigini-na uukriste, natu dhiginine oohapu dhaKalungungu Ps.130 F. I. Naholo

OIMALIWA OYA FIKA NAWA

Oimaliwa R8.00 ya ongelwa kovamwata-teholike voku Usakos, mewiliko la-Paulus Sakaria Ndafyaalako omolwetungo longerki yetu, oya fika nawa.

Kalunga ita ka dimbwa ekwafo letungo leumbo laye mwe li ninga medina leongalo IOhalushu. Ohandi mu kundu onye amushe mwe tu kwafa.

Rev. Simson Ndatipo

Omumbisofi Hermann Dietzfelbinger gwongerki onkwaevangeli paLuther muNdo-wishiland, ina mona omahepeko gaakriste muRumania ngashi ga hokololwa komusitagongalo Richard Wurmbbrand.

Omusita Wurmbbrand okwa talele po wo Suidwes nuumvo nokwa hokolola omahepeko gaakriste muRumania omoluukomunisi. Ongerki dhomuEuropa odha tameke okukonakona oshinima shoka.

Mwiyaaka aakriste otaa gongala memanguluko momalongelokalunga gawo. "Shoka sha hokololwa kuWurmbbrand mwiyaaka, omutoto gowala," osho sha tiwa ishewe kuM.S. Krupka, omuyevangeliste na amushanga gwoshifo muNdo-wishiland.

KALUNGA OYE HA GANDJA OLUVALO

To indile oto pewa, to konkola oto egulu-lwa. Ngame nomukulukadhi gwandje otwa tulwa moskola kuKalunga yokwiindila. Otwa hokana 1966 megongalo lyOshitayi.

Meimbilo 264 otaku ti; Haaluhe tamu ki imonena etango tali imemeha. Ohole yawo koleka. Otwa pewa etegelelo lyokasheeli. Sho ke ya muuyuni oke ya ka sa. Etegelelo etiyali okanona oka valelwa muuyuni, ihe oka ningi mo omasiku gaali noka mana oondjenda. Etegelelo etitatu, ela lya mono oshiponga manga li na oomwedhi ntano. Oluhodhi olwe tu dhenge shili. Otwa kala nokutsongolo koshipala shaTate Kalunga nokwiindila tu pewe omagano gokanona. Otwa tsuwa omukumo kEps. 37. unene ovelise 26. "Aluhe e na ohenda ete ya pe, noluvulo lwe otalu lalekwa nuuyamba?"

Konima yomaidilo otwa pewa okanona okakadhona Helena Tutyeni Ndasilwohenda.

Oku na oyendji ya tsakanekwa kiinima mbika ongotse wo. Esilohenda lye enene komuntu kehe.

Johannes Absalomo, Nandago

Omwaangelekani nOmu- katoolika otava tungifa ongerki onghwaLuther

Oshoongalele shovanangeshefa mEngela
Eti - 23.4.72

Omufitaongalo Malakia Hauuanga, eshi a li ponhele yomufitaongalo, ou a li mefudo, meongalo eli eshi tamu tungwa Ongerki ipe, tate Hauuanga okwa tumina omukulunhu wovanangeshefa, tate Eliakim Namundjebo, opo a twaalele ovanangeshefa mewiliko laye, eenhundana odo detungo Ongerki yaNgela.

Tate Namundjebo okwa shiva ovanangeshefa ava moradio. Ova ongala nawa mEngela. Namundjebo, omuwiliki, a mona omambo ehe shi okukandulwa po. Omuponhele waye, David Ndevelo, a wilika oshoongalele eshi.

Manga inaku ningwa ongalo, tate Ndevelo, okwa wilika oshoongalele nomukumo.

"Ofye Ovangela nату tunge hatu tale ku-



Omushamane David Ndevelo, ou a wilika oshoongalele fiku olo, ota monika e li omutumba pomufitaongalo M. Hauuanga kolulyo lela. Nande oye omukatoolika, ota ulikile ovakwaLuther kutya, eitavelo lihe na oilonga ola fya.

Ontanda yoomeme mOmpundja

Wa li po ongoye u shi oku shi popya.

Kalunga okwa li a longekidha egongalo lyaMpundja opo oomeme ya ningilwe ontanda. Shika osho oshilonga sheyakulo lyoomwenyo nomalutu wo. Edhiladhilo enene mpaka olyo ndika wo okuvululukitha oomeme koshipala shaKalunga meimweneneno.

Osho sha li omuntu to shi tala nonkumwe sho oomeme ya kala yi itula mo nawa lela pwa na eloloko. Osha dhimbulutha ndje kutya nani mongerki nomiitayingerki nomomagongalo oomeme otaa pumbwa okuvululukithwa pamukalo gwontanda.

lipopiwa mbyoka ya pangele montanda oya li ya kwata miiti ngashi uudiakoni, eshunomonima lya holama, eputudho lyaanona, okudhiginina iiniwe megumbo nuukalinawa auhe.

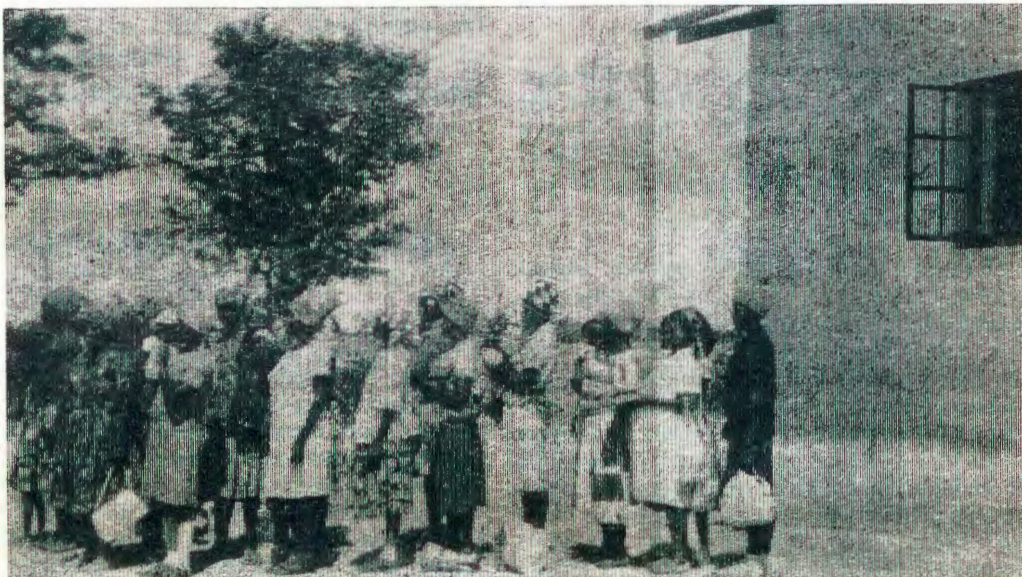
Oonkundathana ngashi dha penduthwa kii-popiwa mbika, odha fulu muule pwa na uumbanda washa. Mwa kundathanwa wo oshiponga shiikolitha.

Ontanda oya li ya talelwa po komusitagongalo Johannes Ekandjo, Eheke, ngoka a kundu oomeme noshipopipiwa sheitaalo moka a fatulula eitaalo niimpaga. Aakwanegongalo

yamwe yomegongalo lyaHeke otwa kala nayo melongelokalunga ya zi momikunda dhopuu-shiinda wontanda, oshoka ontanda oya li poongamba.

Eeno, Kalunga mpeyaka okwe tu ningile iinima iinene, otse notwe shi nyanyukilwa.

T. Shigwedha



Ongundumutima moshigongi shaakulukadhi megongalo lyaMpundja. Efano olya fanekwa 1970 manga taa zi moshigongi shawo moka haa longo iilonga yiikaha.

mwene weongalo." Eshi okwe shi kolekifa Jes. 26: 1-4. neimbilo 505. "Manga inatu pewa eembongo otwa pewa sha, osho shokomwenyo."

Ekundo la E. Namundjebo, oleli: "Fye ovanangeshefa otwa holoka moshooongalele eshi medina laKalunga, ou e tu pa ouna-

ngeshefa. Fye itatu dulu sha, okuninga Kalunga te tu kwafa."

Opo nee okwa ningwa ongalo, oyo ya wa R77. 60c. Ovanangeshefa ava, ova udaneke natango kutya, otava ka ninga natango oshoongalele osho tashi ka ongelela Ongerki ei oimaliwa.

E. Namundjebo okwa shiivifa unene kovanangeshefa vongerki yetu ve linyenge moshinima eshi. Namundjebo owongerki yAngelekani na D. Ndevelo owongerki yaKatoolika, Omupanda.

Iyaloo, omuwiliki wovanangeshefa, nomuponhele woye! Kumwe novanangeshefa amushe. Iyaloo, ovanangeshefa, eshi tamu tungu otembeli yajehova pamwe nafye. Omwene na yambeke eemwenyo deni nomalutu eni nomaliko eni. *Malakia Hauuanga*

Omalweendo gomuyevangeliste gwongerki

Omuyevangeliste gwongerki, Rev. Efraim Angula, iiwikembibeli momwedhi tagu ya ote ke yi kala momagongalo taga landula shimpa tuu omutse gu li kumwe nothingo:

Onayena 5-9.6.1972

Oshigambo 12-16.6.1972

Oshaango 19-23.6.1972

litayingerki iikwawo ngashi Uuninginino nUukwanyama okwe yi koona ko nale. Omumvo kehe tate Angula ohe ende omagongalo gi ili nogi ili pamalufu gago moshitayingerki kehe. Ano omagongalo 15 mongerki yetu oga mona nale eyakulo ndika okuza petameko lyomumvo.

Ovanyasha nava fatululilwe nawa

Oluhapu eshi nda endaenda moyoongalele yovanyasha yongerki yetu Elok, onda kumwa eshi ovafitaongalo vamwe momaongalo omo oyoongalele yovanyasha ya ongala eshi tava ti: Olwotete eshi nda kala moshongalelele omu. Nande oyoongalele yovanyasha paife oya ninga nokuli eedula dihapu tai ongala.

Ovafita vahapu vongerki yetu kave shi shii natango osho hashi ningwa moyoongalelele yovanyasha kutya oshike. Vamwe ove litula mo shili eedula adishe, ovahokwa unene okulonga oshilonga shetumo pamwe novanyasha.

Apa nda hala okupula kutya, hano ovafita ava ovo aveke mbela va ufilwa va kale moyoongalelele yovanyasha? Onda pulile omufita umwe ndele okwa nyamukula nge va ti, ihava pewa mo sha shokupopya, onghee vati osho hashi va fifa ko ounye.

Eshi oshili tuu mbela tate Dumeni? Ovafita vahapu kave na ko nasha eshi ovanyasha veongalo va shonopala ve li kokule lela mokwoongelelele oshilonga shetumo. Omufita keshe ota pumbiwa shili e litule mo novanyasha noku va twa omukumo nokufatullilwa nawa ovakwaneongalo va kwafele ya ovanyasha, oyo eongalo lavo liha kale laxuuninwa mokwoongela oshilonga shetumo.

Ovafita vahapu oyoongalele yomomaongalo otai tameke ngo, nde tai lixulile, nomhadi oyo ngoo ina enda mo, shapu onge mwe ya omweenda. Onda tala meembapila domalandulafano oyoongalelele yovanyasha momaongalo omu na yo olufo lomufita. Ovafita vahapu ove likufa mo kutya, ei kai fi oilonga yavo, vati oyooDumeni nooHailonga kumwe oko.

Vamwe ova nyengwa okutalela po ovanyasha vavo mokatutura nomoshitata nomokomboni. Ova tala ei oilonga mbela yooMax nooToivanen. Ova tala oilonga yavo okuyakula ashike meleloongalo nomelongelokalunga opuwu.

Natango ope na oinima ihapu tai mu pula, unene okuxwamifa ovanyasha mokwoongelelelele oshilonga shetumo momaongalo.

Ongerki yetu paife oya pewa ovafita vahapu ovanyasha. Ndele vamwe onghee ngo va nangekelwe poima nde ofilu, kape na ngo nande oshimwe e shi longa tashi udika, onghee ohatu nyengwa okushiiva omadina avo nonhele opo a nangekwa. Vahapu otuva shii eshi ve tu udifila momhepo nove tu udifila moifo yOmukwetu, onghee nande katu va shii paipala, otu va shii momaudifo avo, momaudifo avo momhepo nomoipopiwa mOmukwetu.

Neudo yo oyoongalelele yetu yovanyasha oya tameka, ndele oshilonga shetumo nono-neudo inashi humbatwa po ashike kovanyasha nde nokovafitaongalo yo vongerki yetu amushe, opo oshilonga shOmweene shi ye komesho.

Ovanyasha otava udu ko nawa mbela ngahelipi okwoongelelelele oshilonga shetumo ngeenge ovafita momaongalo itave va fatululilwe nawa? Rom. 10: 13-18. Abraham Haileka

Ya pewa onkatu meilongo lyawo

Osikola yokombanda yaFort Hare muS.A. oya gandja lwotango komuluudhe onkatu ontiyali (M.A), onkatu ndjoka tayi laalele uundohotola. Petrus D. Gqola naAllworth M. Sipamla, oyo ya pewa lwotango onkatu ndjika nuumvo muApilili. Ayeha oyomu-Suid-Afrika nokwa tengenekwa otaa tsikile natango nonkatu yuundohotola.

VA HOLOLA EITAVELO LAVO

Ovakulukadingudu meongalo eli "Ovambo-gemeente," mOliindili ova tumina omudiakoni ondjafa youtalala, ou ta longo meekamba pokati kOshikango nOhangwena. Ove shi tala oshi na efimano omudiakoni ou nge ta dikwa oshikutu, osho shi na edimba letumo - eshi pewa medina letumo.

Omweevangeliste ou, efiku e shi pewa: okwa mwena okafimbo, no ina nyamukula sha. Okwa li ta pwilikine Kalunga ta popi monhulo yaye. Te mu ulukile.

"Tala! ondi na ovanhu vahapu moshilando eshi."

Konima okwa nyamukula, ta kakama, ye tadi oshimhi, ongaau ta dikwa eenghono dipemoshilonga shaye. Ovakulukadingudu efiku va tuma oshikutu eshi, ova li va onga-

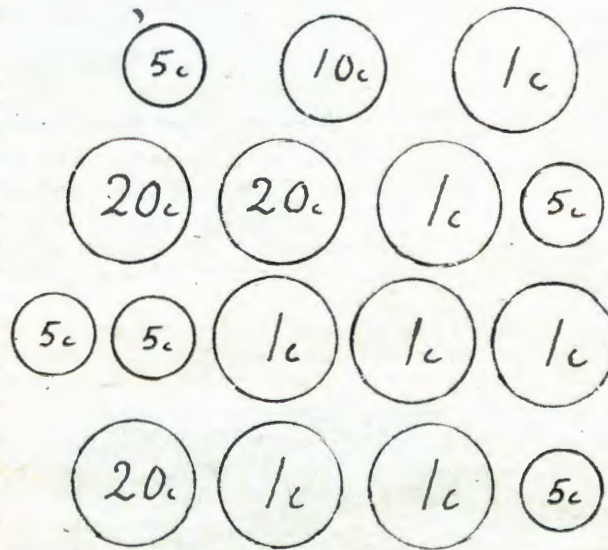
la ongudu, nde tava ningi eilikano. Osha yela hano omulumenhu ou nge ta kakama. Konima nee, okwa tumbulila ovakulukadi ava ta ti:

"Omweene yambeka oyomwenyo domukulukadi keshe mongudu ei. Omaliko avo, omindjalo davo. Va xwameka nOmhepo yetumo.

Omweevangeliste Natanael Mwafufya eshi okwe shi tumbula, ta shisha omahodi mahapu shili.

Hai ti: Ovamwange meongalo eli, mwa kuma omwenyo womulumenhu waKalunga. Akutu eshi mu li kokulekule kexulilo ledu, pefuta la filuka. Eshi mu li shili ouyelele, mwa dimbuluka yo omaluhepo kOwambo. Kaleni ouyelele wounyuni. Mat. 5:13-16.

Malakia Hauuanga



Ovanyasha omudo keshe ohava ongele ousenda wavo ookamwe nookamwe ngolongo va ninga eeranda domafele, osho oshilonga shetumo mongerki ei sha yambulwa po kuvu. Ove ousenda vove oho va ongelele shike?

AAGUNDJUKA NAA KALE YA MANGULULWA

S. Schulze, Oranjemund. 1. Ongerki yetu otandi yi indile yi pe agundjuka emanguluko opo mboka ya yalekathana ya kale pamwe, ya lolathane, opo sho taa ka hokanathana ondjokana yawo yi kale yi na oonkondo.

KAaheberi omulongo nandatu ovelise ontine otaku tiwa, oondjokana nadhi simanekwe kwaayehe, nontala yoondjokana yi kale yaa na oshipwe, oshoka aahondeli naahondelwa naaholume Kalunga te ya pangula.

Ehalo lyaKalunga olyo ndika, eiyapulo lye ni mu yande oluhondelo, oshoka omuhondeli nenge gwonyata yuulunde kehe, kee na uthiga moshilongo shaKalunga, Ef. 5:5. "Omumwanyoko omuhondeli ino enda naye." 1Kor. 5: 11.

Omatetho go gene oga nigila, notaga dhini Kalunga. Ngoka ti inekele Kalunga ota pula omukiintu kuKalunga nosho wo ta pula omulumentu kuKalunga.

Ongerki ngele tayi pitika onigili yi thike mpaka, nena oya londo koshilikama. Tala Ehololo 17: 3-8. Tashi ti, ongerki oyi iteeka Kalunga nokukala yasatana lelalela.

2. Shika onde shi popi okugamena oondjokana, oshoka olwindji nge ya hokanathana kaa uvitathane we ohokwe. Oto dhiladhila ope na ngaa ngoka a hala omindjupa dha shikilwa nale?

Ondjokana oshinima shohole tayi thimini-ke aantu ya yakulathane muuyuni sigololo omegulu. Kayi shi sha shilwe, Oyo etanitho lyezimo pahalo lyaKalunga, ihe omuntu ota vulu okukala mondjokana nando kape na aanona. Kalunga oye ta wilike mpaka.

Aakiintu mboka ya nyatekwa kaalumentu manga Inaaya ya mondjokana, olwindji inaa

vava we sho ya yi mondjokana. Osho wo aalumentu ya dhanitha iivalitho yawo noku yi nigilika, oya kanitha shoka to tala elago lyomoondjoka.

Onawa to nyolele ndje opo u mone epukululo lya tya shoo.

Jason Amakutuwa, Okahao



Omumwandje, iipungulila iipango yaho ngoye ino kandula po omapukululo ganyoko. Oshoka oshipango osho onyeka, nomalongo ogo uyelele Omay. 6:20,23.

OVE TU FIILA ETIMAU-MBWILE LA PAMA

Ovawiliki vomalundululo Ombibeli momalaka e lili noku lili eshi va talela po ongerki yetu, ove tu fiila eendaka di shii kupwili-kinwa. Ovaenda ova li apa muApilili ngaashi sha holokele moshifo eshi No. 7.

"Ngeno okwa li inandi hala mu mone nge omunaipupulu, ngeno onde mu lombwela kutya, onaini tamu ka kala mu na Ombibeli yeni melaka lOshikwanyama," osho hamushanga munene woshilonga shetoloko lOmbibeli momalaka ovadalelwamo Rev. J.F. Naudé, a tonga mEngela.

Omuyandjimaye moshilonga shetoloko lOmbibeli, Rev. J.L. Reyneke, naye yo okwa li mosheendo eshi, osho yo Rev. Dr.H.F. Peacock, omupashukili woshilonga eshi mu-Afrika alishe.

Eshi va kundafana nokomitiye yelundululo lOshikwanyama, ovafimanekwa ava ova holola ehala liwa ve li koneka moshiwana sha-Ukwanyama mokutelela Ombibeli melaka lavo.

"Ngeno oshilonga shenyanyangido ihashi pula efimbo lile, ngeno ihatu ke mu teelelifa vali efimbo lile, "osho ovaenda va ti.

Enyanyangido lOmbibeli opo li kale la pwa, ohali pula eehani 18. Vo ova ti kutya, okudja apa otave ke i tuma diva moshinyanyangido.



Okomitiye yetoloko lyelaka lyOmbibeli mOshikwanyama oya kondjo oomvula odhindji nongashingeyi ope na etegameno lyokwaadha ethikilo.

Ki italele ko mwene

Eti-29.3.1972 osheendo shimwe oshu ukilile uuninginino wetango nelalakano lyokufala elaka lyomwenyo kutya, Omukulili guuyuni okwa sile, ihe tala okwa yumuka nota pangele aluhe sigo aluhe.

Osheendo osha li shooye ano? Aatokele aakwaseppälä, oye shi yambukile mEngela lyatatekulu Shinana, ta kwathele Haishanga Ya pitula po mukwawo, okamati okagundjuka, kaha itsile kontondje, ka zile puushiinda haku tiwa, omwene gwOngenga, taka lukwa Nailenge.

Osheendo osha hala shi kwathe oomwenyo ndee nomalutu go gene. Osha kutha Omupangi, she mu pitula mehala lyomiti, Apoteka. Oye mu kutha mo ngoka iha tila sha, ye iha nyanyala. Kee na omulungu nomuntu, shila opo te gu ningi.

Okwa longa nalenale moshigwana shika shAawambo noku shiwiki kAawambo noya penduka moomposi. Oye mu tameka taye mu ithana meme, nena ohaa tumpakana ya hala ye mu tye; kuku. Oye kuku Mattila.

Momuhandjo gwaAshipala shaNakwedhi, oya kutha mo Gwanandjokwe, ngu a longa nale komindamba, nokasheeli kaSheyavali, Taimi.

MOmindamba dha tatekulu Toivo yo nate Kosmas, oya li ya pulakene euvitho lyaNailenge ndyoka lye ya lenge koomwenyo. Omatanga golwiimbo oga li wo gi imbi nuuladhi.

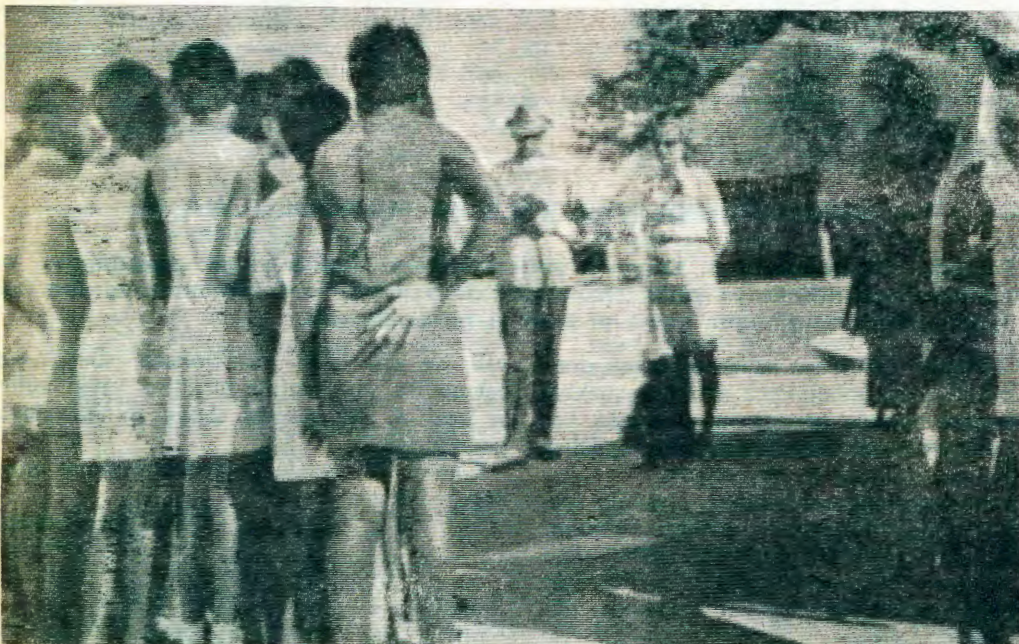
"Sheyavali e uya vali e mu popife kanini," osho Mwafufya e va fufya.

Kuku Mattila okwa topolele aavu omiti, manga aakulupe momagumbo ya talelwapo wo noya li ye shi nyanyukilwa noonkondo. ElongeloKalunga oya li naantu 76.

Osheendo osha tsikile kEtunda hoka ya ulukilwa omafano goshilongatamo ngaashi tashi longwa kaamwameme yamwe mOputu. Osho wo omahala omakwawo oga talelwapo ngaashi; Etoto, Otjovanatje, noga uvithilwa eyumuko lyOmukulili.

OoSepälä, osho haa ende noshito komahala ngoka getumo muuninginino wOwambo

Tala kep. 7.



KALUNI PO NAWA

"Oto yiilile nenge oto ka fudha po ashike? Epulo ndika olya nyenge aakwaSeppälä okuyamukula, ihe inaye li mwenena owala. Nii-tya iifupi shimpa tuu ya pulwa ngeyi, oya yamukula:

"Kalunga mwene ta tseya."

Nani ethimbo lya thiki ishewe aatumwa naaputudhi yoshigwana shika yopambepo aakwaSeppälä ya ze po manga mokati ketu noya shune koyaandjowo.

Omutumwa Matti Seppälä oye okwa longo mokati ketu mongerki ongaamushanga gweputudho lyopakriste moshigwana shika.

Oshihauto she osha tseyika konyala apehe, ihe unene tuu mokati kAahimba nAadhimba. Aalongi yoosikola dhoshigwana shika nosho wo aalongwa unene mboka ya kala poondju- go, oya talelwa po aluhe kuyo.

Meme Raili Seppälä, okwa kala ongundhi yimwe meputudho lyopakriste mongerki

Ngundu yaanasikola yaTshandi tayi laleke tate na meme Seppälä mUukwaluudhi. Mego- ngalo ndika aakwaSeppälä oya longo mo e- thimbo ele manga inaa ya kEngela.



ndjika. Shika oshi iholola nawa komukumo gwe neitulomo lyosikola ndjoka ompe moshigwana yaatekuligumbo ya tamekwa koni- ma yomimvo ndatu.

Katu hole lya tuka po, tse otu hole lya lambele. Aamati yaKalungambaka naa ka fudhe po ano ye ye ya tsikile natango oshilonga she mpaka muAfrika.

U U P O L O T I K A O S H I K E A N O ?

Omumvo gwa zile ko 1971 Epangelo IyaS.A. olya indilile kohofa yuuyuni auhe, ngele otashi vulika iigwana ayihe muSuidwes yi pewe ompito yokuninga ehogololo Iyayo, ko ku monike aantu mboka ya hala Epangelo IyaS.A. li tsikile natango nokulela iigwana mbika kutya oye thike peni, naamboka ya hala elelo Iyigwana ya hangana (V.V.O.) oye thike peni.

Ope na wo omadhiladhilo, pamwe inaga kola ashike kutya, konahiya iilyo mbyoka nayi ka kala mOraata yEpangelo IyOwambo onayi ka hogololwa koshigwana ashihe. Omalalakanano agehe ngaka otaga kongo oshili yoshinima nuwanawa womuntu kehe.

Kombinga yimwe oto vulu oku shi fatulula kutya, osho uupolotika wo wene. Uupolotika ohau inekelelwa oshigwana ashihe pankatu dhu uthwa. Aakriste oyendji sho haa ngingi omwenyo omwiinayi ngele okuulwa omupolotika, otatu eta mpaka elalakano Iyuupolotika nenge oonkatu dhuupolotika pafupi lela.

ONKUNDANA YUUDI AKONI MOMINDAMBA

Omudiakoni gwetu Timoteus Mwafufya, Omindamba, ota hokoloia ta ti:

"Eti-9.6.71 onda hanga omukulupe ta vele, a vela efimbo li dule eedula 3. Okuya puye oto eta onghenda, omunhu a hepa shili, edimba oixuna.

Puye monduda, oto i mo ashike nelididimiko linene. Otwa kundafana novana ndi mu twale koshipangelo. Ova itavela, opo nee otwe mu twala kOnakayale. Omunangeshefa ou e tu kwafa oshihauto okwa ti ashike: 'Kalunga ta futu.' Omukulukadi moshipangelo okwa dja mo e li nawa."

Ote gandja eluku kuMateus Kupolola ngoka a kwatha omudiakoni te ti:

Pamba ne ku gamene, Mbangu ne ku yambeke. Kalunga e ku koleke, Nampongo e ku ndjangeke.
Jason Amakutuwa

Epandulo Iyegongalo Oniimwandi

Aamwameme mu li mokomboni Local Hostel, C.D.M., iikwatha yeni omolwetungo Iyongerki yegongalo IyaNiimwandi, ya thiki. Iikwatha mbika R9.00 oya gongelwa kaa-kwanegongalo yomomagongalo agehe gaElok, osho wo mongerki onkwakatoolika kaRooma, unene yegongalo IyaKatana.

Nando twa li tuu tu na ehalo okutumbula edhina Iyakehe gumwe mpaka, otatu gandja ombili omolwehala eshona. Shila nandi tye ashike:

"Kulupeni nomeho, omayego tatu mu taasinine."

Ashihe shika osha li mewiliko Iyaayakuli mbaka; Sem Lukas naMetusal Ashipala.

Peha Iyegongalo Rev. Tomas Shindongo

KI ITALELE KO MWENE

dha za kep. 6.

Ihe molweendo nduka, oya yile nokamulombo ye ka holeka koompanda sho ya nika ye tu pe omake ya shune kOsoomi, kevi Iyooyina. Ihe oya ti, itaye tu dhimbwa, yo oya hala okugaluka, ngele Pamba te shi utha. Kalunga na menithe ombuto ye yi kunu mevi ndika koonkondo dhOmbepo ye.

Aawambo hamu lukula hamu ti, Nampongo e tu piitha mo miipwe yuupagani, omwa yamukula shike kepulo Iye; "Olye ngo tandi mu tumu? Olye ngo te ke tuyila ko?" Mutumbatuli, okwa tile wo; "Ongame ngu tuma ndje."

"Eteyo olya tiligana, ihe aalongi aashona."

Selma Shejavali

Uupolotika, ngele to u fatulula niitya iifu-pi yowala, owo okulela iinima yoshilongo. Shika otashi ningwa, nokutota ooveta mongulu yepangelo (parlement) kiilyo yepangelo, nenge kongundu ompitithiveta, nokupititha mo ooveta ndhoka kongundu yoministeli.

Miigwana yopademokrati, kokutya mbyoka omuntu kehe omukuluntu a ziminwa a holole omadhiladhilo ge miinima yoshilongo shawo, omu na ihe oongundu dhuupolotika. Iilyo yomondjugo yoveta otayi zi moongundu ndhoka. Miigongi yomopalamende, oongundu ndhika dhuupolotika ohadhi kondjele kehe yimwe pamanenedhiladhilo gayo. Oongundu ndhika ongashi yaanamapya, yaanafabulika, nenge yaanambeleva nosho tuu.

Ngele oongundu yontumba oyi na iilyo oyindji, nena oyi na ompito okutota ooveta ombwanawa ndhoka tadhi opalele oongundu yuupolotika wayo. Oshiholelwa: Ongudu yaalongi yiikaha ngele onene, otashi vulika tayi ka tota ometa yondjambi dhi tameke nekota R100.00 komwedhi.

Otashi ti ano ngaaka kutya uupolotika oshilonga shiilyo yomondjugo yoveta opuwo? Aawe ndishi. Ngashi twa tumbula pombanda, kutya miigwana yopademokrati, omuntu kehe oku na uthemba u thike pamwe, omulumentu nenge omukiintu ngoka a gwanitha oomvula 18 nenge 21. Oku na

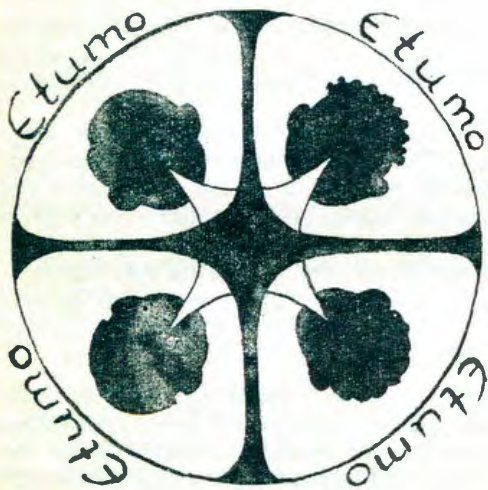
ewi Iyokuhogolola iilyo yomopalamende, mbyoka tayi ka tota ooveta. Notaa tokola iinima ayihe yoshigwana nkene tayi ka e ndithwa.

Ooministeli (aapitithimpango) ohaa hogololwa moongundu dhuupolotika mondjugo yooveta. Ngele ano tu tye, oongundu yaanamapya ndjoka yi li mondjugo yooveta onene, nena otayi kala wo yi na ooministeli oyendji ya za muyo. Pamukalo nguka omuntu kehe moshigwana ota si oshimpwiyu a konakone iinima yuupolotika, opo oshigwana shi lelwe nawa.

Sho omuntu a konakona nokwa lesa ngeyi pamwe nokukundathana wo nayalwe, ota tseya ihe nawa kutya, ota ka gama kongundu yuupolotika yini po nota gandja ewi Iye nkoka. Ngashi miigwana iinene noyi na oongundu dhaakriste naakaanakonashanakalunga, ngele aakriste moshigwana shono itaa tonata miinima yuupolotika yo itaa longitha ompito yokugandja ewi Iyawo mehogololo nge tali ningwa, nena otashi vulika iilyo mbyoka kaayi na ko nasha nongerki tayi hogololwa yi ninge iilyo yomondjugo yooveta. Yo iilyo ya tya ngeyi, otashi vulika yi ka tote ometa tayi ti kutya, elongo IyOmbimbeli itali pumbiwa we moosikola dhoshigwana. Ohole yokuhola oshigwana oyo tuu hayi thiminike omuntu a kale a tonatela niinima yuupolotika nkene tayi endithwa. Omuntu ota lesa iifo oyindji nokuli. Olwindji iifo mbyoka oyo ewi Iyongundu dhaapolitika, onkee oshifo kehe oshi na omadhiladhilo gi ili. Omuntu ota kundathana nokupulakena Oradio, opo a tseya uwanawa nenge oshiponga shuupolotika wongashingeyi.



Aatoolinkundana oye na oshilonga oshinene monkalamwenyo ayihe. Oyo haa gongele uyelele wi ili nowi ili mboka tau likolwa koshigwana naamboka tau kwatha oshigwana mokupopila omadhiladhilo gontumba nenge oku ga pangula. Efano ndika olyaatoolinkundana mboka ya kala mOwambo moshituthi sheegululo Iyosikola yokombanda yaNgwediva, sho ya egululwa koministeli omusimane-kwa H. Muller 1971. Omafano ohaga ulike shoka sha li po.



EPYA ENENE

1.

*Omwa tungila aayamba.
Mumwe naathigona kaapu na etopoko.
Aanene naashona aafupi naale kehe pehala lye
limpungu yo opala yimwe yi [nongwena.*

2.

*Omagumbo gaayamba yomuuyuni
Nge ga gongelwa mulyo,
Gamwe ito ga tala,
Oga fa ga dhimbiwa.*

3.

*Uugumbo waaselekadhi pamwe nohepele
Wa tungwa wa tungikika,
Gamwe guumatyona u ly'uushiinda nohe
Aaposi niitiningili ayehe oya thuwa.*

4.

*Onda yi mo te lengalenga
Te kongo egumbo limwe,
Lyakuume gwashililela gwopothingo,
Lya tungilwa mepya mo.*

5.

*Ompaka ine kundwa nda th'kam'owala,
Pamwe tandi kundwa ngaa.
Omadhiladhilo muule sho tandi dhiladhila,
Nda fa gwaPatmosa.*

6.

*Ondu uvite taku ti:
Hey!, Oto kongo lye ano,
Wa fa wa limbililwa?
Ondi li pooha dhoye melago lya gwanenena.*

7.

*Kombanda yevi enyanyu lyegulu lya kana,
Mpaka efuta niikungulu kayi po,
Uudhigu auhe wa dhimbiwa.
Enyanyu lya gwanenena.*

8.

*Esiku tali ya tatu tsakanene,
Uuna **Onyothi yOngula** noyuukuume,
Tayi tu pitile sigo aluhe.
Otatu tsakanene megumbo lyomegulu,
Shuna owala manga kegumbo
kuTimothy yaNamuhuja*

ONHANDA YOOMEME

Tete natu taleni eendjovo daKalunga kutya odo oshinima shi tu kwete, unene mokutala eshi twa fika momudo ou. Ohai ti oome-me, eitavelo ola finda onyuni, nande nau kale u na eenghono. Okwiitavela Jesus Kristus osha mana. Omwa diladila tuu neudo kutya onhanda oi li mOlupandu?

Onda hala neudo tu litulei mo, opo tu ka kale tu neni efudo liwa. Ondi udite nge-nge oomeme tava fuda po koilonga yomeumbo, otashi kala shiwa okulongela Omwene u li melimweneneno. Ohai lombwele vali oomeme vokuElim kutya, onda hafa unene nondi udite ouumbo pamwe nanye. Neudo eli tu kaleni twa kwata moiti, oipala yetu i taalele omushiyakano wOmwene.

Ohai pandula vali oomeme mOngandjera meongalo laKahao kutya noneudo otwa teelega okufuda ketale laBetesda. Oomeme veongalo laNhelelwa ohatu pandula unene eshi mwa holokele monhanda yetu "Apa opawa" mEndola.

Onghee handi mu kundu mOmwene kutya, neudo eli onhanda otai kala mOlupandu. Kalunga ne mu pe omalutu a kola nawa mu fike ko. Ovanhelelwa omu nyota yo Ovakalongo.

Neudo ohatu ningeni ngaha: Etanga keshe nali kale li na ependela. Omashiivifo taa

ka shiivifwa ngaashi shito kutya, omwedi u lipipo nomafiku.

Ohai kumu yo omutonateli wetu Shikomba, opo a yandje ouyelele melongekido eli tali longekidwa kovadiakoni vomaongalo aa; Endola nOlupandu.

Namwene woshilongo otwe mu teelega monhanda. Ava hatu pe oilonga mu i longe, noneudo ohatu ke mu ifana mu uye mu tu kwafe. Ovamwameme, ileni tu fudeni po. Omapata ileni, ileni.

Omubisofi wetu yo ne uye a tale eshi tashi ka kala ketale lefudo mOlupandu.

*Omudiakoni Likus Neumbo
Endola*

Ombelewa ipe ya dikwa

Oshoongalele shokukundafana ombili yopakriste nhumbi i shii kudiinwa mounyuni osha dika paife ombelewa yasho tai kalelele muNew York. Dr. Karl Soule, Omuyamerika wongerki yaMethodisti oye ta kala omukulunhu wombelewa ei ye ta kwafwa ku-Mateus Stadnjuk omukalelipo nomulihongi mouteologi womongerki yaKatoolika komu-Rusland (Ortodoks). Ombelewa oya dikwa ponhele opo pe na [eembelewa dEhangano loiwana.

OLYELYE TE VA FILE OSHISHO?



Nge to ende peenhele neenhele oto mono omaumbo e yadi ndo, ndele ava ve li mo ova nangala meembete daxuuninwa, oonakufya. Netumbulo la tetekela otali ku pulakutya, olye te va file oshisho?

Ovakriste vakwetu tu taleni nomesho e na onghenda omaumbo ovaenda omo fye atushe hatu ka nangala mo. Ope na ngaa omaongalo amwe omo eumbo la tya ngaho, la wapekwa nawa. Ndelenee peenhele dimwe oto kumwa shili.

Onye oonakufiwapo vakwetu tu fileni eembila doovakwetu oshisho. Nande vo kave na vali omhito oku tu yakula mounyuni ou ngaashi va li nale, ndele ofye oonakufiwapo nena, tu wapekeni eembila da halakana.

Inda' momaendo eni nde to talaatala ngo apa mwa tulile nakufya weni u tale oixuna. Noshidimbulukifo kashi ko. Ngeenge momaendo omu na oixwa omunhu ota ti: Opa fa pa li oshixwa.

Tu kondjifeni ouhefi ou wokuhayavala eembila doovakwetu ve tu tetekelela, Mat. 5:7.

Ovanelao ovananghenda, osheshi ovo tava ka filwa onghenda.

Eembila dihapu onghe da monikile ashike fiku lefudiko da djalekwa ngaha, konima yomafiku ovanhu ova pilamena ko filu.

OMUKWETU

Oshifo shOngerki onkwaevangeli paLuther yomOwambokavango
Die Nuusblad van die Evangeliese Lutherse Owambokavangokerk
Ohashi nyanyangidhwa mOniipa,
Omukuluntu gwoshifo/Hoofredakteur omubisofi Dr. Leonard Auala,
Amushanga/redakteur Rev. Sebulon Ekdandjo
Ondando yoshifo komumvo muSuidwes-Afrika R1.00, kombanda yomafuta R2.00
Oondando nomambesitelo naga tumwe kOmu-kwetu, Oniipa, P/B 2013, Ondangwa, S.W.A.

Omatseyitho gomuntu mwene pashinyolwa shuule woondeimi 1 otashi futwa R1.00
oondeimi 2 otadhi futwa R1.90
oondeimi 3 otadhi futwa R2.70
oondeimi 4 otadhi futwa R3.40
oondeimi 5 otadhi futwa R5.00
Oto vulu okutuma wo efano lyaashono wa hala shi tseyithwe

Owambokavango Church Press
P/B 2013 Ondangwa, S. W.A.

Maria Shikomba