

OMUKWETU

Registered at the General Post Office as a Newspaper



APILILI 1972

No 8

Oliturgi nenge elongelokalunga

Oshitya oliturgi osha za mOshigreka "lekitorgia." Osho iitya iyali ya tulwa kumwe, leitos = shoshigwana nenge laos = shaayehe-naergon = oshilonga. Leitourgia otashi ti ano oshilonga tashi longelwa aantu ayehe medhina lyawo.

MEtestamendi Epe, oshitya otashi holola oshilonga sheyakulo shomoshilongo shaKaluga. Oliturgi otayi holola oshikalimo shomelongelokalunga ngashi; Okulesha Ombimbeli, Okwiimba, ehempululo lyeitaalo negalikano.

Ekota lyelongelokalunga

Omuntu kehe oku na ompumbwe yokuholola ekwatathano lye naKalunga ke. Nokuli omupagani ote shi ningi noondjambo dhe nomasaagelo ge. Ihe ukwatya welongelokalunga lyopakriste owi ili lela okuyelesa nomaitaalolongelo galwe.

Omupagani ota yekelele okwiilongela sha nomayambo ge, opo a geulukithe Kalunga nenge a kwatathane naye, a wape okupewa shoka ti indile. Aisrael osho wo ya ningi, ano ya ningile sha Kalunga metegelelo ya pewe ondjambo.

Ashihe shoka ukriste otatu shi ekelehi, oshoka oshilonga shehanganitho naKalunga osha longwa sha pwa mOmwana Jesus Kristus. Ehupitho lyetu otatu li pewa omagano kesilohenda, hashinima tatu shi ilongele. Elongelokalunga lyashili oyo okwiigandja omwenyo nolutu kuKalunga. Rom. 12:1 Luther ta ti: Olyo eitaalo lye lyene.

Elongelokalunga nando olya fa aluhe oshinima shomeni, mpoka li na omwenyo ohali holoka wo kombanda. Aakriste oye na ompumbwe okuholola kumwe eitaalo lyawo lyomeni, ehambelole lyawo noompumbwe dhawo muukumwe. Oye na ompumbwe yokugongala kumwe. pashituthi nokupewa oonkondo oompe dhokulongela Kalunga moshilonga sheithano lyesiku kehe. Iyakulitho yokutaamba oonkondo ndhika oyo Oohapu dhaKalunga nomasakramendi omayapuki, u-nene Uulalelo Uuyapuki.

Elongelokalunga ekwakriste oshike?

Olyo iiningwanima ya za mokukalamwenyo kwegongalo noya tulwa melandulathano lya nika oshituthi tashi ithana omuntu kehe. Elongelokalunga ekwakriste omo egongalo lyopakriste tali hololele Kalunga esimaneko lyalyo, tali kongo ekwatathano naye meitaalo nomohole yomuKristus Jesus.

Elongelokalunga ndyoka olyo wo iiningwanima ya za momwenyo gwomeni lyegongalo noya tulwa melandulathano. Otali ningwa pamukabo tagu opalele oshituthi oshiyapuki, moka oomwenyo dhaakwanegongalo dha yeluthwa kuKalunga, yu uvite oye li koshipala shaKalunga.

Olyo olyaayehe noitali ningilwa nando meholamo. Olyo otali longo omuntu omikalo dhopakriste ndhoka tadhithiminike aakriste ye li tsikile nomomagumbo gawo uuna ya halakana mokudhiginina oowandaha. Elongelokalunga otali dheula ano egongalo okukala meitaalo nomohole.

Elongelokalunga ekwakriste otali dhana ombinga yoshituthi shoka ootaali taye shi

Dumeni ta ka gandja ewiliko kuHeikki

Ewiliko lyoshilonga shomokati kaagundjuka yongerki yaElok, ndyoka omusitagongalo Kleopas Dumeni e li hambata omimvo dhi vule kashona omulongo, otali ka tulwa komapepe gomusitagongalo Heikki Uushona muKotoba tagu ya.

Omusimanekwa Dumeni, Epangelongerki olya dhambulula kutya oonkandanga mbali ihadhi dhipagwa mbali oshita, sho lye mu mangukula moshimpwiyu shewiliko lyaagundjuka nolye mu pe uusita wegongalo lyaShakati alike.

Nale iilonga mbika okwe yi longa oshita. Ngashingeyi osha yela nawa kutya, oonkandanga adhihe mbali otadhi ka dhipagwa ihe. Ondjuulukwe yegongalo lyaShakati oya yamukulwa, noshilonga shomaagundjuka shi imono ishewe epumpo sho sha gwile miikaha yaUushona ngoka a kala nokuli oshikaha shokolulyo shatate Dumeni.

Tate Uushona, oshilonga shuhamushanga miilonga yaagundjuka okwa langekwa mo 1971 pamwe newiliko lyoshilonga shomokati koosikola dhOsoondaha.

Nando etaambathano tali ka nigwa ngiika pokati kaayakuli mbaka yaali moshigongi shaagundjuka ayehe yOngerki muKotoba, Epangelongerki olya utha omusita Uushona a tameke nokuli iilonga ye lyotango lya-Juli 72.

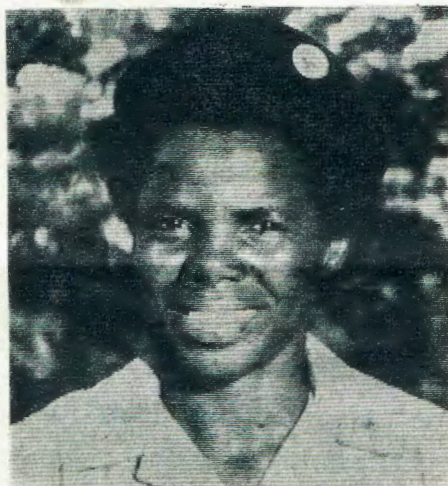
OPAASA MOTHIKA

Oshituthi shapaasa eti-31.3. 1972, osha dhanwa nesimaneko enene nomegongalo lyetu lyaThika. Omahokololo noondjimbo oya li ya longekidhwa kaakiintu manga aalumentu ye li po aapulakeni.

Natse wo Athika otatu pandula emanguluko moonkandja dhomutondi, sho ekulilo lya gwanithwa kombanda yevi, onyama ayihe yi hupithwe. Omunelago oongoka ta ka makela uutoye wonkalomwenyo ndjoka yaa na ehulilo.

Othika egongalo epe ndyoka lya valwa megongalo enene lyaElim lya gamakuumbantu. Olya totwa 1969 notali koko natango maakwanegongalo yalyo.

Frans S. Uulenga



Omupangi Katrina Auala

tegamene ye ke shi adhe megulu osho evululuko lyesapati.

Mulyo Omuwa ota popitha ootaali ye mOohapu dhe, nootaali taa popi kuye megalikano nomomahambelondjimbo.



Rev. Heikki Uushona

OMUNAFALAMA A MONA EHANDU LIDJU

MuNdowishilanda lokouninginino, omunafaalama umwe okwa handukilwa neenhono kepangelo loshilongo eshi a hangika a pulula po ombila imwe, neeranda konyala R1,9000. Otaku tiwa ombila ei yovakwapata vooHuns oya kala pokati kepya lomunafaalama ou oule weedula 4,000 nde ya talika naanaa kutya efyuululo limwe loikulunima.

Omukongindjila Kayuhwena kuSoomi

Oshitayi shuukongindjila mOwambo osha tegelela nondjuulukwe ehokololo nomakundo ga ze kOsoomi mokana komupangi Kayuhwena.

Meme Katrina Auala, (Kayuhwena edhina lyuukongindjila,) okwa mona ompolo ndjika a ka talele po Soomi, ye a hokolole oshilonga shuukongindjila muSuidwes, kutya otashi humu ko ngiini.

Meme Kayuhwena omuwiliki gwaakongindjilakadhona mOwambo, ota ka kala pamwe oomwedhi ndatu hwiya, nosha yela kutya, ota zi ko noontungwa dhu udha omakundo gookuume koshilongatumo muSoomi.

Kekwatho lyiimaliwa yoshiketha shuukongindjila muuyuni, meme Katrina okwa mono ompito ya tya ngaaka ndjoka tayi ka etela oshilonga shoka oshigundjuka lela mongerki yetu omayambeko, osho wo moshigwana ashihe.

Hwiya kuSoomi, meme Katrina okwa landulile ko meme Rajja Salmi, omuwiliki gwomatanga gaakongindjilakadhona mOwambo, sho a ka fudha po oomwedhi dhimwe.

Kalunga ne ya gamene momalweendo gawo hwiya.

ESO ESINDANO LYOYE OLILIPENI?

Olwindji ohatu dhimbulukwa nohatu popi iinima yi ili noyi ili, twa dhiladhila ashike onkalo yokombanda yeve. Moshipopwiwa shika nda hala tu dhiladhileni oshinima shoka omuntu kehe kee na ando oku shi dhimbwa, osho eso.

Melongo lyUukriste otwa longwa kutya eso li li moongundu ndatu:

- Eso lyokomwenyo
- lyokolutu
- nolyaaluhe.

Eso lyokomwenyo oyo omwenyo gwomuntu sho gwi iteka Kalunga nokuhokwa uulunde. Lyokolutu oyo ndyoka omwenyo sho tagu zi molutu. Eso lyaaluhe omuntu nomwenyo gwe nolutu lwe sho ta topoka naKalunga omunamwenyo sigo aluhe ye e ta umbilwa moheli.

Eso lyaaluhe nenge ndi tye oheli, ohayi thigulula shono sha dhipagwa tango keso lyokomwenyo. Otayi shi dhiginine wo sho tayi shi pewa keso lyokolutu.

MuLukas 16:19-31 otamu popiwa omukengeli gumwe. Kandi shi wo ngele okwa li omukwaniilwa nenge elenga. Kandi shi wo ngele okwa li omutiligane nenge omuludhe. Shimwe ashike ndi shi shi nawa, okwa li omukengeli i ishi ukengeli. Okwa li e na uuntsa nondhino. Nomolwasho okwa hunu.

Omuwambo gwonale okwa tile: "lihuna yomuntu oyi vule yombwa." Omuyamba ngwiya mokuhepeka Lasarus, ohepele, okwa li u uvite oonkondo. Okwa li u uvite uunenentu. Koshililo she inaku opala Lasarus e na uvu nokuli. Okwa gwana okukala nondjala. Oombwa dhe odho ta palutha. Lasarus na hakane shila noombwa dhe.

Okuhuna kwomuntu oku vule kwombwa. Omuyamba okwi ihunu po kombanda yeve. Okwa hunu oheli nokuli. MuLukas 16:23 taku ti: Ihe mokukala muwehamwe moshashi, sho kwa ligamene pombanda, okwa mono Abraham kokule ye li naLasarus mekolo lye. Oku ya lwetele kokule, oshoka pokati kawo opwa tendwa ongamba komuyapuki.

Opwa tendwa ongamba yi vule yaAngola-Uuyuni wa mpinyuka. Omuyamba ukengeli we wa siikililwa koshi yuuyuni sho wa mpinyuka nowa piluka. Ov. 24. Omuyamba oku li momulilo a sa enota. Ota indile omeya e ga pewe kuLasarus ngoka kwa li a hepeke. Ihe eyamukulo e li pewa kuhukulu yooitaali, Abraham, olya ti:

"Nokuli oku na olumbogo olunene lwa tulwa pokati ketu nane." Ite ya ko, ota talalekwa megulu.

Onda hunu shike, nowa hunu shike? Pamwe owa hunu oheli? Jesus ta ti: Ashihe shoka inamu shi ningila oohepele naadhinwa, ongame mwene inaamu shi ningila." Manga tu li molutu otu na ompito yokulongela Jesus nokwiindila edhimopo lyomayonagulo kuye. Jesus ta ti:

Shaa ngoka te ya kungame, itandi mu tidha po. Nge to mu faalele oondjo dhonyanya yoye, dhondhino yoye okudhina eshito lyaKalunga nokukonga esimano lyoye nokuhepekitha aantu. Ote ku taamba shimpa tuu to yi ko meitedhululo lyashili. Ihe ngele ito shi ningi, oto ki ipa uusama.

MuMateus taku tiwa. "Oye nokwa tameke okunyenyetela iilandu mbyoka mwa ningilwa iilonga ye oyindji yoonkondo, ihe inayi itedhulula." Eso esindano lyoye oli li peni? Eso kali na sha mungoka e li muKri-

stus. Olya ninwa, olya sindwa sheke. MEhololo taku ti: "Aanelago oonakusa moka taa sile" mOmuwa kongashingeyi... eeno, oyo taa ka vululukwa kuudhigu wawo 14:13 "Kalunga na hambelelwe, onguka te tu pe esindano omolwOmuwa gwetu Jesus Kristus.

Egongalo niilyo yalyo

Etsikilo

Egongalo oyo epya moka ombepo omuyapuki ta longo

Oohapu dhaKalunga nge tadhi uvithwa nomasakramendi ngele taga topolwa palombwelo lyaJesus, opo tuu mpoka Ombepo Omuyapuki ta longo. Mefatululo lyehepulumulo lyeitaalo, Luther ota popi Ombepo Omuyapuki ta ti: "Ombepo Omuyapuki oti ithana nota gongele nota minikile e ta yapula uukriste auhe kombanda yeve, e te u gamenene meitaalo limwe eyuuki omuKristus Jesus."

Omolwashoka egongalo li li po

Egongalo oyo elongelokumwe lyiilyo ayihe yi li mo.

Egongalo moka Ombepo Omuyapuki ta longo otali humu komeho ihe hasho shoka ashike sha gwana. Oli na okugwanitha wo oshilonga she li thigilwa kOmuwa Jesus: okuuvitha evangeli, elaka etoye, sigo kooaha dhuuyuni. Egongalo tali pumbwa aalongi oyendji ya longwa oshindji mboka ye na omagano gi ili nogi ili. lilonga tayi pula wo iimaliwa. Omukwanegongalo kehe, oshilyo kehe otashi pumbwa, shi tunge olutu lwaKristus.

Etungo manga inaali pwa okutungwa, otaku monika iilongitho niikwathitho yi ili noyi ili. Ihe Omutungi omunene ta gwanitha iilonga ye. "Ihe ongoye, Omuwa, ongoye omuumbi gwetu, otse atuhe oshilonga shoshikaha shoye." Jes. 64:8. Esiku tali ya uuna iilongitho ayihe otayi kuthwa po, etungo lya pwa otali holoka otali monika nawa meadhimo naasindani otaa gongala koshipala shaKristus.

Elongelokalunga enene

Tangotango tu dhiladhile kutya, elongelokalunga oyo oshinima shimwe ashike, nando shi

na oombinga dhi ili nodhi ili. Ongendjo ngele tayi tono ongulohi yEtihamano, otayi dhimbulutha kutya ngula Osoondaha, natse tu tameke okwiilongekidha oomwenyo dhetu tu longithe ompito ndjoka okutsakaneka Omuwa. Ongula yOsoondaha ongendjo nge tayi igidha pomugoyi ethimbo lyelongelokalunga olye ya. Otwa gwana okumwena nokukala noshimpwiyu tu thike kuye. Eyakulo lyokowalitali otali tu kwacha elongekidho tu wape okupulakena oohapu dhaKalunga nkene tadhi tu popitha nge tadhi leshwa notadhi uvithwa.

Omuntu ngele a lombwelwa a ye kuuwa, ndi inekela ota yi ko kuyele manga ethimbo inaali pwa po. Elongelokalunga oyo ompito yetu okutsakaneka Omuwa Omukwaniilwa gwakwaniilwa. Otashi vulika ngini ndi kanithe nando okatopolwa kamwe kompito ndjoka.

Ano tu thikameni kuyele okuya kelongelokalunga

Omuwanegongalo a gwana okutseya oshikalimo sha "liturgi," eyakulo lyokowalitali o po li simanekwe lyo li kwathe nawa okulongekidha oomwenyo dhi wape okutaamba elaka lyehupitho oohapu dhaKalunga nge tadhi leshwa e tadhi uvithwa. Ombinga ndjika tatu yi luku elongelokalunga lyoohapu.

Nokuli eyakulo ndyoka tali ningwa kowalitali otali kwatha aantu ya pewe omayambeko gomauyamba gaKalunga nuuna omuuvithi kee na oshindji shokupa aantu. Ombinga ndjika, eyakulo lyowalitali, sho ihayi lunduluka nuupu otashi kwatha aakwanegongalo ya taambe eyambeko lyaKalunga. Opo mpoka omuntu kehe e nompito okulongela Kalunga nomahambeledondjimbo nomagalikano neitulomo nomwenyo aguhe nekwato lyaikaha. Nando ongeyi, tatu itula mongundu ndjoka tayi simanekwe Omuwa, opo tuu mpoka Omuyakuli Omunene oku li po ta yakula. Osho ngeyi tatu kolekwa e tatu kumidhwa tse tu wape okutsakaneka iinima ayihe mbyoka tayi tu adha mokukala kwetu. Omuwa te tu tumu ongoonzapo dhe.

Eyakulo lyokowalitali ngele tali ningwa pamukalo omwaanawa nesimaneko, omuyakuli (omuliturgi) ti igandja meyakulo nehalo ewanawa, otali vulu okugamena nokuhumitha komeho iinima ayihe iinene yuukriste: euvito lyuuyapuki nehanganano lyaayapuki ayehe yongerki yaKristus.

Ngele taku ekelwahi shoka tashi yelutha oomwenyo dhi taalele pombanda, oshiponga oshi li popepi: Elongelokalunga alihe noombinga dhalyo adhihe oli na elalakano limwe alike: okusimaneka Kalunga Omuyapuki noku-tsa oongolo.

Okwa tiwa: ongerki itayi si ngele tayi tidhaganwa, ihe otayi si elongelokalunga ngele itali simanekwa noku li dhiginina. K.Korhonen





Kuku S. Markkanen

Ya shuna kOsoomi

Kuume kEtumo nokAaluudhe ngoka kwa li e yi iyambela olutu lwe neyakulo lye, kuku Selma Serafia Markkanen, okwa shuna ngashingeyi kuSoomi. Kuku Selma okwa valwa 1898, kOwambo okwi ile ko lwotango 1927 molwoshilongatumo.

Olwindji kuku Selma okwa kala omimvo omulongo miilonga mpaka manga inaa ka fudha po nando. Oshilongatumo okwe shi longo unene muuninginino wOwambo, oyo a ka tsikila ishewe koKavango.

Nando kuku Selma a pewa nokuli nale 1962 uuthemba wokulya ashike oshikwiila she shevululuko paveta yoshilongo shawo, oonkondo dhe dha hugunina okwa tokola oku dhi manena moshilonga okuyakula aantu e ya hole ya hupithwe.

Aagundjuka oyendji moshitayingerki sha-Kavango, unene megongalo lyaRupara moka a li omutumba, okwe ya vangeliha nevangelili tali zi momwenyo gu udha ohole.

Pamwe naye okwa yi naatumwa aagundjuka; meme Helka Juvakka, ngoka kwa li ha longo mokapangelo kaKahao osho wo Aniki Turtinen, omulongi gwosikola koMpungu.

Ayehe Omukwetu te ya halele efudho ewanawa mpeyaka.

Eeterolesa domishila dahapupala

Ovapolifi veemhuku mOwambo eshi va pewa omukifi wolutapo nowefyo laKapitahanga komuti wepombelo, oshishikuli osho eshi kutya oikulo yeemhuku otai tyakaleke nee noitondokela ya kufa momakunde nokuhe na ekandekelo lasha.

Eemhuku edi paife da fa tadi lulumike unene shi dulife eshi kwa li inaku pombelwa nokweeta oshiponga ngashi okutwa omaanda okulya oilya noku i nyateka, okunyateka oitelekwa aishe omo ya tuvikilwa, okunyauna oinima aishe yoikwafitola noshu tuu.

Eemhuku odo ombuto inene youdu i fike ile i dule nokuli odo tadi kondjifwa komuti wepombelo. Pefimbo eli oonyuni otatu weelele moitukulwa ihapu eshi vati oilongo imwe tai eta omeva monduda eeterolesa nOvakina, nde Owambo ohatu tale nomesho manene odjo yokupalula ouhapu weeterolesa domishila omu. H.A.Nakamhela

Eshito otali dhipagwa mokwaashi sha

Oshinyolwa tashi landula, osho oshieshelwa shomulongi gwosikola yokombanda mOshigambo, tate Toivo Tirronen, e shi leshele oshigongi shoshitayingerki shomOndonga 1971. Musho otatu ilongo okugamena eshito lyaKalunga ndyoka e li gandja komuntu e li tonatele.

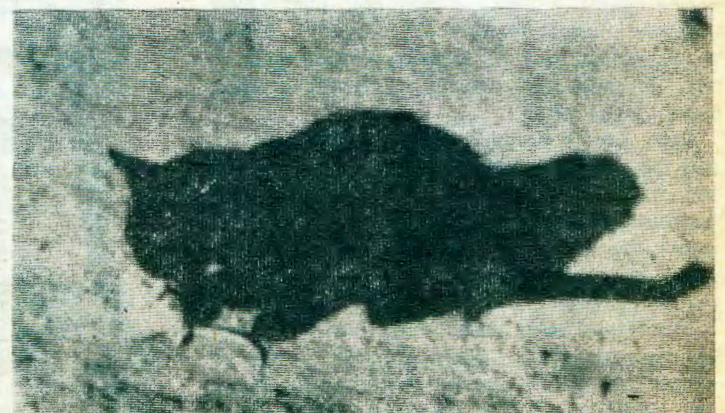
Mongerki yetu omumvogu otwa dhanene omumvo gweligolo. MuSuid-Afrika alihe oya dhanene omumvo gwomeya okudhimbulukitha aantu esimano nomupondo gwomeya nonkene taa vulu okwiikwatha moshinima shika. Muuyuni auhe oya dhanene omumvo gwokugamena uushitwe. Ngame onda dhiladhila okupopya sha kombinga yoshinima shika, oshoka osho oshinenenima muuyuni auhe. Oshitiyali shi thike pamwe naashika, osho okwiindjipala kwaantu taku kondo oongamba nomiyalu adhihe.

Oshipopiwa shandje oshileeleka noonkondo. Ngame onda lesa ommbo ogendji moshinima shika. Onkee oshidhigu kungame okutseya nokuhogolola iinima mbyoka tayi vulu okuhokololwa mominute 40.

Okuza petameko otatu pumbwa okundhindhilika oshinima shika oshinene. Uuyuni inau shitwa mepathimo limwe, mokupita kwomathimbo omaleeleka, oomvula oomiliyona dhoomiliyona. Itashi tu kwatha sha okutumbula mpaka omiyalu dhi ili nodhi ili. Iinima ayihe yi na omwenyo, oya holoka po kashona nakashona. Ihe shika manga inaashi ningwa, opwa pitile tango ethimbo ele, uuna moondundu dhowala mwa zi evi ndyoka alihe tu li ngashingeyi kombanda yeve ndika naamoka iimeno tayi mono ompito okukoka.

Natango nge tatu dhiladhila sha kombinga yomathimbo, ethimbo lyokukoka kwomuti oyo ele kutse, tu tye nando oomvula 100 limwe nando muuyuni omu na wo omiti dhi na oomvula 4000. Ihe omuntu nge ta kwata ekuya lye nenge oshisaaha, ota vulu okukeka po omuti mokathimbo. Osho wo omuntu ota vulu okuhanagula po epya lye moomvula nando 20, ihe ethimbo ndyoka lya li lya pumbiwa mokuholoka po kwevi ndyoka li li mepya, oyo oomvula oomiliyona. Onke omuntu oku na oonkondo okuhanagula po mokathimbo shoka sha li sha holoka nuudhigu muushitwe. Natu shi ndhindhilikeni nawa, nge tatu popi okugamenwa kuushitwe.

Ngashingeyi otu na uuyuni mbuka wetu, moka mu na omaukukutu nomafuta. Kombanda yeve, meni lyeve nomomafuta omu na iimeno yi ili noyi ili yomaludhi oomiliyona. Osho wo kombinga yinamwenyo okuza kumbyoka kaayi wetike nomeho sigo okumbyoka iinene ngashi ondjamba. Evi nefuta oyu udha iinima yi na omwenyo, tayi indjipala notayi si. Ihe ayihe oyi li melandulathano ewanawa lyu uthwa kuKalunga. Elandulathano ndika oyi ithanwa omuhukilila gwiikulya. Natu taleni nando okantoko okafupi momuhukilila nguka. Iimeno yi ili noyi ili oyo iikulya yoshikombo. Onyama yoshikombo oyo iikulya yomuntu nenge yembungu nenge yonime nokuli. Onime nge tayi si, onyama yayo tayi liwa komambungu nenge koombakiteli. Momuhukilila nguka omu na iitayi oyindji ihe oshinima oshinene osho shoka, kutya oonakukala ayehe oye li melandulathano, na oludhi kehe olu na oshilonga shalwo melandulathano ndika. Oludhi lumwe ngele talu kuthwa mo, epiyagano otali holoka e tali vulu okweeta oshiponga. Otatu dhiladhila ngiika kutya, omayoka kage na oshilonga. Ihe oshilonga shago osho okulya nando oombuku nenge oontunankwi. KuNatal oya dhipagele po omayoka momikunda dhimwe, sigo ya dhimbulula kutya, oontunankwi odhi indjipala noonkondo, osho wo oombuku, nodha hanagula po iilya niimeno



Oterolesa imwe yomushila oi li apa mokanya komushalotati ependa Kalenga.

Eshito otali dhipagwa

yilwe. Nopalwe wo muuyuni iinima ya tya ngeyi oya dhimbululwa. Uupuka uushuushuka ou li nokuli momuhukilila nguka gwiikulya.

Muuyuni omu na ontengelelwa yikwamwenyo. Oludhi lumwe olu li po omolwoludhi olukwawo nomaludhi agehe oge li melandulathano lyu uthwa. Oludhi lumwe ngele talu tameke okwiindjipala noonkondo, omaludhi galwe nenge iinima yokombinga yikulya otayi tameke okukondjitha eindjipalo ndyoka, sigo iinkundi tayi si tango. Mbyoka ya kola otayi vulu okuhupa.

“Kalunga noku umbu omuntu...” Kalunga nokwe ya lombwele: Kaleni mu na oluvalo, indjipaleni, nevi mu li udhithe aantu, **ne mu li pangele.**”

Aantu oya tameke okwiindjipala, ngashingeyi evi olyu udha konyala, nokupangela evi. **Omuntu oha pangele evi ngiini?** Onayi okutumbula oshitya shimwe ashike. MuAmerika oya yi nokuli neshina lyokolotenda nokuyaha iinamwenyo yimwe iinene ayihe, onyama nando oya li inaayi pumbiwa nando. Ayihe oyo olele ashike. Nenge mokathimbo kamwe omuntu ota keke po omuti omunene, ngoka gwa li mokukoka oomvula ethele. Ongiini? Osha pitikwa nenge inashi pitikwa okukeka omiti? Ndishi osha pitikwa oshoka omuntu ote dhi pumbwa. Ihe aantu ayehe ngele taa tameke okukeka po omiti adhihe muuyuni auhe, ongiini? Shoka nashi kale shi indikwa. Ihe oolye andola taa vulu okukeka omiti? Mpaka oveta yoshilongo nanyi gandje eutho, oshoka euvathano limwe pokati kaantu kali na ngiika oshilonga. Kehe ngoka ota pumbwa iiti.

Tango aantu sho ya li aashona, kape na mbudhi kehe ngoka nando okwa ningi pahalo lye mwene miinima mbika yopaushitwe: moku ka weya, mokukeka omiti nenge nokuli moku dhi lilika po mpoka pwa li pu na okukala epya lye nosho tuu. Ihe ngashingeyi itashi vulika we twaa hanagule po eha lyetu ewanawa lyokukala mo, twaa hanagule po ongonga yeve ndika lyetu. Shika otashi mu imemhitha ngiika, ihe mpoka aantu ye li po oyendjijendhji ya fa oombahu tadhi manapo ayihe sheke, itaa vulu okwiimemeha we. Nokonima yoomvula omilongo osho tashi ka kala kombanda yeve alihe, mokwiindjipala kwaantu ngele itamu holoka elunduluko lyasha.

Moshitopolwa shika onda popi emanopo lyomaludhi giimeno nenge giinamewnyo muuyuni. Moku shi ninga omuntu ota kondjitha eshito lyaKalunga noti iyetele oshiponga oshinene, nando ngiika ite shi dhimbulula mbala.

Sho nda popi nokuli pomiti onda hala okutsikila kashona moshinima shika kombinga yOwambo oholike yetweni atuheni. Oniipa nale, osho taa ti, oya li mokuti. Ngashingeyi omu yi shi mpoka yi li. Ihe itatu pumbwa okutala ethimbo ele kashona li thike mpoka. Omumvogu otwa talelwa po kaayenda yetu omuprofesori Dammann nomukulukadhi gwe, mboka ya adhika ye tu talele po wo 1953. Oya li ya kumwa shili pethimbo ndika efupi Owambo nkene ya kanitha omiti odhindji. Oya li ya tila shili omolwoshinima shika. Otashi ti methimbo efupi nokuli Owambo otayi ka kanitha omiti dhayo adhihe kakele kaandhoka dhi li momapya gaantu. Shika otashi etele po shike? Iinima oyindji tayi tilitha.

Okuloka kwomvula otaku ka lunduluka. Itaku loko we nawa. Ihe uuna tayi loko, omata otaga dhenge evi lya yela nokuninga owala uumpomponga nokufaalela po omeya nevi. Omeya itaga mono we ompito okuningina mevi, ge li tutike nawa. Evi kali na we iimeno ya gwana. Oombe po oontukuluki otadhi kwata evi noku li faalela. Omapya itaga vulu okugandja we sha. Aantu otaa tembuka nenge otaa si. Ihe otaa tembukile peni, akuhe sho ku na othina yaantu?

Oshinima oshityali tashi yono po evi, osho **omwaalu gwiimuna** gwa pitilila. Oongombe niikombo na unene uundoongi otayi gugula omalundu nomidhi dhomwiidhi nokuli. Ohayi mana po wo omimeno dhomiti omiwanawa. Omuntu oha tala iimuna oyo uyamba we, ihe nge ta kanitha po oongombe dhe adhihe omoluukumba nenota, oshoka evi kali na we oonkondo okuhumbata nokupalutha omwaalu gu thike mpo, nena uyamba womuntu ou li peni? Ye mwene okwe u hanagula po omolwokwaa shi sha kwe.

Ando aantu ayehe mOwambo ya dhimbulule iinima mbika iyali iinene I. Okugamena iimeno unene omiti; Tala kep. 6

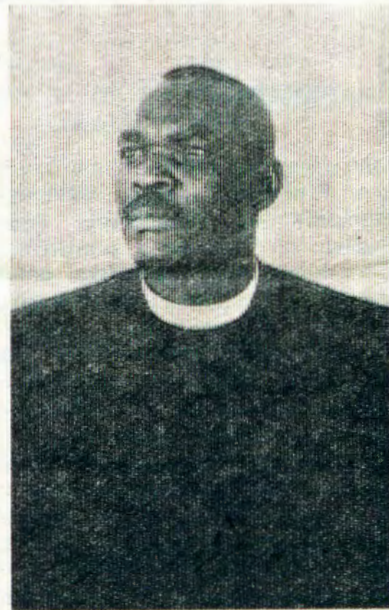
MALAKIA A ALUKA NOMULONGELO

Omufitaongalo Malakia Hauuanga eshi a talela po eongalo laShomeva, okwa aluka ko nomulongelo weeranda 10.00 nepakete limwe loikutu. Eshi osha ningwa mewiliko lomufitaongalo Metusalem Shilongo.

Omufitaongalo ou Shilongo, okwa ongela ounona aveshe va shashwa peedula 1966-1969 nde te va pula ou e va shasha. Eshi inava dula okunyamukula osheshi kave mu shii, opo nee omufita Shilongo okwa fikameka omufitaongalo Malakia Hauuanga nde ta lombwele ounona kutya, oye omufita e mu shasha ou.

Tate Malakia okwa ti kutya, eshi nda talela ongudu oyo yeongalo lomongula, nde handi pwiilikine omaimbilo avo eshi tava imbi, osha kuma omwenyo wange. Onghee nde ve lixula eshi kwa li va tonyenwa moikeli-ve, nani osho va kulu itava wana mo vali. Kalunga e va kulika nde e va pa oilonga meongalo laye yomaimbilo.

Ounona ava ohava ende yo nomaumbo tava imbi. Ohava wilikwa kumeme Marta Kanandjembo. Omufita Malakia okwa pewa natango oshisho shokwiilikanena oumbwityona venya.



Omufitaongalo Malakia Hauuanga, ou a longa nale meongalo laShomeya, nde paife ota hakula eemwenyo moshihakulilo shaNgela.

Oshilonga sheshasho otashi talululwa koongerki

Euvathano epe olya ningwa ishewe moongerki mbali dhaFilipine, ongerki yaKatolika kaRooma nongerki onkwaevangeli paLuther, miinima yeshasho. Elongo lyeshasho oyo shimwe shomiinima ya etele omayooloko pokati kongerki yaKatolika nongerki onkwaLuther miilongo oyindji.

Ekundathano moshinima shoka olya zi melongelokumwe lyoongerki dhomoshilongo shoka konima yoomvula ndatu niyimati oya monika ngashingeyi nkene okuhedhathana pamwe tashi eta omauvathano.

Otaku tiwa kutya, euvathano lya fa ndika olya ningwa nale nokuli pokati koongerki dhomaludhi ngoka gaali miilongo oyindji ngashi; Belgium, Britania, Franisa ihe muSwitzerland otaku tiwa oli li popepi nokuadhika ishewe.



Omusamane T. Tirronen

KALUNGA IHE TU PE MBELA ENYAMUKULO?

Eshi osho sha pulwa komufitaorigalo Stephen King-man Cheug, waHong-Kong, o-munashipundi mokangudu kokukonakona eitavelo eli li nouteku wopakriste.

Moshoongalele shomafiku omulongo mekundafano lohinima eshi, omushamane Stephen okwa ti kutya, ngenge hatu eta okukalamwenyo kwomukriste mekwatafano nOndjovo yaKalunga, omunhu oo ote ke lihonga nota ka shiiva nhumbi e na okukala mounyuni ina lumbakana nao.

Mekwatafano novapaani, o-munashipundi Stephen okwa shila omadiladilo ovapwilikini noku va londwela va konakone nova fimaneke eitavelo lovapaani fiku tava longo mokati kavo, osheshi eitavelo lavo efina lo-shinima ashishe.

Moilongo imwe hatu longo mo, efininiko letu lokweefifa po ovanhu eitavelo olo va kala shito, ohashi kondjifwa kovanhu voo vene, ile kepangelo. Nopomafimbo amwe oshi li oveta nokuli yoshilongo. Moshinima shi li ngaha, Kalunga ite tu pe ngoo mbela ondjila yokupita moudjuu ou?" osho omufitaongalo Stephen a pula.

Ovapwilikini moshoongalele eshi ova dile moilongo 15. Oshoongalele osha ningilwe u-nene omolwomapulo a dja meengerki dihapu, okumona ondjila iwa moshinima eshi. Dr. Herbert G. Schaefer, hamushanga woshikandjo shouteku mongongahangano yovakwa-Luther, naye yo omo a li moshoongalele eshi.

LWF-Informatioⁿ

Iilandela oshihauto

oVolkswagen Microbus (Kombi) omodela 1968, otayi landwa R850.00. Endeleta u yi adhe mOngalashyongerki, Oniipa, P/sak 2018, Ondangwa.

Matti Seppälä Engela

Eshito otali dhipagwa

dha za kep. 5

2. Okushonopeka omwaalu gwiinamwenyo.

Oshitopolwa oshitiyali moshipopwiwa shika osho shoka, omuntu nkene ta nyateke uuyuni we. Shika otashi ningwa pamikalo dhi ili nodhi ili. Muka mOwambo otwa tseyu kutya, aantu otaa mono nuudhigu omeya ga yela. Aantu ohaa iyogele momeya moka taa kutha omeya gokunwa. Nenge iimuna oyi na ompito okuya momeya gokunwa nomakondo gayo nokusitamena mo nosho tuu. Shika otashi taandelitha omavugi ili nogi ili Ihe unene onda hala okutumbula iinima yimwe tayi eta oshiponga kuu-ntu auhe.

1. iinima yoplastika;

2. Omathegela goofabrika;

3. iinima yuuradioaktivi;

4. omauzigo ngoka haga longithwa komuntu mokugamena iimeno ye nenge mokudhipaga uupuka muunshitwe.

1. Nale aantu oya longitha iinima mbyoka ya zi muunshitwe: oombiga dheloya, oontungwa, omatamba giiti nosho tuu. Iinima ya tya ngeyi iikulu otayi vulu okushuna mevi no-kwoolela mo. Iinima yipeleki noyiyela osho yi li wo nando tayi pula ethimbo ele. Ihe oplastika ihayi kana. Nokuli nando u kambadhale oku yi fika, olwithi lwoplastika otalu ga lukile kevi. Uuzigo u li mo, otau tameke okutaandela miimeno nomiinamwenyo. Miilando iinene aantu ohaye ekelehi kehe omumvo oongundu dhootona iinima yoplastika itayi vulu okuhanagulwa po nenge tayi ningi omauzigo gi ili nogi ili.

2. Moofabrika dhi ili nodhi ili ohamu zi iinima kaayi na oshilonga. Otayi ekelwahi owala. Oofabrika odhi li olwindji pooha dhomeya, oshoka konyala aluhe otadhi longitha omeya ogendji. Konima omeya otaga shuna mpoka ga zi, ihe oge li ga nyata nayi. Omu na uuzigo hau dhipaga iimeno niikwameya. Ngele uuzigo otau zi miimeno nomiikwameya iinamwenyo yilwe otayi li iimeno niikwameya mbyoka yi na uuzigo. Osho uuzigo tau ende komeho miikulya nokuthika wo molutu lwomuntu.

3. Oshinima oshidhigu okuuya osho uuradioaktivi. Moomboma dhoatomi nomiinima yilwe yi ili ohamu zi ontsi yuuradioaktivi tayi falwa kombepo, sigo tayi kulukile kevi. Ontsi ya tya ngeyi ohayi yi kokule lela. Ontsi ndjoka nokuli oyi na oshiponga kiinamwenyo nokaantu. Ihe oshiponga otashi koko nokuli ngeyi. Iimeno ohayi taamba oominerale tadhi zi mevi. Osho tayi taamba wo ominerale dhuuradioaktivi. Iinamwenyo nenge aantu ohaa zi iimeno (omboga, iilya nonsho tuu), moka mu na oominerale dha tya ngeyi. Otadhi yi molutu lwomuntu, unene momasipa moka ihadhi zi mo. Ihe omasipa otaga tameke okweeta oonte dhuuradioaktivi dhi na oshiponga koontumba, ihe unene koluvalo.

4. Ngashi twa tseyu muunshitwe omu na uupuka wi ili nowi ili. Mpoka omuntu inaalu-ndulula nando iinima yomuunshitwe, uupuka mbuka ou li montengelelwa. Otashi ti omaludhi agehe omo ge li, ihe oludhi lumwe italu vulu okusindana. Ihe mpoka omuntu a lundulula elandulathano lyomuunshitwe, omaludhi gamwe okwe ga dhipaga po, ihe omaludhi galwe oga tameke okwiindjipala noonkondo e taga hepeke omuntu. Onkee aantu oya tameke okukonga nokulongekidha omauzigo gi ili nogi ili, opo ya dhipage po omaludhi ngoka. Ngashingeyi omauzigo ngoka haga longithwa oge li po omathele. Gamwe ohaga dhipaga uupuka. Ogo ohagi ithanwa ooinsektiside. Gamwe ishewe ohaga dhipaga iimeno. Agehe kumwe ohagi ithanwa oobioside. Oshitya shika otashi ti iidhipagi yiikwamwenyo.

Uuzigo umwe u vule agehe mokulongitha owo DDT (dichloor-difeniel-trichlooretaan). Uuzigo mbuka owa li wa tseyika nokuli 1874, ihe 1939 omunongononi gumwe okwa dhimbulula kutya, ohau dhipaga oondhi noomwe nuupuka ulwe. Ayehe oya li ya nyanyukwa noya dhiladhila kutya, okuza mpoka otaa vulu okudhipaga po uupuka hau taandelitha uuvu ngashi omaralia, nenge wo uupuka mboka hau hepeke iimeno.

Aantu oya tameke okugunda uusila waDDT shaa mpoka. Osho ya wapa okudhipaga pomaha ogendji oomwe hadhi taandelitha omaralia nuupuka ulwe, ihe kashona nakashona oya tameke okudhimbulula kutya, omaludhi ogendji guupuka oga lunduluka. Ihaga dhi pagithwa we DDT.

Ookemikali (=iinima yomuudhindoli) odhindji ohadhi tunguluka mevi. Nando odha li tango uuzigo, otadhi hauka noitadhi eta we oshiponga. Ihe uusila waDDT ihagu tunguluka nuupu. Ngashingeyi uuyuni auhe ou li po wa nyatekithwa DDT: omavi, omafuta, osho wo omeya ge li meni lyevi. DDT oya adhika nokuli moondhila ndhoka hadhi kala popepi nekuvu lyokolukadhi lyongonga yeve, huyaka kaku na aantu. DDT ohayi dhipaga nuupu oohi, nomomafuta omanene omalunduluko omawinayi oga dhimbululwa nokuli.

itandi tsikile kombinga yaDDT. Oshinima shimwe ashike. Ngashingeyi momavi ogendji DDT oyi indikwa paveta. Ihe nando uuyuni, auhe u landule mbalambala oshiholelwa shika, otashi ka pula oomvula 20-30, manga uuzigo mbuka inaa hahuka.

Nando oku na wo omauzigo ogendji galwe itandi ga popi we. Edhiladhilo lya simana mpaka olyo iilonga inene yaKalunga, mbyoka omuntu ta hanagula po nuupu omolwokwaashisha uuhethi nenge sha shilwe sha tya ngeyi. Otatu pumbwa okudhiladhila shili shoka sho opalela Kalunga tu tonate, opo tu hupe nolualo lwetu.

Shejavali ta twikile elihongo

Onghundana ya dja mEpangelongerki otai ti kutya, omufitaongalo Abisai Shejavali oo te lihongo kuAmerika nokwa li a teelelwa a alukile keumbo pexulilo lodula ei, ite uya manga. Omushamane Shejavali okwa indila kEpangelongerki a kale natango okafimbo ta vandamene momishangwa dOshiamerika, nde okwe shi itavelelwa. Paife okwa teelelwa pokati kodula tai uya.

KUNENE A KUNDATHANWA MUNDOWISHILAND

Opulanda yiilonga yomulonga gwaKunene ndjoka ya tamekwa kepangelo lyaS.A. nolyaPutu, oya pendula omalimbililo ngashingeyi, tango maakondjelimanguluko opo momahanganano wo galwe.

Moshifo "This month" hashi zi muGeneva, osha holola omadhiladhilo gamwe kombinga yoshikundathanwa shika moshigongi moka mwa li aakalelipo yomahanganano noyongerki ya za muEuropa nomuAmerika lyokuumbangalantu.

Ompumbwe oya dhimbululwa yokutsikila oonkundana ndhika moshigongi shokomitiye yehanganano lyongerki dha hangana muuyuni (WCC) shi na okugongala nale ando muApilili. Okomitiye ndjika oyo hayi gongelele aafadhukipo iikwatha.

Epanuno ko lyomeya gaKunene nedhiko lyoonkondo dholusheno komulonga, mbika oya tseyika muSuidwes kutya oshitopolwa shimwe shomeyambulopo lyaavalelwamo ngaashi sha fatululwa kepangelo lyaS.A. Pamadhiladhilo guuyuni oshinima otashi uvika ko ngashingeyi shi ili lela.

Aakondjelimanguluko otaa ti, shika osho omukalo gwokutsakanitha oonkondo dhaakwiilongo mookoloni ndhoka mokupangela nawa aaludhe nando oyo oyendji, otashi indjipaleke wo omwaalu gwaatiligane muumbugantu waAfrika mboka taa ka kala aayugi yaaludhe uuthemba nomaliko goomina ndhoka taye dhi hakana manga aaludhe inaa manguluka, osho oshifo sha ti.

Opulanda otayi ka tunga konyala oondama 27 noonkondo dholusheno. Ondama onenenene oya tamekwa nale pokati kaAngola 1969 notayi ka pwa nuunvo. Oyo ondama yaGove. Osho wo tapu ka tungwa natango pomahala taga landula, Matala, Matunto, Calueque nopegwo lyaRuacana.

Oofalama oonene dhaatiligane muAngola odha tegamena omeya gomulonga nge taga ka enda opo ya likole iyimati yawo niikwamboga ayihe. Ope na wo oopulanda dhokuputudha iimuna yombelega, ilahite. Otaku ti oopelesenda 60 dhevi lyaAngola odhi li mefaneko lyoofaalama dhaatiligane.

Momumvo 1960 muAngola omwa li ashi-

OVETA OMPE YIILONGA

Elandulathano lyeuvathano pokati kaagandji yiilonga naalongeli olya holoka moshifo shEpangelo eti-30. 3. 1972 nolya gandjwa kiifo kutya;

Oombelewa dhiilonga otadhi ka dhikwa miilongo niilongo momavigumbo nopondje, moka elandulathano lyomukongi gwiilonga lya gandjwa. Omutaambi kehe gwiilonga e na sha inee shi panda na ye kuKomufala gwomoshitopolwa shoka, ngoka ta ka konakona oshinima. Komufala ngoka oku na oonkondo dhokuhulitha po euvathano.

Omutaambi gwiilonga ngoka ta zi piilonga ye inaashi ziminwa komugandji gwiilonga nota adhika pehala li ili, ota tulwa megeelo.

Oveta otayi ti wo kutya, omugandji gwiilonga ina gandja nando eha lyokulala nenge osheenditho kungoka inaa kala nando miilonga. Mbyoka naye futwe komutaambi gwiilonga ye mwene.

Shika oshi na eziminathana neuvathano ndyoka lya ningilwe pokati komapangelo; Epangelo lyOwambo, lyaKavango nEpangelo lyaS.A. petameko lyomumvo mOshaanda.

ke aatiligane 172.000. Mo-1970 oya indjipala ye thike mpoka lwaali, nope na elalakano ku kale etata lyomiliyona dhaatembukilimo. Aaputu oyendji nAaitalia mboka ya za kuLibia nenge ya tidhwa kuSomalia, oye li nale muAngola.

Oshinima sha simana mopulanda ndjika okumonena oomina olusheno, oshifo sha ti ngeyi. Okwa tumbulwa omina yaTsumeb ndjoka tayi pangelwa komahanganano gAayamerika; American Metal Climax naNewmount Mining. Omina ndjika ohayi zi iilikolomwa oopelesenda 80.

Ope na wo efaneko puRusinga pu ka tamekwe omina 1975 omolwoshikwamina uranium. Omakonakono gamwe ogi ipyakidhila

nokukonga omahooli, omeya giitenda nokawe.

Ekundathano enene ndyoka lya ningwa muArnolkshain, Ndowishiland, olya londodha omahanganano agehe omanene ga zimina okukwatha niimaliwa mopulanda ndjika yaKunene ga shunithe omutse molukwe, oshoka ngele taga tsikile otaga ka mwenyepaleka oonkondo dhaatiligane okulyata aaludhe pothingo mookoloni moka.

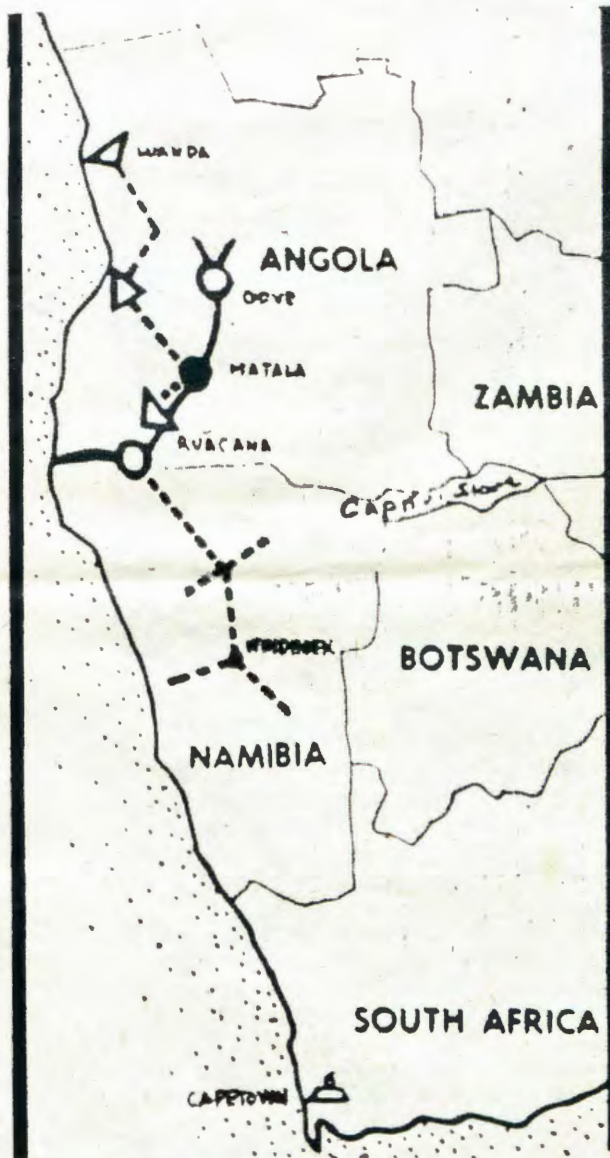
Omahanganano galwe noongerki unene ndjoka ya tumbulwa kedhina ongerki yaKatolika noshigongi shoongerki dha hangana muuyuni (WCC) oya indilwa kaayi tsikile nokupungulitha we iimaliwa yawo moombaanga ndhoka tadhi kwatha niimaliwa mopulanda yaKunene.

Ongerki ya N.G. tayi kwatha ELOK

Ondumba yomambo ge vule 100 guuteologi, oga gandjwa omagano kongerki yOombulu (N.G.Kerk) ga yakulithwe moshilonga shopamhepo mongerki yaElok. Omambo ngaka ongerki yetu otayi ke ga topolela koondjugo dhomambo (Biblioteek) dhomahala ngashi; Engela, molwaayevangeliste nokosikola yuusita kOtjimbingwe.

Medhina lyongerki, omambo ngaka oga taambwa pashituthi mOshakati komumbisofi Dr. L. Auala, amushanga gwe noshwo wo aasita yamwe, moka aakuluntu yegongalo pamwe nomusita gwongerki yOombulu mOwambo, Ds. D. Beyers, ye ga gandja medhina lyongerki yawo.

Ishewe iimaliwa R300.00 oya gandjwa kongerki tuu ndjoka opo omumbisofi gwongerki yaElok, a ka talele po osikola yaaposi KUTLWANONG, kuRustenburg, Transvaal. Epangelongerki olya ulike omunashimpwiyu gwoombolo, Rev. Kristof Shuuya nomulongi gwaaposi mEngela, Raimo Holopainen, ya ye ko yo yu uvathane ethimbo tali opalele nomukuluntu gwosikola ndjoka.



OONKWATWA MOWAMBO DHA MANGULULWA

Oonkwatwa 130 dha li dha edhililwa pamukalo gwoveta ompe yOwambo, otaku tiwa odha mangululwa mo. Shika osha zi moshifonkundana "Die Suidwester" sheti-14 Apilili 1972.

Aalumentu oyendji 213 mOwambo oya li ye edhililwa moondholongo okuza petameko lyomumvo omolwomapiyagano ga holokele po konima yoshipotha shondhalate, oshifo sha ti. Pamupopyo gwomusamane S. L. Müller, oministeli yaapolisi, okwa ti kutya, aantu 83 natango oye li mondholongo yomasiku okutameka nomasiku gatano sigo 62. Kombinga yaamboka ya egululwa mo oya li ye edhililwa omasiku okutameka komuntu gwesiku limwe alike mondholongo sigo kwaamboka ya li ye na omasiku 25.

Oshitokolitho 19 shoveta yonuumvo 1972, osha li sha gandja uuthemba mboka wokukwata omuntu kehe ta limbilike Komufala nenge oshilyo kehe shopolisi nenge osha kwatela mo wo omayono galwe.

Uudhudhu, amatilitho nomahindathano oyo ya dhiladhililwa oveta ndjika, oshifo, "Die Suidwester" sha ti.

Enyolo ekulu lyi itsuwa moshipelende



'Ngame Kores (Kiros), omukwaniilwa gwaa-kwaniilwa ngoka elelo lye tali zi komutima, Sho nda yi moshilando shaBabel muMesopotamia, aantu ayehe oya taamba ndje nenyanyu. Osho ngeyi nda kuutumba koshipundi shuukwaniilwa. Marduk, Kalunga kAababel, ngoka wo nde mu simaneke nondi mu hole, okwa pandika kaantu yomuBabel omolwandje. "Engathithi lyaakwiita yandje sho lya kwata oshilando shika, inapa tika nando ombinzi. Omahala omayapuki gomoshilando shika, oga enditha ndje wo omwenyo. Onda gandja nokuli elaka omuntu kehe a longele Kalunga kehe koyaandjawa mombili nopwaa kale ngoka ti ipe uuthemba woku mu ngwandjagula. Onda lombwele kwaa hanaguliwe nando egumbo limwe, nokwaa kale nando omukalimo gumwe ta yugwa shoka she.

"Onda halele ootempeli adhihe ndhoka dha li dha edhilwa po dhi egululwe niyelekelakalunga yi falwe pomahala gayo gonale noyi kalelele mpoka sigo aluhe. Onda gongaleke aakalimo ayehe yomomikunda ndhika dhaMesopotamia, mboka omagumbo ga-

sho Kalunga katatugumwe a tameke okulongelwa nokusimanekwa.

Ezra nomuprofeti Jesaja, otaa kuminwa omukwaniilwa nguka notaye mu tala nesimaneke sho a gandja emanguluko kAayuda 40 000, mboka ya li muupika waBabel noya shuna kevi lyeuvaneko. Komukanka guuthemba mboka oko kwa tungile omapangelo agehe, pethimbo ndika, nando otawu dhinwa konyala miilonga kehe yesiku kehe.

R.Shangula



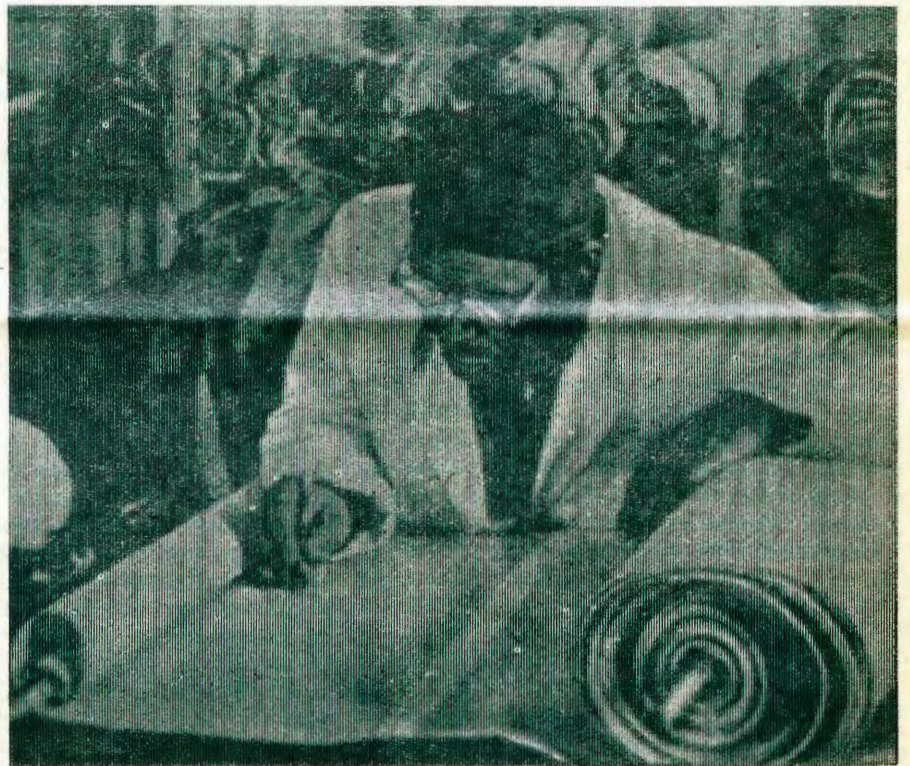
Omanyoyo agehe omakulu oga nyolwa moongonga dhomikoya dha tya ngeyi ngashi to tala mefano ndi. Sigo onena aafuli mevi ohaa itsu oongonga ndhoka dha filala koshi yiilando iikulukulu. Mefano omunongoramata gumwe ta lesa embolyompango yaMoses Jesus mosinagoga yaNasaret, okwa lesa wo membo lya fa ndika. Luk.4;17.

ETAMEKO LYEGUMBO

Ohaku tiwa, kape na ngoka e na sha ngele ina pewa kOmuwa. Jeremia Kangonga (29) naMartha Amwaalwa (26) oye shi itaala, onkene etameko lyegumbo lyawo oyi ile ye li pewe megumbo lyaKalunga, eti-4.3.1972. mOntananga.

Omusamane Kangonga, Ontananga, okwa longa oshilonga shokuyakula ongerki ayihe noshigwana nokulongitha eshina ndyoka hali pititha omambo niifo mOshinyanyangidho shaNiipa oomvula dhi vule kashona omulongo. Kakele kaashika, iipopiwa ye oya holoka olwindji moshifo shongerki, "Omukwetu,, nohayi kala yi na omulyo. Aluhe komuzimbuko gwiilonga okwiipyakidhile newiliko lyaagundjuka, unene mOniipa miigongi yawo. Oye wo oku li oshilyo mewilikongndu lyaagundjuka moshitayingengerki shawo shaNdonga.

Oya dhike egumbo lyawo nomupangi Martha, ngoka a kala moshilonga she omimvo ngashingeyi mbali. lilonga yawo sho ya guma omuntu kehe moshigwana shino, otatu ya halele uupenda u vule woshito miilonga yawo pamwe noshinakugwanithwa oshipe ye shi taamba megumbo lyawo epe.



wo nomahala gawo ga halakanithwa po, ga tungululwe. Onda gandja ano ombili nemwenerenemanguluko kaantu ayehe."

Oohapu ndhika odha popilwe komukwaniilwa Kores, gwaPersia sho a kwata oshilando shaBabel omimvo 2500 dha piti. Omatumbulo itaga adhika nando mOmbimbeli yetu, ihe otaga adhika miinyolwa yimwe iikulu. Oshipelende shoka sha nyolwa omatumbulo ngaka, osha toolwa 1879 nosha pungulwa ngashingeyi momusium (ompungulilo yinima yonale) muLondon.

Edhina lyomukwaniilwa Kores otatu li adha muJesaja 45:1 sho taku ti, omugwayekwa gwOmuwa. Kores ota hokololwa kutya okwa li kee na ontongo miituthi ya simana okwa kala koshililo pamwe naathigona. Molwetilokalunga lye, Kalunga okwe mu lenge Jes.45:3. Okwa li omukwiita ofule nelelo lye olyi itumbile pombanda. Muule woongamba dhepangelo lye, okwa gandja emanguluko lye-longelokalunga notaku tiwa, olwo lwotango

OMUKWETU

Oshifo shOngerki onkwaevangeli paLuther yomOwambokavango
Die Nuusblad van die Evangeliese Lutherse Owambokavangokerk
Ohashi nyanyangidhwa mOniipa,
Omukuluntu gwoshifo/Hoofredakteur omumbisofi Dr. Leonard Auala,
Amushanga/redakteur Rev. Sebulon Ekanjo
Ondando yoshifo komumvo muSuidwes-Afrika R1.00, kombanda yomafuta R2.00
Oondando nomambesitelo naga tumwe kOmukwetu, Oniipa, P/B 2015, Ondangwa, S.W.A.

Omatseyitho gomuntu mwene pashinyolwa shuule woondeimi	1	otashi futwa	R1.00
oondeimi	2	otadhi futwa	R1.90
oondeimi	3	otadhi futwa	R2.70
oondeimi	4	otadhi futwa	R3.40
oondeimi	5	otadhi futwa	R5.00

Oto vulu okutuma wo efano lyaashono wa hala shi tseyithwe

Owambokavango Church Press
P/B 2015 Ondangwa, S. W.A.

