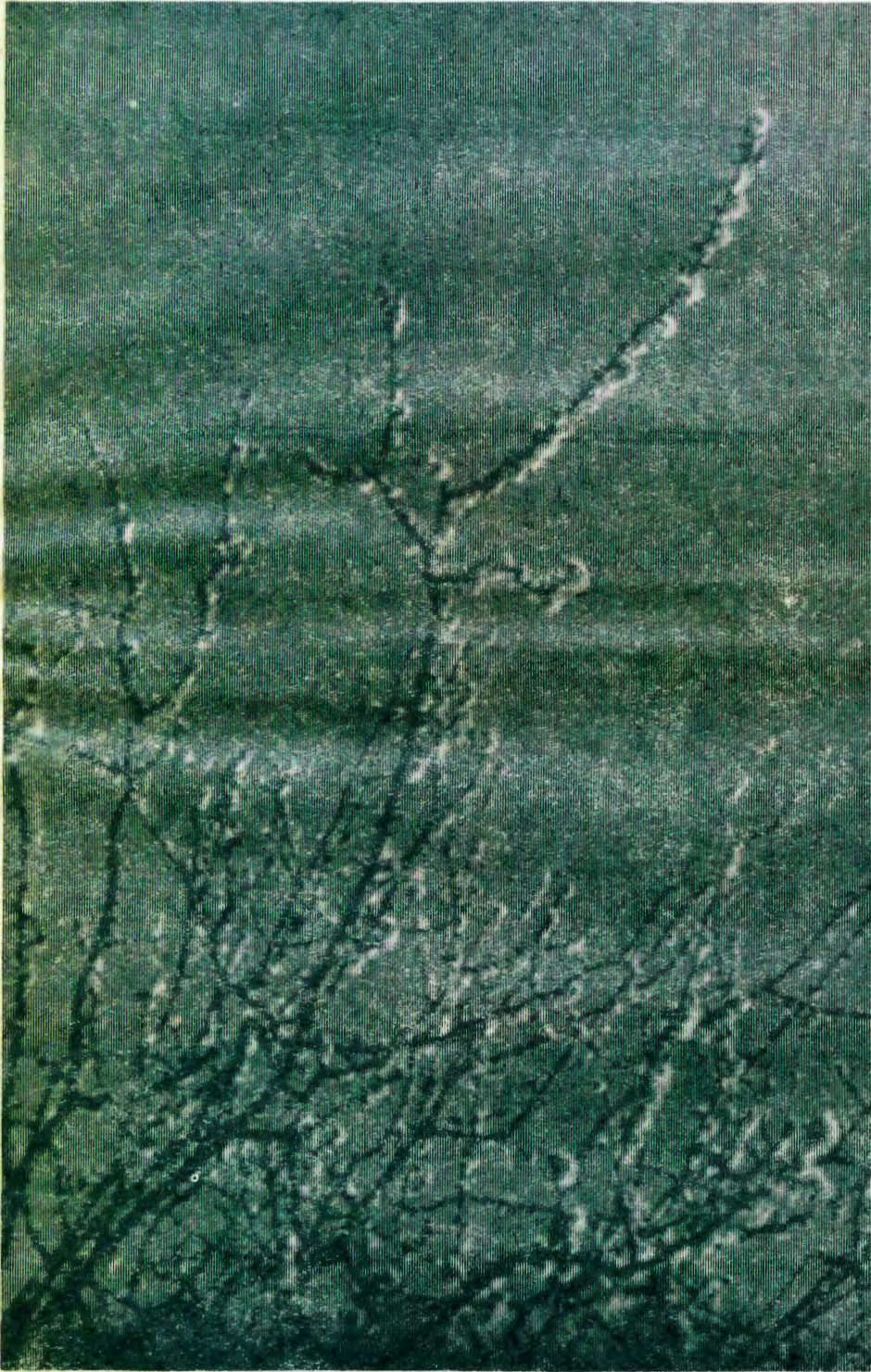


# OMUKWETU

Registered at the General Post Office as a Newspaper

## Uuthemba waantu neyukipalitho



Ondjundo yuuthemba womuntu oyo oshini-  
ma shoka tse ngaakriste muumbugantu waA-  
frika tatu ipyakidhile nasho. Omuntu ota he-  
pa mondjundo yuuthemba we, hamoluunku-  
ndi we ashike, ihe moshilongo shetu, o-  
muntu ota hepa omolwomauthomutungilo  
ngoka ga tulwa po mokati ketu.

Otatu vulu okulongitha eutho lyuuthemba  
womuntu ongoshiyelekitho, apehe mpoka aa-  
ntu taa hepekwa. Tse ngaakriste itatu ikonge-  
le uuthemba wopantu tse yene, ihe otatu  
ipyakidhile nuuthemba waantu aakwetu.

Otatu vulu okupopya tu ukilila ngashinge-  
yi shi vulithe shito, nokutumbula iinima ko-  
shito pampumbwe, omoluuthemba mbuka, o-  
shoka owo tau ningi aakwashigwana aaineke-  
lwa. Eutho lyOngongahangano yaakwaLu-  
ther muEvian Franisa, mekwatathano lyalyo  
neutho lyuuthemba womuntu lyiigwana ya ha-  
ngana otali vulu oku tu kwatha okumona  
ko nawanawa mpoka nonkene uuthemba wuu-  
ntu waantu ooyakwetu tau ehamekwa notau  
patanwa.

Oowino ndhoka twa topolelathana mOse-  
minali (moshigongi shaawilikingerki yoonger-  
ki dha hangana muumbugantu waAfrika, FE-  
LKSA) ndjika nadhi tu sikumudhile momadhi-  
ladhilo omape gopauteologi. Ondunge yopa-  
kriste yeyukipalitho, oya kwatathanithwa u-  
nene nepulo lyeyukipalitho lyoonkondo no-  
mpango. Esilohenda lyaKalunga olye eguluki-  
la aantu ayehe noitapa talwa iilonga yawo no-  
nkatumuthika yawo monkalathano nopa-  
muhoko.

Etaambathano lyu udhilila lyaantu ayehe,  
nali kale eyamukulo kesilohenda lyaKalunga,  
tali fala meudhililo lyelongelokumwe mokati  
ketu. Eyoololo muukuume nali tse kumwe,  
neyooloko meudhililo lyuukwashigwana. Ka-  
pe na nando eikalekopo nenge eingungunino  
lyomuntu gumwe lyaa shi ndyoka lyomuu-  
kwangundu wo.

Inapa kala nando omayoololo nenge oma-  
topolo mOngerki, ngoka taga holele omayoo-  
lokotopolo moshilongo shetu, oshoka onger-  
ki oyaKalunga, kayi shi yomuntu. Omukri-  
ste kehe na kale e shi kutya, ngele kashi li  
ngeyi nena eitaalo lye otali limbilike.

Ongerki oyi na okukwatakanitha kumwe  
nokuhanganitha omayooloko nenge omato-  
polo pokati kaantu, nokutya oonkatu dho-  
lela pamuthika gwopamukunda, pashikandjo  
nopashigwana yi kale ongerki yimwe muu-  
yuni umwe waKalunga.

Pamuhungo nguno, tse ongongerki onkwa,  
Luther, otatu ka vula okulongela ku-  
mwe nawa nokutsakanitha oshinakugwani-  
thwa shetu shimwe paukumwehangano.  
okuuvitha evangeli lyOshilongo shaKalun-  
ga mongerki nomoshigwana.

## NATANGO EKWATHO LYE-PANGELO OLYA PUMBIWA

Okuza uuna ondhalate ya teka, no-shitya oshivanawa okupulakenwa "euvathano," sha pingene etumbulo lyondhalate, haantu aashona nando ya hokwa okulandula omukalo omupe gwetaambo lyiilonga nkene tagu ende. Pamwe ehala ewanawa lyotango okukonakona oshinima shegandjo lyiilonga, poombelewa dhiilonga mpoka aamati taa tsakanene naalongelwa nokuninga omauvathano gawo.

Mpeyaka omuntu oto kwatwa mbala keuvito u kale to lukaluka ashike manga inoo tseye kutya iinima oya thinda peni.

Natango mpeyaka aantu oya ninga omalalapundo nokutegamena iilonga ye yi pumbwa. Otaa ningi ngulangu-la. Natango otaa ilondo koothingo nokuhakana aahona nomahala, omukalo ngoka kombinga yimwe tagu pyakidhile aagandji yiilonga noku ya lyalyakanitha, opo yaa tseye shono ye na oku shi ninga. Nokombinga onkwawo otagu ningitha aalongeli ya kale ye na ombiliha, sho taa monika ngeyi nomukalo ashike omupu.

Inali konda gwaNiimbungu, aalumentu yomathele ogendji sho ya shuna kiilonga ya pitile mosheelo sheuvathano epe, lyo olya lila nale, oshoka hwi-yaka oya dhimbulula euvathano poombapila ewanawa li vule miilonga yo yene.

Pamwe mboka ye na oonkondo dhoku tya sha meuvathano epe, oya yogo nale iikaha yawo moshiyaha shoka kutya, kape na mbudhi iinima nayi ende komukalo ngoka tayi ende, shimpa tuu oshinima euvathano. Lyo emakelo ndika lya tsakanene aaleli, enene, kutya nomanga oonkundathana dheopaleko lyondhalate dhi li metifa, uupe u monike, yo aalumentu yAawambo oya thikamena nale ombelewa yiilonga ya ka longe. Shoka osha fa tashi ti, eopaleko lyoshinima shoka kalya li lya pumbiwa.

Ihe mbika ayihe itayi ningitha iikaha yaaleli iyelele. Epangelo lya S.A. olya popya olwindji nkene li ilongekidha okuyambula po evi ndika. Lyo evi itashi ti okutunga oondama adhike nenge okupala oondjila, aawe. Eyambulopo lyevi okuguma ompumbwe yomuntu kehe nenge oku mu kwatha nkene ta mana po ompumbwe ye. Shika osha simana unene.

Aamati yetu oyo naanaa oshitopulwa shimwe shomiinima mbyoka epangelo lya S.A. li ilongekidha okuyambula. Opo yaa ka kale ashike miilando iitokele aaheheli, nenge yaa ke ende moondjila dha palwa nawa, ya sa ondjala, otali ya longekidhile iilonga noondjambi tadhi kutha oluhepo. Aamati ngele oya tsikile okuyemata meuvaneko epe, pamwe oya dhimbulula eyambulwopo lyawo oli li kokule nomauvaneko gepangelo.

Tala kep. 7.



Ongerki yaShitayi ndjoka onkulu sho ya opalekululwa nawa

Egongalo lyaShitayi, olya tembuka mOndangwa sho Ondangwa ya ningi eha lyepongalo Elongelokalunga lyahuginina mOndangwa, olya li meti-12.3.1922. Ongerki yotango, mOshitayi oya tungwa mo-1922 noya fikwa, po kolwaadhi 1923.

Omuhongi Närhi okwa tungu mo ongerki ontiyali 1924 negongalo ndika olya langekwa omusita omuvalelwa mo gwomaayapulwa yotango mOwambo, tatekulu Juuso Ngaikukwete, a yapulwa 1925.

Konima yethimbo omusitagongalo Ngaikukwete okwa yi kOshigambo nomusitagongalo Johannes litope, a langekwa mOshitayi sho a yapululwa uusitagongalo 1937. Omusita litope sho a longo omimvo 12 mOshitayi, okwa kumuna po ongerki ndjoka ya tungwa kuNärhi nokwa tungu ompe 1950.

Sho pwa piti omimvo 15 egongalo olya dhimbulula ongerki oyi li pokukulupa notayi pumbwa eopaleko nenge ku tungwe ompe ishewe. Kekwathopukululo lyatate Toivo Pentikäinen natate Eino Amaambo, sho ye tu talelepo, oya dhimbulula ekuma nondunda oyo opala, kakele komakende nomiyelo nolupanda oyo ayike itaayi pumbiwa.

Oshigongi shegongalo sheti-23.1.1966, osha zimine eopaleko. Okwa ningwa egongalo lyiimaliwa, omulumentu kehe R9.00 ndhoka te

dhi tsakanitha methimbo lyoomvula ndatu nomukiintu kehe R6.00 ndhoka ta tegelelwa a mane oku dhi futa muule wethimbo lya tu mbulwa pombanda. Omulongi Josef Konis oye kwa li omugandji gwotango esiku tuu ndyoka.

Osho kwa gongelwa ngeyi nomaudhigu ogendji nomakemo okutameka eti-23.1.66 sigo 12.7.1970 niimaliwa oya kondo R3000.00.

Tate Toivo Pentikäinen okwa mbestele mbala iitungitho ayihe ya pumbiwa, niilonga yeopaleko oya tameke ihe mewilikko lye nomupehawiliki ngoka a sile oshimpwiyu eopaleko alihe okuza pombanda sigo opevi, tate Erastus Kakololo litope, naakwathi yawo 15.

Ongalasho yongerki oya kwatha wo okutula kumwe iitenda yiipundi 62 natate Ndili Leonard Asser, e yi tula kumwe mongerki. lipeleki oya tulwa komitenge dhomuhongo, omiyelo 3 omakende 13, iipundi 62, nolupanda pondje nomeni, ayihe oya ningwa iipe. Ekuma kombanda olya tulwa ondhalate eta li kolongwa nokaalaka, oshuuvithilo oshipe, owalitali wo ompe.

Aashitayi oyu uvite uuntsa nenyanyu sho iimaliwa yawo ya holola po ongulu onde ya fa ondundu yaRusinga mombuga yaNamibia lla wi italele ko mwene.

Rev. Titus Ngula



Omusitagongalo gwotangotango omuvalelwamo megongalo lyaShitayi, Juuso Ngaikukwete, nengumbo lye

# INO SA UUNYE, KONDJA NATANGO

Mat. 15:21-28

Etendo lyomotekisti ndjika, olya kwatela mo shono omuntu olwindji hi itsu musho, ongele omolwe mwene nenge molwomukwawo. Nokuli pamwe oto dhimbulukwa nkene i-hoo popi we naNima molwashoka ine ku uthila mbala omoluudhigu woye mwene nenge wamukweni, wopambepo nenge wopalutu.

Nomotekisti ndjika omwa li iinima mbyoka ya li tayi hindi omukulukadhi nguka Omukanani okuthika keyakulo e li pumbwa. a) Uupagani we wokoludhi lwawo owa li tau mu thiminike a se mbala uunye manga ina yamukulwa kuJesus. Oov. 24,26.

b) Omayamukulo ngoka ge mu tsakanene tango noye mu dhenge moshipala oga zi mokana kaangoka (Jesus) kwa li e mu inekela shili, e mu itula a mana mo. Oonkamadhala dhaalongwa yaJesus okupopila ko omukulukadhi, odha fa dha li tadhi dhenge ombepo yowala .Ov. 23,24.

Miinima ya fa ngaambika, to yi ningilwa, oyo ya popitha Omuwambo omukulu kutya, "Ando egulu olya li na oongudhi, ando omapongo twa londo." Moshinima shika, omukulukadhi ngwiya okwa li u uvite, ita pumbwa okulonda kegulu a ka konge aakwathi yalwe, ota kala puJesus, ota tegelele euthilo, okwa tseya lela kutya Jesus oye awike omukwathi gwe.

Meidhidhimiko lyomukulukadhi omoluuvu wokamwana, sho a kala po nokwa landula ko, nando ita yamukulwa nawa kuJesus, omwa walwa etegameno kooitaali noyomathimbo gonena. Uukwatya womukiintu ngwiya womeni, owa shiti omainyengo ge gokombanda ge endithe omwenyo gwajesus.

1. Eitaalo lye lyomeni oye mu thiminike a tumbule aluhe "Omuwa, Omuna gwaDavid." litya mbika oya yelutha Jesus a ze monkalo yomuntu gwowala ngashi olwindji hashi tiwa. Kee shi owala omuna gwaJosef naMaria, ihe oku vule mpoka. Oye Omunan-kondo, Omukwaniilwa, ta vulu okulonga iilongankumwe nge a hala. Osho shoka Jesus kwa li wo te shi kongo muye.

2. Moonkundathana dhomukiintu naJesus ndhoka dha li po mombepo ya pama, ohole yomukiintu oya koko noya kolo. Uukukutu wiitya yaJesus kuye, owe mu tonyo poongolo a ninge **omwiifupipiki** gwolela. Ov. 25. Okutseya uunene wajesus, otashi tu ningi aafupipiki. "Johanes Omushashi ta ti: "Jesus na koke ngame ndi shonopale" Joh. 3:30.

3. Omayamukulo gomukiintu oga fa ge na koho, kage li owala. Muukukutu wombepo yoonkundathana, omukiintu ongaanguka e lwete ekwatho lye li li handiyaka yehulilo lyoonkundathana dhawo. Muudhigu we, ina kukutika owala omilungu, ihe ota mentye mo sho ta tala oshipala shaJesus. Ndika oyo endhindhiliko lyetegameno.

Mbika ayihe Jesus ine yi talela ashike momukiintu ye mwene, ihe okwa tala unene ohole ndjoka yi li pokati komukiintu nomwana, nekondjo lyomukiintu omolwomwana. Uukwatya mbuka owa faathana naamboka te u popi pehala limwe ta ti: One aawinayi ngele mu shi okukongela aana yeni iinima iwanawa paidilo lyawo, unene tuu oho yeni yomegulu ota gandja uwanawa kumboka taye mu indile Mat.7:11.

Inda muuthigona woye puJesus meifupipiko, oto yakulwa. *Sebulon Ekandjo*

## Oshigongingerki shuukumwe

Oongerki onkwaevangeli paLuther mbali dhaavalelwamo muSuidwes sho tadhi ka hangana mbala, oshigongingerki shoka tashi ka kundathana uukumwe mbuka otashi ka gongala Eti-23.2. sigo 2.3.1972 mOtyjimbingwe. Oshigongingerki shoka otashi ka kala iilyo ya za moongerki mbali; Evangeliese Lutherse Kerk in S.W.A. (E.L.K.) na Evangeliese Lutherse Ovambokavango Kerk (ELOK).

Kombinga yongerki yetu, Epangelongerki lya simana olya hogolola omadhina taga landula mpaka ga ka kakele po iilyo yongerki yetu ayihe moshigongingerki shoka shopaukumwe, pakotampango:

1. lilyo yEpangelongerki ayihe kumwe naatonateli yiitayingerki oyo iilyo yoshigongi.

2. Aahogololwa yatano pamadhina taga landula:

Rev. Kleopas Dumeni, Rev. Gideon Muremi, Ev. Petrus liyambo, Ev. Tomas Shigwedha, nomukuluntugongalo Sem Paulus. Mbaka kehe gumwe oku na omupeha gwe uuna ta adhika komaimbo.

3. Oongerki kehe sho yi na iilonga yi ili noyi ili, unene mbyoka ya fa tayi longwa meithikameno, okwa hogololwa wo mboka taa kalele po iilonga mbyoka moshigongi shoka oshinene.

Okangundu kuuteologi mongerki otaka ka kalelwa po kuRev. Kristof Shuuya.

Okangundu kiinyolwa yopakrite; Rev. Sebulon Ekandjo

Okangundu kopasosiale (onkalathano); Rev. Gerson Max

Okangundu kEtummo; omupangi Taimi Saari

Okangundu keputudho lyopakriste; Rev. Josia Mufeti

Okangundu kuudiakoni Ottilie Hidengwa.

Ayehe mbaka nayo oye na wo aapeha yawo uuna taa kala ye na omaimbo. Osho mwa hiyilwa wo omudhiginini gwiiniwengerki Rev. Matias Nghipandulua nomunyo-leli gwEpangelongerki Rev. Petrus Shipena, ya kale iilyo yoshigongingerki shoka.

Omumwamemengerki hwiya muUshimba E.L.K. osho wo ta hogolola iilyo pama-

*Ombinga yimwe yehala lyoshigongi shuukumwe woongerki mOtyjimbingwe. Ondjugo onene yi li popepi, okombitha noshililo moka aayenda oyendji taa ka yakulilwa.*

ludhi ga tumbulwa mpaka. Oshigongingerki shika shotango paukumwe woongerki ndhika ngele osha tsakanitha omafaneko gasho, ondjuulukwe ndjoka ya kala pokati koongerki ndhika mbali mokulongelakumwe nomokuulika ugumwe womuKristus, otayi tsakanithwa ihe.

Oshigongi shoka sha simana, otashi ka koleka omafaneko gekotampango lyehangano tali dhikwa VELKSWA, Ehanganano lyoongerki. Otashi hogolola omuwiliki gwehangano ngoka ta kala moshilonga shoka omimvo 6 manga ehogololo ekwawo inaa li ningwa. Otashi kundathana etaambelomo lyuukwashilyo wongerki onkwaevangeli paLuther yaAandowishi muS.W.A. (DELK).

Amushanga gwongongahanganano yaakwaLuther, LWF, Dr. Andre Appel, kuGeneva, okwa tegelelwa a kale wo medhiko lyuukumwe woongerki ndhika. Noye omuningi gweuvitho lyetameko lyoshigongi.

### 10 TAVA KA HOVELA OUTEOLOGI

Ovanyashamati omulongo mongerki yaElok, omaindilo avo okutambulilwa mofikola yehongo loukalunga kOtyjimbingwe, okwa tumbulwa kEpangelongerki. Ofikola yoo vene ota ka hovela vali oilonga yayo neudo pexulilo lohani ei.

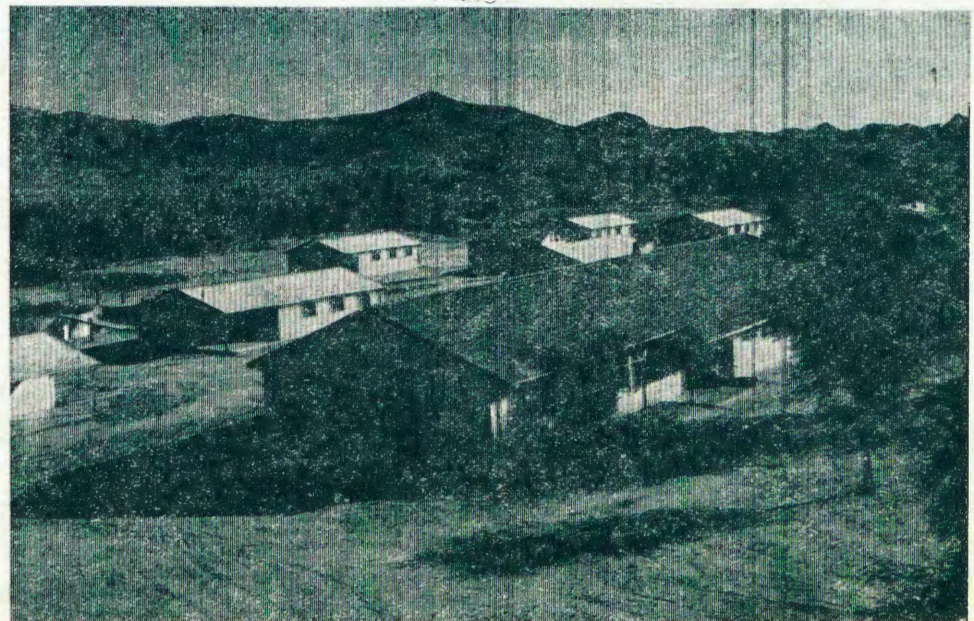
Omuvalu wovanyasha omulongo ovo va itavela eifano okulonga nokuyakula moshilonga eshi shopamhepo, nande oonakukala musho havo naanaa ovo tave limonikila, otashi tu tomhele natango kutya, Kalunga okwa fila epya laye oshisho fiyo onena.

Ovalumemhu ava ova dja eembinga adishongerki yOwambokavango. Omadina avo okwa holoka ngaha meenhokolwa dE-pangeiongerki:

1. Filemon Malima, Onayena
2. Tomas Nashongo, Oshigambo
3. Petrus Shipanga, Okaku
4. Josef Namutenya, Eheke
5. Immanuel Hainghumbi, Eenhana
6. Onesimus Shanyengange, Etunda
7. Kleopas Amunyela, Tshandi
8. Johannes Nghishekwa, Omundaungilo
9. Josef Nghuyepa, Olupandu
10. naSem Shivute, Onesi

Vaheyali vomongudu ei, ove na odjapo yaJuniolo fimbo vavali ovalongi naumwe a kambifa ko kanini kwa li, a hange Juniolo.

Ava otava ka shakena novalinyolifi vakwao mongerki yaE.L.K. muUshimba 12.



Omuntu kehe oku na oompumbwe dhe dhi li meni, nando oku na uudhigu oku dhi holola Opwa pumbiwa omupangi ngoka ta konakona oshike shi li meni lyomukwawo. Manga inatu mona omupangi, natu topole tango aavu moongundu dhawo.

- a) Aanona yomimvo 1-16
- b) aagundjuka yomimvo 17-25
- c) aashakati yomimvo 26-40
- d) aakuluntu yomimvo 40-55
- e) aakulupe yomimvo 60-100

Mpaka tatu holola ashike pafupi kombinga yaapangi yaanona yomimvo 1-25. Tango aalangi naawiliki yaagundjuka oyo taa talwa aapangi yotango yoomwenyo dhomapipi ngaka. Okuhunga omwenyo osho okulangela omwenyo tagu ehama. Otashi ningwa miigongi yawo metalelopo lyomagumbo, nosho pamathimbo galwe.

Tango otapu pumbiwa ompani yokulonde-lako opo tu wape okwaadha omwenyo gwokanona. Ompani ndjika oyo oonkundathana dha manguluka pokati komuwiliki nomuvu.

Okwiikalela okwo omuthitu omunene moka satana ta vulu nuupu okunukila okanona, onke ongerki ya kongo ompito aanona wo ya ningilwe iigongi opo ya kuthwe muuwike no mezaza. Pondje yuungundu nenge yiigongi ukriste womunona otatu kokotwa po kuyuyuni mbyoka kayi na sha nehupitho lyomu muntu.

likolitha noluhondelo oya yona po epipi lyongashingeyi. Omunona ngele a kanitha eitaalo li na omwenyo ota adhika kuuvu weteekeo tali etwa kohoni nokeiyekelelo sigo omuntu a pwidhuka. Onke kongka mbala uukuume nomuntu a tya ngaaka.

Ongerki oya ithanwa kuKristus yi pange oomwenyo, yi falele elaka etoye lyehupitho. "Indeni nuuyuni auhe..." osho oshilonga ye shi inekelelwa. Eimatulo olyo eyambeko enene kungoka e li ningi.

Opo tu uve ko omaudhigu gaagundjuka gomeni, otatu pumbwa ongaaputudhi tu kale megalikano tse tu ifupipike tu kale ngaanona. Oshilonga shika osho oshidhigu, ngele tatu shi longo tse yene, ihe ngele tatu ende pamwe naPaulus otse otu na omukumo. Omuyapostoli Paulus ota ti:

"Ayihe otandi yi vulu munguka ta koleke ndje."  
Hiskia Haufiku



### Kwafa nakufya omeva

Tala kep. 8

1

Tete manga ino fudifa, tala ngenge mokanya ile momayulu aye omuyela. Tula omunwe wo ye wa kula wokeenyala mokanya, kwatela elaka pedu, opo omhepo tai dulu okuya nawa komapunga. Kufa mo oimbodi nomadu mokanya nomomayulu aye. Kufa mo oshilanda ile oinima aishe mofingo, nangeka ongali pedu, tifulila omutwe waye konima ngaashi ongobe tai yuvwa. Hovela oku mu fudifa.

## Ounona itava piti vali

Meshiivo lange moule weedula mbali nda kala moulongi, onde lilonga sha kutya, onunona itava shiiva sha vali nongaashi itava piti vali omakonakono nawa.

Onda kala nokukwata alushe onghone nokutakela alushe eembulu omunwe kutya, odo de tu kengelela, osheshi ovanhu tava piti mofikola yaNgwediva itava pewa naanaa ouyelele wa wana kutya ove na okulonga ngahelipi, opo va udife ko nawa okaana. Alushe omulongi mupe a dja mOngwediva, mehongo laye okwa limbililwa,

Luhapu mokulonga oshilongwa shonhumba, ita dimbulukwa nande efiku limwe e shi ulikililwe yo nawa komulongi waye. Onghee ashike "meneer," ile "Juffrou" kOngwediva a tile:

"Tambuleni, omambo oyoo. Lihongeni shili nouidiini." Ile ngehe Juffrou e va nyanyangidilile omambapila mahapuhapu nonava hetekele yoo tuu okulonga oshilongwa osho mokushinyanda (praktiseer).



Rev. Hiskia Haufiku

Vali kombinga ikwao, eefikola kadi na oilongifomwa (leermiddels). Patitatu, ovdali ove na oshitwa sha kula moshinima eshi sholudalo loshiwana.

Oinima aishe oyo oinene nohatu i tale ne nyeme, shaashi otai filukifa eshiivo lounona vetu, moshilongo shetu. Oshinima ashishe onda tala otashi yadifwa komputudi womunona. Kristus ta ti: "Ou ta kala muame oye ta imi oiimati ihapu."

Onda tala ovaputudi vahapu katu lyeni mukristus. "Sha mena osha dja ketindi." Otashi holoka mounona voshiwana eshi, eshi itava piti nawa. Ndele hakuhapita ashike moilongwa ei yokopena, ndelenee momikalo diwa yo okutula ovakulunhu inave va dala, mokuhehole ongerki-shapo opoundingosho, osho yo moinima ikwao ihapu itai pu.

Vali keepena itava piti nee, osheshi kape na omayambeko asha. Ou ho va putuda ku li mujesus, ou li muimwe i lili, luhapu mumwe noludalo loye nokuli.

Aishe ei oiimati eshi ihatu liyandje tu kale oilongifo momake aye. Omuputudi iha yandje onunona vaye efimbo nefimbo kuKristus, iha lesa eendjovo daKalunga nandende. Mofifiya yomeva mai otamu di tuu mbela omeva mawa?

Ovatekuli vounona, ofyeni yoo odjo inene yomwaado tadi nwefa oshiwana.

### A kanifa ewifa laye

Meekulu Linda, meangolo laNdobe, okwa kanifa okamati kaye ewifa, Jesaja Shimhanda, moshiponga shoshihauto pexulilo lodula ya ya. Okamatyona aka, oka hangikile ke li natango mofikola St. VI, okapenda noka hokiwa kovalongi vako.

Meme M. Shikomba, umwe womovalongi vako, ota ti ngaha: "Fye ovalongi otwa dengwa shili keyo lokamati aka, osheshi oko ka li omuti muwa pofikola yetu."

Oka li ashike ke na omido 16.

### E TU THIGI PO MPA

Omukulukadhi Toini Tagayena yaStefanus, okwa mana oondjenda eti-2.10.1971. Omulongi omukulu Toini, okwa pitile mosikola 1939 nokwa kala omulongi mOshitayi.

Omumvo 1942, meme Toini okwa yi mondjokana natate Filemon Namwandi noshe mu imbi okutsikila iilonga yuulongi. Egongalo lyaandjawa olye mu inekele nolye mu hogolola a ninge omuleli gwalyo moshimpwiyu shoka e shi humbata oomvula ndatu. Ihe sigo okusa kwe oye okwa kala omuwiliki gwongundumbimbeli. Okwa thigi po omumentu gwe noothigwa 9.

### Alec a pewa ondjambi yaJudas

Oshiningwanima oshinene osha ningwa kongerki yaMetodiste muEngland sho ya gandja iimaliwa iisiliveli itano koministeli yaEngland, Sir Alec Douglas-Home, sho yi ile okukundathana emanguluko lyaaluudhe muRhodesia nomusamane Ian Smith.

Iisiliveli mbika e yi pewa muLondon, osha ningwa yi mu londodhe pethimbo lyoonkundathana dhe muRhodesia, kaa idhimbike nando lumwe uuwanawa waaluudhe yaamoka. Ongerki oya halele okugandja koministeli Alec iisiliveli 30, ondjambi yaJudas sho a gwaaleke Jesus.

Omusamane Alec, oministeli yiinima yopondje mepangelo lyaEngland.

Informasiediens

## Osha li sha ningifa nge omwenyo mwii

Eshi u li po hamushanga woshifo shOmu-kwetu, nowe lineekelelwa oishangwa aishe i na okukala mo, ohai ku shangele ombapila ei, omolwoshipopipiwa shedina: OVANA-NGESHEFA EEMHADI DOSHIWANA" mo-shifo shajuni No. 12. 1971 kopardja etivali.

Moshipopipiwa eshi, omu na edina lange la tumbulwa nokuli pehovelu, olo la kwata oshipopiwa ashishe. Osho omu na yo vali epulo kutya, ngenge handi tale momiandi daNgela, efano olashike handi pewa mo.

Tala, oshipopiwa osho inandi shi hokwa unene eshi tashi tumbula edina lange, naashi tashi pula omiandi daNgela. Osha hovela neendjovo dange odo nde di popya nokuli lu-5 ile lu-6 moyoongalele yongerki, nonde di tonga yo novanangeshefa voovene kutya:

Fye Ovawambo koshitwe yetu, katu fi shito ovashingifi ndelene fye ovalongi vompaya novafita voimuna.

Eshi nda lesa oshishangwa eshi, tete onda yola eshi ou a fatulula omadiladilo ange pomunghulo, ke udite ko nande eshi nda hala okutonga, haxwe nokuli ngeno a mwenene ashike moshinima osho, ngenge ina hala okupula nge omadiladilo oshipopiwa.

Mokutumbula kwange etumbulo eli, onda diladila moule, hakombada. Inandi diladila popepi ndelenee okokule. Vali eshi sha yela osho eshi kutya, ame itai kondjifa ounangeshefa neengeshefa, osheshi naame omunangeshefalela, ndi na ongeshefa ya hovelwa 1955, ndelenee paife ondi li omuwiliki wayo.

Inandi hala yo okupwilikina epangelo tali tumbulwa moshinima eshi, osheshi omolwalo ndi hole okupopya kutya, omolwalo oinima aishe ya tokelwa, nande oshiwana she i djuulukwa. Eshi oinima ya kala ko, oshiwana osha longa oinima oyo paihopaenenwa, hapapukululo.

Epangelo inali hala okulonga meshikulafano padiladilo lalo, nde ohali pulwa. Eshi la tunga eefikola doshiwana noihakulilo neendjila doteya, oshilando shaShakati osho sha tungwa omutenya umwe nosho tuu, ndishi ove shi ningifwa komapulo onyati.

Hano nge va pulwa ekwafelo kovanhu va ngungumana, ha tave va nyamukula ngo, opo ve limonene efimano lavo momahokololo kondje younyuni? Ashike inava hala okulonga sha osho inave shi pulwa nande nashi kale shi na oshilonga.

Apa onda kendabala paxupi okweeta okanehele komadiladilo momatumbulo ange oo a yahameka omwenyo womushangi. Vali o-

handi ti, inandi hokwa unene oimaliwa tai i koilongo pamukalo weefitola, tai uya ndele tai shuna yo itai longo sha mokati kovanhu. Nokutya, ngenge ounamapya nounaimuna tau fyaala po, oimaliwa itai tanene moshilongo, otai shuna ashike koilumbu nokuka tala ko oinima. Eshi oshiwa unene, ndelenee oimaliwa nai kale yo moshiwana nge hatu diinine oilonga yetu shi dulife nale, ngashi nde shi yelifa nawa moshooongalele shovafita eti-30. 5. 1968, omo mwa dilila eenghunda-fana da ya ketokolo ku ehelwe eembakumbaku ngashi u di wete.

Vali onda twikila okukonakona etumbulo lange olo "Ovawambo shito nale ofye ovana-mapya novanaimuna." Omunandunge umwe okwa ti: "Oluhepo loshiwana ohali kufwa po koimaliwa, noimaliwa ohai monika moilonga, osheshi noinima oyo hatu landifa, oya longwa naanaa ngaashi hatu longo omapya nohatu lifa oimuna." Okwa weda ko:

"Ongerki yeni otai ka hepuluka unene nge ovanamapya aveshi tava penduka, nosho yo ovanaaimuna ava ve na omhito okulonga nge tava longo nouidiinini, oimaliwa otai kala movanhu aveshi, hamuvamwe ashike." Okwa ti vali ngaha, kutya fiyo onena inapu monika naanaa ou e na ehalo okushiiva ounamapya nounaimuna, opo mu dule okuulikilwa.

Edi oda twa kumwe naado nda tonga nale, osheshi omunandunge ou Ombulu, ye oye yo a kulifa muame omadiladilo kutya, itava endebele po oshinima inave shi pulwa. Okwa ti kutya ngeno opa monike ovanaimaliwa

tava longo nayo omapya nokutekula eengobe ounafaalama, ngeno otamu xumu komesho diva shi dulife paife. Osheshi omahangu otaa dulu okulongwa mu dje oludi lopetololi, osho yo moilyavala. Eshi ngeno shi ningwe, ngeno ofabulika yopetololi otai dikwa diva noupu ngaashi yoipilangi nde tai pe oshiwana oimaliwa.

Opetololi ei otai i koilongo noshilongo otashi mono oimaliwa tai di koilongo. Eshi otashi ka fininika omunepya keshe a kendabale noilonga yepya, opo naye yo a likole sha moilya yaye. Owe litomha ove mwene eshi wa tya, oilya otai olele momaanda.

Heeno, osho, osheshi naave owe i dina, owa tala kai na oshilonga. Vali okukala momiandi daNgela, ame ihai shi tale unene elao neyokomesho, osheshi vahapu ava ve li mo, ova efa omapata nomaumbo noilonga yavo. Omushangi eshi owe shi tala nehafo la pwa, ndelenee ame onehafo letata. Ove owa diladila nena nomongula, ndelenee ame okomesho kokule.

Winya okwa wedela ko a ti, ounamapya ngeno tau fimanekwa omu mOwambo, ngeno pamwe noinima ikwao ohatu ke i mona diva ngashi ofabulika yofyuuka, osheshi omangumutulu ofyuuka, otaa wapalele mOwambo, oo ihaa pula efimbo lile, shapu oilonga ashike nelitulemo.

Osho hano ame onda hokwa oilonga komesho younangeshefa, osheshi moshilongo nge kamu na oilikolwa, ounangeshefa otatu tokeke vamwe nde tau yambula vakwao.

N.Shinana



### OVE OHO I KO NASHIKE?

Eedula da pita opwa udika ehpu, vati Ovakyanyama ngenge va uda oshipuna she lidenga po, ohava lotokele keenghali ve kwete oikuma yeemongwa meendjato domandjafa, va ka finge nayo eembelela.

Paife ope uya elunduluko lakula. Ngenge va uda umwe a xulifa oweenda waye, oto hange ovakefeti tava lotoka ve kwete eendjato momake. Omu na shike? Omu na omikanda dOmwene va ka finge nado ovalilanghali noku litwa omukumo nokuhekeleka oonakufiwapo nomongwa wevangeli.

Hai ti: Ove paife oho i ko nashike keenghali? Pamwe eengoma noitoo yomalodu noikefa yeekuka. Pamwe oho i nomauta u ka lwile efyuululo? Pamwe eimbilo 159 mEhangano oho kala we li dimbwa?

Omwene ne mu pe omhepo yehekeleko lovamwanyoko Jak. 1:27. Hosea E.Matheus

### EHOMBOLO

Eti-5.9.71, ola li efiku lehombolo laReinhold Shipa, (24) Engela, vo naSaara Ndahambelela yaHendrik, (27) Ongenga, mOngenga. Saara, Mutyafile waNepeti, Omumweni waMukwaanyoka, iha kakama ombada shapu outalala u mu kwete.

Oudano motundi ku mu dule, ndee eendombwedi delihongo odo de mu holola kutya, nge ta danauka, oku shii apa e li. Okwa hanga fiyo St.VI.

Mofikola youhakulipangi mEngela okwa pita mo-1970 nde omo a twikila oshilonga shouhaku ngaashi a li omuyakuli mooxe. Israel Neumbo, luhapu e tu longa mOmu-kwetu ta ti: "Ou e na eendunge doshitwe, oku dule ou e na eendunge dehongo."

Saara wetu omunandunge, a putuka nawa pashiwana. Okwa pewa omaano okushiiva

ovanhu. Oye yo omuhakulimwenyo he lididimikile ovanaudu, hangaashi ou ta teeletelele omunaudi oye e lididimike.

Saara omwalikadi mani, naau e mu hombola okwa mona omwalikadi lela. Ohatu pandula yo Saara wetu eshi a pewa omumati ta ka shiiva oku mu hambata. --Reinhold, Saara ekipa lomomakipa oye, mumwange.

Ovakulukadi have na onhapo fiku lehombolo. Eshi ehombolo la dja kongulu, ye xe yaSaara hanga okwa puma eumbo, vati koshivelo okokule. Ye ina yaSaara okwe mu kwata diva mekwamo ta ti: "Nge owa tila, iho kaluka hano?"

Ovahakuli vakwao okwa li ve mu yelulila omake e yadi omayambeko Omwene. Oimati yomallikaneno ovafikameni oya monika mefindano lovanyasha ava. Malakia Hauuanga

## Ongoma mongerki

Nomeengerki detu yo dopakriste, omusiki oi na onhele ya fimana melongelokalunga. Mokulongifa onhele ei yomusiki ile omaimbilo ngenge wa hala kutumbula ngaha, ohaku longifwa oishikomwa i lili noku lili okunyenypaleka omusiki.

Ovanhu otava shiki ouxumba, oiketala omanghuma, eefiloli osho yo eeshiva domaludi mahapu. Oishikomwa ei otwe i tambula meengerki ngashi twe i etelwa kovatumwa Ovayeuropa pamwe nevangelu. Moku i longifa twe i longifa ngashi hatu longifa oinima iyapuki lela, nande nee inatu yelulwa filulufu komufango wayo eshi ye uya mongerki kutya owa enda ngahelipi.

Pefimbo eli vahapu eshi va landula omalinyengo eengerki dOvayafrika ova fa va tomhelwa kutya, odo eengerki dOvayeuropa di li muAfrika. Eshi otashi monika unene moufyoona wOvayafrika eshi va fa vehe na naanaa sha shavo veve, osho tave linyengifa mokulongela kwavo Kalunga, ongaavo inava kala shito nelongelokalunga.

Mokutonga eshi, inatu hala nande okuyandja oushima komunhu wonhumba, ile itaku diladilwa omhepo younasionale i kokelwe nomoinima yopamhepo, nde keshiwa yo shi talike nombiliha nhumbi Ovayafrika tava pewa ouyeuropa kOvayeuropa ponhele yokupewa oukriste.

Ngenge hatu alukile komusiki nokoishikomwa, Afrika ola kala li na oupuna woinima ei aische. Ova imba oupongo, ova imba mehafo, ova imba meefya nosho tuu. Momafimbo aeshe ngashi haa hange omunhu ova longifa omusiki yavo oyo ya kwatelwa pomafimbo koishikomwa ngashi:

Okashandja, okambulumbumbwa, okayayaa ile ongoma.

Fiku ofikola youfita mOotjimbingwe ya yandjele omhito kovanafikola Ovawambo, oyo va longife ongoma momusiki yopongerki melongelokalunga, osha li naanaa ehoolo lipe kovadalelwamo nokovatumwa.

Umwe okwa ti, "Nghee nda dalwa ndi ude ounyenye welongelokalunga ngaashi nena." Ye mukwao ta ti, "O, ongoma ngenge mboli otai longifwa nomukalo ou, otashi wapala unene."

Odula oya fa ya tumba ko paife, odikwa

yetu mbela otwe i kufa ko nale koshilwa mekwatafano noshinima eshi? Oshipopiwa osha yeulukila keshe umwe.

Paulus Heita

## EKONGO LYAAPAGANI

Olweendo lwa simana olwa ningwa omumvo gumwe komusitagongalo Filippus Imene pamwe nomuyevangeliste megongalo lyawo noya yi ya ka konge mpoka pe na Aayeleele. Shika osha ningwa manga inaku tamekwa nande esiloshimpwiyu lyasha kAayeleele mboka ye li muuzilo wOndonga. Molweendo nduka oya li ya kutha oompunda dhombambo gevangelu nosho wo oonguwo nomakaya ngashi ya li ya longekidhwa kaakwanegongalo yawo.

Evangelu olya li lya pandjwa pomatsali ogendji nolya uvithwa. Shoka osha fa sha li osho etameko lyomilema dholela dhi kanithe oonkondo mokati kaapagani mbeyaka. Natango omumvo tuu ngoka, opwa ningwa ondjenda ontiyali ya uka muuzile wegongalo lyOkankolo nOnyaanya. Osheendo shika osha zile mOnandjokwe, Oshigambo nOlukonda. lihauto oya li po 2 mOsoondaha ontiyali yaKrimesa.

Osheendo shika osha thikile sigo Onyuu-laye, nesiku oyo tuu ndyoka, osheendo shika osha galukile komukunda gumwe Omangundumano mpoka pwa ningwa oonkundathana omolwonkambadhala yokumonena aantu mboka epya lyokuholola po iipalutha. Ehala Onankali olya monika tali opalele, oshoka mpeyaka, iiyenditho yoludhi kehe otayi thiki po nuupu.

Momumvo 1971 aagundjuka yomongerki yaElok, pamwe naawiliki yawo sho ya uvu kOnankali kwa tamekwa oshilongatamo mokati kAayeleele, noku na oluhepo lwongulu yokugongalela. oya ningi omatokolo ga kutha momakunde. limaliwa oya gongelwa kuyo onke ngashingeyi pOnankali otapu thikama etungo lyiipeleki, iilonga yilikaha yaa-gundjuka. Ileni mwi italele ko ne yene.

Omudiakoni A. lihuhwa

## IYALOO KOMAKUNDO ENI

Onda mona eembapila dihapu, diyadi omakundoyambeko. Vamwe otava pula, "Owako la ne pamha?"

Onda nyengwa oku shunifa ombapila keshe nda mona moule womudo ou, osheeshi eembapila odihapu unene. Meembapila omo omwa dila nge eveluko komwenyo wange, nomwa dila nge yo exwamo lopamhepo. Oonakushangela nge ova ninga ovahakulimwenyo wange.

Eembapila edi oda dja mOwambo, nomOu-shimba. Hai ti: ovamwameme, S.W.A. oko tu mwe laama oko? Okrismes oya fika, eednjovo daKalunga ta di ti:

"Kalenii mwe lilongekida" Omunhu weni, oko ndi li, aame Haikuti yanangongo, ha tale nawa metiti, ha tale nge muna omwai avelele shimbome sha namutomeka. Oshilemo shonghenda oshe ya, Jesus Kristus ote ya Nda pandula omakundo oye, aa eli meembapila doye. Iyaloo komakundo eni!

Malakia Hauuanga

## OKONDALAKA NGASHI AAWAMBO YE YI TALA

Oshipalanyolo shoka osho edhina lyembo epeepee lya holokele mOsitola yOwambo mOniipa. Embo ndika olya hololithwa po koongerki oonkwaLuther mbali dhaavalelwamo muSuidwes. Ongerki yetumo lyAandowishi mUushimba (ELK) nongerki yOwambo-kavango (ELOK).

Meme Rauha Voipio, ngoka e li ngashingeyi omulongi gwasikola yuusita kOotjimbingwe, ongomunyoli gwembo ndika, okwa lalakanena unene okufatula uukwatya wiilonga yokondalaka naashono ya shiti moshigwana shaWambo.

Omutumwa Voipio, pawino yethimbo lye ele mokati koshigwana shaWambo, omimvo 25, okwa wapa okulandula nawa omadhiladhilo gAawambo, aalumentu naakiintu sho ya hokolola shono she ya zile muukwatya wokondalaka. Konyala Aawambo 1000 muSuidwes alihe, kumwe naayakulingerki, oya li ya gandja omayamukulo gawo sho ya pulwa nkene ya uvite ko ondhalate.

Membo ndika lyomapandja 35, meme Rauha okwa yelitha nawa shono sha ningitha Aawambo ya kale haa yi kokondalaka. Okwa gandja wo omayamukulo goyendji pafupi aalumentu naakiintu nkene ya hepekwa komukalo gwondhalate. Moshipalanyolo shOndhalate nondjokana, omunyoli ota hokolola pafupi uudhiginini wegeeloputudho mongerki yaElok nokumboka taq pundukile moluhondelo omolwetopoko lyondhalate. Ihe ota tumbula wo oshilonga shehungomwenyo shono sha tamekwa mokati kaamati yomehalakano muule wethimbo ele.

Okwaauvitathane ko pokati komulongelwa nomulongeli okwa fala momapuko ogendji. Uushona wondjambi sha ningwa nowino, osha nayipaleka onkalo yondhalate ayihe. Ihe mwaashihe konyala omunyoli gwembo ina mona sha pamayamukulo gaamboka ya kala mekwatathano nondhalate, shi popile omukalo gwayo ngoka gwa longithwa konyala omimvo 40.

Nonando taku ningwa omaopaleko ogendji momukalo gwondhalate, embo ndika otali kala li na esimano enene mokuholola nawa puuyeleele omaudhigu ogendji, ngoka pamwe inaaga konekwa nale kepangelo. Okanyolwa melaka lyOshimbulu, notaka monika mositola yOwambo Oniipa, P/B. 2015, Ondangwa nenge koBoek Depôt v/d. Rynse Sending, Posbus 71, Karibib.

Oto li imonene koosenda 30 adhike.

## OVETA YA NINGILWA OWAMBO

Oveta ompe, ya ningwa owina omolwOwambo, oya gandjwa omasiku nga kEpangelo lya S. A, kutya okuninga pwa gandjwa eziminino kuNdjayi Komufala mOwambo, egongalo lyaantu ye vule yaatano, otali talika naanaa kutya etaaguluko lyoveta. ligongi yopangerki, iigongi yomaudhano, omafumviko niituthi yokulya, oyo ayike itaayi talikila molupe ndoka.

Oveta ndjika ya holoka moshifo shEpangelo (Staatskoerant) oya ti kutya omukalo kehe gwokutilitha omukweni omunEpangelo lyOwambo nenge omukwanepangelo lya S. A. nenge okweetela eliko lyamukweni oshiponga komukalo gwoshiningilawina, nenge okukondjitha mukweni ye mwene nenge aanegumbo lye, ayihe mbika oto kala omunandjo muyo.

Elenga nenge omwene gwoshilongo, ota pewa uuthemba koveta ndjoka, oyo a futithe ngoka ta yono iinima mbika R 100.00 nenge oongombe nenge iikombo 20, nenge e mu tulithe mondongo yoomwedhi dhi vule ndatu. Ye omuntu a tulwa mondholongo paveta ndjono, itiikongele hahende manga inaaku pulwa ezimino lyoministeli yinima yaaluudhe nenge okomunepangelo gulwe a uthwa a longe pankondo dhaministeli.

Mekwatathano noveta ndjika okwa tumbulwa wo kutya, oministeli yaaluudhe nehumokomeho lyawo ota tseyitha kutya, Owambo otayi kala ehala li ikalekelwa. Shoka otashi ti, hamukwiilongo ta ziminwa a ye mo musho nenge a ze mo.

## EHEMPULULO LYAATUMWA YA ELK

Pehulilo lyomumvo 1971 aatumwa ayehe yometumo lyongerki yaRyns muNdowishilanda taa longo mongerki yaAaluudhe mUushimba (E L K) moshigongi shawo shaanashilonga mOshiwakopo, oya nyola ehempululo lyawo ndyoka yi indila Epangelongerki lyongerki yawo li taandelithwe nomagongalo gawo agehe, ngashi tali landula mpaka;

"Eti-18 Juli 1871, Omapangelongerki lyaELK nolya Elok, oga li ga popi oohapu dhomukumo mombilive ndjoka yopausita ya tuminwe komagongalo nomombilive ye egulukanda ndjoka ya tuminwe komunisteli gwtango gwa S.A., omolwomatopagulo gomihoko mongerki nomonkalathano ayihe.

"Muuyelee woshinima shika kutya, Ongerki yetu oya pewa oonkondo nuuthemba oku popya oohapu dha tya ngawo mombepo yaJesus Kristus, tse aatiligane oonakulonga mongerki ndjoka, ya ELK otatu shi hempulula kutya, mehistolli lyomimvo 130 lyiilonga yoshilongatumo shOngerki yaRyns, Kalunga okwe yi yambeke kesilohenda lye, nonando kwa kala omaunkundi ogendji gopantu.

"Tse otatu hempulula kutya, olwindji otwa gwile memakelo lyaapangeli yuuyuni mbuka omolwokulongela kumwe naamwameme aavalelwamo.

"Tse poompito odhindji oshe tu nyenge okwoopaleka ekwatathano ndyoka lyopokati komaludhi nokiigwana.

"Tse inatu longa naanaa twa mana mo opo ando tu ete po ombepo ompe yomwana nahe muumwainathana.

"Tse olwindji otwi ipwililikile ondjuuikwe yiigwana yaavalelwamo, sho ya yuulukwa uuthemba wopantu neithikameno, notwa kala ashike ngaaka nokwiipa ombili kutya, Aaluudhe oyu uvite enyanyu pamuthika gwawo gwopevi.

"Tse inatu kala tu na omukumo gwa gwana noinatua kambadhala nasho aluhe miilonga oyo tu tale omayooloko gopauntu meni lyongerki ngele otaga vulu okukana po.

"Ihe mwaayihe mbika, tse otwa dhimbulula eidhidhimiko olindjilindji maamwameme aavalelwamo nohole yedhiminathanopo ekumithi. Otwe shi pandula shono molwoombilive dhethi-18 Juli 1971, she tu yelee nawa natango, kutya mondjila ya ELK otu na euvathano naamwameme notatu wapa okweenda pamwe.

"Otatu galikana Kalunga e tu pe oonkondo ehempululo ndika tu li longithe miilonga yetu hamoohapu dhowala."

*Medhina lyoshigongi lya shainwa  
kuTheo Sundermeier*

*(Omutonateli gwetumo lyaRyns muS.W.A.)  
palnformasiediens*

## SWAPO A INDILA OVAKWAITA

**Konena eli eshi ndi li apa ofika, konyala ovanhu 8 ova dipawa kovasholotati va-S. A., vahapu va yehamekwa 120 ove li eenghwate, osho Peter Mueshihange, a popifa Oraata yeameno ya V.V.O. muAddis Abeba**

Omushamane Mueshihange, waSwapo moinima yopondje, okwa indila koshoongalele sha fimana shoilyo yeameno lomadu nde te va lombwele eshi tashi linyenge paife mOwambo. Okwa ti kutya omolweenghendabala adishe dombili da ningwa koiwana ya hangana, nomatokolo inaa shakenifwa, noinashi eta elunduluko muNamibia, oiwana yaNamibia paife oye liameka komauta.

Hamushanga, Mueshihange, okwa indila Oraata i tume ovakwaita kuSuidwes va pingene ovakwaita vEembulu. Okwa indila yo kOraata ei, okomisi ya V.V.O. ya hoololwa omolwaSuidwes, i kwafelwe yo i talike oyo aike i na eenghono muSuidwes.

Omatanga oita naa longekidwe okukondjifa S. A. pashitopolifo 7, ongonghatu yaxuuninwa yokuxupifa Ovanamibia, osheshi eenghatu dombili inadi mona oiimati yasha," osho Mueshihange a ti.

Okwa weda ko vali kutya, voo moshinima eshi ova hovela nomukalo wokunghundipaleka emona mu S. A. eshi ovalumenhu va efa oilonga, ovakwaita otave va kondjifa nokutela eemboma meendjila nosho tuu. Koilongo aishe i na eengeshefa dakula muSuidwes, okwe i londwela neenghono kutya, vo okuhovela paife fiyo va manguluka, eengeshefa da tya ngaho tadi kongo ouwa wado vene otava ka longela pamwe nado.

Oilongo imwe ya tumbulwa apa: Engilanda, Amerika, Ndowishilanda lokouningini, Japani, Franisa naKanada.

Moshoongalele eshi, oministeli yoikwapondje yaUganda, omushamane Wanume Kibedi, okwa eta efaneko eli kutya;

- Omatokolo oV. V. O. a longifwe ngashi a tokolwa,

## Ekwatho lyepangelo...

*dha za kep. 2.*

Elandulathano mokugandja iilonga pOndangwa ngele edhigu natango, itashi limbilike, oshoka sigo onena inali putudhilwa aantu mboka, shila okuhingwa nomapokolo ngashi iimuna. Oshinima shotango sha li shi na okuningwa meuvathano epe, ngele nani itaku dhiladhilwa okuhepa kwiiilonga shi vulithe omuntu, osho okweegulula omiyelo dhoosikola pomahala ogendji, mpoka aalumentu taa longwa omukalo gwokutaamba iilonga. Mosikola ndjoka ofupi ando otaa pewa onzapo yeidheulo lyiilonga yontumba mbyoka tayi shilipaleke wo nondjambi ye pakutseyakwe.

**Eyambulopo lyoshigwana lyashili olyo ndyoka okulonga omumati okuyuula ohi, shi vulithe oku mu pa aluhe ohi ya pya.**

**Etunda, Onesi**-Omulongi gwomepya lye-tumo, Eunike M. Shanghala, ota hambelele Kalunga sho nonuumvo a pewa ompito yokutsikila oshilonga she shuulongi konima sho a zi moshiponga shekandomo lyoshihauto. Yatatu yomoshihauto shika oya li ya falwa neendelelo moshipangelo mOshakati, moka okanona koomwedhi dhimwedhimwe ka mana oondjenda. Omulongi Eunike, okwa li gumwe gwaamboka ya ehamekwa nayi.

Shika osha ningilwa pokati kOmbalantu nEtunda-Mindamba.

- Wo omahangano neengeshefa dovanailonga moshilongo, nadi mwenekwe filu. Oministeli yoikwapondje yaZaire, (nale Kongo) oya indila Oraata moshoongalele eshi, Oraata ei yeameno oyo venevene i kale mewiliko loinima yaSuidwes fiyo ovalaula va pewa emanguluko,



"Omolwashika onda galikana Omuwa lutatu shi ethe ndje. Oye nokwa lombwele ndje; "Esilohenda lyandje olye ku gwana, oshoka oonkondo dhandje otadhi gwanene pombanda omunkundi." 2Kov. 2:8,9.

## INO TILA OKUKWABA OMUNHU A FYA OMEVA

Pefimbo eli odula tai loko, omeva mahapu taa monika moyana, meendobe, momatatale nomomingheke. Luhapu otapa holoka oiponga omolwomeva, onunona novakulunhu keembinga neembinga otava wile momeva notava fi, osheshi vahapu inava shiiva oku va kwafa, ongee paife twa hala oku mu pululula opo mu dule oku va kwafa nawa.



2.  
←Lyaalaleka eke loye komutwe wanakufyomeva. Eke limwe nali kwate nakufyomeva koshedi, manga likwao tali mu kwata komayulu, nde to mu shili a ekame, opo u tule okanya koye mokanya kaye, ndee to mu fudifa ngaashi mefano eli etivali ha'u mono.

Ngeenge owa mona omunhu a wila momeva ombadilila, endelega u ke mu kwafe manga ina fya. Konga oshiti sha kola shile, u mu lombwele a kwate kombinga imwe no-ku shi diinina, manga ove wa kwata ikwao, opo u mu shile mo. Ngeenge ito mu dule, oshiti ino shi efa. Ifana mokule ovanhu ovo ve li popepi, ile u kuwe onghuwo, osheshi ngeenge to mu fiye po, natango ota loloka ta i koshi yomeva, endelega u mu konge mo, ngeenge ou shii okuyowa. Ngeenge ku shi shii, ifana ovanhu ovo ve li popepi. Tala ngeenge ota fuda. Ngeenge ita fuda ota pumbwa okufudifwa divadiva.

Ovahakuli mEngela

2  
↑  
Fudila mokanya kaye nde to kwata komayulu opo omhepo iha pitile komayulu. Fudila mo omuku woye nokutala ngeenge omhepo otai i tuu momapunga, u shiive eshi onhulo tai tumbu. Teelela omhepo i dje mo ota mono onhulo tai footele, opo u twikile natango. Ngeenge to fudifa okaana, fudila mo omhepo ya yeleka. Ngeenge wa fudifa ngaha, tala yo ngeenge omutima otatu denge tuu. Ngeenge itatu denge, tumba pombadja opo omutima u ha mwene, diinina neenghono omukulunhu, nge okanona tumba nondjele.



4.  
←Mefano etine otashi dulika ovanhu vavali tava ni'ngi ekwafu lotetetete oshita. Umwe ta tumbu mhanga mukwao ta fudifa.

### Natango yaali ya tidhwa po

Aatumwa yaali oya tidhwa po natango mu Suid-Afrika manga inaku gandjwa etompele kutya omolwashike. Omulongi mosikola yuuteologi yaUmpumulo, Natal, Dr. U. Lochmann, okwa lombwelwa a huliithe po oshilonga she mbala shokulonga mosikola ndjoka. Omulongi Lochmann, okwi ile mu S.A. 1971 a kale ando oomvula ndatu, ihe pokati kaDesemba 1971, okwa shunithwa.

Osho wo omupateli gwaKatolika, Wilfried Jackson, ngoka kwa li e na oshilonga oshinene shopolunda yuuteku womapya mokati kaaluudhe, muNatal okwa kondwa mo moshilongo.



3.  
→Mefano etitatu ototula ponhulo yaye eke limwe la yukilila, manga eke likwao tali li kambakana, opo oikanda nominwe di pingafane. Mu tumba nee ove u ke mu fudile. Tula eke loye limwe la yukilila ombadja, opo nee likwao tali kambakana likwao opo nee to ke mu fudila vali mokanya. Ino dimbwa okwiifana ovanhu mokule ovo tava ende po, ile kuwa onghuwo, osheshi to pumbwa omuyakuli nge wa loloka okulonga. Fudifa oule weetundi 2-4 ile fiyo mwa fika koshihakulilo. Ngeenge nomutima wa hovela okudenga, ino finda, fudila mo ashike omhepo yoye fiyo mukweni ta fuda nawa.

Teta mpaka .....

### O HANDELESI YANDJE OONDJI

Ngele owa lunduluka pehala lyoye konima sho wi inyolitha oshifo shoye, tu tseyithila mbala tu ku kwathe opo oshifo shoye shi thike mbala.

Edhina Mr./ Mev./ Mej .....

Oshako .....

Oshilongo .....

Nale onda nyolithile

Edhina .....

Oshako .....

Oshilongo .....

Tuma okambapila haka mbala kOmukwetu, Oniipa, P/B. 2015, Ondangwa.

### OMUKWETU

Oshifo shOngerki onkwaevangeli paLuther yomOwambokavango  
Die Nuusblad van die Evangeliese Lutherse Owambokavangokerk  
Ohashi nyanyangidhwa mOniipa,  
Omukuluntu gwoshifo/Hoofredakteur omubisofi Dr. Leonard Auala,  
Amushanga/redakteur Rev. Sebulon Ekanjo  
Ondando yoshifo komumvo muSuidwes-Afrika R1.00, kombanda yomafuta R2.00  
Ondando nomambesitelo naga tumwe kOmukwetu, Oniipa, P/B 2015, Ondangwa, S.W.A.

Omatseyitho gomuntu mwene pashinyolwa shuule  
woondeimi 1 otashi futwa R1.00  
oondeimi 2 otadhi futwa R1.90  
oondeimi 3 otadhi futwa R2.70  
oondeimi 4 otadhi futwa R3.40  
oondeimi 5 otadhi futwa R5.00  
Oto vulu okutuma wo efano lyaashono wa hala shi tseyithwe

The Finnish Mission Press Oniipa  
P/B 2015. Ondangwa, S. W. A.