

OMUKWETU

Registered at the General Post Office as a Newspaper



JANUALI 1972

No 2

Ekonakono lyuuteologi mopolitika

Oshitsa shopokati tashi kondjelwa mokudhila dhila pauteologi mekwatathano nonkalo yetu yongashingeyi, osho emanguluko lyomukriste ngashi lya gandjwa kuKalunga. Ondunge yopakriste yemanguluko otayi vulu oku tu pa euveko lyomuule momutungilo guuyuni.

Uuyuni kau li molupe ihalu inyenge, lwe etwa kuunshitwe, ihe owo eshito lyaKalunga ngoka e u ningi nokwa hala tse tu longe pamwe naye miilonga ye yeshito. Elalakano lyeshito lye olyo eendathano lyomuntu kekwo lyohole. Kape na nando eyooloko paunshitwe mokati kaantu, ndyoka li na ondi lo yasha nenge oshilonga.

Ekwatathano pokati kOngerki nEpangelo lyoshilonga, olya kankamekwa koshinima shika kutya, ayihe iyali, ongerki nEpangelo, oyi na okutsakanitha iilonga yawo omolwomuntu. Onke eyooloko lyuuthemba nolyoonkondopangelo olya tungilwa komukanka gwoshinakugwanithwa shawo shimwe shokuyakula omuntu.

Ongerki nando kayi na oonkondo mokuyelekanitha nEpangelo, oyi na oonkondo dhayo yene dhokuuvitha evangeli nokulonga aantu nokutaneka euveko lyuuyuni wopakriste maantu. Ongerki oyi na okukala yi shi oonkondo dhayo noyi dhi longithe okufoloma uuyuni pahalo lyaKalunga.

Oshilonga kehe shongerki nashi holole omadhiladhilo gevangeli nondjundo yalyo memanguluko lyopakriste. Iilonga ya tya ngaaka oya dhiladhililwa oku tu kolekela mo moshilonga shetu shimwe ashike shokuhokolola Jesus moshigwana shetu. Ehololo lyomadhiladhilo miilonga ya tya ngaaka, otali vulu okugandjwa pamithika dhi ili nodhi ili noshwo wo pamikalo dhi ili nodhi ili.

Oompumbwe dholela monkalo yetu

Ongerki oyi na oshilonga shokukala ewi lyantu mboka taa hepekwa yo ya mwena, mongundu yaamboka tse tu li mo iilyo. Ongerki oyi na oshilonga sha tya ngaaka shokupukulula moshilonga, shoka tu na oku shi tsakanitha twaa na uumbanda pampango yohole.

Oshitopolwa shimwe shomoshilonga shika osho okulombwela Epangelo olwindjilwindji nokuukilila koshipa oompumbwe dhaantu. Omukalo gwiilonga yokondhalate sho gwa konakonwa, ongerki oya ndhindhilike kutya, oshinima shika otashi pumbwa okutalwa nomeho omanene nokudhiladhilwa aluhe pwaan ezimbuko. Otaku dhimbulukithwa omatseyitholombwelo goshigongi shaasita kOtjimbingwe muSuidwes nogoshigongi shopatumo kuUmpumulo 1970.

Mpaka ongaakriste otatu gandja esimano alihe kuKalunga ngoka a nengeneke oomwenyo dhaapangeli yaS.A. sho ya pulakene onkugo yaalongeli yomuSuidwes omolwomukalo gwondhalate ngoka gwa shundula uuthemba waantu yaa-muka ethimbo ele. Epangelo sho lya tameke ngeyi eopaleko ndika, otatu i-nekele otali ka tsikila natango miinima oyindji.

Ovanyasha ovalumenhu vaheyali mongerki yaELOK, ova fikama va dingilila owalitali mongerki ikulu, meongalo omo inamu longanda nande lumwe omutumwa Omusoomi. Meyakulo lomumbisofi wongerki, Dr. Leonard Auala novakwafi vaye, ovanyasha ava okwa li va yelula omitwe davo ongeendjanyi doita de lilongekida okuya kelondo.

Eshi osho sha li oshivilo shotete shongerki sha kula shopehovelu lomudo eti-16.1.1972, mEndola, Oukwanyama. Konyala ovamhu 1000 okwa li va ongala moshivilo eshi.

Ovayapulwa ova kala mofikola youteologi kuPaulinum, Otjimbingwe, oule weedula nhatu fiyo nhe. Omukalo wokualukila keumbo nokuyapulilwa meni longerki yavo, Komufala Ndjai, De Wet, oshe mu tomhela kutya, ongerki oi na elalakano liwa kovantu vayo. Omufimanekwa De Wet, oye aake kwa li omutilyane omunepangelo a kala moshivilo eshi.

"Otamu dulu okudimbwa oitya yOshigreka ngashi mwe lihonga, otamu dulu yo okudimbwa ehistolli longerki, ndelene epuko la kula ongenge outeku weni inau mu fikifa meitavelo loshili," osho omuhongi wavo wofikola youteologi meme Rauha Voipio, a popifa ovayapulwa.

Ongudu ei oyo yotete mondjokonona yehistolli loyayapulwa vongerki yOwambokavango moshilonga shoufitagongalo, osheshi mongudu ei olwo lwotete eshi mwa fikama umwe oo ta talika kutya oshilimati shetumo longerki oyo. Ou okwa dja moshiwana shinini mouhapu nomeitavelo, oshiwana shOvadimba, mepya letumo mUuningini no wOwambo.

Vali ongudu yovayapulwa ava, fimbo ve li va fikama koshiilikaneno konima yavo okwa fikama oukadona vavali, ovadalelwamo votete va tekulwa mofikola youteologi. Ava ova tenhekwa yo omake kovateolohi vakwao ovakainhu, ovatumwa ovo tava longo natango mongerki ei. Kape na ou te shi twifa omhata kutya kasha li etwo lomukumo koukadona vahapu mongerki yaElok, okuliehenifa komesho nomoinima youteologi. Pamwe eshi sha kandula po yo omalimbi-

lilo muava kutya, eshi ve shi ninga mokati kavakwao inashi puka.

Eongalo laNdola moshitayingerki shaUkwanyama, otali fimanekelwa omukumo walo mokulongikida oshivilo sha kula shi fike opo.



Rev. T. Shiwana

Efano kombanda okuza kolumoho sigo kolyo ongudu yaayapulwa; Johannes Mufeti, nale Endola; Matti Endjala nale Nakayale, Jesaja Uahengo, nale Onhelelwa; Wihelmina Amweelo, nale Niimwandi; Paulus Musheko, nale Endola; Hilma Shilongo, nale Elim; Set Son Shivute, nale Elim; Tobias Shiwana, nale Etunda naAbsalomo Hasheela, Endola.



Rev. S. Shivute nomuyalekwa gwe

ELANGEKO LYAASITA AAPE

Aasitagongalo aape yaheyali mboka ya yapulilwa oshilonga shoka omasiku ngaka mEndola oya siikile ombinga yompumbwe yaasitagongalo momagongalo ogendji ndjoka ya holoka pomimvo ndhika. Oyendji yomaayenda yoshituthi mboka ya zile momagongalo, oya shuna taa imemeha, sho ya yamukulwa kondjuulukwe yawo yethimbo ele.

Omuyevangeliste Filippus Kambanda, Okankolo, okwa ti, ye ota ka kotha nawa ngashingeyi omolwomukwathi, omusitagongalo ngoka a langekwa komikunda dhomuuzilo wOndonga kEpembe, nkoka tate Kambanda ta longo. Tate Paulus Musheko oye ta ka tameka egongalo epe moongamba dhOkankolo nOshaango, mokati kAayelee naayamba. Omusitagongalo Johannes Mufeti, ota ka yakula tatekulu Andreas kanhalelo kegongalo lyomuuzilo wUukwanyama, mOmundau-ngilo, manga omusitagongalo Jesaja Wahe-ngo ta ka longo mEdundja peha lyomusita-gongalo Kornelius Ndjoka ngoka a ningi oministeli yelongo mEpangelo lyOwambo nuumvo.

Tatekulu Kaulinge naye okwa mona ompo-
lo ndjoka mOndobe. Sho a gandja nenyanyu omugundjuka gwe Filippus Shikomba a ye melelo lyoshitayingerki ashihe shUukwanyama, nena okwa pewa ependa Tobias Shiwana, oshiyimati shomepya lyetumo kE-tunda. Ye tatekulu Andreas Mungungu, mEndola negongalo alihe, inaa ipyakidhila ashike nomalongekidho goshituthi sheyapu-
lo, oyi indile wo kEpangelongerki lya sima-
na li tale ompumbwe yawo. Oya pewa

Moshikungulu na Jesus

MuMateus 14:22-33, ohatu leshe nghee Jesus a kala okafimbo konhumba e he po povahongwa vaye opo a kale meilikano. Fimbo ovahongwa ve li mowato mefuta, ova hangwa koshikungulu shinene, nosha li she va tilifa.

Omuyapostoli Petrus e shi a mona Jesus ta ende kombanda yomeva okwa pula nge oye tuu, opo e uye kuye naye ta katuka kombanda yomeva. Petrus oye ekanda moimnima aise, okwa katuka oshimati, loo elimbililo ole mu hanga. A xupaela mo lumwe, ye okwa dja mokalungu. Petrus ina tya, memei, shaashi iha dimbwa Omwene waye okwa ti; "Omwene xupife nge."

Luhapu twa hangwa kolkungulu ndele twa dimbwa okukuwa kOmukulili wetu. Kame nge wa hangika koshikungulu shounyuni ou, keuka u mone Jesus, ove u mu dimbulukwe, ndele mu ifana, tya; Omwene, xupife nge ohandi ningine mo.

Otekisti ei nai tu longe okuyepa oikungulu younyuni ou, fyee tu liyandjeni muJesus, opo e tu yambule, ngee twa xunukwa keitavelo notu li pokuningina.

Gottfried M. Hiyoonanye

ETUMWALAKA LYOPAUSITA KOMAGONGALO AGEHE MOSHITAYINGERKI SHANDONGA

Kaasitagongalo moshitayingerki shOndonga: Sho twa tameke omumvo nguka omupe, 1972, otu na ongunga okutsikila iilongayakulo yetu, ngashi Kalunga kwe yi tu inekelele megongalo lye. Olwindji katu shi uviteko nawa, omolwashike tatu pewa ompito yi thike mpaka.

Shoka tu shi oku shi ninga, osho okupandula ashike esilohenda lye nokulonga nenyanyu. Nando aluhe wo pe na ngaa shika naashi-yaka tashi tu ningi twaa uve enyanyu lyoshilonga. Sho nashi tu kale aluhe wo kekothi, opo omeho ha taalele omutameki nomugwanithi gweitaalo oJesus. Omahaleloyambeko nomumvo nguka miilonga nomomagumbo.

omugundjuka gwawo Absalomo Hasheela ngoka ya tumine komalongo. Shoka osho shi hole omwenyo.

Koshilongo shoka shi hole ombili, Okavu, (Ombalantu) nasho inashi dimbiwa. Egonga-



Aateologi Amweelo na H. Shilongo kolulyo

lo epe ndyoka li na okukala pokati kOngandjera nOmbalantu, Eengolo, olya pewa omukokoli, omusitagongalo Matti Endjala.

Mpoka hapu kondele omatamba poshilando shaNakambale Kanene, hanga pu ethiwe owala, ihe lya simana olya ti nga omusitagongalo Set Son Shivute, na kale po ngaa oomwedhi 6 manga inaa ya ketsikilongilo lye.

Aateologikadhona; meme Wilhelmina Amweelo, okwa langekwa mEnongelo lyaayakuligongalo. Nguka ano ota ka yakula egongalo kehe mongerki ndjika omolwaamboka taa ka tsakanena naye momalongekidho gi ili nogi ili mEngela. Meme Hilma Shilongo okwa tegelela a ka longe moshilonga shelundululo lyOmbimbeli pamwe nomulundululi gwayo Rev. Eino Amaambo, mOniipa.

Pamukalo nguka inapa hepa nando oshitayingerki shimwe mOwambo, ayihe Epangelongerki lya simana olya li lya endeke omakutsi galyo li pulakene omakemo giitayingerki. Ngoka inoo pewa, poyendji opo tuu ihaapa kutwa, po kapa siwa ondjala.

Kristus omufindani

Ovakriste vakwetu, oshi shii okudiladilwa komwiitaveli keshe kutya, Kristus omufindani. Oshiponga shinene oshi li opo eshi tu li monyuni omu mu yadi omawii mahapu a fa taa ingida keenghono donhumba, ngashi Omuyapostoli Paulus ta ti: ovo tava yakulwa kusatana.

Osho tashi tu pe onyati meitavelo letu, eenghono defindano laKalunga. Otadi holola oshiholekwanima eshi sheitavelo newi lefimano laKristus otali yooloka diva momawi ounyuni ou. Oto dimbulukwa tuu shili kutya Kristus omufindani nomuove? Omushiyakano waKristus otau pundula notau tonyaunine poshi omandudumo eenghoshi doulunde, notau fifa ohoni aveshe ovo tave lidimbike oshili notau kolekele ovaitaveli mekondjo, okukondjifa omilaulu nohonde yOmukulili.

Omukweni mekondjo,

A.J.Halundonga

OSIKOLA YOMUSIKI

Opulanda otayi dhiladhilwa ngashingeyi nkene taku ka monika olweedhe lwokuputudha iilyo yongerki yaElok miinima yolwimbo, nongele tashi vulika momuvo tagu ya. Ngele osha ningwa olwo lwotango mongerki ndjoka sho tamu kala osikola yoludhi ndoka.

Sigo oompaka egongalo kehe mongerki oli na ompito yokutuma iilyo yomwaalu gwa uthwa kepukululosikola molwiimbo, ndyoka hali kala iiwike ngele iile itatu. Shika osha li pahiyi lyameme Magdalena Namalenga nenge kumeme Aune Hirvonen pamwe natate Toivo Ndevaetela.

Shika itashi gwana nando, osikola yomumvo gumwe nenge shi vule otayi pumbiwa, osho meme Namalenga ngoka a putudhilwa oshilonga shika kongerki, a dhiladhila noa paidilo lye osikola ndjika otayi ka tamekmbala, shimpa tuu kwa monika iitsa niipangitho mekwatathano nEpangelongerki. Oshilonga sholwiimbo mongerki oshi na Ewilikongundu lyasho,

Johanna S. Uukule, Olukonda, ota nyola ngeyi: Ihe Kalunga kombili, oye mwene ne mu yapule uuntu auhe, omwenyo nombepo nolutu lu gamenwe lwaa na shipo, osigo okugaluka kwOmuwa gwetu Jesus Kristus. Oye nguka he mu ithana oye omudhiginini note shi gwanitha wo.

Aamwameme, kaleni noku tu galikanena. 2Tess. 5: 23-23.



Omulongi gwasikola yuusita kOtimbingwe, meme Rauha Voipio

Nambaishita e lishita neshito letu la tameka muye. Oukwatya womunhu tau, ufwa koushitwe nokonghalo yovadali. Olupe nomikalo dokanona tadi holola ovadali nomudingonoko omo ka tekulwa. Omhepo yako tai tameke manga ke li moshidalelo shaina. Eshi osha shiivika komitwe dinene edi da hokolola kutya, "Ovo vedimo lagadi, ihava dulika."

Pashinanena onghalafano ya mwena yovaneumbo tai unganeke omikalo dako, manga inaka dalwa. Onhuko ya kunwa kovakulunhu mokuhanongela oshiponga eshi ye va lilifa omahodi mapyu. Omunhu manga e li meshito, oku li pamwe nomalinyengo avo a eta sha monghalo yokomesho nande ina ka mona etango manga.

Oshisho shomufimba ongonghela, to tumbula: "She ku pe Mufifi tambula, she ku pe Kalunga kaNangombe, shambekela nomaoko avali."

Wa tala tuu oshinenelanga shoye, mokudimbulukwa omatumbulo we a tumbulile? Oshihepunda to ti tashi ku kateke, nashi ye manga kuinakulu, manga to ka lyanga. Ou shii ovo nainakuu, aaye, onye naye. To ti ame shalo-

tu kumwe nouteku muwa. Osha pumbiwa okutala oinima imwe po u likole omwenyo wokanona manga ke li pefimbo. Onghenda inene eshi wa teelega shiwa kokaana, ngenge oko hake ku eta keumbo ngenge wa tuta. Tala, konakona oshiholelwa eshi shii okupewa okanona. Osha pumbiwa ngenge okanona taka dulu okuholola omapulo povakulunhu kehe na oumbada.

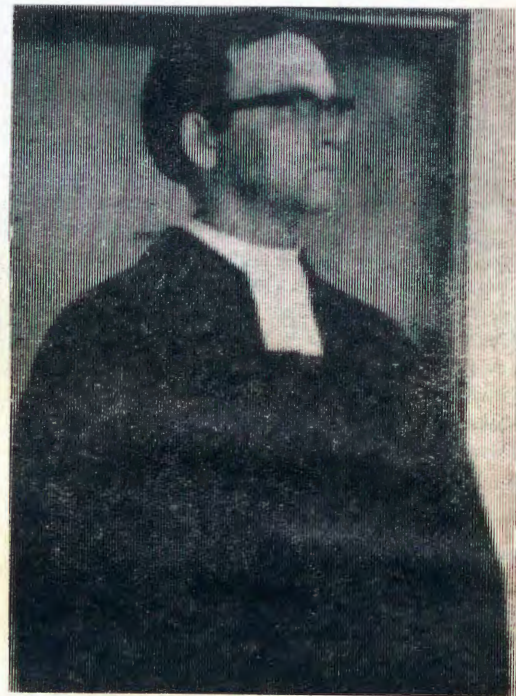
Omutanda eshi ihau uhala meumbo to ti, wa pepelelwa manga, omulongi na vyule ko. Inashi wana omulongi aeke, osheshi oukuni vokumwe otava eta shomunguda. Manga tau tuna, e li kokule, a hambolwa ile a hambola, ha ti. "Dja mo monhu yange." Ove to mu tu omayeke opanhu noopamhepo. Okanona ka fa oulemba, notaka tambula ashishe. Omutekuli ta yandje oshiholelwa sha tya ngahelipi? Tala nghee ho popi, ho ende uha kanife kamwe kaava vanini.

Ngenge twa tumbula Kavandje, omushila waye ihatu u fiye ko, ongheenaau a lile shakakodi, onga tale pom-bada. Enongelo olo onhele omo ou-

madiladilo oye nomukalo wokudiladila?

Owa teelega sha shiwa tashi di monghalo yoye opo omavalulo nokutakuma taku landula. Itashi ti onunona eshi tave uya kenongelo, omolwodimbo yovakulunhu, nde omolwohokwe yomulongi. Mokuhaudako va dengwa, ndele ne eshi oudano, inave shi valula. Emoniko loshiwana tali monika momulongi. Luhapu ohaku ti, onda hala okumona tete kaume koye, opo ndi tale nhumbi u li.

Tala kopardja tala tali landula



Omusitagongalo amushanga gweputudho lyopakriste muElok, Matti Seppala.

OMUNHU INA KOLA

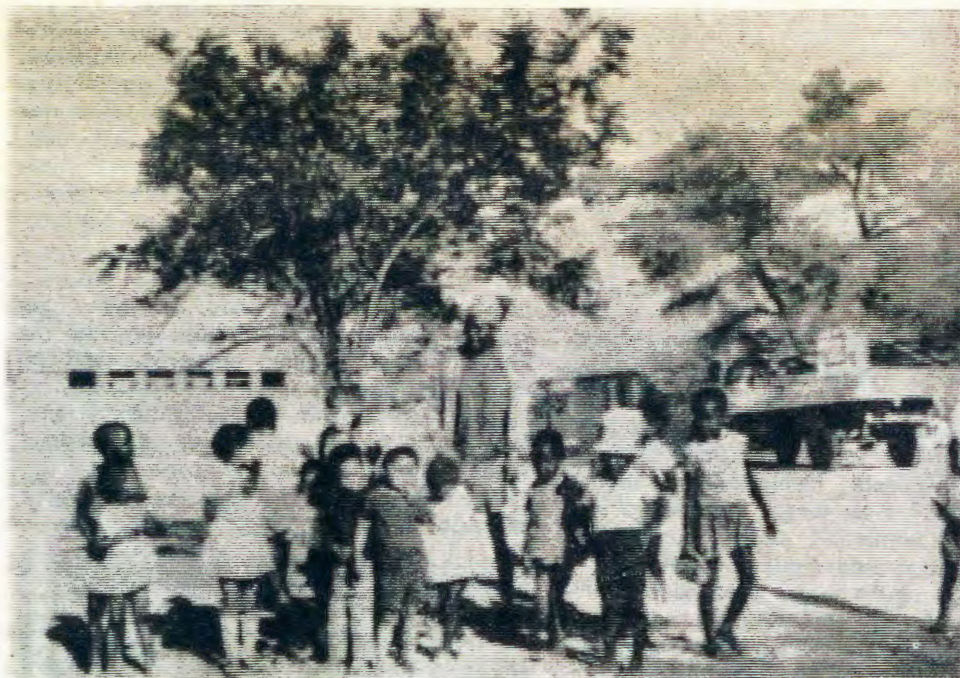
Shimba wa shiiva kutya oinima yedu kai kwete okutenda omifya. Omunhu yo oshiyuma shiha kolele. Omifya detu otadi holoka alushe meenghalelo detu. Ino tya kutya owa kola, iho tende omifya, oto fufya Kalunga 1Joh. 1:8.

Ame ondi li po oshiyuma shihe na oukolele, ndelene Kalunga na hambelwe kefilonghenda laye, ou a shiiva oshiyuma nghene shi li po. Kalunga okwa shiiva oiyuma aische, kutya oi na omifya. Elidilululo, olo exupifo letu mokulimonena nomokuilikana Jesus, omo hamu di eenghono detu Jes. 30.15-17.

Epistoli laJohannes otali popi ohole ndishi? Jesus ota hafele oshilonga shohole, osheshi oye ohole. Ngenge to konakona Ombibeli yoye, Jesus oha tondo ovalunde, ina hokwa ovadini, okwa hala ovalidilululu voshili. Ota ti ashike; "Ileni ookaume amushe mwa longa nomwa loka." Joh.7:7.

Inda kuye, limwenenena koshipala shaye, e ku pe eenghono dipe. Ino kala kokule naye, ota fitike omifya odo da tenda. Onghenda yaye, oyo eka la mana. Ote ku wapaleke moanima ei ye ku tondifa kovantu. Kalunga ta wapeke osho sha tondika.

P.H.Hamukwaya



ngo inai dala manga, ile ame ongadji. Haye aeke ou wa dala tyanghu ta landula omhepo yoye. Naye ou to tekula e li momhepo oyo. To tekula ngahelipi oshiwana shangula?

Otashi dulika to longo neendjovo dongaho, ove wa dimbwa oku ka hongamaimbilo nomahokololo opamhepo. Outeku ngenge kau fi womOmwe-ne, owongaho lela. Ou shii owa kufa oshikumo shouteku eshi ino dimbulukwa oshiponga pefimbo, kutya ngenge hatu kombo mepya, meumbo namu kale mwa yela.

Konakona ehalo loye ngenge otali

nona eshi tave uya omatwi, tava tekulwa. Ounona itava i kofikola ongokoima ku na enenge tali nyenganyengifwa ile omunhu a djala nawa, okutalwa. Ndishi otava i kedilakola, nokomukwaita e na onywa i yadi nokupa keshe umwe sha shondilo.

Waima, engafifi olo oho li tale ongo, shinima shefiku ile ongaashi tuu shipe noshinakuwanifwa shefiku keshe? Namungha ngenge te ya poshihadi, keshe kamwe oka ekama ke lineekela take shi kufwa shondjala. Eshito lomushiti mefutamundilo la endifa tuu o-

Olye ta file oshisho.....

da dja kep. 4.

Ounona va fa itava dulika ile itava piti ekonakono. Pamwe eshi tashi li ekunde omolukunde shi li. Otashi dulika to va shingile komesho manga wa ninga efyaaalela. Ngenge ito kwatele eedi komesho, otadi fikama ashike. Oku na vamwe va tala oshilonga eshi oshongaho, onghe tava ti. "Kwa tiwa lunga, okwa tiwa litapula."

Lungamena onhiko ei, tala ashike opo u yandje oshiholelwa shiwa u hafe pamwe nomuwiliki woshilonga.

Omufita oye efano la kula moshwana onghee sha pumbiwa a shiivike kokaana. Oku mu shiiva kedina, itashi ti sha. Efimaneko loumbada eli li li, mounona, tashi dulika okukufwa mo, mokukala pamwe navo, hamelongelokalunga amuke. Oshipala shaye nande tashi vema, onunona kave shi wete, o sheshi omulaulu wa ninga muhapu. Onghe sha pumbiwa ve mu mone molupe limwe omo tava dulu okupula no kukundafana naye koshilonga shaye.

Mekwatafano eli, onunona tava etwa metungo noupu. Omalweendo aye taa tukulula onunona ovo va kanena momikunda ve uye ketungo manga tava dulu okuvyulwa. Oshilonga shomunguda osheshi manga ve li meenhe-mo, opo ohole yOmwenene wavo i ninge ekanghameno.

Eshi inashi wana okunyamukula ou talamhundja wokanona, ka fa taka kulu ombinga imwe. Eshiivo lomwenene womukunda, elenga ile ohamba yo-

"Wa popi po dhandje!"

Moshifo shaNov. No. 22, 1971, omusamane Malulu okwa holola shoka a mono nokwa dhimbulula maapashiyoni aakadhona yomOwambo. Muuyuni auhe omukiintu okwasimana, ndele nomOwambo yetu osha kala sha dhiginwa. "Omukiintu iha taaguluka iilongo". Uuna omukiintu a ya kiilongo e ta tulwa iiso, nena ongashi naanaa wa talika pomatako.

Mokuuva omuhapo nguka omupe gwaakadhona: "Desemba masiku gwe ya tse tu... moohofa omo muuwanawa," otagu sitha aalumentu oyendji yevi lyaWambo ohoni. Aakadhona mOwambo oyo aayogoki naanesimano, ihe shaa we ya adha mOvenduka nOmbaye, woo meme! Epashiyono mUushimba itali indikwa, ihe dhimbulukwa nee ondilo yeshito lyoye. Epashiyono lyomukiintu nopwaa na shoka tashi tungu, ohoni onene moshigwana. Shika oshi yematitha unene ngashi omusamane Malulu e shi holola, no itatu ka pitika we oondelekelama ngele nani omuntu ote ya a ninge "Kakombo lilifa."

Oshi na ondunge yashike okukala gwondilo pomukunda nenge moshilongo sheni, ihe miilongo yopondje ETOPE LYOHENDA. Otwa loloka ihe omapopiwo gaakadhona Aawambo muka mUushimba. Muka namo aakiintu ooyakweni ye li mo, ihe kaye li ngashi hamu kala mo. Tamu kanitha esimano lyoshigwana. Tamu idhinitha ishewe kaanona aakweni. KOTOKENI ONE MWAA NINGE "DESEMBA TU MANGULULA" maamati yomehalakano.

Ndatala.

shilongo, otali kufa onhele youteku, wako. Ovapangeli ve lipyakidila unene novakulunhu, voo tava dimbwa ku tya "Uhe na mutanda, ku na ngo-be, uhe na mhaona ku na ilya," nde va nyengwa okuwanifa eshi.

To teelee ngahelipi eduliko kokaana, ove metiti ino yandjela mo sha? Eshi onunona ve na okatalekonawa, o va hala okutalelapo ovapangeli mewiliko lovalongi, ndele ovapangeli vaha-pu nomhadi pofikola.

Meshiivo eli, okaana otaka mono omanyamukulo komapulo ako notaka tungile komukangha woshilongo shavo. Ino va dinina oufemba wavo ve u lya ko nale. Ounona ova hala oku mu shiiva noilonga yeni. Otashi dulika tuu okutotela omunhu oveta ove ino kala puye u shiive eshi a pumbwa?

Omunhu ngenge a ninga ekiyombi, naye mwene ne likwateleko. Itashi kwafa sha ngenge wa ninga oshikululume shaNdyapo sheshuku kali kululwa, ove ino hala okulandula. Owa tungwa luhapu nomalombwelo, ndelene wa nhuka. Handiya ndi ku vakele ko ndi ku kufile ko mbali:

Vati ke ku lombwele ke fi woye Pamwe u li nokuli wa ekelelwa, vati iho petwa mheto, ovakulunhu va wa mo ngomodikwa yombwa. Paife o-

wa ninga omunyasha, likwatela ko u ninge shiwa noshomupondo. U na nokuli elao wa putuka novakulunhu.

"Hamhundja ya kulu naxe, hamba-bi ya putuka naina, kai lya ukola wokoshivanda ulula." Eshi wa dililwa, shi hokololela vakweni meumbo, opo ehafo loye li dule la mbishi meumbo mwa tomwa. "Kakombo u lilifa, iho likanifa."

I. Hatutale

SHA TIKA IHASHI IGWANA PO

Etambu lyombadhilila lyongerki yegongalo lyaGongo mUukwambi, olya eta uupyakadhi megongelo lyiimaliwa. Omolwomafaneko omanene nomape gepangelo ngoka ga tamekwa wo nopOgongo, omoluuteku wiimuna nuunamapya pawiliko lyepangelo, egongalo lyaGongo olya kanitha ongerki yalyo onkulu sho lya tembudhilwa kulwe opo eha li kale lyepangelo.

Omauwaneko gokusiikila ekanitho lyeliko lyegongalo ngoka ga ningilwe po sho inaga tsakanithwa, egongalo olya yi momalimbililo omanene nkene li na okuimonena natango ongerki ompe. Epangelongerki ndyoka lya thiki wo olwindji kEpangelo omolwoshinima shoka, sho lya dhimbulula kondjamba kaku na we olukaku, olya indile kOngongahanga-no yaakwaLuther ku ze ekwatho R 8000.00. nongele sha ningwa, uupyakadhi owindji owa kandulwa po. Omugongo u lilila ogwo ngoka hagu ku kwiinine.

Egongalo ndika oli na aakriste 2,679 payalulo lyomuvo 1970 melelo lyomusitagongalo Naftali Amadhila.



Omumvo Omupe megumbo lyomukuluntu gwoshinyanyangidho tate name-mose Moses Amkongo, ogwa li enyan-yu lya gwedhelwa kenyan-yu, oshoka mesiku ndika oya pewa okamati, Mahevo, kuudhigu 2.7.kg. (6 lb) nkoka ye ka tegelele nondjuulukwe ethimbo ele. Tala, tate Amkongo okwa yakula meme Aune okuza moshipangelo mOnandjokwe.

Mongerki yetu yaELOK oku na luhapu epulo, unene kovaitaveli vajesus ovo ve hole oshilongatumo, tava pula kutya oshilongatumo otashi ehene tuu komesho?

Epulo nande oli na oudjuu okunyamukulwa otu shii okutya, oshilongatumo otashi ehene komesho nawa, osheshi osho tashi nyenge ovanhu, Kalunga ote shi longo po nota kongo ondjila iwa opo evangeli laye li ye kovanhu aveshe.

Omafiku a dja ko otwa hafa shili eshi twa kala lwotete molweendo laTomas naVainö tava udifa evangeli mokati kovamwaina ovo ve li keembinga neembinga moshitangerki shOukwanyama koushilo nomOshitangerki shOndonga koushilo washo. Osha li ngaha:

Otwa tokola tu ninge olweendo okutalela po Ovayeleele mofuka noku va udifila evangeli laJesus, opo nee otwa kufa Ovayeleele ava, Tomas naVainö, pamwe nafye, Omuwiliki wetu mondjila oye Omutumwa. Terttu Heikinen. Oye a kwata oshishingifo ondjila a ishe, oule woshivike shimwe. Ndele apeshe twa enda atushe otwa li ovaudifi, unene Tomas naVainö va popya nawa evangeli melaka lOvayeleele. Inava toloka, ndele ova leshe eetekiste da lundululwa melaka lavo kumeme Terttu nova fatulula noupenda, nOvayeleele vakwao va pwilikina nohokwe, osheshi va koneka kutya, navo yo nani otava dulu okuudifa eendjovo daKalunga.

Tomas naVainö ova udifa nawa osheshi va shiiva naanaa omadiladilo Ovayeleele vakwao, onghee Ovayeleele va li va hafa moku va pwilikina notwe lineekela ova uda shili evangeli.

Mokukundafana navo otwa koneka ova hala okuninga shili ovakriste, ndele vahapu o ve li kokule, kape na ovaudifi novalongi ovo tave va yakula. Otava pumbwa okutalelwa po omafimbo nomafimbo. Ovanhu vahapu o va hepa, unene oikulya kave i kwete, otava li omanghete aeke, o ve na omaudu tava pumbwa omiti.

Mokutala ehala lavo ova hokwa meefuka, inava hala okuongelwa peenhele dihe fi davo, ngaashi voo vene tava ti: "Apa oponhele yetu. Otwa hokwa okukala po. Opo hatu ningi omaumbo nomapya etu." Nande peenhele dimwe kape na ouwa womapya, ndele eemwenyo davo da hokwa po. Onghe, otu na epulo. Ohatu ningi ngahelipi opo va mone omapya opo va hala voo vene nokuxumifa komesho omapya nomaumbo avo? Oku na ovo ve na omaumbo, ndele navo yo otava pumbwa okukwafwa, opo va diinine omaumbo avo nomapya avo va dule okulikwafa voo vene.

Oshilonga shetumo osha shakana nomaudjuu manene omalunduluko omafimbo oonyuni nomalwisho oimaliwa nokuhala oupuna, muhapu, onghee ope na omaudjuu mahapu. Otava pumbwa omailikaneno ovayapuki, okuilikanena ovayakuli va mone elididimiko linene nexwamo lOmhepo lyapuki. Osheshi omhepo yokulinenepeka tai kondjifa ovayakulitumo momapya aeshe konyala nosho ngaa tashi keelele oshilonga shi xume komesho neyambeko li tandavele movapaani.

Oikwafa yokolutu otai pumbiwa shili, ovanhu va kwafwe moluhepo lokolutu nolo komwenyo.

Ohatu pandula Kalunga eshi ta longo mokati kovapaani ndele te tu longifa yo. Onghe natu mu longeleni nehafo tu ilikaneneni yo Tomas naVainö. Onye ookaume ketumo, ohatu mu kundu medina laJesus. P. Andreas

Emanguluko lyiigwana yaSuidwes, muEngiland olya kala tali ludhikwa ngeyi moshigongi shomaludhi. Oministeli yopevi yikwapondje omusamane Anthony Kershaw, okwa ti kutya

"Onda tila tu taambe omadhiladhilo ngaka kutya S.A. oye nga a kale omuleli gwaSuidwes. Ihe natu zimine wo kutya onkambadhala yigwana ya hangana otayi ka palutha, yo itayi ka etela aavalelwamo uwanawa. Onke Britania ta hogolola ondjila yoonkundathana shi vule yilwe."

Patrick Wall, oshilyo shomongundu yooveta mepangelo lyaBritania naangoka a wilike omaludhi ngaka, okwa ti kutya ope na iinima mbyoka tayi eta omalimbililo metokolo lyompangu yuuyuni, ngashi ando eindilo lya S.A. kutya aapanguli yamwe ya kuthwe mo, inashi taambwa, yo ohofa inayi talela po evi, yo inayi taamba eindilo aavalelwamo oyo ya gande ewi lyawo yene. linima mbika oyo ya kolekitha Britania okwiikutha mo kwahahe nde Fitzmaurice, (ohahende yaBritania kuDen Haag) mbyoka. Ishewe S.A. ota longitha iimaliwa oyindji okuputudha omavigumbu, onke ota ka nyengwa wo ngiika a shunithe elandulathano lye ndyoka monima.

Robert Hughes, oshilyo mokangundu kompilamenako mepangelo lyaEngiland, okwa ti: Wall ota ti kutya, omalenga moshilongo inaga hala oV.V.O. yi kuthe ko evi," inashi dhimbiwa kutya pamwe omalenga otaga ka kanitha oonkondo nuuyamba ngele epangelo lyopamanguluko tali ka etwa mo. Okwa ti ishewe.

"Ngame ondi itaala kutya aaluudhe muSuidwes nomuRhodesia oya gama unene kaakondjelimanguluko. Omalenga inaa gama kugo pamanguluko. Omukalo ngoka ya mwena noya fa ya zimina uukwatya womalenga, itashi ti kutya oya gama kugo."

Sho a pulwa kutya omolwashike kaku na omakondjithathano moshilongo, Robert okwa ti: kutya ngiika ooteroleza odha tega ashike manga shono oV.V.O. tayi shi ningi. Okutya shono oshinima tashi kandulwa po mbala nupu kashi li moshili, oshoka muVietnam ngashingeyi oomvula 40 taa kondjo.

Robert okwa gwedha ko a ti:

"Kandi na nando ehala lyokutala ombinzi tayi kunguluka pokati kaantu, nando ndi na eitaalo kutya ombinzi ndjoka tayi ka tika oyindji, oyaaluudhe. Tse itatu vulu okwekelahi nando omadhiladhilo gohofa yuuyuni."

OLUHOHDI LWA TALALEKWA
MuAguste 1971 onda yakelwa iimaliwa R114.00 mokomboni yaLocal nosha li sha etela ndje oluhodhi olunene. ihe aamwameme shonde ende noku ya tseyithila uudhigu wandje oya talaleke ndje nekwatho lyooranda 76.69. Otandi pandula shili aamwameme mbaka. One mboka mwa kwatha ndje, Omuwa ne mu yambeke.

Sakaria Shikongo



Elangeko lyomukwaniilwa Filemon, muuleli woshilongo shaNdonga, olya li ngashi tashi monika mefano, naanaa petameko lyomumvo gwa yi 1971. Nuumvo petameko okwa langekwa papangelo a kale omuleli gOwambo ayihe. Onguwo yongwe komapepe okwe yi zalekwa kepangelo melalo lye lyuukwaniilwa. Ngika oye gwotango a zalekwa onguwo ya tya ngaaka mOwambo.

Omukwaniilwa Filemon a mono eha moshigwana

Epulo lyoshigwana kutya oye te shi kalele po mepangelo, sha yamukulwa mOradio-Owambo sho kwa igidhwa kutya, omukwaniilwa Filemon Shuumbwa yaElifas, mOndonga, oye a ningi oshilyo oshikuluntu mEpangelo lyOwambo peha Iyanakusa Ushona Shiimi.

"Nguka oye naanaa kwa li twa tegelela, oye kwa li twa hala," osho gumwe i igidha konima yoradio sho ya popi.

Omukwaniilwa Filemon ngoka kwa adhika opo a langekwa mongundu yeledo lyOwambo ongoministeli yuuyuuki, okwa hogololwa a ninge oshilyo oshisimanekwa oshikuluntu, omutse gwEpangelo lyOwambo eti-14.1. nuumvo. Ehogololo ndika olya sindana nomawi 24 ga kondjithwa ashike komawi 14. Omusitagongalo Kornelius Ndjoba oye a li pamwe nomusimanekwa Elifas methigathano lyehogololo ndika.

"Otandi pumbwa eyambidhidho moshilonga shika sha simana noshidhigu miinima mbyoka yi na uyelele," osho omukwaniilwa Filemon a indile ekwatho koshigwana she nokepangelo IyaSuid-Afrika. Ndjayi Komufala Jannie de Wet, mekundo lye koshilyo shika opo sha hogololwa, okwa ti:

Omuleli ita tegelele aluhe amatokolo ge ga kale go opalela oshigwana pethimbo alihe,

ESHI S.A. TA KA NINGILA OWAMBO

Oshikondo shoikwapondje mepangelo la S.A. osha tunga ehokololo nde tashi li twaalele oshoongalele shoiwana ya hangana (V.V.O), nhumbi Owambo tai ka ningilwa, naasho sha ningwa po nale. Paxupi mehokololo omwa li oinima imwe ngashi;

Owambo nOkaoko omu na nale oihakulilo ya kula 13 nouhakulilo vanini 34. Oihakulilo ikwao ivali otai ka tungwa pOndangwa nOpohangwena mOukwanyama.

Oupangelo vakwao vanini otava ka tungwa vati pEenhana, Kongo, Nakayale nOpokahao. Ehokololo ola twikila tali ti kutya, ovanandu va hakulwa moihakulilo ei 45,627 ava va kala meembete omudo 1970. Ava hava hakulwa tava di komaumbo 859,274 modula oyo. Ofuto youhaku 10c nde ovo itave i mono ovahakulwa oshimha, ehokololo la ti.

Kombinga yeehenifokomesho loshilongo, okwa ti kutya, B.B.K. ota longo oshilonga sha kula medu olo. Okwa fanekwa ku ka tungwe diva omaulikilo oihauto ipe avali, pOshakati nOndangwa, opo ovanhu tave li-landele oihauto yavo.

Opwa fanekwa yo eenhele mbali domalodu nokutala eekino pOshakati nOndangwa. Eenhele domafudo otadi ka longiki-dwa pOshikango nOruacana. Eeholosaila opo di li novanangeshefa ovo ve na eefitola ove fike 1,500.

Ehokololo ola fimaneka yo ehapupalo loimuna mOwambo okudja 1962. Eengobe vati oda hapupala nomuvalu 188,000 fimbo eendongi 30,000. Ehapupalo eli ola monika yo moingulu nomeedi. Oikombo oyo aike inai mona ehapupalo eli, ehokololo la ti.

Elunduluko lodoolopa yOwambo, Oshakati, ei i na okulundulukila kOngwediva, ehokololo ola ti kutya, ola eta po ekata-sho lasha mependulepo loshilongo.

Meefabulika daShakati otamu wedelwa vati ofabulika yokushika oipa, noyembosha. Okwa ulikwa yo kefanekoilonga yolusheno oyo tai di komulonga waKunene noimaliwa eeranda deemiliona 58.

ihe gamwe otaga ka monika uuwanawa komeho.

Omusimanekwa De Wet, okwa li a kunduo oshilyo oshikuluntu Filemon noku shi halela elago medhina Iyepangelo IyaS.A.

Oministeli yotango Filemon, okwa adhika ashike opo a tsakanitha omvula melelo lyoshilongo she shaNdonga. Methimbo ndyoka Owambo ayihe oya adhika ya yeledwa kutya omukwaniilwa. Elifas kee shi ashike omuleli gwaNdonga, ihe ota tegelelwa a kale omuleli gwOwambo ayihe.

Ndjika oyo ombepo yuukuumwe ndjoka tayi holola iiyimati yayo moshigwana, kutya, uuwanawa woshilongo shimwe, ngashingeyi Aawambo oya hala okukala nawo muukuumwe.

"Omukwaniilwa Elifas oku tu shi nomo-maudhigu getu, ota vulu oku tu kwatha," osho sha tumbulwa olwindji nopendji moshigwana shika. Ohokwe yoshigwana shika okuhokwa omukwaniilwa Filemon, oya teyagula po omakuma gokwidhiladhila pamihoko. Shika osho ombuto ombwanawa tayi mene moshigwana.

Shono sha tegelelwa komusimanekwa Shuumbwa, osho etopolo lyuuwanawa kaantu ayehe ye li mOwambo naa kale oyolwaala luni.



Oshilyo oshikuluntu oshiye, omukwaniilwa Filemon Elifas

litokolitho yimwe yuuthemba womuntu

7

Moveta aantu ayehe oye thike pamwe, nopwaa na ondjooola yasha, noveta otayi ya gamene shi thike pamwe. Aantu ayehe oye na uuthemba wokugamenwa shi thike pamwe kontondo ndjoka ya hala okuyona efatulo ndika, nokukehe shoka tashi eta ontondo ya tya ngaaka.

8

Omuntu kehe oku na uuthemba a gamenwe shili kooveta dhoshilongo kwaashihe shoka tashi mu kutha oompito dhokukala noshe kwe shi pewa kEkotampango nenge koveta.

9

Kwaa kale nando gumwe ta kwatwa owina e ta edhililwa nenge ta tidhwa moshilongo.

10

Omuntu kehe oku na uuthemba wa gwana opo a pulakenwe pauyuuki nopashili nokupangulwe kepangulo ndyoka tali tala uuthemba niinakugwaniithwa ye, nokutala ondjo ye.

11

Omuntu kehe ngoka ta tamanekelwa eyono lyoku mu pangulitha, oku na uuthemba wokutalwa kee na ondjo, sigo a monika ondjo paveta mepangulo lyomontaneho yaayehe moka ta kala e na emanguluko lyoompito adhihe dhokwiipopila.

2. Kape na ngoka ta pewa ondjo yeyono lyokupangulwa, ngele pethimbo ndyoka eyono Iya ningwa kapwa li oveta yoshilongo nenge yopokati kiilongo tayi ti, eyono ndyoka o-lyokupangulitha omuntu. Naishewe inapa gandjwa egeelo edhigu li vule ndyoka Iya li lyu uthilwa eyono ndyoka pethimbo lyokuyona.

12

Pwaa kale ngoka miinima ye tamu idhopwa owala owina, ngashi egumbo nenge iinyolwa ye osho wo esimano nedhina Iye Iyaa luudhikwe. Omuntu kehe oku na uuthemba wokugamenwa koveta komaidhopo ga tya ngaaka.

13

Omuntu kehe oku na uuthemba oku ka holama kiilongo yilwe pethimbo lyomatidhagano no a kale hoka nombili.

2. Uuthemba mbuka itau kala po ngele omatidhagano ogopaveta, ge etwa komayono gaa shi gopolitika nenge kiilonga ya tsa ondumbo nomalalakano nomikanka dhiigwana ya hangana (V.V.O.)

14

1. Omuntu kehe oku na uuthemba wuukwashigwana.

2. Kape na ngoka ta yugwa owina uukwashigwana, nenge ta tindilwa uuthemba wokulundulula uukwashigwana we.

15

1. Aalumentu naakiintu mboka ya koka, oye na uuthemba wokuhokana nokudhika egumbo pwaa na etalo lyoongamba dholudhi, dhuukwashigwana nenge elongelokalunga. Oye na uuthemba u thike pamwe mokuya moondjokana nomokukala moondjokana nomemangululo lyoondjokana.

2. Oondjokana odhi na okudhikwa ashike pe na euvathano Iyaahokanathani yo yene.
3. Aakwanegumbo oyo okangundu kotango kopanshitwe moshigwana noye na uuthemba wokugamenwa koshigwana nokepangelo.

EGALIKANO LYOMUKWASHIGWANA LYOPETA-MEKO LYOMUMVO.



Omuyevangeliste Josef Iyambo, Tsu-meb, okwa yapulilwa oshilonga shuuyevangeliste 1971, mOngwediva, konima sho a kala oomvula mbali mosikola kOotjimbingwe. Tate Josef manga kwa li po inaa mana eilongo lye, uunona we uyali owa pile megumbo esiku limwe. Ihe sho a langekwa wo mokomboni yaamati mOshomeya, hwiya-ka okwa kundana uunkundi womukulu-kadhi gwe neso lyokamwana okatitatu. Oye oku li manga pegumbo mOshigambo, ihe oshilonga otashi mu tegelele wo natango hwiya. Okwa pumbwa omagalkaneno goye.



Haalushe tamu ka mona etango tali menyemo. Uudhigu wa gumwe owo tau ka kala wo uudhigu womukwawo, ihe Jesus nge ta kulukile megumbo, otali udhililwa komayambeko nde tamu kala mwa ndjangumukwa, osho aagundjuka mbaka yaali; Israel Neumbo, Ongwediva, nomufuko waye Teopolina yaJona, Elim ya lombwelwa komutonatelishitayingerki shuuninginino, Rev. Jason Amakutuwa.

Otatu ku hambelele Kalunga ketu sho we tu pe okanona Jesus, opo ke tu endithe nomomvula ndjika ompe 1972.

Otatu ku hambelelele esimano ndyoka we li gandja kaantu mboka taya talwa aadhinwa.

Otatu ku hambelelele etegameno lyomwenyo gwaaluhe ndyoka we li gandjela aana yaantu mboka ya kundukidhwa keso esiku nesiku.

Otatu ku hambelele shoka we tu pe omwenyo muuyuni mbuka we wu shiti, notu uvite elago sho Ngoye u li mokati ketu.

Otatu ku pe omahambeleso getu, Kalunga ketu omolwuyamba wevi lyetu neopalo lyalyo. Tu pa aluhe omauvito ga yela, opo tu kale nohokwe yokupungula omagano ngaka we ge tu pa.

Tate Kalunga, otatu ku hambelele sho ookuku ya li ye na ompito yokwiilela yo yene. Otatu pandula sho tu na ethigululo lyemanguluko.

Otatu indile edhiminopo, ngele nani iilonga yetu oyo tayi kelele egwanitho lyemanguluko lyetu.

Tu kutha okwiihola tse yene hoka taku kateke elongitho lyuuyuki mokati ketu.

Kalunga ketu, owe tu mangela kumwe mevi ndi, nowe tu lombwela tu holathane. Otatu hempulula kutya ohatu nyengwa notu li kokule oku shi tsakanitha. Meifupipiko enene otatu ku indile u tu tsakanithile ompumbwe dhetu.

Muuyuni muka sho mu na aasindjala oyendji, tu pa ohenda nuudhiginini wokupungula iikulya yetu.

Uuna omeya ga pumba, tu pa uudhiginini tu ga longithe nawa.

Sho oyendji kaaye na iizalwa, tu pa oondunge mushoka twe shi pumbwa, opo twaa iulike nuuyamba wetu momeho goonakuhepa.

Tu mangulula momalyenge gomithi-

Mongerki yoshinanena, muElim, omutonateli Amakutuwa okwa li a yapulitha ondjokana yaagundjuka mbaka nohapu yaKalunga nokwa ti.

Kalunga ota ka uva okamunongono keni kehe komagalikano geni tamu ke ka ninga megumbo lyeni. Kalunga iha monenwa, ye ihu uvilwa.

Omupangi Teopo okwa dhikilwa ondjokana yawo kuhekulu Amakutuwa eti-26.9. 1971.

guluwakalo dhetu ndhoka tadhi tu dhiladhilitha kutya aakwiilongo kaye na esimano ngatse noyo aatondi yetu okuza kevalo.

Tu pa eidhidhimikilathano, ngoye u kandule po omaumbanda ngoka taga penduka uuna tatu nyengwa okuuya ko mboka itaya dhiladhila ngatse.

Pa aaleli yetu oondunge noonkondo miilonga yawo. Gandja omauvito gokukalelapo uuyuki nelandulathano itali zi methiminiko, ihe omokupangela moluuwanawa waayehe, opo uutondwe u kandulwe po pokati komuntu nomuntu nopokati kiigwana niigwana.

Otatu ku indile, Tate yetu, nuumvo u gandje omukalo gwokumana po uutondwe. Otatu limbililwa onkambadhala yokweeta ombili muVietnam, nomuIreland lyokuumbangalantu ngele nani olyo ehala lyoye kuyo, ya pa wo oonkondo dhoku shi humbata medhina lyoye.

Otatu galikanene mboka taa sile miita nonena ndjika, oshoka oomboka ye ya hole, otaye ya tegelele noye na ondjuulukwe oku ya mona ye na omwenyo ishewe.

Kalunga ketu, tu kwatha tu iyageke iita ongomukalo gwokweeta ombili, ihe u yambeke ngoye u koleke aagandjimayele momikalo dhokweeta ombili muuyuni mbu. Tu kwatha tu itule mo, tse tu igidhe nga Francis gwokuAssisi "Omuwa ninga ndje oshilongitho shokweeta ombili yoye." Amen!

R. R. Shangula

OMUKWETU

Oshifo shOngerki onkwaevangeli paLuther yomOwambokavango
Die Nuusblad van die Evangeliese Lutherse Owambokavangokerk
Ohashi nyanyangidhwa mOniipa,
Omukuluntu gwoshifo/Hoofredakteur omumbisofi Dr. Leonard Auala,
Amushanga/redakteur Rev. Sebulon Ekanjo
Ondando yoshifo komumvo muSuidwes-Afrika R1.00, kombanda yomafuta R2.00
Ondando nomambesitelo naga tumwe kOmukwetu, Oniipa, P/B 2015, Ondangwa, S.W.A.

Omatseyitho gomuntu mwene pashinyolwa shuule
Woondeimi 1 otashi futwa R1.00
Oondeimi 2 otadhi futwa R1.90
Oondeimi 3 otadhi futwa R2.70
Oondeimi 4 otadhi futwa R3.40
Oondeimi 5 otadhi futwa R5.00
Oto vulu okutuma wo efano lyaashono wa hala shi tseyithwe

The Finnish Mission Press Oniipa
P/B2015. Ondangwa, S. W. A.