

OMUKWETU

Registered at the General Post Office as a Newspaper

Uudhigu wondhalate wa lundu kiikogo

Okuzalekwa okaholo mothingo nakuningi-lwa iinima oyindji kayi shi yopantu mekwata-thano nokaholo, osha kondjithwa kaalumentu ayehe ngashingeyi mboka ya kala miilonga yehalakano mUushimba momukalo gwokwethapo iilonga yawo.

Pokati kaDesemba 71 aalumentu ayehe Aawambo mUushimba haa longo moomina moofabulika nomiilonga yilwe, oya tokola ngomuntu gumwe ye ethe po iilonga yawo sho shi holole ehala lya kola kutya inaa hala we okuuva dhokaholo.

"Ondhalate uupika wo wene. Oto uhala wa hingwa nomapokolo, ito pewa ondjambi yi thike piilonga yoye, owa dhinwa kiigwana yilwe, ku na uuthemba okupula ondjambi onene oto lombwelwa ou li kondhalate, ngoye ku lunduluka pushilumbu kamu uvitathane, oto yi mondholongo, okuya kegumbo kwa holoka uudhigu, osho etukano."

Ayihe mbika oyo ya li po omapopyo gaalongi yokodhalate konyala 12,000 mboka ya tutilwa komashina nokomakambamba mevi lyooyina. Moshigongi ye shi ningi pOluno, mOndonga, lwotango lela manga yakwawo inaa pwa okututwa mo mUushimba, aamati oya kumagidha noonkondo mboka ya adhika ye ya kokaholo pOndangwa, kutya:

"Tu shuneni komagumbo tu kazale iikondjo ngashi ootate ya li, ngele ondhalate itayi teka".

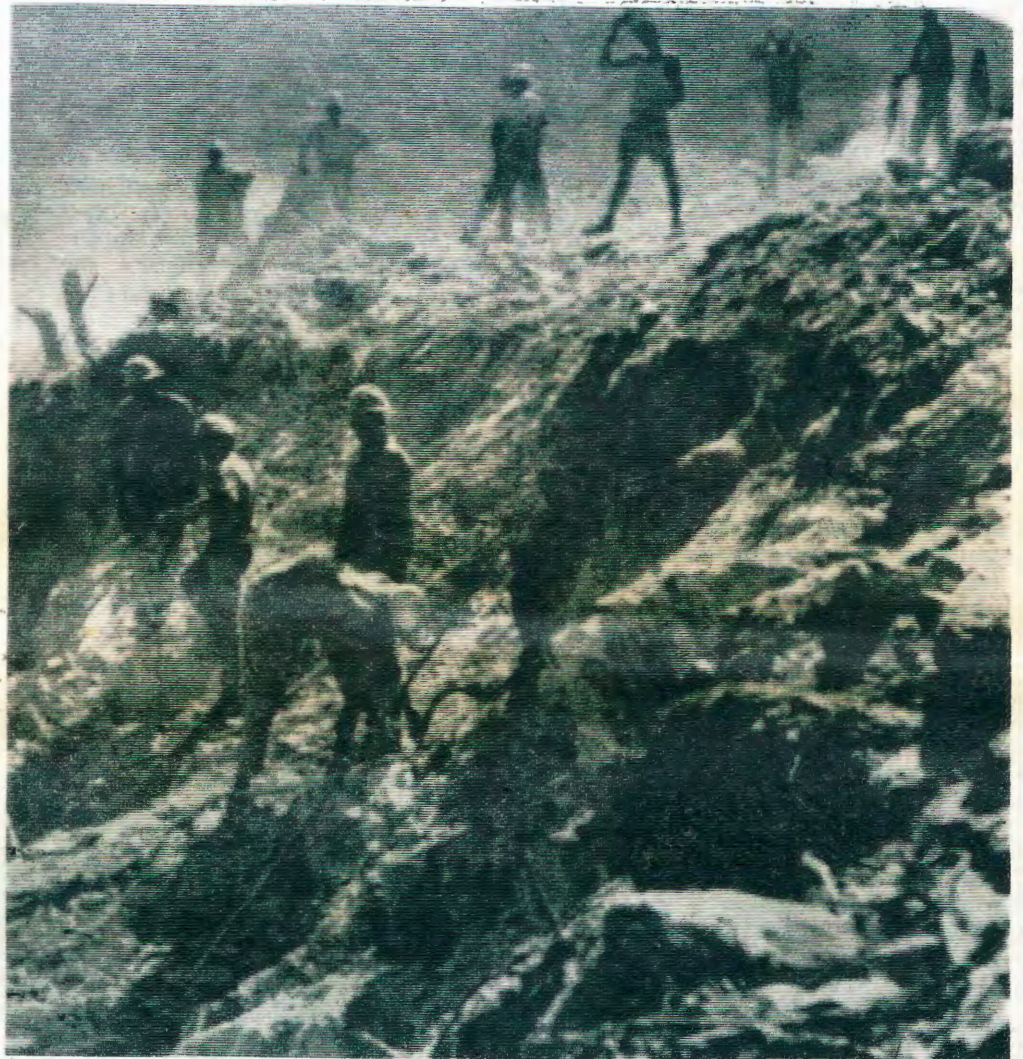
Olwo lwotango muSuidwes sho mwa ningwa oshipotha sha kutha momakunde shi thike mpaka, naahona oyendji oya thikama nokwiikwata poombunda momalimbililo omanene. Gumwe okwa ti kutya;

"Aawambo mboka ya kala shito aawanawa nomapenda miilonga, ya ninguluka, hayo we."

Aakuluntu yomahangano goomina nogoo-fabulika muSuidwes alihe, oya kundathana onkolonkolo naKomufala Omunene gwaaludhe omusamane Jannie de Wet, mOshakati, noonkundathana ndhika odha tsikilwa sigo okoministeli yiinima yaaludhe, omusamane M.C. Botha, kuPretoria, opo ku monike uyelele washa uupe. Oomina adhihe muSuidwes sigo onena, odha thikama.

Omafaneke gokwiithana aalongi palwe muAfrika nenge ku S.A. inaga pita, oga hulile manga mombepo. Ekwatho lyotango okuhupitha iilonga yilwe yi na sha nokukalamwenyo kwaantu kwesiku kehe, oya hakanwa po kaanasikola, nokaatiligane yo yene, pamwe na-pashiyoni mboka ya adhika mUushimba.

Momavigumbo gamwe omwa ithanwa wo aalumentu mboka taa kwatha okuhupitha eliko nomahupilo gaS.A. ngashi mOkavango, mOdamura nomOherero. Ihe ombululu mpo-



ka pwa zi Aawambo oya nyengana okuthita.

Ondhalate oya adhika opo yi ikundwa kaawilikingerki yoongerki mbali oonkwaluther dhaavalelwamo, ELK. na ELOK, mOvenduka naKomufala De Wet, ngoka e lile po aaludhe muSuidwes. Oonkundathana ndhika odha li etsikilo kundhoka aawilikingerki mbaka ye dhi tamekele noministeli yaS.A. omusamane B.J.Voster, omumvo gwa yi mOvenduka, mo ka ya li ya holola nkene omukalo gwondhalate tagu yono uuthemba womuntu auhe notagu teya uukumwe wopandjokana. Oonkundathana adhihe ndhika kadhi zile eu-vathano lyolela moshinima shoka.

Oongerki adhihe muSuidwes ndhoka tadhilongo mokati kaavalelwamo inadhi mona nando esiku limwe etompelo lyokupopila omukalo gwondhalate yaaniilonga mevi ndika.

David de Beer, amushanga gwomumbisofi gwongerki yaAnglikani movenduka okwa nyola moshifo shOshingilisa, "The Windhoek Advertiser" kutya:

"Aawambo kaye na nando uuthemba wokutya sha kwaashono taye shi holola po miilonga yawo kaye na uuthemba wokupula uuyamba tau zi moomina nomoofabulika, kaye na uuthemba wokupewa iiyimati mbyoka tayi zi miilonga taye yi longo, yo kaye na ewi lyokupula iilonga tayi ya etele iimaliwa. Shika osha nika ethiminiko."

Omusamane De Beer, okwa gwedha ko ta ti: "Nkene aalongi yondhalate taa taamba

Tala kopardja tali 6

Ovanamwenyo ovo have ke shi mona

Ava tu li oixupe yomulendu wa kanifa vahapu oudwaali, osha fa tashi tu yelege natango kutya inatu xupifilwa ashike omwenyo, nde nokutala yo ile okupwilikina oiningwanima ipe medu laSuidwes, olo vahapu va hokwa oku li ifana paife Namibia.

Ngenge wa leshele oshinyolwa moshifo eshi shaMai, No. 9, 1971. mepandja etivali, "Walye eshi tashi ke uya," oto shi itavele kutya, ouprofeti wopaife ihau dingilile vali inau wanifwa. Pexulilo loshinyolwa eshi omwa tiwa ngaha:

"Tu longifeni eliko noukodi nomoshili, ondjila yokuhapupalifa oilya i diladilwe, omayambeko aKalunga, a kongwe fimbo oixuna yoo vene inai fika.,,"

Ovalumenhu voshiwana eshi va ekelashi paife eembike noixupulo nova alukila kooina va pwilikine ngenge eindilo lavo tali pwilikinwa tuu kovakulunhu kutya vo va nyengwa okutwikila nonghedi yodalate tai yehameke.

Otava hokwa odalate tai yandje emanguluko okuhoolola oilonga oyo, omunhu ta dulu oku i longa. Otava hokwa odalate tai mangulula omunhu a kale neumbo laye opo ta longo. Otava indile paha kale ombelewa tai landifa omunhu ou ta ka longa. Vo tava indile omunhu a futwe shi fike poilonga, hapashipa shaye.

Oinima ei, naayo inai tongwa apa oya kwatela mo efimaneko lounhu aushe. U papale ya itavelwa, osha yela kutya Epangelo la ninga nee lovanhu li shi kuhokiwa kovanhu. Ashike nee, eshi kashi fi exuliko lomakemo ovanailonga.

Luhapu oilonga oya endelelifwa i ye komesho, shi dule okunyamukula eemhumbwe dovanhu. Komukalo ou omashina manene okwa hapupalifwa nokwa mana po onhele yovanailonga. Ounyuni aushe paife owa wila melambo eli, lo olo ne la fikamenwa kOvanamibia paife.

Ovamati vavali ove lipopila ngaha kutya; Ou ito kwata nawa paife oumanya voye (oimaliwa), to liningi oshiyele. Eendaka edi odoshimati lela, osheshi ashike da nyongofolwa.

Waima, natango oto danauka ngo nemonu noku li hadaula shoxuxwa i li poilya? Efimbo li li po paife olokufula omalambo aeshe taa mbolongodjele eliko loshiwana, olokukonga ondjila tai eta elifikameno mokukalamwenyo kwetu komunhu keshenolokuninga eemhangela doovatatatu noovane, nhumbi tava lwifa omutondi womaxupilo oshilongo eshi. Ngenge hangaha, epulo eli otali kala alushe kombada yetu kutya; Oto i kokule naame, ito ka fya ondjala.?

"Omahanganotumo mongerki otaga pumbwathana," Mukwiilongo a ti

"Otseni mbaka tu li po iilyo yomahangano goshilonga shetumo mongerki yaElok, natu tsaathaneni omukumo, opo pu holoke iiholelwa iwanawa mbyoka tayi etithitha ehumokomeho lyoshilongatumo mevi lyetu," osho omunangeshefa Leonard Mukwiilongo, a lombwela aagundjuka ayehe yongerki yaElok, mOkahao.

Omusamane Mukwiilongo, Elim, ngoka e li po omuwiliki gwehangano lyanangeshefa aakriste mongerki ndjika, okwa li a popitha ehangano lyaagundjuka lyoshilongatumo manga lya li moshigongi shalyo shoka hashi ningwa omumvo kehe pehulilo lyomumvo gwa yi. Moku ya ulukila ondilo yethimbo lyomugundjuka kehe, tate Mukwiilongo okwa ti:

Ompito ombwanawa aluhe ohayi kala peke lyomugundjuka, oshoka onakuyiwa ohayi kala aluhe yi inekelelwa aagundjuka. Shika mwaningi omasiku nasho notamu shi tsikile (iilonga yoshilongatumo) otamu shi ningile aagundjuka yokomongula."

Ehangano lyaanangeshefa aakriste olya tameka 1964 mongerki yaElok, nohali futu nokuli omuyevangeliste gumwe mepya lyetumo. Medhina lyiilyo 77 yomehangano ndyoka, omuwiliki Mukwiilongo okwa gandja omakundo omawanawa koshigongi shaagundjuka nokufatulula elalakanu lyehanga no lyawo. Mokuhololela aagundjuka eitalo lya kola lyonakuyiwa yi na elago, tate

Mukwiilongo okwe ya lombwele kutya itashi vulika ashike mpoka ethimbo itali longithwa kuyo, nenge tapu ya shono tashi ya imbi okulongitha onakuyiwa pauyuuki.

"Ompito ngashingeyi opo yi li nomu shi oku yi longitha manga kuyele ye mu egulukila, oyo okugalikana Kalunga e mu pe ashihe mwe shi pumbwa monakuyiwa yeni," osho omu-

nangeshefa Mukwiilongo e ya indile.

Komapulo ogendji gazi maapulakeni, omusimanekwa Mukwiilongo okwa holola nkene osheelo she egululilwa omuntu kehe a hala okwiinyolitha mehanganu lyaanangeshefa aakriste. Okwa indila wo aagundjuka ya kale haa piti poositola dhawo siku taa kongo ehanga lya pya, note shi tala osho elongelokumwe ewanawa lyomahanganotumo.

Pafatululo lye ehangano ndika olya hala notali lalakanene okukala meni lyiipango omulongo yaKalunga, nonando pwa na manga omautho galyo. Omunyoleli gwongerki Rev. Matias Nhgipandulwa oye omunyoleli gwoshigongi shaanangeshefa aakriste. Aasita yalwe wo omo ye li nando kaye shi aanangeshefa.

AAGONGO YA PANDULA

Egongalo lyaGongo, Uukwambi, otali pandula unene omakwatho ngoka lye ga tuminwa kAawambo aalumentu mboka taa longo kOlange, iilyo yongerki onkwaevangeli paLuther yomOwambokavango noyongerki yaKatolika.

Amuhe otatu mu pandulile ekwatho lyeini muudhigu wetu wetembudhwo mongerki yetu onkulu. Ooranda mwe dhi tumu R75.00 odha thika kutse. Kundweni ano nohapu ndji 2Kor. 8: 16-24.

Peha lyegongalo,
Rev. N. Amadhila



Omundohotola gwaNandjokwe, Dr. Tapio Hallamaa pamwe negumbo lye, oya shuna kuSoomi petameko lyomwedhi nguka, nkoka ya zile konima yoomvula mbali. Omundohotola Hallamaa okwi ile a kale mpaka omvula yimwe ayike andola, ihe olukeno lwokutala oshigwana tashi tongo komavu ogendji, inalu mu pitika a shune mbala. Tatekulu Hallamaa, konyala ethimbo alihe okwa li a kwatela mela, a papata omolwiilonga ya li po oyindji. Mboka ya tsakanene naye meyakulo, otaa dhimbulula ohokwe ye neitulomo lye lyokukwatha. Meme Eeva Hallamaa okwe tu thigile omadhimbuluko, sho e tu dhikile omukanka gwedhiginoiniwe lyehanganu lyiinyenditho mongerki. Ando inaye tu dhimbwa nando.

Osoondaha onti-5 ya landula esiku lyaapagani.

"Omuwa, ino kuna mo nani oombuto oombwanawa mepya lyoye? Omau oga zi peni? Ov.27Ndishi omalimbililo gaamati mboka inaga faathana nogetu nangoye? "Oshike ite manguluka momakaya, omolwashike ite manguluka momadhiladhilo omawinayi momwenyo gwandje, oshike ite zi muupika wuunkolwi, oshike ano nda nyengwa okwiiyapulila Jesus nehala lye, nonando nde shi hala tuu shili? Omapulo ngaka ohaga dhingoloka natse aluhe mokukalamwenyo kwetu. Haaluhe tu uvite ko omolwashike ekondjo lyetu okukondjela oomwenyo li na okumona iiyimati iishona yowala nenge tatu dhimbulula kayi po nokuli.

Jesus ote tu yamukula niitya iifupi, ihe oya yela lela. "Omutondi ote shi ningi." Ov. 28. Omutondi okwa tonatela oshilonga kehe tashi longwa oshiwana, tashi ka vala u- uwanawa. Oyendji oya dhiladhila kutya omutondi, omutondi ashike gwomwenyo gwaa- luhe, ihe oye oguwanawa kehe mboka omuntu te u pumbwa shaampoka omuntu e li po Satana ota eta moshilonga shetu kehe ezimba tali eta eolelo opo tu se uunye, tu nyanyale, tu ethe tse tu kale aantimbe yiilonga ayihe liwanawa.

Motekisti ndjika otu shi okutala iinima mbika:

a) lilonga yetu mbyoka twe yi tameke melalakano ewanawa otayi kala ko nonando ku na iithininiki. "Etheni ga kokele mumwe." Ov. 30. Mokati koonkambadhala dhomutondi iilonga yetu otayi thikama notayi imi iiyimati yayo. Omuyapostoli Paulus ta ti: "Ongoka a tameke oshilonga oshiwana mune, oye ote shi tsakanitha." Fil.1:6 Natu kune ombuto yevangeli neinekelo tayi ka vala.

b) Omahindo nomuhindadhi, mbika Kalunga ite yi etha owala inee yi geela. Tse ongaantu ohatu holola mbala uunkundi wetu noonkambadhala dhetu sho twa hala oku- paleka iilonga yetu. Ombuto yomahindo Kalunga okwe yi pitika yi kokele mokati koo- mbuto dhoshilonga shetu, sigo ethimbo lye lya thikana lyokuyoolola. Kalunga oye ta yoolola, ota pangula nepangulo lye okwe li gandja kOmwana nota longo shono shu uka. Joh.8.16. Moshinima shika Omuyapostoli te tu longo wo tu gandje olweedhe kuKalunga ngoka ha tala nuuyuuki. Rom.12:19.

c) lilonga yetu nekondjo lyetu oshinima shi li meni lyethimbo. Onaku ke ya esiku ndyoka tu na okuzimbuka mwaayihe tatu yi lalakanene. Esiku ndyoka Kalunga e na okutsakanitha omauvaneke ge, uuna Kalunga a wike talongo. Ombimbeli tayi ithana esiku ndika "Esiku lyOmuwa." Uuna esimano alihe tali gandjwa kuKalunga nokOmwana Kristus. Esiku naatondadhi kaye na we ompito yokukala iilonga yaKalunga moshipala. Esiku enene lyepangulo. Omo moka Paulus ta ti iilonga yetu otayi ka yelithwa, ongoshingoli tashi hemunwa momulilo. Ongerki yaKristus nomwiitaali kehe ota longo ome- ho ge ga taalela kesiku ndika, uuna Kristus ta gandja evululuko kwaamboka ya longa noya loloka.

Sebulon Ekandjo

EENDJOVO DOVAKWALUTHER TADI KA NINGA DOSHILI

Opwa pita paife efimbo eshi eengerki ee- nghwaevangeli muSuidwes da kala nokuku- ndafana moyoongalele yavo nenge otashi du- lika ku dikwe oukumwe mokati kado. Ee- nghundafana otadi ka wanifwa nenge osho- ongalelengerki sheengerki tadi hangana tashi ka ongala pokati kaFebuluali naMaalitsa neu- do okukoleka efinamhango lehangano.

Ongerki onghwaevangeli paLuther yEtumo lOvandowishi mOushimba (E.L.K.) nongerki onghwaevangeli paLuther yomOwambokava- ngo (E.L.O.K.) odi li ondijlakati da yuka pexu- lilo okuya moukumwe u yadi tau ka shiivika medina: **Ehangano leengerki eenghwaeva- ngeli paLuther domuSuidwes-Afrika (VELKSWA).**

Efinamhango ola totwa nale nola konako- nwa koyoongalelengerki yeengerki odo, la tambulwa. Paife tai ka kala oshikundafanwa shinene mooshoongalelengerki osho shopau- kumwe weengerki.

Moshoongalele osho sha kula tashi ka kala shotete mehistoli leengerki muSuidwes, o- mwa ifanenwa ovakalelipo ovaenda vomaha- nganotumo omo mwa dalwa eengerki da tu- mbulwa, kOndowishiland nokOsoomi, omwa ifanenwa yo ovawiliki veengerki da hangana

momumbuwanhu waAfrika (FELKSA), osho yo hamushanga wongongahangano yovakwaLu- ther LWF, kuGeneva, omufimanekwa Dr. An- dre Appel.

Shiimba moshoongalele eshi tamu ka ku- ndafanwa yo ekongholo longerki onghwaLu- ther yOvandowishi muS.W.A. nenge tashi du- lika nayo i litule noi tambulwe mehanganano eli. Ongerki ei oilyo yayo aisho ovatilyane ashike. Omapangelongerki avali eengerki tadi han- gana okwa kundafana pamwe pexulilo lodula ya ya, nokuninga yo omafaneko ouhapu woi- lyo tai kala moshoongalele osho mOti- jmbingwe. Pafaneko eli, ongerki keshe ota- tumu oilyo yEpangelongerki aisho, noilyo tano tai kalele po ovakwaneongalo vonger- ki yonhumba aisho, osho yo oilyo imwe oyo tai kala mounkundulungekido patumo, pauteku wopakriste, paishangomwa, ile opauteologi nokuli.

Omhumbwe youkumwe weengerki edi oya konekwa nalenale, nde omadiladilo e li konda- bo yoshinima eshi, okutala nhumbi evangeli tali udifwa mokati kojwana yaSuidwes. Na- shi otashi tomhoka ashike, nenge eenger- ki tadi koneke tete kutya do oda ifanenwa oshilonga shimwe ashike, ongho di na okulo- nga moukumwe.

Mindolo ota wilikwa kOmuzambia

Meni lyaAfrika

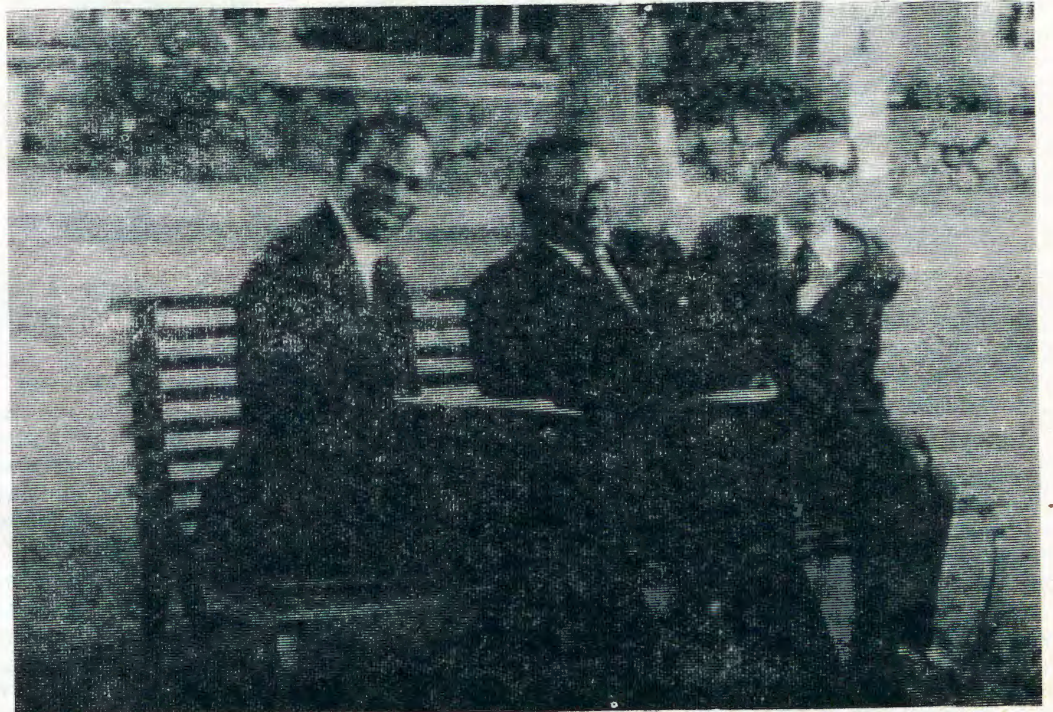
Oshiputudhilo shAayafrica ayehe muMindolo, Zambia, osha tulwa ngashingeyi mewiliko lyomuvalelwamo, omusamane Jason Mfula. Oye omutine nomuvalelwamo gwotango okutaamba oshimpwiyu shewiliko lyosikola ndjoka onene ya longo oomvula 13 adhike.

Mindolo Ecumenical Foundation, omo hamu putudhwa aaluudhe ayehe yomiilongo ya manguluka yaAfrika oku ka humbata iimpwiyu niinakugwanithwa iinene miilongo yawo. Elalakano lyotango oyo okukwatha eputudho alihe lyopakriste mokati kAayafrica andola, ihe shono osha kala ekwatho enene wo kombinga yiniinakugwanithwa yaavalelwamo paupolitika, paekonomi, pasosiale nopa-

longo.

Omuna gwomulongi, omusamane Mfula, o- kwa pita osikola yuulongi muRhodesia. Pe- thimbo limwe a humbata oshimpwiyu shu- longi kumwe noshilonga shombelewa yomi- na onene muZambia. Omusamane Mfula o- kwi ilongo nale okuhumbata iinakugwanithwa iinene.

Ngashingeyi okwa tulwa a kale koluuli lwe- wiliko lyuukumwe woongerki adhihe muZa- mbia moka mwa kwatelelwa omafaneko goo- programa oonene dhokuhumitha Aayafrica komeho. Ongerki yetu oya putudhitha wo aantu yayo mehala ndika. Tate Mfula okwa yakula omuwiliki Grenville-Grey moshilonga shika ngoka a kala mo uule woomvula ntano



Aawiliki yoseminali yaMindolo; okuza kolumoho sigo kolulyo Jason Mfula, Dr. Donald (M' Timkulu,) naMr. Wilfrid Grenville-Grey.

OKWA YI, OSHOKA EPANGELO INALI HALA

Omusitagongalo Hans-Ludwig Althaus (39) ina ziminwa kepangelo lya S.A. a kolekithulule opaasa ye yokukala mu Suidwes, naasho no tashi ehameke ongerki osho shoka sho pwaa na omatompelo taga gandjwa kutya omolwashike.

Omutumwa Omundowishi, Althaus, okwa longo mongerki yEtumo lyAandowishi mUushimba (E. L. K.) oomwedhi 18, moka a sile unene eputudho lyopakriste oshimpwiyu mokati kaanasikola.

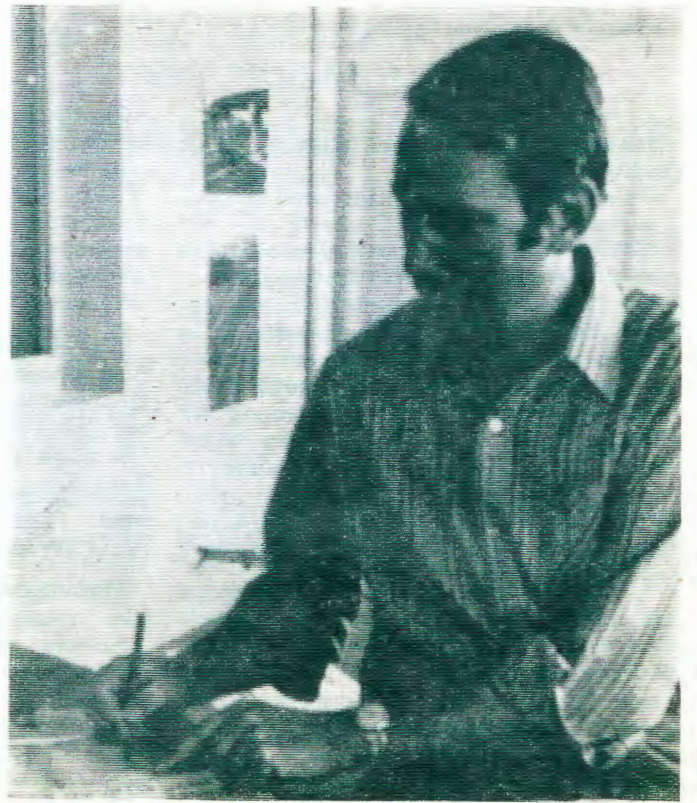
Meuvitho lye lyelaleko mOvenduka, omusita Althaus okwa ti: "Kape na epangelo etilithi lya fa ndyoka tali tidha omuntu pwaa na etompelo." Na Jesus ando a kale moshilongo shika, ando ota tidhwa mo muule wiiwike iishona yowala."

Omusamane Althaus okwa longo mokati kaagundjuka nokwa ningile aalongi oyendji iigongi. lilonga ye nke ya taambwa kaavalelwamo, osha monika momainyengo nomoohapu dhoyendji mboka ya holola oluhodhi lwawo lwokuzwa kwe mokati kawo.

Pokapale kondhila aavalelwamo yomaludhi agehe oya thikama ya zala omapakete moka mu na omatumbulo ogendji, ngashi "Epangelo lyaVorster otali tidha Jesus."

Olwo lwotango epangelo lya S.A. sho inaa li zimina ekolekululo lyopaasa yomutumwa omukwaLuther muSuidwes, kakele ashike kaamboka inaa zimininwa ya galukile moshilongatamo.

Okwa li a hokana noku na aanona yatatu.



Omusitagongalo Hans-Ludwig Althaus i ipyakidhila niilonga ye. Onda longo mpaka, niilonga yandje oya li yi na iiyimati, osho ye mwene a popya manga inaa thiga po Suidwes.

Hawo tau manene nge po

Oshipalanyolo osho natu shi pwilikineni hano nawa. Kaume, neudo dja mondabo ongandiba a mona ombwa, naave hano osho u kala naanaa odula twe ya muyo.

Ongoshihalukifo shetweni atusheni, oshinima shipe ohashi hafifa omumoni washo. Natu lilongele hano OMUKWETU wetu wodula ei 1972. Natu shi ninge nondjungu, haye te ku manene po.

Shimha tuu we lilandele Omukwetu, to ka uda mo oinima iwa noyopashinanena, yefimbo lopaife. Mu lilandela u pwilikine eshi ookaume nookaume tava hokolola oilonga yohamba Mufindani, ta tongwa momapandja mahapu ongOmbibeli.

Landa hano Omukwetu woye paife, handi mu halele enangekonoupuna lomudo ou.

F. S. Kamongwa
Tsumeb-Hospital



Omumati Elias Angula (26) Onyaanya nomuvalekwa waye Albertina Amwaalwa, (24) Oniipa, ova indila ehombolo kovakulunhu vavo nokeongalo, nde va pewa eti-13.11.71.

Albertina okwa putukila mooxe omufita woimuna, okakadona meumbo, ndee koufita ongomumati waxe. Xe kakwa li e hole okaana taka i kofikola, onghee Albertina okwa kala a patekena peemhanga edi; a hala a wanife ehalo laxe nolaKalunga.

Koufita okwa tola oshifo shOmukwetu nomoku shi lesha, okukalamwenyo kwaye efiku keshe ongaau e li melongelokalunga, neulu ola fa li li popepi nomwenyo waye. Koufita okwa mona yo omhito okwiilikanena xe, ou a ninga oshikelelifo aha ye kofikola

nokomalongelokalunga. Kalunga okwa pupaleka omwenyo waxe fiyo e mu fininika a kale ta i kofikola.

Albertina mokuxwamekwa kOmhepo, okwa yelula omesho aye okutala oluhepo loshiwana shaye. Okwa tokola okuya kofikola yohakulipangi kEngela 1964. Omwene okwe mu kwafa moilonga omo a talifwa oinima ita tu. 1.A kulilwa kuJesus 2. Oluhepo loshiwana shaye 3. Olutu laJesus tali vele Mat. 25:43.

Omwene a hapupaleka onghenda inene mowwenyo waAlbertina. Ovanaudu mEngela okwe va yakula nohole nononghenda. Omuduliki noha tondo eenhamanana mokukalafana navakwao. Okwa lukwa "Kamuhongi" vawmwe ve mu ifana "Kaima ketu." Osho a kala ta tembulwa ngaha ongokaana. Oinima yaye aishe oya nyika ouhongi.

**ILA U LANDE OSHIHAUTO
V W-Kombi, omodela 58, eshina epe inali enda nando, otashi pula R300.00 Ila mbala tu kundathane manga kuyele.**

Festus Ashipala, Onandjokwe

Efimbo limwe okwa yakula yo mokapangelo kaHalushu, oko a longa noudiinini nokwa kala yo hamushanga woshongalele shovanyasha. Fiku kamuhongi a hombolwa, omufita woshipangelo shaNgela pamwe nongudu yovahakuli ova pitula ovahalushu netuwa nde tava i kOniipa kefundula. Kamuhongi okwa kala omuyakuli wovaenda moshivilo shaye.

Omukongo ehe na ombwa, oha lile kokwena. Omumati ove ohatu ku pandula, osheshi oimaliwa ino i lila kOushimba nde oyo to tungifa nayo eumbo. Ovaniipa tva pandula oshilyo sheongalo leni ou a kala yo omuxunganeke mOshitayi shetu shaUkwanyama. Eshi osho enyamukulo mwa nyamukulwa momailikaneno eni mOniipa. Ps.103:2.

Malakia Hauuanga

OMWA DANA NGAHELIPi OKRISMESA?

Ovaholike muKristus vongerki yaELOK, omwa dana ngahelipi Okrismesa? Hokololeni moshifo shOmukwetu oinima tai holola exumokomesho loivilo yaKrisimesa mOwambo yetu. Itai pula oikombo ingapi ya dipawa, ile oikunwa ilipimo wa nwa noiliwomwa ikwao, osho yo inandi pula oipakete ingapi we i pewa, ile we i yandja omaano kovaholike voye.

Ei aische oinima ikulu ndelene mongerki yetu otwa hala okuxuma komesho itatu yuka ko vali konima ile itatu kala ofika ponhele imwe nokuninga eshi sha ningwa nale.

Fye otwa dana Okrismesa ngaha: Eshi twa uda kutya, Okrismesa oyo okutwala elaka lehafo kovanhu aveshe, otwa udafana tu ninge omalongelokalunga neexungi peenhele dimwe dopopepi nafye. Oxungi yotete ya li mEendobe omo Ovayeleele vahapu va ongala, okwa li omakundoudifo Okrismesa, e li atatu.

Omuyeleele umwe oye a lesa 'evangeli laKrisimesa, nomufitalongwa Paulus Heita, okwa kunda ovanhu nondjovo yaKalunga nokwa hokolola ehafo laKrisimesa, opo omuhongi Osmo, a udifa nokwa fatulula nawa Okrismesa kutya oshike. Opo otwa talifwa omafano oku-Palestina kumeme omupangi, Maija Piëttila. Okwe tu ulukila eenhele dimwe omo Jesus a li ngaashi muBetlehem omo a dalelwa, fiyo kuGolgata oku Omukulili a vaelwa komushiyakano. Otwa li shili twa hafa.

Konima yomafano okwa xulifwa neilikano.

Eti-26.12.71, Okrismesa oya li po inene kE-koka, Okwa li omuudifi umwe Omuyeleele ou a lesa otekisti yefiku olo mOshixwaga, ya lundululwa kumeme Terttu. Okwa lesa nokwe i fatulula mOshixwaga. Okwa li noupenda. Onde mu tala okwa xwama momwenyo waye okuudifila vakwao evangeli louhamba waKalunga.

Omulongi Sakaria okwa udifa melaka IO-vangongolo. Okwa li oshinima shiwa okuuda nokutala ovanhu va li ve udite ko nawa. Omuhongi Osmo a fatulula efiku etivali laKrisimesa, kutya ohali ifanwa efiku laStefanus, omo-lwouhokololahonde.

Ovanyasha Ovayeleele va kweya ko kokaxu-

EANGELOK

Sho wa lesa moshifo shOmukwetu shaKotoba 1971 No. 19 moka mwa fatululwa EANGELOK nkene Iya holoka po, oshilonga nelalakano lyalyo, pamwe wa kwatwa nokuli kehalo okuninga oshilyo. Ihe pamwe natango ou na omapulo gaa na omuyamukuli kushika. Omukwetu nguka okwa hala ngashingeyi okuyamukula omapulo goye.

1. Ehanganano Iyo Iyene olya totwa kaanangeshefa mboka ya kwatwa kehalo lyokulonga oshilongatamo nokukala muukumwe miinima yopambepo. Ihe omuntu kehe nando keeshi omunangeshefa, oku na ompito, nota vulu okuninga oshilyo, MEANGELOK omu na nokuli iilyo oyindji mbyoka kaayi shi aanangeshefa. Opo u ninge oshilyo, oto ilandele ashike okakalata kuukwashilyo hoka ke na onomola ndjoka tayi kala onomola yoye palandulathano lyomadhina membo lyiilyo. Okakalata hoka ohaka landwa ashike 50c, dho oosenda ndhoka odho ofuto yuukwashilyo, oshilyo shi nokukala hashi dhi futu omumvo kehe. Shaa tuu wa ningi oshilyo, oto kala nee ho tuminwa ehiyo okuholoka kiigongi, noto kala wo ho tuminwa oontokolwa dhiigongi.

2. EANGELOK oli na aalandithi yuukalata walyo, ya hogololwa noya halakanena miilongo ayihe yOwambo. KOkawango inaku monika manga oshilyo, nando nayo wo oye na ompito yokuninga iilyo. Ngele ano wa hala okwiinyolitha nokwiikongela okakalata kuukwashilyo, aalandithi yuukalata oyo mbaka: Omusamane L. Mukwiilongo, Elim, T. Nakambonde, Niimuandi, V. Kelimwe, Okahao, A. Kamanja, Onangalo, J. Kijjala, Onesi, A. Shingenge, Nakajale, H. Hamuaama, Engela, S. Kaulinge, Ondobe, S. Mbokoma, Oshitayi na A. Uuguanga, Ontananga, Pombelewangerki pOniipa wo ope na ompito ndjoka kuM. Ngipandulua nenge P. Shipena.

3. Ngele wa ningi oshilyo, oto vulu ishewe okwiilandela ombandi yehanganano. Ombandi ndjoka ohayi landwa 50c, nohayi zalwa pontulo.- Inyolitha ashike mEANGELOK, kaku na shoka tashi ku imbi okukala oshilyo.



Kuku Laina Kivela, ota gandja oshihwa shoongala kukuku Haapanen mesiku Iyevaloo Iye. Ayehe otaa tala kuku Haapanen ya nyanyukwa. Tala, kuku Aina Auala oku li pokati lela kefano.

Omutumwa mEhanganano IyaSoomi, kuku Helmi Haapanen, okwa gwanitha omimvo 65 pehulilo lyomumvo gwa yi. Moshituthi shevalo Iye, omusimanekwa kuku Haapanen, okwa pewa wo emanya lyoshingoli (medaljé) ndyoka hali pewa aasimani oyendji muSoomi. Kuku Haapanen oye omutumwa gwotango gwokOwambo ngoka a pewa esimane-ko enene li thike mpoka omolweiyambo Iye koshilonga shetumo.

Kuku Haapanen, okwa thigile po lwotangotango oSoomi 1938. Okwa kala ha mono wo omafudho pokati. Ongerki oyi na oshindji okutumbula kiilongayakulo yaKuku Haapanen. Sigo onena uladhi we nomukumo, ongashi sha li 1938. Moombilive odhindji hadhi zi pondje okwa shangwa Mr. Haapanen. Ano oye omulumentu miilonga ye. Tate Olle Eriksson, oye a gandja emanya medhina lyomukuluntutumwa M. Ihama-ki ngoka kwa li mefudho.

Elenga enene mUukwanyama Vilho Ueyulu, otaku tiwa olya dhengwa kaamati yamwe sho Iya adhika Iya shigakaneka oshihatu mondjila yoombasikela. Osho wo aamati mboka ya adhika naye moshihauto oya dhengwa. Osho wo elenga limwe mOngandjera, Indongo yaShigwedha, okwa dhengwa pamukalo ngoka. Omadhengo agehe ngaka, otaku tiwa kage na sha nondjahi yokondhalate.

M. Ngipandulua
Amushanga gwEhanganano.

OMAPULO NOMAYAMUKULO

Paulus Hamukwaya, Windhoek: Onda uda ko omanyamukulo mwe a nyamukula nge, kutya itashi dulika ovafita novaevangeliste va shunwe moilonga, osheshi ova pewa shihapu. Ohai ti: Ovanhu ovo ndishi ova ekelwashi, eshi inava diladililwa oilonga yasha? Nani mboli omunhu ina kufilwa po shili. Kape na edimopo lomatimba shili, omolwashike iha twikile oilonga yaye? Eshi otashi tu limbi-like unene.

Omwa ti omunhu okwa kufilwa po, ndelenee okwa kwatelwa onghone, ita pewa oilonga meongalo. Oshi lidule ngahelipi ye omayakulo aeshe ote a yakulwa. Oilonga oyo nee ya kula? Shoo venevene osha shangwa peni omunhu a tya ngaho iha tulwa vali moilonga? Omembo lalyelye nomekapiteli li li?

Okwa tiwa omatimba otaa yela a fa omongwa. Ongerki otai taataa, inai ku pumbwa ove.

Omulongwa gwandje Paulus, kombinga yomusita nenge omuyevangeliste a pundukile moluhondelo, omuntu okwa yono po aantu mboka ta litha. "Ndishi oye e na okulitha oonzi?" Hes.34:2 Kalunga mwene ote tu kutha

PUKULULA

Mondjalulamasiku yonuumvo 1972, omu na epuko motekisti yeti-24.12.1972 yevangeli sho pwa shangwa Joh.32,30. Pukulula shi kale ngeyi: Joh.3.22-30.

Ondjodhi yandje ya gwanithwa

Sho nda kala nondjuulukwe onene ndi talele po omappa getumo kuuzilo, opo ndi tale wo iilonga yaKalunga, iha nyengwa kusha, mbyoka tayi longwa mpeyaka, olweedhe nduka olwe egulukile ndje, sho ndi ile mEngela, pehulilo lyomumvo gwa zi ko. Mokuthikama otwi itsu wo mokagongi kaalongekidhi yiini-ma yoshilongatumo ka gongala. Nangame wo onda pewa eha moka opo ndi hokolole oshilonga shetumo mpoka ndi li po.

Otwa thikama mEngela nokuya kuKongo, sho twa thiki mo, natango otwa tsikile ngaa, oonkundathana. Osha dhimbululwa kutya, oshilonga shetumo oshi li po tashi katuka oonkatu dhasho dhetaandelo koombinga adhihe nando ope na omaudhigu nomaluhepo gi ili nogi ili.

Otwa dhimbulula wo kutya oshilonga sho shene musho, otashi pumbwa ekwatho. Otatu hambelele naampaka kekatho ndyoka hali holoka po. Oshinima shimwe oshinene shi na okudhigininwa natango, osho okugalikane na ooitaali mboka aape, Kalunga e ya kwathe ye ethe omithigululwakalo dhawo dhuupagani, yo ya shituke shili ya ninge aantu yOmukulili.

Ohungi ya ningwa esiku ndyoka mOnamatadiva moka mu na aantu oyendji lela. Elongelokalunga mesiku lya landula, olya ningilwa mEkoka. Onda li nda kwatwa komwenyo melongelokalunga kaatoloki yaali mboka ya yakula okutula euvitho momalaka gOshikwankala. Nani oye na wo omihoko odhindji.

Osha yelele ndje kutya, oshilonga shika shetumo, shaa mpoka tashi longwa medhina lyaJesus, itashi longwa osima nando, otashi eta iyimati yasho. Tu kondjeleni ano oshilonga shOmuwa shi taandele, oshoka Kalunga a hala aantu ayehe ya hupithwe noya tseye, oshili. 1Tim. 2:4. M.Ndj.

Onkundana ya thiki ngashingeyi otayi ti kutya, aalongeli aaludhe 120 oya thiki mOvenduka nekambamba okuza ku S. A. Mbaka oya za momihoko dhAatswana nAakoosa. opo ya kuthe po iilonga yimwe mbyoka ya thigwa po kAawambo sho ya ningi oshipotha shondhalate. Aawambo ya galukila kOwambo oye thike 12,700. kumwe.

oonzi dhe. Hes. 34:10. Ngele omuntu ti itedhulula shili noita adhika we kohwehwe yengandja noyaakiintu, ota vulu ngaa okukuthilwa po nokukala megongalo, ihe walyewo nee nduno ngele oku na omukumo okuuvitha tuu shili.

Onda li omupopili ando gwaashika, ihe mentu gwameme natu ipolithile owala. Kombinga yiilonga ndishi muusita nomuyevangeliste kamu na futo ya tya shoo. Ngele omuntu a yono oshilonga she, onawa ta longo owala iilonga yilwe mbyoka tayi mu pe ondjambi nokuli.

Oshoka ngele inatu tsikila iilonga naantu ngaa yo yene oyu uvite ombili, oshoka nge tatu yi moshilonga twe shi iyonene, aantu oye tu kenyanana naKalunga ita tuhdimbulukwa kaya.

"Dhiginina shono u shi na waa yugwe oshishani shoye."

Jason Amakutuwa

Ondhalate

dha za kep. I.

iilonga, nokwaasila oshimpwiyu ookomboni moka kamu na iiyakulitho yawo ya gwana nokumbwikwa mumwe kwaantu ye vule 5,0-00 yaa li melandulathano, moka uukolwe tau pangele nuushona woondjambi tadhi tyololokitha, ayihe mbika otayi ulike nkene omuntu ita tekulwa nawa."

Konyala iifo ayihe yopapolitika muS.W.A. inayi zimina kutya, moshipotha shika kamu na ehongakanitho lyasha konima lyuupolitika. Ihe kombinga onkwawo, oya popila wo aamati kutya, otaa pula shono ya pumbwa oku shi pula.

Oshifo shongundu yompilameni yepangelo lyaS.A. "Die Suidwes Afrikaner" osha ti, momukalo gwondhalate omu na oshindji inashi opala nando, nonando pe na uudhigu mbuka ngele aaludhe oyendji taa ka mbombolokela mevi lyaatiligane taa kongo iilonga.

Hahende J.P.Niehaus, ongomuwiliki gwongundu yompilameni noshilyo shepangelo mondjugo yooveta dha S.A. okwa ti: Ombinga inayi opala momukalo gwondhalate unene oyo ndjoka, sho omulongi kee na ompito yokweeta aanegumbo lye mpoka ha longo, onke elandulathano lya kola moshinima shomulongi ngoka ta kala ethimbo ele naangoka ta ka pumbwa egumbo lye li kale puye, osha pumbwa okukonakonwa neitulomo.

Oshifo shOshingilisa (Advertiser) hashi zi mOvenduka osha ti: Aalongi oya ngwenyukile sho haa piyaganekwa aluhe kopolisi, unene mboka yomokomboni yaVenduka.



"Odalate nai teke!" osho omumati ou a ingida neenghono fimbo ongudu yovalumenhu konyala 3500 ve mu ongalela. Efano ola fanekelwa pOluno.

TWA PANDULA

Ookaume, osho mwe tu ningila sha wanifwa. Ongerki yomOnheleiwa oyo mwa kondjela, oya fikama nokuli.

Ohatu mu pandula unene onye ovatungi pamwe na fye:

Ovambaye	R 28.00
Ovayakulipangi mEngela	24.00
Ovangenga	7.00
Ovavenduka	5.34 1/2
Ovakombata	3.55
Ovatavi	3.34

R 71.23 1/2

Tate Kalunga ne mu yambeke alushe, Eliko leni ne li hapupalife, onye ava mwe tu kwafa momailikano nomeengalo. Rev. M. Nengola

TOOLITHA NDJE KWEE!

Onda kanitha okofa ya hondje-lwa oshako nokombanda kwa shangwa **DAVID ANDREAS, OMPANGELA, OMULLO, ONDONGA**. Okofa oya kana siku twa heluka pOluno okuza kUushimba eti-29.12.1971.

Ngoka u yi na okofa ya tya ngeyi, toolitha ndje ko kuume, onda hala wo oku ku nyanyudha. Onawa u yi fale pOnguta, mpoka tandi monika nuupu.

David Andreas, Onyelelo, Okaku

AATILIGANE OHAA LUNDILE

Elalakano lyokuhulitha po omukalo gwondhate ngoka tagu longithwa sigo oompaka, ogwa taambwa nepandulo kAawambo ayehe mOwambo. Moshigongi shokomitiye yokutunga elandulathano lyomadhiladhilo ngoka aamati ye ga falele kEpangelo lyOwambo mpaka petameko lyomumvo, elenga esimankwa Amakali glindongo, mOndonga, okwa kuminwa unene omaipopilo gaatiligane sho inaa hala okufuta aaniilonga, nde omolwashoka aniwa omalenga inage shi tya.

"Oshigongi shono osha li sha gongalele peni moka twa li twa tindi aamati ya gwedhelwe iimaliwa?" osho elenga Amakali lya pula moshigongi.

Omusamane Amakali pakutseya kwe, oshigongi sha ningilwe, onkundathana yomagwedhele, (ina popya ethimbo) osha ningilwe mOmtananga moka omalenga ga tokolelele ofuto yiilonga mUushimba yi tameke R1.00 mesiku. "Shika aatiligane inaye shi ninga," osho a ti ngeyi.

Epangelo lyOwambo otali ka gongala lwo-tango nuumvo eti-14.1.1972 okuhogolola oshilyo oshikuluntu peha lyanakusa Ushona, ngiika moka wo oshipotha shika oshinene otashi ki ipulwa, manga oonkundathana dhasho pokati kaagandji yiilonga nomalenga gOwambo nehangano lya SWANLA, inadhi tameka eti-19-20.1.72, mOshaanda.

OMALUNDULUKO MOILYO YEPANGELO LOWAMBO

Omalunduluko oo a ningwa mokati koilyo yEpangelo lOwambo odula ya ya oku li ngaha kutya, elenga Filippus Kaluvi oo a kala moshikondo shoinima youhongu okwa ningwa paife omuyakuli pokati kovanailonga nEpangelo. Oye omupwilikini womaudjuu oo taa holoka kombinga yovanailonga ovalaule novahona vavo, ye e a fikife mEpangelo lOwambo.

Oshilyo mongudu Oyandjiveta omufitaongalo Kornelius Ndjoba, okwa nangekwa a ninge oministeli yomoshikondo shouhongu ponhele yelenga Kaluvi. Epangelo lOwambo olo la ongalele mOshakati eti-14.1.72, ola tambulile yo oshilyo shipe mongudu yalo ponhele yohamba Ushona Shiimi oyo ya xulifa oweenda pexulilo lodula ya dja ko. Ou oye ohamba Jafet Munkundi ou ta pangele paife Ongandjera.

Oshilyo oshikulunhu mEpangelo lOwambo osha hoololelwe yo mongudu ei osho tashi kala omutwe mEpangelo lOwambo ponhele yohamba Ushona Shiimi, oye— Ohamba Filemon Shumbwa Elifas mOndonga.

Oshifo shombelewa yongongahangano yaakwaLuther, (LWF Information) osha gandja omadhiladhilo gomalenga gatatu mOkaoko kombinga yeenditho lyeepangelo lya S.A. mokati kaavalelwa mo yaSuidwes. Omapulo nomayamukulo oga li po ngeyi:

Epulo: Oshike naanaa wa hala shi ningilwe oshilongo sheni shaKaoko?

Elenga 1: Emanguluko

Epulo: Ino hala okupangelwa ku S.A?

Elenga 2: Epulo lyoye otali tu lilitha. Owa uva nale sha kombinga yoopaasa, tse inatu pitikilwa ehala lilwe we muka mOkaoko. Ite vulu okuya nando kefumviko lyaakwanezimo lyandje nenge olyomukwaniilwa gwetu a sile mwiya mUushimba ondi na okuninga eindilo.

Epulo: Omafaneko gepangelo gokumangulula evigumbo lyaKaoko, omu li nago ngiini?

Elenga 2: Suidwes-Afrika evi limwe alike okuza uuzilo sigo uuninginino.

Epulo: Epangelo olye mu pula wo tuu ngele omwa hala mu ningilwe evigumbo mpaka mOkaoko?

Elenga 2: Epulo ndyoka otali tu lilitha. Epangelo otali kambadhala okutopola Okaoko kiilongo iikwawo muSuidwes nokupopya kutya, oshilongo osheni, noitashi kala kumwe niilongo iikwawo. Otwe ya lombwela kutya oombila dhoohekulu yaantu yomUushimba odhi li muka mOkaoko. Epangelo otali kambadhala okutopola okanona kegundji lyayina. Ngele omutiligane a silwa he nenge omumwayina, oha vulu okuya kuPretoria a ka kale pefumviko nopwaa na omakandekelo gasha. Ihe omuluudhe anuwa na ninge eindilo manga opo a pitikilwe okuya kaamwayina ya sa.

Epulo: Epangelo lya S.A. ohali lombwele uuyuni kutya Aawambo nAaherero otaa kondjo shimpa tuu epangelo inaali ya topola.

Elenga 2: Hatse twa kuna uutondwe mboka, ihe epangelo lya S.A. Nalenale otwa kala tatu ende nemanguluko pokati kOwambo nOkaoko, otwa enditha iipindi yetu nAawambo nayo wo oya enditha iipindi yawo kutse. Kapwa li nando uutondwe washwa manga epangelo ndyoka inaali ya.

Elenga 3: Epangelo ndika otali tu hepeke notatu ehama komapeko galyo.

Epulo: Otamu hepekwa komukalo guni?

Elenga 3: Epangelo otali tu lombwele shono lya hala tu shi ninge. Tse ngele oshinima shoka inatu shi hala, ohatu li lombwele kutya, inatu hala, ihe lyo otali tsikile ashike.



Omufitaongalo Kornelius Ndjoba (45) ou a hoololwa vali a ninge oshilyo momhitifiveta, okwa wiilikile omutumba wEpangelo lOwambo oudwaali muKotooba, omo mwa kundafanewe yo okondalaka yovamati. Pefimbo olo omunashipundi Gabriel Kautuima okwa li ta vele. Tate Ndjoba oye wotete omufitaongalo mEpangelo lOwambo a hoololelwa mongudu yeeministeli. Ota ka longa moshikondo shoulongi.

OSHITWO SHA OKUC

1.

Oshigwana oshi nomvulwe ndjo
Mushika ngele mwaashiyaka
Ondhelela yamupetami nge ya pita
Niilonga yakufu nge ya pwa po
Mukwanangomb'okolwaale tu uhala
Momuzile gwomwandi ta tsoonyanyo

2.

Oshigwana kashi nasha
Sho kwiinyanyudha nasho
lipemba sho ya za po
Omutenya taye dhi leke
Okukonga kumpwaku kumpwaku
Uukaya wokutokelwa ta hili
Ohungi ya dhog'ote yi mono peni?

3.

Masiku ngano ga piti
Mumvo mutimilongohamano
Niihup' iheyali mpo
Yamwe yomagundjuka
Mongundu yAawambo mba
Oyi ikundu taa ti:

4.

Omukadhona ngoye gwameme
Na ngoy'omumati gwatate
Tatu tongel' omutumba
Owala ihe tu etele sha
Natu imange okapandi kamwe
Kokwiikongela po sha

5.

Inapa pita omasiku mpa
Aanona sho ya tokola
Okuc ye yi tote po
Uudhigu nando uli po
Shidhigu iha nyenge mwene
Shigwana shandje taamba ndje

6.

Tala ngoye omugundjuka
lilonga ngoye to longo sha
Nyokogona kee shi nyoko
Ye hogona kee shi ho ngo
Andw'aakulu ye shi ningi
Mbo ya toto oshigwana shi
Oyana ye shi humpate ti.

7.

Aamwameme tu longeni
Okuc tu yambuleni
Moshigwana yi longe sha
Omimvo nando dhi ka pite
Okashona yi gandjele
Muuninginino wOwambo
MOndonga nUukwanyama

KuTangeni Andreas Nuukwawo



Ongerki oya humbata esiloshi-mpwiyu lyaalumentu haa longo mehalakano ethimbo ele keyakulo lyaayakulingerki, aasitagongalo naayevangeliste. Mbaka oye ya lambalala apehe mpoka aamati taa falwa kiilonga yawo, opo oomwenyo dhaamati dhi vululukithwe kevangeli li na omwenyo. Mefano ndika, omuyakulingerki Rev. Andreas Haimbili, ngoka a yapulilwa oshilonga shuusita 1969, okwa longo megongalo lyaElim omvula yimwe nokwa langekwa ihe mOmbayē moka ta longo sigo ongashingeyi.

Oipango oi fike tuu pamwe?

Onda hala okupula kombinga yoipango omulongo nghee tai longifwa mongerki yaElok. Oi fike pamwe tuu hano? Omolwashike omomaongalo aeshe a fa taa longifa ashike oshipango shimwe, oshitihamano? Momaleloongalo itamu kundafanwa vali shimwe oshipango tuu osho.

Ame onda tala oipango i fike pamwe. Naashi itai popile nande fiku limwe oshipango oshitihamano nde onda hala ashike okupukulula ovanhu okufimaneka yo oipango ikwawo. P. H. Hamukwaya

Teta mpaka

O H A N D E L E S I Y A N D J E O O N D J I

Ngele owa lunduluka pehala lyoye konima sho wi inyolitha oshifo shoye, tu tseyithila mbala tu ku kwathe, opo oshifo shoye shi thiike mbala.

Edhina Mr./Mev./Mej.

Oshako

Oshilongo

Nale onda nyolithile

Edhina

Oshako

Oshilongo

Tuma okambapila haka mbala kOmukwetu, Oniipa, P/B. 2015, Ondangwa.

O M U K W E T U

Oshifo shOngerki onkwaevangeli paLuther yomOwambokavango
Die Nuusblad van die Evangeliese Lutherse Owambokavangokerk
Ohashi nyanyangidhwa mOniipa, Omukuluntu gwoshifo/Hoofredakteur omubisofi Dr. Leonard Auala, Amushanga/redakteur Rev. Sebulon Ekandjo
Ondando yoshifo komumvo muSuidwes-Afrika R1.00, kombanda yomafuta R2.00
Oondando nomambesitelo naga tumwe kOmukwetu, Oniipa, P/B 2015, Ondangwa, S.W.A.

Omatseyitho gomuntu mwene pashinyolwa shuule
woondeimi 1 otashi futwa R1.00
oondeimi 2 otadhi futwa R1.90
oondeimi 3 otadhi futwa R2.70
oondeimi 4 otadhi futwa R3.40
oondeimi 5 otadhi futwa R5.00
Oto vulu okutuma wo efano lyaashono wa hala shi tseyithwe

The Finnish Mission Press Oniipa
P/B2015, Ondangwa, S. W. A.