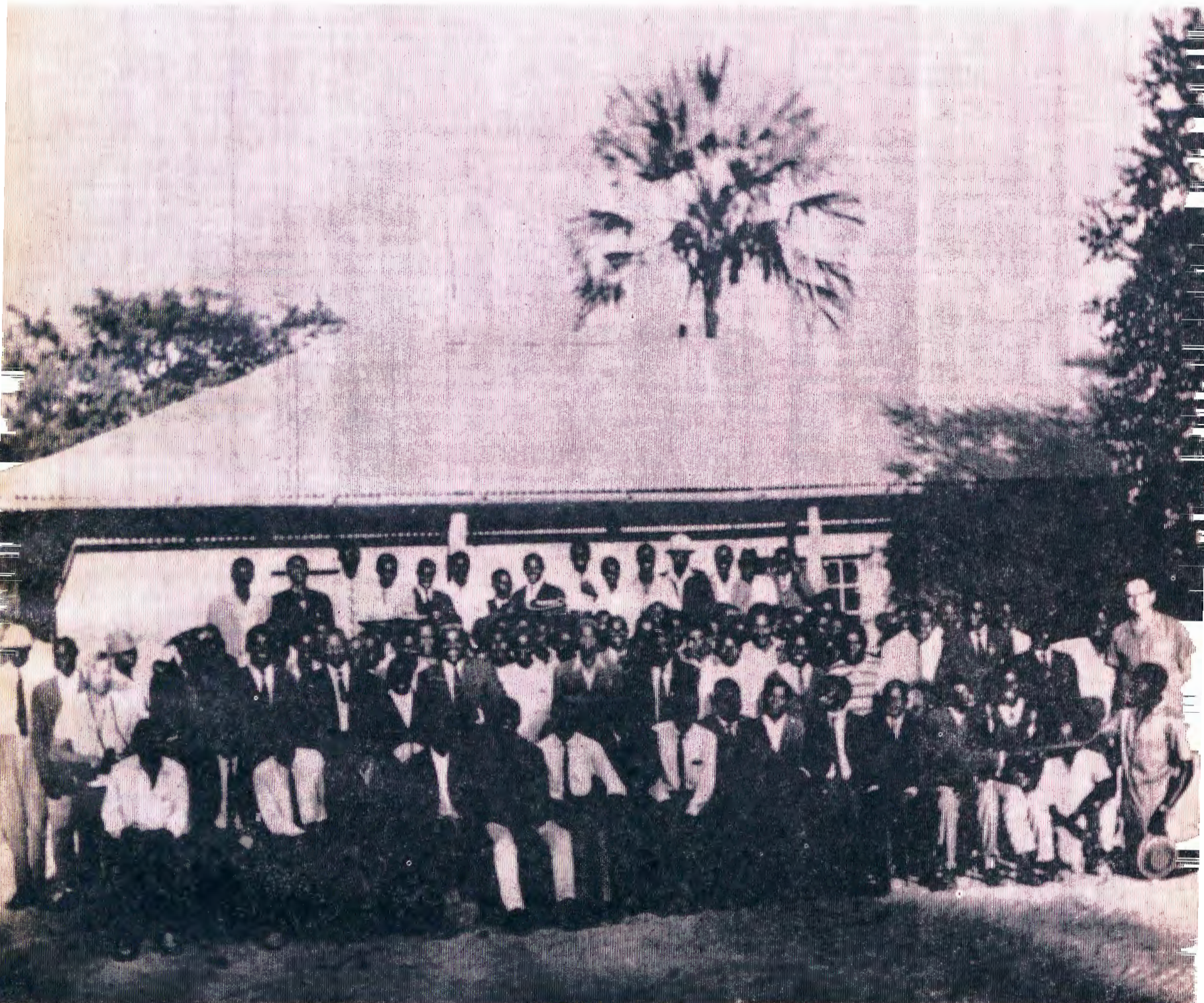


OMUKWETU

Registered at the General Post Office as a Newspaper



MAI 1971

No 9

Walye eshi tashi ke uya

Edu lovalaule, Afrika, muio otamu hangika paife oilongo i dule 30 oyo ya mona emanguluko moule weedula ashike omulongo. Otashi ti nee, eemiliona di dule efele limwe dOvayafrika, otadi ende keemhadi davo vene moinima aishe yehongo loshiwana, epopilo loshiwana, ile outeku monghalafano yoshiwana. Shiimba na-Suidwes yo tali ka kala efiku limwe momuvalu ou.

Nde oshipulifo shi li kombada yoiwana oyo, oshondjala. Ovanyasha ovo tete va fiya po eenhele davo omo va kala haya xupu moimuna nomomapyia, nde tave uya keedolopa okulongela ovatilyaane. Ovakuupe inava dula okutwikila nokukalamwenyo kwopashiwana, nosha ngonapaleka eliko alishe.

Eshi nee va manguluka nova pewa eendjabi da ondoka, va lalakanena tete okunwa nado nokulanda oihauto. Omalwoodi yo pokati koshilongo shimwe, inaa pwa po, ova tembaka nomaliko avo okwa halakanena mokuya onhapo yovatondi.

Onghedi yokulonga omapya inai wana natango okufikamena ehapupalo lomvalu hau monika odula keshe.

Owambo yo oya taalela epito eli. Eenghatu dimwe da fikwa nale nokuli ngashi okufiya ovakulunhu komikunda oko va fiilwa oimuna, omapya nomanota. Okuhalakanifila oondjabi hava tambulwa mokunwa nomoitukutuku. Eenghatu dikwao otwe di teelela natango nde odi li popepi.

Oku na yo onghedi yokungoneka omaxupilo molwovakainhu vamwe eshi tava pewa eendjabi inave di lilongela mokunangalwa navo. Ongudu ei otai hapupala omudo keshe, nde oya ninga eenghupa doshiwana neliko lihapu otali kanene muvo.

Vahapu nenge tava tale oupuna waNima, ohava diladila kutya oshiwana oshi na eliko. Otwa kanifa paife oilya ihapu, oimuna ihapu, nde oumaliwa ava hava monika, ove na omakwena manene oo taa pumbwa kufufilwa alushe. Tu longifeni eliko noukodi nomoshili, ondjila yokuhapupalifa oilya i diladililwe, nomayambeko a Kalunga a kongwe, fimbo oixuna yoovene inai fika.

ODIBO

Oilyo aishe yEhangano lOvalihongi Ovakriste, mOwambo noKavango, otai teelelwa koshoongalele shayo kOdibo, Kalunga nenge e shi hala eti-3-6 Septemba 1971. Hamushanga wehangano eli muS.A. Omufitaongalo J. J. Viljoen, okwa shiivwa koshoongalele eshi.

Etumwalaka kaasita yomagongalo agehe (R.K.) muDurban

Esimano lyomuntu kali li momuhoko gwe

Kristus oye omutse gwongerki, nongerki ngele mehempululo lyayo tayi palutha okuhokolola evangeli lyoshili, otashi ti oya palutha oshinakugwanithwa shayo shaKristus.

Aantu oya li ye na okumona evangeli lyaKristus momwenyo gwongerki. Oya li ye na okumona oonkondo dhaKalunga tadhi longo muuyuni, unene sho tadhi lundulula uutoondwe pokati kaantu, opo ya kwatathane, ya silathane oshimpwiyu mohole.

Ependulo lyetu oondika sho ku na ngaa omandhindhiko geyakulathano, ihe otu shi shi wo kutya tse, hatse mboka ando ihaatu puka. Moshilongo shetu oku na linima oyindji tayi sitha omuntu oluhodhi. Okakombonoludhi nkoka taka tana ishewe niishewe pamikalo odhindji, shika otashi shiti ombepo yokwaana elago sho oludhi lumwe talu talwa olunene, lwa simana lu vule olukwawo.

Eshito lyomuntu

Tse oshe tu yelela notatu shi ekama polweela kutya shono shi na oshilonga momuntu, kashi shi omuhoko gwe, ihe uukwatya we wopanshitwe mboka ta kalathana nawo nayalwe, pamwe nomagano ge gopakulwa, ngashi e ga pewa kuKalunga pasilohenda. Oyo mbika tayi simanekitha, hamuhoko gwe ashike (ras).

Ando tu tye omuntu ota simana paludhi lwe shi vulithe ye mwene nke e li paunshitwe we, nena otatu tamaneke eshito. Evangeli otali tu uvithile kutya Kristus oye Omuva gwetu, noonkondo adhihe okwe dhi pewa. Aakriste otaa pewa oshilongaithano shawo muKristus.

Nongele tztu tula oshilonga shika twe shi inekelelwa ponkatu yokupangela, tu konge uuwanawa wetu yene, muyalwe, nena otwa shundula eithano lyetu.

Otu shi shi muS.A. omu na omapuko omanene nuugoyoki mboka tau ehameke oyendji. Omuhoko gumwe, aatiligane, otaa

nyanyukilwa uuwanawa nuuthemba mboka taa tindi oku u pa yalwe. Oya tegelela kehe gumwe a zimine kutya omuhoko gwomuntu ogwo oshinenenima shi vule yilwe.

Epulo lyotango mpaka ndyoka u na oku li yamukula olyo omuhoko gwoye kutya oguniipo. Nonge we li yamukula, nena owi idhengela nale okatenda mpoka u na okukala, ngoka u na okuhokana naye, iilonga mbyoko u na okulonga, osikola u na okusikola naampoka u na okufumvikwa. Osha fa' naanaa kutya ando wa li waa na omuhoko, ito dhimbululwa, nena ku na wo sha, oshoka ayihe oto yi ningilwa paludhi lwoye.

Pwaa na omagumbo

Kape na nando gumwe mokati ketu iisiikila a kale kee lwete ando okukalamwenyo okudhigu muka kwe etwa kuS.A. Oshiholelwa shimwe; Paveta yoshilongo, konyala omiliyona yimwe yaalumentu, otaa longo muundjendi. Aalumentu mbaka aaludhe oshitopolwa sha simana moshilongo mokulonga iilonga mbyoka tayi pumbwa yi longwe po shili. Yo iilonga mbyoka ihayi vulika kaatiligane. Aalumentu mbaka inaa pitikwa ya kale naakulukadhi yawo. S.A. ota ti ye ota yambula eputuko lyopakriste moshilongo. Tse otu shi shi shono ongerki tayi shi longo omolwondilo yokukalamwenyo kwaanegumbo. Ihe S.A. ote shi keelele nompango yiilonga ye mbyoka yi na ethiminiko.

Iiyimati moshinima shono oya monika nale. Aalumentu yaa na aakiintu yawo ndika elongo tali sikumudha omuntu a kale muumbwanda nomonkalelo yaa shi yopantu. Aakulukadhi kaye na we egameno nekwa-tho, aanona oohe otaa ya tala ngashi aakwiilongo.

Ashihe shika inashi ningwa ashike ando kongundu yontumba ndjoka tayi pangele ihe osha kala ethimbo li vule etata lyethelemumvo muka muS.A. Osho omukalo gwaS.A.

Epangulo oko li li

Oshilongo shetu nongerki yetu, oyi li koshi yepangulo lyaKalunga. Kristus ota ehama komadhiladhilo gokupangela omihoko, tu tye ota ehama konkalomwenyo yaS.A. Kalunga ite tu pangula pakuhokwa ongundu yontumba nenge omuthigululwakalo gwongandi nenge elongo lyopaupolotika. Ote tu pangula pakwaahala kwetu tu ningwe aape muukumwe waKristus.

Natu ipule ano shili naashono tashi ningwa mokati ketu. Otu shi shi tse otwa ithanenwa esindano enene neiyambo tu li ningilwe medhina lyaKristus. Shika kashi shi oshipu.

Natu ku pule ashike epulo ndyoka lye tu thikamena wo esiku kehe. Ohokwe yokulonga kwoye owe yi tula mulye, nenge moshike? Omongundu yadhinwa? Omomaludhiogendji gaantu muka? Okelandulathano lyopantu nokomithigululwakalo? Omuropolitika nenge muKristus?

Kalunga ne tu kwathe tu kale aayinekelwa yevangeli lyaKristus, notwii gandje kuye komeho gaayihe.

Etumwalaka ndika nali taambwe kwaayehetwe yetu mombepo yopakriste nehalelo ewanawa lyokulandula Kristus, tu hole ooyakwetu ngashi tu ihole tse yene.

Southern Cross



Omuhongi Erkki Hynönen okwa galukile ishewe kuAfrika kOwambo ethimbo efupi lyoomwedhi mbali Mai naJuni. Ota kala iiwike yimwe kegumbo lye ekulu kuKongo, opo oshiwike shimwe okwe shi kala ishewe moshigongi shelundululo lyOmbimbeli mOshikwanyama. Tatekulu Hynönen, oye omupokati kEhangano lyokunyanyangidha Ombimbeli muLondon nokangundu kelundululo lyOmbimbeli yOshikwanyama mOwambo. Ongerki yaElok, otayi pandula keyakulo lyomumati nguka gwaKalunga nonando e li muSoomi. Tatekulu Hynönen okwa li wo e tu popitha moshituthi shEtumo mOmandongo, omumvo gwa yi

**EPANGELO LYAKRISTUS
MOKUKALAMWENYO
KWETU**

Rom. 8: 31-39

Kristus oye tuu nguka a sa eeno, okwa yumudhwa nokuli, oye e li kolulyo lwaKalunga."

MuRusland omu na omanyolo gamwe ngoka ga tsilikwa puule ga monike komuntu kehe, taga hempulula; "Tse otatu ka sindana, oshoka otu na oonkondo omolwaLenin ngoka e li mutse."

Osho aakomunisme taa simaneke Lenin gumwe gwohe yelongo, komeho gaKristus. Oshitya shi li aakriste pomwenyo, osho shoka kutya "Tse otatu ka sindana," oshoka elalakano ndika otali kambadhala okunina po uukriste.

Eitaalo lyongashingeyi olya faathana naandyoka mulyo mwa zile uukomunisme, sho tali tala kutya okukala u na ashihe we shi pumbwa, osho okwaadha elago lyomwenyo. Onke oomwenyo dhetu otadhi fudhagana, tadhi tidhwa notadhi luwa kehwamo ndyoka lyombepo yomososiale yu udhilila ondjala, onkayi, uyina, oothina nosho tuu. Esiku kehe otwa fa tatu lesa oshipalanyolo sha tsilikwa komeho getu, "Otatu ka sindwa, oshoka katu na oonkondo molwashoka katu na ngoka e li mutse."

Paulus, omuyapostoli ota pula omapulo omanene, ngoka mugo ita tegelele omayamukulo, oshoka oku ga na nale.

"Kalunga nge te tu gama, olye ta tsu ondumbo natse? Olye ta vulu okutamaneka aahogololwa yaKalunga? Kalunga ngele oye tu utha epangulo, olye te tu pangulile mekano?" Ov. 31,33.

Ondjala itayi vulu, onkayi itayi vulu, noshishitwa shimwe shomegulu nenge kombanda yevi kashi vulu. Lenin nenge aalongwa ye kaa vulu, nando ya nyole iipalanyolo inene mombepo yesindano. Omolwashike?

Lenin okwa sa, ihe ina yumudhwa, ye ina kuutumbikwa kolulyo lwaKalunga ngashi Kristus, ngoka e li ko te tu galikanene. No hakugalikana ashike, okwa kalekwa ko wo a pangele aawa ayehe, oonkondo adhihe nedhina kehe tali vulu oku tu tilitha. Ef. 1: 21.

Ano kaku na onkalathano yi na oonkondo nuuthemba muSuidwes nenge palwe woku tu pangulila mekano ngele tu li po aana yaKalunga. Kalunga na kokithe ohole noshili ye ndjika mutse esiku kehe.

Sebulon Ekandjo

EYAKULO LOMWEENDA

Ombibeli lyapuki otai tu kumaidile unene eyakulo lovaenda. Eyakulo lovaenda otwe li pewa ongoshipango shohole.

Ndele eyakulo oli na ondilo inene osheshi otali kufa osho u shi hole unene, notali ku pula u litule mo ove mwene nehalo alishe.

Eumbo lomwiitaveli oli na okukala nonduda yovaenda va yakulwe momilele eshi va enda va loloka. Ndele ngenge omulele omwii omweenda ita tulumukwa nawa oye oku udi te ngeno a shune keumbo lavo.

Nomupaani meumbo laye oli na okukala onduda yovaenda hai filwa oshisho efimbo keshe, okalupale kawa ka wapekwa efimbo keshe, shashi ovapaani Ovawambo ove hole ovaenda. Omweenda meumbo lomupaani okwa longekidilwa aishe, ovakwaumbo otava kala, nokuli moluhepo nande oinima opo ili meumbo, oya teelega okuyakula ovenda. Ngenge hai yelege eyakulo lovapaani oha ti: Ola fa tali piti komesho eyakulo lovakriste. Omweenda movapaani a talika oshinima oshinene noshiwa unene.

Otwa tonga omilele dovaenda nhumbi di na okukala nokuningilwa oshisho diha kale oilikama nande, osheshi oilikama otai kufa po ombili nehafo lavo.

Oshiyakulilo oshitivali osho oikulya. Omweenda ta dimbulukifwa koikulya kutya okwa tambulwa nehafo ile nombili. Mwene weumbo e na okutala oikulya ya tya ngahelipi omweenda ta yakulifwa nayo. Vamwe ve linekela nekulu laye meyakulo. Heeno nekulu ne linekelwe shili, ndee omushamane e na yo okutala nokukwafa nekulu laye meyakulo, o po ovaenda va shune nefimaneko okufimane ka ovayakuli vavo.

Paife onda hala okuyuka momayakulo oyoongalele yopangerki Ndishi paife oku na oyoongalele yopangerki ihapu tai shivi ef mbo keshe. Onda hala ndi tonge kutya, oonakushi va dimbulukweni tete eedjovo dOmwene eshi tadi ti: "Ovaenda nava yakulwe nohole." o po oyoongalele yopangerki i kale ya f mana.

Otu na ovatumwa mokati ketu va menekela mo. Ohatu va tala ootate noomeme nde ohatu kala yo moyoongalele yavo tave tu yakula nohole inene, omilele fiyo oikulya. Osha wana oku tu pa oshihopaelelwa shiwa.

Oyoongalele yongerki oyo tuu nda hala okutonga osheshi vahapu tava di ko tava ngo-

**DIMBULUKA OSHIPONGA
ESHI**

Omweenda ngenge ta di po ehe na oinangalomwa, omunhu a tya ngaha oye omutandavelifi weembuto donhumba ile dongadi momaumbo ovanhu.

Ondi udite ekwafo linene koshiwana oli na okukala po, ndelene oli na okukala la yela nola yuka. Kevahapu hava tula oinangalomwa omo hava nangeke mo ovaenda pomutenya nande.

Mowambo paife otu na oyeendifo oyo hai tu kwafa moshinima eshi, opo tu ende noinima yetu. Ngenge wa enda moshihautu ndele ku na oinima ei, nena oto pukifa oshiwana, noto shi tula moshiponga lela.

Keshe umwe na kale omukeleli nomupukululi woshinima eshi shoinangalomwa. Ou a putuka naulike eputuko laye kwaavo veheli kwete noveheli shi. Inatu pitikeni owii u dule ouwa.

Ile wa hala nga okufudila mo omifudo daavenya va longifile oikumbafa efiku linya? Ile wa hala u kale omutandavelifi weembuto? Ku hole oshiwana shoye nani?

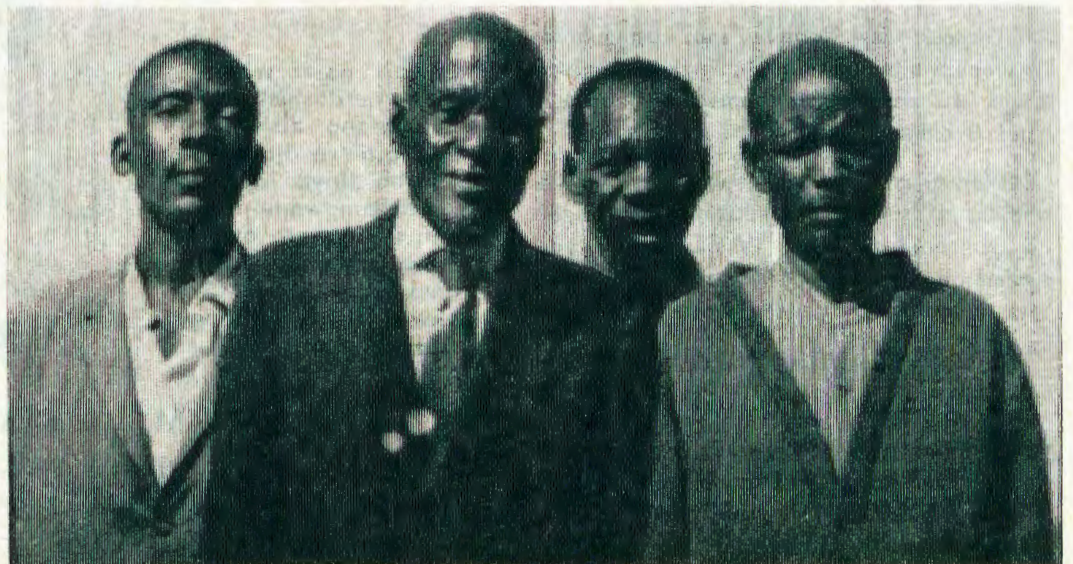
V. B. Kanhalelo

ngota omilele noikulya. Tava ti inava filwa nande oshisho.

Oshititatu osho okutambula ovaenda nombili noku va yakula nayo. Eyakulo lombili tali tuvikile owii aushe meyakulo keshe. Oovene vomaumbo ngenge ove na ombili nehafo mokukala novaenda ovaenda otava udu ouneumbo muwa.

Pehovelo onda ti 'eyakulo oli na ondilo.' Itashi ti eshi to udu ovaenda opo nee to kongo ombili nohole ahowe. Otu na eendjovo dOmbibeli odo ta di tu longo ngashi di li doovene. Rom. 12:10.

Vilho Kaulinge



Aayevangeliste muuzilo wUukwanyama, nayo wo oya kala moshigongi shaayevangeliste mOngwediva, tala ehokololo kep.6 nefano lyongundu ayihe. Mpaka okuza kolulyo nokolumoho; Timoteus Nakale (Kongo), Jonatan Shilimela (O-mundaungilo), Petrus Kaindume, naSalomo Hashipala (Kongo.).

OWADIMBWA ESHI SHE KU KUFU KEUMBO?

Mwa tokelelwe molwaanyuko nye naKatilina woye, ounona vehe na eshi tava li, oimhutu ihe na sha shokupona. Nde nee memukwetu u uye nee kEdiva lEedobe laNau-uanga ofilu ngaho? Oho u hala ashike naNangado, ove to penduka puNanghelo. Otwa li tu shi owe ke shi yukapo mboli owe ke shi eta po nee vali unene.

Koshomeva nani mboli nande kwiileko, shaashi owe ke lishada ashike ove mwene we li nyaneka nee omhombo shiveli aa!

Tala nee kwinya oho u hala nee nye naShimbwada, omona womutakumi ta shi li eengodi, ye ha shiteleko. Wa li ho tale ove to pupu fiyo ekola ngali file pomha, nakeshe umwe eshi wete, kutya owa dimbwa osho she ku kufa keumbo.

Monika naMateus kenongelo ofilu ihava i ko vali, otava djala shike vo tava nyengwa kwaashi shokupona. Hai ti mwameme, pamwe owa dimbwa osho she ku kufa kOwambo kedu loye?

Jonnes N. Kashokulu

EKWATHO LYONGERKI

Okomisi yongongahangano yaakwaLuther muSoomi oya fatulula nokugandja uyelele kombinga yelongitho lyiimaliwa mbyoka hayi gandjwa kiilongo ongekwa, kutya nayi kale tayi gandjwa kiilonga mbyoka hayi konakonwa ngele komahangano goongerki nge kiigwana ya hangana.

Okomisi oya ti, kutya ekwatho ndyoka tali zi kongerki yaSoomi otali lalakanene okukwatha okukutha po uugoyoki tau longithwa muuyuni nokukonga uukumwe womuntu kehe ngoka ta hepekwa, sho ta kwathwa ombepo nolutu lwe.

“Ongerki nayi kondjele ano emanguluko lyaapekwa momathiminiko gawo ngoka itaaga tsu kumwe nuuthemba womuntu,” osho okomisi ya kumagidha nomukumo.

Okomisi oya kumagidha wo ku landulwa ondjila ya tsuwa po kokangundu kehangano lyongerki muuyuni (WCC) sho ka gongalele muEtiopia, ndjoka tayi popile notayi kondolola omafaneko gehangano ndyoka lyaWCC.

ONDJALA MUPAKISTAN

Ondjala inene oya teelelwa muPakistan lokoushilo moshitukulwa osho shi na ovanhu ve fike 1,500,000. Oshiwana eshi sha hovele okulikondjifa, otaku tiwa omapya inaa longwa vali nawa omolwolwoodi lakula. Vali omakwafo okufikifa oikulya kovanhu, otaa nyengwa osheshi ekwatafano leendjila ola hanaunwa po filu koita oyo.

Omukanda wefyuululo

Omukanda wefyuululo, ohau ifanwa “Etestamendi.” Ovalihomboli ohava shange omukanda o, tau holola nghe va tula kumwe emona lavo lihe na mwene, mwaava vavali ve lihombola, nde olavo aveshe. Naanaa ngaashi ongerki ye tu longa moshinima eshi. Ovalumenhu voshiwana shetu ova uda ko diva Etestamendi, unene eshi ve hole oku lesha Ombibeli oyo tai yelifa oshiima eshi moule, Mat.19:4-5. 1Mos.1:27 fiyo va hanga osho Kalunga a udanekela omahombolo, omayambeko mahapu taa kakala mo, naavo tava ka dalwa momahombolo a tya ngaha tava landulwa kouhapu womayambeko, 1Mos.30:1-24. Ovalumenhu ava, ova hovele okuulukila oshiwana shetu oiimati imwe yo mehombolo moyoongalele yongerki, nomepangelo loshilongo. Omapya inaa tukulwa vali. Ohole yokuholafana ya hapupala mehombolo. Ounona va putuka nawa, ongaava tava ka twikila omwenyo ou, womuKristus momahombolo. Vo va nyengwa okuyoolola ovakulunhu vavo. Va tala meme natate omunhu umwe ngaashi naanaa ovalongi vetu Vilho Kaulinge naHynönen va li va fatulula pefimbo lepapuduko moshitaingerki shUukwanyama.

Paife ne ovalumenhu vetu ava va kala ovahongi, ovaprofeti moshiwana shetu, mongerki yetu, momahombolo ve tu limbilika. Vahapu va efa po va hengana ovalikadi va vo. Vamwe tava diinine eengaba mepya, oukwapata tau pangele ngaashi nale. Vamwe va hombola ombada. Vamwe ove na omambo avari. Pondje yOwambo e na ko limwe. Oshiwana otashi kulu noungone wo komwenyo, eshi ovanaenghono va dipawa mo komutondi.

Ovakwaita voshiwana, vamenhoonye! Aalukeni, mwaalukile kOmwene weni. Oikongi yongobe ya haivinga, ya nashitayi shiyala. Omaumbo eni otae mu teelele mwaa yakulife Kristus Jesus. Ovalumenhu nge va pilamena oshiwana, oshiwana osha mona ehakano, nepunduko linene.

Ovalikadi voshiwana shetu va ninga ee-

mhiluki, okumhilukila omahombolo otashi di peni? Ovalikadi va amuka ko kovalumenhu vavo, nde tava ame kounona vavo. Eshi osho omukifi, noshipo movapaani, okaana okwaamuka kuxe nde taka ame kuina. Ovalikadi moupaani, ova li ve na ombada okukala pokati kounona naxe. Ove shi tala, ngenge okaana taka amuka kuxe osho omupya, kake na elao.

Eshi otashi di hano peni ovalikadi ovakriste tava teya eehombo meholeko? Manga ve li ovanyasha ova shiva “Etestamendi” manga ounona inava kula. Nge va kuluna ota pete eemheto ongaau alutula, e na eehove, ngaashi Omukwanyama omwalikadi? Hai ti: valumenhu vakwetu, osho ne she mweefifa eehombo, nomaumbo? Waima, oita nge tai ya moshilongo, nde ovalumenhu tava faduka po, oshilongo ha sheni vali.

Vamenoonye! Oita yohamba oyo Jesus Kristus. Aalukeni, mwaalukile kOmwene weni.

Otwa teelela ne omido dihapu. Otwa hala ondombwedi imwe omwalikadi u mwe a kale omuudifi moshiima eshi. A ingidile vakwao epuko eli, okweefa po omulumenhu waye, nokwaama kounona. Omukulukadi umwe, okwa popya monhanda imwe ta ti: Vakwetu, ovalumenhu vetu ohava longo meehotela, moukoshokilela. Ngenge tava alukile keumbo eemhindo dokunwina odi li poshi, ove ne iho likosho. Tashi ti, omulumenhu ove we mu taataa noumbodo woye. Wa nyengwa oku mu keelelela yo meumbo noukoshoki woye. We mu tondifa eumbo nohombo yo. Omukulukadi ependa moshiwana shetu osho a holokola.

Hai ti: oomeme. Aaluleni ovalumenhu, veni ovo mwa taataa momambo nomikalo deni. Ovalikadi vakweni ova diinina ovalumenhu vavo muKristus. Omulumenhu, ngenge ito lidilulula, oto ka pulwa omwalikadi woye. “Adam ou li peni?” Omukanda wefyuululo ou ushi tuu?

Malakia Hauuanga

Oukali nawa womeumbo nefiloshisho longhalafano aisho yamo, otai tu djuulukifa eumbo linya lomeulu irjaali tungwa nomake, namwene walo oyoo a pewa epangelo alisho nota kala alushe. Oye okwa hala tu lihonge eduliko manga tu li apa.



A DIMBUKA MOILONGA

Omulongi wofikola yeshasho mondobe nomuKongo nomuudifi munene Simon Pashita okwa dimbulwa moilonga yaye kOmwene eti-13. 11. 1970.

Okwa longekida efyo laye nelaka eli: “Ofye otu li moukumwe wo-

hombolo, neliko letu alisho otali pangelwa koukumwe.”

Omufiyekadi Rakel Mwahangeshapwa okwa popya ta ti: Oukumwe wavo naSimon oo, oshinima shopamhepo onghe oo tau talwa wa wana, itau nyonwa po koinima yopedu.

OMAPULO NOMAYAM UKULO

T. L. Emvula, Oranjemund: Kain na Abel oya valemwa mOparadisa nenge opondje?

Oya valemwa pondje yoParadisa.

Mukadha Kain ole naakuluntu ye oole?

Ombimbeli itii popi sha kondjokana yaKain yi totomone omadhina, ihe otu shi shi okwa li omuna gwayina nahe.

MuNod omwa li aantu matsa muze mukadha Kain?

Aawe, ka kwa li aantu yalwe oKain a tula mo.

Aahongi oshike yi indika omalovu mohango, Jesus a shitukitha omalovu mohango?

Omaviinu ga shitukithwa kuJesus omuyakuli gwaayenda okwa ti: "Omawanawa" Tashi ti Aayuda ngele taa ti "Omawanawa" ongoka itaaga kolitha omuntu. Jesus okwa holola eadhimo lyaHe. Ino vundakanitha iinima mentu gwameme.

Ohe kondjele Kristus nde ohe shambekele iitenga oshilumentu, ndele ne tamu ti ngaye ogwasatana, omwe shi mono peni?

Olupe lwoye niilombo ngee to ti oto longele Kristus ngwe wa tya ngaaka.

Iimaliwa yeshasho lyaanona ohayi kosho shike? Omeya nenge oshikaha sho tashi tentekwa okanona, nenge eyambeko?

Owa puka mentu mukwetu, tala muLukas 2:24. Ngele omutokele oto gandja oonguti mbali, ndishi onguti ohayi landwa 25c, mbali ano 50c tashi ti omagano ogo naanaa 50c pampango yo-muwa. "Okweetela kOshinyanga okanzi komumve gumwe nongutyona nenge etendenguti te yi eta komusita nongele a nyengwa, oshoka ohepele nena ne ete uungutyona uyali." 3Mos. 12 6-8. Dholela owa li u na okweeta R5-10 nokuli.

Petrus okwa tindi omulumentu ngwiyaka kwa li te mu pe iimaliwa e mu shashe.

Ne otamu longele Kalunga nenge iimaliwa?

Ombimbeli oho yi lesa iitsandjakapela, oshoka Simon onganga okwa shashwa kuFilippus, manga Johannes na Petrus inaa tumwa ye ye kuSamaria lil. 8. 13. Iimaliwa okwe yi eta a hala a kale e na onkondo dhaayapostoli naanaa ngashi to gandja iimaliwa wu yapulilwe uusita, ndjoka oyo ondjo ndjoka.

Melkisedek oshike kee na etameko nehulilo?

Ombimbeli otii popi Melkisedek pedhengo lyaakwaniilwa 1Mos. 14:18-20 yo inayi popya evalo nenge eso lyaMelkisedek nuukwatya mbuka owa shunguna omuna gwaKalunga Jesus.

Omumentu a falwa megulu etitatu olye?

oPaulus, Omuyapostoli.

Eehapu dhi a uva eembwanawa nenge eembwinayi sho inaa pitikwa oku dhi popya?

Megulu ka mu na uwinayi. Oohapu odho gwala dha li eenene munaangwe.

Luther okwa tondelwa shike sho a dhike egongalo lye?

Okwa li a kondjitha ombapila yedhimo lyoondjo ya landwa kaakriste.

Uukriste owo okulikolitha aavuthi nenge okukongela Kalunga eemwenyo kombanda ye?

Uukriste okukala moohapu dhaKalunga nokuvulika nokulongela Jesus Kristus mongerki Ye.

Eshasho ohali landelwa shike?

Eshasho ihali landwa. Kalunga ota lombwele aantu Ye, hayalwe ta ti: "Eteni oshitimulongo" Malakia 3:10.

Omagano gaKalunga itaga landwa niimaliwa. Otamu landitha opo mu ka ye moheli mu na omakwele ga gwana nenge, opo tu ka ye mo kaatu na nando okapeni?

Omboka ya hala uyamba otaa yulwa kemakelo nokomwigo nokuuhalu owindji wuugoya no-wiiponga, hau fala aantu meyonuuko nomemakelo. "Tim. 6:9 Oshimpwiyu nefundjaleko lyuyamba tali thetekepo oohapu." Mat. 13:22" Aayamba oya nyengwa okuya moshilongo sha-Kalunga "Mark. 10:25.

Omolvashike hamu taamba iigandjwa yomuntu e na aalikadhi yatatu ne itamu shasha oyana?

Omuntu gwombaleshe-ombanda ota kondwa megongalo nokatu taamba iigandjwa yaakondwa Jason Amakutuwa kuume.

Konima yomimvo 10

Ostada ontihamano oya nyolwa lwotango mOwambo momumvo 1960, kaalongwa aashona yowala. Momumvo 1964, omwaalu ogwi indjipala, onke mokutaamba aalongwa omumvo gwa landula, oosiminali inadhi vula okutaamba ayehe ya pita, nokwa li ku na okushangwa ekonakono lyetaambo. Okuza lwaampoka, opo u taambwe, owa li u na okukala inoo ndopa, ongele omwaalu, Oshiwambo nOshimbulu.

Mboka inaaya taambwa mOwambo, oya ka konkola kuAugustinium, Okahandja, hoka ihaku taambwa wa kwiinwa mondhi-kwa yoshikombo, noopaasa dha kitakana.

Lwopo-1966, mboka inaaya taambwa moosiminali, kutya openi, yo inaa mona uulongi, mboka kau na onzapu, oya tameke okwiishuna hatango mongundu ontihamano moka ya zi mo.

Mo-1969 onda yi wo mostanda ontihamano, ihe mboka ya li taa endlulula oyo ya li mo oyendji. Yamwe oya pita iilongwa ayihe yekonakono, ihe aniwa oopelesenda dhawo

inadhi gwana. Osha li oshidhigu okulongwa pamwe naamboka taa endlulula, ngoye opo to tameke, oshoka nani opu na eyooloko pokati keendlululo netoto.

Petameko 1970, omayamukulo getu oga thiki, nda pita ngaa ano iilongwa ando ayihe, ihe inandi taambwa. Onda li ndi na okwiishuna mo mongundu, opo oopelesenda dhandje dhi ka adhe, ngame ndi ka taambwe 1971.

Ishewe kombinga yimwe osho omukalo omupe opo to taambwa. Otwa li aalongwa yopamaludhi gatatu; mboka opo ya zi kostanda ontitano, mboka tatu endlulula nooNahenda mboka inaa taambwa oshikando oshitiyali, ye ya ya kambadhale, opo ya ka tale olutitatu pamwe talu zi.

Nuumvo ngame nda ningi omunelago, nda taambwa moseminali. Pamwe nangame ooya kwetu yatatu yomaalongwa omulongo nayatano kaya li taa endlulula.

Eipulo

Matsa aanona yaaludhe niilumbu kondje

yOwambo nayo osho haa iishuna mongundu ya pita mo?

Otashi ti ngiini okukala noonzapu dhongundu yimwe mbali nenge ndatu, dha pita. Ngele onakugandjwa omwaalu gwaamboka ya pita ostada ontihamano, matsa itandi ka yalulwa ngaa lwaali, ye Nahenda a yalulwe lutatu, ko kutiwe ngaa aantu yatano, nani otu li ashike yaali?

Omumvo gwa yi omukuluntusikola sho a li ta ti kapu na omulongi ando ongundu ye twa topolwa, mbela aantu ngaa ya pumba yokuninga aalongi, nenge oosiminali dhokuputudha aalongi odho kaadhi po? Nomolwa shike dhaahe po?

Ohenda

Otandi ende omwenyo ngele tandi tala konima. Ohenda onene omulongi gwetu sho a li e tu hokwa, oshoka twa tseyaniwa iilongwa, ye ina tala kutya otwa li aayendlululi, katu shi ooyene yongundu. Twa fa twa yugu mbeyaka aape ethimbo nehala lyawo, onke momu-15, yatano ashike ya piti.

Ohenda onene, oshoka omaendlululo ngaka otaga mana po ethimbo nogo eshunithomonima lyetu. Nale taku ti, ino pita omwaalu, Oshiwambo nOshimbulu. Ngashingeyi oopelesenda inadhi gwana. Ngame nda piti hewa, Ngula?

Itandi ti ando ngoka andopa ositanda ndjika nenge a pita ndele ina taambwa mosiminali, nenge palwe, na kale inaa shuna mo we, aawe. Ihe ongundu ngele nee nani ontihamano, nayi kale naalongwa mboka ya piti ongundu ontitano.

Ondaa shi ashike ngoka ta kutha po omukalo nguka omupe, note shi ningi uunake.

EDHIYA

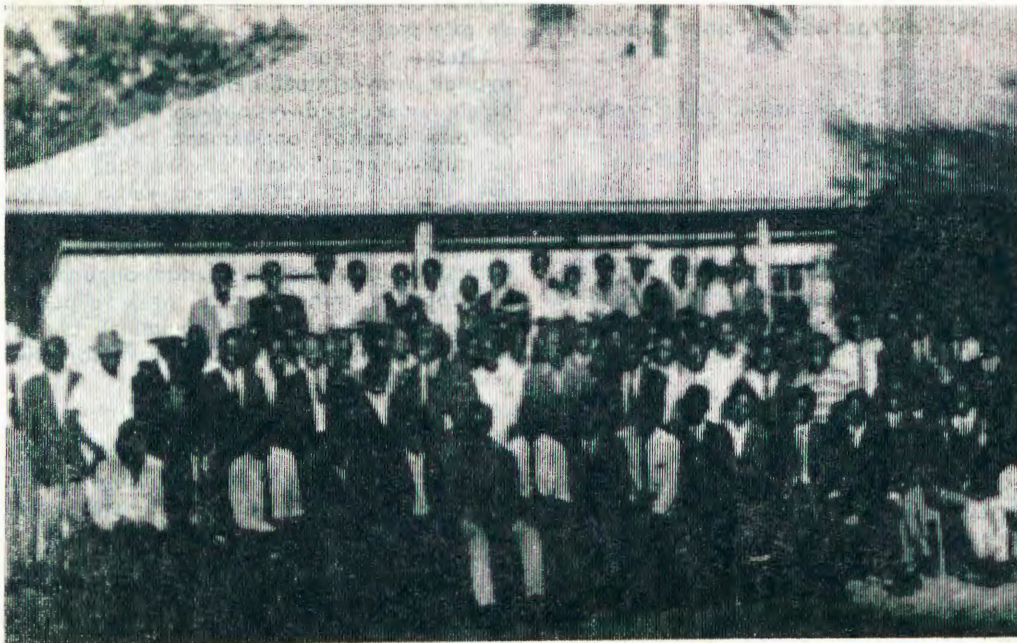
Ileni tu fukuleni omavo. Mwaandi tse twa kala mo. Mwaamutumba naShikoto, Lyoompinge nOonuugwanga LyOonandjundu noyana. Ndika lyetu lyoondombe li na omilonga Nuumpagalonga, li noothithiya ku pula.

Li nomilamba ominene, tadhil tondoka omeya Uusiku nomutenya, gaa na nando oluthuwo. Ndika lyetu tu li hole, uunshitwe nosho wo onkalelo. Mwaandika twa kala mo nokunya-nyukwa.

A. J. Andima



Omumati nguka Simson Hulof, tala ehokololo lye moshifo No. 8, epandja 6, lya shangwa kuM. Hauuanga



Ekondjo lovayevangeliste

Ovayevangeliste vomuElok mOwambo, ova ongalele mOngwediva muApilili, o-mo kwa li va taalelifa omesho avo koilonga yavo momaongalo. Moshongalele eshi shomafiku ane, vahapu okwa li she va etela enyeme eshi va diladia oixuna ve i shakeneka momanyamukulo avo, nde kombinga ikwao she va etela yo ehafo noupenda eshi va koneka onghenda yaKalunga oyo ye va kwatela moshilonga fiyo oopo.



Kuku natate Werner Amwaalwa nokatekulu kawo

A langekwa mOnandjokwe

Omyevangeliste Werner Amwaalwa, okwa langekwa moshipangalo shaNandjokwe o ngomuyakuli gwaavu mwiya-ka. Shika osha ningwa konima yoluhapo lwa holoka po omolweso iyomuyevangeliste David Katau, nehokano lyomudiakoni Maria Heita.

Omusamane Amwaalwa okwa pitile 1947 mEngela. Okwa longo oomvula mbali netata mOhalushu. Okwa tembudhwa mo a ka yakule aamati yomehalakano mUushimba kOtiwarongo oomvula 18, nokonima okwa galukile ishewe mOwambo nokwa yakula molukanda lwaNdjondjo pOnguta oomvula mbali netata.

Tatekulu Amwaalwa okwa valelwa pOshikango mUukwanyama 1907, oluvalo lwa papa nota yakulwa kaatekulu ye. Omukwetu, ote mu halele onkonondo odhindji dhopalutu nodhopambepo ngashi te dhi pumbwa esiku kehe.

Ongudu ei yovaviyauki oya shiivika efimbo lile mokushiika omikunda yongerki, opo va tale opo tapa dulu okuningilwa eeandaha nomalongelokalunga. Oya shiivika yo unene kovakulupe koingudu nokovapofi eshi ya fiifila meenduda davo da kaka, oku va yakulifa olutu lOmwene wavo nohonde yaye.

Vamwe meengeda da tya ngaha va imbwa mo kefiloshisho leefikola domashasho ile domakoleko peendjuwo, opo omufita ita dulu okulonga oilonga aishe ei oshita, nde vamwe ohava longo oilonga aishe ei ivali.

Omapulo avo mahapu moshongalele a ulika nhumbi tava pumbwa shili eyambidido lohole tali di komwenyo, opo onunhu wavo aushe olutu nomwanyo u kwafwe. Kombinga yomaxupilo avo osho oshinima sha kuma omunhu keshe wopaife.

Eedula dihapu da pita, ovayakuli vaElok, ova yowa kombada yekufikufi eli, nonghuwilili otai kaluka pombada osheshi epandela laKristus lefindano la yeletwa alushe. Ekondjo eli inali pwa po natango. Pefimbo eli, unene ovayevangeliste vahapu va udaneke-

Vanavamali wokuhara

Mwa Hompa gwetu Jesus Kristus, tani mu harere etungiko nougawo walyo. Ano nye vanavamali tani mu kumangeda; Kefilonkenda lyaKarunga, li gaveni marutu geni nzambo zi nakara nomwenyo nokupongoka, zi nawaparera Karunga. Ilyo erunganenokarunga lyeni lyonondunge.

One mwa halifana nouzuni ou, hawe, situkeni kewaparo lyomagazadaro geni, mu horowore eharo lyaKarunga lipipo, no-so sosiwa sina wapere si nagwana. Nye, e-fironkenda olyo ana lipenge tani mu tantee-re one namuvenye mwa hali gazarera mwanyinye oyo yi na mu hetekare, inye mu kambadare kurigazarera pauserere nkenye gumwe peheteko lyepuro lyendi olyo gamu pa Karunga ngwendi momu tuna kara morutu rumwe, iilyo yoyinzi.

Valirongi namuvenye mOwambo noKavango, tani mu kundu nononkango odo Rom. 12:1-4. **Jeremia Thomas**

lwa keengudu dimwe eendjabi da ondoka omaumbo mawa, noshifauto shokweenda nasho.

Ovahongauli ava otava ulike pomwenyo womhumbwe yomunhu, opo va shakenife diva elalakano lavo. Kape na olwoodi ihali eta oipute, pamwe naali yo tali ka lemaneka ovayakuli voshiunda shaKalunga muElok, Hano eyambidido okukanyatela ketundji leitavelo otali indilwa komukriste keshe e na oshisho neemwenyo dovayakuli vongerki yavo. Ngenge u he udite ko oshinima eshi, teelega ngo, osheshi eshi sha tya kwinya kolokoto, hinga shi tya depa, pwoove.

Omubishofi wongerki Dr. Leonard Auala, okwa talelapo yo ovalumenhu ava moshongalele shavo. Okwe va kumaida neenghono va lungamene oshiponga shomalimbilafano haa di mokulieefa efimbo lile. Okwe va indila yo va tale omhumbwe yoshongalele shoukumwe wovanashilonga avesho mongerki.

Oshongalele eshi shoilyo i dule efele osha kalwa yo kovapashukili voitaingerki avesho mOwambo, nove va kwafa momapulo mahapu a kuma ovafita. Epulo la fimana ngenge otashi dulika va hovele okwoongelela oshilonga shetumo sha, ola kundafanwa nexwamo linene, nde ve li popila avesho kumwe meudafano liwa nomuvalu R22.75 ve woongela okafimbo tuu oko. Omupashukilishitai Rev. Ismael Nhinda, oye a wilika oshongalele osho.

Ovaakwaita vOmwene va shuna neteelelo liwa kouhakumwenyo ve u shakeneka meetundi davo, nande omapulo amwe inaa mona manyamukulo.

Otwa fikile nawa

Ohatu pandula eyakulo leni amushe Ovatsumb, fiku twa fika kunye, fiyo efiku twa shuna. Kalunga Tate ne mu alulile ouwa aushe. Fye otwa fikile nawa mOshakati. Ongerki oye tu endifa nawa nosheendifo, nande tu na oikolokoto ihapu, inapa kana nande shimwe. Otwa pewa omaumbo mawa unene kape na sha sha lokwa.

Kaimba to mono olupe lange nombashikela nda ka kongele oikuni moTsumeb. Ai kaume, eshi twa fika onda hanga nokuli omatamba o-mundilo a eta nale oikuni. Oinima aishe ya etwa, eumbo la koshwa nale, aishe ya ningwa, ovakriste Ovashakati va enda po nale.

Inandi hala okudimbwa tate Benjamin Makambuli okwa yakula shili oudjuu aushe oku tutumba noinima nomwenyo u yadi ohole. Mutsumeb nda pita mo, ovamwamene tava twikile penya okuhokolola ealuko laJesus, kaleni navo nombili. Kristus ote uya diva.

Johannes Hishoono

S.A. ta dana oshivilo

Oshivilo sha kula shokudimbulukwa elipangelo laS.A, otashi ka danwa moshilongo ashihe shaSuid-Afrika naSuidwes, kovatilyane novalaule. MOwambo yo oshivilo eshi otashi danwa tete eti-22.5. keshe oshilongo ponhele yasho. oponee eti-31.5. Owambo aishe otai ka ongala mOndonga nokuninga oshivilo eshi. Omalongekido mahapu oku li po nale okutula aishe meshikulafano. Elipangelo eli laS.A. paife otali ka wanifa eedula 11, eshi a dja meenghono dOvaingilisha.

TRANSKEI OTA INDILE EIPANGELO

Elenga noministeli yotango yaTranskei omusamane Kaiser Matanzima okwa indila kepangelo lyaSuid-Afrika a pewe natango oongamba adhihe dheipangelo lyoshigwana she. Okwa ti.

"Kaku na evi tali vulu okwiipangela nokaku na evi tali vulu okumanguluka, manga inaali pewa eipangelo alihe sigo o-koongamba dhalyo.

Transkei olyo evi lyotango lya pewa eilelo kepangelo lyaS.A. pahedhi yokweenditha omamanguluko gomavigumbo gaaludhe muS.A. naSWA. Okoshilongo shika Suid-Afrika okwa lolo a tale ngele okugandja eipangelo komavigumbo pandjila ndjoka okulya uuholo komutse.

Omuleli Matanzima okwe shi holola sha yela kutya ondjila ndjika otayi ende kasho na. Mesiku lyokudhimbulukwa eipangelo emanguluko lyawo okwa ti:

"Otwa kala nokutegelela neidhidhimiko alihe tu pewe iikondo mbyoka yi li ko natango inaatu yi pewa pamukalo gwesimane ko lyomautho geyambulopo lyomavigumbo gaaludhe.

Ngele Lesotho, Swaziland na Botswana o-taa vulu okulela iikondo mbyono, oshike ihe tashi nyenge Transkei? Mpaka ota dhi-ladhila oshikondo shepangelo lyuukalinawa, shepangelo lyopoosa nootefona noshepangelo lyopolisi negameno lyoshilongo.

"Tse otwa hala epangelo lyu udha mevi lyetu nepangelo lya gwana miinima yetu," osho omusamane Matanzima a popya. Mokiindila ya shunine evi ndyoka ye li kuthwa muukulu, ministeli okwa ti.

"Itaku ka kala nando ekwatathano lya kola pokati ketu naatilgane, okuninga shila evi ndyoka tali galulwa moompadhi oontalala.

Shika okwe shi popi manga omupresidende gwaS. A. J. J. Fouche moshipopiwa sheegululo lyoshigongi a tile:

"Osho uuwanawa wetu sho tu lwete ombepo ombwanawa yelongelokumwe tayi pangele pokati kaatilgane naaludhe muTranskei sigo moomvula dhi li komeho." Okwa gwedha ko; "Uuyuni otatu wu ulukile nkene muS.A. oshikaha shimwe tashi vulu okuyoga oshikwawo, opo olutu aluhe lu kale lwa yogoka."

Ngele inaku tegelelwa oshikaha shokolulyo osho ashike shi kale tashi yakula olutu, nena otashi ki iholola keyamukulo lyomapulo ngaka.

Ihe omusamane M. C. Botha, oministeli yiinima yaaludhe nehumokomeho lyawo, okwa nyenyeta nale komapulo ngaka anwe sho inaaga pulwa mongumitila. Okwa ti ota ka yamukula nawa komeho.



Kaiser Matanzima



Johannes Vorster, oministeli yotete yaS.A.

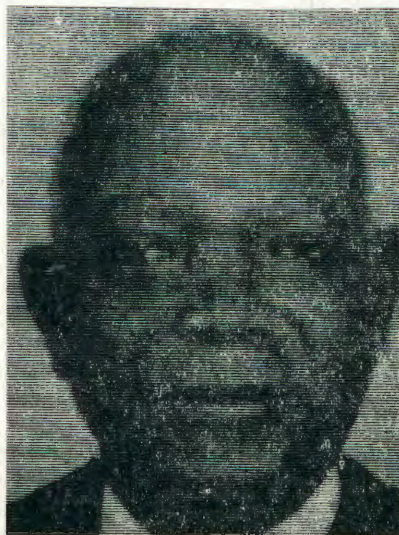


Jacobus J. Fouche, opresidende yaS.A.

Oilongo itatu yaAfrika ya kalela po Suidwes momhangu



Hahende Isaac Forster, waSenegal, ou a popila nale ekondjo laEtiopia naLiberia momhangu oyo, okwa kala oshilyo shohofa ei okudja 1964. Modula 1960 okwa ninga presidende yohofa yopombada moshilongo shavo. Okwa longa oilonga ihapu nokwa shivika mounyuni aushe. Omukulunhu weedula 67.



Hahende Luis Ignation Pinto, waDahome, okwa ninga hahende mohofa younyuni neudo. Oshilonga shouhahende okwe shi lihongela muFransa. Moshilongo shavo okwa kala luhapu mouministeli nomongudu yokupitifa eeveta. Okudja 1960-67, okwa kalela po oshilongo shavo muAmerika nomongudu yoiwana yahangana. Oku na eedula 67.



Hahende Charles D. Onyaema waNigeria, ou oku na eedula 53. Okwa ningi hahende yohofa okudja 1967 omhango e i lihonga mulngilanda eshi a dja moupolotika nokwa pewa oshilonga osho opo nee okwa ninga hahende muNigeria mohofa yopombada.

Oshigongi

Eti-26.6. sigo 2 Juli, 1971, otaku ka kala oshigongi oshinene kuAmanzimtoti, Zulu Training College, muNatal, shokuhambelela Kalunga sho a humbata Ehanganano ndika muule woomvula 75 dha piti, okuza uuna ehanganono lya totwa muS. A., nolya taandele sigo Owambo.

Oshitayi kehe otashi ka tuma aakelelipo yasho yaali lwaampoka. Otatu tegelelwa tu galikanene oshigongi shoka naamboka taa ka ya ko, Kalunga e ya endithe nawa.

Tula esiku ndika megalikano

Eti-9 IyaMai nuumvo otali tegelelwa li kale enene nolya simana kiilyo ayihe yEhanganano lyaailongi aakriste. Oumvo kehe ohaku kala esiku lyegalikano melandulathano lyehanganano ndika.

Nuumvo otatu dhimbulutha ongerki ayihe mOwambo nokoKavango yi kale ya tegelela nokulongekidha esiku ndyoka. Otu na mOwambo itayi yehanganano ndika ihamano. KONandjokwe, kONGwediva, kOSHakati, kOKahao, kOSHigambo nokOdibo.

Nesimaneko enene oshitayi kehe nomagongalo agehe mongerki, otayi tegelelwa yi ka kale **NEGALIKANO MO-SOONDAHA** yesiku ndyoka eti-9.

"Aamwameme, kaleni noku tu galikanena." Tess. 5:25. P. Auala



Pinehas Auala

Omuyevangeliste Frederich Nghihalua, ehapo apa oshilonga shaye okwe shi hovele 1959-1966 mOngenga meongalo lavo. Okwa yakula eehani mbali mONkongo, nokwa dja ko eshi a tumwa KOtavi oko e lifyo onena. Luhapu a shiivika mexwamo laye mokukumika ovaleshi vOmwetu.

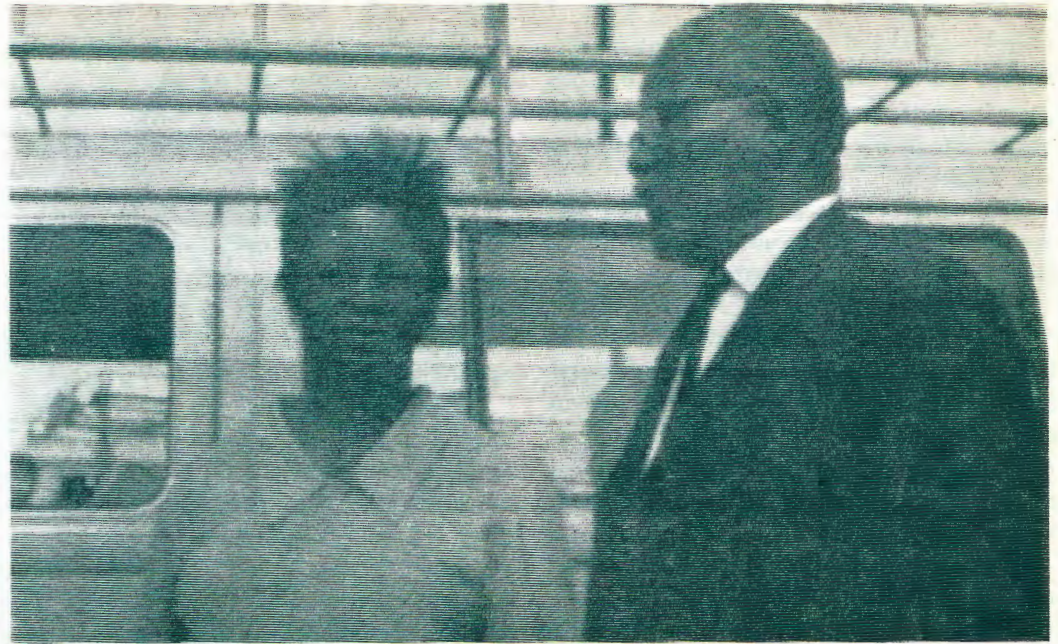
OLYE E YI MONO?

Omasiku 7. 12. 70 onda kanitha ondjato yandje pomakambamba pOnda ngwa. Meni lyondjato omwa li; Ombimbili, Eimbilo, Okambongerki nuukalata wegongalo, nonzapo yehokano nayimwe inaandi yi tumbula.

Mpaka otandi indile ngoka wa tola ondjato ndjoka iinima mbika nda tumbula yi fala koshinyanga shegongalo lyaandjeni. Ondjato nayilwe mbyoka inaandi tumbula nayi ninge yoye.

Ino yaka ihe ngele ito longekidha mbyoka nde ku lombwele opo to ka ninga omufuthi.

Johannes Eliakim,
Posbus 47, Swakopmund.



Omukulukadhi meme Naemi (Shuumbili) J. Kemba, okwa talele po ookuume ke oyendji mUukwanyama, mUukwambi nomOndonga muMaalitsa nuumvo. Meme Naemi ngoka e li ngashingeyi, muJohannesburg, okwa li a nyanyukilwa etalelopo ndika sho a tsakanene noyendji mboka a hulathana nale nayo. Ihe okwa shuna ngaa neyeme kashona, oshoka ina mona ompito yokumona omumwayina, omusitagongalo Hofni Nakamhela kEtunda. Nande okwa kala kokule, mOrepublika yaS.A, aluhe ohe ya a talele po, aakuluntu ye, kOmundudu, mEndola.

Shito okwa kala muukalele womundohotola kuku Anni Melander, mOndanjokwe ngoka a yi naye metumo koKavango 1957. Hwiya okwa hokanwa komulumentu gwe omusitagongalo J. Kemba, mongerki yaN. G.

Oku na ngashingeyi oomvula 40, nuunona wawo 5. Oye ota kunditha unene ayehe mboka ina tsakanana nayo metalelopo lye, naamboka mwa monathana ota ti kaleni po manga nawa. Okwa talele po wo omumbisofi negumbo lye.

Molwashike tu na okwiilika?

Apa ohadi holola paxupi oshikalimo shefiku lovalihongi lelikano nohandi indile omaongalo aeshe aKristus, ootate noomeme meitavelo va kale pamwe nafye meilikano efiku eli.

Ohatu hambelele nokupandula Kalunga -molwohole yaye eshi a yandja Omona omolwexupifo lounyuni -molwomapuniko mahapu opamhepo hatu a pewa meyakulo longerki, mokulesha eendjovo daye, momahanganano opakriste ngaashi ehanganano lovalihongi ovakriste, oyongalele yovanyasha, oukongindjila, eenha nda nosho tuu -molweemwenyo dovanyasha vahapu da ehenifwa kuKristus momahanganano aa.

-molwoufemba wokukala momalongelokalunga nomokulongela Kalunga nopuhe na omaliko, ngaashi momadu amwe.

-molweemhumbwe dopalutu-oipalwifa, omidjalo, omhito yokulihonga, ovakulunhu, ovamwameme nookaume have tu kwafa.

Ohatu kuwile Kalunga:

-opo ovalihongi medu letu nomounyuni aushe va pewe omhepo yeidilulo nova tambule Kristus ngOmuxupifi weemwenyo davo ova kale nohole yeendjovo daKalunga, have di leshe efiku keshe nohave liufa kudo.

-opo ovalihongi va kale eendombwedi tadi holola Kristus opo va ete vakwao mouhamba weulu.

-opo ovalihongi va nyanyale keemwenyo davo oumbwada woikunwa, woluhaelo nowoulunde keshe.

opo ovalihongi va pite nawa omakonakono avo noneudo.

-opo ovanyasha aveshe va punikwe pamhepo momahanganano avo opakriste, ohole i monike noukumwe u pangele.

Ohatu ilikanene:

-eefikola medu letu.

-ovalihongi novakulunhu vetu naaveshe ovo ve na sha neputuko letu lopalutu nolopamhepo -ovawiliki aveshe vehanganano lovalihongi ovakriste meefikola nomoikandjo.

-ovawiliki vovanyasha moongerki detu.

ovalongwa vakwetu momadu oukomunisi tava hepekelwa eitavelo lavo.

Ohatu pumbwa yo ekwafo loimaliwa opo tu shakenife eemhumbwe dimwe domoyoongalele yetu tadi pumbwa oimaliwa.

Pamwe nomuyapostoli Paulus ohatu ingida kovaitaveli vakwetu muKristus: "Ovamwameme, kaleni noku tu ilikanena", 1Tess.5:25.

Omukulunhu wEhanganano lovalihongi ovakriste mOwambo.

Apollos Kaulinge

OMUKWETU

Oshifo shOngerki onkwaevangeli paLuther

yomOwambokavango

Die Nuusblad van die Evangeliese Lutherse

Ovambokavangokerk

Oha zi mOniipa,

Omukuluntu gwoshifo/Hoofredakteur Omumbisofi Dr. Leonard Auala,

Amushanga/redakteur Sebulon Ekandjo

Ondando komumvo mOwambo 70c kUushimba noKavango 90c

Komanda yomafuta R1. 30.

Oondando nomambestelo naga tumwe

kOmwetu,

Oniipa, P/B. 2015, Ondangwa, S. W. A.

Oshinyolwa shuule

wondeimi 1 otashi futiwa R1.00

oondeimi 2 -"- -"- R1.90

oondeimi 3 -"- -"- R2.70

oondeimi 4 -"- -"- R3.60

oondeimi 5 -"- -"- R5.00

Oto vulu okutuma efano lyaashoka wa hala shi tseyithwe, nomatumbulo wo gasha ngele ope na.

The Finnish Mission Press Oniipa
P/B 2015, Ondangwa, S. W. A.