

OMUKWETU

Registered at the General Post Office as a Newspaper



APILILI 1971

No 7

Omuntu ke shi oshinamwenyo

Oshi shi okwiipulwa moshigwana shetu shono tashi endelelitha omikalo omiwanawa dhi uke meshunduko nokondoya. Ngiika wa dhimbulukwa nale nokuli efatululo ndyoka hali gandjwa aluhe nuupu kutya ehumokomeho tali shi ningitha. Shika itashi kutitha omuntu a tseye ehumokomeho kutya olyo ekoko lyokutseye nokuyoolola shono shuuka naashono shaaukile

litauwa iinene kayi shi we okweendwa kaayenda yokondje yOwambo omutenya, oshoka muyo oto lengwa, oto si ohoni okutala Aawambo aakweni kaye shi we okwiuhumbata momikalo dhawo. Ngoka a hala kiihwa iha tala we ongame lye, ondi li pulye nondi li peni mpaka, noshitya kiihwa, shoka tashi ti okuholama aantu, okudhiingilila ko iihwa osha kanitha uukwatya washo.

Aafilosofi (aadhiladhili yomuule) yonale mokukonakona ekoko lyomuntu, oya li ya tompelwa kutya omuntu oye oshinamwenyo. Ohenda onene ngele edhiladhilo ndika tali kolekwa moshigwana shika komikalo dhasho. Ombimbeli oyo ayike ya popile omuntu noye mu kutha mongundu yiinamwenyo, naafilosofi oyendji oya tompwa kuyo.

Ombimbeli otayi tu etele wo efano tali tu tilitha, omukwaniilwa Nebukadnesar, nkene kwa li a ningi oshinamwenyo, ta li omwiidhi, ta lala moonyata, oshoka okwa kanitha Ombepo yaKalunga. Pamwe ndika olyo eyamukulo twa tegelela moshigwana shika.

Oluhepo lwombepo maantu oshi iholola nkene ayihe tayi talwa yi thike pamwe uuanawa nuwinayi, uuyuuki nuugoyoki eshunduko neyambuko, omuntu nenge oshinamwenyo.

Oveta tayi popile esimano lyomuntu moshinima shika otayi pumbiwa mendelelo, ihe elongo momagumbo, moosikola nomiigongi nali tameke nziya opo aantu ya kwatwe ishewe kohoni yo yaa holole omikalo dhiinamwenyo mokati kaantu. Ihe kombanda yaayihe, omushigakano gwaKristus nagu kale etegameno lyoshigwana nando omauthemba ogendji katu ga na manga.

Oraata yOwambo ya zimbuka manga Oshakati

Omutumba omutine gwoshigongi shongundu ontotimpango, ogwa hulu po manga eti-24.3. Sigo oompoka shoka sha ningwa po osho ashike omaludhi kombinga yomafaneko guungundulongekidho mboka wa li wa dhiingoloka nOwambo nokupula omadhiladhilo goshigwana, nenge omafaneko giilonga mbyoka ya tegelelwa yi ka tsakanithwe mbala kaaniimpwiyu yayo paikondo yayo. Meegululo lyOraata ndjika, Ndjayi De Wet, okwa li a tula omuthindo moshipopipiwa she kopulanda yoomvula ntano ndjoka tayi longekidhilwa omavigumbo gaaludhe, yi ka longithwe wo naampaka. Oshigongi otashi ka eguluka ishewe nuumvo muSeptemba.

Ehistoli Ioulunde

MuGenesis ekapiteli eti-3, otu na ehistoli lenyono lotete noletimba keshe.

Omuyeleki: Omuyeleki satana okwe ya molupe lOmuvadimi, oshitya sha lundululwa. Eyoka otashi dulu yo kulundululwa "Omuvadimi." Oshitya eshi osha yukila ko, osheshi satana paushili ine ya molupe lweyoka ngaashika tu shi omayoka paife. Satana okwe ya molupe olo la li li na okushila Eva.

Osho satana he ya paife moufudime, molupe tali hafifa. Satana ohe ya molupe lomunhu, kaume koye omuholike, omukwanedimo loye, omulumenhu a ndjanga, omukainhu muwa, omweendanandjila omunambili nosho tuu. Satana ohe ya molupe olunambili nola dja ko. Osha yela kutya kape na ou ta hongololwa komunhu mwii, ile koshinima inashi denga pombada. Satana okwa shiiva kutya olupe la tya ngaho itali wanifa ediladilo laye, onghee ohe ya molupe loudjeko.

Epulo: Omuyelani okwa pula epu-

lo. Komukalo wa tya ngaha okwa mona muEva efatululo loveta lawana ngaashi Kalunga e li yandjele kuvo. Pefimbo lopaife osho shi li onghedi youlandifi. Omulandifioha hovele nokupula epulo, nota efa omunhu a popye sha nokupula sha kombinga yoinima, opo nee yee mwene ta i mo nokutanga oinima, yaye.

Satana ngeno okwa hovelele noveta yoovene, Eva ngeno okwa dulika kuyo diva. Ngeno okwa pamelkelwa meitavelo laye okudulika koveta yaKalunga. Ndele omuyeleki okwa hovela nepulo. Okwa efa Eva



Oye okwa kutha oshitenga, a hambelele nokwa ti; "Shi kwateni, shipaathaneni, oshoka oshili tandi mu lombwele; okonena itandi nu we iiyimati mbi yomuvii-nu oshilongo shaKalunga sigo tashi ya."

OTADHITOKA

Muushitwe wevi lyaSoomi ohamu holoka oshinima ihaashi holoka muushitwe wevi lyetu. Osho olumi. Olumi oshinima hashi kumitha omutali. Olwa toka too too. Olu na omutogelo, onkee halu pangele omilema. Una lwa gwa nawanawa, uusiku ihau luudha thokothoko, oshoka uuyelege woonyothi nowoolamba sho tau gwile kolumi otaw galulilwa momudhingoloko etagu yelithwa. Olumi oshinima sha yela sheke, oshoka mulwo kamu na evongakano lyiilipo yilwe.

Mokusimonona olumi onda yelwela nawa koshilongankumwe Jesus te shi ningile omunandjo. MOMBimbeli yetu omu na euvaneko tali ti: "Oondjo dheni nando nadhi kale dha tiligana dha fombinzi otadhi yele, dha fuutokele wowene." Uutokele wowene, osho elundululo lyOMBimbeli yetu tali ti. Momalundululo galwe otatu adha mpaka oshitya, OLUMI. Ano, "tadhi toka dha fa olumi".

Oondjo odho ondoya onyata noongaga tadhi nyanyalitha. Omutima gu na oondjo otagu zi ezimba ewinayi tali yono ekwatathano lyomuntu naKalunga. Omutima gu na oondjo ogwa ala nogu li koho yomilema thokothoko. Omuntu ta pangelwa koondjo keemo mehanganano ewanawa naantu aakwawo. Oondjo oombakiteli oombwinayi tadhi tuku nokutukilila omwenyo gwomuntu.

Jesus ota ti: "Otadhi toka." Euvaneko ndika olyoshili nolya kola. Momwenyo gwomunandjo. Jesus ota longele mo oshikumithalonga shika.

Oshiholelwa oshivanawa mOMBimbeli yetu oSakeus. Oondjo dhe odha tokithwa kuJesus. Omutima gwe ogwa yelekwa sheke. Oohapu adhihe dhaJesus odha pangele momwenyo gwe. Sakeus okwa ningi ondjolowele omuhupithwa. Ekwatathano lye naKalunga olya kolo. Ehanganano lye naantu ooyakwawo olya pepalekwa. Sakeus okwa ningi onyeka tayi adhimine omudhingoloko gwayo. Aashiinda she oye mu hokwa. Mboka ye mu tsakaneke oya lagopalekwa.

Osho ya tya ngaaka mboka oondjo dhawo hadhi dhimwa po.

Jesus te ku lombwele ta ti: "Oondjo dhoye otadhi toka dha fa olumi."

Otundi kehe okwi ilongekidha okudhima po oondjo dhoye. Kee na katongotongo mokukulonga oshilonga shedhimopo lyoondjo. Oondjo dhaayehe otadhi yelithwa sheke.

Onde ku halela omumvo gwedhimopo lyoondjo. Omumvo guundjolowele wokomwenyo gwoye. Ino ihumbatela oondjo momutima gwoye. Taamba Jesus omudhimipo gwoondjo dhoye. Ando u ningilwe oshilongankumwe shikee. Jesus okwa thikama note shi ningi.

Elia Niinkoti

Ehistoli loulunde.... (da dja kep. 2.)

a ude nawa moku mu pa okafimba a yandje eshiivo laye. Ngenge omunhu te ku pula oshinima osho u shi shii nawa noto dulu okuyandja diva enyamukulo lasho, oho kala u wete nawa, Hasho? Oho kala u udite oukaume nomunhu oo ta pula epulo noho ame diva kombinga yaye momadiladilo pehovelolela nokuli. Yo ei oyo nee ondunge hai longifwa kusatana.

Eanyo: Eshi Eva a nyamukula pashipango shaKalunga, satana okwa anya enyamukulo laye "Shidalelwe mu fye." Neendjovo edi daye a popya dihapu satana okwa tya: "Ove mboli oxuxwa yongaho, omolwashike wa nyika oulai? Omolwashike u he shii sha ngaho, ndee naashi tashi ke ku hanga ku shi shii."

Osho satana ha popi nonena. Ngenge okakadona taka anye okuya mepunduko pamwe nomumati, omumati oha ti: Omolwashike wa nyika oulai? Ou shii nawa kutya itapa ka dja sha. Ila ashike, kashi na shilonga.

Ngenge omumati ta anye oikolwifa mukwao oha ti: Ino kala wa nyika ouvaya ngaho. Ou shii kutya okunwa ashike lumwe itaku ku ningi ongholwe. Ngenge okamati inaka hala okuvaka pamwe nava-kwao ofitola, ohava ti: Aye, ino tila. Kape na ou te ku kwata. Osho satana ta twikile alushe nokuheka kutya itatu ka mona oshiponga sha



sha mokunyona kwetu.

Eudaneko: Satana eshi a anya kutya Eva ota ka hangika komupya washa, okwa hovela nee okufatulula ouwa wokulya oiimati yomuti ou wa kelelwa. "Omesho eni otaa pashuka ndee tamu fe Kalunga, tamu shiiva ouwa nouwii."

Osho satana ha longo nonena. Alushe ohe tu lombwele omahafo oo tae tu dile molunde. "Oshiwa." Osho ha ti, ngenge eyeleko lopau-

Tala kep. 4.

Kristus ina fa aantu yalwe

Euvitho lyomupapa Paulus VI, moshilando she mongerki yaPetrus eti-3.2, olya li po ngeyi:

Kristus ita hokololwa pahedhi yaanene-ntu yalwe momahistoli gawo. Ka li omupolotika, ka li omupangeli omudhudhu nenge omuwiliki gwetanga lyuukwiita. Ka li a homata omatati ngashi oyendji ye shi tegelele Mesias a kale.

Okwa holoka ongomuprofeti, unene omunalukeno nomutseyithi gwetumwalaka lyohole. Okwa li oshipatululo shiiholekwa yaKalunga. Oye omupangeli guuyuni shi vutithe kokule shono omuntu to vulu oku shi yeleka.

Eholoko lyoshilongo shaKalunga otali ulike nawa Kristus ongomufali gwetumwalaka lyohole. Oshilongo shaKalunga osho sha li oshipalanyolo tashi ulike omuthika nehu-ku lyeuvitho lye. Okwe ya, noshilongo shaKalunga osha hedha popepi.

Kristus okwa li e na sha, a tseyitha nokwa gandja olupe lwoshili lwomuntu kehe kalu shi okuyelekwa nasha. Oye omuhona, Oye omusita gwoonzi, Oye omuhupithi.

Oyo noye ya meyana edhina lya-lyo Getsemane, nokwa ti kaalolongwa ye, "Kaleni omutumba mpaka manga tandi ka galikana." Oye a humu ko kashona, a tameke okutila nokwiinyonkola momwenyo. lihata pevi nokwa galikana okathimbo nkoka ngele tashi wapa ku mu pitilila po nokwa ti: "Abba, Tate, ayihe oto yi vulu, kutha ndje oshitenga shika, ihe hangashi nde shi hala, aawe, ongashi ngoye we shi hala."



Ndele satan okwa ya muJudas Omwiiskariot, okwa ya kovapilisteli ovakulunhu, nomalenga ovakwaita okukengelela Jesus. Ndele vo ve lipa oshilaye oku mu pa eembongo nde Judas e shi itavela. Nde opa ningwa fimbo Jesus ta popi novahongwa vakwo mepya, Judas okwe uya pamwe nongudu yovanhu ve na omikonda needimbo va dja kovapilisteli ovakulunhu novanongo vomikanda nokovakulunhu vovanhu nde tave mu kwata.



Mokafimbo okatitano nakane Jesus okwa ingida nondaka inene a tya; "Eli, Eli, lam, sabaktani, "tashi ti, Kalunga kange, Kalunga kange, oshike wa fiya nge po? Ndele oko kwa li yo ovalikadi vahapu tava tale eshi tashi ningwa po va dja muGalilea.

Ehistoli loulunde (da dja kep.3.)

halu wolutu, satana oha ti: "Eshi oshinima shopaushitwe, otashi ku etele ombili."

Ngenge okuvaka oha ti: Oto ka likola omamanya mahapu. Oto ka landa keshe eshi wa hala." Ngenge okunwa oikolwifa oha ti: "Diladila nghee to ka kala wa hafa, oto ka dimbwa oisho yoye aische." Ngenge eyeleko lelinenepeko, satana ota mbebeleke omaliudo oye noku kuulikila kutya oove naanaa omunhu u dule aveshe.

Osho satana ta ningi, ta anye owii oo tau ka hanga omunhu konima yenyono nohe tu fanekele efano liwa louwa woulunde. Melombwelo lasatana mokuhekelekelamo ovanhu moulude omu na ngo okashili kasha. Omanyono mahapu otaa hafifa ovana vovanhu, ngeno hasho ngeno ovanhu ihave a hokwa. Oshinima eshi satana ina lombwela Eva osho yo iha lombwele ovanhu fiyo onena, kutya omupya ihau shikula omanyono.

Iha lombwele ovo ta hekelekele mouhalu wolutu, oudu wohoni ou tau di moluhaelo. Ihe va lombwele oihokolola neenhamanana odo tadi va teelee komesho, unene kombinga yokakadona, mokukala nokaana kehe na xe, kehe na edina, kehe na ekwafo, kehe na exupilo nokehe na eteelelo lasha.

Satana iha lombwele omunyasha kutya oikolwifa otai eta ounghundi, oluhepo tai xupipike eendunge no tai eta nokuli efiyo. Iha lombwele omulunga okutokolelwa odolongo ile edipao olo tali teelee omuvaki keshe.

Iha lombwele mwene weumbo eengunga odo tadi ka lya omwali-kadi nounona vaye ondjala nonghai. Hano satana iha popi oxuuninwa youlunde.

Epunduko: Eva okwa wila mepunduko, a dulika eenghono keyeleko shaashi ina kala e lilongekida okutya **AHOWE** nge ta yelekwa. Ka li a teelega a makelwe na ka li yo e liyandja mokudulika kuKalunga. Omunhu omukeenatokolo alushe ota wile momamakelo.

Ame ohandi makelwa komakaya meedula adishe da pita, onde lilongekida okutya **AHOWE**, komakaya oludi keshe. Paife nge handi pewa okashekeleta ohandi ti ashike pandjikilile ahowe. Enyamukulo otali ya ashike inandi diladila.

Omukalo umwe auke muwa nokufinda omamakelo okukala ashike wa tokola nale okutya, ahowe. Opo nee

eshi eyeleko tali ya, oto dulu okulya nalo onghalango noupu. Ito pumbwa okwoongaonga, ito pumbwa okulipula nge oto dimine ile oto anye. Oto ti ashike, **ahowe**, pandjikilile nowa xupa nokuli osho kemakelo olo.

Oshinima shikumwifwi okutya ahowe, osheshi oku shi tya efimbo keshe oto findi omamakelo, oto pewa eenghono da wana okufinda emakelo eli tali landula, ngolongo ito makelwa vali ku na ehalo lokuninga oshinima osho.

Okulipopila: Evelise 12,13, otadi ulike nghe Adam naEva va kendabala okulupa ounongo. Ova kendabala okuyandja etimba kuumwe e lili. Adam okwa ti: "Omwalikadi ou wa pange." Eva okwa ti: "Eyoka olo li na ombedi." Kalunga okwa ti: "Itamu dulu okudja metimba leni komukalo ou. Kashi na nee mbudi kutya olye e mu hongolola. etokolo okulonga owii oleni vene, onghee omu na okuhumbata oudjuu wenyono leni."

Natango osho hatu yandje oushima kuvakwetu. Okamati kamwe oka dja kofikola taka lili. "Embale lange ola vakwa po." Manga paushili ka li ke na okutya "Onda kala nouhefi nonde li kanifa." "Onda li ndi shi ite ya ko va li kuame," osho oukadona hava ti. Omumati ote lipopile, "Onda li ndi shi ota anye nge." "Omukulu wange womumati oye a lombwela nge ndi shi ninge," oumatyona osho hava ti. Omuvaluli womombaanga ta fatulula, "Omwalikadi wange oye e shi ningifa nge," molwaasho okwa kwatwa a vaka po oimaliwa.

Osho ngaha tashi twikile komikalo dihapu, omunhu keshe ta yandje kumukwao. Pefimbo lopaife vahapu otava kendabala okuyandja etimba kongudu, ovanhu aveshe osho hava ningi." Kashiimba ovanhu aveshe osho hava ningi shili ashike itashi ti oshi li mondjila. Paushili oshinima osho hashi ningwa komunhu keshe osho lela sha puka, osheshi ovanhu vahapu ohava landula ondjila yatatana shi dulife puyaKristus.

Okuya nongudu ondjila yoshiponga osheshi ongudu oyo ya finda koheli. Ito dulu nandenande okudja menyono loye mokupa mukweni oushima. Moinima ei yokulombwela fanwa, kufi mupika wamukweni. Ou na oufemba wokuninga omatokolo oye mwene, ou na eenghono oku shi ninga. Kashi na hano mbudi kutya olye e ku heka okulonga



Efiku la shikula lokulilongekidila esabati, ovapilisteli ovakulunhu novafalisheyi ve uya kuPilatus tava ti: "Omwene, otwa dimbulukwa omupukifi winya fimbo a li e na omwenyo, okwa tya; Ngenge kwa pita omafiku atatu, ohandi nyumunwa. Lombweia hano ombila i nangelwe fiyo kefikuru etitatu."



shonhumba, kashi na mbudi nokuli kutya olye e ku kondjifa oku shi ninga, etokolo okudimina ile okwaanya oloye mwene. Ashishe eshi tashi landula ko oshoye mwene.

Esabati eshi la pita, neluwa eshi la tenda, Maria Magdalena okwe uya kombila nde ta mono emanya la kufwa ko kombila. Okwa lotoka nde te uya kuSimon nokomulongwa omukwao ou Jesus kwa li e mu hole, nde ta ti kuvo; Vo ova kufa mo Omwene wange mombila ndele katu shi apa ve mu tula.

A. L. Nghifikwa

UUKRISTE MUSUID-AFRIKA OTAU IPULWA

Okukala kwamukriste muS.A, otaku ende taku dhigupala mwiya nuukwatya wokakombonoludhi otaku shiti onkalelo kaayi shi okwiidhidhimikilwa kaakriste taa putukile mo, osho amushanga omunene gwongongahangano yaakwaLuther, Dr. Andre Appel, a popya.



Dr. Andre Appel

Omusamane Appel sho a talele po Suid-Afrika, omasiku ngaka okwa ti kutya ekanitho lyomukumo mwiya otali kokele pamwe noongerki omolwomalimbililo gadho sho dha taalela iinima iidhigu. Omunyoleli Appel okwa ende pamwe naalongi pamwe naye kOngongahangano yaakwaLuther, omusitagongalo Gunther Schulze na Paul Hoffman. Omusamane Schulze okwa thikile wo nokOwambo.

Metalelopo ndika amushanga Appel okwa kwatwa unene komwenyo konkalelo yongerki yaamoka, ndjoka a tala kutya oshi li natango kokule oongerki dha tya ngaaka dhi thike muukumwe wokuuvako shimwe oshilonga shadho mokati kaantu. Kombinga yepangelo

Omumoravi a ningi presidende

Omusitagongalo A.W. Habelgaarn okwa hogololwa koshigongi shoongerki oonkwa-evangeli dhomuumbugantu waAfrika (FELK-SA) a ningi omupresidende gwehangano ndyoka.

Ombasitela Habelgaarn, omunashipundi shoongerki yaMoravia moshitopolwa shuuninginino waKaapa, ota kala omutango ngoka kee shi omutiligane, ye kee shi omukwa-Luther, a ningi omupresidende gwaFelksa okuza kedhiko, osha ningwa unene sho omusamane nguka okwa kala mekwatathano ewanawa naakwaLuther omimvo odhindji.

Mehangano ndika ongerki yetu yi li wo oshilyo, olya lelwa komumbisofi Paul G. Pakendorf, gwomoshitopolwa shaTransvaal omimvo 5 dha piti. Olyo li na oongerki 13 okuza Rhodesia sigo Suidwes, illyo yadho yi thike po-830,000.

Oshigongi shomumvo numvo sha ningi'e muJohannesburg, ongerki yetu oya li ya tumu ko Omumbisofi Leonard Auala, nomukuiuntumwa medhina lyetumo Rev. Mikko Ihamaiki, osho wo omunyoleli gwomumbisofi Rev. Petrus Shipena, Rev. Paulus Andreas, Rev. Natanael Sirongo omutonateli gwoshitayingerki shaKavango nomusitagongalo Kleopas Dumeni.

okwa ti ishewe kashi li we kokule omapumathano ga holoke pokati kalyo nongerki, oshoka "olyo inali hala we okupulakena ongerki" ndjoka pamadhiladhilo galyo otayi kongo ompito yoku li nkundipaleka.

Dr. Appel okwa talele po wo aakuluntu yongerki dhimwe moka nosho wo omuwilikingerki gwongerki yoombulu Dr. J.D.Vorster mwayina gwaVorster oministeli yotango yaS.A. Amushanga okwa ti;

"Aamwameme mbeyaka oya humbata oshimpwiyu oshidhigu shoka tashi ya pula eitaalo lya yela, li na omwenyo." Ekwatathano wo lya-wo noongerki dhilwe pondje yaS.A. otali pumbiwa."

A mwenekwa manga

Omusita gwongongo Ontananga, Herman Shongolo, epangelongerki oye mu mwenekwa uule woomwedhi 6, okuza eti-28.12.1970, esiku ndyoka a dhika koshiponga sha popiwa momauthompango pashitokolitho oshiti-91.

Emweneko ndika otali lalakanene shika: "Eenghedi diwa domufitaongalo mefimbo lokumwenekwa kwaye, ngenge tadi yandje ediladilo la kola kutya oye ta ka kendabala shili komesho okuwanifa osho omufitaongalo te shi pulwa, Epangelongerki otali dulu oku mu shunifila oshilonga shoufitaongalo.

Makundo kovaKavango

Tatu mu harere egameno lyaKarunga. Hompa gwetu Jesus Kristus a kare none namuvene varesi vaMukwetu. Tatu mu hundire mu tu diworoke momakanderero geni, ose ava tuna kara meharagano lyouzuni ou.

Apa tani hara kusaneka asi, ame muJerusalem nina kara nani nye awe. Hewa oku koC.D.M. kuwa unene, yeyi kapi ava nu komarovu noyininke nayinye ayi piaganesa mwenyo gomuntu kutupu oku. Ose natuvene ava twa kara oku ngwendi Guhaitu naZinyetu gumwe. Ko tupu uona.

Nye vakwetu sirongo setu Aakavango siwa, nye sina zonauka kombinga zoikunwa. Ipo nye vakwetu hetekeni kusiga yikoruesa yeyi kapi tuna diva Hompa gwetu Jesus Kristus ezuva kenye nga wiza. Tara munwamali ove simpe awa hokwera kulikwaterera emudama lyomundevere. Nani ilyo lyolyo ezuva vasaneka. Ove mukwetu ngapi nye ngo kara? Ipo nye vakwetu tu vareni ku hageka youzuni.

Ove wa zuva nawa nawa asi ehuliro lyouzuni apa ngali wiza asi mouzuni ngamu wiza nonzara noyita noantikristus. Ntantani ove iyo ono ku mona ngapi nye ove mukwetu omu ono ku gazara. Kweyi nayinye yina hurupo ruvadi rwelike nye. Ipo nye asi asi hewa sangoso tu heteke kusiga udano vourende. Tu sikure Hompa Kalunga gwetu. Ipo nina huru ntanko popo, resa Ehol. 21:1-8.

Ige munwanyoko,
Jeremia Thoma



Moshigongi shaFELKSA, numvo muJohannesburg, omupresidende omukulu omumbisofi Paul G. Pakendorf, ota monika a thikama ta popitha oshigongi. Moshigongi shika Dr. Appel, amushanga omunene gwongongahangano yaakwaLuther, okwa etela oshigongi omadhiladhilo gamwe omanene ga kundathanenwe moshigongi shaakwaLuther ayehe yomuyuni omumvo gwa yi muFuianisa, unene omadhiladhilo guutheмба womuntu. Felksa naye wo okwa tokola a longele pamwe nehanganu ndyoka lya tseyika lyokukonakona omaludhi gaantu muS.A.

Nkene uukumwe waakwaLuther tau kolekwa, oshigongi osha indile oongerki dhi ningi omafaneko gadho go ga ka kundathanenwe esiku limwe. Okwa dhimbululwa wo ompumbwe yoshigongi shaawiliki yoongerki ndhoka shi holoke olwindji sho shi koleke uukumwe wa pumbiwa.

OMADILADILO AMWE OMOHOFA

Kutya S.W.A. oku li metonatelo loiwana younyuni mokanima keshe, eshi osha anywa kuS.Afrika. Hahende Dr. H. J. O. Heerden, waS.A. mohofa muDen Haag, okwa ti kutya, oiwana yetonatelo laS.W.A. oya indilile S.A. a kale ha yandja ehokololo loilonga yaye ei a longela ovalaule noku li tumina ehanganano loiwana (Volkebond), nde osho, Dr. Heerden, okwa ti kutya osha hula po nale pamwe nehanganano olo. Ehanganano eli ola li hali longo ngashi V.V.O.

Ovakalelipo vahamushanga waV.V.O., Nederland naViëtnam lokoumbuwanhu, ova anya eendunge edi. Ova ti kutya natango ope na naanaa efaafano pokati komahanganano o a tumbulwa pombada.

Muhammad Khan, omupresidende wohofa, okwa pula hahende David de Villiers, waS.A. a fatulule kutya okonghedi naanaa ilipipo nomeenghono dedina lilipipo eshi tava pangele natango Suidwes, ngenge otava ti kutya epangelo lounyuni kuS.W.A. ola xula po nale pamwe naVolkebond? Epulo eli olo yo la pulwa keehahende yaNigeria naAmerika.

Ohofa oya li ya kukutika omilungu eshi ya uda S.A. ta ti kutya ngenge okwa longa pondje yomafomhango, naVolkebond ngenge ke na eenghono doku mu tamaneka. Moma-twi ohofa eshi otashi ti kutya ngenge S.A. ta anye okuyandja ehokololo loilonga yaye muS.W.A., kape na vali oveta imwe tai dulu okuwapaleka oshinima osho. Nangenge S.A. okwa hala S.W.A. li ye kumwe na-Republika, ote shi dulu ashike.

Mefano pevi, aanamblewa yehanganano lyaFELKSA. Okuza kolumoho Rev. J. Wernecke, omudhiginini gwiiniwe; Rev. A. W. Habelgaarn, Presidende yehanganano; Rev. K. Schmale amushanga gwehanganano naRev. H. von Delft, omupehawiliki gwehanganano. Amushanga omunene gwongongahanganano yaakwaLuther, Dr. Andre Appel, okwi ile okukala moshigongi shika shaFelksa numvo, nokupulakena omaudhigu goongerki oonkwa-Luther muumbugantu waAfrika.

OSHIGWANA OTASHI FUNDJU

"Ngele oku na mboka taa ti kutya tse itatu oshikuluntu, omukwaniilwa Ushona Shiimi a

Moshigongi shomumvo shongundu yepangelo lyOwambo, mOshakati, Komufala omunene gwiigwana yaaluudhe muS.W.A. Ndjayi Jannie de Wet, okwa popya nokulondodha aaleli yepangelo lyOwambo kushono tashi inyenge moshigwana. Okwe ya lombwele:

"Kotokeni mwaa kale ngomafano nenge iipopitha mbyoka kaayi na einyengo lyasha. Naku ningwe ooveta tadhi gwanithwa."

Okwe ya lombwele wo nkene oshigwana

Ohofa ya dimbuka mo mangha

Ohofa oya dja mo mangha momutumba woi-vike itano nomepwilikino leemhata dihapu pokati kaS.A. nounyuni eshi keshe umwe kwa li po te liamene. Presidende yohofa muDen Haag, Muhammad Zafrulla Khan, okwa ti kutya nande ohofa ya fuda po ngaha ava ve na sha noihokolola ei otashi dulika va kale hava ifanwa pomafimbo nomafimbo okuyandja ouyelele tau pumbiwa. Eshi otashi ti, oku na oini-ma imwe tai konakonwa natango.

Hahende yaS.A., R.F. Botha okwa lombwela ohofa fimbo inava halakana kutya: "Odoshili kutya epangelo laS.A. ola tukaula oiwana ei, ndele itashi ti ngeno kutya okwa hala ongudu imwe oyo i kale tai hepeke vakwao nokukonga ouwa wayo vene ndele nee etukaulo eli ola dja ashike moukwatya wovanhu voovene, eshi va tongoka panghedi youpolitika yemona noyuteku wavo."

Osho omushamane Botha a etela ohofa onghalo yoiwana yaS.W.A. nokuweda ko kutya osho, osho onghedi yepangelo laS.A. a endife oiwana ei nondjila ei, fiyo ya hanga onghatu yokuya meenghundafana doovavali navavali nge nomahanganano omuS.W.A. ile nomahanganano omoumbuwanhu aushe waAfrika.

Presidende Khan, okwa ti kutya eindilo leembulu kutya oiwana yaSuidwes i holole apa tai ame, kuS.A. ile kuV.V.O., eshi otashi ka tokolwa kohofa komesho. Oshifo sheembulu "Die Suidwester" osha ti kutya eehahende daS.A. oda shuna koshilongo nehafo linene, shashi ova koneka kutya mboii ova longa oshilumenhu. Omutumba ou woi-vike 5 ova kosha S.A. R200,000. Inaku shiivika manga ohofa otai ka twikila vali naini.

iilele tse yene, otaa fundju," osho oshilyo yamukula Ndjayi Komufala omasiku ngaka. tashi dhiladhila kutya iinima ayihe yepangelo lyOwambo, otayi endithwa ashike kaatiligane. Omukwaniilwa Ushona Shiimi ina zimina omadhiladhilo ngaka. Okwe mu lombwele:

"Mboka taa ti itatu ilele, otaa fundju, Ngiika omukalo gweipangelo ogwo kaaye shi, noinaa hala oku gu tseya nokuli."

Moshipopwiwa sheegululo lyoshigongi shika shetoto lyoooveta oshitine okuza uuna oshigwana sha pewa eipangelo. Omusimanekwa Komufala De Wet, okwa tula omuthindo mekokitho lyoshigwana, palutu nopambepo. Ihe oye ine etha owala inaa londodha aaleli yoshigwana kumbyoka e yi tala otayi shunicha nenge otayi hanagula po etungo lyoshigwana ngashi;

Omadhiladhilo omakulu gaaleli ngele taga dhigininwa aluhe, oshigwana ngele tashi kala muugoya wokwaaalongwa, oshigwana naaleli yasho ngele itaa kala melongelokumwe nenge okwaataamba omakwatho ngoka epangelo lyaS.A. tali ga gandja.

Omusamane De Wet okwa ti kutya osho oshinima shaaleli yoshigwana ya longe aantu iinima mbyoka tayi eta iiponga. "Suid-Afrika ita vulu nawa," osho a tumbula.

Mokuulika omadhiladhilo guuyuni, Ndjayi okwa ti kutya omathiminiko pondje opo ge li. Yo epangelo lyaS.A. oya ningile efaneko ndyoka ye li gandja mombelewa yuuyuni, opo ya pulakene ewi lyoshigwana, ihe oye ekelwahi. Nge efaneko olya tindwa, kashi shi nani oshinima shepangelo li tokole lyolyene? Nge hasho omukalo ngoka oshike ngele kagu shi ethiminiko?

Komufala okwa ti kutya, omushiinda shoye omwaanawa oye ngoka mu na naye ombili, hamu kundathana, ihe ite ku yile mo miinima yomegumbo lyoye. Oshigongi shika osha tamekele eti-15.3. nomwa taambelwa wo iilyo iipe 2, omukwaniilwa Filemon Elifas, Ondonga ongoministeli yoshikondo shuuyuki nelenga Elifas Shiimi, mongundu ontotimpango.



OHO KATUKA NONDJILA ILIPIPO?

Owa uda tuu ondaka i li apa ye ku yukilila ile ndi tye u na ongunga muyo? Tala kaume, eshi u li po to ti ame omunyasha natango, ndele ohai li ounyasha wange manga ndi li mounyasha, na ohai longo ngaashi omwenyo wange tau pange, ile ngaashi ounyasha tau ti.

Shiva kutya ounyasha woovene ou na nga shili oilalakanerwa ihapu, ya hala okuwanifwa kwoove. Owa dimbulukwa tuu, kutya manga u li mounyasha, ounyasha otau ku pumbwa u wanife oilalakanerwa ivali? Shimwe oku wanifa ehalo laKalunga, noshitivali, oku wanifa ehalo lasatana.

Ndele kaume onda hala u yelule omesho oye u tale oilalakanerwa ei nomesho ane, opo u longe nee nawa oilonga yoye oyo to pulwa kounyasha woye. Ove dimbulukwa kutya ihai longwa oshita, manga to longo shimwe, kape na omalimbililo shimwe osha mwena, osheshi oovene vayo ove lili kokule ngashi oushilo u li kokule nouninginino.

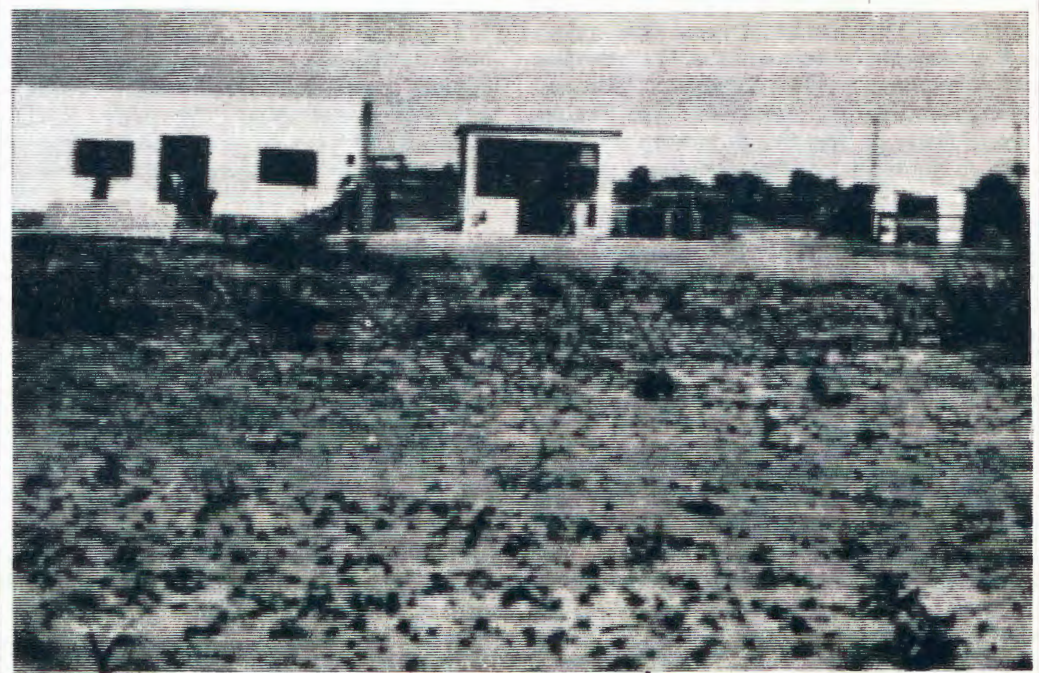
Ile ou li mediladilo olo, kutya ohai longo po manga shimwe, opo ndi ka longe nawa shikwawo? Ehe, oto ningi nawa, ashike shiva kutya ou ta te ndiba, ota teeleele a kwate ndiba, nde ita teeleele eyoka ile shimwe shi lili.

Yelula omesho oye ane u tale omauwa nomaayahame e ku kalela ofika efimbo keshe. Edi eenhele mbali tadi ku teeleele noto pitifwa mudo ashike koilonga yoye oyo to longo. Ngenge wa hala ouyahame, longa oilonga yondjabi youyahame, ndele nee ngenge wa hala ouwa, longa oilonga yamwene wouwa.

Abraham Malua

A si ku na esiku limwe a ye mondjokana

Omumati Samuel Ananias, Niimwandi, okwa mana oondjenda dhe moshiponga shoshihauto manga kwa li esiku limwe alike a ka hokane omukadhona gwe. Meme Helena omuyalekwa gwe ota ti kutya, oshiningwa oshinene itashi uvika ko kungoka inoo shi ningilwa. Okwa tsikile: "Kandi etha oku mu lila oshoka okwa li enyanyu lyandje."



Epangelo Iyoondjila (Sporwee) olya gandja ezimino kumwene gwoositola dha-Namagongwa, omusamane Thomas Philipps, omakambamba Iyaapashiyoni nogofulaha, ga kale haga thikama positola yaNamagongwa ndjoka yi li pooha dhoshitauwa shopokati koteyapate nOnandjokwe.

Pehala ndyoka ngashingeyi ope na ishewe ositola onene ya gwedhele komahooli ngoka ga kala po petamekolela.

Ayehe mboka ya hala okuumba nenge okuhelula iinima yawo nosho tuu okulonda nenge okuheluka, otaa ziminwa oku shi ninga posasiyona ndjika yopOnamagongwa.

A VAKA MANGA TA KWAFWA

Omulumenu weedula shiimba 30, okwa vaka oikutu eeshuta mbali doshikainhu ya kosha R 20, keshe imwe. Imwe ilaula fo (pikswart) naikwao youmhungu yolushikato, Ei okwe i vaka manga kwa li oye aeke moshikoto shoshihauto ta twaalelwa okudja kOmbalanhu nokuhelulwa pOgongo, mUukwambi, eshi a indila ekwafo ngaha. Osha li 28. 1. 197.

Kukeshe umwe ou to mono ile to udu elandifopo loikutu ya tumbulwa apa shiivifa kopolifi yopopepi naave mekwatafano nomufitaongalo Hofni Nakamhela nomupangi Aini Nakamhela, Eunda-Clinic, Onesi, Uukolonkadhi.

Matheus Kapenda, Oshigambo, ota nyola ngeyi; Ino hondela, ino haluka omukiintu gwamukweni. Ehokano nali simanekwe kwaayehe, nontala yoondjokana nayi kale yaa na oshipo, oshoka aahondeli naayoni yoondjoka Kalunga ote ya pangula. Heb. 13:4.

Oshako ye oondji

Moshifo No. 5, otwa adhika twa tseyitha oohandelese, dhaayevangeliste oompe. Tate Mika Kajjamo, kOutjo, ota ti ye oondji: Posbus 280. Ku nyolelwe ngeyi, notayi thiki nawa.

Kaaipstad

Moshoongalele shokuyandja eeveta muKaaipstad, omushamane T.J.A. Gerdener, oministeli yoinima yomeni loshilongo, oya popya kutya S.A. ita kwatafana nomadu ovakomunisme, osho yo ita ka yandja kovakwaS.A. ovo tava ka enda moilongo ya tya ngaho edimino. Eshi osha lulumike unene epangelo laGhana, nde ola indila Suid-Afrika a fatulule nawa oshinima osho.

Oilongo ya popiwa; Albanie, Bulgary, Kiina, Kuba, Tjeggoslowakia, Ndownishiland lokoushilo, Hongary, Mongolia, Korea lokoumbanganhu, Ple, Rumanie, Rusia naViëtnam lokoumbanganhu. Ghana olo alike la tumbulwa muAfrika, sho osho nee tashi mu feta osho.

OMUKWETU

Oshifo shOngerki onkwaevangeli paLuther yomOwambokavango
Die Nuusblad van die Evangeliese Lutherse Ovambokavangokerk
Oha zi mOniipa,
Omukuluntu gwoshifo/Hoofredakteur Omumbisofi Dr. Leonard Auula,
Amushanga/redakteur Sebulon Ekandjo
Ondando komumvo mOwambo 70c kUushimba noKavango 90c
Kombanda yomafuta R1. 30.
Ondando nomambestelo naga tumwe kOmukwetu,
Oniipa, P/B. 2015, Ondangwa, S. W. A.
Oshinyolwa shuule

wondeimi	1	otashi futiwa	R1.00
oondemi	2	"-"	R1.90
oondemi	3	"-"	R2.70
oondemi	4	"-"	R3.40
oondemi	5	"-"	R5.00

Oto vulu okutuma efano Iyaashoka wa hala shi tseyithwe nomatumbulo wo gasha ngele ope na.