

OMUKWETU

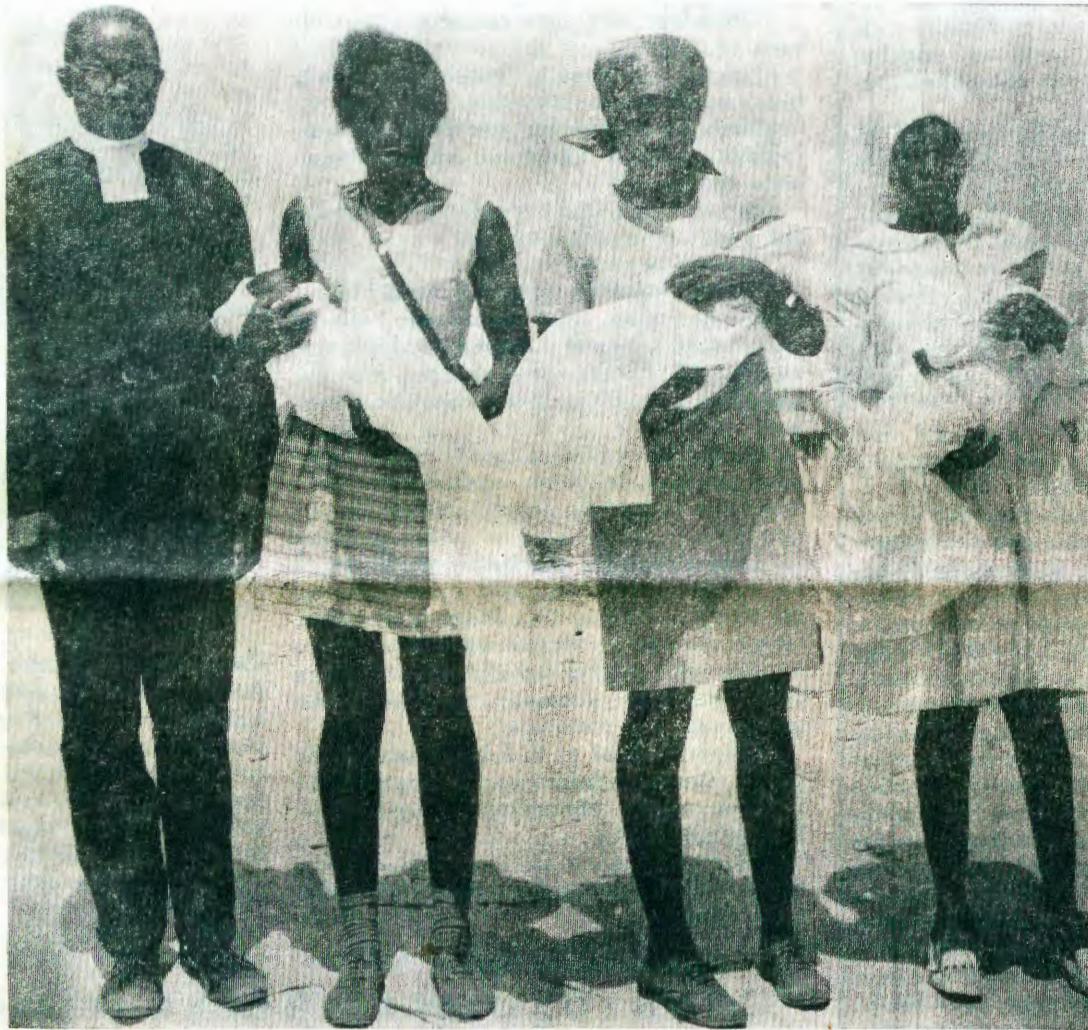
Registered at the General Post Office as a Newspaper

EHANGANO

Amushanga/Redakteur: Sebulon Ekandjo

No. 6, 1970

ONGERKI YETU NESHASHO EYAPUKI



Oshilongo kehe nenge egumbo oli na omikalo dhalyo, dhimwe hadhi tsu kumwe nokufaathana niinima yontumba noyongandi. Nomukali megumbo nenge moshilongo oku na okukala a tseyo oompango nomikalo dhaandjawa. Osho wo shi li negongalo nenge nongerki yaKristus kombanda yeve. Omukriste oku li mukukalamwenyo kwomomaunyuni gopaali; moshilongo shokombanda yeve nomuuyuni woshilongo shegulu kombanda yeve shaa lwetike, onke ota pulwa oshindji shi vule omukeeneitaalo. Egongalo olyo wo egumbo lyaKalunga kombanda yeve. Omuyapostoli Paulus ota nyolele

omuyakuligongalo Timoteus ta ti: "Opo ngele inandi ya mbala, u kale u shi shi nke tamu longwa notumu kalwa megumbo lyaKalunga oondyoka egongalo lyaKalunga Omunamwenyo, ongudhi nomukanka gwashili." (1Tim. 3:15).

Metestamendi Ekulu otatu lesa opendji shi li ngawo, egongalo lyetu olya uuthilwa wo iiyakulithohenda, oohapu dhaKalunga nomasakramendi omayapuki; ngashi ga dhikwa kOmukulili mwene, lyEshasho nolyUulalelo Uuyapuki. Momasakramendi omu na sha shoka shi lwetike, nogo oshinakugwanithwa shegongata
Tala ep. 4



SUIDWES OMBIYA I LI PEDIKO

Omuniyumbo ou a kanifa eengobe 20 molwoukumba, shiimba oye ta tawwa omunelao. Vahapu ovaava va idila ko koyuunda. Odula ya loka nee paife, naau a xupifilwa ko okatana oku na ngoo nee etimhaumbwile.

Ndele nee nande ongaha, eemhangela da endeke momudingonoko wOwambo momudo wa ya eengobe di ye ngeno meedate, shiimba eshi osha fyaala natango momadiladilo avahapu. Sho shiimba tashi ka endlulwa natango neudo, ile sha tulwa manga mokila.

Apa pehovelomudo eengudu dihapu dovanhu oda monika poivelo yeembelewa, yeefitola, yomaumbo, yeefabulika nomeefikola va tambulilwe moilonga nomeefikola. Omalinyengo aa inaa kala shito mOwambo, hano otaa ulike ope na sha. Pondje yOwambo oku na eeterolesa novakomunisi, nepangelo laS.A. la londwela luhapu ovanhu ava va lungamenwe.

Mombelewa ya kula younyuni muDen Haag, Holland, paife eembulu otadi pangulwa, osheeshi vati odanya okudja muS.W.A. Suid-Afrika okwa ninga omafaneko aye omalipopilo, amwe kwa tiwa a ekelwashi, novatamaneki vaye ova tunga yo amatomhelo avo nomayandjo avo oushima. Eshi tashi di mo katu shii manga oku shi xunganeka, ashike eshi ombiya i li natango pediko tai ehelwa.

Vali fye katu li po manga ovateleki ile ovaeheli vombiya ile ovatyai voikuni. Efaneko la yandjelwe momhangu kuS.A. kutya ovadalelwamo atushe ovakainhu novalumenhu tu yandje ondaka yetu nokukoleka apa hatu ame eshi inashi pita mo manga.

Ngenge oumuxanganeki muwa nomushikuli womalinyengo oiningwani, nawa humbata oshisho sheemwenyo noshomalutu ovanhu muS.W.A., nena ito kwatwa nande komhepo youprofeti woipupulu ei tai udifa; ombili, ombili, eli edu lombili, osheshi embobo eli ola pola ashike kombada. Omailikaneno otaa pumbiwa nelitulemo moshinima eshi.

Ngashingeyi omvula sho ya loko, nomeya taga monika shaa mpoka, aantu wo yomaludhi gi ili nogi ili, nomaukwatya gawo gi ili nogi ili, otaa monika nkene taa iikutha okwenye momadhiya, momatale, miindobe nopiihenene. Oonyata wo dhilwe ndhoka dha kungululwa koombinga noombinga odha faalwa apehe mpoka omeya ga gongala po, notaga ka kala po sho taga longithwa. Ano itashi kumitha iilonga momagumbo ngele itayi tsakanithwa, sho aantu ya kalela ashike iipangelo oongundu noongundu, moshigwana shetu. Omeya goye fulukitha tango, u nwe ihe nawa.

Omusitagongalo Ambinga a ka vululukwa po

Omusitagongalo Festus Ambinga, okwa zimbukile muuyuni mbuka eti-15.12.1970, konima sho a kala ethimbo ele muunkundi, nomuukulupe. Amushanga gwiifongerki manga omukulupe Ambinga inaa hulitha okwa adhika e mu talele po muuwehamwe we megumbo lye. Omapulo kwa li e ga pulwa okwa li e ga yamukula ngeyi:

"Tatekulu Ambinga, nuumvo otu na nokuli oshituthi shoomvula ethele, evangeli sho lya longo mOwambo. Aatumwa ayehe otatu ya simanekele oshilonga shika, ihe oshike to shi dhimbulukwa natango komutumwa Nakambale?"

"Ngwiya okwa li omumati gwaKalunga, ha popi namwene gwe. Okwa galikanene mondjala yomeya, omvula noye ya. Okwa kondjelele oshilonga shaKalunga, opwa sa ependa mpaka mOwambo."

"Okukalathana kwe naantu, okwa li kwa tya ngiini?"

"Nakambale okwa li omuhungimwenyo, okwa kongo aantu oogumwe nagumwe."

"Pethimbo ndiyaka, sho mwi ile momambo, oshike sha li po naanaa eko ndjo lyongerki?"

"Pethimbo ndiyaka, ongerki oya kondjitha unene, omagongo noohula."

"Nomalovu tuu?"

"Aawe, pethimbo ndiyaka, omalovu hauene, oga nuwa ngaa kaasamane ashike. Uukwanyama owa fa owo wa tetekele mokunwa, aakriste taa nu, ihe aahongi wo Aakatolika inaa dhiginina okukondjitha iikunwa."

"Pethimbo ndika ongerki otayi monika ngaa ya fa yi na omakondjo oge ndji, oto ti ngiini, otayi kondjo tuu osima?"

"Osha yela nawa esindano otali ke ya, ihe itali endekele. Aanasikola oyo taa ka tema omulilo, mboka taa ilongo ngashingeyi. Inamu tila owala. Nokuli uupagani wowe ne owa tewa po kevangeli, iinima mbyoka tamu tala ya fa uupagani, oyo iiko'okolo yowala, kayi na oshilonga."

"Ongerki opo yi holole ehambelole lyayo omolwoshilonga shevangeli sha longwa mpaka ethimbo ele, oyi na okuninga ngiini?"

"Dhiginineni ashike oshilonga shetumo momapya agehe gomongerki. Shika shi longeni neitulomo."



Otwa kala ethimbo ele twa tegelela ando tu mone uyelele wa gwana wokukalamwenyo kwaKuku Festus Ambinga, ihe sigo onena katu na sha. Mpaka pamwe neso lye otatu tseyitha ashike papupi manga tatu tsikile ngaa okumona sha sha gwana. Ngele ou shi sha kuye ndishi onawa to tu tseyithile wo moshinyolwa oshiwana!

OONTOKOLWA DHEPANGELONGERKI

1.

Onkundana yoluhodhi ya thiki kEpangelongerki, kutya oshinyangongalo shaNkurenkuru sha teywa komufuthi nokwa yaka mo iimaliwa yegongalo. Natango tuu Epangelongerki otali londodha omagongalo gi ikongele ooBrandkasa.

2.

Omusita Hofni Nakamhela ngoka a longo kEtunda, Epangelongerki lye mu langeke megongalo Onesi omoluukulupe womusita tatekulu Paavo Nambundunga tau mu fala mbala mopensione. Epangelongerki lya gandja oshimpwiyu komutonatelishitayingerki a tale nkene, Etunda tali yakulwa manga, sigo taku monika omusita e shi okulangekwa kEtunda.

3.

Omolwoluhupo lwiimaliwa yokudhika oshiketha shoopensione mOngerki yetu, nomolwompumbwe yombelewangerki ompe ya dhimbululwa tayi pumbiwa shili, Epangelongerki lya tsikile ishewe meti-15, lyaJanuali 1971 nolya tokola pu indilwe ekwatho kuLWF omolwompumbwe ndjika yopaali.

EITEKOKALUNGA LYOMONGUWI

Ombepo yeitekokalunga otayi longo wo maantu yamwe naamboka ye li megundjilo megongalo. Omolwonshitwe yomuntu yopaungodhu, eitekokalunga ndika itali hokoka miilonga. Ihe monguwi omuntu okwa kanitha ekwatathano naKalunga nohole. Shoka tashi dhambululwa kombanda okwaayendathana kwe nomalongelokalunga nenge nomasakramendi omayapuki. Oshiponga shika otashi zi monkalo yopaali. 1) Uukunyunu u li mokwaatseya (agnoma) nokwaauviteko ondjila yehupitho. 2) Oondjo dha zi mepunduko ndyoka inaa li holokela yalwe no dha ningwa oshiholekwa kumwene, nando ke li we metsikilo ko. Onke okukonga nokwaadha omwenyo gwaantu ngambaka, otashi ningi aluhe oshidhigu notaku pumbiwa

OUNGONE WETU

Heb. 4:15-16

Monghalafano yovanhu alushe naakushe inamu monika ovo va kuta oukolele nge wolutu ile womhepo, shapo ovo aveke ovo va kuta omwenyo, va kuta oupuna nosho tu. Ndelene nenge hatu litalele mekende li yela nawa tali hanga eemwenyo detu, ohatu hovele okukoneka oungone wetu.

Oungone wange ohandi u hange muKain, Kalunga eshi a koneka ope na oshiponga she mu nangela okwa endeleda nokwa londwela Kain a kale oupafi. Kain okwa kofa ashike noungone woulunde we mu nhukila, nde a longwa oixuna. Eemhata dange dokwaanya oungone wange oda fa daPetrus eshi a lombwela kOmwenyo waye kutya satana ote mu kwata nde te mu ningi evaya, okwa nyamukula ashike:

"Ame onda wana okuya pamwe naave modolongo nomefyo." Luk. 11:31-43. Jesus okwa lila eshi a tala Jerusalem sha nyengwa okukoneka oungone washo. Okwa lila eshi a tala Judas ta anyene mougone waye wolwiso, nokwe mu lombwela, "Omunhu ou ta kengelele omona wornunhu ngeno ka dalwe." Mat. 26:24.

Edi odoshili kutya omupilisteli wetu haye ou ehudithile ngeno oungone wetu onghenda, ahowe. ov. 15. Oha lili. Pombila ya-Lazarus ota lili, okutala eembunga dovanhu va fya ondjala, okwa uda onya nde te va palufa,

Eshi osho oukwatya waye wopashili fiyo onena nenge ta tale oingone yeengholwe, yoipupulu, youbwada, younwa nomalitumbo. Oingone yaava ve na onghai ve na ondjala, va nyika oufiye va kanifa eitavelo lashili. Ota tala fiyo onena nolukeno oingone oyo ya kanifa omutumba mokati kavakwao, hai shekwa, ya dinwa, i tondifa mokati kovakwao.

Oye omupilisteli omunamutimanghenda e shi oululu womamakelo ngashi e mu hepeka mombuwa nde okwe a ta. Mat. 4:1-11. Vahapu ve shi itavela paife kutya ekano lomulunde ohali ufwa yo kuKalunga, nde Ombibeli ongondaka yaKalunga mwene, itai koleke nande oshinima eshi. "Ame itai hokwa efyo lomwiitekikalunga," osho ye mwene ta ti. Ohashi mu nyeke ombili, okwa hala keshe umwe a hupifwe.

Panghedi ei omulunde a tondwa kovanhu ota dula okuya kuye nde ota filwa onghenda. Ovelise 16 ya tya: "tu ehene hano kolukalwa lwaye lwe filonghenda tu na etimhaumbwile, tu mone onghenda..." Elandwelo laye oleli nena kovaitaveli:

Ehafo leni nali kale opo nenge omadina eni oku li momukanda womeulu Luk. 10:20. Eshi osho ehafo iaKalunga.

Sebulon Ekandjo

ekonakono lyuupisgologi (pamwenyo.)

Olwindji aantu ye li moshiponga sha tya ngawo, ompumbwe yawo itayi dhambululwa opo ya kwathwe. Mboka ye li meitekokalunga tali zi mokwaauviteko ondjila yehupitho otaku pumbiwa elongo lyuukriste lya kola, unene moosikola dhomakoleko noma-shasho. Oshoka osha monika notashi ningwa olwindji, omuntu ngoka a mono ompito yekoleko inaa uuvako ondjila yehupitho, powalitali yesakramendi ita galukile po we konima yekoleko. Onke oyendji megon-galo oomboka ye li monkalo yuukunyunu u li mokwaauviteko ondjila yehupitho. Nokombinga yamboka ya kwatwa koondjo noya tilitwa oku dhi holola, oshinima shawo oshi li muule. Nomokupulwa omolwashike itaa iyakulitha iyakulithohenda naye mwene ota nyengwa oku shi fatulula. Oku na ngaa euvito ita vulu okulya nokunwa olutu nombinzi yOmukulili manga inaa manguluka meiyuvo lyeputuko (paraptoma) lya ningilwe momwenyo, ihe oshinima otashi mu nyenge oku shi pititha mokana. Onke tuu aantu ya tya ngeyi oye li monkalo yuulunde womonguwi, mboka omuyapostoli te u popi: "Ihe mbuka wayamwe (uulunde) otau ya landula" (1Tim. 5:24b).

Eimbembeleko monkalo ndjika nenge uufudhime (hupokrisis) olyo oshiponga shotano nonkatu yekano momuntu. Onke naambaka kaa shi ku ethiwa nokutalwa, oshoka aniwa ihaku uuvika sha kuyo. Nayo otaa pumbwa okuhaluthwa ya ze ontuku yeimbembeleko. Ngele oonkambadhala moshinima shika itadhi ningwa, nena ndhoka dhomuprofeti Jer. 6: 14 ngashi dha fatululwa komuyapostoli: "Manga taa ti; ombili, kaku na nando ombudhi, ekanitho tali ya akele no kaa na mpoka taa yi ontuku," otadhi tsu methimbo ndika (1Tess. 5: 3). Oshoka methimbo ndika otu na wo okwaangala nokutonatela oshiponga sheimbembeleko shaa falithe oomwenyo mekano.

T. Shipanga

Olukonda.

Omukulupe Monika lindombo, Olukonda okwa mana oondjenda dhe, muukulupe we nokonima yethimbo ele lyuukundi wopalutu. Okwa thigi po oyana yahamano, aatekulu 44 naatekulululwa 45. Okwa si e na omimvo 90.

A hangika noshondolo

Hendrik H. Janse van Rensburg, waVenduka, okwa futifwa R150, ile a kale omafiku 50 modolongo, osheshi okwa hangika e li nomulaule ehe li kodalate,

Israel ta kwafa Angola

Ovakondjelimanguluko vaAngola ova nyematela paife Israel, osheshi vati ota kwafele unene Angola monghedi yokuhepeka ovalaule. Eshi ove shi mona molwifo oyo va kwata, vati oya longwa naanaa mulrael.

Osha tilifa nge neenghono

Mokulesha oshifo shange shOmukwetu, No. 22, 1970, onde litwa mo oshileshwa shimwe tashi popi Oheli. Osha li sha tilifa nge unene neenghono. Onda li nde litula naanaa ponhele oyo, ndishi aame ndi li mufuta lomundilo, handi hekumuna. Nakuulikiwa oinima ei, diinima, fiyo to ka fika vali kefikilo.

Hilaria Haileka

Efano kombanda tali ti, Ehanga-no ohali monika omwedhi omuti-yali kehe, lu-6 momumvo. Owi inyolitha tuu?

Omuntele, Ondonga,

Omvula sho ya loko nawa ngaashingeyi Omwambo ayihe, nenge Suidwes alihe nokuli. M Omuntele muuzilo wOndonga okamati okashona komvula yimwe netata oke etwa neendelelo enene moshipangelo shaNandjokwe konima, sho ka yuulwa momeya noka pewa ekwatho lyotango mokapangelo kaandjawa.

"Onda kondjo noku ka fudhitha uule wotundi yimwe netata, opo ndi dhambulule kutya ope na ngaa omuntu nani," osho omupangi meme Josefina Shekunyenge a hokoolola.

Okanona oka li ashike taka dhana nooyakwawo pethimbo lyokuya kosikola, manga aakuluntu taa longo mepya. Opo kwa adhika kwa si natango aanona yatatu momeya, manga omutine gwawo okwa hupithwa.

"Kandi shi wo omolwashike aantu ye na okusa omeya shi thike mpoka nando omeya kage shi naanaa ogendji ngaashi mpaka," (pOndanjokwe) osho meme Shekunyenge a tumbula nonkumwa onene.

Omupangi Josefina oye awike ha longo mokapangelo kaMuntele oomaila 40 oku za pOndangwa, ihe ota pandula unene omunangeshefa Johannes Nakawa omolwekwatho lye moshihauto she. "Aluhe shimpa tuu twa adhika koshiponga oshinene, nena ohaluka yowala ote ya nota kwatha."

Ngaashingeyi oka shuna kegumbo ke li nawa.

ONGERKI YA TALELWA PO

Aalongi yamwe yomoosikola dhongerki no-dhoshigwana oya li ya zi koombinga adhi-he dhOwambo noya gongala pamwe naawiliki yongerki moNiipa eti-18. 11. 1970, opo ya kundathane naamushanga gwepatudho lyopakriste Dr. Sheaffer.

Moonkundathana okwa li taku kongwa ondjila tayi opalele elongo lyuukriste miilyo yongerki yo yene, unene moosikola dhomas-shasho nomakoleko, nenge maanona aashona nokuli. Osha li oshiwana kongerki okupulakena oonkambadhala dhoongerki dhi-lwe muuyuni, unene muAfrika nomuAsia sho tadhi thikitha evangeli lyomwenyo kaantuo yadho. Dr. Sheaffer okwa tula omuthindo moshipopuwa she, kohapu yOmbimbeli maantu yi kale oshityesha shonena, handjokonona yowala ngashi oyendji muuyuni ye shi tala ngashingeyi. Shika otashi tompoka ashike, ngashi Dr. Sheaffer a ti kutya: "Uuna omuntu a tseya ashithe te ke shi longa nena."

Kashi shi oshipu okuthikitha elongo li na omwenyo maapulakeni yoye, ihe okukala miinima mbyoka yi shiwiki momudhiingoloko gwoye, nokukonga omatompelo maalongwa yo yene pwa na ethiminiko nenge oshipango, shika osho ondjila tayi fala keyamukulo ewanawa, osho a fatulula.

Omusamane Sheaffer ngoka a pulakene wo oonkambadhala ndhoka tadhi longwa kongerki mokutaandeliitsha uukriste mokati kaanona nokaapagani, okwa kumagidha nomukumo ongerki yi konge omakwatho omape taga pumbiwa koshikandjo sheputudho lyuukriste kongongahanganu yaakwaLuther, ku-Geneva. Okwiilonga okulesha komukuluntu-lela osho ondjila yimwe ya monika ompe konima yomimvo 20 dha piti nokwa tala otayi oopalele wo naampaka okulongithwa. Omumbisofi Dr. L. Auala nomukuluntutu-mwa Rev. Mikko Ihamaki oya kala wo moonkundathana ndhika.

YA YAMBEKELWA OSHILO- NGA MONGWEDIVA

Aagundjuka yatatu oya yambekelwa oshilonga shawo shuuyevangeliste montaneho yongerki ayihe mOngwediva, komumbisofi Dr. L. Auala. Moshigongerki eti-15.1. nuumvo, Lineekela F. Shidute, Josef Iyambo, naGottlieb Manya, oya thikama powalitali yongerki yaNgwediva mpoka ya lombwelwa komumbisofi Auala, pahapu yOmuwa;

“Otandi mu tumu ongoonzi mokati komambungu,” ngaka ogo omalaka omadhigu, ihe omu na wo omukumo, oshoka ota ti wo, “ondi li pamwe nane.”

Mbaka oyo aalongwa ya longwa mosikola yuuyevangeliste mOtjimbingwe oomvula mbali, nelalakano ndika opo ya ka kwathe aamati, niilyo yongerki yaElok, mUushimba, nenge mehalakano. Nando oyo ayehe yatatu oya hokana, Epangelongerki oye ya tumu manga ongaalangi yokodhalate, noya langekwa ngeyi;

Lineekela Shidute, Olupandu, okwa langekwa mOvenduka, peha lyomuyevangeliste Miika Kaijamo, ngoka ta yi kOutjo. Josef Iyambo, Oshigambo, Omoshomeya, mokomboni naGottlieb Manya, Olukonda, kokamina kaMatschless.

OTO KA NINGA NGIINI?

Omukuluntu nakuvala owa tokola okuninga ngiini nuumvo, opo u kwathe omumwoye omuholike ngoka e li kosikola? Nenge omusamane oto ti natango omunona ke shi omukweni? Omadhiladhilo ngoka oga puka nayi shili. Omukweni oye ngele keshi oluvalo lwomungoye mwene?

Aanona ye li moosikola oonene otaa pumbwa ekwatho enene lyaaikuluntu yawo miinima kehe taa yi pumbwa. Shotango osho okuya galikanena ya kale ye na eitaalo lyashili lyomuJesus Kristus, okuya galikanena wo omolwekwatho lyopalutu.

Oye na oyindji taa yi pumbwa esiku kehe. Omukuluntu kehe ota pulwa shili eitulomo mesiloshimpwiyu lyomunona gwe kehe e li mosikola. Kambadhala okutala okomukalo guni po to kwatha omunona, opo a kale u uvite elago manga e li menongelo. Ye a tsakanithe nenyanyu iinakugwanithwa ye yesiku kehe.

Otu na iimuna mumbyoka hatu vulu okwiimonena mo iimaliwa, opo tu ikwathe tse tu kwathe wo aana yetu. Iilya oyo olunza lumwe lwa simana okwiimonena mo iimaliwa. Oyendji ohaa longo iilya oyindji, ihe sho inaa tseya okwiikongela iimaliwa miilya onkee, ha etha iilya tayi tukwa e taye yi ekelehi ashike, yo inayi ya etela nando osha.

Kambadhala ano, opo u kwathe oluvalo lwoye lu ye komeho, opo ye ke ku kwathe pethimbo lyuuko-kele woye. Oluvalo olwo olwoondje lwomukuluntu.



Aasita aakatolika, Philip naDaniel ye li momalyenge

Toronto Canada - Omusamane Wilfred English, okwa si muCanada omasiku ga zi ko, sho a dhimbiwa oshihanduke mela manga kwa li ta tandwa. Oshihanduke osha li petando, tashi longithwa mokupugula ombinzi ndjoka ya li po tayi endebele, nani poku mu hondja ye shi dhimbwa mo. Inaku uvika egeelo lyasha omolwoshinima shika, ihe aapangi moshipangelo shoka oyi iuvanene ya kale haa yalula aluhe iilongitho yawo konima yetando kehe. Omusamane okwa li gwomimvo 68.

UUTHEMBA WOKU KALA NOMWENYO

(Etsikilo kuF. Ashipala)

Shika kashi shi oshishona ngashi gumwe gwomutse ta vulu oku shi dhiladhila. Oku na aantu oyendji mboka ya li yaa na uuthemba wokuvalwa. Pamwe wa dhiladhila nale nokuli aanona mboka yaa shi yomoondjokana, mboka ashike ya zi muhalu nenge muudhano waagundjuka. Tu tye oye ya sha fa inaashi tegelelwa.

Shika otaa vulu oku shi dhiladhila yo yene ihe unene okukalamwenyo kwo kwene otaku ya longo kutya oya li yaa na uuthemba wokuvalwa nonando aantu ayehe pakupopya oshili oye na uuthemba womwenyo, naamboka wo oye na ngashi naanaa yalwe. Omavalo getu nonkalo yetu oyi na okukala momikanka dhokukala po kwetu, hamoku yona nkoka taku eta euvito ewinayi. Shika ohashi dhimbululwa sho omuntu e li po ashike ta ti:

“Ondi na omwenyo ashike ngele.....”

Pamwe mokati ketu kamu na naanaa mboka taa dhiladhila kaye na omagumbo, yaa li mongundu yasha nenge yaa shi aa-

Baltimore - Ovafitaongalo vavali ovakatolika ove li paife moupyakadi munene wepangelo muAmerika, osheshi vati okwa li ve litula meehangela dokuvaka po omuyandjindunge womupresidende woshilongo, Richard Nixon, pamwe neembudi dikwao. Omutitatu wavo naye yo okwa li nale omufita otava pangulwa naye.

kwamuhoko naakwashigwana. Ihe mokati ketu omu na aantu oyendji mboka taa dhiladhila oshipa shawo oshiluudhe, osho oshinima shethingano noshomupya. Hamolwoshipa sho shene, ando osho haye shi tala oshiwinyayi, ihe sho uuyuni we itau petha uuthemba wokukala nomwenyo, nena olwindji muye oku uvite ashike oku na okukala po ngele omutiligane e shi hala.

Onkalathano miipangelo yetu olwindji sho tayi yonuka pokati kaavalelwamo naatiligane, ondi shi shi opu na oyendji taa shi dhiladhilile kombinga ndjika kutya otaa ningilwa shika omolwashoka ye li aaluudhe. Oyendji nokuli ohaa ti:

“Akwetu omolwashike nda shitilwe omuludhe ndi mone iihuna ngeyi?”

Metumbulo ndika ou uvite naanaa kutya uuthemba wokukalamwenyo kau po, oshoka omuntu oku uvite e na okukala moongamba dhasha, ina manguluka ngashi yalwe. Onke nomiilonga oye omulongeli gwaantu yalwe.

Esiku nde shi mona onda li nda kumwa

Esiku limwe onda li ndi na okweenda ondjila onde ngiika oomaila 50 lwaampoka. Mondjila yi thike mpaka onda li nda hingi iimuna. Onda li nda mono uudhigu owindji, oshoka iimuna mbika kaya li ya hala okulandula epola ndyoka ndi na okweenda nalyo. Konima yekondjo enene nomalimbililo ga aadha ndje ngele ote vulu tuu okutsikila natango, ohaluka omugundjukakadhona gumwe ota zi konima yandje a londa ombasikela. Ina popya odhindji okwa tameke owala ta gongele iimuna. Sho e yi tidha uule ngiika womaila yimwe onda dhimbulula kutya, oyi li ngashingeyi pokugundjila yi ende nombili.

“Tangi unene meme kekwatho ndika. Ondi inekela ngashingeyi oti ka tsikila nga nombili.” Osho nde mu laleke.

“Aawe tate, otandi ku pititha



Omufuko Rebeka Sheuyange

TU DHILADHILENI NAWA AAMATI

Ondu uvite ohenda unene kombinga yetu aamati Aawambo, oshoka otwa fa tatu lalakanene mbyoka itaayi kwatha sha. Dhiladhila, omuntu oto landa omashuta ogendji, ngoka tage ku pula iimaliwa oyindji pamwe R50, mukehe limwe. manga siku limwe ku na nando ongombe nenge oshikombo, nenge iilya.

Ngoye ishewe esiku limwe notee maandjeni ihayi nuwa mo, ngoye

manga moluhwa ndoka etandi ku thikitha koshana shimwe shi li hwiya.

Onda dhiladhila momwenyo kutya, oku shi ndje, pamwe ongame awike inaandi mu tseye. Sho nda li nda hala oku mu ulukila kutya, nangame onda fa ngaa ndi mu shi kashona onde mu pula:

“Ongoye olye ano meme, nda fa ngaa ndi ku shi?”

“Ito tseye ndje tate, kandi shi gwomoshilongo shika. Oshoka nangame wo inandi ku tseye nando.”

“Ano omolwashike wi ihepekele ndje ngeyi ongo u shi ndje nale?”

“Sho hatu kala miigongi yetu yaagundjuka otwa longwa wo kutya, shaa tuu tatu adha omuntu e na uudhigu nenge a hepa natu mu kwathe, inatu mu pitilila po owala. Onke itandi vulu okuku pitilila inandi ku kwatha.” Pethimbo ndyoka otwa ende nokuli oshikako shoomaila dhi vule mbali, notwa lalekathana ihe.

Onda tsikile niimuna yandje yi na egundjilo enene nokudhiladhila oshiningwanima shika. Onke itandi dhimbwa nando ekwatho ndyoka. Ihe onda longwa wo oshilongwa shimwe kutya, iilonga yaawiliki yaagundjuka nani kayi shi osima yowala moshigwana shetu.

Omuwa ota ti: “Oohapu dhandje itadhi igalukile owala.”

N. litenge

OMUFUKO WANGE

Kaume kovakulukadi, ovaxungu nounona; ke na nando okanhondo, aveshe ookaume kaye. Aveshe ova makela mo mouwa waye wombili. Vahapu ova ndungikwa, omayeke va yelekwa. Omukumo ta kumike, noupenda ta pendeke. Eenghono ta nghoneke, vahapu ova lola mo, mouwa waye ku pula.

Oye okwa fa ongala, mokati koixwa inai hapa. Oye okwa fa omume, efimbo ku he na odula. Oye okwa fa omeva, momukunda mu na onghange. Oye okwa fa olamba, pefimbo ku na omilema. Oye okwa fa oshiiimati, pefimbo i li kokule nophonhele ya pumba po. Oye okwa fa ondaka yongendjo, tai ngele- ngedja efimbo kwa tya filu.

Eenghono daye ongondjab. Elama ongongalangobe Omundjoboko ongomenye, onga tungu shokomanyana noomukoko pomilonga. Okweendelela ongekodi, tala kaimbi ta tengele, mangha ye ta

oho lala mokandunda kiihenguti, okambo kooposa ku ka na. Omumati e na ondunge noha dhiladhila ota kala nooshuta mbali, odha gwana. Ongaamati yopethimbo ndika, shika tu shi dhiladhileni nawa.

K. E. Engombe



Simon Sheuyange

vakula. Ondjungu neendelelo okudiladila to nyengwa. Okatenda to lidengele, omapulo taa holoka: “Oupenda nomukumo hano ohau di peni?”

Okukala kwaye taku shikula, taku ya, taku talika. Nge to mu tale ongoshilemo, efimbo ku na omutenya. Ye ta yelekwa ngohani, efimbo ku na omilema. Oye ta yelekwa netango, efimbo ku na omudimbi, nombabi tai shikula.

Keshe apa a kala po, naapa ta ka kala po, aische oya wapala. Tai hafifa ovatali, ovaudi ku pula vali, shapu otava shambukwa. Oupuna noukengeli, eshi we uya popepi.

Walye noove Nakadika, ouwa we u ningilwa, to nyengwa okudimbulukwa. Kala nee wa lungama, pamwe omaofi to fele. Omufima tau dongele omu wa kala ho nu mo. Kala nofika lipula nomutumba, diladila ouwa we u ningilwa. Lungama nee kaume ekuva lovanhu la nwefwa, ove u he lingudike.

Tala ove Mufuko, ombuto wa kuna kwinya oya mena. Akushe to ka kala ko, ookaume tava tale ko. Lungama nee kaume eenghono wa pewa, nomukumo wa kumikwa. Momeva tau ningine ngenge ove ito fikama. Diladila omakotongo, nounonywe to ka hanga. Neke lokolulyo dama nomutwe woye, yelula kuOu te ku koleke. Simon Sheuyange

Tshilongo Amuulo Tsumeb, ota ti; aagundjuka ongoshigwana shangula, inamu ya we komambo mwaa na Ombimbeli, oshoka oyo omatati gomwiitaali. Vulikeni kuKalunga, kondjitheni ondeveli oyo notayi mu yi ontuku Jak. 4: 7-8.

OSHILONGA SHETUMO

Mongerki ina omwenyo yaKristus, oshilonga shetumo tashi popiwa efiku keshe. Osheshi oshilonga shetumo osho enyamukulo lovaitaveli va tambula eitavelo li na omwenyo muKristus Jesus, Ou a tumwa mounyuni e tu xupife mefyo laalushe.

Ovaitaveli vajesus nge tava dimbuluka oiningwanima i fike opo, otava diladila; Ondi na oku ninga shike exupifo eli laKalunga li ye yo kovashitwa aveshe? Nepulo eli tali twala omwiitaveli metokolo okulongela Omwene moshilonga shetumo.

Omhito yokulonga oshilonga shetumo ya yelifwa nawa moifo yOmukwetu nomembo li na edina "Nounyuni aushe," nomOmbibeli Mat. 28:18-20 Mark. 16:15-18 Embo e li "Nounyuni aushe" nali leshwe momaumbo



Okangundu nkaka kunona oka tseyika nawa komagongalo agehe gopuushiinda wOshitayi, oshoka oga talelwa po kuko. Okangundu nkaka mewiliko lyomunangeshefa Silas kweyo, oka longo oshilongatumo ethimbo ele noondjimbo dhako nomahokololo taga hungu omwenyo. Otekisa yomusamane (Mbokoma) ngashi a tseyika nawa medhina ndika, oyo omagulu gaanona mbaka, okuthika kokule ngashi ya talele po wo egongalo lyaShomeya, nopwaa na ofuto yasha. Efano pevi tali tu ulukile egongalo lya-Tsumb nkene lya hokwa okupulakena okangundu kaatumwa. Osha yela Kalunga ita ka dhimbwa nando eyakulo ndika.



Dhimbulukitha aashiinda yoye nayo wo yi ilandele oshifo shOmukwetu nEhangano. Ya lombwela wo ondjila yoku shi ithana ko. Ehangano leengerki mounyuni (WCC) ola ninga eindilo komupresidente waGuinea Sekou Toure, a file onghenda ovananyi ovo va tokolelwa eflyo. Eindilo eli ola ningwa yo komupapa, Paulus VI.

meefikola, meengudumbibeli nomoyoongalele yovanyasha, nande ndi na okutumbula apa ongokunenepeka ovanyasha vongerki yaELOK, ova xwama okulonga oshilonga shetumo.

Ndele oshiwa unene keshe umwe a kendabale okulonga oshilonga shetumo nehafo, ngaashi ohole i li muye tai mu lombwele.

Omudo wekuwililo 1970, wa pita, ndele eemwenyo detu di yadi ehafo. Omudo, 70 inau pita mo meemwenyo dovaitaveli, cwa ninga efuta linene nongomulonga omunene, nongofifiya inene tai fuluka omayambeko.

Nande tu shi shi omudo keshe ou na shao, ndele osho twe shi pewa kuKalunga osha kola noshaalushe, osho Jesus Kristus, ou ehafo lovanhu aveshe." Omwiimbi weimbilo 186:3 ota pula nde ta lombwele ovaitaveli ta ti:

"Omukriste, sho wa kulilwa, najesus e ku na. To vulu tuu kunyanyukwa, mohole ndjo yOmuya yakweni manga ye li po Taa u ka ngaa mekaneno? U penduke, ngu tonate, Naakweni u ya wilike kOmukulili yii tek' Ondeveli."

Ongerki yaKristus itai hafe nge ku na ou ina uda elaka linyenye lexupifo, osheshi oya tumwa i twale evangeli kovanh, notai shi ningi diva.

Oivjilo yetumo momaongalo nai twikile, mounona, movakulunhu efiku eti-9 laJulie 71 nali longekidwe nawa ovanhu va xwame mokuhambelela Kalunga. Omukriste keshe a dimbulukifwe oye omutumwa a tumwa kuKalunga mounyuni womulaulu, a hokolole ouyelele ou wa etwa kuJesus mounyuni.

Jesus ta ti: "Onye ouyelele wounyuni ouyelele weni nau yele moipafi yovanhu, va mone oilonga yeni iwa va fimaneke Kalunga."

Ovaholike, Eengudu detumo nadi xwame yo neudo okwoongala nokwiilikanena unene oshilonga shetumo, omailikano oku na oshilonga. Pamwe nandi tumbule oinima i shi kwiilikanenwa, imwe ya popiwa kOmbibeli lyapuki ngaashi, mu 2Tes. 3:1-2. Okwiilikanena evangeli li tambulwe akushe nokwiilikanena ovatumwa, va xupifwe movanhu ovapwidi novai. Nokwiilikanena ovaitaveli vomovapaani va kole meitavelo, osheshi ova kondekwa kounyuni wopaife nokovatondi vahapu, ngaashi: oikolwifa, omahongaulo olwisho, oinima ei tai litula moshipala sha vahapu, notai kanififa eitavelo lavo.

Kalunga omunamapangelo aeshe ta dula okupa ovaitaveli vaye vomovapaani eenghono va finde oulunde keshe.

Paulus Andreas

OKO OHAMU SHEENDE NGAHELIPI?

Ongudu oyo i na oshisho shinene okutalela po ovanandu, ovakulupe noingudu meongalo laKalongo, oya talela po yo omunaudu womido dihapu Ottilia Hilukwa eti-13. 9. 1970. Ove mu hekeleka neendjovo daKalunga nomaimbilo ndee hauxuuninwa, ve mu umbila ongalo omo mwa dja eefewa, oupalwa, noimaliwa, osho yo oinima imwe i lili. Omunaudu ou okwa li a hafa unene molwetalelo eli. Oko vakwetu ohamu shi ningi hano ngahelipi? Ombibeli tai ti: "Elongelokalunga loshili nola wapala puKalunga, olo ngenge umwe ta talele po ovafiyekadi neefiye moudjuu wavo, nde te li kelele kounyuni ou ehe linyateke." Jak. 1:27.

Tu yeni mepya letumo

Kovamwameme aveshe ovo ve li moshilongatumo nale naavo va ya mo neudo, dimbulukweni, kutya ha ehalo leni tali mu fininike opo mu longe momapya etumo, ndele ehalo laKalunga. Dimbulukweni Jesus ta ti:

"Aame nde mu tula ko mu ka imike oiimati, noiimati yeni i kalelele Joh.15:16. Imikeni hano oiimati ya wapalela elidilululo." Pexulilo ohandi kundu ovamwameme ovakongindjila aveshe muElok. Xumifeni natango ehanganu letweni komesho. Nge tamu ka fuda po oupyu womOwambo mwa yuka kuKunene, pituleni nge pOmindaba. Tangi eshi tamu shi ningi.

Abner H. Shanyengange

AISHE OHE I LONGO NOUDIININI

Tate Lukas Shinyama, oye umwe wovanshilonga vomoshipangelo shaNandjokwe. Ovanhu vopomudingonoko waNandjokwe otave mu shiiva nawa oilonga yaye.

Omushamane Lukas okwa tameka oilonga yaye mOnandjokwe 1958. Tate okwa li ha tungu eengulu doshipangelo, opo konima yefimbo okwa lundulukile koilonga vali imwe. Oye umwe fye Ovanandjokwe nOvanaipa tu shii oku mu pandula molwoukoshoki waye womeva aa he tu longekidile pondama yaNandjokwe. Oshilonga eshi okwe shi longo noudiinini nonoupenda yo.

Omushamane Shinyama paife oku na oshilonga shefiloshisho loukalinawa womoshipangelo. Ohe ende peenhele di lili apeshe apa tapa dula okudalelwa keedi, nokupombela po omuti wokudipaa eedi nomai ado. Ota file oshisho poukololo aushe ou u holike keedi, nokufufila omalambo. Oye omudiinini moshilonga shaye shekondjifo leedi.

Oshilonga shimwe vali sha fimana nosha pumbiwa kuvahapu komba ya Tate Shinyama, osho okuyandja ohonde kovanaudu, ava tava ehama, ndele ove na omhumbwe yohonde. Moshilonga sha tya ngaha, ovanhu vahapu ovakulunhu nounona, va mona ekwafo eli liwa kuye. Eshi oshilonga shidjuu okuyandja ohonde, nde ye ohe shi ningi nomutima muwa we litula mo. Oha talele po yo ovanandu ovo e va pa ekwafo eli.

Tate Shinyama, oilonga yoye oyo oiwa ngaho noya fimana, ohatu linekele kutya tate Kalunga ote ku wedele natango eenghono mokulonga noudinini, u twikile nombili ngashi we shi ninga nale.

"Mokulonga ouwa inamu loloka, osheshi efimbo ngenge la fiki otamu ka teya."

R. Ndevahoma.

MuZambia omualu otau hapupala

Omualu wovafadukipo voudjuu, otau hapupala natango muZambia, unene ovo tava di muMozambiqwe, Angola nomuSuidwes. Pahapu lomushamane Oeystein Tveiten, oo a longa efimbo lile muZambia, ota ti kutya, ovafadukipo konyala 2.000, ove uya muZambia modula ya dja ko.



"Tse katu li mu mbika yuuyuni,"
Blake a ti.

"Ooitaali yetu taa kala moongerki oonshona dhowala miilongo yaakomuni, inaa ninga nando aakomunisi, nonando oyo ngaa olwindji aantu aawanawa yo opalela epangelo," osho amushanga omunene gwoongerki dha hangana muuyuni, (WCC) Dr. Eugene Carson Blake, a lombwele oongerki dhomuSuid-Afrika.

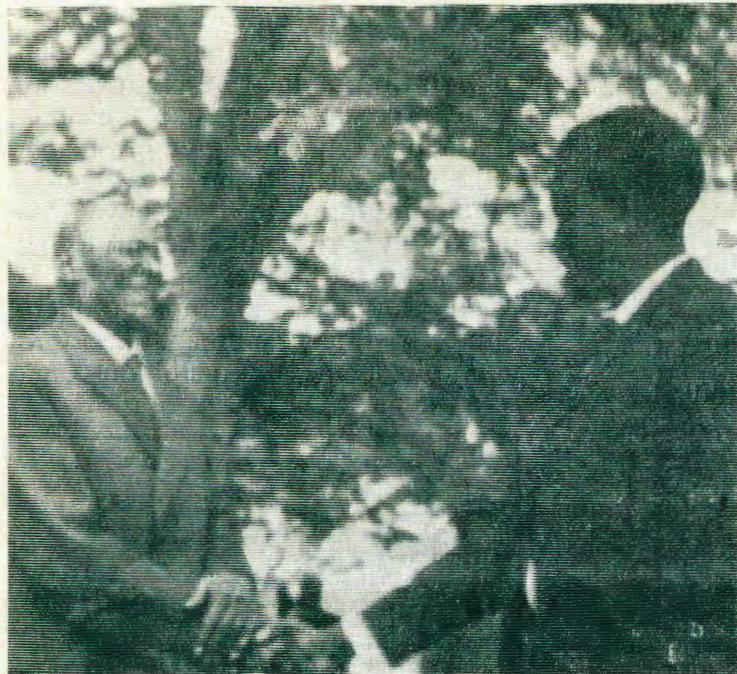
Metalelopo lyomasiku gatano, omusamane Blake okwa talela po oongerki nomahangano gomoRepublika yaS. A. omasiku ga zi ko moku ya tsa omukumo yi itule melongelokumwe (oongerki dhomuS. A.) Dr. Blake okwa ti kutya, kape na oongerki tayi shi fulula ko mokwiikutha mo moonkwawo.

Okwa ti kutya ye moku shi tala, kape na nando omukriste gumwe ta kala nomadhiladhilo omawanawa niigwana yilwe, ngele ite yi kwatha momaudhigu gayo, nando tu li ngaa muuyuni wa tula omaitaalo gawo miikwaliko, (kapitalisme) miikwamumwe (sosialisme) nomuukomunisi.

"Tse katu li mumbika yuuyuni, ihe meitaalo ndyoka tali yoolola omuntu muuyuni," osho omusamane Blake okwa popile iilonga yehangano lyoongerki muuyuni

Moskou

Ehangano lyoonkundana muRusia, Tass, olya ti kutya, Rusia okwa tuma oshikuti she konyothi Venus, noshā gwila ko nawa, e tashi etelele ko ehokololo lyuukwatya wombepo (klimat) kutya owa londa sigo 900 ° F. Uudhigu wombepo yako ou vule wokeyi lwo 90. Ondjila yokuya konyothi otayi pula omasiku 120, paendelelo lyoshikuti. Onyothi ndjoka oyo hayi monika ongula kehe, Magwila.



TWA THITHULUWA

Niimwandi

"Mbaka aayakuli megongalo lyetu, noya kala ngashi oonani dhokomeho mokuhunga oomwenyo dhaakwanegongalo oyendji," osho omusitagongalo Tomas Shindongo, a tumbula mombilive ndjoka e yi nyolele kOmukwetu, moluhodhi olunene.

Omusamane Shindongo ngoka a ithanwa onkolonkolo kefuldho mUushimba, omolweso lyomukulupe, omusitagongalo Festus Anibinga, okwa ti kutya, yo egongalo lyaNiimwandi, oshitewo shawo ongoshomukulu gwonale ngoka a tile;

Paimhe opa pita eedula omulongo di na omaudjuu nomaluhodi manene. Okudja 1960, opa ningwa omalunduluko manene, eshi otashi monika nomesho nomoilonga mOshakati ponhu yaBou Afdeling.

Ohatu hange po ovakongi voilonga lwopo 300, fimbo 1050 hava longo. Eengeshefa oda ehena komesho, eefabrika oda tungwa.

Omaluhodi mahapu ohatu a hange yo meedula edi 10. MuJanuali 1960, S.A. okwa kala nenyeme kwaava va filwa eshi omina ya Coal Brook Colliery, i li popepi naSasolburg, ya wa, noya pipwikila mo ovanhu 437 va fya, 6 vomuyo ovatilyaane.

Omafiku atatu ashike a pita po, eenghali dovapolifi 9 oda udika eshi va dipawa nomamanya, eshi kwa li tava kongo omalodu muCato Manor, muDurban, kongudu yovaulaule 900.

Momafiku 3 Febuluali modula tuu oyo, oministeli omukulunhu waEngland Harold Macmillan, nondaka ya xwama ota udifa kutya odula oyo, odula yOmhepo yElunduluko (Wind of change).

Modula oyo muMaalitsa 21, okalongo kamwe Sharpeville, ka hangwa kovapolifi neendjebo, va yasha ovalaule vahapu 66 va fya, no 186 va ningwa oipute.

MuApilili 1960 natango oministeli onene Dr. H.F. Verwoerd, a yashwa eeholo mbali momutwe kuDavid Pratt, fimbo a li moshivilo shomaludi muRand Show, Johannesburg.

Yo oyo odula ohamba Baudouin waBelgia a yandja elipangelo liyadi kOvakongo. MuJuni Kongo sha wila momundilo washo vene, edipao, ondjala noluhepo oye va hepeka. Hano oya li odula yoixuna.

MuSeptemba, 6, Dr. H.F. Verwoerd, okwa

kufa oshipundi shaye mondjuo yeeveta nomminute dinini eshi a fya a tuwa komutilyaane weexwiki ditwima, D. Tsafendas. Meedula edi omulongo omwa kala omali-laano mahapu muS.A. naSuidwes.

Okwa kala oita yomafiku a hamano muJuni 1967 pokati kalsrael naEgipiti. Vamwe va twikwa omitima nosho tuu. Omadipao ovanenenu, omavakwepo ovanenenu, oiponga yeedila mombada. Oihauto meendjila, oihomona yominghoko nominghoko.

Tate Kalunga ne tu file onghenda modula ei 1971, nomeedula tadi ka shikula ko, tu kale tu na ombili, tu tunge oshilongo she-tu, tu na ondjipangela yokupopya, yoku linyenga noyopaushiwana. Osho yo ku kale Oshoondaka shimwe shokwiilikana odula meengeleka adishe mOwambo. Odula ei nai ninge Jesus "Onghela nonena nofiyo alushe."

Uganda morevolusi

Olwoodi nomadipao okwa kundana omafiku aa muUganda, eshi ondjai yoita ye likufila epangelo moineha, fimbo omupresidende woshilongo a ya koshoongalele shoovene voilongo kuSingapoer. Idi Amin okwa vaka po epangelo laDr. Milton Obote, nde okwa indila Obote a alukile keumbo, ye a kale omumenhu wongaho ngaashi vakwao. Ndjai Amin, okwa udanekela yo oilongo oyo ya kala mekwatafano (diplomate) nomelongelokumwe naUganda i kale nombili. Eenghwate adishe doupolitika, edi da kala meedolongo, okwe di yeululifa mo.

Amin okwa kala omukulunhu wetanga loita. Dr. Obote, weedula 46, oo a pangela oshilongo okudja 1966, eshi va mangeluka, otaendaenda paife noilongo yaAfrika noku-kundafana noovene vayo. Eshi tava pangele inashi shiivika manga.

Dr. Kwame Nkrumah, waGhana, oye umwe a shiivika nawa, a endwa koshi pamukalo ou ndele nee otaku ti, oilongo i dule 20 muAfrika, oya pita mevelo eli, meni leedula 10.

ligwana yaSuidwes nayi tokole yo yene

Manga ompangu yoshiipotha shaS.A. inaayi tameka mombelwa yuuyuni, oohahende dhaS.A. odha adhika dha tumu ko nale efaneko lyadho kulya iigwana ayihe naakwankala muS.W.A. naa monenwe ompito ya holole ewi lyawo, ngele oya hala okulonga natango pamwe nepangelo lyoombulu nenge otaa itula melelo lyaV.V.O.

Okuza 20 Januari 71, ompangu yoombulu sho dha tindila muS.W.A. oya tameka, ihe omongumitila. Eti-8 Feb. omo kwa tamekwa omaludhi go gene montaneho yaapulakeni. Efaneko lyokukonga ewi lyiigwana, ombelewa yuuyuni oye li tumu kiigwana yahangana, manga amushanga gwiigwana yahangana okwe shi tala oshinima shombelewa yuuyuni.

Okangundu kokukonakona elelo lyaSuidwes nkene li na okutamekwa, oka tamane-ka unene efaneko ndika, kutya oombulu kadhi na uuthemba wokuninga omafaneko ngaka, oshoka mevi odhi li mo pwaa na ezimino, na ishewe otadhi kongo omukalo gwokutompakanitha nokulimbilikitha oshinima shika shemangululo lyevi. Okangundu haka iilyo yiilongo 11 yaAfrika naAsia, ka hogololelwe kiigwana yahangana uuna ya tokolele epangelo lyaS.A. muS.W.A. kutya olya hula mo 1966.

Omufitaongalo Paulus Nailenge, Ongenga eshi a kala efimbo lile mombete, paife ota ehene nawa komesho moukolele. Okwa holokele yo moshongalelengerki mOngwediva navahapu okwa li ve mu djuulukwa. Otave mu hambelele noku mu minika

"Kandi etha okulila, oshoka okwa li gwe-nziko lyetu."

"Tse wo egongalo lyetu poomvula dha piti, otwa thigululwa kOmuwa gwetu, aayakuli yegongalo:

- Omulongi Oiva Nambinga
- '-' Josef Nghihangwapo
- '-' Martin Hakweenda

nomusita Festus Ambinga,

"Tate Kalunga okwe tu pele, noye okwe tu kutha wo," osho tatekulu Shindongo a hulitha. Kalunga na hambelele egongalo lya Niimwandi sho tali tseyo oye e li hula.

OKUKALA KWETU MONDONGA

Aantu yaNamukolomunene gwaAshitenda. Twa zi kuuzilo lwokuumbugantu twe ya. Pomeya ogendji nooyakwetu twa tula, oshilongo twa tala oshitoyelela.

Aamwameme mUukwambi mOngandjera ya tula.

Yamwe yomutse ya tumbu lwokuuninginoni ya thindi. Omukwanyama a vulwa ku tu lindila, kuumbangalantu a uka a ka konge omeya ogendji.

Twa kala mOndonga nuuntu twe wu adha mo.

Wa tindi kuvulika kaantu twe ya mo. Muupenda molugodhi miita twa sindi, Ondonga wo uuthiga wetu ya ningi.

Mumbwenge a tema mo omulilo a hala a hakane po uuthiga womapenda. Omulilo gwe mOndonga gwe mu dhi-mine. Koofule boKayone nooShaangulula.

Nembungu komeho kokule a tala, Omiya ndhi dhuuthiga dha halakana. Nomamenkulonkondo a sindilila, Uuthiga we waa yugwe po kAangandjera.

Uuthiga mbu wa kola wa kolelela. Eliko lyaantu mba ya halakana, lya taambekidha Elume ndi lya Amutenya Aandonga Nangolo e ya ningi Aandonga.

Ondonga tse otwe yi igwanene. Twa tokolela mo nando okukale. Aanankondo ooJonker taa yungula Omaliko getu uuthiga nuuyamba.

Uyelele we etwa wa zi kokule MOndonga oomwenyo dhetu dhi minikilwe

Natse wo twa panda notwa inyanyukwa MOndonga tu udha ombili ya igwanenena

Aakwiilongo ya siikile oonkondo dhetu mOndonga yetu ye tu sindile Uuthiga mbu wuundonga onau shunine, kAandonga mbo yomapipi tage ya omape.

Onatu ka kala wo memanguluko, Uunongo miilonga mbi tau ka huma ko Oonkondo nuupenda tau ka hwamenena Ndongo uuthiga wetu tau ka yambuka.

Niikaha ya kola noombepo dhuupenda, Epangelo lyetu twa kolekitha. Omapenda Aandonga taa ka wilika Oshigwana shAandonga sha manguluka. Ku A. P. S. Shuuya.

EKUNDO KAAKONGINDJILA
Ovamwameme ovaholike muKristus, kOshigambo, mOmandjokwe, mOngwediva mOshakati nomOkahao. Ngashi mu shi shi efimbo li li po tali endebele, osho yo euyo lOmwene tali ehene popepi. Onghe hano tu kaleni twe lilongekida alushe. Ohandi pandula eshi mwa indilila nge manga nda li mofikola, paife onda dja mo. Nde natango twikileni oshilonga osho mwe shi longa nale pe he na-edi-mbuko.

Paife ohandi longo kOmindaba, inamu kala inamu talela nge po ngenge tamwii komu-longa.

Weni. Peka A. Shanyengange



Sakeus Uukongo, Ondonga, ota nyolele aalumentu muSidiem, mboka ye muumbila ongalo omolwoshiponga she ta ti: "Shoka mwe shi ningi osha thiki nawa kungame, inamu etha oku shi ninga. Otandi mu halele oonkondo odhindji miilonga yeni. Otandi mu kundu wo nohapu yOmuwa 1Petrus 1:1-15. Onda li nda hala okutumbula edhina lyakehe gumwe, ihe ite mono ehala lya gwana mOshifo. Tangi"

OHO NU NDISHI

Ndishi oho nu oikolwifa? Eewa, onawa ngo ndelene noinima ei shiimba itai ku kala yo kokule: omadiladilo mahapu, elundililo eshi to diladila ovanhu ove ku tondé, ounhwa eshi to liulike kutya ino pumbwa sha. Oumbodo eshi ito dulu kudimbulukwa ngenge ou li hamunghele, ile owa djala tuu sha, okutukana shaashi to diladila kape na vali umwe e ku te, okuhaela, shashi ito dulu vali okulipangela, oto kala kokule naKalunga, osheshi ku na vali efimbo lokupwilikina eendjovo daye.

Omadiladilo mahapu otae ku ulikile yo oluhepo, nde to ka vaka, osheshi ombada ku u na, nde tokwatwa yo diva to tulwa modolongo, ile to dengwa, ile to futifwa. Oto landifa po oinima yoye u fute oinima yovanhu, ile eengele dovanhu. Eumbo otali ku kana nde tali halakana po filu, eenghono molutu onghela da li mo, oilonga ito i dulu vali. Naayo wa li u kwete oto tewa po, nosho oinima tai ende tai shikulafana ngaha fiyo hau-xuuninwa oto file moluhepo eli. Ehovelo laaishe ei okumakela mo ashike kanini vati. Ombibeli tai ti: Inamu efa omalutu eni a pwidukifwe kouhalu wombelela.

W. B. Kantalelo

EKUNDO LYAAFUKO

T.F. Amunyela nomufuko gwe Evelina Paulus-otaa kundu aaleshi ayehe yOmukwetu ngeyi: "Zaleni iikondjitho ayihe yaKalunga mu wape okwiipopila esiku ewinayi nokukala omuthika nge mwa gwannitha ayihe. Kaleni mwi imangeleka oshili moombwetelo ne mwa zala iipakosolwa yuuyuuki poontulo nei-longekekeko tali zi mevangeli lyombili li ninge oongaku koompadhi dheni. Shino shi ningeni nomagalikano nomaindilo agehe nokugalikana omasiku agehe mOmbepo nokutonata."

OMUKWETU

Oshifo shOngerki onkwaevangeli paLuther yomOwambokavango
Die Nuusblad van die Evangeliese Lutherse Ovambokavangokerk
Oha zi mOniipa,
Omukuluntu gwoshifo/Hoofredakteur Omumbisofi Dr. Leonard Auala,
Amushanga/redakteur Sebulon Ekardjo
Ondando komumvo mOwambo 70c kUushimba noKavango 90c
Kombanda yomafuta R1. 30.
Ondando nomambestelo naga tumwe kOmukwetu,
Oniipa, P/B. 2015, Ondangwa, S. W. A.
Oshinyolwa shuule

wondeimi	1	otashi futilwa	R1.00
oondeimi	2	"-"	R1.90
oondeimi	3	"-"	R2.70
oondeimi	4	"-"	R3.60
oondeimi	5	"-"	R5.00

Oto yulu okutama efano lyaashoka wa haja shi tseyithwe nomatumbulo wo gasha ngeje ope na.

The Finnish Mission Press Oniipa
P/B 2015, Ondangwa, S. W. A.