

# OMUKWETU

Registered at the General Post Office as a Newspaper





## Ongerki oya hala okulonga pavangeli

Momafimbo nomafimbo ohashi ende tashi yelele oiwana kanini nakanini, kutya evangeli loshilongo shaKalunga olo oshinima osho shihe na nando ongaba, ile kashi shi okutendelwa ngeno ombinga yonhumba, opo apeke ngeno li na okulonga.

Ngenge onghedi ya tya ngaha tayi holoka, nena osha yela kutya shihapu unene shopahalo laKalunga, otashi nyonauka. Ehala laKalunga oleli, kutya, aveshe va shiive Kalunga xe naau e mu tuma Jesus Kristus. Eshi osho efina leitavelo nolexupifo.

Pamwe osho yo sha li shiimba sha pendulila omumbishofi wongerki yaElok, Dr. L. Auala omalipulo, pefimbo olo onghedi yomaduumbo ya hovelwa okufatululilwa oiwana yomuS.W.A. nomOwambo yo 1963. Eshi osha li she mu fininike okupula ovaendifi vomadiladilo aa nhumbitashi ka enda kombinga yelongelokumwe leengerki eenghwaLuther muSuidwes.

Ongerki yoovene oi shi shii noya itavela etongoko lomalaka, lomalupe ovanhu, etongoko leenghedi davo ile eendjikilile davo kutya oinima ya tya ngaha oko i li notai eta oupyakadi mokukalafana kwovanhu. Ndelene ongerki oya itavela yo evangeli ongomungumauni womakuma aa, opo keshe umwe e li fikifilwe mouyadi walo nope he na eengaba.

Oilyo yoshoongalele shongerki yaElok, ile yaE. L. K., mokwiitavela oamadiladilo okuhangana kweengerki edi mbali, osha yela kutya inava dimina ashike ongoshinima shovawiliki veengerki odo, ndelene otashi holola unene nhumbi omukriste keshe ongoshinhimbu sheengerki edi, a hala okweeta ehapaululo leitavelo laye poluhaela momafimbo mai ile aa mawa ongerki, ngashi tashi yelifwa mefinamhango.

Kalunga mwene oye omweendifi nomufilishisho woiwana omo mokati kayo ongerki ya pewa oshilongaifano. Nometokolo eli lehangano leengerki la fimana la itavelwa keendaka 183 pehe na ekondjifo laumwe, ohatu shi itavele kutya Kalunga mwene oye a longifa oamadiladilo aa nota ka longa yo nokomesho.

Ndelene moshinima tuu eshi, inatu hala yo okudimbwa ehala liwa lomwamemengerki yomOushimba yOvandowishi, eshi va hala okulonga pamwe nafye. Omalongikido avo aeshe, noiimbi ihapu shiimba tai va kala moshipala, twa hala oku i twala koshipala shaKalunga efiku keshe fiyo va yeululilwa oshivelo, fye tu longe pamwe navo mouyadi wonghenda yaKalunga ei hatu ke mu fimanekela moukwaalushe.

## AAWAMBO AAHOLIKE

Mwa dhana oshituthi sheni oshinene shethele. Aantu ya gongala oyendji, ndi shi. No mwa nyanyukwa ngaa. Ndele Jesus, mwene gwoshituthi omo a li? Ngaashi moshituthi oshinene shaJerusalem. Okwa igidha ewi enene: "Ngoka a senota, ne ye kungame a nwe." Kwa monika tuu ko-yendji?

Natse Aasoomi otu na oshituthi shetu nena, oshituthi shemanguluko lyetu. Oyendji yamwe oya gongala tuu moongerki, nokupandula Kalunga molwemanguluko andola, ndele oyendji taa yi kiituthi yuuyuni okunyanyukwa payuni. Okutanga Jesus, Omumangululi, oku li peni?

Popepi opu na oshituthi oshinene, shi vule iituthi ayihe yuuyuni. Osho eyo lyajesus gwetu - Okrismesa.

"Okrimesa yetu, eeno ya thiki Twa mon' enyanyu enene tuu ndi."

Twa valelwa Jesus Omukulili, ngoka kwe ya oku tu mangulula moondjo dhetu adhihe. Yaloo Jesus gwetu!

Ndele moshituthi muka wo olwindji tatu ipyakidhile miinima oyindji yuuyuni, natango itatu mono Jesus, ngoka e tu hoole ngeyi. Yayee, oluhepo lu thike peni?

Muuyuni wongashingeyi oyendji kaye na Okrimesa, noyendji ye li moondholongo, taa hepekelwa edhina lyajesus. Ndele nando taa hepekwa nokudhengwa, ye na enyanyu, ya fa ye tu vule nokuli. Ye na oshituthi shoshili.

Momasiku ngaka muka muSoomi gumwe okwa yile kuNorwee. Okwa kala moondholongo oomvula 14, molweitaalo lye. Okwa kala oomvula ndatu ina mona etango, oshoka okwa kala muule womevi oometri (10) omulongo. Olwindji ya dhengwa noina pewa iikulya. Okwa li e na iiyadhi kolutu aluhe, ndele nando ongeyi ya nuka kenyanu enenene, nomondholongo moka. Oshoka ya nyanyukwa, sho ya gwana okuhepekelwa Kristus, Omuwa gwaKrismesa. Ya fa ya tala Jesus mwene nkene kwa hepekelwa aantu ayehe yuuyuni. Atuhe tu hupe.

Omuuvithi nguka kwa ti, ya mono eadhimo lyajesus mwene, no ya sindi. Aagundjuka aamati, mondholongo moka, taa tanga Kalunga na Jesus, sho taa falwa kokudhipagwa. Naakadhona taa tsu oongolo nokutanga

Jesus, sho taa ka thika kuJesus koshituthi oshinene mEgulu.

Oyendjiyendji ya thika ko nokuli. "Aawambo aaholike, Tu kondjeni ekondjo ewanawa, lyeitaalo. Ngashi omuyapostoli Petrus ta ti."

Nyanyukweni, ngele tamu hepekelwa Kristus. 1 Petrus.4:12-16.

Aantu ya tya ngaaka ye na oshituthi shashili. Omuwa kwatha ndje wo ndi yi mone nonuumvo wo.

Mboka ye na Jesus, ye na wo oonkondo dhashili. Miiwike mbika nkuka kwa yile Omuyamerika. Okwa tanga oonkondo dha Kalunga. Jesus oku li po ngonale, okwa ti. Sho kwa galikana, Jesus kwa fa e ya mokati kaantu, aantu omathele ya aluka. Aaposi ya tonata, iitiningili ya tameke okweenda. Mboka ya lemana ya aluka. Ando mwa uuvu aantu nkene ya tanga Kalunga. Aantu ya li ya gongala pethimbo mpoka ye thike 10,000. Ehambelelo ndyoka lya thika kuKalunga ndishi? Pethimbo ndyoka pwa li pu na oshituthi nomEgulu wo. Yaloo, Kalunga kaaluhe na Jesus gwetu!

"Tu nyanyukweni, tse tu ligoleni, tse tu mu simanekeni oshoka ohango yOnzigona ya thikana, komukiintu gwe kwi ilongekidha, nokwa pewa okuzala oonguwo, dha adhima, nodha yela. Oonguwo ndhoka uuyuki uuyapuki."

Kalunga shitila ndje omwenyo omupe, ndi thike nkoka koshituthi shaayapuki, noku ku tanga aluhe sigo aluhe.

Hilma Ranttila

## INAMU KANITHA EIPANGELO LYENI

Aaleshi naalongi ooyakwetu mepya lyetumo, otse otu li moshilonga oshidhigu shili, ihe tu dhimbulukweni kutya tse, aayakuli ashike, aatoloki yohapu ndjika Jesus. Onke tu kaleni tu na ohole neifupipiko mokati kiigwana inaayi mona natango uueyelele mbuka Kristus. Inamu etha okwiidhidhimikila eyakulo ndika okukwatha Aaelele komalutu nookomwenyo.

Kuuzilo wOndonga oku na omapya ga tiligana, aalongi kaye ko ngashi kOmunya-kwe. Oya pumbwa ekwatho. Osho wo kOshaampula kaku na omukwathi. Eteyo oloyo olindji, ihe aalongi oyo aashona. Luk. 10:2-4.

← N. D. limene, Onyuulaye



Nakaye, Ombalantu - Aagundjuka omulongifikola Johannes Namuhuja nomudiakoni Menete Angala, Aanakayale oya dhiki egumbo lya-wo omutenya montaneho yaayehe mongerki yaNakayale eti-3.7.1970. Omuwa ngele ita tungu egumbo, aatungi yalyo otaa ihepeke owala, Ps.127:1.

T. M. Asino, Swakopmund, ota kunditha aayakuli ayehe yongerki yaElok, kutya taambeni oonkondo mOmuwa. Uyelele nau kale komeho geni, nepola lyeni li kale lyuukilila, ne mu thikame mOmuwa. Otandi mu galikanene, ihe nane wo inamu dhimbwa ndje Kalunga a pendje oonkondo, nOmbepo ye yi kale pamwe nangame. Oonakweenda ondjila ya tsa ohaa tila Omuwa.

**EPUKULULO LOMUNHU**  
**Mat. 18: 15-22.**

Okupukululafana oshilonga tashi pumbiwa. Osheshi omunhu ou a puka ota mono omaupyakadi moku-kalafana novanhu vakwao. Ndele ota etele yo vamwe omaupyakadi inaa pumbiwa.

Omunhu nge ke na onghalelo iwa yopanghalafano mokukalafana novanhu: pokati kaye naKalunga kape li yo nawa. Onghee ou te mu kwafa ota ningi osho sha teelwa kuKalunga tu shi ninge. Ekwafopukululo nali kale la wana na kuningwe ashishe tashi dulika sha wana okukwafa ou a puka.

Eongalo laKalunga lokombada yedu shamha tali longo li li mekwatafano naKalunga: aveshe ovo tali kwatafana navo otava kala va kwatafana neulu. Eenghono odo opo di li. Ndele nge omunhu a tukuka neongalo laKalunga lokombada yedu: okwa tukuka yo naali lomeulu. Fyee otwa shitilwa ouhamba waKalunga. Ndele tu dimbulukeni kutya, ouhamba winya owedimepo lomatimba omolwasho Jesus okwa valelwa komushiakano opo omatimba a dimwepo kohonde yaye. Ndele Kalunga ote tu pula yo oinima yo pokati ketu navakwetu i kale i li nawa.

Ndele mokati ketu ohatu pulwa edimnafanepo lihe na eengaba.

**Paulus Shidiue**



**Omusitagongalo Natanael Sirono, Mpungu, Kavango okwa li wo moshigongingerki nuumvo mOngwediva. Tate Sirono okwa taamba oshilonga shewiliko lyoshitayingerki shaKavango omumvogu, omusitagongalo Elia Neromba, Mupini, sho a ziminwa kEpangelongerki okutaamba iilonga iipe mongundu yelero lyondiipangela yaKavango. Omusita Sirono oye wo oku li oshilyo mEpangelongerki.**

**A. Shikele, Oranyemund, ota ti:** Tse Aashidiem, atuhe otwa nya-nyudhwa kefatululo lyaRev. Matias Nghipandulua, sho e tu fatululile shono sha ningwa mongerki naashono tashi ka ningwa. Oshituthi sheligolo osha fatululwa nawa kuye, nokuRev. Pauli Laukkanen ngoka e tu ulukile omafano omawanawa. Iyaloo sho mwi ile po. Inamu tya kamu ende po we.

**Amerika a londwelwa**

Ovakiina ovo hava ifanwa Rooi China, ova londwela natango Amerika neenghono oluti-480, eshi va ti oha kala ngo ta imbilaana needila daye peengamba daKiina. Oshikandjo shoikwapondje osha ti kutya elondwelo eli eti-480 nenge itali pwilikinwa, Amerika ta ka lika keenyiki.

**Reinhard Indongo Oranjemund, ota ti:** liyaloo, sho tu na omuhumbati tate yetu. Kandi shi wo ihe kutya tse nangoye otwe mu pe shike momumvo gwa yi, nenge otwi ilongekidha oku mu ningila shike? Ombimbeli tayi ti: "Ayihe mbyoka mwe yi ningile aamwaameme aashuushuuka, ongame mwene mwe yi ningile."

**Elok naye wo a zimine ehanganano**

"VELKSWA ota pumbwa etokolo lyaElok," osho sha li po melandulathano lyiikundathanwa yoshigongingerki shopampumbwe shono sha li sha gongala mOngwediva omasiku ngaka mongerki yaElok. Oshipopiwa shika osha li sha simana unene nosha li she etelwa oshigongi komukuluntutumwa gwEhanganotumo lyaSoomi, Rev. Mikko Ihamäki. Oye okwa li e shi ningi meyelithilo ewanawa ndyoka lya fa lya kandula po omalimbililo ogendji maakwashigongi nuumbanda wokuya mo metokolo, onke sha tokolwa pwaa na ekondjitho lyomawi.

Ngiika wi ipula nale nokuli kutya VELKSWA oshike ano? Ndika olyo edhina lya pewa ehanganano lyoongerki mbali dhaavalelwamo muS.W.A. ano ongerki yomUushimba, Ev. Luth. Kerk in S.W.A. (E.L.K.) nongerki yomOwambokavango (ELOK). Ekotampango ndyoka lya fanekwa omolwehanganano ndika, olyo ndyoka lya etelwa oshigongingerki shaElok, shi gandje etokolo mulyo. Ano manga etokolo inaali monika, omukuluntutumwa Mikko Ihamäki okwa eta tango ehistolli lyoongerki ndhika mbali moka a tumbula iinenenima, yimwe tatu yi tumbula mpaka:

- a) Edhiginino lyokukala pamwe miigongi yomapangelongerki goongerki ndhika mbali.
- b) Ehanganano lyosikola yuuteologi muPaulinum, Oshimbingwe.
- c) Omusamane Ihamäki okwa tsikile kutya osha li lwotango eti-20 Novomba 1968, sho Omapangelongerki goongerki dha tumbulwa metetekelo ga li ga gongala pamwe mOvenduka nomwa etwa omadhiladhilo ngaka ngele oongerki ndhoka tadhii vulu okuhanganana kumwe.

Omoluukumwe wa kankamekelwa kehe mpululo lyetu limwe alike lyopaLuther, nuunene kehistolli lyongerki nolyetumo muS.W.A., nomolweyakulo ewanawa lyopambe-po nosho wo uukumwe momapatudho ngashi lyaasita, methimbo ndika epangelo lyevi sho li na omadhiladhilo gomavigumbo, omapangelongerki agehe gaali oga dhiladhila okudhika ongerki ya hangana onkwaEvangelii paLuther muSuidwes-Afrika.



**Omwiiloangi Naftali Hamhata, Engela okwa kala ngashingeyi omimvo ndatu ko Universiteit yaNatal, S. A. moka ti ilngyo uunamiti. Omumvo kehe aakuluntu yosikola ndjoka ohaa tumu ehokololo lyeilongo lye kongerki yaElok, noye na etegameno lya kola kutya omugundjuka Hamata ota ka thika nawa ponkatu yuundohotola wowene. Kalunga ngele te mu enditha nawa otatu inekele konima yomimvo ne nenge ntano otu na ihe omundohotola omuludhe mokati ketu.**

Efaneko lyekotampango lya fanekelwa ehanganano ndika, olya falwa tango moshigongingerki shomwamemengerki yomUushimba shoka sha gongalele muJuli 1970. Omanenedhiladhilo gomEkotampango gamwe oge li po ngeyi:

- Edhina lyEhanganano li kale ngeyi; Ongerki ya hangana yEvangelii paLuther muS.W.A., notayi fupipikwa mOshiwambo (OHEL-SWA) mOshiafrikaanisa ongaashi sha tumbulwa petamekolela.
  - Eitaalo nelongo lyayo li kale nga omukanka nkoka oongerki ndhoka tadhii hangana dha thikama nale, ano komukanka Jesus Kristus ngashi ta hokololwa komanyolo omayapuki mEstamendi Ekulu nEpe, nokomahempululo geitaalo lyopaYapostoli, lyopaNikea nolyopaAntanasius nopamahempululo gopayelitho lyeitaalo lyongerki pamukanka gwaLuther.
  - Oshilonga shayo shi kale okuuvithila aantu evangelii lyombili nokulalakanana uukumwe wooitaali ayehe muKristus Joh.17:21. u kale wa kola nou lwetike kwaayeha.
  - Okuhogolola omawilikongundu gOHEL-SWA ngashi; Oshigongingerki, Epangelongerki lyokumwe nongundu Ompitithi mo.
  - Okugandja oompale kEhanganano ndika nEpangelongerki lyokumwe tali tala nkene tayi uthwa nokuyalulwa.
- Omadhiladhilo agehe ngaka ge li mEkotampango lyehanganano ndika ogo, ngashi omukuluntutumwa Ihamäki e shi popi moshipopiwa she kutya; "Okutaandelitha oshilongo shaKalunga."

## Kala aluhe petameko nopehulilo

Ehiyo enene olya ningilwe komukwaniilwa guudhila, inandi tseya olye, nopethimbo lini sha ningwa. Okwa ithana uudhila auhe koshigongi, opo e u longe kombinga yowino wokutunga omagumbo (i-handhila).

Oshigongi osha li oshinene shuudha uudhila auhe komaludhi kehe kakwa li okadhila kaaka li ko, nenge inaaake shi uva andola. Aahiywa ayehe oya thikile pethimbo moshigongi shasimana. Aawiliki wo opo ye li, aafatululi naanawino yomatungo gasimana oya longekidhwa nale.

Oshigongi osha tameke nga palupe lwonkalo yuuyuni wopaudhila. Ano kwe etwa nga nkene egumbo li na okutamekwa tango. Aafatululi inaa fatulula shoka ye shi ilongekidhile oshigongi, ando okutameka sigo okuhulitha oshigongi okufatulula owala okutunga egumbo, aawe.

Tru-tru, papa-papa, oshike mbe-la? Handa nanguti ya yi, ya mono ethimbo otali pu po owala, onkene inaa uva we ehulilo lyefatululo kutya, olya tya ngiini. Sigo onena kahanda nanguti omagumbo gawo oge li ngaa petameko oshoka opo yu uva. Manga oonaamutungandhileu ye ga tunga nuunkulungu. Oonaashiishika gawo ye ga ngongela piyelo ya tula po aapolisi (omambo-nzi). Oonamunka ye ga ninga iiyelo oohiyali, omaudhi gepuku. Oonamutapaloya oya tunga oohote dha simana ihe kahanda nanguti ngashingeyi otaa lili owala, "uuyuni-ee", omolwokwaaidhidhimika kwa-wo.

Onuumvo ya tameke ishewe, tse nangoye wo otwa hiywa koongundumbimbeli kiigongi yaagundjuka, momalongelokalunga, moosikola dhosoondaha, miigongi ya simana yoohapu dhaKalunga yi ili noyi ili tu yeni mo ano, tu kaleni mo sigo ehulilo.

Vilho Ph. Shikulo

### OSKOLA YIILONGA YIIKAHA OLUKONDA

Otayi taamba aalongwa aape nuumvo eti-19.1.1971. Omolwomumvo gwo-numvo gwa kukuta, aalongwa itaa pumbwa okweeta iikulya, Oskola otayi ya monene iikulya nomukalo gwii-li.

Mboka ya hala okwiihumitha komemo miilonga yiikaha otaa tegelelwa nenyanyu, nando oskola oya tameka. Ombelewangerki

## O U K W A P A T A

Apa onda hala omunyasha keshe e li tule mo moshileshwa eshi handi shi eta apa, Ohandi ku lombwele u tale ove mwene eshi to li po naashi to pe po eembwa. Ove omukwapata walyelye? Ndishi owa nyoko? Ndele nee eshi hasho, omunhu omukwao waxe. Lesha divadiwa 1Moses 2:21-25, ove u tale ngenge enyamukulo loye oli li tuu mondjila.

Eshi to ifanwa Mukwanangombe, xo oye omukwanangombe ile onyoko? Olyelye e ku luka, oxo ile onyoko? Omolwashike nee iho ifanwa nanyoko, ye oye omukweni vati? Omunhu omukwapata waxe, ei oshili; nosho shi li moiwana aishe okudja kuAsia fiyo Europa naAfrika kakele kOmuwambo oye aeke. Ndele oshili yoovene oye shi yelifa kutya. nOmuwambo yo omukwapata laxe, osheshi oku na okwii ifanwa naxe. Israel Neumbo, Aune Shilongo, ile S. Nuuyoma, ile Mukwanangombe, tashi ti omunhu omukwapata lovakanangobe, ile lovakanekamba. Epata laye olo hali longifwa apa, hasho? Onda ti nale ove mwene to tokola apa to shi ameke ngashi oshili yasho tai ti.

Ame kuame osha yela kutya ame omukwatate, Israel Neumbo, omukwaNeumbo. Naave omukwaxo, eshi oshoshili. Natu ye kaniini moule weshiivo eli. Meitavelo ohatu hepaulula hatu ti: Tate yetu womeulu. Natu tale nee elalakano lomushashwa keshe olashike, omolwashike wa shashwa kaume?

### OKAMATI SADRAK

Esiku limwe moshipangelo shaNandjokwe, okamati Sadrak koomvula ne oka taambelwa moombete. Okamati nkaka oka kallewa kuyinakulu, ihe oka li taka ehama unene, itaka vulu okufudha nande. Otwa yelekele oku ka fudhitha niifudhitho, opo ka fudhe ihwepo. Aluhe sho tatu ka pula nkene ku uvite take ehama, oka yamukula owala ondi li nawa, nokwiimemeha.

Shika oshe tu kumitha otse aapangi naakuluntu ye kutya ota kai pewa peni oonkondo? Ongulohi yimwe Sadrak okwa popi nomeho ga yela kutya:

"Talen, Jesus ote ya ngashingeyi a fale ndje kokule, ta humbata ndje mpeyaka."

Tse otwe shi tseya kutya Sadrak okwa mono Jesus ngoka kwa li e mu kwatha muwehame we, ngoka kwa li e mu pe eidhidhimiko noonkondo. Konima okwa ti kuyina:

"Meme, inda polupanda lwongulu pondje, opo u vululukwe, manga tandi vululukwa wo."

Mbalambala Sadrak okwa kotha po, Omukulili gwe e mu taamba megulu, Aavu mboka ya kala monduda noya mono uuwehame wokamati neidhidhimiko lyako, oya li ya kwatwa koluhodhi. Ihe yina okwa hambelele Kalunga nokwa ti:

"Ondi shi shi omumwandje okwa taambelwa megulu puJesus, onkee kandi na oluhodhi, aawe, ondi na enyanyu."

Sadrak okwa li a longwa omahokololo gomOmbimbeli, onkee kwa kala a tseya, Jesus ote mu ithana megulu. Omunelago omunona ngoka ta tseya ondjila yaKalunga nokuli sho e li po okanona.

Otse aakuluntu twa li twa tala eso lya-Sadrak, otwa li mosikola onene. Otwa longwa eipulo ndika:

"Ondi ilongekidha tuu ngashi Sadrak?"

Kaarina Honni

Okeshasho otwa fudikwa pamwe . . . ., osho nafye yo tu na okweenda moupe womwenyo Rom. 6: 4. "Ou ta itavele nde ta shashwa, ota xupifwa." Eshasho letu ovaitaveli ola udanekelwa sha, **efyuululo lomwenyo waalushe**. Tashi ti okufyuulula oshilongo shatate Kalunga.

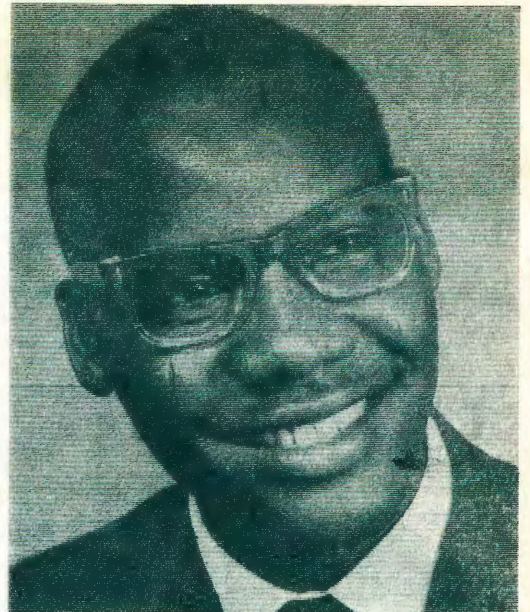
Natu taleni nee eitavelo letu Ovawambo otwa itavela hatu ka fyuuulula oshilongo shatate shomeulu, fye ihatu fyuuulula kovana vetu, ihatu fyuuulula ootate? Hano apa ope shi okutalwa nawa shili komunyasha keshe, opo u tokole ove mwene ove u li yekele eitavelo loye nhumbi latya. Xo Kalunga, naxo Neumbo, kutya oukwatya wopausibili ou li peni apa?

Ame ondi wete ongudu inene i li pondje yoshilongo shaKalunga omolwepulo eli. Oufiya woye owalye? Owovamoye tuu? Ovamoye naina yavo ovo tuu tave ku fyuuulula? Otashi dulika u ka kale pondje, mongudu ei ndi wete, omolwepulo eli? Omolwashike wa hala okufyuulula Kalunga Xo, ove ino hala okufyuulula kovamoye naina yavo?

Eshi eefiye novafiyekadi hava kala noku lililila eshi xe yavo a xulifa oweenda waye, ohava ningi ovakwanaluhupo lwopavali; Xe kepo vali na oluhupo lokolutu le va hanga osheshi oikulya ya iwa nayo kovanyeki vavo. Oveta nayo kai na ekwafo moshinima eshi. Xe naina novana ovo epata limwe, eshi odjapo ya yela nawa kwaau a filwa onghenda yomeni; oikulu oya xula po, oipe tai hovele.

Keshe umwe ne litale ye mwene nghee a tya, haku tala vakweni, ashike. Inatu taleni ashike ovakulu ve vonale nokuva pa oushima, fye nee itatu yelifa etwimo loshinima. Oukwapata owa pilama, otapa teelelwa epilulo layela nolopaushili. Ohandi mu halele ovaeshi amushe vOmwetu elao moku li xumifa alushe komesho meshiivo longhenda yaKalunga tate noyOmona Jesns nomuxwameki Mhepo lyapuki.

Israel Neumbo, Windhoek



I. Neumbo

### Vahapu tava ka fya omakaya

Ovanhu 20,000 otava ka fya koshiponga shokushila ousekeleta 1977, okuninga epangelo tali ningi po sha oku shi keelela, osho dr. Takeshi Hirayama muJapan a tonga. Pahokololo laye ovanhu eemiliyona 30 muJapan ohava shili oupakete wousekeleta u dule 20 mefiku. MuEngland yo ovanhu 27,500, ovo ve na eedula okuhovela 35 fiyo 64, ohava fi omudo keshe, nde eepelesenda 90, domuvo otadi fi kokushila omakaya.

# Aagundjuka yaElok

A FIYA PO KONGO

Aatumwa yoshigongerki mOngwediva nuumwo ngiika ya thikitha nale nokuli o-makundo gawo komagondalo gawo, naandika wo lyepatudho lyaagundjuka. Eeno, o-shiwanawa, ihe einyengo lini ngiika lya zi montokolwa ndjoka omolwelunduluko eshona lyowala ndyoka lya ningwa kutya nale sho ya yono noya falwa moshinyanga, ngashingeyi otaa yi ngaa mongerki?

Pamwe, yamwe ye shi taamba nokuha-kela omake, manga yamwe she ya nikitha ashike oluhodhi nokwekelelahi etegameno lyawo lyepatudho ngashi sha li wo shi iholola nomoonkundathana dhoshigongi moshinima shika.

Oshinima sho shene ondjamba, kokutya oshinene, nokehe gumwe tu umbu ko eku-ma kusho ka kala inee shi guma, onke naangoka e shi nikitha oluhodhi, ke shi okupewa ombedhi, nenge ngoka e shi nyanyukilwa ke shi okutalika ongo oye e li mondjila thiluthilu.

## Omolwashike kwa tokolwa ngaaka?

Yamwe oye shi tala kutya aagundjuka oya sindana molugodhi lwawo lwomimvo konyala 20, nongerki oya sindika noye ekelehi omatati gayo. Eeno, oshipu nosho opalela efatululo, ihe onkene ngaa inashi lya uuholo komutse.

Yamwe oya tala wo kutya aawiliki yongerki sho ye li pokukukitha eputudho lyoyana, onke ya panuna ko oshinima, opo ye tu thigile uupyakadhi tse mboka tu li metifa lyepatudho. Ngele pe na omuwiliki mongerki gumwe a kwatwa kedhiladhilo lya tya ngeyi, ndishi ando tatu fatulula ngashingeyi shila kutya otse katu na aawiliki yongerki, ihe otu na shila aawiliki yomagumbo? Onkene naashika itatu shi landula oshoka omadhiladhilo ga za meyeme.

Ontokolwa yaagundjuka oyi shi shila oku talelwa muyelele wiinima iyali: a) Eputudho lyaagundjuka momagumbo nomomagondalo otali kala li li ngashi shito, nando ngoka a yono ita falwa we moshinyanga. Okugamena aagundjuka kukehe shono tashi ya etele oshiponga pambepo nopalutu, shika otashi silwa natango oshimpwiyu kaaleli yawo momagumbo, megongalo, nomoshilongo.

b) Kombinga yaagundjuka yo yene mboka ya kala neitaalo lyomompango alike, ya dhiglnina uukadhona wawo nuumati wawo ashike molwashoka oya hala okwoopalela omukalo gwokombanda, sho taa yi mongerki, aniwa, hamolwashoka ya tala okuyona ku-Jesus gwawo, shika ongerki oye shi tala oshiponga shimwe oshinene sha langela aagundjuka momukalo gwokupatudha palupe ndwiyaka. Onke ongerki ya hala oku ya pa ondjila yomukanka gweitaalo lya kola tali ende meithikameno. Eyelitho lyevangeli pa-Luther, olyo okupatudhila omwenyo mohole yevangeli shi vulithe oku gu putudhila muumbanda wompango.

## Aagundjuka yo yene otaa ende momadhiladhilo geni po moshinima shika?

Kandi shiwo ngele yu uvu tuu etumbulo lyomupatudhi sho ta kumagidha aaputudhi ooyakwawo ta ti; "Tu etheleni Kalunga ompito yokugeela hatse tu pita komeho." Ngii-ka to ti: ehe, nani otwa ekelelwa. Aawe, hasho. Osha popiwa kombinga yaaputudhi

Ependa Johanna Tokateya Mumbala a fiya po Kongo. Johanna okwa hovela oshilonga omudo 1967 moshihakulilo shetumo muKongo, ongomuyakulihakuli. Mokati koilonga yaye ihapu moshihakulilo, ependa Johanna okwa hovela yo oshilonga shokuwilika oukadona-ongalo pamwe nomudiakoni Selma Nghifenna. Ova longa pamwe nouidiini fiyo 1968, eshi Selma a nangekwa meyakulo letumo mOvayelege.

Tokateya a twikila noupenda oshilonga shouwiliki meongalo. Oukadonaongalo va li va hokwa unene omuwiliki wawo omolwohole yomuKristus ve i mona muye. Tokateya okwa li e hole oshilonga shetumo, unene a hokwa okukala mokati kOvayelege. Okwa li ha talele po omaongalo pamwe noukadona-ongalo, osho yo okangudu kOvayelege opo va hokolole oshilonga shetumo nexupifo lomwenyo muJesus aeke.

Meme Tokateya a hovela yo ongudu yolwiimbo mokati kovanashilonga vakwao, osho yo mokati kovanyasha. Eti-9. 8. 1970 mongerki yaKongo mwa ningwa elekelo linene lependa Johanna eshi a kaninga oshivilohombolo shaye.

Ongudu yovanashilonga, ovakongindjila, oukadonaongalo nosho yo ovanyasha, ova onkala nova imba nokuholola nokuhambelela Kalunga molweyakulo lameme Johanna. Oshivilo shavo shehombolo ve shi dana eti-6. 9. 1970 pamwe nomuvaleki waye Lamek Jambeinge, mEngela. Vo aveshe otava longo moshihakulilo shaNgela paife.

Fye ovanyasha moshitayingerki shaUkwanya, nomongerki aishie inatu hala okudimbwa ombuto we i kunu mokati ketu, meenhanda moyoongalele naapeshe. Unene eshi we tu shiivifila kutya: eshi hatu kunu, osho hatu ka teya. Omwene ne ku pe eumbo li na elao.

## Omuwiliki wovanyasha I. Mungungu

ya dhimbulukwe kutya oyo aalongi pamwe naKalunga, hayo ayeke muudhigu wawo. Nokombinga yaagundjuka ya dhiladhile muule kutya, eputudho ngashi ndika, tatu vulu oku li luka emanguluko, otali ti shike kutse. Ombimbeli tayi ti: "Iihuna okugwila miikaha yaKalunga omunamwenyo."

Paulus ota ti, ethigathano kehe oli na elalakano (doelwit). Ngiiika aagundjuka yamwe otaa tala kutya momemo gawo kamu na we sha shokulalakanena, kamu na eha lyasha lyokuthigathanena. Aawe, Jesus oko e li nomushigakano gwe. Uuyapuki wuukadhona nowuumati owo oshinima sha simana kombanda yevi nomegulu, kape na ngoka te shi ludhikitha. Omolwashono ongerki otayi galikanene yaa na ezimbuko "Gamena aagundjuka yetu ya kale aayogoki komalutu nokoomwenyo."

Ano ontokolwa yepatudho lyaagundjuka, oyo okugandja kaaputudhi oshimpwiyu oshinene sheputudho shi vule nale, haku tyololoka kowala, ihe kaagundjuka yo yene, osho okutula Jesus mwene a kale oshitsa shopokati methigathano lyawo, shi vulithe sho ya yelelwa kongerki (iipeleki).

**Epato, Ongandjera,** --Kornelia Amunjela naRauna Sheehama otaa ti, yo oya nyanyukwa notaa hambelele Kalunga sho e ya gwanithile euvaneko lyawo ndyoka ya kala nalyo omimvo ndatu. Aanasikola mbaka oya kala nehala enene ya ka talele po epya lyetumo kOmindamba, noye shi gwanithilwa eti-23.10.1970, konyala osikola yawo ayihe pamwe naalongi yawo yatatu. Otaa ti mpeyaka otwa vulu okutalela po ookamba nookoshuis noku-tsaathana omukumo nohapu yaKalunga. Itaa dhimbwa wo eyakulo lyokolutu ye li ningilwa pomahala ngoka ye ga talele po. Kalunga okwa li e tu humbata nawa, osho ya hokolola.



Johanna Mumbala

## OWE SHI DIDILIKA MUKWETU?

Kandi shi, nga pwe ya elunduluko meendelelo ledingonoko ledu, nolomuuliki wotundi. Efimbo lopaife, otali tondoka oixuna. Opo twa li paife momudo wekuwililo, nena ou li nale konima. Paife ohatu lipula ashike osho we tu fiila naasho hatu shi etelwa komudo wetoolo loikuti 1971. Olye mbela ina hala okutoola oikuti? Ai onde lineekela keshe umwe okwa teelela osho te shi toola momudo konima yoshivilo shinene. Ende-ela manga kuyela opo kuha tiwe, fye omu oikuti twa toola nale.

Omunashilonga keshe paife ota diladila, osho e shi longa momudo waya, nota fanekenghe ta twikile momudo mupe. Ovanafikola otava tale eengundu davo, delilongo lodula ya ya, otave li li ominwe noku litwa omukumo kutya, "Ai momudo ou mupe aame ndi shii nghe handi shi ende."

Hai ti, oko tuu mwe shi ama oko? Onde lineekela ohatu ka monafaneni apa na penya ngenge Tate Kalunga eshi hala. Moyoongalele muJanuali naFebuluali omake ohatu lipe ngaho, fye hatu kufa ko mbali. Ame handi ku kutula ngaho noku ku etela efano lOtjimbingwe koiwana ya hangana. Otu li nawa mehangano letu.

Oko tuu to ke ya koyoongalele yetweni? Ongwediva nayo otayi ka ifanwa ngaho. Onhele yopokati.

Alikana ehafo lokuuda owuumbo wOwambo yetu, otali fiminike nge ndi mu kunde onye ootate noomeme ovafimanekwa novanyasha vakwetu, inandi hala okufiya ko onunona ovaholike novalihongi oovakwetu. Omwene ne tu yambekeleni omudo wetoolo loikuti.

**Weni. A. Shilongo.**

## A ya kooiakulu

Kaume, Tate Henok Oskar Haludilu, a xulifa po oweenda waye 1970, a ya kooiakulu, mouhamba waKalunga xe yaaveshe. Nokeongalo linya la fika kefindano. Manga fye, nomufiyekadi meme nodikwa twa fiilwa ekondjo. Tu li meongalo, olo li li mondjila tali kondjo natango. Eshi tu na omaudaneko a kola, nge hatu fiki ko kwinya ohatu ke mu mona. Oko e li ina fya! Inatu fye ni oihodi ongaava tuhe na eteelelo.

Itatu mane okuhokolola tate ou, twa li twe mu tuminwa keongalo Oshigambo, a kale omulongi (meester) omukulunhu moshikolamati mEngela. Efiku lefudiko, mo maendo aNgela a findikilwa mo keembunga dovanhu vahapu, va dja keembinga neeTala kep 8.

## EINDILO KOVAKU-LUNHU

Onye ootatekulu omalenga amushe medu eli letu Owambo, ohandi mu kundu unene nohandi mu indile mu tu kwafe mu yelule oimaliwa yodalate, yo yi ehene komesho. Oi li konima neenghono, eesenda 30 mefiku nadi wedwe. Ohandi mu halele eyambeko laKalunga Tate, mu mone eenghono okuhumbata oshiwana sheni. Tangi unene eshi tamu tu kwafa.

A. L. Shikufa, Swakopmund

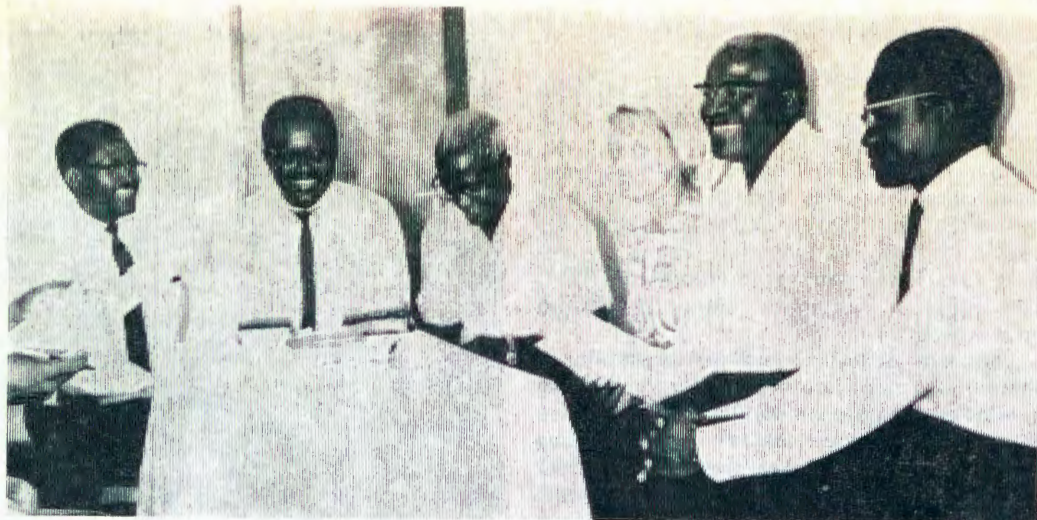
## OVETA TAIKA WANIFWA

Okudja efiku lotete laJanuali 1971, keshe shilumbu ta nangeke ovalaule modolopa, na kale e na ompapila yediminino loveta. Eshi otashi koleke oshitokolifo shoveta ei osho sha yandjelwe, 1951. Ovalongi vomeekombifa nomeehotela ovo unene va kumwa koshinima eshi. Omushamane Piet de Wet, oo e na oshisho shoilonga yovalaula okwa ti kutya, ompapila ei yediminino otai ka yandjwa nenge ovakonakoni voukalinawa va konakona tete oipondoka omo tamu ka nangalwa kovalaula, navali shilumbu nenge ota ka kala e na ovalaule vahapu, edimino laye otali ka dja kovakulunhu vodoolopa. Otaku tiwa kutya oilumbu 5000, fiyo opaapa kai na eempapila edi.

## VA YA KUGERMANY NEENGHAMBE

Ovalumenhu vavali pamwe novakainhu vavo muLesotho ova tokola va ye komafiafano oonyuni aushe kuNdowishiland lokouningninino nova londa eenghambe. Cardon Navysmith, odalele yaEngland naDavid Evans, odalele yaAustralia otava ka londa eenghambe oshinano sheemaila 15.000, noku tauhnuka oilongo .18 yaAfrika naEuropa, fimbo inava fika kuGermany.

Elongekido londjila ei mekwatafano nomuleli woshilongo shaLesotho, omushamane Leabua Jonathan, ovalumenhu av otava ka longifa oukambe waLesotho (Ponies) oludi eli lixupi, la kola hali londo eendudu vo ihava tita ondjala. Otava pitile muKenya tava i muEgipiti fiyo Lebanon, Siria, Irak, Rusland, Poland naCzechoslovakia. Mefiku otava ende ngeno eemaila 25. Ove lideula eehani dihapu okukala efimbo lile peembuda doukambe. Omafiafano oo "Olimpiese Spele" otava ka kala ko 1972.



Okangundu kelongekidho lyOkefe yongerki mOshakati oka li ka gongala lwahugunina omumvogu muDesemba noka ningi omafaneko gako nkene okefi ndjika tayi ka yakula aayenda ngele ezimino olya monika kepangelo. Elalakano lyayo aayenda ya vule okumona iikulya mpoka, omulalo, omuuhalo, sha shokulesha nosho tuu. Esiloshimpwiyu muuyogoki wiikulya nowiinguma owa konakonwa kokangundu, osho wo iilonga yaayakuli nkene tayi ka enda. Okutala omafaneko agehe kape na ehala mOwambo tali ka kala lya fa ndyoka, na ngoka a ka fudha kOkapa ina tya sha natango—Omumbisofi oku li wo mokangundu nkaka, omutiayali mefano okuza kolulyo. Natate Dumeni omuwiliki, omutitatu okuza kolumoho.

kukundathana naye, ihe aantu ya tya ngaka itaa monika, osho Amaambo a ti mwene.

Omukalo gwokunyola Ombimbeli pamunyolelo gwoshinanena, ngoka gwa kambadhaliwa nagwo tango kutate Gabriel Taapopi, inagu tompoka nando, ngiika naashika tate Eino ota ka tala nkene te shi ende. Ihe ngele shi na okweendela pamwe nelundululo lyo lyene, nena oshi na okupula ethimbo lyoomvula odhindji, nando oshinima sho shene oshe endeleda, osho tate Amaambo a dhiladhila. Omulundululo gwOmbimbeli Amaambo ota longo pamwe nokangundu kelundululo lyOmbimbeli moka mu na wo Aakatolika. Otatu mu halele elago moshilonga she oshidhigu shokutanekela aantu evangeli polweela. Oye oku na omimvo 35, a hokana noku na aanona yane.

## EFIMANO LOMUNHU

Eti-10.12.1970, ola li efiku lokudimbulukwa eyandjo nepameko loveta ei tai popile oufemba womunhu keshe na kale olyelye, eshi ya yandjelwe koiwana ya hangana konima yeedula 22. Keengerki adishe di li oinhibu mongongahangano yovakwaLuther okwa tuminwa omukanda tau dimbulukifa oshinima eshi. Omukanda ou otau indile ongerki keshe ngeno i konakone oitokolifo oyo i na sha nomunhu ngashi oshiti-2 okukalamwe nyo kwomunhu, emanguluko neameno laye, oshiti-9 etulo leenghwate modolongo noku pongekwa kwavo, oshiti-18 emanguluko lomadiladilo omunhu nolelongeloitavelo laye oshiti-26 outeku wovanhu.

Eengerki adishe nadi tale momidingonoko dado, do di tale eshi tashi keelele ovanhu ombili nouyuuki, nadi tunge eshikulafano tali kongo onghalelo iwa movanhu va mwenyekwe vo va mbilipalekwe moufikepamwe wavo, osho okangundu koufemba moshikandjo eshi ka indila.

Omukanda ou owa kumaida neenghono kutya eengerki dopaife nadi shi shiive kutya odi li mefimbo inaadi kala mo shito, nde nadi konakone shili nawa eendjila dokukwafa ovanhu, ovakainhu nounona naaveshe ovo kave na vali etimhaumbwile lasha momwenyo. Omukanda ou owa leshwa komupresidende mupe wongongahangano yovakwaLuther Prof. Mikko Juva nahamushanga waye.

paInformation



Omusitagongalo E. Amaambo

## A GALUKILE ISHEWE KOSHILONGO

Omusitagongalo Eino Amaambo ngoka a kala omvula yinwe kuEngland okwiilonga oowino dhelundululo lyombimbeli okwa galukile ishewe kegumbo. Tate Amaambo okwiilongo nkwiya elaka lyOshiheberi moka Ombimbeli oya li ya nyolwa, (Etestamendi Ekulu), nongashingeyi oku na etegameno a tameke oshilonga shokulundulula Ombimbeli ayihe yOshindonga, shimpa tu a pewa o lweedhe nge a kundwa kEpangelongerki.

"Nani kashi kumitha ngele tatu mono aantu itaa lesha Ombimbeli, oshoka omuntu ku uvite ko shili, ite dhiladhila ando mboka ye na onyalo, osho tate Amaambo a hokolola sho a ndhindhilike uudhigu welaka li li mOmbimbeli ndjoka tayi longithwa ngashingeyi. Omusita Amaambo ota tala oshilonga she otashi ka enda nawa nge ta mono omuntu e shi omalaka gOmbimbeli omakulu, Oshiheberi nOshigreka, ye e shi wo elaka lyOshiwambo nawa ye e na ethimbo aluhe lyo-

## HELSINKI

Martti Simojoki, omumbisofi omunene gwo-ngerki onkwaevangeli paLuther muSoomi, okwa taamba ombilive ya zi kokakomisi kiinima yonkalathano mongerki, ndjoka tayi pula notayi kongo emanguluko lya gwana miilyo yongerki. Omolwiilyo mbyoka yi thiike poomiliyona 4.3, ombilive oya indile ku lungamenwe oshiponga shi li aluhe popopi nomagongalo shokutala yalwe ye li pevi. Ombilive oya ti natango omuthika gwoonkondo moongerki odhindji odhi li unene oshigwana pombanda, nuropolitika wawo nenge uuthemba wawo wokutya sha ou li natango konima, onkene ombilive ndjika otayi indile elongelokumwe moma-tokolo pamawi giilyo yongerki osho wo ye endeke shimwe nenge pamwe mokudhila-dhila iinima iipe tayi holoka po.

## Pretoria

Cyril Axelrod, gwoomvula 28, okwa yapu-lilwa oshilonga shuusaseri pehulilo lyomu-mvo gwa yi muJohannesburg. Axelrod oye omusaseri gwotango ombolo a yapulilwa oshilonga shoka muAfrika alihe, noye omu-titatu muuyuni auhe. Omvatele yopokati kOmuyuda nOmurusia Axelrod okwa va-lwa ombolo. Mosikola yoombolo okwe yi tameke e na omimvo ndatu adhike. Sho a gwanitha omimvo 9 okwiilongo embo lyoveta "Talmud" mOshiheberi mosikola yoombolo yAayuda. Eitaalo lyopakatolika okwe li taamba 1964, muS.A. moka a kwa-twa kehalo enene okuninga omusaseri. Om-pito ndjika kuye kaya li ompu, ihe koni-ma okwe yi mono nokwa ka tsikila muA-merika nkoka a kala pamwe naanasikola ooyakwawo 6,000. Ehalo lye enene olya li ndyoka a kwathe oombolo ooyakwa-wo pamwenyo. Mokugalukila kuS.A. o- kwa kala ishewe mosikola yaSt. John Vianney moka konima a yapulilwa o- shilonga shuusaseri komumbisofi E. Green. Axelrod ota ka yakula oombolo dhomu-Suid-Afrika alihe.

## London

Omuyevangeliste gwaAmerika Dr. Billy Graham, kwa ligolele okutaambwa kwomu-mbisofi gwaAnglikan, Kanterbury, muSuid-Afrika, Dr. Michael Ramsey. Okwe mu tala ongaJohannes Omushashi. Omumbisofi Ram-sey okwa zile muEngland, nokwa mene-kele iiwike itatu muS.A. tu uvithile aantu omayovi, aatiligane naaludhe nokukunda-thana nayo.

Shika osha tsu omuyevangeliste Graham omukumo ngoka a yulukwa nale okuya ko, ihe ina pitikwa sho inaa hala okuuvitha pa-kakombo noludhi. Ramsey oye omutetekeli ngashi Johannes Omushashi, nondjila oyi li pokweeguluka, osho a ti.

Omumbisofi Ramsey ngoka a kundathana wo najohannes Vorster, ominister yotango, okwa shuna noluhodhi olunene mokutala onkalo yomaludhi ogendji muS.A. Oye ina panda omukalo gwomavigumbo gaaludhe, ye ina zimina England li landithe iikondji-tho kuS.A., osho wo ina zimina etokolo lyongongahangano yoongerki okukwatha aa-kondjelimanguluko niimaliwa.

**Efano kombanda yoshifo ola dja mO-mbelewa yoinyolwa yopakriste muPort Elizabeth. Omunaudu ta hakulwa.**

**Otandi tumu omakundilo gandje kune amuhe hamu yakula miipangelo, aapangi, aayevangeli naayakuli amuhe**

**"Ohapu okwa ningi onyama," Joh.1:12.**

Elandulathano lyetu lyopakriste oyo eyapuki oshoka muKristus Kalunga ye mwene okwe ya muuntu nokwa ningi omuntu. "Ohapu okwa ningi onyama." Muuntu nomaa-ntu omo oshili yehupitho lyaKalunga ye endeke okuya mehistolli. Omalandulathano galwe oga nyengwa notaga nyengwa noga ndopa nokuli okugandja uuthemba nesimano lyo-muntu. Eitaalo lyomuJesus mOkrisimesa otali uvitha uuthemba nemanguluko lyomuntu nokutya omuntu oku na ondilo oshoka Kalunga okwe ya muye. Oshiningwanima shOkris-mesa osha ningwa omolwokukalamwenyo kwomuntu. Elardulathano lyopakriste oyo o- kugamena nokuyelutha omuntu mukehe shimwe tashi mu tungu, tashi mu aludha no tashi mu kokeke. Tse otu na kulalakanena opo omuntu nokombanda nomeni a mangu-luke ye a aluke. Nguka ogwo omusinda gwOkrisimesa yashili tandi mu halele.

Gweni, **Festus Ashipala**  
**Onandjokwe Lutheran Hospital**

## Nuujoma muLondon

Oshoongalele shoifo muLondon osha pwill- kina Sem Nuujoma, omuwiliki waSwapo, muDesemba eshi e shi hepaululila omukalo weembulu wokukonga eetelolisa mOwambo. Oshifo "The Windhoek Advertiser" osha ti kutya, Sem okwa mona omukanda wa dja kuumwe konhunhu yaRobben oko ku na eenghwate daS.W.A. Namibia, ngashi la lukwa. Omukanda ou owa pitifwa pau- finongo. Sem okwa hokolola kutya ovapo- lifi mOwambo ova hepeka ovanhu, vamwe va dipawa eshi tava kongo Israel lyambo (Patrieka) Keshe oo ta monika e mu fa ile a udika e na ekwatafano nalsrael okwa li e na okuiwa naye, Sem ta ti. Eshi vati osha ningwa unene mOngandjera nomUu- kwambi.

Oshifo sha tongwa pombada osha ti ku- tya omahepu aeshe aa kae na nande e- kanghameno lasha, shapu ongenge ashike va uda eshi ovapolifi kwa li tava keelele okulandifa omangandja nombelela moluka- nda laKatutura, mOvenduka. Hano ovapo- lifi vaMuni, ile ovapolifi eshi va ile mofiko- la yaShidebula, yOvakatolika, omo ovana- fikola va ningile oshibofa, nde ovanafikola vavali okwa li ngo shili hanga va yehama. Aishe ei oya ningwa 1970, oshifo "The Windhoek Advertiser" sha tonga.

## Omusita gwotango a si

Omusamane Gideon litula okwa mana oon- djenda dhe eti-2.1.1971 mOndonga. Kuku Gideon okwa li omulongi mOseminari ya- Niipa, osikola yuusita sho ya tameke Gideon oyo ya yi mo, nokwa yapulilwa oshilonga shuusitagongalo 1925, ano oye gumwe gwa- sita yotangotango. Okwa longo omasiku omafupi kuuninginino, opo ihe okwa lo- ngo mOnayena, nOnyaanya. Sho a pundu- ka okwa itedhulula nokwa kala omukwane- gongalo gowala. Okwa kwatwa kuunkundi ethimbo ele. Manga inaa mana oondjenda okwa gandja omakundo ge gahugunina kookuume ke, unene kuku Sakeus liuhwa ngoka a yapulwa pamwe naye. Okwa ti: Kuume keni a shuna mevi ngashi a zile mo. Konima yeyakulo lyUulalelo Uuyapuki, o- kwa kotha po ihe. Okwa fa a valwa 1875.

**"OSHOKA OMUKRISTE KEHE**  
Shika nando osho ontokolwa yimwe yoshi- gongi shaapapudhuki shono sha gongalelele mOngwediva eti-13-15.11.1970, notayi ka holoka pamwe noontokolwa oonkwawo, on- da hala wo shi tseyike nokaaleshi ayehe yOmukwetu, oshoka aakriste ayehe oyo aa- papudhuki mokukalamwenyo kwawo, kutya: Omolwoluteni lwopambepo noomwenyo dhaashitwa yaKalunga dha sa enota, aaki- ntu itaa vulu we moondjokana, aalumentu itaa gwanenwa we komukiintu gumwe, e- shunomonima lyaapapudhuki lya vuka, olu-

**Hanover, Germany --** Dr. Kurt Schmidt- Clausen, hamushanga mukulu wongongaha- ngano yovakwaLuther, okwa nangekwa o- mafiku aa a ninge omupashukilishitaingerki shaa Osnabrueck, komumbishofi Hanns Lilje. Moshitai eshi muHanover eengerki eenghwaevangeli odi li mo dihapu. Omu- shamane Clausen oku na paife omido 50, nde ota shikula moilonga ei omufitaongalo Kurt Degener, oo a dimbuka paife moilo- nga yomido 14 komapepe aye.

Oshitaingerki eshi oshi na oitukulwa i- nene 6, omaongalo konyala 100 taa pashu- kilwa kovafitaongalo 125 lwaapo. Omusha- mane Clausen okwa kala yo omupresidende weengerki da lumbakana eenghwaevangeli mu- Ndowishilanda, nde oku li yo oshilyo mongudumhitifimhango yongongahangano yo- vakwaLuther. Ndowishilanda alishe oli na o- vakwaLuther ve dule eemiliona 10, novafi- ta 4,670. Ongerki i dule adishe omo oya- Saxon i na oinhibu eemiliona 3.4, nova- viauki mongerki 1,200.

## pa Information

**New York -** MuAmerika eengerki eenghwaevangeli paLuther oda ha- la okukatuka onghatu oyo tai lon- gifwa konyala keengerki adishe, okulongifa ovambishofi, ponhele ya- presidende. Okakomishi kovalume- nhu 5, oka hoololwa ka konakone oshinima eshi ko ka etele oshoonga- lelengerki omafaneko. Nale muA- merika meengerki daye inamu longi- fwa edina olo omumbishofi, pamwe moubada eshi e na okukala mo- mufika oo fiyo keyo laye. Onghe ohava longifa ashike presidende ou ta dulu okukanifa onhele oyo ko- nima yefimbo lonhumba, ile a hoololululwe ngenge okwa pandika.

## OMUPAPUDHUKI.

hepo lwomapya gEtuom mongerki yetu, aa- vu miipangelo nomomagumbo, oshilonga shuudiakoni shi endekele, nohole yopaKalun- ga ndjoka twa kanitha:

Onke naku ningwe omagalikano nomaga- likaneno momagumbo gaaidhiliki naapapu- dhuki Etitano kehe nOsoondaha, go gaa i- mbwe nendo kosha. Egalikano tali egulula egulu. Ye mwene ota ti:

"Indileni nde tamu pewa."

Omukweni mekondjo,

**Rakel Heita, Nakayale**

# OLUFO LI LI KO OLOYE, PAIFE OLUFO OLAYE

**A ya kooiakulu**, odha za kep. 6. mbinga, nokOndonga. Osho osha hokolo-  
lwa nale momaendo kovafita, nokookau-  
me kaye. Nomoshuumbo evangeli la he-  
kelekifa Ovalilanghali aveshe.

Otu na onghedi ei moilongo yetu, omu-  
nenenhu nge a fi, ovalilanghali nge tave  
uya keenghali, ohava etelele omongwa, o-  
kufinga eehove odo tadi tomwa meefya.  
Meefya edi daHenok ova etelela mo eva-  
ngeli laKristus Jesus, li kale ouyelele mee-  
mwenyo daava, tava lovelele eulu neemwe-  
nyo davo, da dengwa nai koluhodi. O-  
mwa ninga nawa, eshi mwa ulika Kristus  
meefya edi. "Tala odjona yaKalunga oyo  
tai humbata po omatimba oonyuni." Va-  
mwe va ulika Kristus neyakulo lolutu. U-  
mwe mwaava oStefanus Sakaria Hamutenya  
ou a longifa oshihauto shaye pefimbo lee-  
fya. Pokati (kOshuumbo) kEngela nOshaka-  
ti molwomodimba wanakufya. Ovahona  
vokila moshihakulilo mOshakati, inava ya-  
ndja diva omudimba omolwomakonakono.  
Onghe a yakulifa ohole yaye tai fuluka. Na  
a dimbwa nokuli Ps.102:5.

Kaume H. Haludilu oye omulongi wange  
mofikolamati. Manga nda li mo, onda li  
nda hongololwa kounyuni. Tau ti: Mofiko-  
la oto hepele mo. Tala mUnion omu na  
onhele imwe, omo mu na ofikola tai ho-  
ngo okushinga oihauto. Oyo ofikolalela,  
inai fa oyo yeni tai hongo oimbaba, noi-  
nda. Nge owe i xulifa oto ka futwa shike?  
Shangela kOndangwa.

Onda shangela omuhona kOndangwa (aan-  
soek) xuuninwa, onda ka lekeia omulongi  
H. Haludilu. Ndi na etokolo la kola, ndi  
fiye po ofikola ei. Ame ndi ye kofikola  
yoihauto kUnion. Enyamukulo laye ola ti:  
Oshike she kweetele mofikola ei?

Mofikola onda etwa mo koinima ivali.  
Shotete onda hala okuudifilwa ondjila ya-  
Kalunga. Oshitivali okuudifila ovapaani e-  
vangeli.

Ngenge wa shiiva nee ondjila yaKalunga  
oyo wa li u he i shi onawa. Oshitivali e-  
shi wa li u na ehalo okuudifila ovapaani?  
Ondi shi shi paife ino udifila ovapaani ma-  
nga. Eshi owa li u na oku shi ninga nge  
wa piti mofikola ile hasho?

"Heeno osho."

"Paife onda itavela inda hano kaume. Nde  
manga ino ya onawa, u lombwele Kalunga  
e uye a ka udifile ovapaani ponhele yoye.  
Ota nyengwa okulongifa umwe ponhele  
yoye. Omunhu keshe ota longifwa ponhele  
yaye. Ove owa li wa pewa onhele yoye,  
okudja mofikola u ka udifile ovapaani vo  
moshiwana shoye.

Onda tala, Kalunga a nyamukula nge. O-  
nda kwatwa noku li kolukaka netilo linene.  
Nda fa nda kanifa olupe laHenok ondi wete  
olupe lOmufita omukuiunhu, ta ifana nge  
moshilonga shaye. Pefimbo tuu olo onda du-  
lika kemoniko eli. Nonde li denga poshi.  
Omwene a longife nge. Na Henok ailikane-  
na nge e kwete nge momaoko, ta shi sha  
omahodi momesho aye. Alushe hai dimbu-  
luka onhele ei, i li mEngela. Opo pa li pa-  
waana oku tuningila eenduda nhatu imwe o-  
yOmwene wange oya H. Haludilu, noyange.  
Ndi kale ngahelipi ita ndi ifana Henok Kau-  
metate.

David meefya dajonatan kaume kaye ta  
ti: Efimamo loye, ove Israel la dipaelwa  
keemhunda doye, eefule ova fila ko ngaheli-  
lipi? Kaume kaMartin Luther okwa uda kau-

Kalunga na hambelwe ouwanghenda waye eshi e tu pa omudo ou we-  
kuwililo notwa talifwa oilonganghono yaye yohole. Momudo tuu ou mEno-  
ngelo lovayakuliongalo omwa kala, kakele keengudu odo domudo aushe  
di li nhatu, oyoongalele **ixupi** i li 7, muyo omwa kala ovanhu 171.  
Ouhapu mokwoongala okudja 11 fiyo opovanhu 42 moshoongalele keshe.  
Opa li yo oshoongalele osho sha shiva, ndele oovene vasho inava holo-  
ka mo. Vamwe eshivo ihave li udu ohava ka pula eshi efimbo la pita  
nale.

Otashi ka kala sha wapalela omushivwa keshe ngenge ta didilike efiku  
leifano laye koshoongalele shaye, opo aha ka umbe ka tuka po nale.

Ngenge Tate Kalunga te tu pe omudo 1971 pauyadi wonghenda yaye,  
mEnongelo lovayakuliongalo otamu ka kala **eengudu** noyoongalele  
i x u p i. Koneka hano nawa efimbo leifano loye nEnongelo otali ku ta-  
mbula nombili eshi to holoka mo, ongho ole ku teelela nomwenyo aushe  
paifano loye. **ILA NOMAILIKANENO! KENGELA.**

**EENGUDU** odo edi:

- I. 2.2.1971 Ovaevangeliste otava twikile odula onhivali.
- II. --,-- Ovamatimupanda otava twikile ehongokwafo lavo.
- III. --,-- Otaku tambulwa ongudu IPE yovatekuliumbo, ovamati nou-  
kadona. Moukadona otamu ka dja ongudu youdiakoni 1972.

**OYOONGALELE IXUPI** oyo ei:

- 4-7.2.1971 Oshoongalele shovawiliki vovanyasha vomOukwanyama.
- 11-14.2.1971 oshovawiliki "vahakaana" hamukulunhu" vaUkwanyama.
- 1-18.3.1971 oshovawiliki veengudumbibeli vomOukwanyama osho yo  
vomomaongalo aa: Onayena, Onyaanya, Oshaango nOnta-  
nanga.
- 23-26.3.1971 oshovanamikunda vomOukwanyama.
- 14-29.4.1971 oshovawiliki veengudumbibeli vaUninginino nOvandonganga o-  
vo va xupile ko.
- 29.6-28.7.71 oshoukadona shokukonakona Ombibeli.
- 3-26.8.71 oshovalumenhu shokukonakona Ombibeli.
- 24-26.9.71 oshovatekuliumbo vakulu.
- 27.9-1.10.71 oshovahongi veefikola doshiwana, ovakainhu.
- 12-28.10.71 oshovakulukadi vovaevangeliste.

Oshoongalele keshe otashi hovele **noxungi** yefiku olo lasho **lotete**.  
O f u t o omolwoikulya eesende omulongo nanhano (15c) **mefiku**.  
komunashoongalele shixupi keshe.

"Ameka omwenyo wange komahongelo oye, opo uha ame kouhalu  
weliko" Ps. 119:36.

Medina lEnongelo lovayakuliongalo: **Josia Mufeti**

me kaye Martin a fya. Okwe mu lila ta ti;  
Ngeno okwa kalele po eedula 27. Na etu  
shangele omambo na tangwee! Ovakriste va  
lila Henok, a li a tula eehombo davo, dili  
da nyonauka.

A longifwa mEpangelo lOshilongo. Okwa  
kala pokati kovatilyane novalaule. Ovatiya-  
ne novalaule ova tukulwa keputuko. Epu-  
tuko ola fiyafana po, kali li omufika umwe  
Kaumetate a li a putuka momufika keshe  
weengudu edi mbali. Okwa li a shiiva oku  
findaeka omufika keshe mexumokomesho  
lao nokupopila. Onghe ohatu nyengwa  
oku mu dimbwa. Ohatu mu dimbwa nge  
twa pewa omunhu e mu fa payakulo laye.

Omufiyekadi meme, kOukwanyama ka-  
mwiileko mwa eta oipindi (Ondado) ndele  
ne mwa li mwa pewa eongamukonda oku-  
longa oshiwana shetu Ovakwanyama. Ova-  
kwanyama ova katuka onghatu. Otwe ku ta-  
la ove ina yoshiwana shetu. Oshiwana iha  
shi kala shina xe aeke. Nge Henok, otate  
mOukwanyama, nena ove omeme tuu naa-  
na. Oshilongo sheni sha eta oiimati ihapu.

**Malakia Hauuanga**

## O M U K W E T U

Oshifo shOngerki onkwaevangeli paLuther  
yomOwambokavango  
Die Nuusblad van die Evangeliese Lutherse  
Ovambokavangokerk  
Oha zi mOniipa,  
Omukuluntu gwoshifo/Hoofredakteur Om-  
mbisofi Dr. Leonard Auala,  
Amushanga/redakteur Sebulon Ekandjo  
Ondando komumvo mOwambo 70c kUushimba  
noKavango 90c  
Kombanda yomafuta R1. 30.  
Oondando nomambestelo naga tumwe  
kOmukwetu,  
Oniipa, P/B. 2015, Ondangwa, S. W. A.  
Oshinyolwa shuule  
wondeimi 1 otashi futilwa R1.00  
oondelmi 2 --" --" R1.90  
oondelmi 3 --" --" R2.70  
oondelmi 4 --" --" R3.40  
oondelmi 5 --" --" R5.00  
Oto vulu okutuma efano lyaashoka wa hala  
shi tseyithwe nomatumbulo wo gasha ngele  
ope na.

The Finnish Mission Press Oniipa  
P/B 2015, Ondangwa, S. W. A.